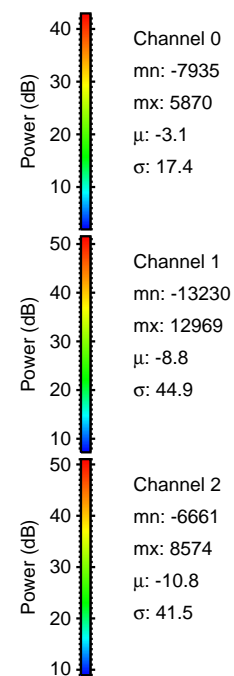
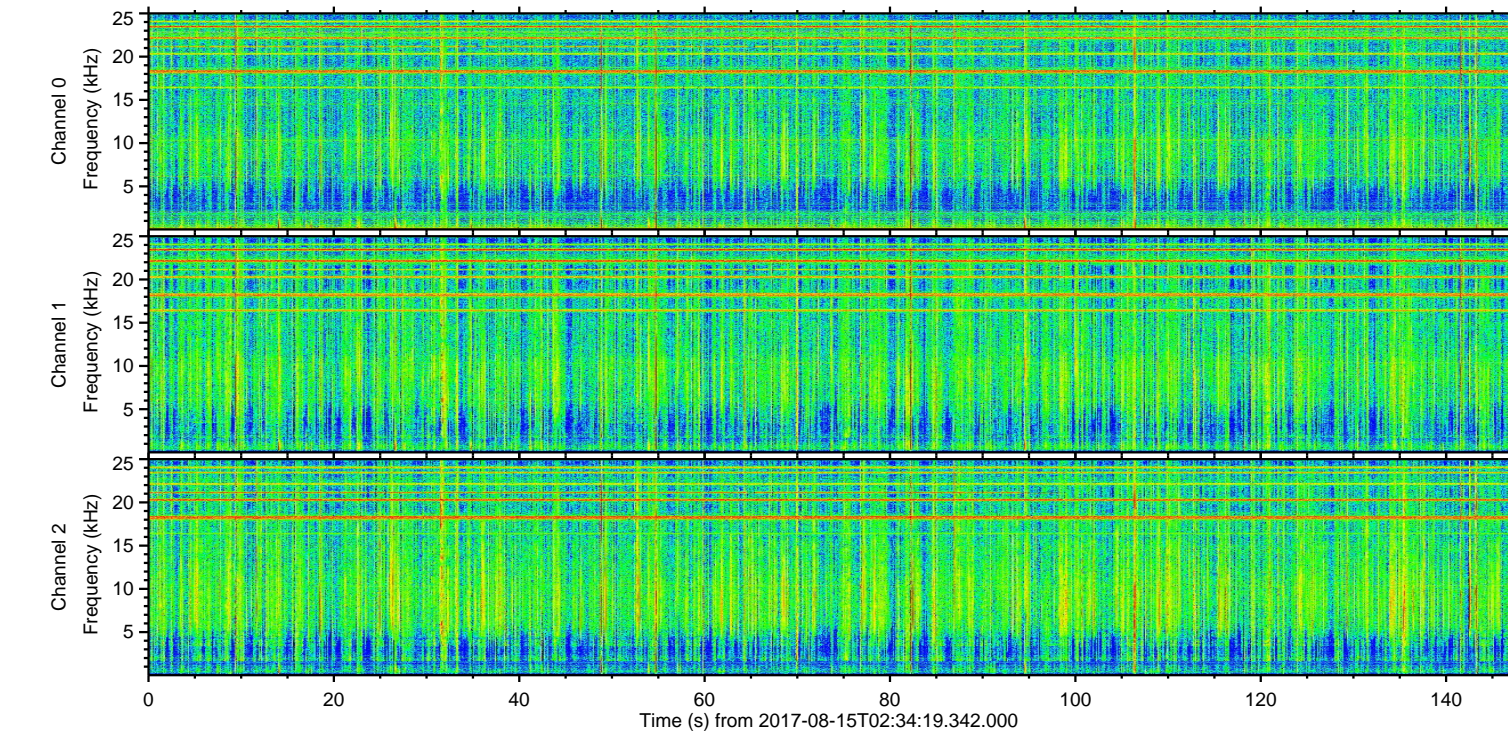
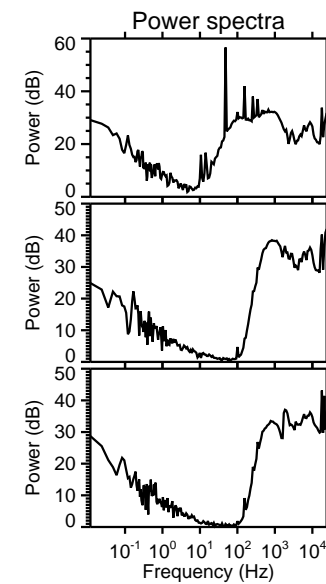
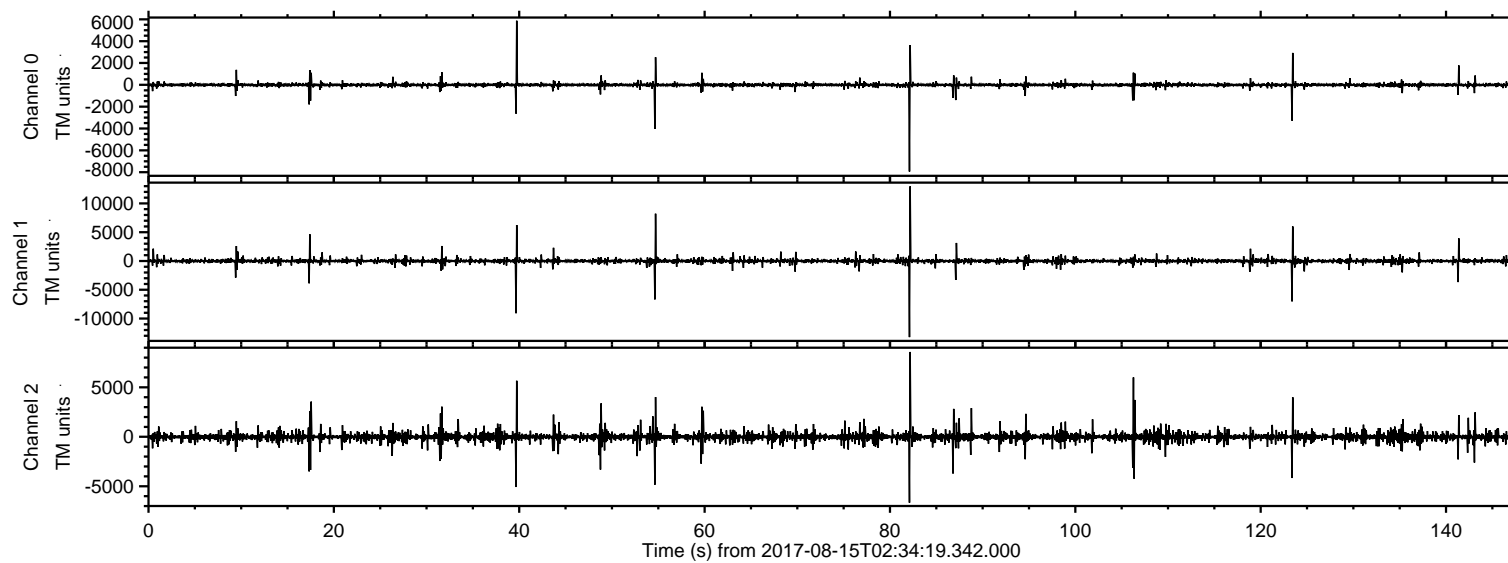
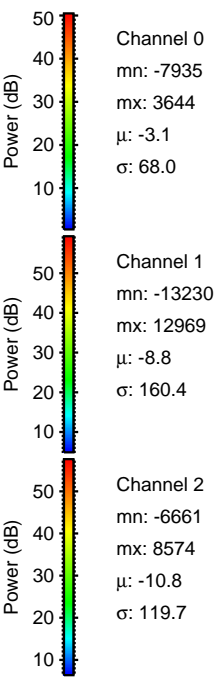
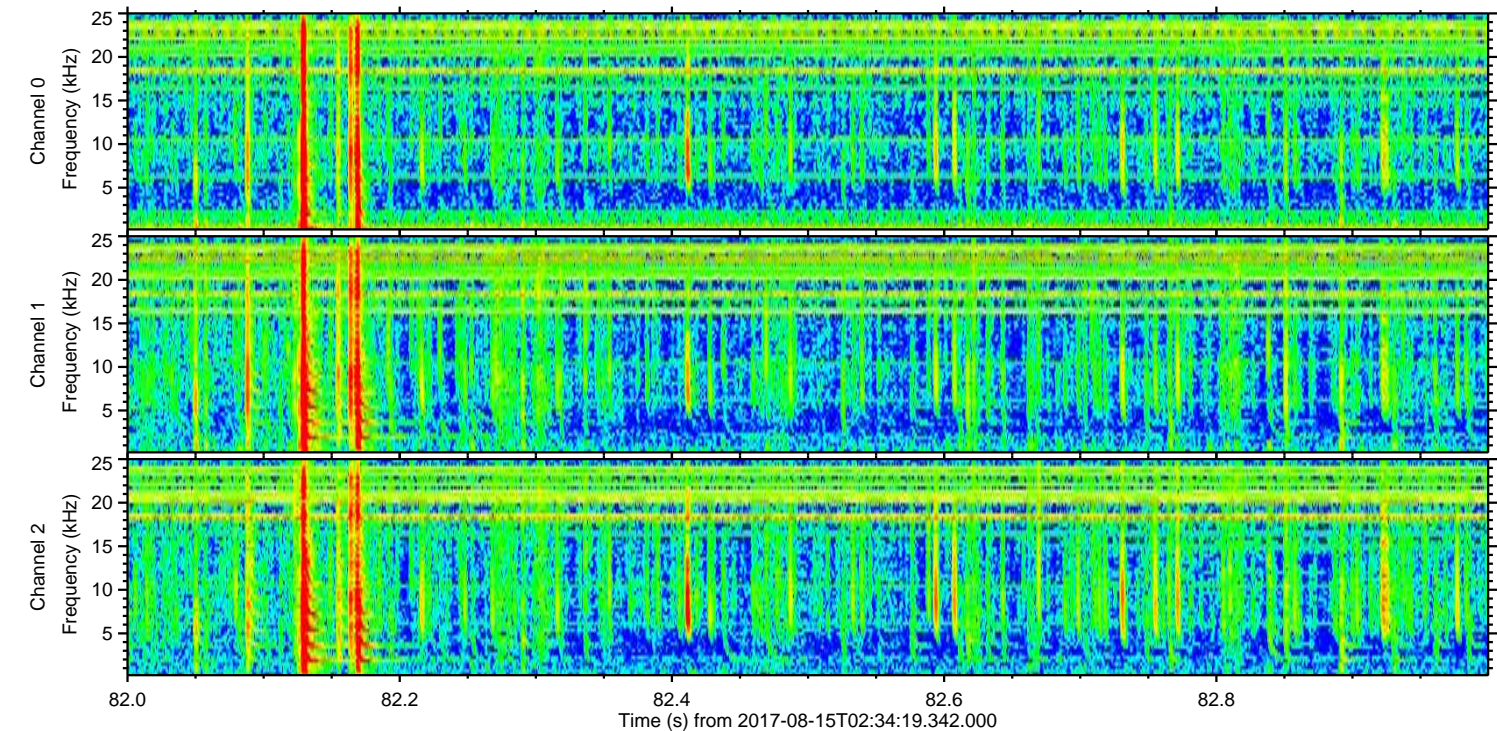
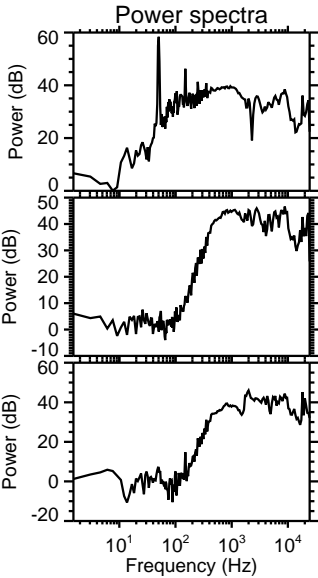
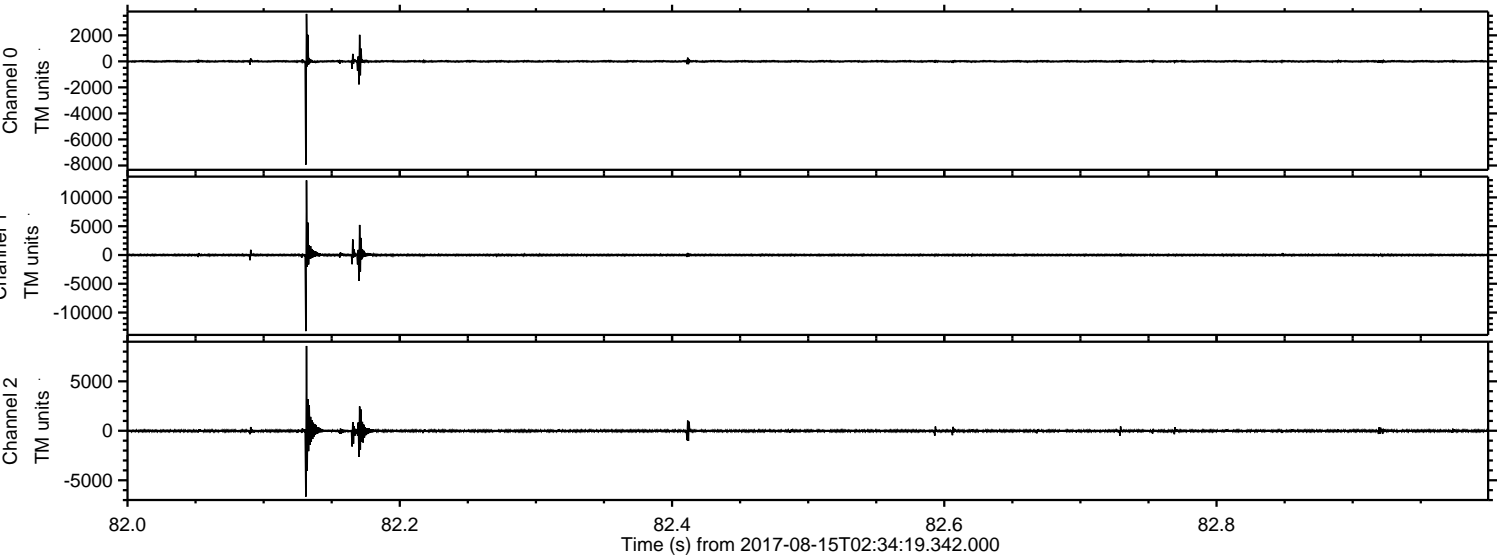


ELMAVAN 3D WAVEFORMS (Measured data sampled at 50 kHz) 51000 packets of 144 samples from 2017-08-15T02:34:19.342.000.

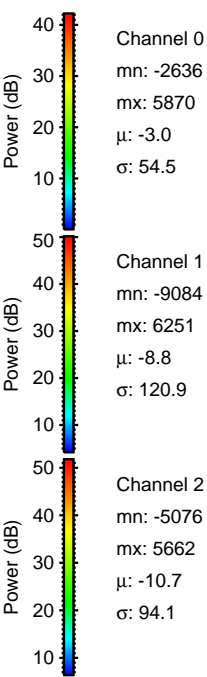
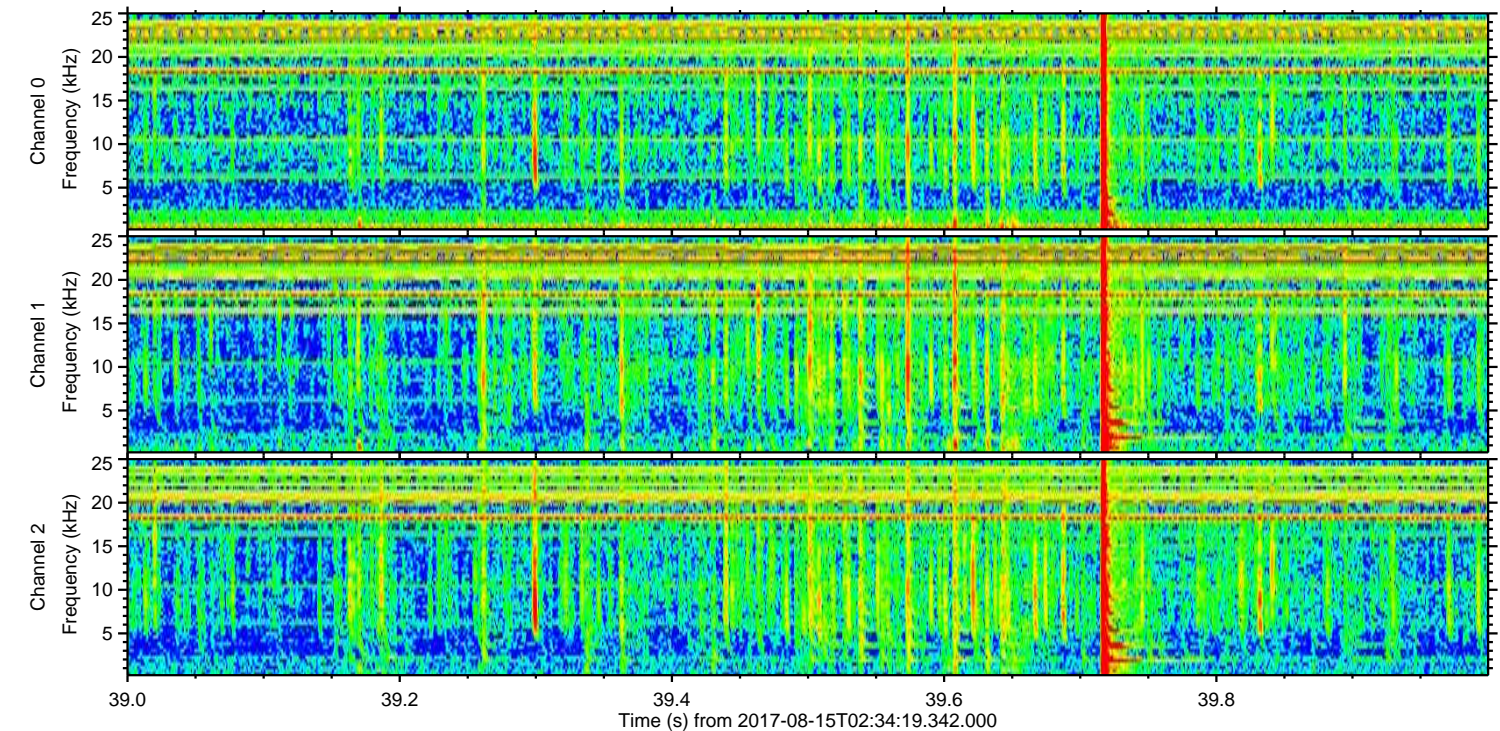
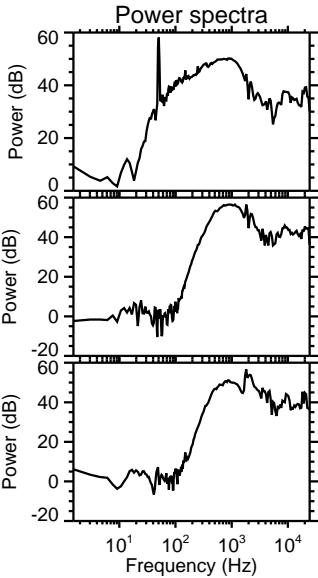
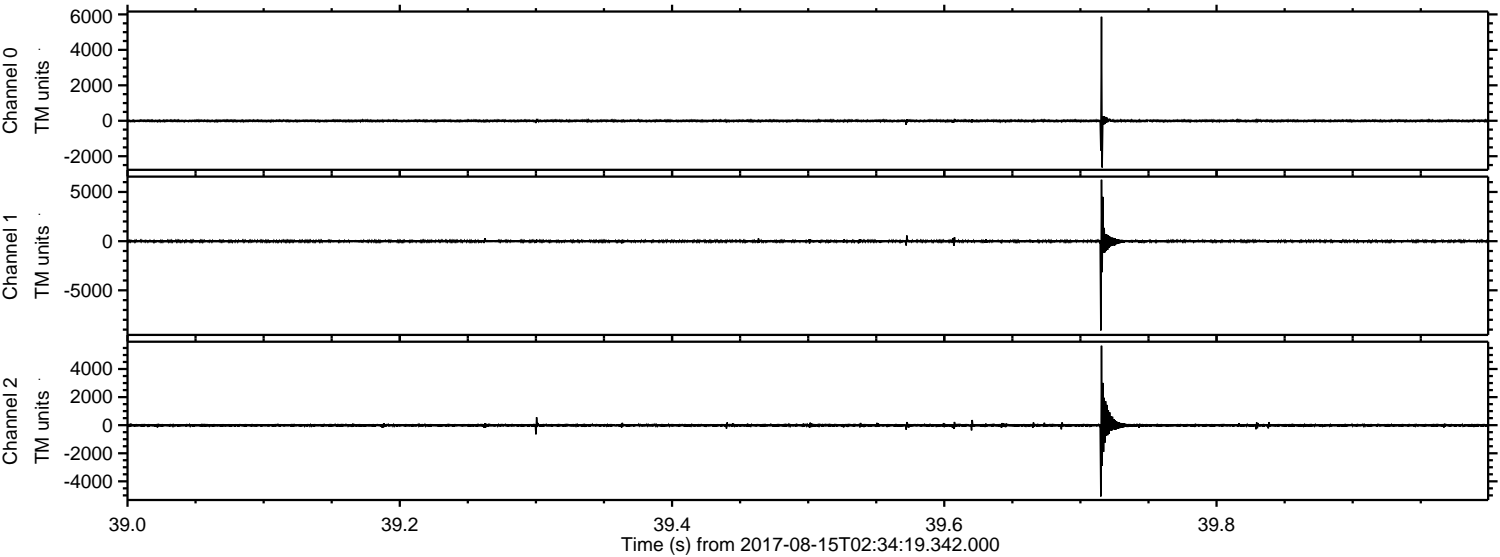
Processed Tue Aug 15 04:41:52 2017 by ELM ver.2012-10-06 from 001__elm20170815_023418__dat00.bin



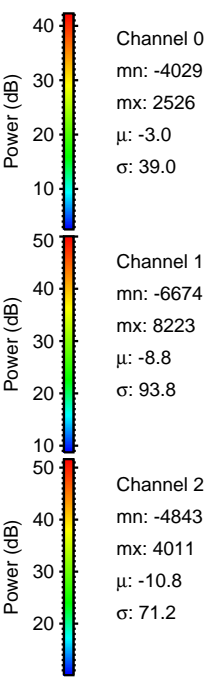
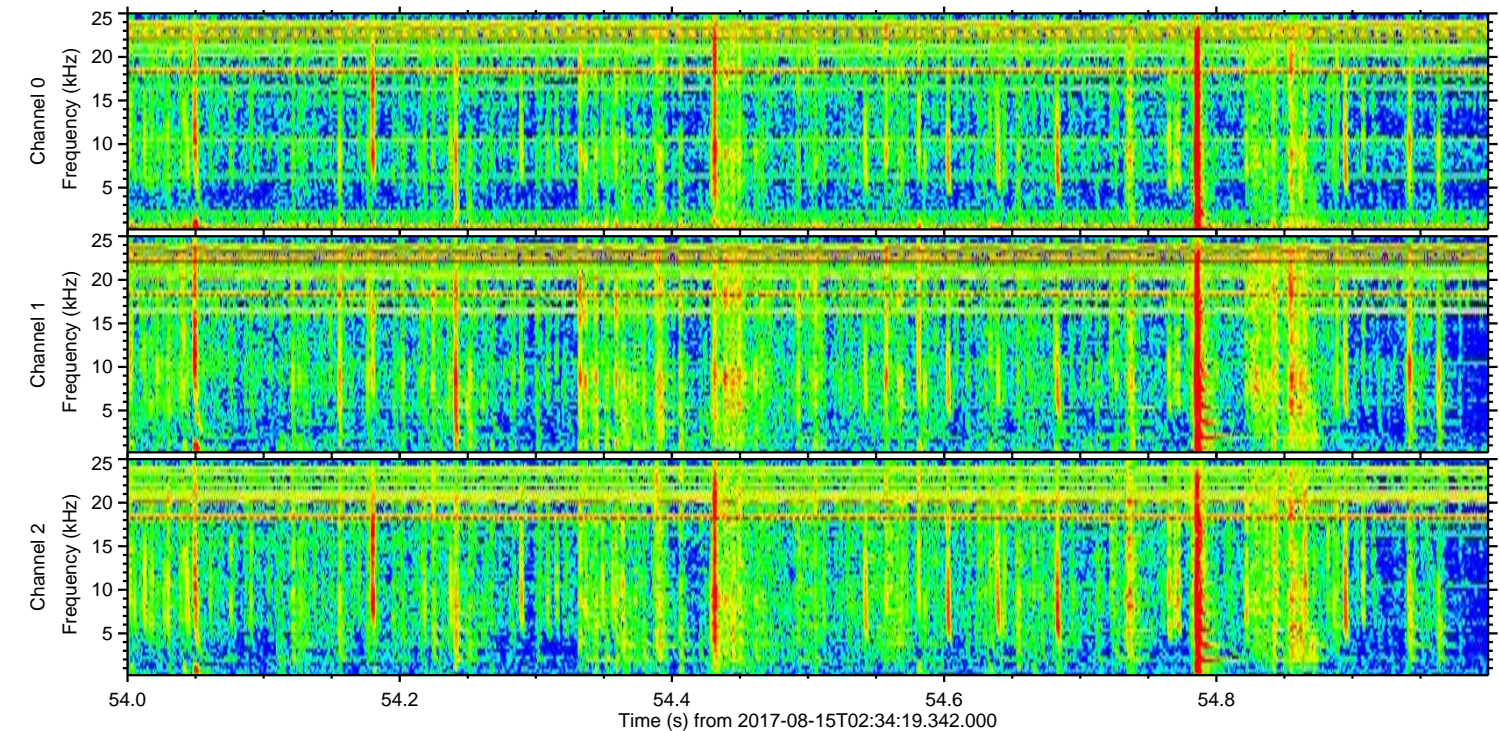
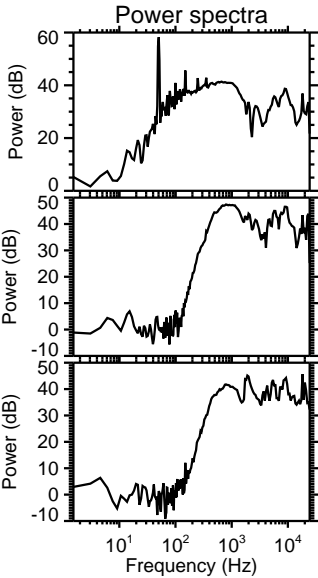
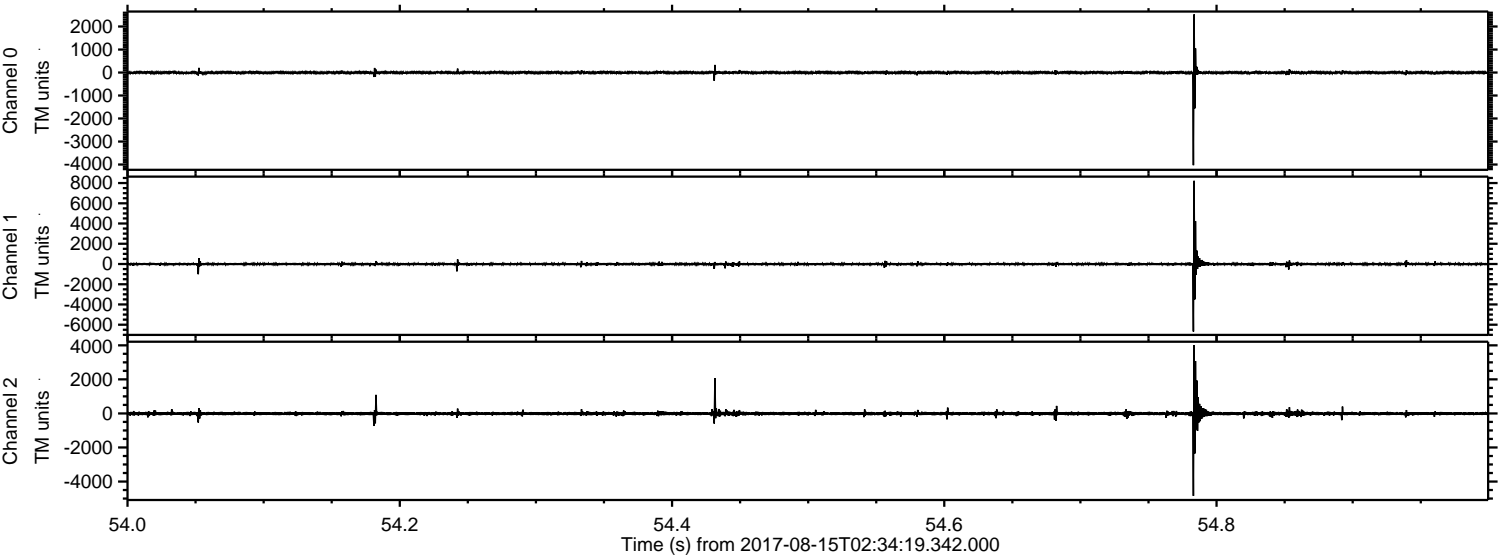
Processed Tue Aug 15 04:41:58 2017 by ELM ver.2012-10-06 from 001__elm20170815_023418__dat00.bin



Processed Tue Aug 15 04:41:59 2017 by ELM ver.2012-10-06 from 001__elm20170815_023418__dat00.bin

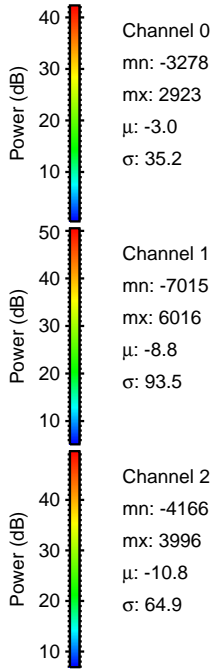
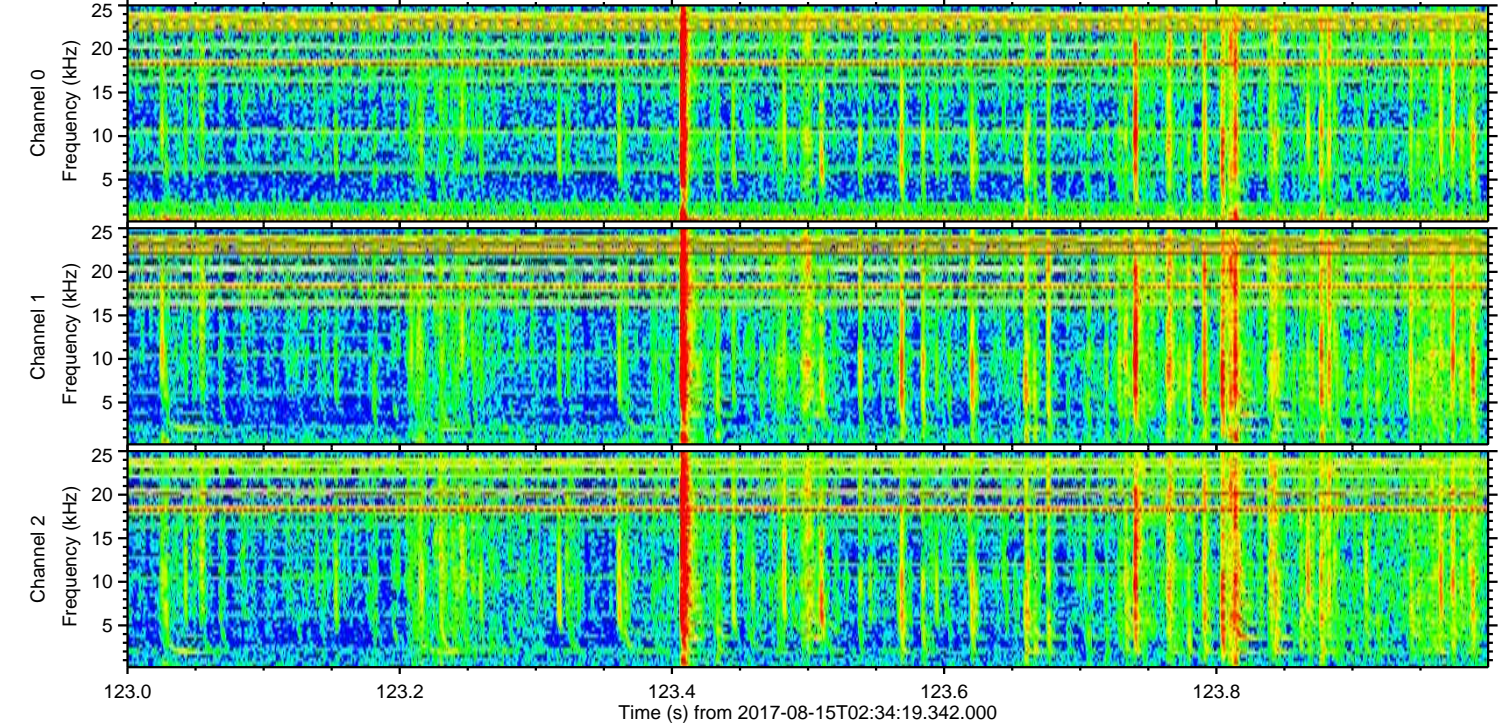
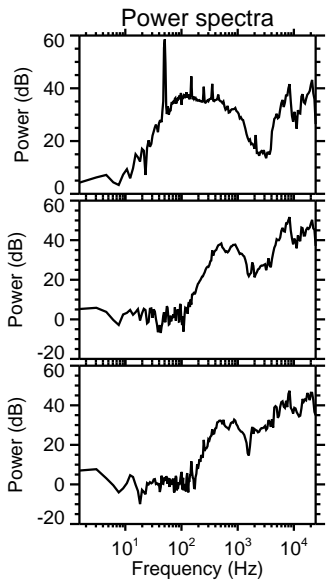
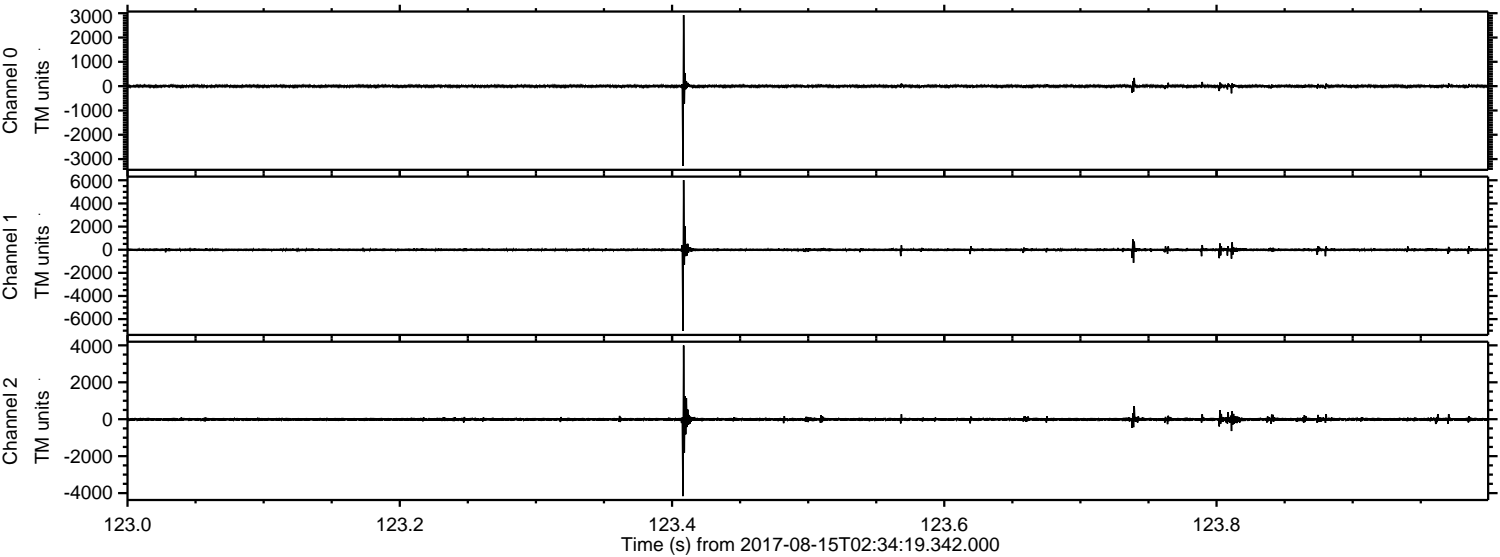


Processed Tue Aug 15 04:41:59 2017 by ELM ver.2012-10-06 from 001__elm20170815_023418__dat00.bin



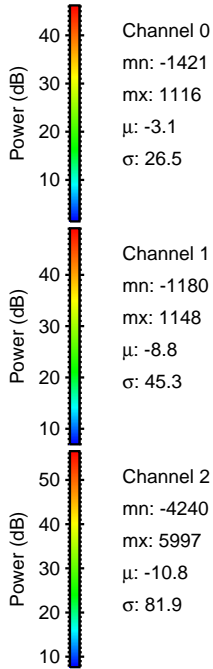
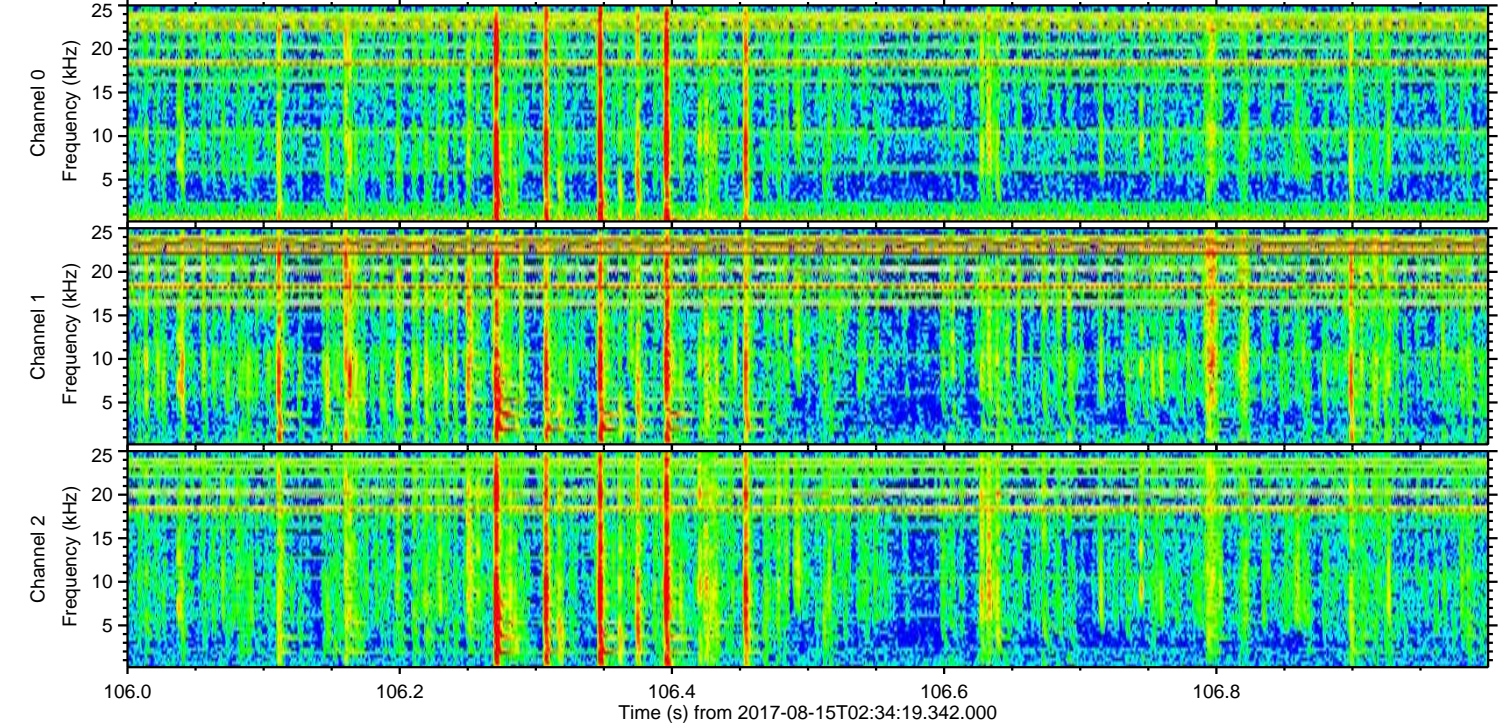
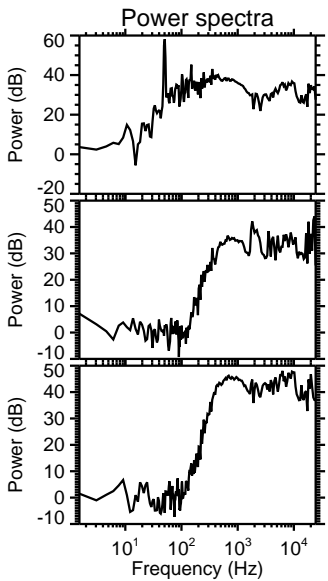
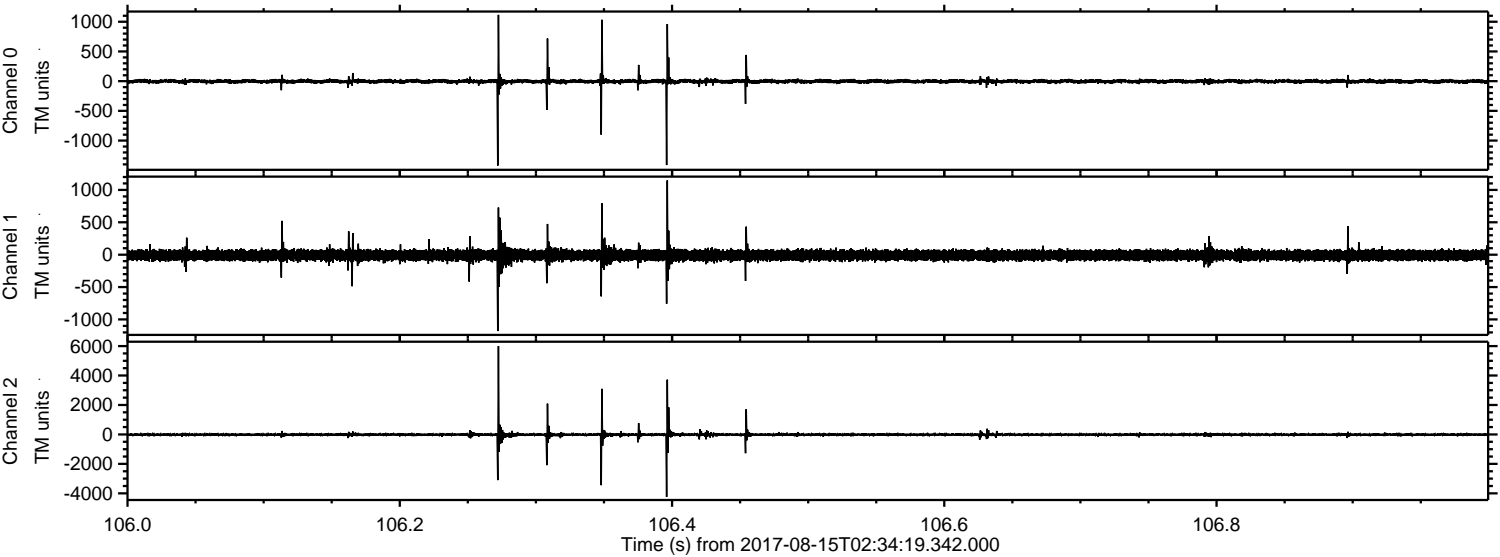
ELMAVAN 3D WAVEFORMS (Measured data sampled at 50 kHz) 51000 packets of 144 samples from 2017-08-15T02:34:19.342.000. Part 124/147

Processed Tue Aug 15 04:42:00 2017 by ELM ver.2012-10-06 from 001__elm20170815_023418__dat00.bin

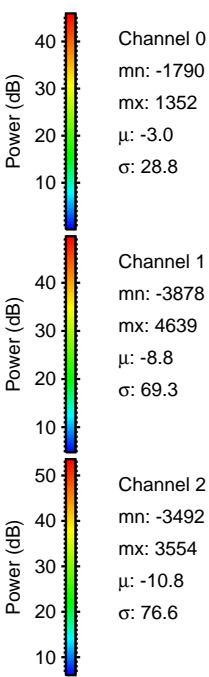
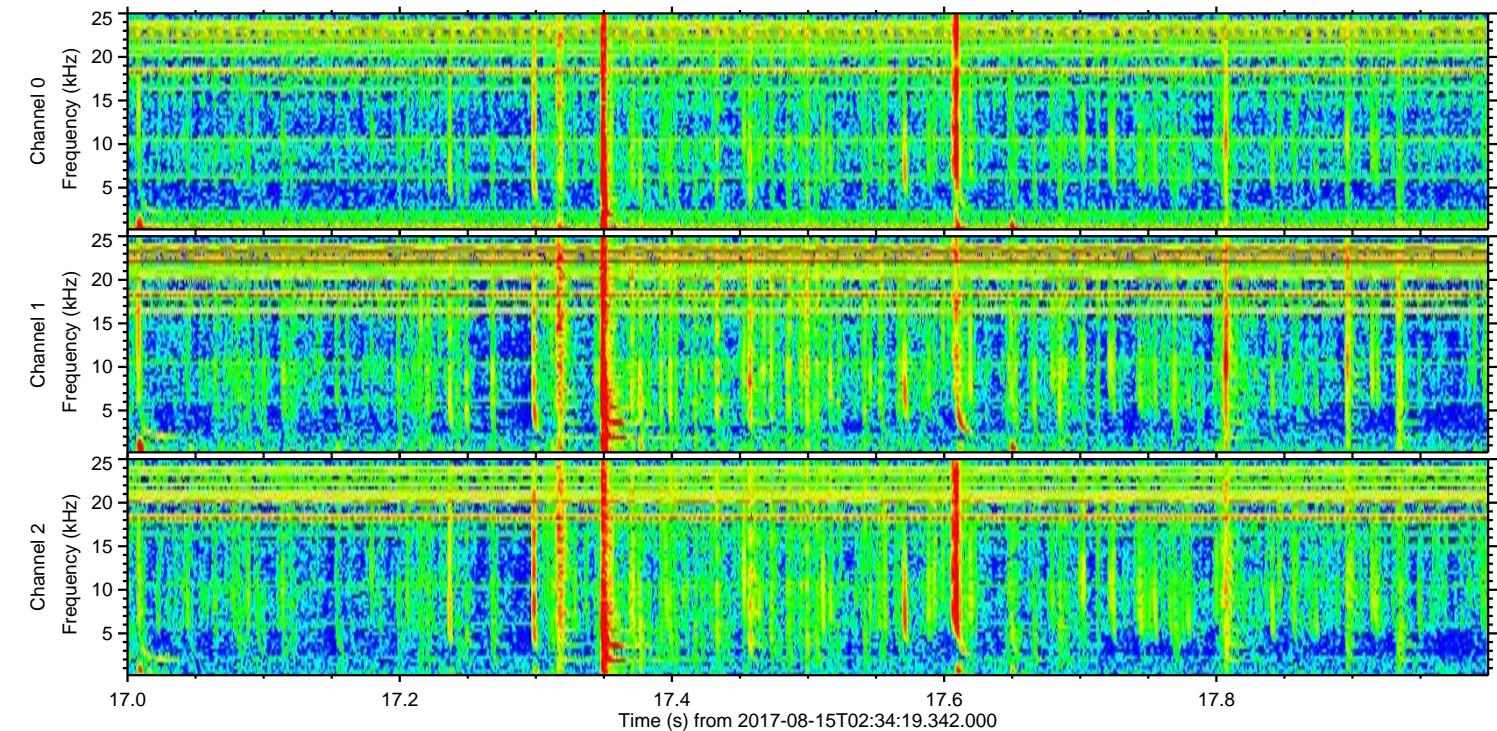
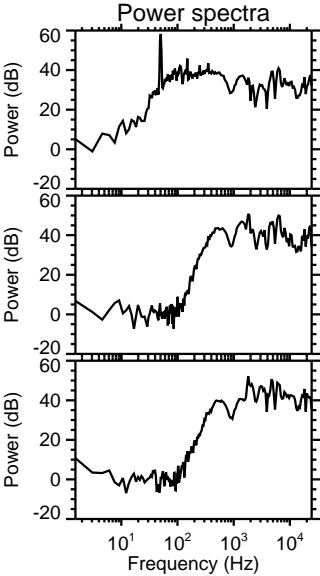
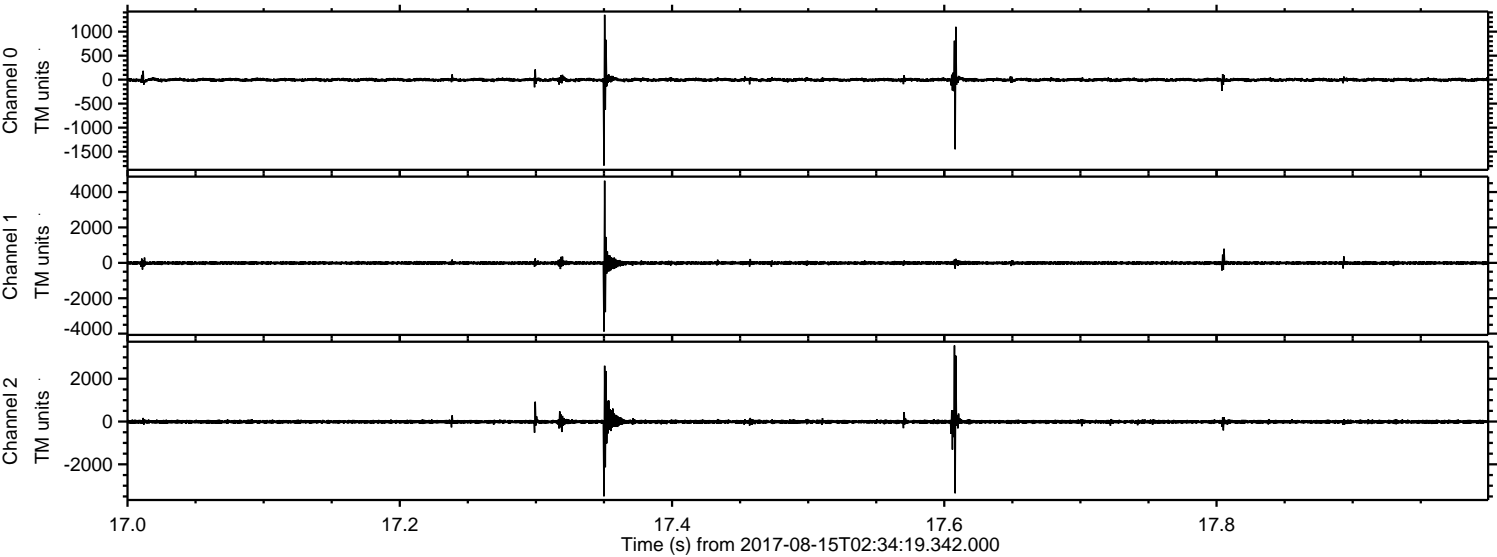


ELMAVAN 3D WAVEFORMS (Measured data sampled at 50 kHz) 51000 packets of 144 samples from 2017-08-15T02:34:19.342.000. Part 107/147

Processed Tue Aug 15 04:42:01 2017 by ELM ver.2012-10-06 from 001__elm20170815_023418__dat00.bin

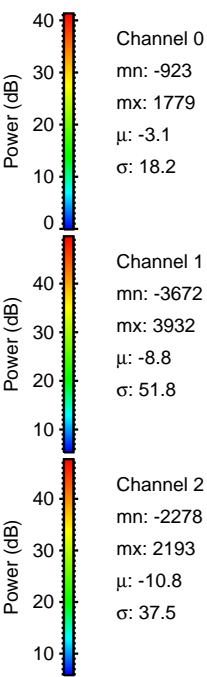
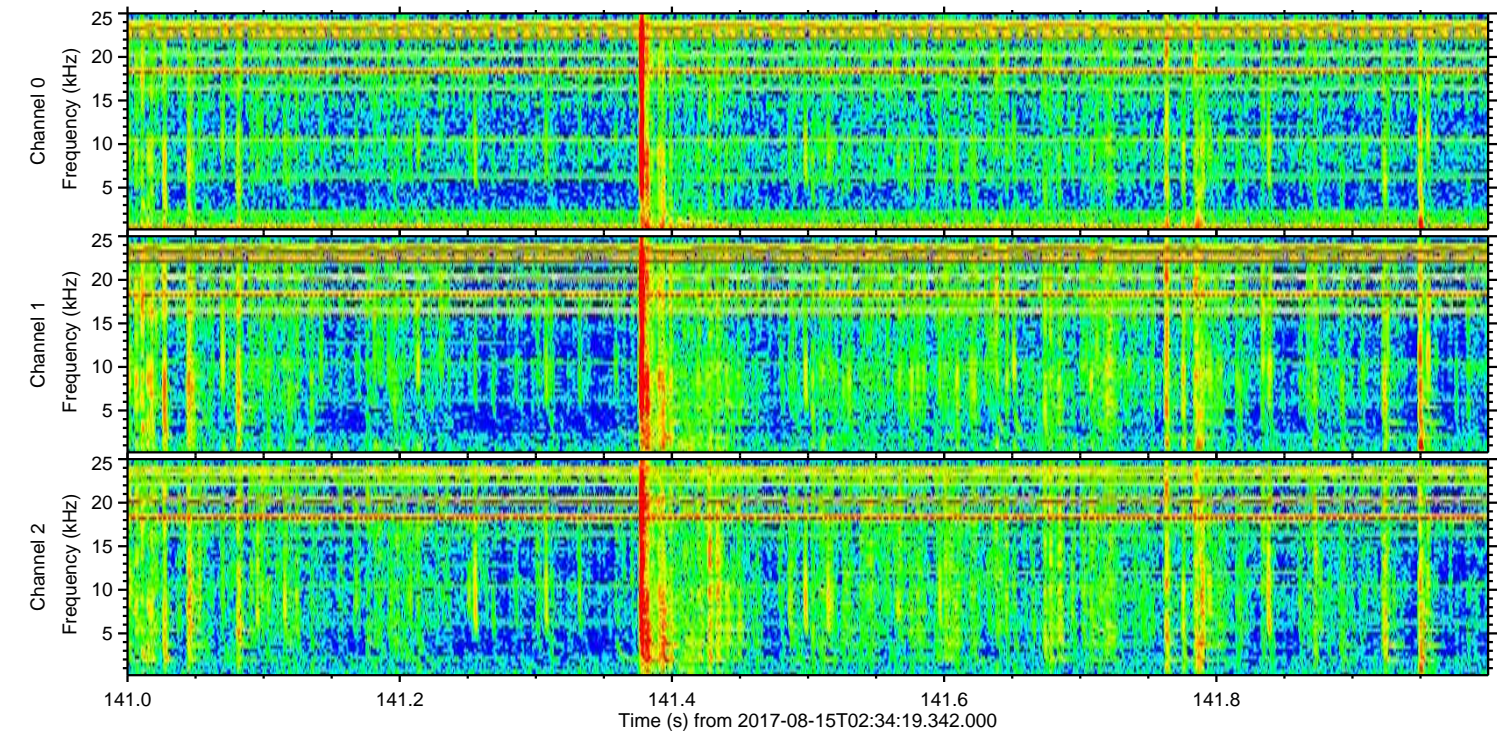
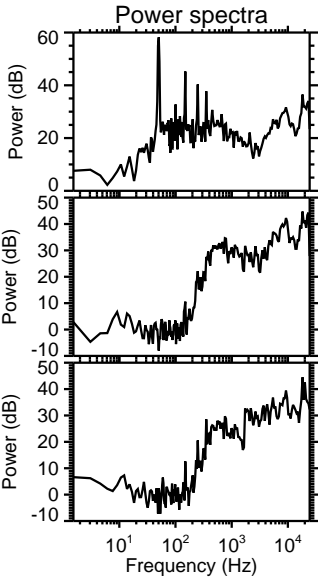
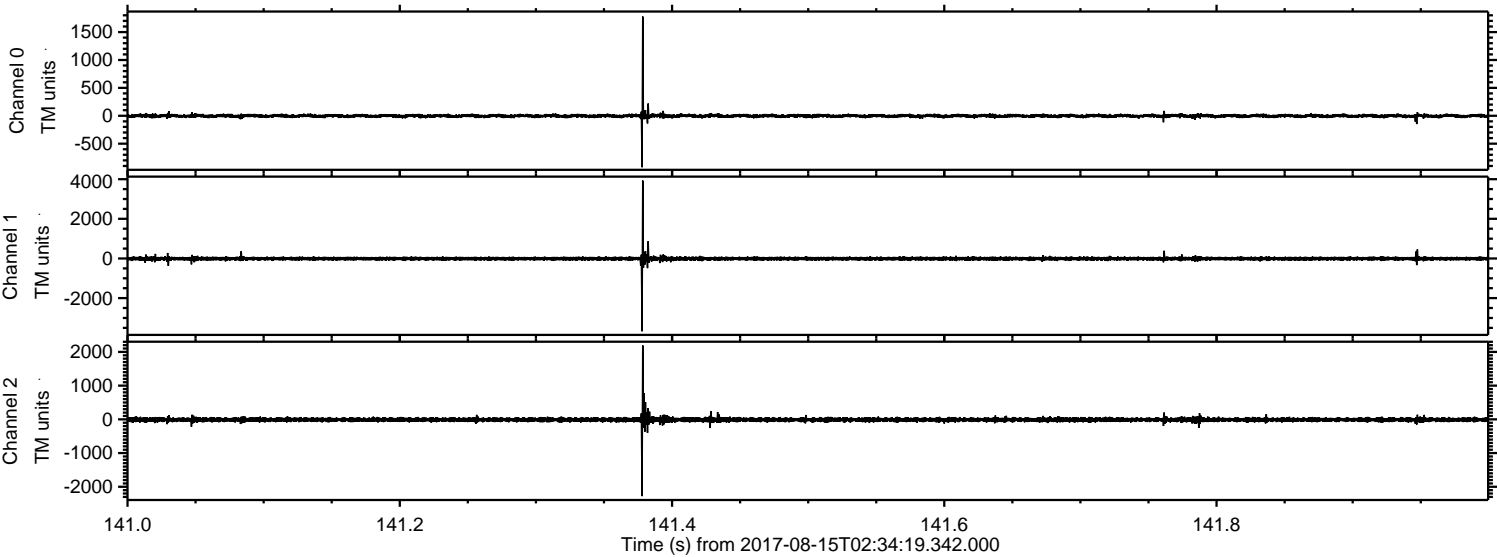


Processed Tue Aug 15 04:42:01 2017 by ELM ver.2012-10-06 from 001__elm20170815_023418__dat00.bin

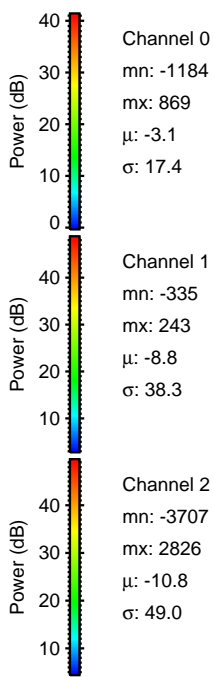
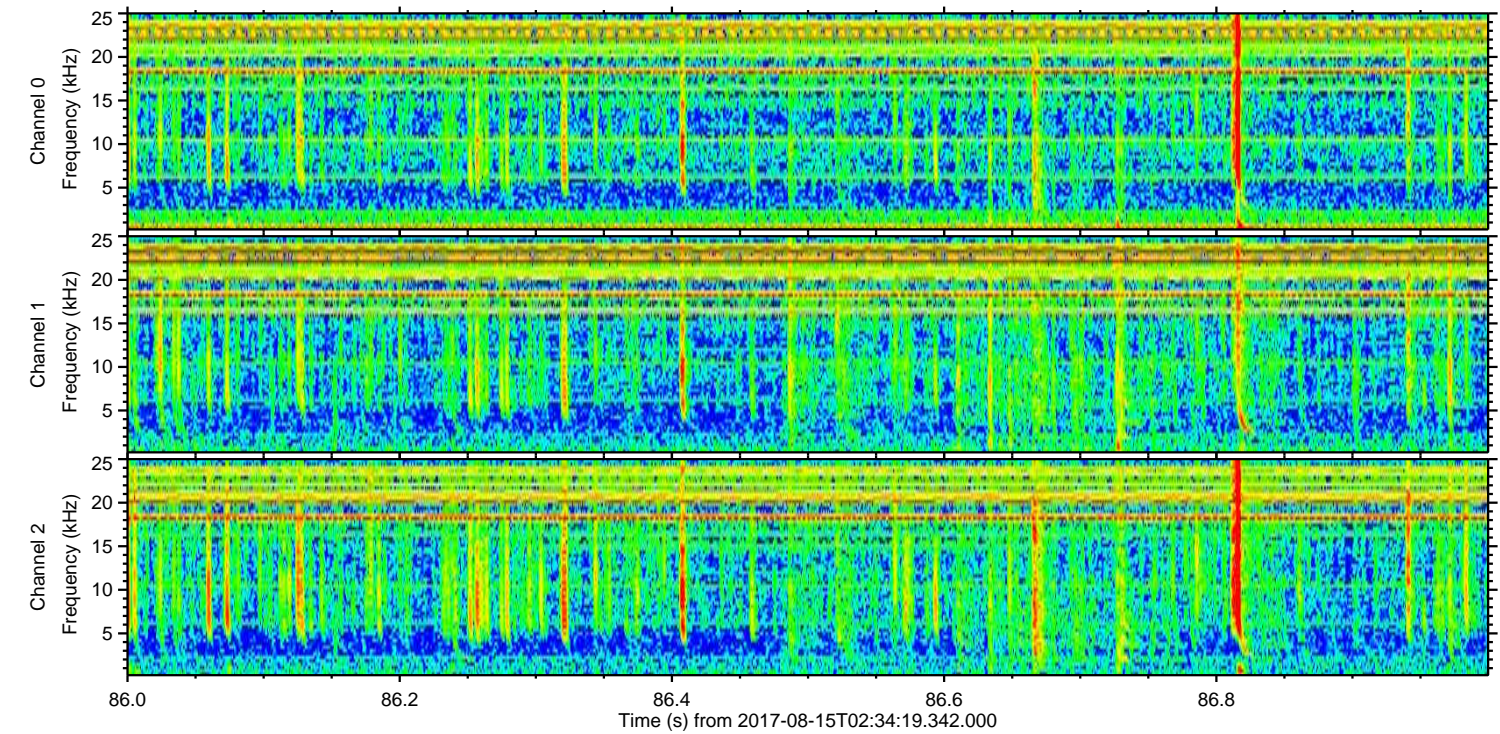
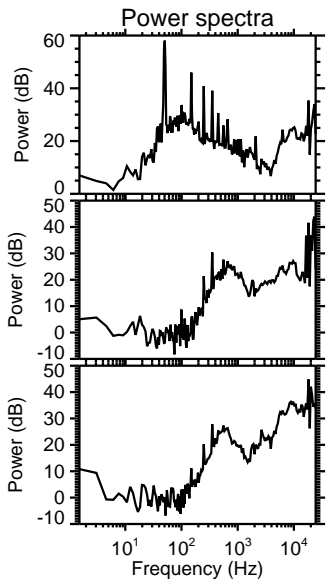
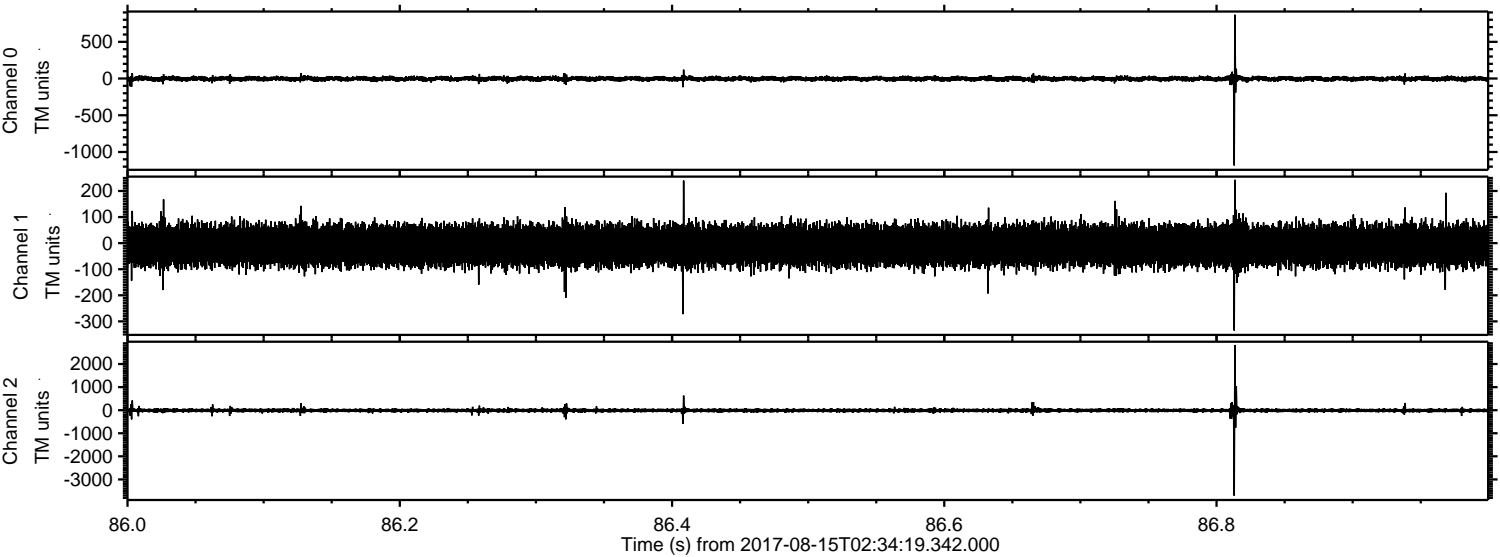


ELMAVAN 3D WAVEFORMS (Measured data sampled at 50 kHz) 51000 packets of 144 samples from 2017-08-15T02:34:19.342.000. Part 142/147

Processed Tue Aug 15 04:42:02 2017 by ELM ver.2012-10-06 from 001__elm20170815_023418__dat00.bin



Processed Tue Aug 15 04:42:02 2017 by ELM ver.2012-10-06 from 001__elm20170815_023418__dat00.bin

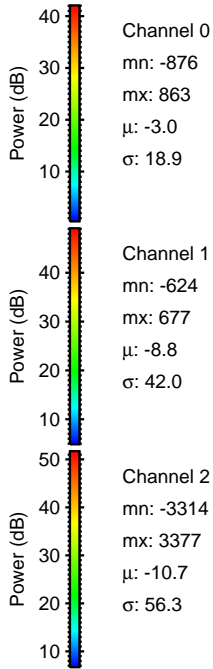
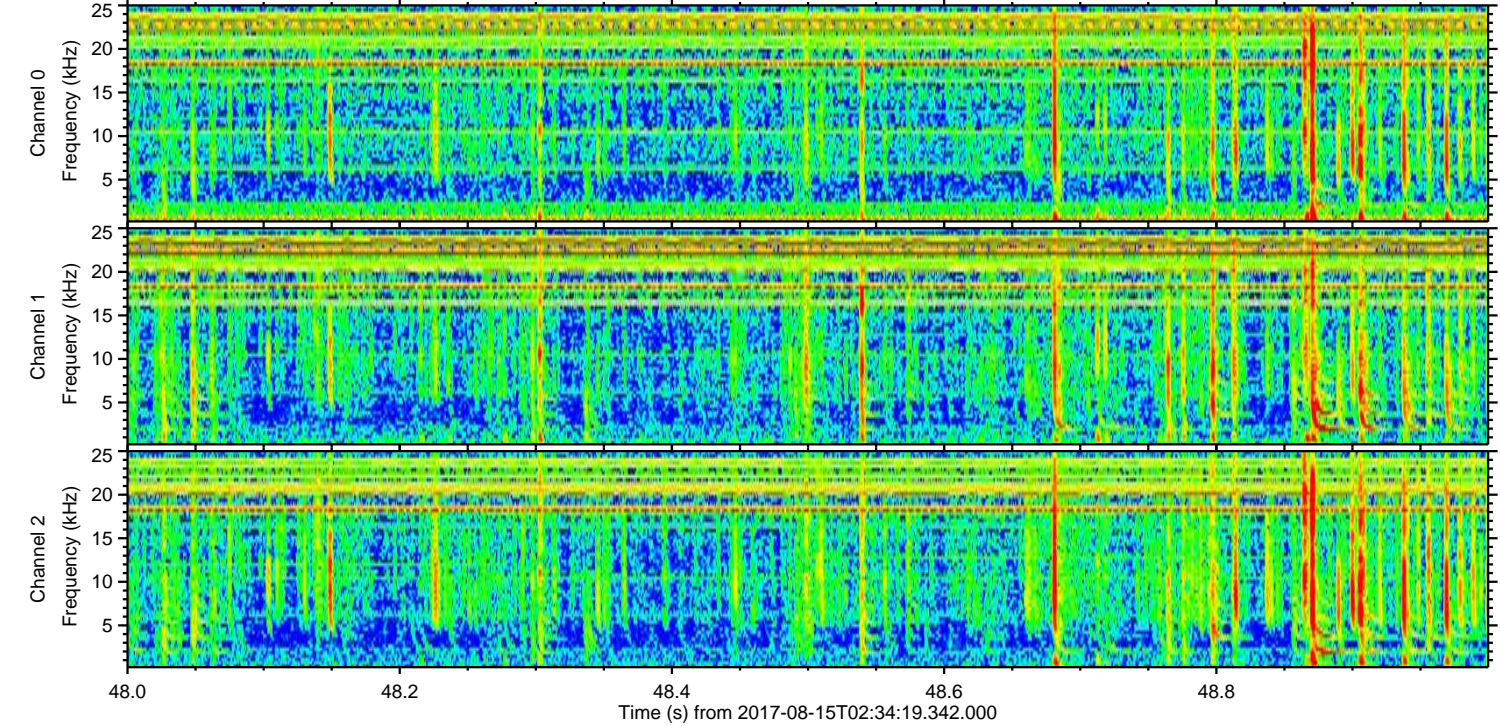
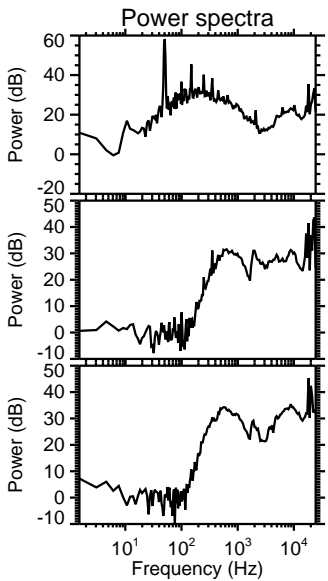
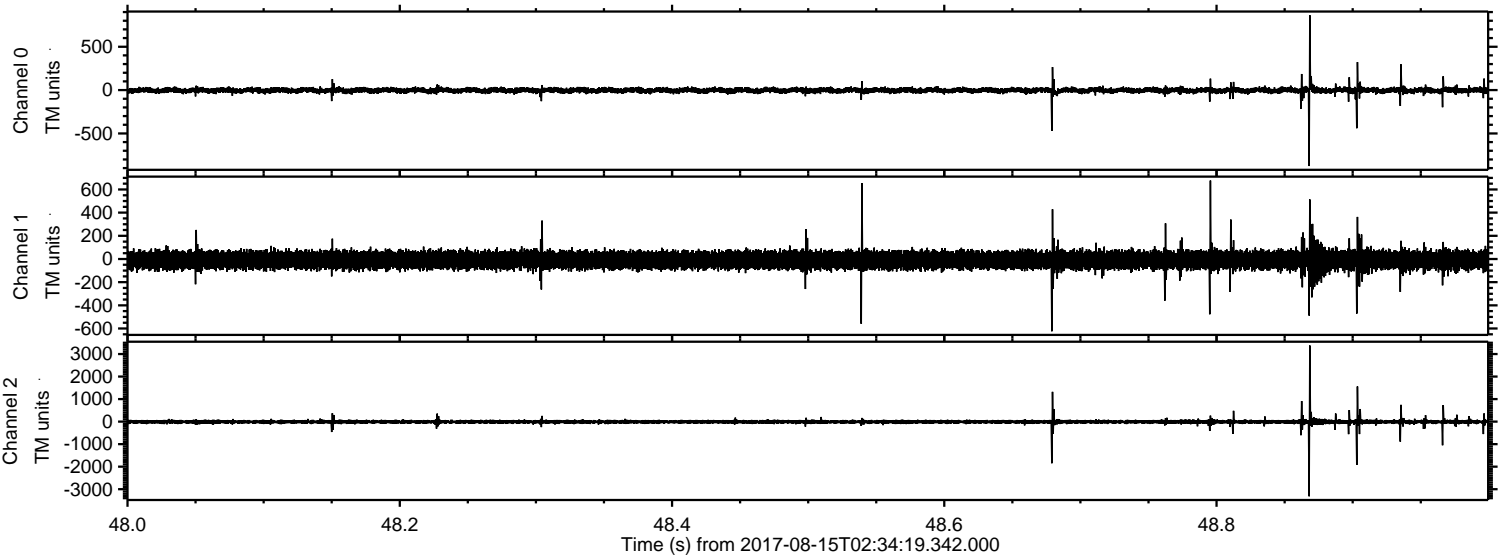


Channel 0
mn: -1184
mx: 869
 μ : -3.1
 σ : 17.4

Channel 1
mn: -335
mx: 243
 μ : -8.8
 σ : 38.3

Channel 2
mn: -3707
mx: 2826
 μ : -10.8
 σ : 49.0

Processed Tue Aug 15 04:42:03 2017 by ELM ver.2012-10-06 from 001__elm20170815_023418__dat00.bin



Processed Tue Aug 15 04:42:04 2017 by ELM ver.2012-10-06 from 001__elm20170815_023418__dat00.bin

