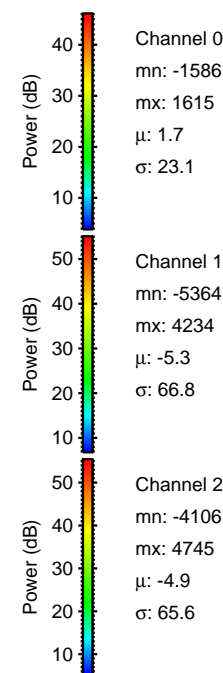
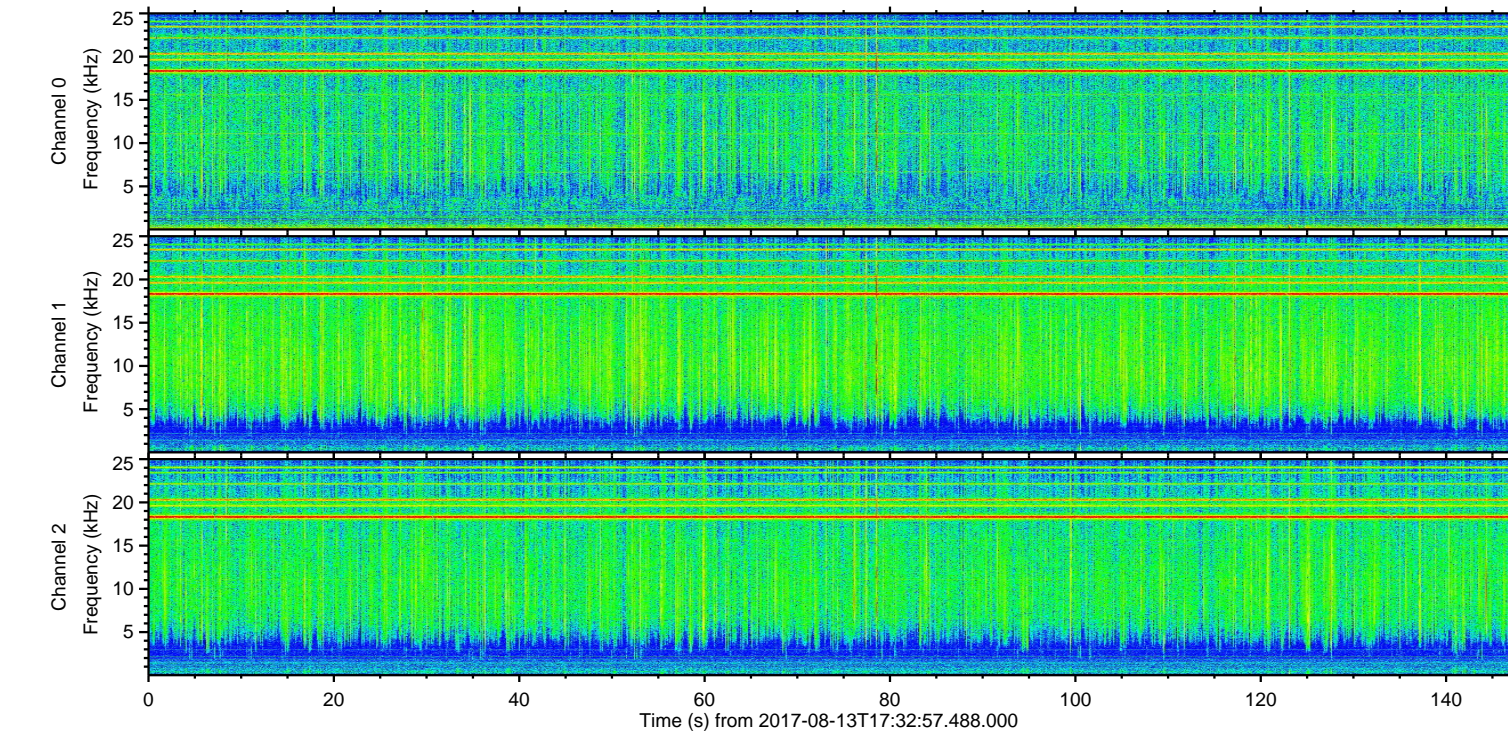
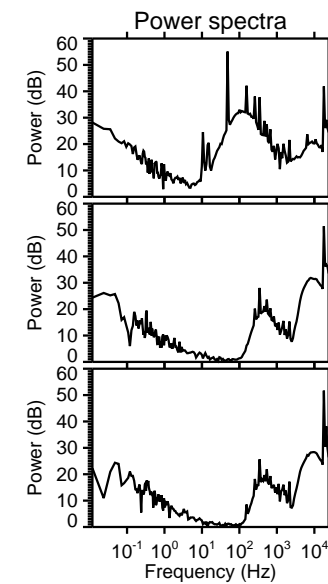
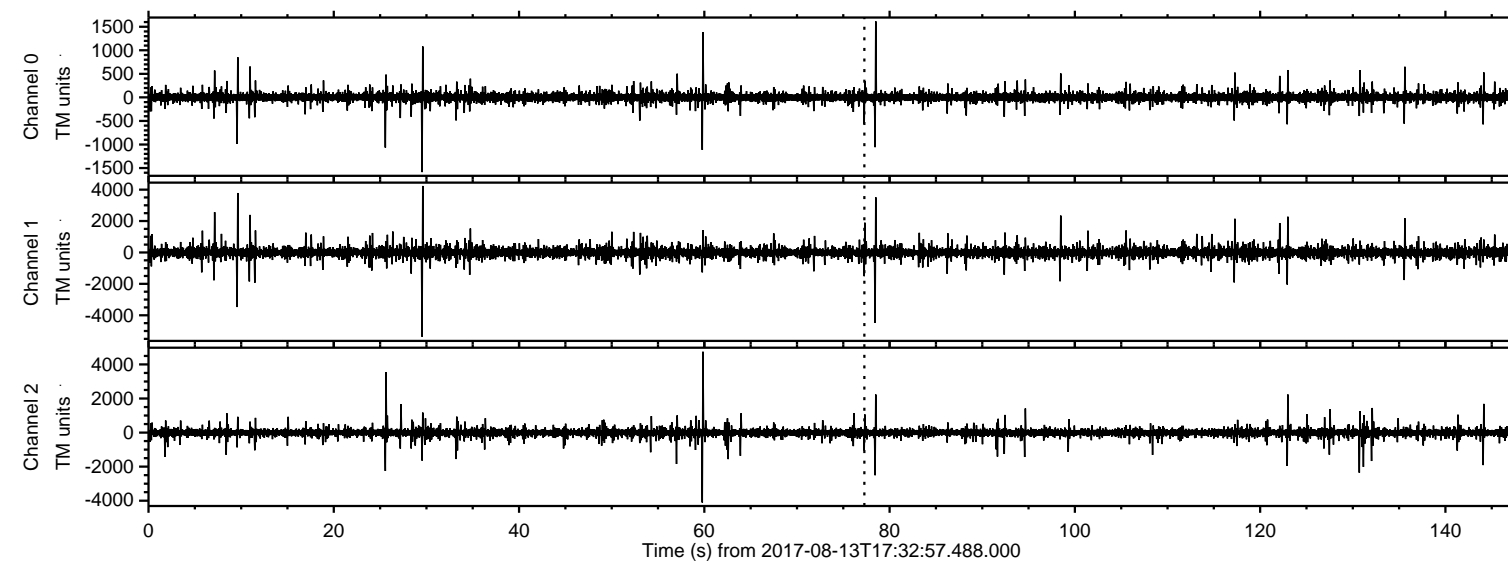
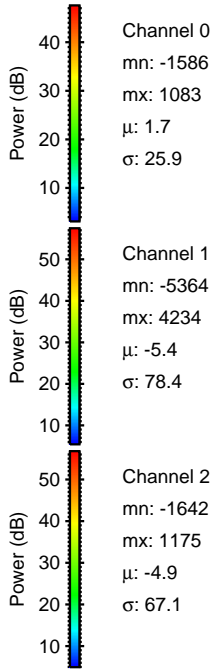
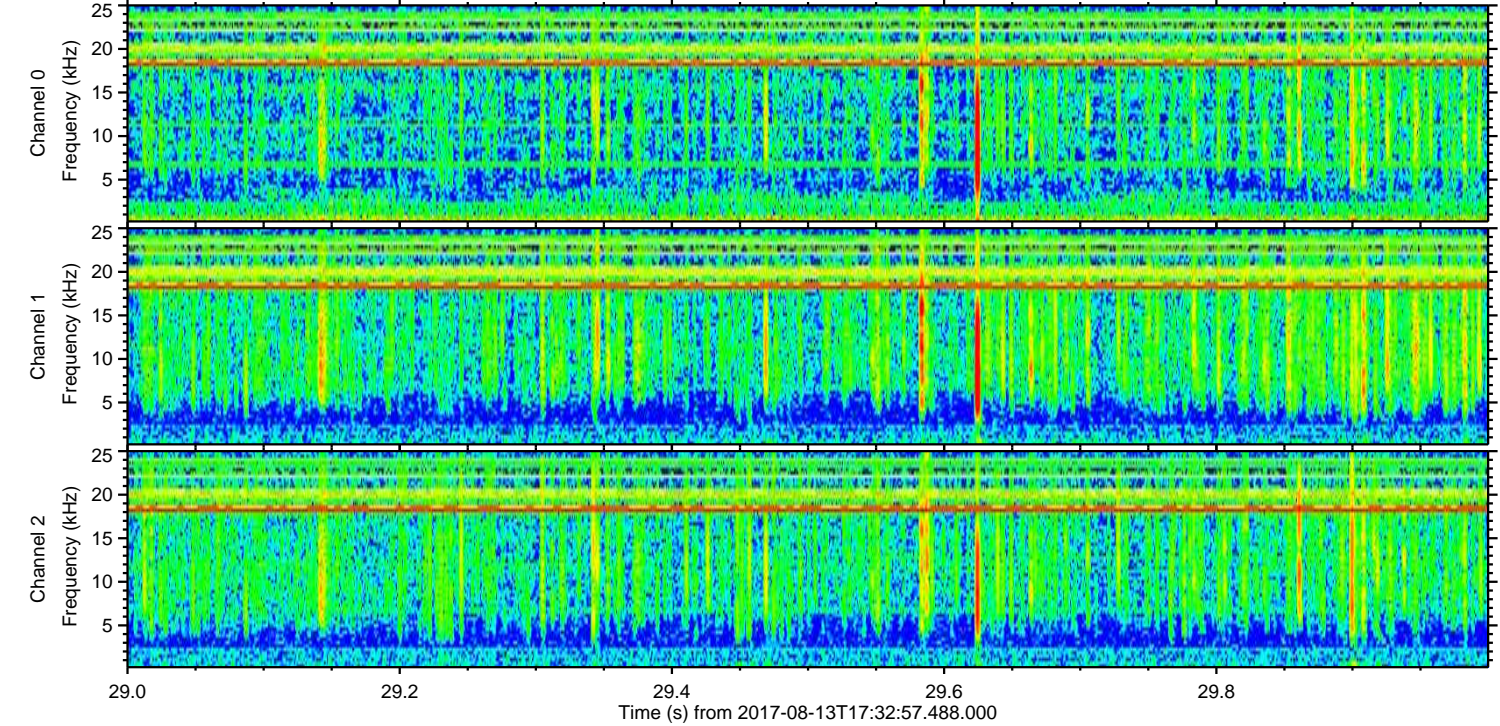
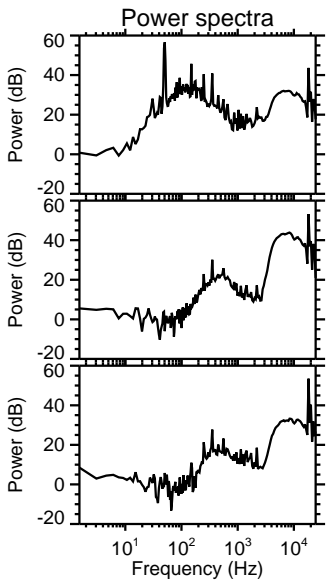
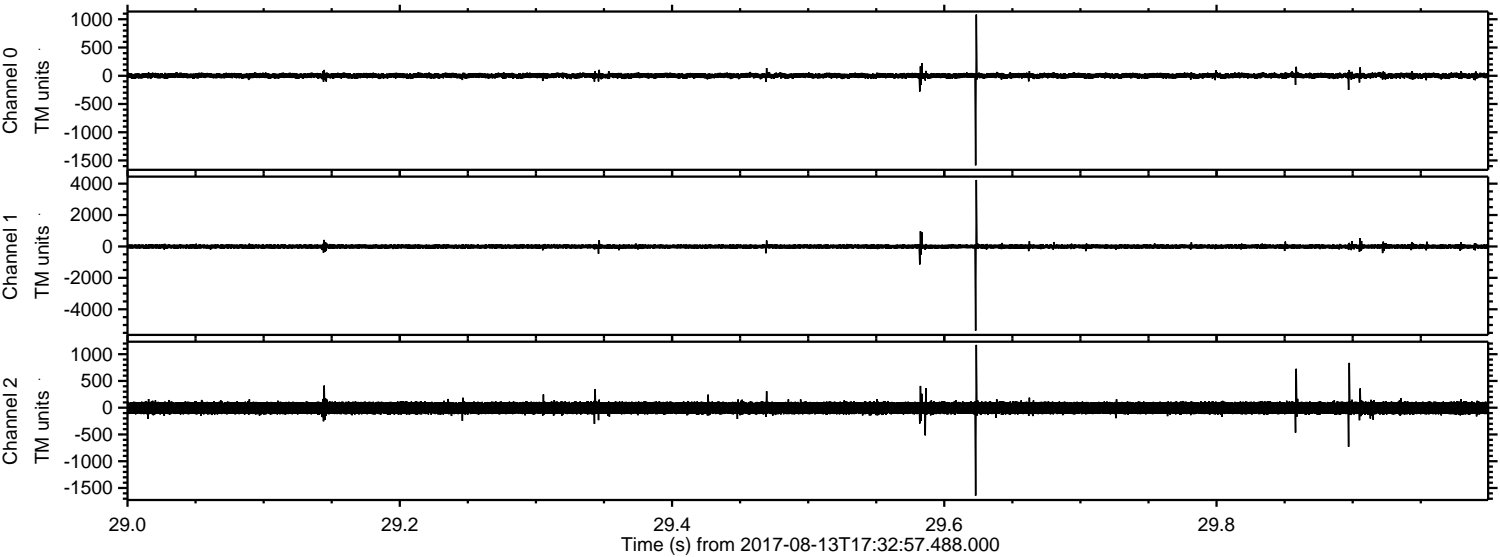


ELMAVAN 3D WAVEFORMS (Measured data sampled at 50 kHz) 50999 packets of 144 samples from 2017-08-13T17:32:57.488.000.

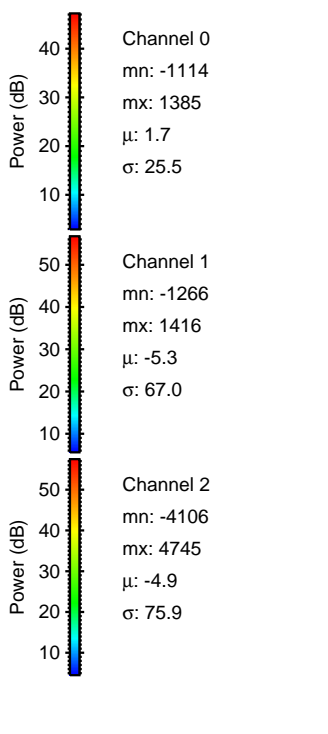
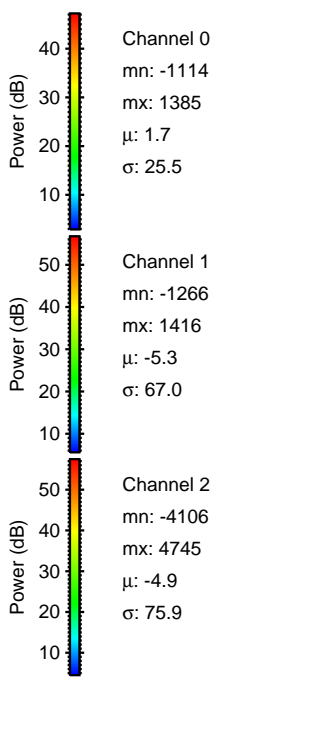
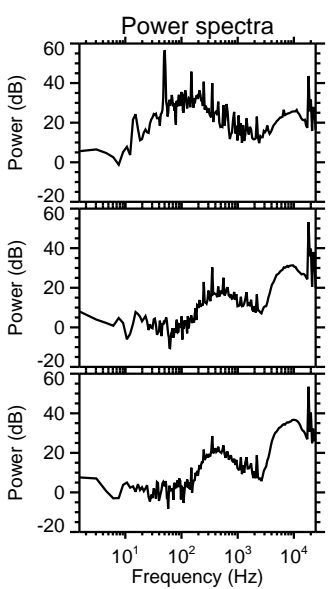
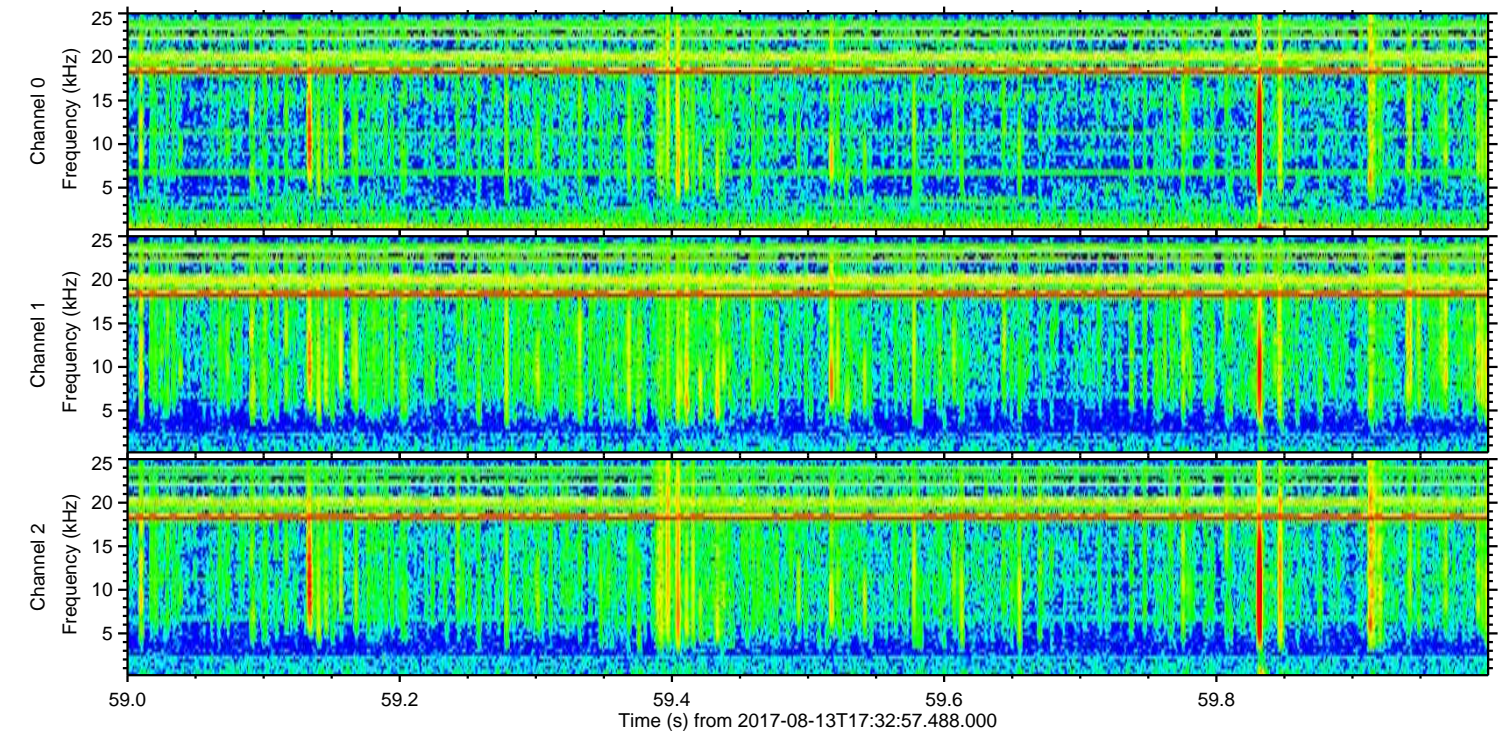
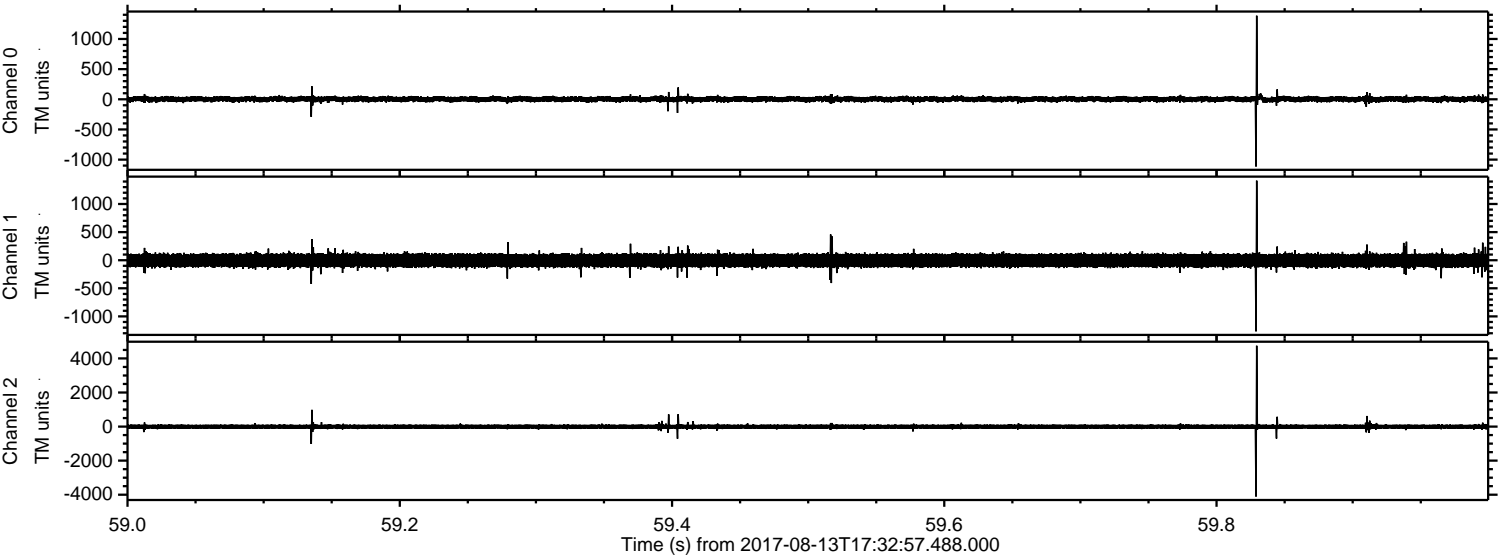
Processed Sun Aug 13 19:40:47 2017 by ELM ver.2012-10-06 from 001__elm20170813_173256__dat00.bin



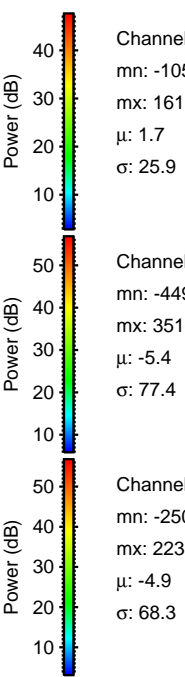
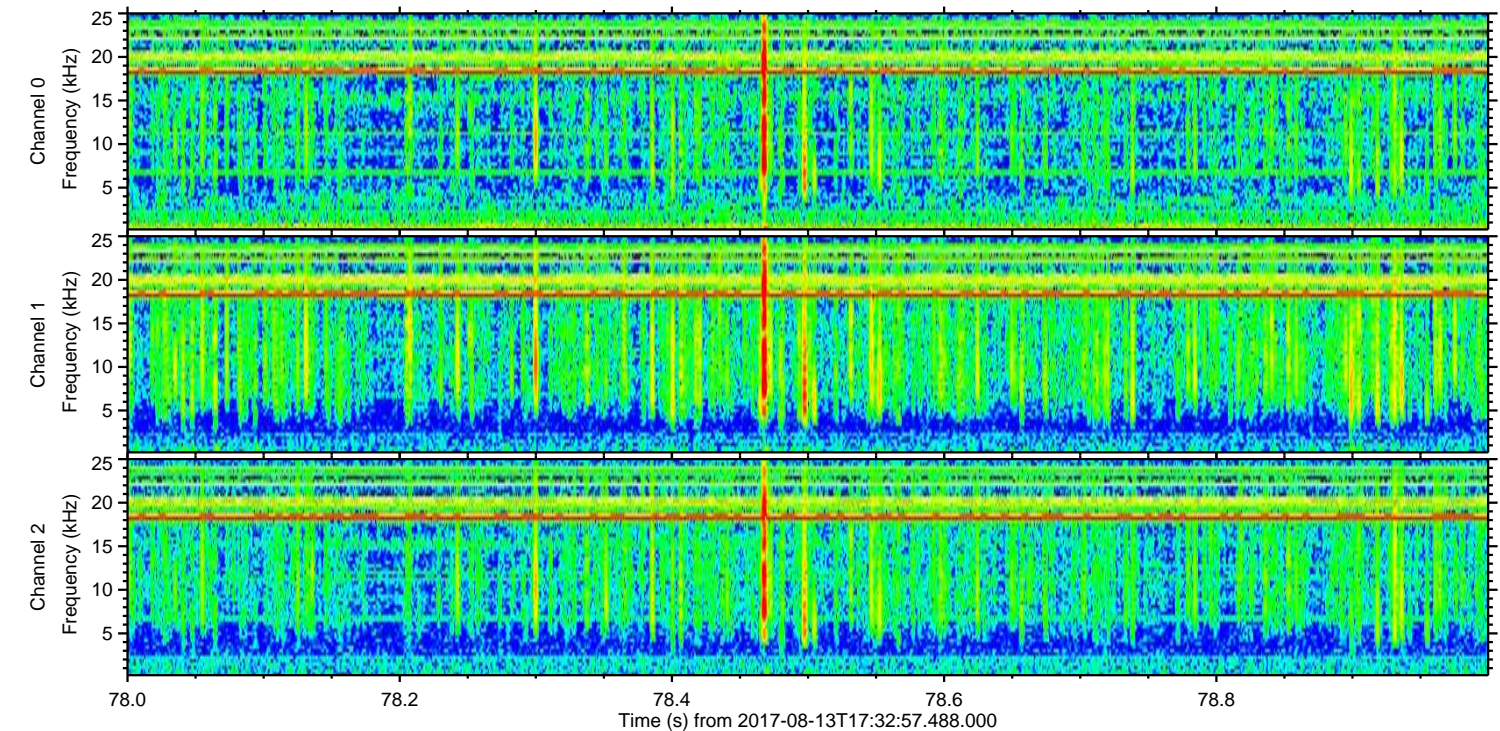
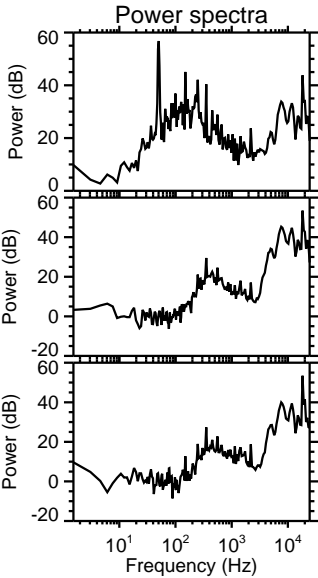
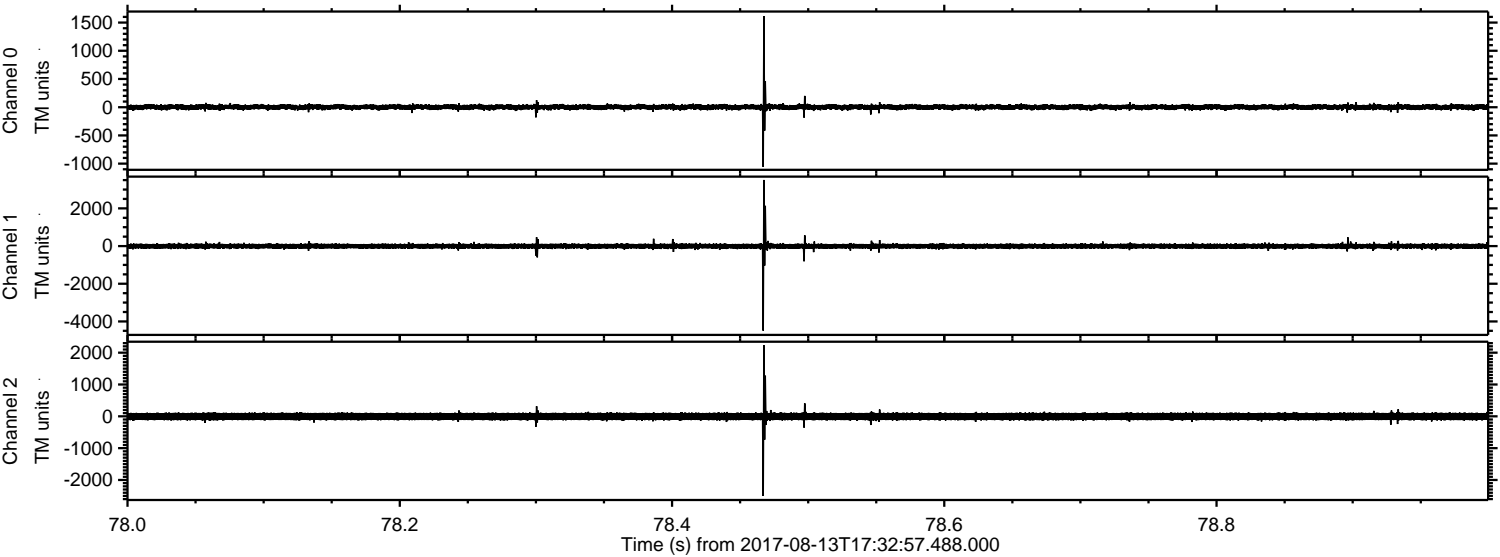
Processed Sun Aug 13 19:40:55 2017 by ELM ver.2012-10-06 from 001__elm20170813_173256__dat00.bin



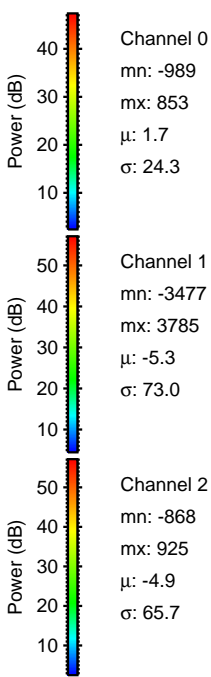
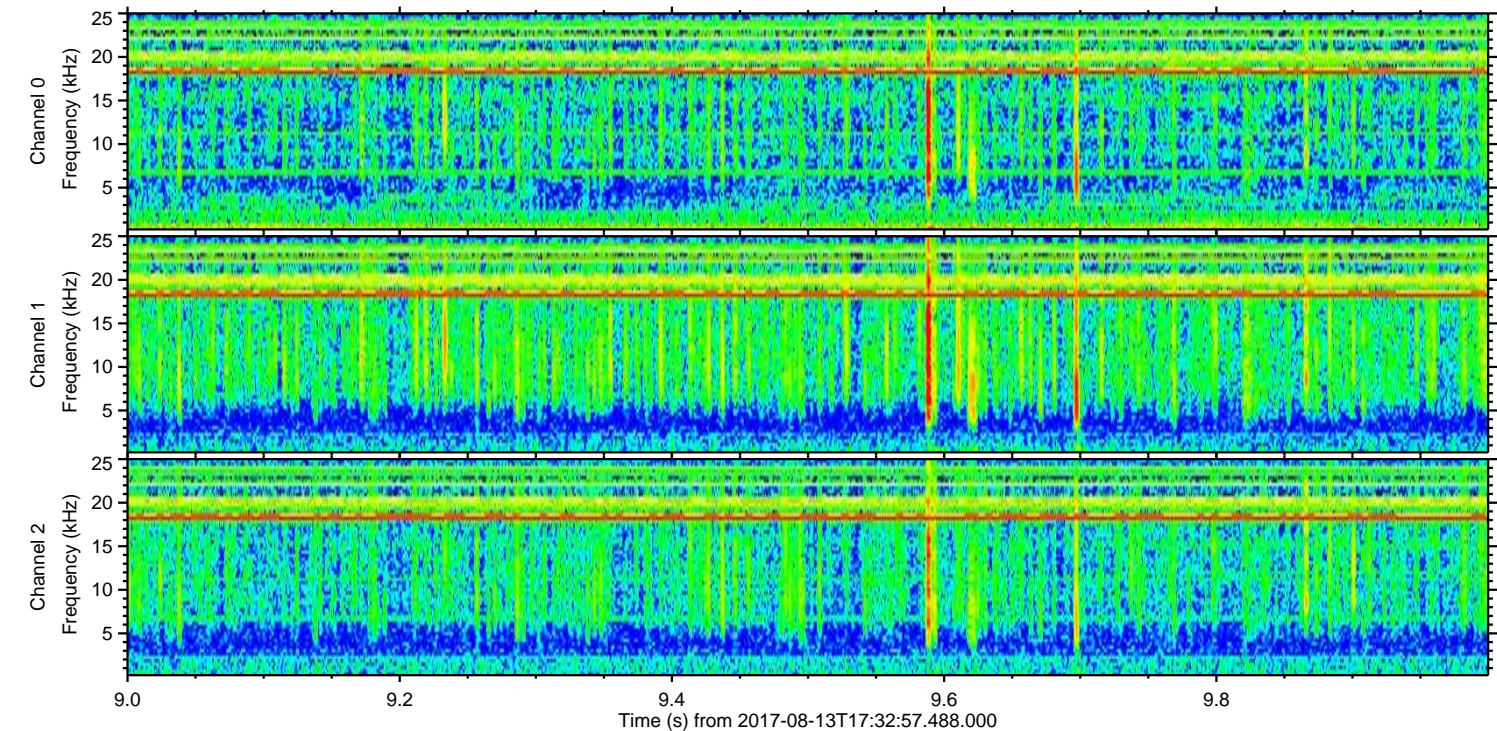
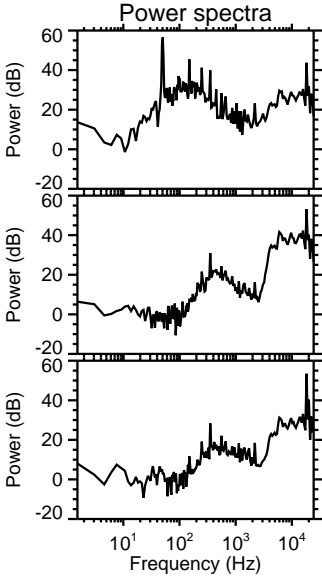
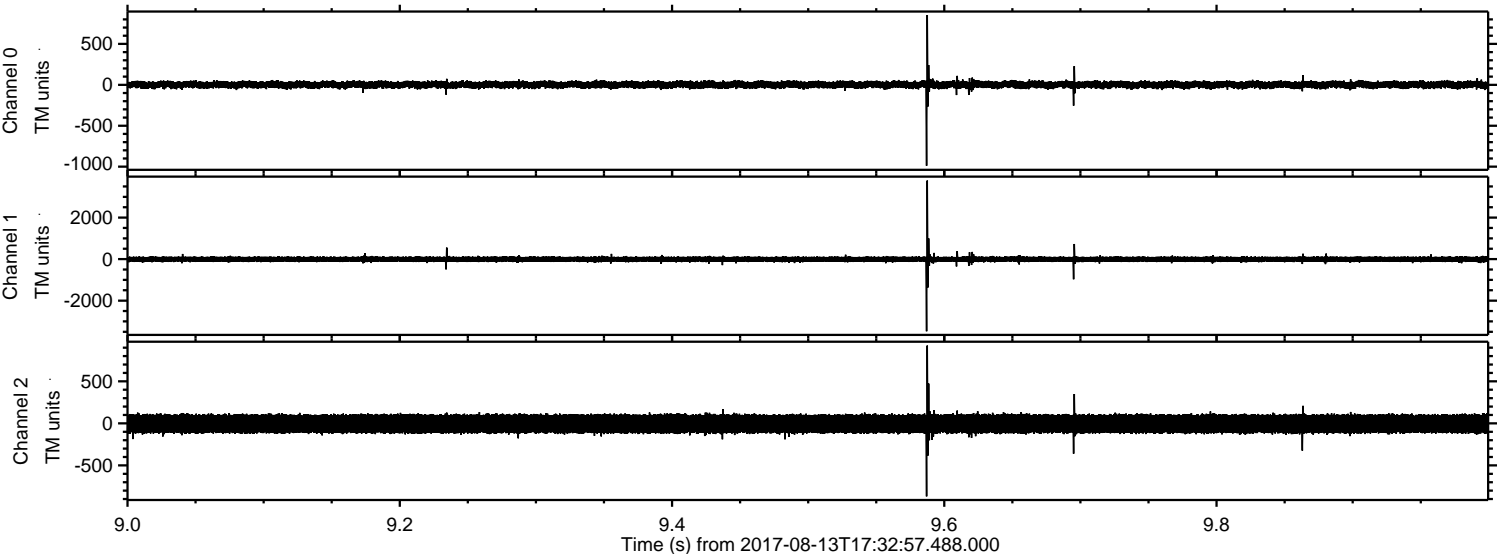
Processed Sun Aug 13 19:40:56 2017 by ELM ver.2012-10-06 from 001__elm20170813_173256__dat00.bin



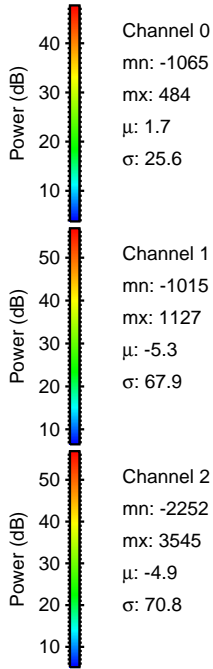
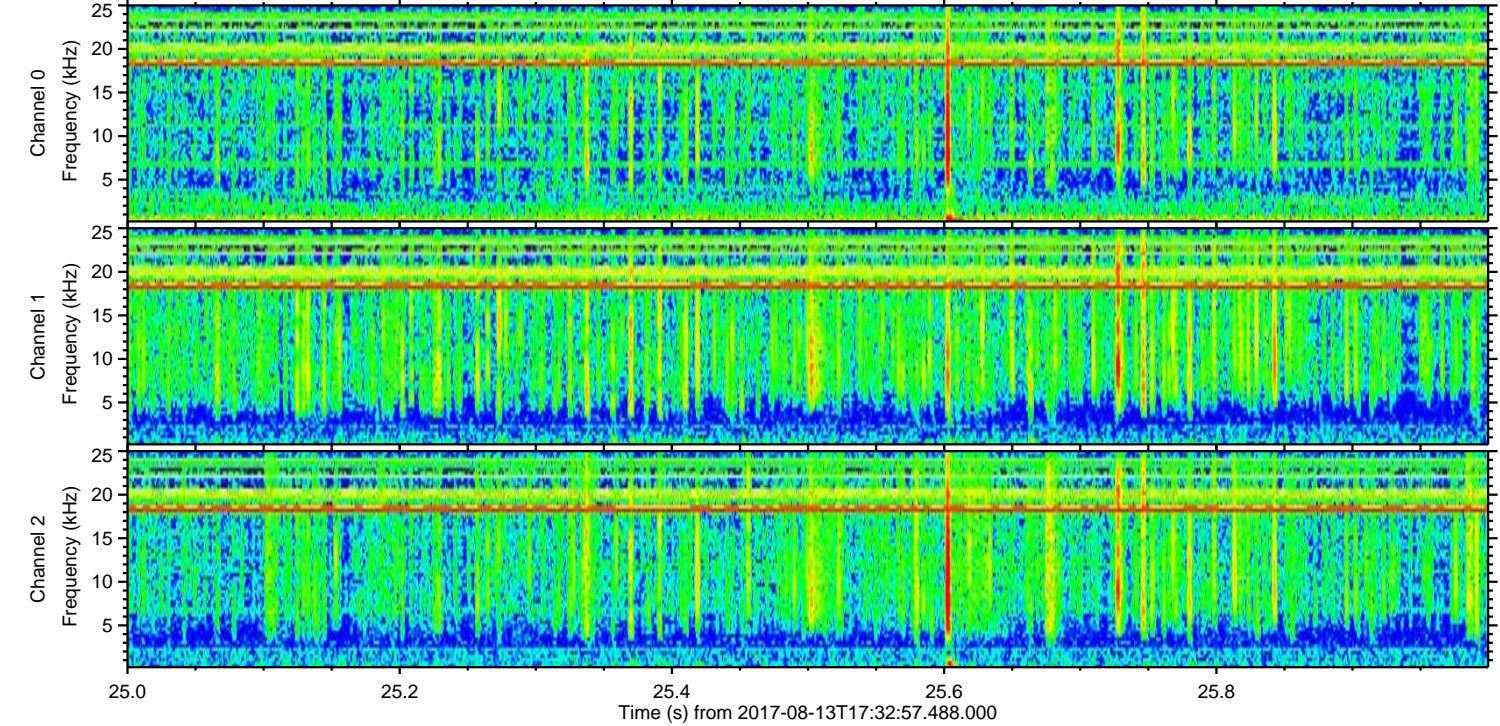
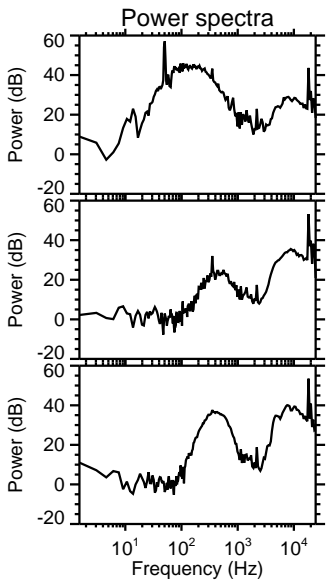
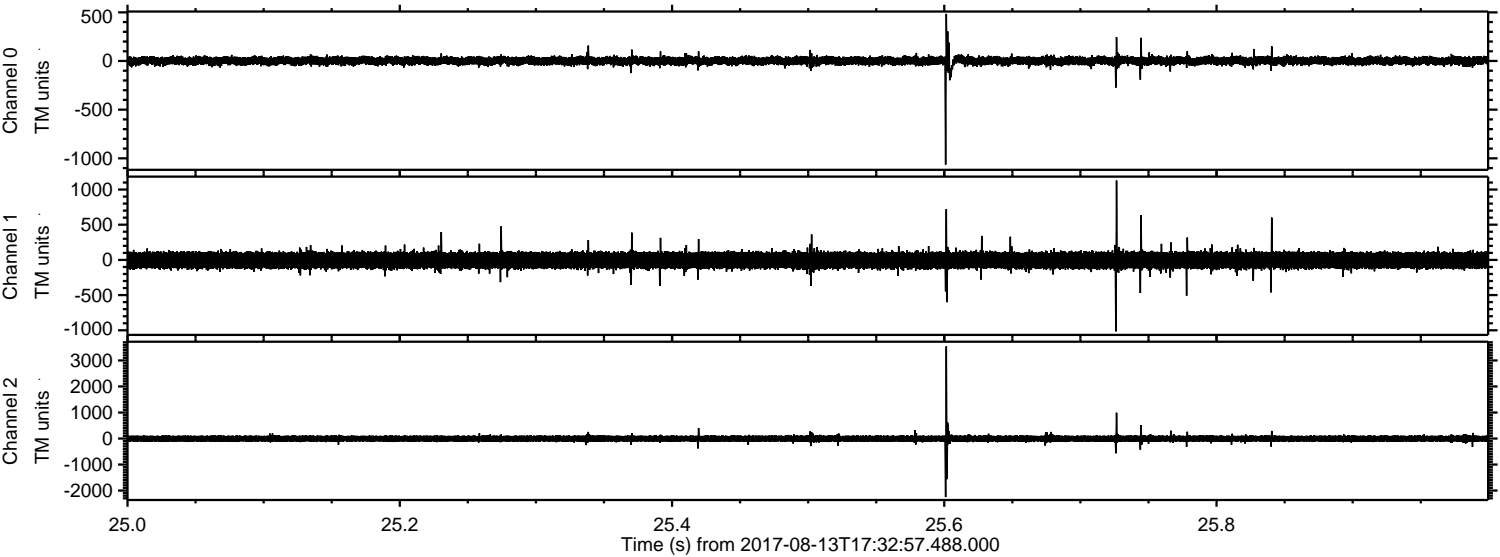
Processed Sun Aug 13 19:40:57 2017 by ELM ver.2012-10-06 from 001__elm20170813_173256__dat00.bin



Processed Sun Aug 13 19:40:58 2017 by ELM ver.2012-10-06 from 001__elm20170813_173256__dat00.bin



Processed Sun Aug 13 19:40:58 2017 by ELM ver.2012-10-06 from 001__elm20170813_173256__dat00.bin

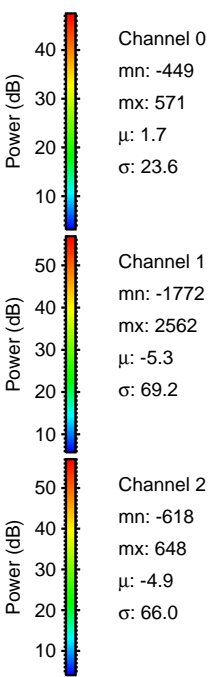
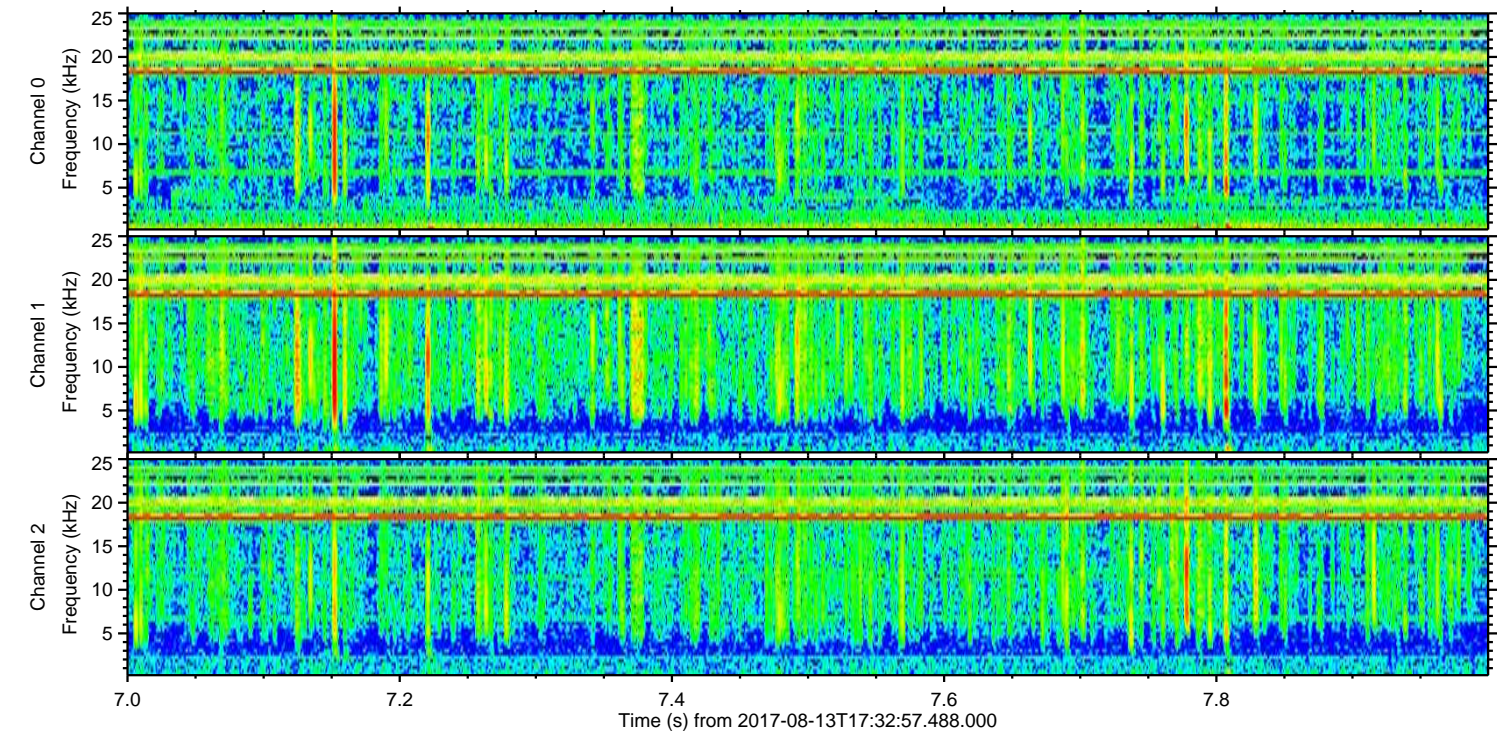
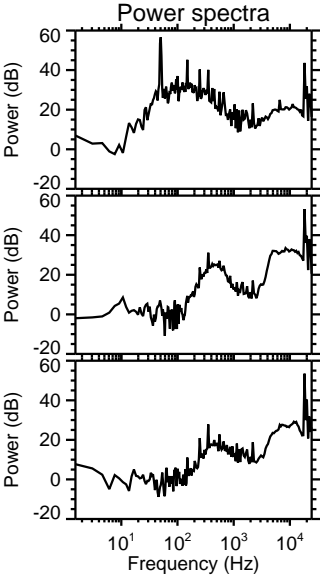
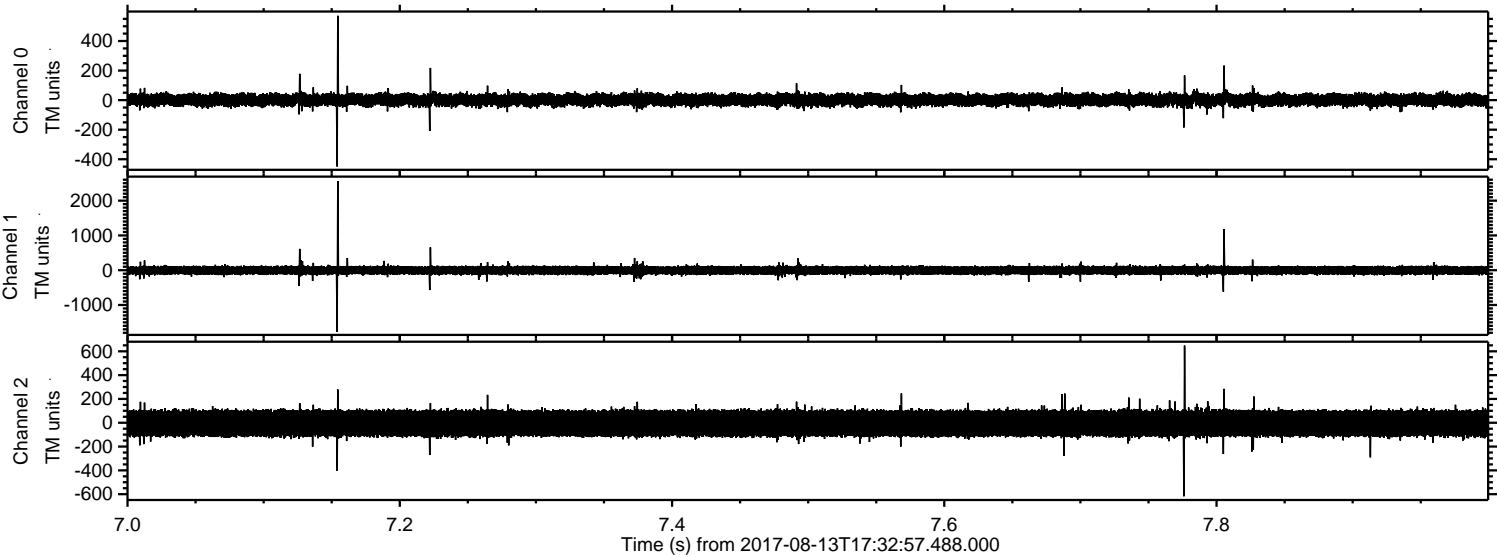


Channel 0
mn: -1065
mx: 484
 μ : 1.7
 σ : 25.6

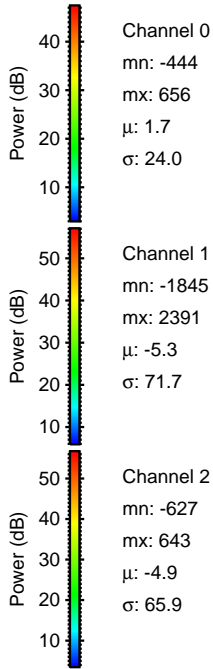
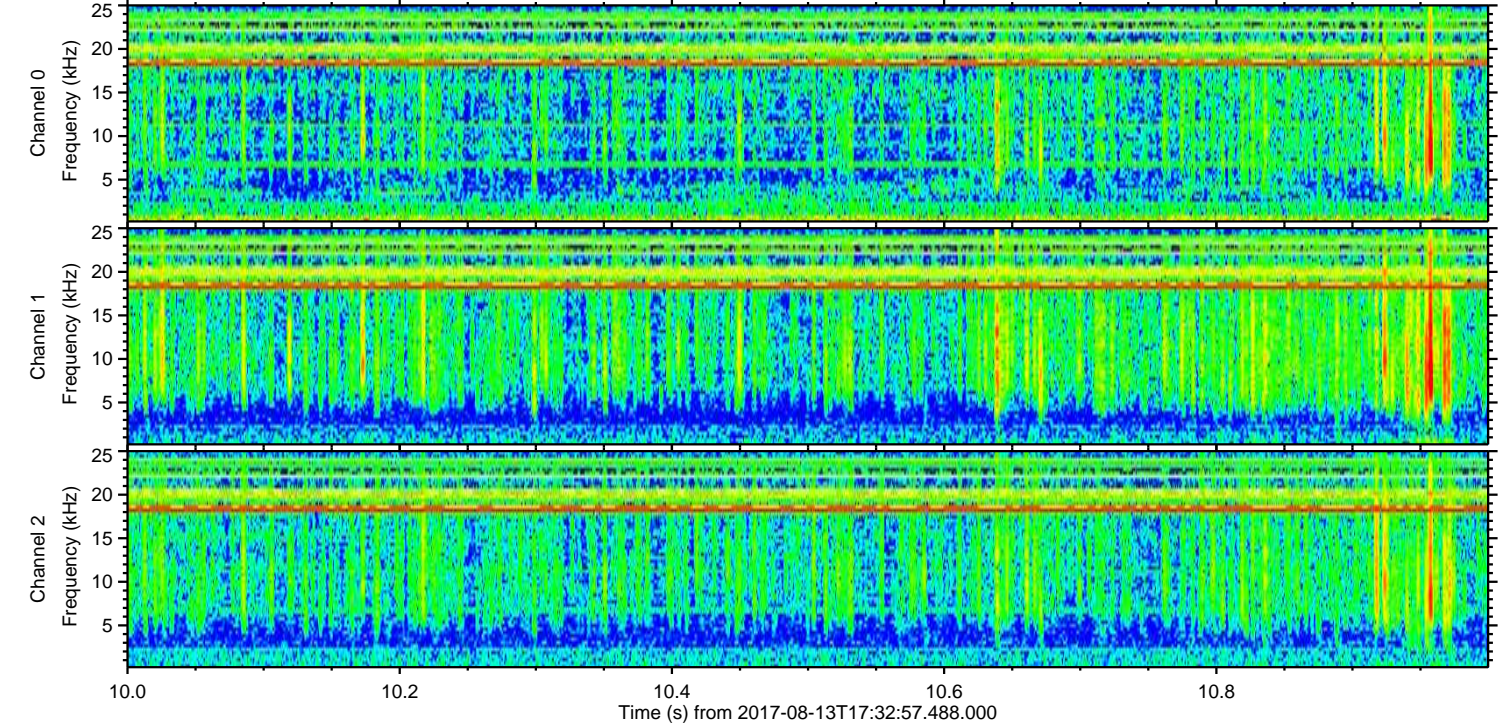
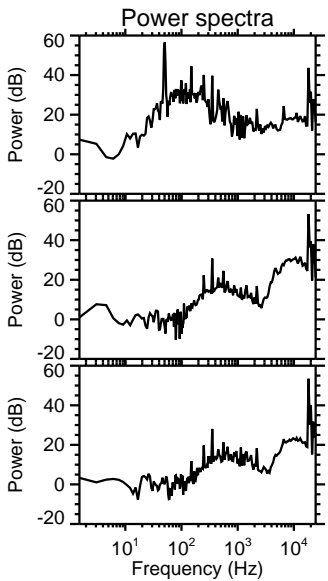
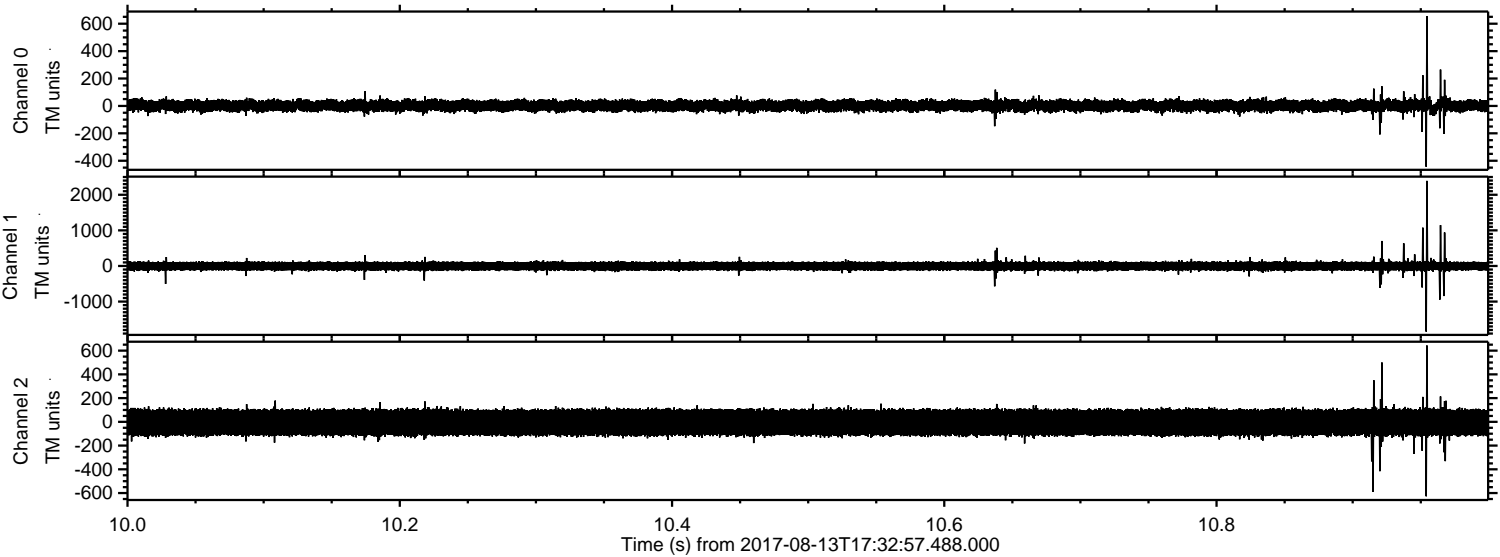
Channel 1
mn: -1015
mx: 1127
 μ : -5.3
 σ : 67.9

Channel 2
mn: -2252
mx: 3545
 μ : -4.9
 σ : 70.8

Processed Sun Aug 13 19:40:59 2017 by ELM ver.2012-10-06 from 001__elm20170813_173256__dat00.bin

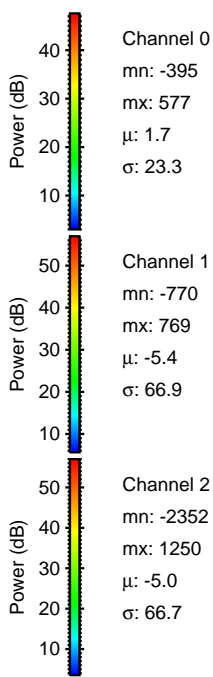
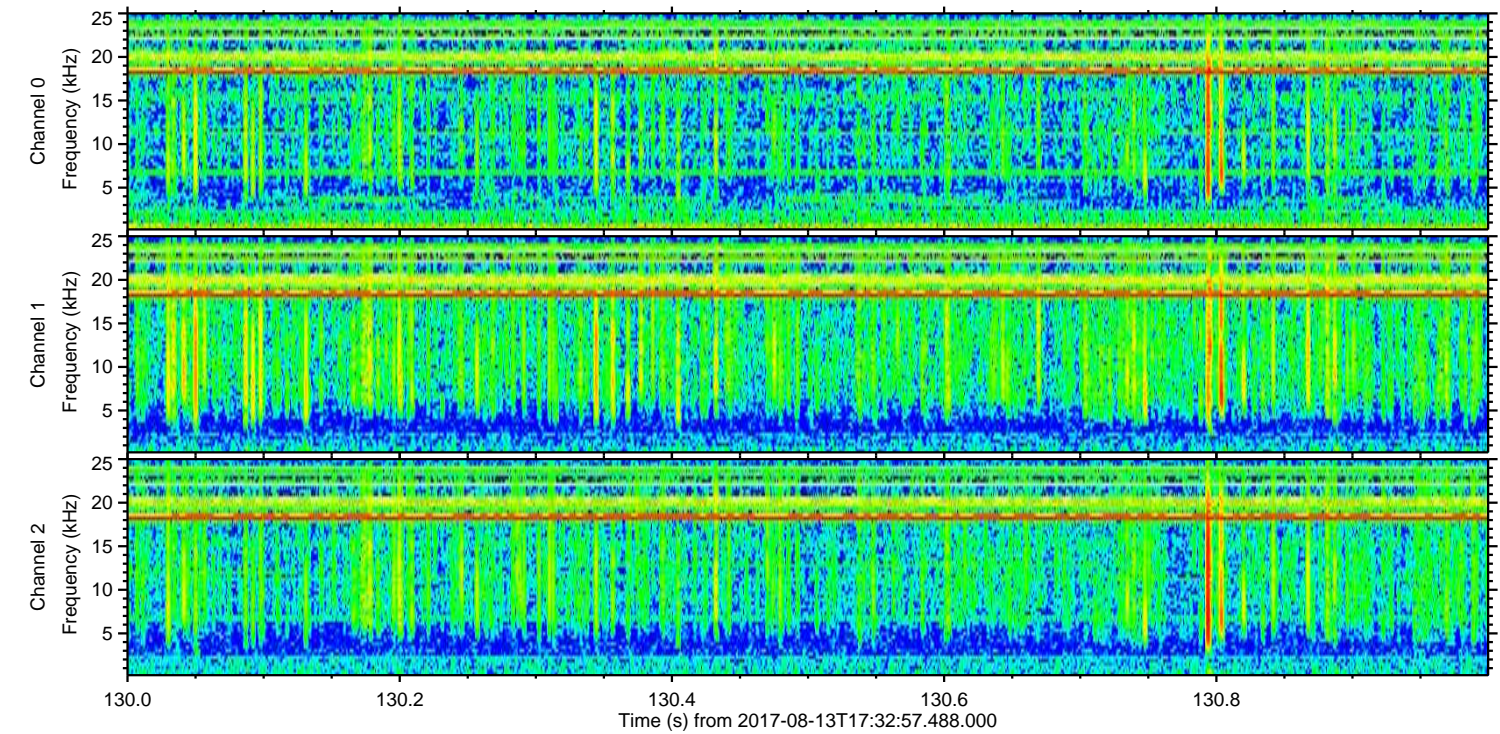
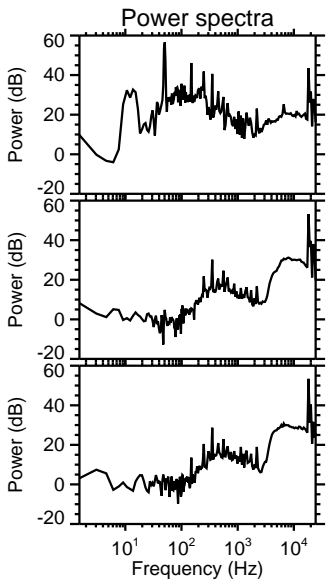
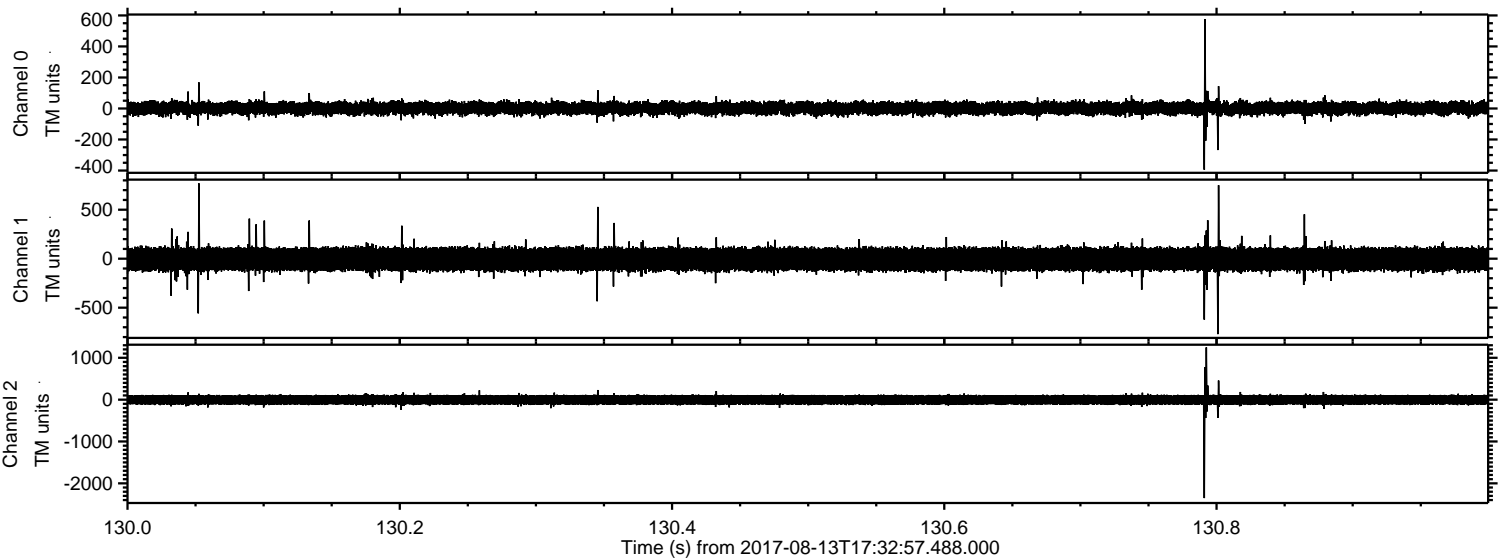


Processed Sun Aug 13 19:41:00 2017 by ELM ver.2012-10-06 from 001__elm20170813_173256__dat00.bin



ELMAVAN 3D WAVEFORMS (Measured data sampled at 50 kHz) 50999 packets of 144 samples from 2017-08-13T17:32:57.488.000. Part 131/147

Processed Sun Aug 13 19:41:01 2017 by ELM ver.2012-10-06 from 001__elm20170813_173256__dat00.bin

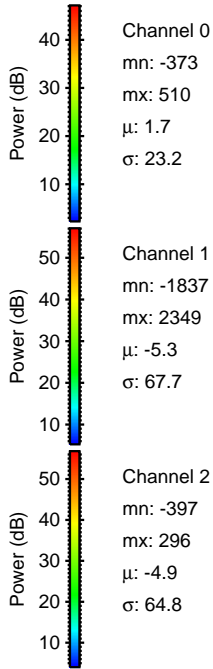
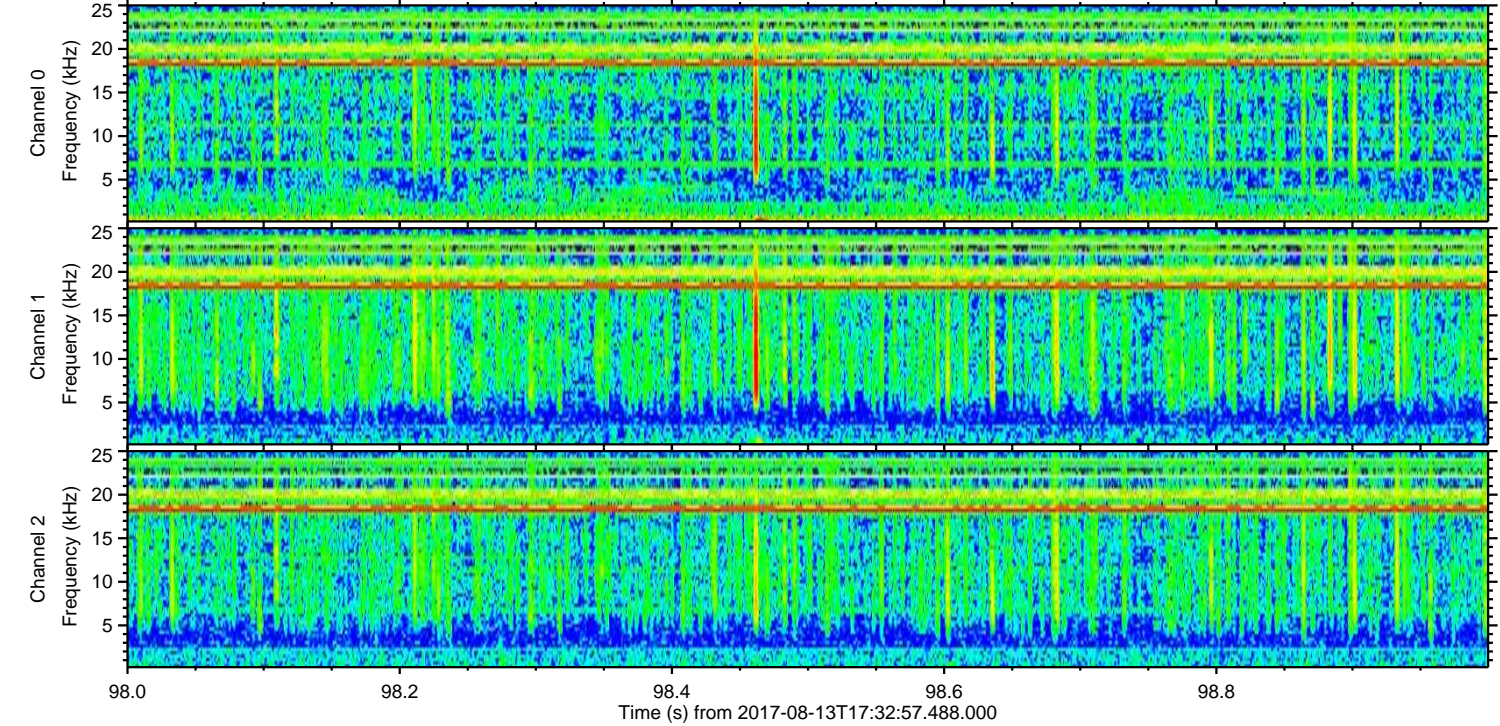
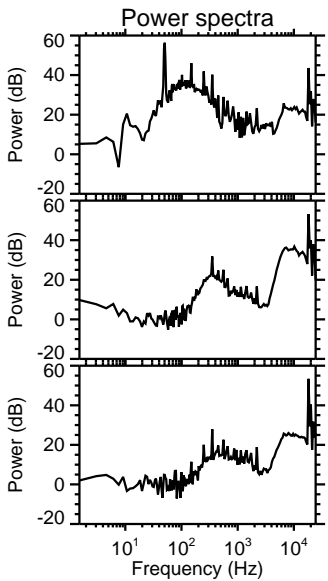
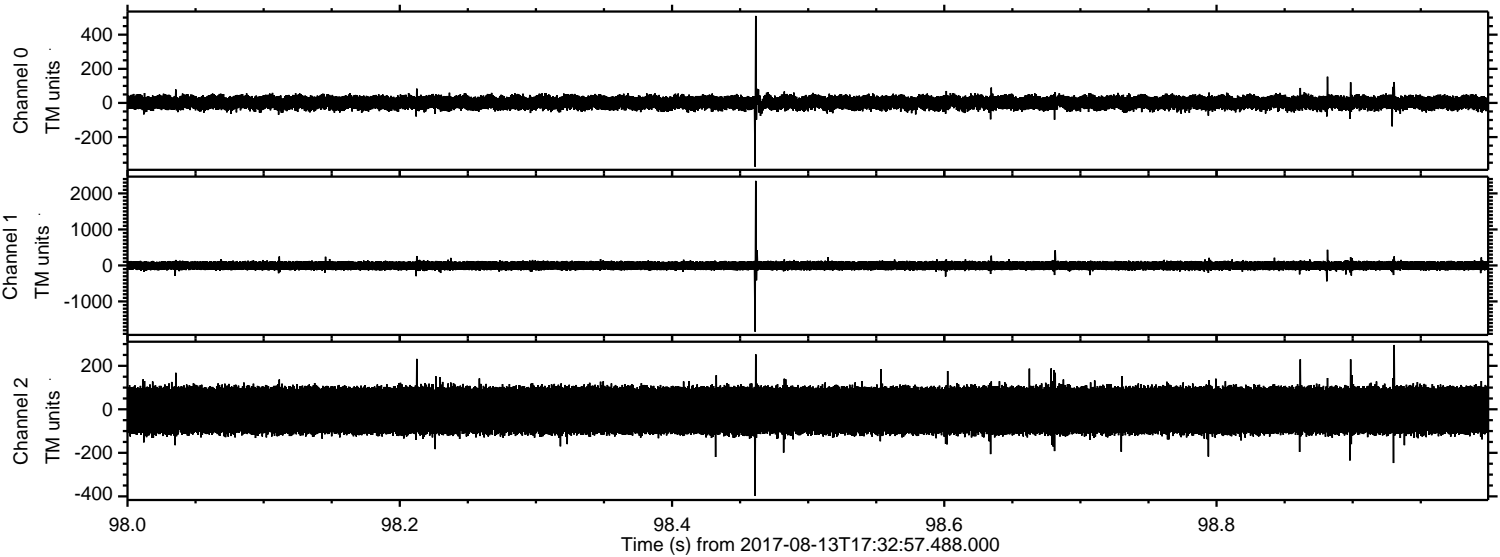


Channel 0
mn: -395
mx: 577
 μ : 1.7
 σ : 23.3

Channel 1
mn: -770
mx: 769
 μ : -5.4
 σ : 66.9

Channel 2
mn: -2352
mx: 1250
 μ : -5.0
 σ : 66.7

Processed Sun Aug 13 19:41:01 2017 by ELM ver.2012-10-06 from 001__elm20170813_173256__dat00.bin



Processed Sun Aug 13 19:41:02 2017 by ELM ver.2012-10-06 from 001__elm20170813_173256__dat00.bin

