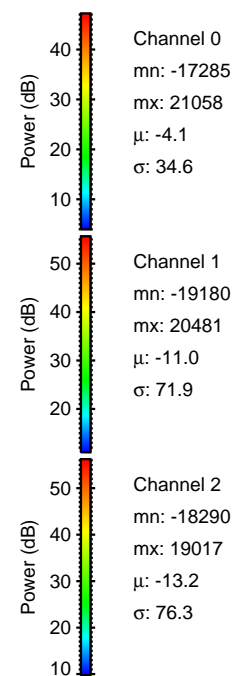
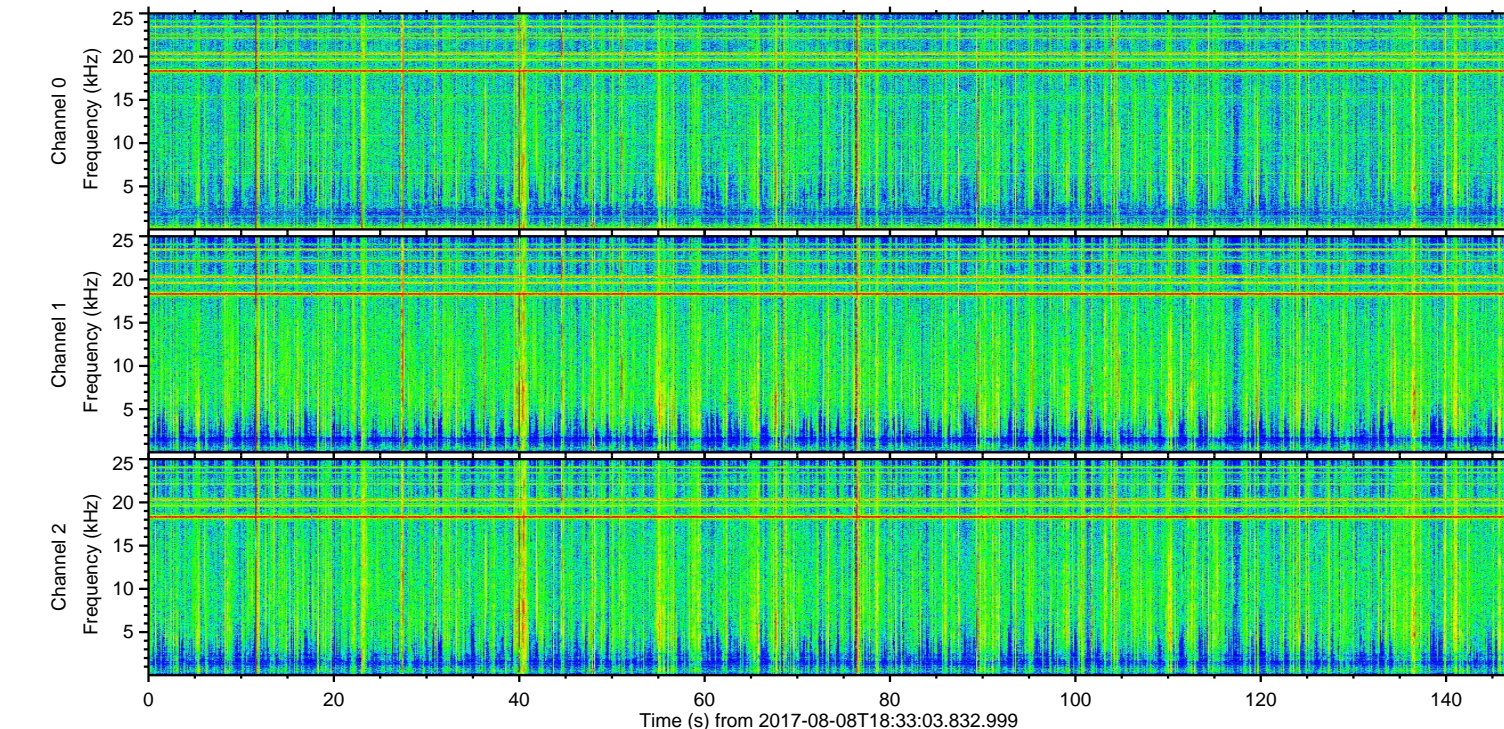
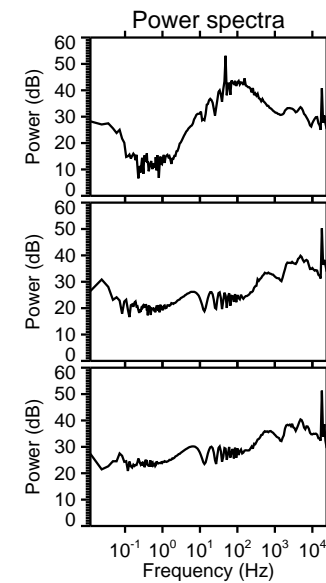
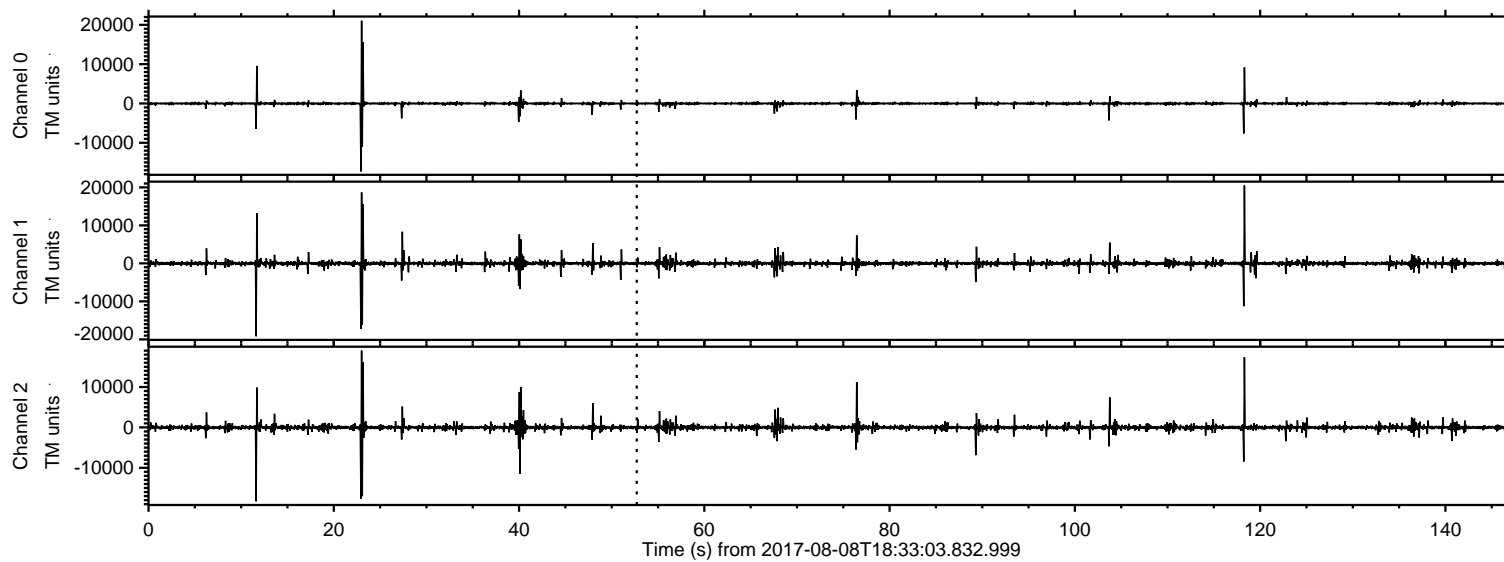


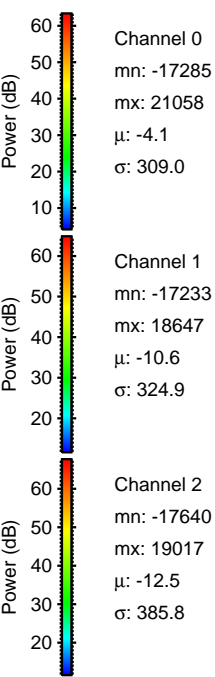
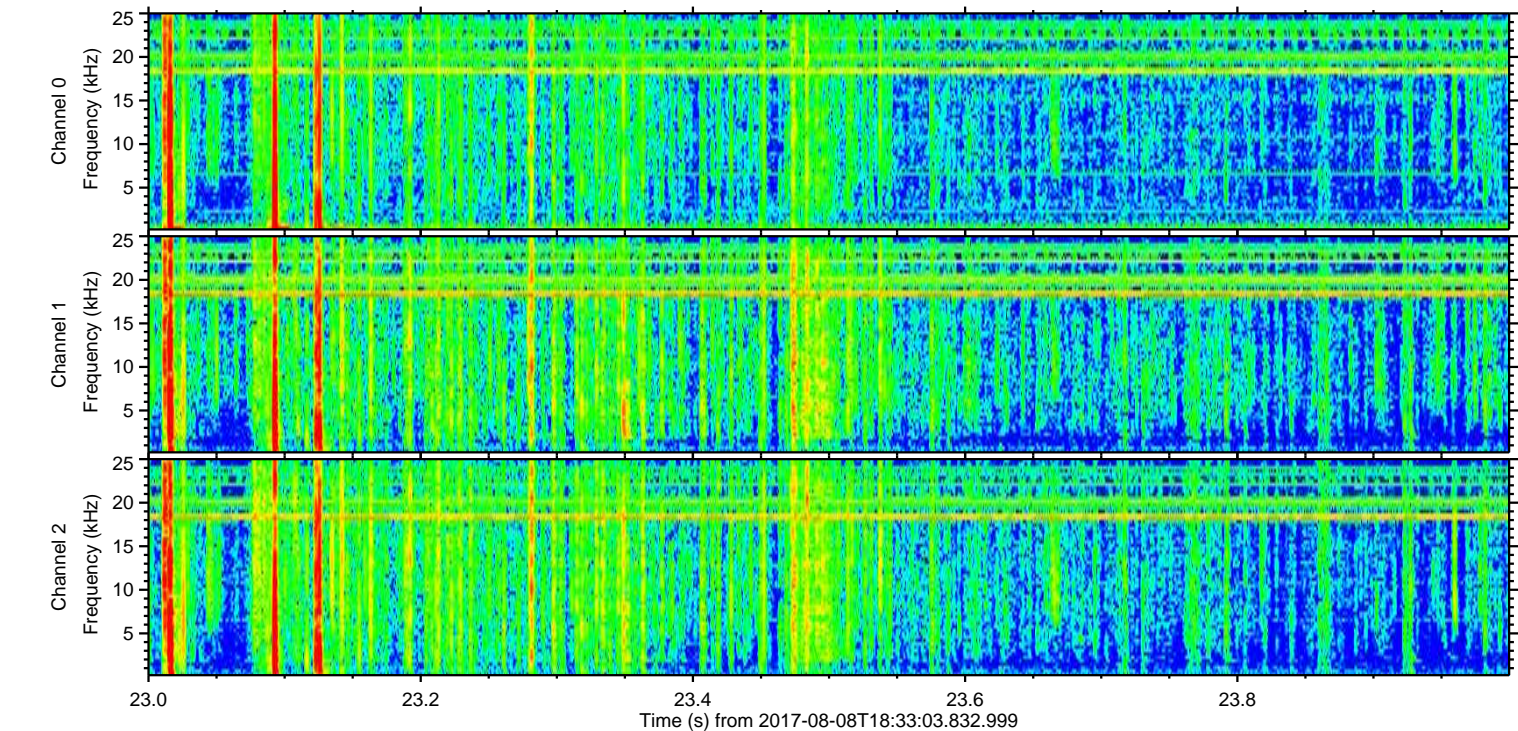
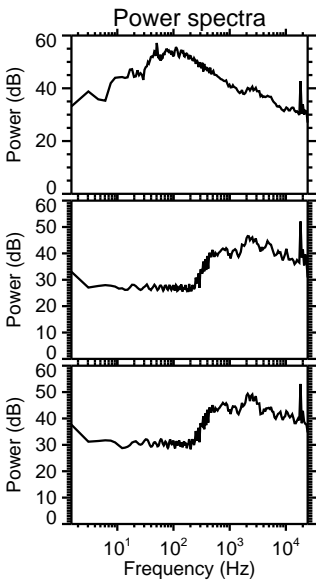
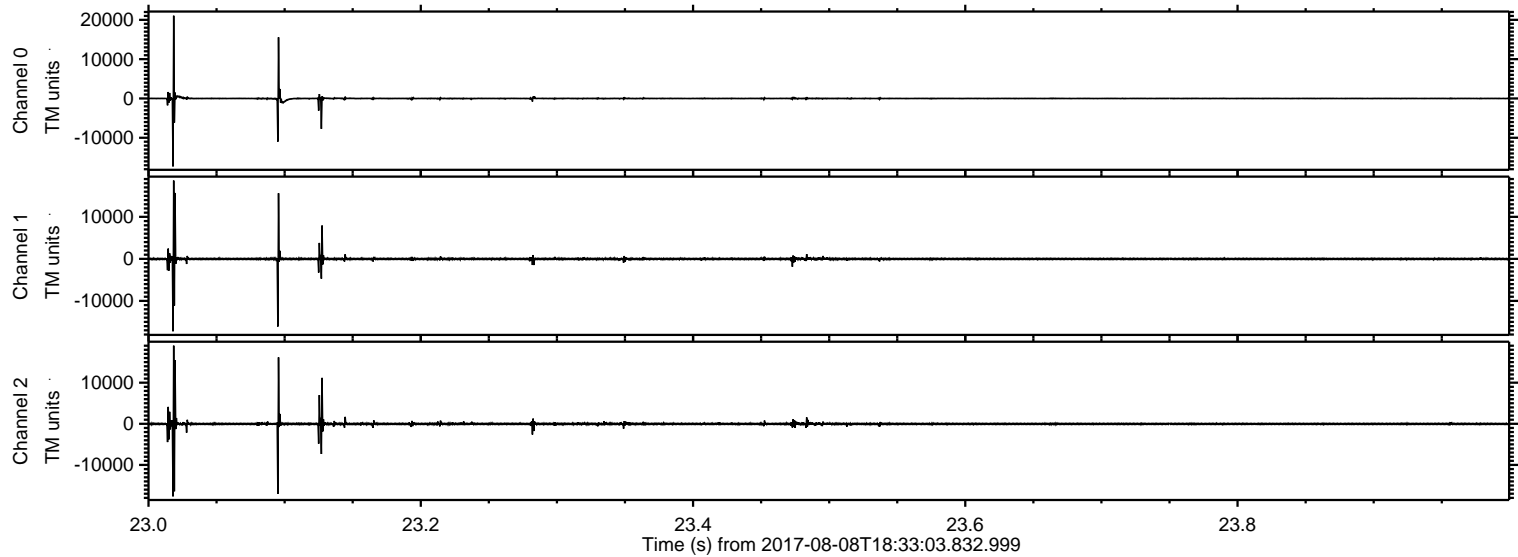
# ELMAVAN 3D WAVEFORMS (Measured data sampled at 50 kHz) 50999 packets of 144 samples from 2017-08-08T18:33:03.832.999.

Processed Tue Aug 8 20:40:56 2017 by ELM ver.2012-10-06 from 001\_\_elm20170808\_183302\_\_dat00.bin





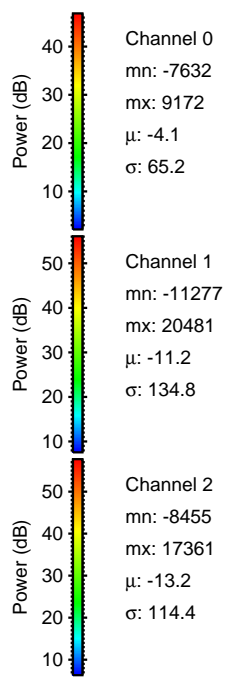
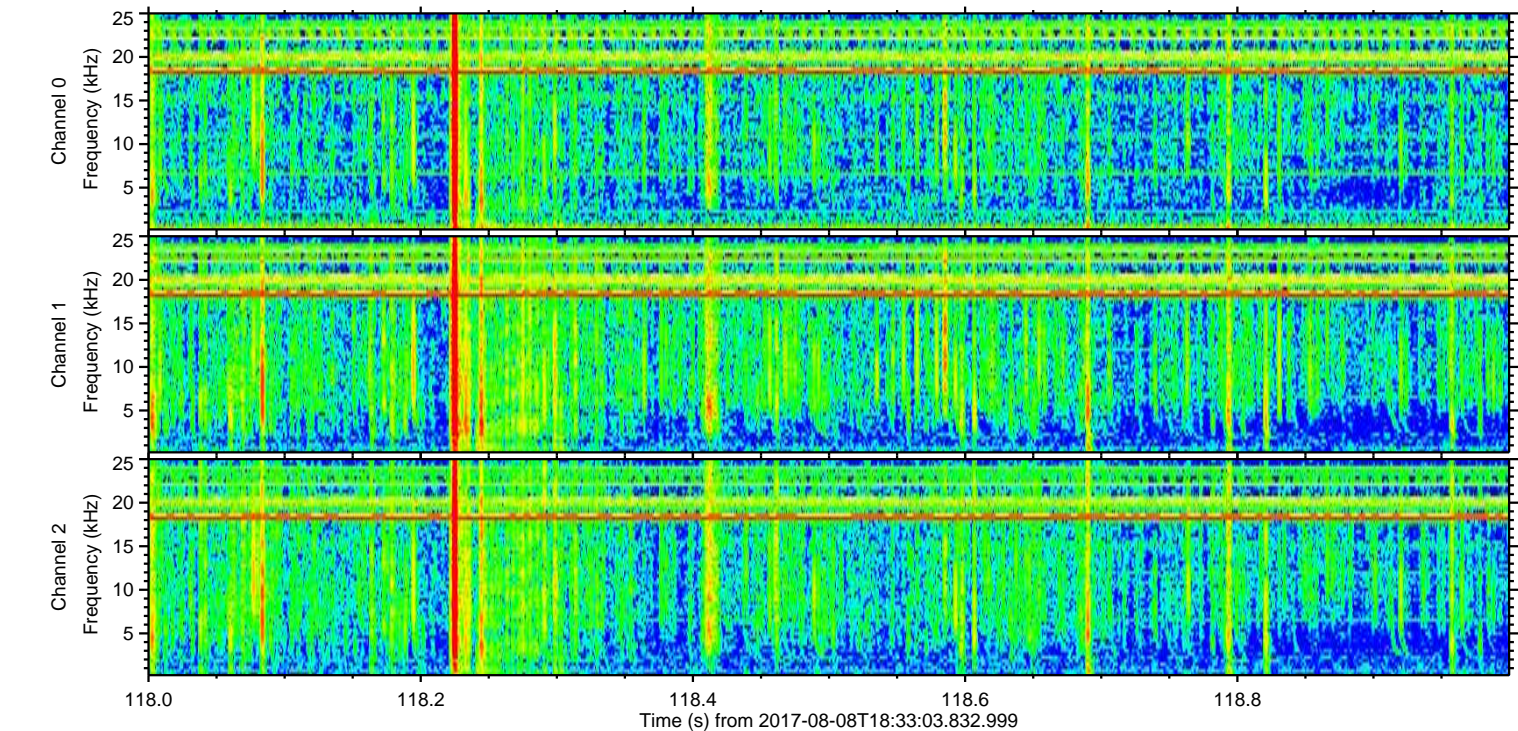
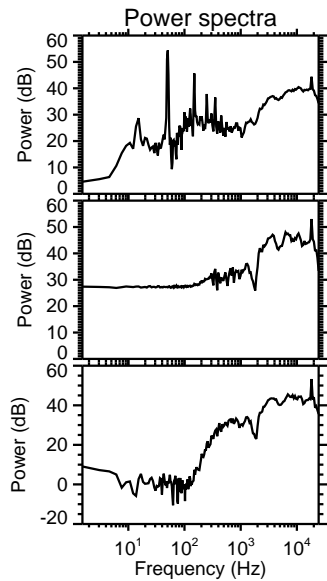
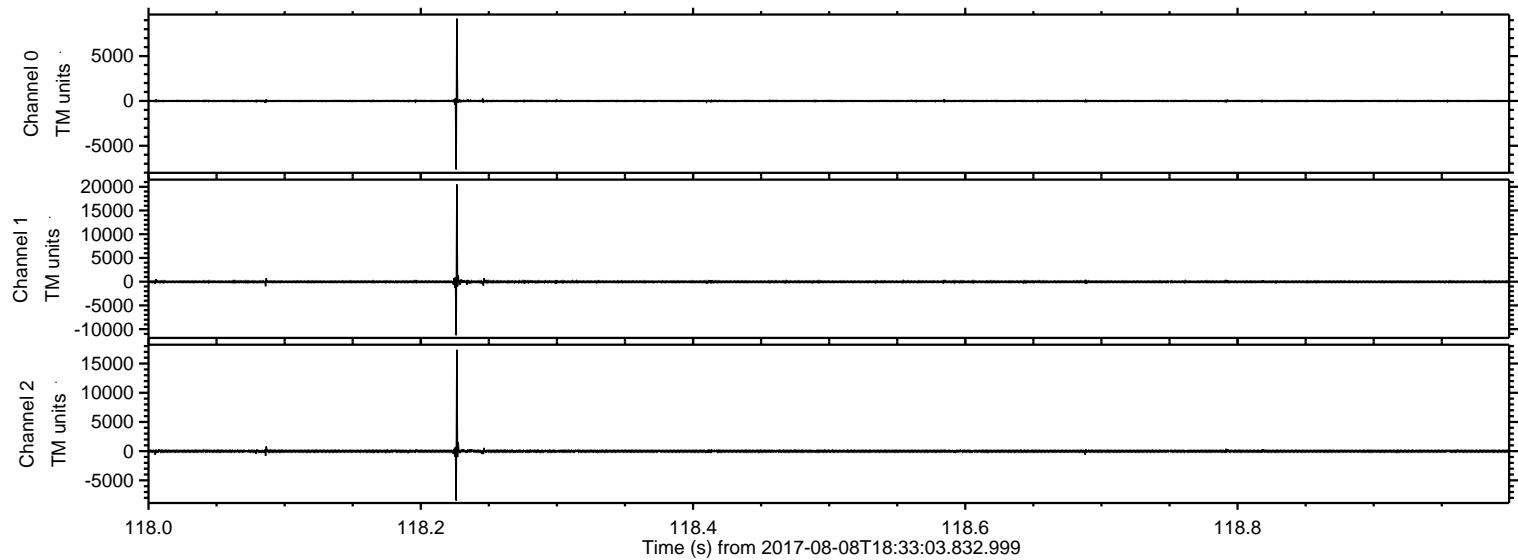
Processed Tue Aug 8 20:41:03 2017 by ELM ver.2012-10-06 from 001\_\_elm20170808\_183302\_\_dat00.bin





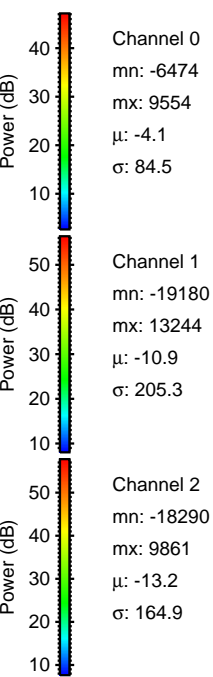
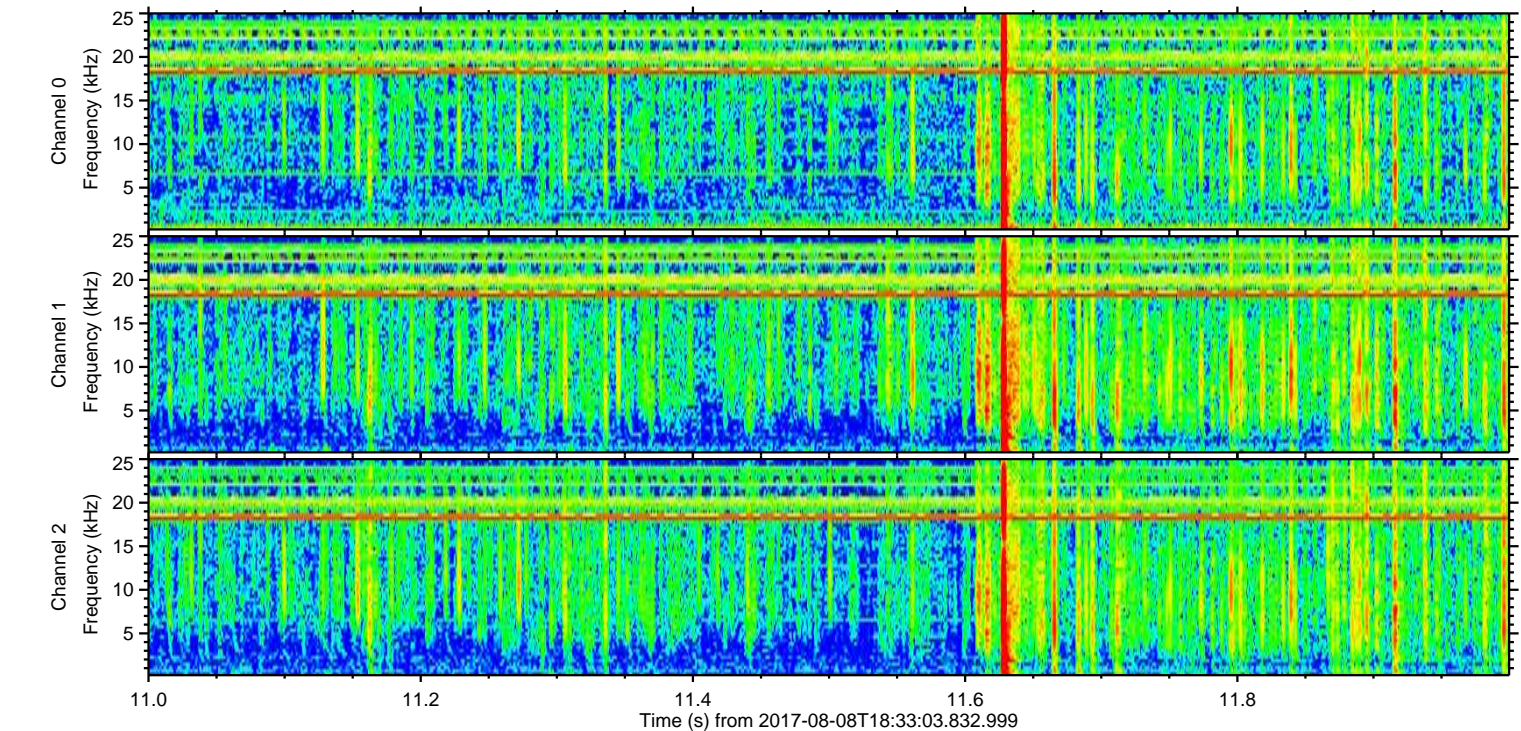
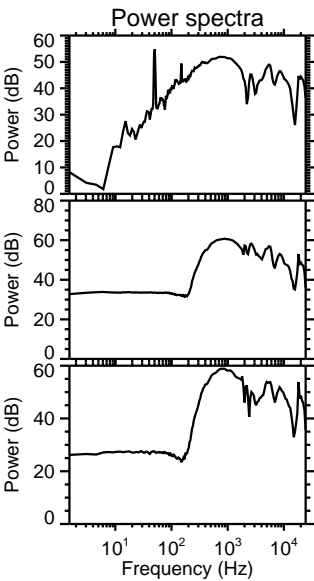
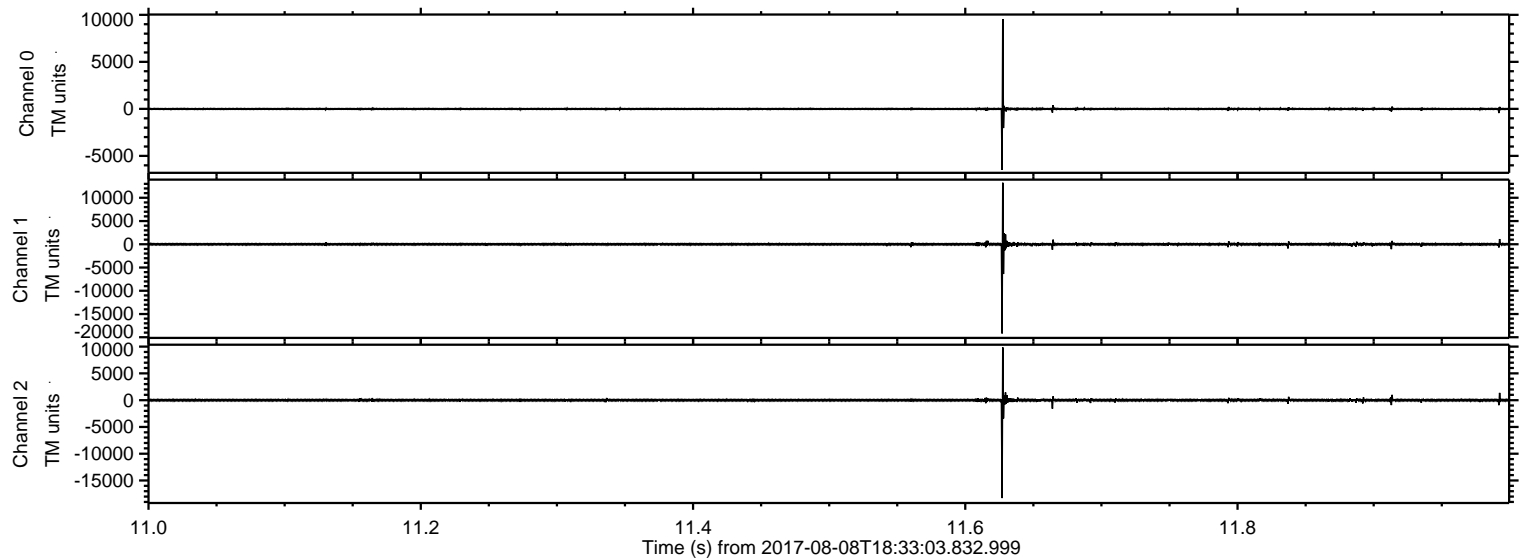
ELMAVAN 3D WAVEFORMS (Measured data sampled at 50 kHz) 50999 packets of 144 samples from 2017-08-08T18:33:03.832.999. Part 119/147

Processed Tue Aug 8 20:41:03 2017 by ELM ver.2012-10-06 from 001\_\_elm20170808\_183302\_\_dat00.bin



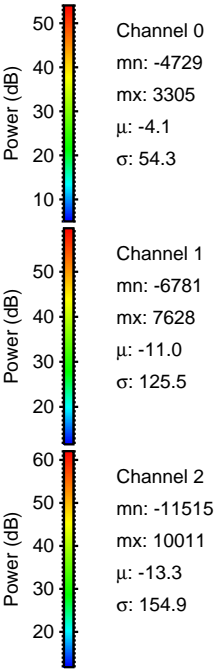
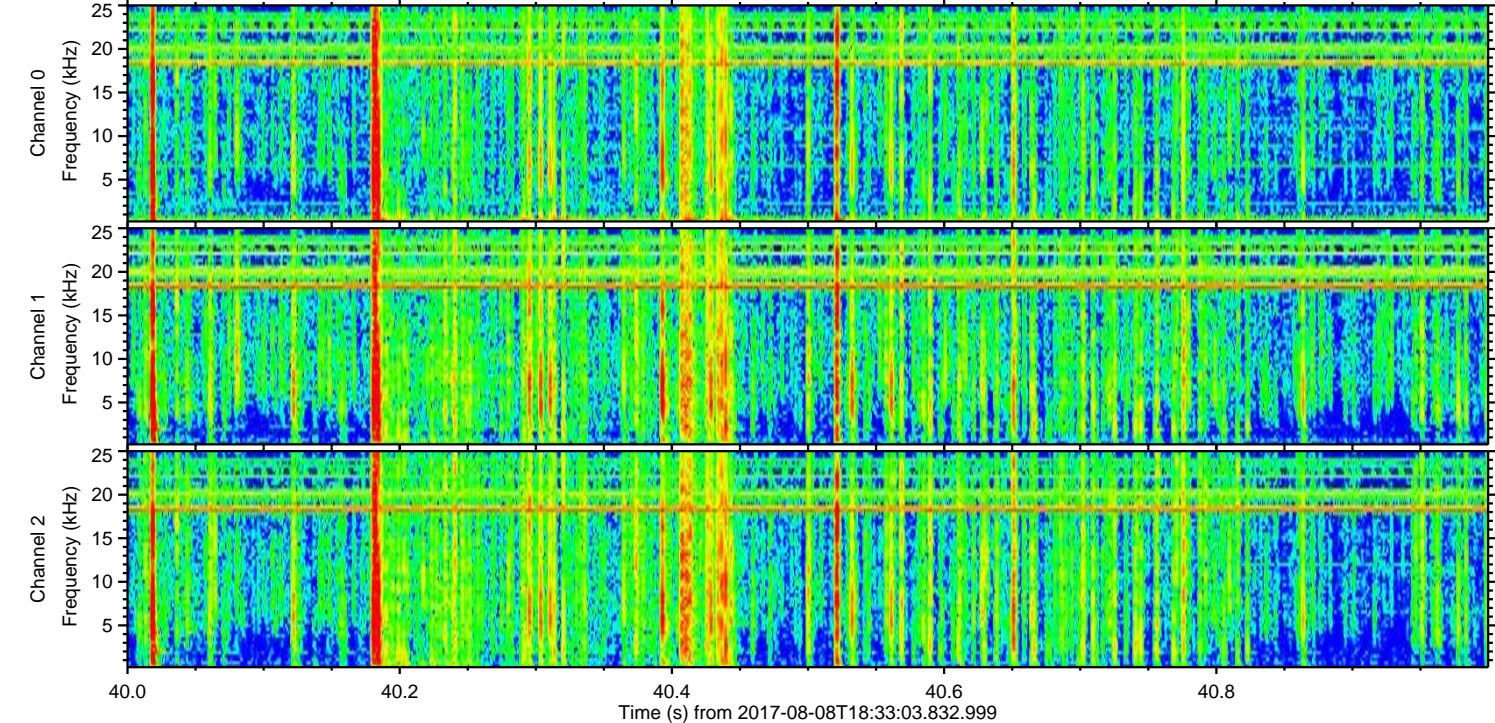
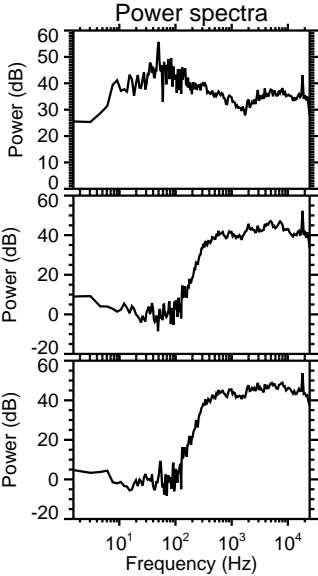
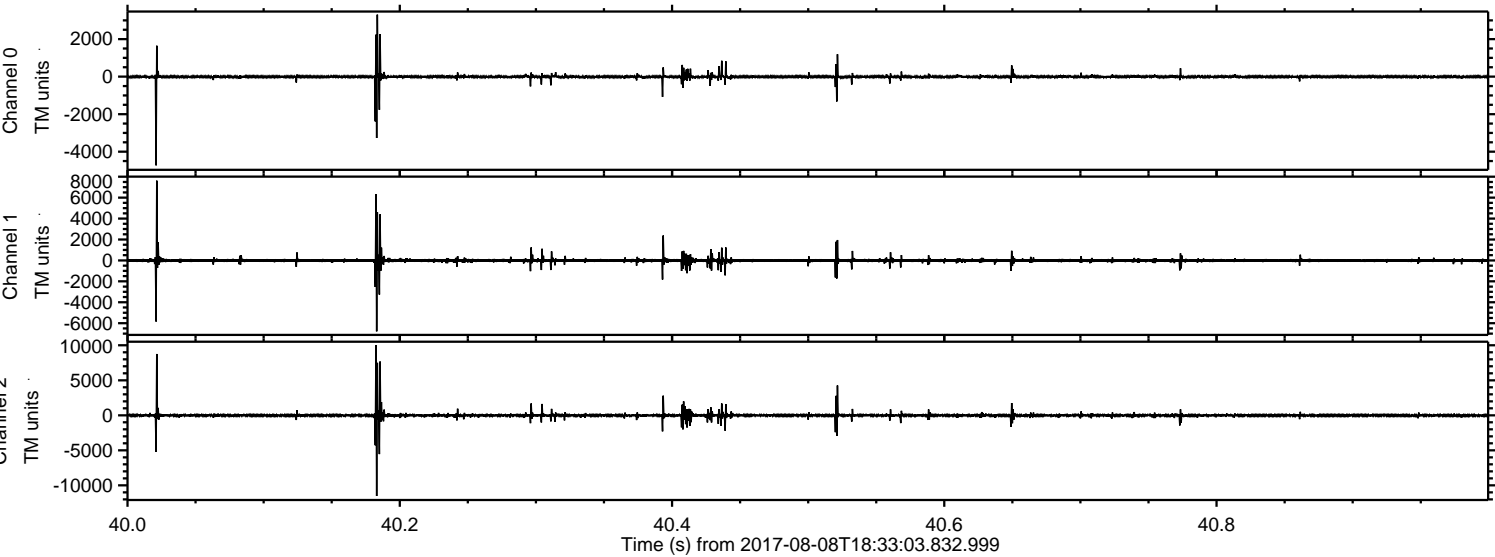


Processed Tue Aug 8 20:41:04 2017 by ELM ver.2012-10-06 from 001\_\_elm20170808\_183302\_\_dat00.bin

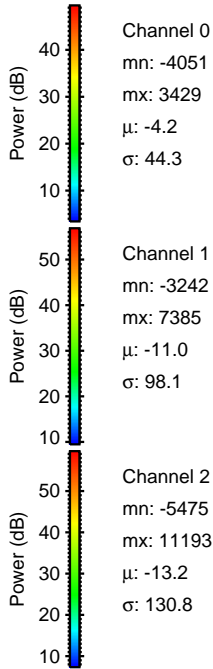
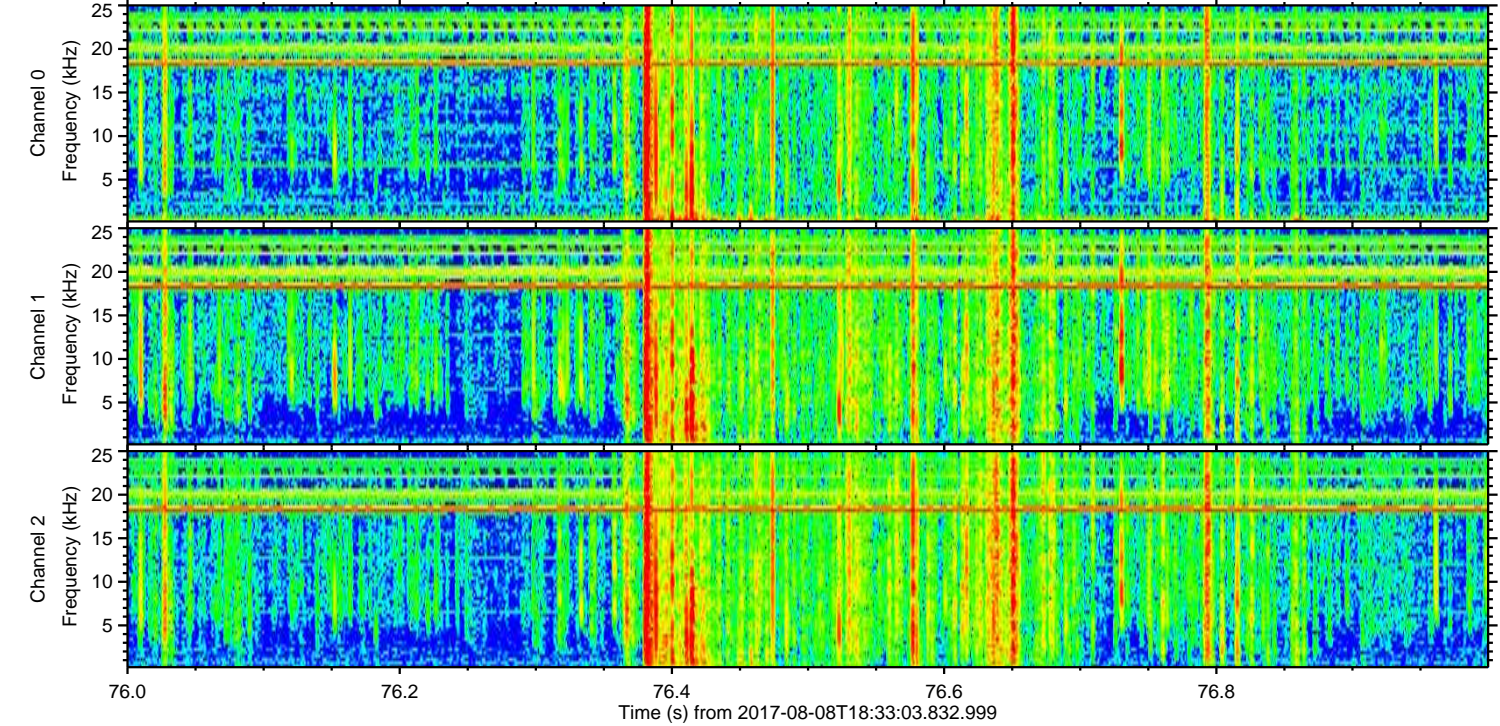
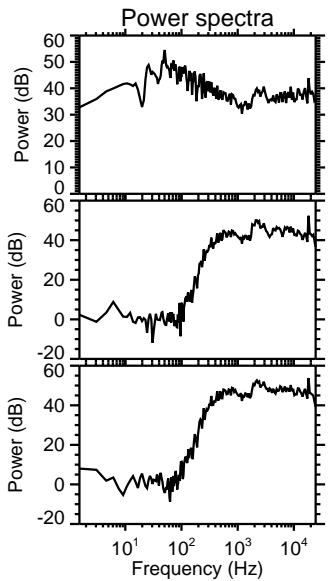
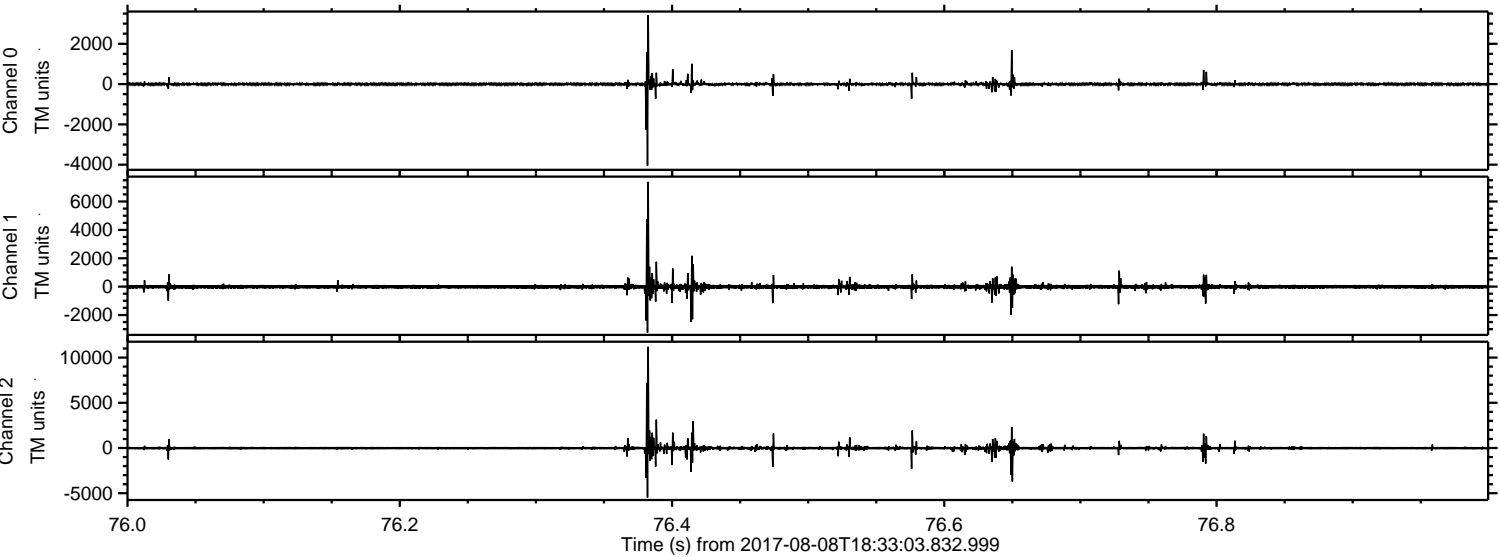




Processed Tue Aug 8 20:41:05 2017 by ELM ver.2012-10-06 from 001\_\_elm20170808\_183302\_\_dat00.bin

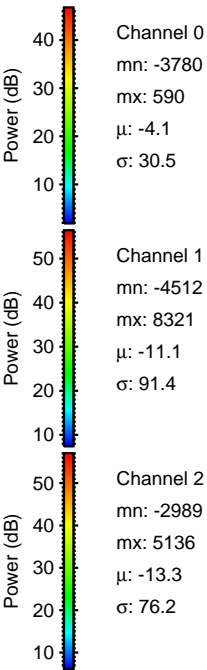
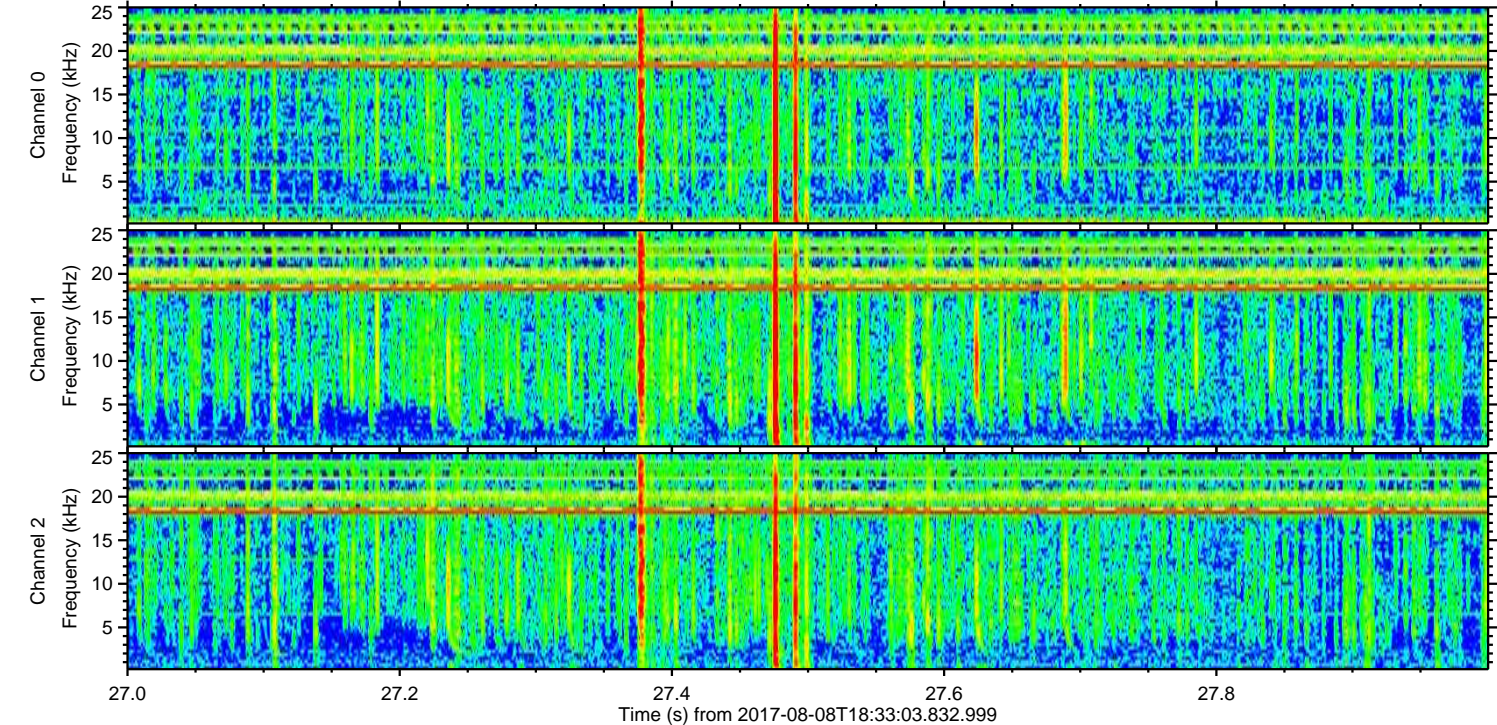
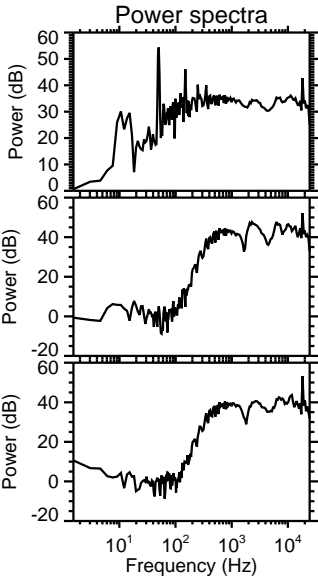
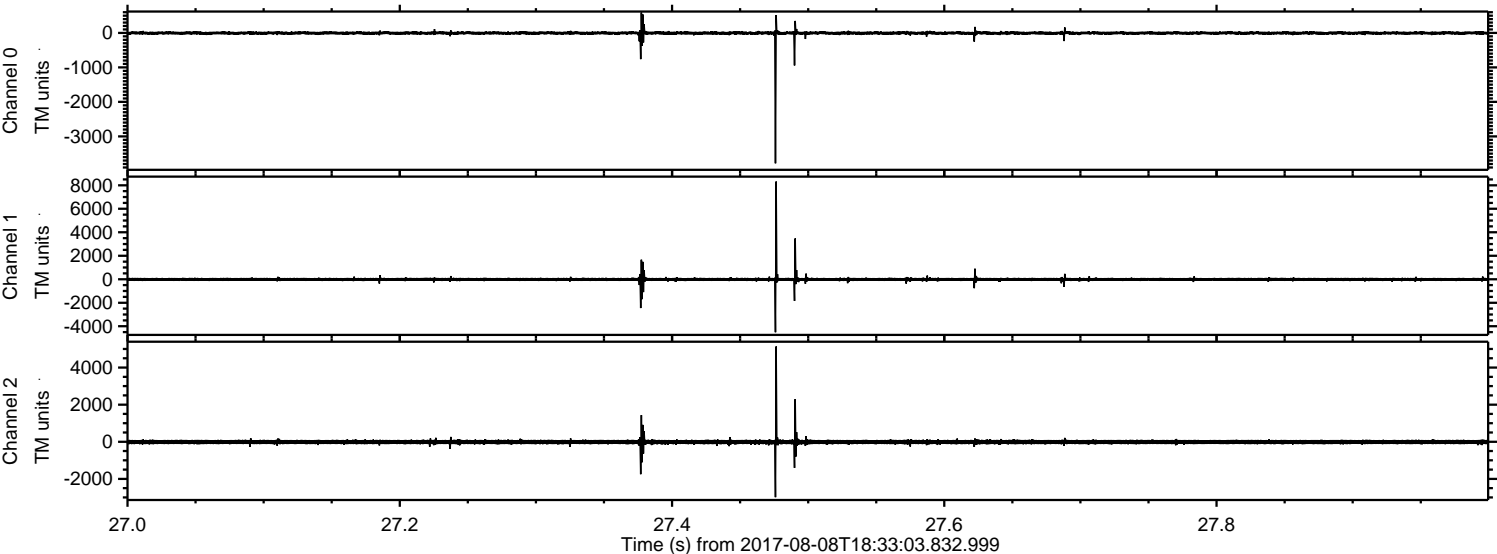


Processed Tue Aug 8 20:41:05 2017 by ELM ver.2012-10-06 from 001\_\_elm20170808\_183302\_\_dat00.bin





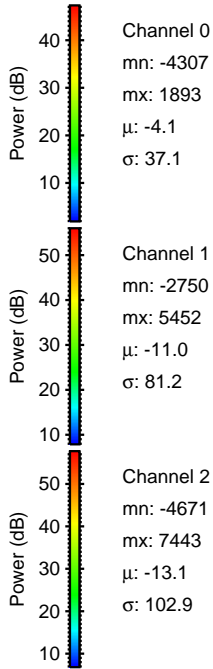
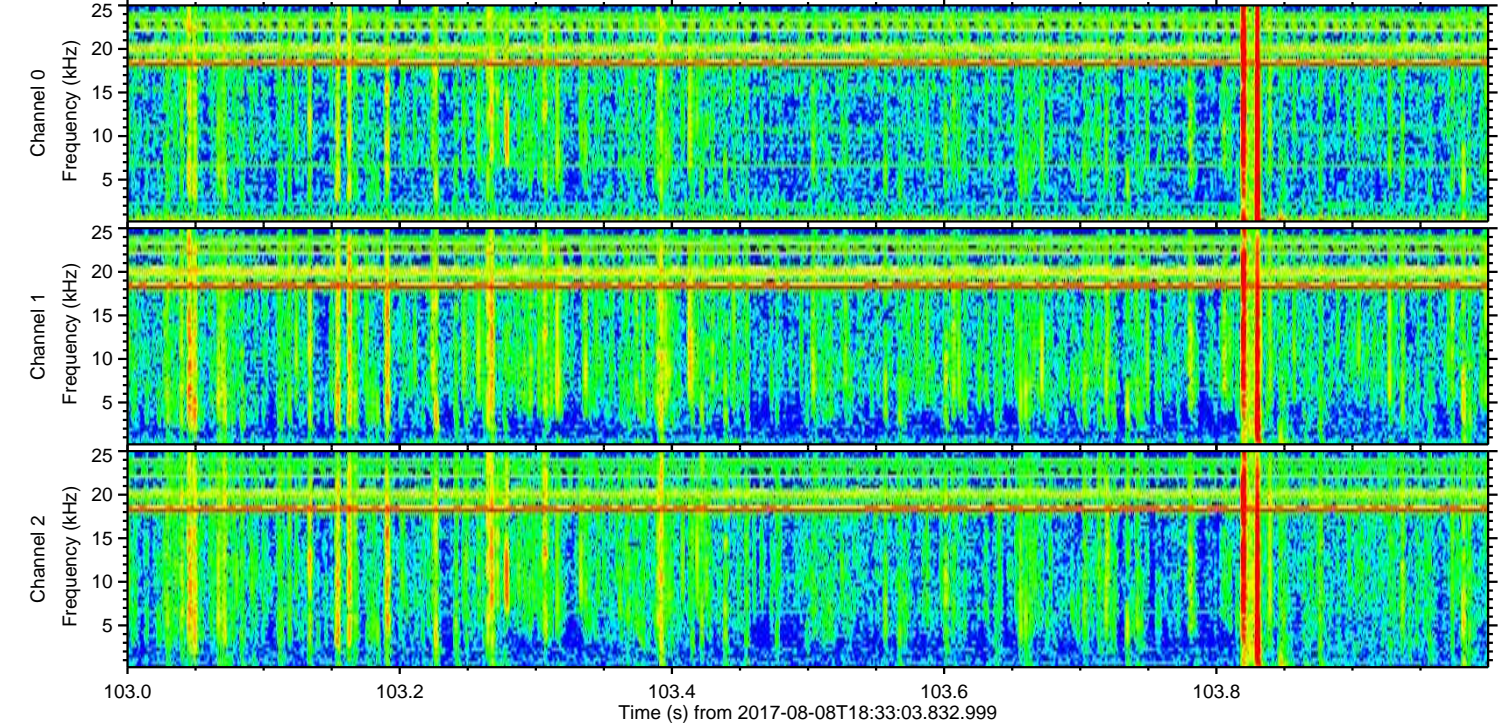
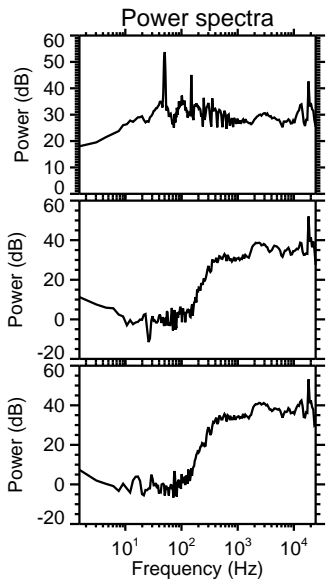
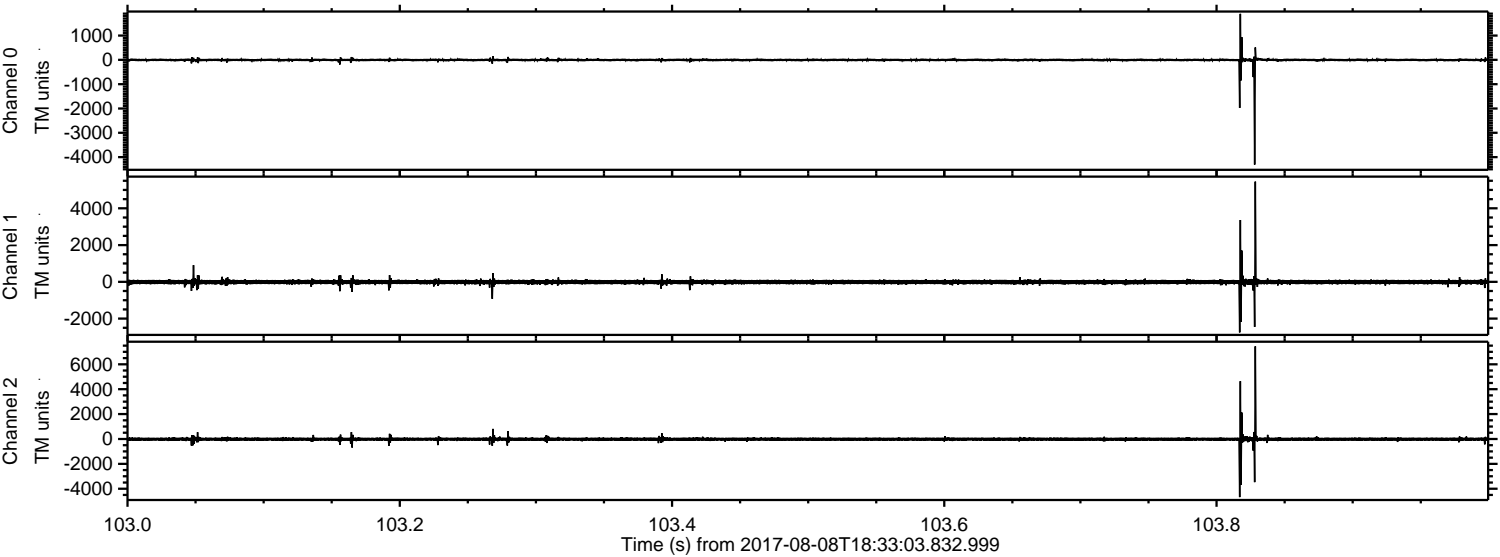
Processed Tue Aug 8 20:41:06 2017 by ELM ver.2012-10-06 from 001\_\_elm20170808\_183302\_\_dat00.bin





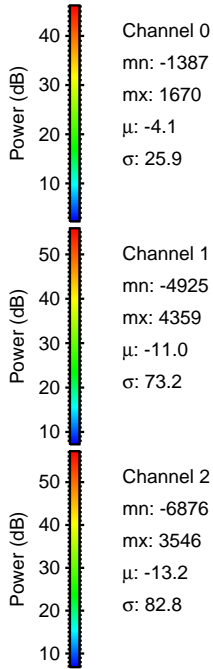
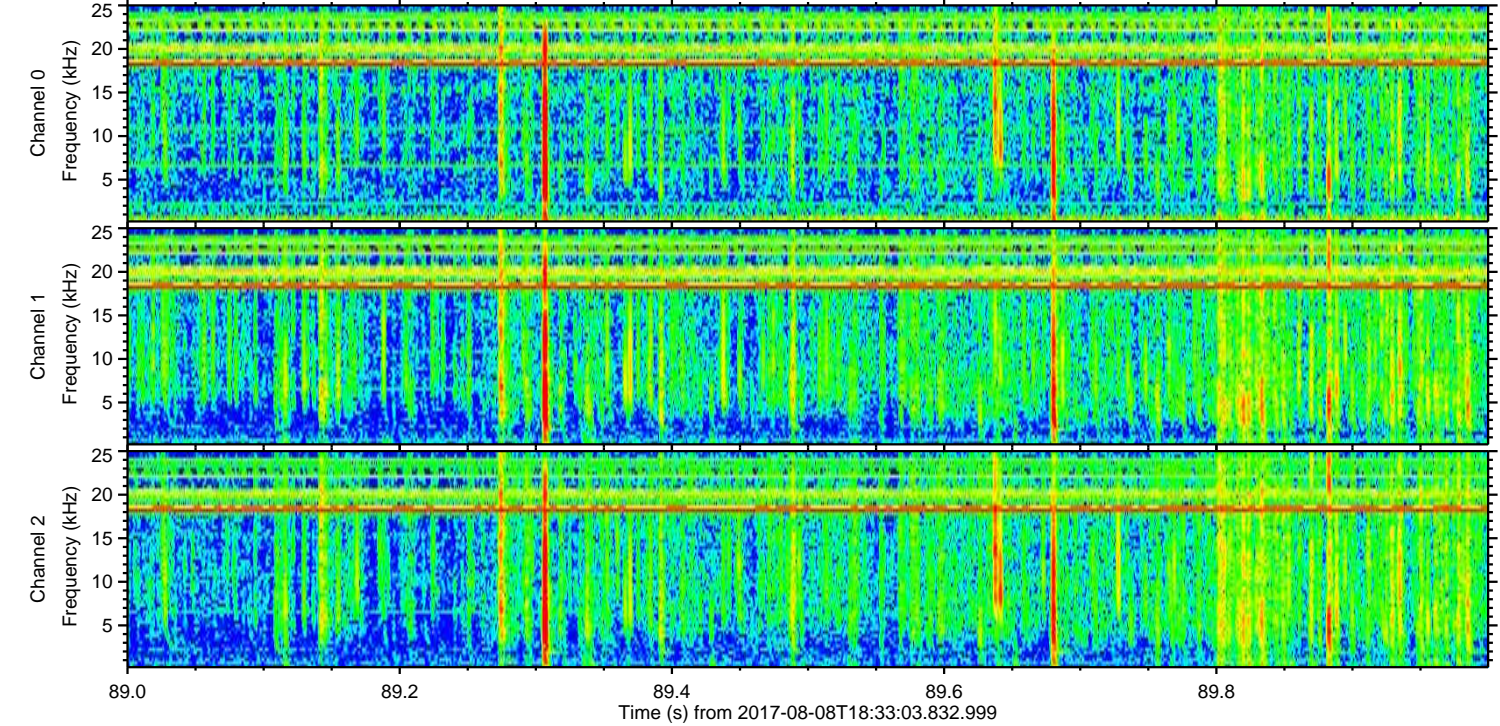
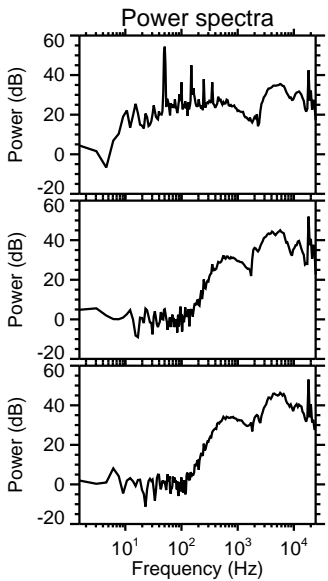
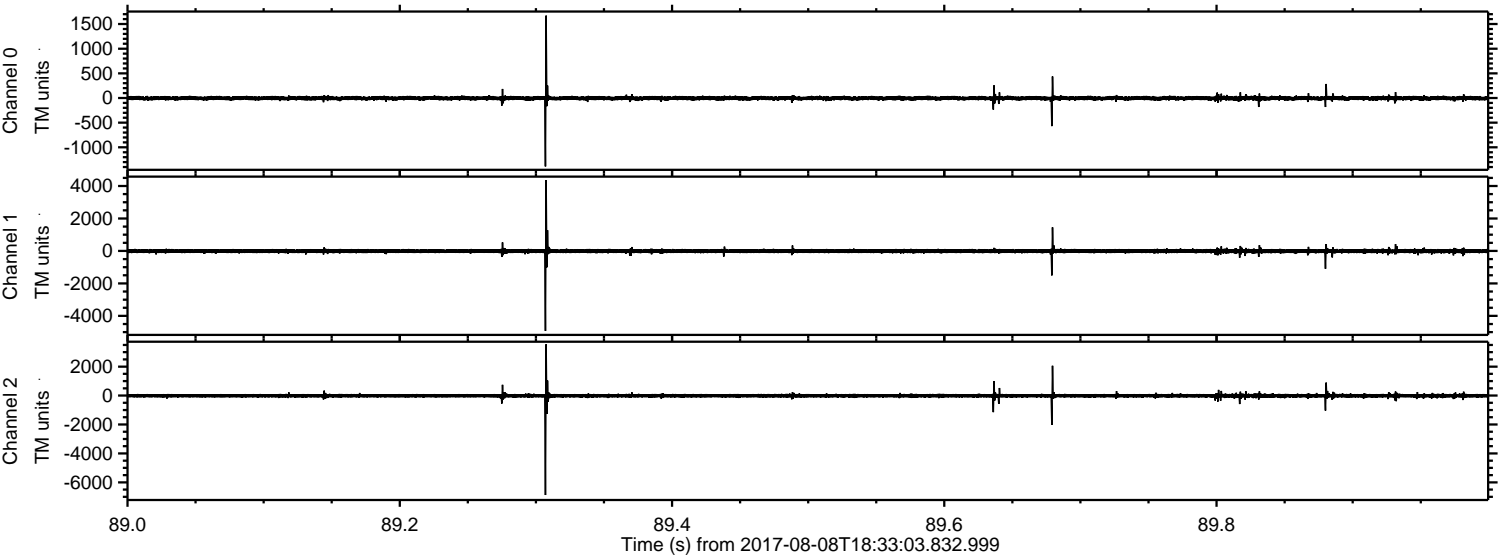
ELMAVAN 3D WAVEFORMS (Measured data sampled at 50 kHz) 50999 packets of 144 samples from 2017-08-08T18:33:03.832.999. Part 104/147

Processed Tue Aug 8 20:41:07 2017 by ELM ver.2012-10-06 from 001\_\_elm20170808\_183302\_\_dat00.bin





Processed Tue Aug 8 20:41:08 2017 by ELM ver.2012-10-06 from 001\_\_elm20170808\_183302\_\_dat00.bin



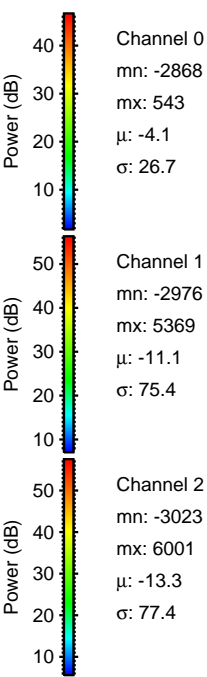
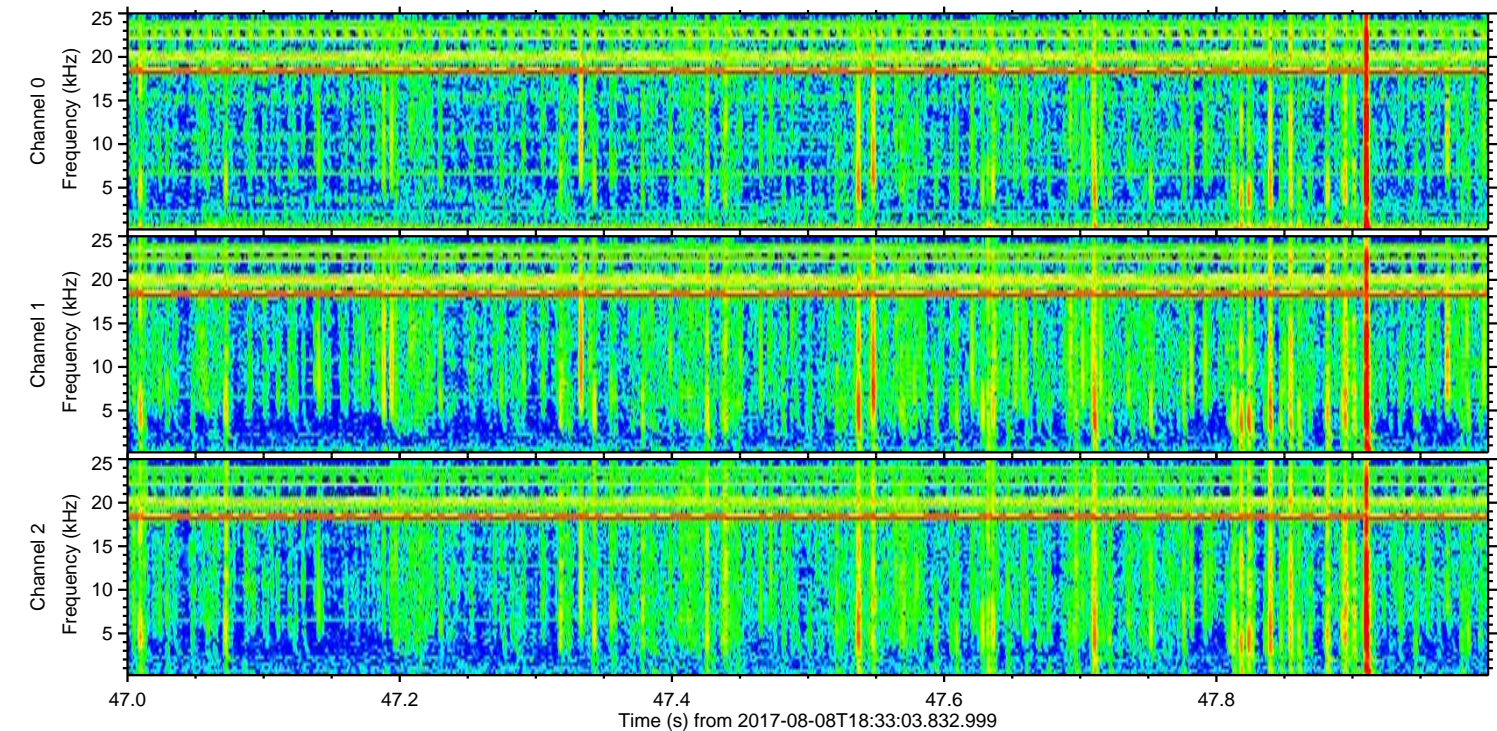
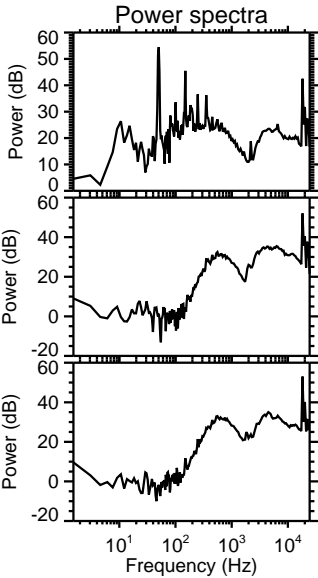
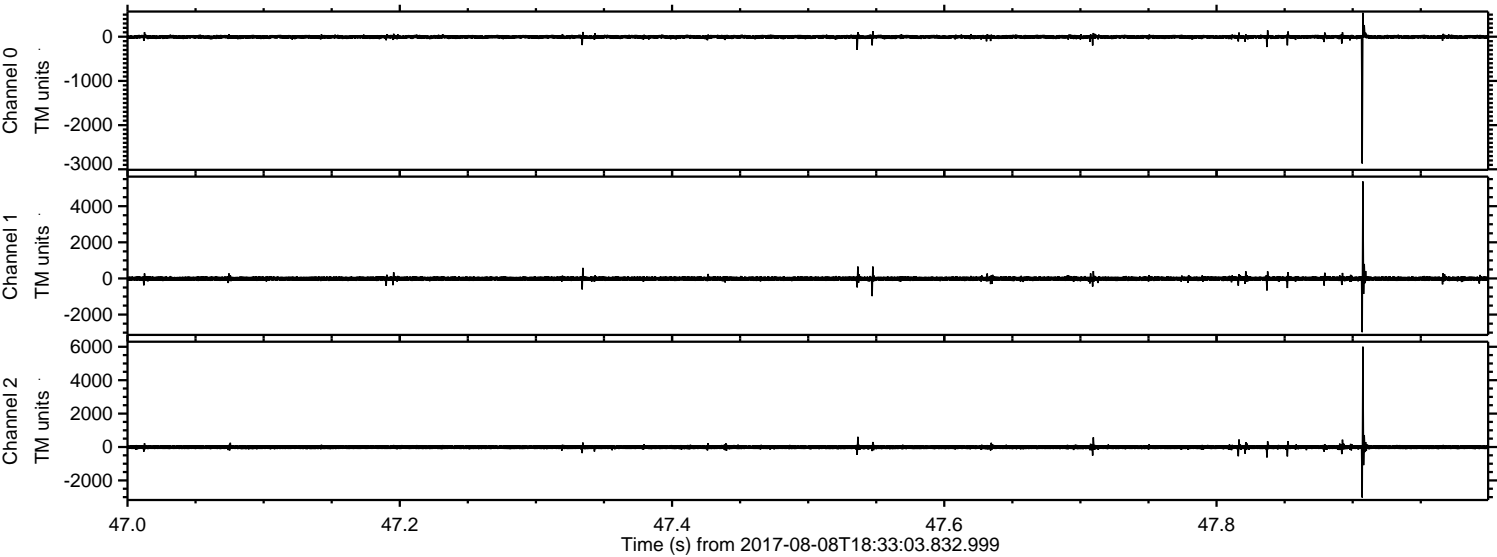
Channel 0  
mn: -1387  
mx: 1670  
 $\mu$ : -4.1  
 $\sigma$ : 25.9

Channel 1  
mn: -4925  
mx: 4359  
 $\mu$ : -11.0  
 $\sigma$ : 73.2

Channel 2  
mn: -6876  
mx: 3546  
 $\mu$ : -13.2  
 $\sigma$ : 82.8



Processed Tue Aug 8 20:41:08 2017 by ELM ver.2012-10-06 from 001\_\_elm20170808\_183302\_\_dat00.bin





Processed Tue Aug 8 20:41:09 2017 by ELM ver.2012-10-06 from 001\_\_elm20170808\_183302\_\_dat00.bin

