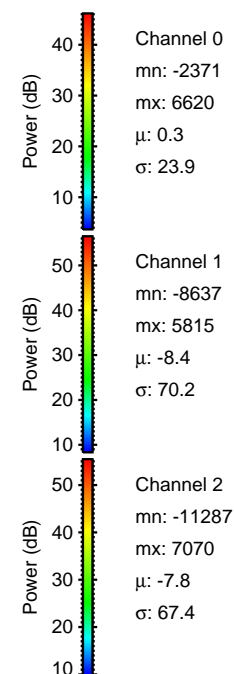
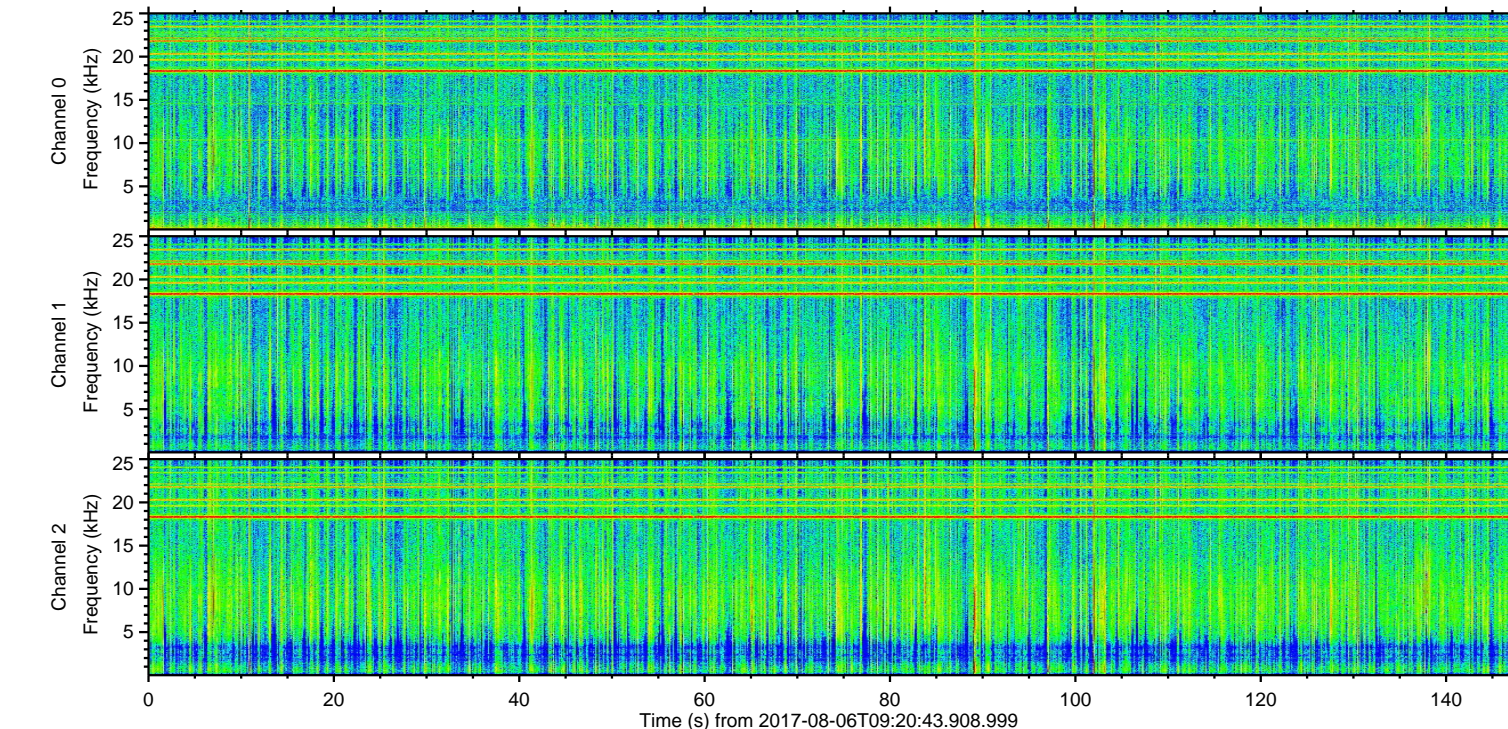
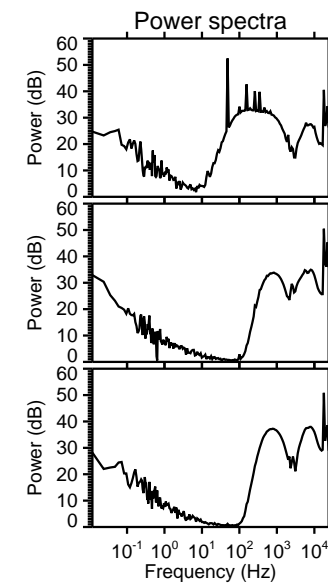
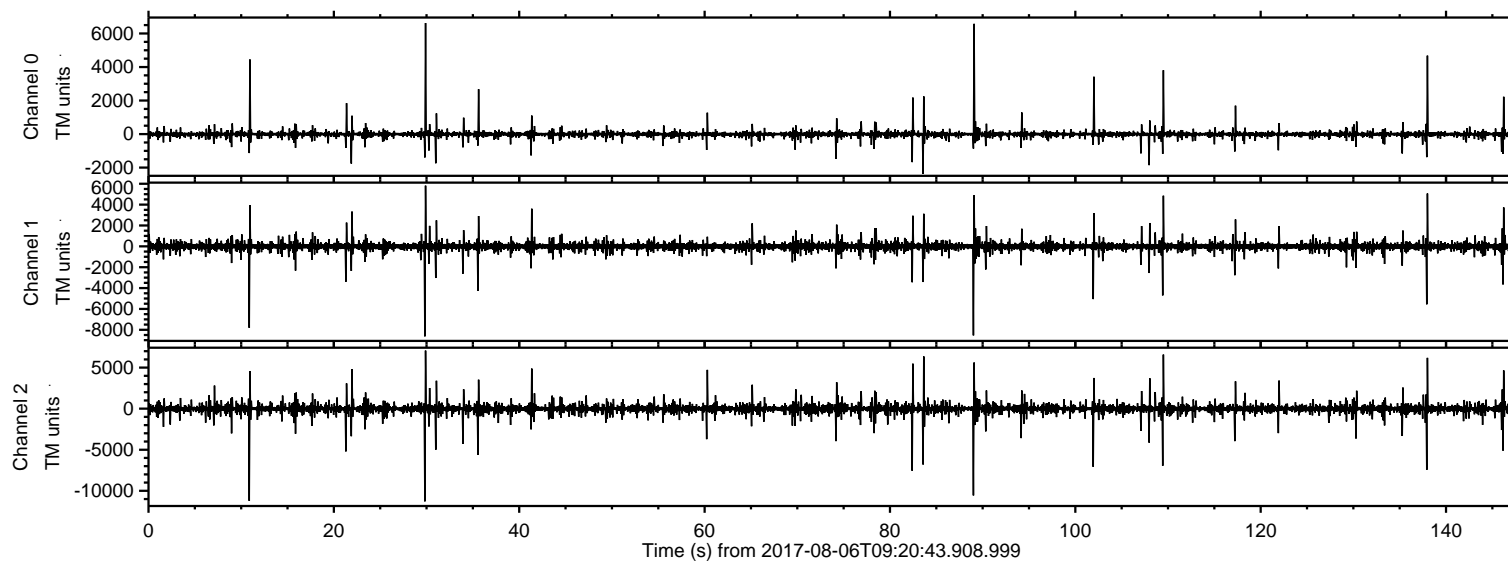
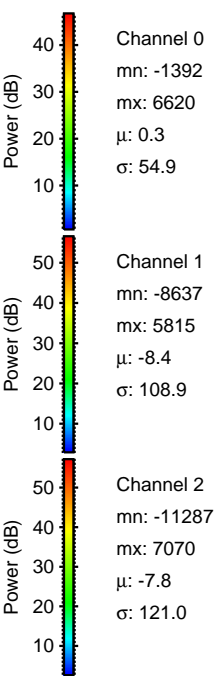
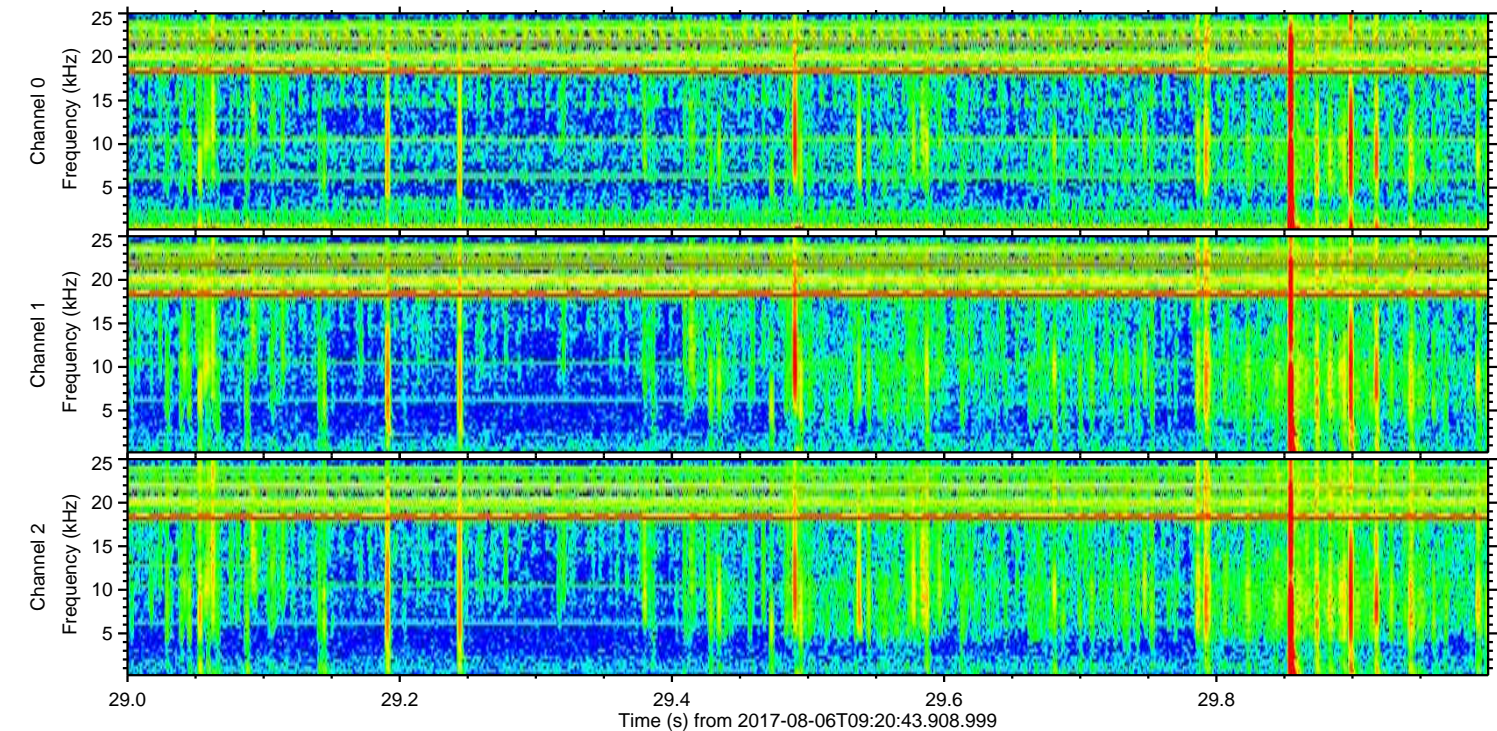
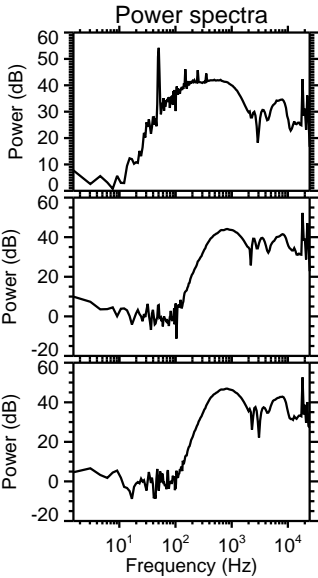
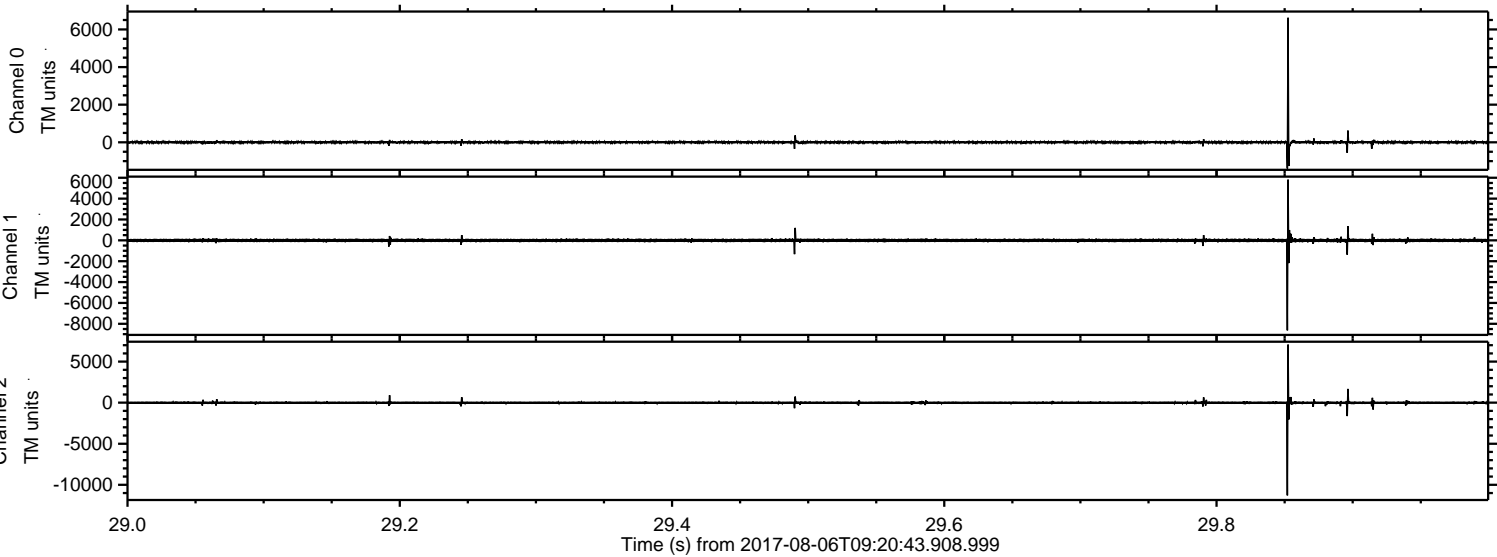


ELMAVAN 3D WAVEFORMS (Measured data sampled at 50 kHz) 51000 packets of 144 samples from 2017-08-06T09:20:43.908.999.

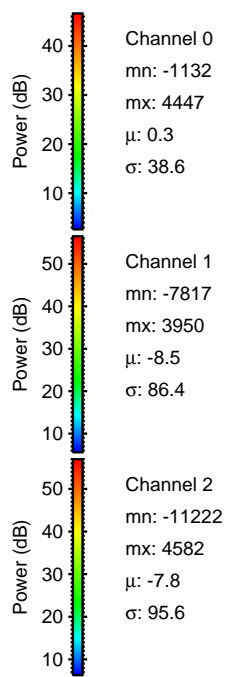
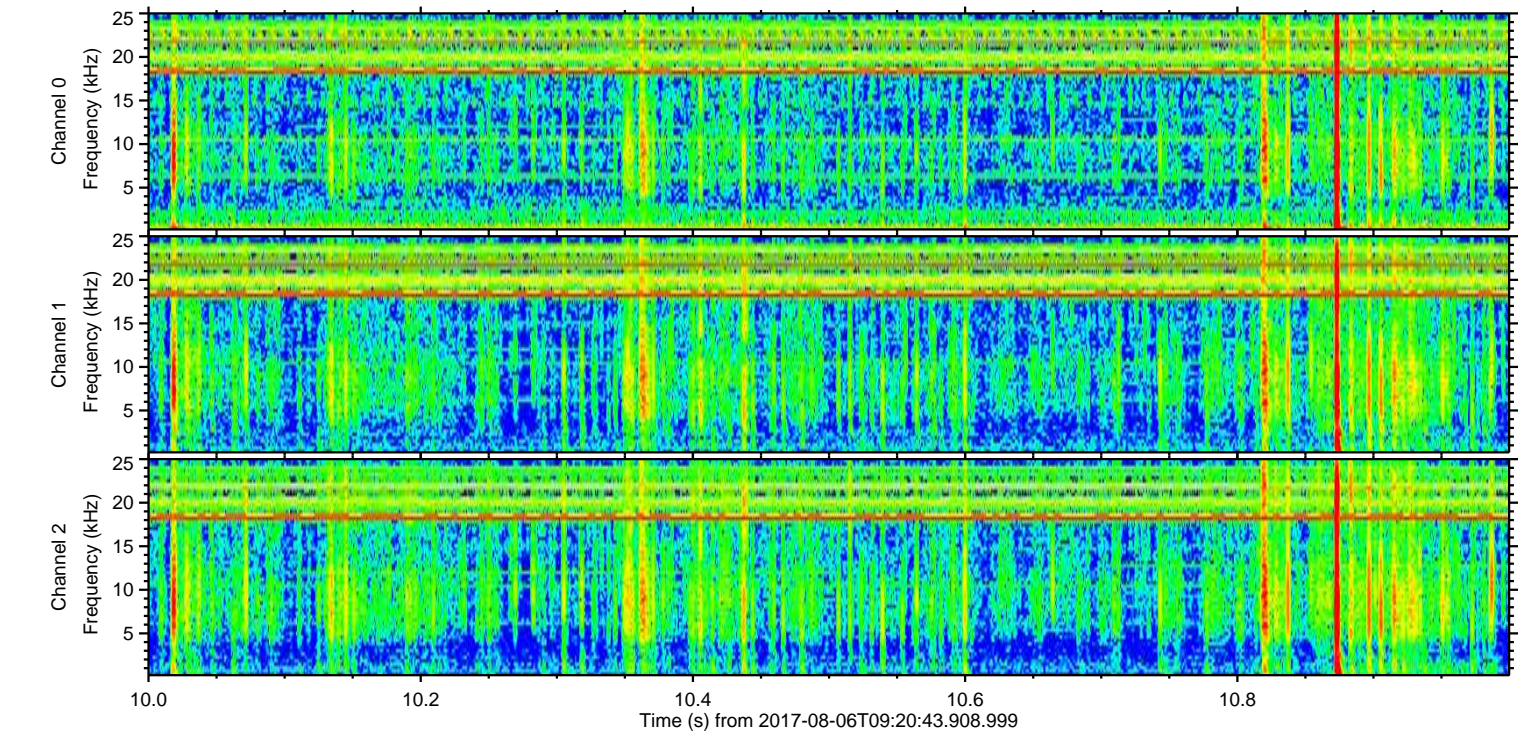
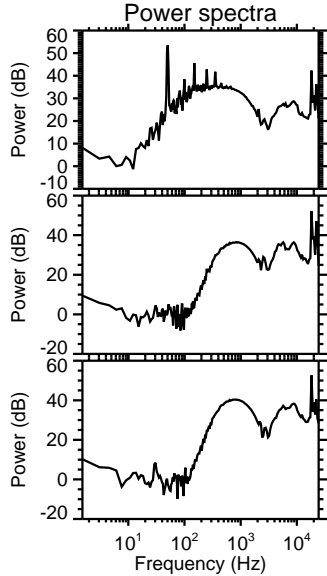
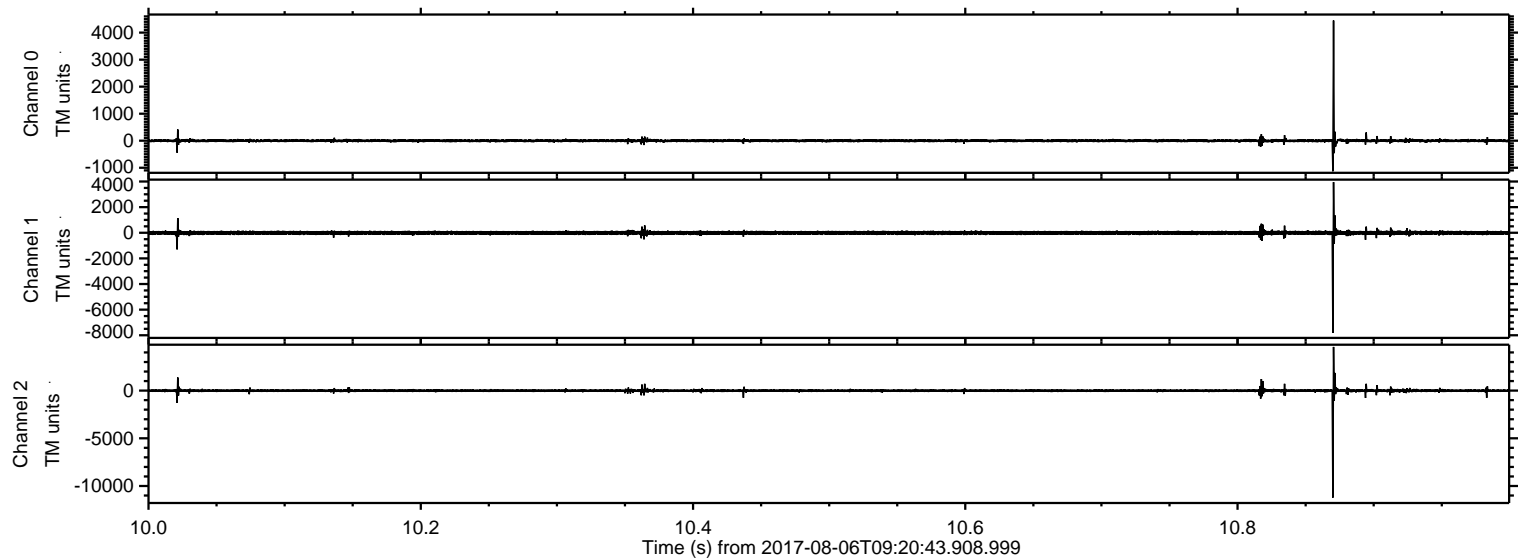
Processed Sun Aug 6 11:29:04 2017 by ELM ver.2012-10-06 from 001__elm20170806_092042__dat00.bin



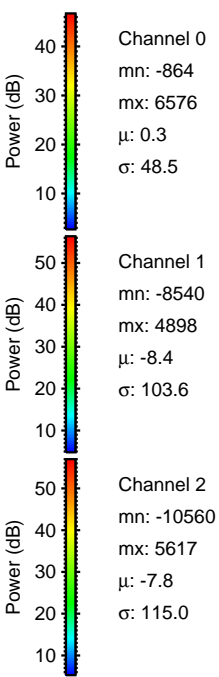
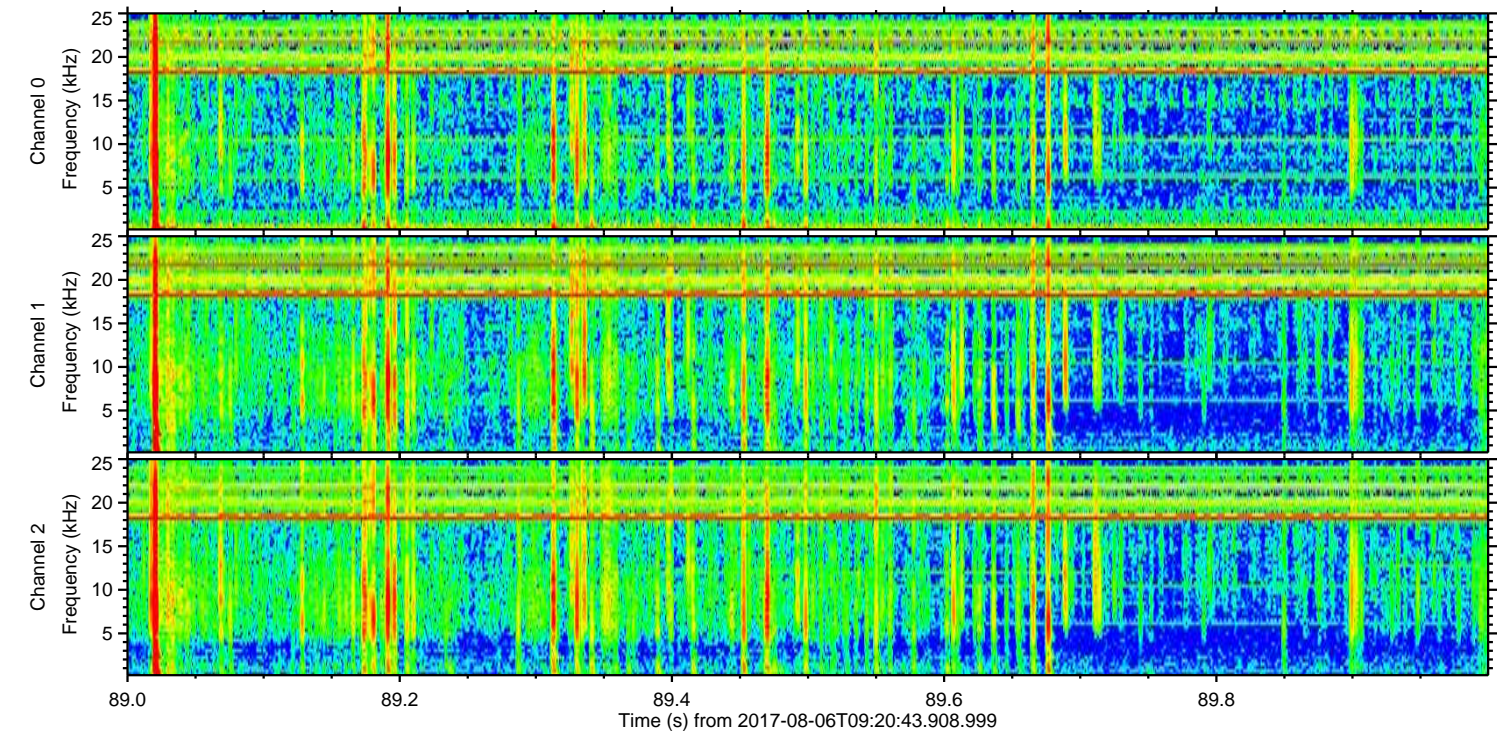
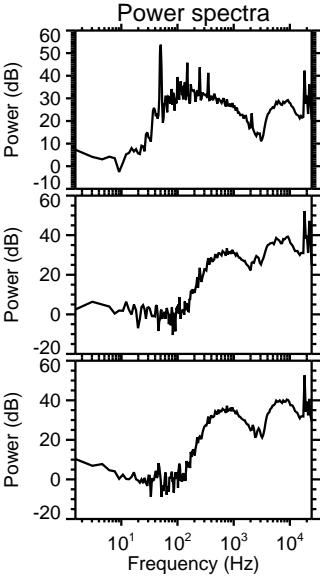
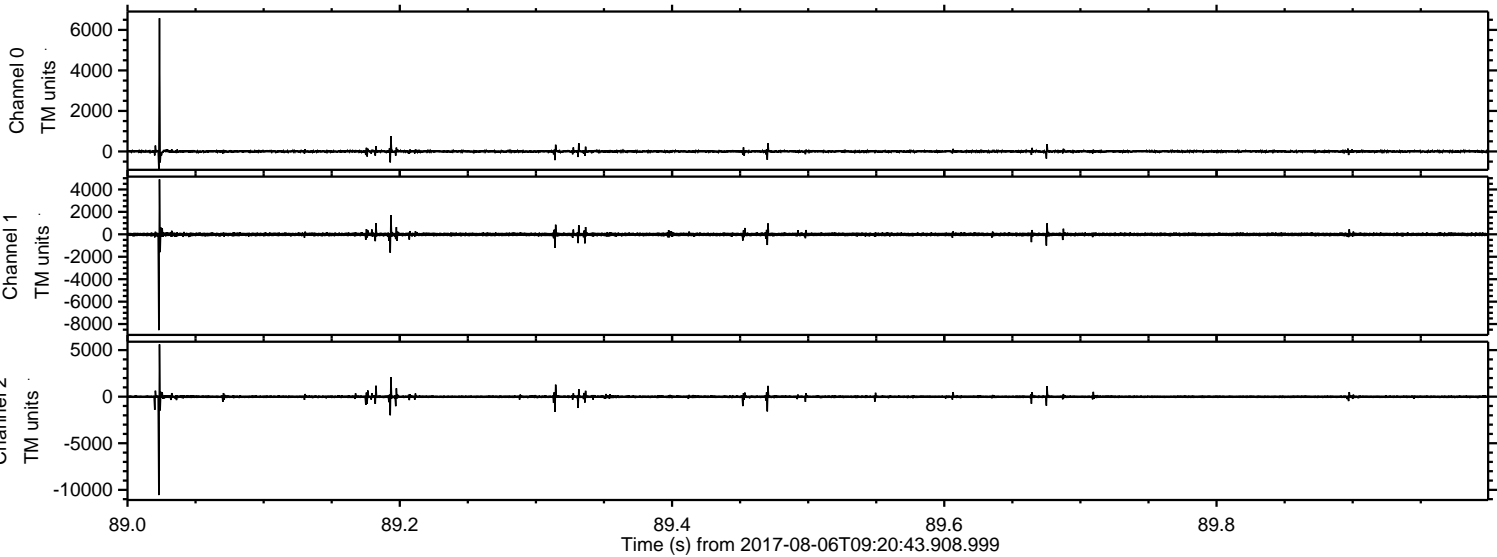
Processed Sun Aug 6 11:29:10 2017 by ELM ver.2012-10-06 from 001__elm20170806_092042__dat00.bin



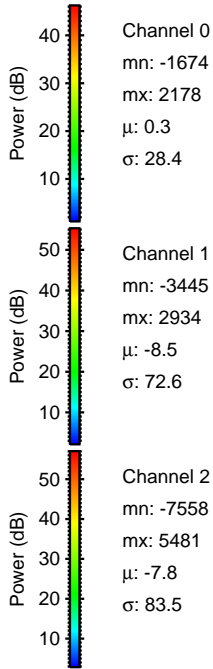
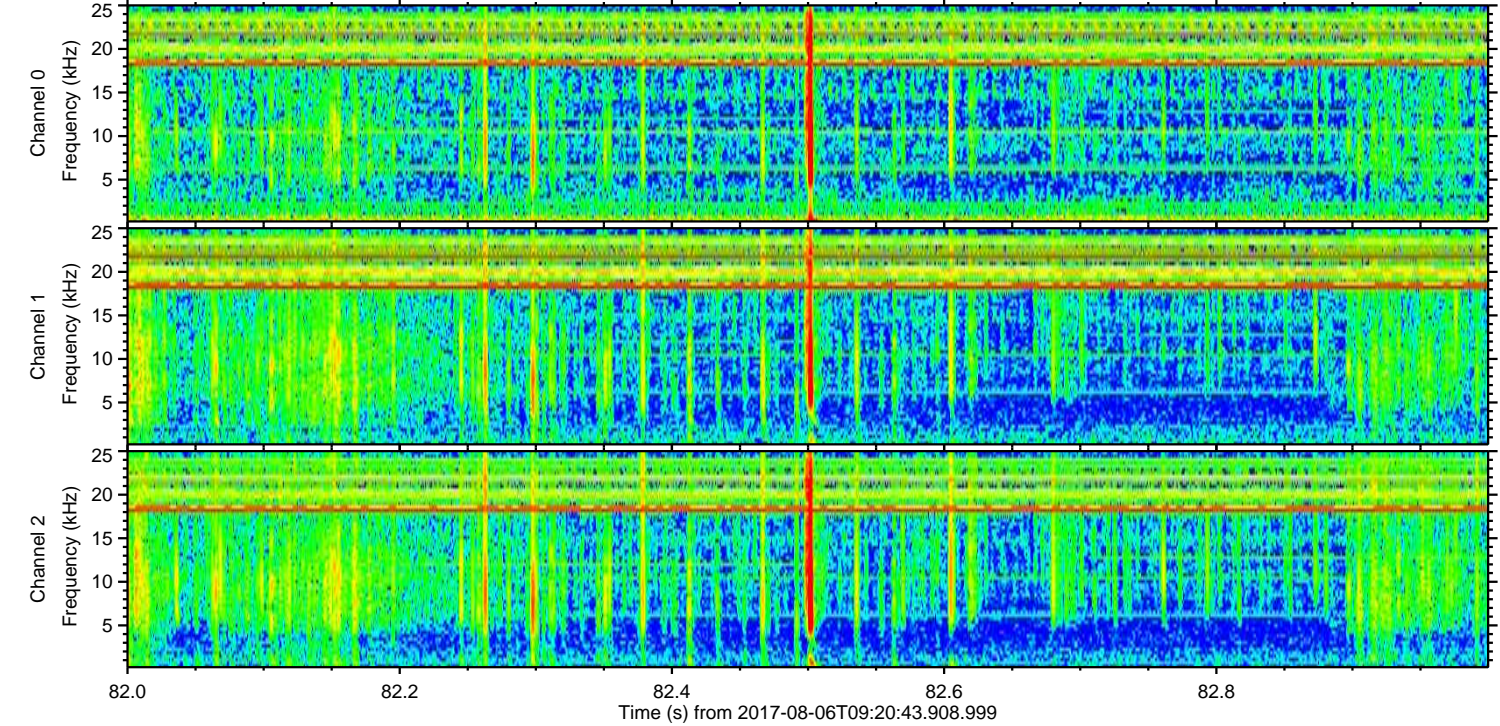
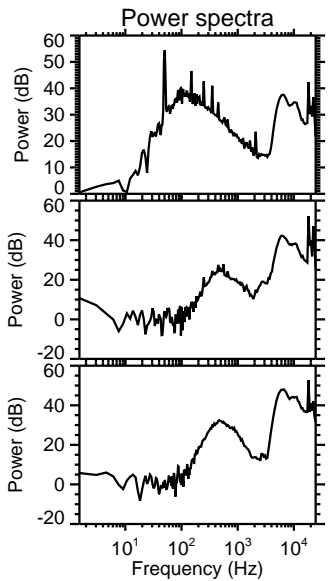
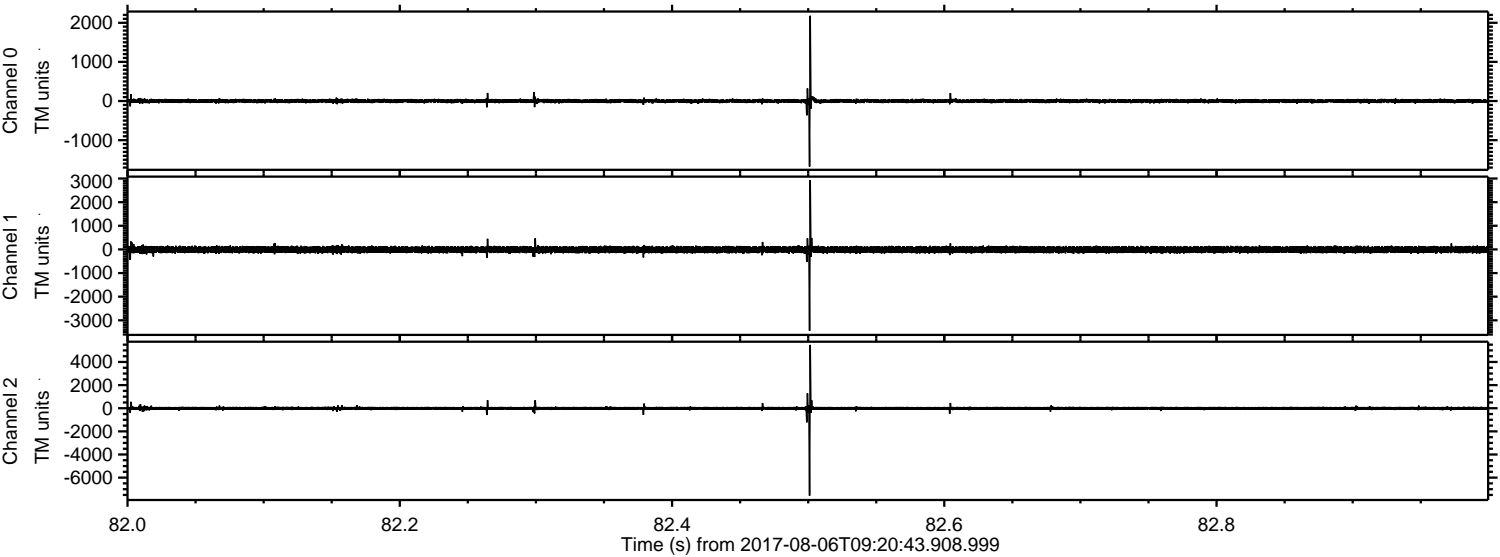
Processed Sun Aug 6 11:29:11 2017 by ELM ver.2012-10-06 from 001__elm20170806_092042__dat00.bin



Processed Sun Aug 6 11:29:12 2017 by ELM ver.2012-10-06 from 001__elm20170806_092042__dat00.bin

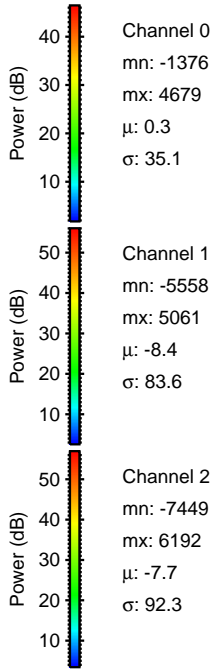
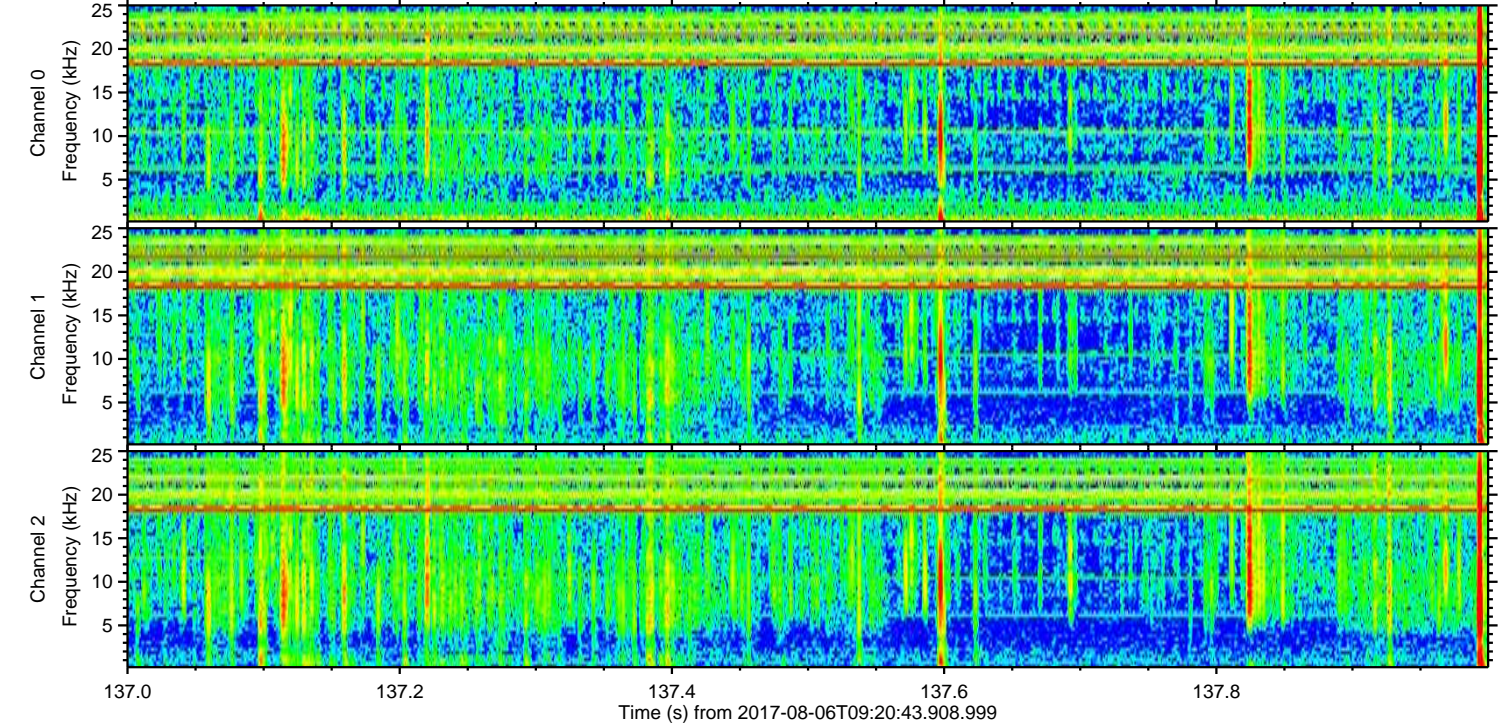
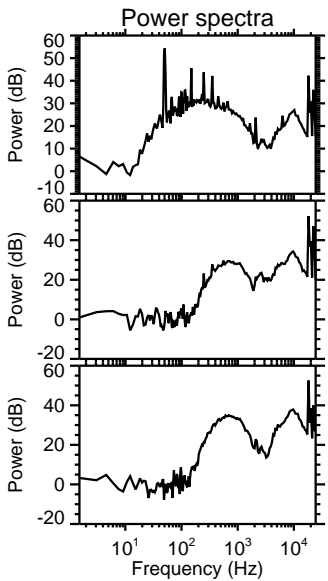
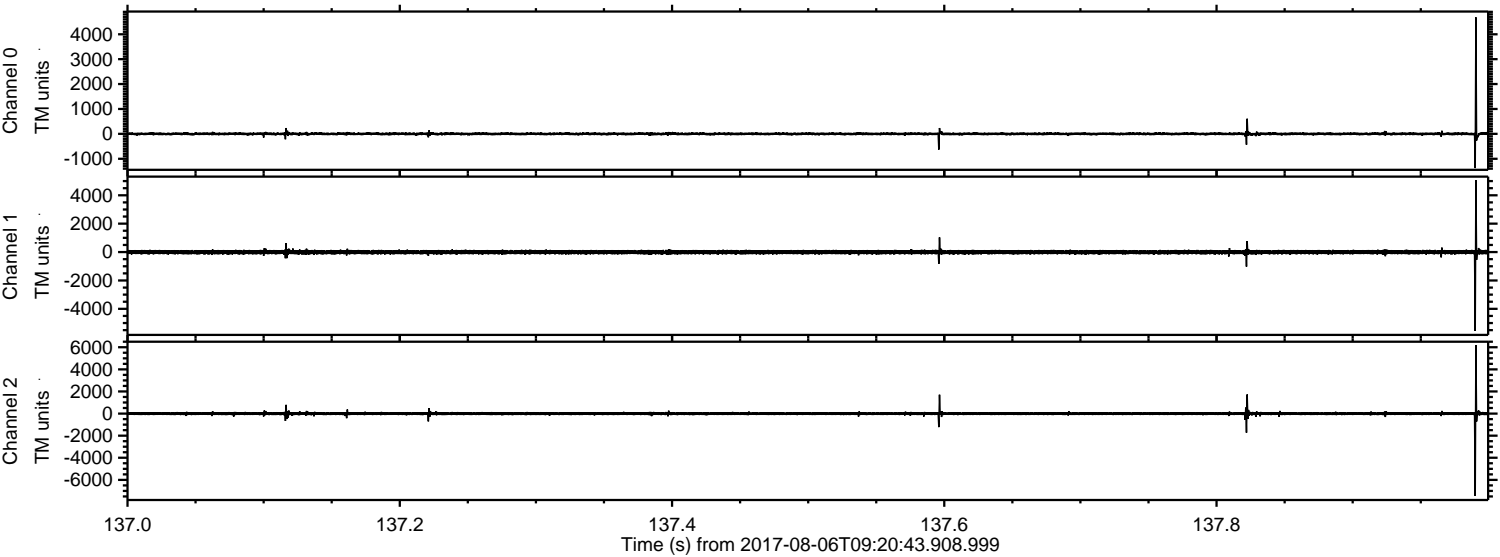


Processed Sun Aug 6 11:29:13 2017 by ELM ver.2012-10-06 from 001__elm20170806_092042__dat00.bin



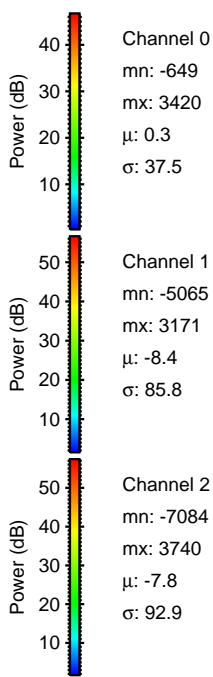
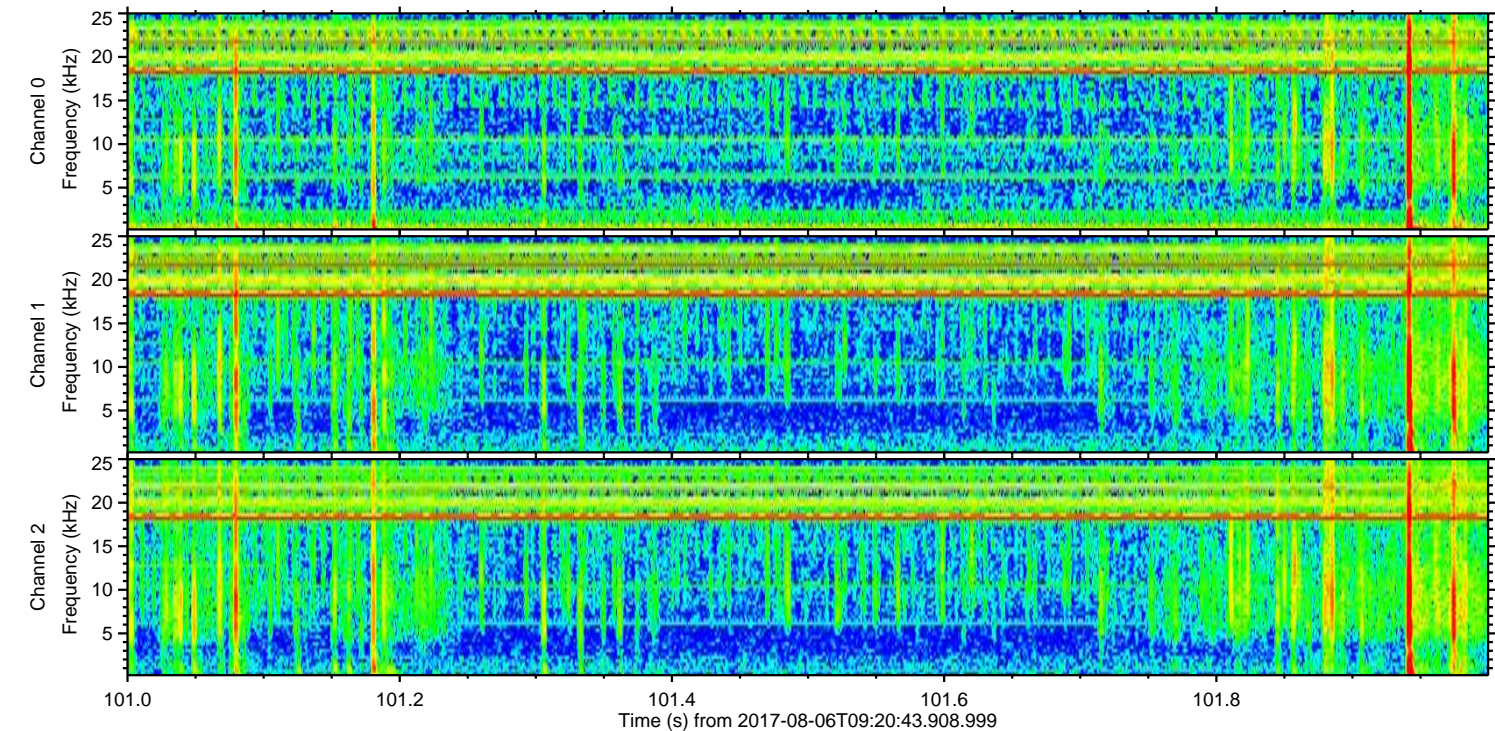
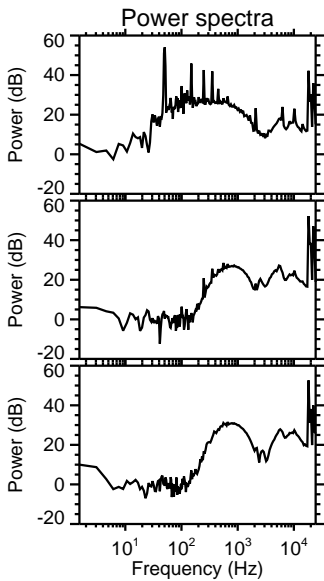
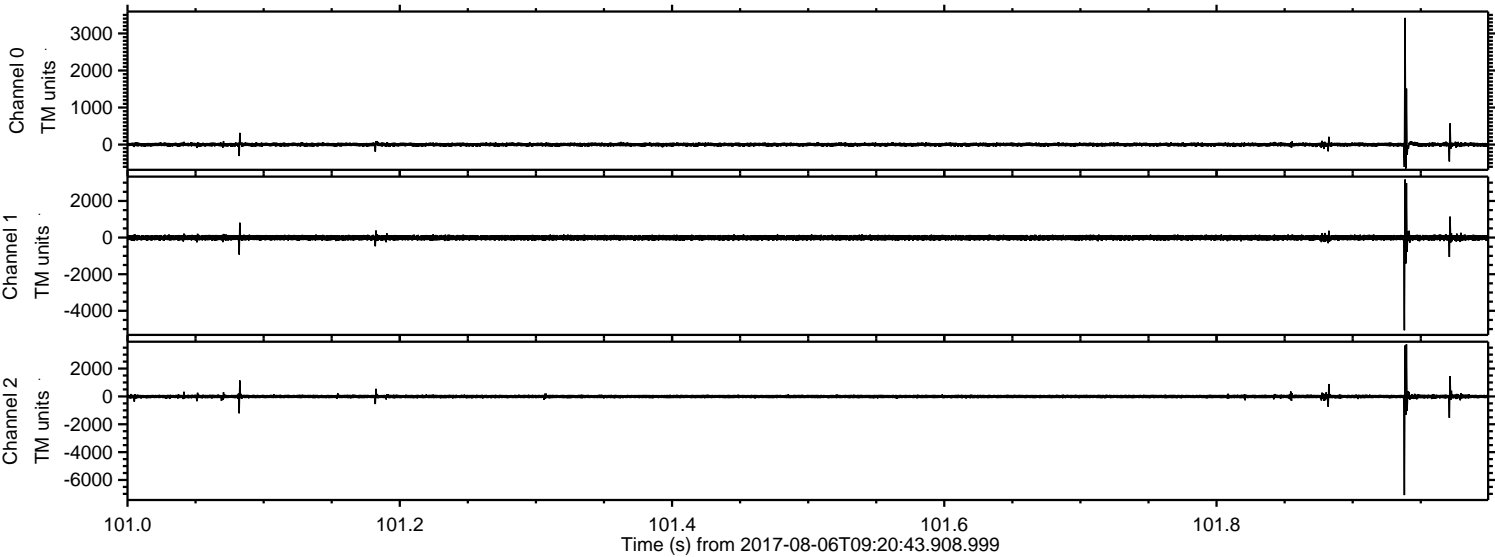
ELMAVAN 3D WAVEFORMS (Measured data sampled at 50 kHz) 51000 packets of 144 samples from 2017-08-06T09:20:43.908.999. Part 138/147

Processed Sun Aug 6 11:29:13 2017 by ELM ver.2012-10-06 from 001__elm20170806_092042__dat00.bin



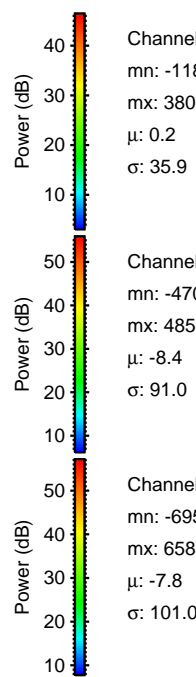
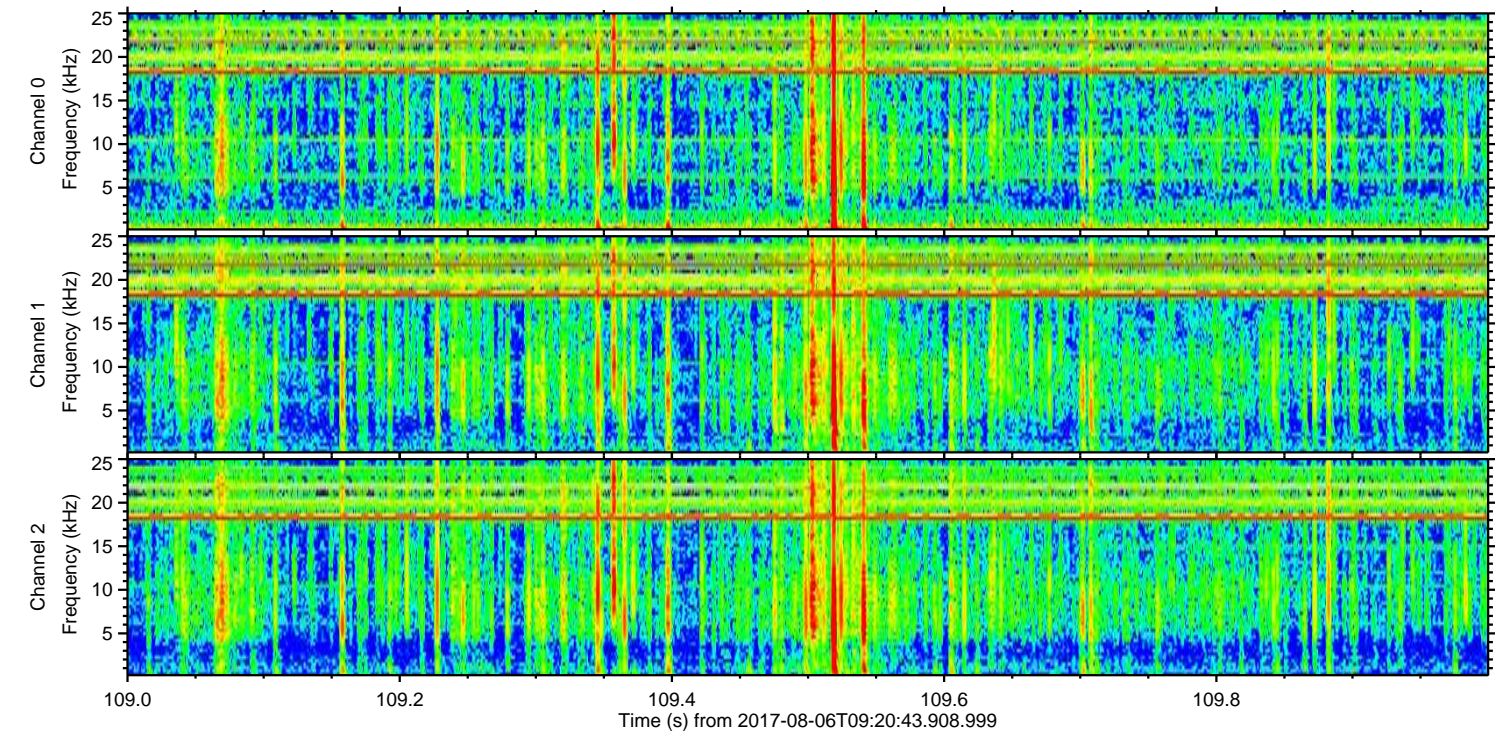
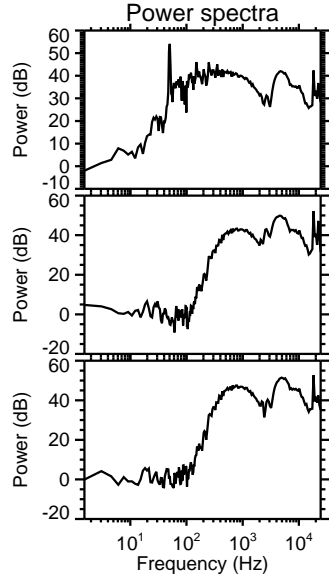
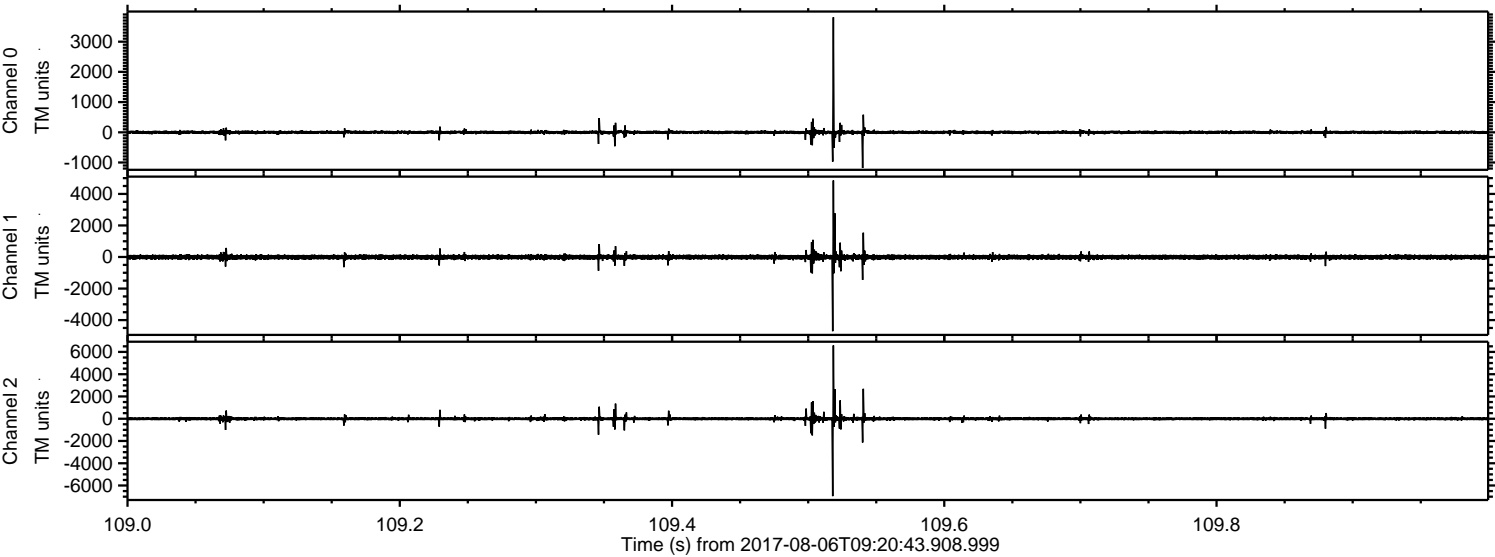
ELMAVAN 3D WAVEFORMS (Measured data sampled at 50 kHz) 51000 packets of 144 samples from 2017-08-06T09:20:43.908.999. Part 102/147

Processed Sun Aug 6 11:29:14 2017 by ELM ver.2012-10-06 from 001__elm20170806_092042__dat00.bin



ELMAVAN 3D WAVEFORMS (Measured data sampled at 50 kHz) 51000 packets of 144 samples from 2017-08-06T09:20:43.908.999. Part 110/147

Processed Sun Aug 6 11:29:15 2017 by ELM ver.2012-10-06 from 001__elm20170806_092042__dat00.bin

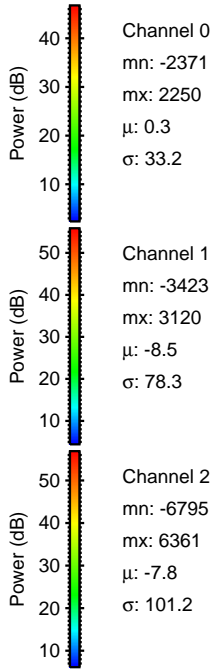
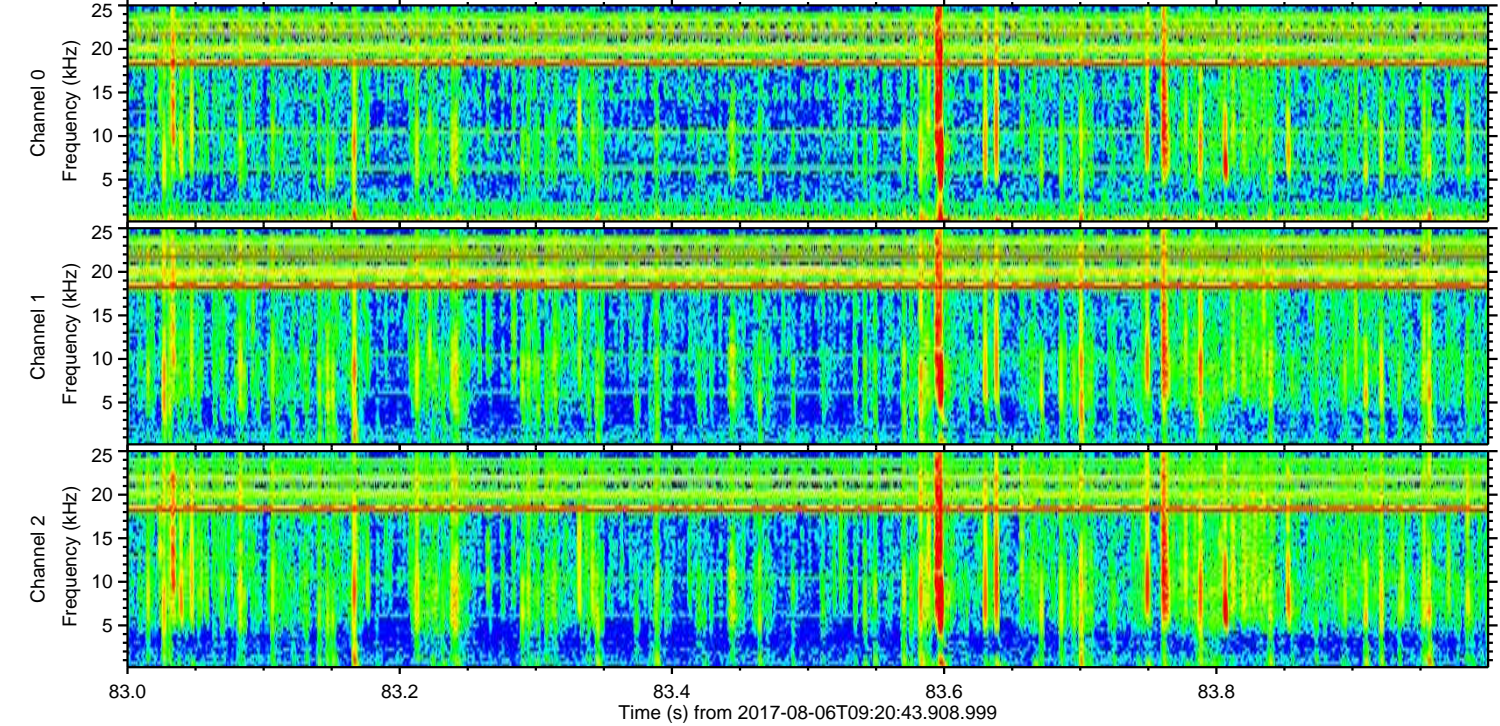
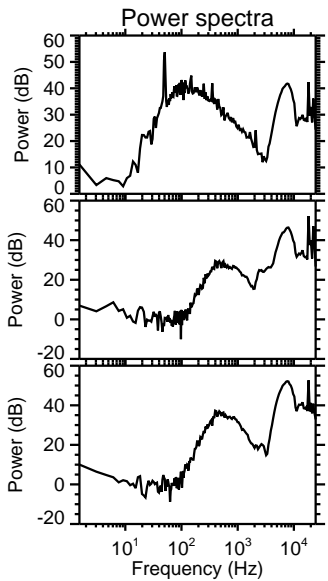
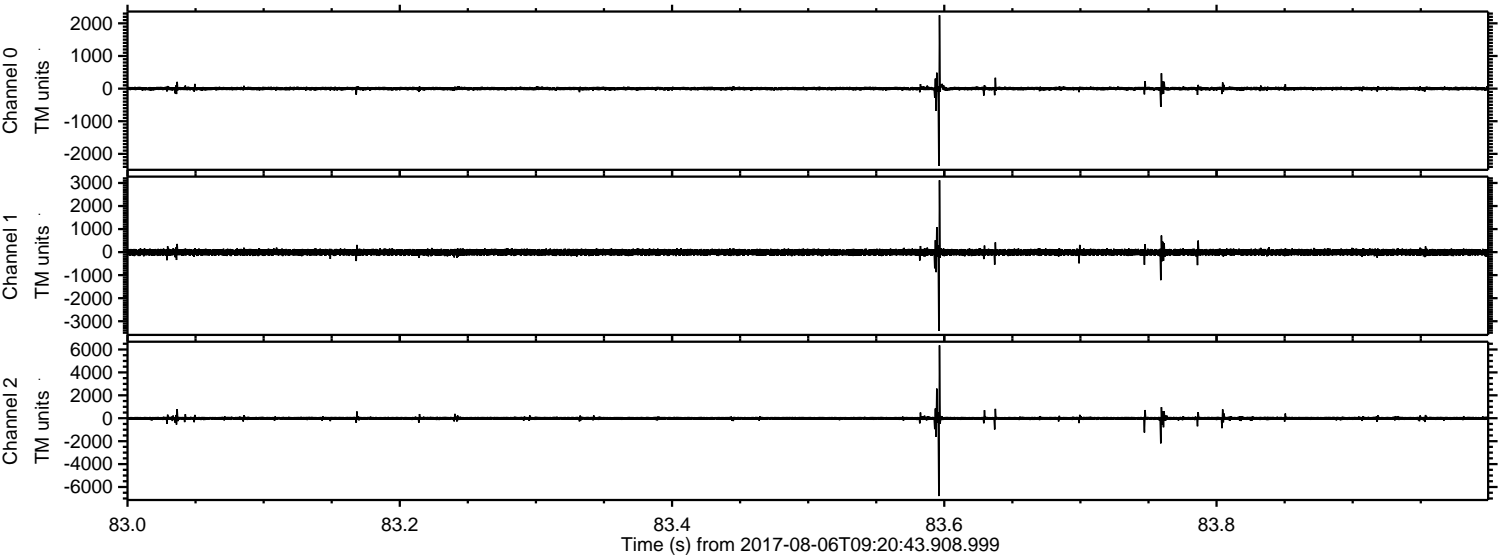


Channel 0
mn: -1183
mx: 3807
 μ : 0.2
 σ : 35.9

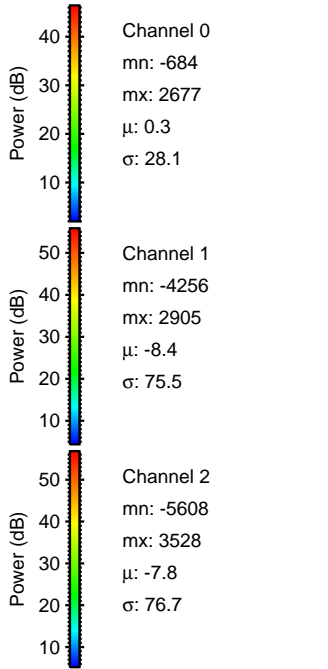
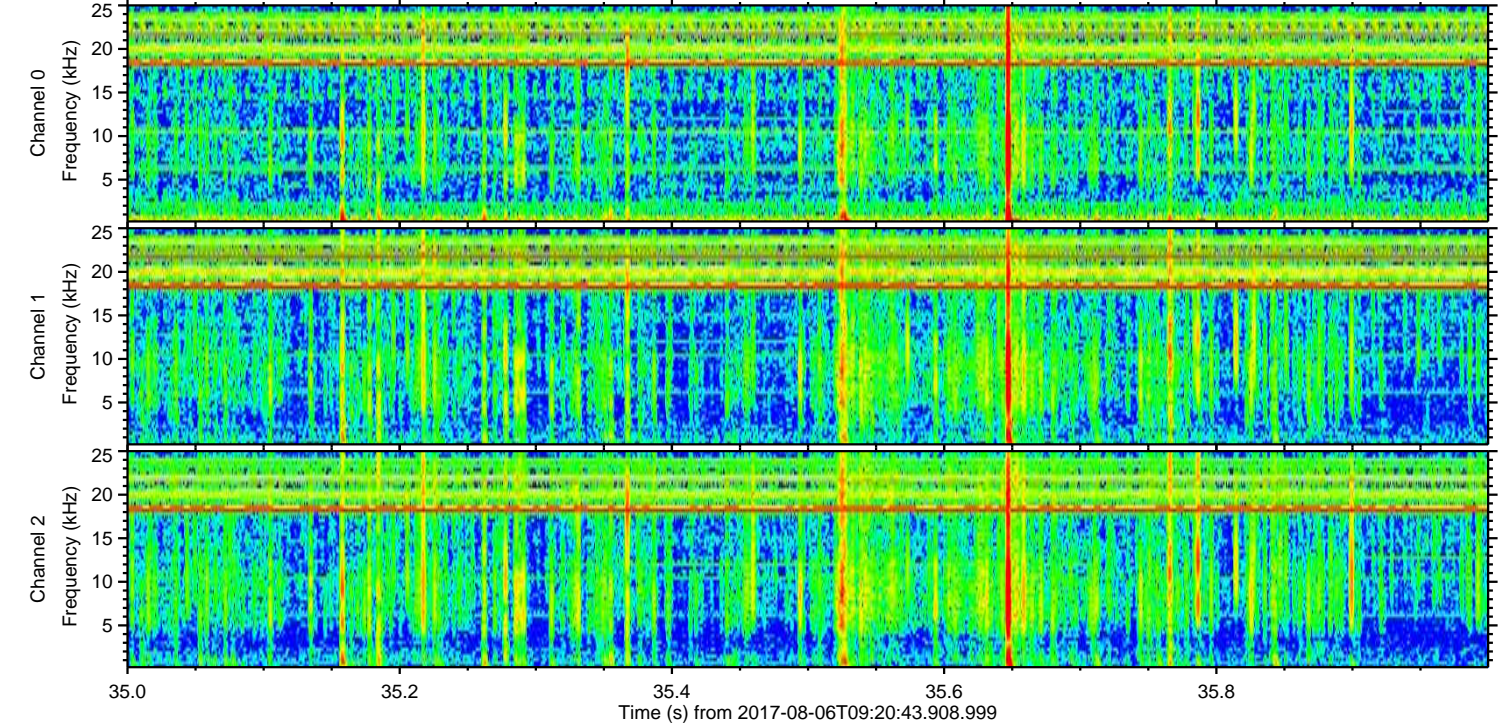
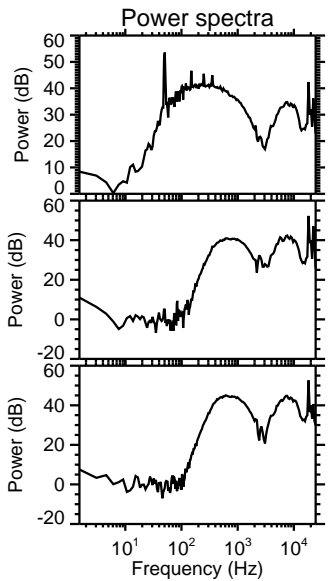
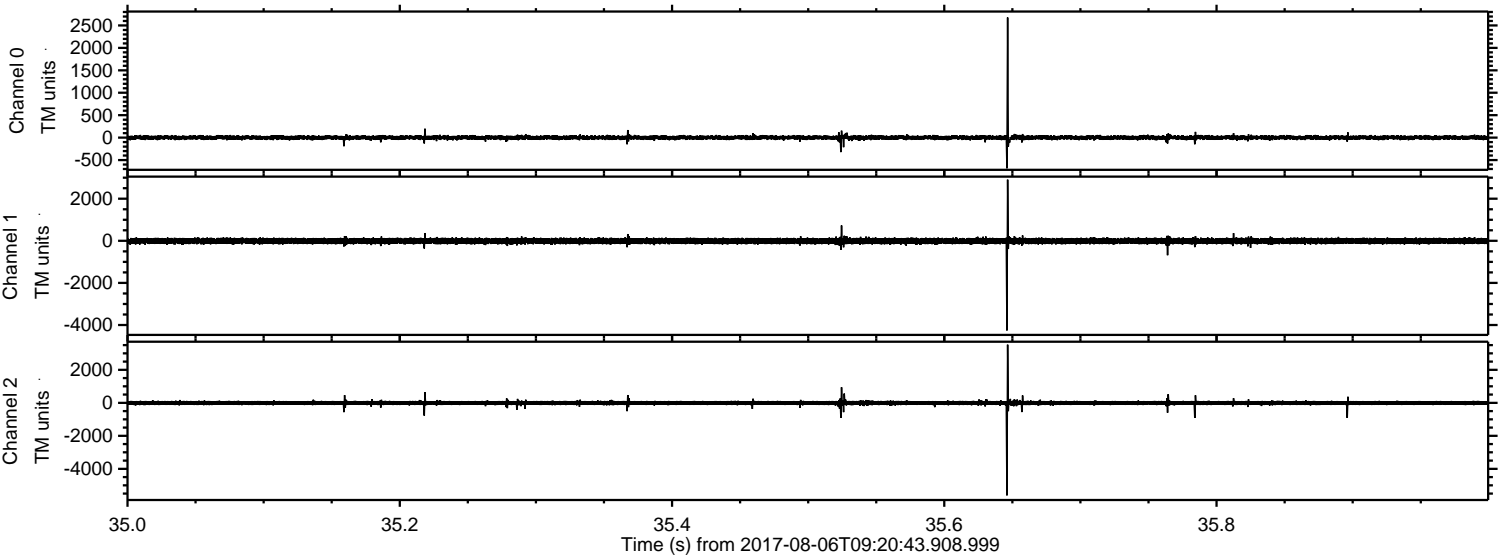
Channel 1
mn: -4704
mx: 4853
 μ : -8.4
 σ : 91.0

Channel 2
mn: -6954
mx: 6588
 μ : -7.8
 σ : 101.0

Processed Sun Aug 6 11:29:15 2017 by ELM ver.2012-10-06 from 001__elm20170806_092042__dat00.bin



Processed Sun Aug 6 11:29:16 2017 by ELM ver.2012-10-06 from 001__elm20170806_092042__dat00.bin



Processed Sun Aug 6 11:29:17 2017 by ELM ver.2012-10-06 from 001__elm20170806_092042__dat00.bin

