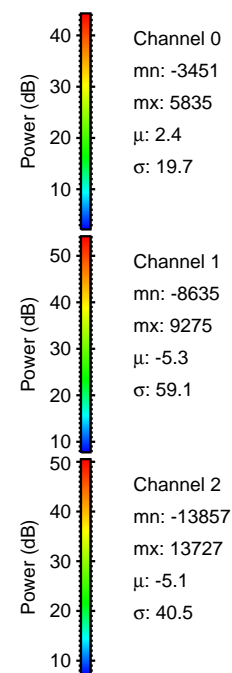
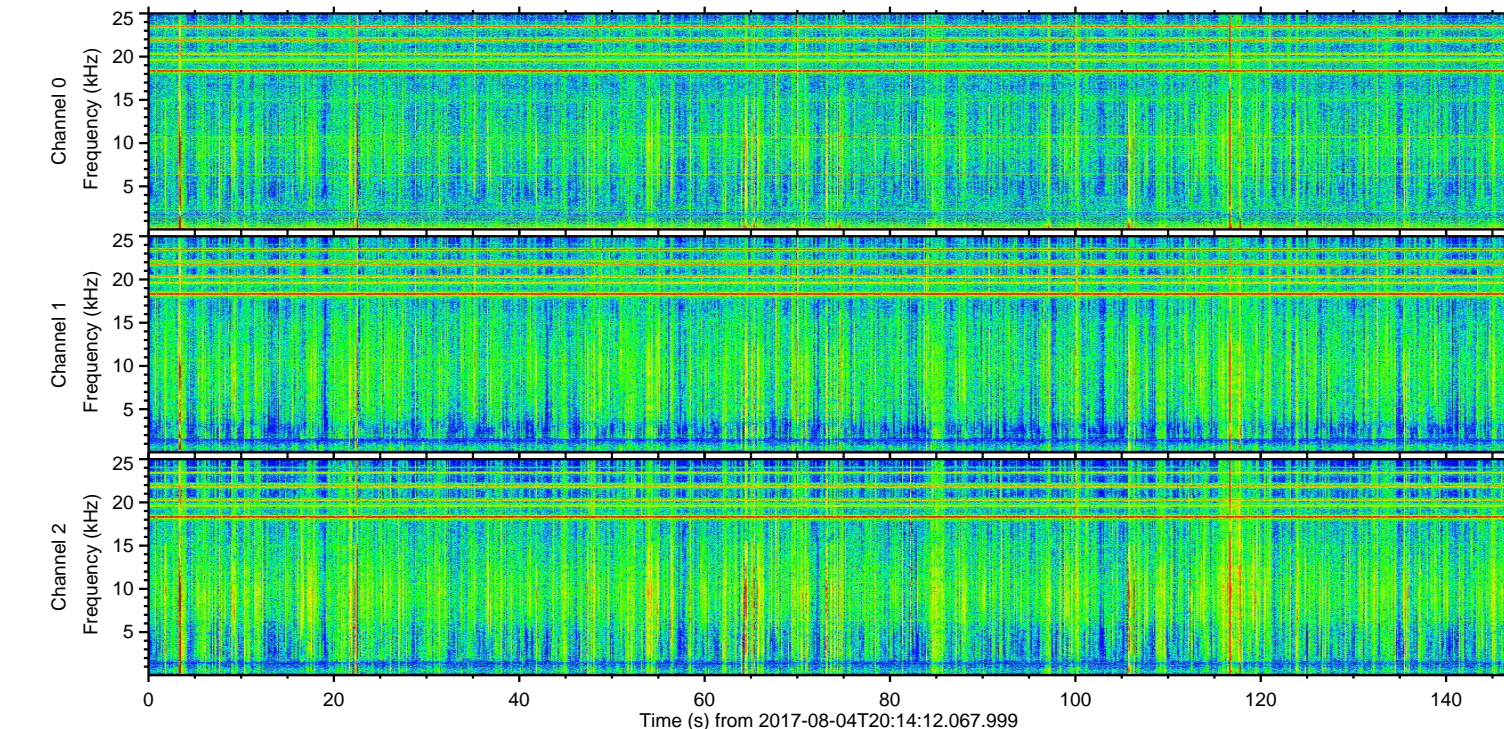
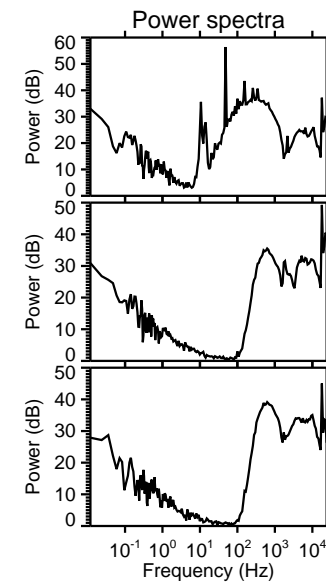
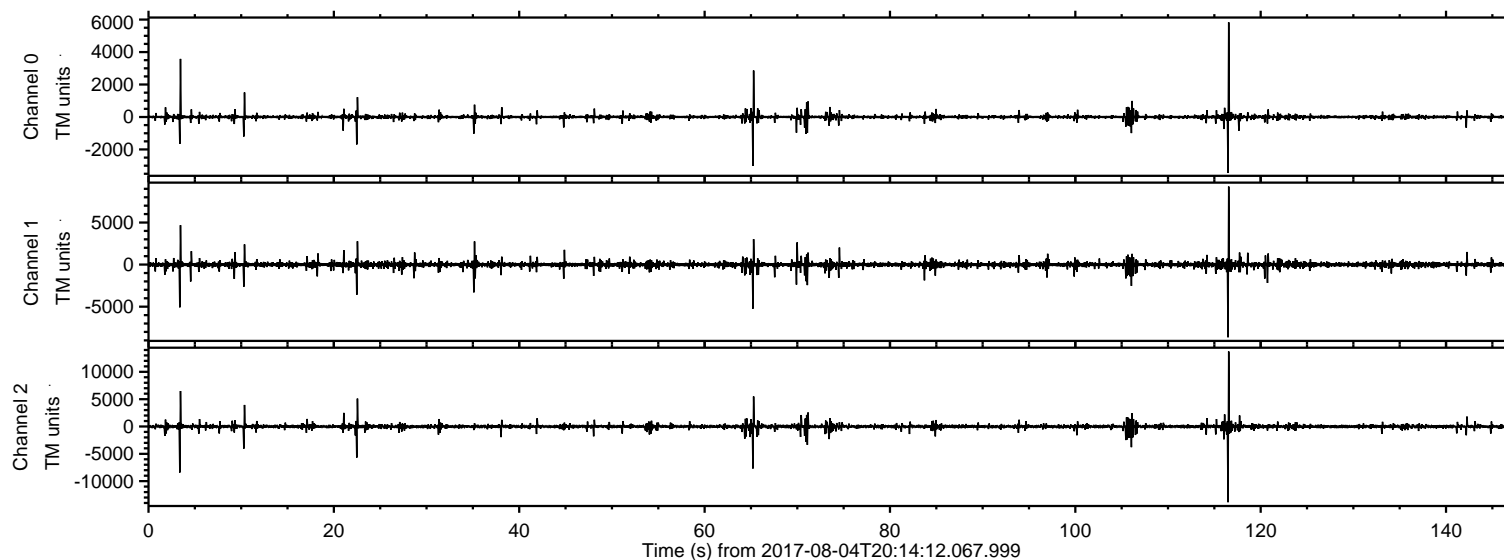


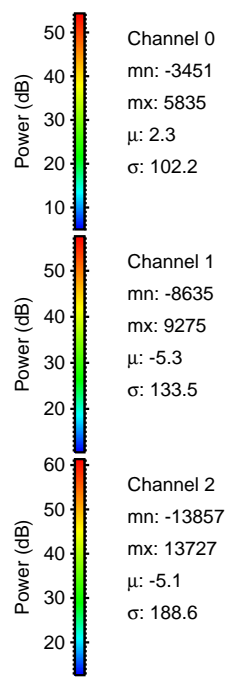
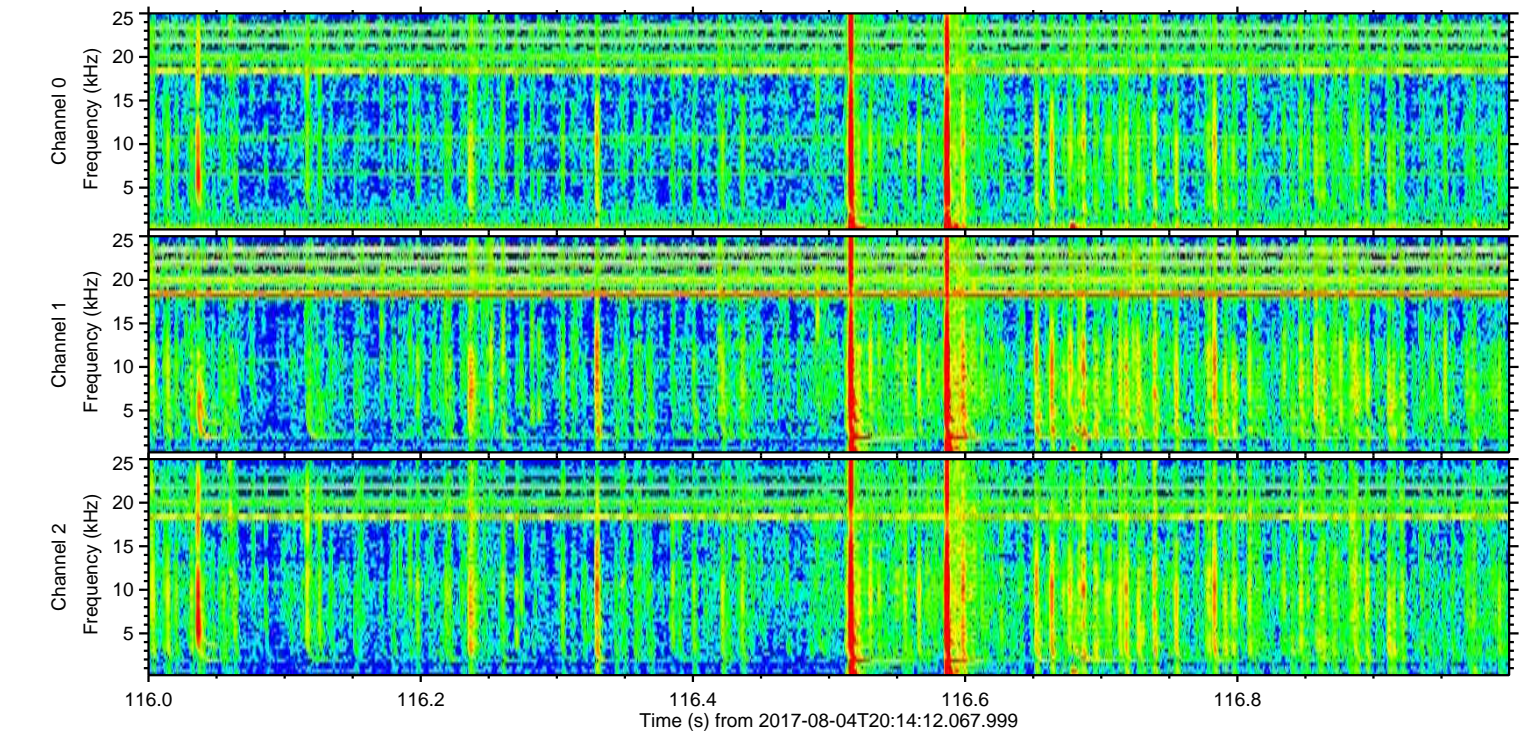
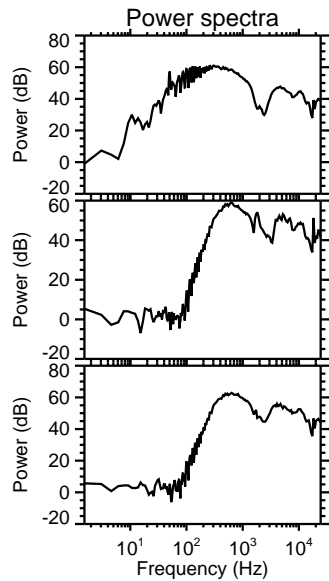
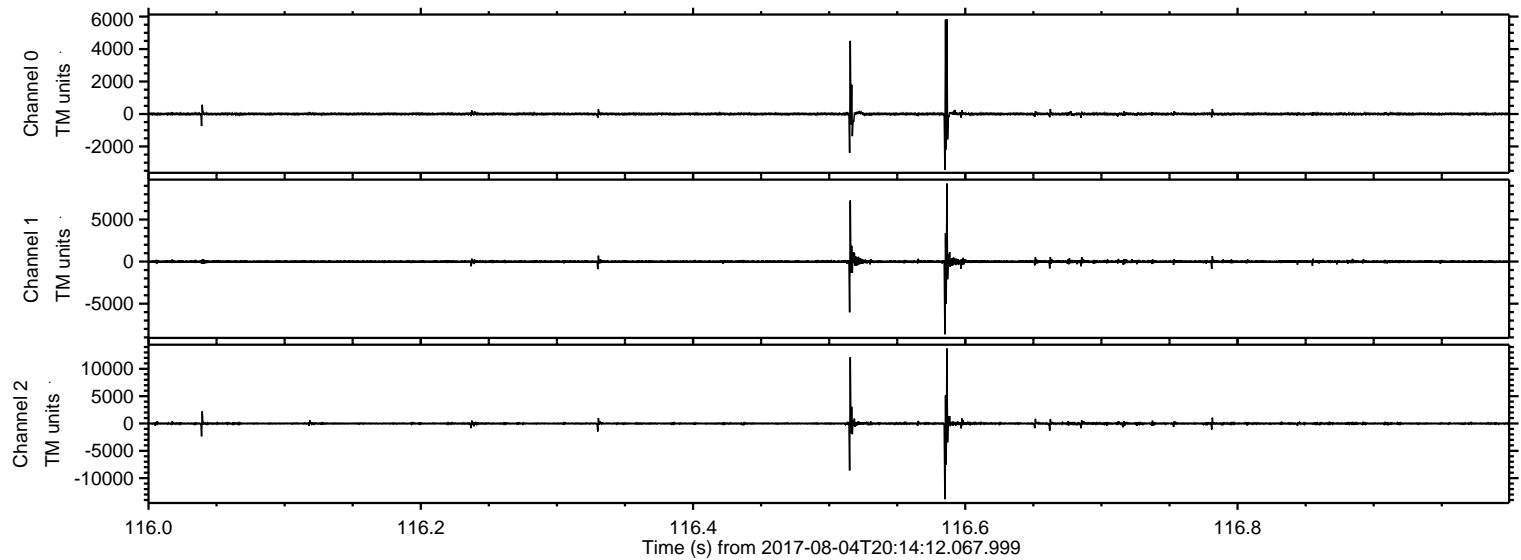
ELMAVAN 3D WAVEFORMS (Measured data sampled at 50 kHz) 51000 packets of 144 samples from 2017-08-04T20:14:12.067.999.

Processed Fri Aug 4 22:21:26 2017 by ELM ver.2012-10-06 from 001__elm20170804_201411__dat00.bin

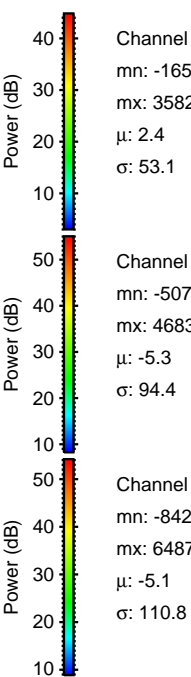
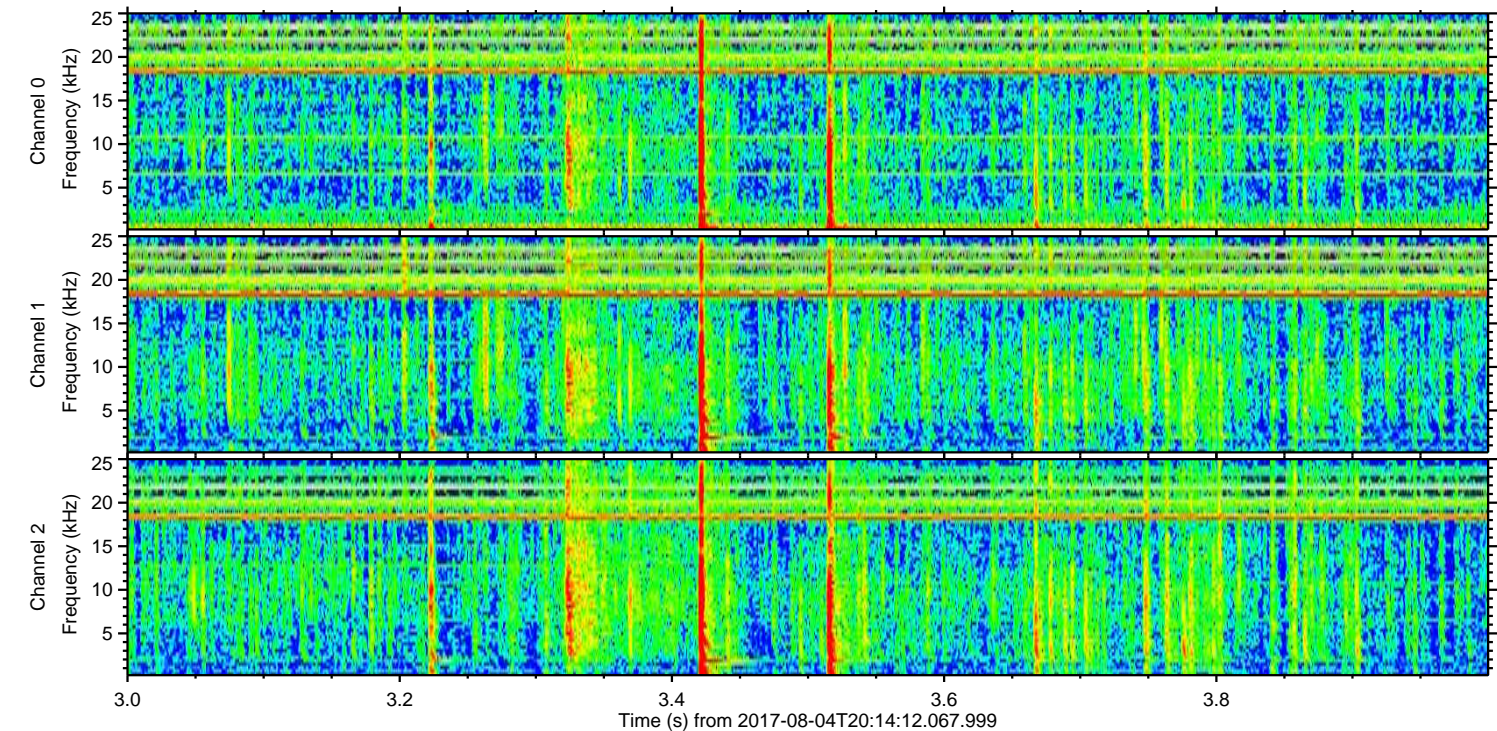
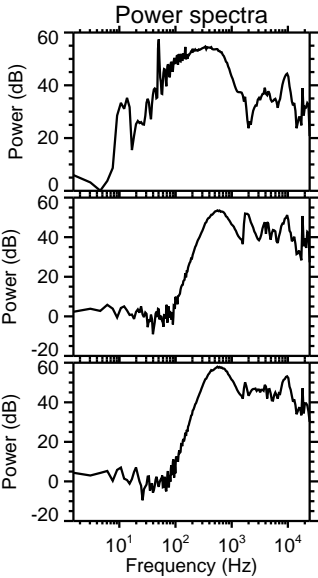
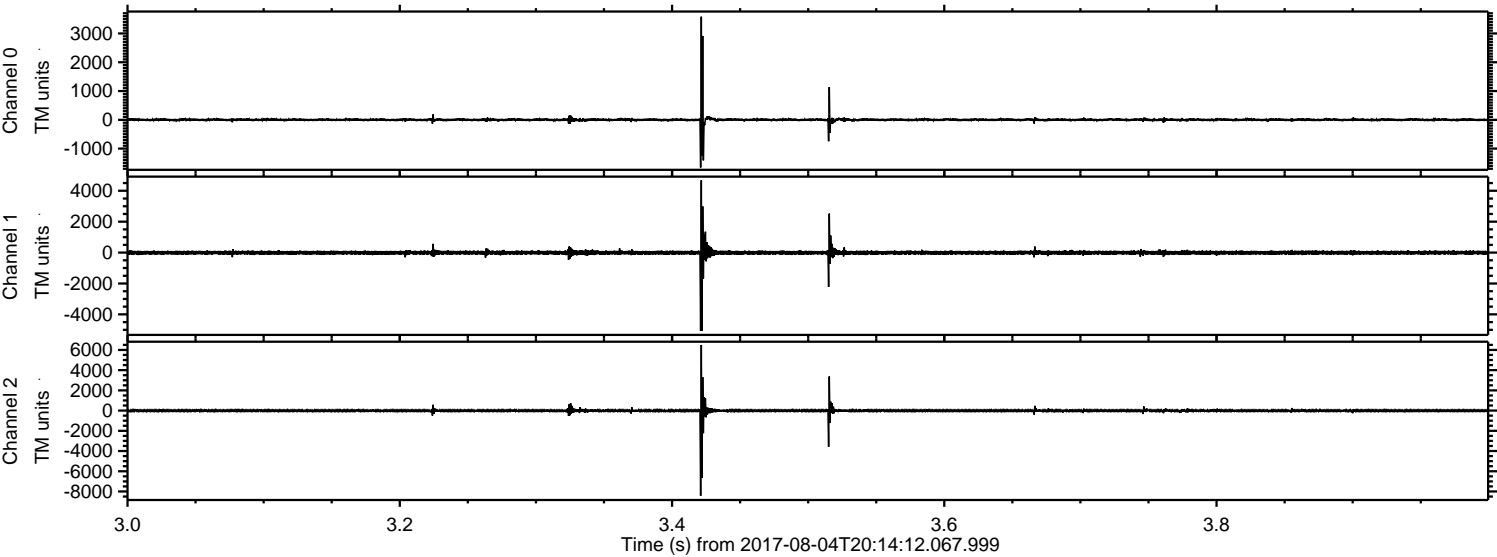


ELMAVAN 3D WAVEFORMS (Measured data sampled at 50 kHz) 51000 packets of 144 samples from 2017-08-04T20:14:12.067.999. Part 117/147

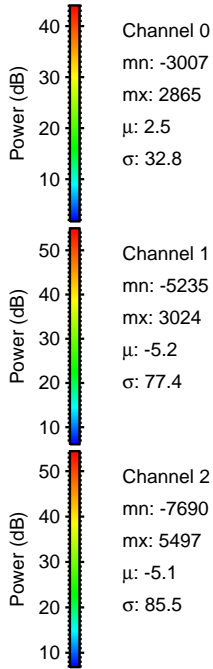
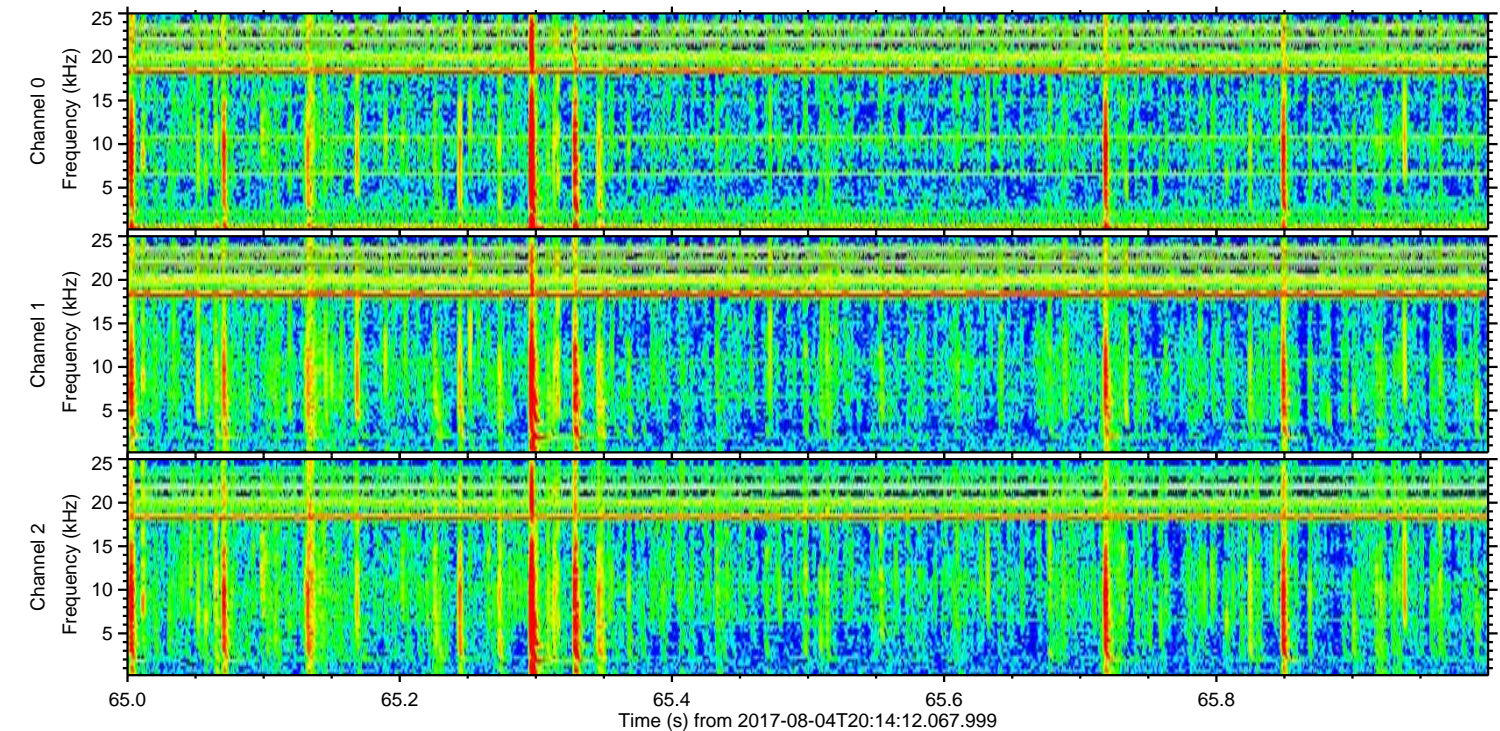
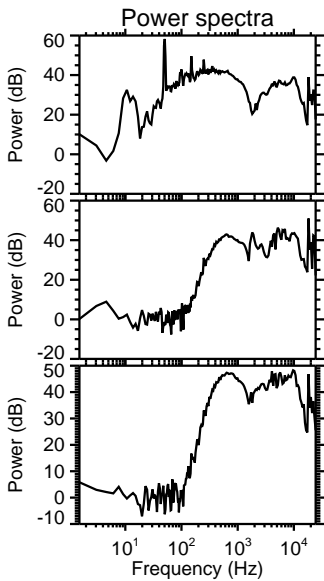
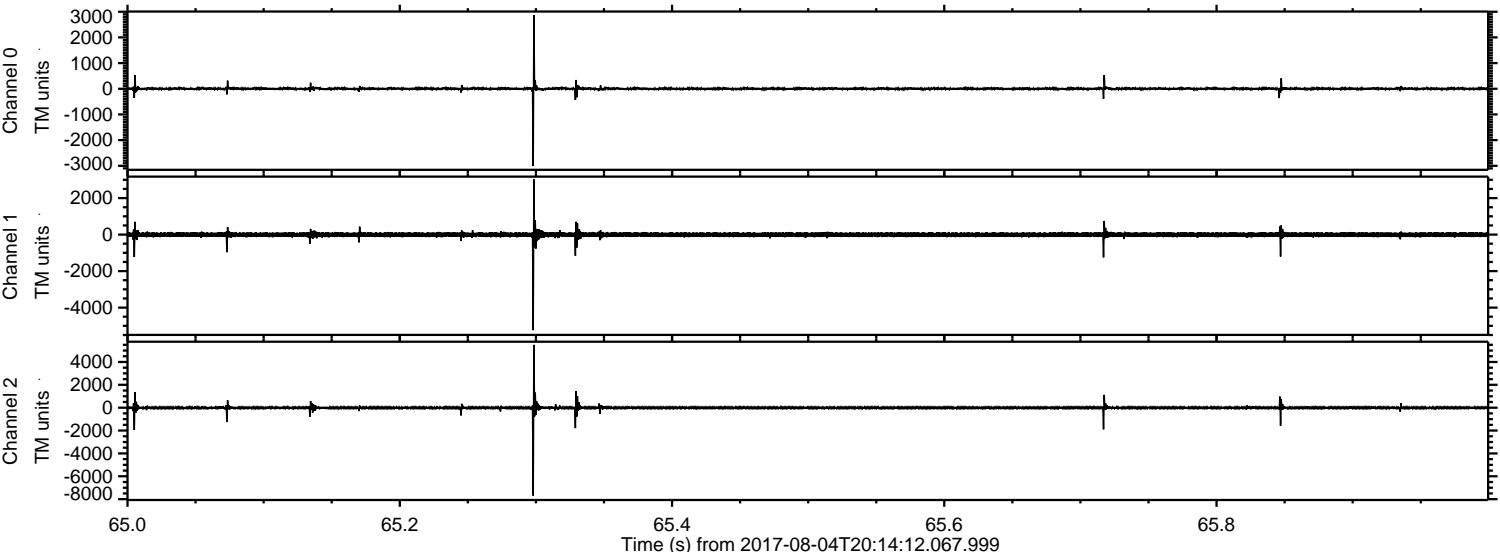
Processed Fri Aug 4 22:21:32 2017 by ELM ver.2012-10-06 from 001__elm20170804_201411__dat00.bin



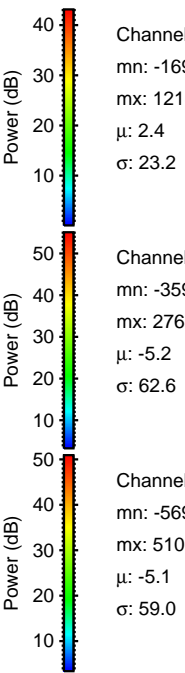
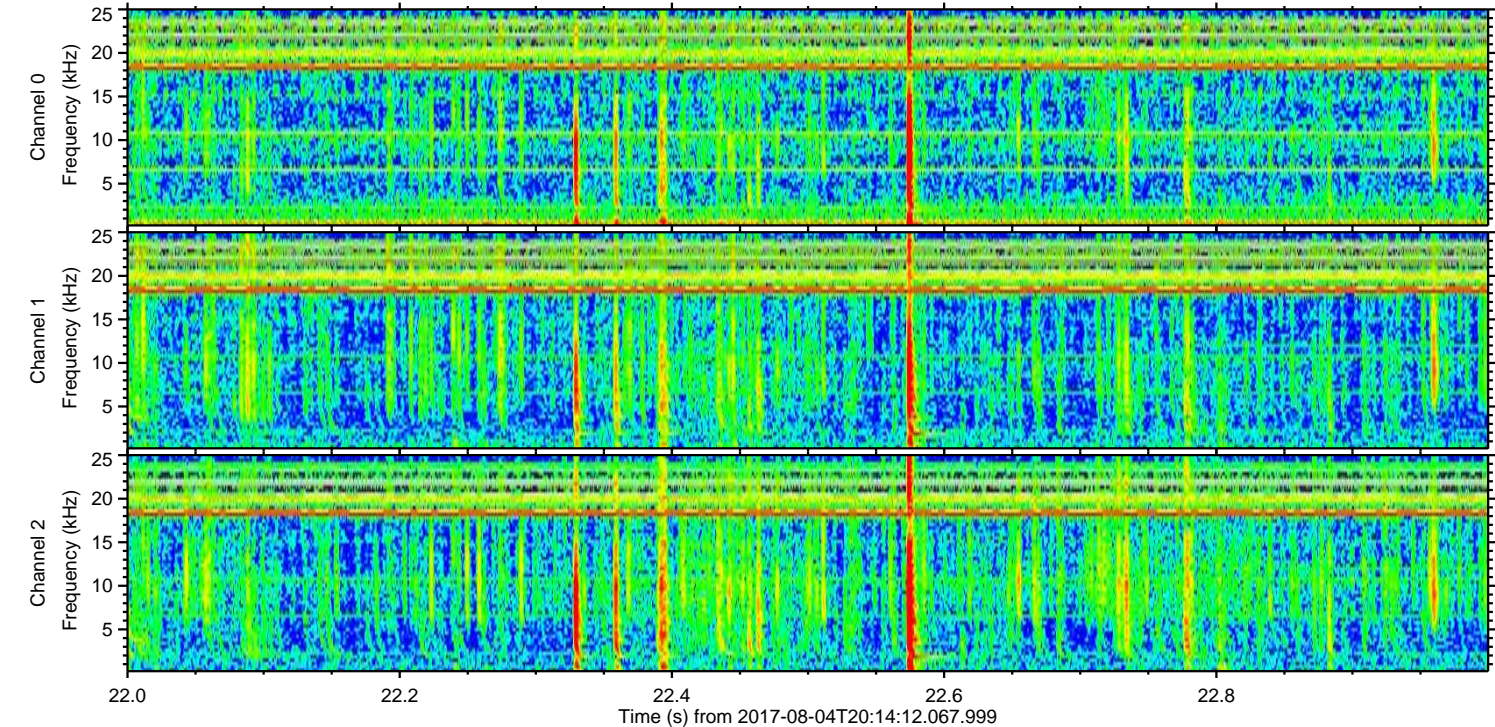
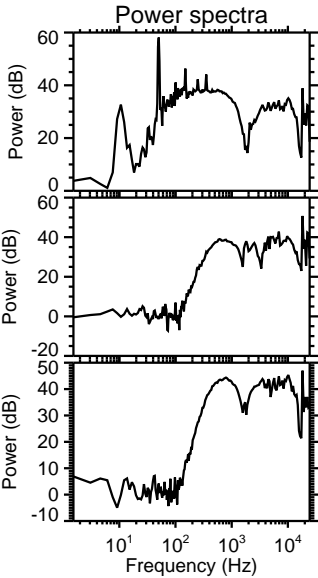
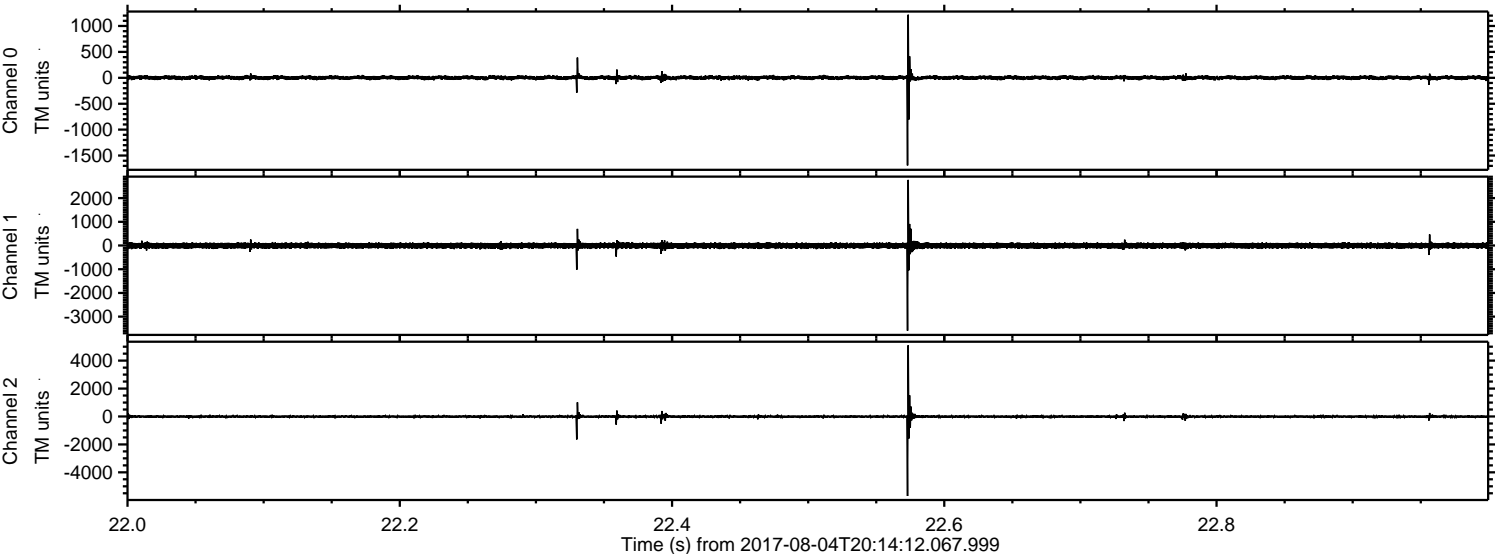
Processed Fri Aug 4 22:21:33 2017 by ELM ver.2012-10-06 from 001__elm20170804_201411__dat00.bin



Processed Fri Aug 4 22:21:33 2017 by ELM ver.2012-10-06 from 001__elm20170804_201411__dat00.bin

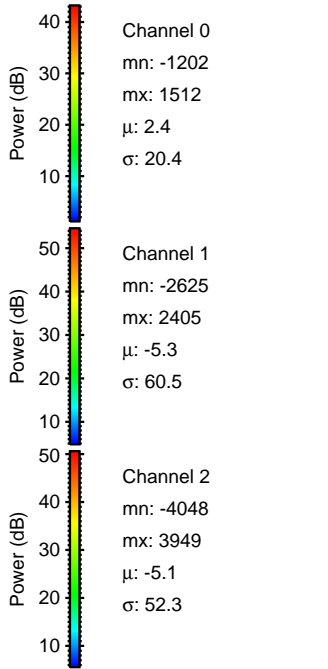
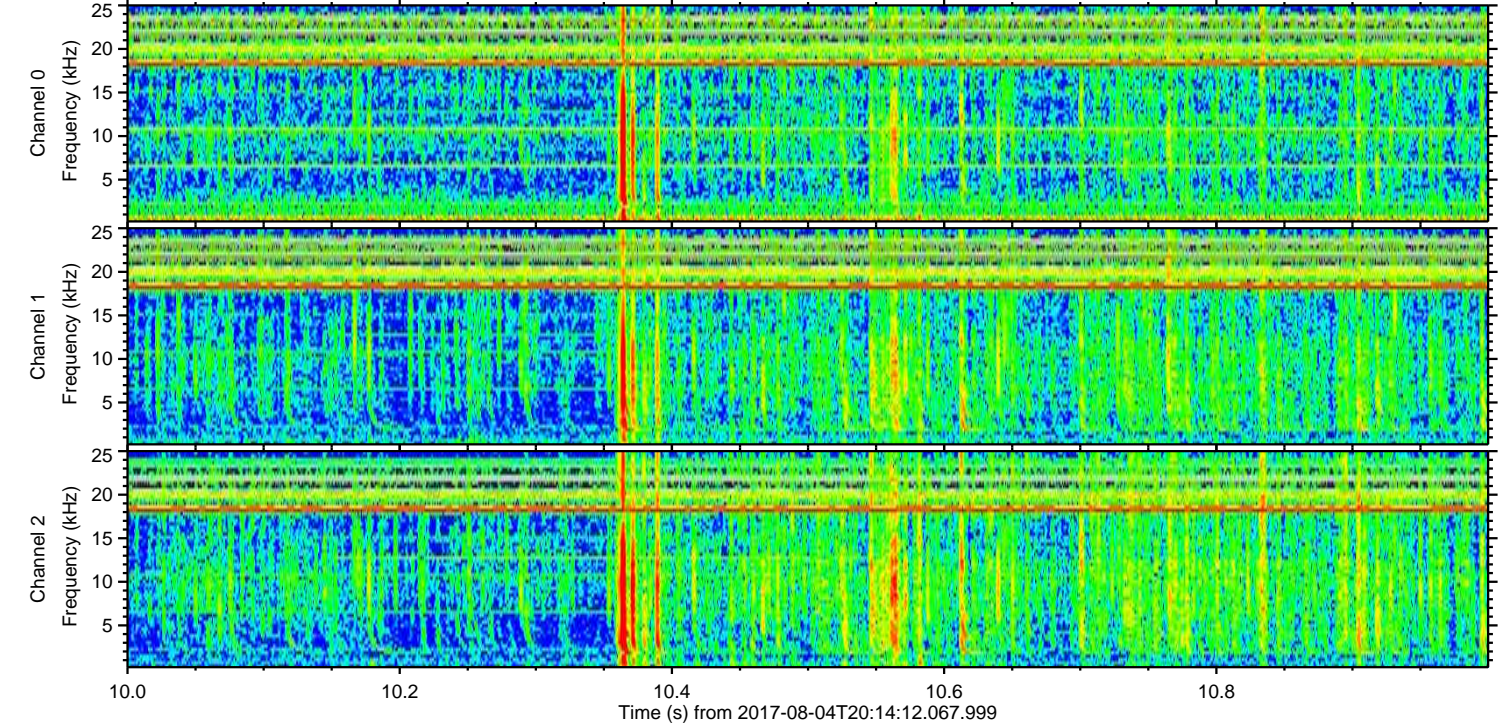
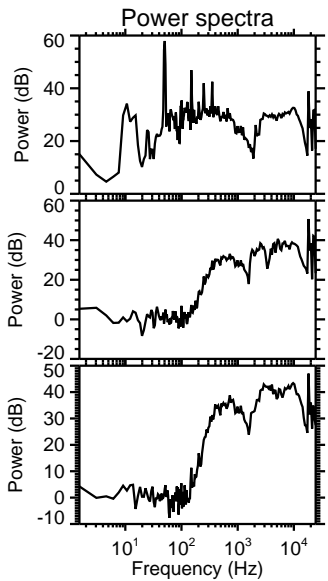
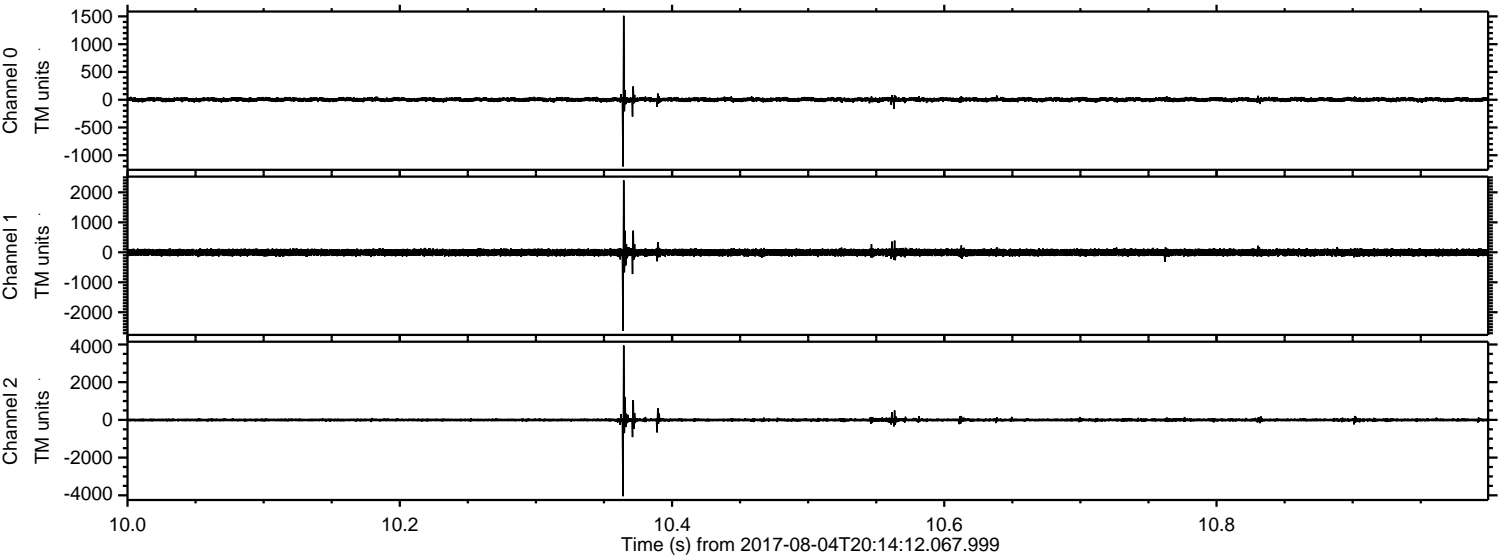


Processed Fri Aug 4 22:21:34 2017 by ELM ver.2012-10-06 from 001__elm20170804_201411__dat00.bin



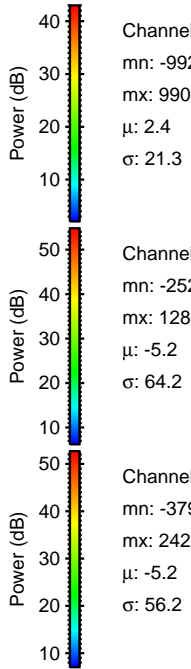
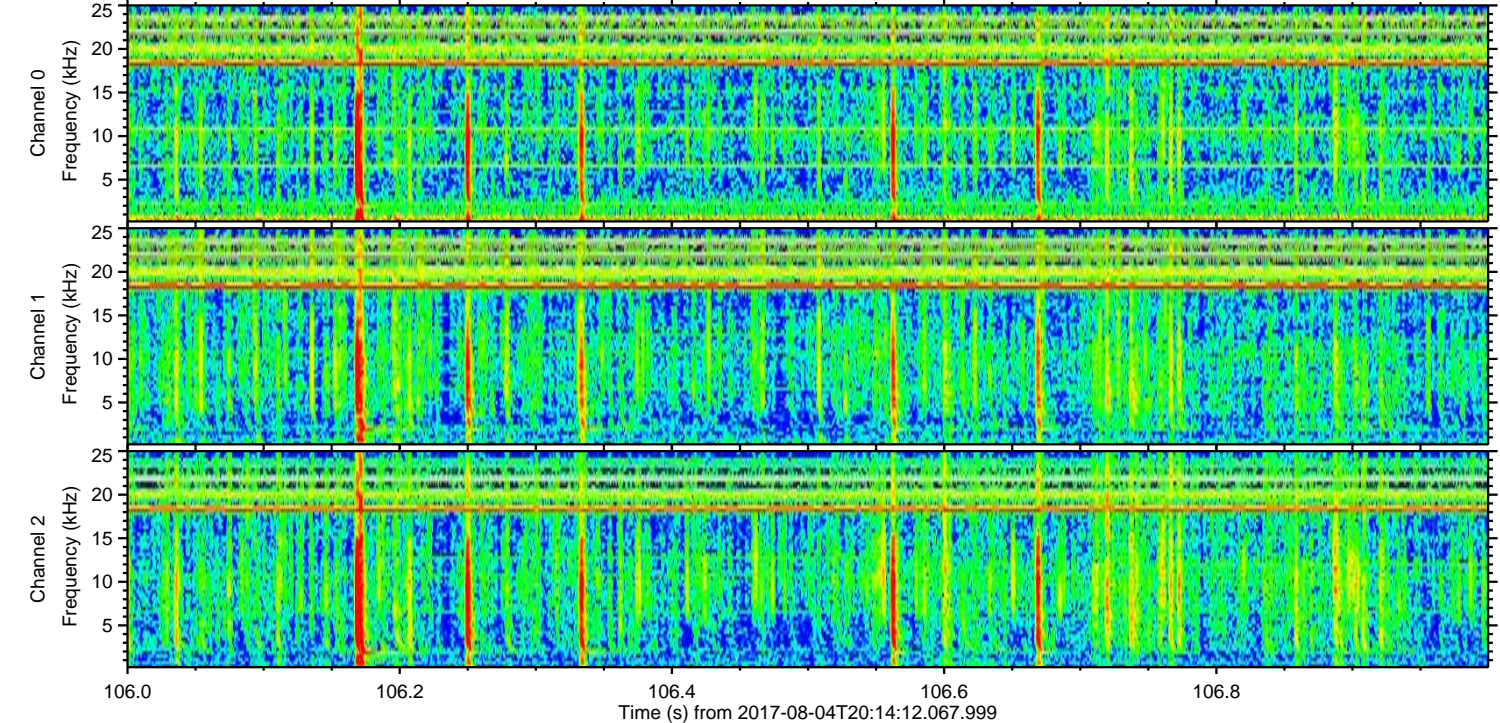
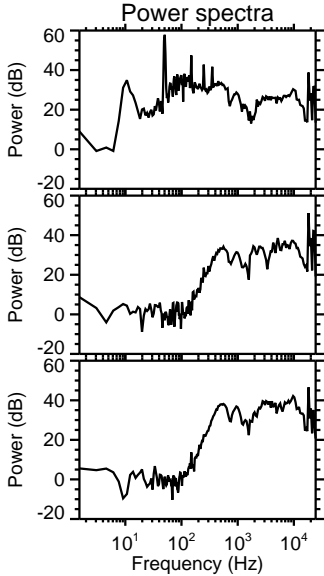
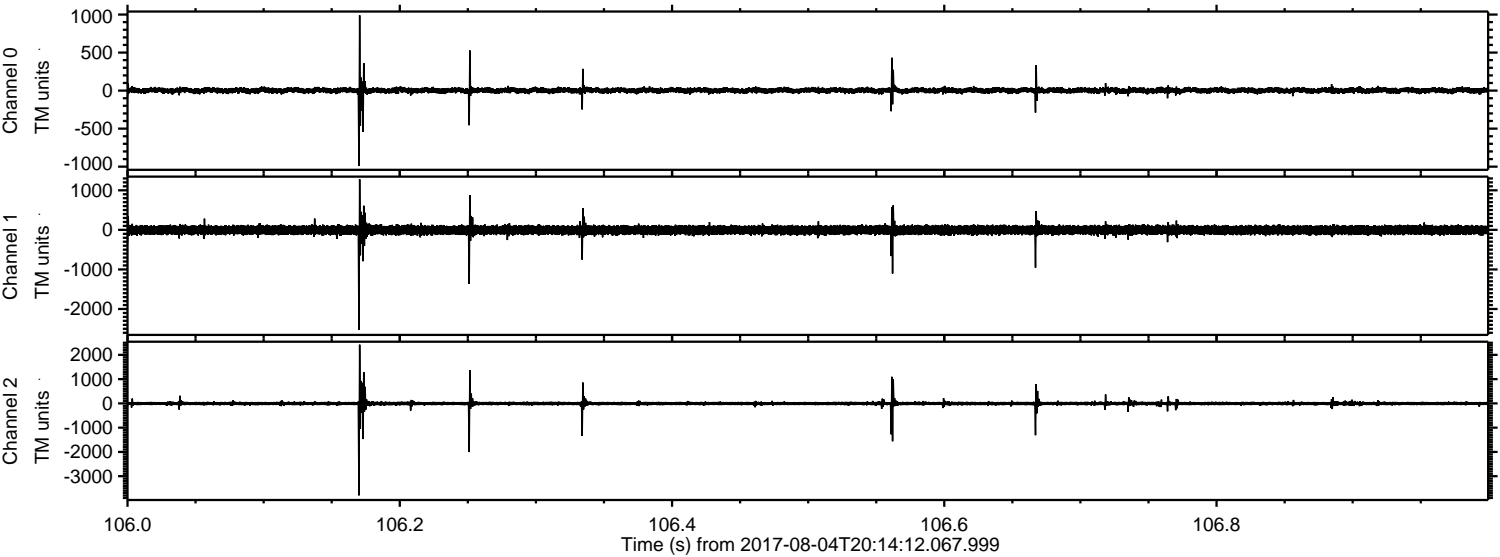
ELMAVAN 3D WAVEFORMS (Measured data sampled at 50 kHz) 51000 packets of 144 samples from 2017-08-04T20:14:12.067.999. Part 11/147

Processed Fri Aug 4 22:21:34 2017 by ELM ver.2012-10-06 from 001__elm20170804_201411__dat00.bin

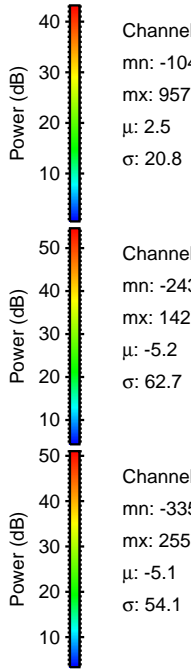
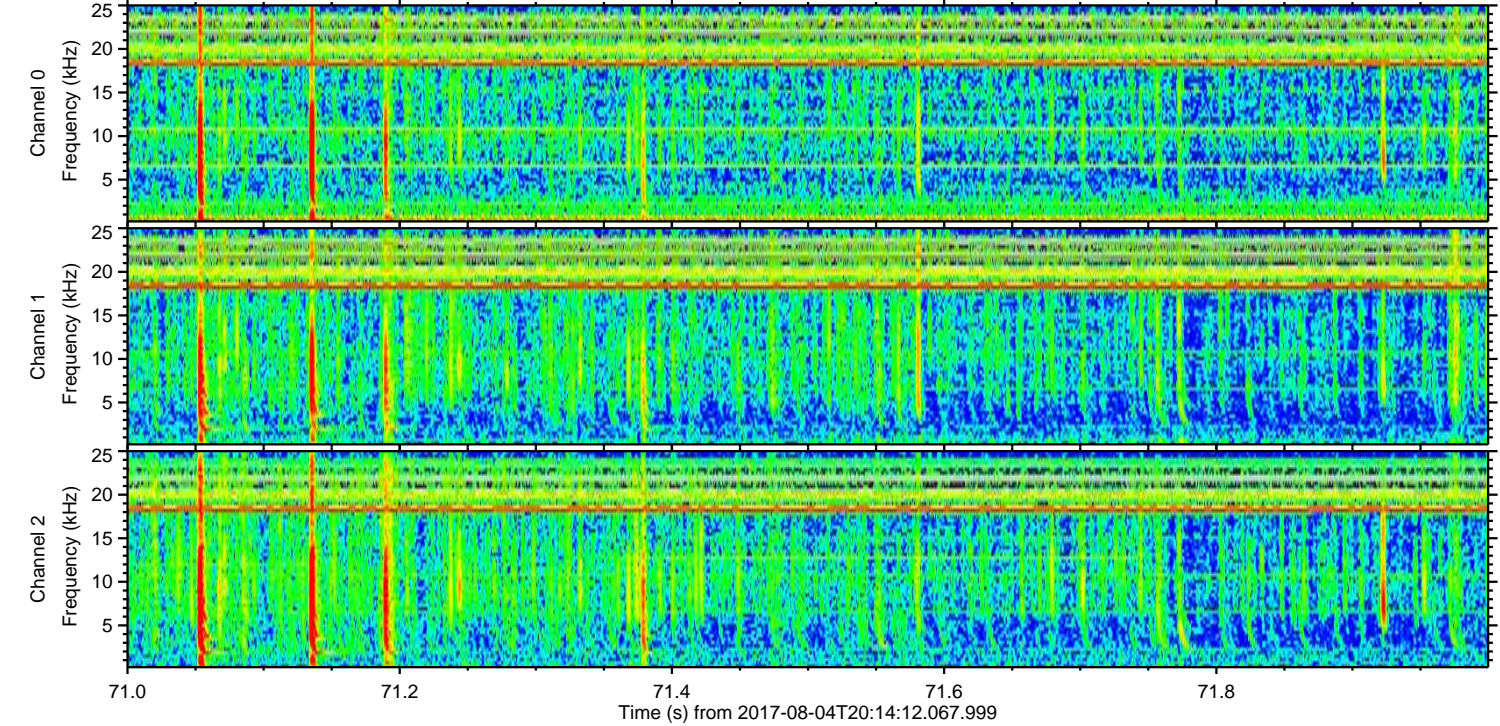
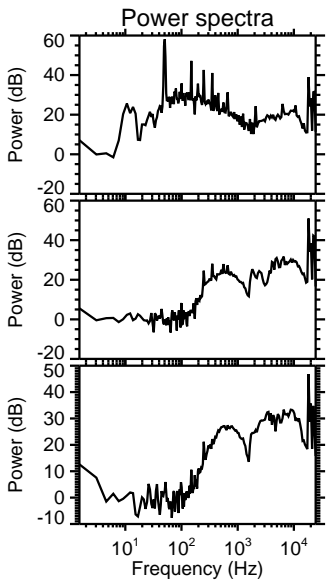
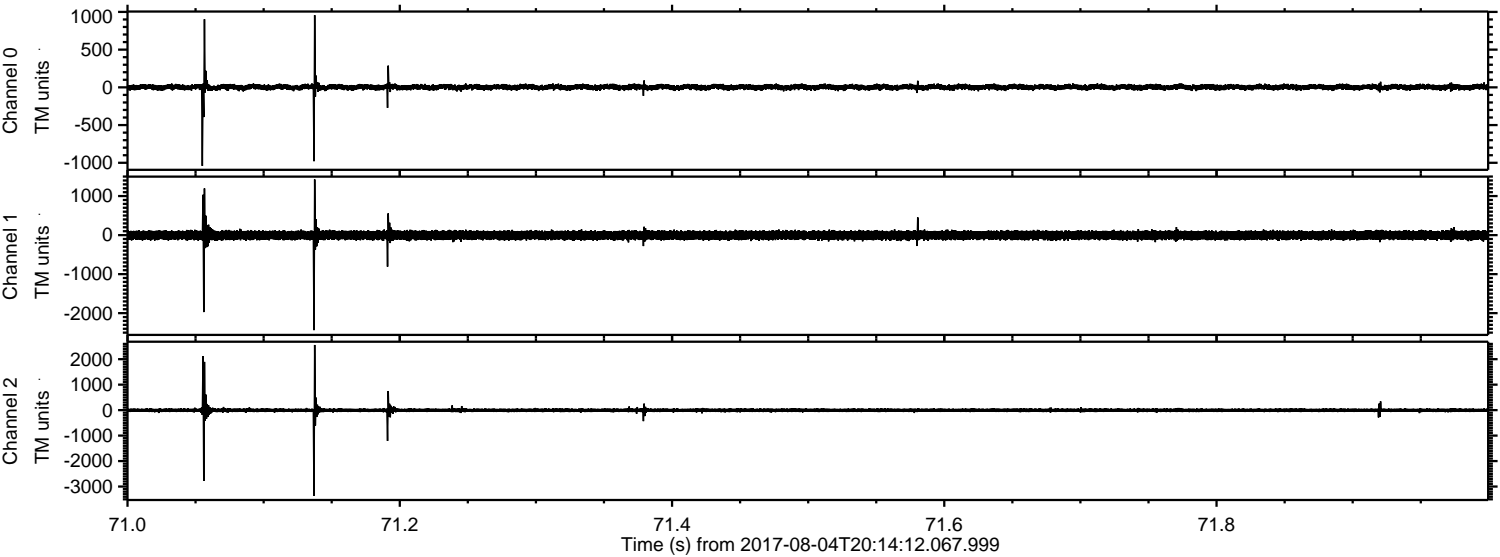


ELMAVAN 3D WAVEFORMS (Measured data sampled at 50 kHz) 51000 packets of 144 samples from 2017-08-04T20:14:12.067.999. Part 107/147

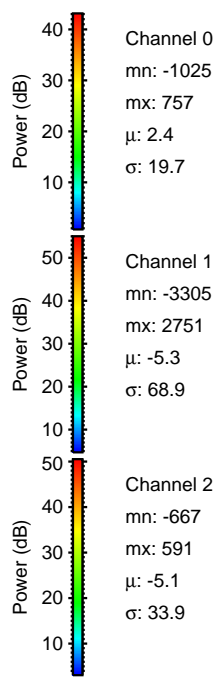
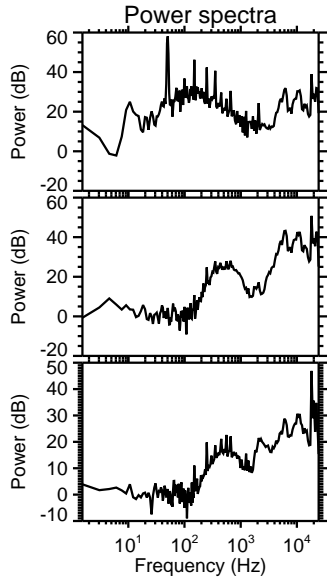
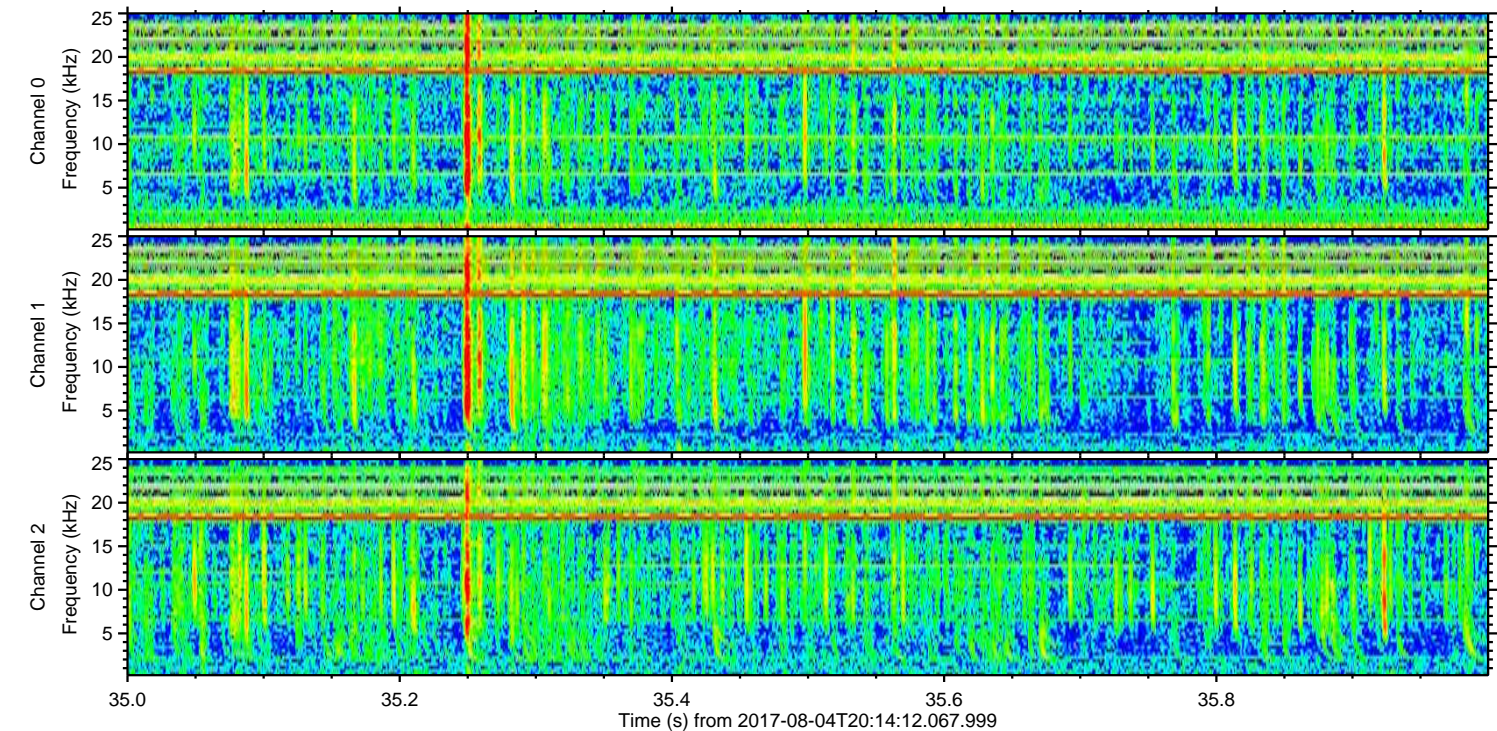
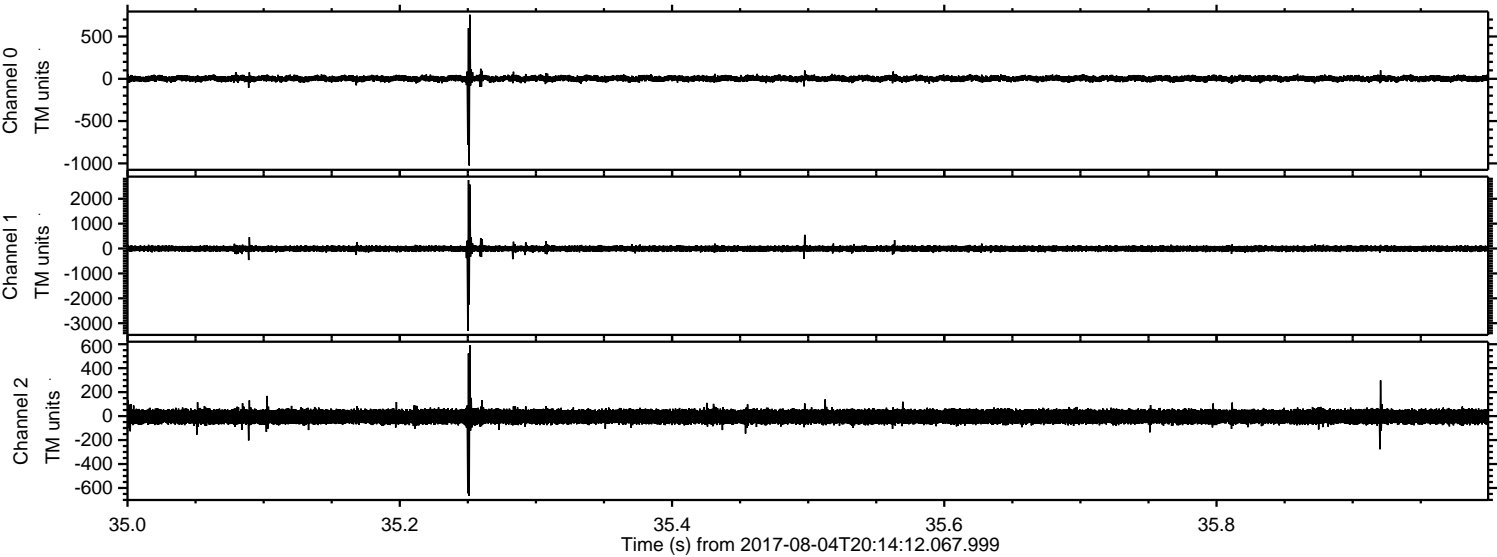
Processed Fri Aug 4 22:21:35 2017 by ELM ver.2012-10-06 from 001__elm20170804_201411__dat00.bin



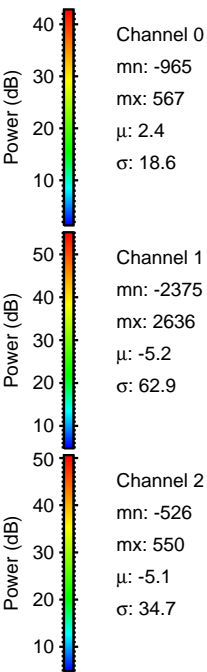
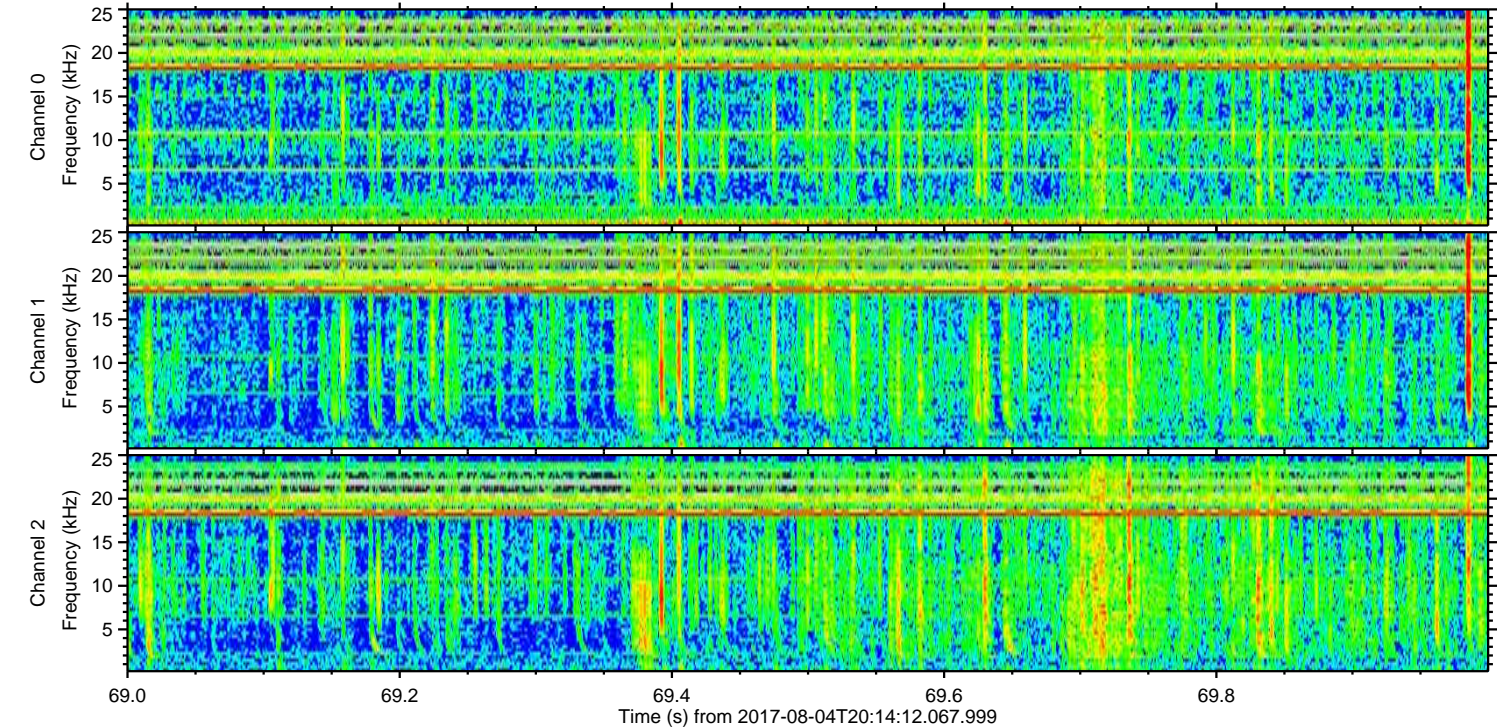
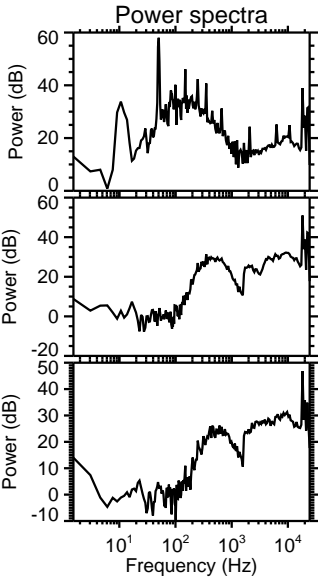
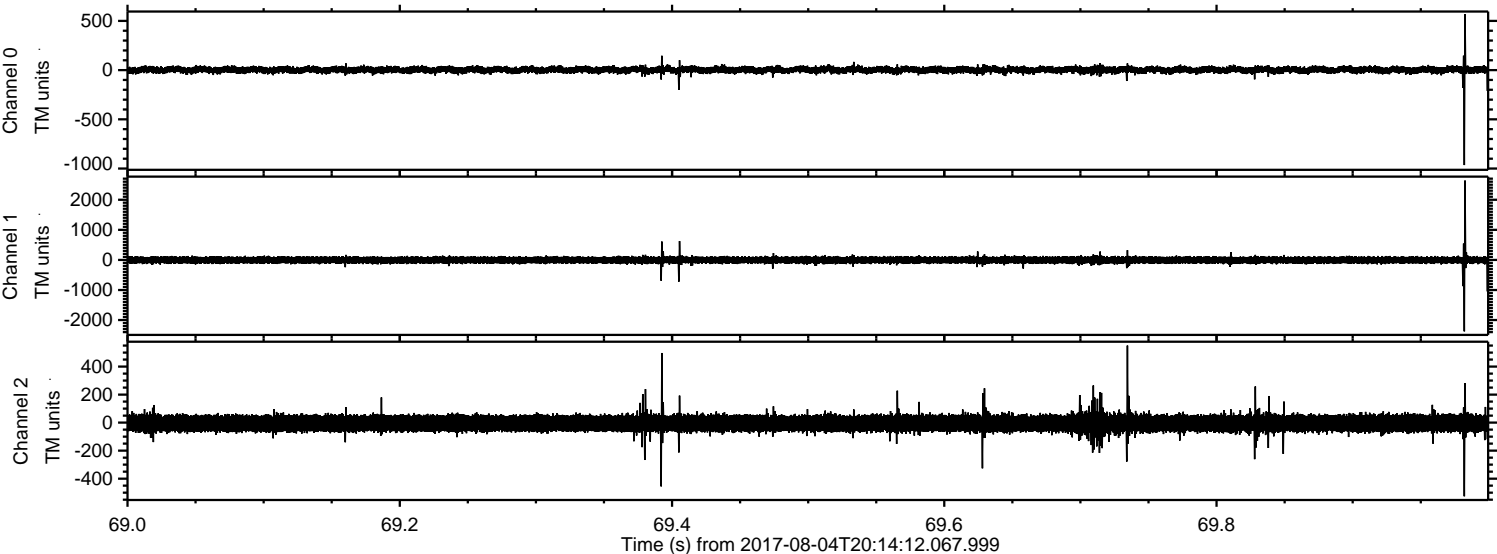
Processed Fri Aug 4 22:21:36 2017 by ELM ver.2012-10-06 from 001__elm20170804_201411__dat00.bin



Processed Fri Aug 4 22:21:36 2017 by ELM ver.2012-10-06 from 001__elm20170804_201411__dat00.bin



Processed Fri Aug 4 22:21:37 2017 by ELM ver.2012-10-06 from 001__elm20170804_201411__dat00.bin



Channel 0
mn: -965
mx: 567
 μ : 2.4
 σ : 18.6

Channel 1
mn: -2375
mx: 2636
 μ : -5.2
 σ : 62.9

Channel 2
mn: -526
mx: 550
 μ : -5.1
 σ : 34.7

