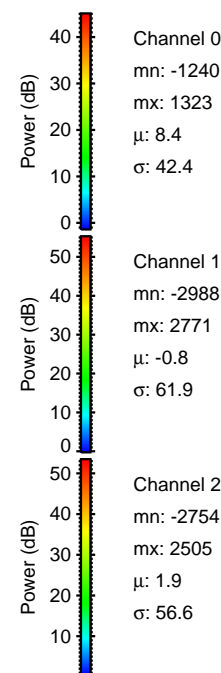
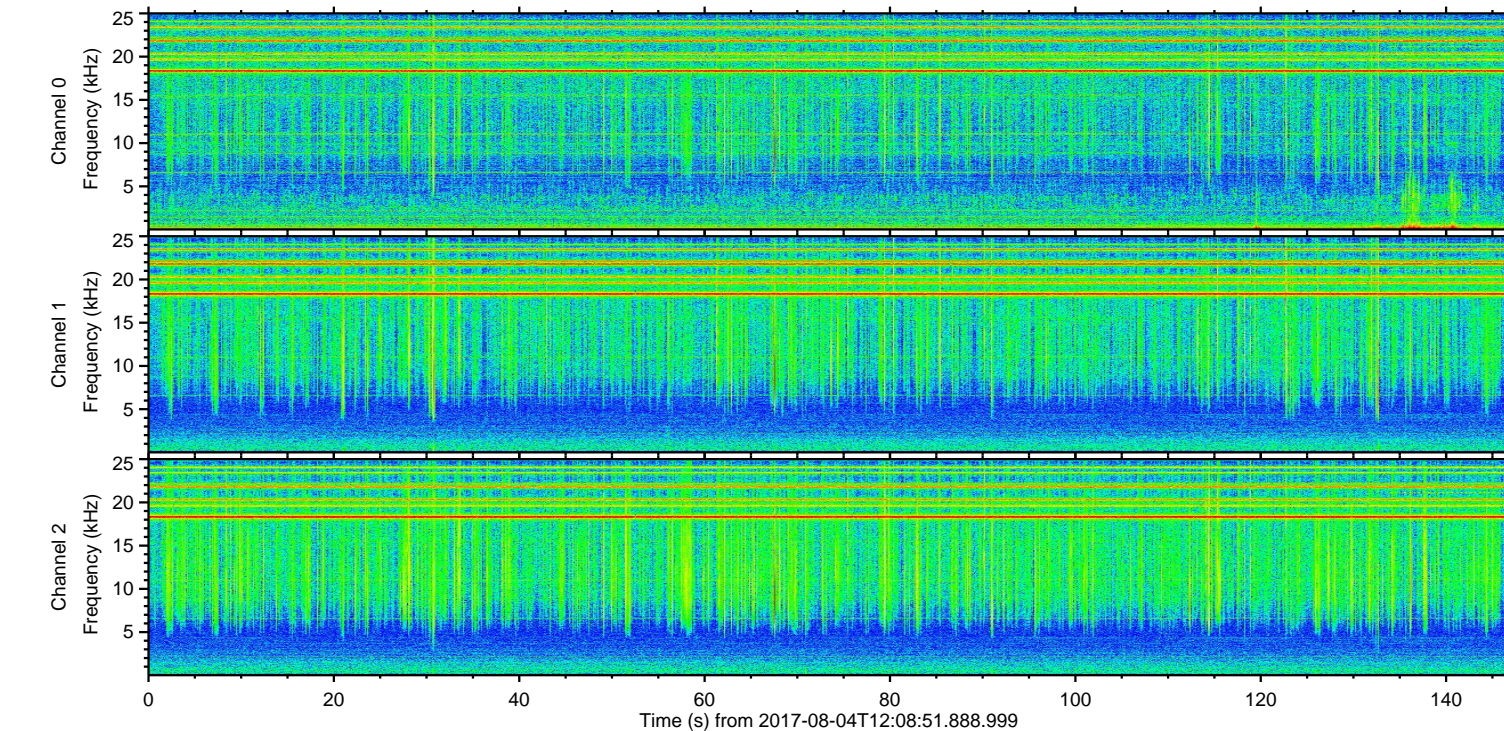
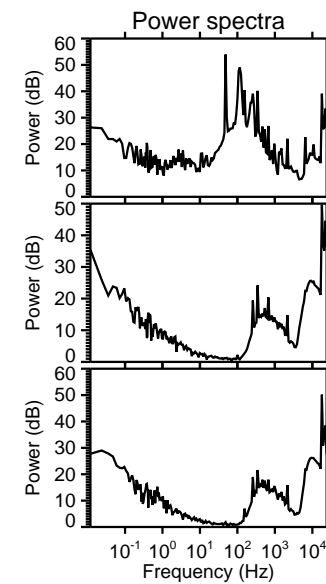
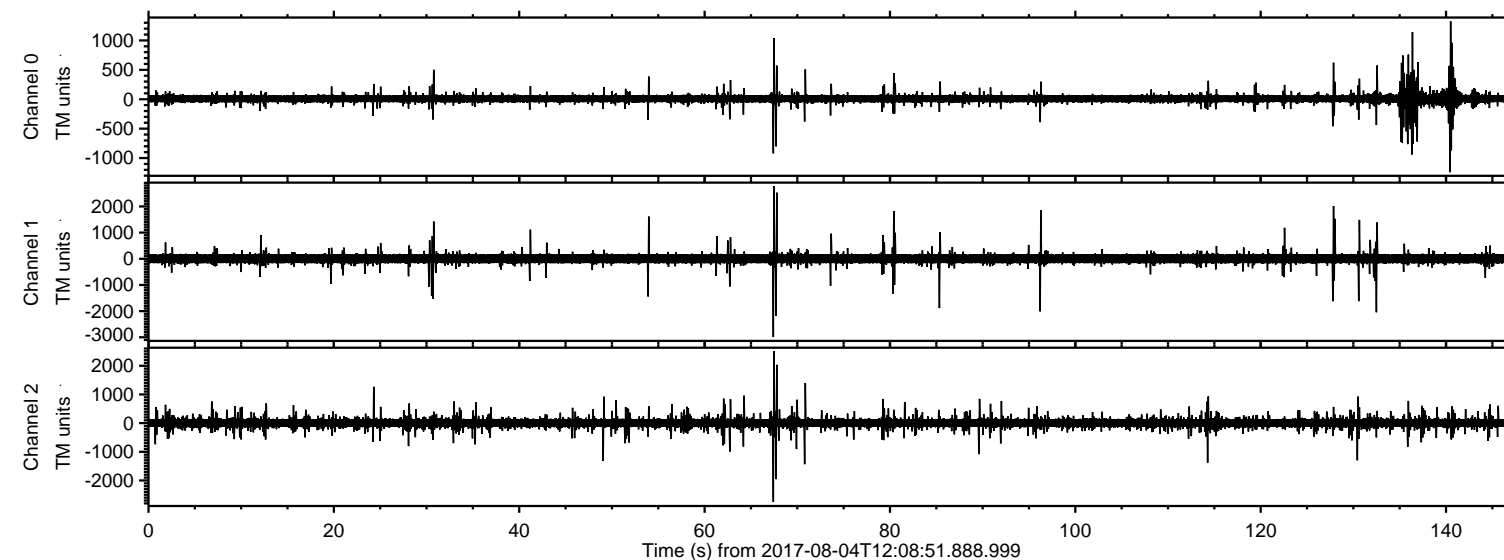
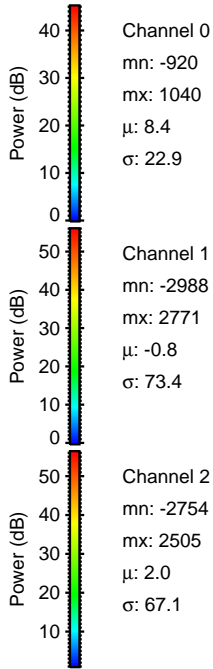
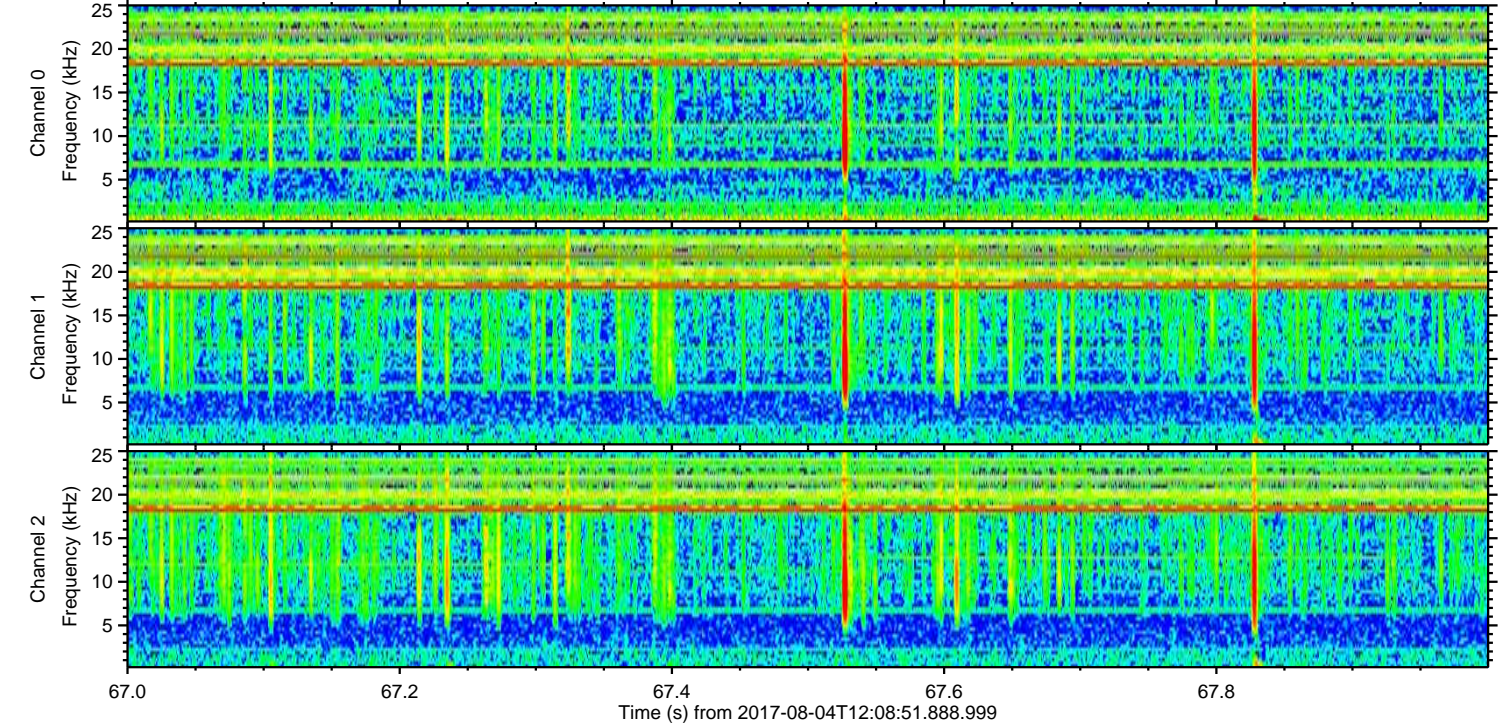
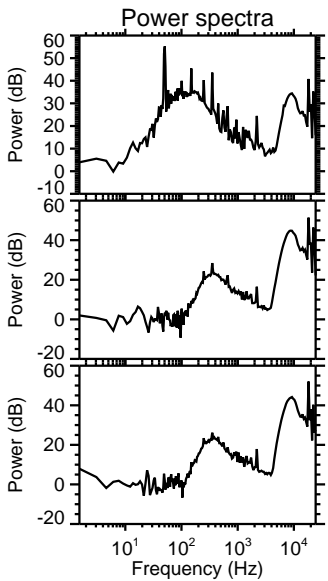
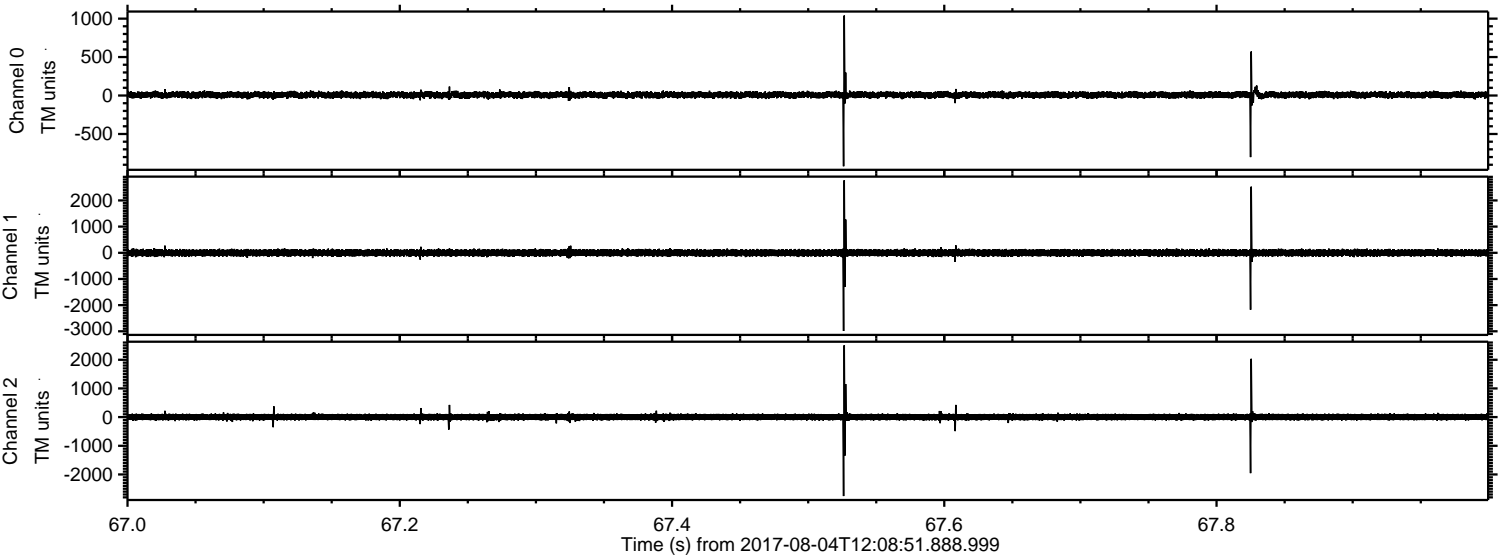


ELMAVAN 3D WAVEFORMS (Measured data sampled at 50 kHz) 51000 packets of 144 samples from 2017-08-04T12:08:51.888.999.

Processed Fri Aug 4 14:17:17 2017 by ELM ver.2012-10-06 from 001__elm20170804_120850__dat00.bin

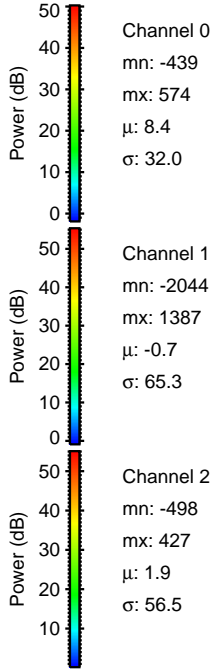
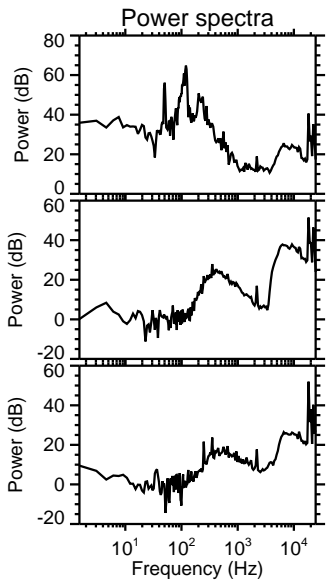
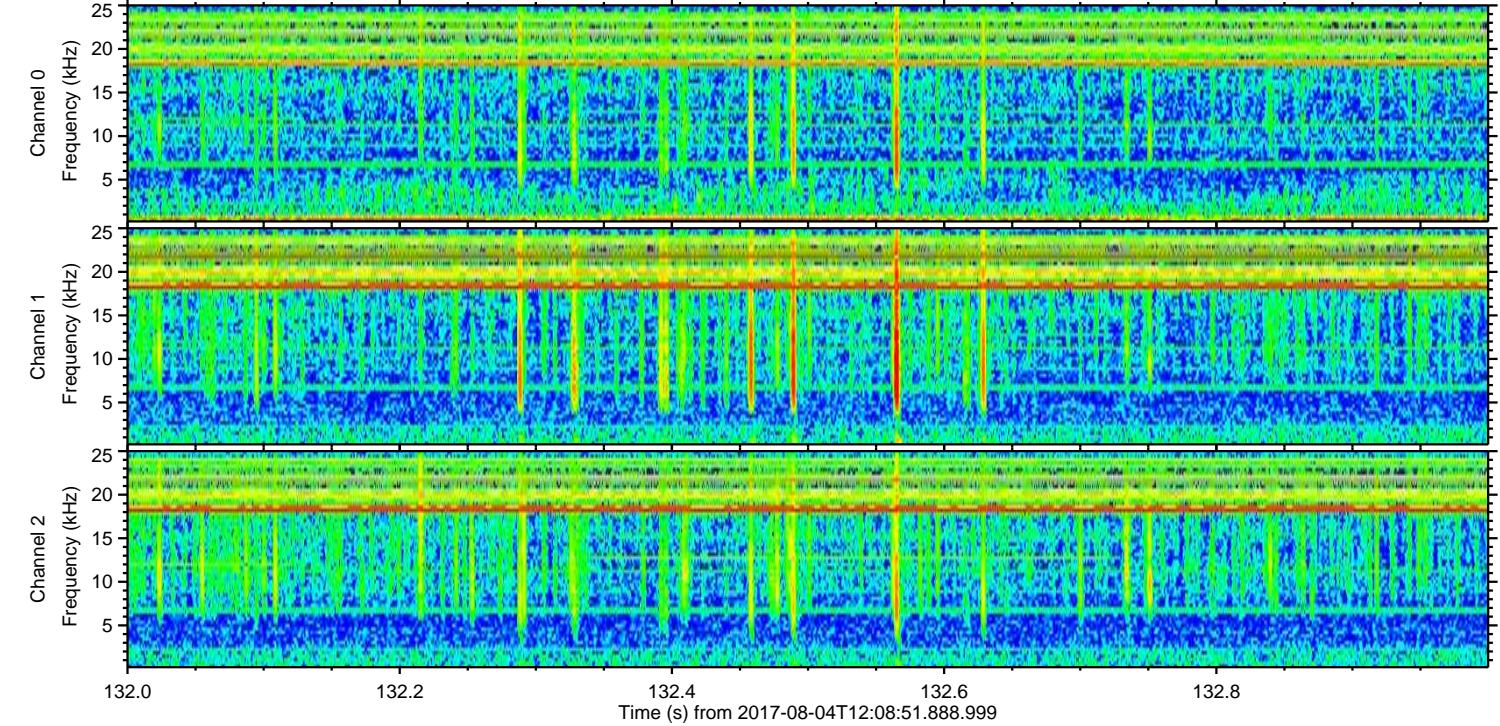
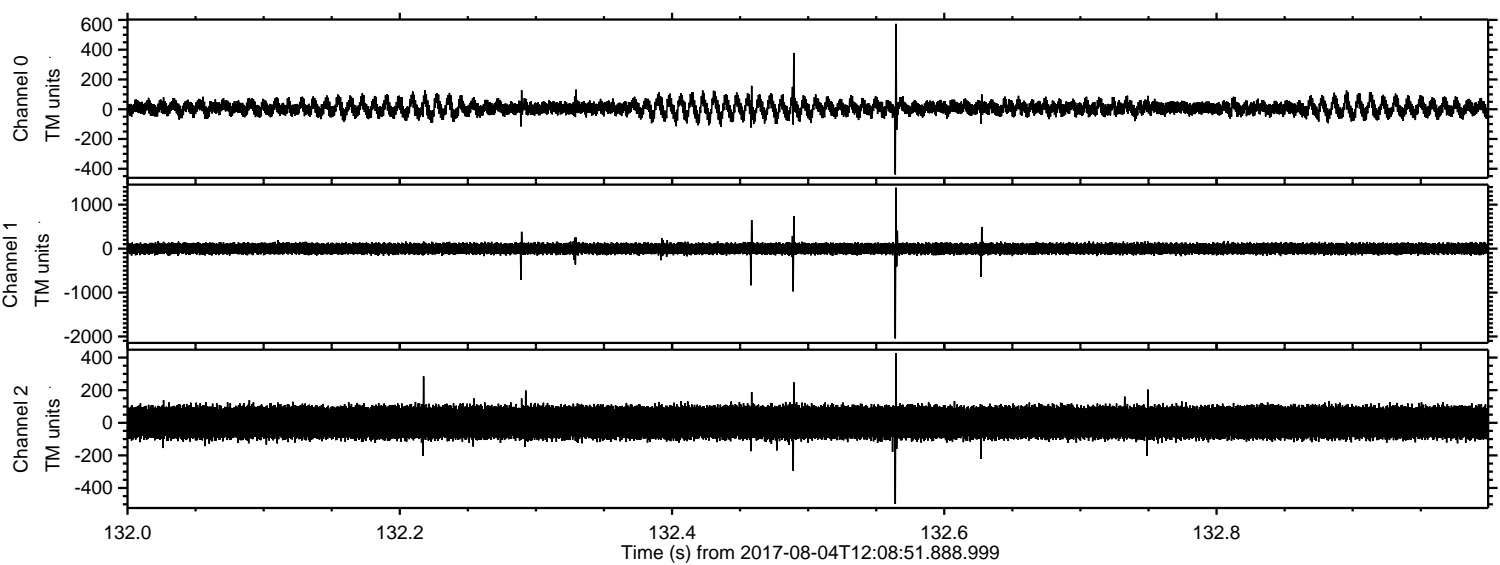


Processed Fri Aug 4 14:17:25 2017 by ELM ver.2012-10-06 from 001__elm20170804_120850__dat00.bin



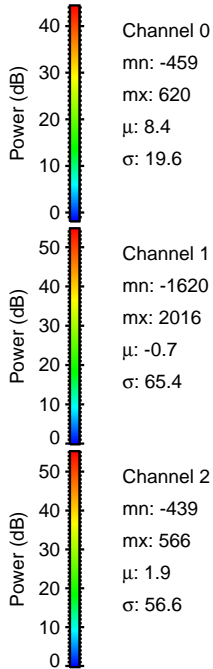
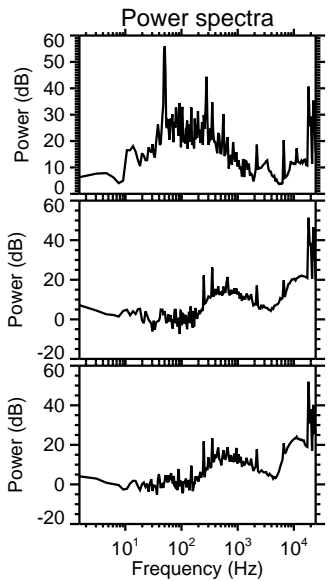
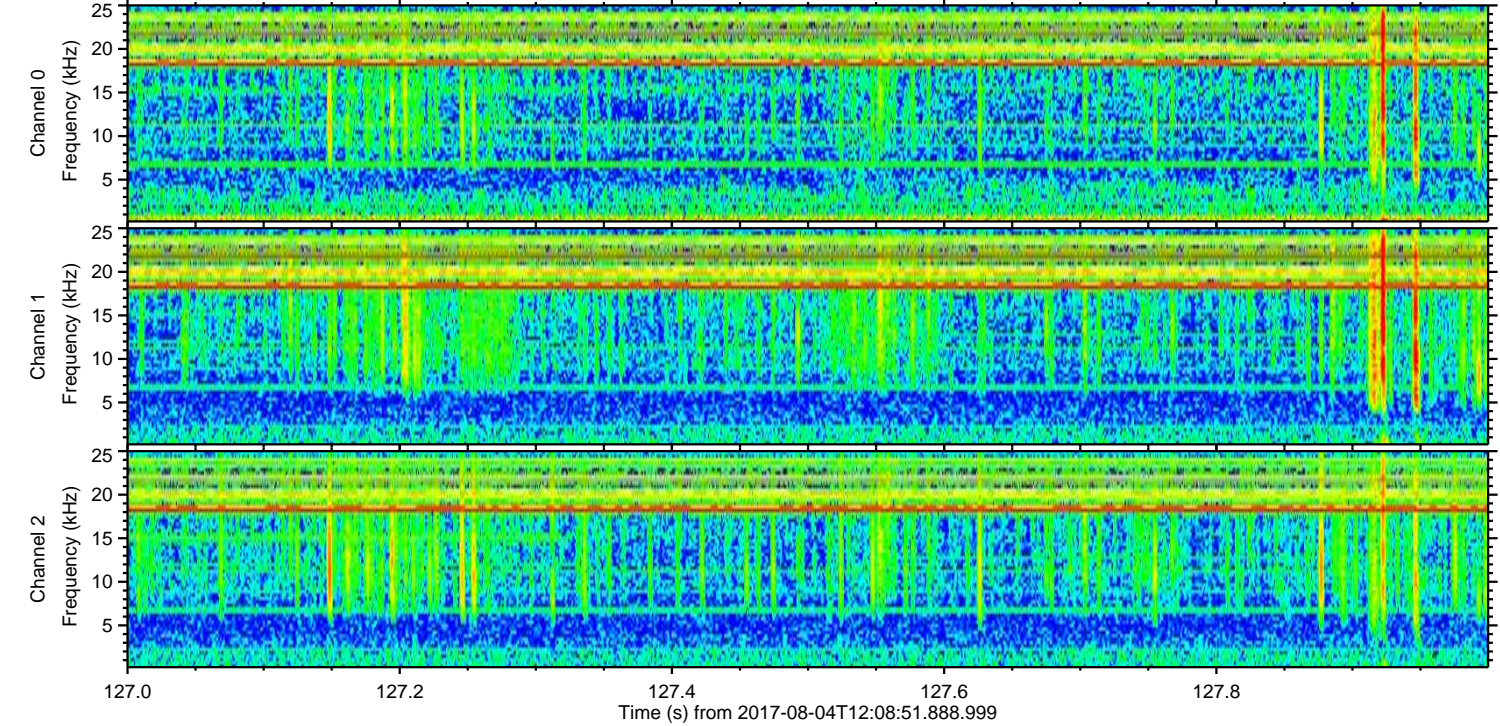
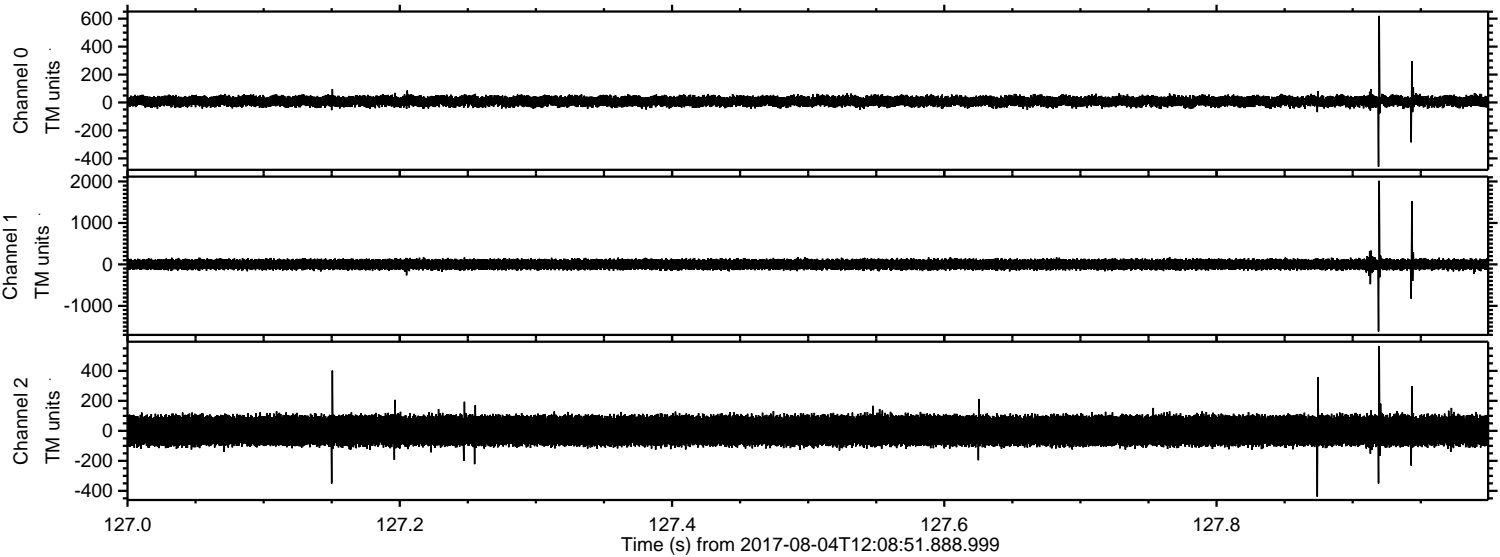
ELMAVAN 3D WAVEFORMS (Measured data sampled at 50 kHz) 51000 packets of 144 samples from 2017-08-04T12:08:51.888.999. Part 133/147

Processed Fri Aug 4 14:17:26 2017 by ELM ver.2012-10-06 from 001__elm20170804_120850__dat00.bin

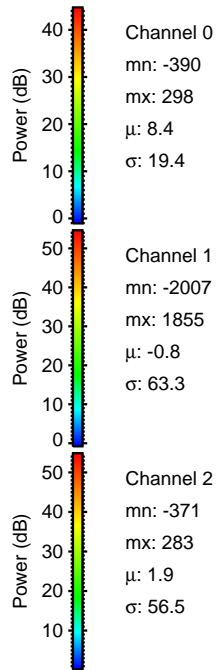
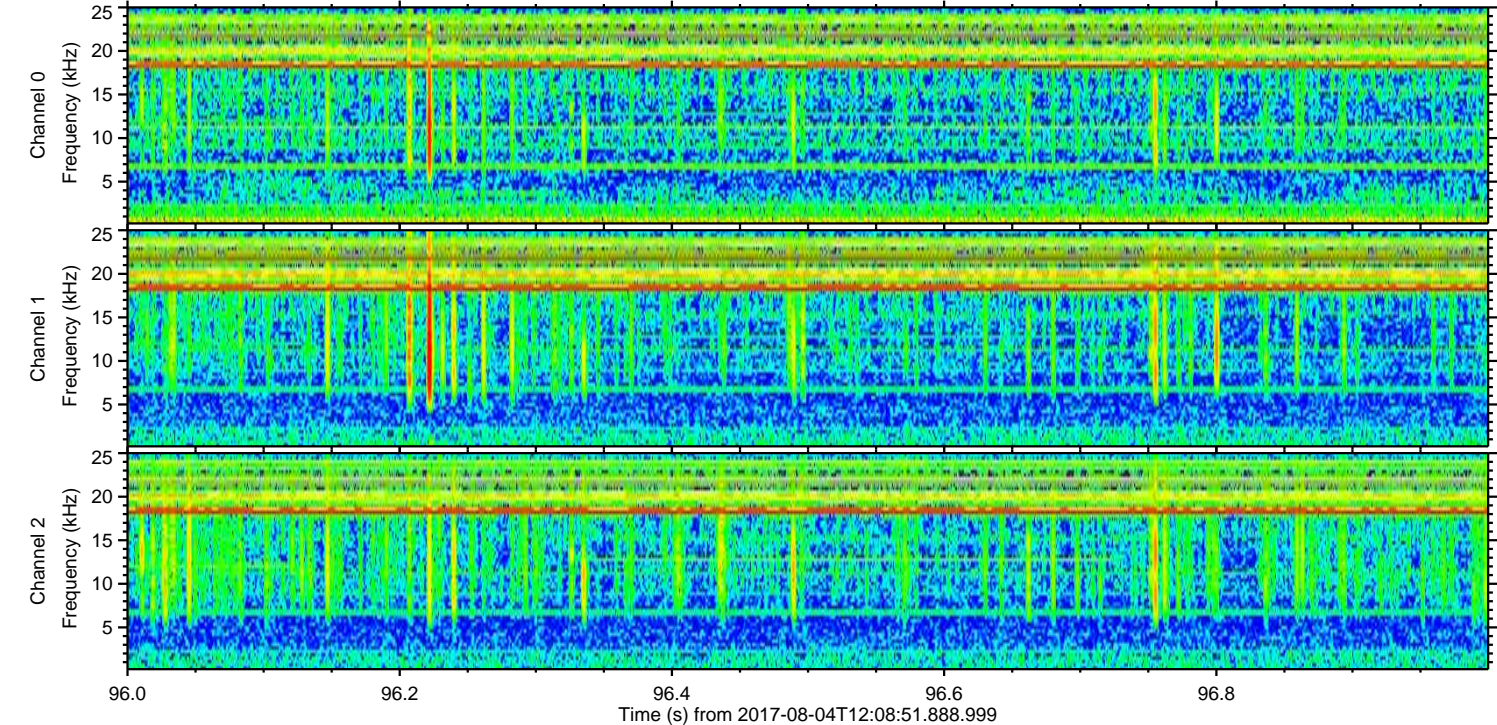
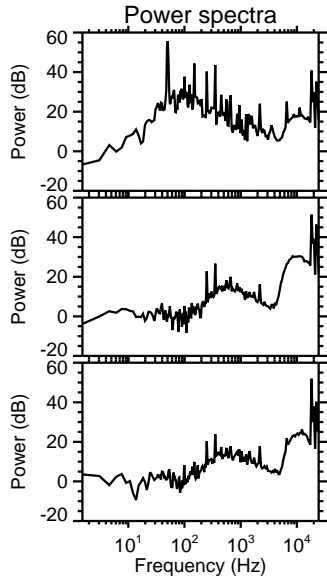
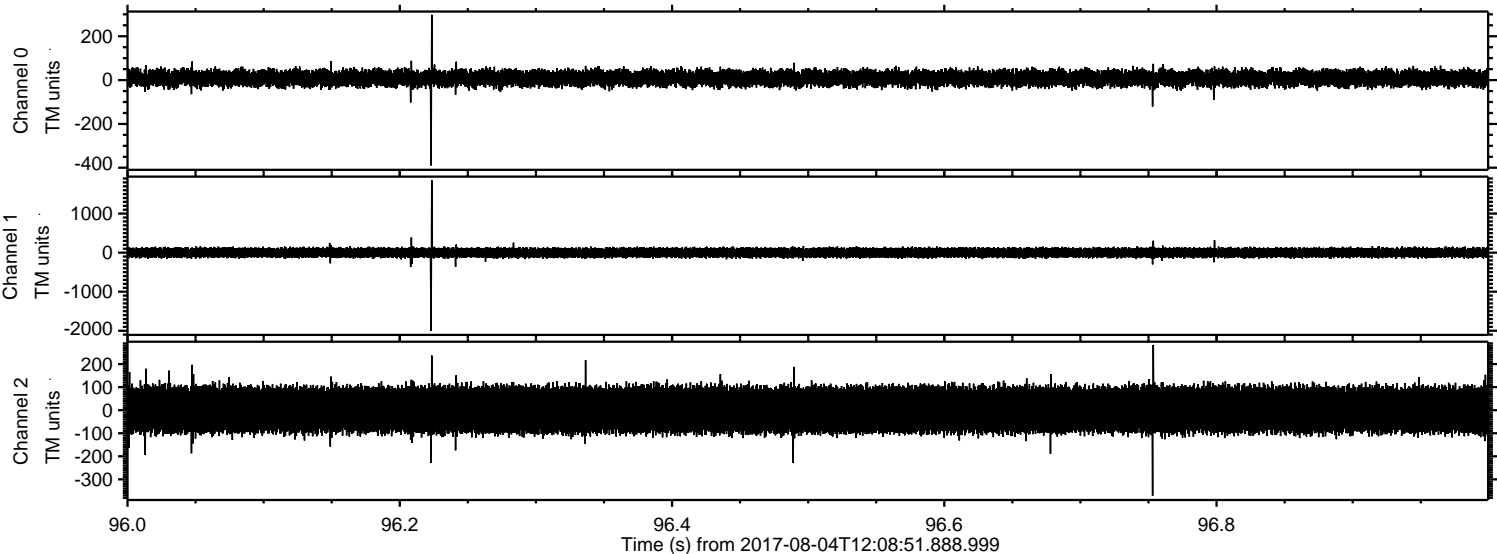


ELMAVAN 3D WAVEFORMS (Measured data sampled at 50 kHz) 51000 packets of 144 samples from 2017-08-04T12:08:51.888.999. Part 128/147

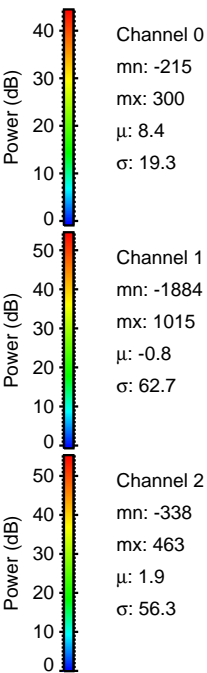
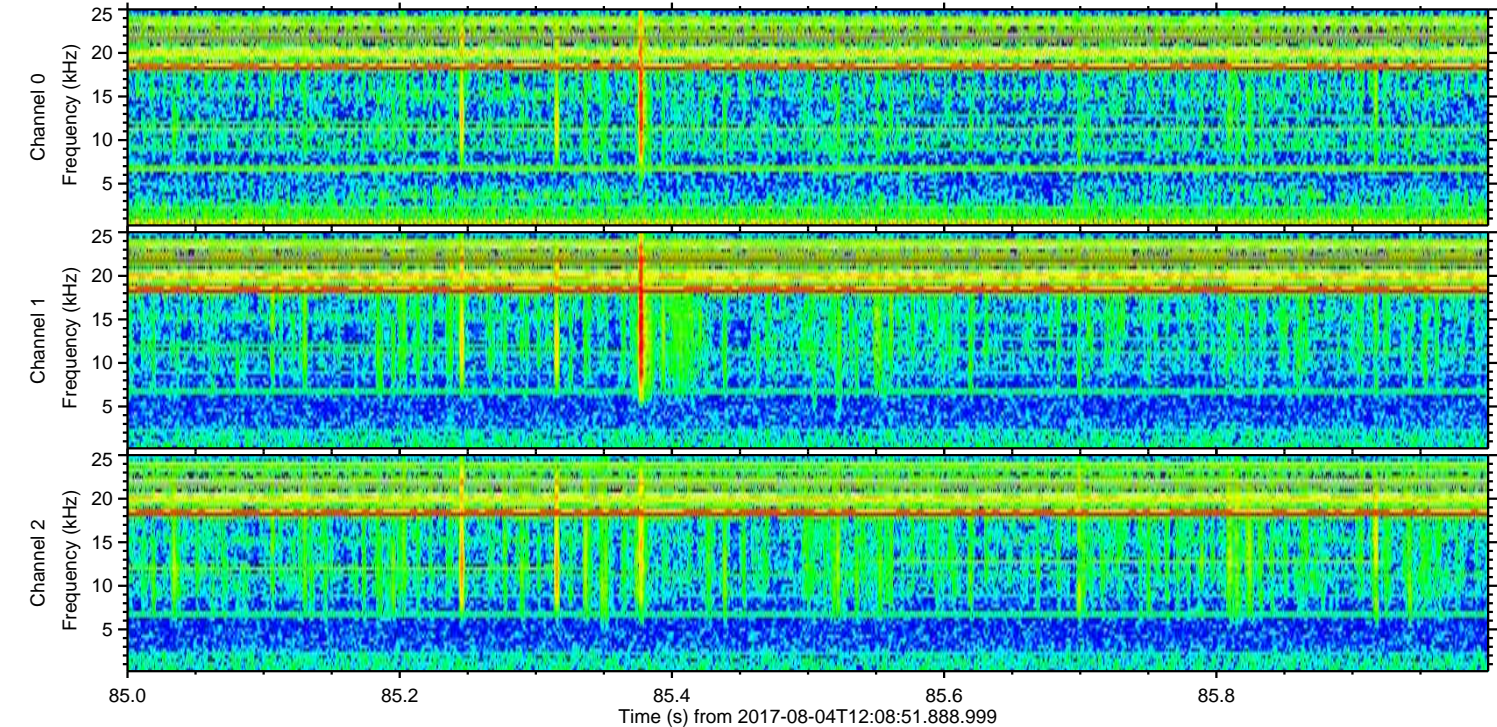
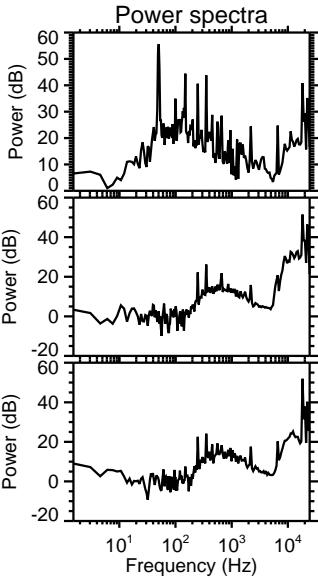
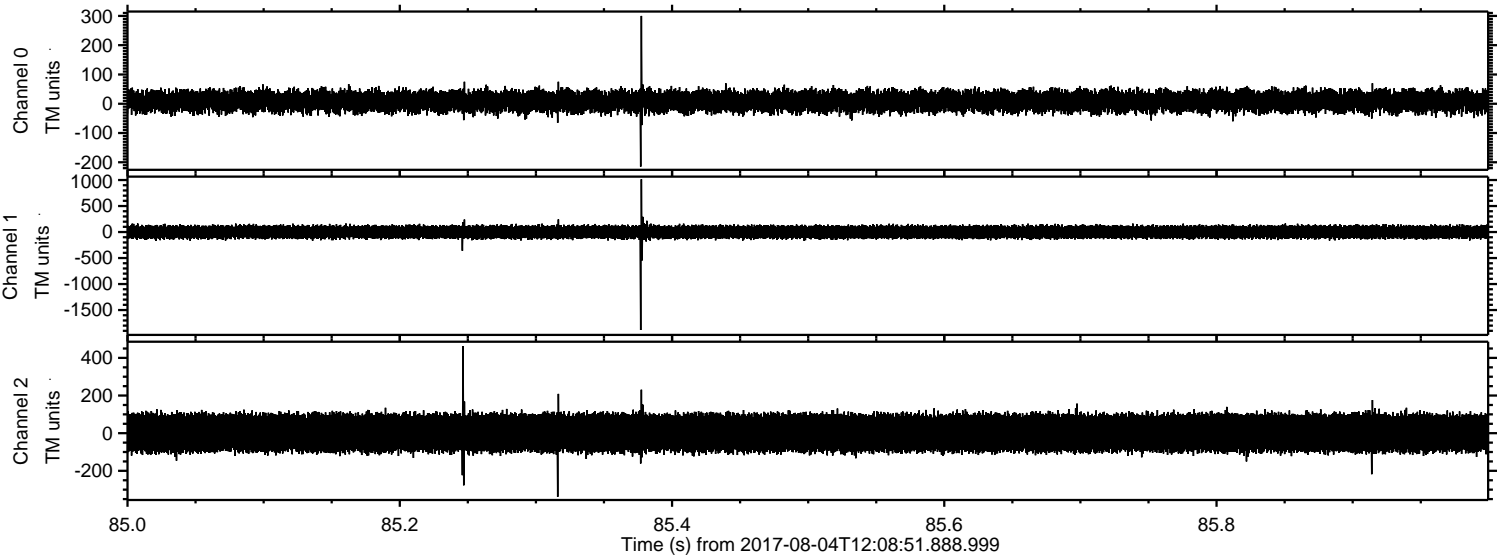
Processed Fri Aug 4 14:17:27 2017 by ELM ver.2012-10-06 from 001__elm20170804_120850__dat00.bin



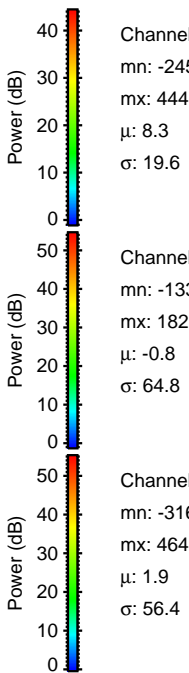
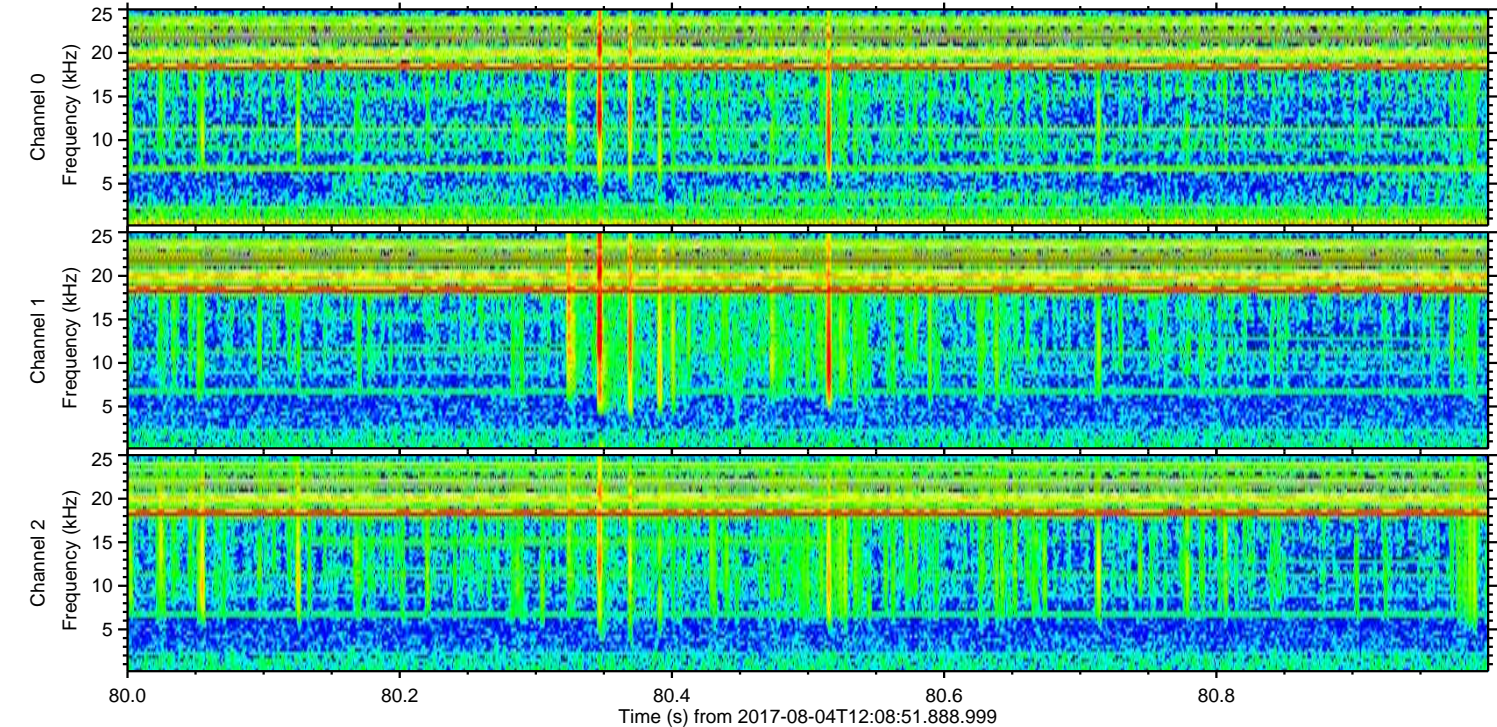
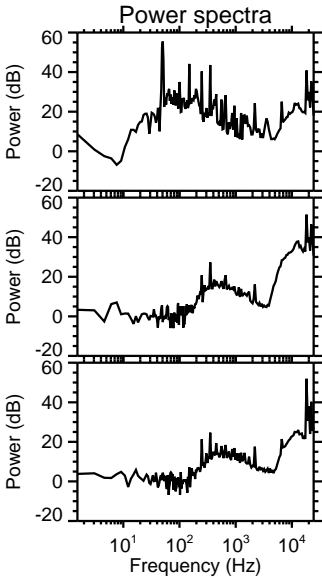
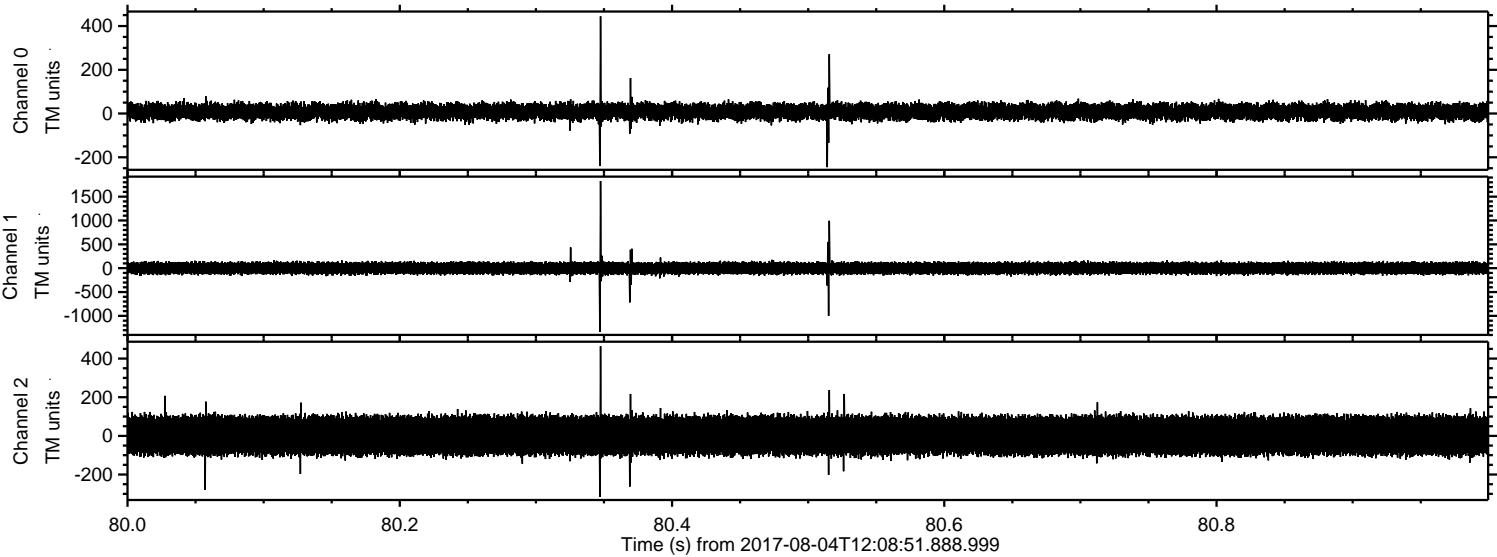
Processed Fri Aug 4 14:17:28 2017 by ELM ver.2012-10-06 from 001__elm20170804_120850__dat00.bin



Processed Fri Aug 4 14:17:28 2017 by ELM ver.2012-10-06 from 001__elm20170804_120850__dat00.bin



Processed Fri Aug 4 14:17:29 2017 by ELM ver.2012-10-06 from 001__elm20170804_120850__dat00.bin



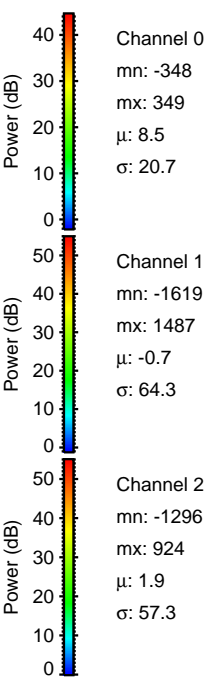
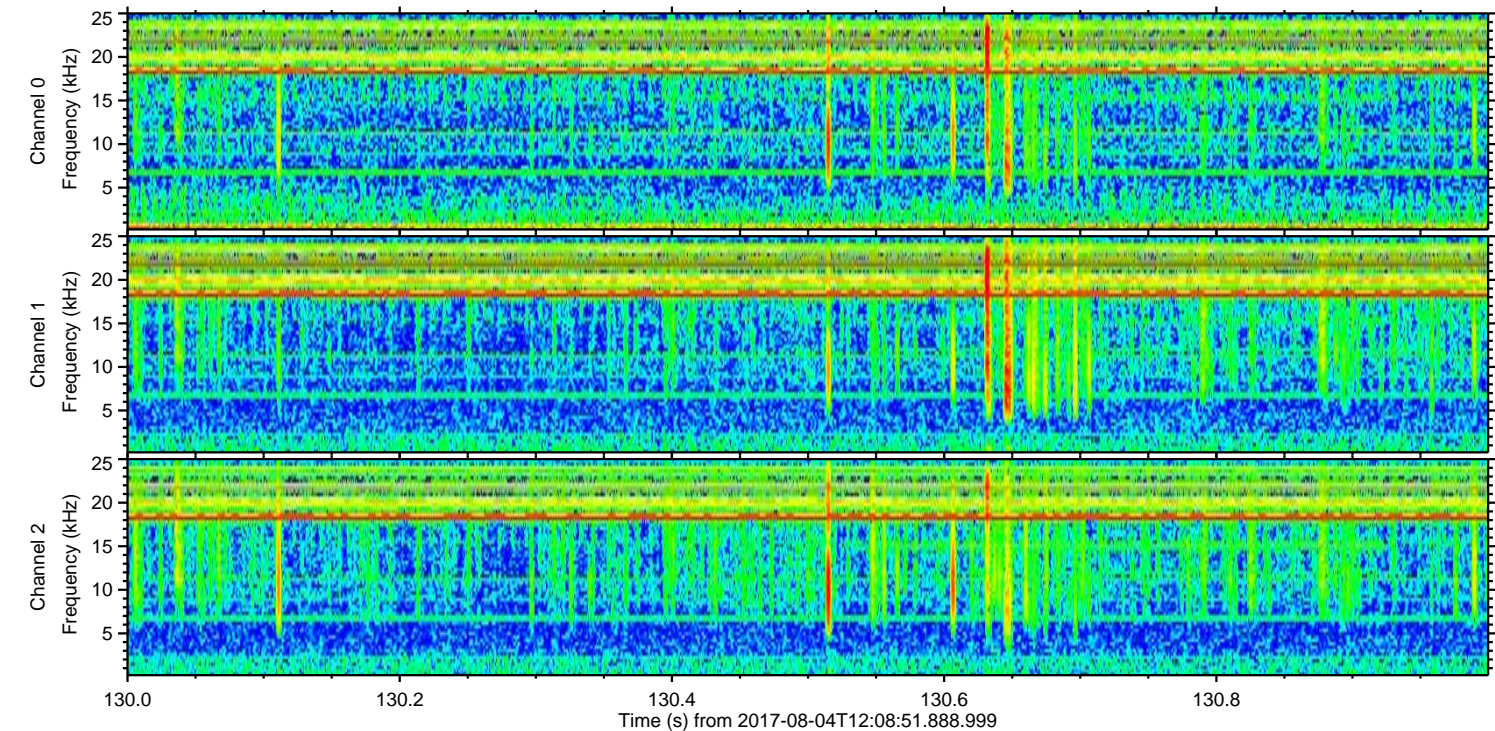
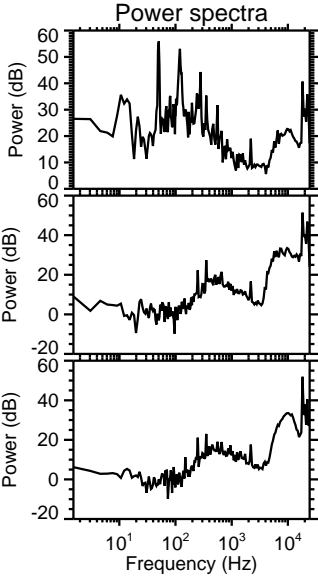
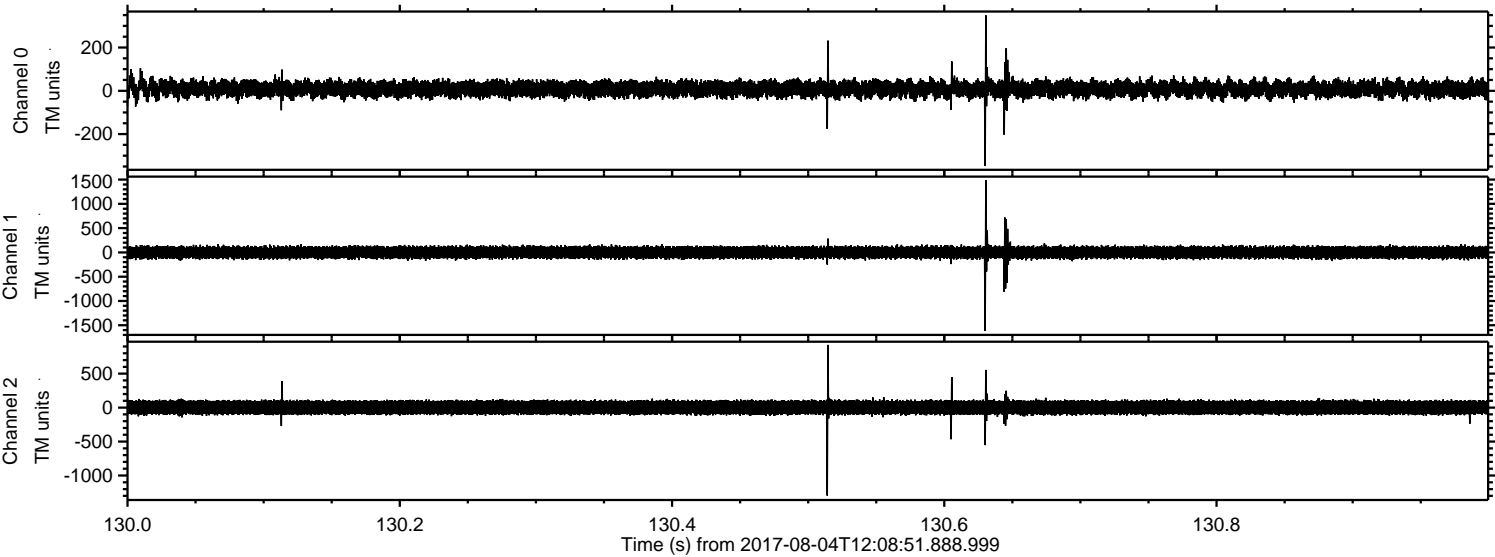
Channel 0
mn: -245
mx: 444
 μ : 8.3
 σ : 19.6

Channel 1
mn: -1332
mx: 1828
 μ : -0.8
 σ : 64.8

Channel 2
mn: -316
mx: 464
 μ : 1.9
 σ : 56.4

ELMAVAN 3D WAVEFORMS (Measured data sampled at 50 kHz) 51000 packets of 144 samples from 2017-08-04T12:08:51.888.999. Part 131/147

Processed Fri Aug 4 14:17:30 2017 by ELM ver.2012-10-06 from 001__elm20170804_120850__dat00.bin

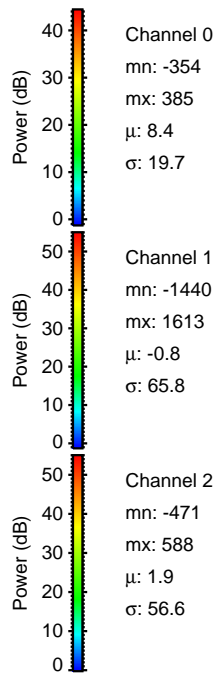
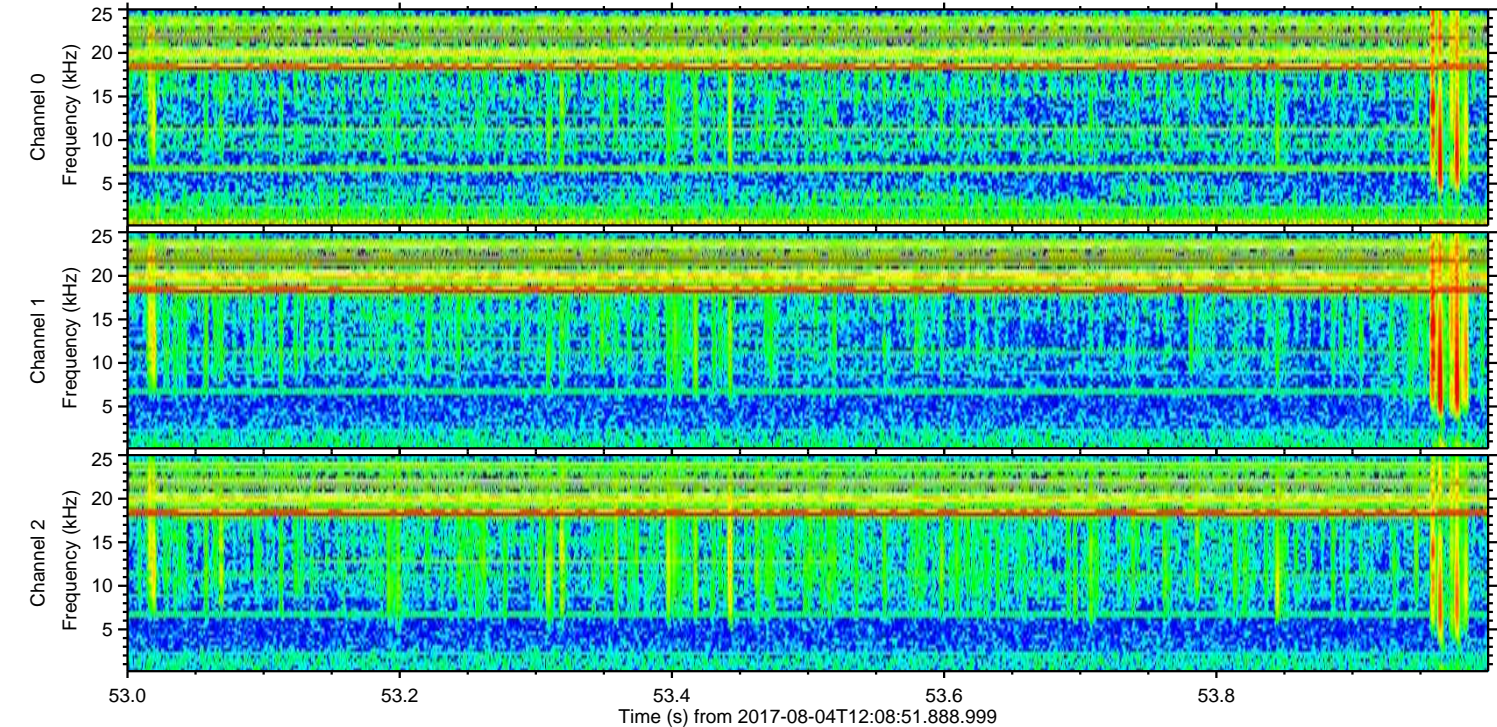
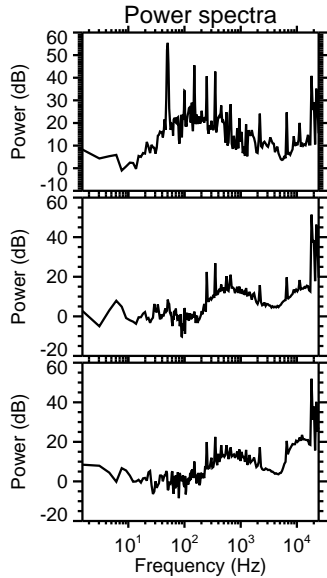
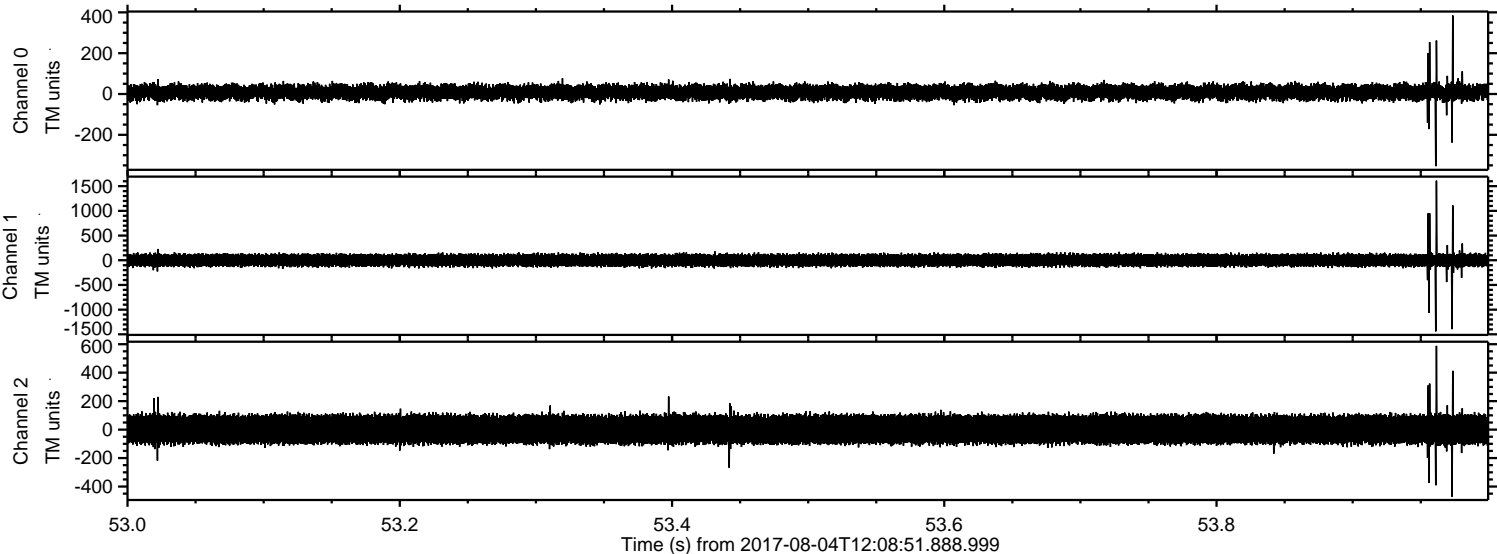


Channel 0
mn: -348
mx: 349
 μ : 8.5
 σ : 20.7

Channel 1
mn: -1619
mx: 1487
 μ : -0.7
 σ : 64.3

Channel 2
mn: -1296
mx: 924
 μ : 1.9
 σ : 57.3

Processed Fri Aug 4 14:17:31 2017 by ELM ver.2012-10-06 from 001__elm20170804_120850__dat00.bin



Processed Fri Aug 4 14:17:32 2017 by ELM ver.2012-10-06 from 001__elm20170804_120850__dat00.bin

