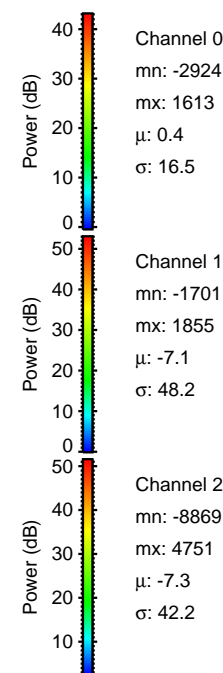
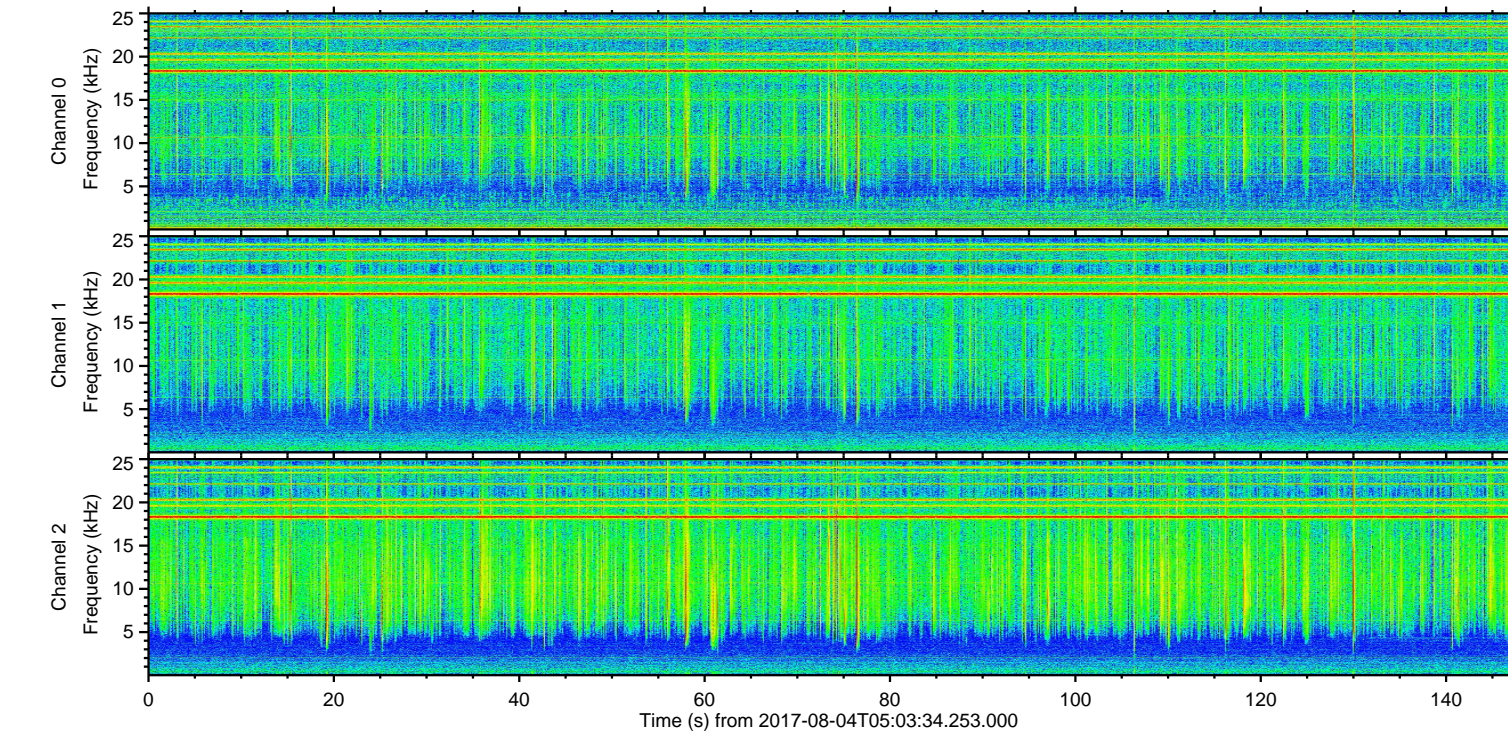
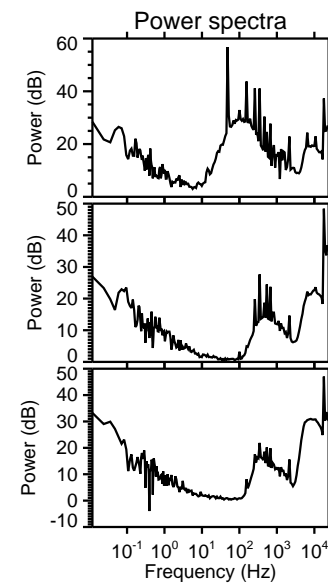
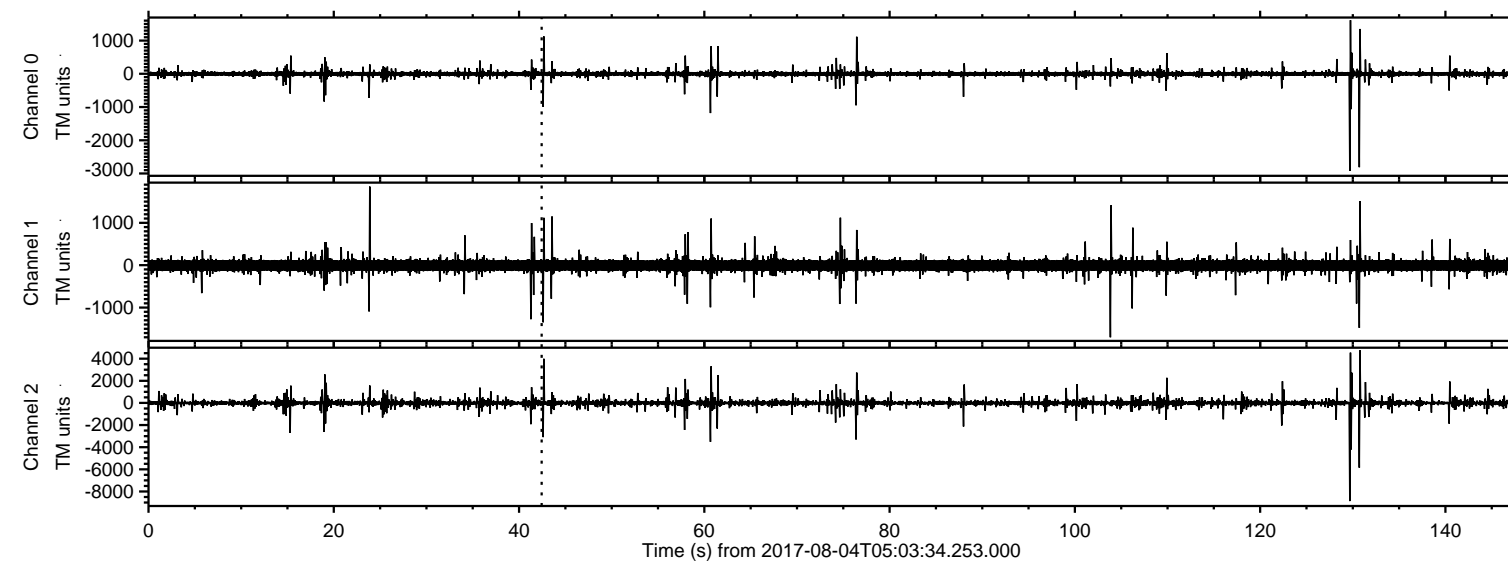


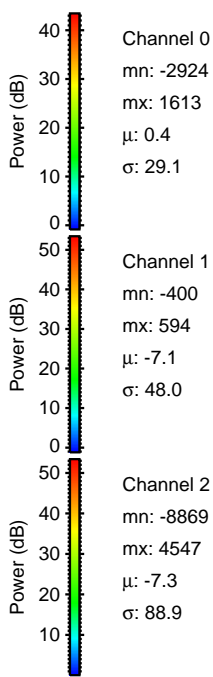
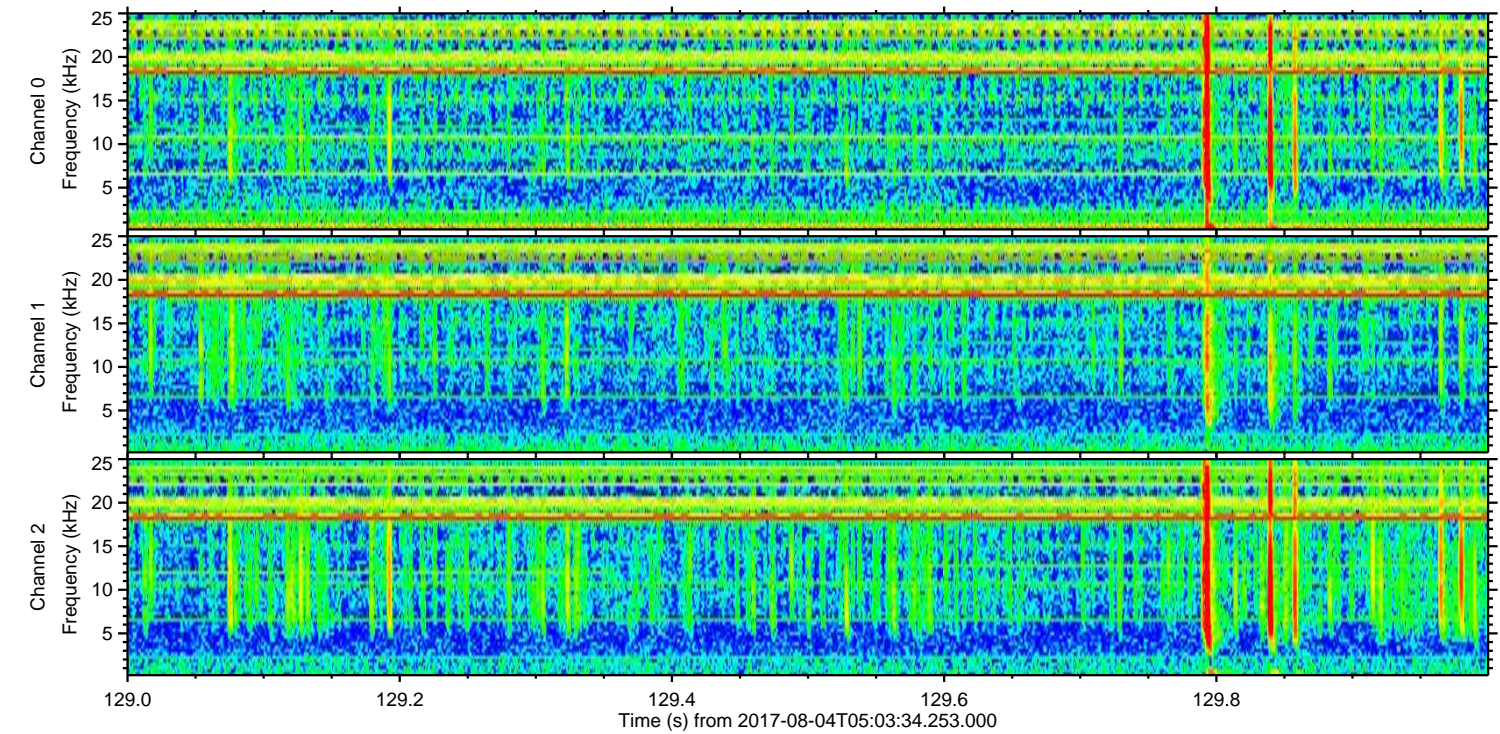
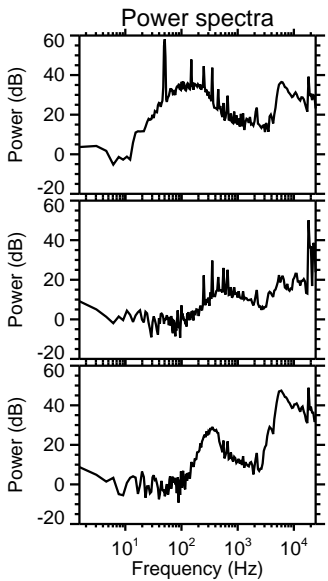
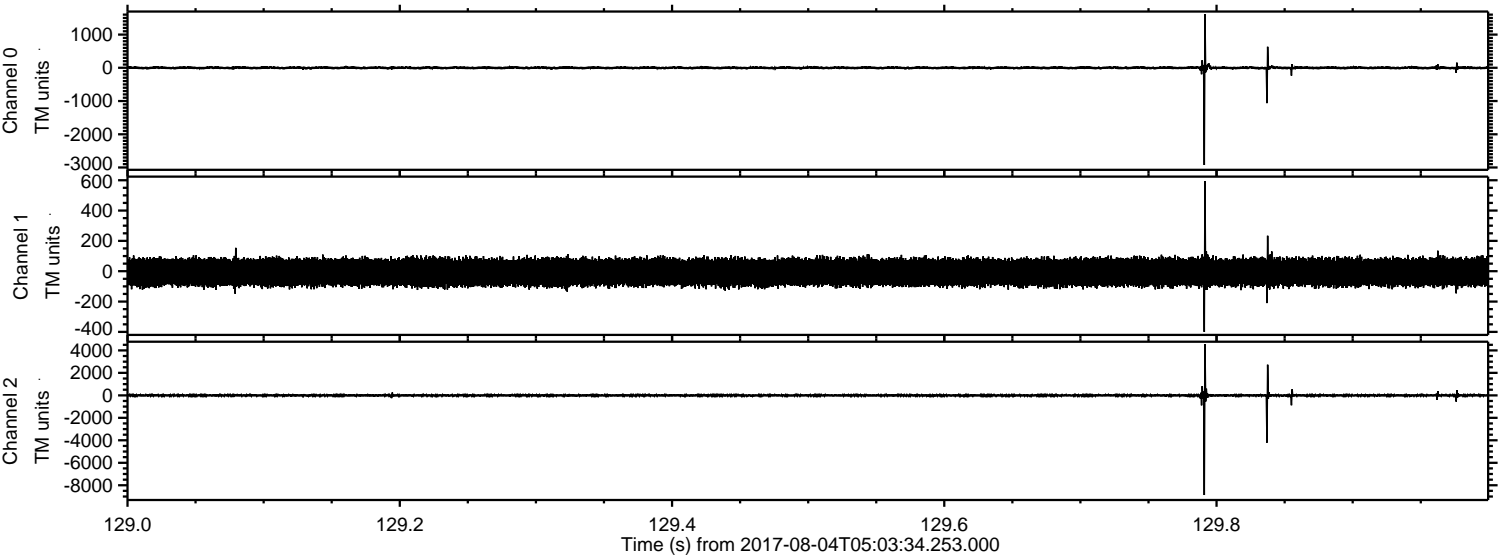
ELMAVAN 3D WAVEFORMS (Measured data sampled at 50 kHz) 50999 packets of 144 samples from 2017-08-04T05:03:34.253.000.

Processed Fri Aug 4 07:10:54 2017 by ELM ver.2012-10-06 from 001__elm20170804_050333__dat00.bin



ELMAVAN 3D WAVEFORMS (Measured data sampled at 50 kHz) 50999 packets of 144 samples from 2017-08-04T05:03:34.253.000. Part 130/147

Processed Fri Aug 4 07:11:01 2017 by ELM ver.2012-10-06 from 001__elm20170804_050333__dat00.bin



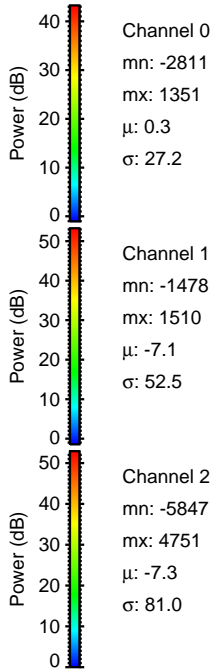
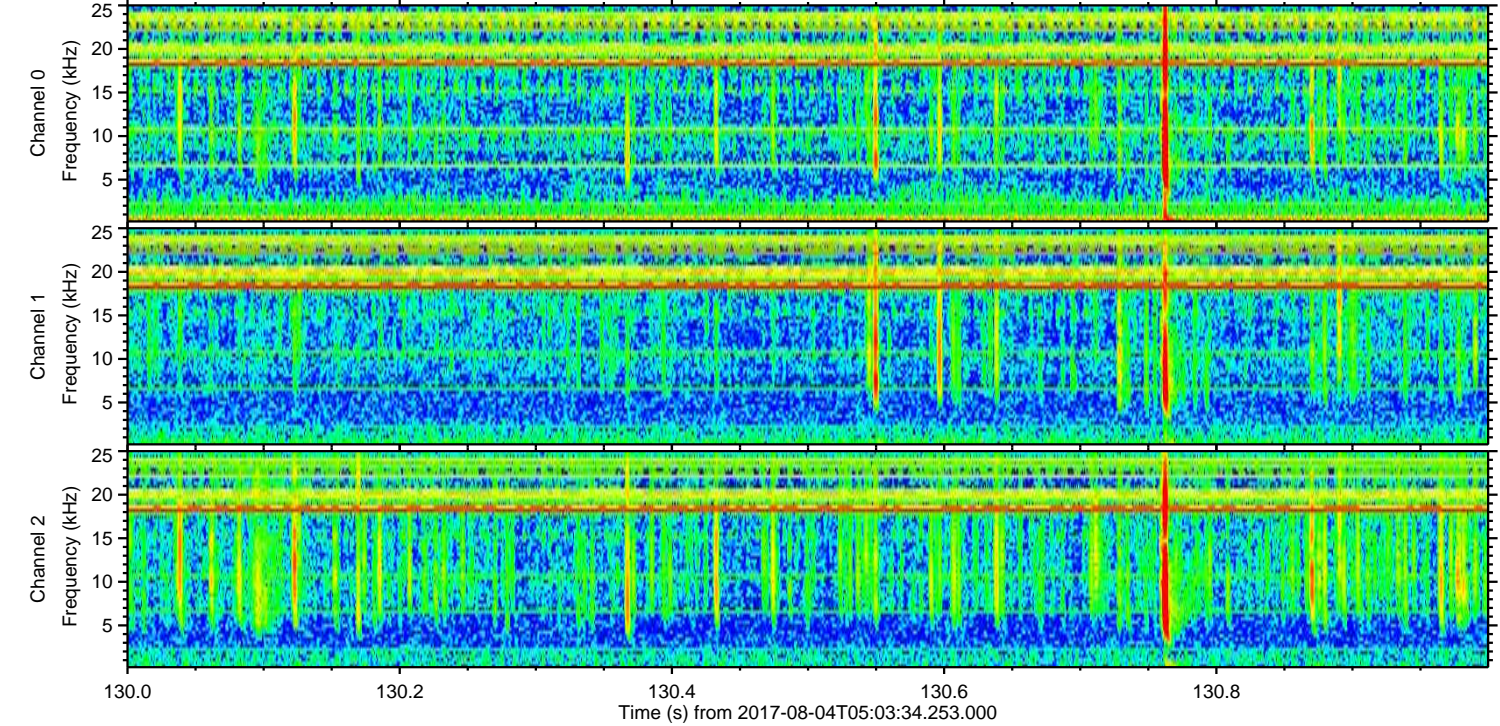
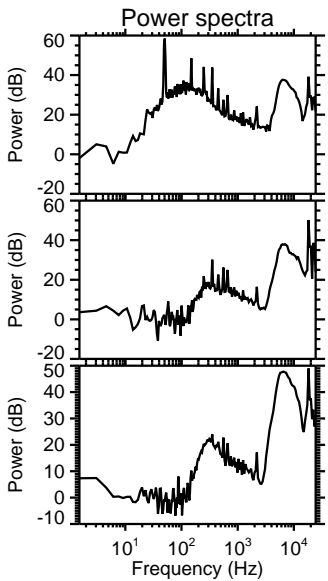
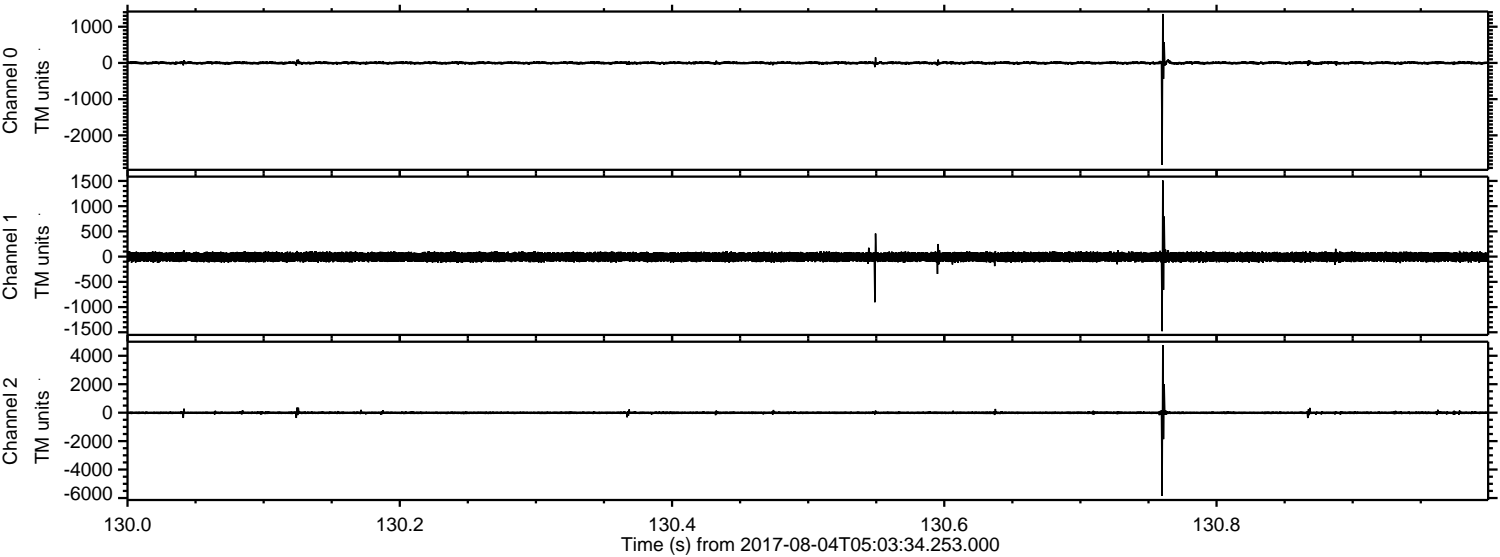
Channel 0
mn: -2924
mx: 1613
 μ : 0.4
 σ : 29.1

Channel 1
mn: -400
mx: 594
 μ : -7.1
 σ : 48.0

Channel 2
mn: -8869
mx: 4547
 μ : -7.3
 σ : 88.9

ELMAVAN 3D WAVEFORMS (Measured data sampled at 50 kHz) 50999 packets of 144 samples from 2017-08-04T05:03:34.253.000. Part 131/147

Processed Fri Aug 4 07:11:02 2017 by ELM ver.2012-10-06 from 001__elm20170804_050333__dat00.bin

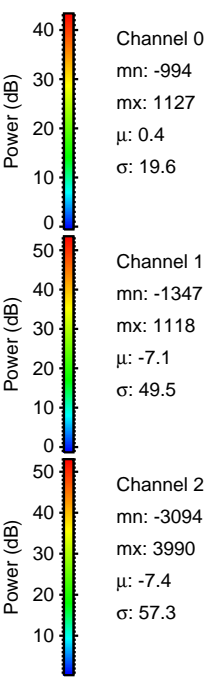
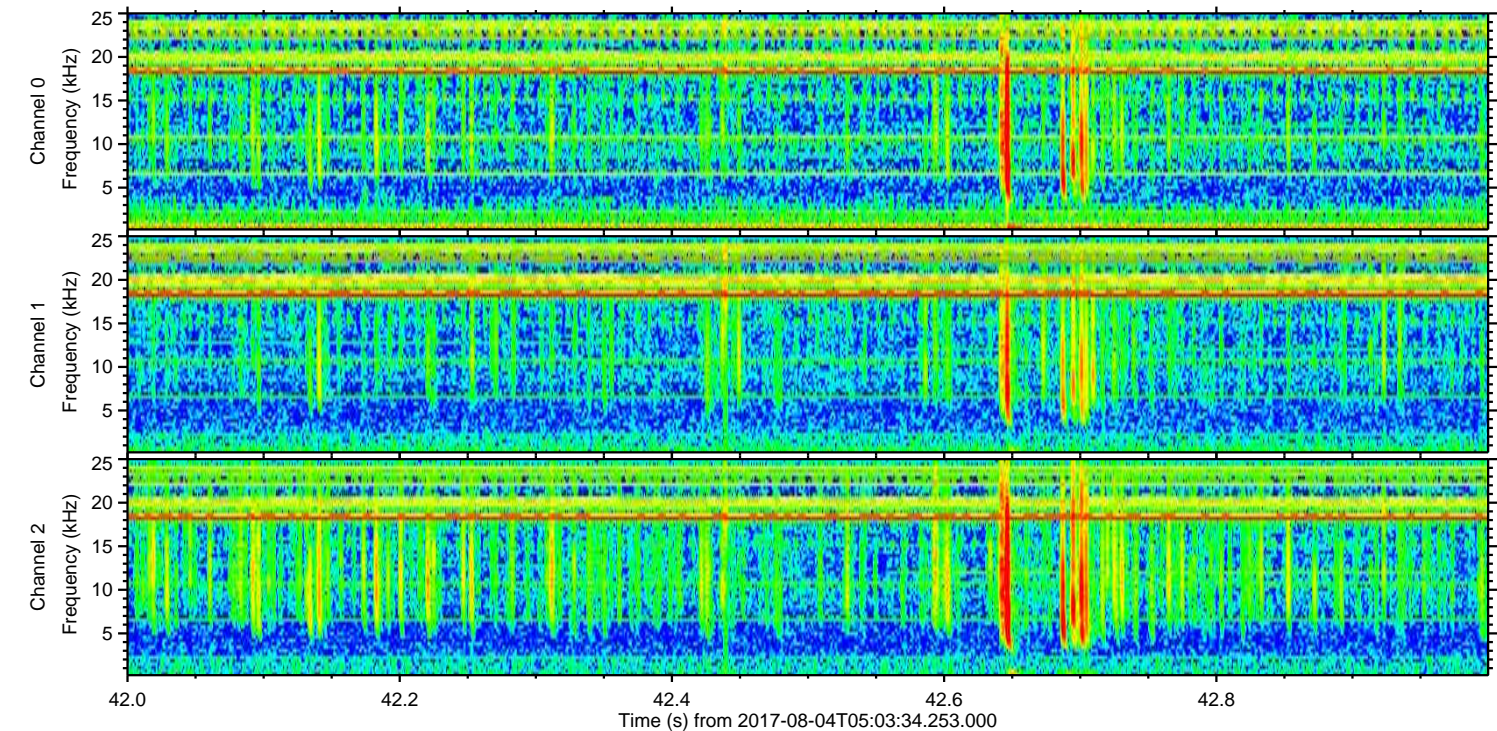
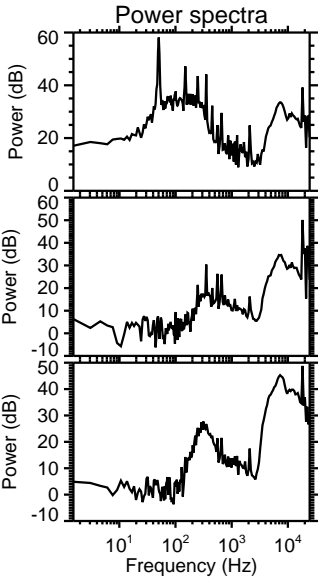
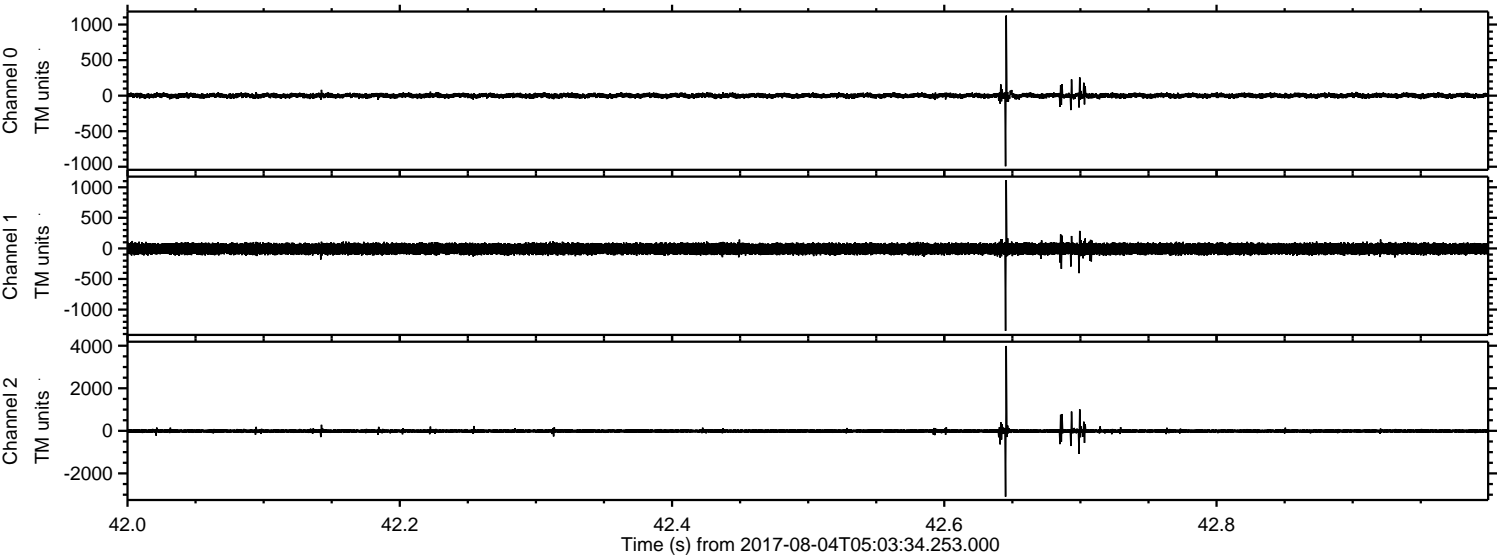


Channel 0
mn: -2811
mx: 1351
 μ : 0.3
 σ : 27.2

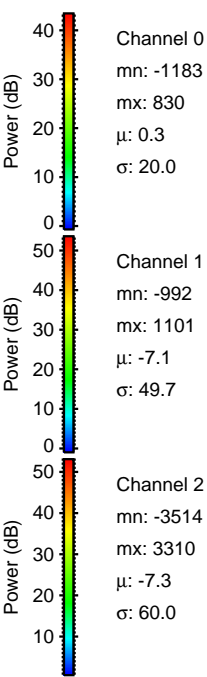
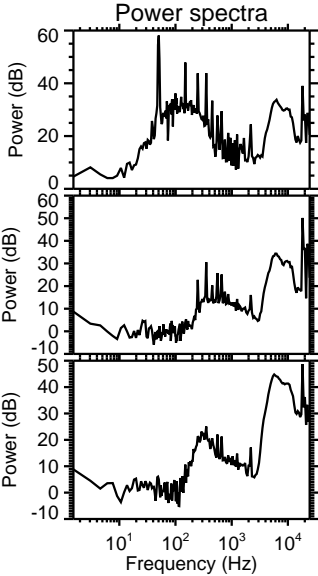
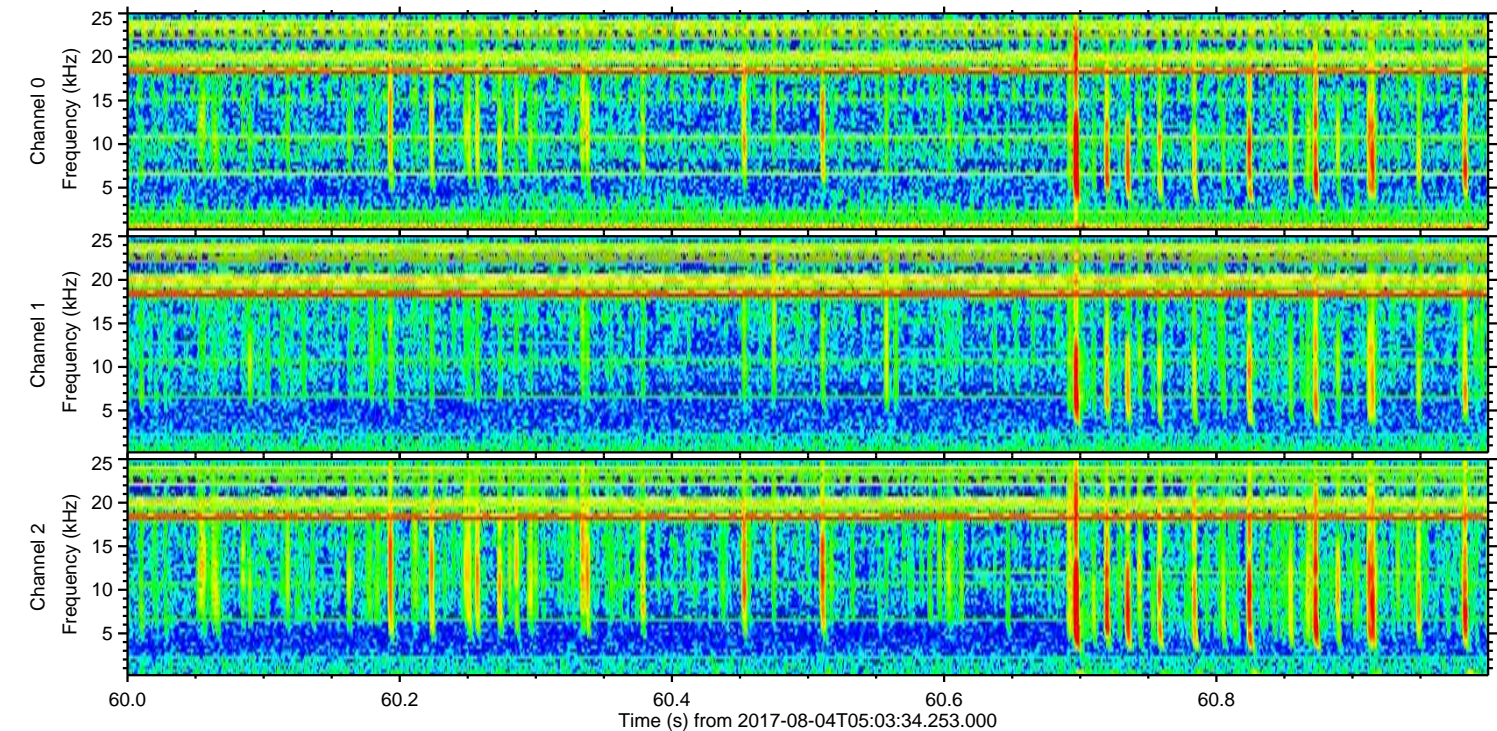
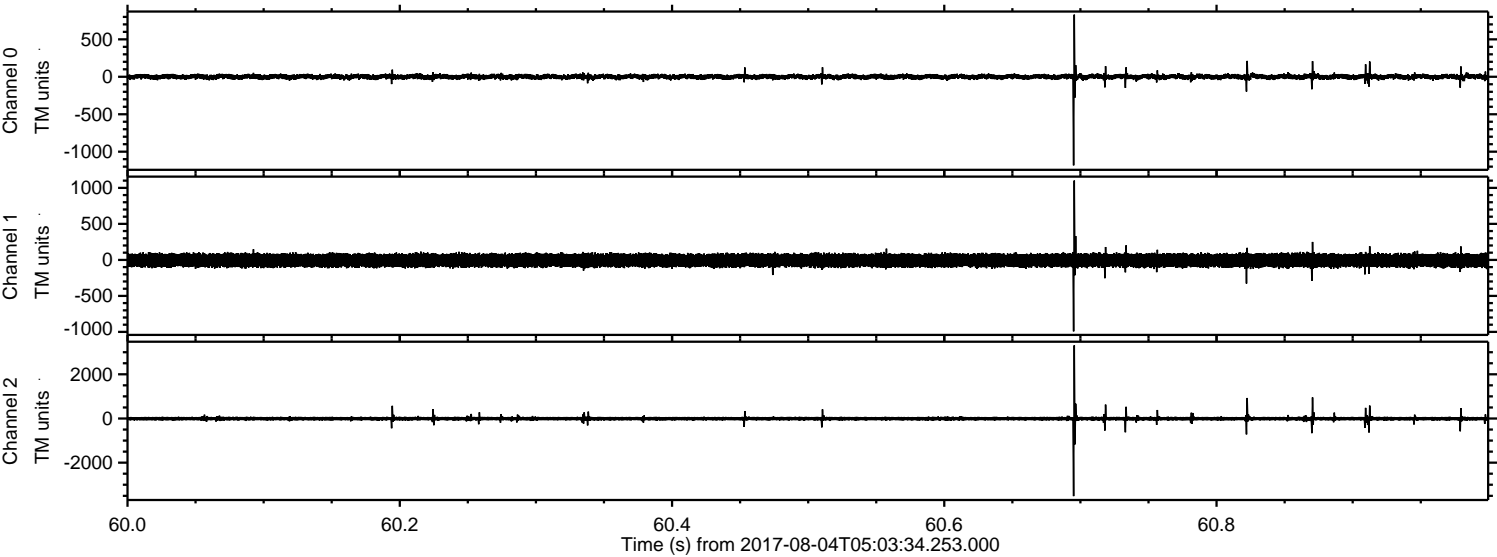
Channel 1
mn: -1478
mx: 1510
 μ : -7.1
 σ : 52.5

Channel 2
mn: -5847
mx: 4751
 μ : -7.3
 σ : 81.0

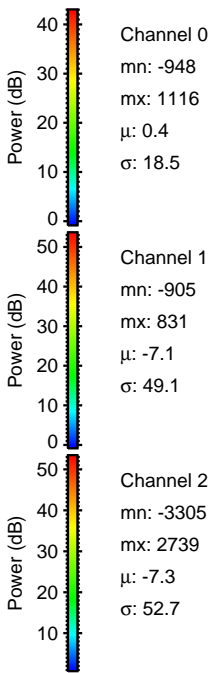
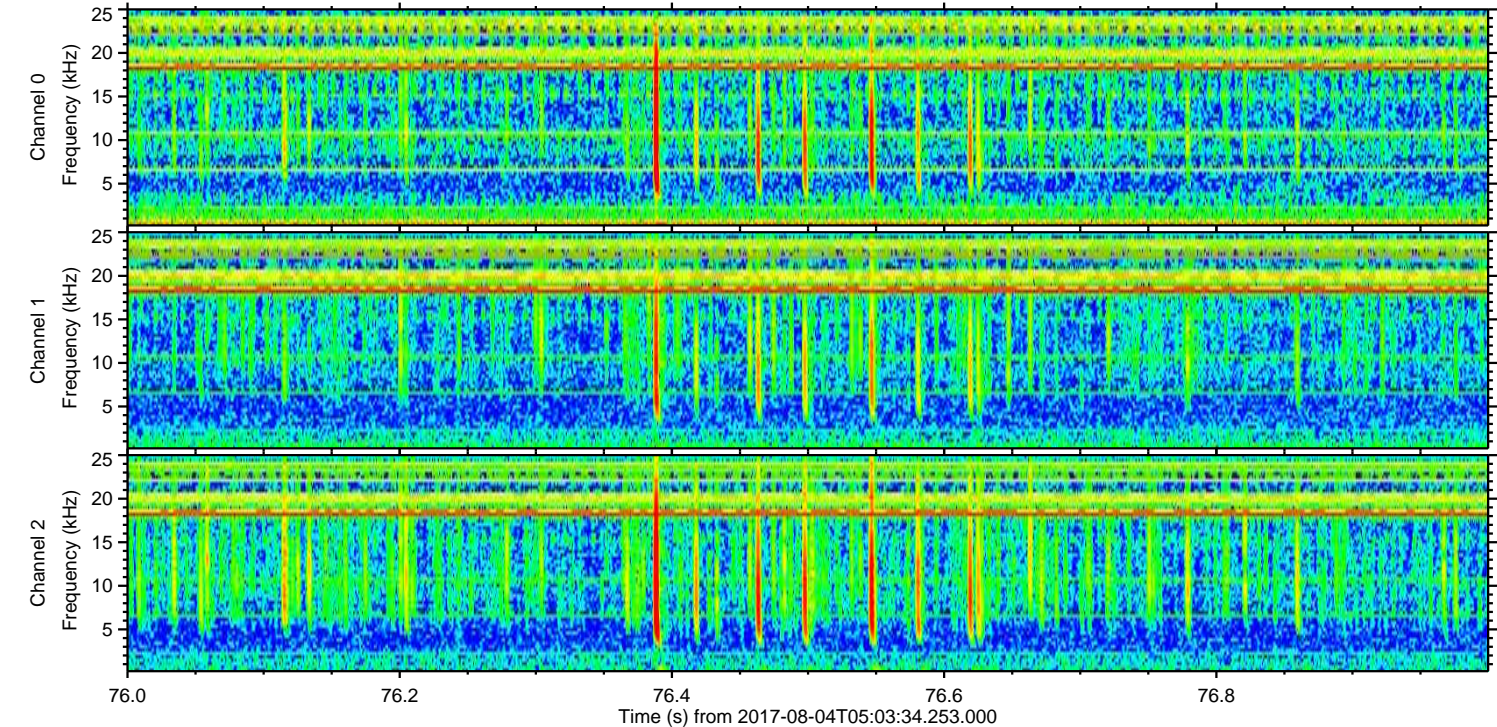
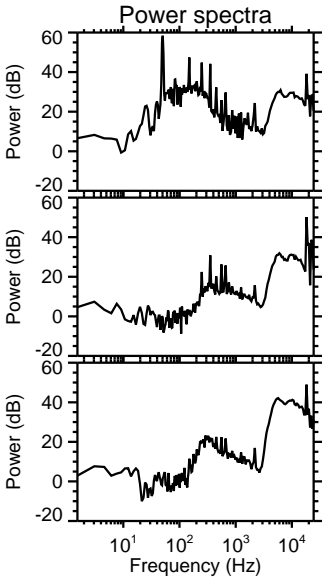
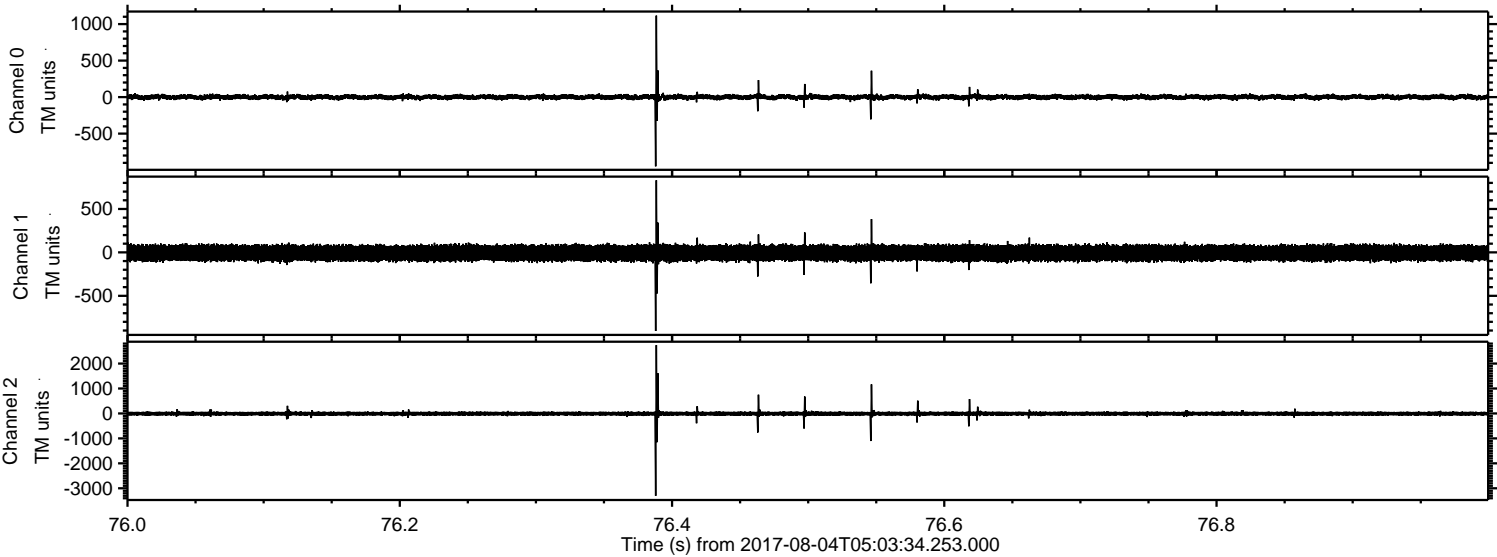
Processed Fri Aug 4 07:11:02 2017 by ELM ver.2012-10-06 from 001__elm20170804_050333__dat00.bin



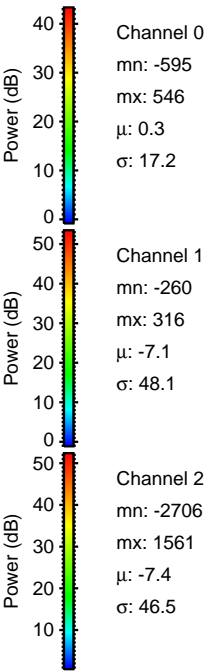
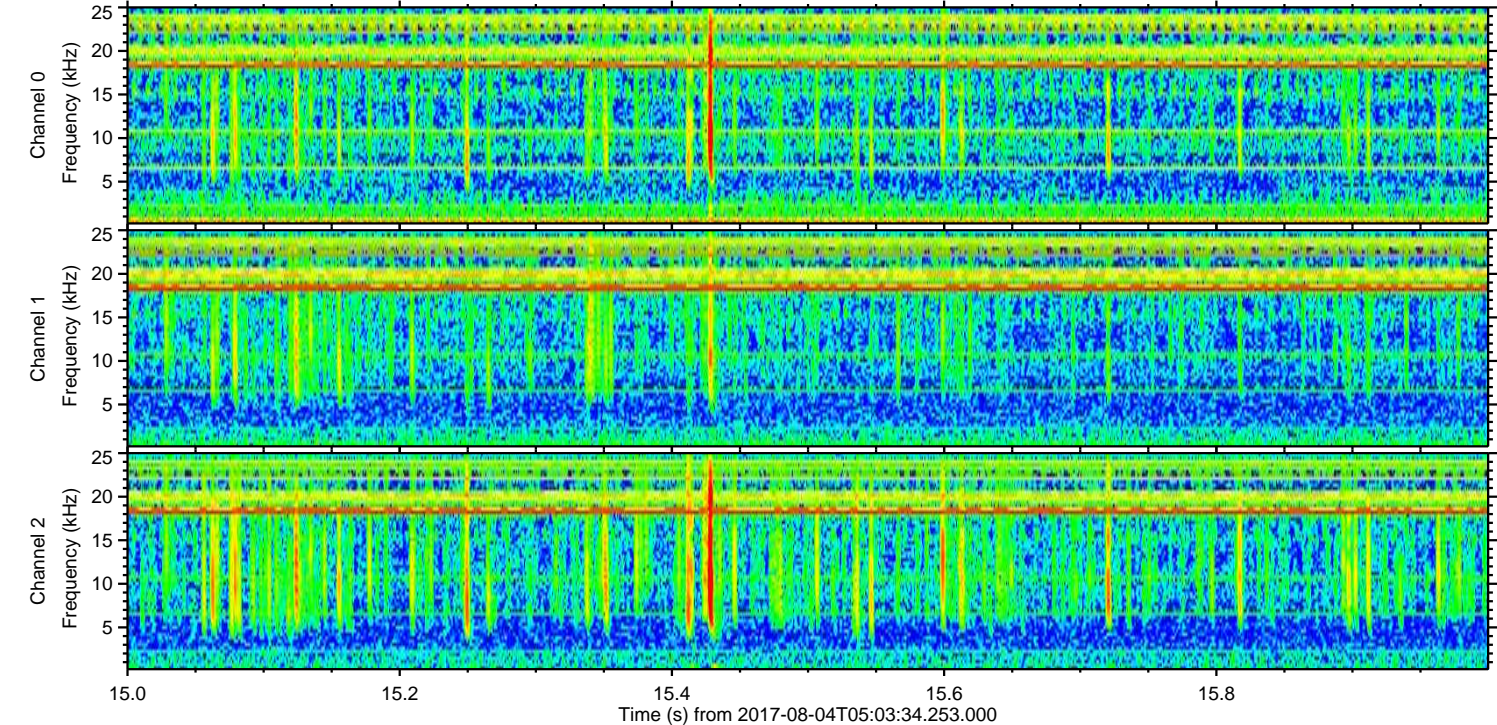
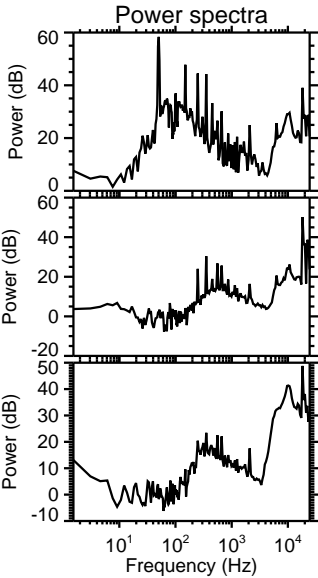
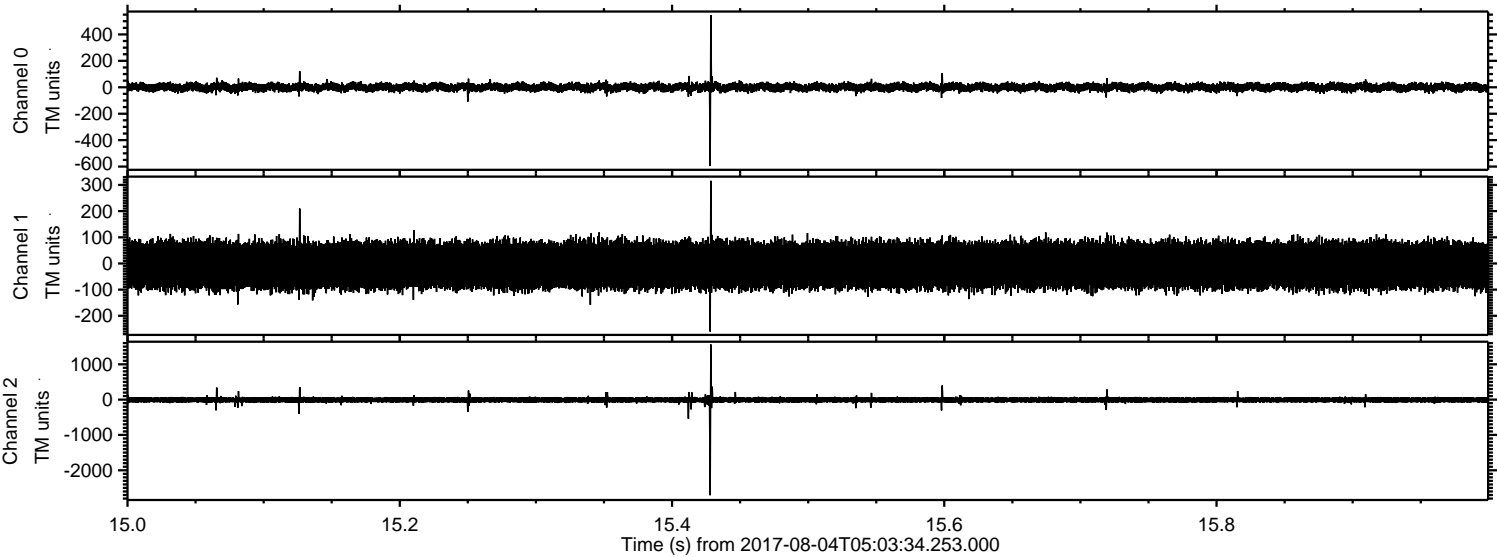
Processed Fri Aug 4 07:11:03 2017 by ELM ver.2012-10-06 from 001__elm20170804_050333__dat00.bin



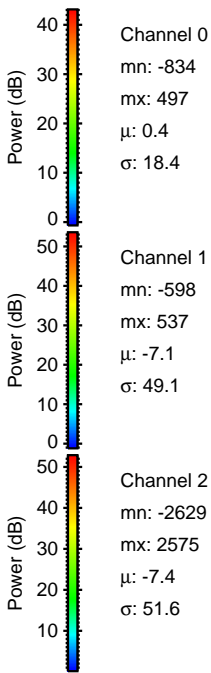
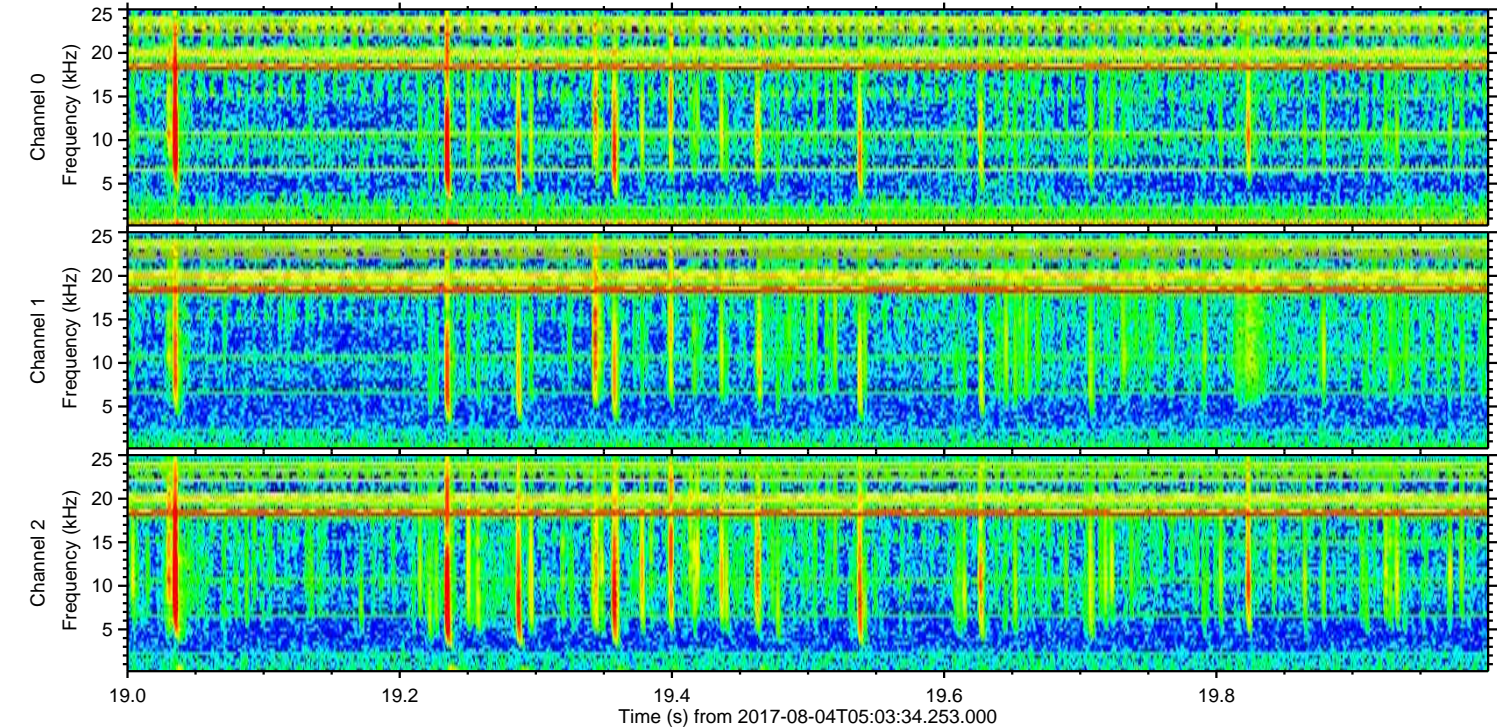
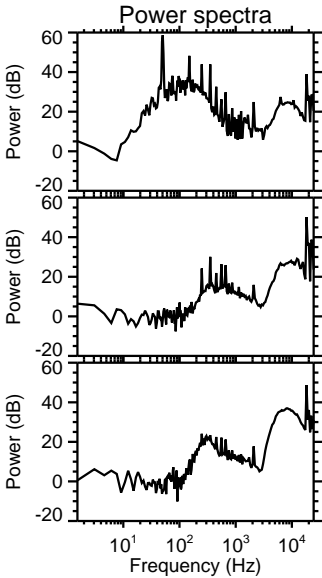
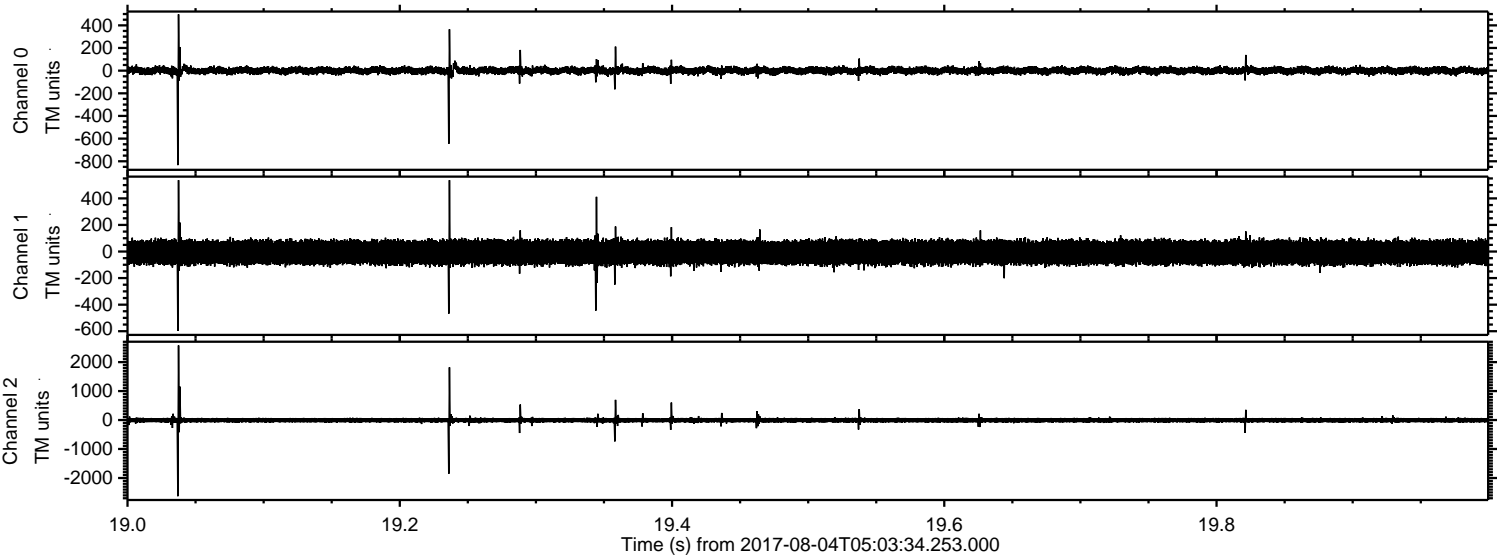
Processed Fri Aug 4 07:11:04 2017 by ELM ver.2012-10-06 from 001__elm20170804_050333__dat00.bin



Processed Fri Aug 4 07:11:04 2017 by ELM ver.2012-10-06 from 001__elm20170804_050333__dat00.bin



Processed Fri Aug 4 07:11:05 2017 by ELM ver.2012-10-06 from 001__elm20170804_050333__dat00.bin

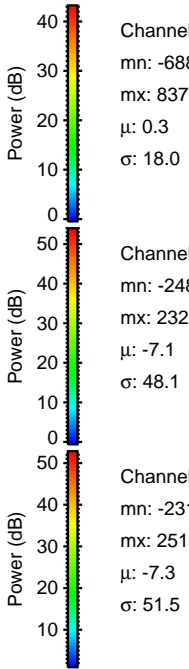
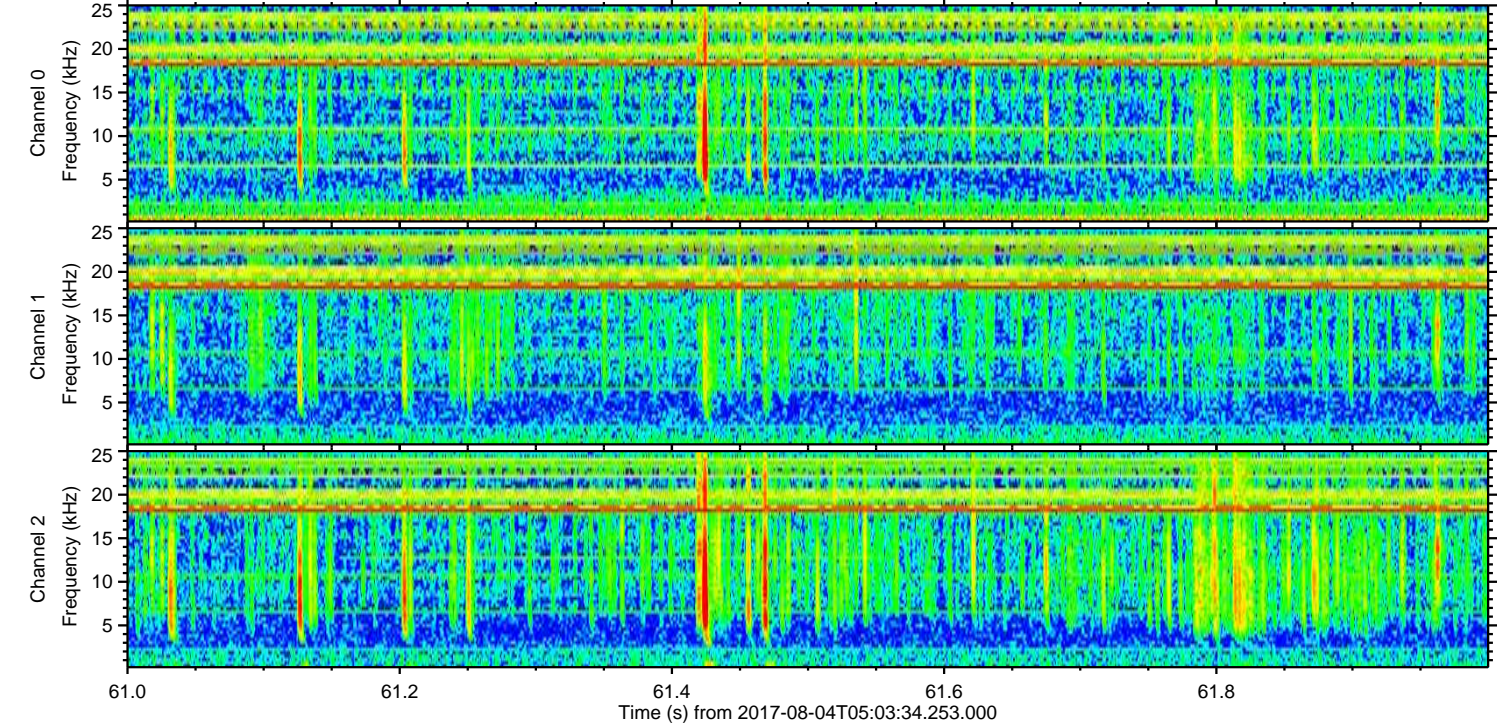
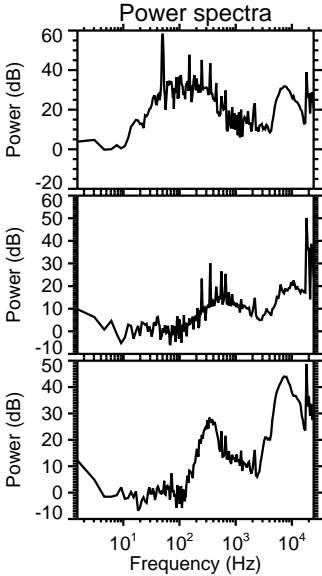
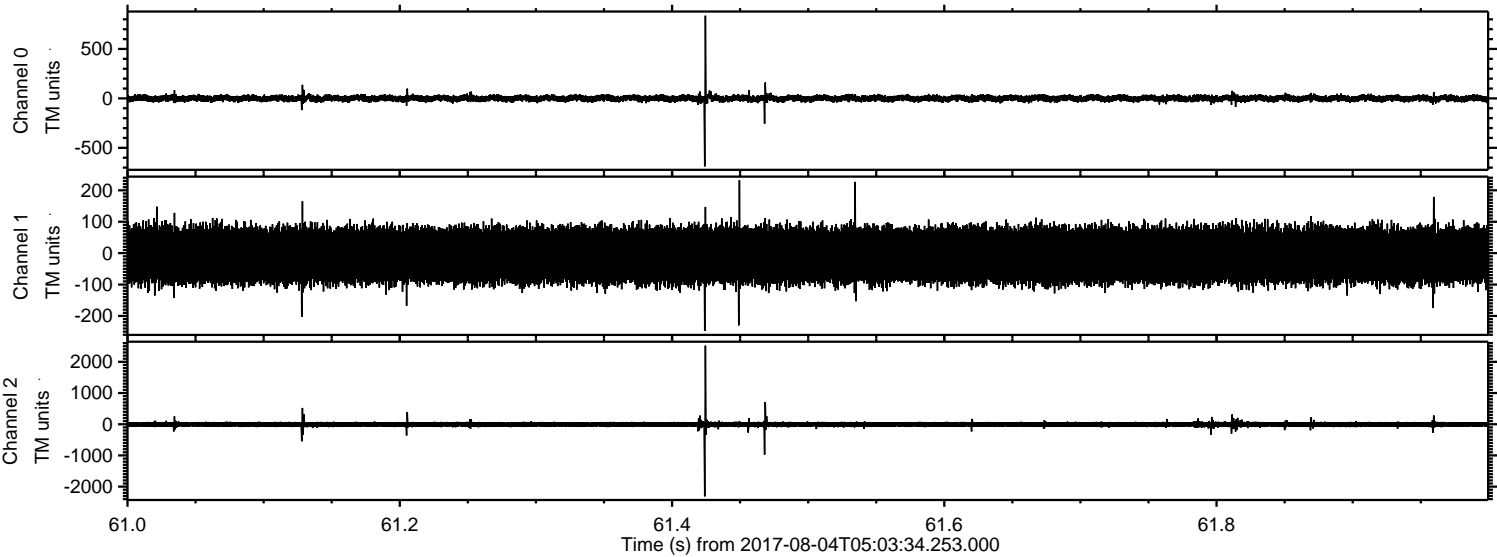


Channel 0
mn: -834
mx: 497
 μ : 0.4
 σ : 18.4

Channel 1
mn: -598
mx: 537
 μ : -7.1
 σ : 49.1

Channel 2
mn: -2629
mx: 2575
 μ : -7.4
 σ : 51.6

Processed Fri Aug 4 07:11:06 2017 by ELM ver.2012-10-06 from 001__elm20170804_050333__dat00.bin



Processed Fri Aug 4 07:11:07 2017 by ELM ver.2012-10-06 from 001__elm20170804_050333__dat00.bin

