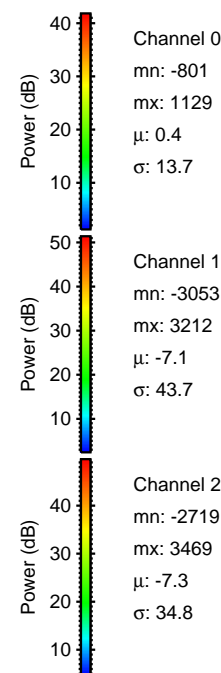
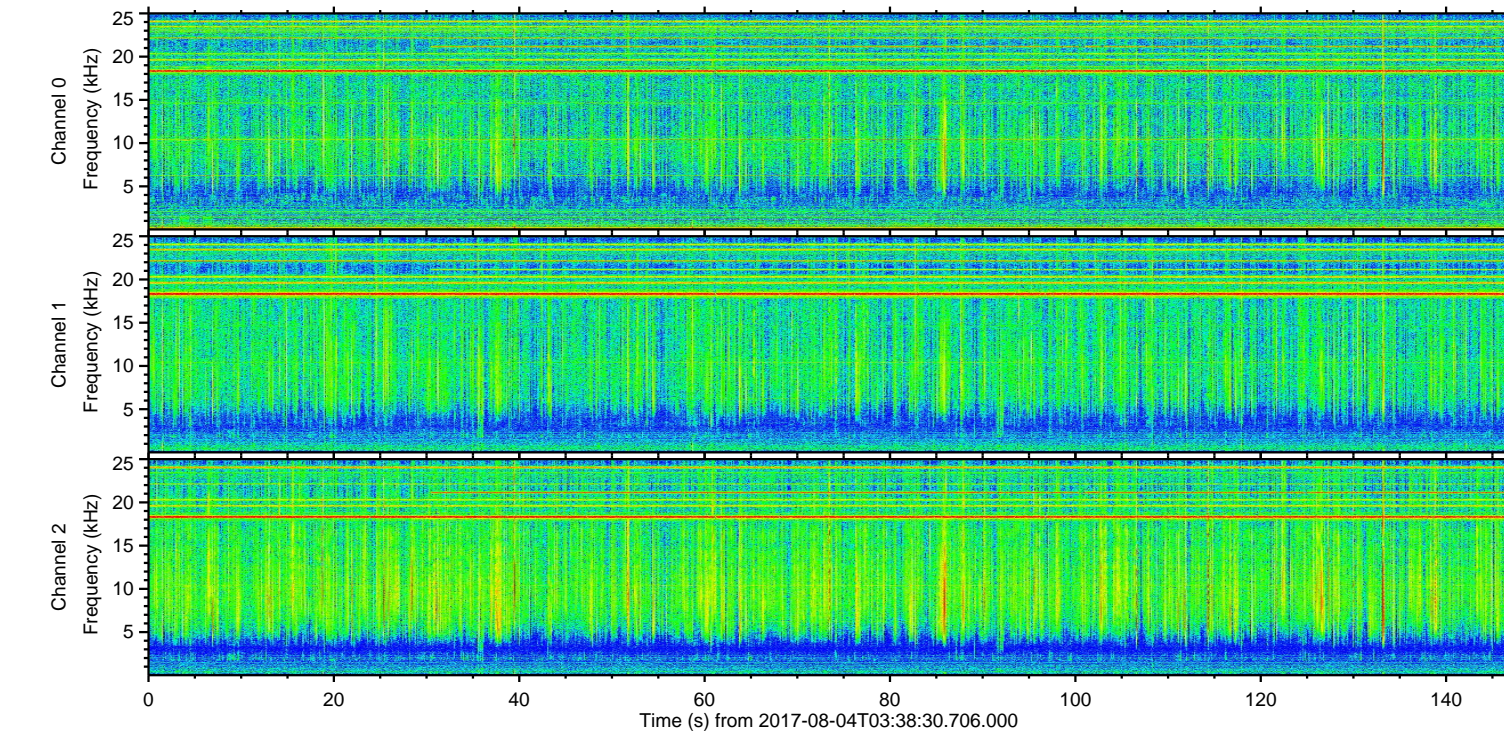
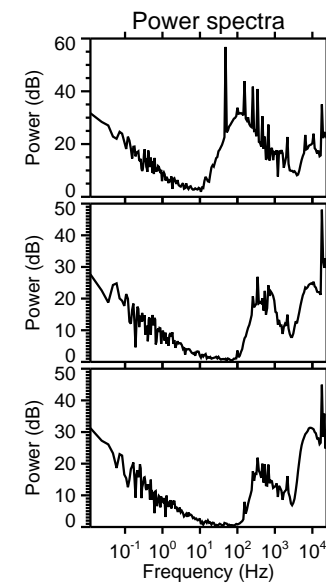
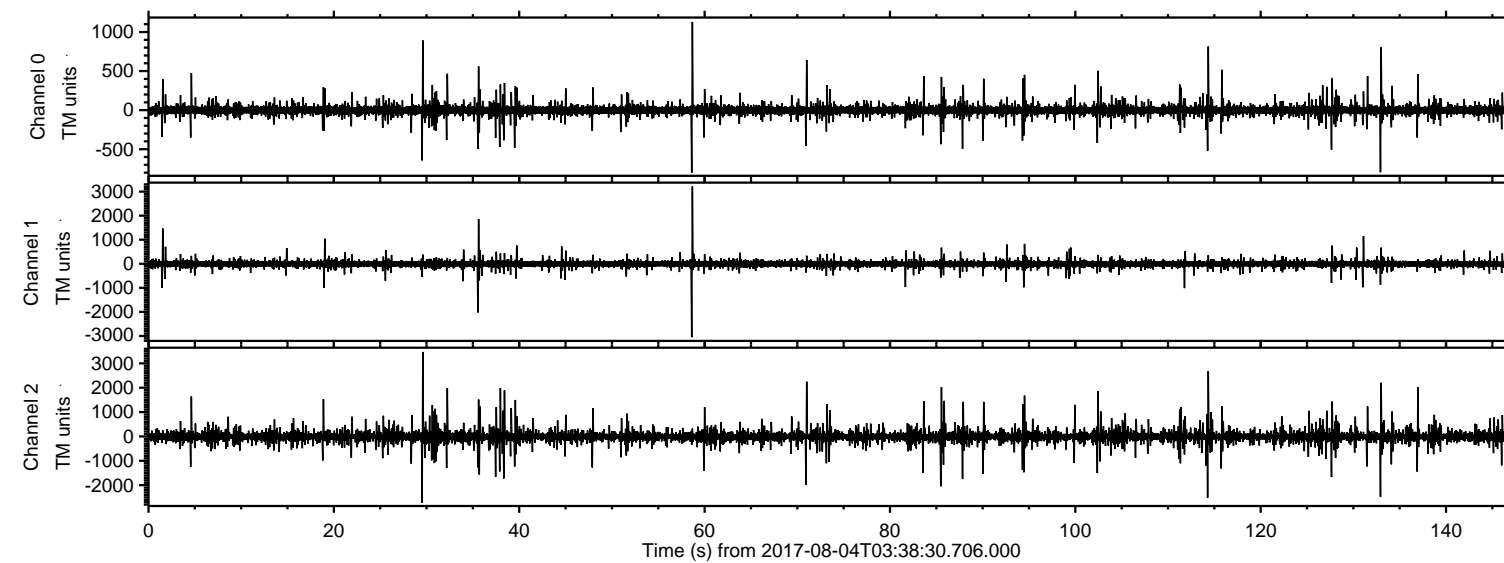


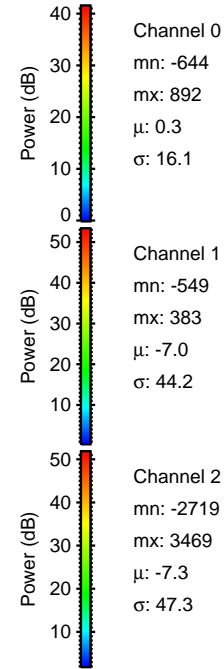
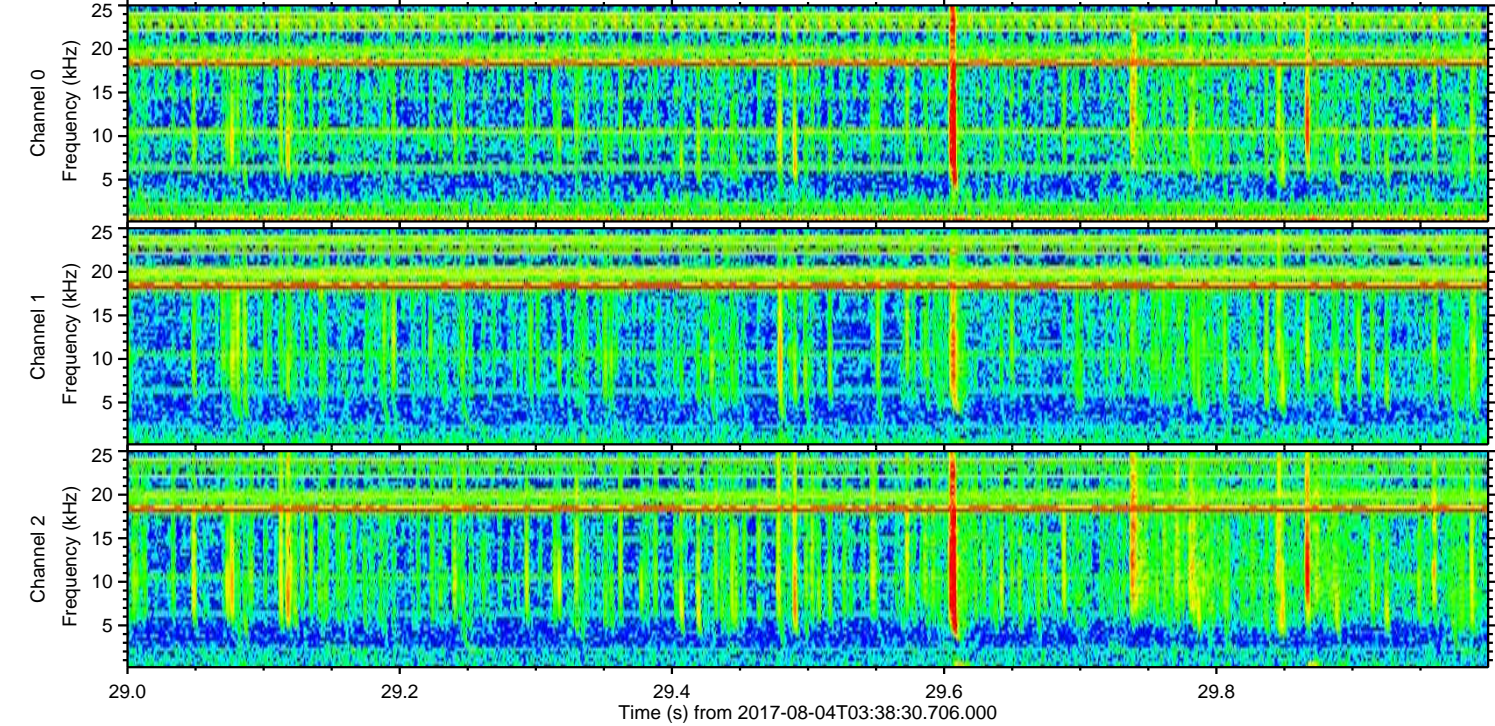
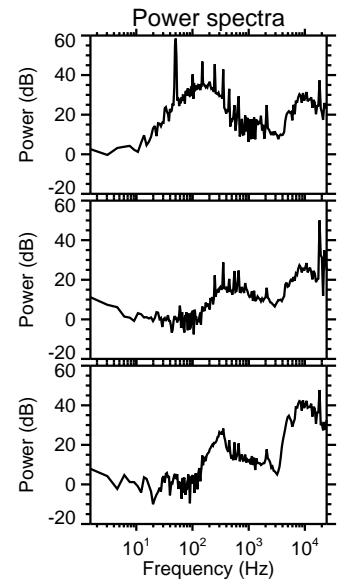
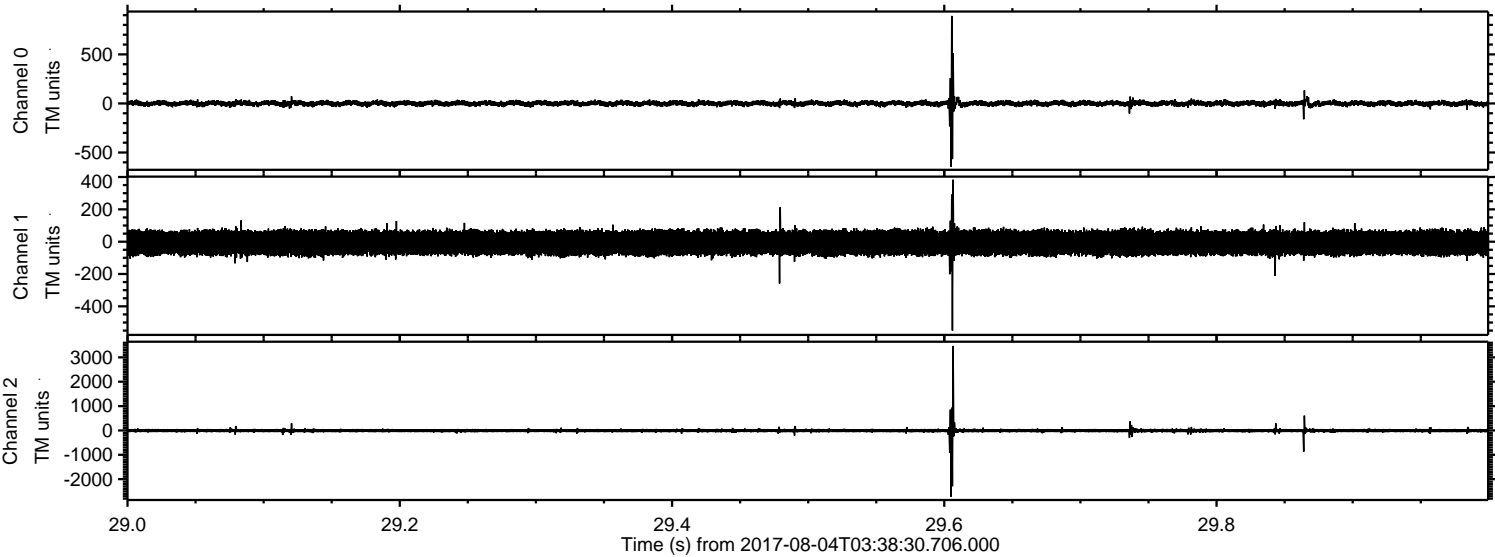
# ELMAVAN 3D WAVEFORMS (Measured data sampled at 50 kHz) 51000 packets of 144 samples from 2017-08-04T03:38:30.706.000.

Processed Fri Aug 4 05:46:33 2017 by ELM ver.2012-10-06 from 001\_\_elm20170804\_033829\_\_dat00.bin



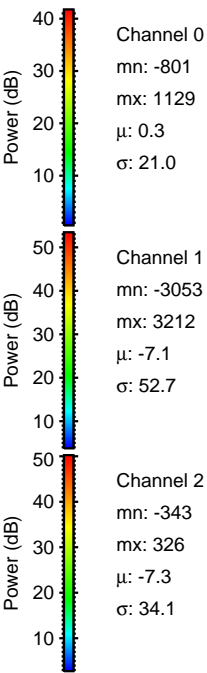
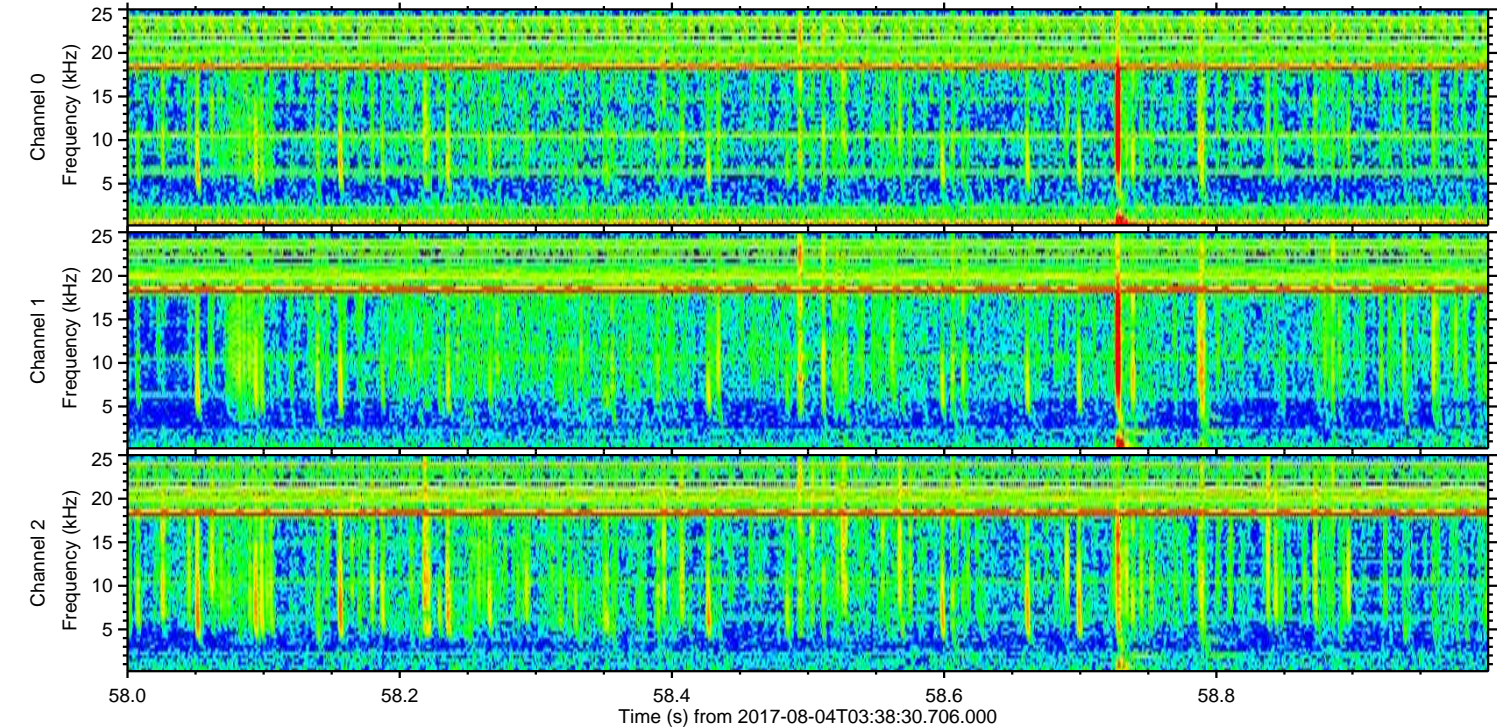
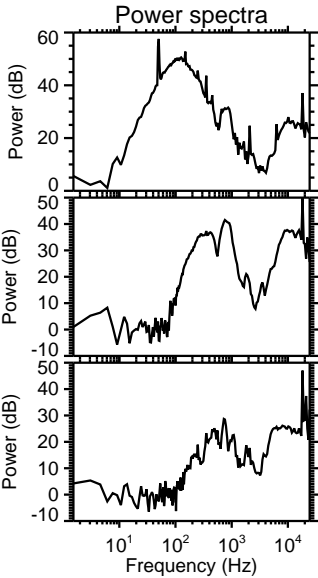
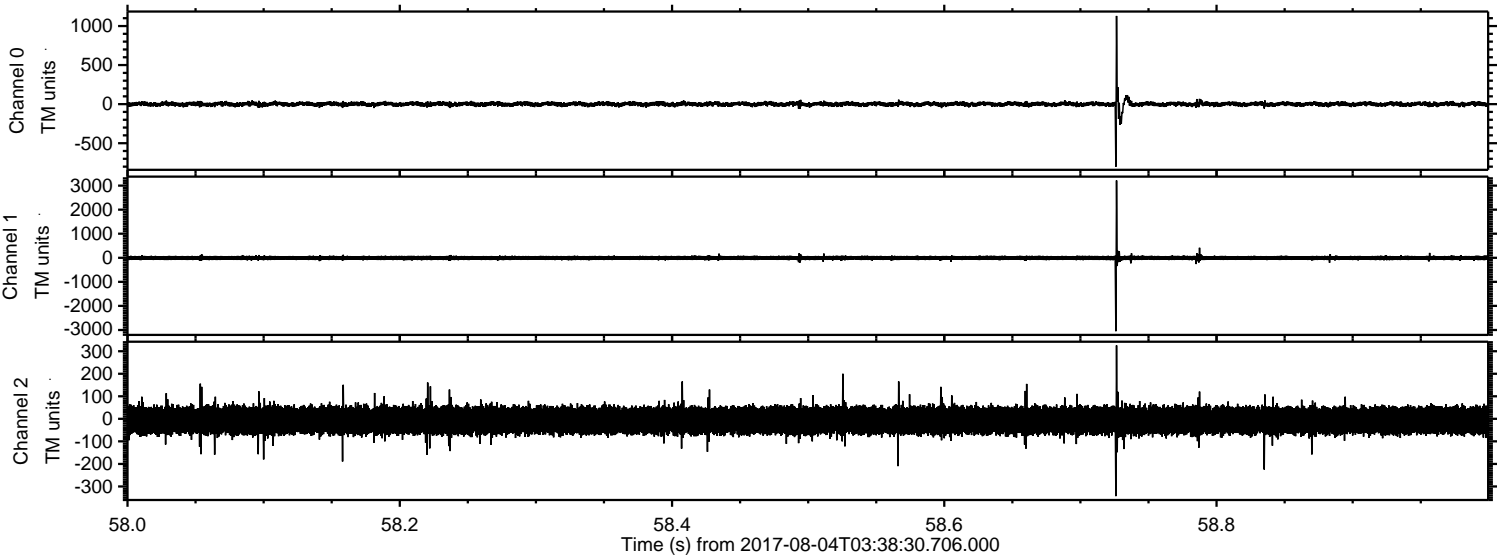


Processed Fri Aug 4 05:46:39 2017 by ELM ver.2012-10-06 from 001\_\_elm20170804\_033829\_\_dat00.bin



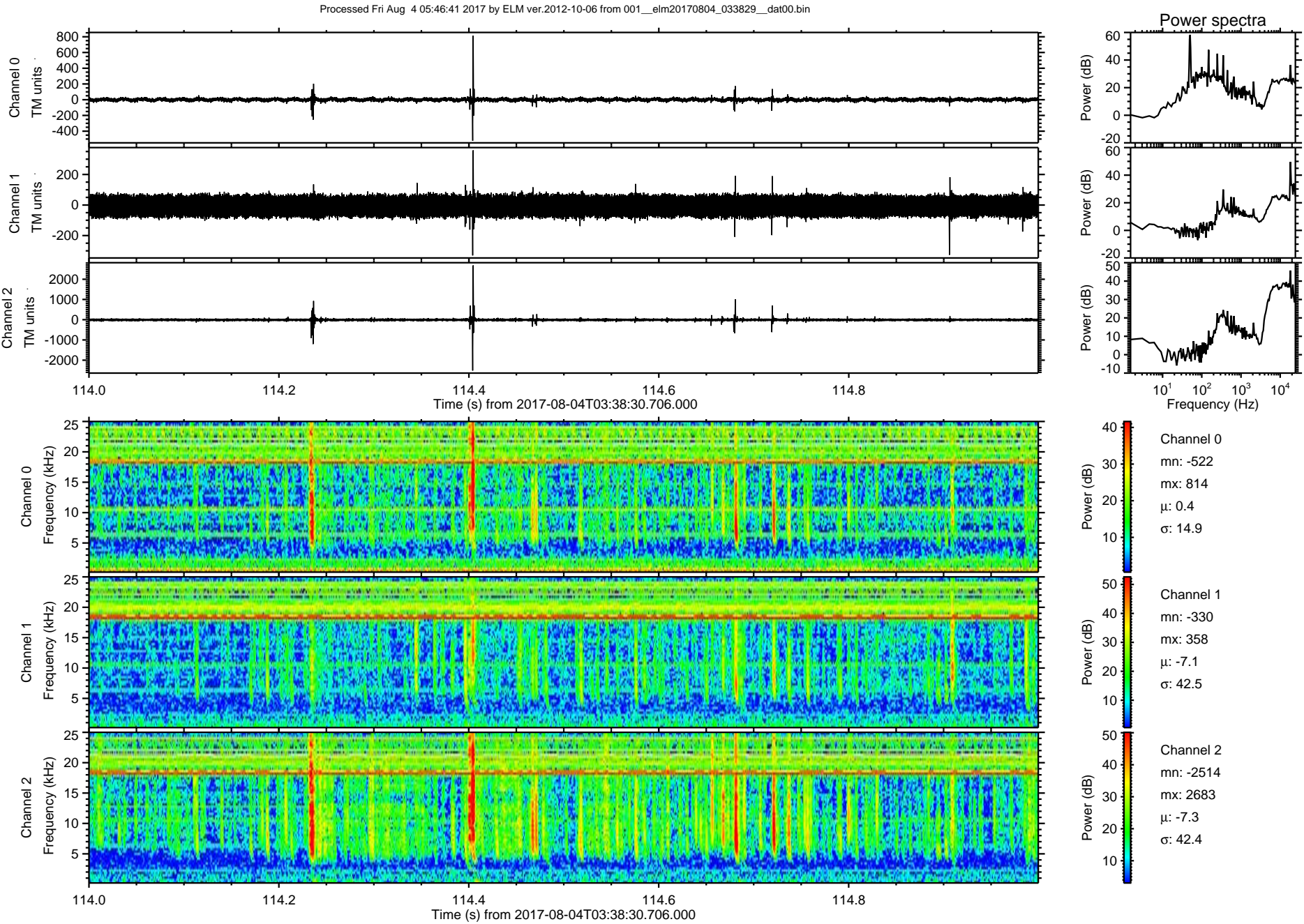


Processed Fri Aug 4 05:46:40 2017 by ELM ver.2012-10-06 from 001\_\_elm20170804\_033829\_\_dat00.bin





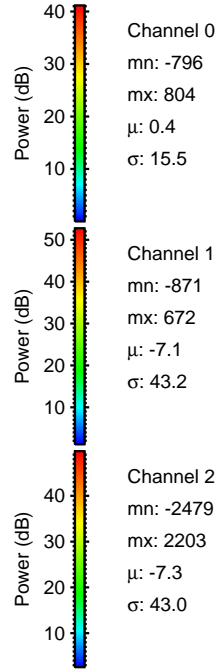
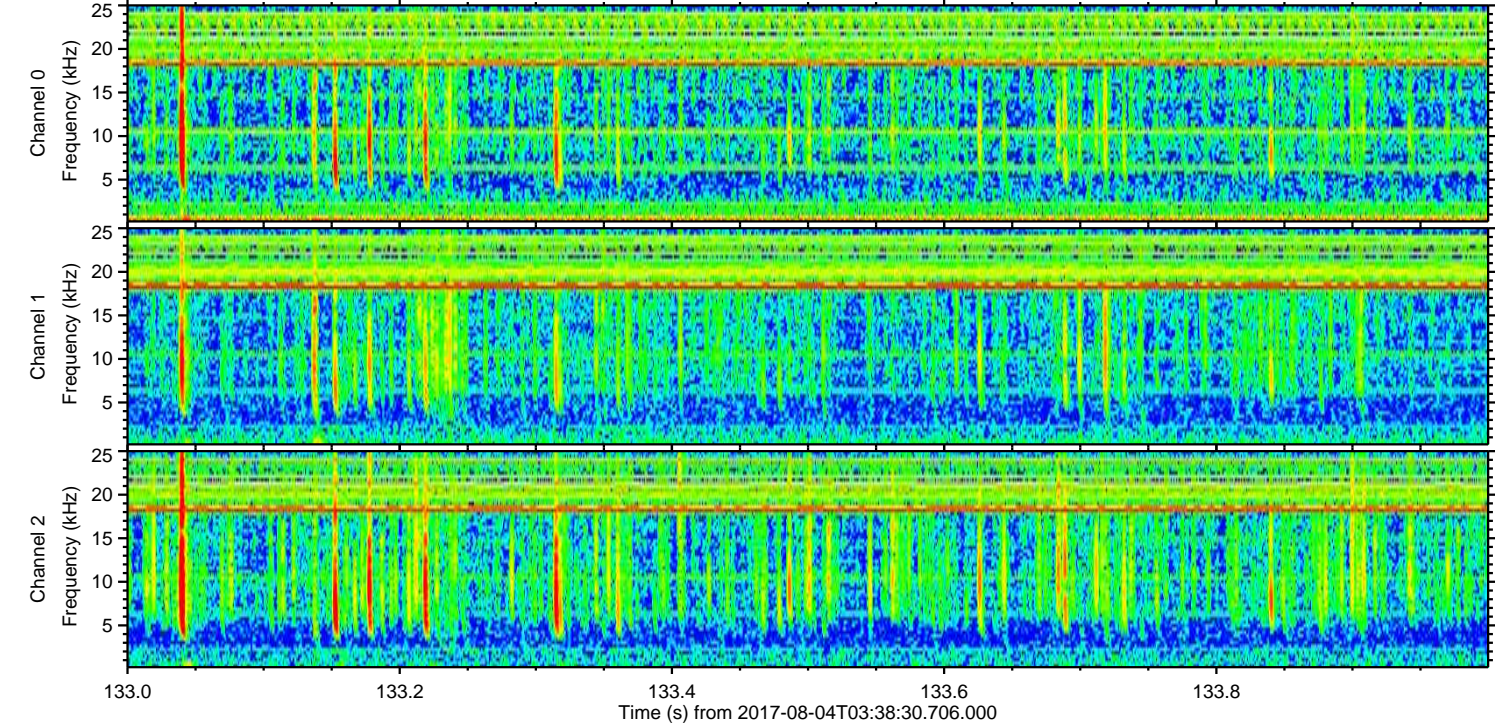
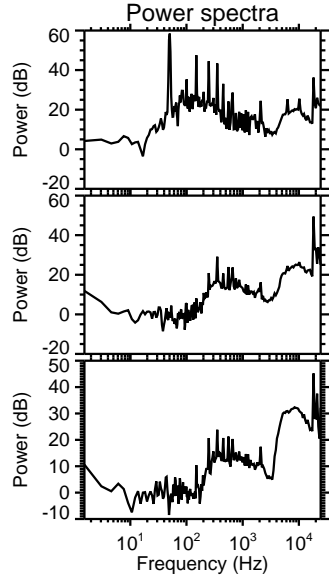
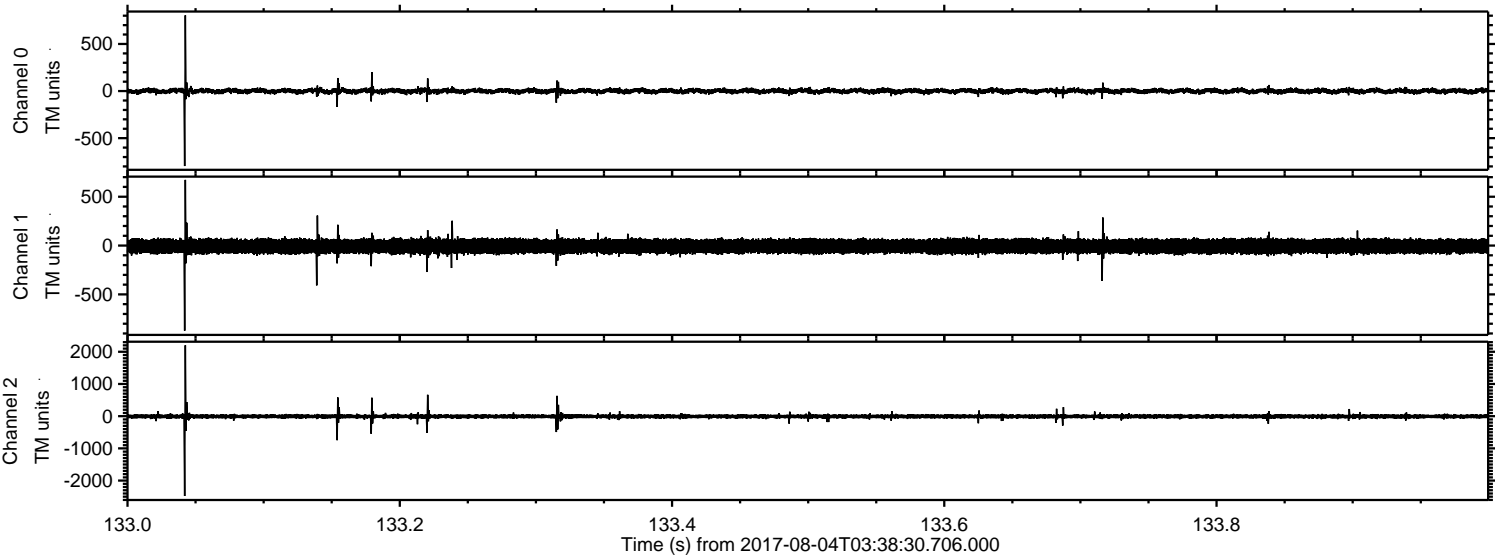
ELMAVAN 3D WAVEFORMS (Measured data sampled at 50 kHz) 51000 packets of 144 samples from 2017-08-04T03:38:30.706.000. Part 115/147





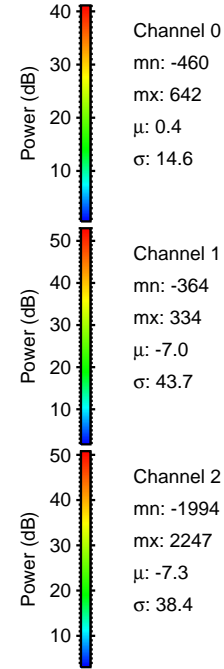
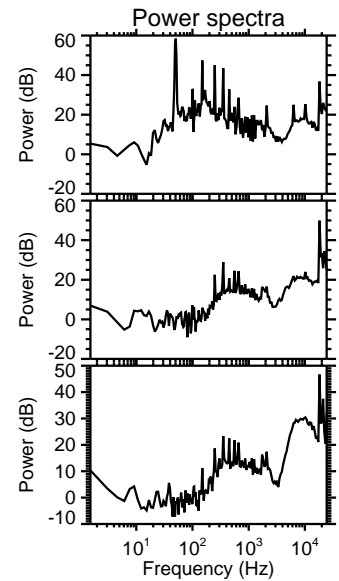
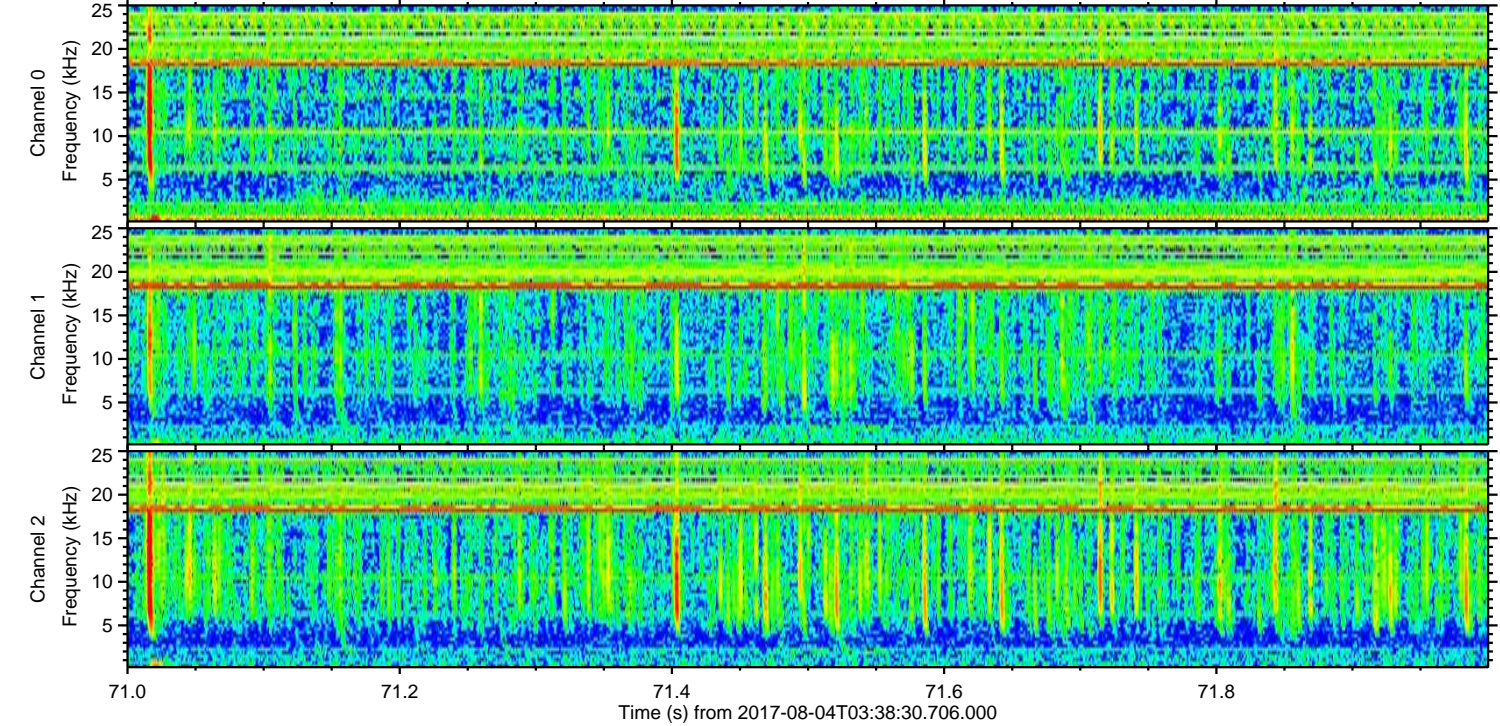
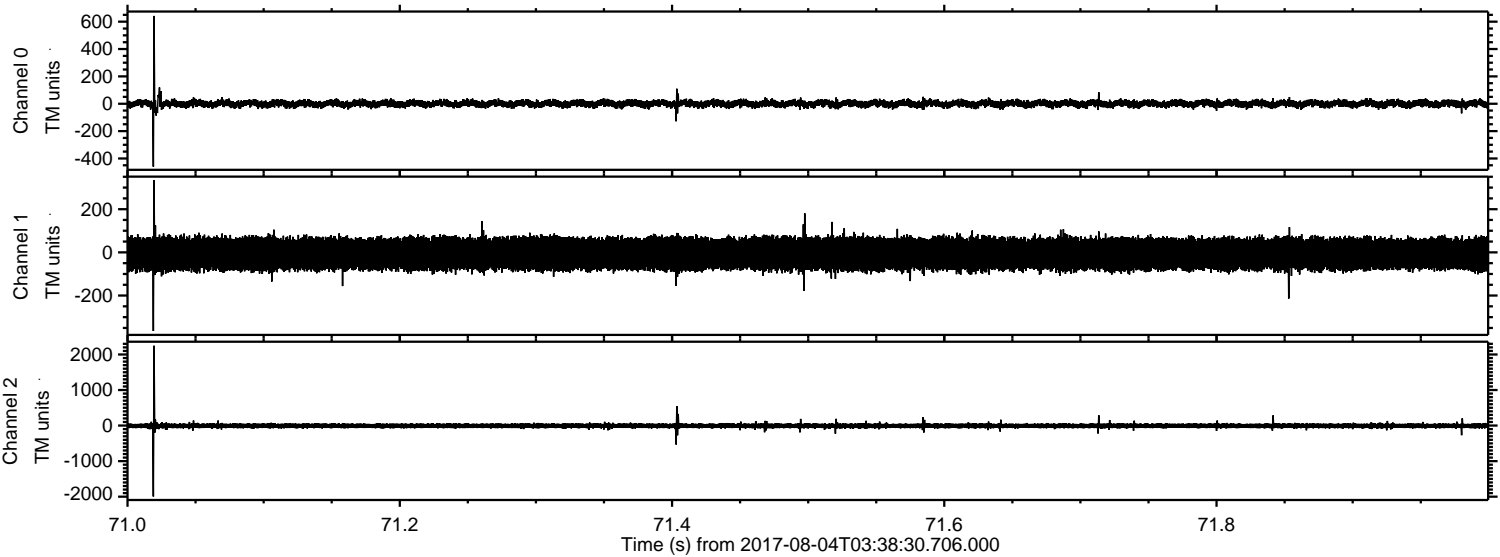
ELMAVAN 3D WAVEFORMS (Measured data sampled at 50 kHz) 51000 packets of 144 samples from 2017-08-04T03:38:30.706.000. Part 134/147

Processed Fri Aug 4 05:46:42 2017 by ELM ver.2012-10-06 from 001\_\_elm20170804\_033829\_\_dat00.bin



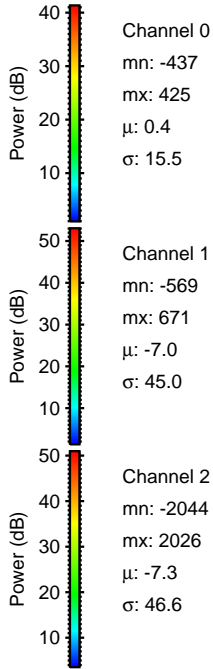
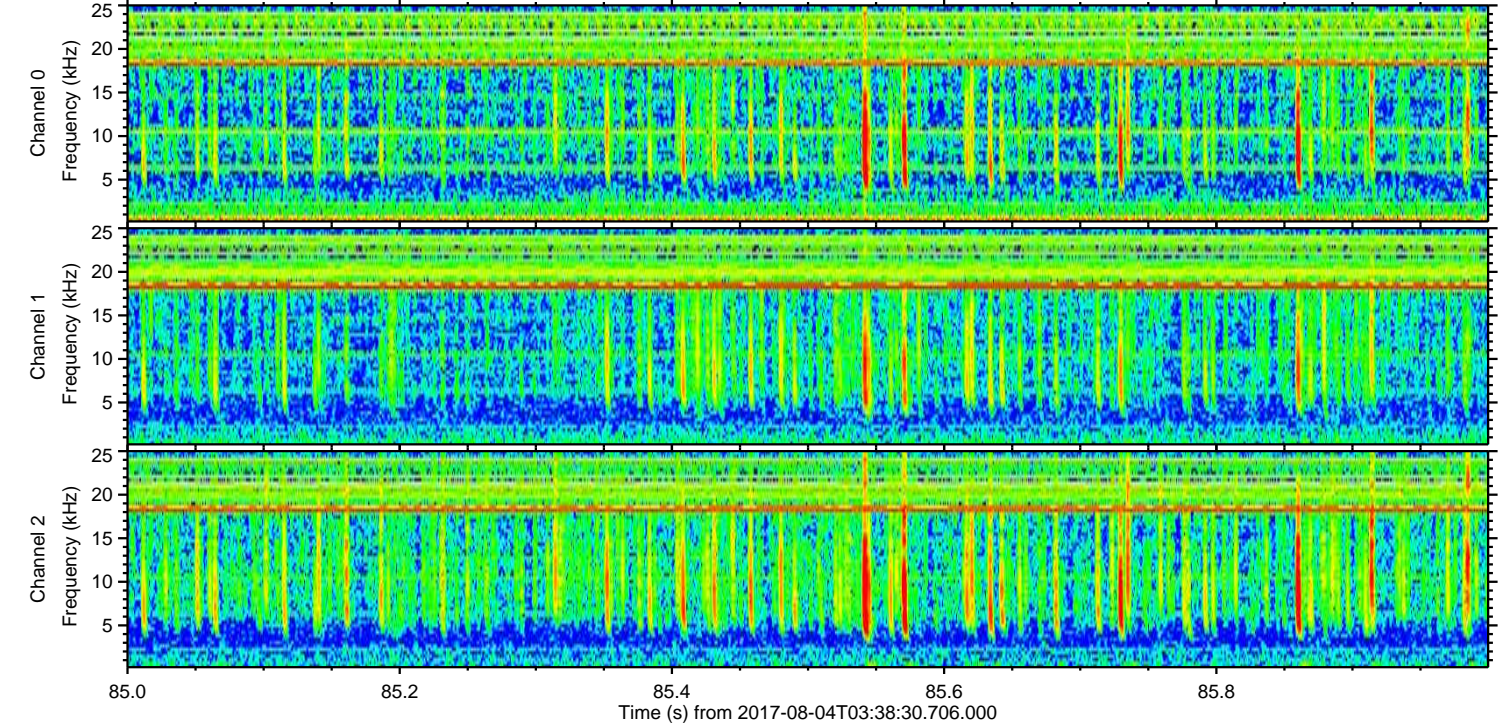
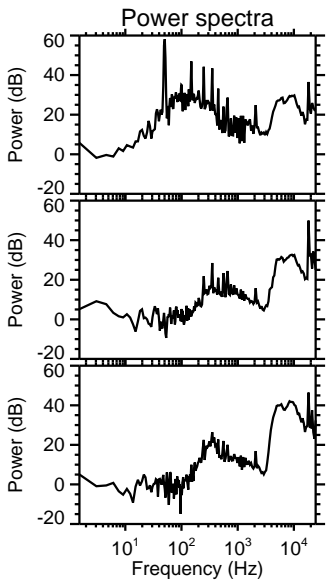
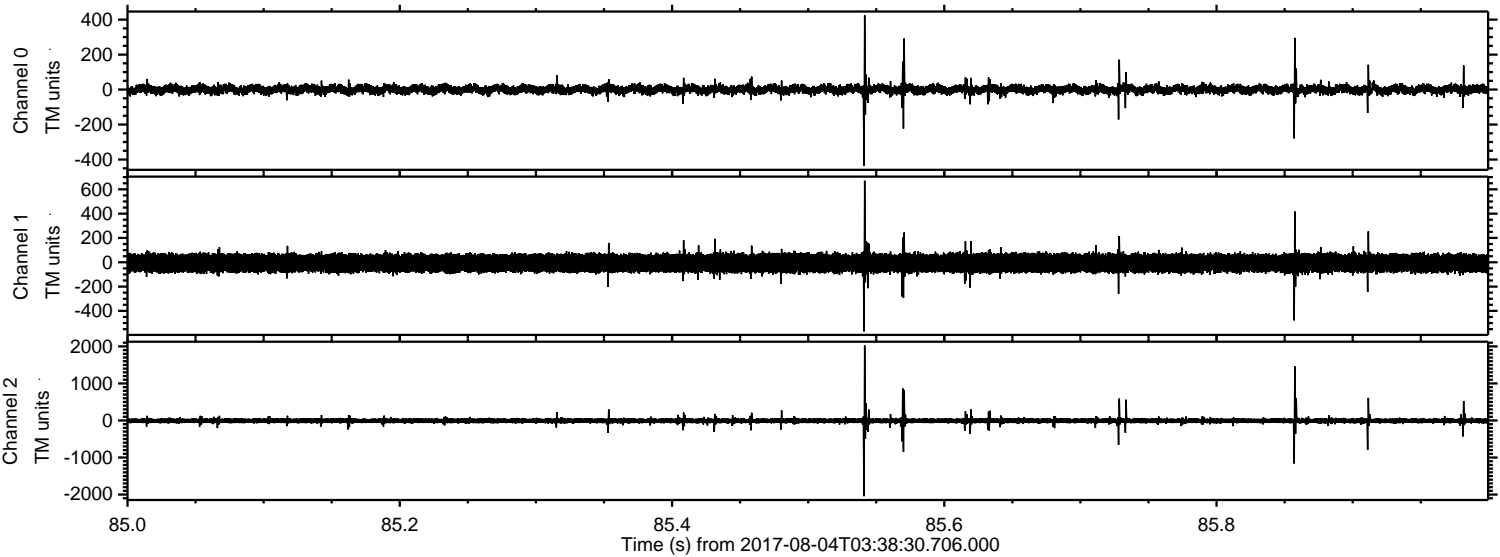


Processed Fri Aug 4 05:46:42 2017 by ELM ver.2012-10-06 from 001\_\_elm20170804\_033829\_\_dat00.bin



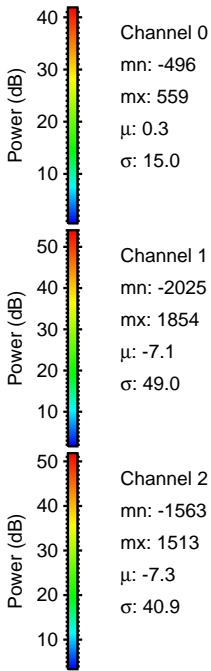
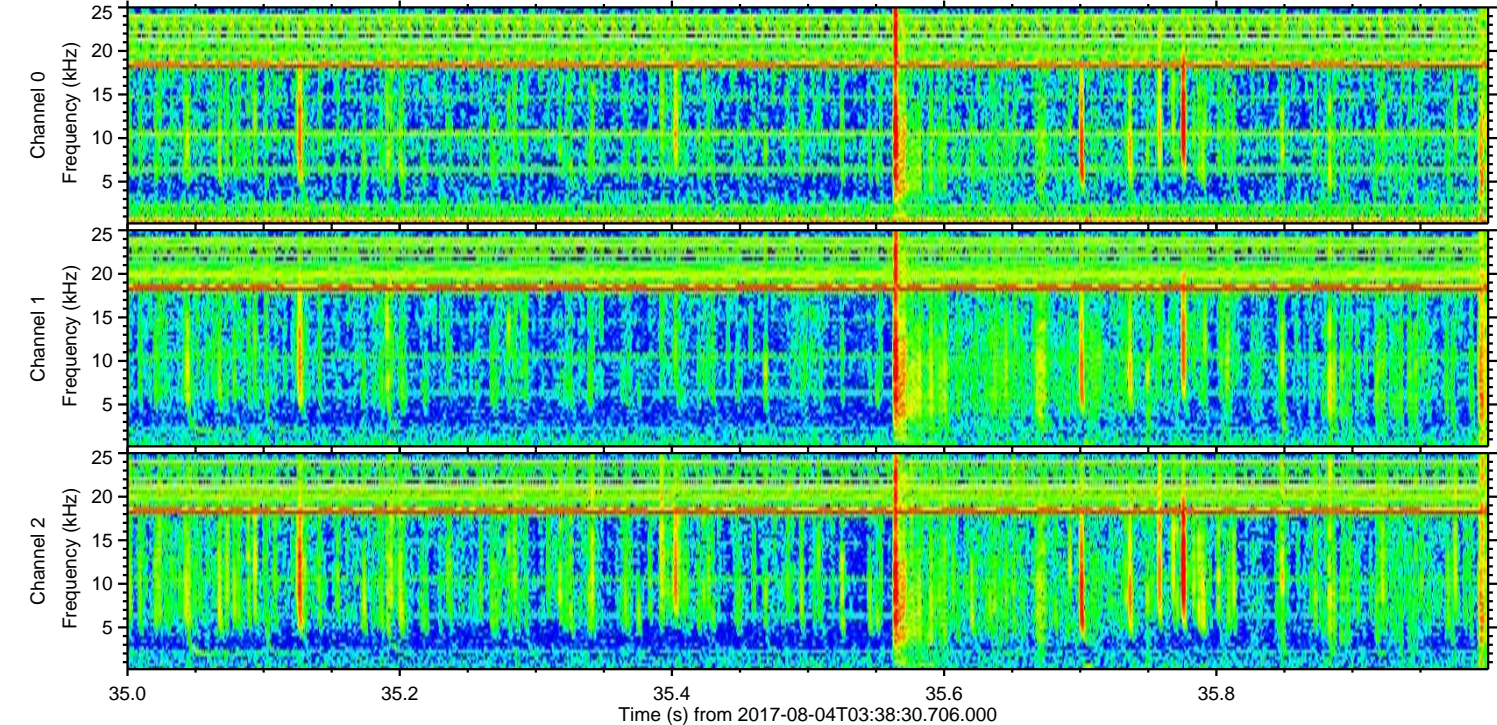
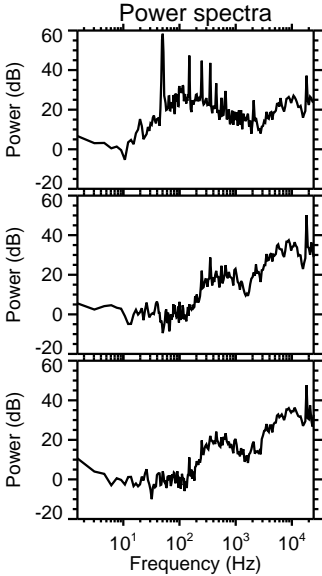
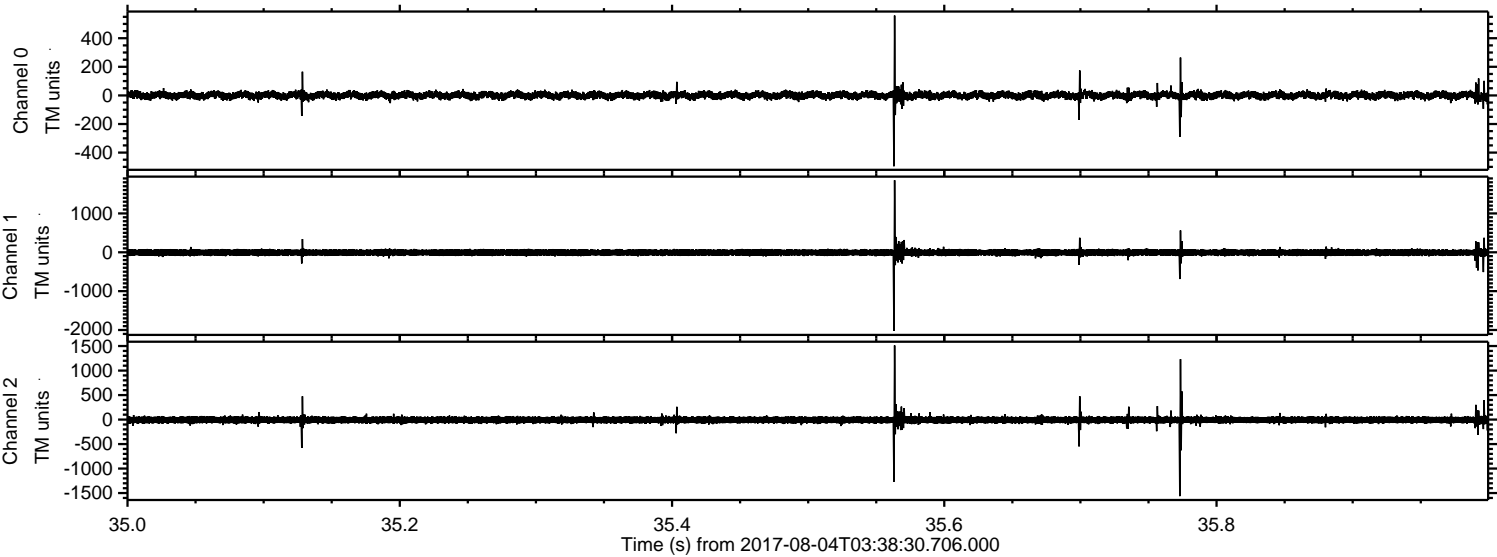


Processed Fri Aug 4 05:46:43 2017 by ELM ver.2012-10-06 from 001\_\_elm20170804\_033829\_\_dat00.bin





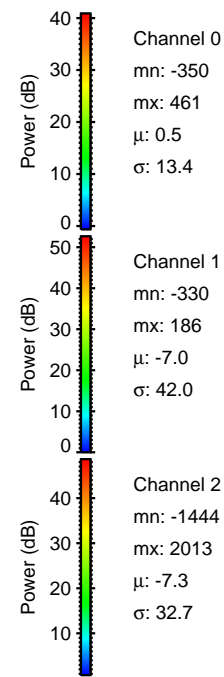
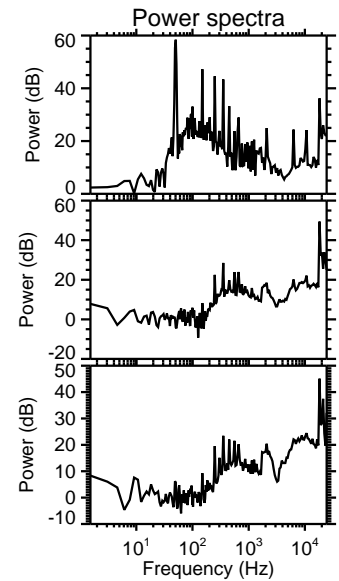
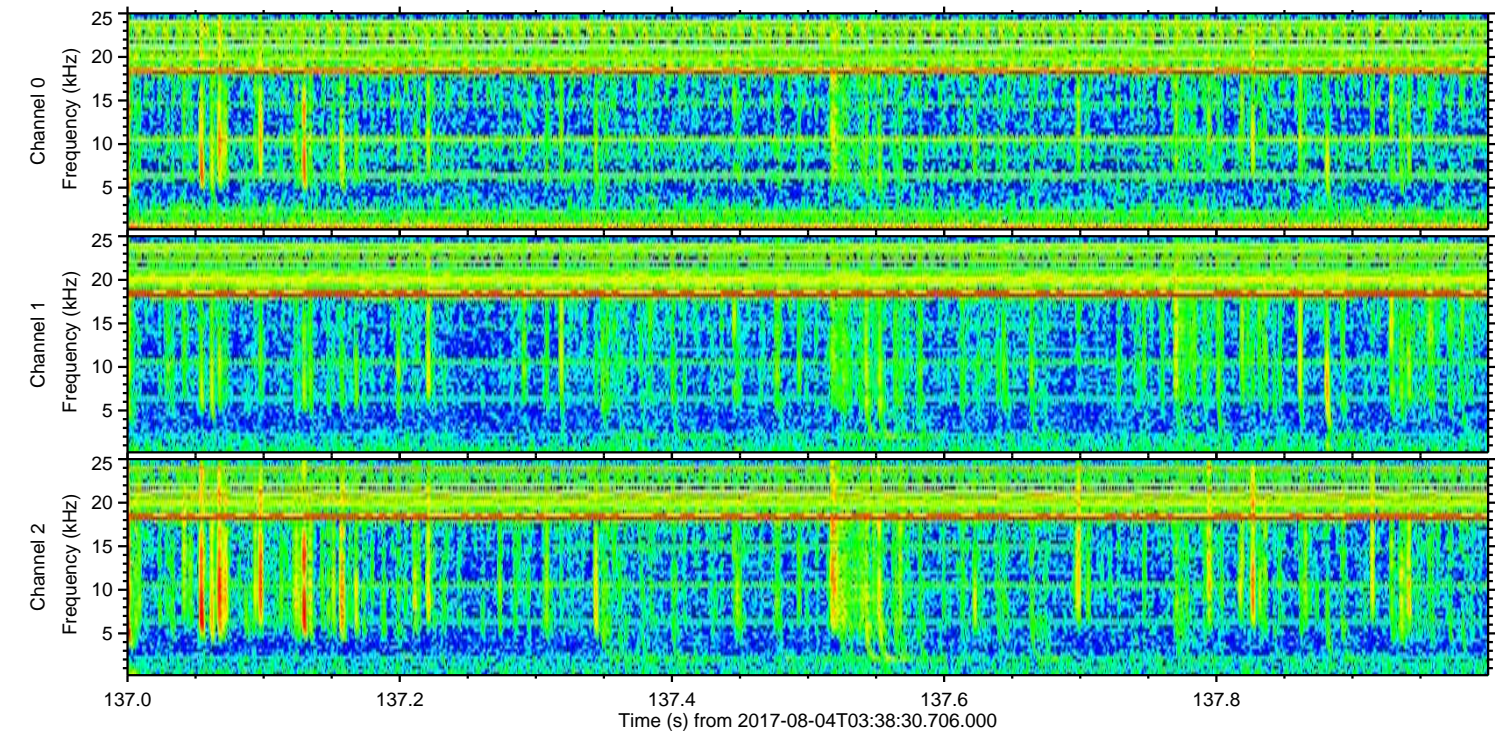
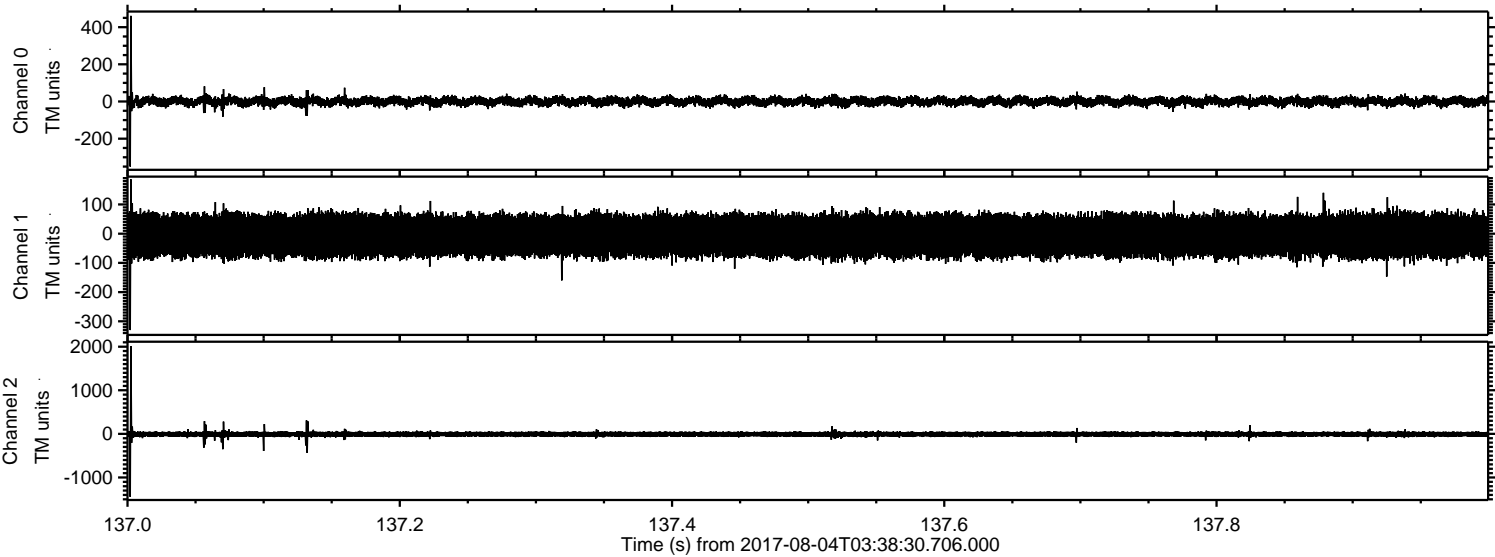
Processed Fri Aug 4 05:46:44 2017 by ELM ver.2012-10-06 from 001\_\_elm20170804\_033829\_\_dat00.bin





ELMAVAN 3D WAVEFORMS (Measured data sampled at 50 kHz) 51000 packets of 144 samples from 2017-08-04T03:38:30.706.000. Part 138/147

Processed Fri Aug 4 05:46:45 2017 by ELM ver.2012-10-06 from 001\_\_elm20170804\_033829\_\_dat00.bin





Processed Fri Aug 4 05:46:45 2017 by ELM ver.2012-10-06 from 001\_\_elm20170804\_033829\_\_dat00.bin

