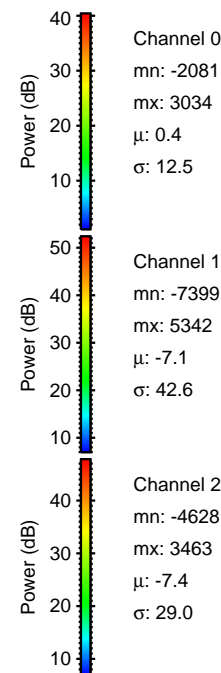
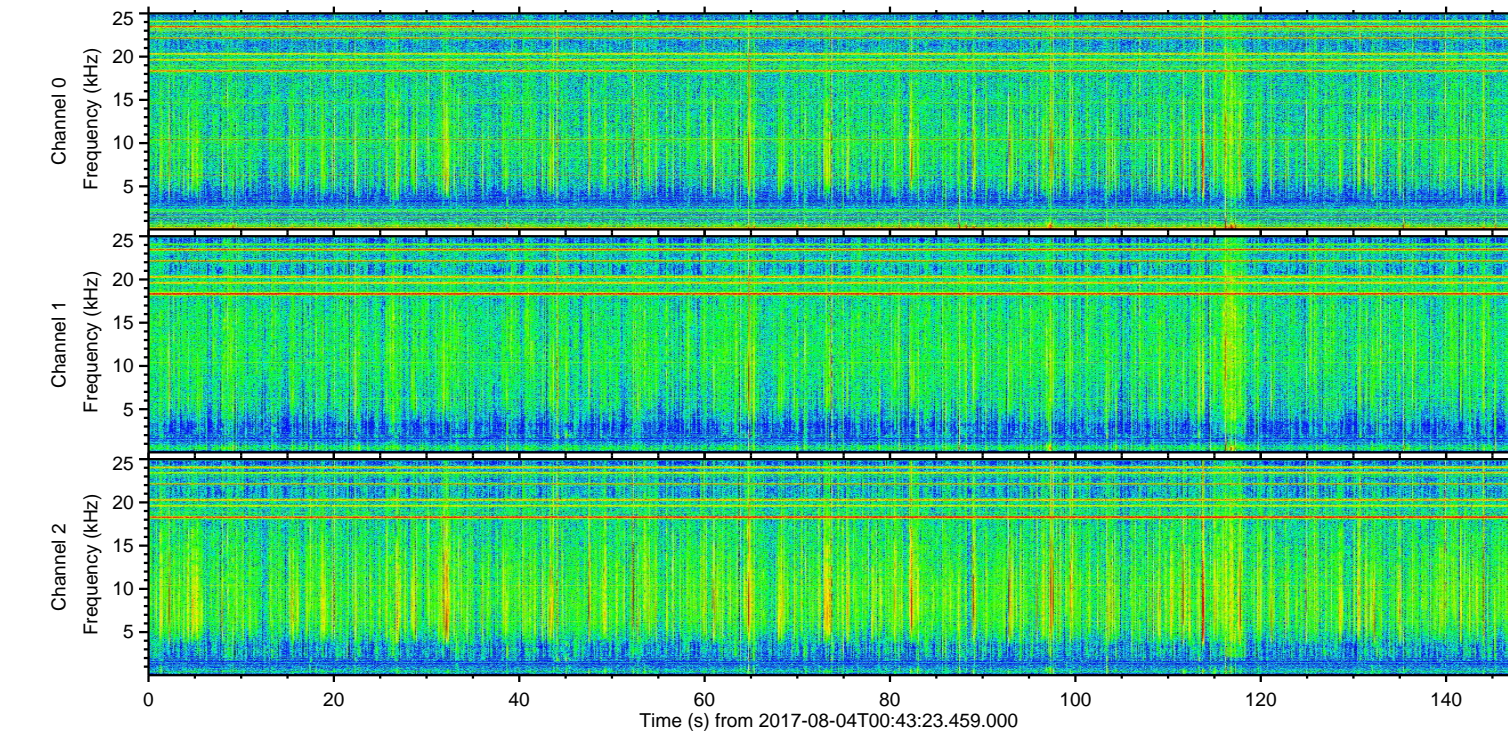
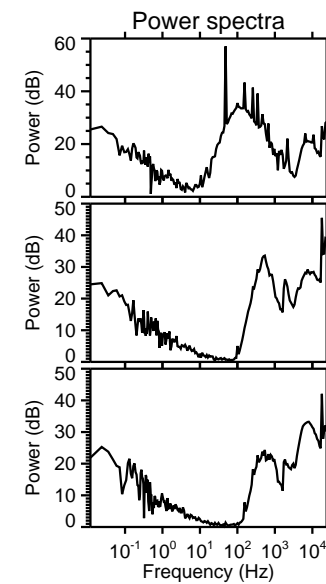
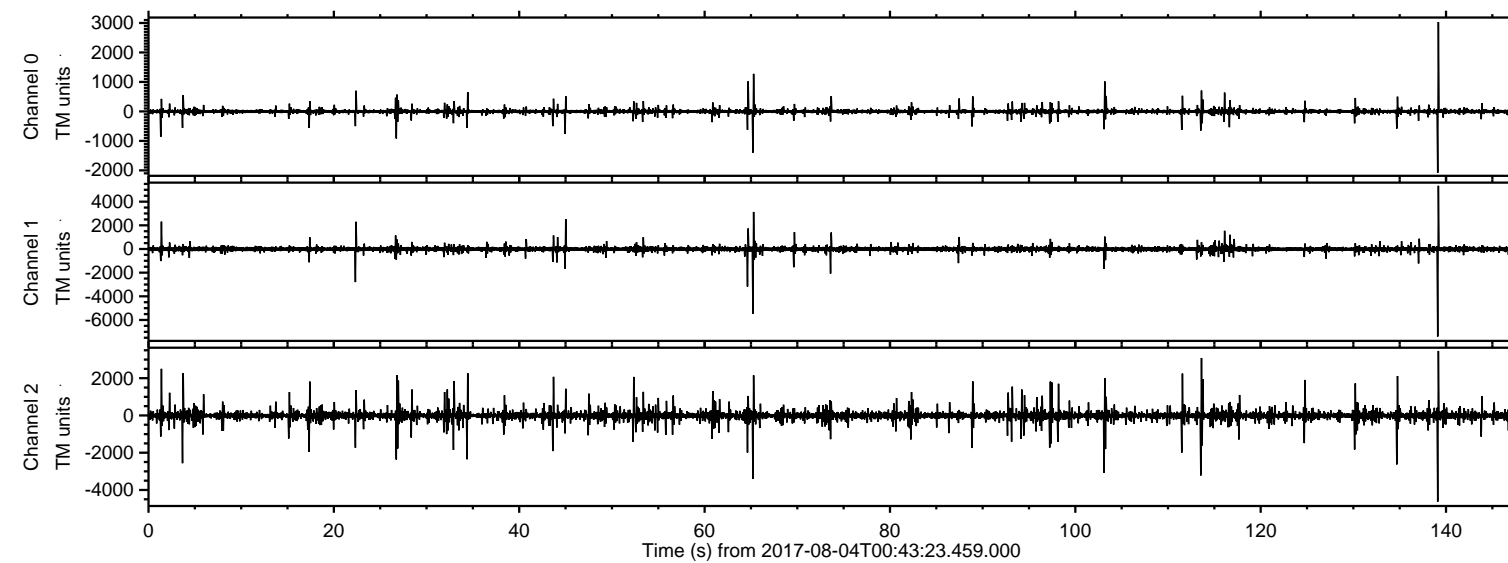


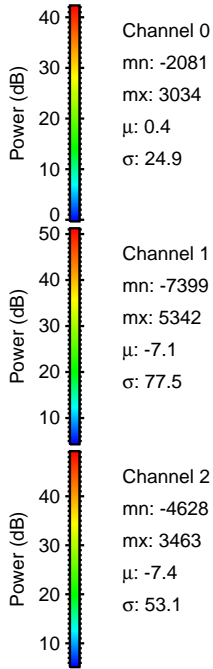
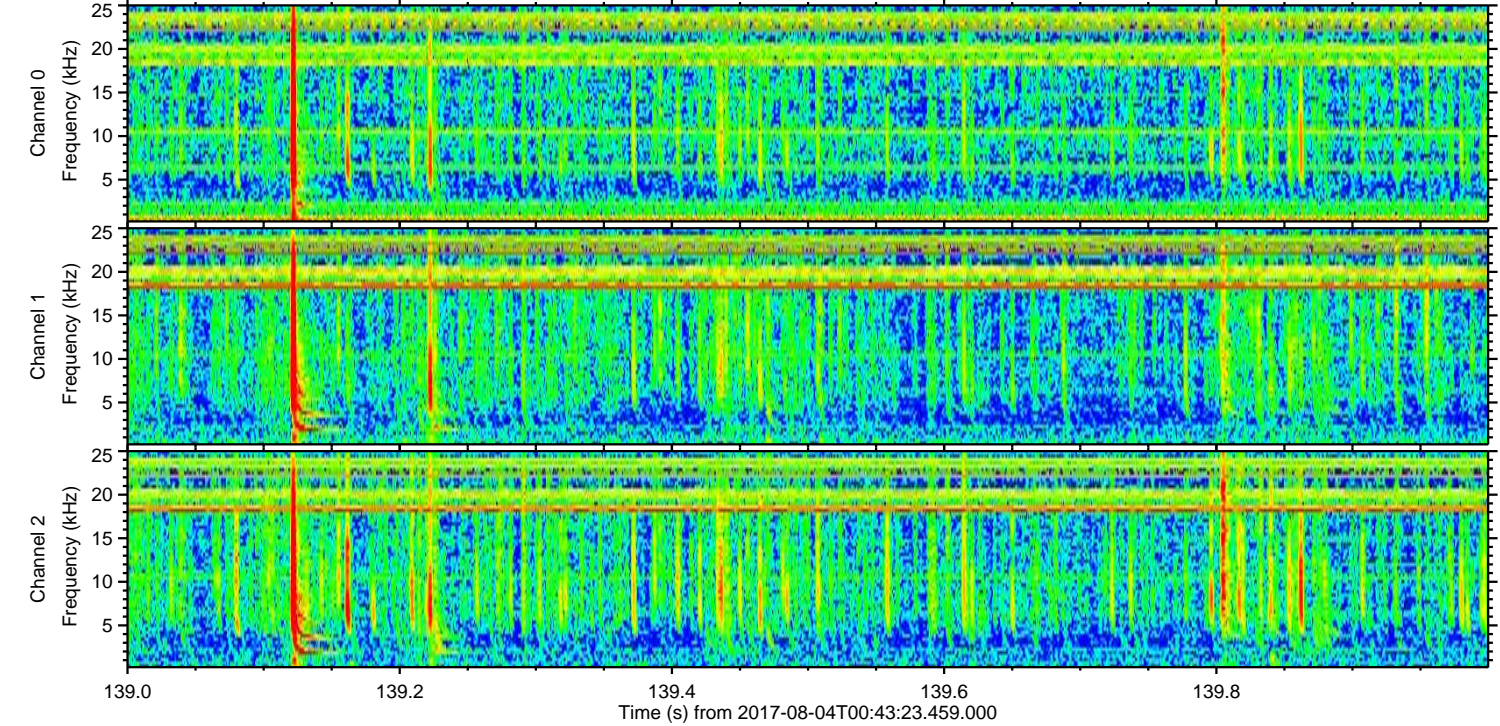
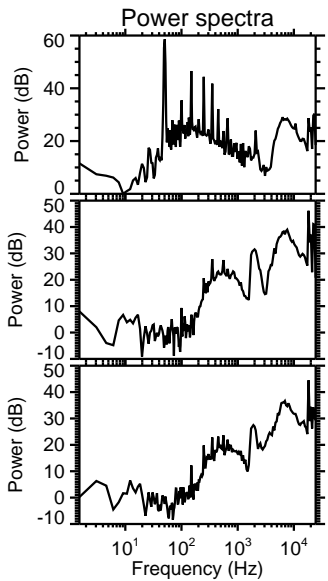
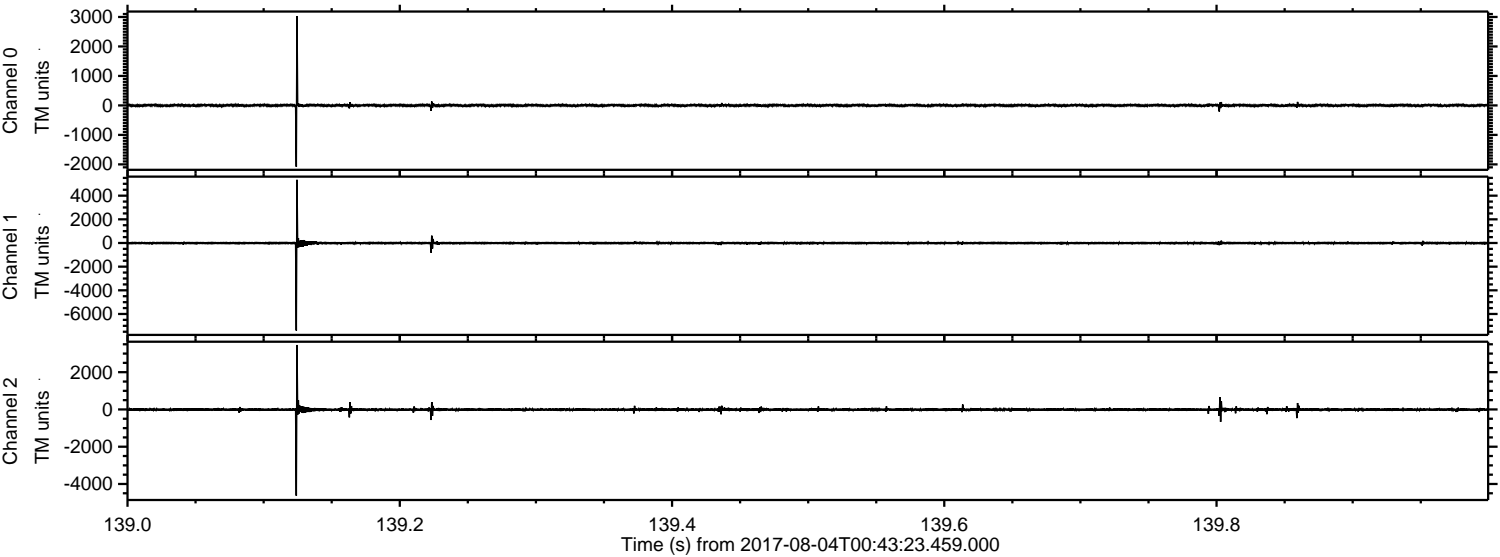
ELMAVAN 3D WAVEFORMS (Measured data sampled at 50 kHz) 51000 packets of 144 samples from 2017-08-04T00:43:23.459.000.

Processed Fri Aug 4 02:50:43 2017 by ELM ver.2012-10-06 from 001__elm20170804_004322__dat00.bin

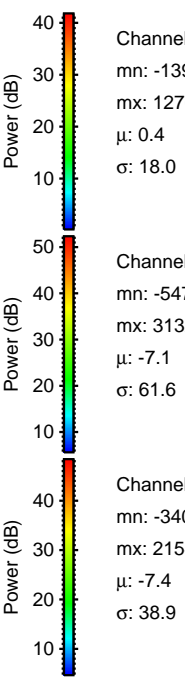
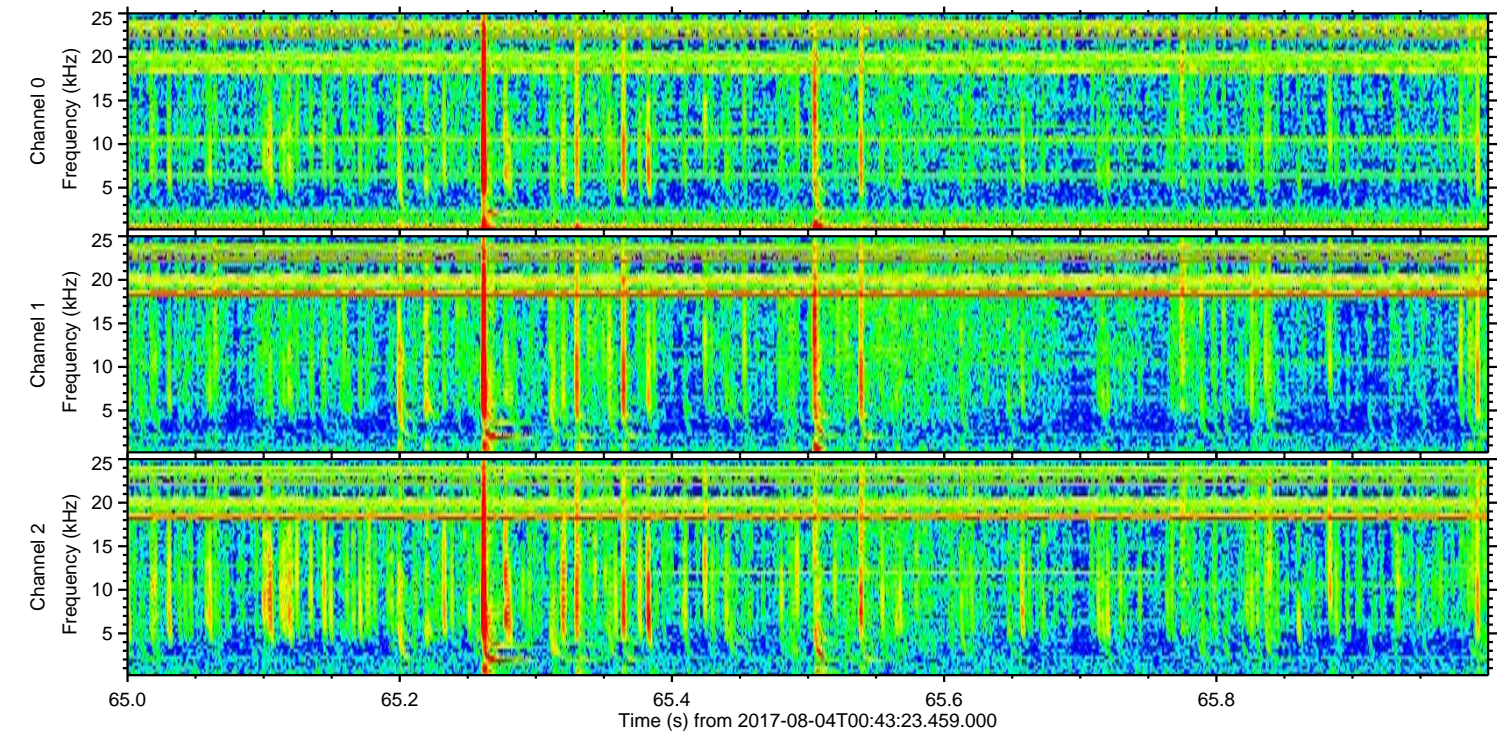
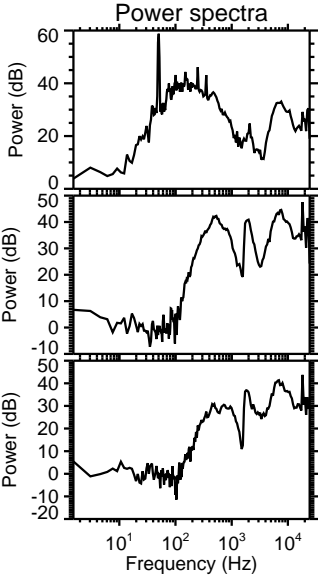
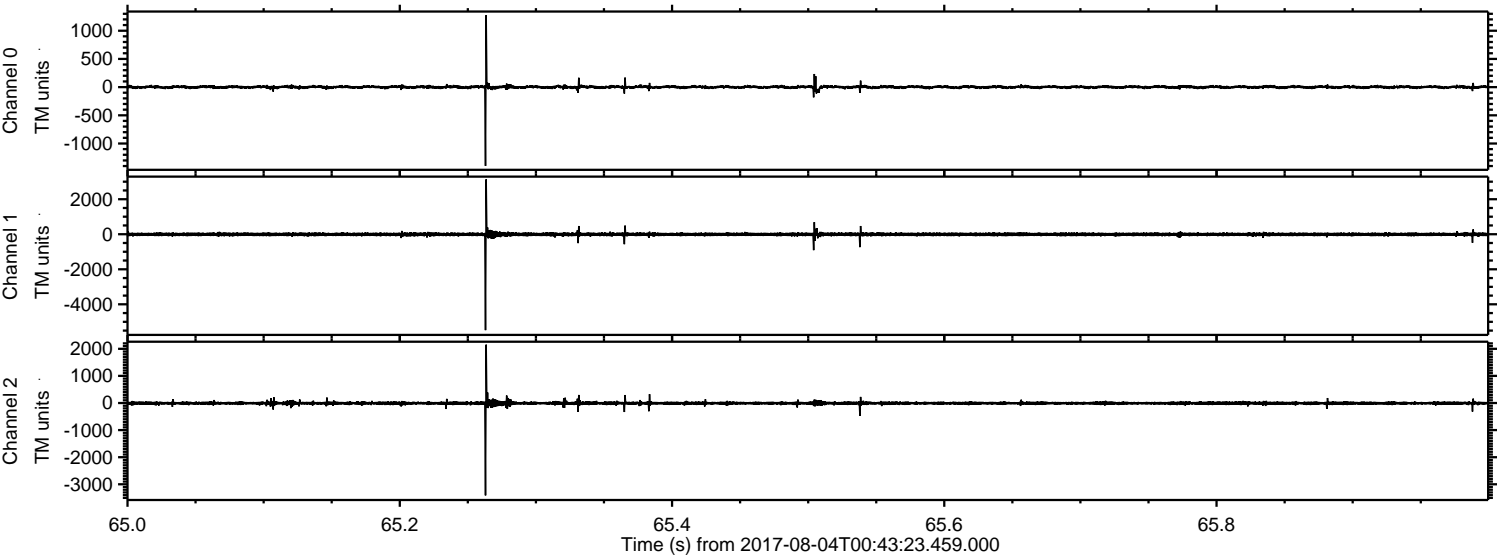


ELMAVAN 3D WAVEFORMS (Measured data sampled at 50 kHz) 51000 packets of 144 samples from 2017-08-04T00:43:23.459.000. Part 140/147

Processed Fri Aug 4 02:50:50 2017 by ELM ver.2012-10-06 from 001__elm20170804_004322__dat00.bin



Processed Fri Aug 4 02:50:51 2017 by ELM ver.2012-10-06 from 001__elm20170804_004322__dat00.bin



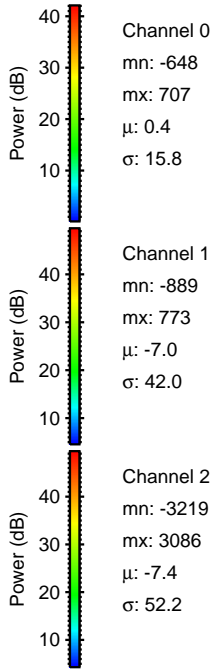
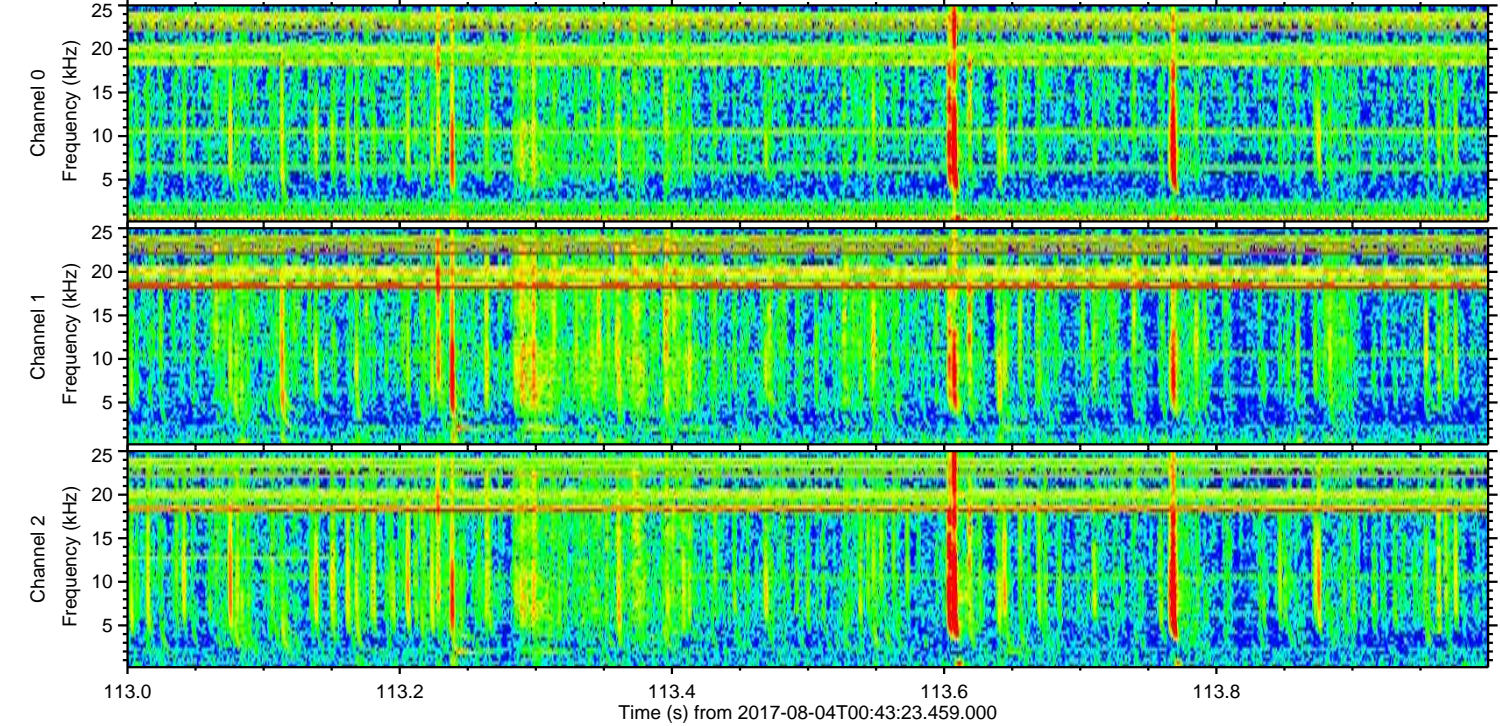
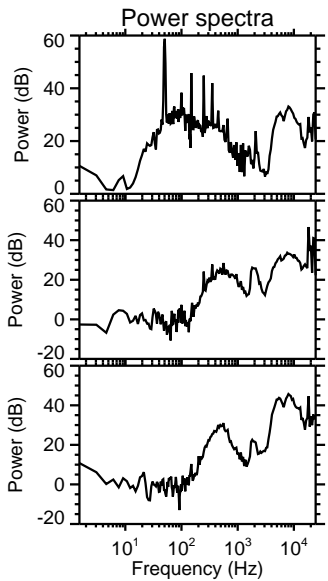
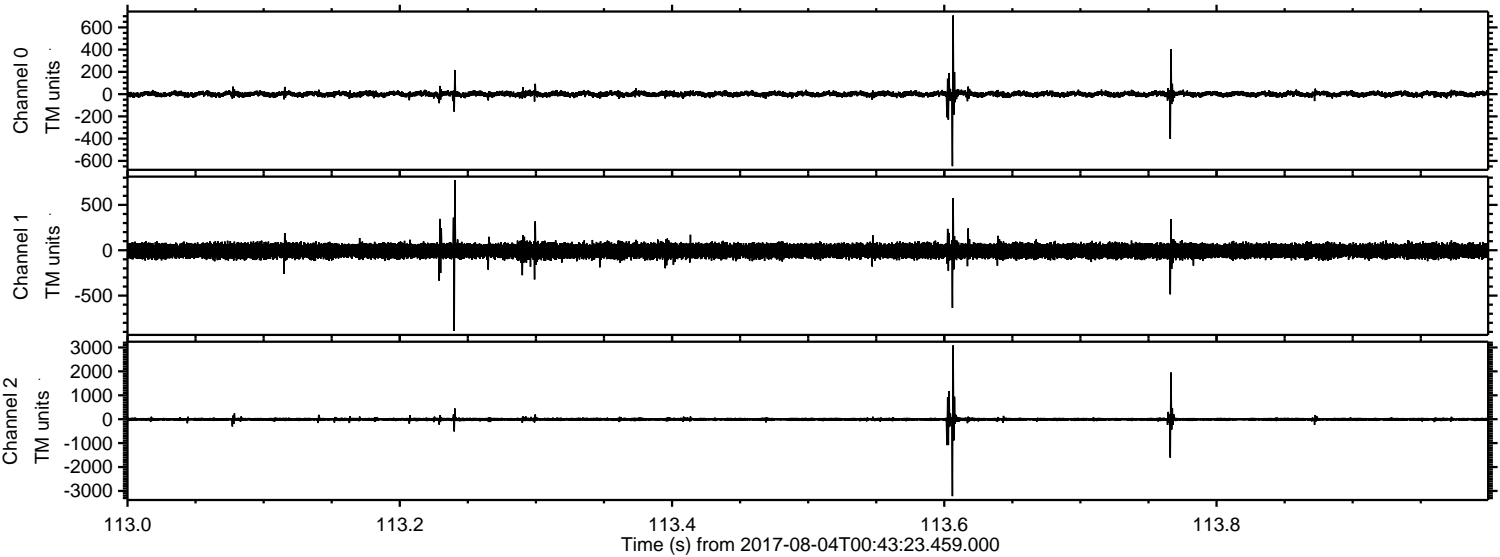
Channel 0
mn: -1397
mx: 1276
 μ : 0.4
 σ : 18.0

Channel 1
mn: -5472
mx: 3132
 μ : -7.1
 σ : 61.6

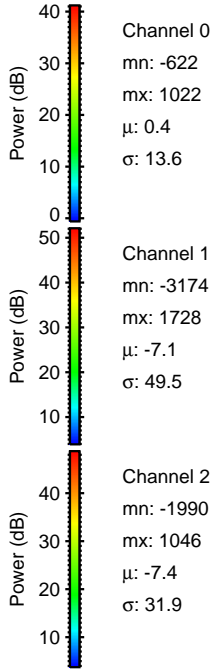
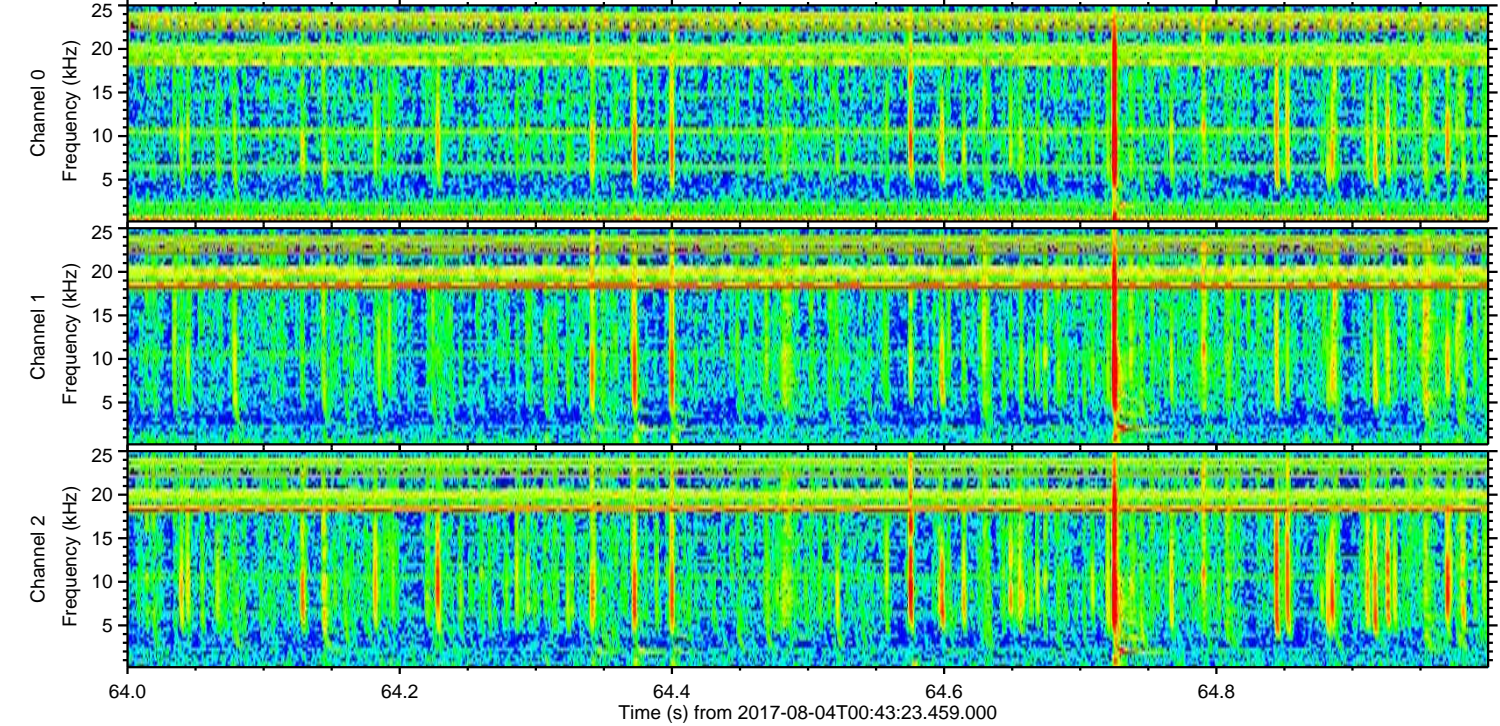
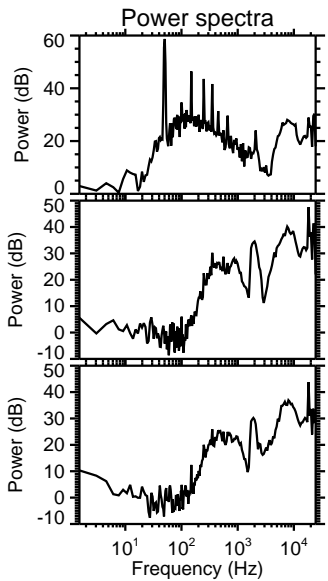
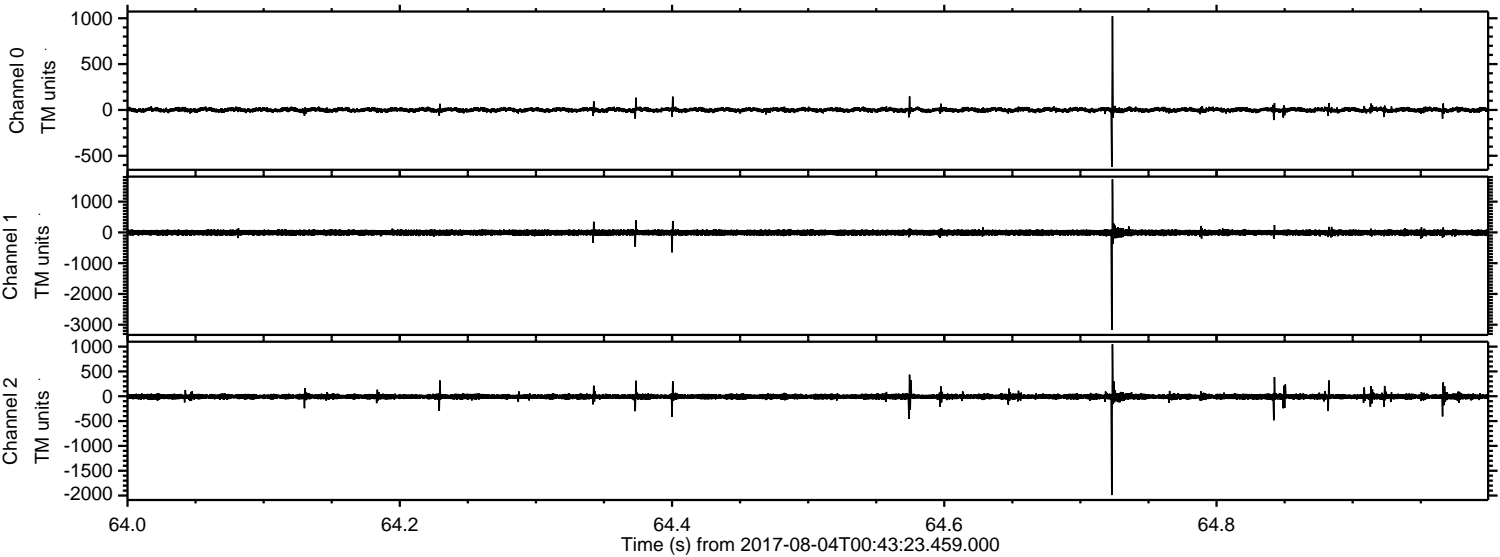
Channel 2
mn: -3409
mx: 2154
 μ : -7.4
 σ : 38.9

ELMAVAN 3D WAVEFORMS (Measured data sampled at 50 kHz) 51000 packets of 144 samples from 2017-08-04T00:43:23.459.000. Part 114/147

Processed Fri Aug 4 02:50:52 2017 by ELM ver.2012-10-06 from 001__elm20170804_004322__dat00.bin



Processed Fri Aug 4 02:50:52 2017 by ELM ver.2012-10-06 from 001__elm20170804_004322__dat00.bin



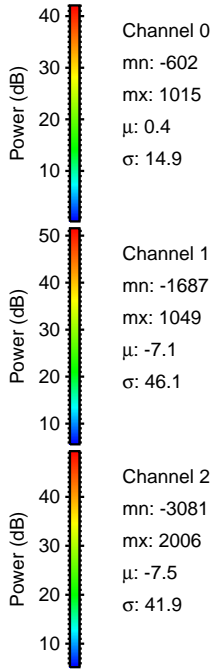
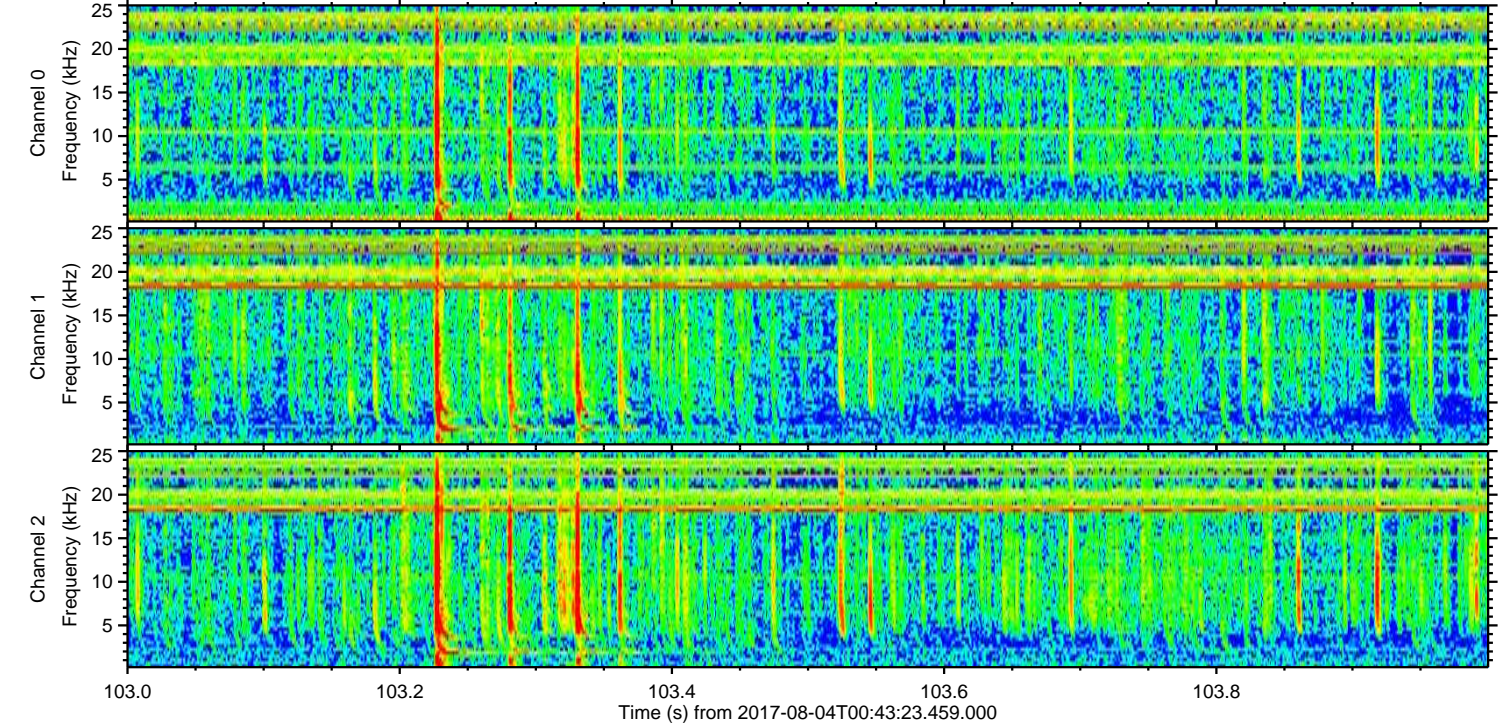
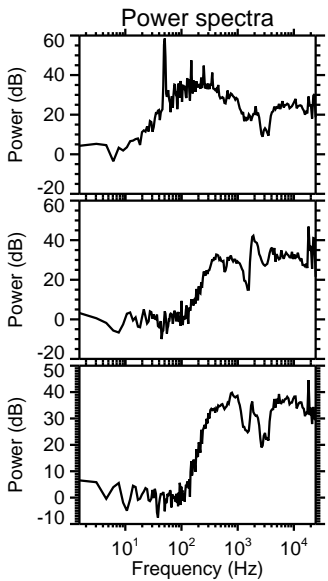
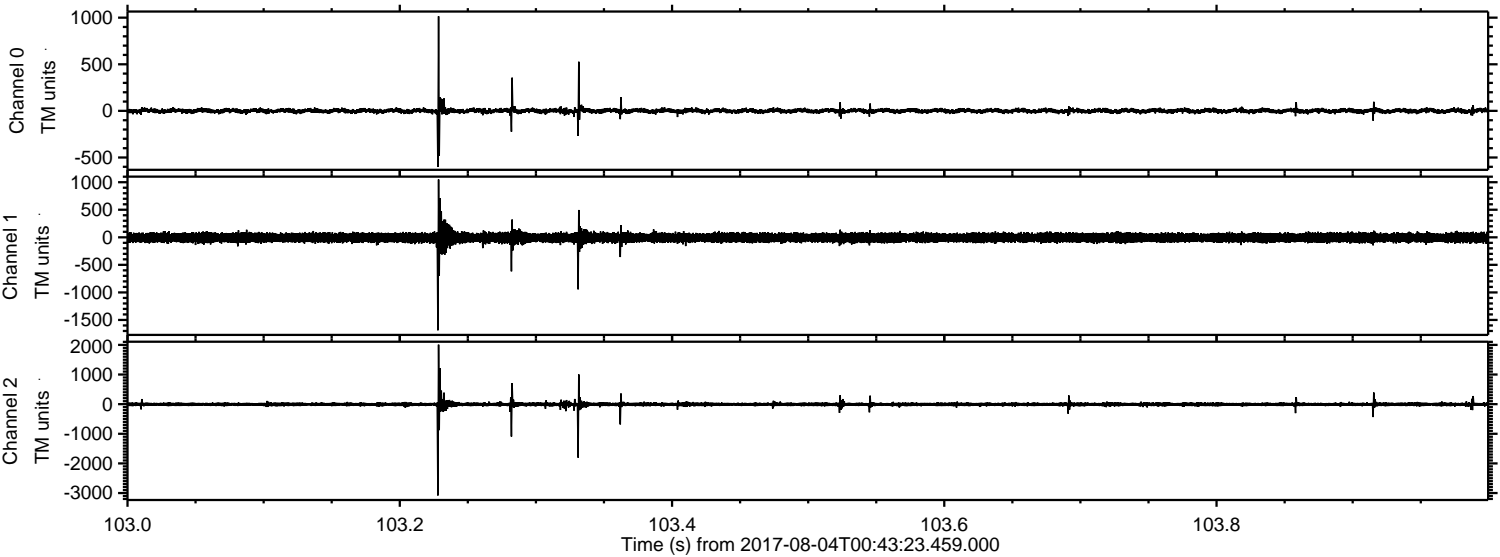
Channel 0
mn: -622
mx: 1022
 μ : 0.4
 σ : 13.6

Channel 1
mn: -3174
mx: 1728
 μ : -7.1
 σ : 49.5

Channel 2
mn: -1990
mx: 1046
 μ : -7.4
 σ : 31.9

ELMAVAN 3D WAVEFORMS (Measured data sampled at 50 kHz) 51000 packets of 144 samples from 2017-08-04T00:43:23.459.000. Part 104/147

Processed Fri Aug 4 02:50:53 2017 by ELM ver.2012-10-06 from 001__elm20170804_004322__dat00.bin

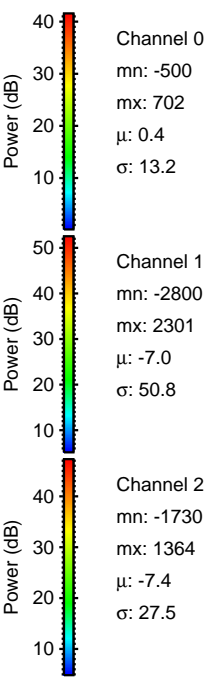
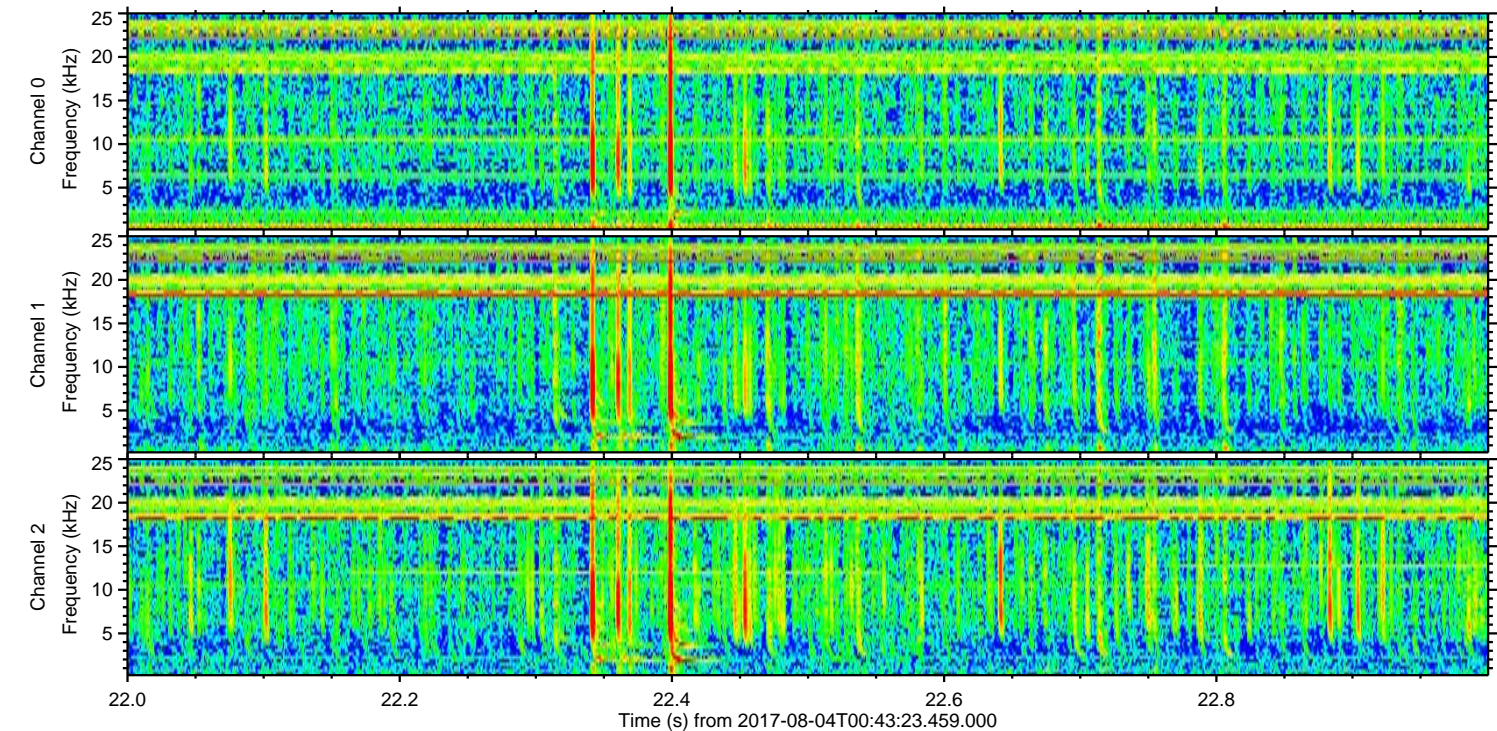
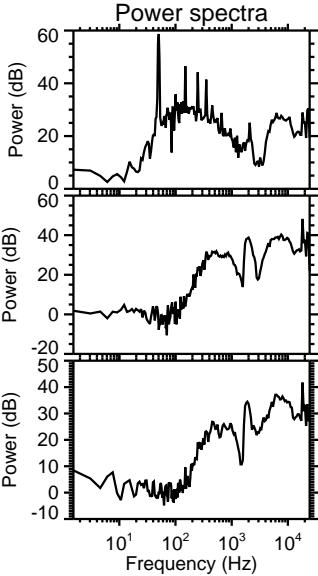
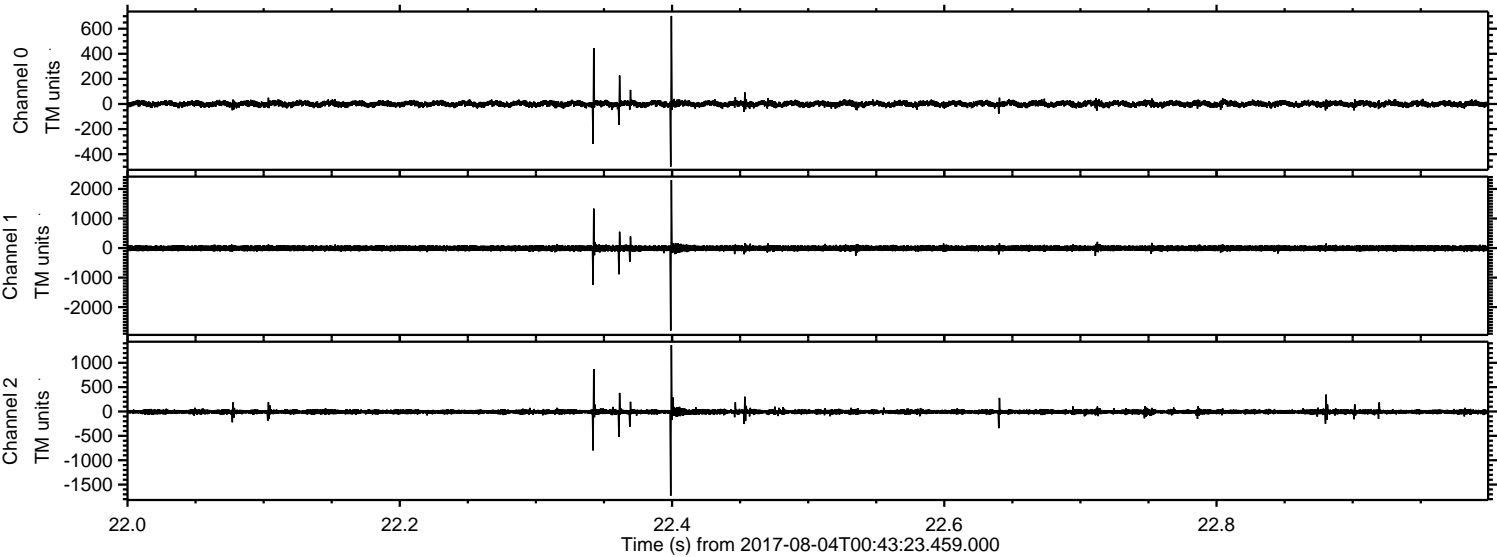


Channel 0
mn: -602
mx: 1015
 μ : 0.4
 σ : 14.9

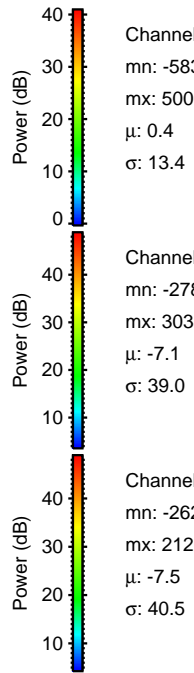
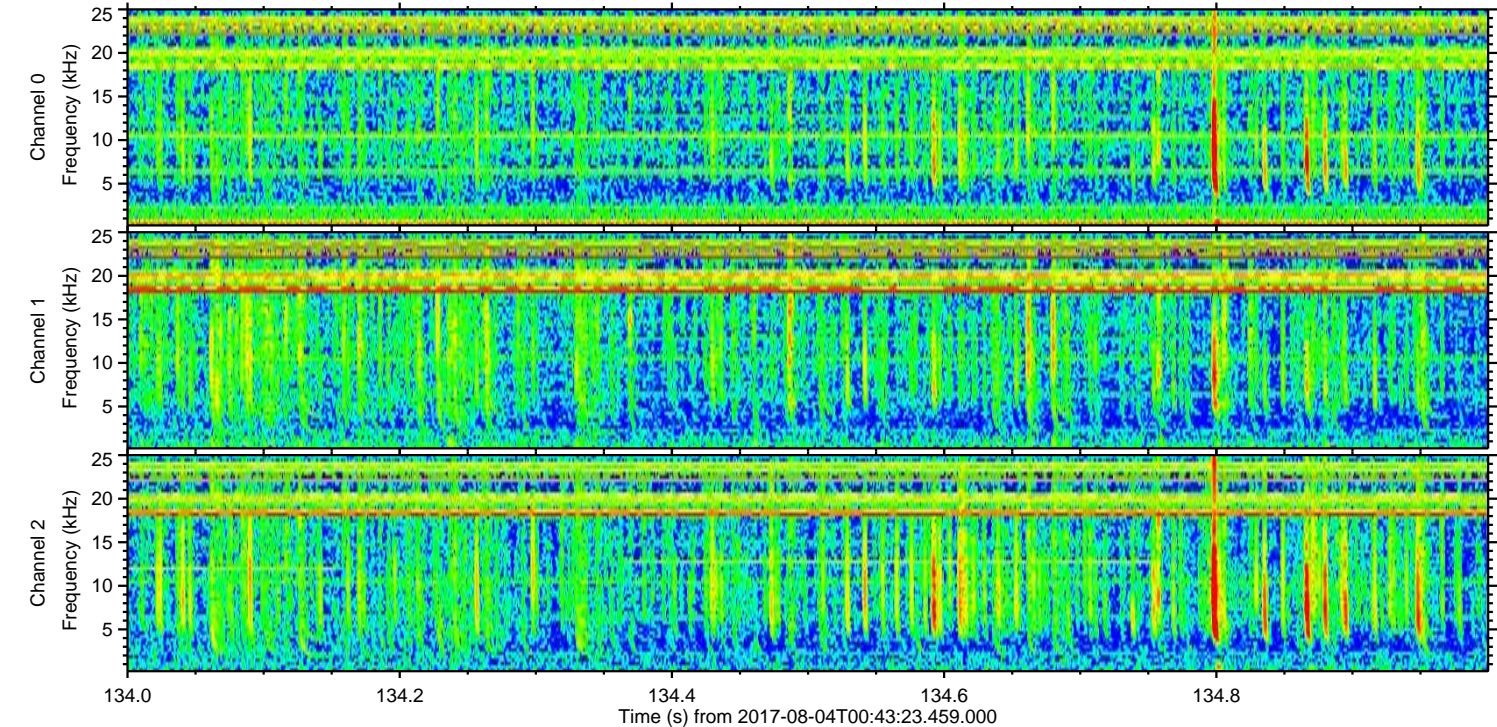
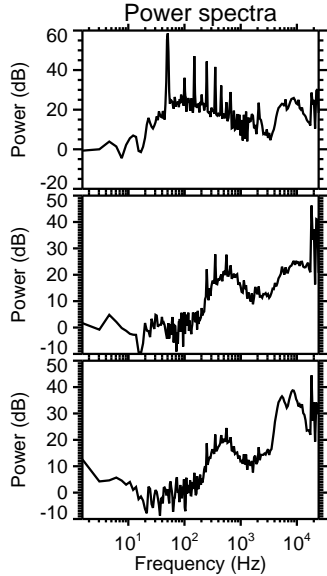
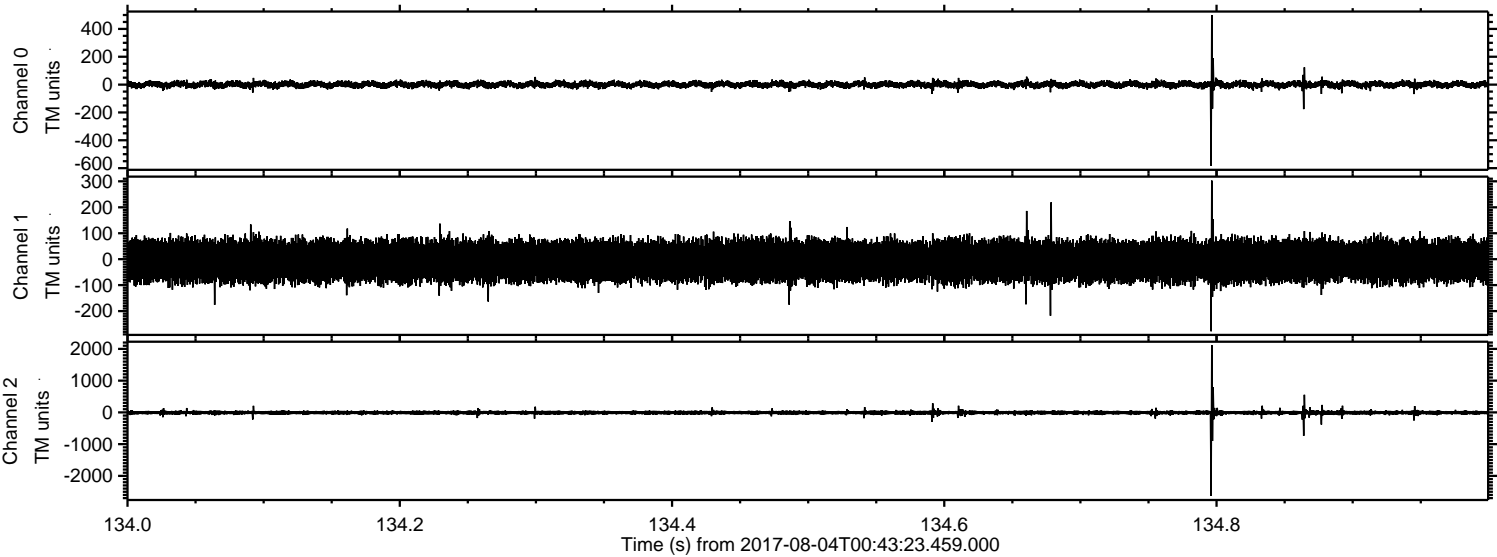
Channel 1
mn: -1687
mx: 1049
 μ : -7.1
 σ : 46.1

Channel 2
mn: -3081
mx: 2006
 μ : -7.5
 σ : 41.9

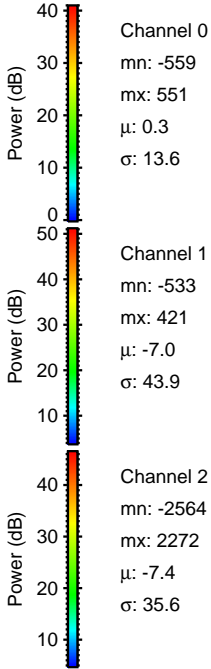
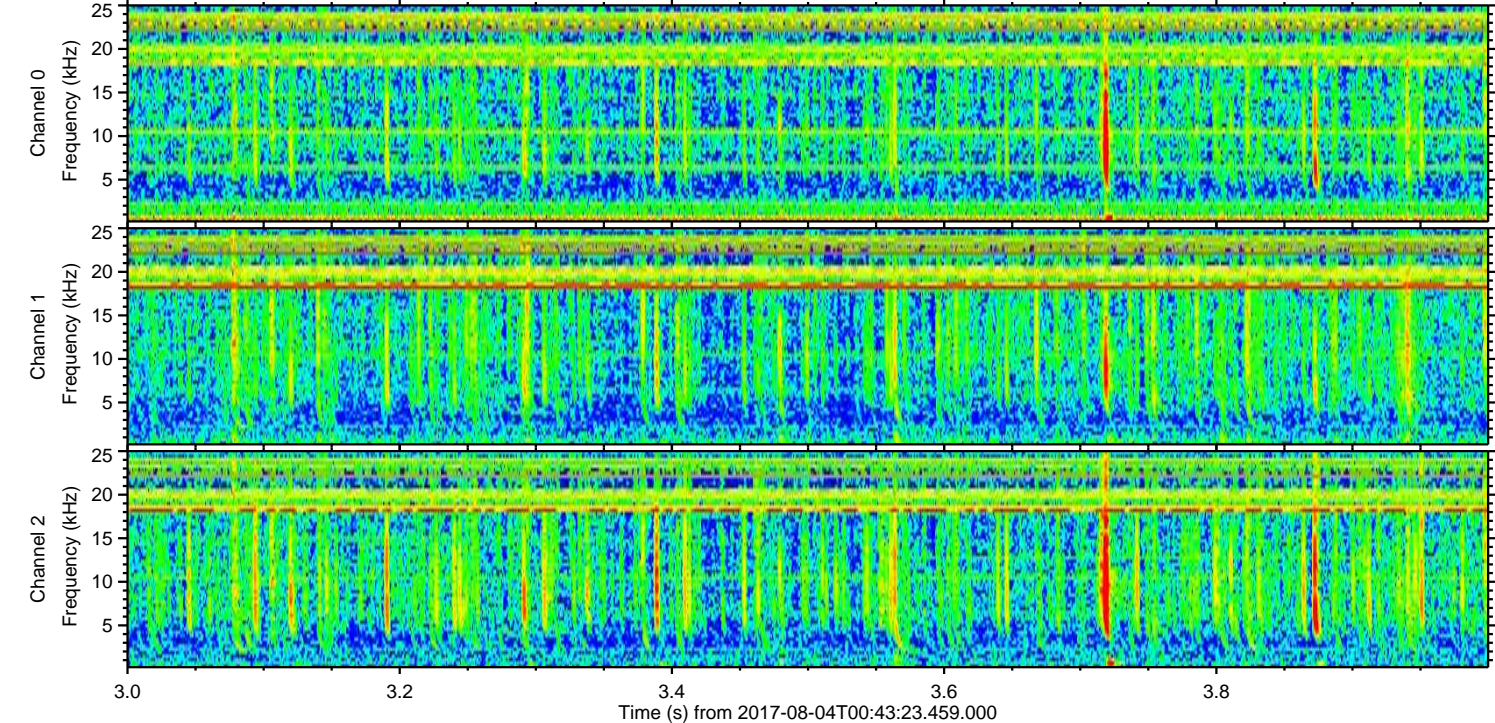
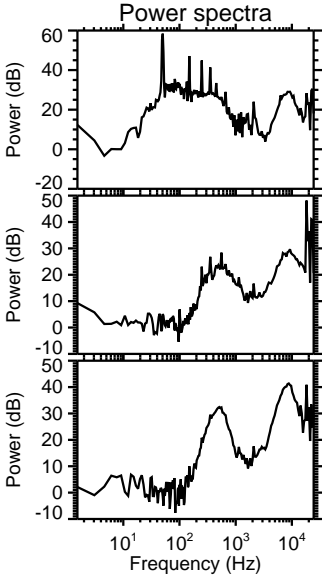
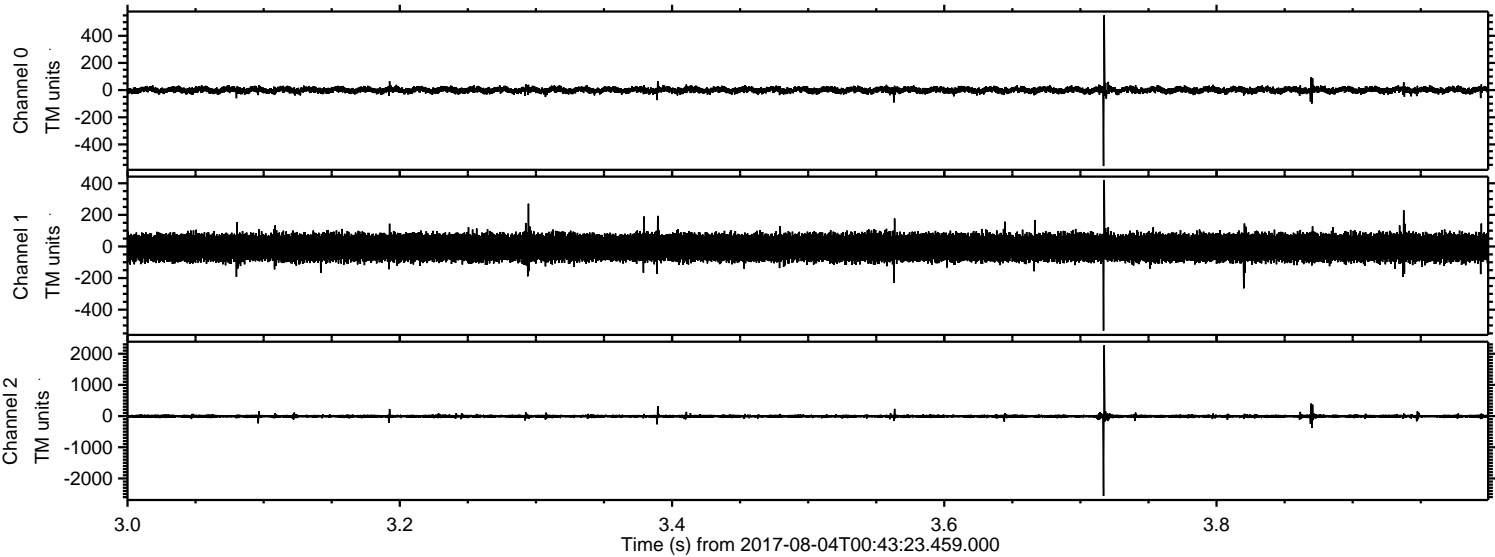
Processed Fri Aug 4 02:50:54 2017 by ELM ver.2012-10-06 from 001__elm20170804_004322__dat00.bin



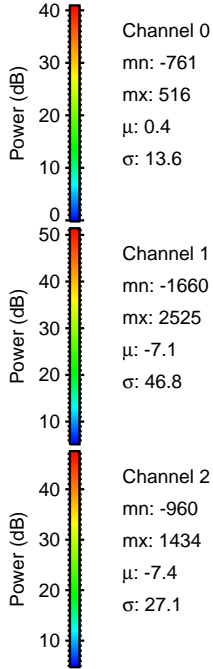
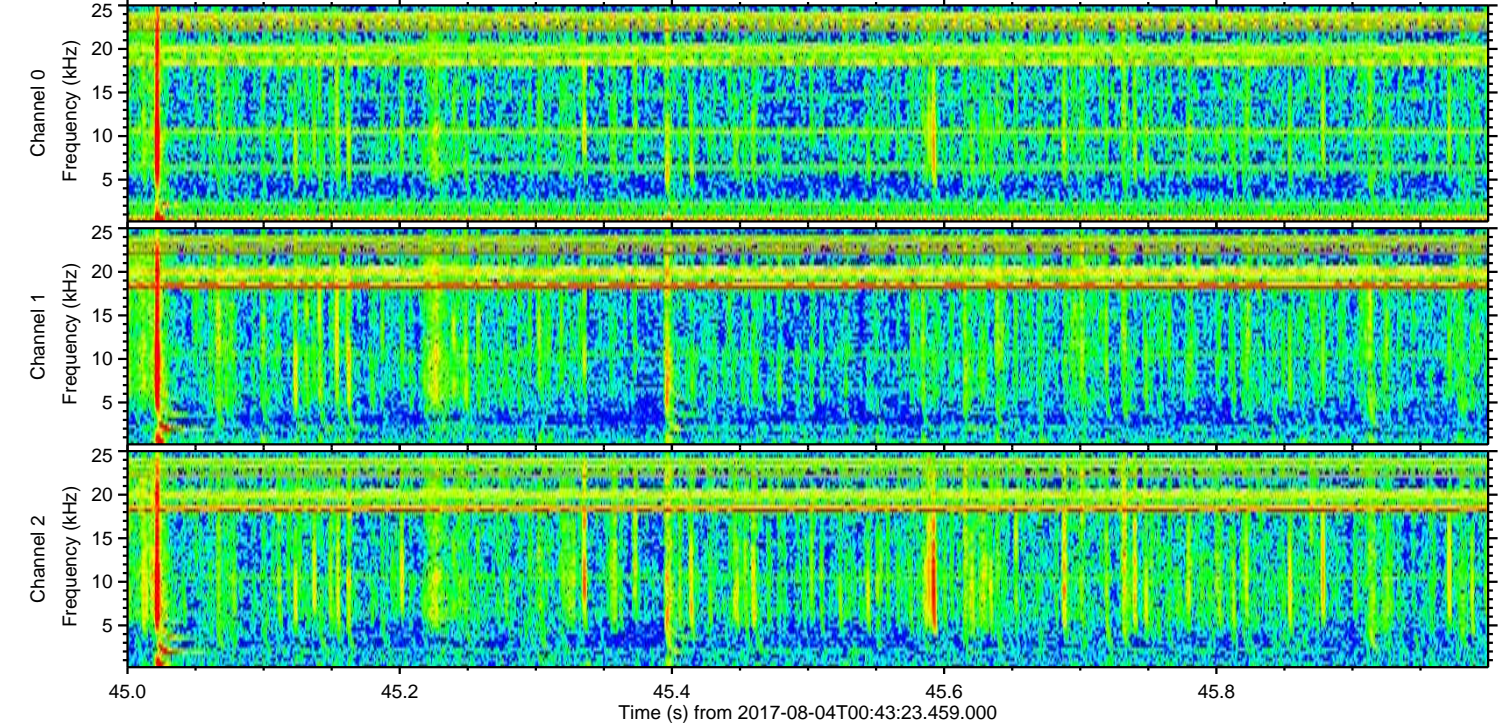
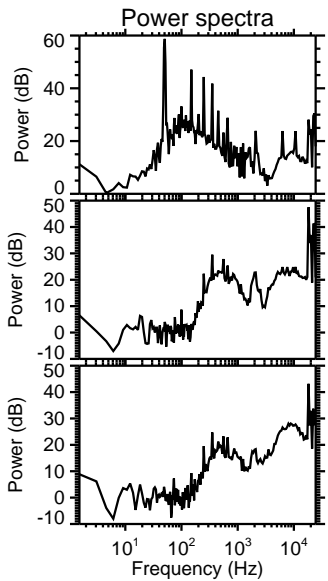
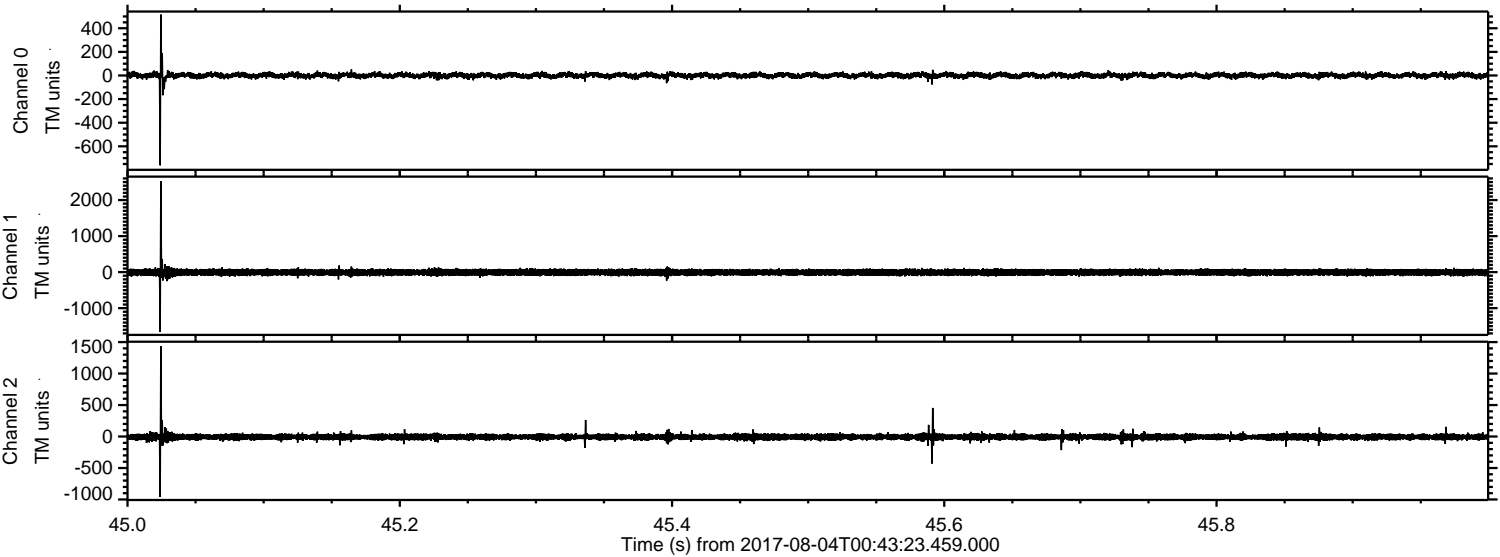
Processed Fri Aug 4 02:50:55 2017 by ELM ver.2012-10-06 from 001__elm20170804_004322__dat00.bin



Processed Fri Aug 4 02:50:55 2017 by ELM ver.2012-10-06 from 001__elm20170804_004322__dat00.bin



Processed Fri Aug 4 02:50:56 2017 by ELM ver.2012-10-06 from 001__elm20170804_004322__dat00.bin



Channel 0
mn: -761
mx: 516
 μ : 0.4
 σ : 13.6

Channel 1
mn: -1660
mx: 2525
 μ : -7.1
 σ : 46.8

Channel 2
mn: -960
mx: 1434
 μ : -7.4
 σ : 27.1

