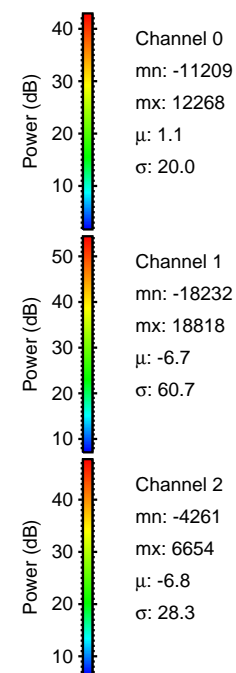
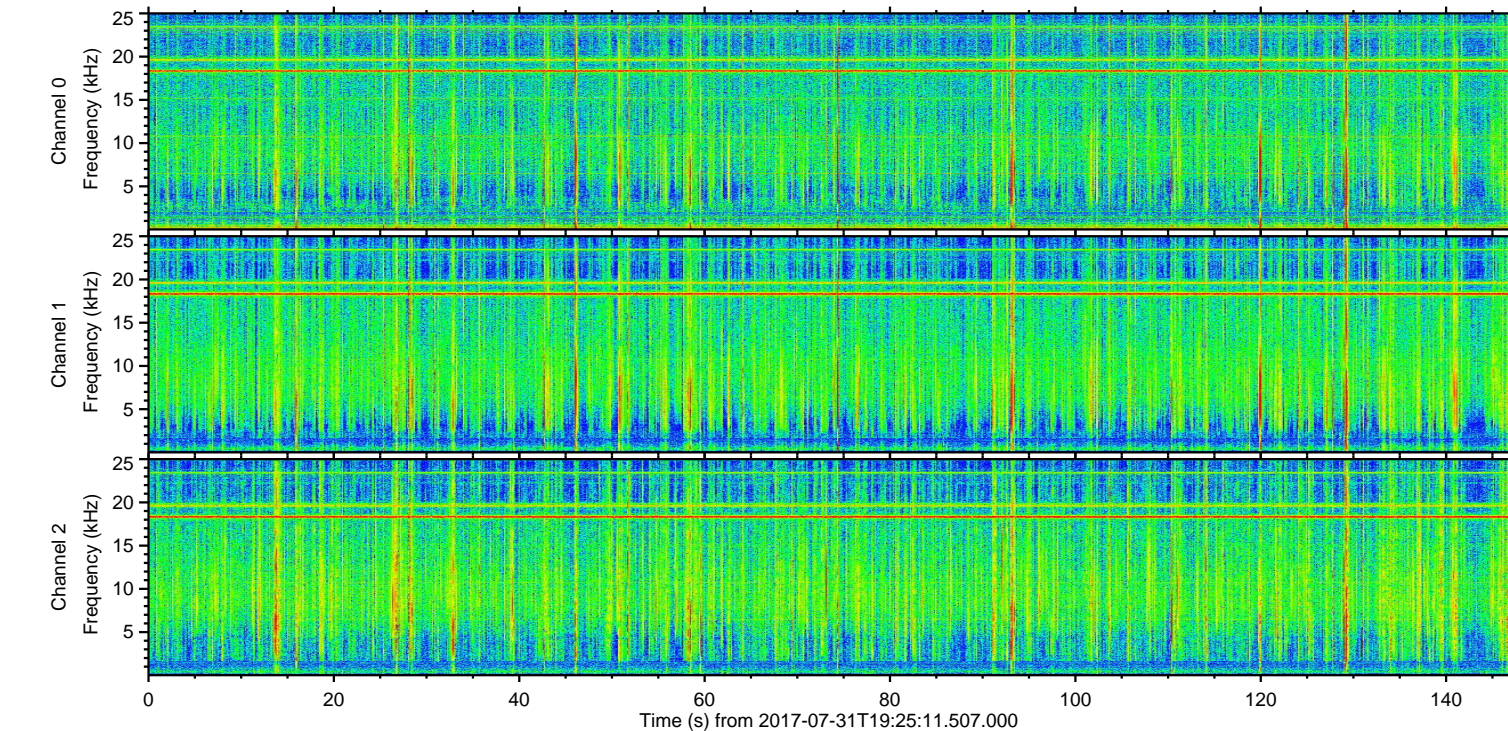
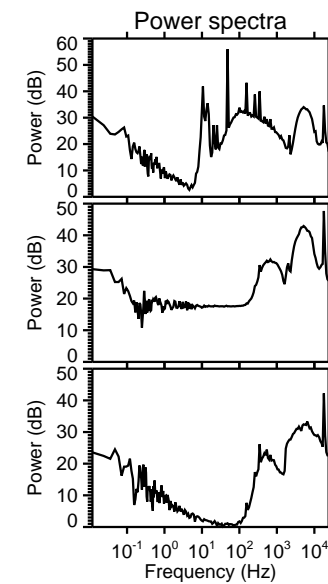
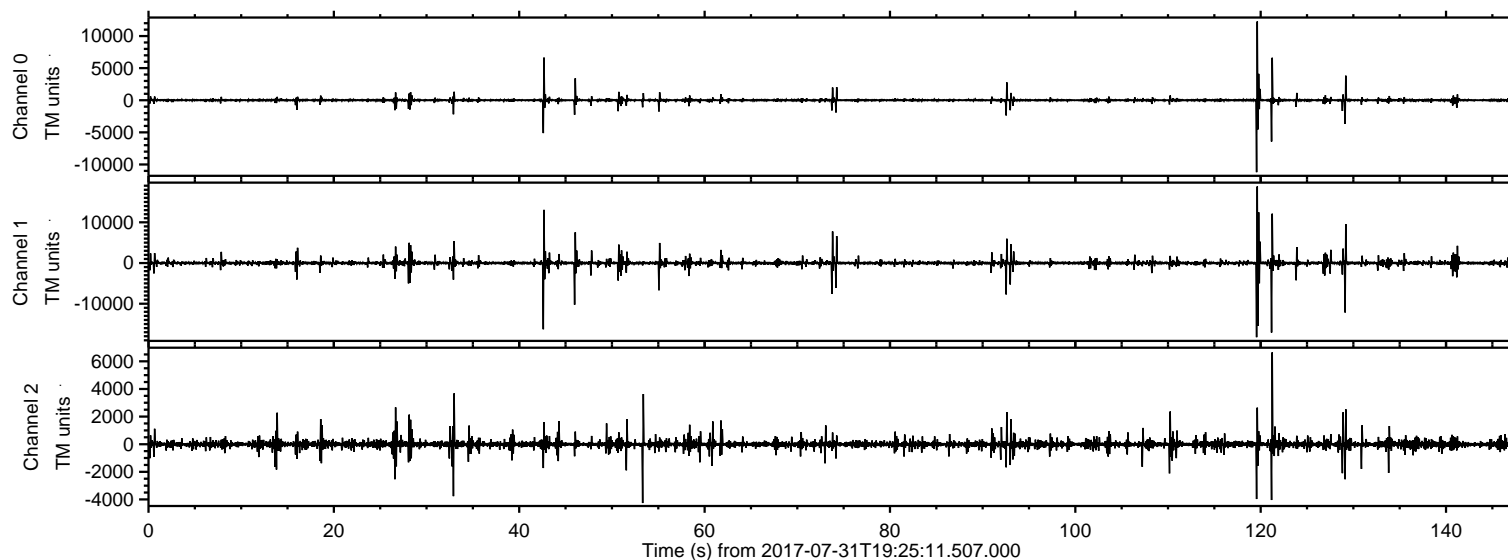


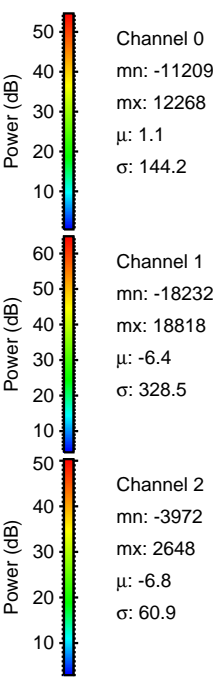
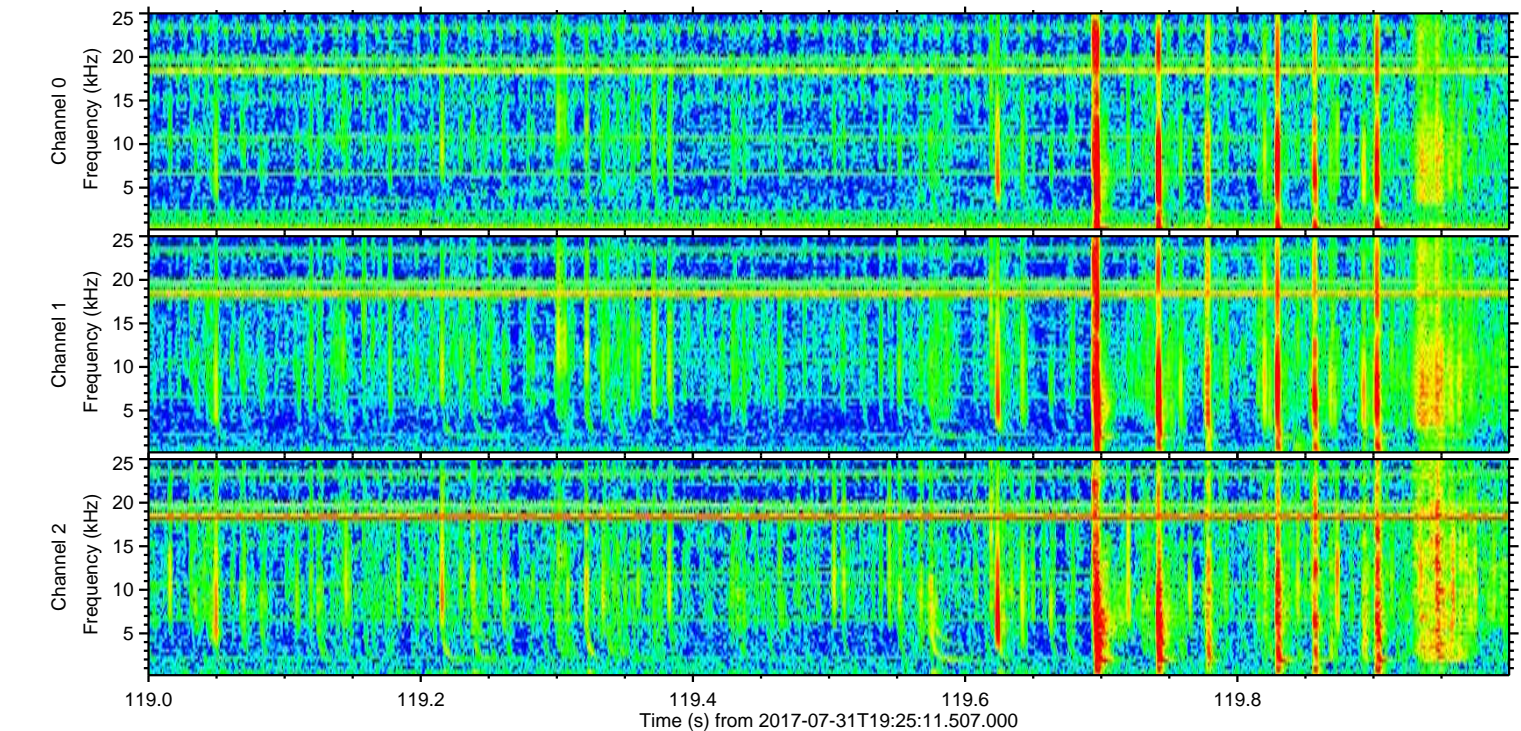
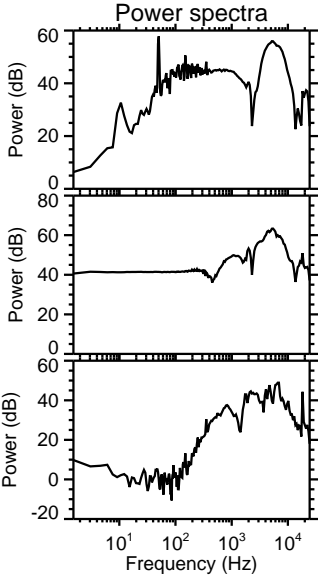
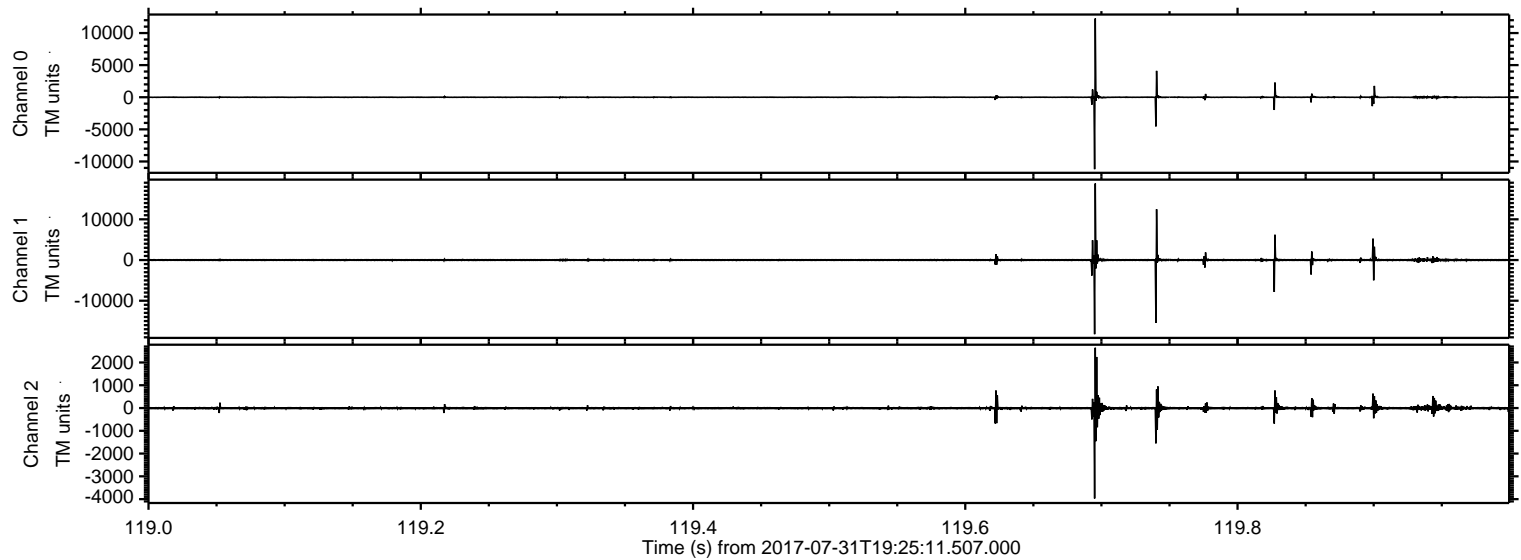
ELMAVAN 3D WAVEFORMS (Measured data sampled at 50 kHz) 51000 packets of 144 samples from 2017-07-31T19:25:11.507.000.

Processed Mon Jul 31 21:33:00 2017 by ELM ver.2012-10-06 from 001__elm20170731_192510__dat00.bin



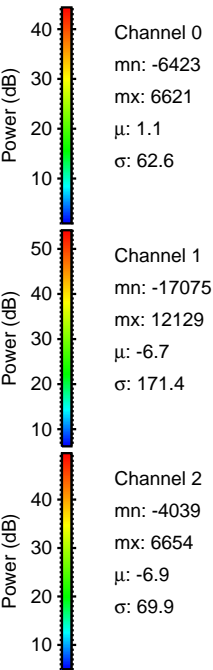
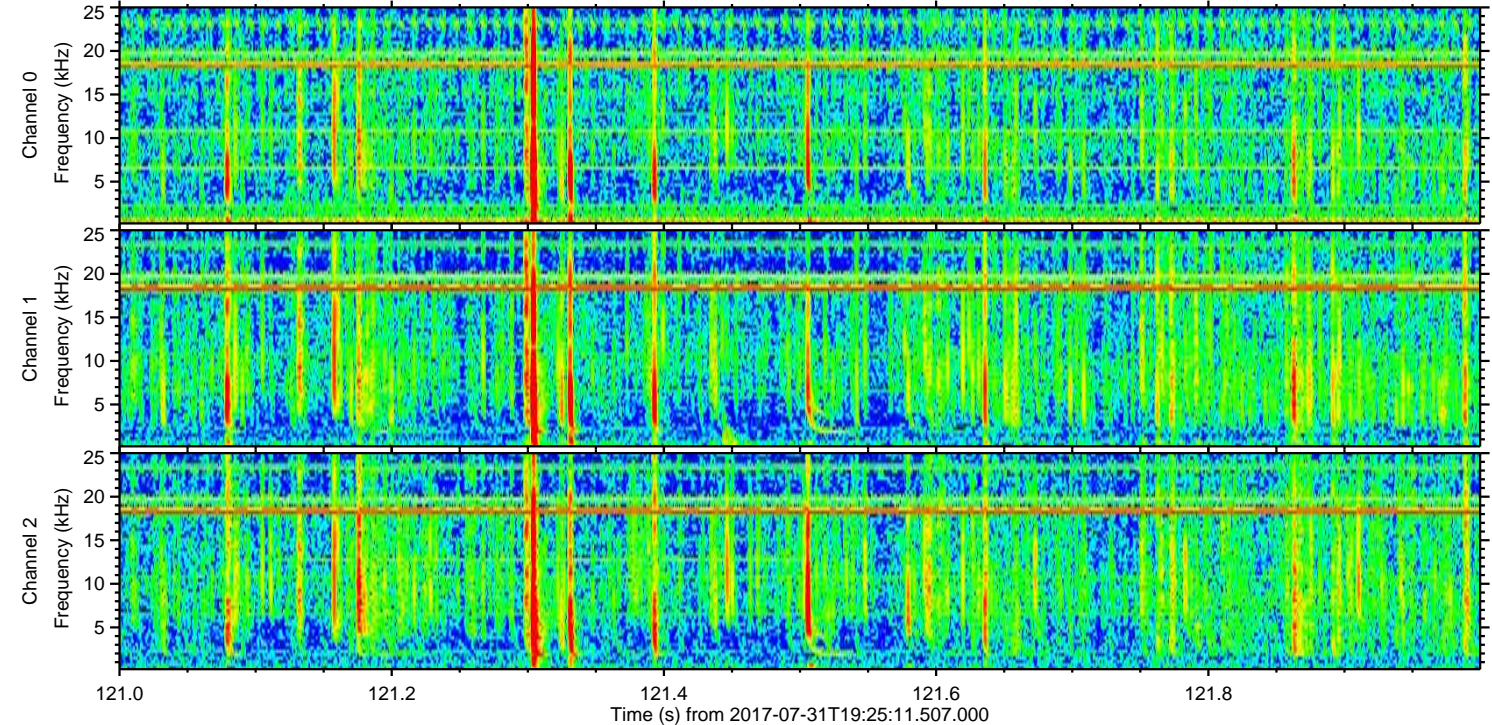
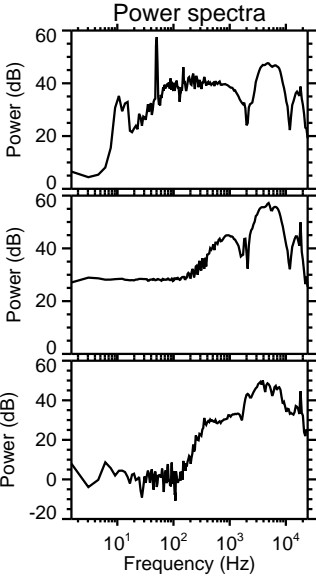
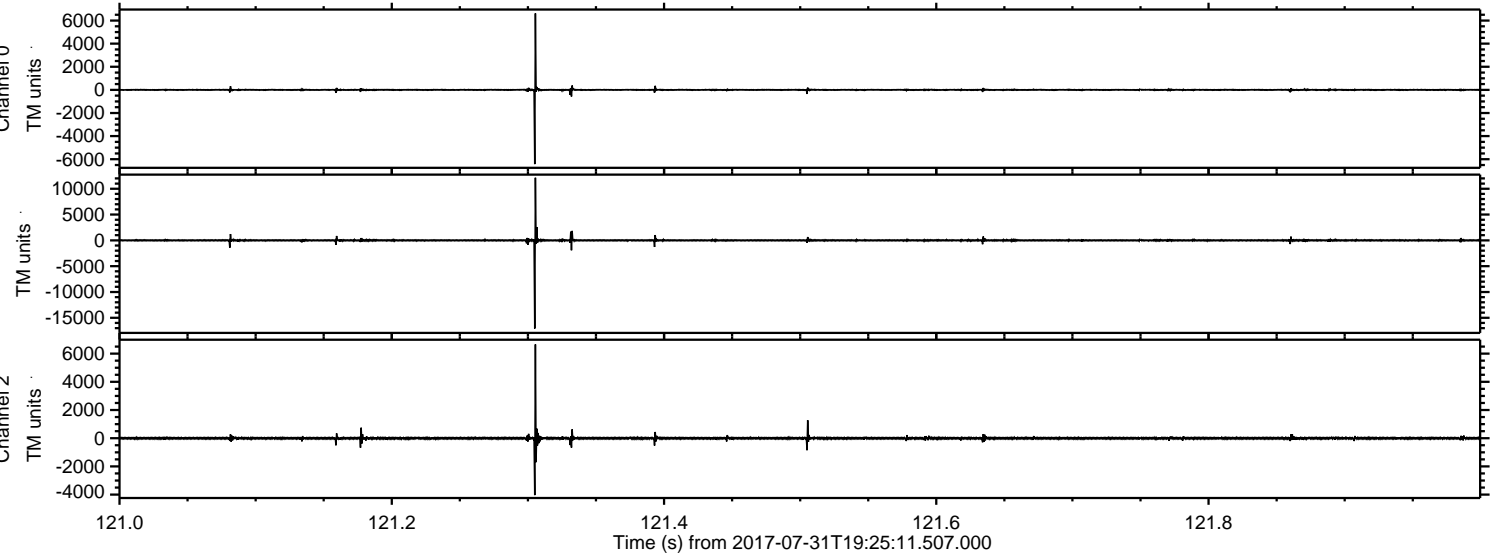
ELMAVAN 3D WAVEFORMS (Measured data sampled at 50 kHz) 51000 packets of 144 samples from 2017-07-31T19:25:11.507.000. Part 120/147

Processed Mon Jul 31 21:33:09 2017 by ELM ver.2012-10-06 from 001__elm20170731_192510__dat00.bin



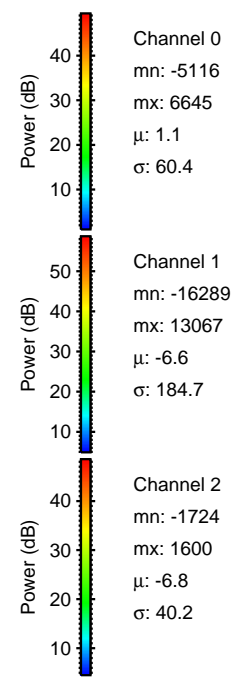
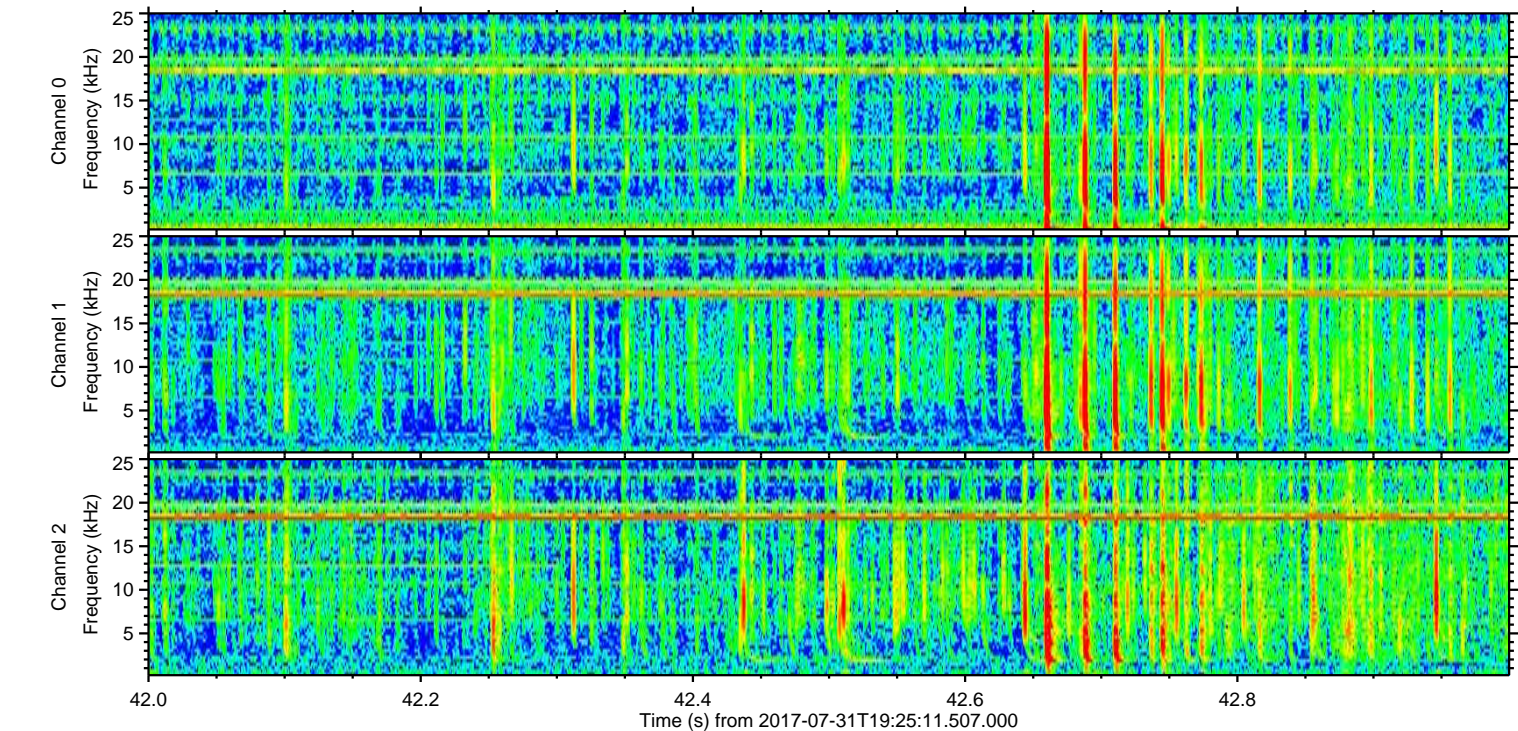
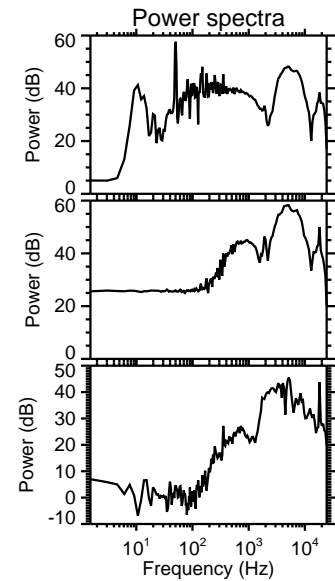
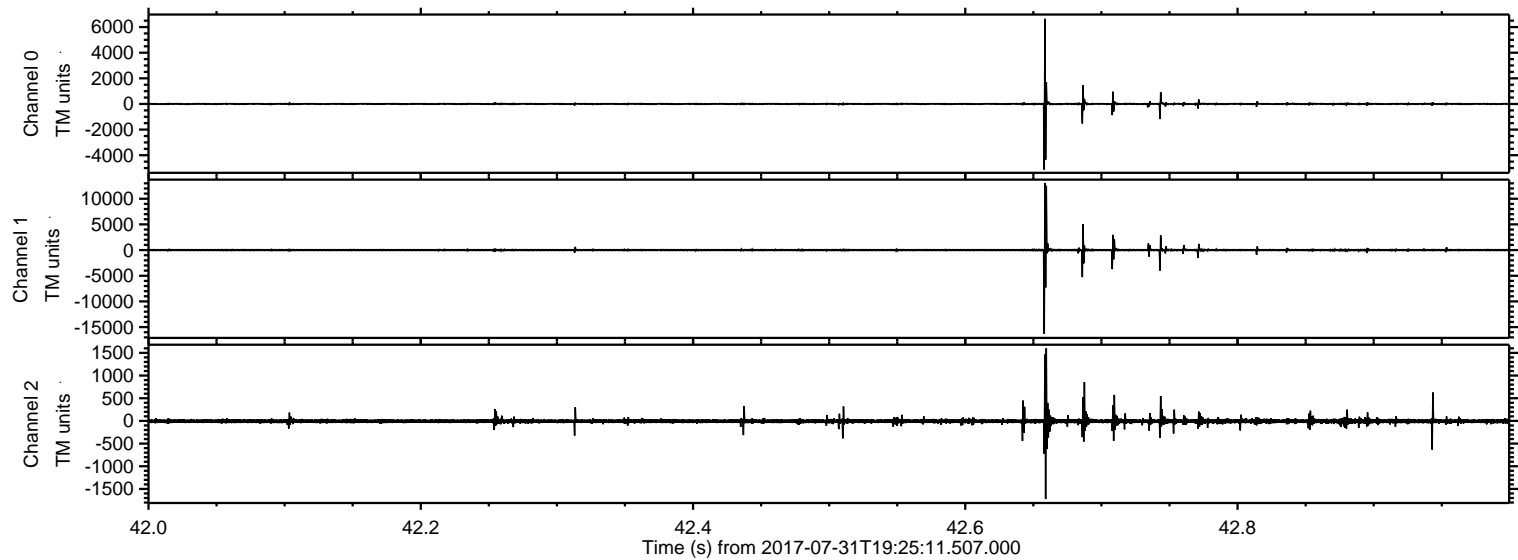
ELMAVAN 3D WAVEFORMS (Measured data sampled at 50 kHz) 51000 packets of 144 samples from 2017-07-31T19:25:11.507.000. Part 122/147

Processed Mon Jul 31 21:33:10 2017 by ELM ver.2012-10-06 from 001__elm20170731_192510__dat00.bin



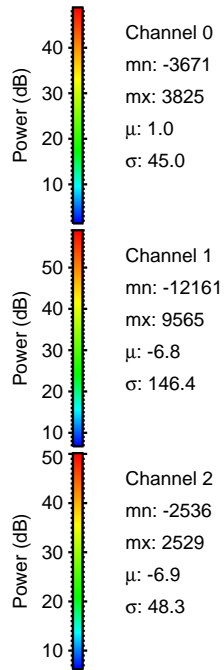
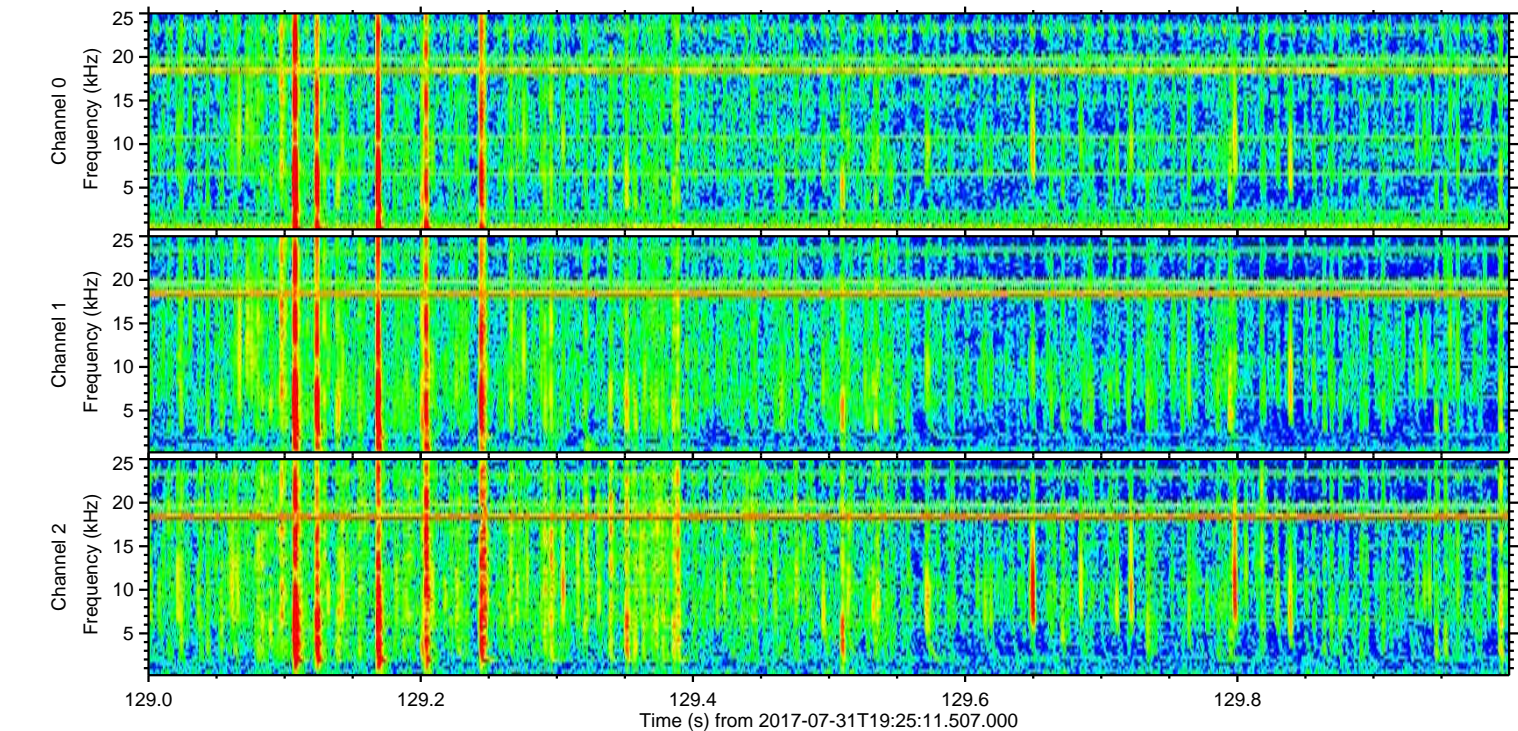
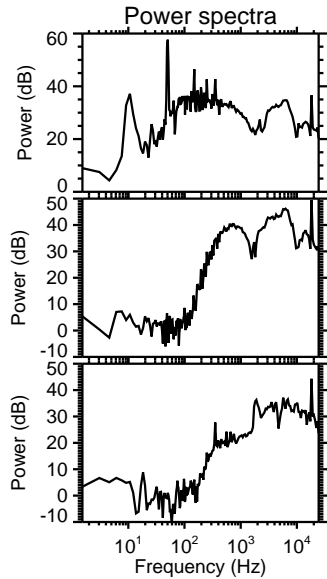
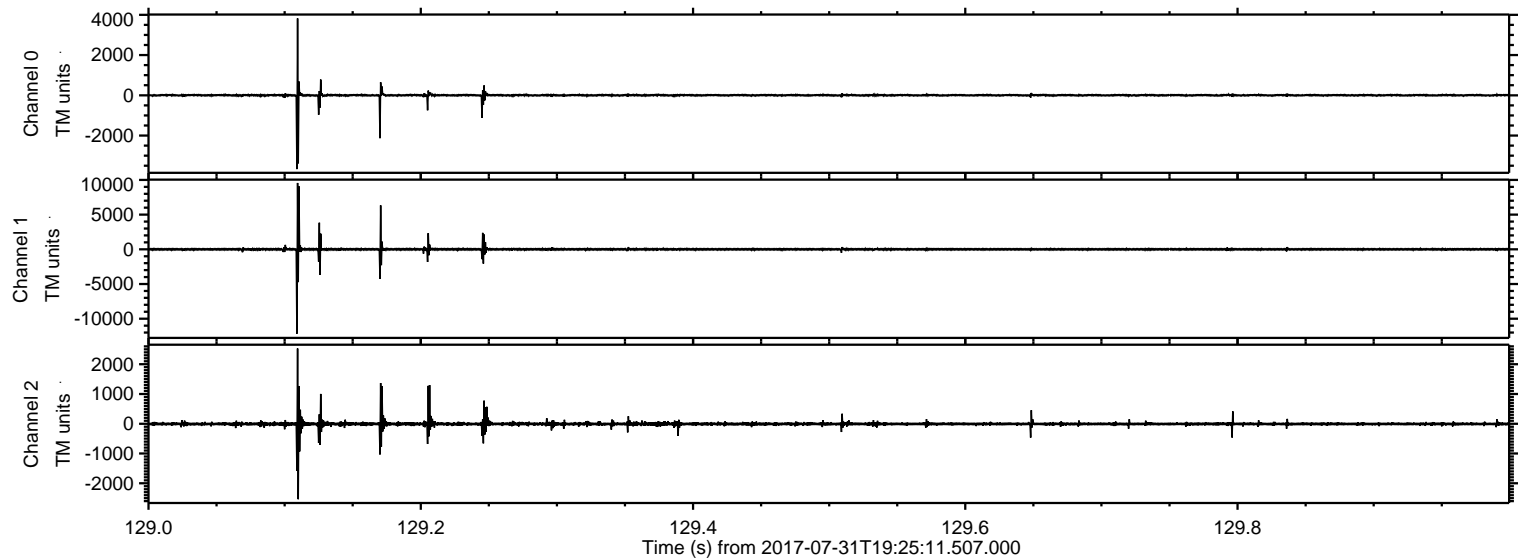
ELMAVAN 3D WAVEFORMS (Measured data sampled at 50 kHz) 51000 packets of 144 samples from 2017-07-31T19:25:11.507.000. Part 43/147

Processed Mon Jul 31 21:33:11 2017 by ELM ver.2012-10-06 from 001__elm20170731_192510__dat00.bin

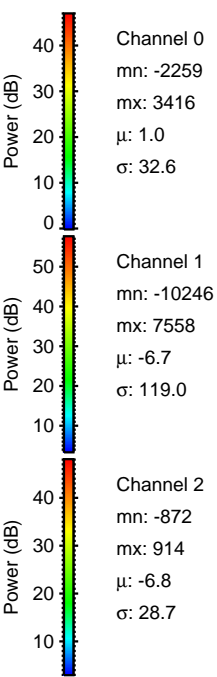
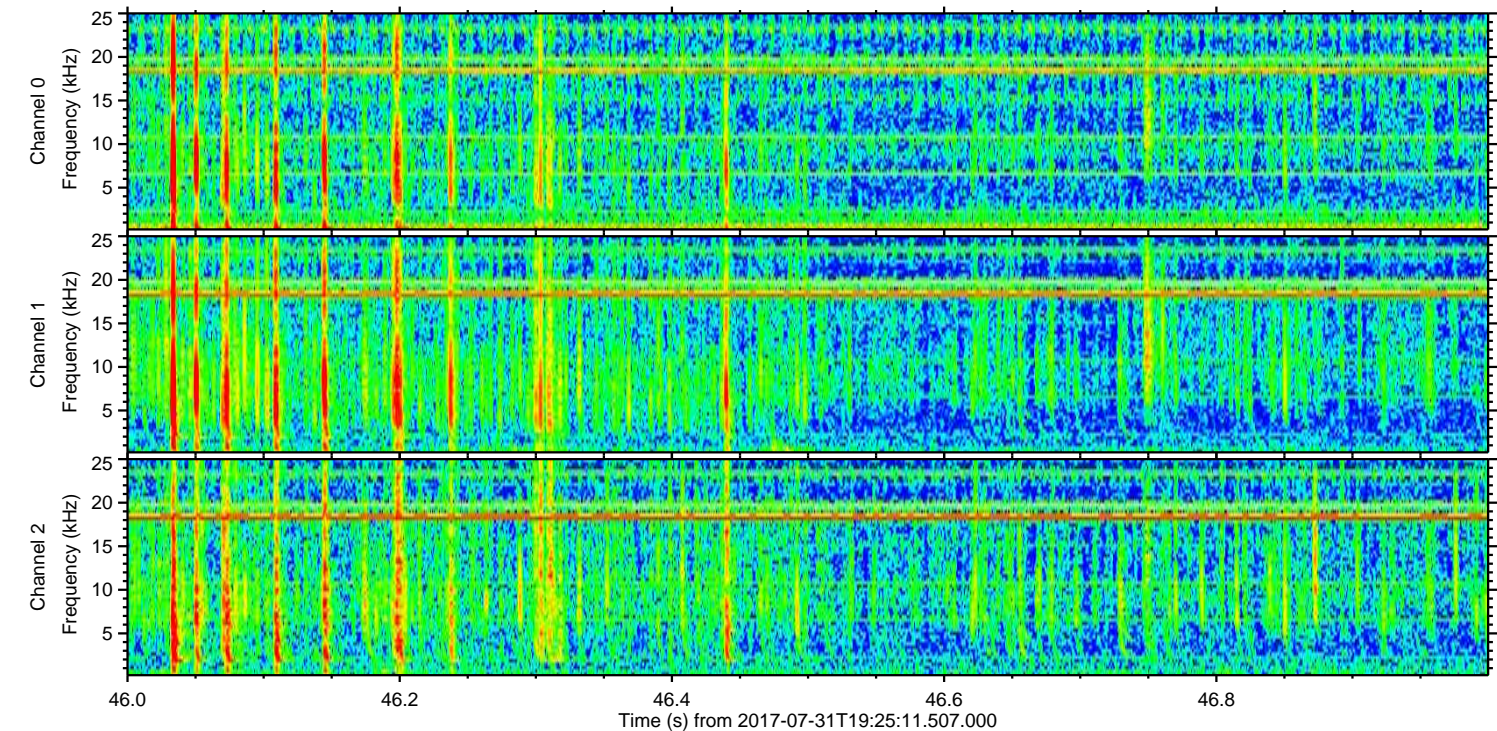
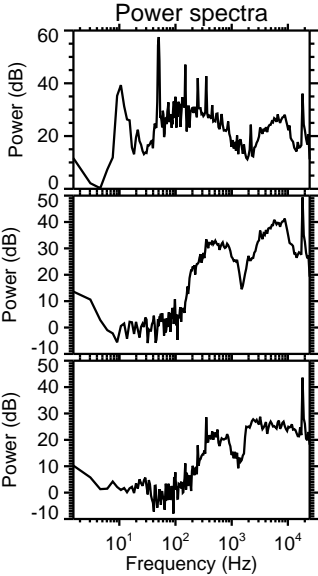
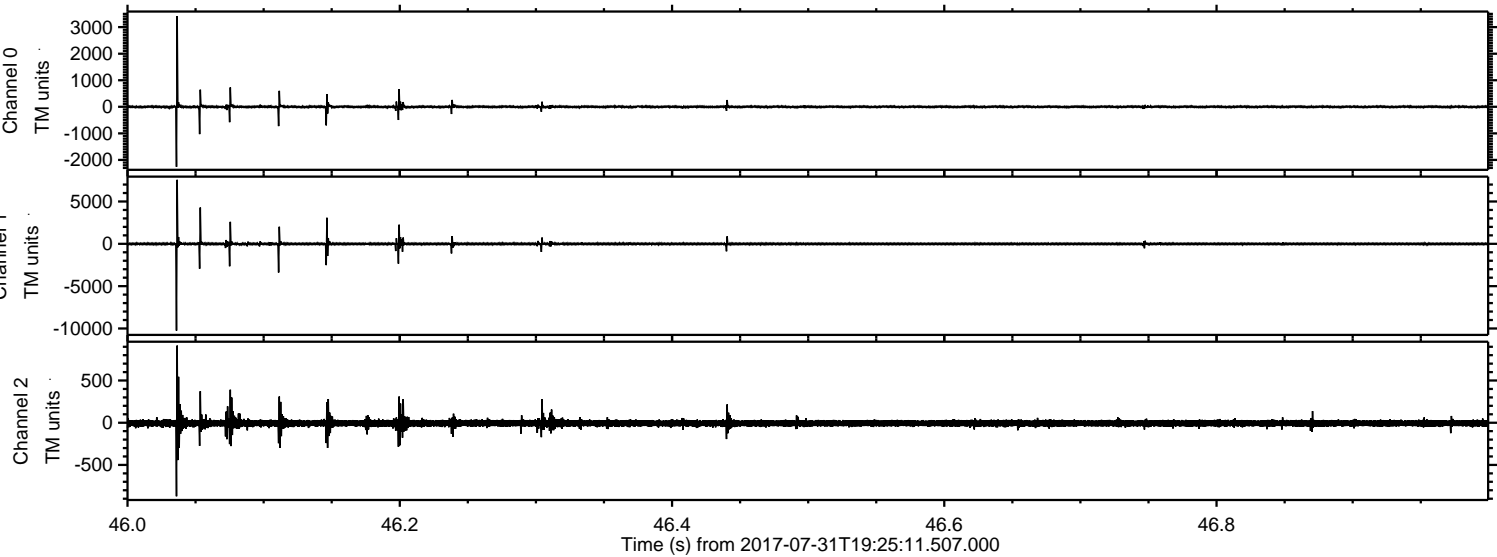


ELMAVAN 3D WAVEFORMS (Measured data sampled at 50 kHz) 51000 packets of 144 samples from 2017-07-31T19:25:11.507.000. Part 130/147

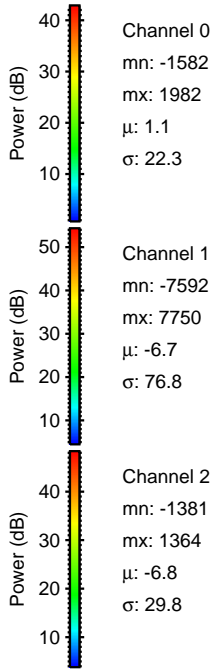
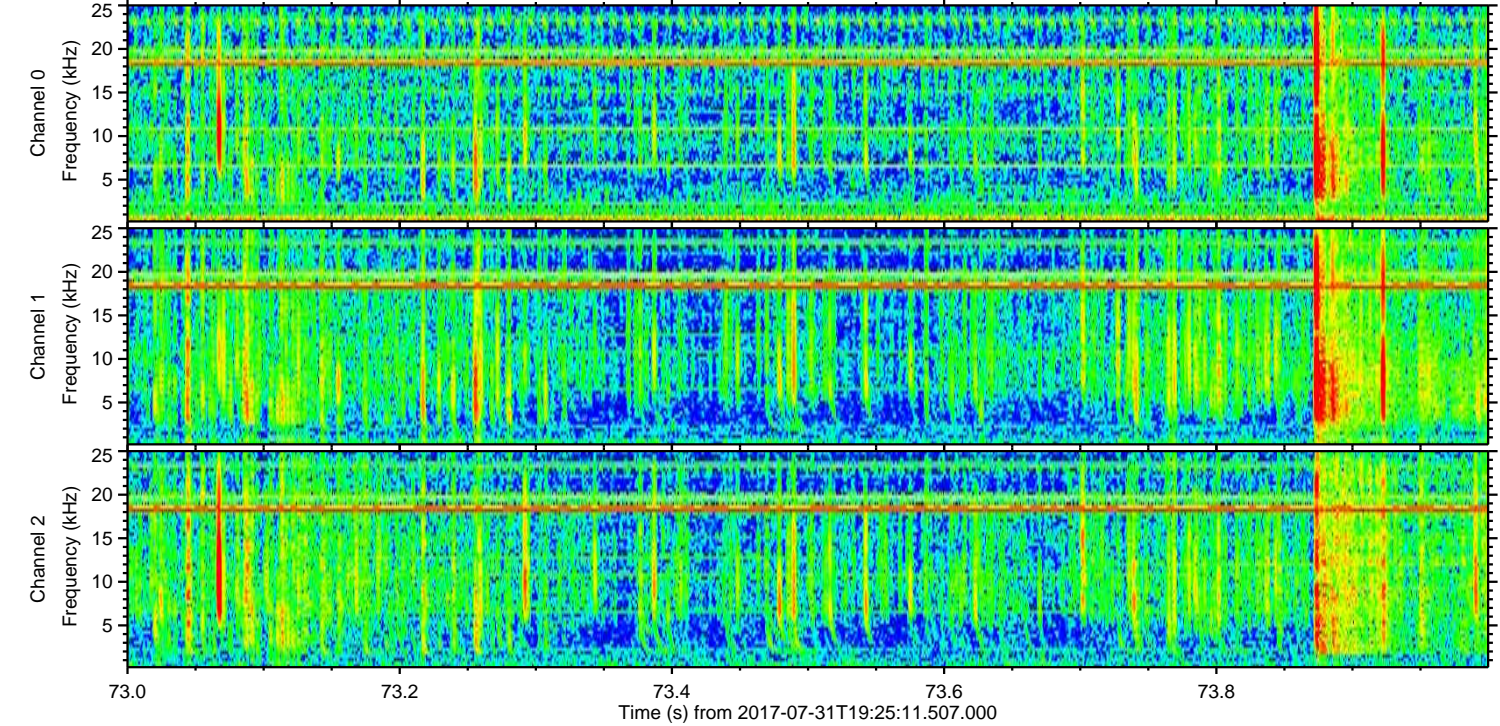
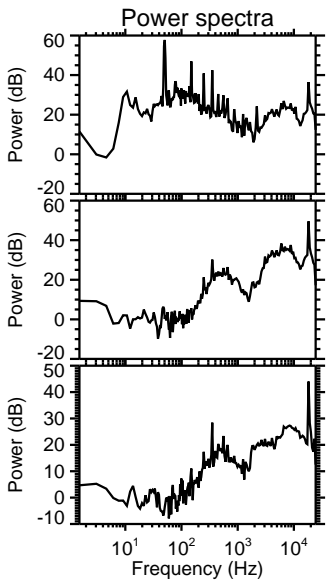
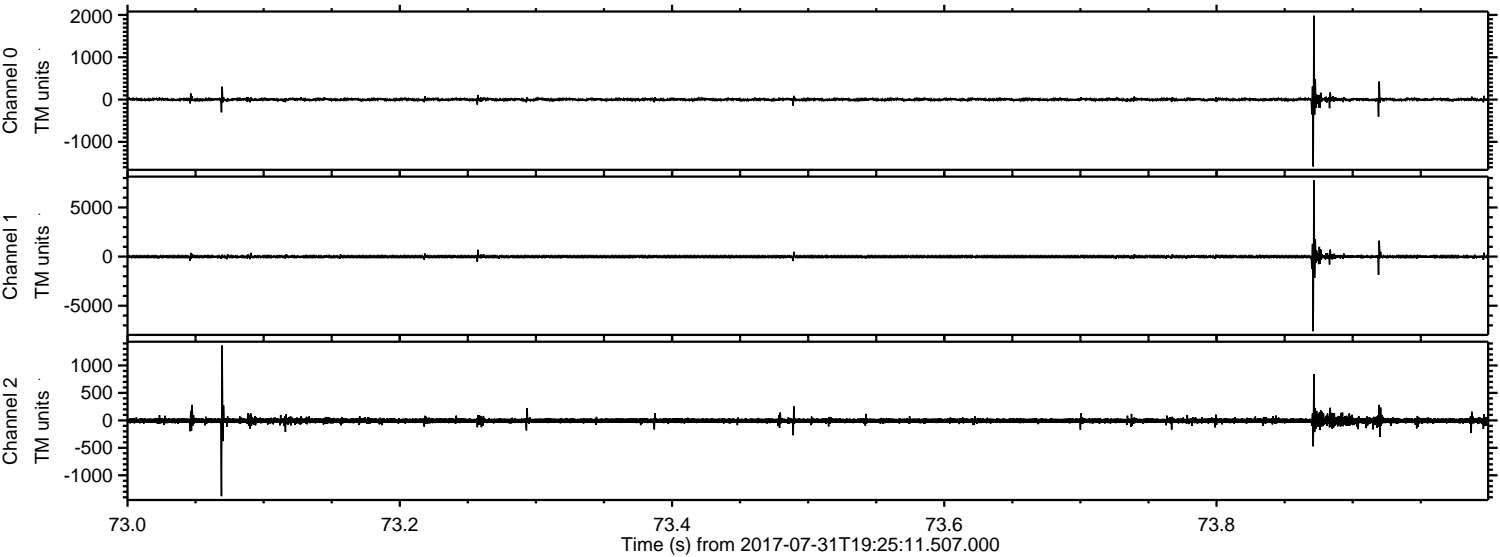
Processed Mon Jul 31 21:33:12 2017 by ELM ver.2012-10-06 from 001__elm20170731_192510__dat00.bin



Processed Mon Jul 31 21:33:12 2017 by ELM ver.2012-10-06 from 001__elm20170731_192510__dat00.bin



Processed Mon Jul 31 21:33:13 2017 by ELM ver.2012-10-06 from 001__elm20170731_192510__dat00.bin

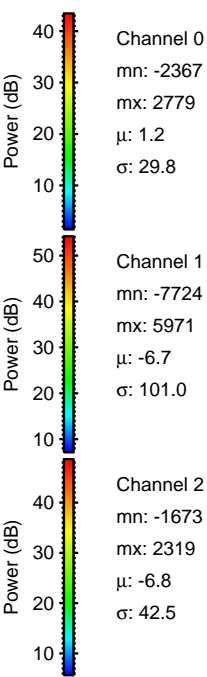
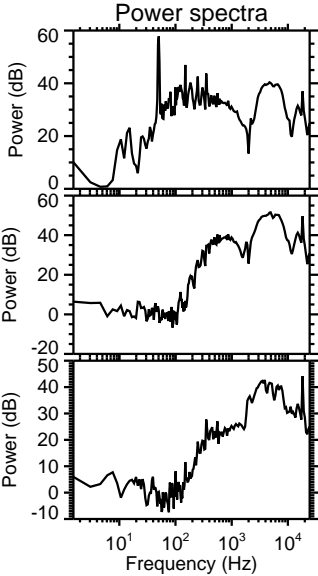
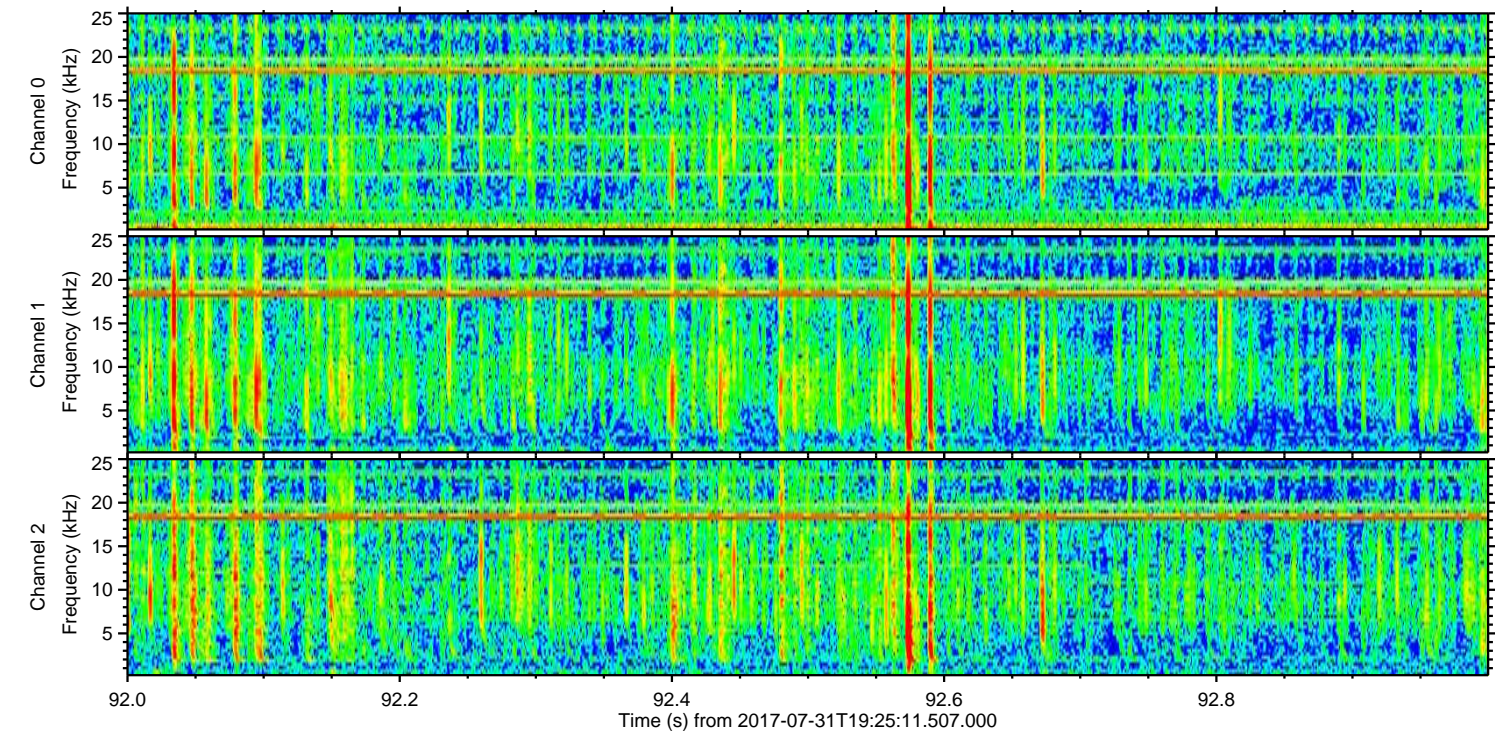
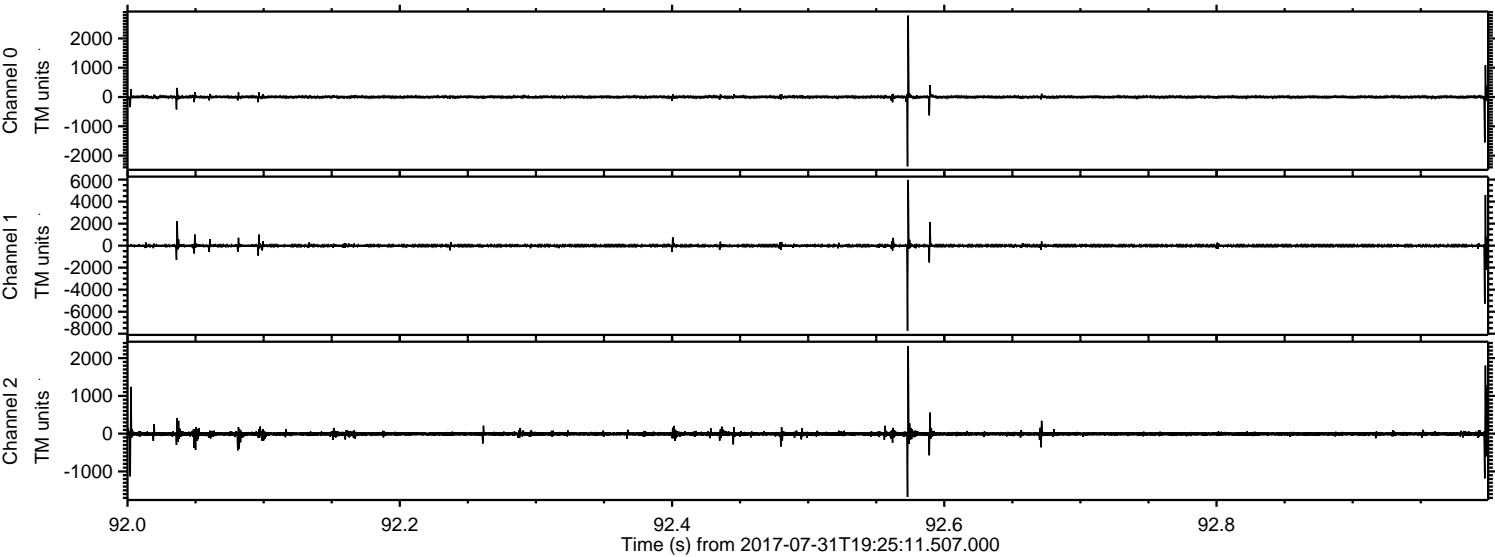


Channel 0
mn: -1582
mx: 1982
 μ : 1.1
 σ : 22.3

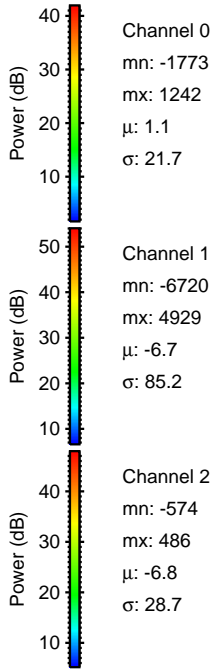
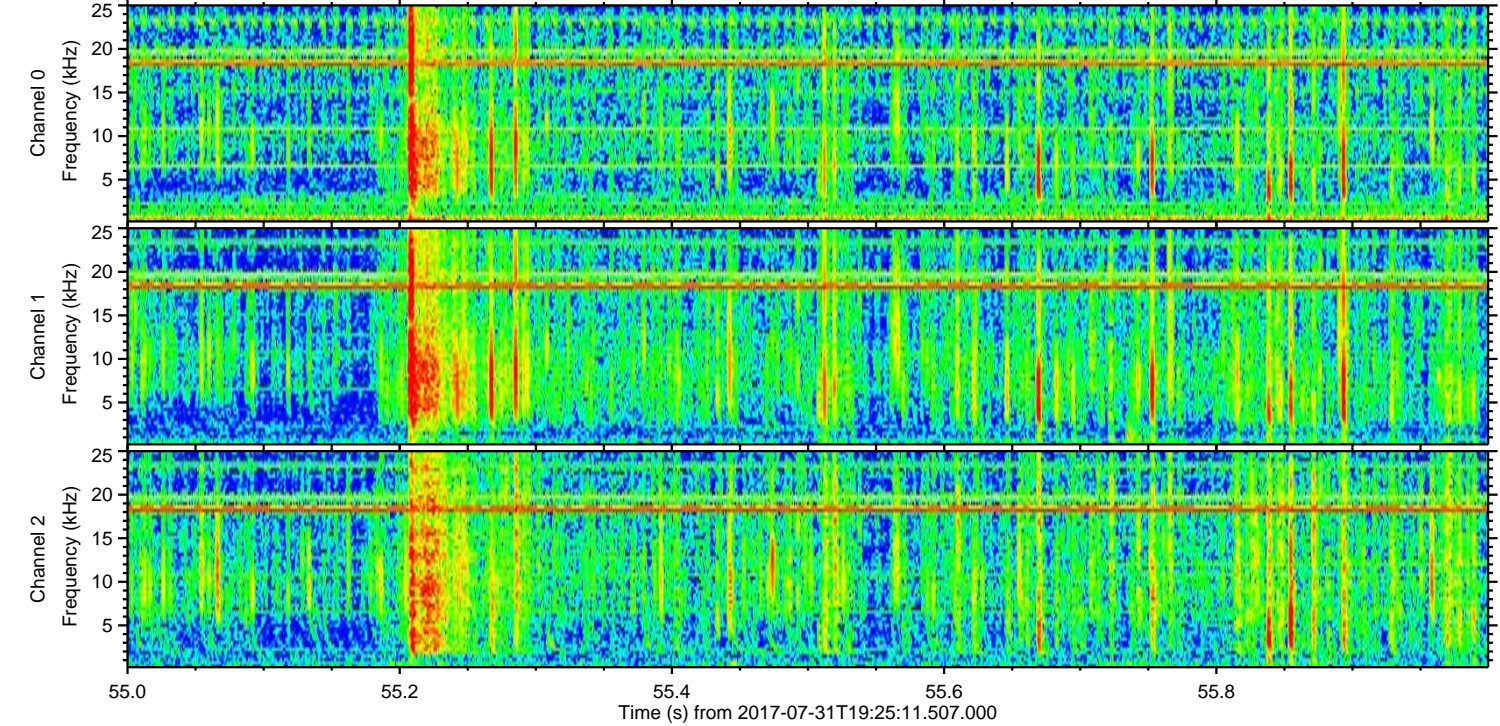
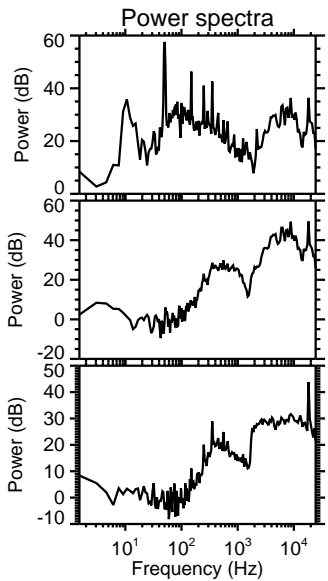
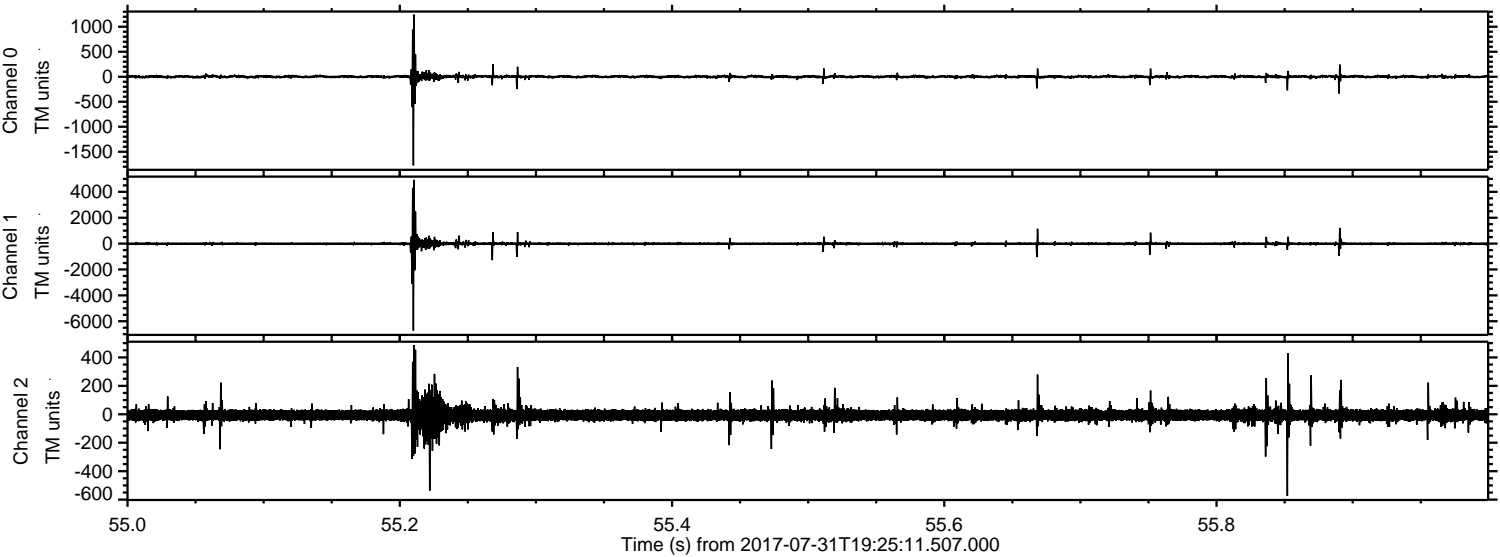
Channel 1
mn: -7592
mx: 7750
 μ : -6.7
 σ : 76.8

Channel 2
mn: -1381
mx: 1364
 μ : -6.8
 σ : 29.8

Processed Mon Jul 31 21:33:14 2017 by ELM ver.2012-10-06 from 001__elm20170731_192510__dat00.bin



Processed Mon Jul 31 21:33:15 2017 by ELM ver.2012-10-06 from 001__elm20170731_192510__dat00.bin



Processed Mon Jul 31 21:33:16 2017 by ELM ver.2012-10-06 from 001__elm20170731_192510__dat00.bin

