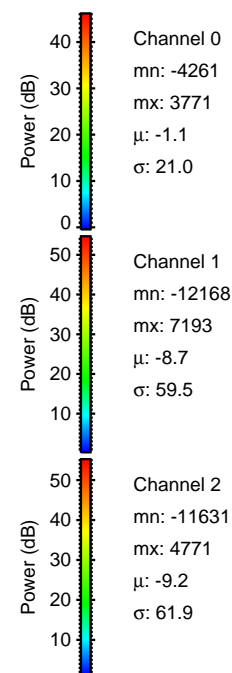
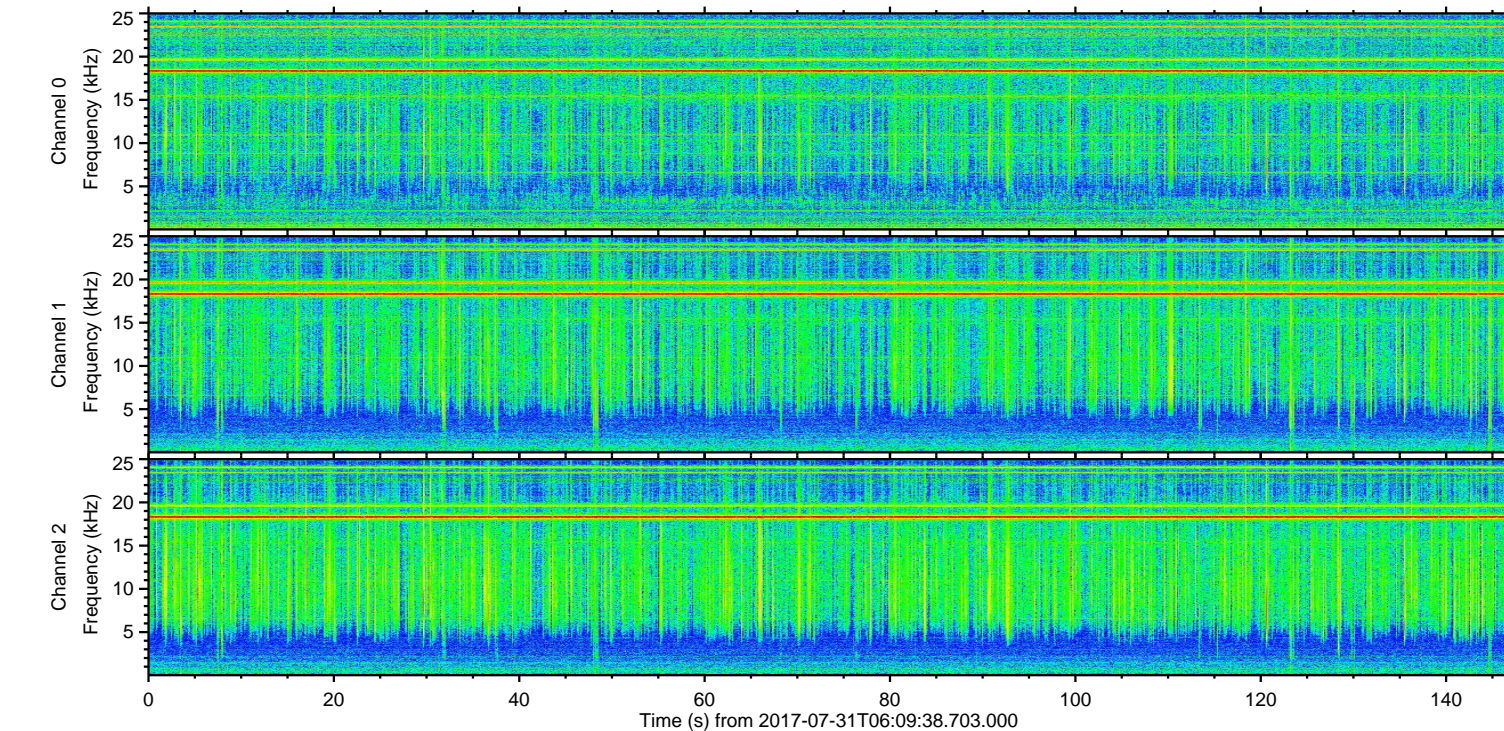
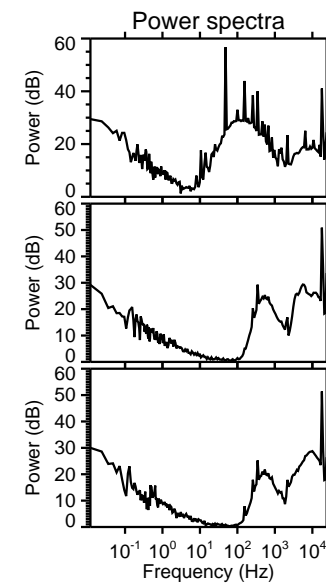
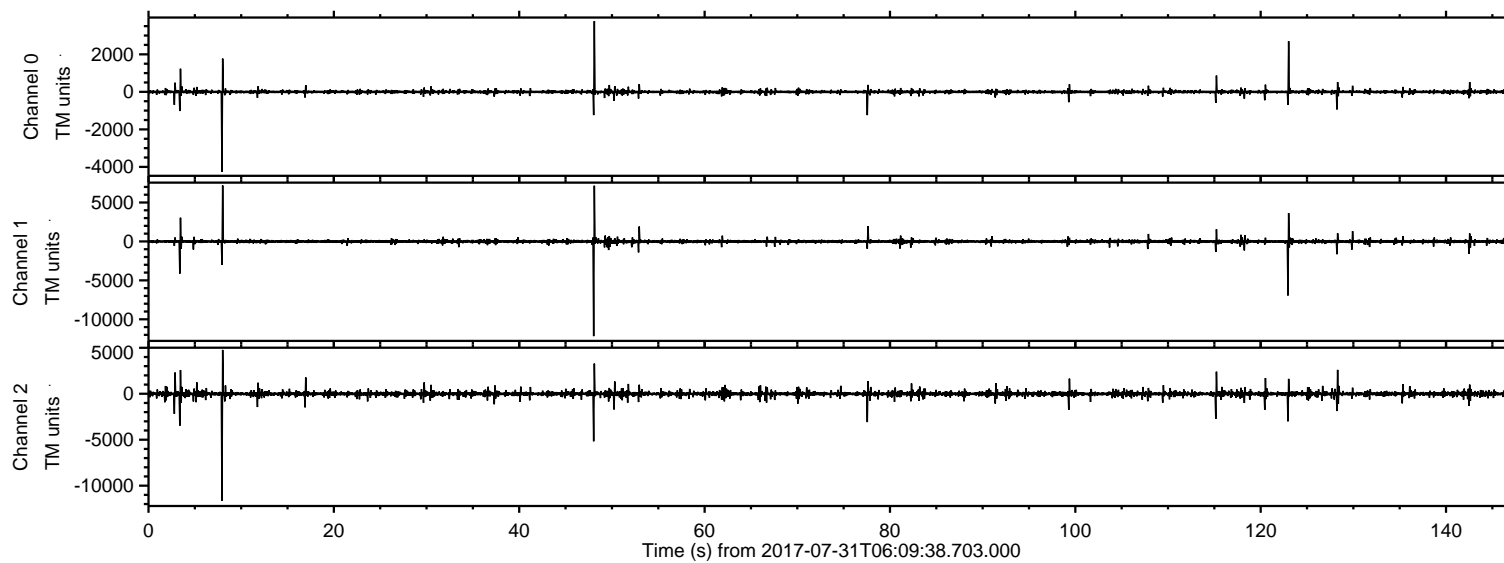
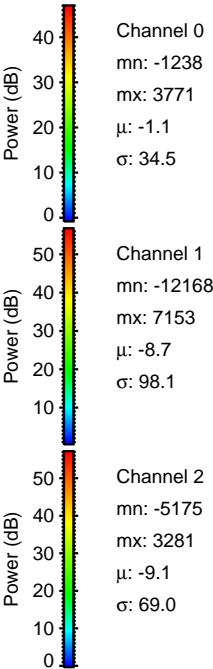
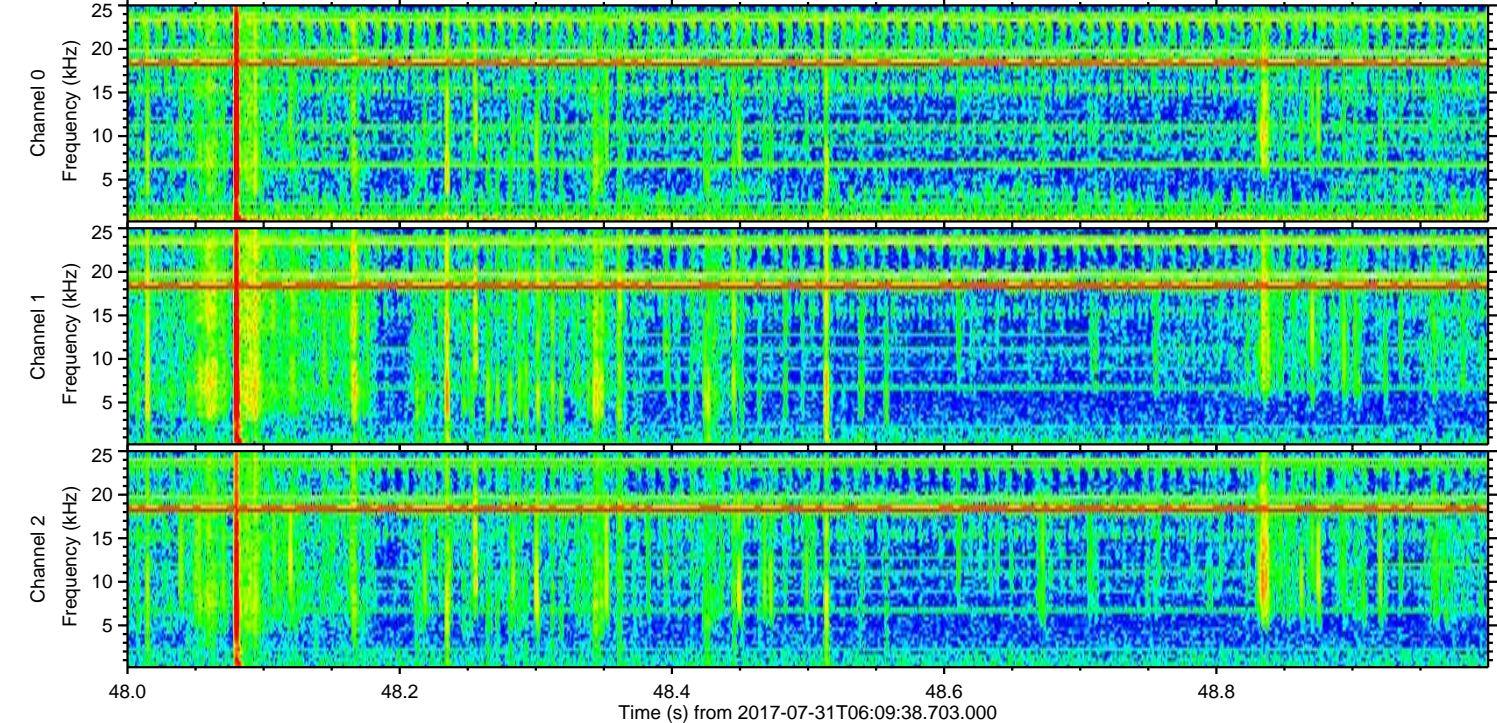
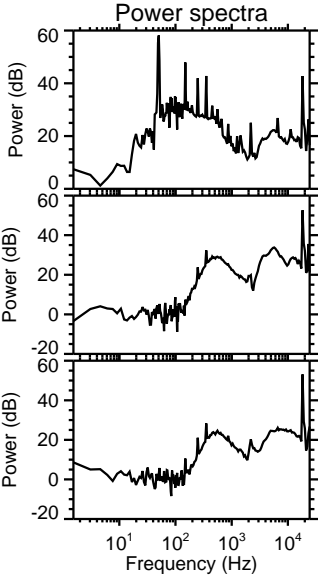
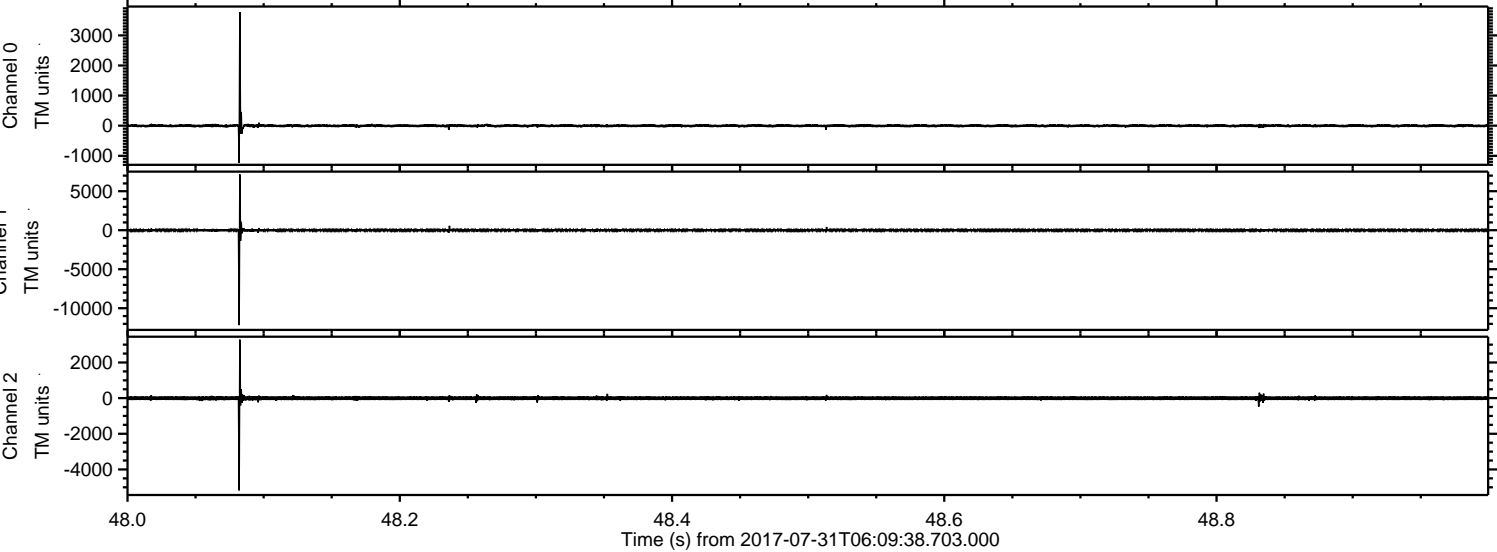


ELMAVAN 3D WAVEFORMS (Measured data sampled at 50 kHz) 51000 packets of 144 samples from 2017-07-31T06:09:38.703.000.

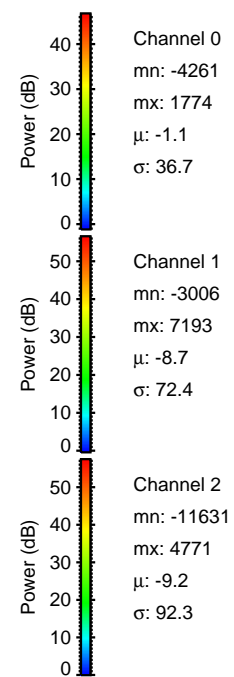
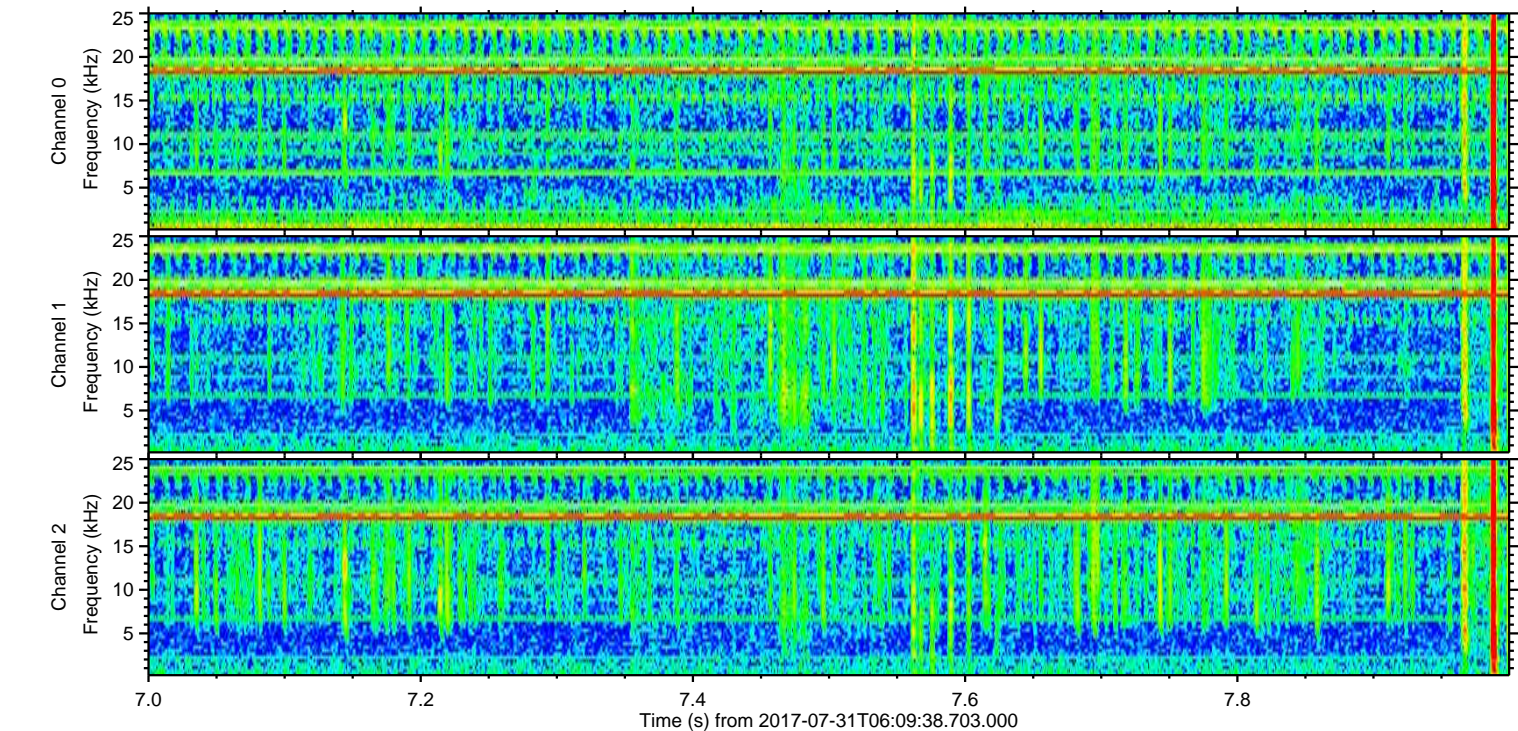
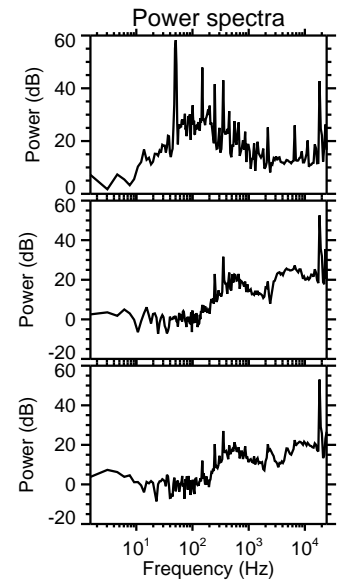
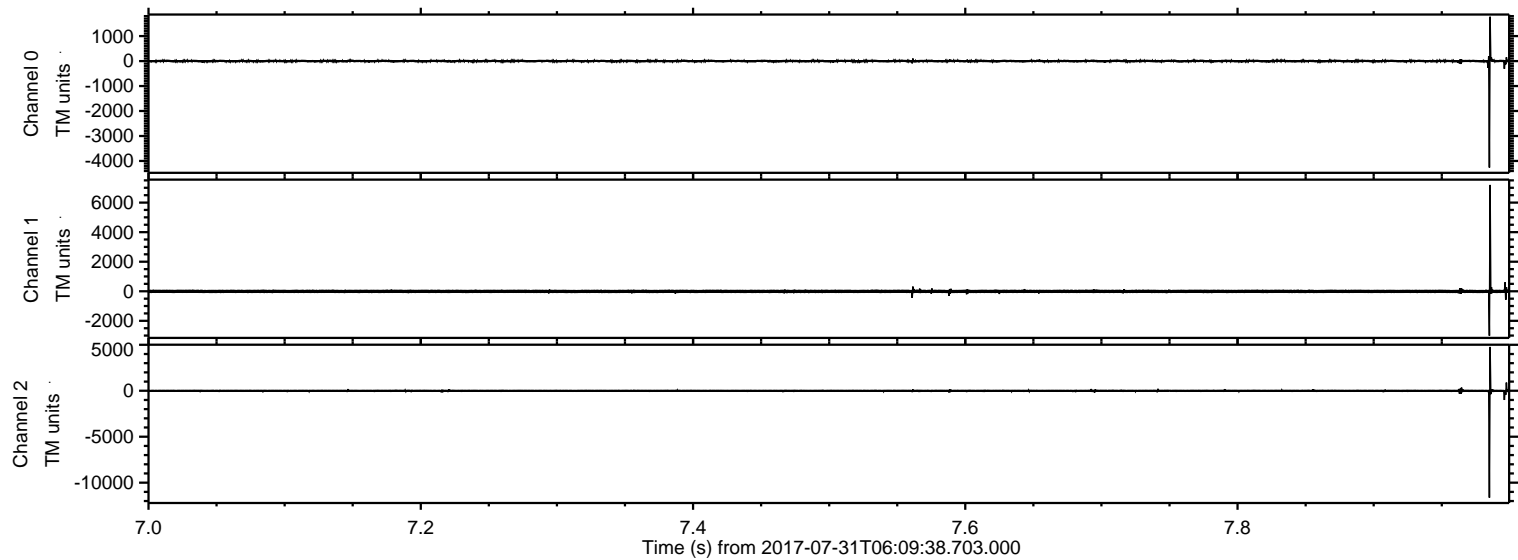
Processed Mon Jul 31 08:17:28 2017 by ELM ver.2012-10-06 from 001__elm20170731_060937__dat00.bin



Processed Mon Jul 31 08:17:35 2017 by ELM ver.2012-10-06 from 001__elm20170731_060937__dat00.bin

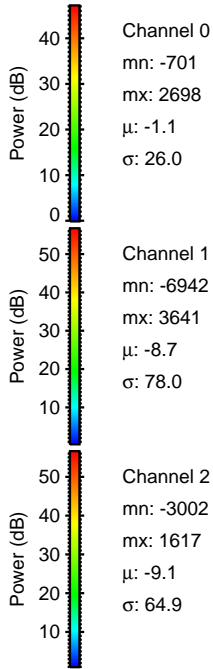
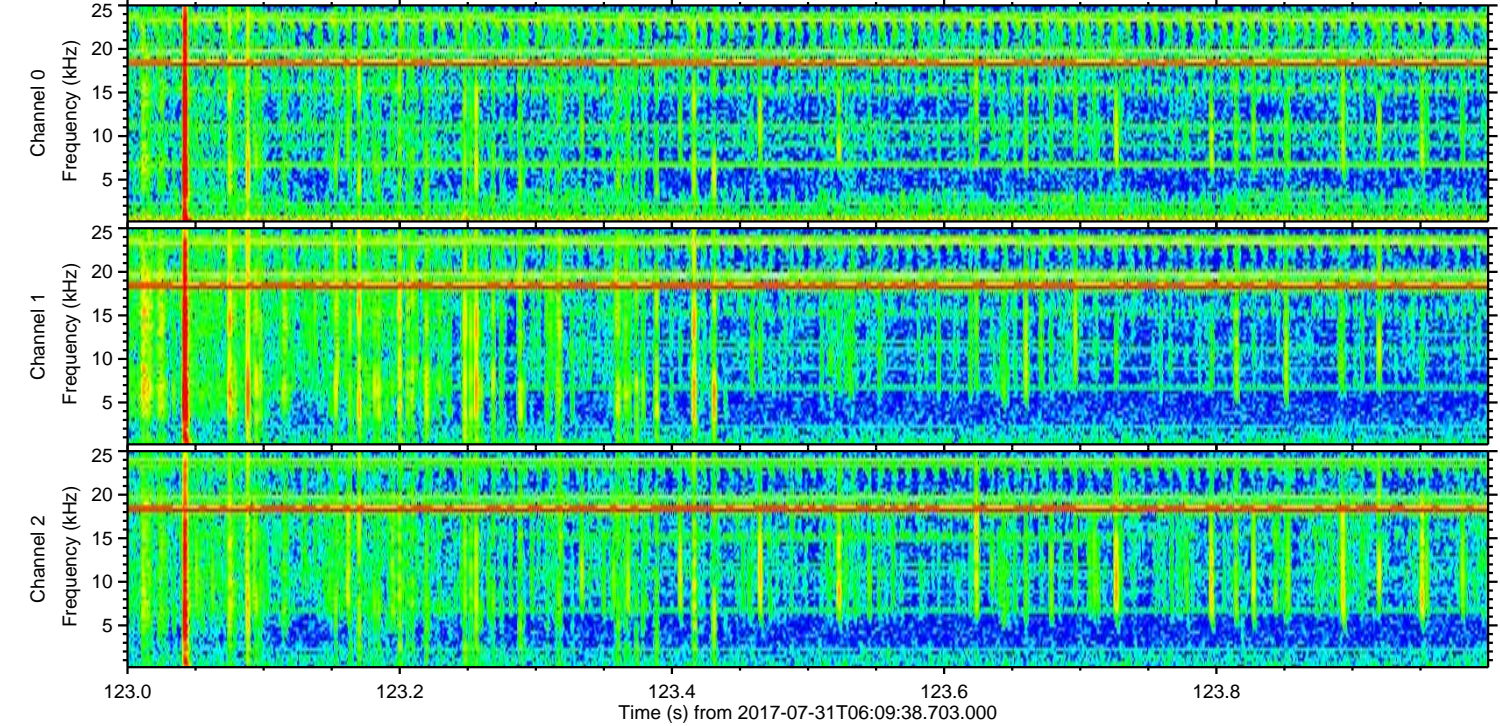
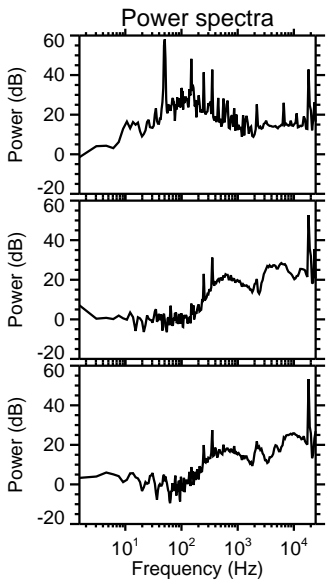
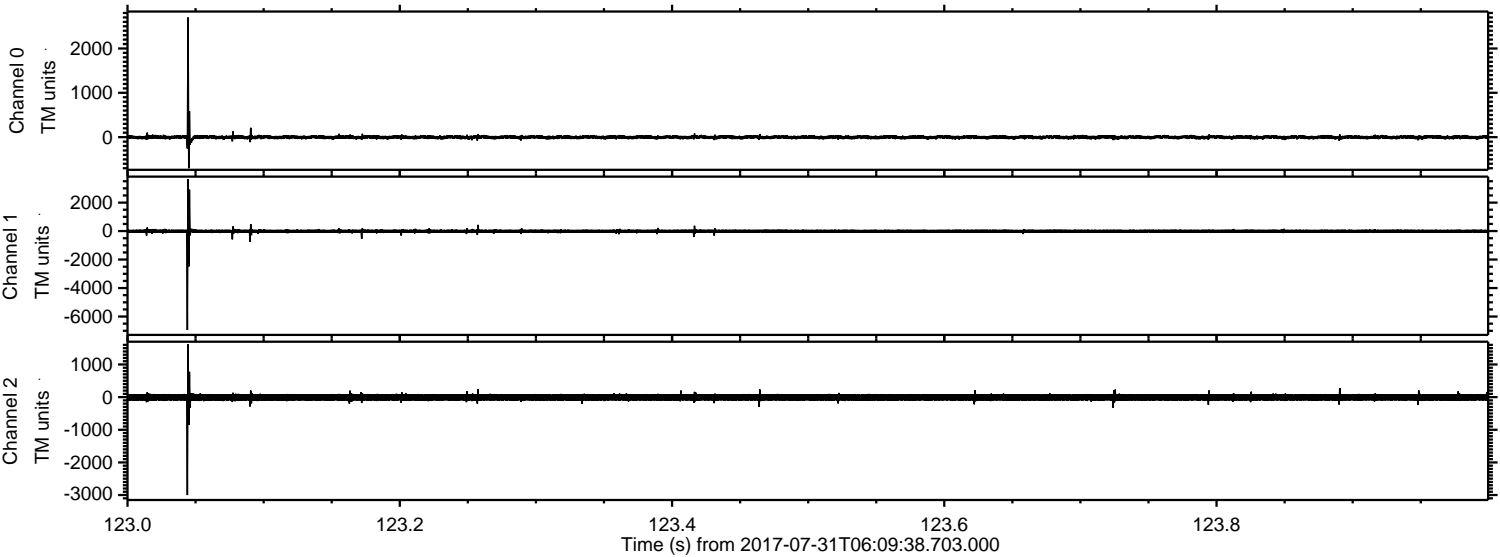


Processed Mon Jul 31 08:17:36 2017 by ELM ver.2012-10-06 from 001__elm20170731_060937__dat00.bin



ELMAVAN 3D WAVEFORMS (Measured data sampled at 50 kHz) 51000 packets of 144 samples from 2017-07-31T06:09:38.703.000. Part 124/147

Processed Mon Jul 31 08:17:36 2017 by ELM ver.2012-10-06 from 001__elm20170731_060937__dat00.bin

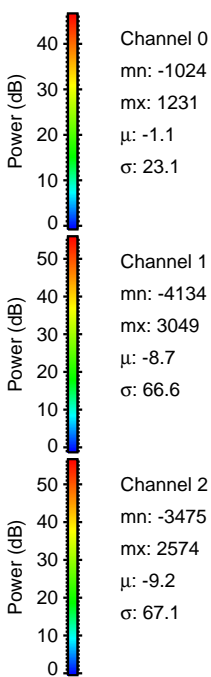
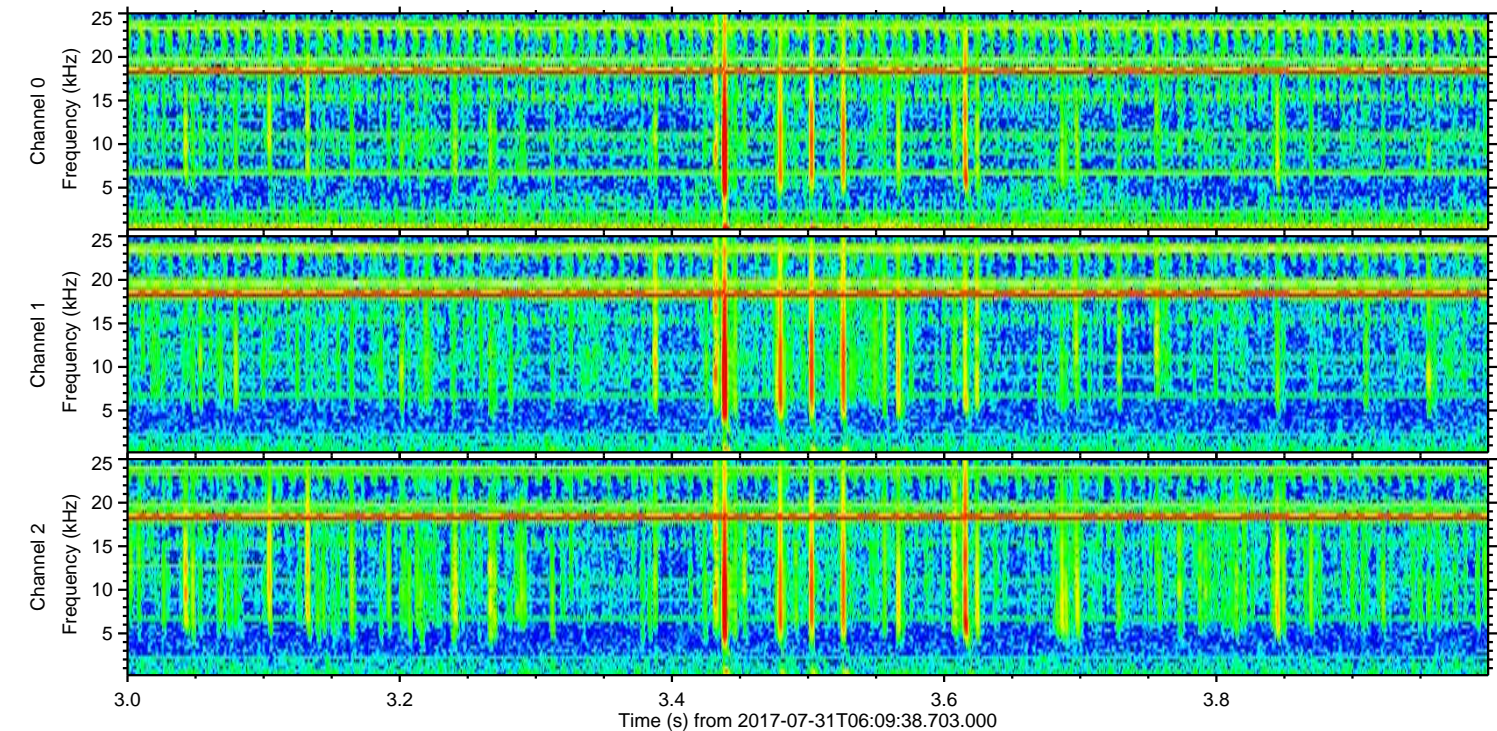
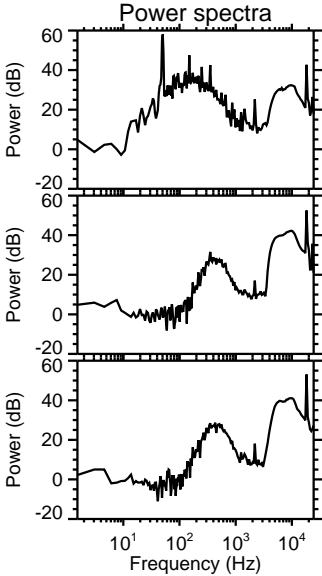
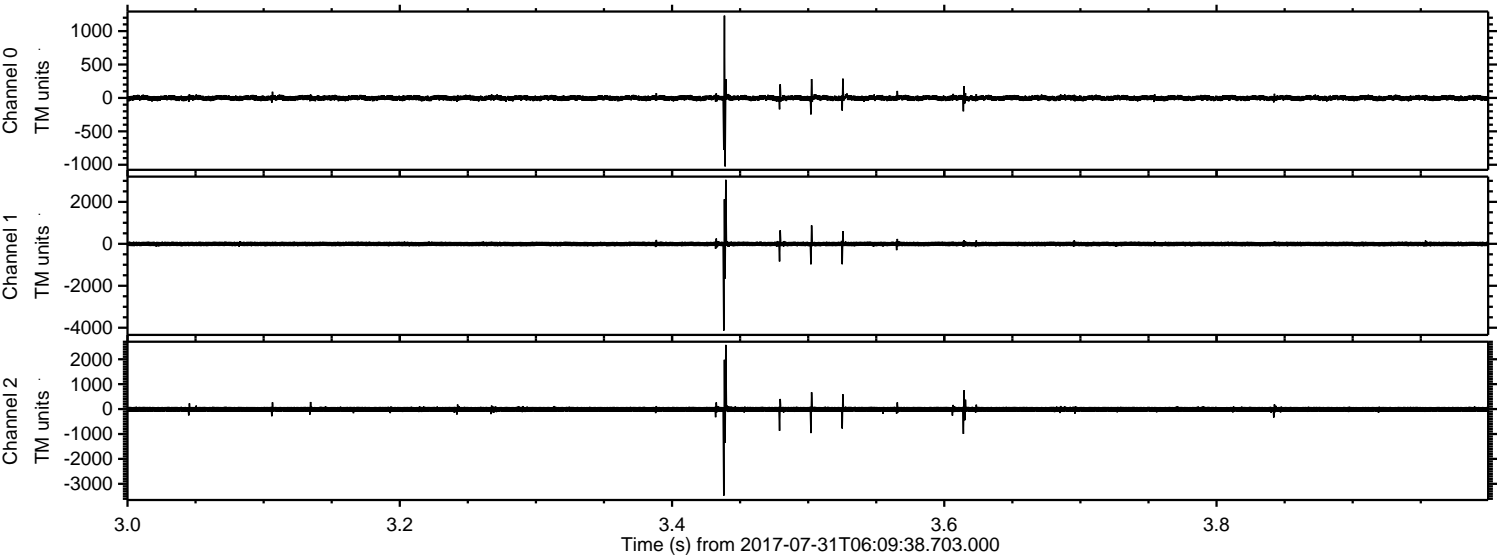


Channel 0
mn: -701
mx: 2698
 μ : -1.1
 σ : 26.0

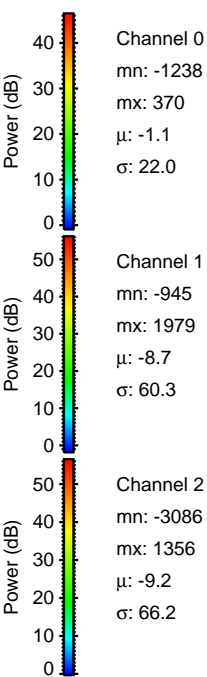
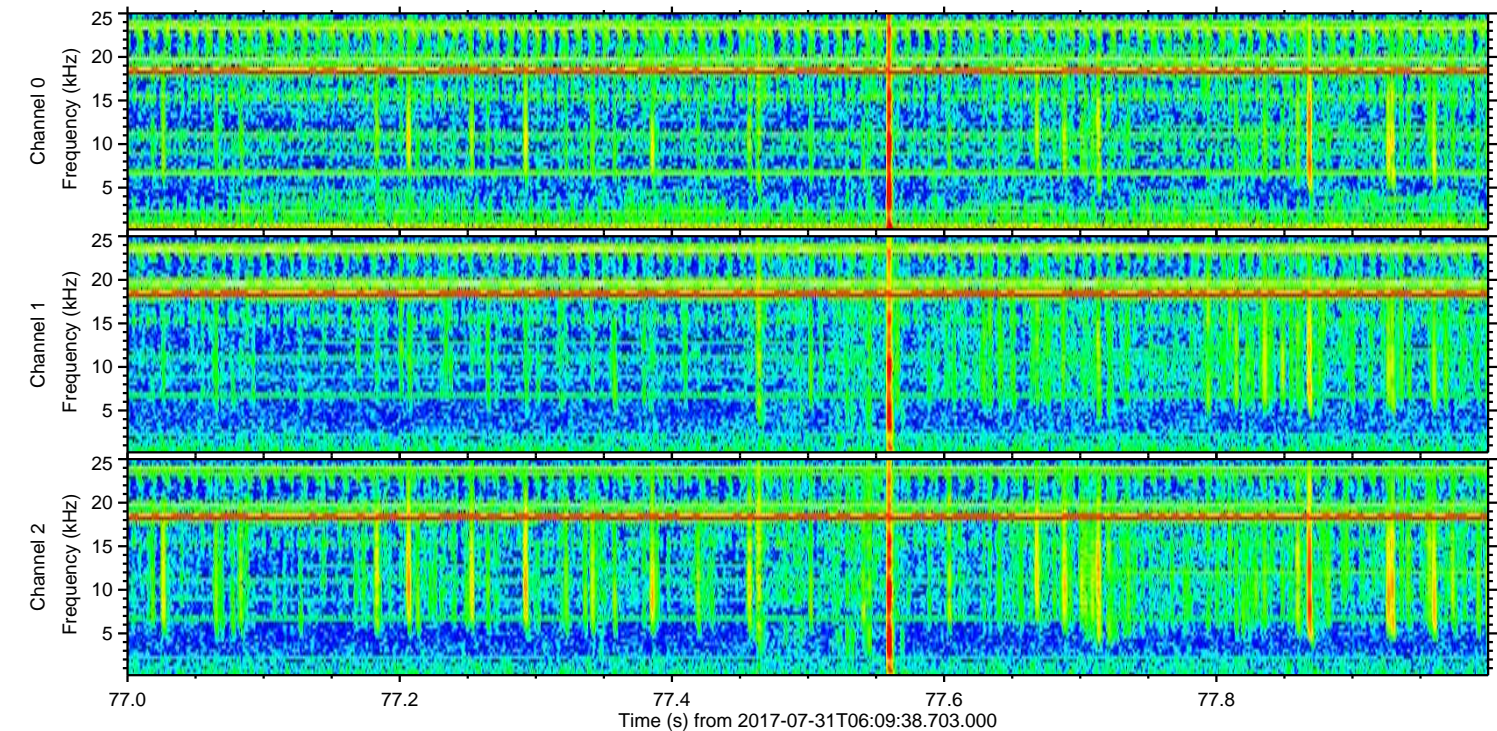
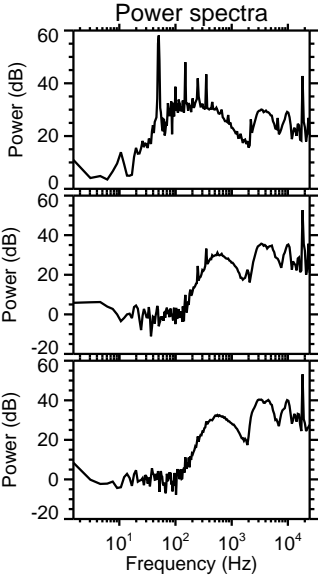
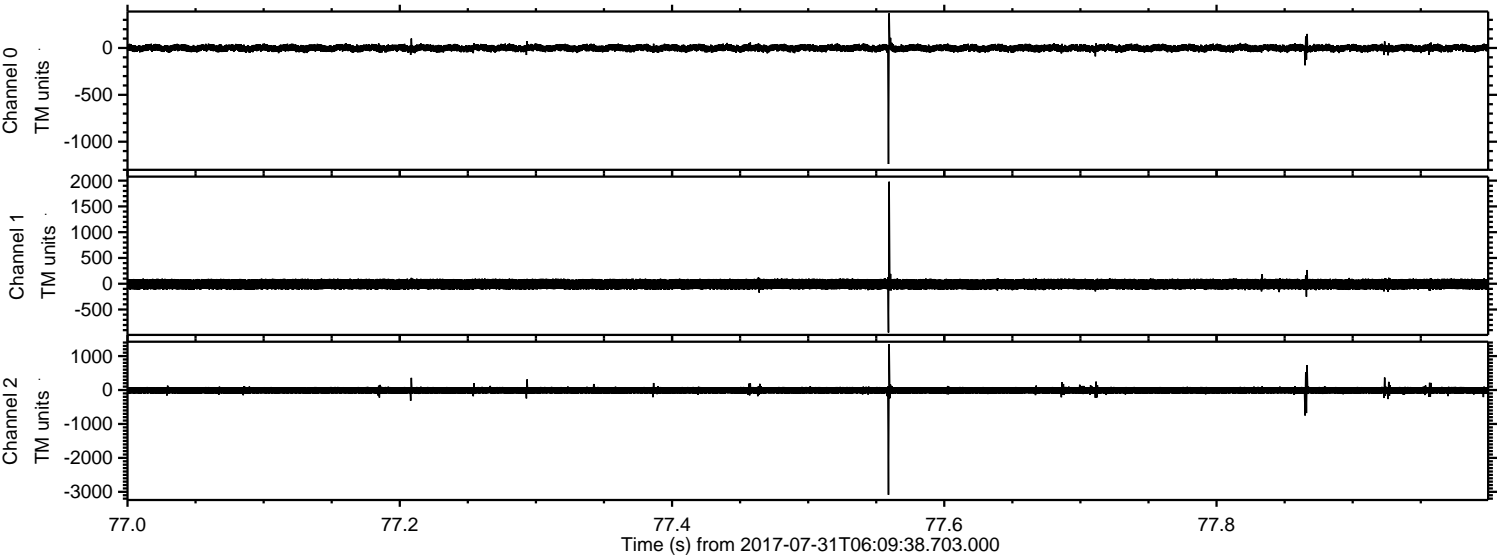
Channel 1
mn: -6942
mx: 3641
 μ : -8.7
 σ : 78.0

Channel 2
mn: -3002
mx: 1617
 μ : -9.1
 σ : 64.9

Processed Mon Jul 31 08:17:37 2017 by ELM ver.2012-10-06 from 001__elm20170731_060937__dat00.bin

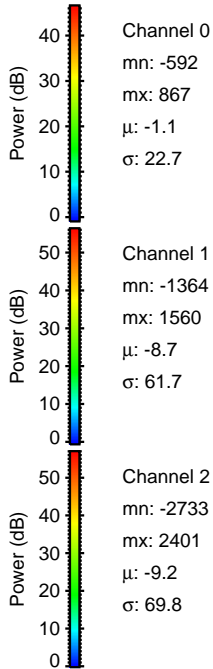
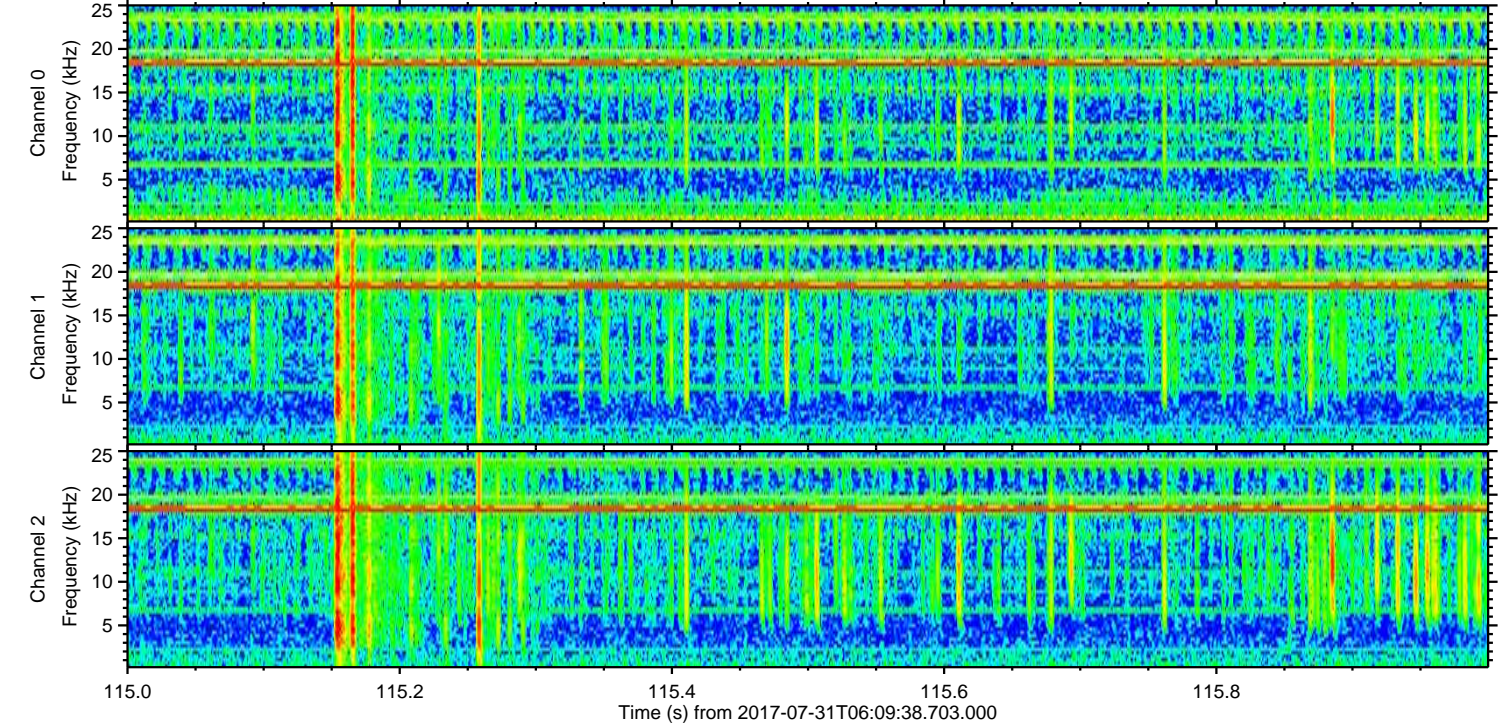
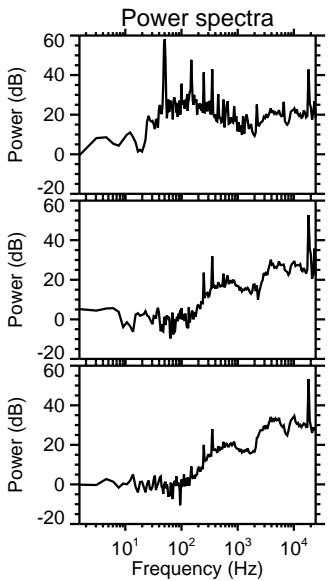
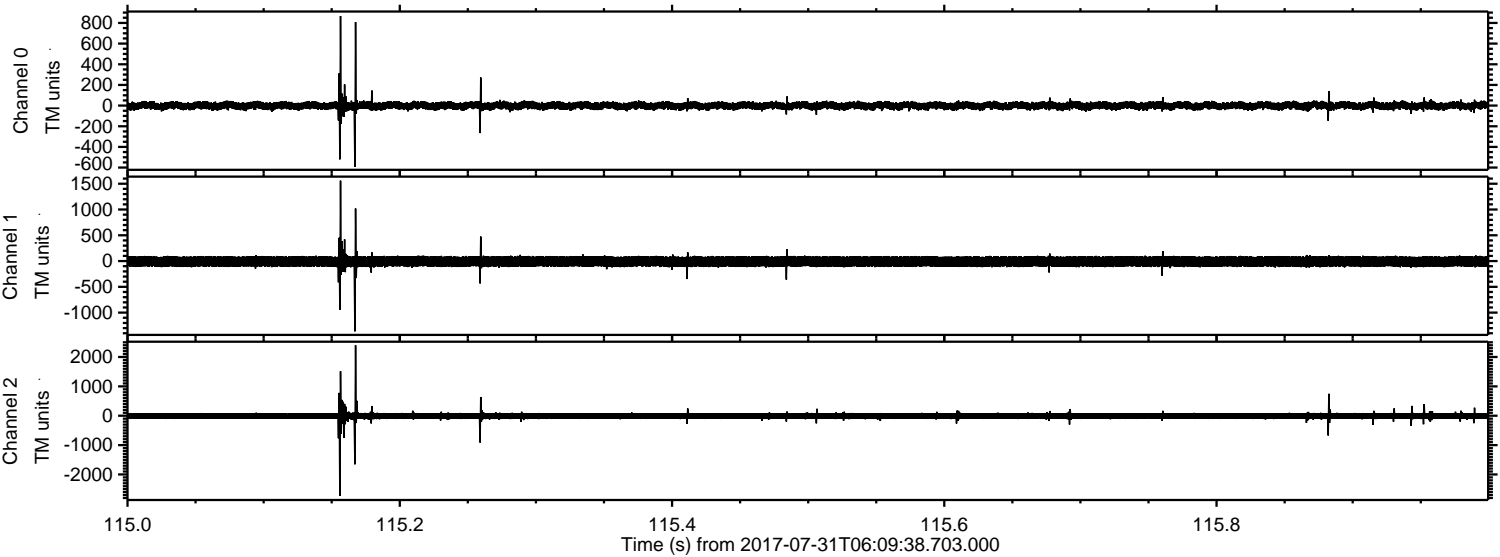


Processed Mon Jul 31 08:17:38 2017 by ELM ver.2012-10-06 from 001__elm20170731_060937__dat00.bin



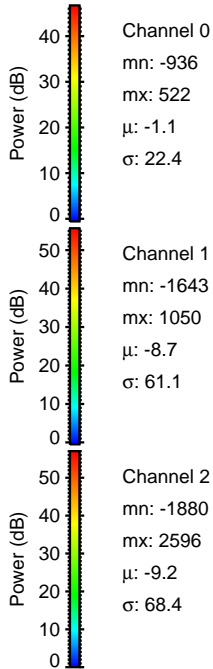
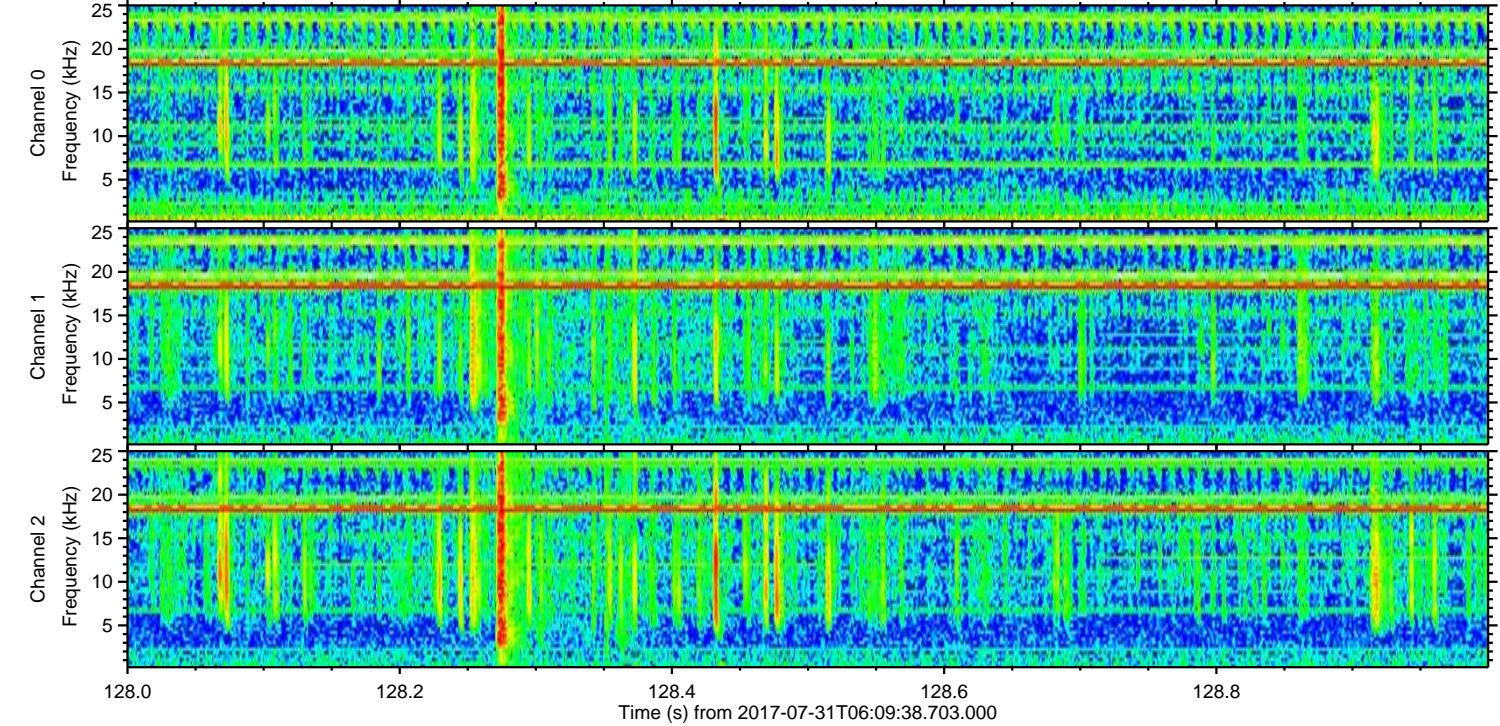
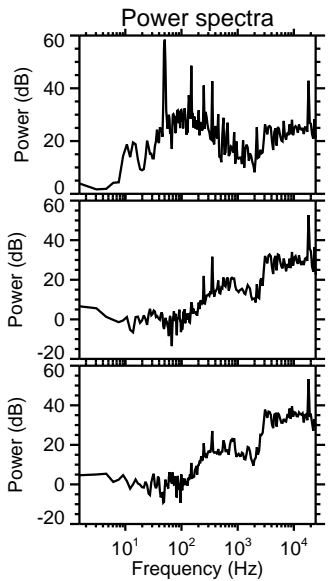
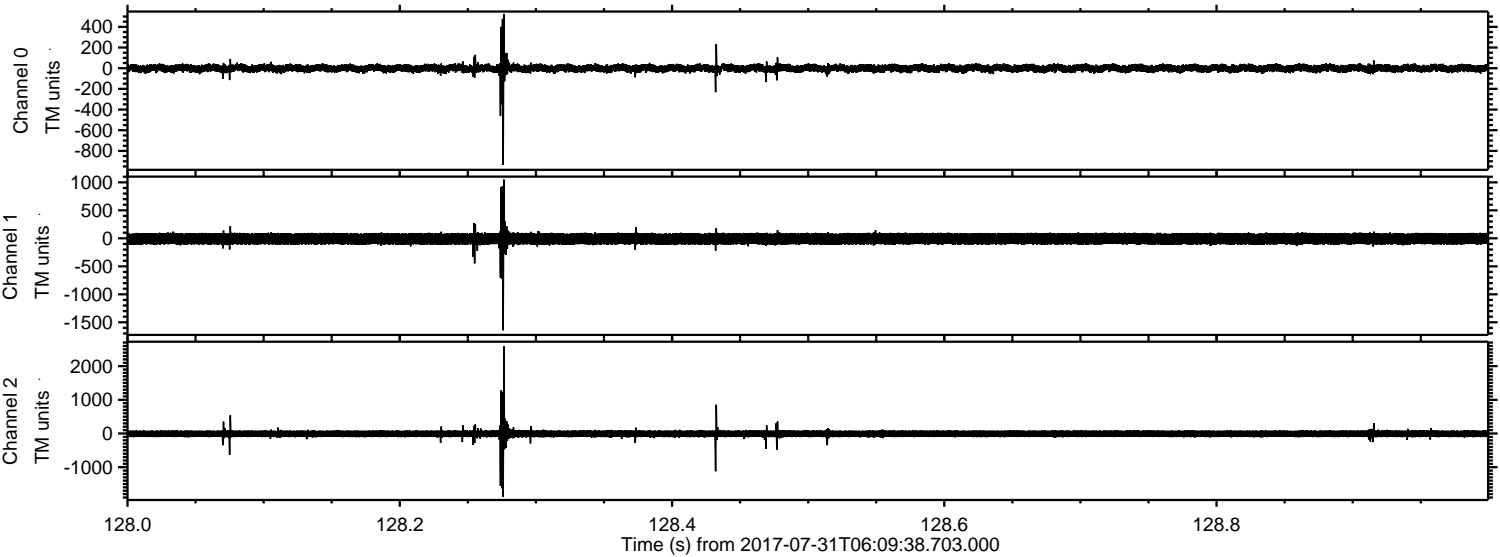
ELMAVAN 3D WAVEFORMS (Measured data sampled at 50 kHz) 51000 packets of 144 samples from 2017-07-31T06:09:38.703.000. Part 116/147

Processed Mon Jul 31 08:17:38 2017 by ELM ver.2012-10-06 from 001__elm20170731_060937__dat00.bin



ELMAVAN 3D WAVEFORMS (Measured data sampled at 50 kHz) 51000 packets of 144 samples from 2017-07-31T06:09:38.703.000. Part 129/147

Processed Mon Jul 31 08:17:39 2017 by ELM ver.2012-10-06 from 001__elm20170731_060937__dat00.bin

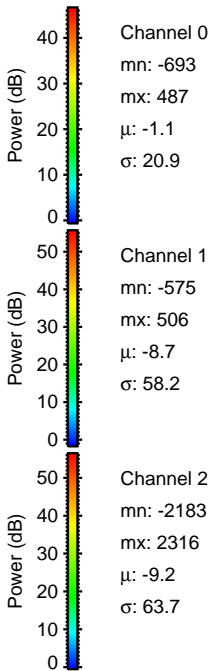
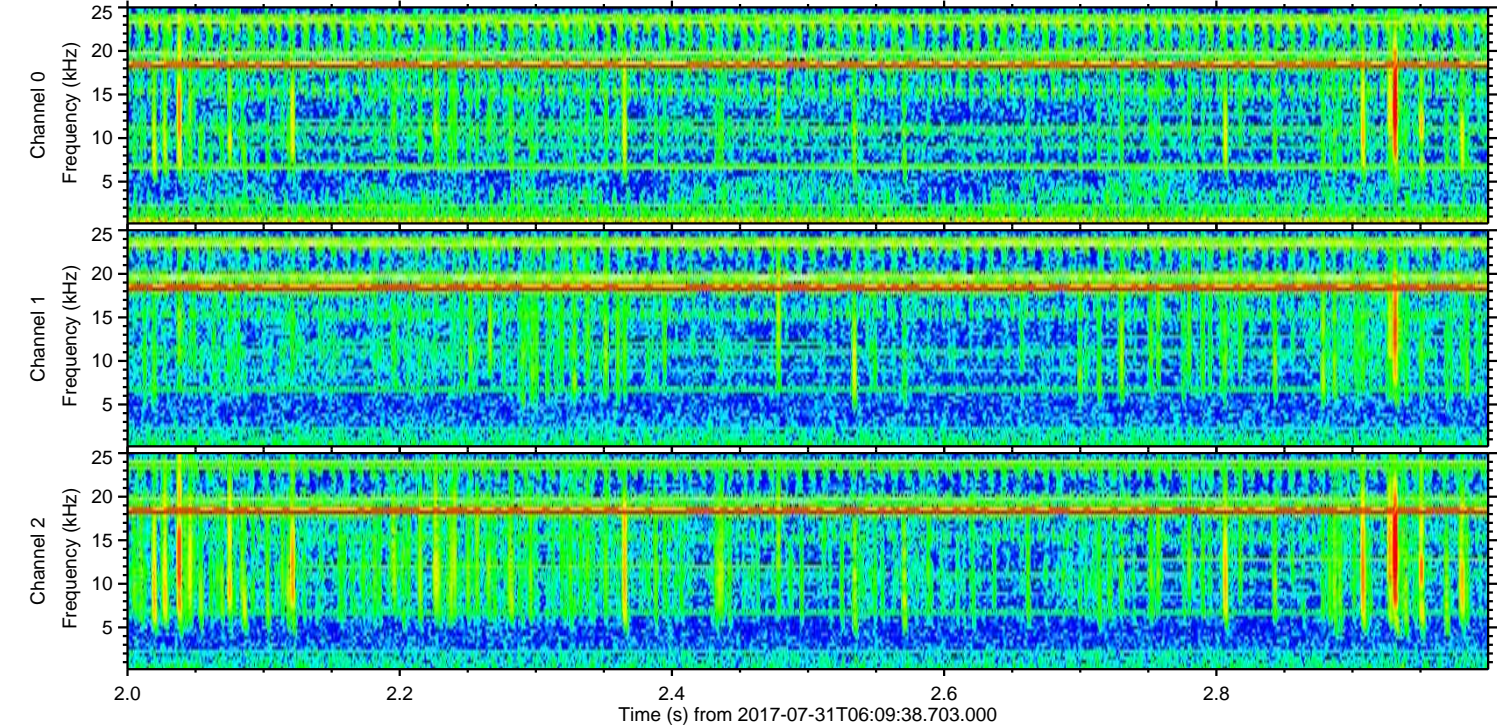
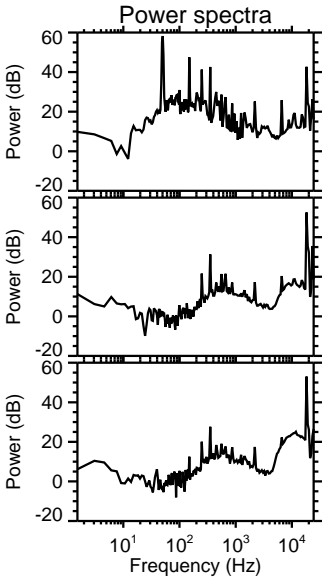
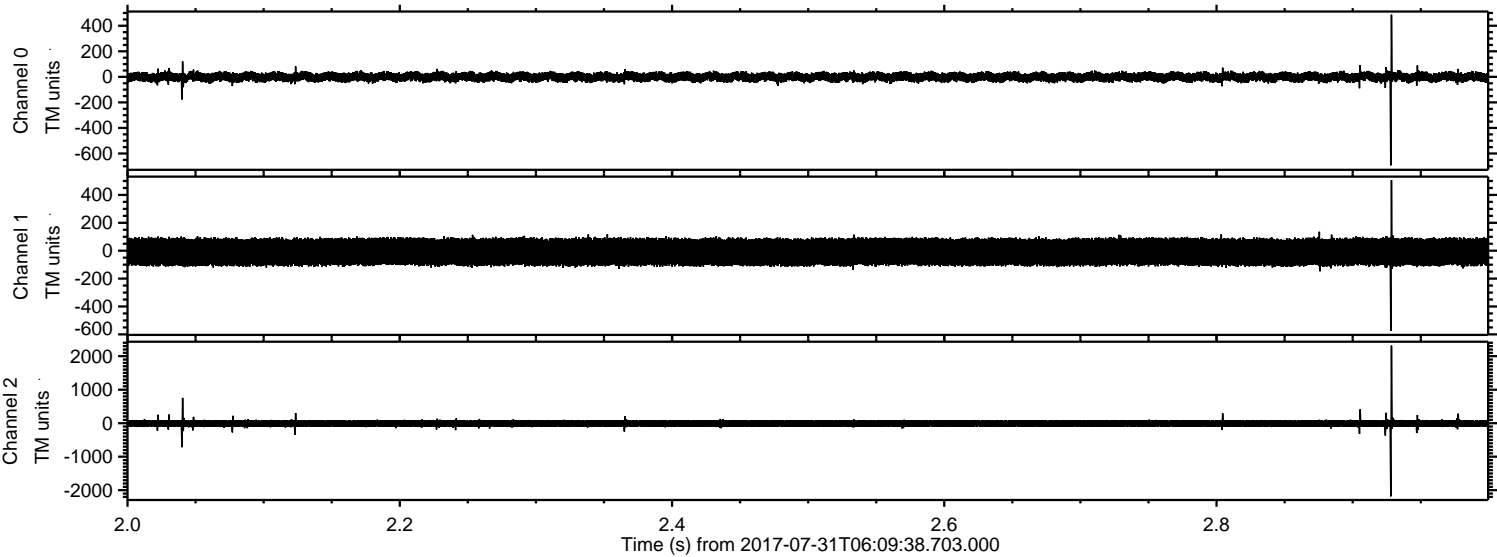


Channel 0
mn: -936
mx: 522
 μ : -1.1
 σ : 22.4

Channel 1
mn: -1643
mx: 1050
 μ : -8.7
 σ : 61.1

Channel 2
mn: -1880
mx: 2596
 μ : -9.2
 σ : 68.4

Processed Mon Jul 31 08:17:40 2017 by ELM ver.2012-10-06 from 001__elm20170731_060937__dat00.bin



Processed Mon Jul 31 08:17:41 2017 by ELM ver.2012-10-06 from 001__elm20170731_060937__dat00.bin

