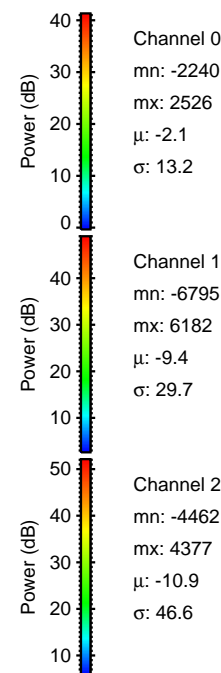
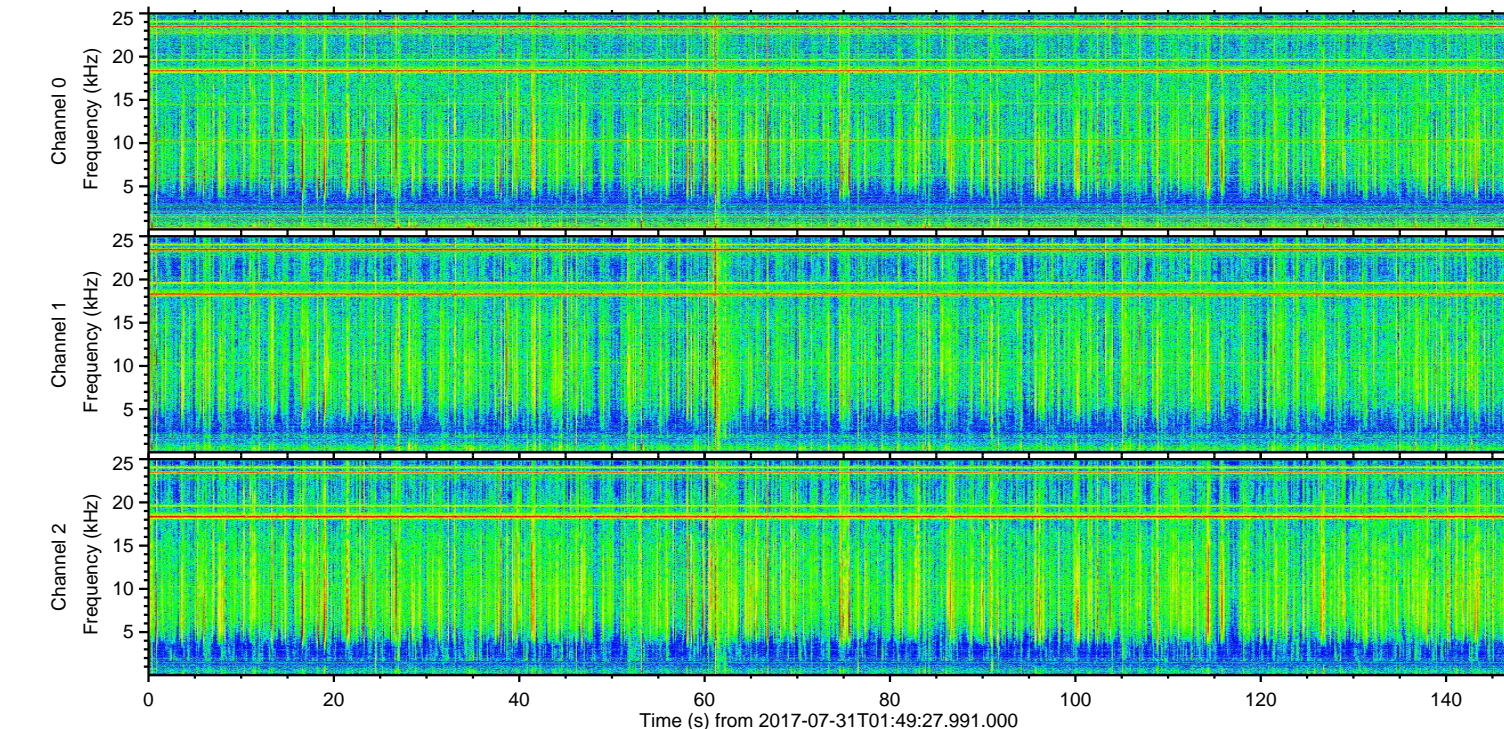
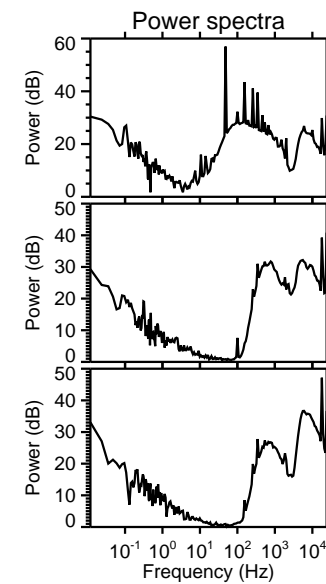
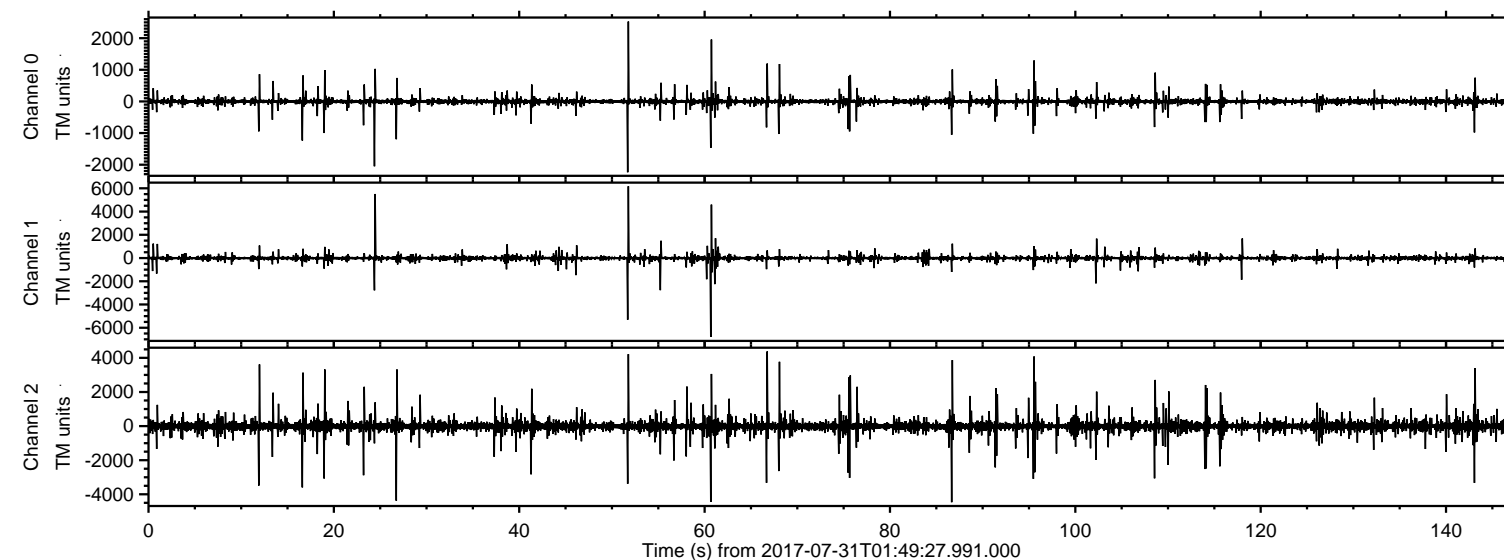
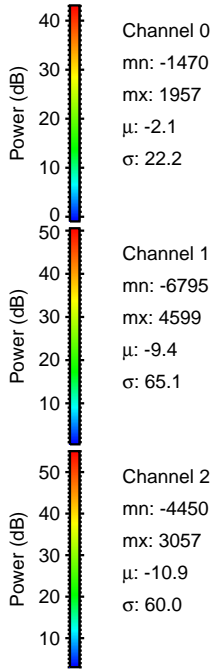
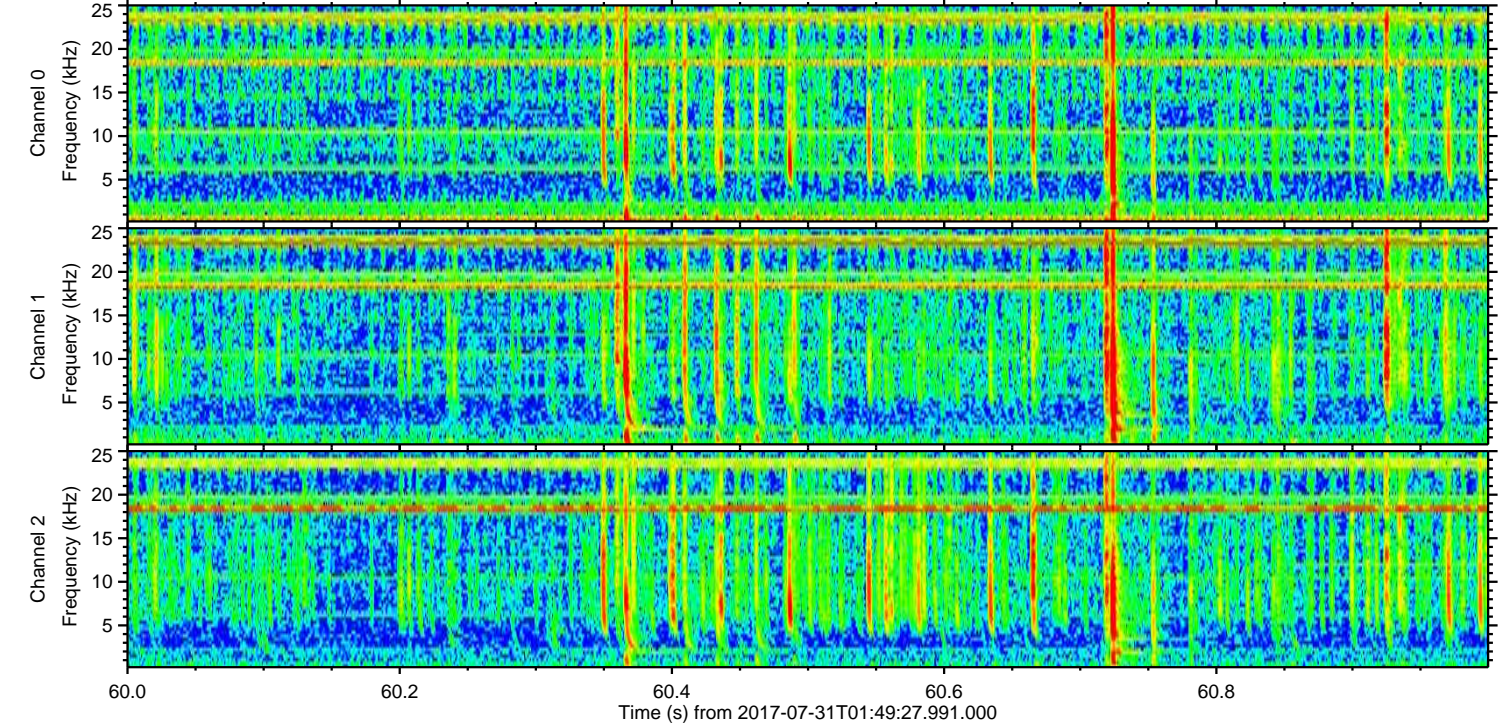
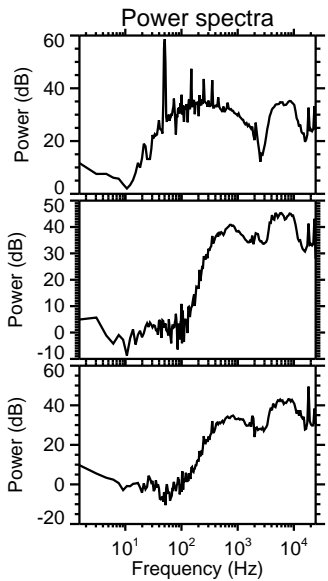
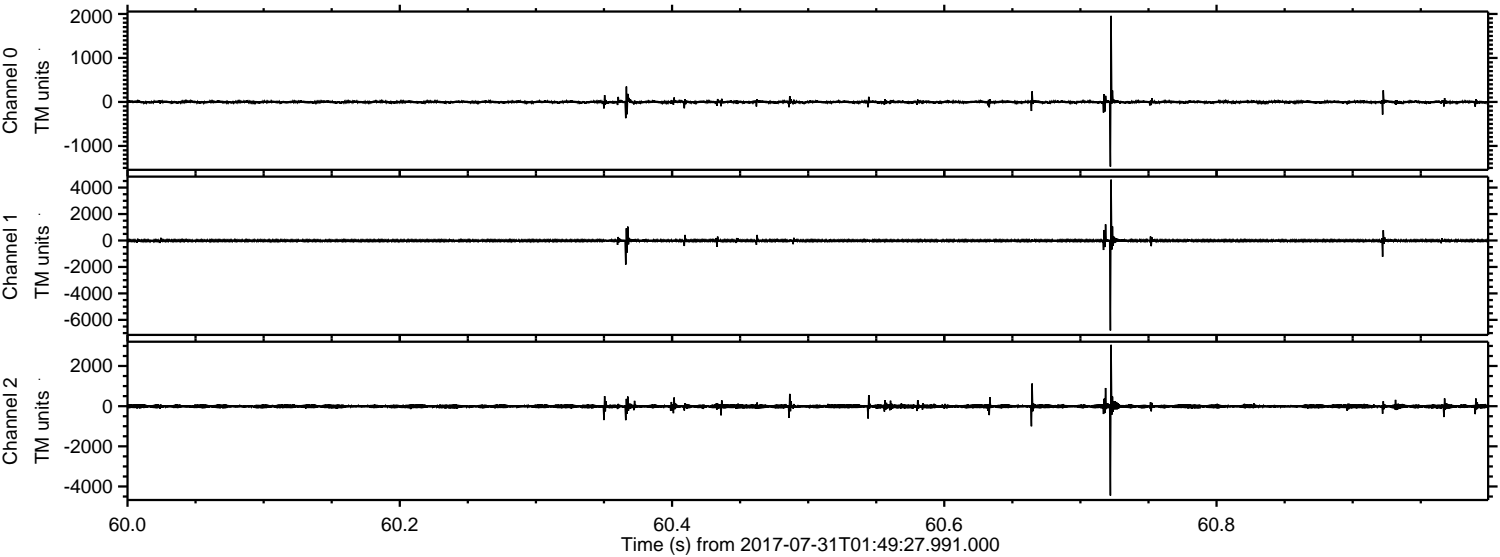


ELMAVAN 3D WAVEFORMS (Measured data sampled at 50 kHz) 51000 packets of 144 samples from 2017-07-31T01:49:27.991.000.

Processed Mon Jul 31 03:57:27 2017 by ELM ver.2012-10-06 from 001__elm20170731_014926__dat00.bin



Processed Mon Jul 31 03:57:34 2017 by ELM ver.2012-10-06 from 001__elm20170731_014926__dat00.bin

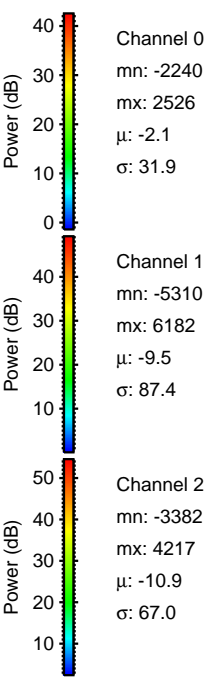
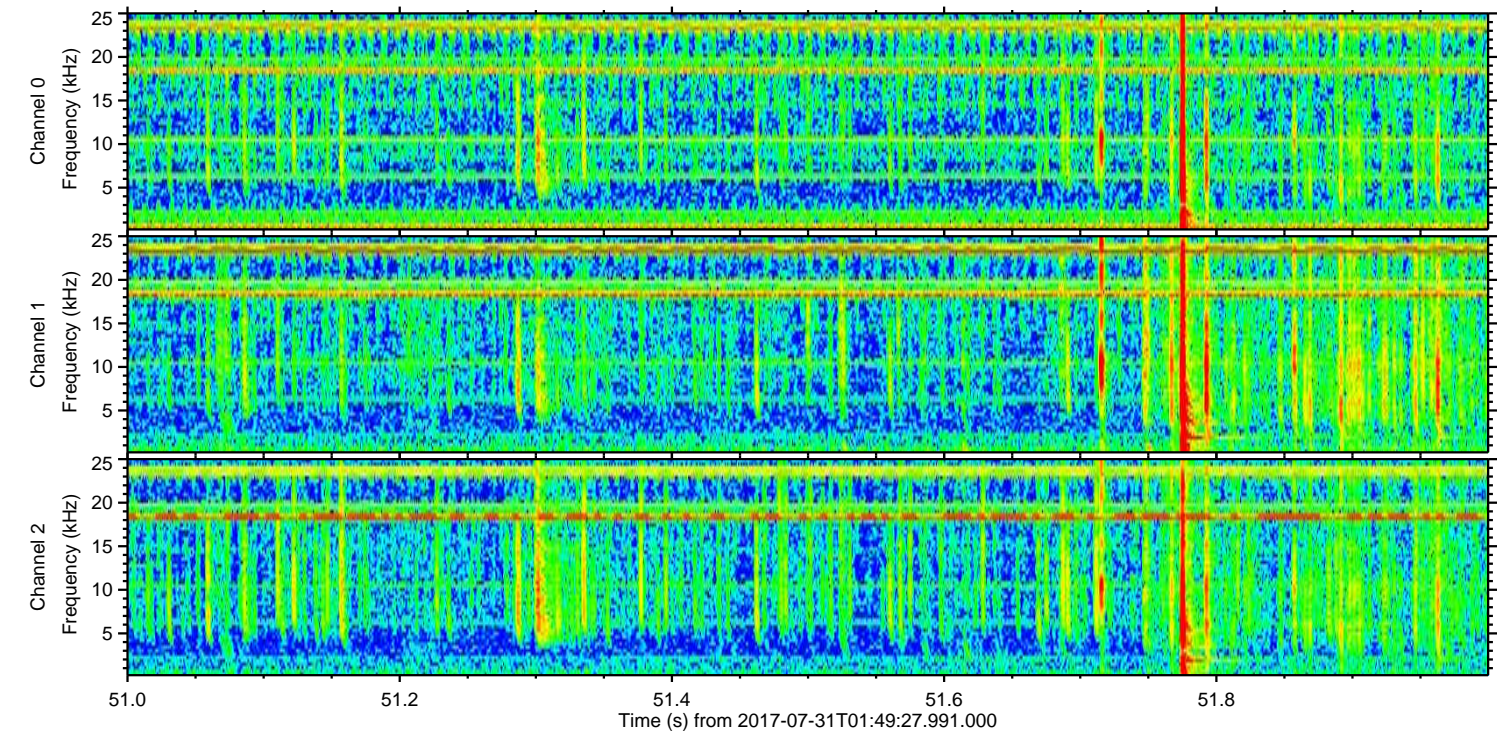
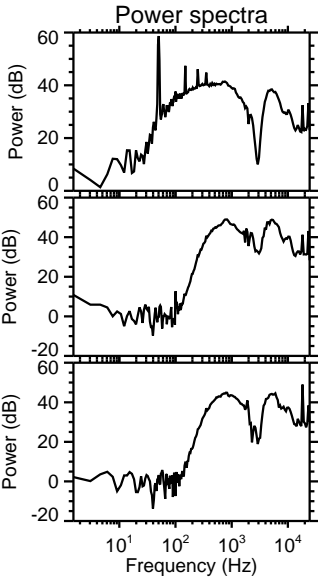
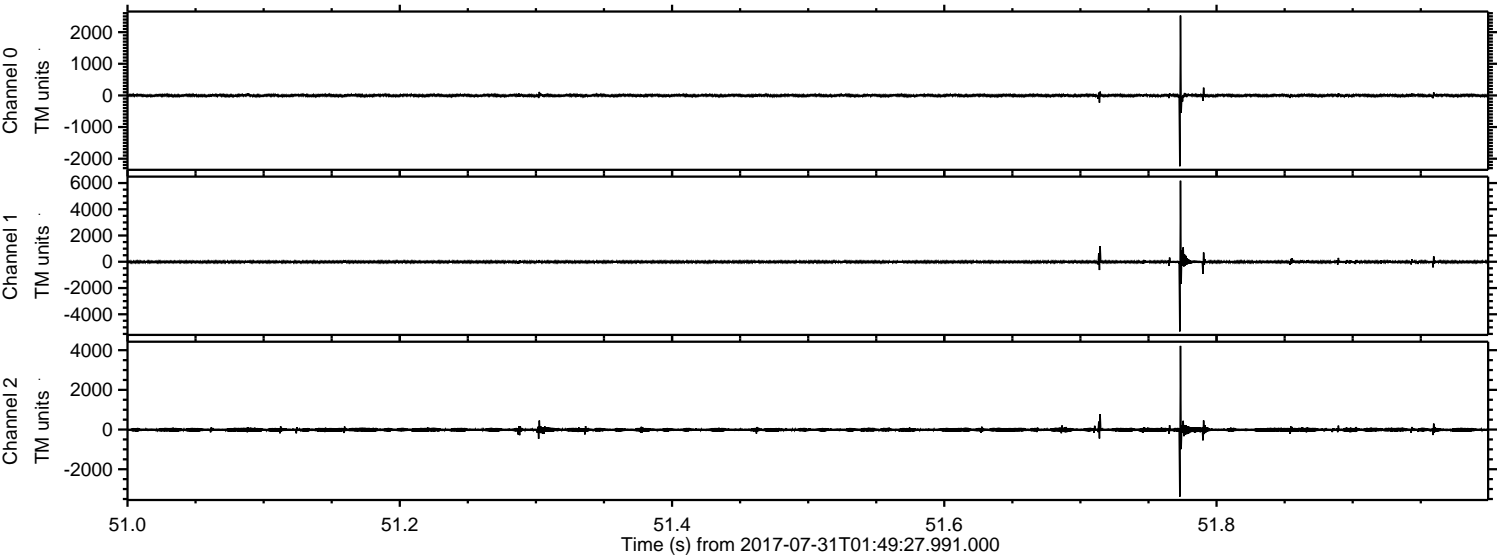


Channel 0
mn: -1470
mx: 1957
 μ : -2.1
 σ : 22.2

Channel 1
mn: -6795
mx: 4599
 μ : -9.4
 σ : 65.1

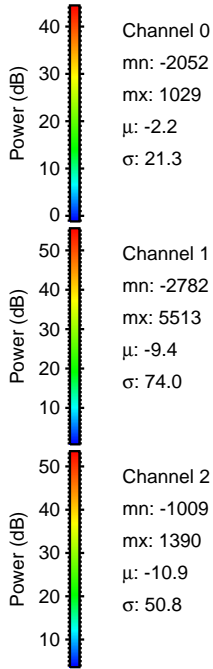
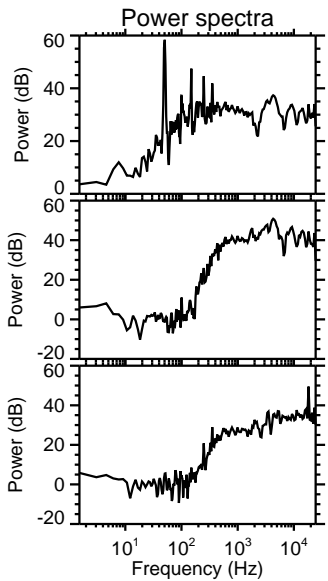
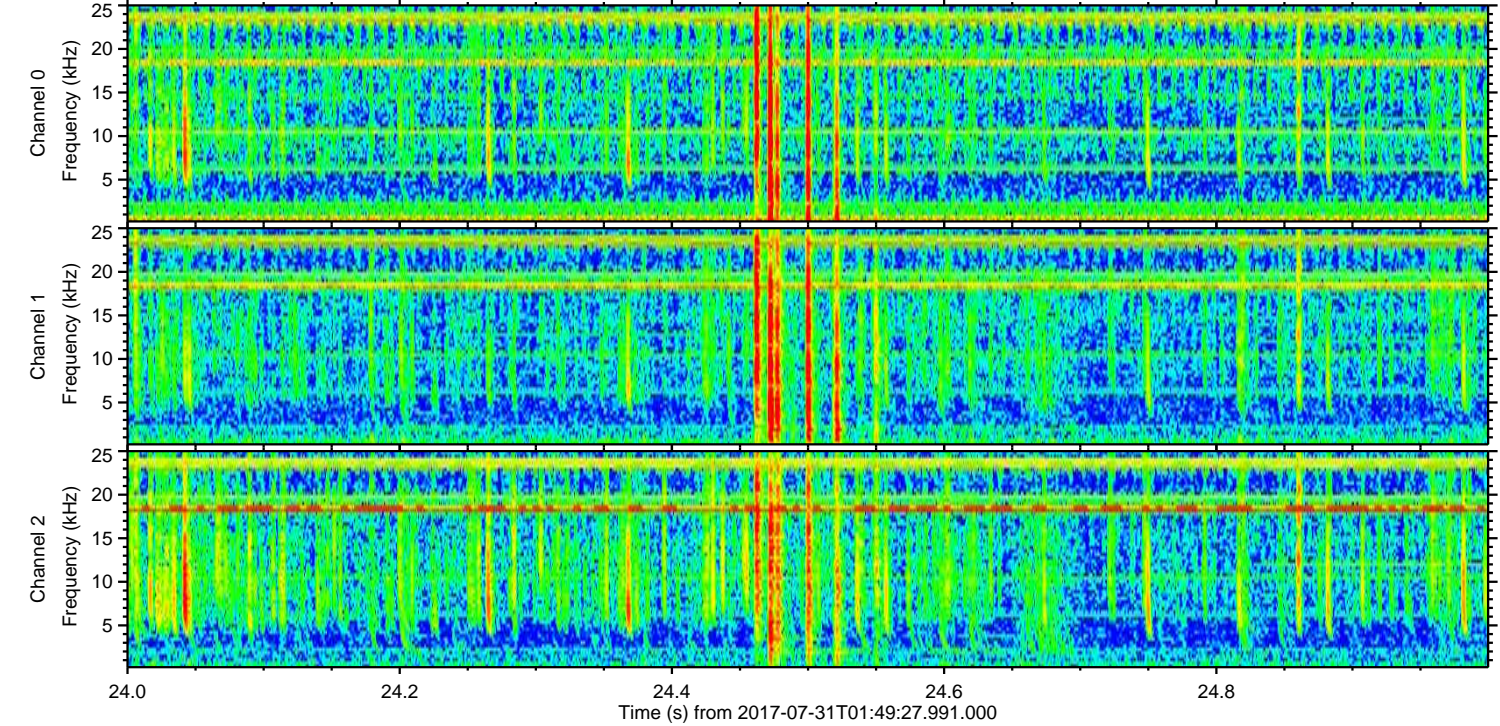
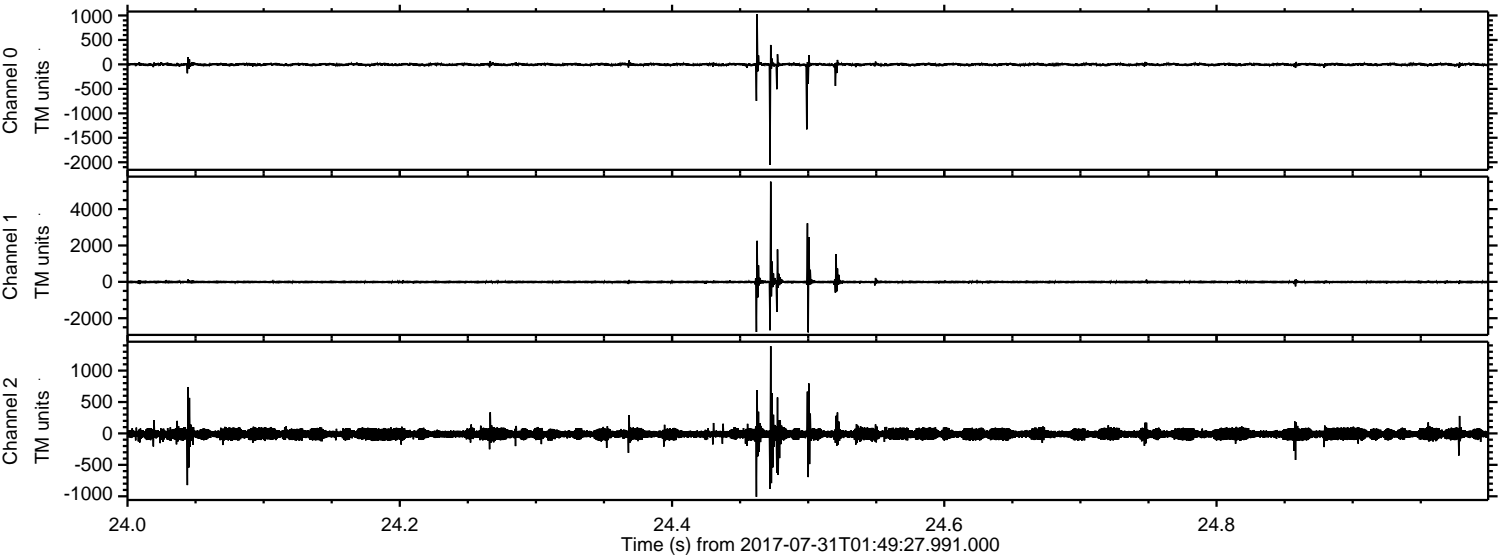
Channel 2
mn: -4450
mx: 3057
 μ : -10.9
 σ : 60.0

Processed Mon Jul 31 03:57:34 2017 by ELM ver.2012-10-06 from 001__elm20170731_014926__dat00.bin

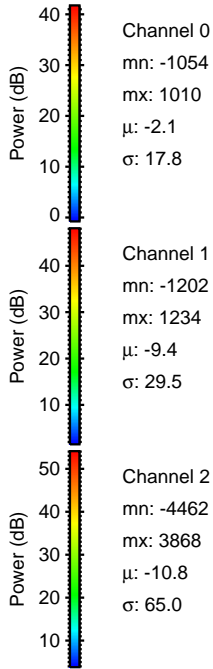
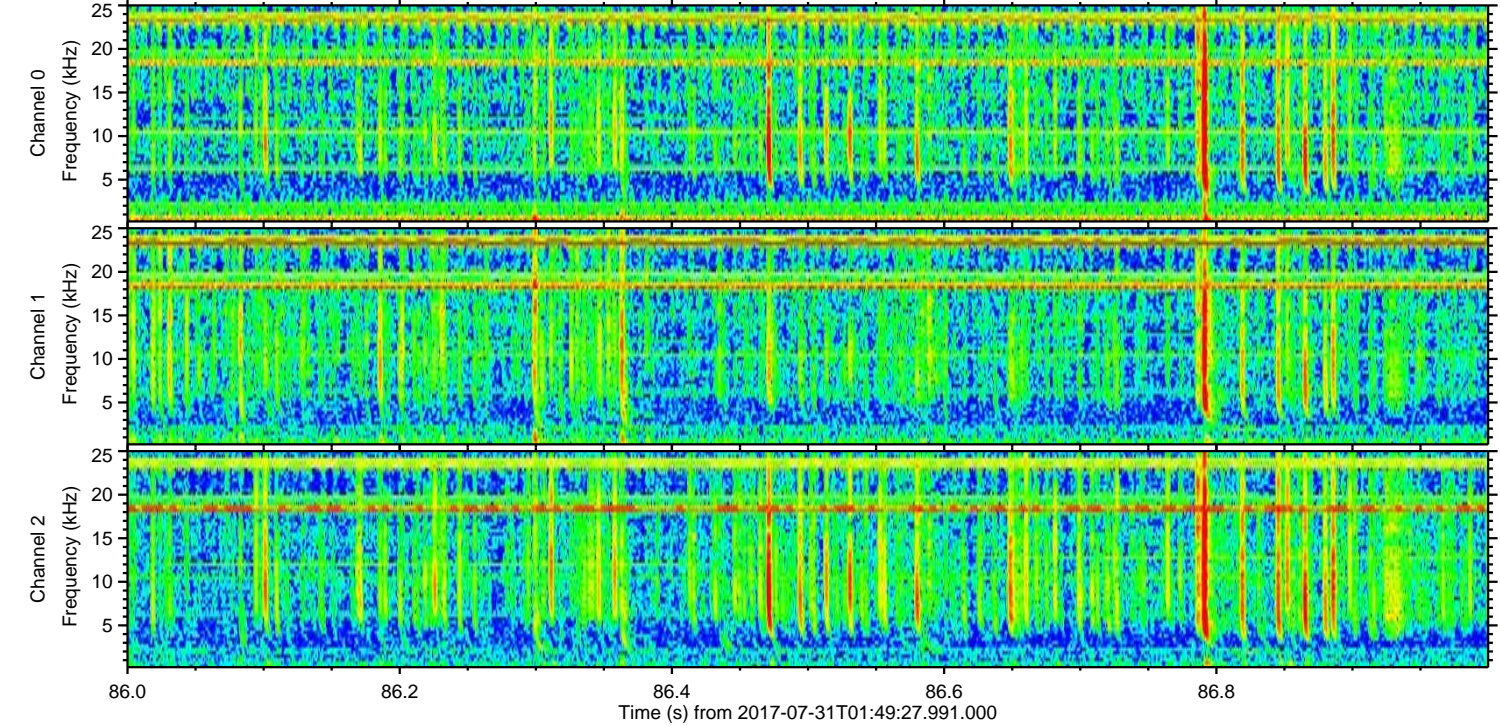
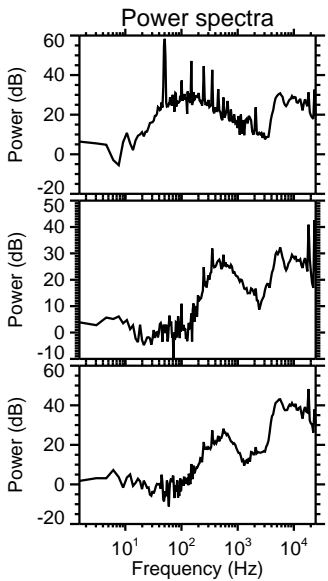
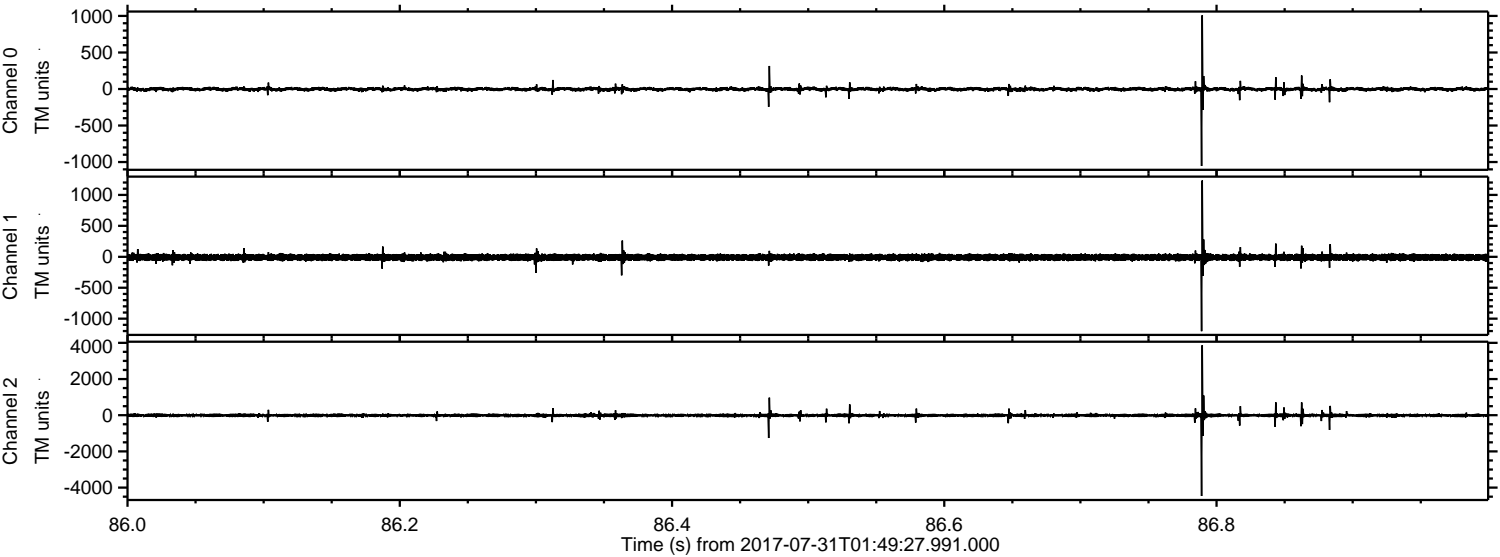


ELMAVAN 3D WAVEFORMS (Measured data sampled at 50 kHz) 51000 packets of 144 samples from 2017-07-31T01:49:27.991.000. Part 25/147

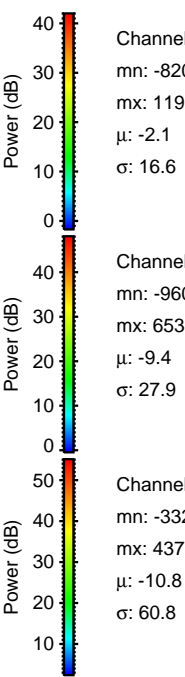
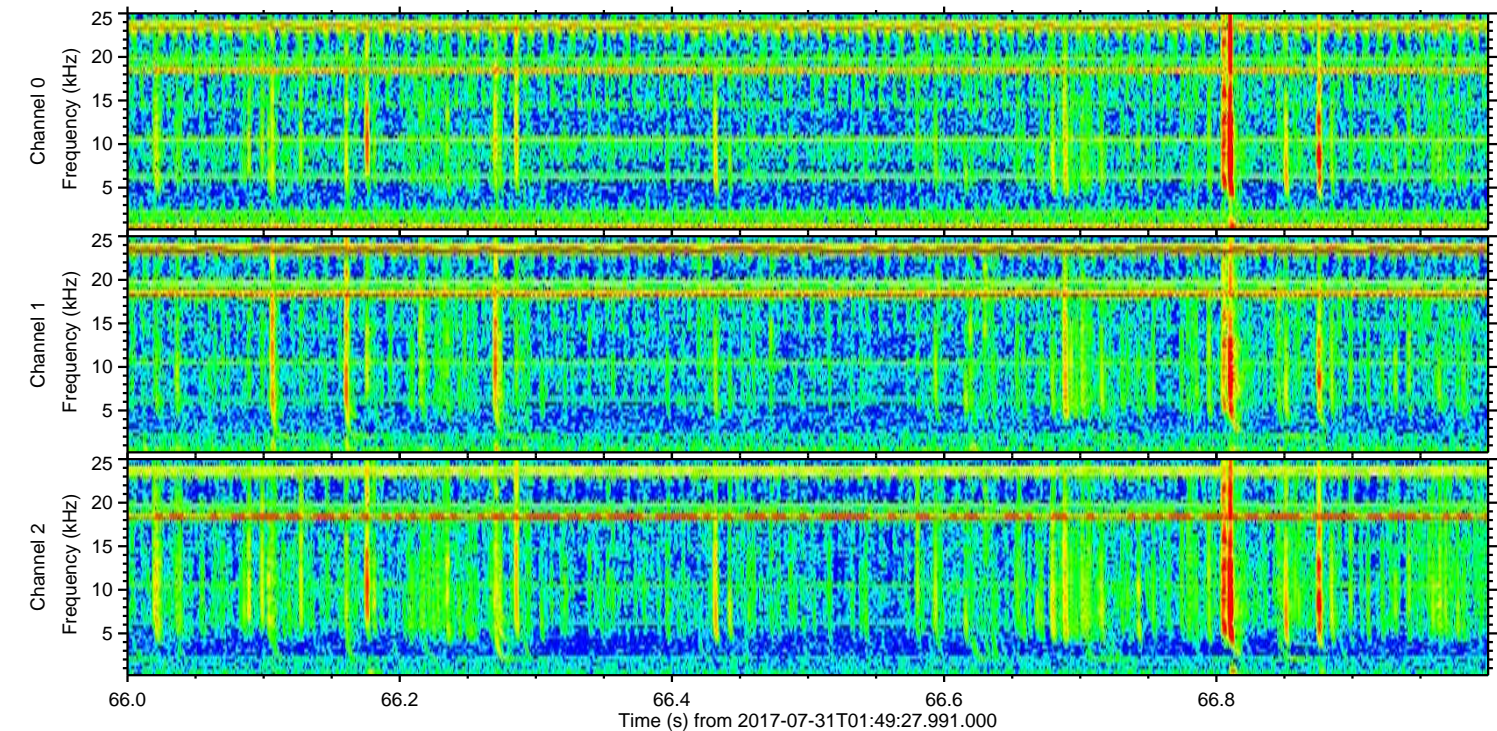
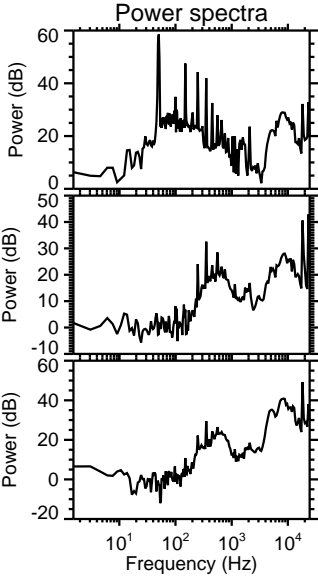
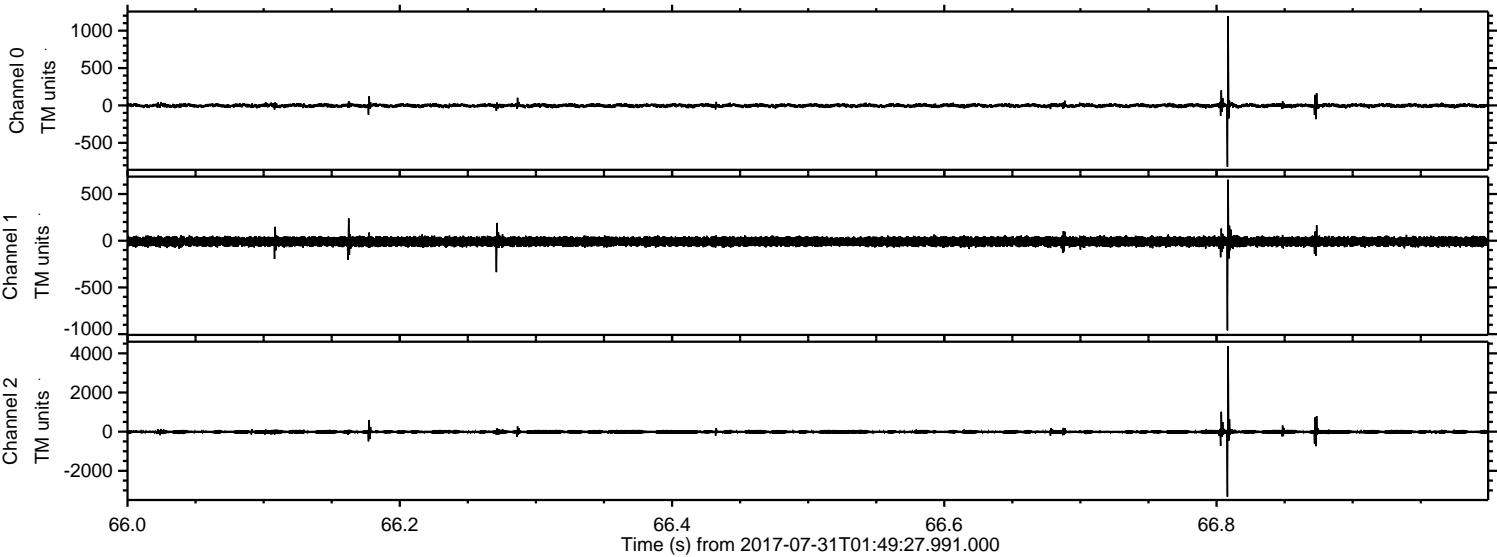
Processed Mon Jul 31 03:57:35 2017 by ELM ver.2012-10-06 from 001__elm20170731_014926__dat00.bin



Processed Mon Jul 31 03:57:36 2017 by ELM ver.2012-10-06 from 001__elm20170731_014926__dat00.bin



Processed Mon Jul 31 03:57:36 2017 by ELM ver.2012-10-06 from 001__elm20170731_014926__dat00.bin

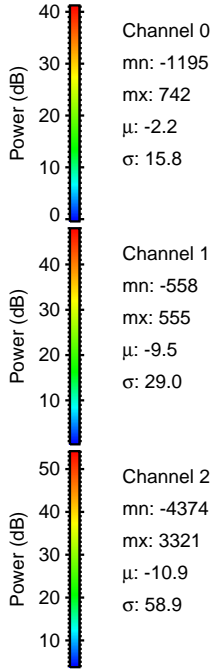
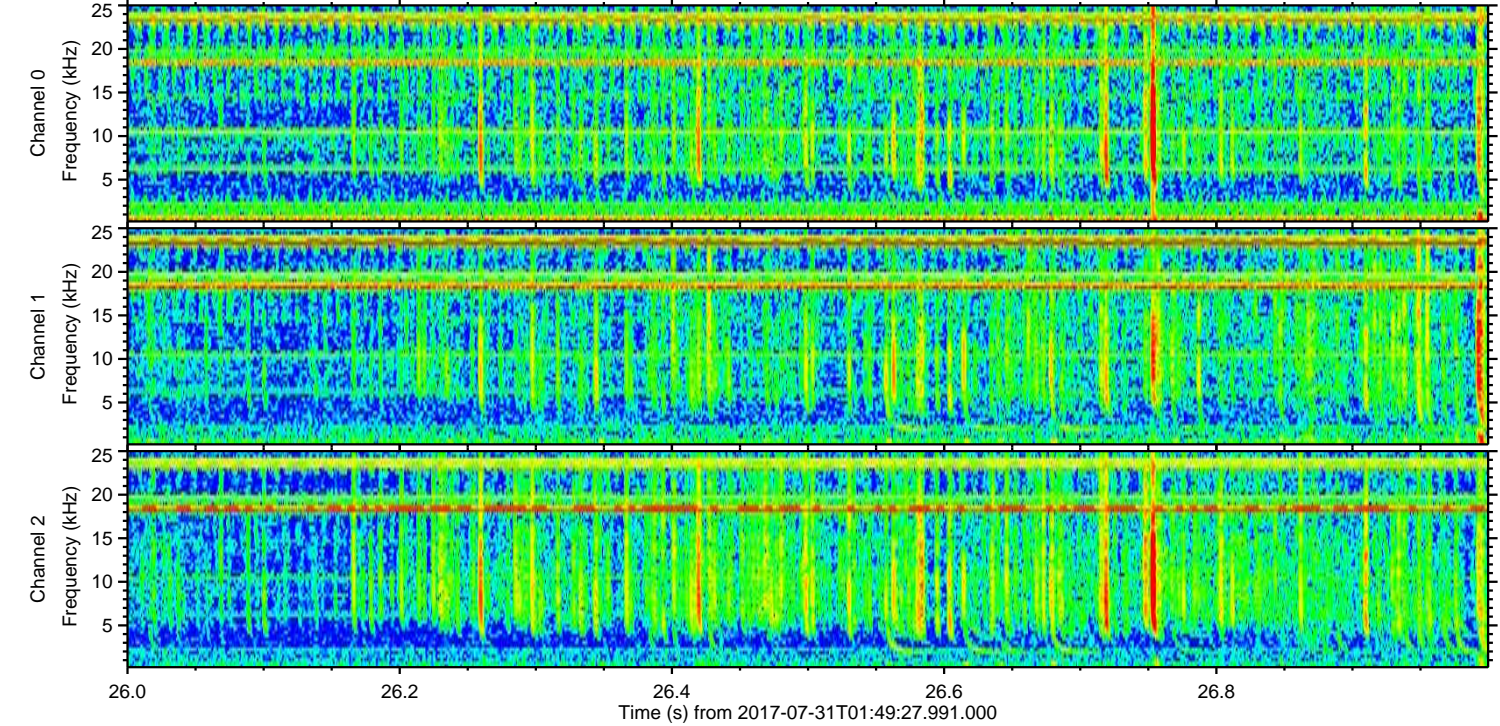
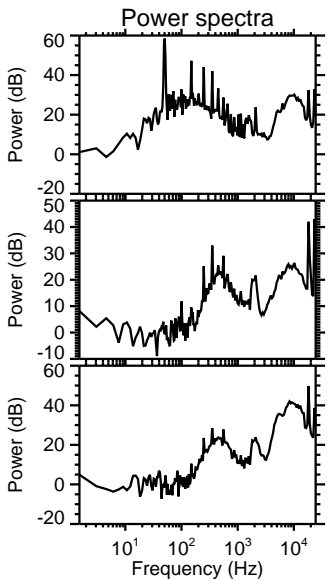
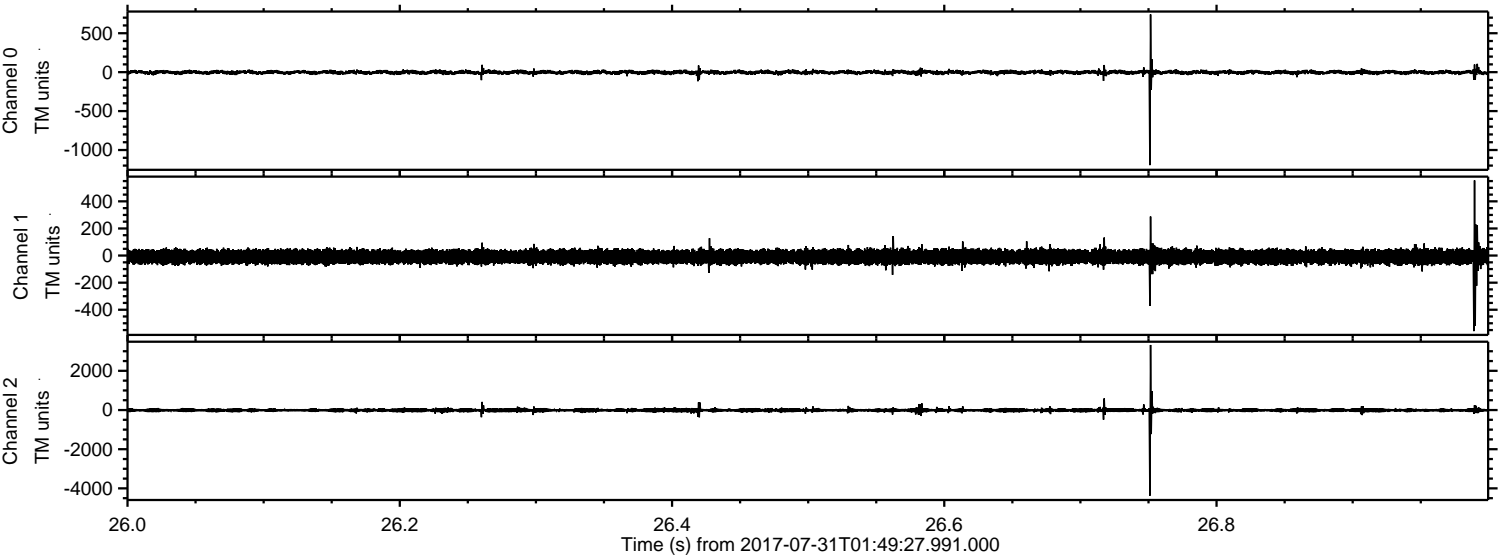


Channel 0
mn: -820
mx: 1196
 μ : -2.1
 σ : 16.6

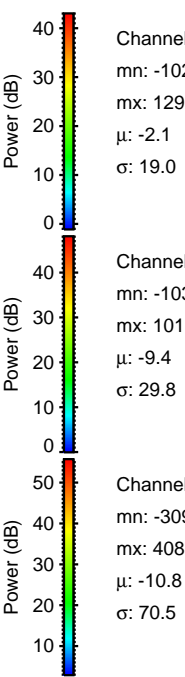
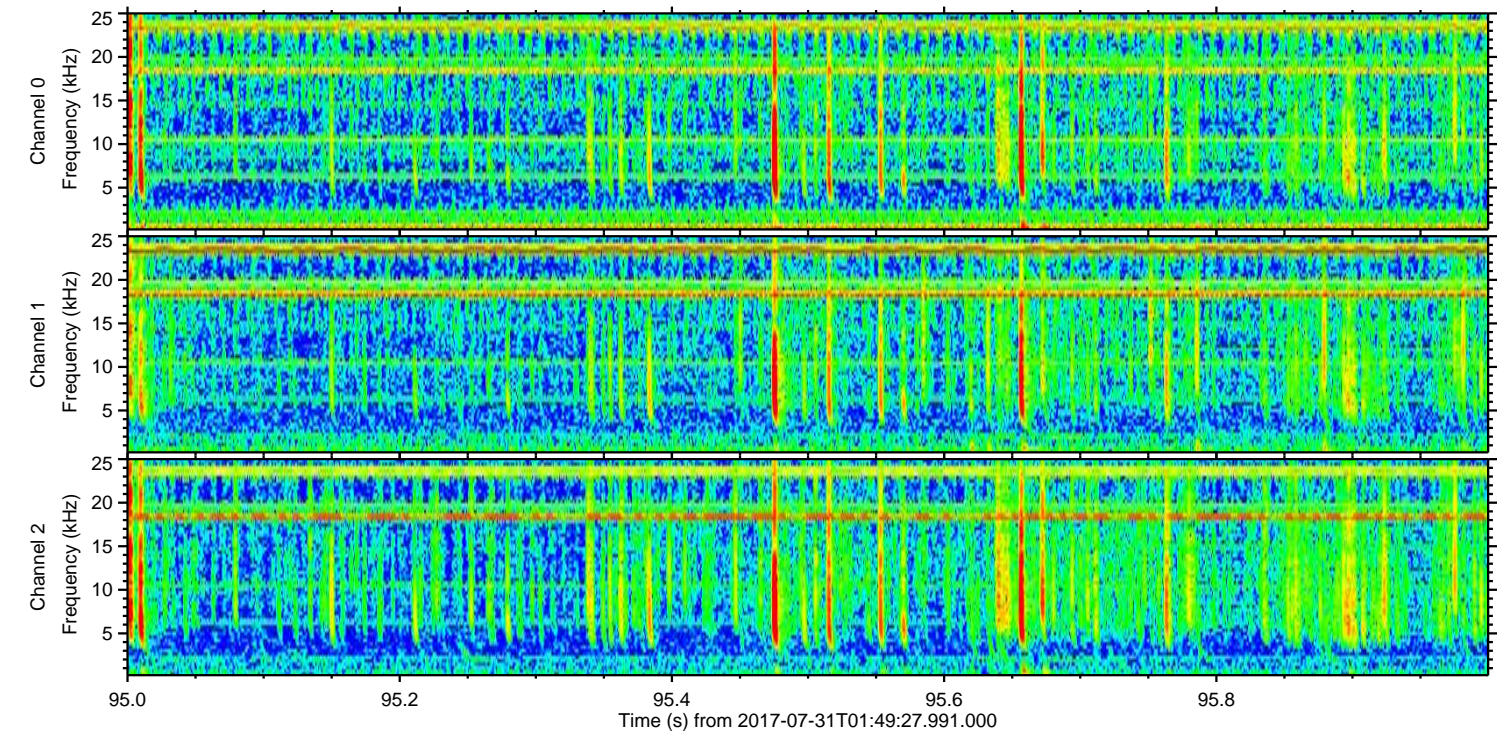
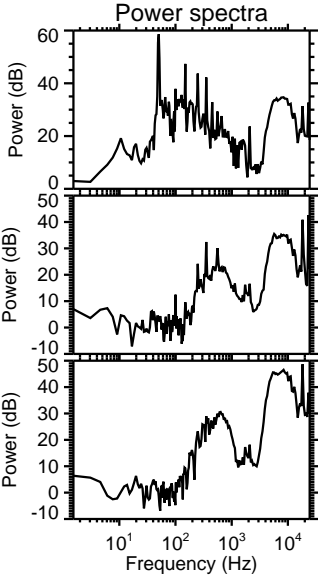
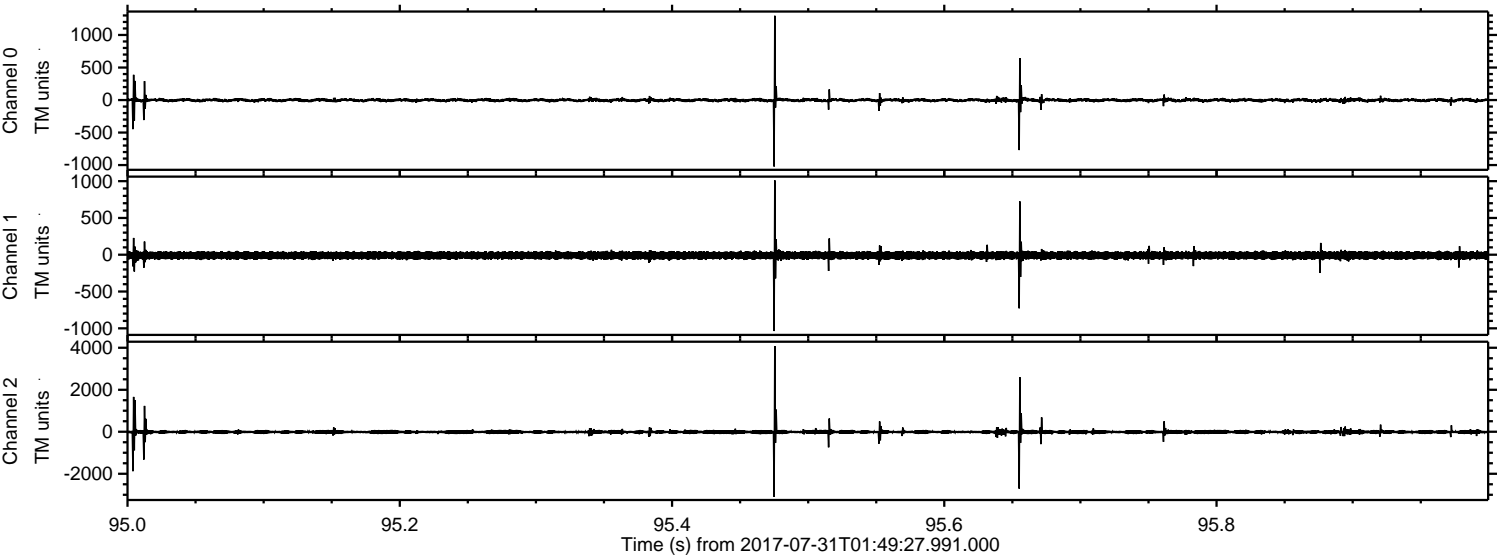
Channel 1
mn: -960
mx: 653
 μ : -9.4
 σ : 27.9

Channel 2
mn: -3325
mx: 4377
 μ : -10.8
 σ : 60.8

Processed Mon Jul 31 03:57:37 2017 by ELM ver.2012-10-06 from 001__elm20170731_014926__dat00.bin



Processed Mon Jul 31 03:57:38 2017 by ELM ver.2012-10-06 from 001__elm20170731_014926__dat00.bin

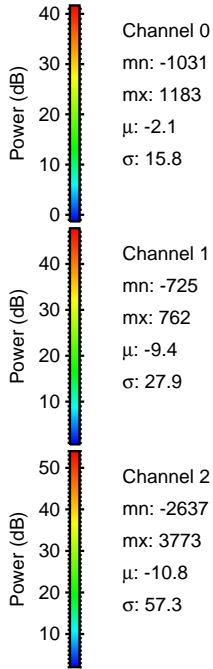
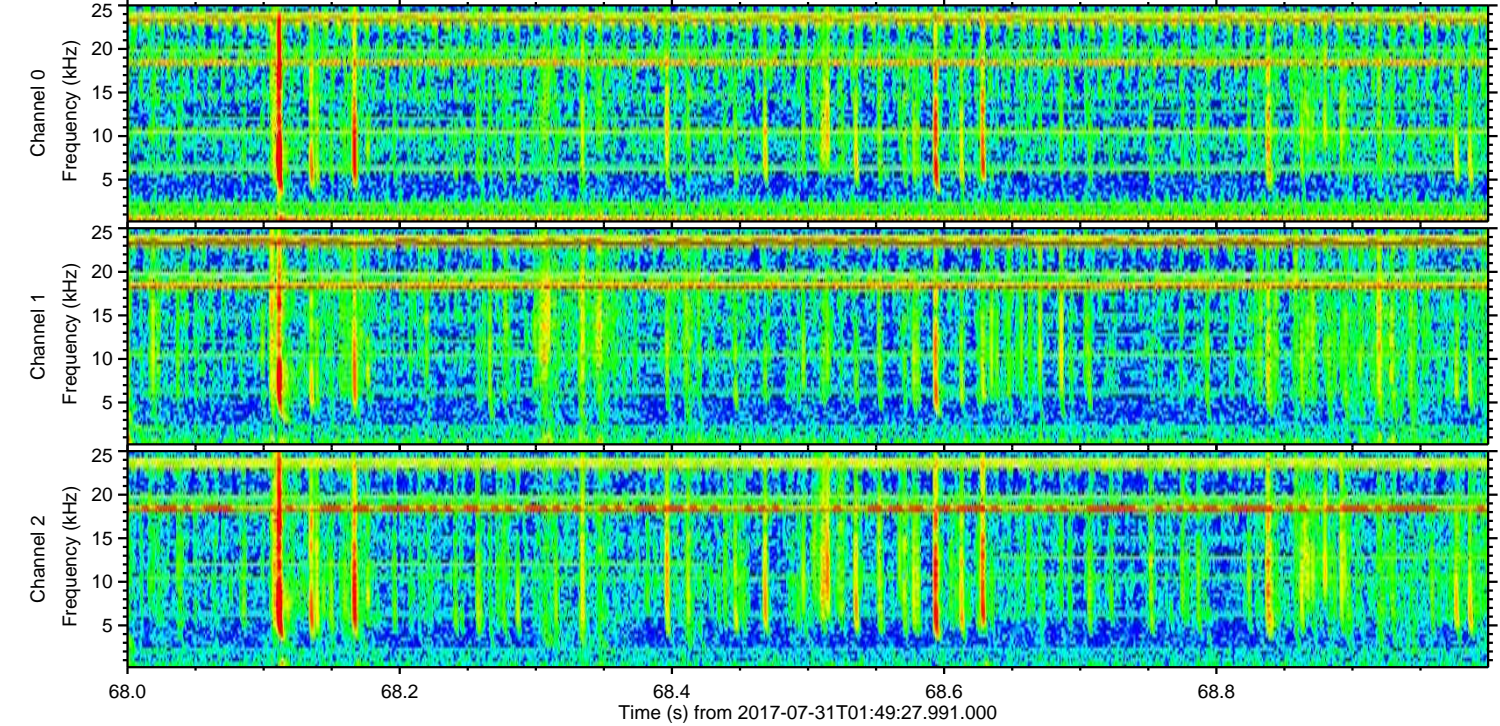
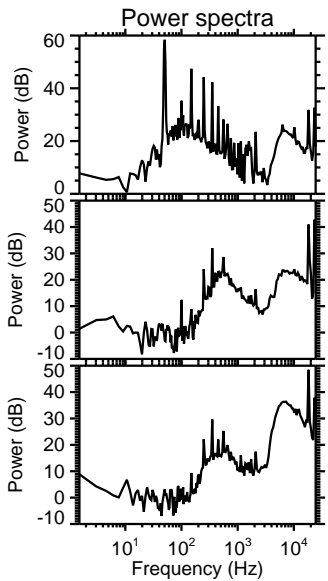
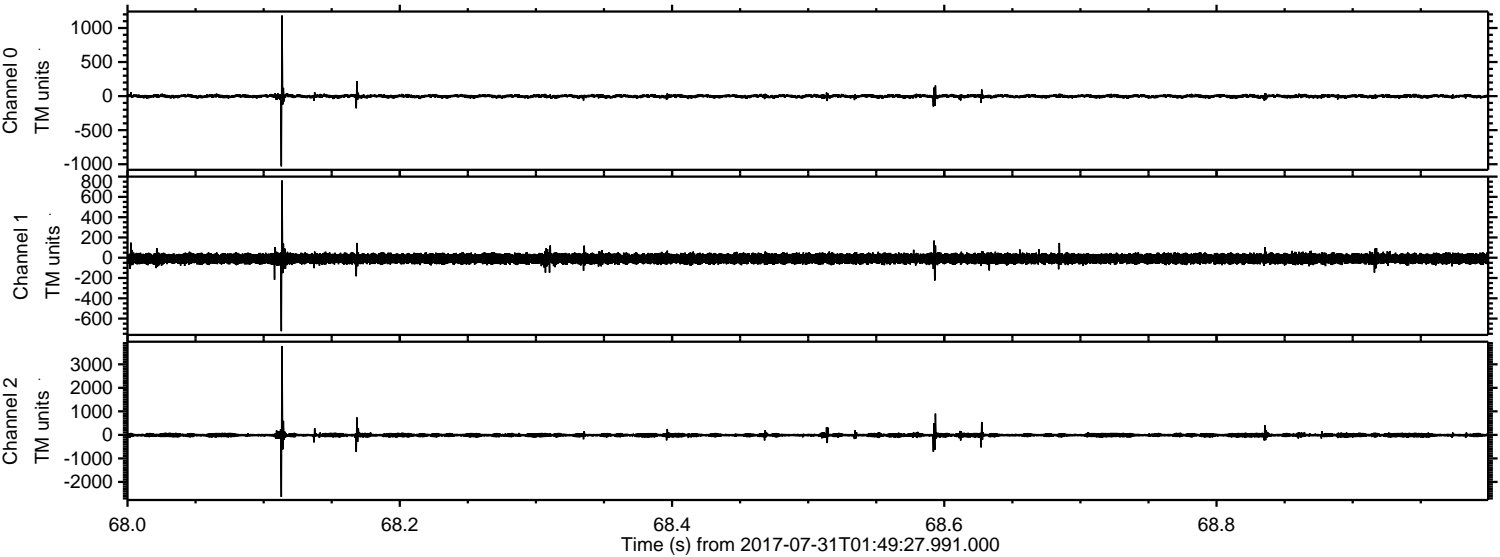


Channel 0
mn: -1022
mx: 1296
 μ : -2.1
 σ : 19.0

Channel 1
mn: -1038
mx: 1011
 μ : -9.4
 σ : 29.8

Channel 2
mn: -3094
mx: 4083
 μ : -10.8
 σ : 70.5

Processed Mon Jul 31 03:57:39 2017 by ELM ver.2012-10-06 from 001__elm20170731_014926__dat00.bin



Processed Mon Jul 31 03:57:39 2017 by ELM ver.2012-10-06 from 001__elm20170731_014926__dat00.bin

