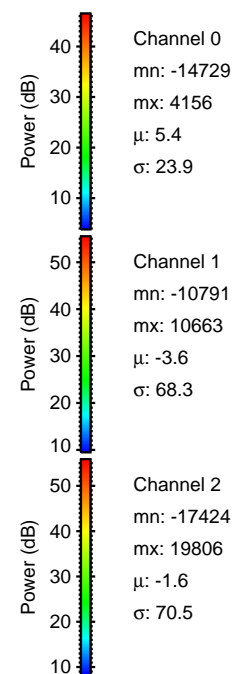
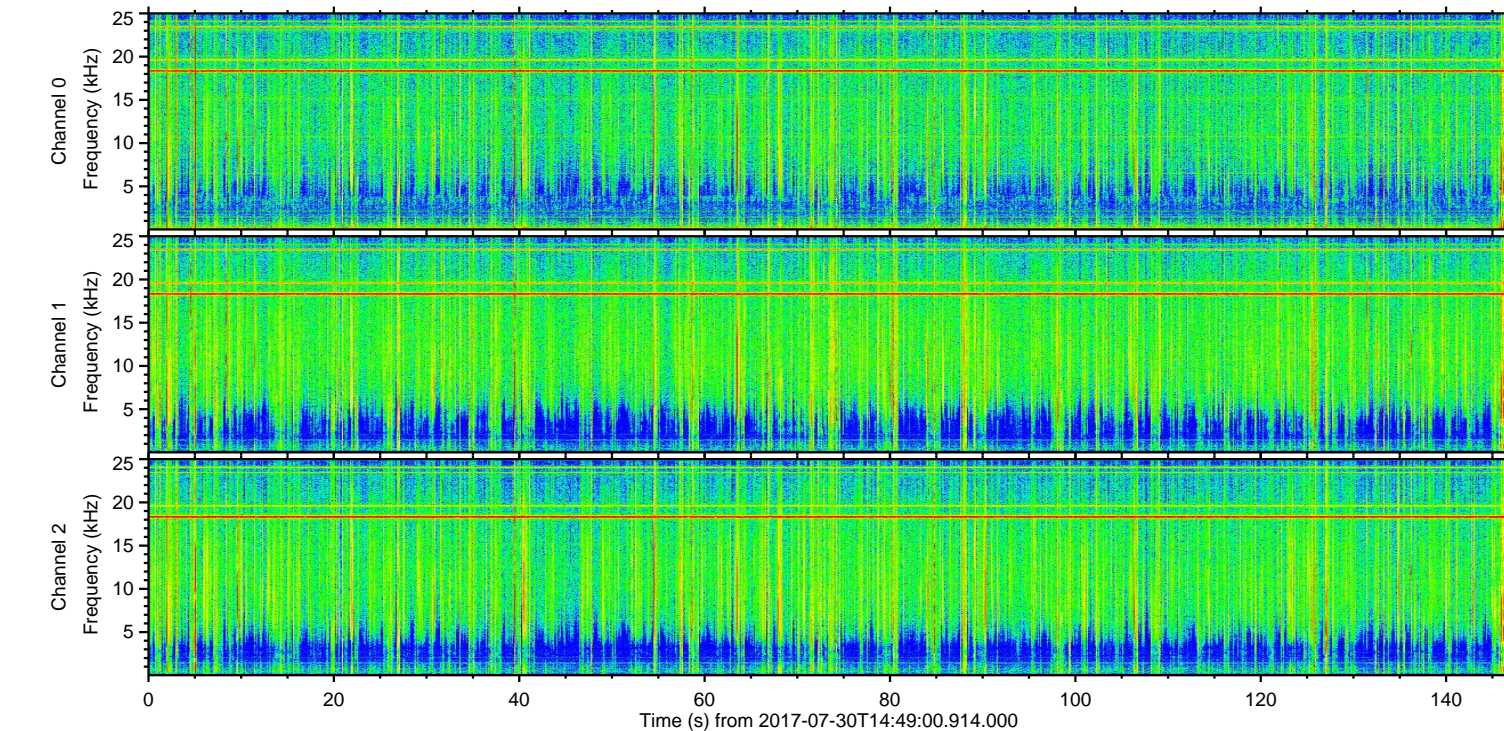
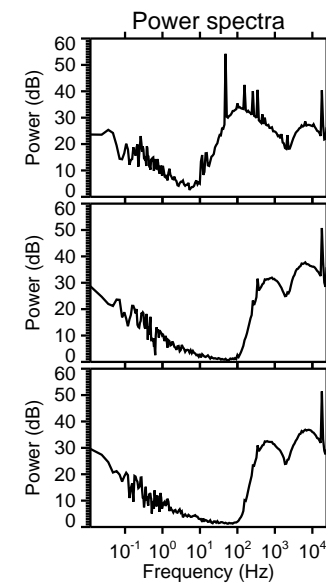
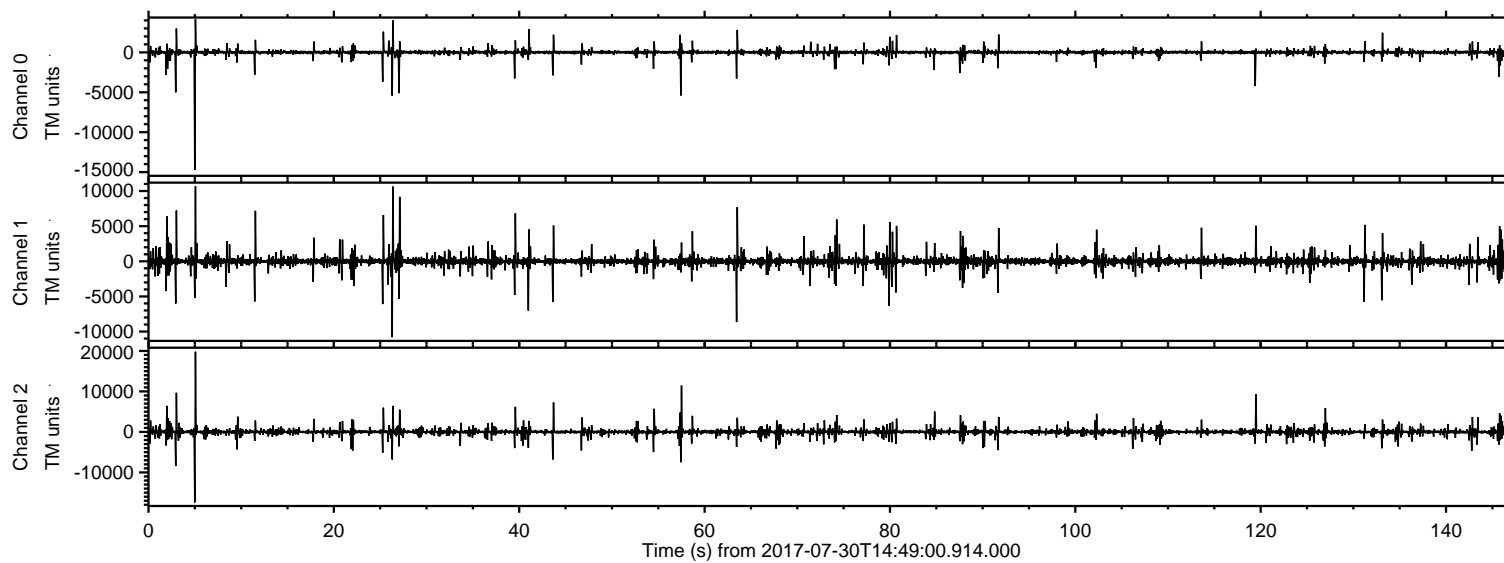
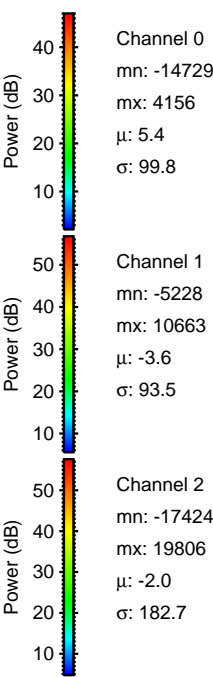
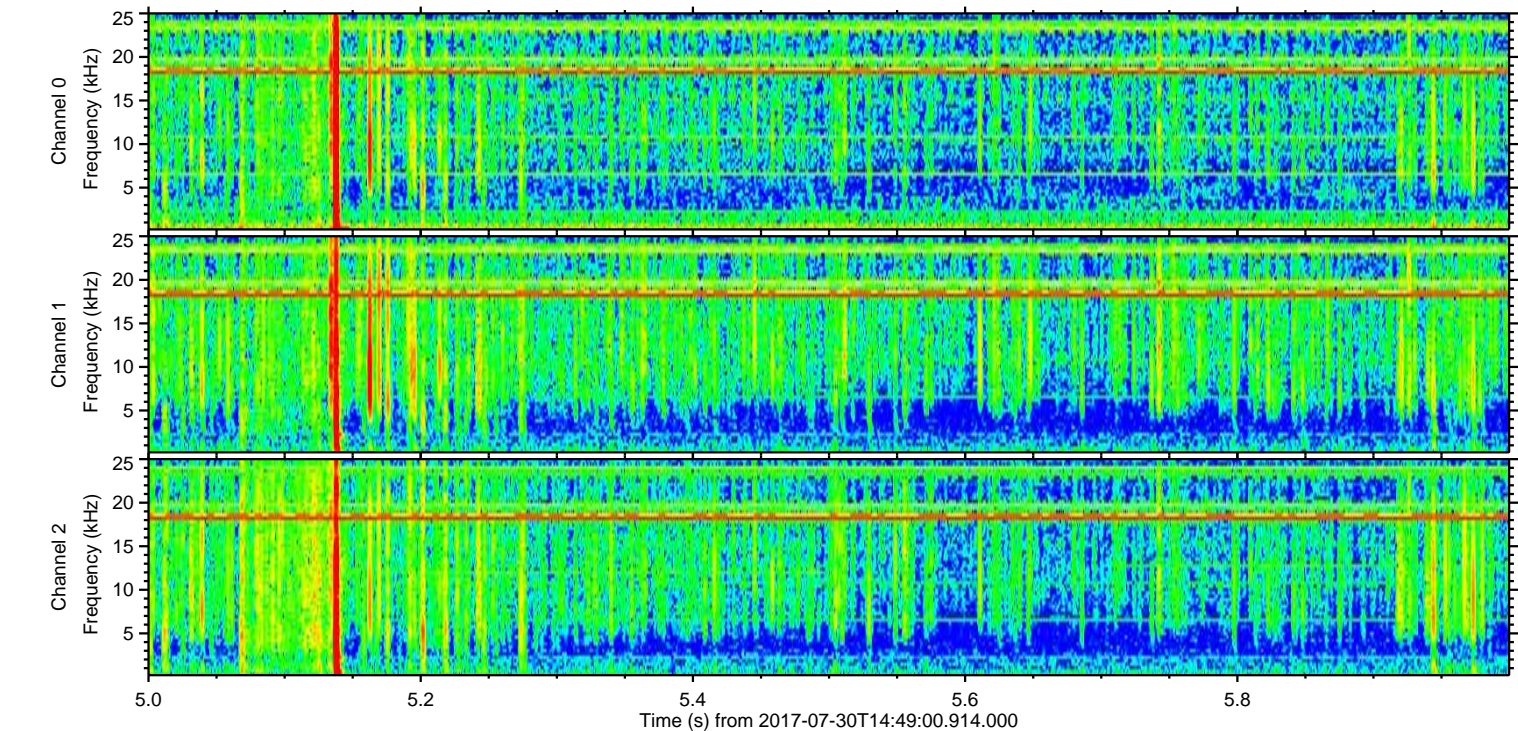
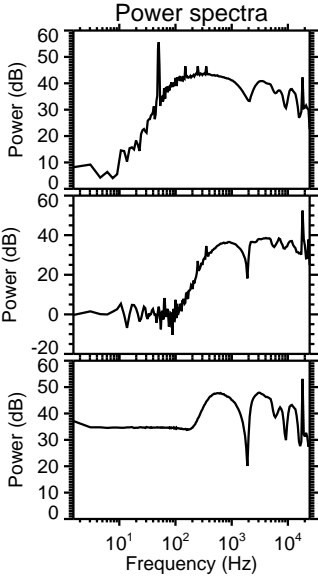
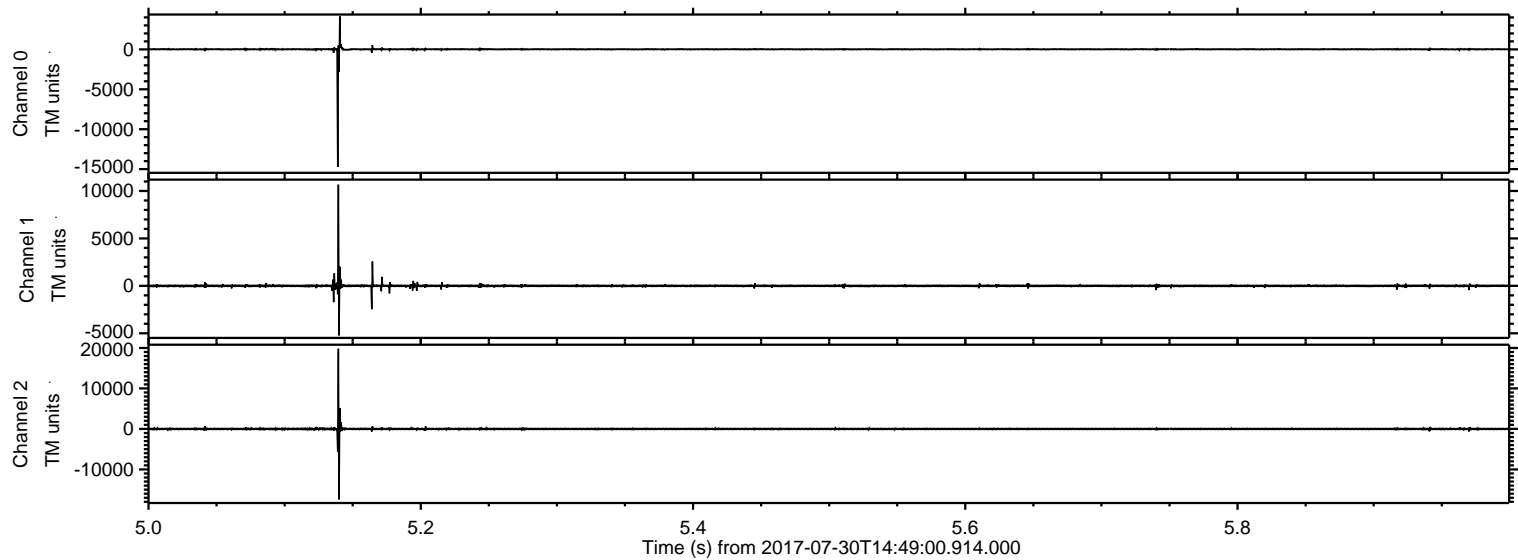


ELMAVAN 3D WAVEFORMS (Measured data sampled at 50 kHz) 51000 packets of 144 samples from 2017-07-30T14:49:00.914.000.

Processed Sun Jul 30 16:56:43 2017 by ELM ver.2012-10-06 from 001__elm20170730_144859__dat00.bin



Processed Sun Jul 30 16:56:49 2017 by ELM ver.2012-10-06 from 001__elm20170730_144859__dat00.bin



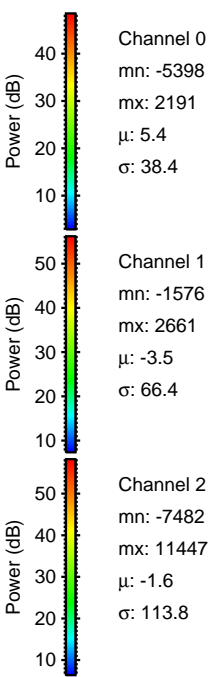
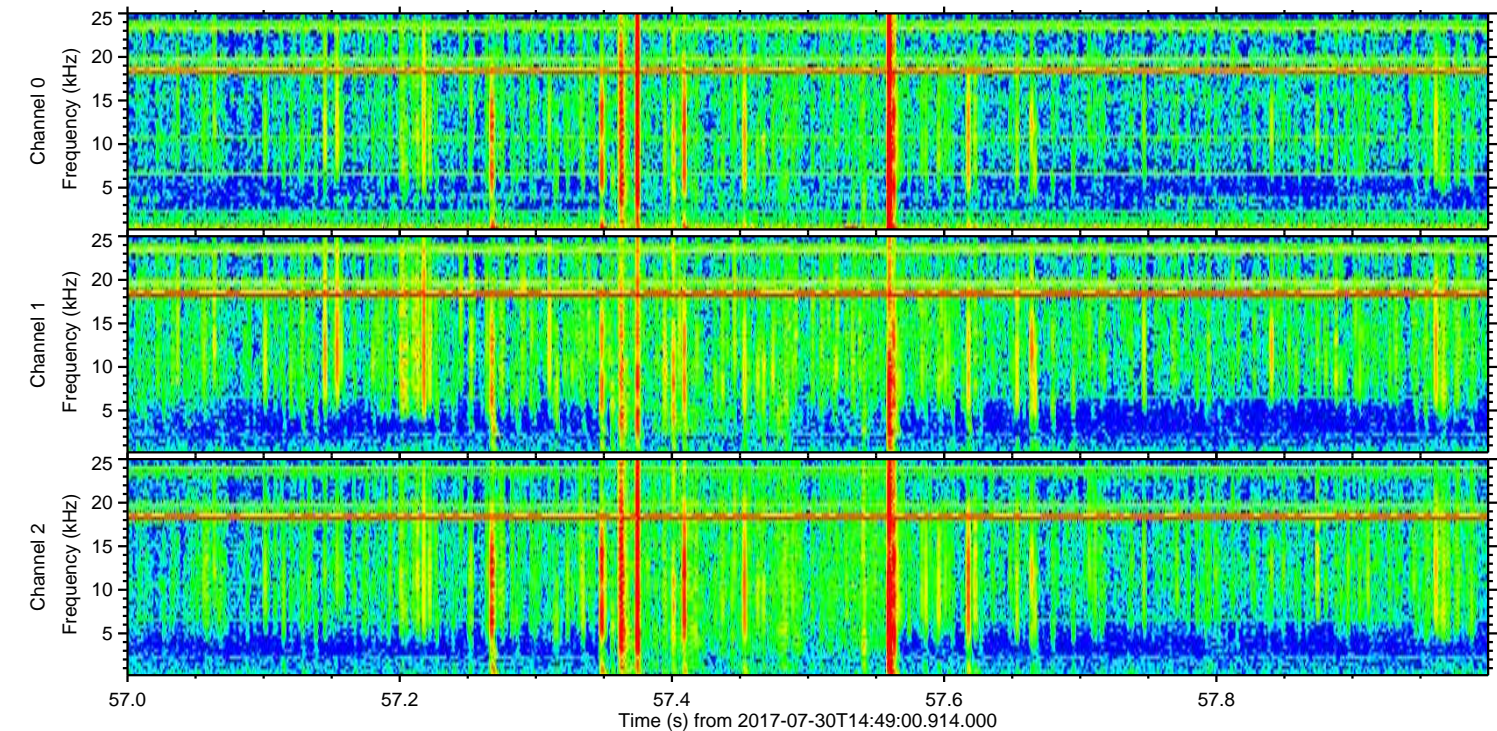
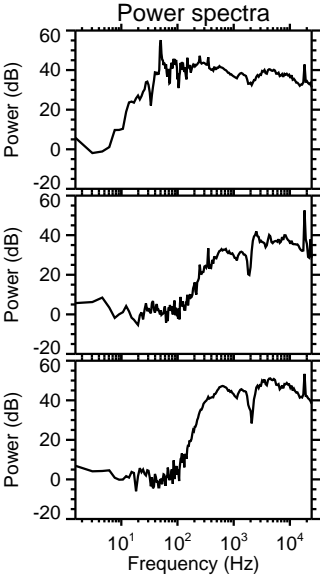
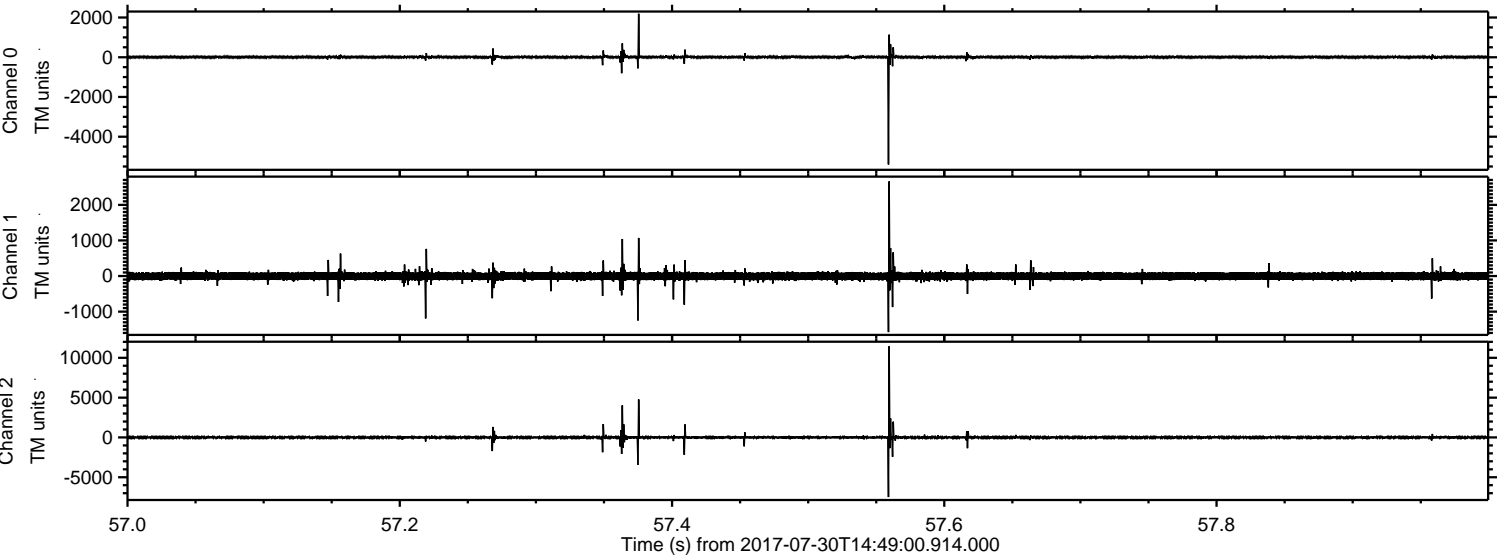
Channel 0
mn: -14729
mx: 4156
 μ : 5.4
 σ : 99.8

Channel 1
mn: -5228
mx: 10663
 μ : -3.6
 σ : 93.5

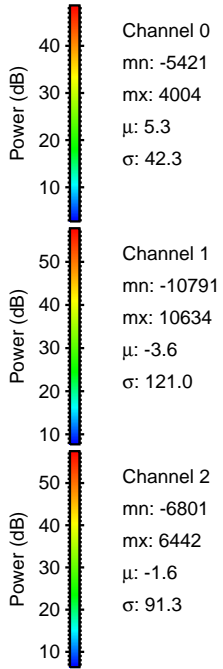
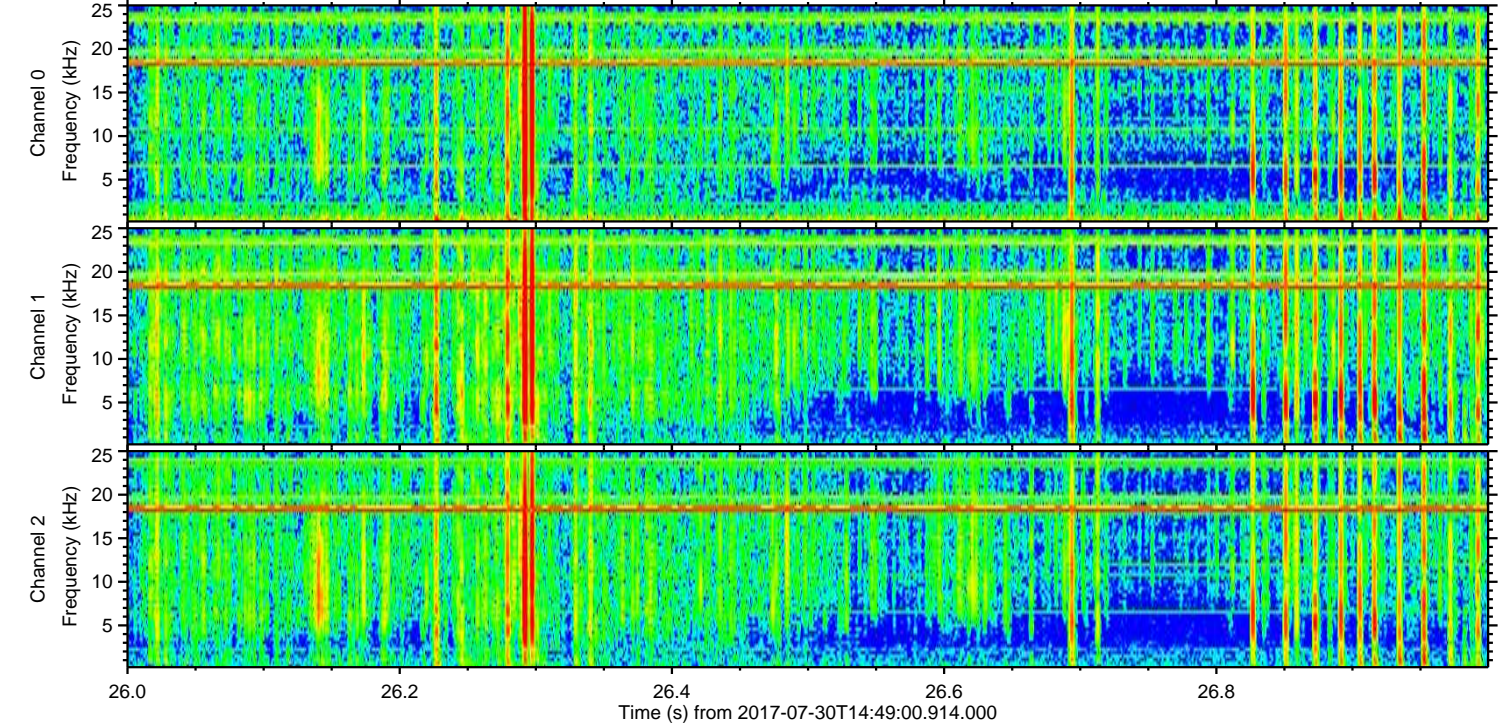
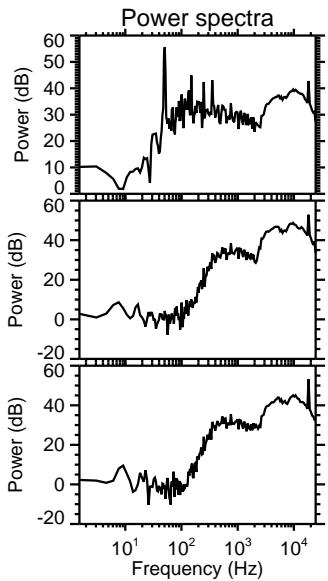
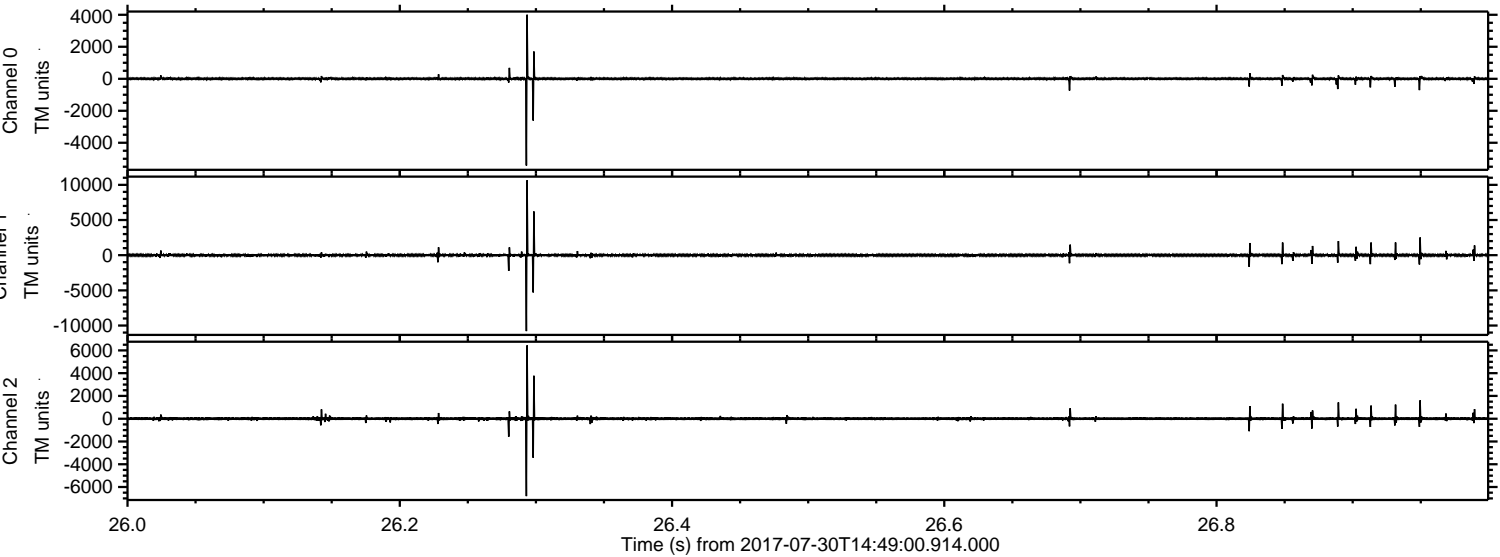
Channel 2
mn: -17424
mx: 19806
 μ : -2.0
 σ : 182.7

ELMAVAN 3D WAVEFORMS (Measured data sampled at 50 kHz) 51000 packets of 144 samples from 2017-07-30T14:49:00.914.000. Part 58/147

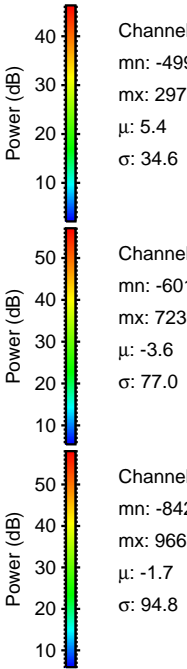
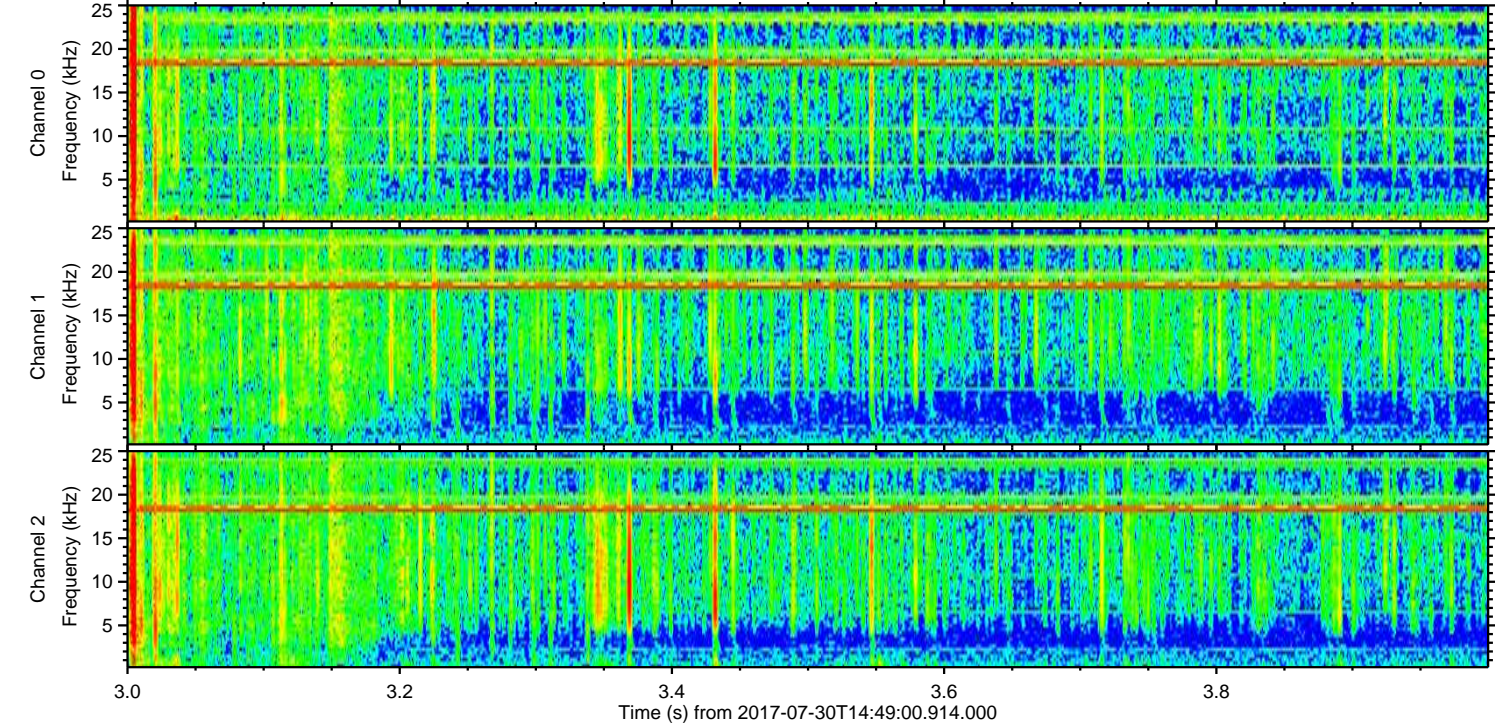
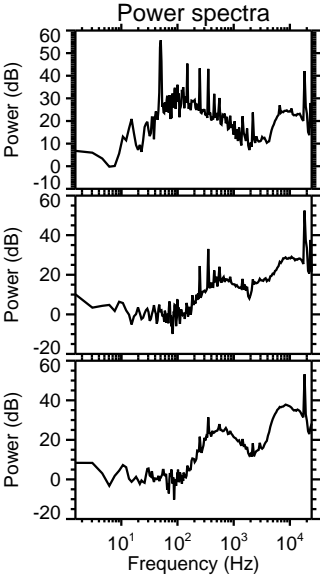
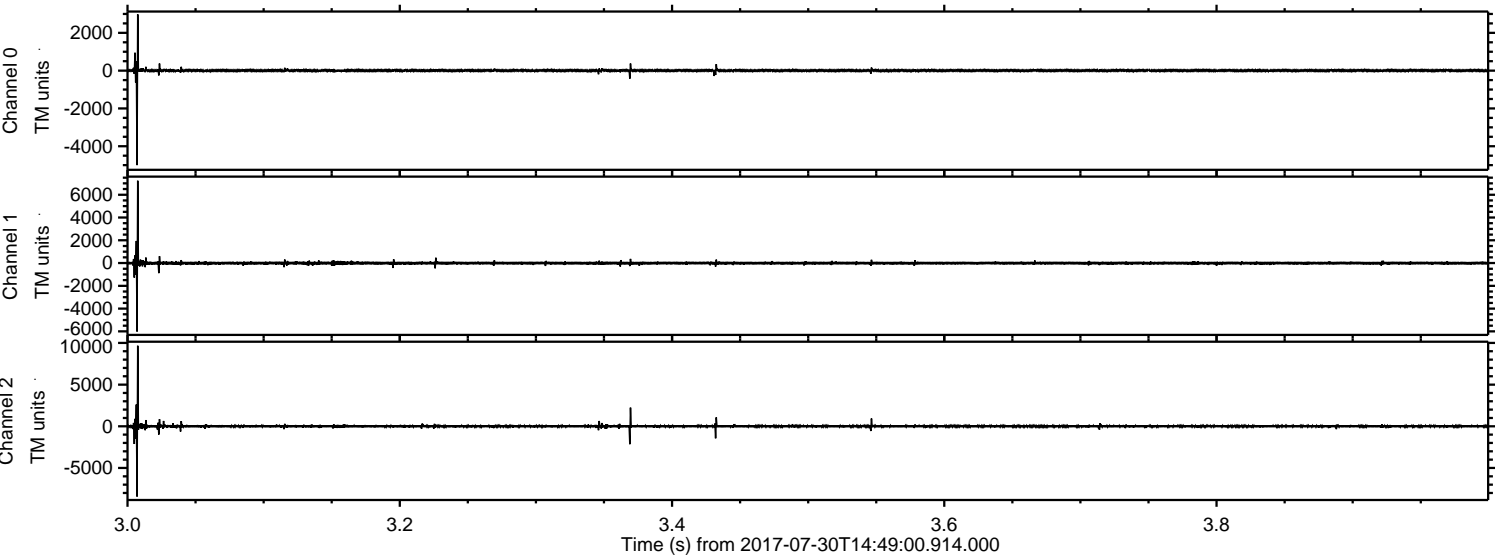
Processed Sun Jul 30 16:56:50 2017 by ELM ver.2012-10-06 from 001__elm20170730_144859__dat00.bin



Processed Sun Jul 30 16:56:50 2017 by ELM ver.2012-10-06 from 001__elm20170730_144859__dat00.bin

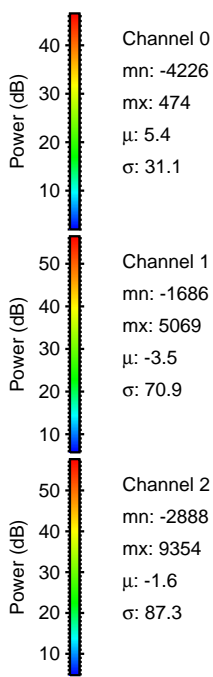
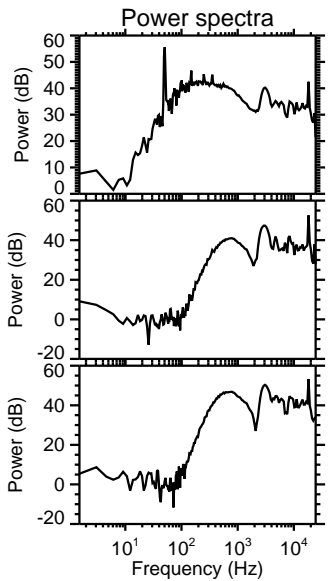
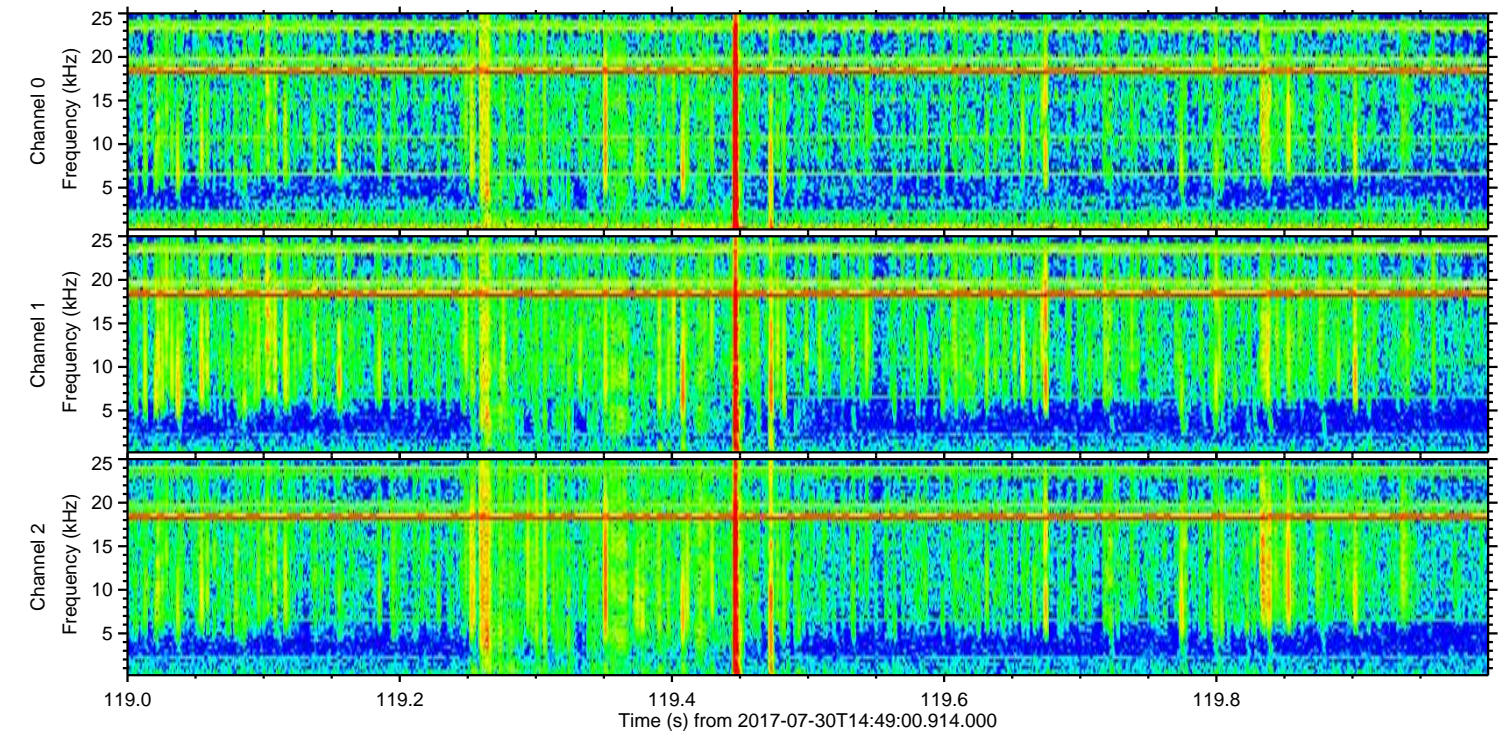
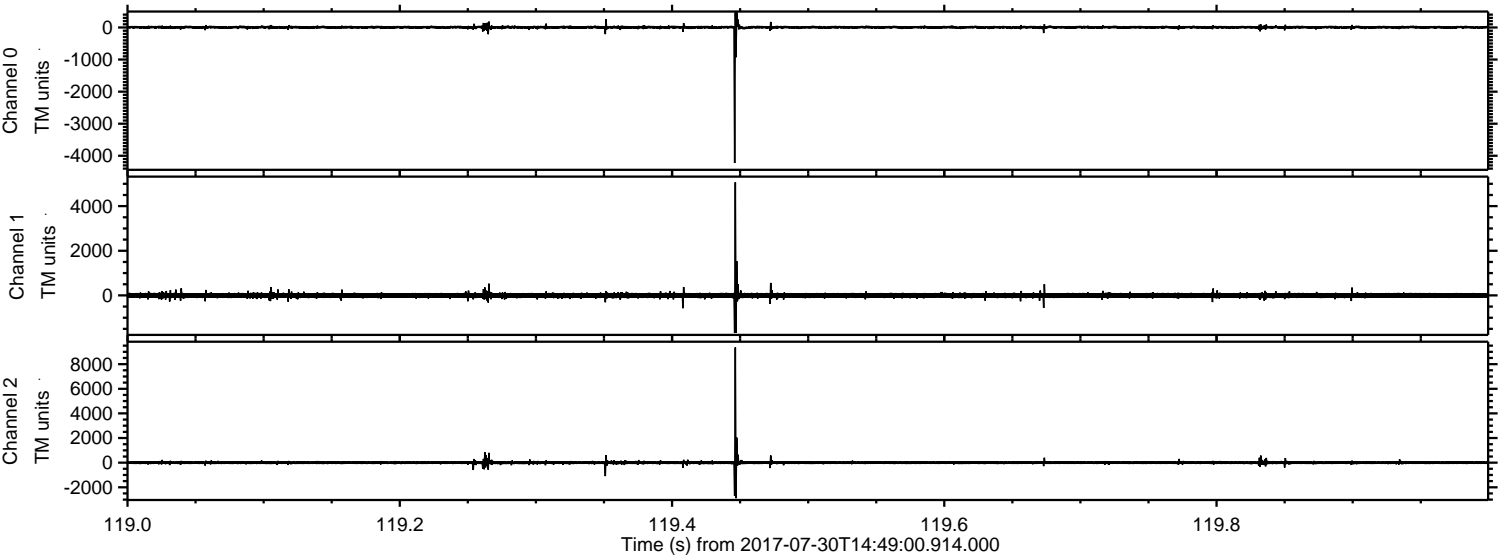


Processed Sun Jul 30 16:56:51 2017 by ELM ver.2012-10-06 from 001__elm20170730_144859__dat00.bin

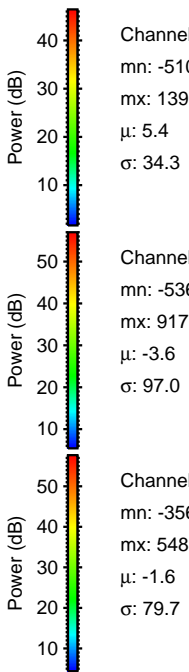
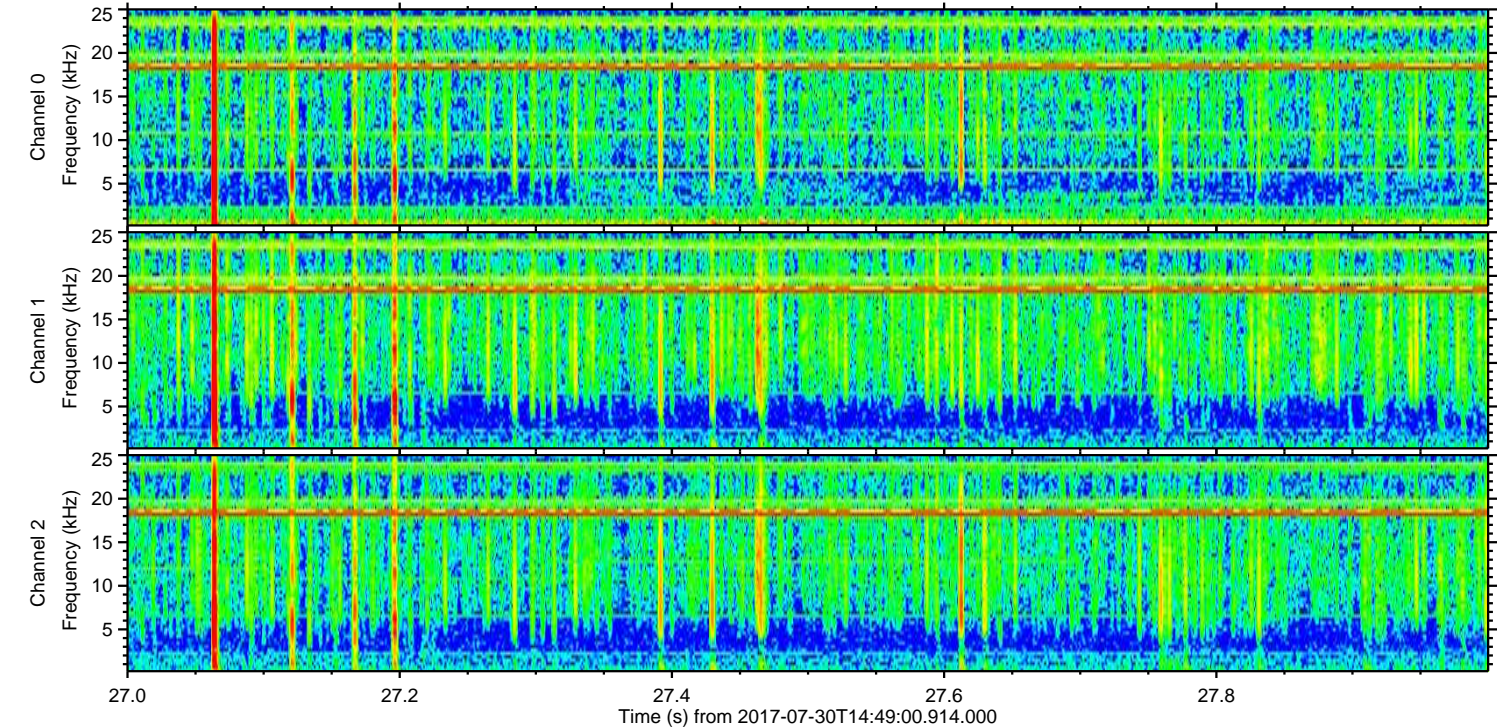
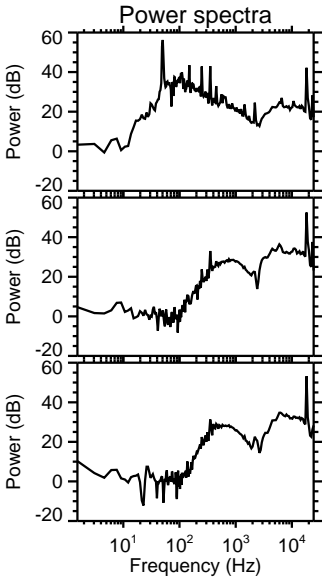
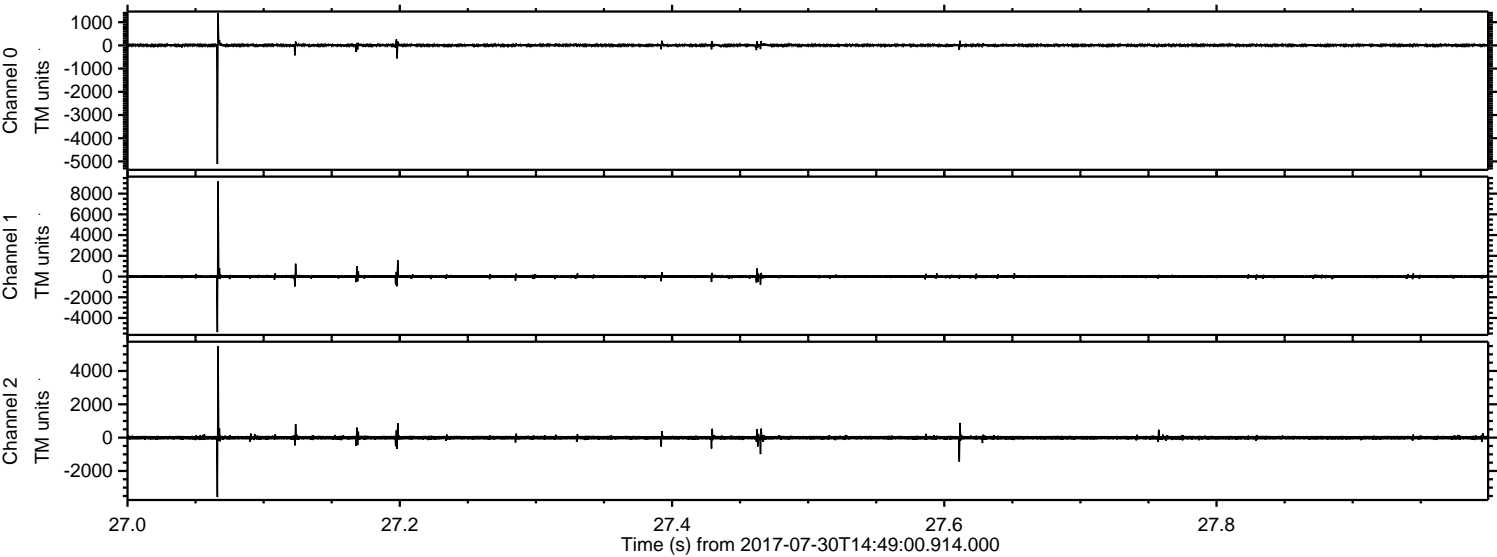


ELMAVAN 3D WAVEFORMS (Measured data sampled at 50 kHz) 51000 packets of 144 samples from 2017-07-30T14:49:00.914.000. Part 120/147

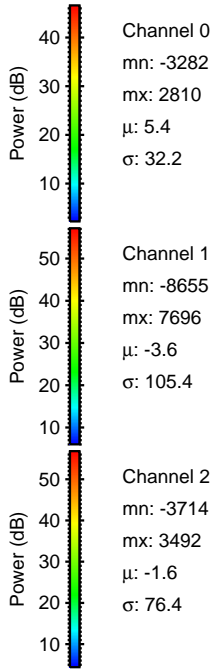
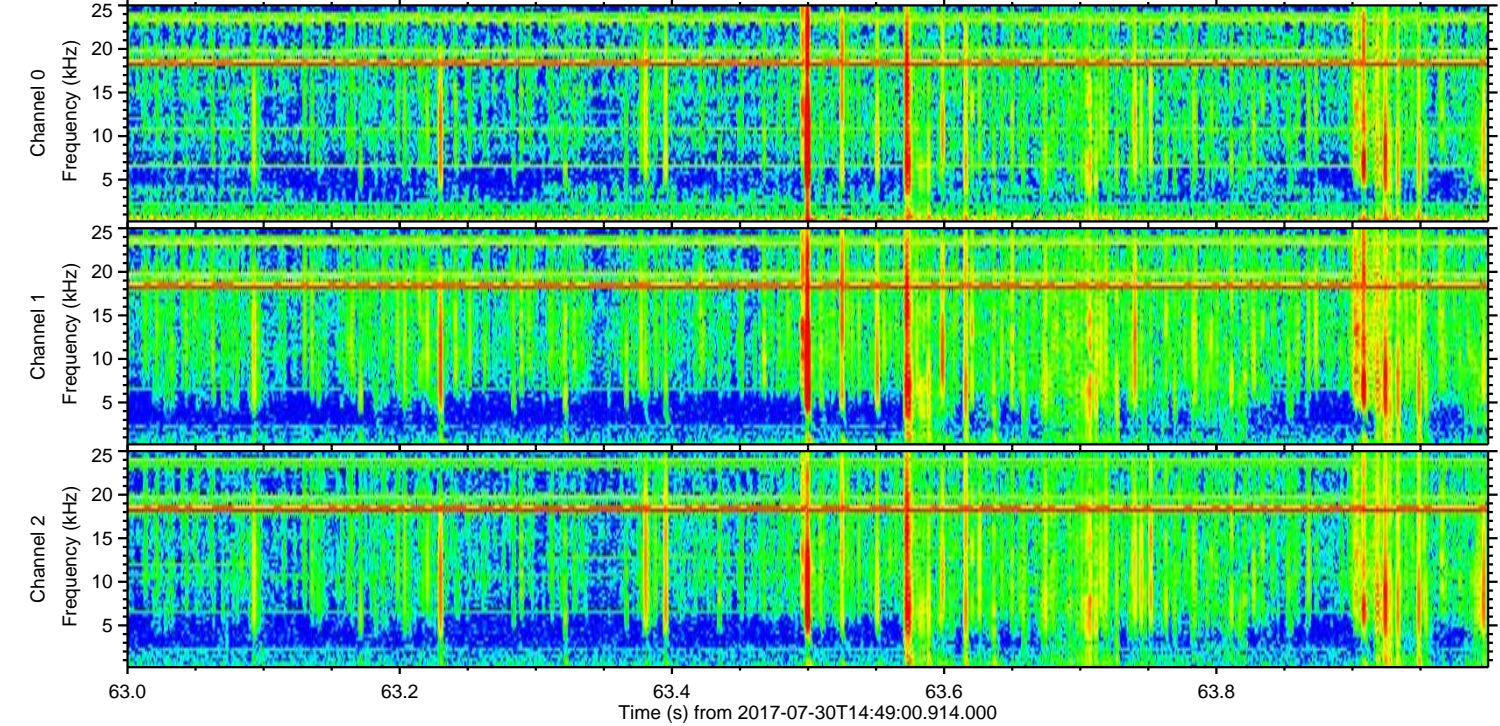
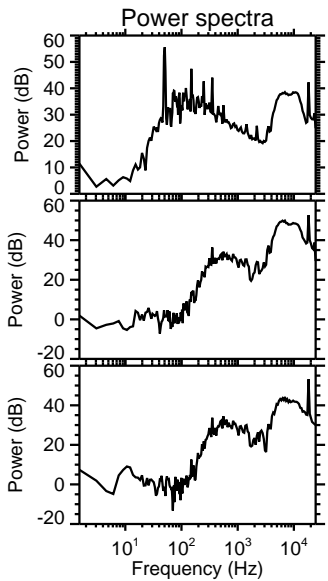
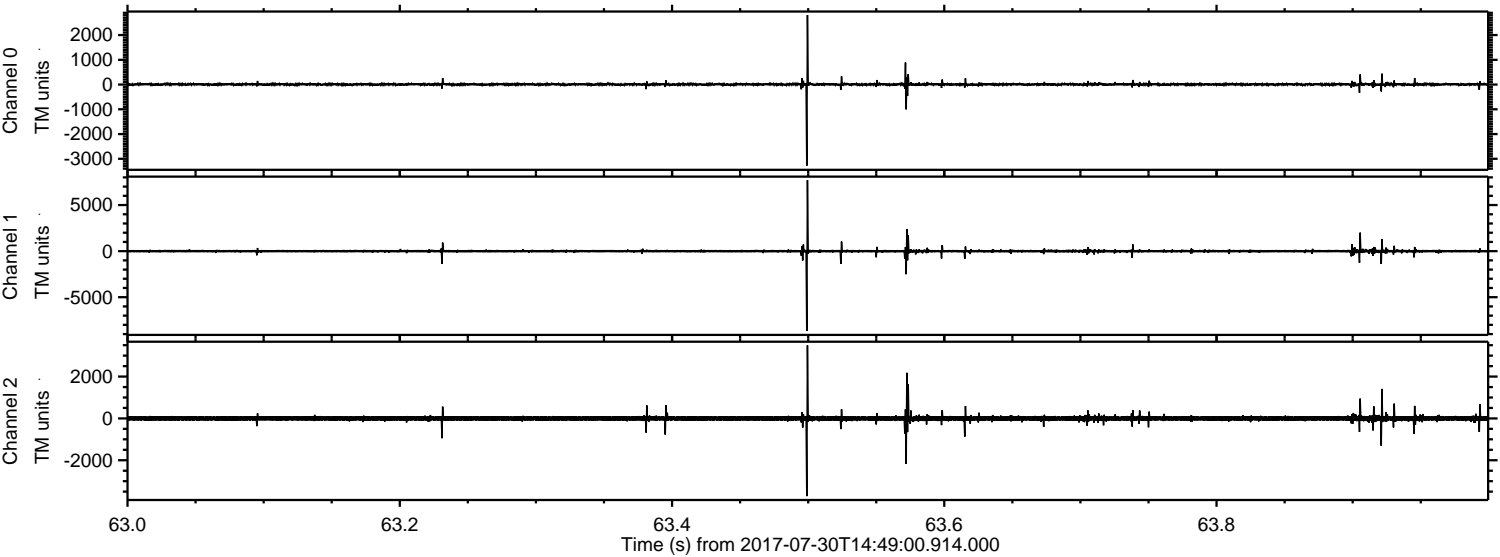
Processed Sun Jul 30 16:56:52 2017 by ELM ver.2012-10-06 from 001__elm20170730_144859__dat00.bin



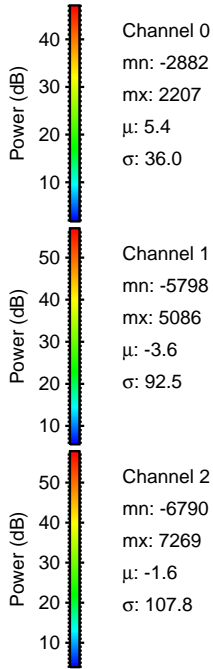
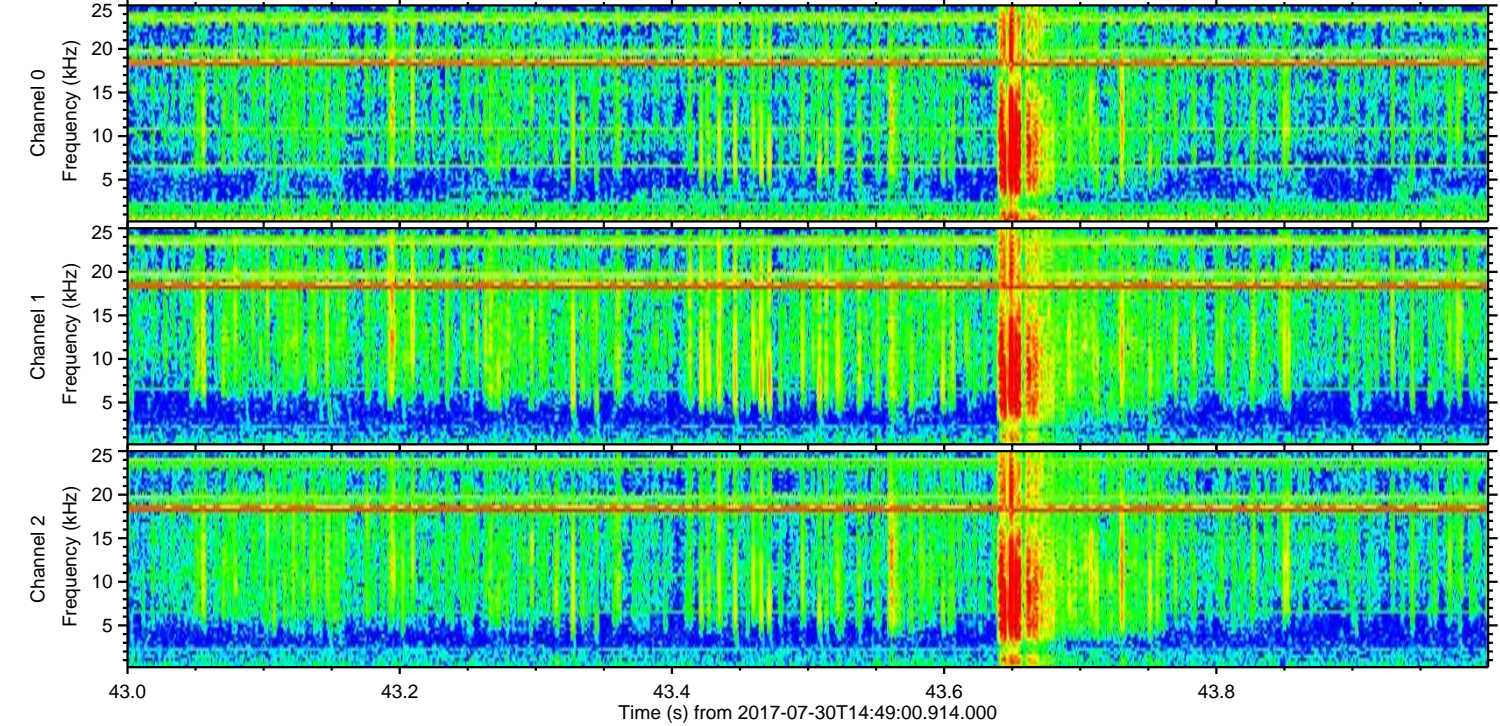
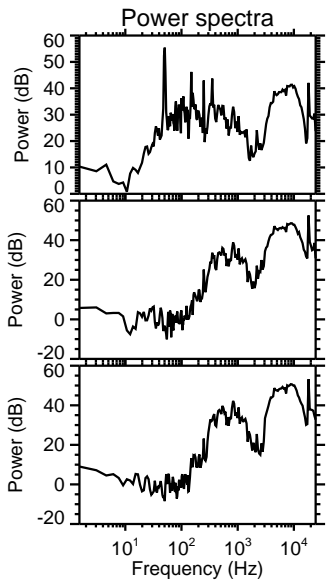
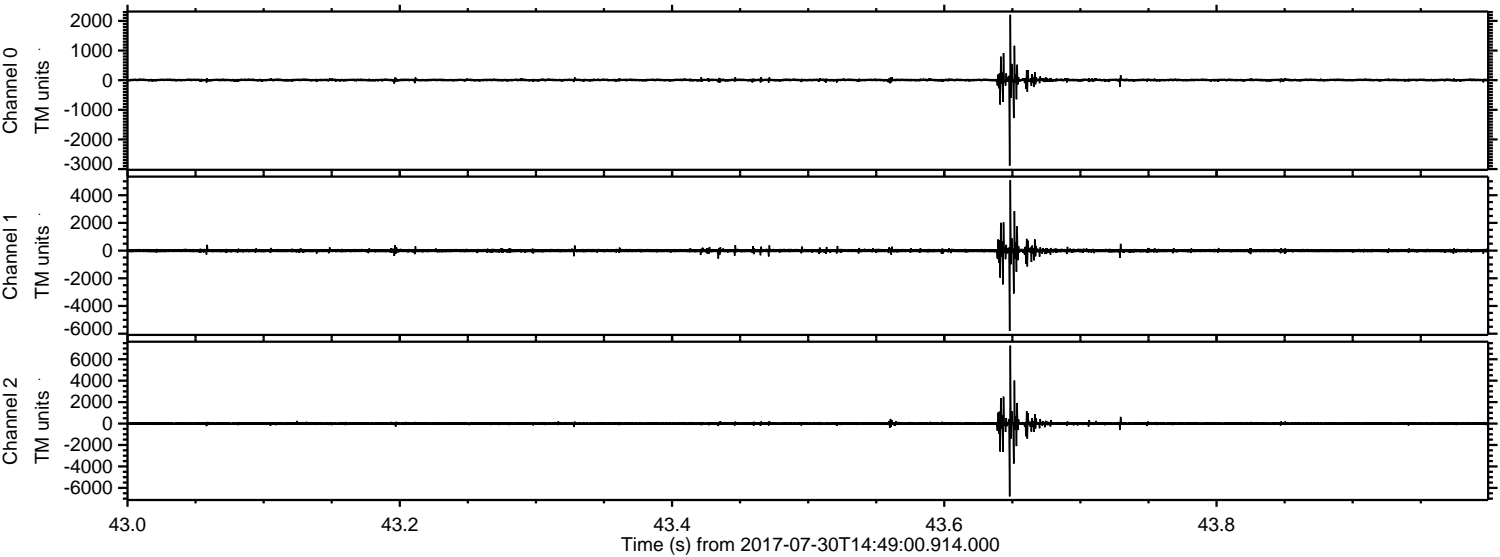
Processed Sun Jul 30 16:56:52 2017 by ELM ver.2012-10-06 from 001__elm20170730_144859__dat00.bin



Processed Sun Jul 30 16:56:53 2017 by ELM ver.2012-10-06 from 001__elm20170730_144859__dat00.bin



Processed Sun Jul 30 16:56:53 2017 by ELM ver.2012-10-06 from 001__elm20170730_144859__dat00.bin



Channel 0
mn: -2882
mx: 2207
 μ : 5.4
 σ : 36.0

Channel 1
mn: -5798
mx: 5086
 μ : -3.6
 σ : 92.5

Channel 2
mn: -6790
mx: 7269
 μ : -1.6
 σ : 107.8

Processed Sun Jul 30 16:56:54 2017 by ELM ver.2012-10-06 from 001__elm20170730_144859__dat00.bin

