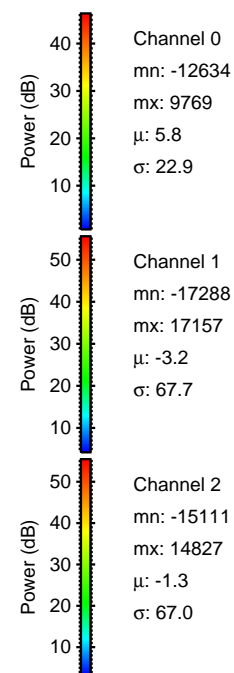
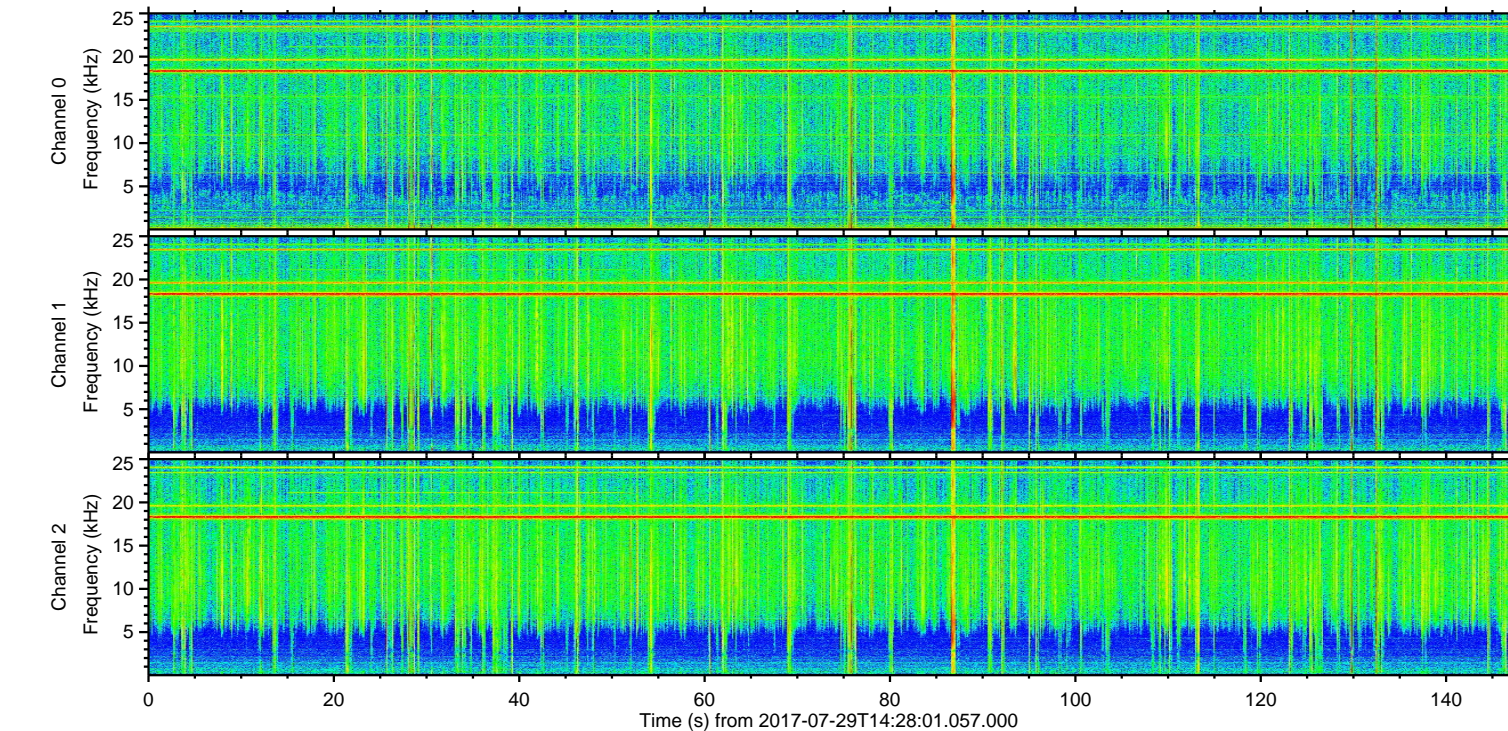
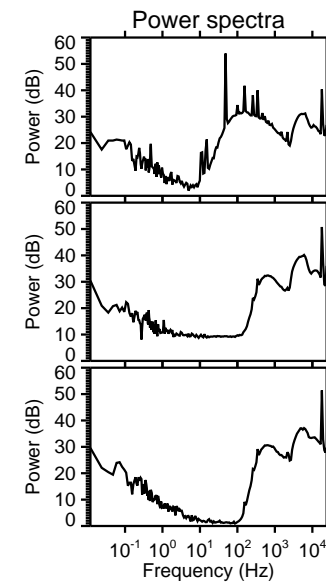
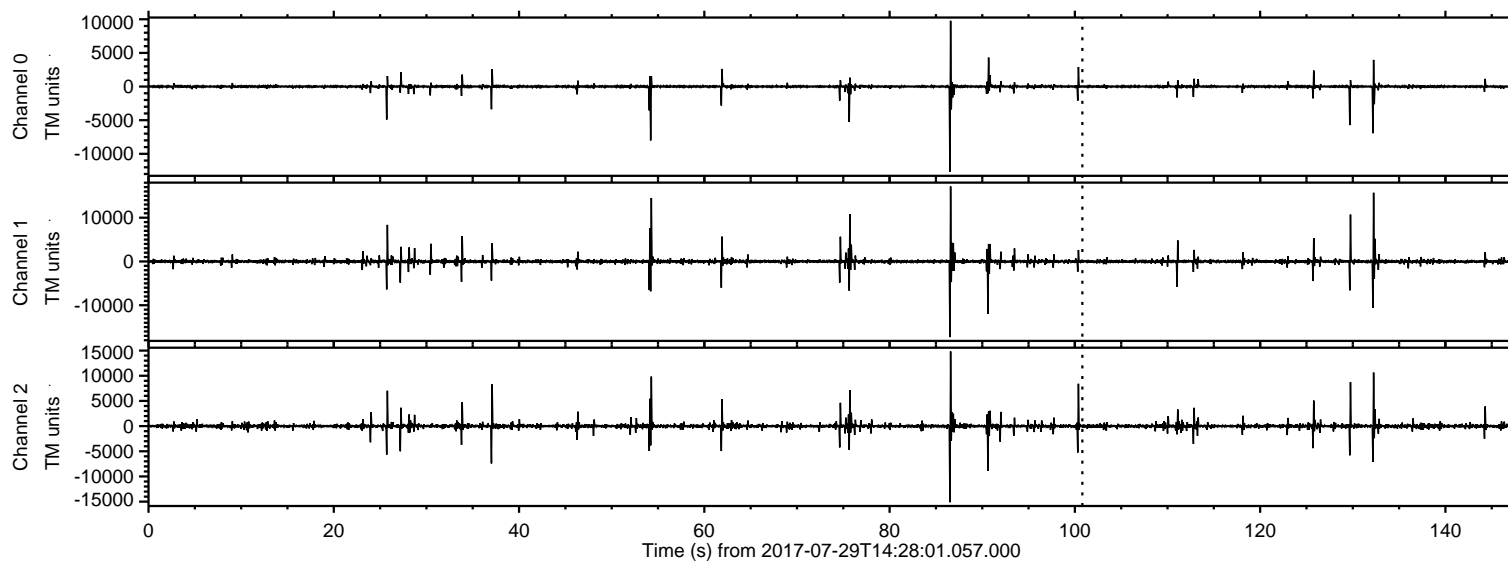
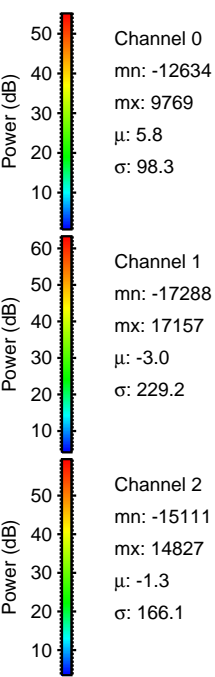
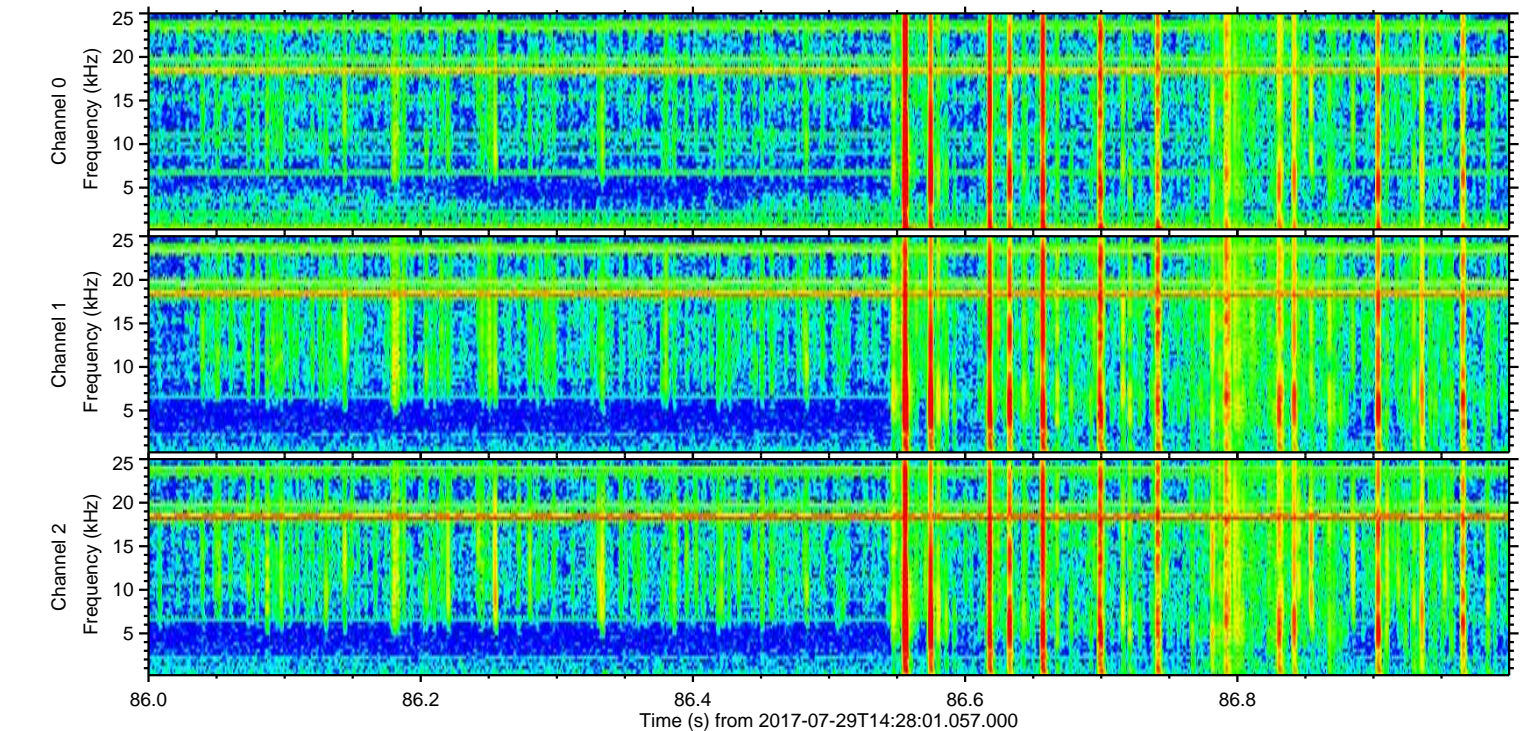
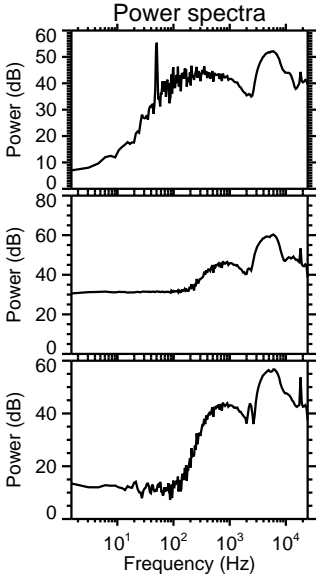
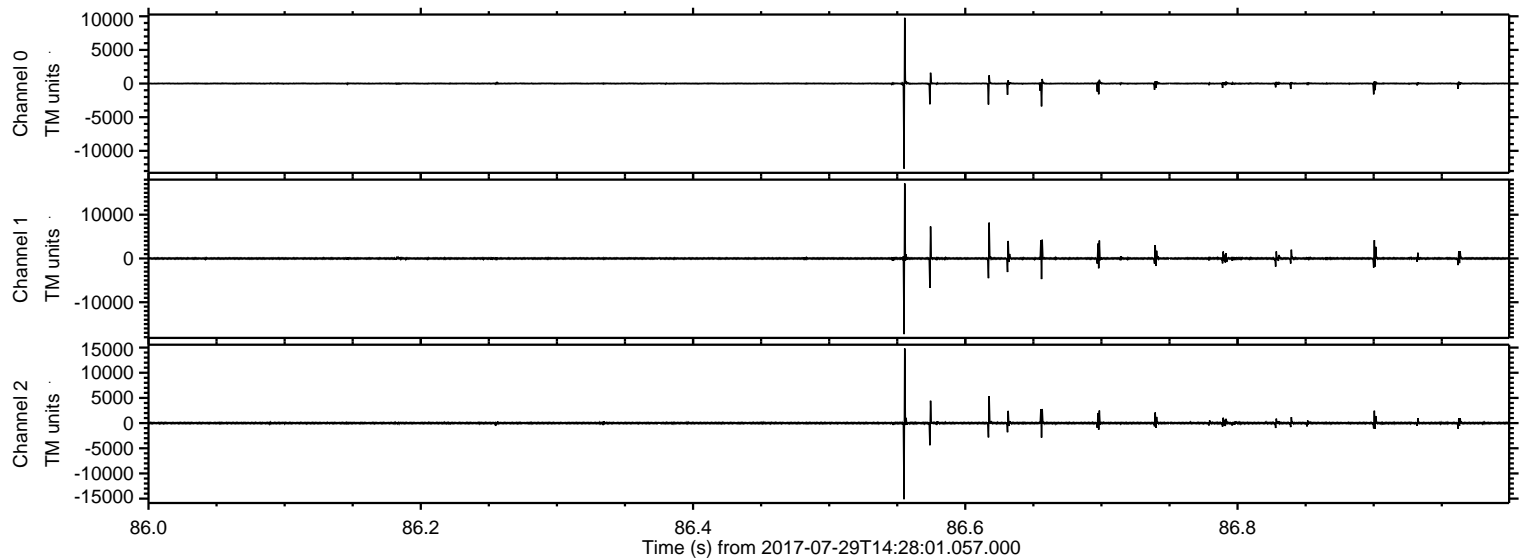


ELMAVAN 3D WAVEFORMS (Measured data sampled at 50 kHz) 50999 packets of 144 samples from 2017-07-29T14:28:01.057.000.

Processed Sat Jul 29 16:36:08 2017 by ELM ver.2012-10-06 from 001__elm20170729_142800__dat00.bin

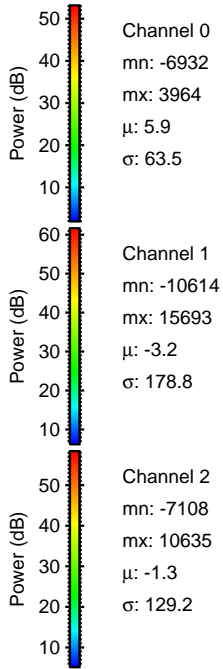
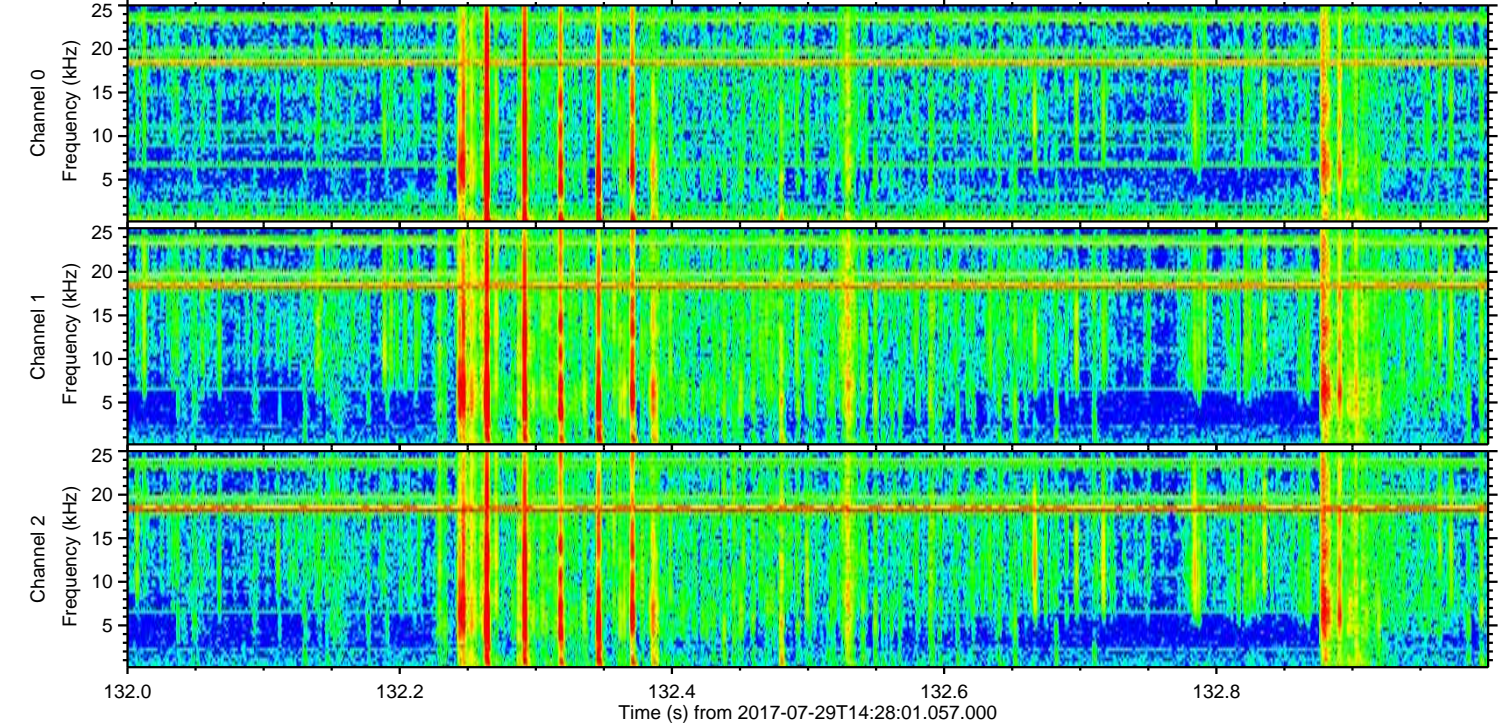
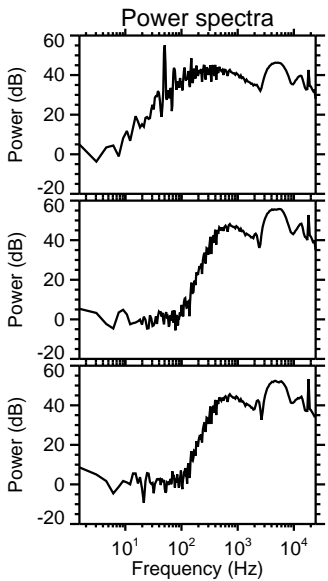
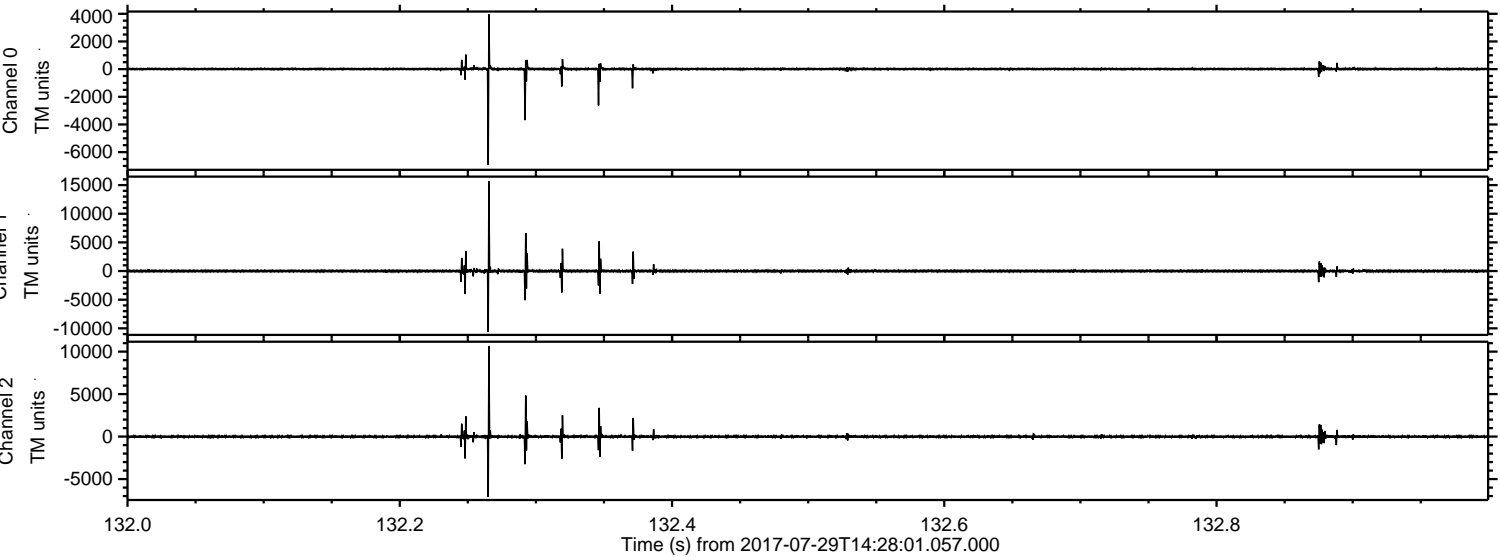


Processed Sat Jul 29 16:36:14 2017 by ELM ver.2012-10-06 from 001__elm20170729_142800__dat00.bin

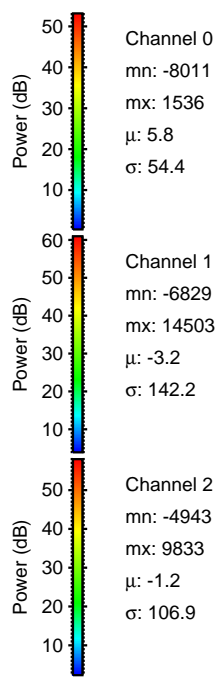
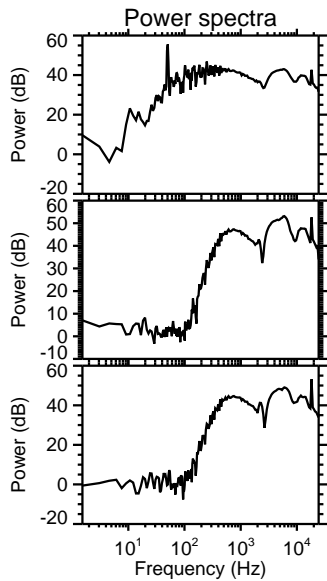
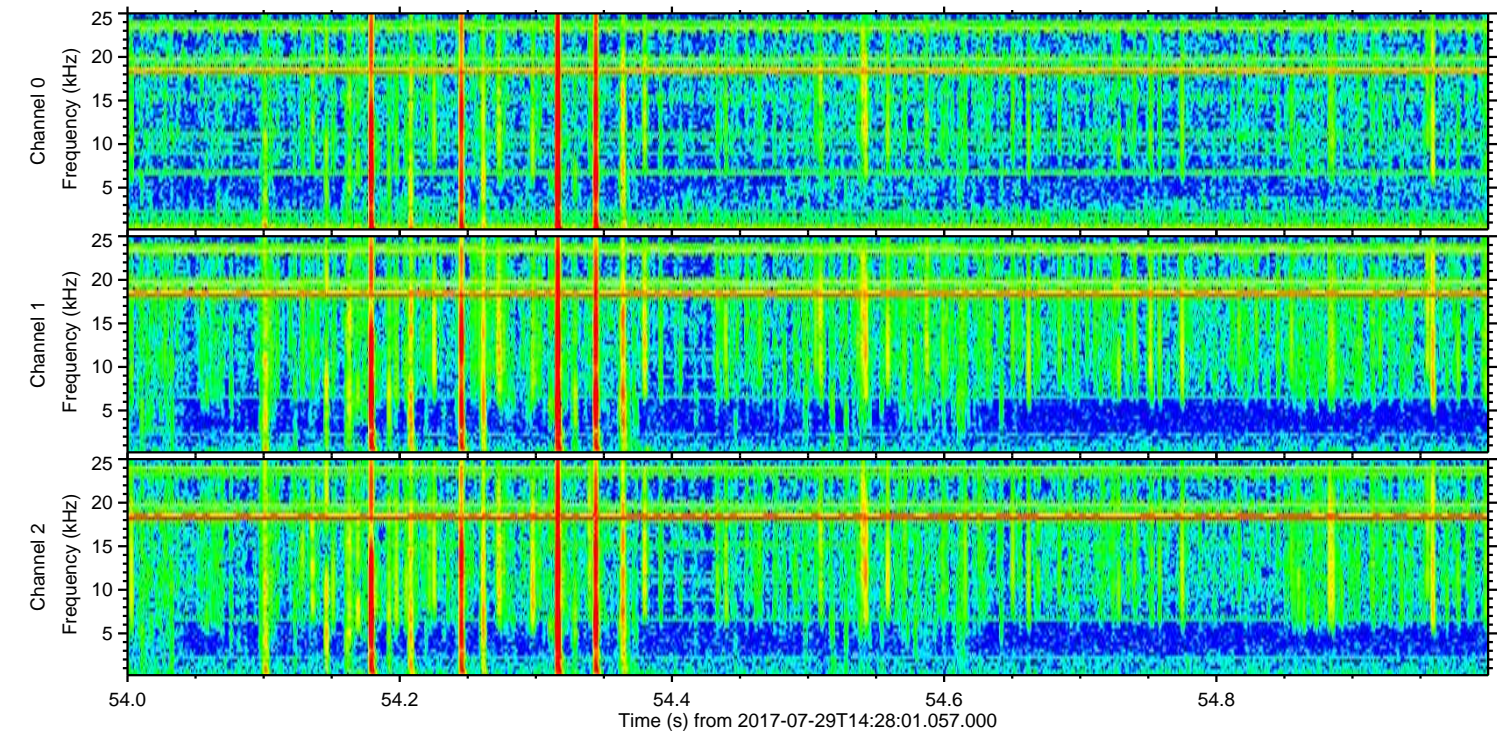
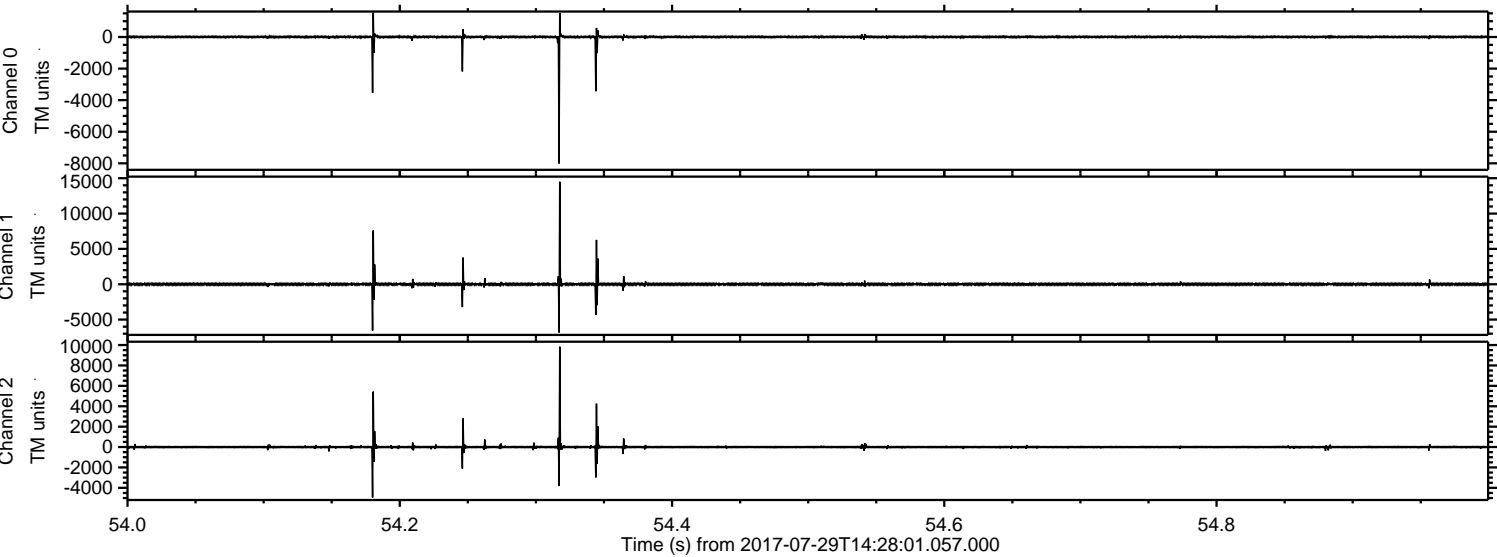


ELMAVAN 3D WAVEFORMS (Measured data sampled at 50 kHz) 50999 packets of 144 samples from 2017-07-29T14:28:01.057.000. Part 133/147

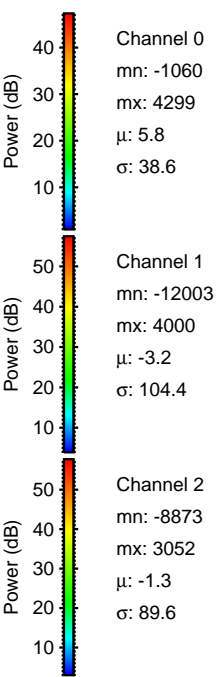
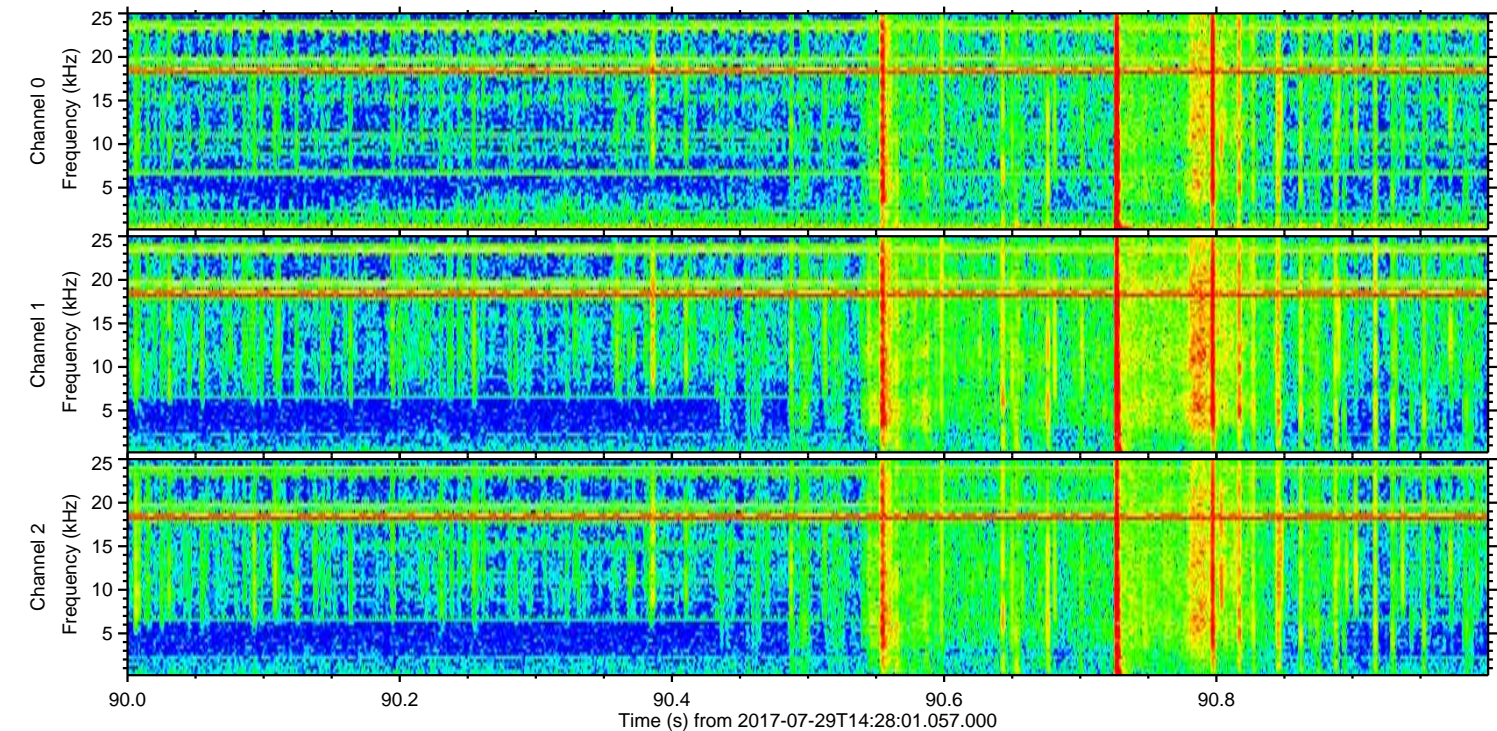
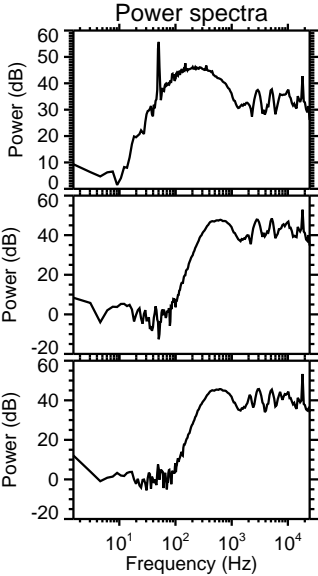
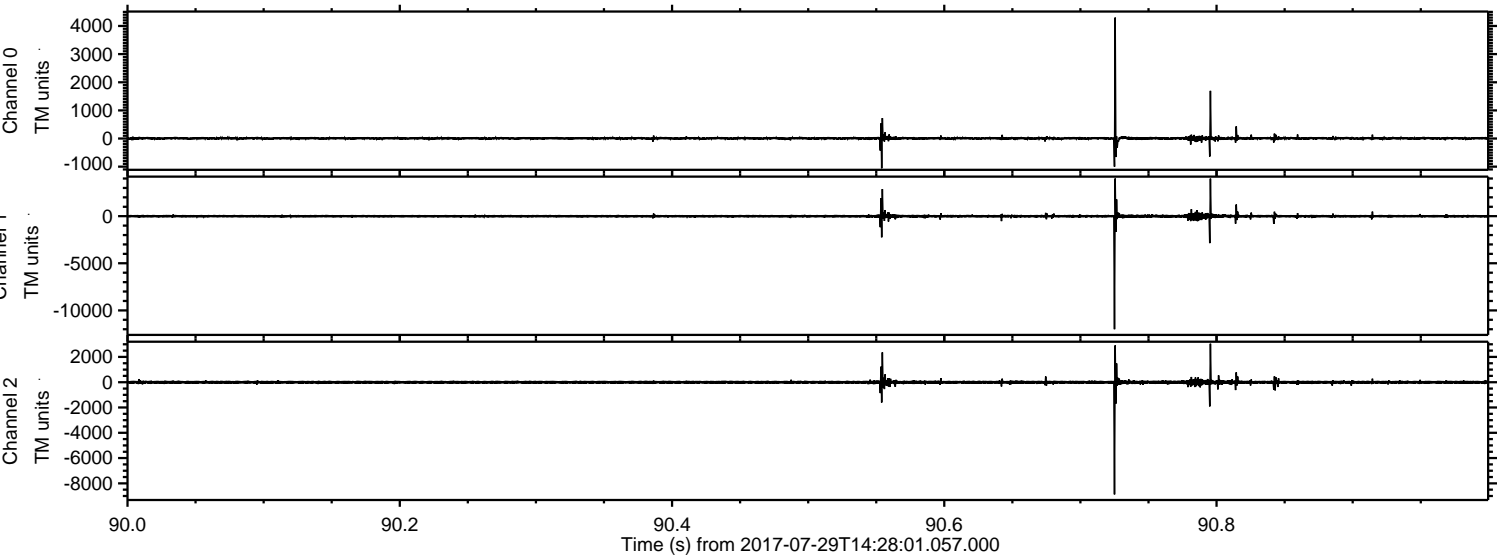
Processed Sat Jul 29 16:36:15 2017 by ELM ver.2012-10-06 from 001__elm20170729_142800__dat00.bin



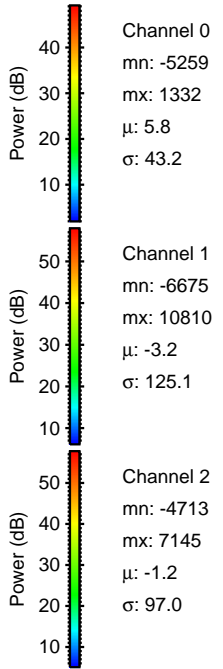
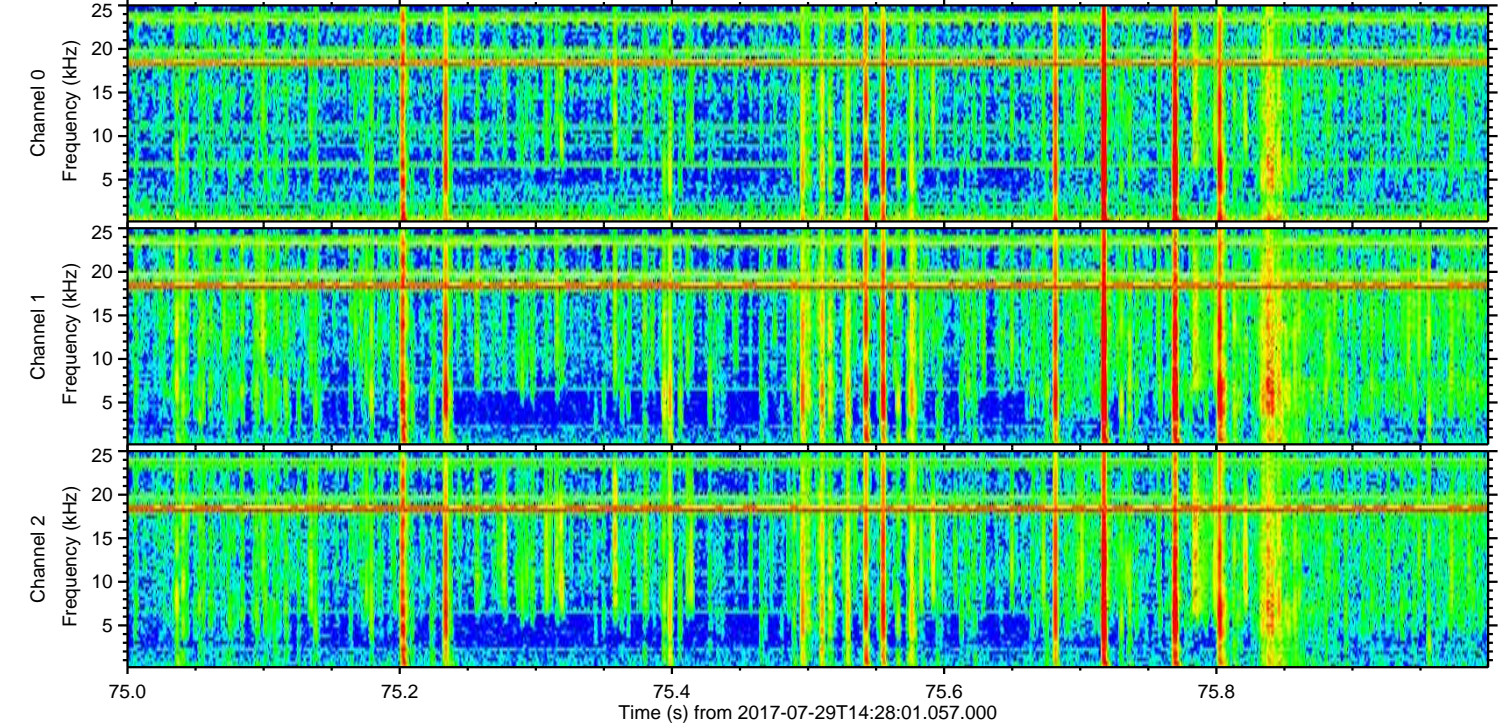
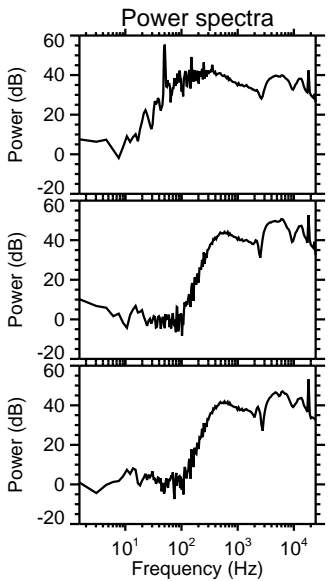
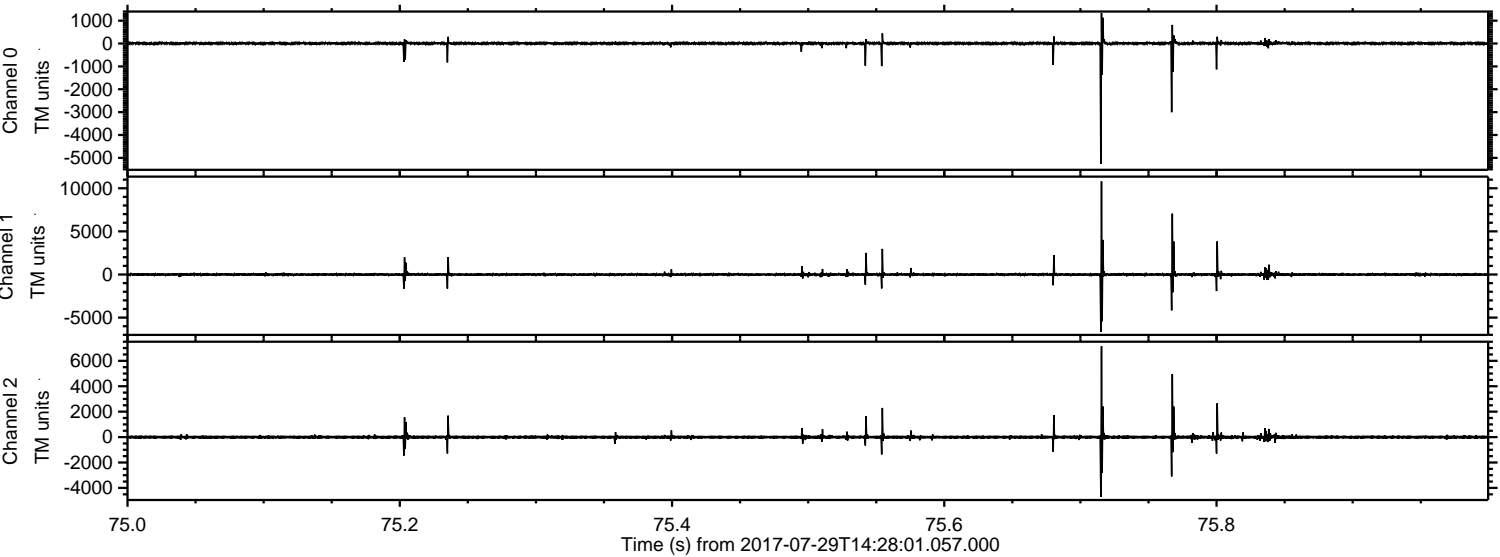
Processed Sat Jul 29 16:36:16 2017 by ELM ver.2012-10-06 from 001__elm20170729_142800__dat00.bin



Processed Sat Jul 29 16:36:16 2017 by ELM ver.2012-10-06 from 001__elm20170729_142800__dat00.bin

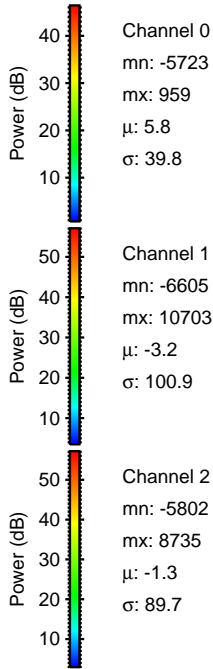
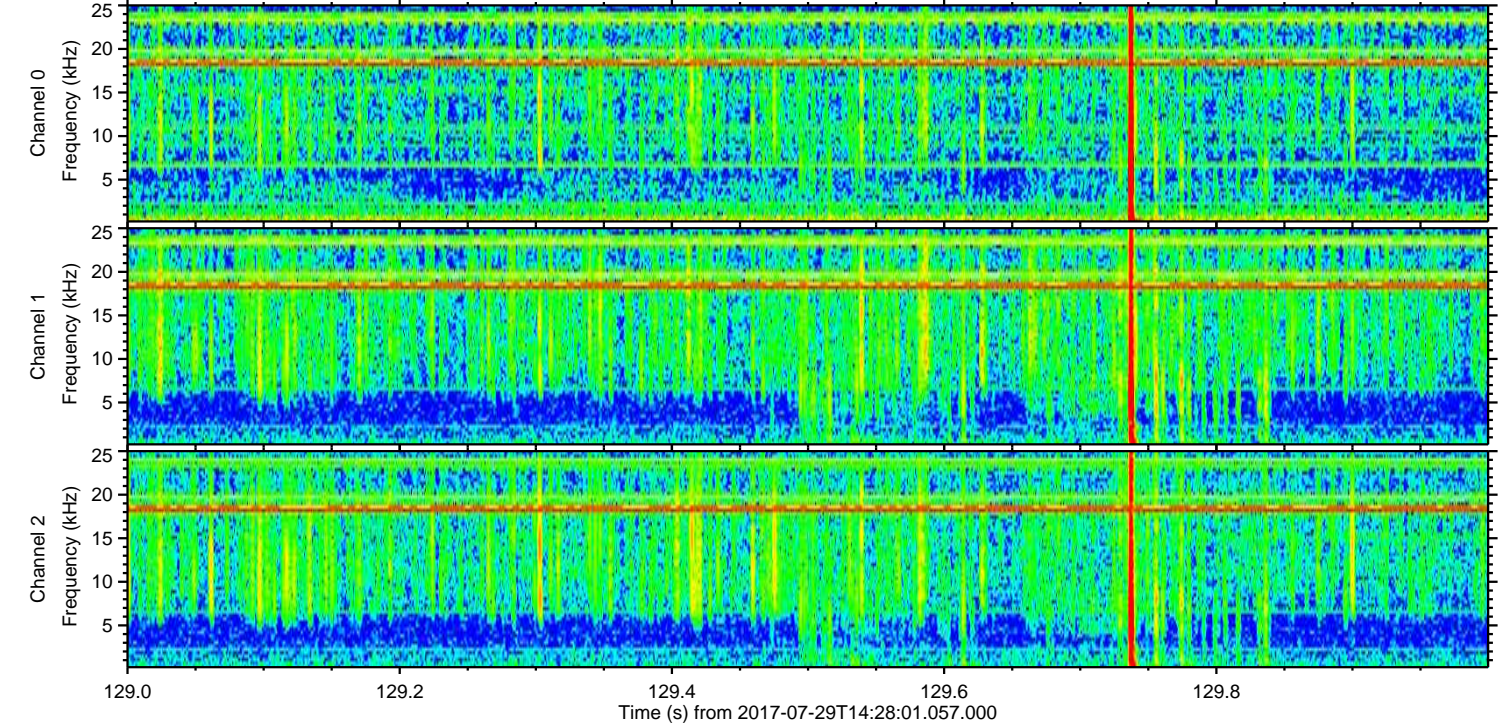
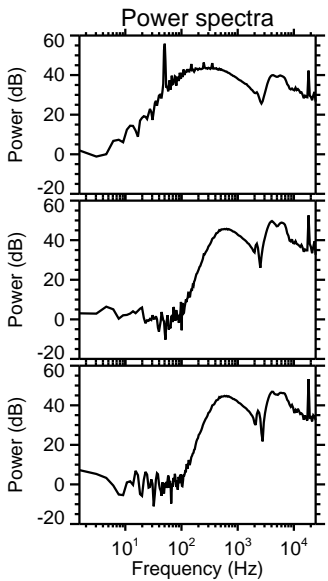
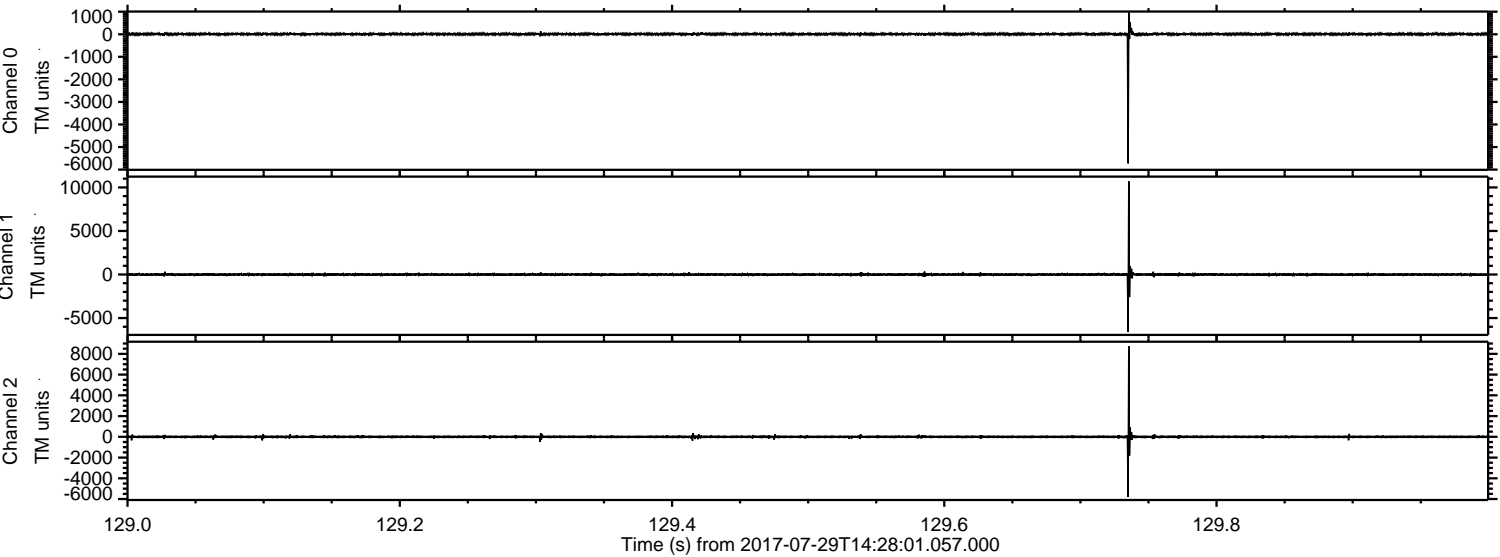


Processed Sat Jul 29 16:36:17 2017 by ELM ver.2012-10-06 from 001__elm20170729_142800__dat00.bin



ELMAVAN 3D WAVEFORMS (Measured data sampled at 50 kHz) 50999 packets of 144 samples from 2017-07-29T14:28:01.057.000. Part 130/147

Processed Sat Jul 29 16:36:18 2017 by ELM ver.2012-10-06 from 001__elm20170729_142800__dat00.bin



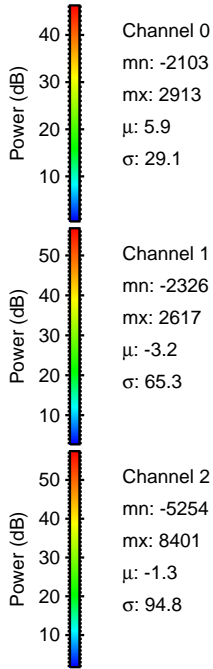
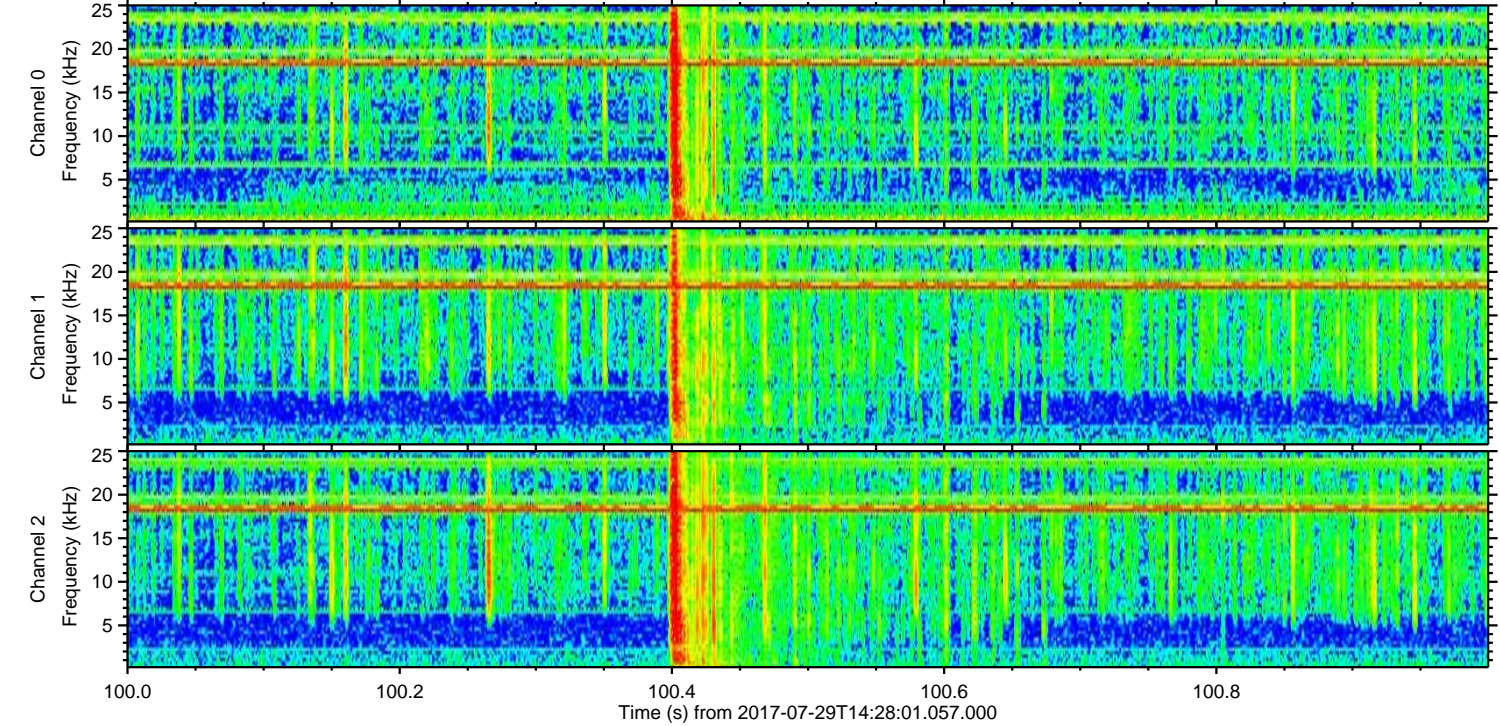
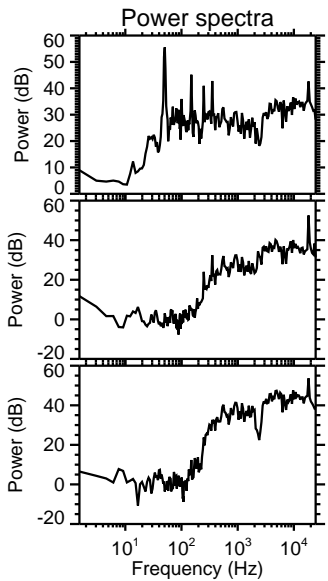
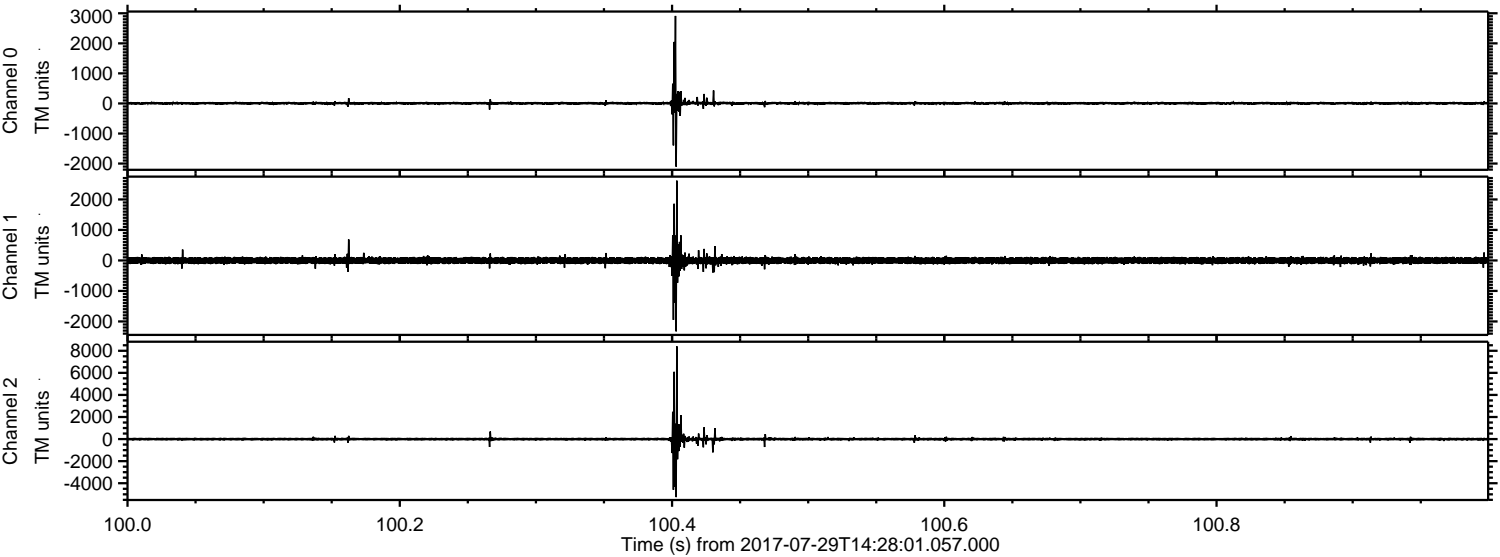
Channel 0
mn: -5723
mx: 959
 μ : 5.8
 σ : 39.8

Channel 1
mn: -6605
mx: 10703
 μ : -3.2
 σ : 100.9

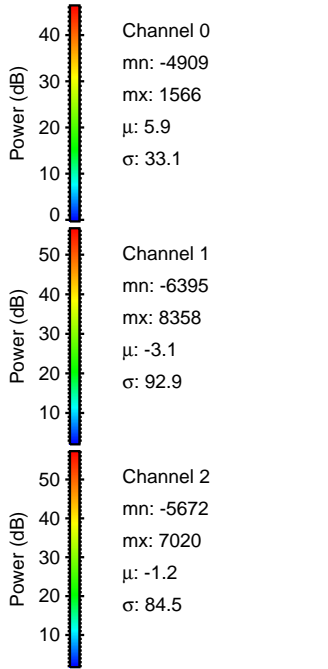
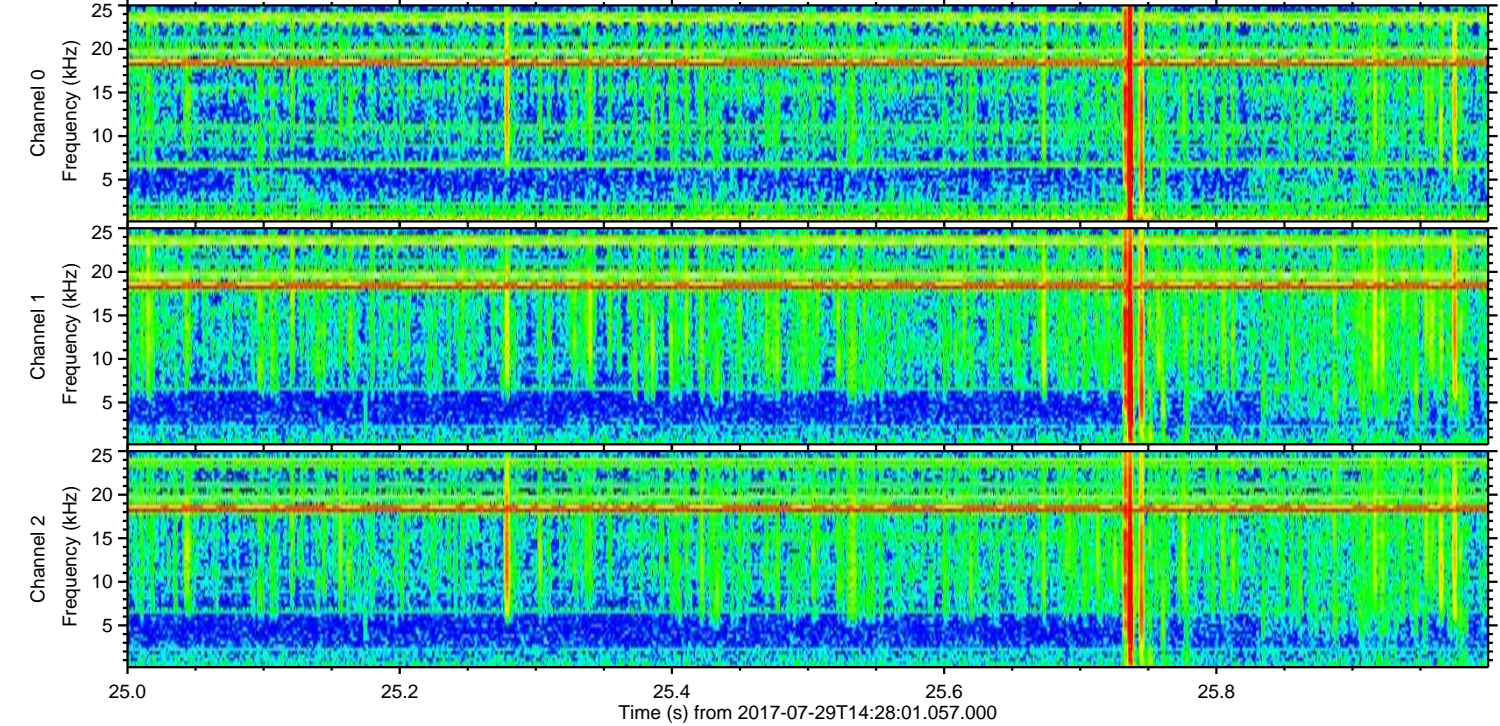
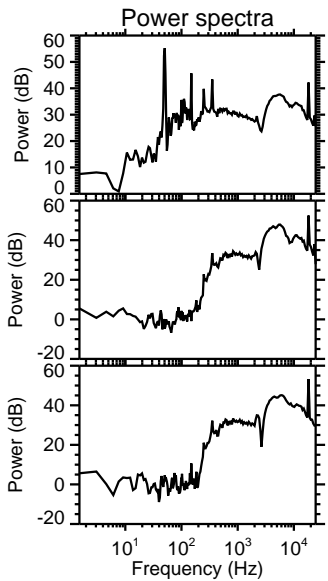
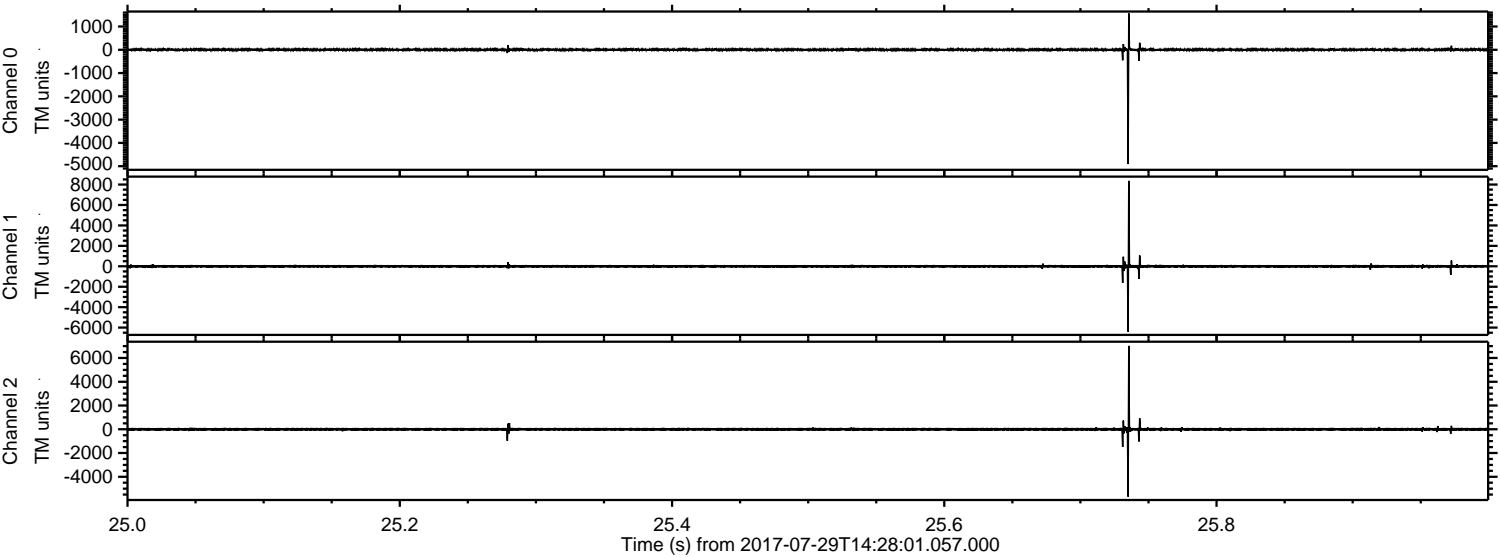
Channel 2
mn: -5802
mx: 8735
 μ : -1.3
 σ : 89.7

ELMAVAN 3D WAVEFORMS (Measured data sampled at 50 kHz) 50999 packets of 144 samples from 2017-07-29T14:28:01.057.000. Part 101/147

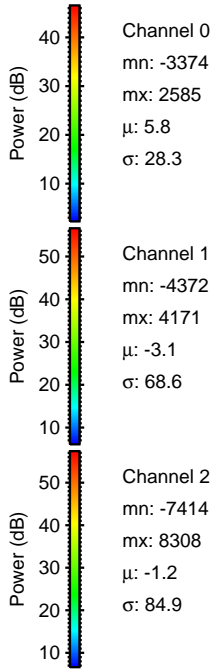
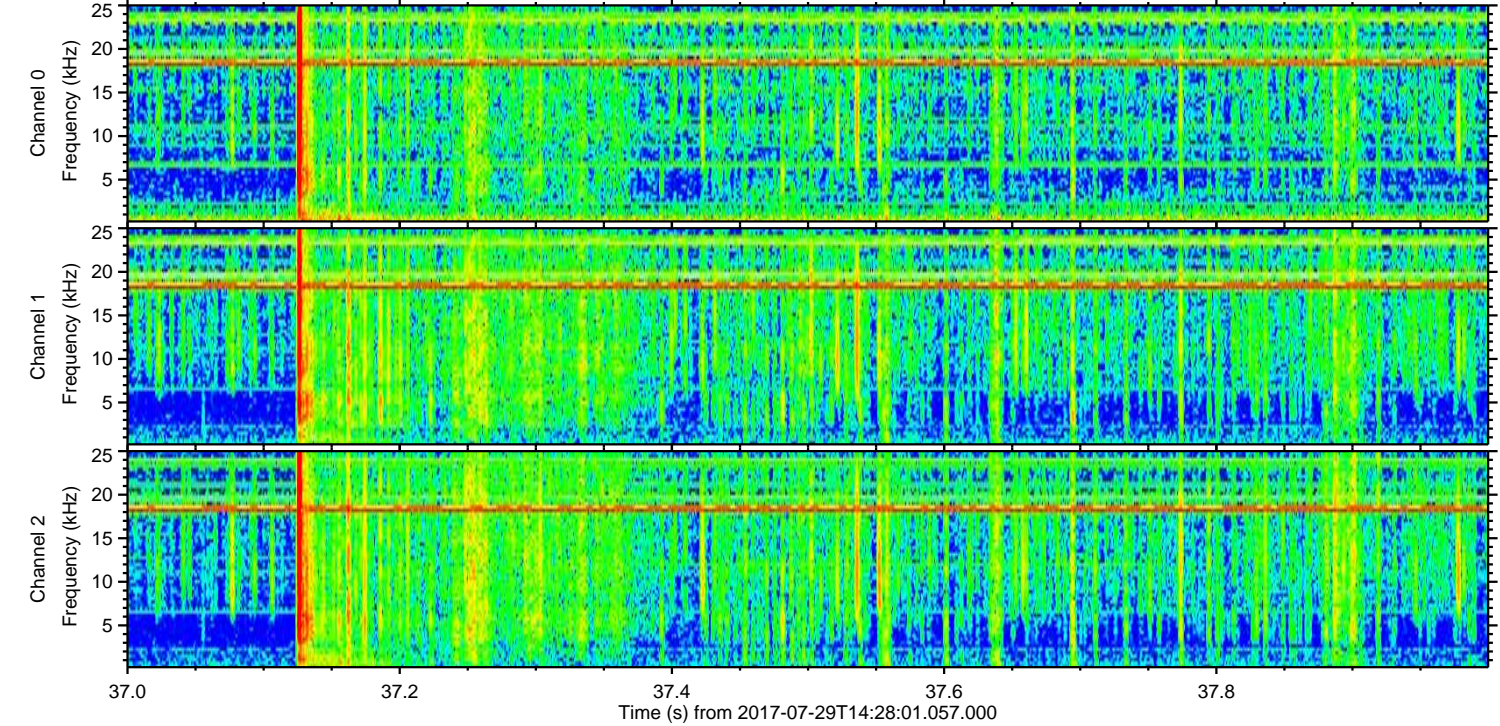
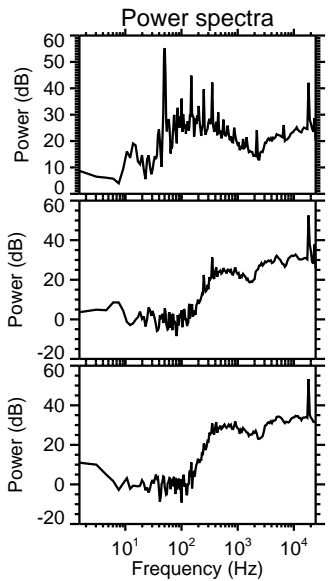
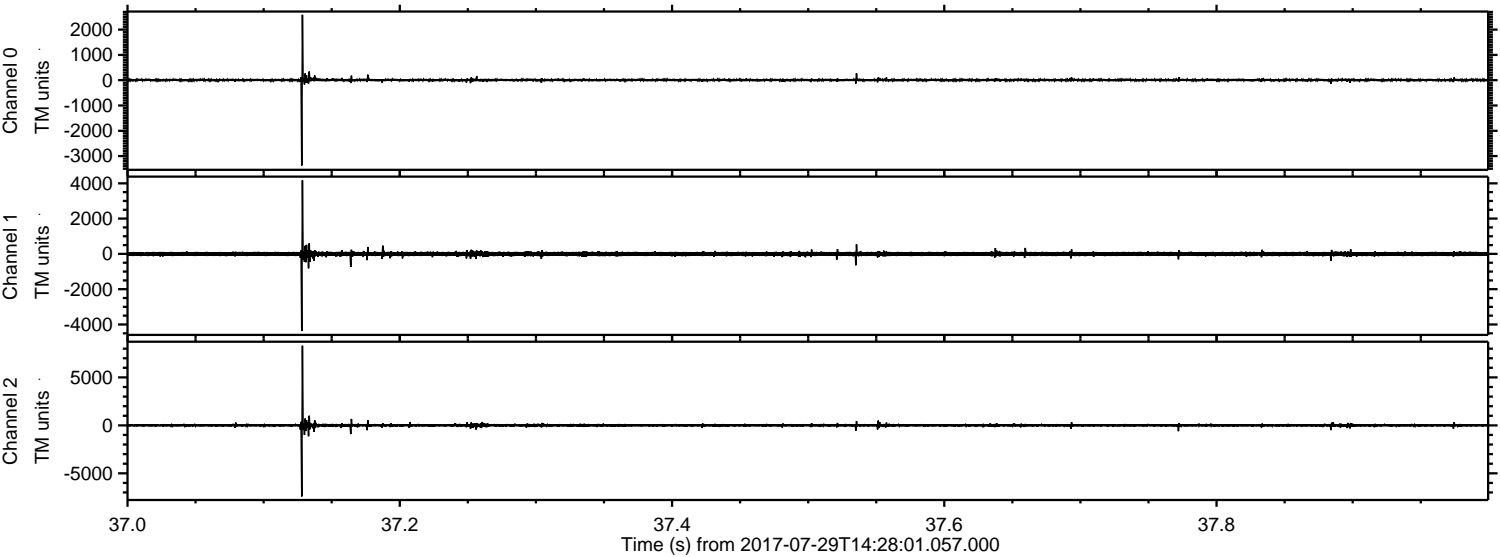
Processed Sat Jul 29 16:36:18 2017 by ELM ver.2012-10-06 from 001__elm20170729_142800__dat00.bin



Processed Sat Jul 29 16:36:19 2017 by ELM ver.2012-10-06 from 001__elm20170729_142800__dat00.bin



Processed Sat Jul 29 16:36:20 2017 by ELM ver.2012-10-06 from 001__elm20170729_142800__dat00.bin



Channel 0
mn: -3374
mx: 2585
 μ : 5.8
 σ : 28.3

Channel 1
mn: -4372
mx: 4171
 μ : -3.1
 σ : 68.6

Channel 2
mn: -7414
mx: 8308
 μ : -1.2
 σ : 84.9

