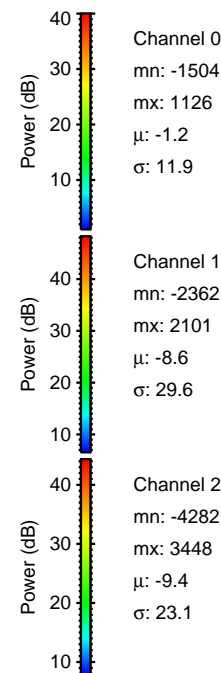
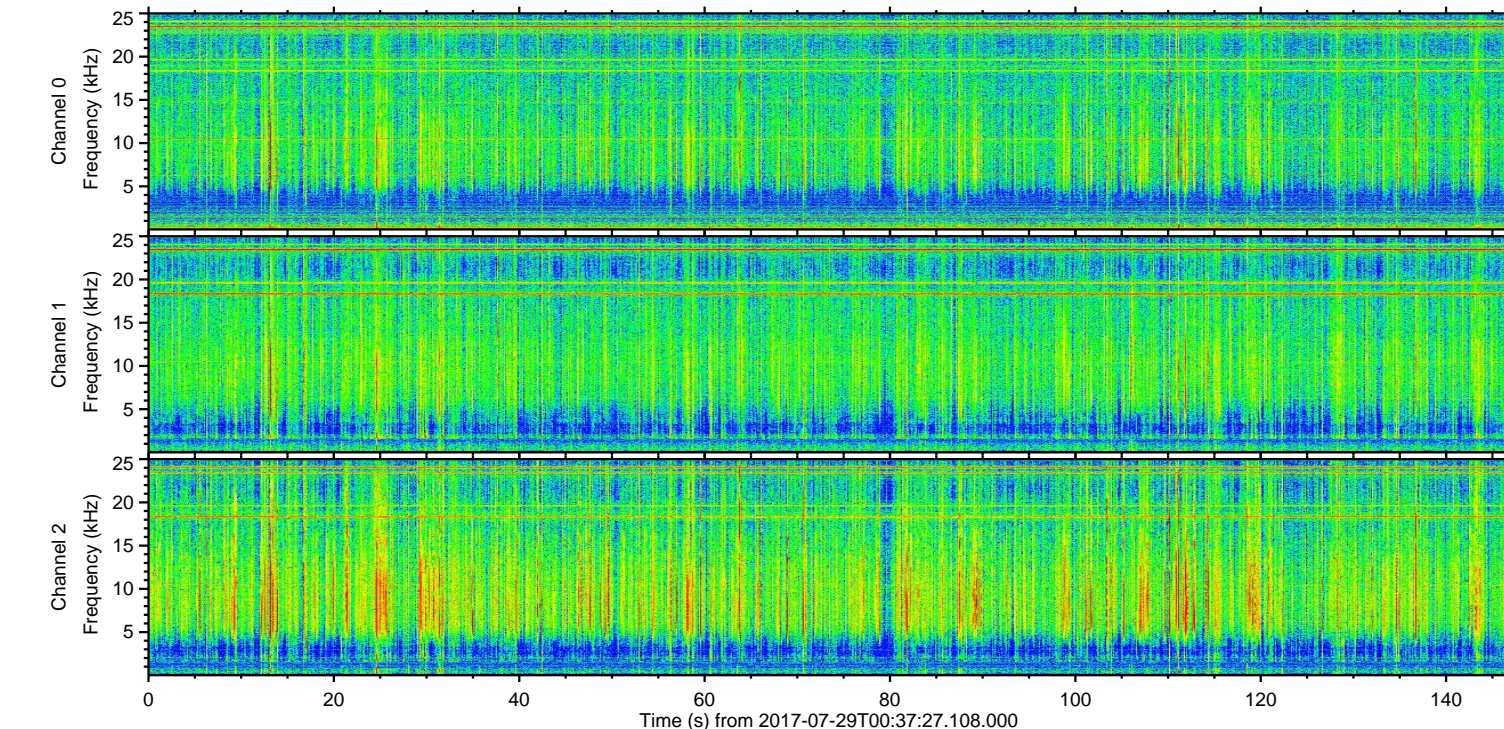
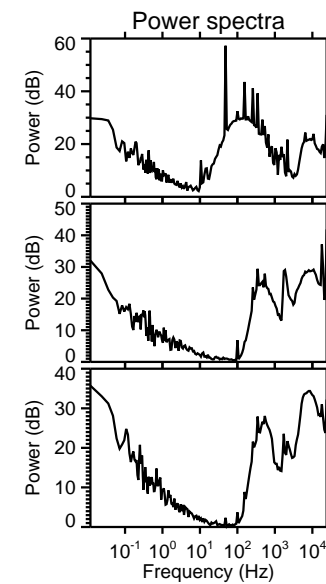
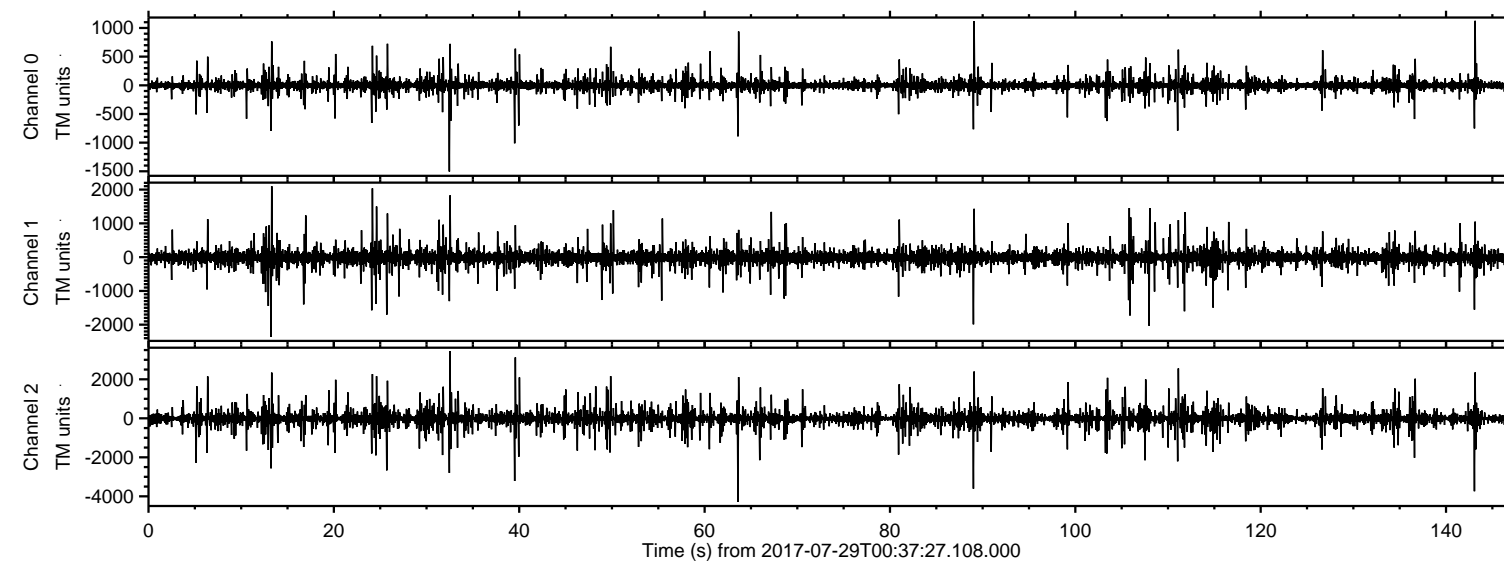
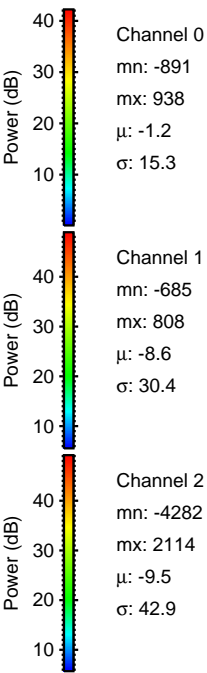
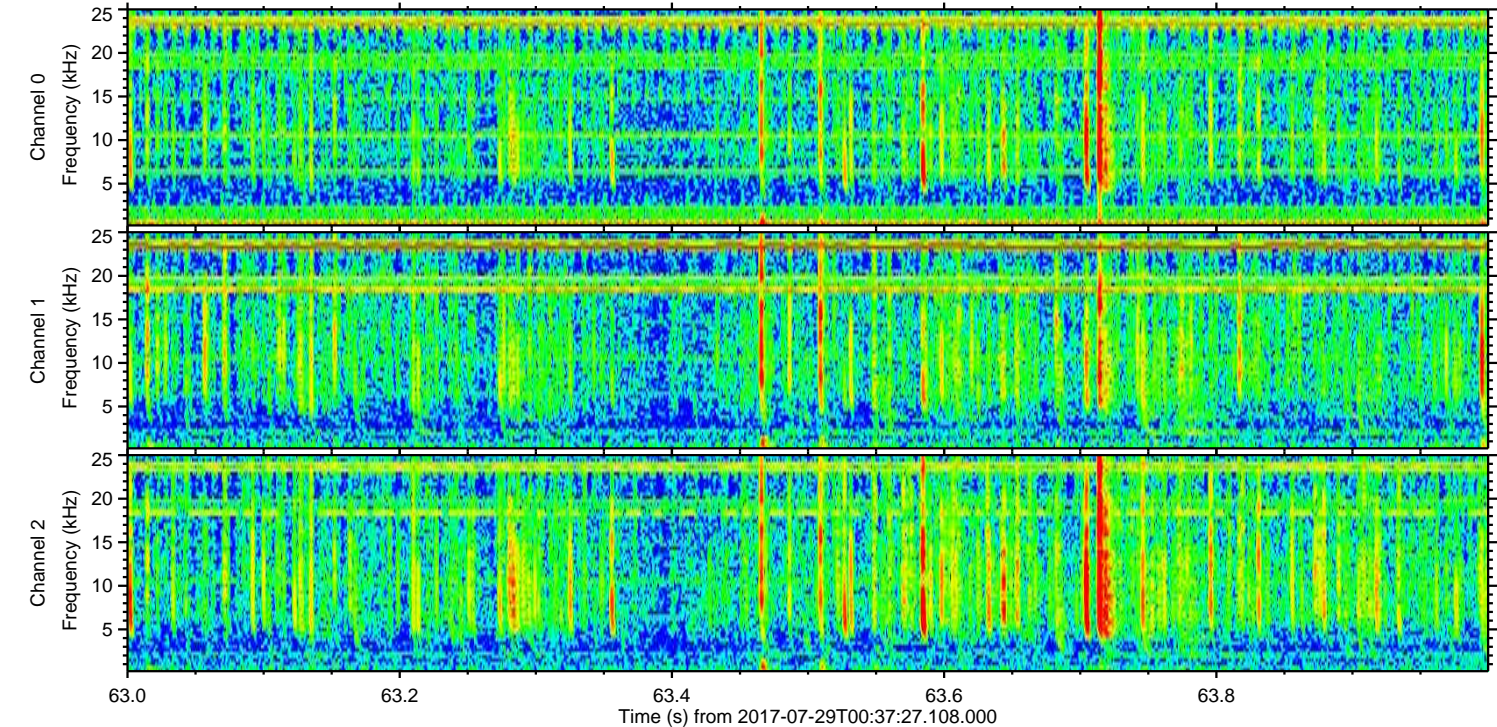
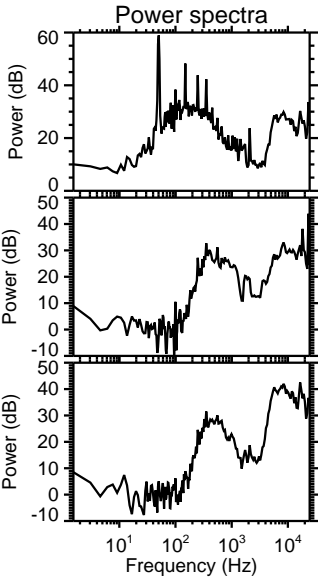
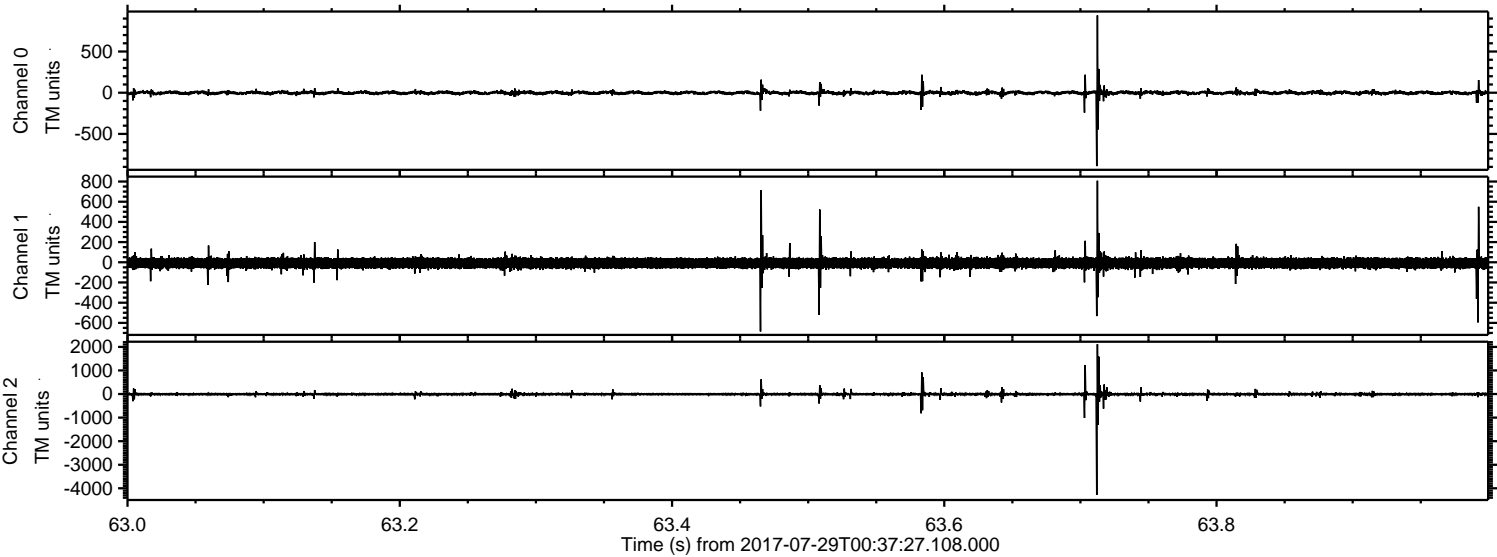


ELMAVAN 3D WAVEFORMS (Measured data sampled at 50 kHz) 51000 packets of 144 samples from 2017-07-29T00:37:27.108.000.

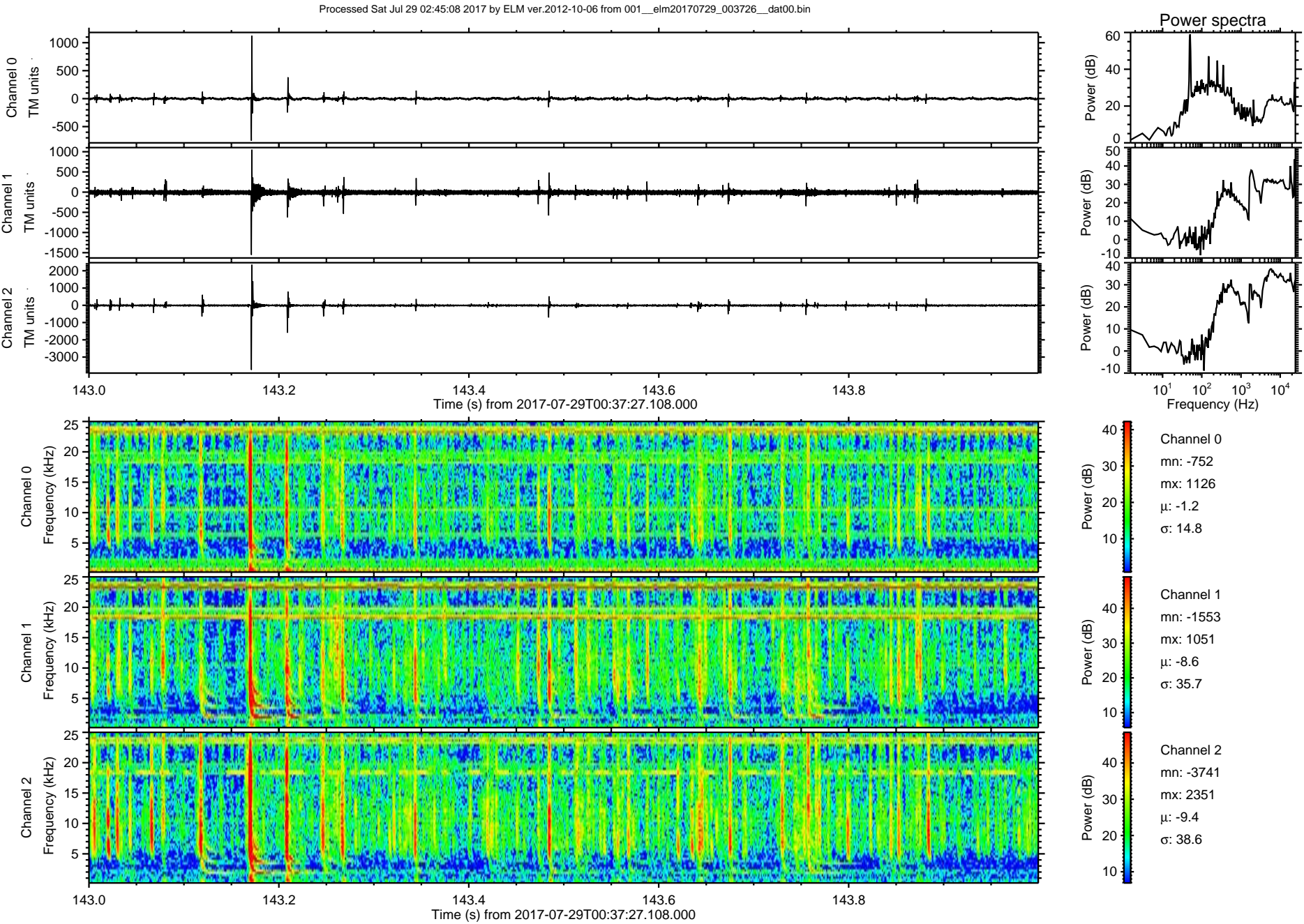
Processed Sat Jul 29 02:45:01 2017 by ELM ver.2012-10-06 from 001__elm20170729_003726__dat00.bin



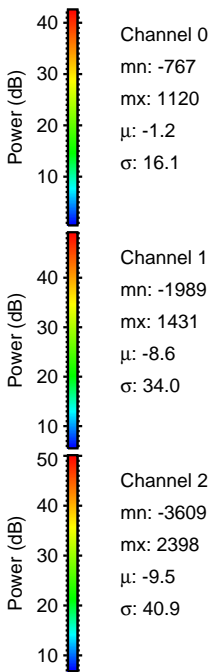
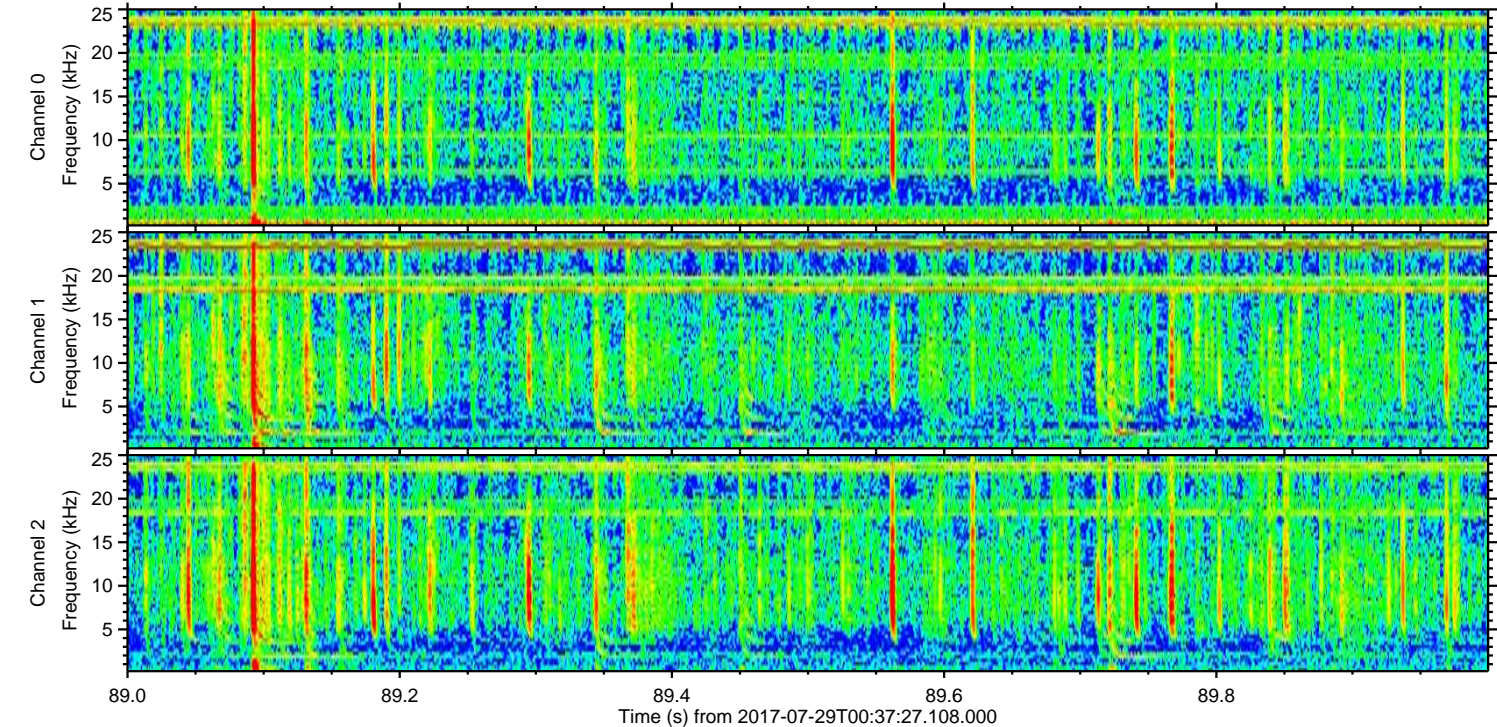
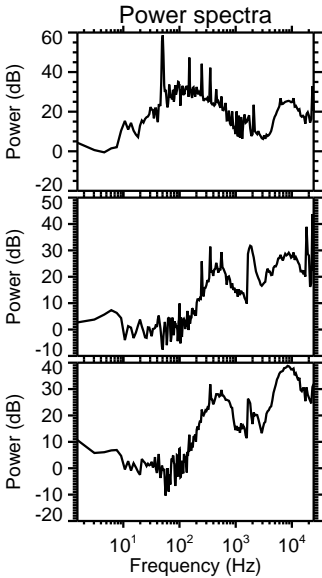
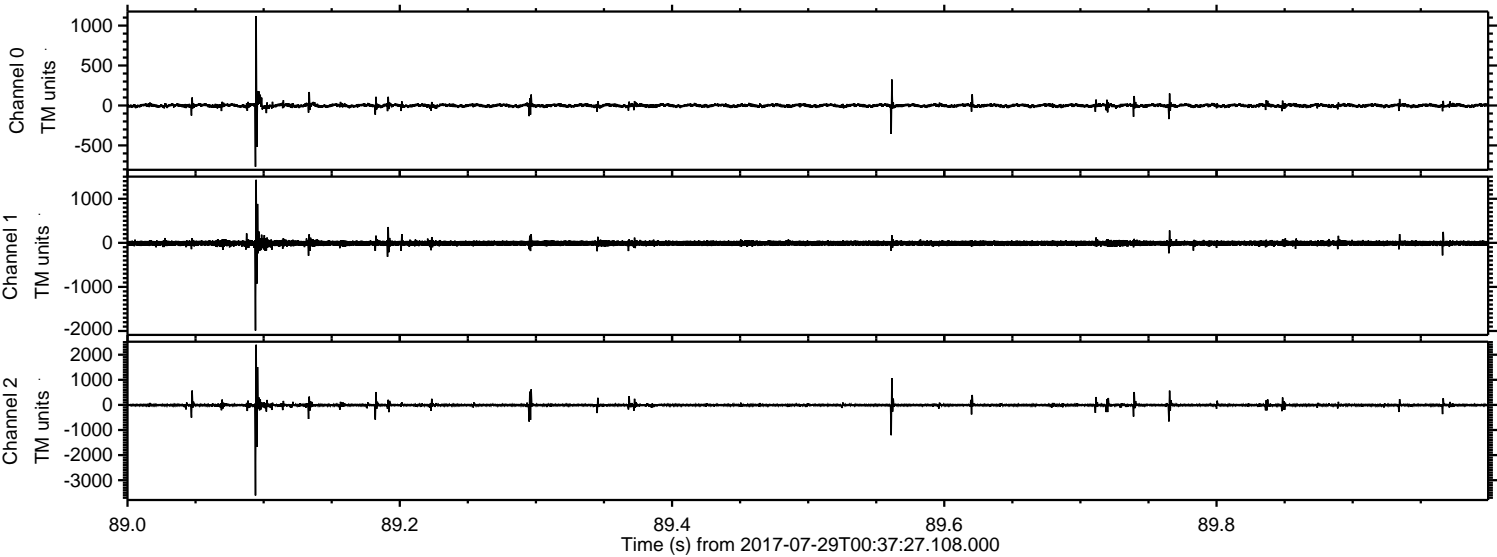
Processed Sat Jul 29 02:45:07 2017 by ELM ver.2012-10-06 from 001__elm20170729_003726__dat00.bin



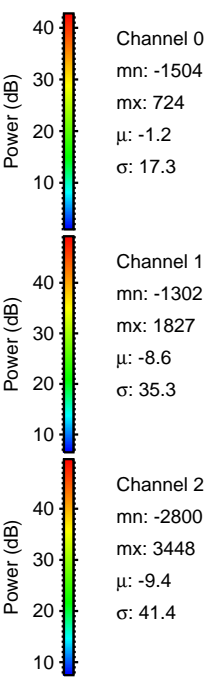
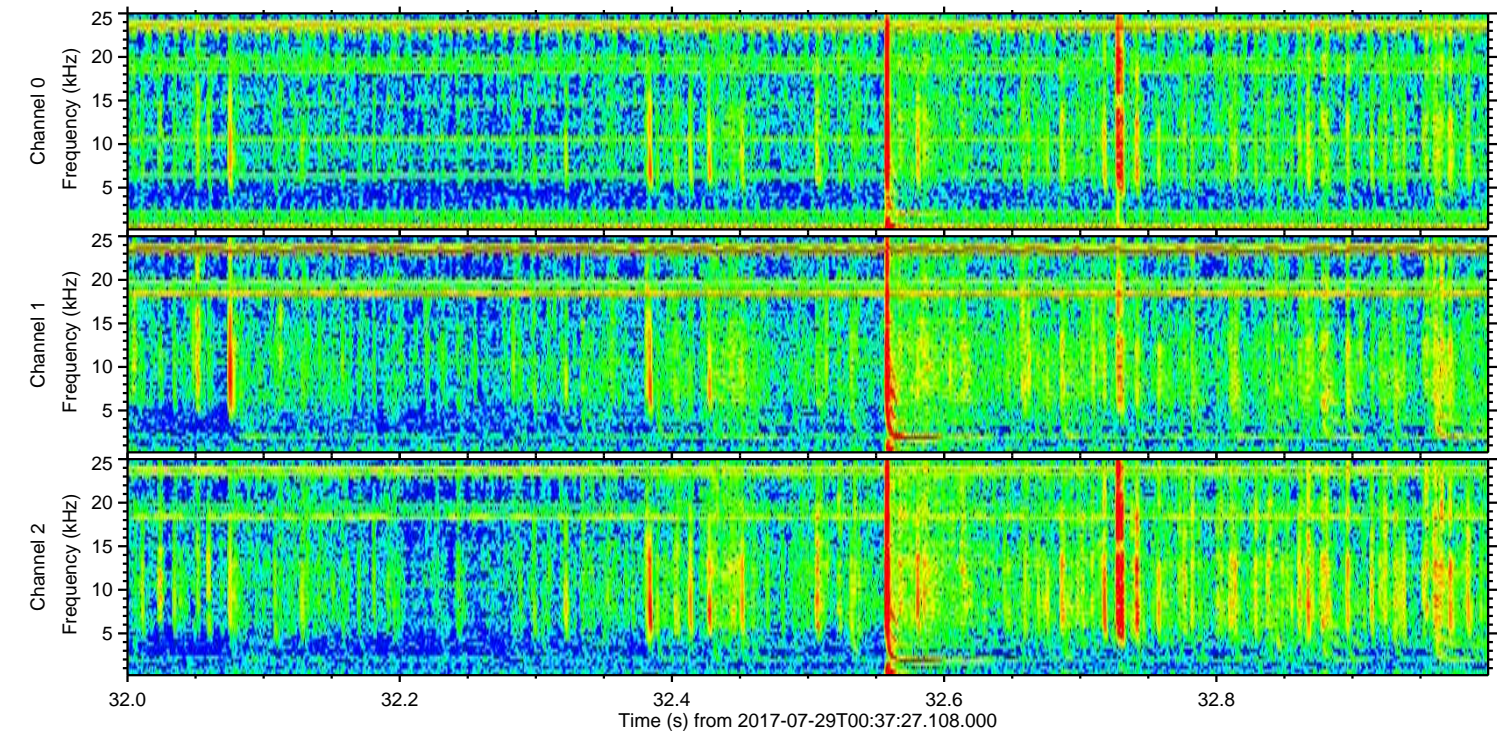
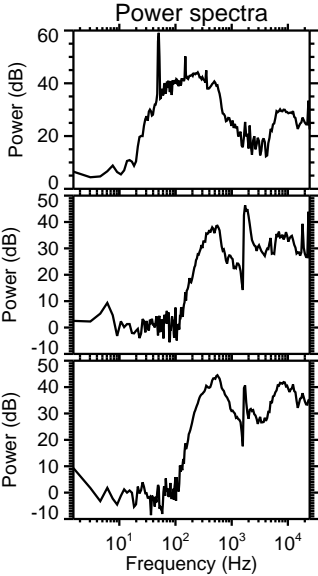
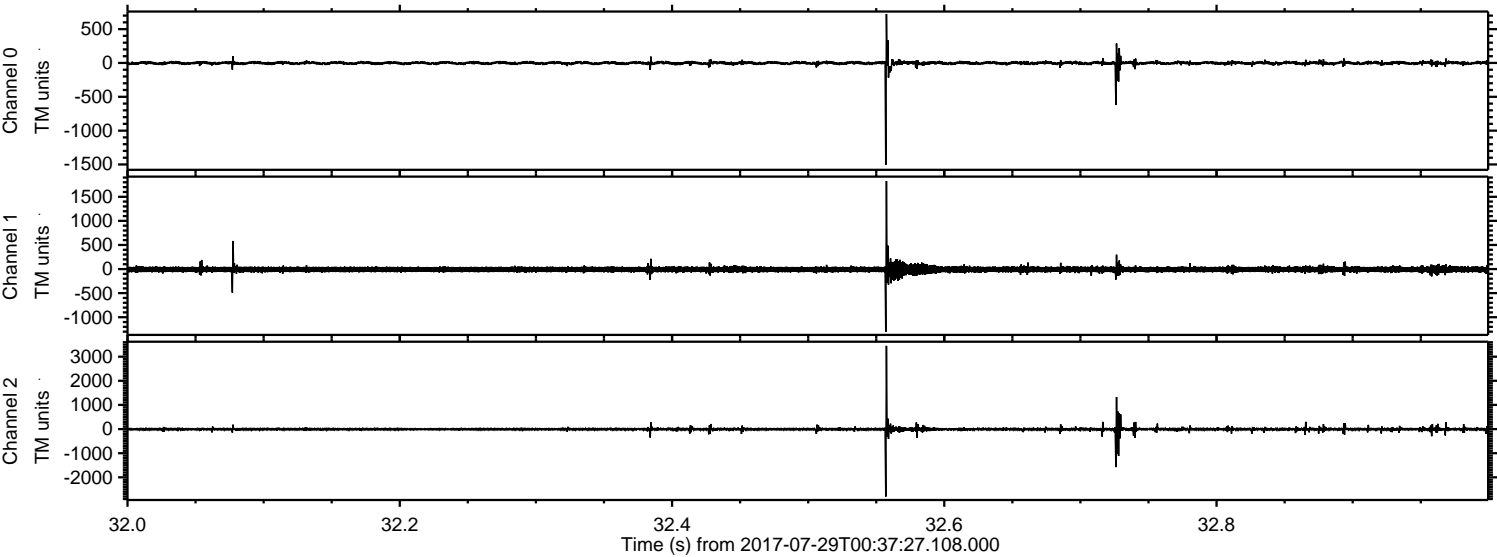
ELMAVAN 3D WAVEFORMS (Measured data sampled at 50 kHz) 51000 packets of 144 samples from 2017-07-29T00:37:27.108.000. Part 144/147



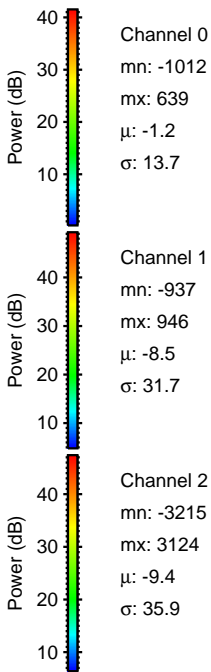
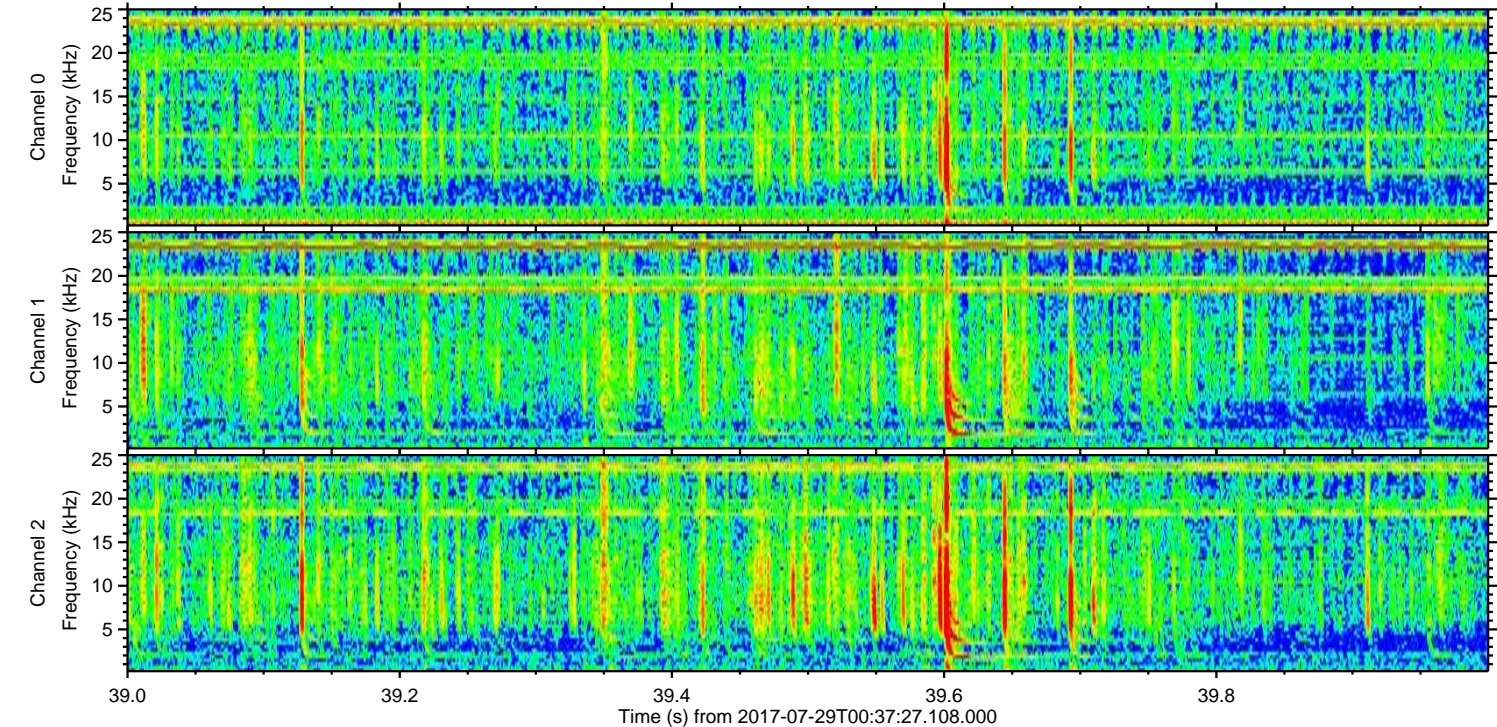
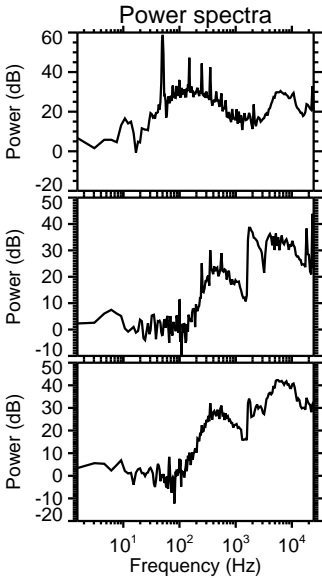
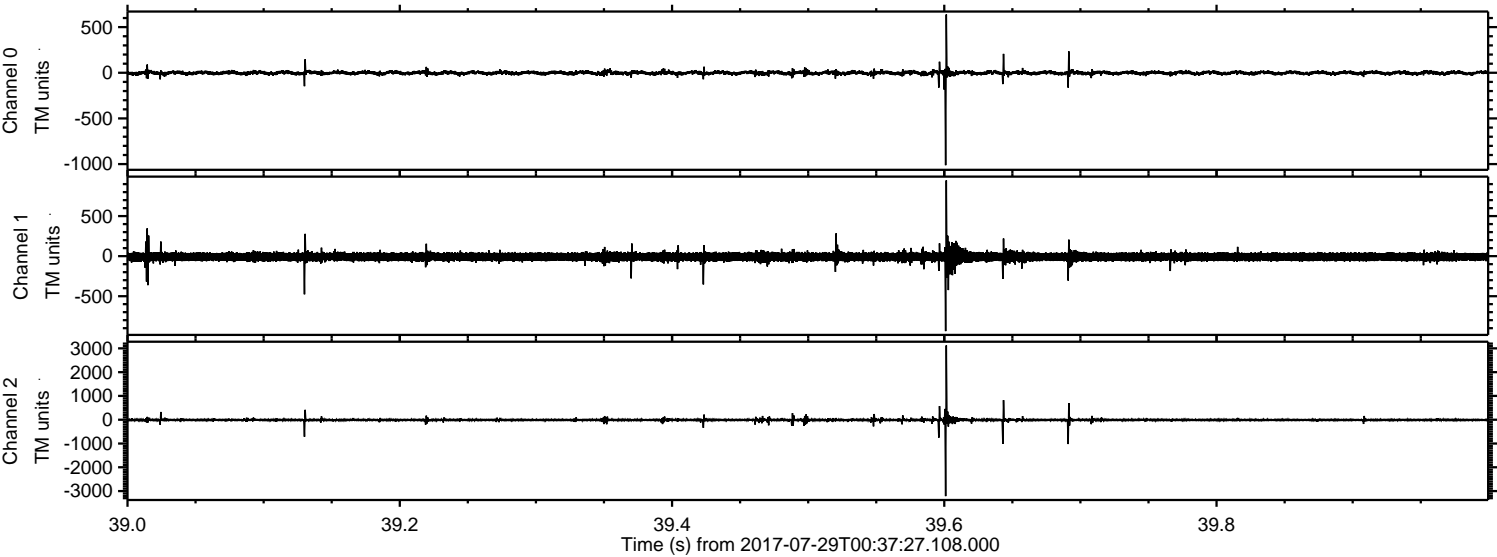
Processed Sat Jul 29 02:45:08 2017 by ELM ver.2012-10-06 from 001__elm20170729_003726__dat00.bin



Processed Sat Jul 29 02:45:09 2017 by ELM ver.2012-10-06 from 001__elm20170729_003726__dat00.bin

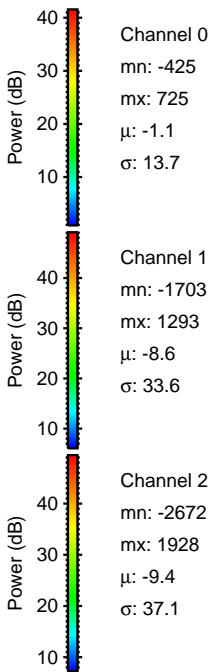
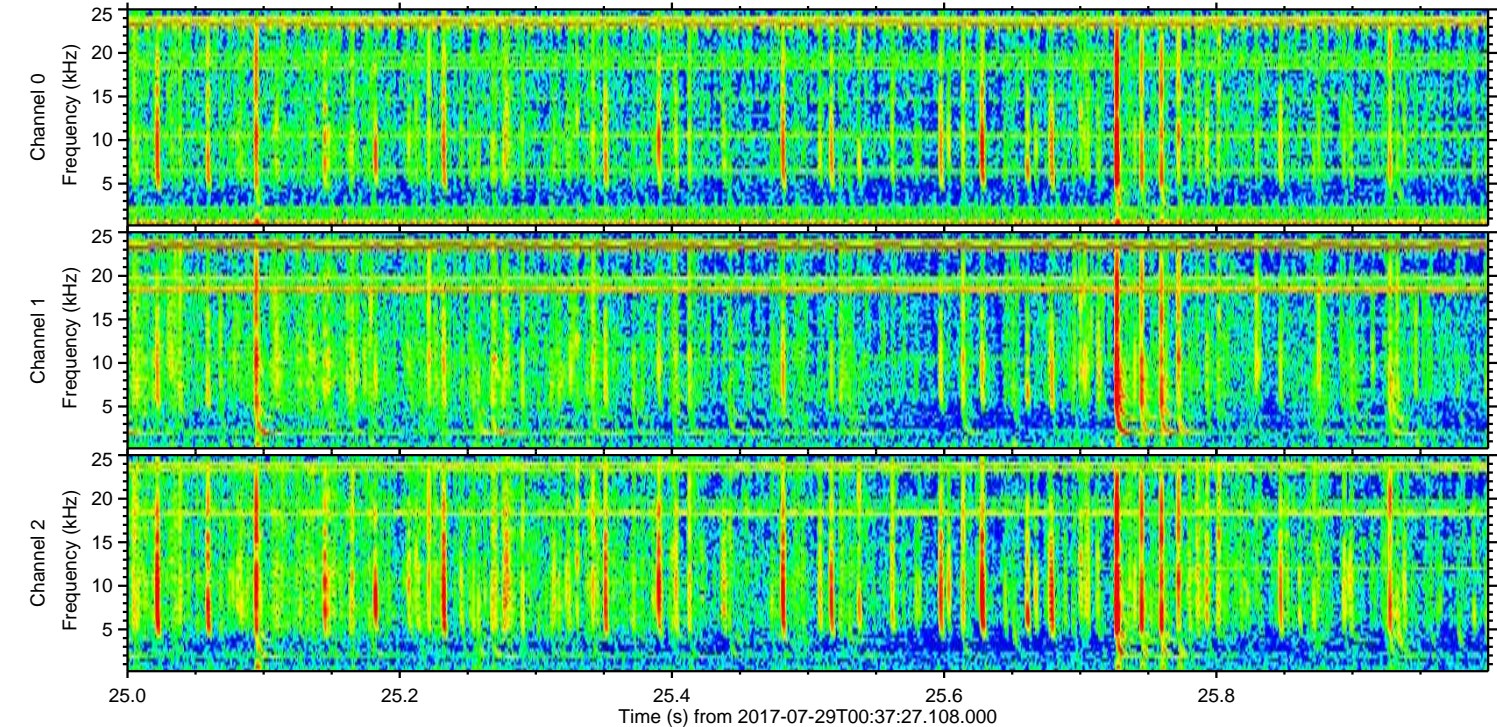
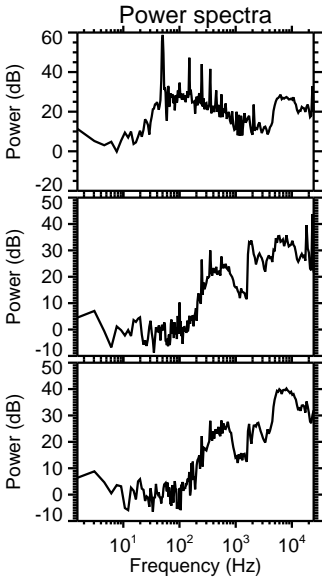
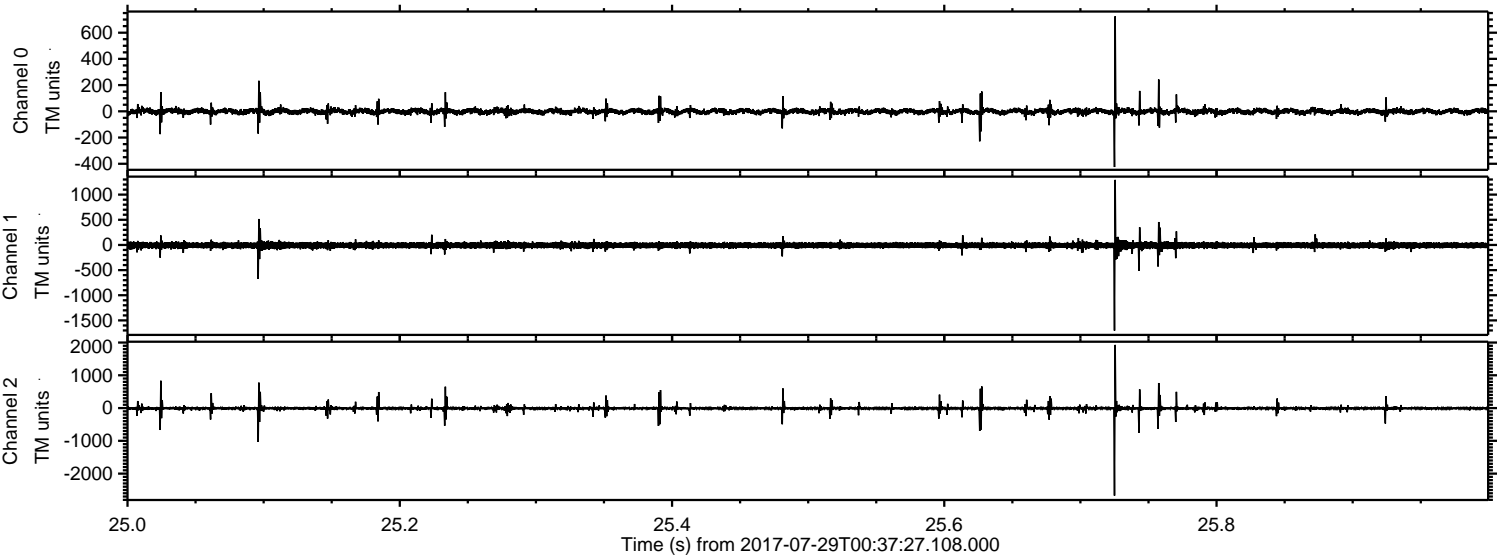


Processed Sat Jul 29 02:45:10 2017 by ELM ver.2012-10-06 from 001__elm20170729_003726__dat00.bin

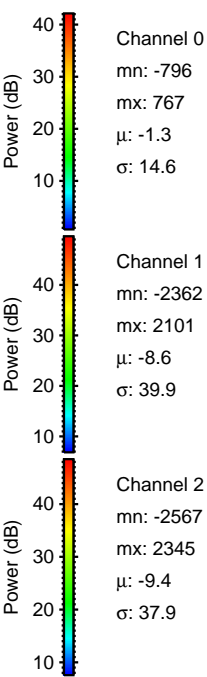
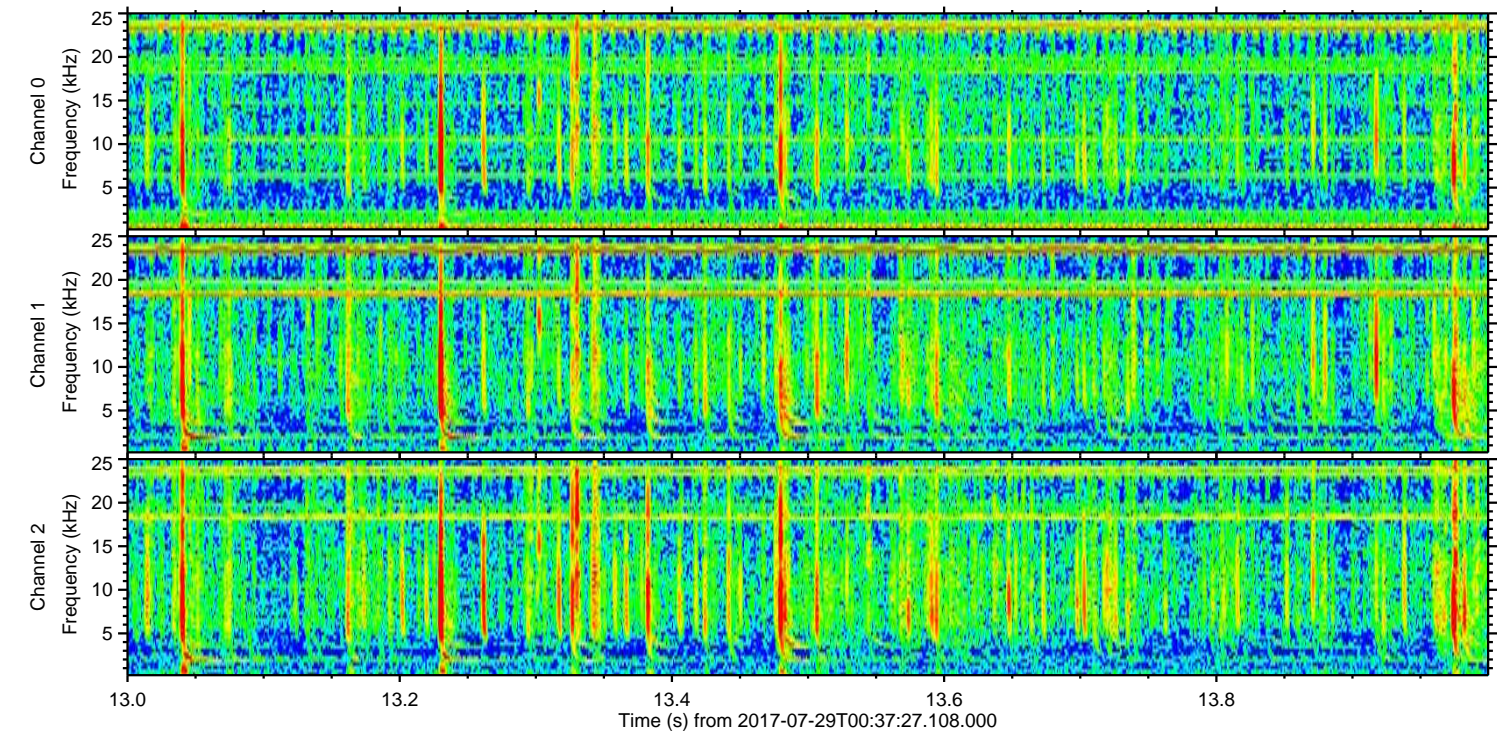
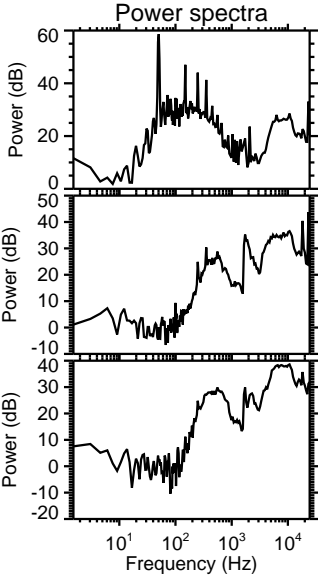
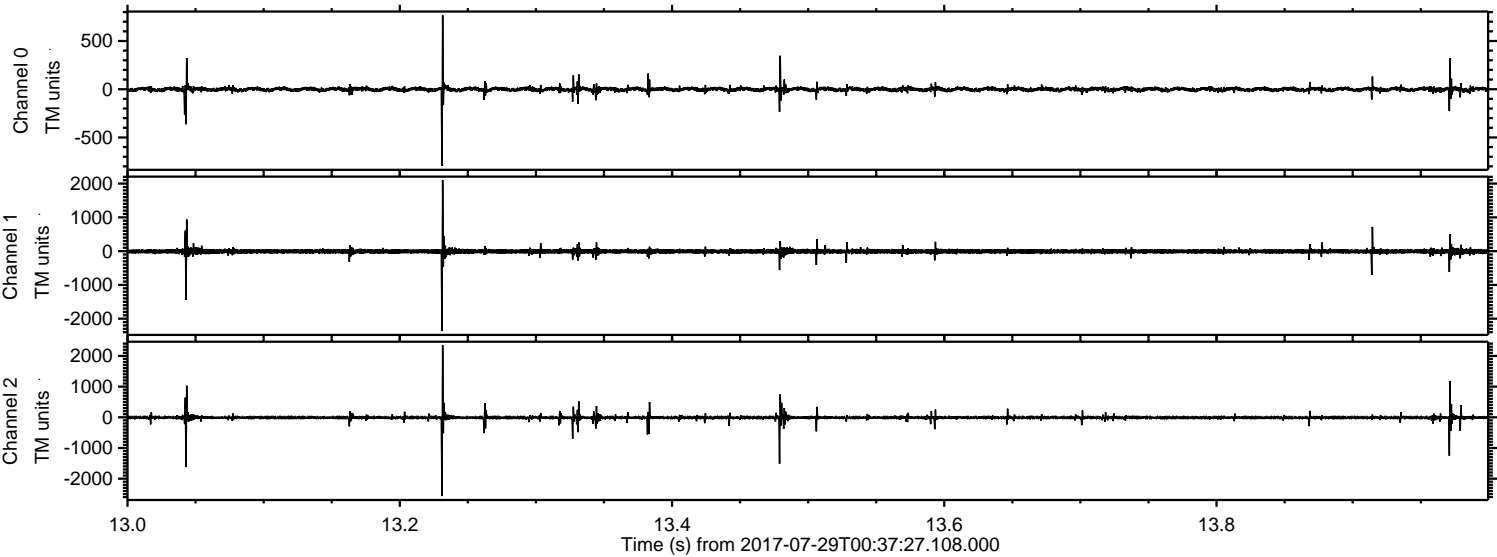


ELMAVAN 3D WAVEFORMS (Measured data sampled at 50 kHz) 51000 packets of 144 samples from 2017-07-29T00:37:27.108.000. Part 26/147

Processed Sat Jul 29 02:45:10 2017 by ELM ver.2012-10-06 from 001__elm20170729_003726__dat00.bin

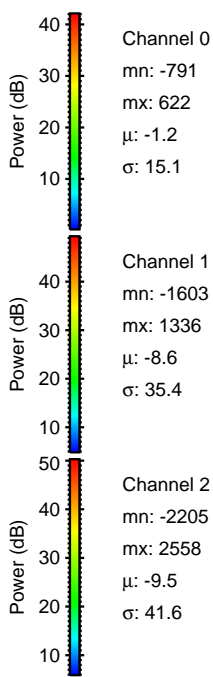
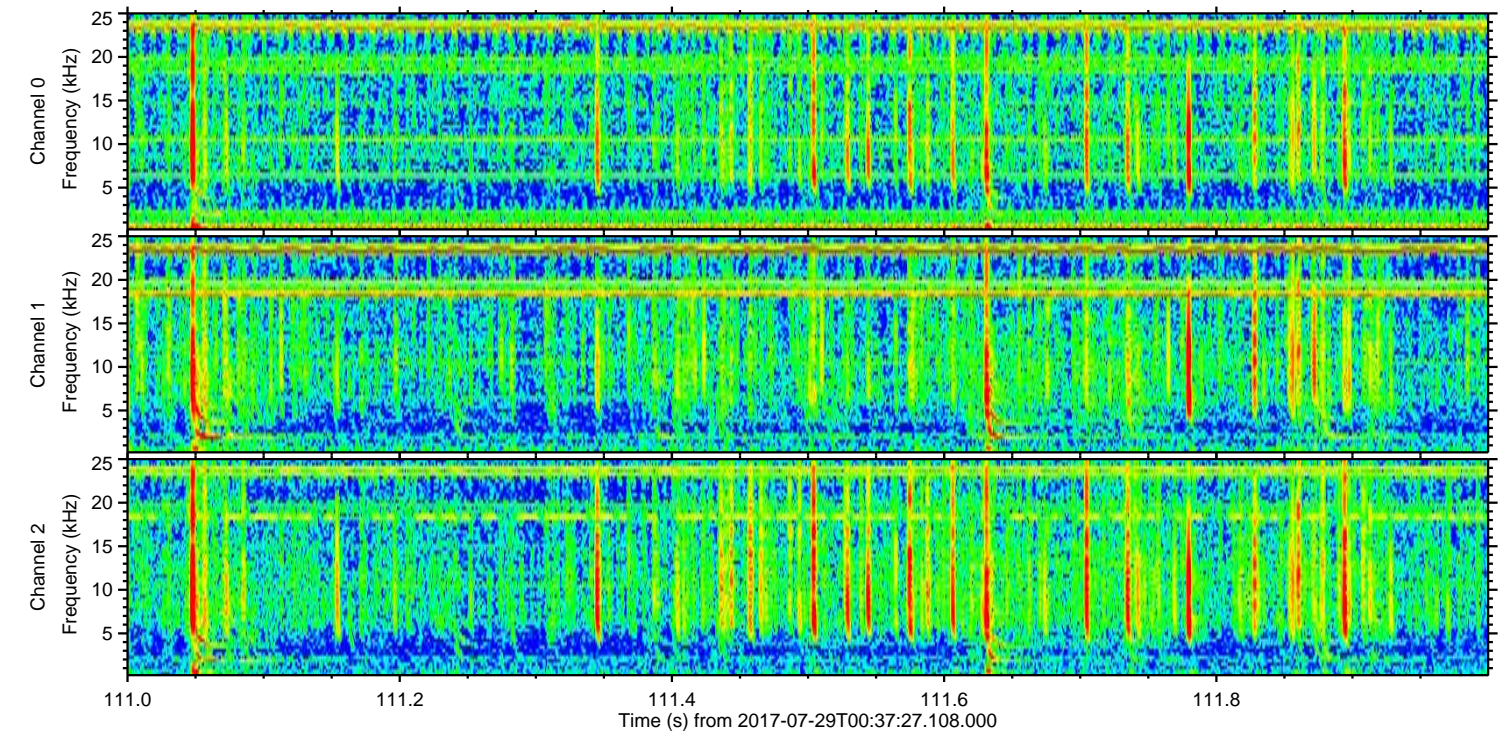
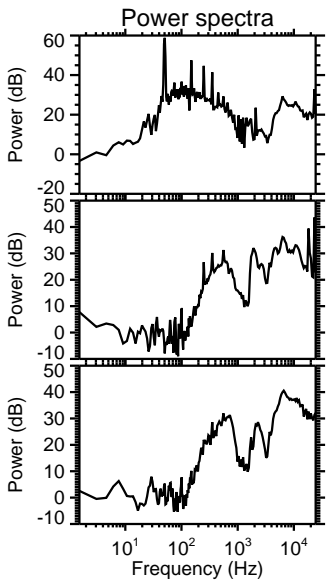
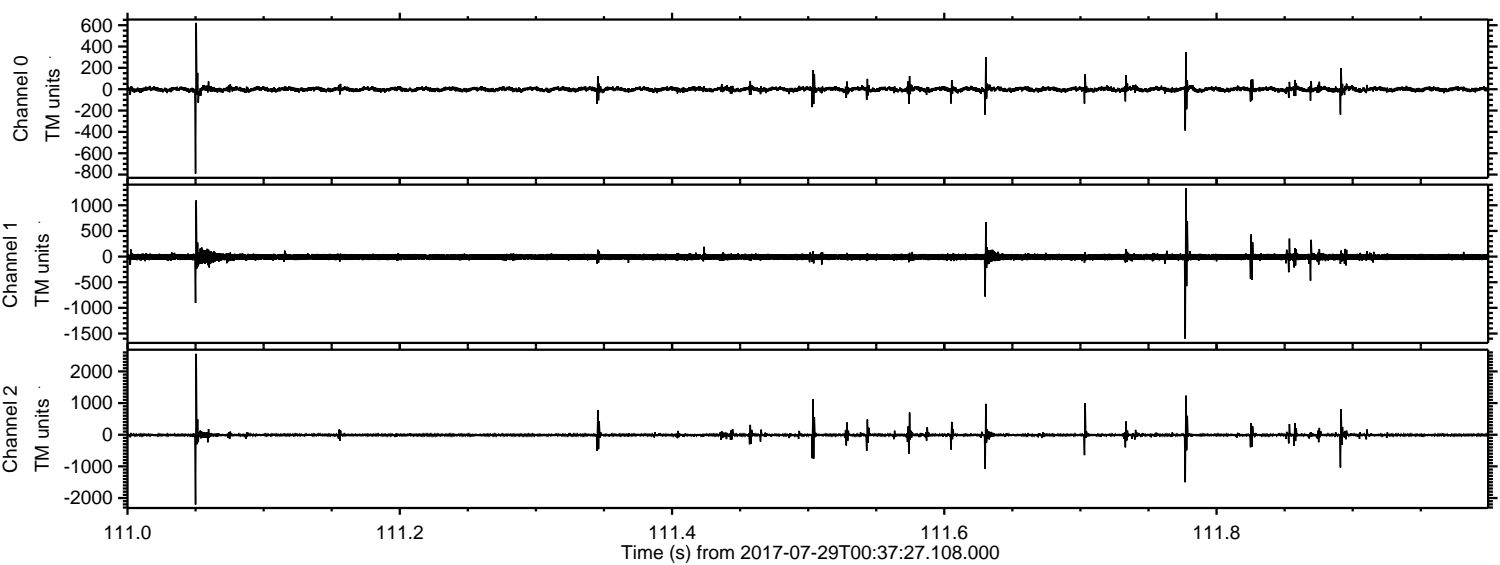


Processed Sat Jul 29 02:45:11 2017 by ELM ver.2012-10-06 from 001__elm20170729_003726__dat00.bin



ELMAVAN 3D WAVEFORMS (Measured data sampled at 50 kHz) 51000 packets of 144 samples from 2017-07-29T00:37:27.108.000. Part 112/147

Processed Sat Jul 29 02:45:12 2017 by ELM ver.2012-10-06 from 001__elm20170729_003726__dat00.bin

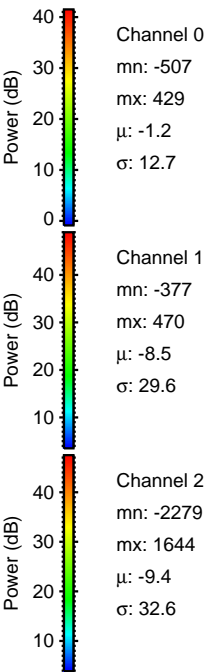
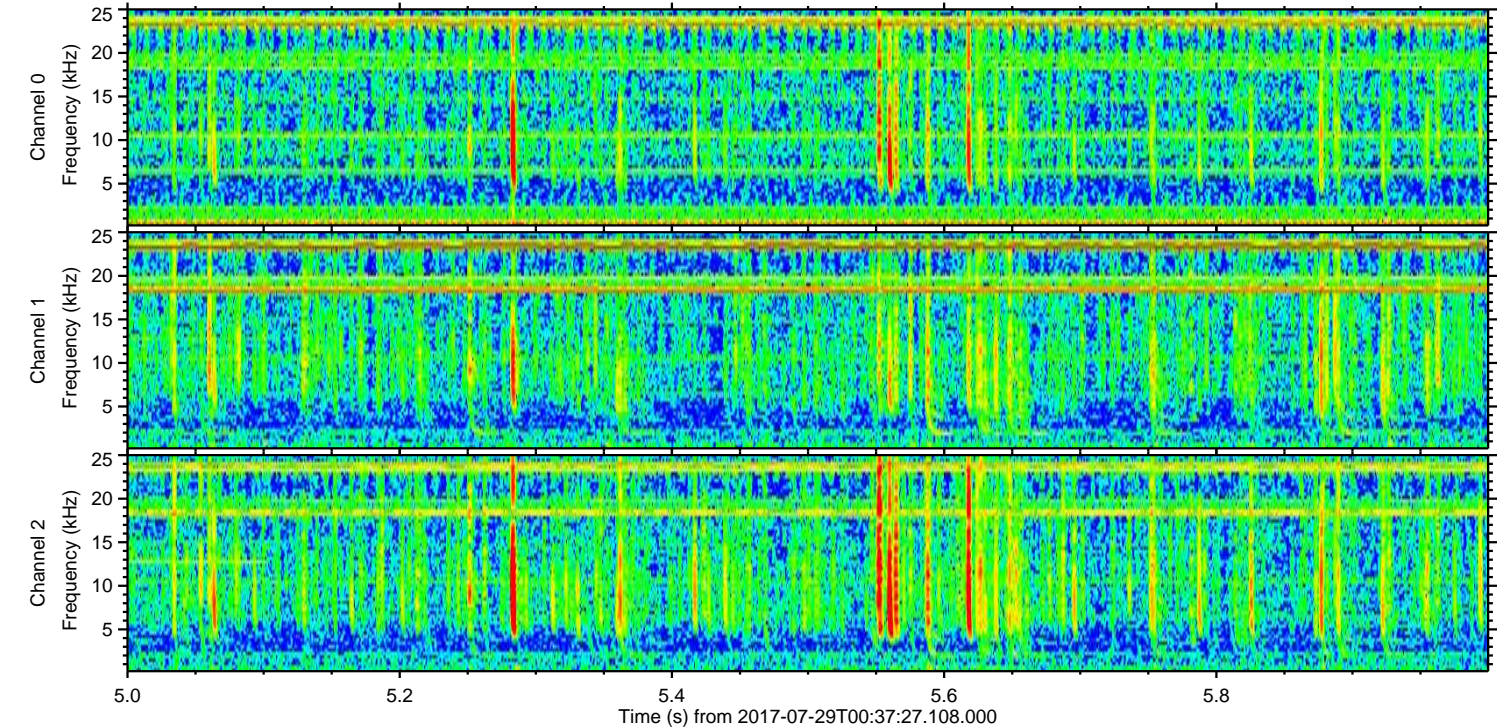
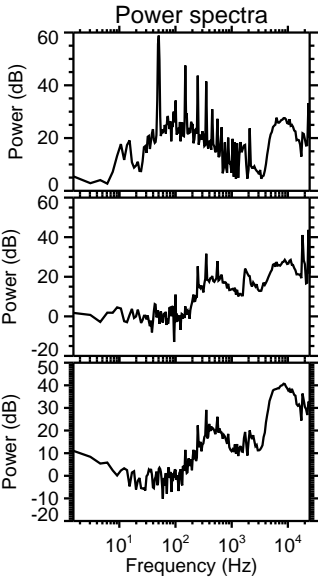
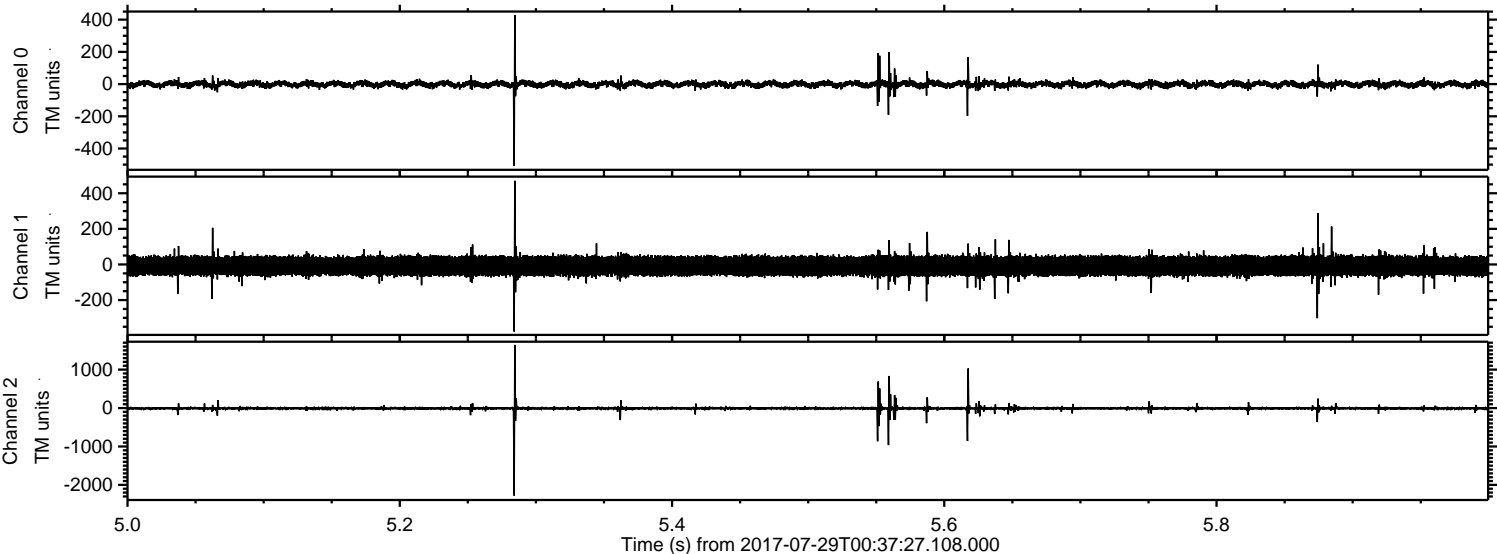


Channel 0
mn: -791
mx: 622
 μ : -1.2
 σ : 15.1

Channel 1
mn: -1603
mx: 1336
 μ : -8.6
 σ : 35.4

Channel 2
mn: -2205
mx: 2558
 μ : -9.5
 σ : 41.6

Processed Sat Jul 29 02:45:12 2017 by ELM ver.2012-10-06 from 001__elm20170729_003726__dat00.bin



Processed Sat Jul 29 02:45:13 2017 by ELM ver.2012-10-06 from 001__elm20170729_003726__dat00.bin

