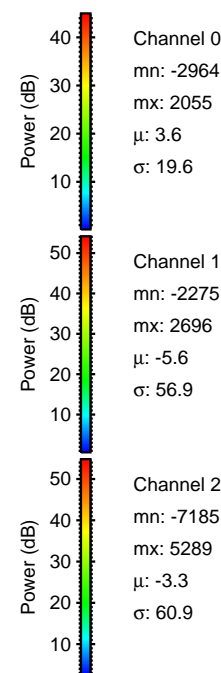
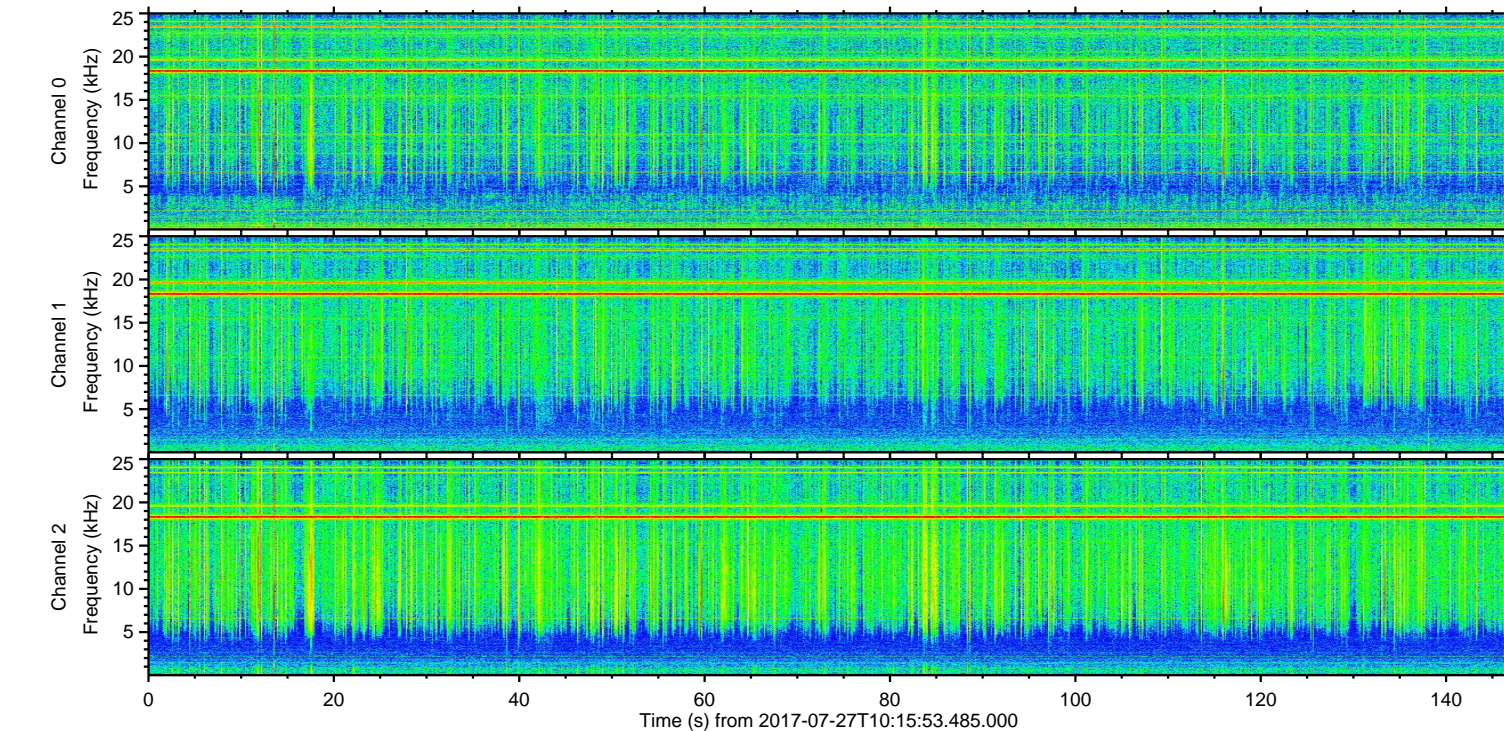
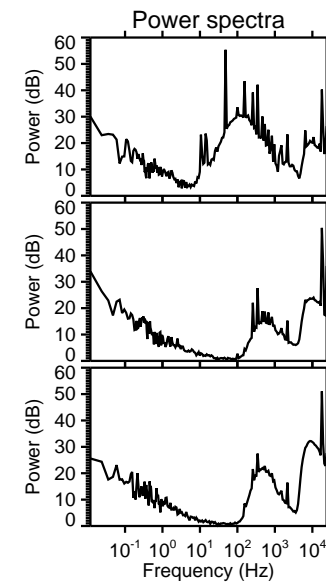
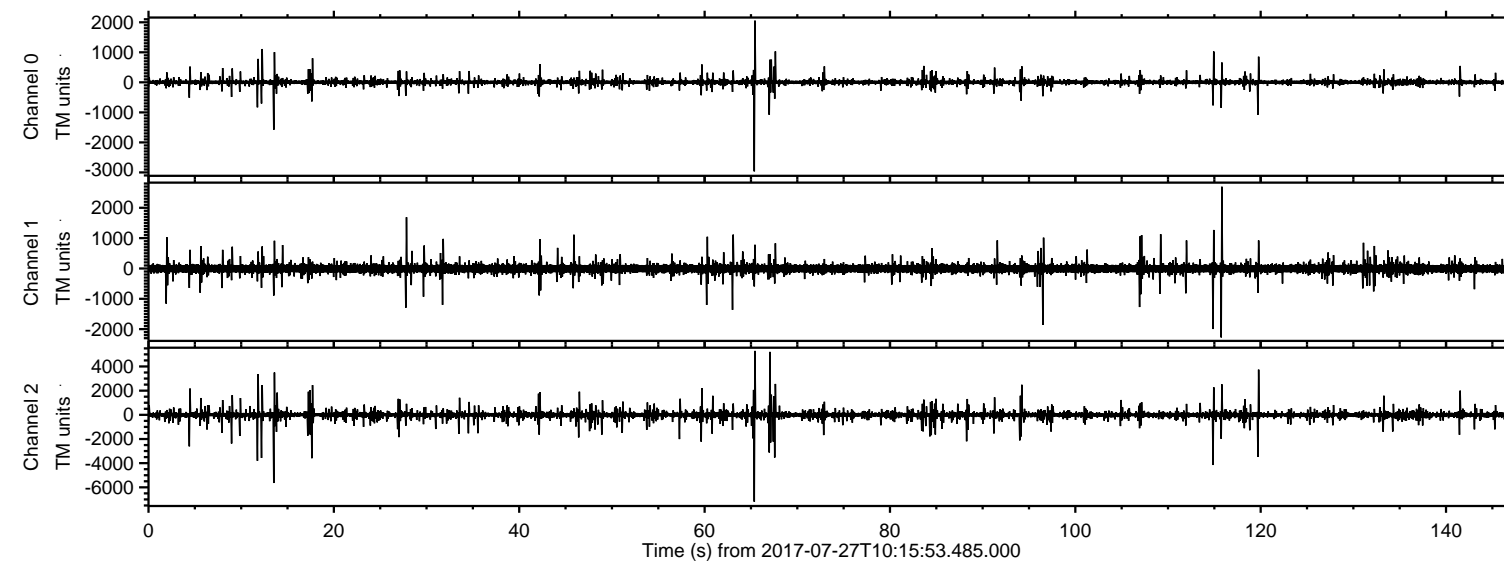


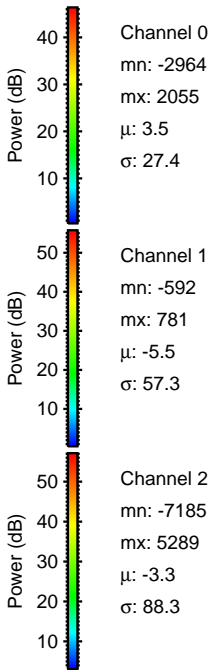
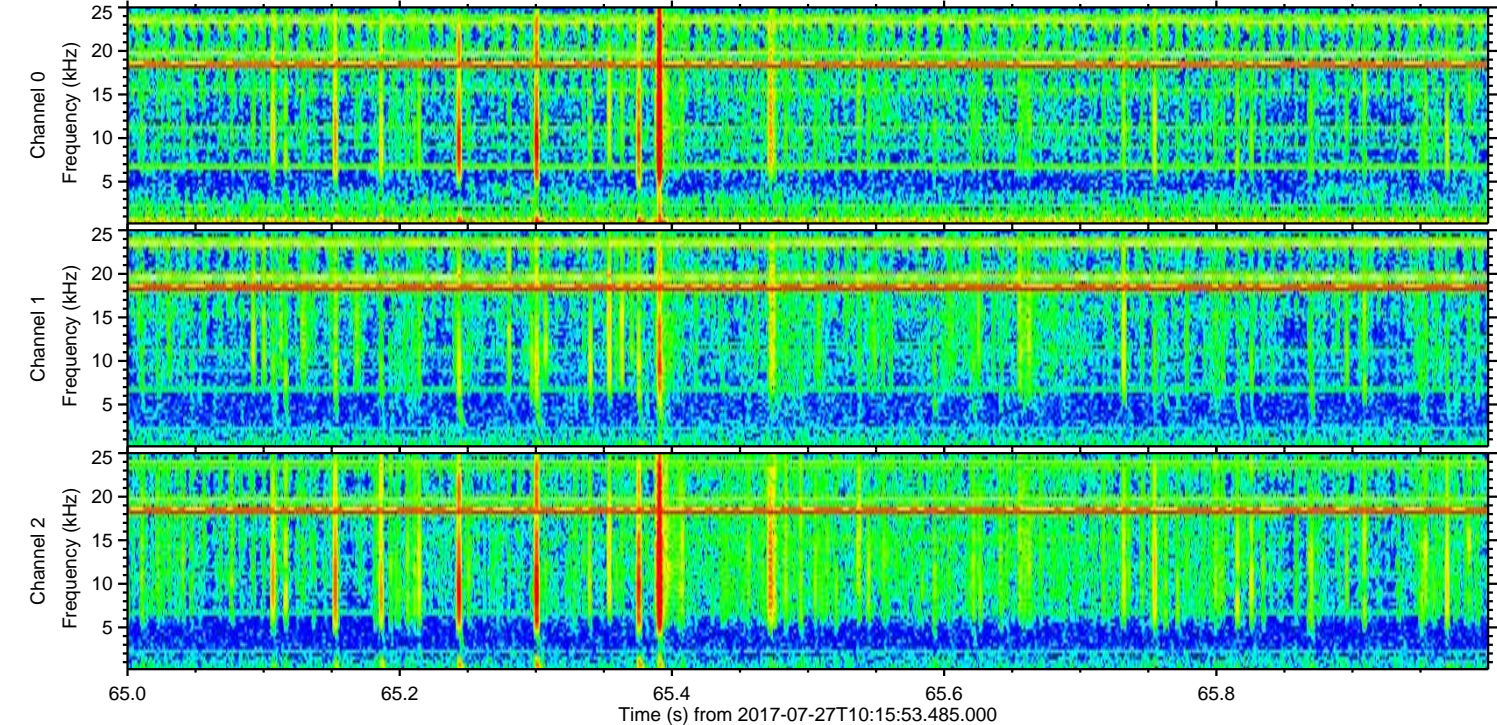
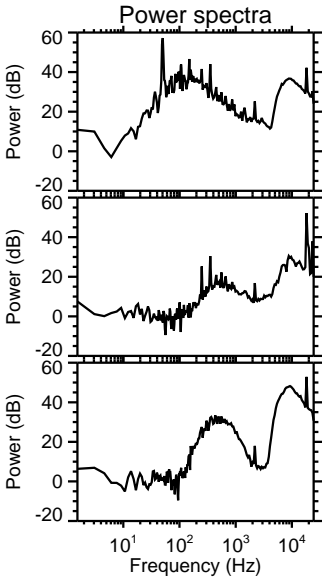
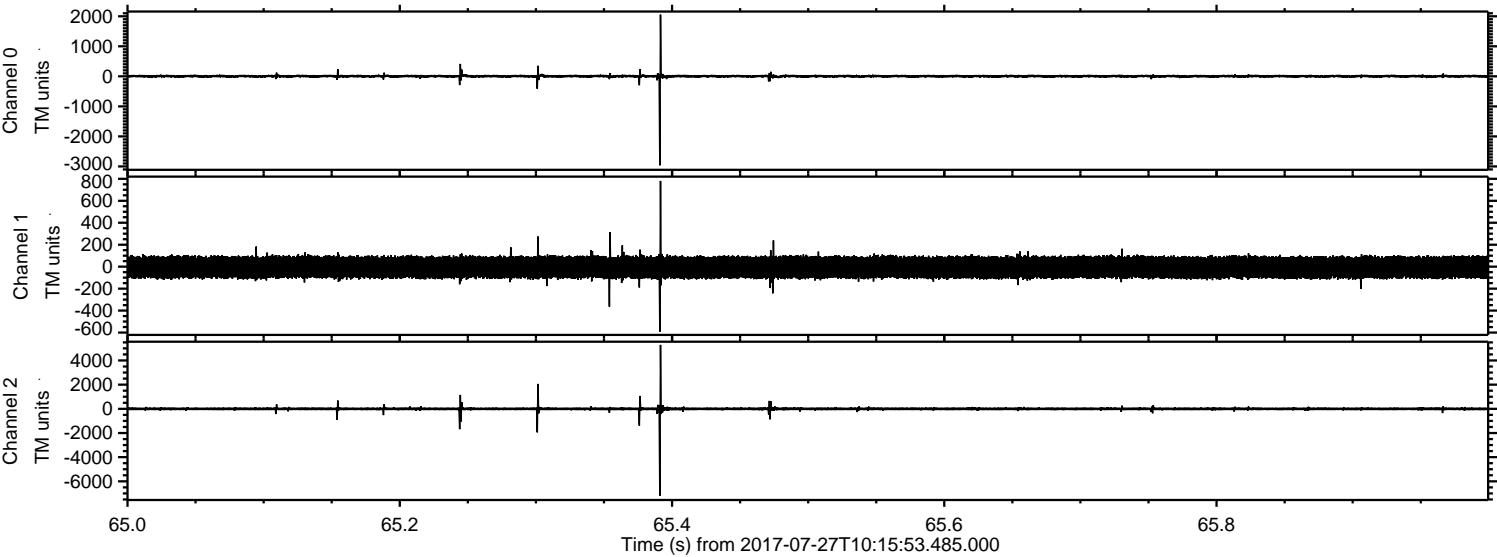
# ELMAVAN 3D WAVEFORMS (Measured data sampled at 50 kHz) 51000 packets of 144 samples from 2017-07-27T10:15:53.485.000.

Processed Thu Jul 27 12:23:44 2017 by ELM ver.2012-10-06 from 001\_\_elm20170727\_101552\_\_dat00.bin



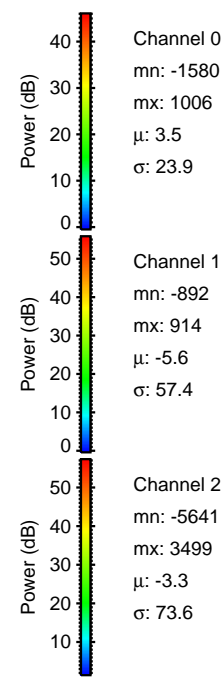
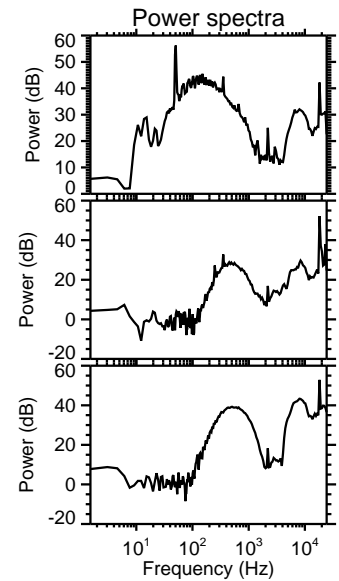
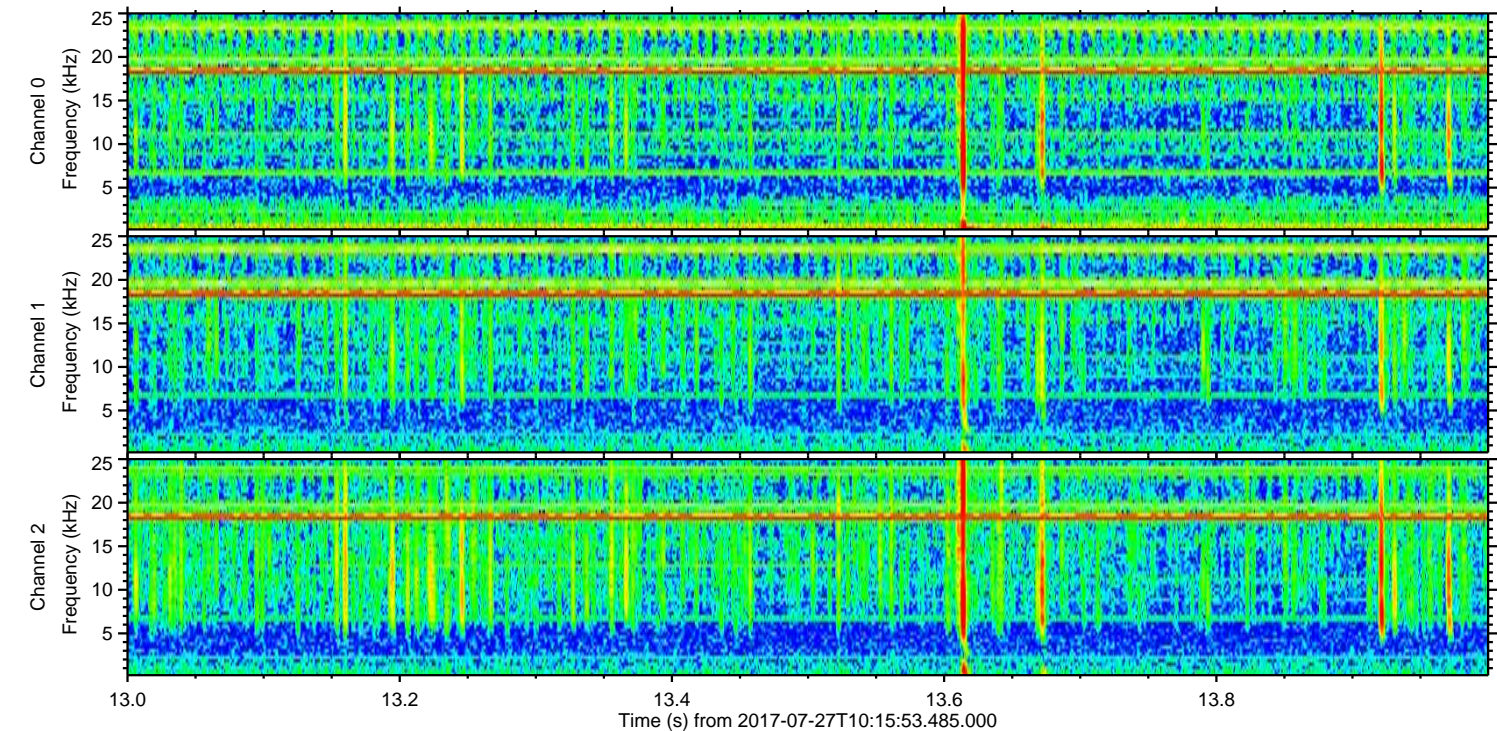
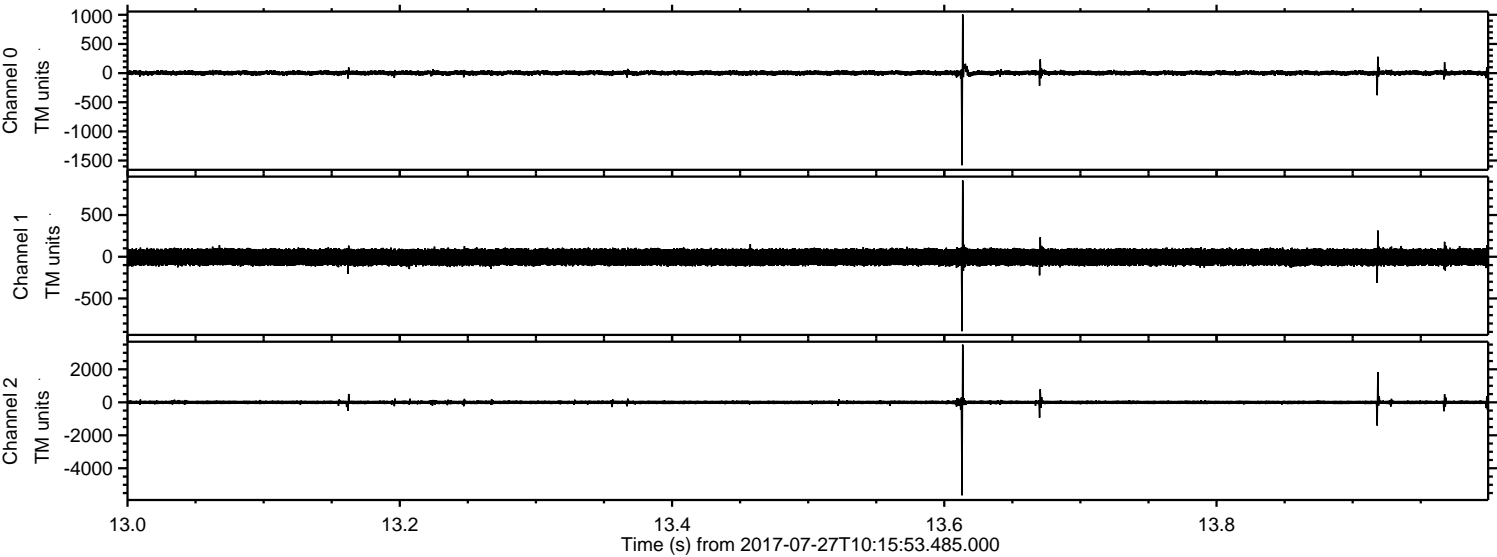


Processed Thu Jul 27 12:23:51 2017 by ELM ver.2012-10-06 from 001\_\_elm20170727\_101552\_\_dat00.bin



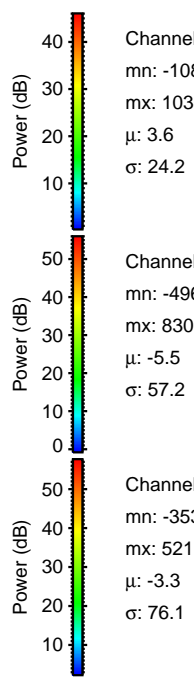
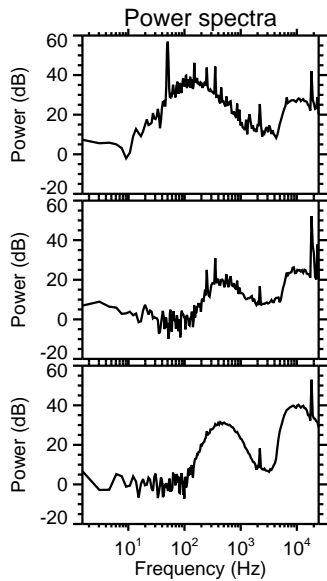
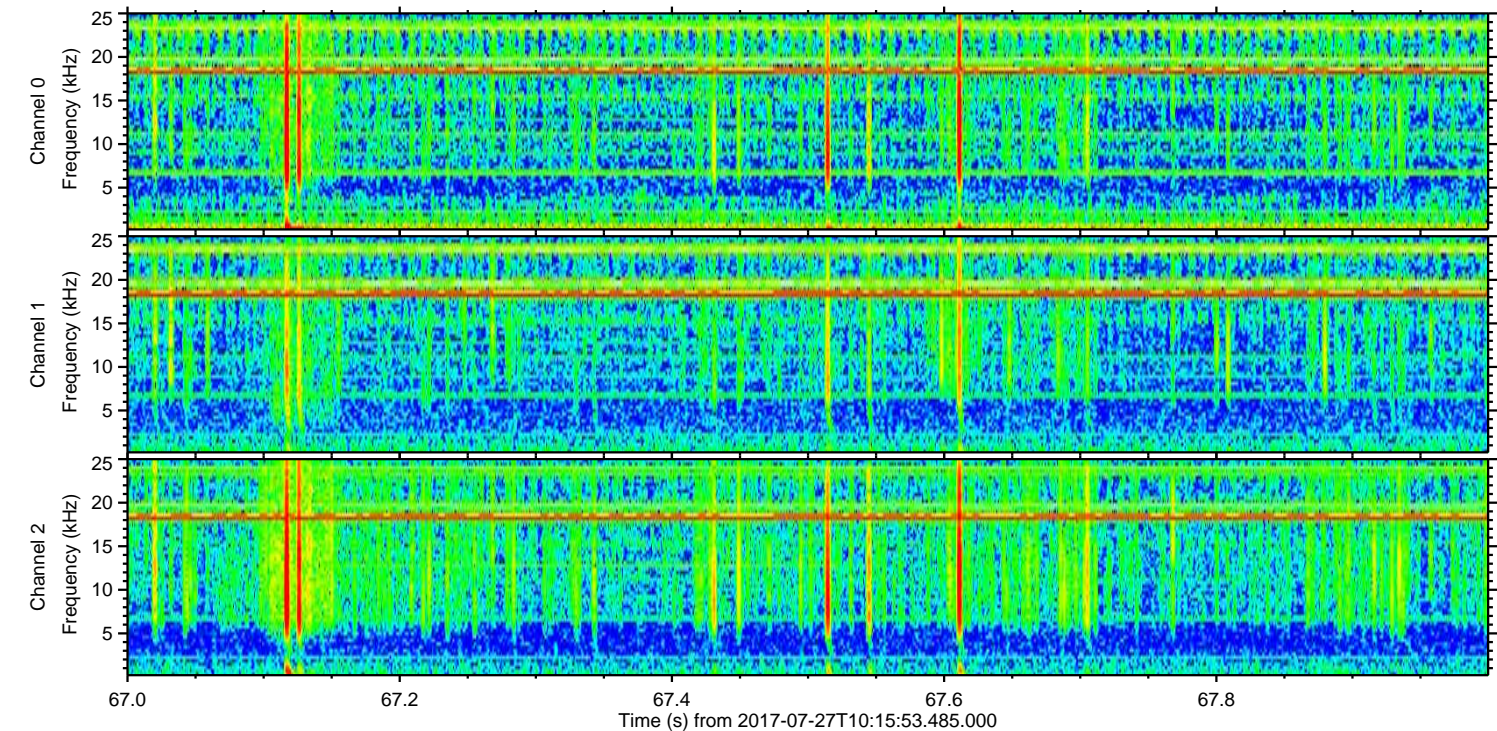
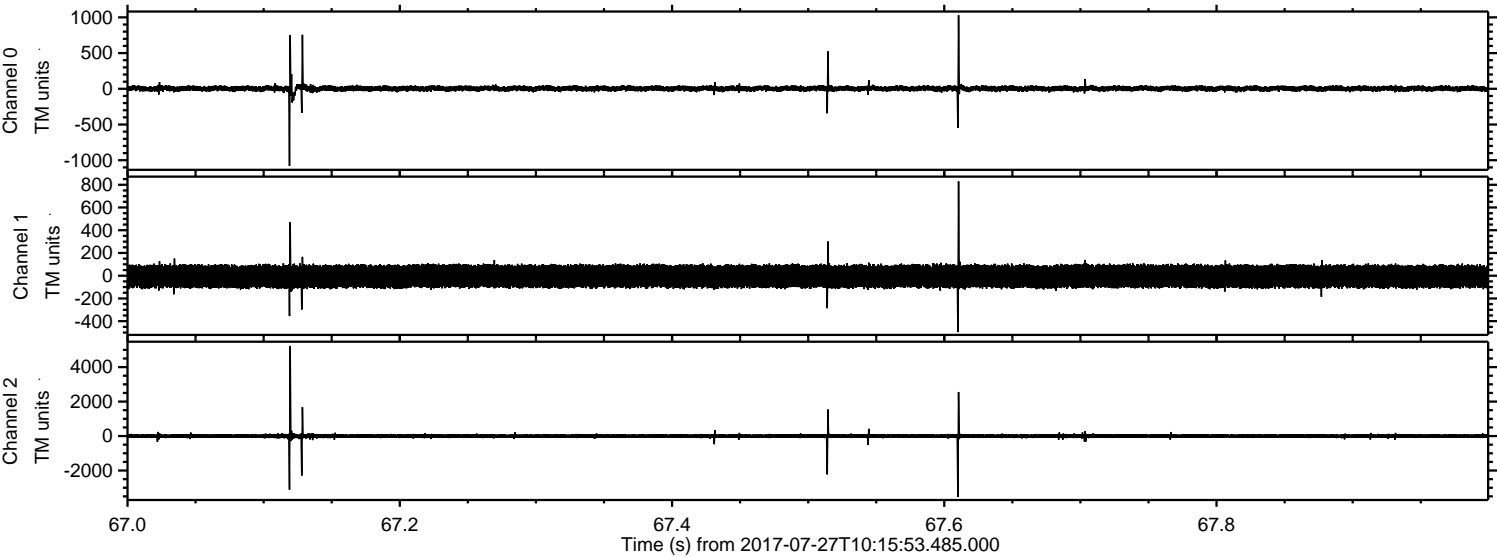


Processed Thu Jul 27 12:23:52 2017 by ELM ver.2012-10-06 from 001\_\_elm20170727\_101552\_\_dat00.bin





Processed Thu Jul 27 12:23:53 2017 by ELM ver.2012-10-06 from 001\_\_elm20170727\_101552\_\_dat00.bin



Channel 0  
mn: -1080  
mx: 1030  
 $\mu$ : 3.6  
 $\sigma$ : 24.2

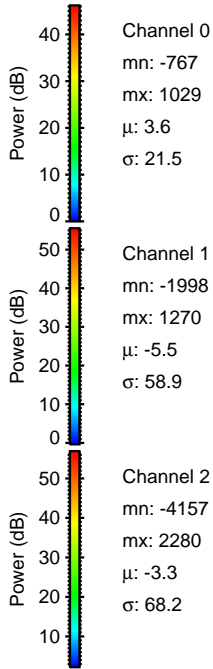
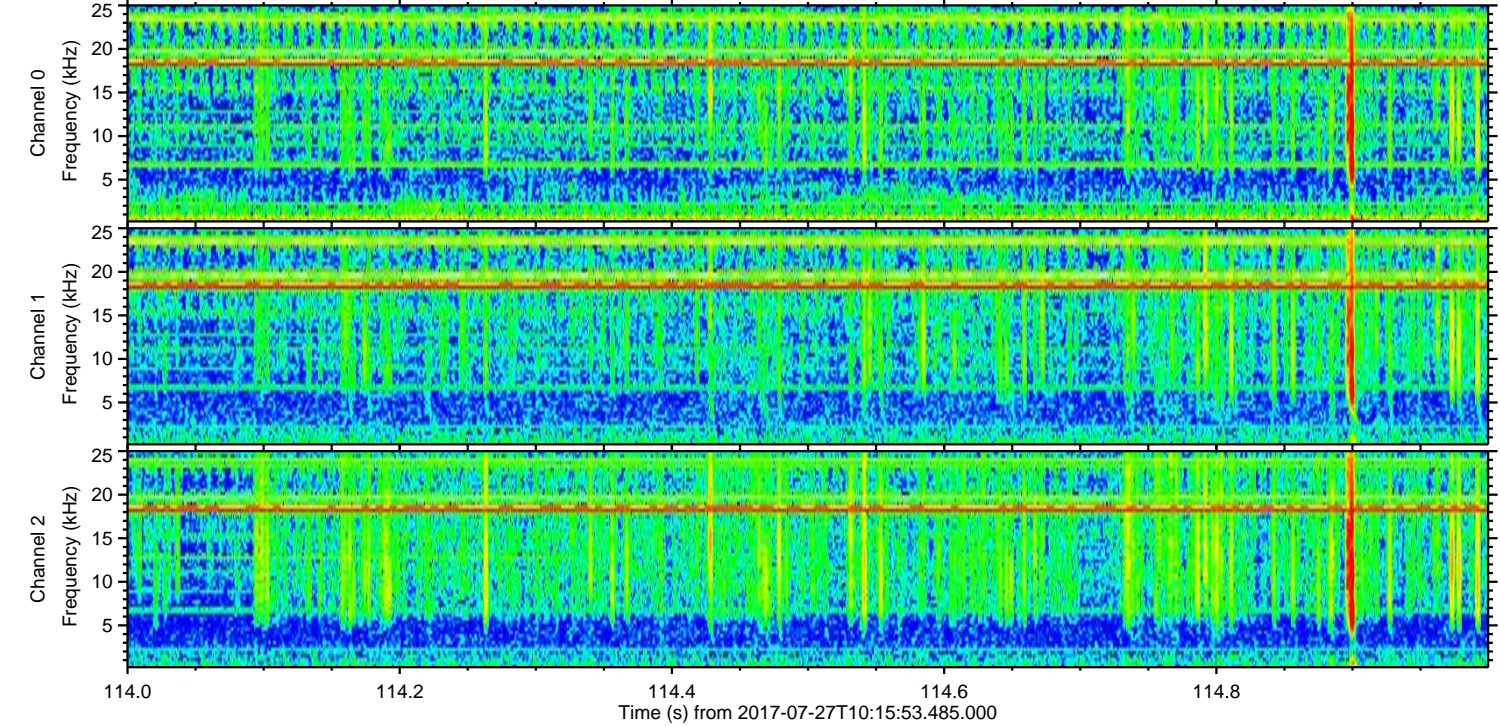
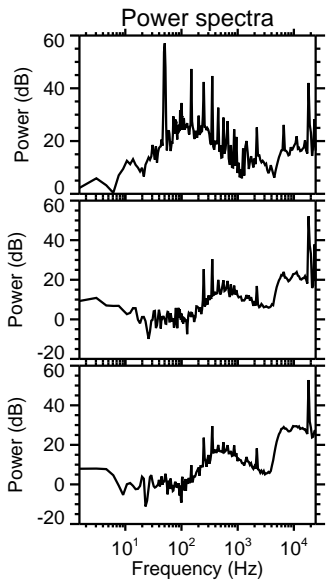
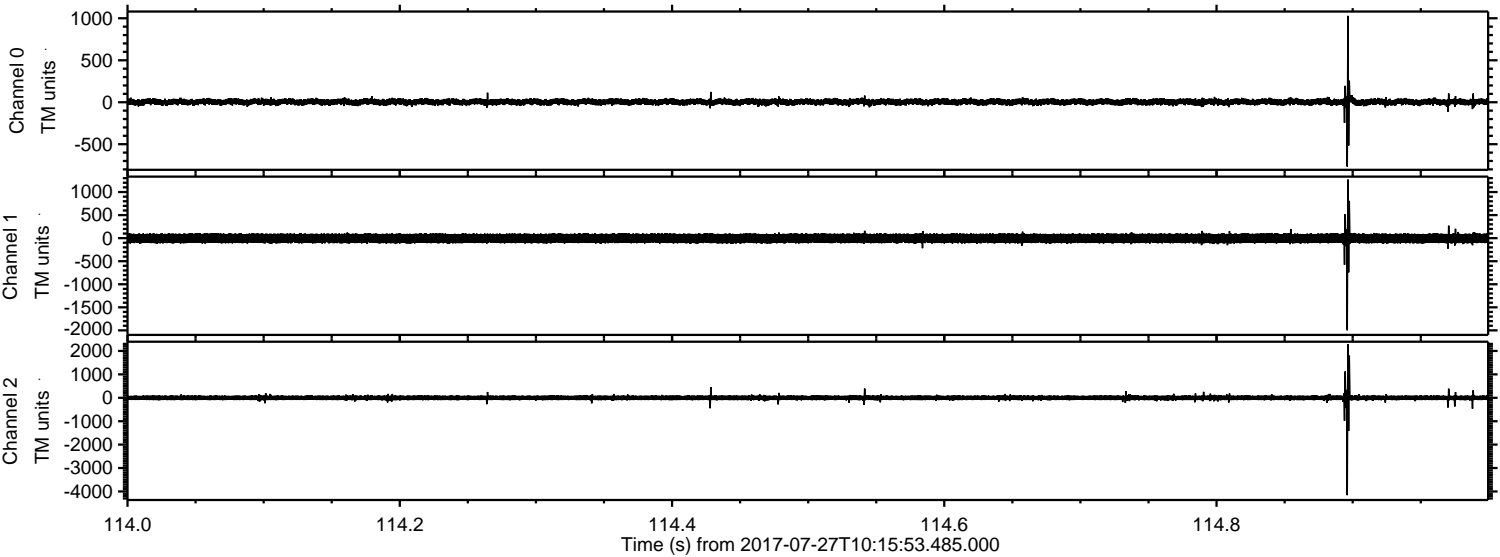
Channel 1  
mn: -496  
mx: 830  
 $\mu$ : -5.5  
 $\sigma$ : 57.2

Channel 2  
mn: -3533  
mx: 5211  
 $\mu$ : -3.3  
 $\sigma$ : 76.1



ELMAVAN 3D WAVEFORMS (Measured data sampled at 50 kHz) 51000 packets of 144 samples from 2017-07-27T10:15:53.485.000. Part 115/147

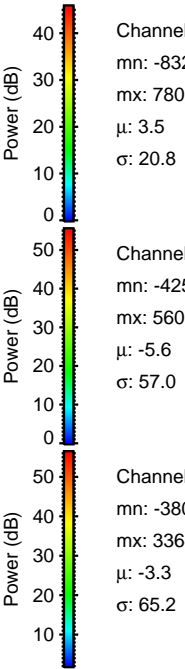
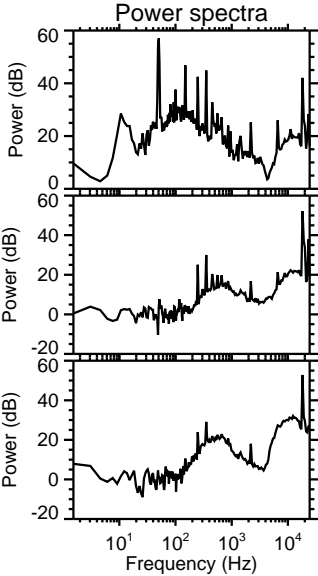
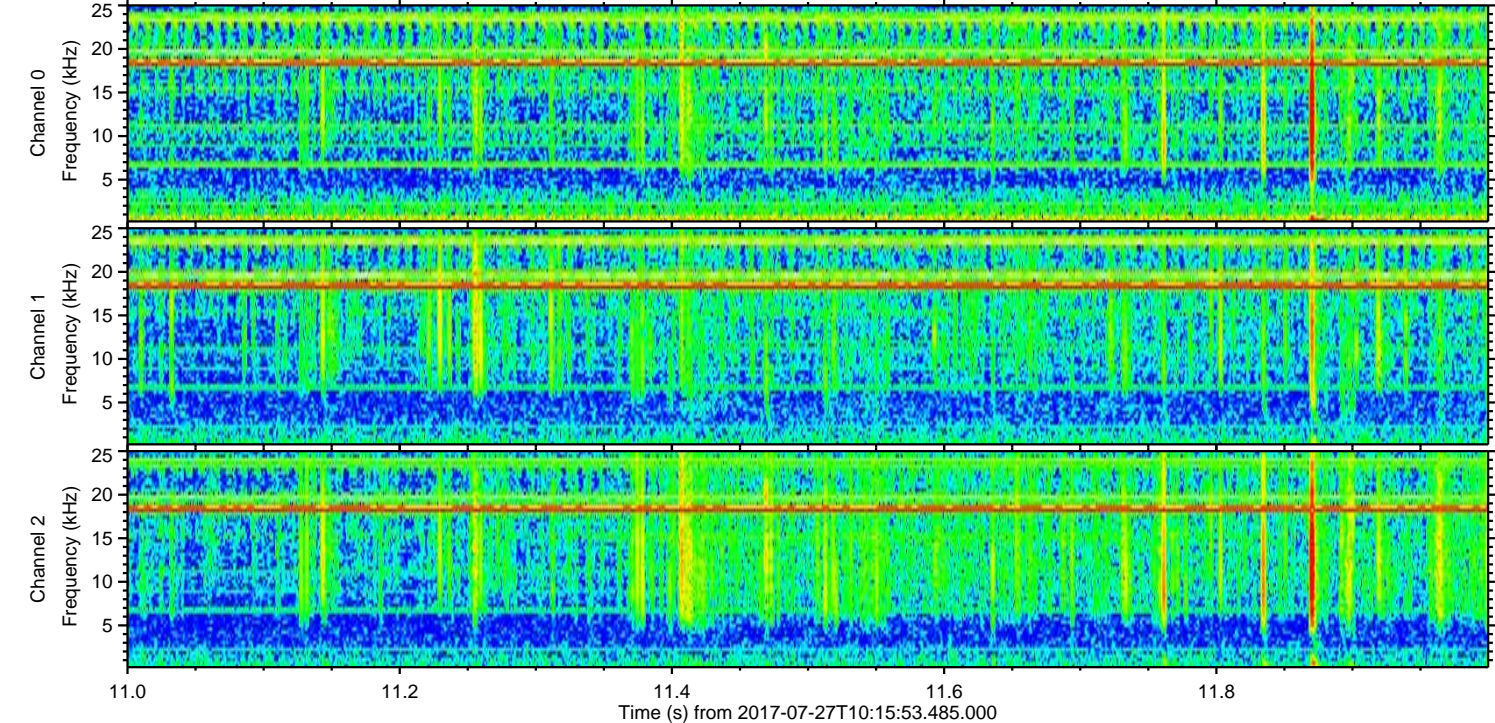
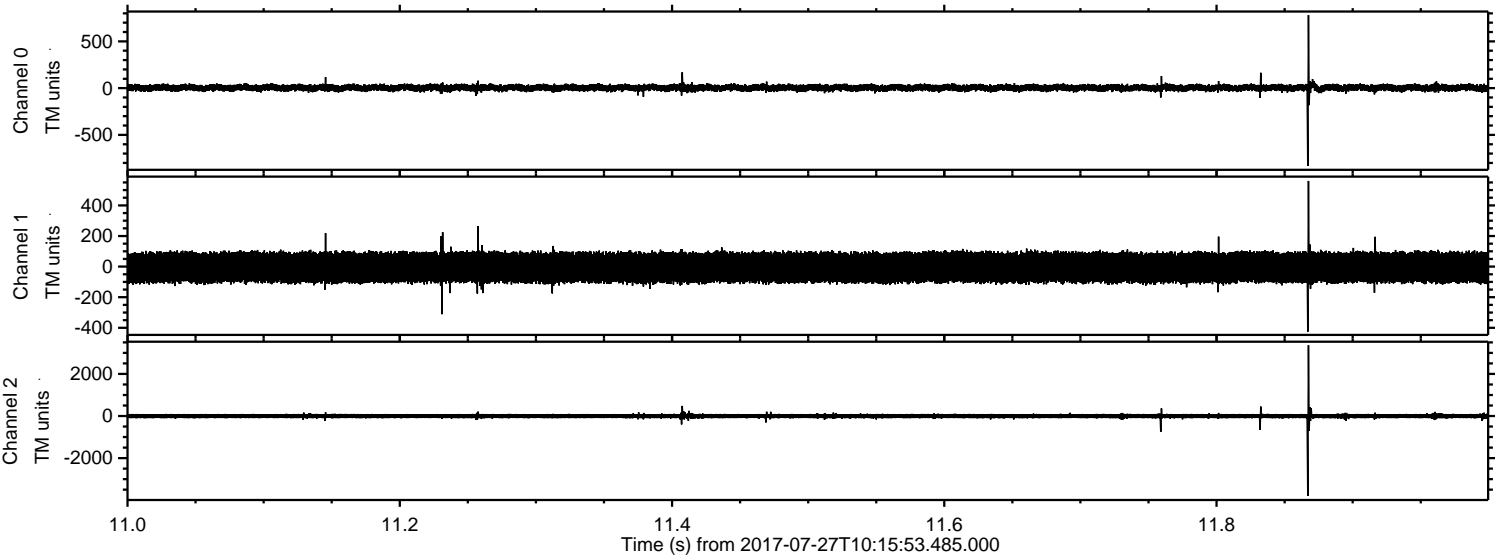
Processed Thu Jul 27 12:23:53 2017 by ELM ver.2012-10-06 from 001\_\_elm20170727\_101552\_\_dat00.bin





ELMAVAN 3D WAVEFORMS (Measured data sampled at 50 kHz) 51000 packets of 144 samples from 2017-07-27T10:15:53.485.000. Part 12/147

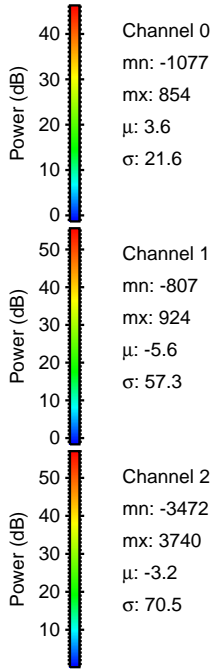
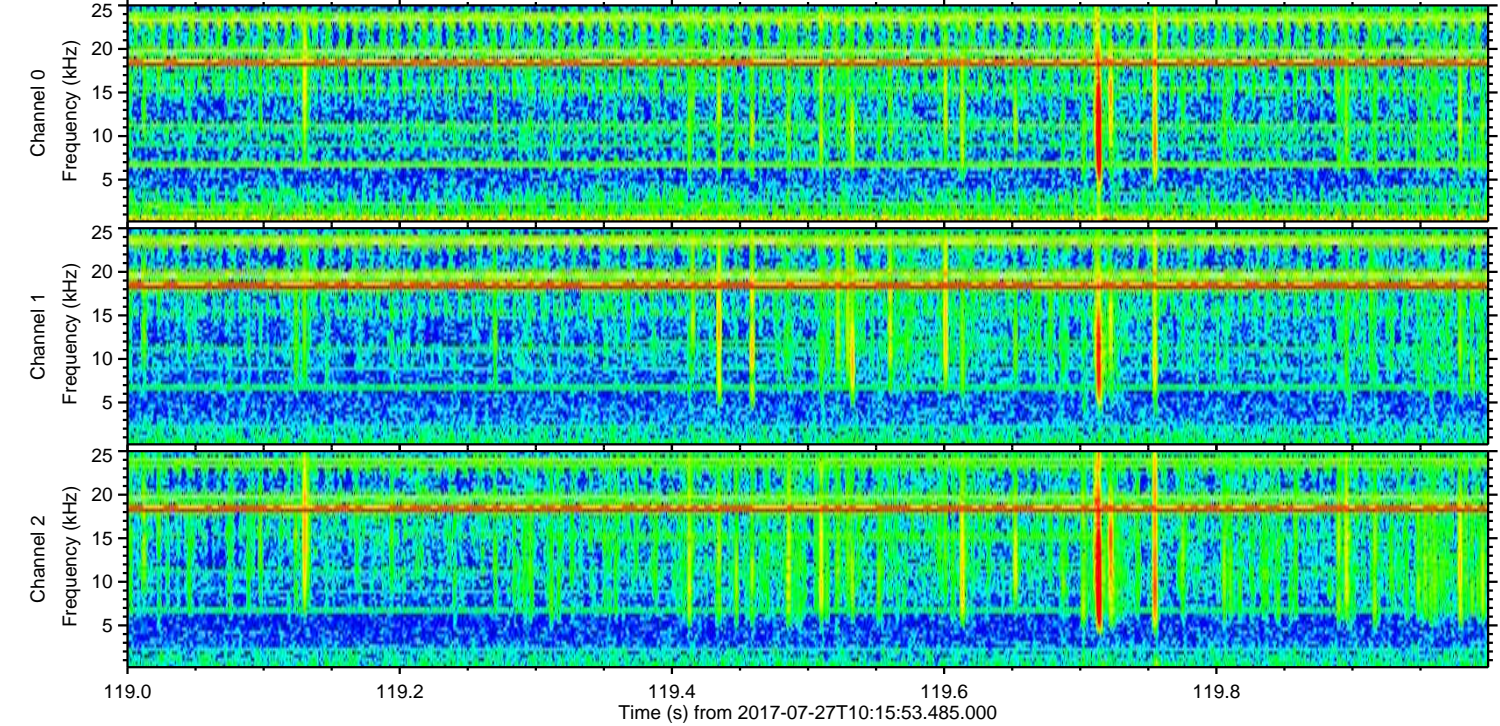
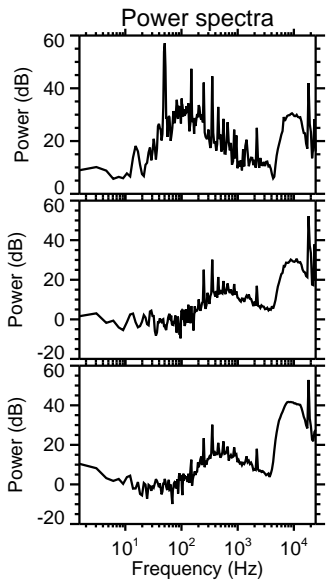
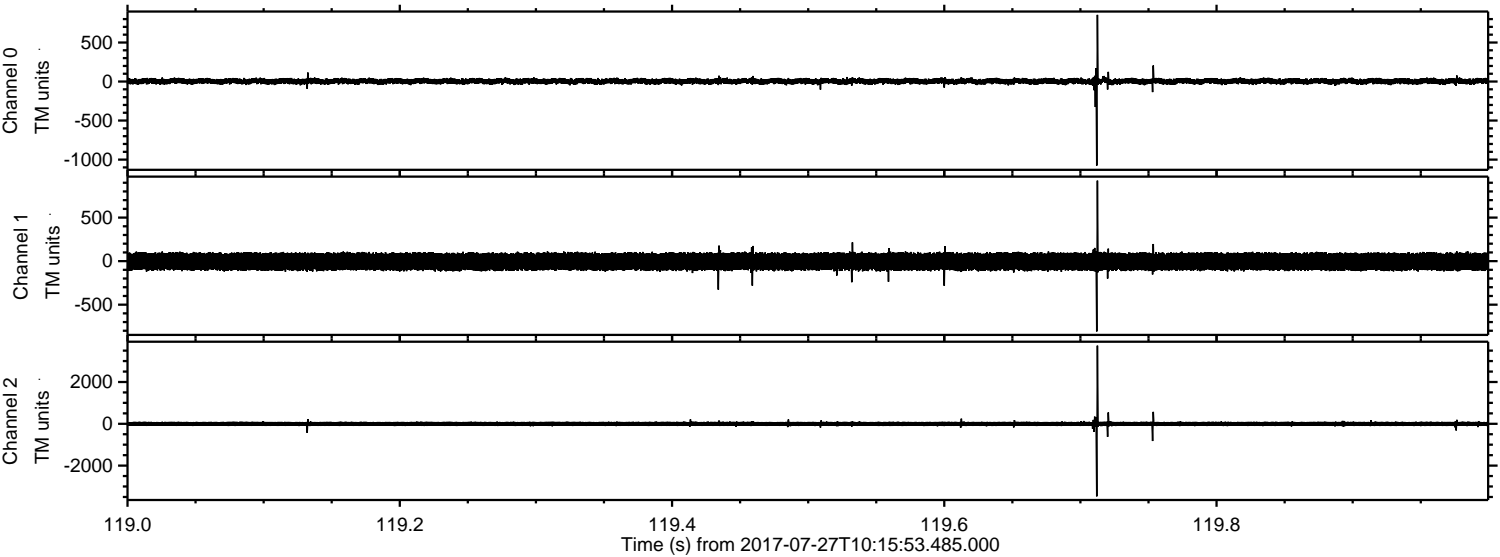
Processed Thu Jul 27 12:23:54 2017 by ELM ver.2012-10-06 from 001\_\_elm20170727\_101552\_\_dat00.bin





ELMAVAN 3D WAVEFORMS (Measured data sampled at 50 kHz) 51000 packets of 144 samples from 2017-07-27T10:15:53.485.000. Part 120/147

Processed Thu Jul 27 12:23:55 2017 by ELM ver.2012-10-06 from 001\_\_elm20170727\_101552\_\_dat00.bin



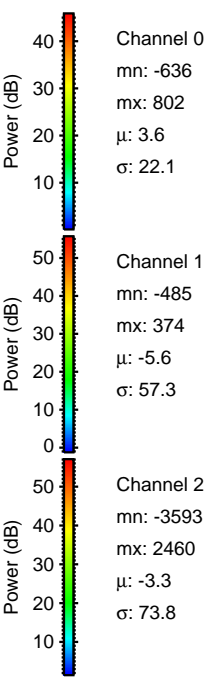
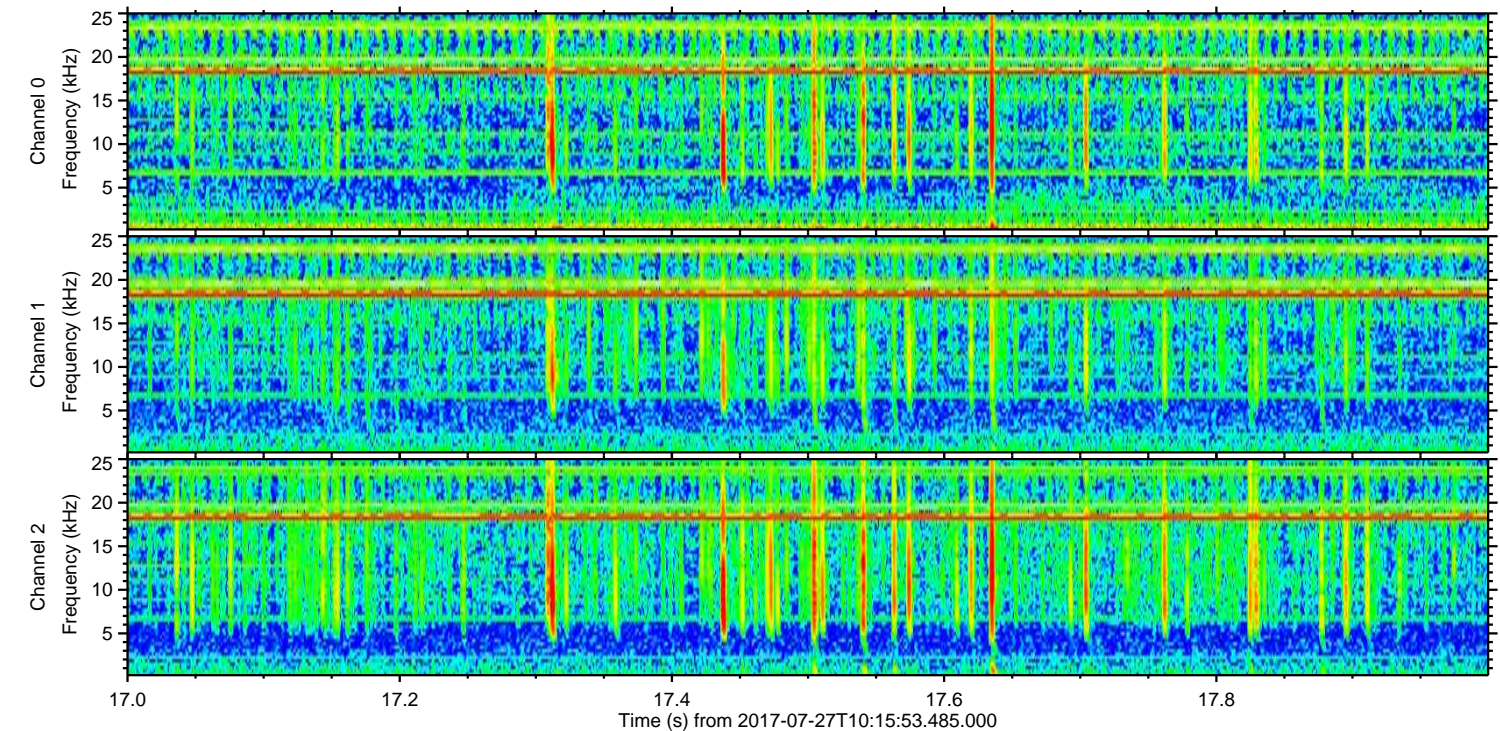
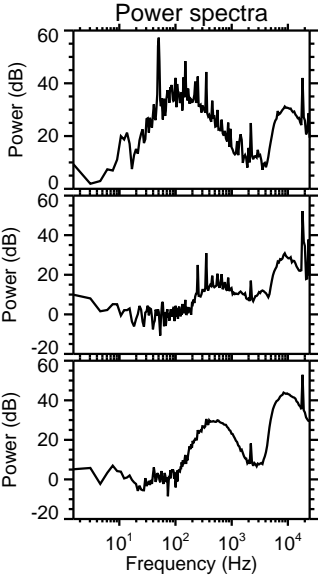
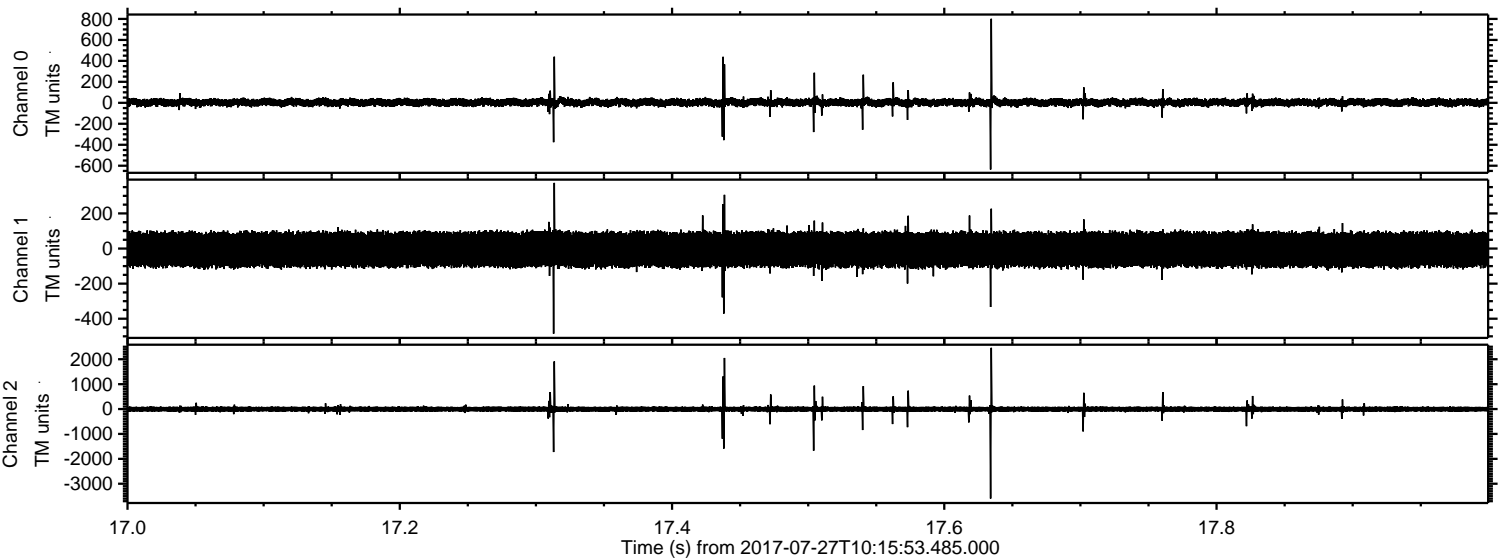
Channel 0  
mn: -1077  
mx: 854  
 $\mu$ : 3.6  
 $\sigma$ : 21.6

Channel 1  
mn: -807  
mx: 924  
 $\mu$ : -5.6  
 $\sigma$ : 57.3

Channel 2  
mn: -3472  
mx: 3740  
 $\mu$ : -3.2  
 $\sigma$ : 70.5

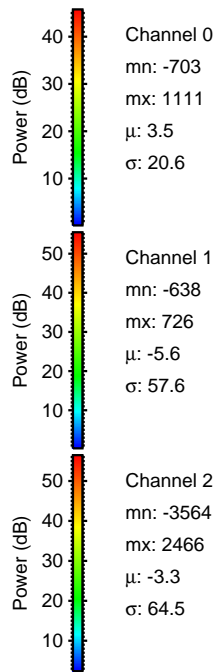
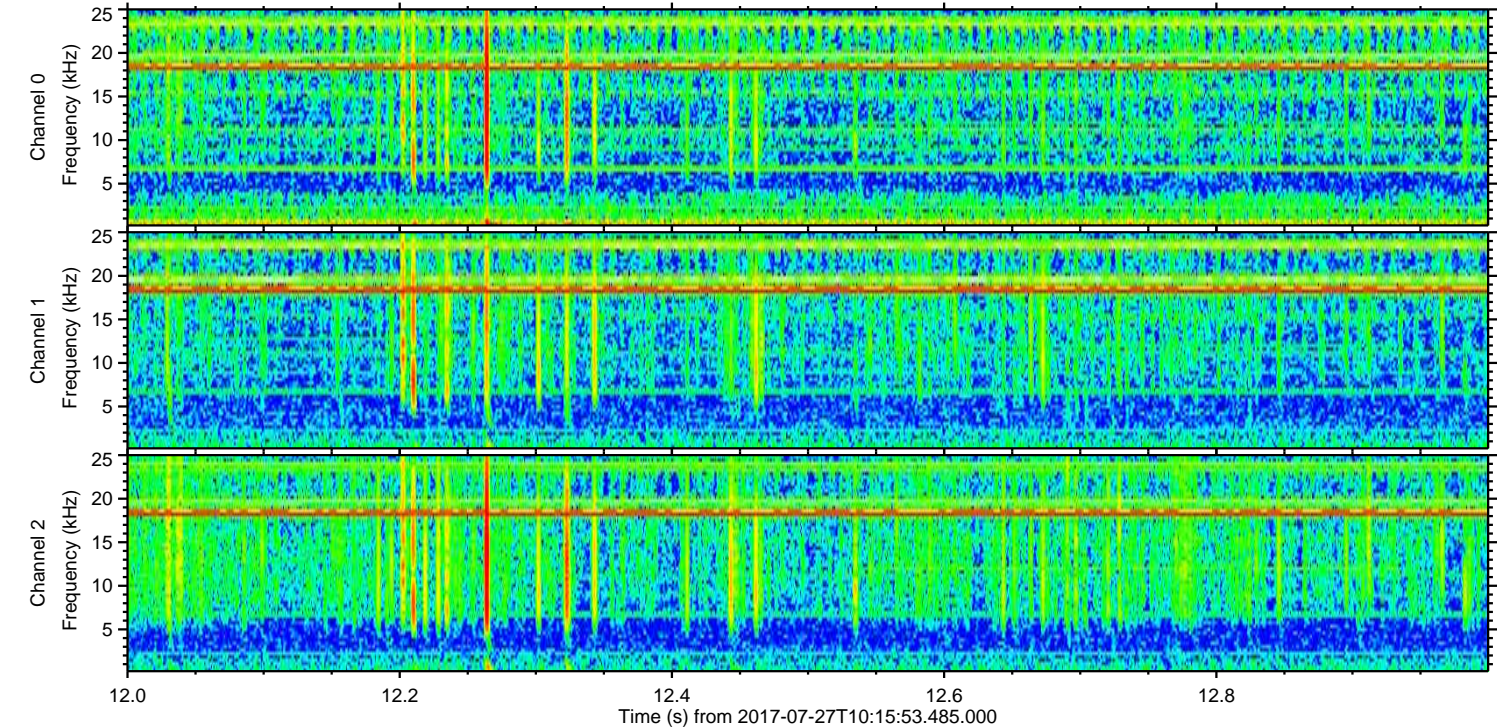
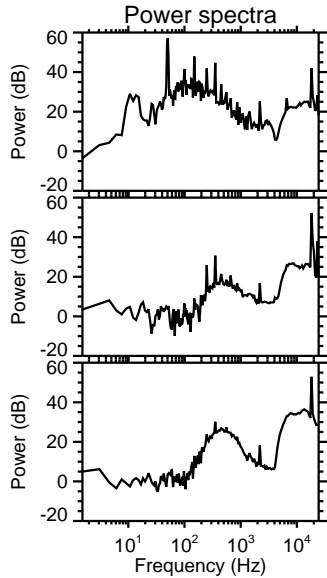
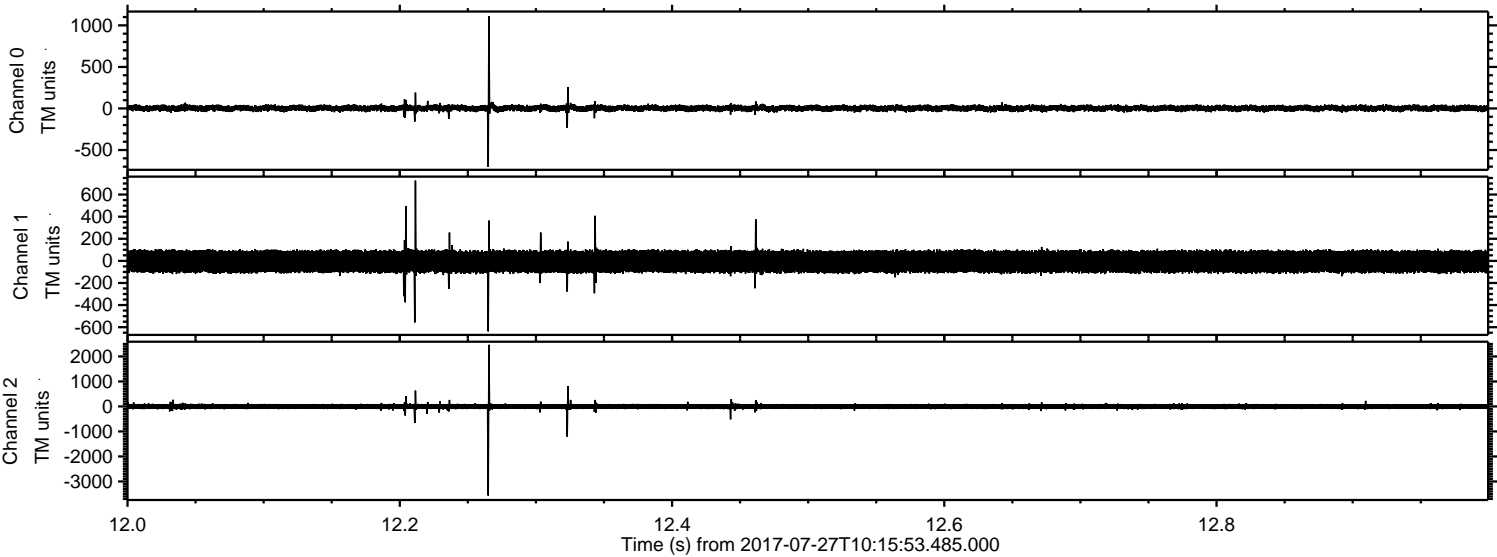


Processed Thu Jul 27 12:23:56 2017 by ELM ver.2012-10-06 from 001\_\_elm20170727\_101552\_\_dat00.bin





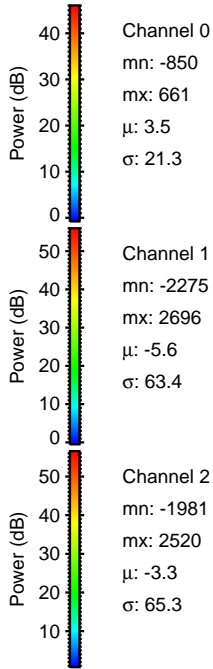
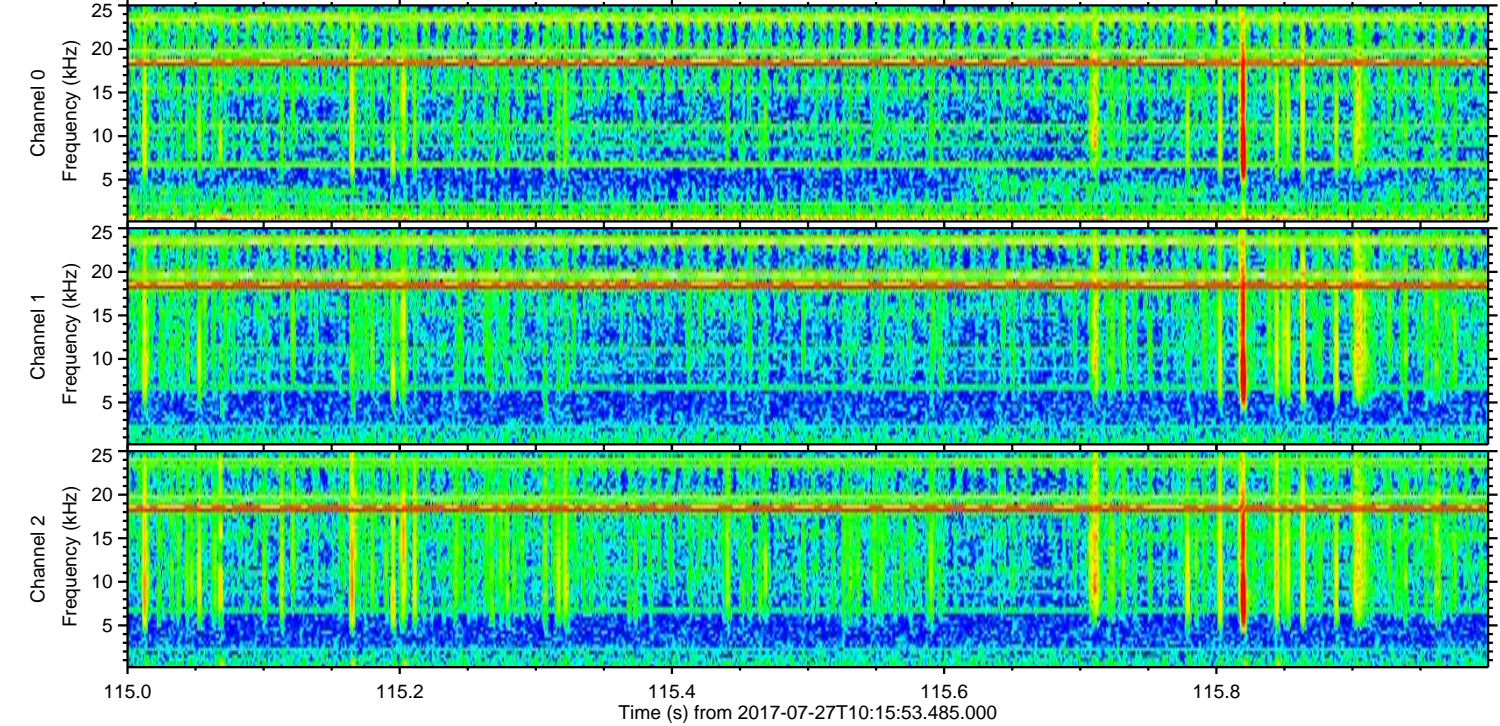
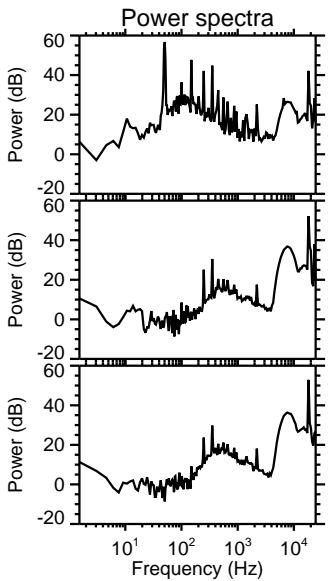
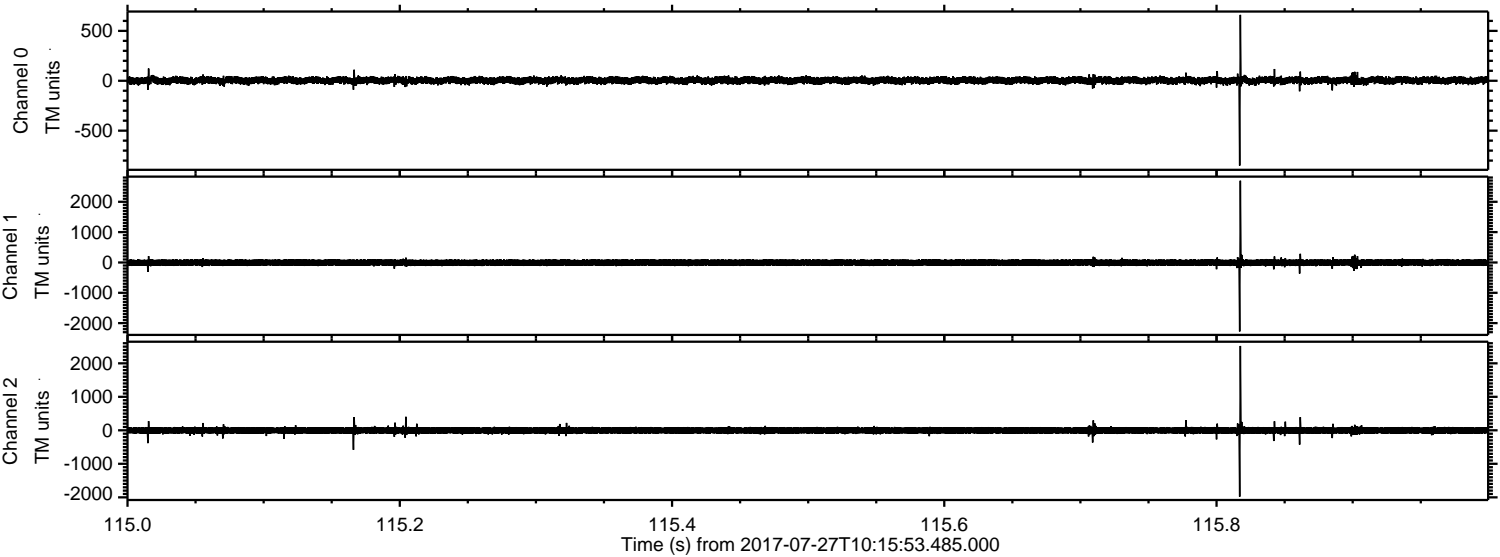
Processed Thu Jul 27 12:23:56 2017 by ELM ver.2012-10-06 from 001\_\_elm20170727\_101552\_\_dat00.bin





ELMAVAN 3D WAVEFORMS (Measured data sampled at 50 kHz) 51000 packets of 144 samples from 2017-07-27T10:15:53.485.000. Part 116/147

Processed Thu Jul 27 12:23:57 2017 by ELM ver.2012-10-06 from 001\_\_elm20170727\_101552\_\_dat00.bin





ELMAVAN 3D WAVEFORMS (Measured data sampled at 50 kHz) 51000 packets of 144 samples from 2017-07-27T10:15:53.485.000. Part 103/147

