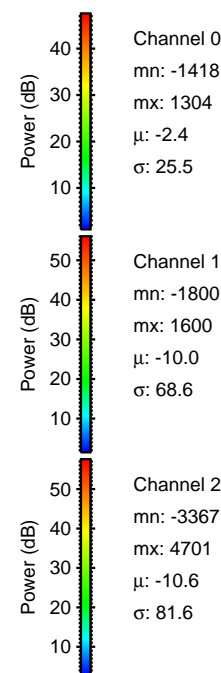
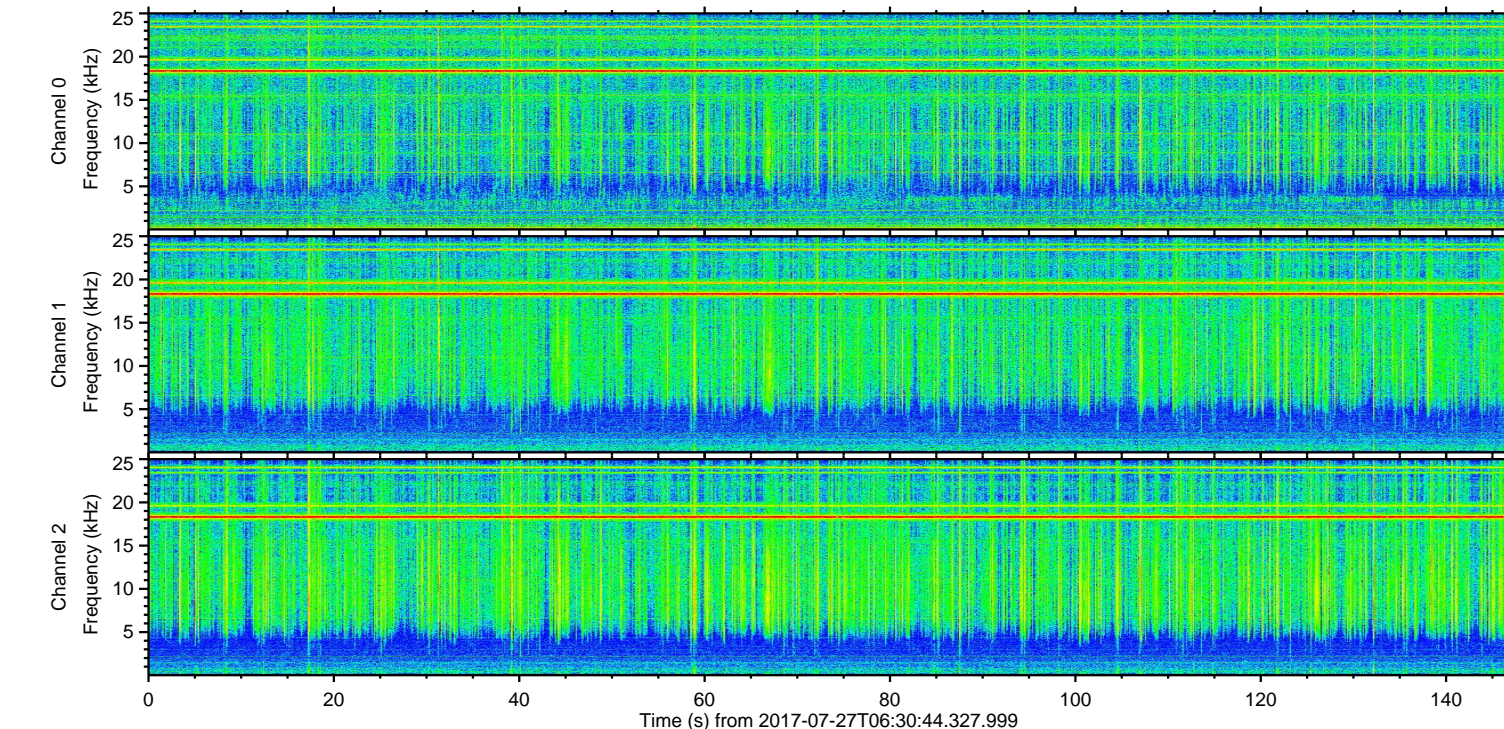
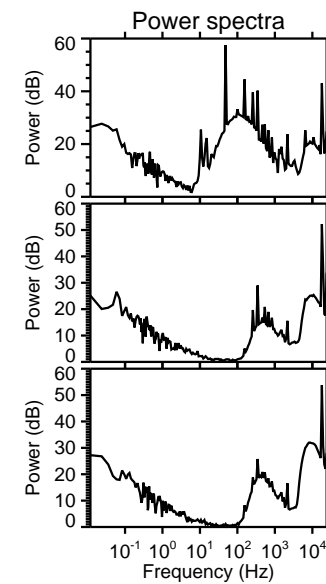
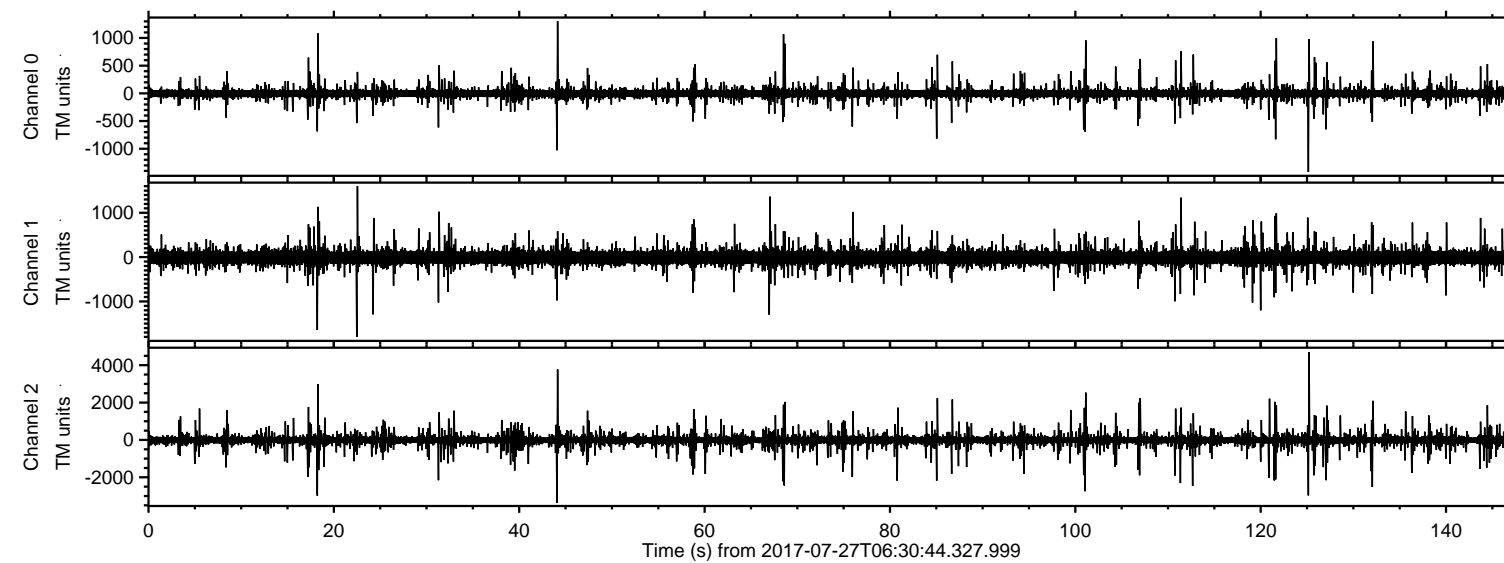


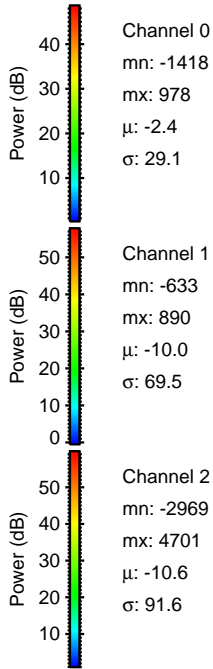
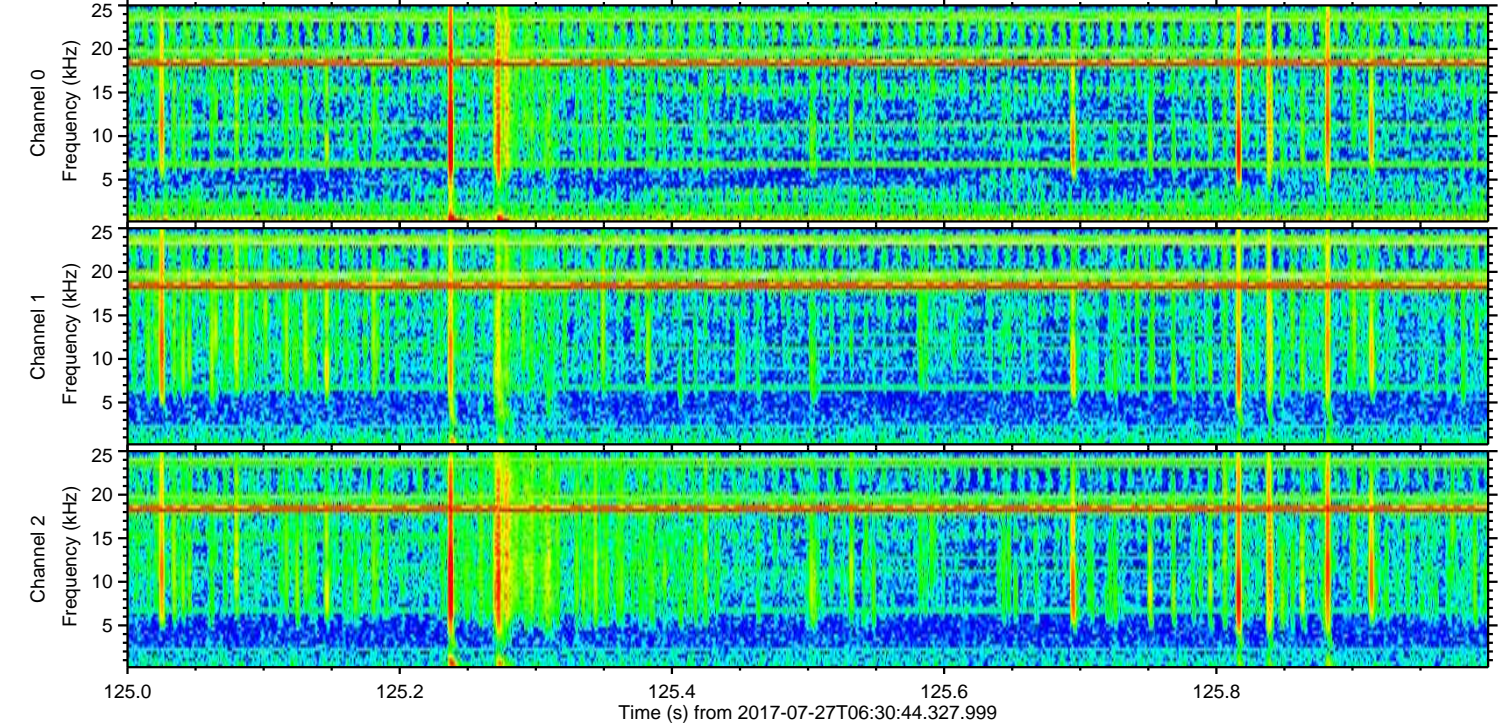
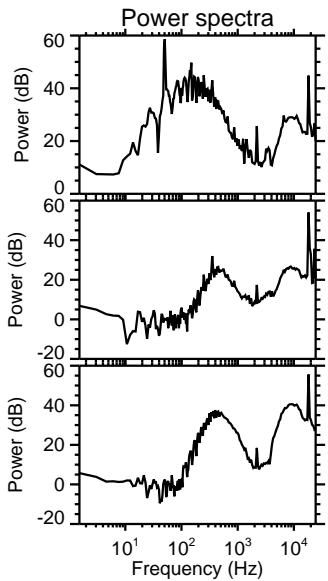
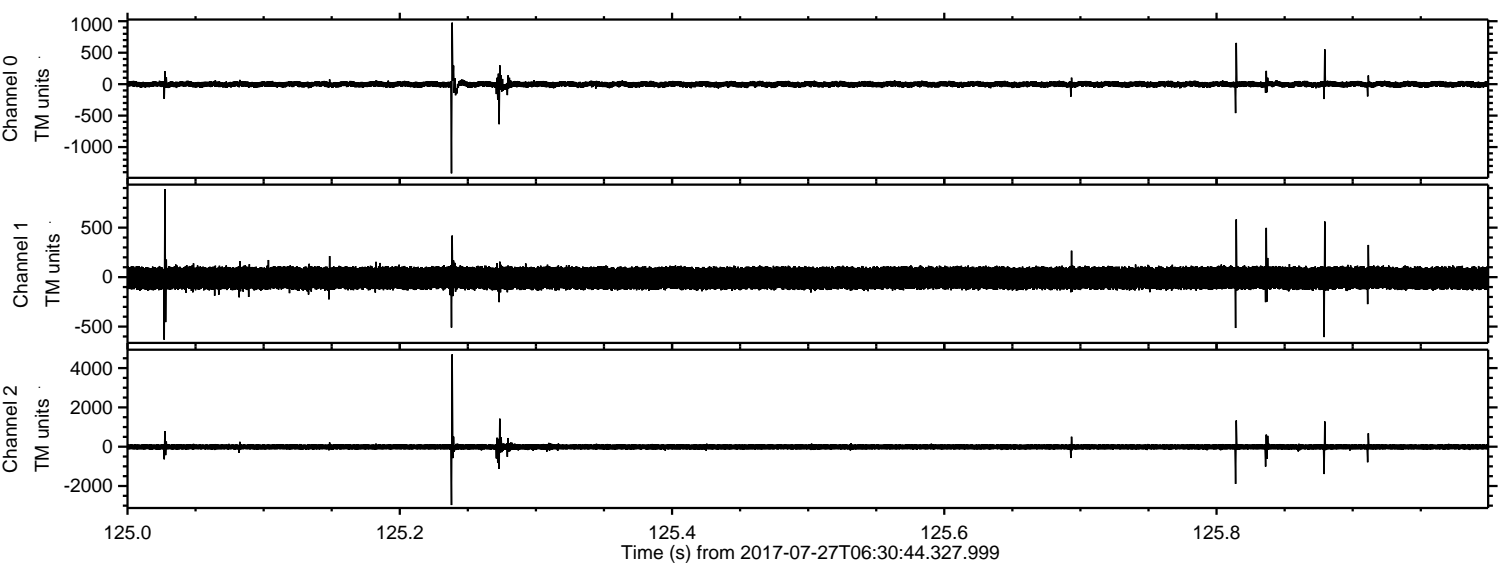
ELMAVAN 3D WAVEFORMS (Measured data sampled at 50 kHz) 51000 packets of 144 samples from 2017-07-27T06:30:44.327.999.

Processed Thu Jul 27 08:38:00 2017 by ELM ver.2012-10-06 from 001__elm20170727_063043__dat00.bin

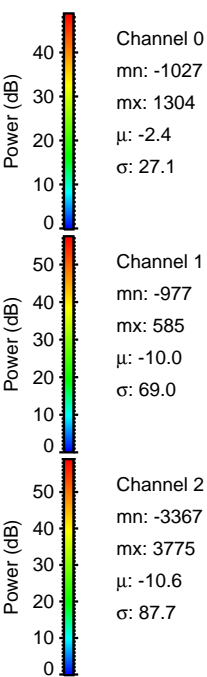
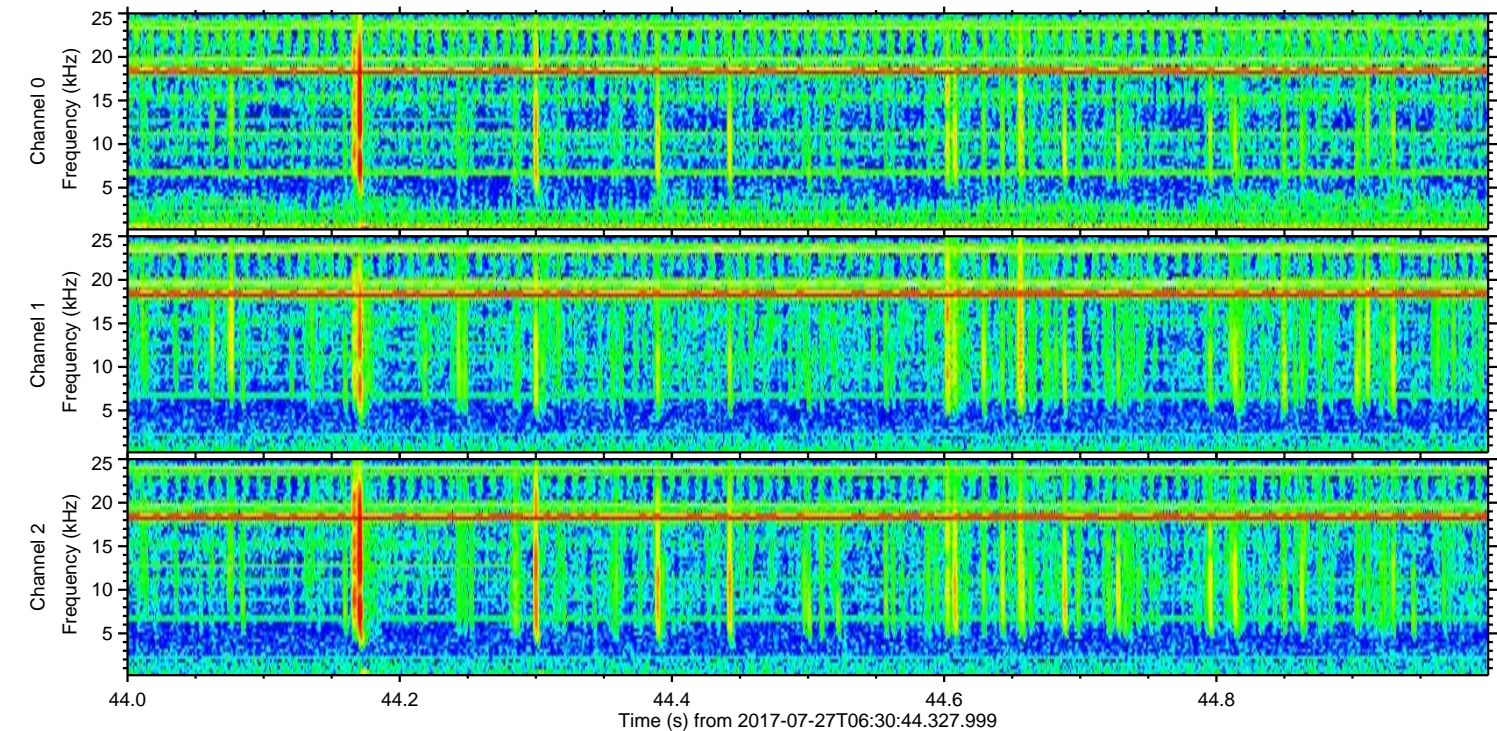
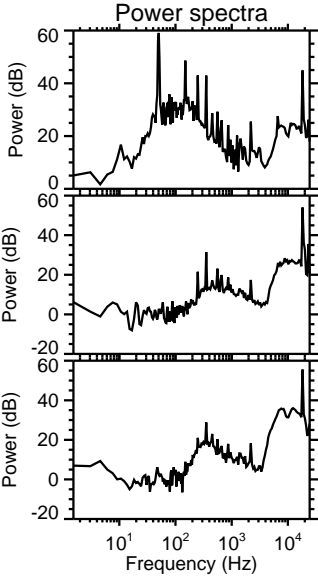
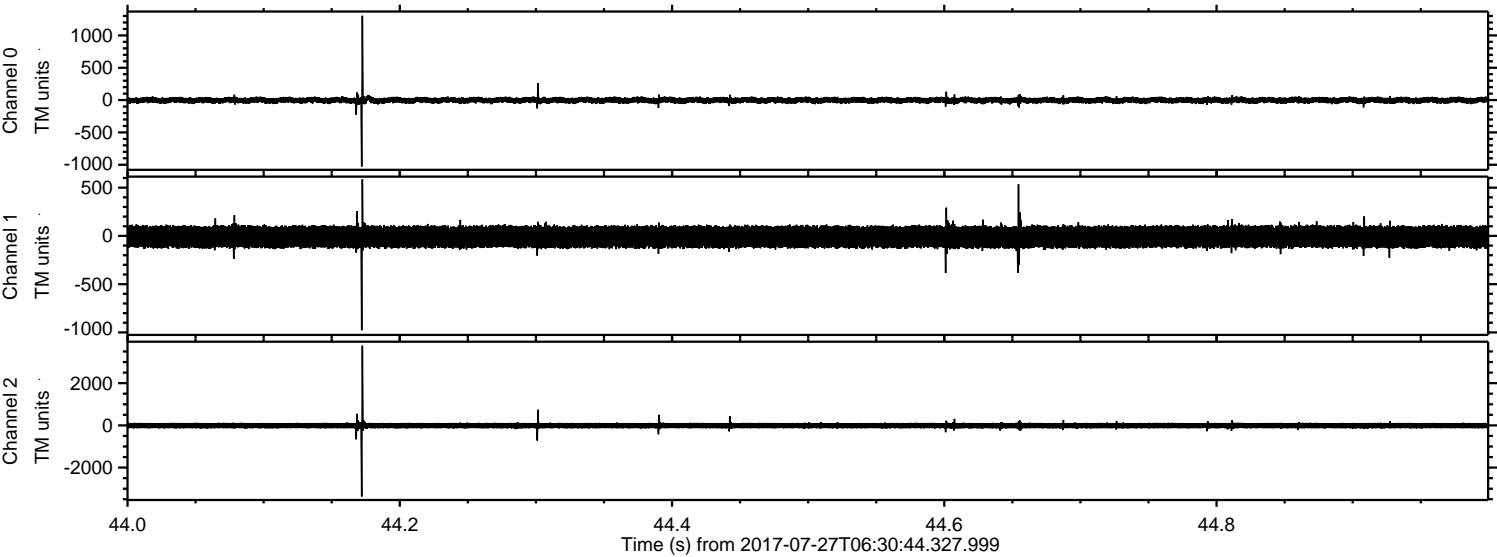


ELMAVAN 3D WAVEFORMS (Measured data sampled at 50 kHz) 51000 packets of 144 samples from 2017-07-27T06:30:44.327.999. Part 126/147

Processed Thu Jul 27 08:38:09 2017 by ELM ver.2012-10-06 from 001__elm20170727_063043__dat00.bin



Processed Thu Jul 27 08:38:10 2017 by ELM ver.2012-10-06 from 001__elm20170727_063043__dat00.bin

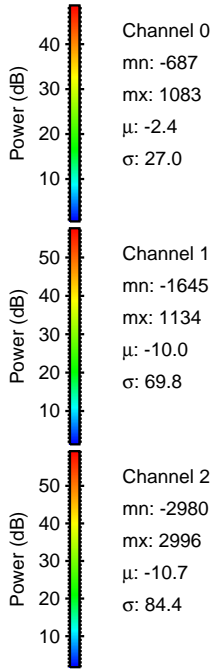
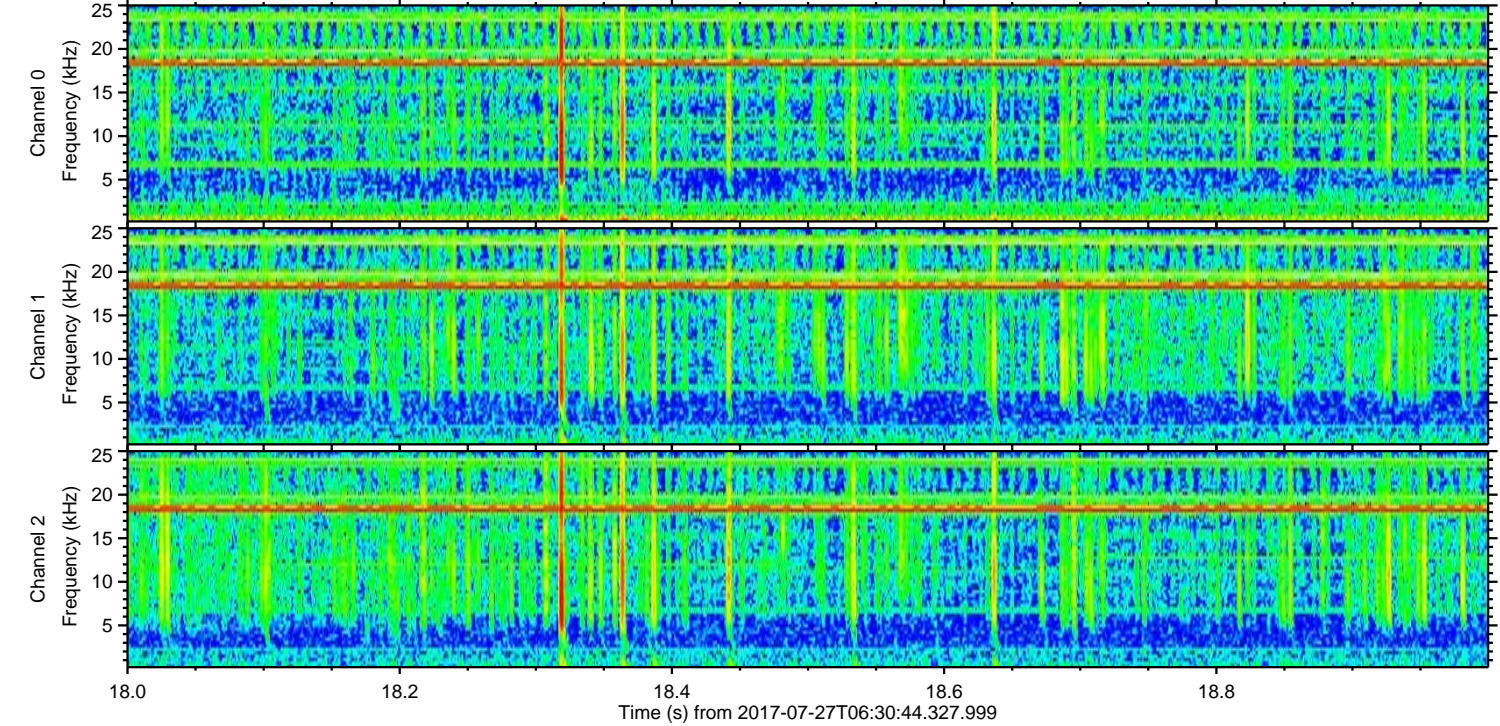
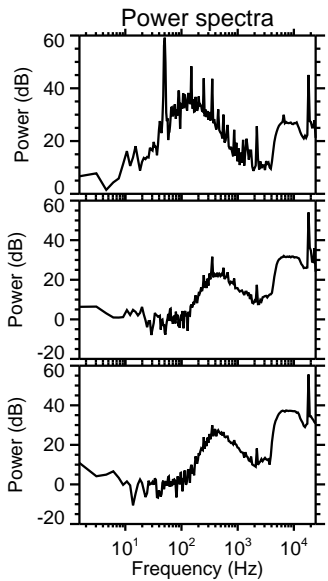
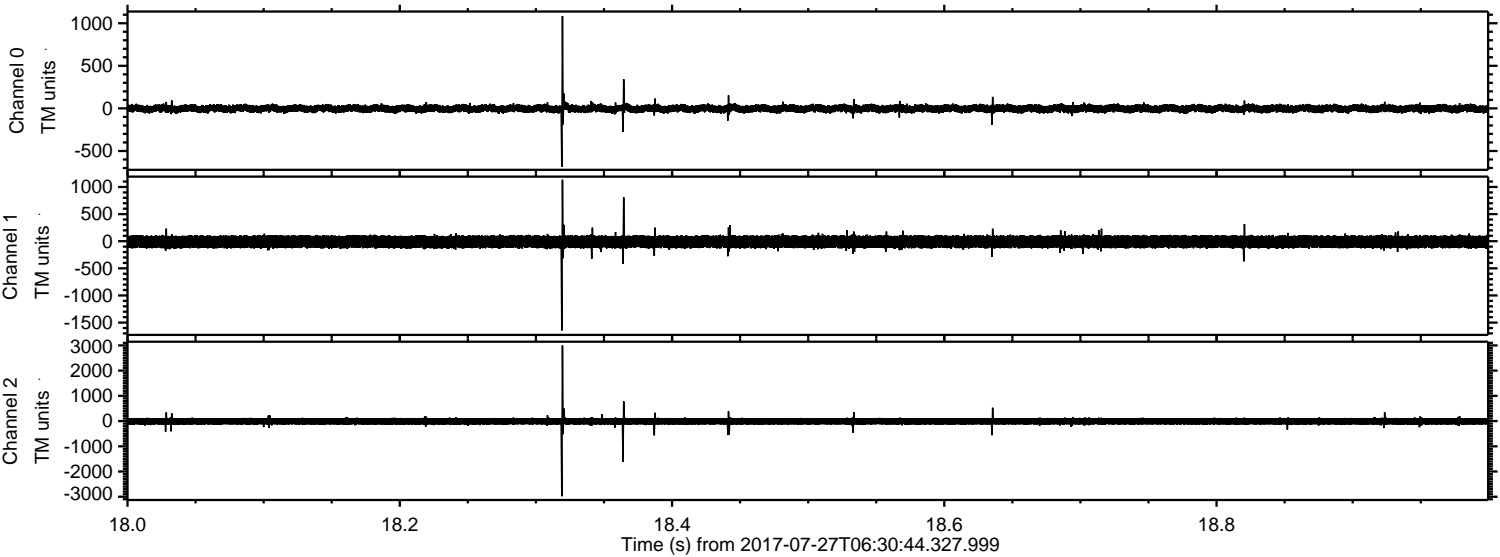


Channel 0
mn: -1027
mx: 1304
 μ : -2.4
 σ : 27.1

Channel 1
mn: -977
mx: 585
 μ : -10.0
 σ : 69.0

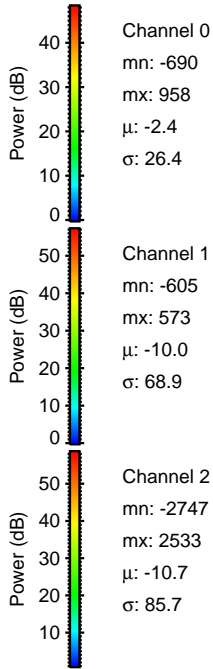
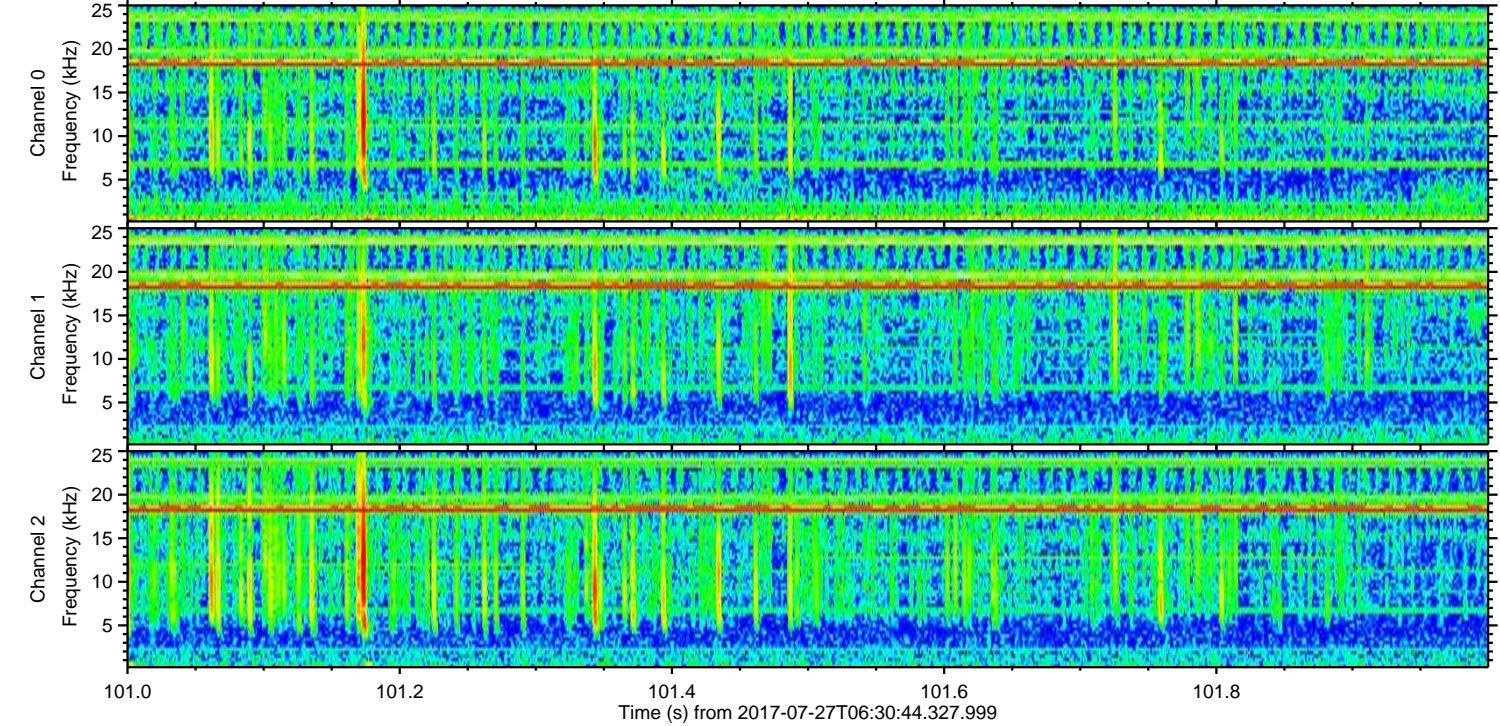
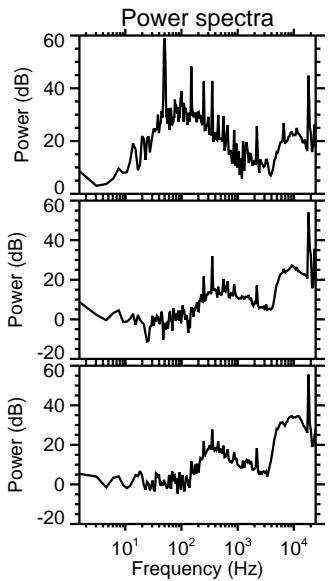
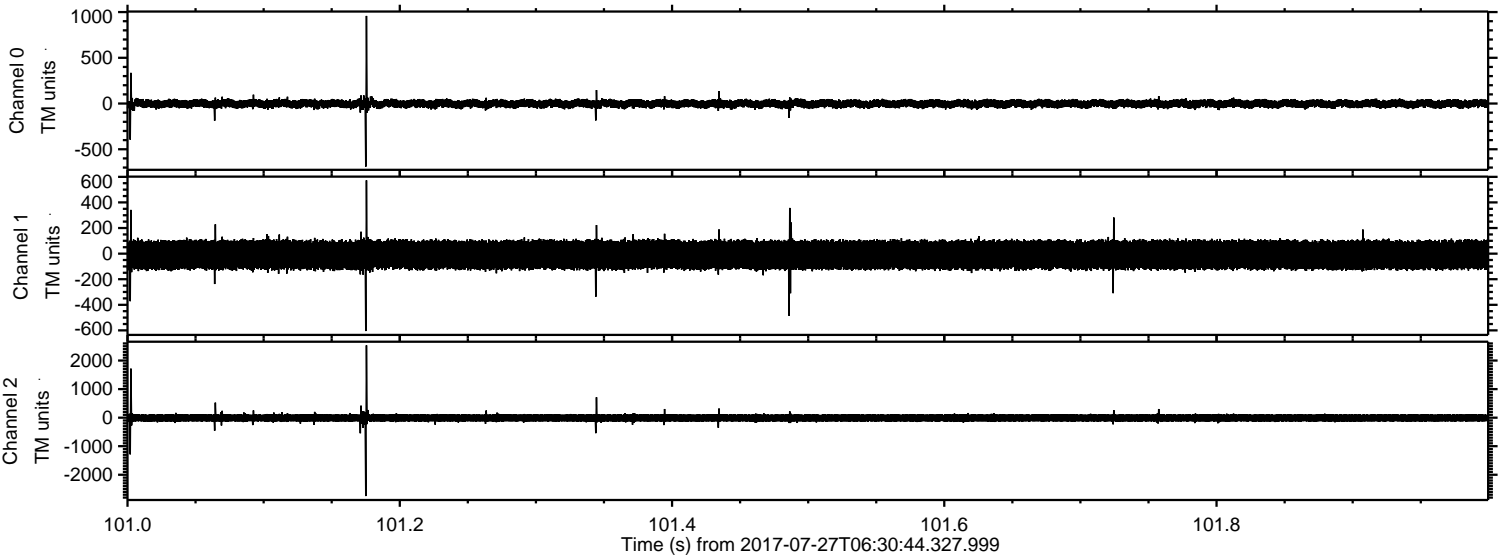
Channel 2
mn: -3367
mx: 3775
 μ : -10.6
 σ : 87.7

Processed Thu Jul 27 08:38:10 2017 by ELM ver.2012-10-06 from 001__elm20170727_063043__dat00.bin



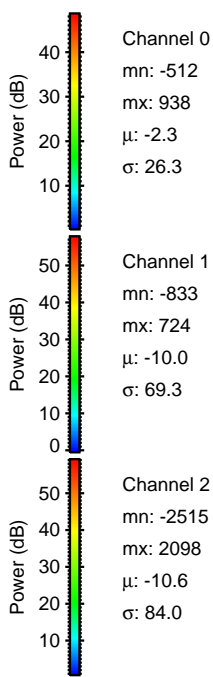
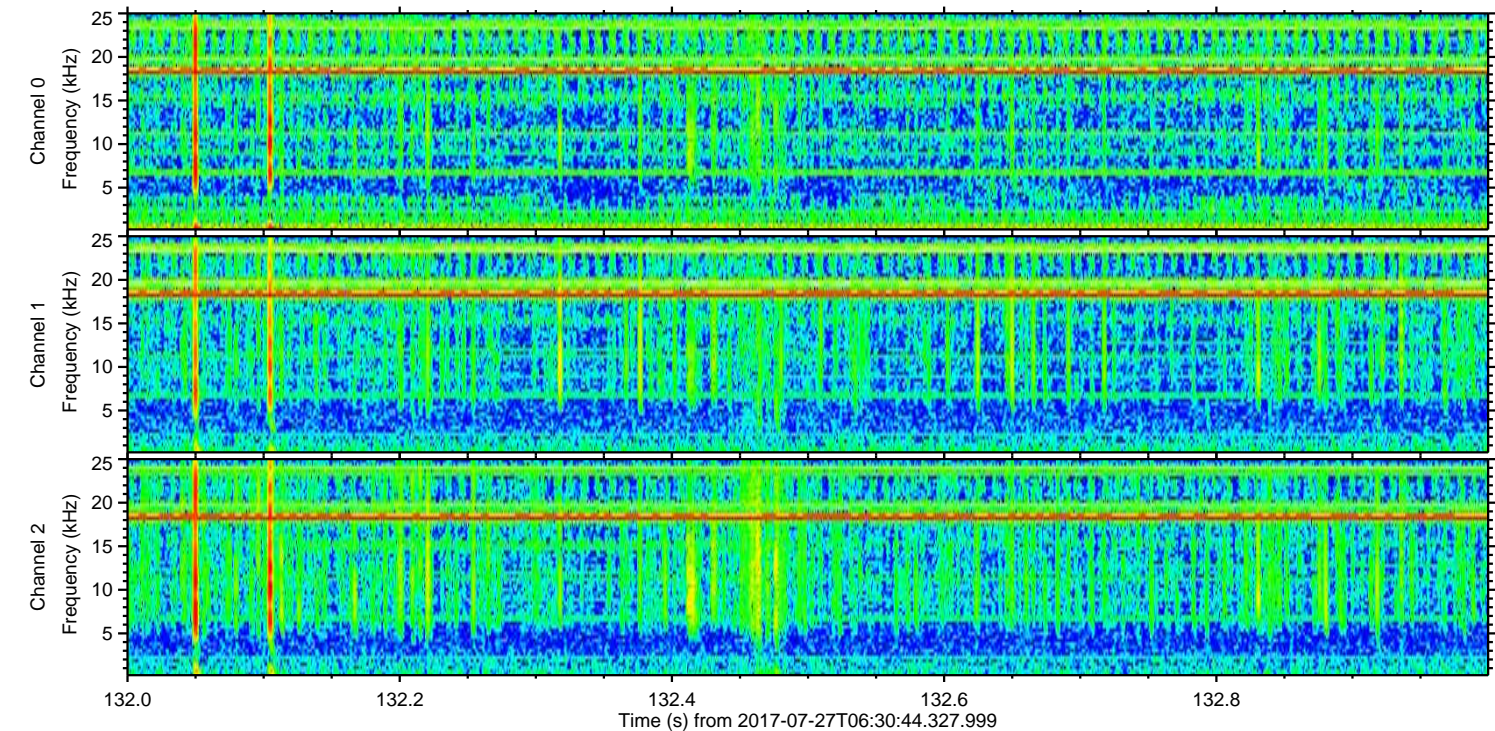
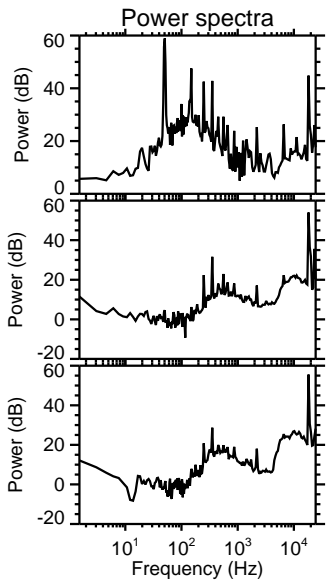
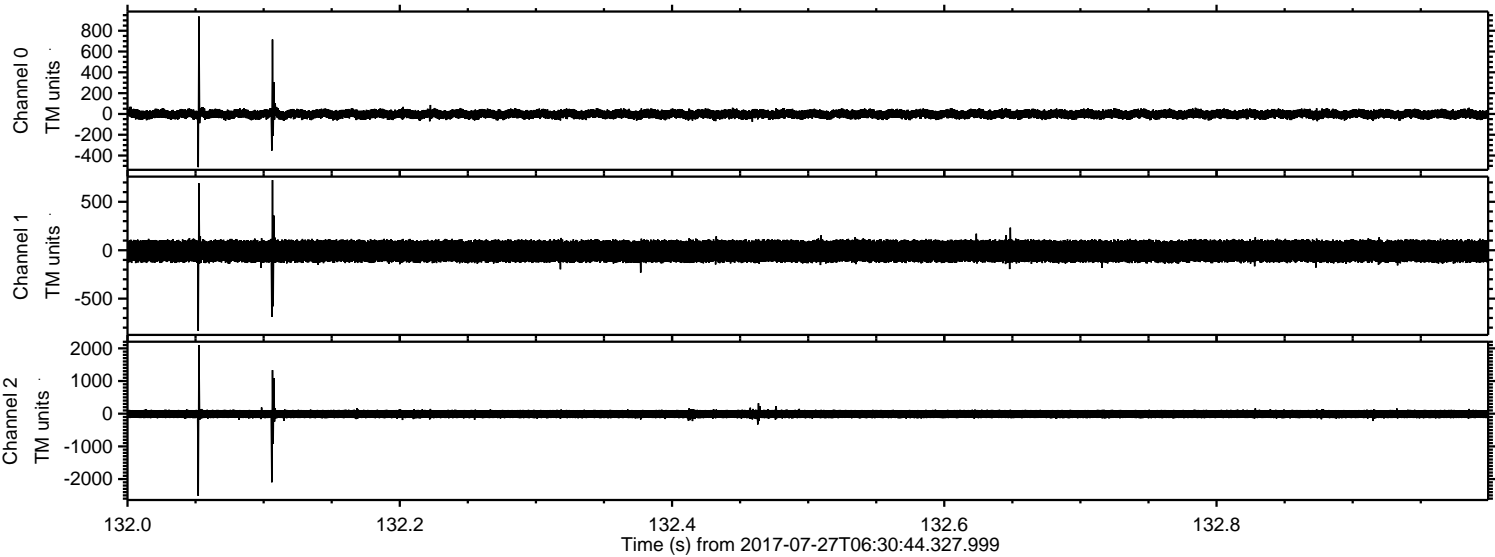
ELMAVAN 3D WAVEFORMS (Measured data sampled at 50 kHz) 51000 packets of 144 samples from 2017-07-27T06:30:44.327.999. Part 102/147

Processed Thu Jul 27 08:38:11 2017 by ELM ver.2012-10-06 from 001__elm20170727_063043__dat00.bin



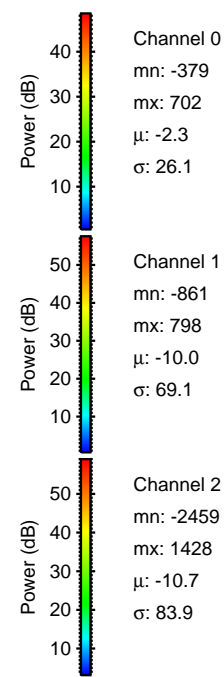
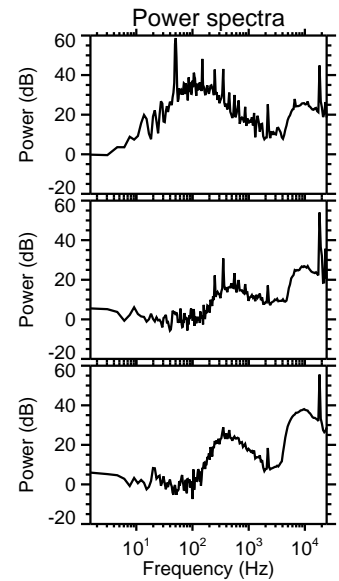
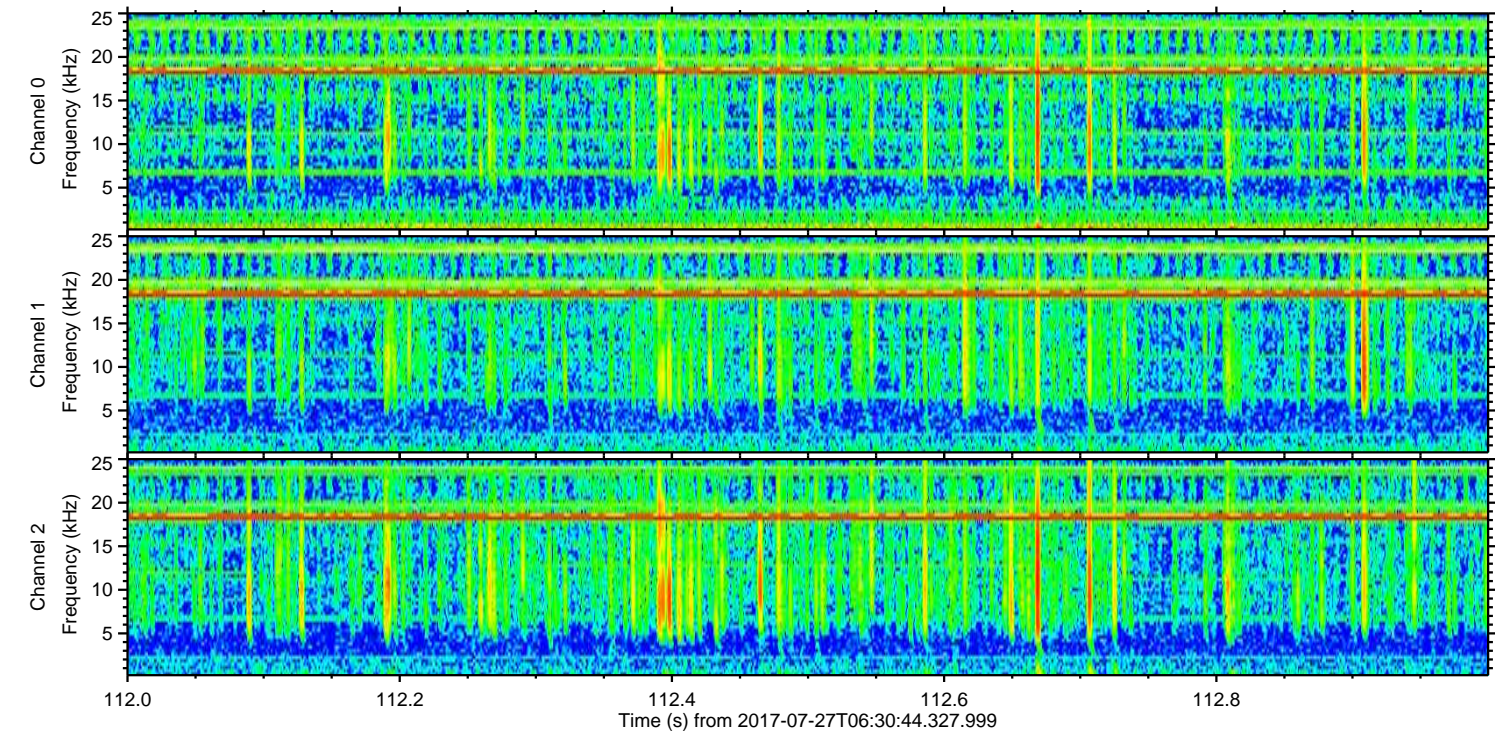
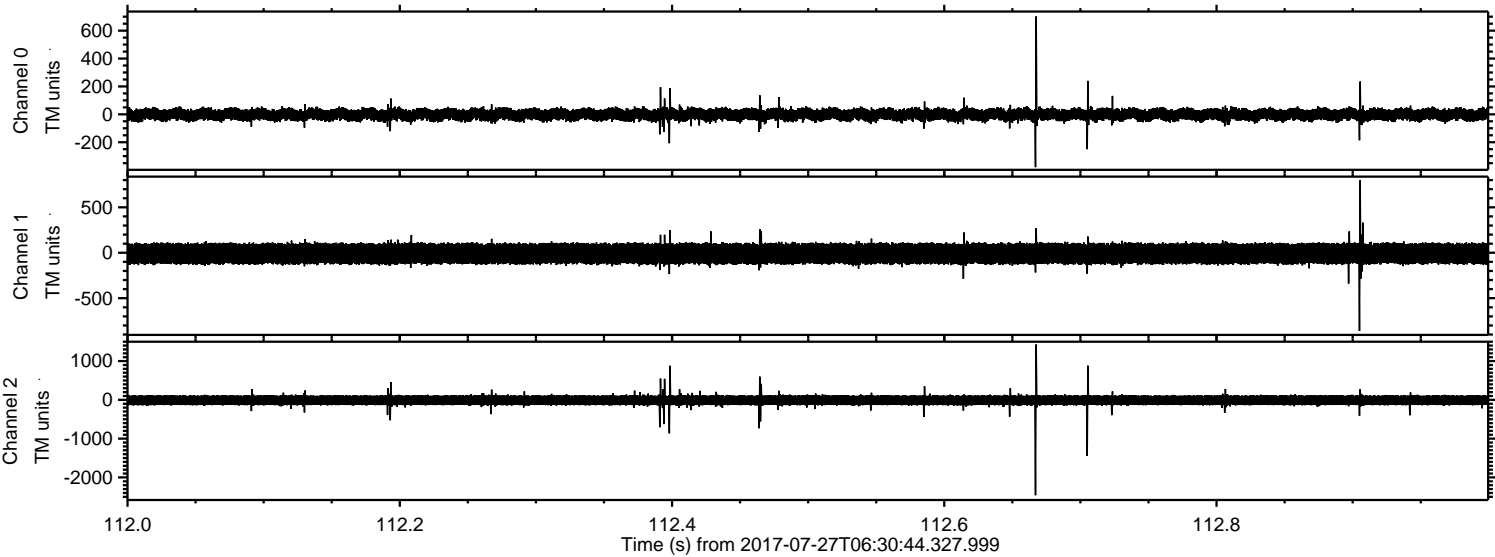
ELMAVAN 3D WAVEFORMS (Measured data sampled at 50 kHz) 51000 packets of 144 samples from 2017-07-27T06:30:44.327.999. Part 133/147

Processed Thu Jul 27 08:38:12 2017 by ELM ver.2012-10-06 from 001__elm20170727_063043__dat00.bin



ELMAVAN 3D WAVEFORMS (Measured data sampled at 50 kHz) 51000 packets of 144 samples from 2017-07-27T06:30:44.327.999. Part 113/147

Processed Thu Jul 27 08:38:13 2017 by ELM ver.2012-10-06 from 001__elm20170727_063043__dat00.bin

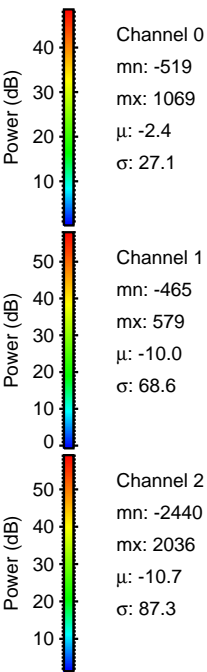
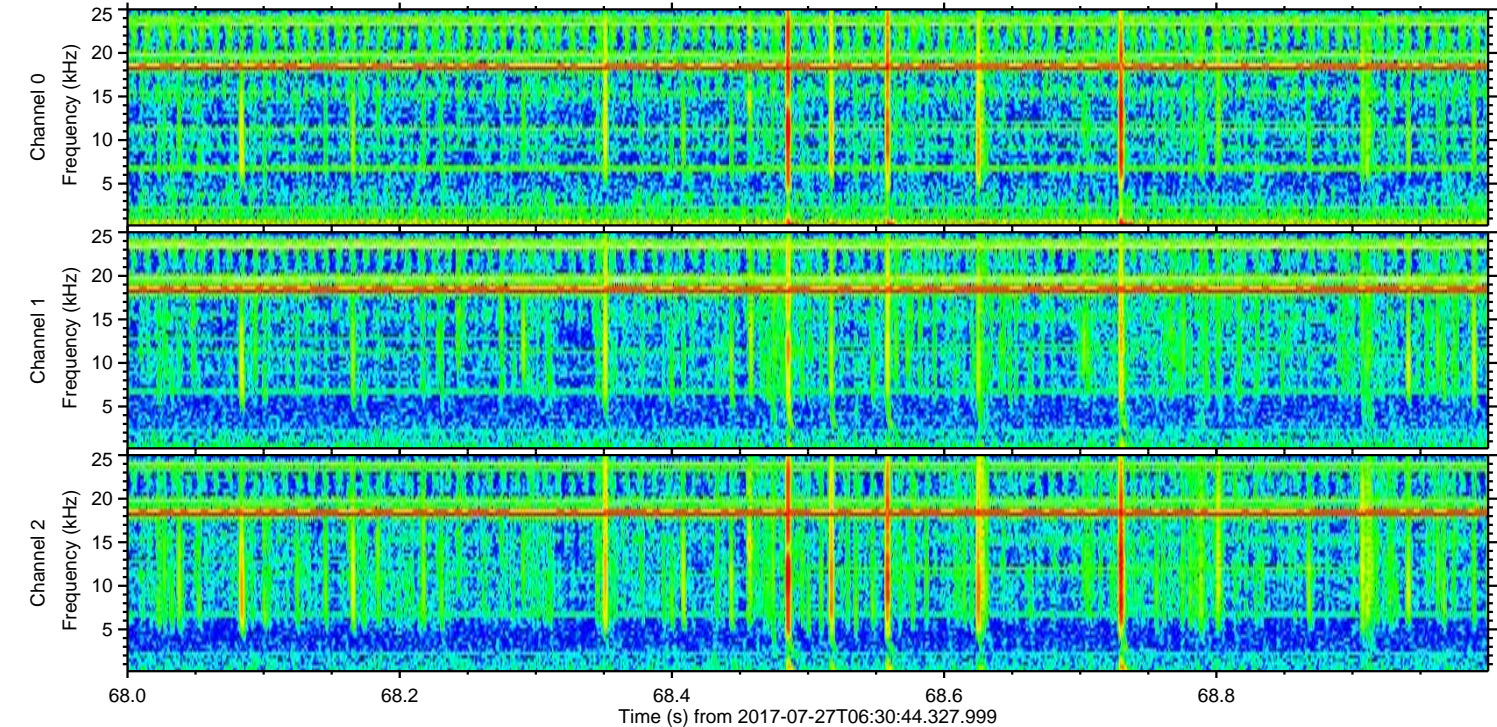
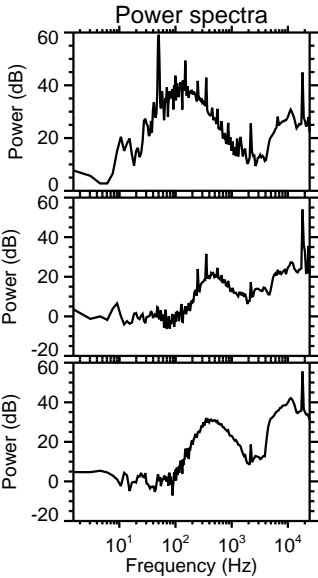
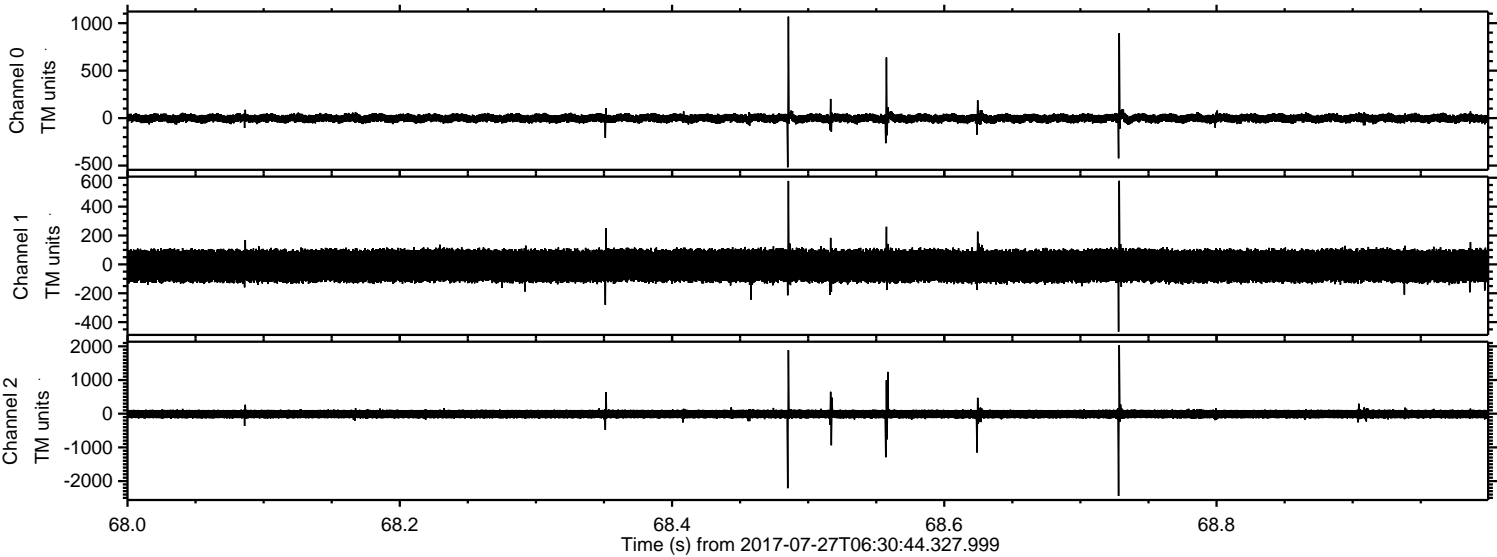


Channel 0
mn: -379
mx: 702
 μ : -2.3
 σ : 26.1

Channel 1
mn: -861
mx: 798
 μ : -10.0
 σ : 69.1

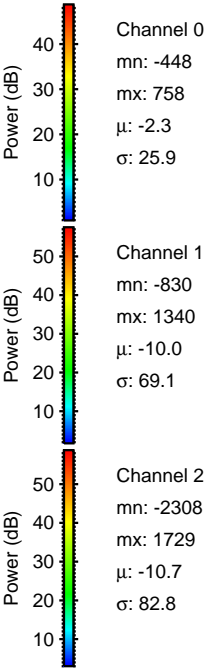
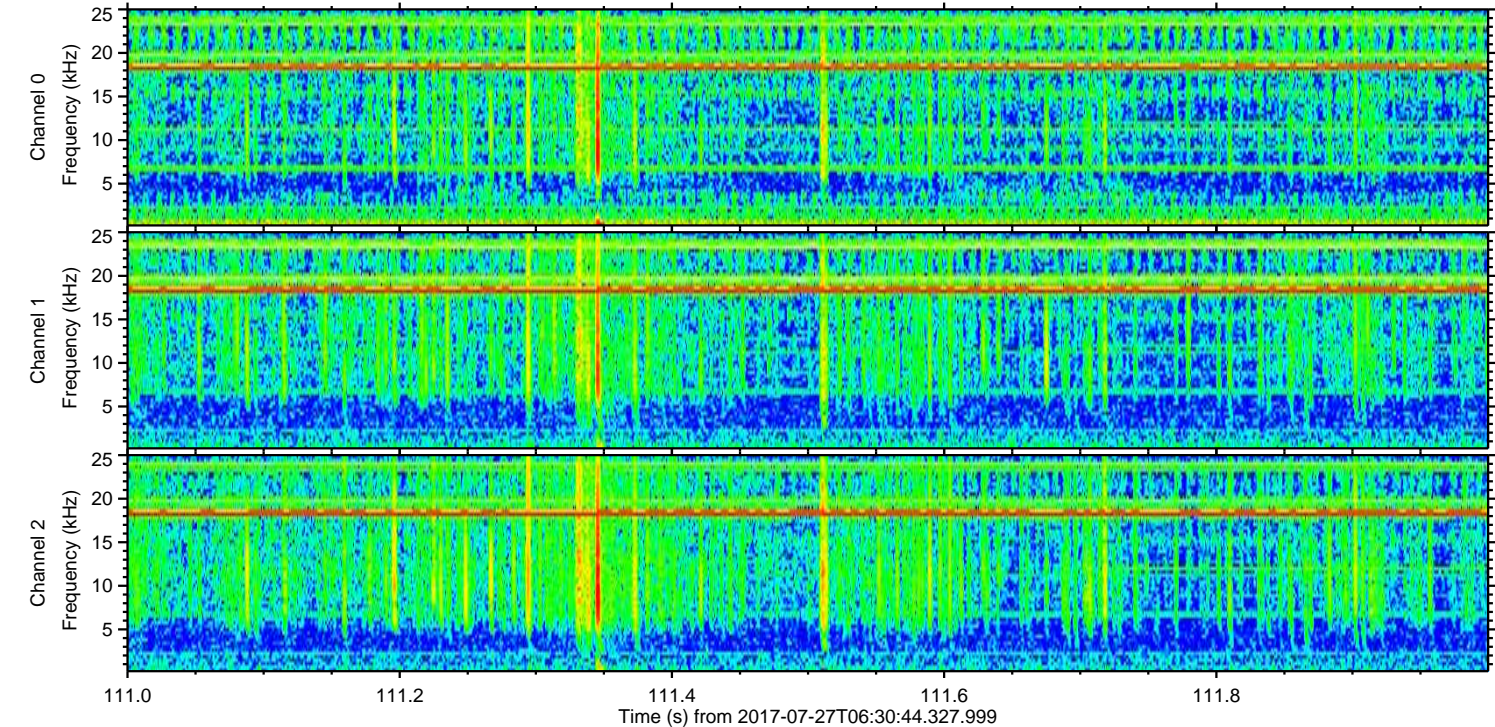
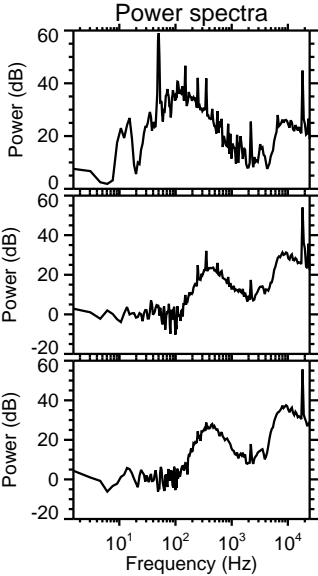
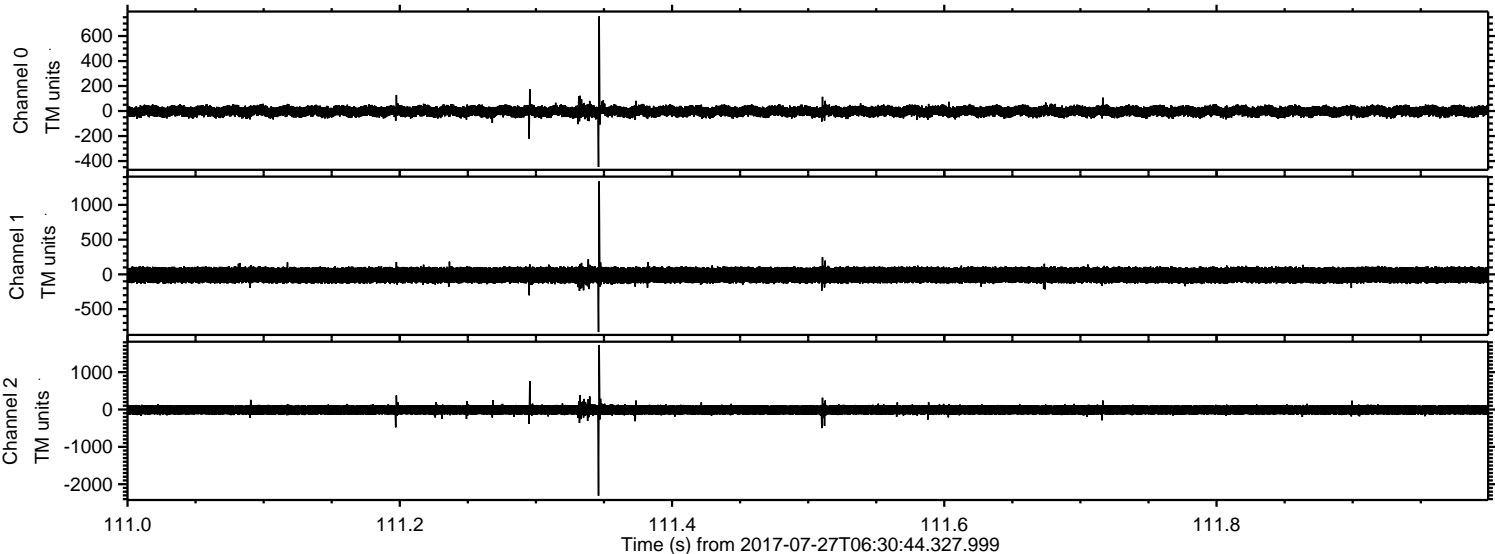
Channel 2
mn: -2459
mx: 1428
 μ : -10.7
 σ : 83.9

Processed Thu Jul 27 08:38:14 2017 by ELM ver.2012-10-06 from 001__elm20170727_063043__dat00.bin



ELMAVAN 3D WAVEFORMS (Measured data sampled at 50 kHz) 51000 packets of 144 samples from 2017-07-27T06:30:44.327.999. Part 112/147

Processed Thu Jul 27 08:38:15 2017 by ELM ver.2012-10-06 from 001__elm20170727_063043__dat00.bin



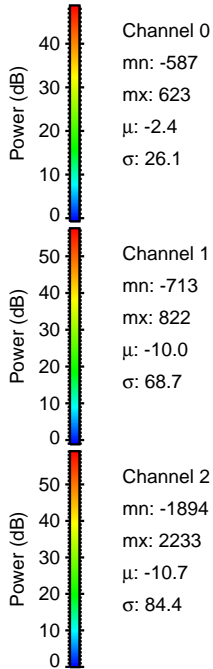
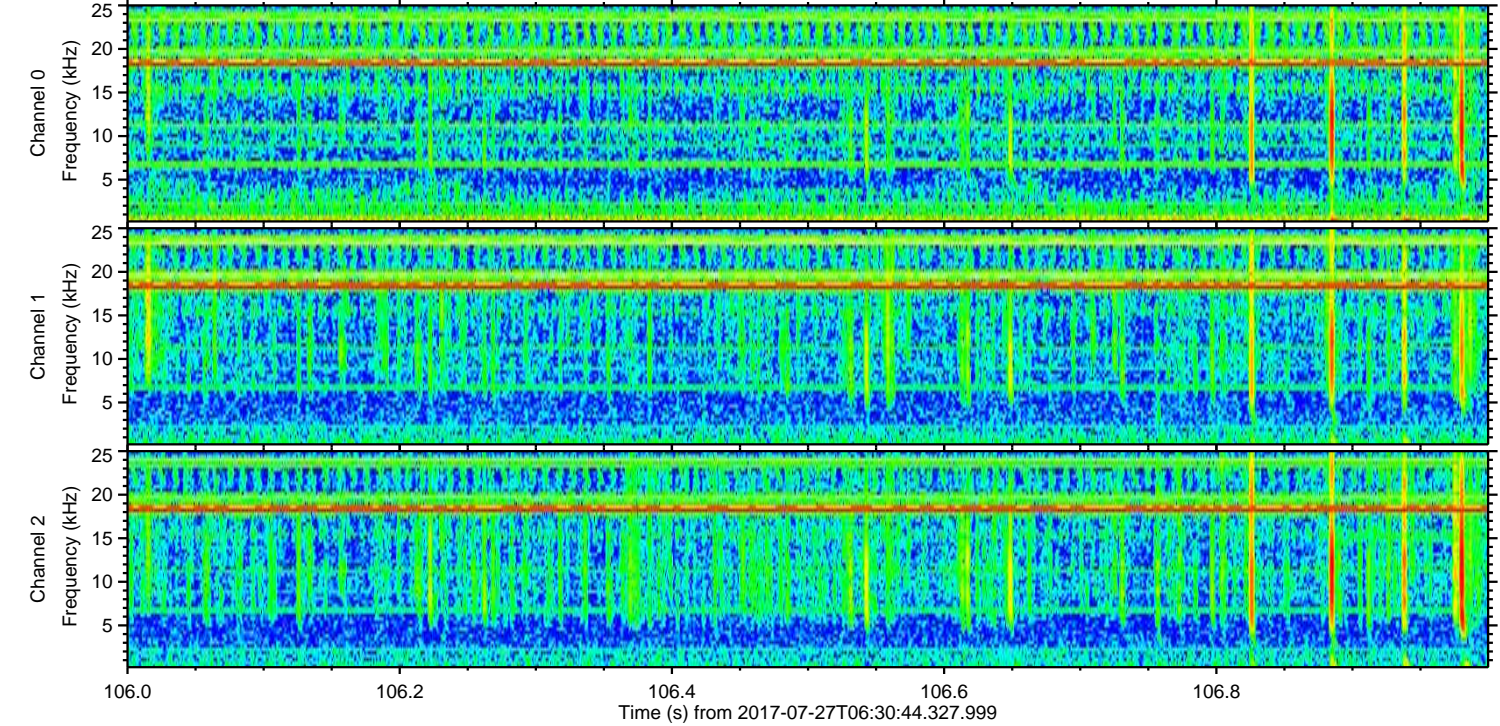
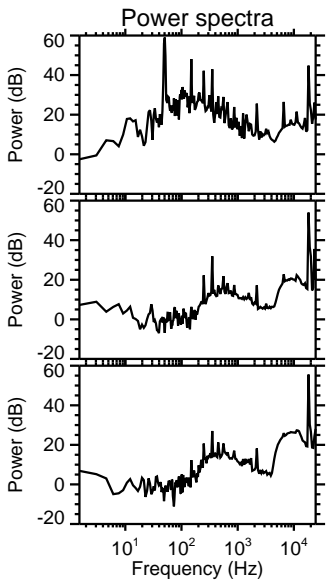
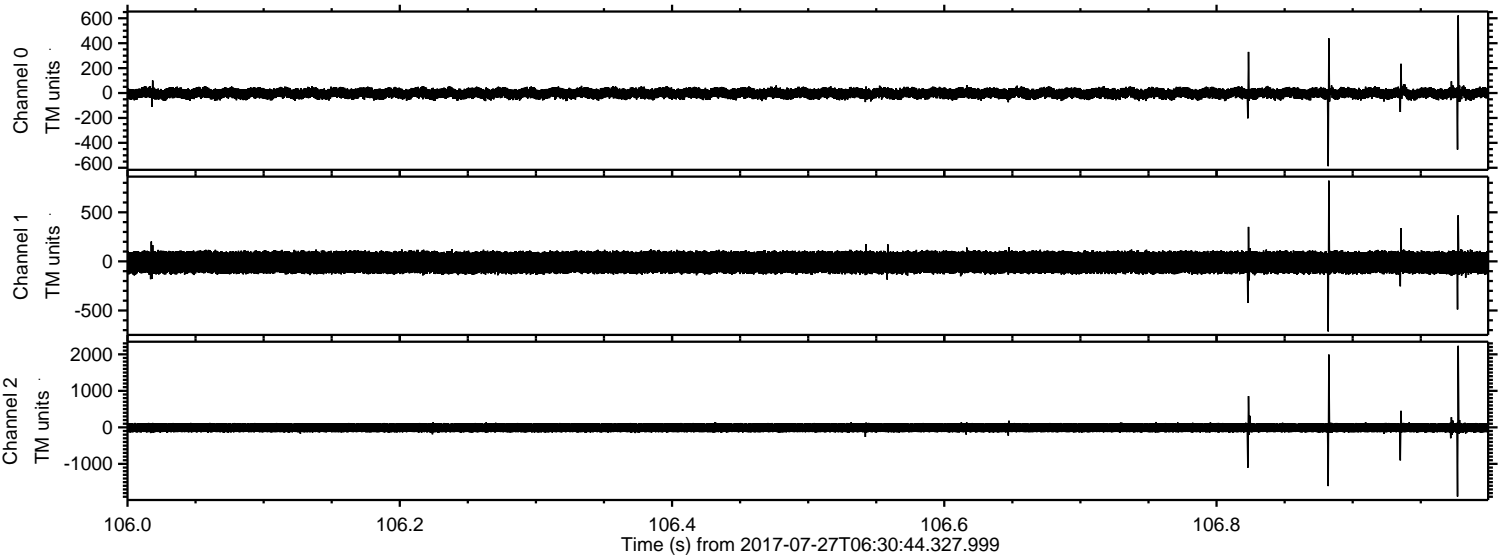
Channel 0
mn: -448
mx: 758
 μ : -2.3
 σ : 25.9

Channel 1
mn: -830
mx: 1340
 μ : -10.0
 σ : 69.1

Channel 2
mn: -2308
mx: 1729
 μ : -10.7
 σ : 82.8

ELMAVAN 3D WAVEFORMS (Measured data sampled at 50 kHz) 51000 packets of 144 samples from 2017-07-27T06:30:44.327.999. Part 107/147

Processed Thu Jul 27 08:38:16 2017 by ELM ver.2012-10-06 from 001__elm20170727_063043__dat00.bin



ELMAVAN 3D WAVEFORMS (Measured data sampled at 50 kHz) 51000 packets of 144 samples from 2017-07-27T06:30:44.327.999. Part 117/147

