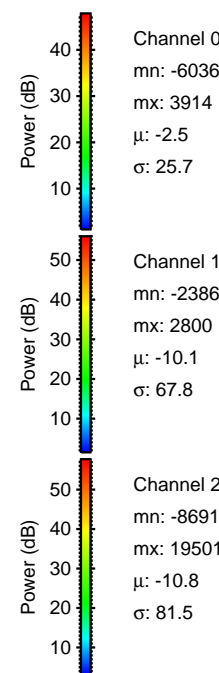
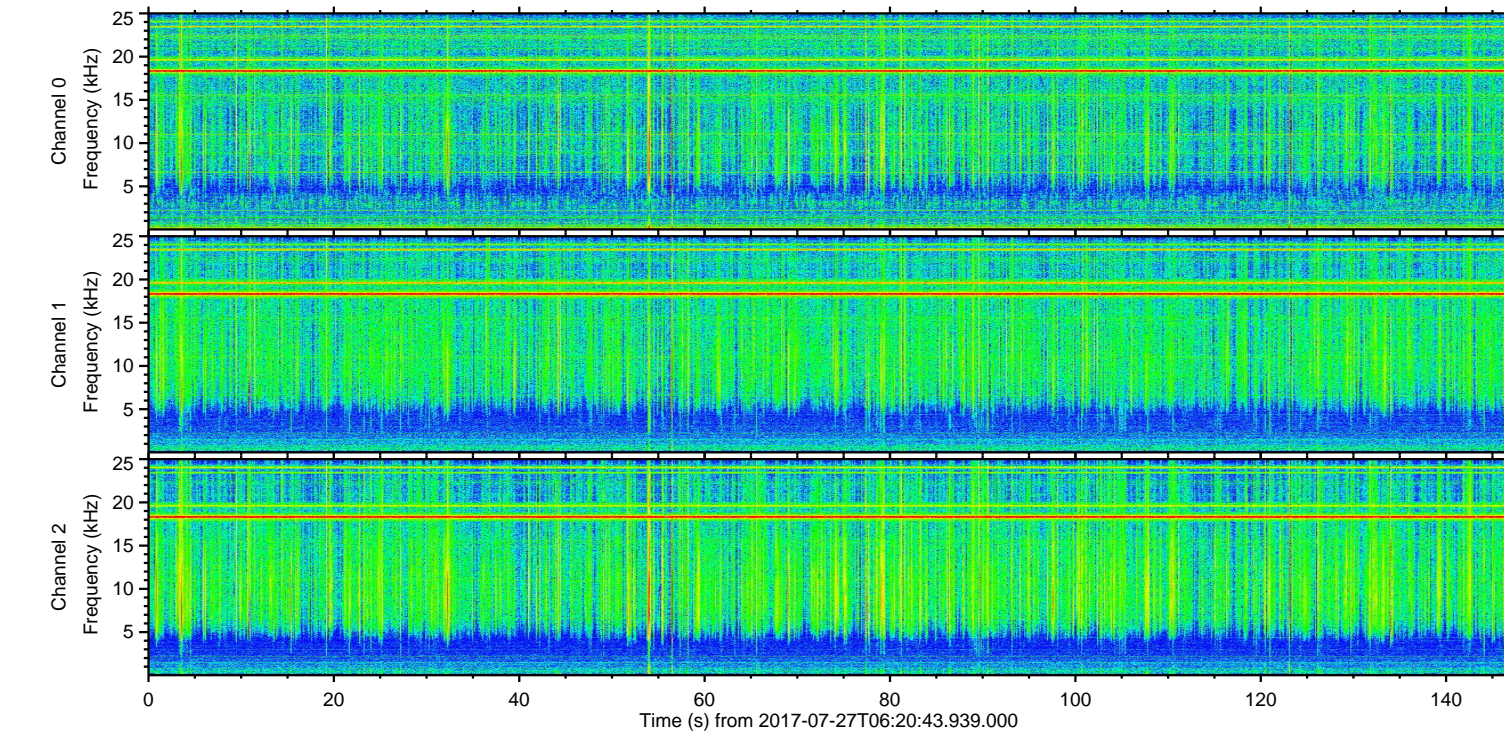
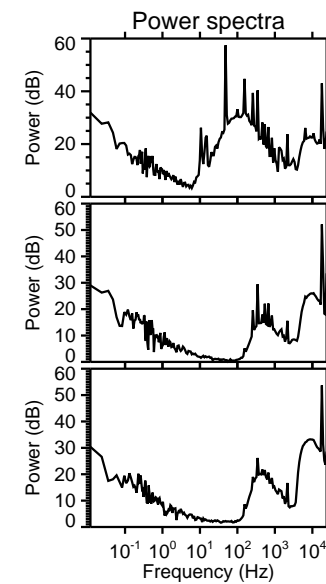
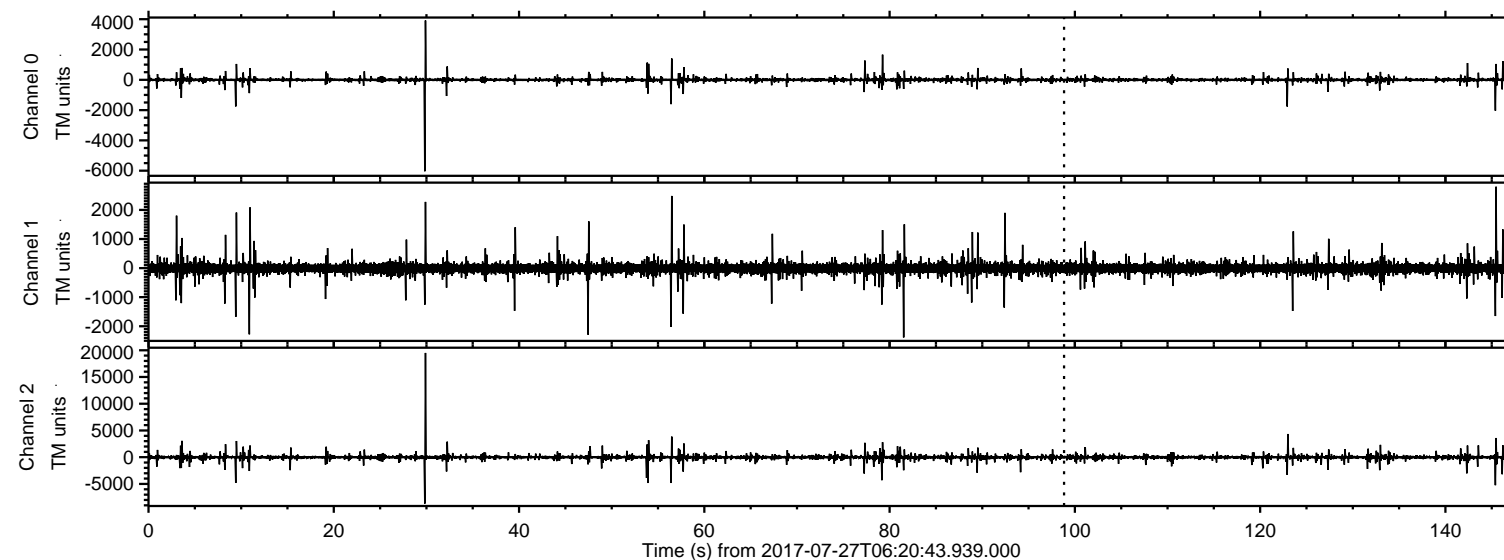
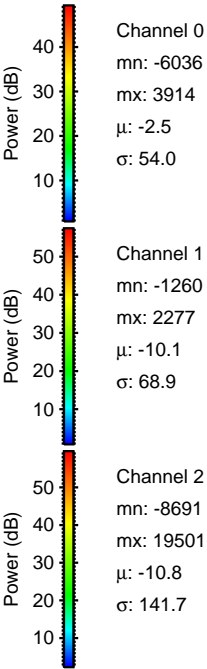
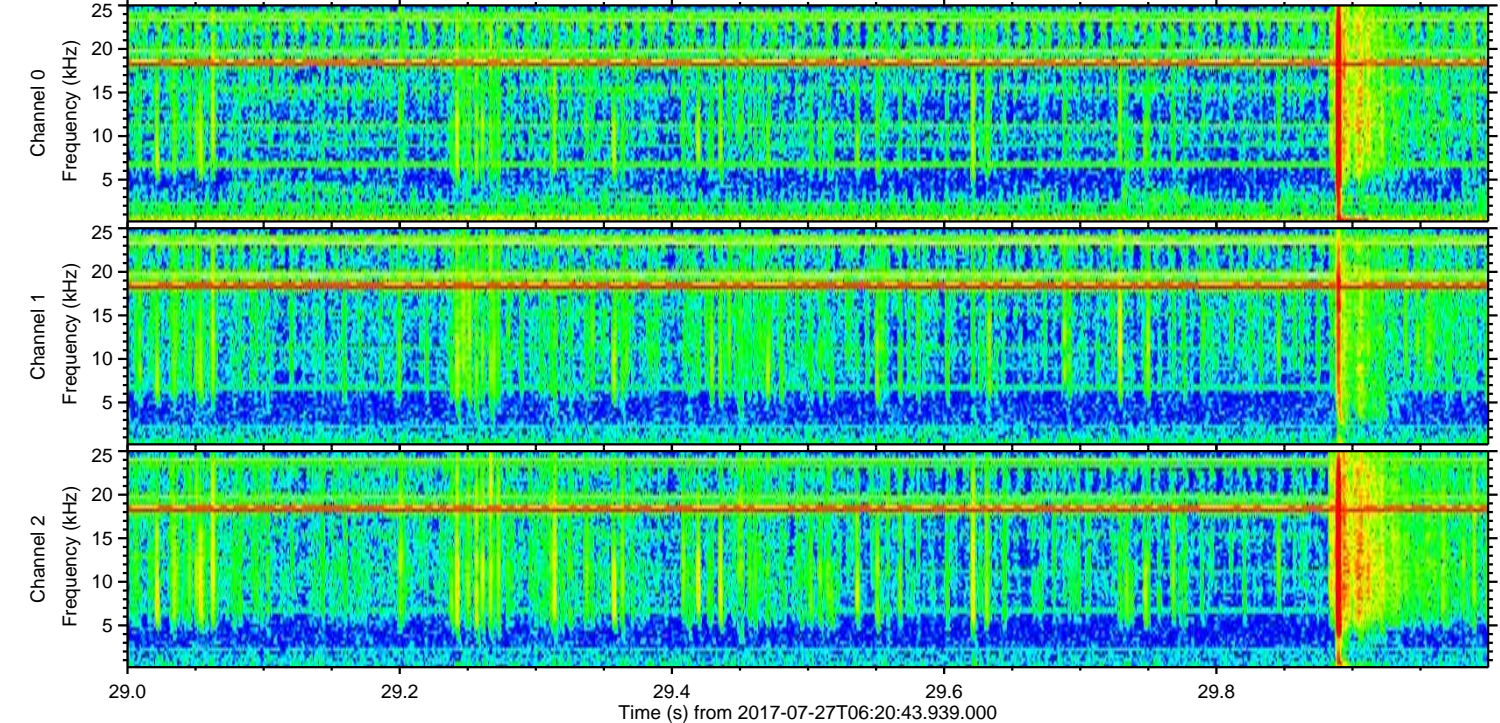
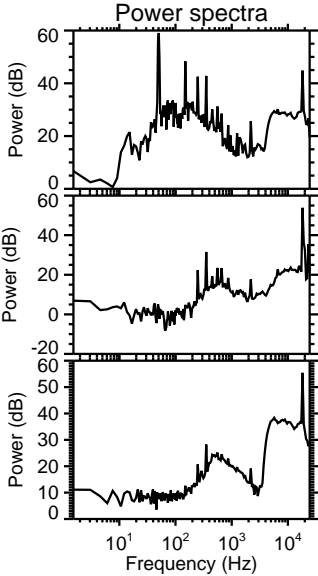
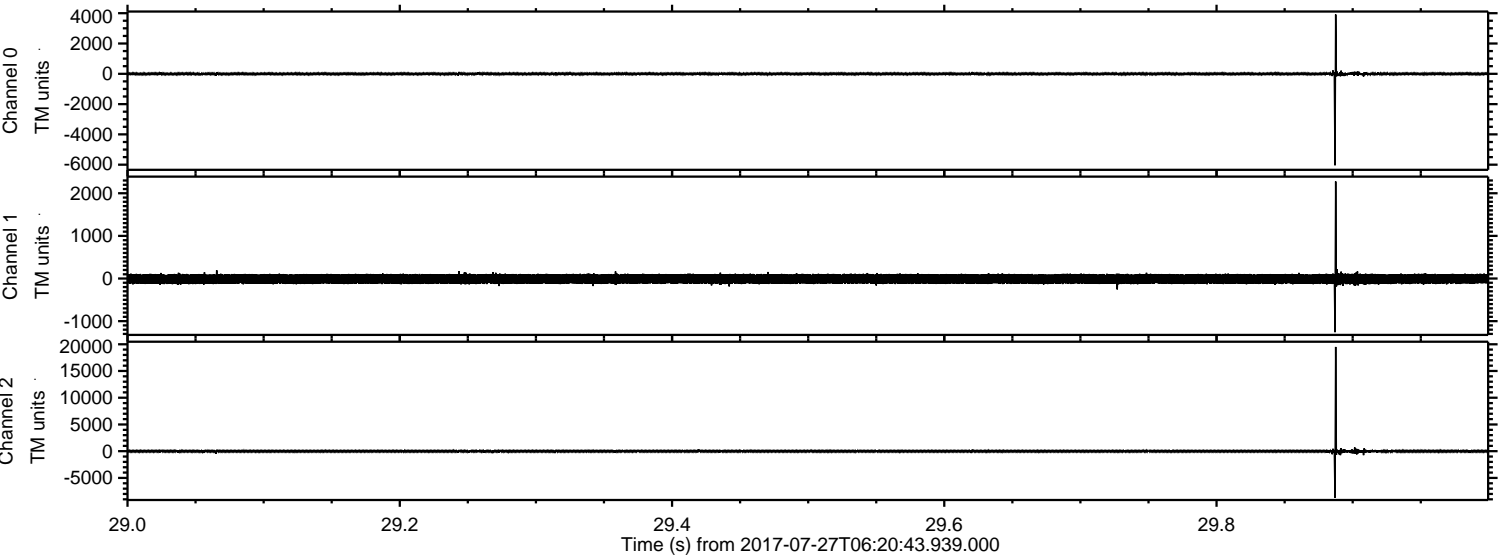


ELMAVAN 3D WAVEFORMS (Measured data sampled at 50 kHz) 50999 packets of 144 samples from 2017-07-27T06:20:43.939.000.

Processed Thu Jul 27 08:28:44 2017 by ELM ver.2012-10-06 from 001__elm20170727_062042__dat00.bin

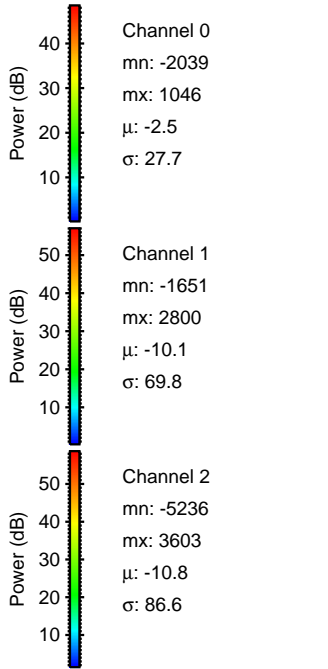
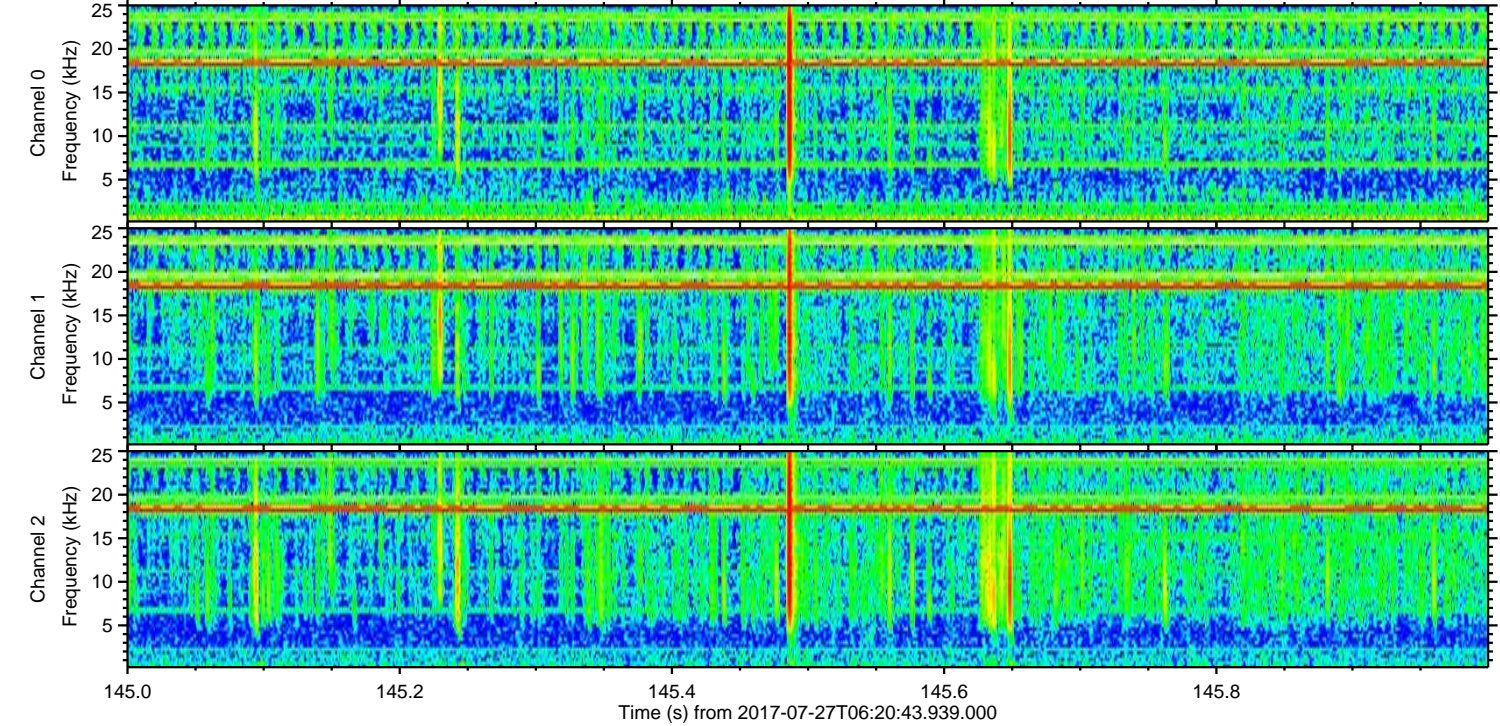
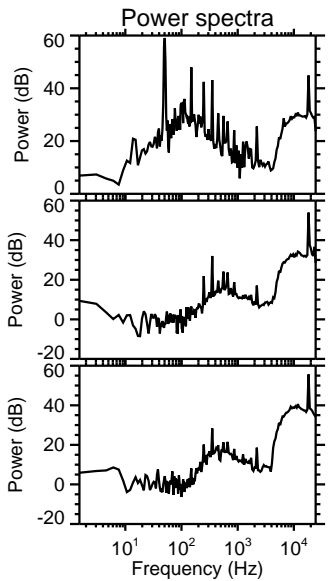
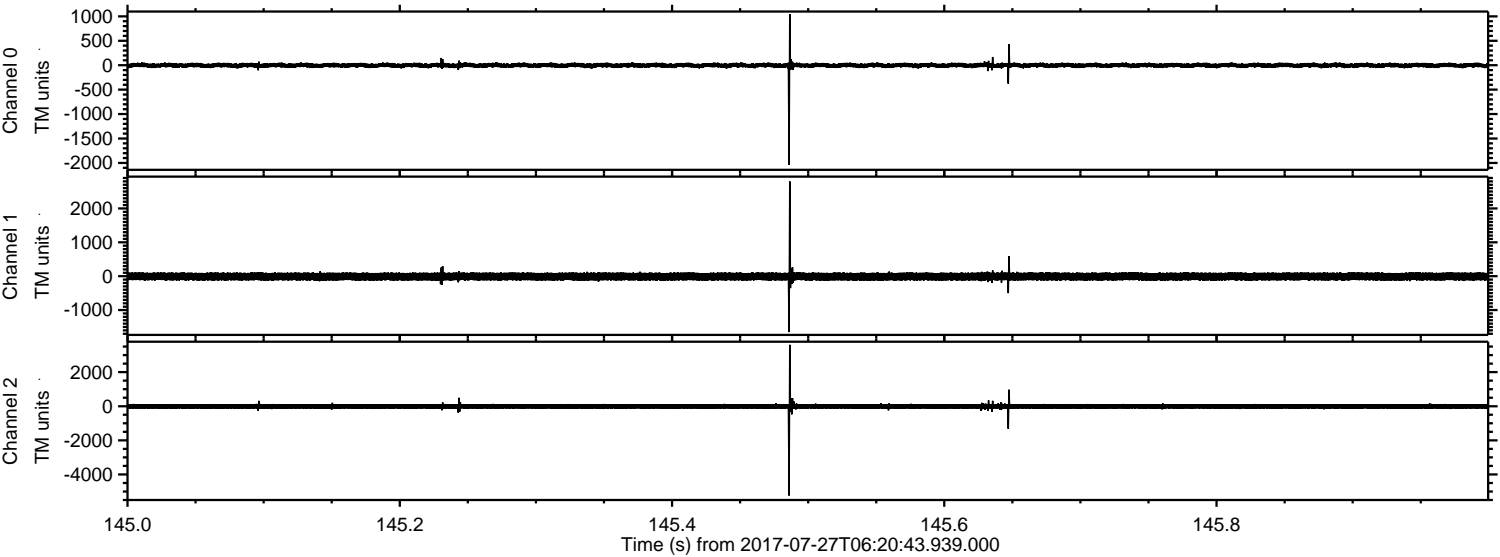


Processed Thu Jul 27 08:28:50 2017 by ELM ver.2012-10-06 from 001__elm20170727_062042__dat00.bin

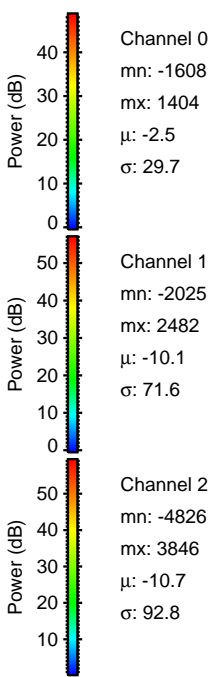
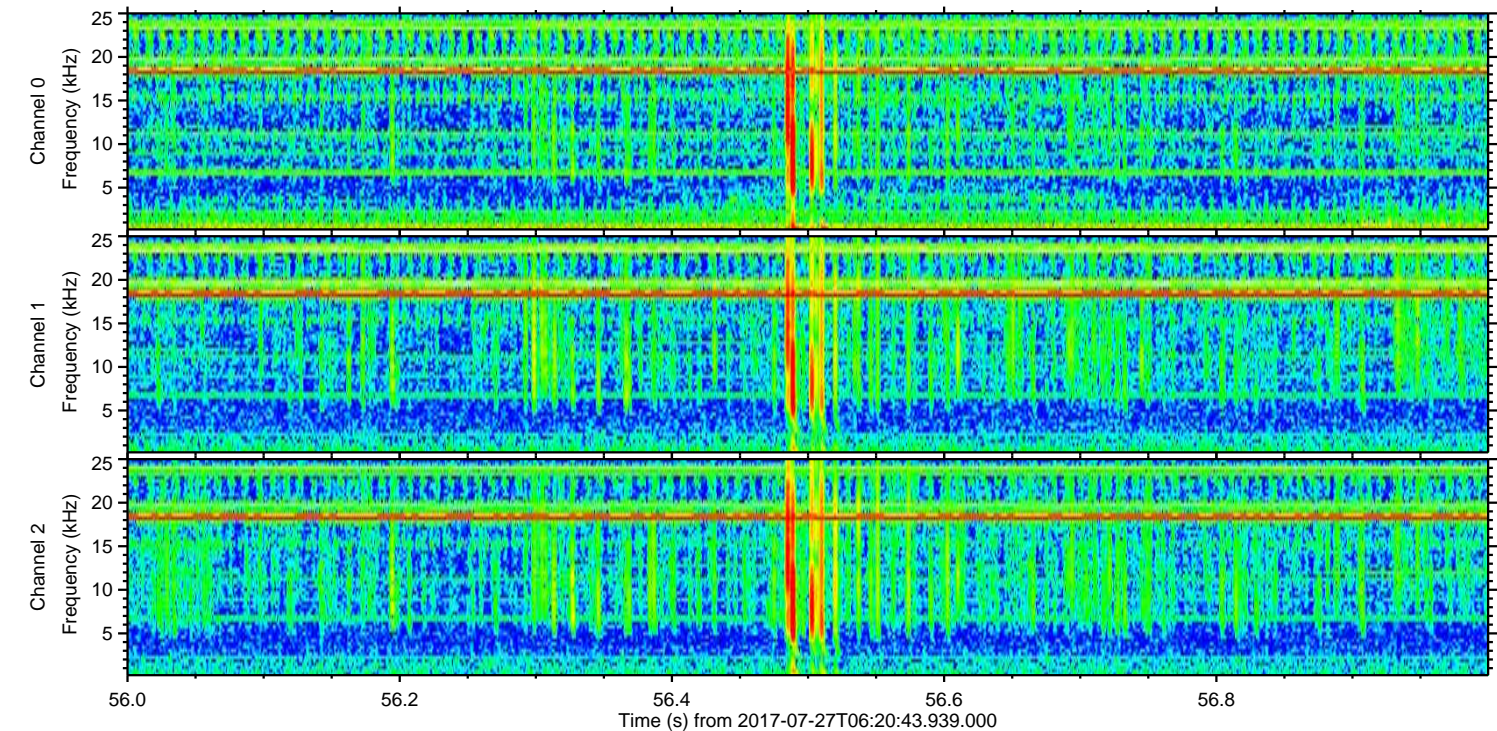
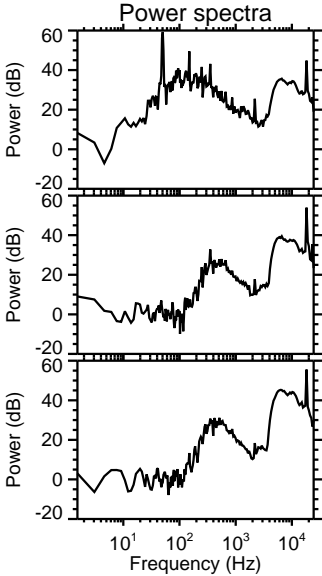
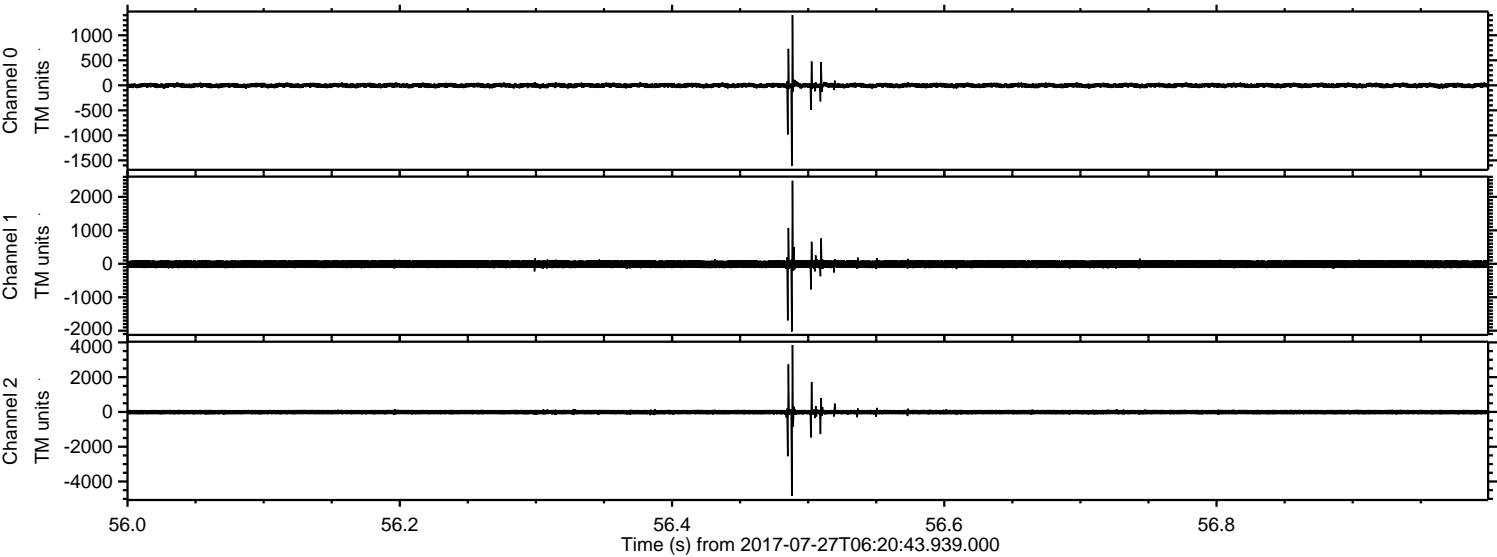


ELMAVAN 3D WAVEFORMS (Measured data sampled at 50 kHz) 50999 packets of 144 samples from 2017-07-27T06:20:43.939.000. Part 146/147

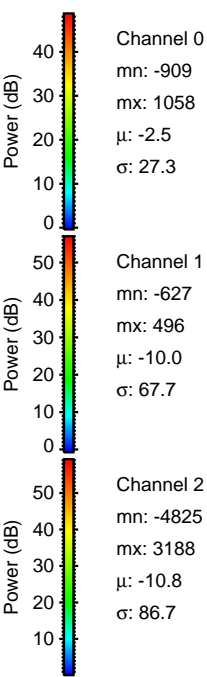
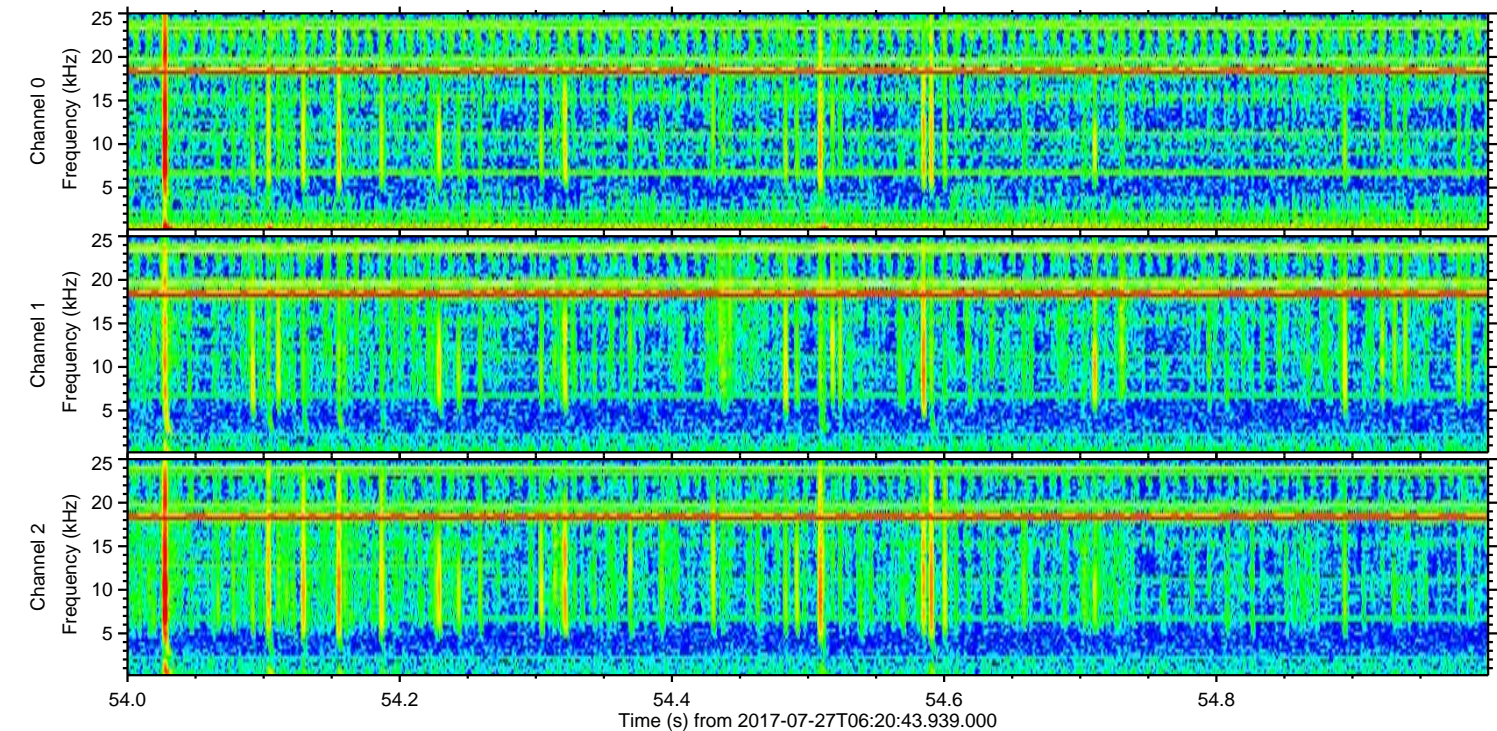
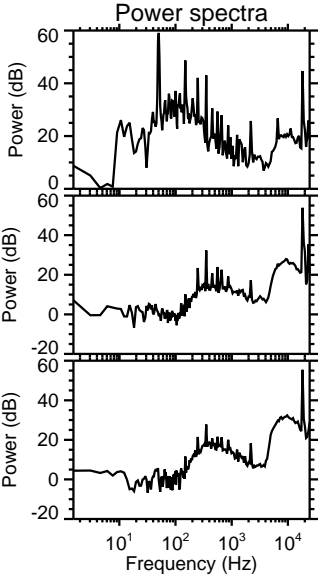
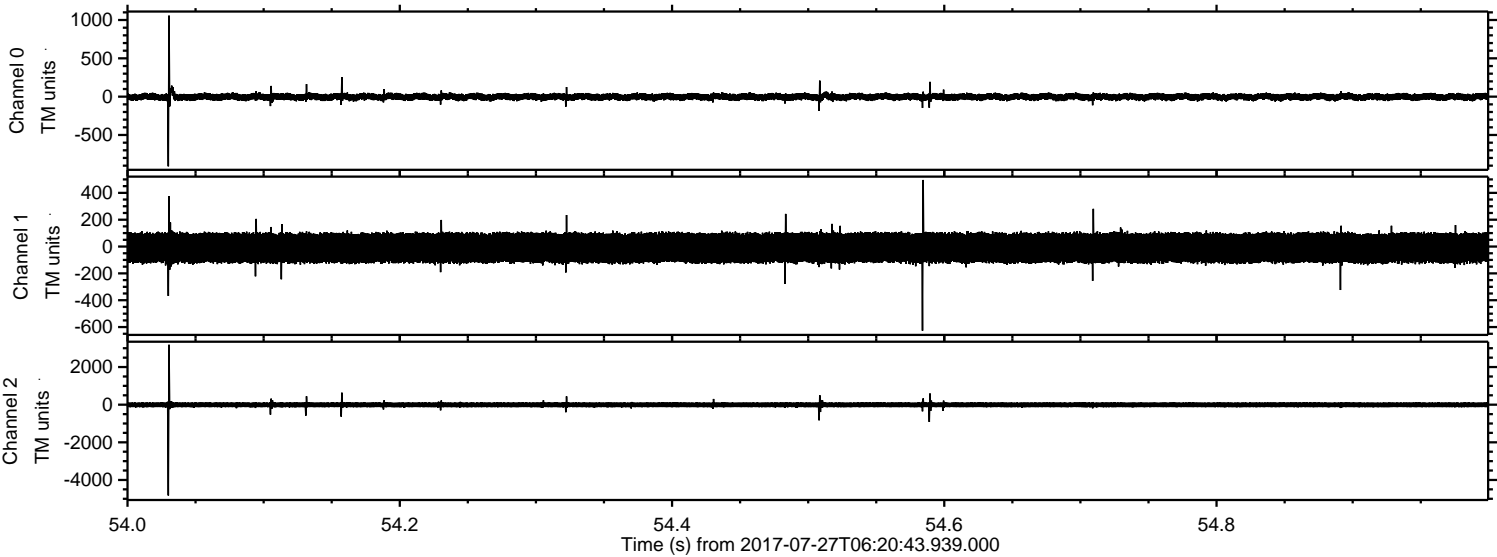
Processed Thu Jul 27 08:28:51 2017 by ELM ver.2012-10-06 from 001__elm20170727_062042__dat00.bin



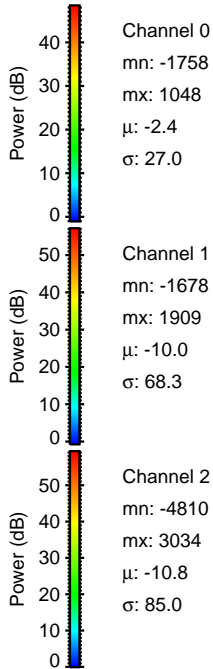
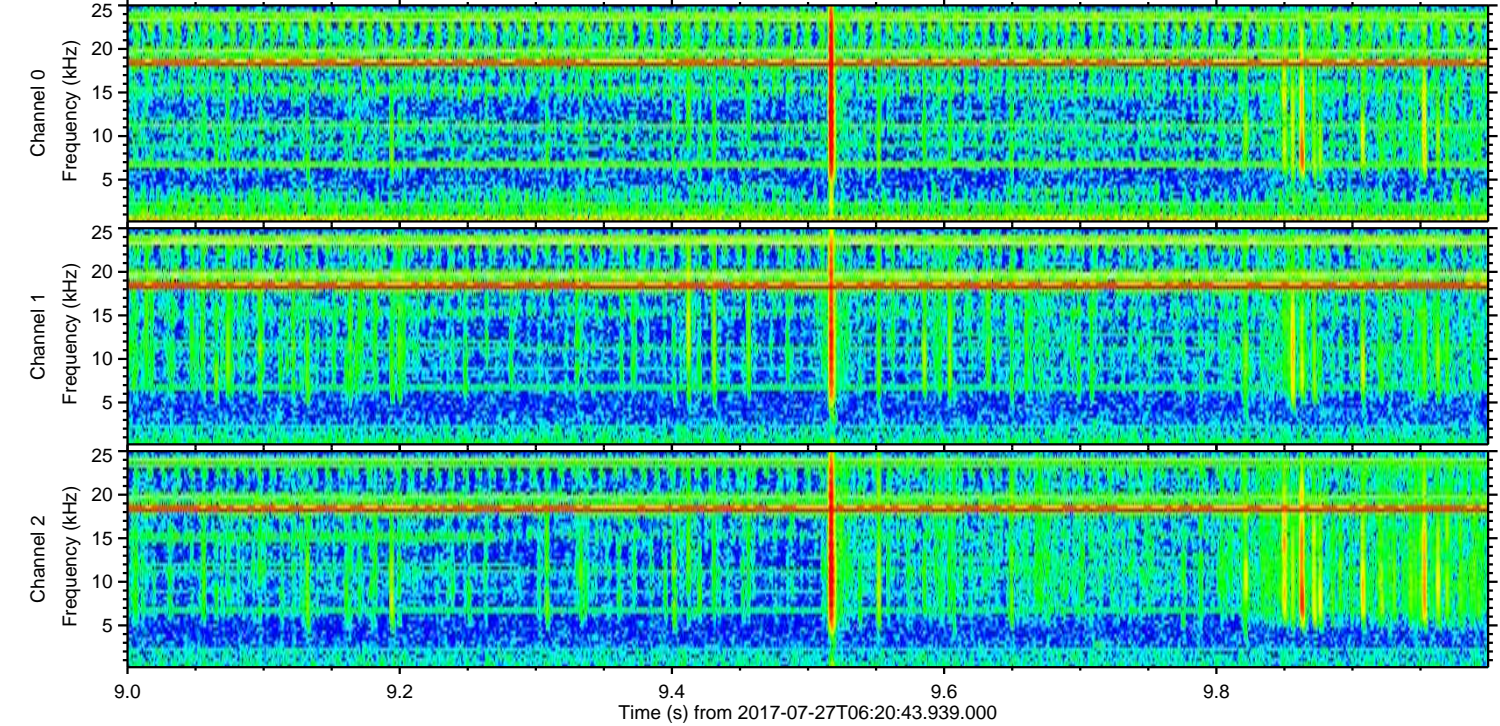
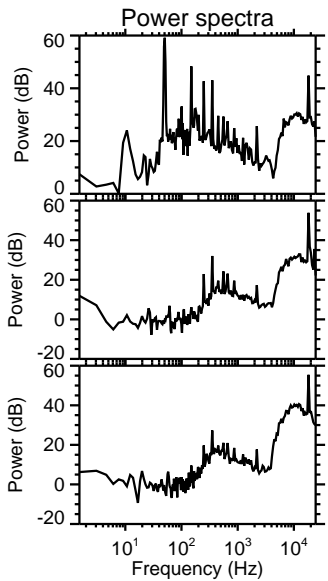
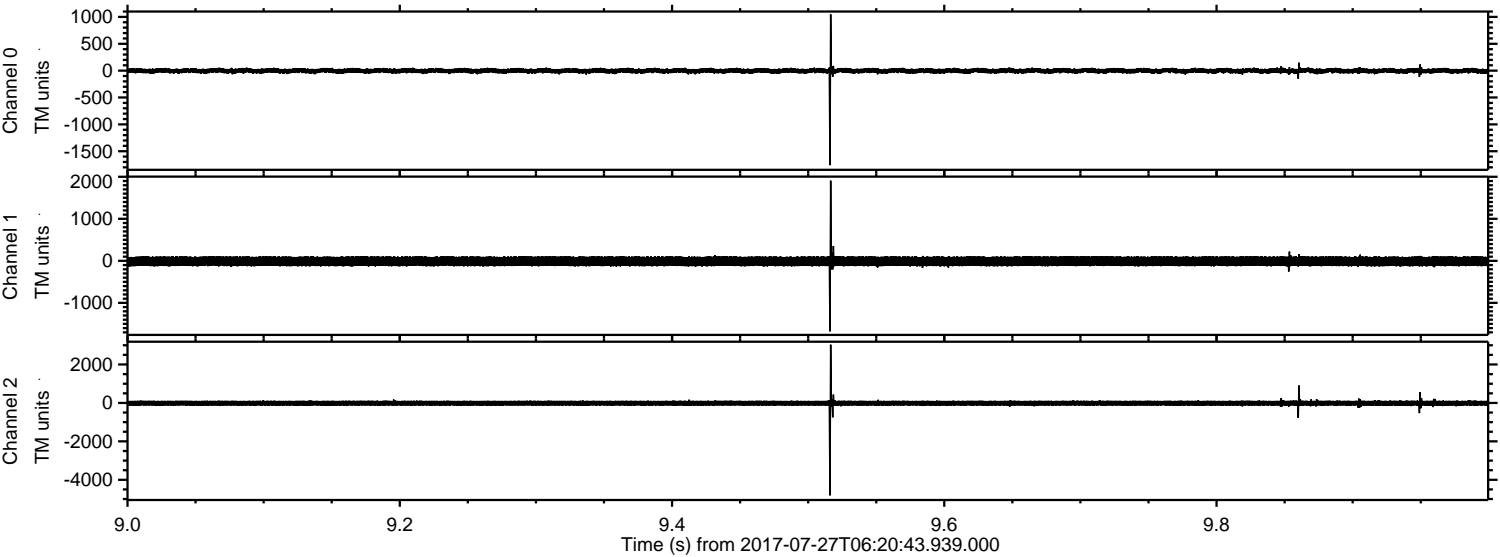
Processed Thu Jul 27 08:28:52 2017 by ELM ver.2012-10-06 from 001__elm20170727_062042__dat00.bin



Processed Thu Jul 27 08:28:53 2017 by ELM ver.2012-10-06 from 001__elm20170727_062042__dat00.bin

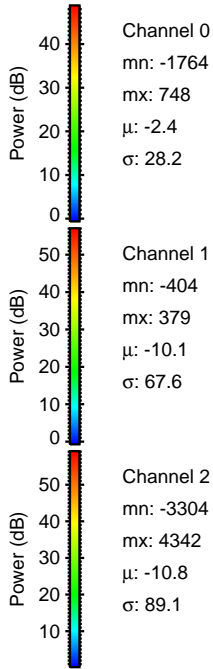
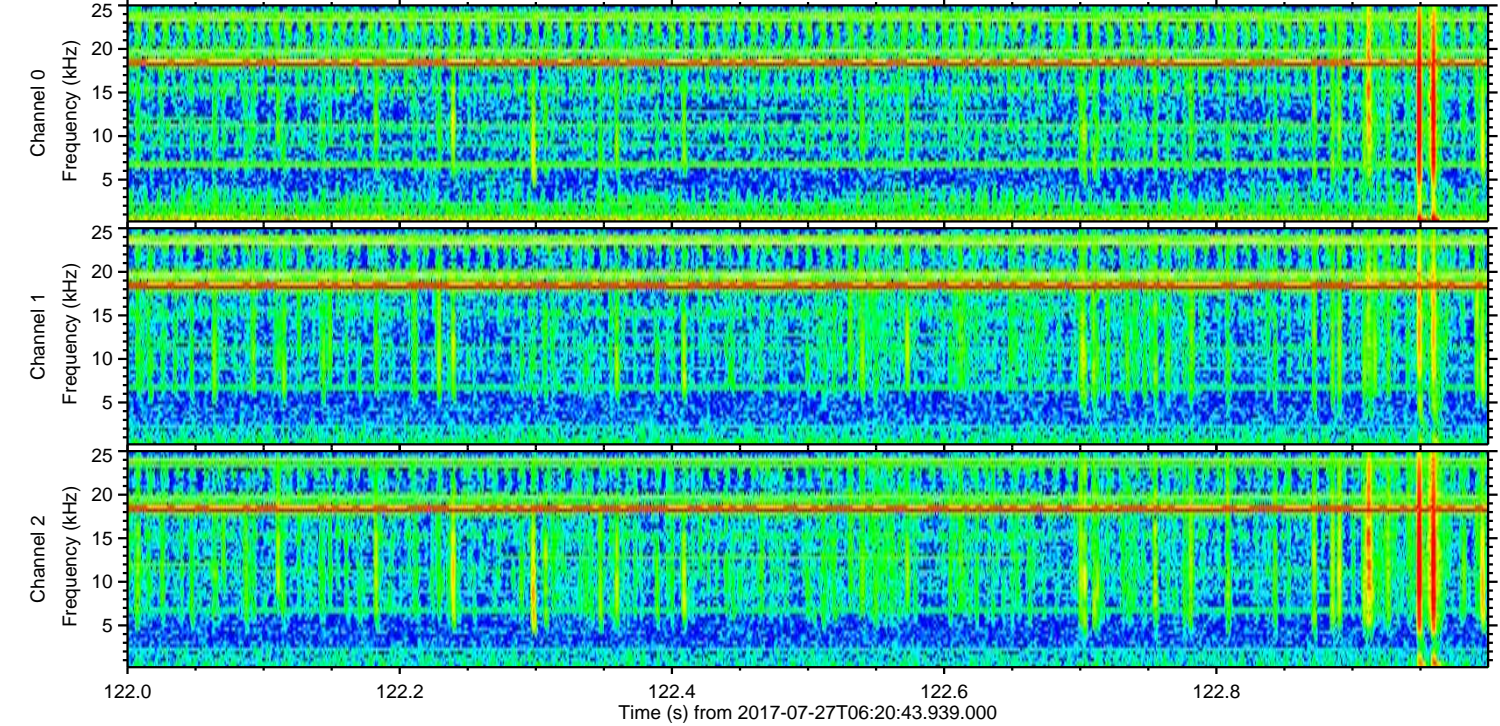
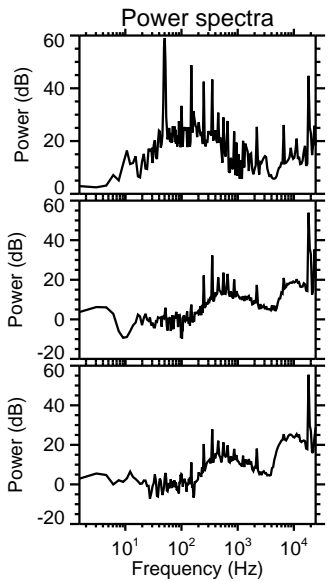
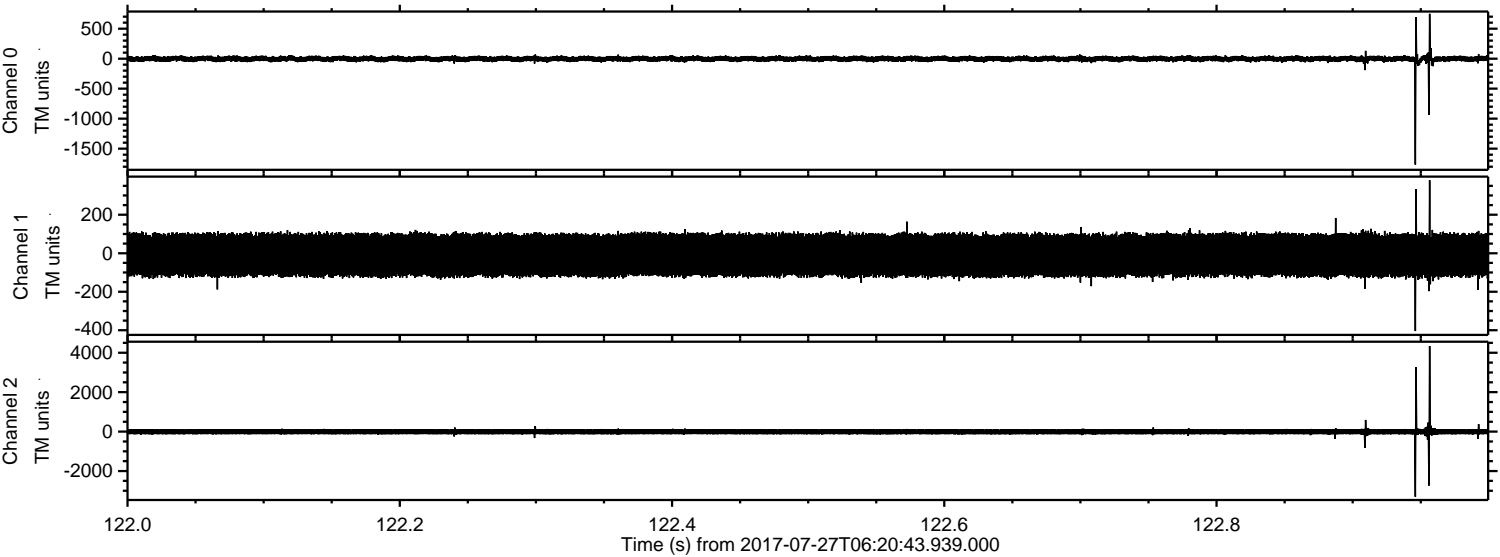


Processed Thu Jul 27 08:28:53 2017 by ELM ver.2012-10-06 from 001__elm20170727_062042__dat00.bin

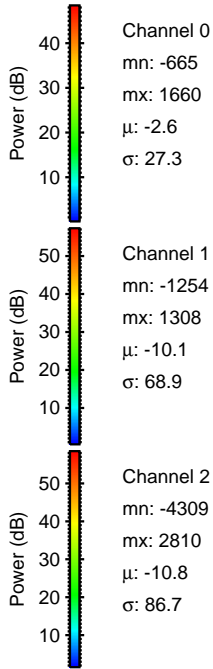
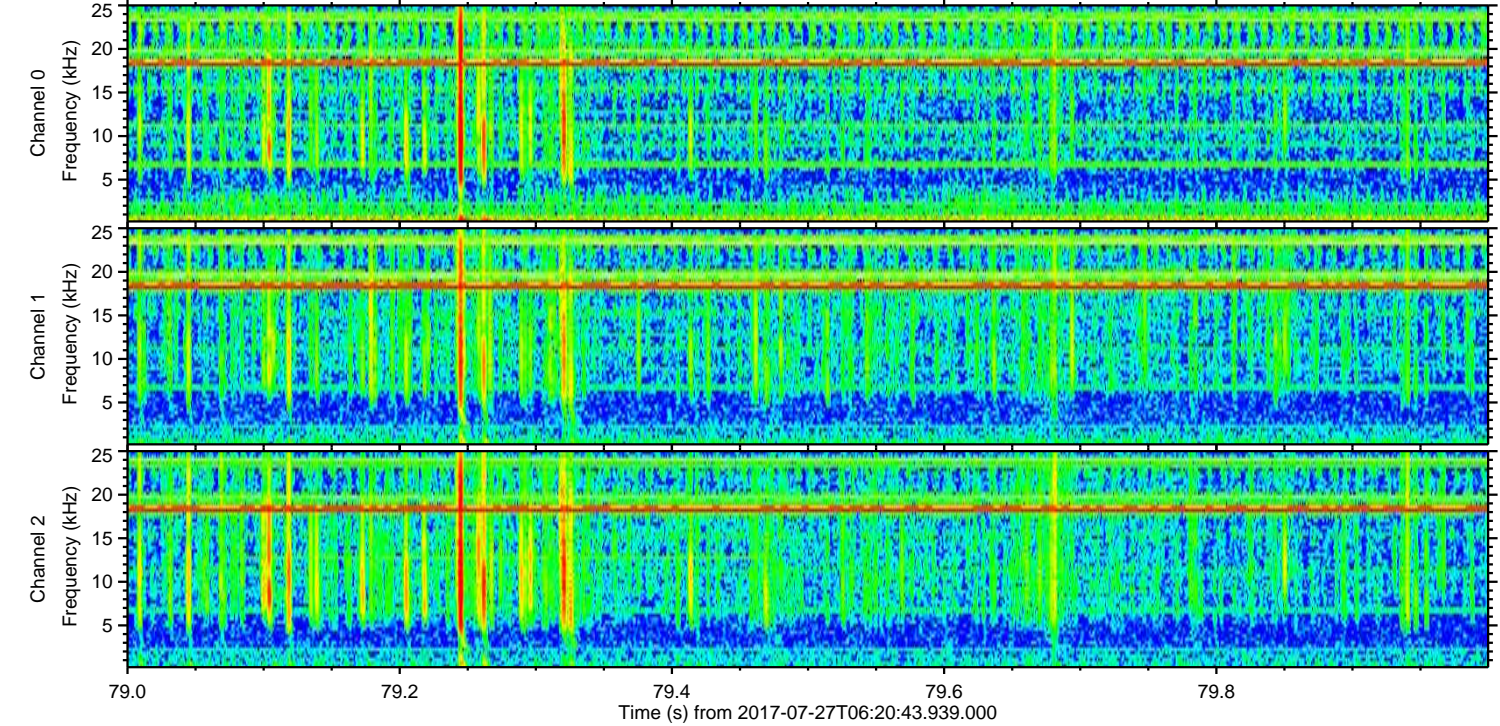
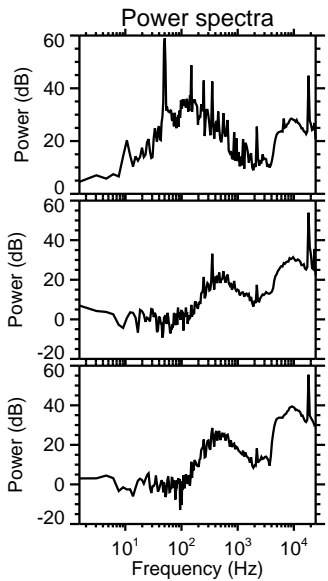
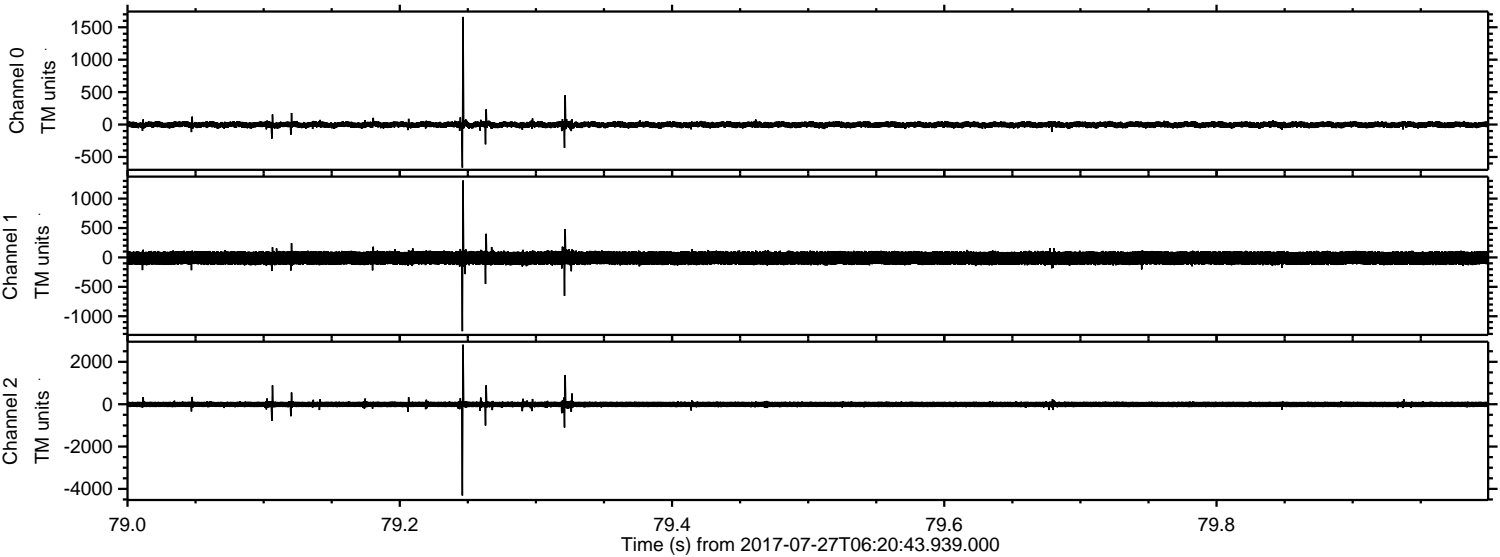


ELMAVAN 3D WAVEFORMS (Measured data sampled at 50 kHz) 50999 packets of 144 samples from 2017-07-27T06:20:43.939.000. Part 123/147

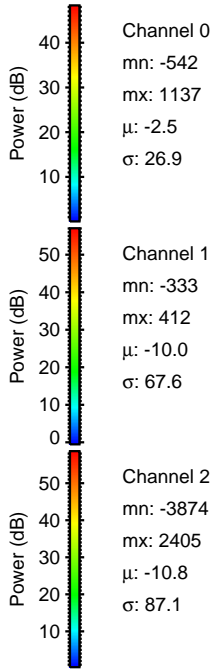
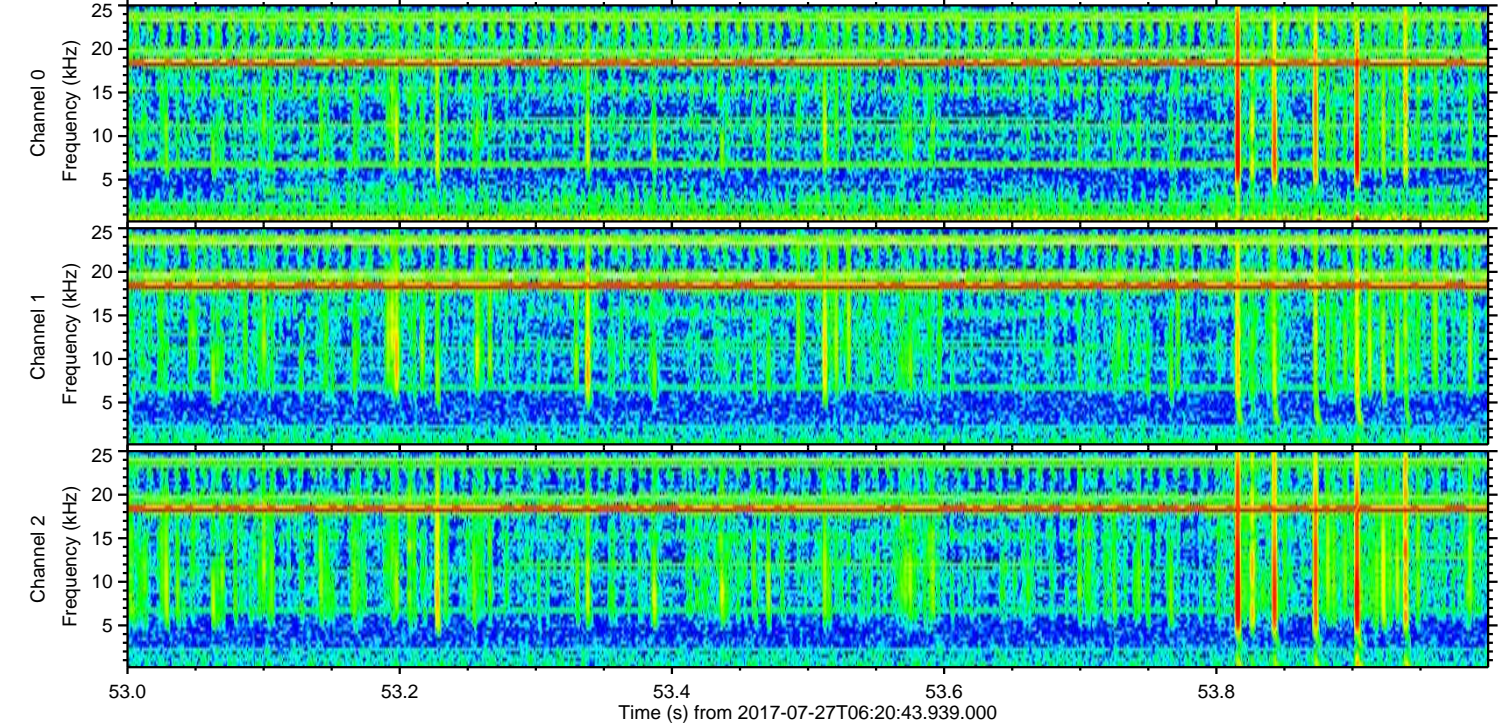
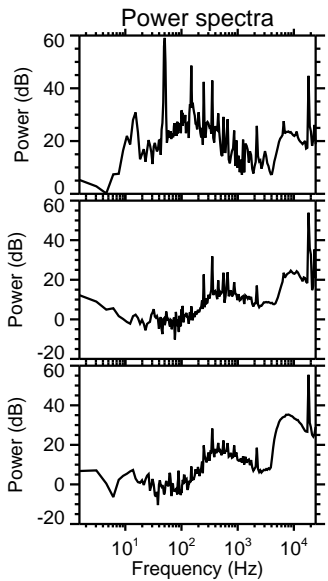
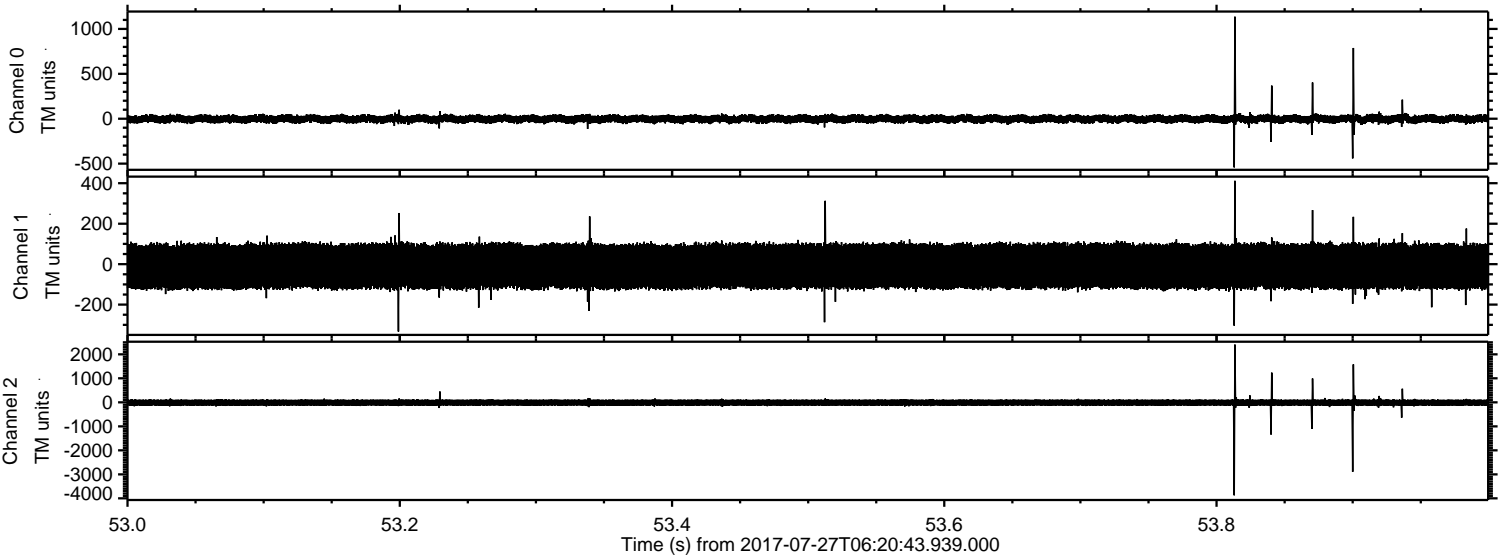
Processed Thu Jul 27 08:28:54 2017 by ELM ver.2012-10-06 from 001__elm20170727_062042__dat00.bin



Processed Thu Jul 27 08:28:55 2017 by ELM ver.2012-10-06 from 001__elm20170727_062042__dat00.bin

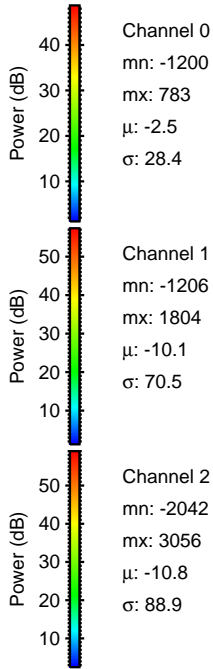
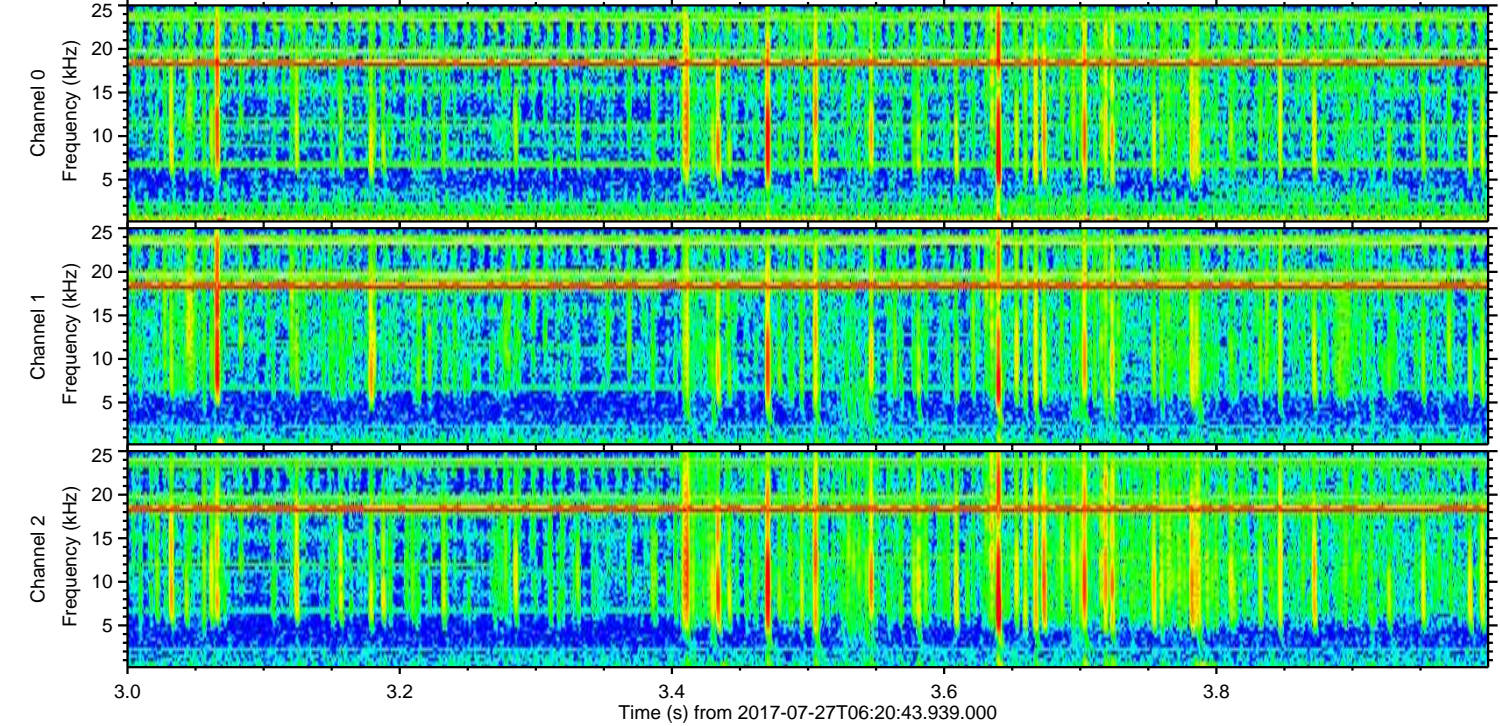
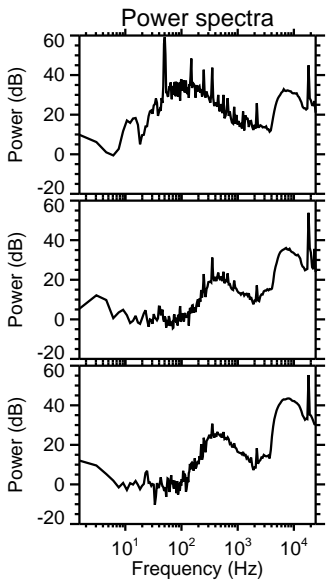
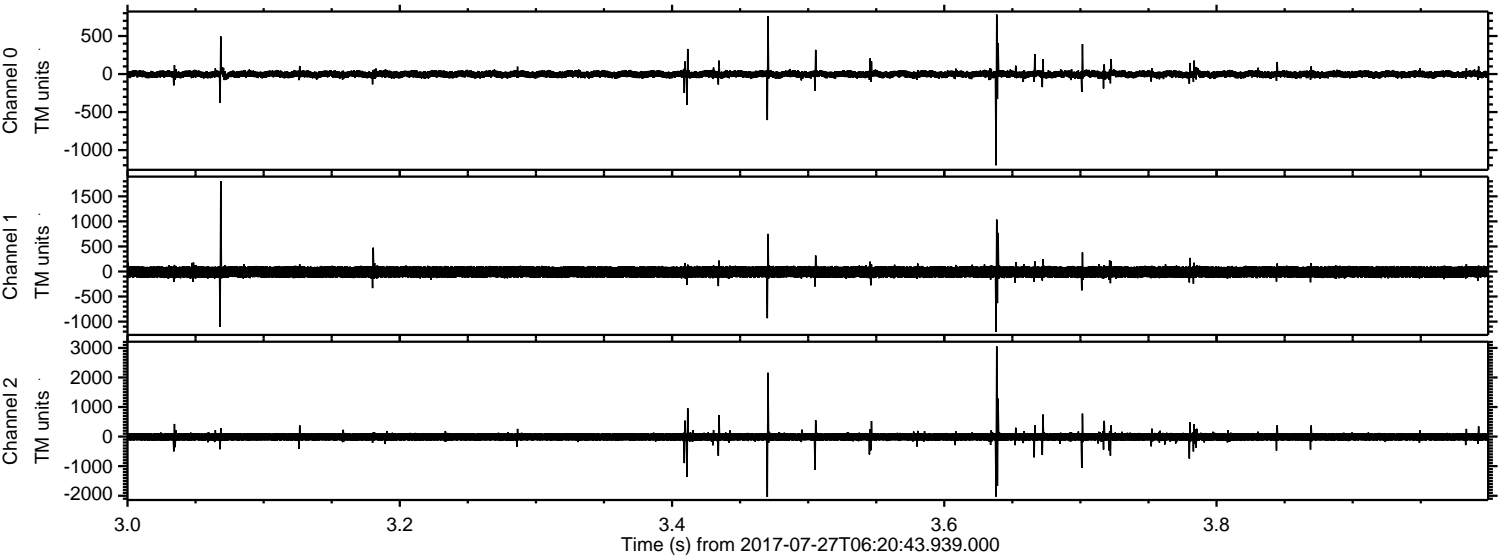


Processed Thu Jul 27 08:28:56 2017 by ELM ver.2012-10-06 from 001__elm20170727_062042__dat00.bin



ELMAVAN 3D WAVEFORMS (Measured data sampled at 50 kHz) 50999 packets of 144 samples from 2017-07-27T06:20:43.939.000. Part 4/147

Processed Thu Jul 27 08:28:56 2017 by ELM ver.2012-10-06 from 001__elm20170727_062042__dat00.bin



Channel 0
mn: -1200
mx: 783
 μ : -2.5
 σ : 28.4

Channel 1
mn: -1206
mx: 1804
 μ : -10.1
 σ : 70.5

Channel 2
mn: -2042
mx: 3056
 μ : -10.8
 σ : 88.9

Processed Thu Jul 27 08:28:57 2017 by ELM ver.2012-10-06 from 001__elm20170727_062042__dat00.bin

