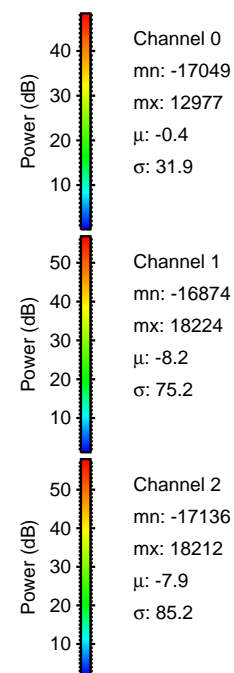
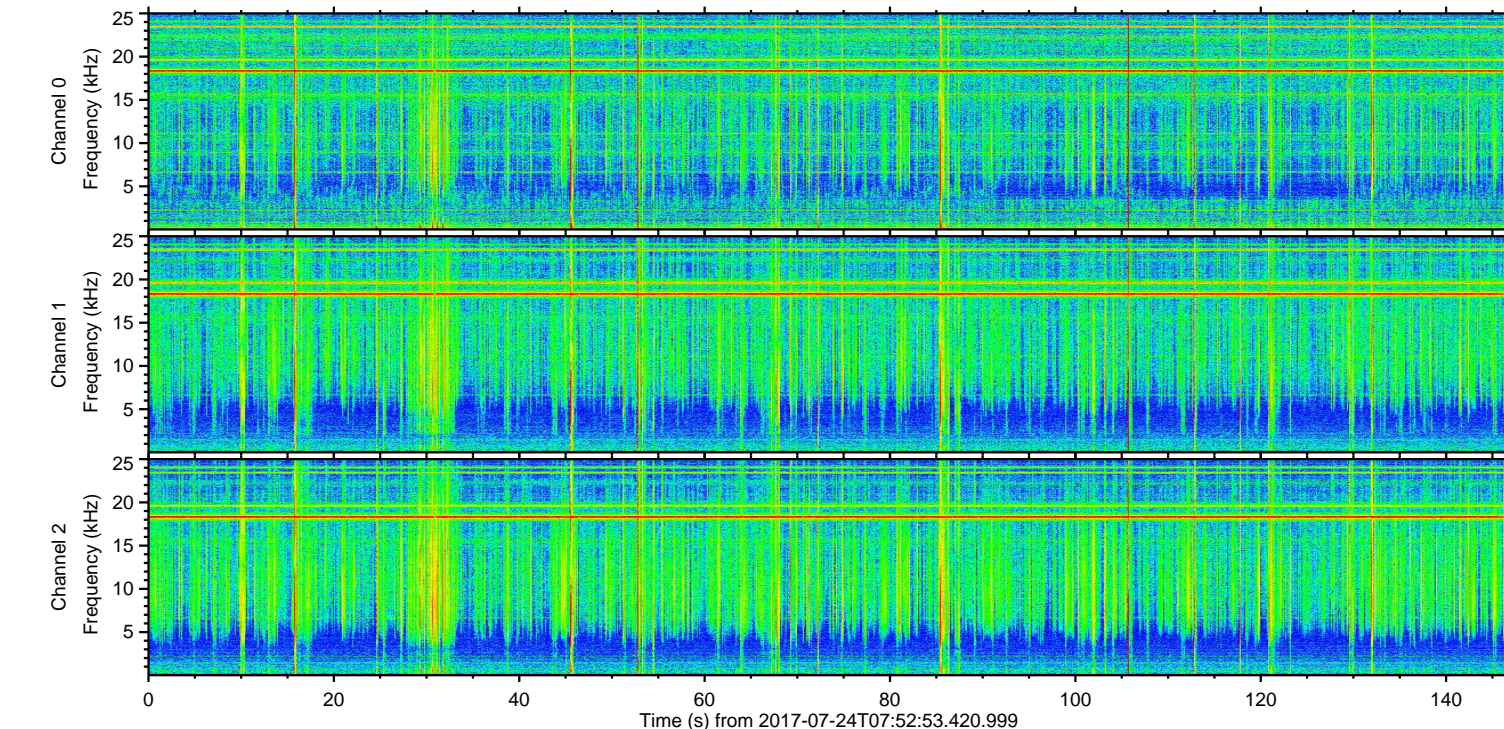
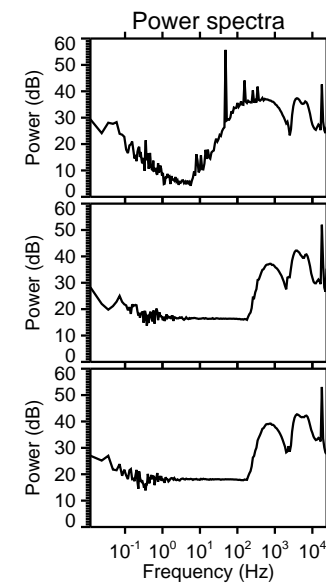
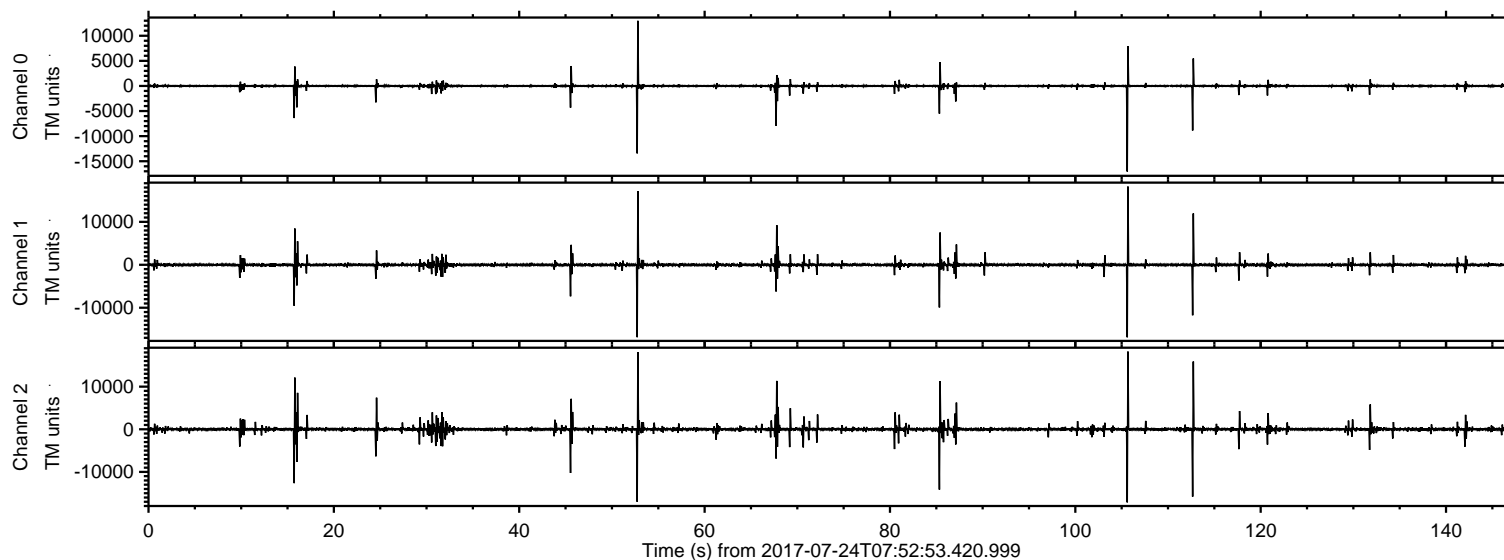


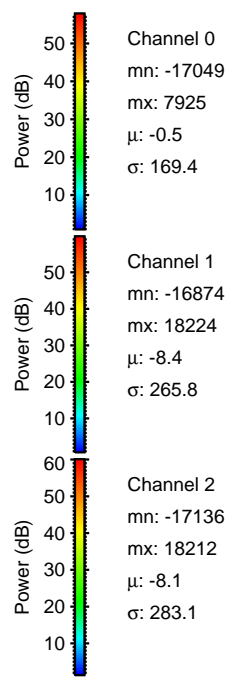
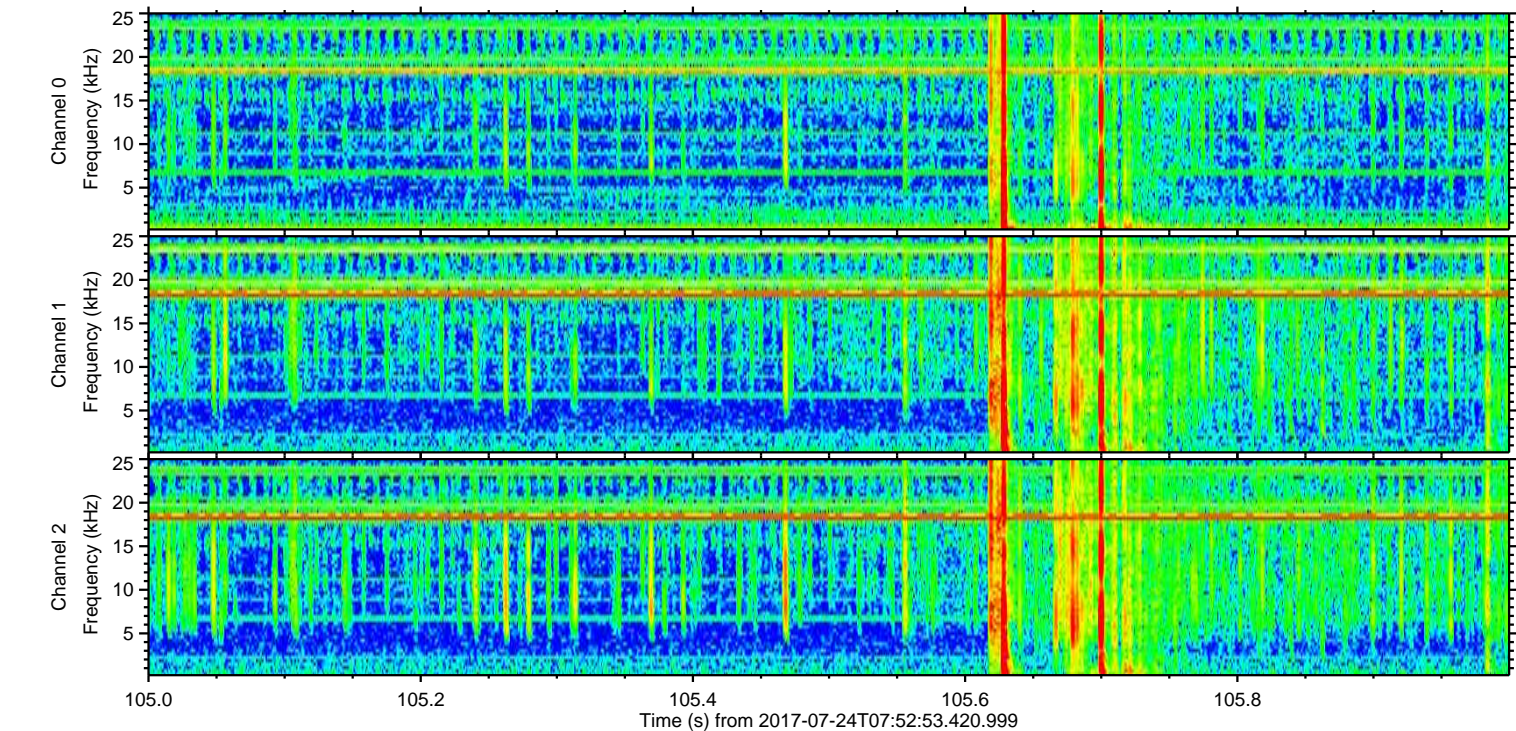
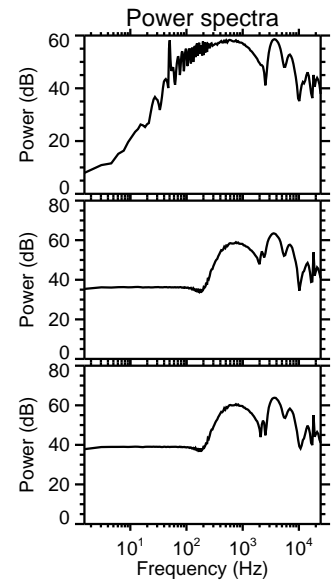
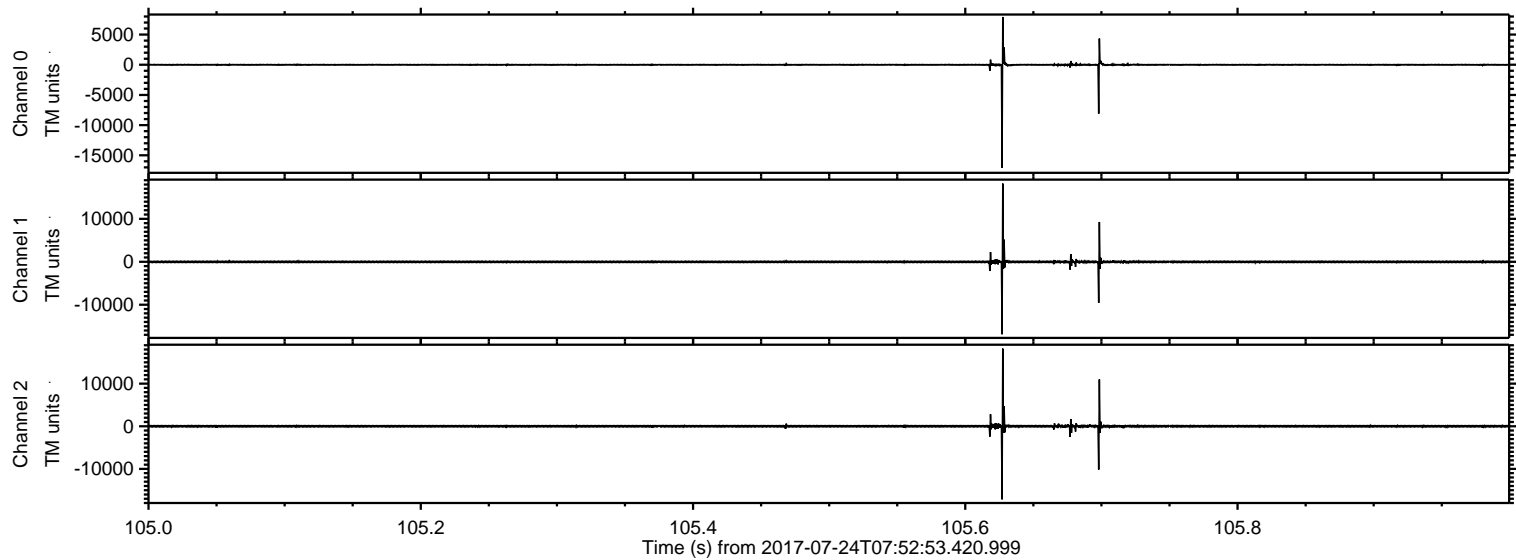
ELMAVAN 3D WAVEFORMS (Measured data sampled at 50 kHz) 51000 packets of 144 samples from 2017-07-24T07:52:53.420.999.

Processed Mon Jul 24 10:01:05 2017 by ELM ver.2012-10-06 from 001__elm20170724_075252__dat00.bin



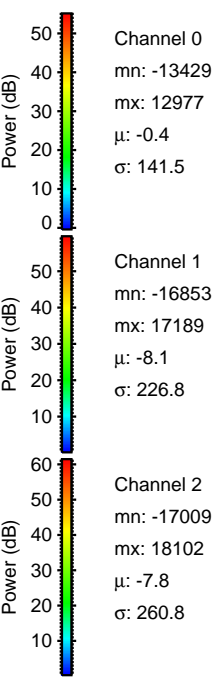
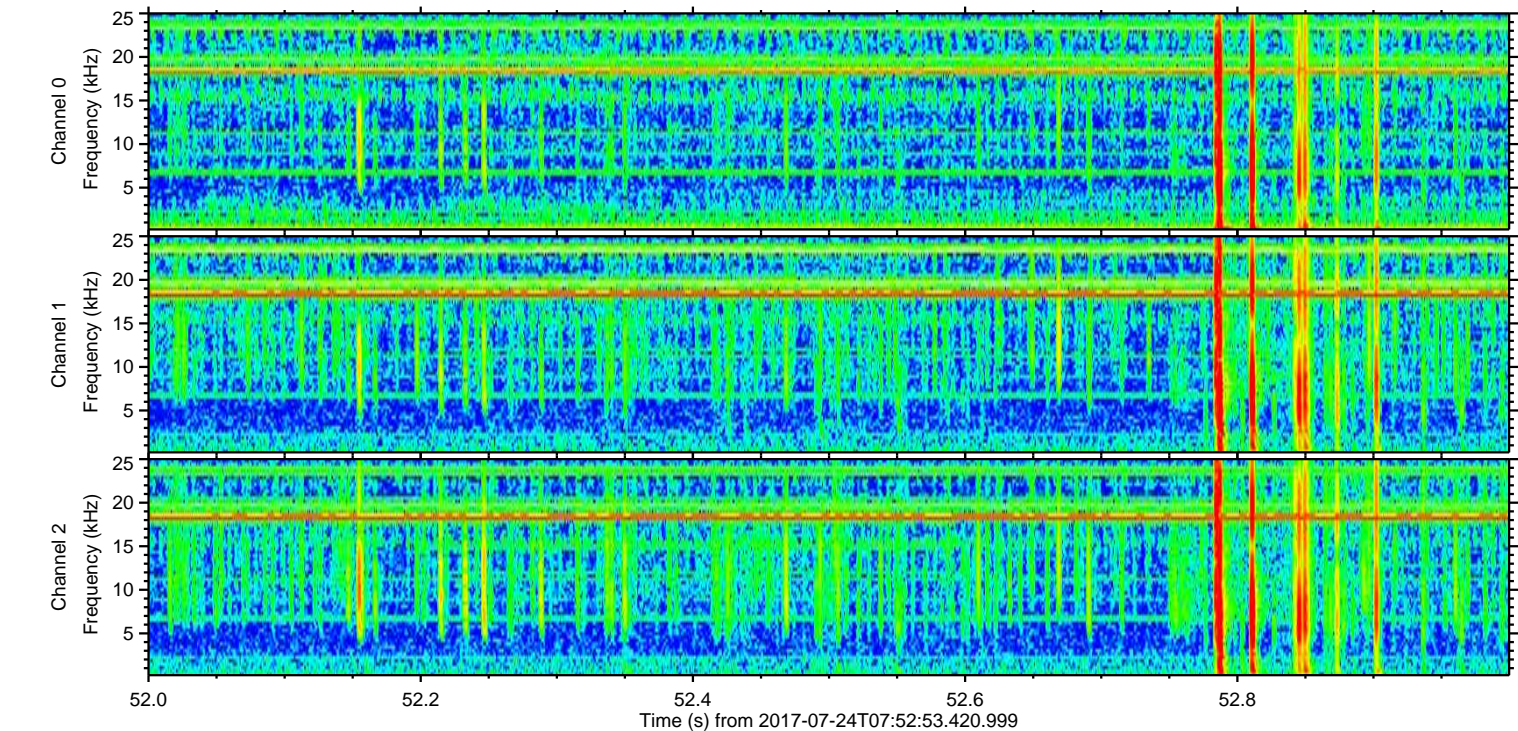
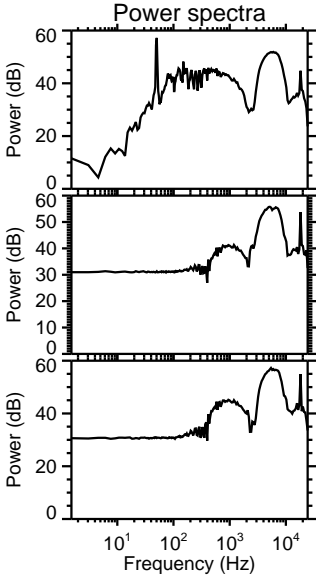
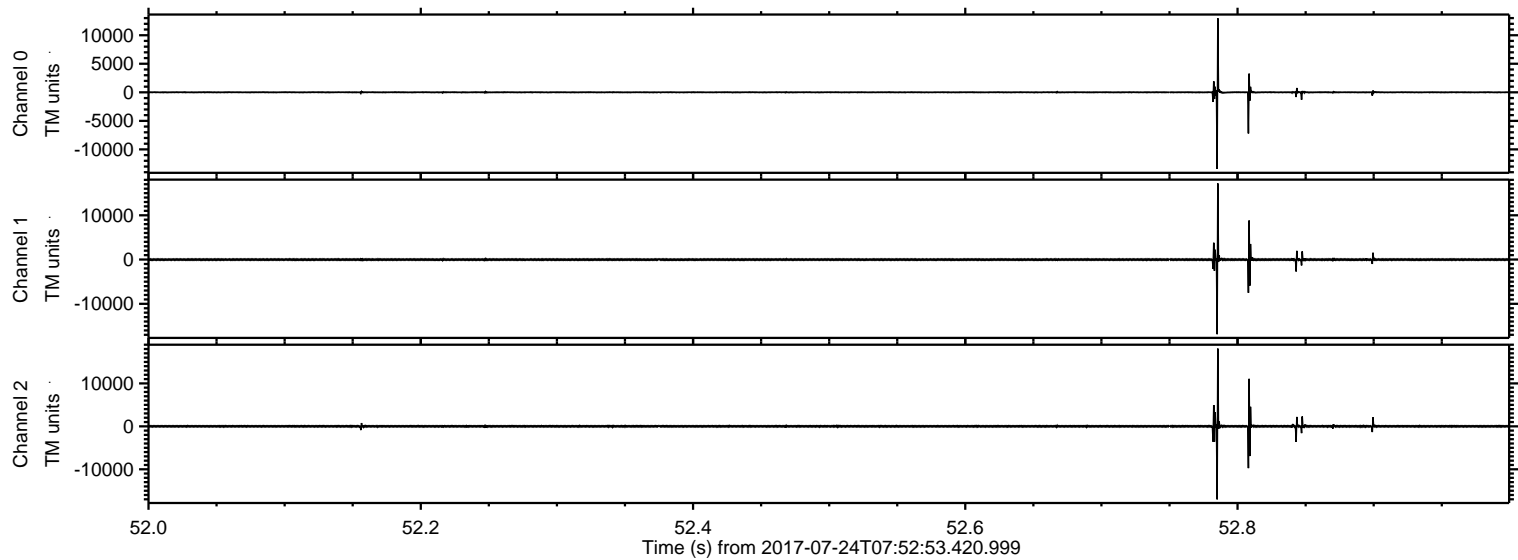
ELMAVAN 3D WAVEFORMS (Measured data sampled at 50 kHz) 51000 packets of 144 samples from 2017-07-24T07:52:53.420.999. Part 106/147

Processed Mon Jul 24 10:01:11 2017 by ELM ver.2012-10-06 from 001__elm20170724_075252__dat00.bin



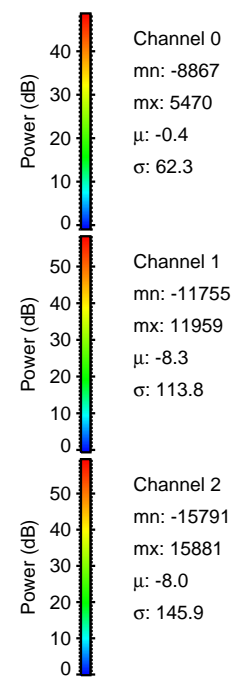
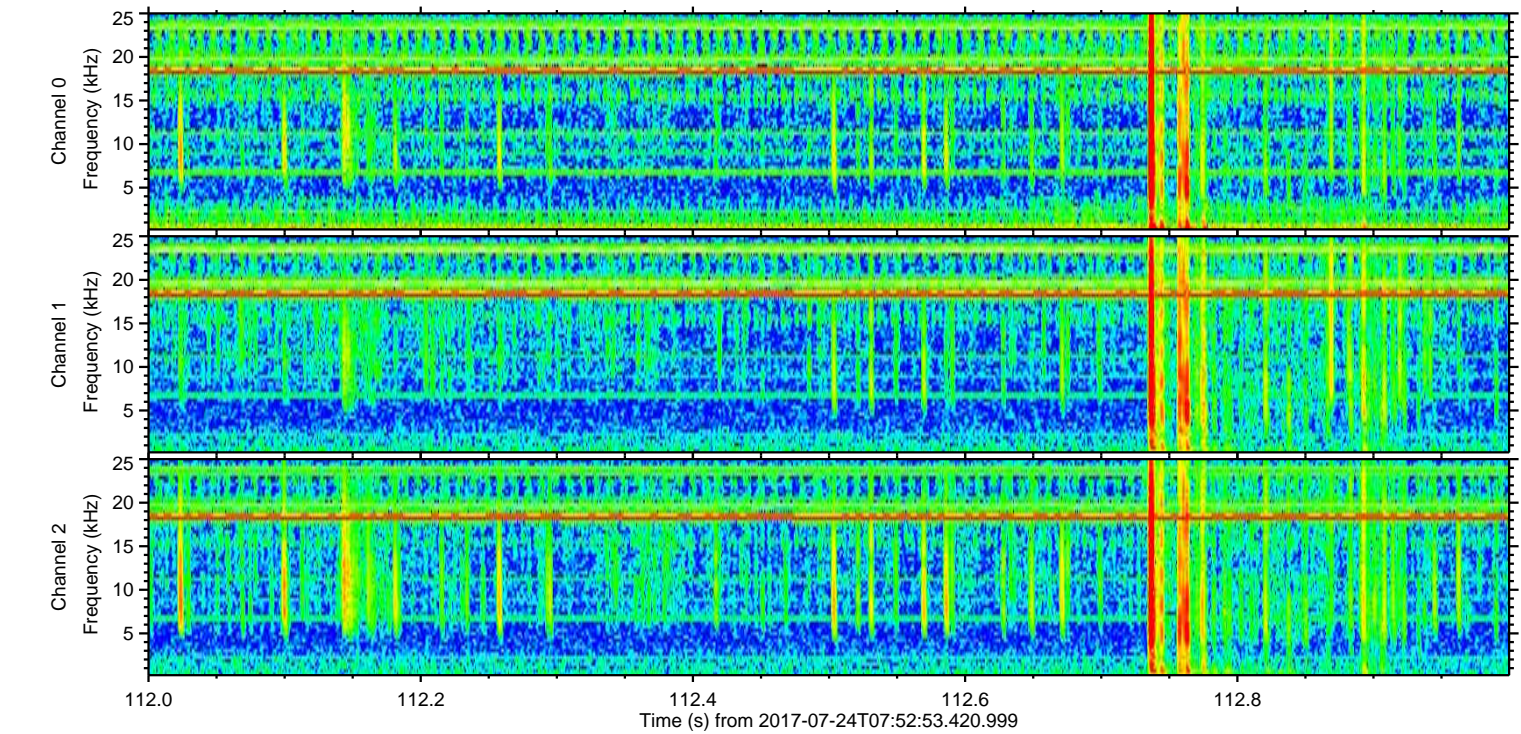
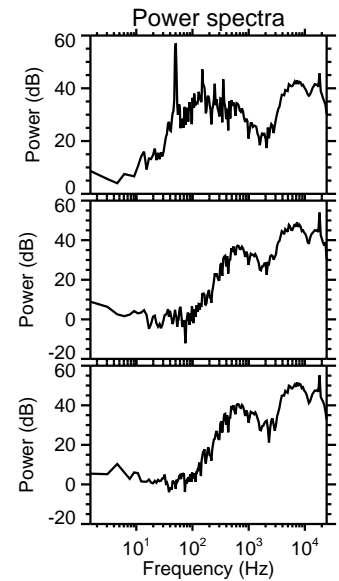
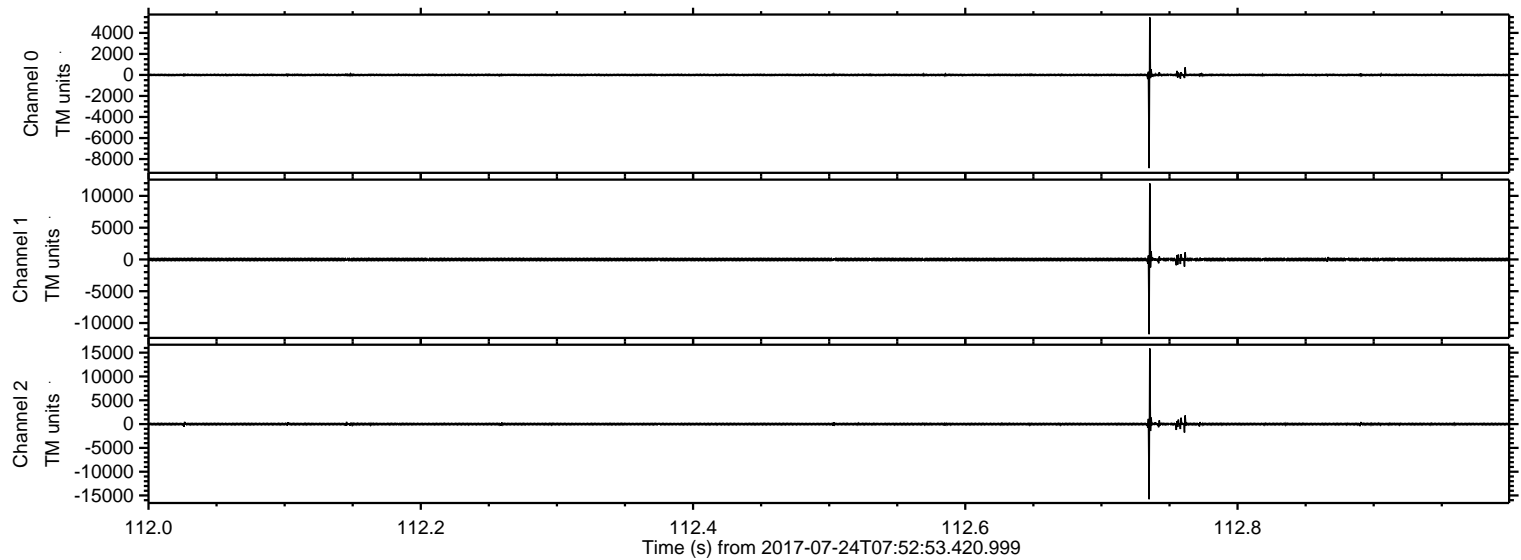
ELMAVAN 3D WAVEFORMS (Measured data sampled at 50 kHz) 51000 packets of 144 samples from 2017-07-24T07:52:53.420.999. Part 53/147

Processed Mon Jul 24 10:01:12 2017 by ELM ver.2012-10-06 from 001__elm20170724_075252__dat00.bin

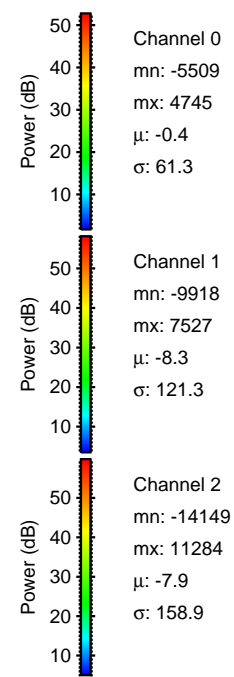
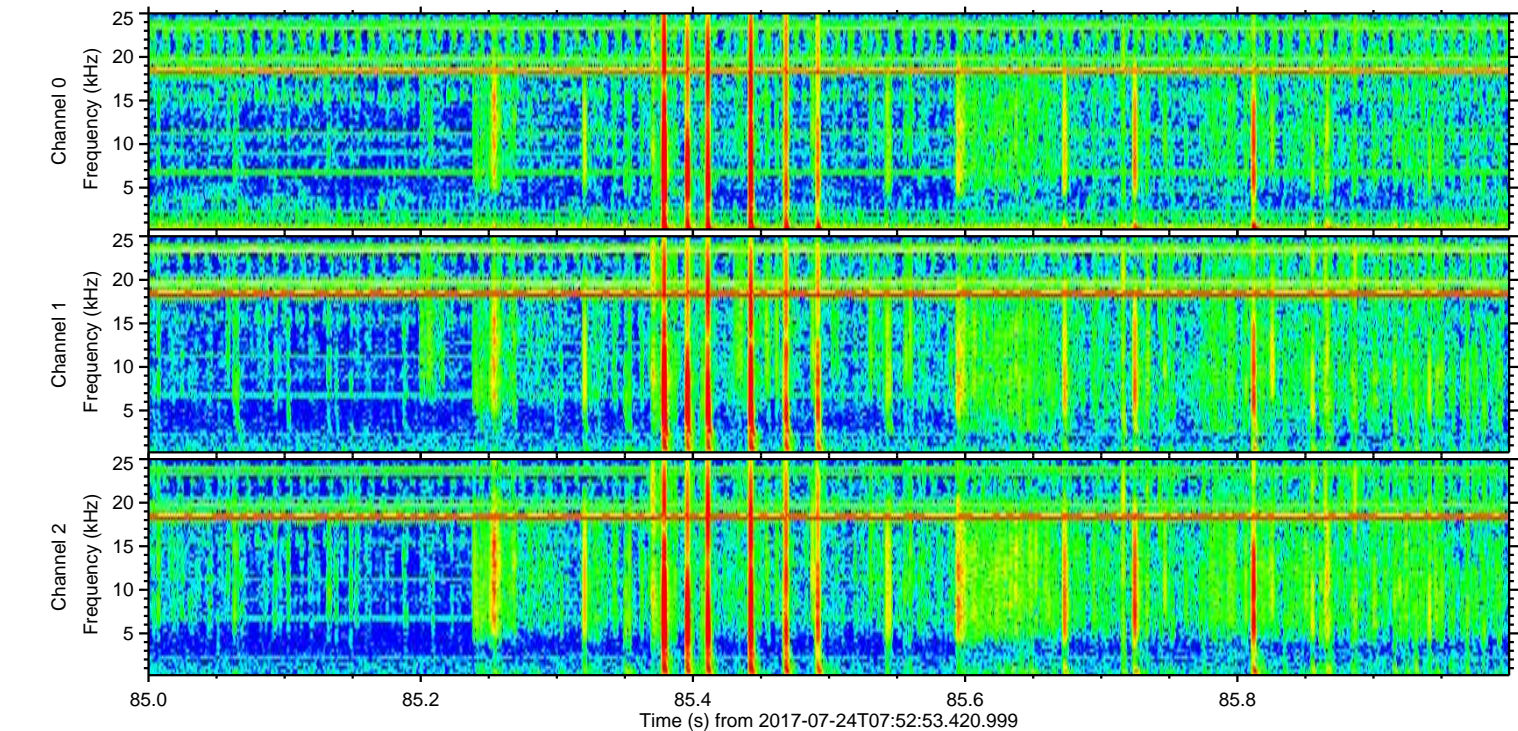
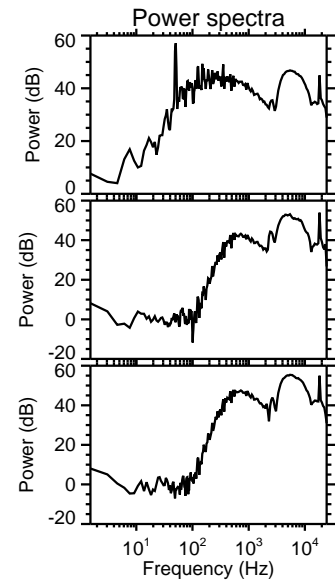
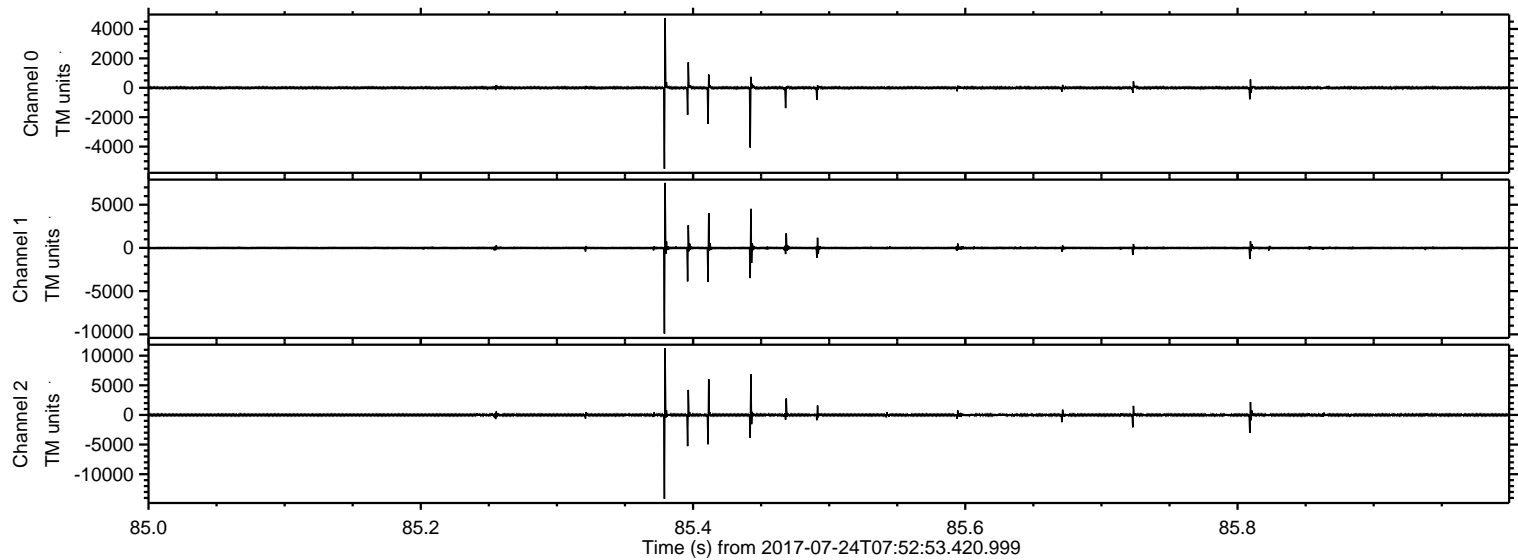


ELMAVAN 3D WAVEFORMS (Measured data sampled at 50 kHz) 51000 packets of 144 samples from 2017-07-24T07:52:53.420.999. Part 113/147

Processed Mon Jul 24 10:01:13 2017 by ELM ver.2012-10-06 from 001__elm20170724_075252__dat00.bin

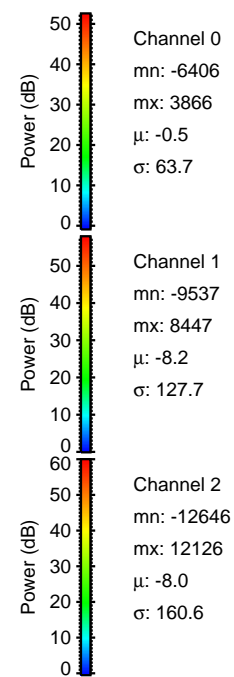
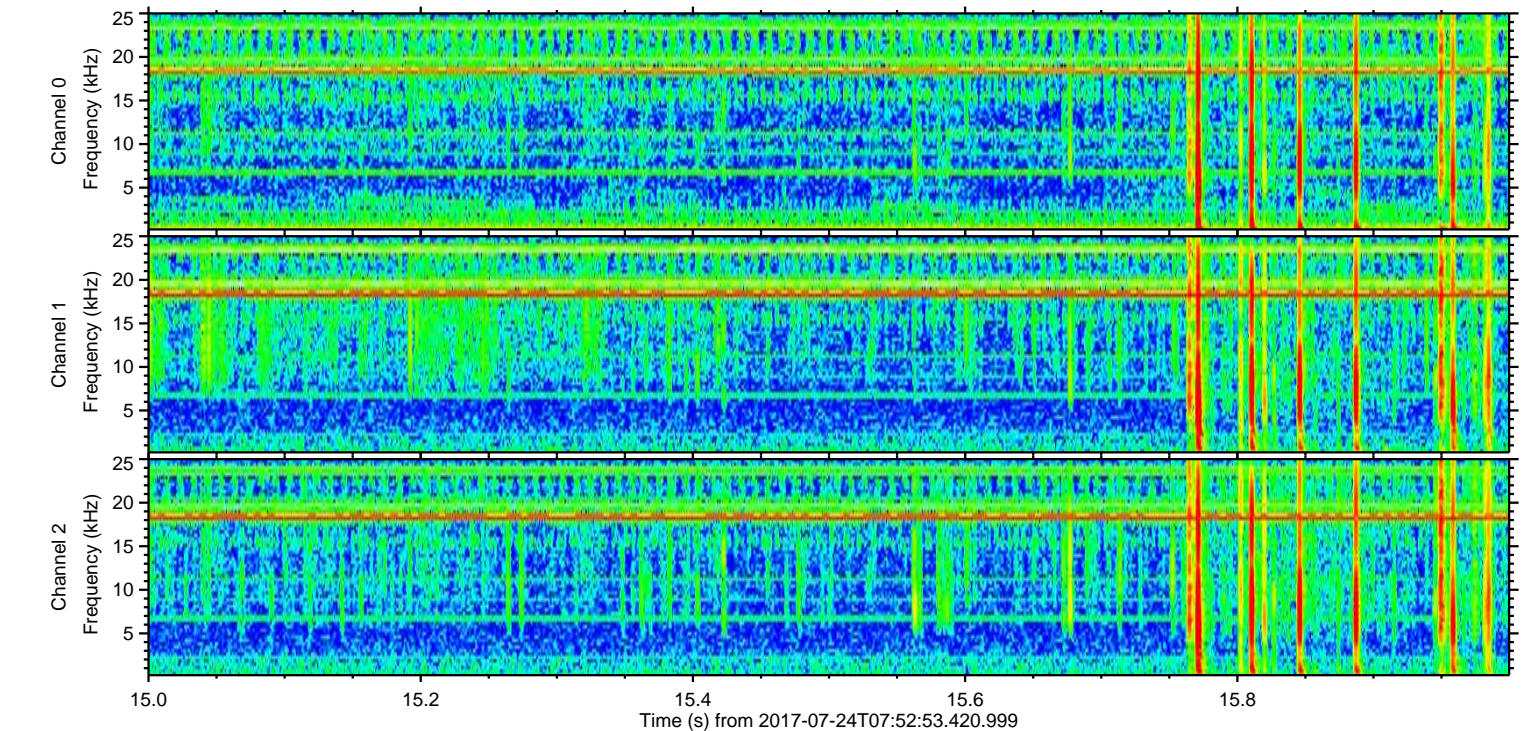
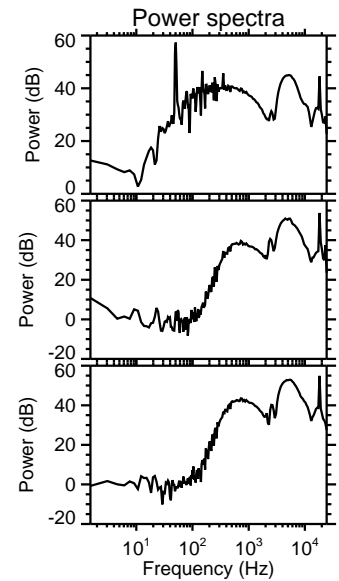
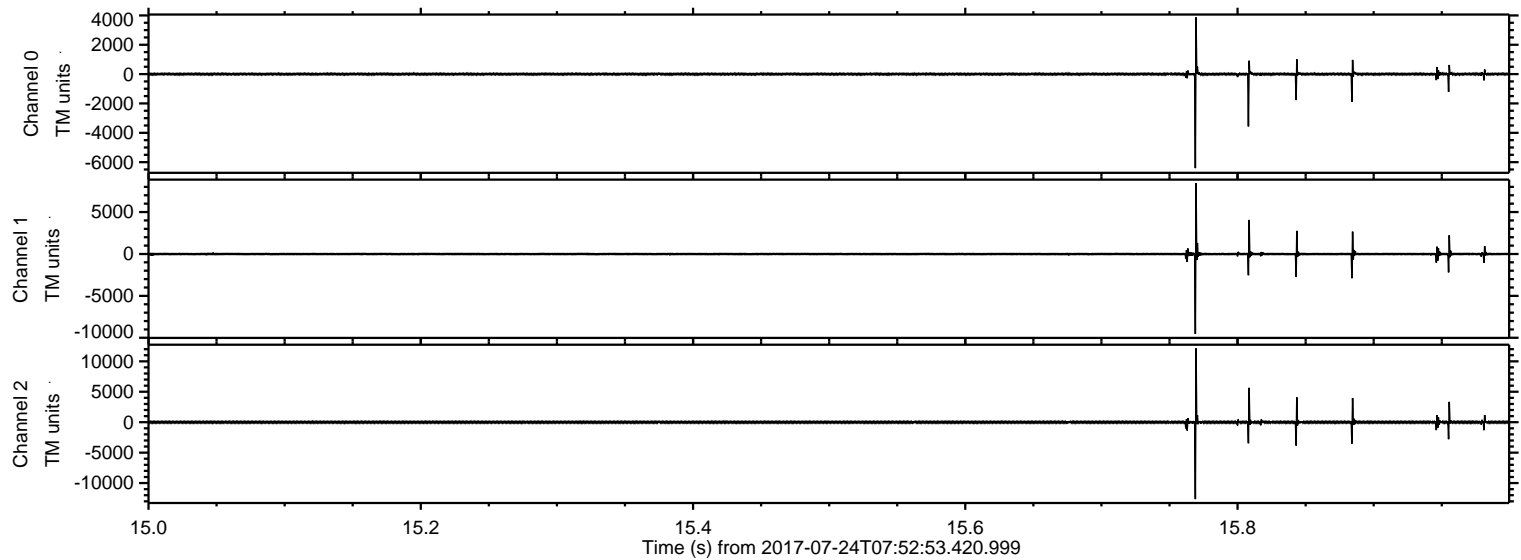


Processed Mon Jul 24 10:01:14 2017 by ELM ver.2012-10-06 from 001__elm20170724_075252__dat00.bin

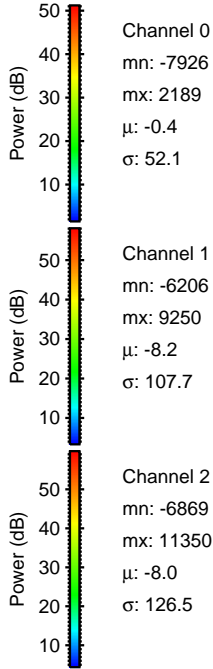
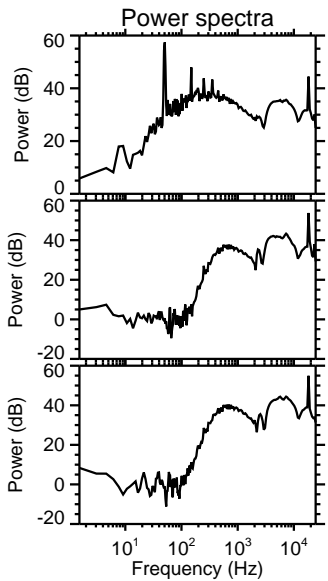
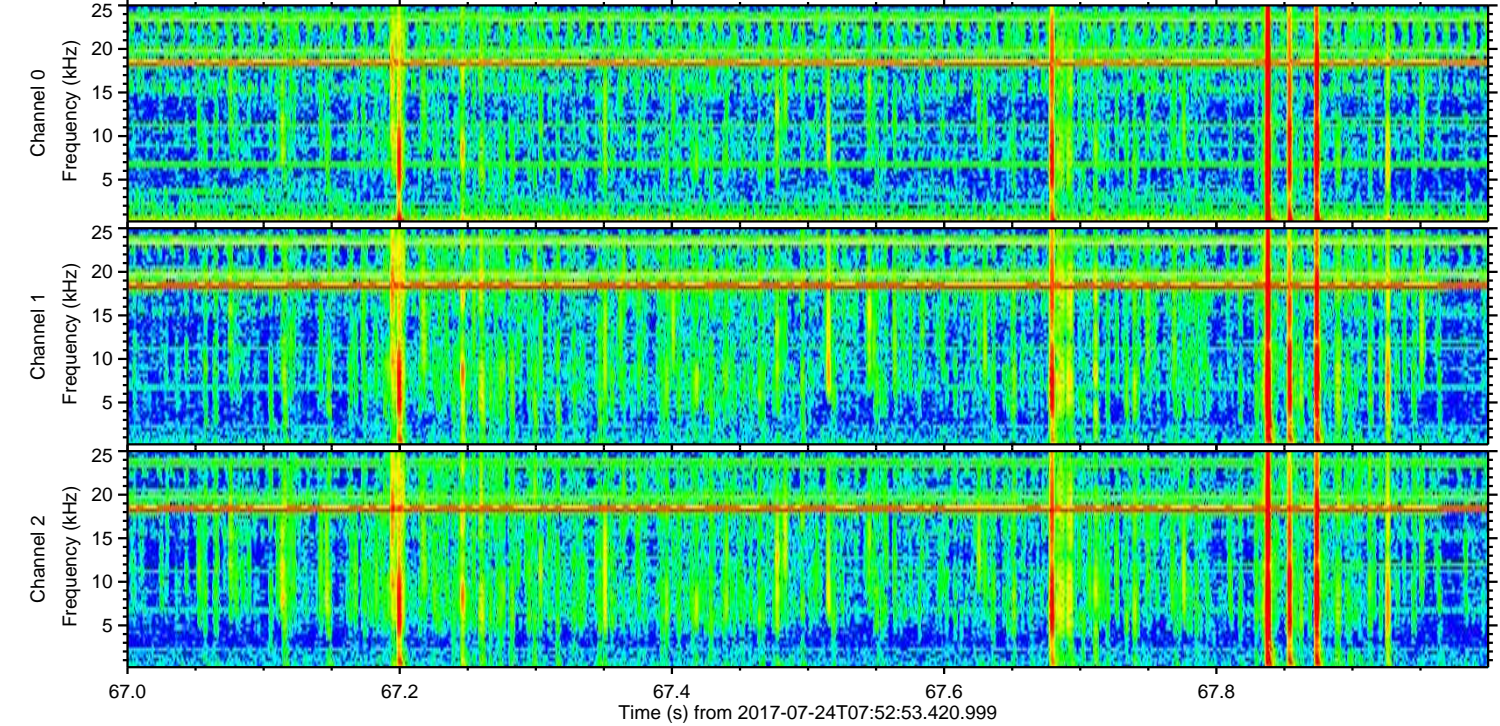
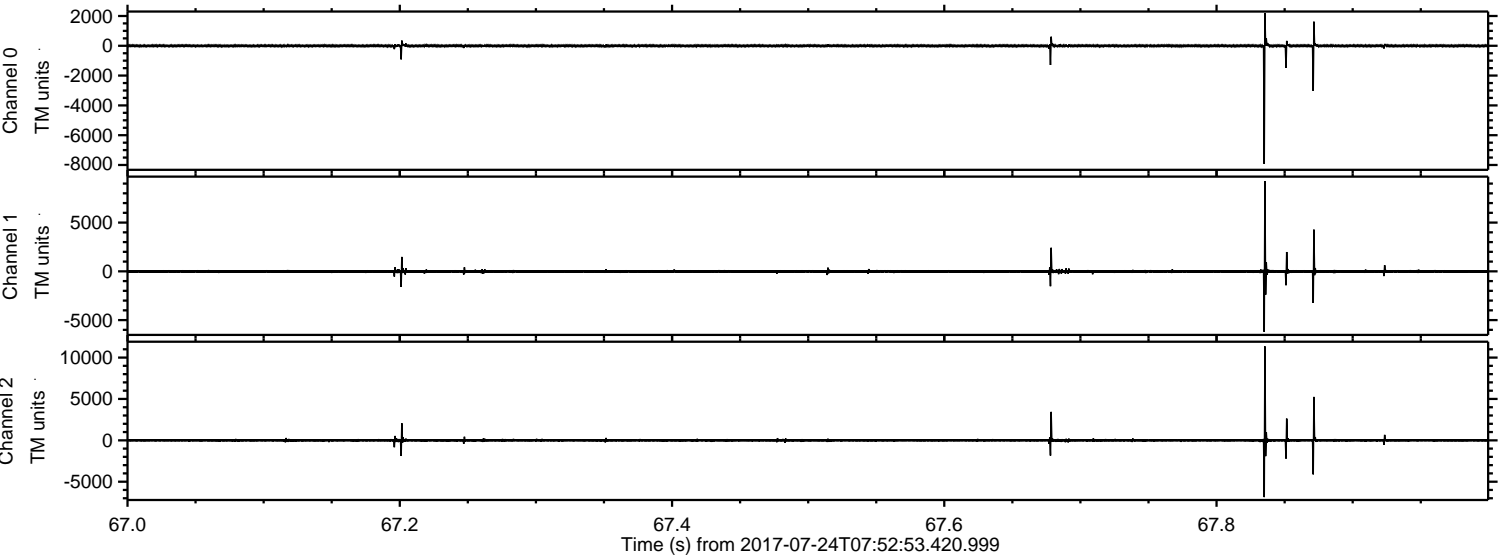


ELMAVAN 3D WAVEFORMS (Measured data sampled at 50 kHz) 51000 packets of 144 samples from 2017-07-24T07:52:53.420.999. Part 16/147

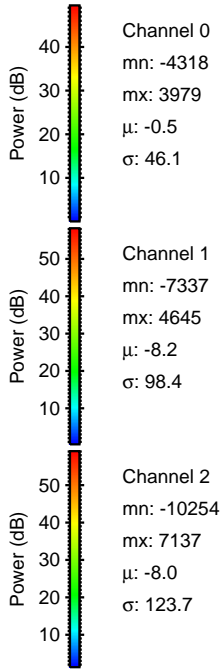
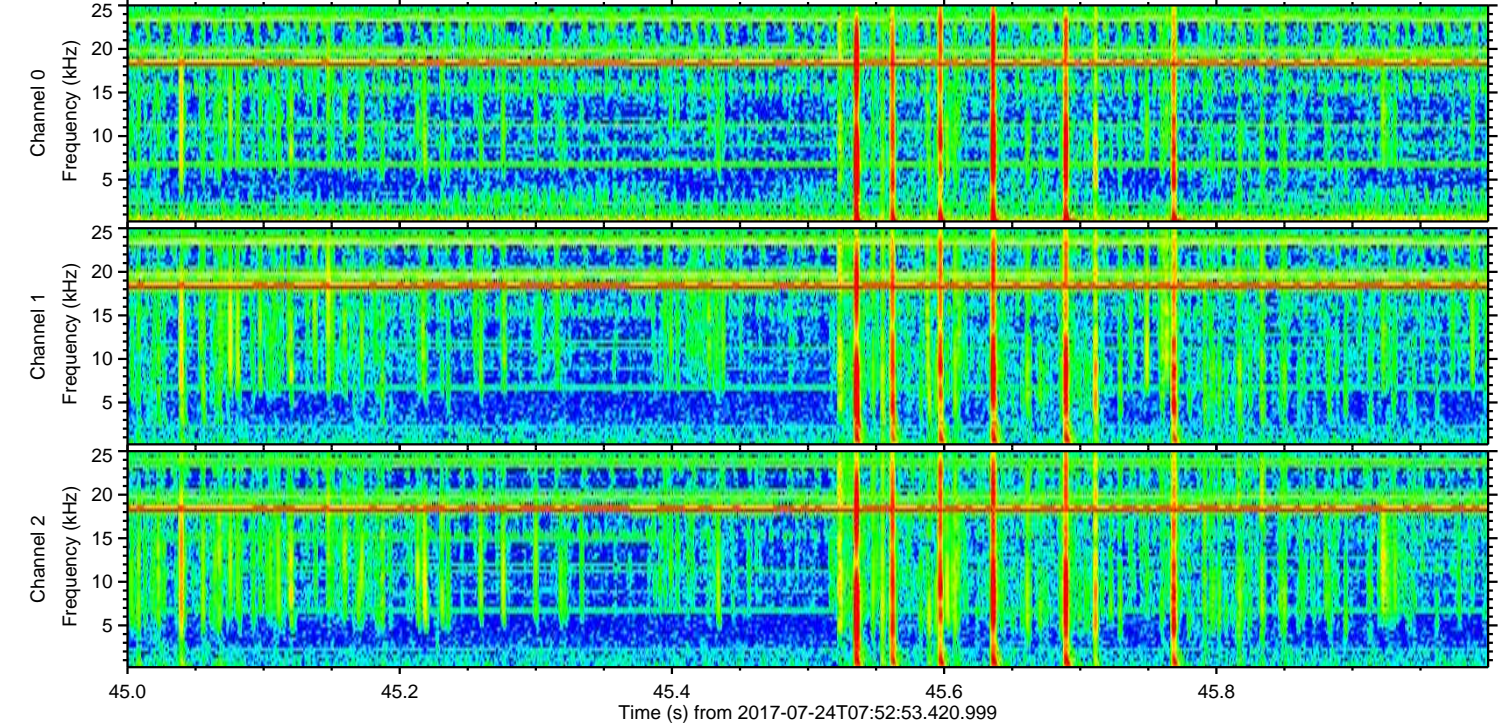
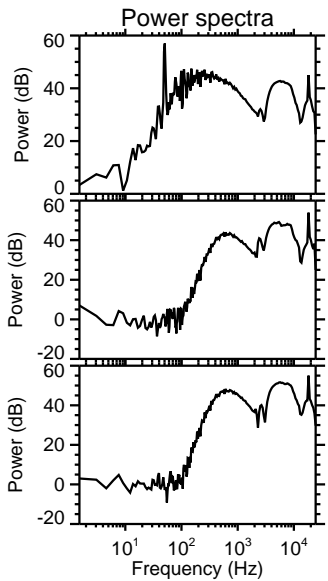
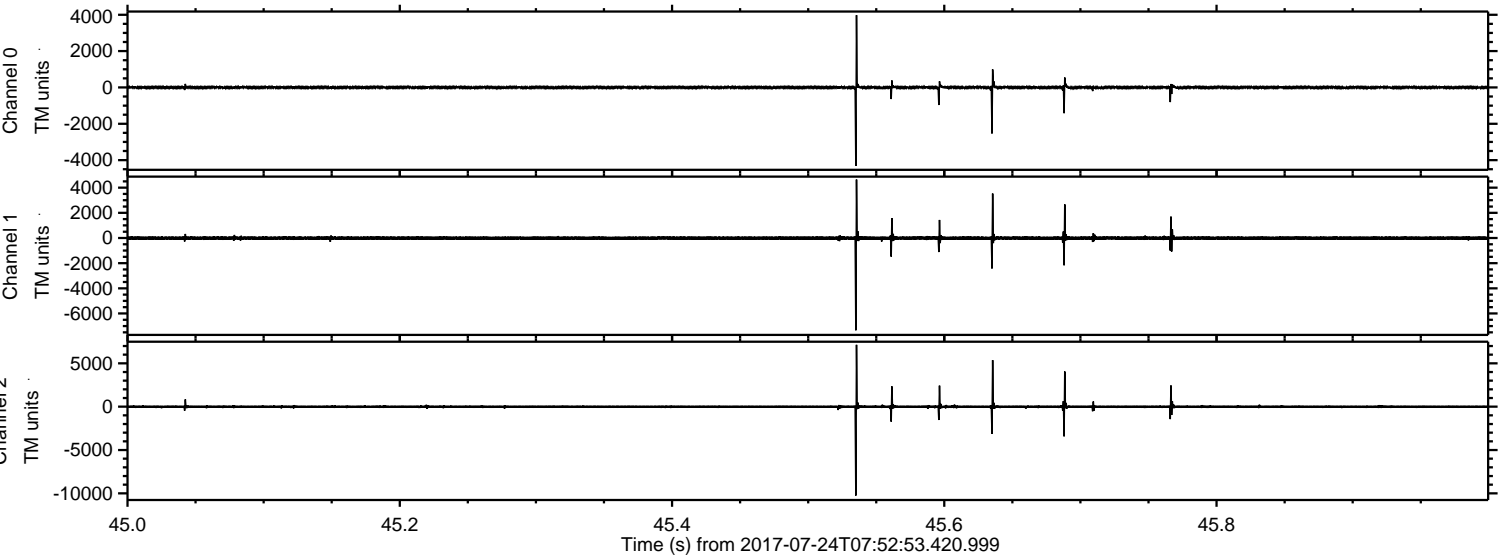
Processed Mon Jul 24 10:01:15 2017 by ELM ver.2012-10-06 from 001__elm20170724_075252__dat00.bin



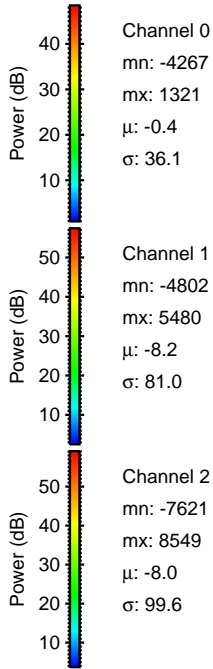
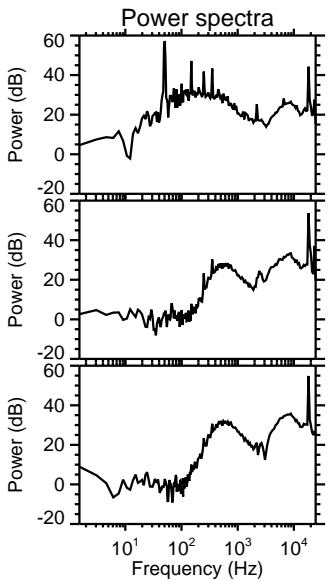
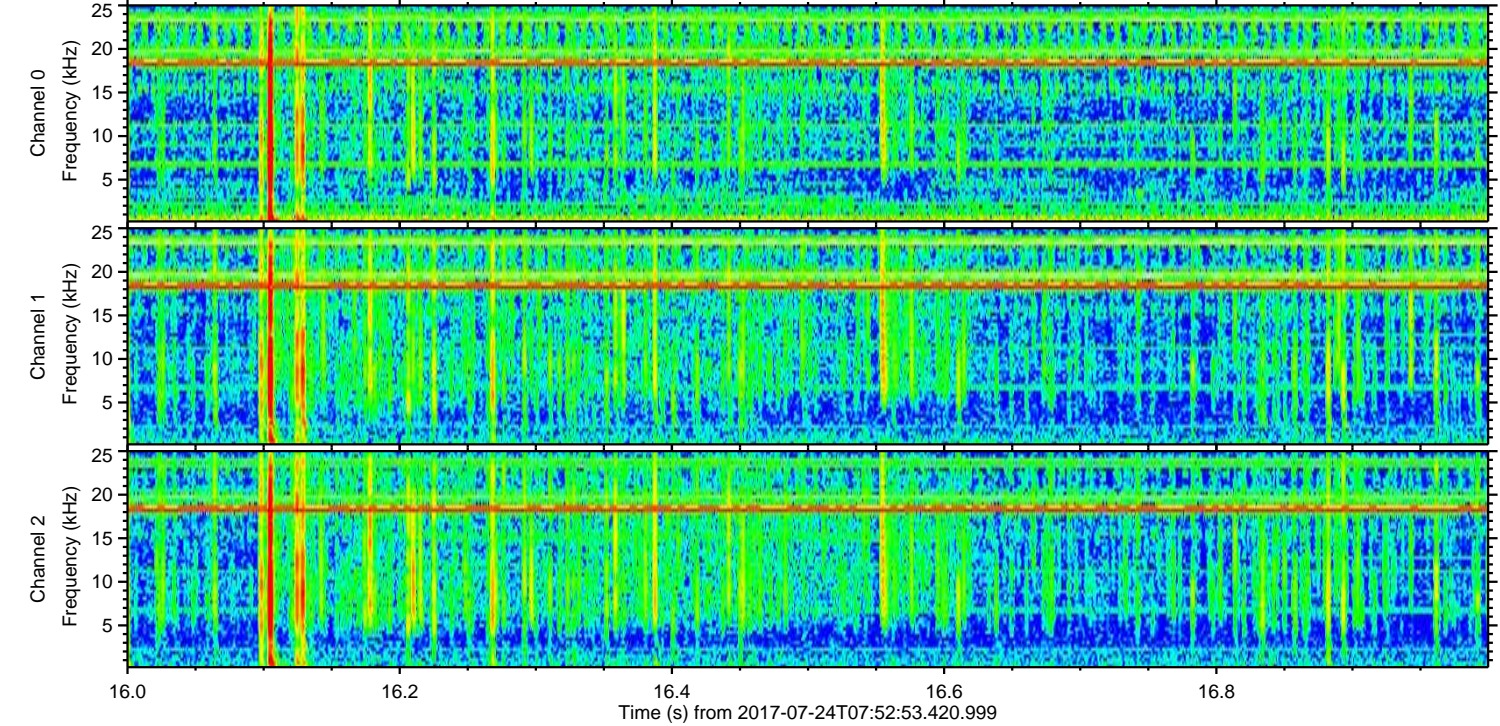
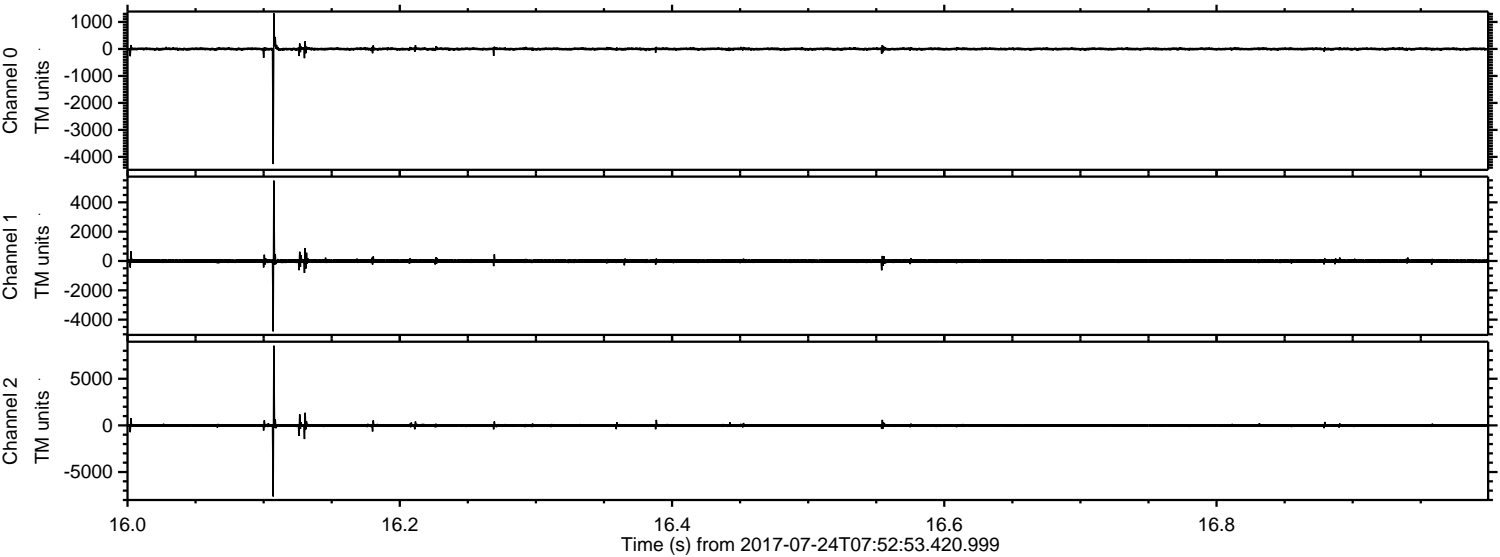
Processed Mon Jul 24 10:01:15 2017 by ELM ver.2012-10-06 from 001__elm20170724_075252__dat00.bin



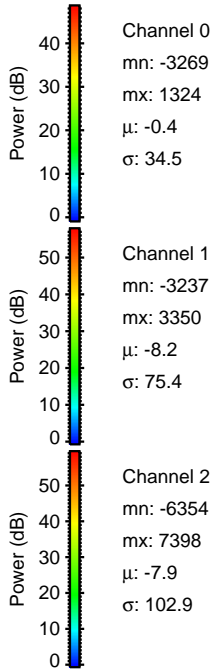
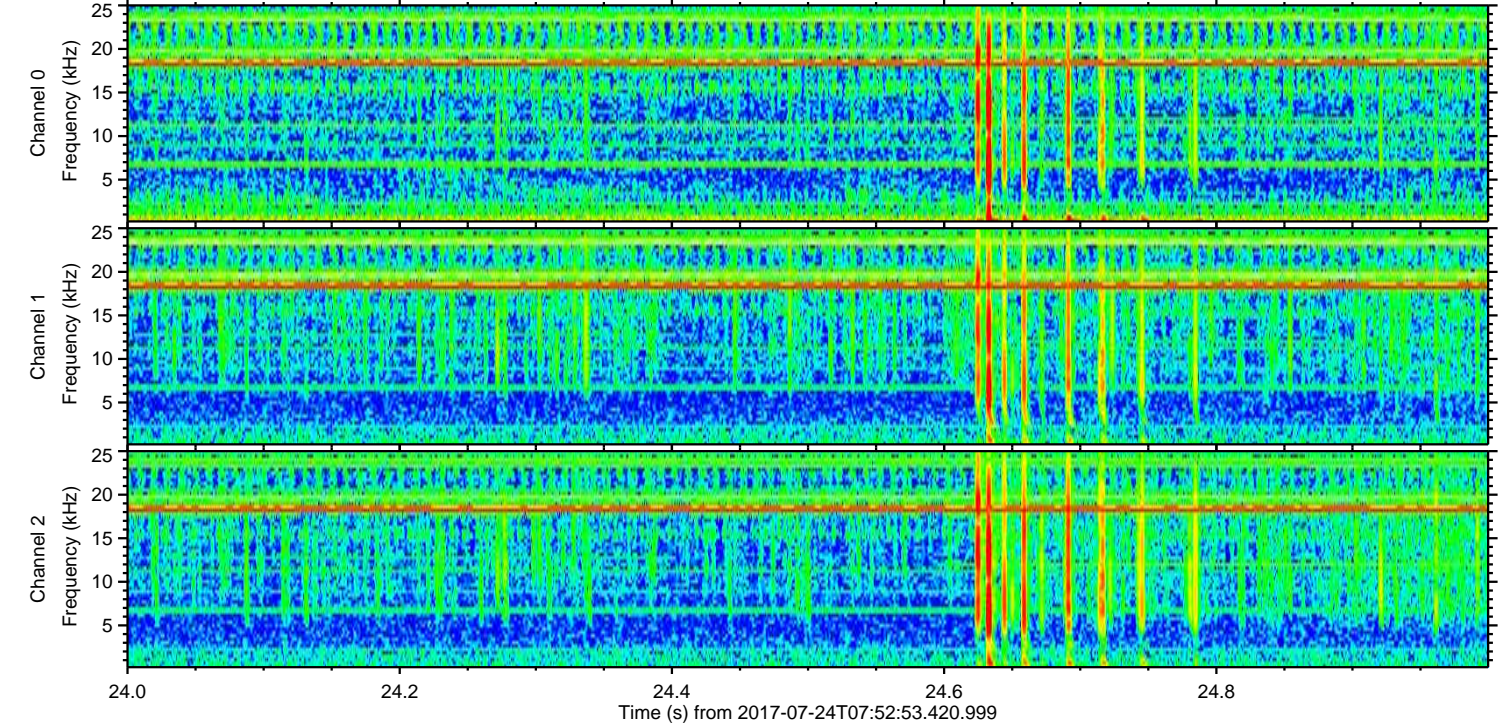
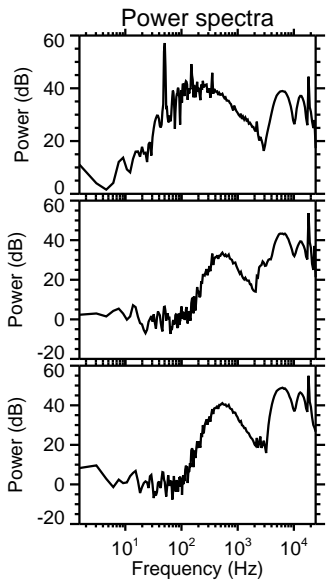
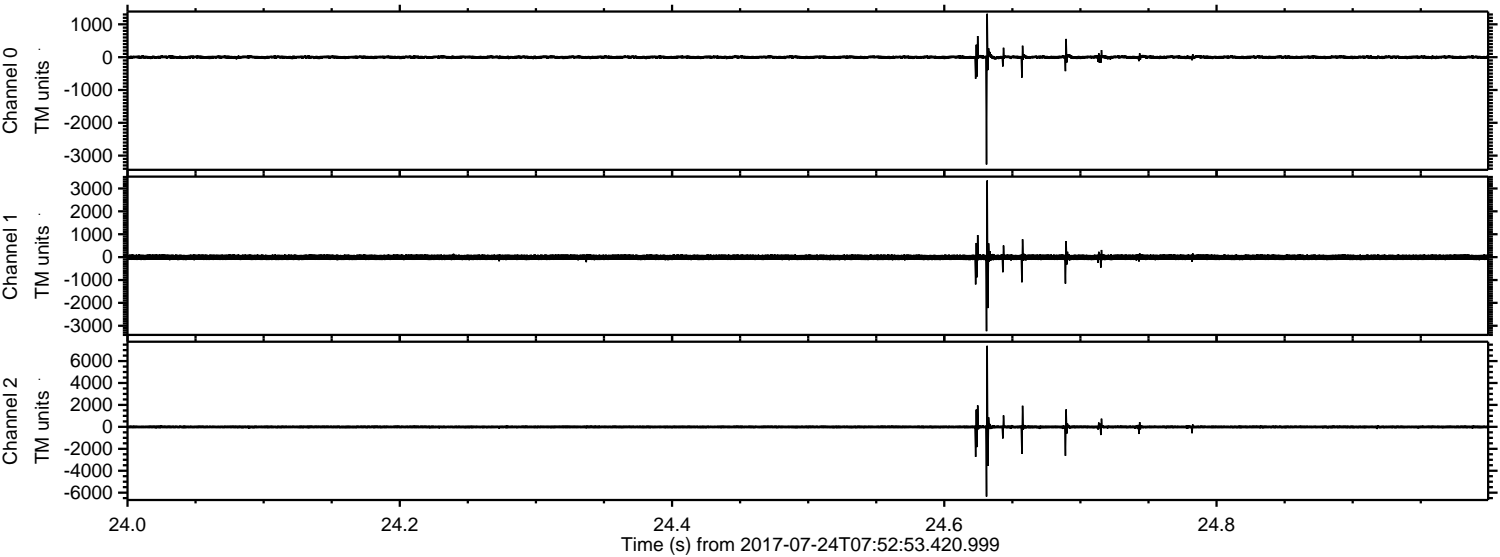
Processed Mon Jul 24 10:01:16 2017 by ELM ver.2012-10-06 from 001__elm20170724_075252__dat00.bin



Processed Mon Jul 24 10:01:17 2017 by ELM ver.2012-10-06 from 001__elm20170724_075252__dat00.bin



Processed Mon Jul 24 10:01:18 2017 by ELM ver.2012-10-06 from 001__elm20170724_075252__dat00.bin



Channel 0
mn: -3269
mx: 1324
 μ : -0.4
 σ : 34.5

Channel 1
mn: -3237
mx: 3350
 μ : -8.2
 σ : 75.4

Channel 2
mn: -6354
mx: 7398
 μ : -7.9
 σ : 102.9

