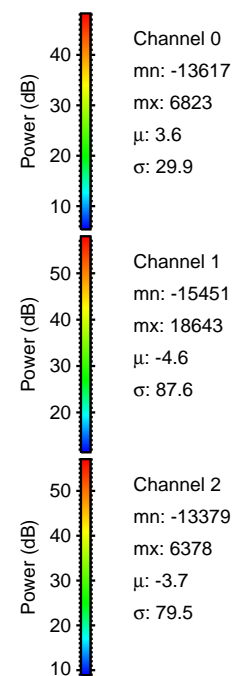
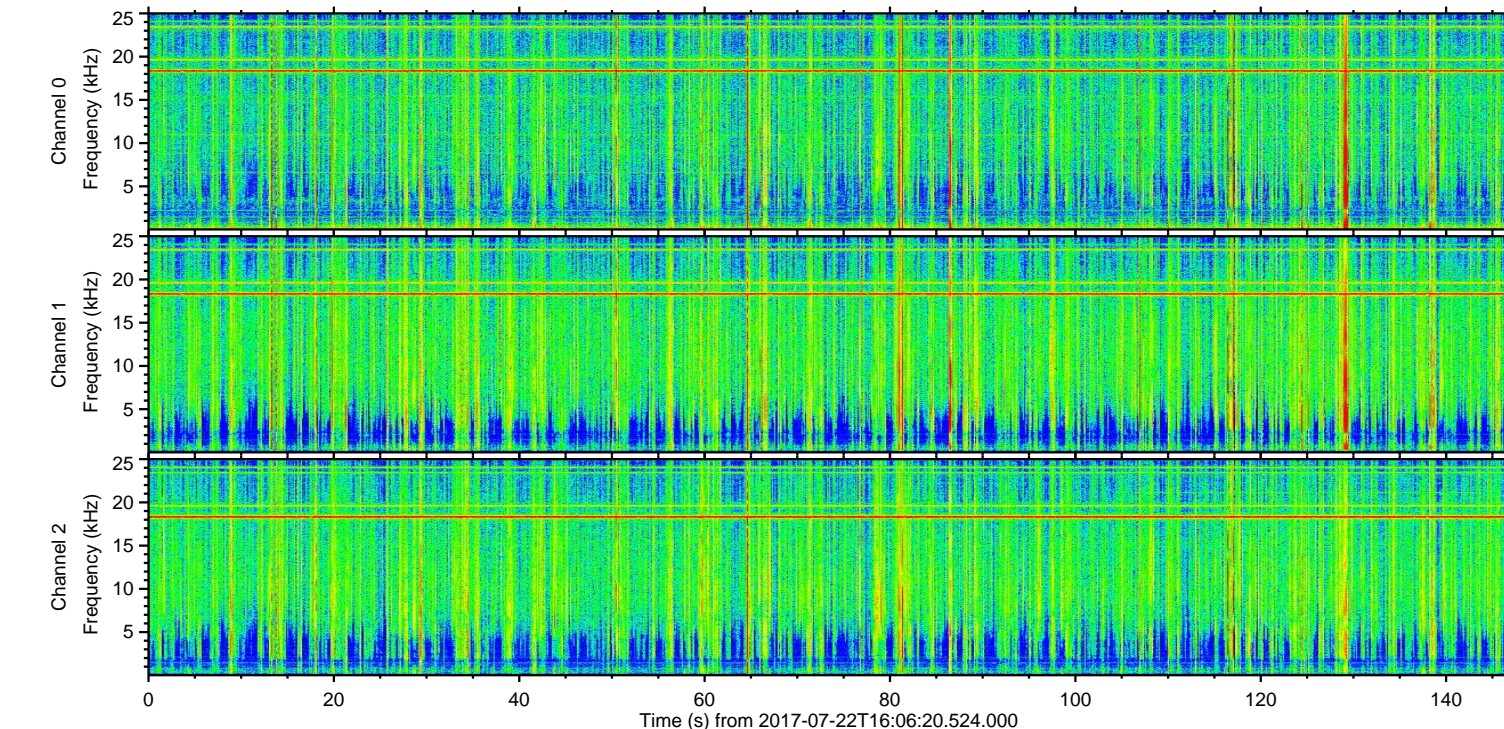
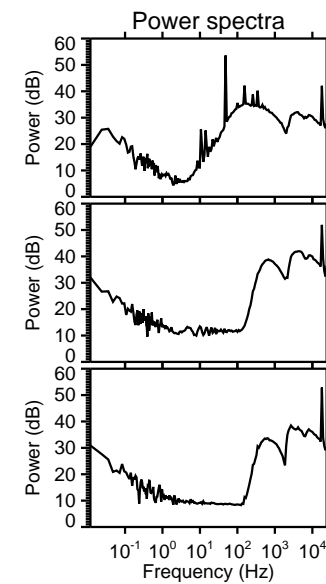
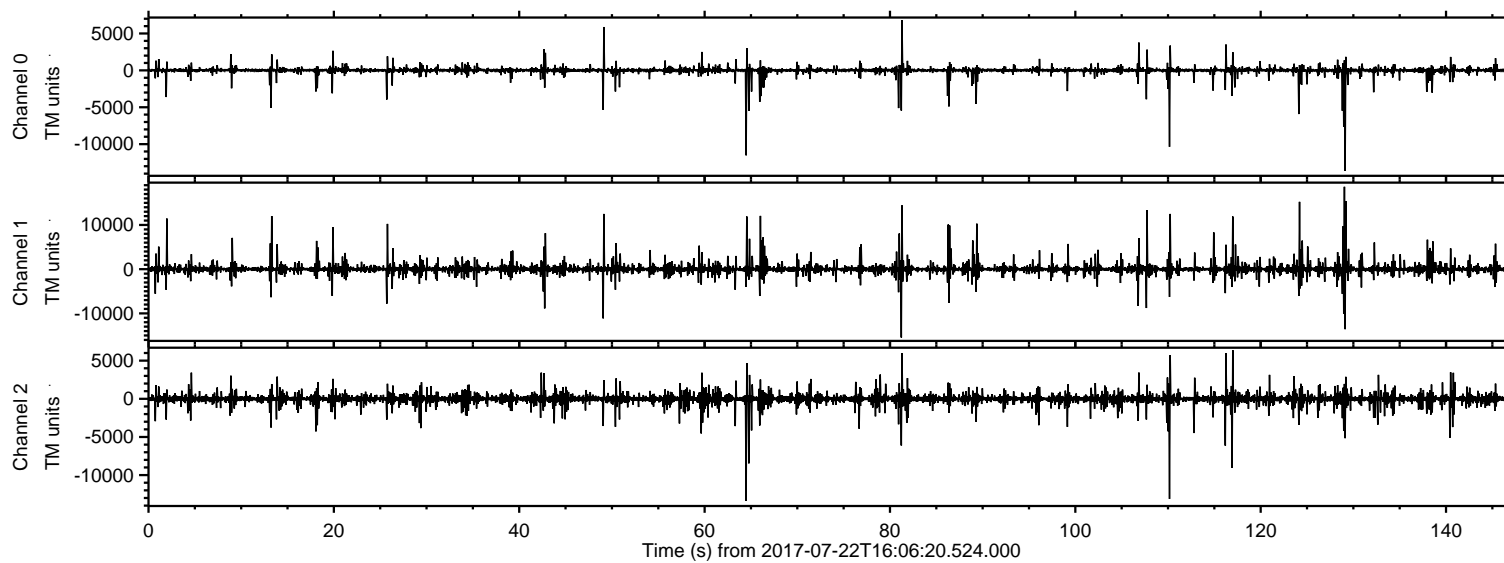


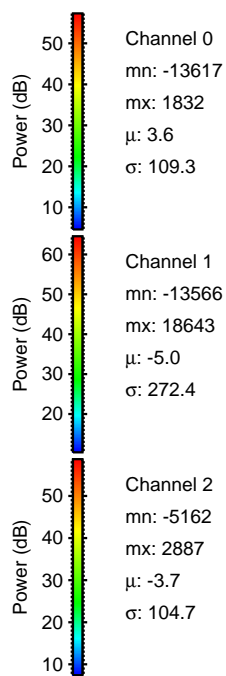
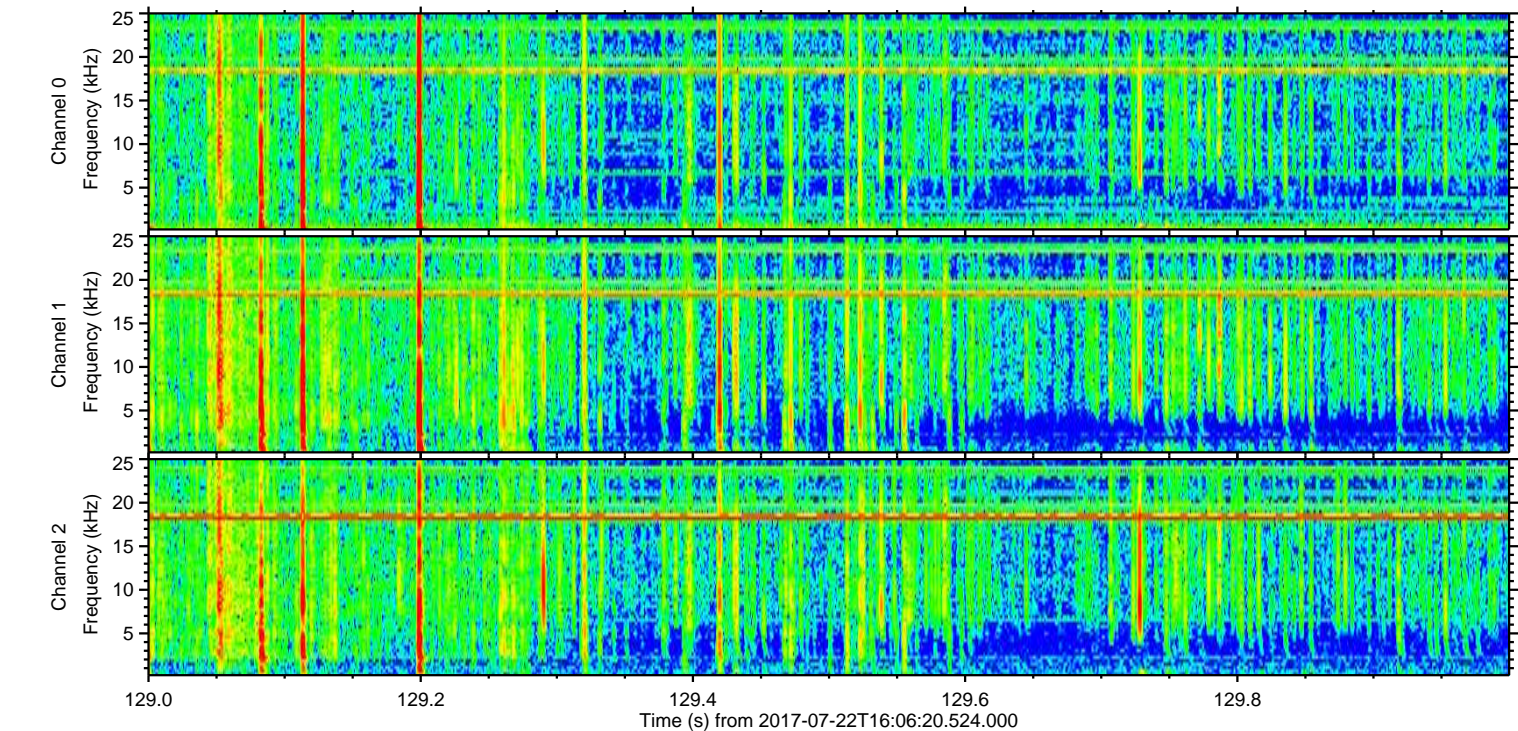
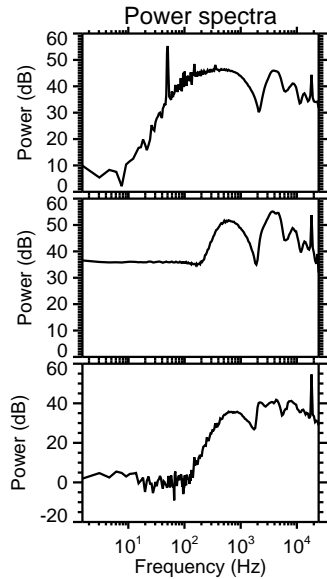
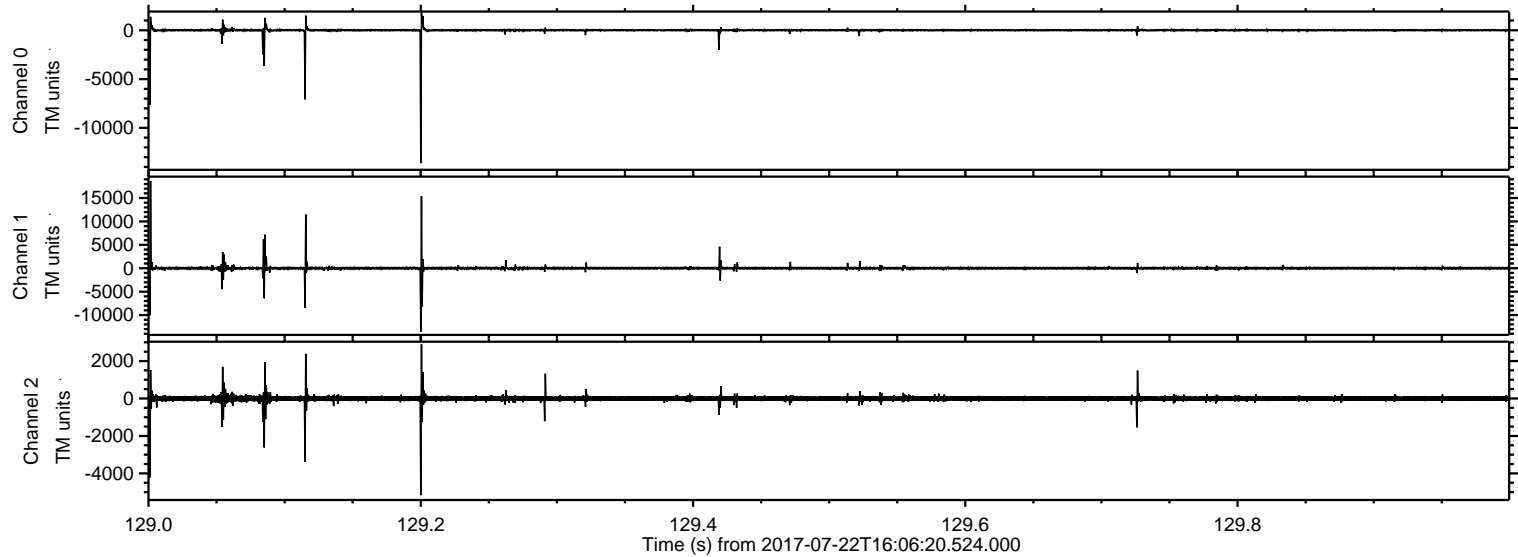
ELMAVAN 3D WAVEFORMS (Measured data sampled at 50 kHz) 51000 packets of 144 samples from 2017-07-22T16:06:20.524.000.

Processed Sat Jul 22 18:14:30 2017 by ELM ver.2012-10-06 from 001__elm20170722_160619__dat00.bin

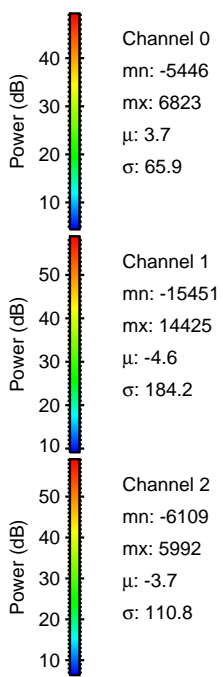
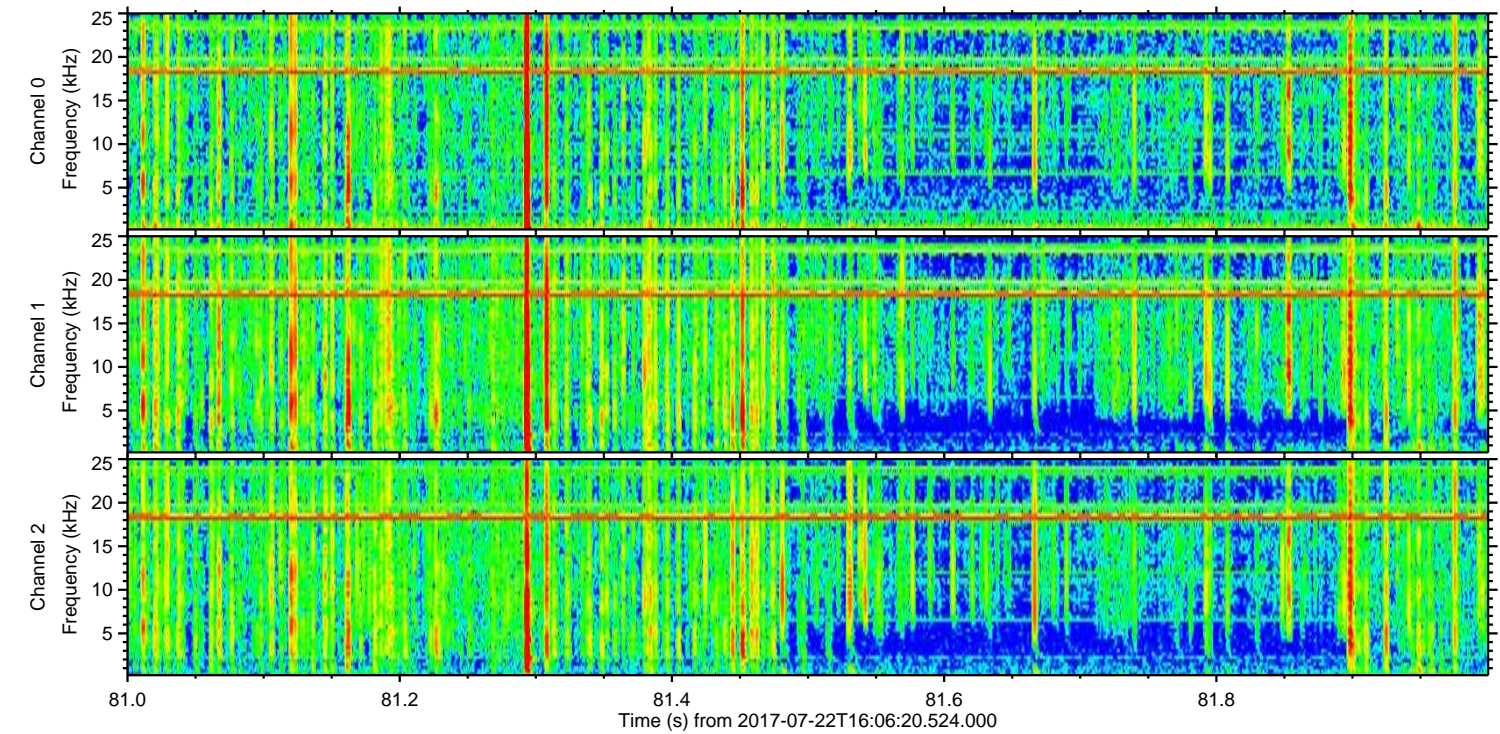
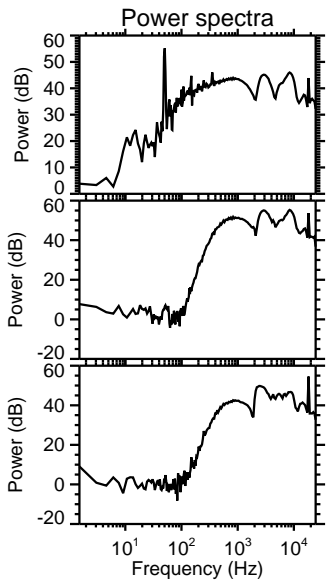
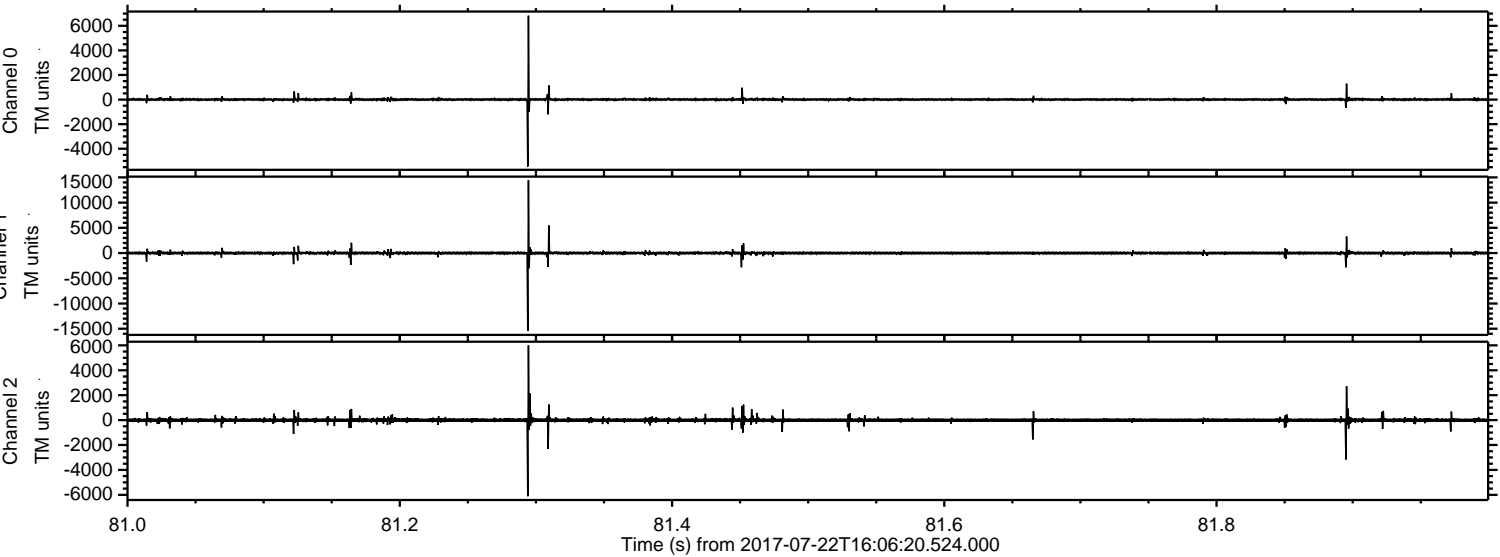


ELMAVAN 3D WAVEFORMS (Measured data sampled at 50 kHz) 51000 packets of 144 samples from 2017-07-22T16:06:20.524.000. Part 130/147

Processed Sat Jul 22 18:14:36 2017 by ELM ver.2012-10-06 from 001__elm20170722_160619__dat00.bin

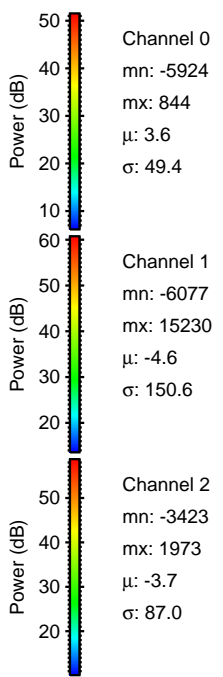
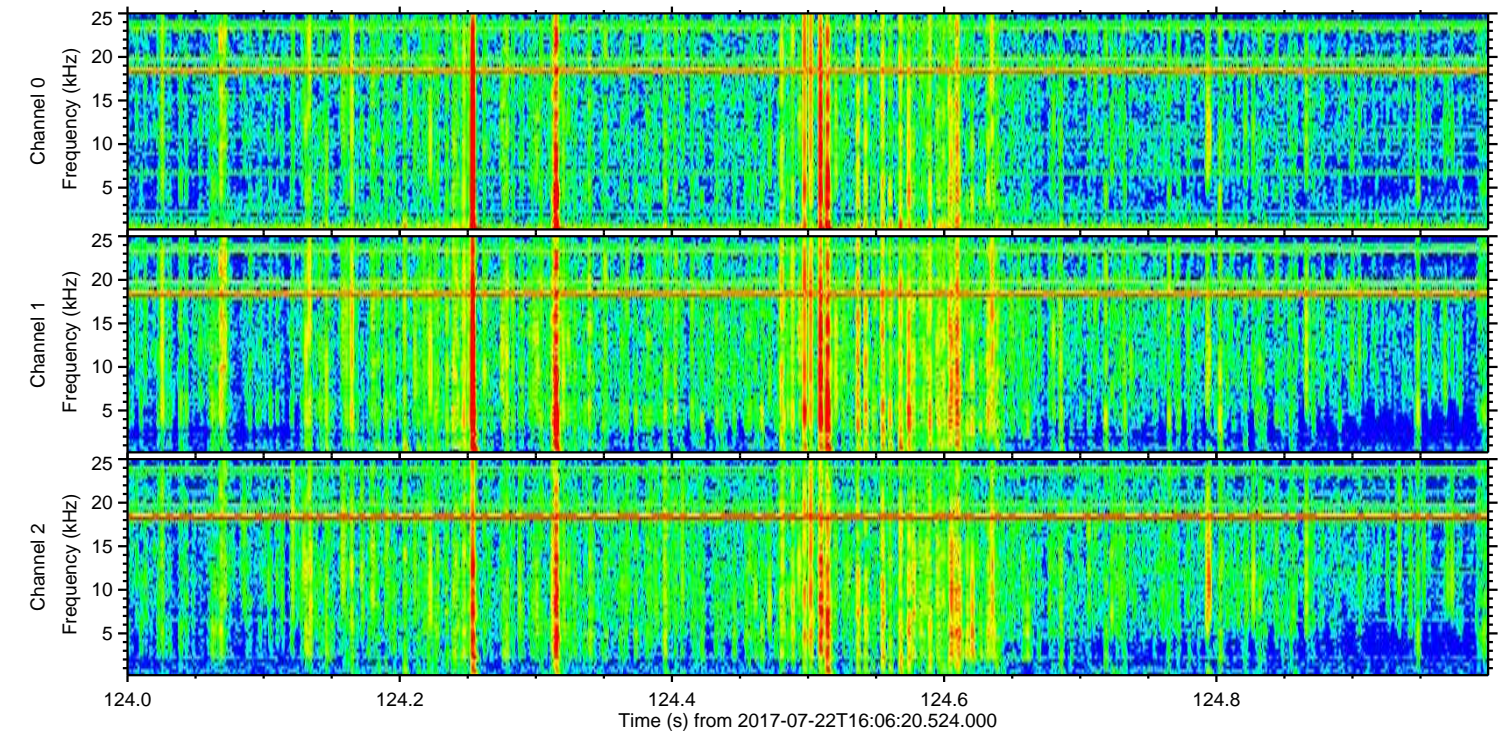
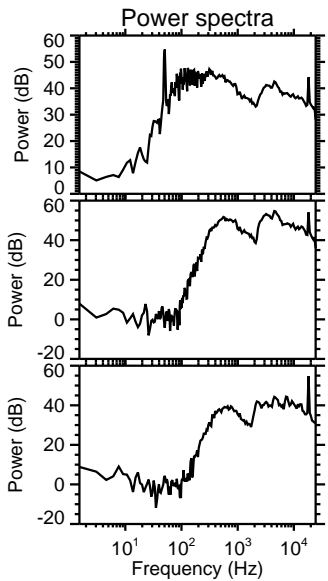
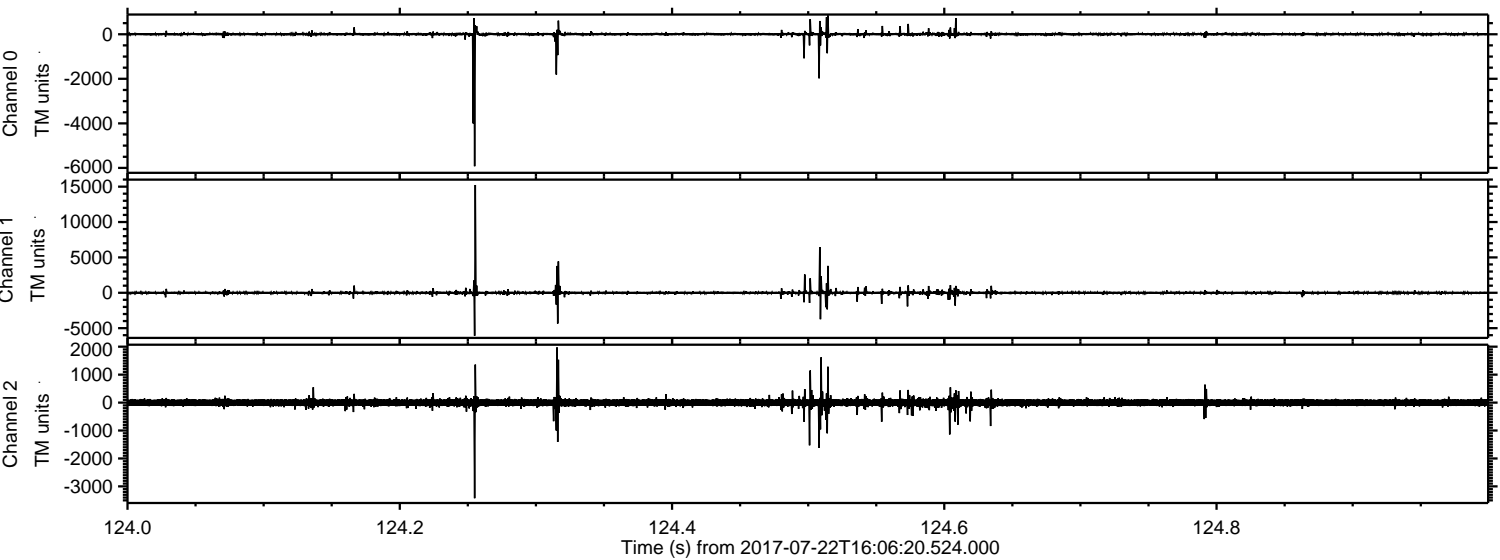


Processed Sat Jul 22 18:14:36 2017 by ELM ver.2012-10-06 from 001__elm20170722_160619__dat00.bin



ELMAVAN 3D WAVEFORMS (Measured data sampled at 50 kHz) 51000 packets of 144 samples from 2017-07-22T16:06:20.524.000. Part 125/147

Processed Sat Jul 22 18:14:37 2017 by ELM ver.2012-10-06 from 001__elm20170722_160619__dat00.bin

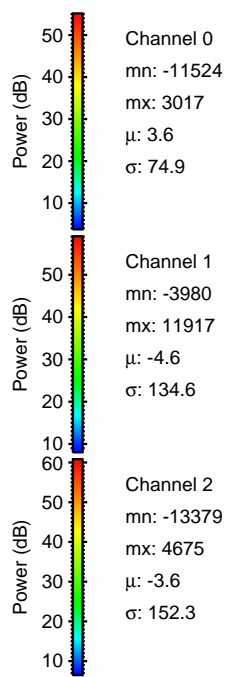
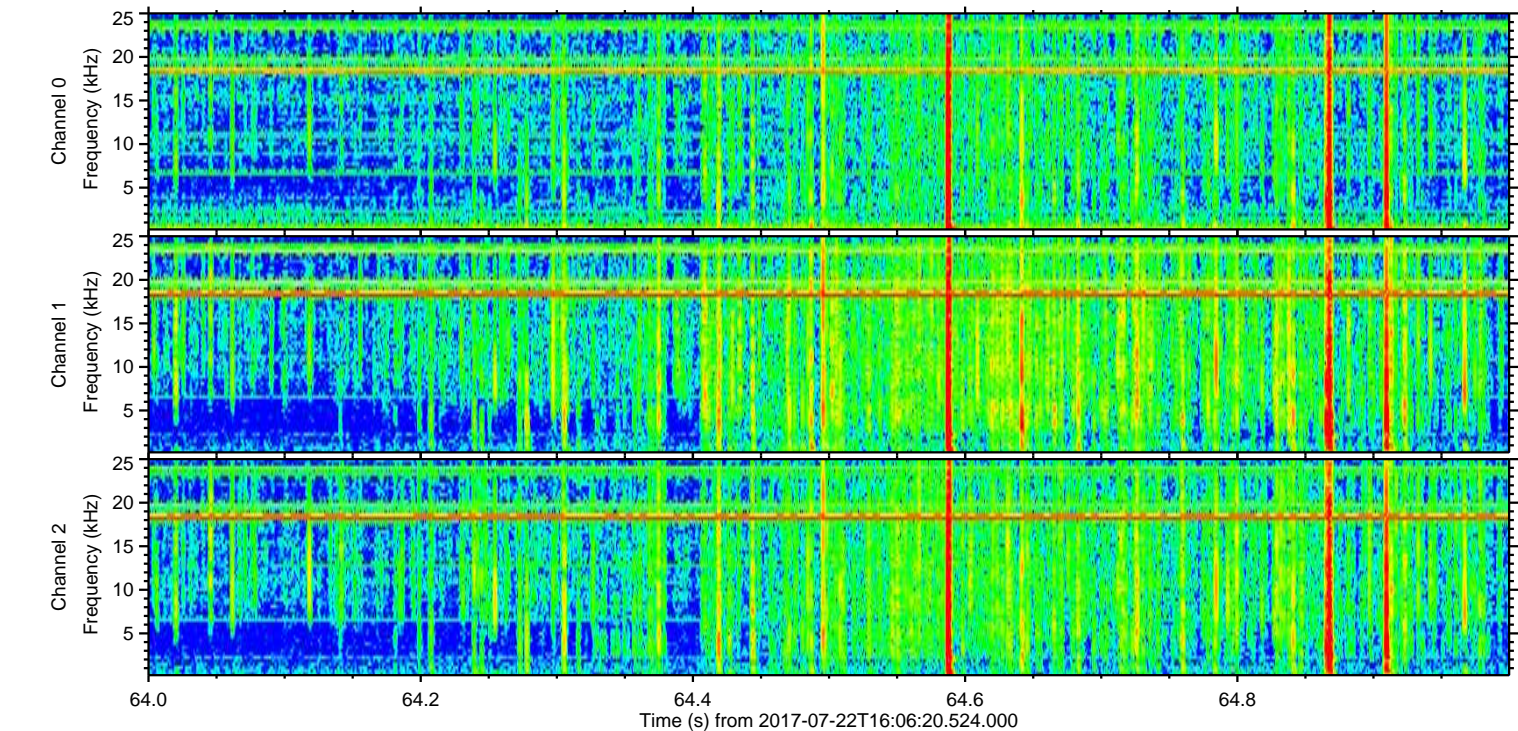
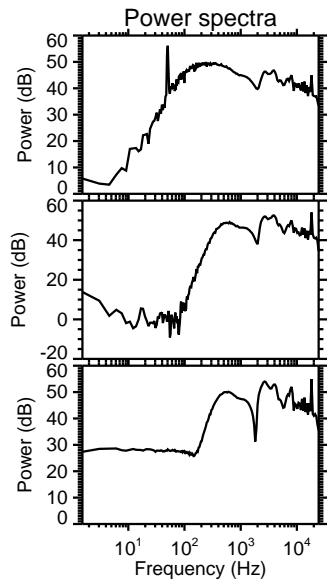
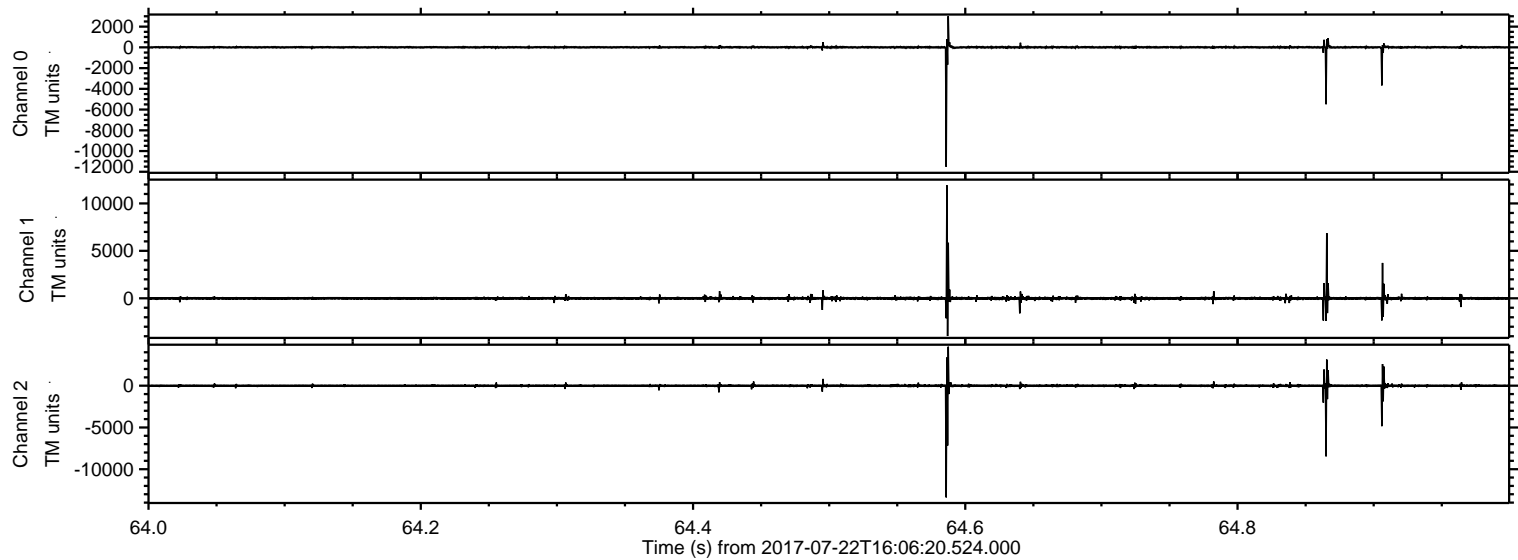


Channel 0
mn: -5924
mx: 844
 μ : 3.6
 σ : 49.4

Channel 1
mn: -6077
mx: 15230
 μ : -4.6
 σ : 150.6

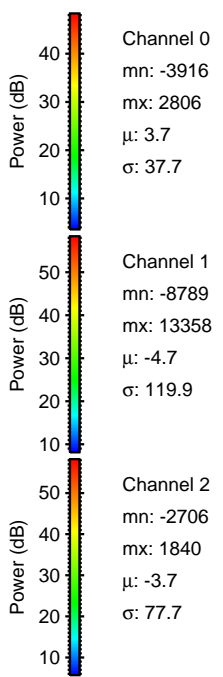
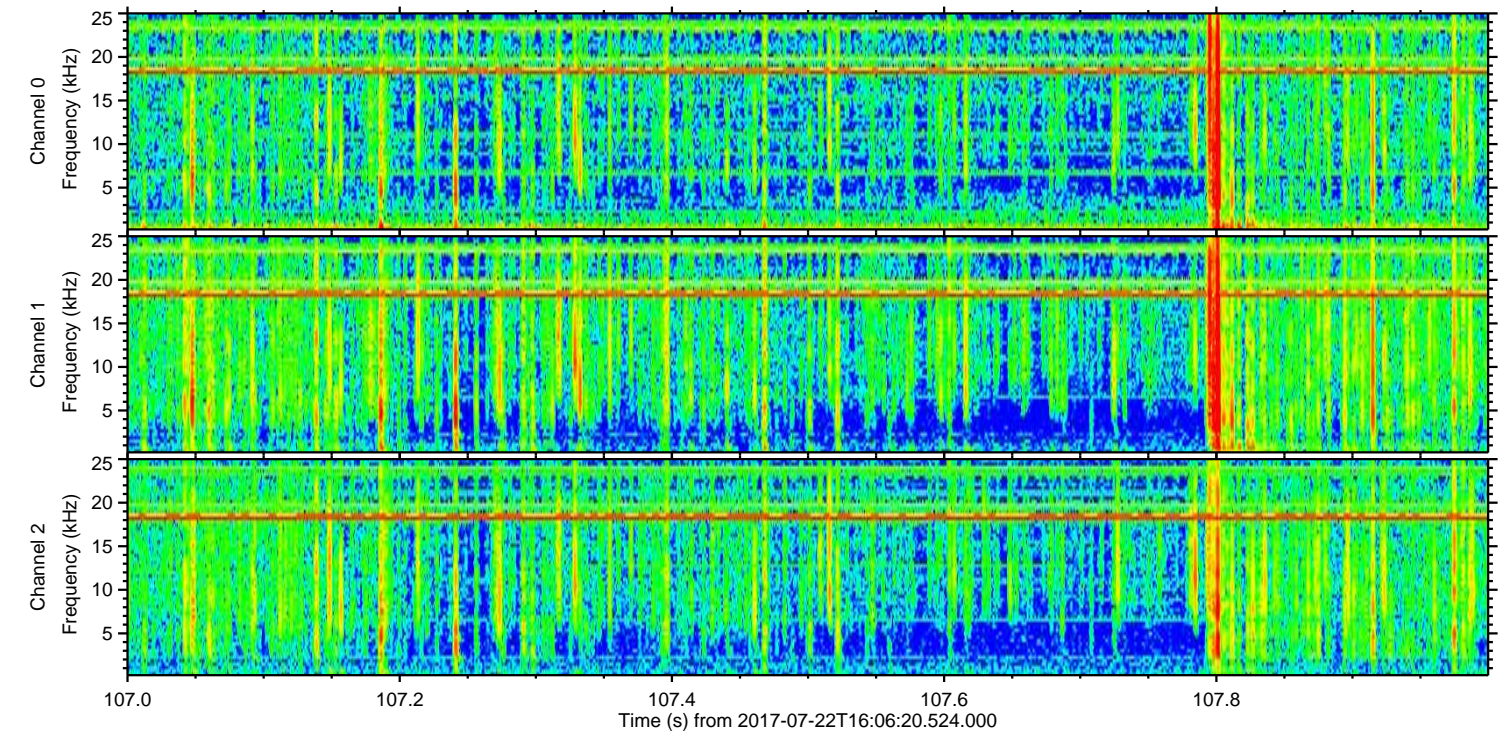
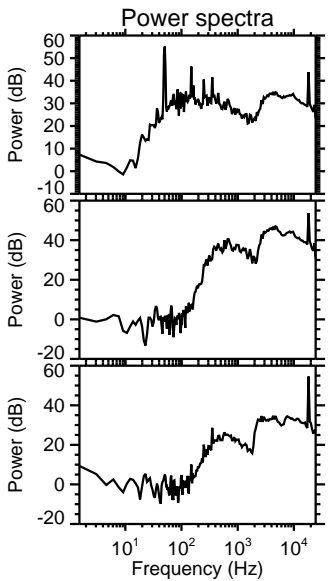
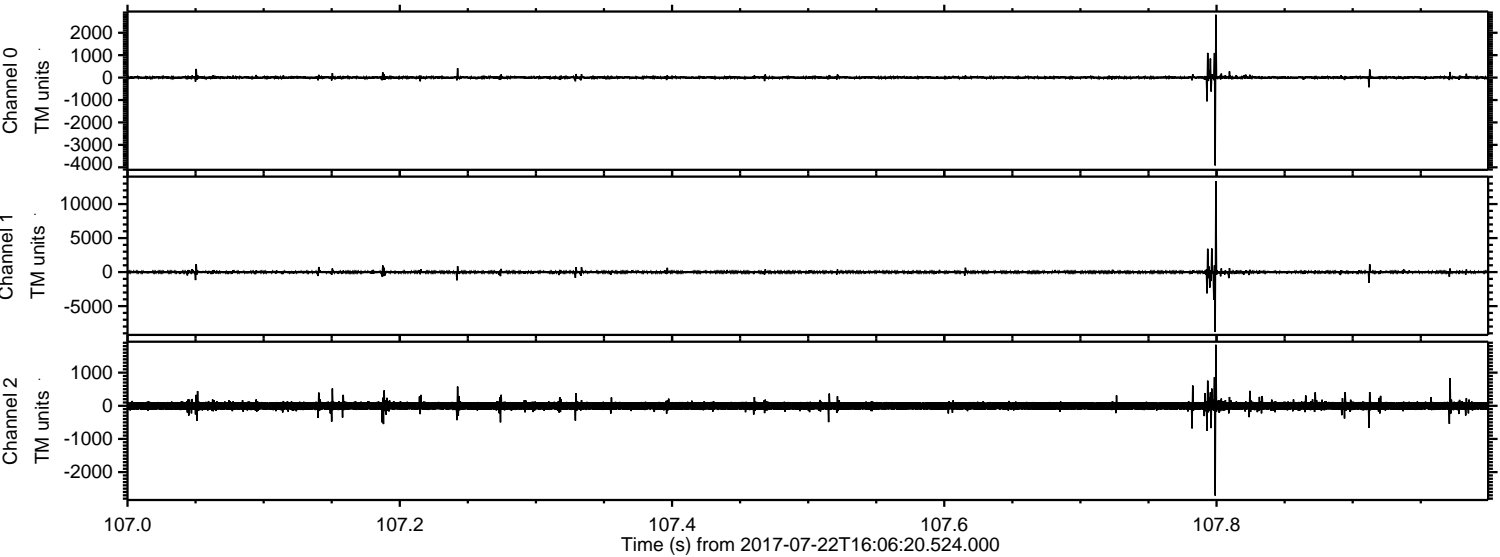
Channel 2
mn: -3423
mx: 1973
 μ : -3.7
 σ : 87.0

Processed Sat Jul 22 18:14:38 2017 by ELM ver.2012-10-06 from 001__elm20170722_160619__dat00.bin



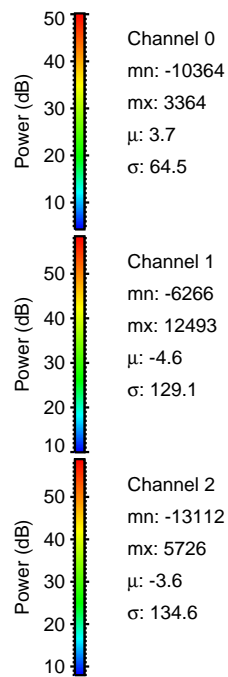
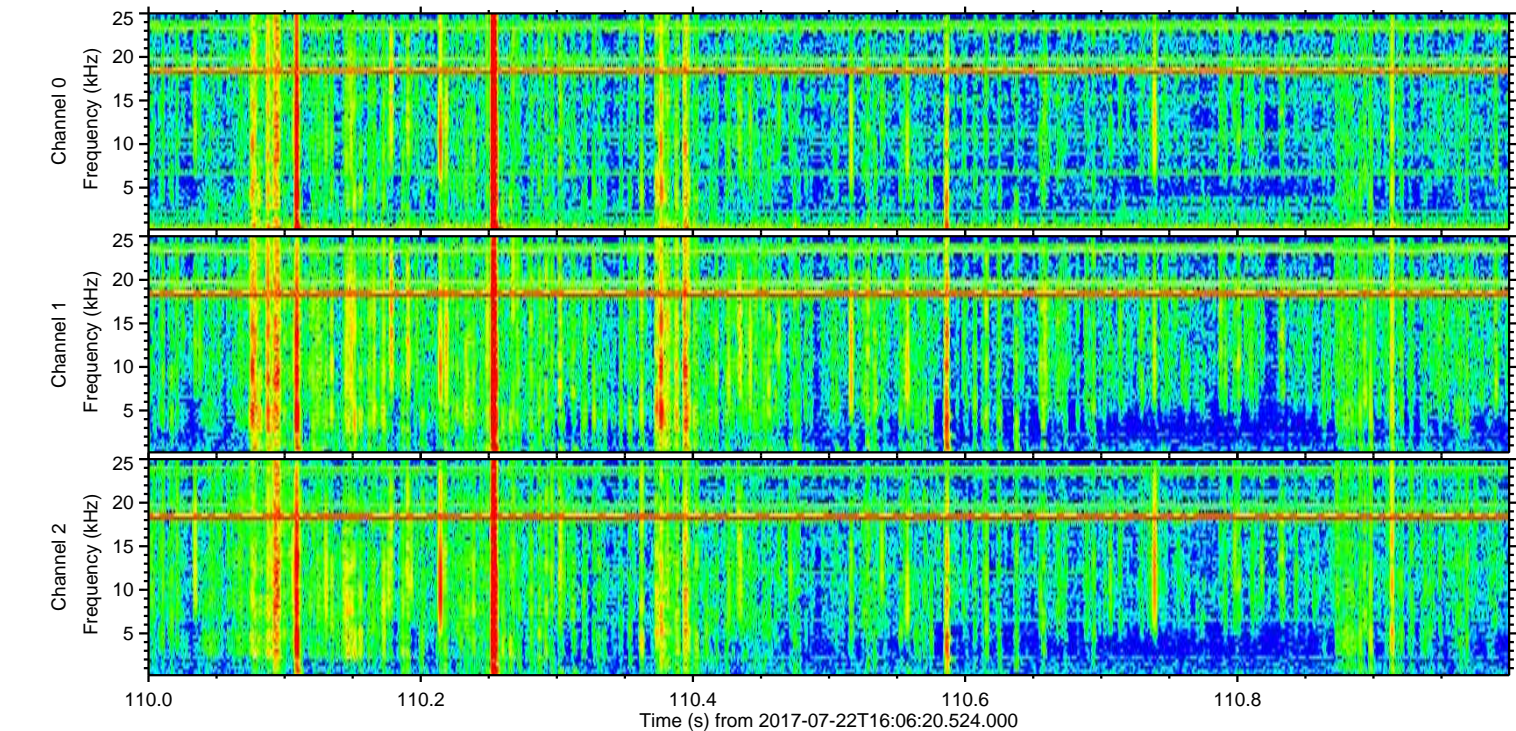
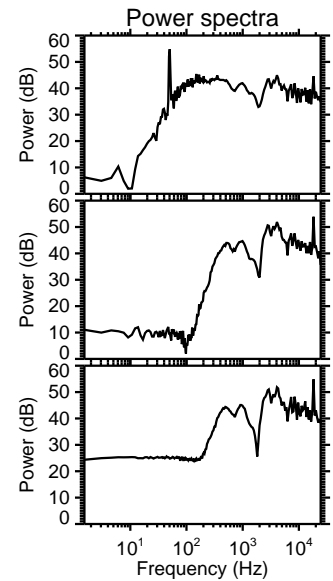
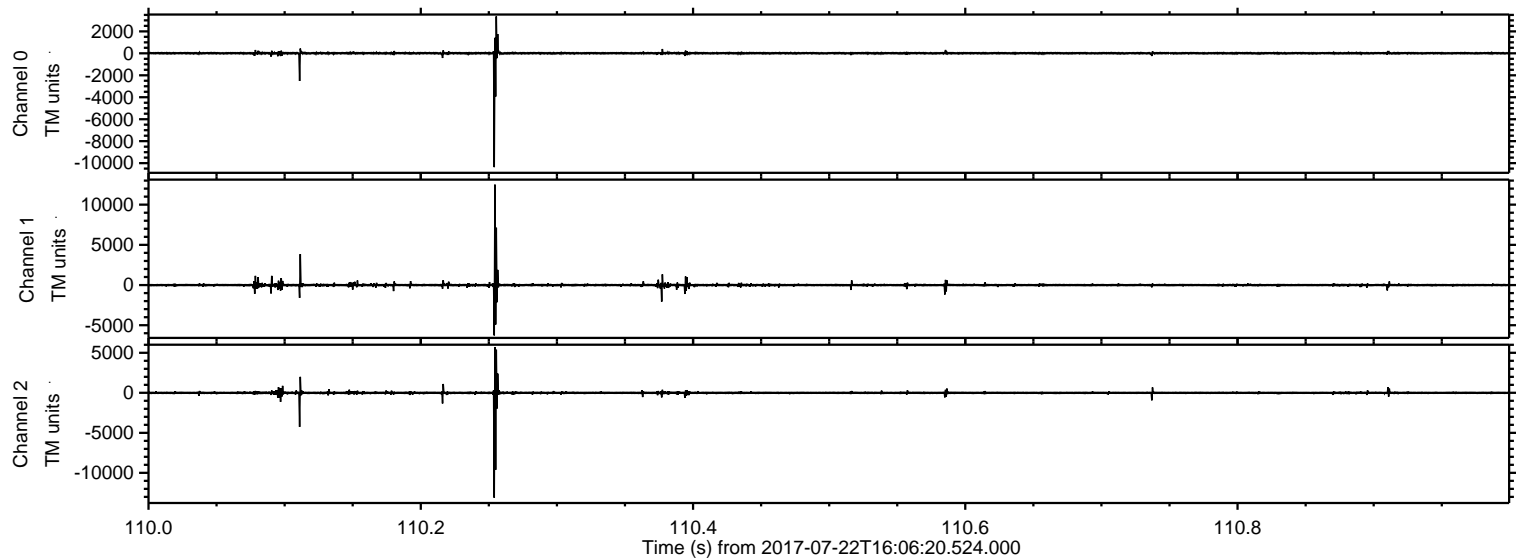
ELMAVAN 3D WAVEFORMS (Measured data sampled at 50 kHz) 51000 packets of 144 samples from 2017-07-22T16:06:20.524.000. Part 108/147

Processed Sat Jul 22 18:14:38 2017 by ELM ver.2012-10-06 from 001__elm20170722_160619__dat00.bin

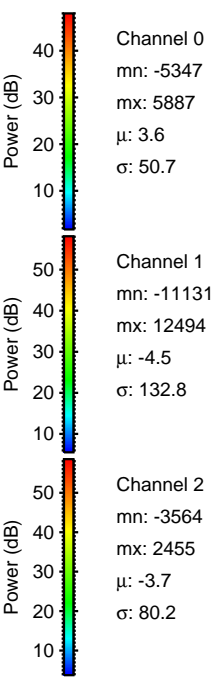
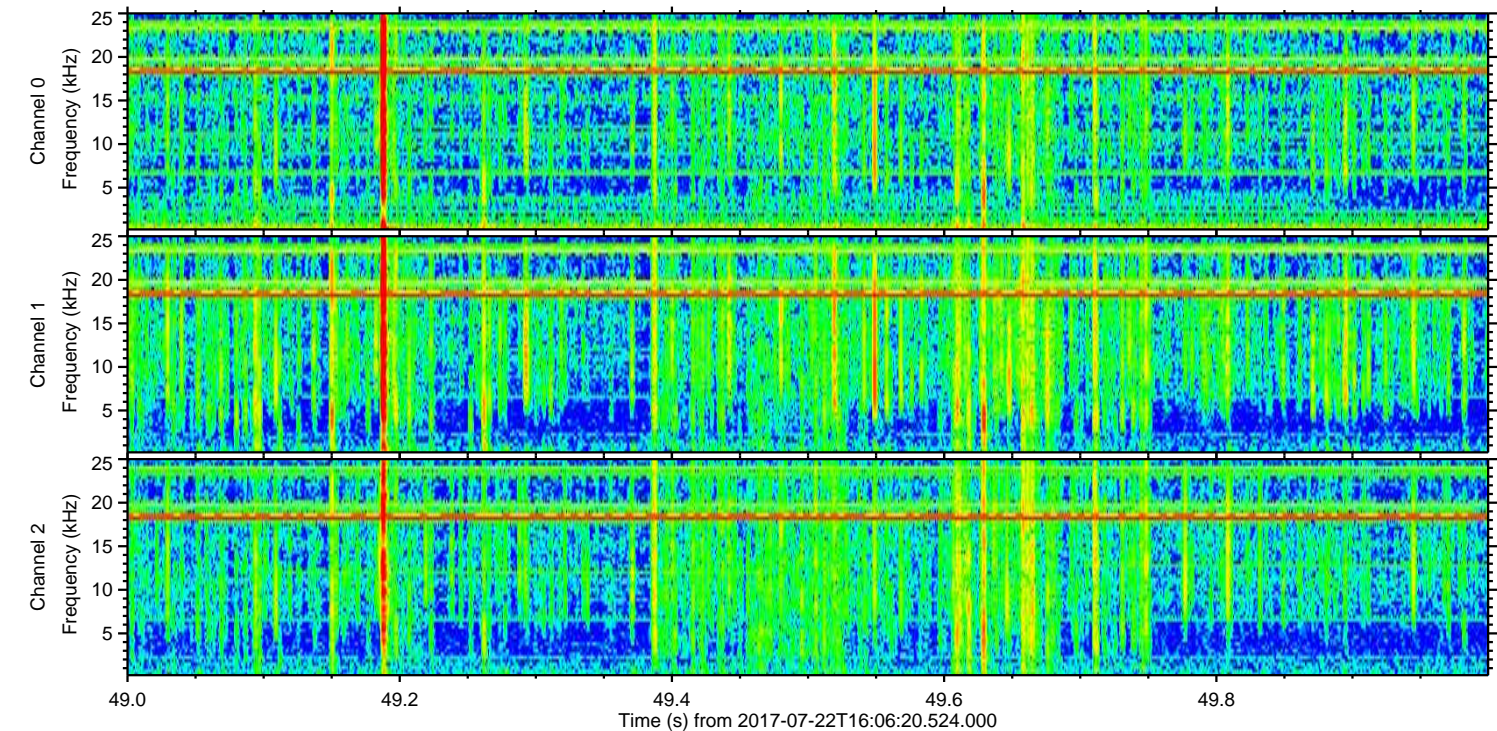
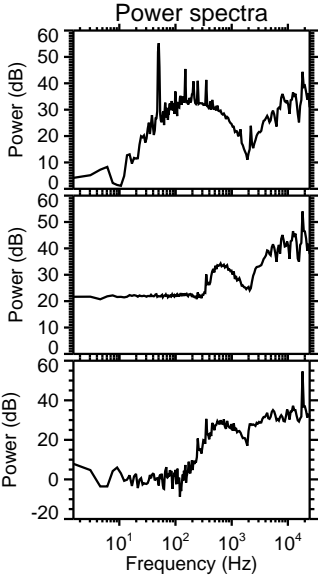
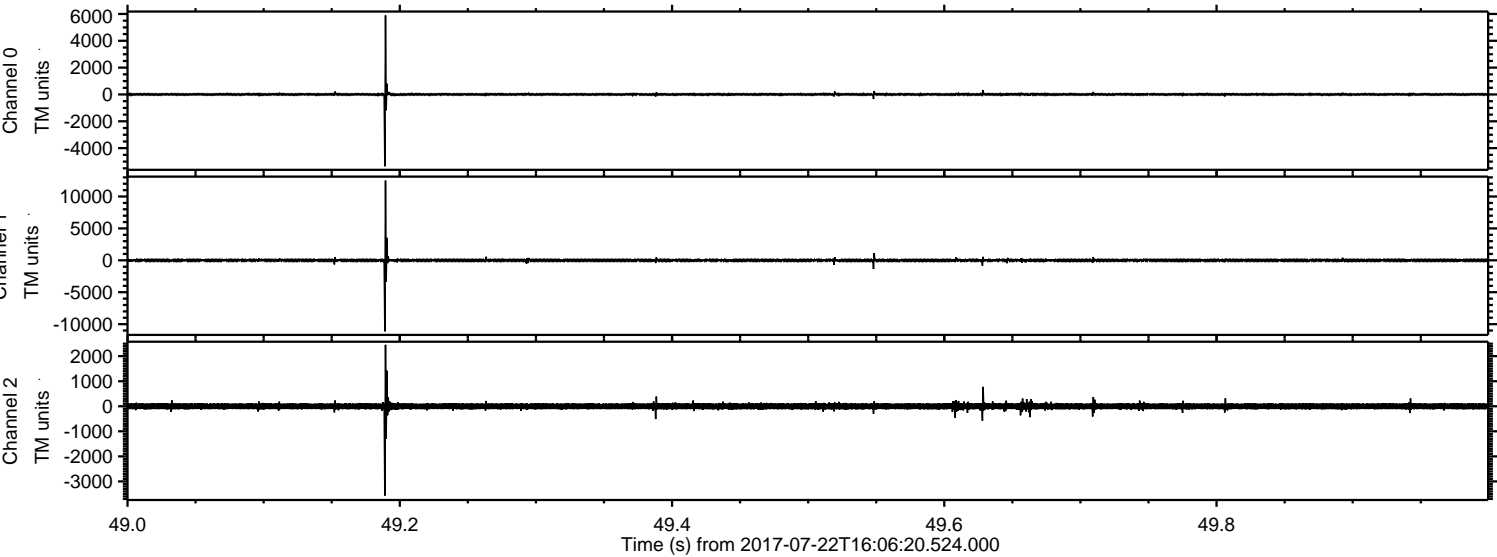


ELMAVAN 3D WAVEFORMS (Measured data sampled at 50 kHz) 51000 packets of 144 samples from 2017-07-22T16:06:20.524.000. Part 111/147

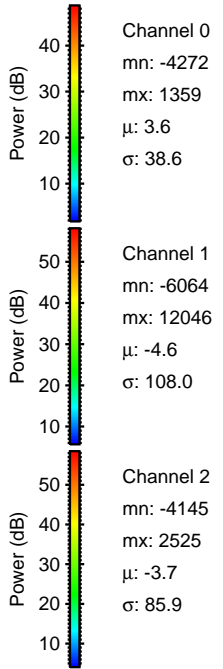
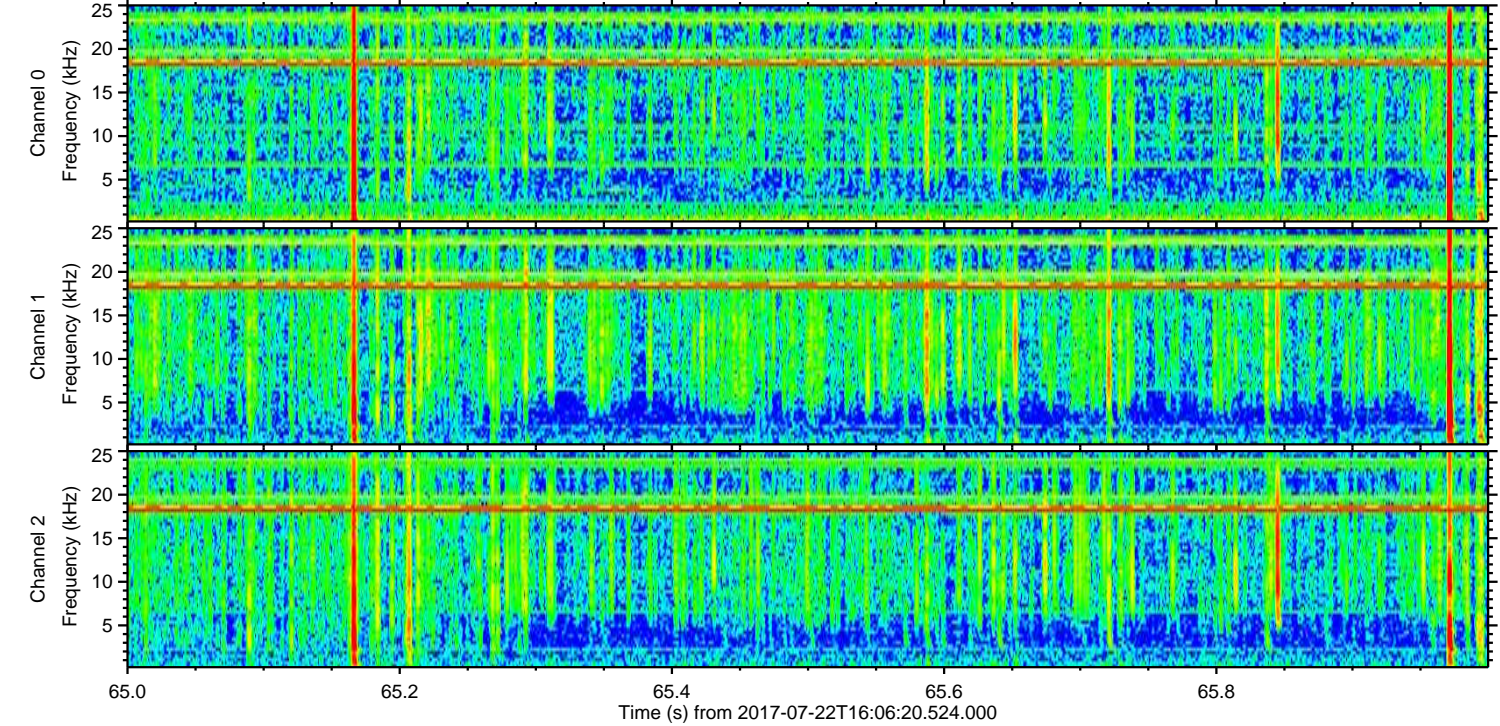
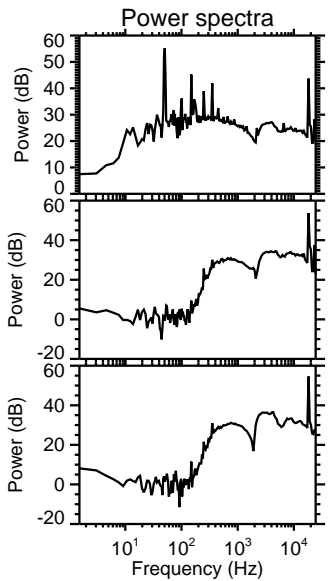
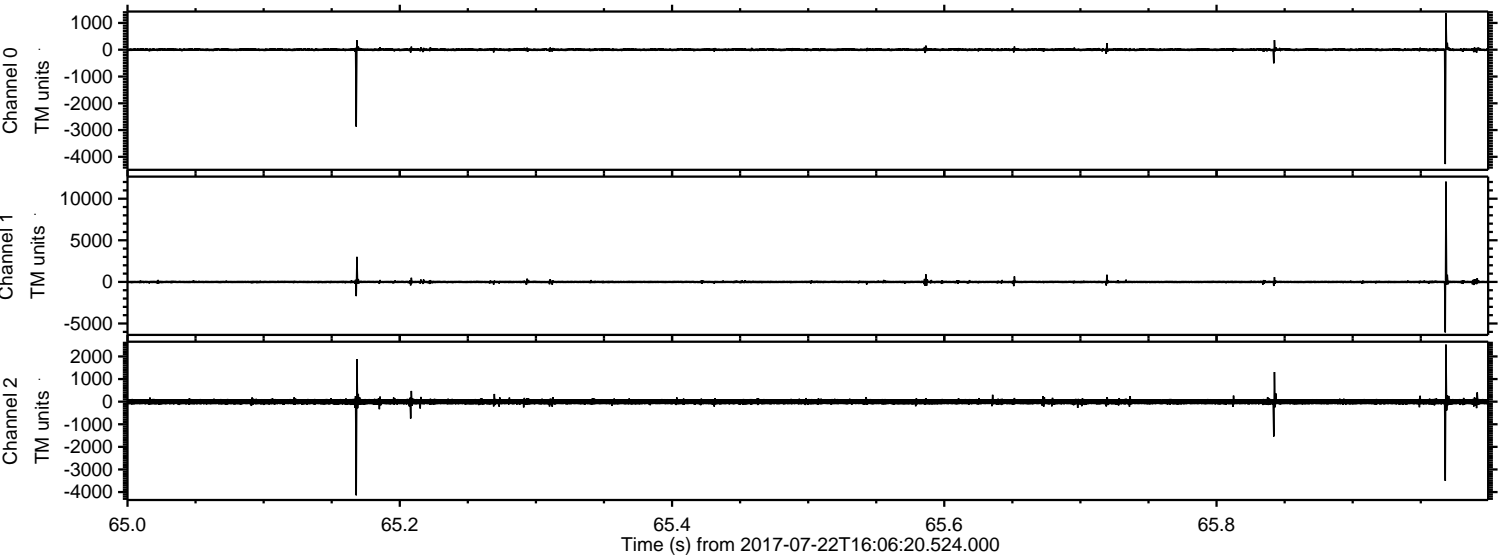
Processed Sat Jul 22 18:14:39 2017 by ELM ver.2012-10-06 from 001__elm20170722_160619__dat00.bin



Processed Sat Jul 22 18:14:40 2017 by ELM ver.2012-10-06 from 001__elm20170722_160619__dat00.bin



Processed Sat Jul 22 18:14:40 2017 by ELM ver.2012-10-06 from 001__elm20170722_160619__dat00.bin



Processed Sat Jul 22 18:14:41 2017 by ELM ver.2012-10-06 from 001__elm20170722_160619__dat00.bin

