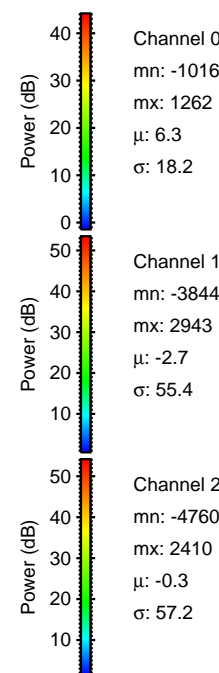
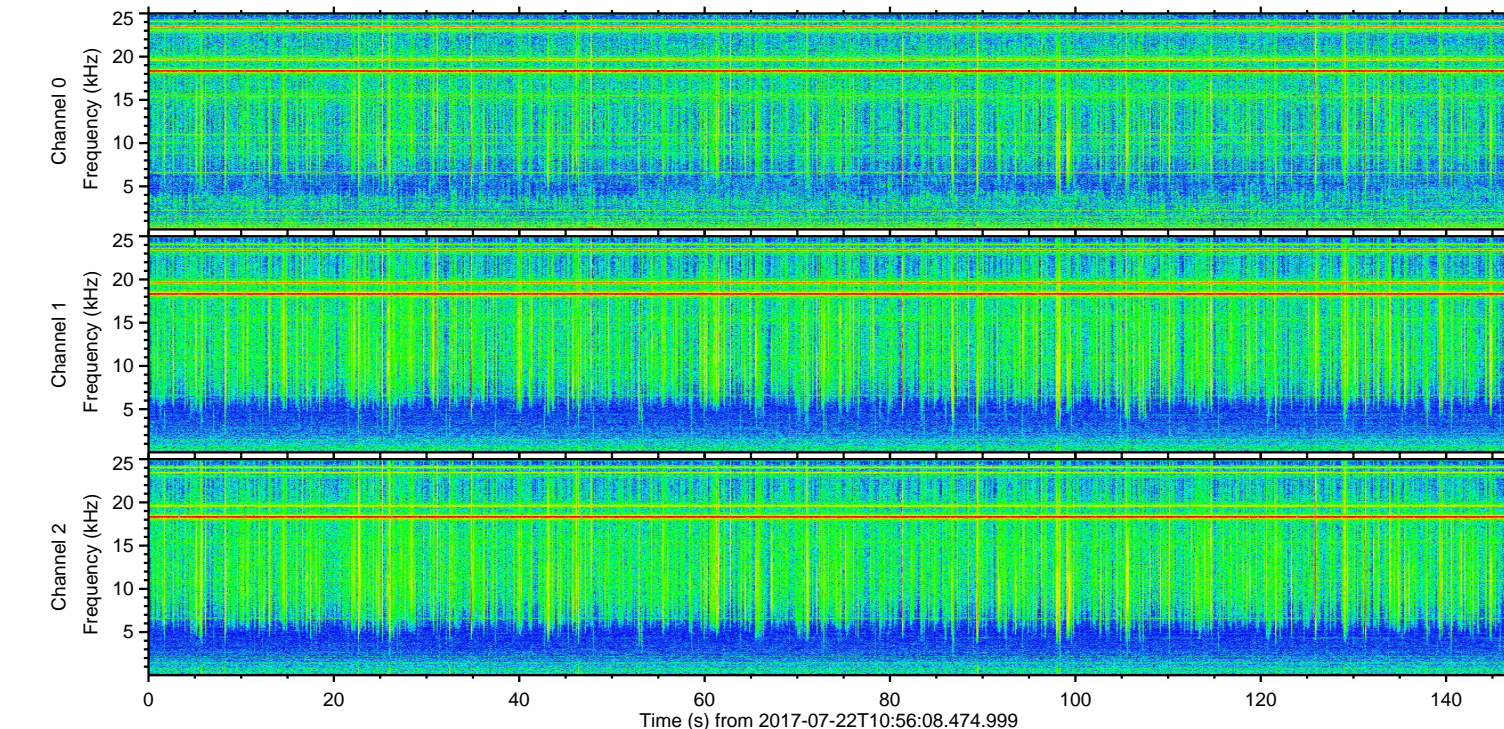
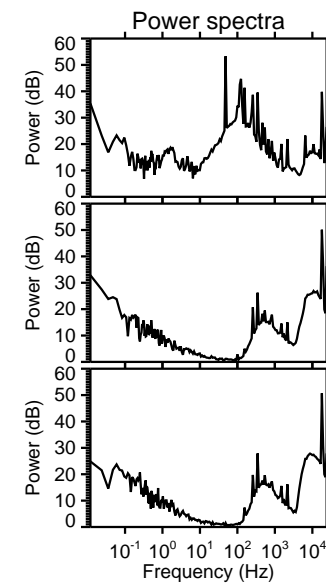
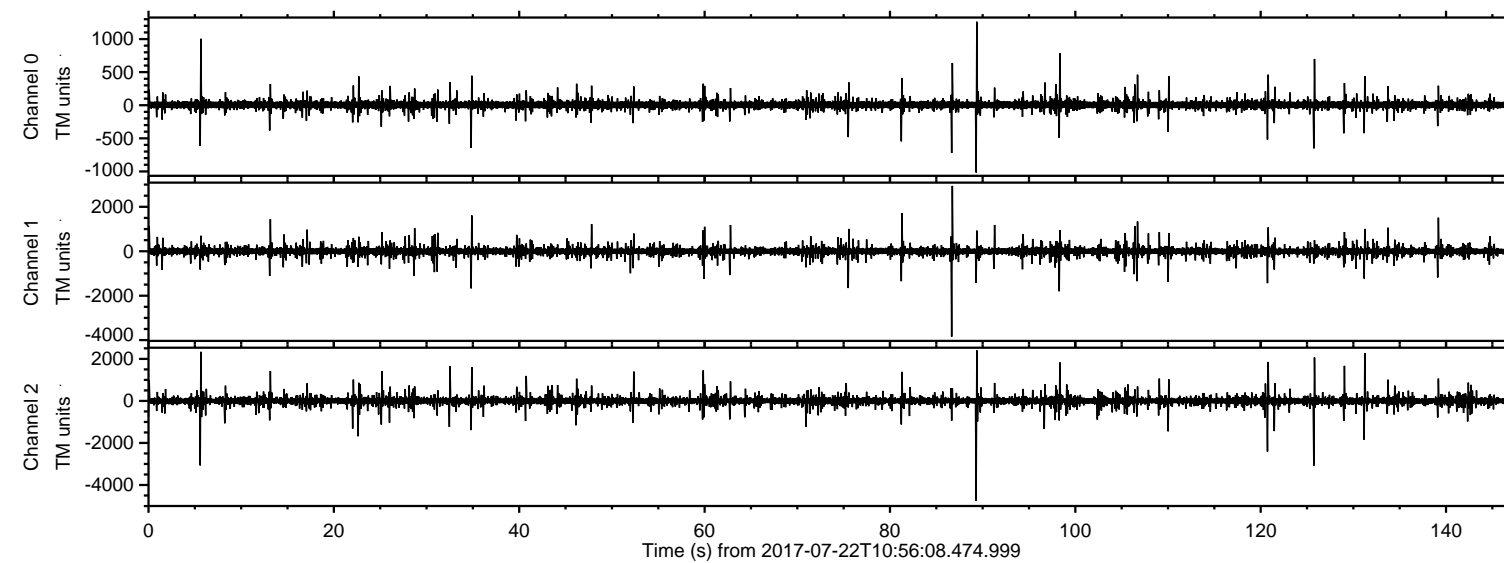
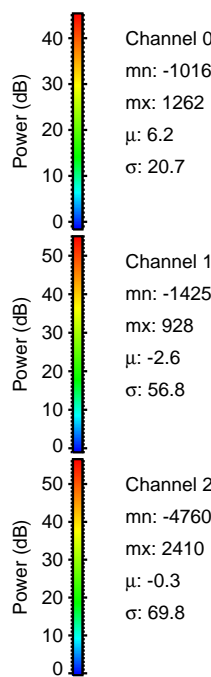
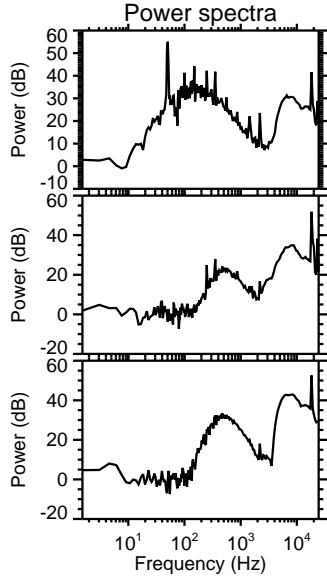
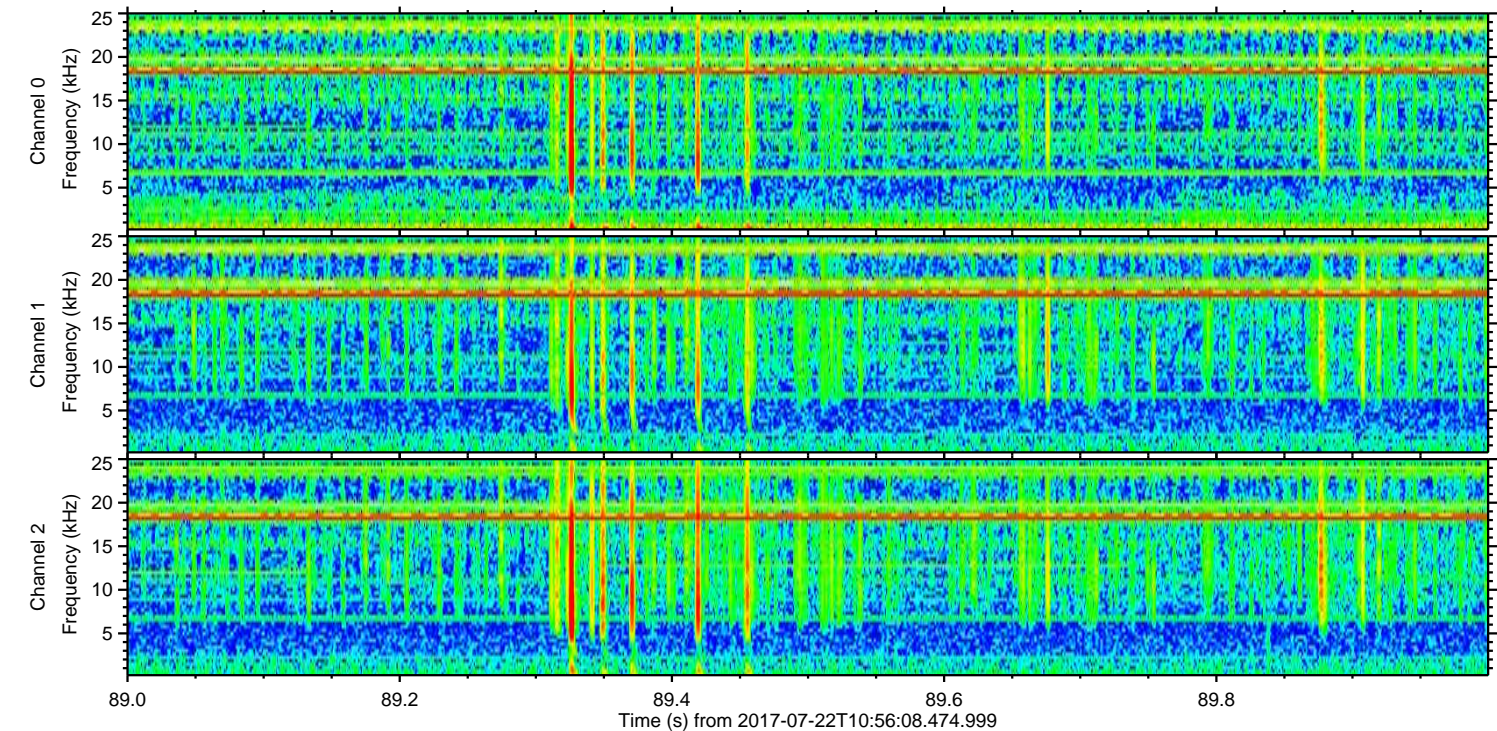
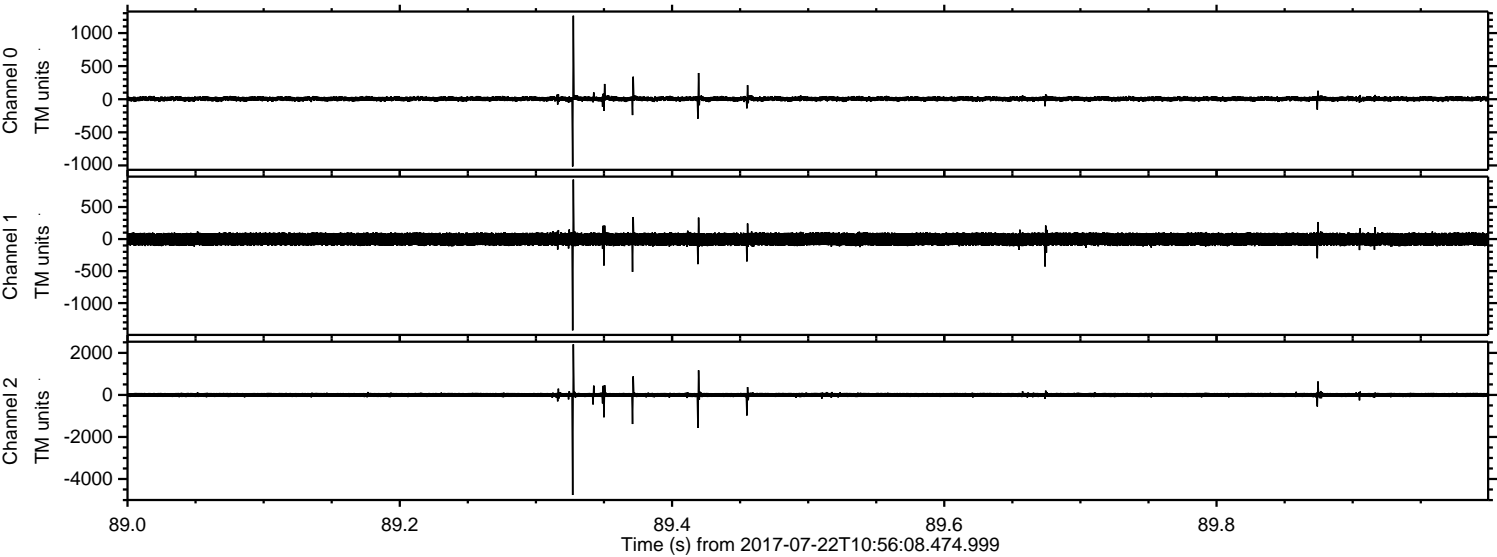


ELMAVAN 3D WAVEFORMS (Measured data sampled at 50 kHz) 51000 packets of 144 samples from 2017-07-22T10:56:08.474.999.

Processed Sat Jul 22 13:03:57 2017 by ELM ver.2012-10-06 from 001__elm20170722_105607__dat00.bin



Processed Sat Jul 22 13:04:05 2017 by ELM ver.2012-10-06 from 001__elm20170722_105607__dat00.bin

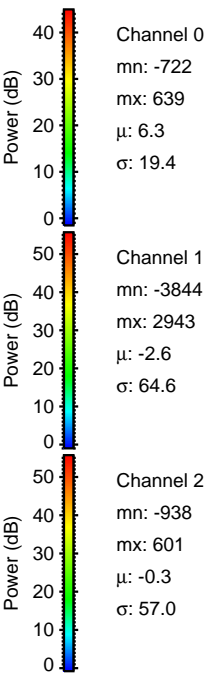
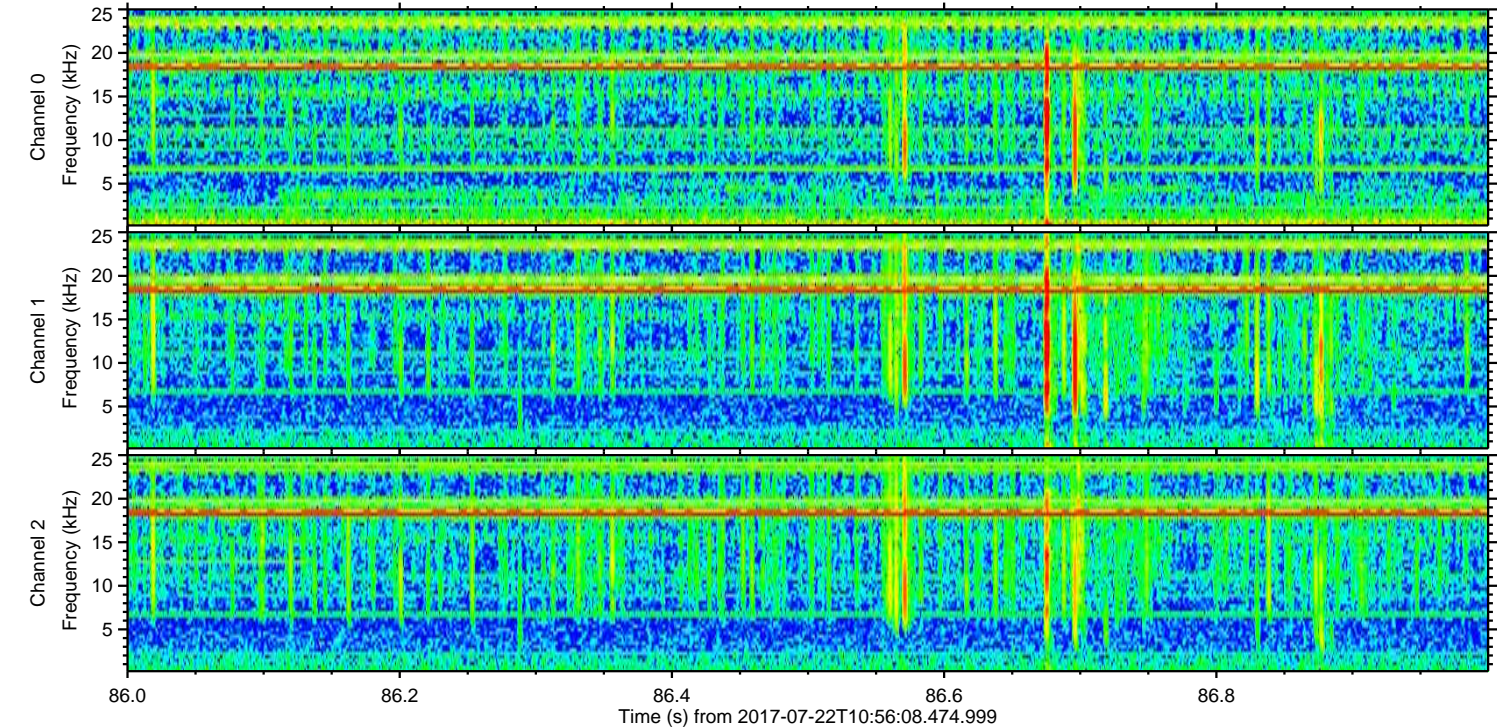
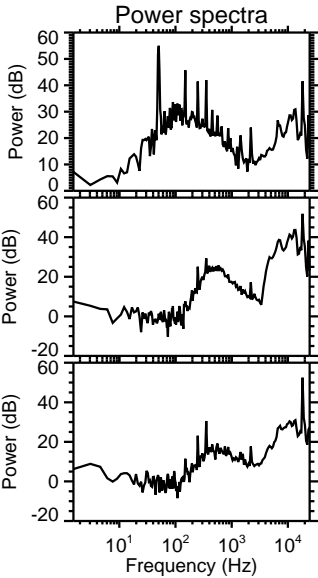
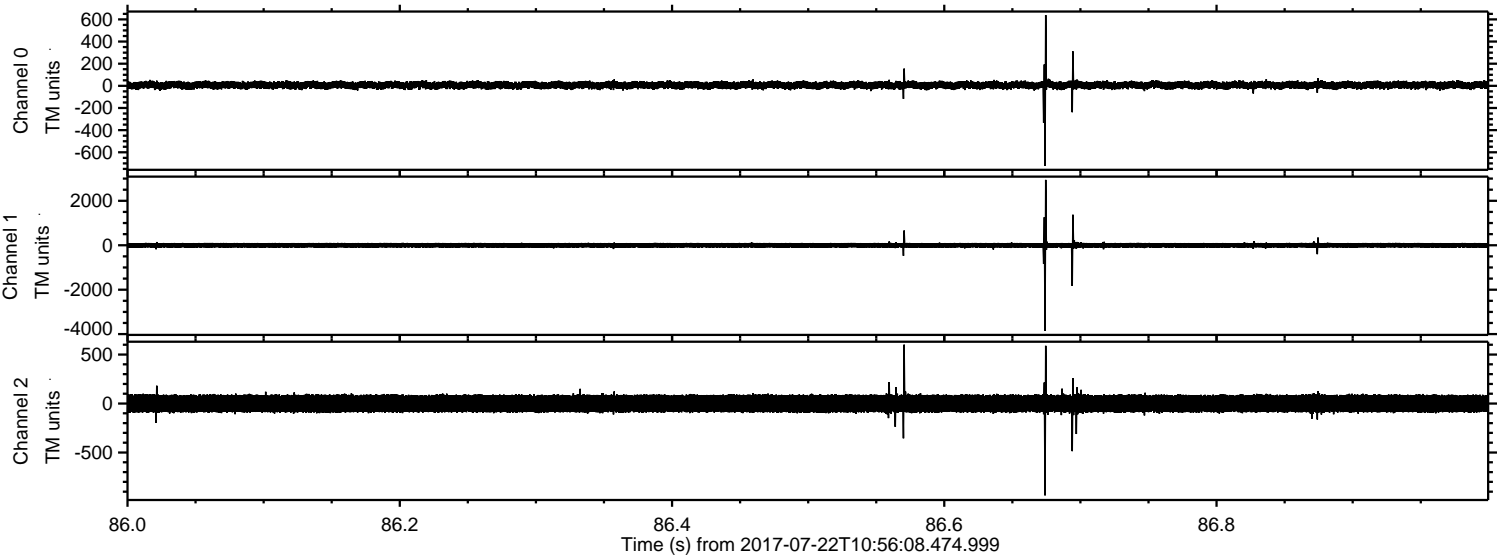


Channel 0
mn: -1016
mx: 1262
 μ : 6.2
 σ : 20.7

Channel 1
mn: -1425
mx: 928
 μ : -2.6
 σ : 56.8

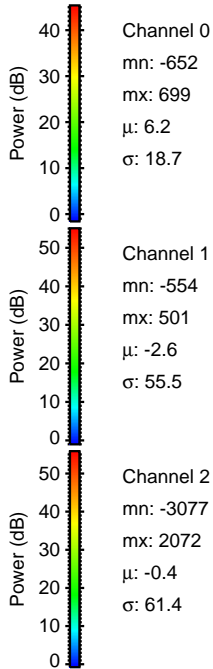
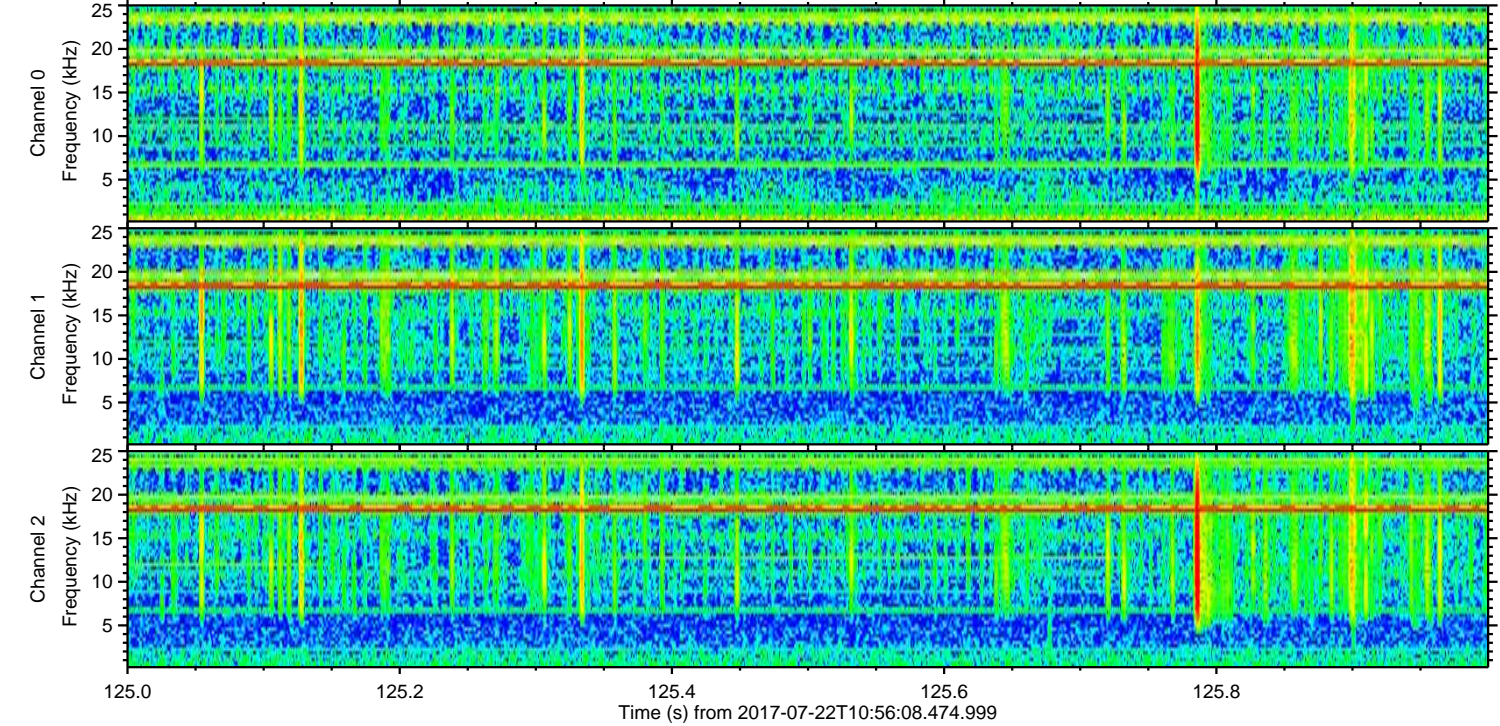
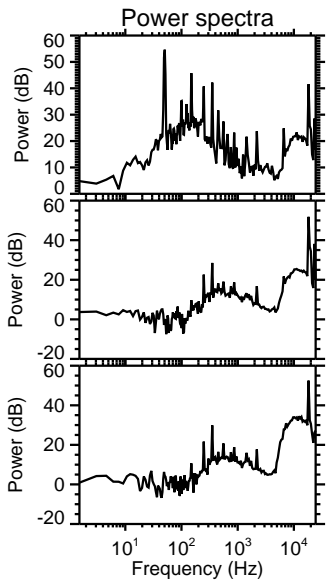
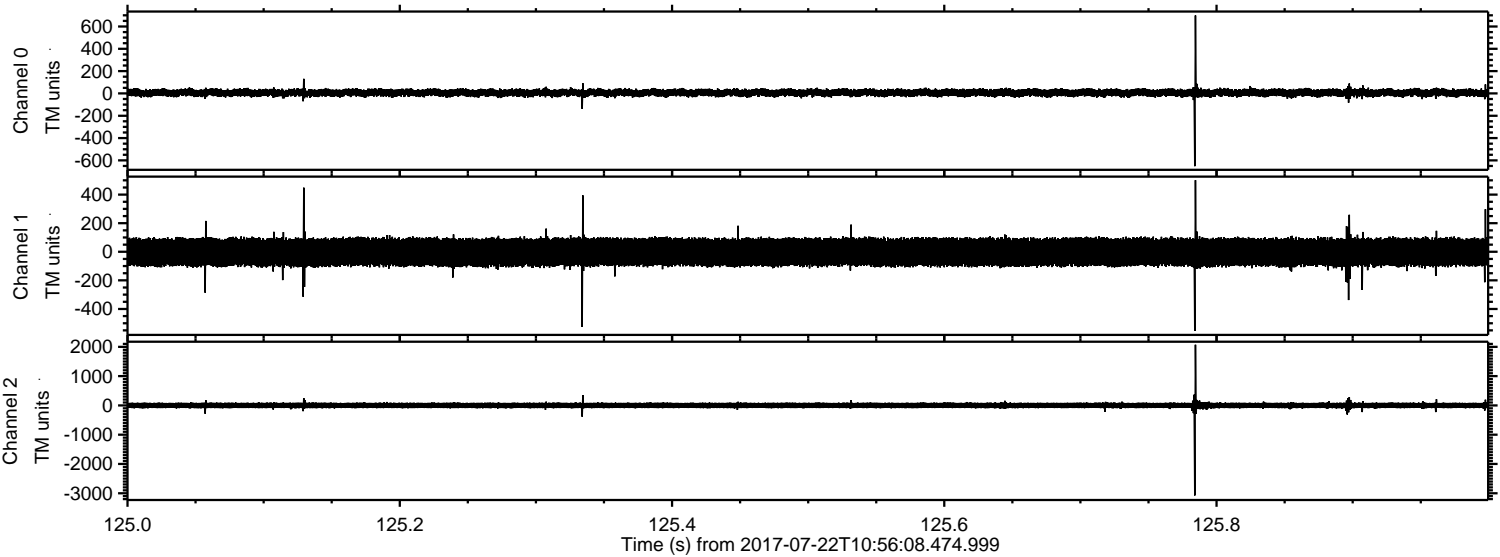
Channel 2
mn: -4760
mx: 2410
 μ : -0.3
 σ : 69.8

Processed Sat Jul 22 13:04:06 2017 by ELM ver.2012-10-06 from 001__elm20170722_105607__dat00.bin

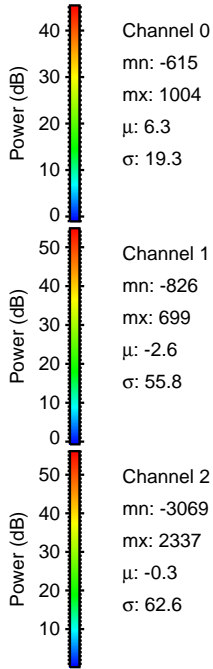
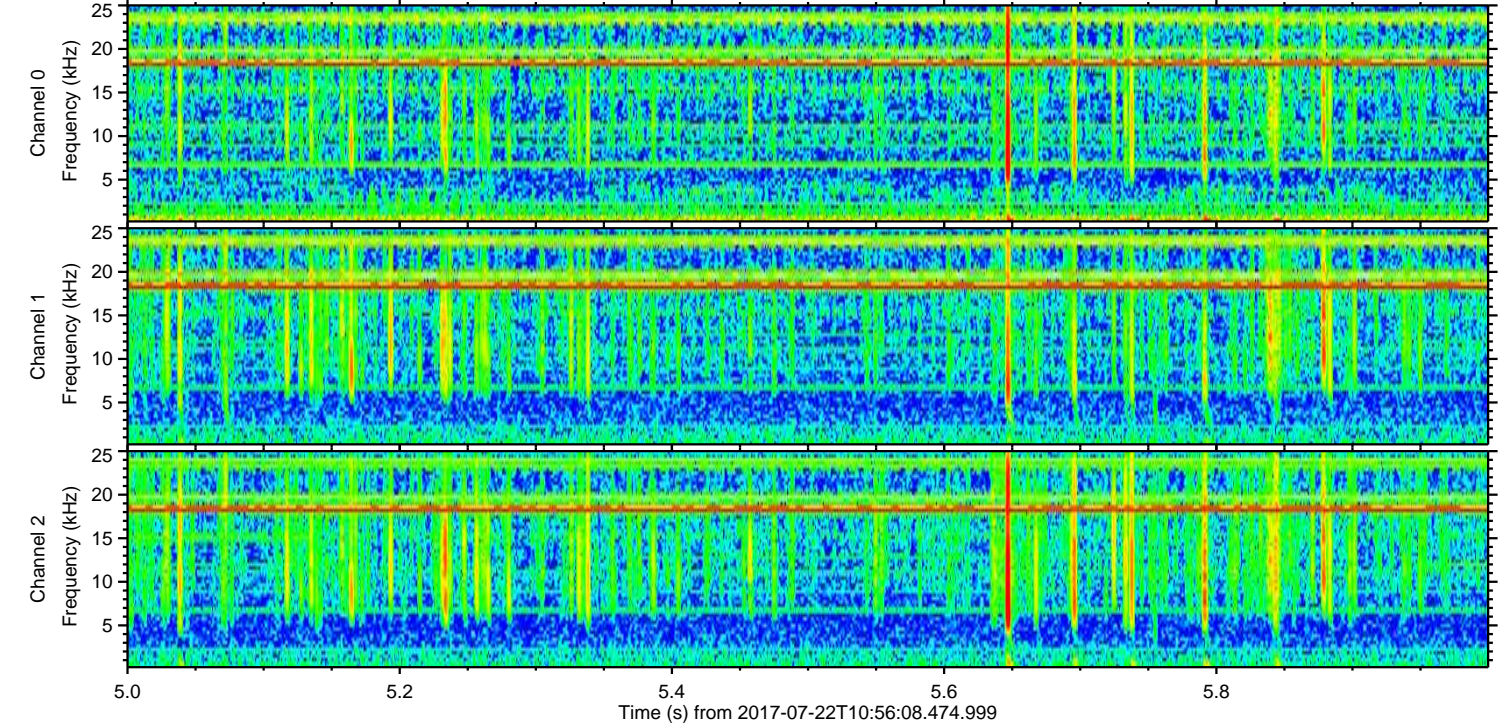
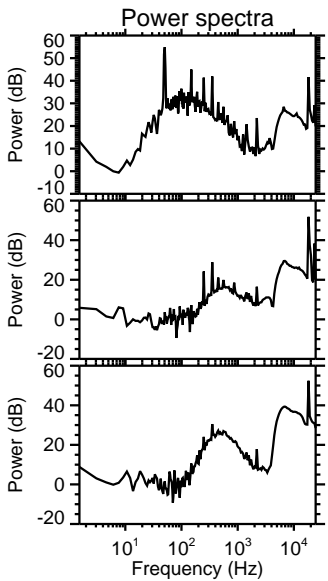
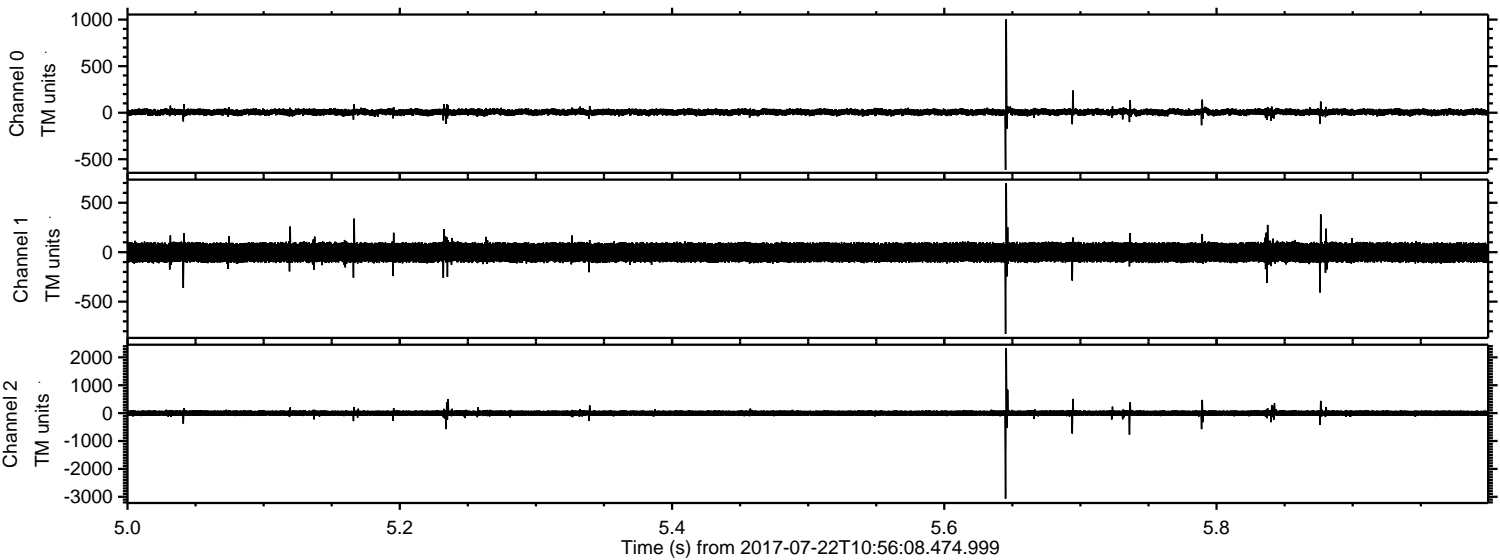


ELMAVAN 3D WAVEFORMS (Measured data sampled at 50 kHz) 51000 packets of 144 samples from 2017-07-22T10:56:08.474.999. Part 126/147

Processed Sat Jul 22 13:04:06 2017 by ELM ver.2012-10-06 from 001__elm20170722_105607__dat00.bin

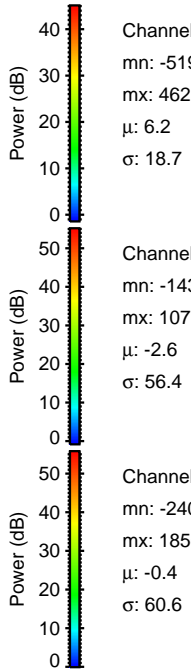
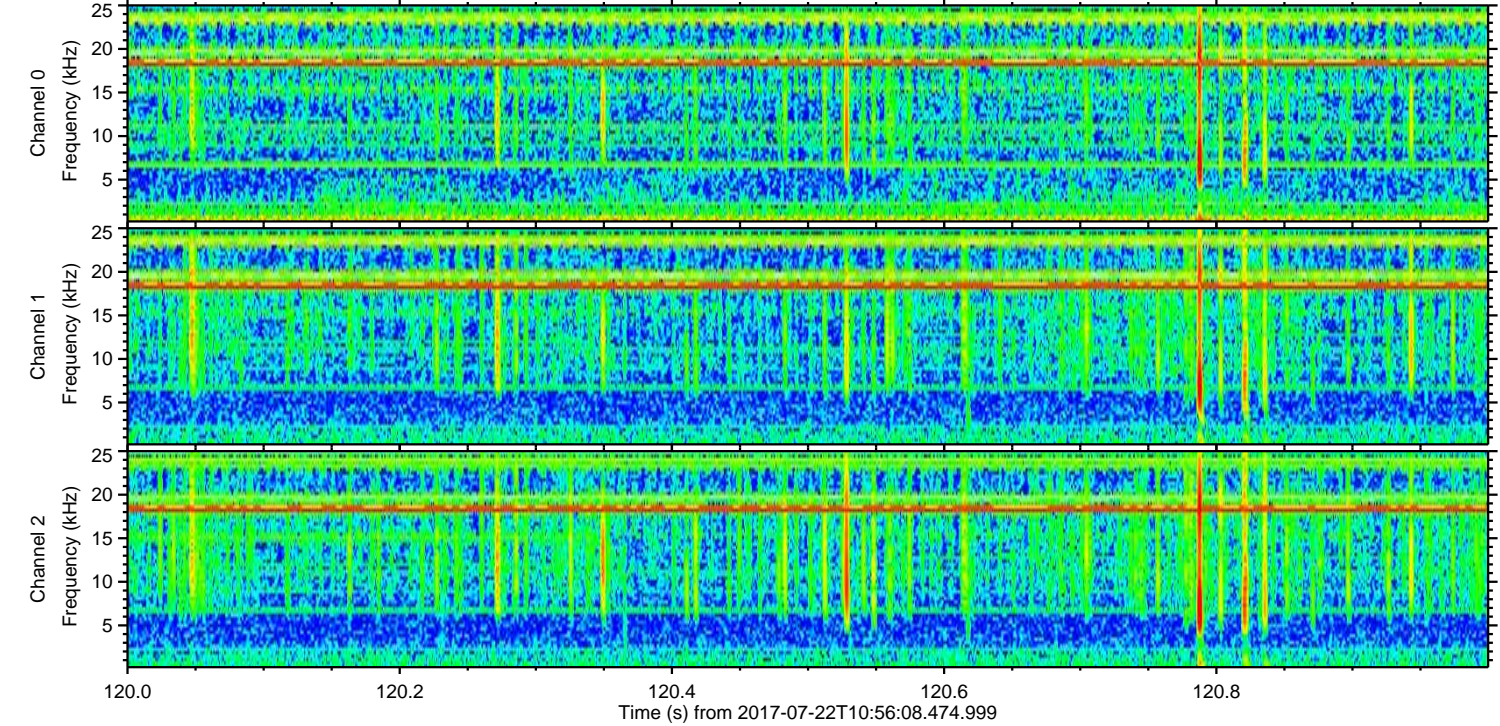
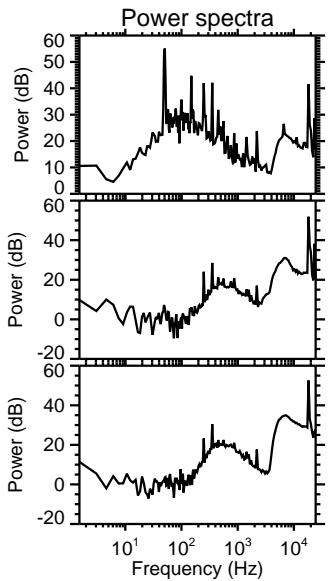
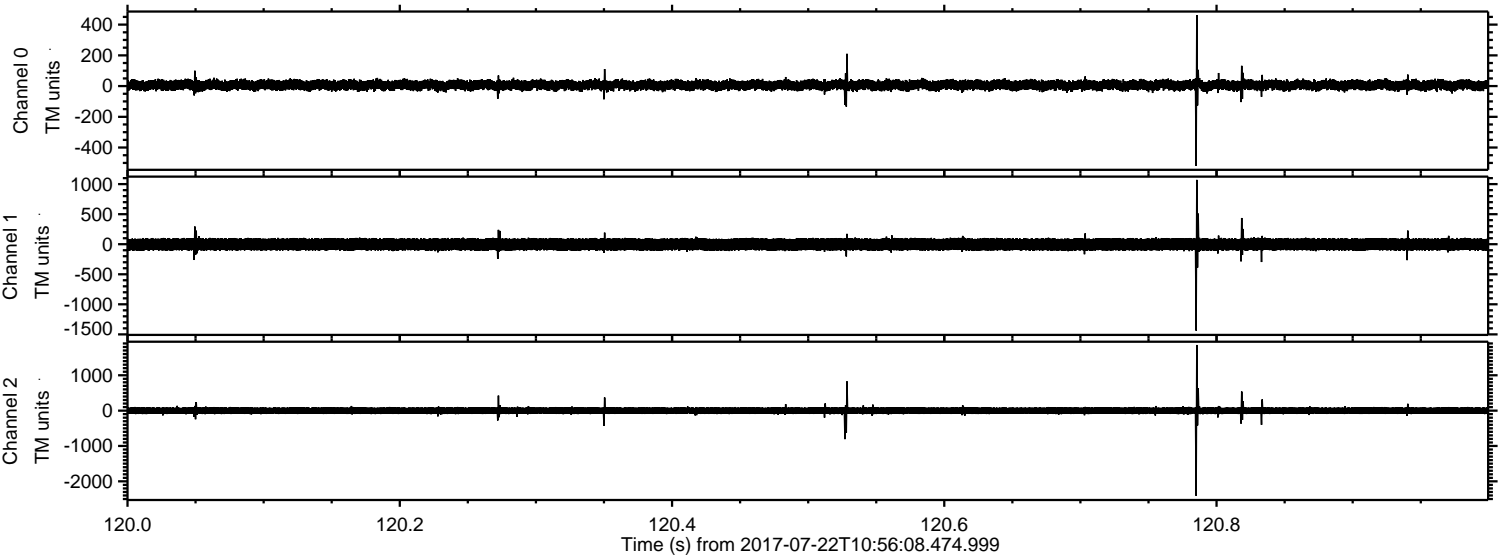


Processed Sat Jul 22 13:04:07 2017 by ELM ver.2012-10-06 from 001__elm20170722_105607__dat00.bin



ELMAVAN 3D WAVEFORMS (Measured data sampled at 50 kHz) 51000 packets of 144 samples from 2017-07-22T10:56:08.474.999. Part 121/147

Processed Sat Jul 22 13:04:08 2017 by ELM ver.2012-10-06 from 001__elm20170722_105607__dat00.bin



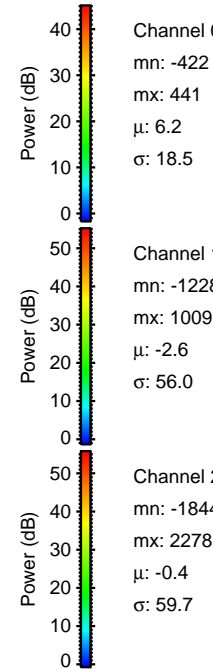
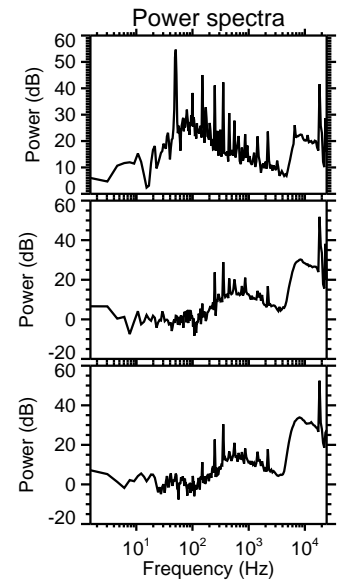
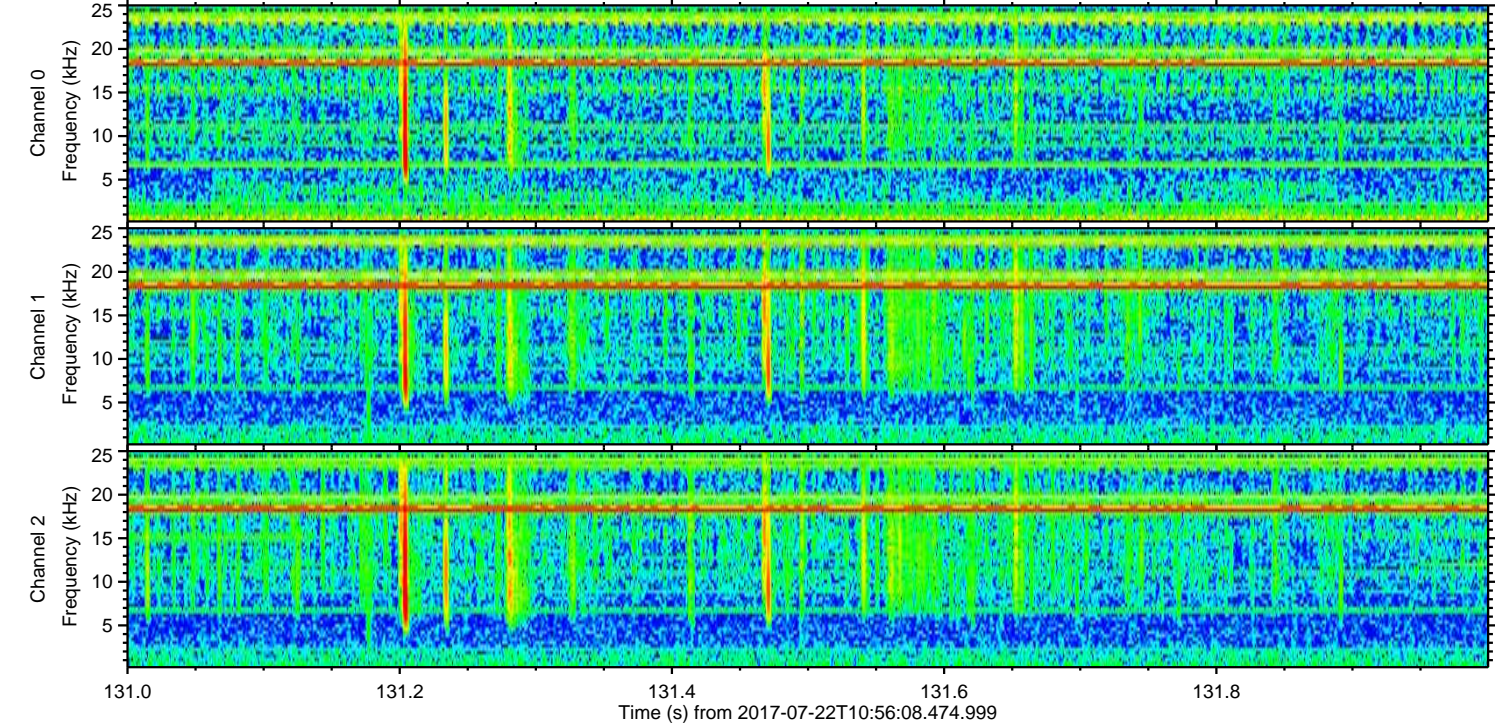
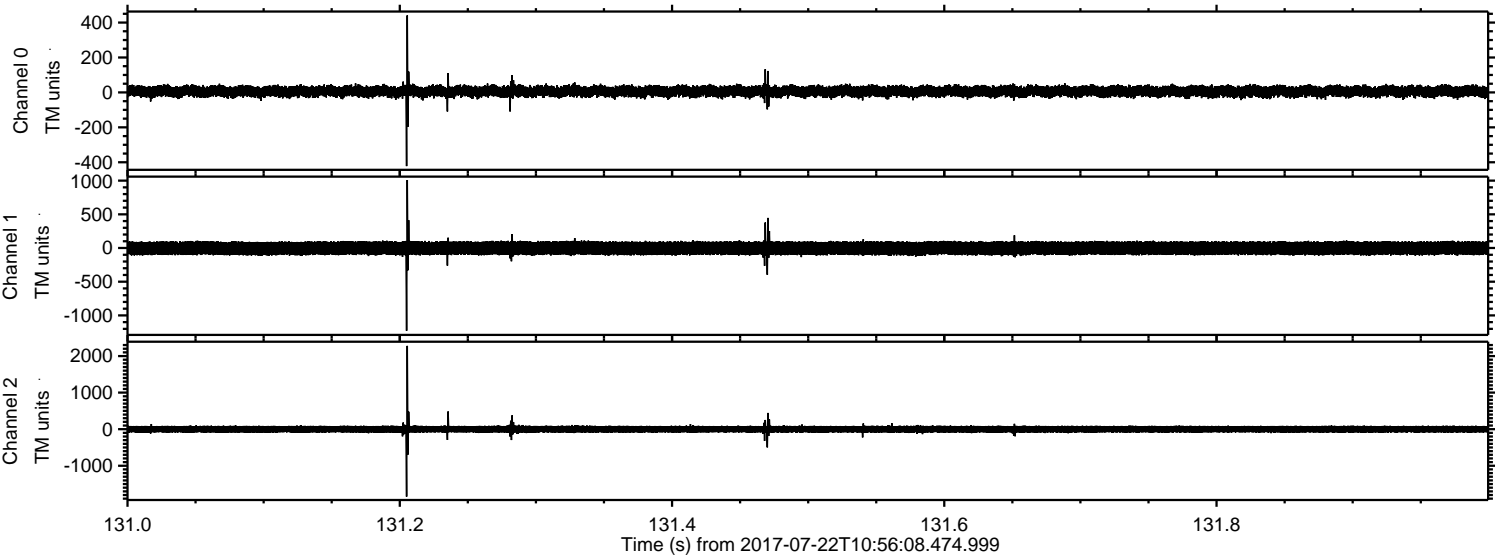
Channel 0
mn: -519
mx: 462
 μ : 6.2
 σ : 18.7

Channel 1
mn: -1437
mx: 1071
 μ : -2.6
 σ : 56.4

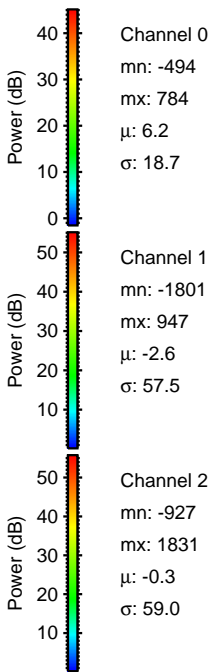
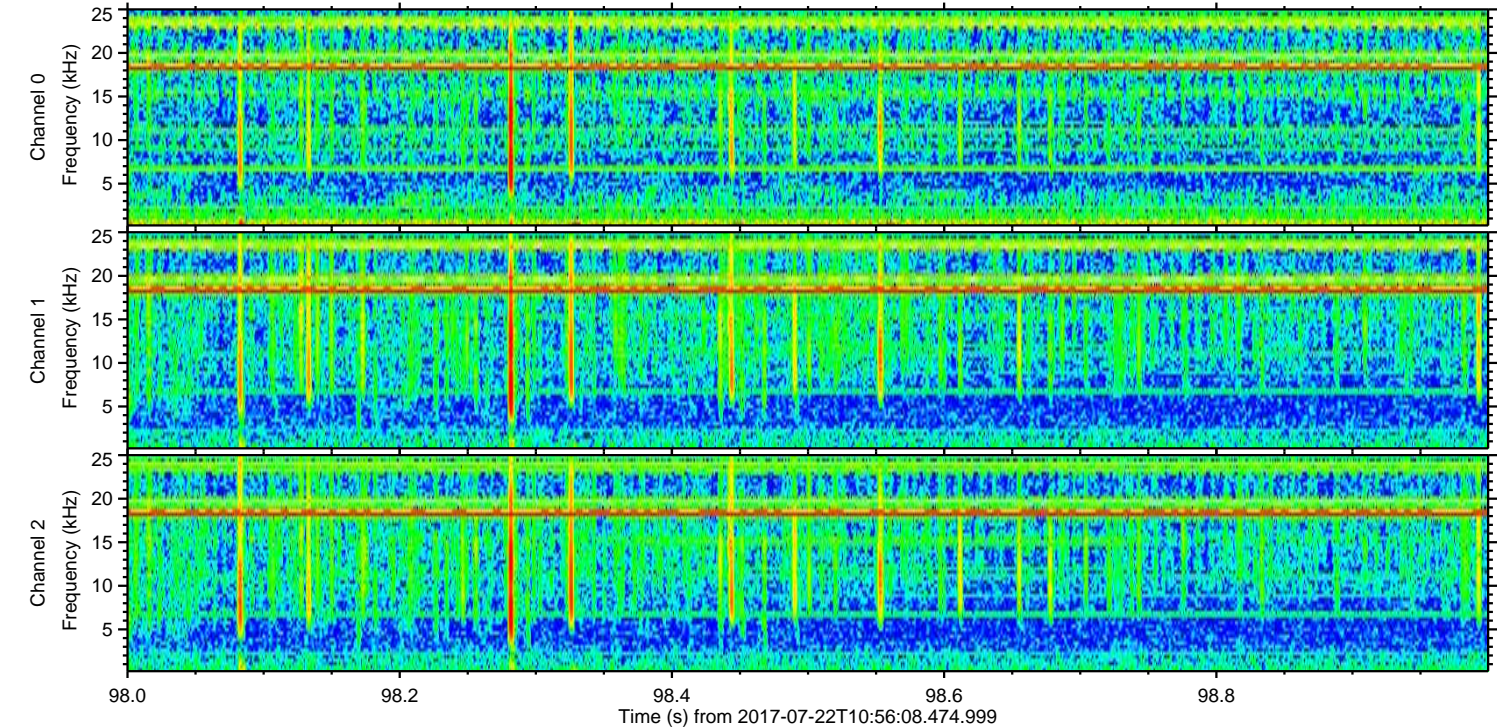
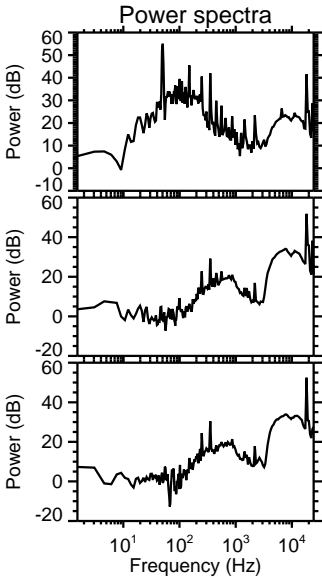
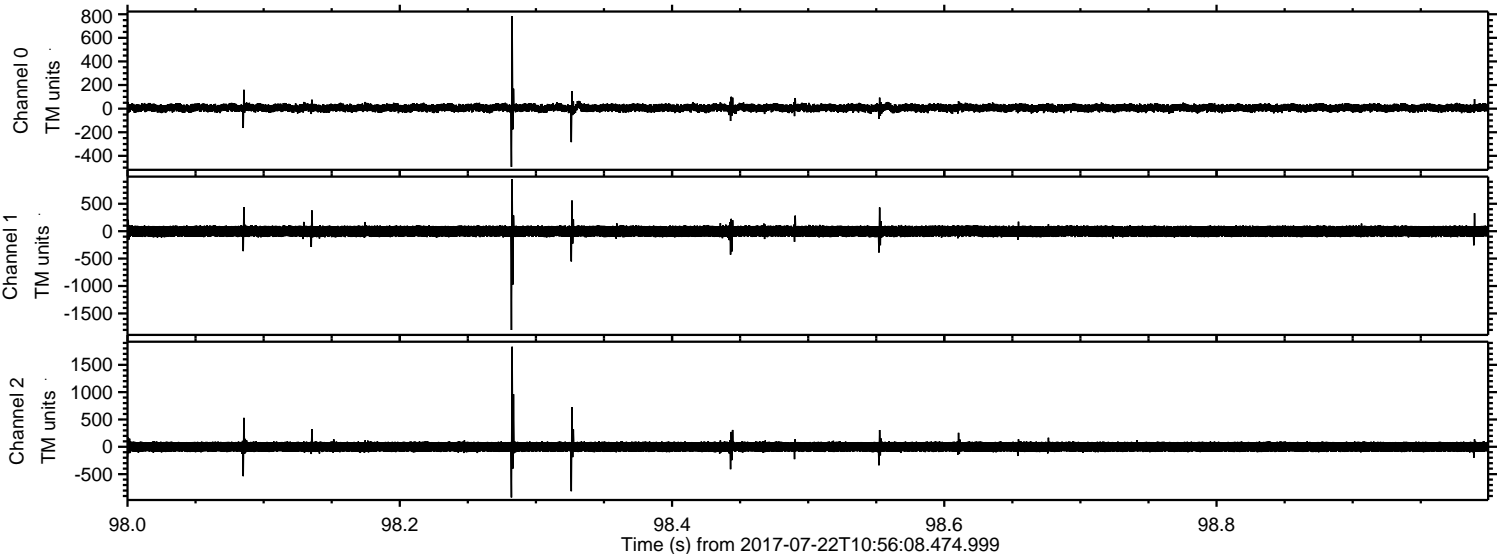
Channel 2
mn: -2407
mx: 1856
 μ : -0.4
 σ : 60.6

ELMAVAN 3D WAVEFORMS (Measured data sampled at 50 kHz) 51000 packets of 144 samples from 2017-07-22T10:56:08.474.999. Part 132/147

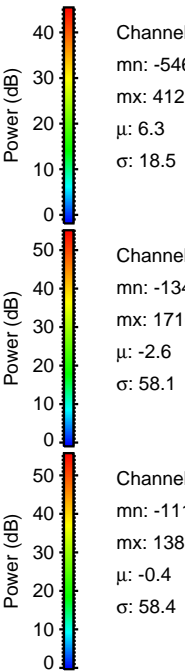
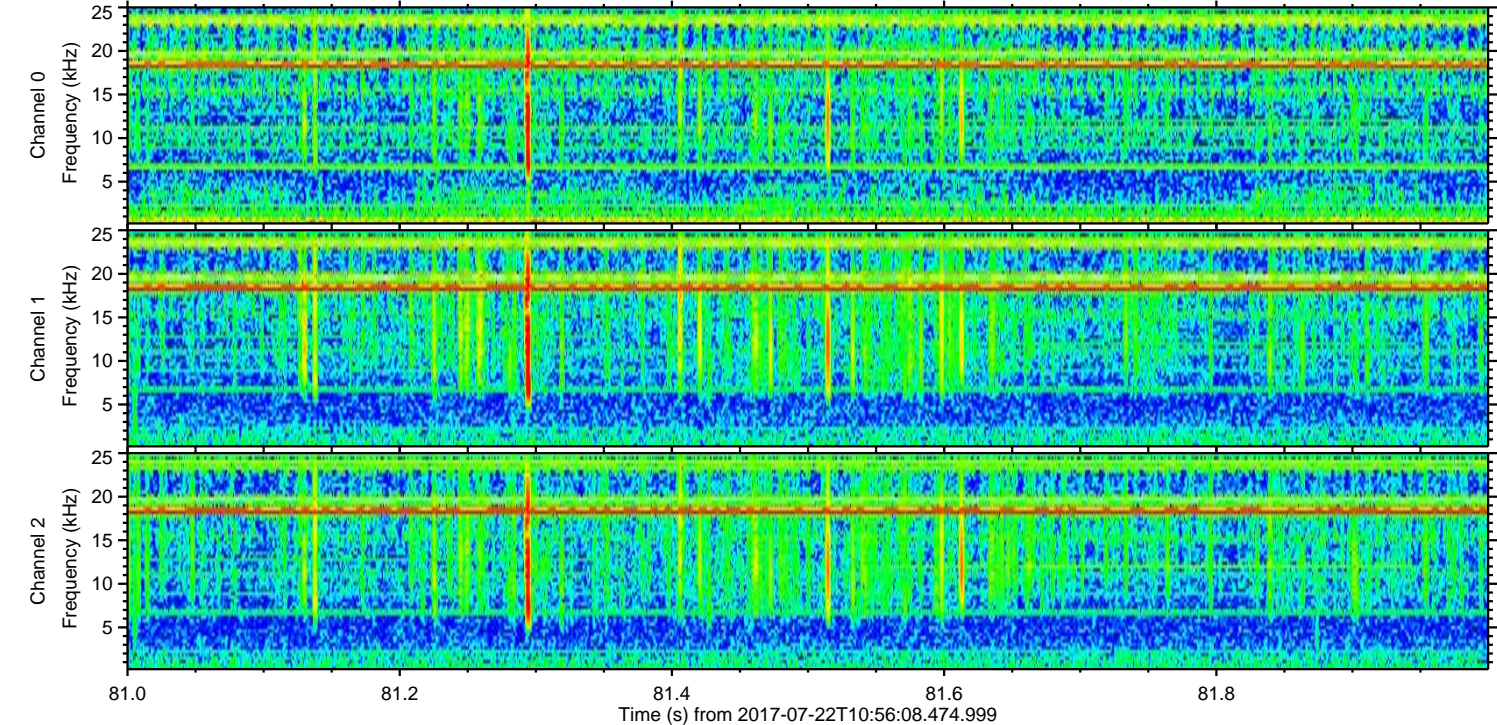
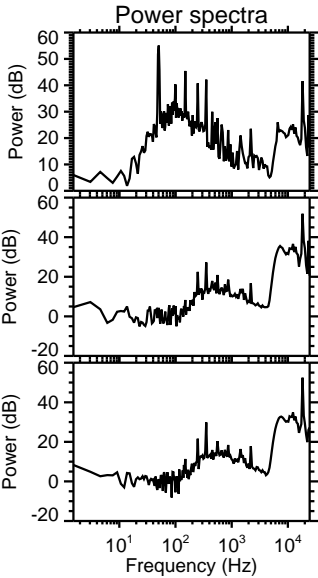
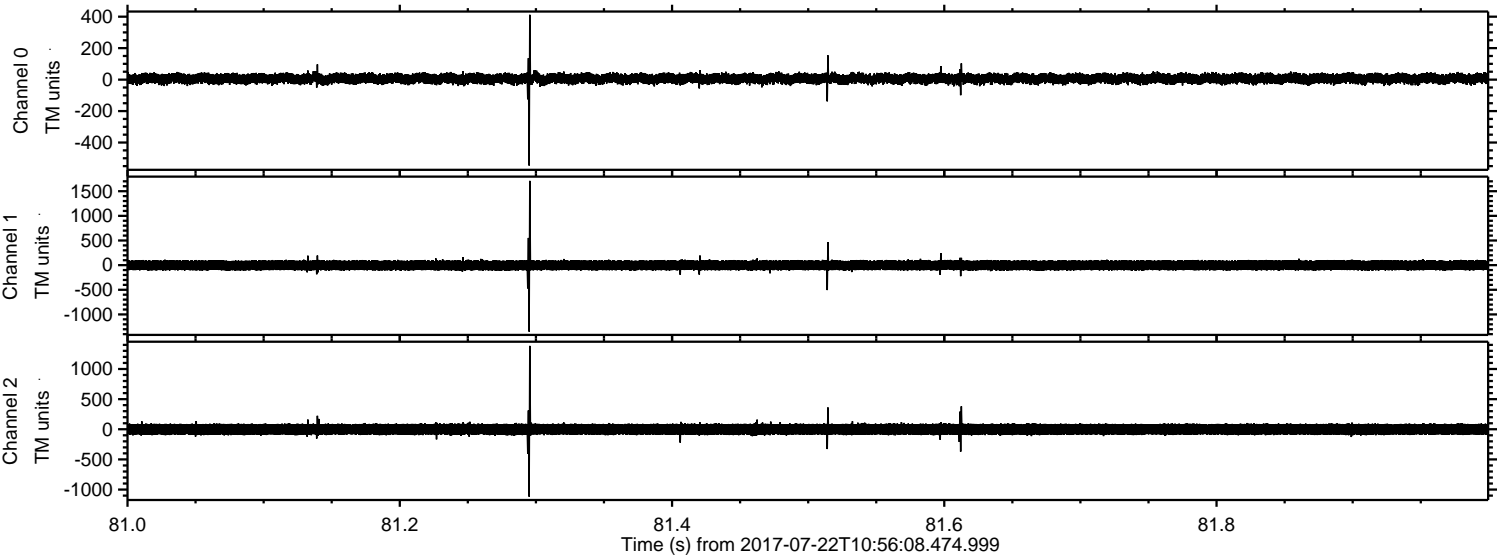
Processed Sat Jul 22 13:04:09 2017 by ELM ver.2012-10-06 from 001__elm20170722_105607__dat00.bin



Processed Sat Jul 22 13:04:09 2017 by ELM ver.2012-10-06 from 001__elm20170722_105607__dat00.bin



Processed Sat Jul 22 13:04:10 2017 by ELM ver.2012-10-06 from 001__elm20170722_105607__dat00.bin

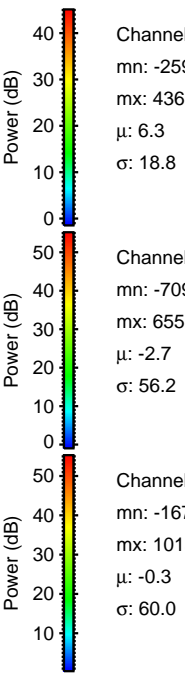
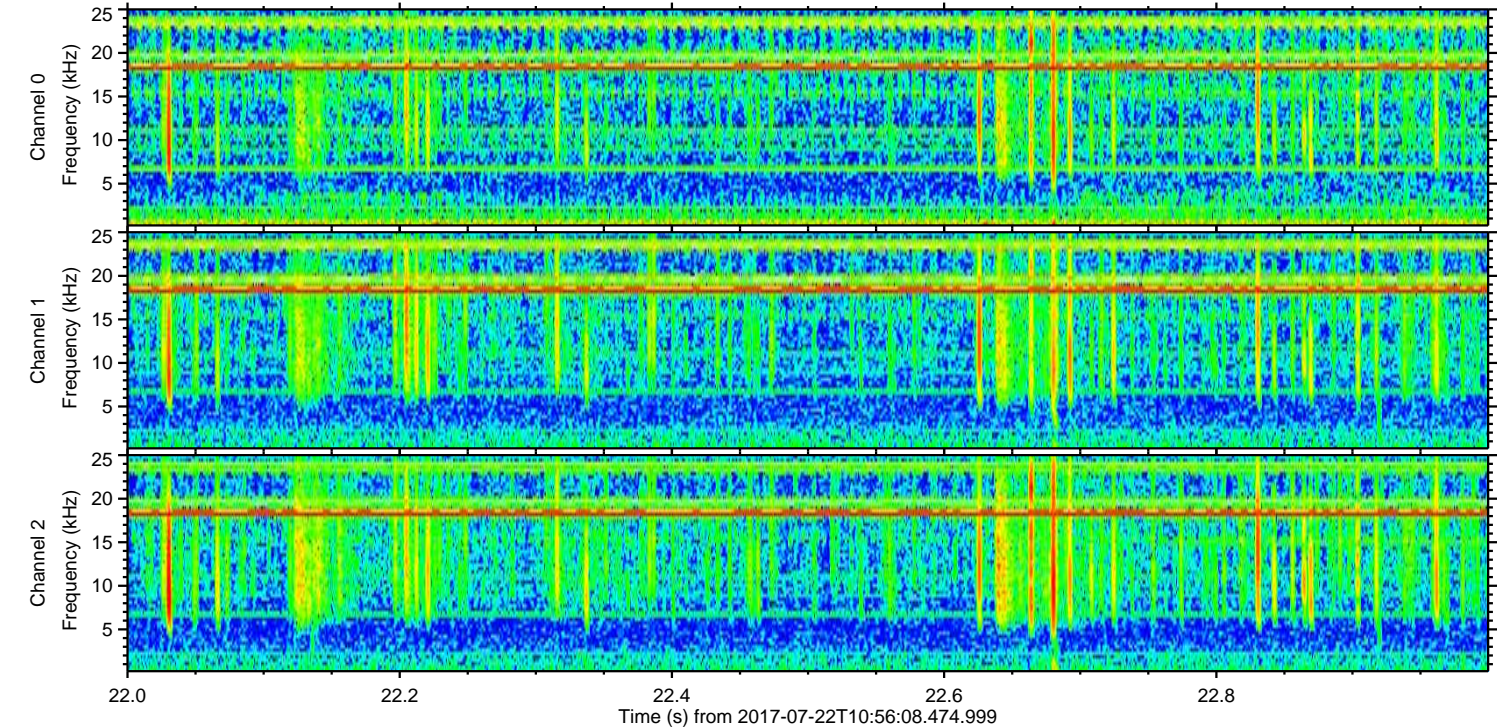
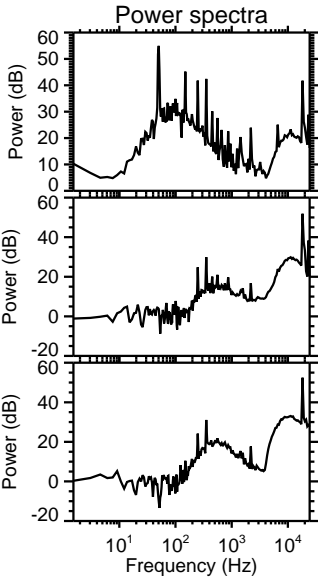
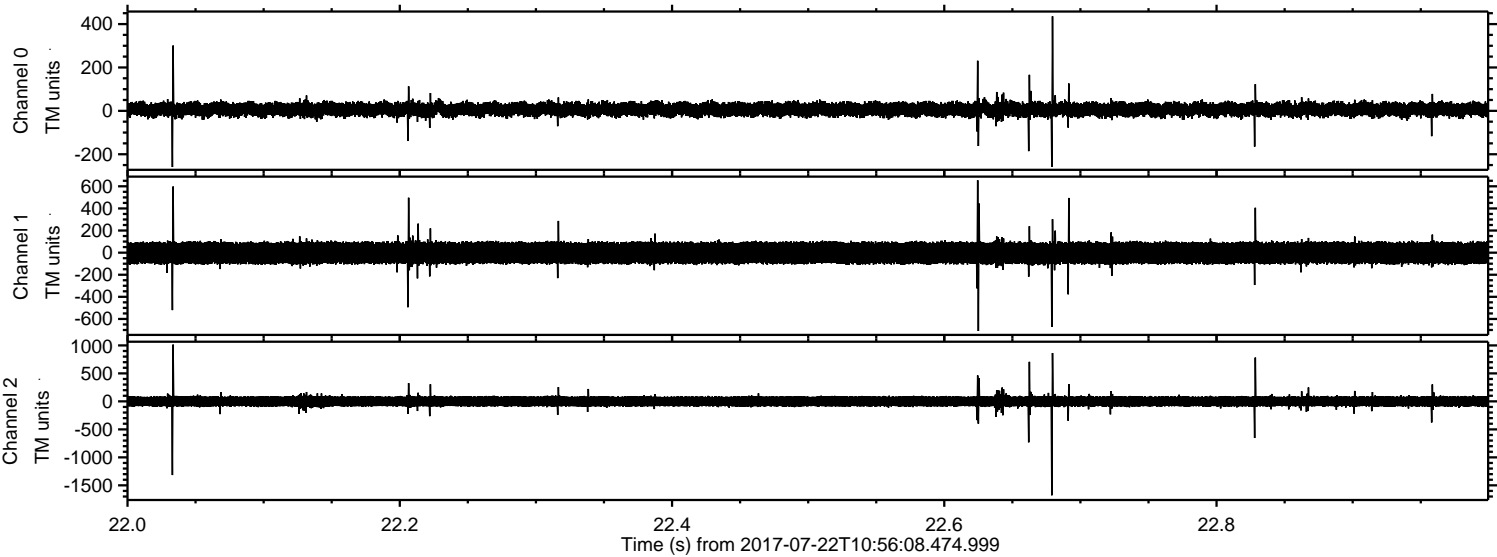


Channel 0
mn: -546
mx: 412
 μ : 6.3
 σ : 18.5

Channel 1
mn: -1348
mx: 1710
 μ : -2.6
 σ : 58.1

Channel 2
mn: -1117
mx: 1383
 μ : -0.4
 σ : 58.4

Processed Sat Jul 22 13:04:11 2017 by ELM ver.2012-10-06 from 001__elm20170722_105607__dat00.bin



Channel 0
mn: -259
mx: 436
 μ : 6.3
 σ : 18.8

Channel 1
mn: -709
mx: 655
 μ : -2.7
 σ : 56.2

Channel 2
mn: -1678
mx: 1015
 μ : -0.3
 σ : 60.0

