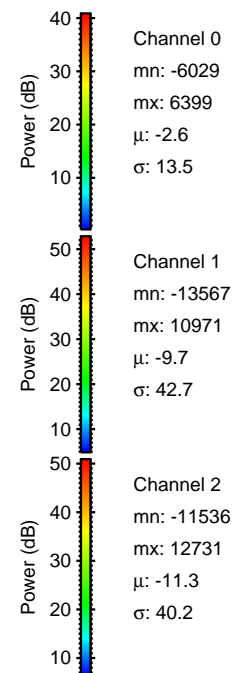
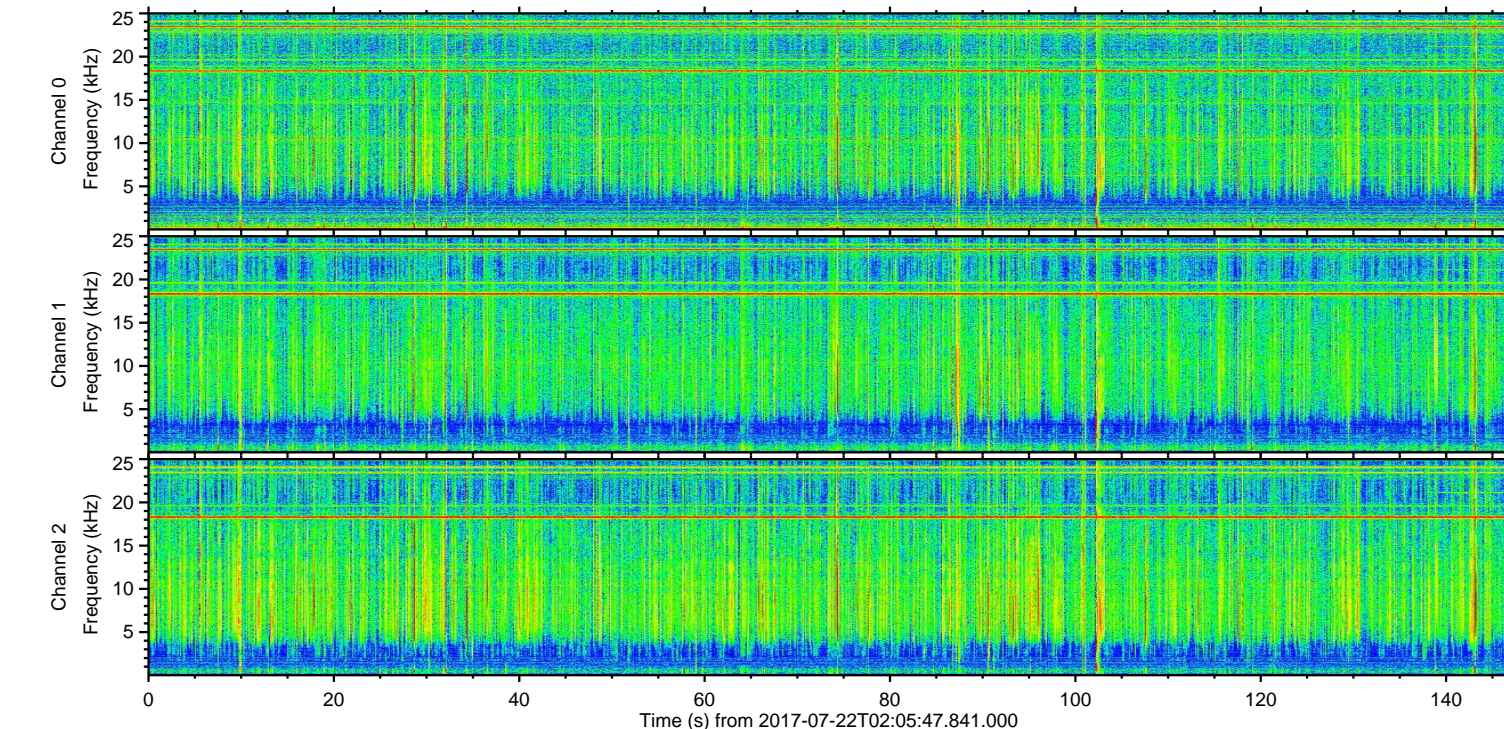
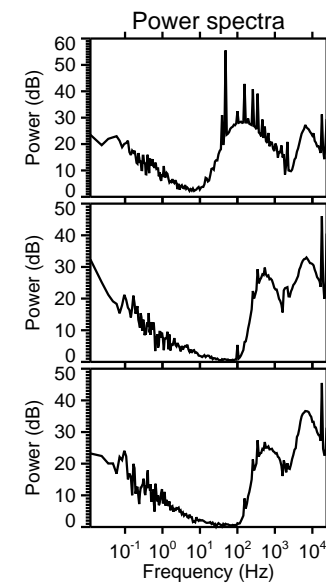
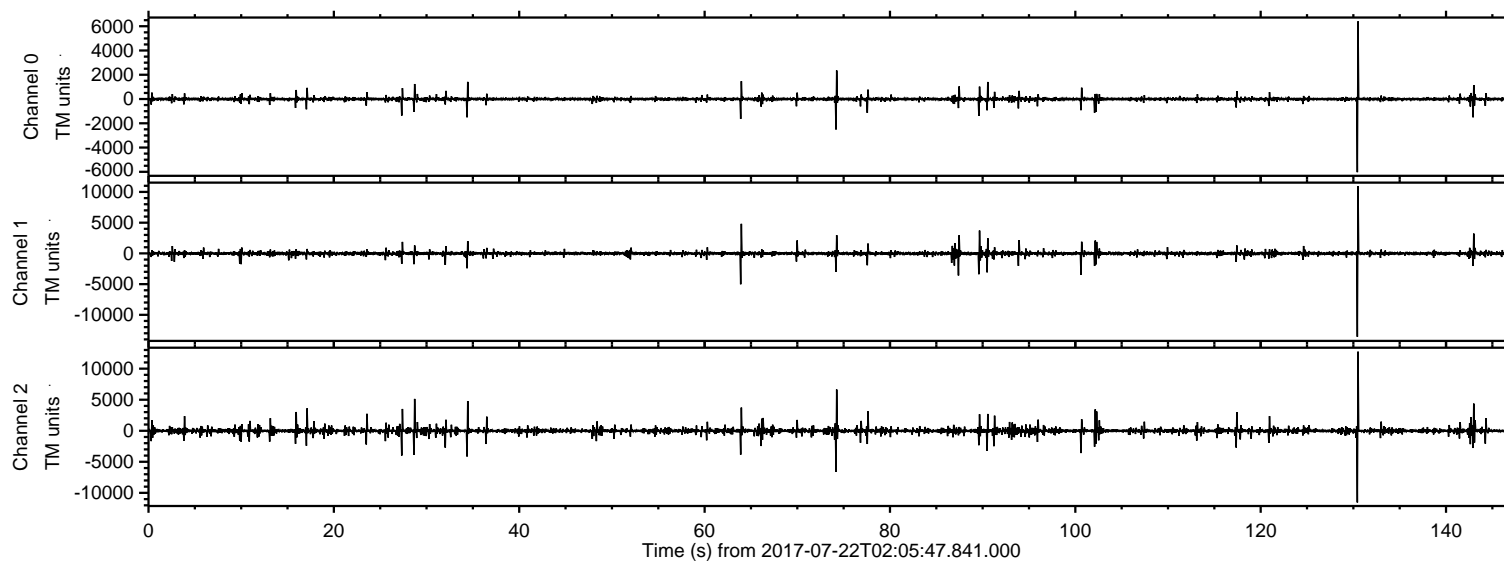


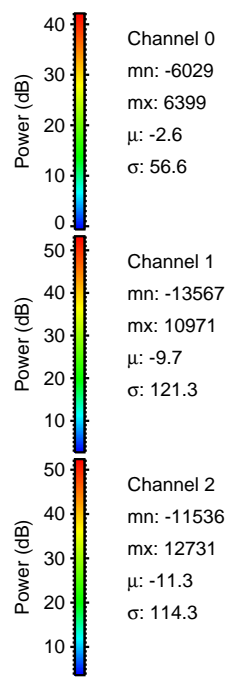
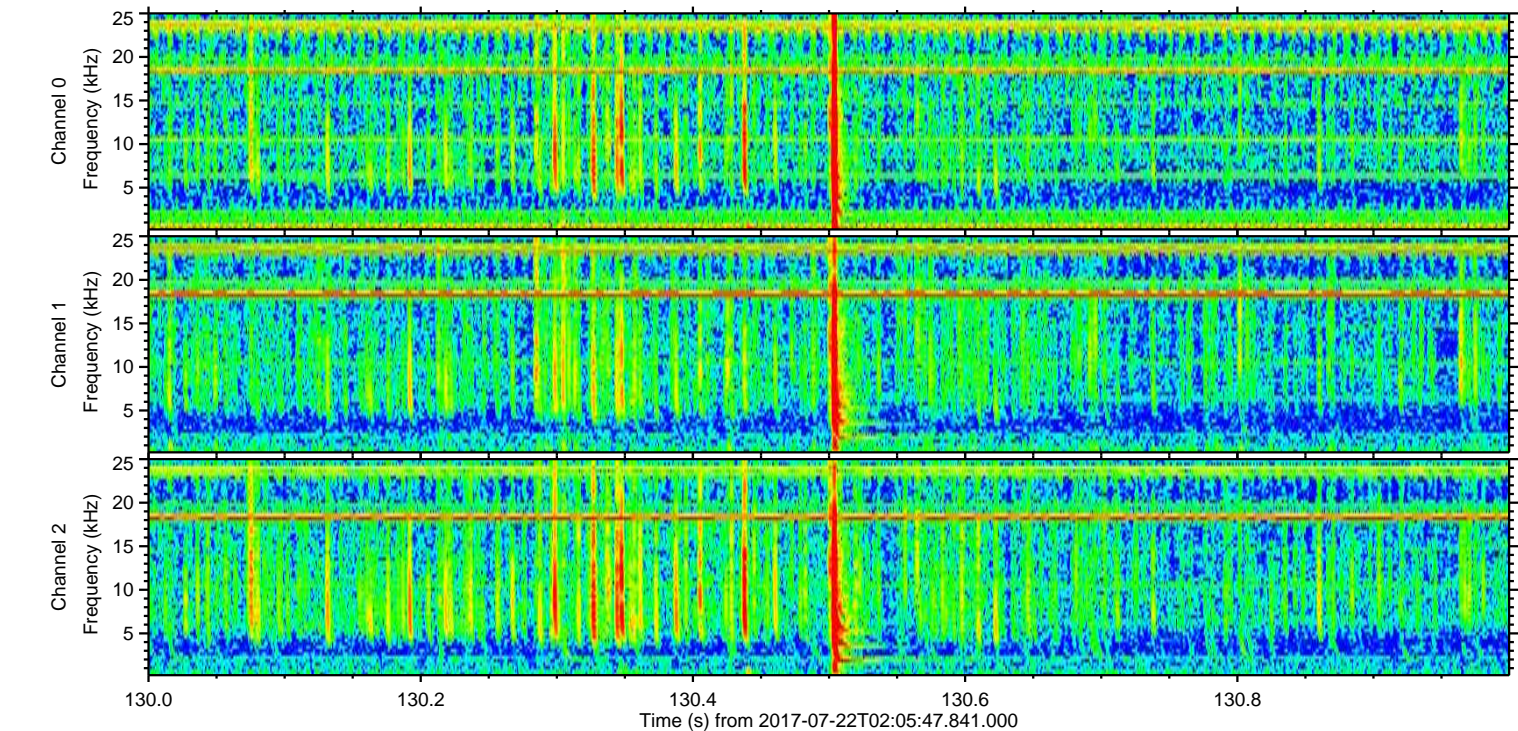
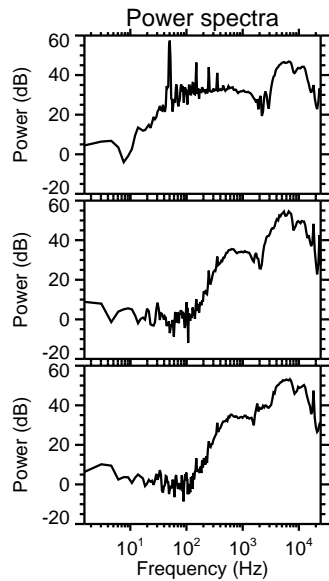
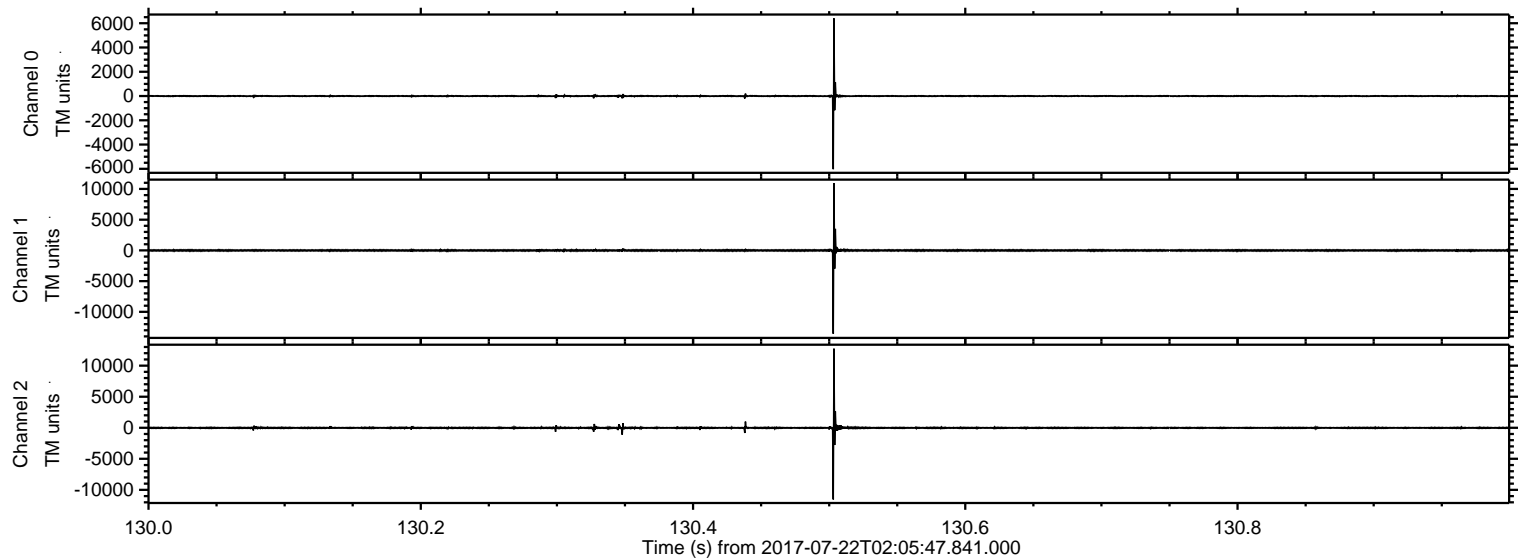
ELMAVAN 3D WAVEFORMS (Measured data sampled at 50 kHz) 51000 packets of 144 samples from 2017-07-22T02:05:47.841.000.

Processed Sat Jul 22 04:13:33 2017 by ELM ver.2012-10-06 from 001__elm20170722_020546__dat00.bin

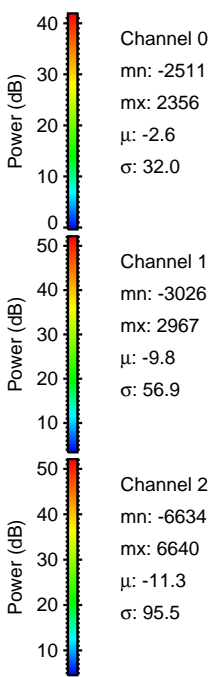
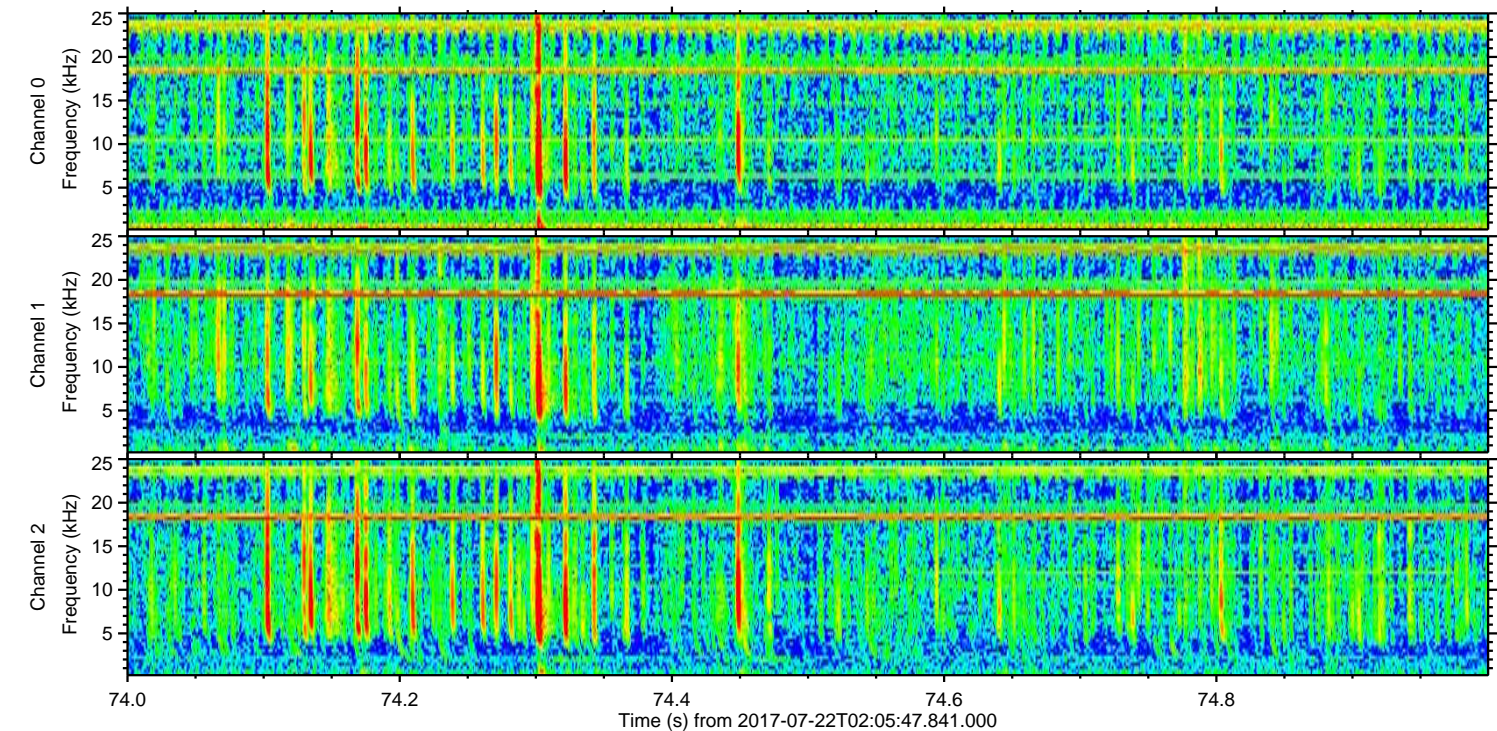
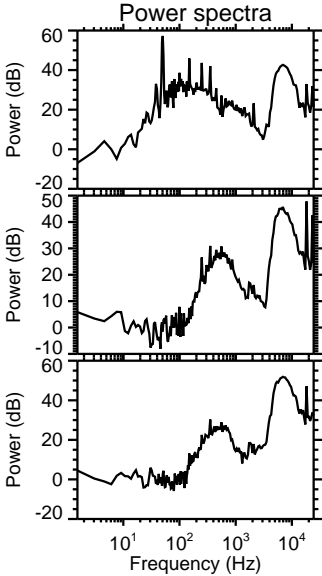
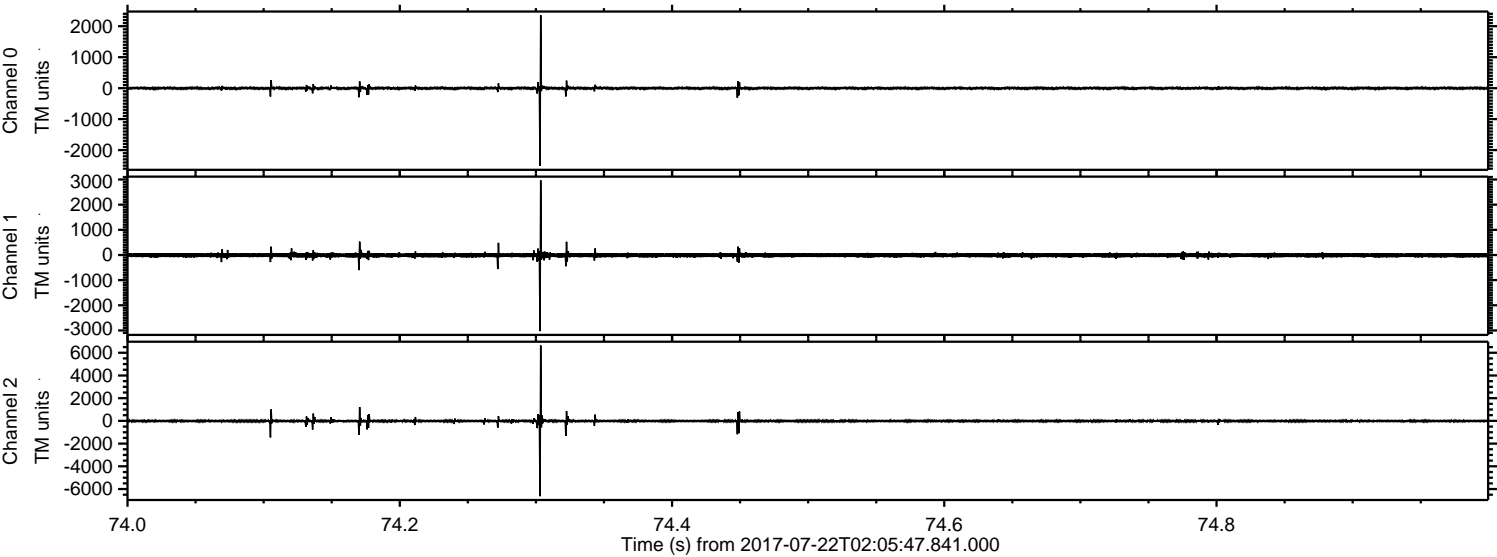


ELMAVAN 3D WAVEFORMS (Measured data sampled at 50 kHz) 51000 packets of 144 samples from 2017-07-22T02:05:47.841.000. Part 131/147

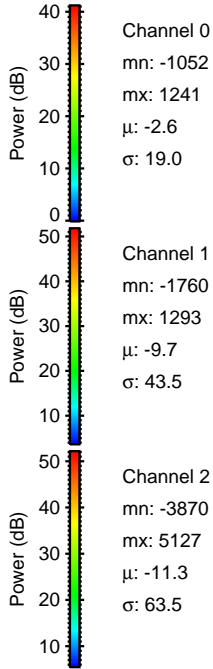
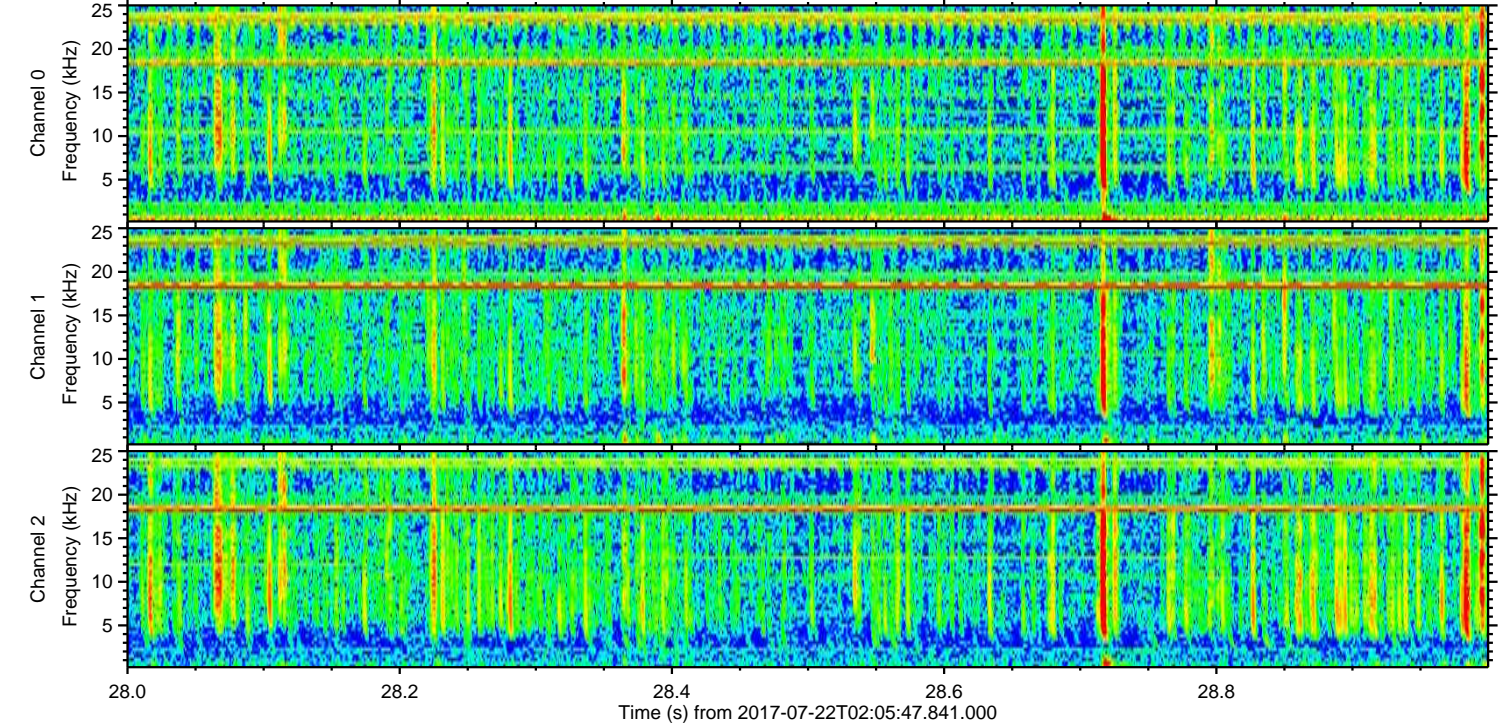
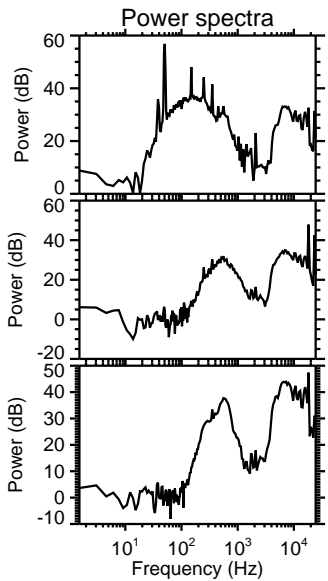
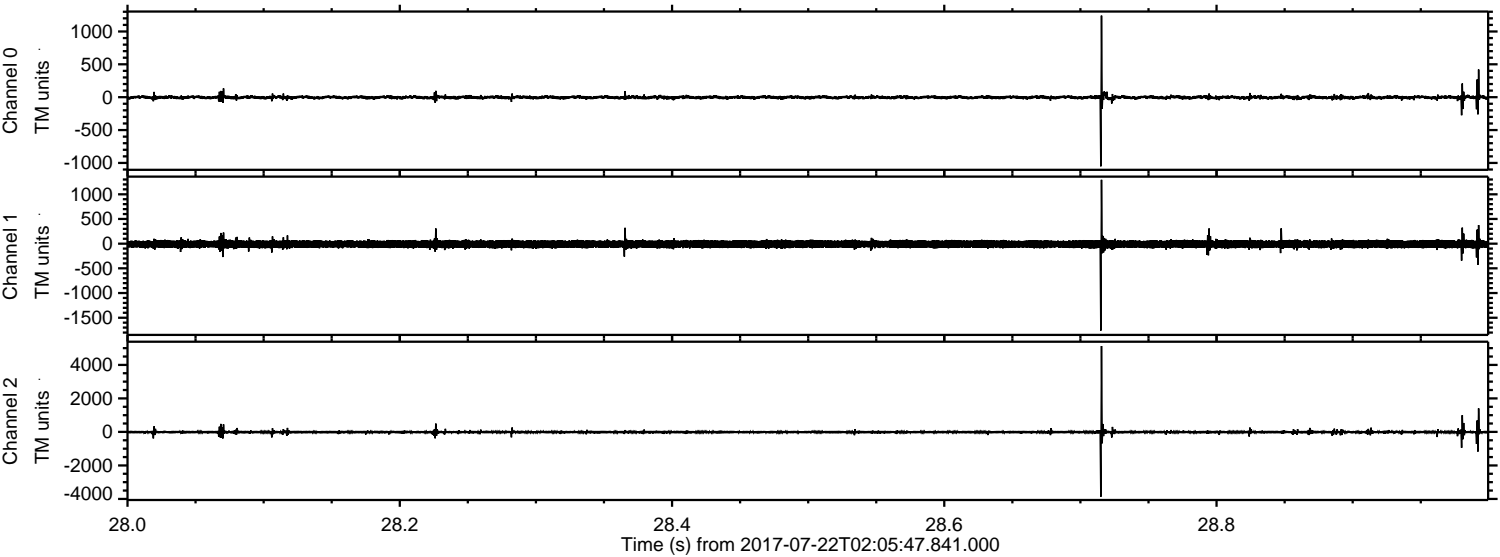
Processed Sat Jul 22 04:13:39 2017 by ELM ver.2012-10-06 from 001__elm20170722_020546__dat00.bin



Processed Sat Jul 22 04:13:40 2017 by ELM ver.2012-10-06 from 001__elm20170722_020546__dat00.bin



Processed Sat Jul 22 04:13:40 2017 by ELM ver.2012-10-06 from 001__elm20170722_020546__dat00.bin

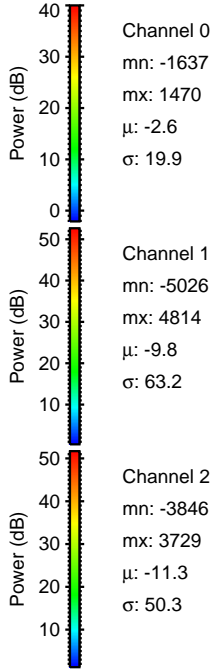
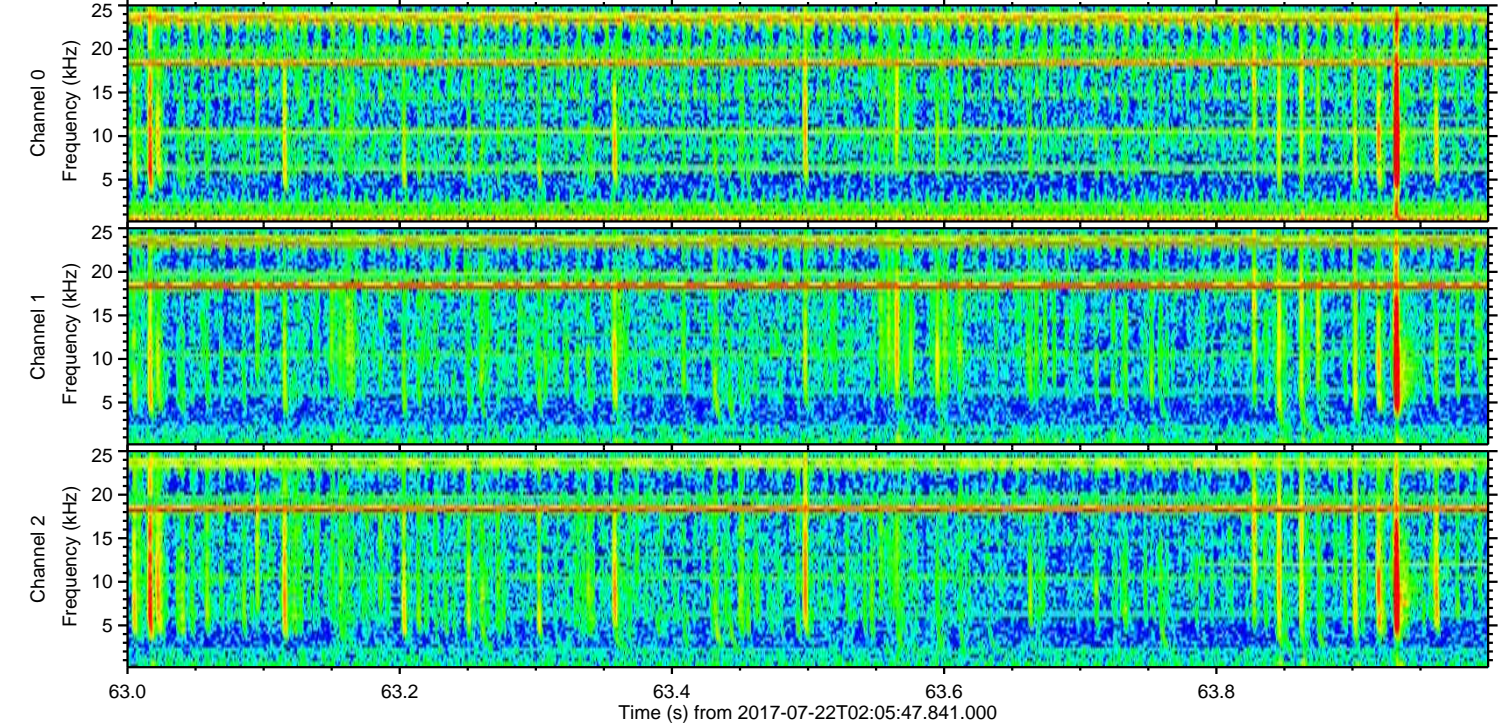
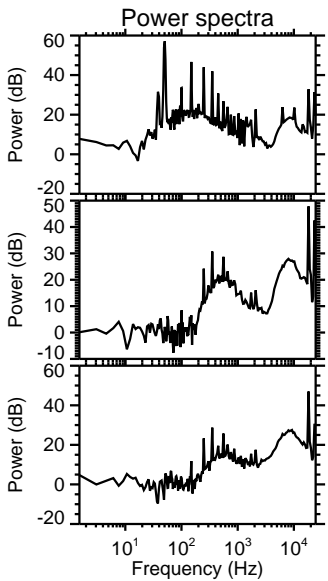
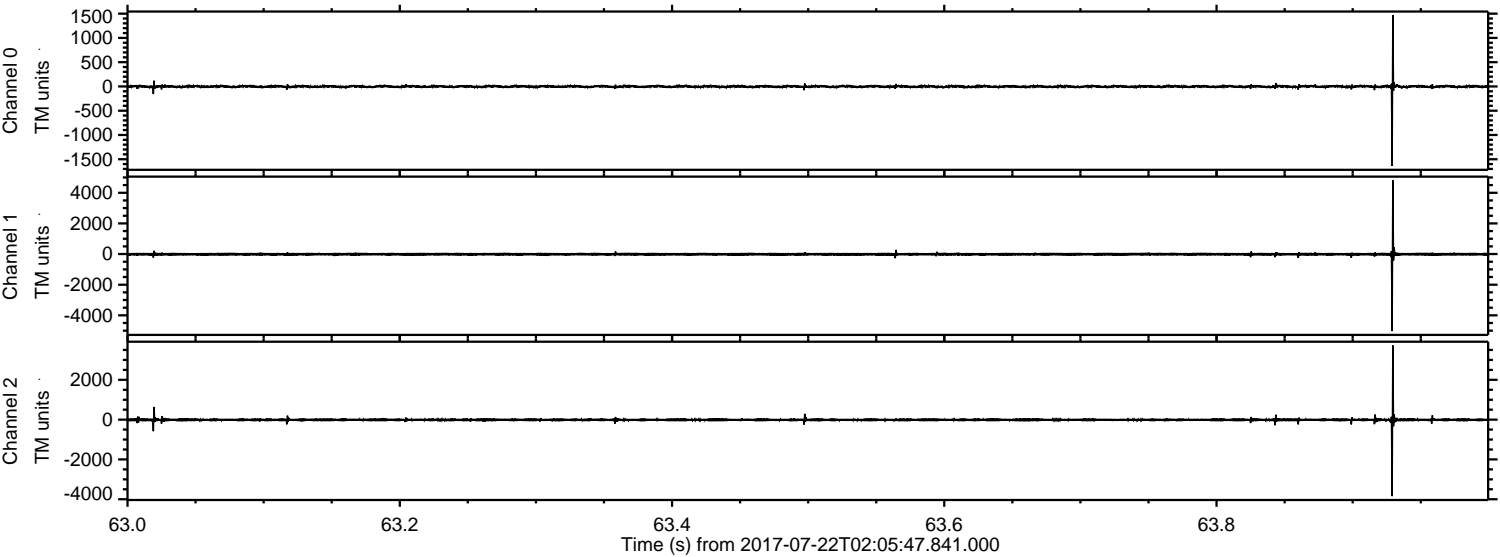


Channel 0
mn: -1052
mx: 1241
 μ : -2.6
 σ : 19.0

Channel 1
mn: -1760
mx: 1293
 μ : -9.7
 σ : 43.5

Channel 2
mn: -3870
mx: 5127
 μ : -11.3
 σ : 63.5

Processed Sat Jul 22 04:13:41 2017 by ELM ver.2012-10-06 from 001__elm20170722_020546__dat00.bin

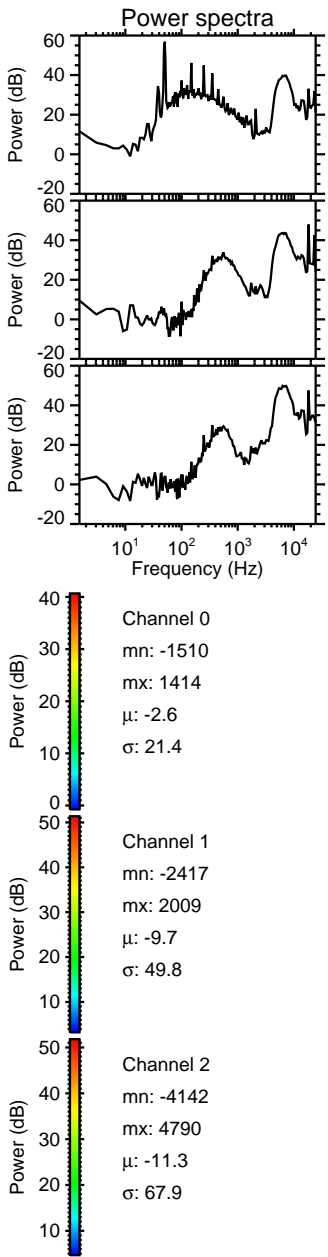
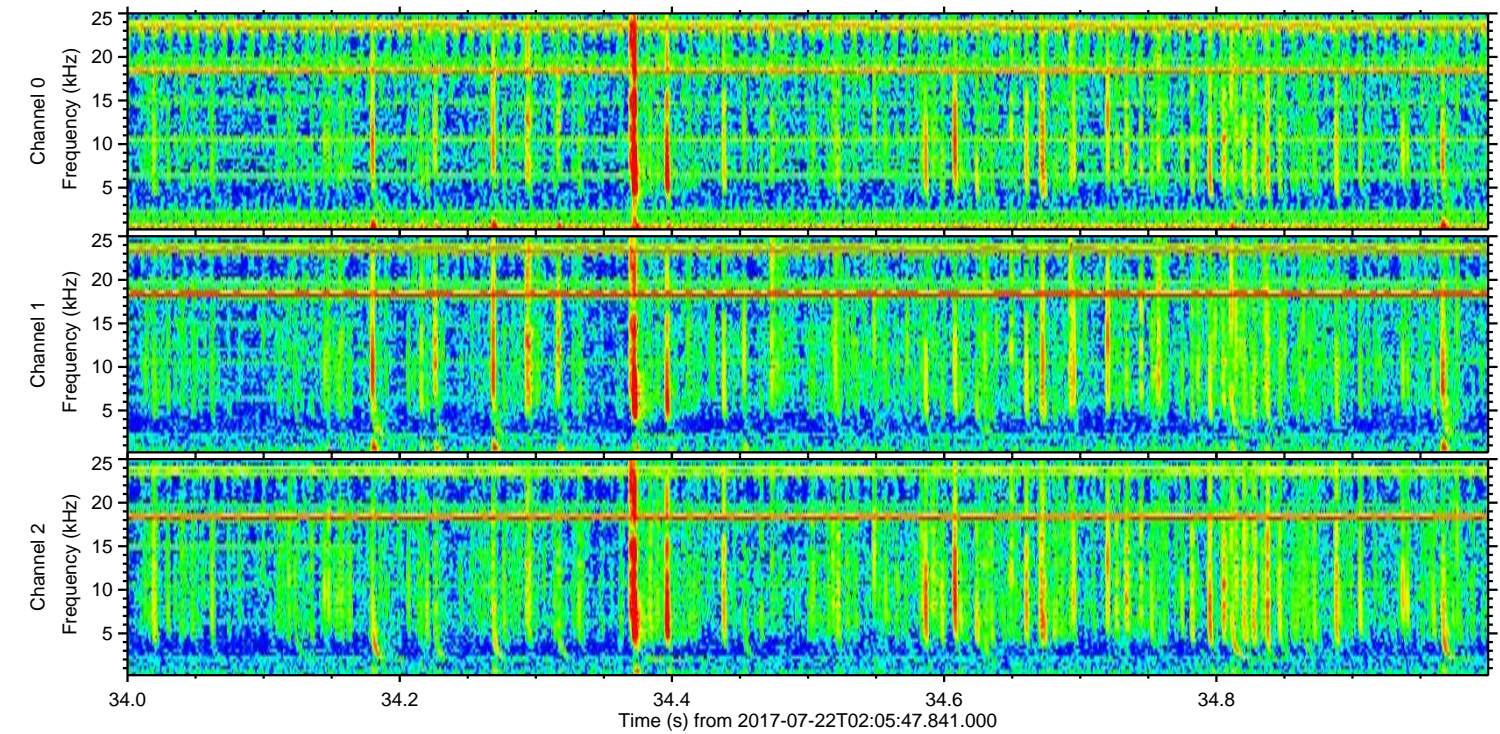
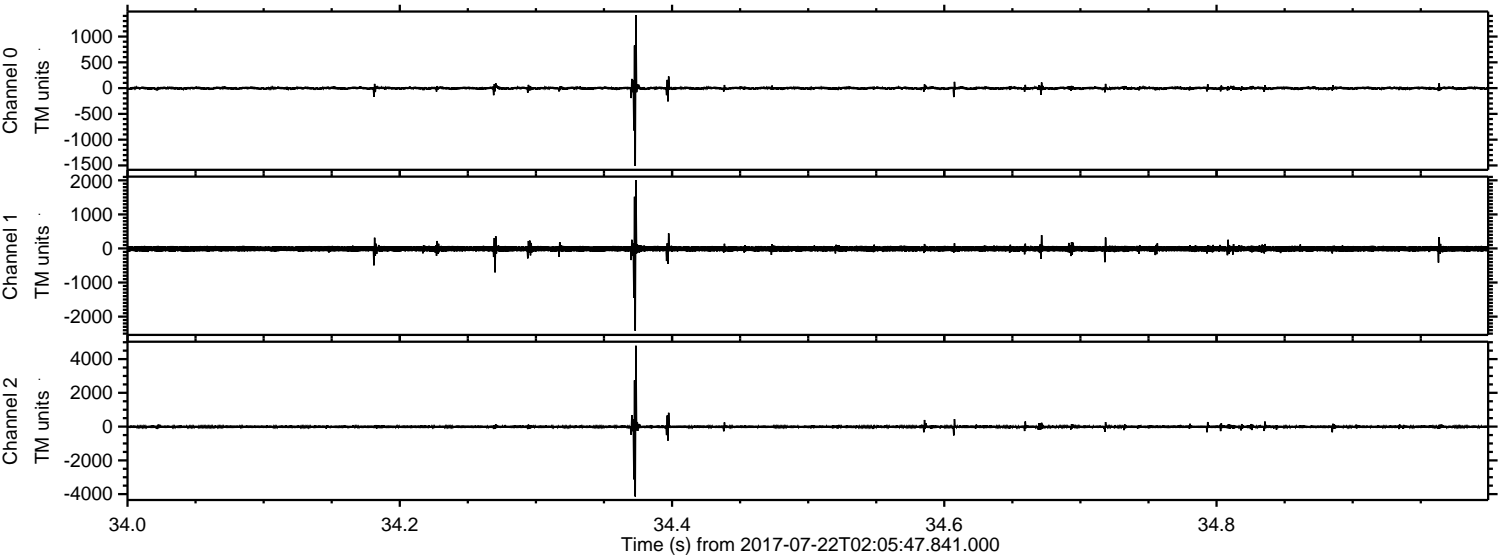


Channel 0
mn: -1637
mx: 1470
 μ : -2.6
 σ : 19.9

Channel 1
mn: -5026
mx: 4814
 μ : -9.8
 σ : 63.2

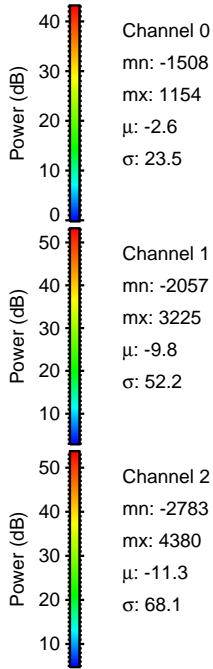
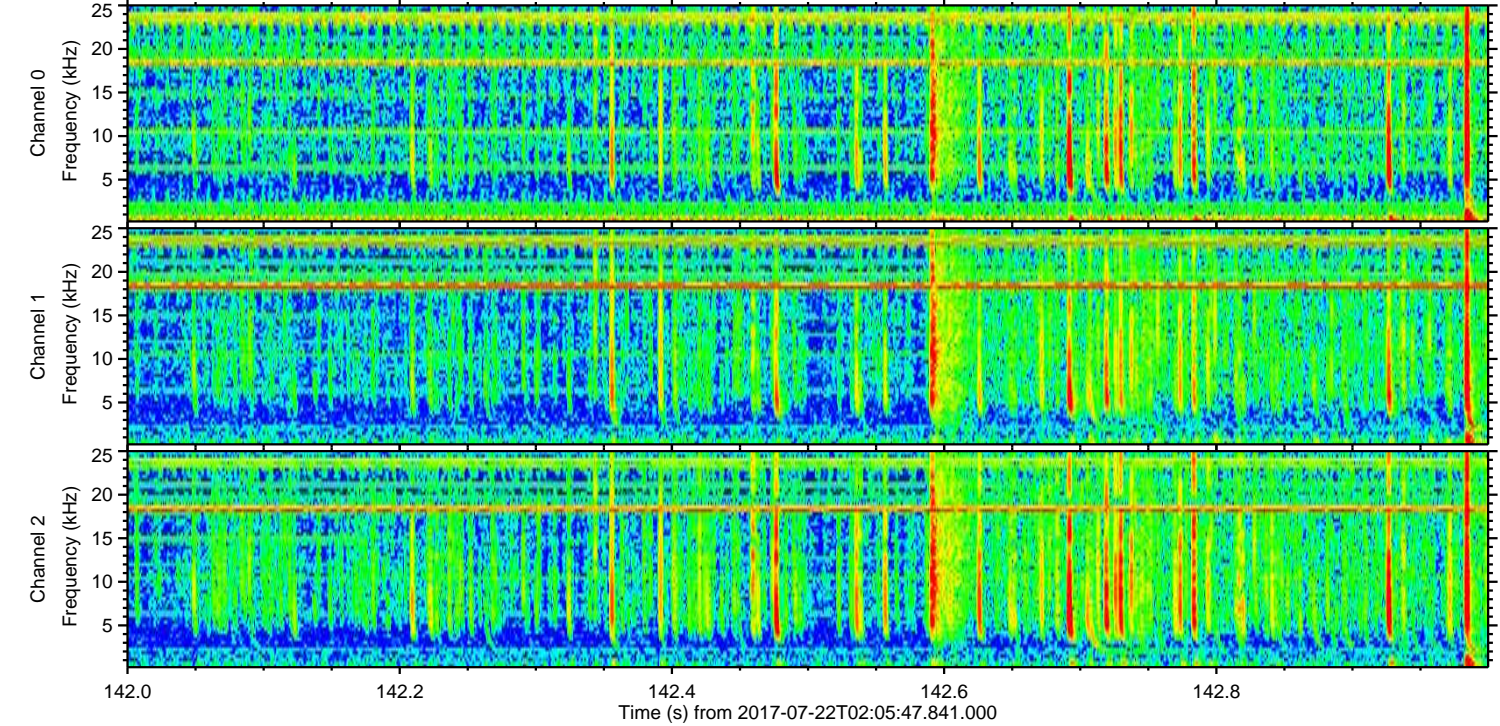
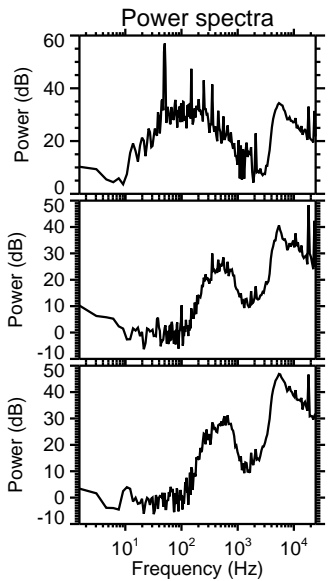
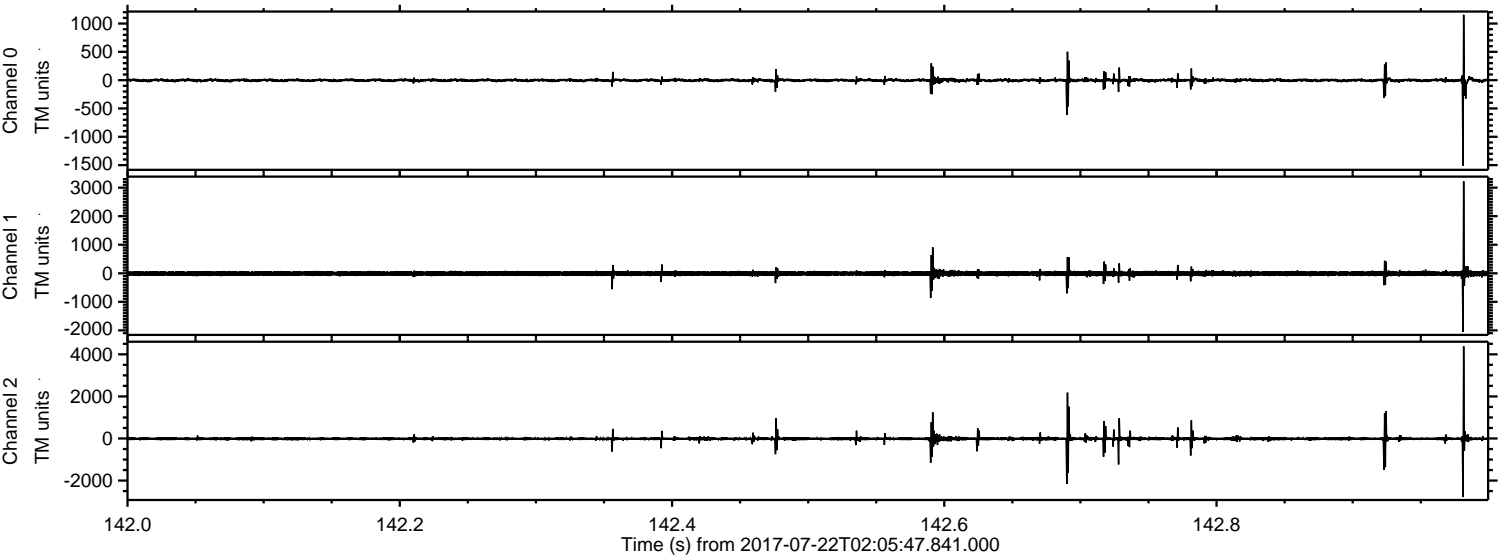
Channel 2
mn: -3846
mx: 3729
 μ : -11.3
 σ : 50.3

Processed Sat Jul 22 04:13:41 2017 by ELM ver.2012-10-06 from 001__elm20170722_020546__dat00.bin



ELMAVAN 3D WAVEFORMS (Measured data sampled at 50 kHz) 51000 packets of 144 samples from 2017-07-22T02:05:47.841.000. Part 143/147

Processed Sat Jul 22 04:13:42 2017 by ELM ver.2012-10-06 from 001__elm20170722_020546__dat00.bin

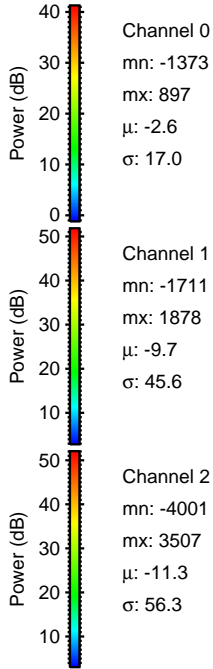
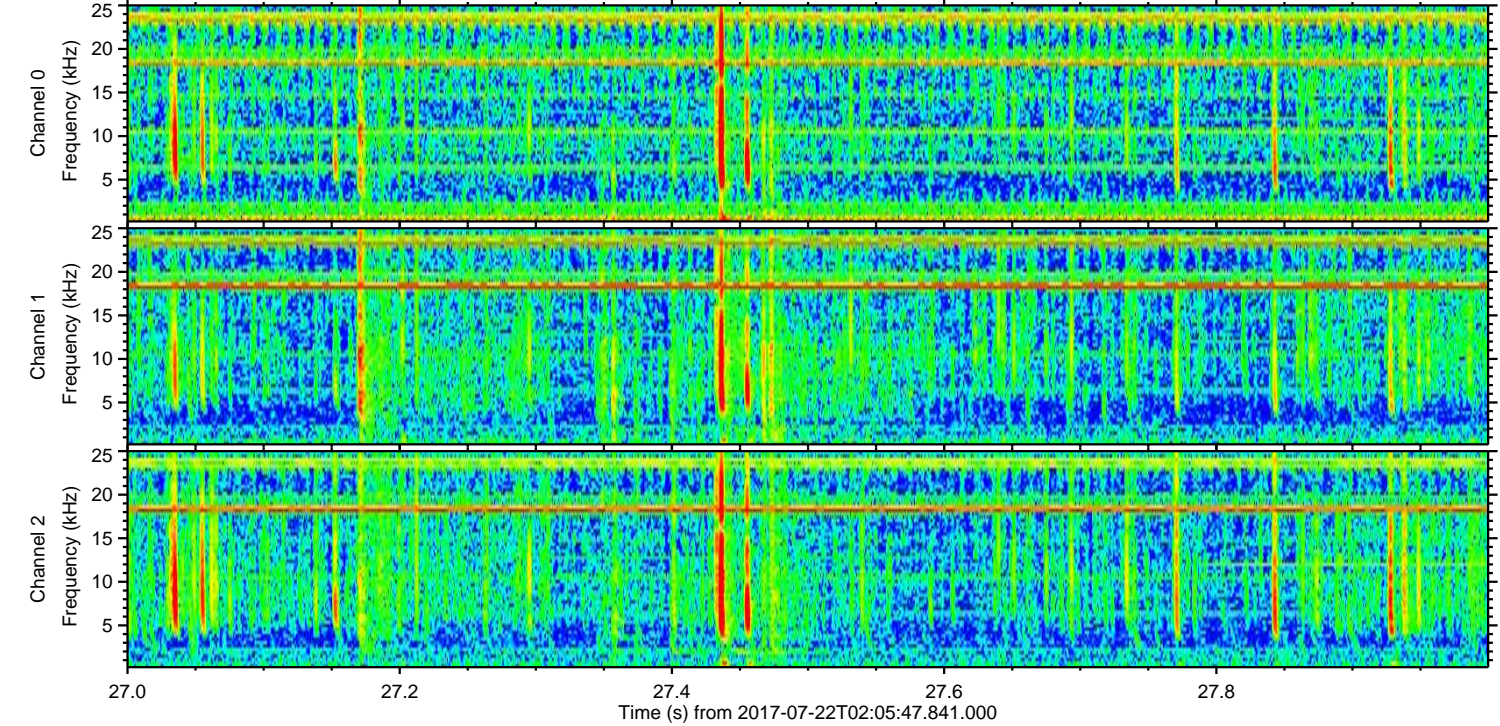
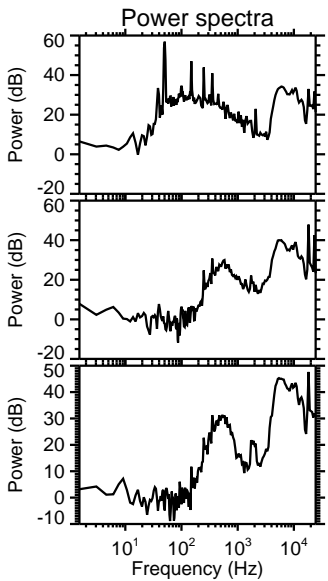
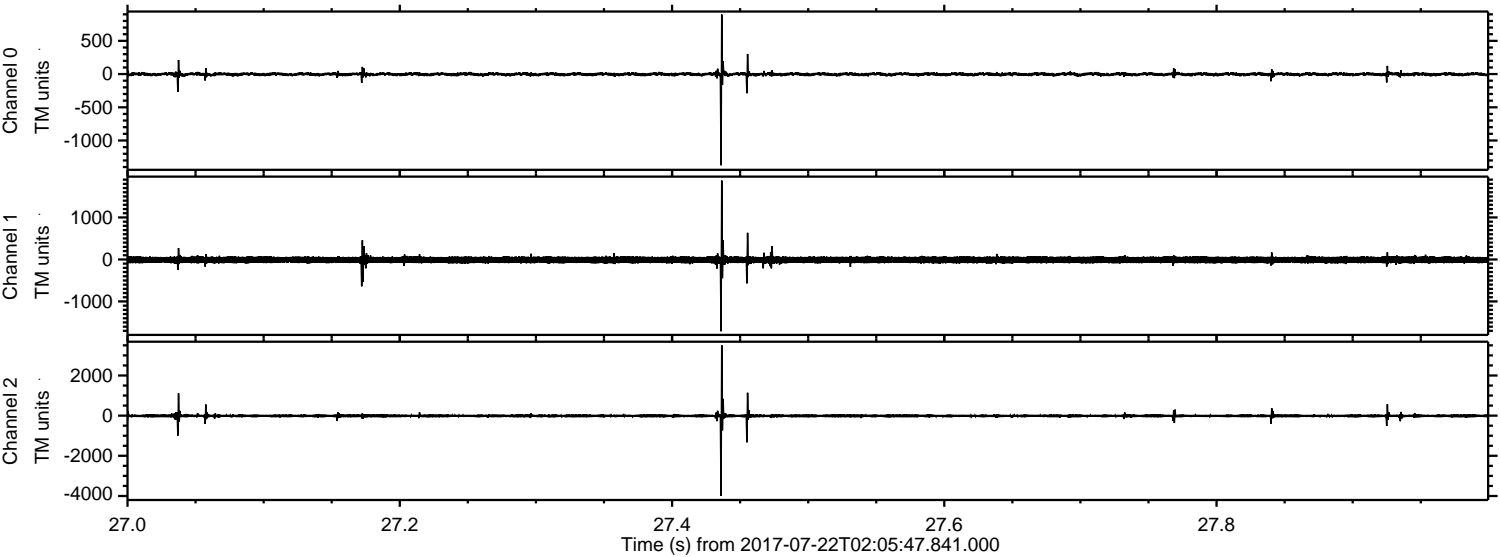


Channel 0
mn: -1508
mx: 1154
 μ : -2.6
 σ : 23.5

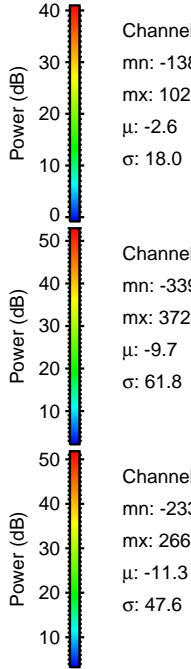
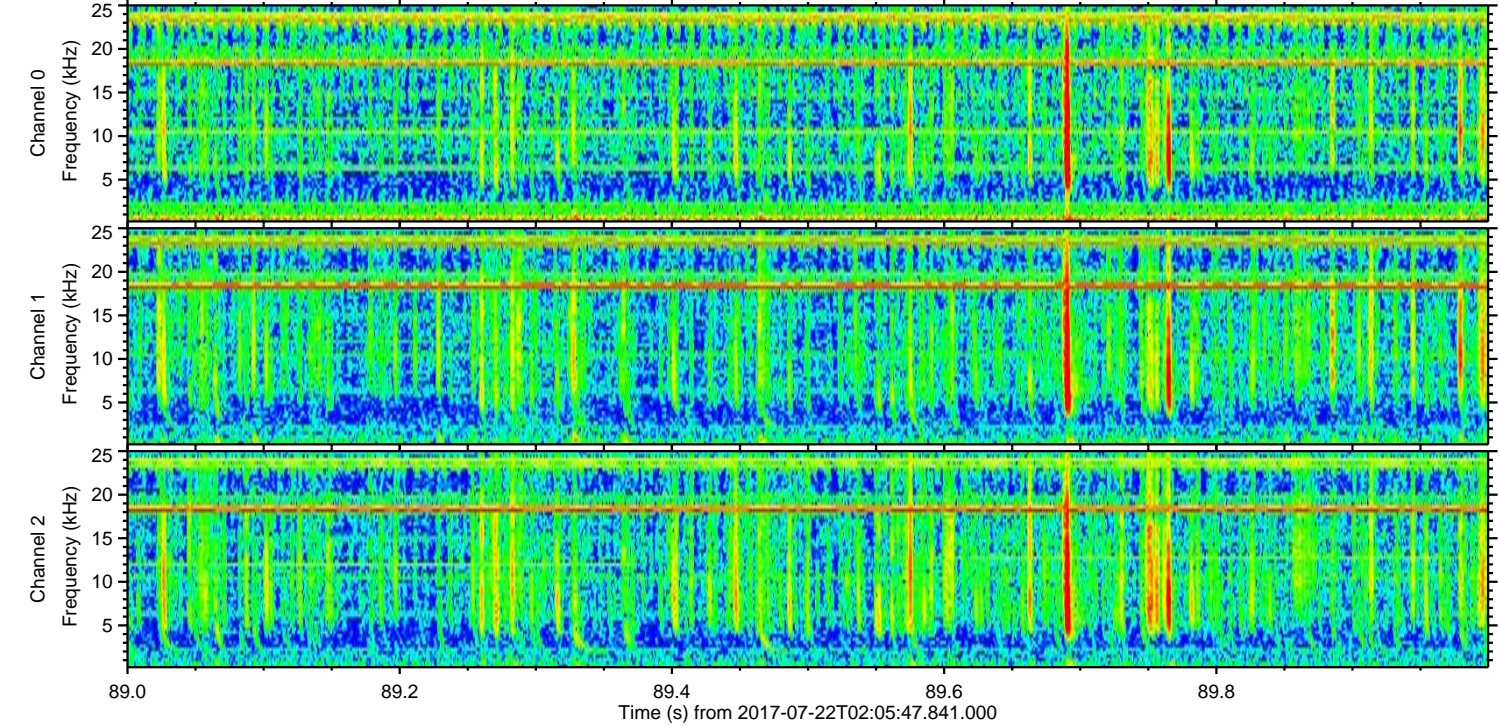
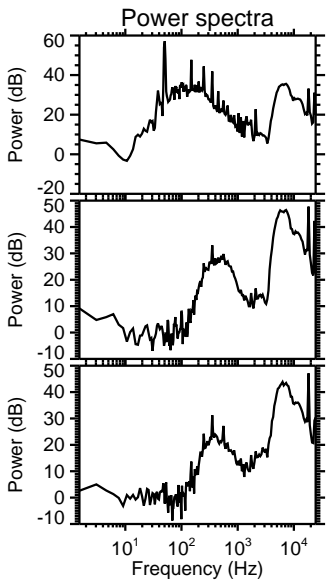
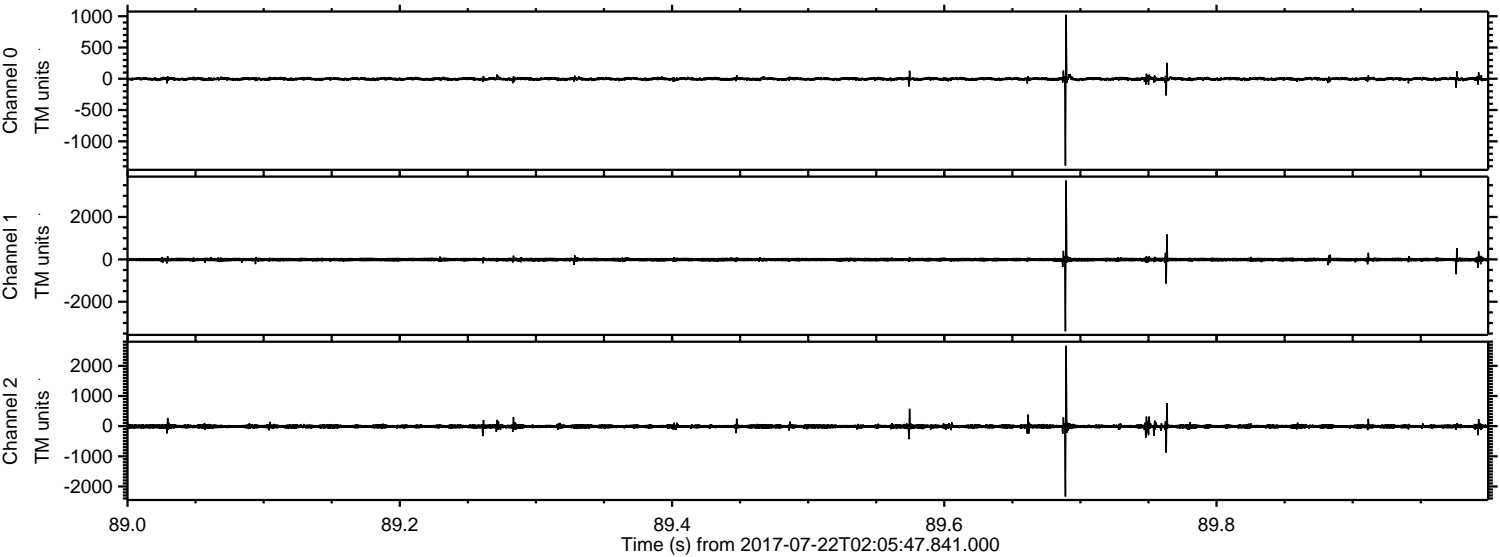
Channel 1
mn: -2057
mx: 3225
 μ : -9.8
 σ : 52.2

Channel 2
mn: -2783
mx: 4380
 μ : -11.3
 σ : 68.1

Processed Sat Jul 22 04:13:43 2017 by ELM ver.2012-10-06 from 001__elm20170722_020546__dat00.bin



Processed Sat Jul 22 04:13:43 2017 by ELM ver.2012-10-06 from 001__elm20170722_020546__dat00.bin



Processed Sat Jul 22 04:13:44 2017 by ELM ver.2012-10-06 from 001__elm20170722_020546__dat00.bin

