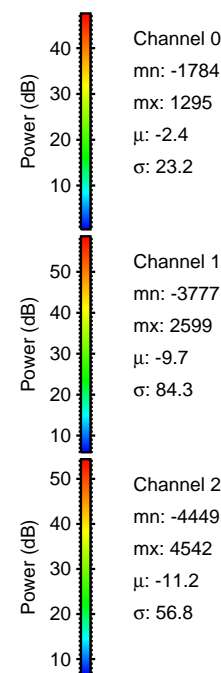
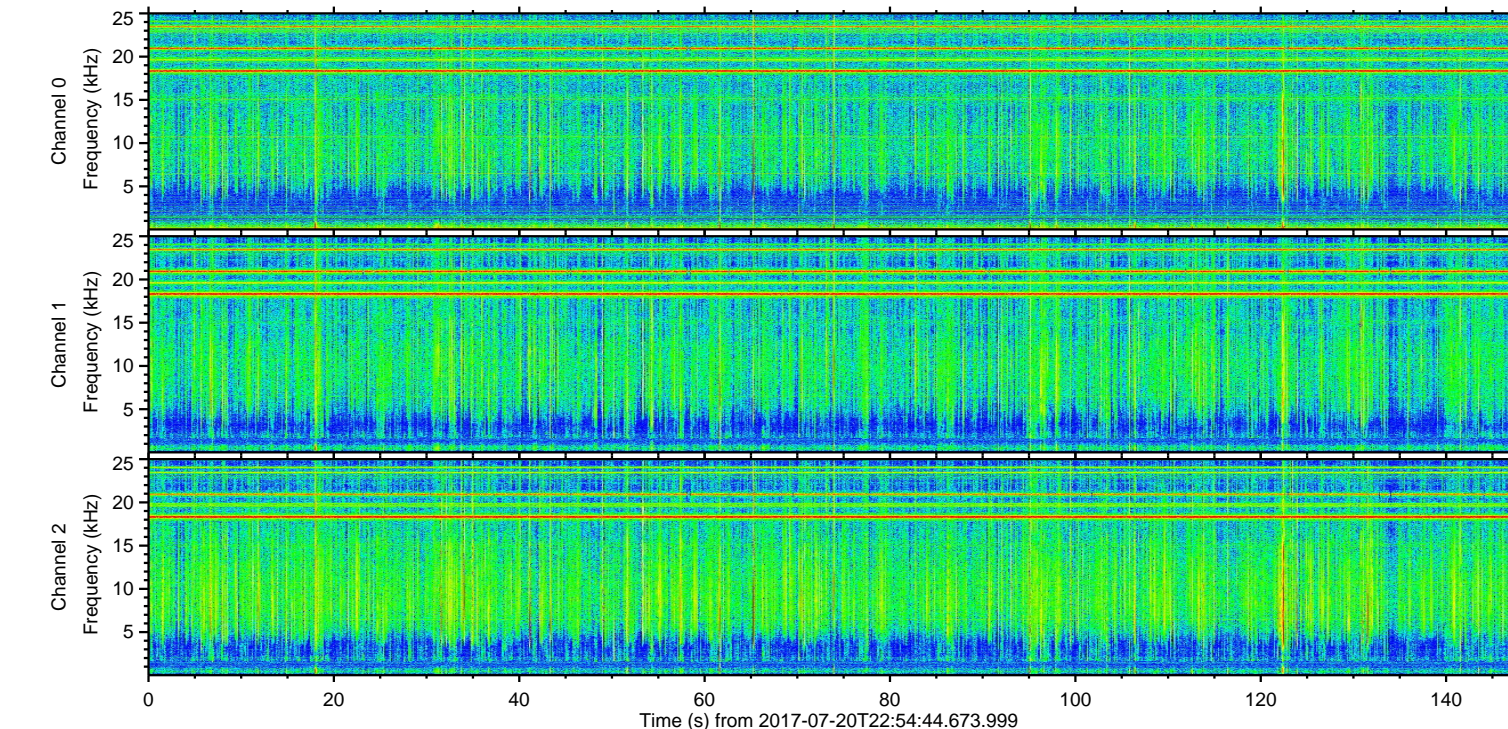
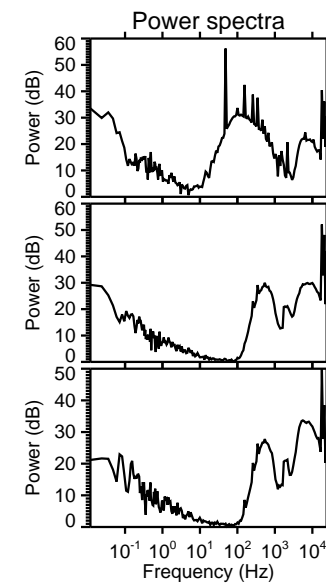
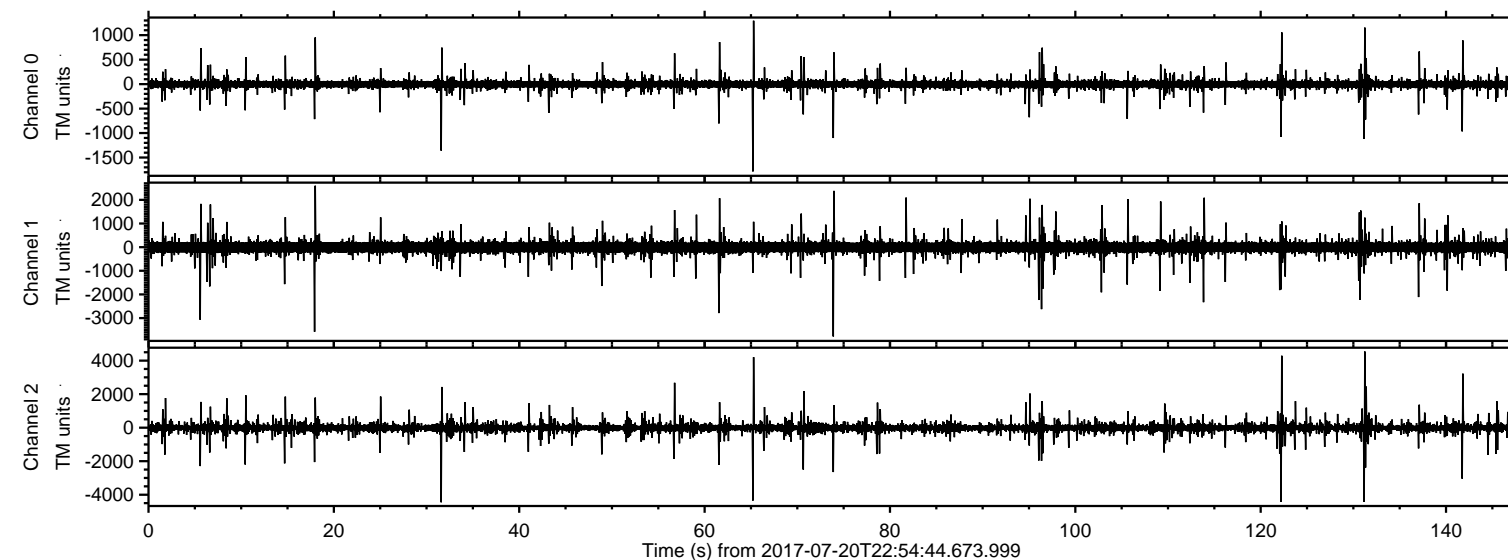


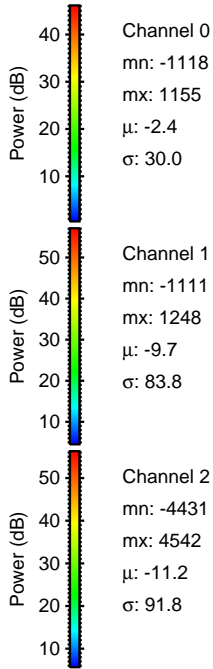
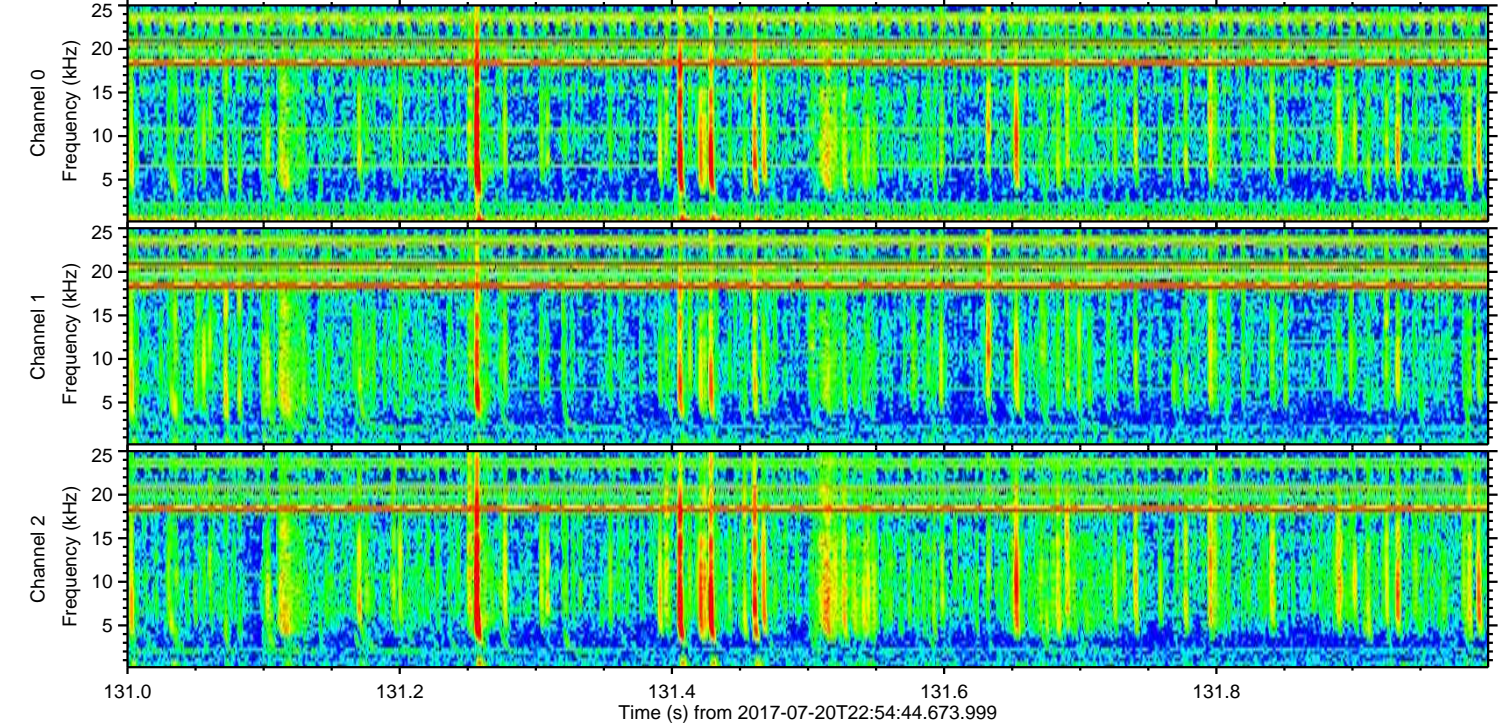
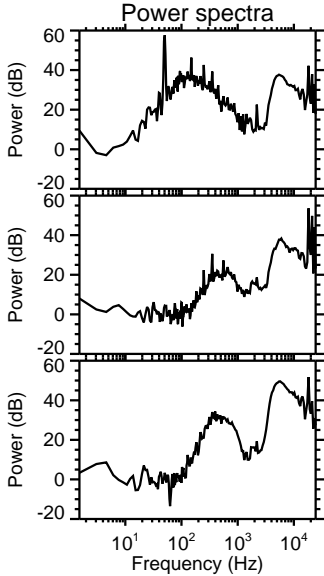
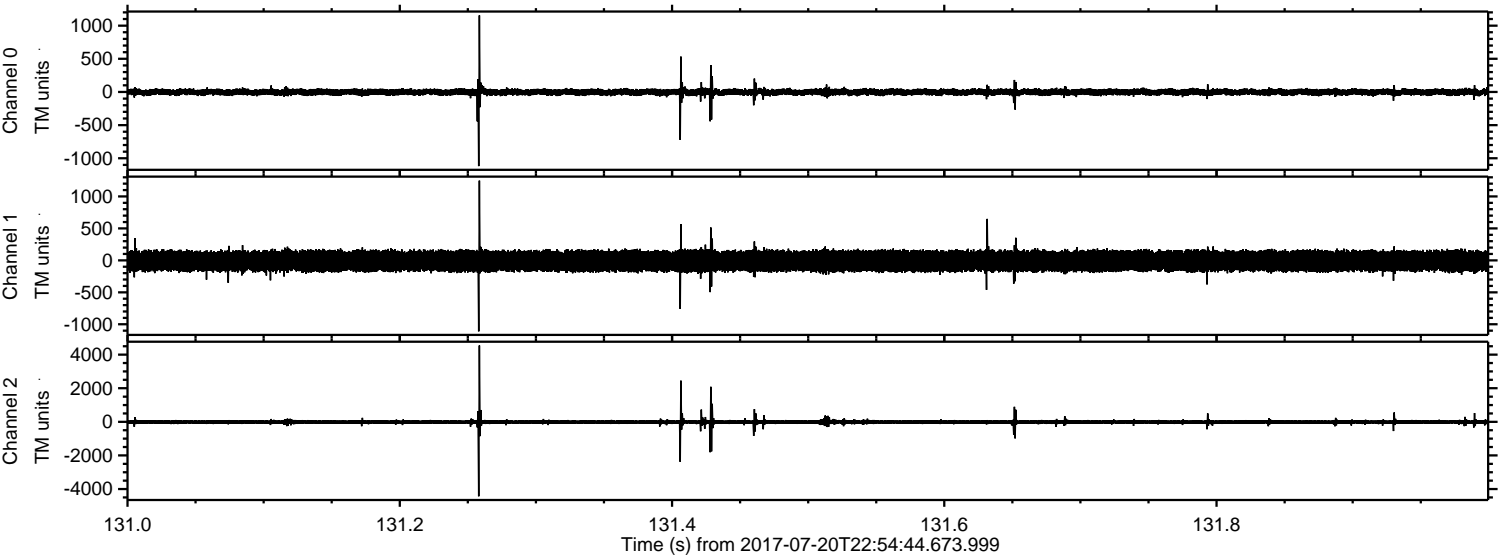
ELMAVAN 3D WAVEFORMS (Measured data sampled at 50 kHz) 51000 packets of 144 samples from 2017-07-20T22:54:44.673.999.

Processed Fri Jul 21 06:30:07 2017 by ELM ver.2012-10-06 from 001__elm20170720_225443__dat00.bin



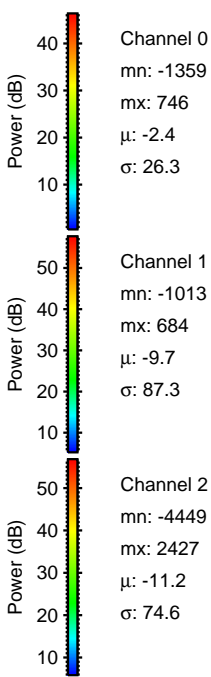
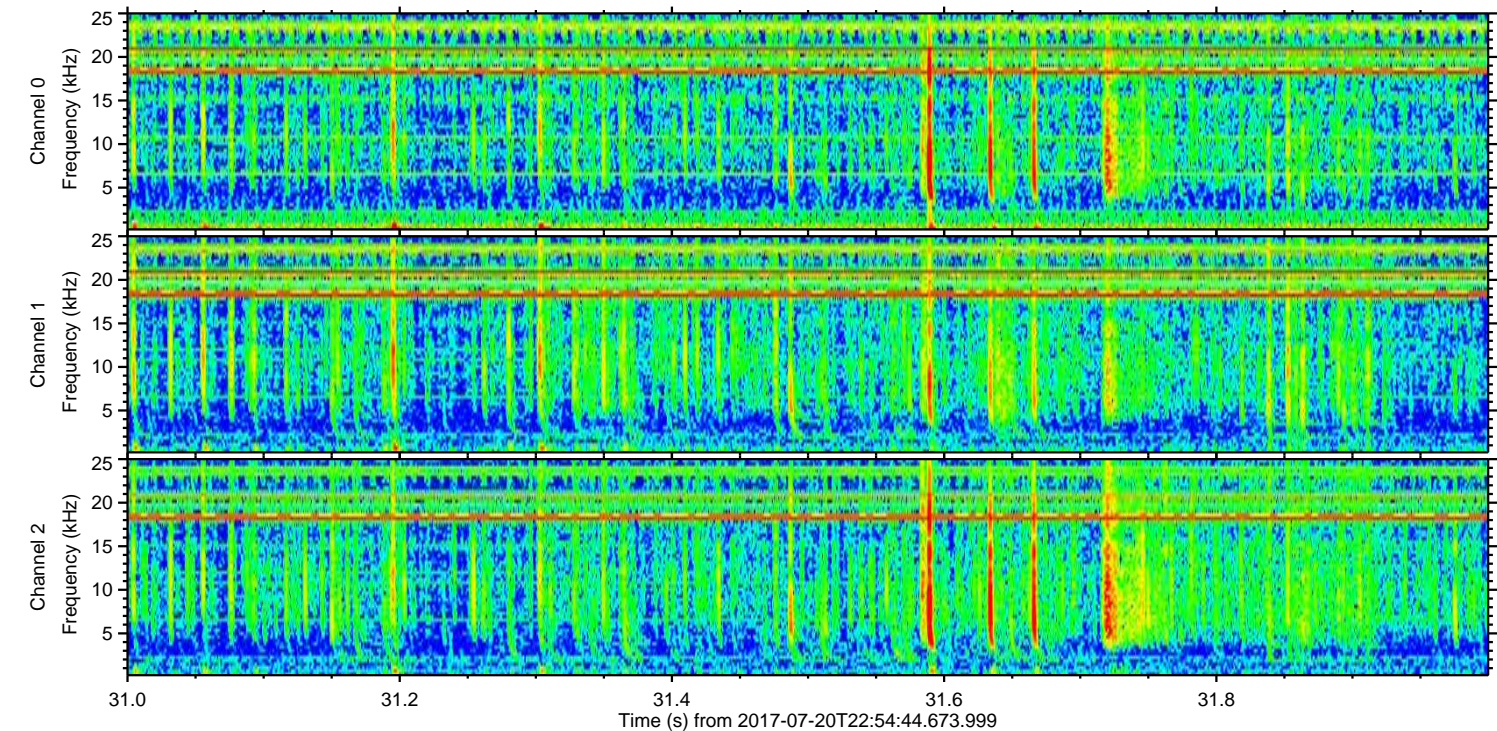
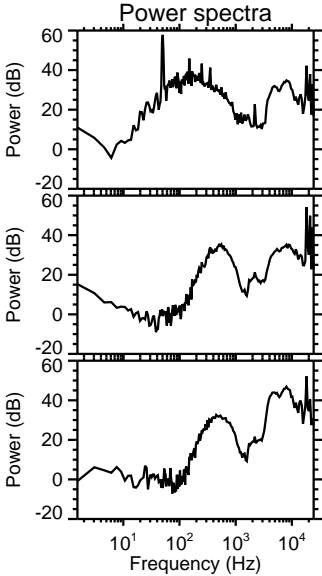
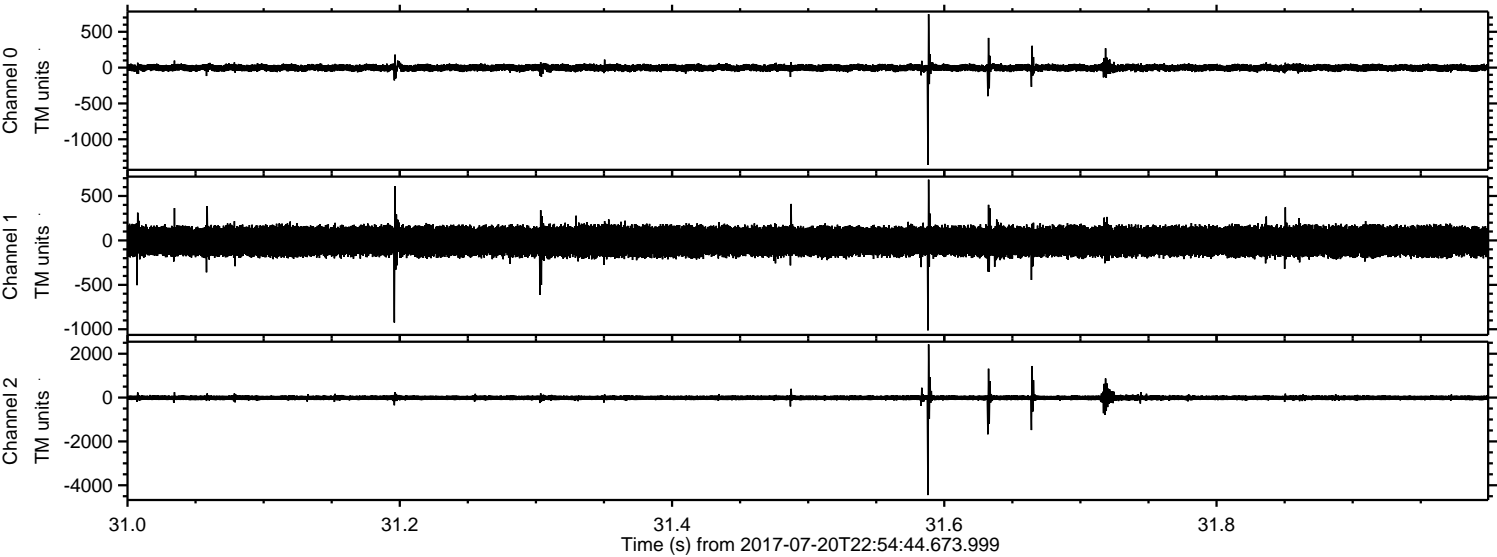
ELMAVAN 3D WAVEFORMS (Measured data sampled at 50 kHz) 51000 packets of 144 samples from 2017-07-20T22:54:44.673.999. Part 132/147

Processed Fri Jul 21 06:30:12 2017 by ELM ver.2012-10-06 from 001__elm20170720_225443__dat00.bin



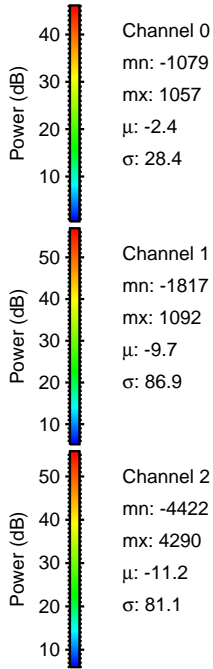
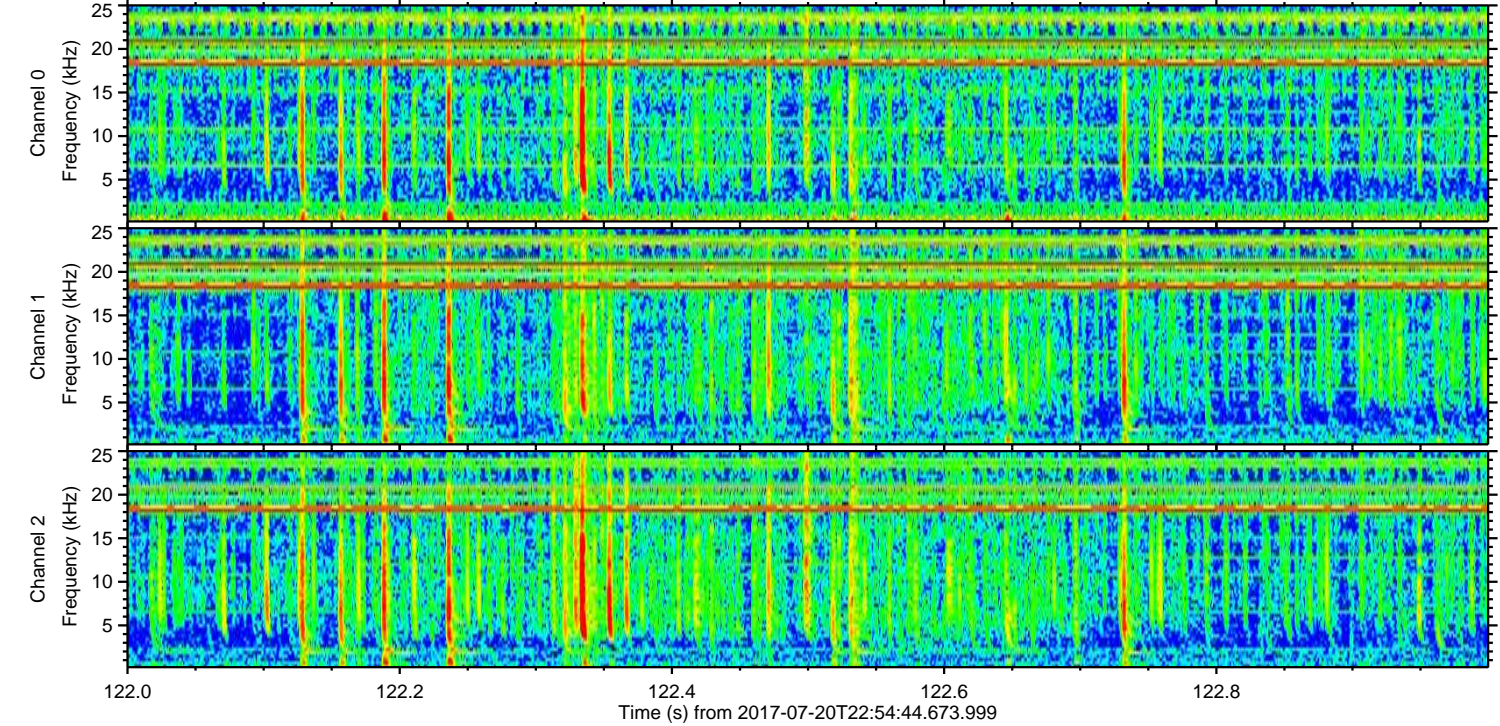
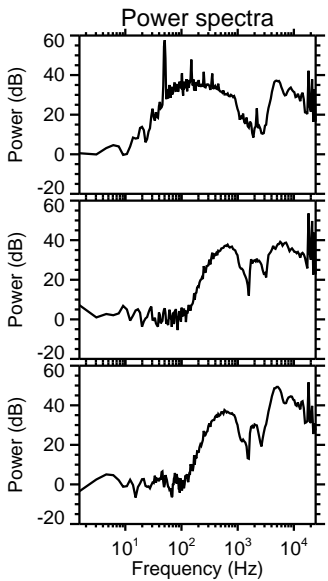
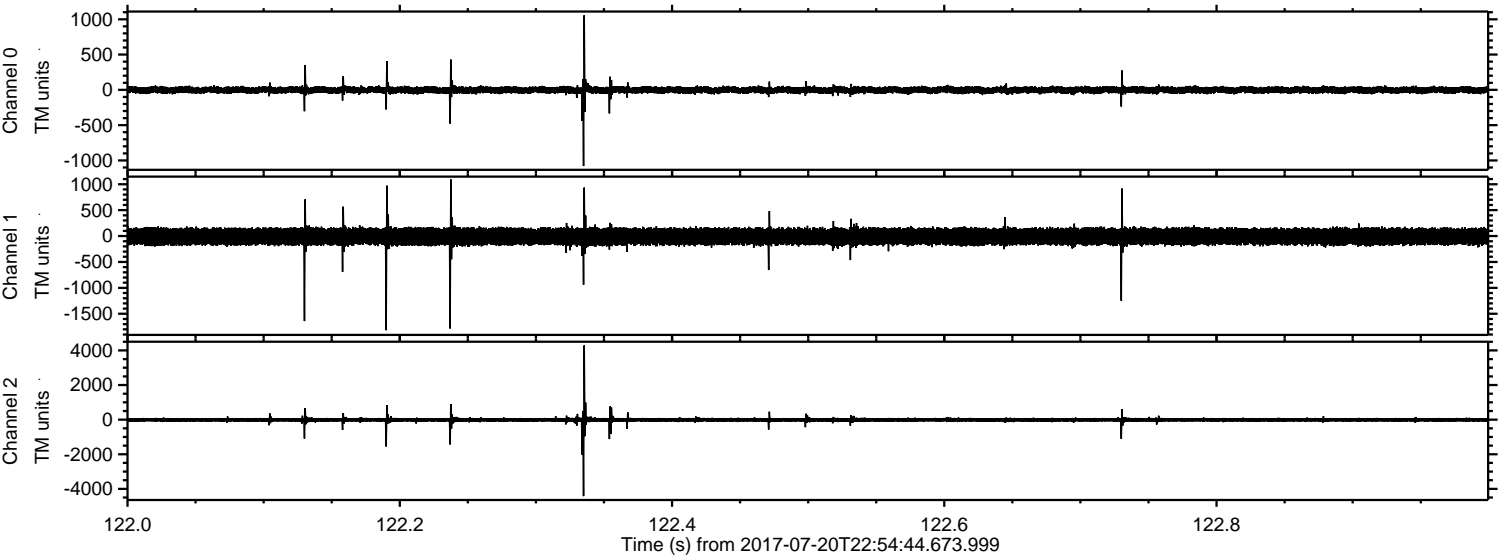
ELMAVAN 3D WAVEFORMS (Measured data sampled at 50 kHz) 51000 packets of 144 samples from 2017-07-20T22:54:44.673.999. Part 32/147

Processed Fri Jul 21 06:30:13 2017 by ELM ver.2012-10-06 from 001__elm20170720_225443__dat00.bin

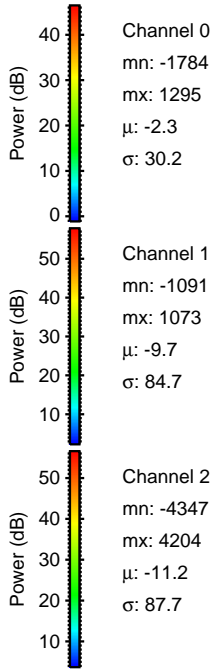
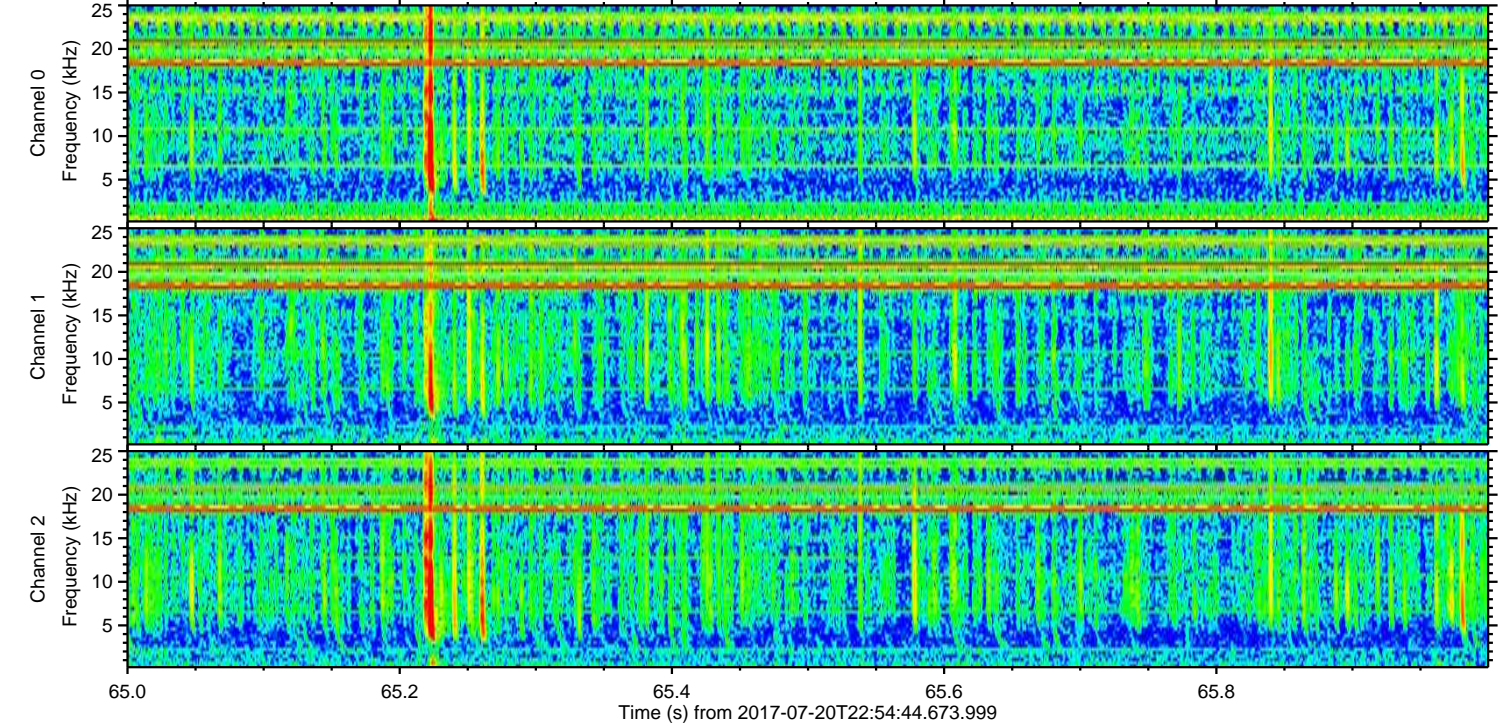
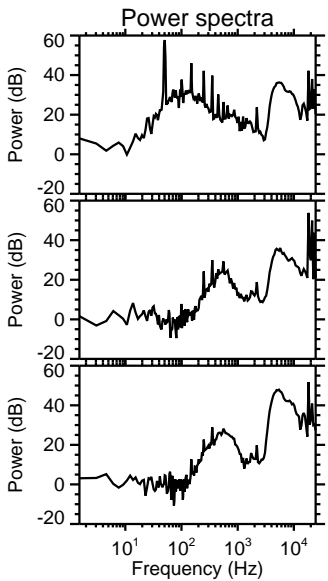
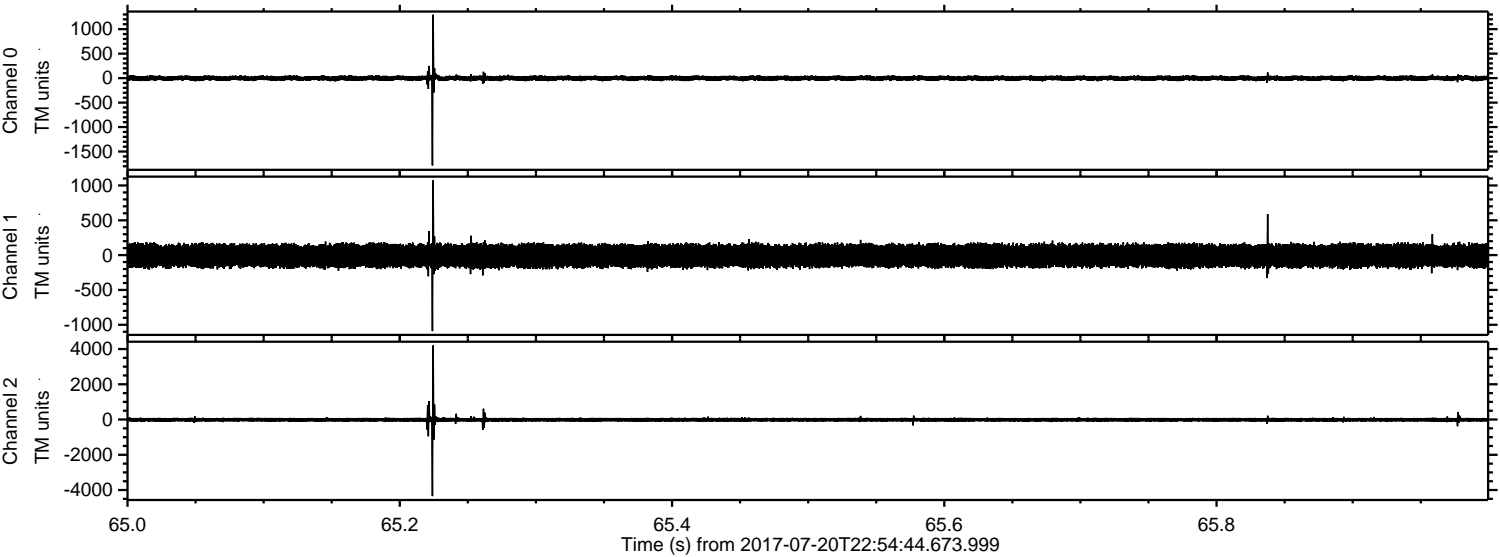


ELMAVAN 3D WAVEFORMS (Measured data sampled at 50 kHz) 51000 packets of 144 samples from 2017-07-20T22:54:44.673.999. Part 123/147

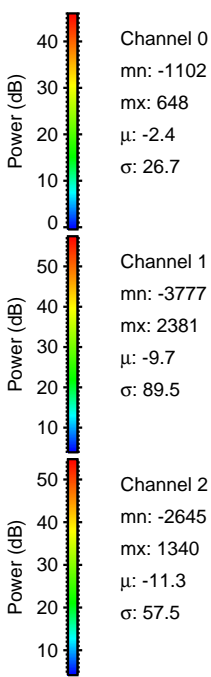
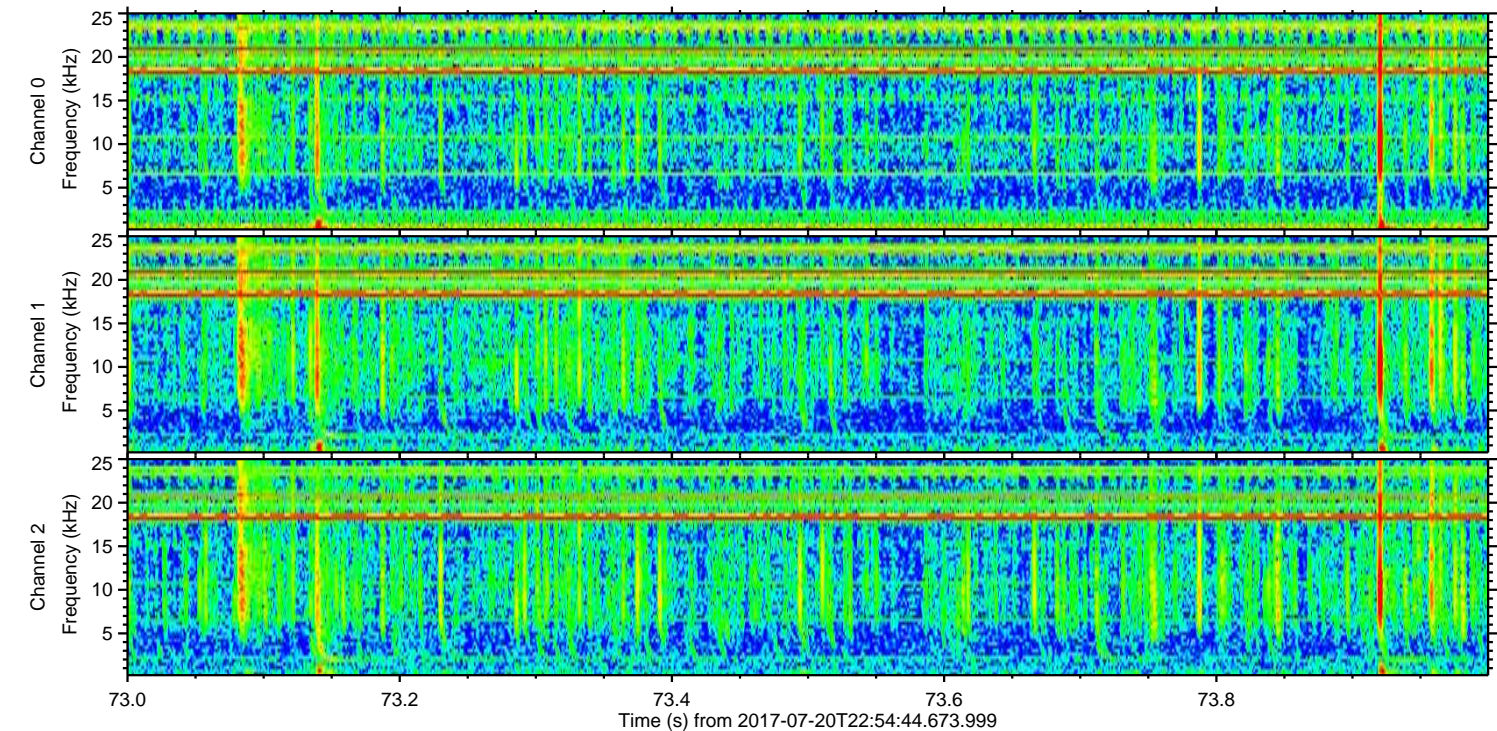
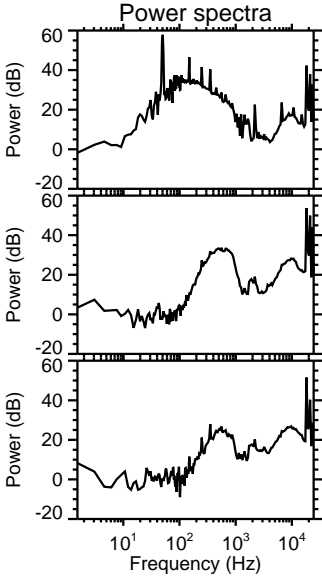
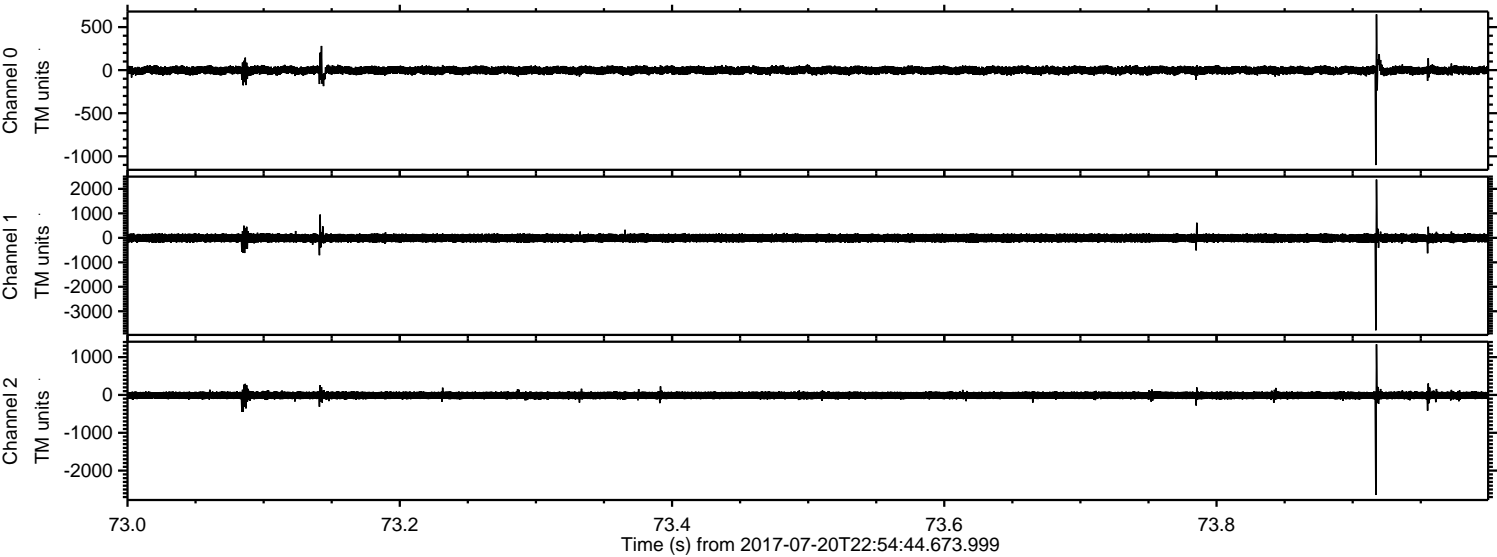
Processed Fri Jul 21 06:30:13 2017 by ELM ver.2012-10-06 from 001__elm20170720_225443__dat00.bin



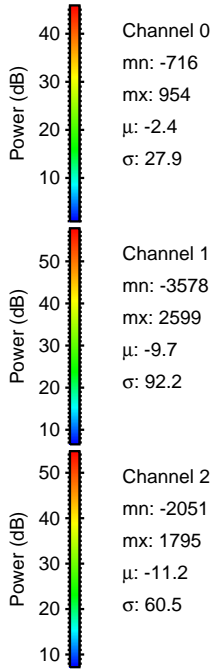
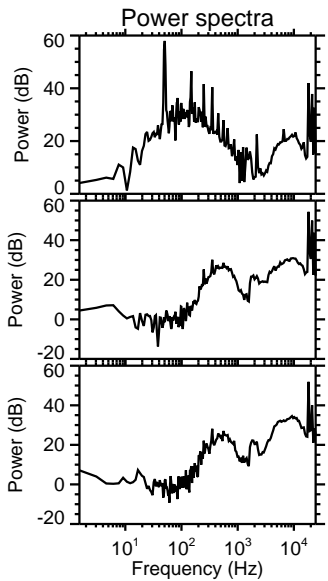
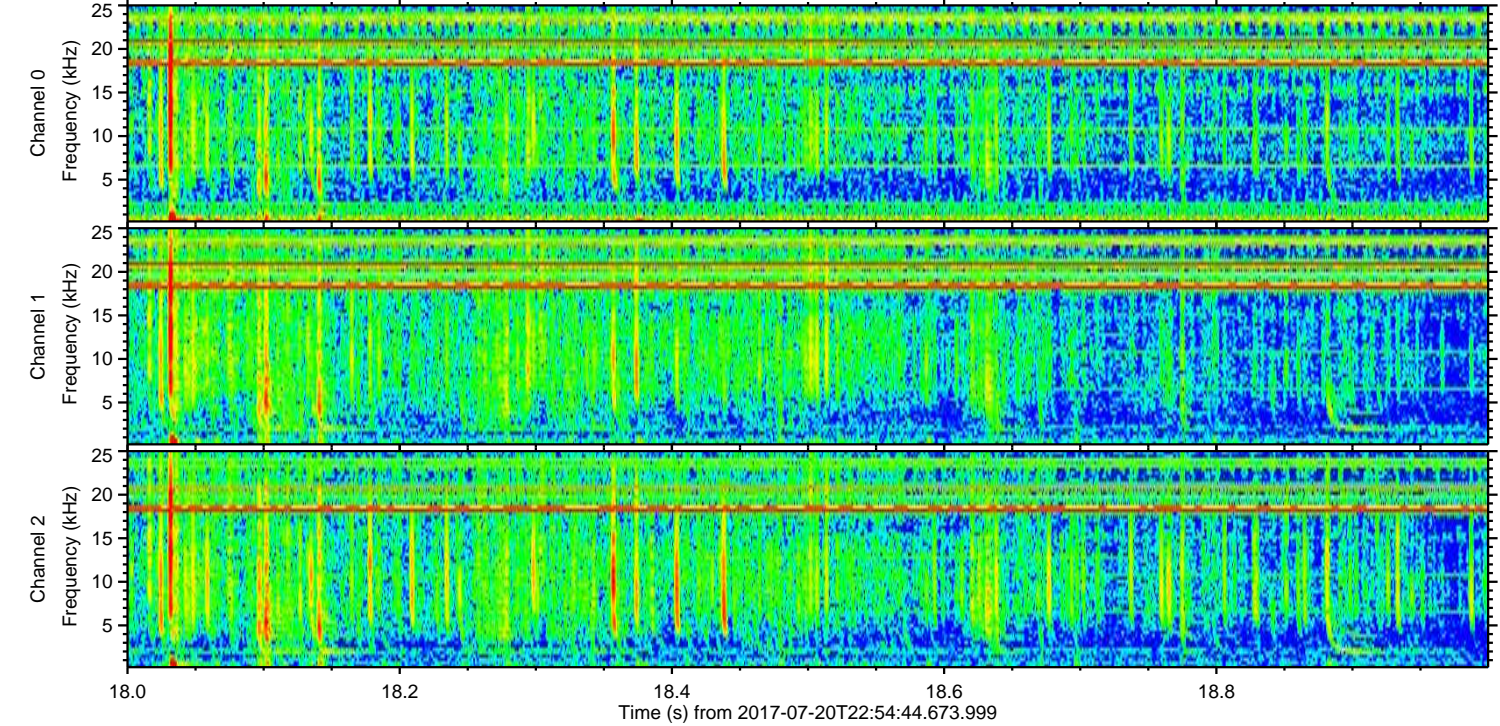
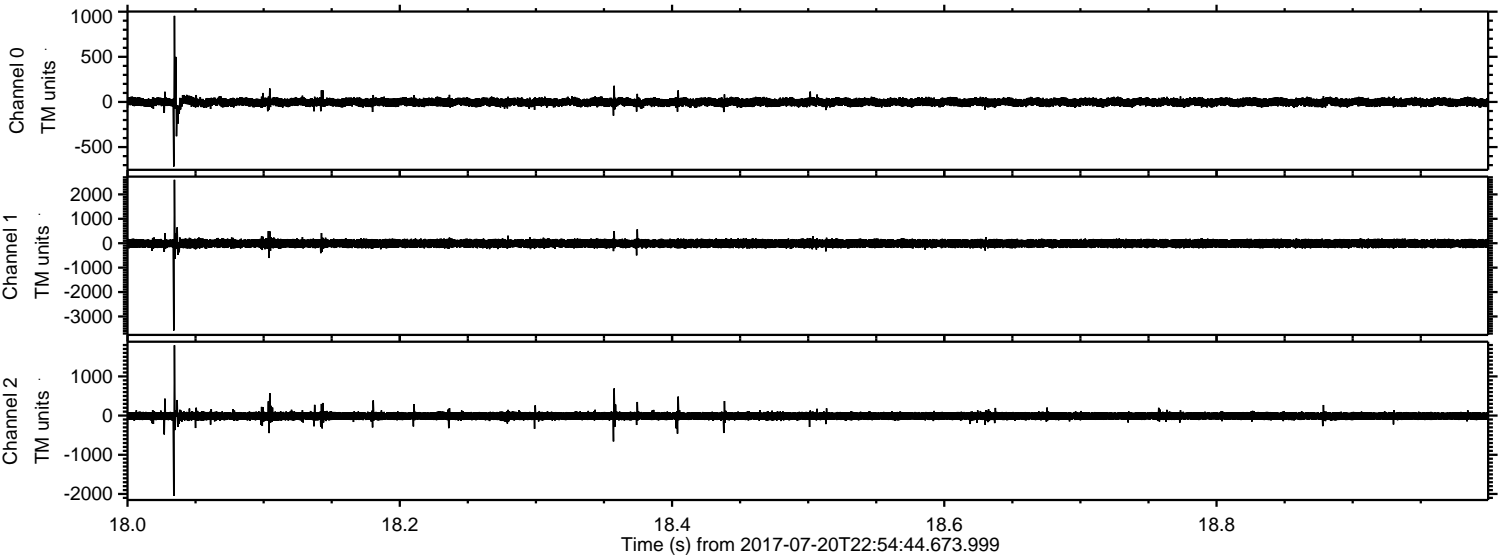
Processed Fri Jul 21 06:30:14 2017 by ELM ver.2012-10-06 from 001__elm20170720_225443__dat00.bin



Processed Fri Jul 21 06:30:15 2017 by ELM ver.2012-10-06 from 001__elm20170720_225443__dat00.bin

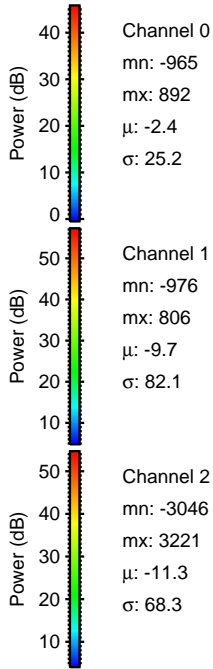
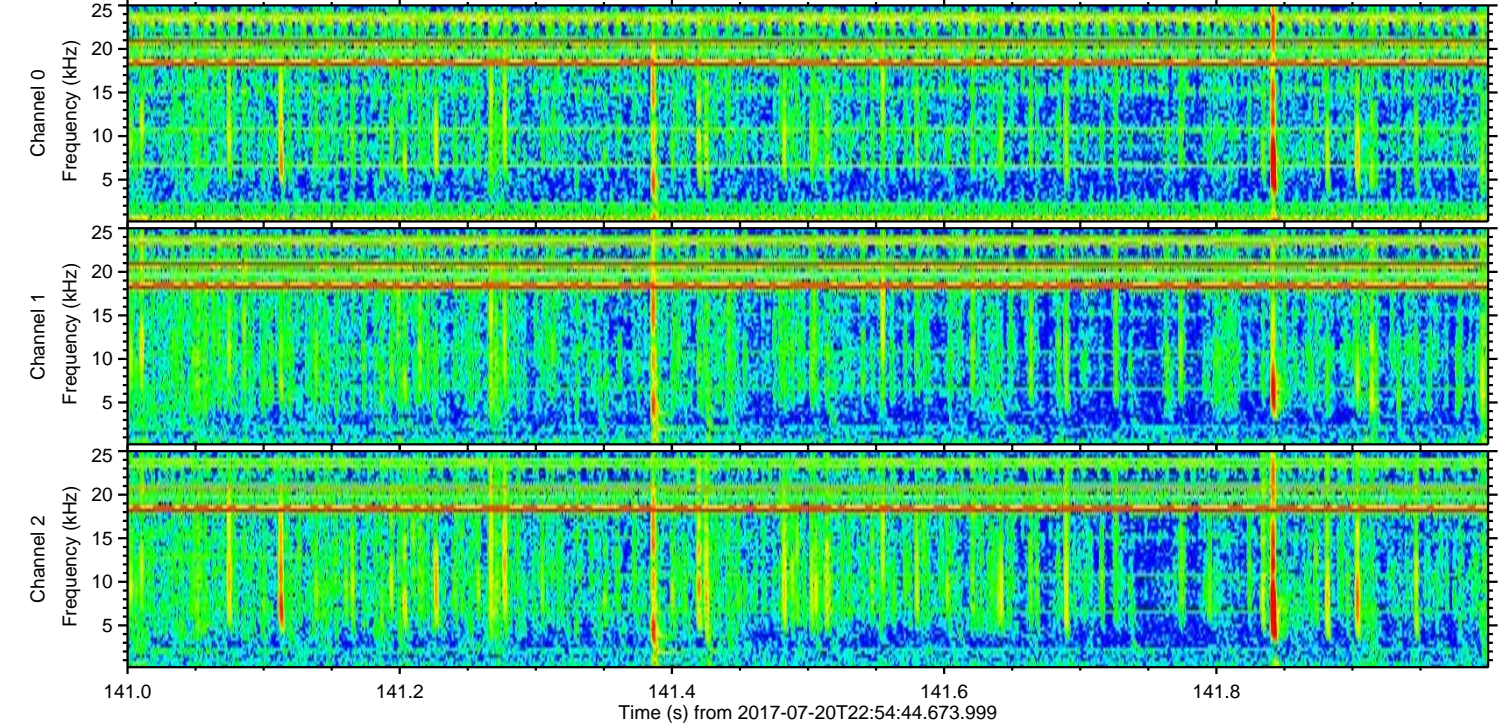
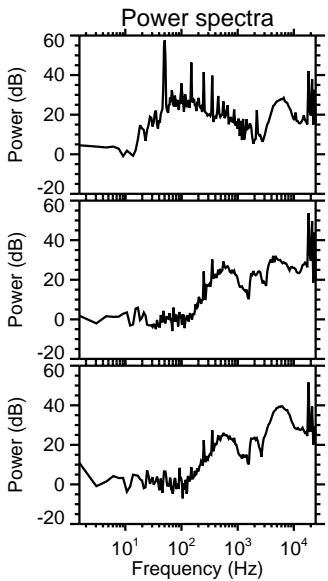
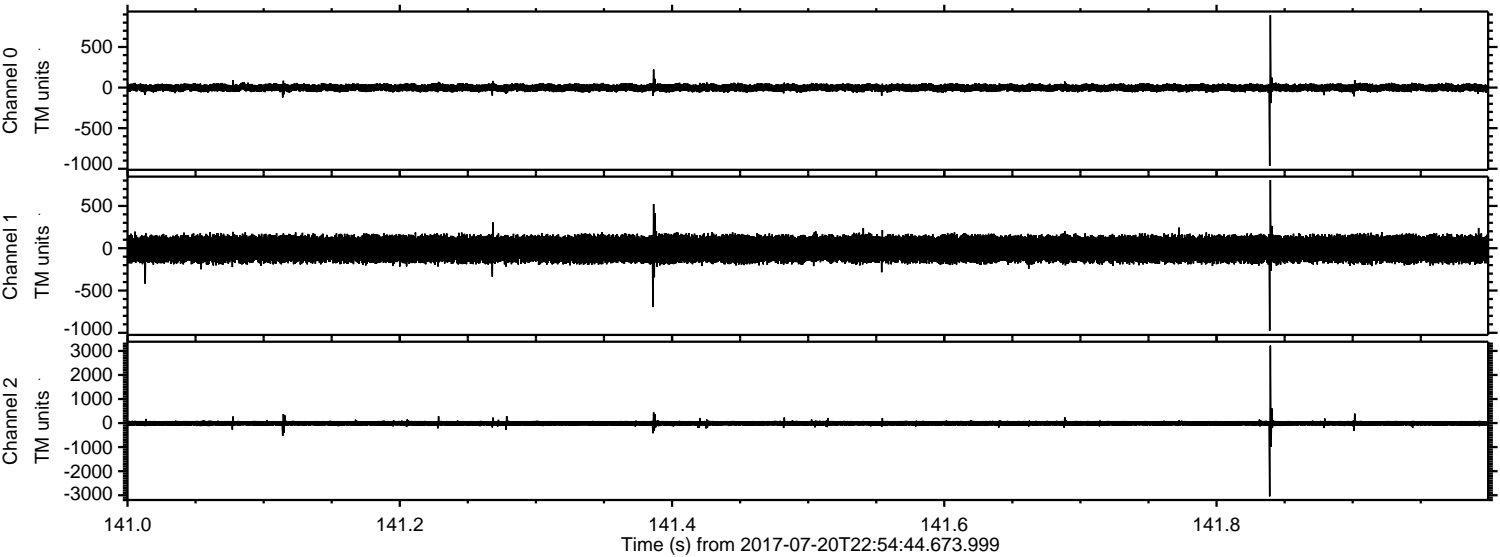


Processed Fri Jul 21 06:30:15 2017 by ELM ver.2012-10-06 from 001__elm20170720_225443__dat00.bin

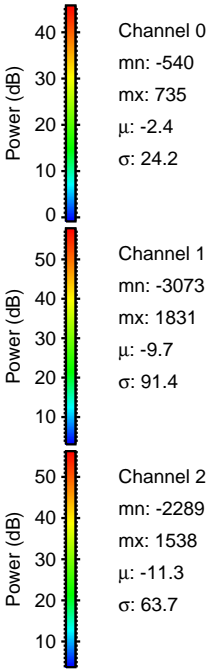
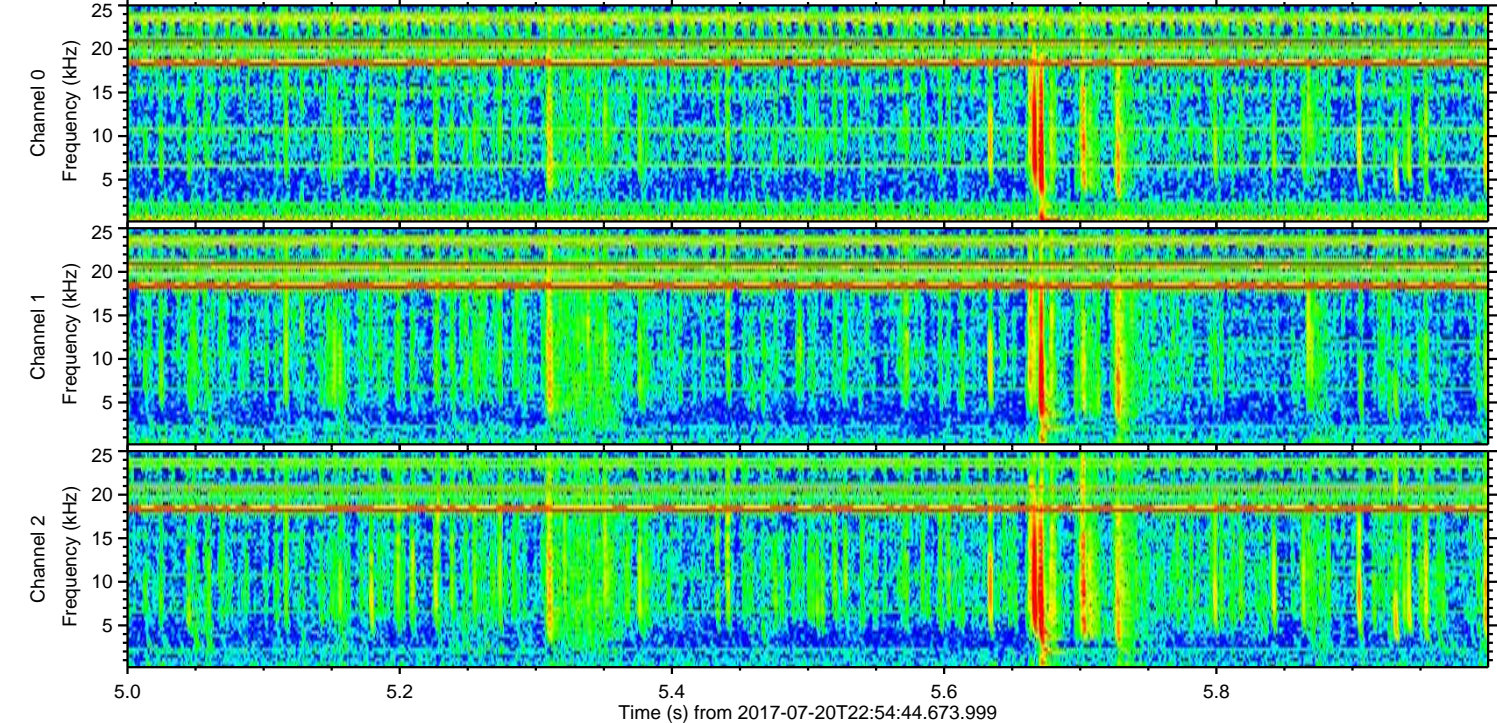
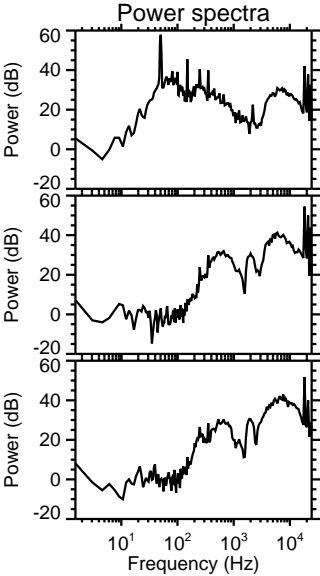
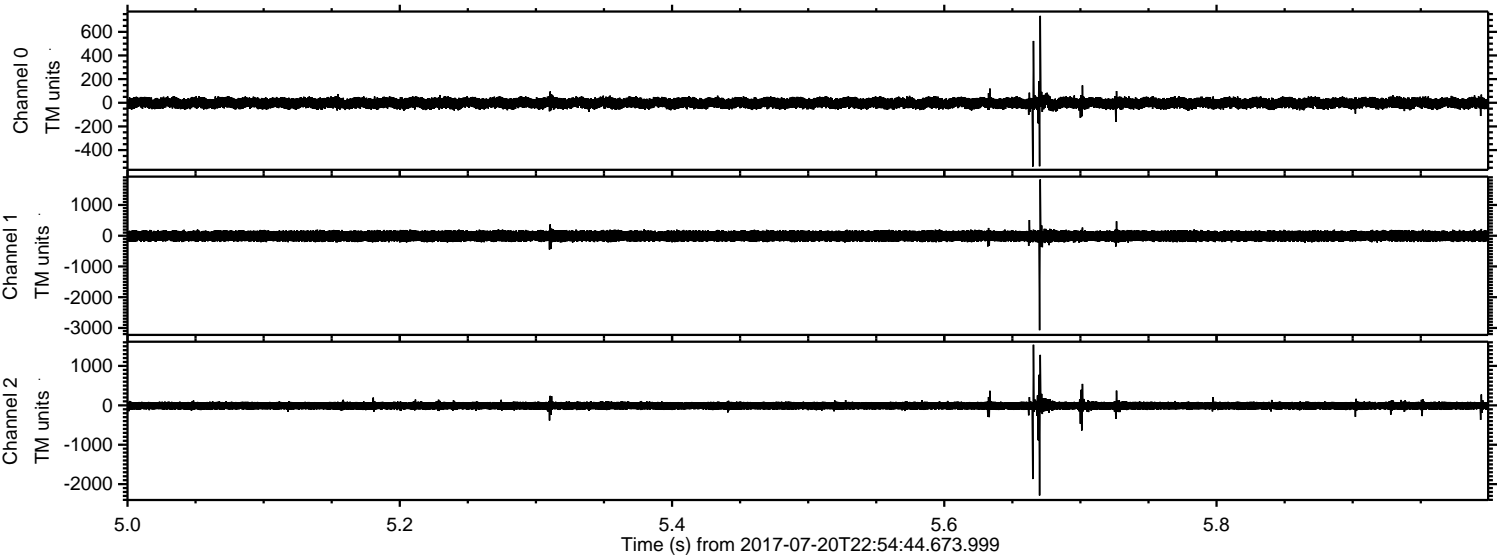


ELMAVAN 3D WAVEFORMS (Measured data sampled at 50 kHz) 51000 packets of 144 samples from 2017-07-20T22:54:44.673.999. Part 142/147

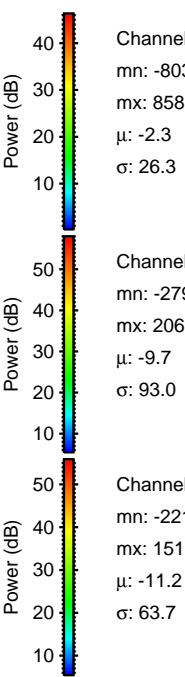
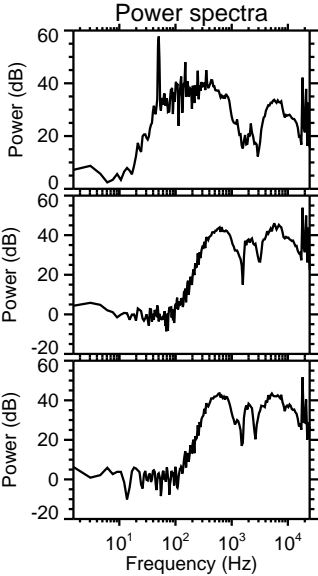
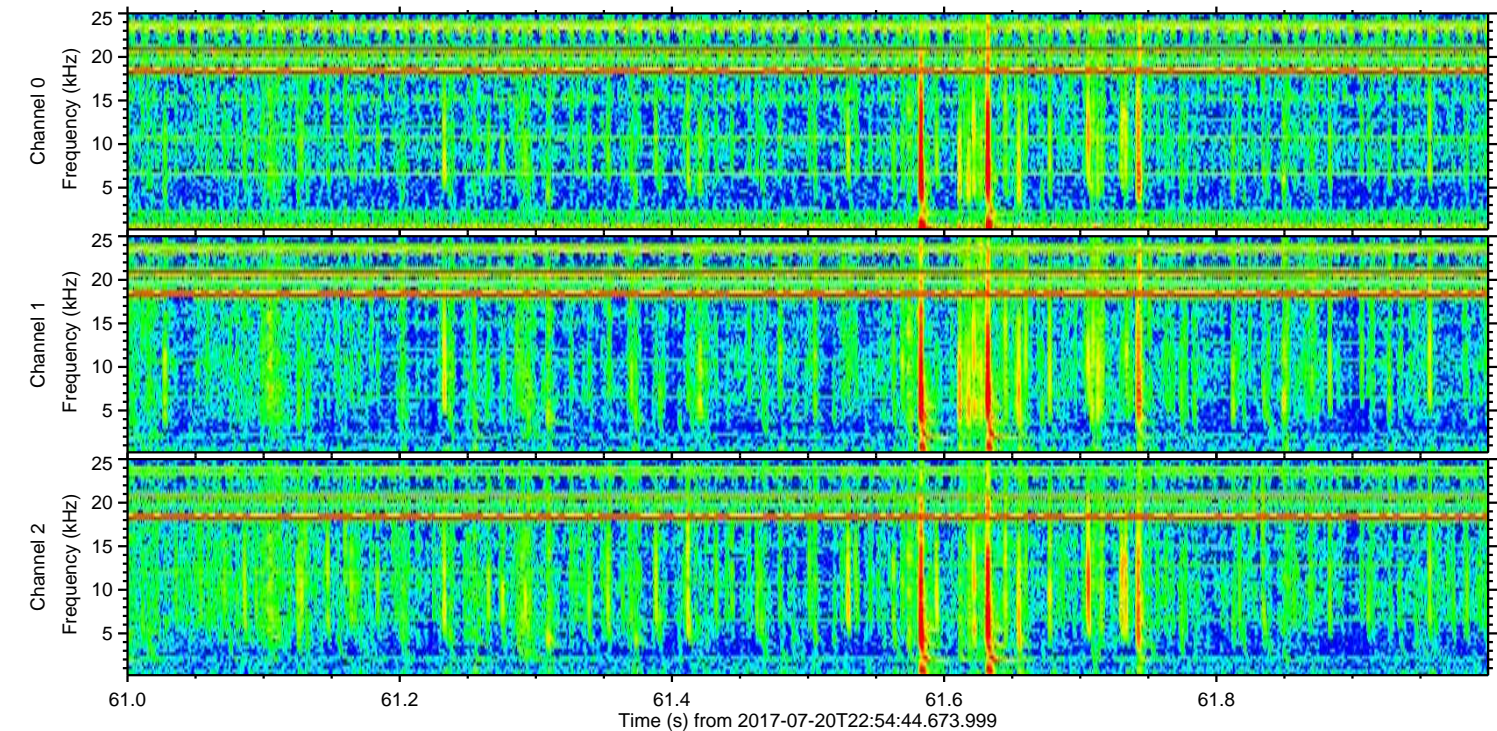
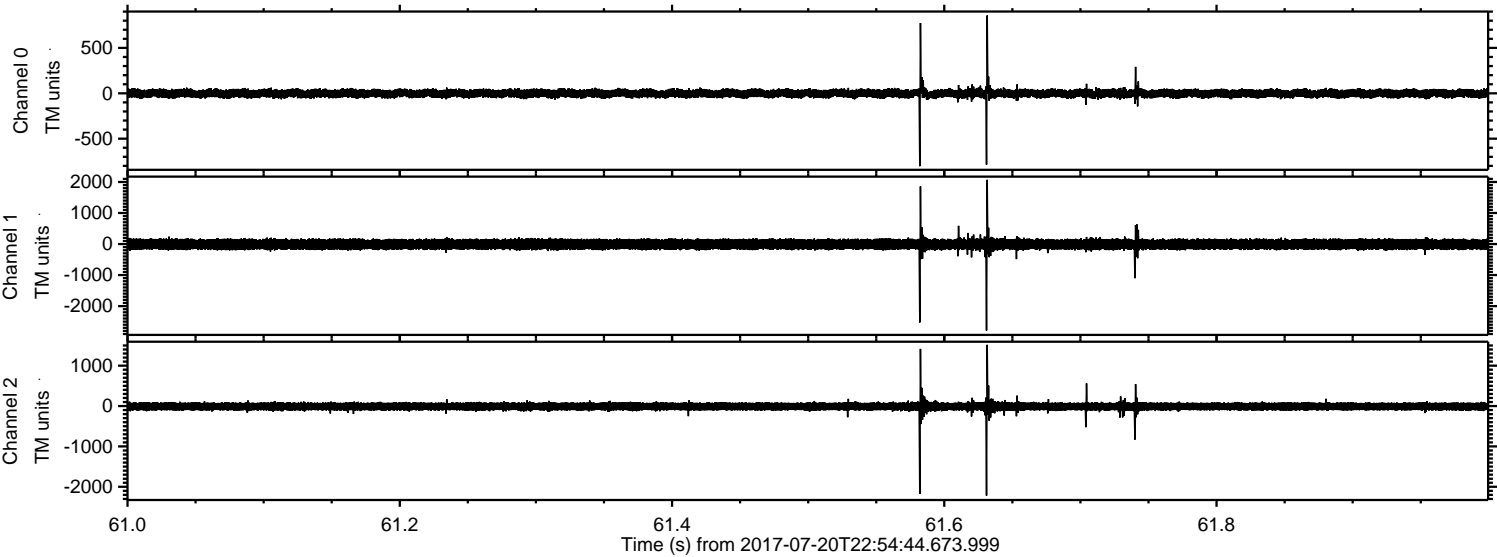
Processed Fri Jul 21 06:30:16 2017 by ELM ver.2012-10-06 from 001__elm20170720_225443__dat00.bin



Processed Fri Jul 21 06:30:16 2017 by ELM ver.2012-10-06 from 001__elm20170720_225443__dat00.bin



Processed Fri Jul 21 06:30:17 2017 by ELM ver.2012-10-06 from 001__elm20170720_225443__dat00.bin



Channel 0
mn: -803
mx: 858
 μ : -2.3
 σ : 26.3

Channel 1
mn: -2790
mx: 2069
 μ : -9.7
 σ : 93.0

Channel 2
mn: -2216
mx: 1517
 μ : -11.2
 σ : 63.7

