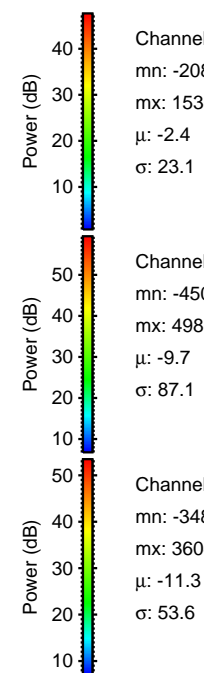
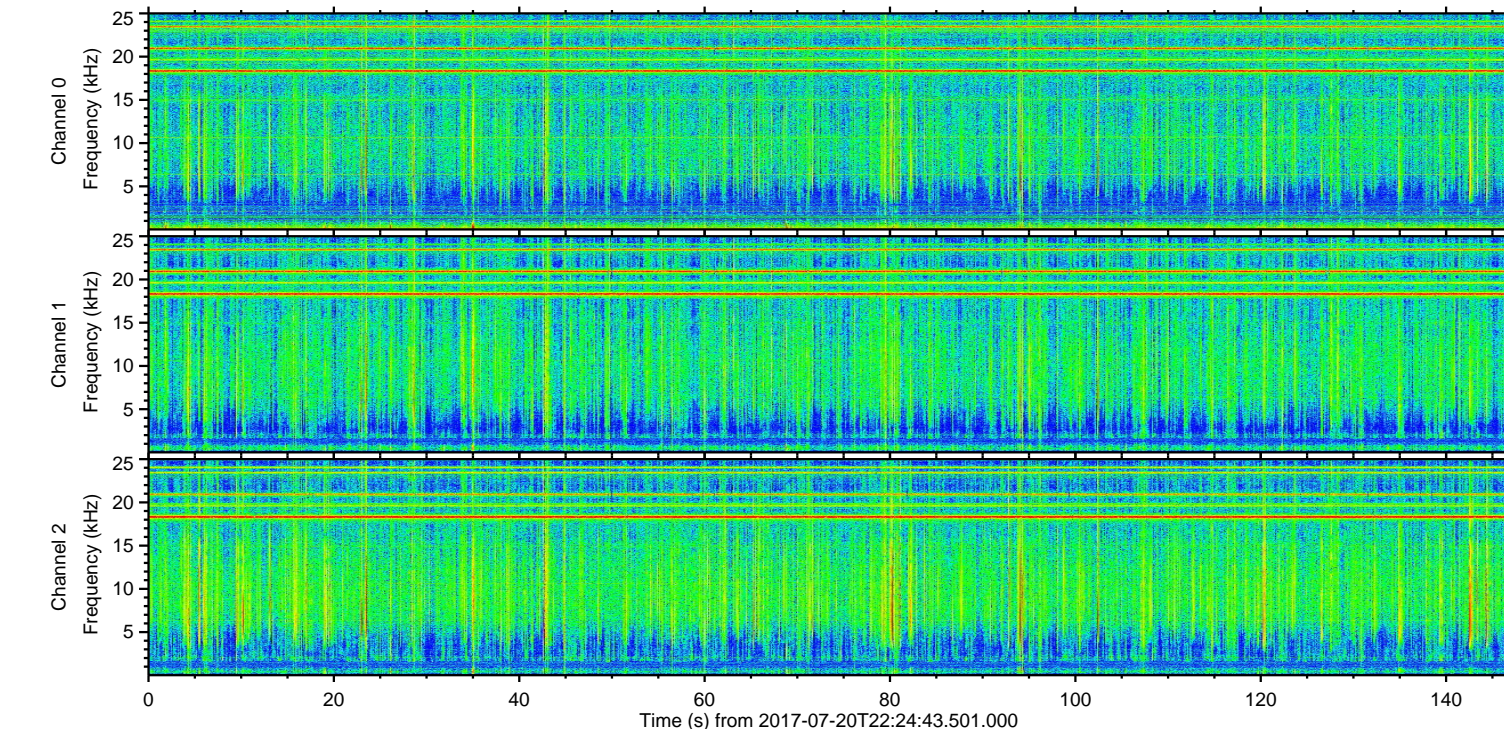
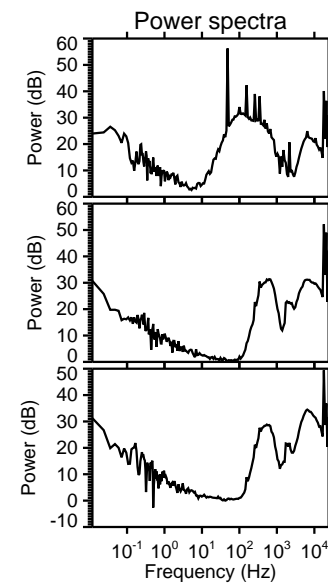
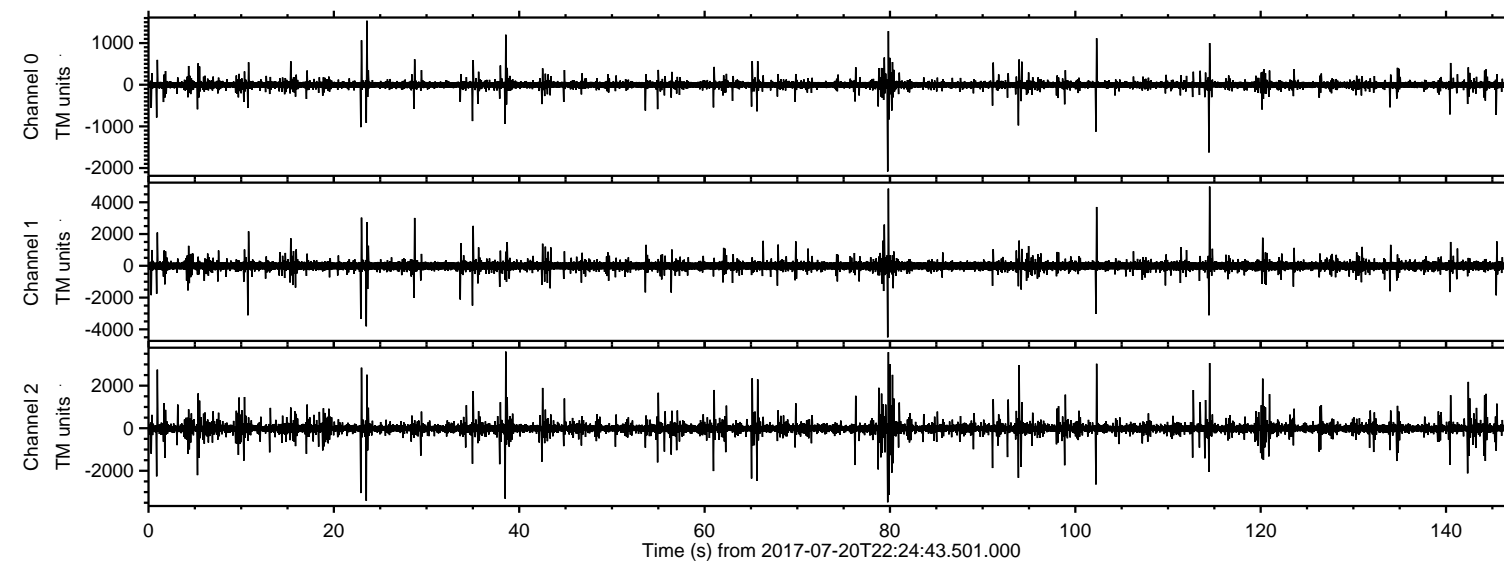


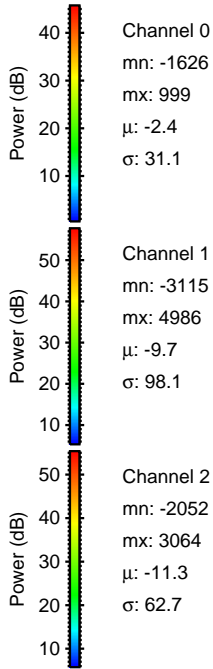
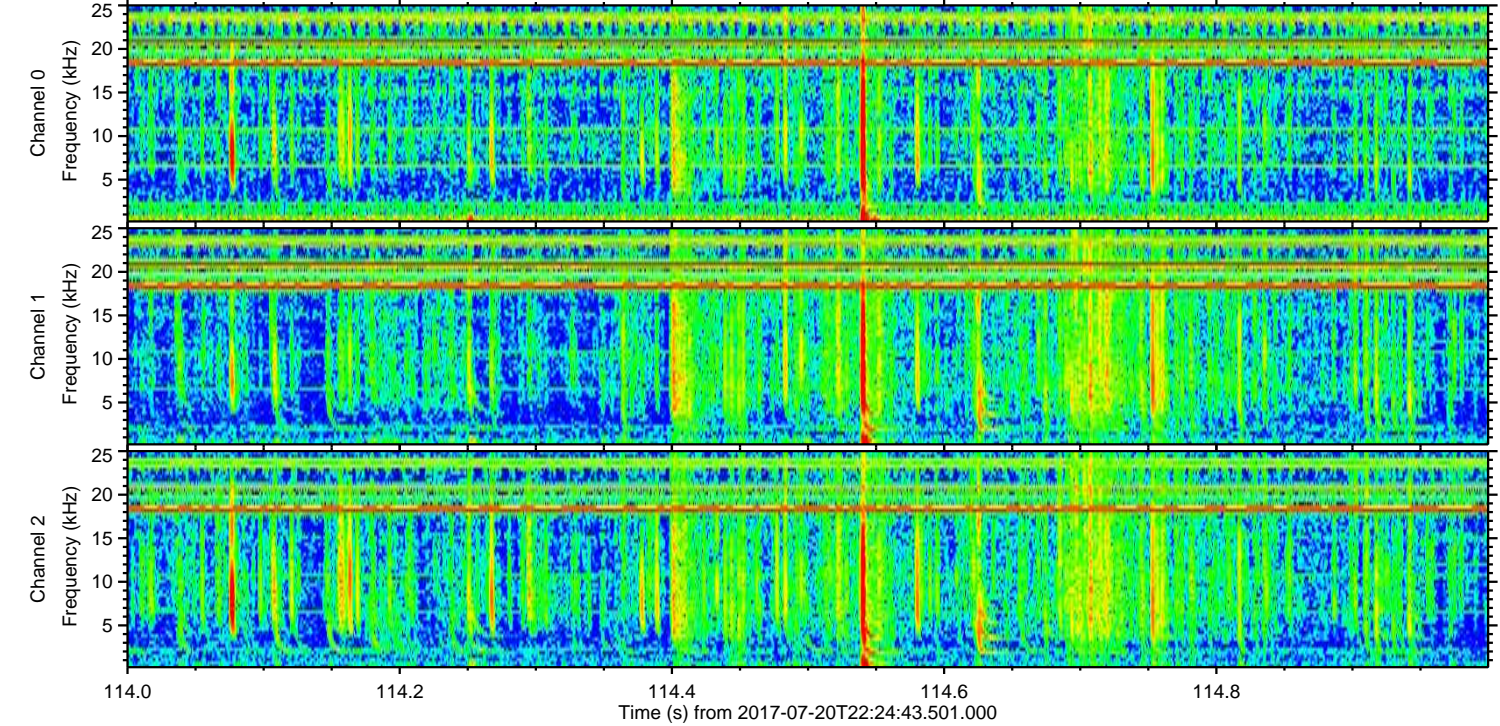
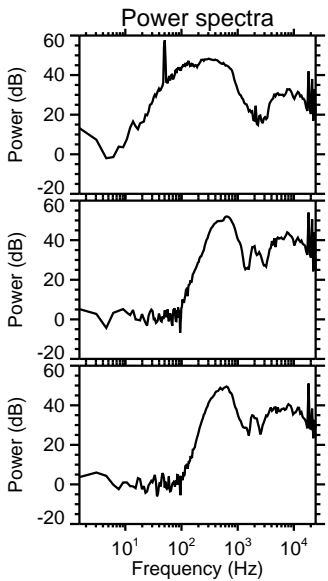
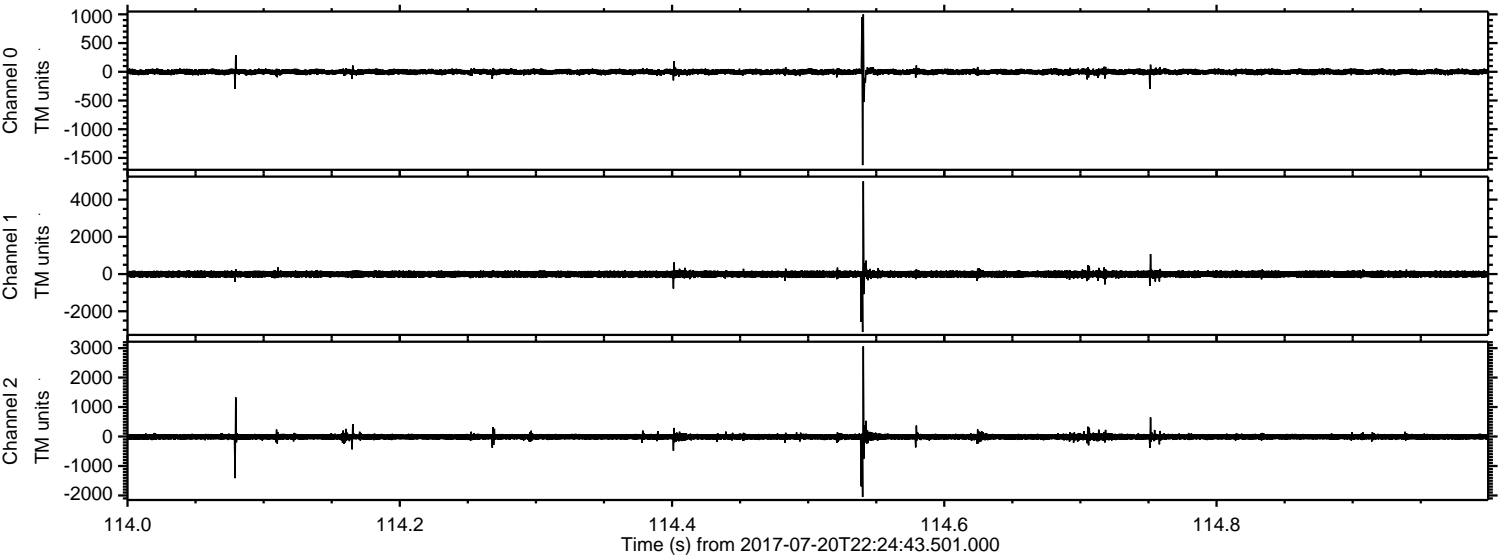
ELMAVAN 3D WAVEFORMS (Measured data sampled at 50 kHz) 51000 packets of 144 samples from 2017-07-20T22:24:43.501.000.

Processed Fri Jul 21 06:26:22 2017 by ELM ver.2012-10-06 from 001__elm20170720_222442__dat00.bin



ELMAVAN 3D WAVEFORMS (Measured data sampled at 50 kHz) 51000 packets of 144 samples from 2017-07-20T22:24:43.501.000. Part 115/147

Processed Fri Jul 21 06:26:30 2017 by ELM ver.2012-10-06 from 001__elm20170720_222442__dat00.bin

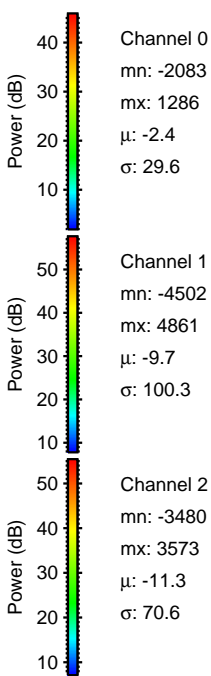
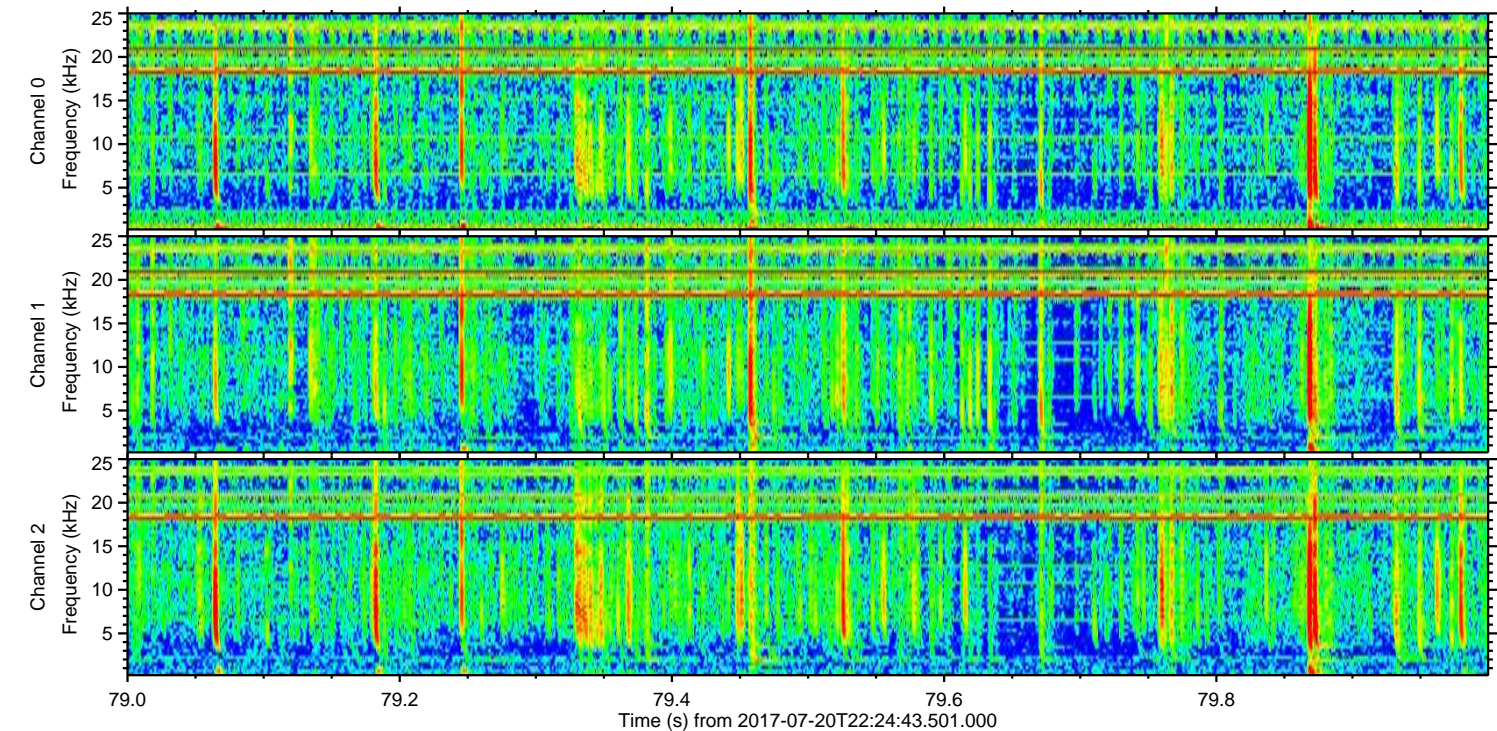
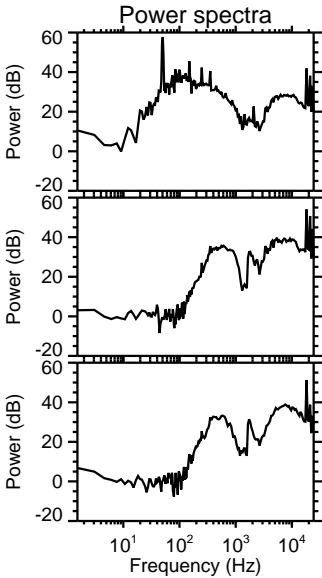
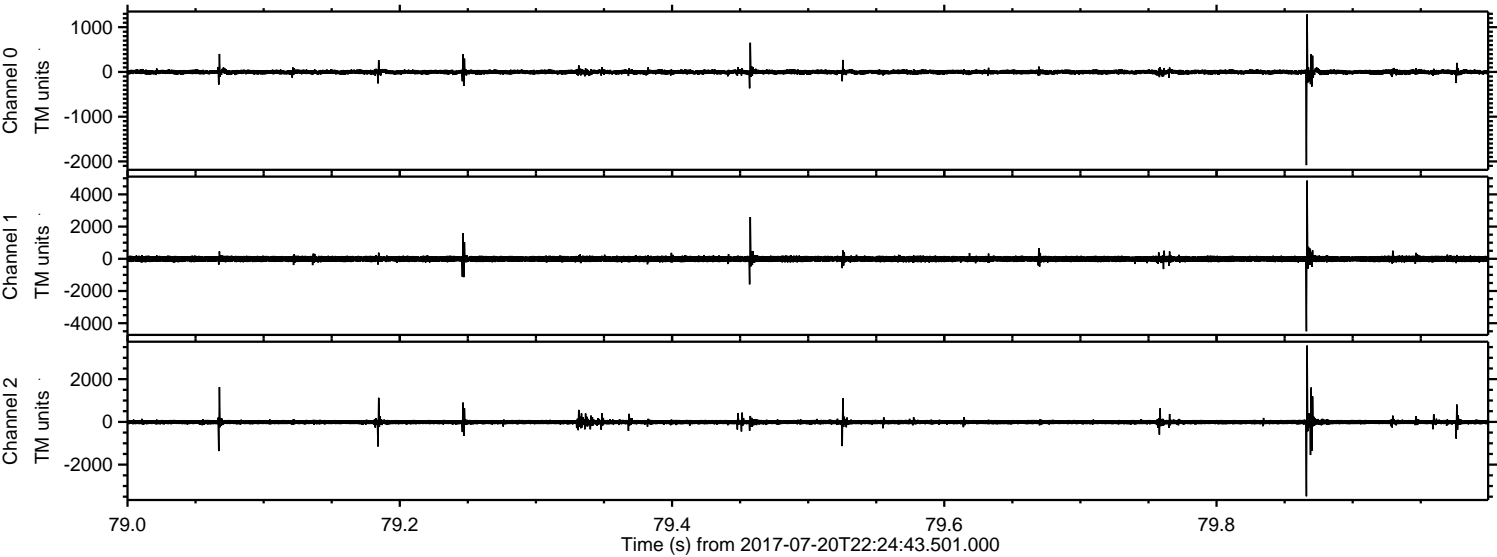


Channel 0
mn: -1626
mx: 999
 μ : -2.4
 σ : 31.1

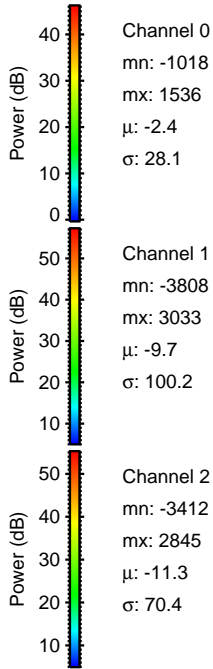
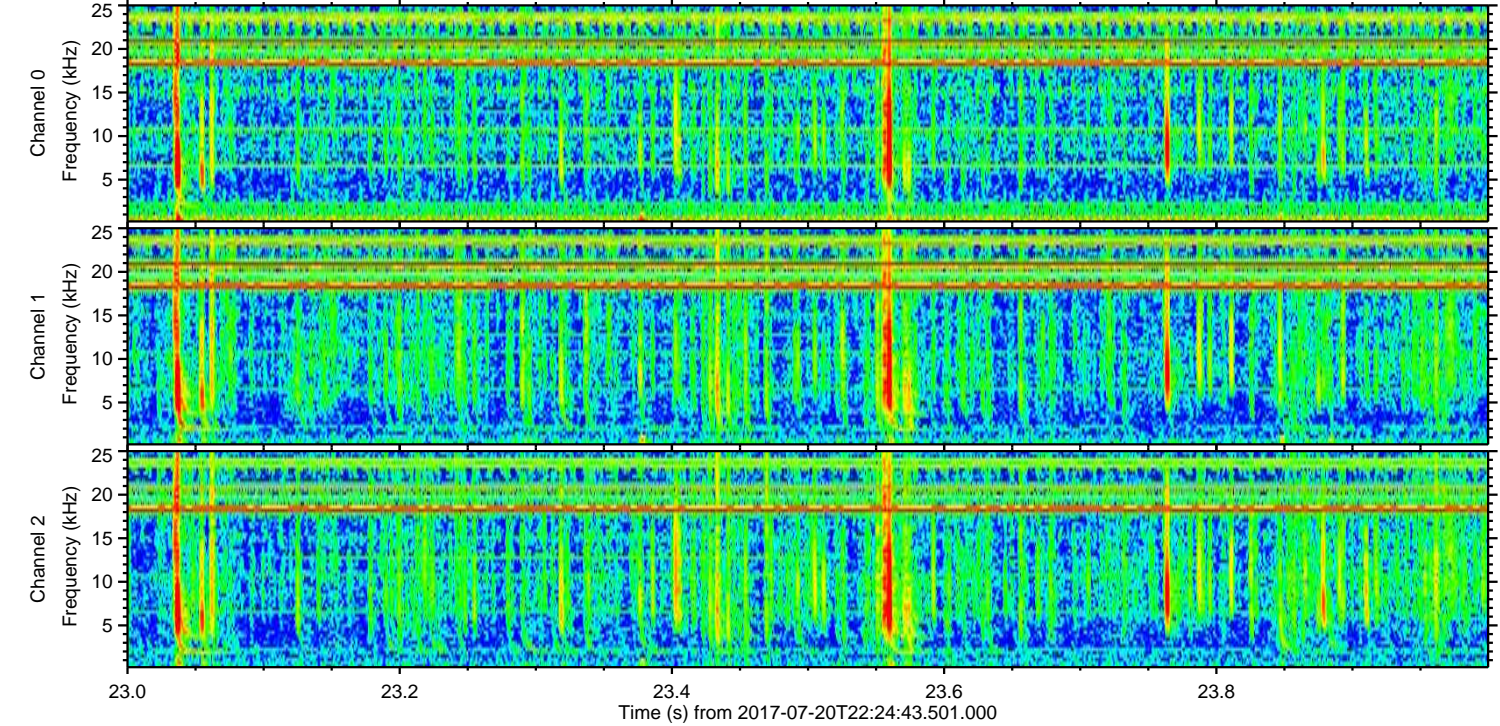
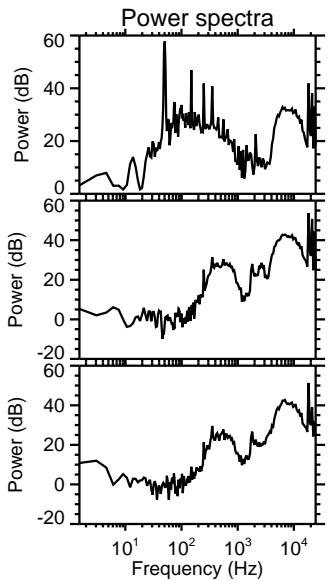
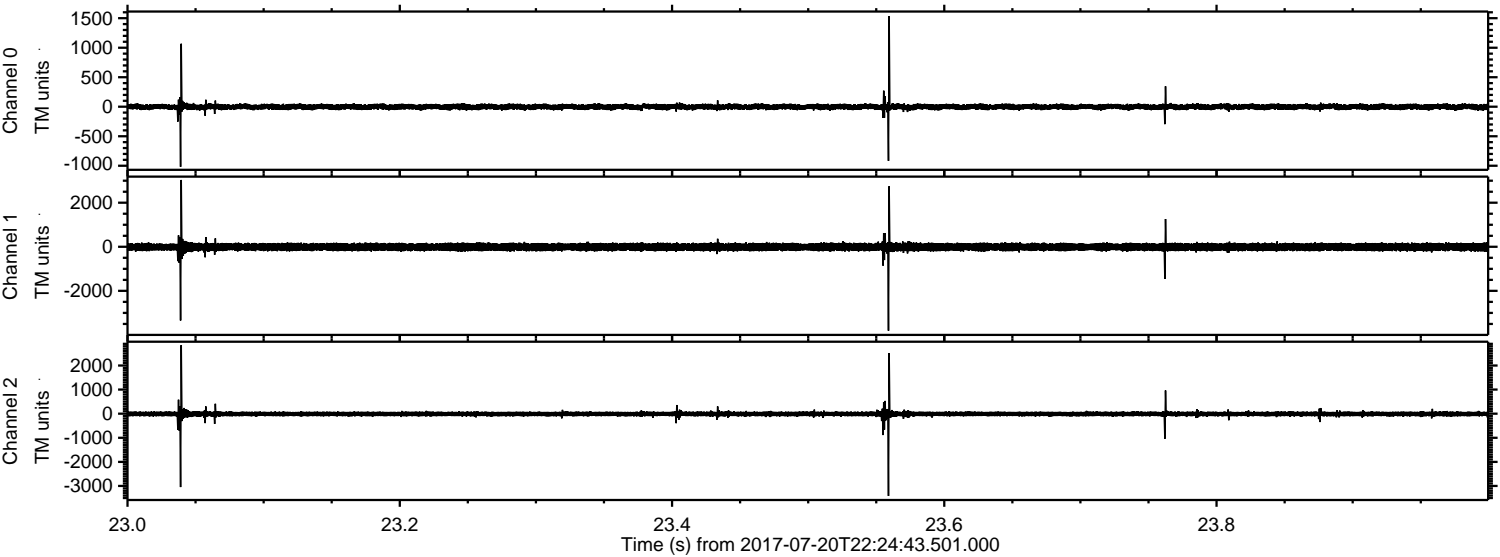
Channel 1
mn: -3115
mx: 4986
 μ : -9.7
 σ : 98.1

Channel 2
mn: -2052
mx: 3064
 μ : -11.3
 σ : 62.7

Processed Fri Jul 21 06:26:30 2017 by ELM ver.2012-10-06 from 001__elm20170720_222442__dat00.bin

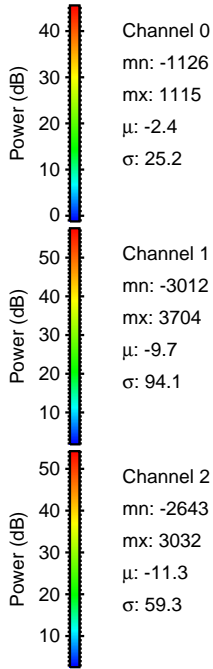
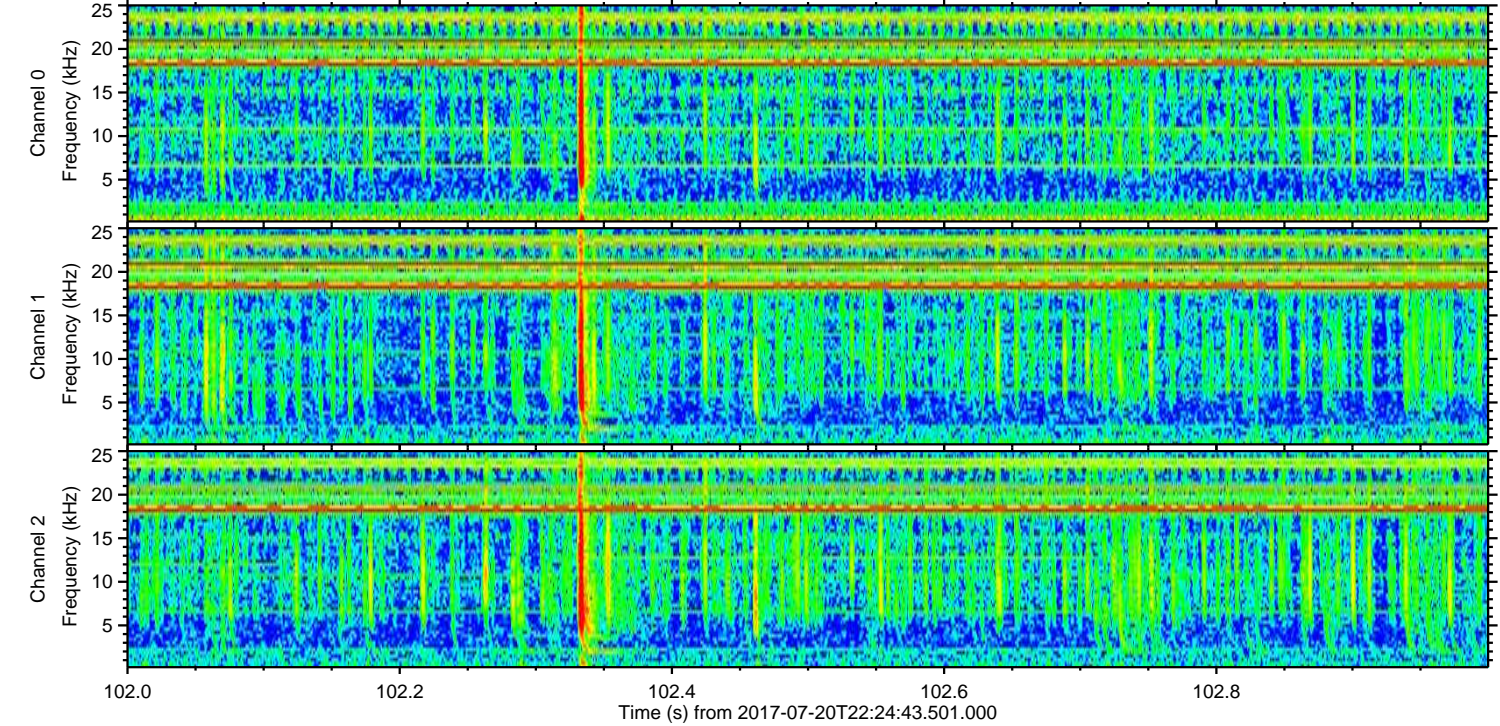
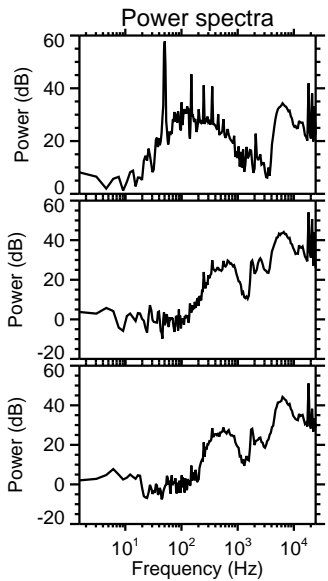
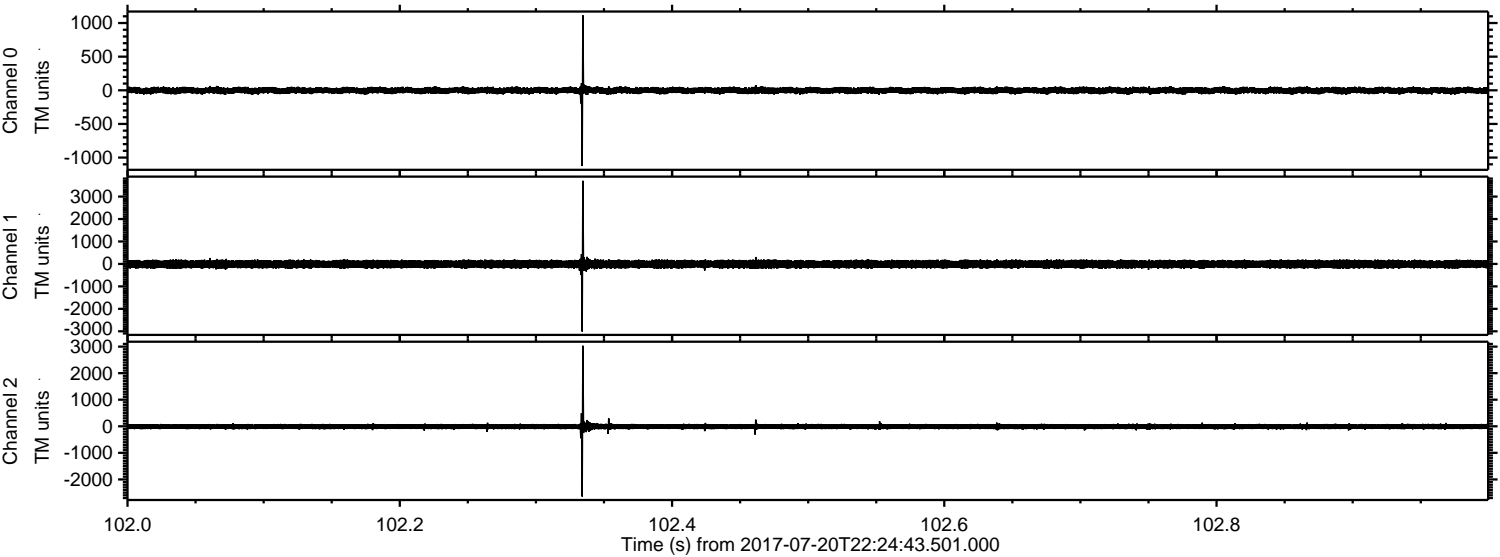


Processed Fri Jul 21 06:26:31 2017 by ELM ver.2012-10-06 from 001__elm20170720_222442__dat00.bin

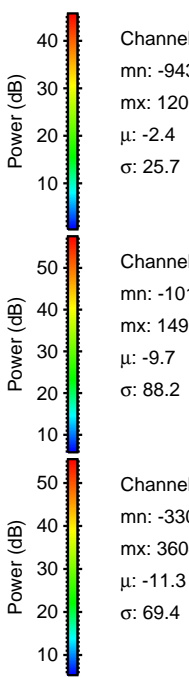
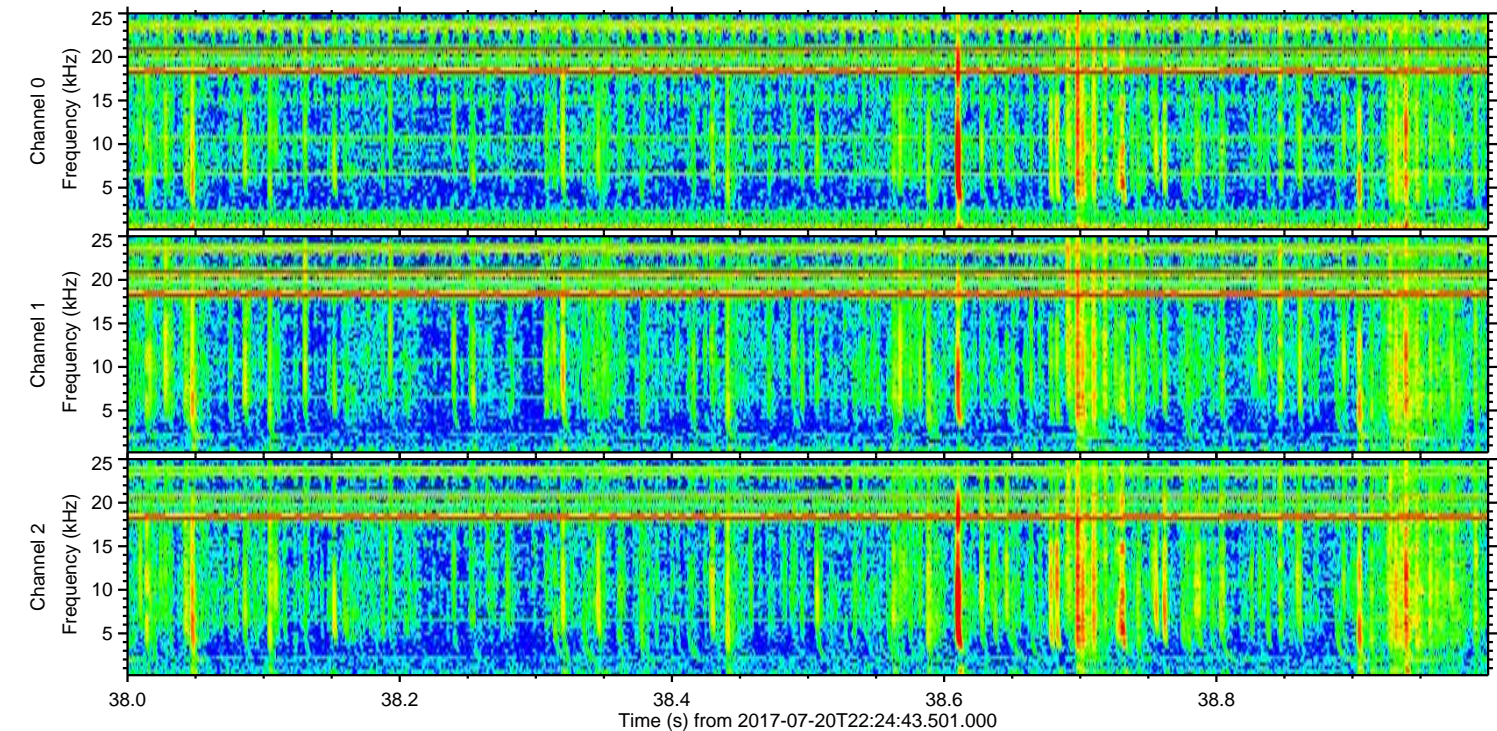
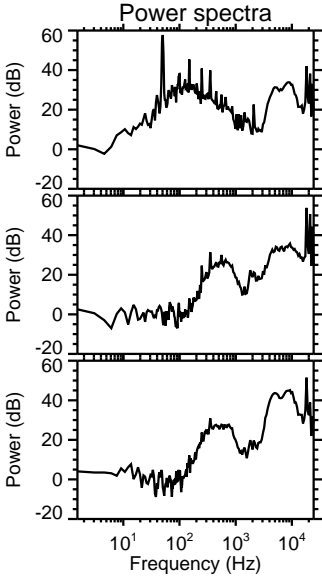
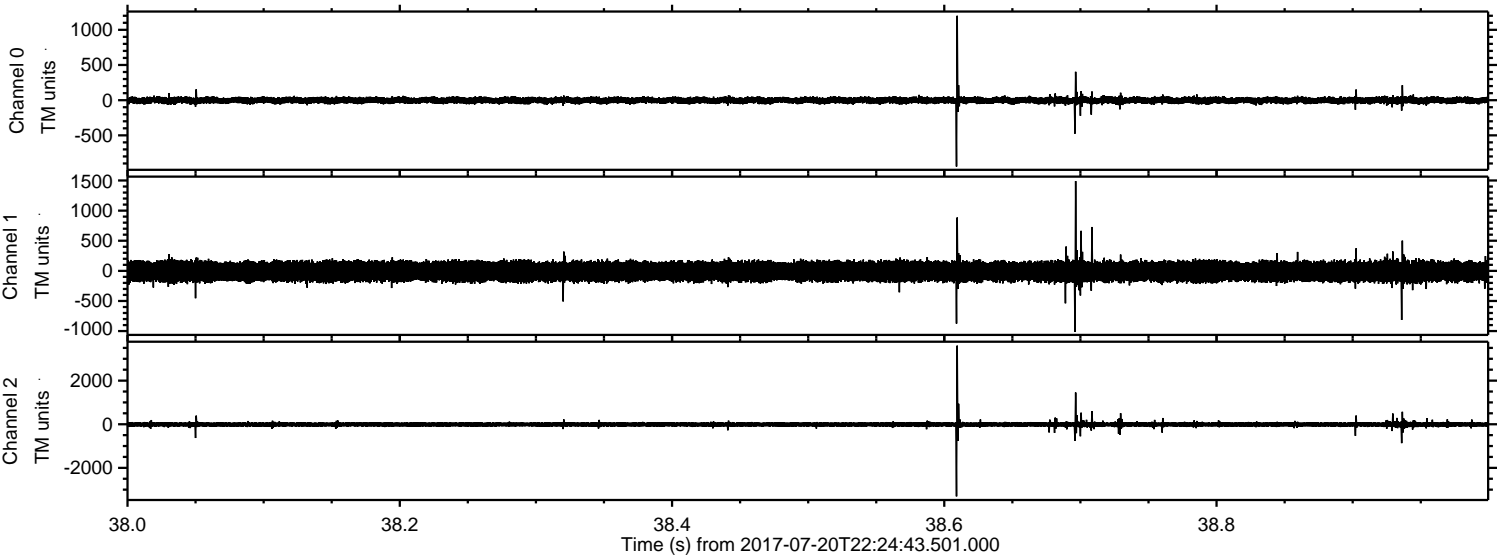


ELMAVAN 3D WAVEFORMS (Measured data sampled at 50 kHz) 51000 packets of 144 samples from 2017-07-20T22:24:43.501.000. Part 103/147

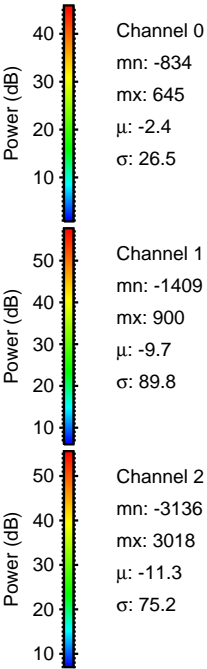
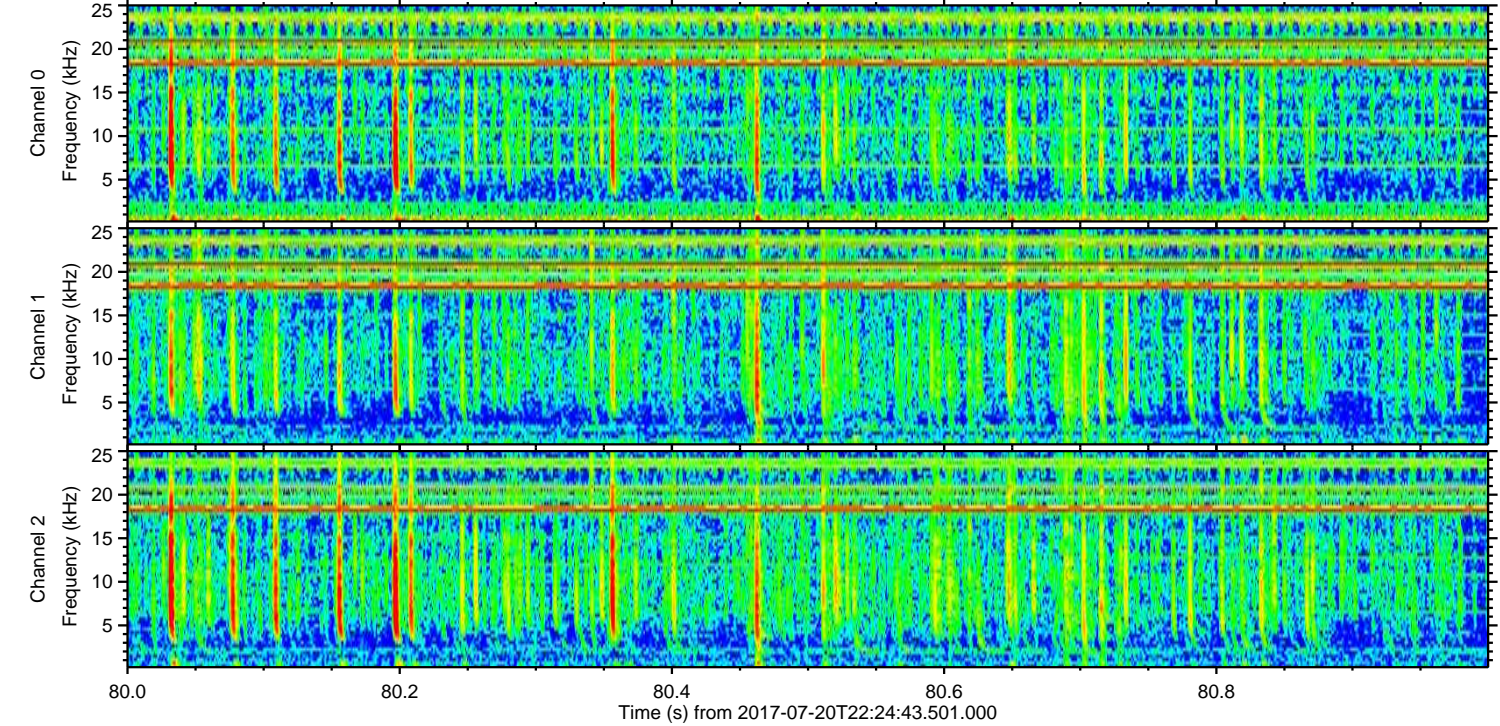
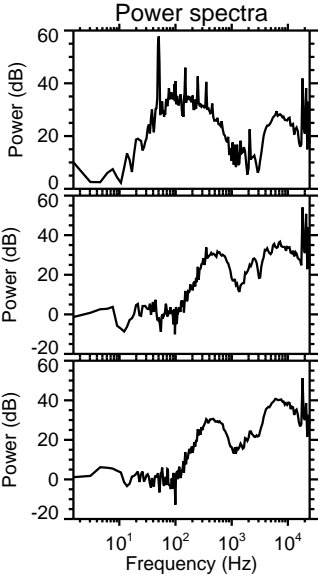
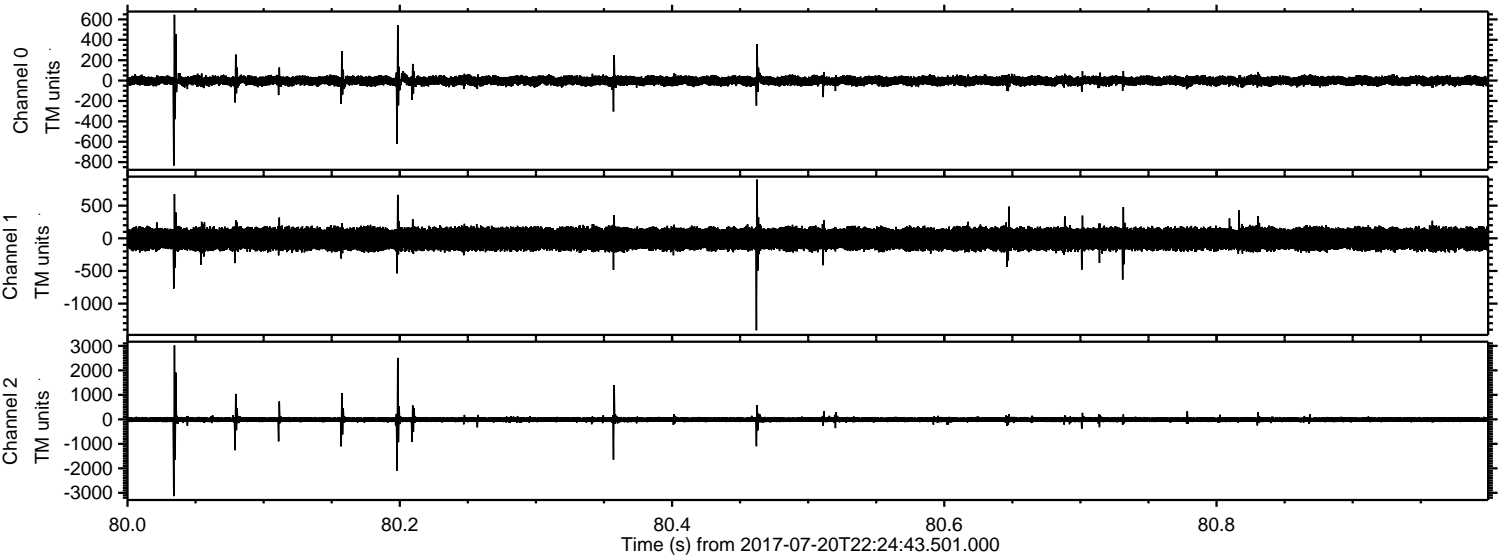
Processed Fri Jul 21 06:26:32 2017 by ELM ver.2012-10-06 from 001__elm20170720_222442__dat00.bin



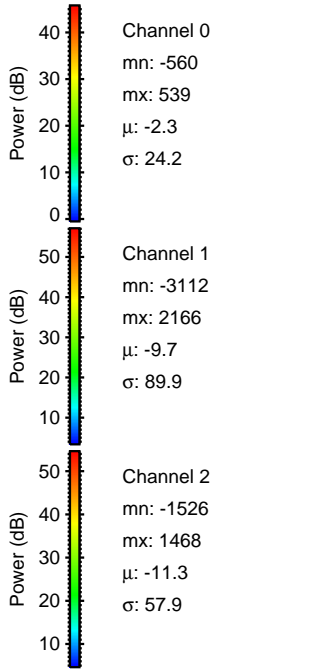
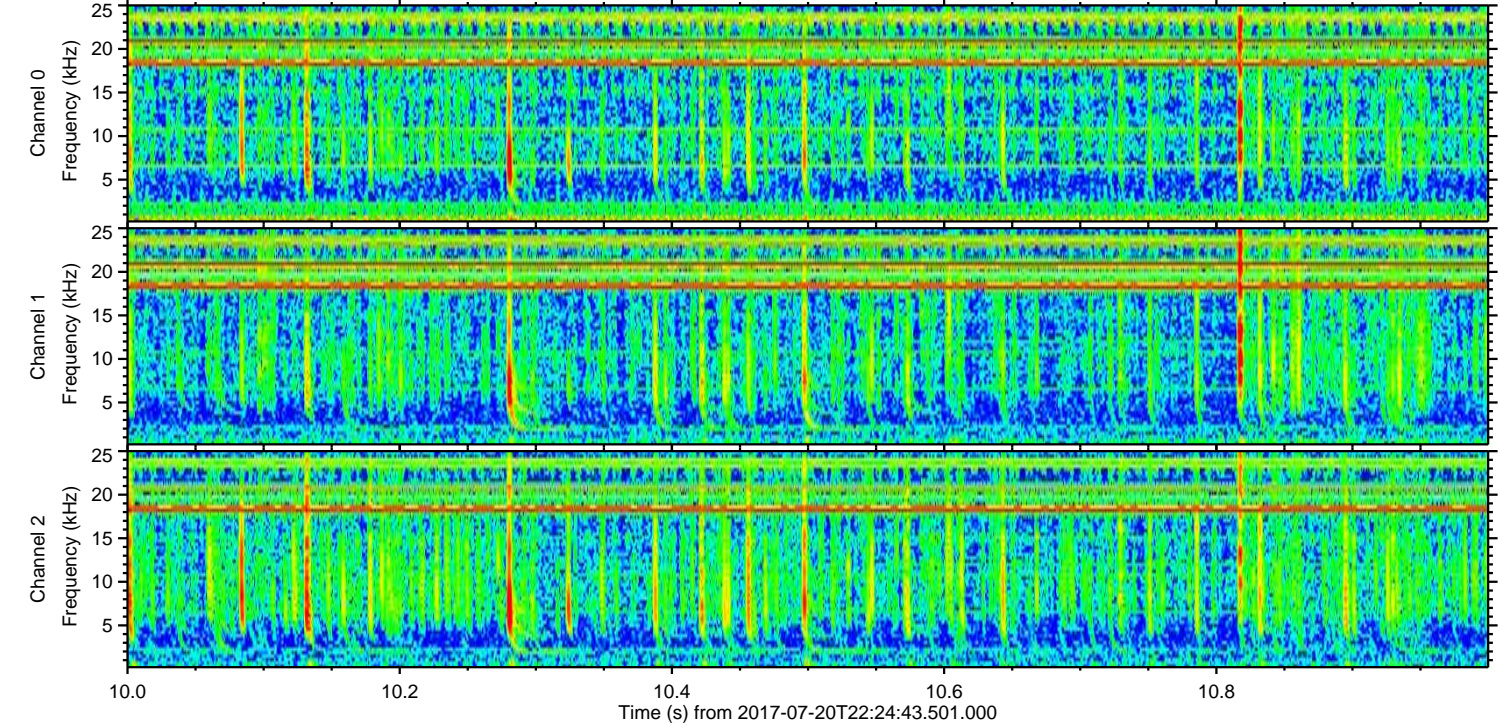
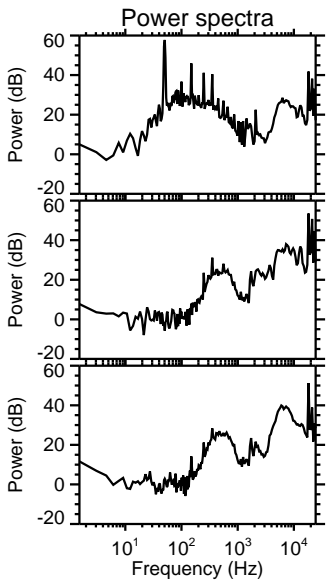
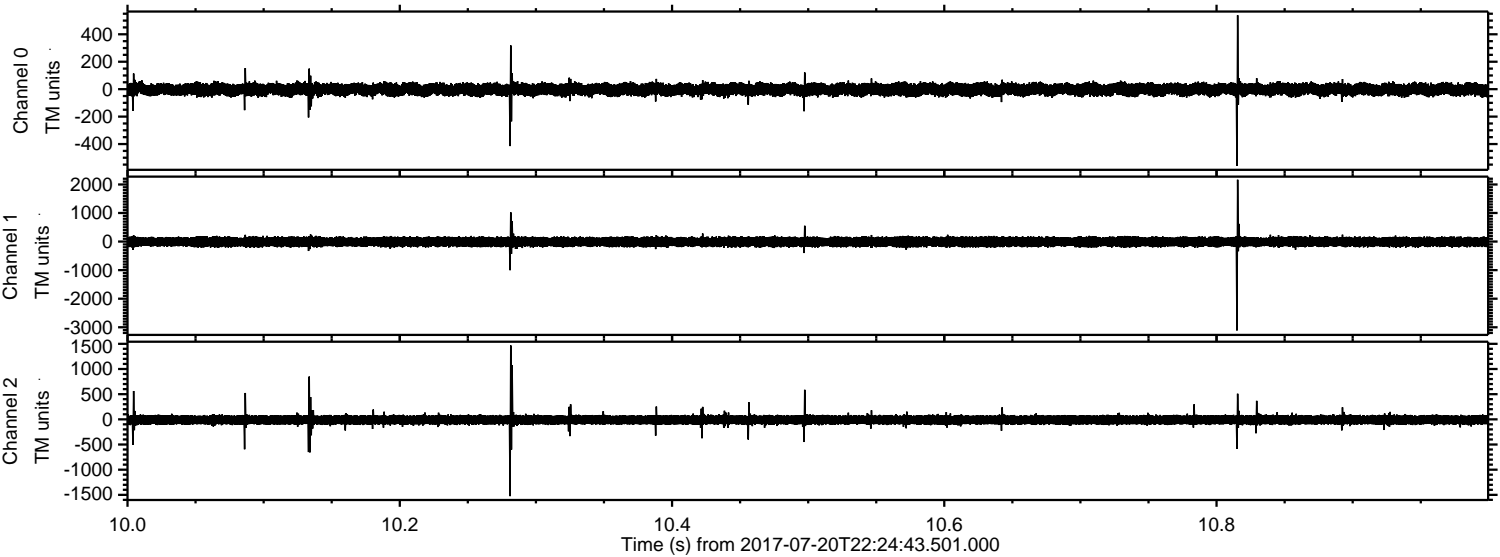
Processed Fri Jul 21 06:26:33 2017 by ELM ver.2012-10-06 from 001__elm20170720_222442__dat00.bin



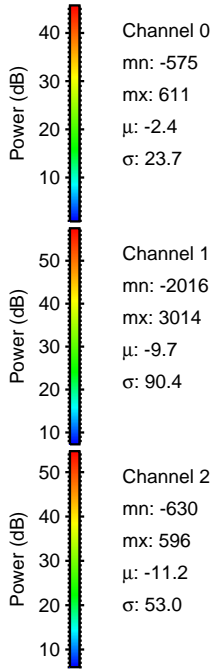
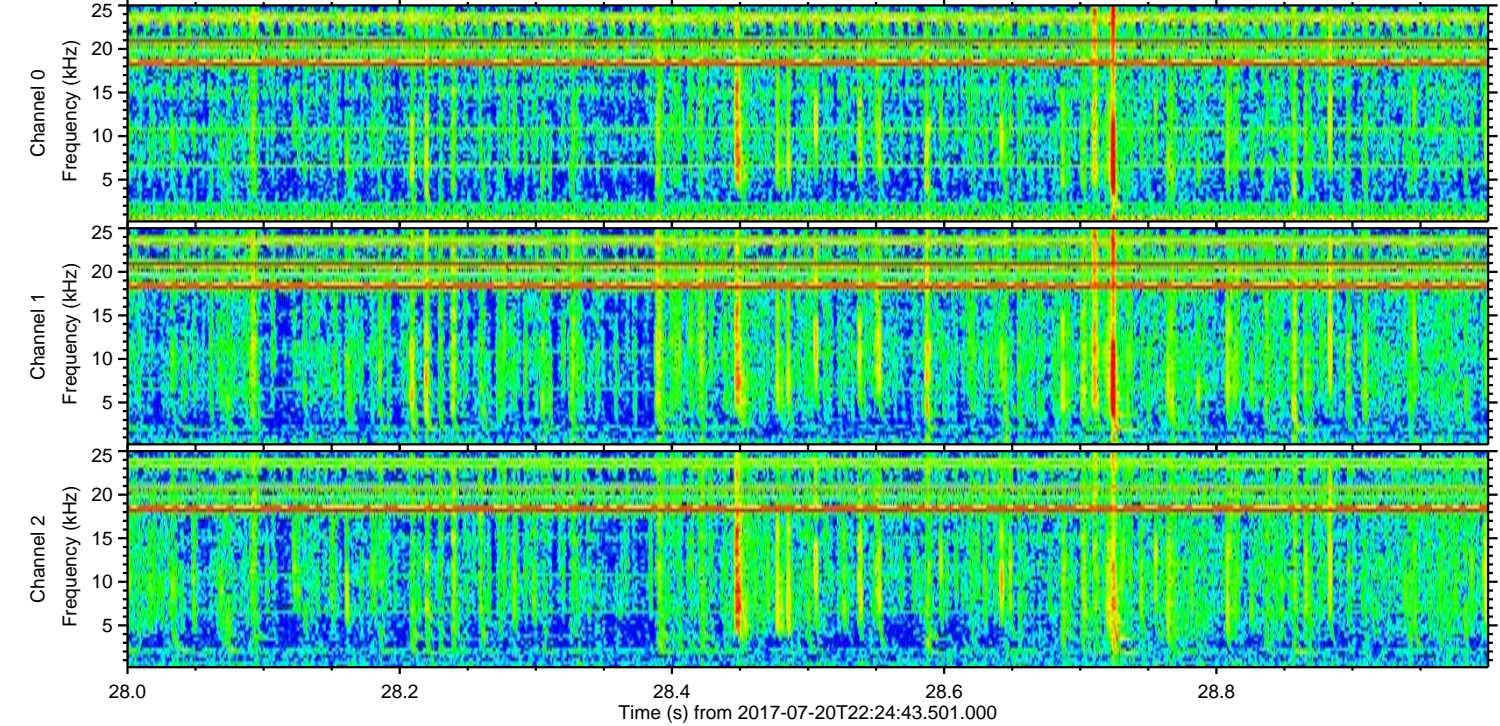
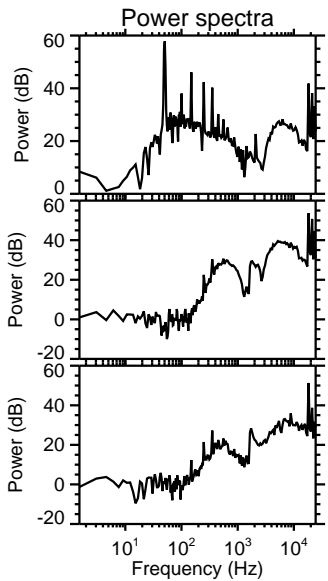
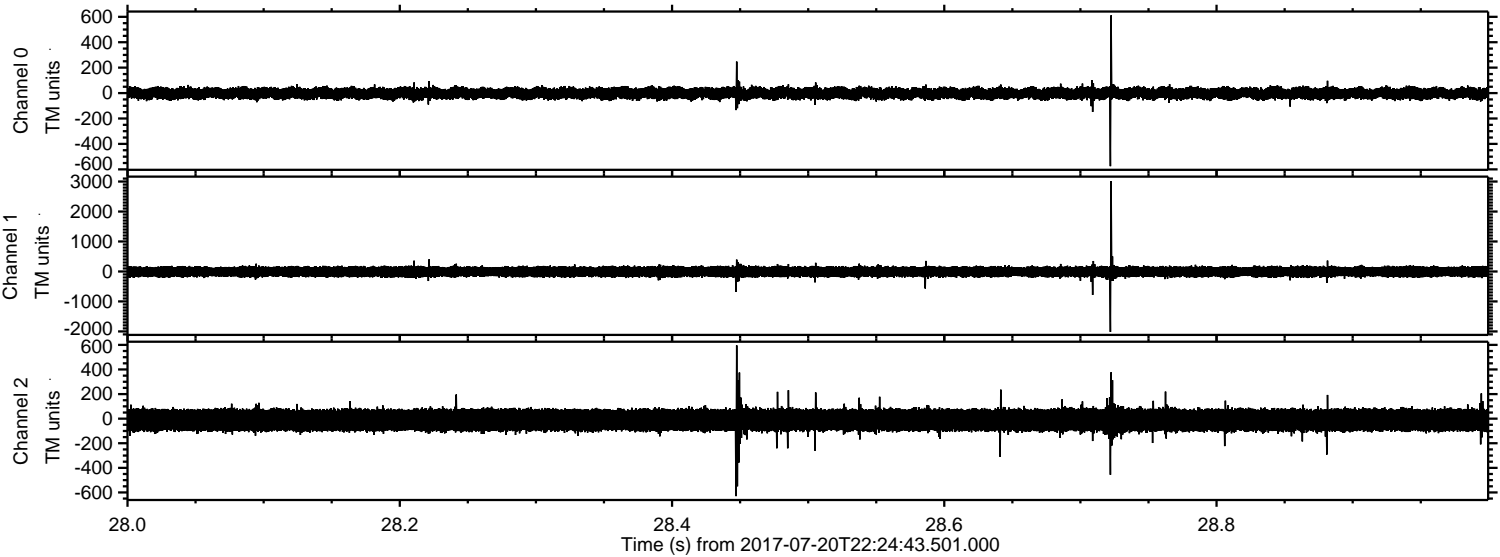
Processed Fri Jul 21 06:26:33 2017 by ELM ver.2012-10-06 from 001__elm20170720_222442__dat00.bin



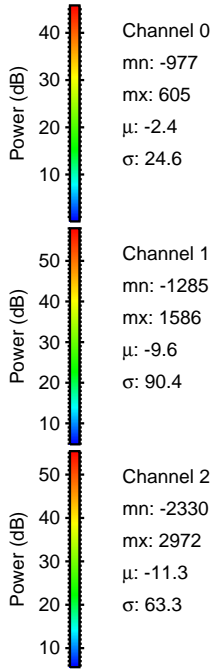
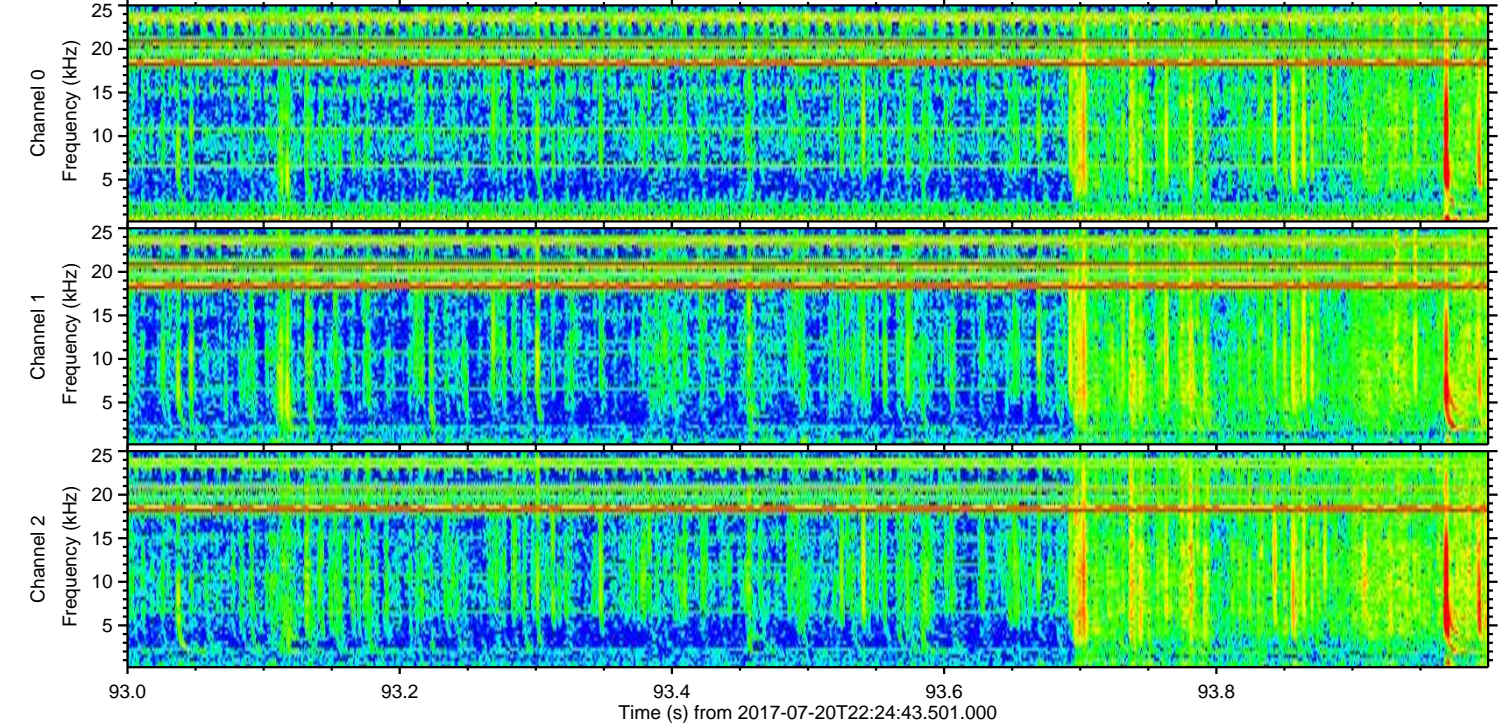
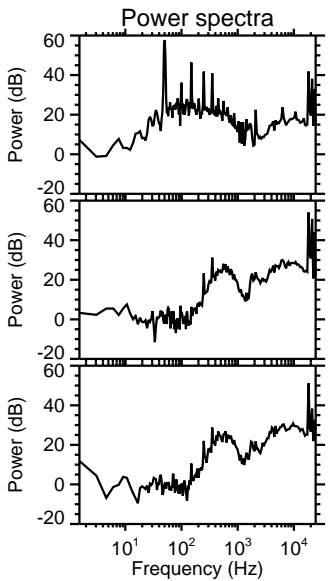
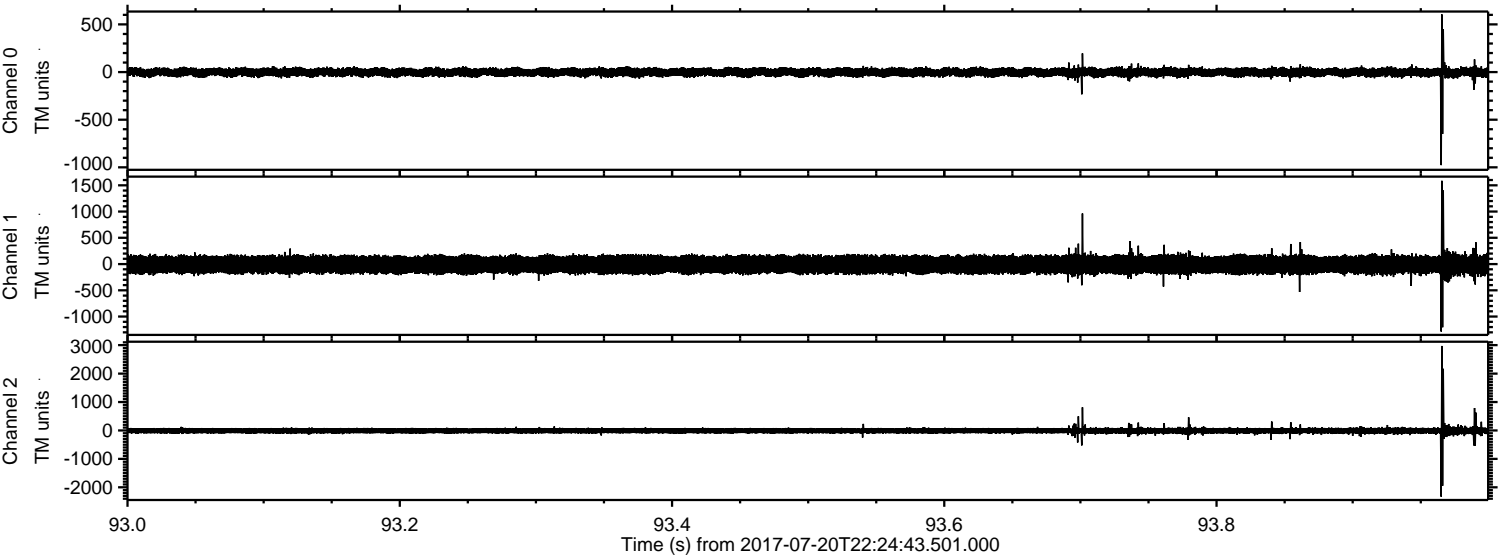
Processed Fri Jul 21 06:26:34 2017 by ELM ver.2012-10-06 from 001__elm20170720_222442__dat00.bin



Processed Fri Jul 21 06:26:35 2017 by ELM ver.2012-10-06 from 001__elm20170720_222442__dat00.bin



Processed Fri Jul 21 06:26:35 2017 by ELM ver.2012-10-06 from 001__elm20170720_222442__dat00.bin



Channel 0
mn: -977
mx: 605
 μ : -2.4
 σ : 24.6

Channel 1
mn: -1285
mx: 1586
 μ : -9.6
 σ : 90.4

Channel 2
mn: -2330
mx: 2972
 μ : -11.3
 σ : 63.3

Processed Fri Jul 21 06:26:36 2017 by ELM ver.2012-10-06 from 001__elm20170720_222442__dat00.bin

