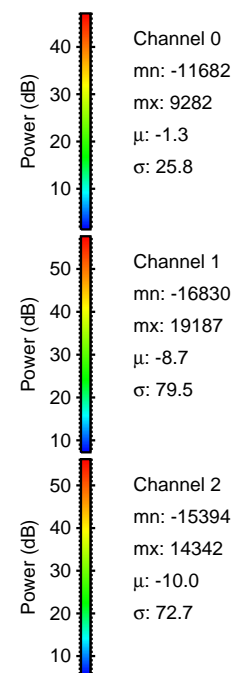
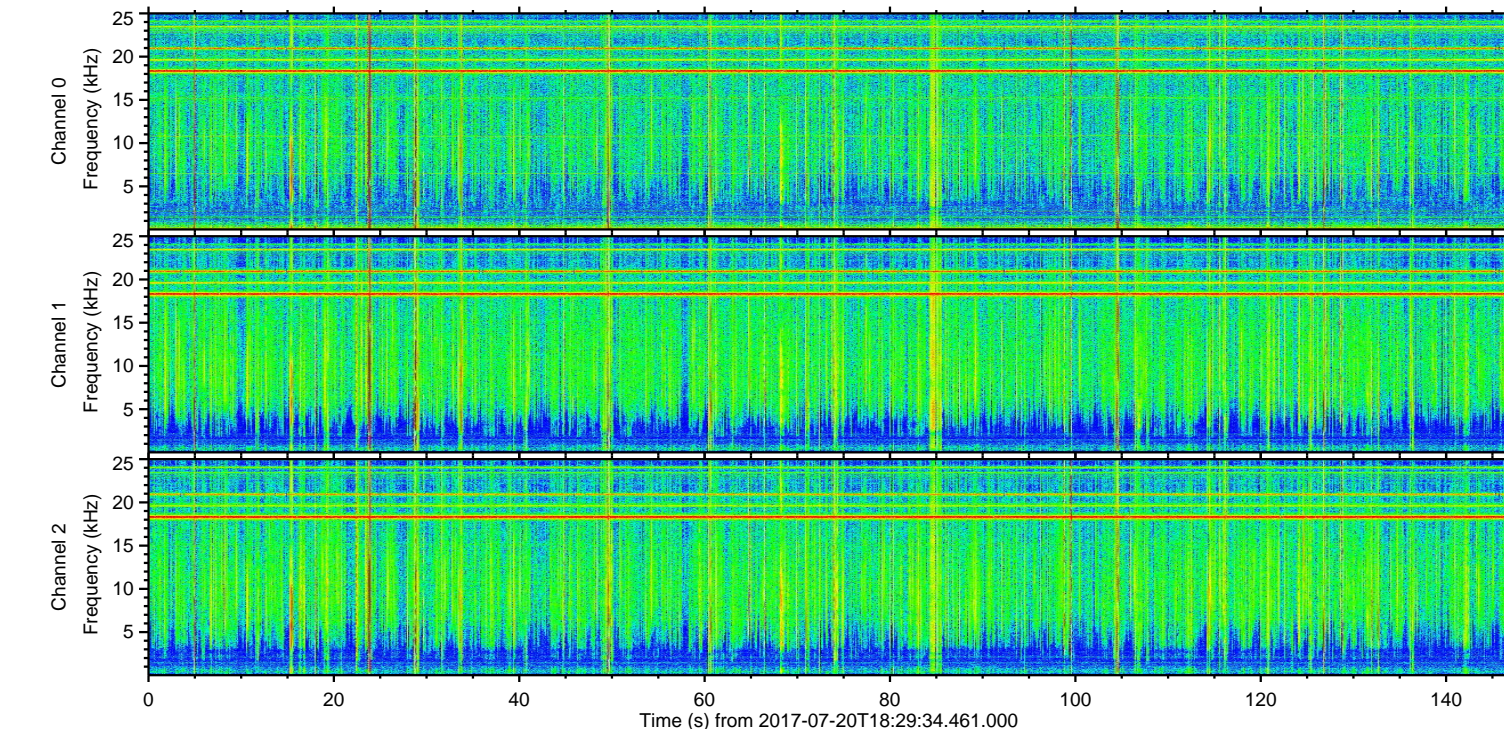
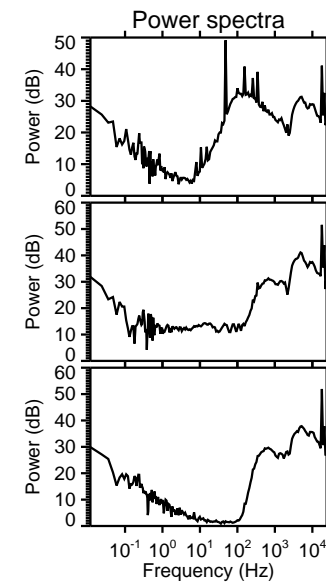
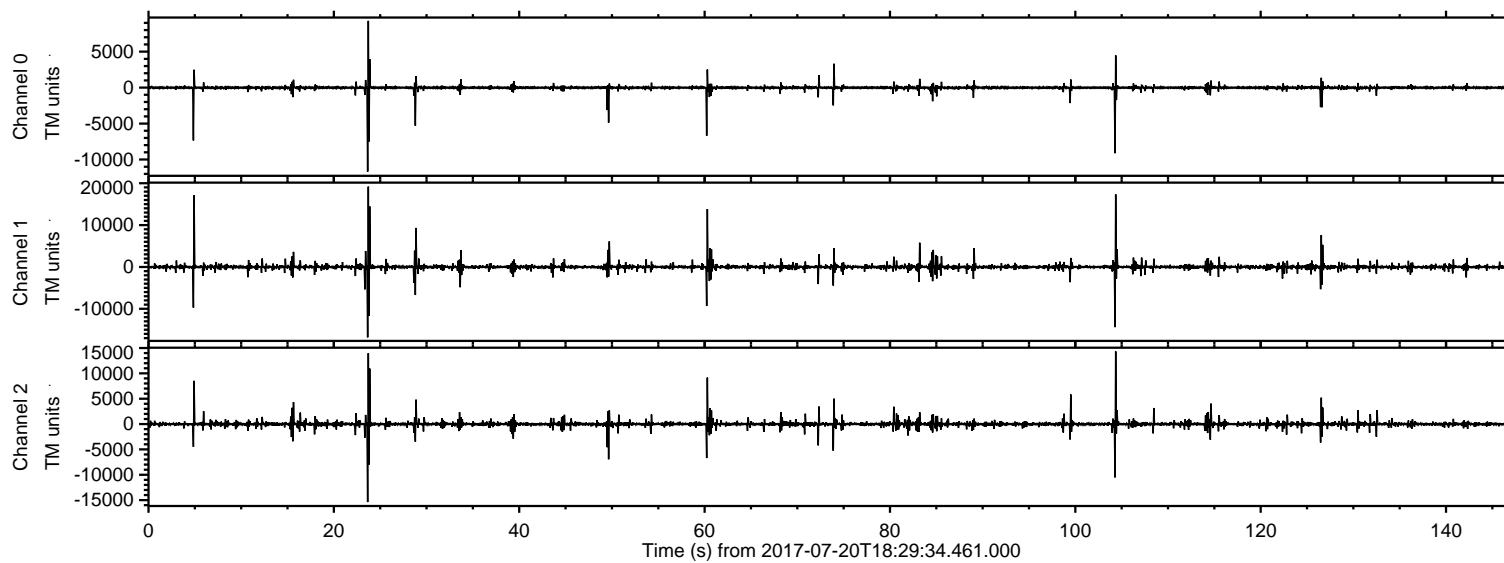
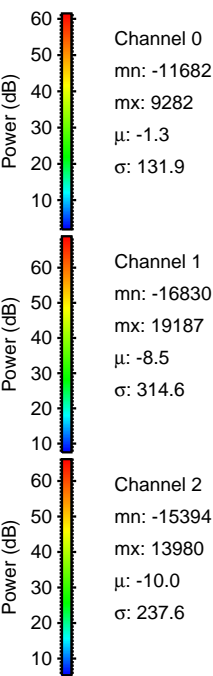
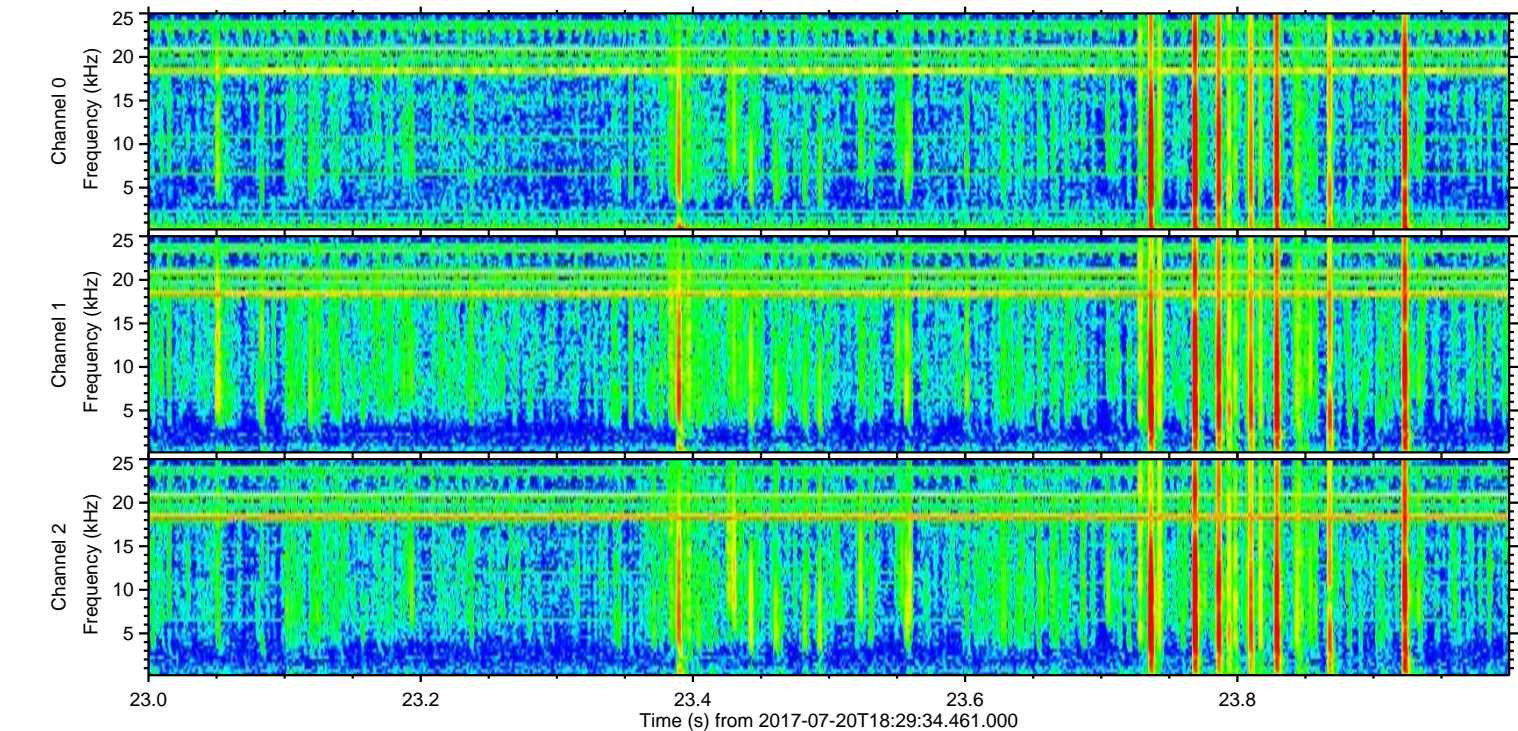
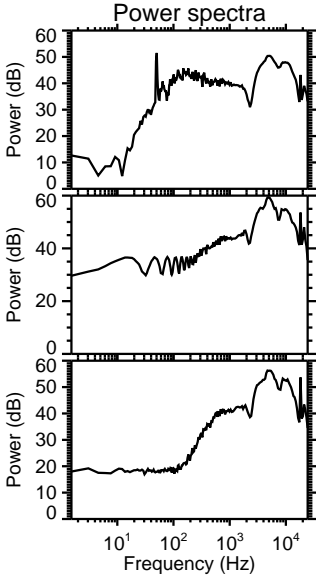
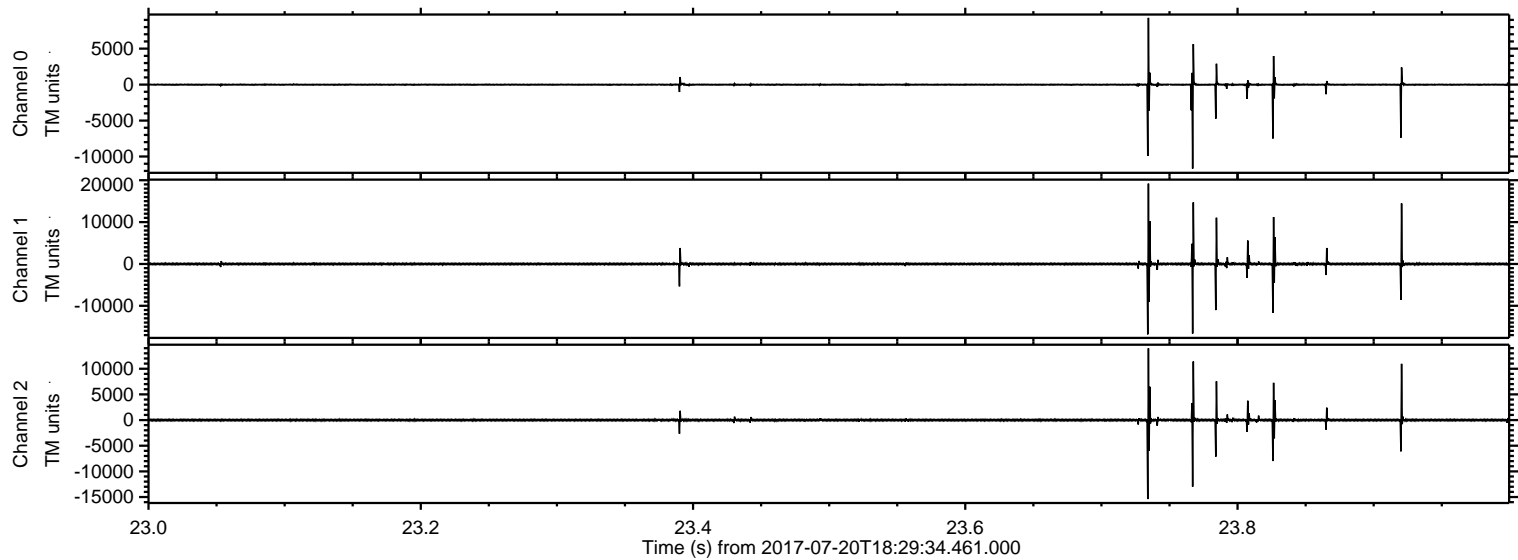


ELMAVAN 3D WAVEFORMS (Measured data sampled at 50 kHz) 51000 packets of 144 samples from 2017-07-20T18:29:34.461.000.

Processed Fri Jul 21 05:53:05 2017 by ELM ver.2012-10-06 from 001__elm20170720_182933__dat00.bin

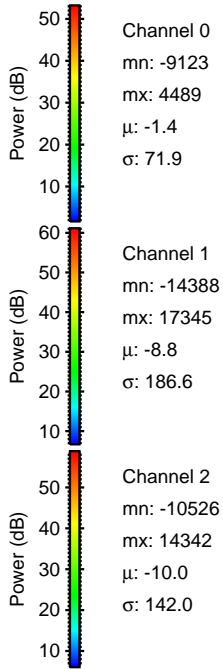
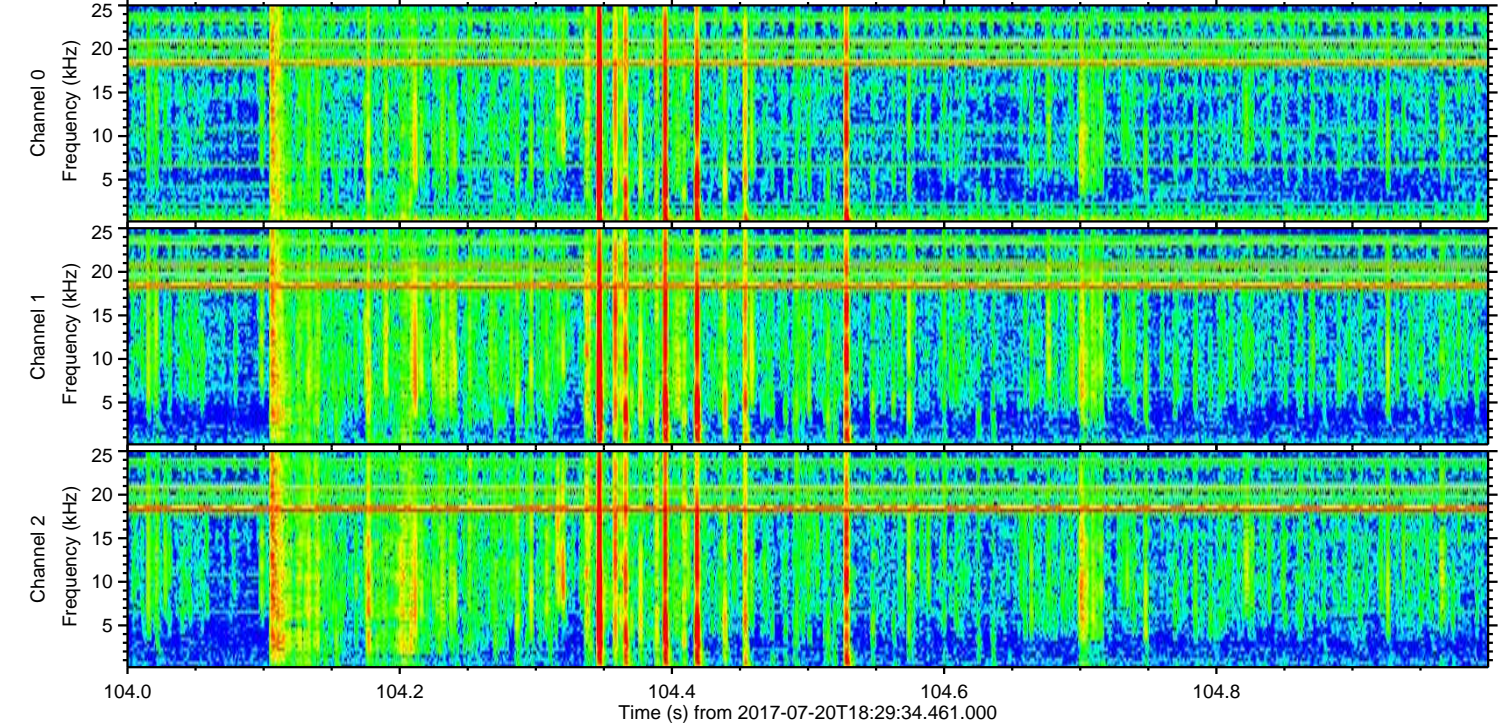
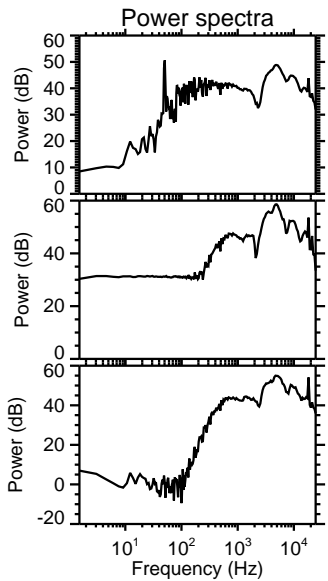
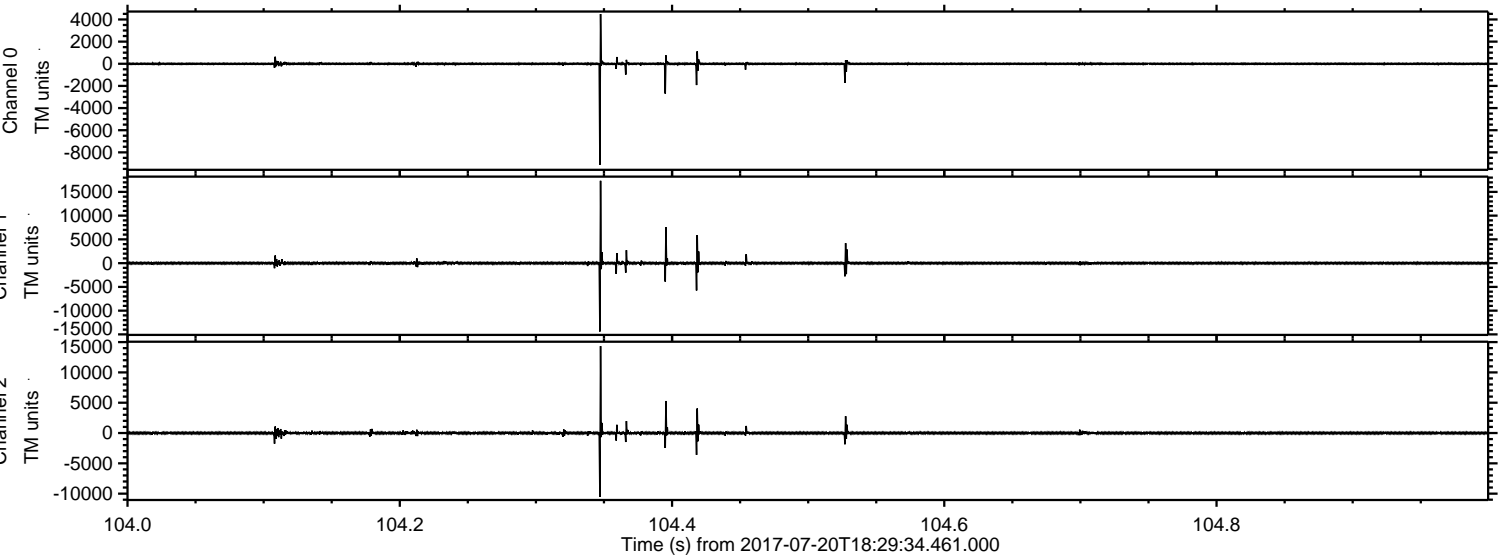


Processed Fri Jul 21 05:53:13 2017 by ELM ver.2012-10-06 from 001__elm20170720_182933__dat00.bin

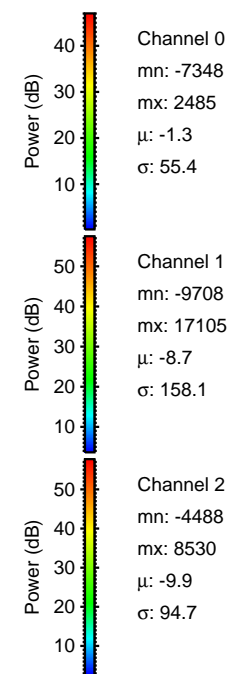
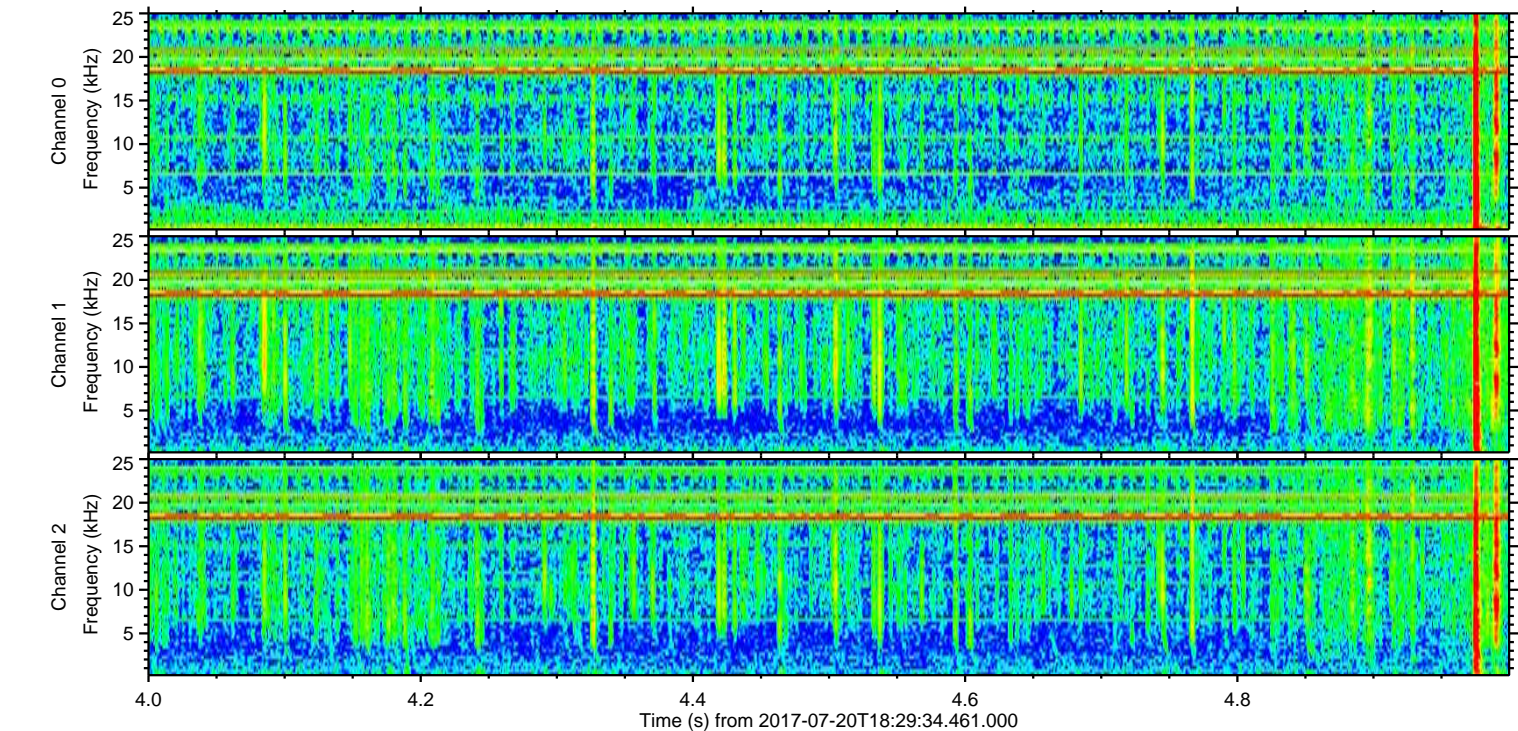
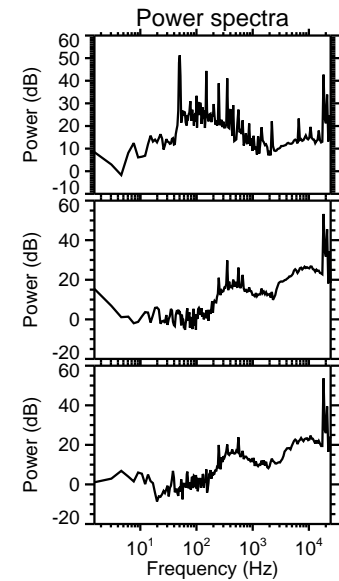
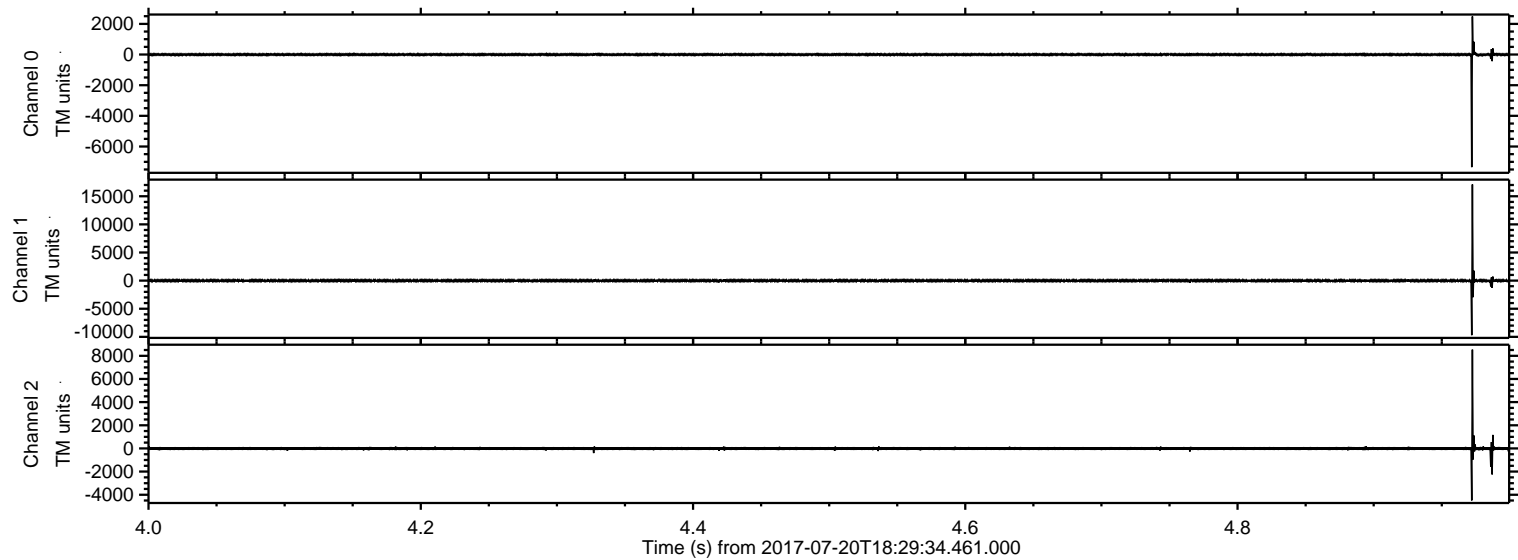


ELMAVAN 3D WAVEFORMS (Measured data sampled at 50 kHz) 51000 packets of 144 samples from 2017-07-20T18:29:34.461.000. Part 105/147

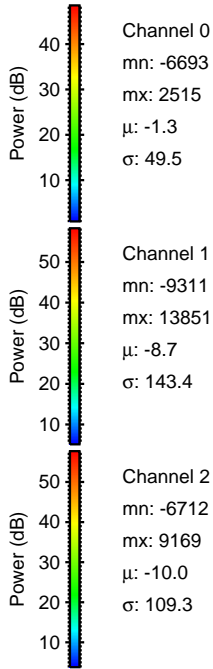
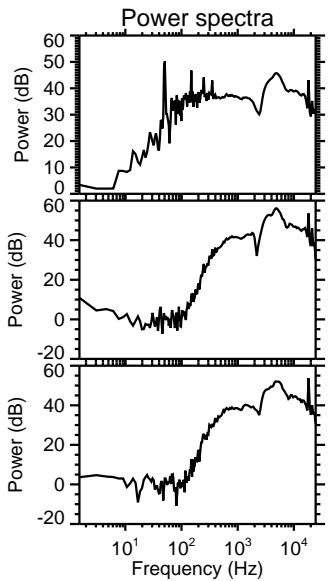
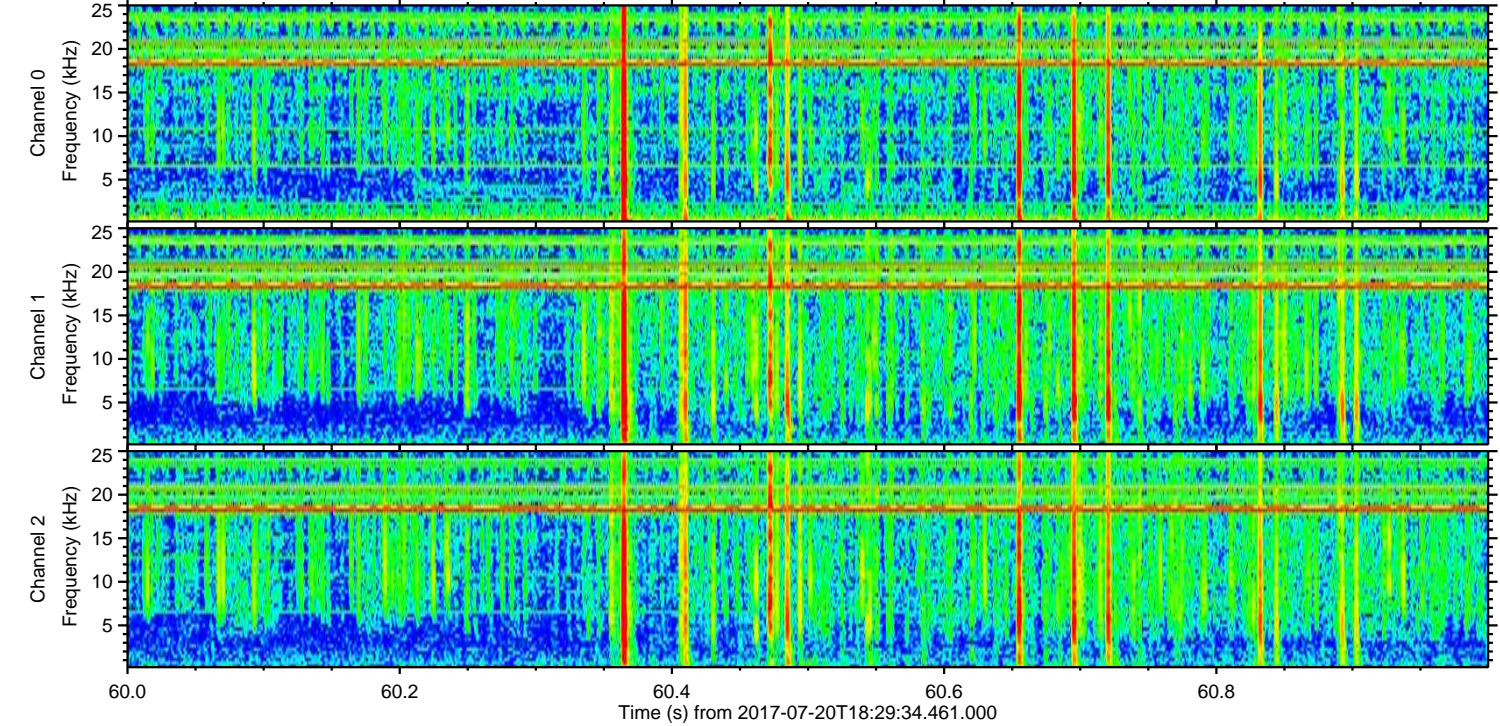
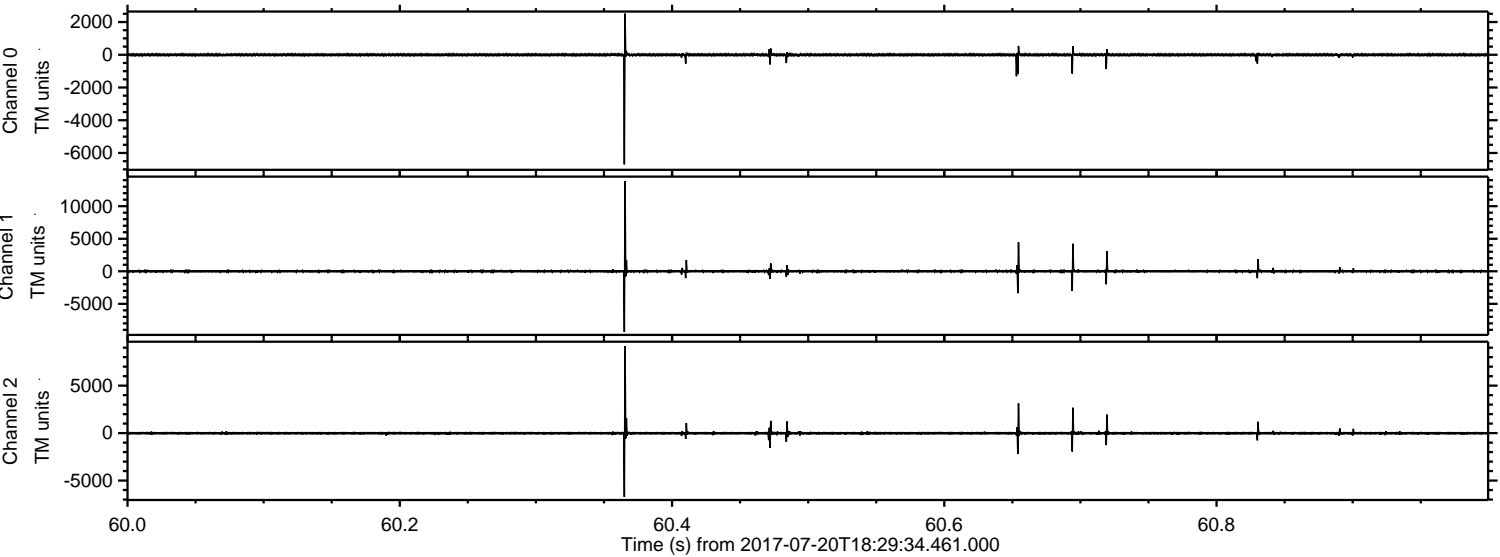
Processed Fri Jul 21 05:53:13 2017 by ELM ver.2012-10-06 from 001__elm20170720_182933__dat00.bin



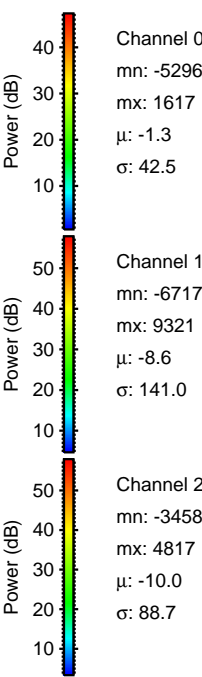
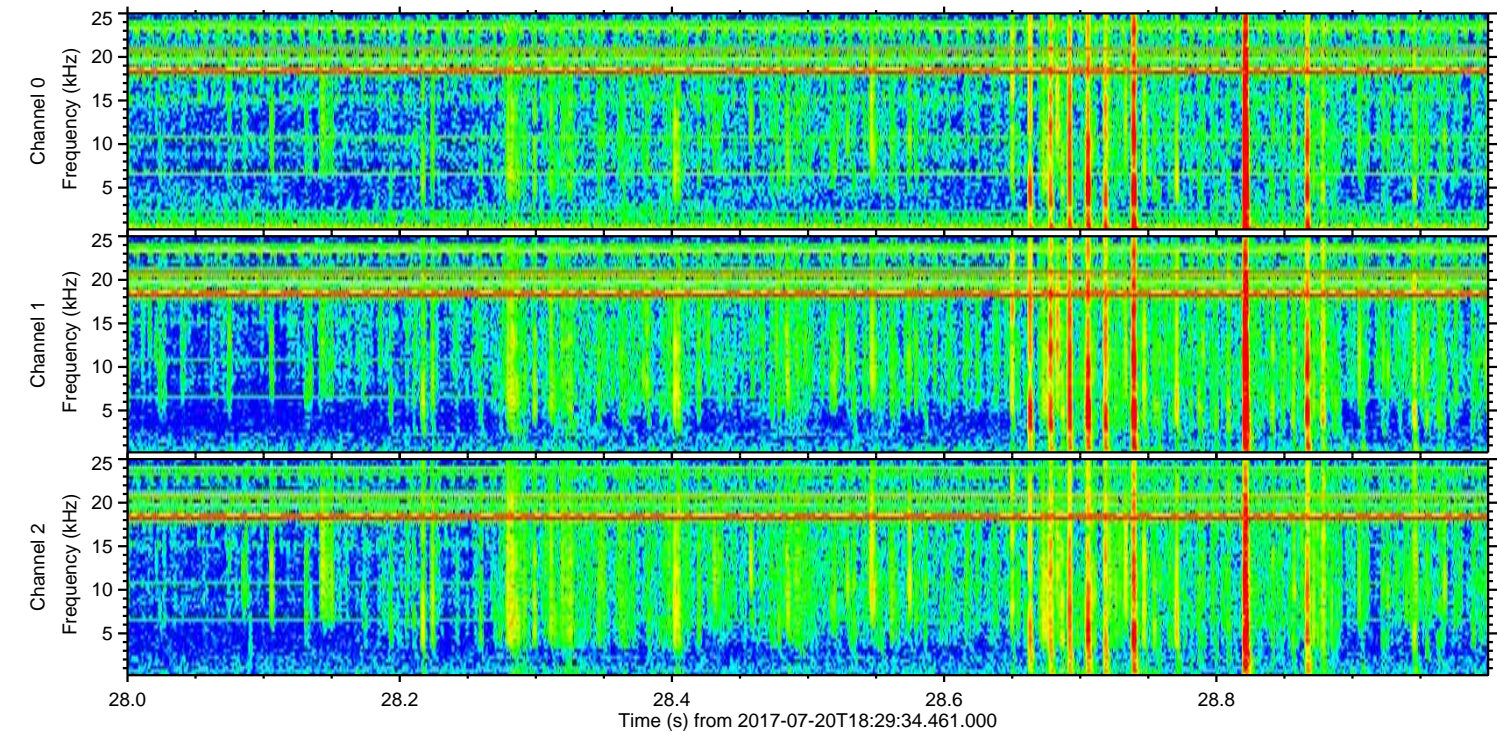
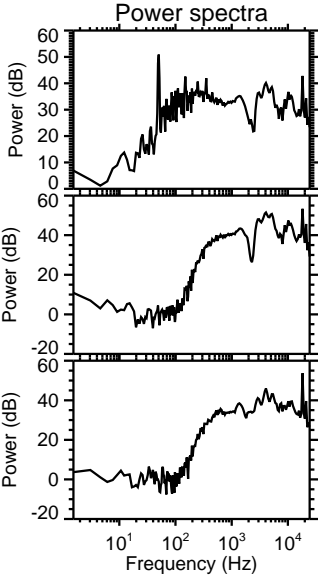
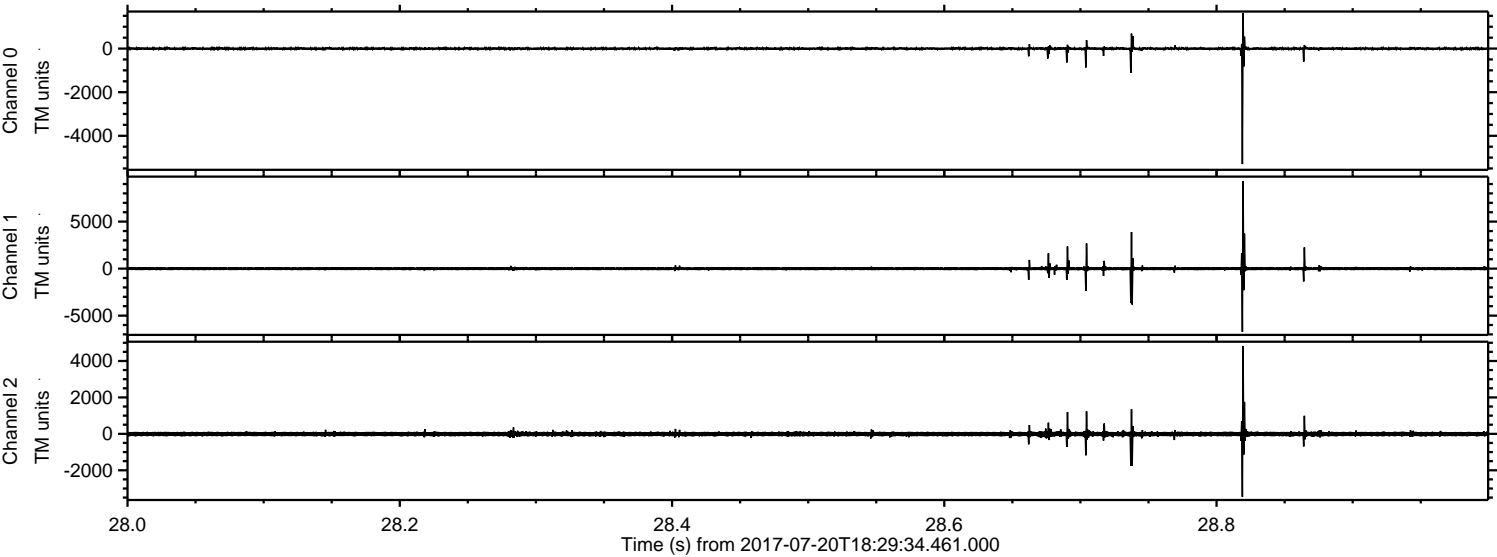
Processed Fri Jul 21 05:53:14 2017 by ELM ver.2012-10-06 from 001__elm20170720_182933__dat00.bin



Processed Fri Jul 21 05:53:15 2017 by ELM ver.2012-10-06 from 001__elm20170720_182933__dat00.bin

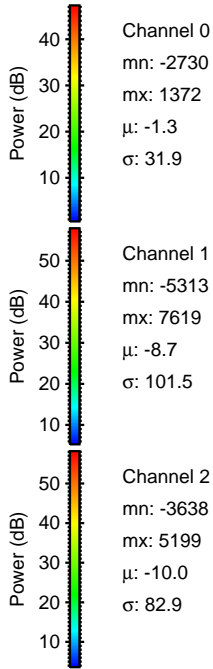
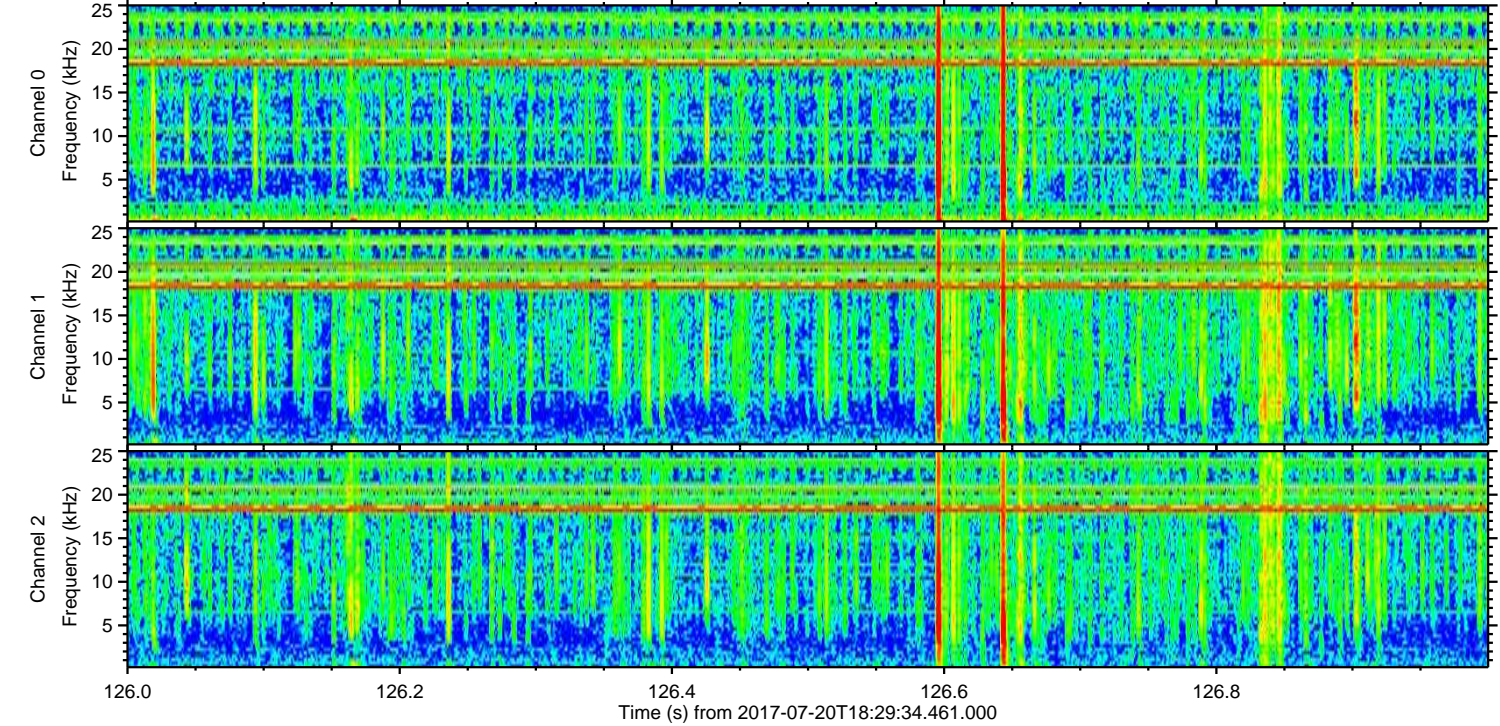
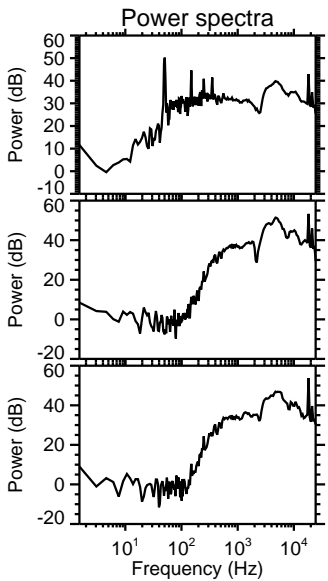
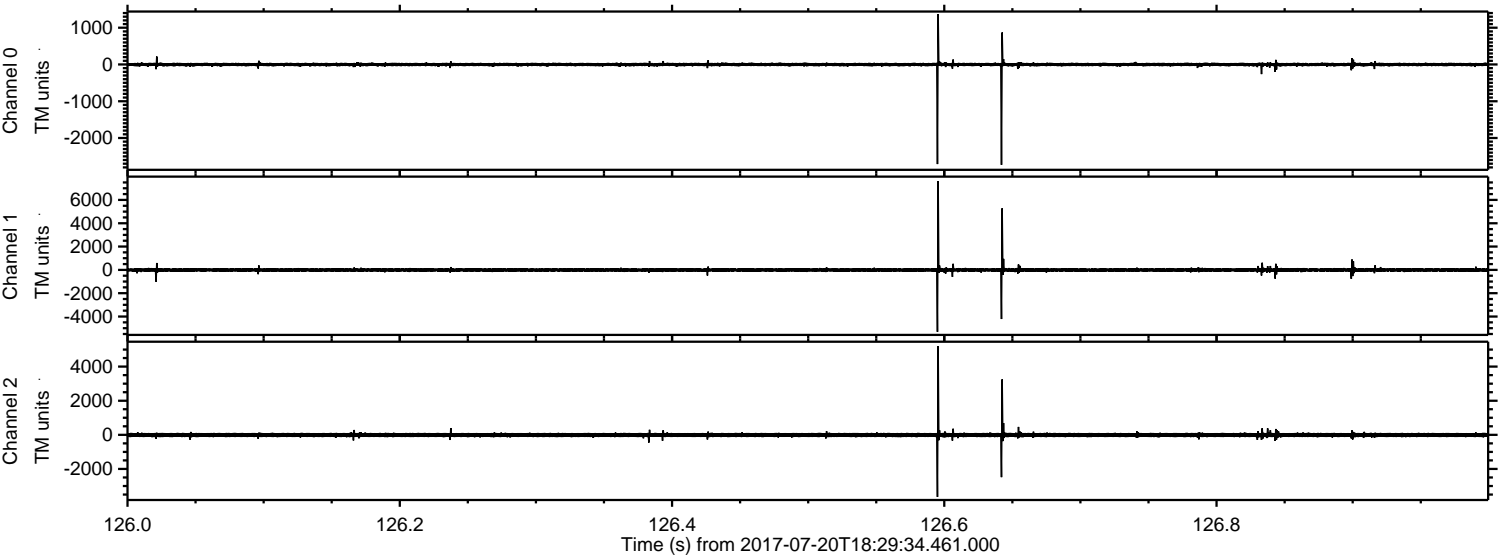


Processed Fri Jul 21 05:53:15 2017 by ELM ver.2012-10-06 from 001__elm20170720_182933__dat00.bin

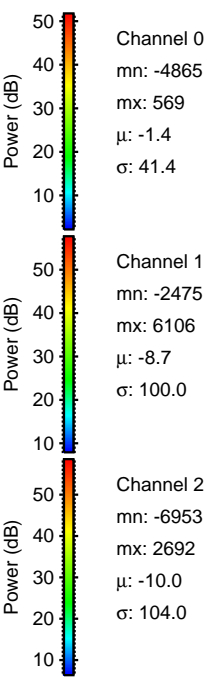
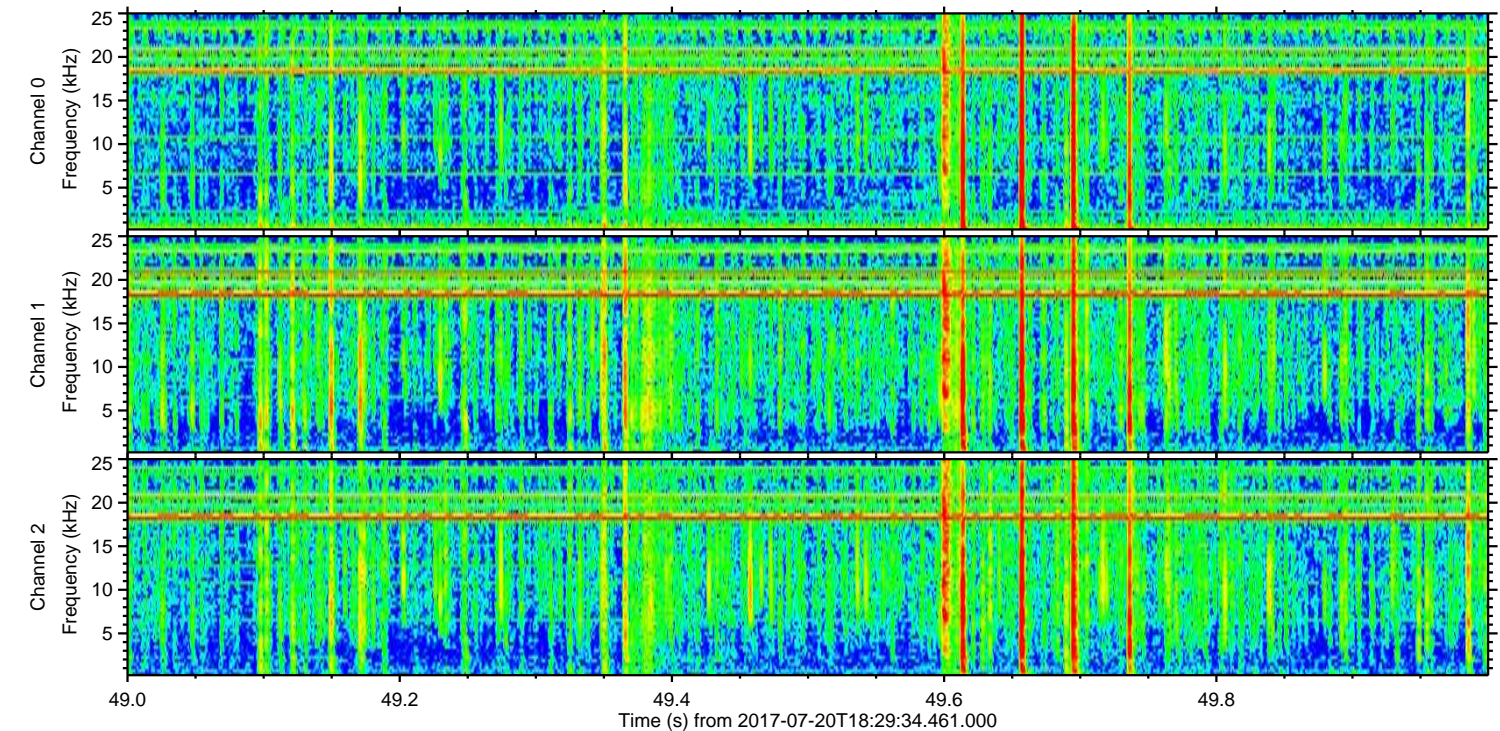
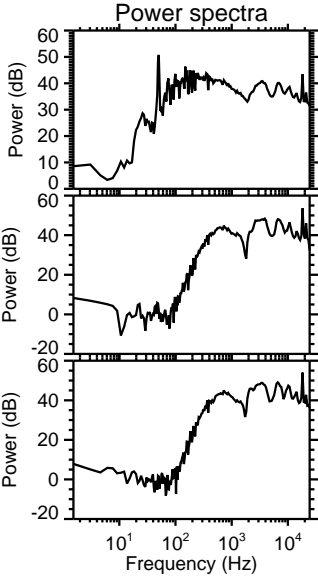
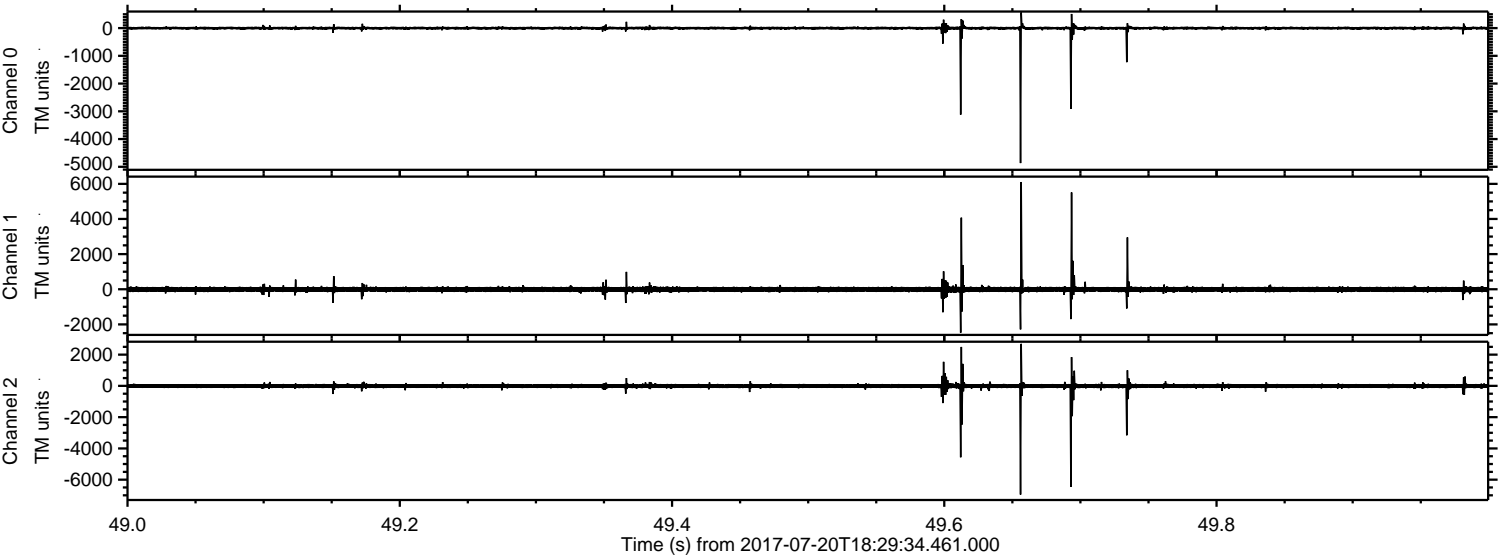


ELMAVAN 3D WAVEFORMS (Measured data sampled at 50 kHz) 51000 packets of 144 samples from 2017-07-20T18:29:34.461.000. Part 127/147

Processed Fri Jul 21 05:53:16 2017 by ELM ver.2012-10-06 from 001__elm20170720_182933__dat00.bin

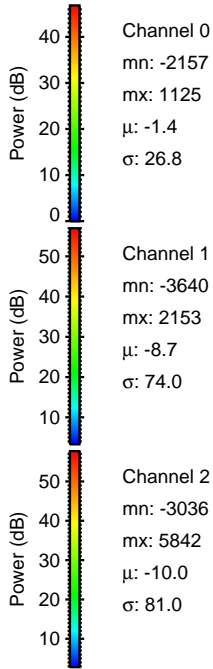
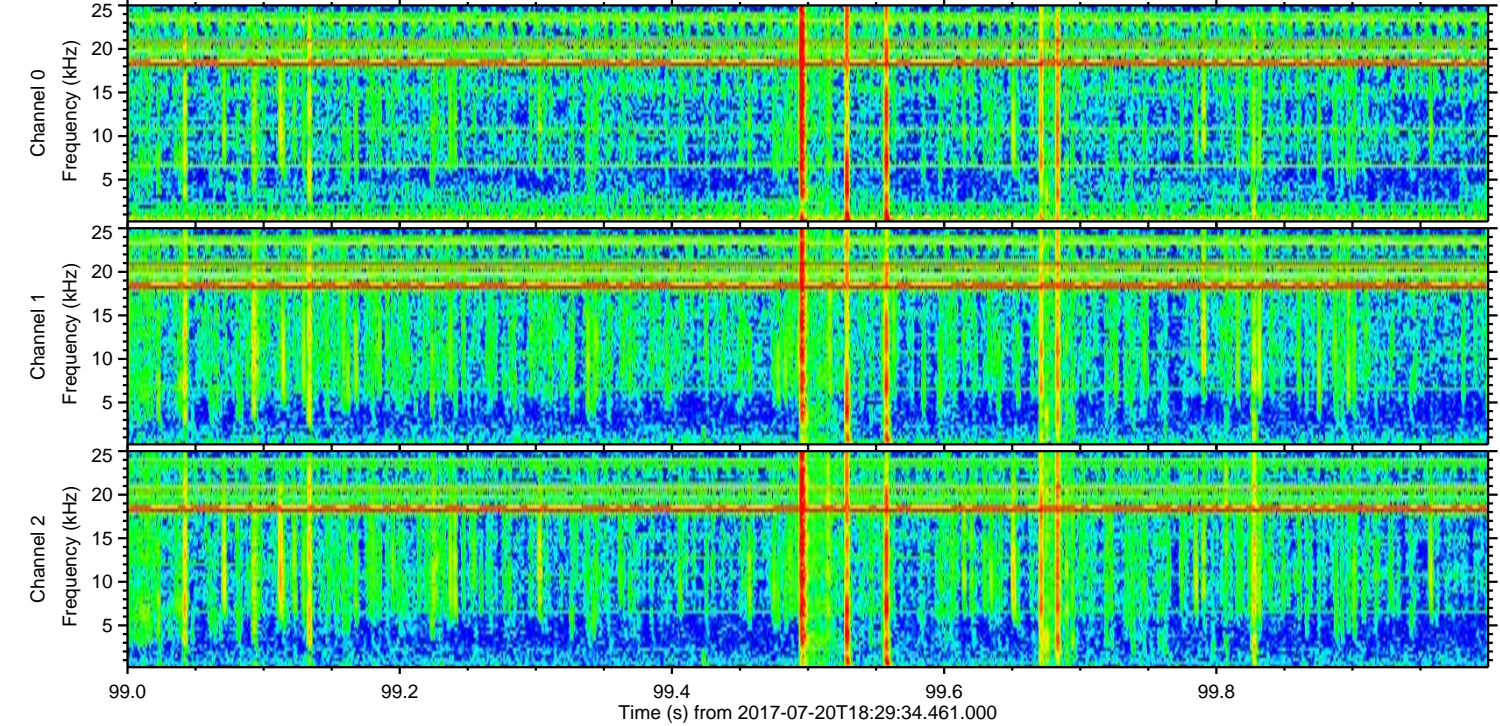
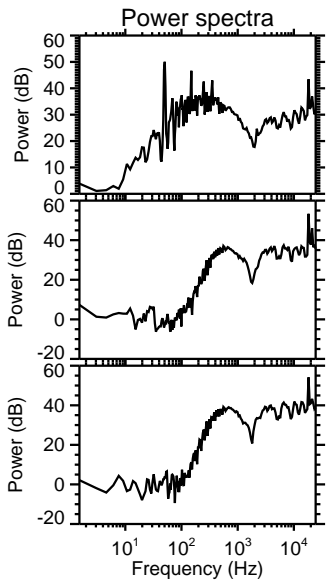
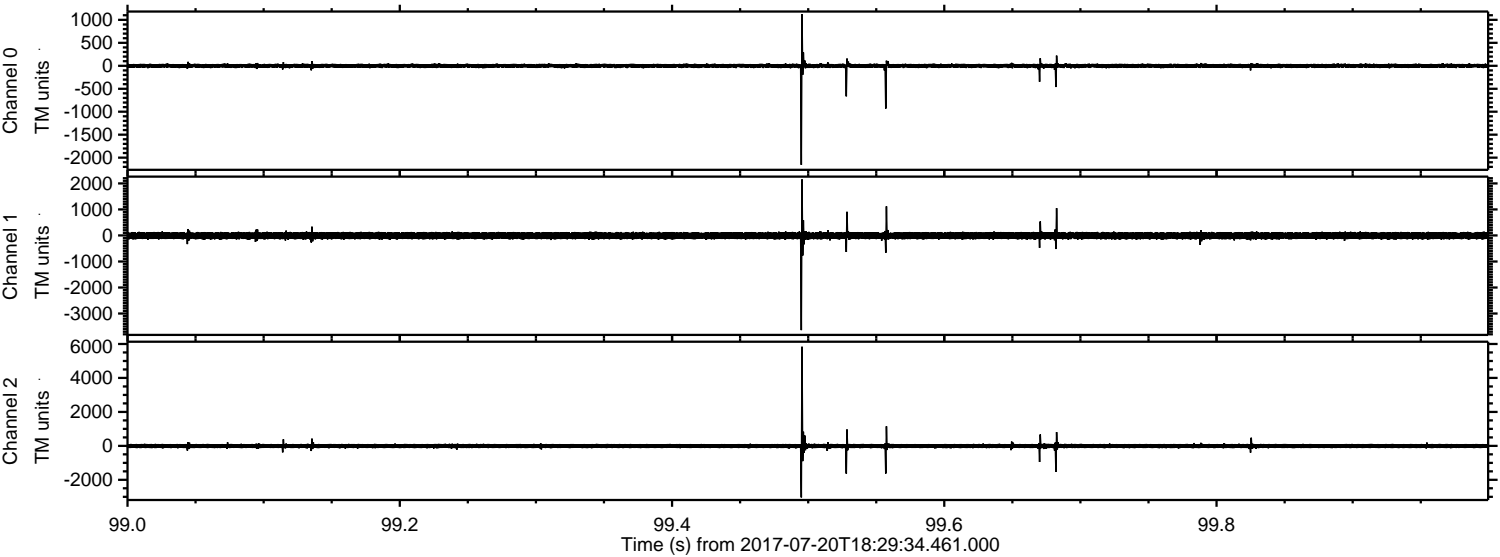


Processed Fri Jul 21 05:53:17 2017 by ELM ver.2012-10-06 from 001__elm20170720_182933__dat00.bin



ELMAVAN 3D WAVEFORMS (Measured data sampled at 50 kHz) 51000 packets of 144 samples from 2017-07-20T18:29:34.461.000. Part 100/147

Processed Fri Jul 21 05:53:17 2017 by ELM ver.2012-10-06 from 001__elm20170720_182933__dat00.bin



Channel 0
mn: -2157
mx: 1125
 μ : -1.4
 σ : 26.8

Channel 1
mn: -3640
mx: 2153
 μ : -8.7
 σ : 74.0

Channel 2
mn: -3036
mx: 5842
 μ : -10.0
 σ : 81.0

Processed Fri Jul 21 05:53:18 2017 by ELM ver.2012-10-06 from 001__elm20170720_182933__dat00.bin

