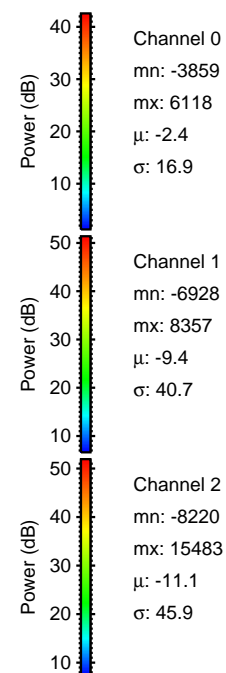
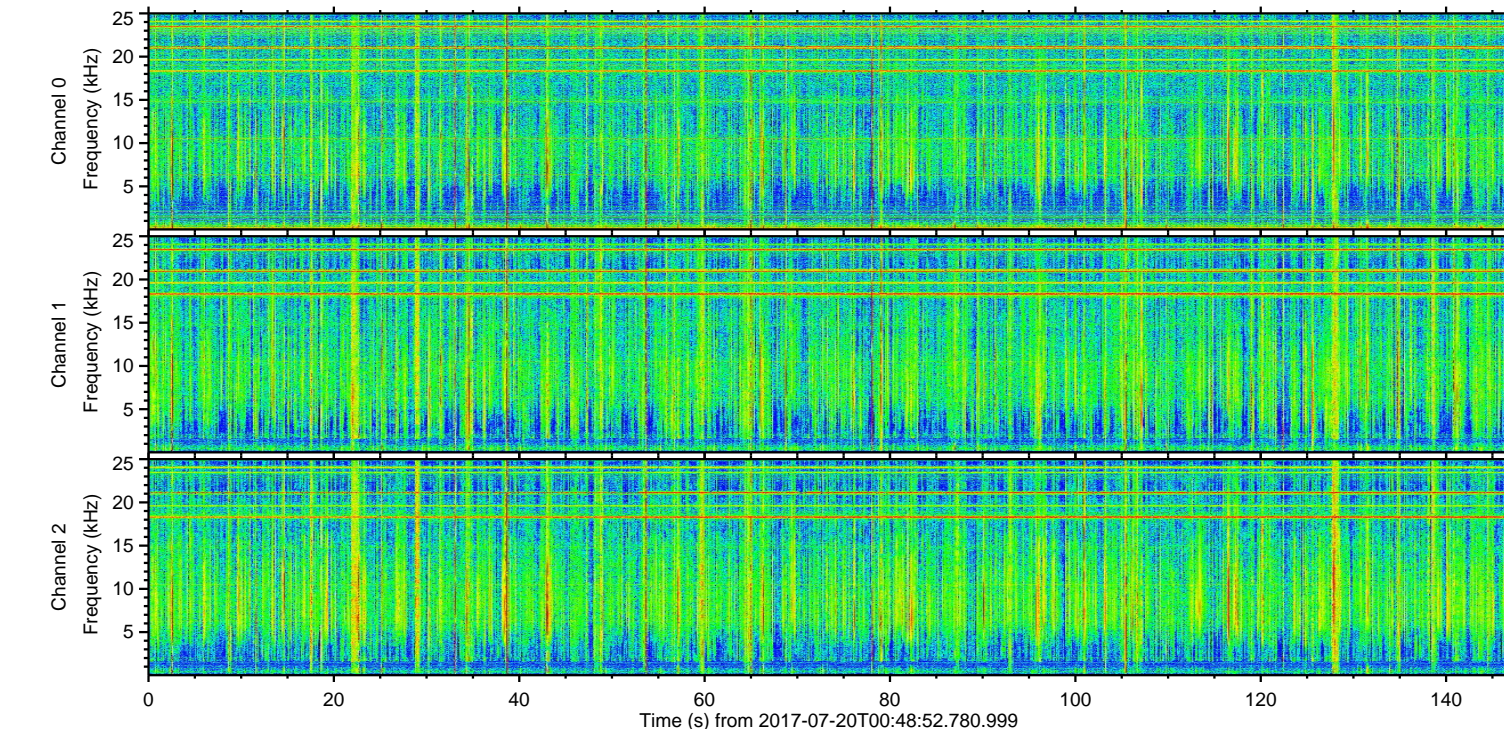
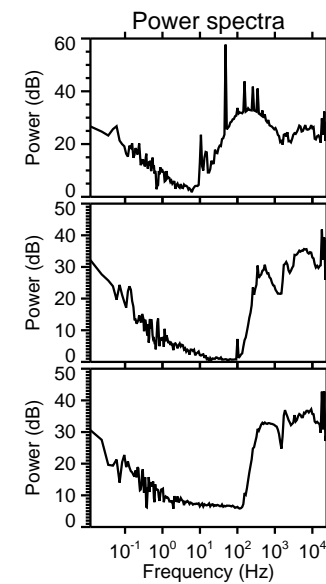
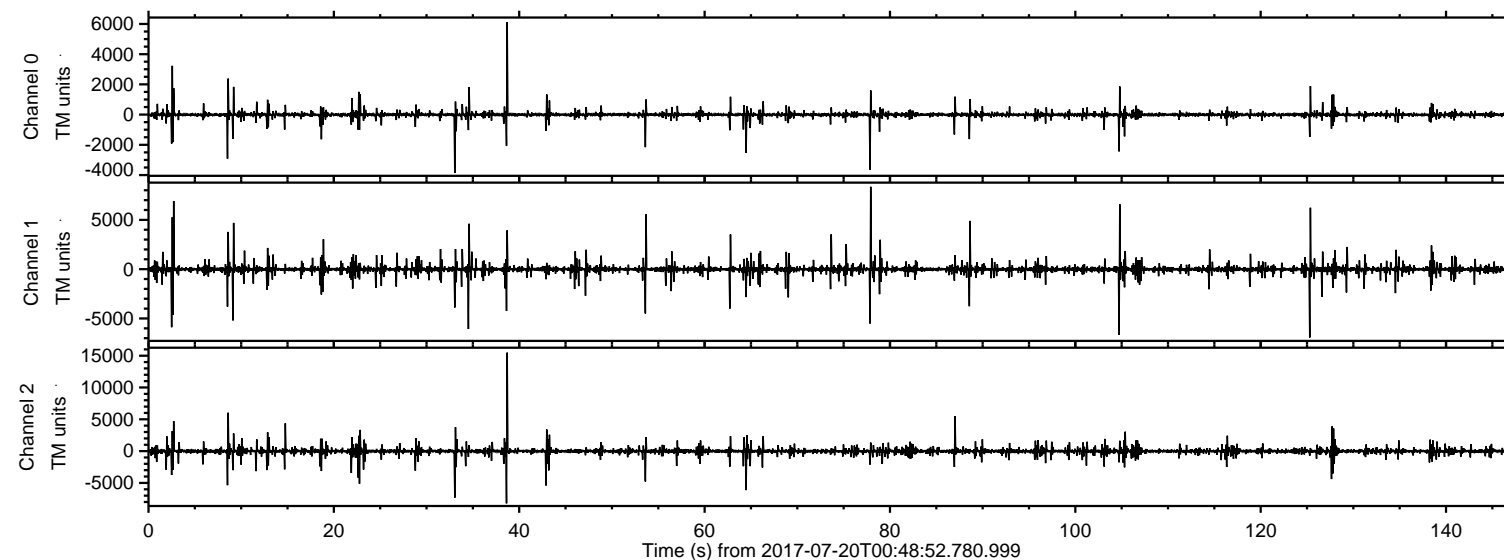
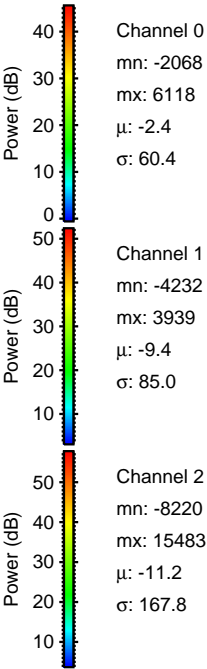
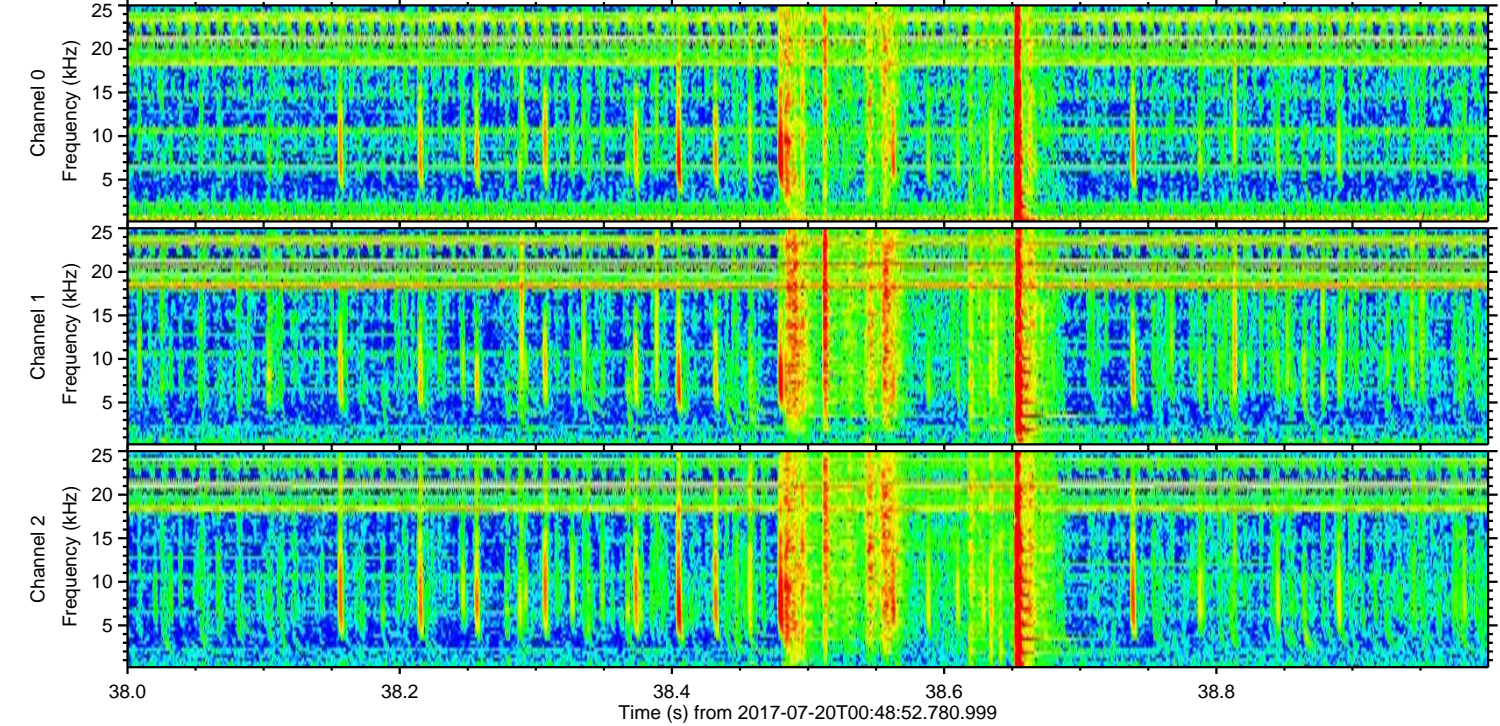
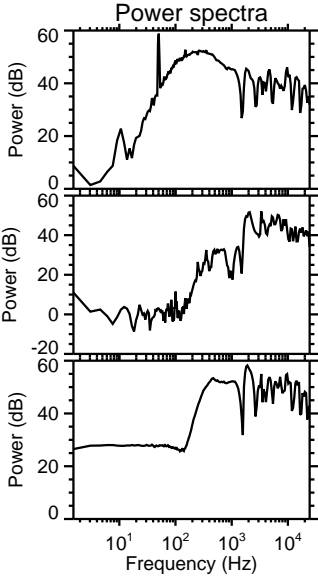
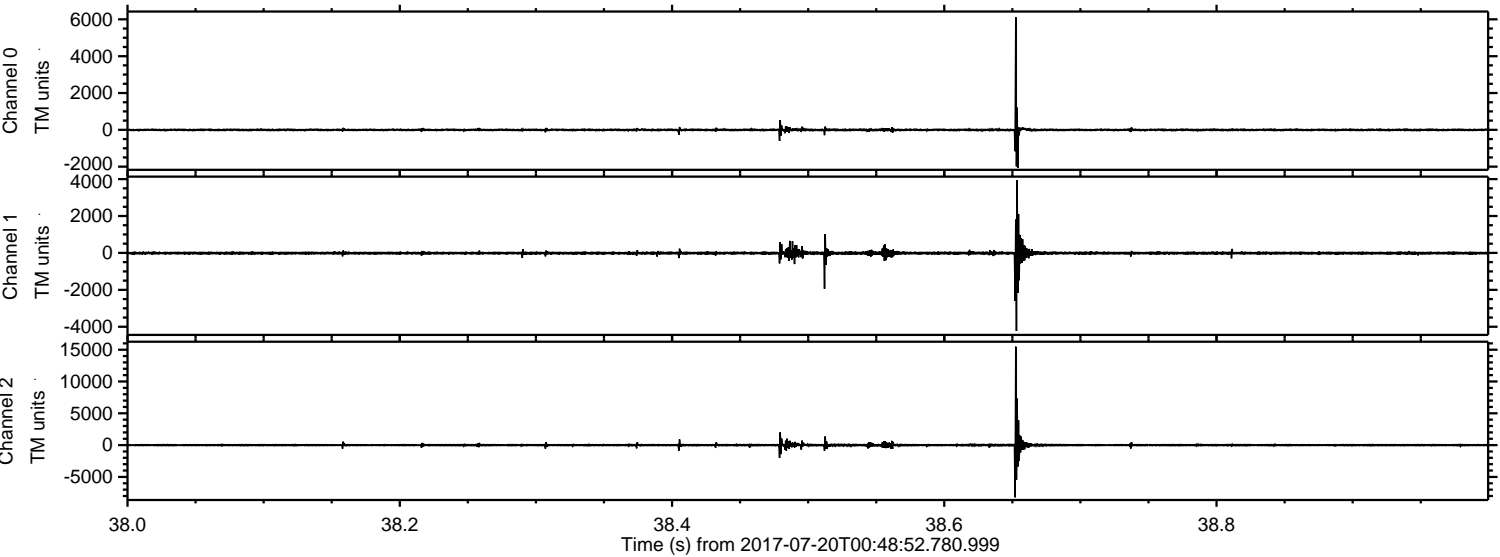


ELMAVAN 3D WAVEFORMS (Measured data sampled at 50 kHz) 51000 packets of 144 samples from 2017-07-20T00:48:52.780.999.

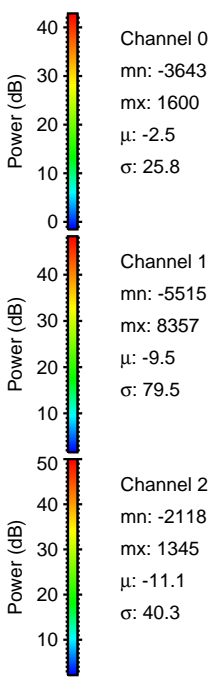
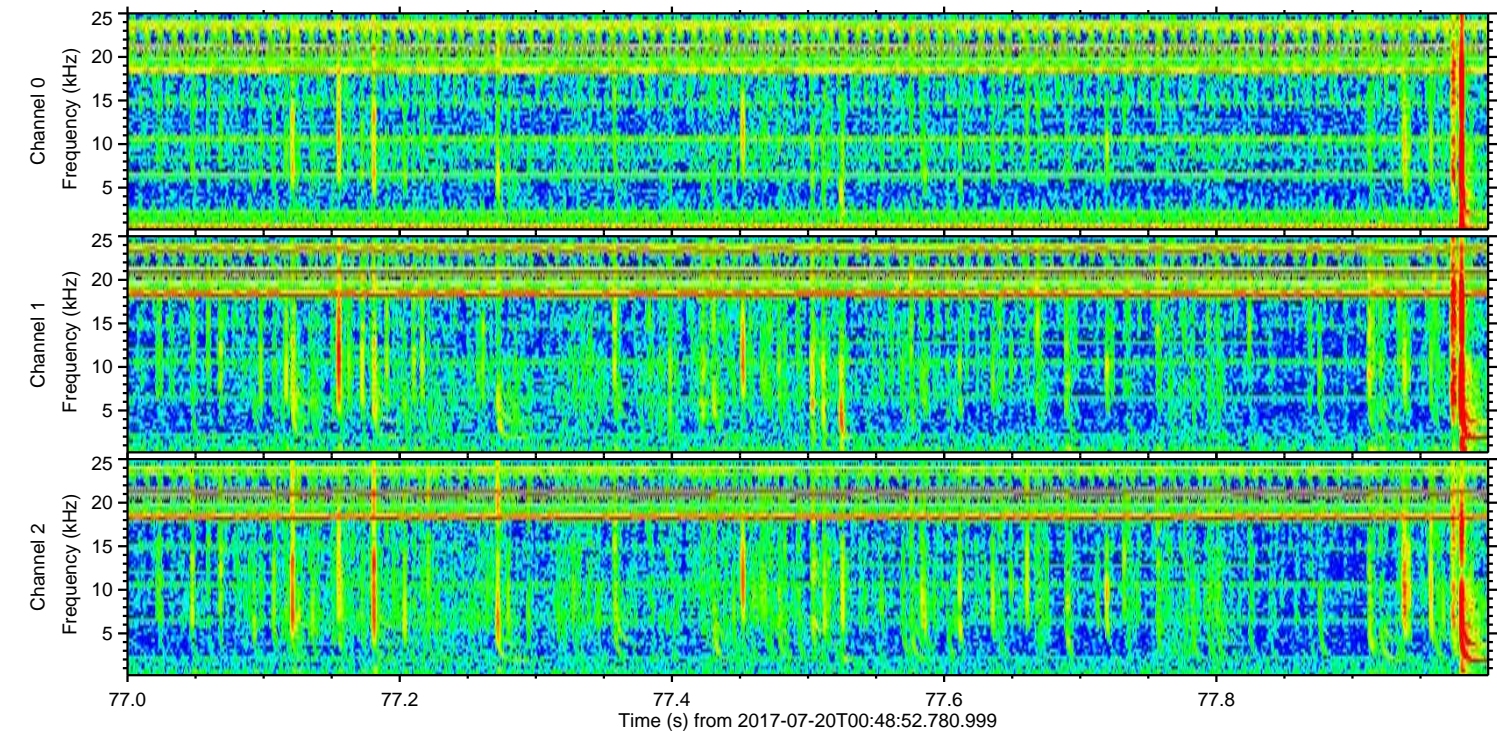
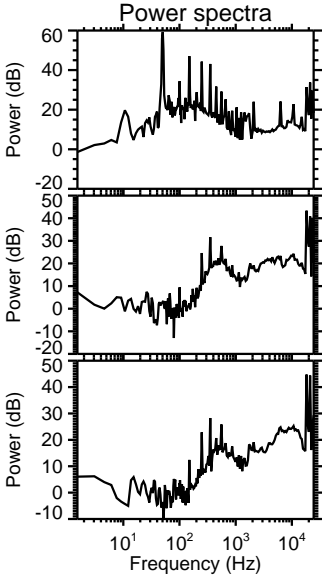
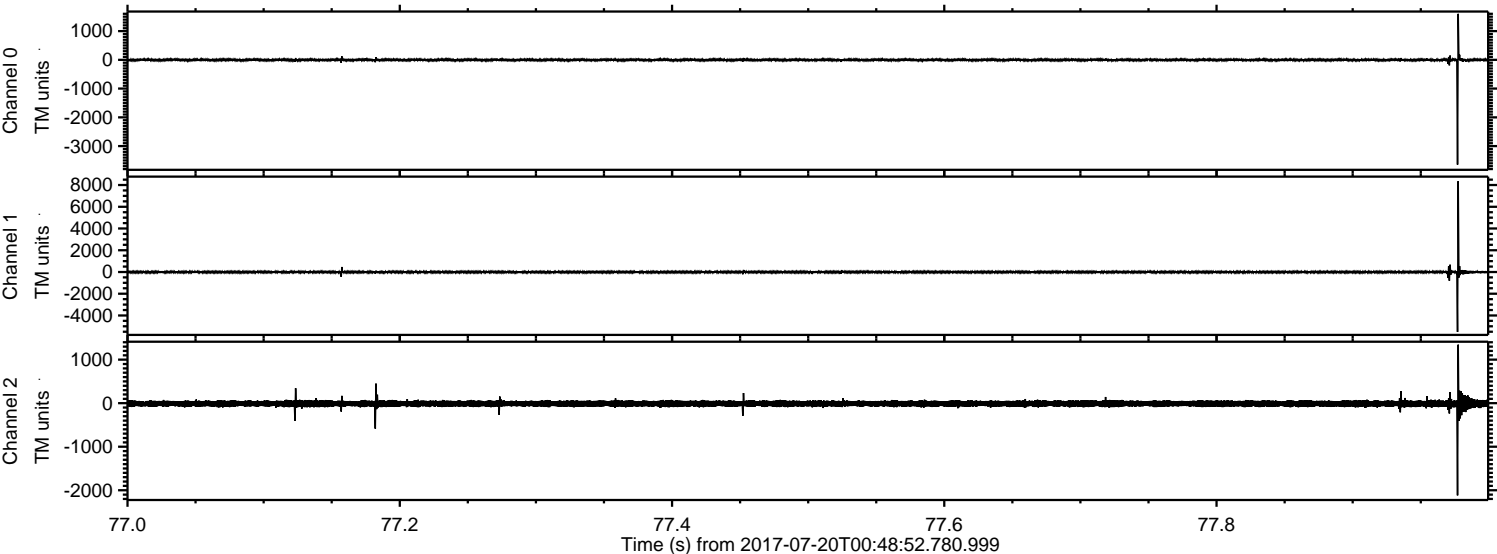
Processed Fri Jul 21 03:18:15 2017 by ELM ver.2012-10-06 from 001__elm20170720_004851__dat00.bin



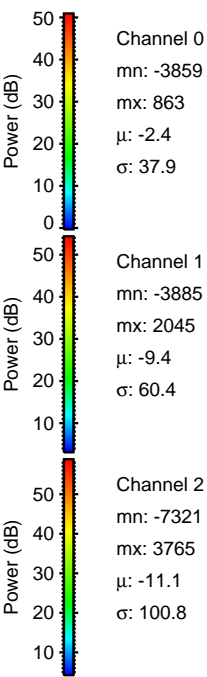
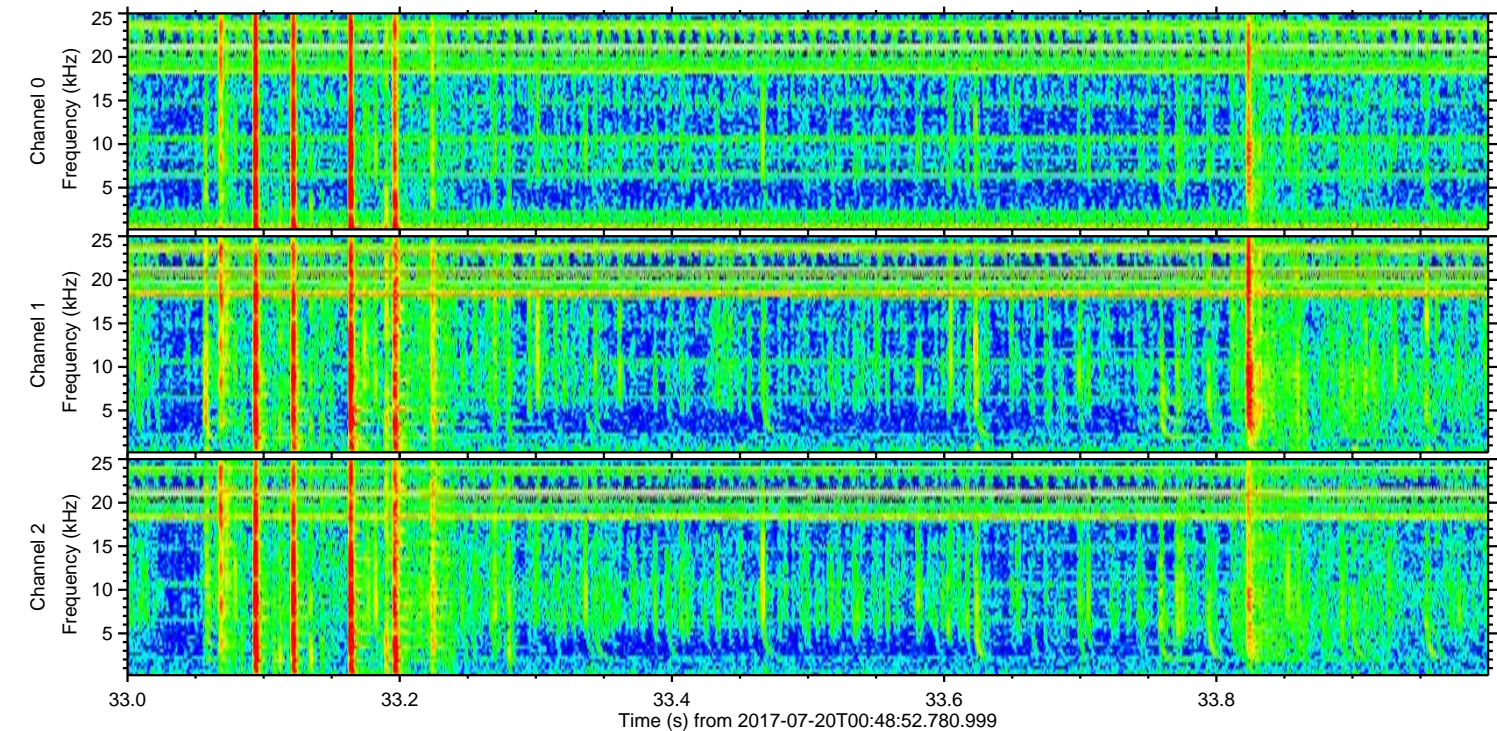
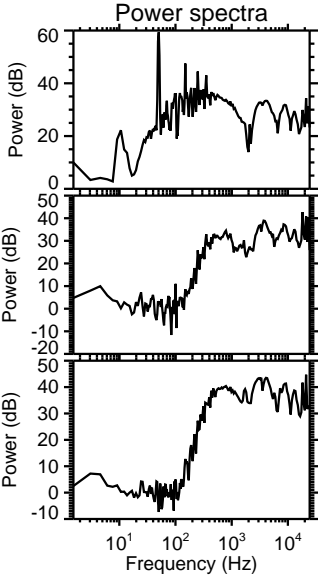
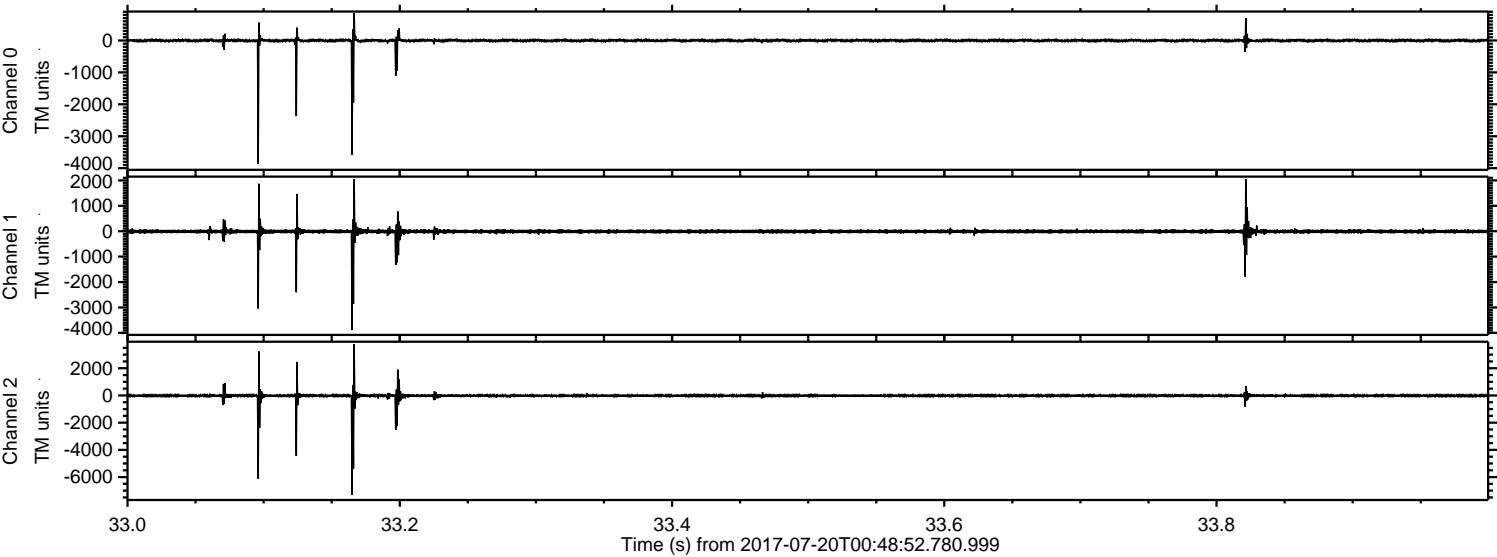
Processed Fri Jul 21 03:18:21 2017 by ELM ver.2012-10-06 from 001__elm20170720_004851__dat00.bin



Processed Fri Jul 21 03:18:22 2017 by ELM ver.2012-10-06 from 001__elm20170720_004851__dat00.bin

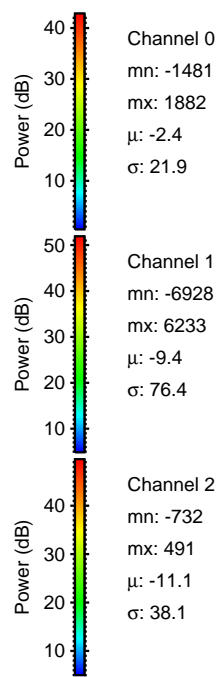
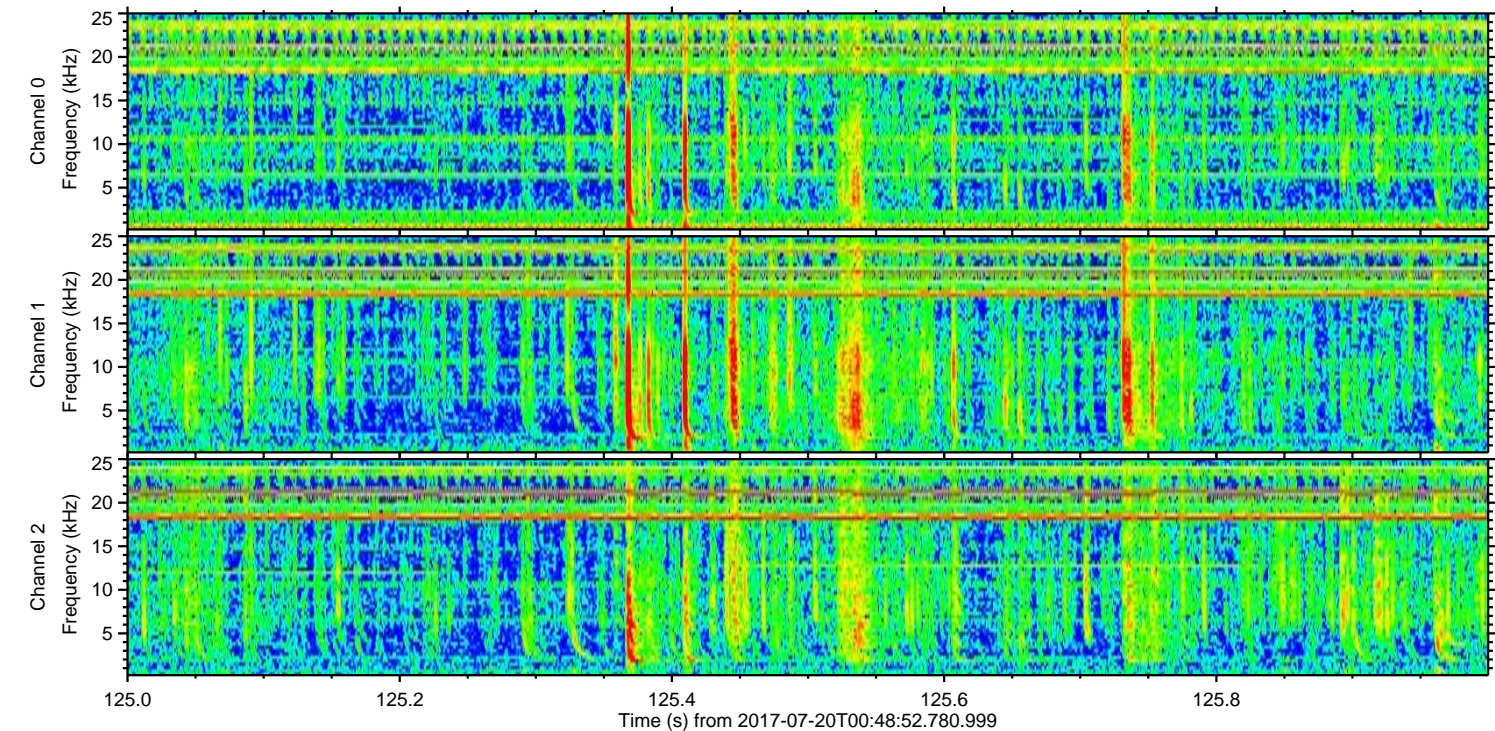
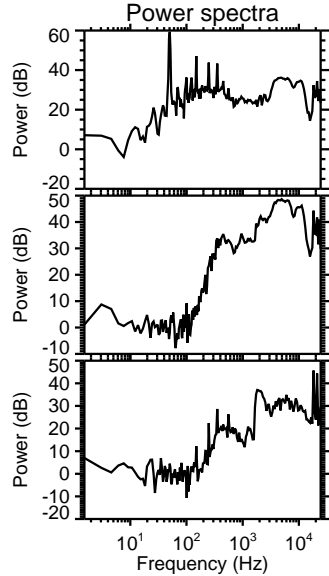
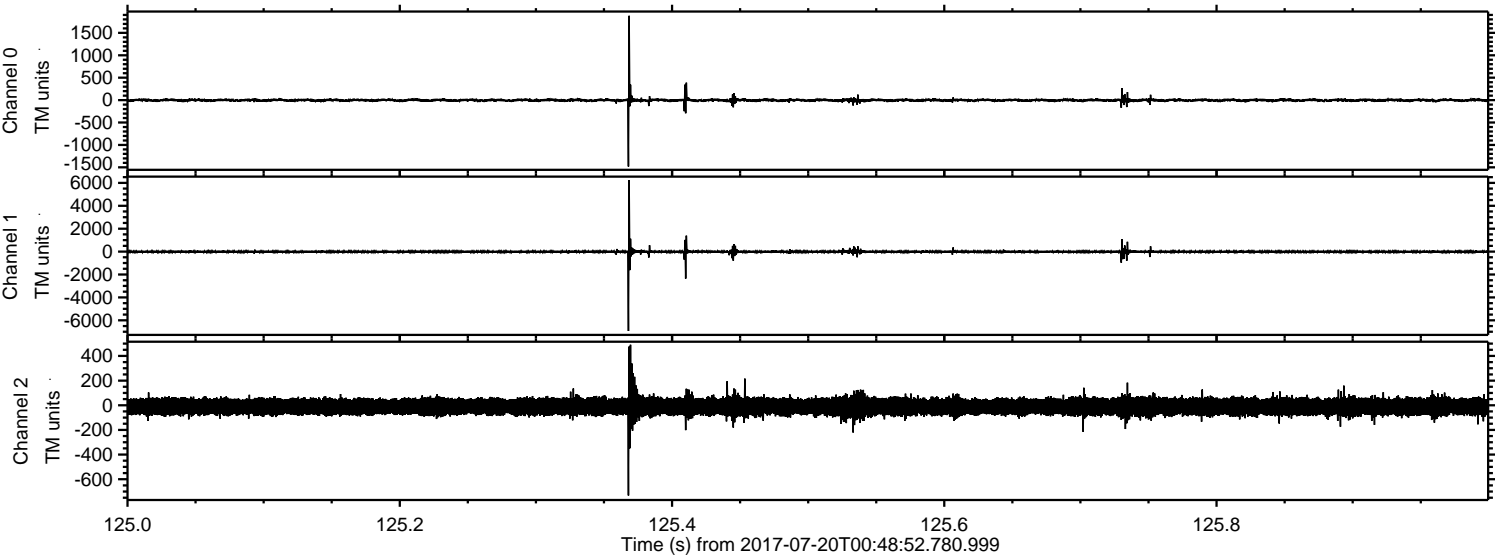


Processed Fri Jul 21 03:18:23 2017 by ELM ver.2012-10-06 from 001__elm20170720_004851__dat00.bin



ELMAVAN 3D WAVEFORMS (Measured data sampled at 50 kHz) 51000 packets of 144 samples from 2017-07-20T00:48:52.780.999. Part 126/147

Processed Fri Jul 21 03:18:23 2017 by ELM ver.2012-10-06 from 001__elm20170720_004851__dat00.bin



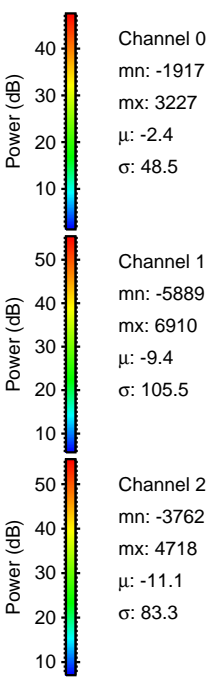
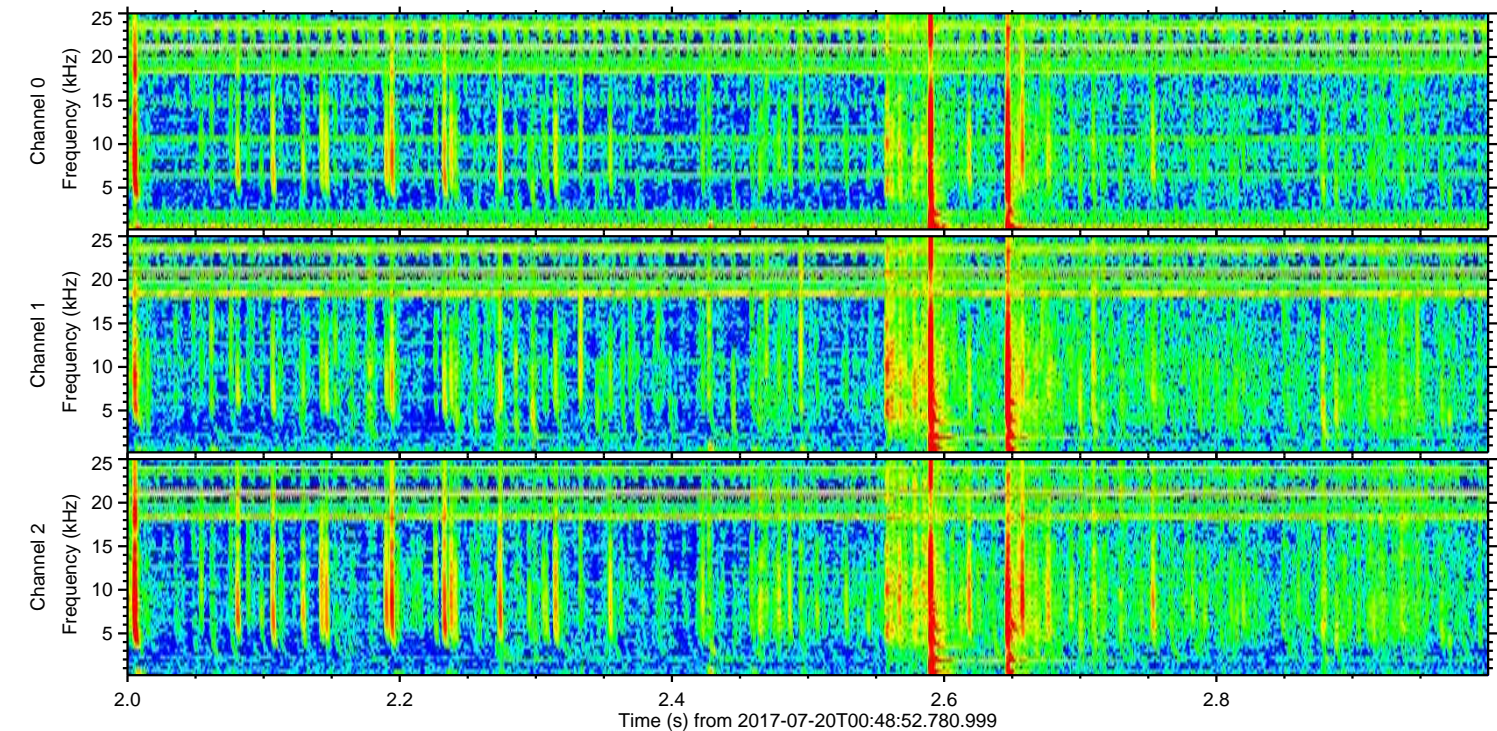
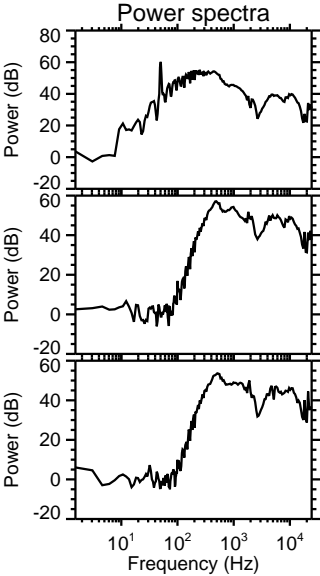
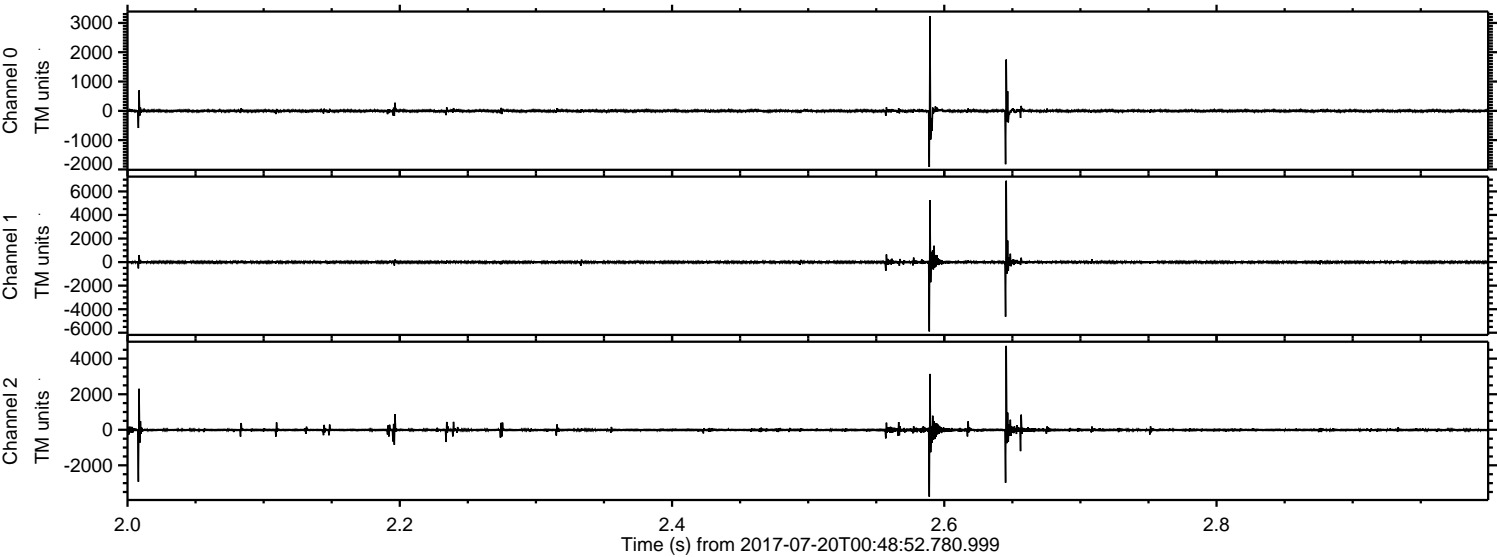
Channel 0
mn: -1481
mx: 1882
 μ : -2.4
 σ : 21.9

Channel 1
mn: -6928
mx: 6233
 μ : -9.4
 σ : 76.4

Channel 2
mn: -732
mx: 491
 μ : -11.1
 σ : 38.1

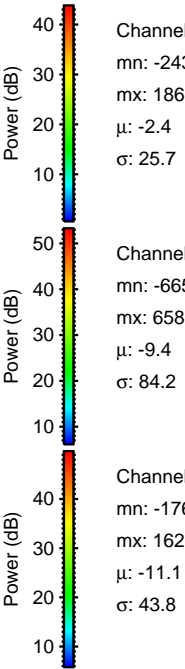
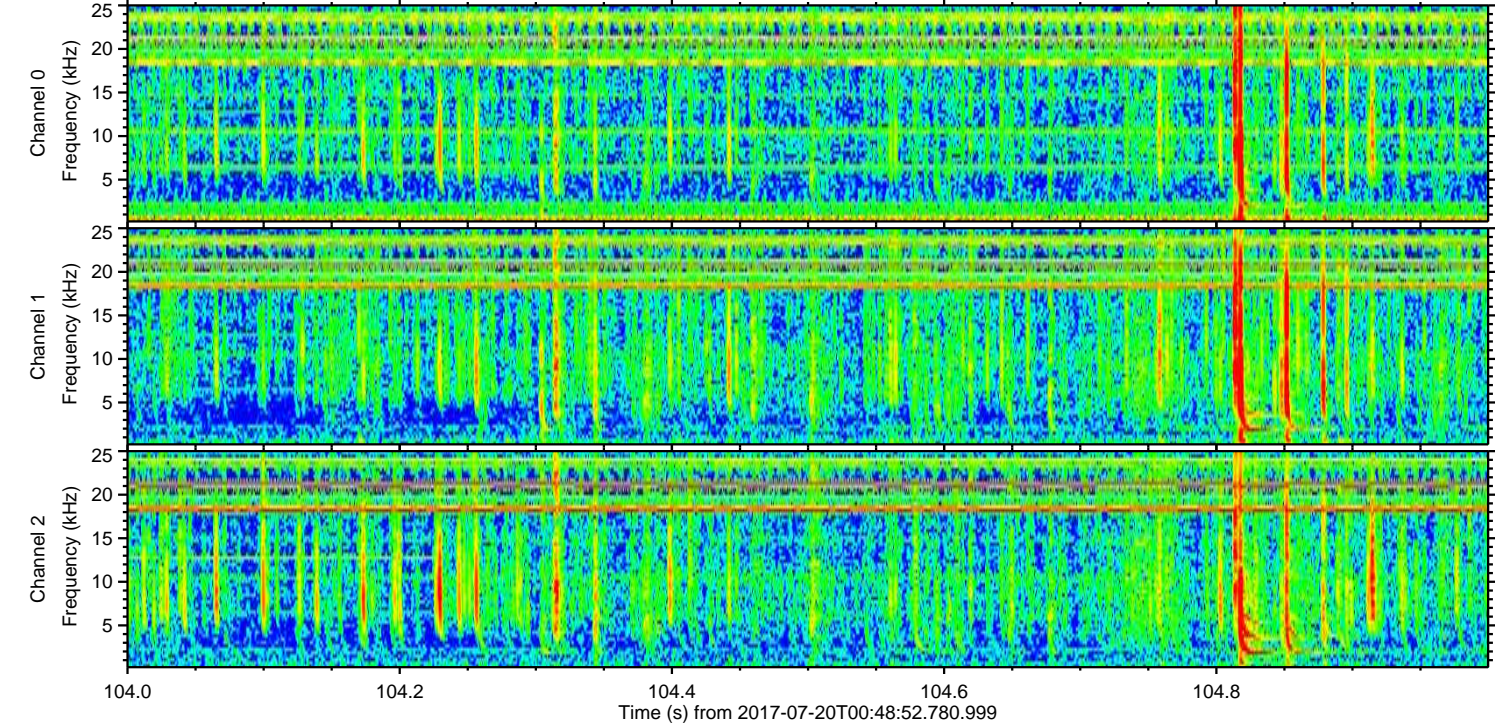
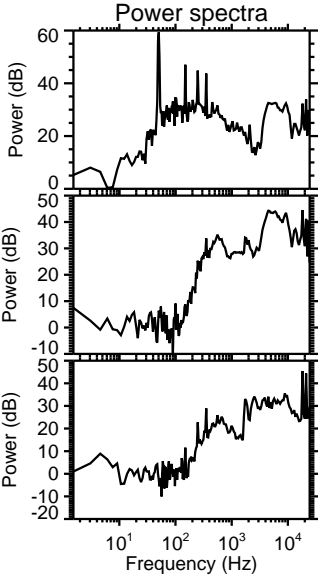
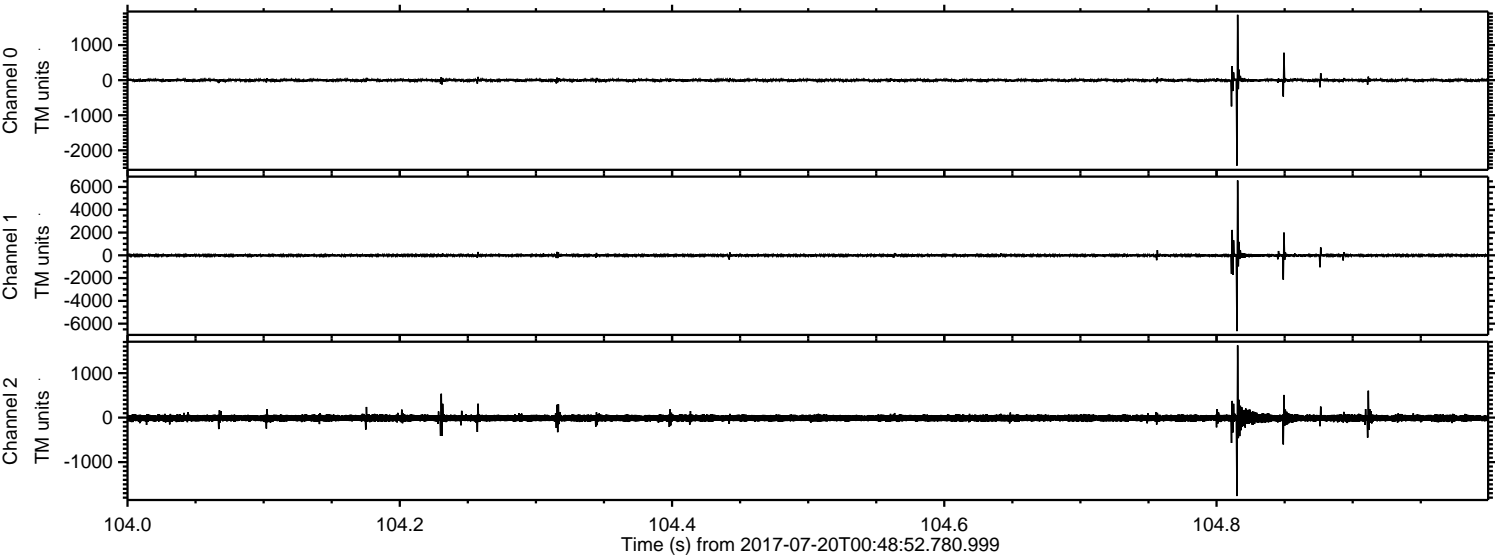
ELMAVAN 3D WAVEFORMS (Measured data sampled at 50 kHz) 51000 packets of 144 samples from 2017-07-20T00:48:52.780.999. Part 3/147

Processed Fri Jul 21 03:18:24 2017 by ELM ver.2012-10-06 from 001__elm20170720_004851__dat00.bin



ELMAVAN 3D WAVEFORMS (Measured data sampled at 50 kHz) 51000 packets of 144 samples from 2017-07-20T00:48:52.780.999. Part 105/147

Processed Fri Jul 21 03:18:25 2017 by ELM ver.2012-10-06 from 001__elm20170720_004851__dat00.bin

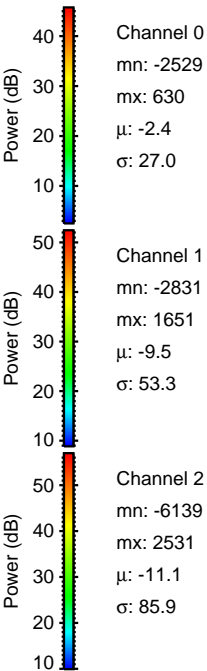
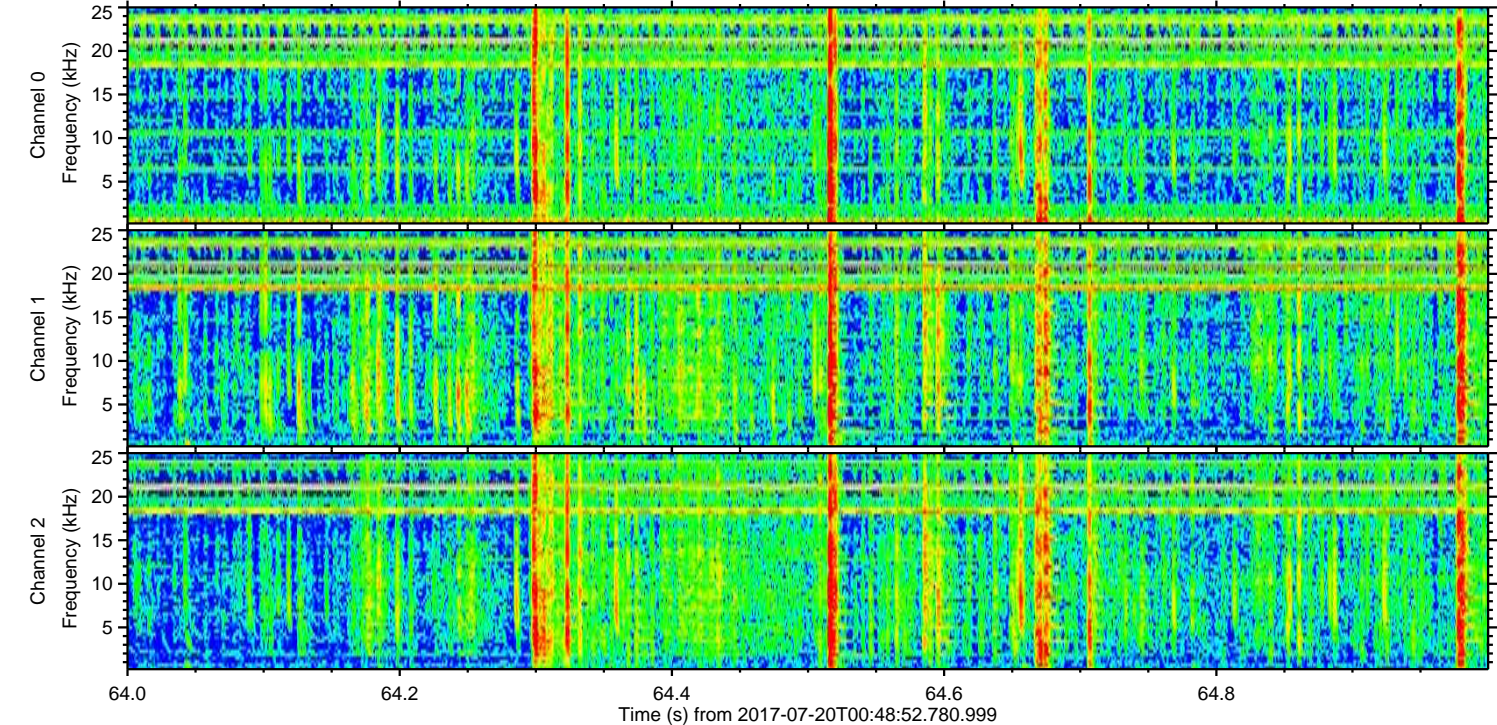
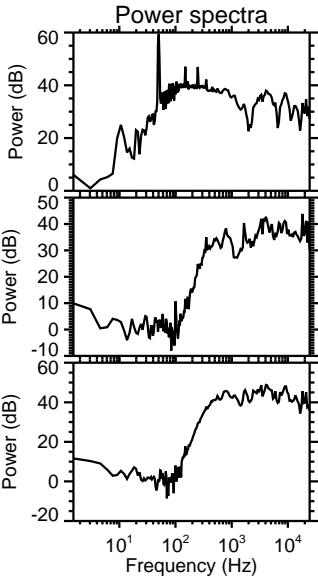
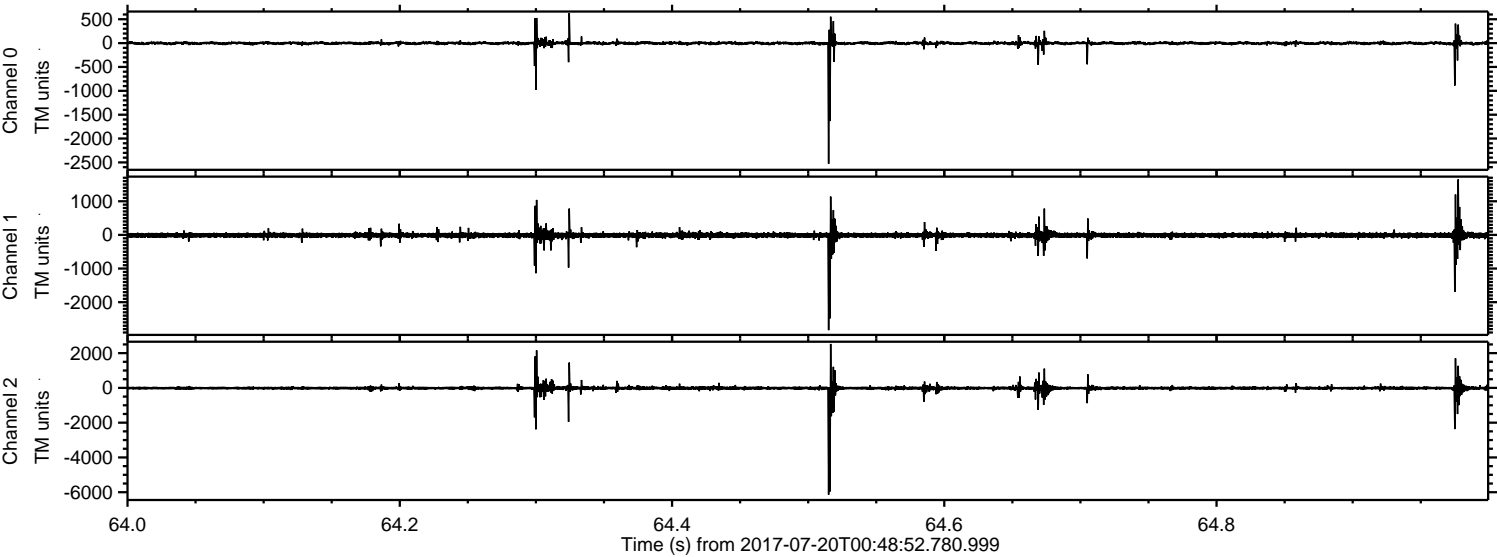


Channel 0
mn: -2434
mx: 1863
 μ : -2.4
 σ : 25.7

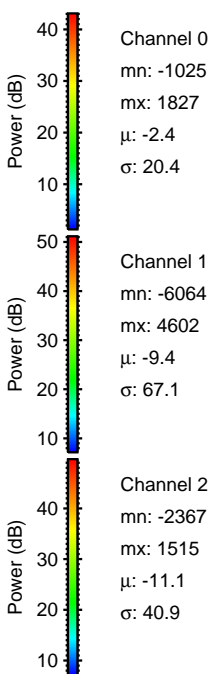
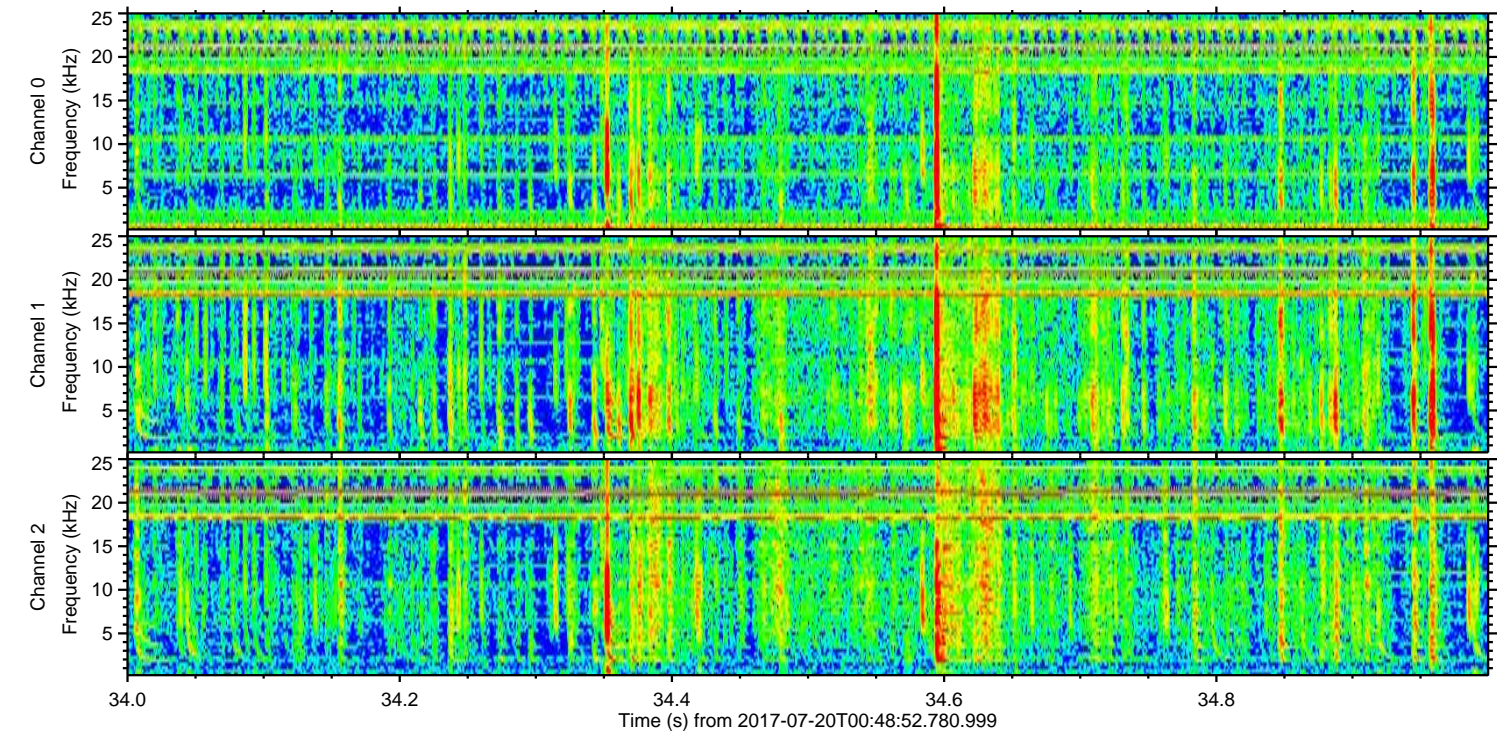
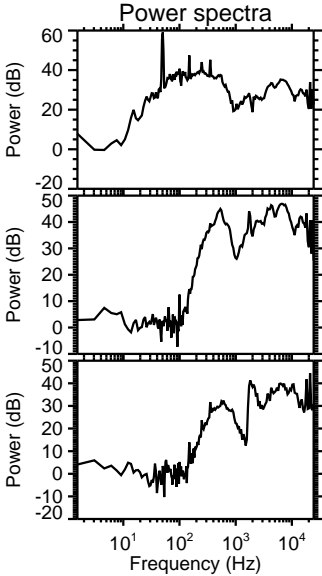
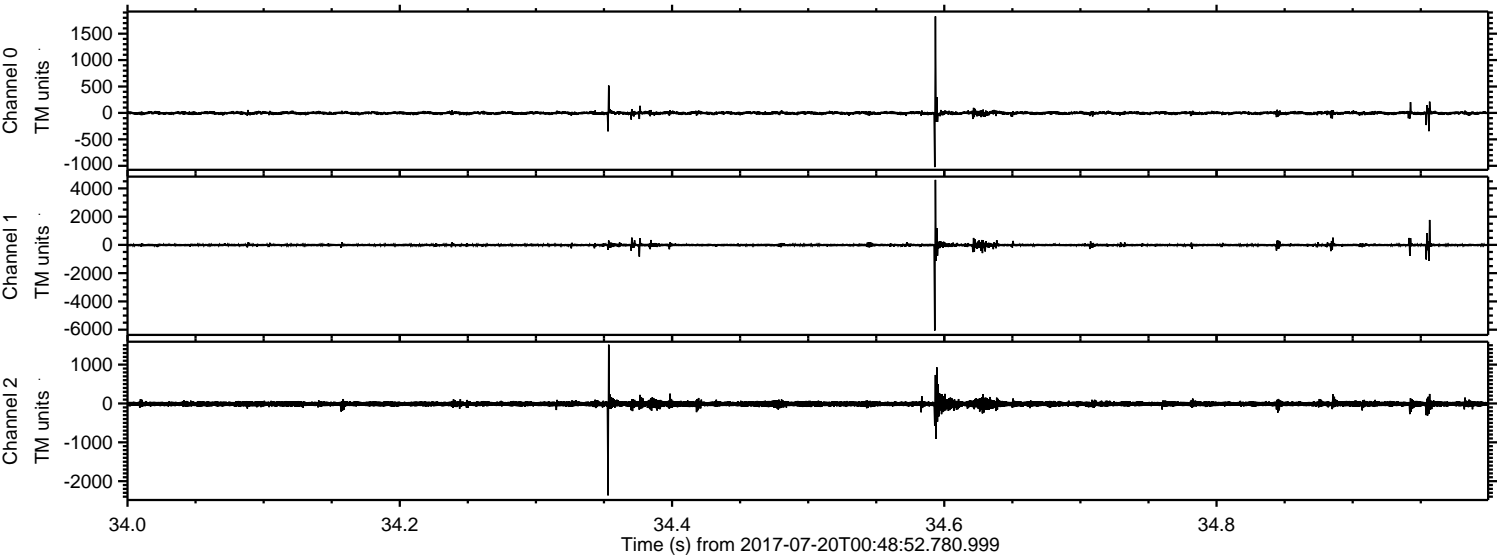
Channel 1
mn: -6655
mx: 6580
 μ : -9.4
 σ : 84.2

Channel 2
mn: -1764
mx: 1626
 μ : -11.1
 σ : 43.8

Processed Fri Jul 21 03:18:25 2017 by ELM ver.2012-10-06 from 001__elm20170720_004851__dat00.bin



Processed Fri Jul 21 03:18:26 2017 by ELM ver.2012-10-06 from 001__elm20170720_004851__dat00.bin



Processed Fri Jul 21 03:18:27 2017 by ELM ver.2012-10-06 from 001__elm20170720_004851__dat00.bin

