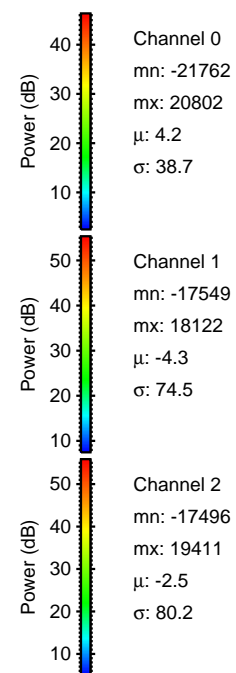
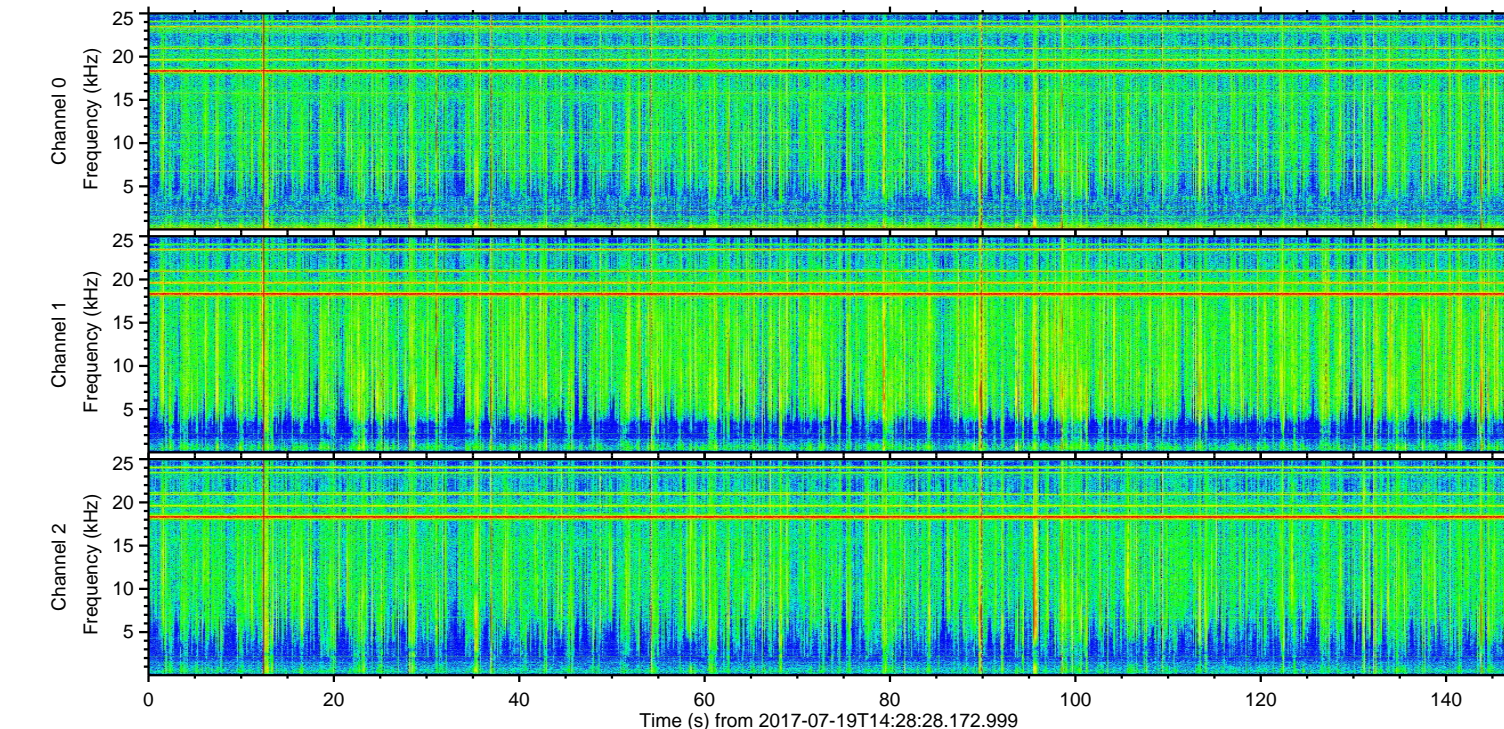
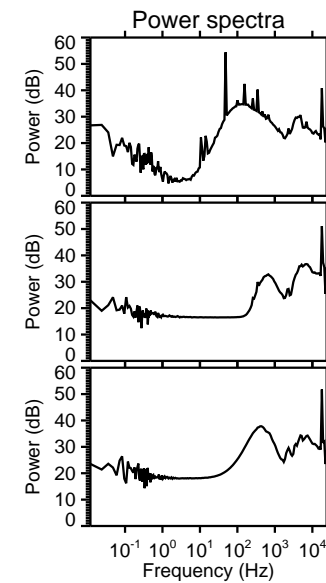
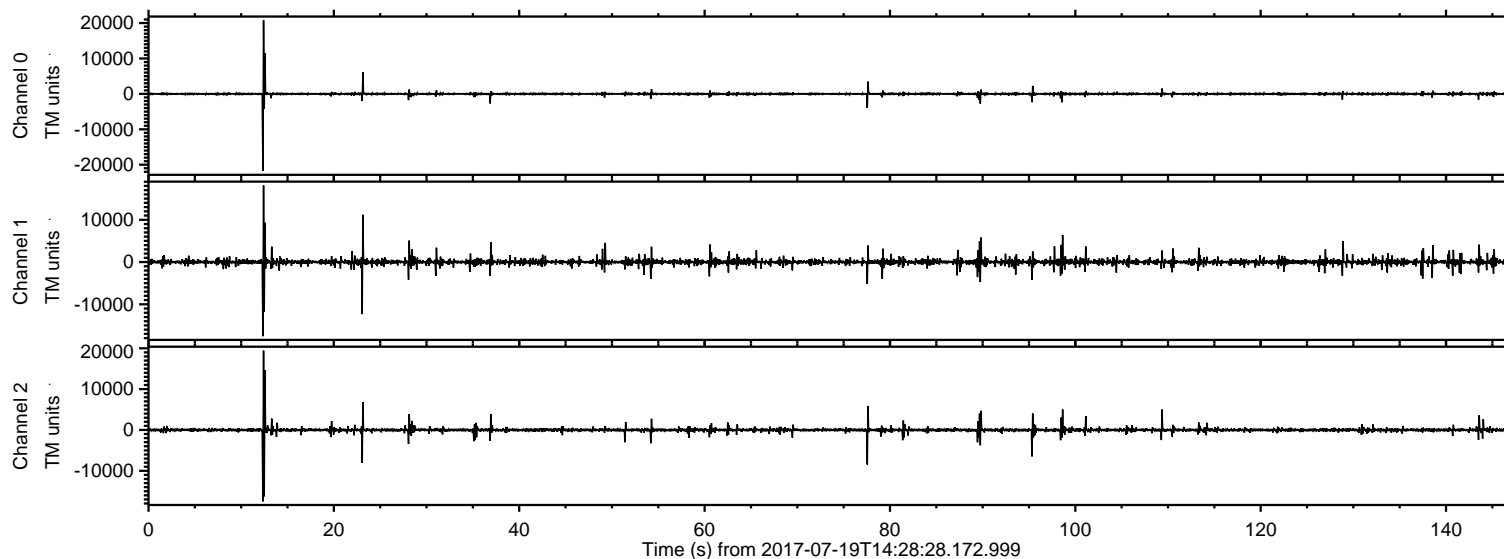


# ELMAVAN 3D WAVEFORMS (Measured data sampled at 50 kHz) 51000 packets of 144 samples from 2017-07-19T14:28:28.172.999.

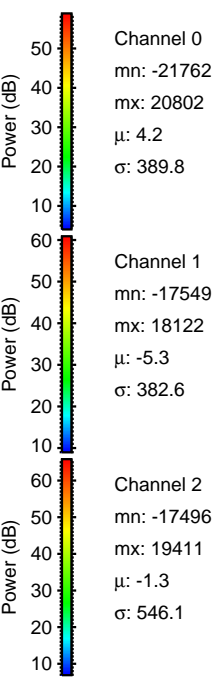
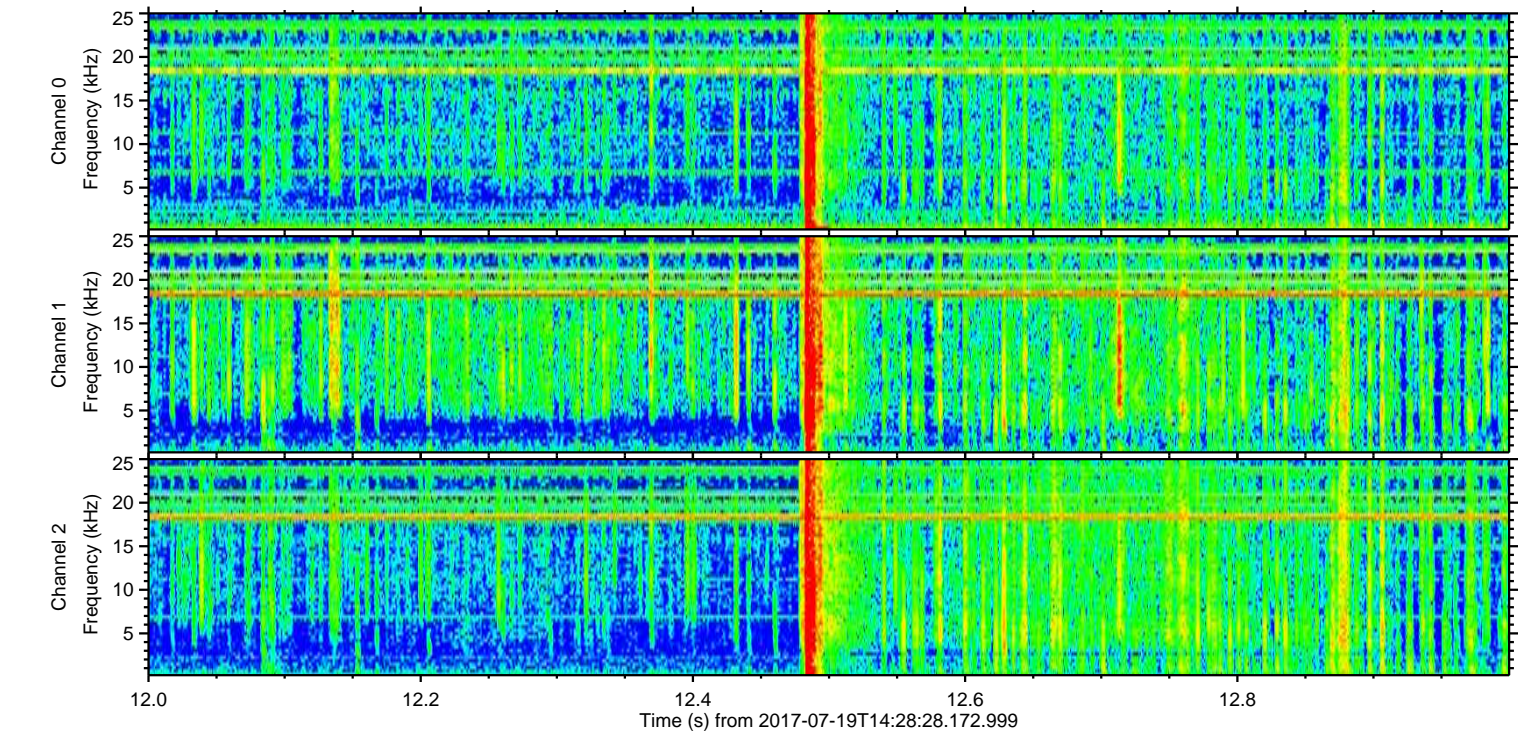
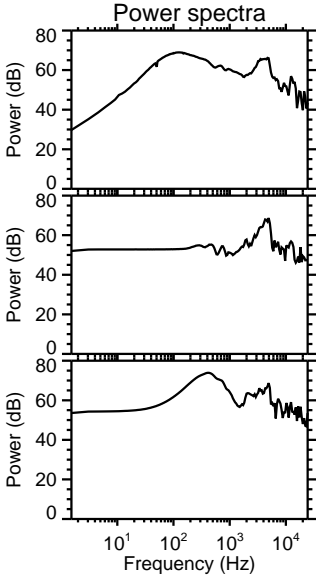
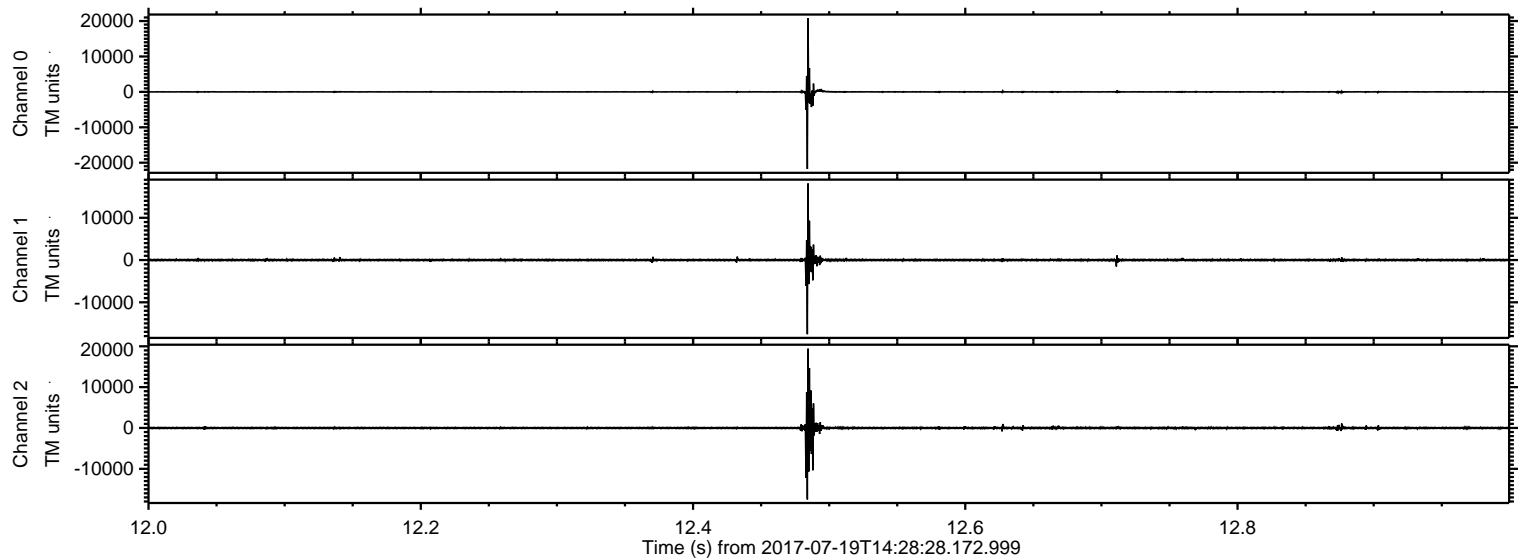
Processed Fri Jul 21 01:45:32 2017 by ELM ver.2012-10-06 from 001\_\_elm20170719\_142827\_\_dat00.bin



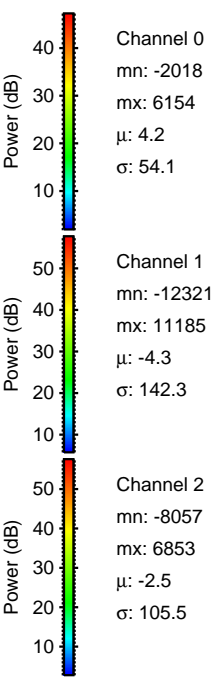
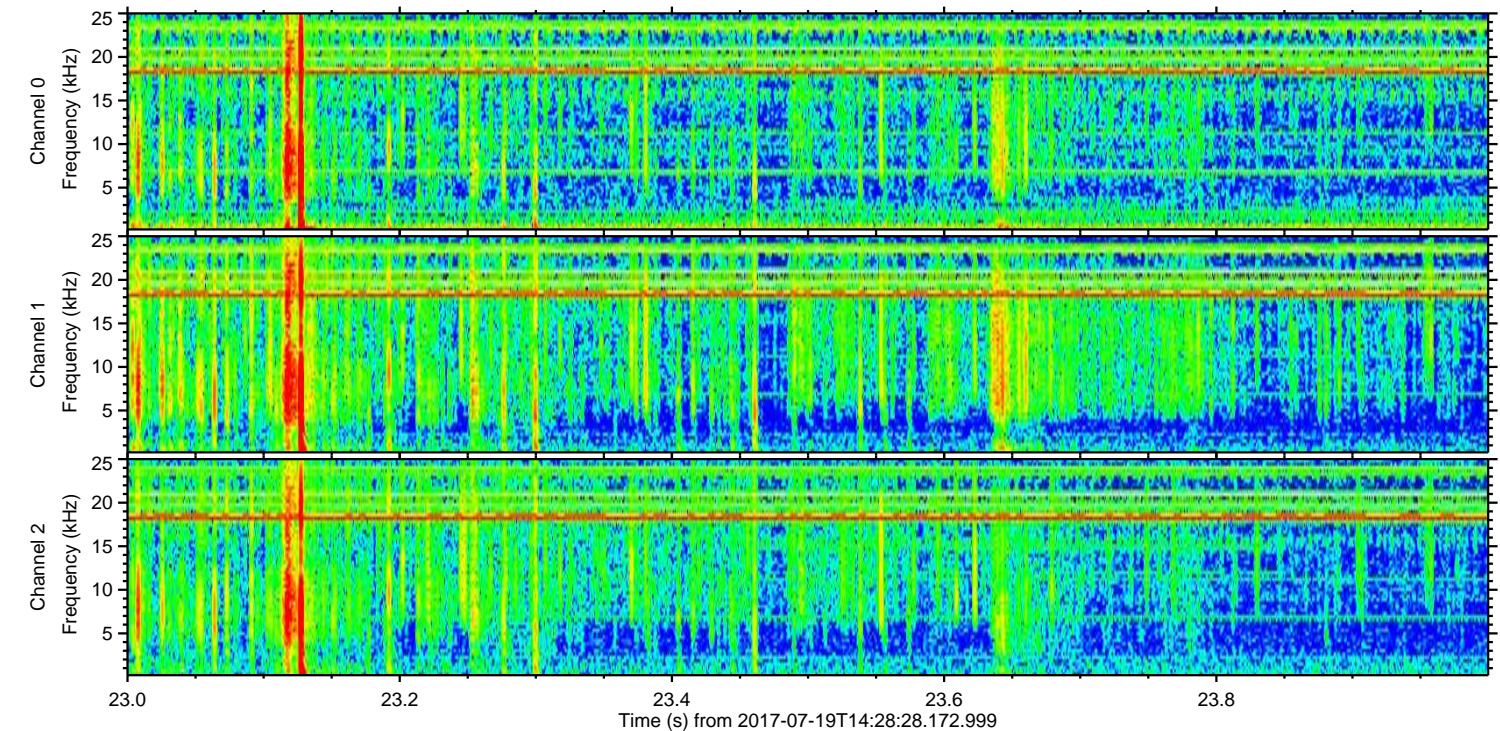
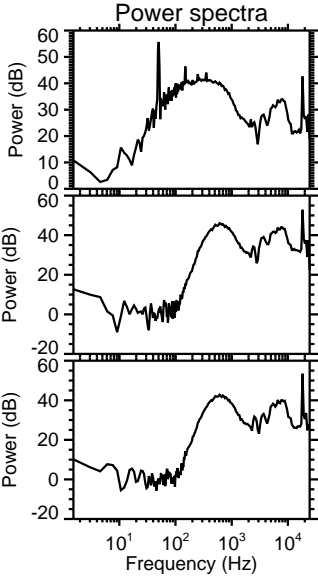
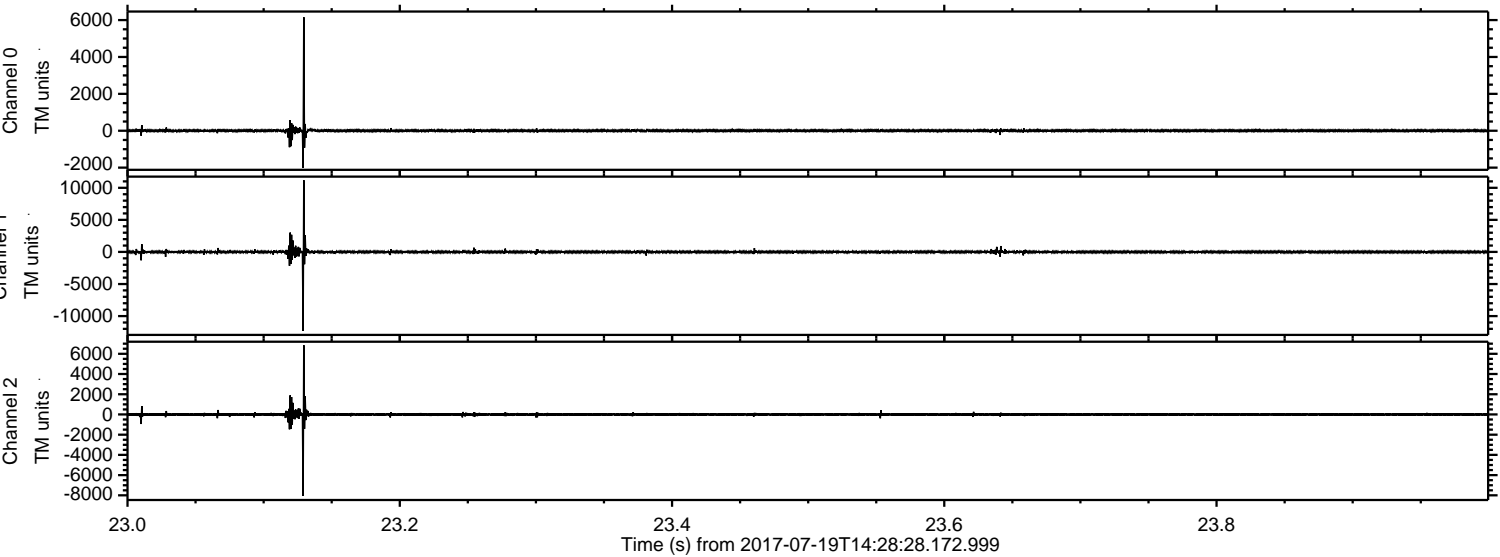


ELMAVAN 3D WAVEFORMS (Measured data sampled at 50 kHz) 51000 packets of 144 samples from 2017-07-19T14:28:28.172.999. Part 13/147

Processed Fri Jul 21 01:45:40 2017 by ELM ver.2012-10-06 from 001\_\_elm20170719\_142827\_\_dat00.bin

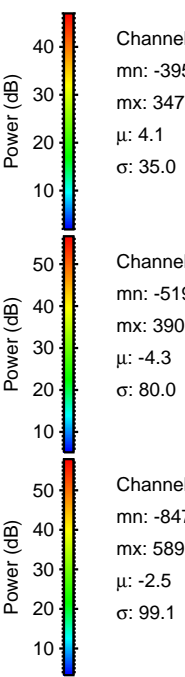
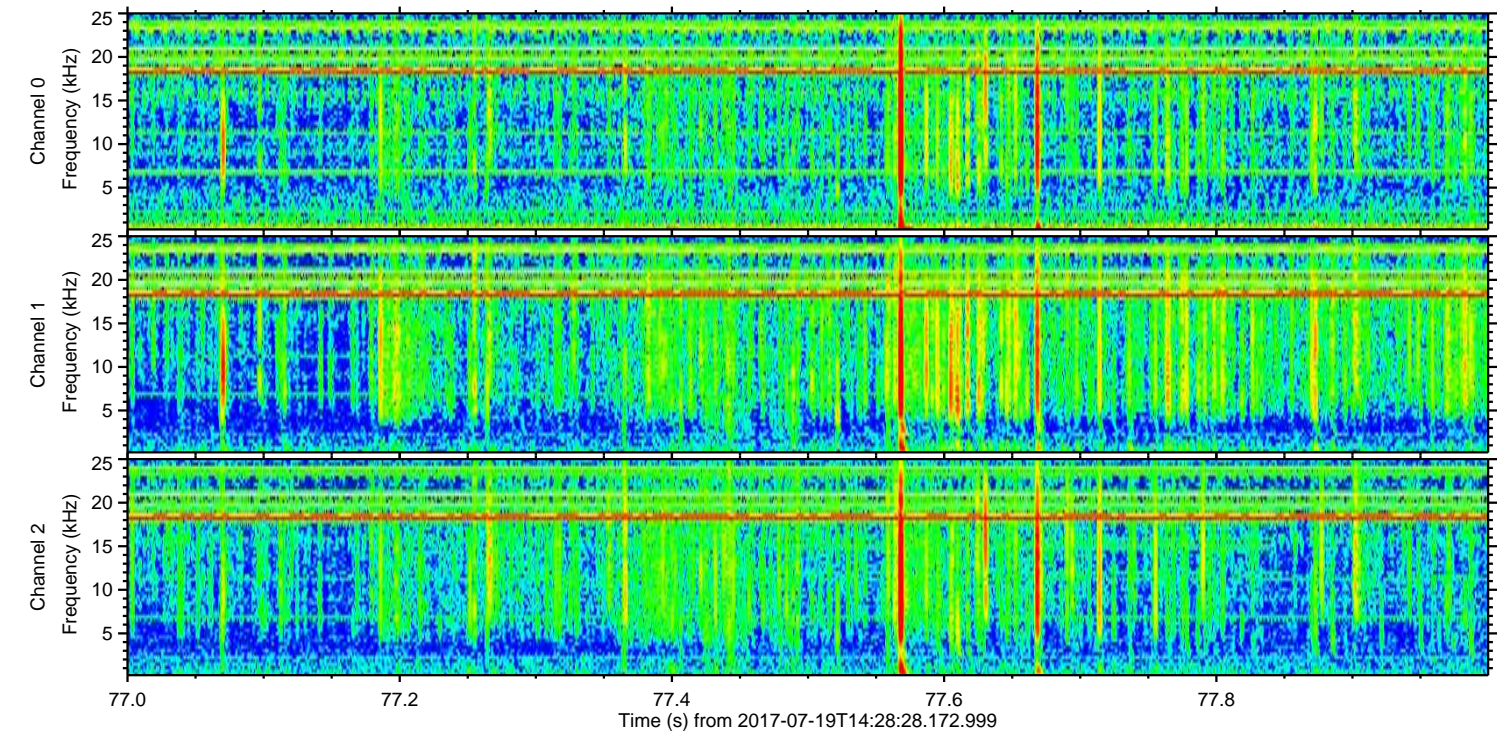
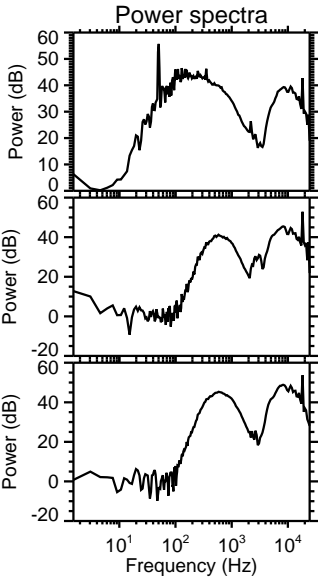
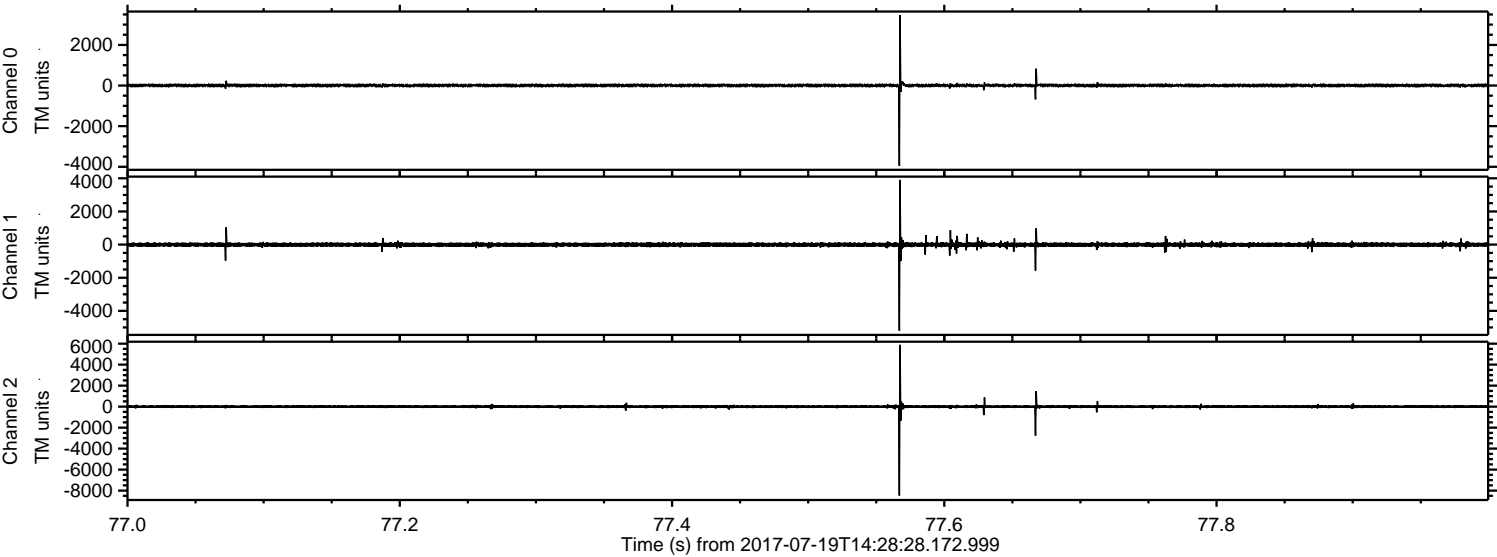


Processed Fri Jul 21 01:45:41 2017 by ELM ver.2012-10-06 from 001\_\_elm20170719\_142827\_\_dat00.bin





Processed Fri Jul 21 01:45:42 2017 by ELM ver.2012-10-06 from 001\_\_elm20170719\_142827\_\_dat00.bin



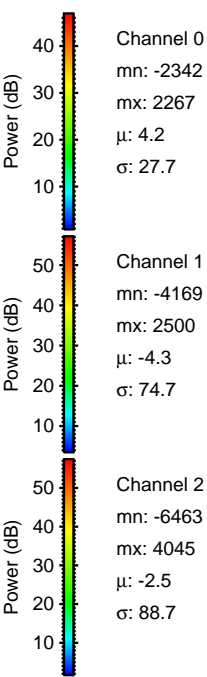
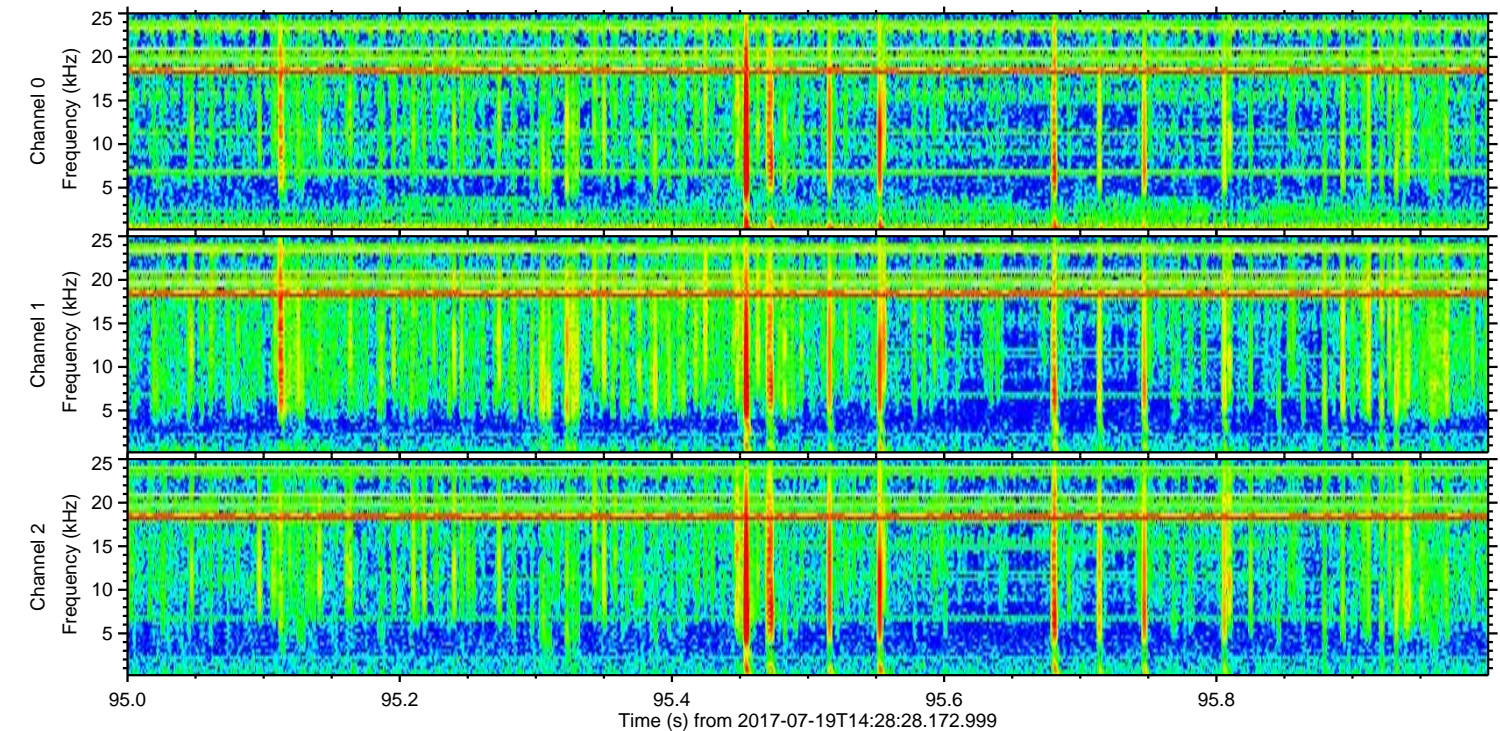
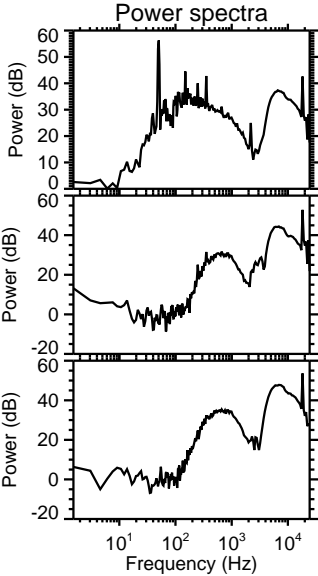
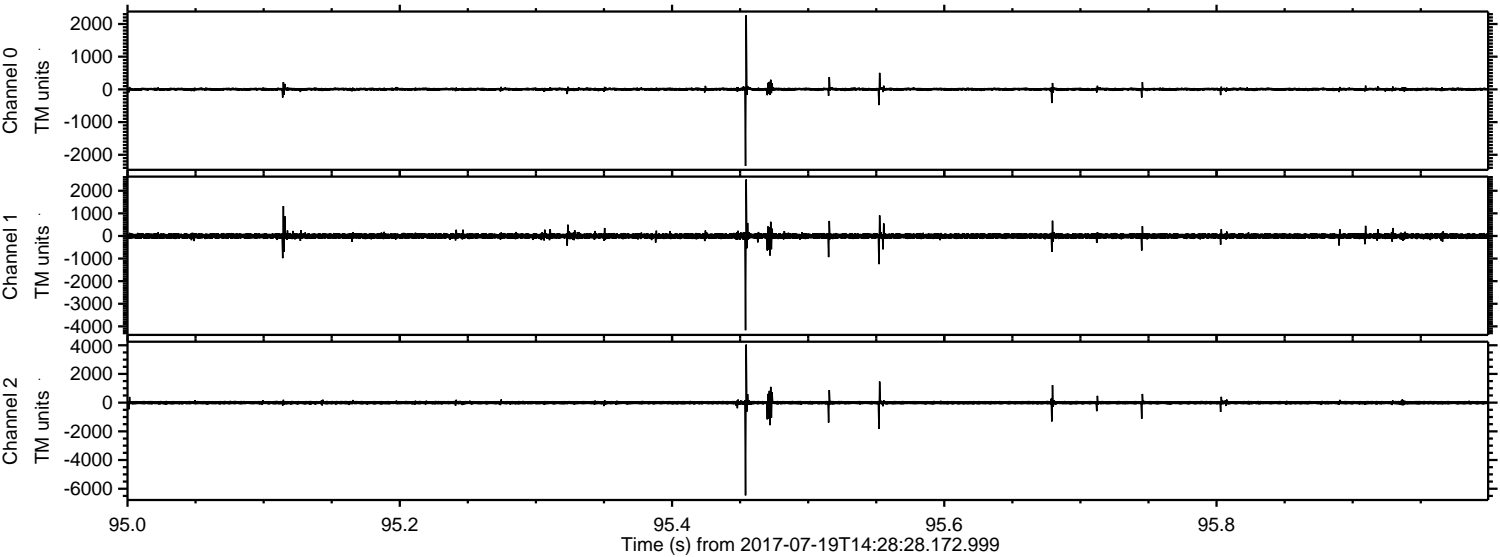
Channel 0  
mn: -3953  
mx: 3471  
 $\mu$ : 4.1  
 $\sigma$ : 35.0

Channel 1  
mn: -5191  
mx: 3907  
 $\mu$ : -4.3  
 $\sigma$ : 80.0

Channel 2  
mn: -8472  
mx: 5891  
 $\mu$ : -2.5  
 $\sigma$ : 99.1



Processed Fri Jul 21 01:45:42 2017 by ELM ver.2012-10-06 from 001\_\_elm20170719\_142827\_\_dat00.bin



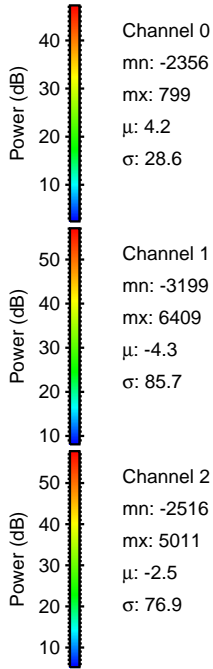
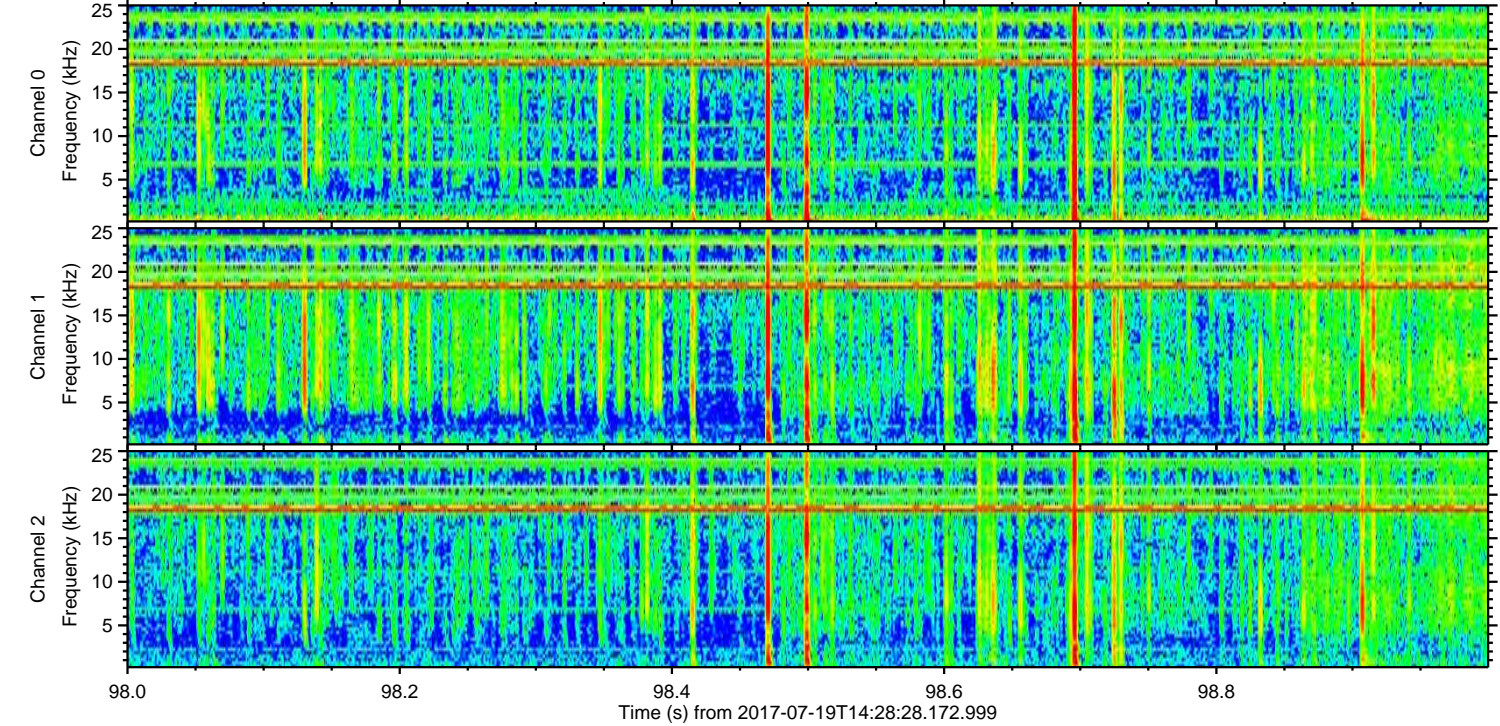
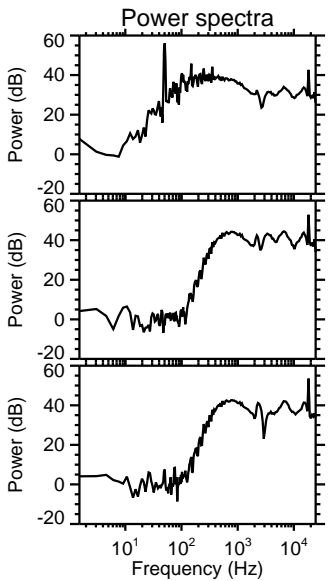
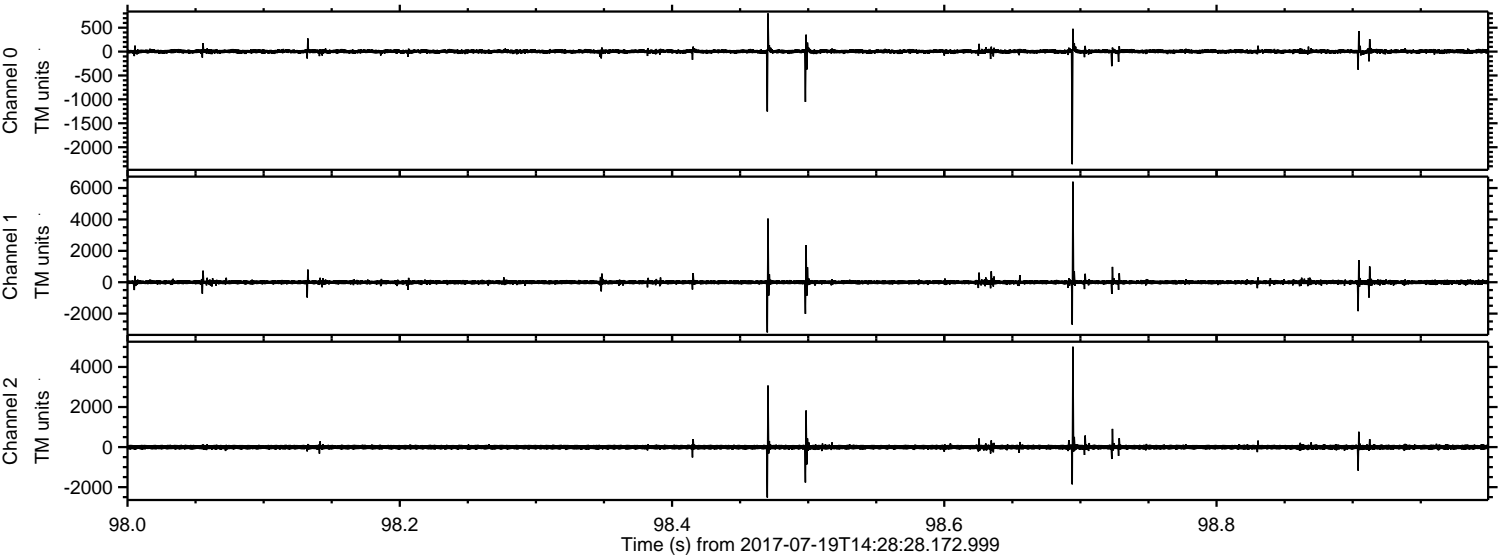
Channel 0  
mn: -2342  
mx: 2267  
 $\mu$ : 4.2  
 $\sigma$ : 27.7

Channel 1  
mn: -4169  
mx: 2500  
 $\mu$ : -4.3  
 $\sigma$ : 74.7

Channel 2  
mn: -6463  
mx: 4045  
 $\mu$ : -2.5  
 $\sigma$ : 88.7

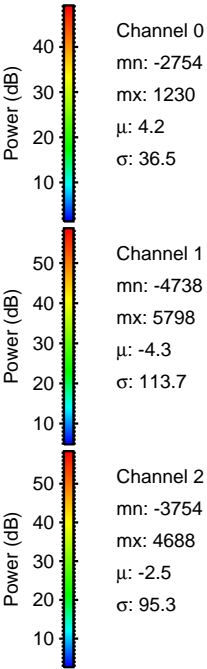
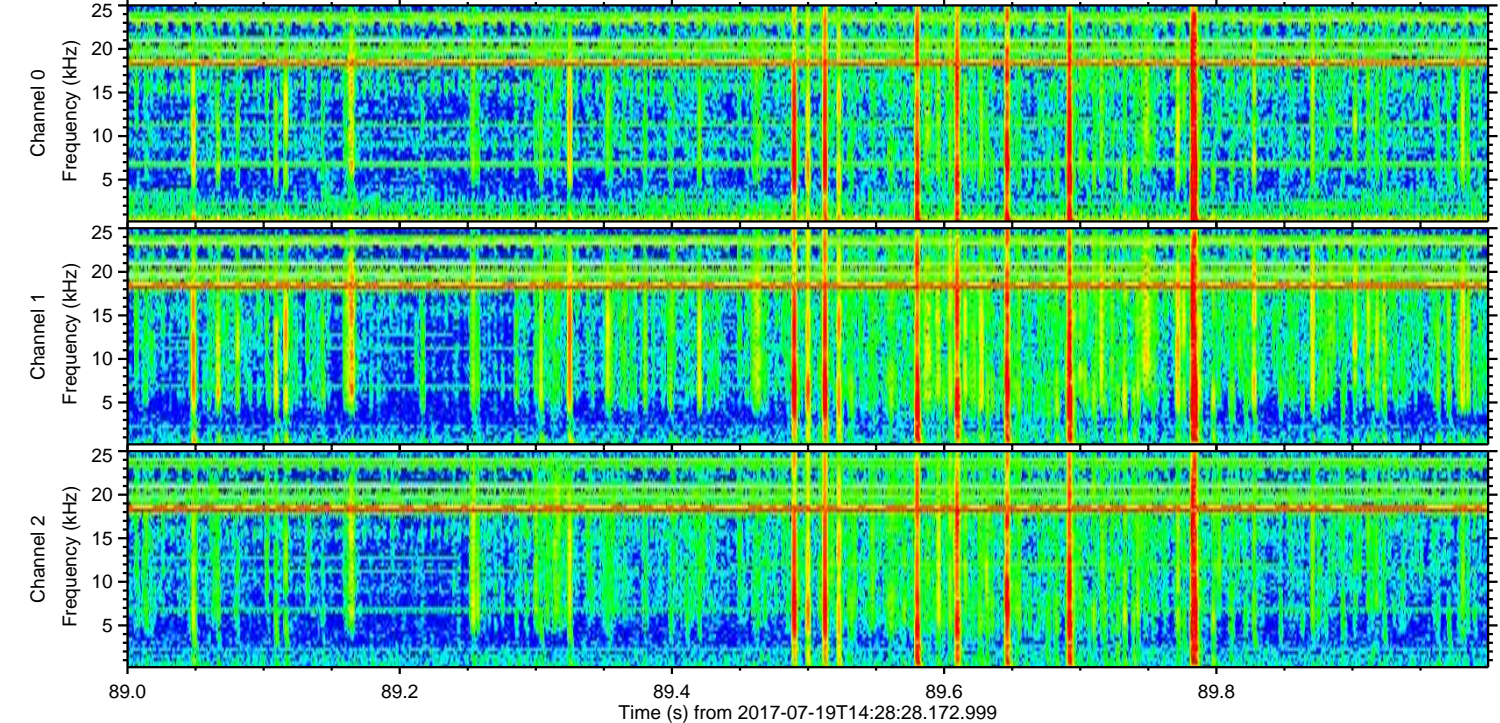
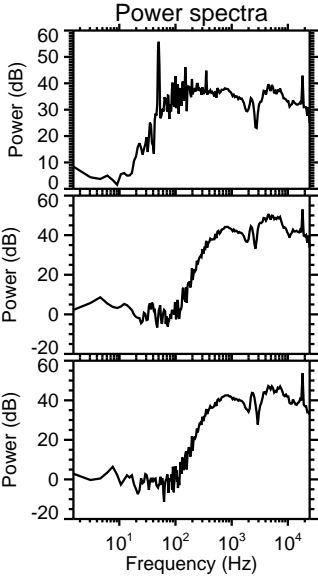
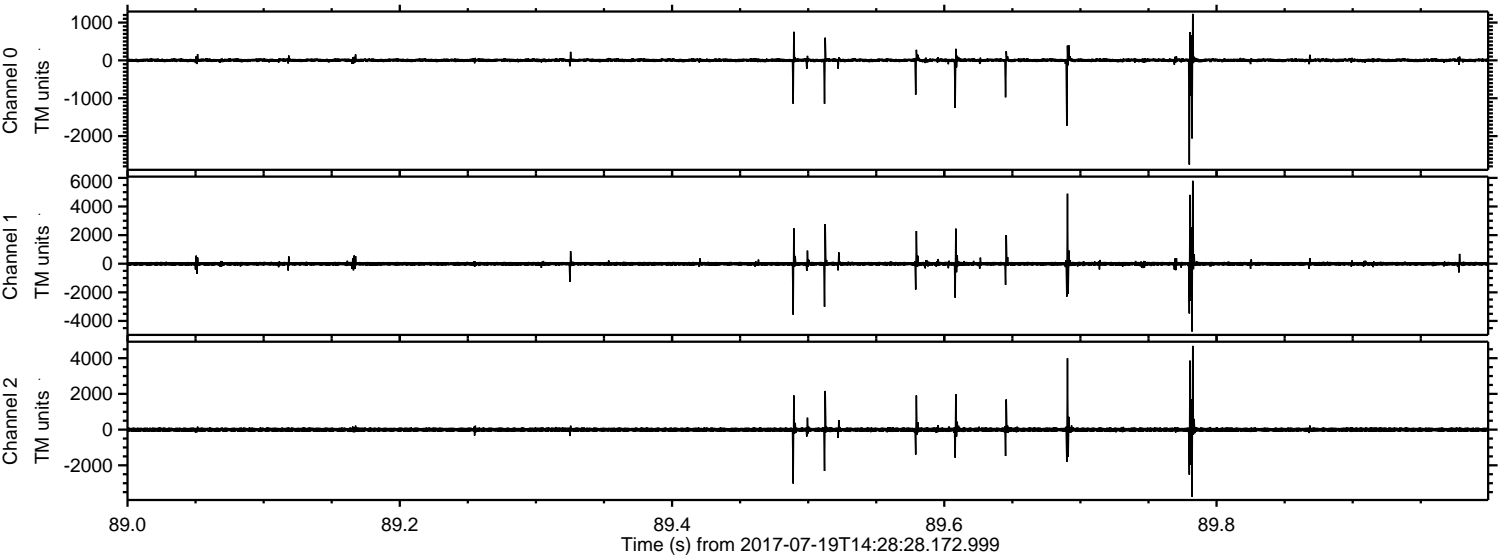


Processed Fri Jul 21 01:45:43 2017 by ELM ver.2012-10-06 from 001\_\_elm20170719\_142827\_\_dat00.bin





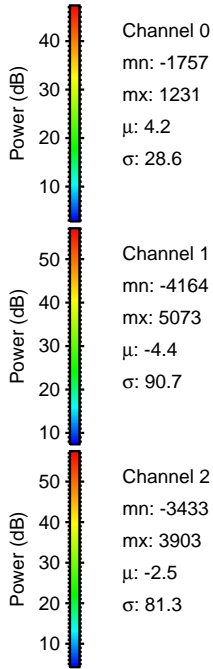
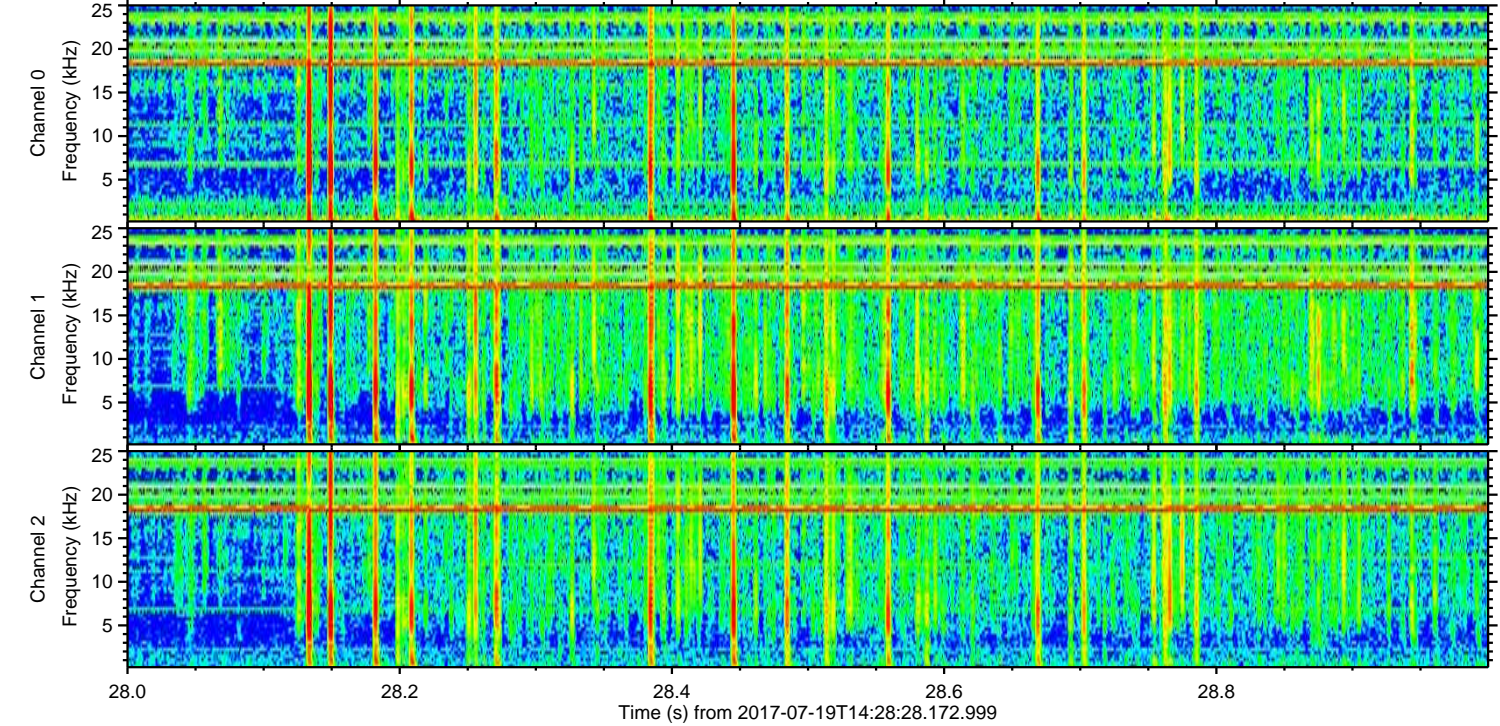
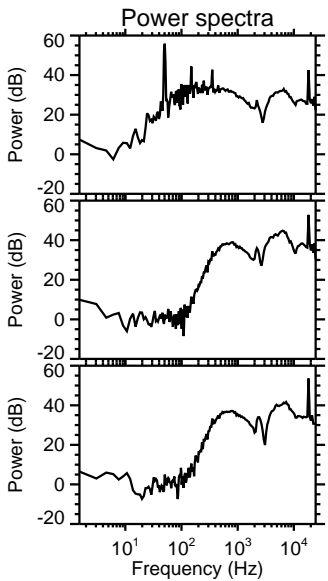
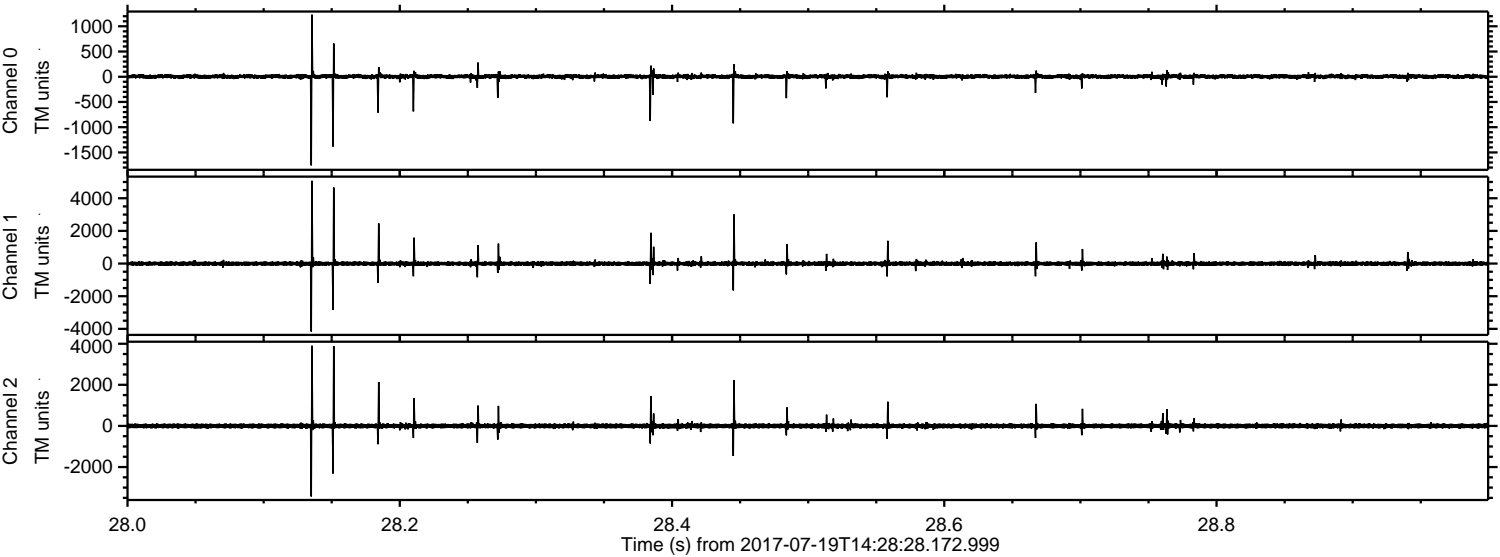
Processed Fri Jul 21 01:45:44 2017 by ELM ver.2012-10-06 from 001\_\_elm20170719\_142827\_\_dat00.bin





ELMAVAN 3D WAVEFORMS (Measured data sampled at 50 kHz) 51000 packets of 144 samples from 2017-07-19T14:28:28.172.999. Part 29/147

Processed Fri Jul 21 01:45:45 2017 by ELM ver.2012-10-06 from 001\_\_elm20170719\_142827\_\_dat00.bin



Channel 0  
mn: -1757  
mx: 1231  
 $\mu$ : 4.2  
 $\sigma$ : 28.6

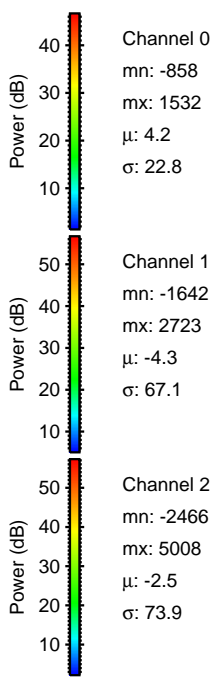
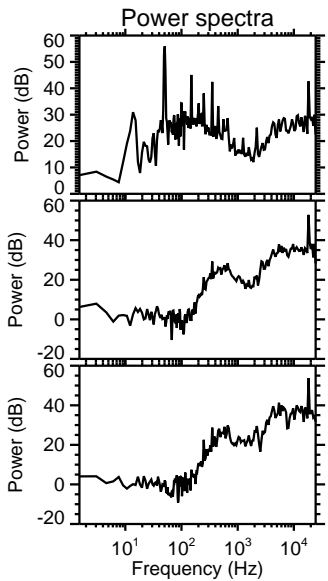
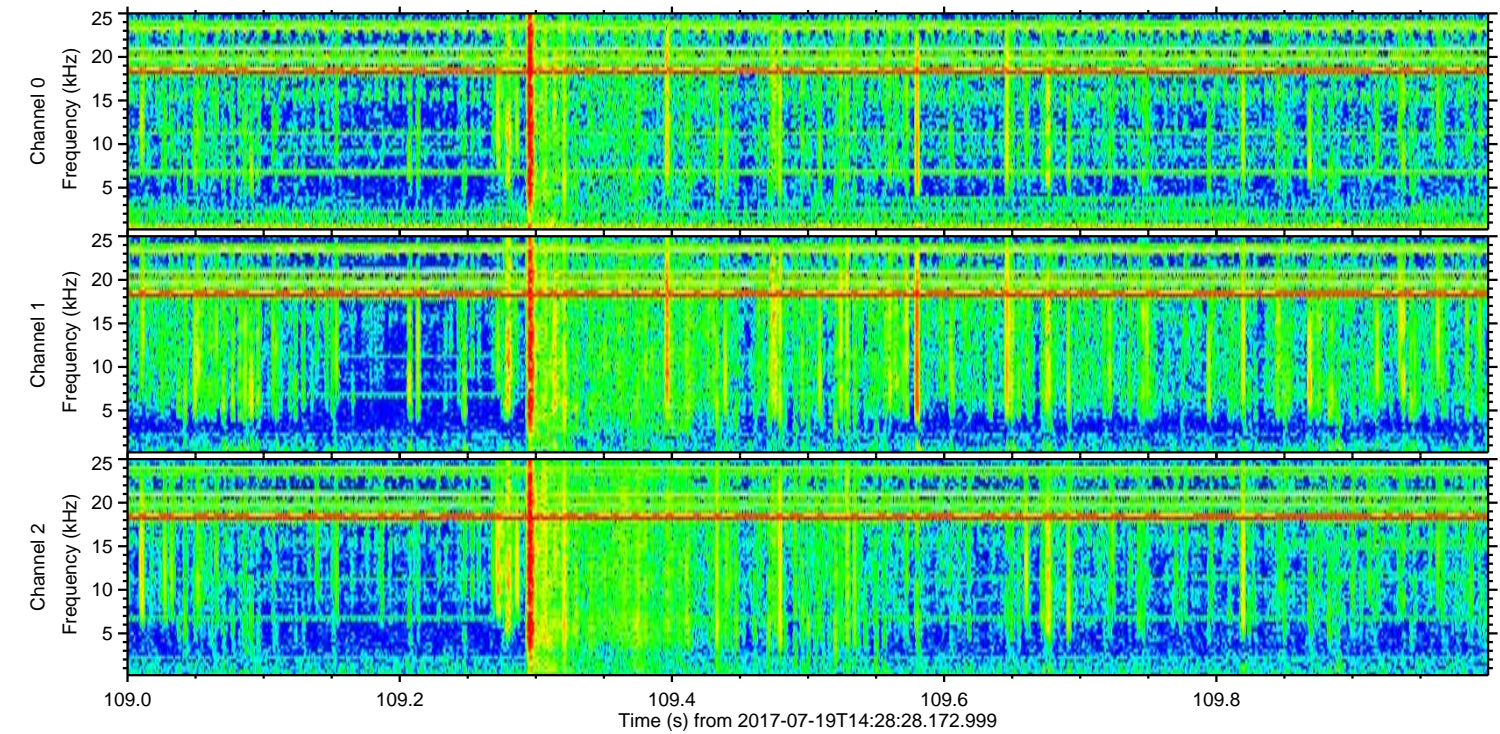
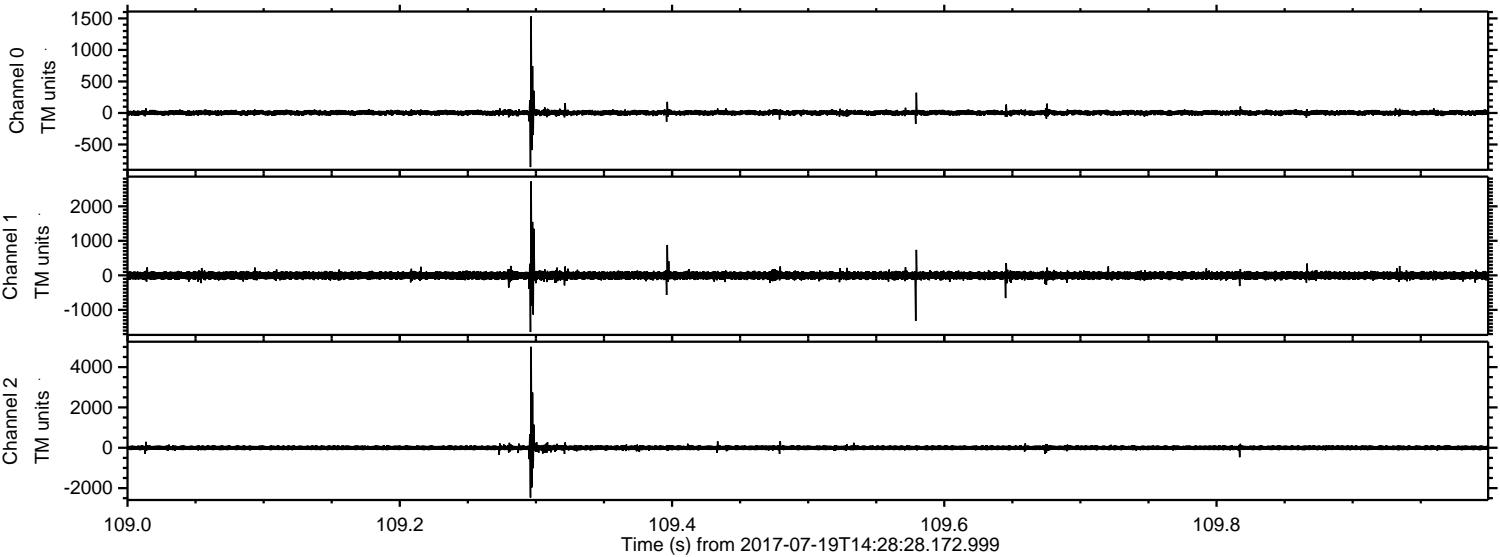
Channel 1  
mn: -4164  
mx: 5073  
 $\mu$ : -4.4  
 $\sigma$ : 90.7

Channel 2  
mn: -3433  
mx: 3903  
 $\mu$ : -2.5  
 $\sigma$ : 81.3



ELMAVAN 3D WAVEFORMS (Measured data sampled at 50 kHz) 51000 packets of 144 samples from 2017-07-19T14:28:28.172.999. Part 110/147

Processed Fri Jul 21 01:45:45 2017 by ELM ver.2012-10-06 from 001\_\_elm20170719\_142827\_\_dat00.bin



Channel 0  
mn: -858  
mx: 1532  
 $\mu$ : 4.2  
 $\sigma$ : 22.8

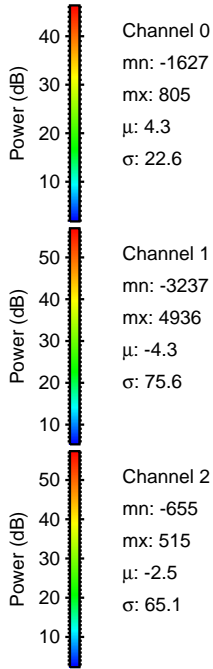
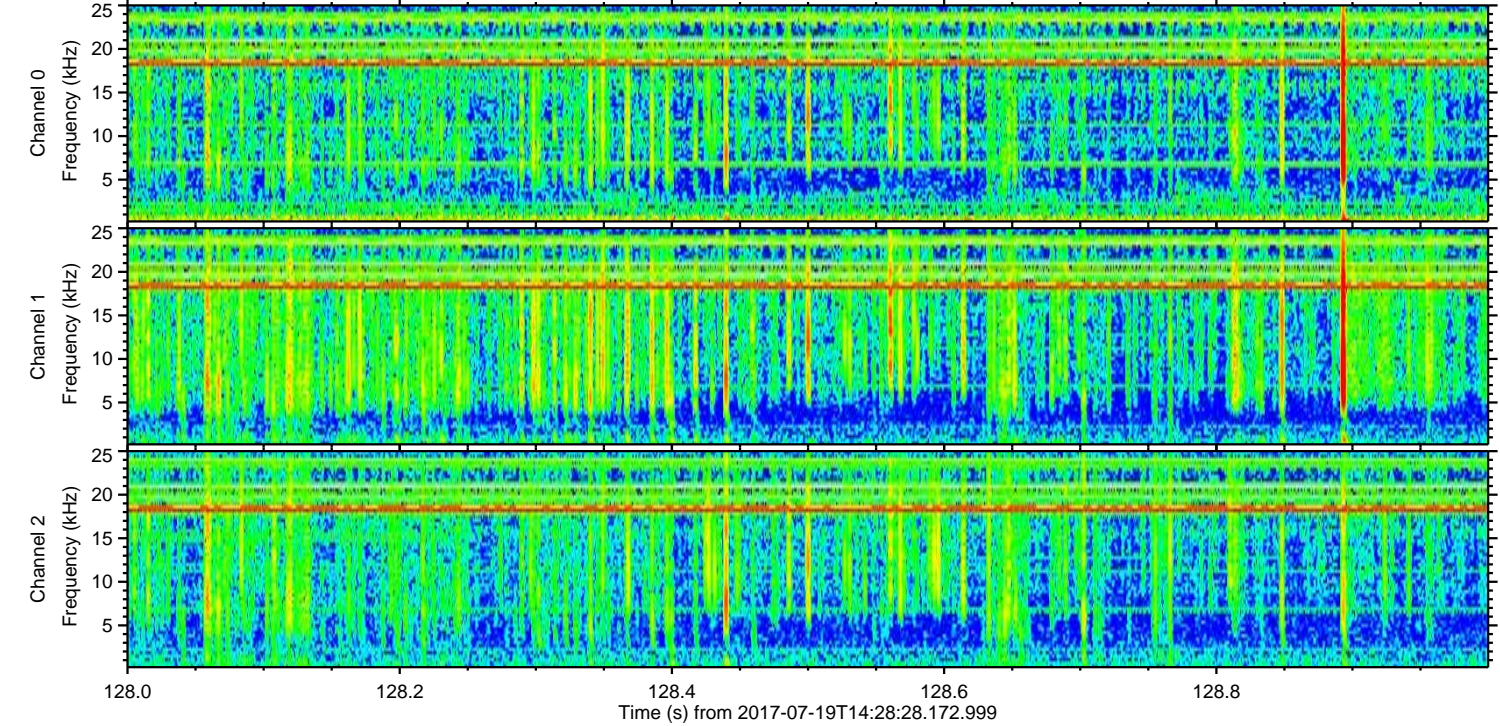
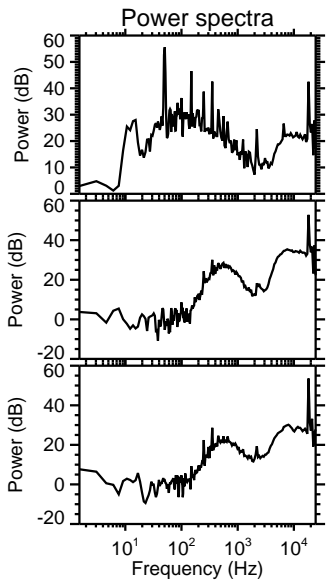
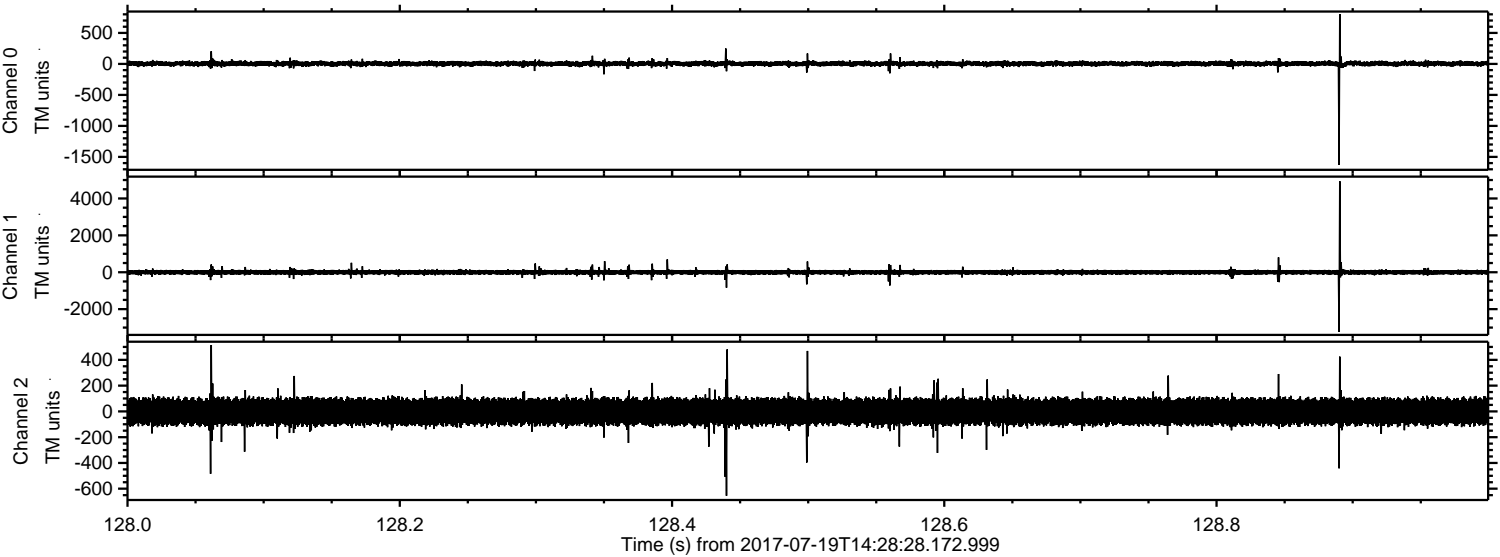
Channel 1  
mn: -1642  
mx: 2723  
 $\mu$ : -4.3  
 $\sigma$ : 67.1

Channel 2  
mn: -2466  
mx: 5008  
 $\mu$ : -2.5  
 $\sigma$ : 73.9



ELMAVAN 3D WAVEFORMS (Measured data sampled at 50 kHz) 51000 packets of 144 samples from 2017-07-19T14:28:28.172.999. Part 129/147

Processed Fri Jul 21 01:45:46 2017 by ELM ver.2012-10-06 from 001\_\_elm20170719\_142827\_\_dat00.bin





ELMAVAN 3D WAVEFORMS (Measured data sampled at 50 kHz) 51000 packets of 144 samples from 2017-07-19T14:28:28.172.999. Part 34/147

