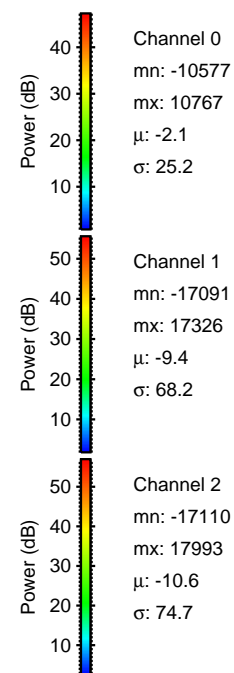
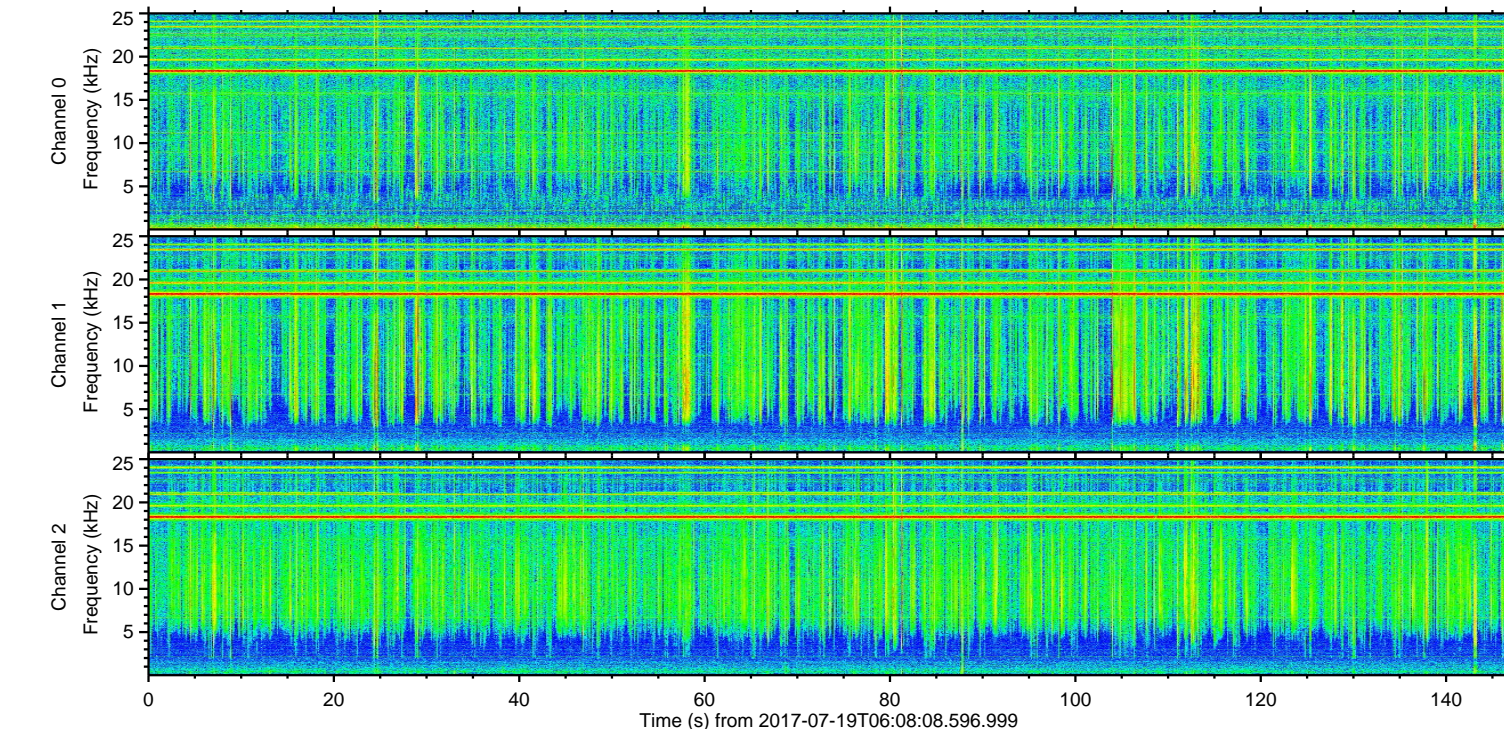
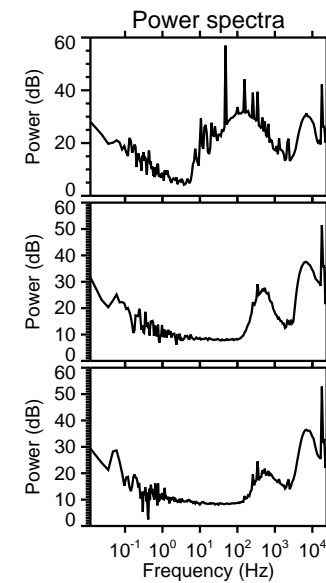
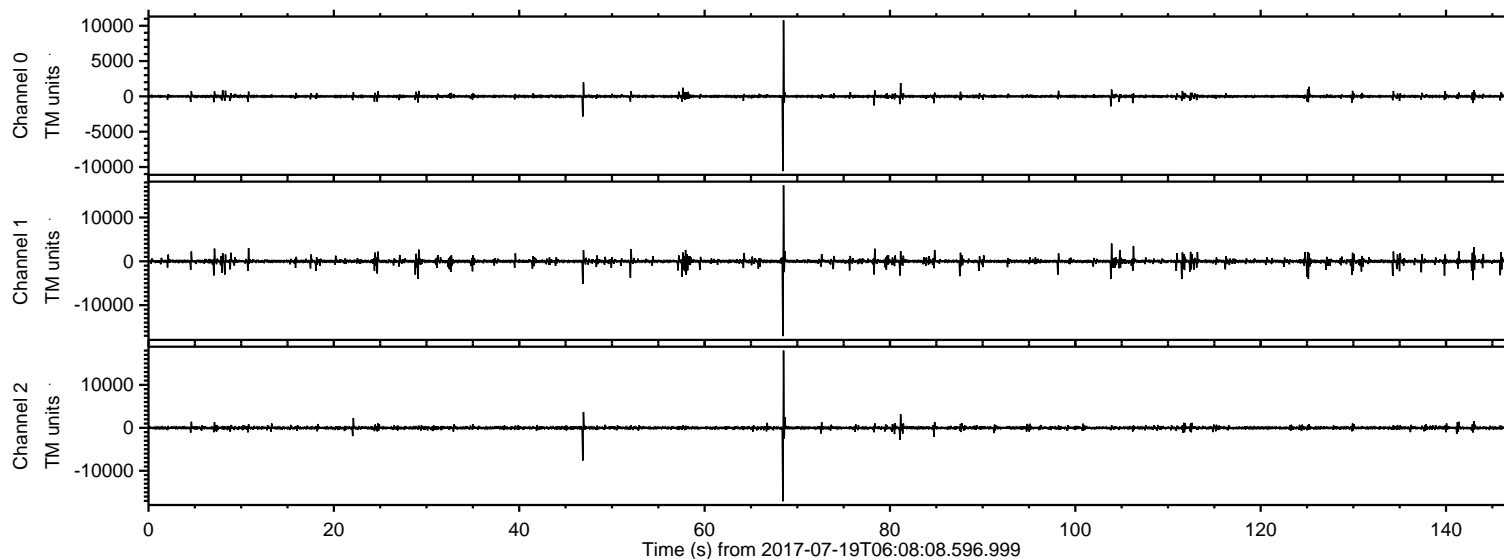
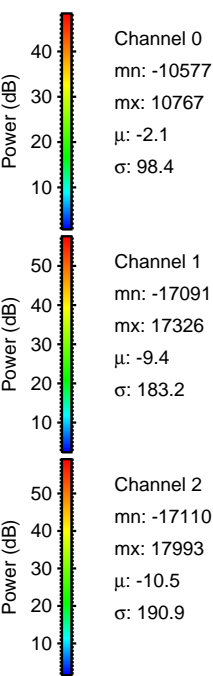
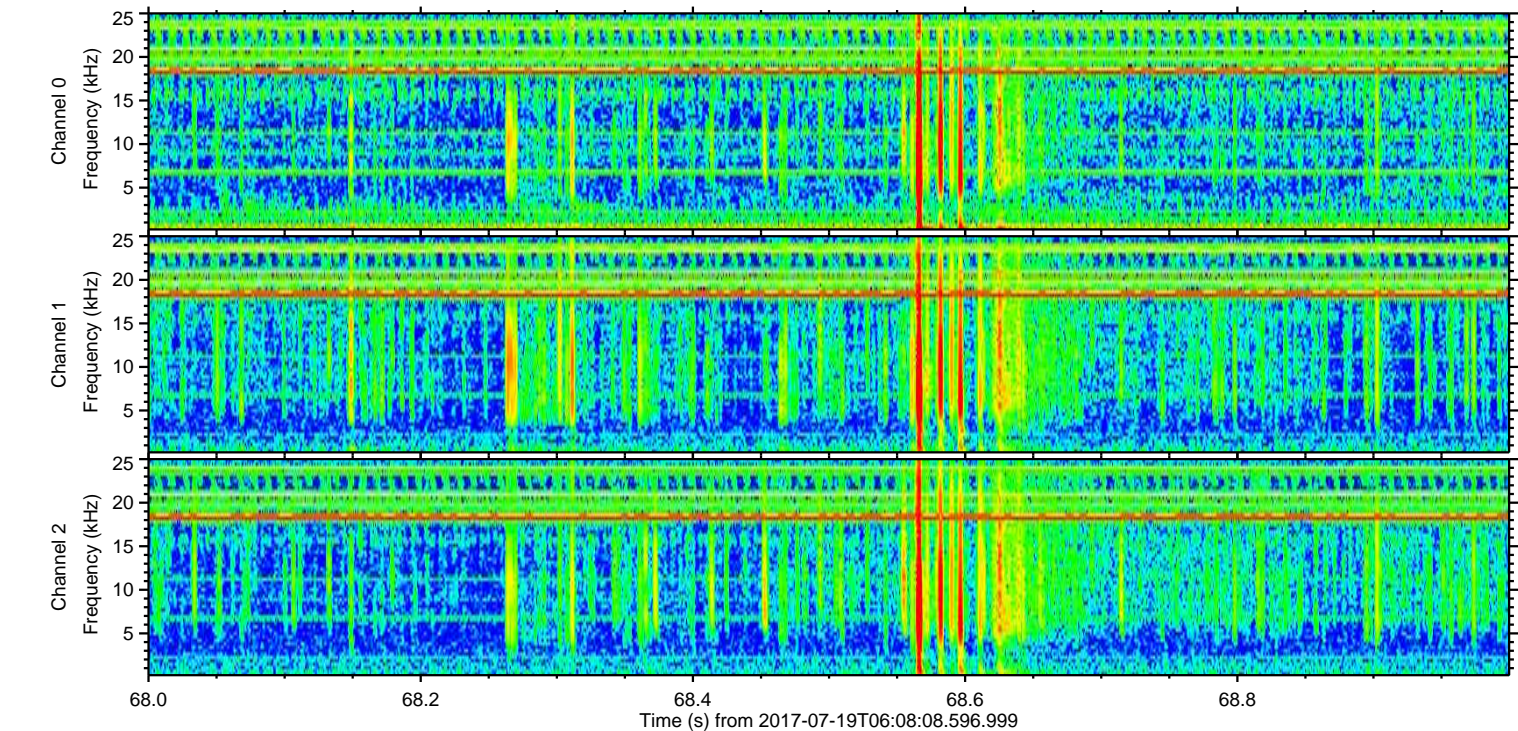
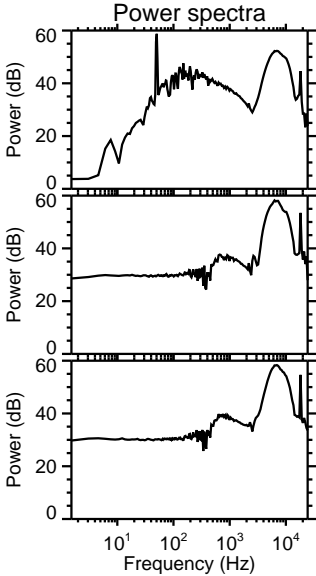
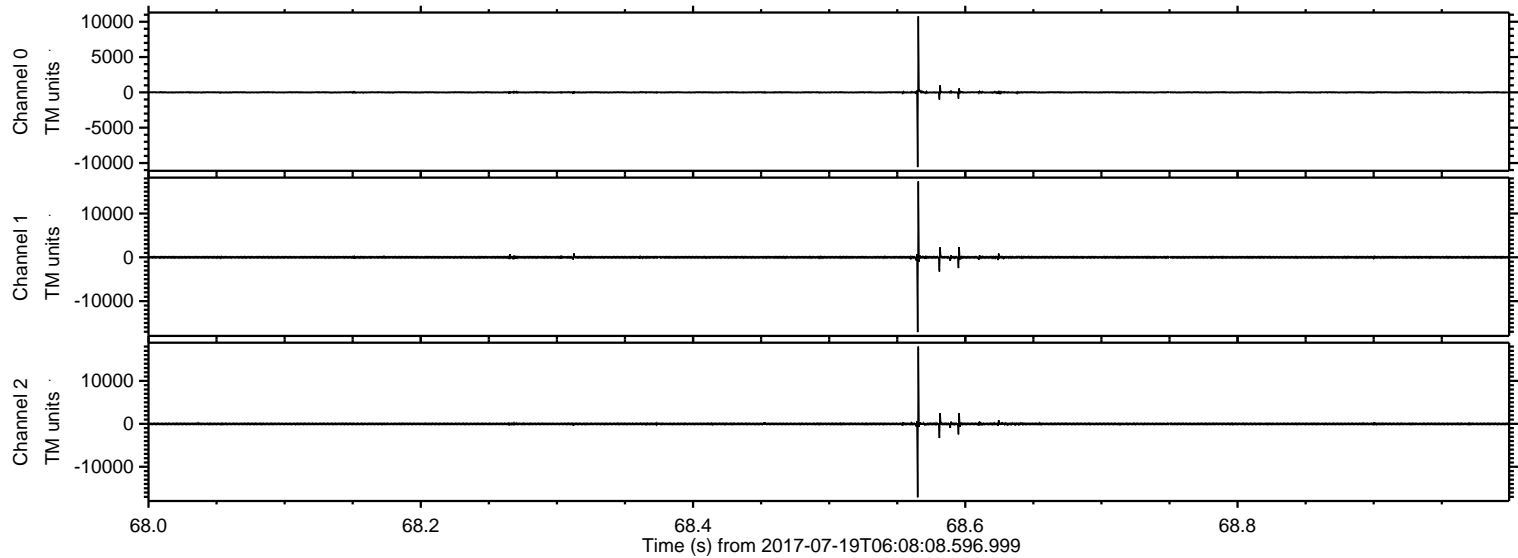


ELMAVAN 3D WAVEFORMS (Measured data sampled at 50 kHz) 51000 packets of 144 samples from 2017-07-19T06:08:08.596.999.

Processed Fri Jul 21 00:31:21 2017 by ELM ver.2012-10-06 from 001__elm20170719_060807__dat00.bin

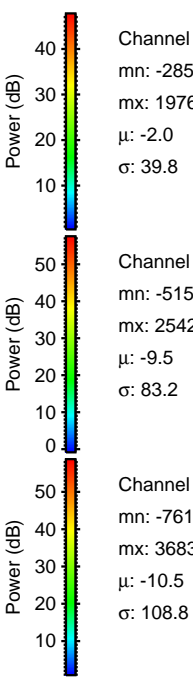
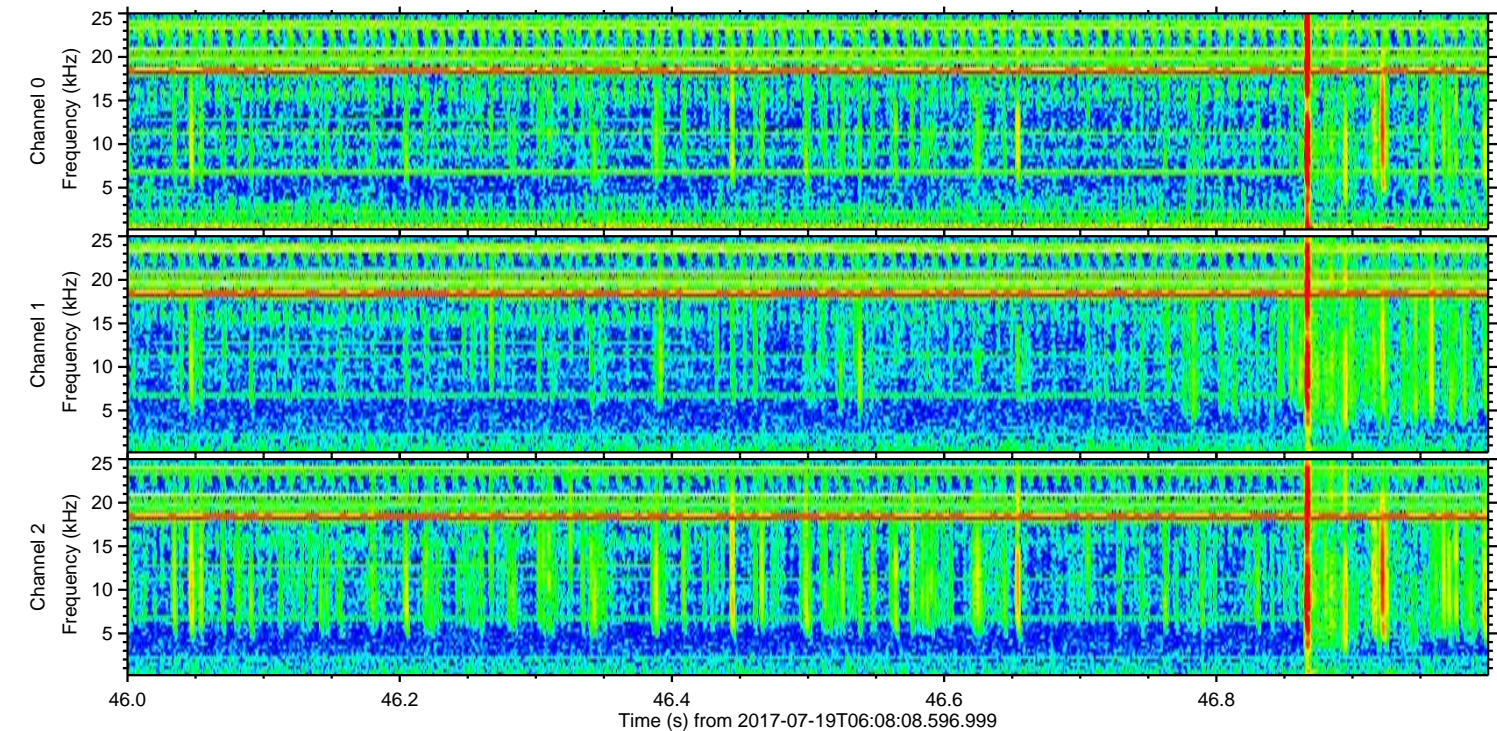
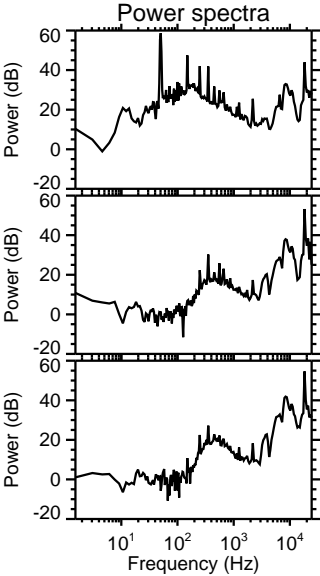
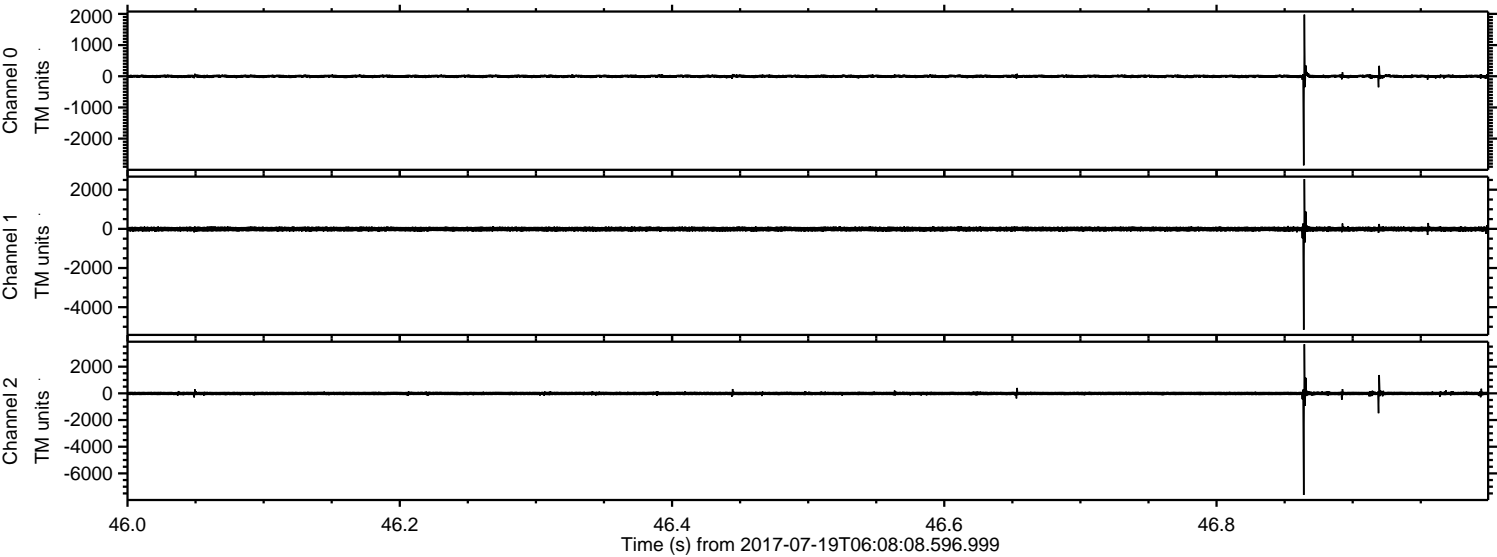


Processed Fri Jul 21 00:31:29 2017 by ELM ver.2012-10-06 from 001__elm20170719_060807__dat00.bin



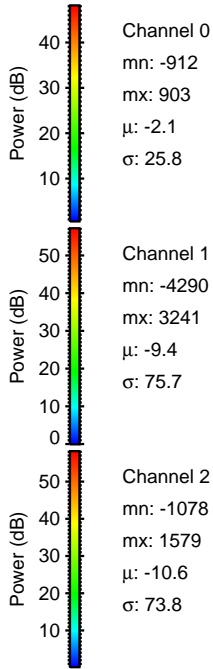
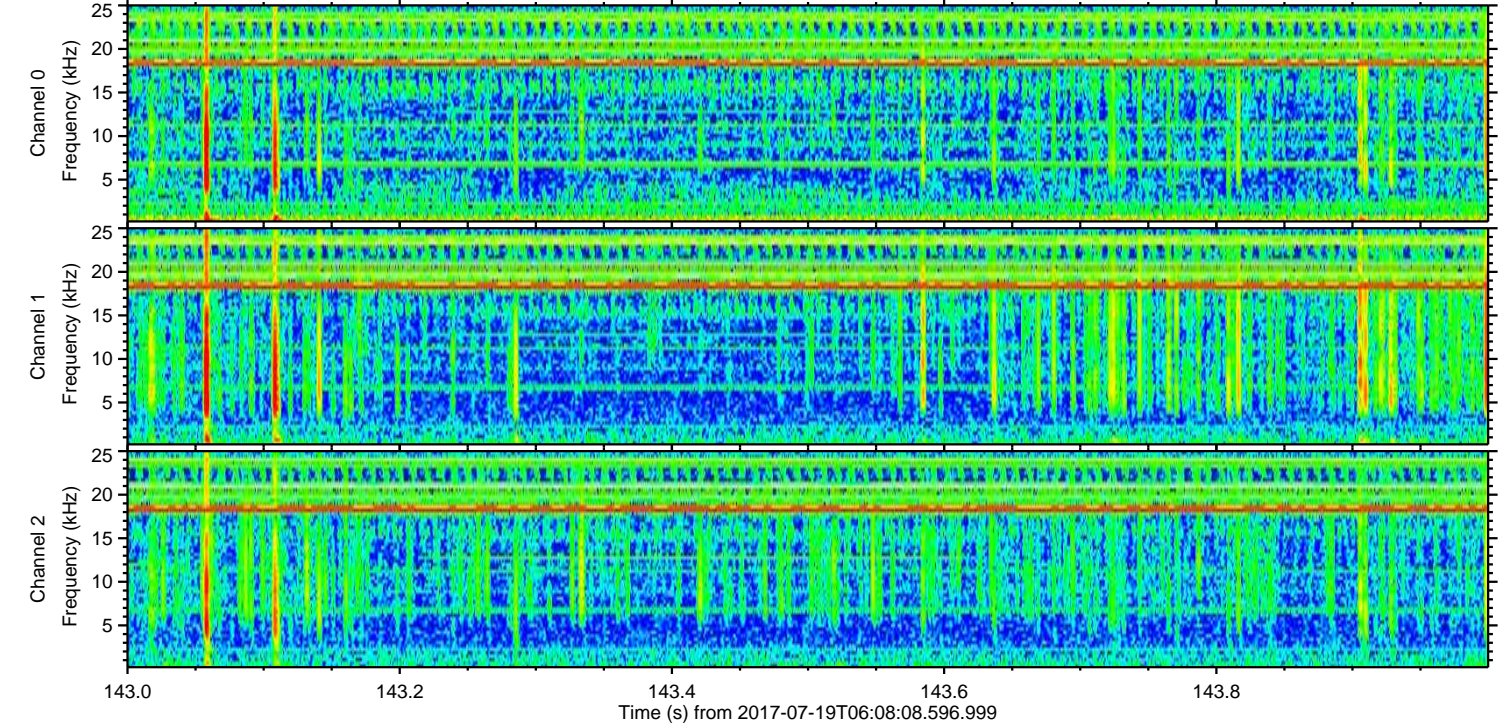
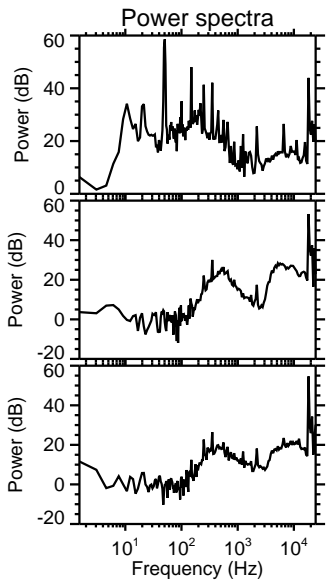
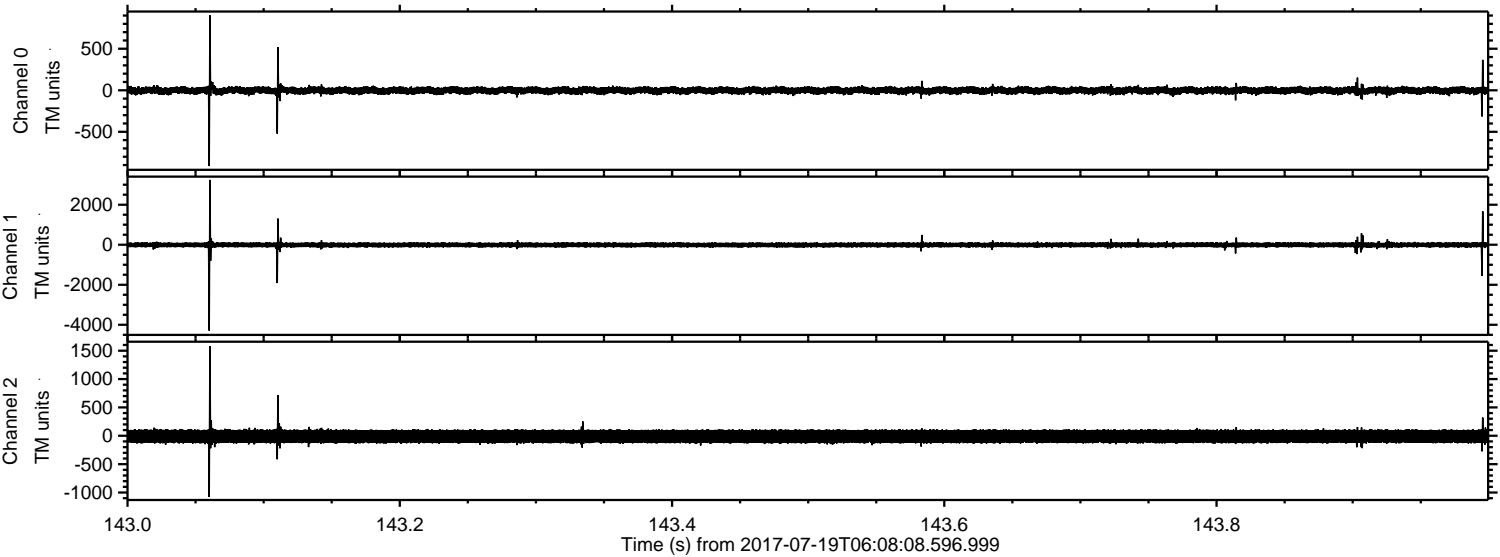
ELMAVAN 3D WAVEFORMS (Measured data sampled at 50 kHz) 51000 packets of 144 samples from 2017-07-19T06:08:08.596.999. Part 47/147

Processed Fri Jul 21 00:31:29 2017 by ELM ver.2012-10-06 from 001__elm20170719_060807__dat00.bin



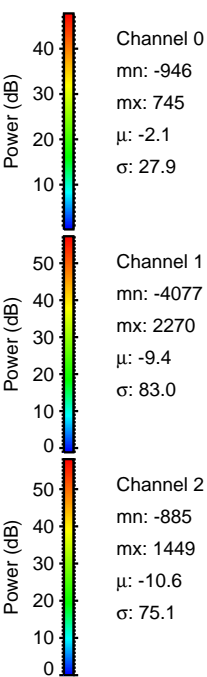
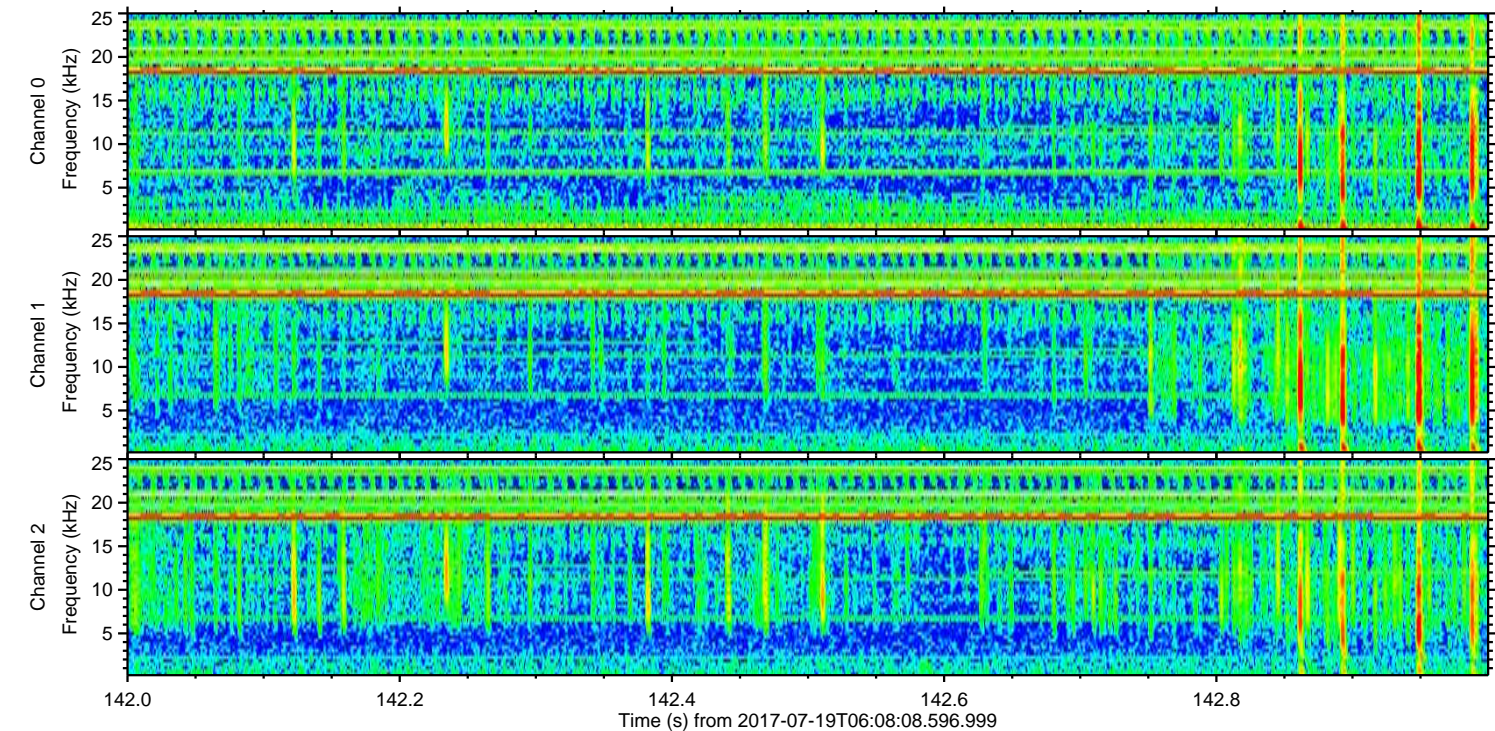
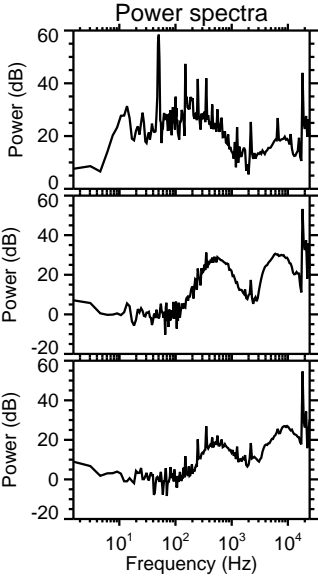
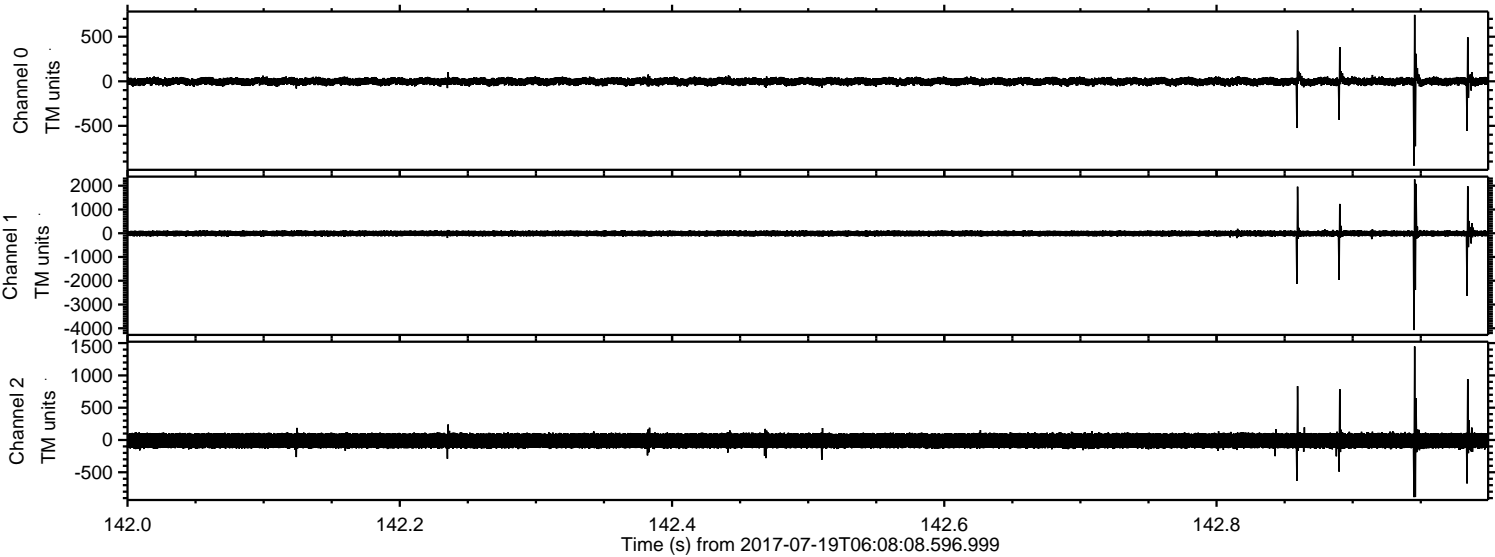
ELMAVAN 3D WAVEFORMS (Measured data sampled at 50 kHz) 51000 packets of 144 samples from 2017-07-19T06:08:08.596.999. Part 144/147

Processed Fri Jul 21 00:31:30 2017 by ELM ver.2012-10-06 from 001__elm20170719_060807__dat00.bin



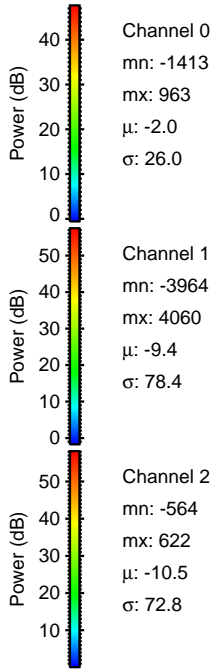
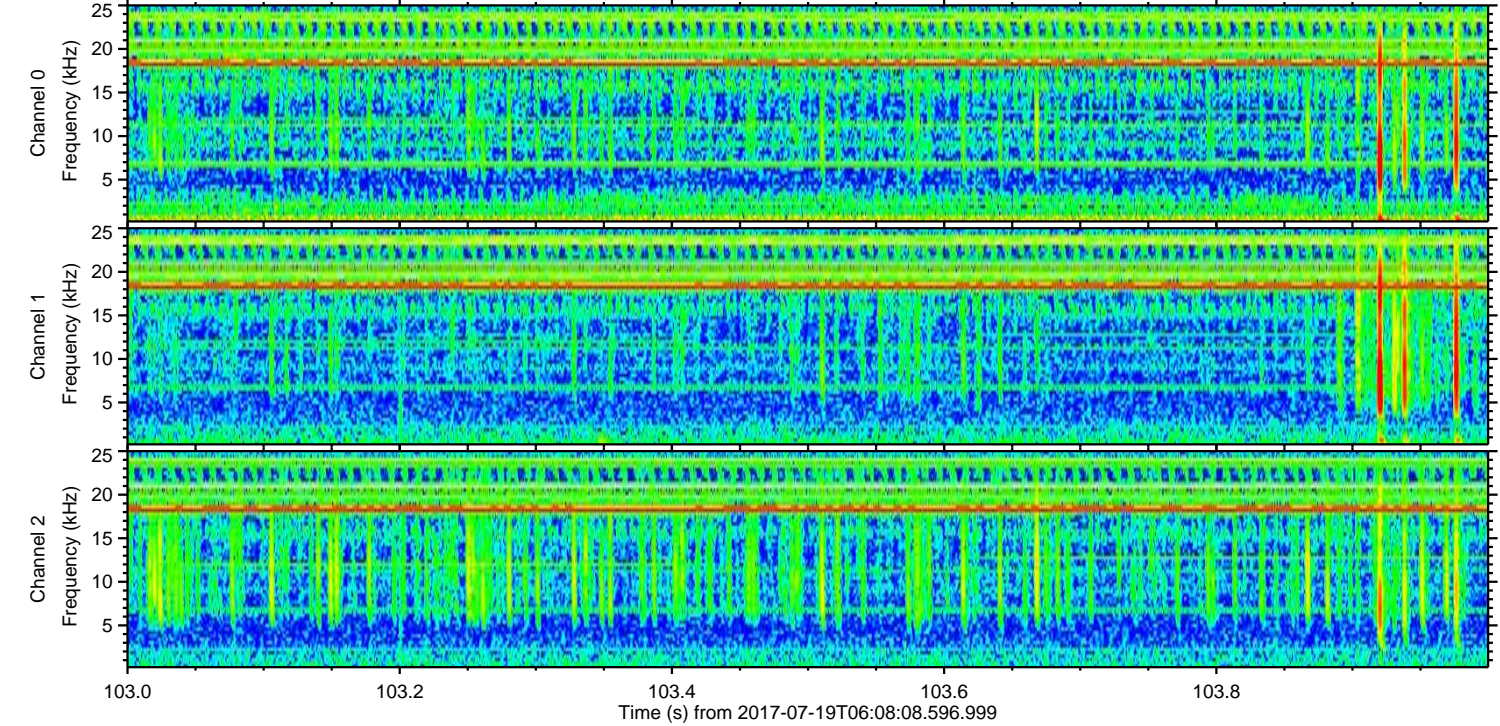
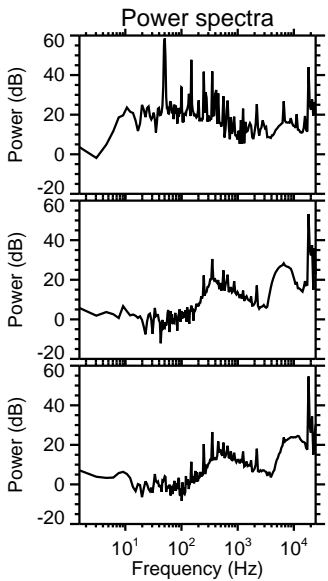
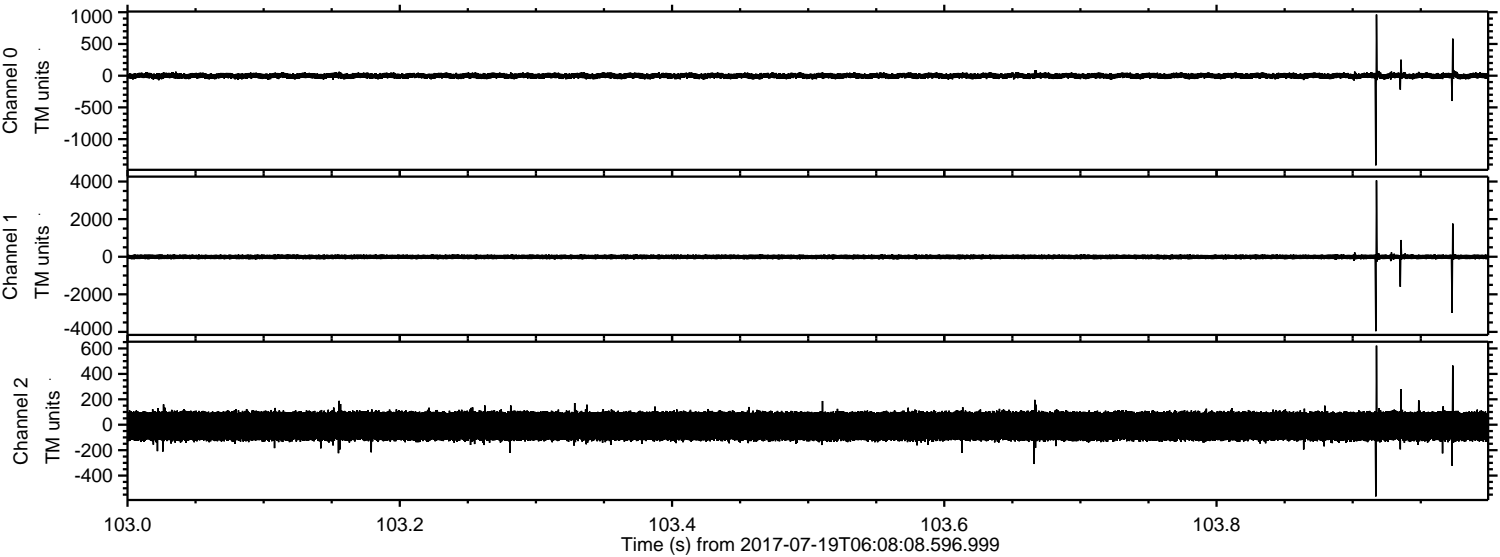
ELMAVAN 3D WAVEFORMS (Measured data sampled at 50 kHz) 51000 packets of 144 samples from 2017-07-19T06:08:08.596.999. Part 143/147

Processed Fri Jul 21 00:31:31 2017 by ELM ver.2012-10-06 from 001__elm20170719_060807__dat00.bin

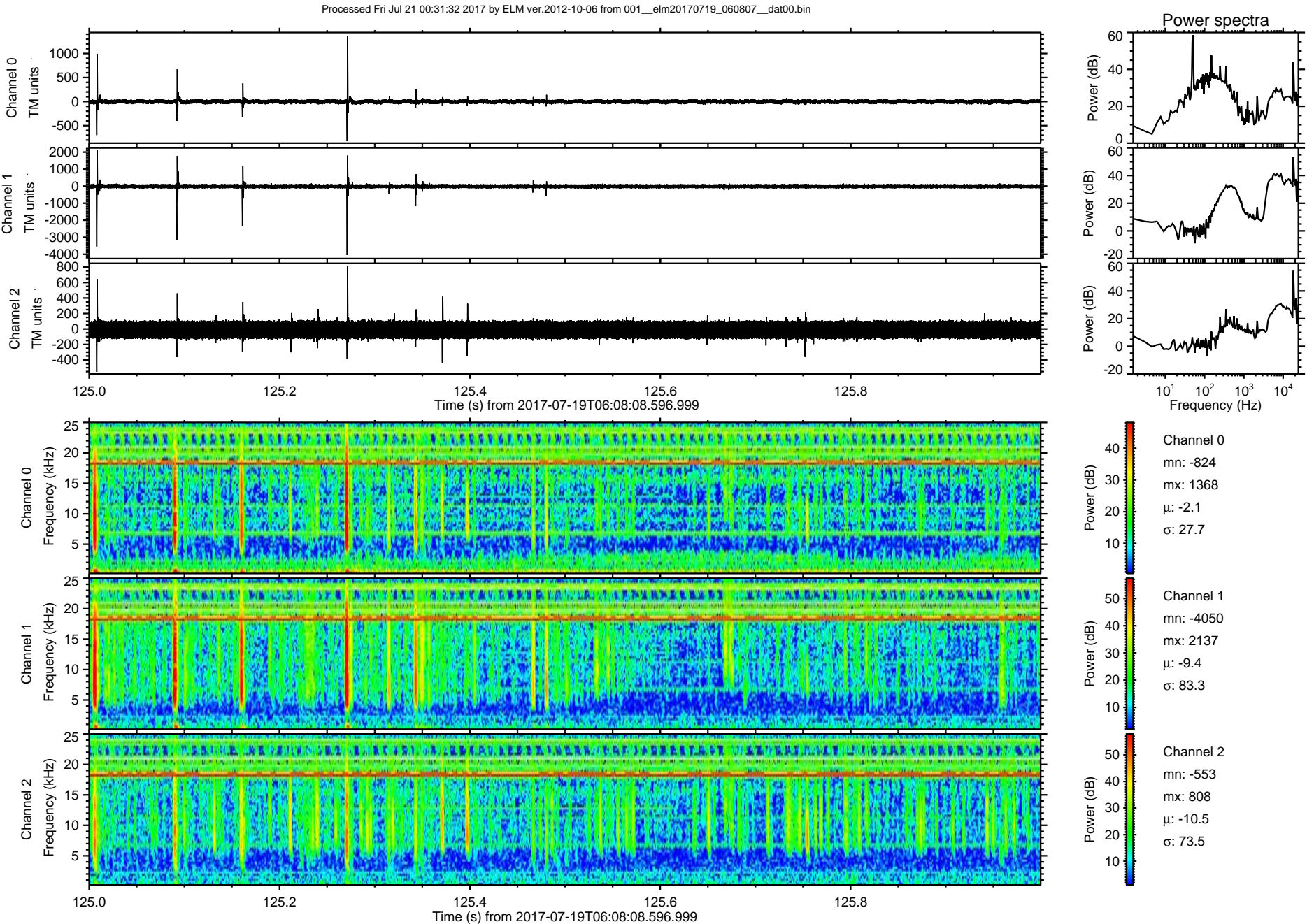


ELMAVAN 3D WAVEFORMS (Measured data sampled at 50 kHz) 51000 packets of 144 samples from 2017-07-19T06:08:08.596.999. Part 104/147

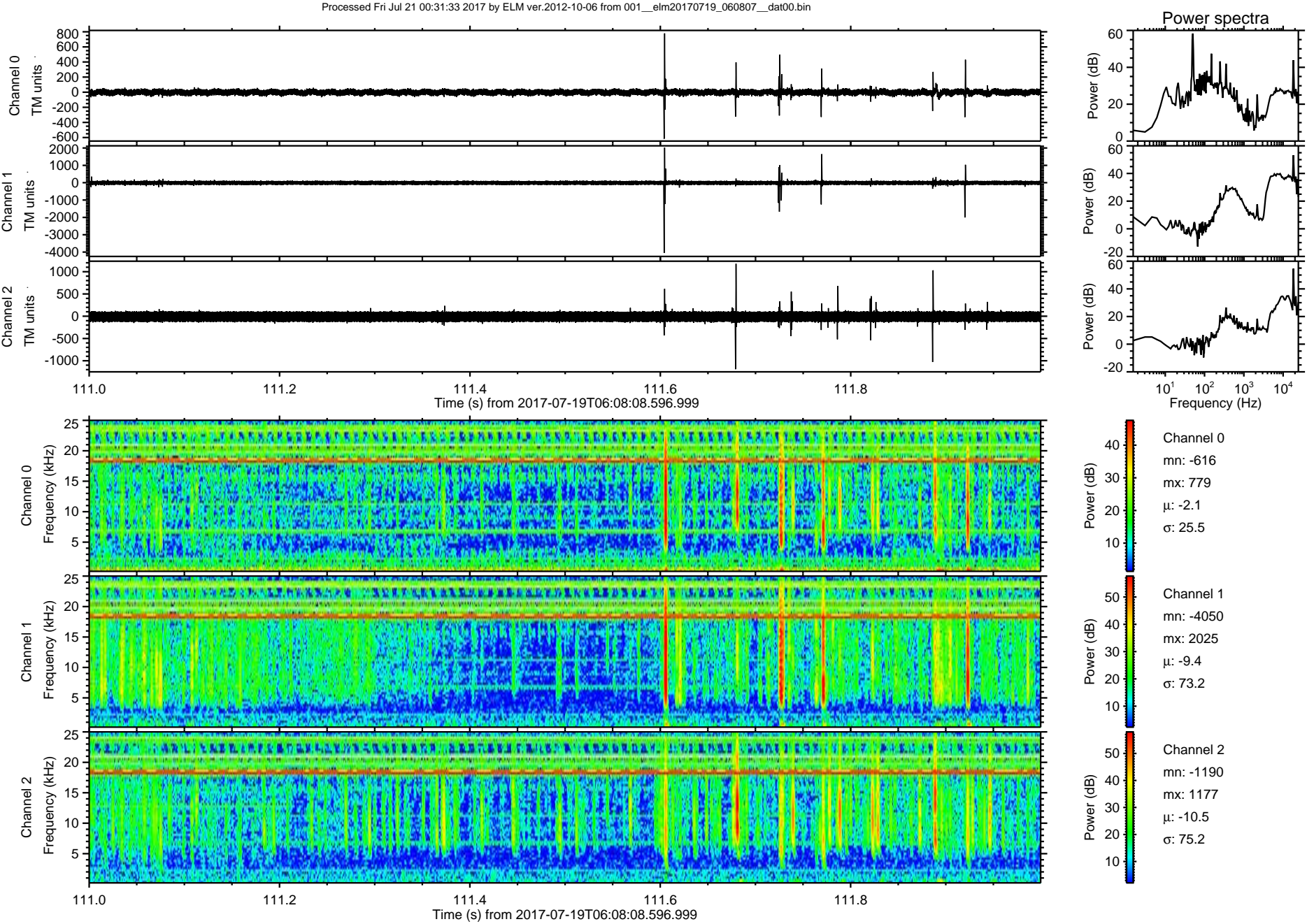
Processed Fri Jul 21 00:31:32 2017 by ELM ver.2012-10-06 from 001__elm20170719_060807__dat00.bin



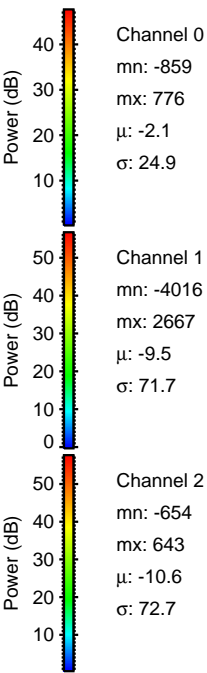
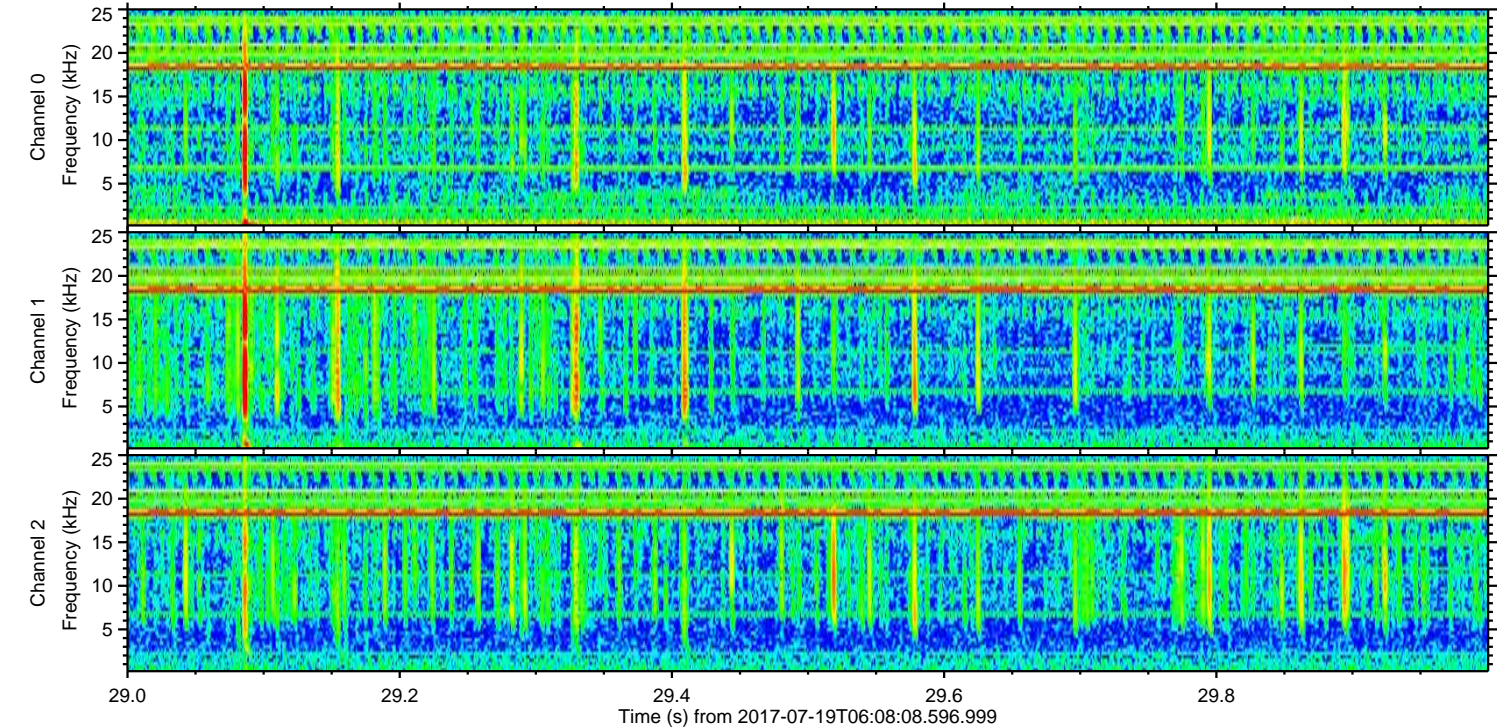
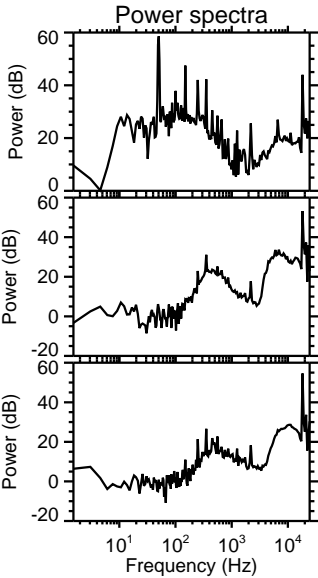
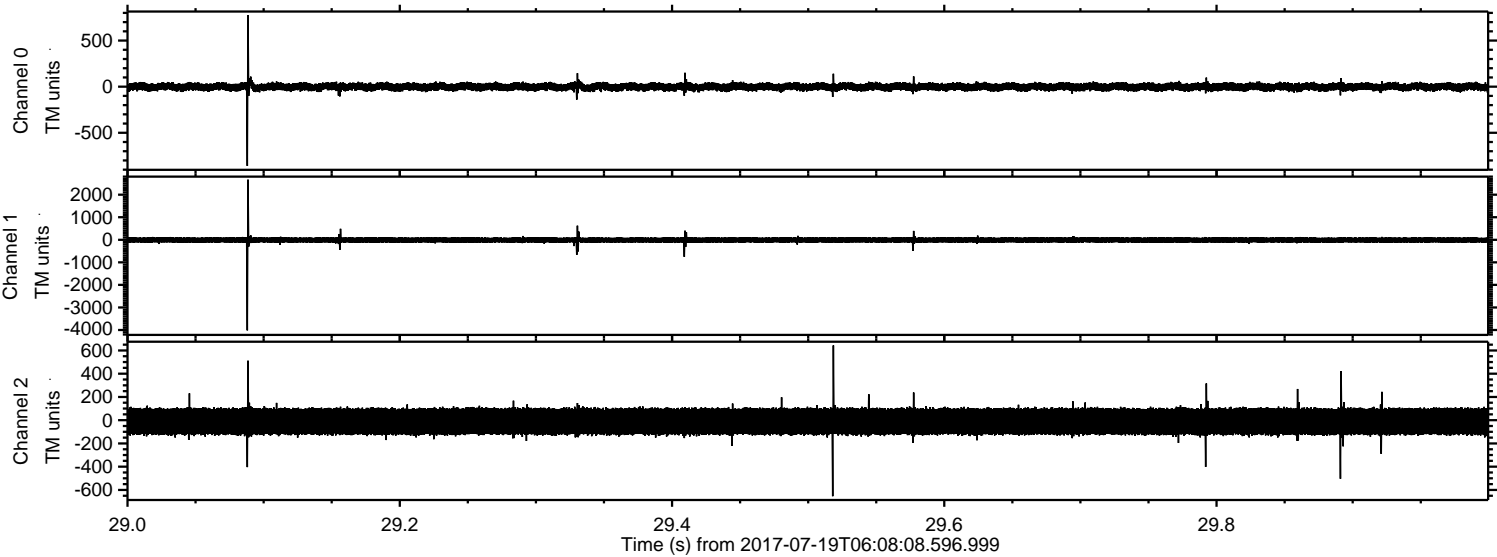
ELMAVAN 3D WAVEFORMS (Measured data sampled at 50 kHz) 51000 packets of 144 samples from 2017-07-19T06:08:08.596.999. Part 126/147



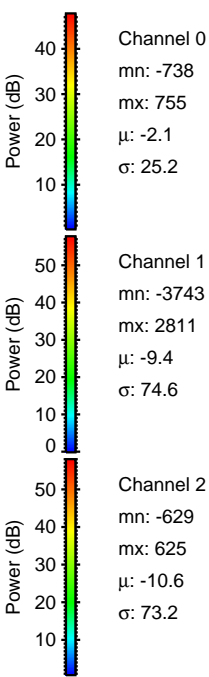
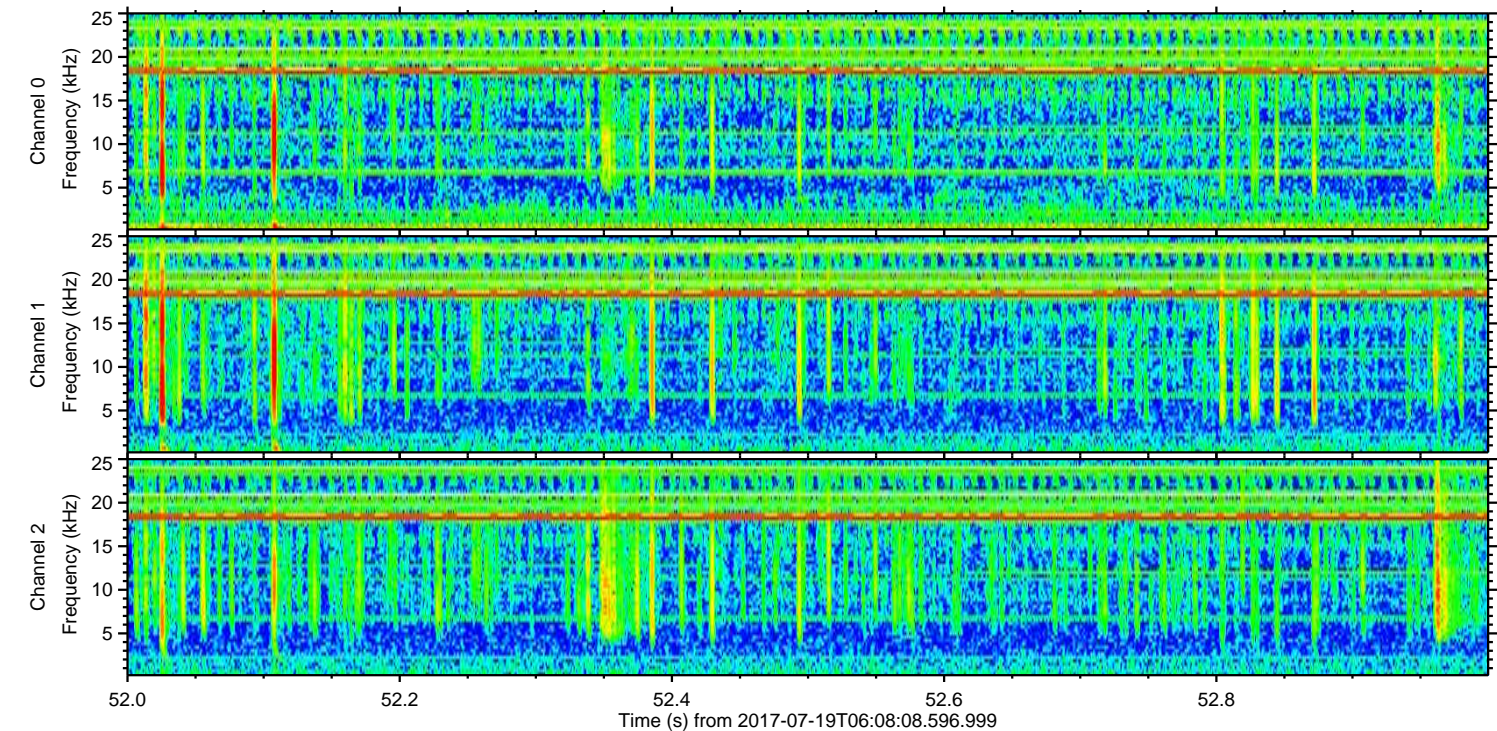
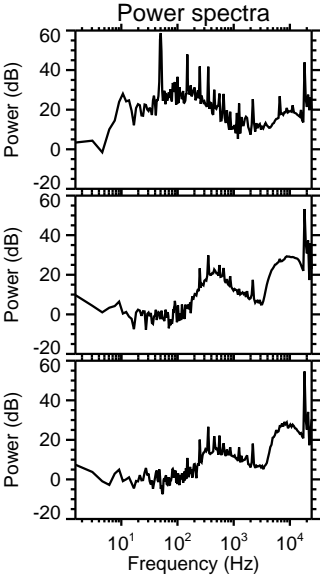
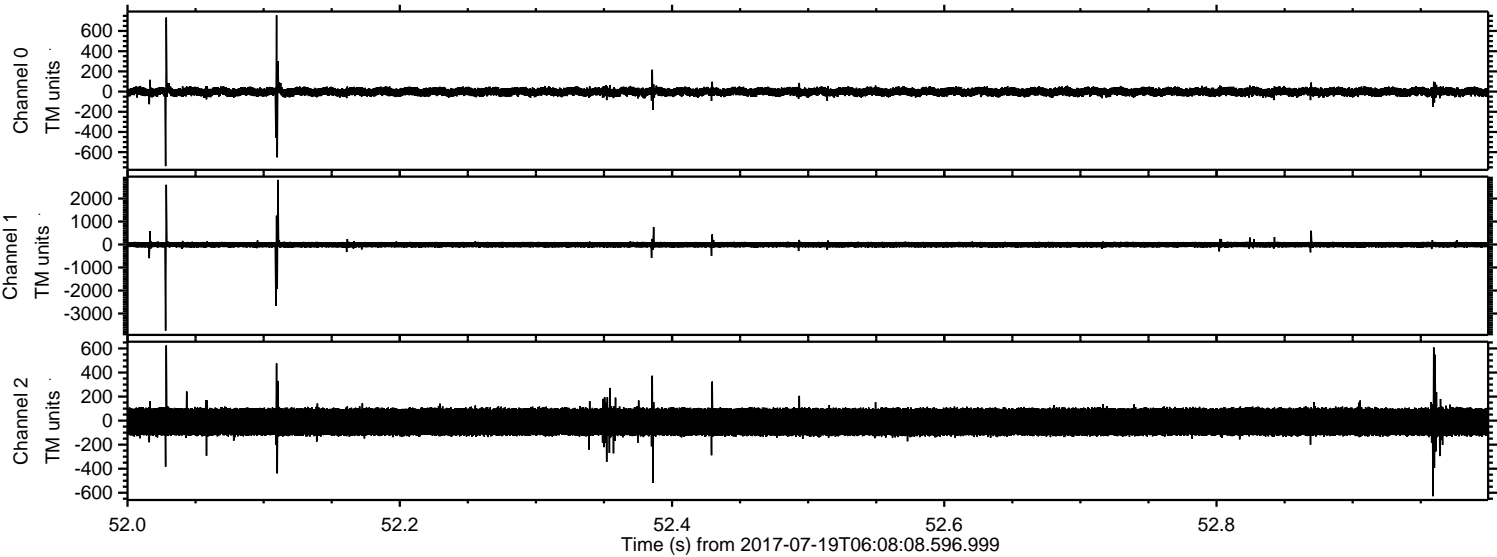
ELMAVAN 3D WAVEFORMS (Measured data sampled at 50 kHz) 51000 packets of 144 samples from 2017-07-19T06:08:08.596.999. Part 112/147



Processed Fri Jul 21 00:31:34 2017 by ELM ver.2012-10-06 from 001__elm20170719_060807__dat00.bin



Processed Fri Jul 21 00:31:34 2017 by ELM ver.2012-10-06 from 001__elm20170719_060807__dat00.bin



Channel 0
mn: -738
mx: 755
 μ : -2.1
 σ : 25.2

Channel 1
mn: -3743
mx: 2811
 μ : -9.4
 σ : 74.6

Channel 2
mn: -629
mx: 625
 μ : -10.6
 σ : 73.2

