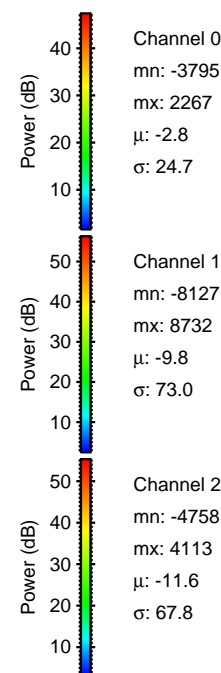
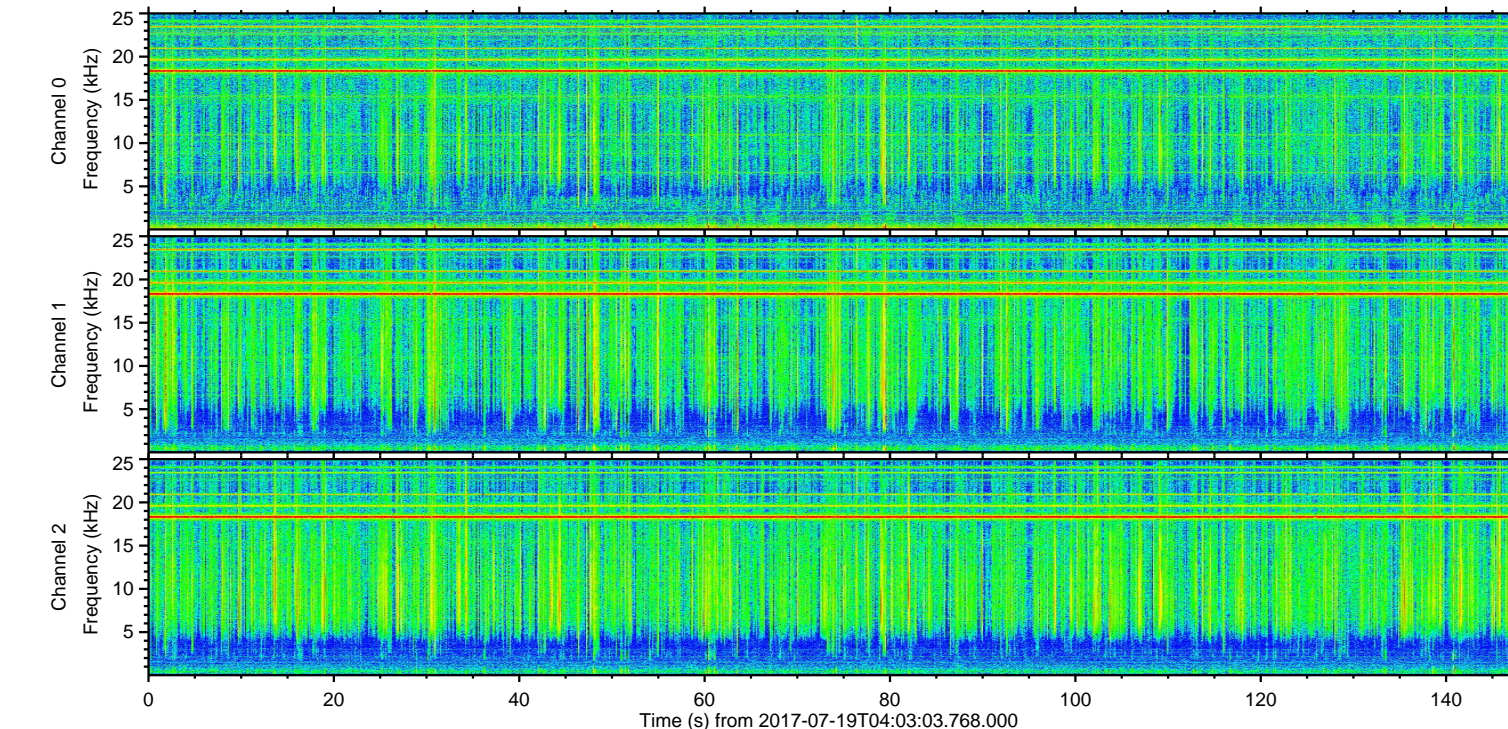
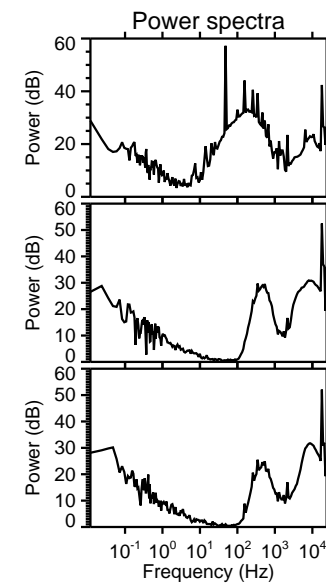
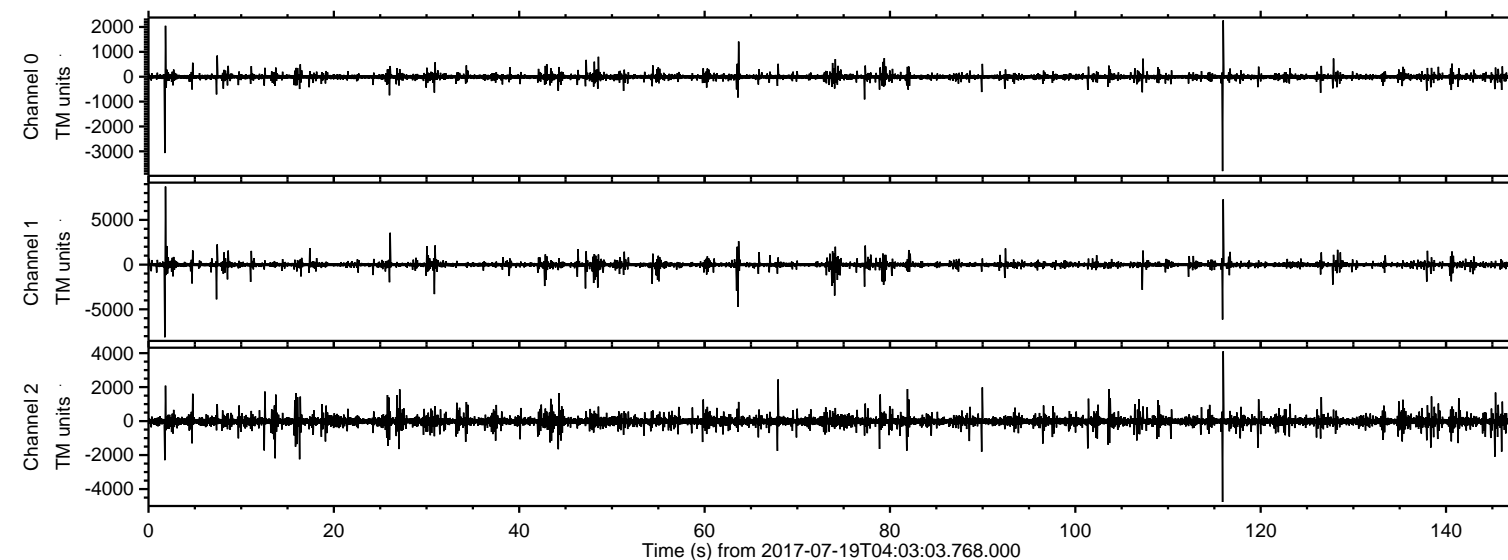
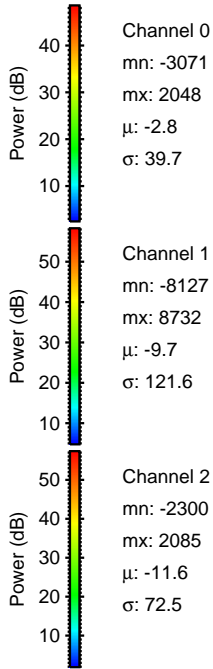
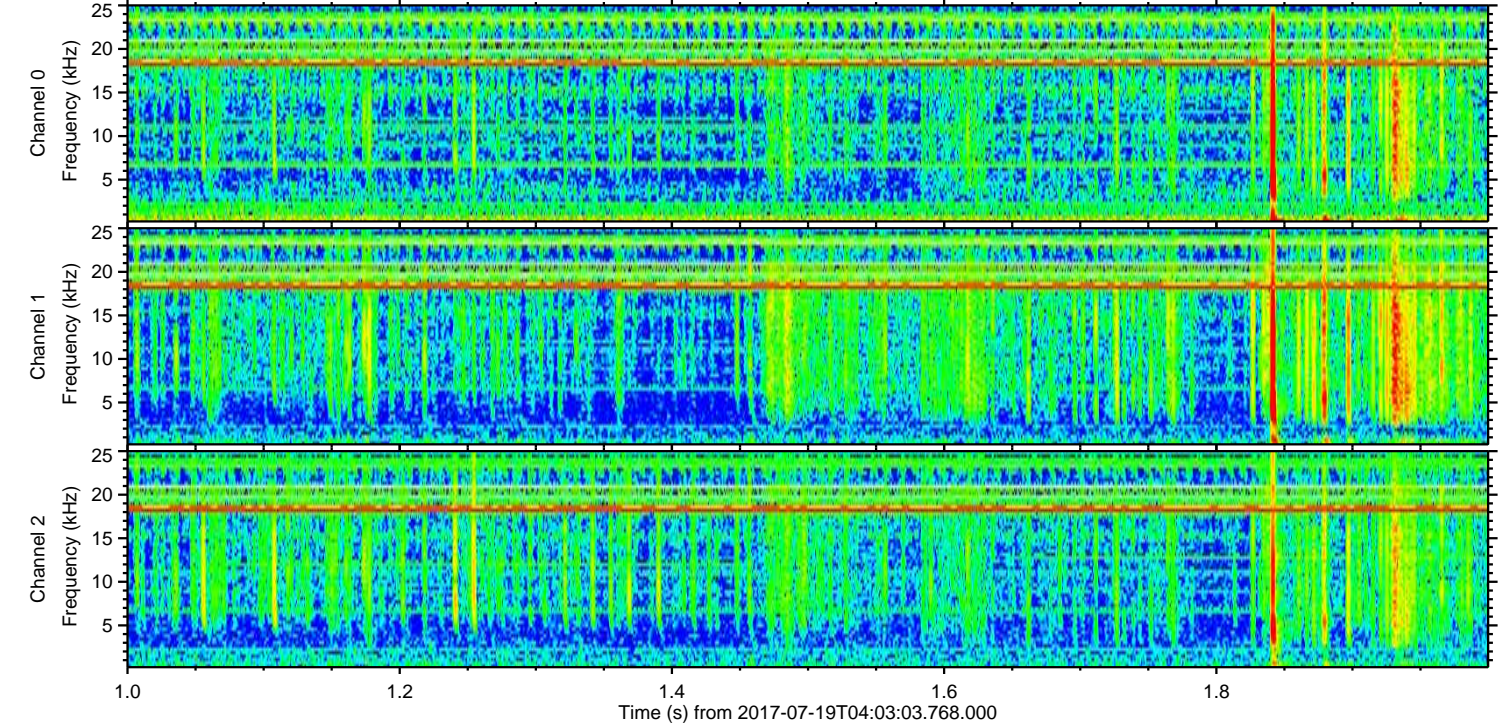
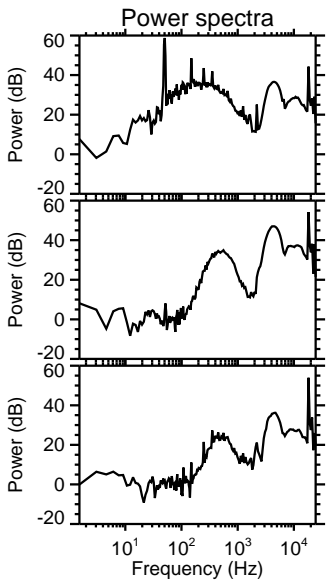
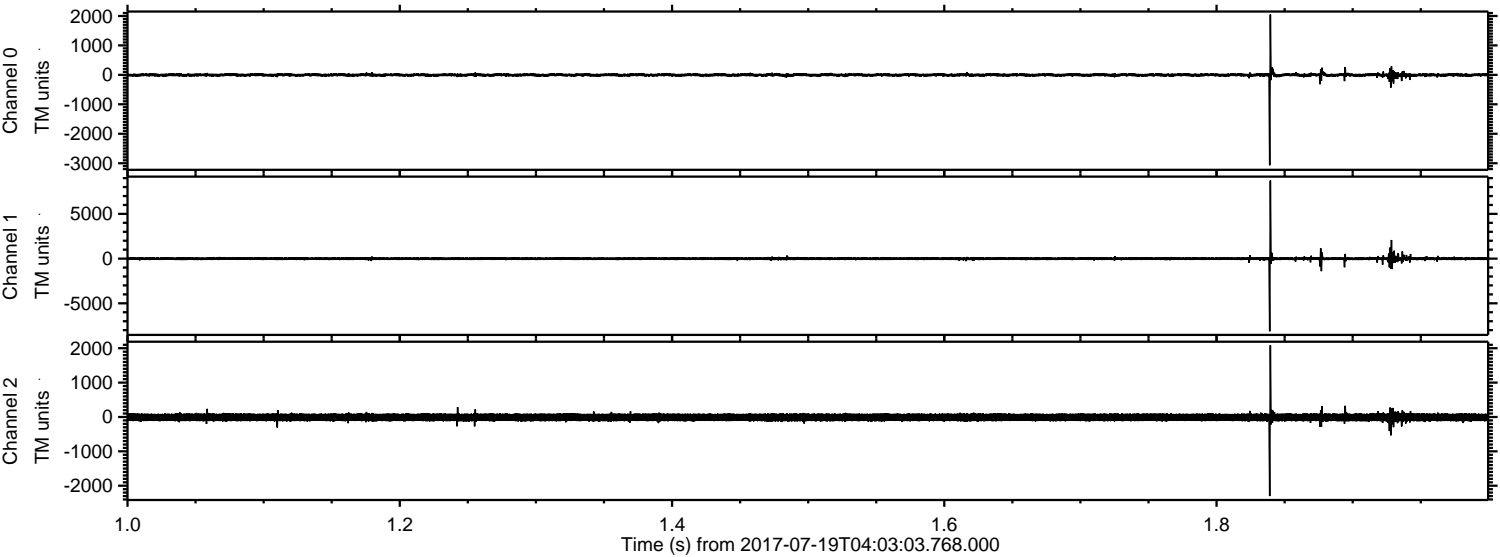


ELMAVAN 3D WAVEFORMS (Measured data sampled at 50 kHz) 51000 packets of 144 samples from 2017-07-19T04:03:03.768.000.

Processed Fri Jul 21 00:13:10 2017 by ELM ver.2012-10-06 from 001__elm20170719_040302__dat00.bin

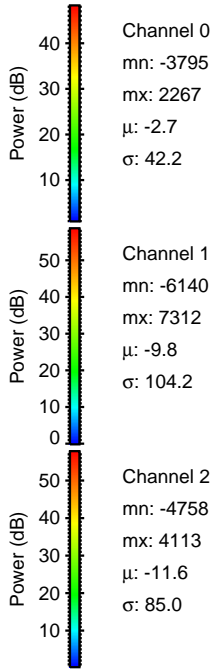
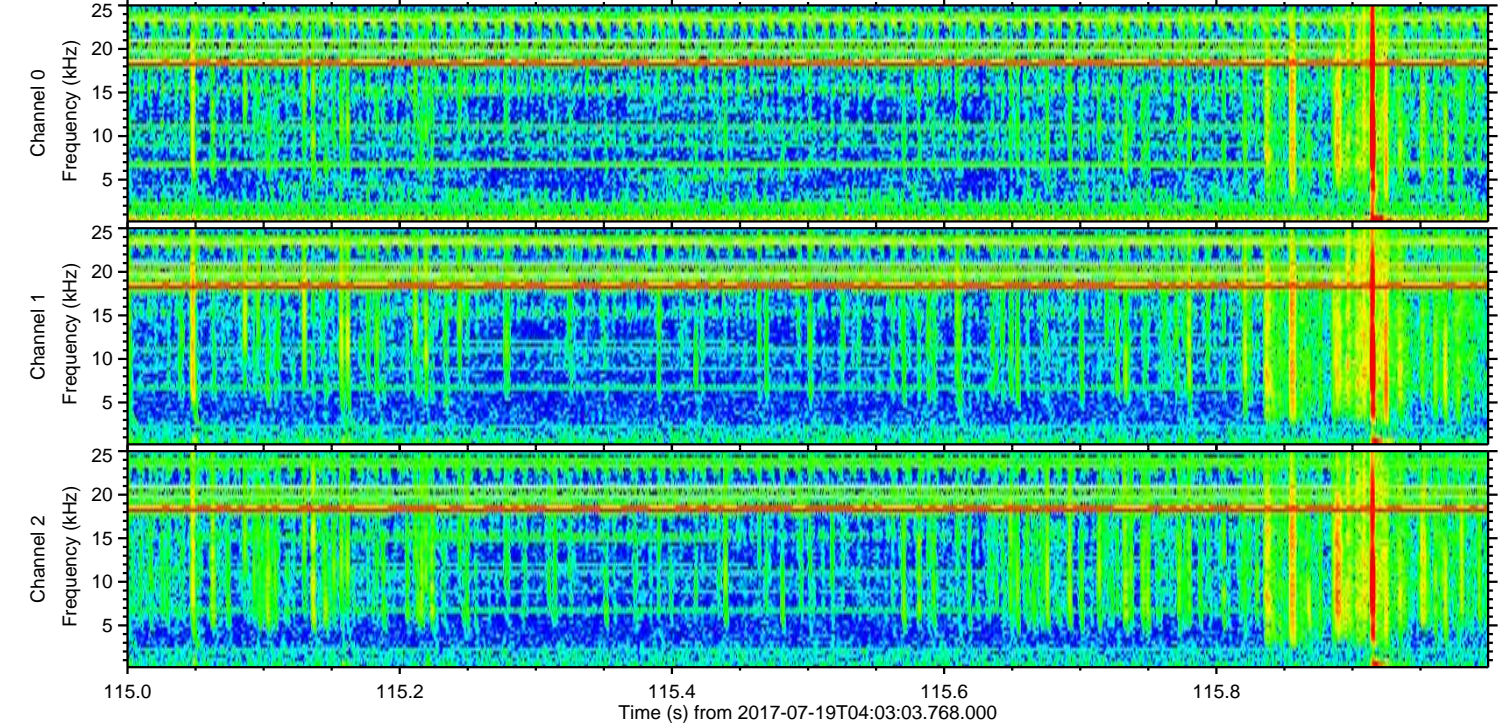
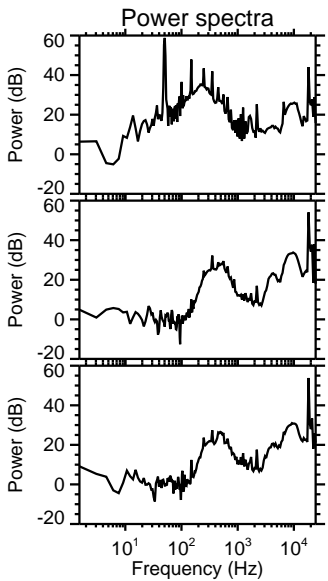
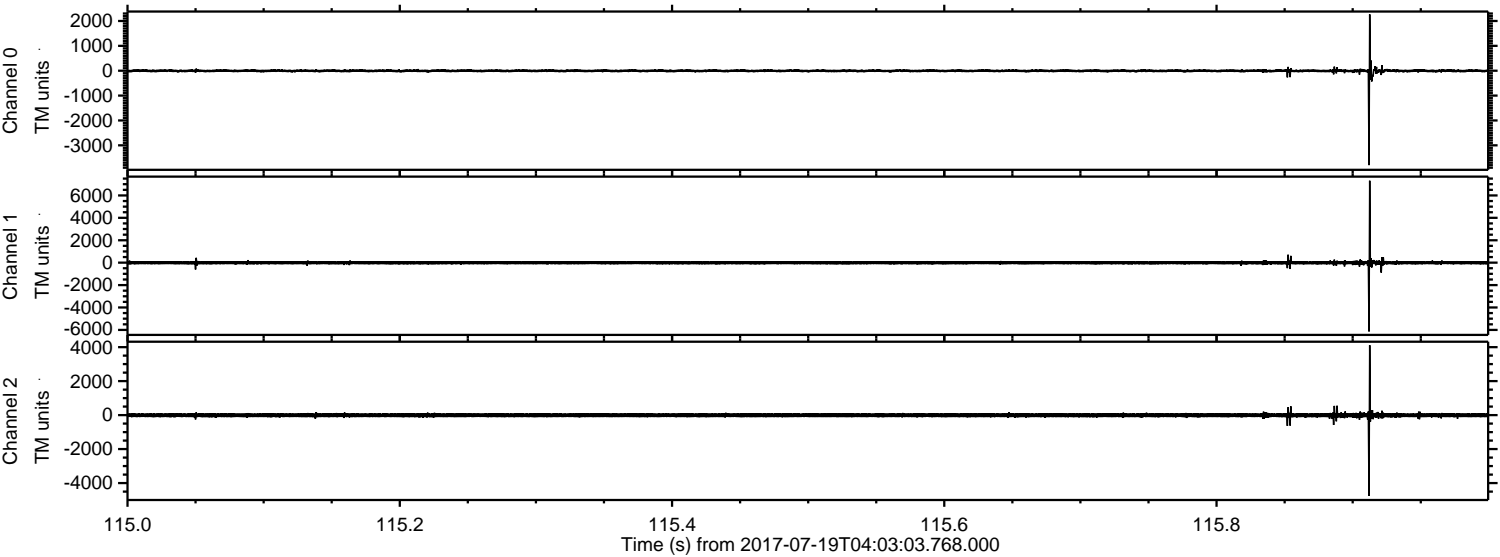


Processed Fri Jul 21 00:13:18 2017 by ELM ver.2012-10-06 from 001__elm20170719_040302__dat00.bin

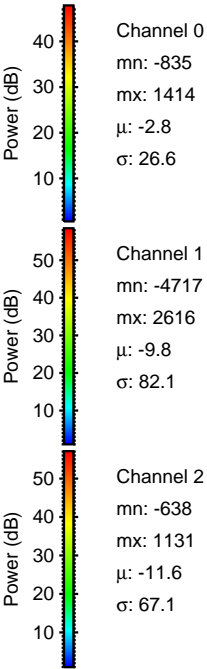
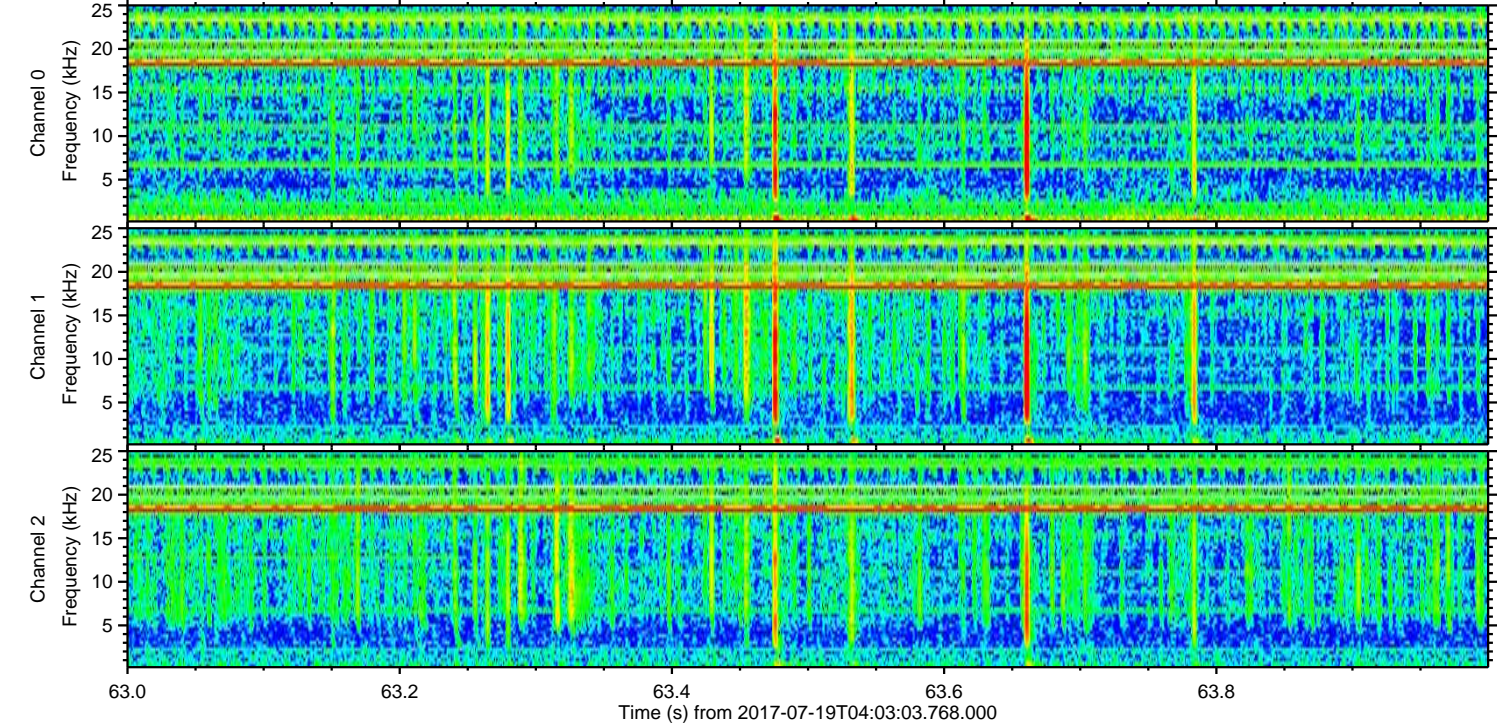
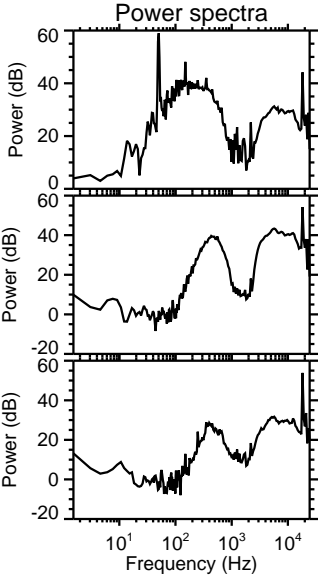
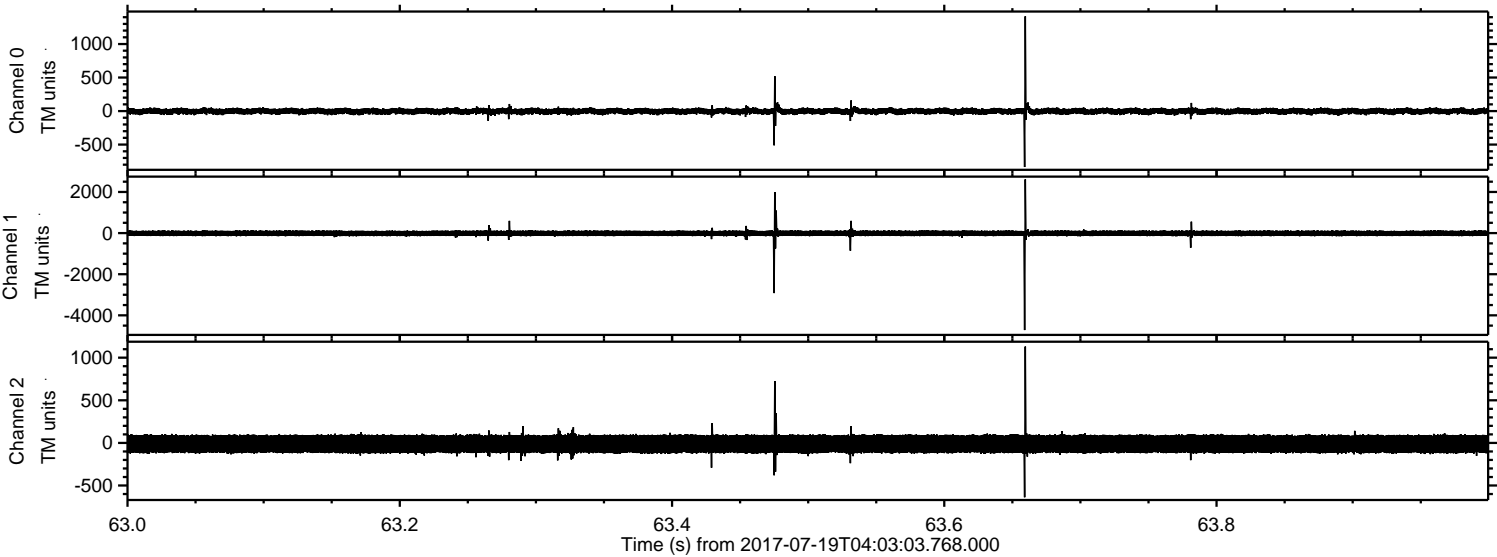


ELMAVAN 3D WAVEFORMS (Measured data sampled at 50 kHz) 51000 packets of 144 samples from 2017-07-19T04:03:03.768.000. Part 116/147

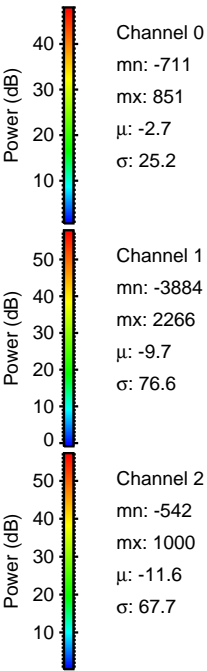
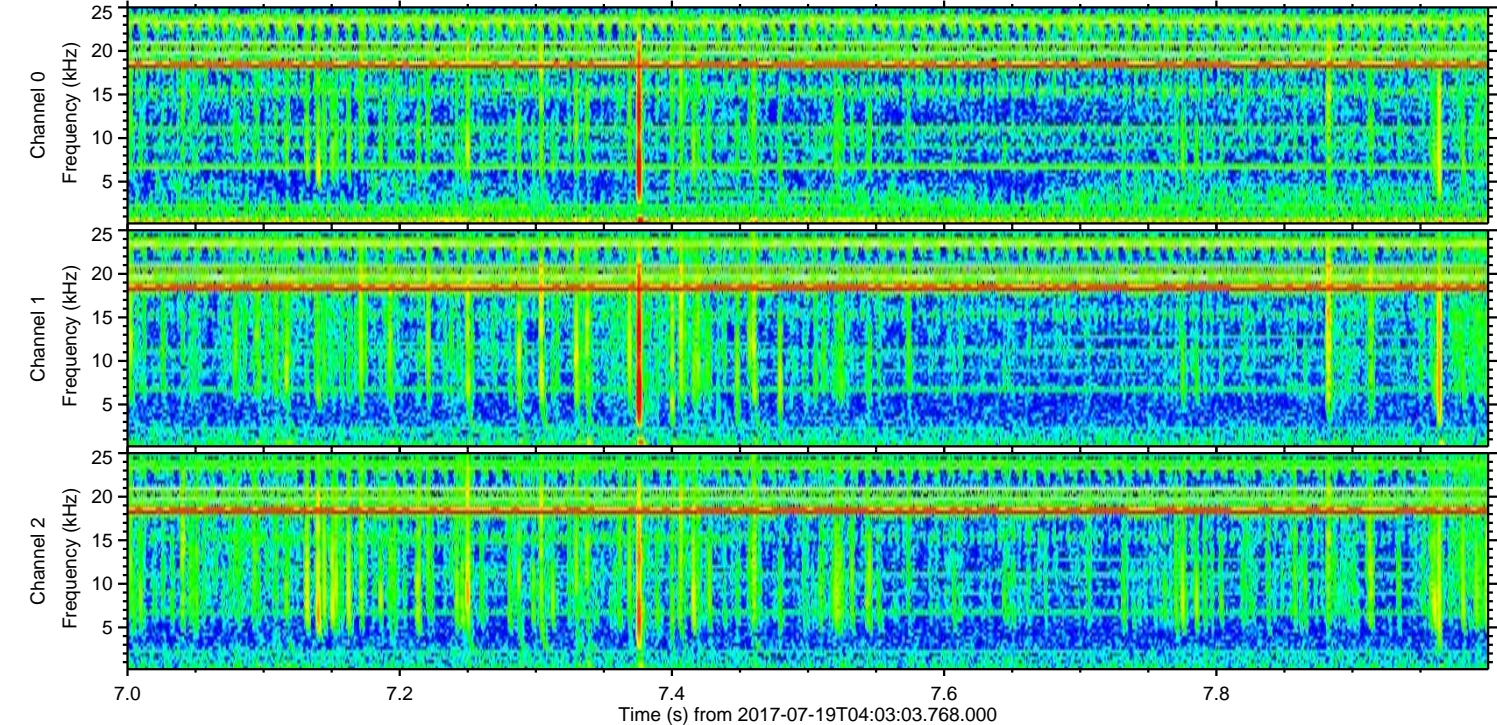
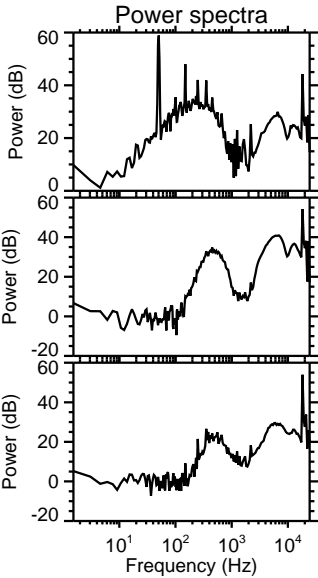
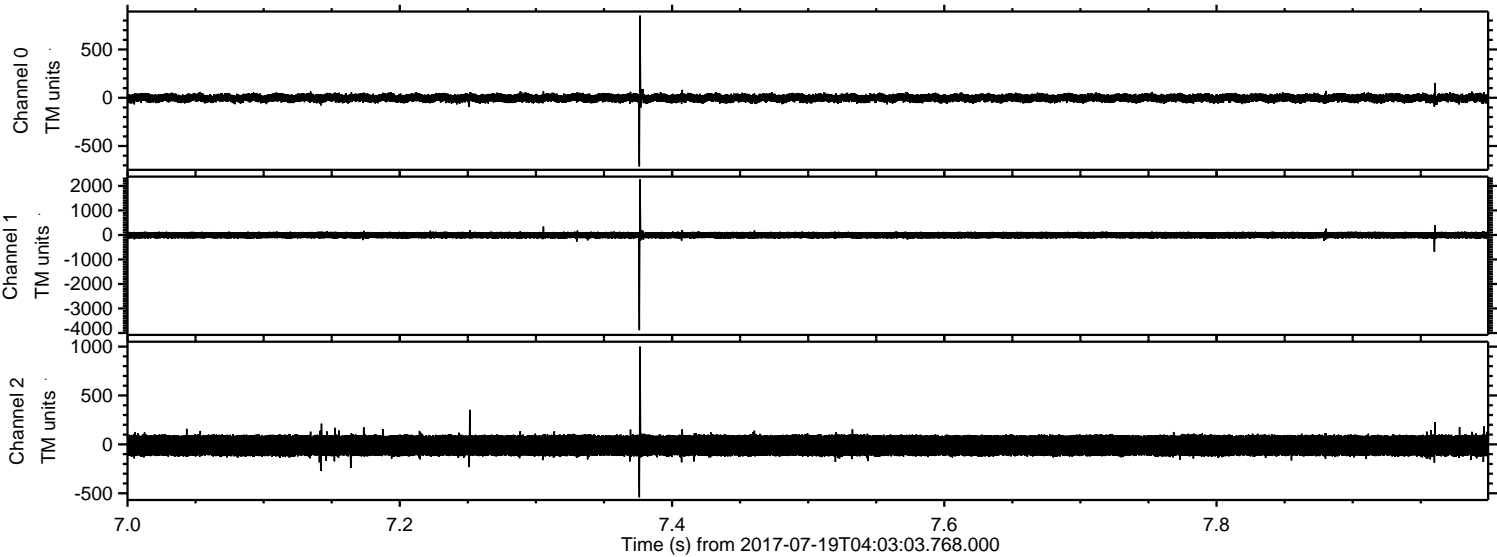
Processed Fri Jul 21 00:13:18 2017 by ELM ver.2012-10-06 from 001__elm20170719_040302__dat00.bin



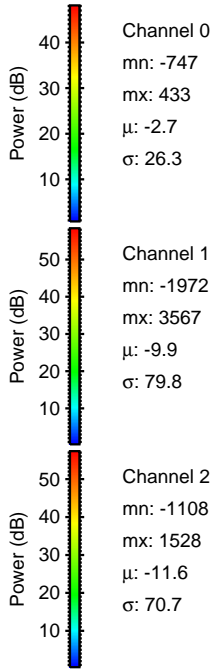
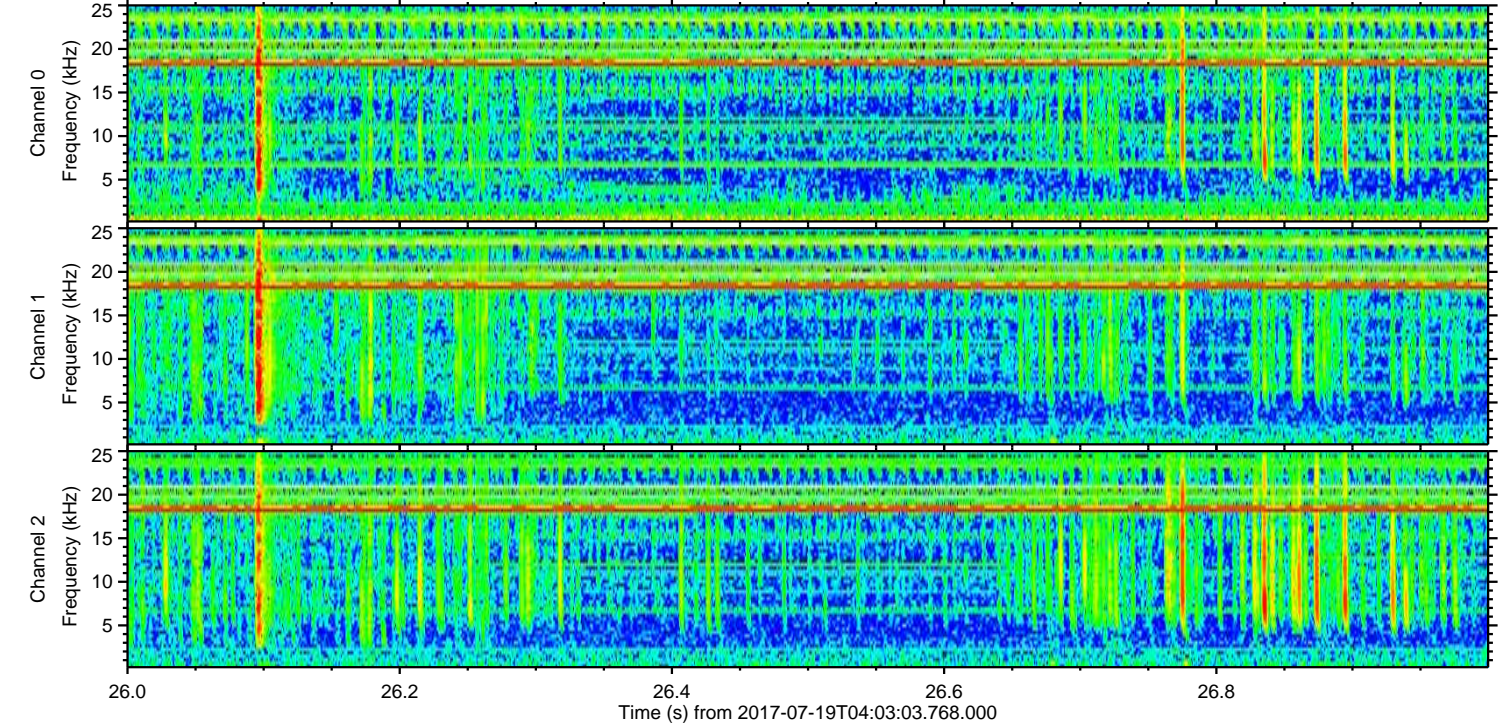
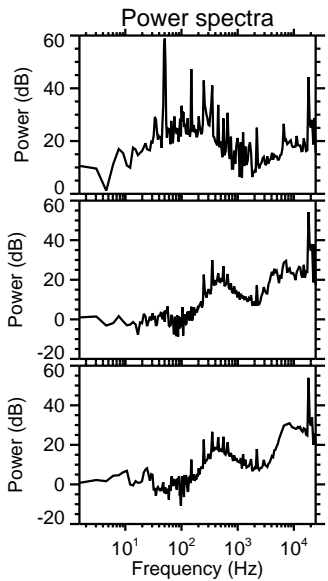
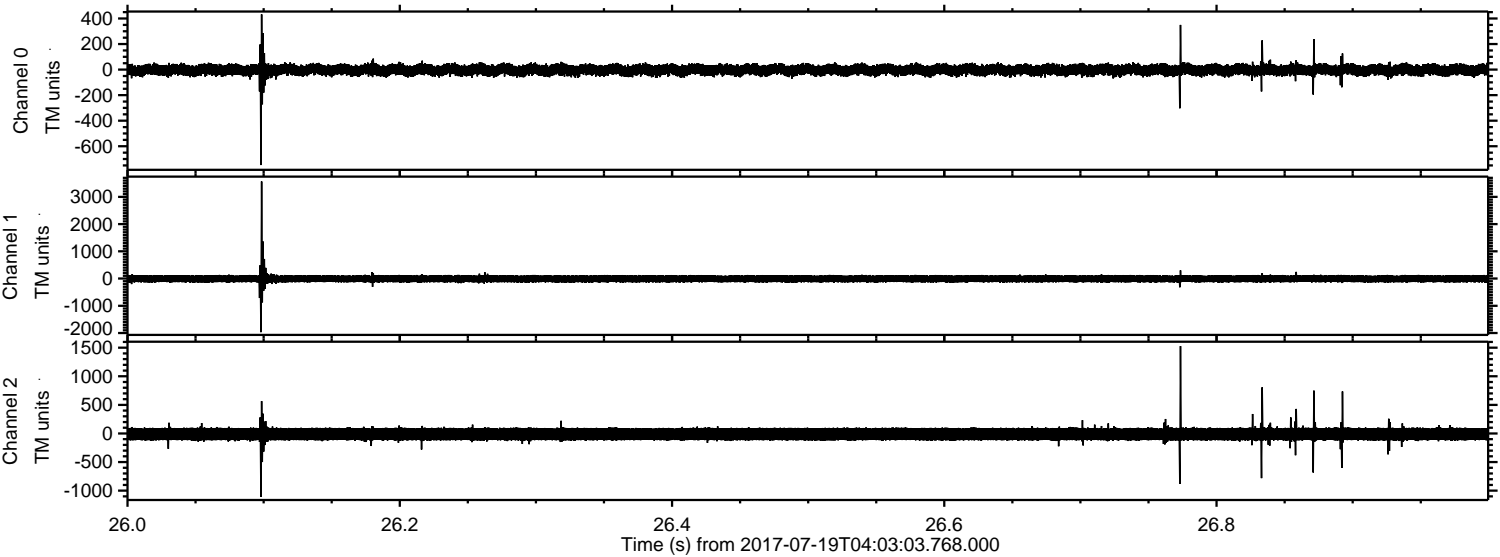
Processed Fri Jul 21 00:13:19 2017 by ELM ver.2012-10-06 from 001__elm20170719_040302__dat00.bin



Processed Fri Jul 21 00:13:20 2017 by ELM ver.2012-10-06 from 001__elm20170719_040302__dat00.bin



Processed Fri Jul 21 00:13:21 2017 by ELM ver.2012-10-06 from 001__elm20170719_040302__dat00.bin

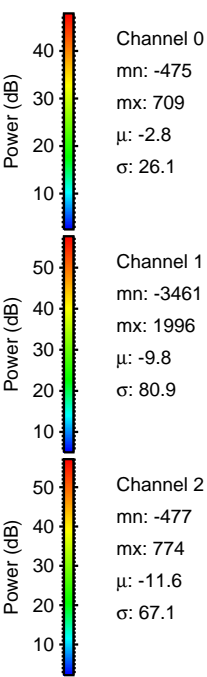
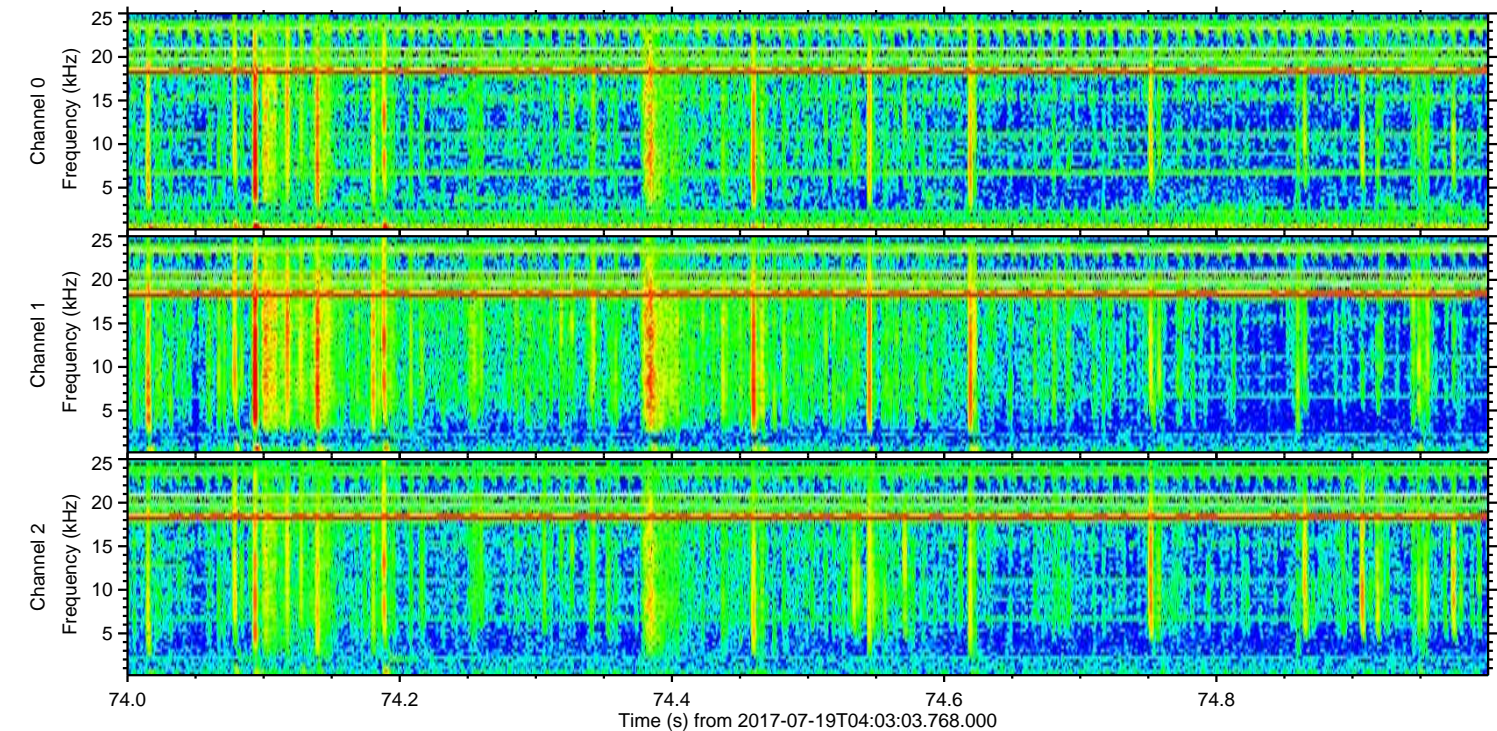
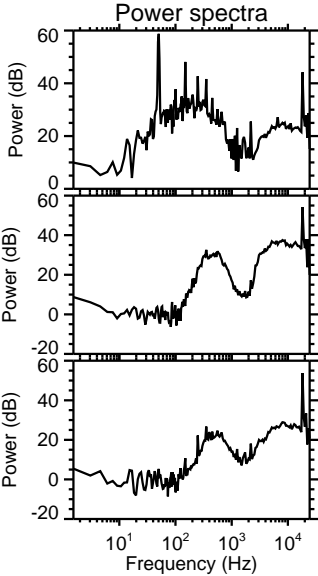
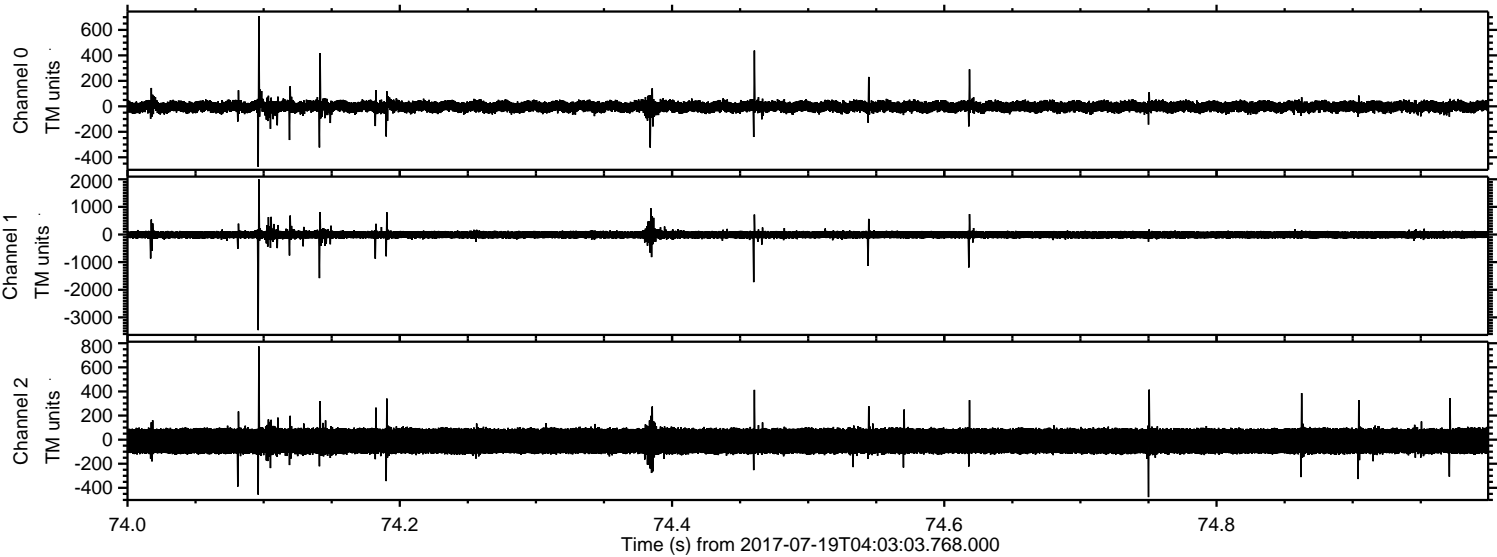


Channel 0
mn: -747
mx: 433
 μ : -2.7
 σ : 26.3

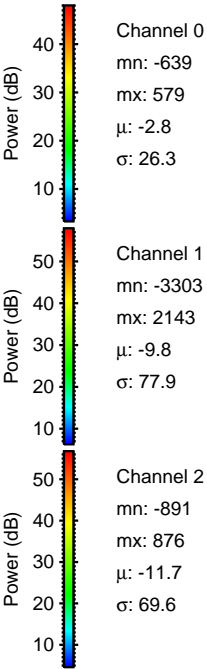
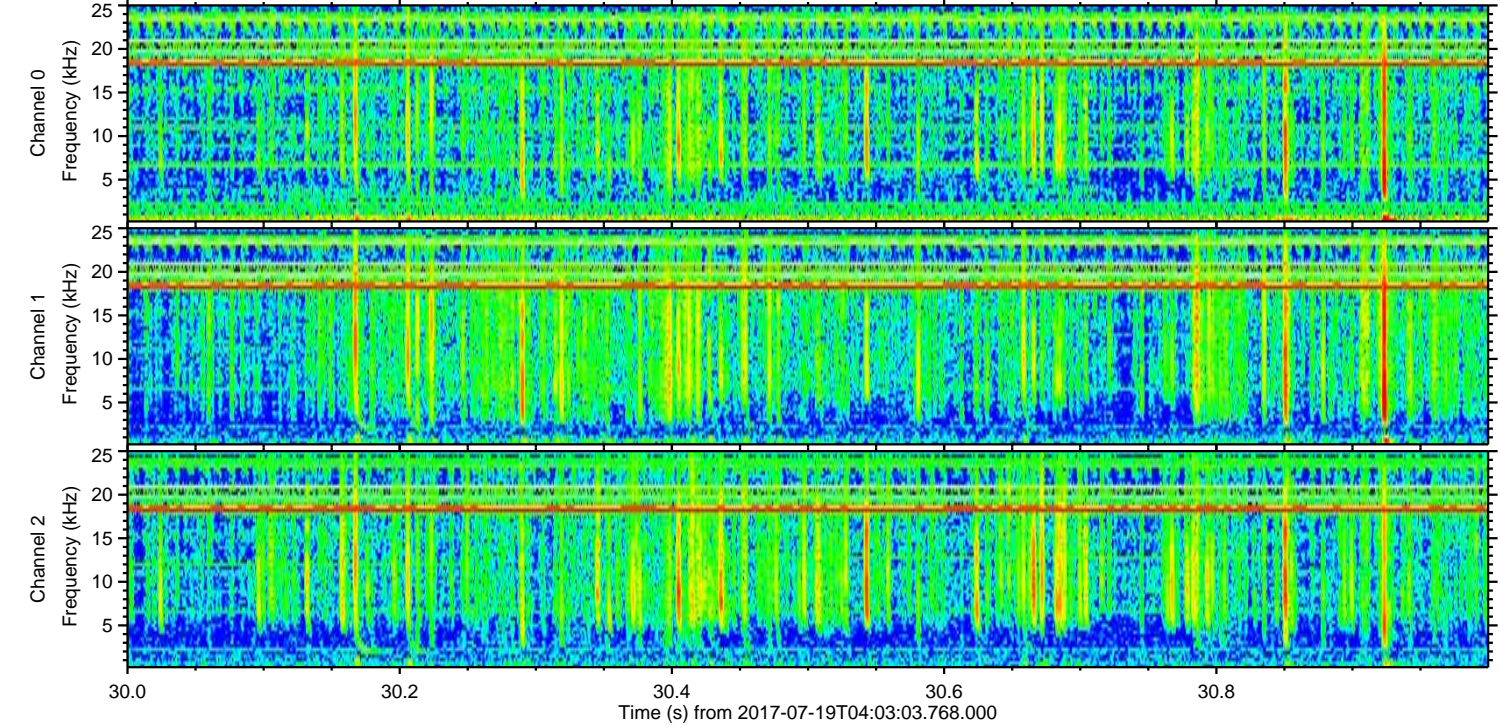
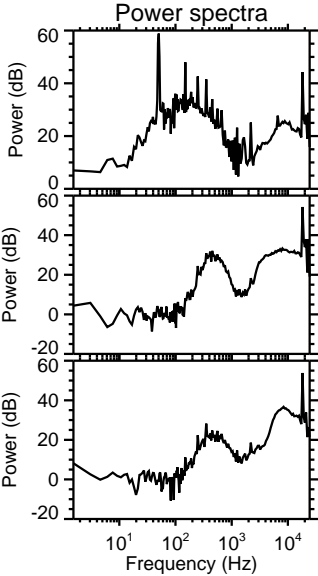
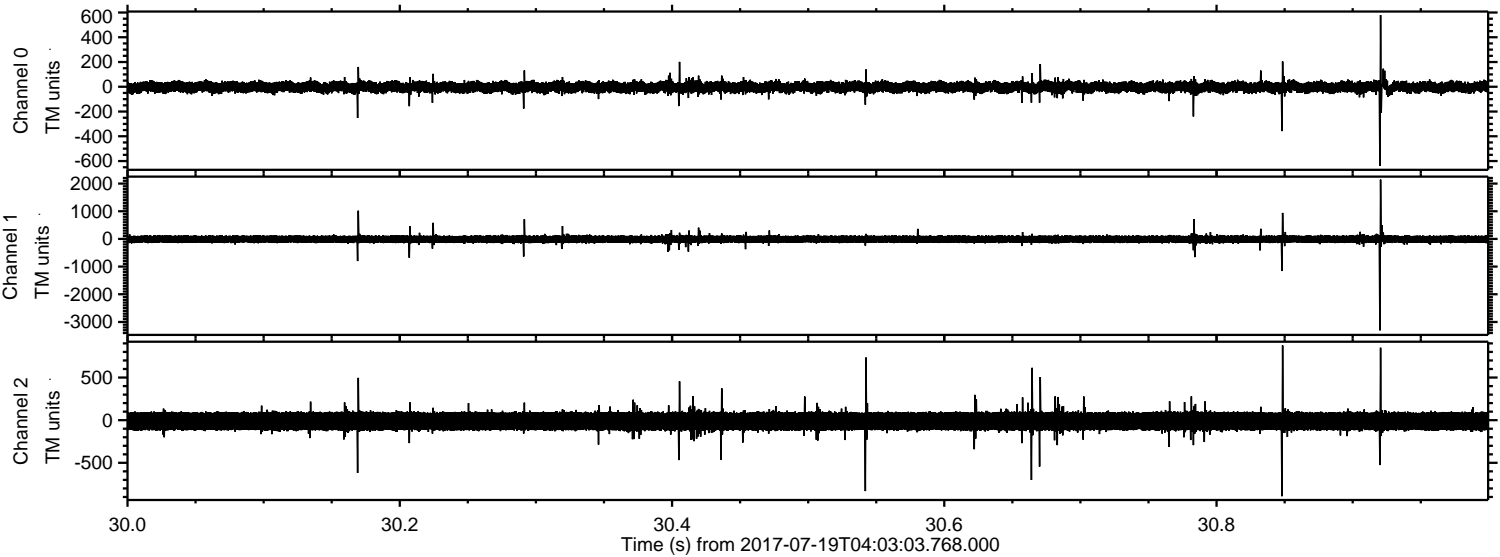
Channel 1
mn: -1972
mx: 3567
 μ : -9.9
 σ : 79.8

Channel 2
mn: -1108
mx: 1528
 μ : -11.6
 σ : 70.7

Processed Fri Jul 21 00:13:22 2017 by ELM ver.2012-10-06 from 001__elm20170719_040302__dat00.bin

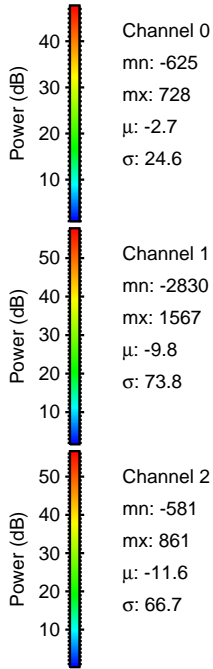
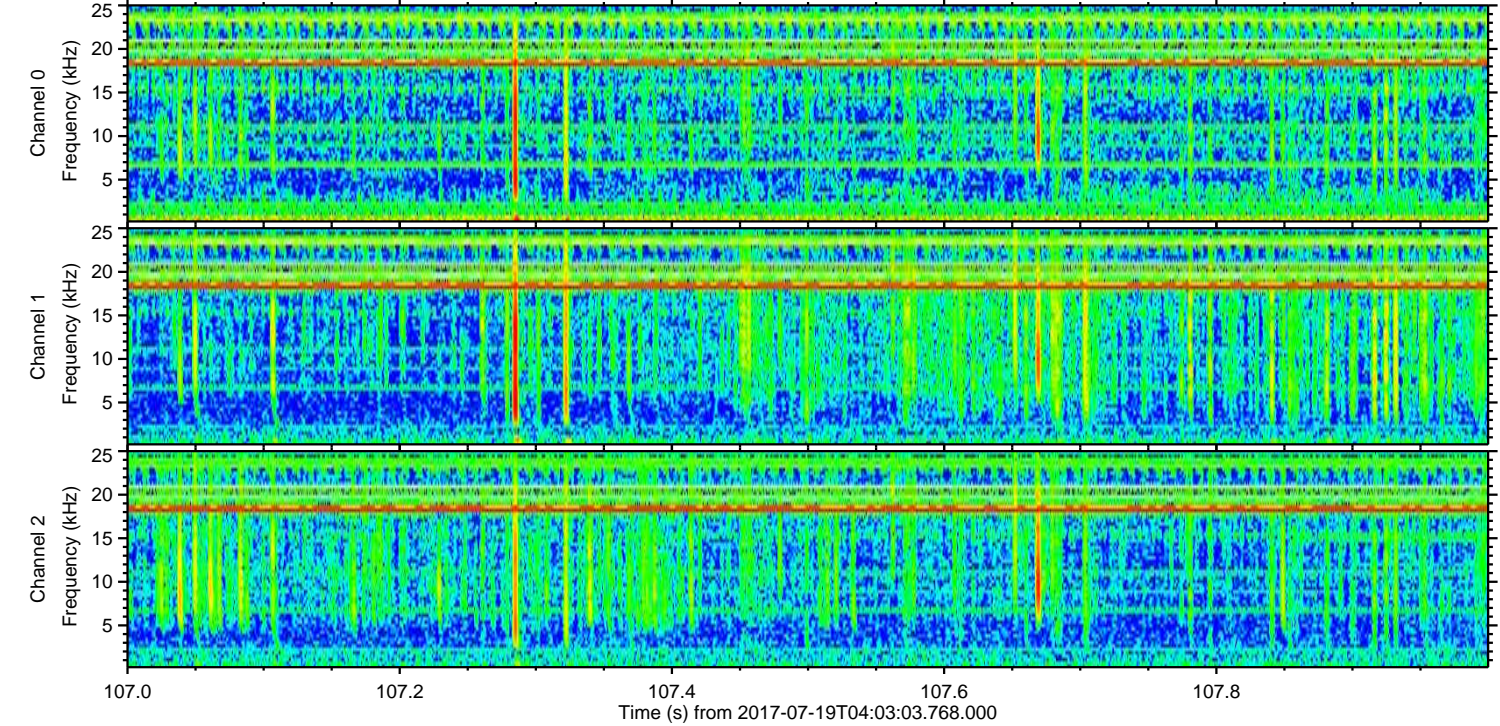
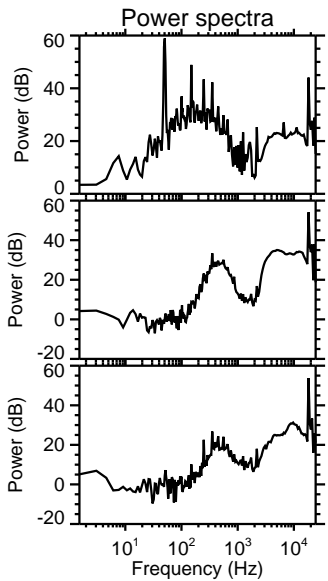
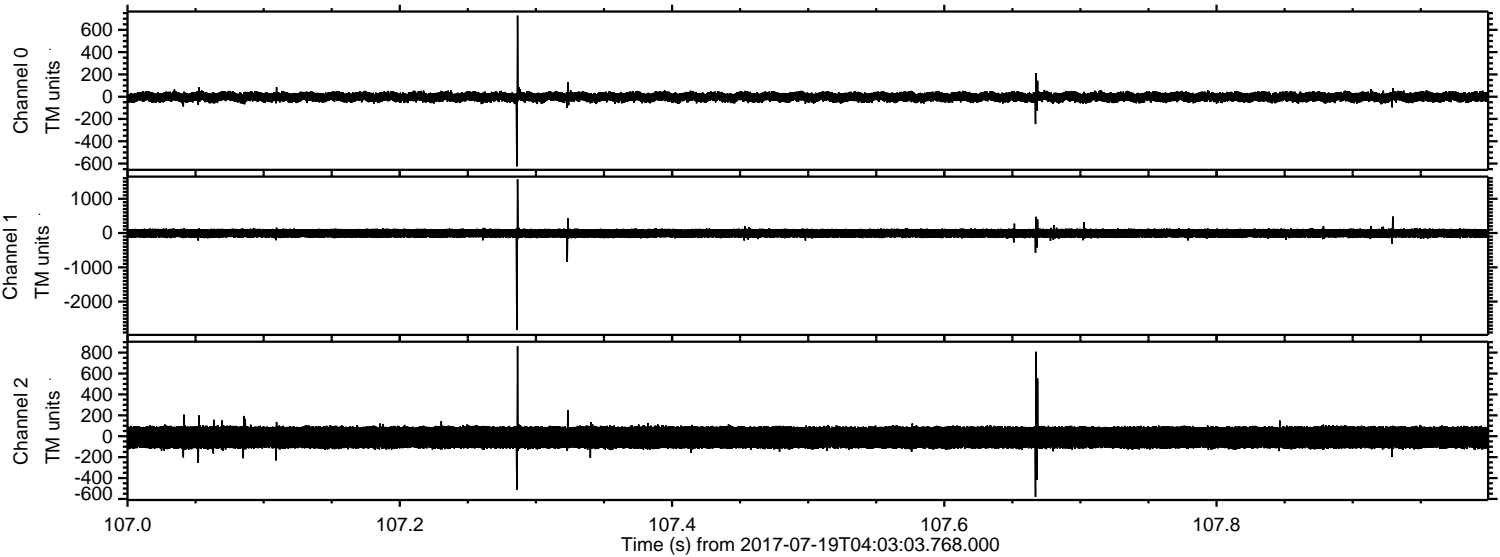


Processed Fri Jul 21 00:13:23 2017 by ELM ver.2012-10-06 from 001__elm20170719_040302__dat00.bin



ELMAVAN 3D WAVEFORMS (Measured data sampled at 50 kHz) 51000 packets of 144 samples from 2017-07-19T04:03:03.768.000. Part 108/147

Processed Fri Jul 21 00:13:24 2017 by ELM ver.2012-10-06 from 001__elm20170719_040302__dat00.bin



Channel 0
mn: -625
mx: 728
 μ : -2.7
 σ : 24.6

Channel 1
mn: -2830
mx: 1567
 μ : -9.8
 σ : 73.8

Channel 2
mn: -581
mx: 861
 μ : -11.6
 σ : 66.7

Processed Fri Jul 21 00:13:24 2017 by ELM ver.2012-10-06 from 001__elm20170719_040302__dat00.bin

