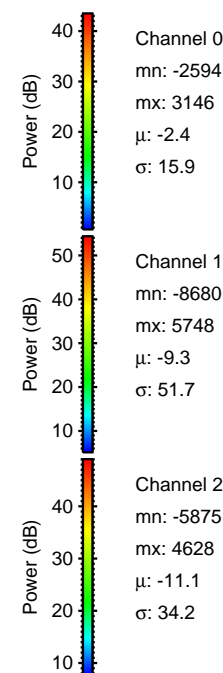
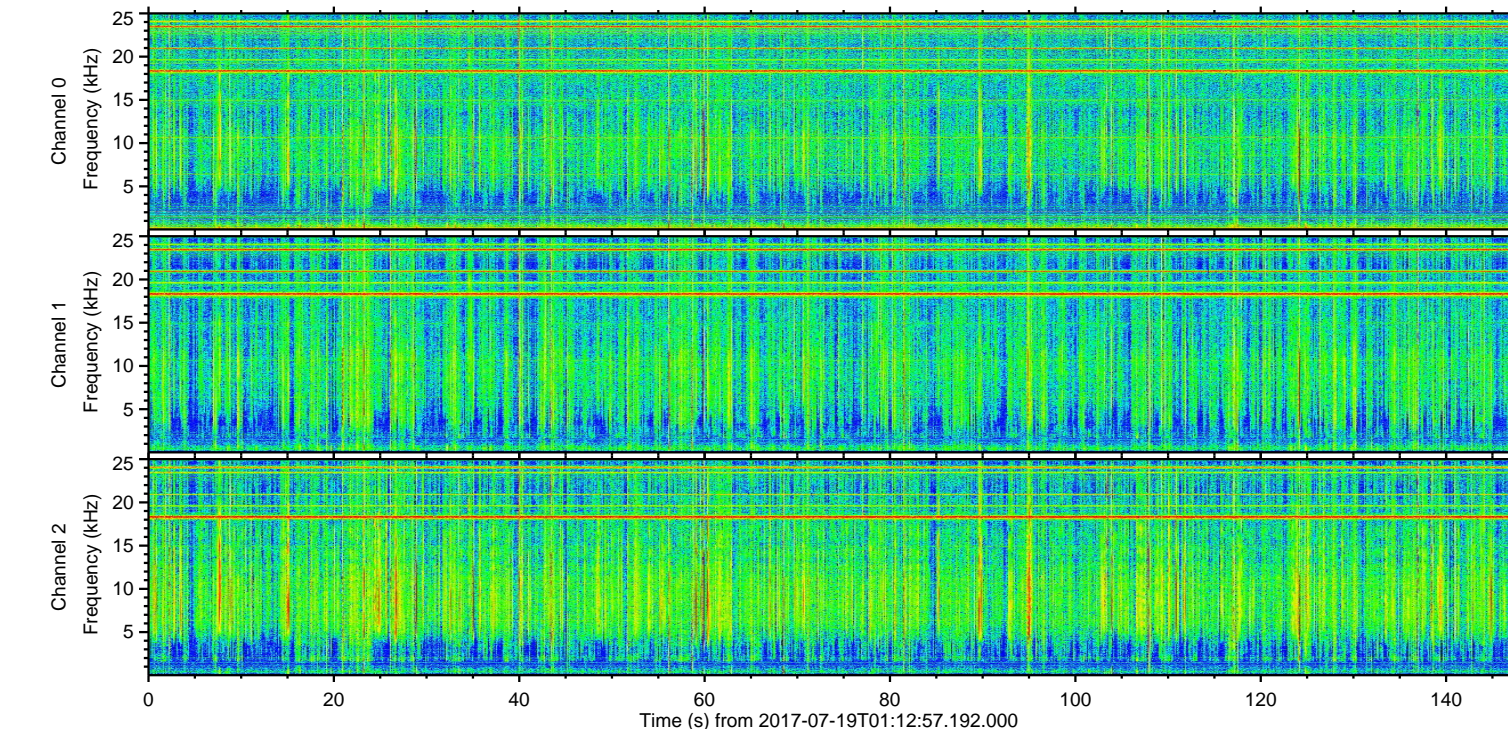
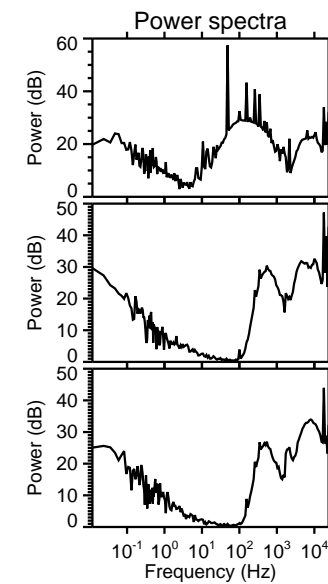
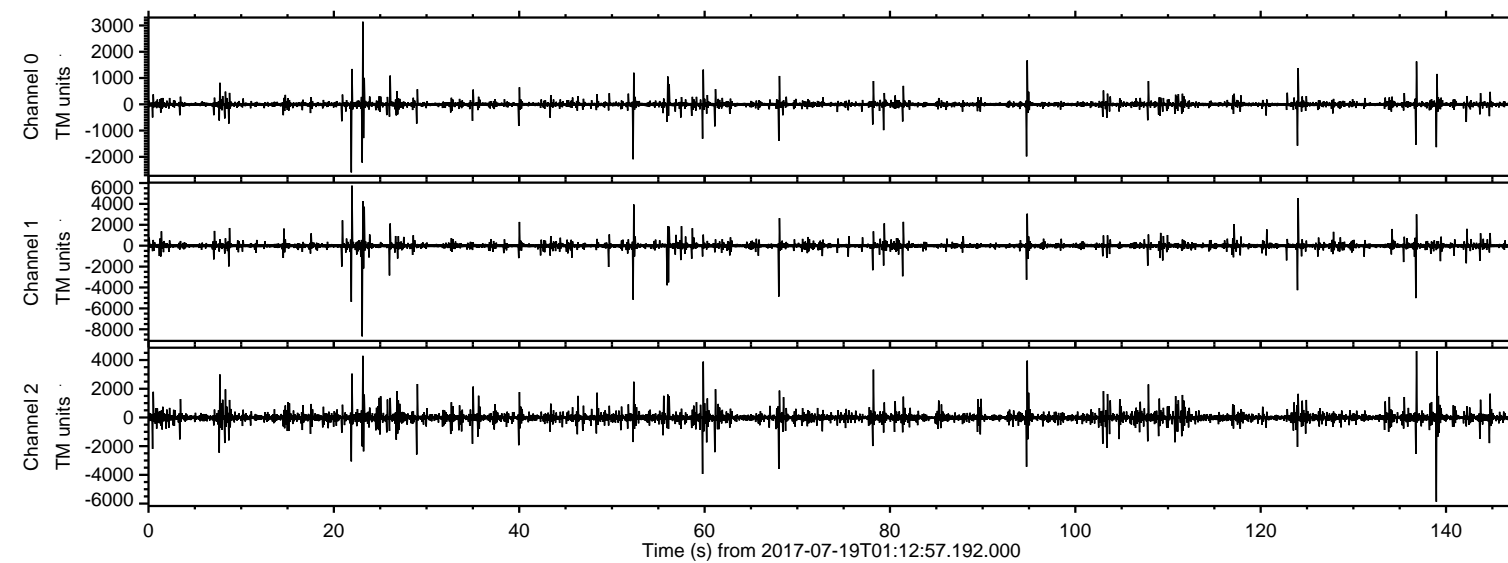


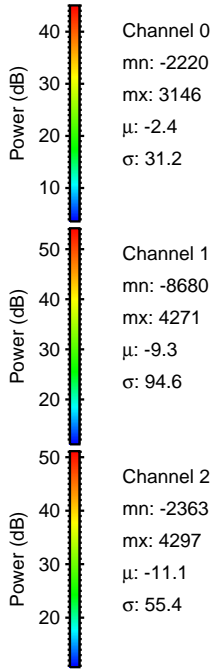
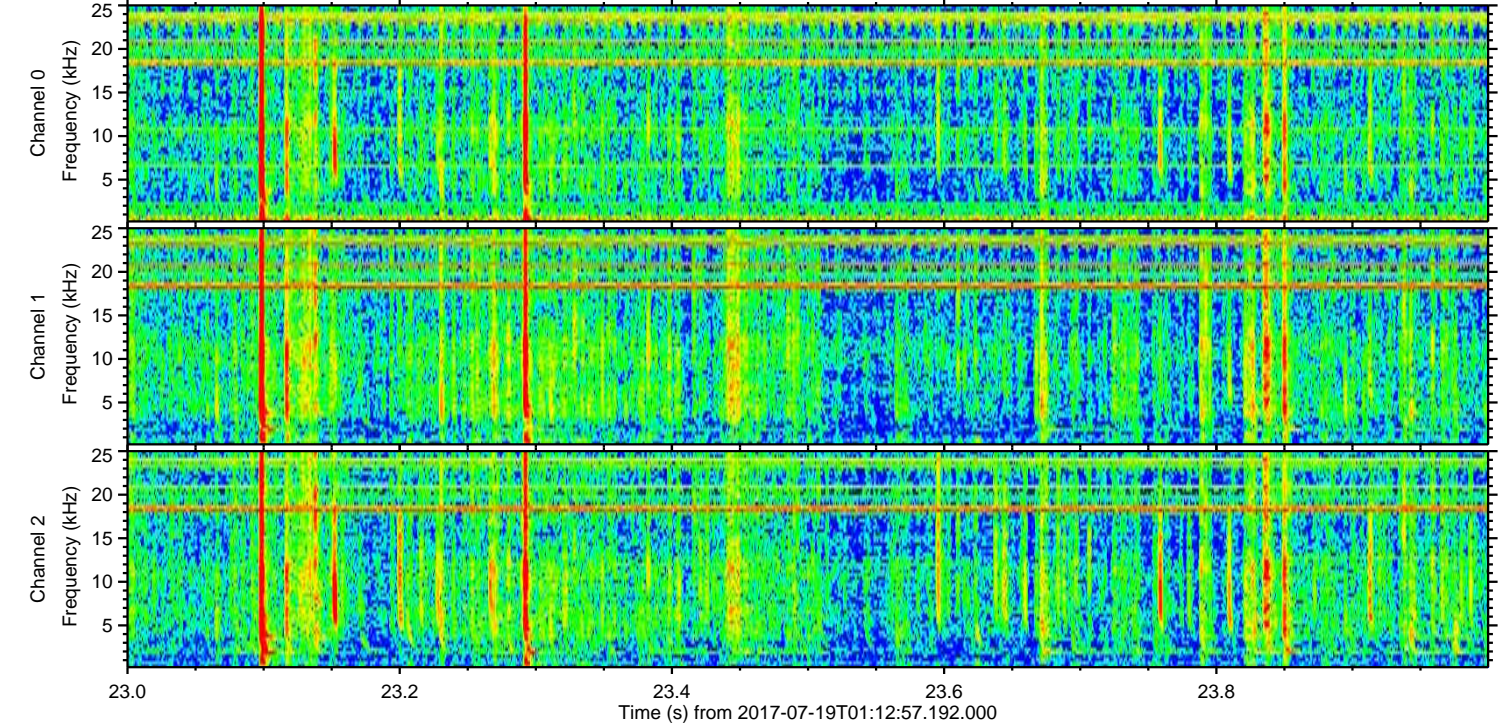
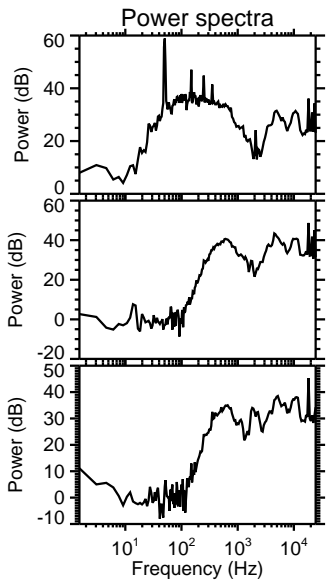
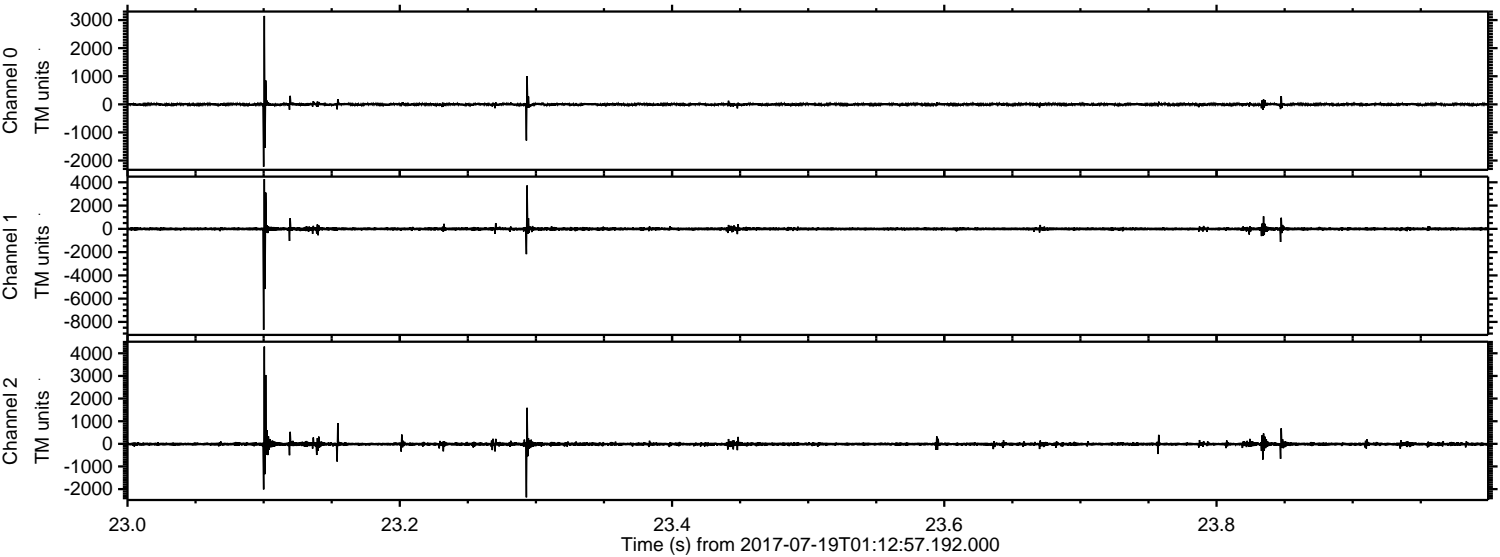
ELMAVAN 3D WAVEFORMS (Measured data sampled at 50 kHz) 51000 packets of 144 samples from 2017-07-19T01:12:57.192.000.

Processed Thu Jul 20 23:47:04 2017 by ELM ver.2012-10-06 from 001\_\_elm20170719\_011256\_\_dat00.bin





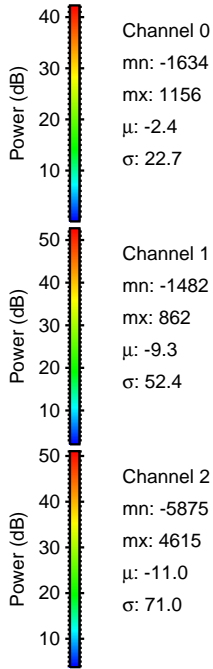
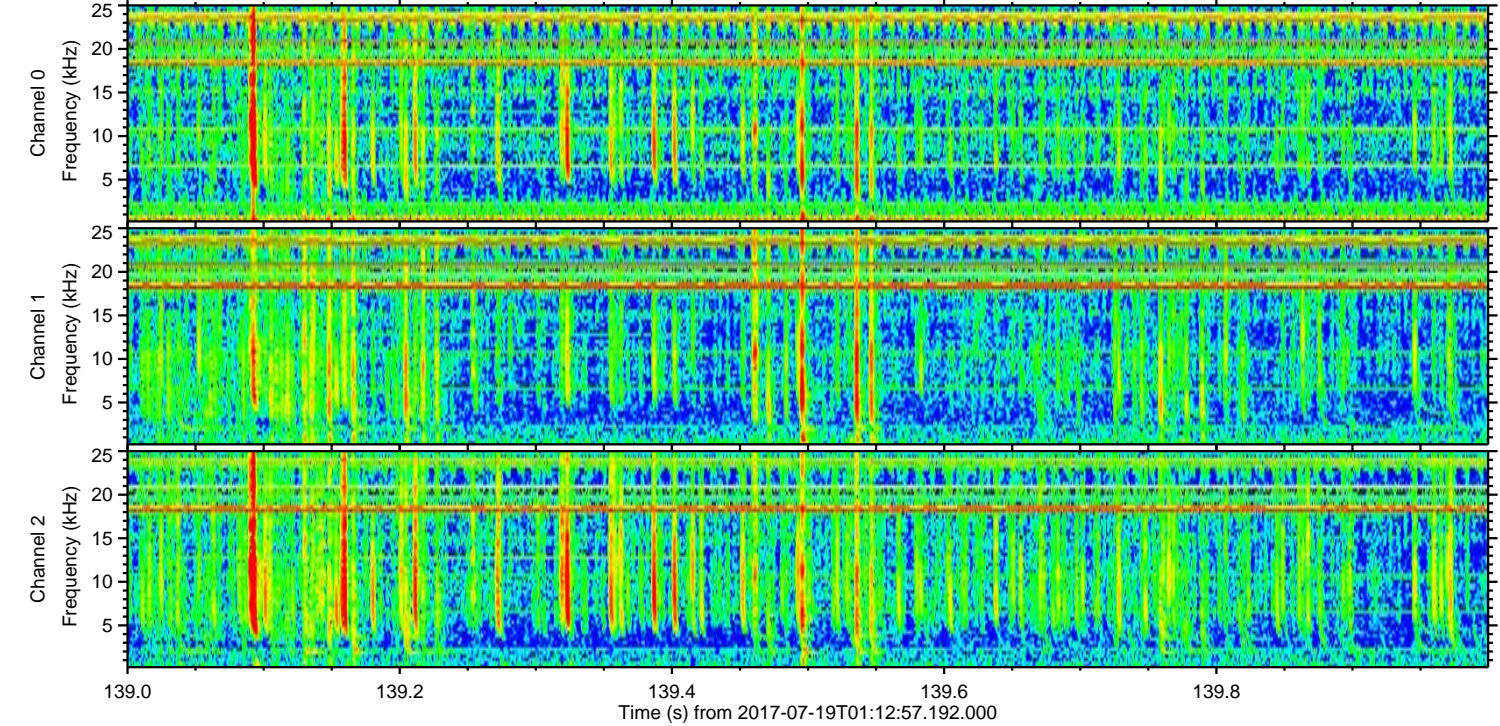
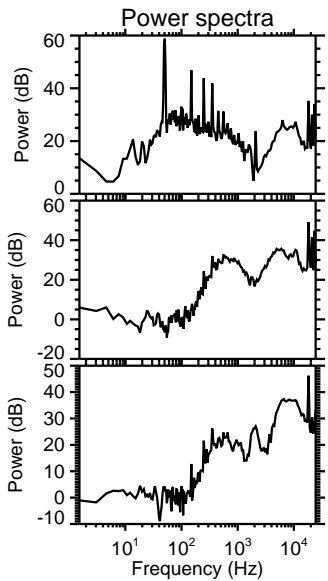
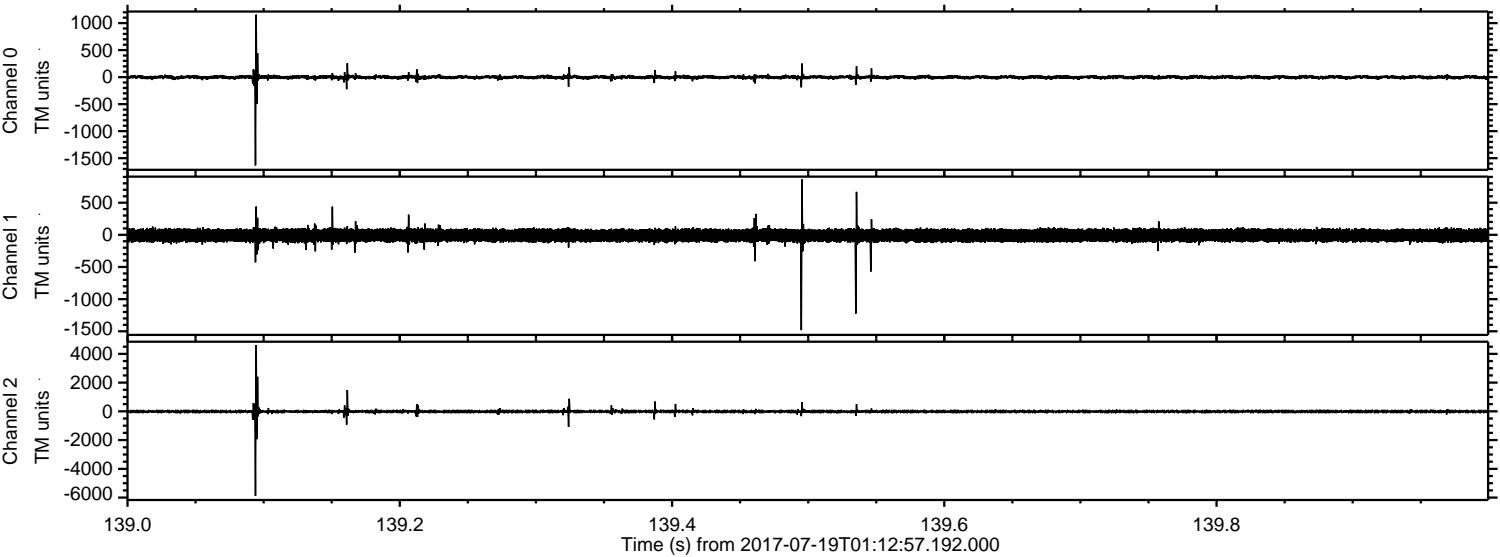
Processed Thu Jul 20 23:47:11 2017 by ELM ver.2012-10-06 from 001\_\_elm20170719\_011256\_\_dat00.bin





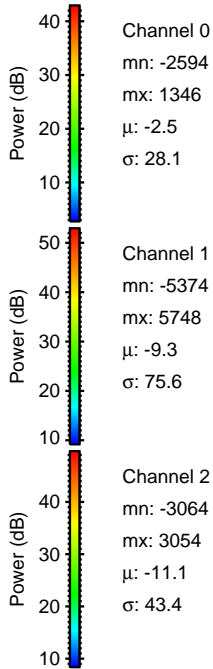
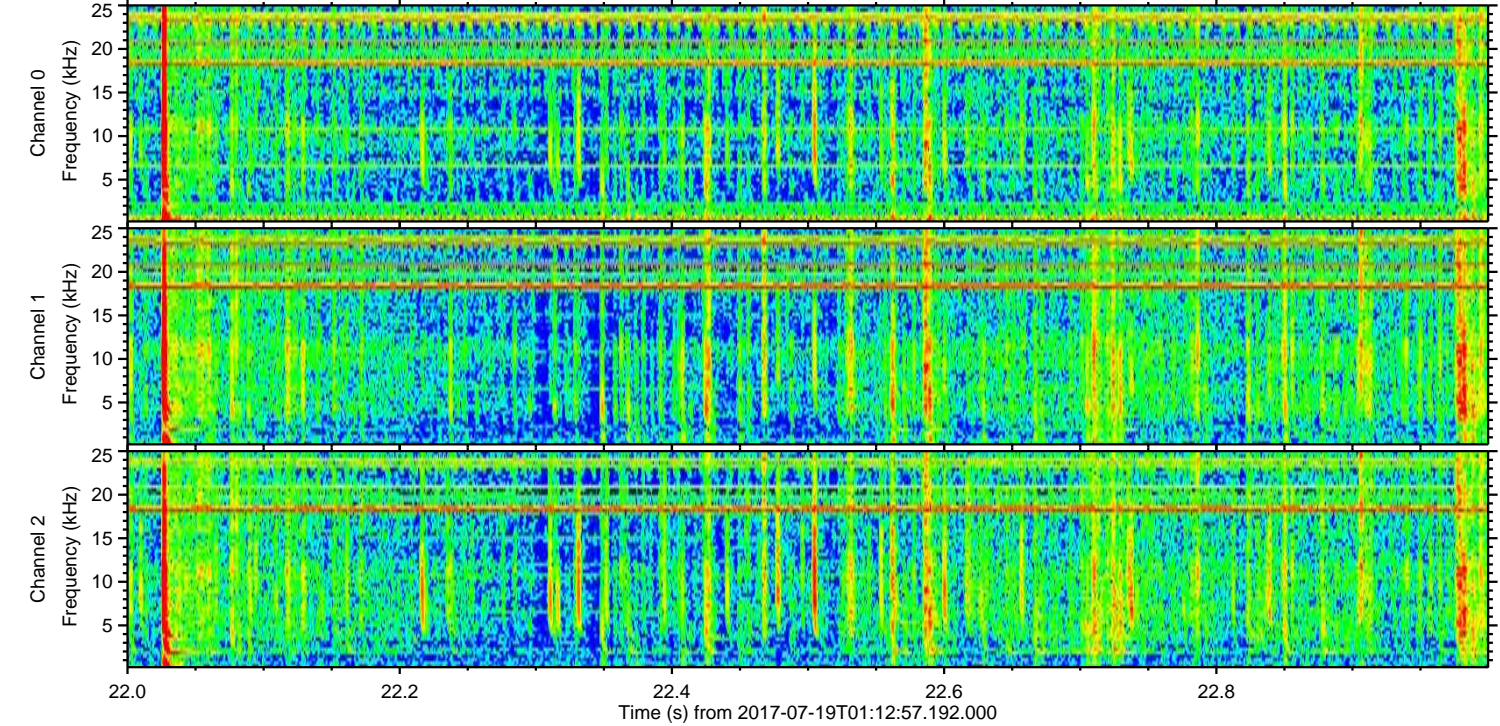
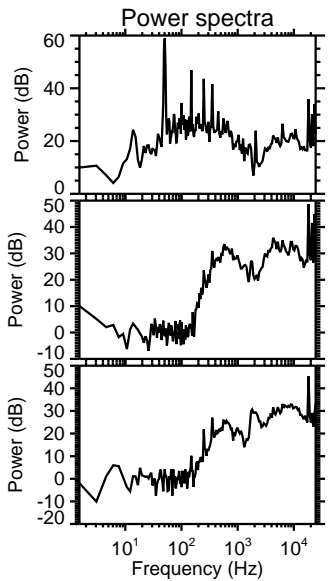
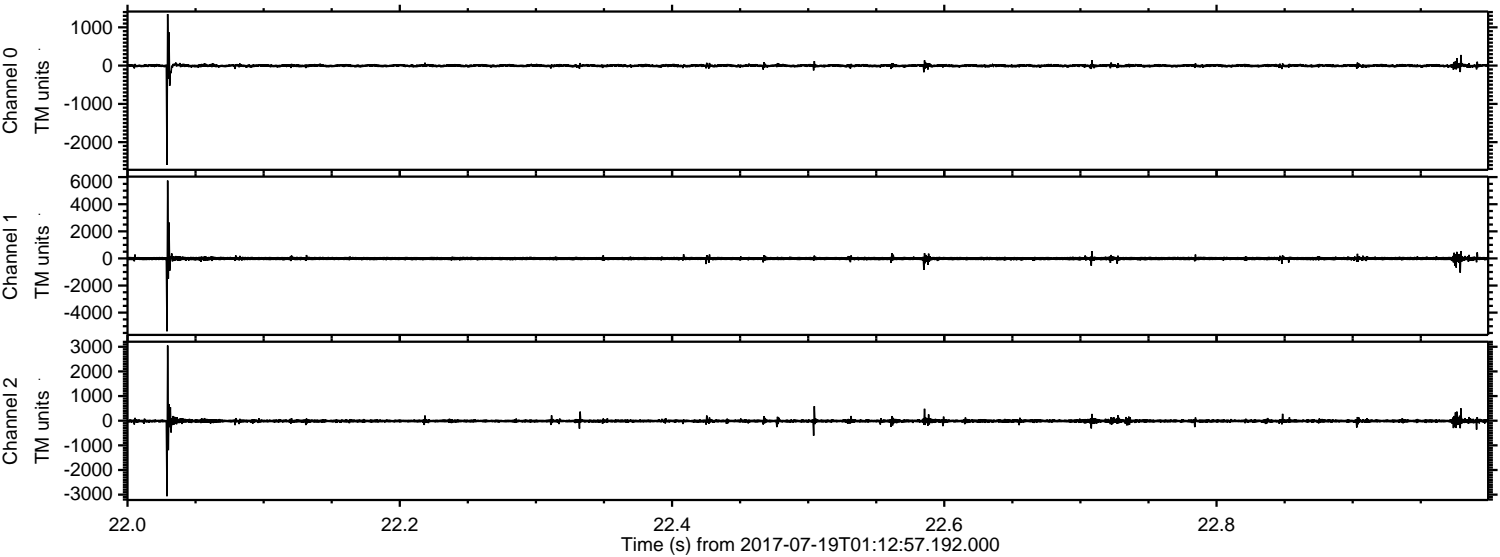
ELMAVAN 3D WAVEFORMS (Measured data sampled at 50 kHz) 51000 packets of 144 samples from 2017-07-19T01:12:57.192.000. Part 140/147

Processed Thu Jul 20 23:47:12 2017 by ELM ver.2012-10-06 from 001\_\_elm20170719\_011256\_\_dat00.bin



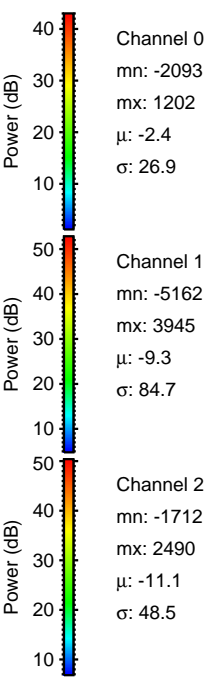
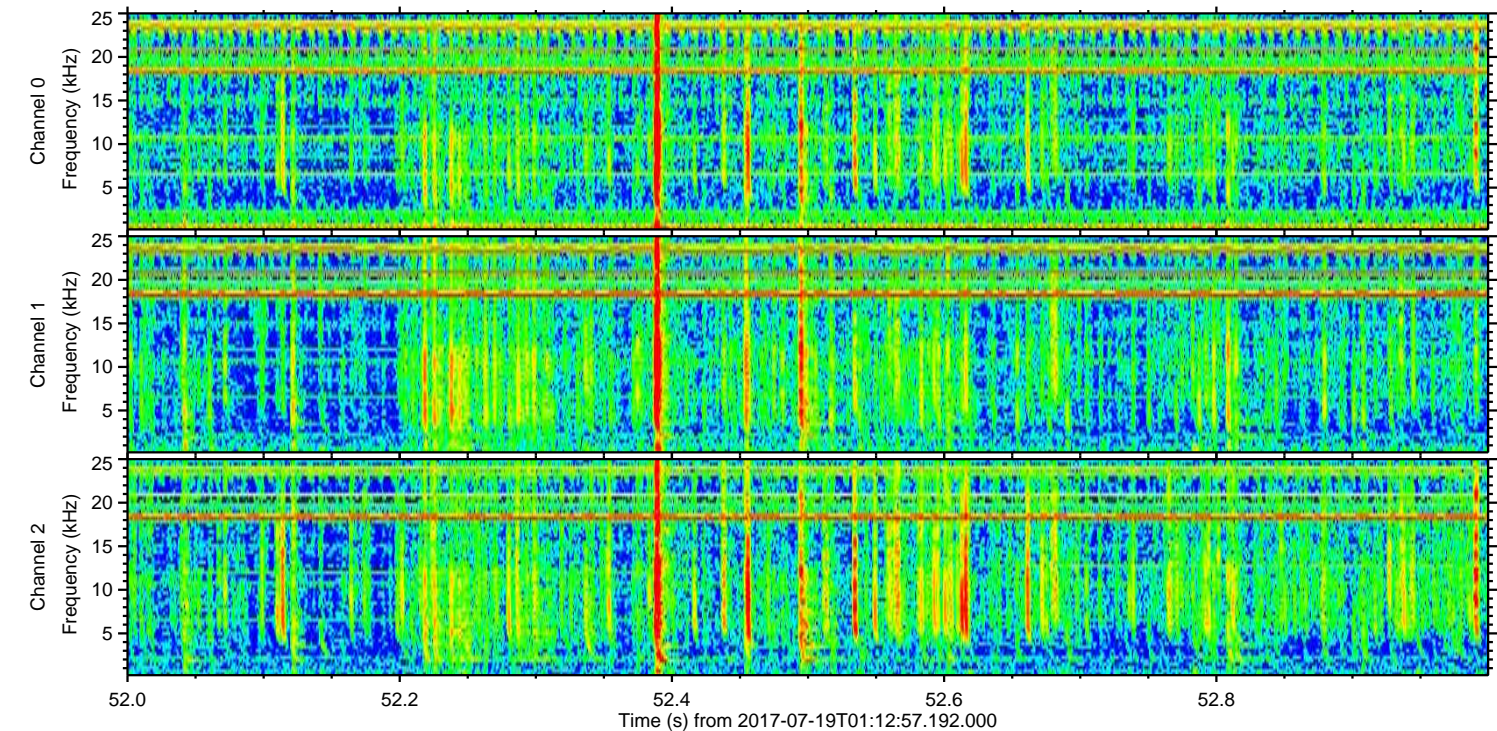
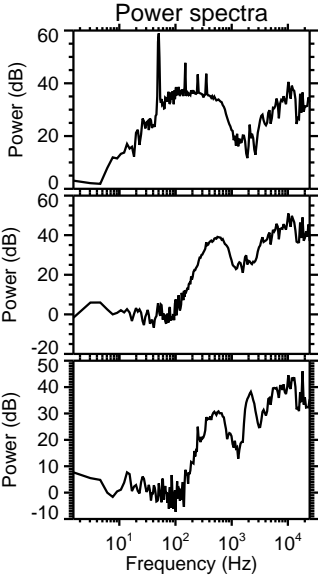
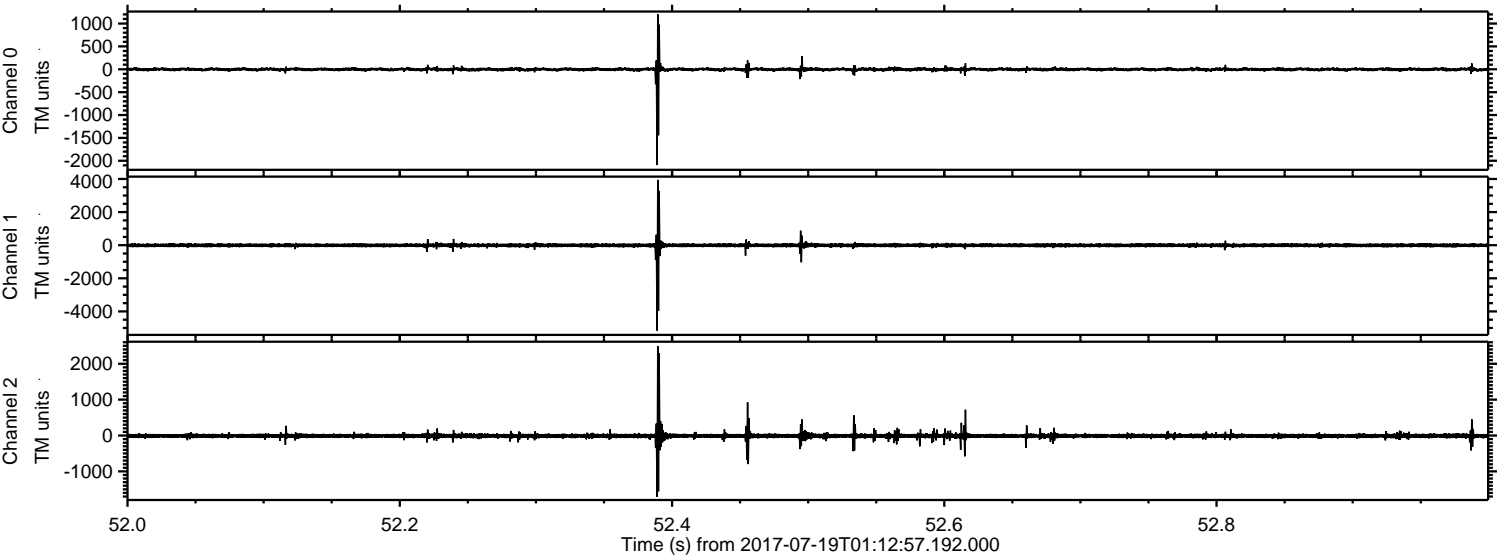


Processed Thu Jul 20 23:47:13 2017 by ELM ver.2012-10-06 from 001\_\_elm20170719\_011256\_\_dat00.bin





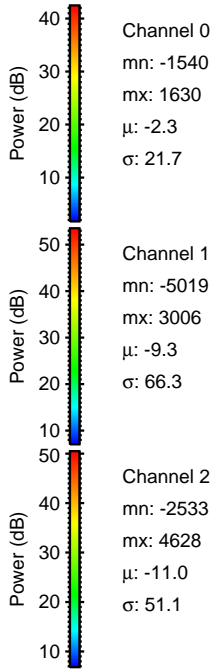
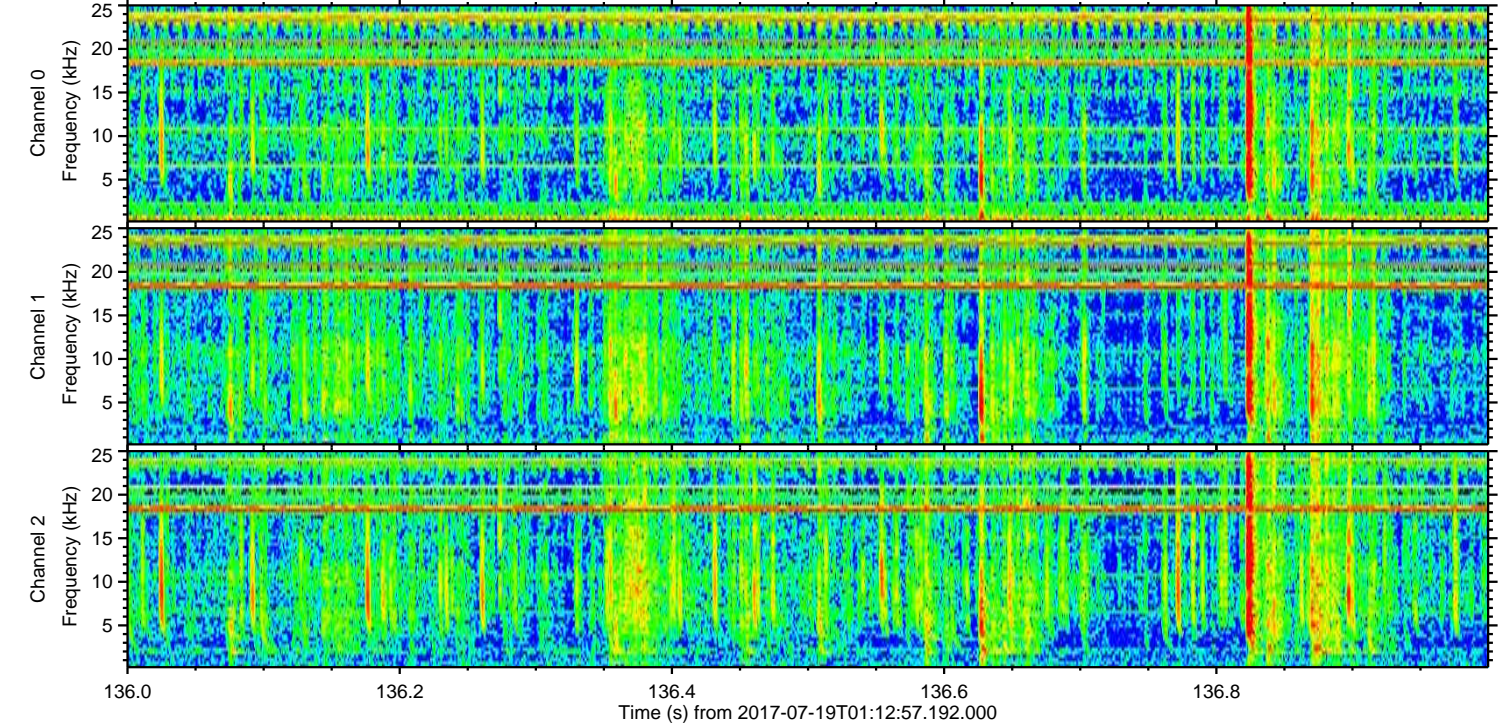
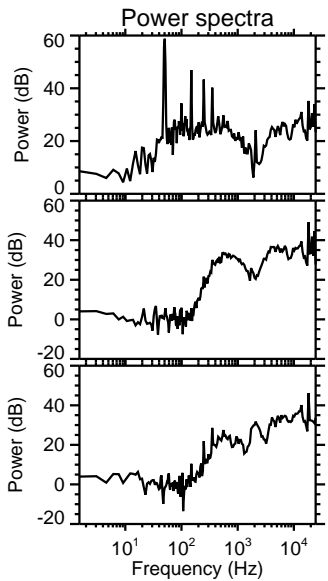
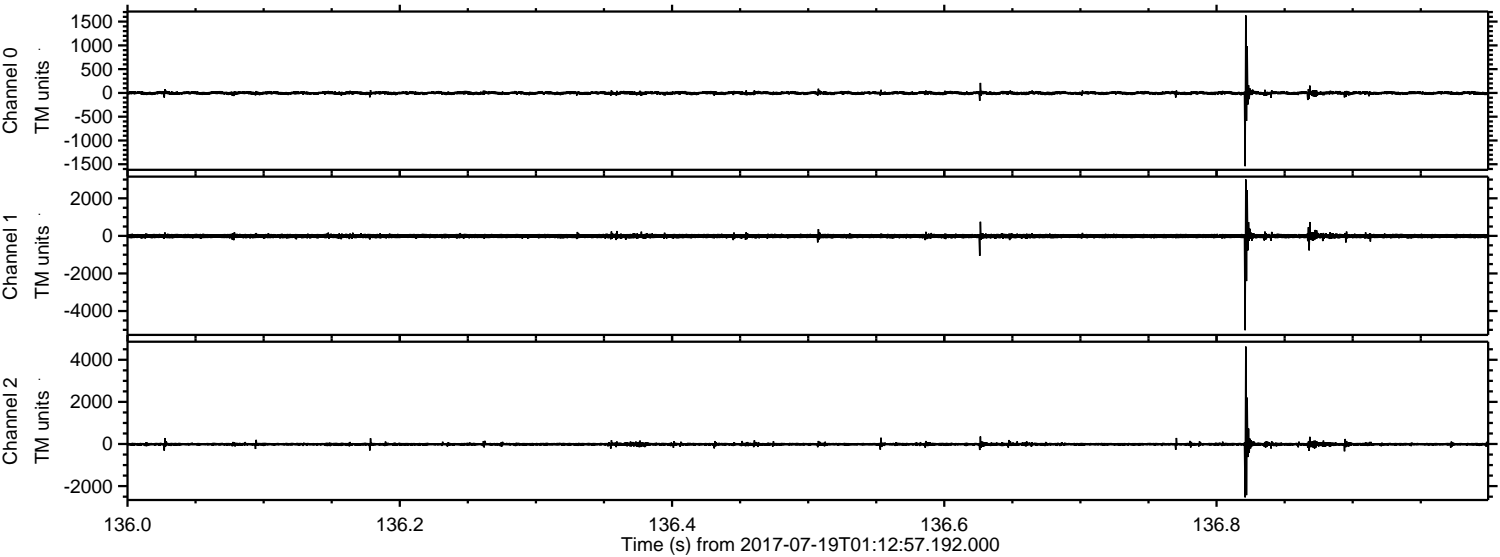
Processed Thu Jul 20 23:47:14 2017 by ELM ver.2012-10-06 from 001\_\_elm20170719\_011256\_\_dat00.bin





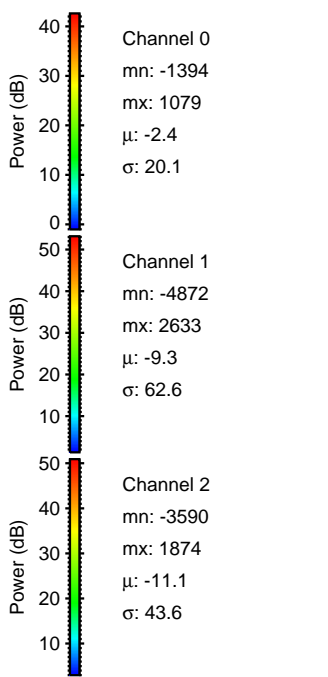
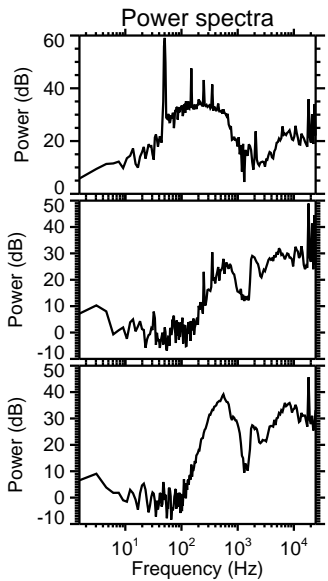
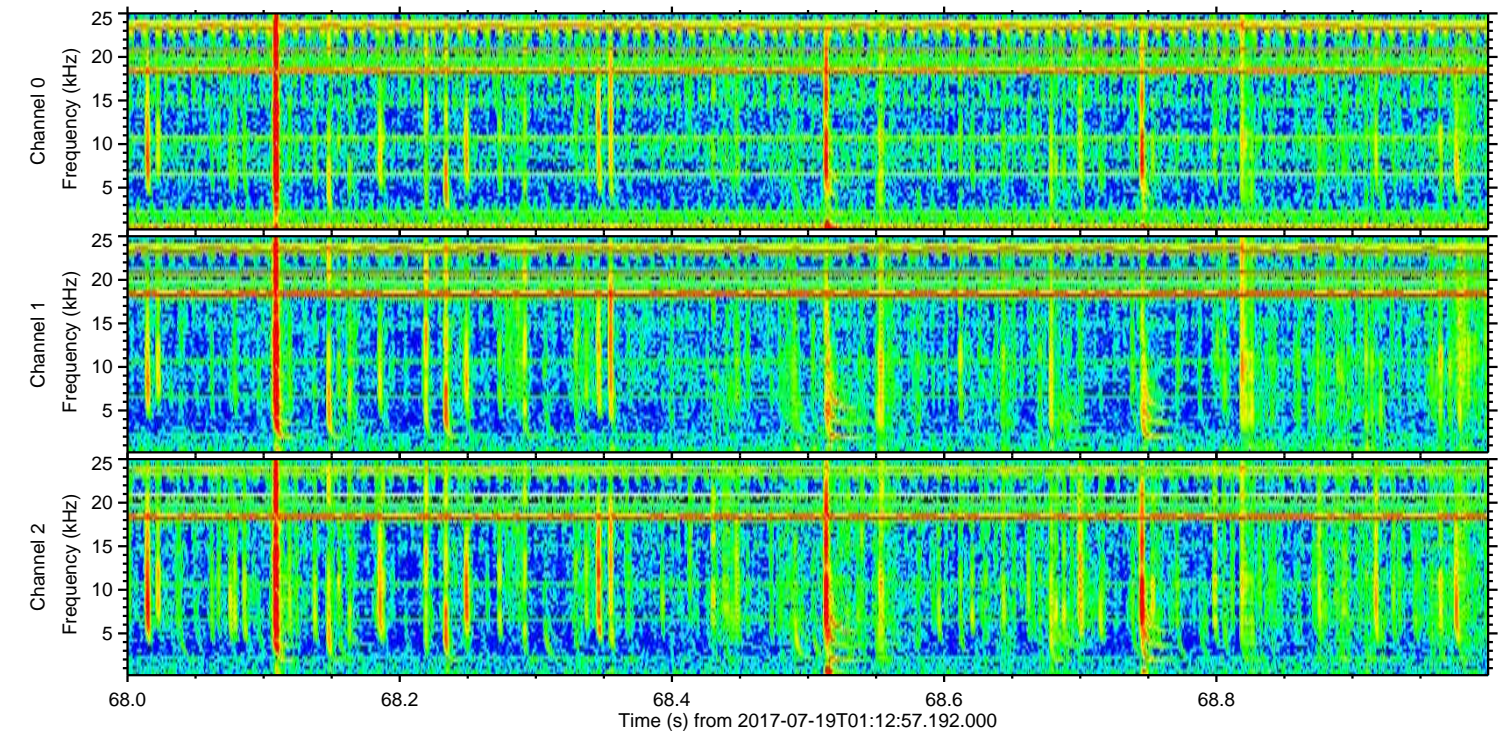
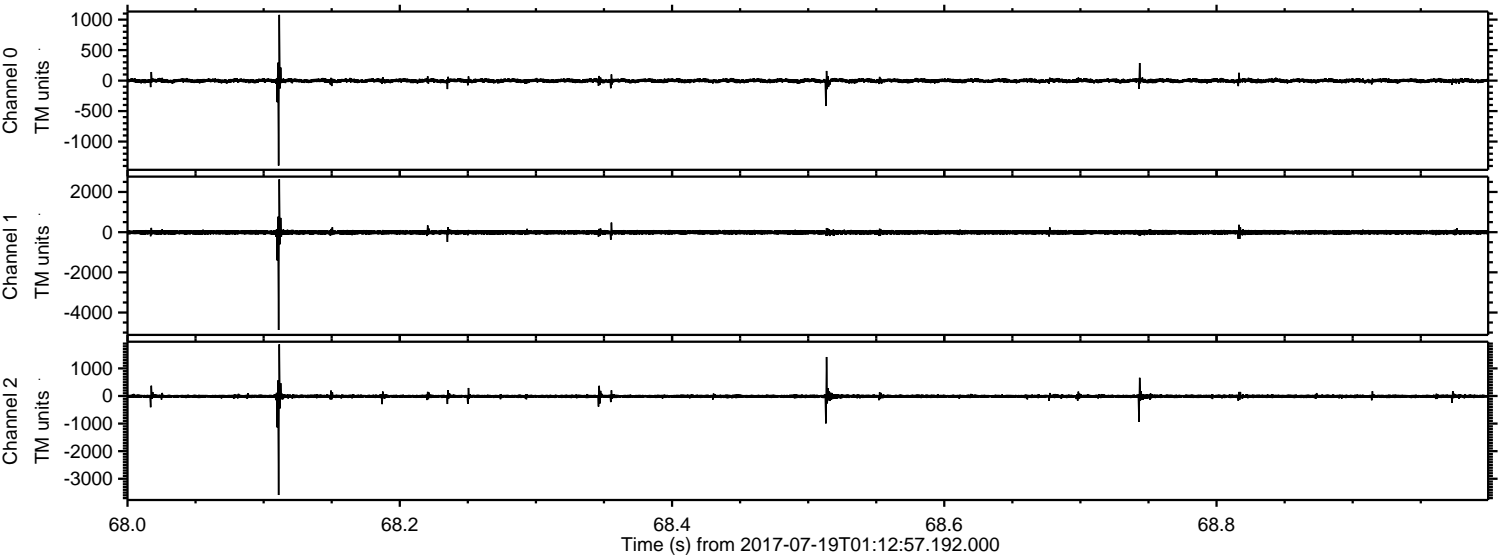
ELMAVAN 3D WAVEFORMS (Measured data sampled at 50 kHz) 51000 packets of 144 samples from 2017-07-19T01:12:57.192.000. Part 137/147

Processed Thu Jul 20 23:47:15 2017 by ELM ver.2012-10-06 from 001\_\_elm20170719\_011256\_\_dat00.bin





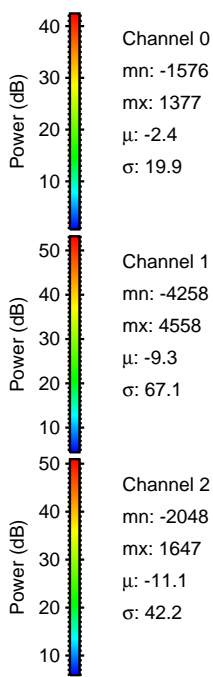
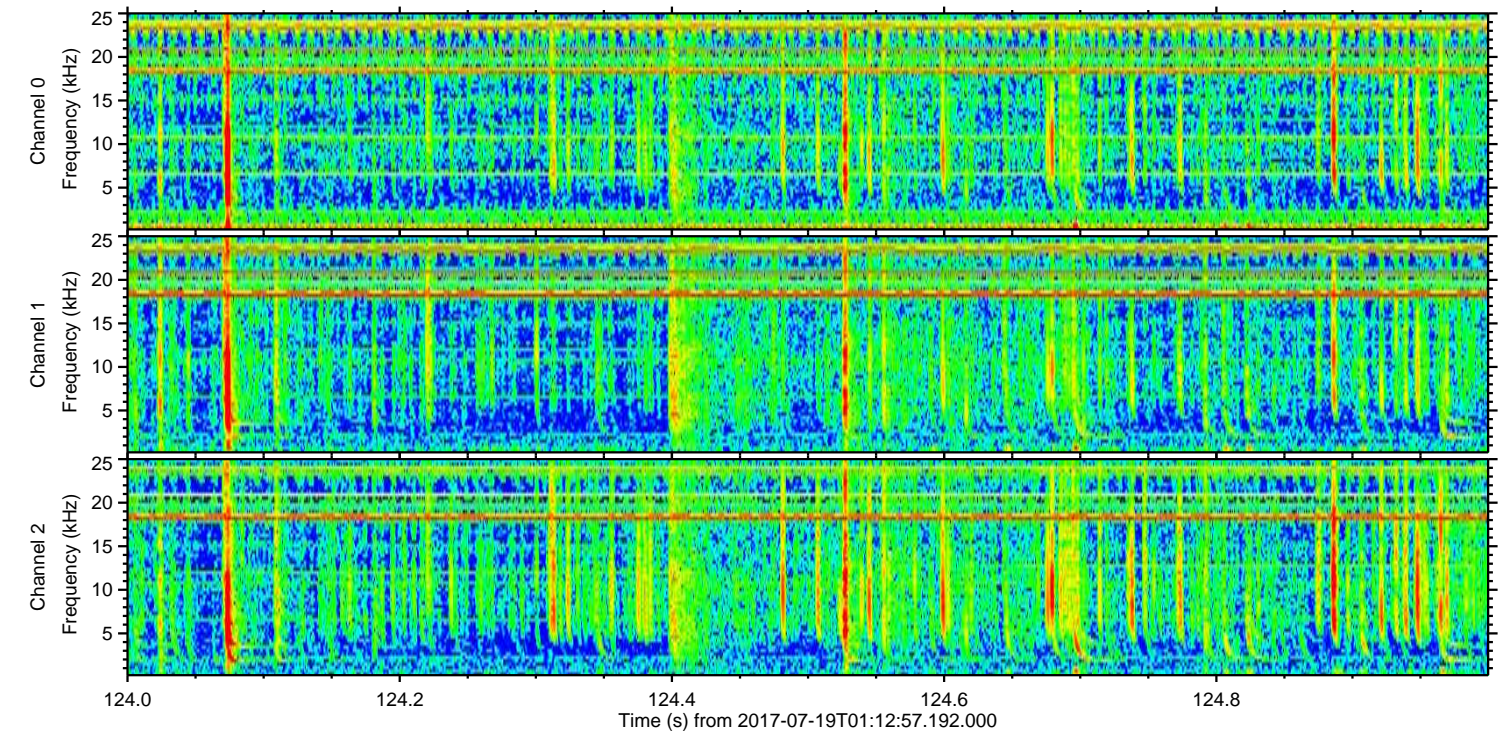
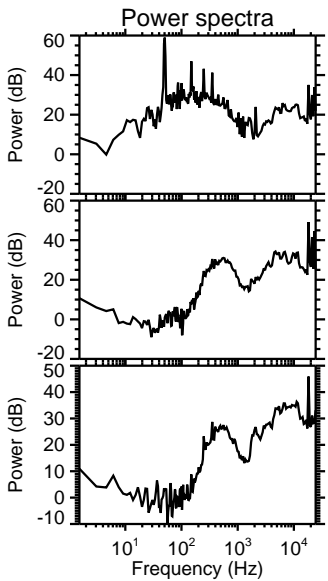
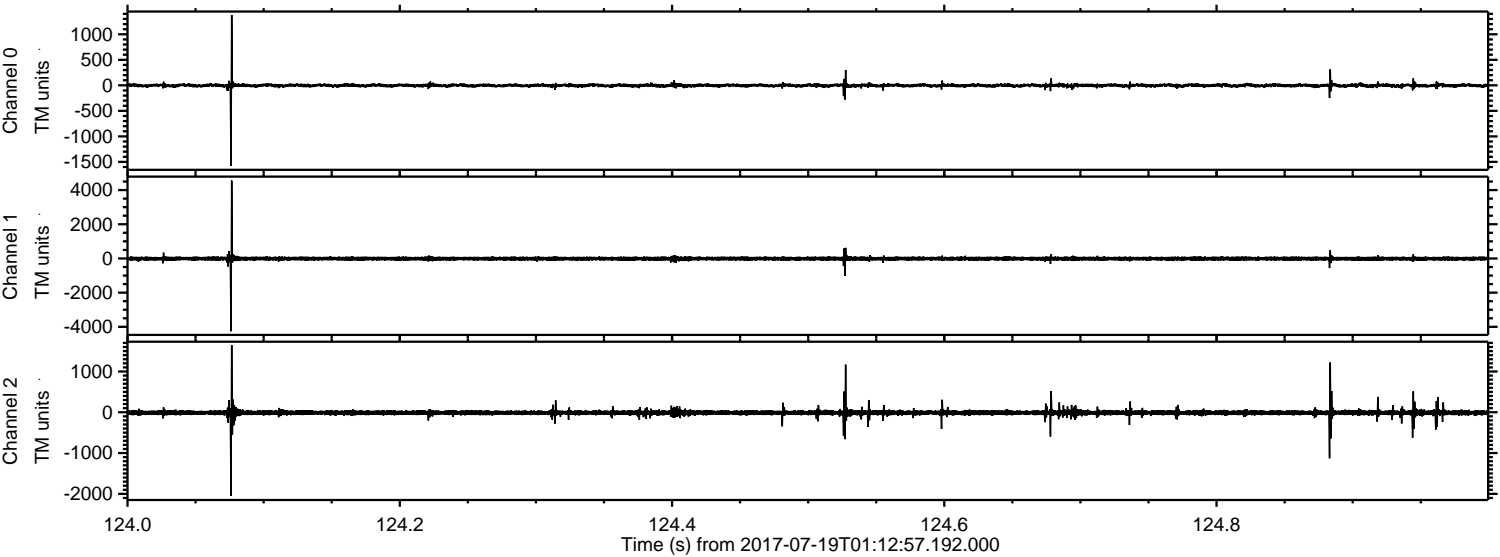
Processed Thu Jul 20 23:47:16 2017 by ELM ver.2012-10-06 from 001\_\_elm20170719\_011256\_\_dat00.bin





ELMAVAN 3D WAVEFORMS (Measured data sampled at 50 kHz) 51000 packets of 144 samples from 2017-07-19T01:12:57.192.000. Part 125/147

Processed Thu Jul 20 23:47:17 2017 by ELM ver.2012-10-06 from 001\_\_elm20170719\_011256\_\_dat00.bin



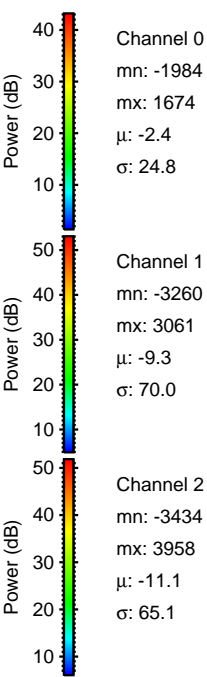
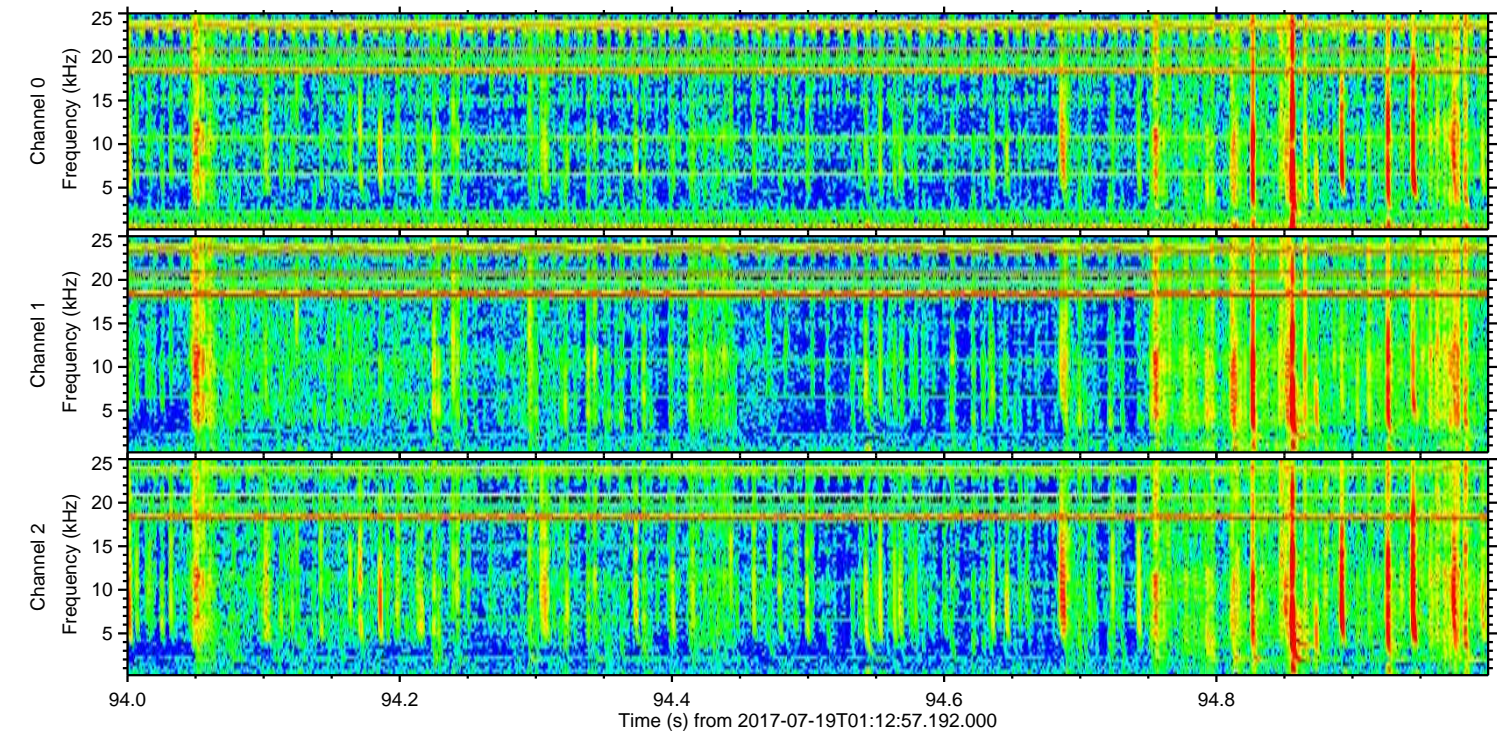
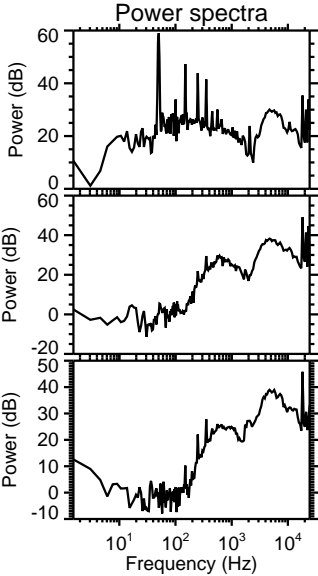
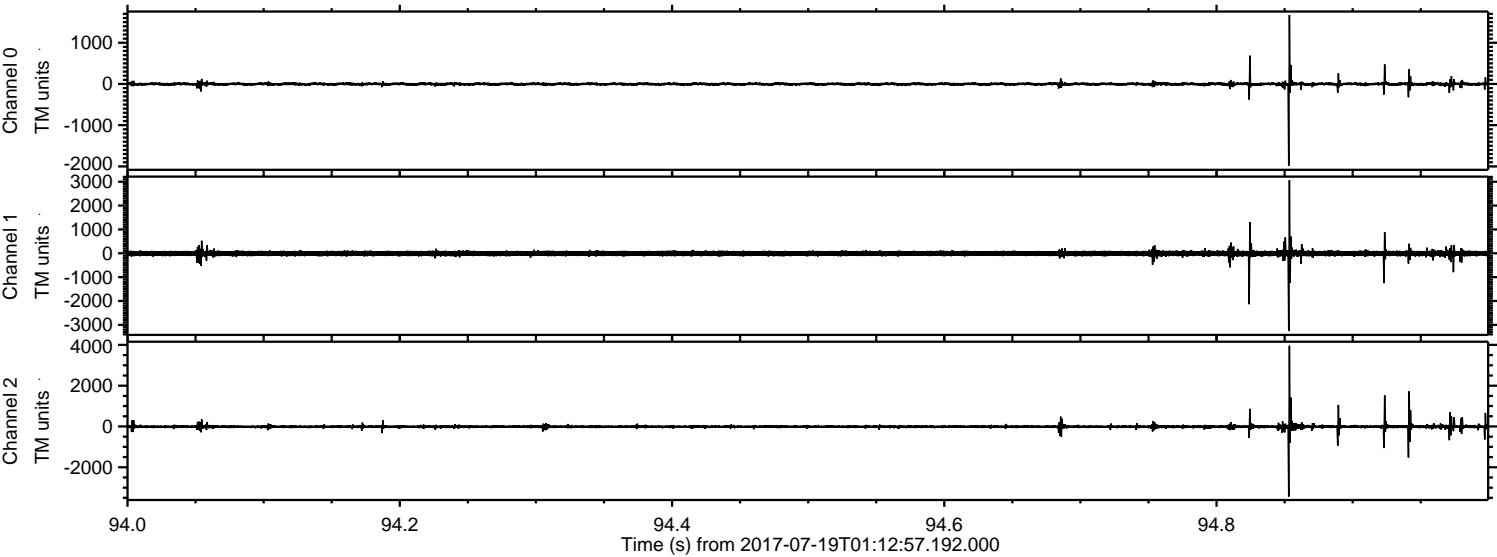
Channel 0  
mn: -1576  
mx: 1377  
 $\mu$ : -2.4  
 $\sigma$ : 19.9

Channel 1  
mn: -4258  
mx: 4558  
 $\mu$ : -9.3  
 $\sigma$ : 67.1

Channel 2  
mn: -2048  
mx: 1647  
 $\mu$ : -11.1  
 $\sigma$ : 42.2

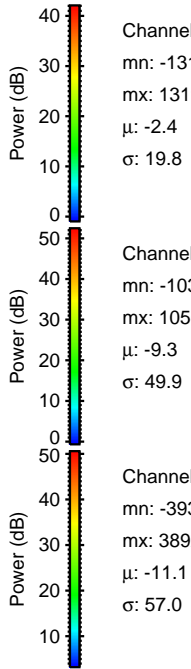
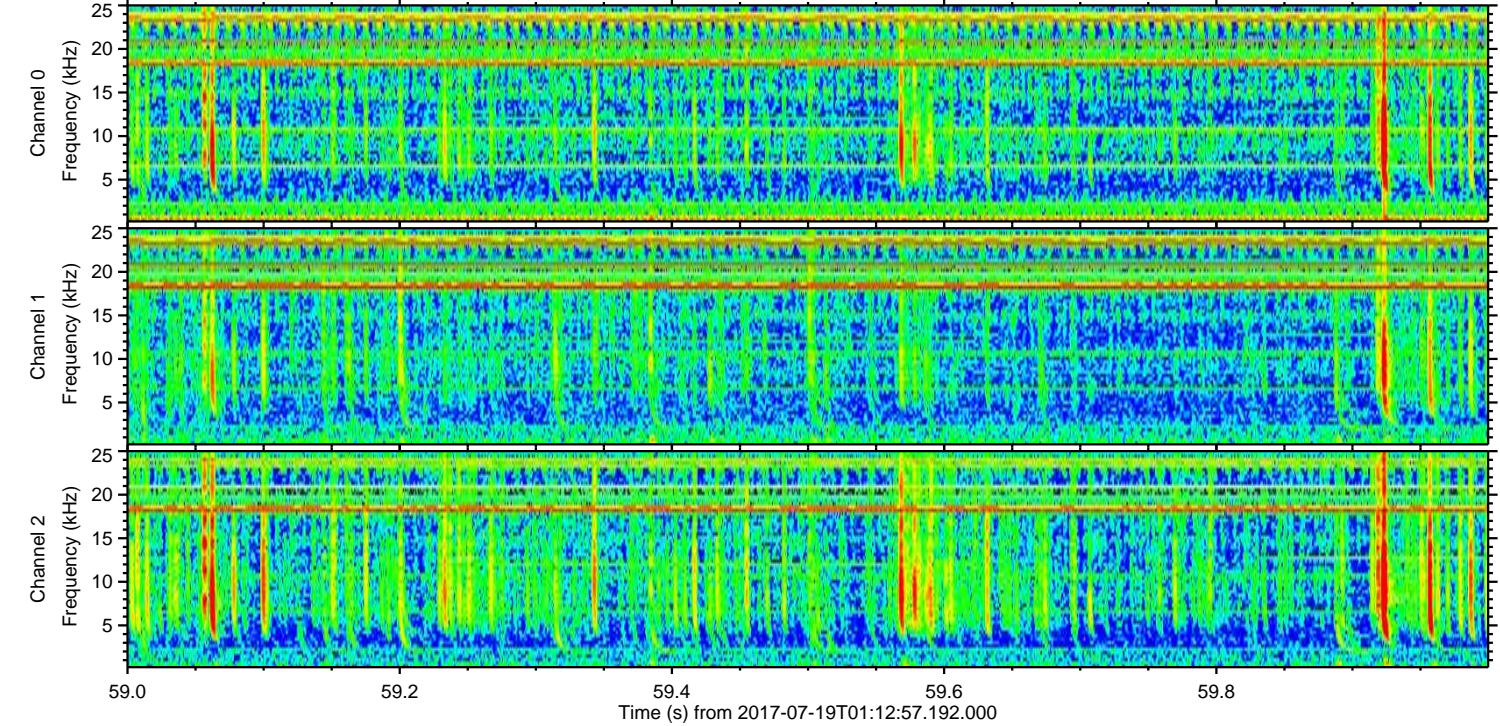
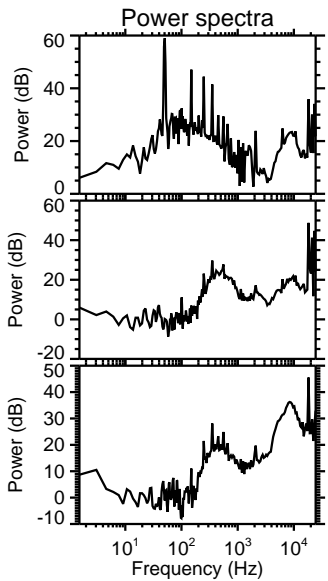
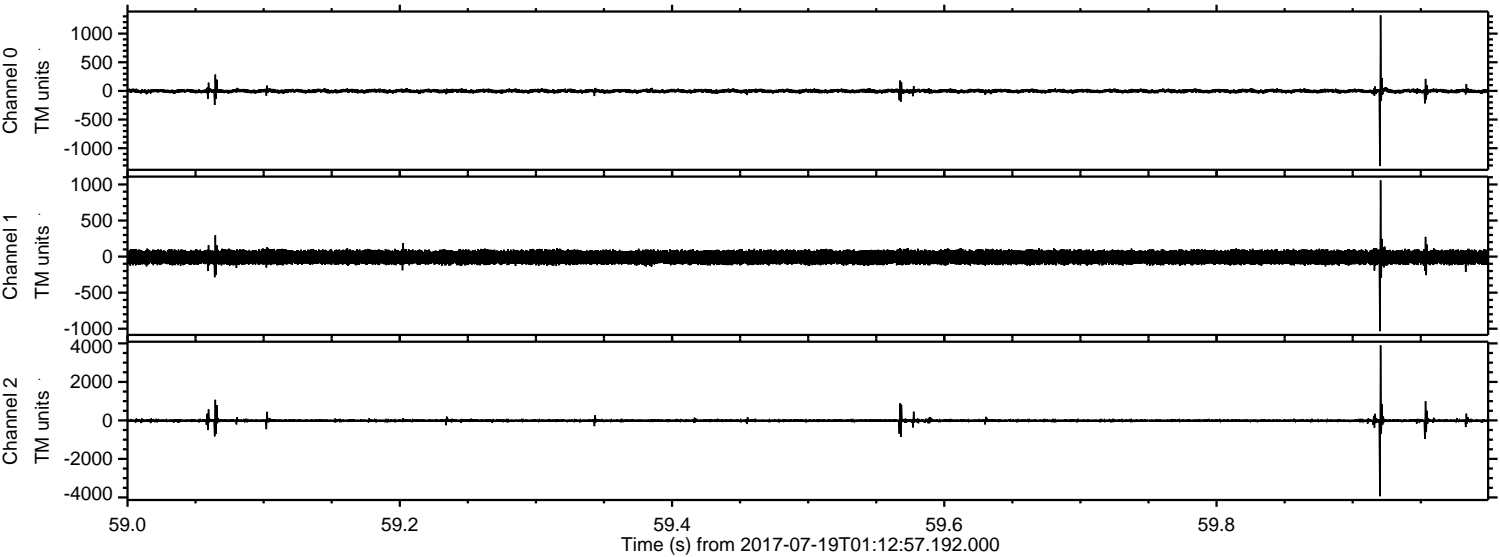


Processed Thu Jul 20 23:47:17 2017 by ELM ver.2012-10-06 from 001\_\_elm20170719\_011256\_\_dat00.bin





Processed Thu Jul 20 23:47:18 2017 by ELM ver.2012-10-06 from 001\_\_elm20170719\_011256\_\_dat00.bin



Channel 0  
mn: -1311  
mx: 1319  
 $\mu$ : -2.4  
 $\sigma$ : 19.8

Channel 1  
mn: -1034  
mx: 1056  
 $\mu$ : -9.3  
 $\sigma$ : 49.9

Channel 2  
mn: -3937  
mx: 3892  
 $\mu$ : -11.1  
 $\sigma$ : 57.0



Processed Thu Jul 20 23:47:19 2017 by ELM ver.2012-10-06 from 001\_\_elm20170719\_011256\_\_dat00.bin

