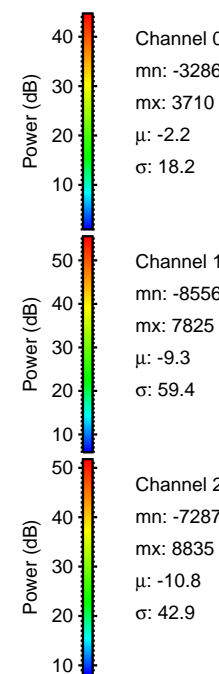
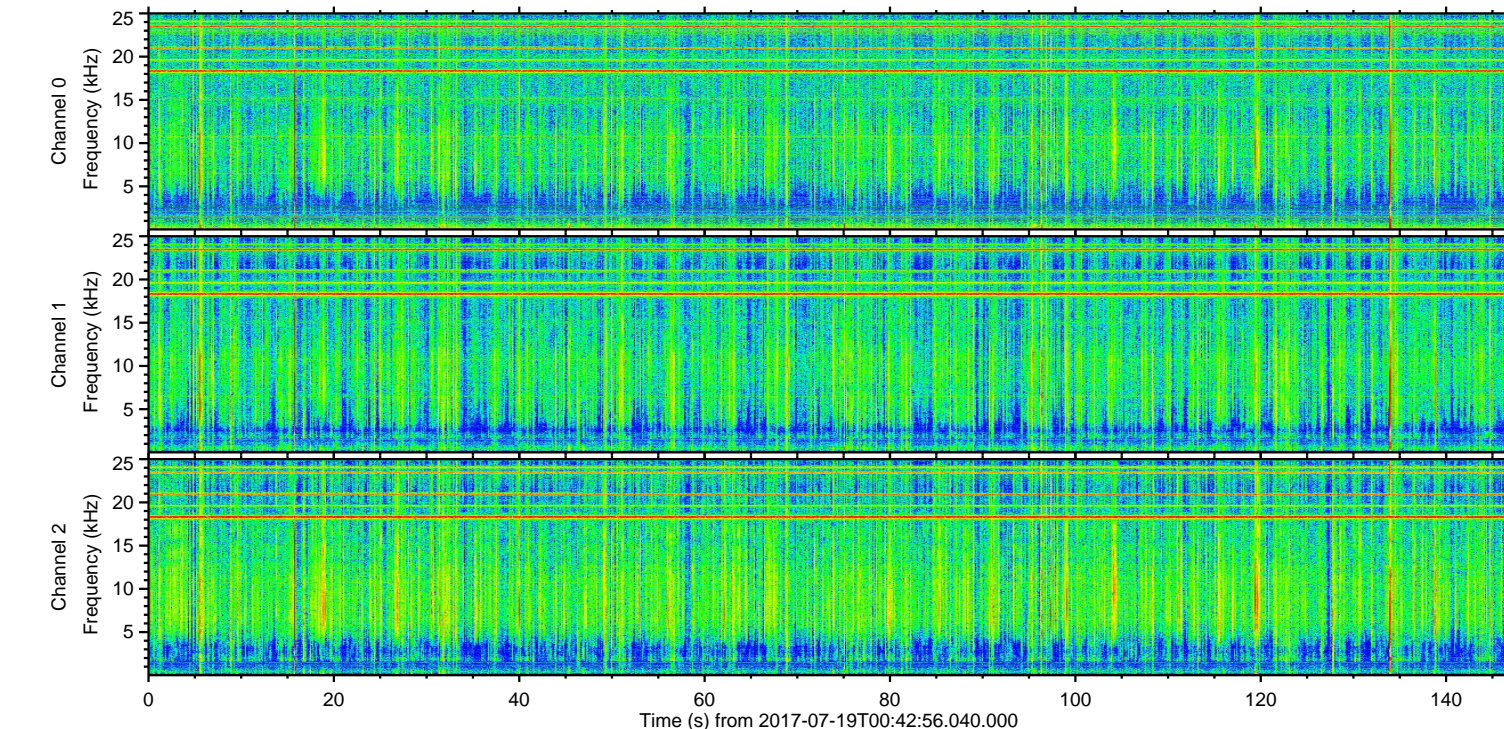
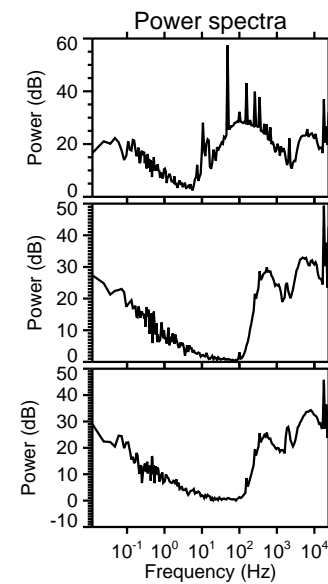
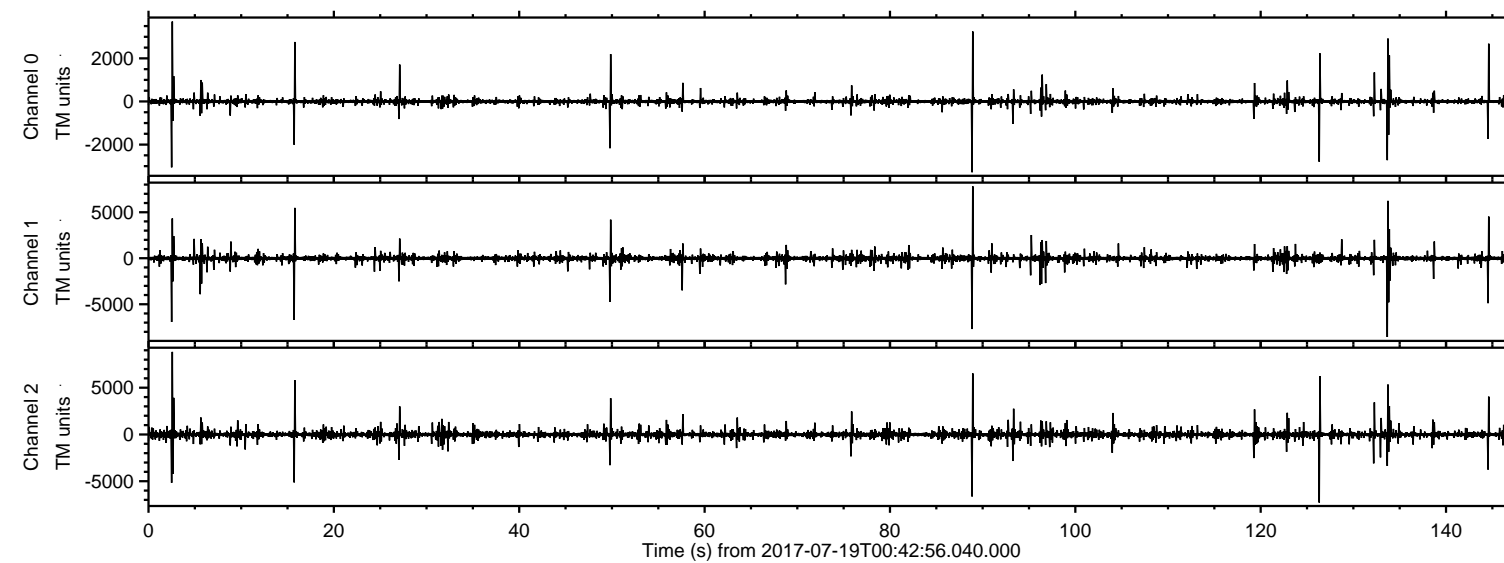


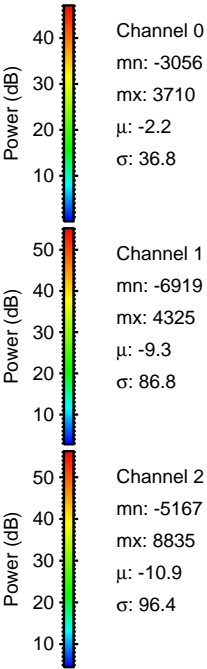
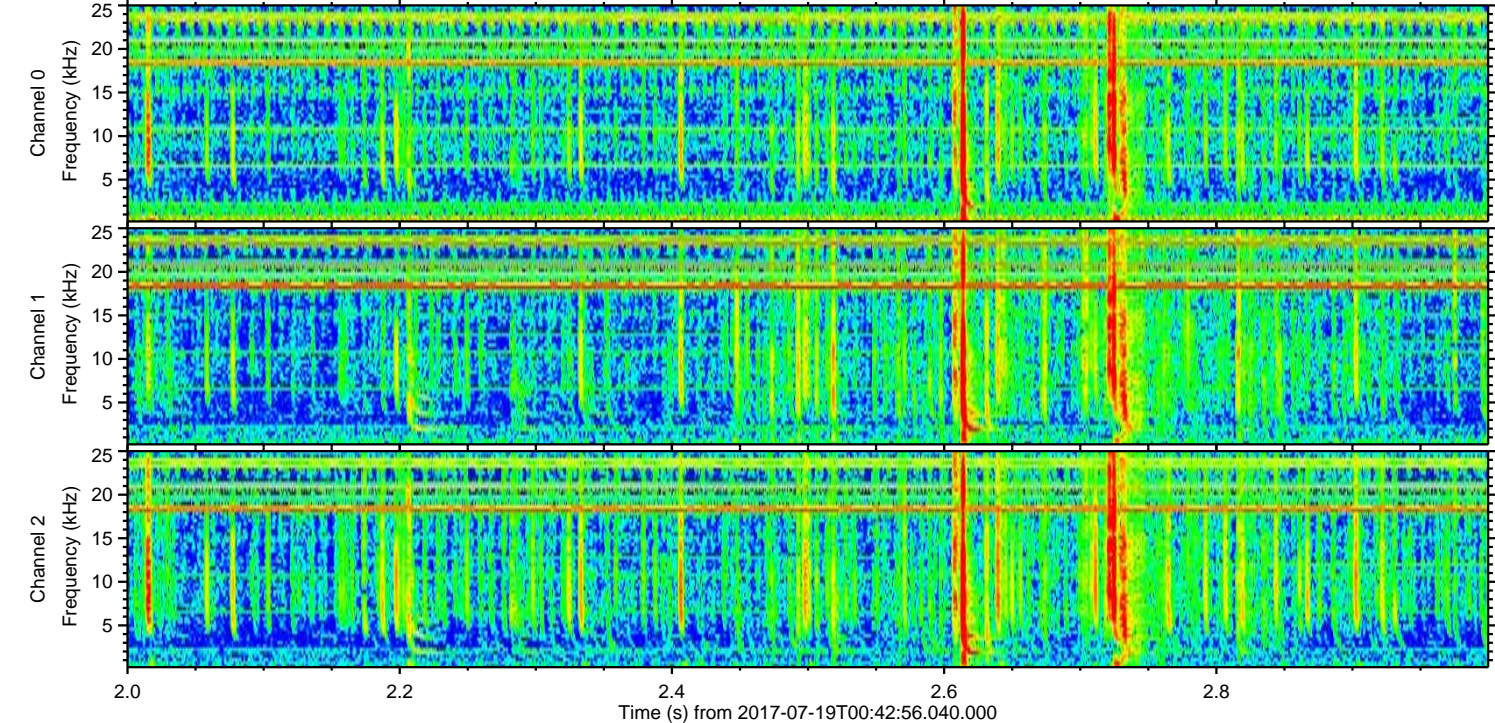
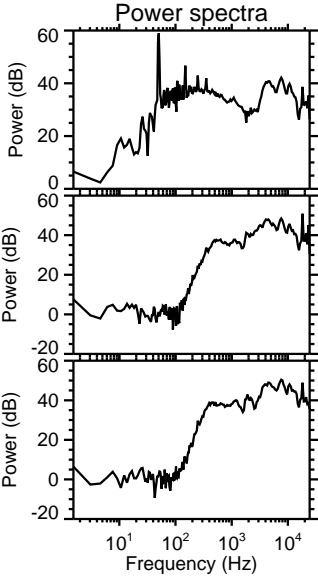
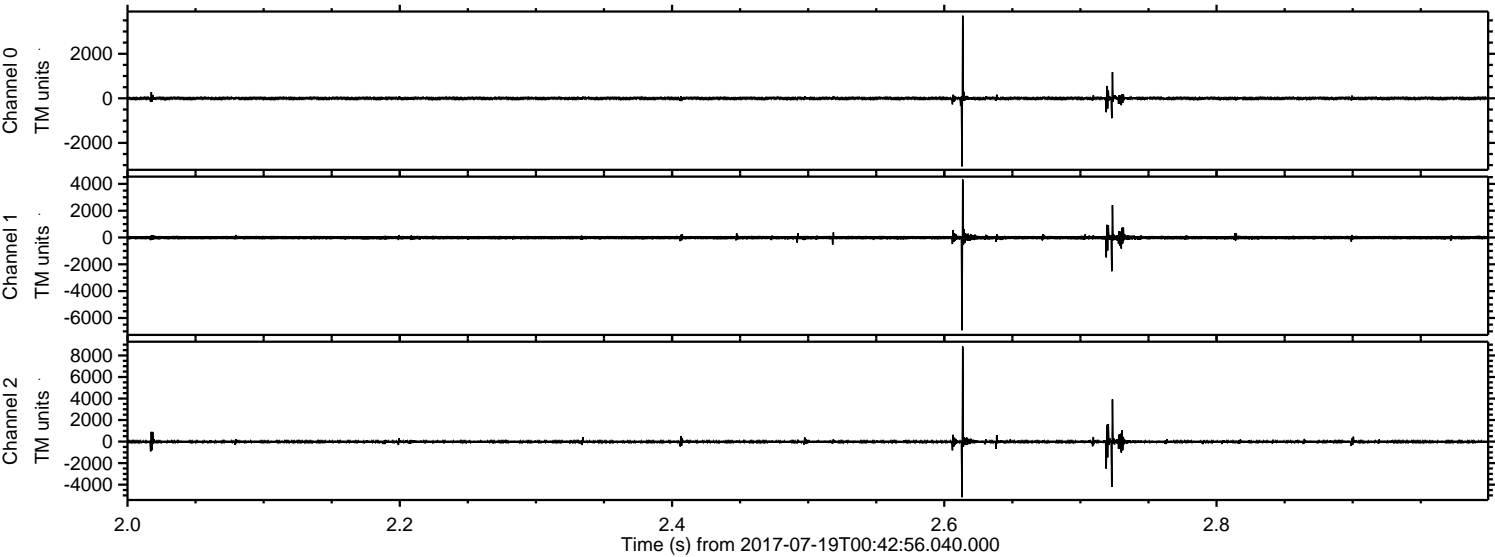
ELMAVAN 3D WAVEFORMS (Measured data sampled at 50 kHz) 51000 packets of 144 samples from 2017-07-19T00:42:56.040.000.

Processed Thu Jul 20 23:42:32 2017 by ELM ver.2012-10-06 from 001__elm20170719_004255__dat00.bin



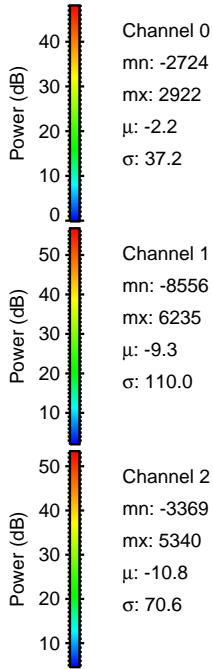
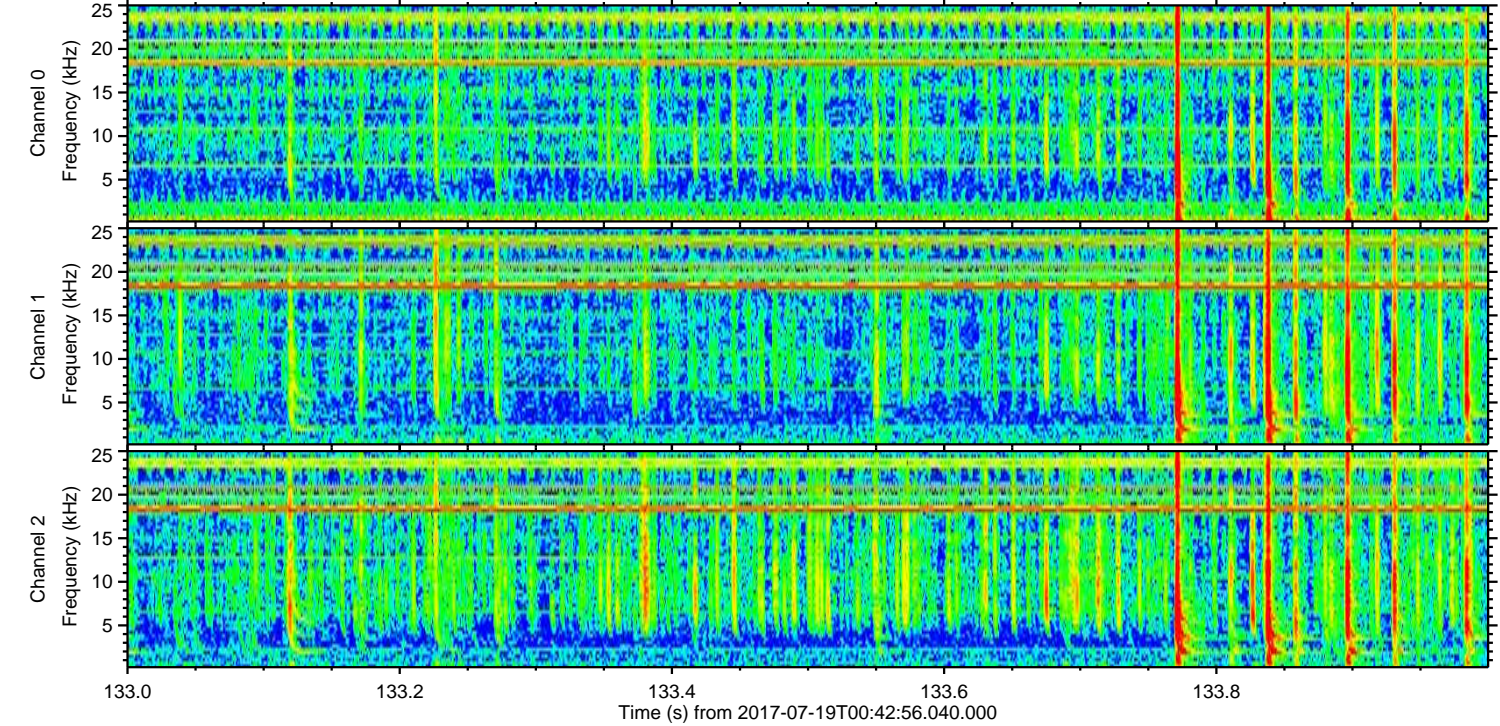
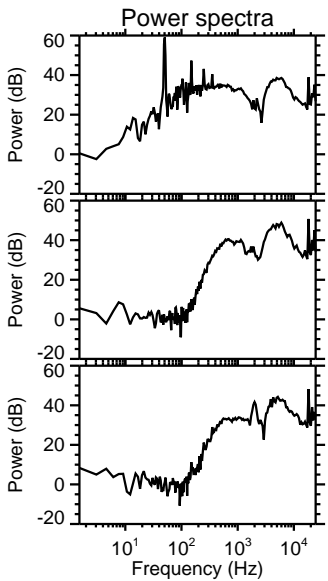
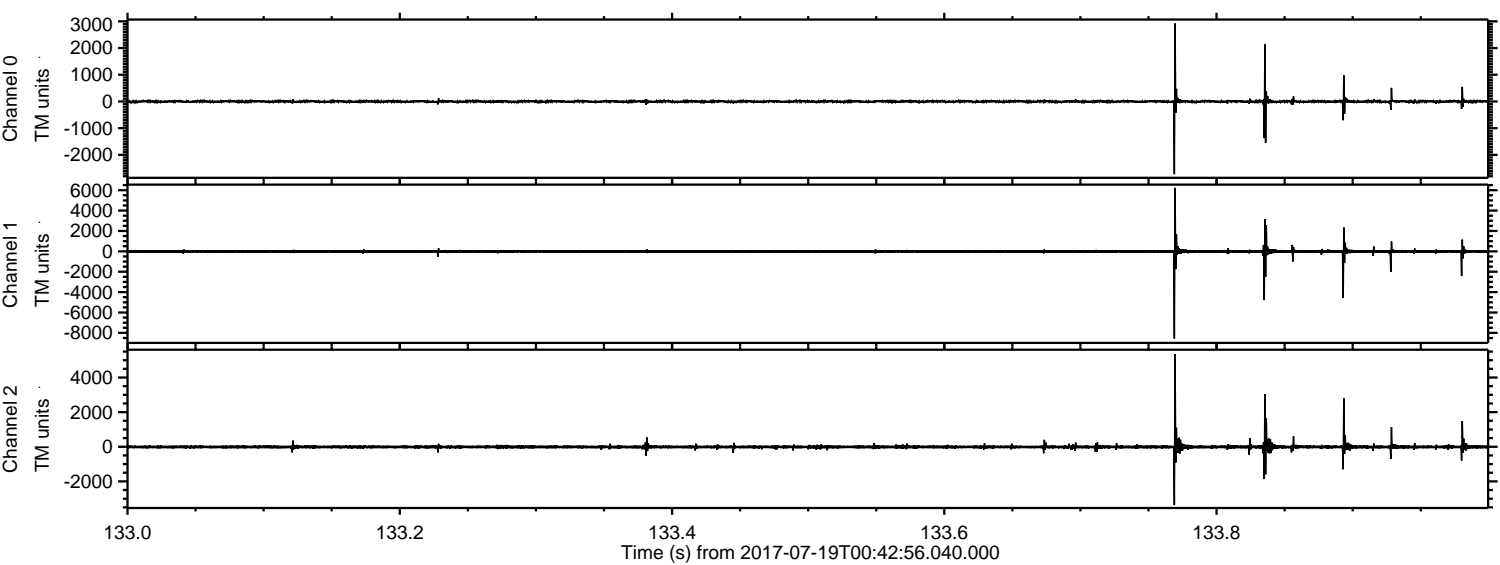
ELMAVAN 3D WAVEFORMS (Measured data sampled at 50 kHz) 51000 packets of 144 samples from 2017-07-19T00:42:56.040.000. Part 3/147

Processed Thu Jul 20 23:42:39 2017 by ELM ver.2012-10-06 from 001__elm20170719_004255__dat00.bin



ELMAVAN 3D WAVEFORMS (Measured data sampled at 50 kHz) 51000 packets of 144 samples from 2017-07-19T00:42:56.040.000. Part 134/147

Processed Thu Jul 20 23:42:40 2017 by ELM ver.2012-10-06 from 001__elm20170719_004255__dat00.bin

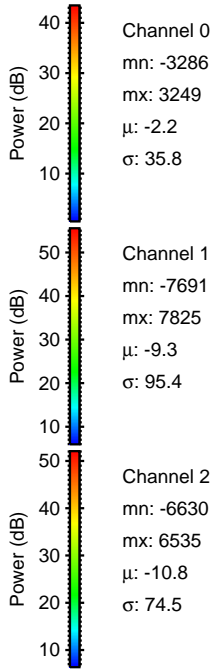
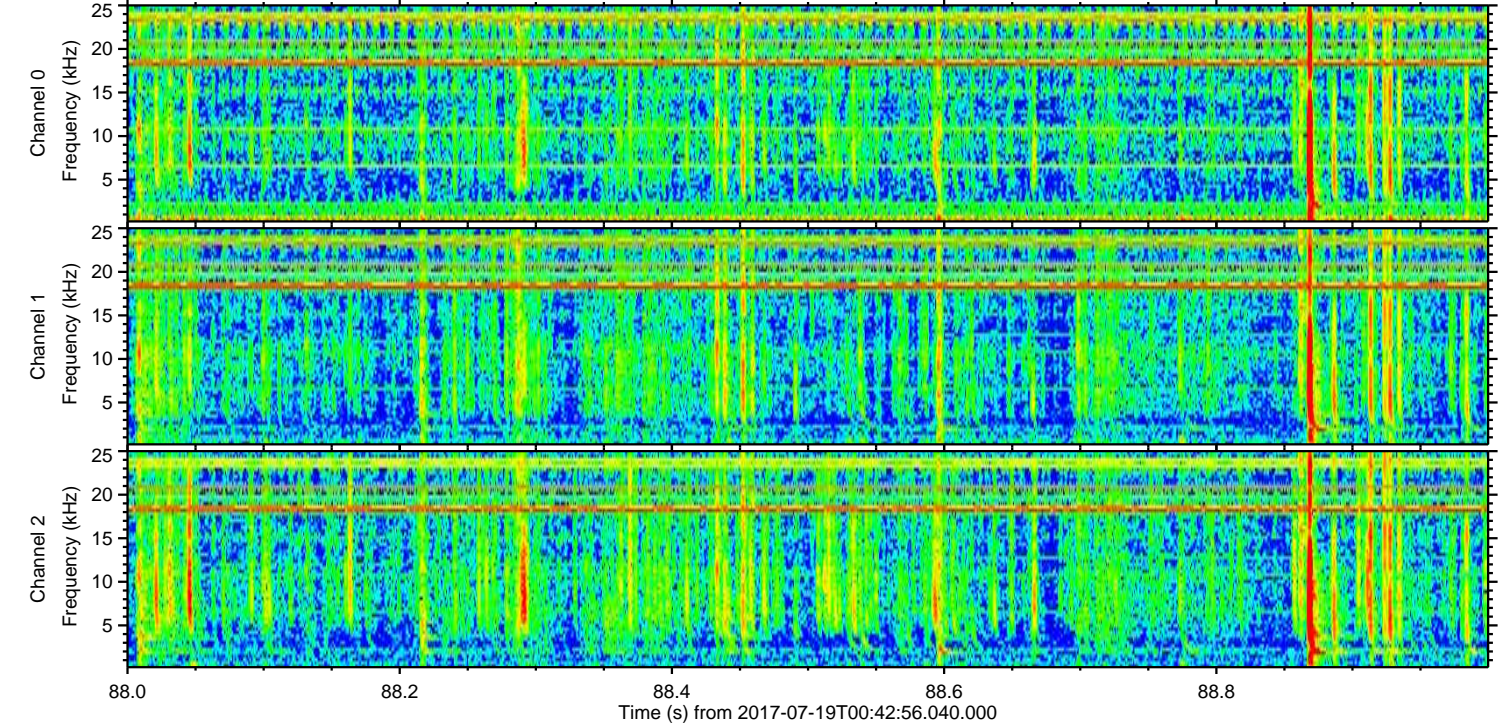
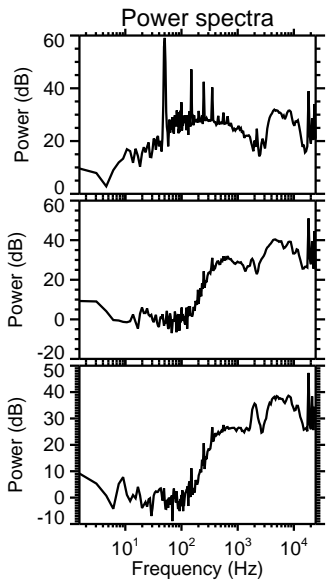
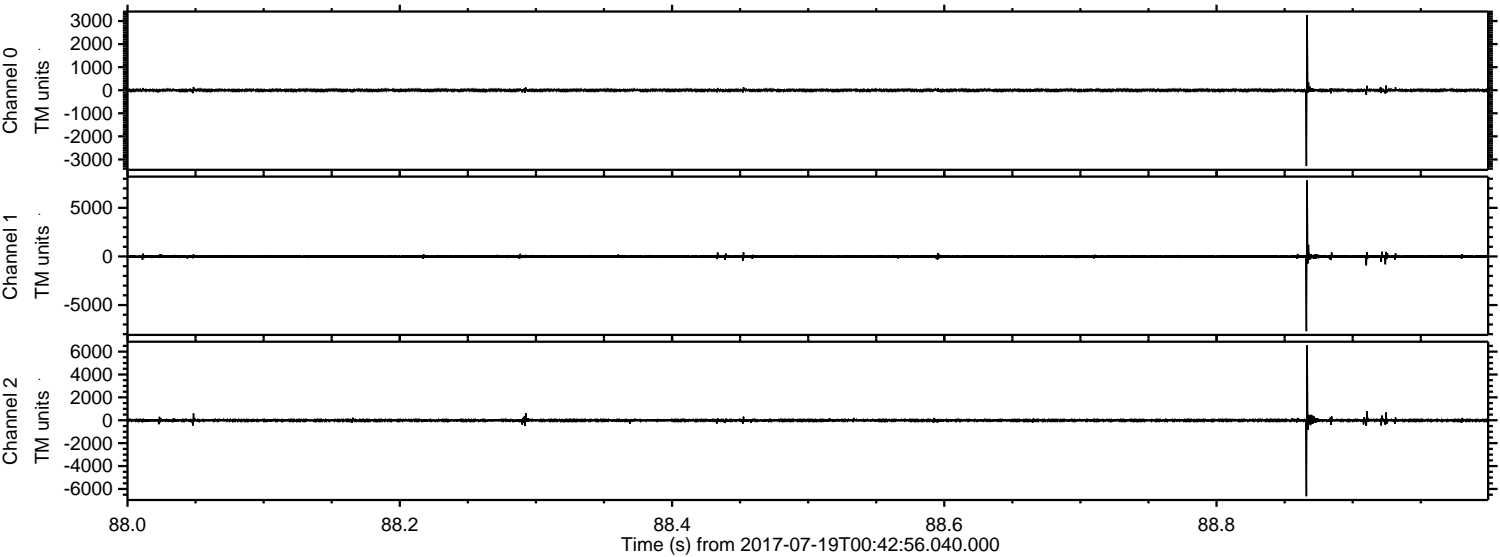


Channel 0
mn: -2724
mx: 2922
 μ : -2.2
 σ : 37.2

Channel 1
mn: -8556
mx: 6235
 μ : -9.3
 σ : 110.0

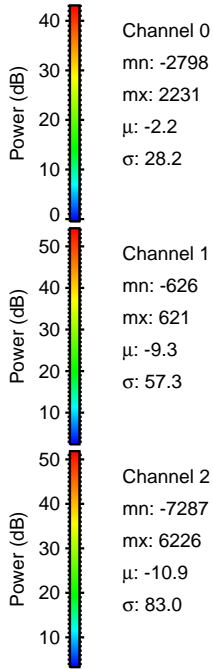
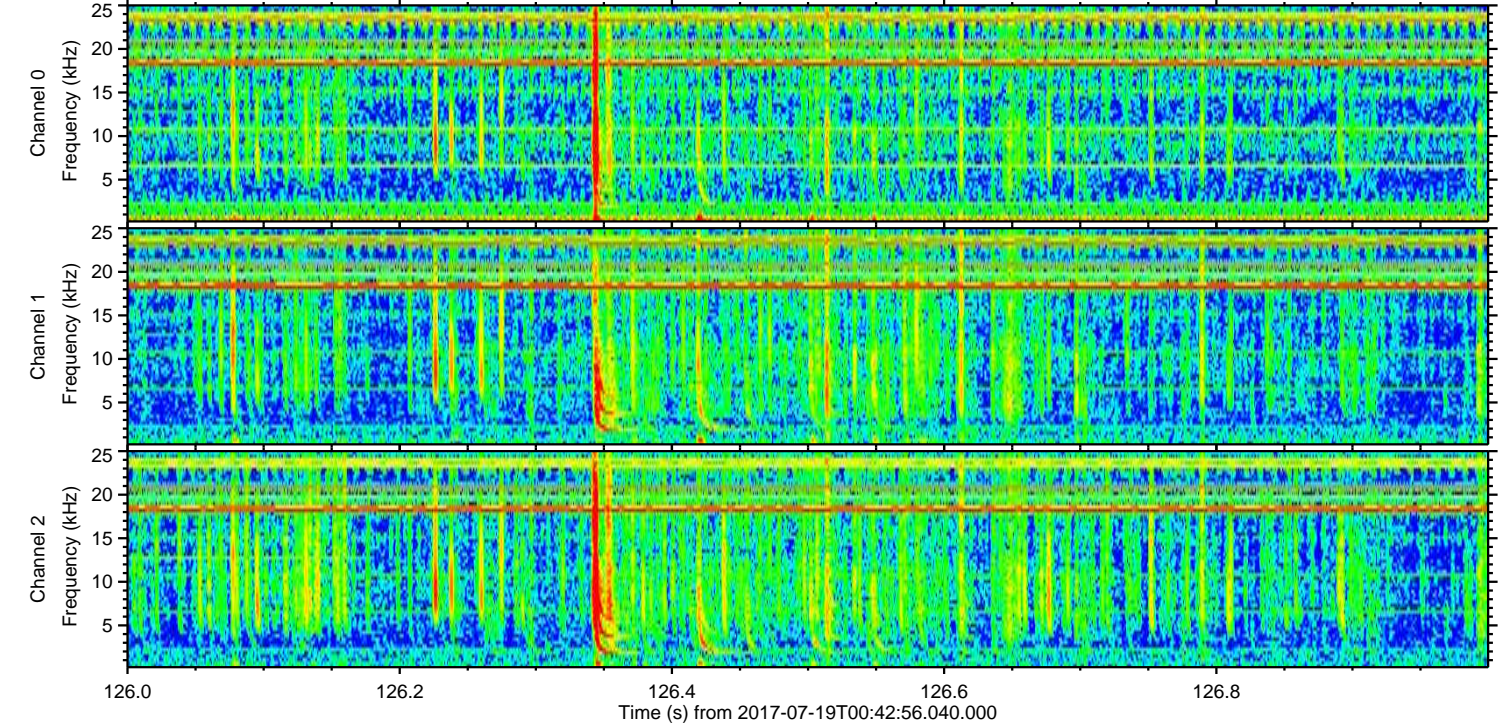
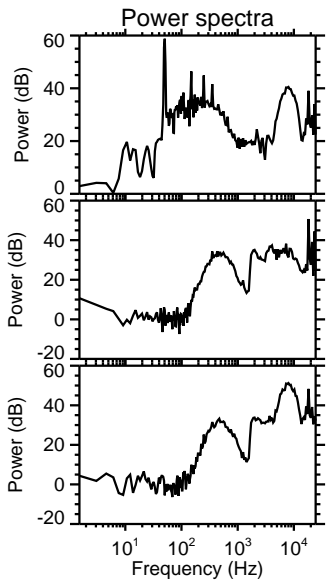
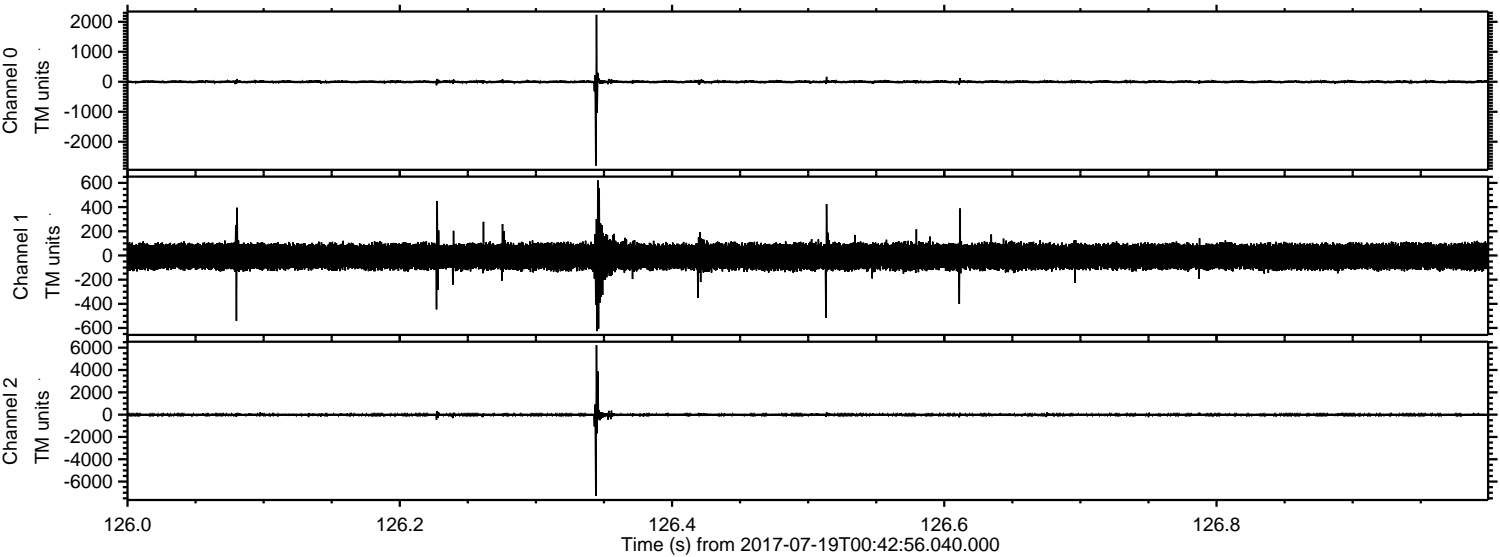
Channel 2
mn: -3369
mx: 5340
 μ : -10.8
 σ : 70.6

Processed Thu Jul 20 23:42:41 2017 by ELM ver.2012-10-06 from 001__elm20170719_004255__dat00.bin



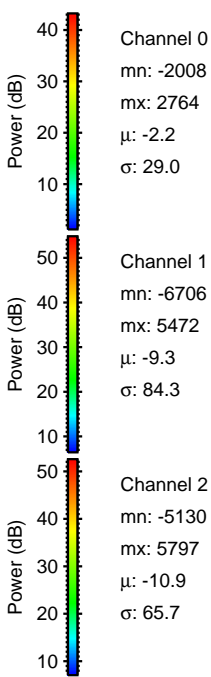
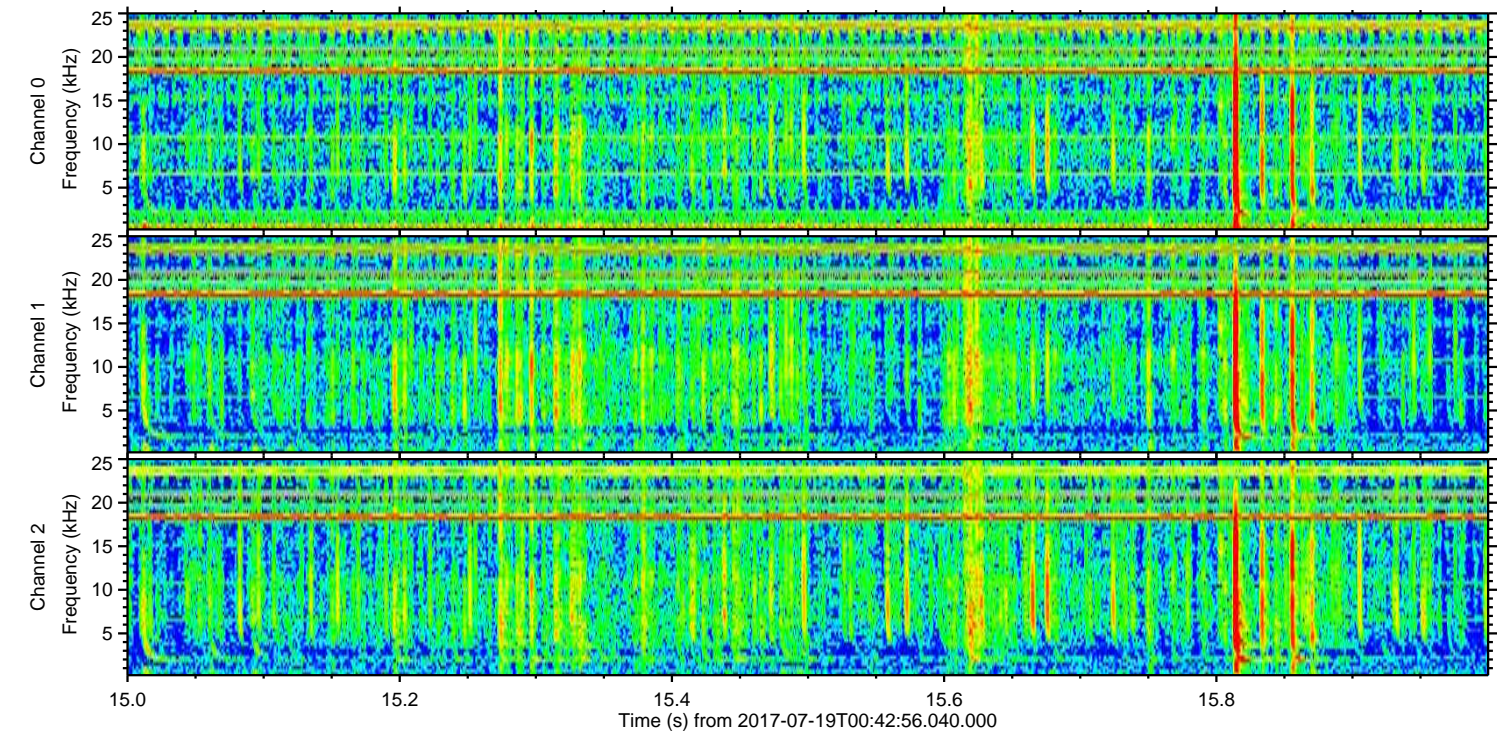
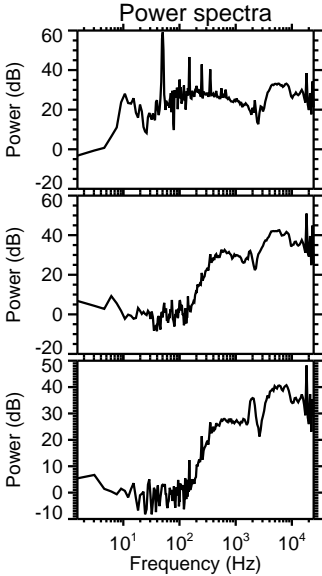
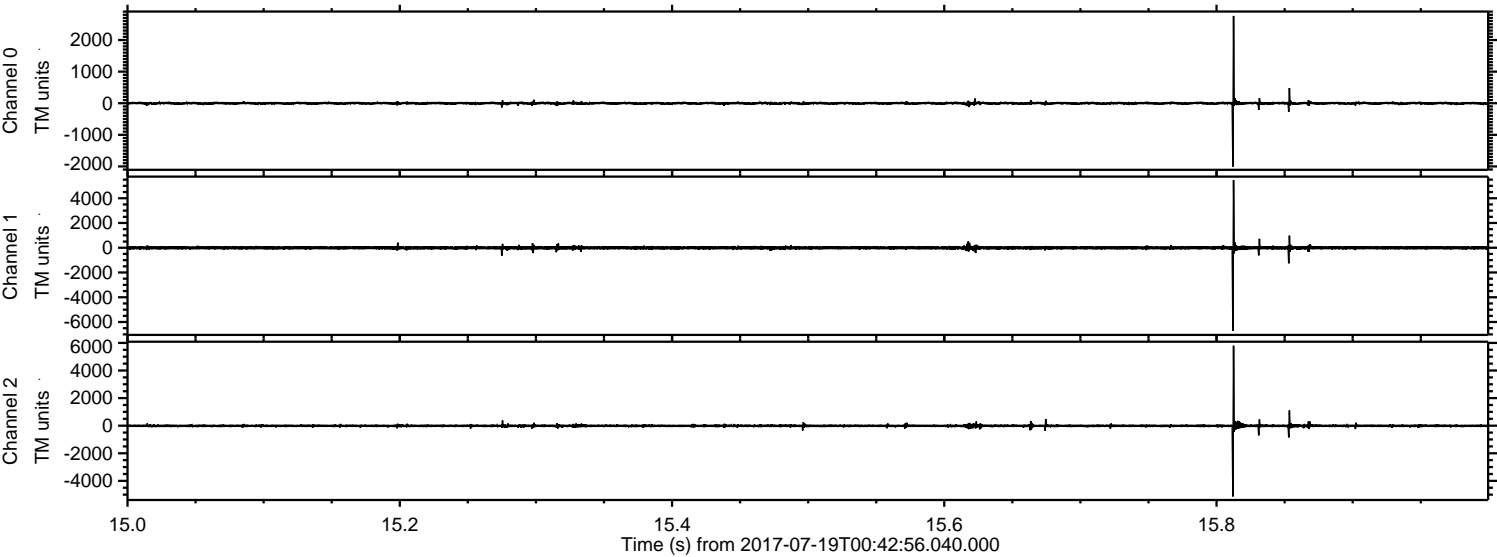
ELMAVAN 3D WAVEFORMS (Measured data sampled at 50 kHz) 51000 packets of 144 samples from 2017-07-19T00:42:56.040.000. Part 127/147

Processed Thu Jul 20 23:42:42 2017 by ELM ver.2012-10-06 from 001__elm20170719_004255__dat00.bin



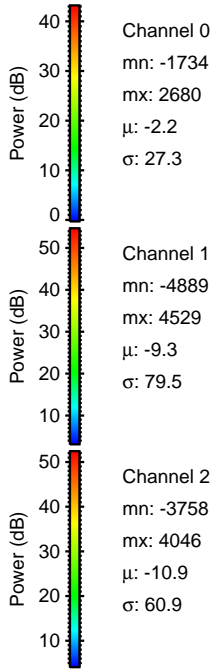
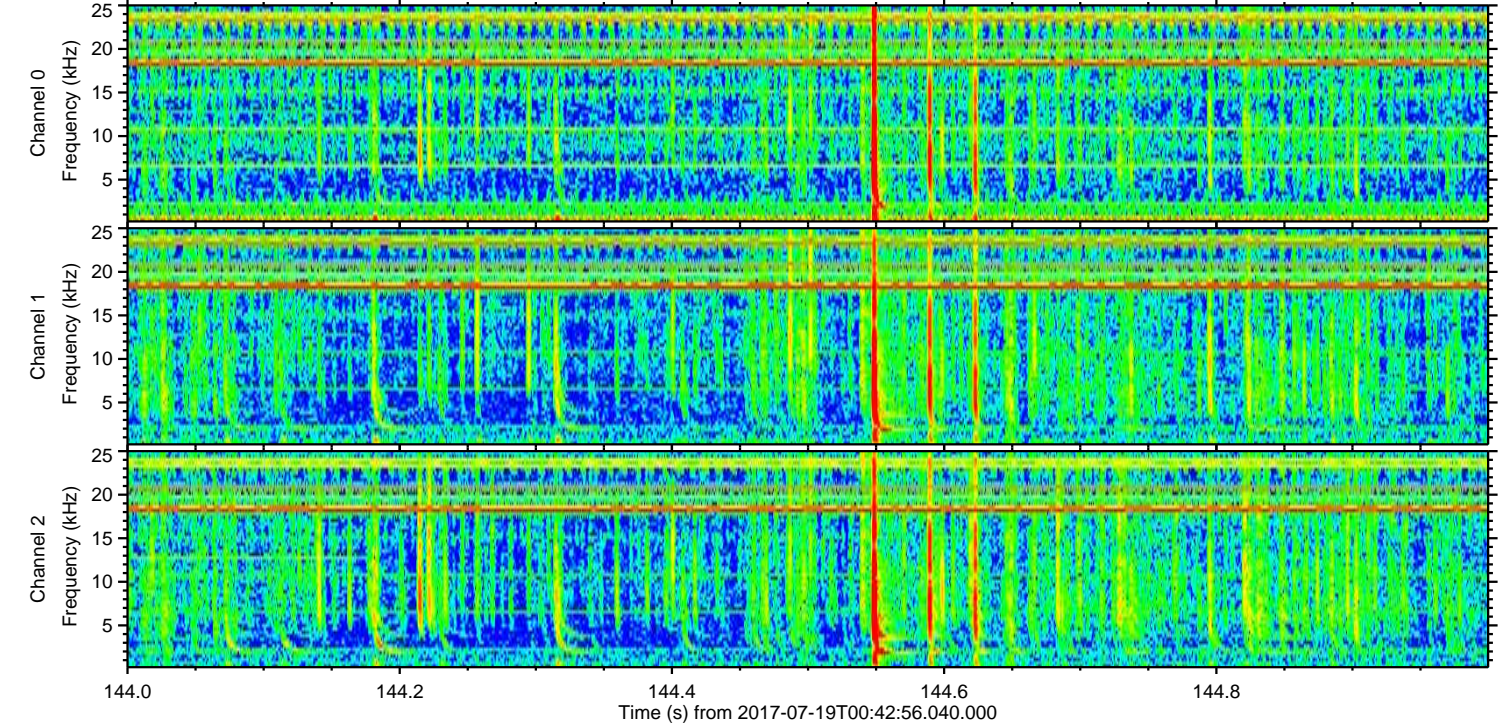
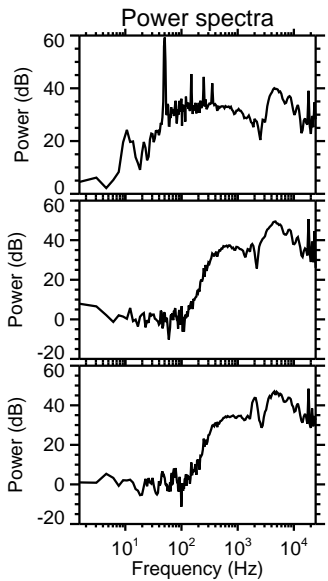
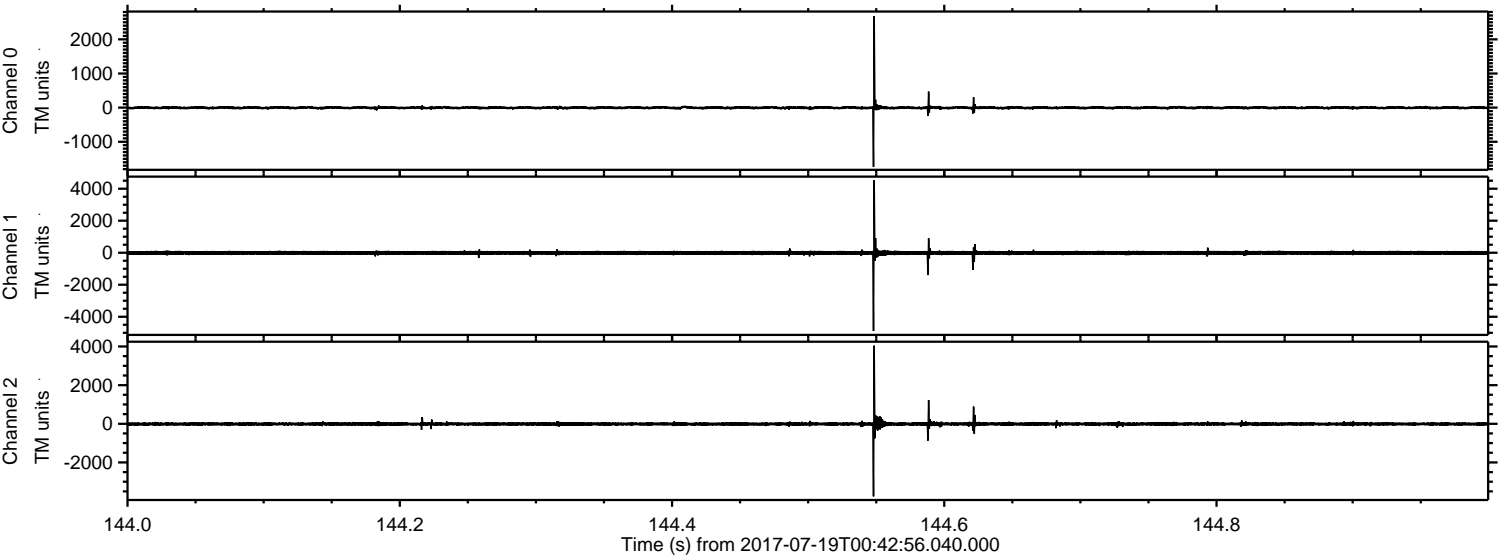
ELMAVAN 3D WAVEFORMS (Measured data sampled at 50 kHz) 51000 packets of 144 samples from 2017-07-19T00:42:56.040.000. Part 16/147

Processed Thu Jul 20 23:42:42 2017 by ELM ver.2012-10-06 from 001__elm20170719_004255__dat00.bin



ELMAVAN 3D WAVEFORMS (Measured data sampled at 50 kHz) 51000 packets of 144 samples from 2017-07-19T00:42:56.040.000. Part 145/147

Processed Thu Jul 20 23:42:43 2017 by ELM ver.2012-10-06 from 001__elm20170719_004255__dat00.bin

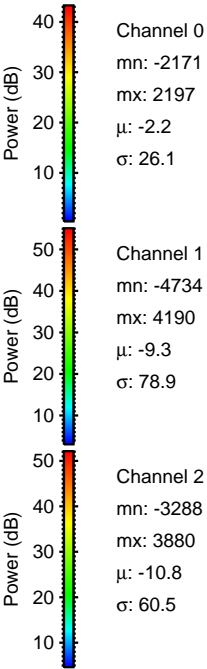
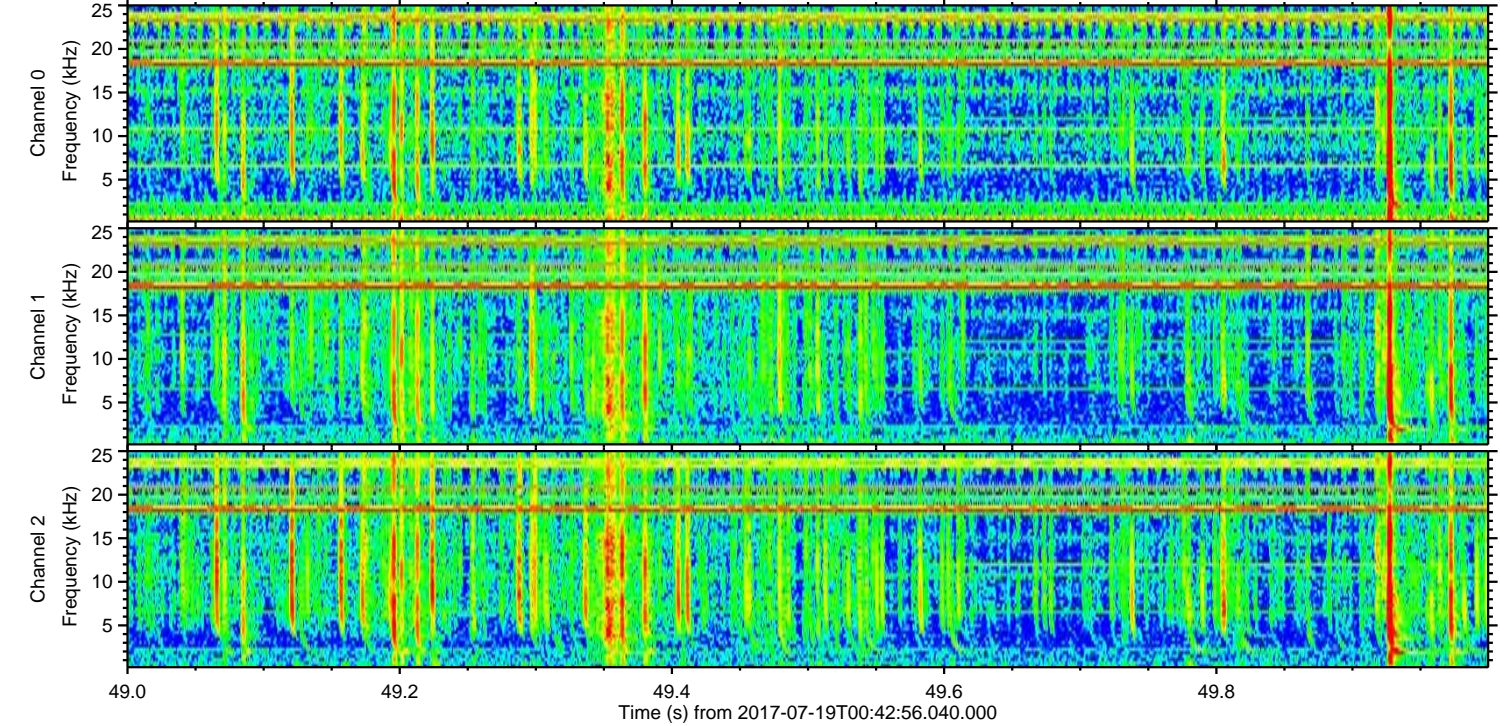
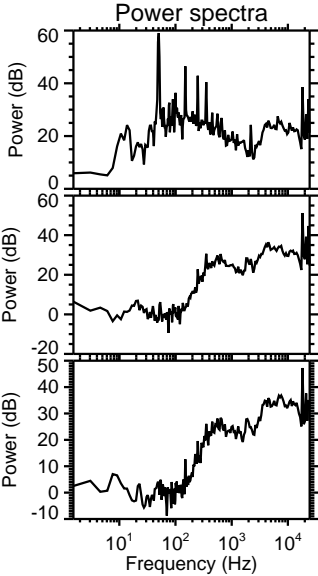
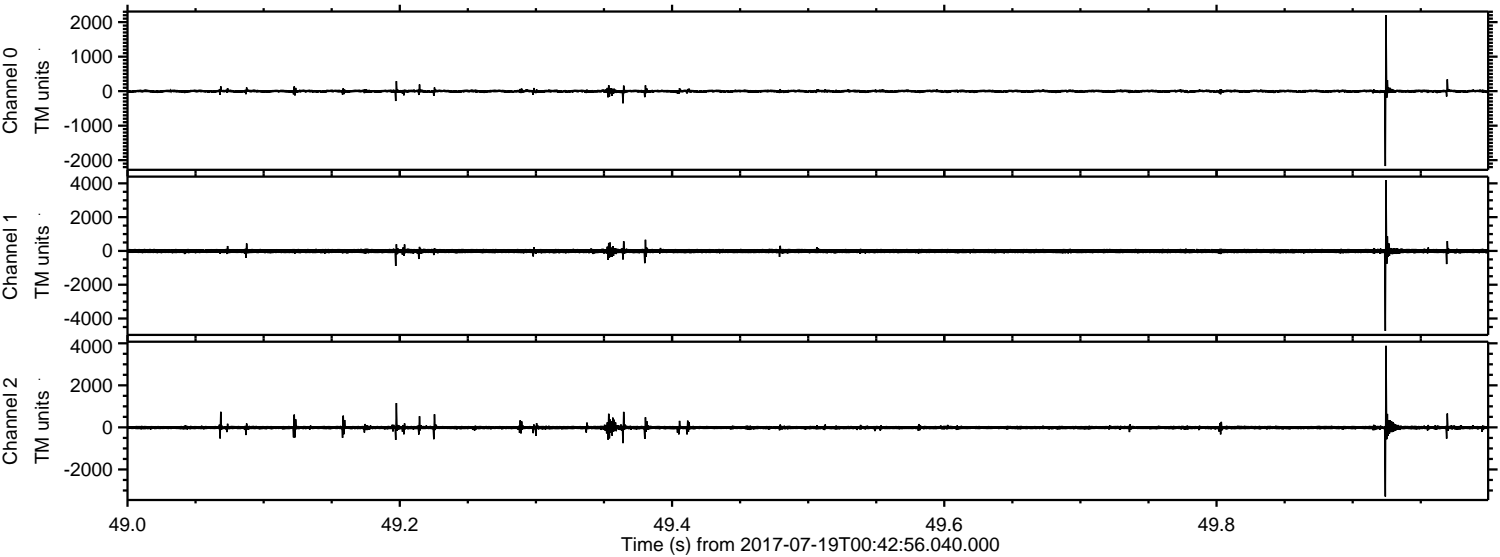


Channel 0
mn: -1734
mx: 2680
 μ : -2.2
 σ : 27.3

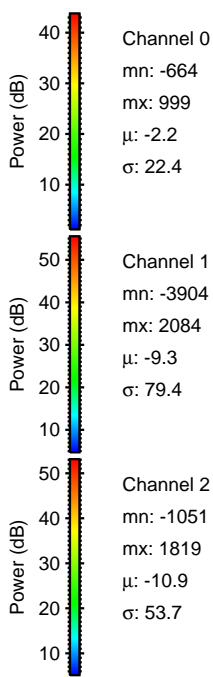
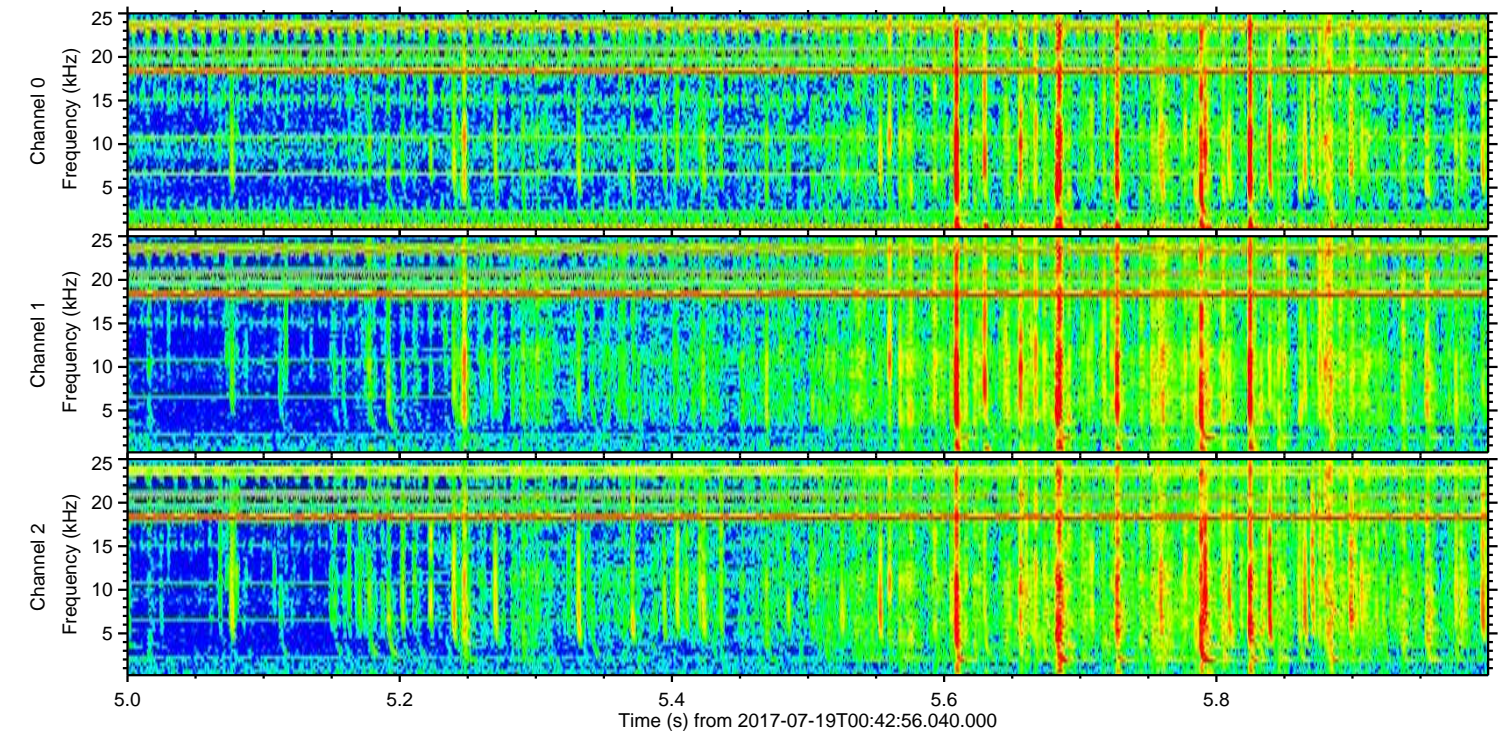
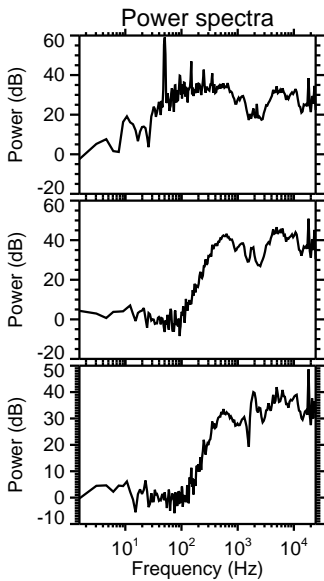
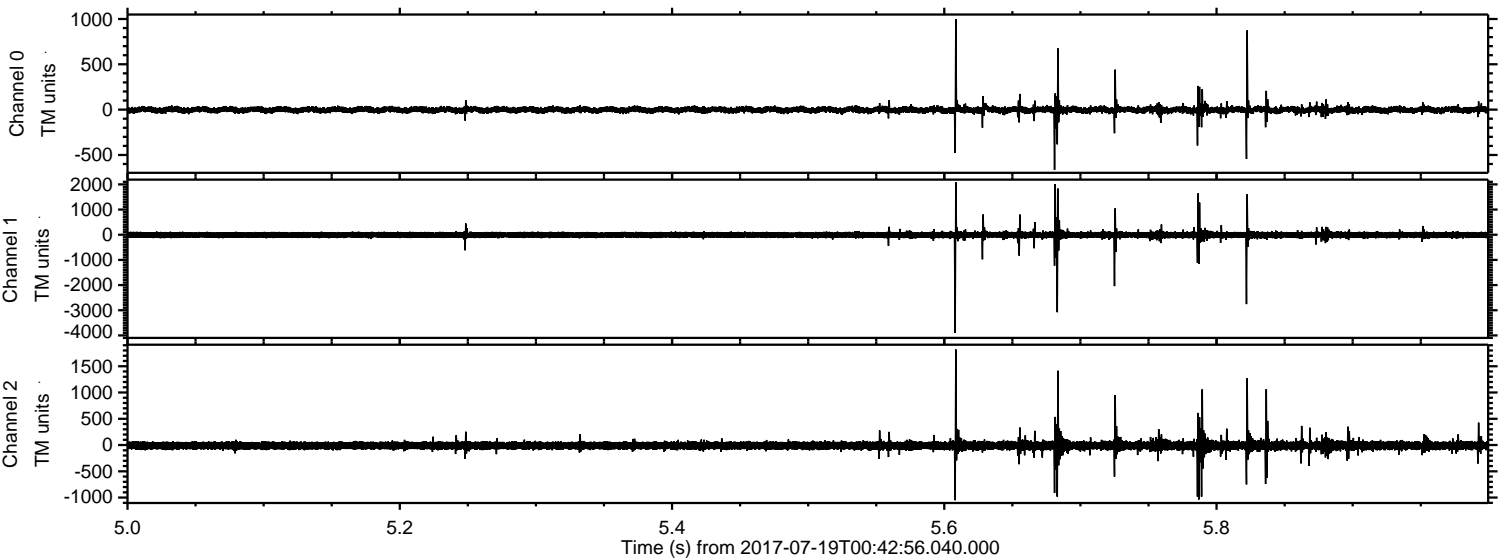
Channel 1
mn: -4889
mx: 4529
 μ : -9.3
 σ : 79.5

Channel 2
mn: -3758
mx: 4046
 μ : -10.9
 σ : 60.9

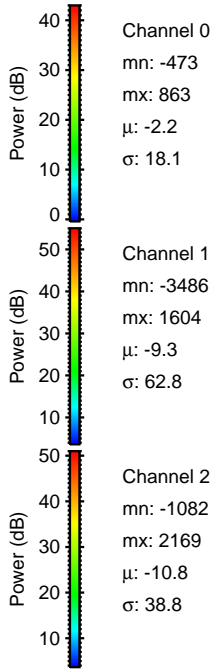
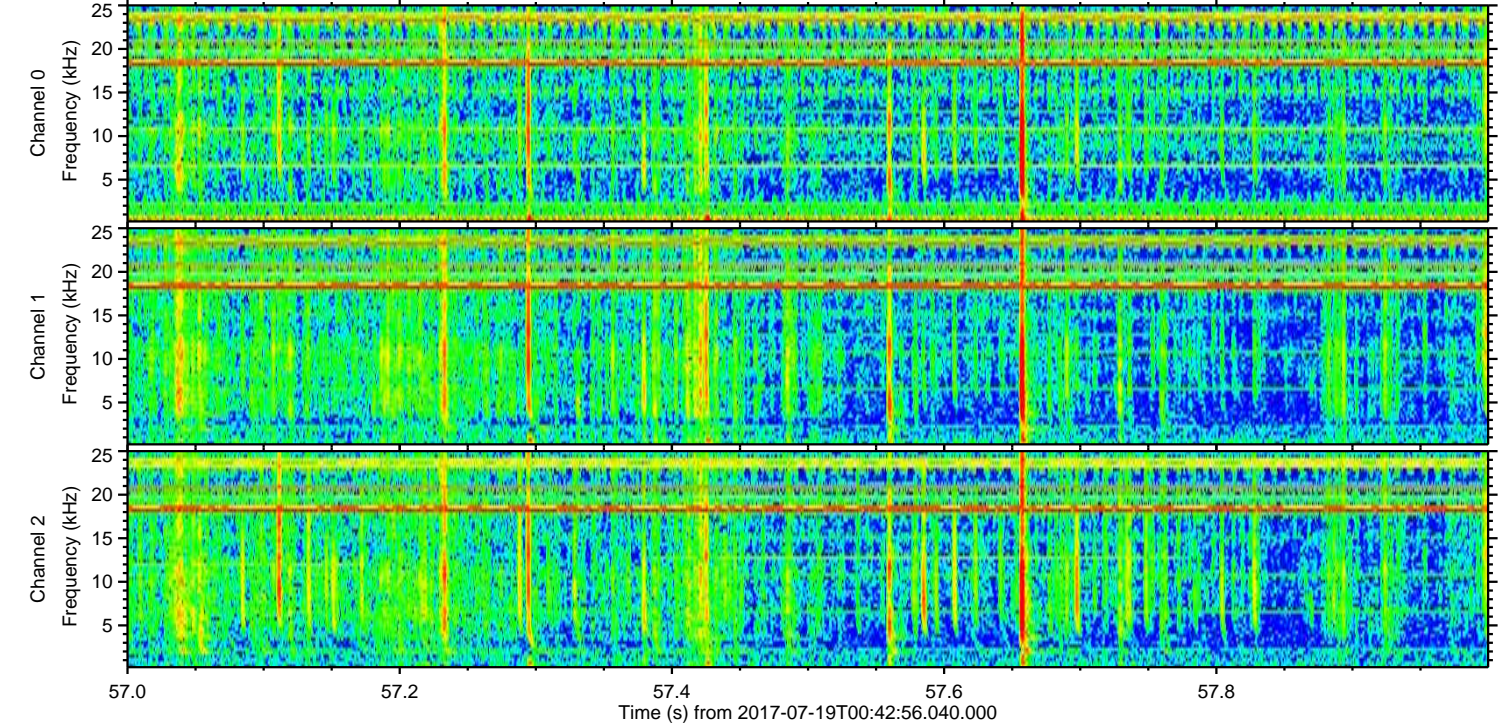
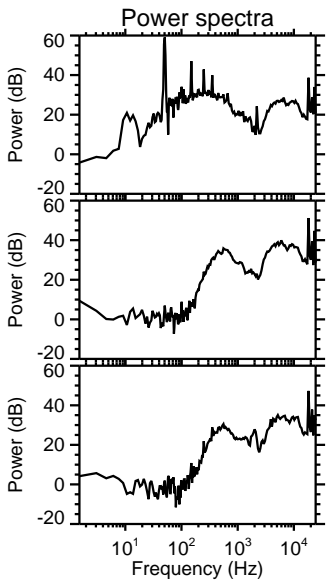
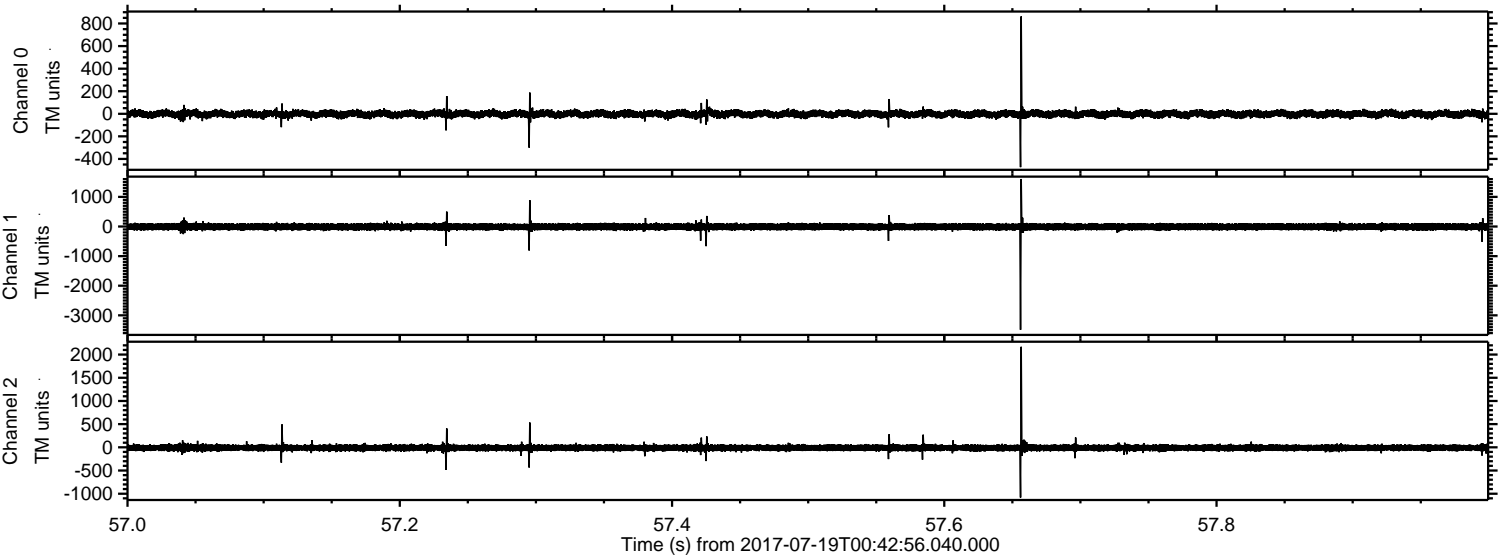
Processed Thu Jul 20 23:42:44 2017 by ELM ver.2012-10-06 from 001__elm20170719_004255__dat00.bin



Processed Thu Jul 20 23:42:45 2017 by ELM ver.2012-10-06 from 001__elm20170719_004255__dat00.bin



Processed Thu Jul 20 23:42:45 2017 by ELM ver.2012-10-06 from 001__elm20170719_004255__dat00.bin



Processed Thu Jul 20 23:42:46 2017 by ELM ver.2012-10-06 from 001__elm20170719_004255__dat00.bin

