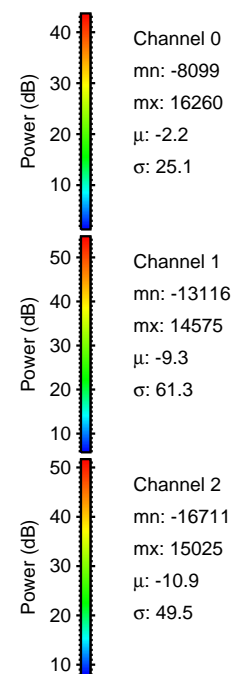
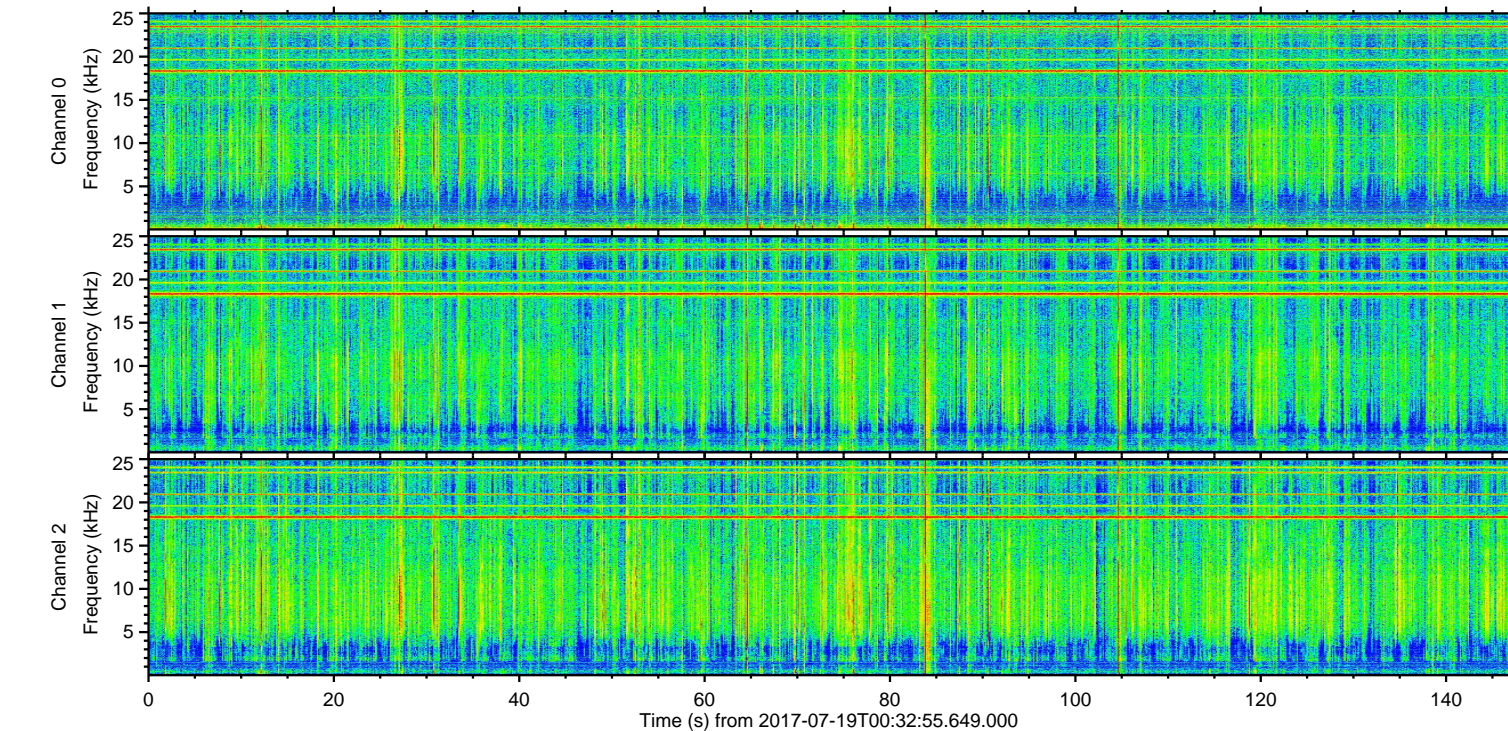
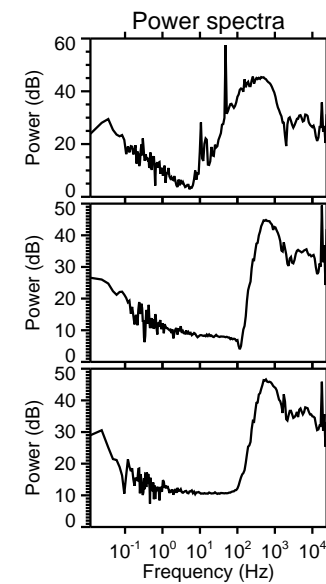
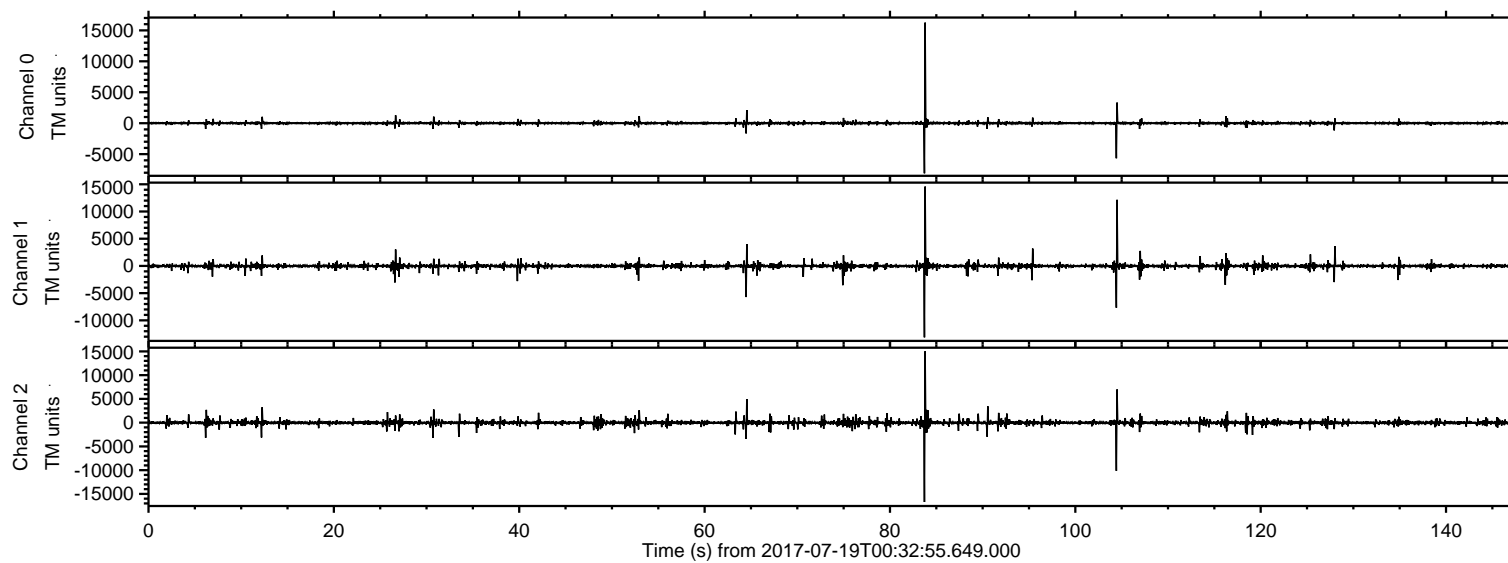


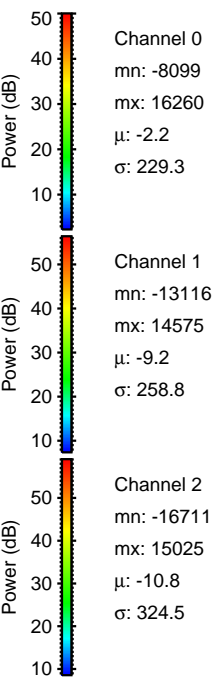
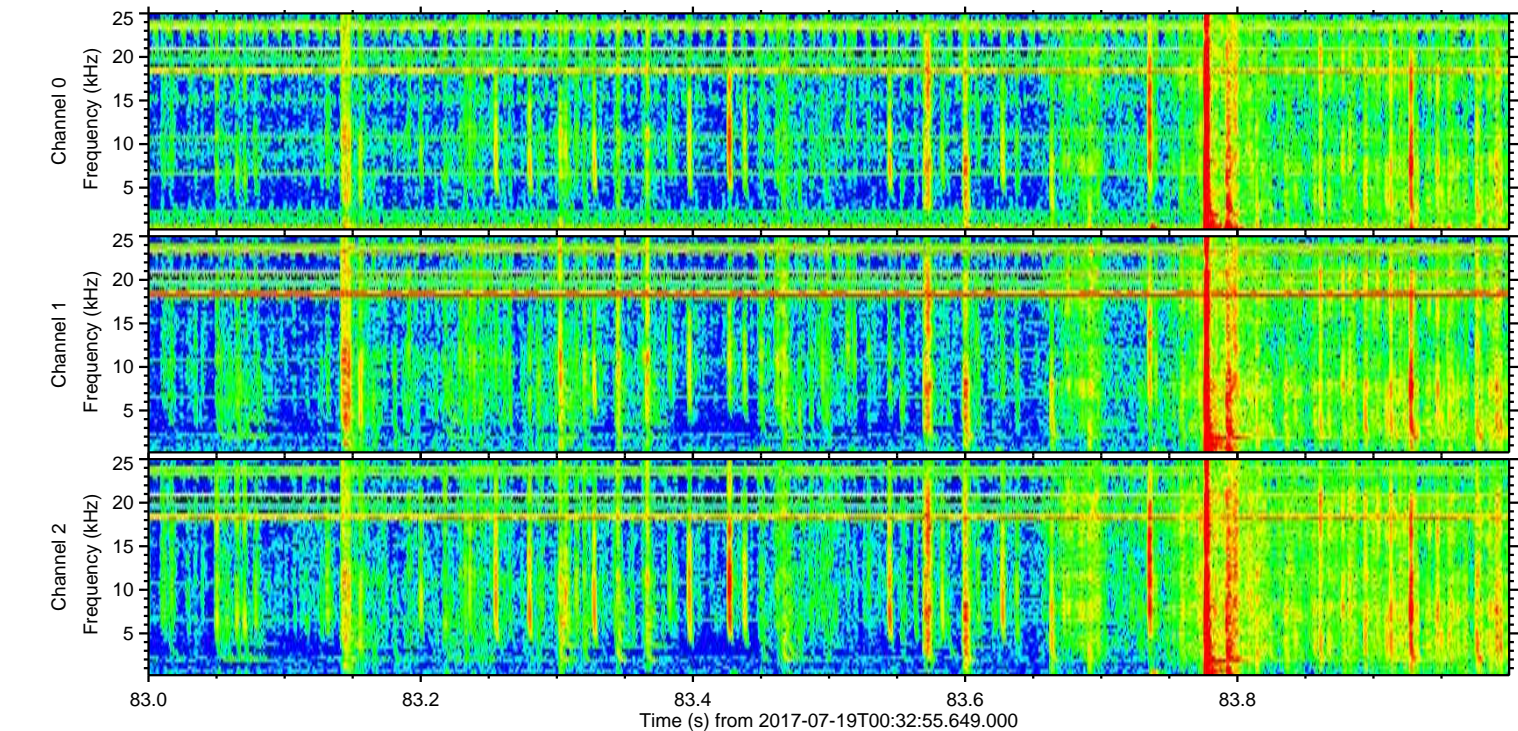
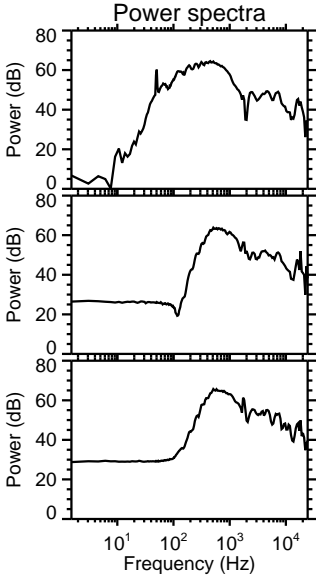
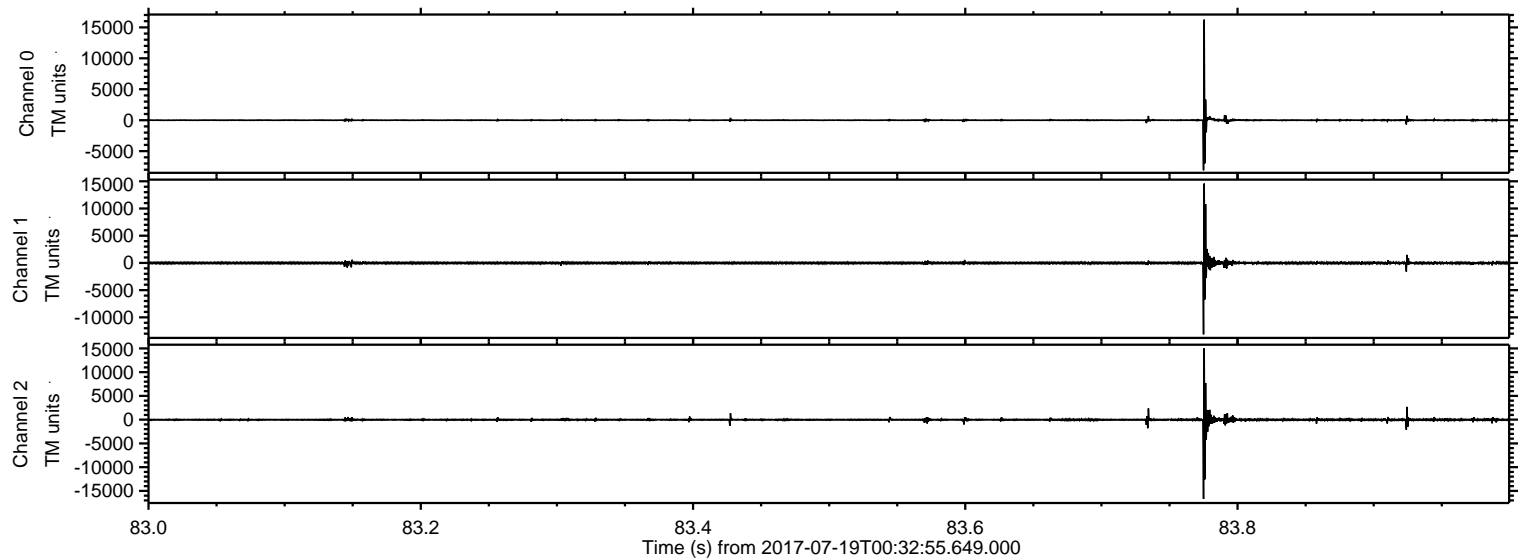
ELMAVAN 3D WAVEFORMS (Measured data sampled at 50 kHz) 51000 packets of 144 samples from 2017-07-19T00:32:55.649.000.

Processed Thu Jul 20 23:41:00 2017 by ELM ver.2012-10-06 from 001__elm20170719_003254__dat00.bin



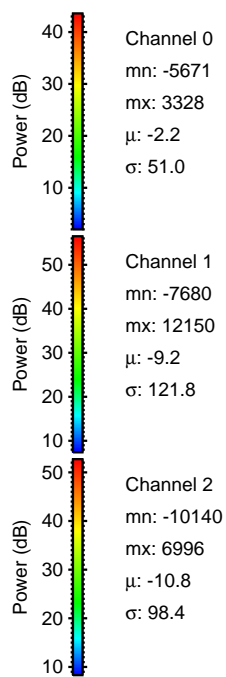
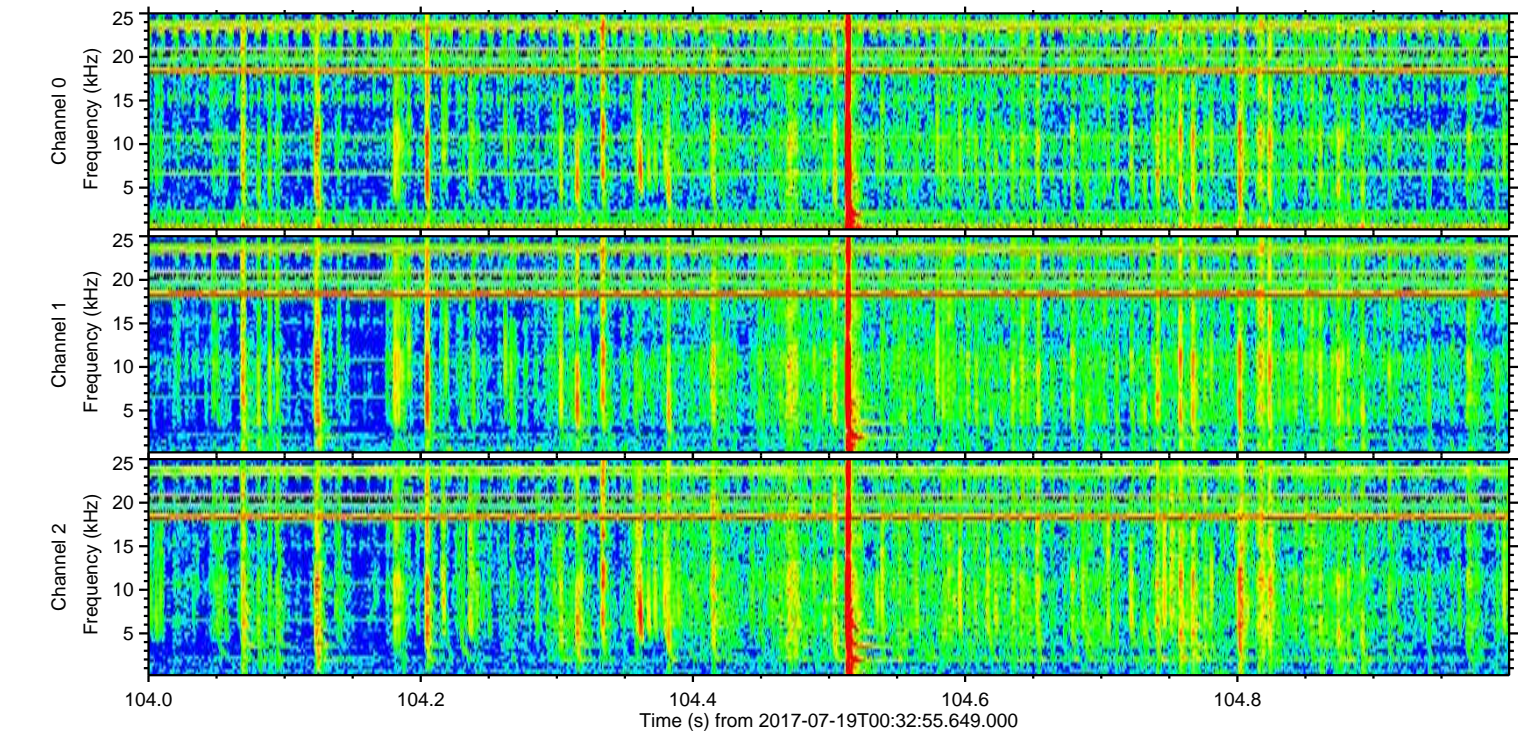
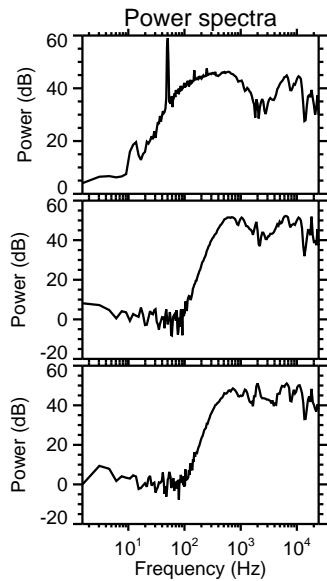
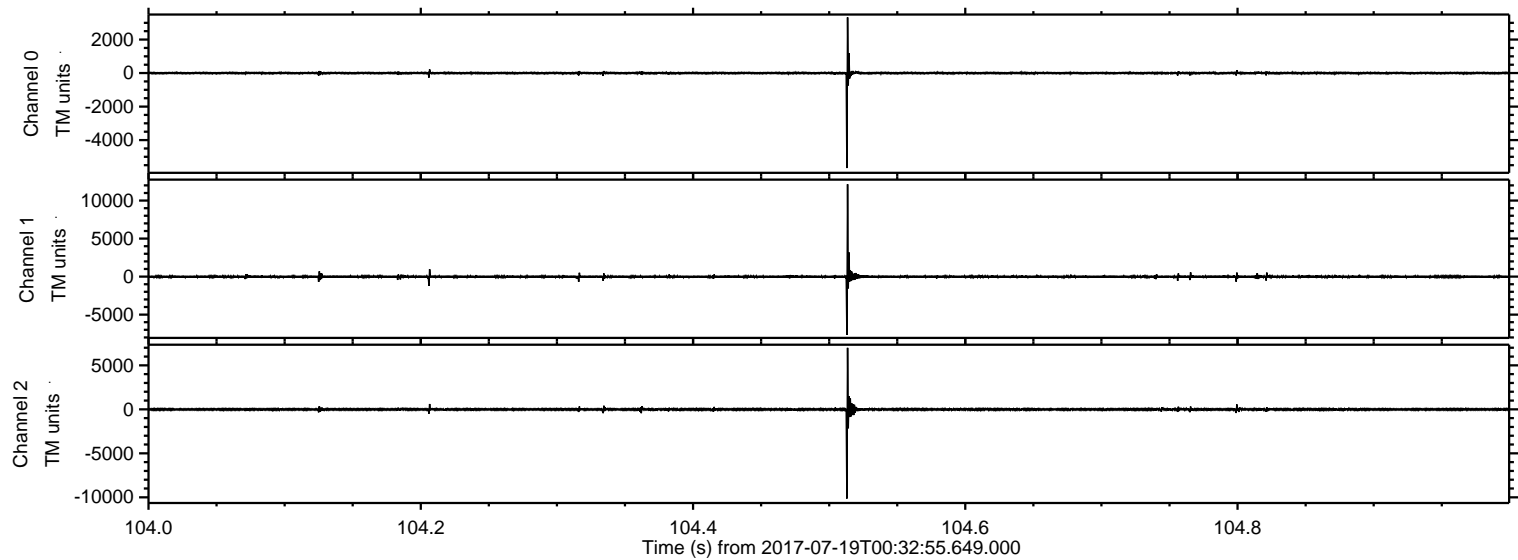
ELMAVAN 3D WAVEFORMS (Measured data sampled at 50 kHz) 51000 packets of 144 samples from 2017-07-19T00:32:55.649.000. Part 84/147

Processed Thu Jul 20 23:41:08 2017 by ELM ver.2012-10-06 from 001__elm20170719_003254__dat00.bin

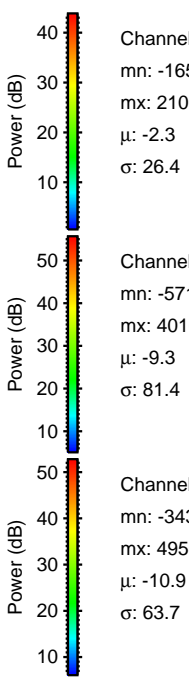
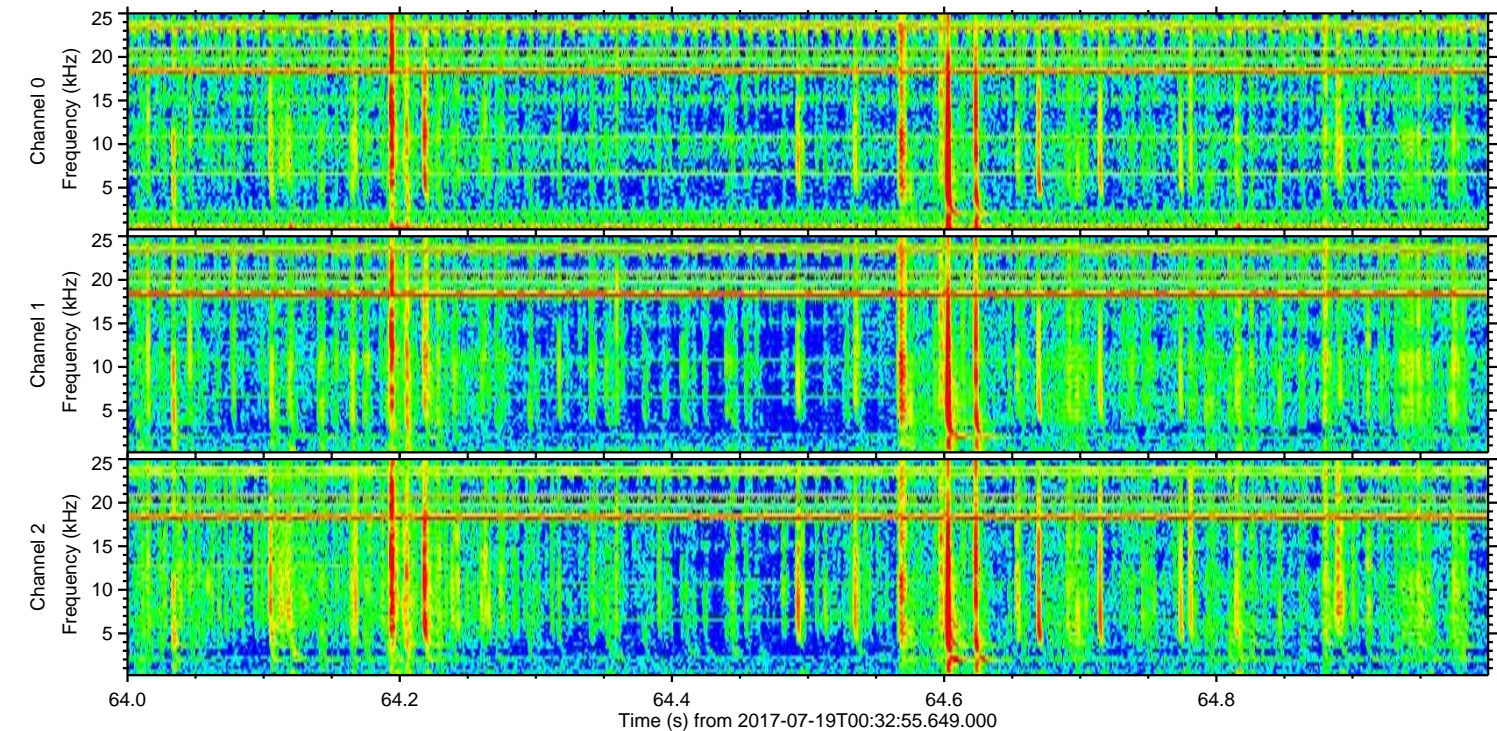
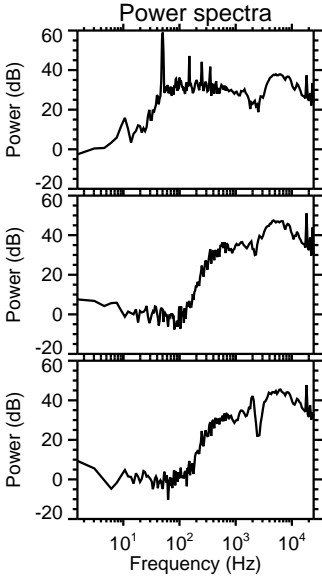
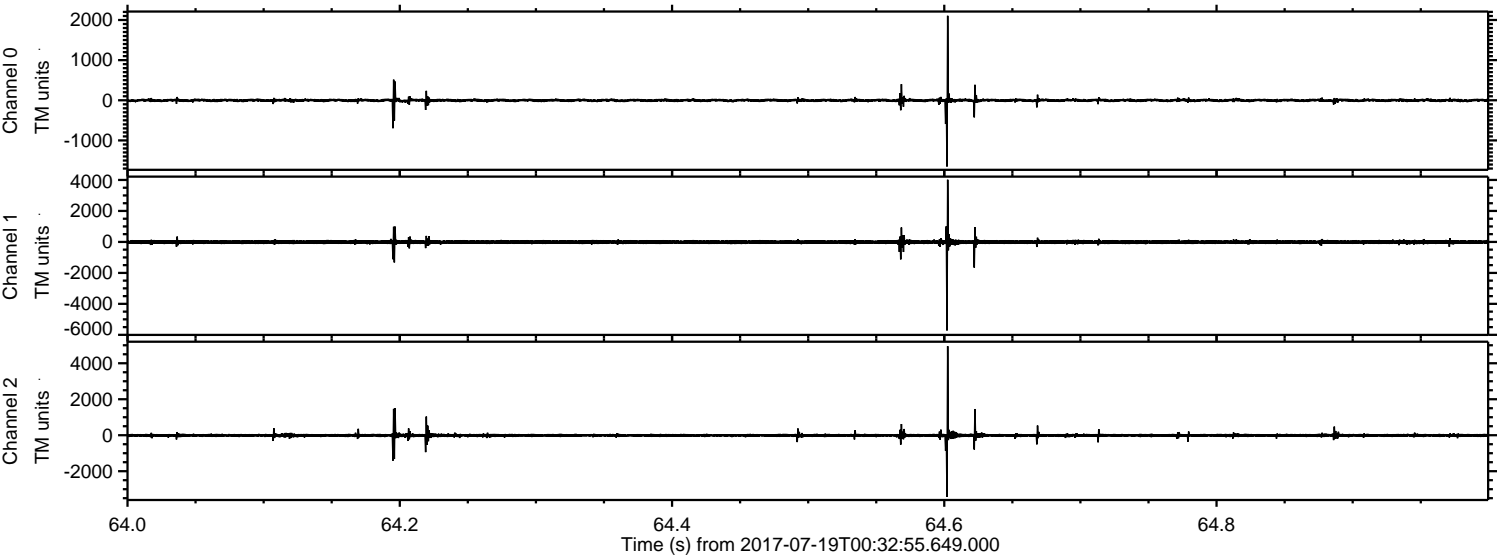


ELMAVAN 3D WAVEFORMS (Measured data sampled at 50 kHz) 51000 packets of 144 samples from 2017-07-19T00:32:55.649.000. Part 105/147

Processed Thu Jul 20 23:41:08 2017 by ELM ver.2012-10-06 from 001__elm20170719_003254__dat00.bin



Processed Thu Jul 20 23:41:09 2017 by ELM ver.2012-10-06 from 001__elm20170719_003254__dat00.bin



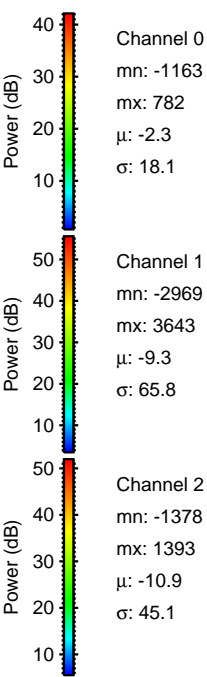
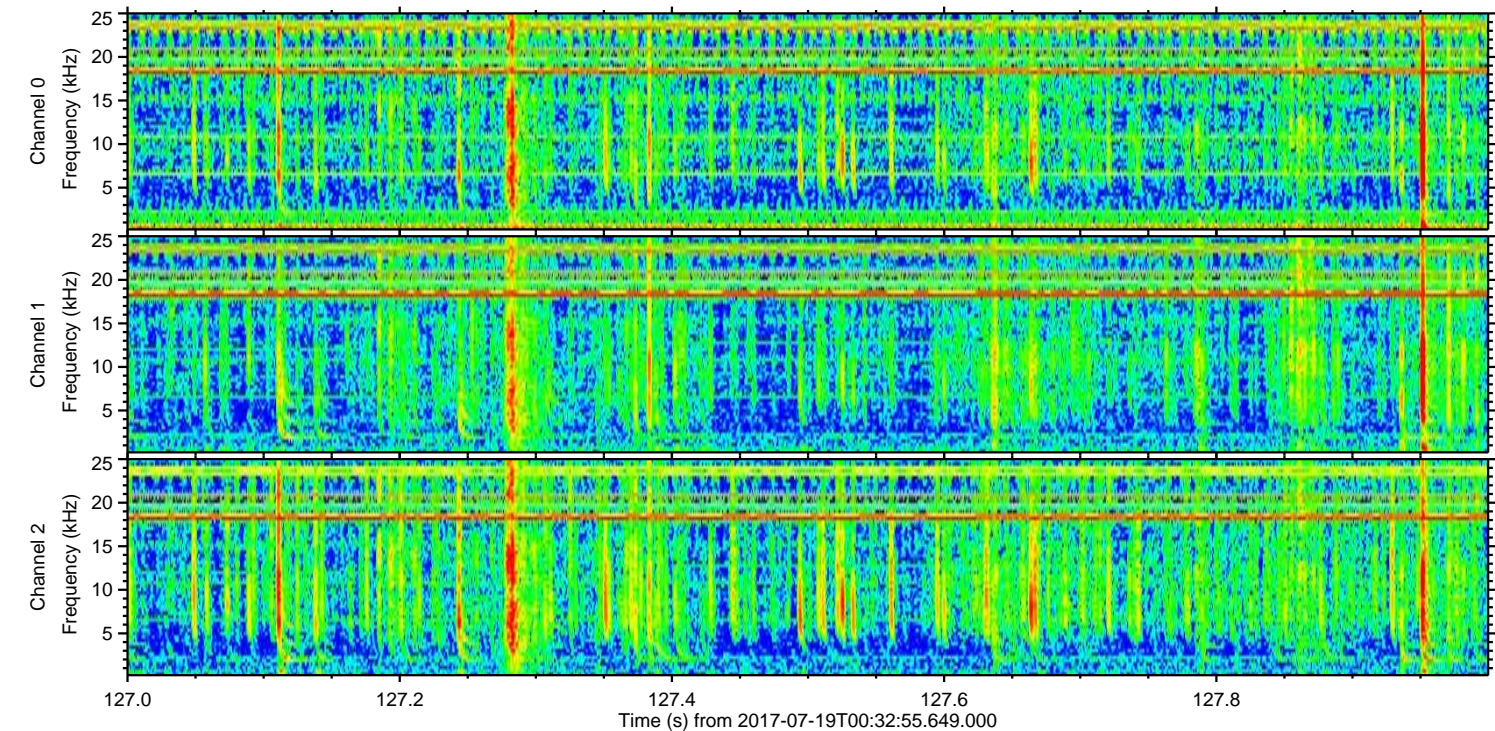
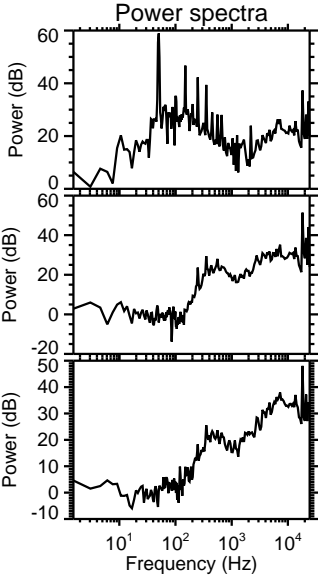
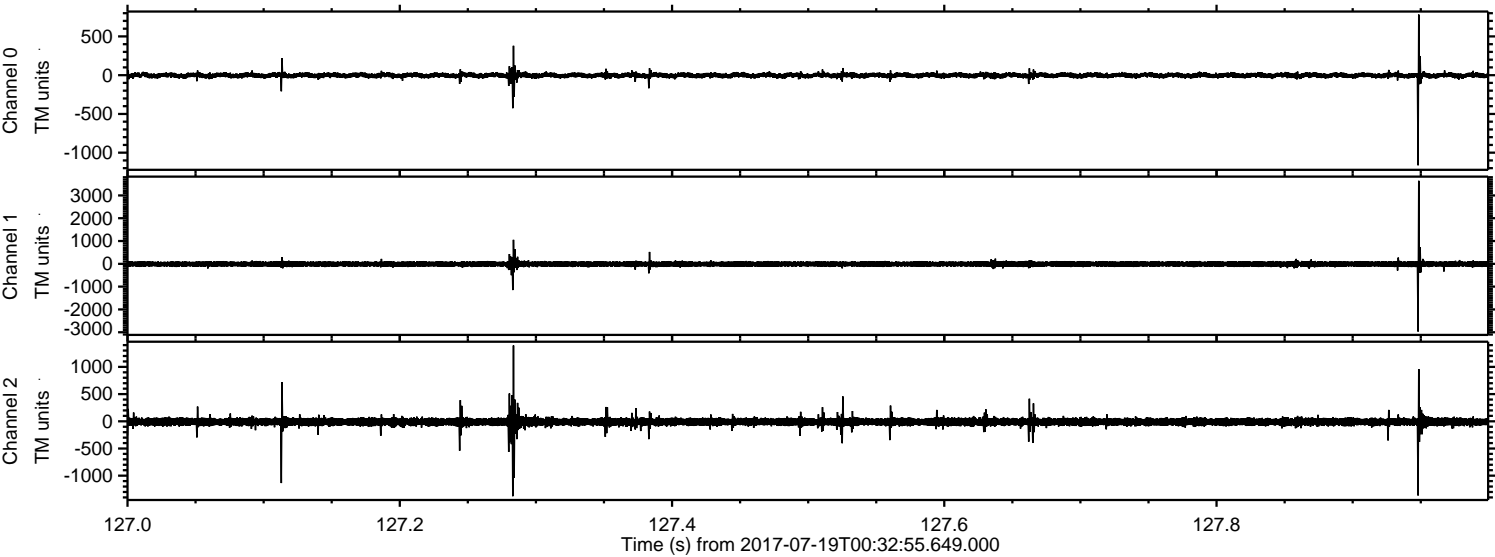
Channel 0
mn: -1650
mx: 2105
 μ : -2.3
 σ : 26.4

Channel 1
mn: -5719
mx: 4016
 μ : -9.3
 σ : 81.4

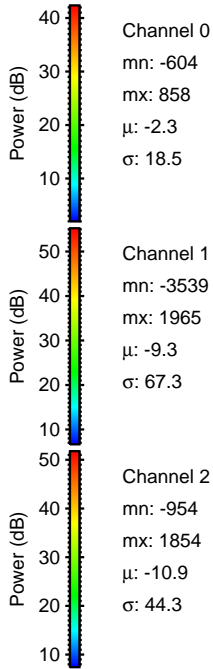
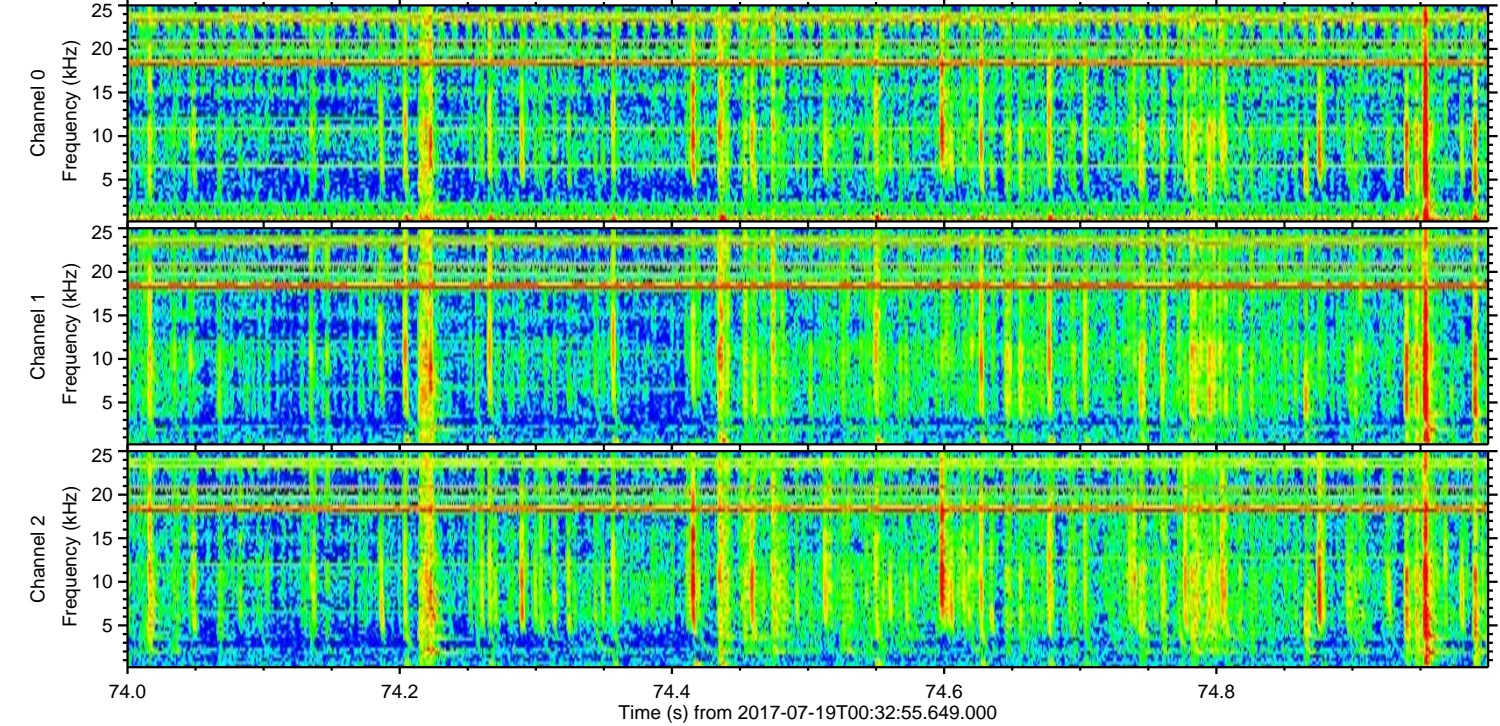
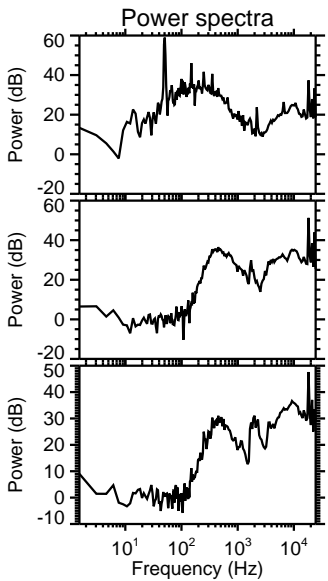
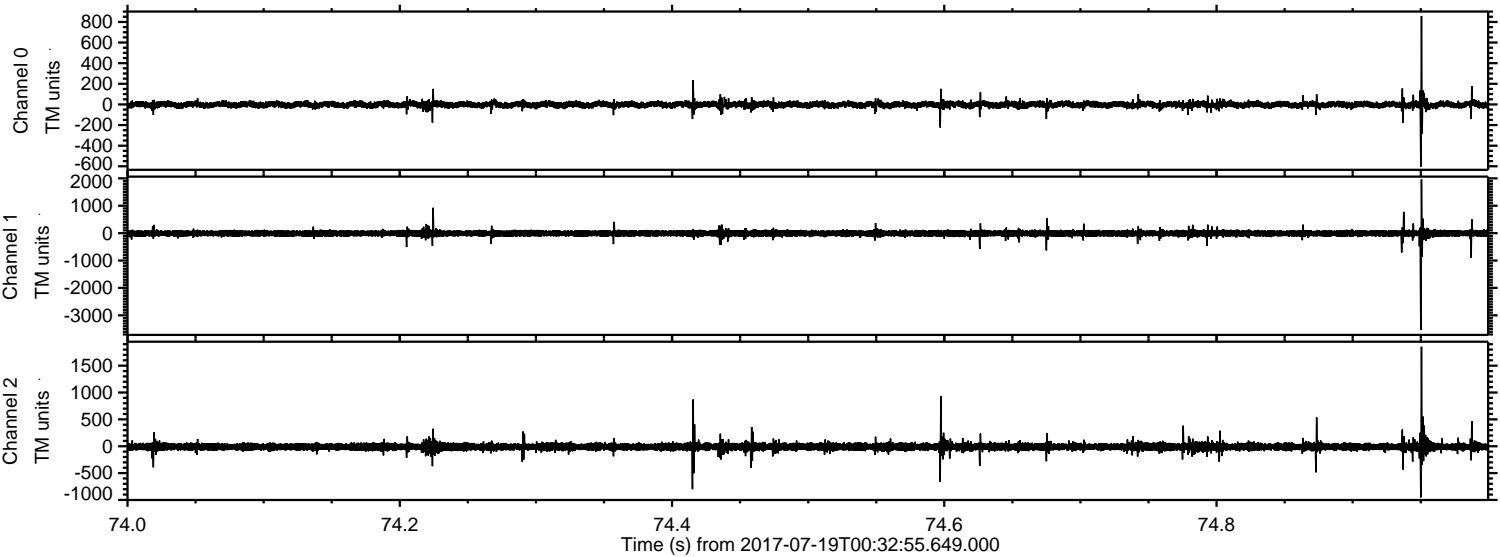
Channel 2
mn: -3430
mx: 4950
 μ : -10.9
 σ : 63.7

ELMAVAN 3D WAVEFORMS (Measured data sampled at 50 kHz) 51000 packets of 144 samples from 2017-07-19T00:32:55.649.000. Part 128/147

Processed Thu Jul 20 23:41:10 2017 by ELM ver.2012-10-06 from 001__elm20170719_003254__dat00.bin

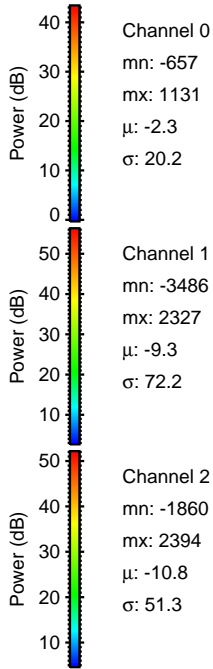
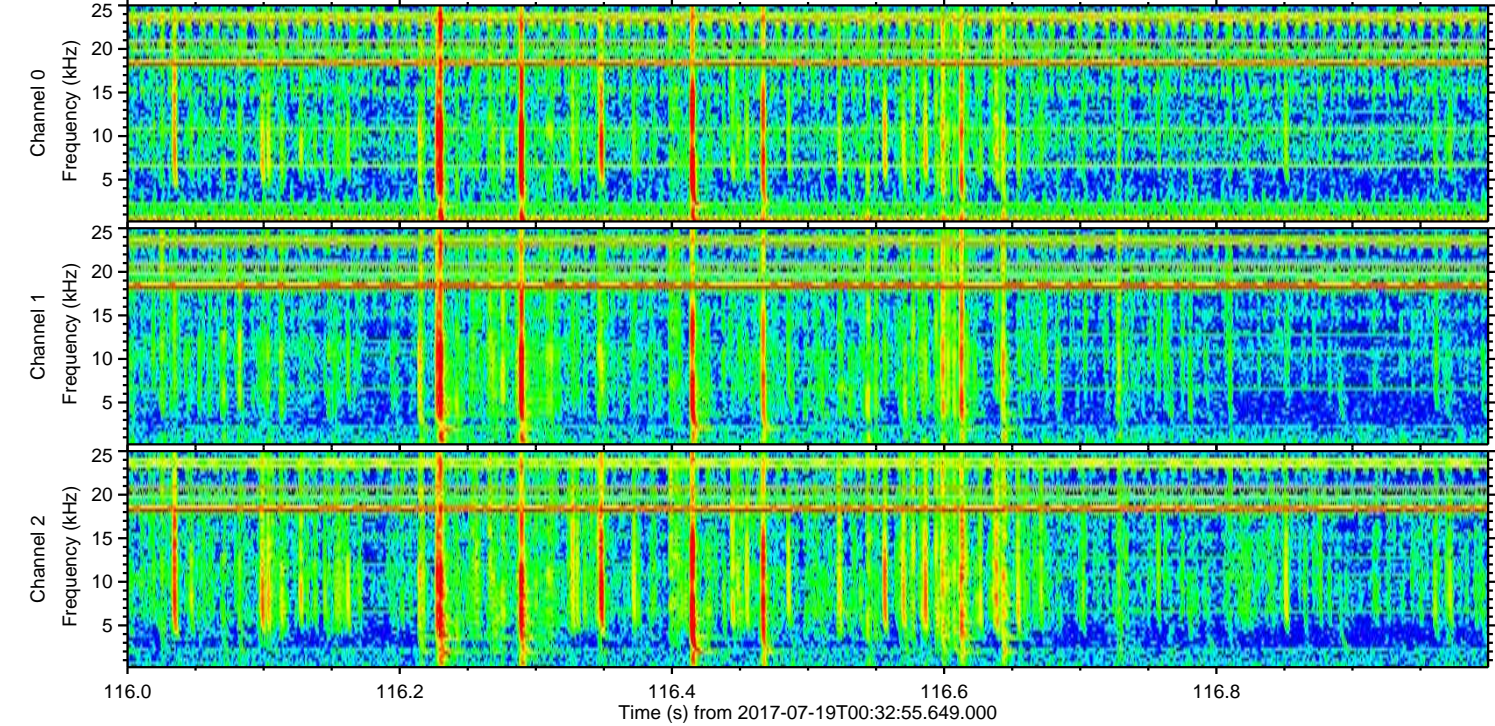
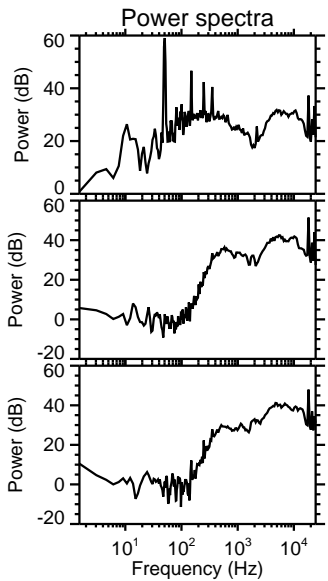
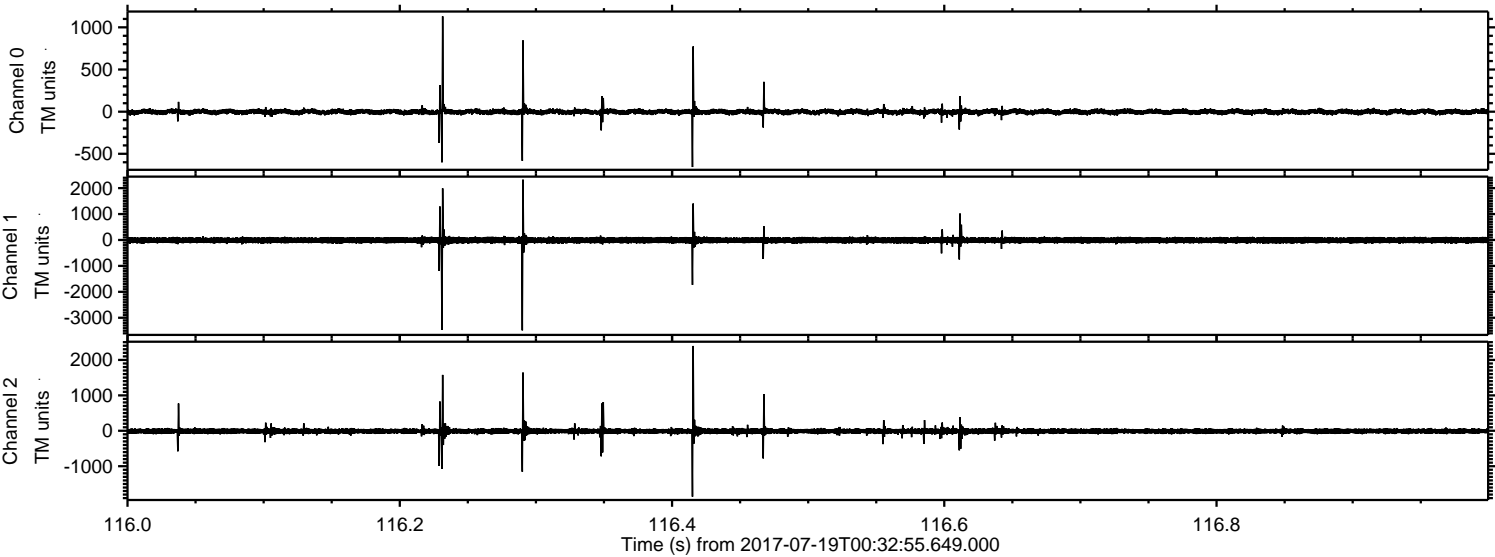


Processed Thu Jul 20 23:41:10 2017 by ELM ver.2012-10-06 from 001__elm20170719_003254__dat00.bin

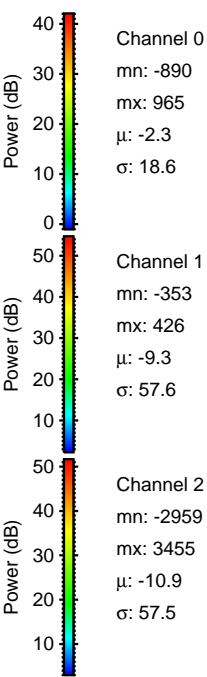
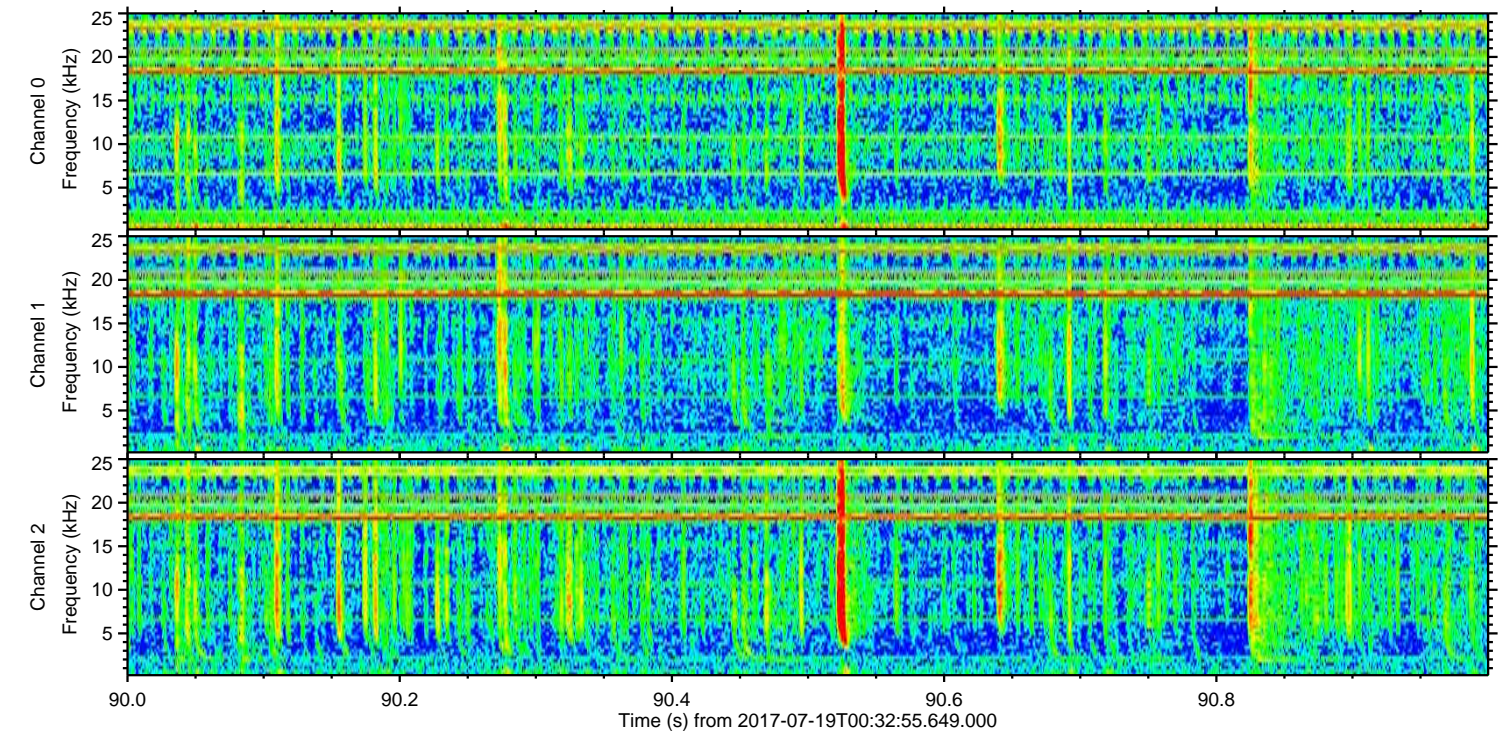
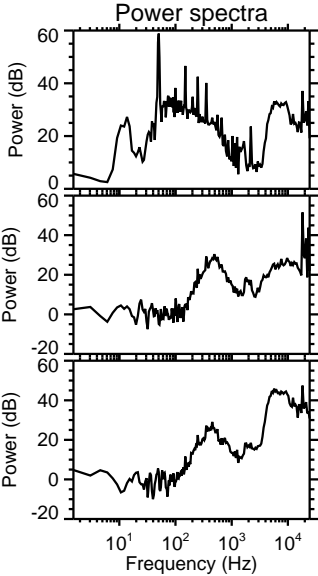
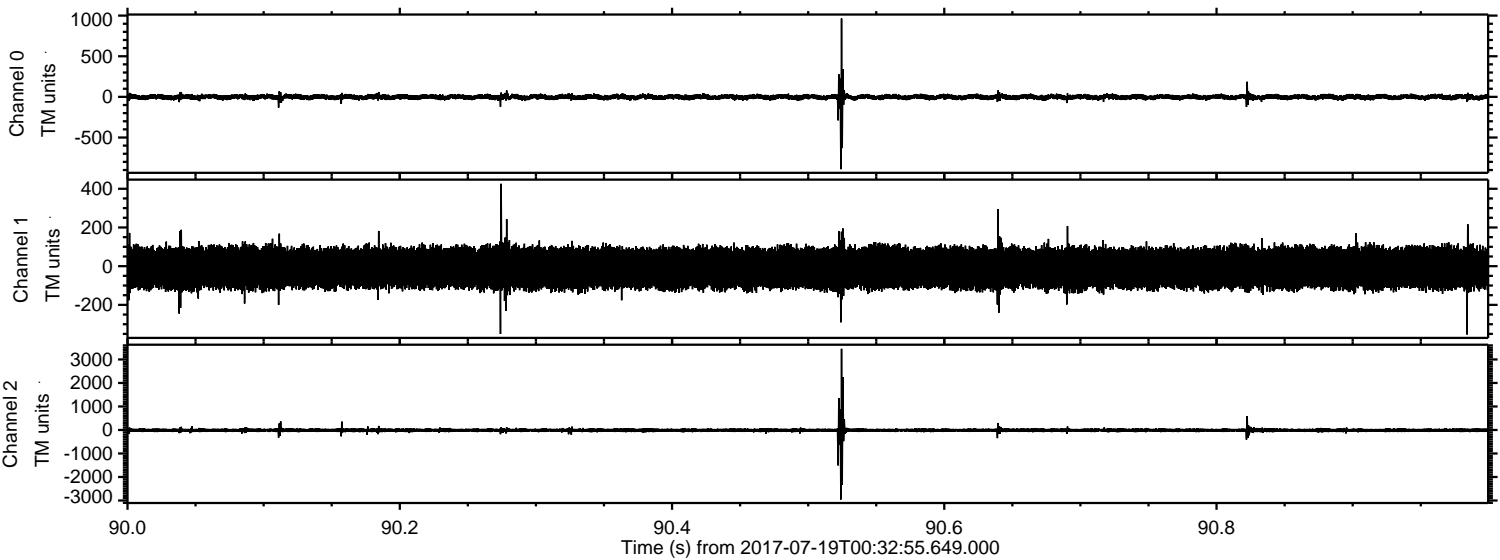


ELMAVAN 3D WAVEFORMS (Measured data sampled at 50 kHz) 51000 packets of 144 samples from 2017-07-19T00:32:55.649.000. Part 117/147

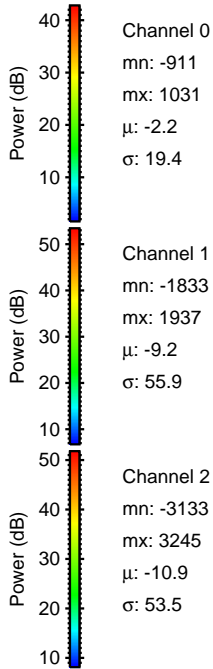
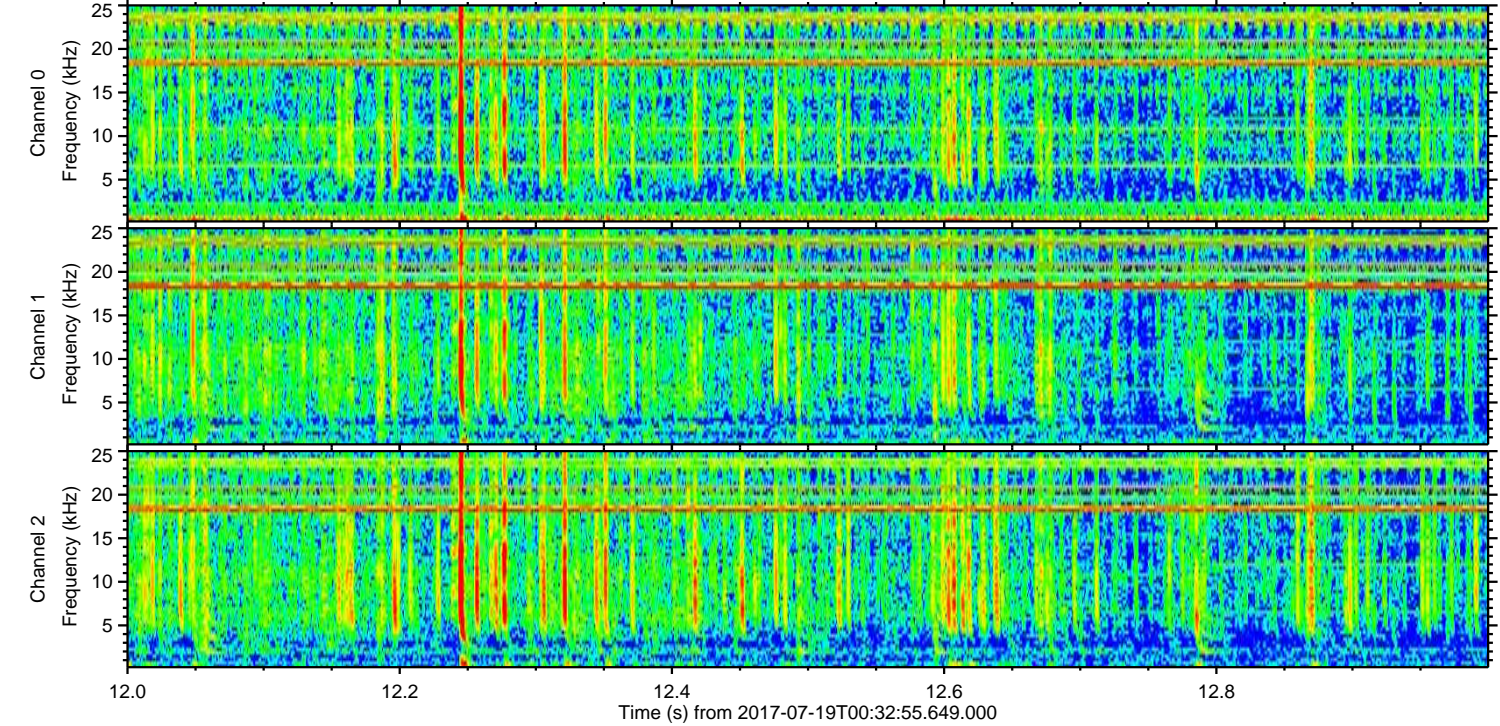
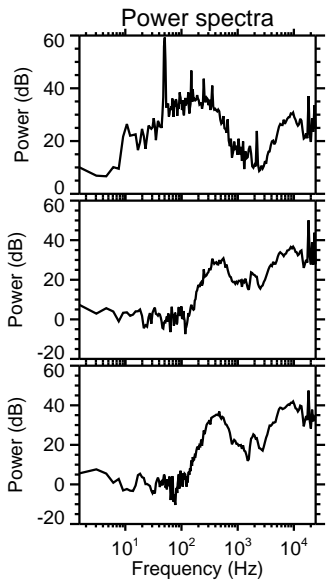
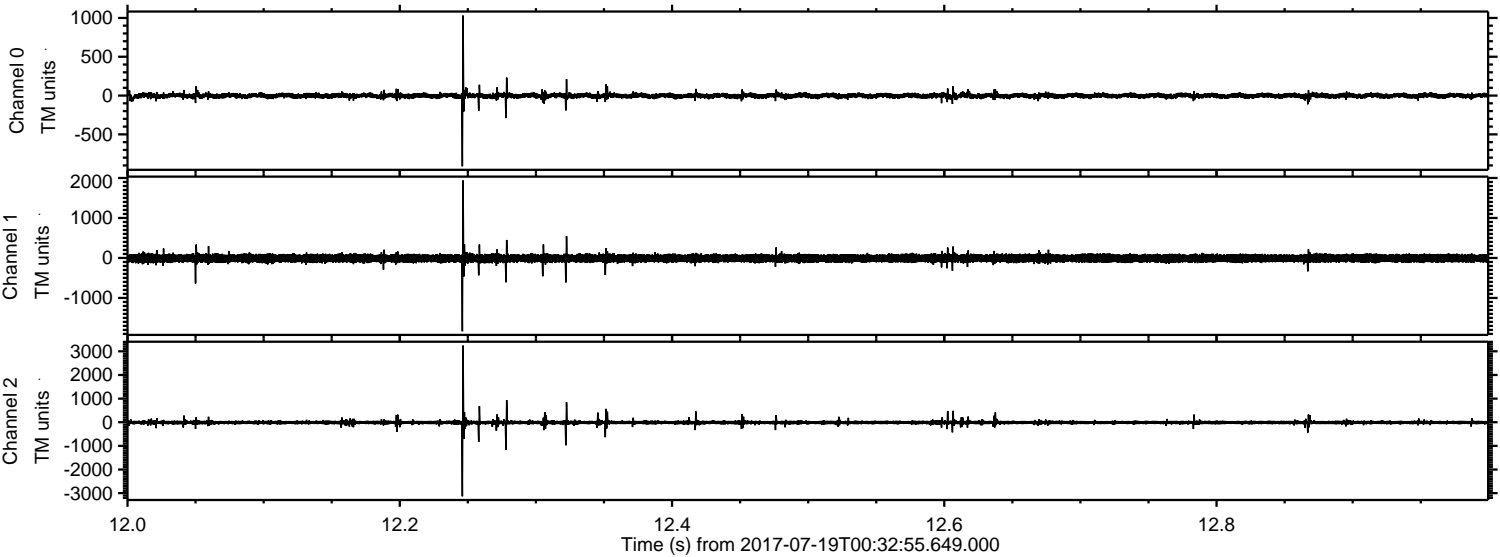
Processed Thu Jul 20 23:41:11 2017 by ELM ver.2012-10-06 from 001__elm20170719_003254__dat00.bin



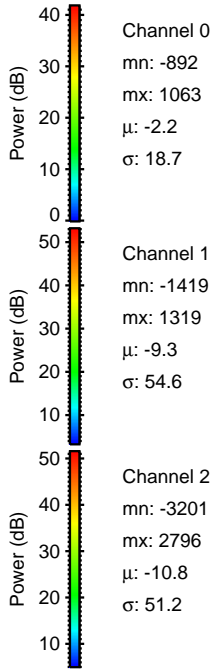
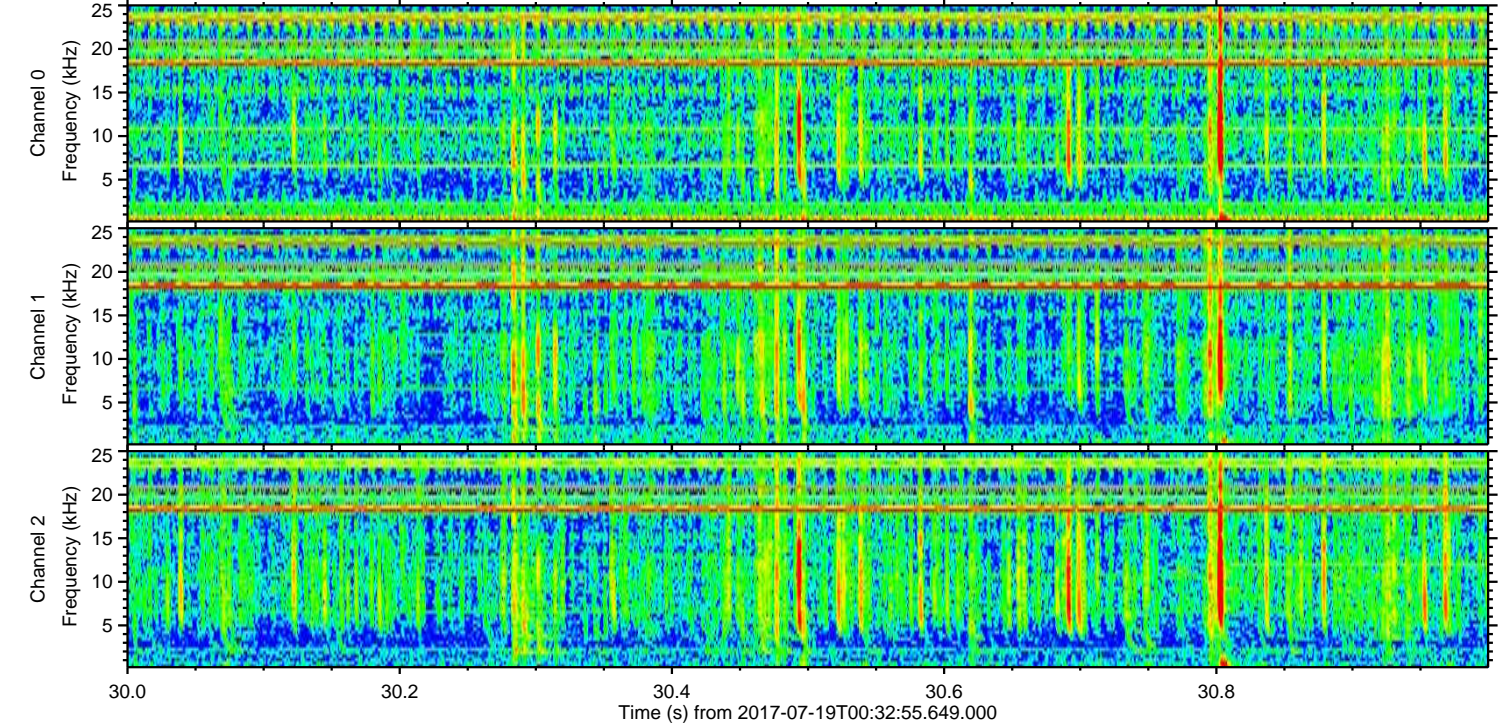
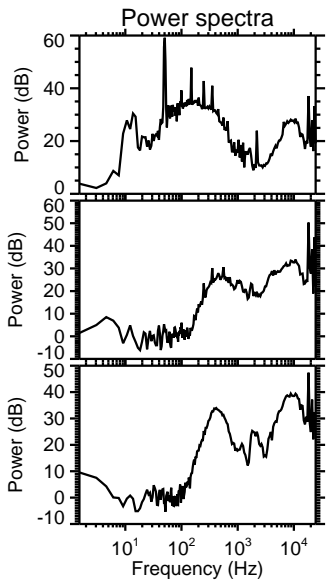
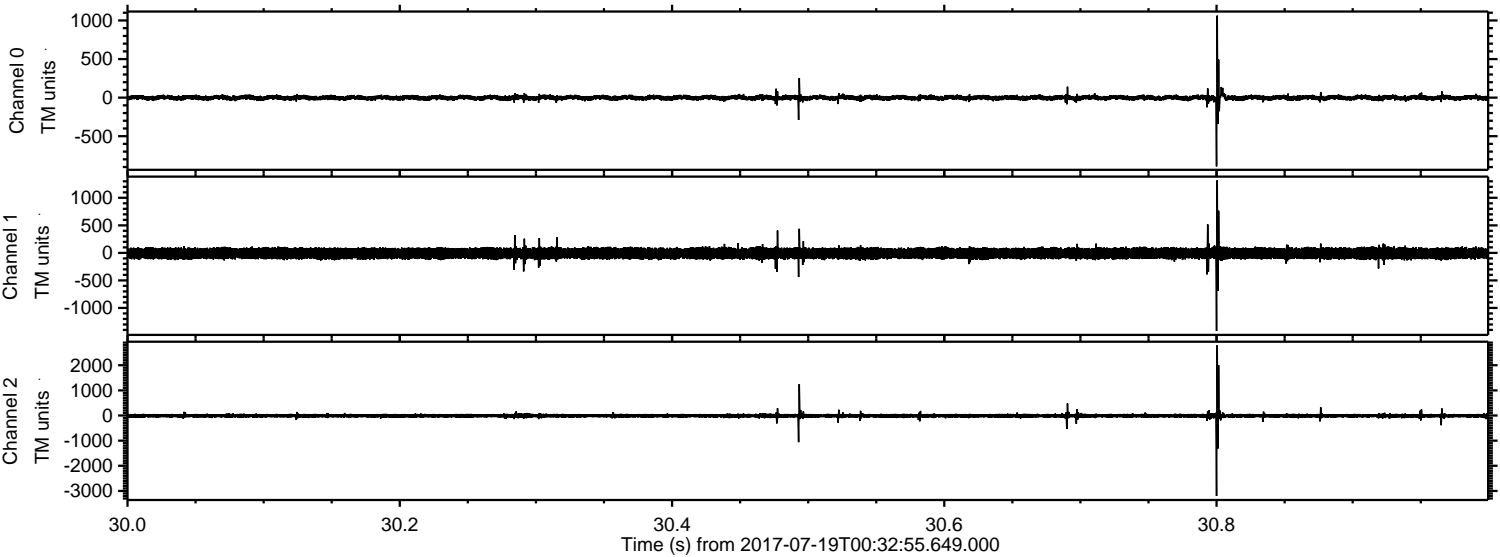
Processed Thu Jul 20 23:41:12 2017 by ELM ver.2012-10-06 from 001__elm20170719_003254__dat00.bin



Processed Thu Jul 20 23:41:12 2017 by ELM ver.2012-10-06 from 001__elm20170719_003254__dat00.bin



Processed Thu Jul 20 23:41:13 2017 by ELM ver.2012-10-06 from 001__elm20170719_003254__dat00.bin



Channel 0
mn: -892
mx: 1063
 μ : -2.2
 σ : 18.7

Channel 1
mn: -1419
mx: 1319
 μ : -9.3
 σ : 54.6

Channel 2
mn: -3201
mx: 2796
 μ : -10.8
 σ : 51.2

