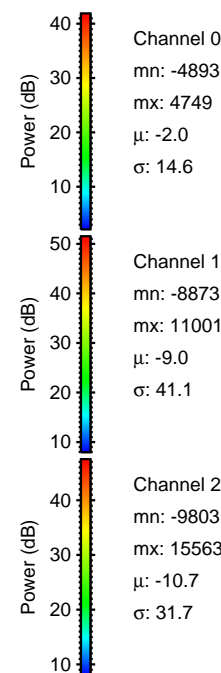
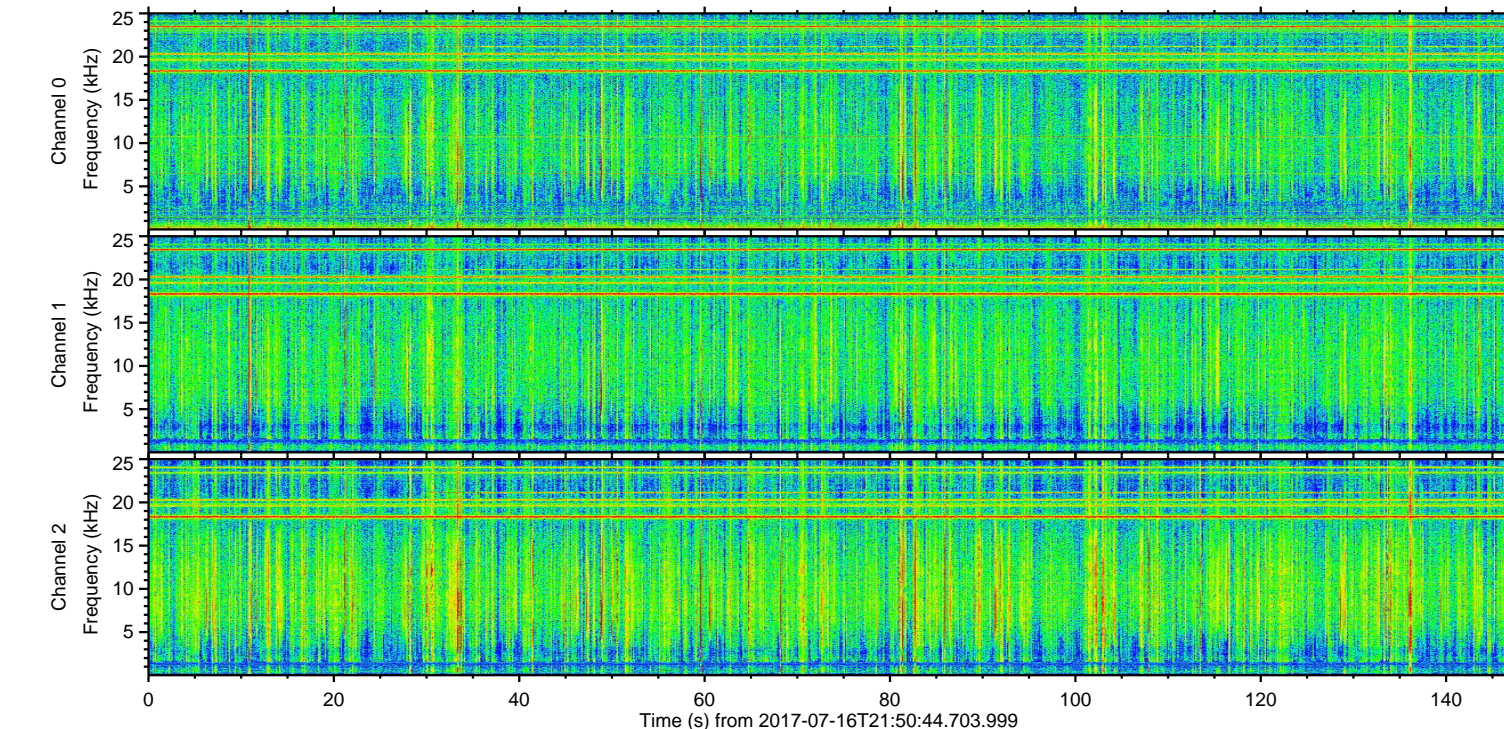
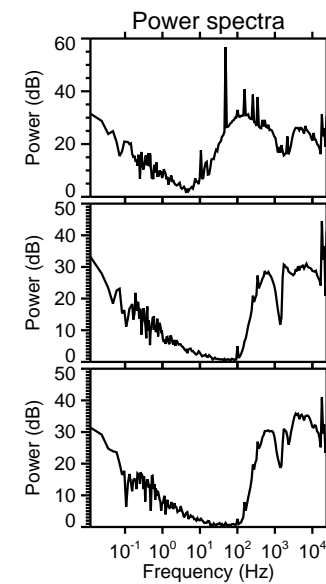
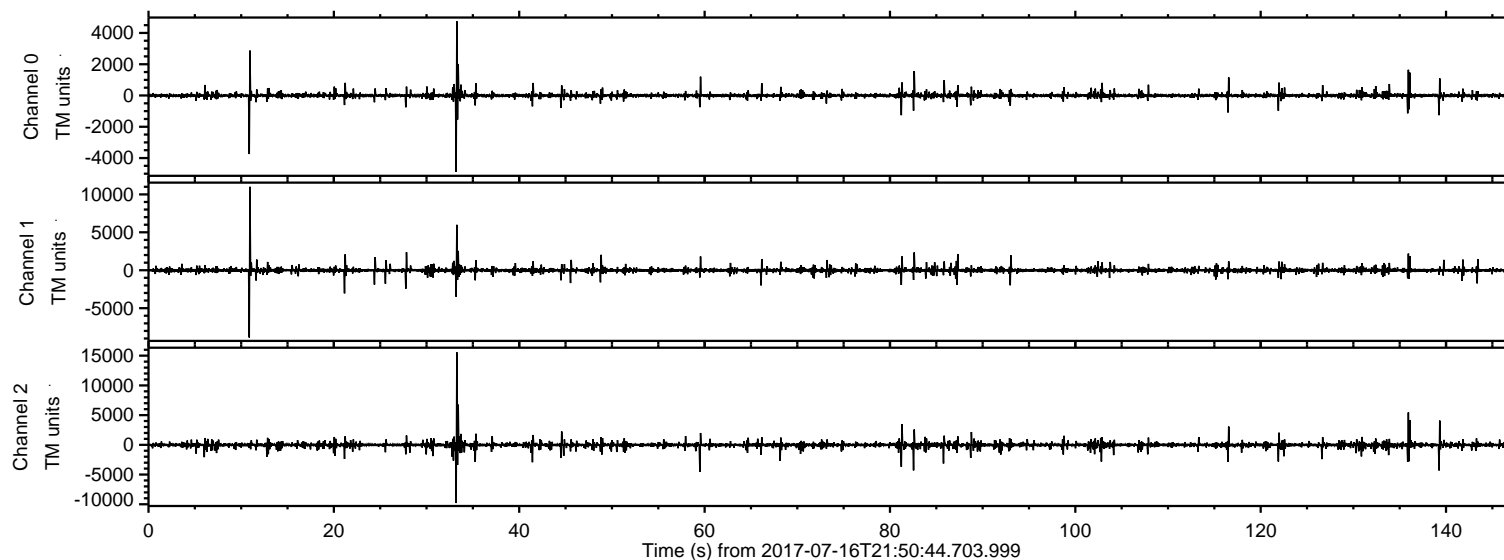
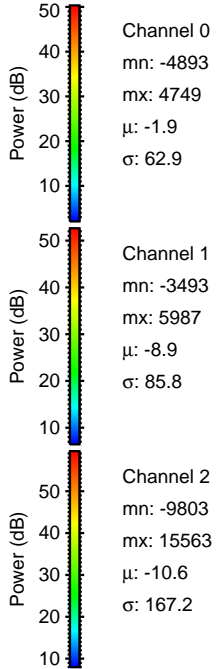
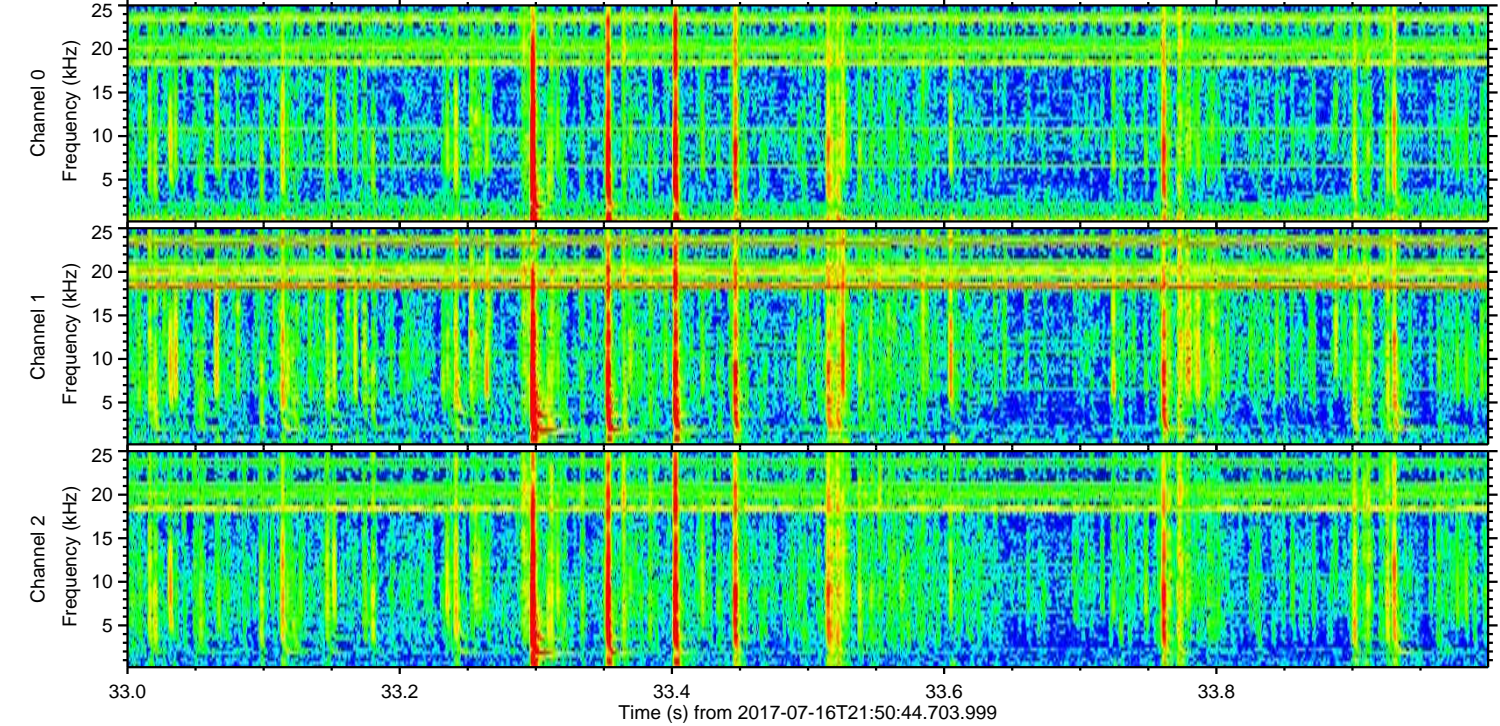
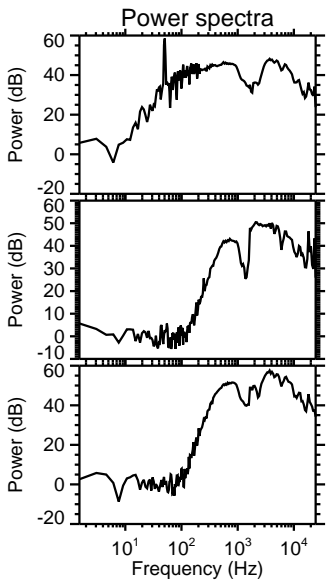
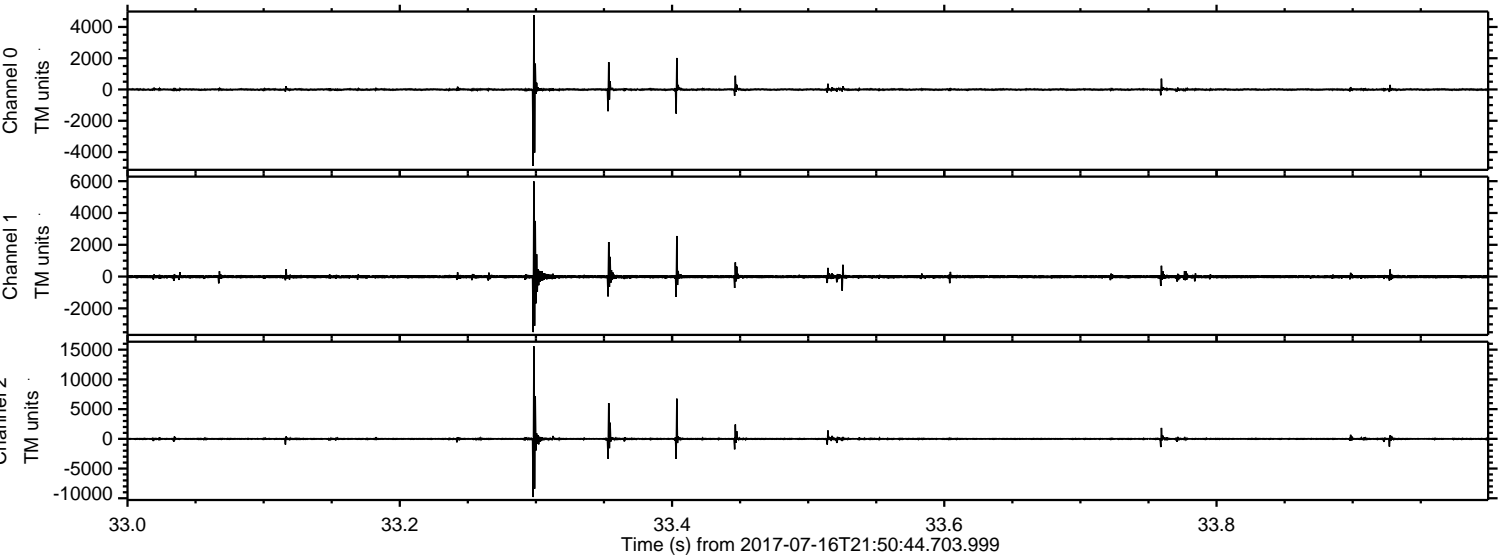


ELMAVAN 3D WAVEFORMS (Measured data sampled at 50 kHz) 51000 packets of 144 samples from 2017-07-16T21:50:44.703.999.

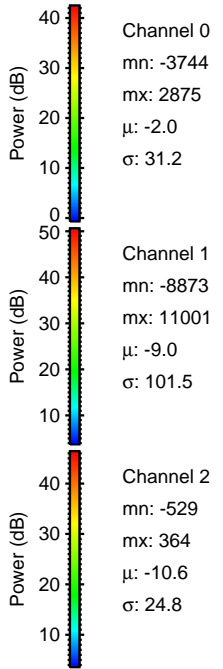
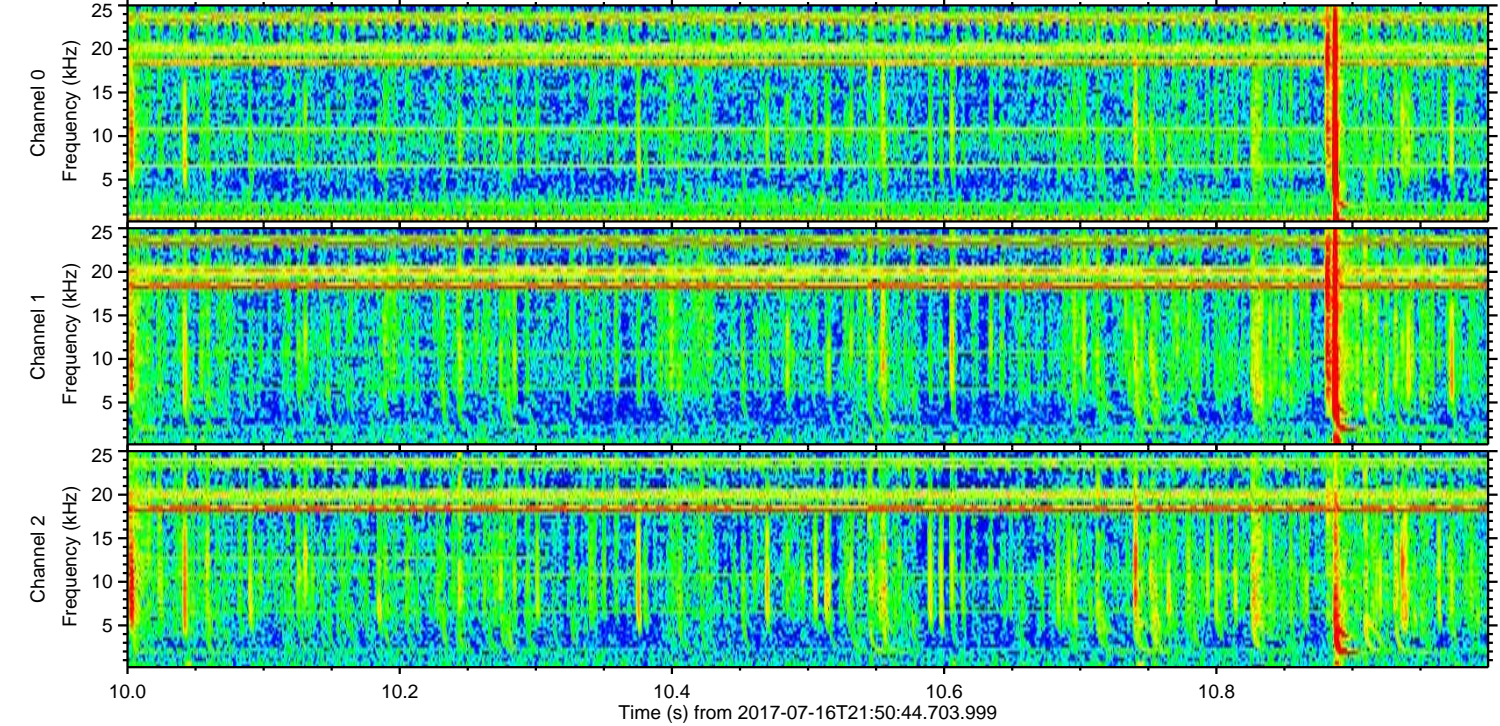
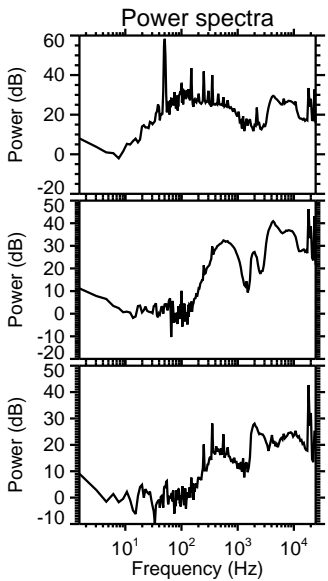
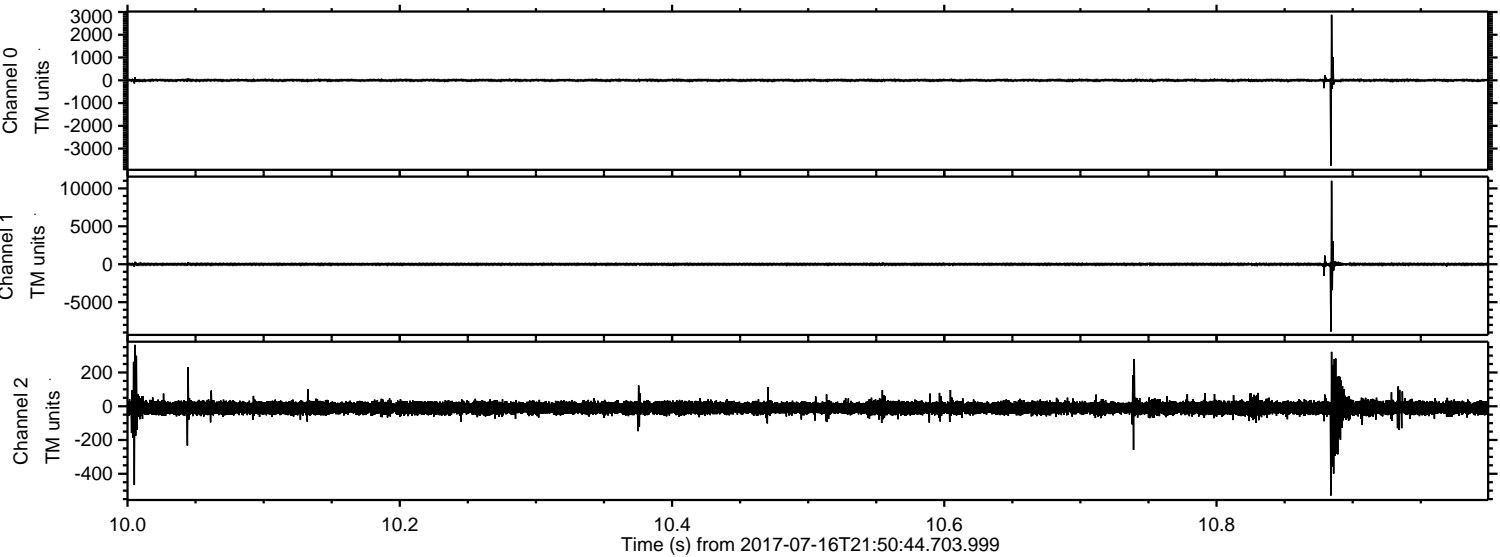
Processed Thu Jul 20 16:20:23 2017 by ELM ver.2012-10-06 from 001__elm20170716_215043__dat00.bin



Processed Thu Jul 20 16:20:31 2017 by ELM ver.2012-10-06 from 001__elm20170716_215043__dat00.bin

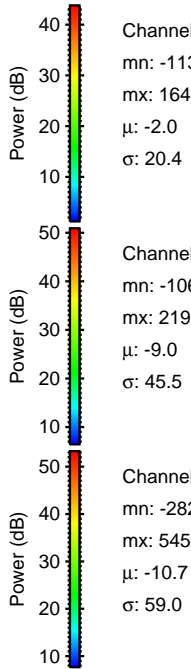
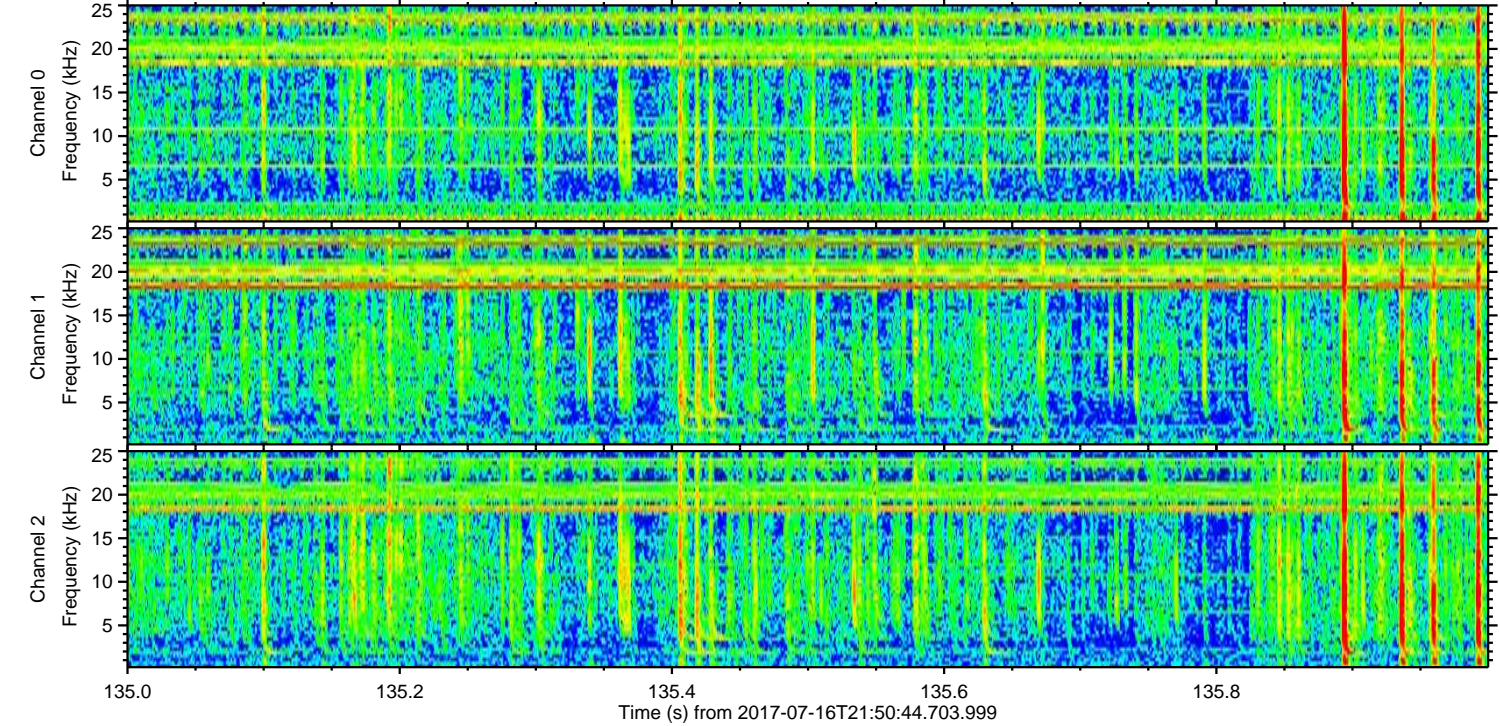
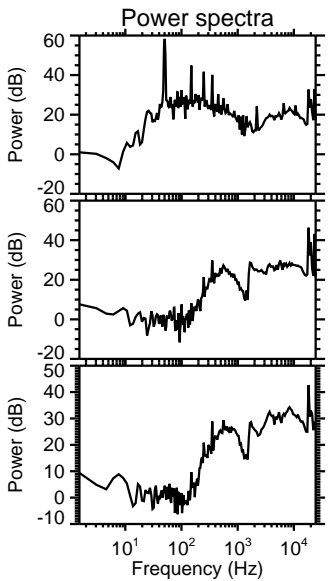
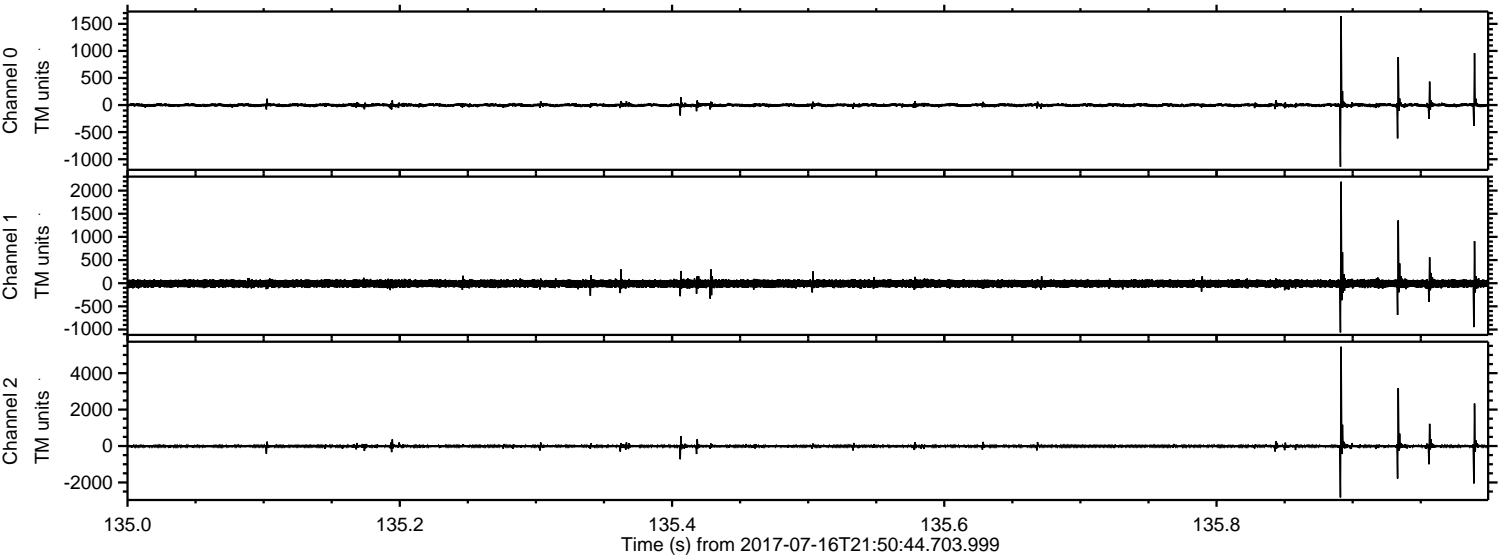


Processed Thu Jul 20 16:20:32 2017 by ELM ver.2012-10-06 from 001__elm20170716_215043__dat00.bin

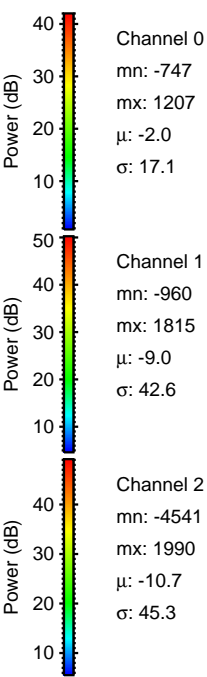
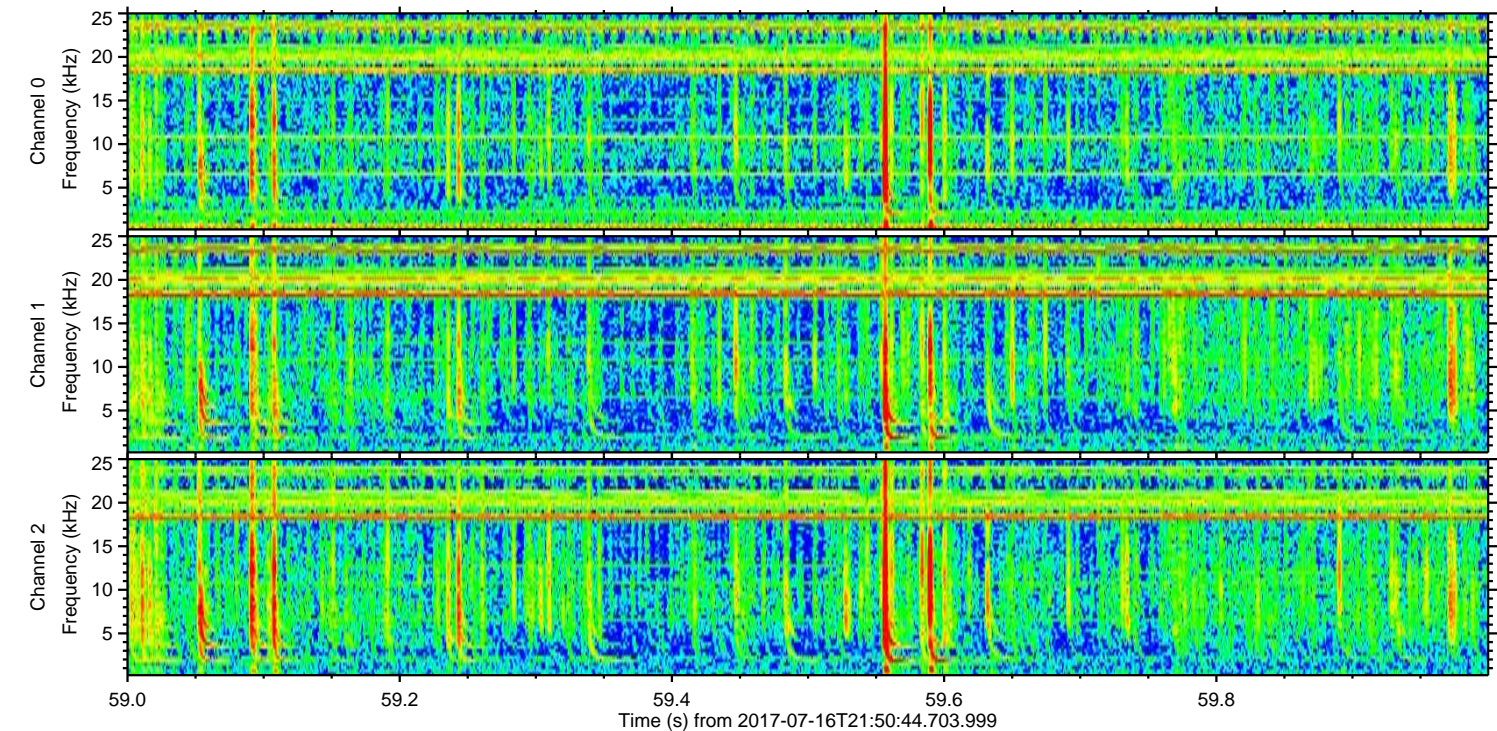
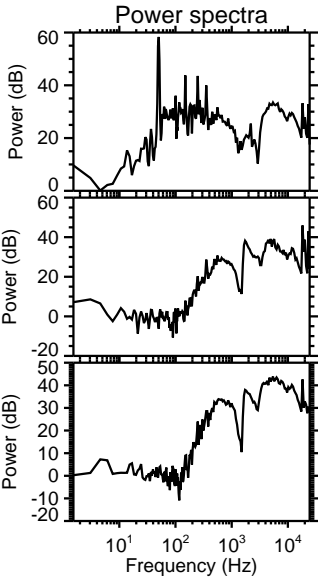
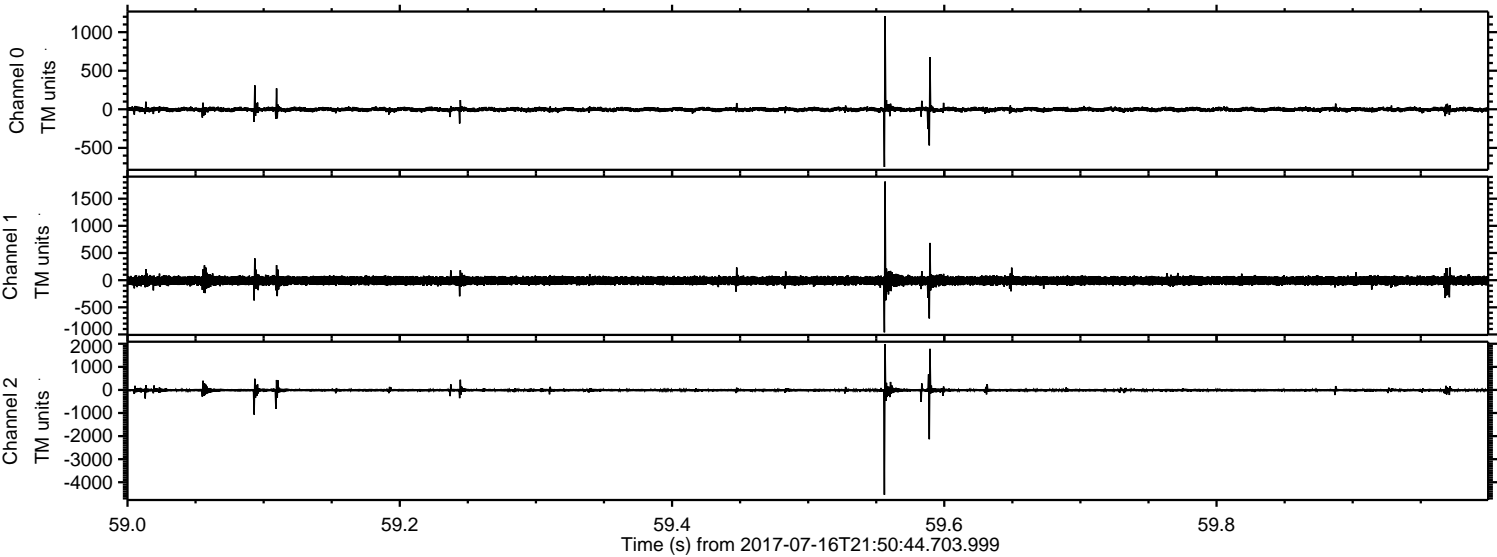


ELMAVAN 3D WAVEFORMS (Measured data sampled at 50 kHz) 51000 packets of 144 samples from 2017-07-16T21:50:44.703.999. Part 136/147

Processed Thu Jul 20 16:20:33 2017 by ELM ver.2012-10-06 from 001__elm20170716_215043__dat00.bin

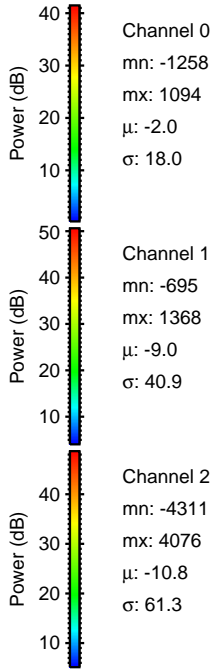
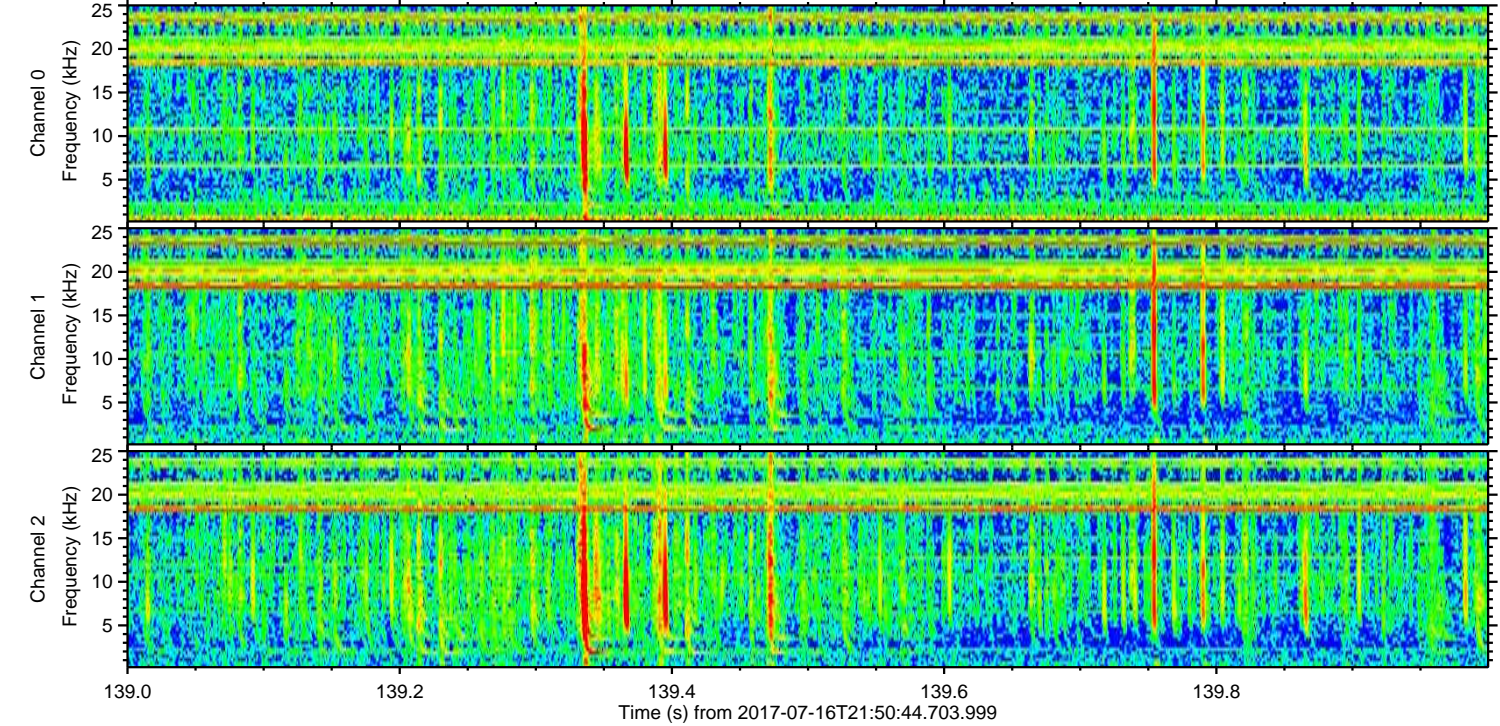
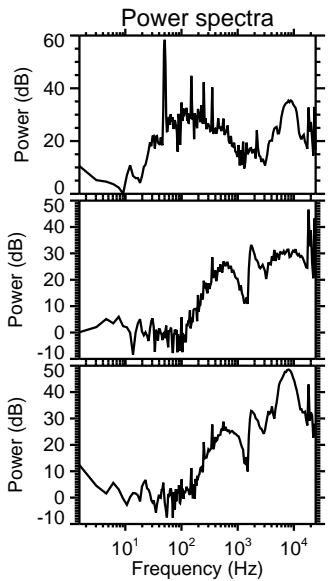
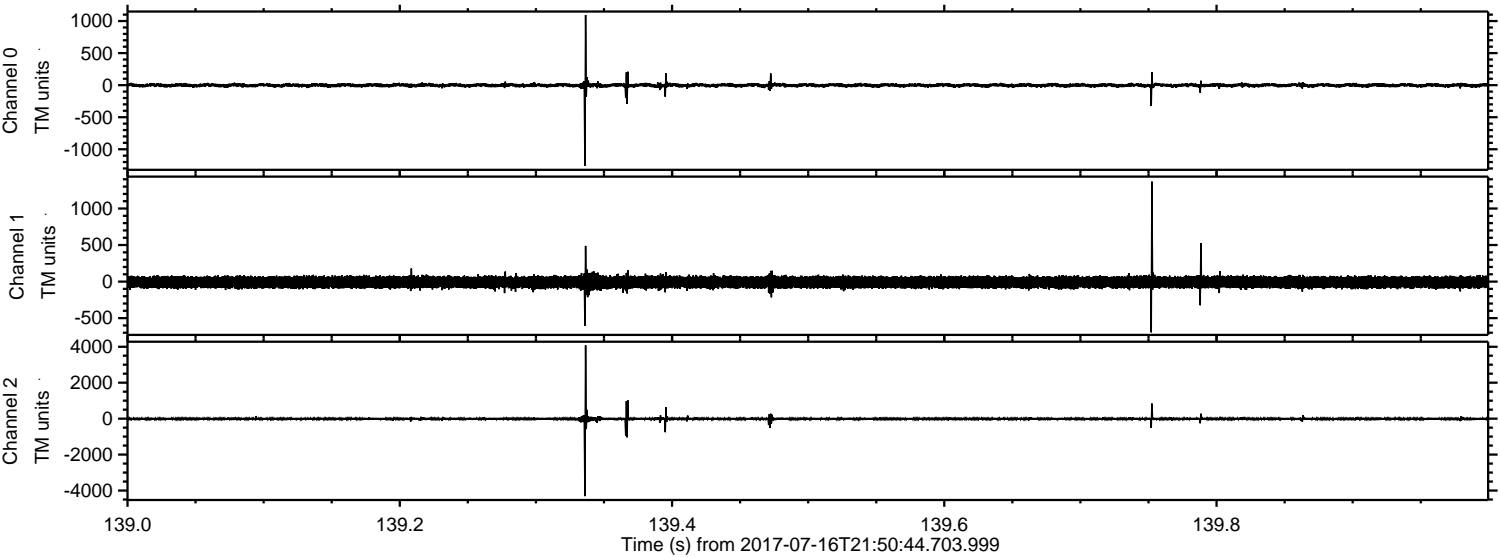


Processed Thu Jul 20 16:20:34 2017 by ELM ver.2012-10-06 from 001__elm20170716_215043__dat00.bin

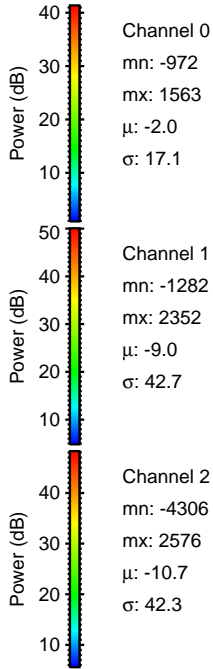
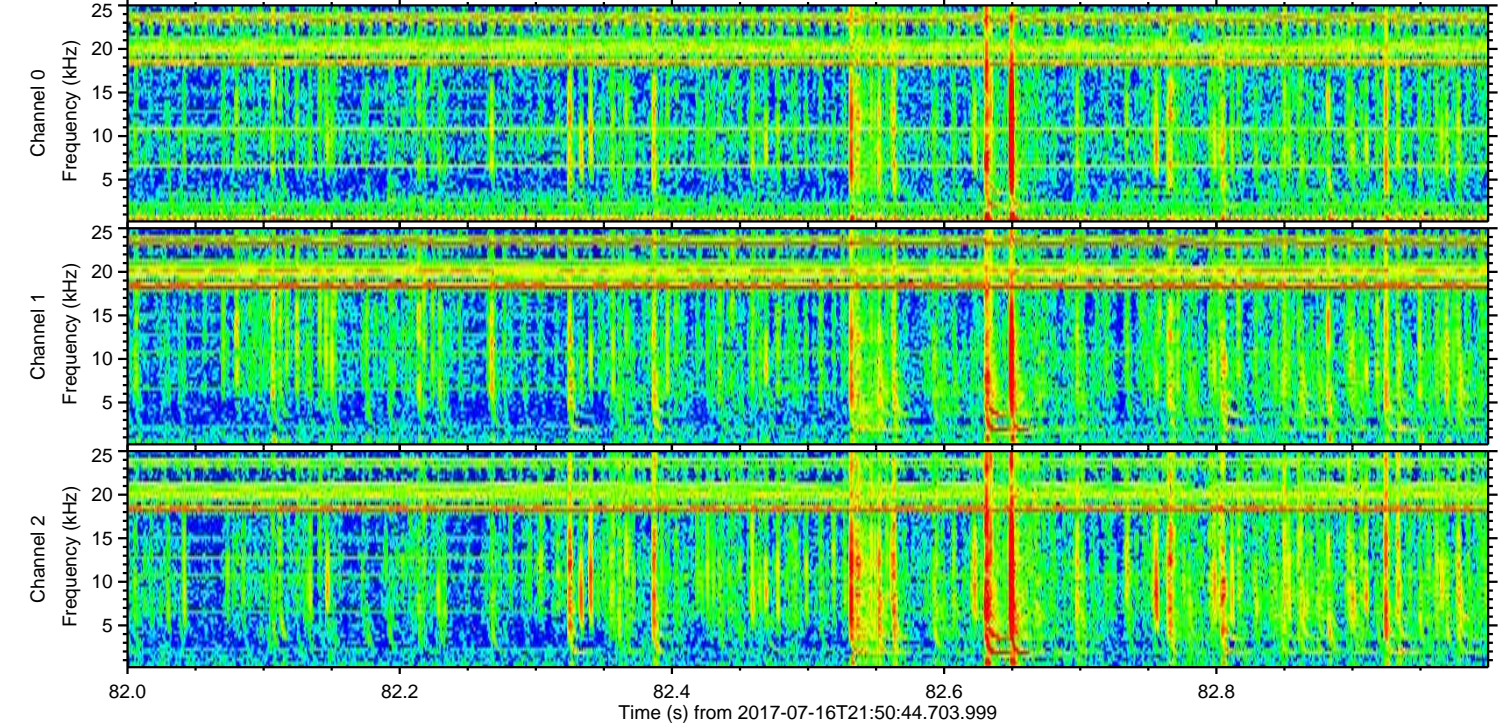
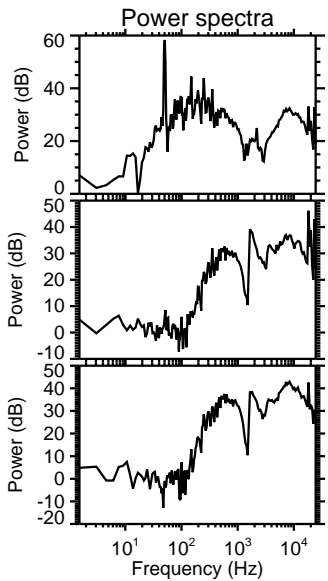
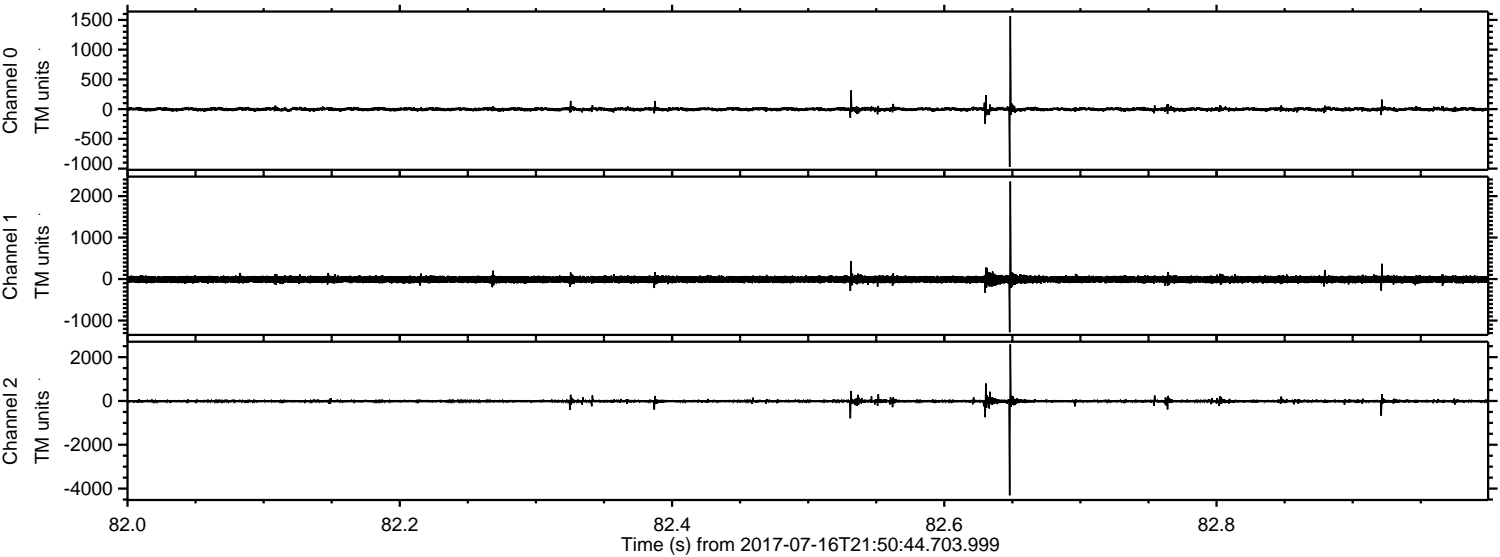


ELMAVAN 3D WAVEFORMS (Measured data sampled at 50 kHz) 51000 packets of 144 samples from 2017-07-16T21:50:44.703.999. Part 140/147

Processed Thu Jul 20 16:20:35 2017 by ELM ver.2012-10-06 from 001__elm20170716_215043__dat00.bin

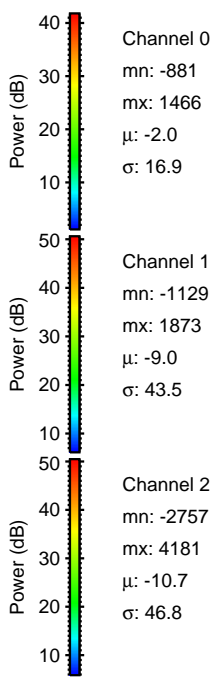
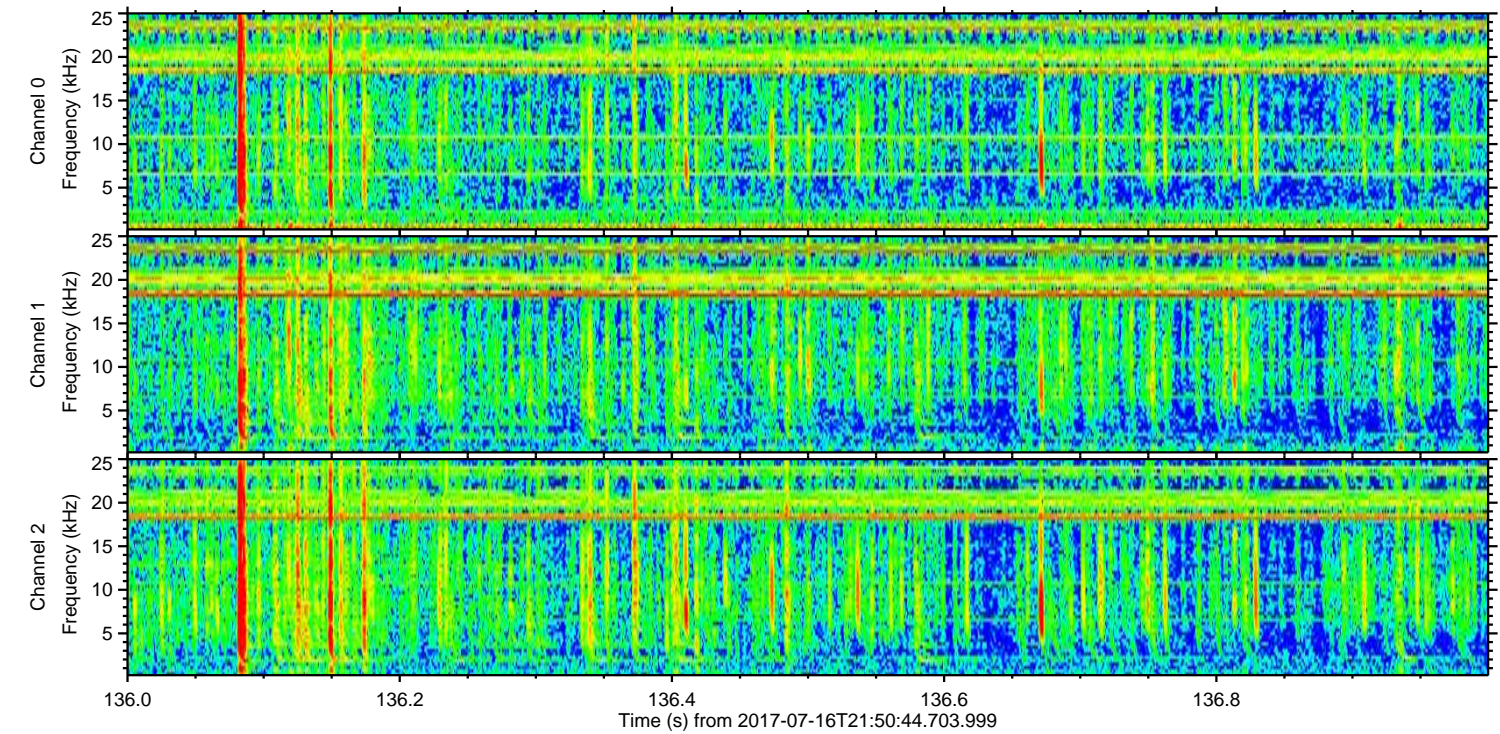
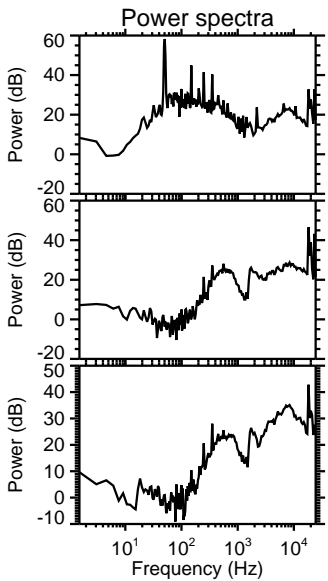
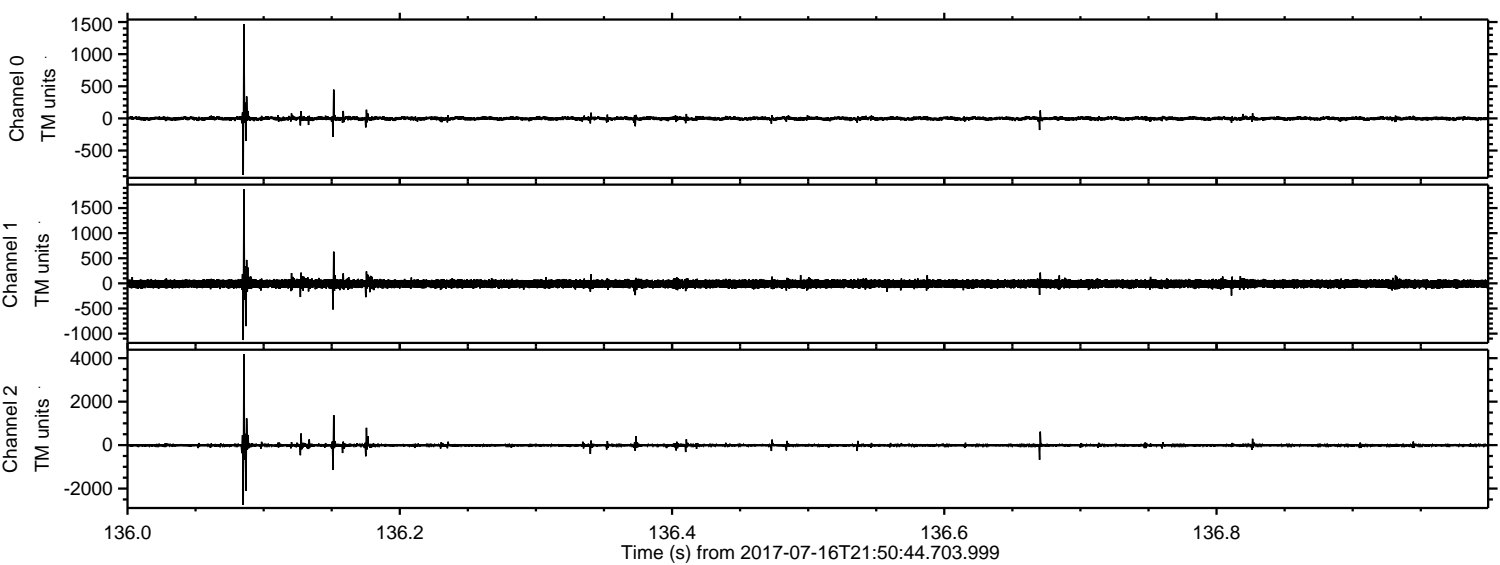


Processed Thu Jul 20 16:20:36 2017 by ELM ver.2012-10-06 from 001__elm20170716_215043__dat00.bin



ELMAVAN 3D WAVEFORMS (Measured data sampled at 50 kHz) 51000 packets of 144 samples from 2017-07-16T21:50:44.703.999. Part 137/147

Processed Thu Jul 20 16:20:37 2017 by ELM ver.2012-10-06 from 001__elm20170716_215043__dat00.bin

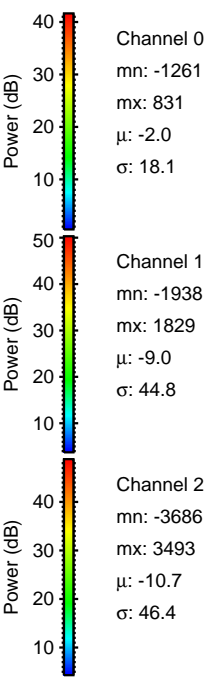
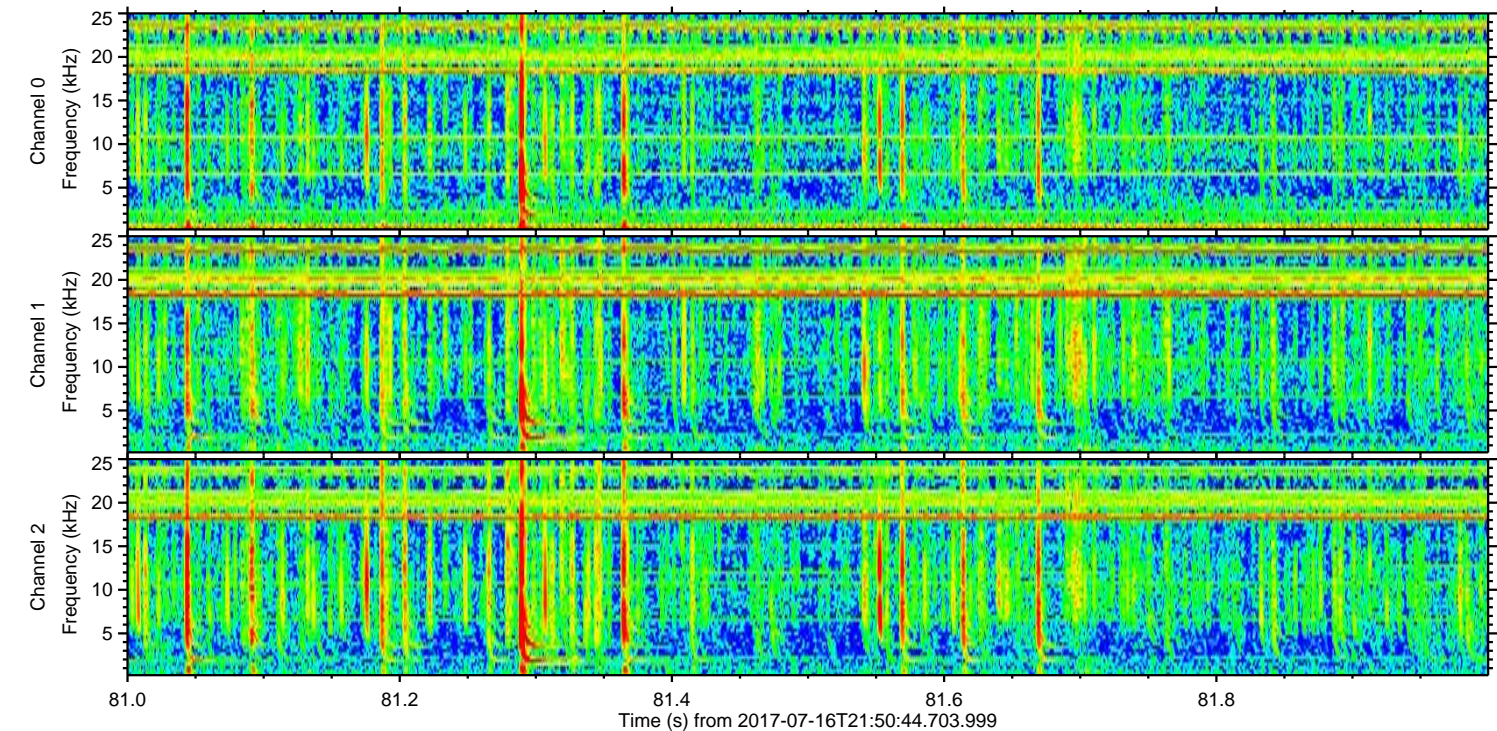
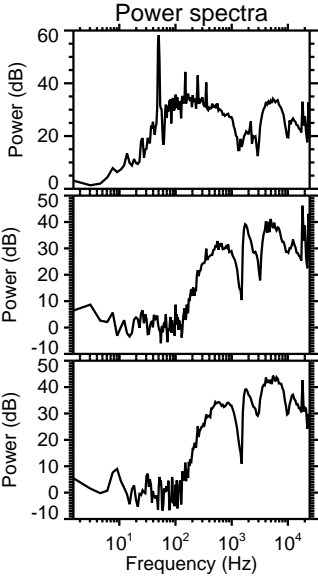
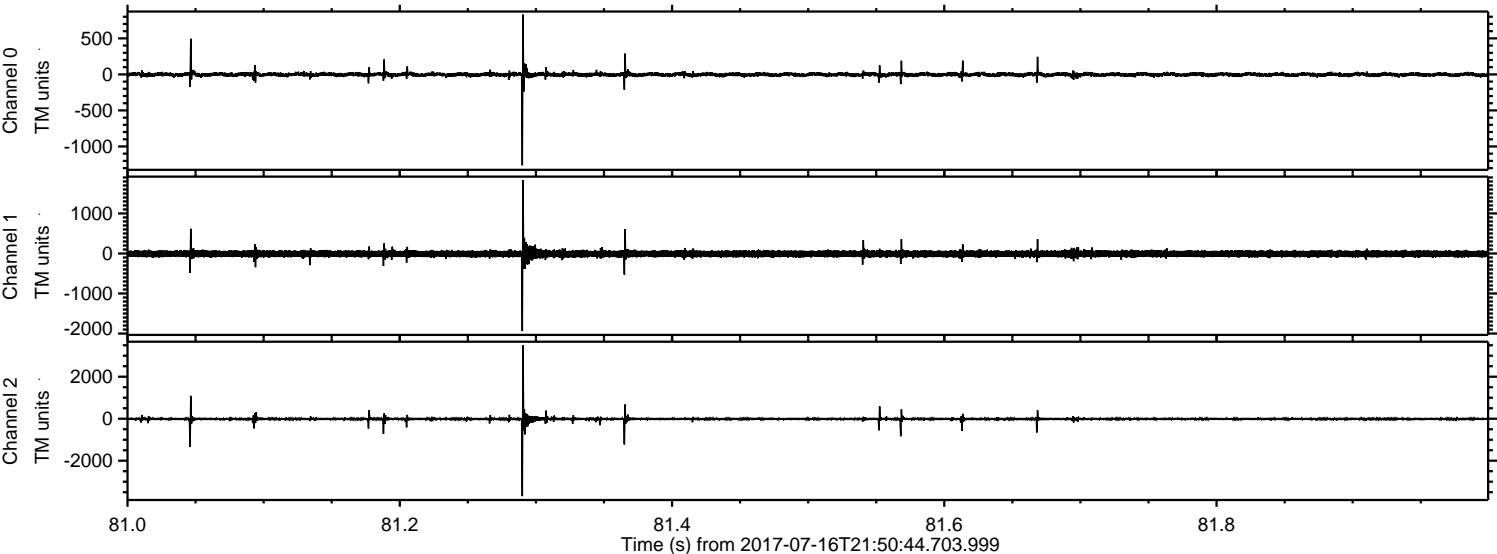


Channel 0
mn: -881
mx: 1466
 μ : -2.0
 σ : 16.9

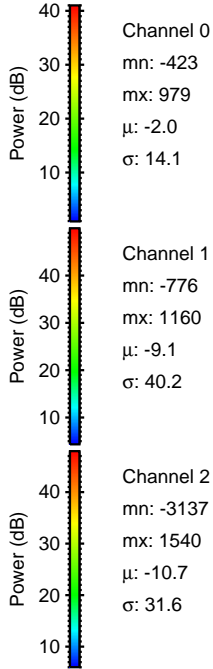
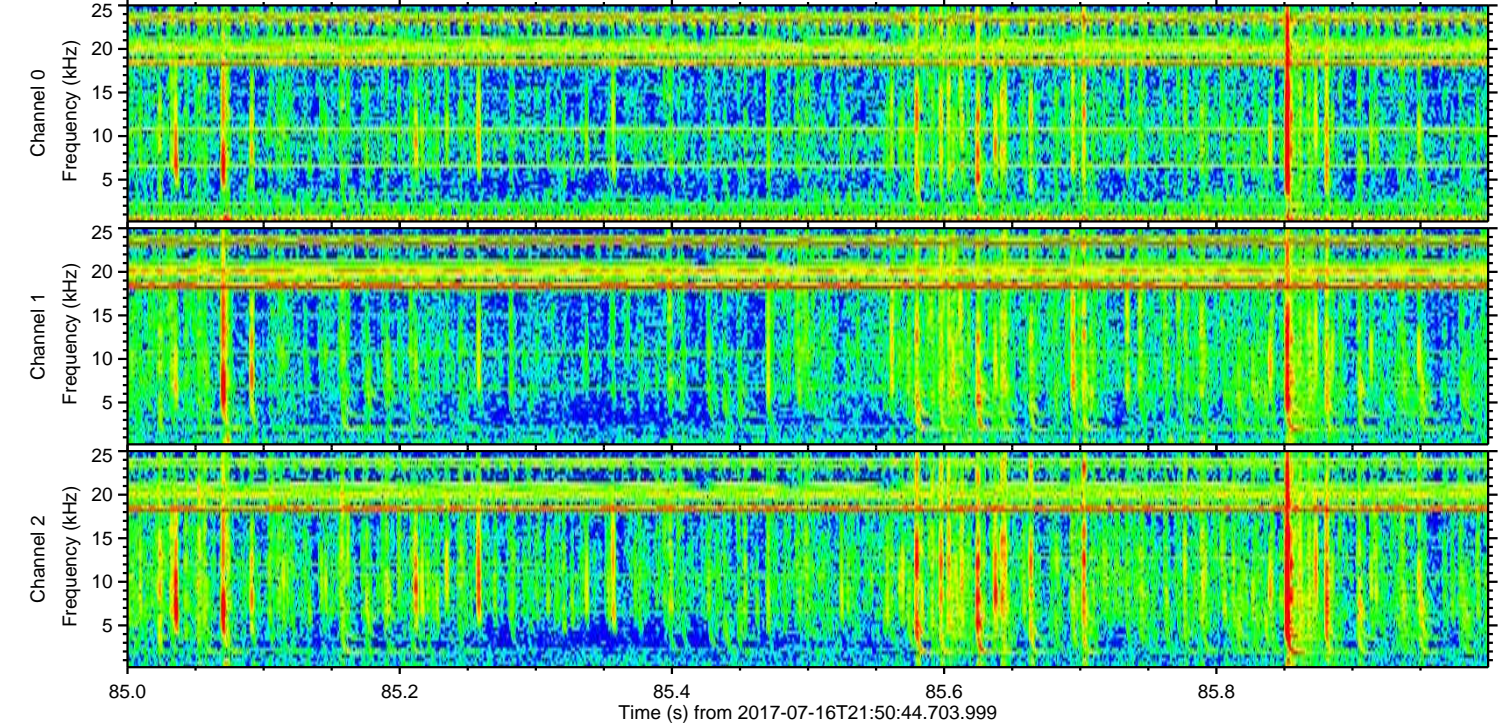
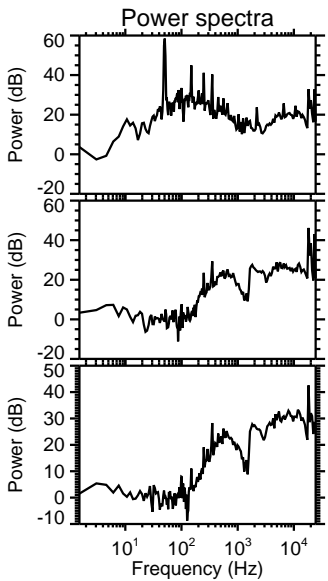
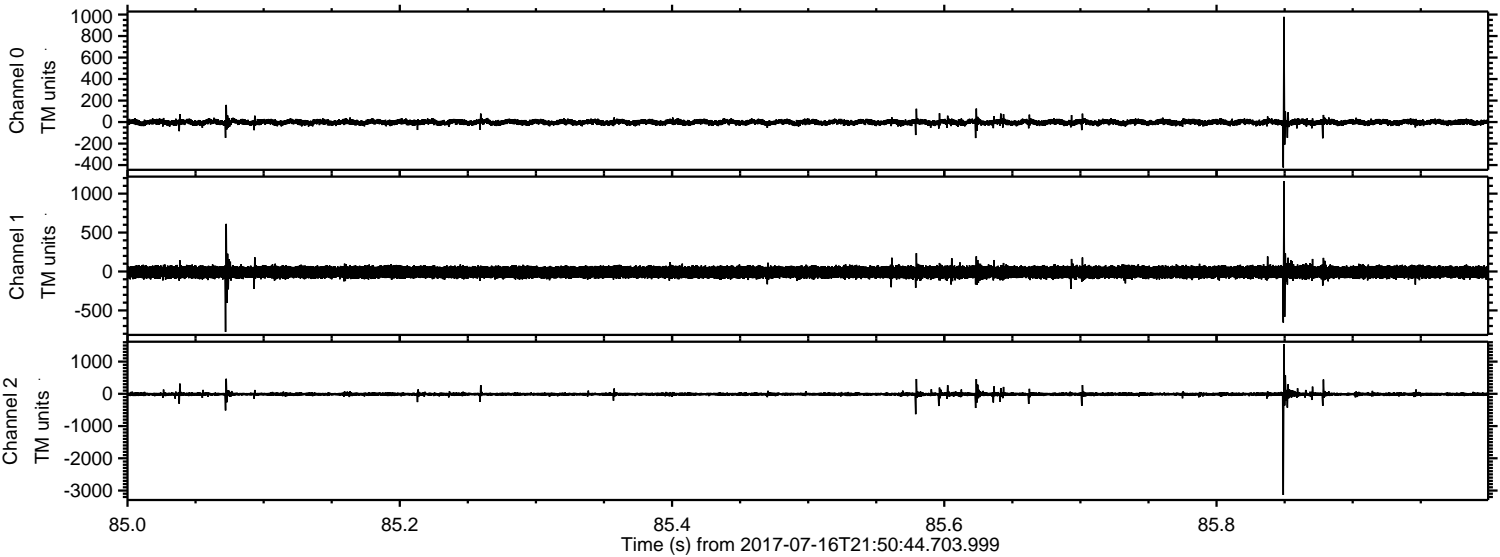
Channel 1
mn: -1129
mx: 1873
 μ : -9.0
 σ : 43.5

Channel 2
mn: -2757
mx: 4181
 μ : -10.7
 σ : 46.8

Processed Thu Jul 20 16:20:38 2017 by ELM ver.2012-10-06 from 001__elm20170716_215043__dat00.bin



Processed Thu Jul 20 16:20:38 2017 by ELM ver.2012-10-06 from 001__elm20170716_215043__dat00.bin



Channel 0
mn: -423
mx: 979
 μ : -2.0
 σ : 14.1

Channel 1
mn: -776
mx: 1160
 μ : -9.1
 σ : 40.2

Channel 2
mn: -3137
mx: 1540
 μ : -10.7
 σ : 31.6

