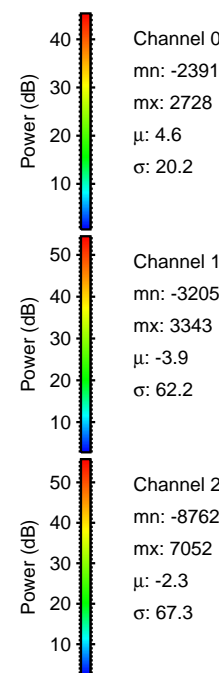
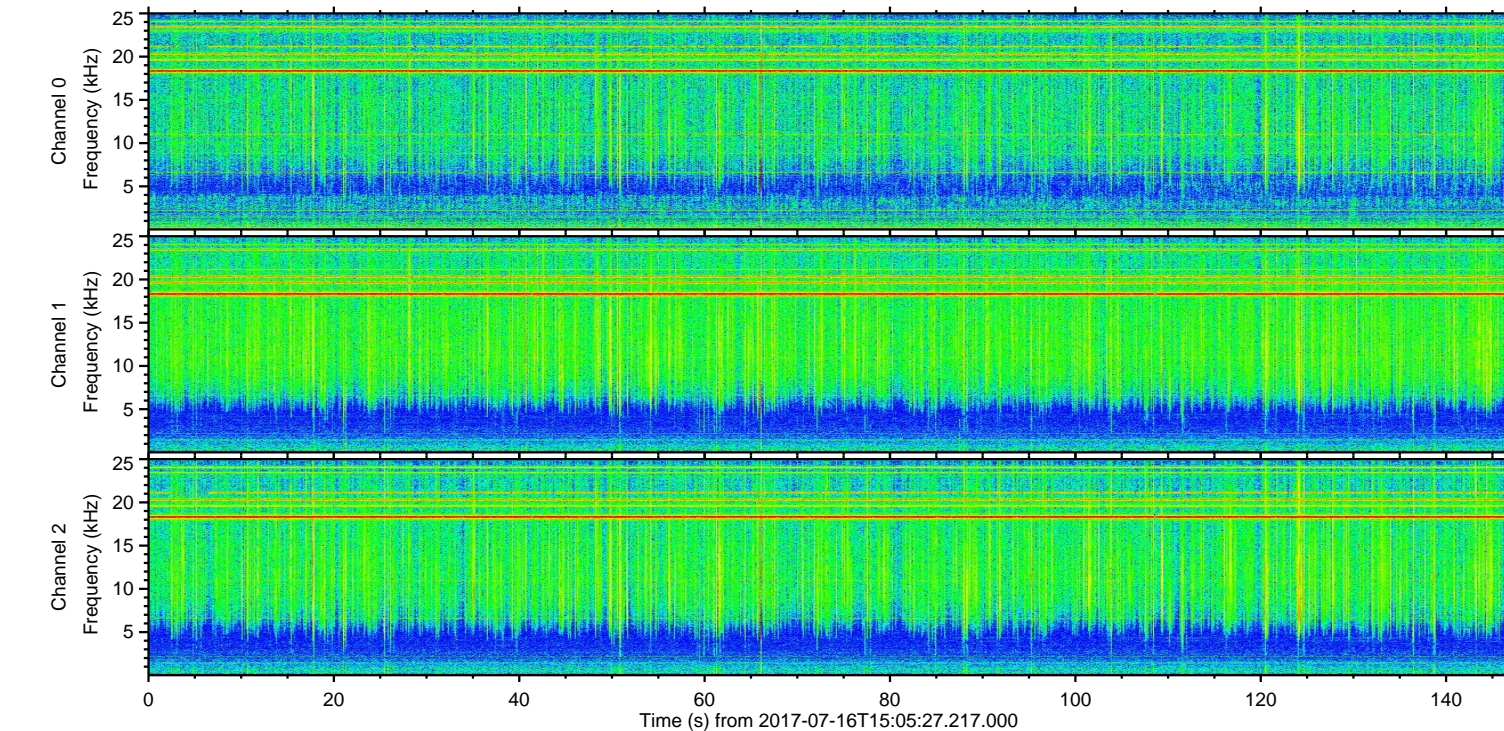
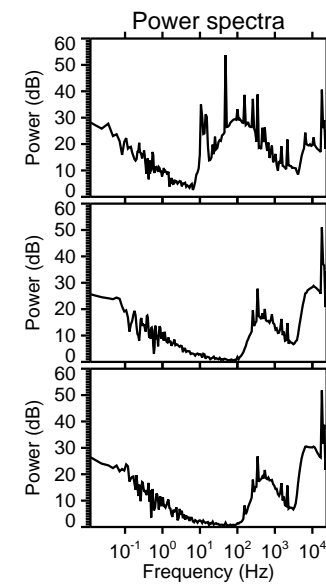
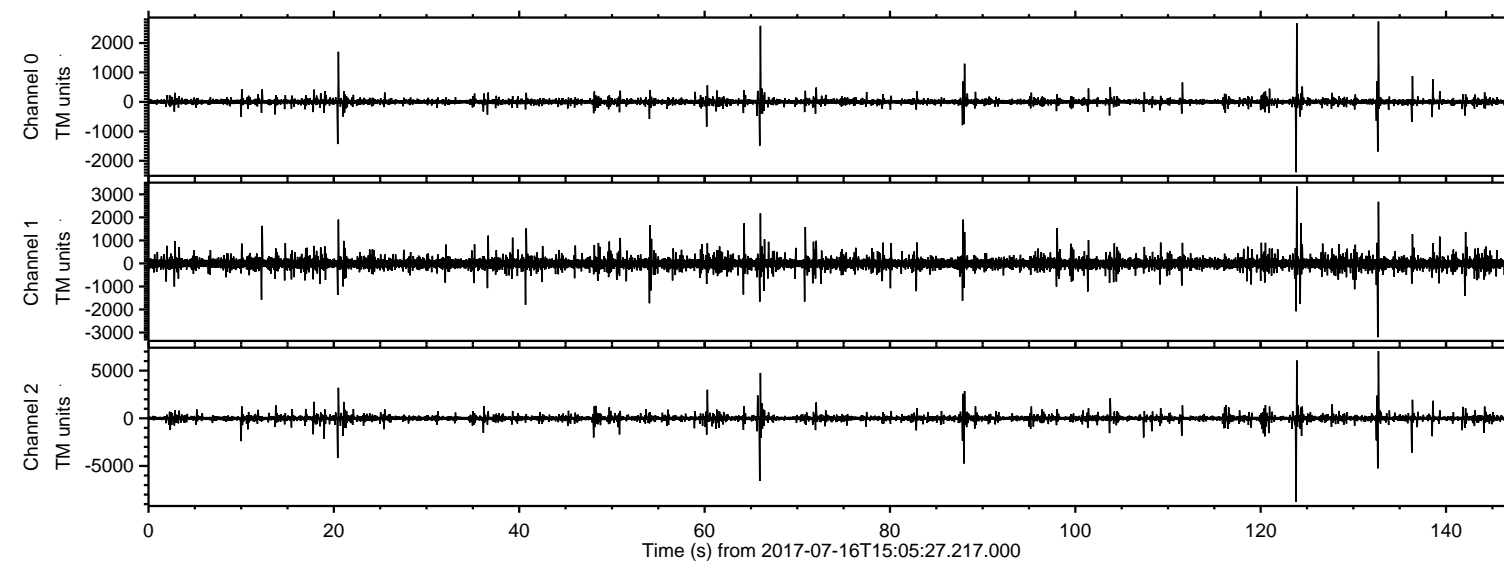


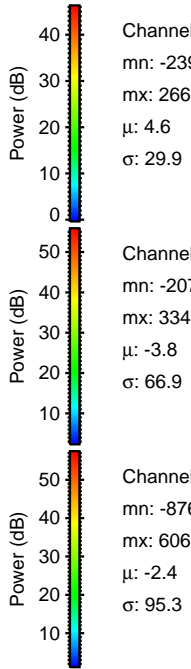
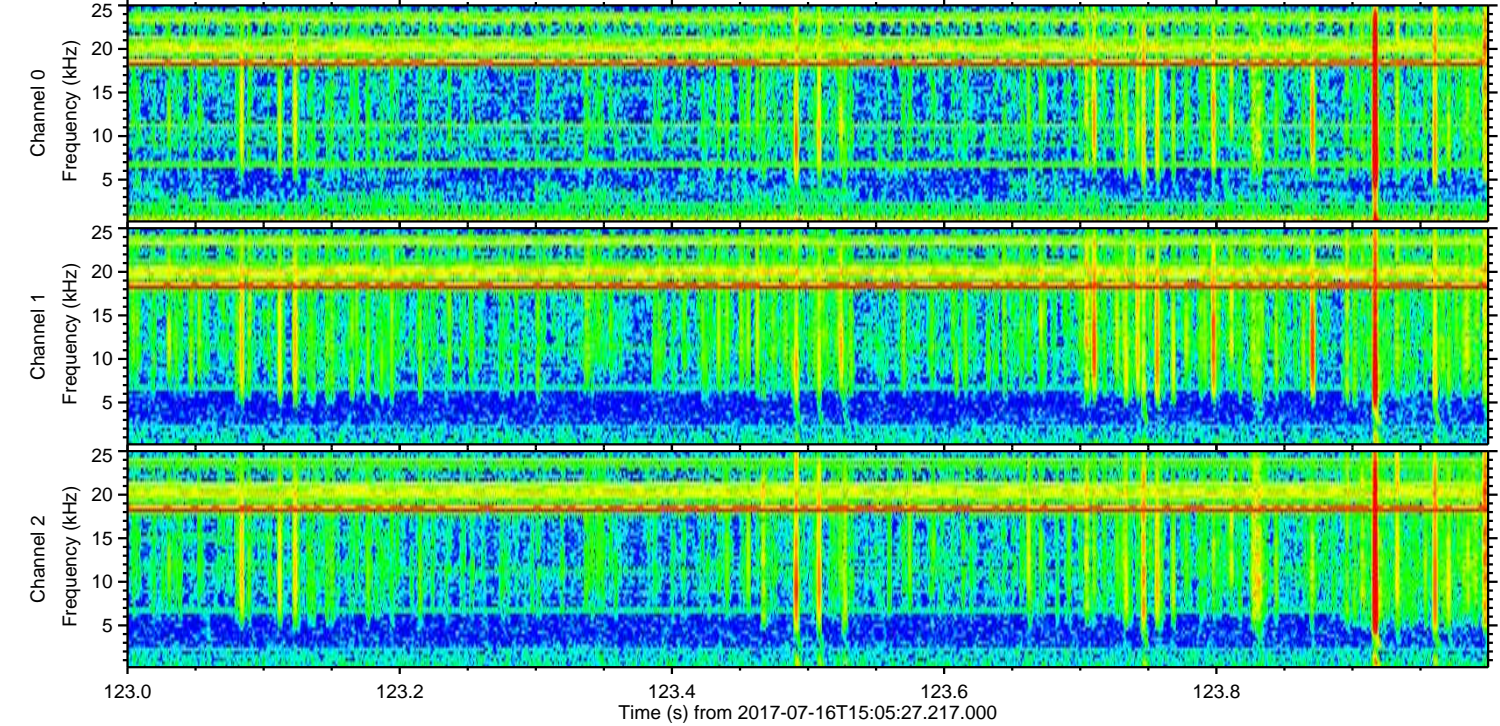
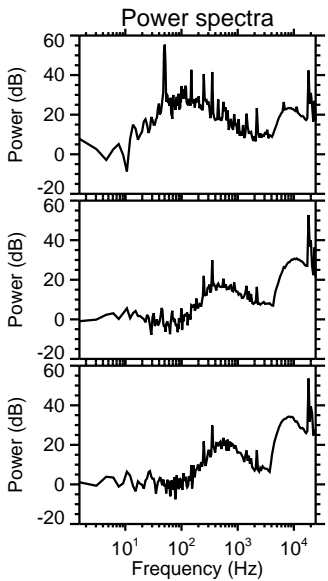
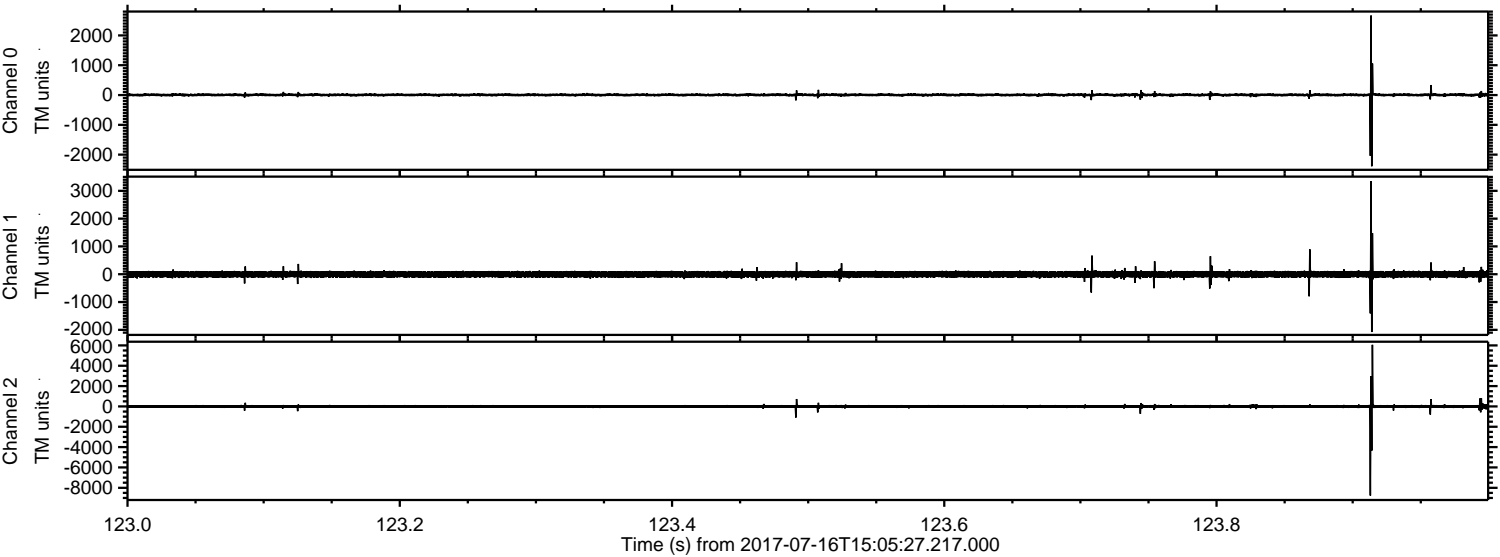
ELMAVAN 3D WAVEFORMS (Measured data sampled at 50 kHz) 51000 packets of 144 samples from 2017-07-16T15:05:27.217.000.

Processed Thu Jul 20 15:18:43 2017 by ELM ver.2012-10-06 from 001__elm20170716_150526__dat00.bin



ELMAVAN 3D WAVEFORMS (Measured data sampled at 50 kHz) 51000 packets of 144 samples from 2017-07-16T15:05:27.217.000. Part 124/147

Processed Thu Jul 20 15:18:51 2017 by ELM ver.2012-10-06 from 001__elm20170716_150526__dat00.bin



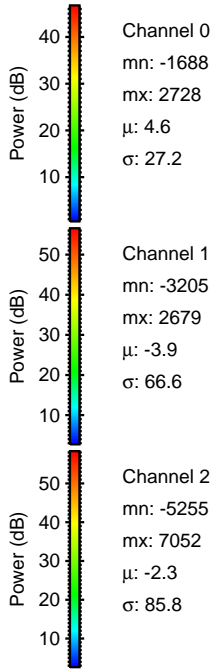
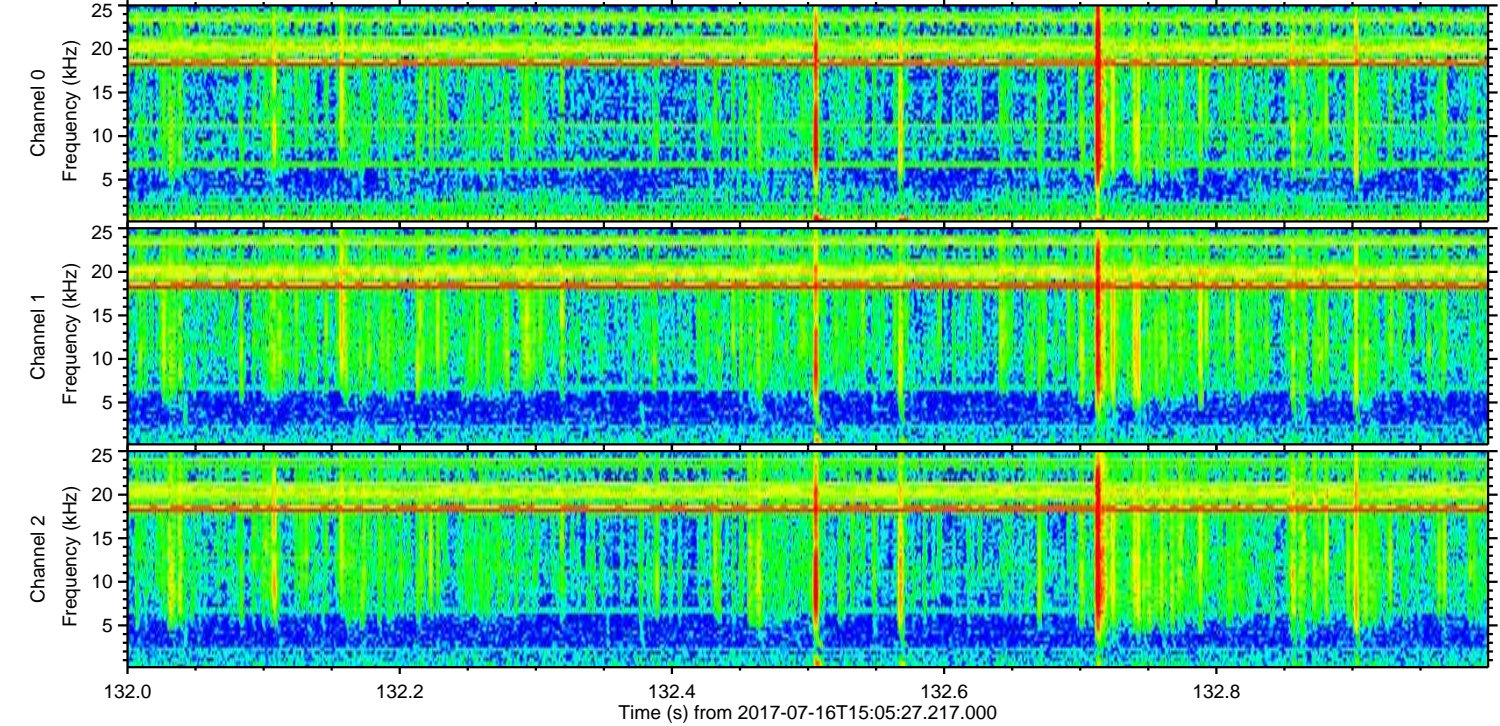
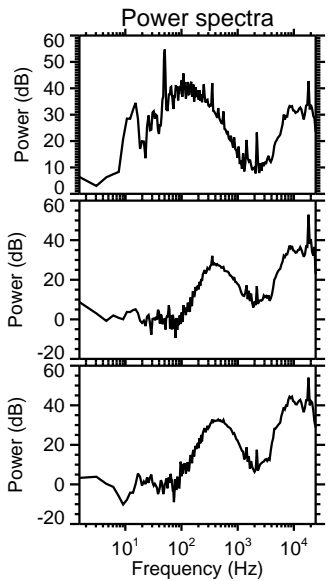
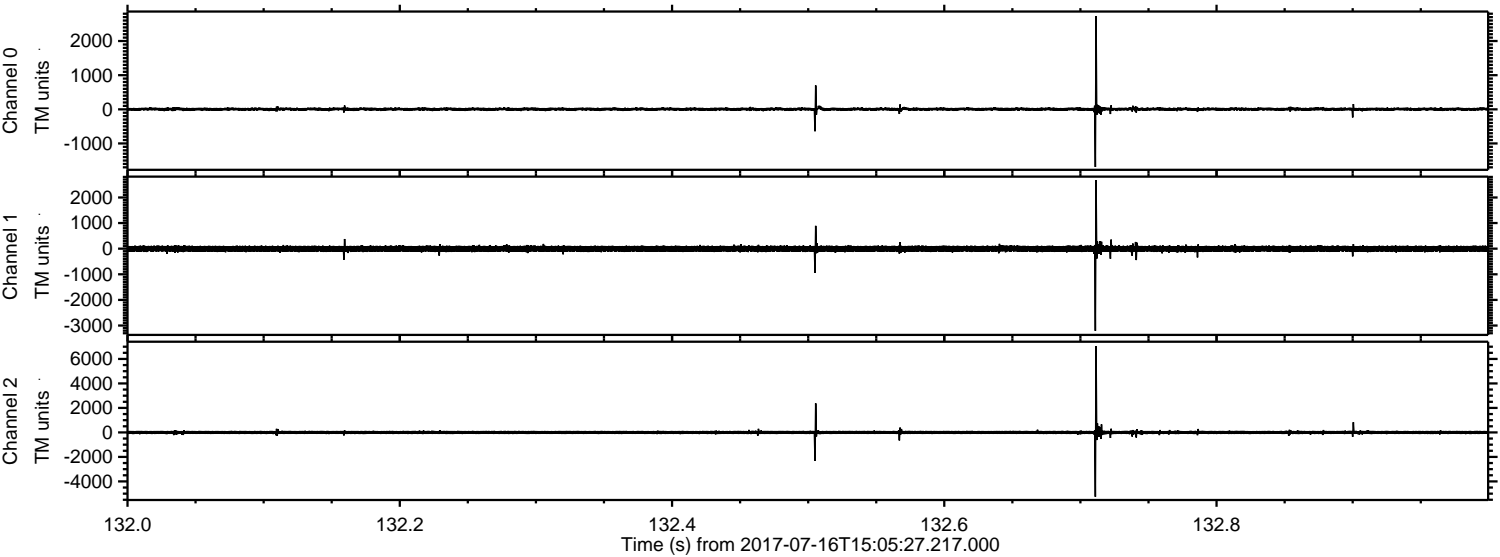
Channel 0
mn: -2391
mx: 2669
 μ : 4.6
 σ : 29.9

Channel 1
mn: -2078
mx: 3343
 μ : -3.8
 σ : 66.9

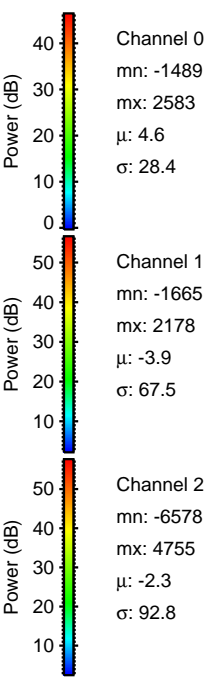
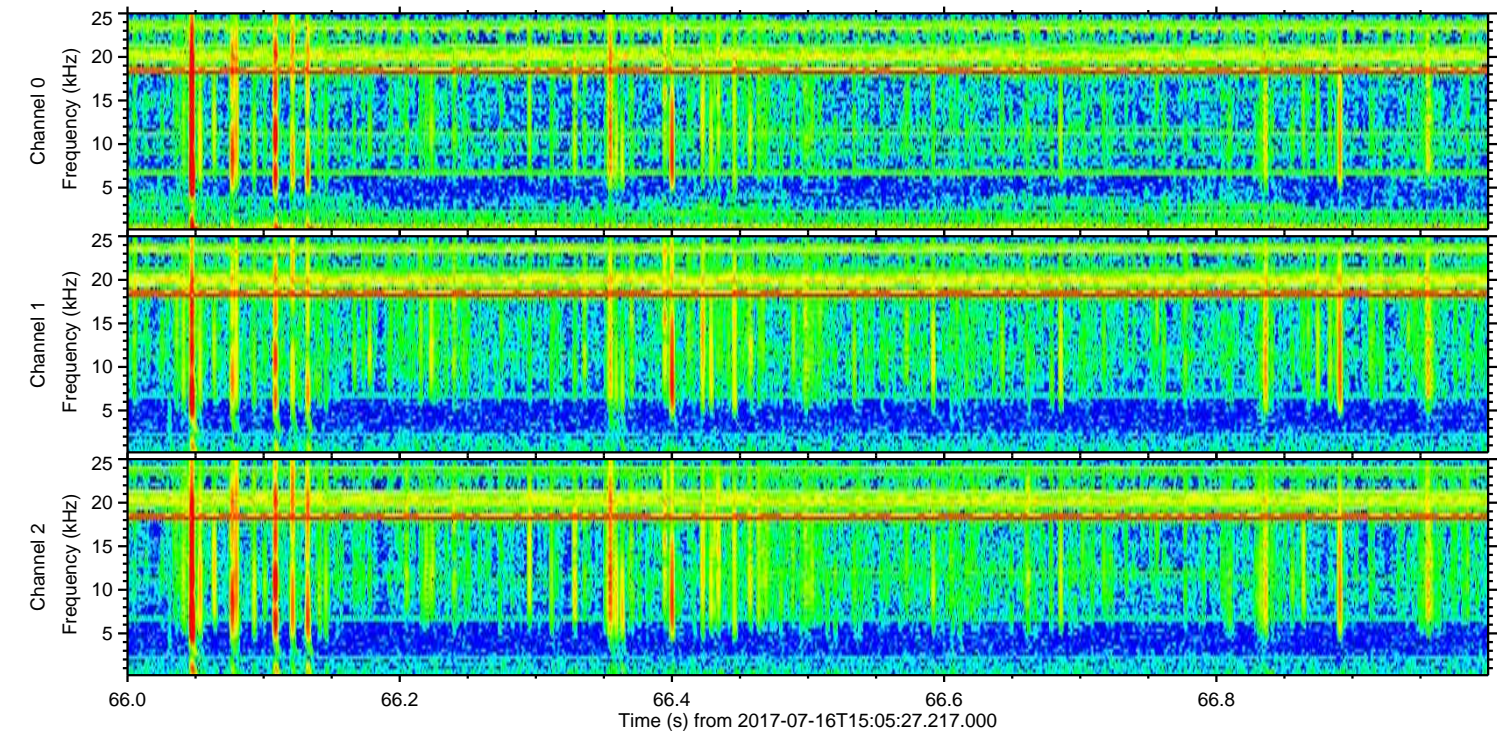
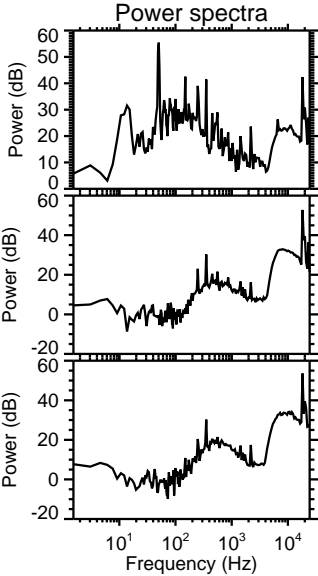
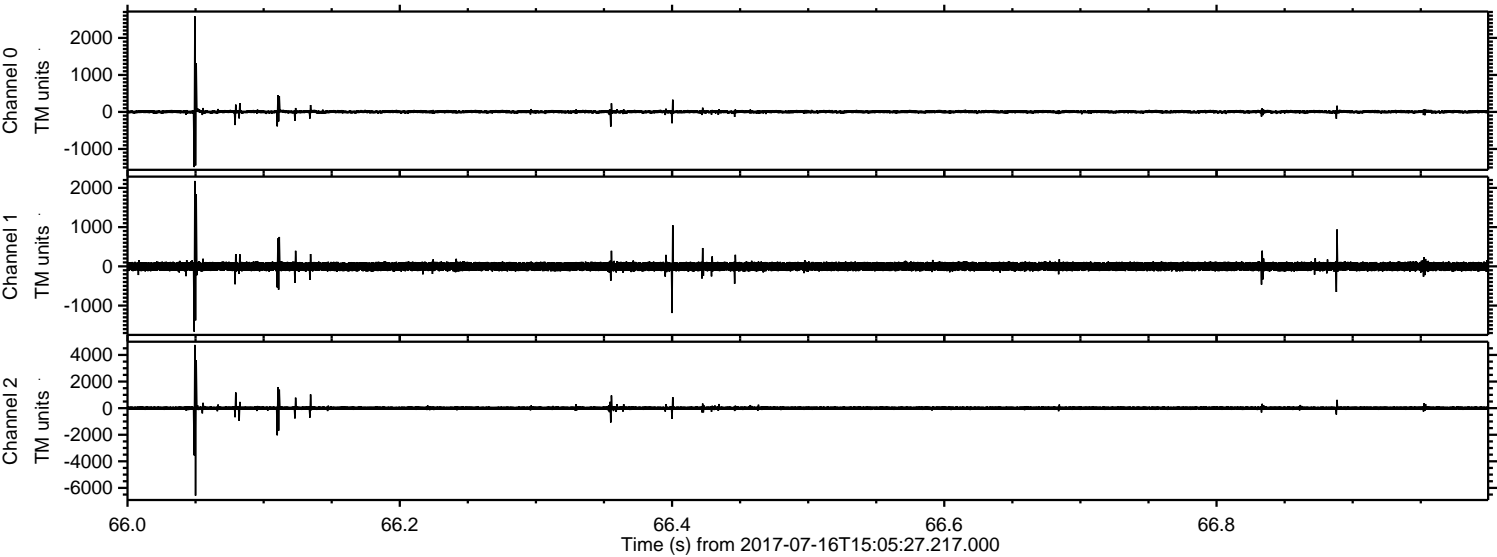
Channel 2
mn: -8762
mx: 6062
 μ : -2.4
 σ : 95.3

ELMAVAN 3D WAVEFORMS (Measured data sampled at 50 kHz) 51000 packets of 144 samples from 2017-07-16T15:05:27.217.000. Part 133/147

Processed Thu Jul 20 15:18:52 2017 by ELM ver.2012-10-06 from 001__elm20170716_150526__dat00.bin



Processed Thu Jul 20 15:18:53 2017 by ELM ver.2012-10-06 from 001__elm20170716_150526__dat00.bin

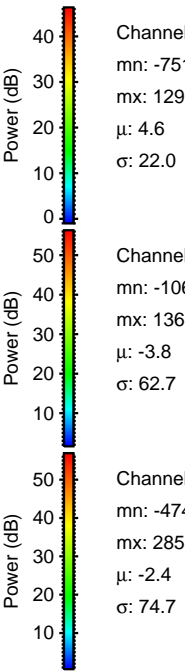
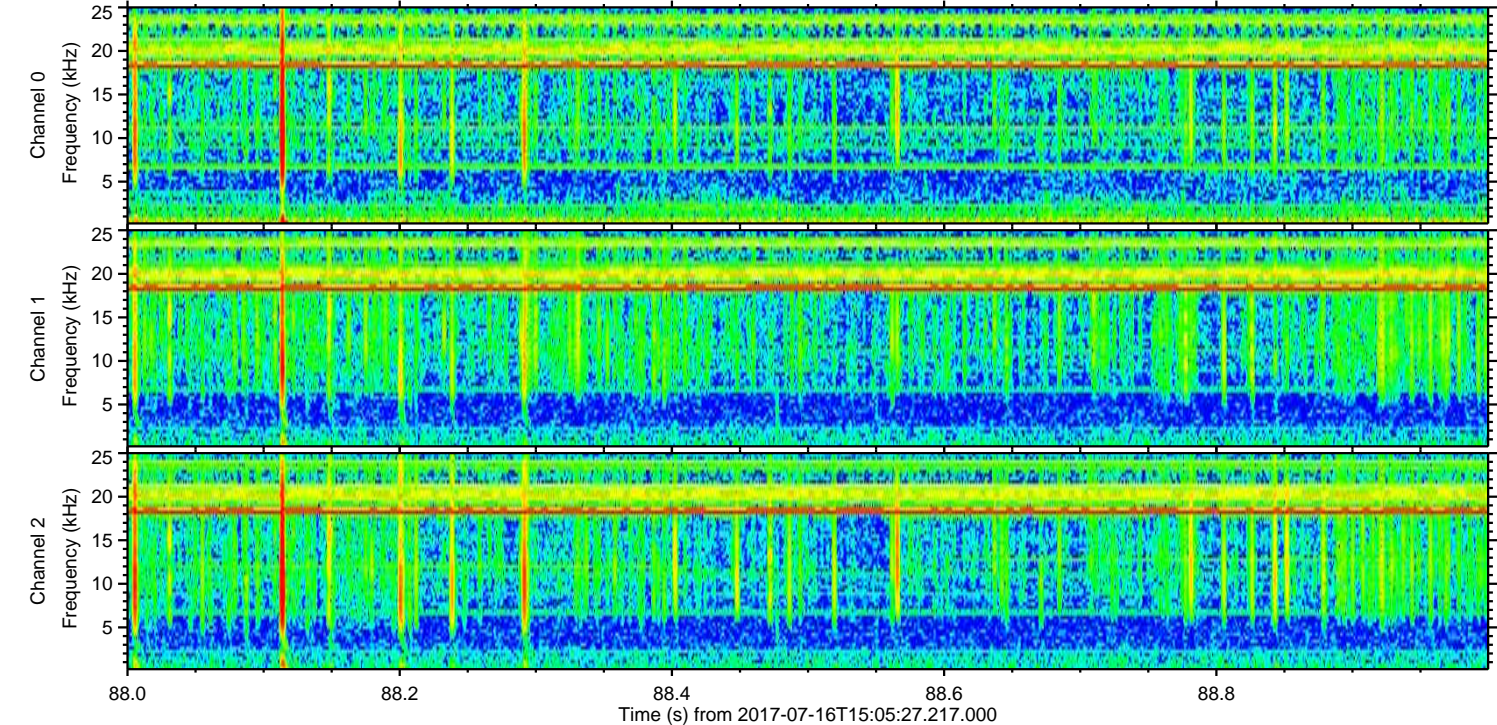
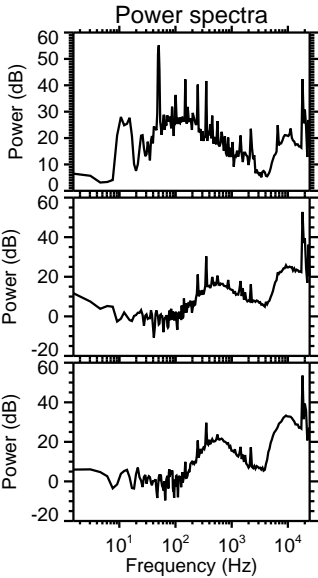
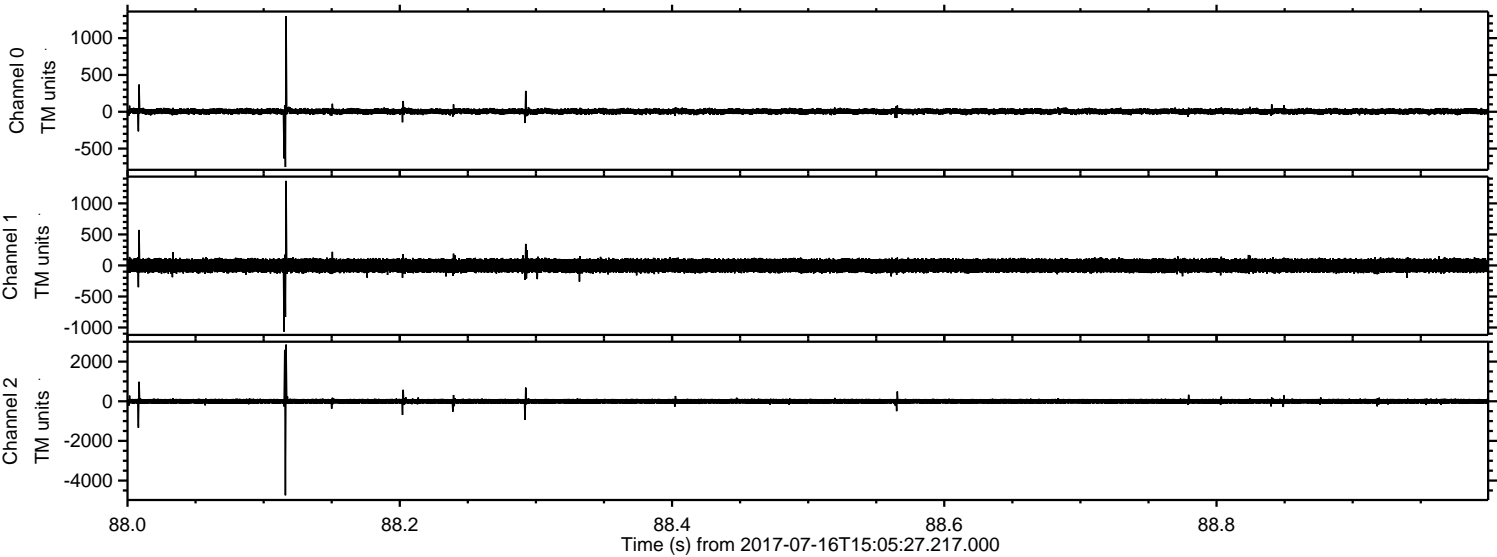


Channel 0
mn: -1489
mx: 2583
 μ : 4.6
 σ : 28.4

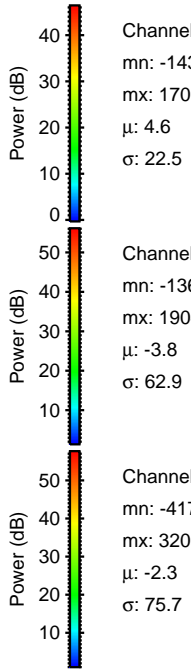
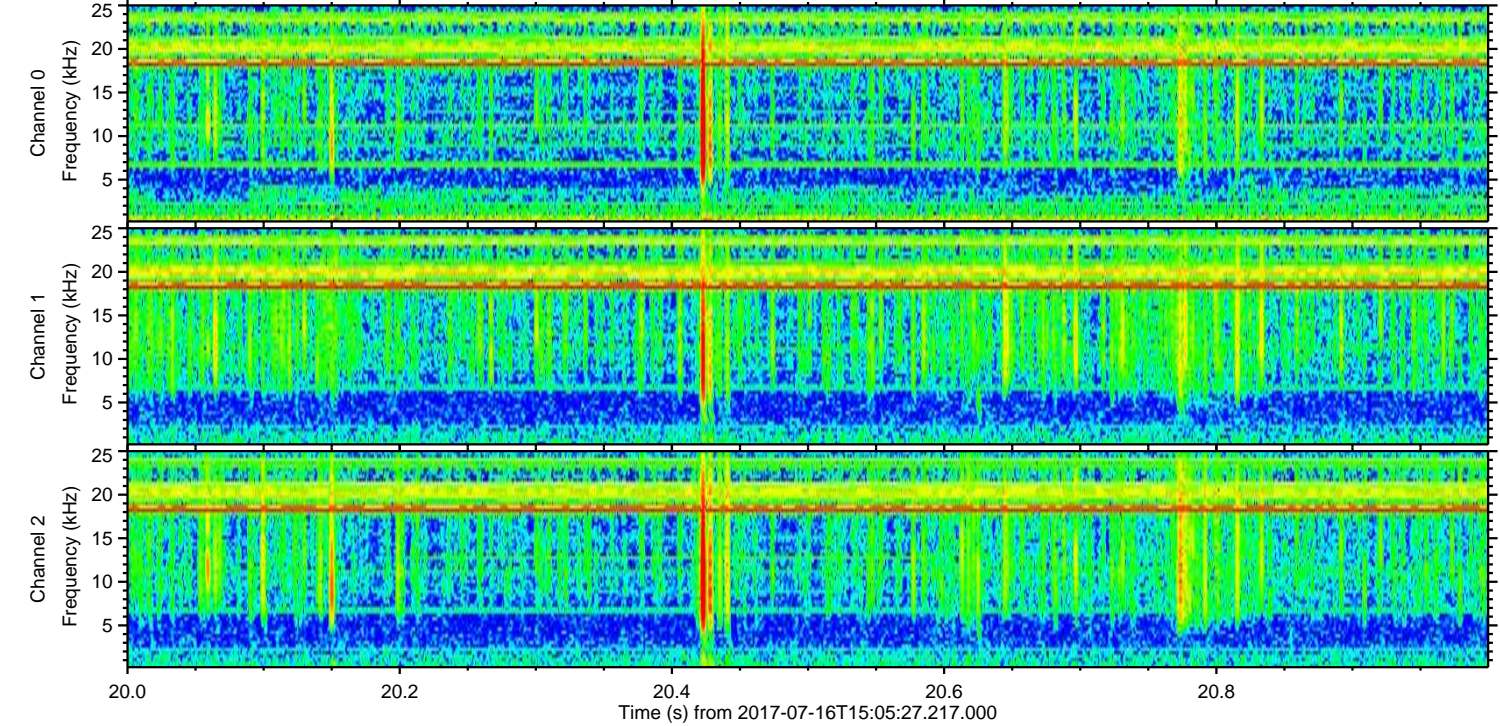
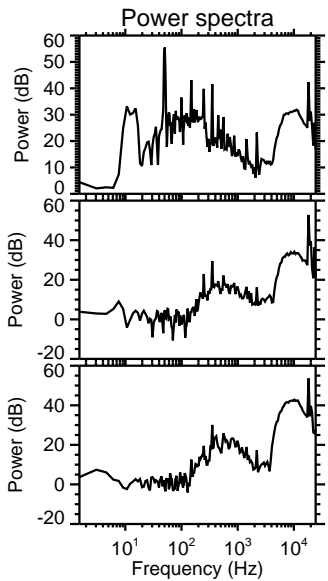
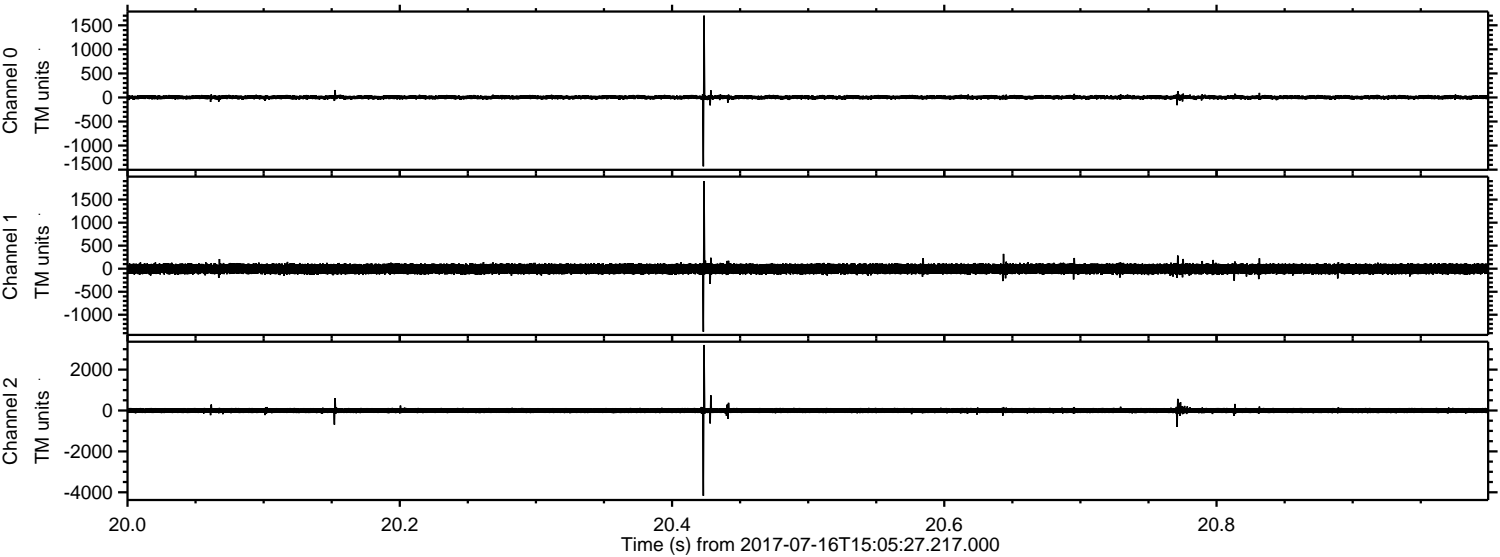
Channel 1
mn: -1665
mx: 2178
 μ : -3.9
 σ : 67.5

Channel 2
mn: -6578
mx: 4755
 μ : -2.3
 σ : 92.8

Processed Thu Jul 20 15:18:54 2017 by ELM ver.2012-10-06 from 001__elm20170716_150526__dat00.bin



Processed Thu Jul 20 15:18:55 2017 by ELM ver.2012-10-06 from 001__elm20170716_150526__dat00.bin



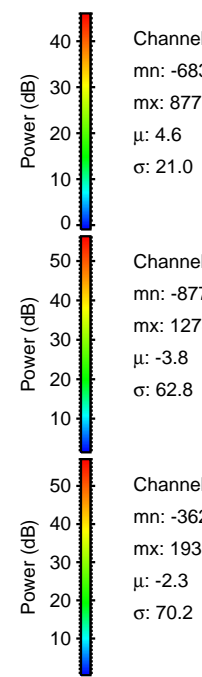
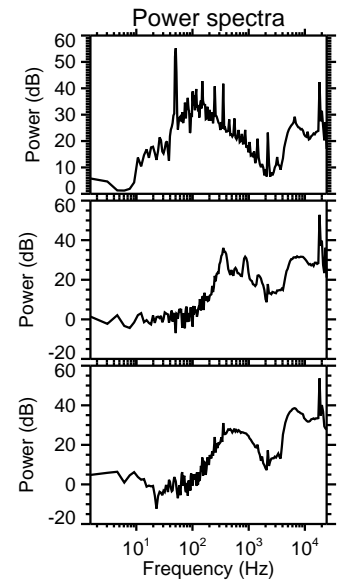
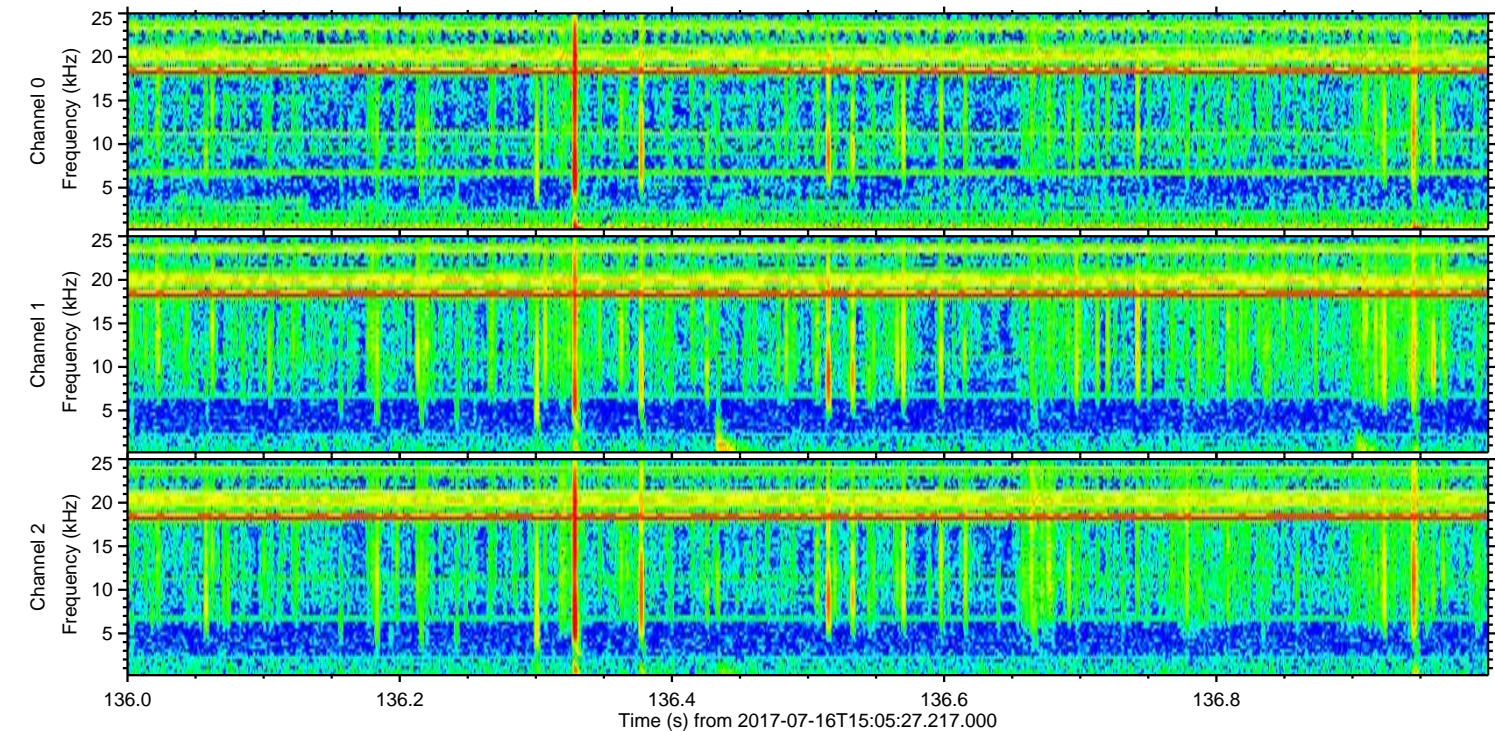
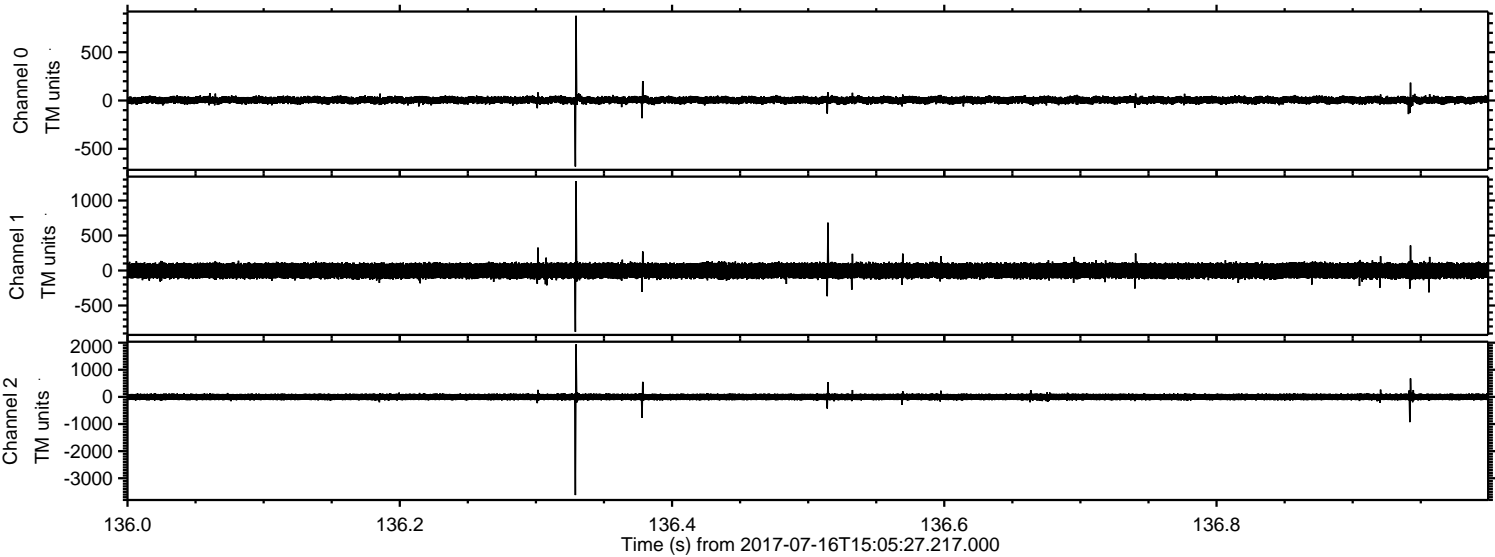
Channel 0
mn: -1432
mx: 1701
 μ : 4.6
 σ : 22.5

Channel 1
mn: -1369
mx: 1904
 μ : -3.8
 σ : 62.9

Channel 2
mn: -4170
mx: 3205
 μ : -2.3
 σ : 75.7

ELMAVAN 3D WAVEFORMS (Measured data sampled at 50 kHz) 51000 packets of 144 samples from 2017-07-16T15:05:27.217.000. Part 137/147

Processed Thu Jul 20 15:18:56 2017 by ELM ver.2012-10-06 from 001__elm20170716_150526__dat00.bin

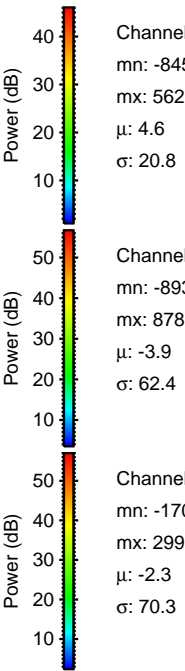
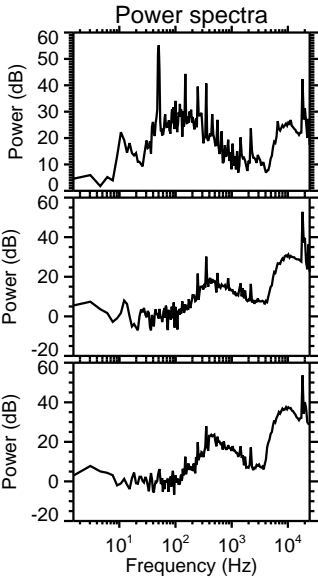
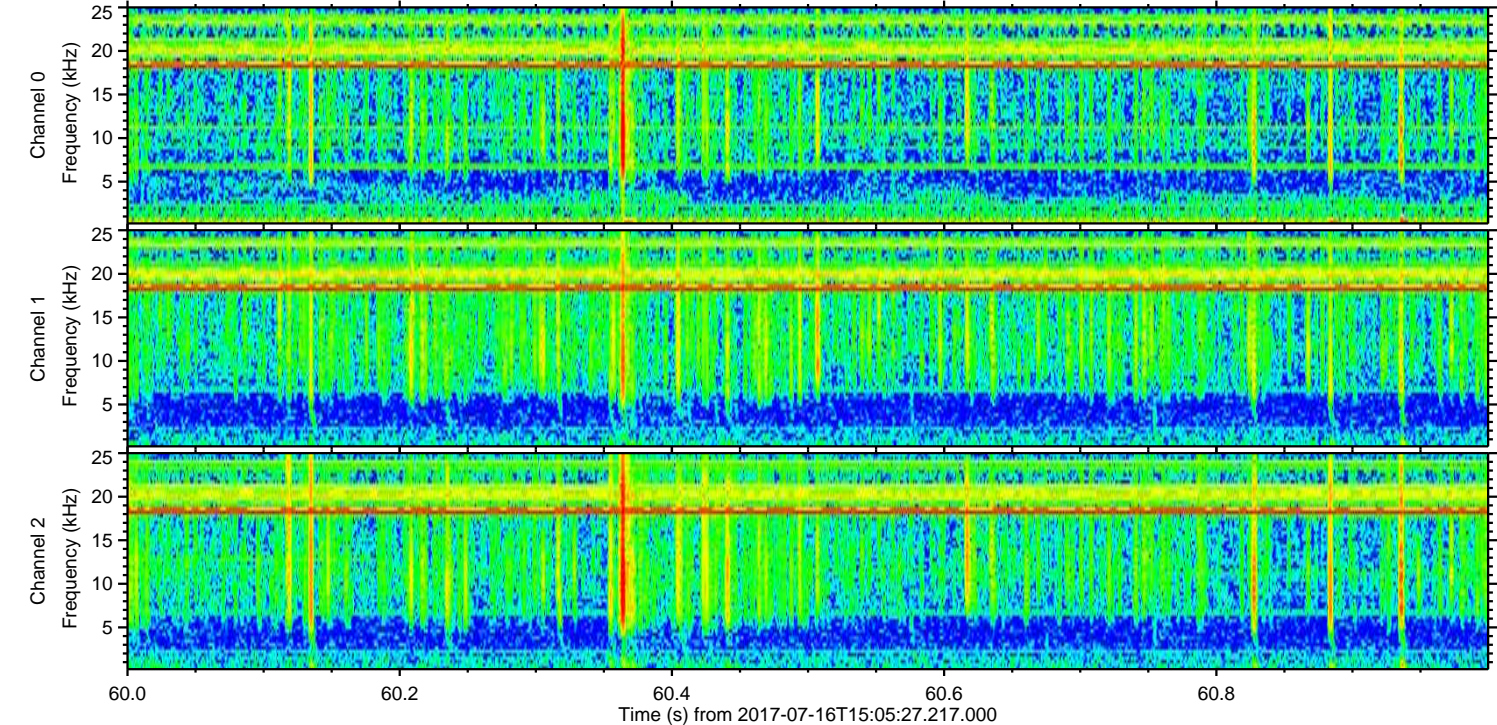
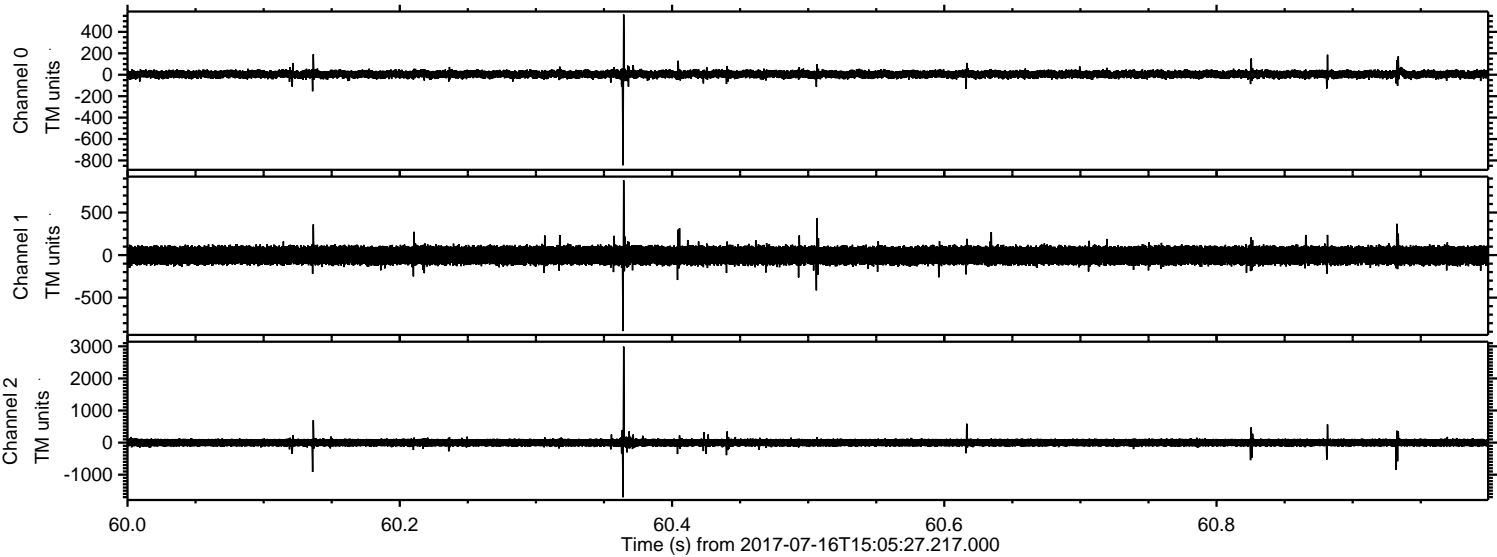


Channel 0
mn: -683
mx: 877
 μ : 4.6
 σ : 21.0

Channel 1
mn: -877
mx: 1278
 μ : -3.8
 σ : 62.8

Channel 2
mn: -3621
mx: 1938
 μ : -2.3
 σ : 70.2

Processed Thu Jul 20 15:18:57 2017 by ELM ver.2012-10-06 from 001__elm20170716_150526__dat00.bin

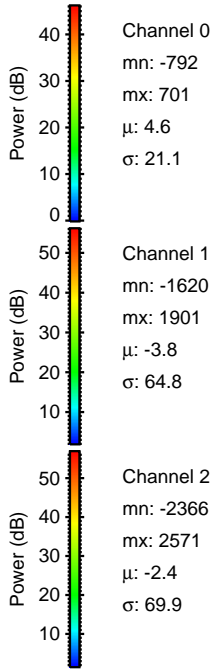
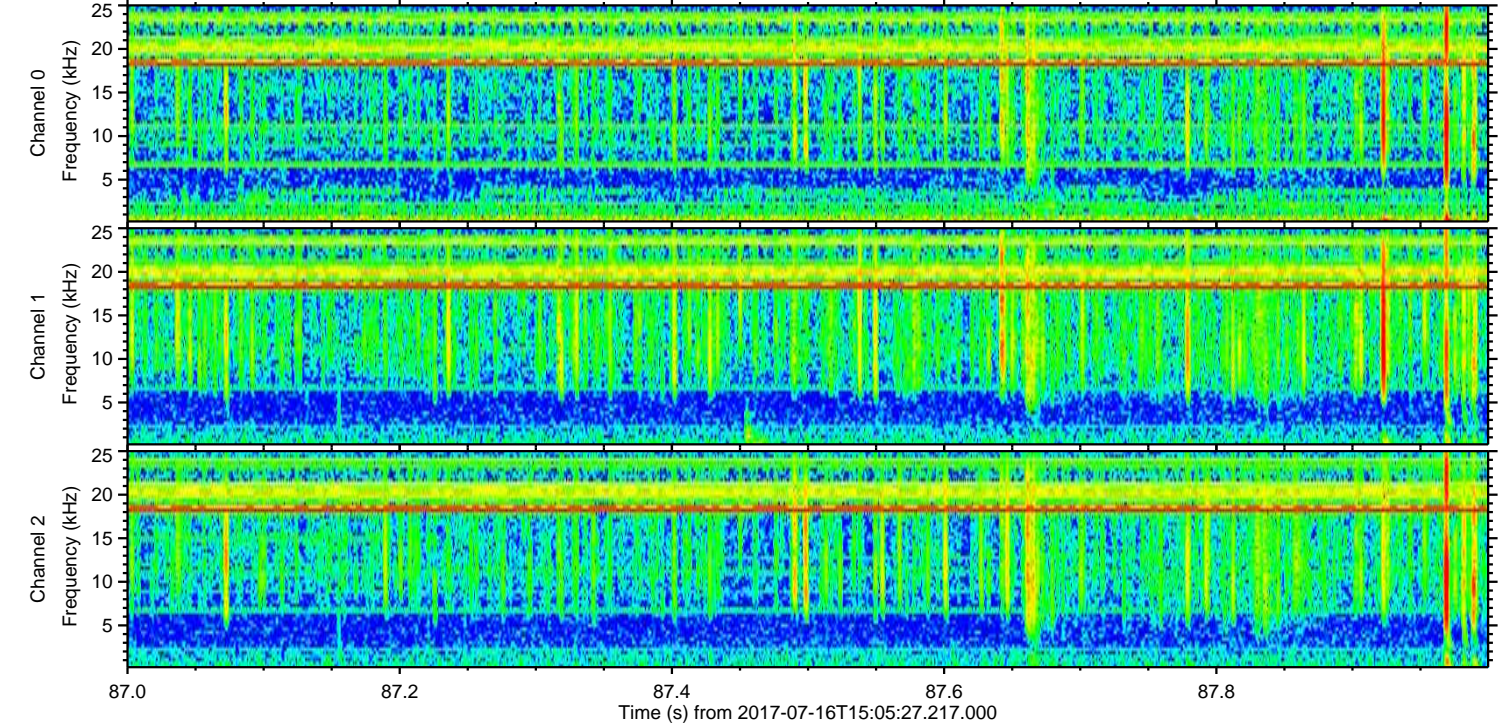
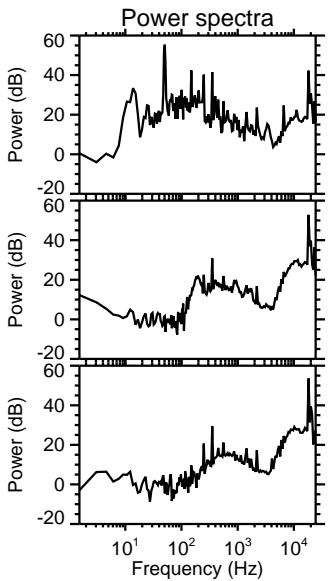
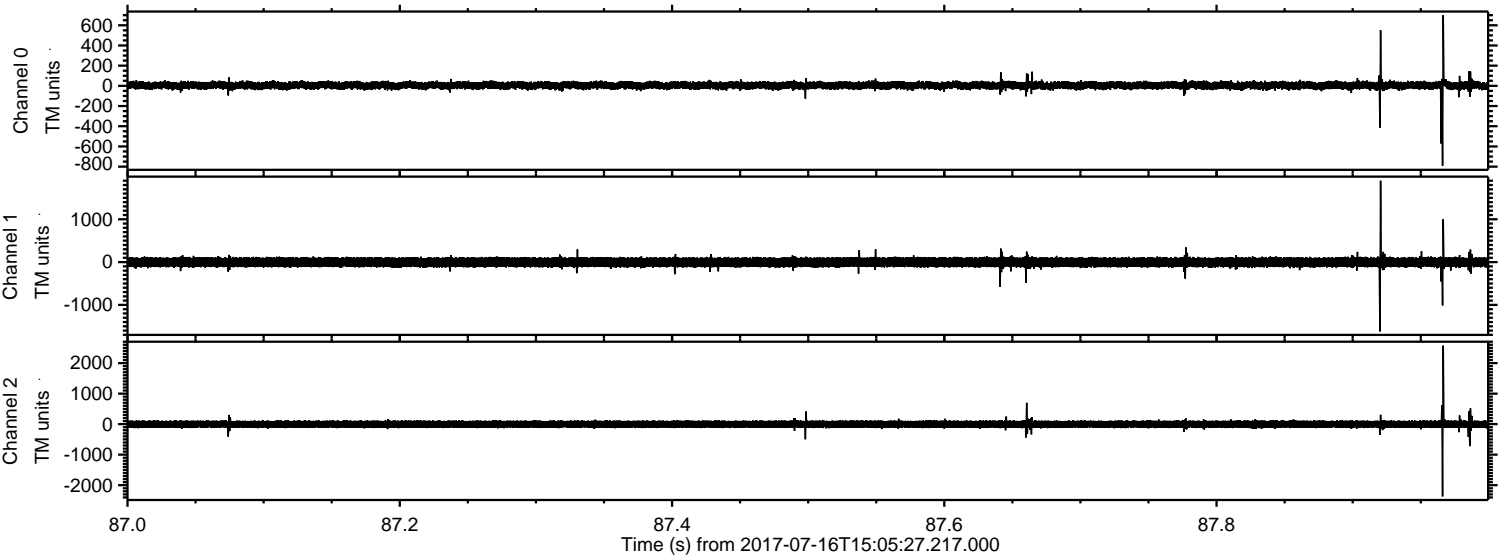


Channel 0
mn: -845
mx: 562
 μ : 4.6
 σ : 20.8

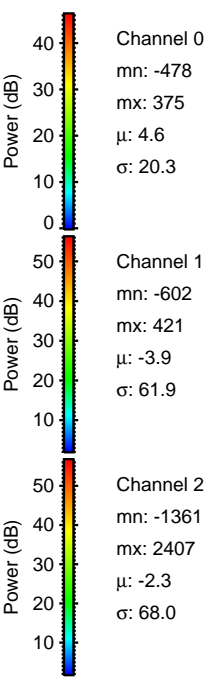
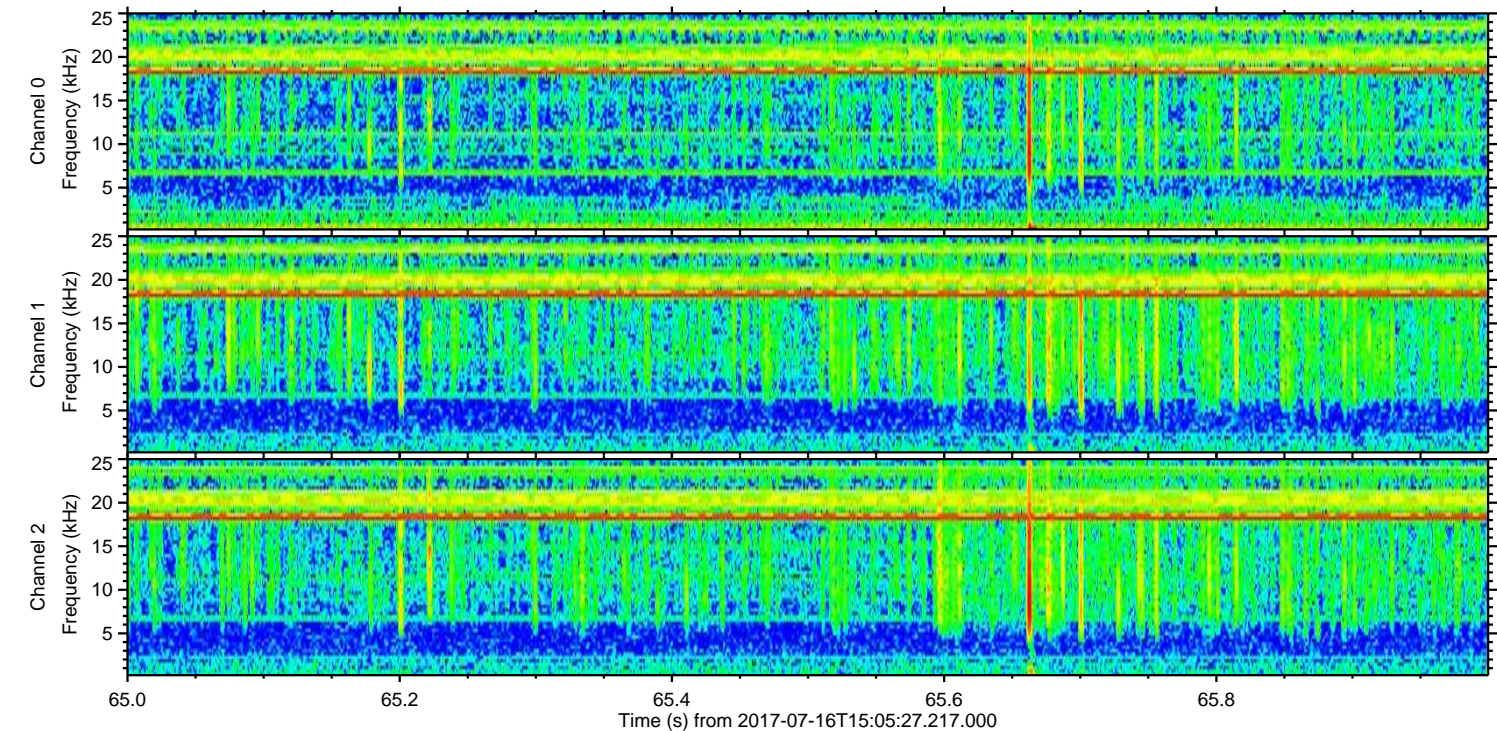
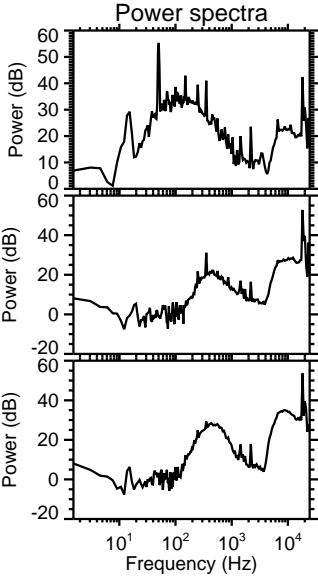
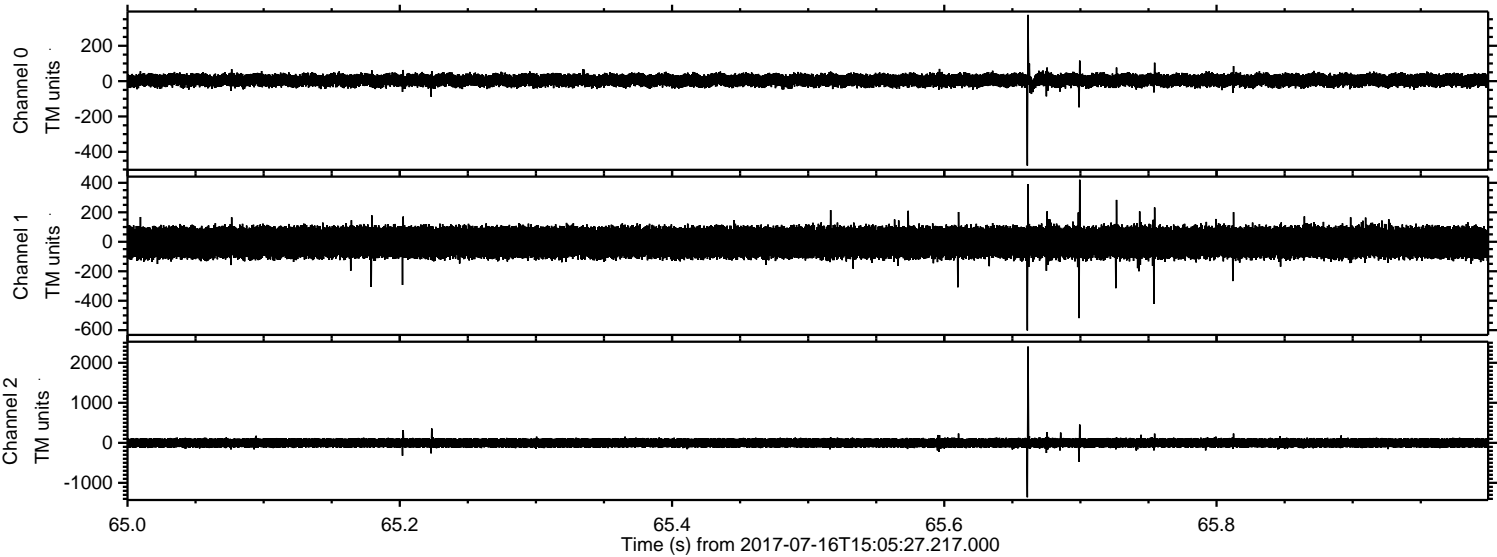
Channel 1
mn: -893
mx: 878
 μ : -3.9
 σ : 62.4

Channel 2
mn: -1704
mx: 2995
 μ : -2.3
 σ : 70.3

Processed Thu Jul 20 15:18:58 2017 by ELM ver.2012-10-06 from 001__elm20170716_150526__dat00.bin



Processed Thu Jul 20 15:18:58 2017 by ELM ver.2012-10-06 from 001__elm20170716_150526__dat00.bin



Channel 0
mn: -478
mx: 375
 μ : 4.6
 σ : 20.3

Channel 1
mn: -602
mx: 421
 μ : -3.9
 σ : 61.9

Channel 2
mn: -1361
mx: 2407
 μ : -2.3
 σ : 68.0

Processed Thu Jul 20 15:18:59 2017 by ELM ver.2012-10-06 from 001__elm20170716_150526__dat00.bin

