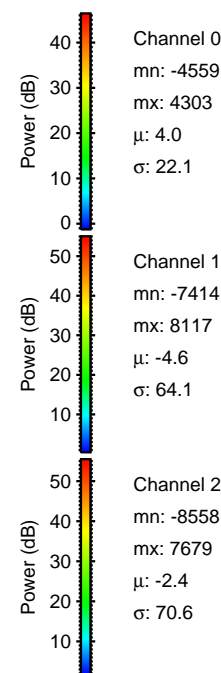
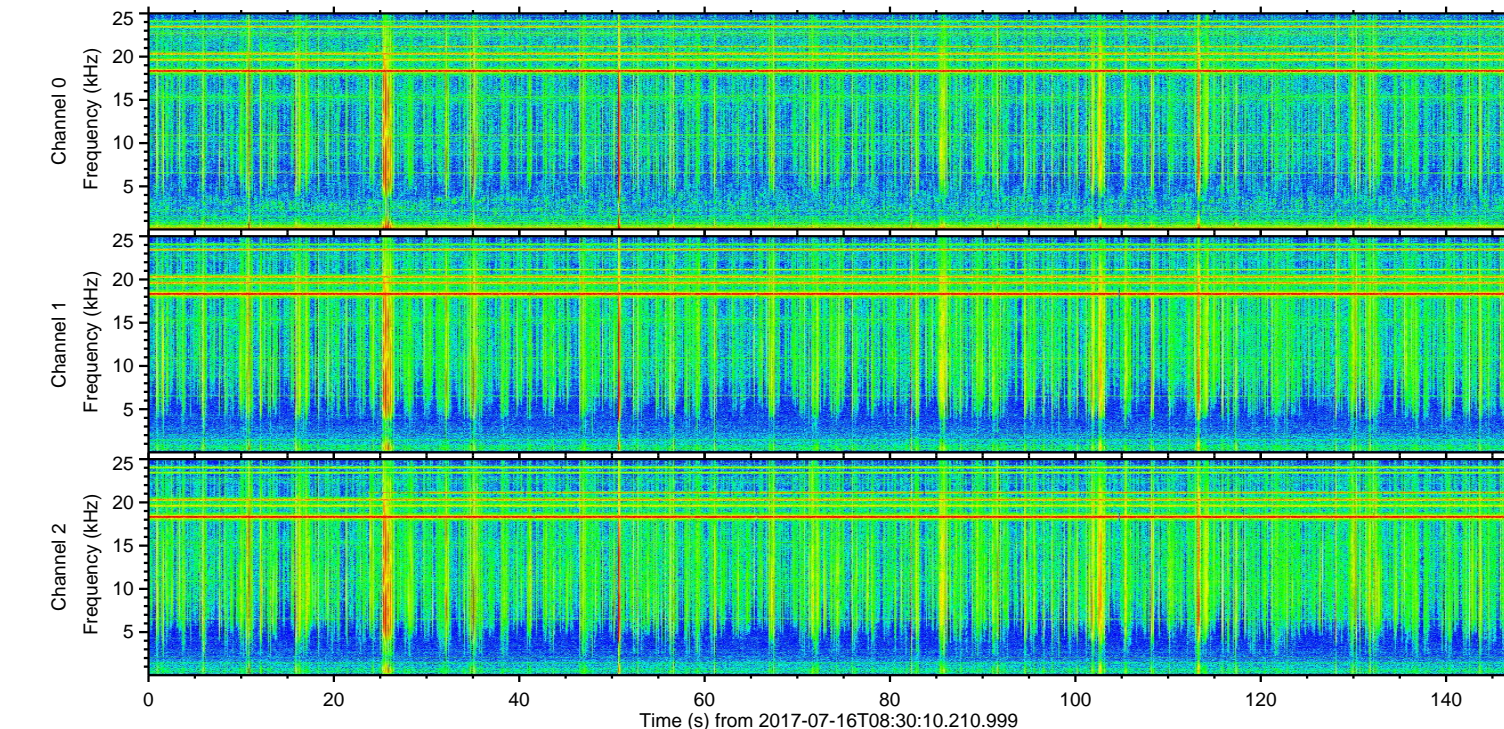
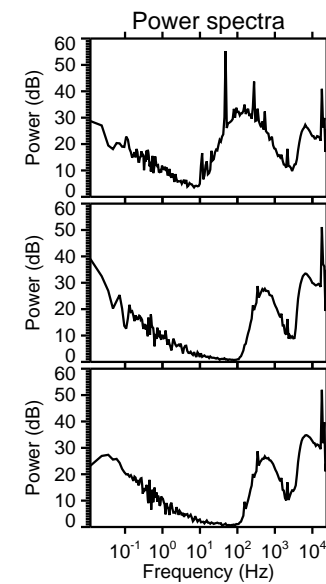
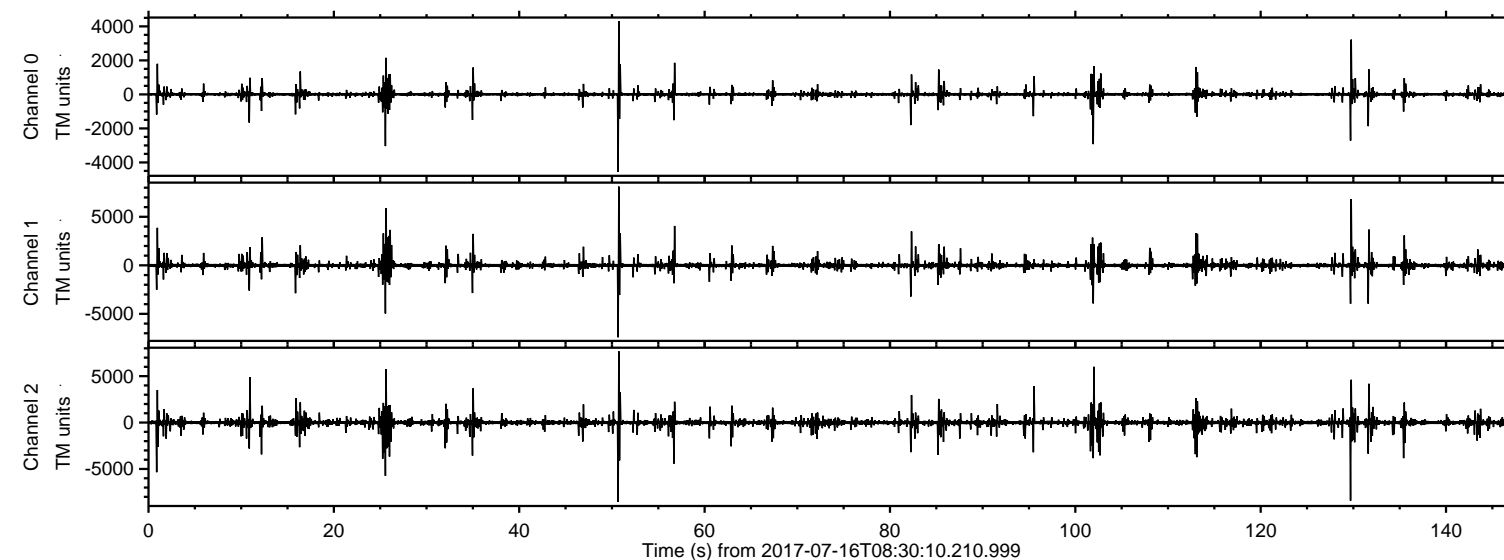


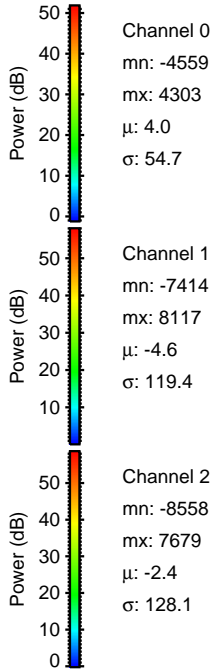
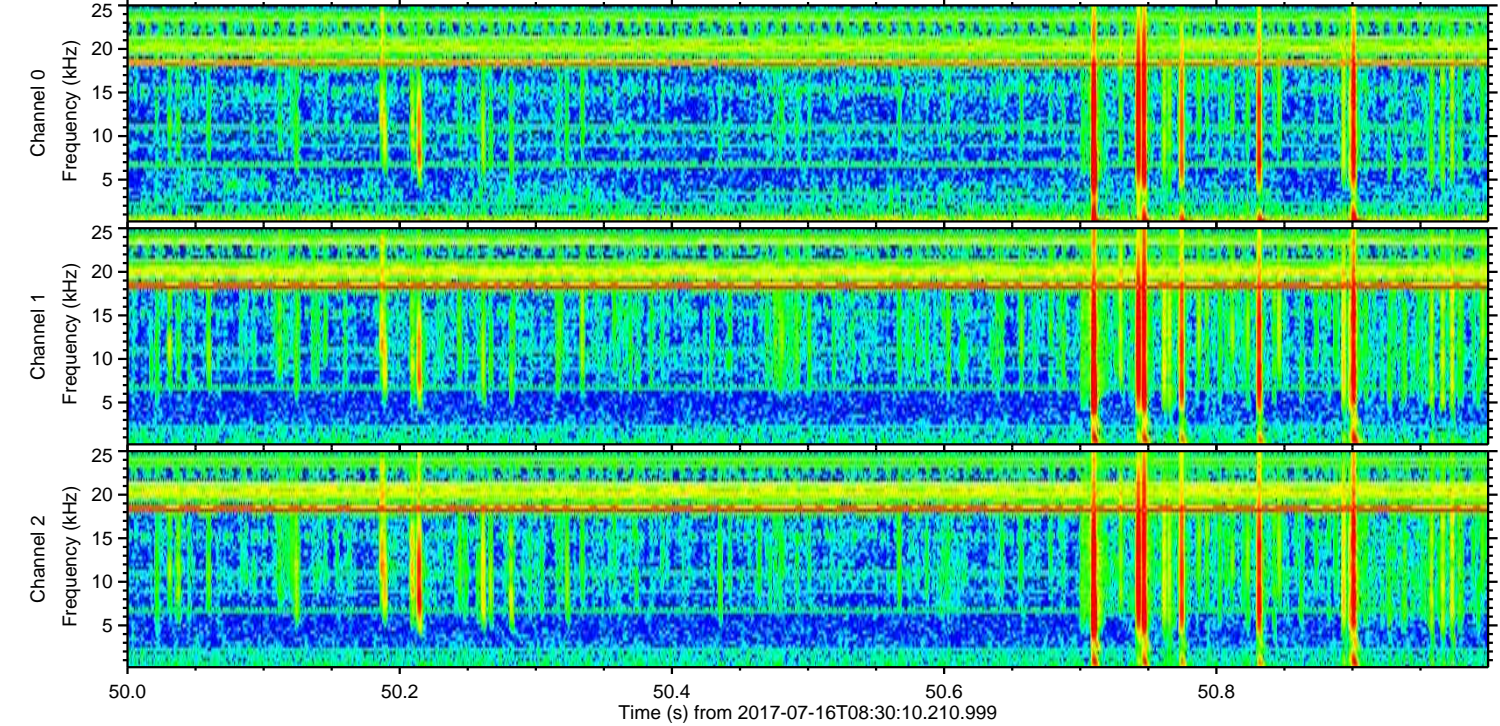
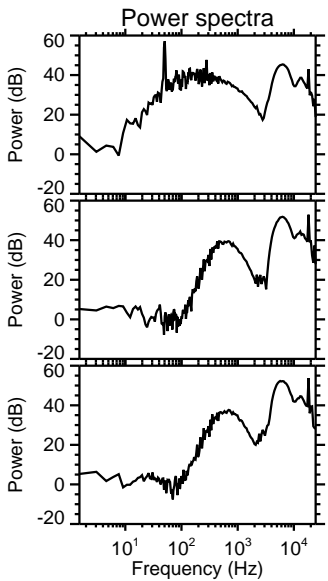
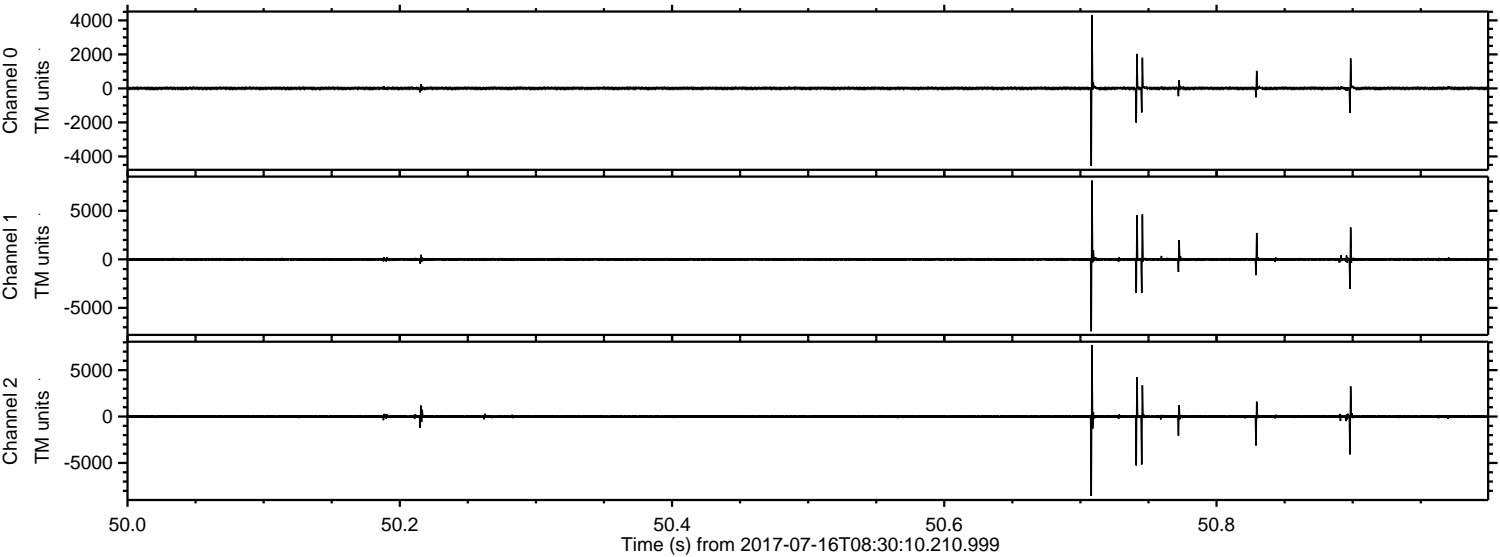
ELMAVAN 3D WAVEFORMS (Measured data sampled at 50 kHz) 51000 packets of 144 samples from 2017-07-16T08:30:10.210.999.

Processed Thu Jul 20 14:20:07 2017 by ELM ver.2012-10-06 from 001__elm20170716_083009__dat00.bin



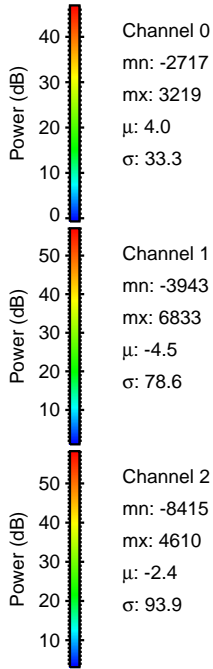
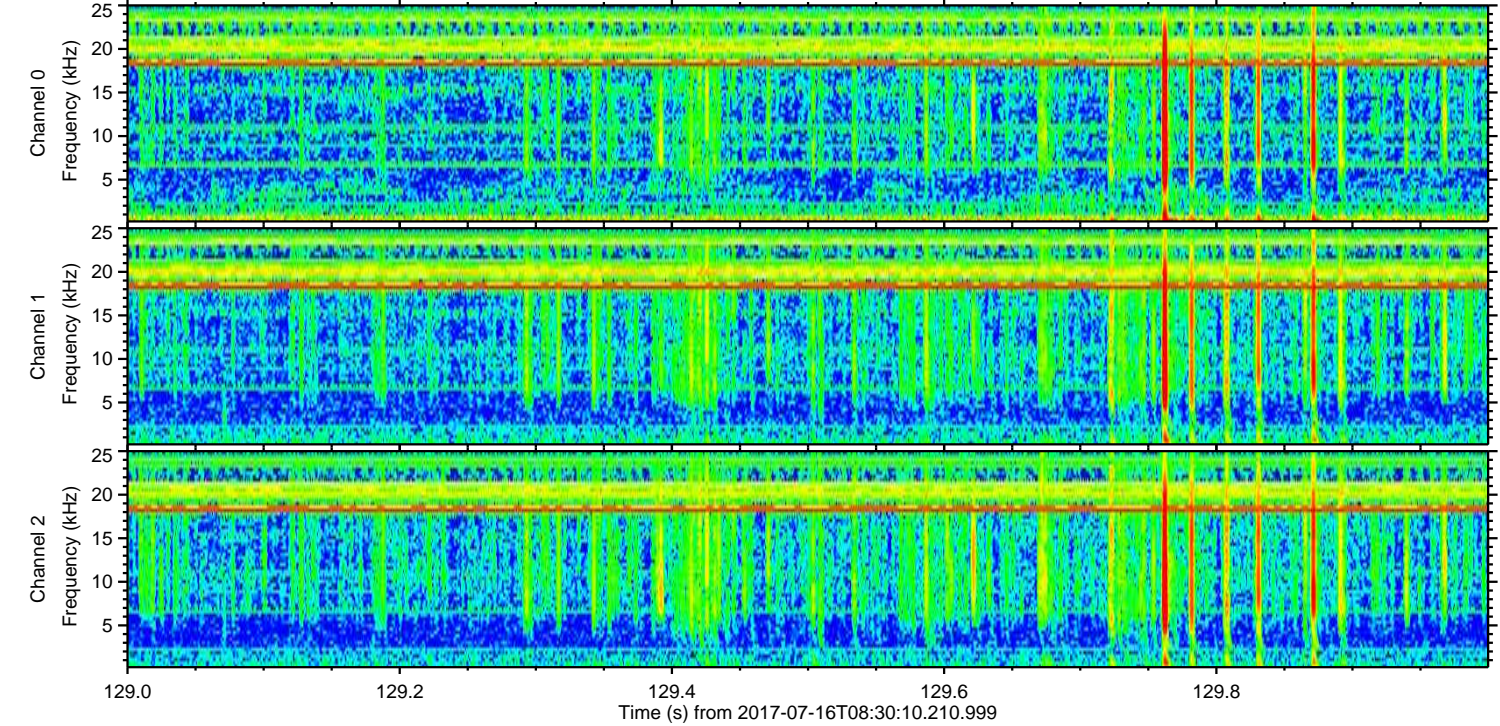
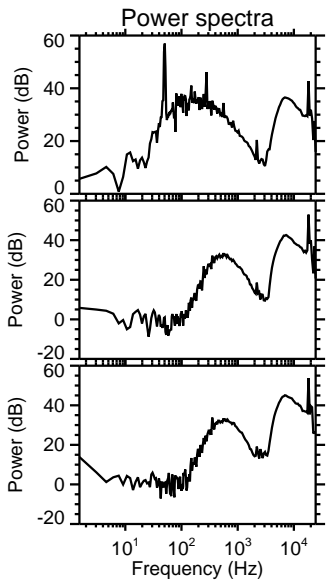
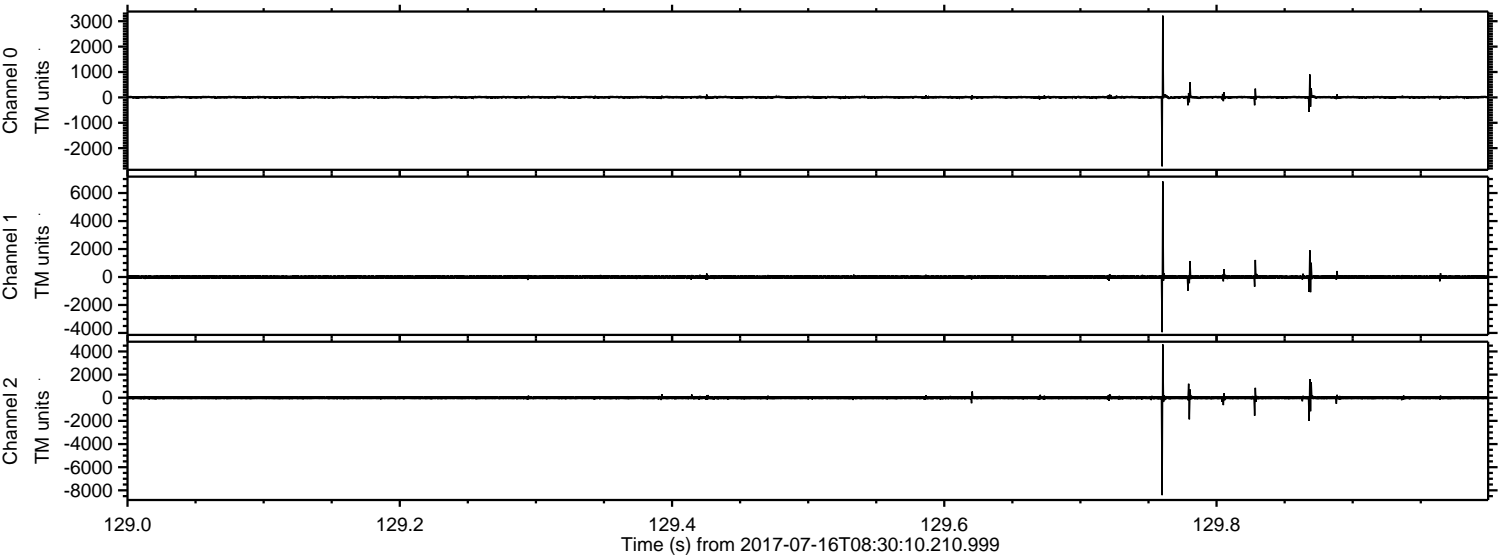
ELMAVAN 3D WAVEFORMS (Measured data sampled at 50 kHz) 51000 packets of 144 samples from 2017-07-16T08:30:10.210.999. Part 51/147

Processed Thu Jul 20 14:20:15 2017 by ELM ver.2012-10-06 from 001__elm20170716_083009__dat00.bin



ELMAVAN 3D WAVEFORMS (Measured data sampled at 50 kHz) 51000 packets of 144 samples from 2017-07-16T08:30:10.210.999. Part 130/147

Processed Thu Jul 20 14:20:15 2017 by ELM ver.2012-10-06 from 001__elm20170716_083009__dat00.bin



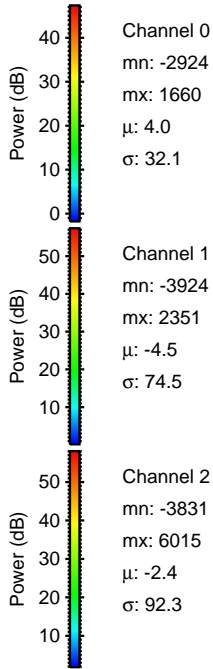
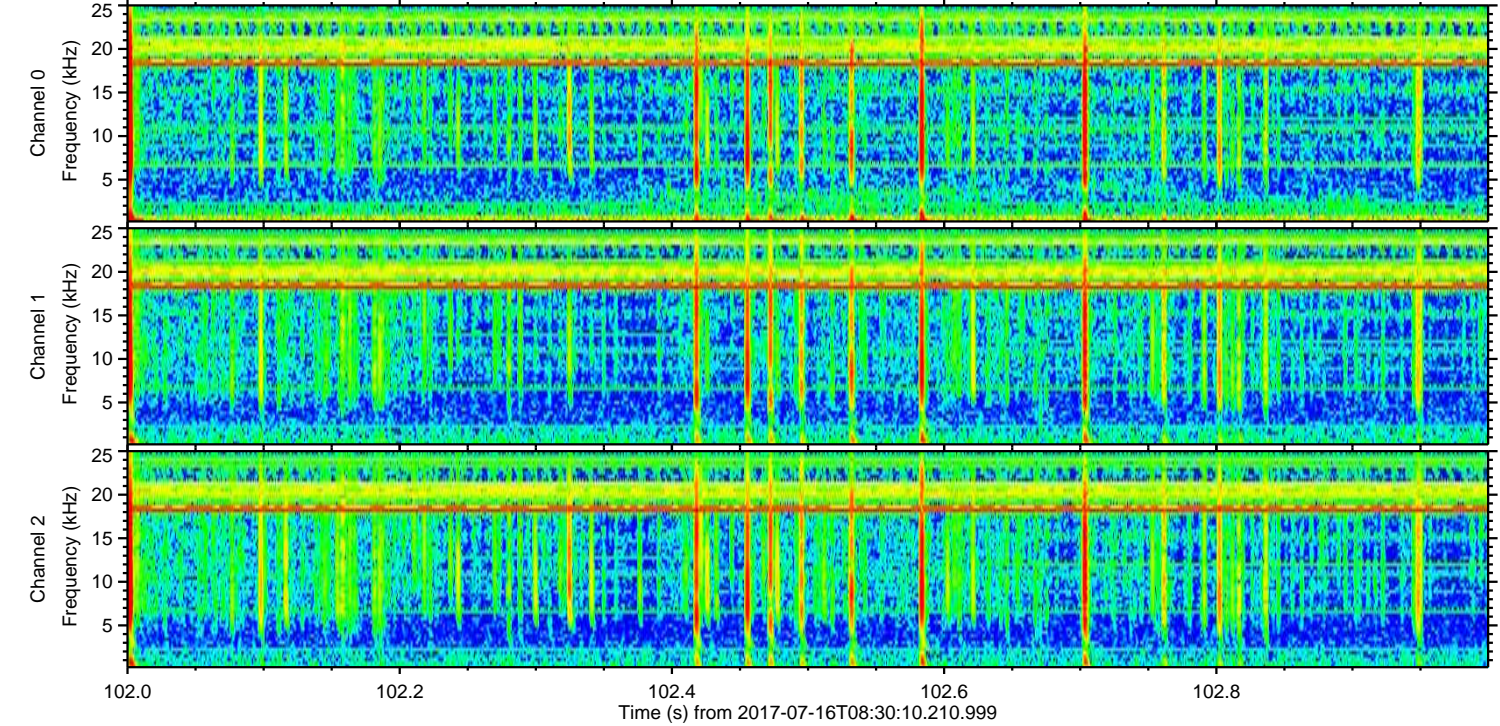
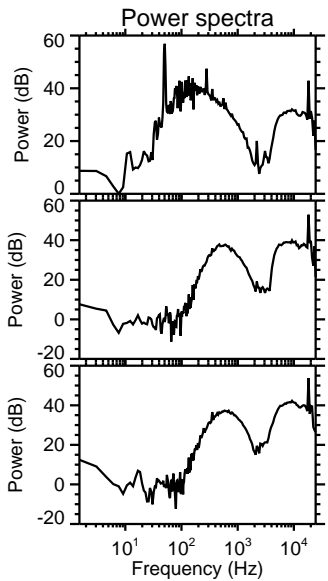
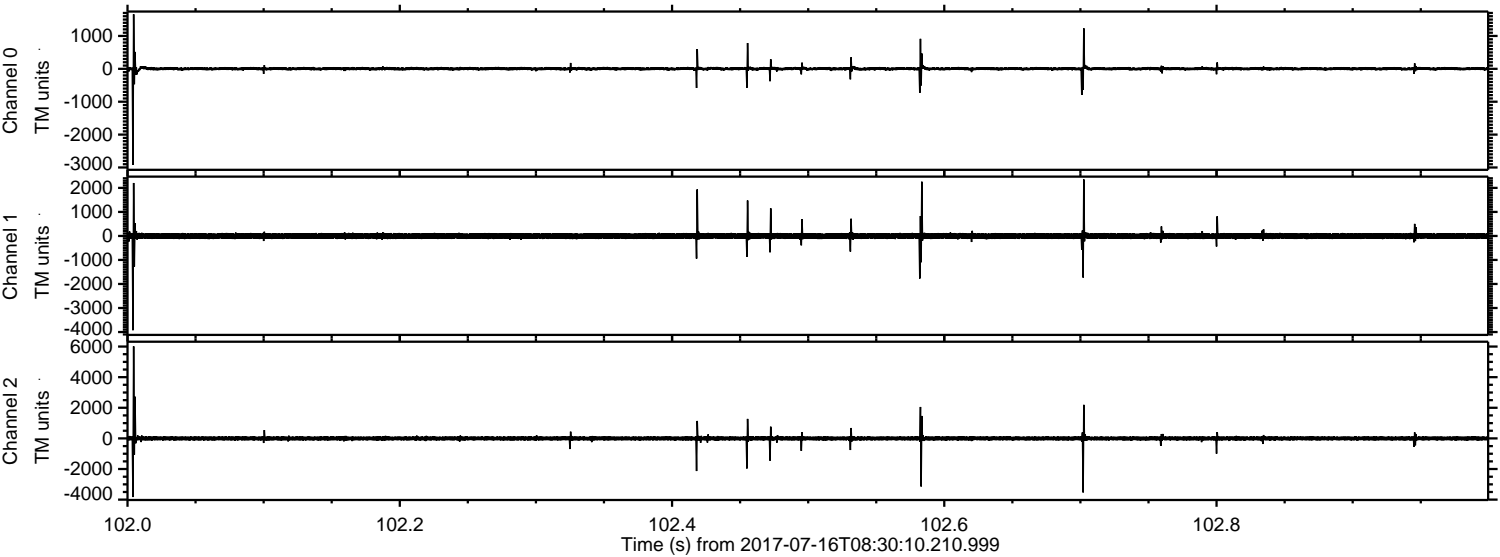
Channel 0
mn: -2717
mx: 3219
 μ : 4.0
 σ : 33.3

Channel 1
mn: -3943
mx: 6833
 μ : -4.5
 σ : 78.6

Channel 2
mn: -8415
mx: 4610
 μ : -2.4
 σ : 93.9

ELMAVAN 3D WAVEFORMS (Measured data sampled at 50 kHz) 51000 packets of 144 samples from 2017-07-16T08:30:10.210.999. Part 103/147

Processed Thu Jul 20 14:20:16 2017 by ELM ver.2012-10-06 from 001__elm20170716_083009__dat00.bin



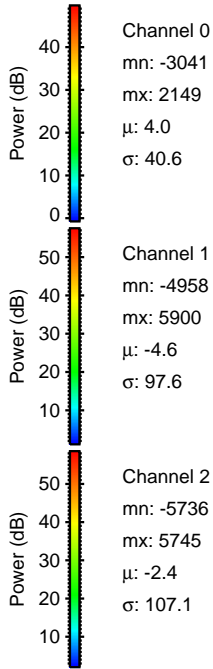
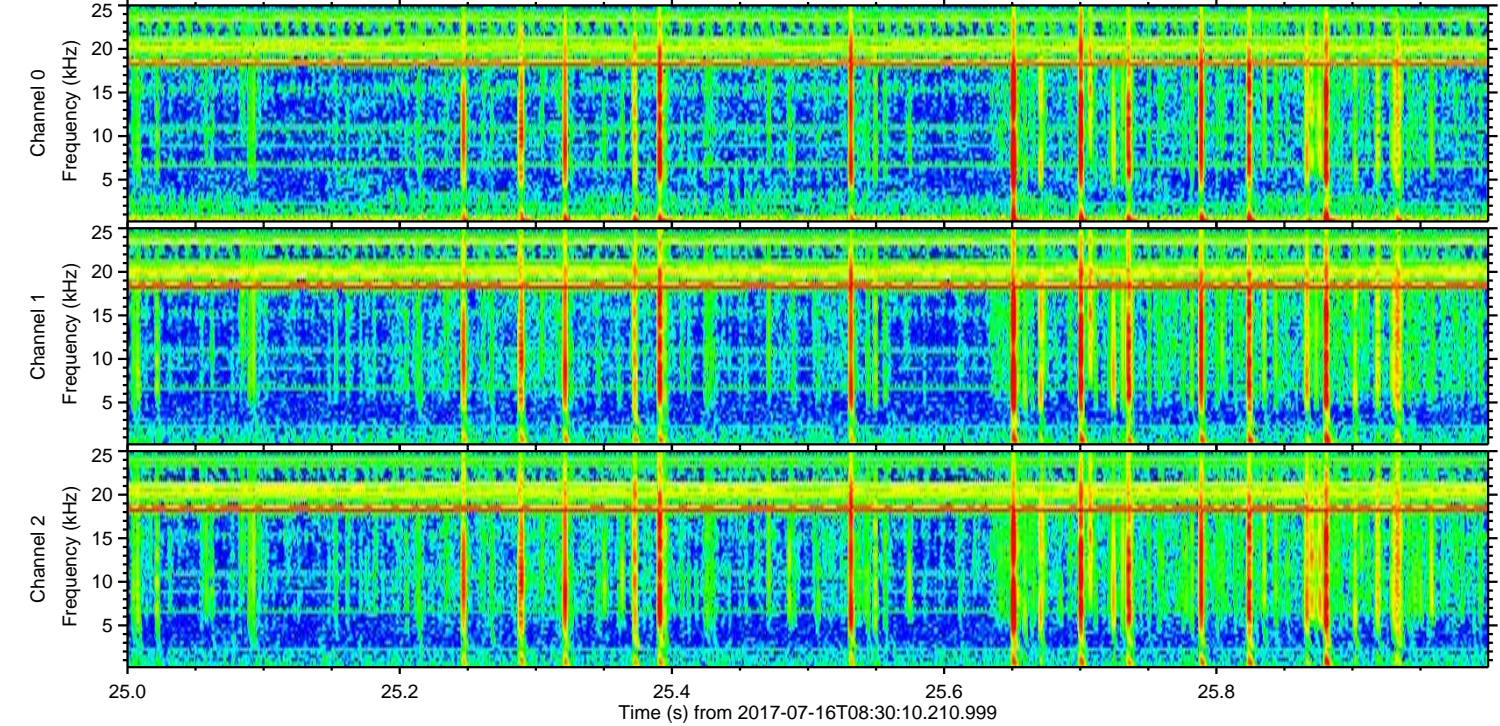
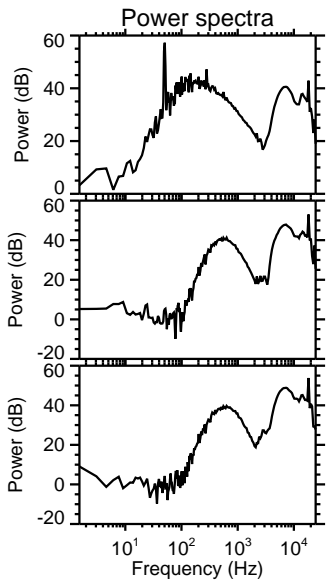
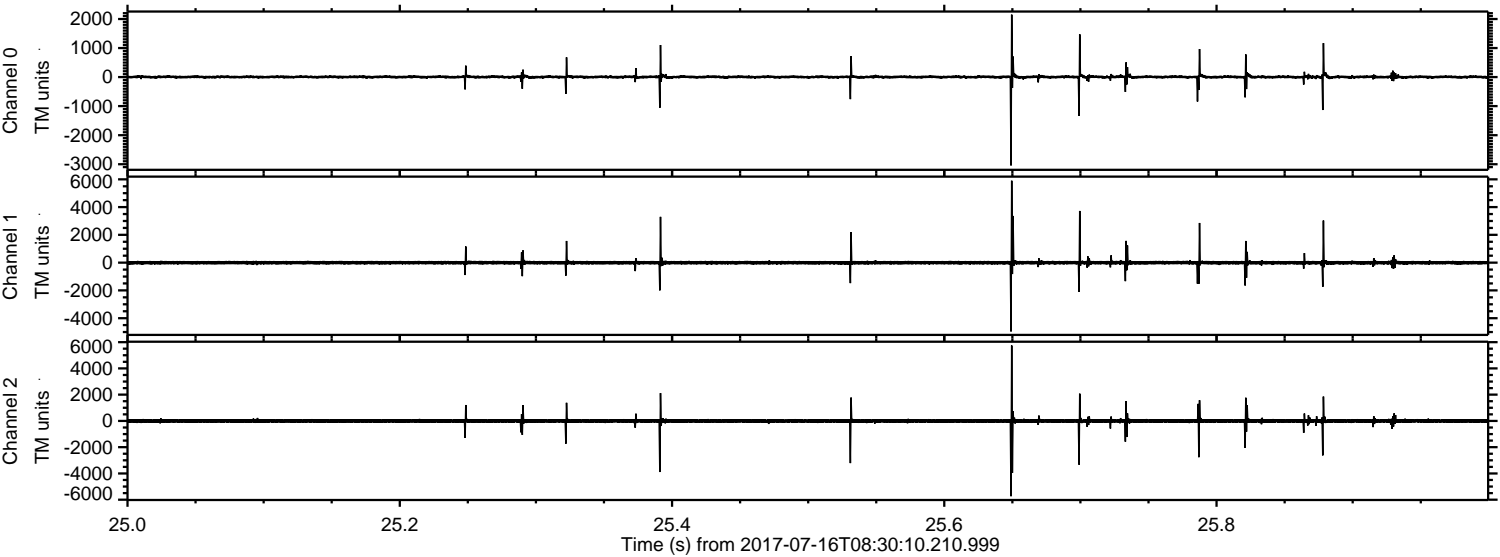
Channel 0
mn: -2924
mx: 1660
 μ : 4.0
 σ : 32.1

Channel 1
mn: -3924
mx: 2351
 μ : -4.5
 σ : 74.5

Channel 2
mn: -3831
mx: 6015
 μ : -2.4
 σ : 92.3

ELMAVAN 3D WAVEFORMS (Measured data sampled at 50 kHz) 51000 packets of 144 samples from 2017-07-16T08:30:10.210.999. Part 26/147

Processed Thu Jul 20 14:20:17 2017 by ELM ver.2012-10-06 from 001__elm20170716_083009__dat00.bin



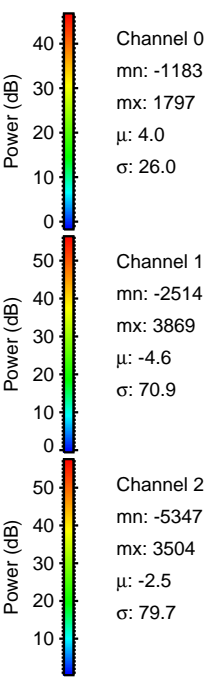
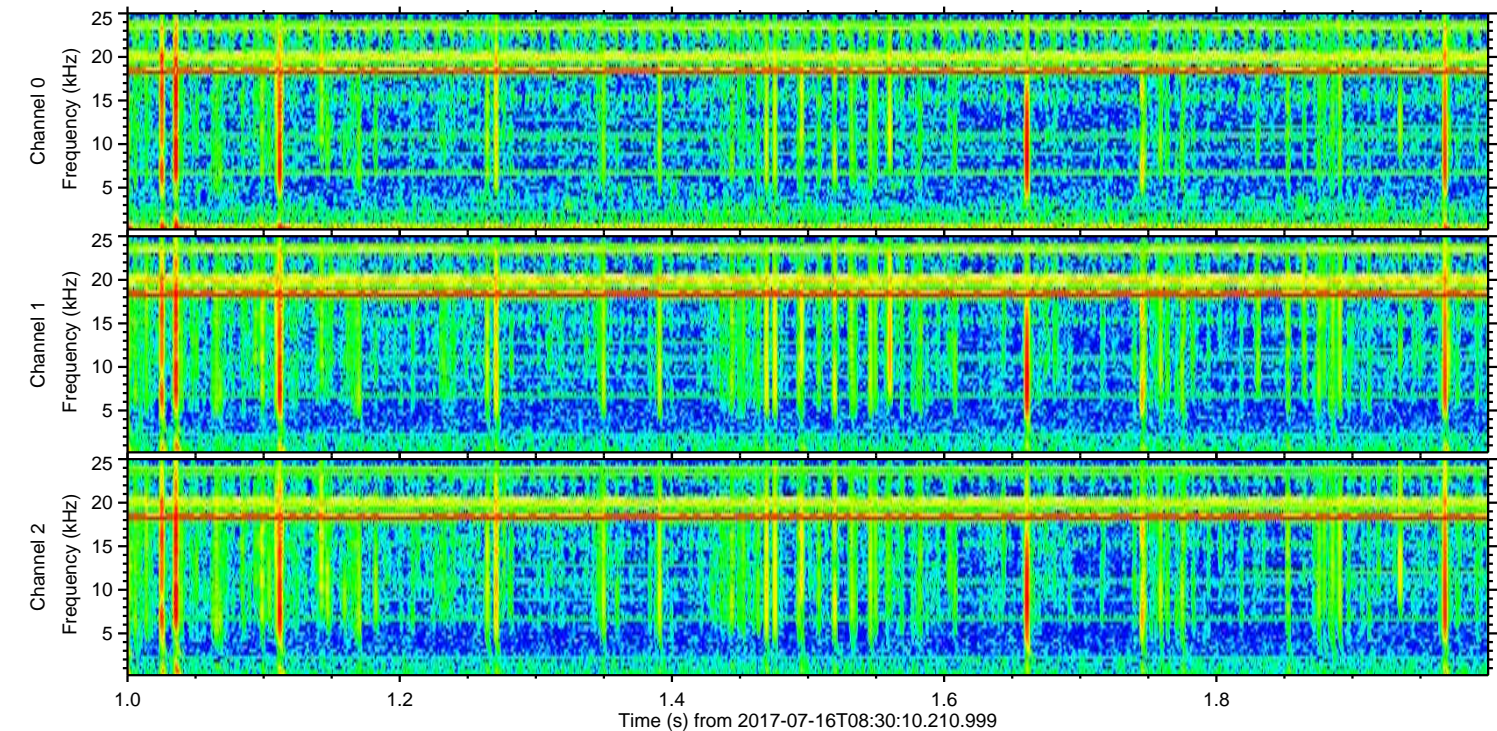
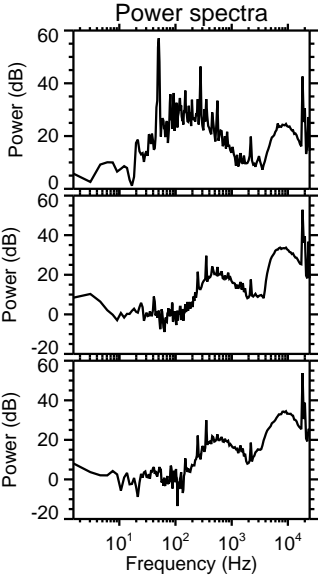
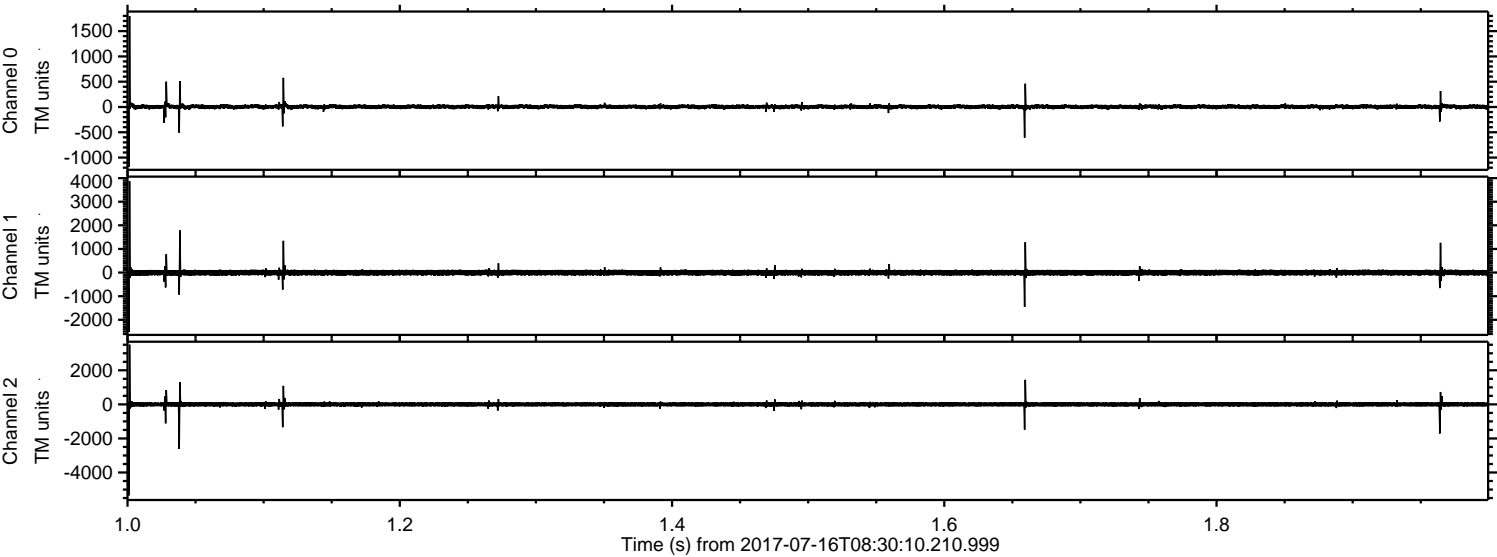
Channel 0
mn: -3041
mx: 2149
 μ : 4.0
 σ : 40.6

Channel 1
mn: -4958
mx: 5900
 μ : -4.6
 σ : 97.6

Channel 2
mn: -5736
mx: 5745
 μ : -2.4
 σ : 107.1

ELMAVAN 3D WAVEFORMS (Measured data sampled at 50 kHz) 51000 packets of 144 samples from 2017-07-16T08:30:10.210.999. Part 2/147

Processed Thu Jul 20 14:20:18 2017 by ELM ver.2012-10-06 from 001__elm20170716_083009__dat00.bin



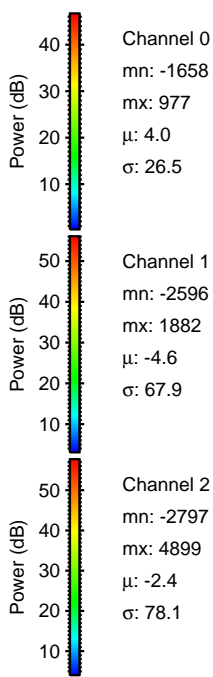
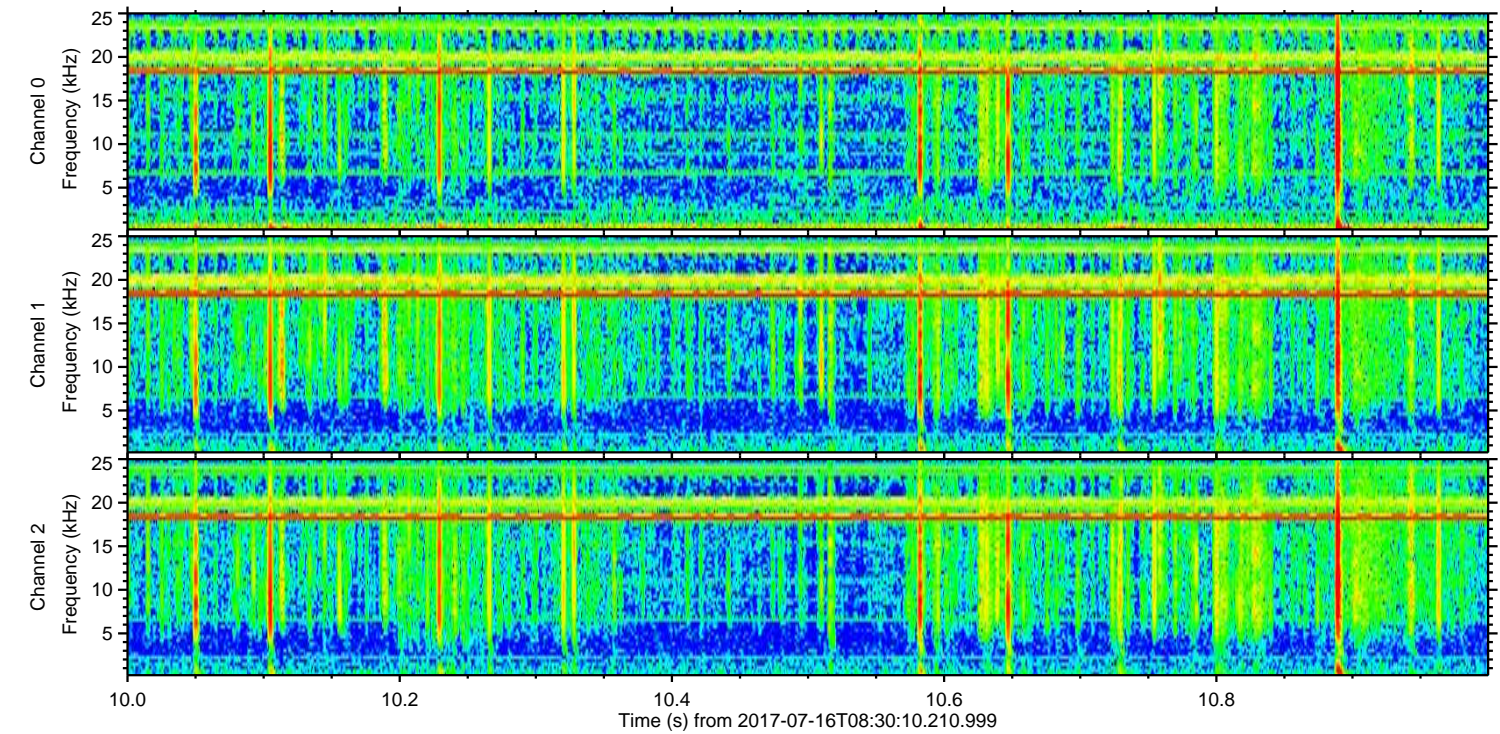
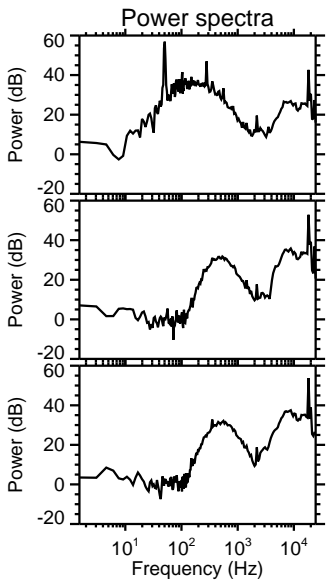
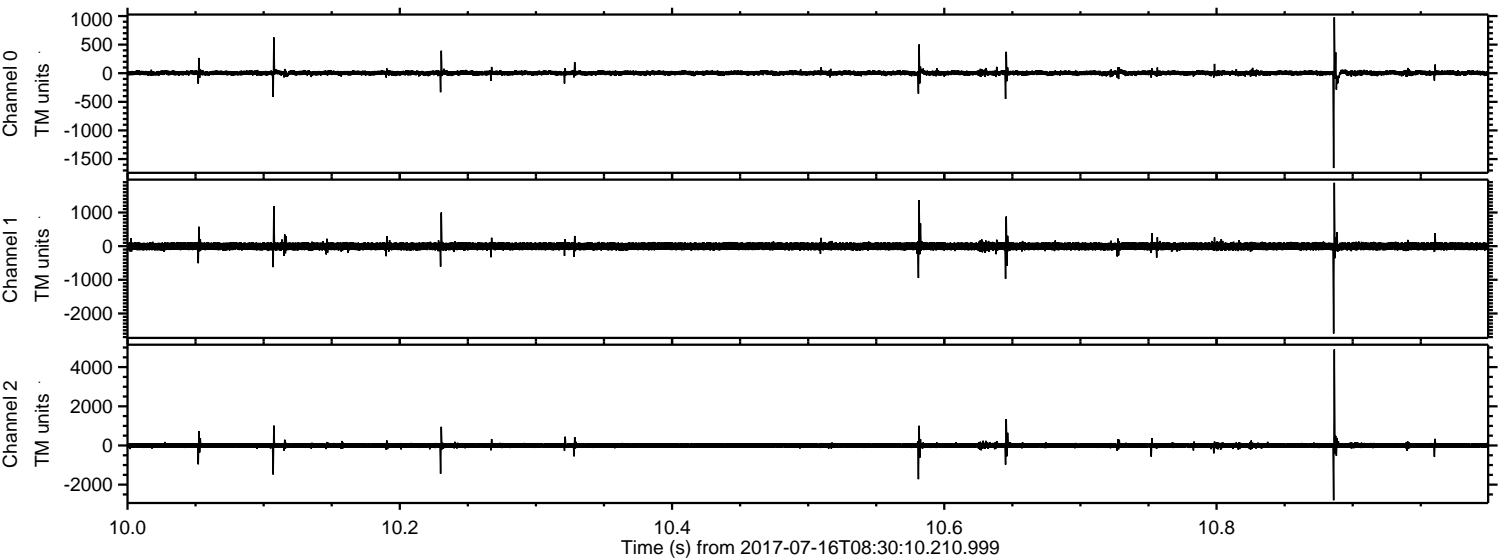
Channel 0
mn: -1183
mx: 1797
 μ : 4.0
 σ : 26.0

Channel 1
mn: -2514
mx: 3869
 μ : -4.6
 σ : 70.9

Channel 2
mn: -5347
mx: 3504
 μ : -2.5
 σ : 79.7

ELMAVAN 3D WAVEFORMS (Measured data sampled at 50 kHz) 51000 packets of 144 samples from 2017-07-16T08:30:10.210.999. Part 11/147

Processed Thu Jul 20 14:20:19 2017 by ELM ver.2012-10-06 from 001__elm20170716_083009__dat00.bin

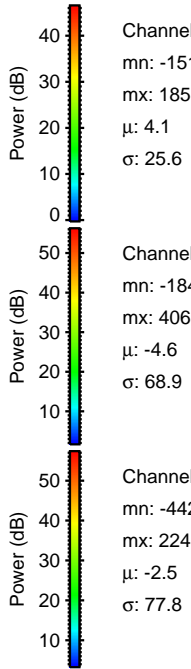
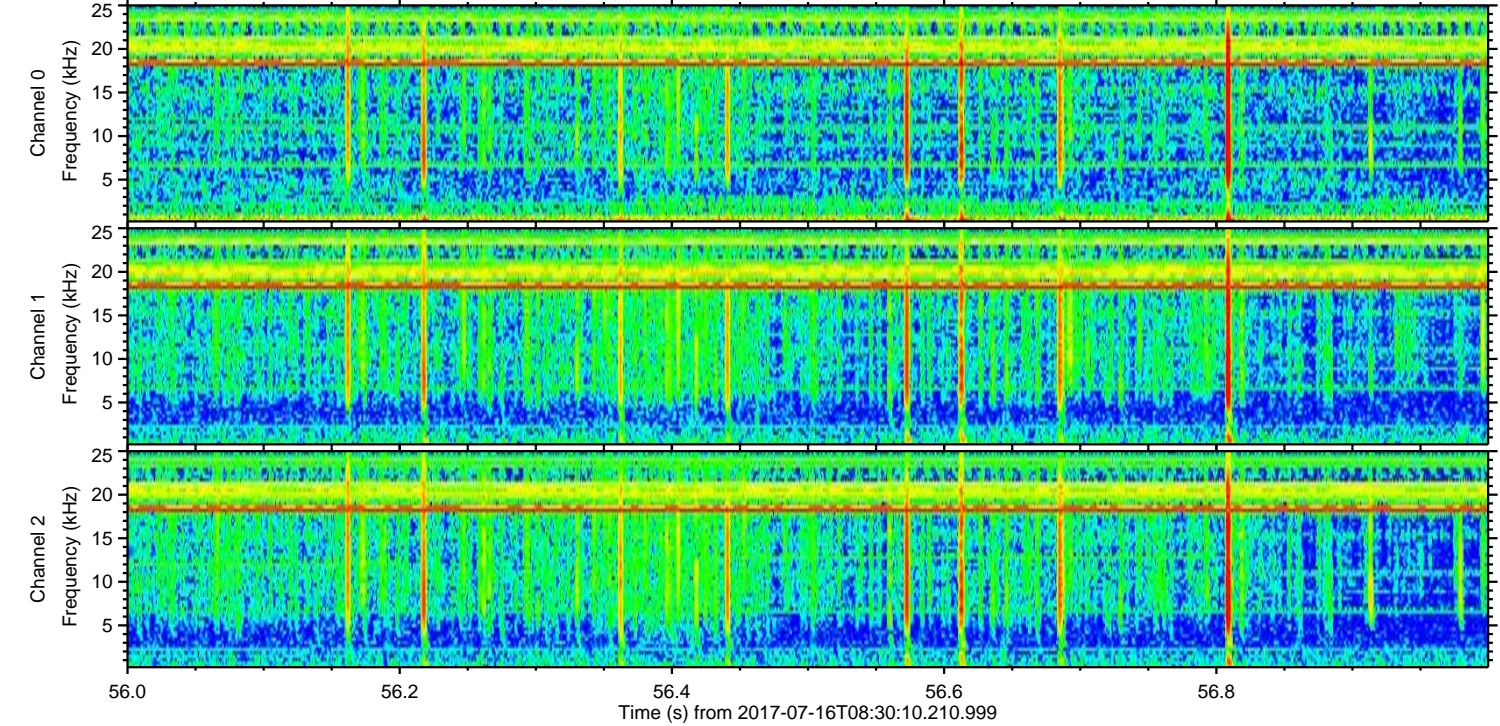
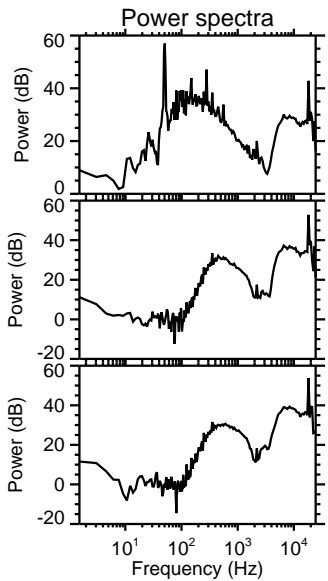
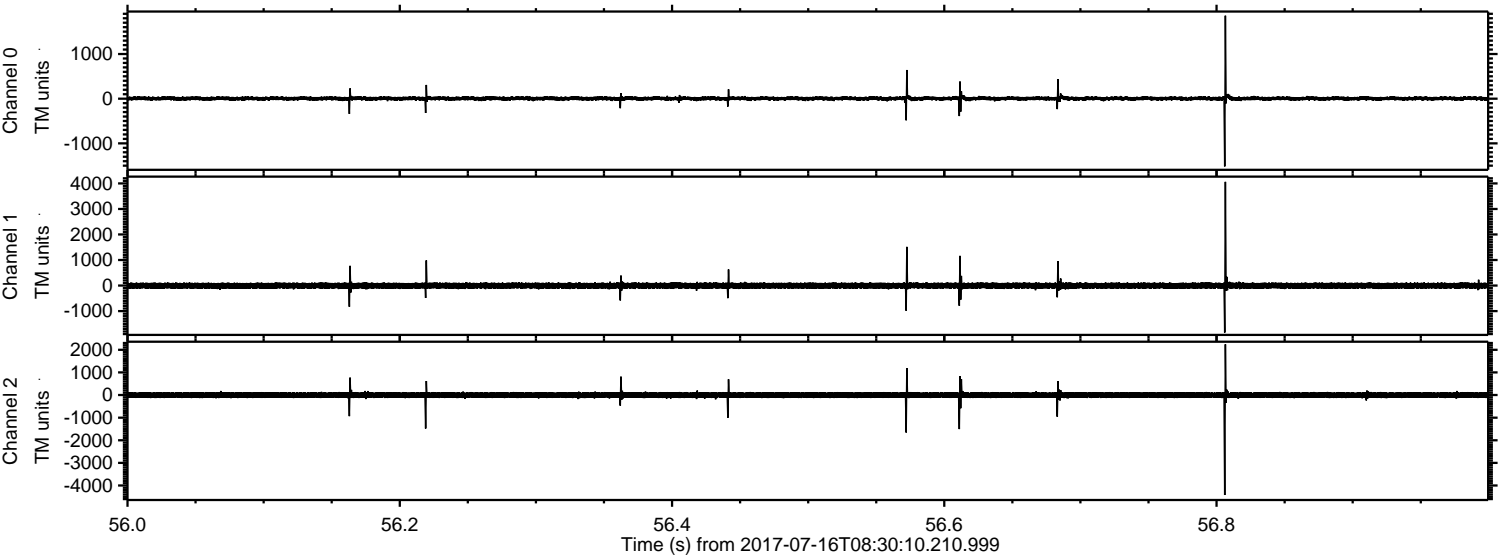


Channel 0
mn: -1658
mx: 977
 μ : 4.0
 σ : 26.5

Channel 1
mn: -2596
mx: 1882
 μ : -4.6
 σ : 67.9

Channel 2
mn: -2797
mx: 4899
 μ : -2.4
 σ : 78.1

Processed Thu Jul 20 14:20:19 2017 by ELM ver.2012-10-06 from 001__elm20170716_083009__dat00.bin



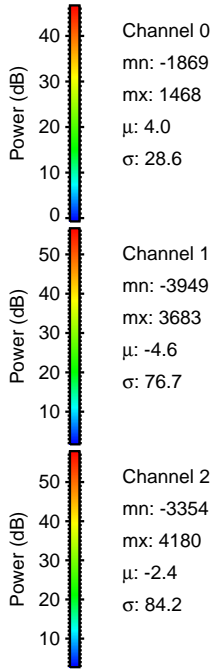
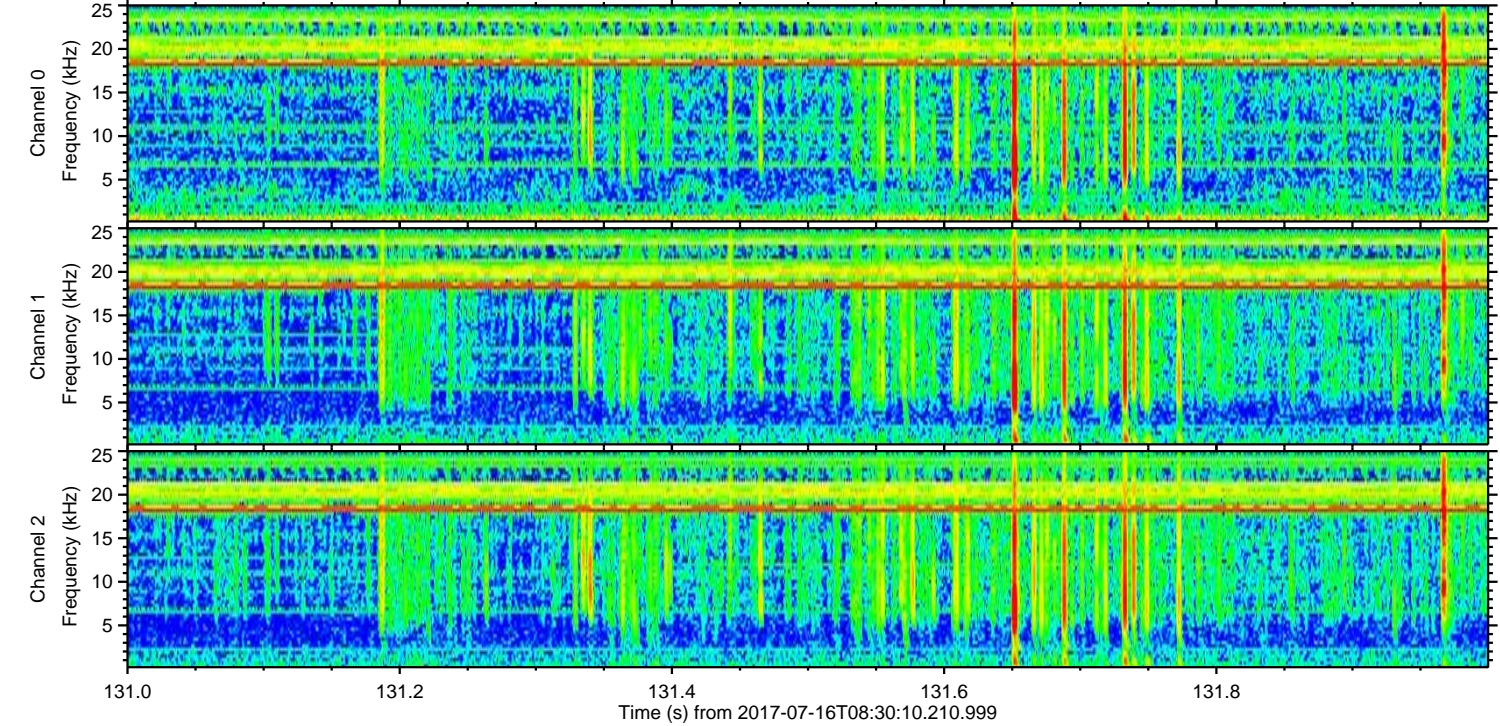
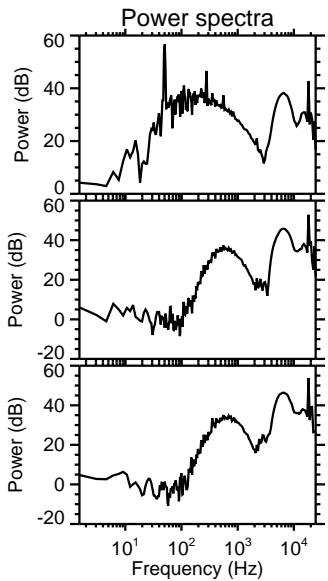
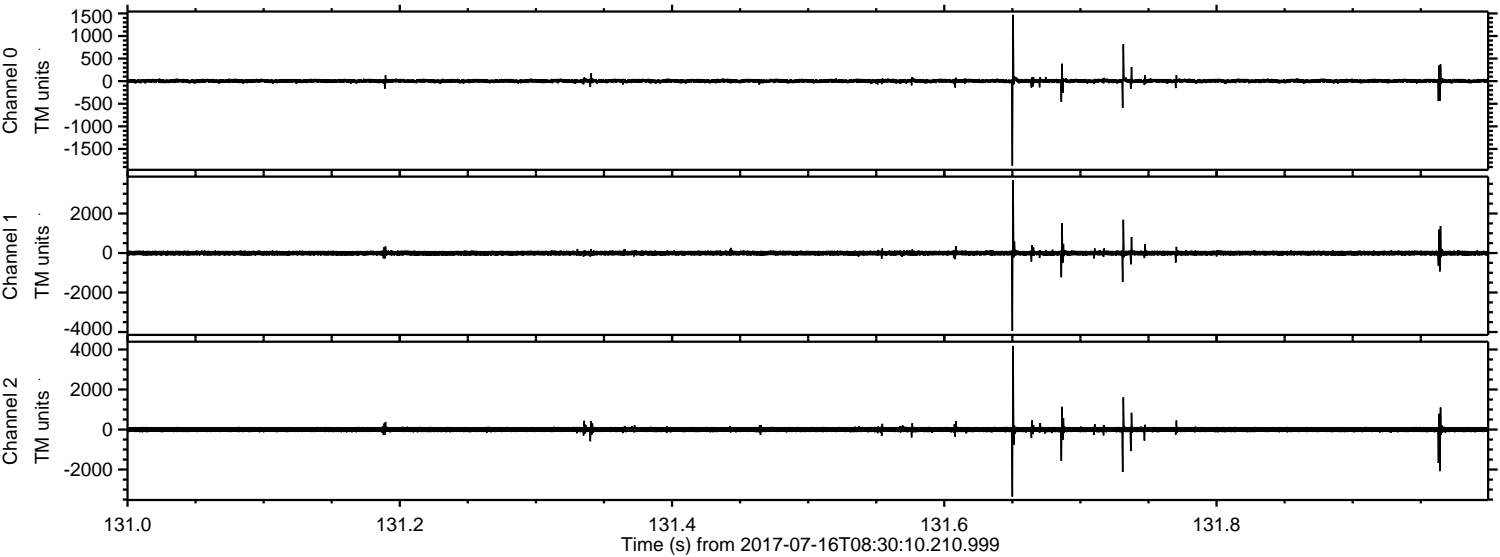
Channel 0
mn: -1517
mx: 1858
 μ : 4.1
 σ : 25.6

Channel 1
mn: -1841
mx: 4063
 μ : -4.6
 σ : 68.9

Channel 2
mn: -4420
mx: 2245
 μ : -2.5
 σ : 77.8

ELMAVAN 3D WAVEFORMS (Measured data sampled at 50 kHz) 51000 packets of 144 samples from 2017-07-16T08:30:10.210.999. Part 132/147

Processed Thu Jul 20 14:20:20 2017 by ELM ver.2012-10-06 from 001__elm20170716_083009__dat00.bin



Channel 0
mn: -1869
mx: 1468
 μ : 4.0
 σ : 28.6

Channel 1
mn: -3949
mx: 3683
 μ : -4.6
 σ : 76.7

Channel 2
mn: -3354
mx: 4180
 μ : -2.4
 σ : 84.2

ELMAVAN 3D WAVEFORMS (Measured data sampled at 50 kHz) 51000 packets of 144 samples from 2017-07-16T08:30:10.210.999. Part 96/147

Processed Thu Jul 20 14:20:21 2017 by ELM ver.2012-10-06 from 001__elm20170716_083009__dat00.bin

