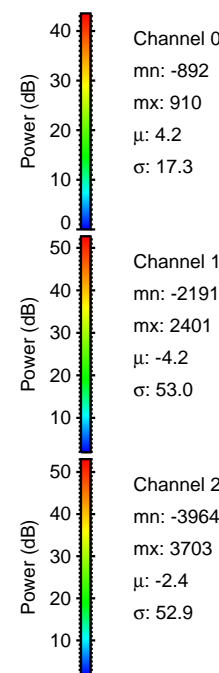
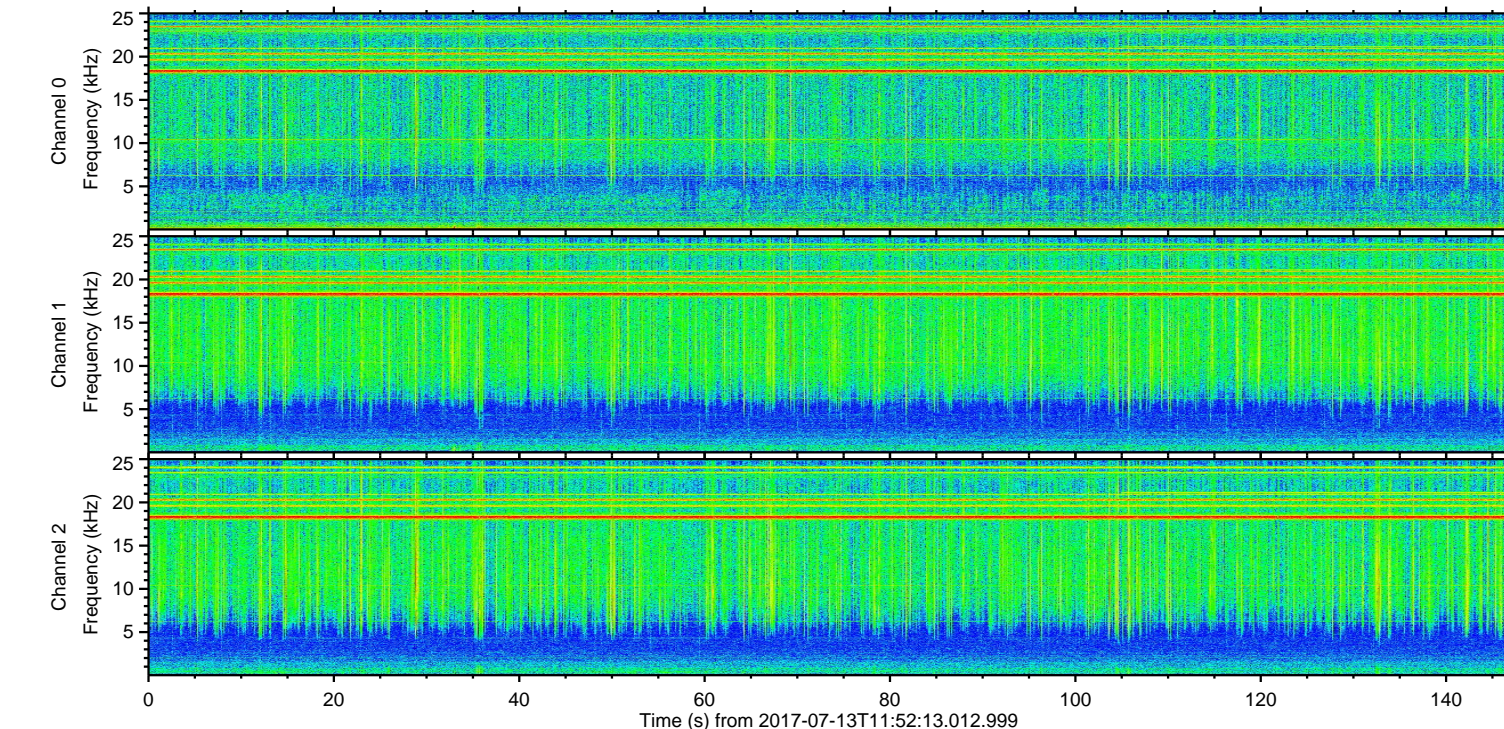
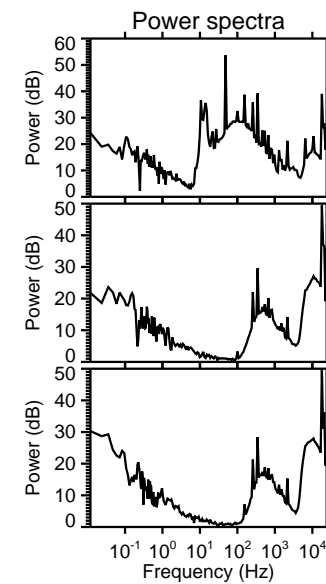
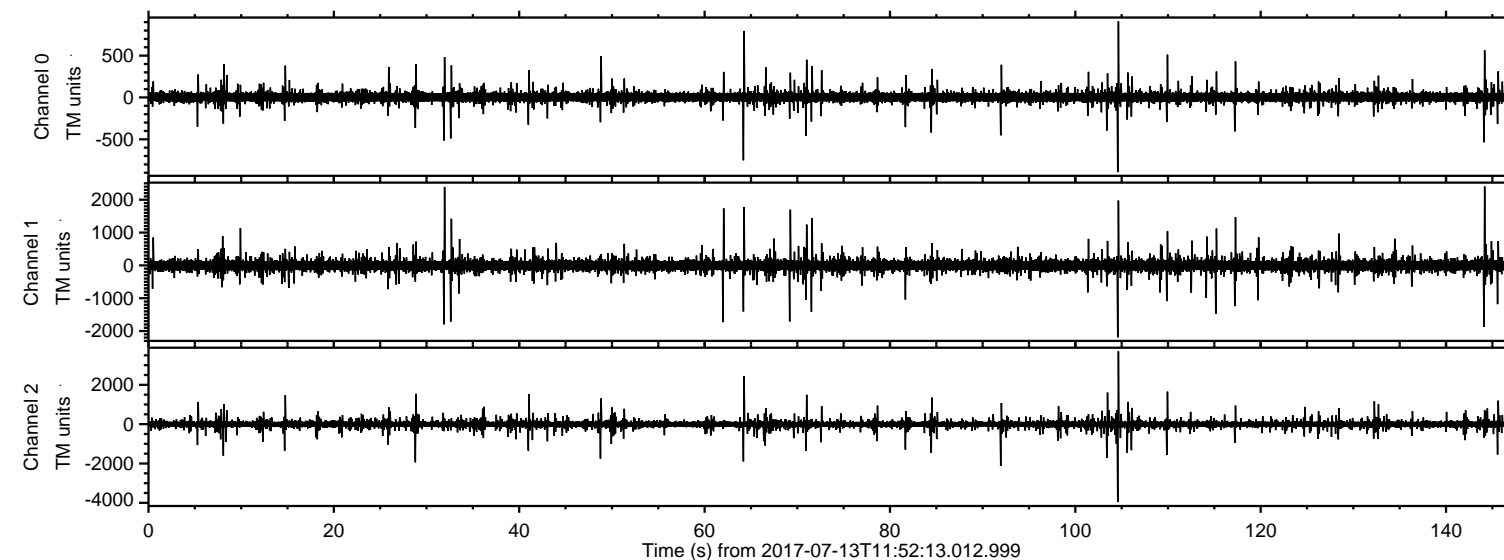


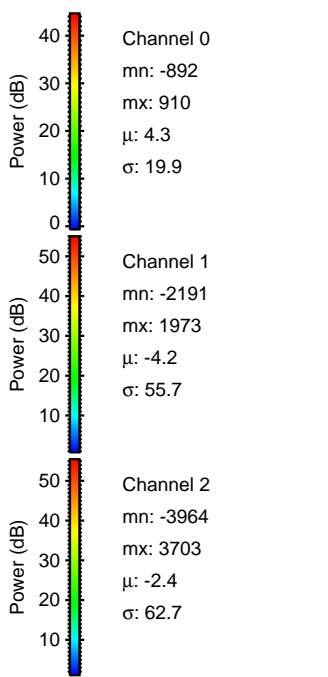
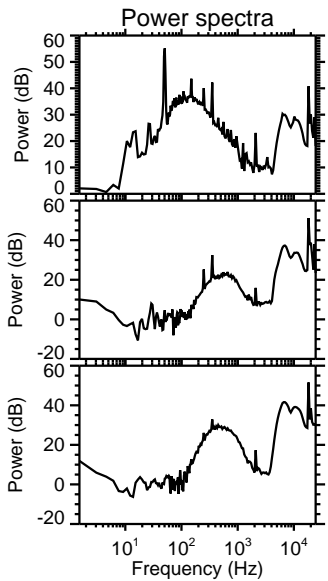
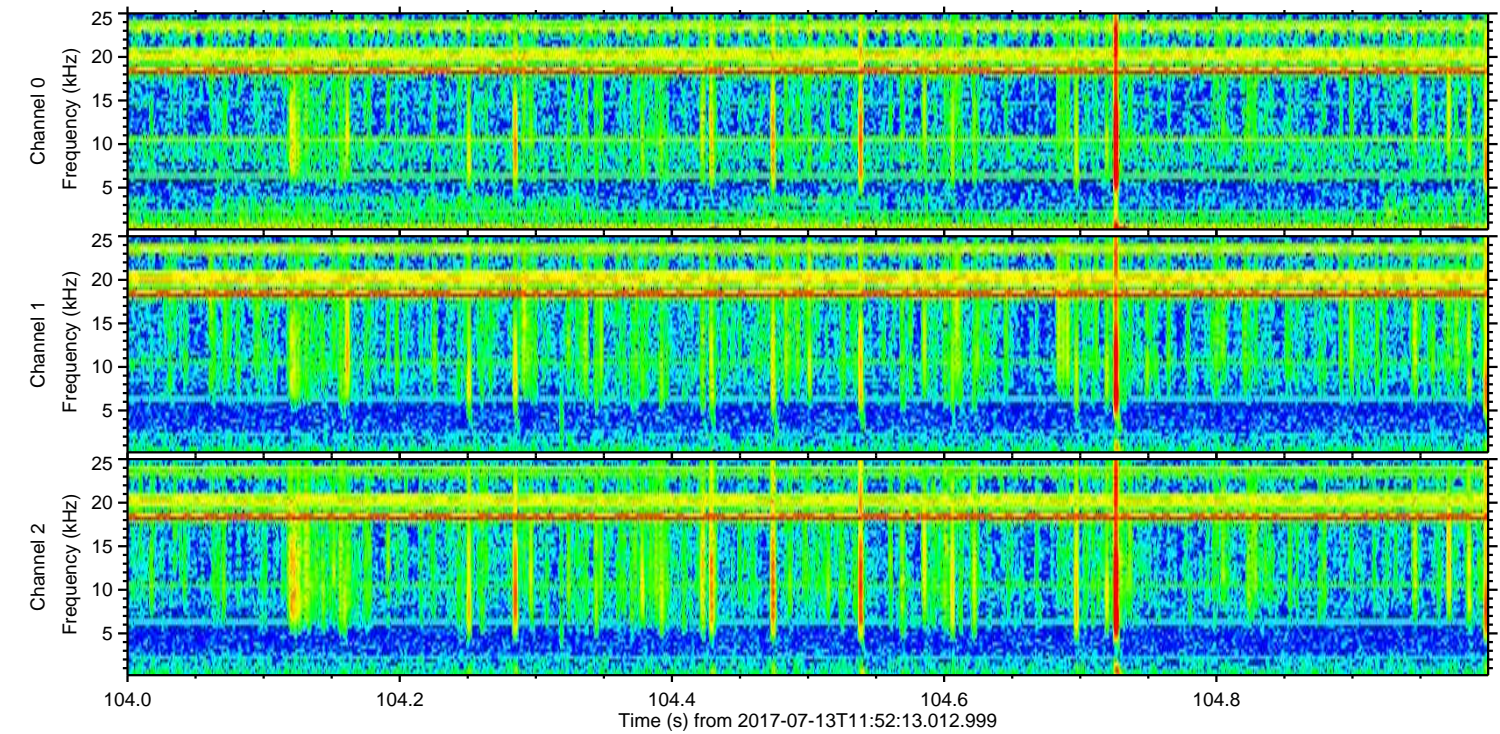
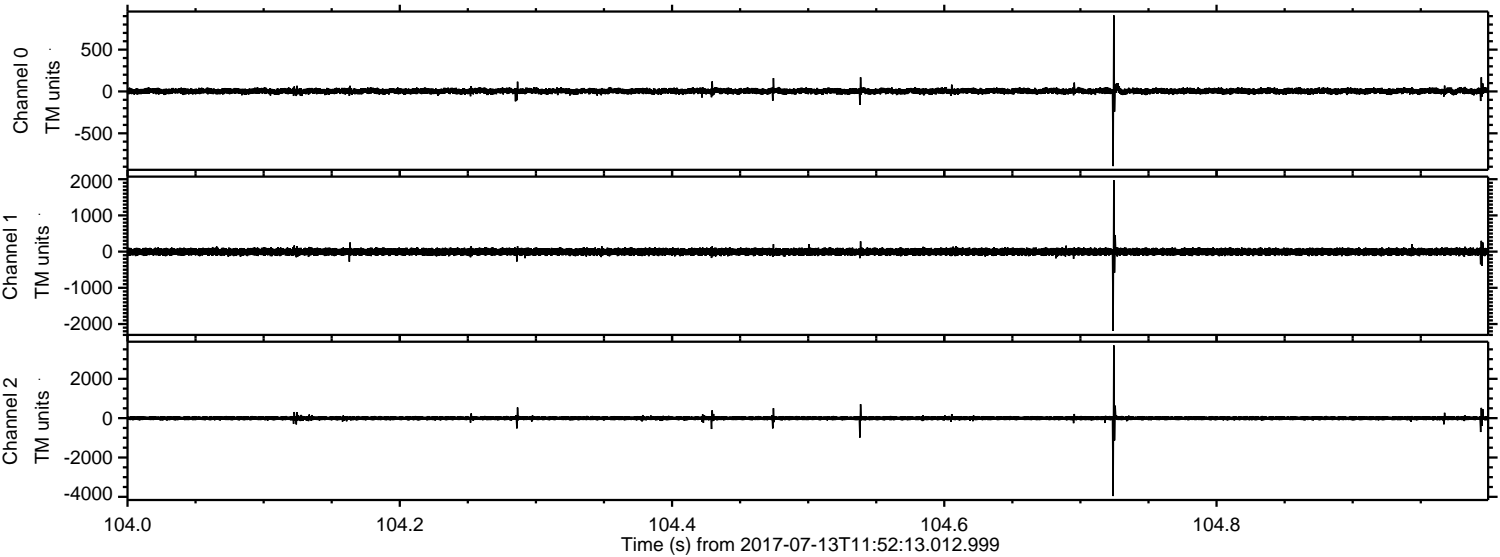
ELMAVAN 3D WAVEFORMS (Measured data sampled at 50 kHz) 51000 packets of 144 samples from 2017-07-13T11:52:13.012.999.

Processed Thu Jul 20 04:10:01 2017 by ELM ver.2012-10-06 from 001__elm20170713_115212__dat00.bin

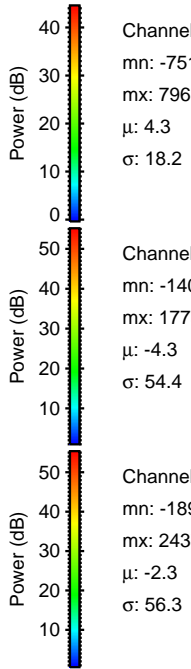
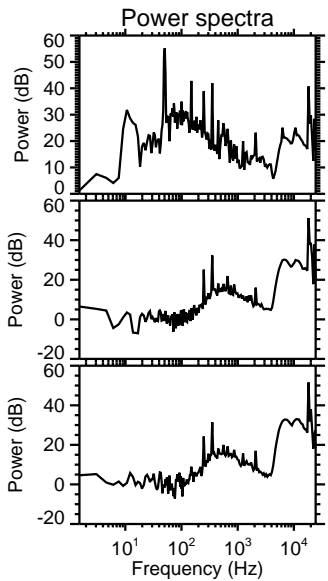
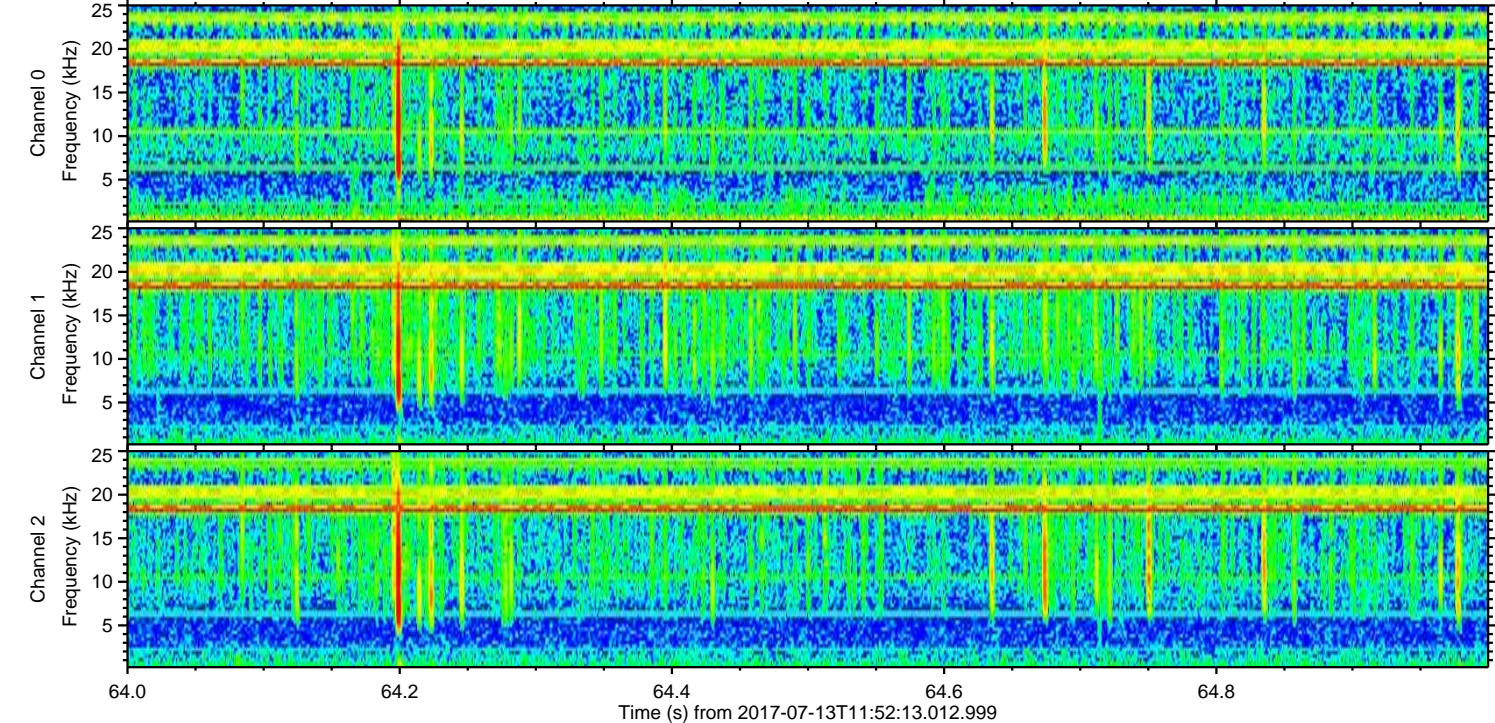
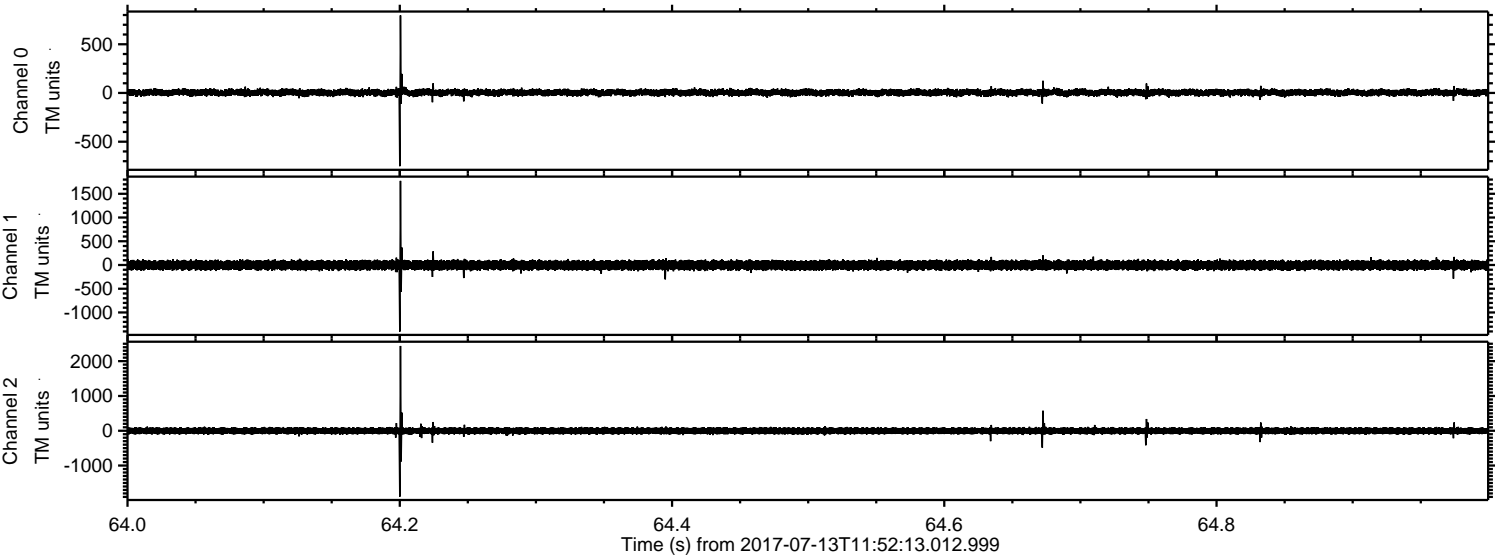


ELMAVAN 3D WAVEFORMS (Measured data sampled at 50 kHz) 51000 packets of 144 samples from 2017-07-13T11:52:13.012.999. Part 105/147

Processed Thu Jul 20 04:10:09 2017 by ELM ver.2012-10-06 from 001__elm20170713_115212__dat00.bin

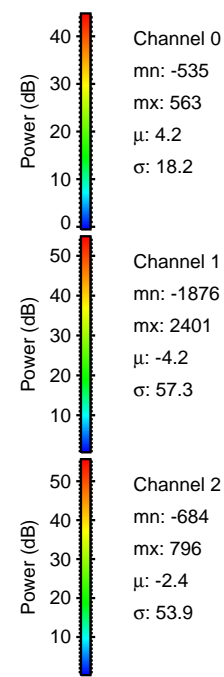
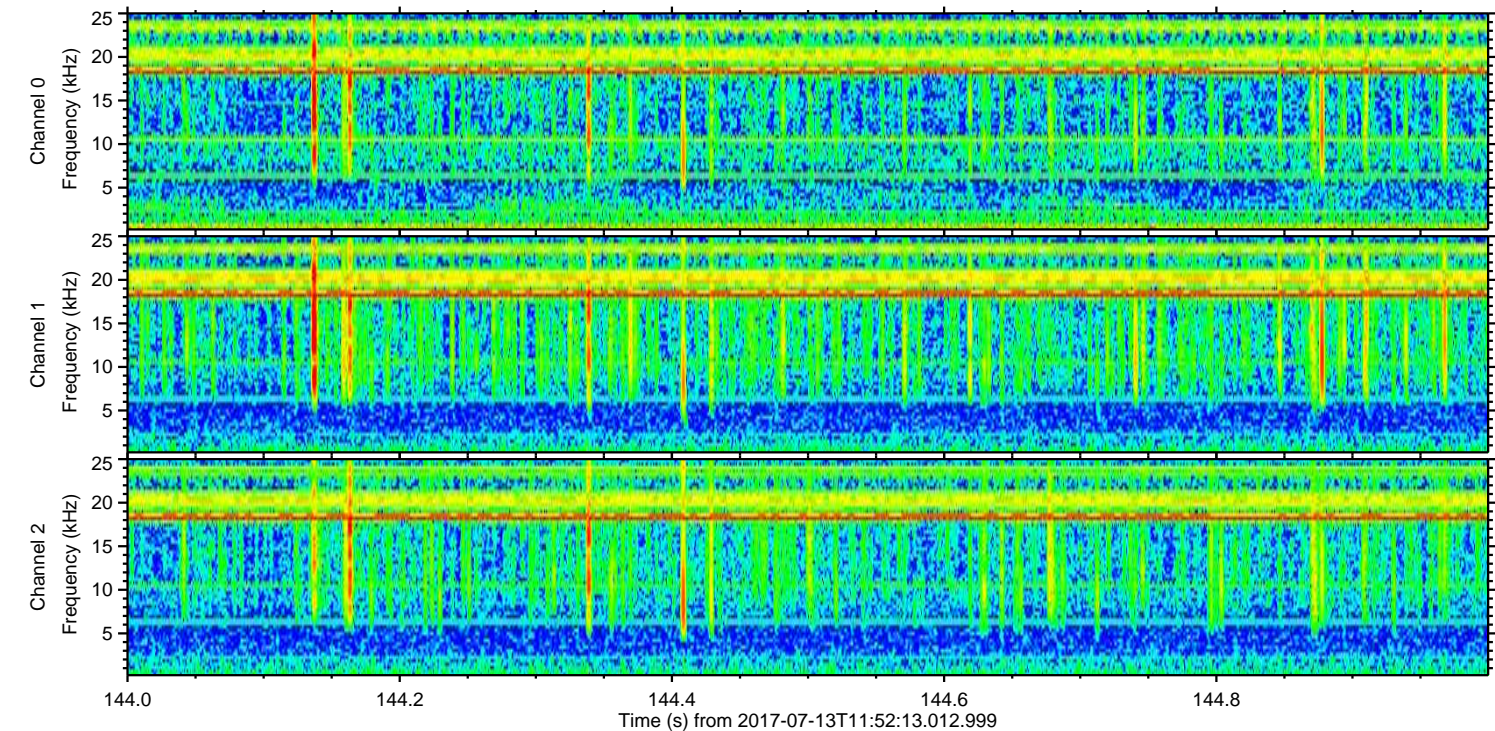
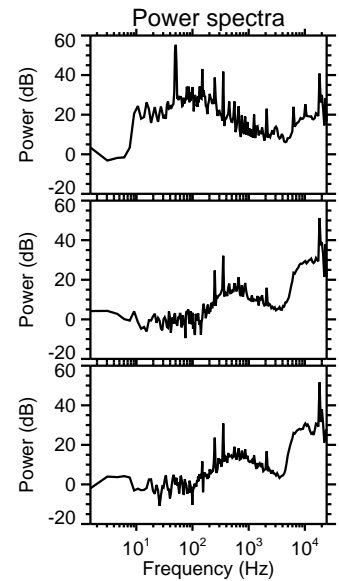
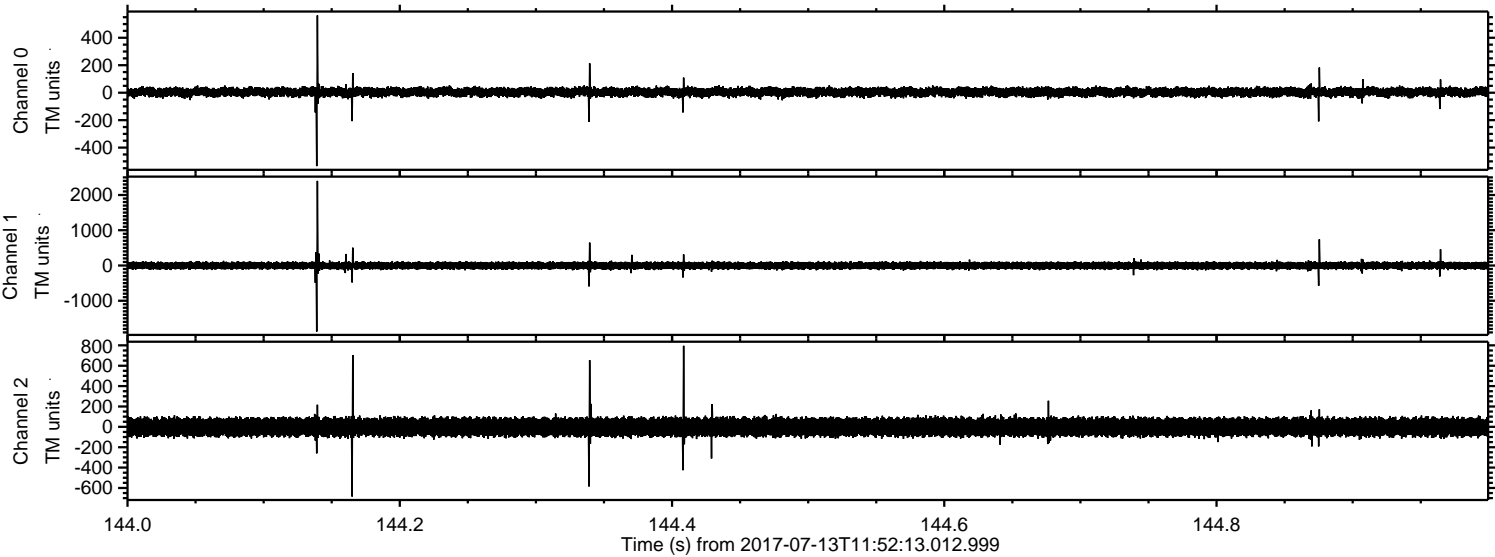


Processed Thu Jul 20 04:10:10 2017 by ELM ver.2012-10-06 from 001__elm20170713_115212__dat00.bin

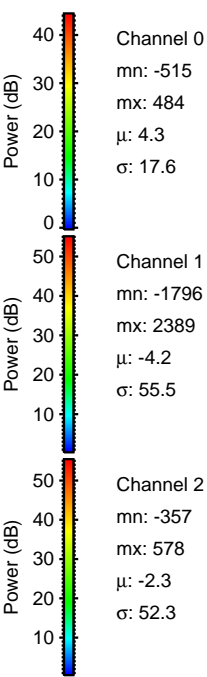
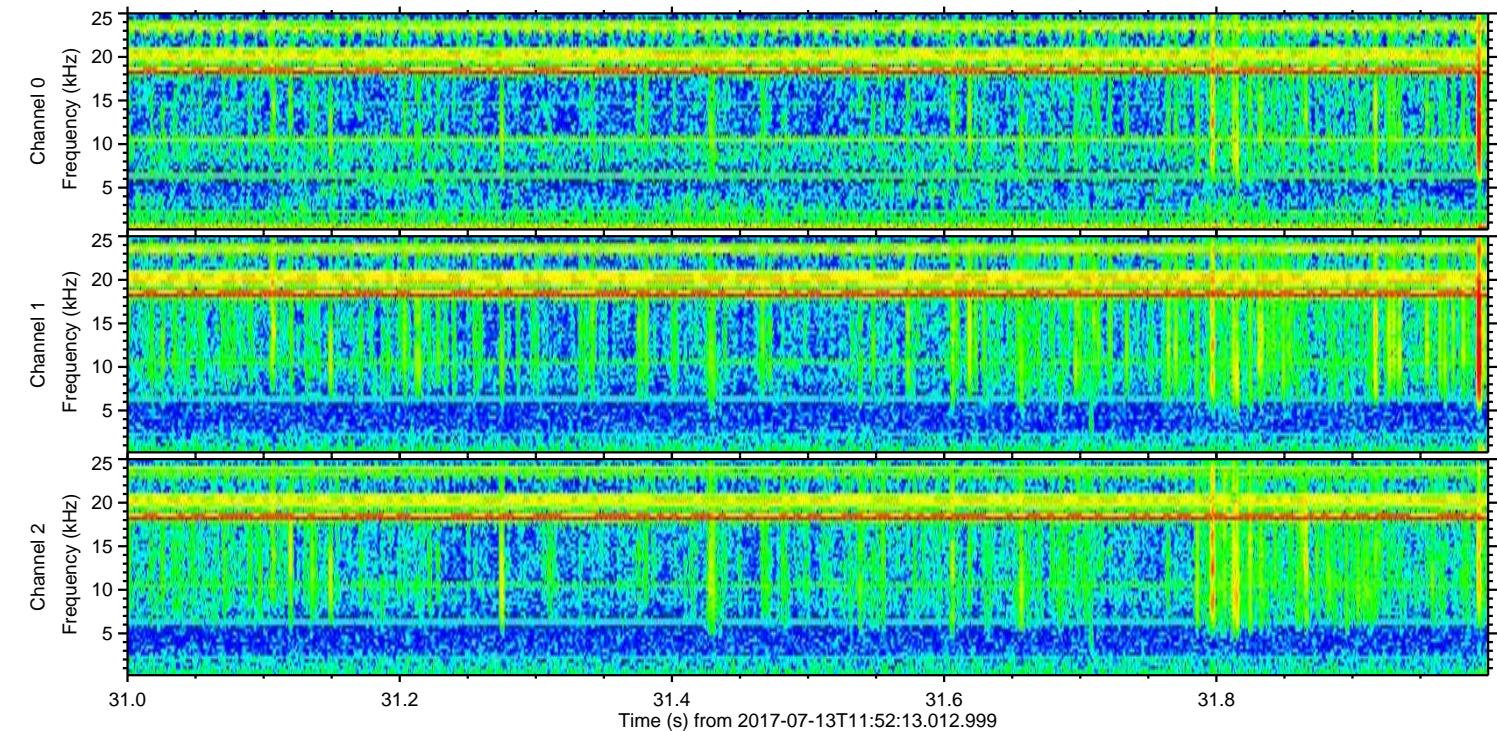
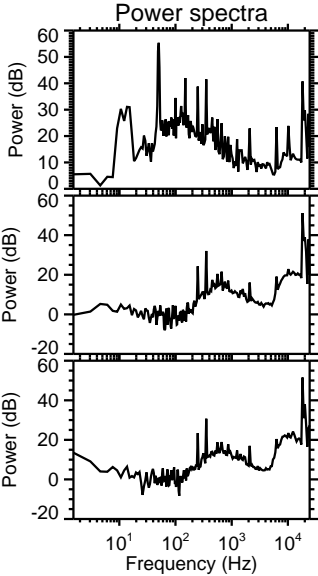
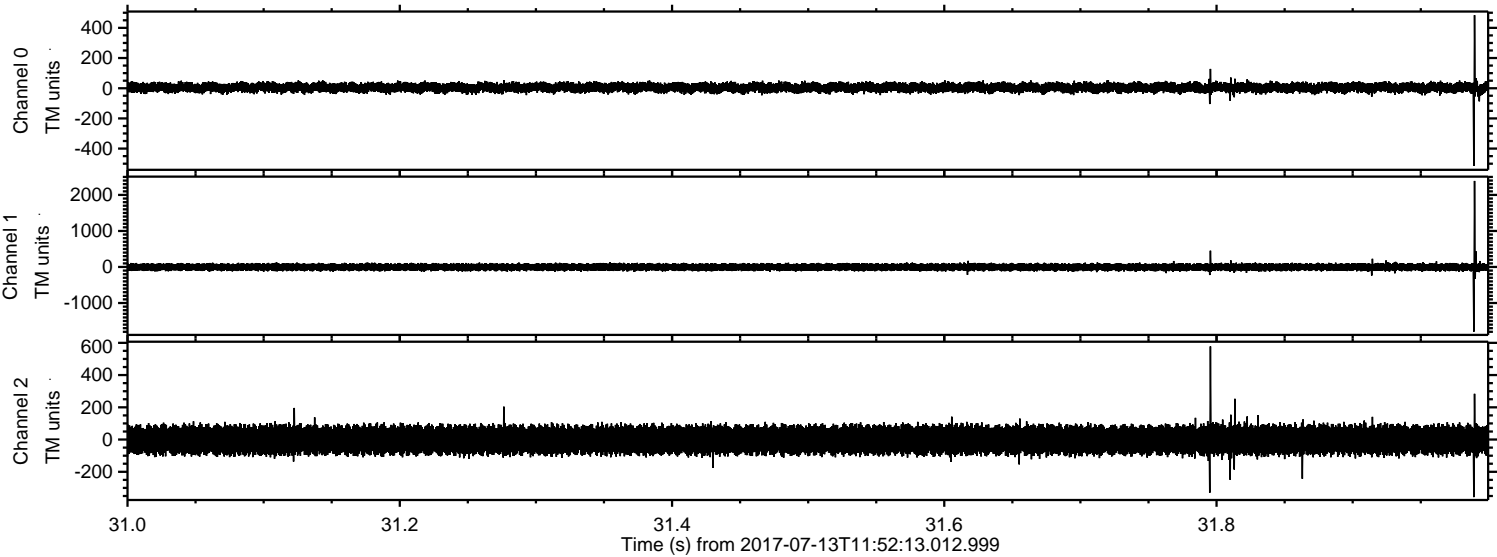


ELMAVAN 3D WAVEFORMS (Measured data sampled at 50 kHz) 51000 packets of 144 samples from 2017-07-13T11:52:13.012.999. Part 145/147

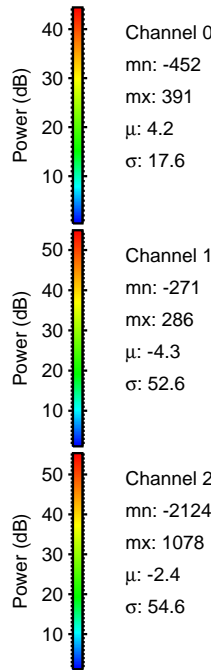
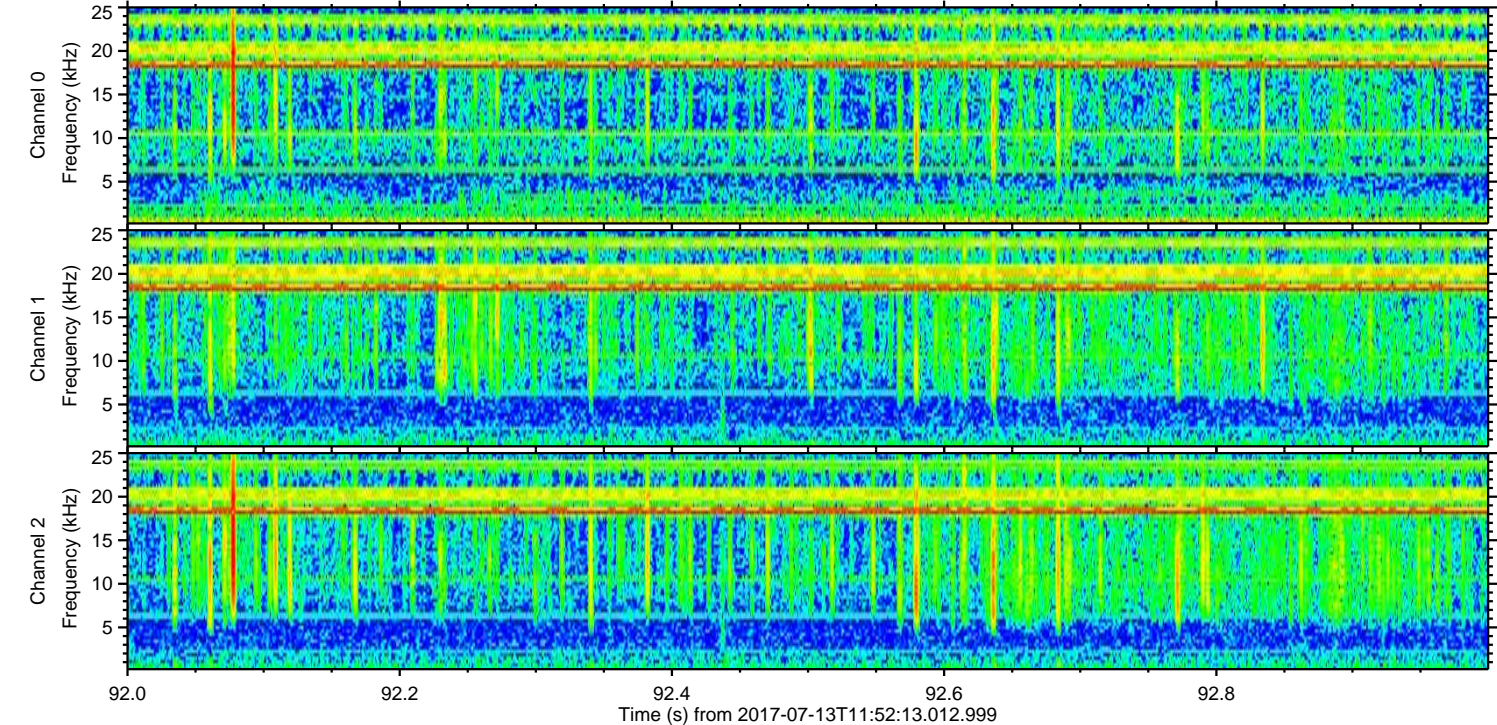
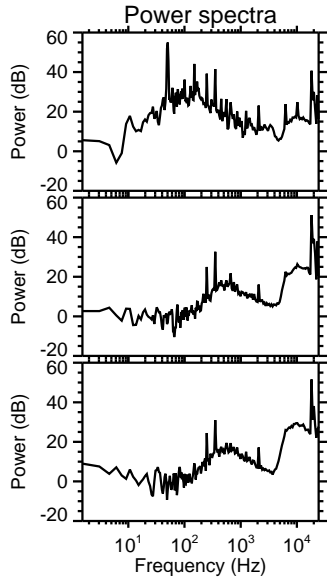
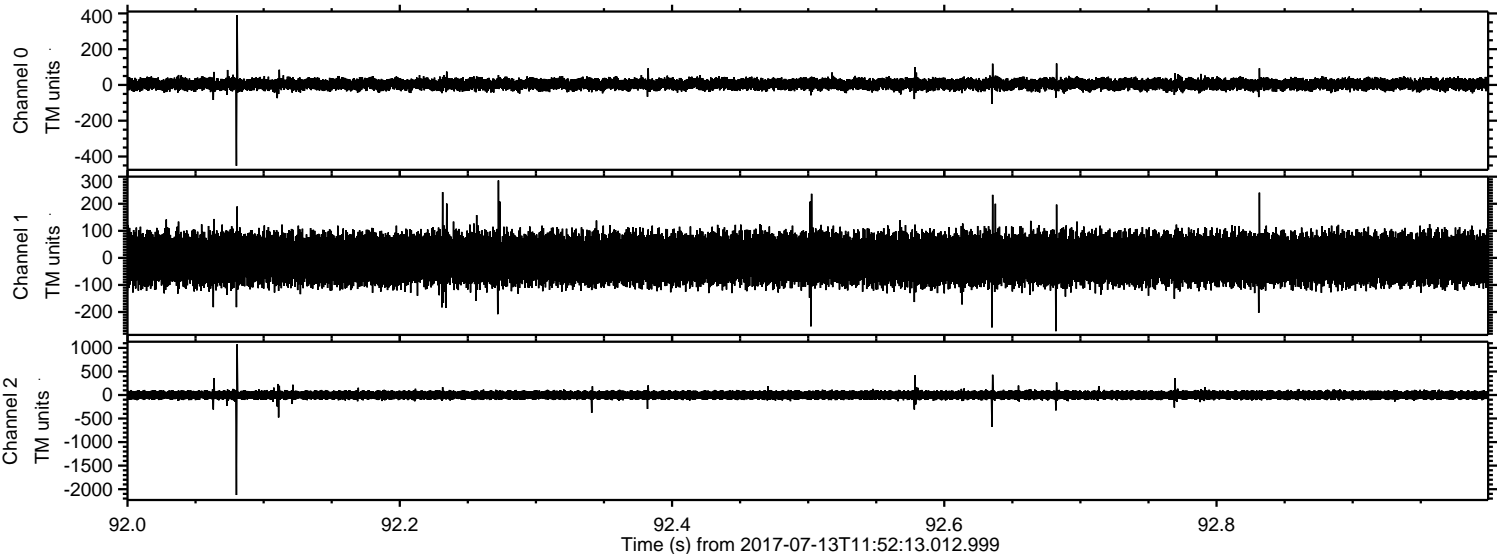
Processed Thu Jul 20 04:10:10 2017 by ELM ver.2012-10-06 from 001__elm20170713_115212__dat00.bin



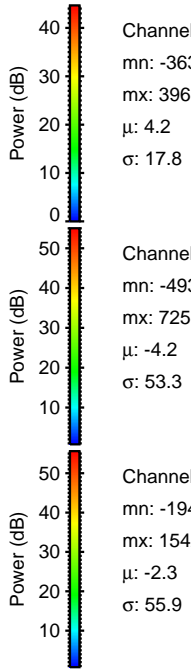
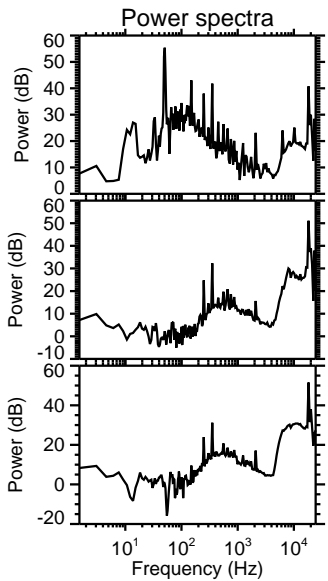
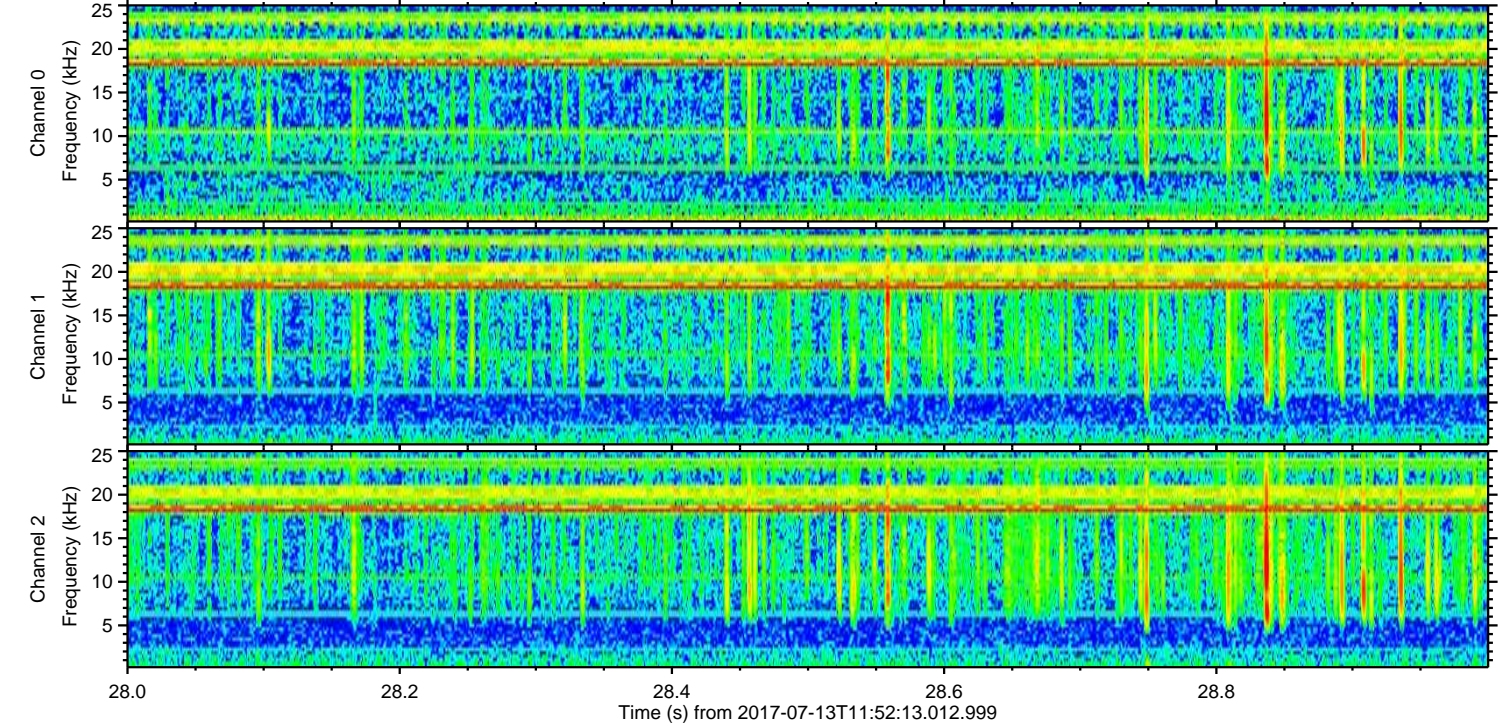
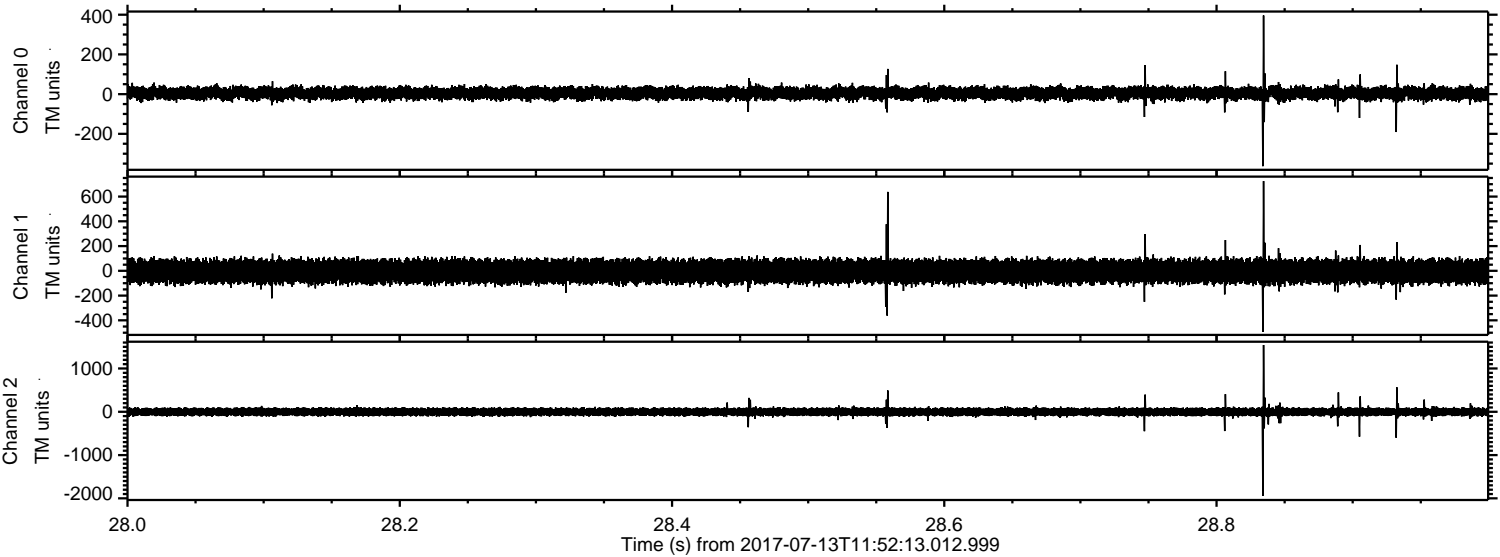
Processed Thu Jul 20 04:10:11 2017 by ELM ver.2012-10-06 from 001__elm20170713_115212__dat00.bin



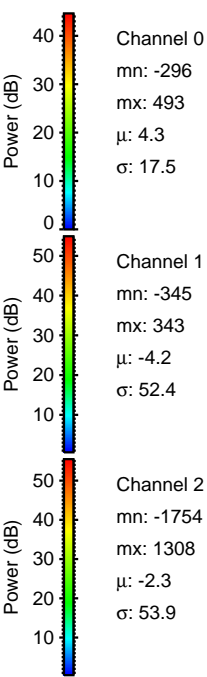
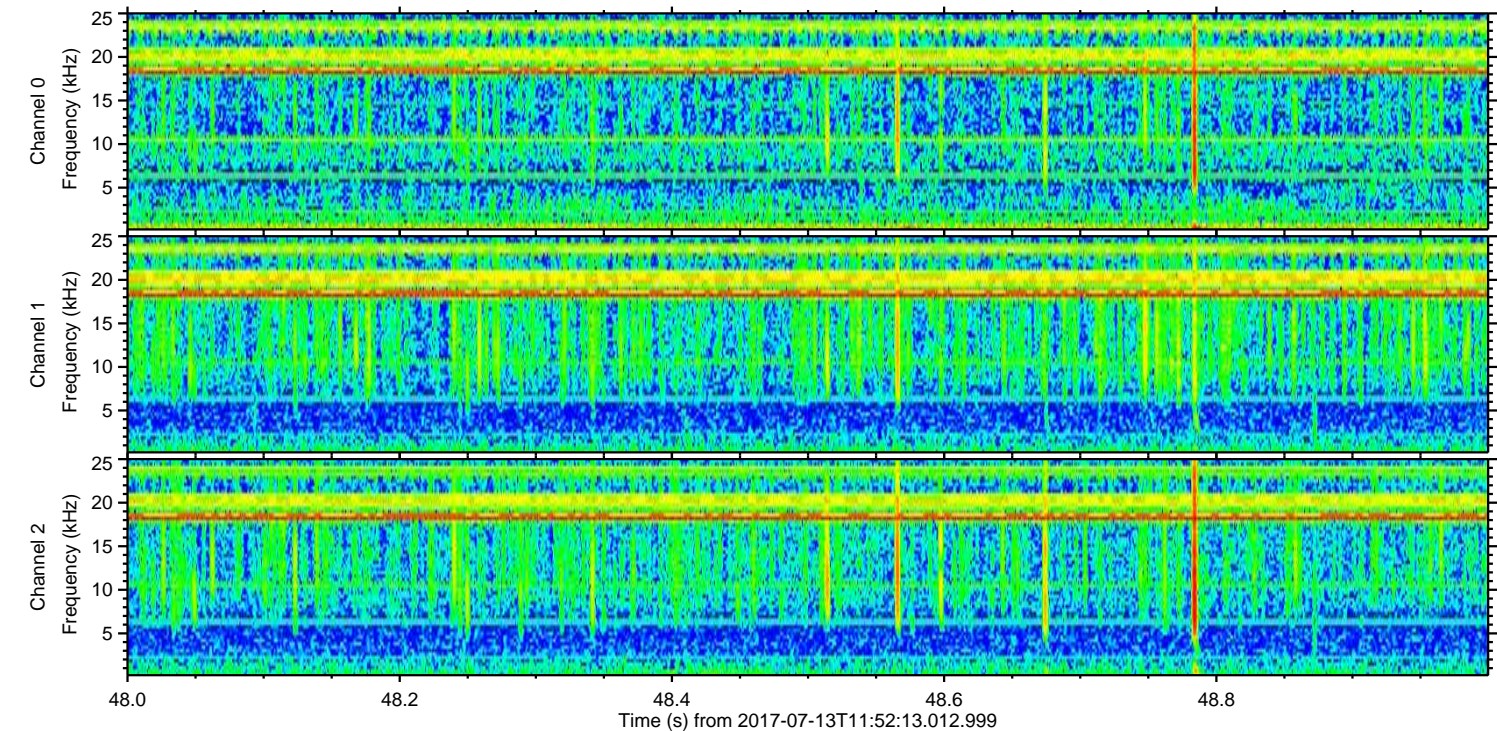
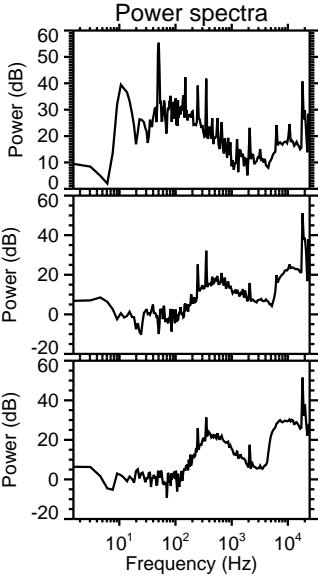
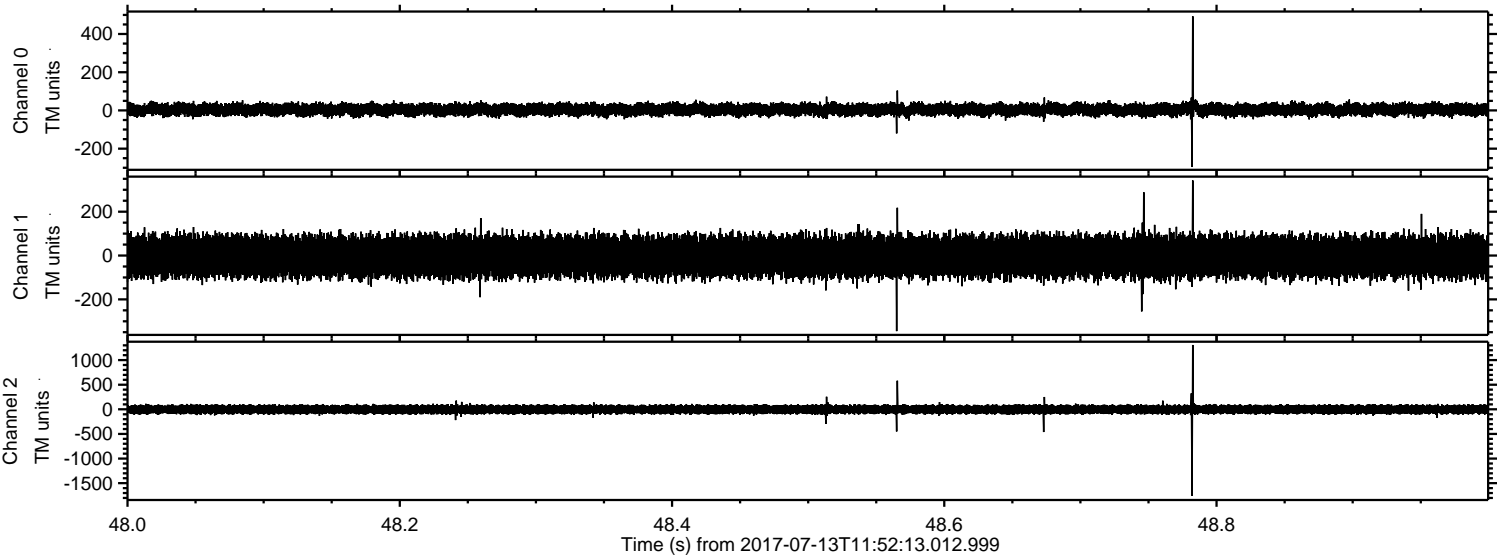
Processed Thu Jul 20 04:10:12 2017 by ELM ver.2012-10-06 from 001__elm20170713_115212__dat00.bin



Processed Thu Jul 20 04:10:13 2017 by ELM ver.2012-10-06 from 001__elm20170713_115212__dat00.bin



Processed Thu Jul 20 04:10:14 2017 by ELM ver.2012-10-06 from 001__elm20170713_115212__dat00.bin

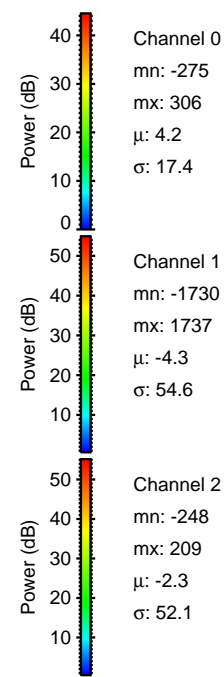
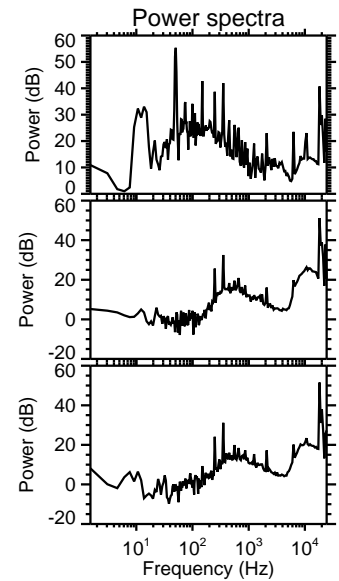
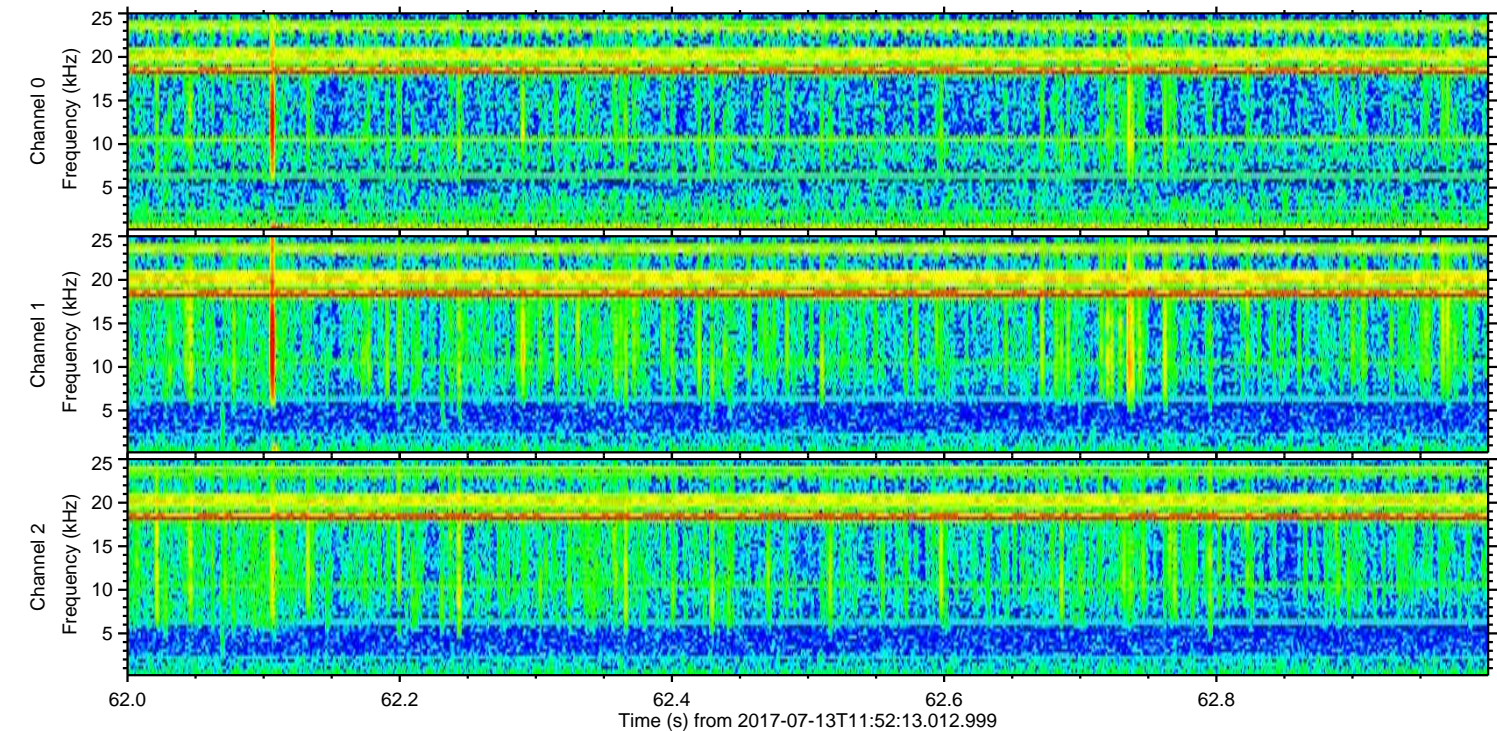
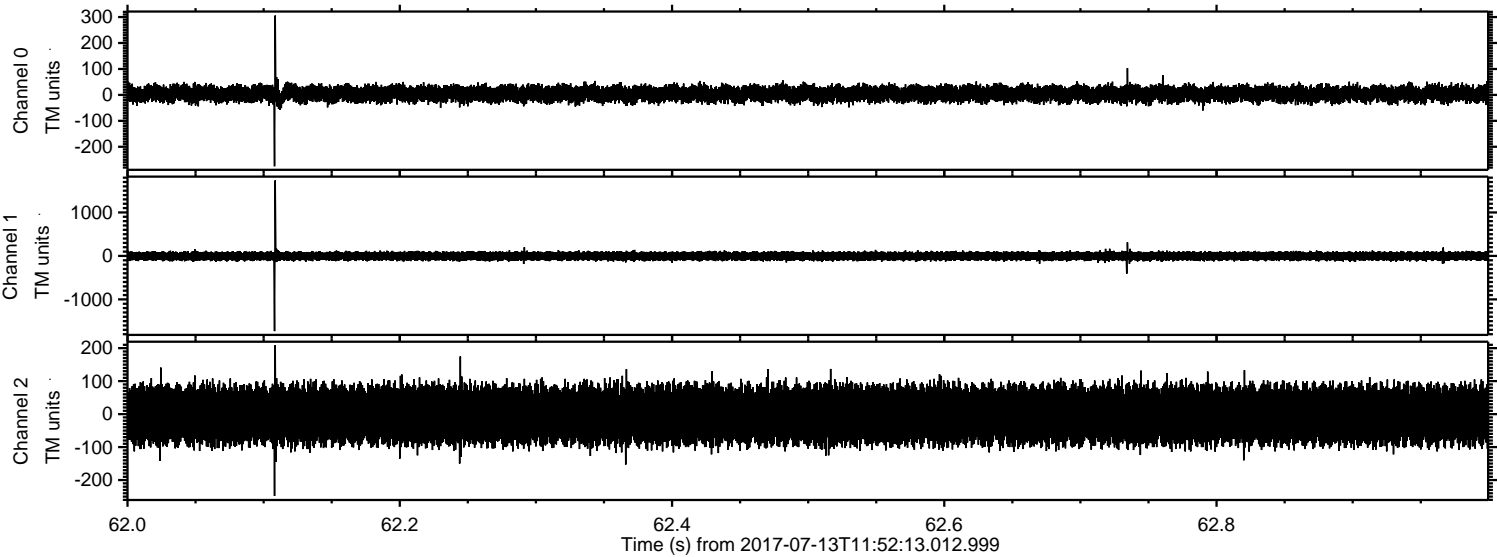


Channel 0
mn: -296
mx: 493
 μ : 4.3
 σ : 17.5

Channel 1
mn: -345
mx: 343
 μ : -4.2
 σ : 52.4

Channel 2
mn: -1754
mx: 1308
 μ : -2.3
 σ : 53.9

Processed Thu Jul 20 04:10:14 2017 by ELM ver.2012-10-06 from 001__elm20170713_115212__dat00.bin



Channel 0
mn: -275
mx: 306
 μ : 4.2
 σ : 17.4

Channel 1
mn: -1730
mx: 1737
 μ : -4.3
 σ : 54.6

Channel 2
mn: -248
mx: 209
 μ : -2.3
 σ : 52.1

Processed Thu Jul 20 04:10:15 2017 by ELM ver.2012-10-06 from 001__elm20170713_115212__dat00.bin

