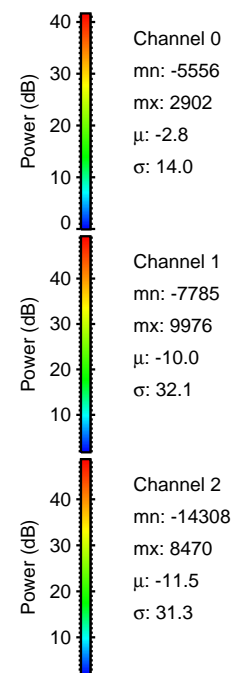
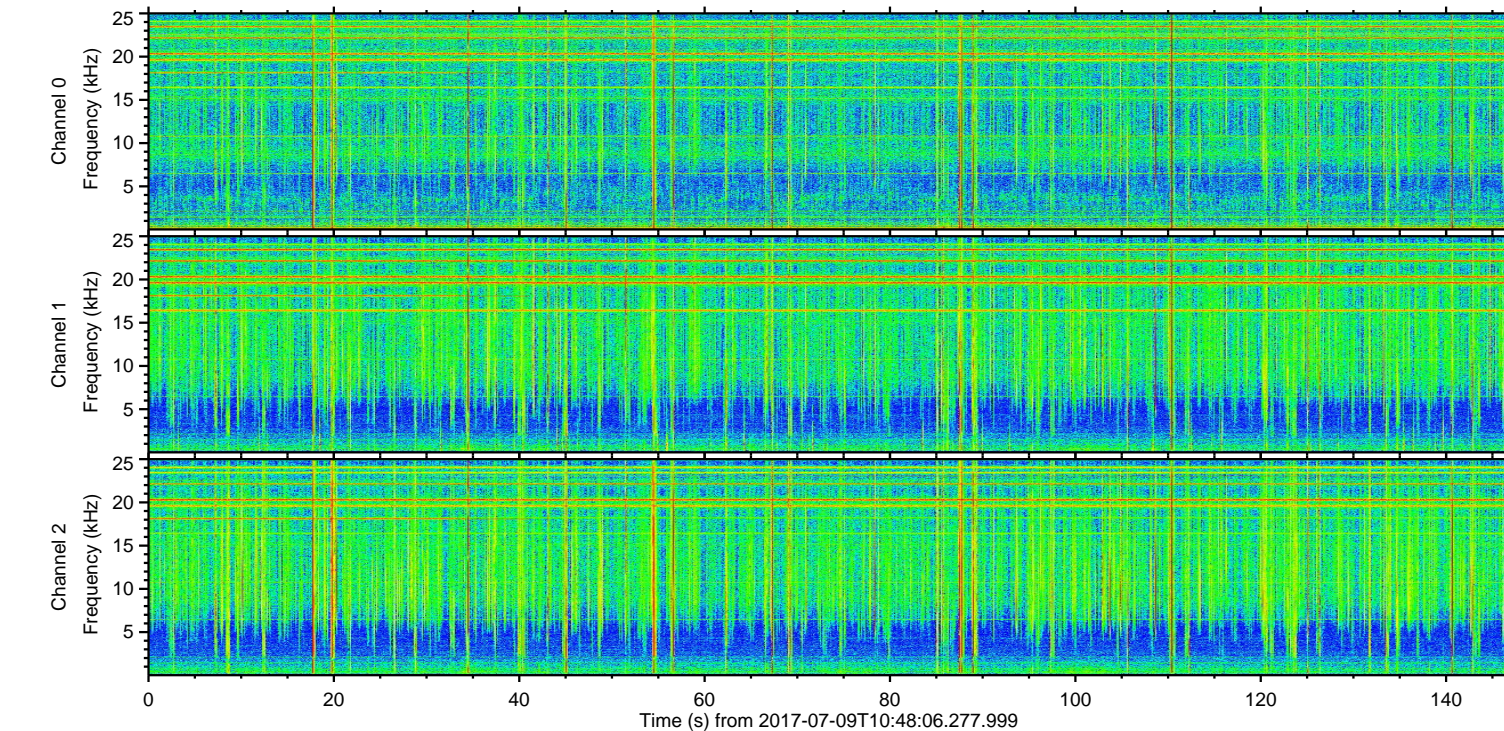
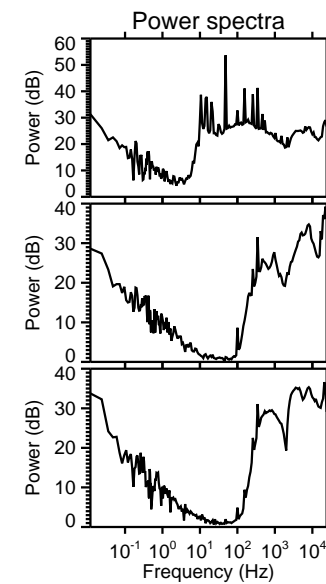
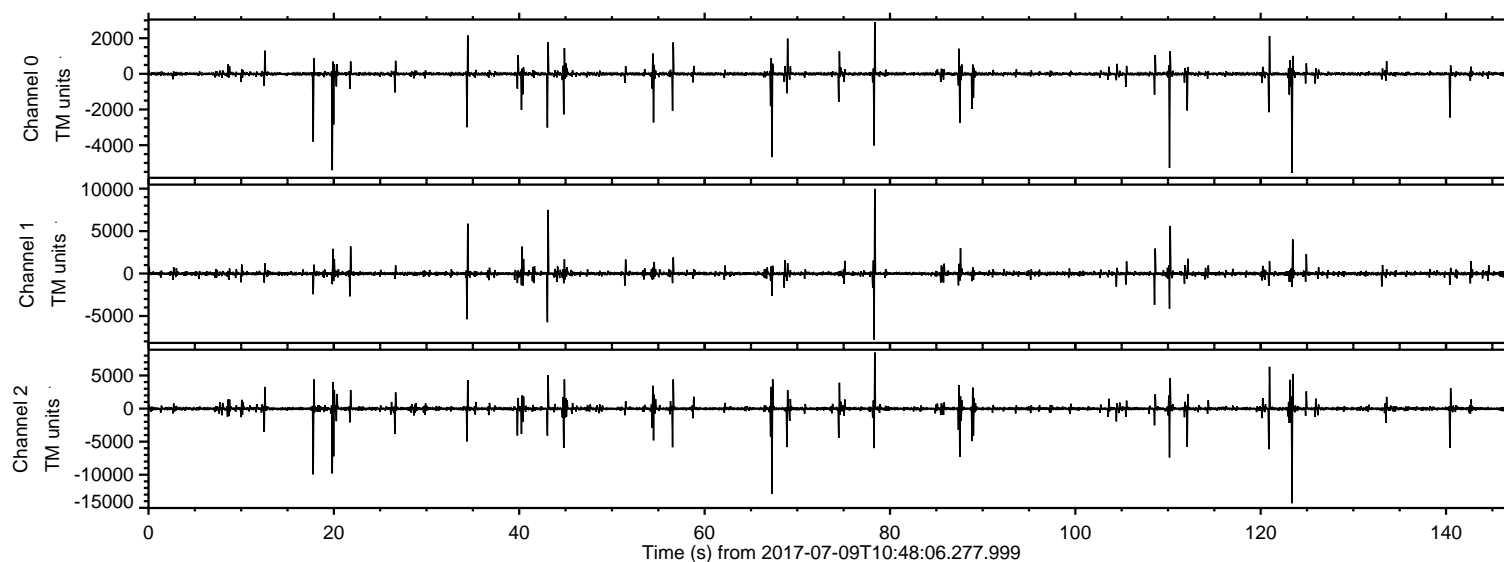


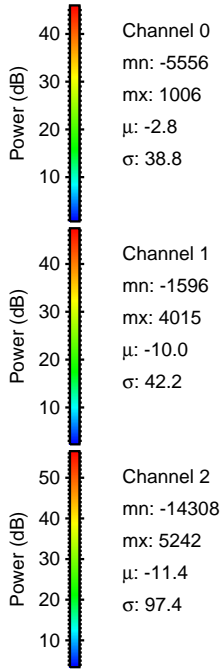
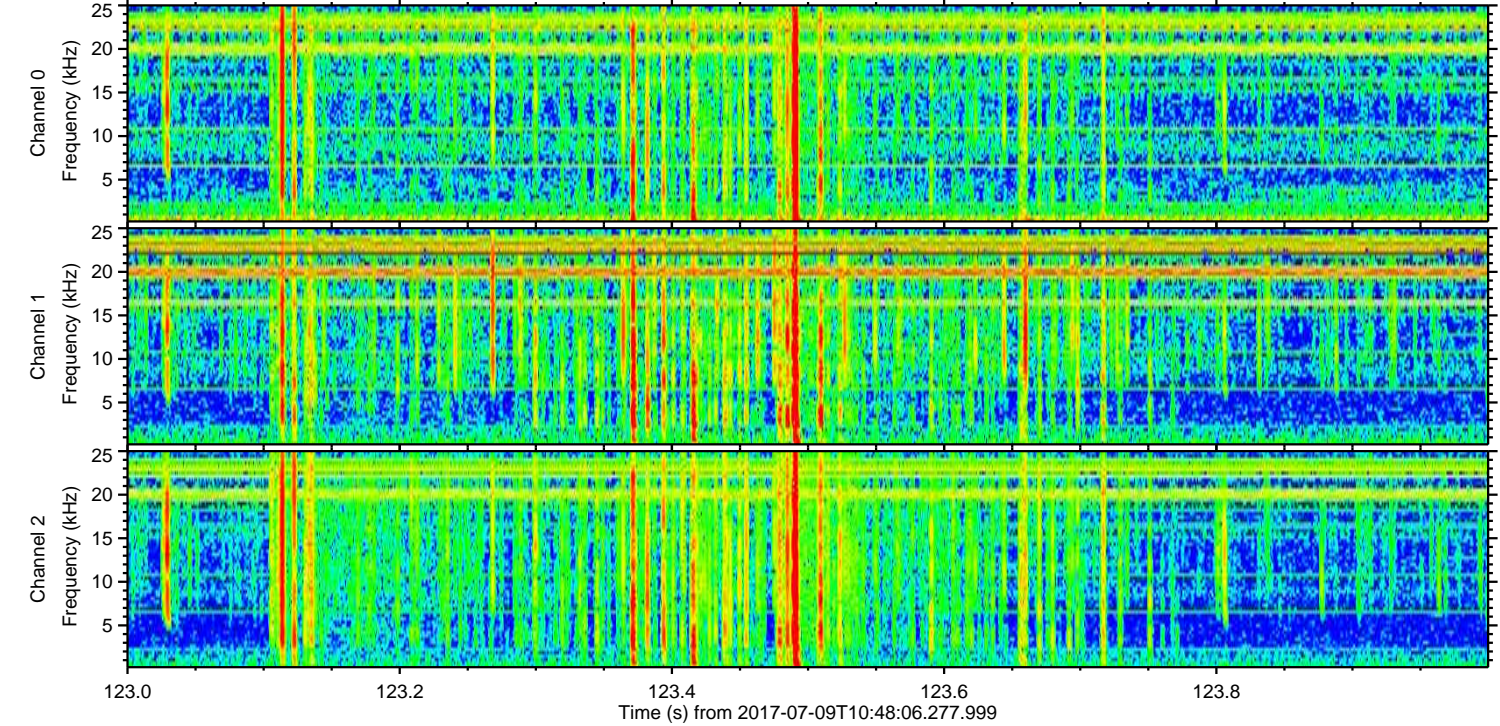
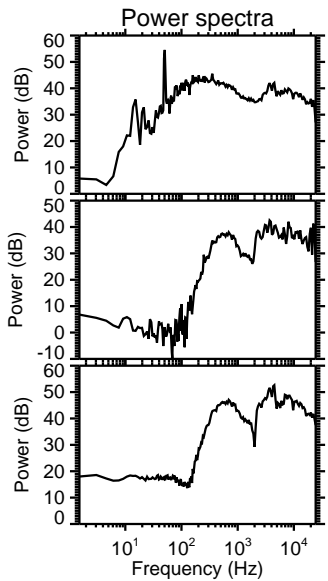
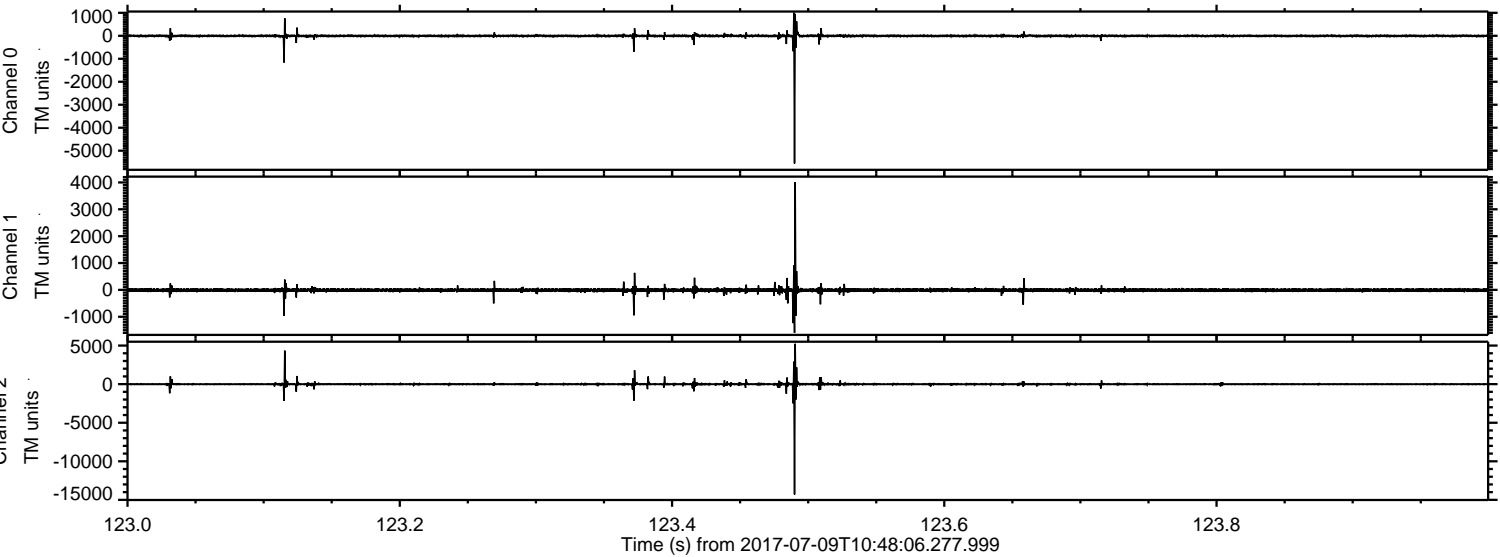
ELMAVAN 3D WAVEFORMS (Measured data sampled at 50 kHz) 51000 packets of 144 samples from 2017-07-09T10:48:06.277.999.

Processed Wed Jul 19 13:44:25 2017 by ELM ver.2012-10-06 from 001__elm20170709_104805__dat00.bin

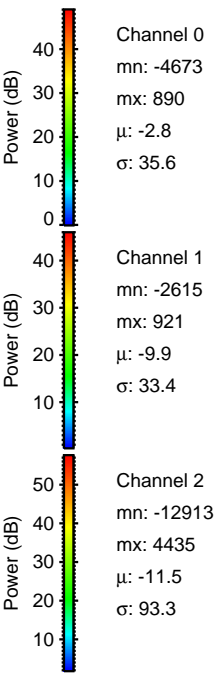
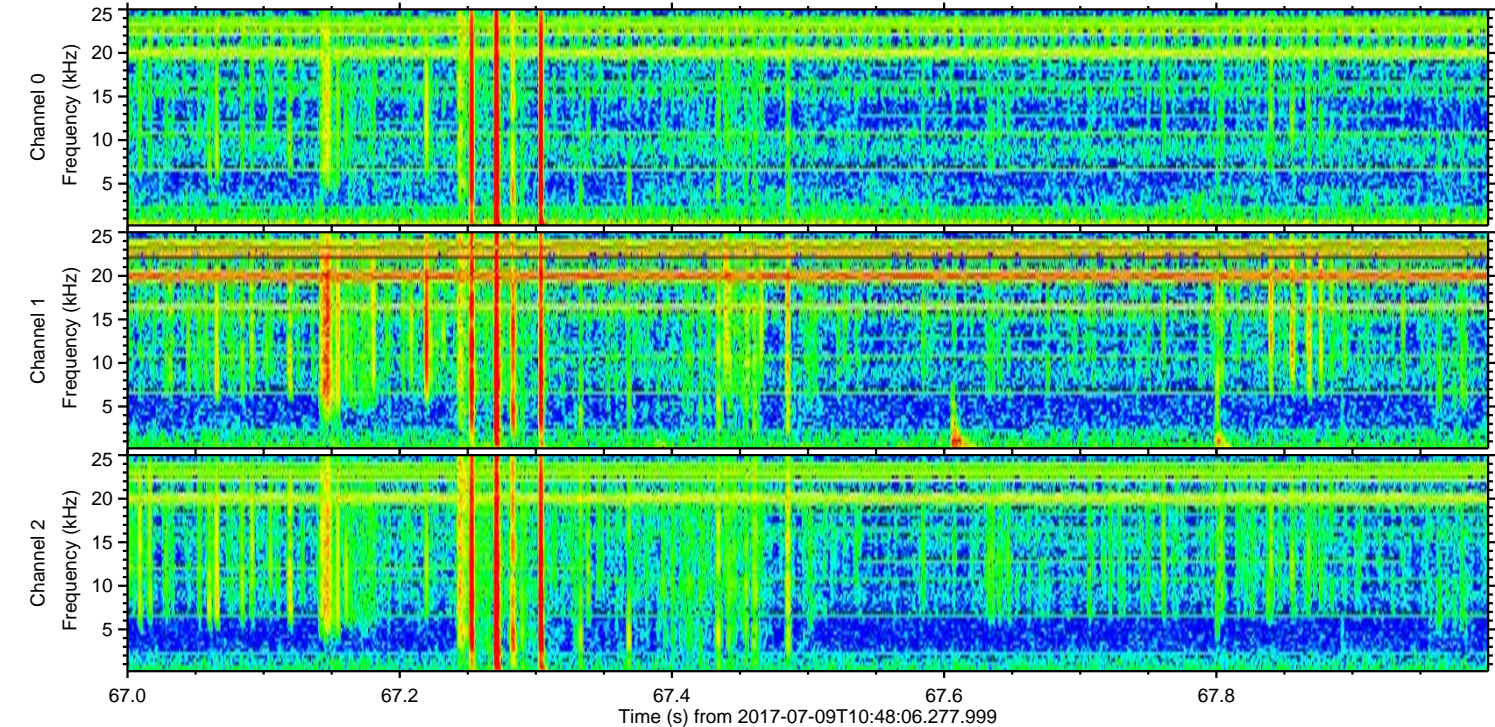
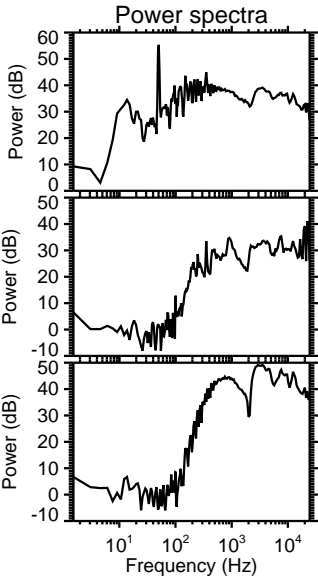
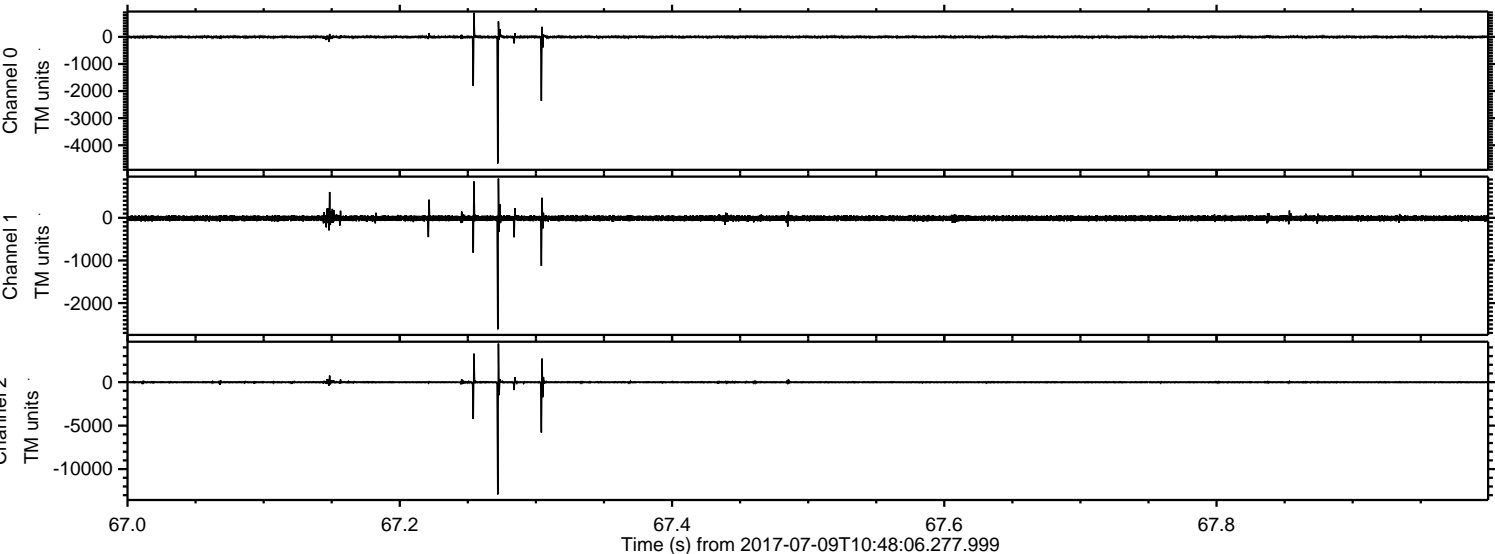


ELMAVAN 3D WAVEFORMS (Measured data sampled at 50 kHz) 51000 packets of 144 samples from 2017-07-09T10:48:06.277.999. Part 124/147

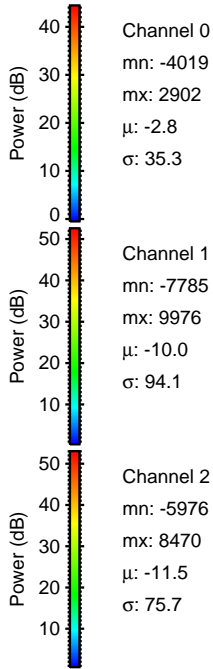
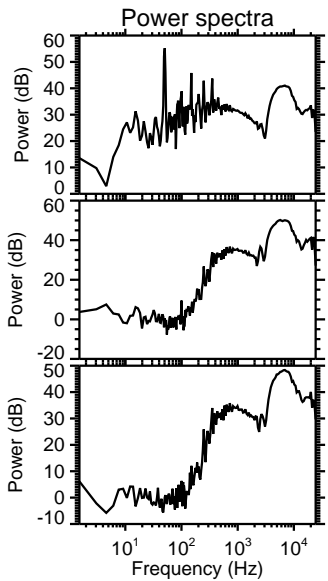
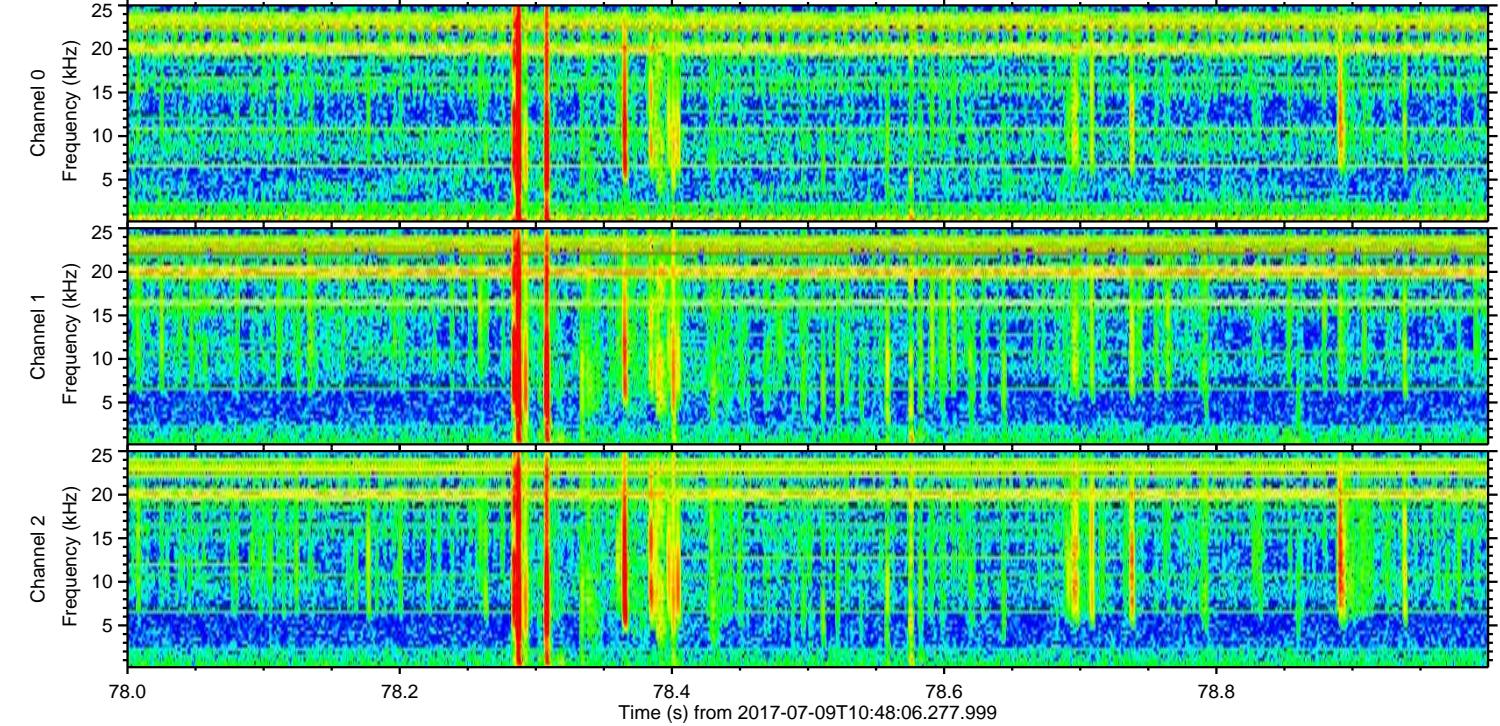
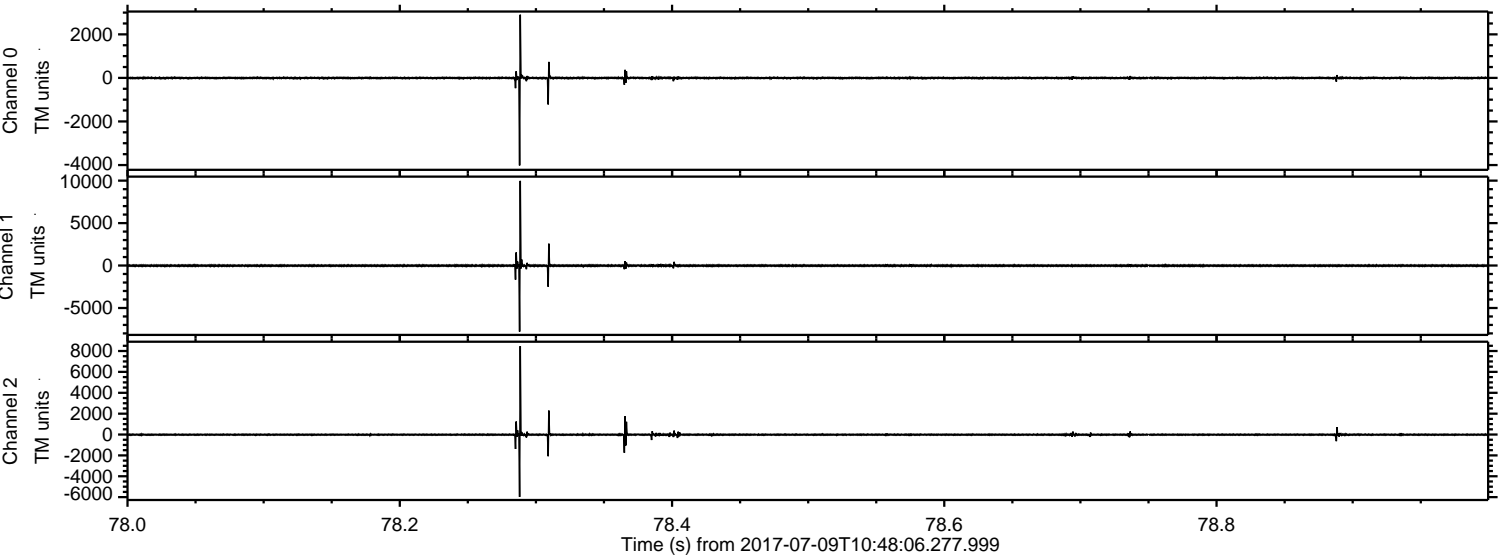
Processed Wed Jul 19 13:44:33 2017 by ELM ver.2012-10-06 from 001__elm20170709_104805__dat00.bin



Processed Wed Jul 19 13:44:33 2017 by ELM ver.2012-10-06 from 001__elm20170709_104805__dat00.bin

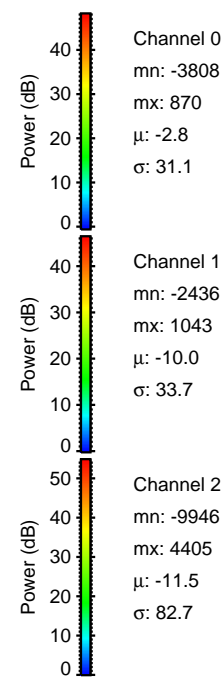
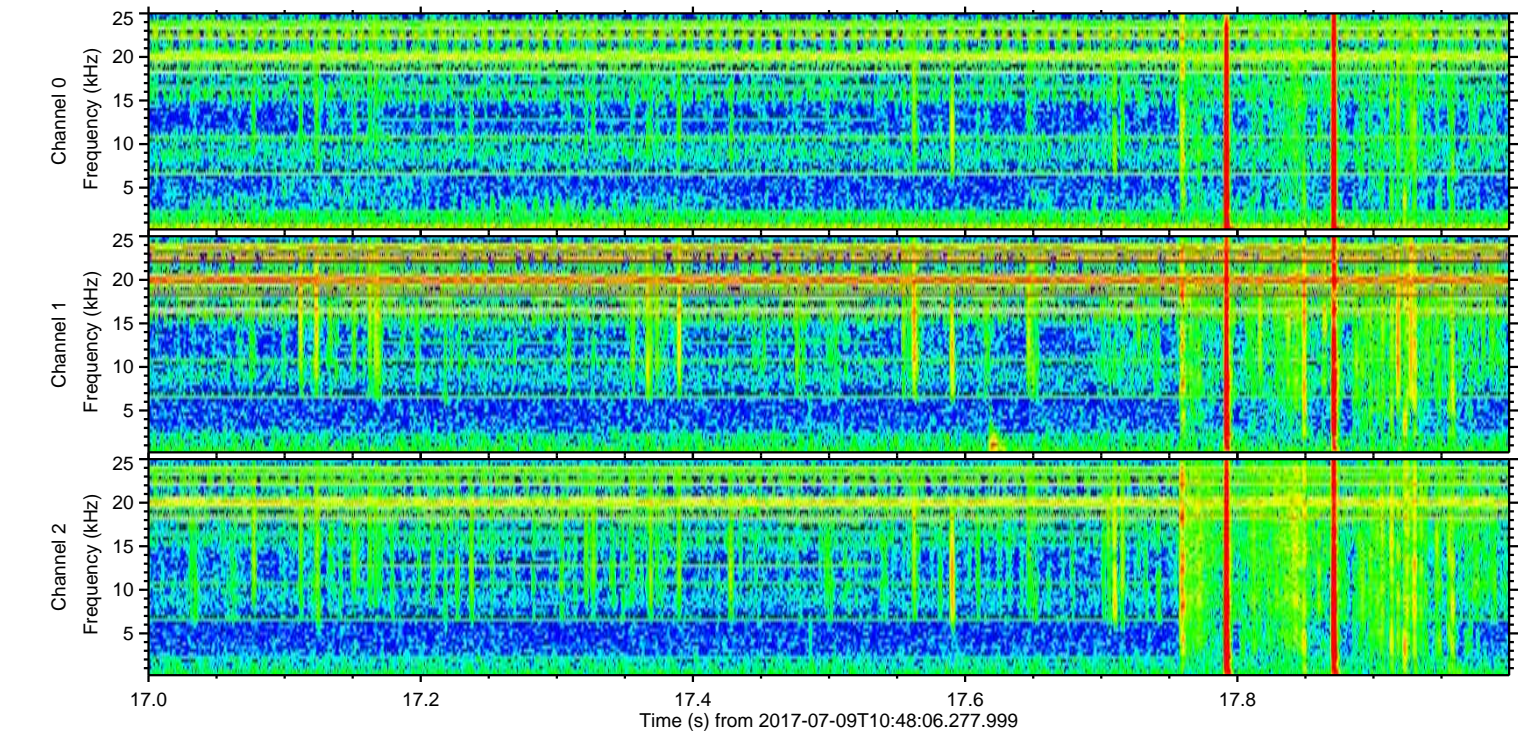
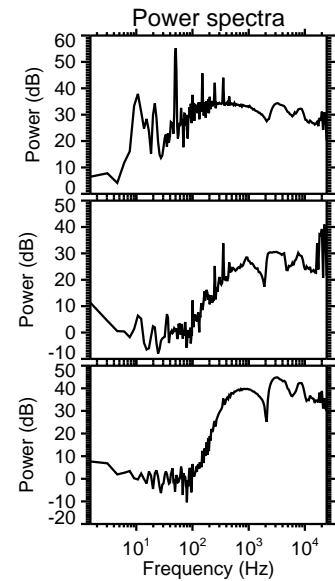
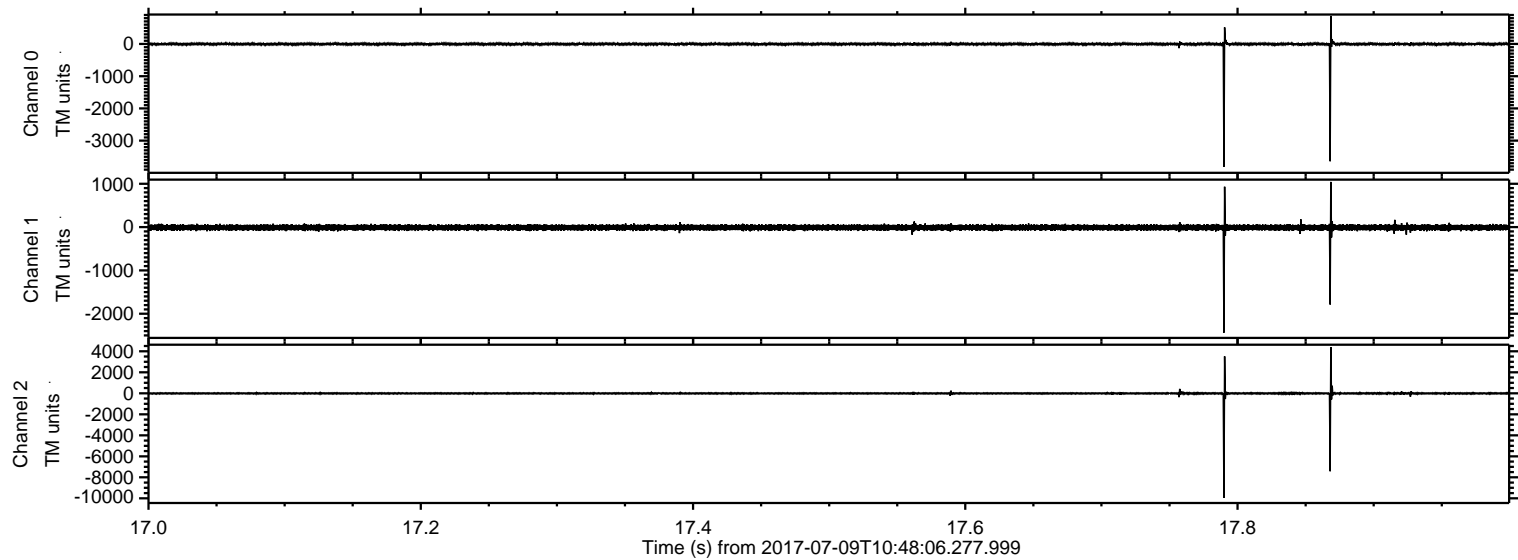


Processed Wed Jul 19 13:44:34 2017 by ELM ver.2012-10-06 from 001__elm20170709_104805__dat00.bin

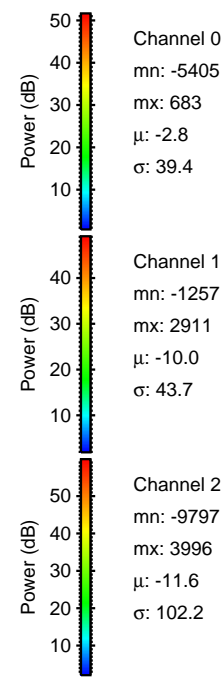
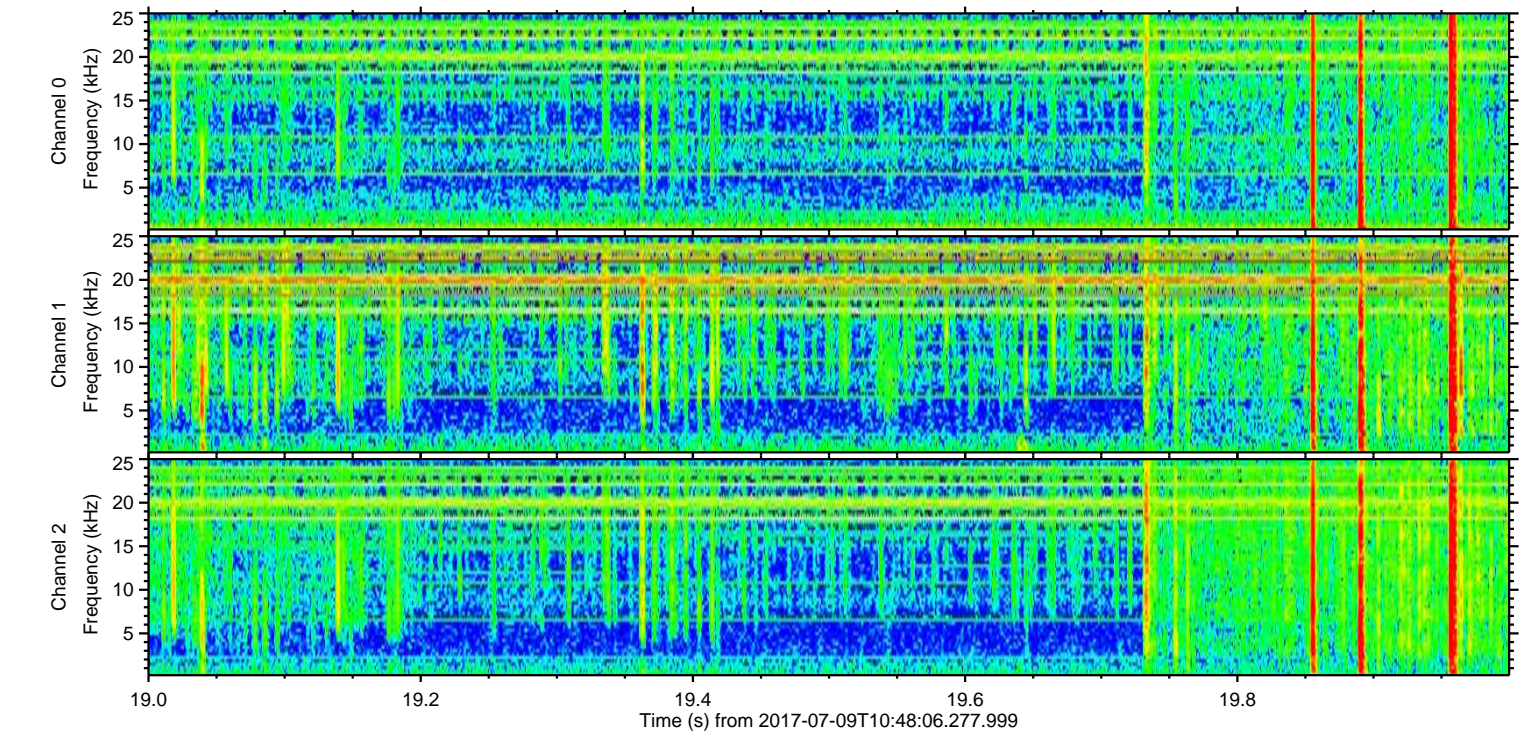
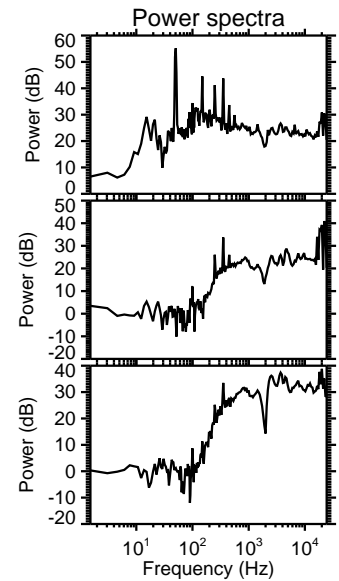
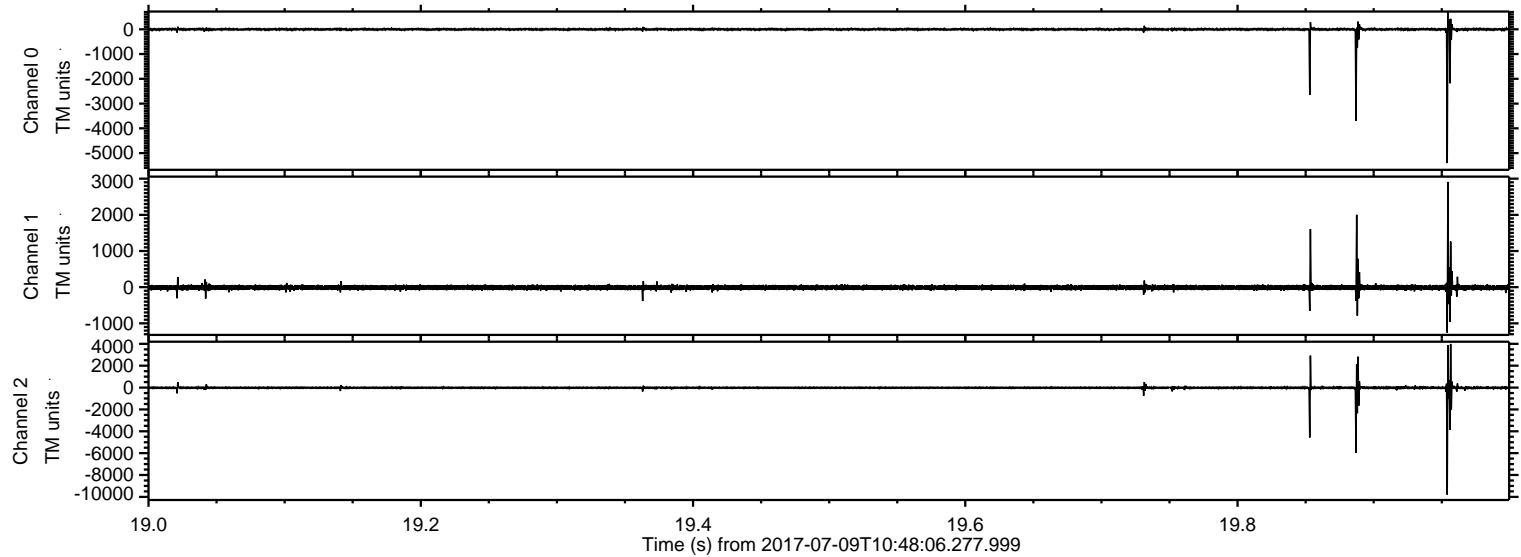


ELMAVAN 3D WAVEFORMS (Measured data sampled at 50 kHz) 51000 packets of 144 samples from 2017-07-09T10:48:06.277.999. Part 18/147

Processed Wed Jul 19 13:44:35 2017 by ELM ver.2012-10-06 from 001__elm20170709_104805__dat00.bin



Processed Wed Jul 19 13:44:36 2017 by ELM ver.2012-10-06 from 001__elm20170709_104805__dat00.bin

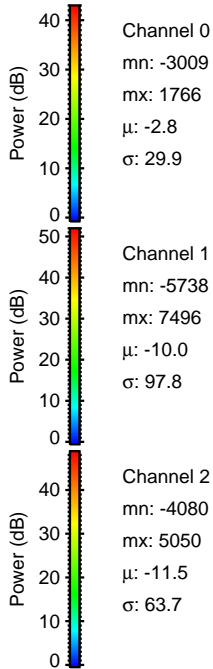
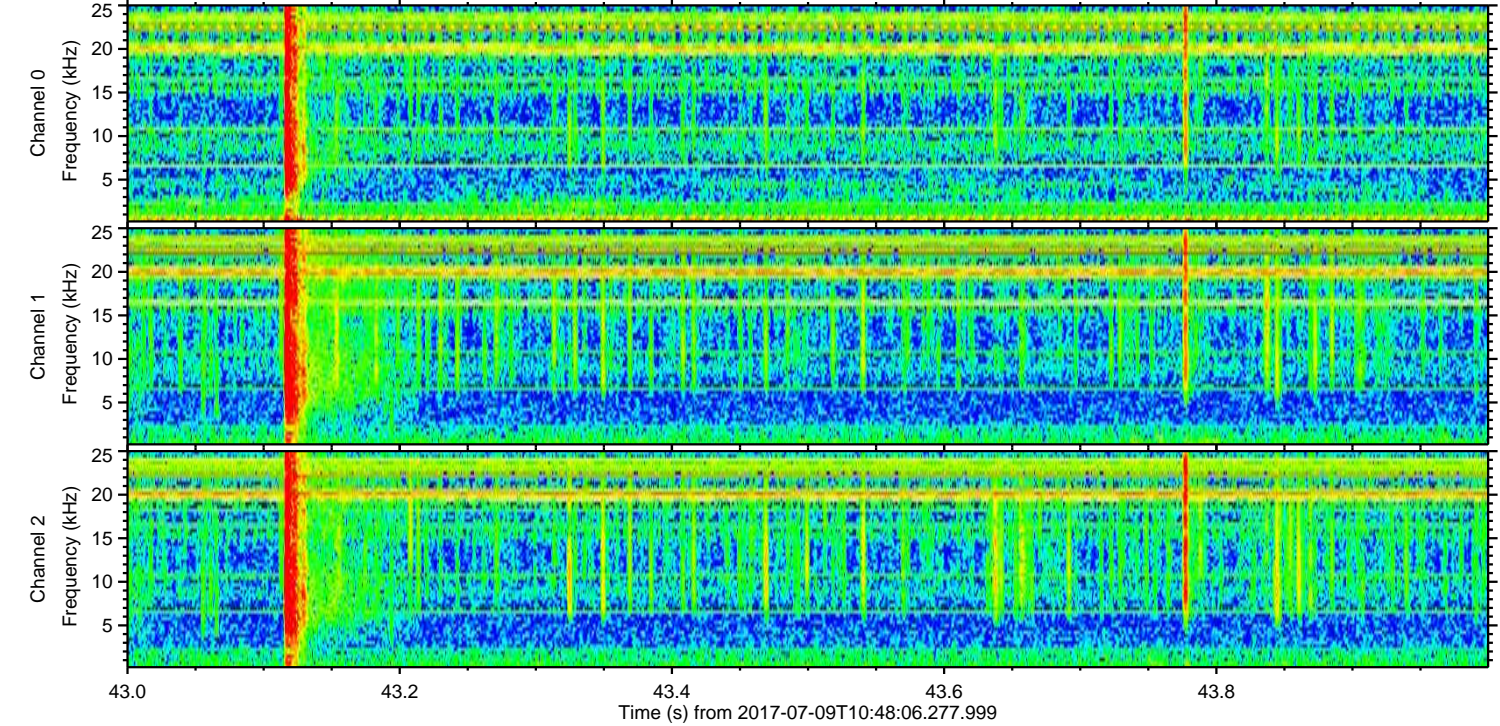
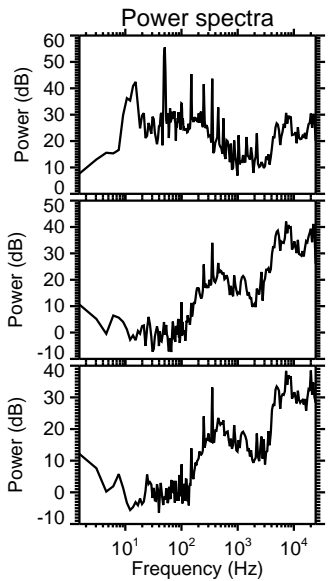
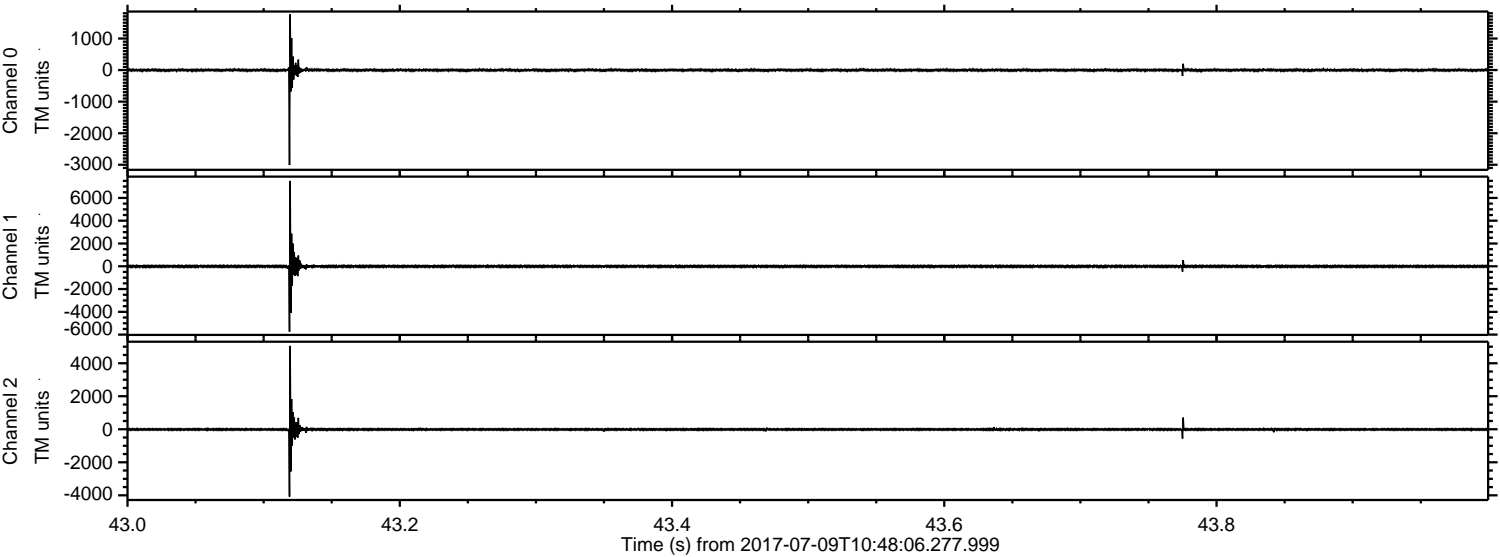


Channel 0
mn: -5405
mx: 683
 μ : -2.8
 σ : 39.4

Channel 1
mn: -1257
mx: 2911
 μ : -10.0
 σ : 43.7

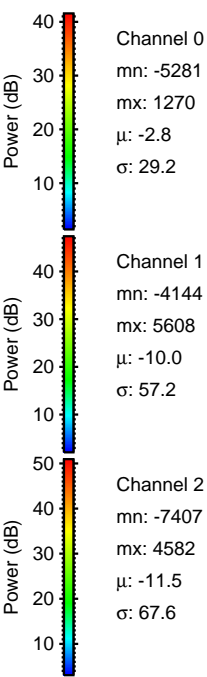
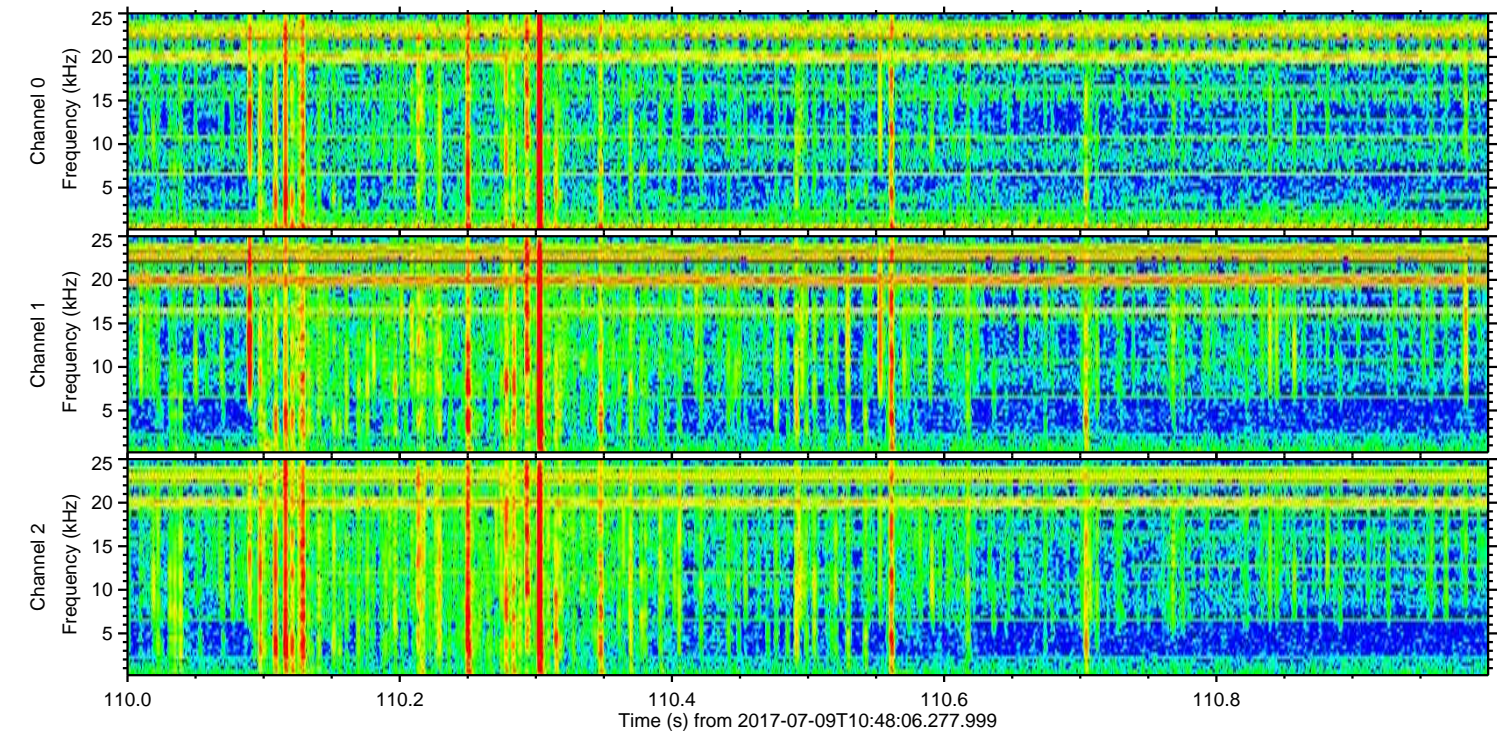
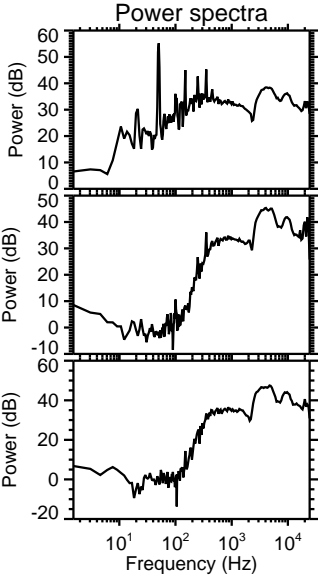
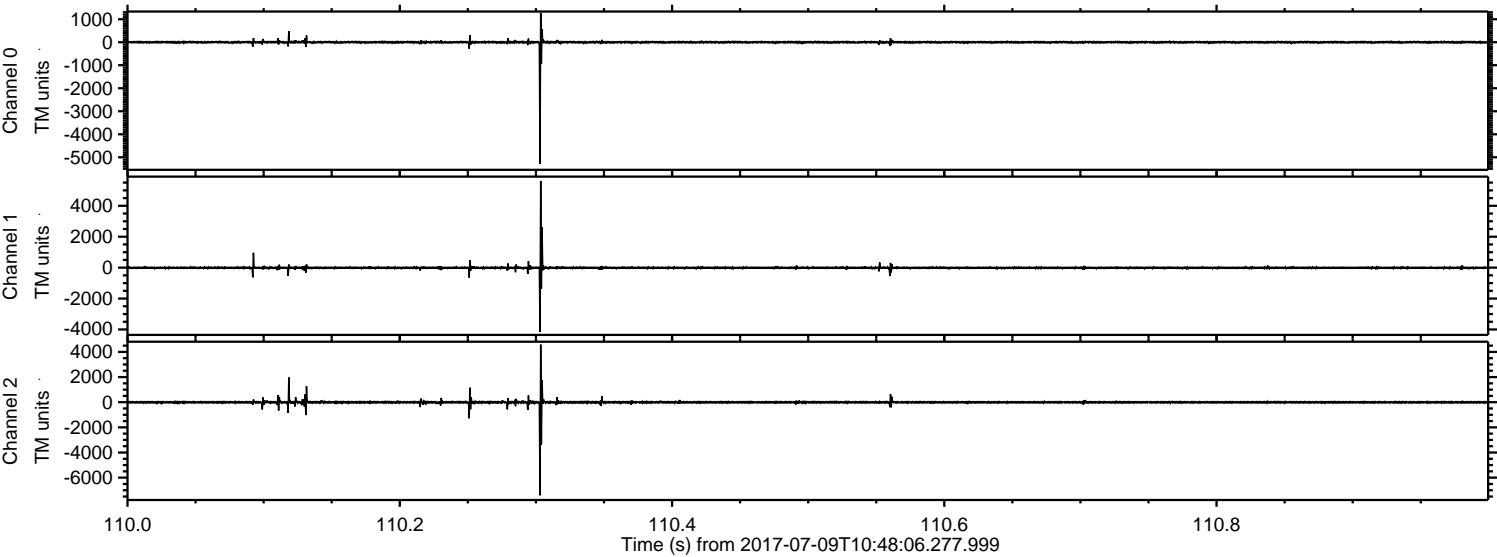
Channel 2
mn: -9797
mx: 3996
 μ : -11.6
 σ : 102.2

Processed Wed Jul 19 13:44:37 2017 by ELM ver.2012-10-06 from 001__elm20170709_104805__dat00.bin

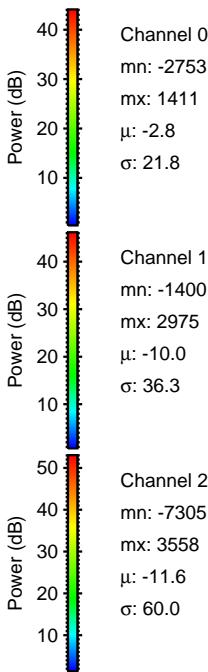
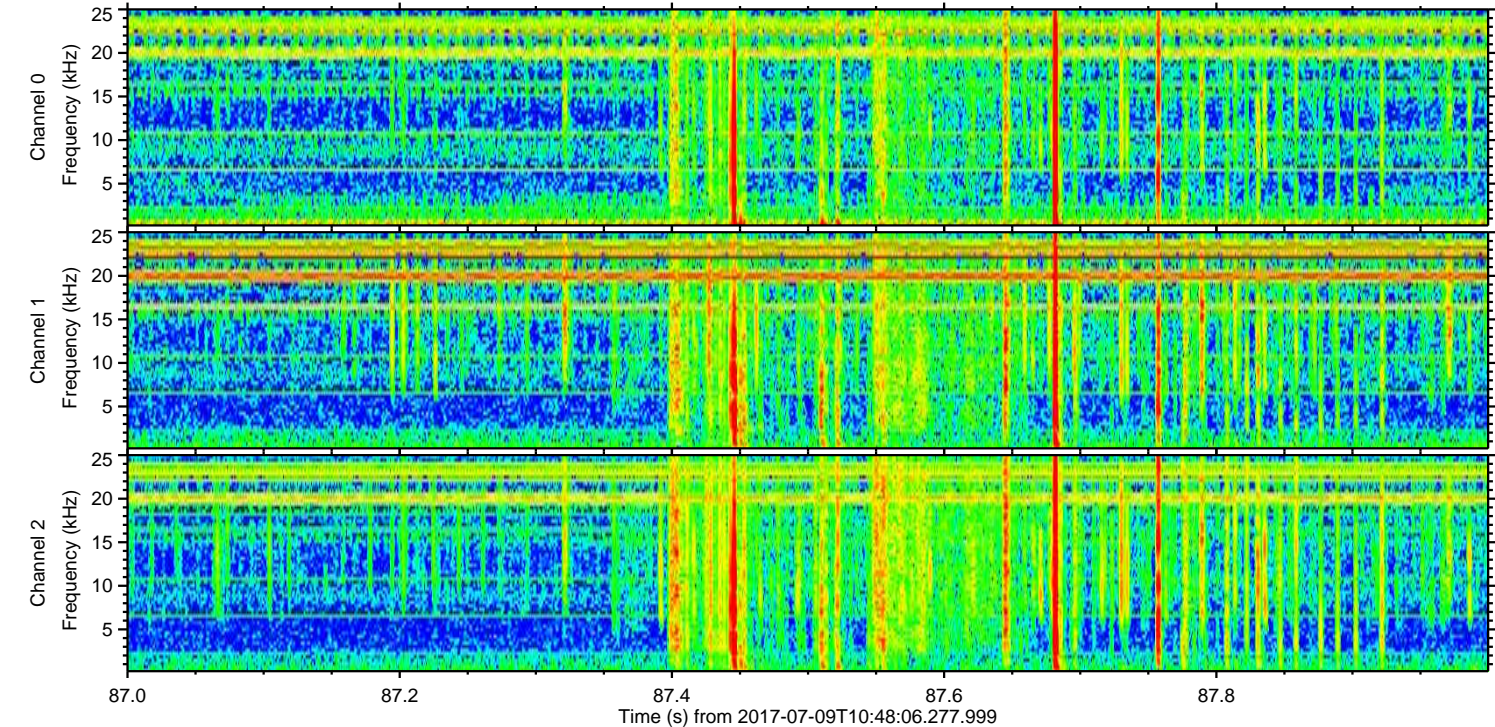
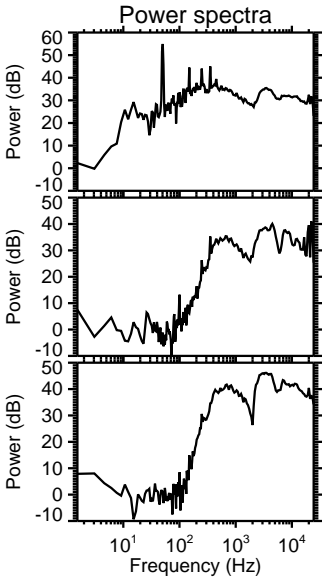
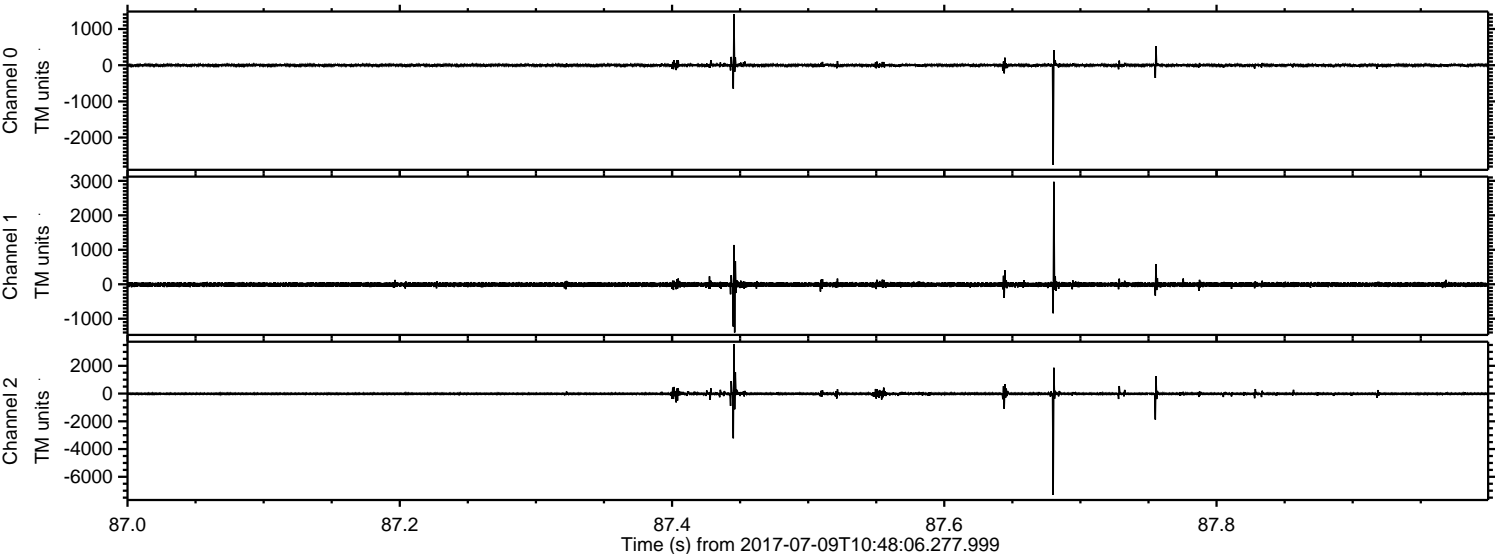


ELMAVAN 3D WAVEFORMS (Measured data sampled at 50 kHz) 51000 packets of 144 samples from 2017-07-09T10:48:06.277.999. Part 111/147

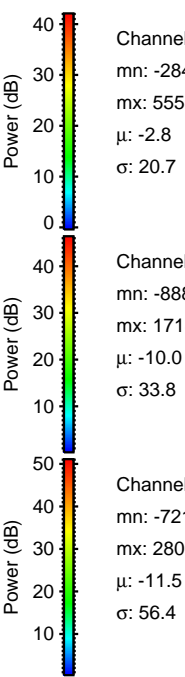
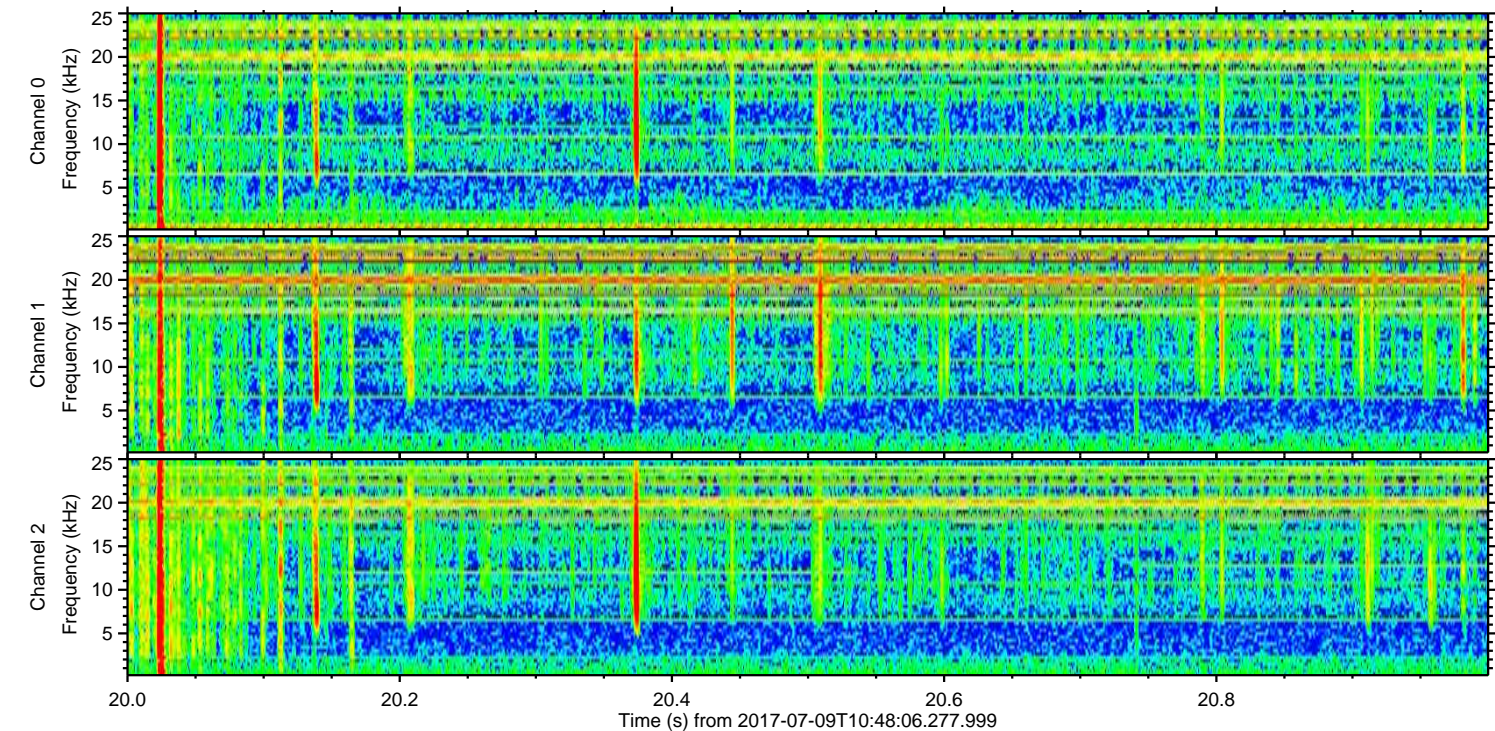
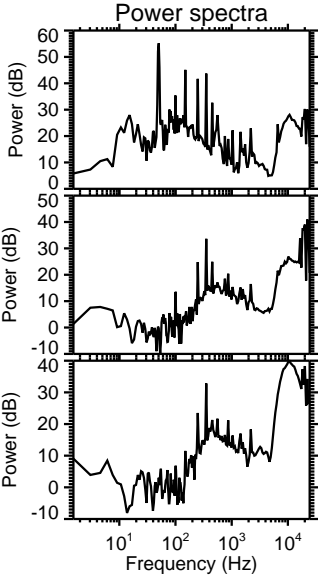
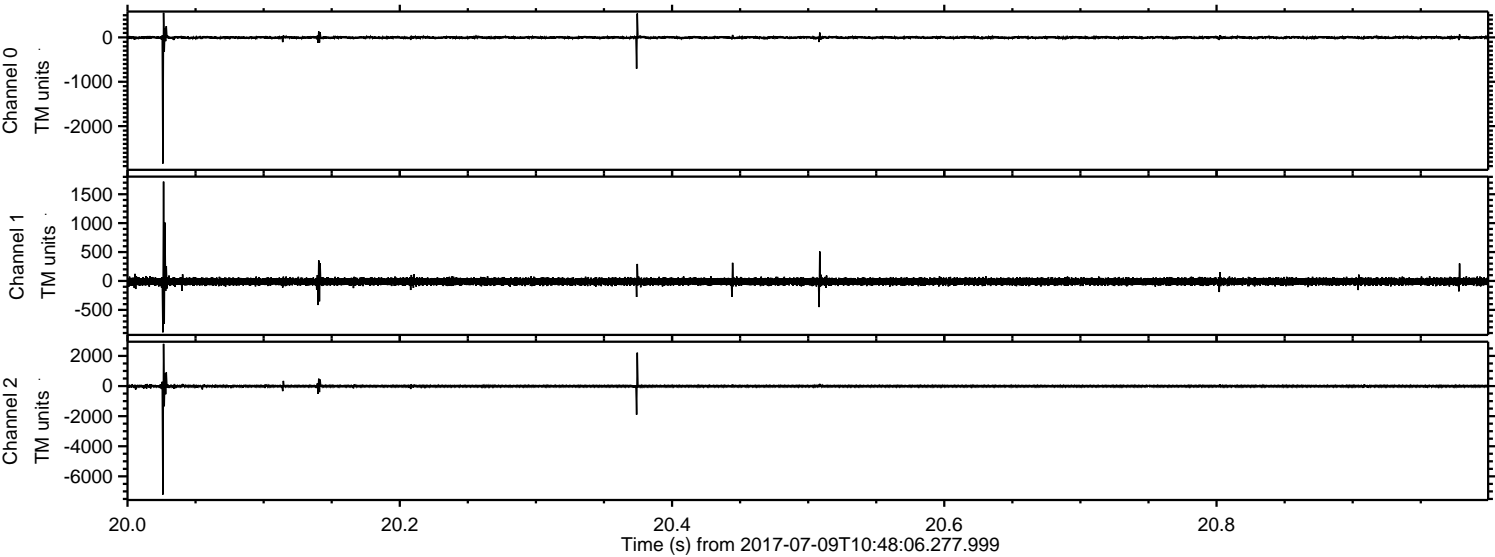
Processed Wed Jul 19 13:44:37 2017 by ELM ver.2012-10-06 from 001__elm20170709_104805__dat00.bin



Processed Wed Jul 19 13:44:38 2017 by ELM ver.2012-10-06 from 001__elm20170709_104805__dat00.bin



Processed Wed Jul 19 13:44:39 2017 by ELM ver.2012-10-06 from 001__elm20170709_104805__dat00.bin



Channel 0
mn: -2842
mx: 555
 μ : -2.8
 σ : 20.7

Channel 1
mn: -888
mx: 1718
 μ : -10.0
 σ : 33.8

Channel 2
mn: -7211
mx: 2806
 μ : -11.5
 σ : 56.4

