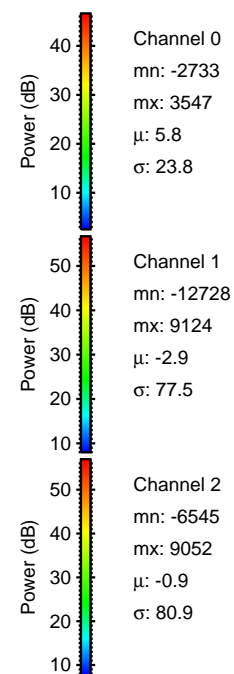
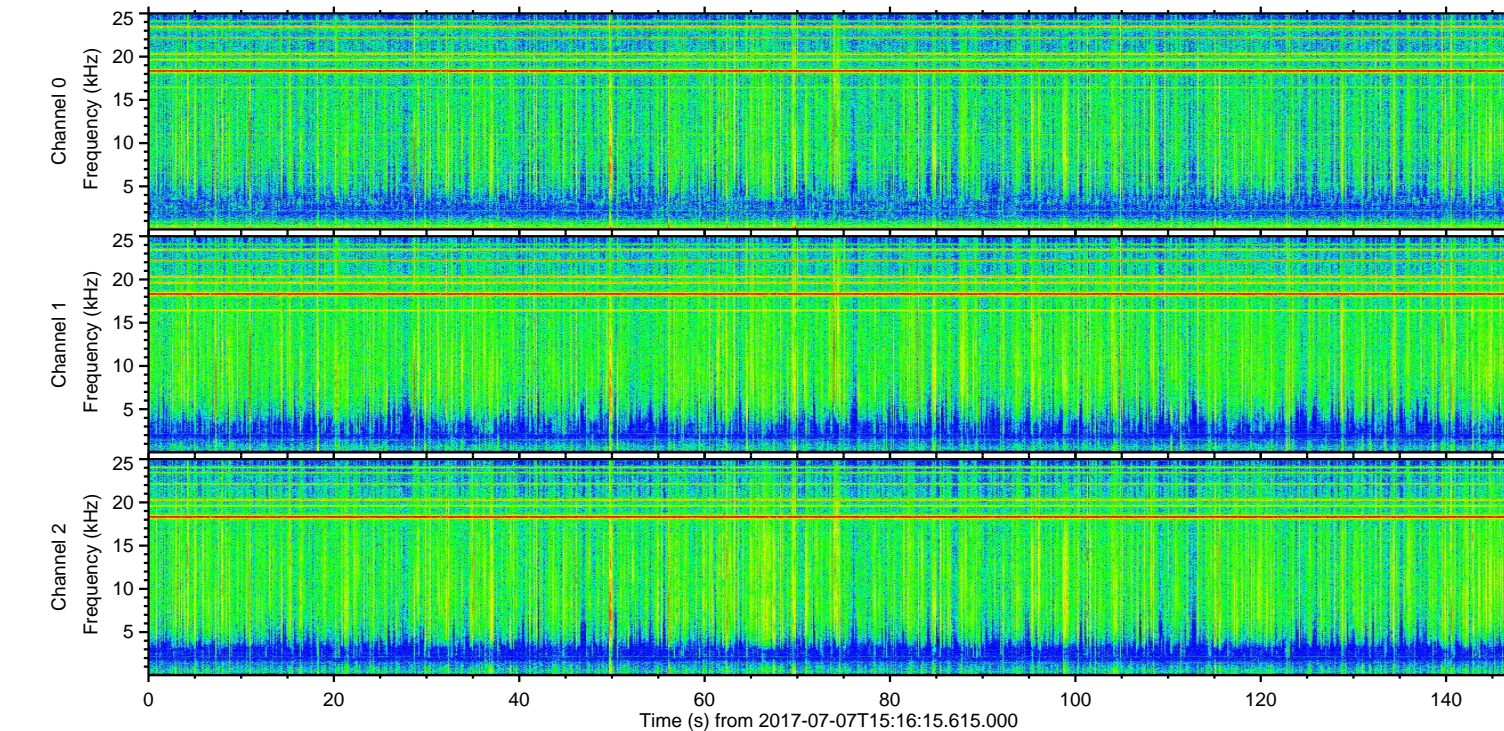
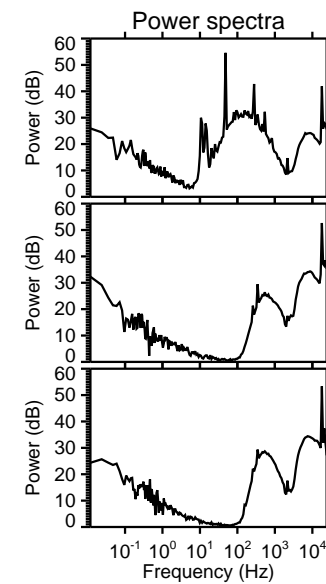
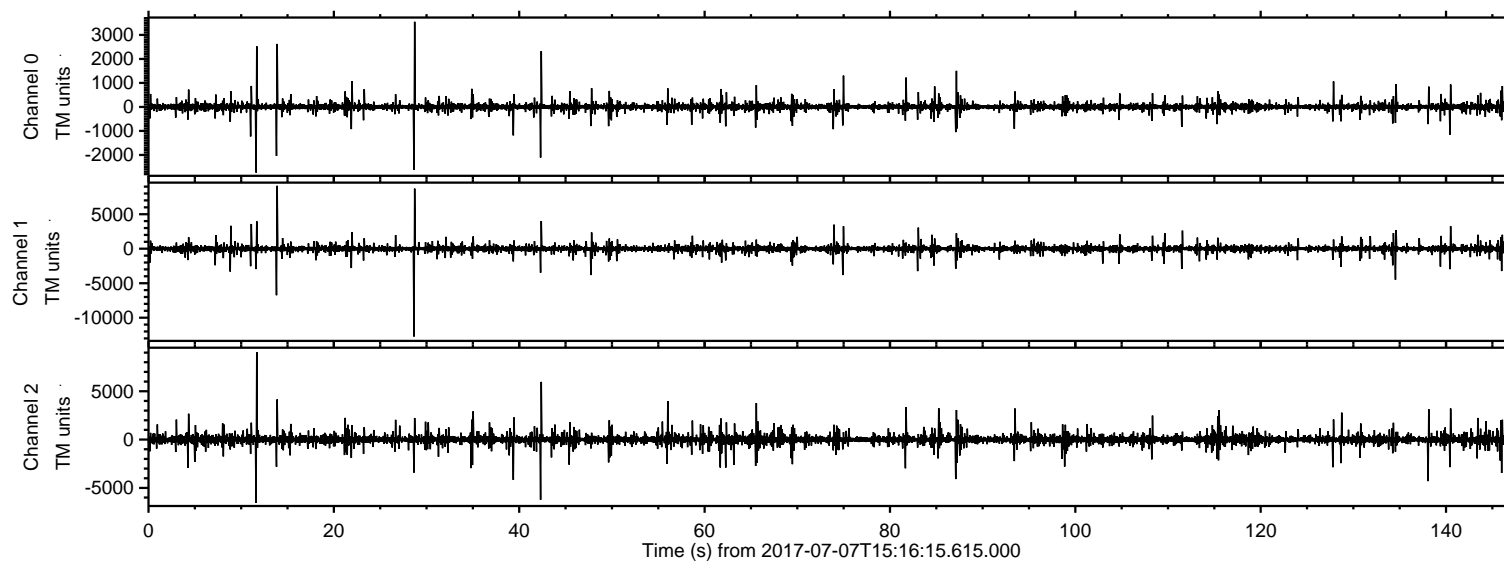


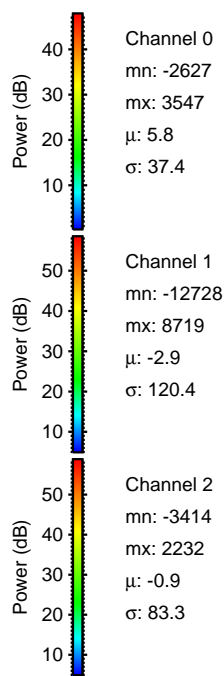
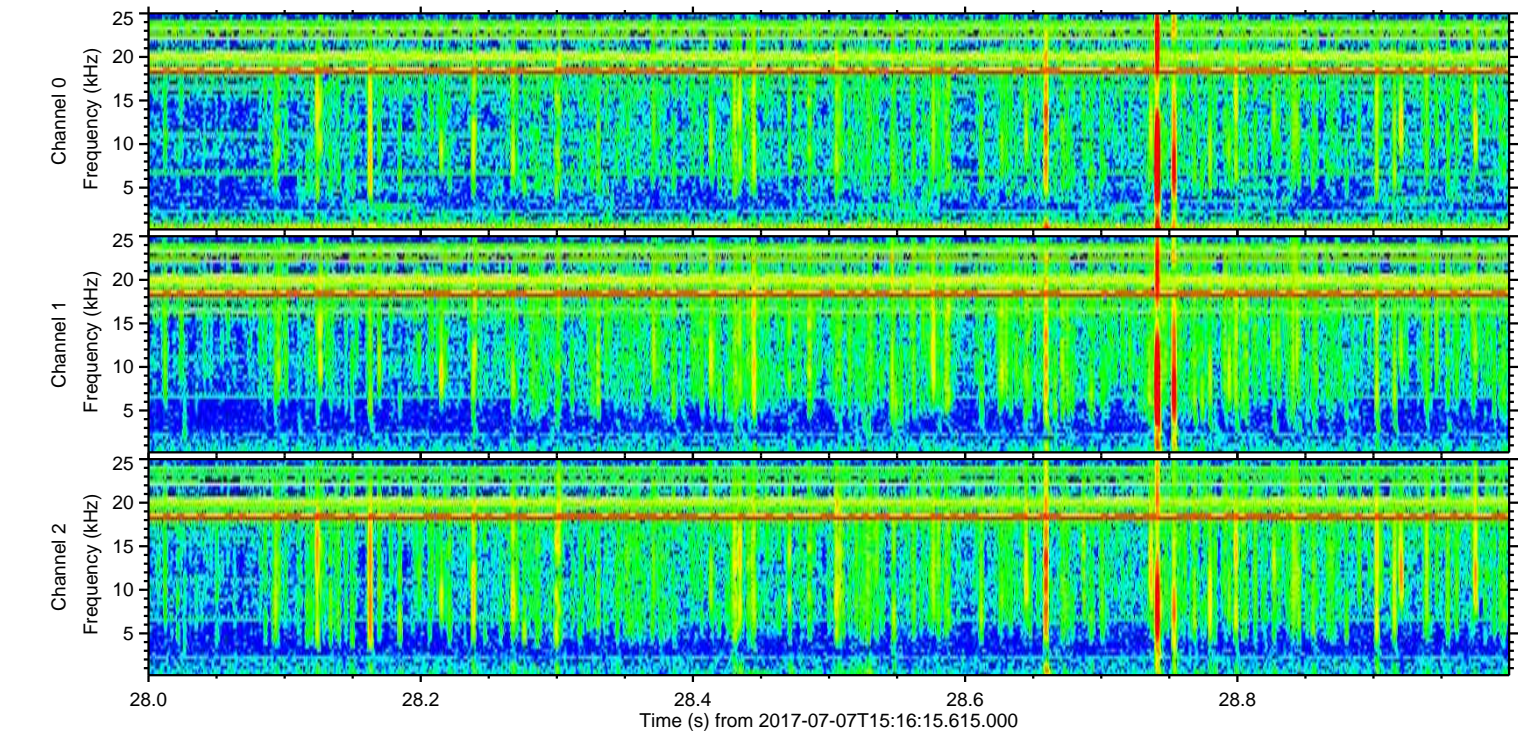
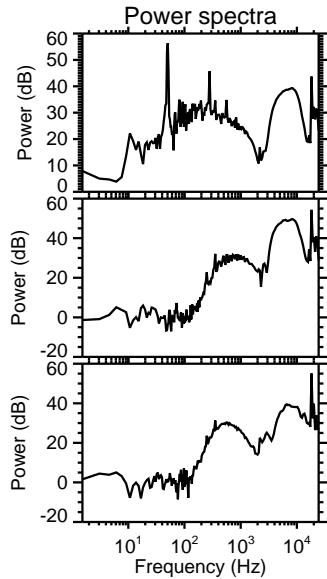
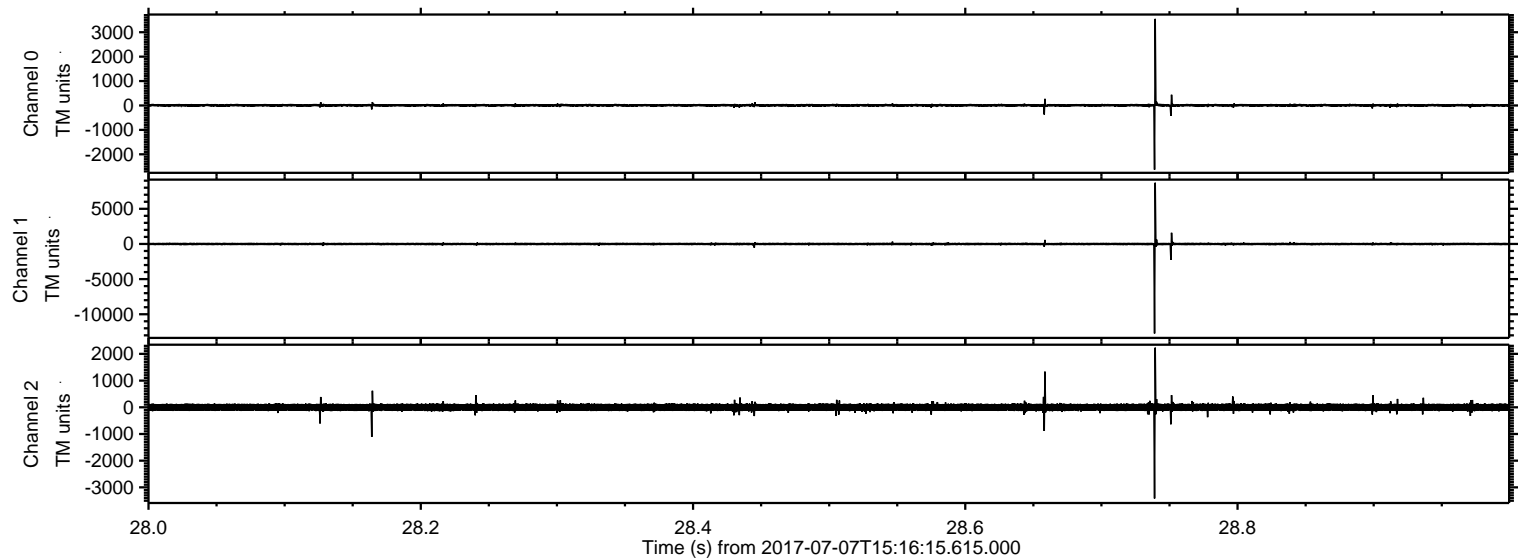
# ELMAVAN 3D WAVEFORMS (Measured data sampled at 50 kHz) 51000 packets of 144 samples from 2017-07-07T15:16:15.615.000.

Processed Wed Jul 19 07:12:17 2017 by ELM ver.2012-10-06 from 001\_\_elm20170707\_151614\_\_dat00.bin



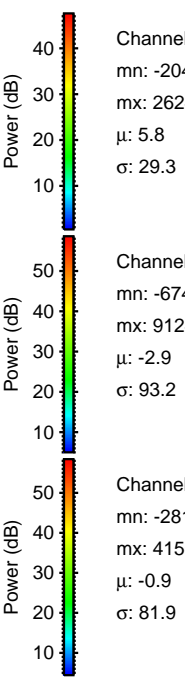
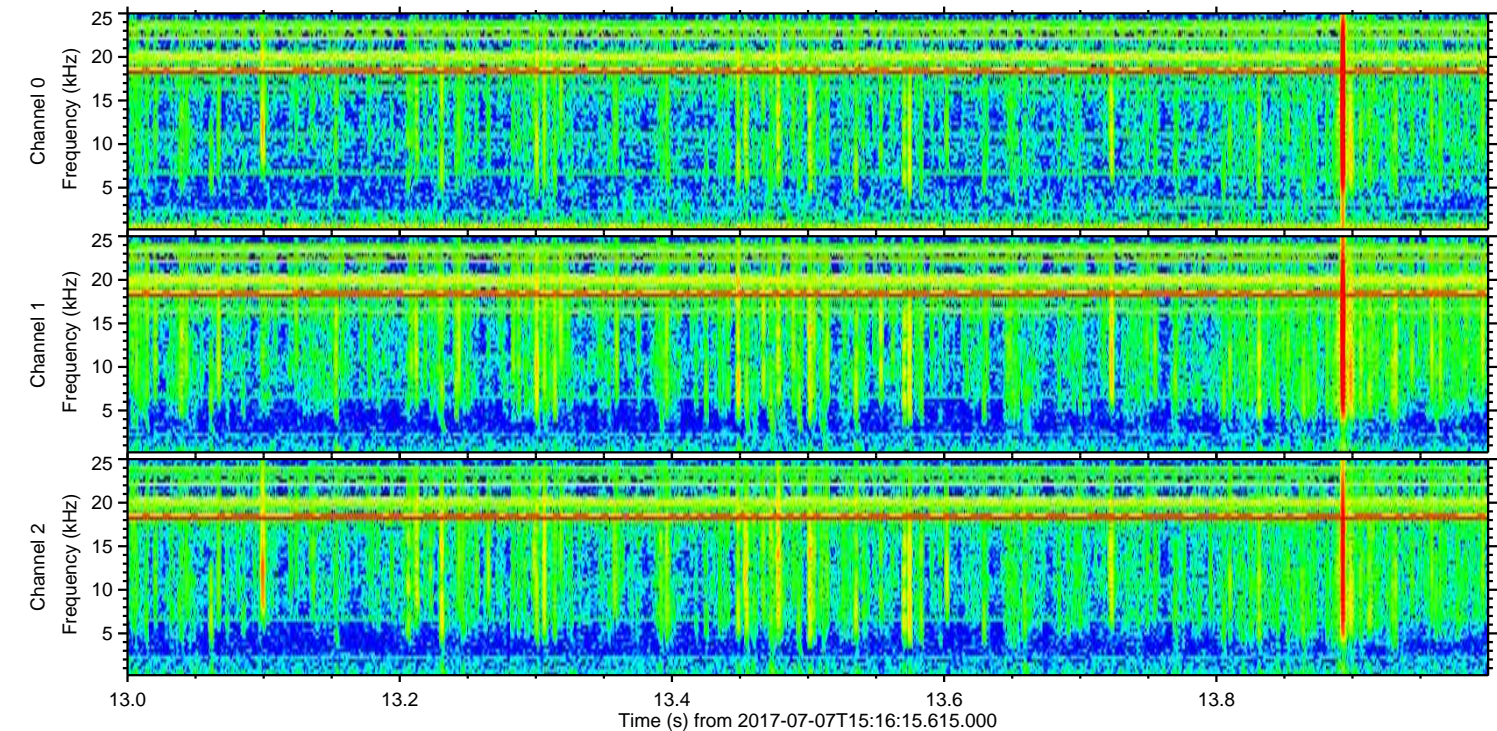
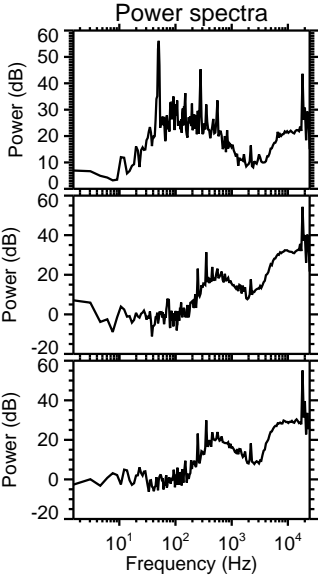
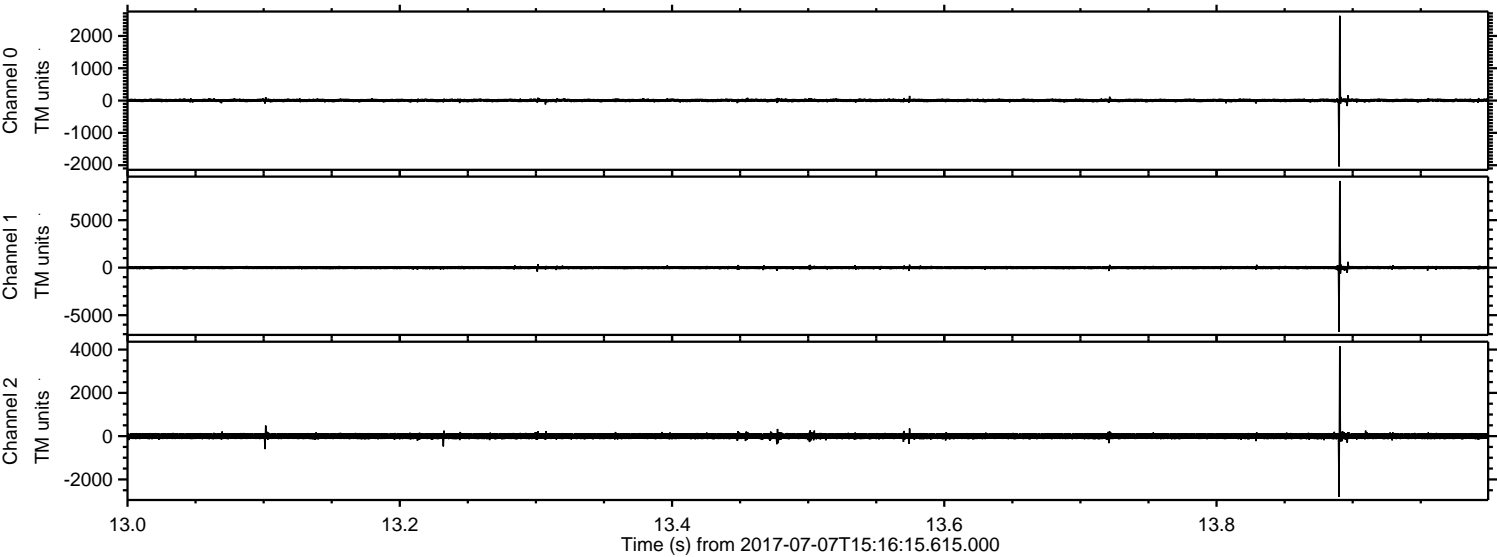


Processed Wed Jul 19 07:12:25 2017 by ELM ver.2012-10-06 from 001\_\_elm20170707\_151614\_\_dat00.bin





Processed Wed Jul 19 07:12:26 2017 by ELM ver.2012-10-06 from 001\_\_elm20170707\_151614\_\_dat00.bin

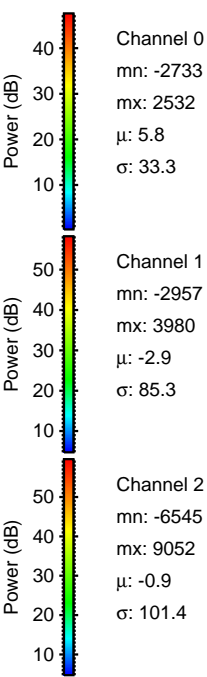
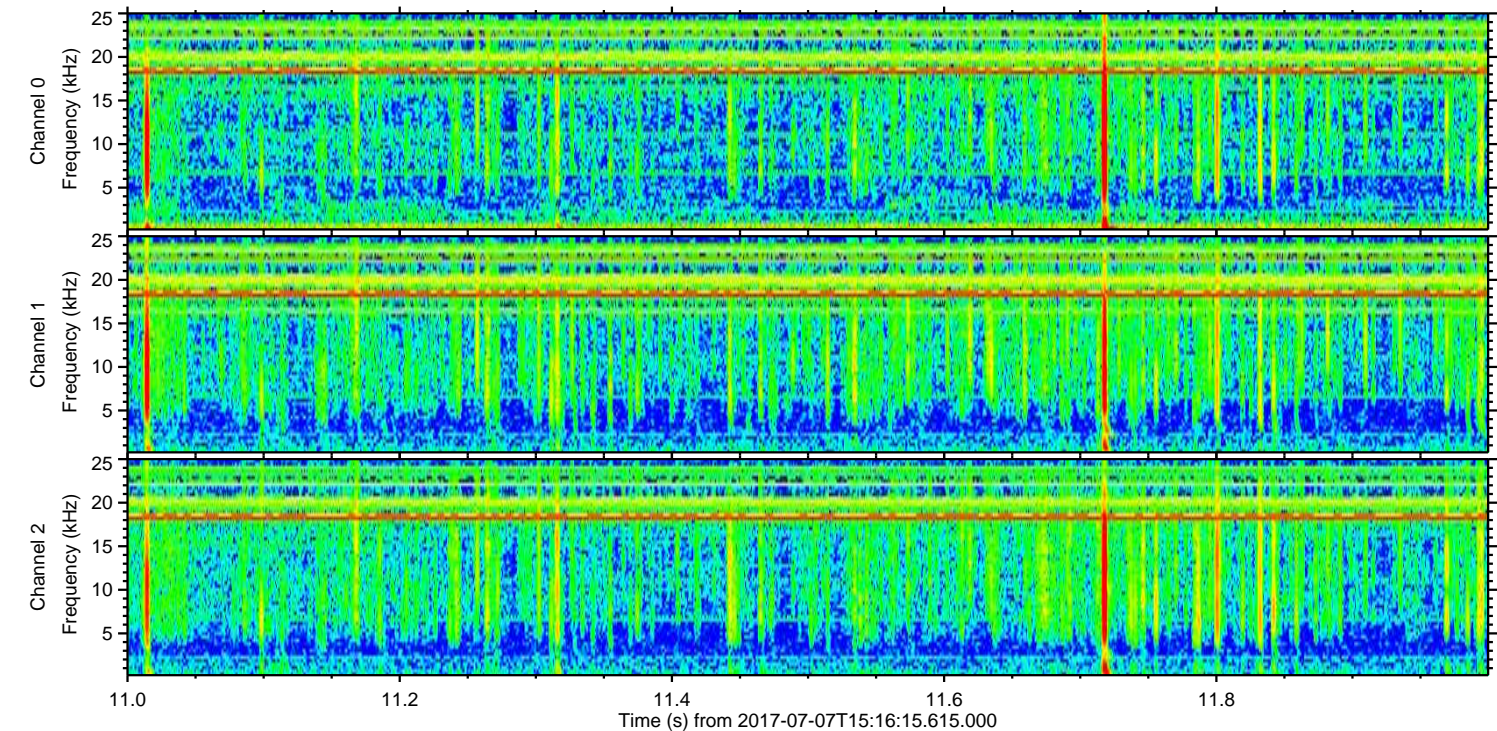
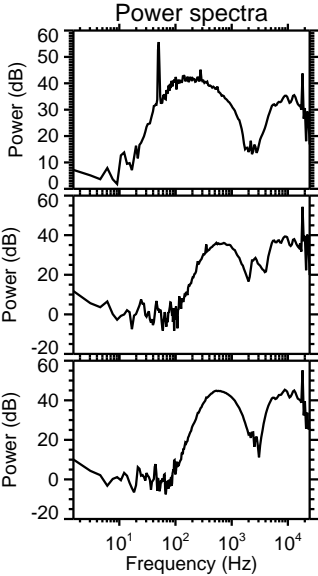
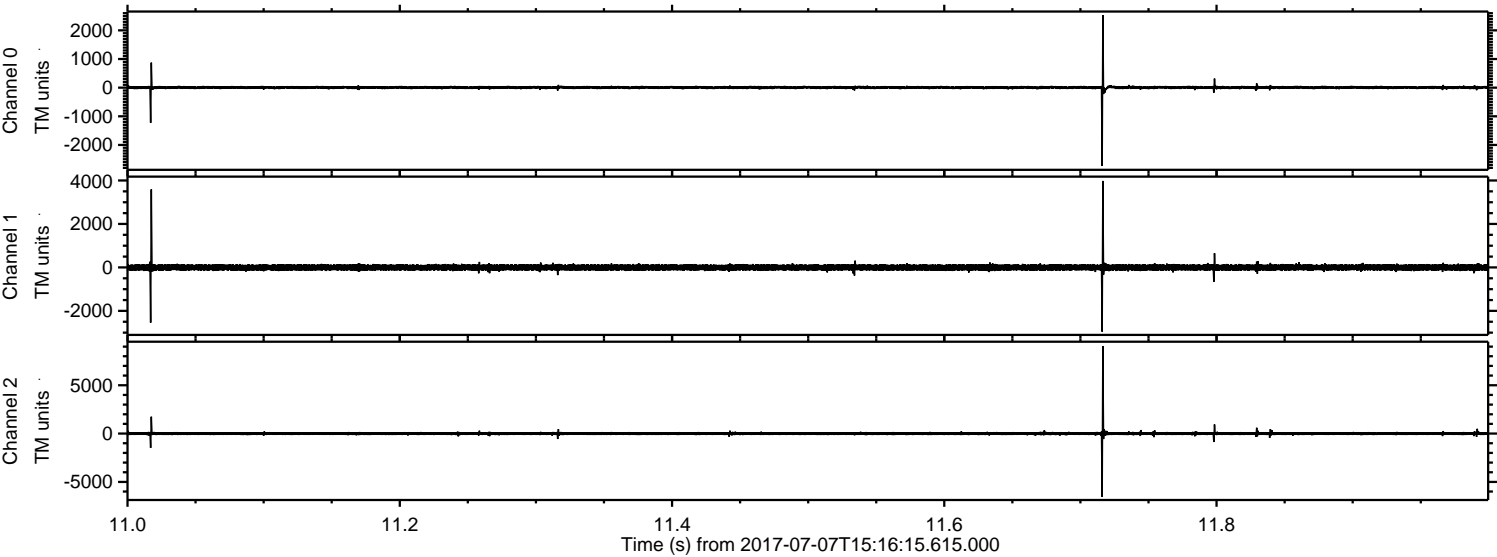


Channel 0  
mn: -2041  
mx: 2624  
 $\mu$ : 5.8  
 $\sigma$ : 29.3

Channel 1  
mn: -6743  
mx: 9124  
 $\mu$ : -2.9  
 $\sigma$ : 93.2

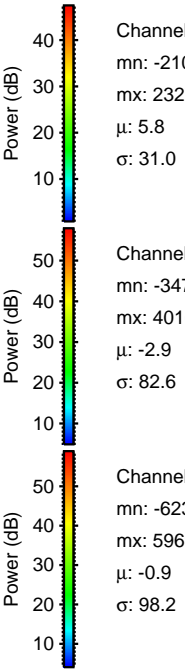
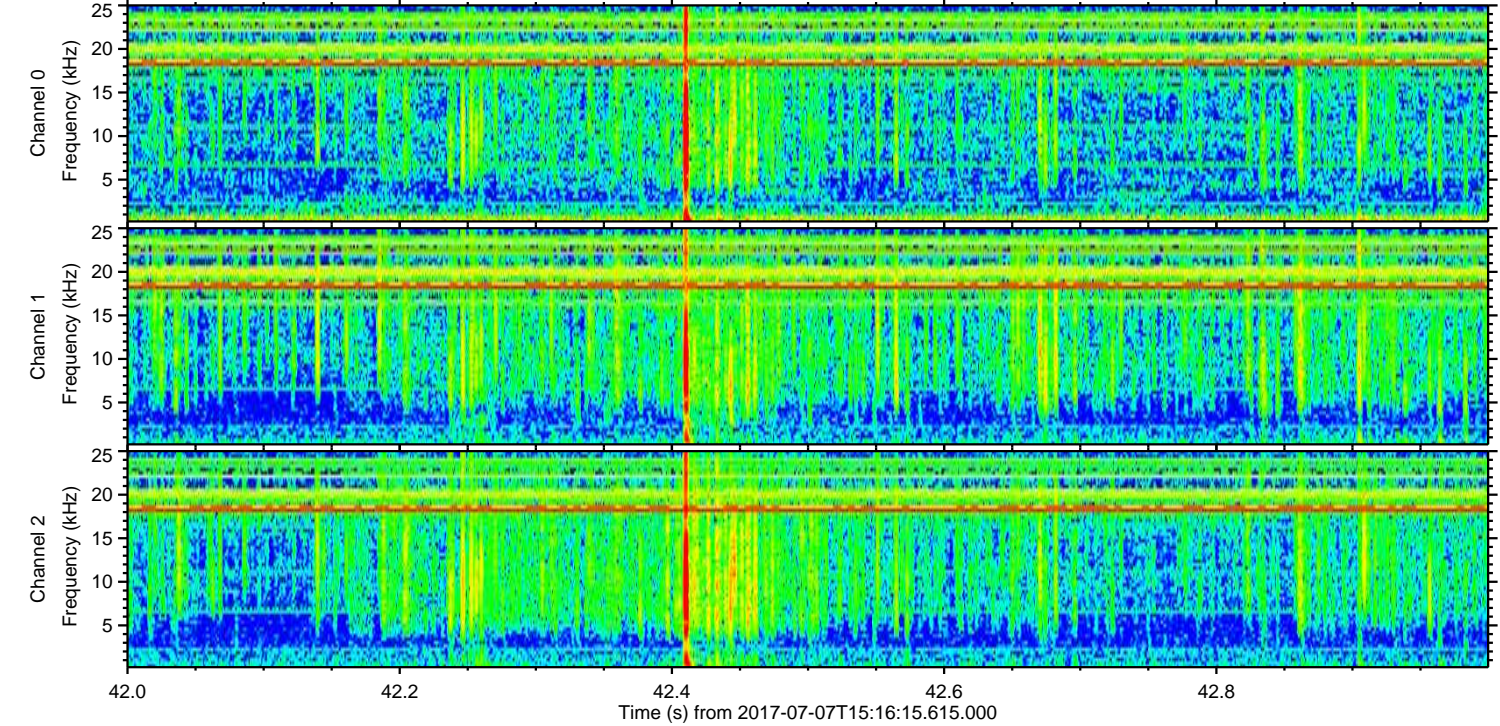
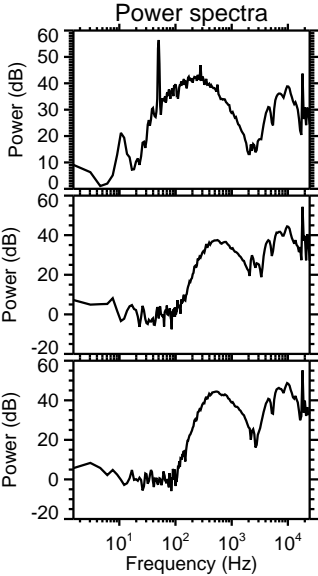
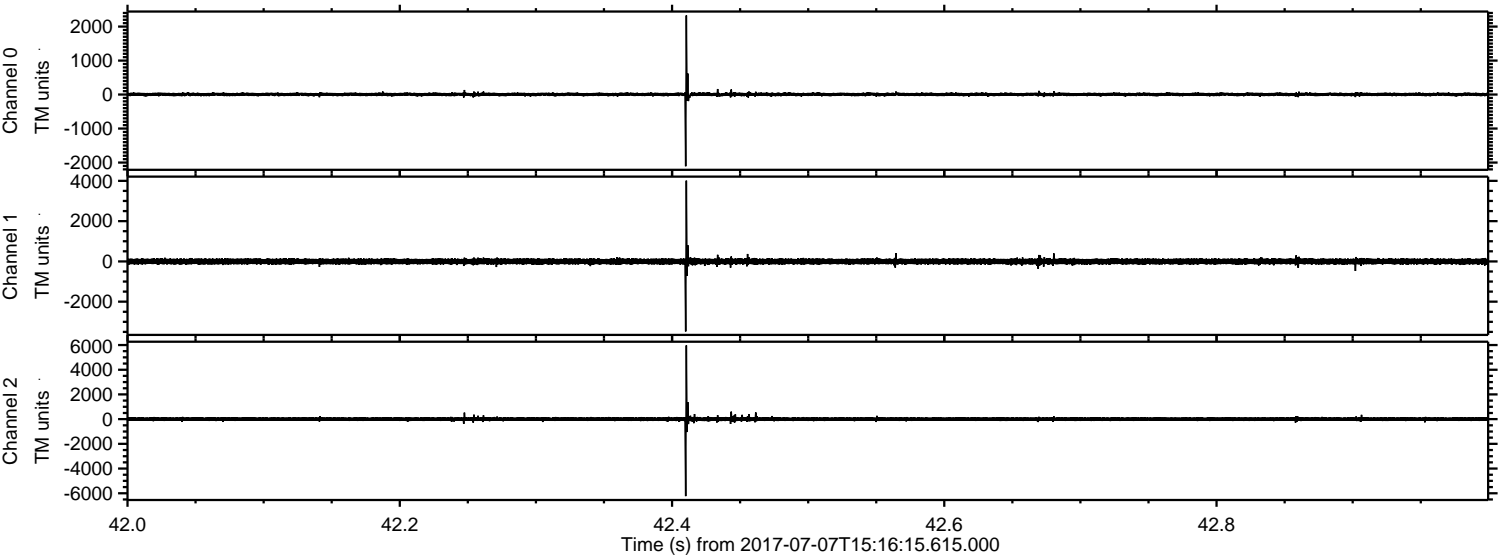
Channel 2  
mn: -2811  
mx: 4156  
 $\mu$ : -0.9  
 $\sigma$ : 81.9

Processed Wed Jul 19 07:12:27 2017 by ELM ver.2012-10-06 from 001\_\_elm20170707\_151614\_\_dat00.bin





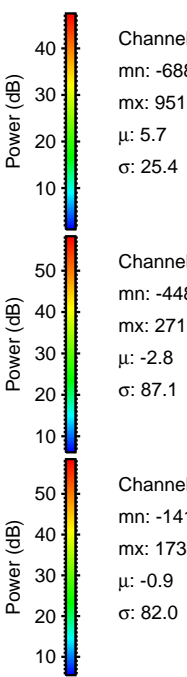
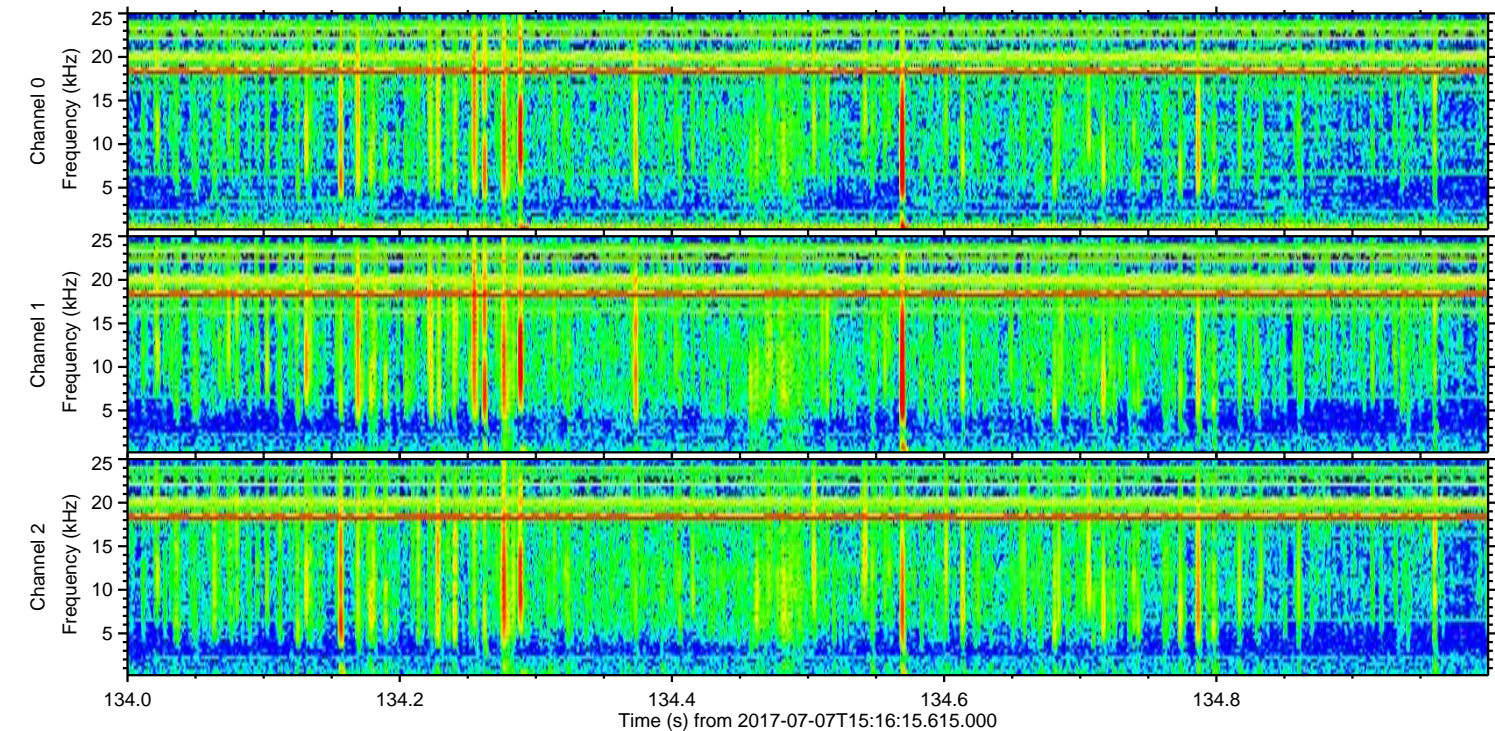
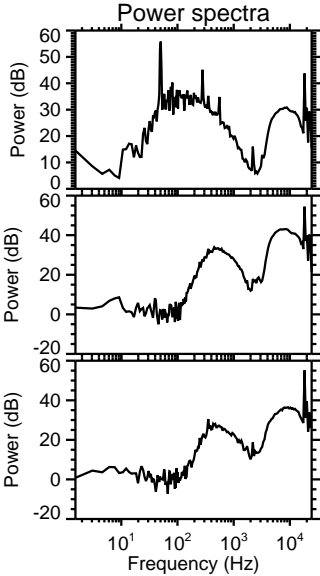
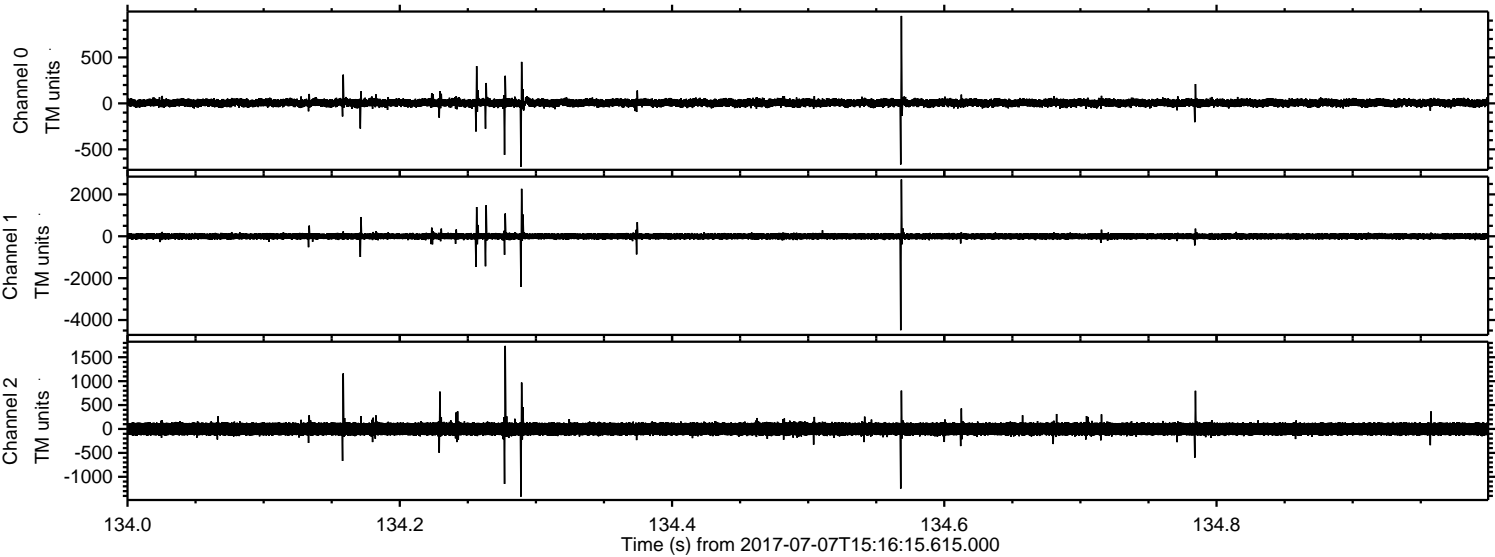
Processed Wed Jul 19 07:12:28 2017 by ELM ver.2012-10-06 from 001\_\_elm20170707\_151614\_\_dat00.bin





ELMAVAN 3D WAVEFORMS (Measured data sampled at 50 kHz) 51000 packets of 144 samples from 2017-07-07T15:16:15.615.000. Part 135/147

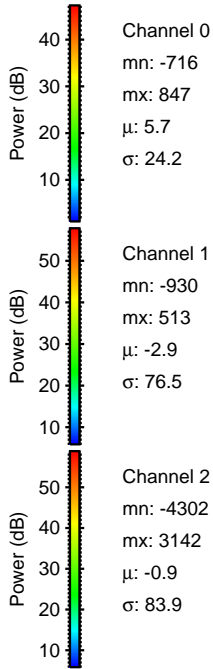
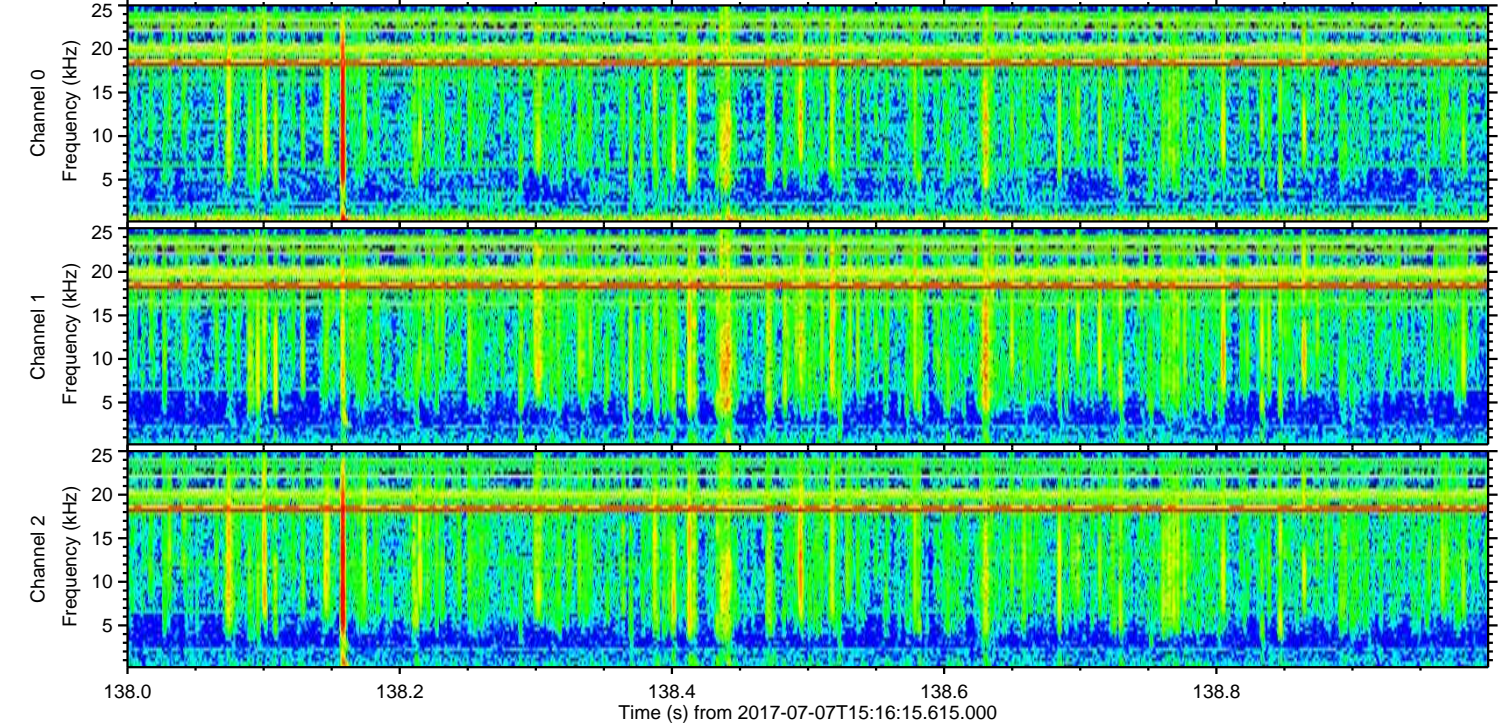
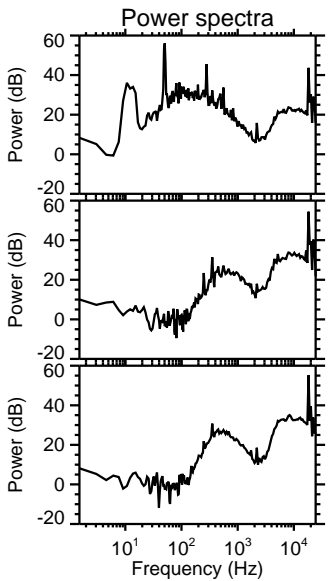
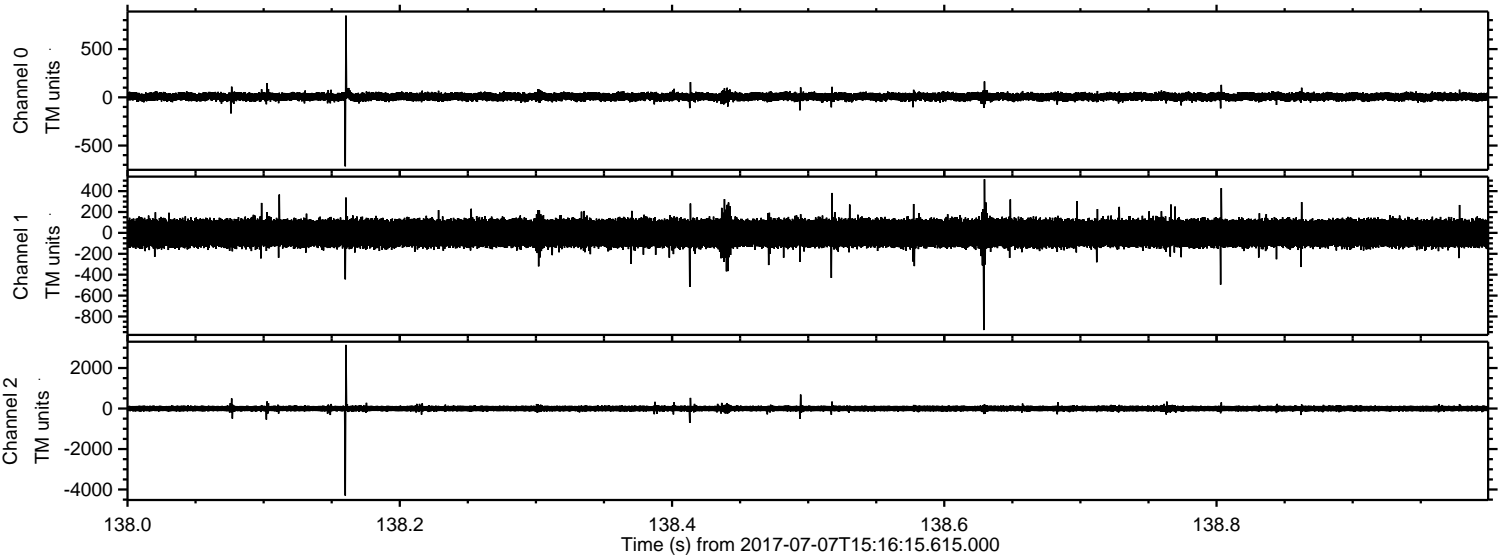
Processed Wed Jul 19 07:12:28 2017 by ELM ver.2012-10-06 from 001\_\_elm20170707\_151614\_\_dat00.bin





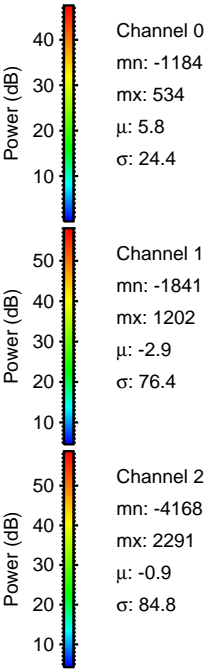
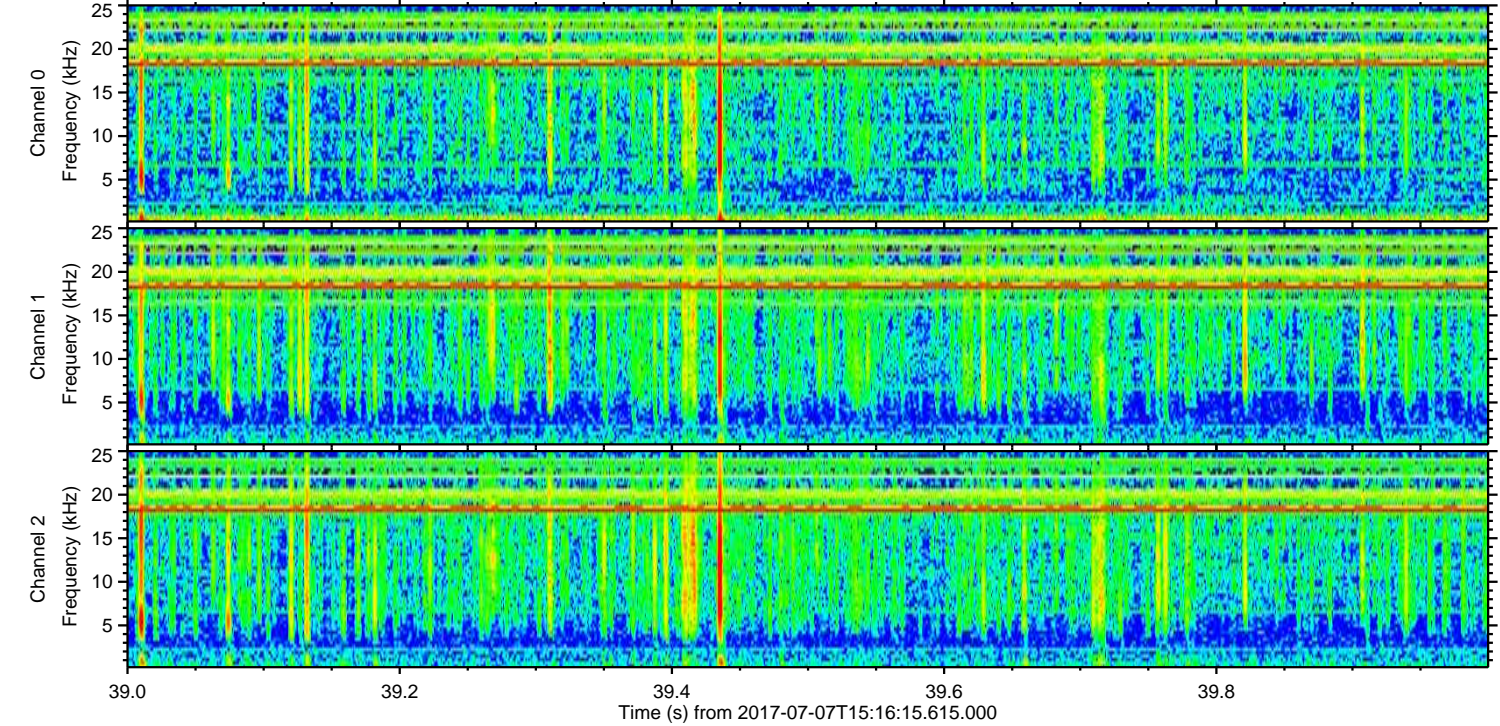
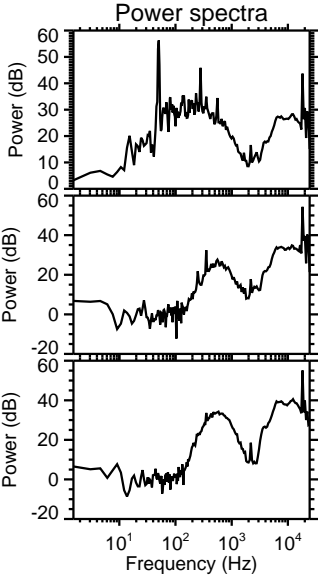
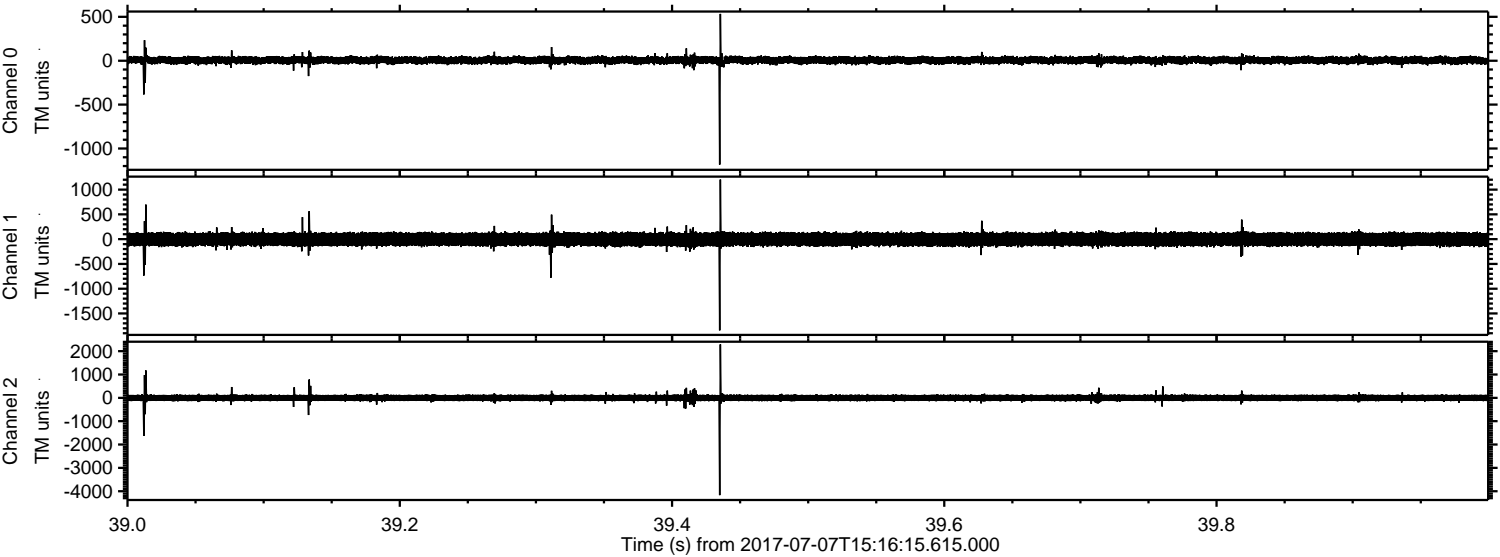
ELMAVAN 3D WAVEFORMS (Measured data sampled at 50 kHz) 51000 packets of 144 samples from 2017-07-07T15:16:15.615.000. Part 139/147

Processed Wed Jul 19 07:12:29 2017 by ELM ver.2012-10-06 from 001\_\_elm20170707\_151614\_\_dat00.bin



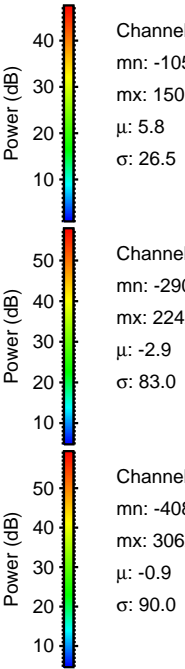
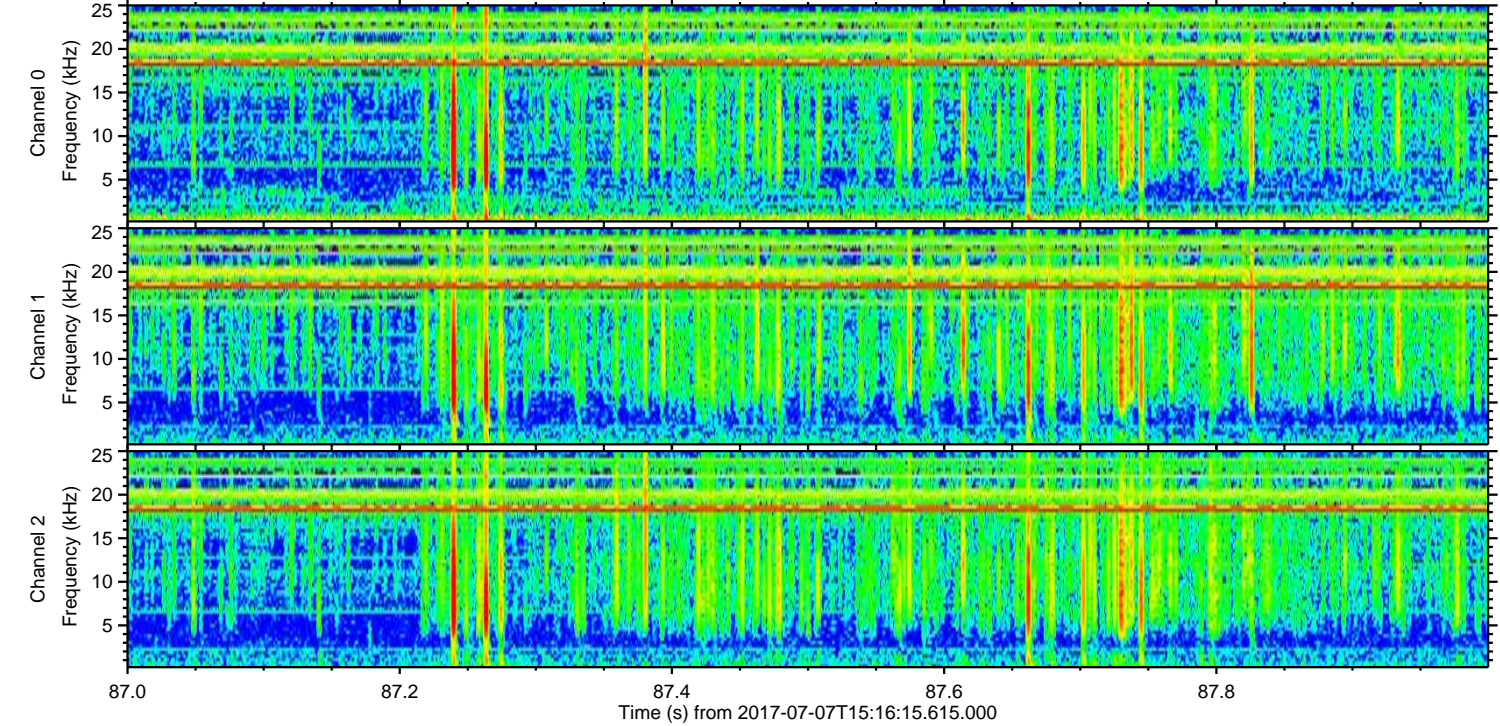
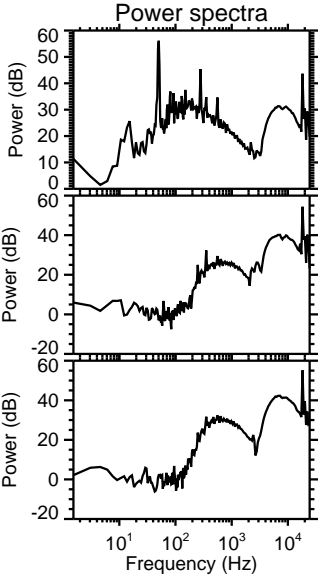
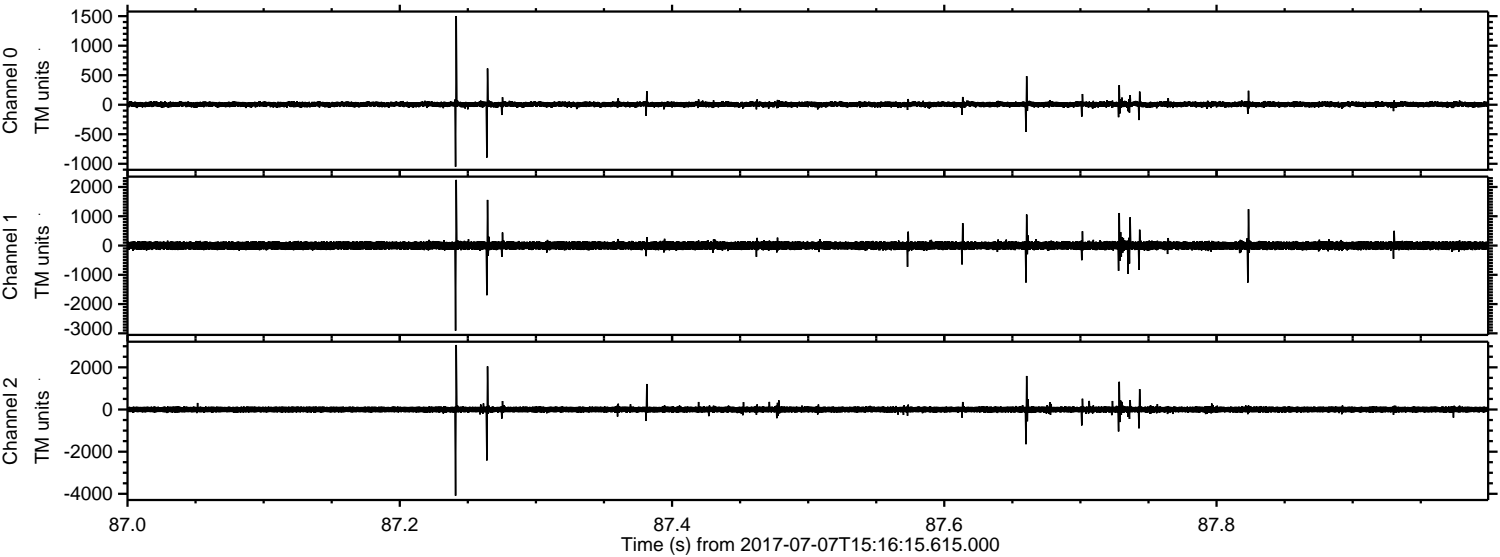


Processed Wed Jul 19 07:12:30 2017 by ELM ver.2012-10-06 from 001\_\_elm20170707\_151614\_\_dat00.bin



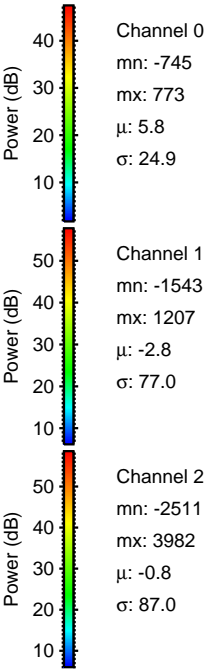
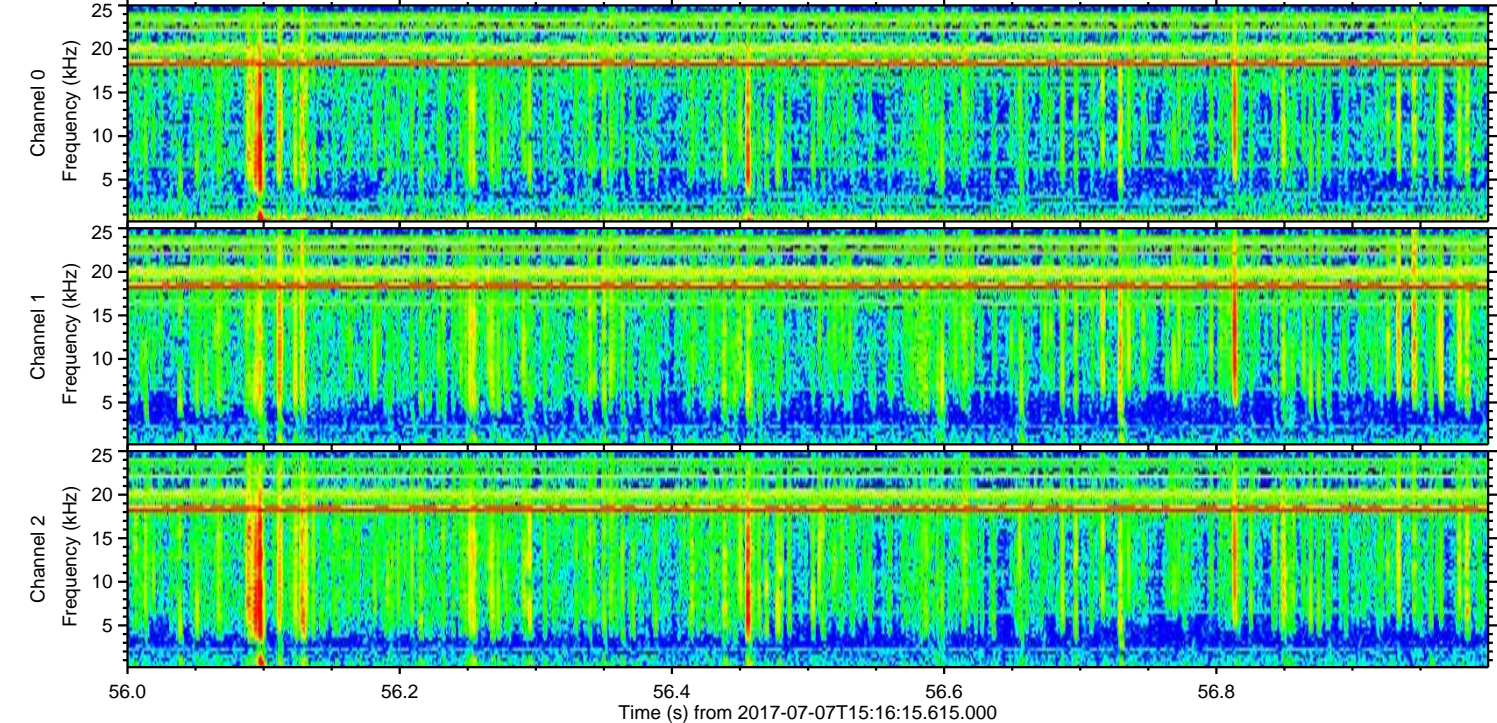
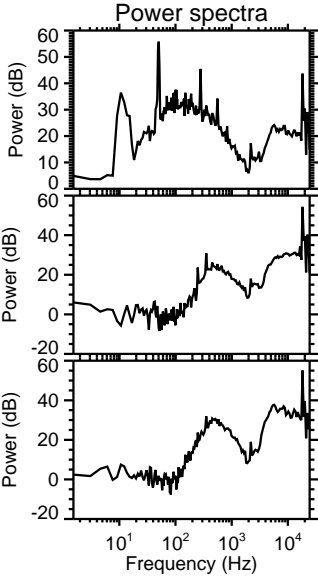
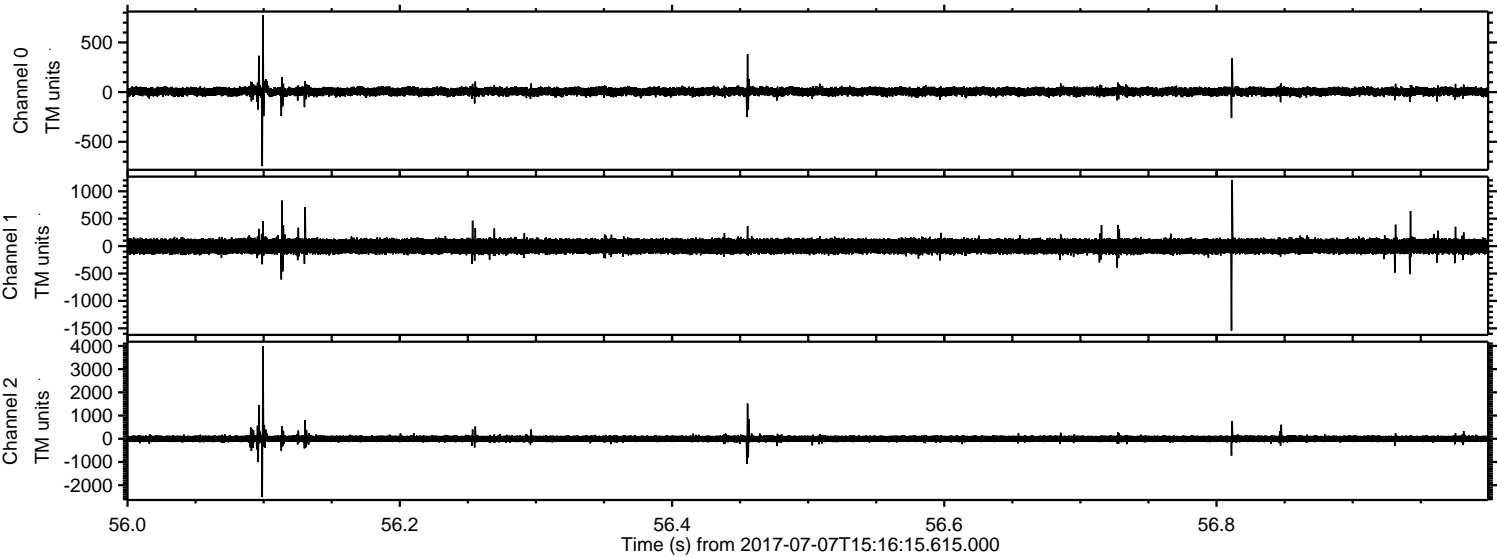


Processed Wed Jul 19 07:12:31 2017 by ELM ver.2012-10-06 from 001\_\_elm20170707\_151614\_\_dat00.bin





Processed Wed Jul 19 07:12:31 2017 by ELM ver.2012-10-06 from 001\_\_elm20170707\_151614\_\_dat00.bin





Processed Wed Jul 19 07:12:32 2017 by ELM ver.2012-10-06 from 001\_\_elm20170707\_151614\_\_dat00.bin

