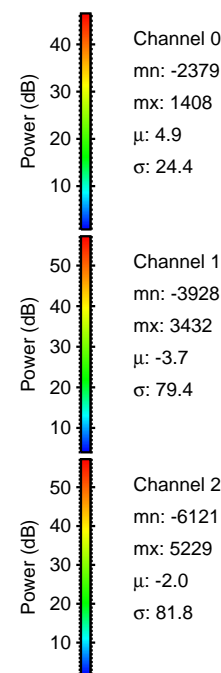
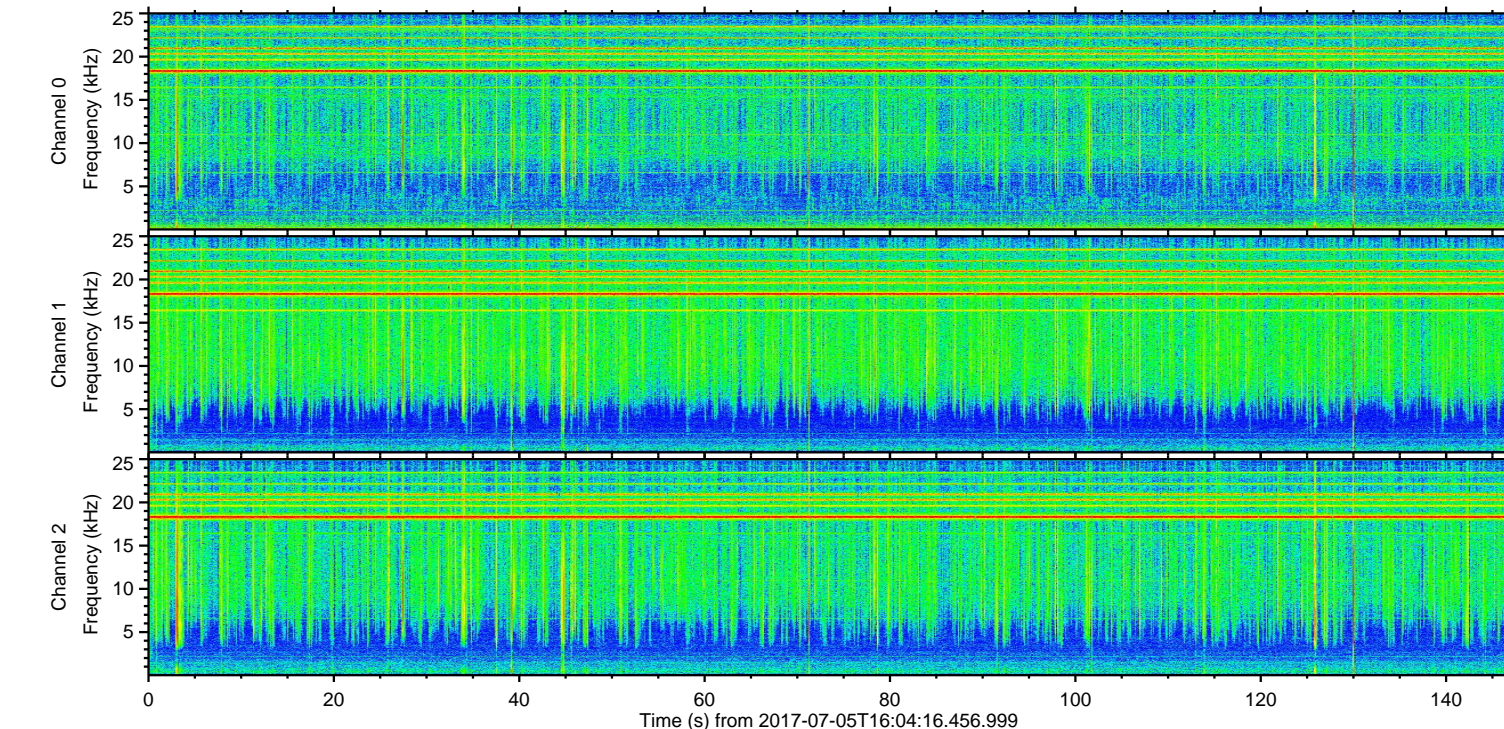
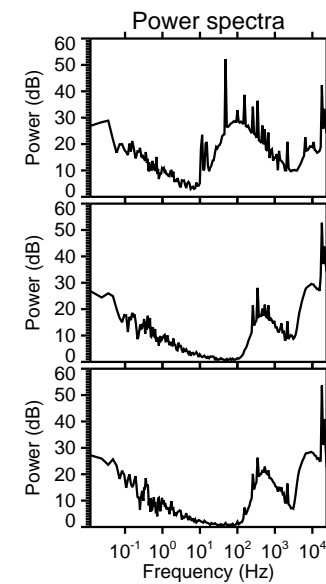
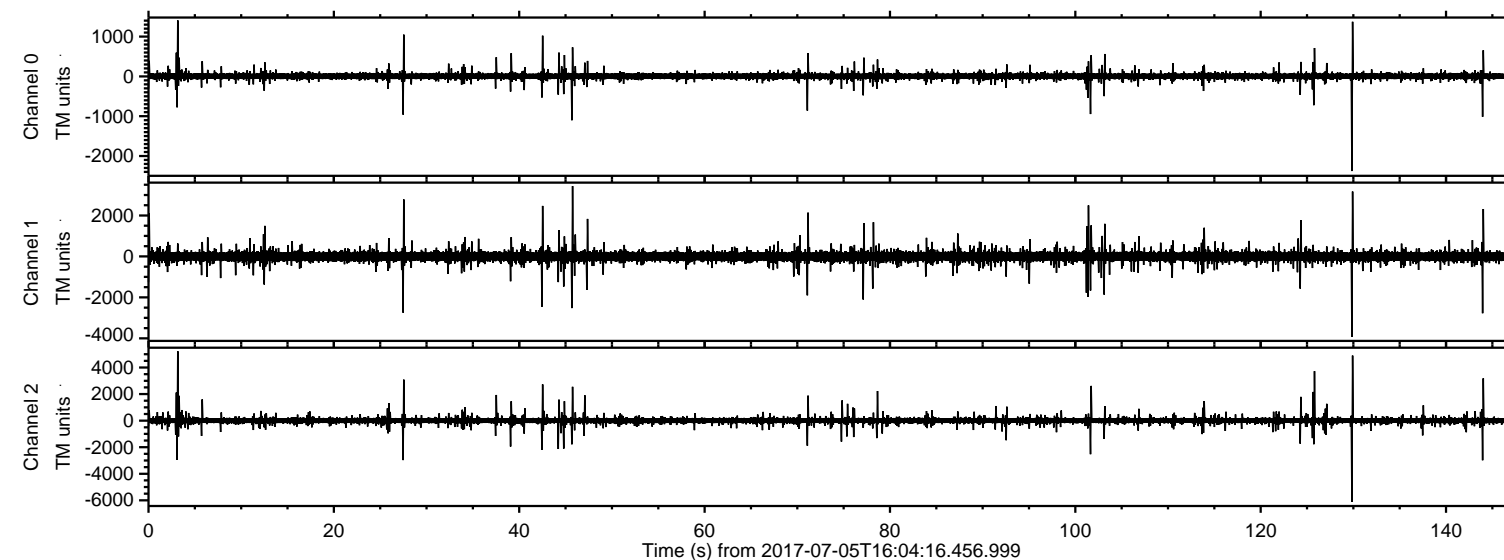


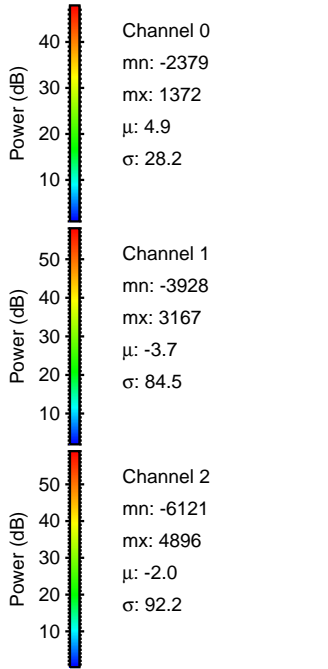
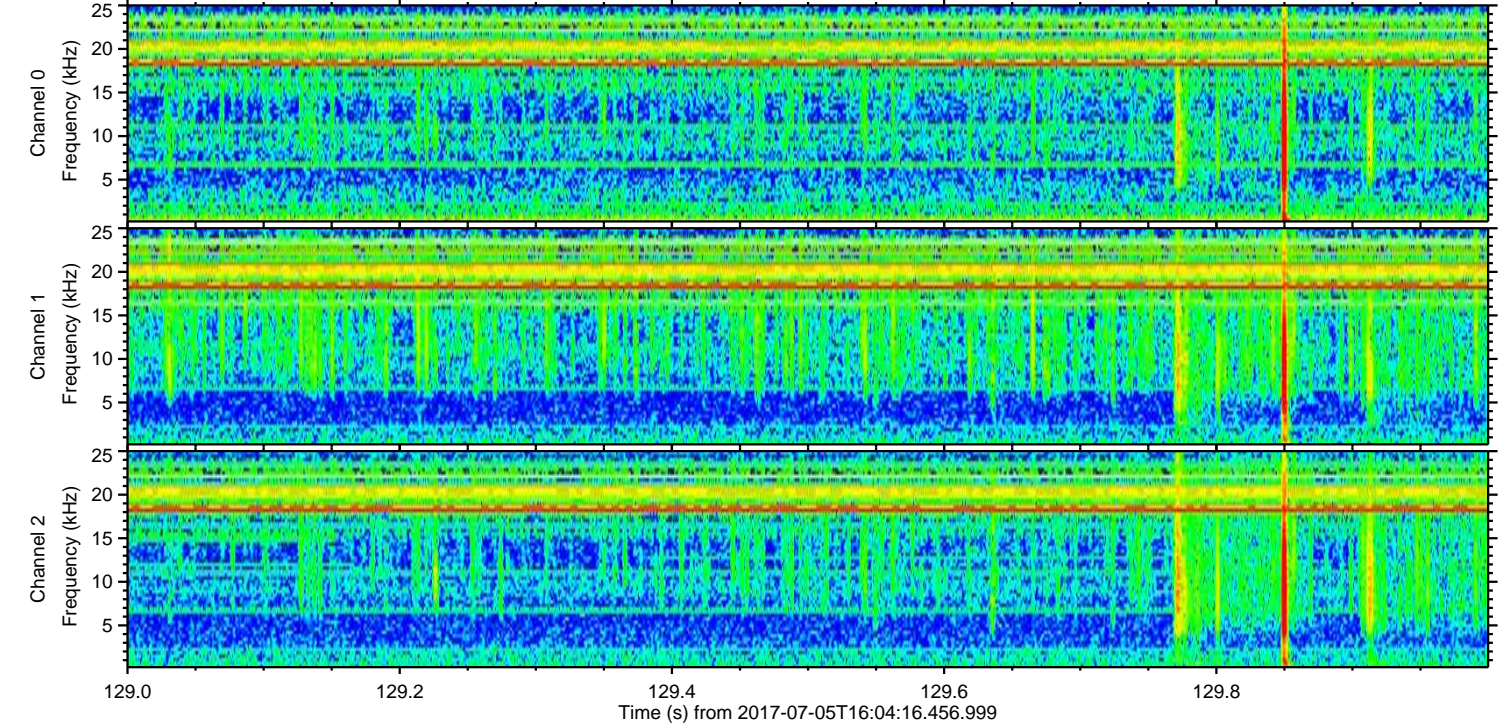
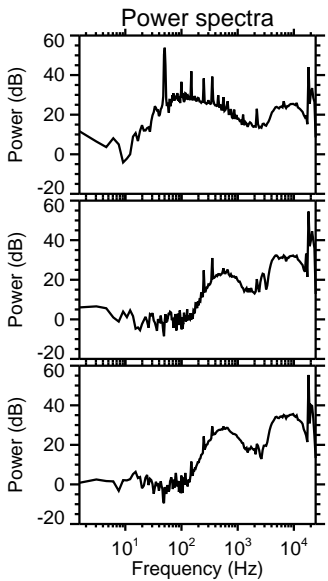
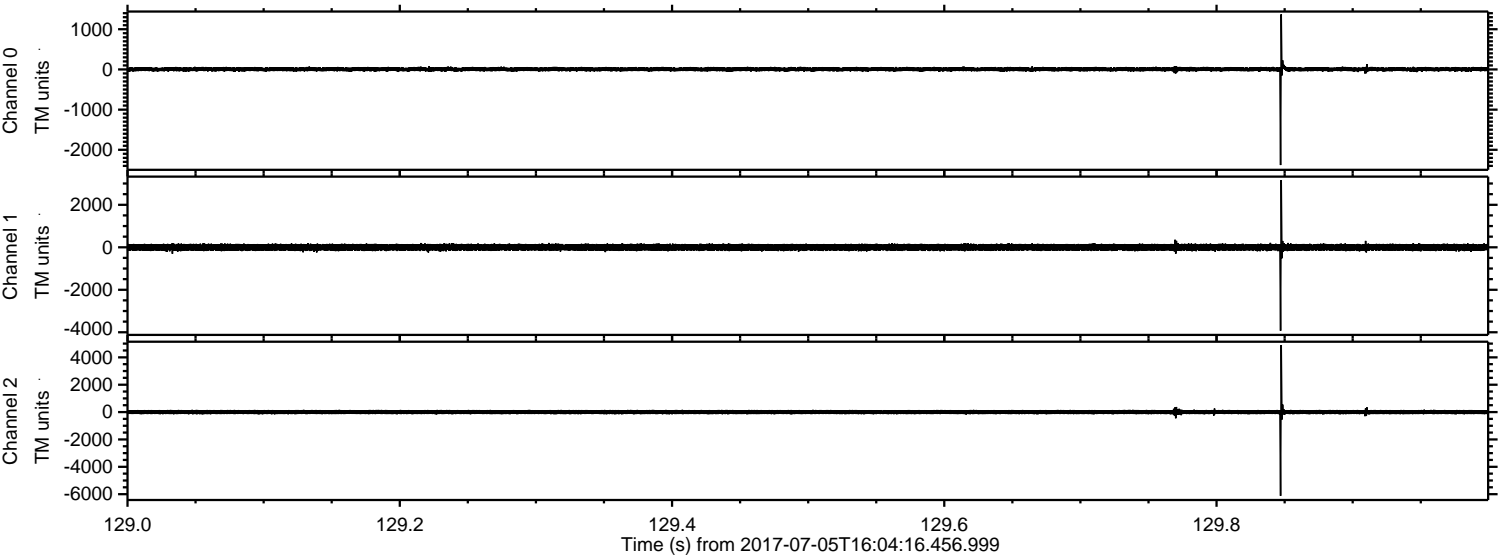
ELMAVAN 3D WAVEFORMS (Measured data sampled at 50 kHz) 51000 packets of 144 samples from 2017-07-05T16:04:16.456.999.

Processed Wed Jul 19 00:03:41 2017 by ELM ver.2012-10-06 from 001__elm20170705_160415__dat00.bin

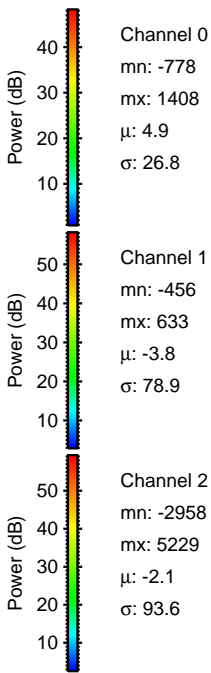
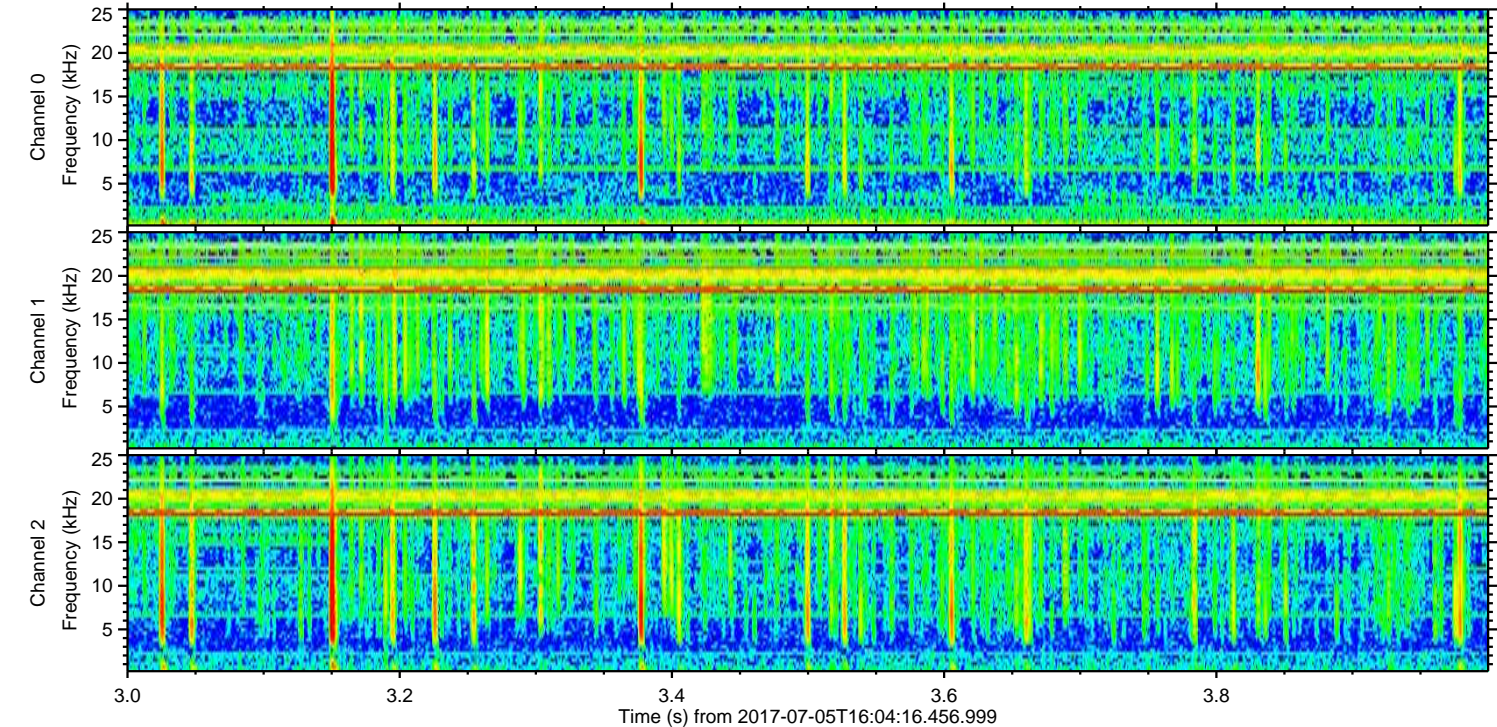
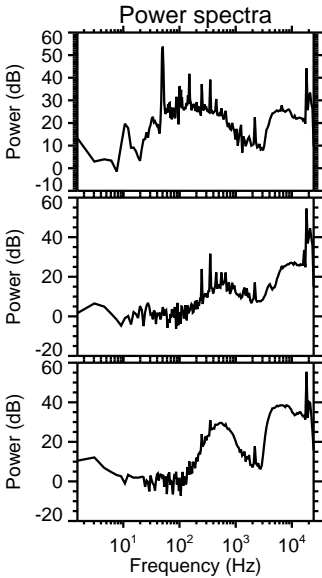
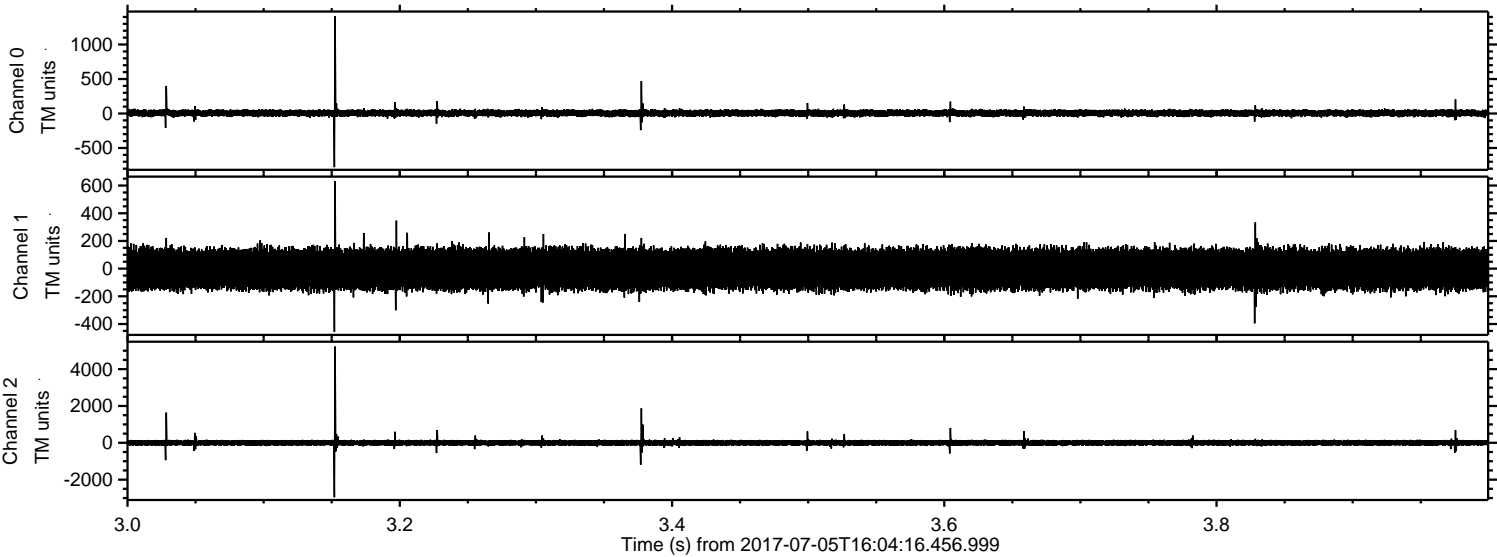


ELMAVAN 3D WAVEFORMS (Measured data sampled at 50 kHz) 51000 packets of 144 samples from 2017-07-05T16:04:16.456.999. Part 130/147

Processed Wed Jul 19 00:03:48 2017 by ELM ver.2012-10-06 from 001__elm20170705_160415__dat00.bin

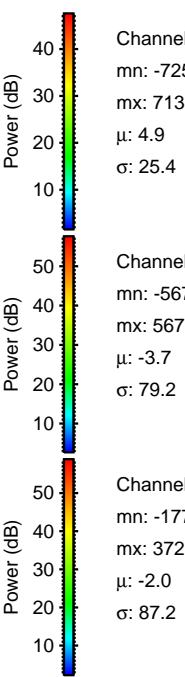
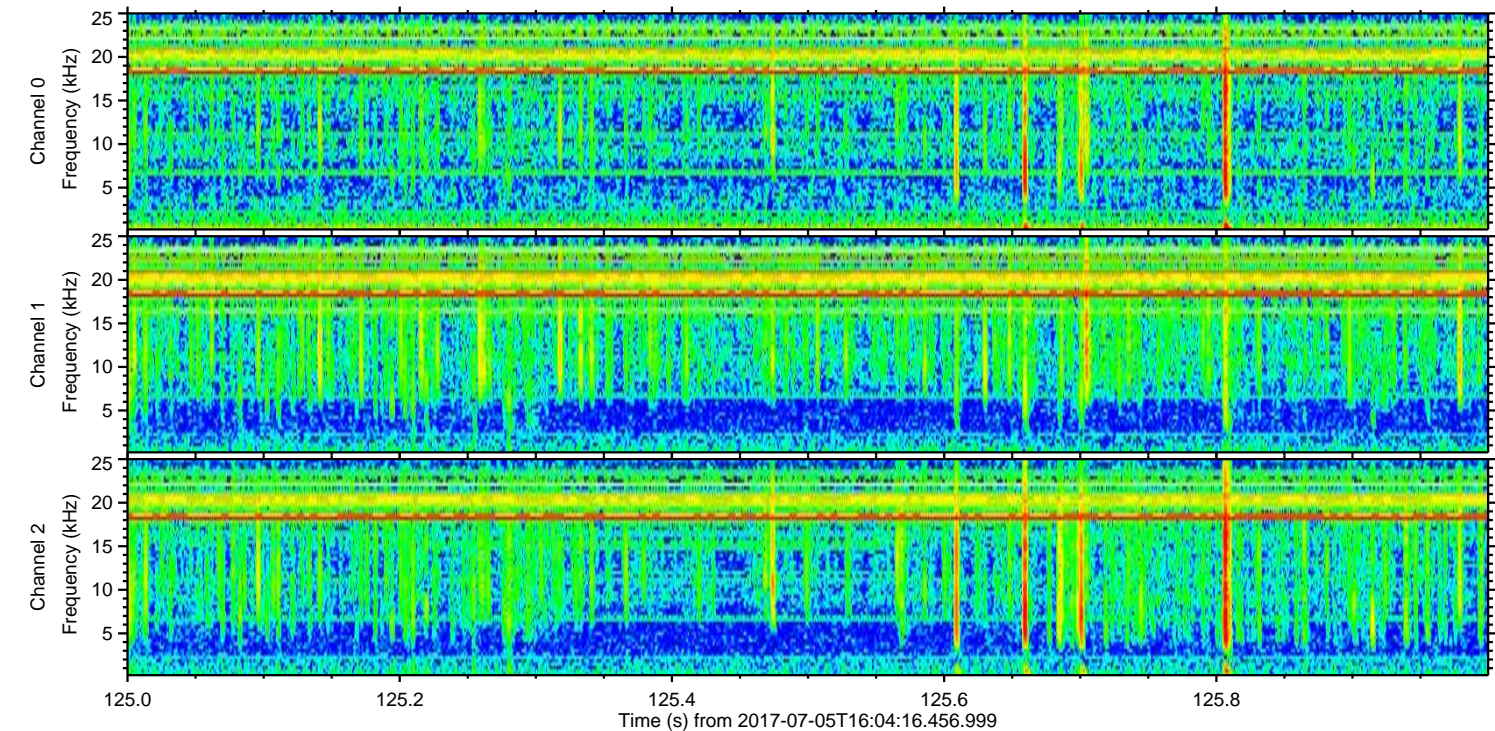
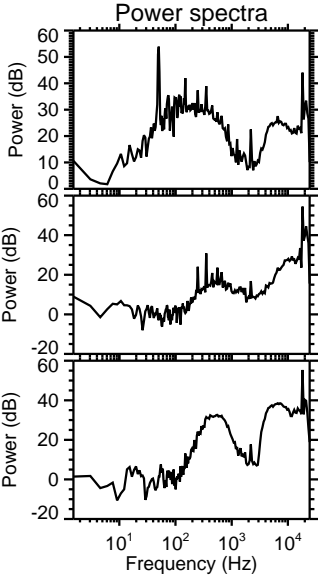
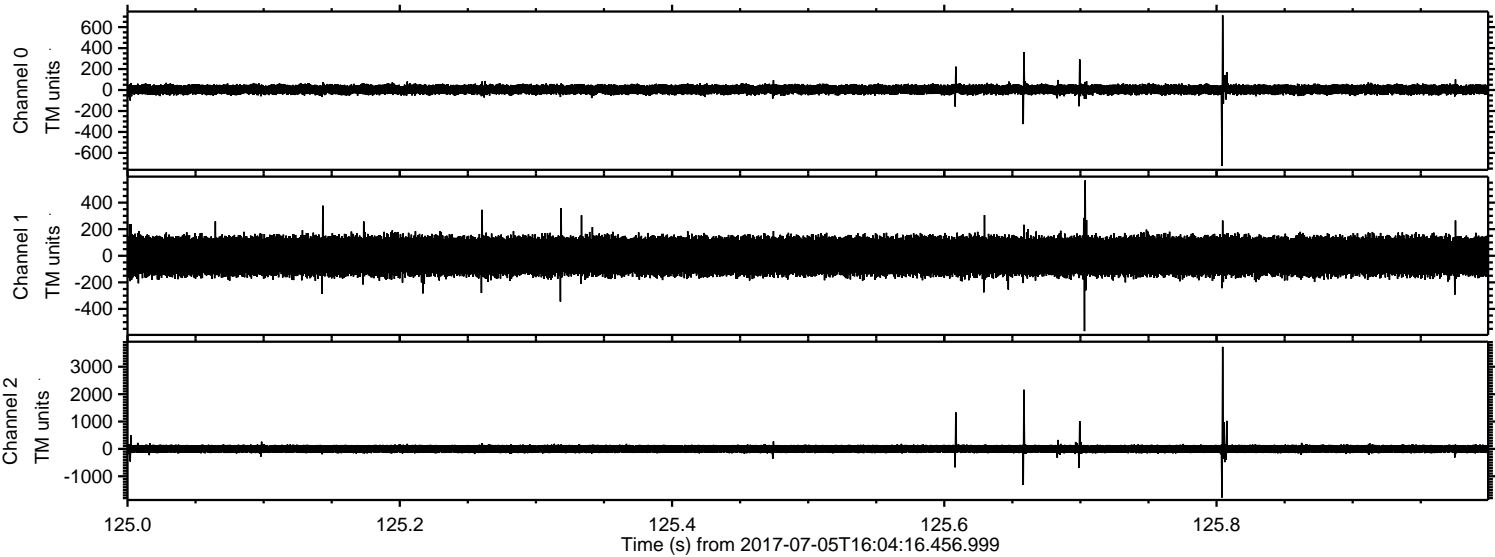


Processed Wed Jul 19 00:03:49 2017 by ELM ver.2012-10-06 from 001__elm20170705_160415__dat00.bin

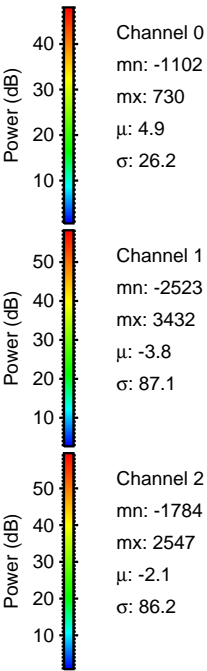
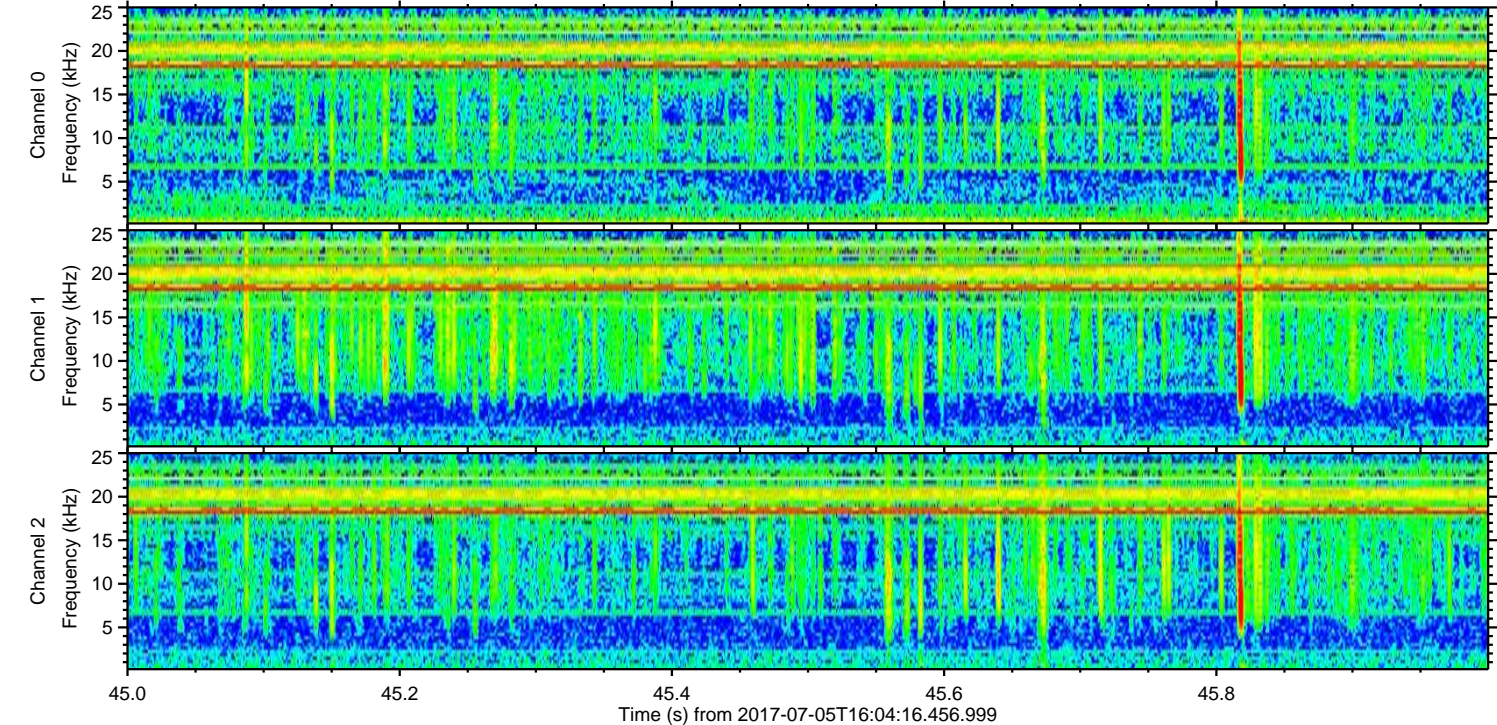
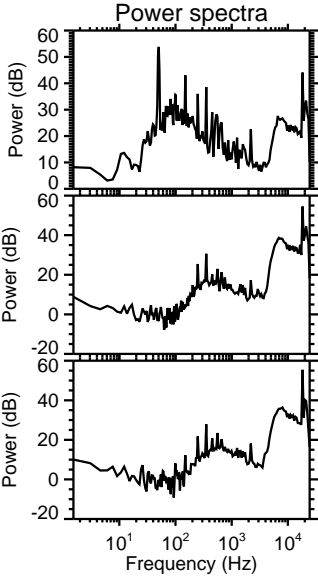
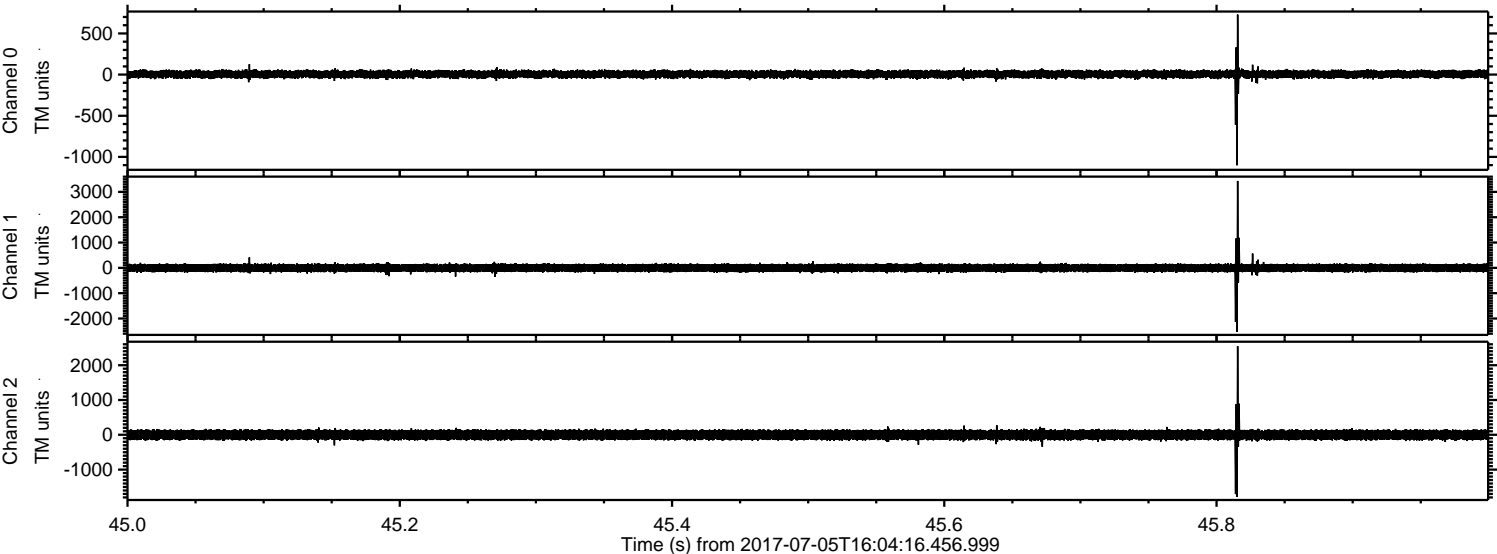


ELMAVAN 3D WAVEFORMS (Measured data sampled at 50 kHz) 51000 packets of 144 samples from 2017-07-05T16:04:16.456.999. Part 126/147

Processed Wed Jul 19 00:03:50 2017 by ELM ver.2012-10-06 from 001__elm20170705_160415__dat00.bin

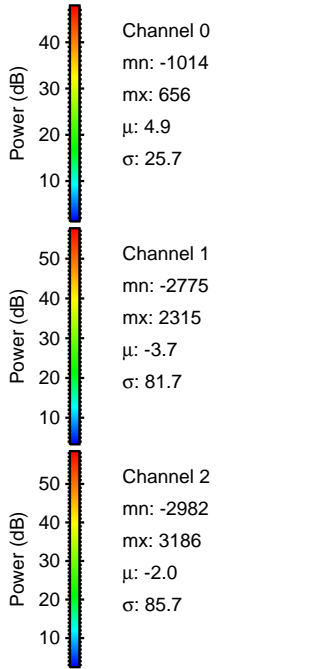
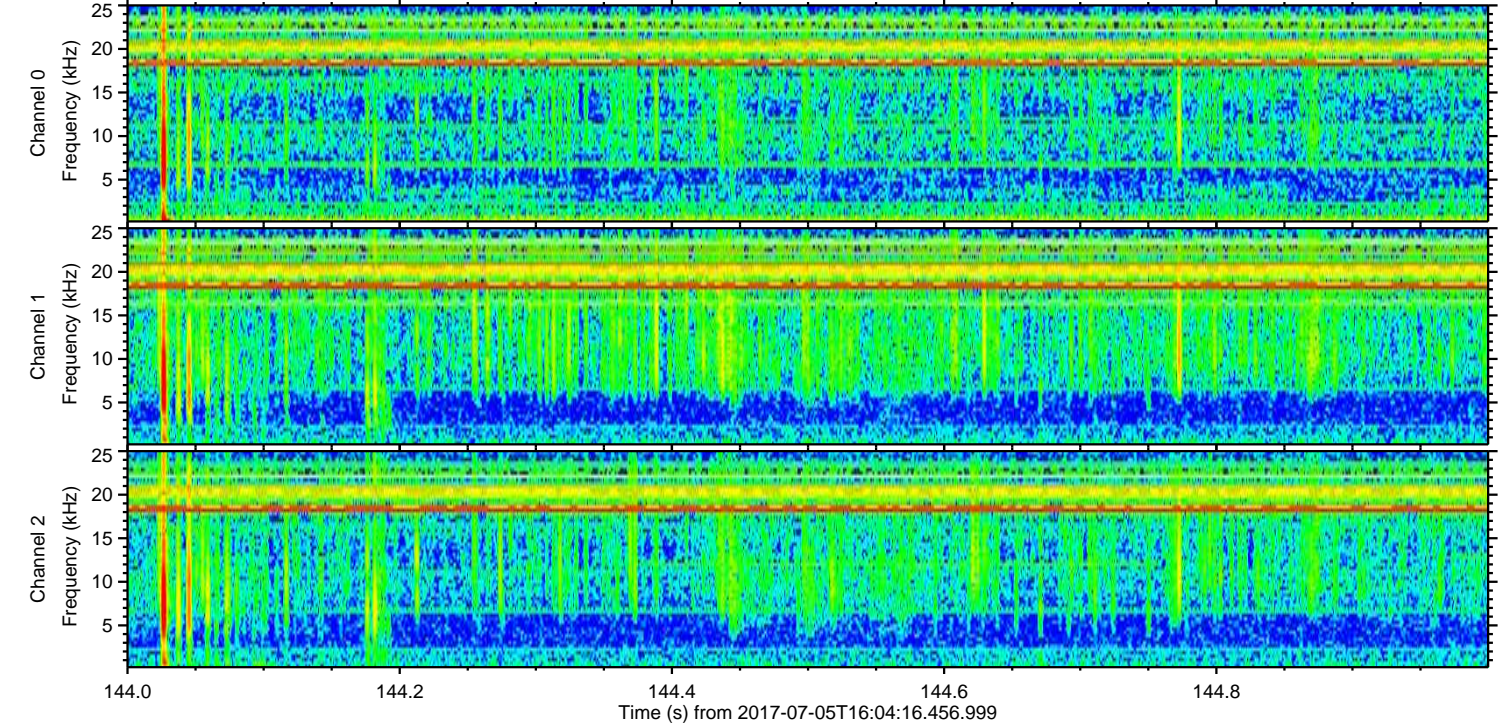
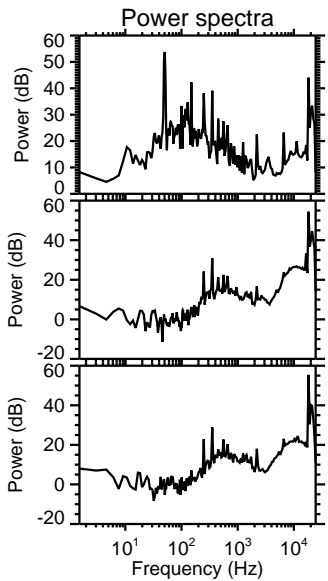
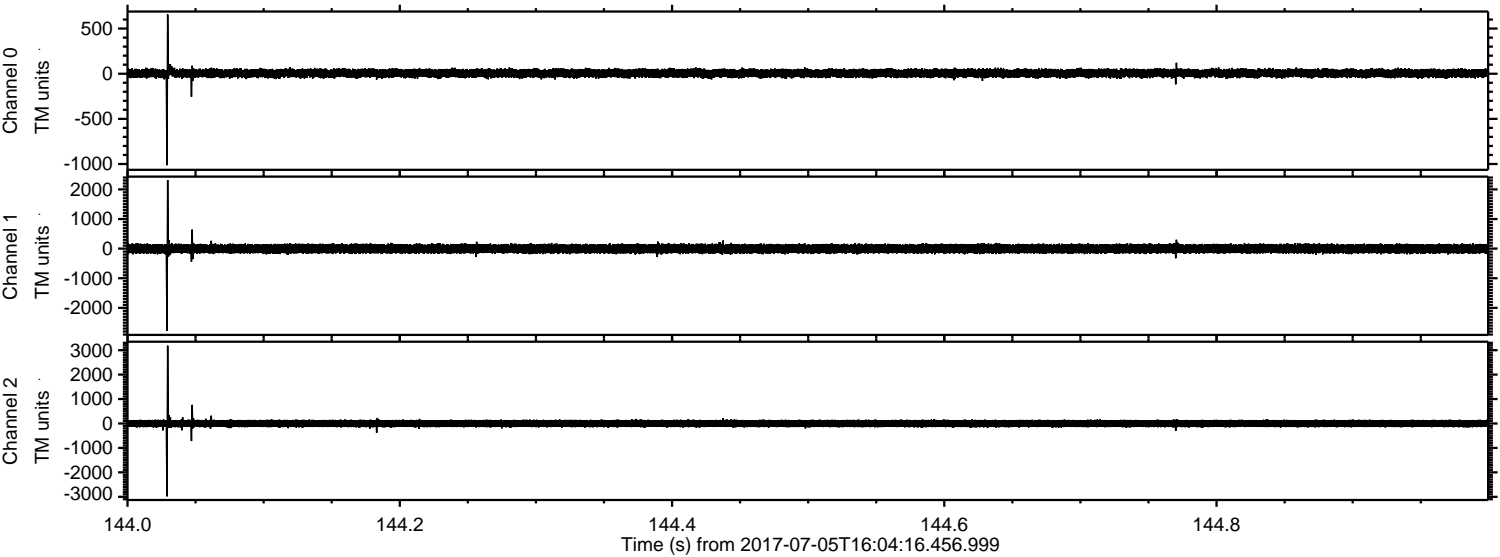


Processed Wed Jul 19 00:03:51 2017 by ELM ver.2012-10-06 from 001__elm20170705_160415__dat00.bin

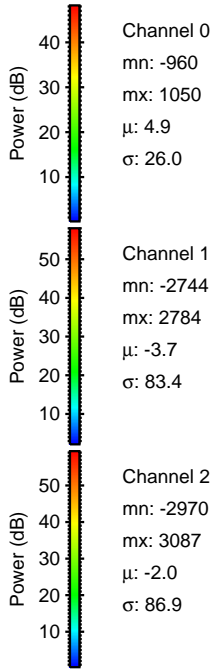
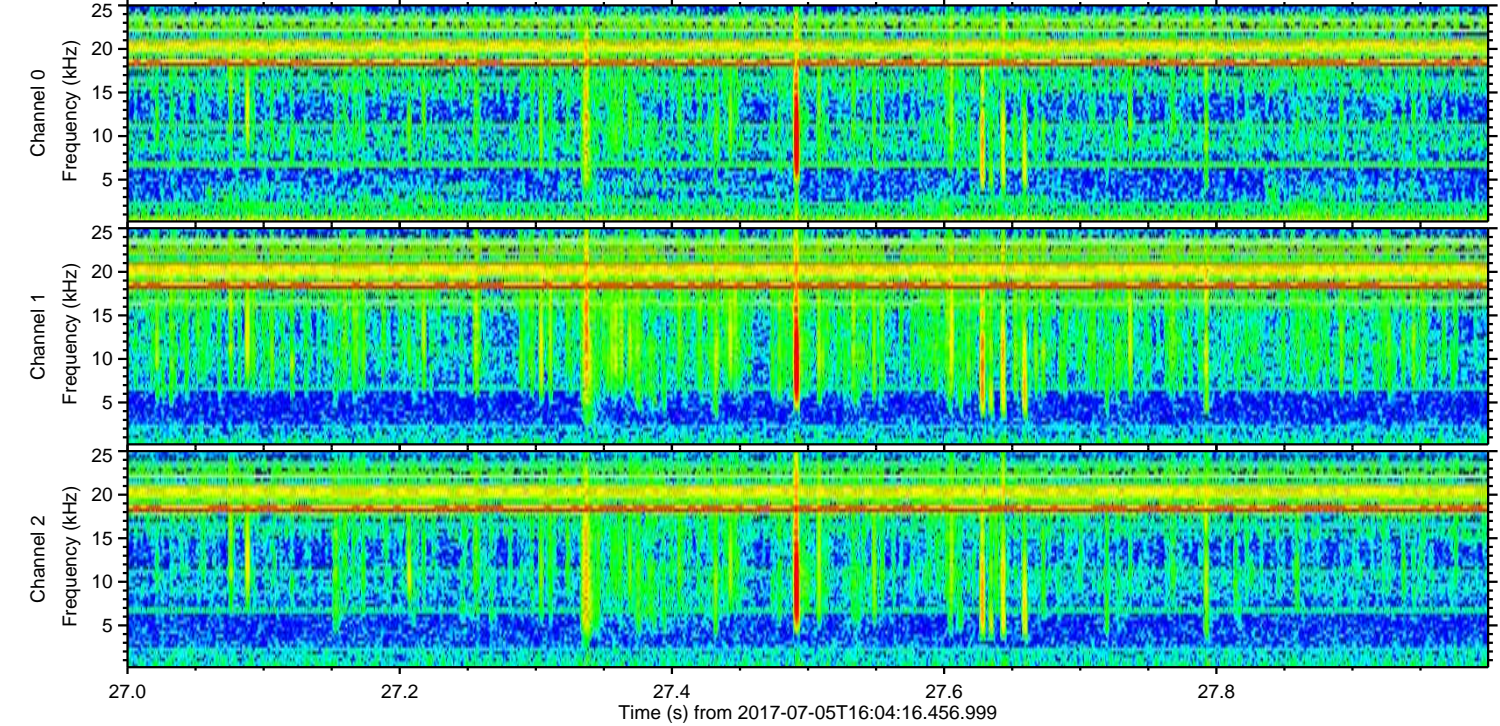
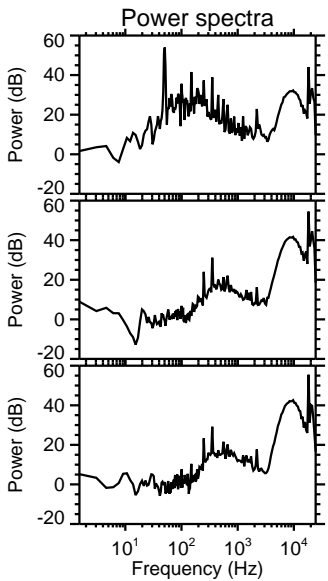
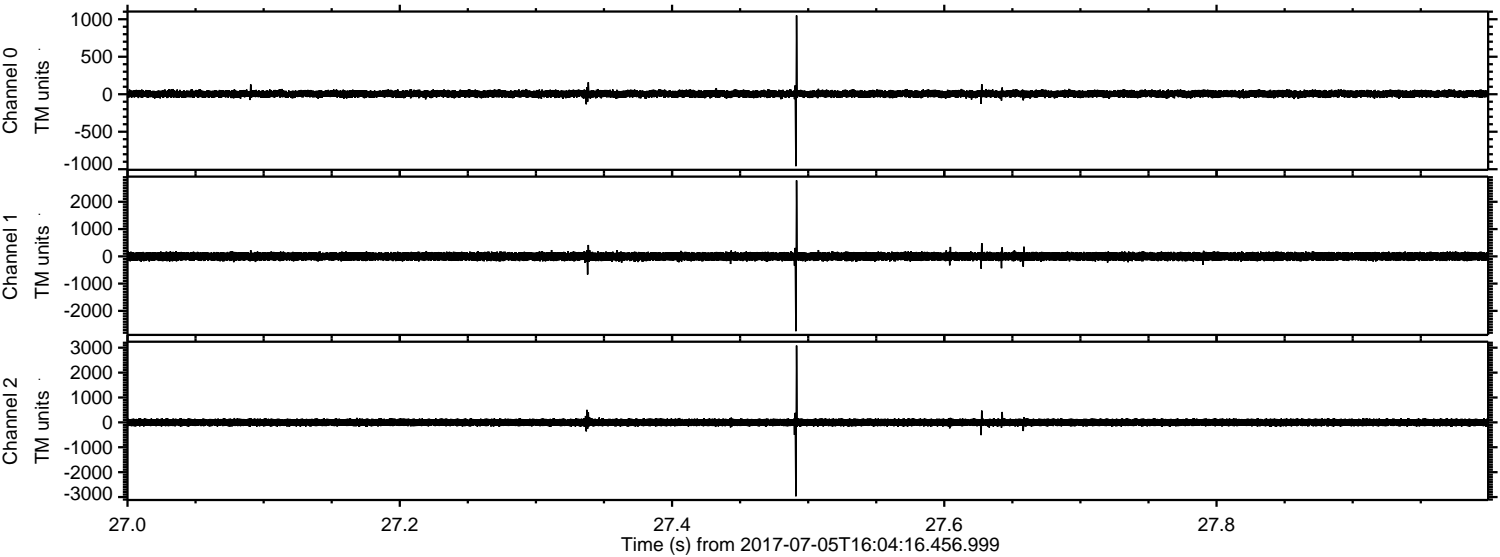


ELMAVAN 3D WAVEFORMS (Measured data sampled at 50 kHz) 51000 packets of 144 samples from 2017-07-05T16:04:16.456.999. Part 145/147

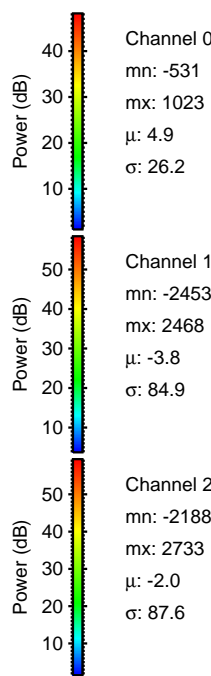
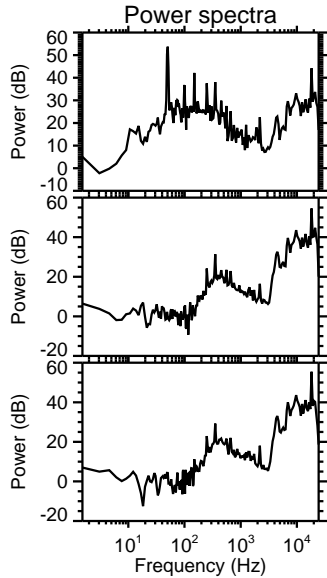
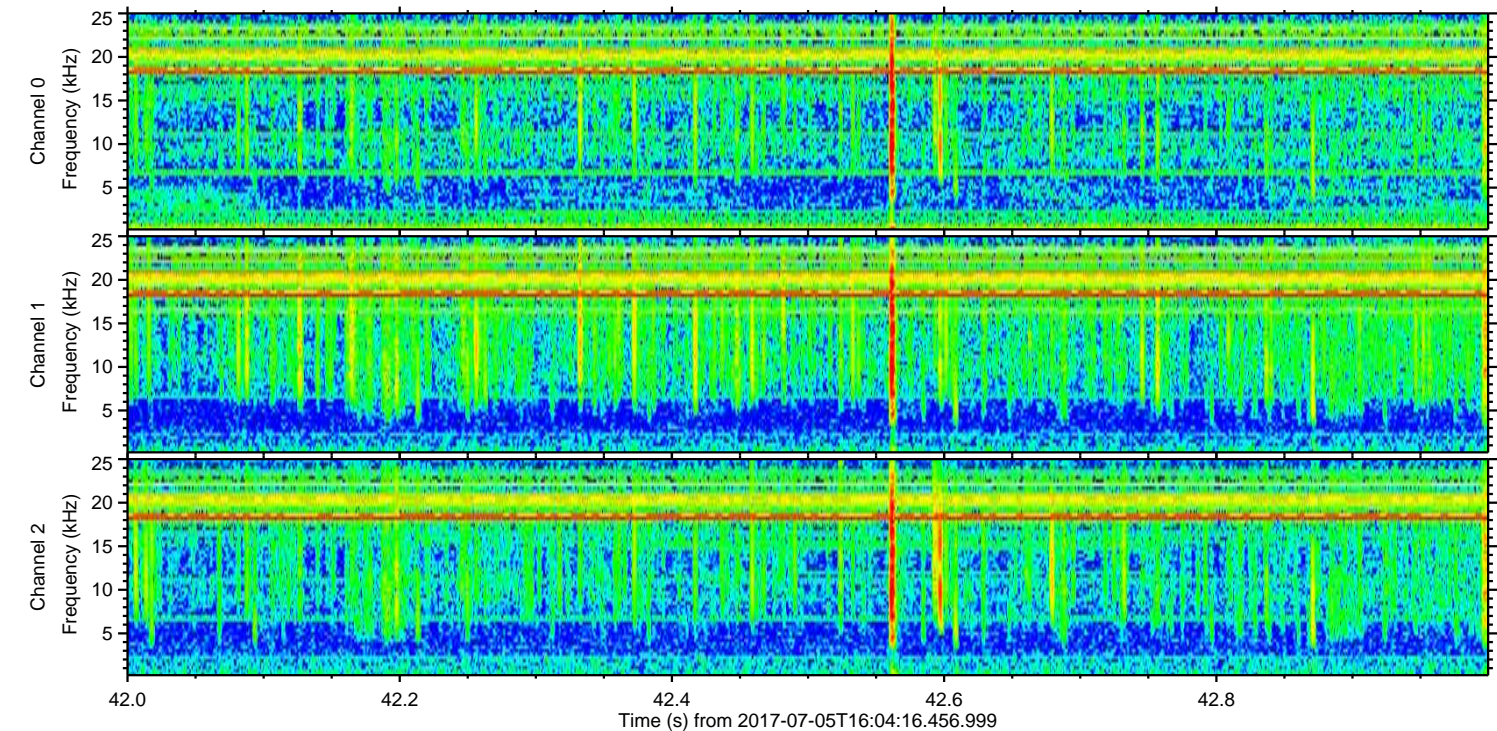
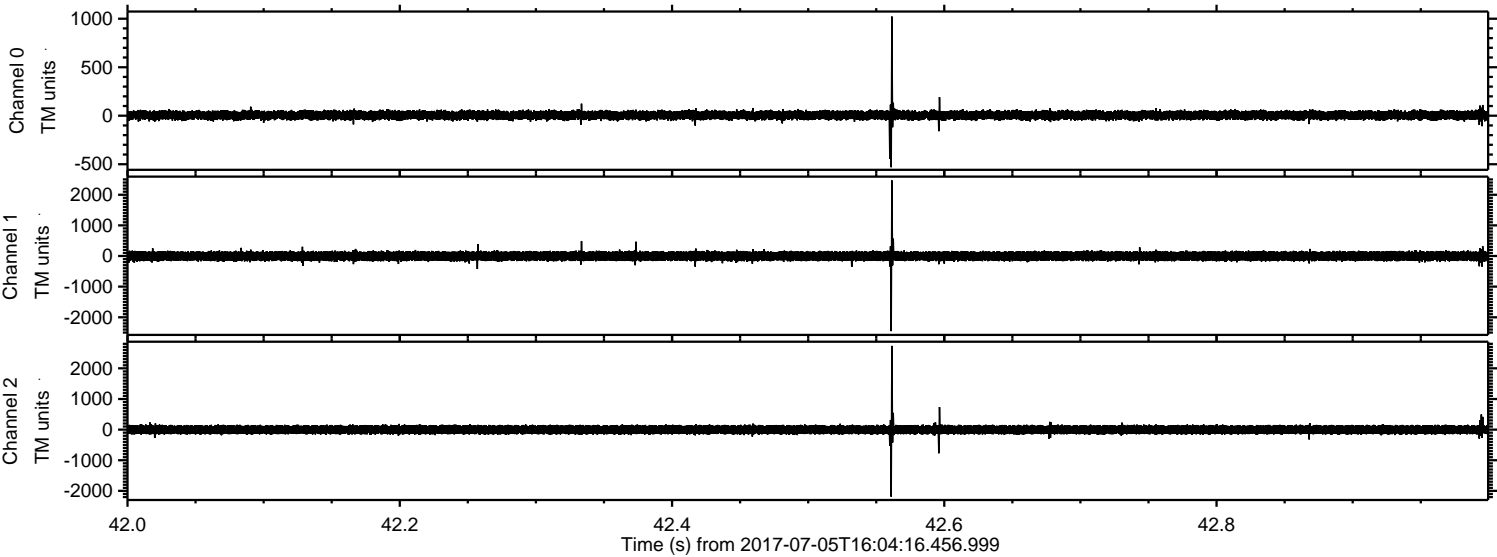
Processed Wed Jul 19 00:03:51 2017 by ELM ver.2012-10-06 from 001__elm20170705_160415__dat00.bin



Processed Wed Jul 19 00:03:52 2017 by ELM ver.2012-10-06 from 001__elm20170705_160415__dat00.bin

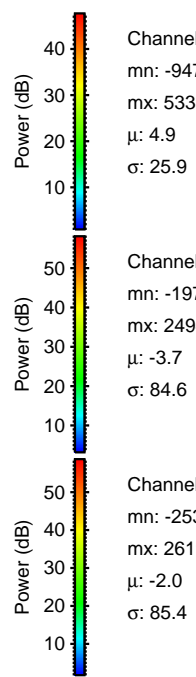
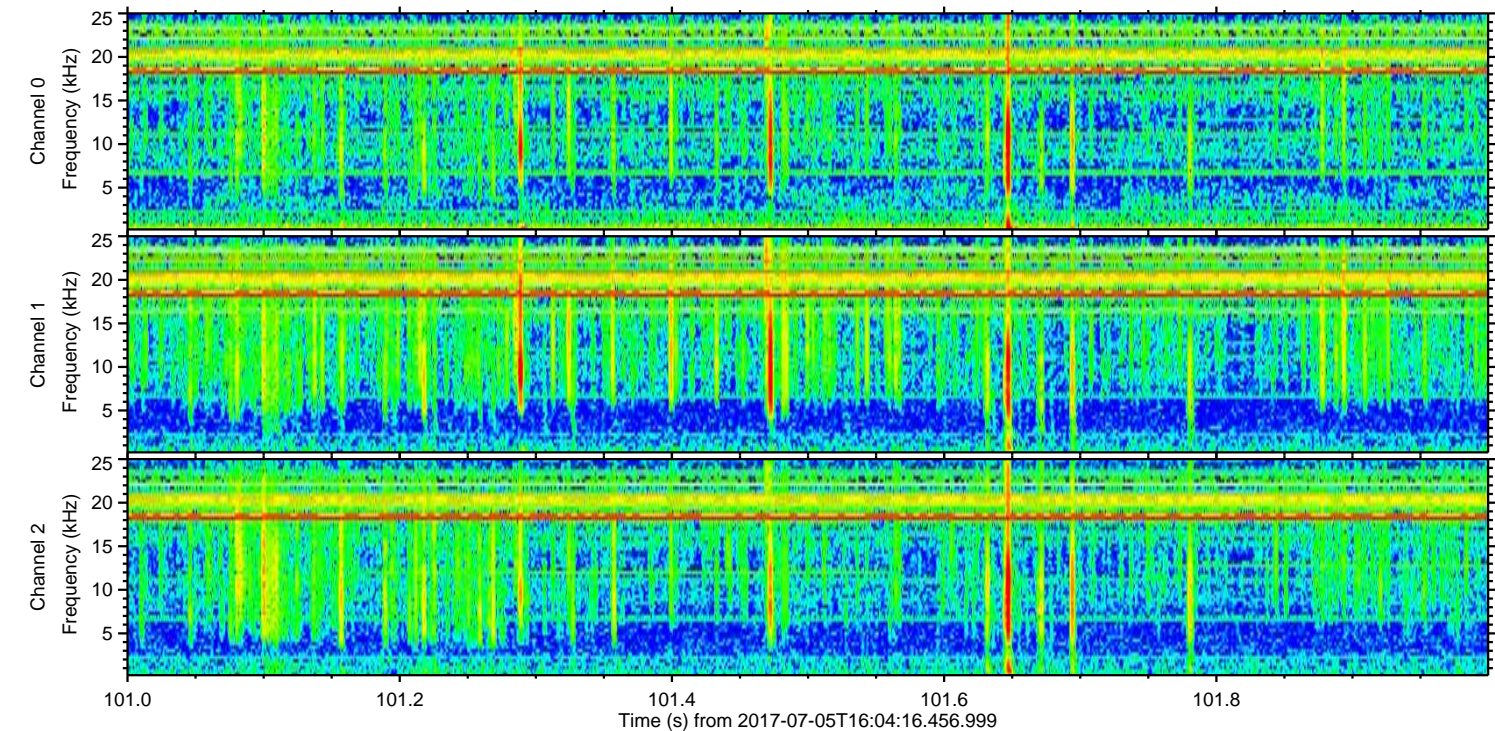
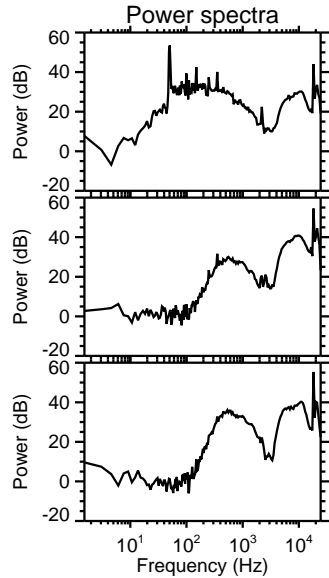
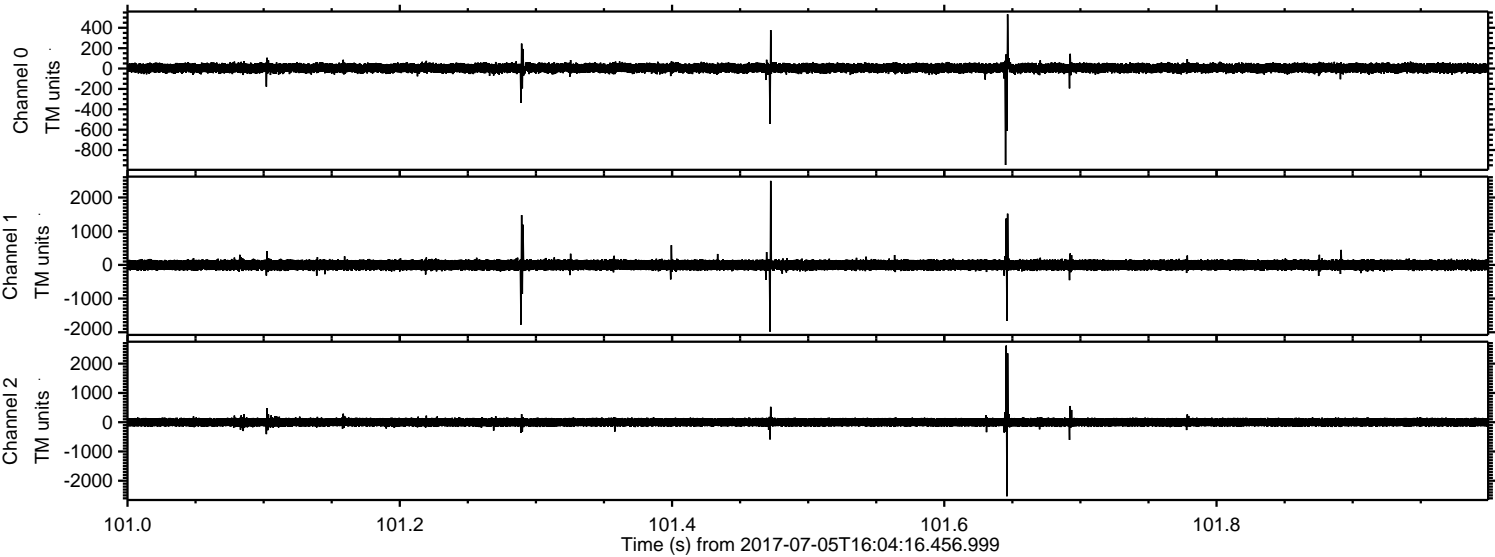


Processed Wed Jul 19 00:03:53 2017 by ELM ver.2012-10-06 from 001__elm20170705_160415__dat00.bin



ELMAVAN 3D WAVEFORMS (Measured data sampled at 50 kHz) 51000 packets of 144 samples from 2017-07-05T16:04:16.456.999. Part 102/147

Processed Wed Jul 19 00:03:54 2017 by ELM ver.2012-10-06 from 001__elm20170705_160415__dat00.bin

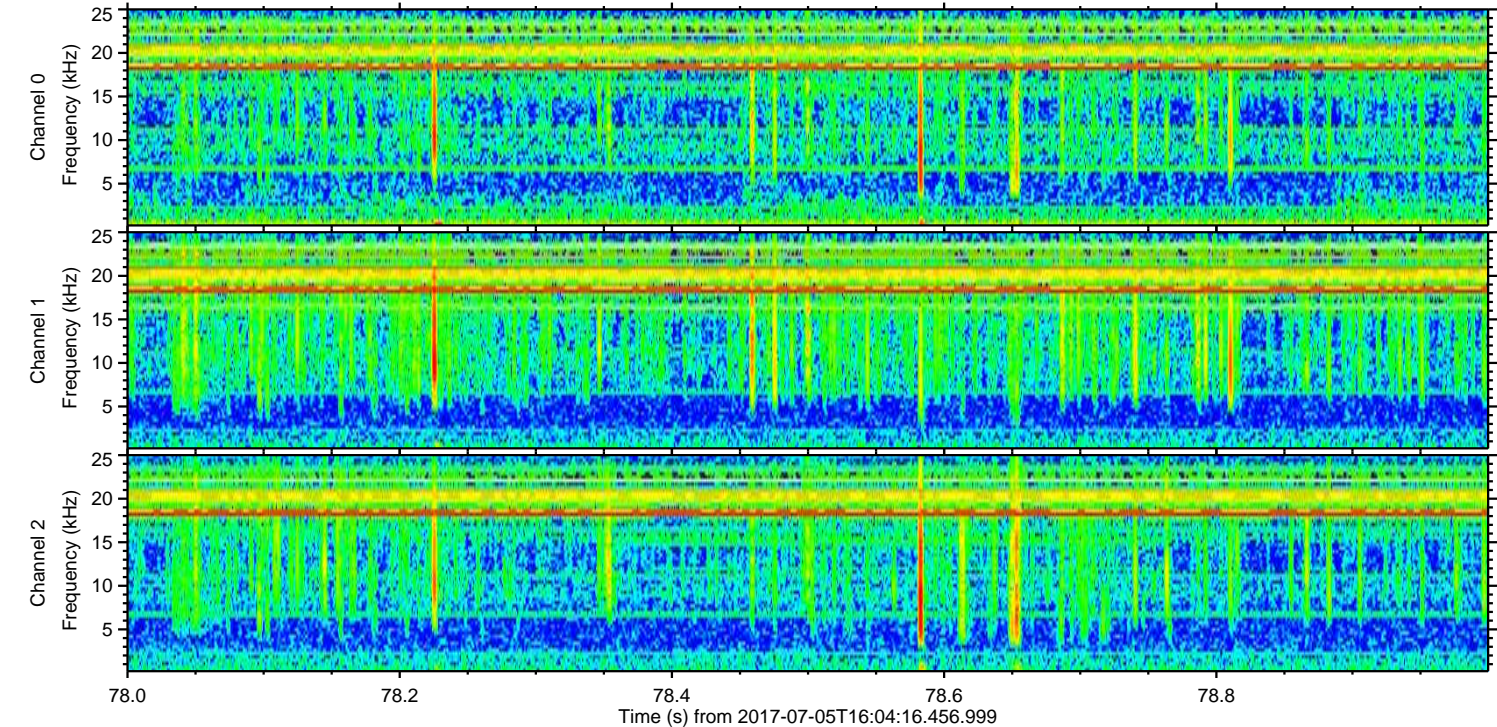
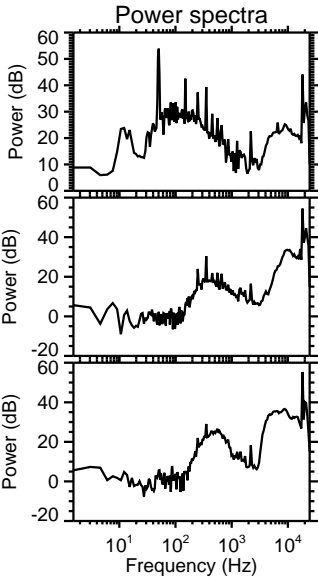
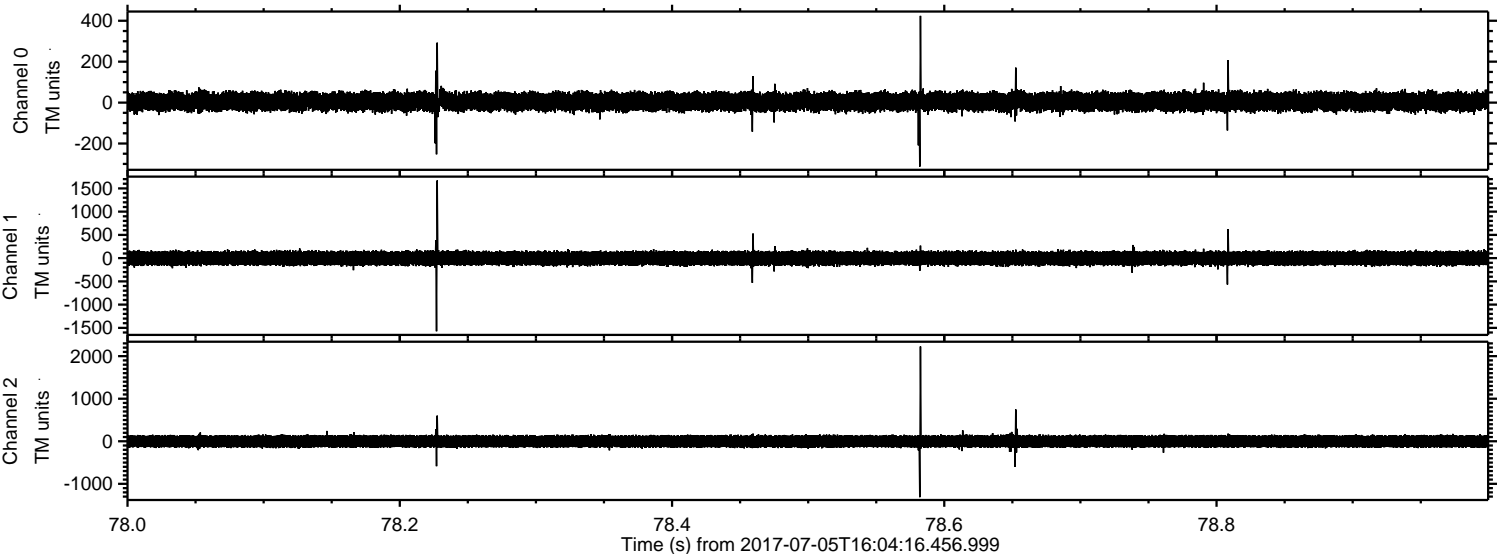


Channel 0
mn: -947
mx: 533
 μ : 4.9
 σ : 25.9

Channel 1
mn: -1979
mx: 2494
 μ : -3.7
 σ : 84.6

Channel 2
mn: -2531
mx: 2619
 μ : -2.0
 σ : 85.4

Processed Wed Jul 19 00:03:55 2017 by ELM ver.2012-10-06 from 001__elm20170705_160415__dat00.bin



Channel 0
mn: -313
mx: 424
 μ : 4.9
 σ : 24.8

Channel 1
mn: -1573
mx: 1670
 μ : -3.8
 σ : 80.3

Channel 2
mn: -1314
mx: 2228
 μ : -2.0
 σ : 82.9

Processed Wed Jul 19 00:03:55 2017 by ELM ver.2012-10-06 from 001__elm20170705_160415__dat00.bin

