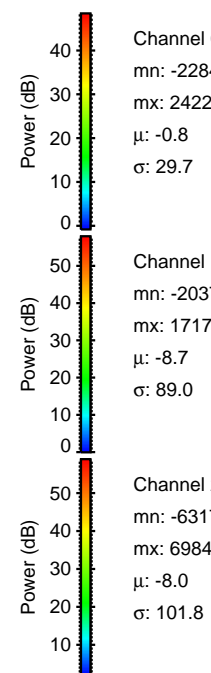
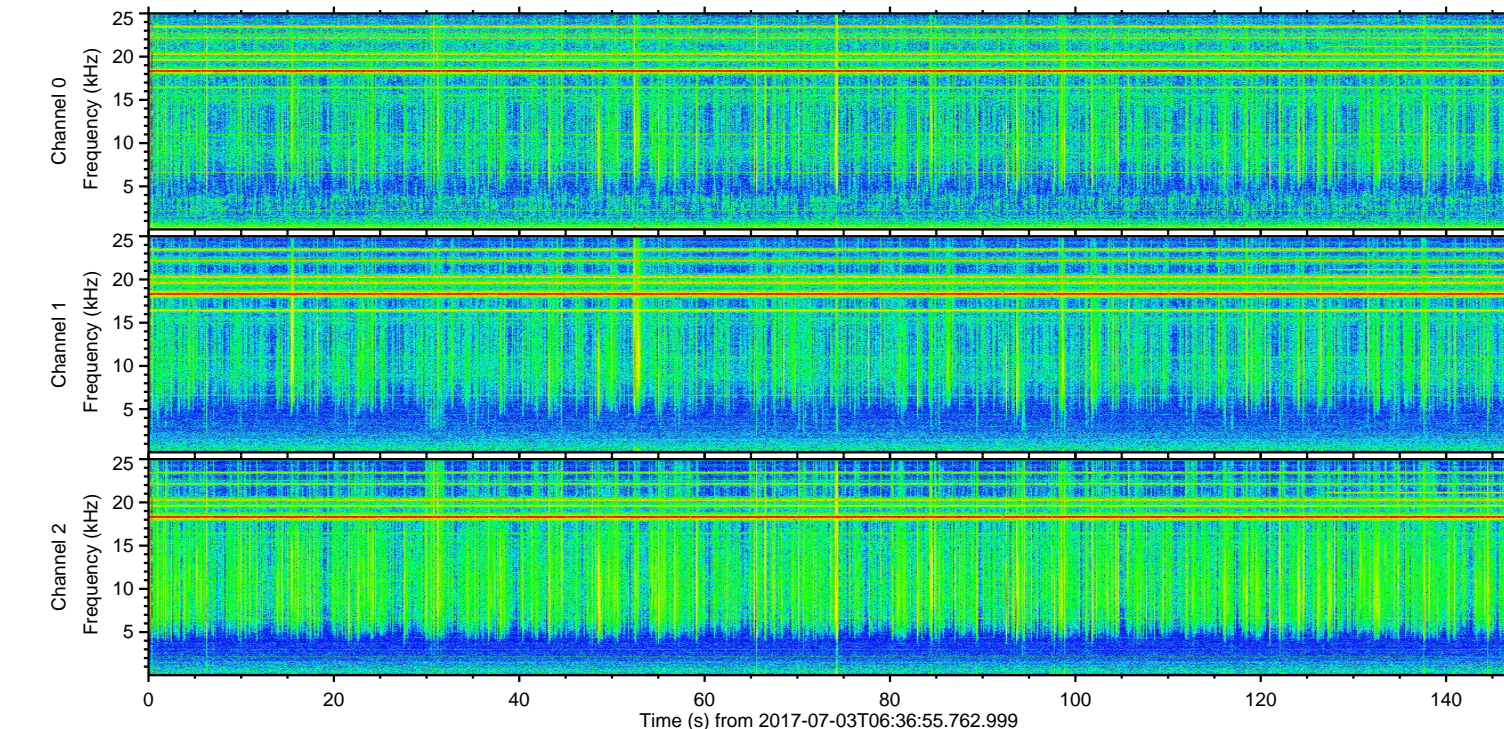
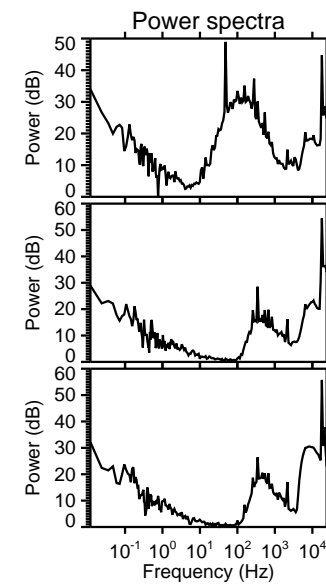
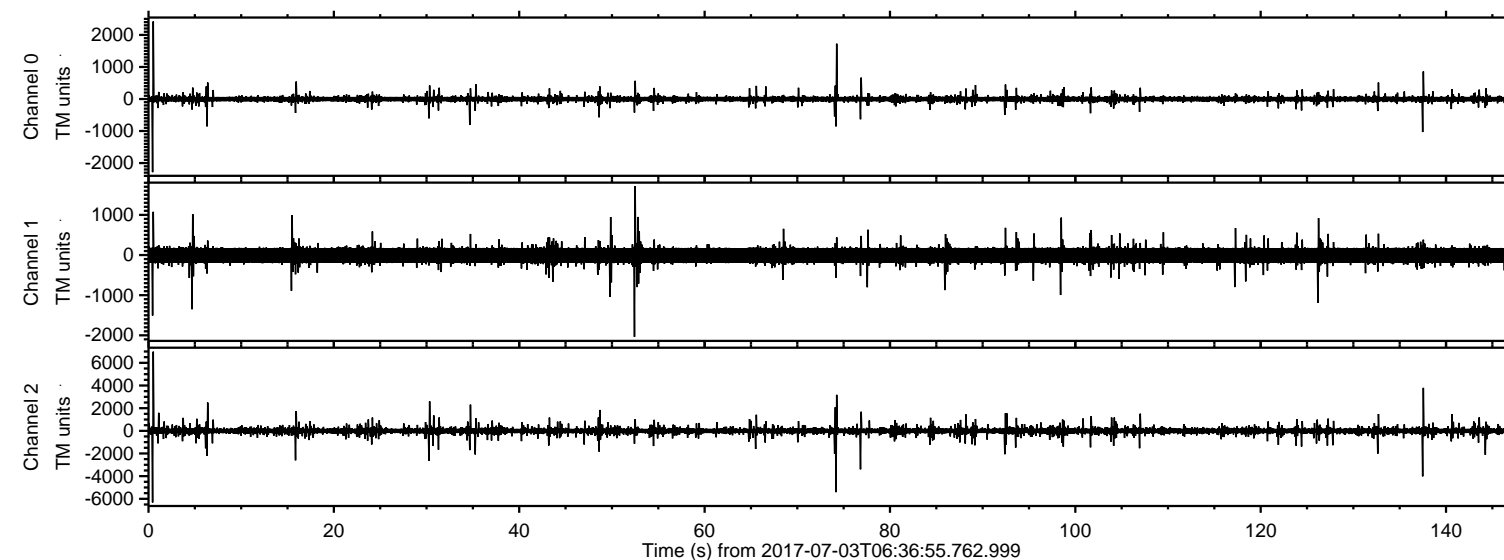


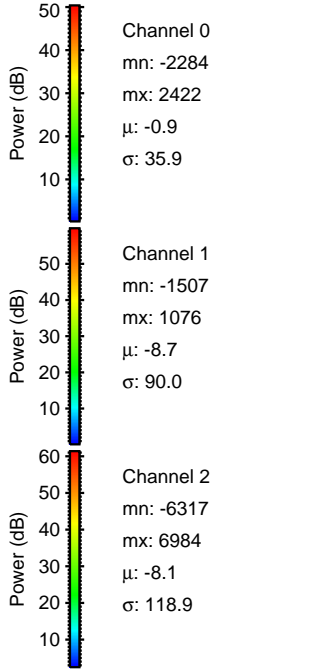
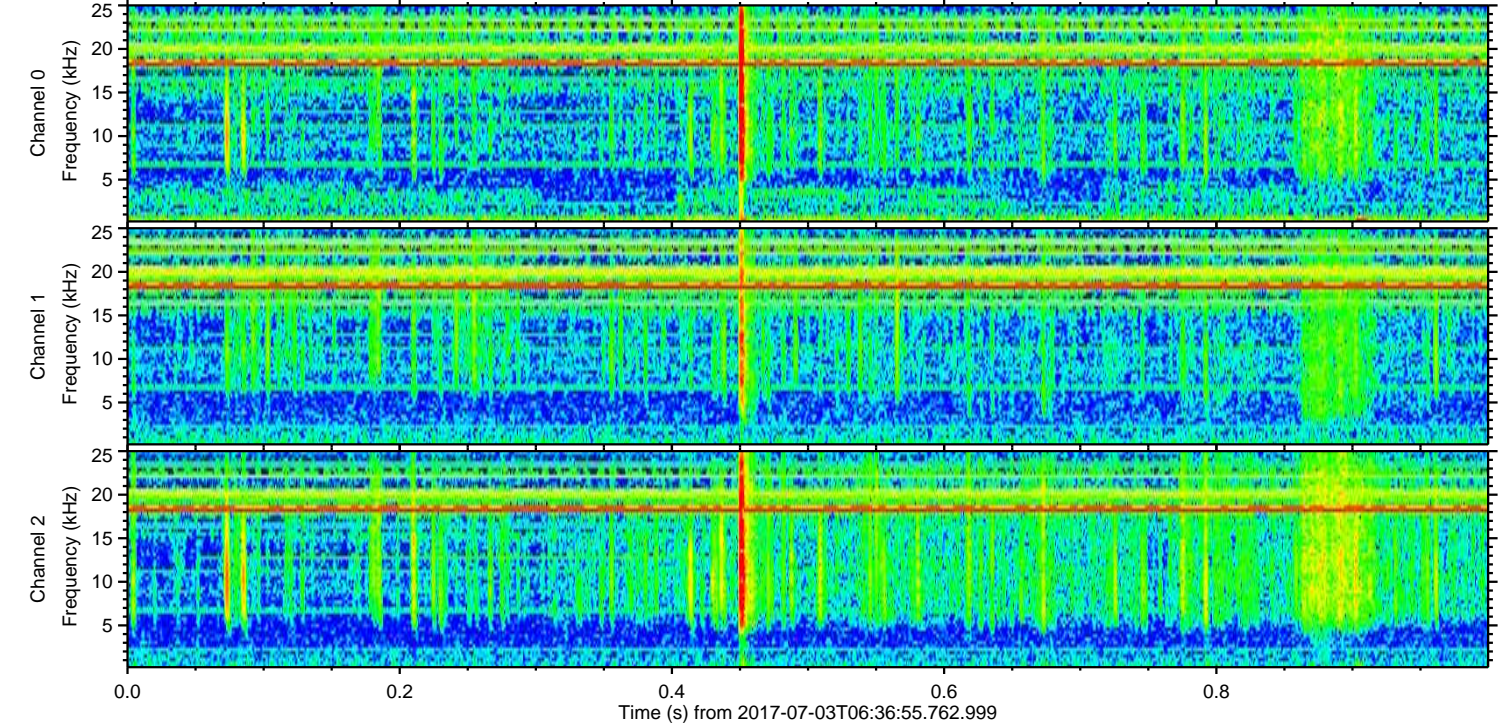
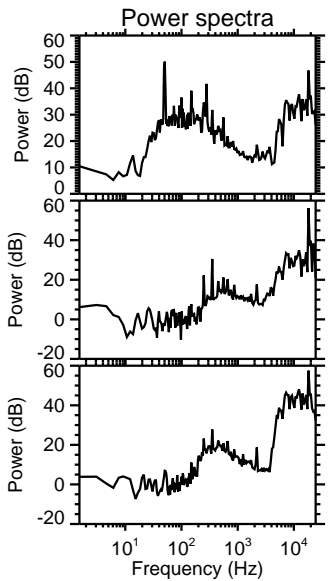
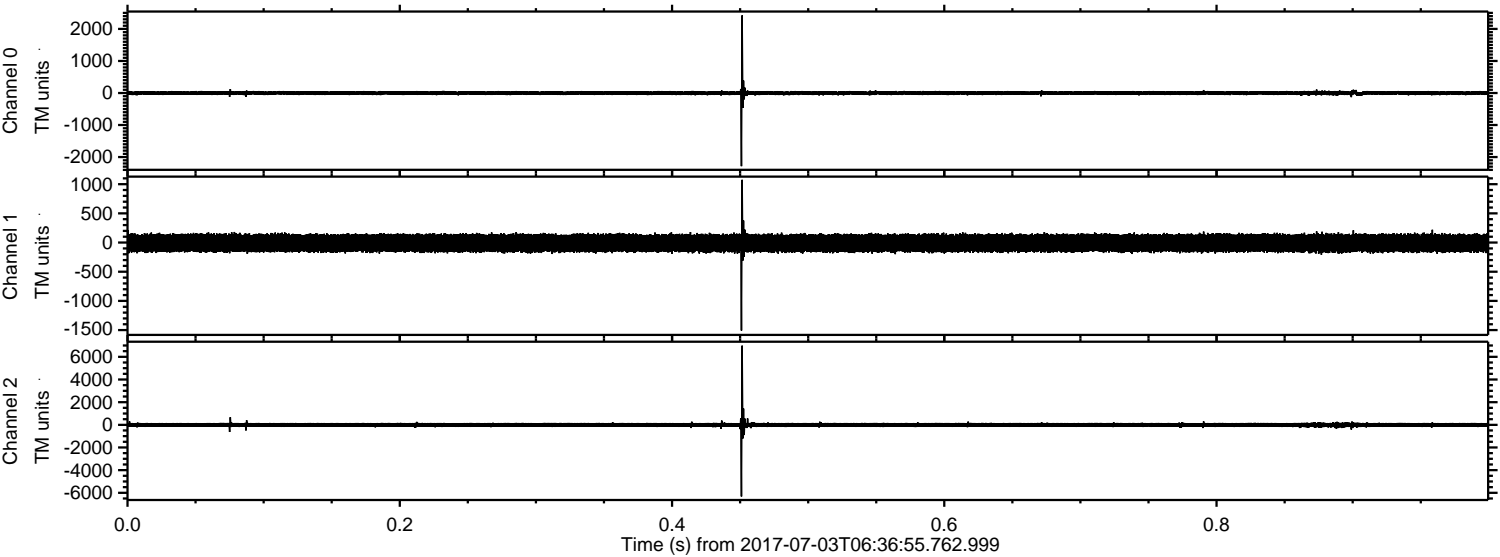
ELMAVAN 3D WAVEFORMS (Measured data sampled at 50 kHz) 51000 packets of 144 samples from 2017-07-03T06:36:55.762.999.

Processed Tue Jul 18 15:21:15 2017 by ELM ver.2012-10-06 from 001__elm20170703_063654__dat00.bin



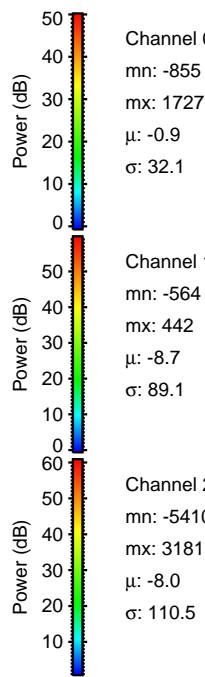
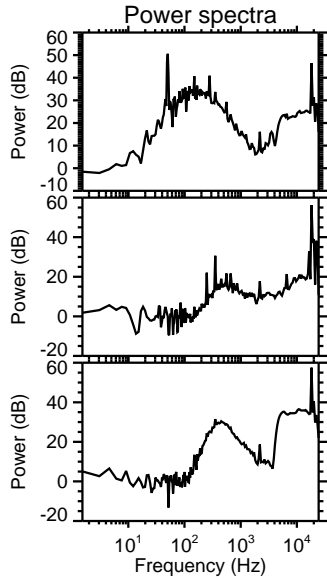
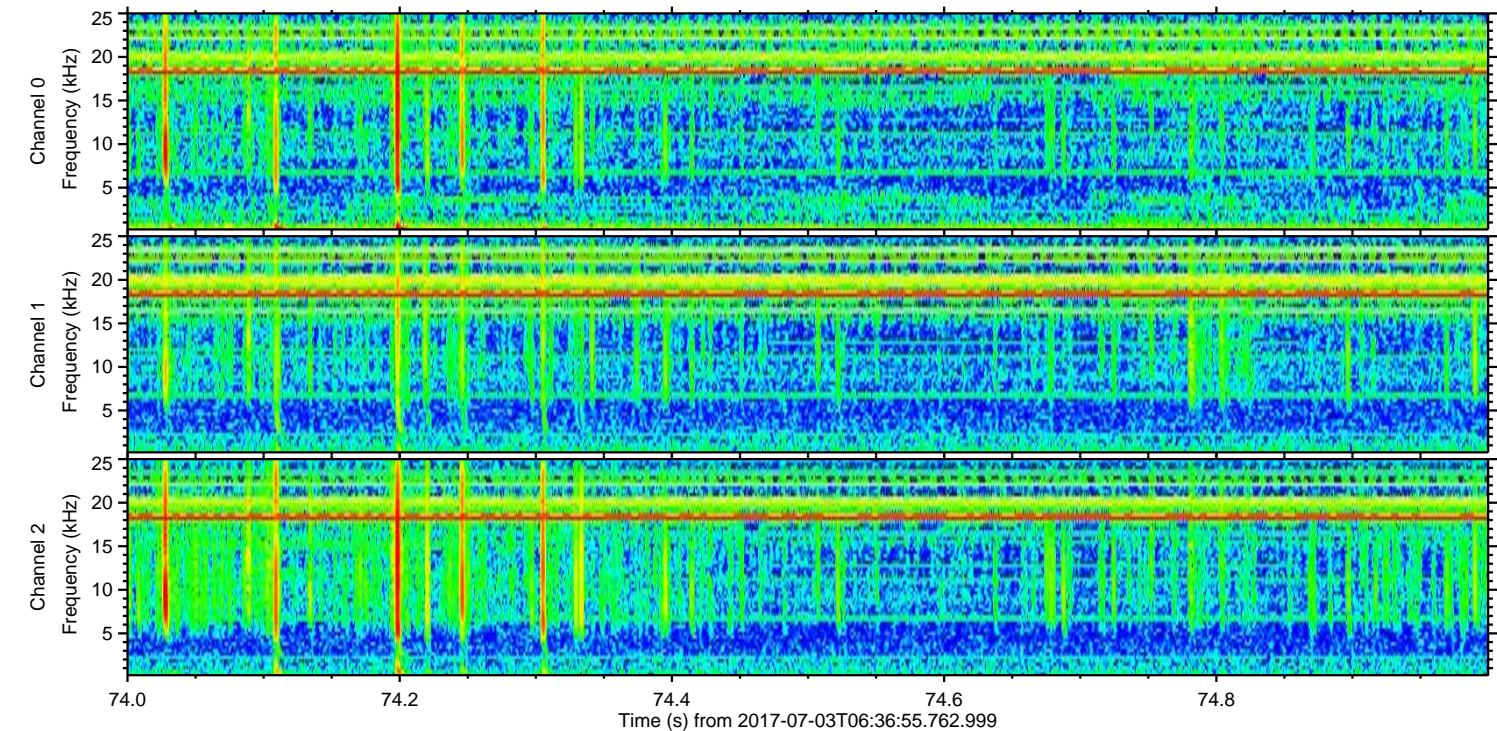
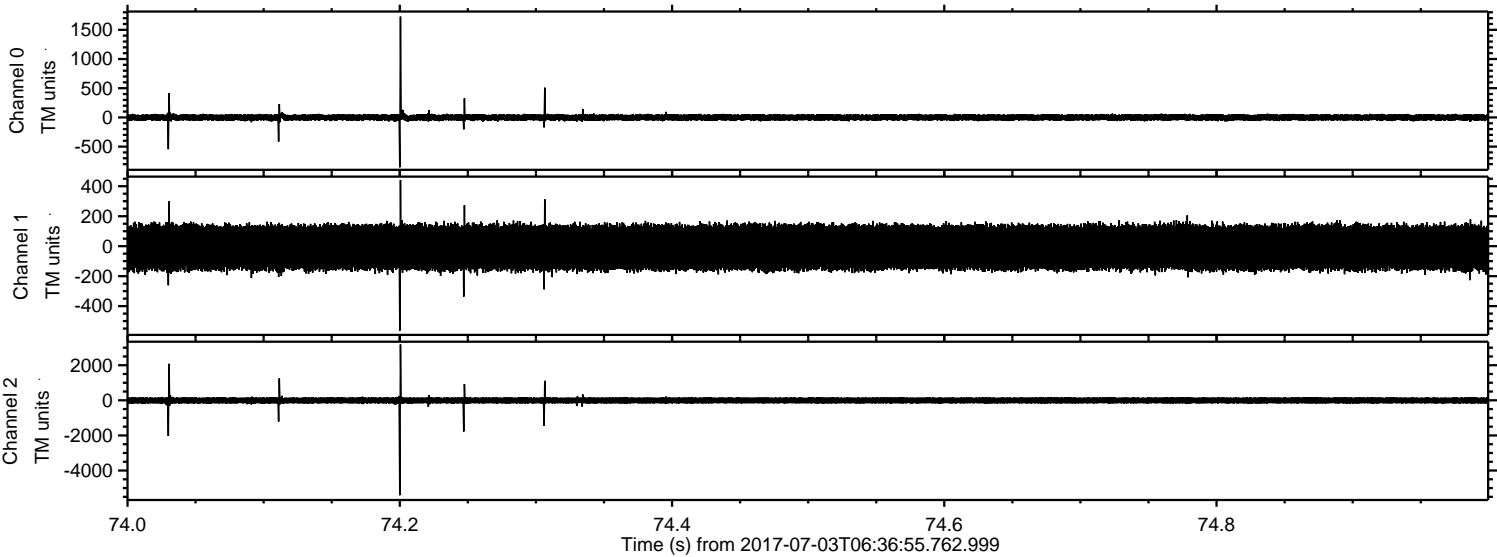
ELMAVAN 3D WAVEFORMS (Measured data sampled at 50 kHz) 51000 packets of 144 samples from 2017-07-03T06:36:55.762.999. Part 1/147

Processed Tue Jul 18 15:21:23 2017 by ELM ver.2012-10-06 from 001__elm20170703_063654__dat00.bin



ELMAVAN 3D WAVEFORMS (Measured data sampled at 50 kHz) 51000 packets of 144 samples from 2017-07-03T06:36:55.762.999. Part 75/147

Processed Tue Jul 18 15:21:24 2017 by ELM ver.2012-10-06 from 001__elm20170703_063654__dat00.bin



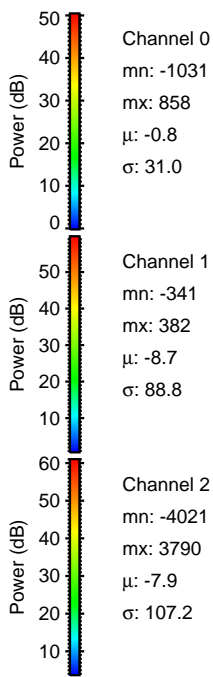
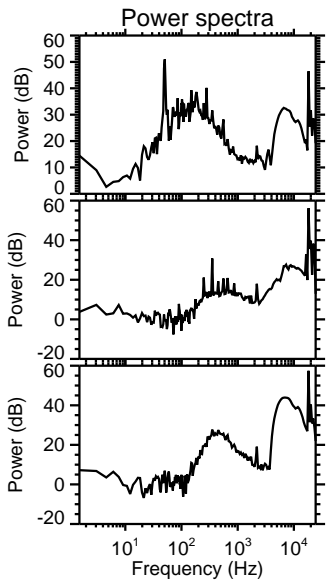
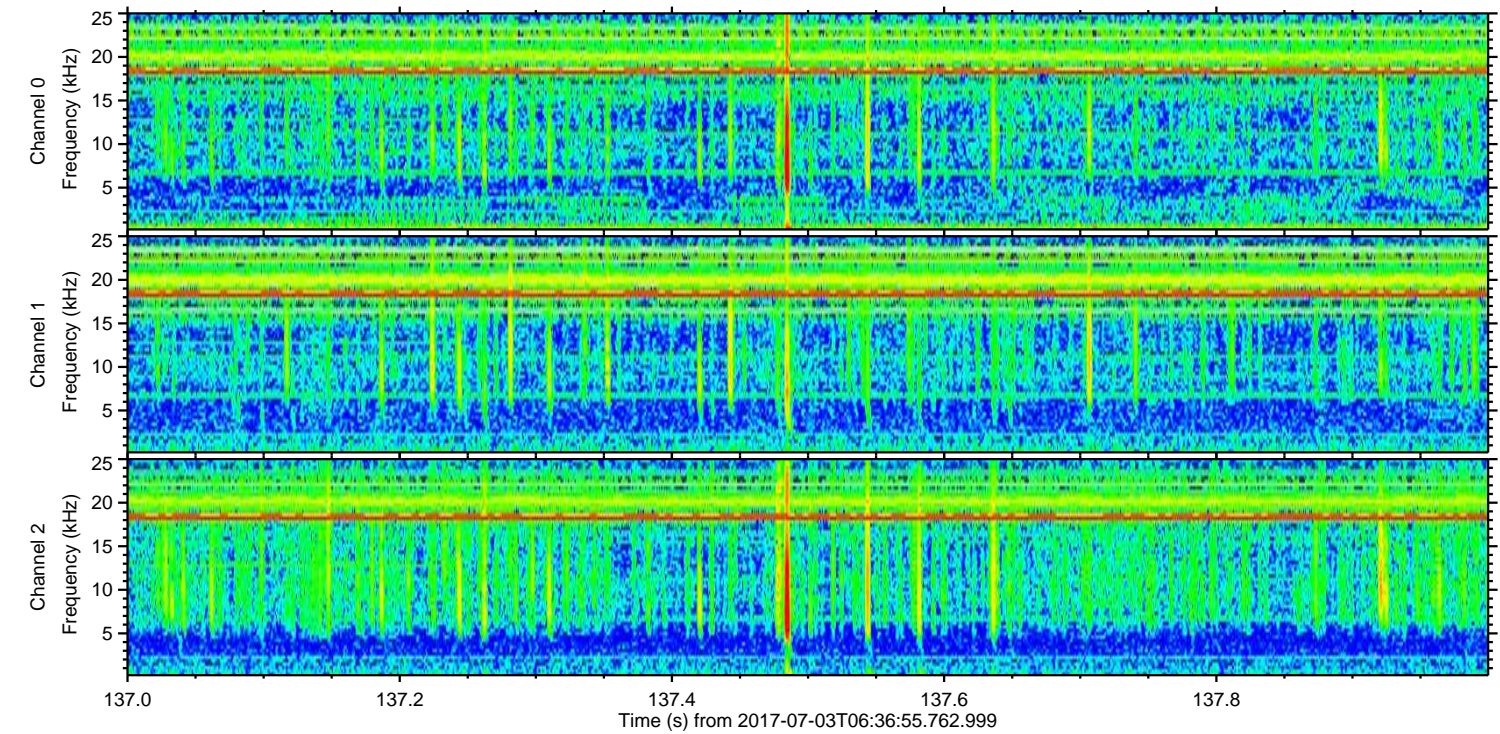
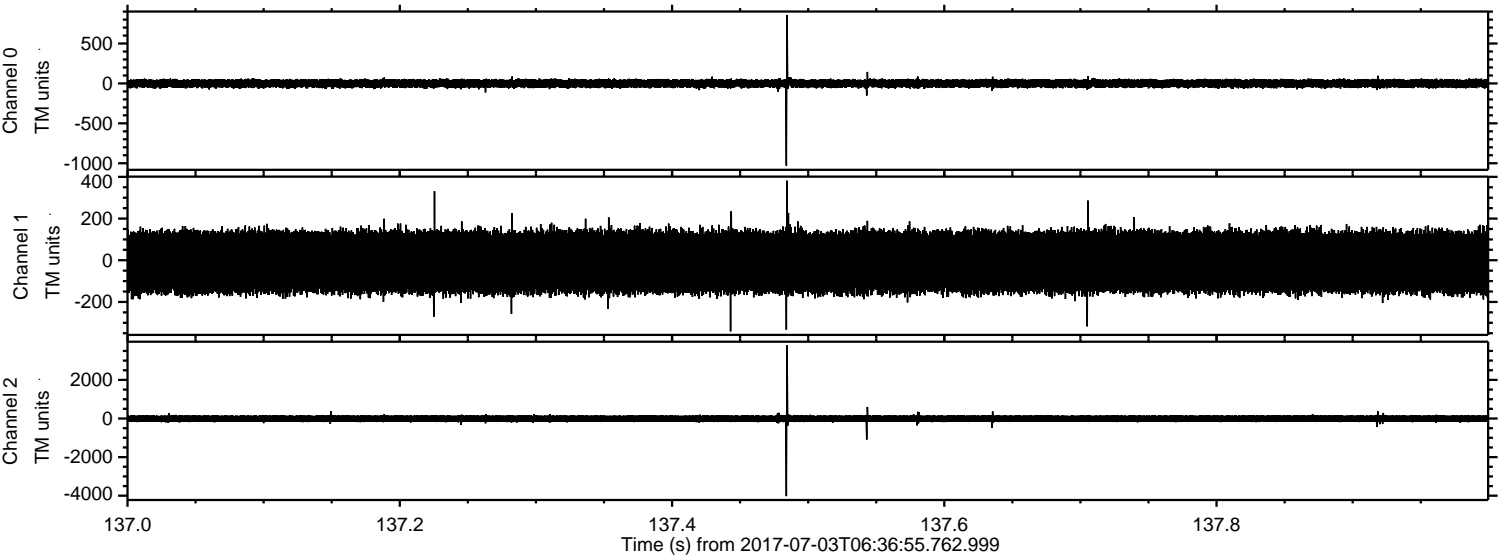
Channel 0
mn: -855
mx: 1727
 μ : -0.9
 σ : 32.1

Channel 1
mn: -564
mx: 442
 μ : -8.7
 σ : 89.1

Channel 2
mn: -5410
mx: 3181
 μ : -8.0
 σ : 110.5

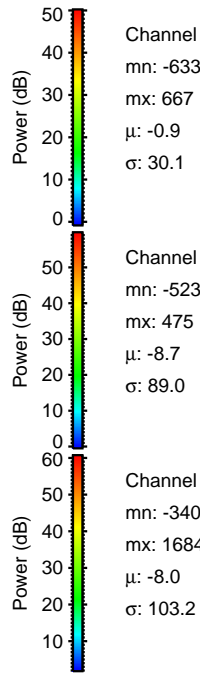
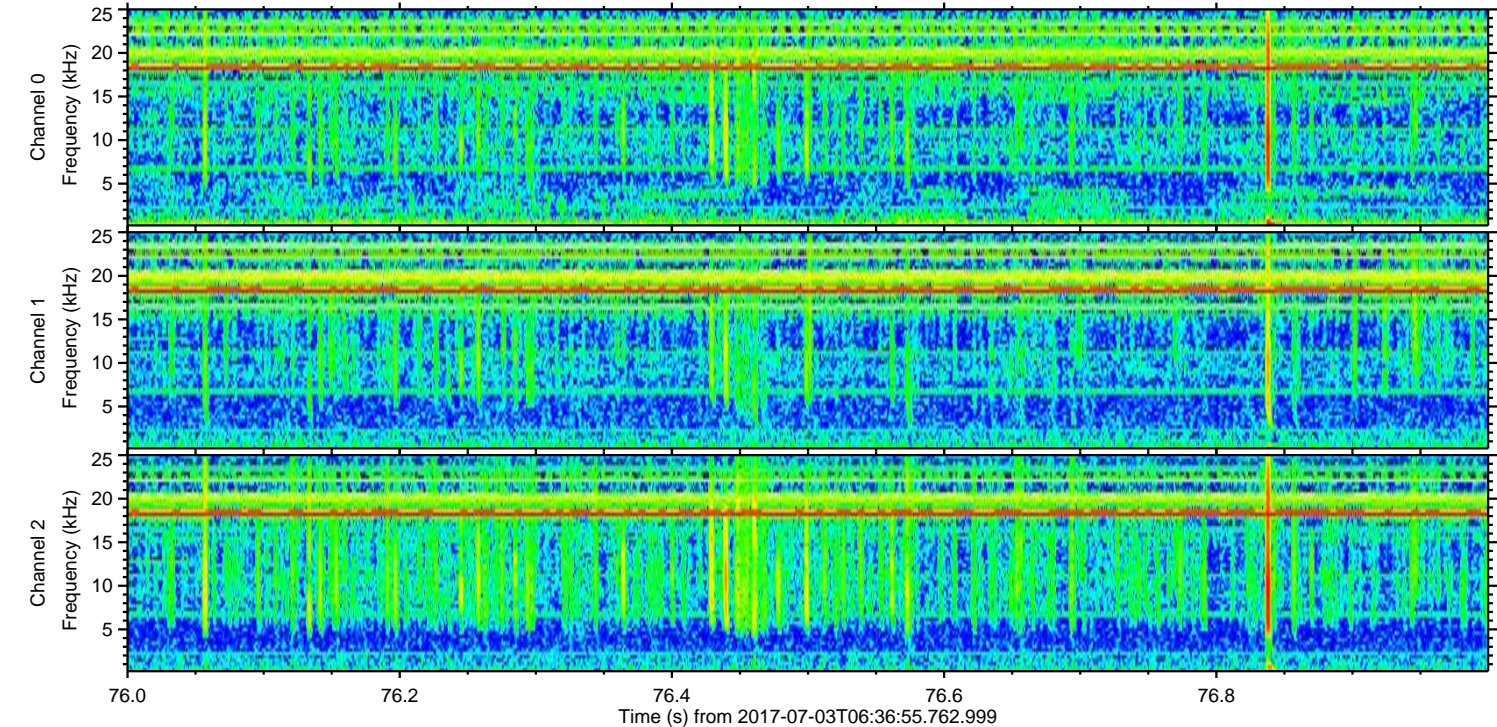
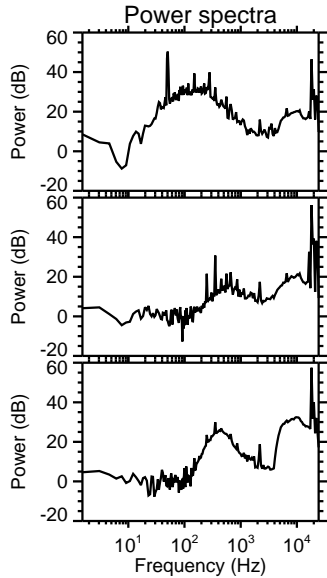
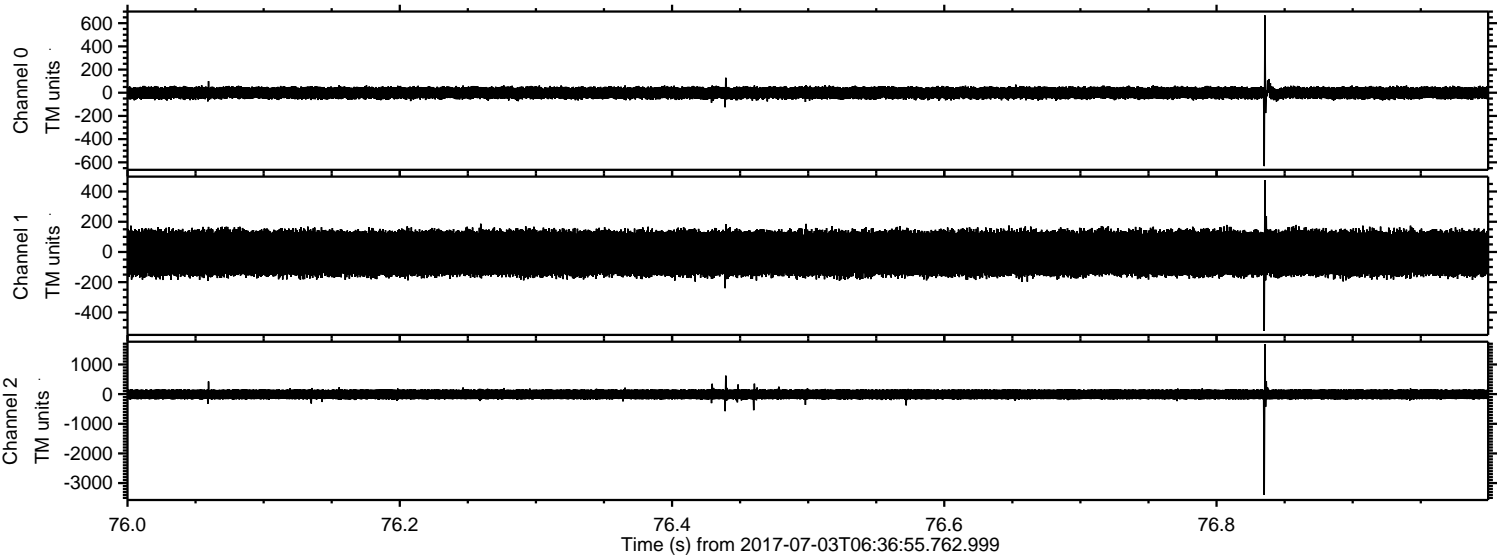
ELMAVAN 3D WAVEFORMS (Measured data sampled at 50 kHz) 51000 packets of 144 samples from 2017-07-03T06:36:55.762.999. Part 138/147

Processed Tue Jul 18 15:21:25 2017 by ELM ver.2012-10-06 from 001__elm20170703_063654__dat00.bin

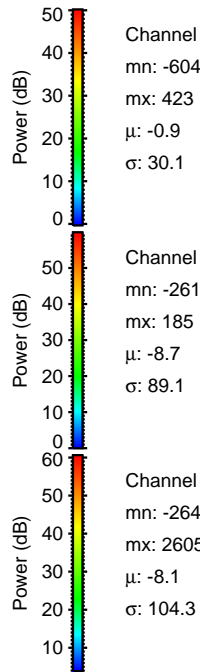
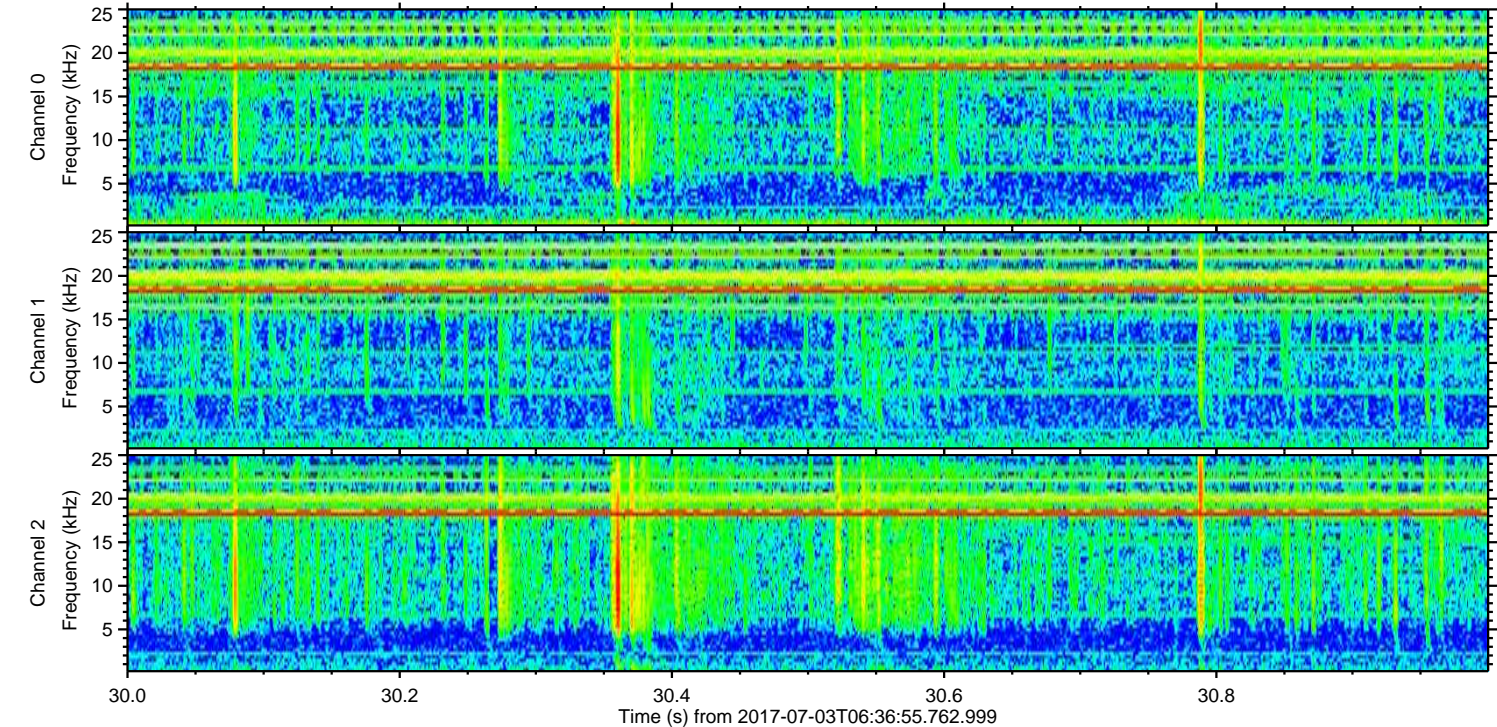
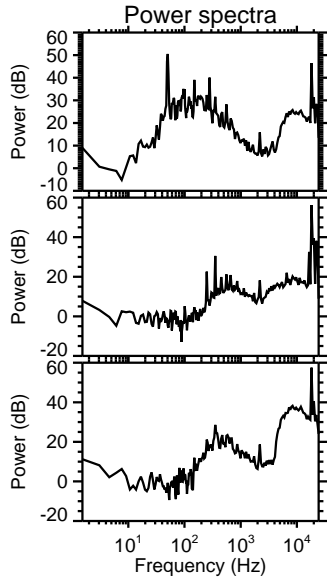
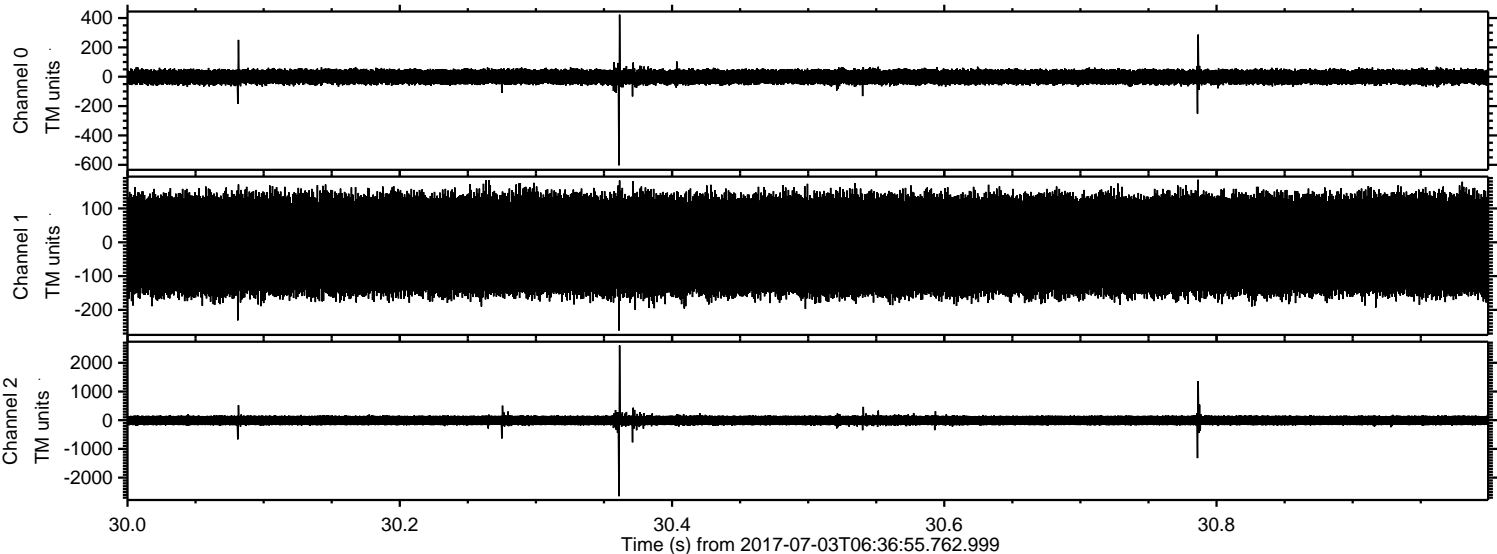


ELMAVAN 3D WAVEFORMS (Measured data sampled at 50 kHz) 51000 packets of 144 samples from 2017-07-03T06:36:55.762.999. Part 77/147

Processed Tue Jul 18 15:21:25 2017 by ELM ver.2012-10-06 from 001__elm20170703_063654__dat00.bin

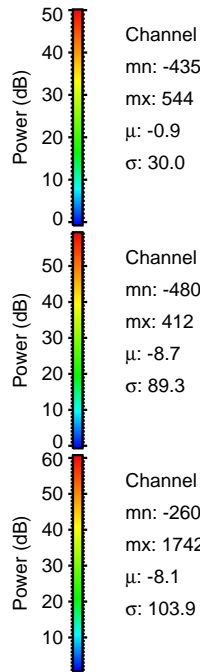
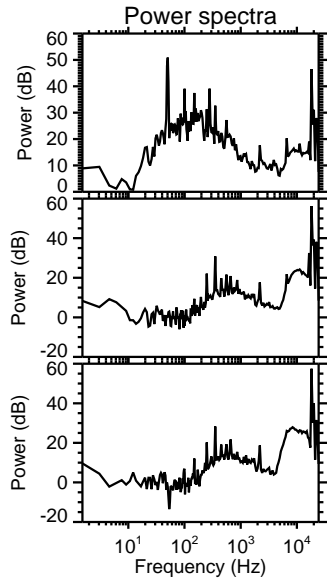
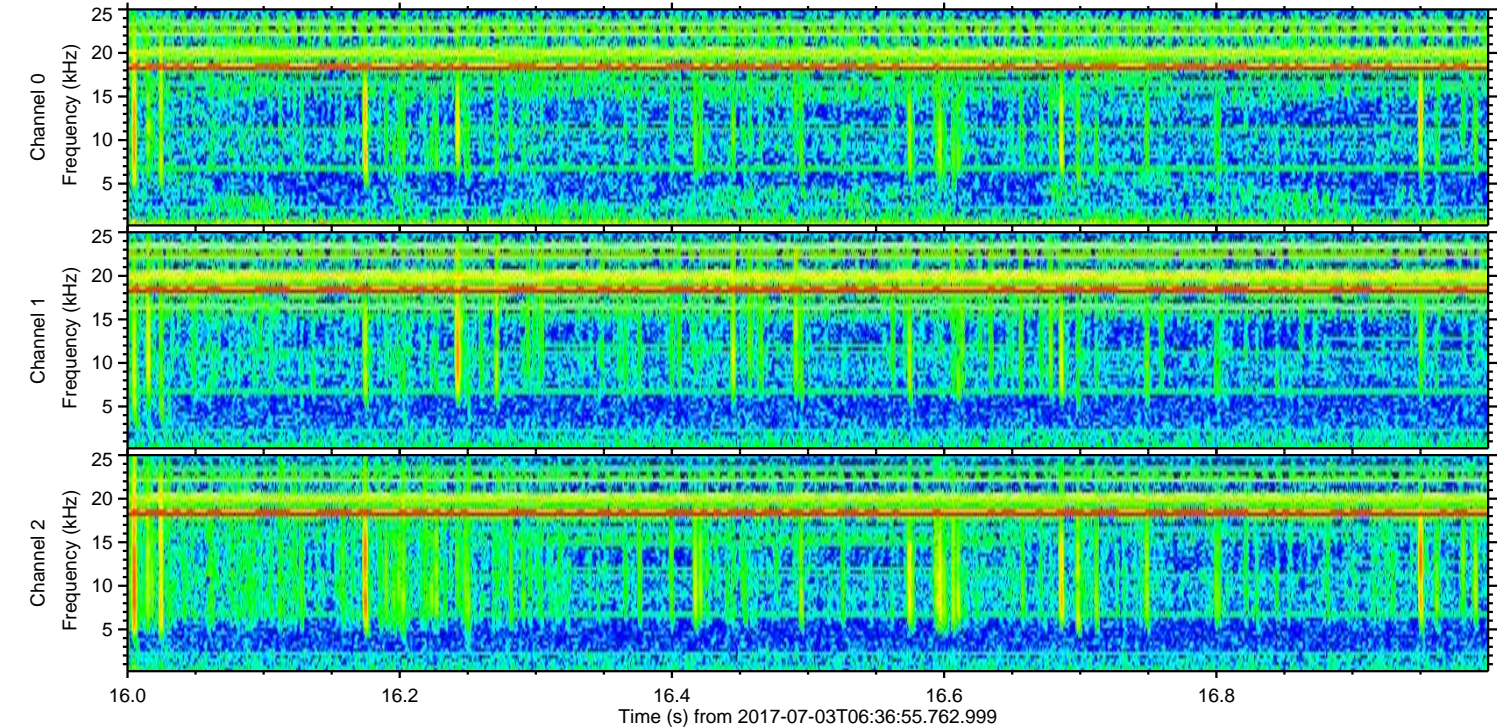
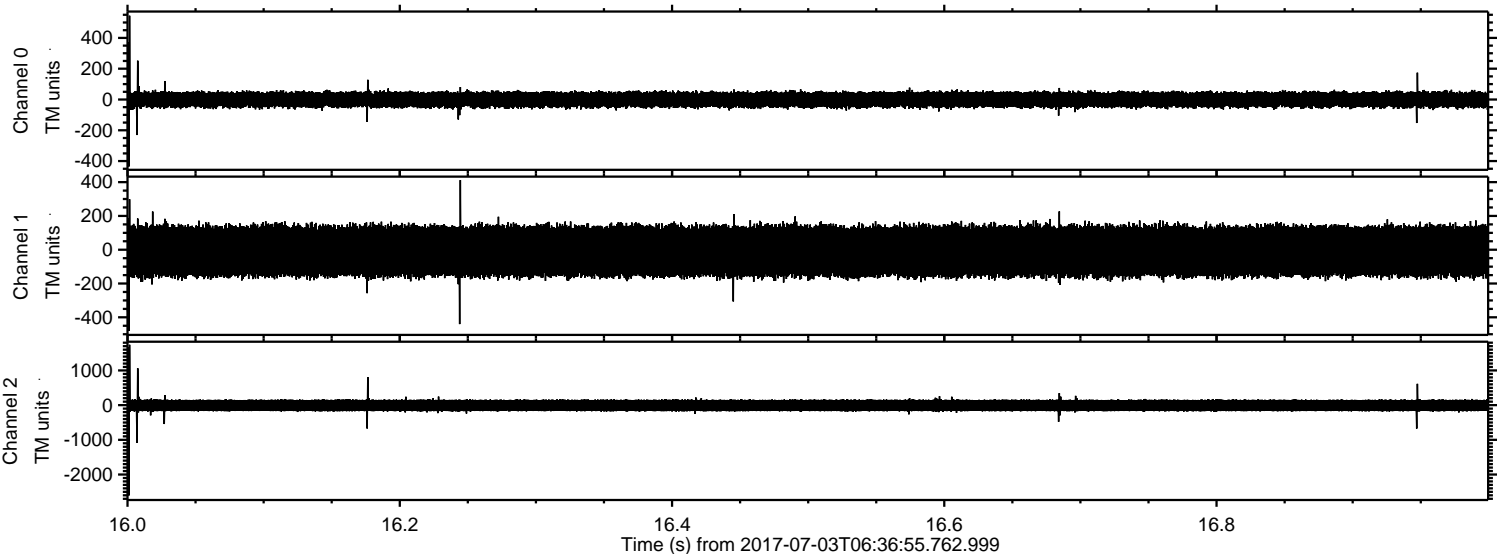


Processed Tue Jul 18 15:21:26 2017 by ELM ver.2012-10-06 from 001__elm20170703_063654__dat00.bin



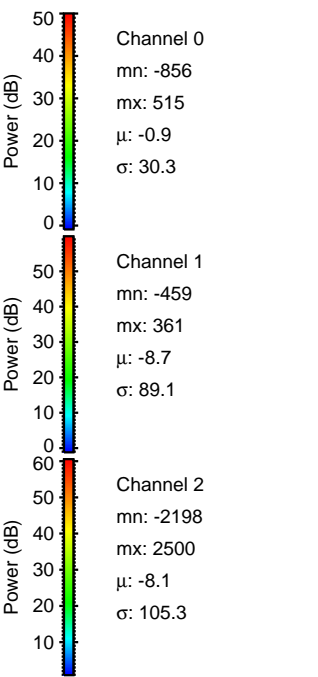
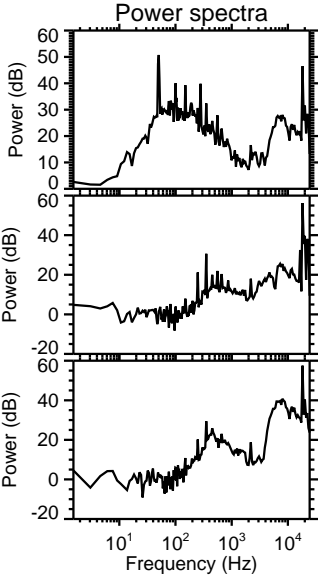
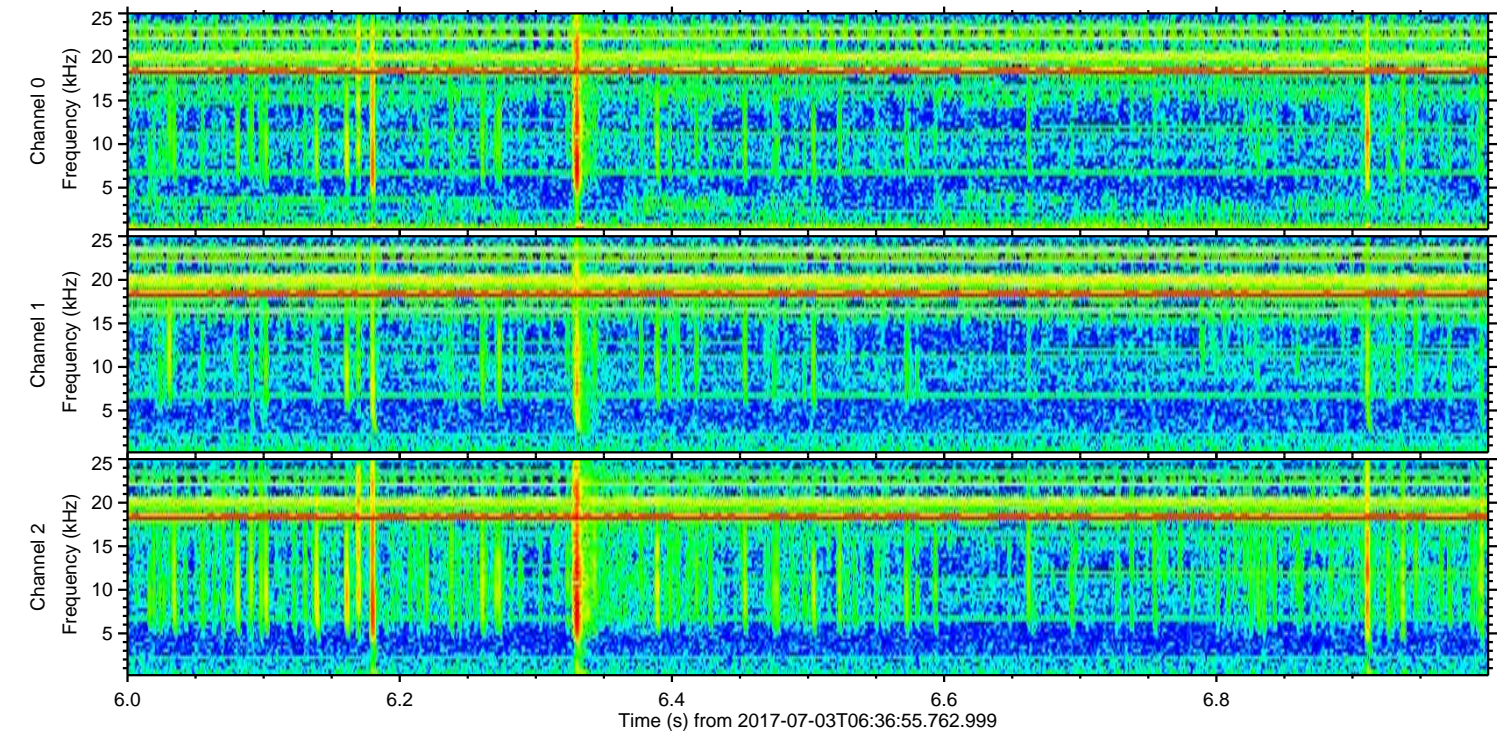
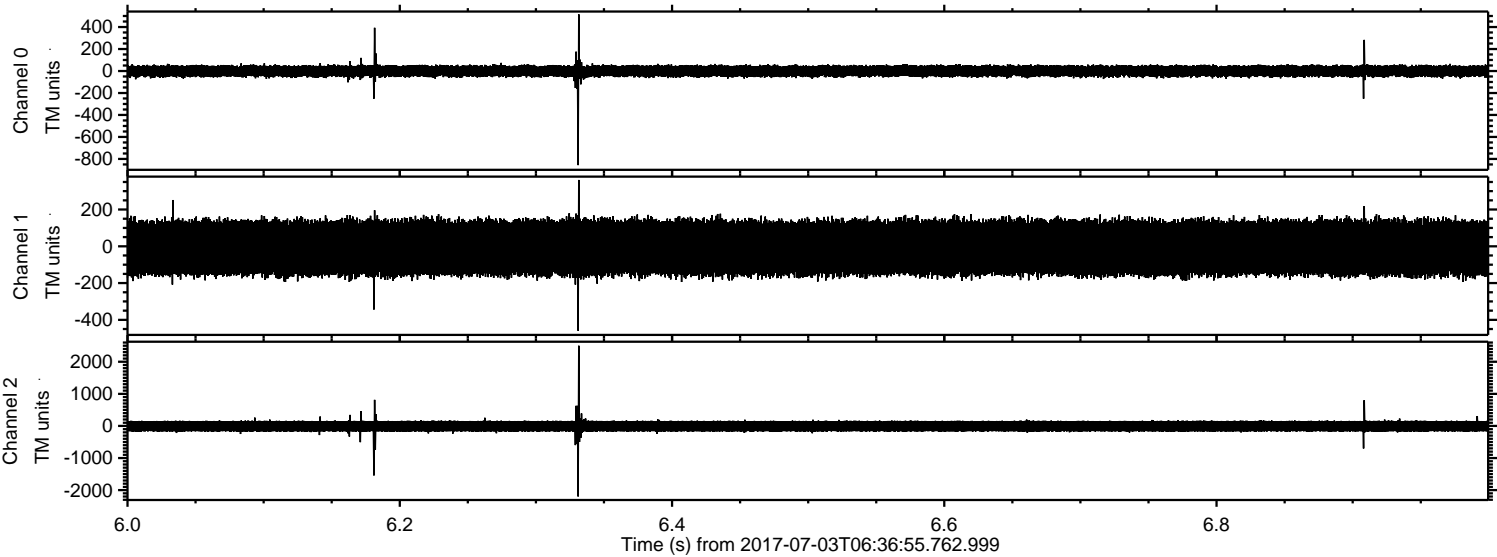
ELMAVAN 3D WAVEFORMS (Measured data sampled at 50 kHz) 51000 packets of 144 samples from 2017-07-03T06:36:55.762.999. Part 17/147

Processed Tue Jul 18 15:21:27 2017 by ELM ver.2012-10-06 from 001__elm20170703_063654__dat00.bin



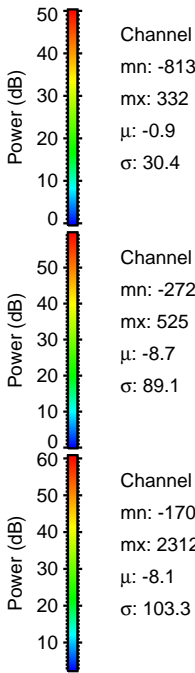
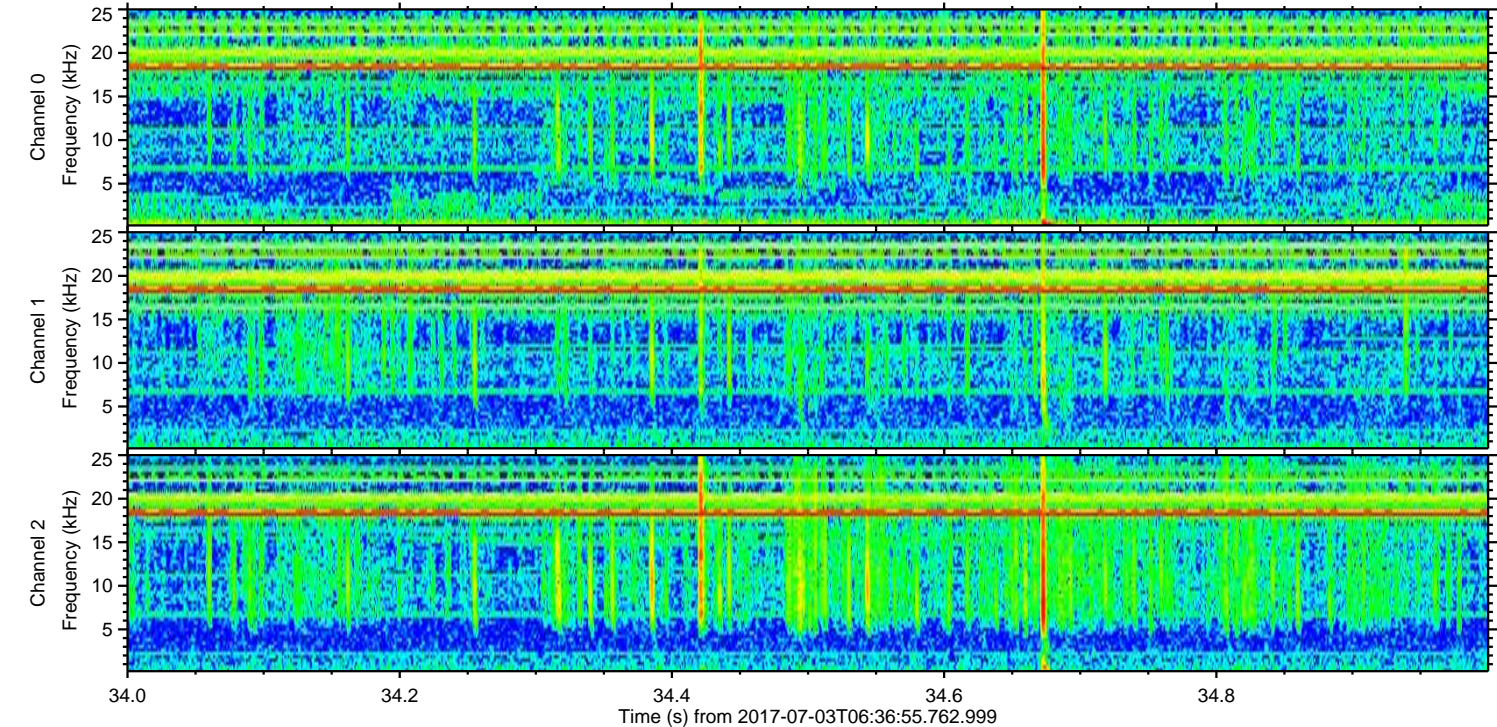
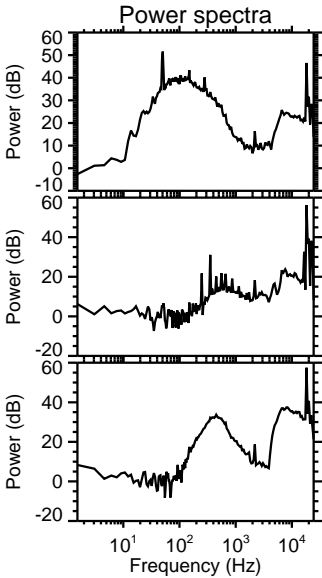
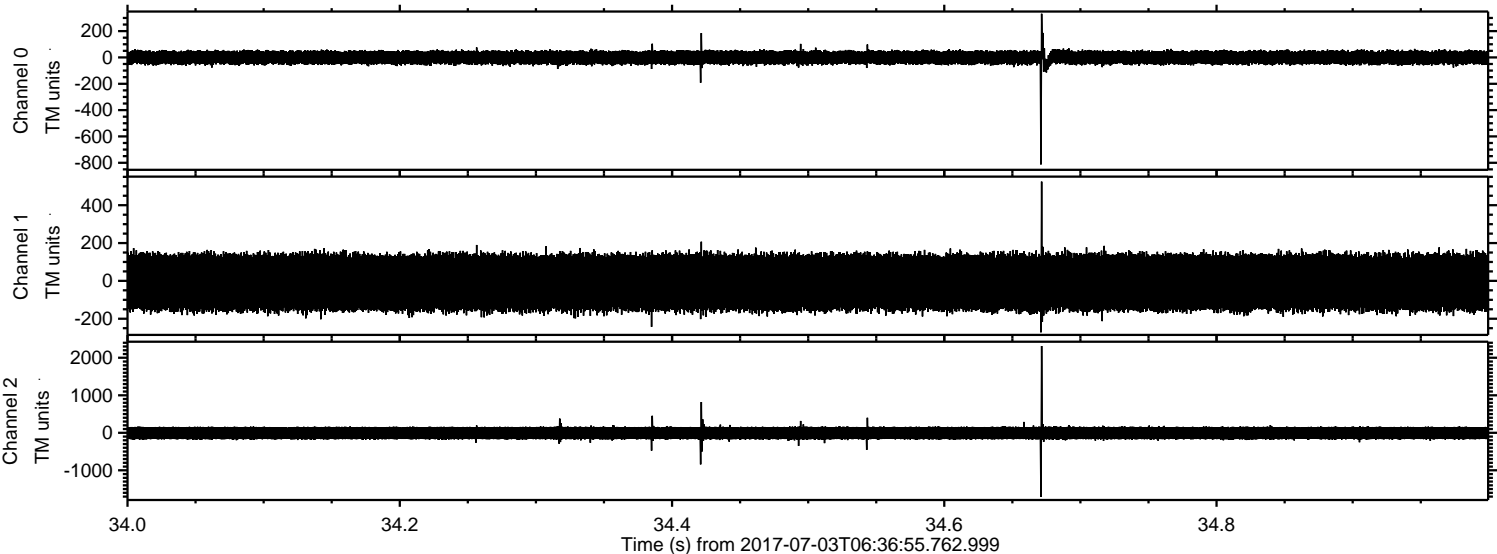
ELMAVAN 3D WAVEFORMS (Measured data sampled at 50 kHz) 51000 packets of 144 samples from 2017-07-03T06:36:55.762.999. Part 7/147

Processed Tue Jul 18 15:21:27 2017 by ELM ver.2012-10-06 from 001__elm20170703_063654__dat00.bin



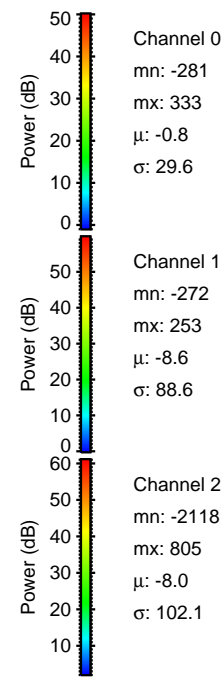
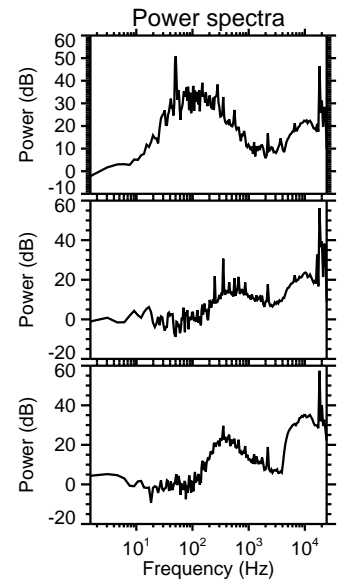
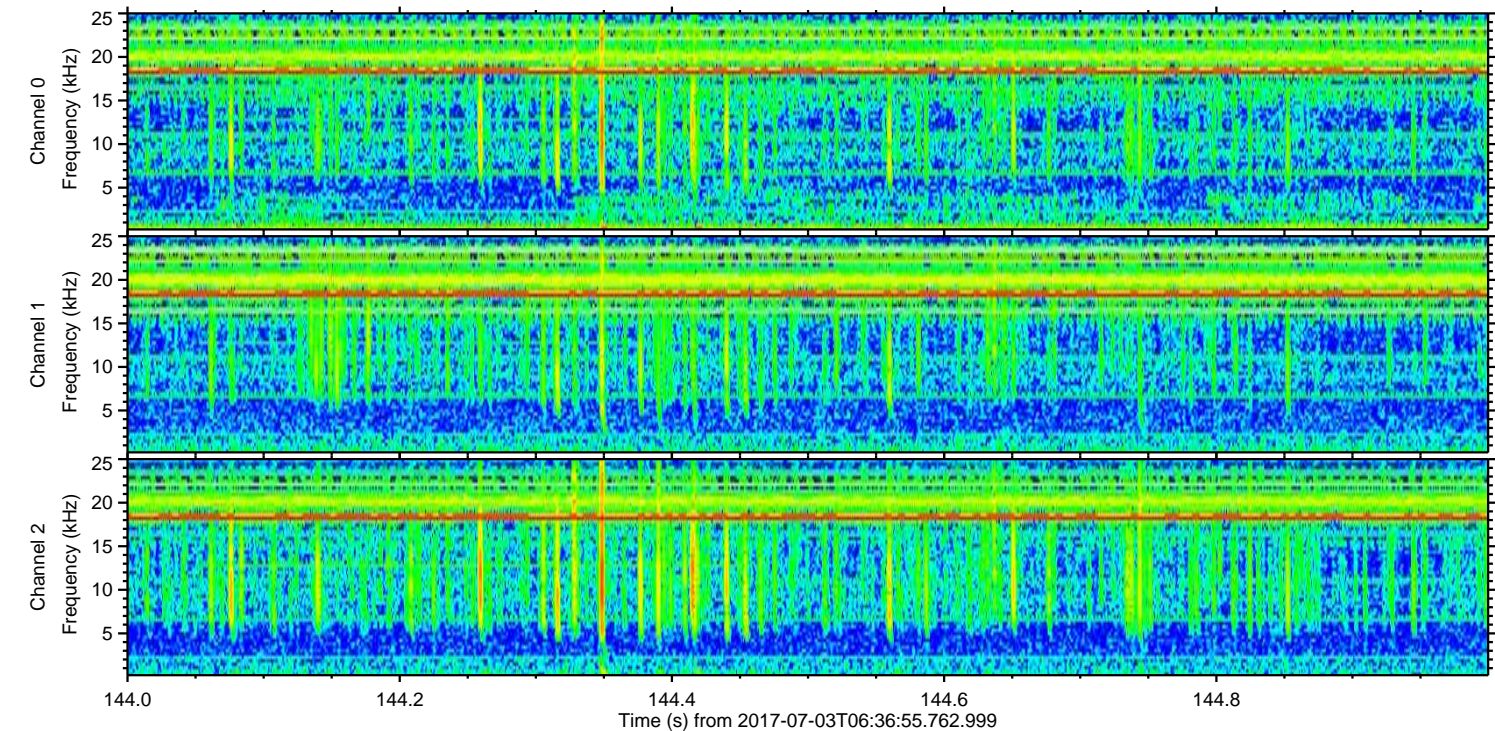
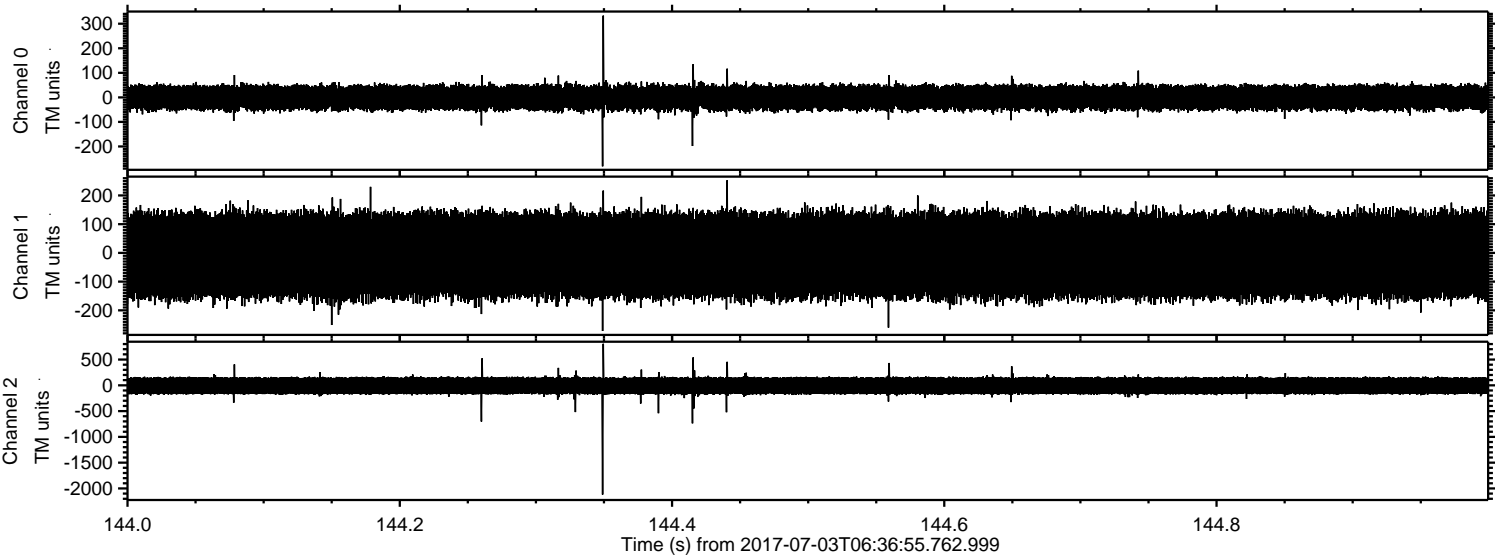
ELMAVAN 3D WAVEFORMS (Measured data sampled at 50 kHz) 51000 packets of 144 samples from 2017-07-03T06:36:55.762.999. Part 35/147

Processed Tue Jul 18 15:21:28 2017 by ELM ver.2012-10-06 from 001__elm20170703_063654__dat00.bin



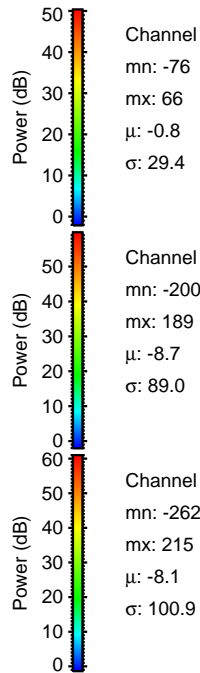
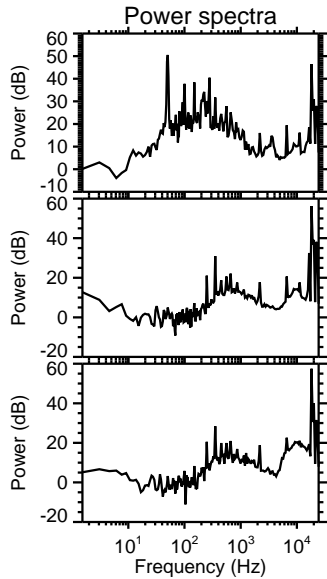
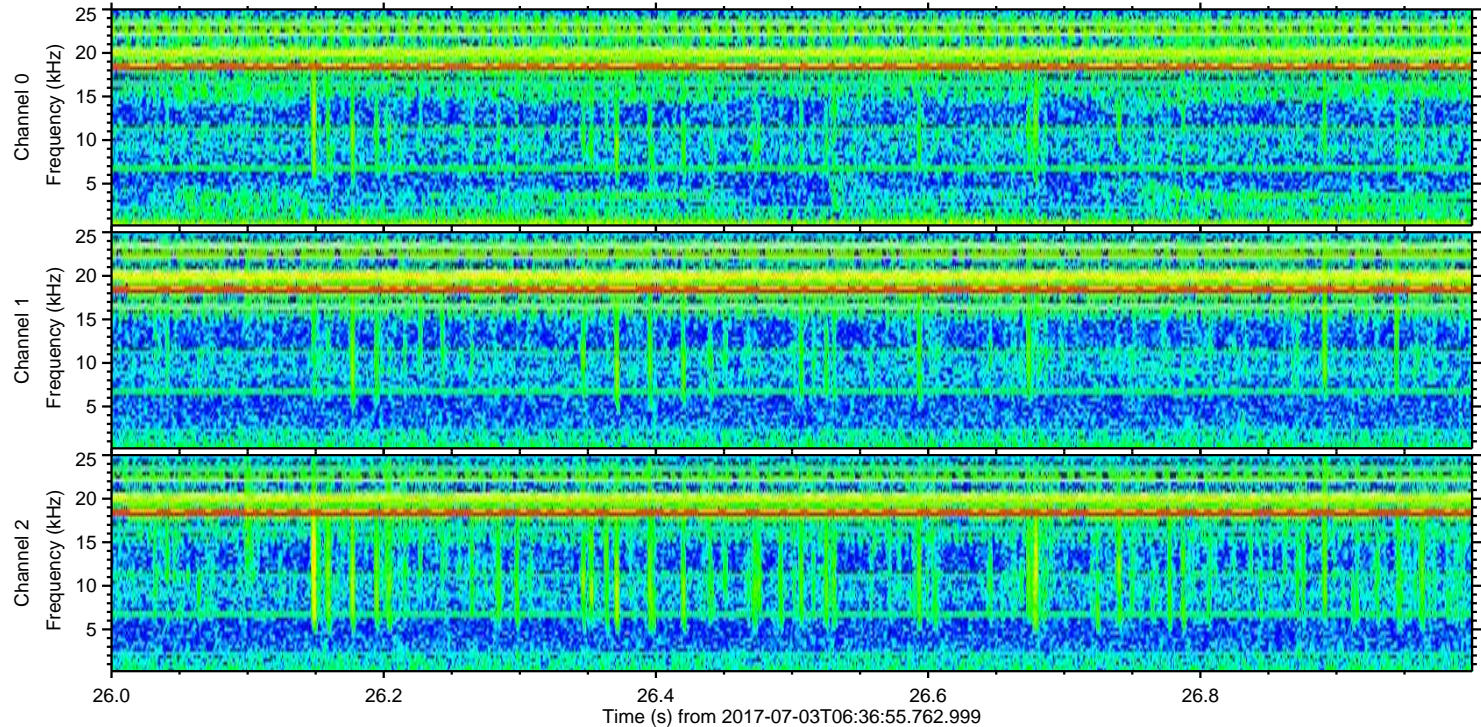
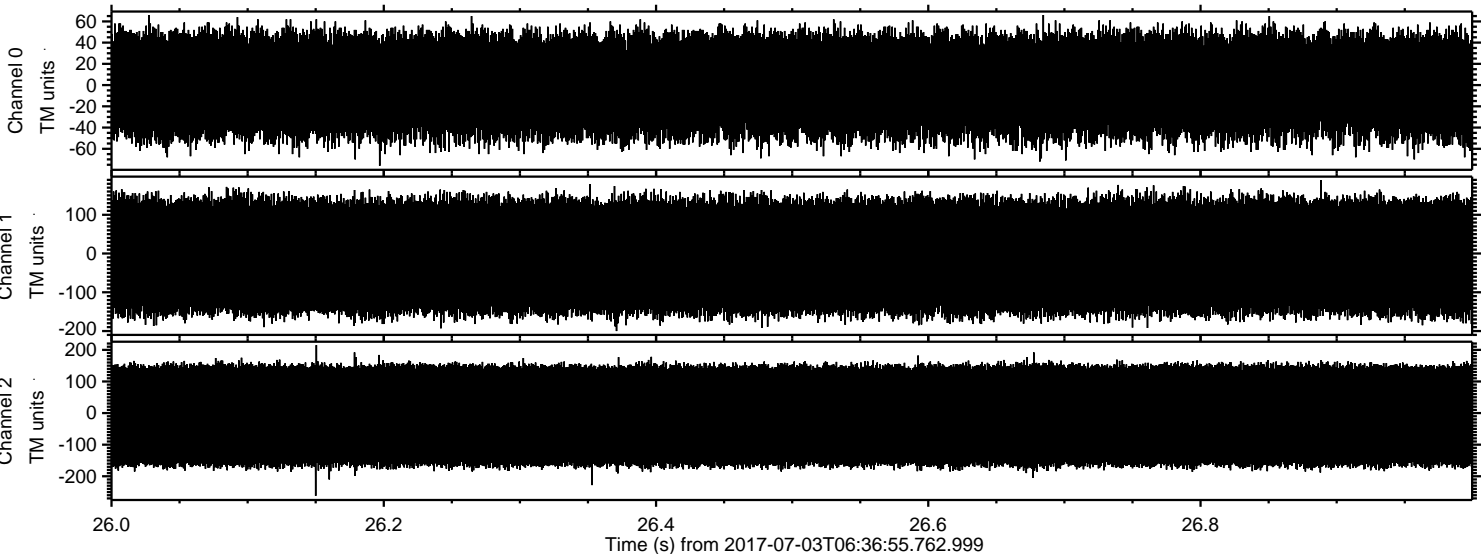
ELMAVAN 3D WAVEFORMS (Measured data sampled at 50 kHz) 51000 packets of 144 samples from 2017-07-03T06:36:55.762.999. Part 145/147

Processed Tue Jul 18 15:21:29 2017 by ELM ver.2012-10-06 from 001__elm20170703_063654__dat00.bin



ELMAVAN 3D WAVEFORMS (Measured data sampled at 50 kHz) 51000 packets of 144 samples from 2017-07-03T06:36:55.762.999. Part 27/147

Processed Tue Jul 18 15:21:30 2017 by ELM ver.2012-10-06 from 001__elm20170703_063654__dat00.bin



Channel 0
mn: -76
mx: 66
 μ : -0.8
 σ : 29.4

Channel 1
mn: -200
mx: 189
 μ : -8.7
 σ : 89.0

Channel 2
mn: -262
mx: 215
 μ : -8.1
 σ : 100.9