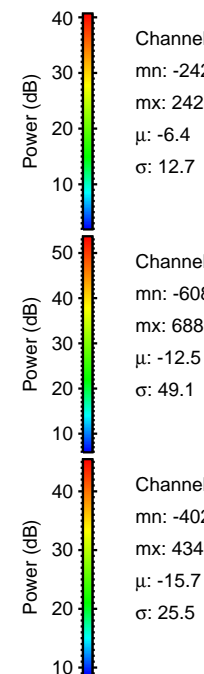
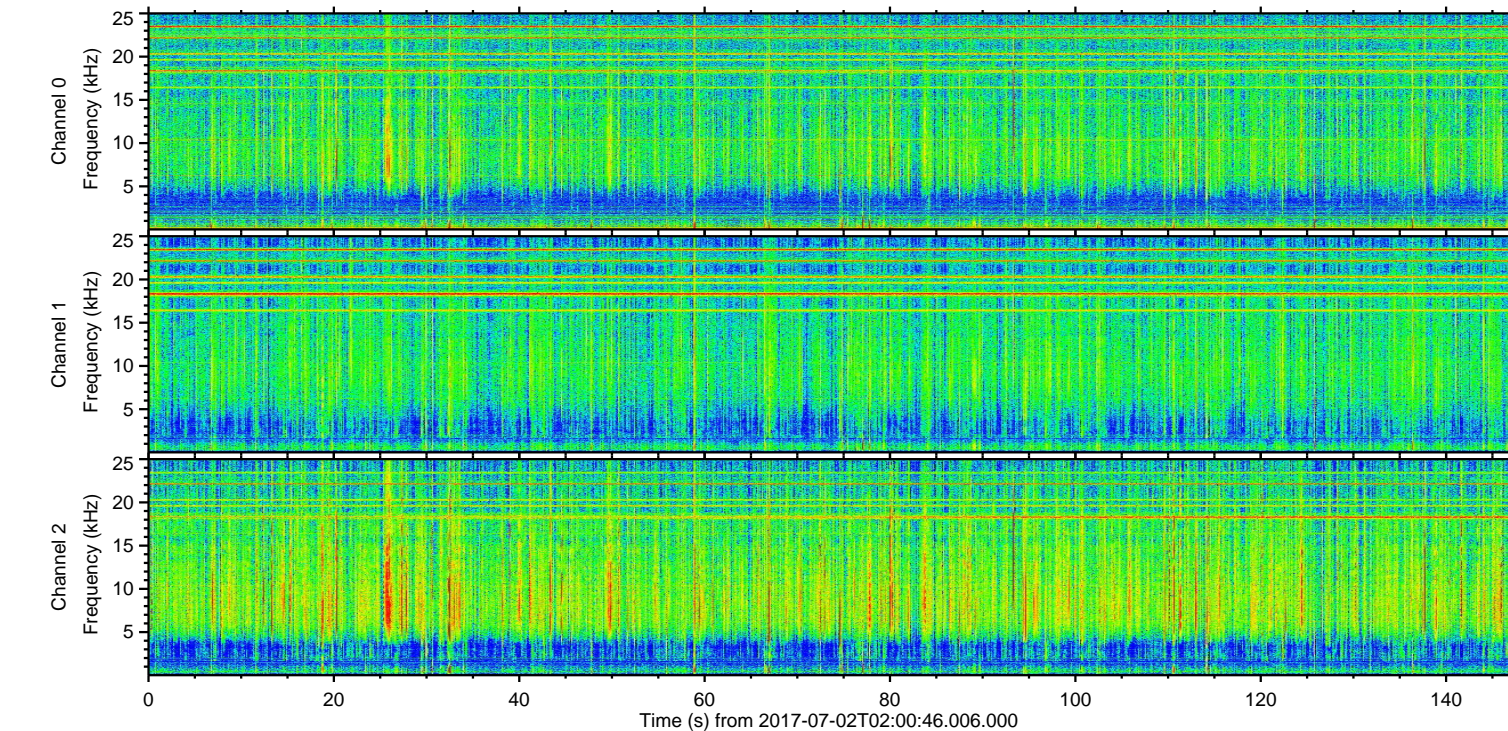
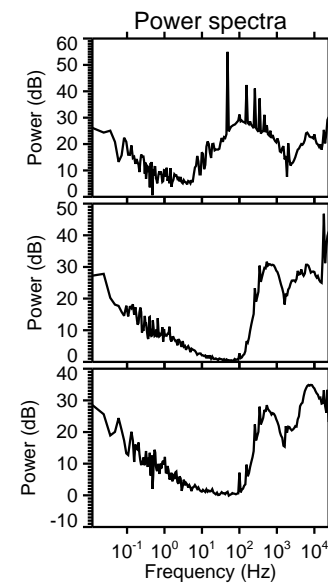
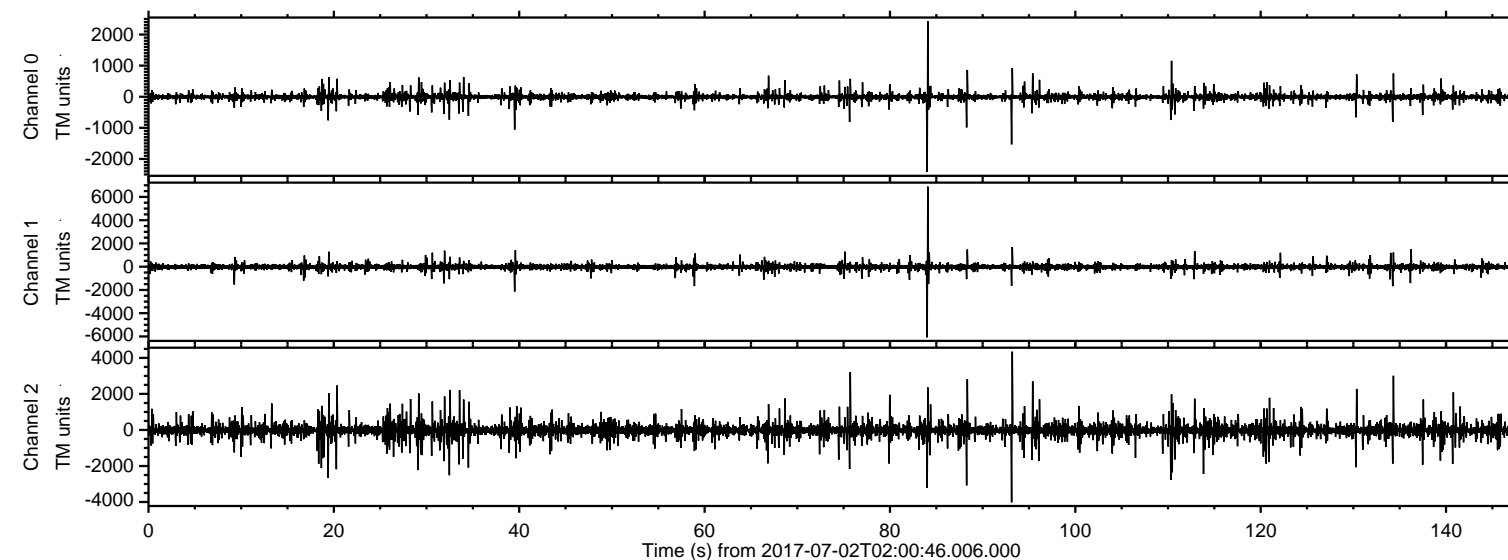
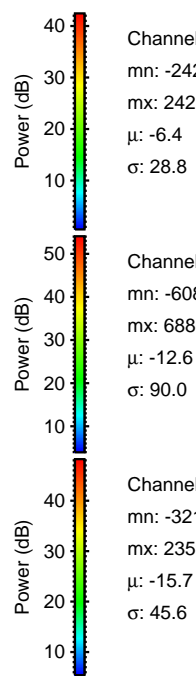
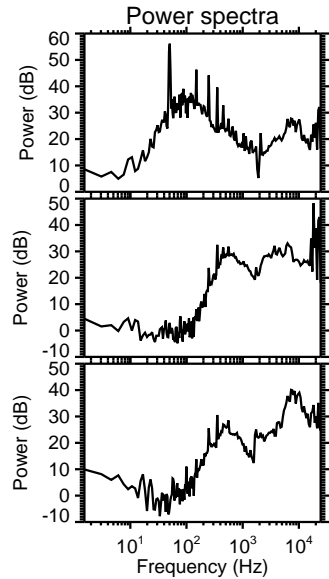
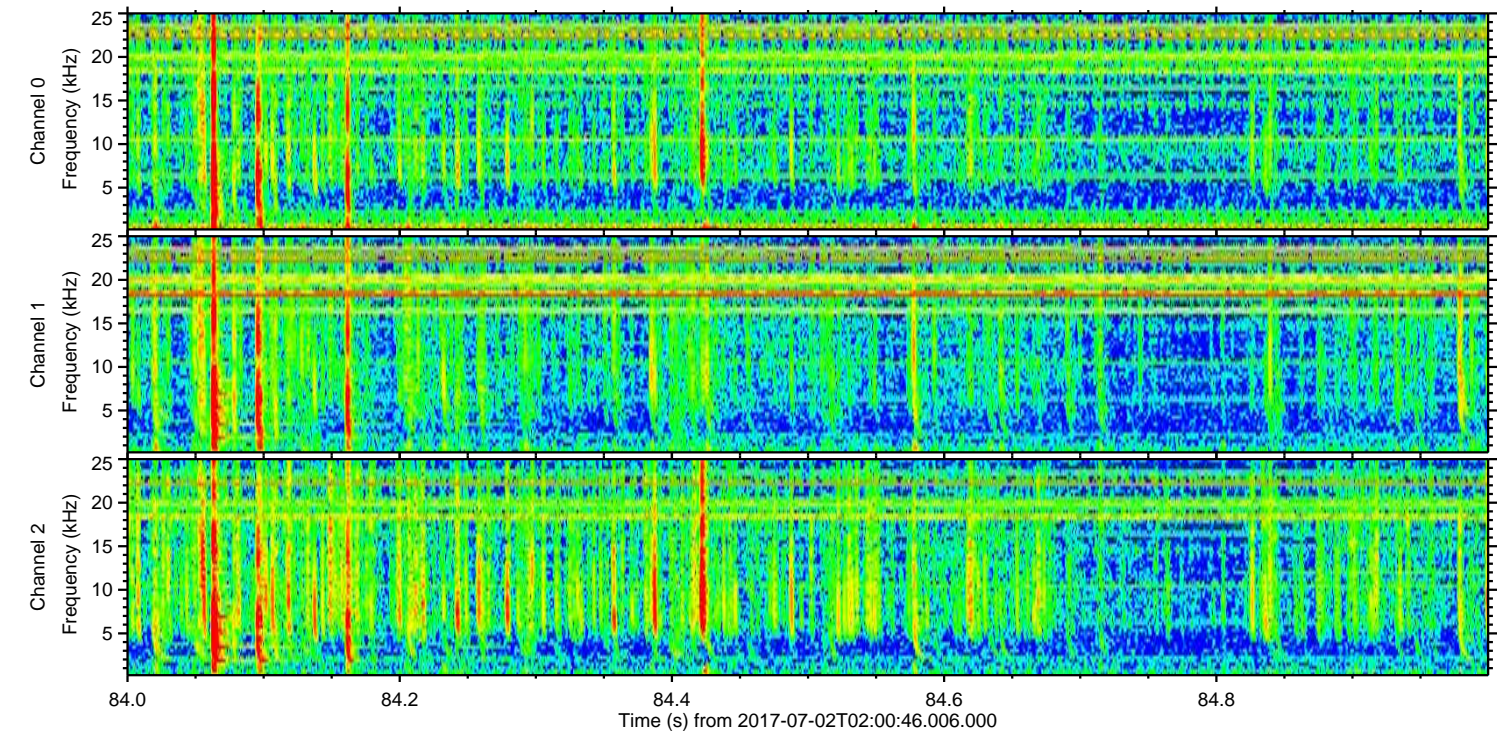
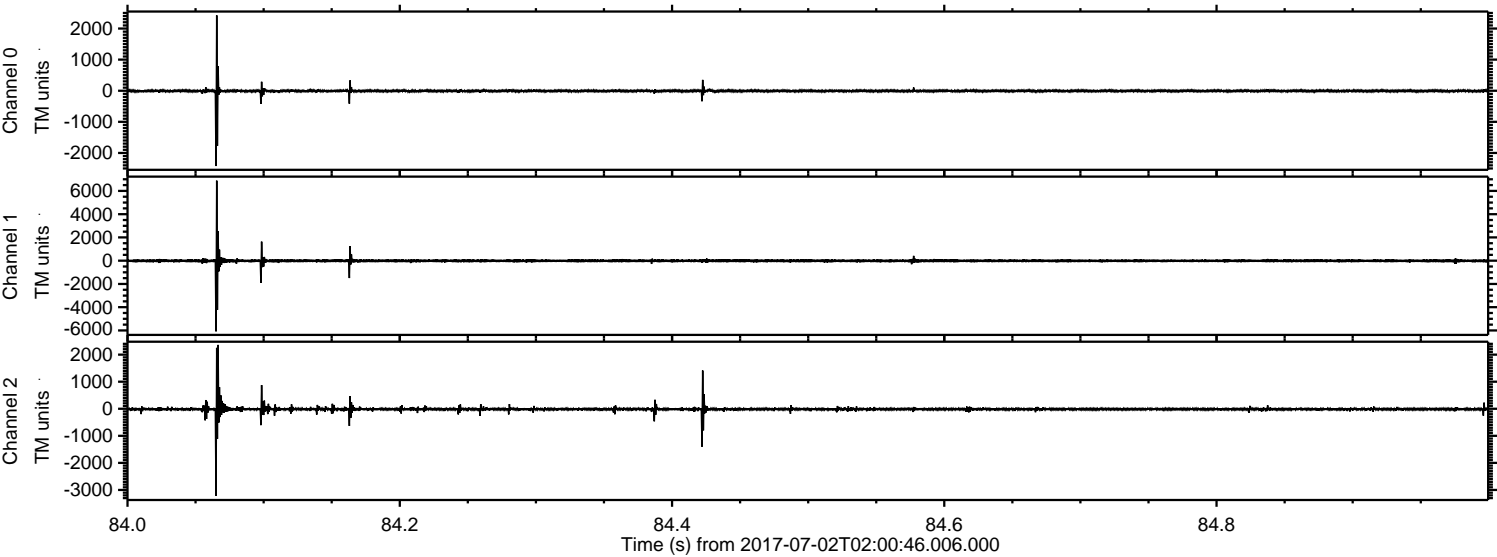


ELMAVAN 3D WAVEFORMS (Measured data sampled at 50 kHz) 51000 packets of 144 samples from 2017-07-02T02:00:46.006.000.

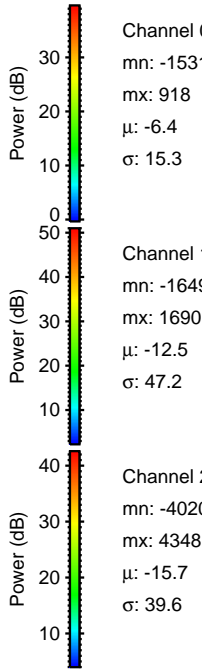
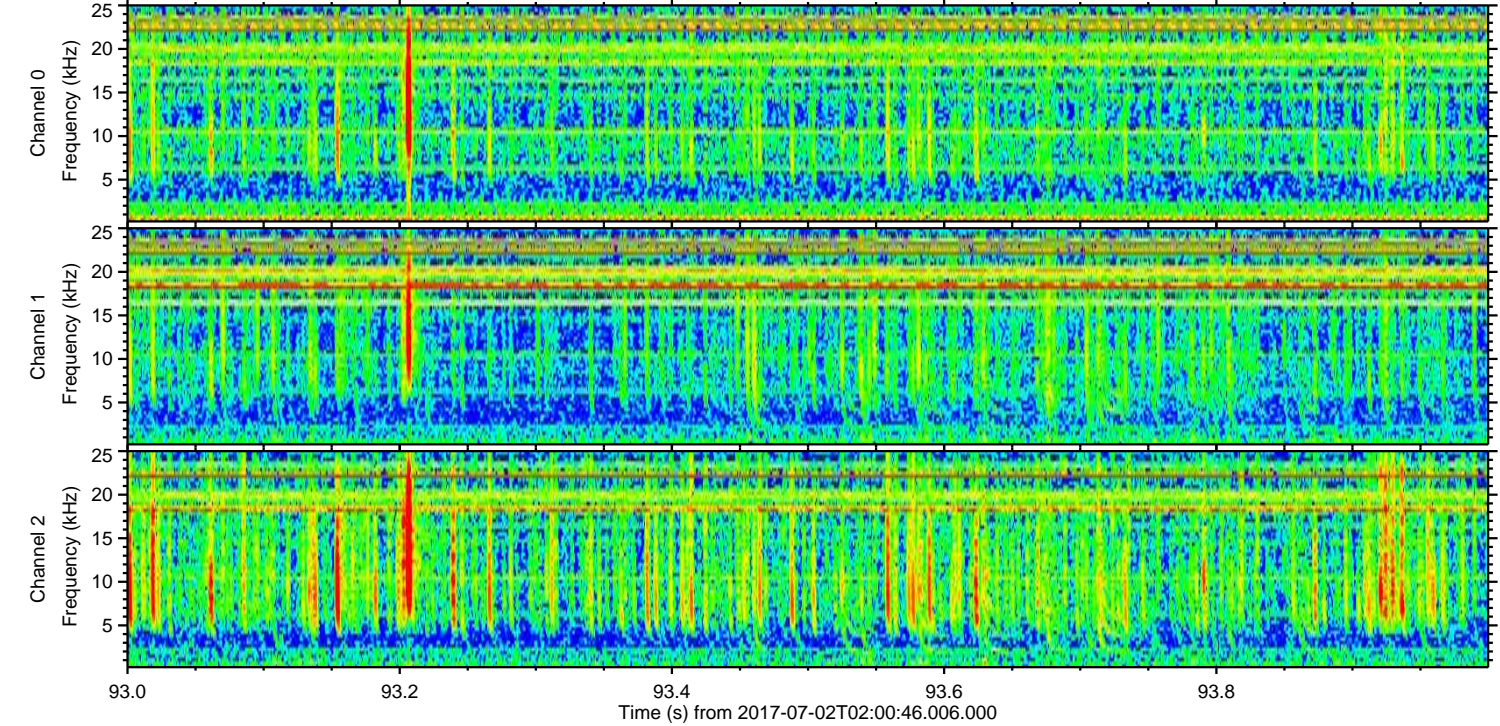
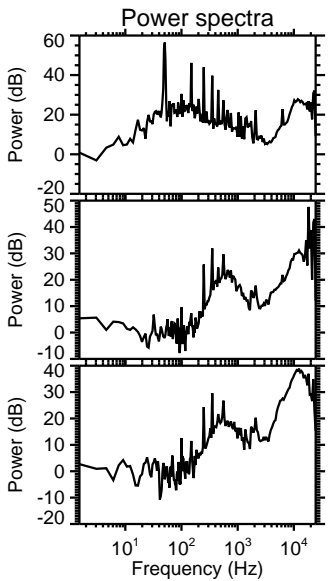
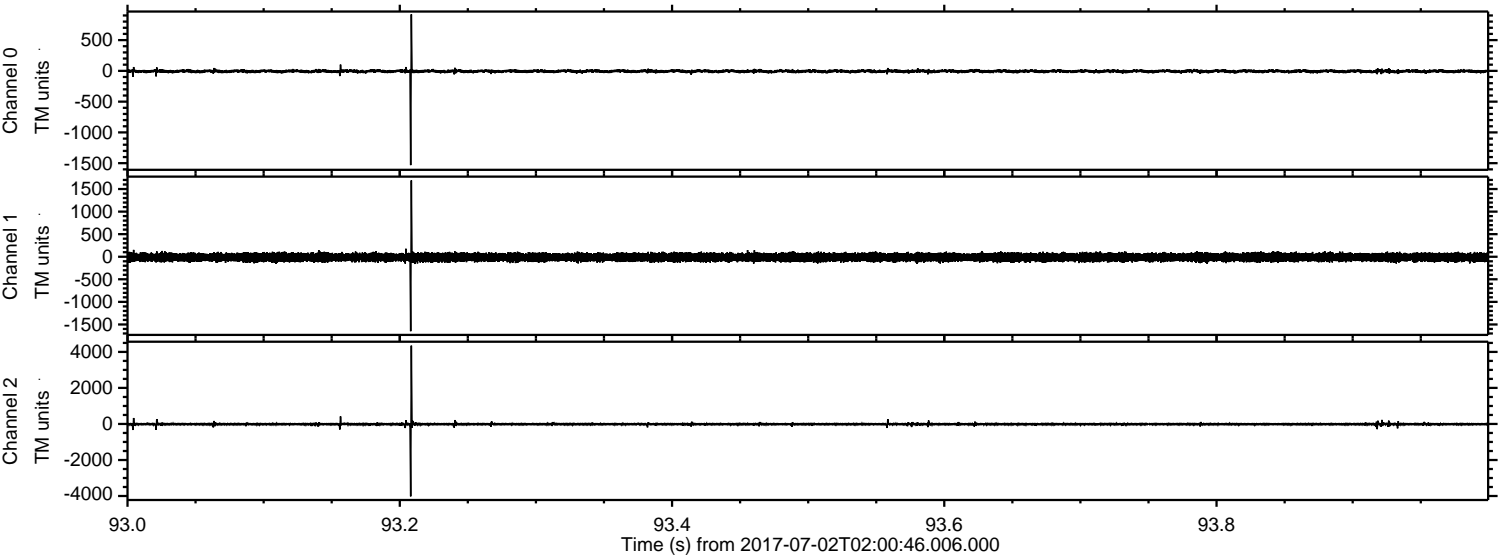
Processed Tue Jul 18 11:00:27 2017 by ELM ver.2012-10-06 from 001__elm20170702_020045__dat00.bin



Processed Tue Jul 18 11:00:36 2017 by ELM ver.2012-10-06 from 001__elm20170702_020045__dat00.bin



Processed Tue Jul 18 11:00:36 2017 by ELM ver.2012-10-06 from 001__elm20170702_020045__dat00.bin



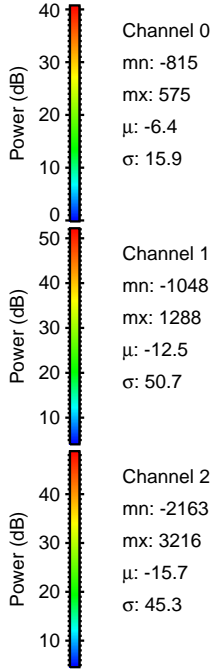
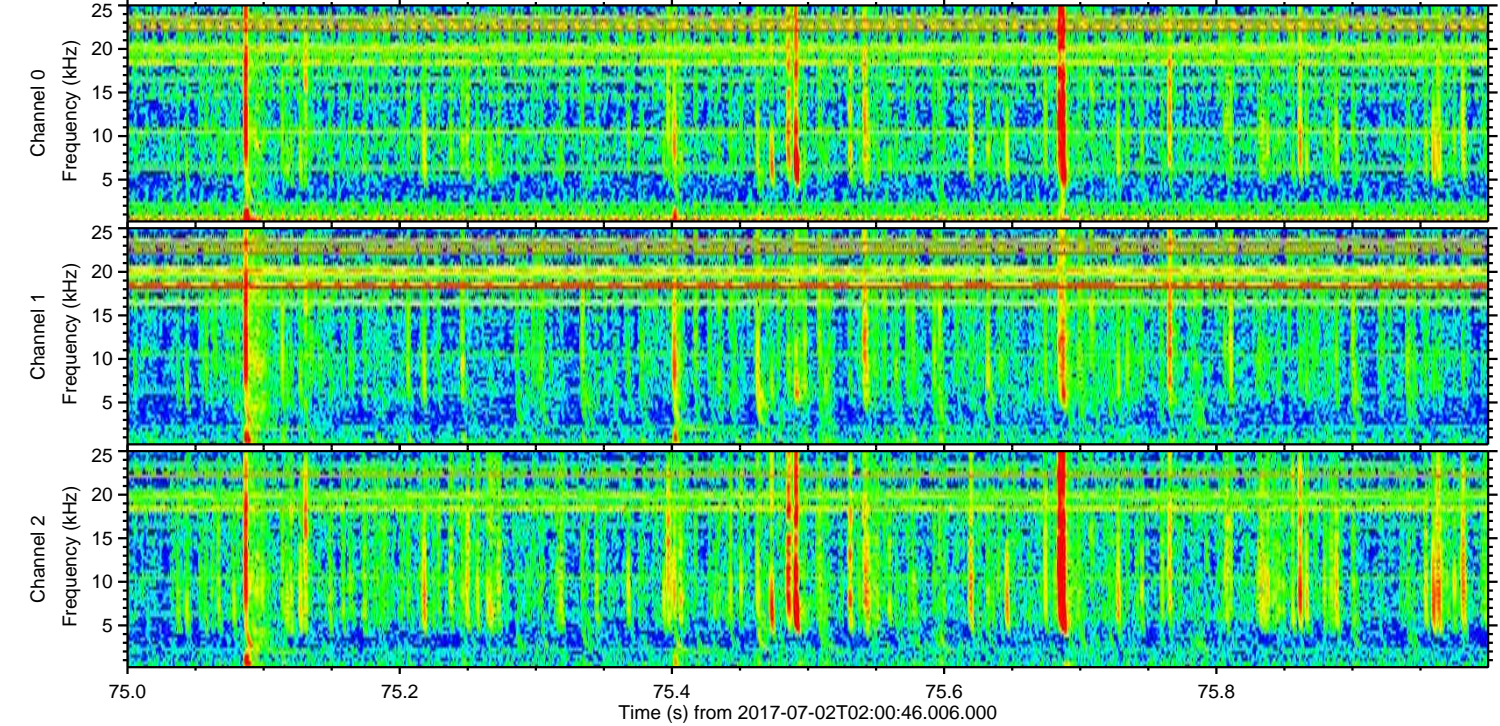
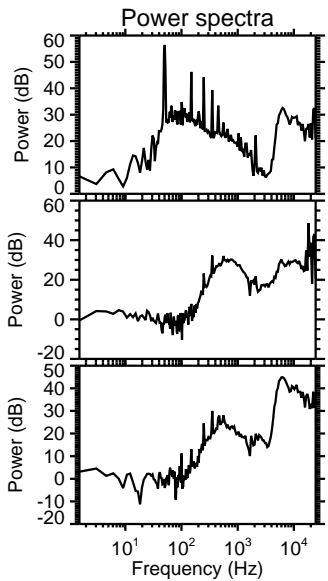
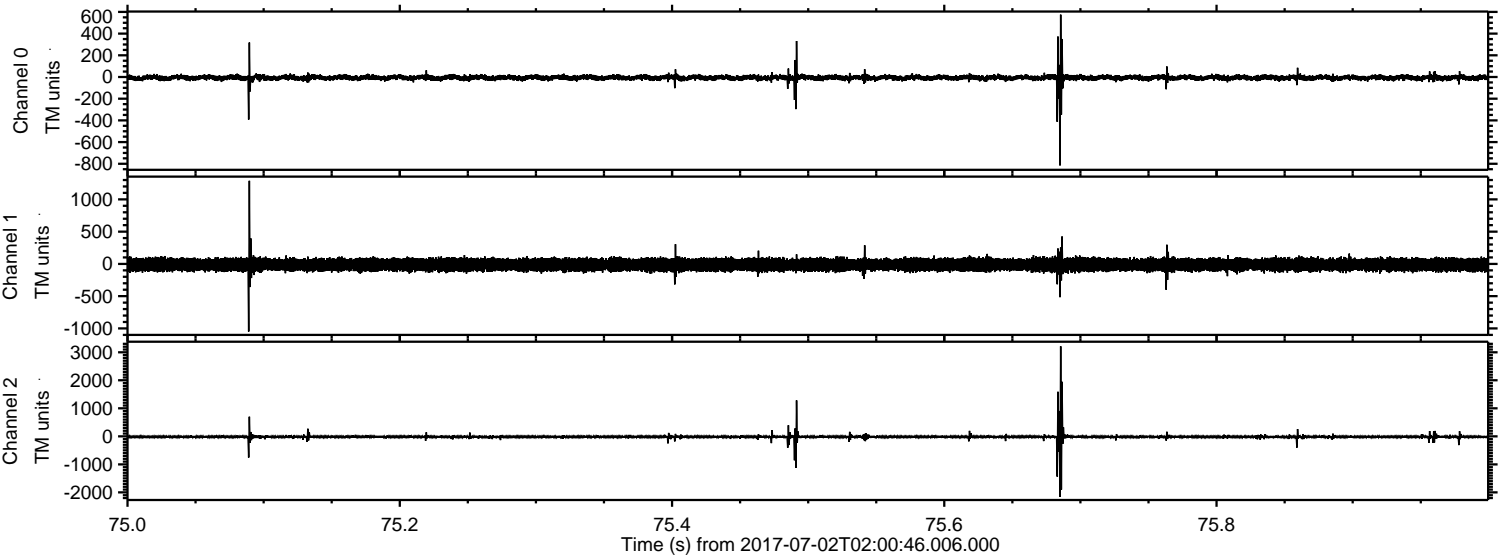
Channel 0
mn: -1531
mx: 918
 μ : -6.4
 σ : 15.3

Channel 1
mn: -1649
mx: 1690
 μ : -12.5
 σ : 47.2

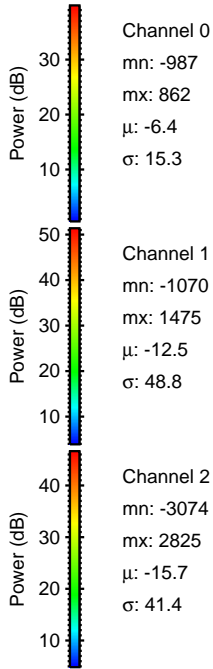
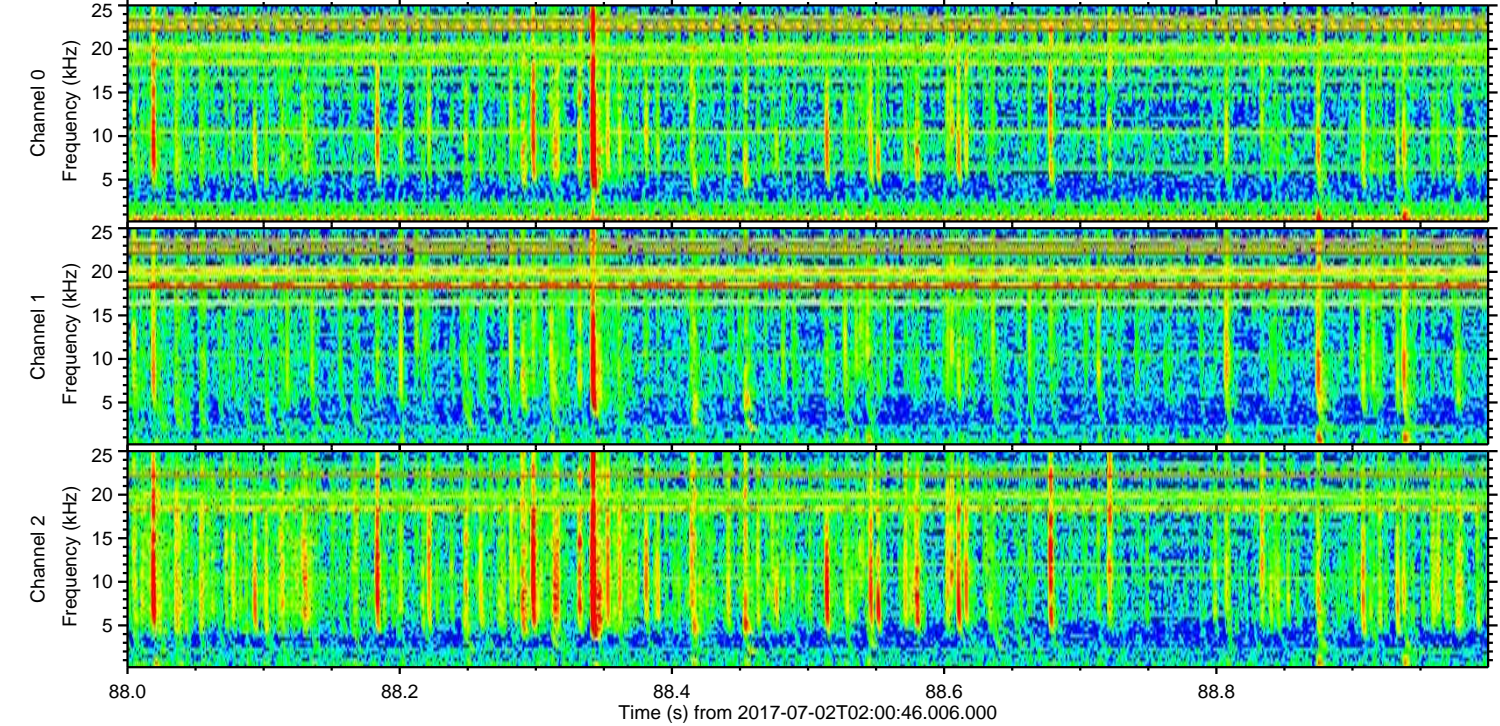
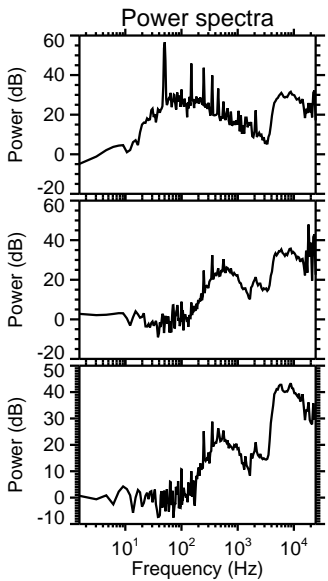
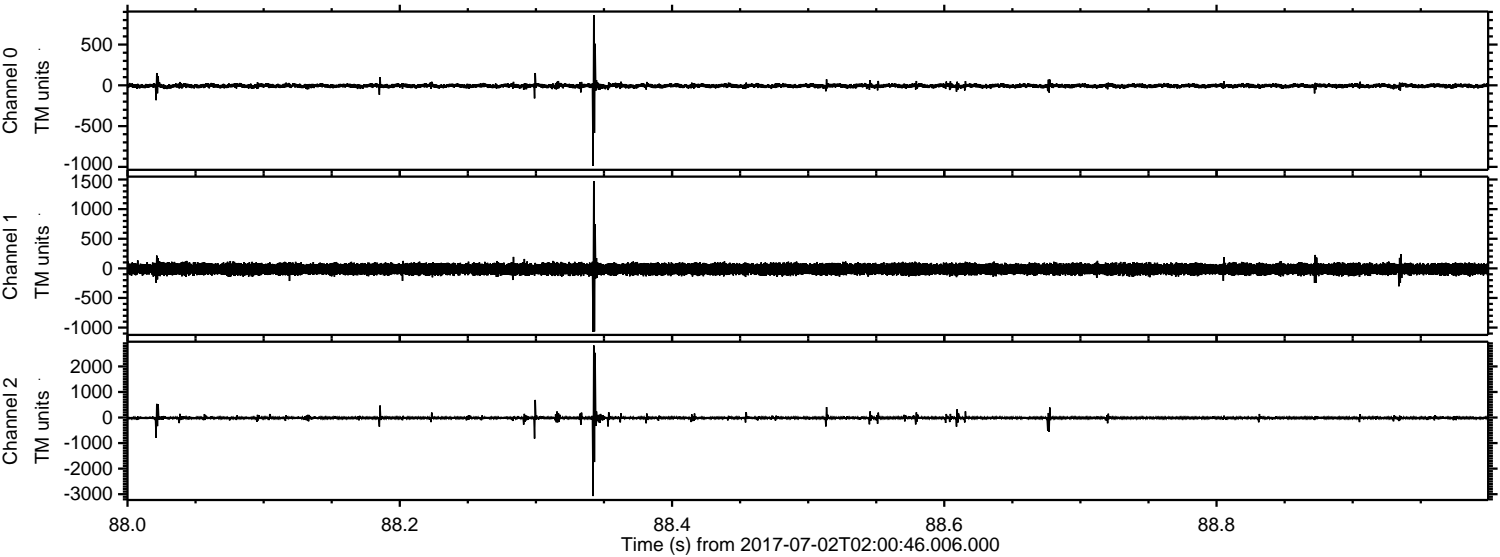
Channel 2
mn: -4020
mx: 4348
 μ : -15.7
 σ : 39.6

ELMAVAN 3D WAVEFORMS (Measured data sampled at 50 kHz) 51000 packets of 144 samples from 2017-07-02T02:00:46.006.000. Part 76/147

Processed Tue Jul 18 11:00:37 2017 by ELM ver.2012-10-06 from 001__elm20170702_020045__dat00.bin

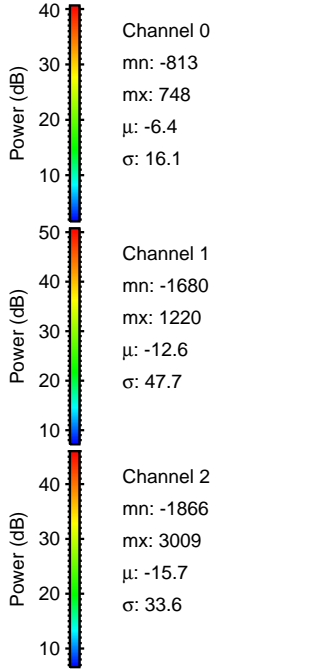
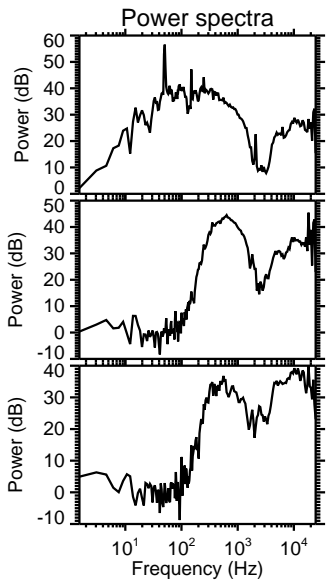
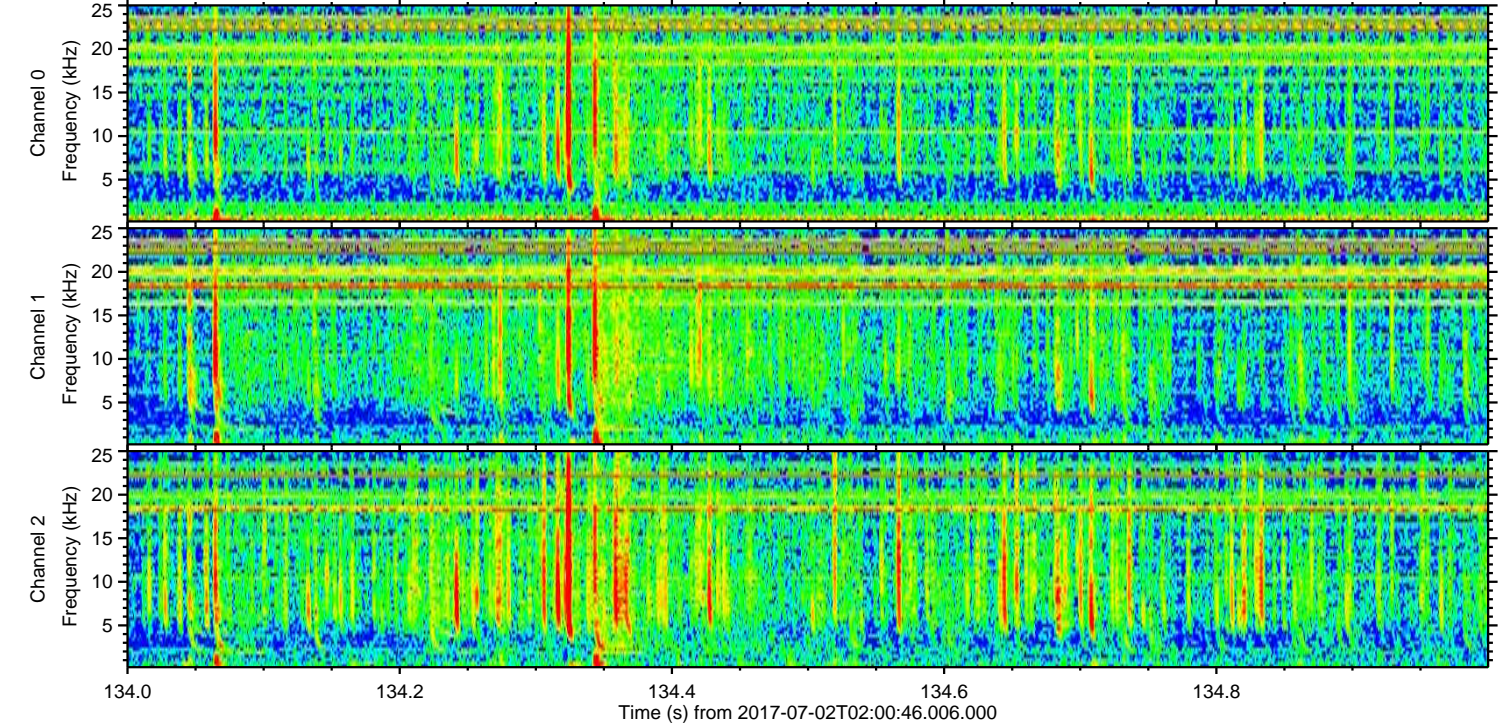
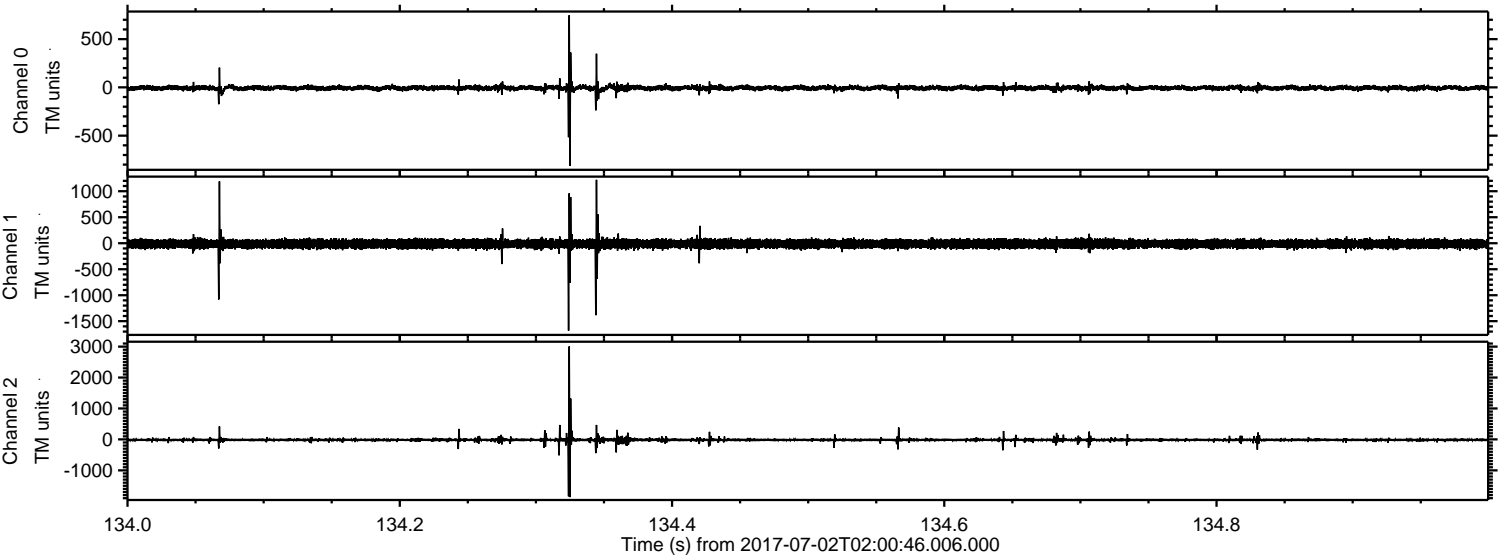


Processed Tue Jul 18 11:00:38 2017 by ELM ver.2012-10-06 from 001__elm20170702_020045__dat00.bin



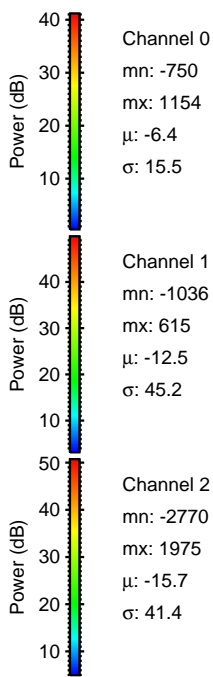
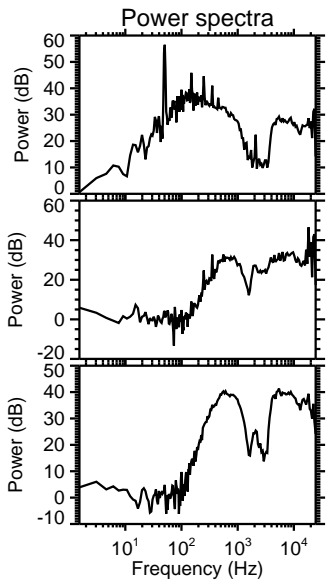
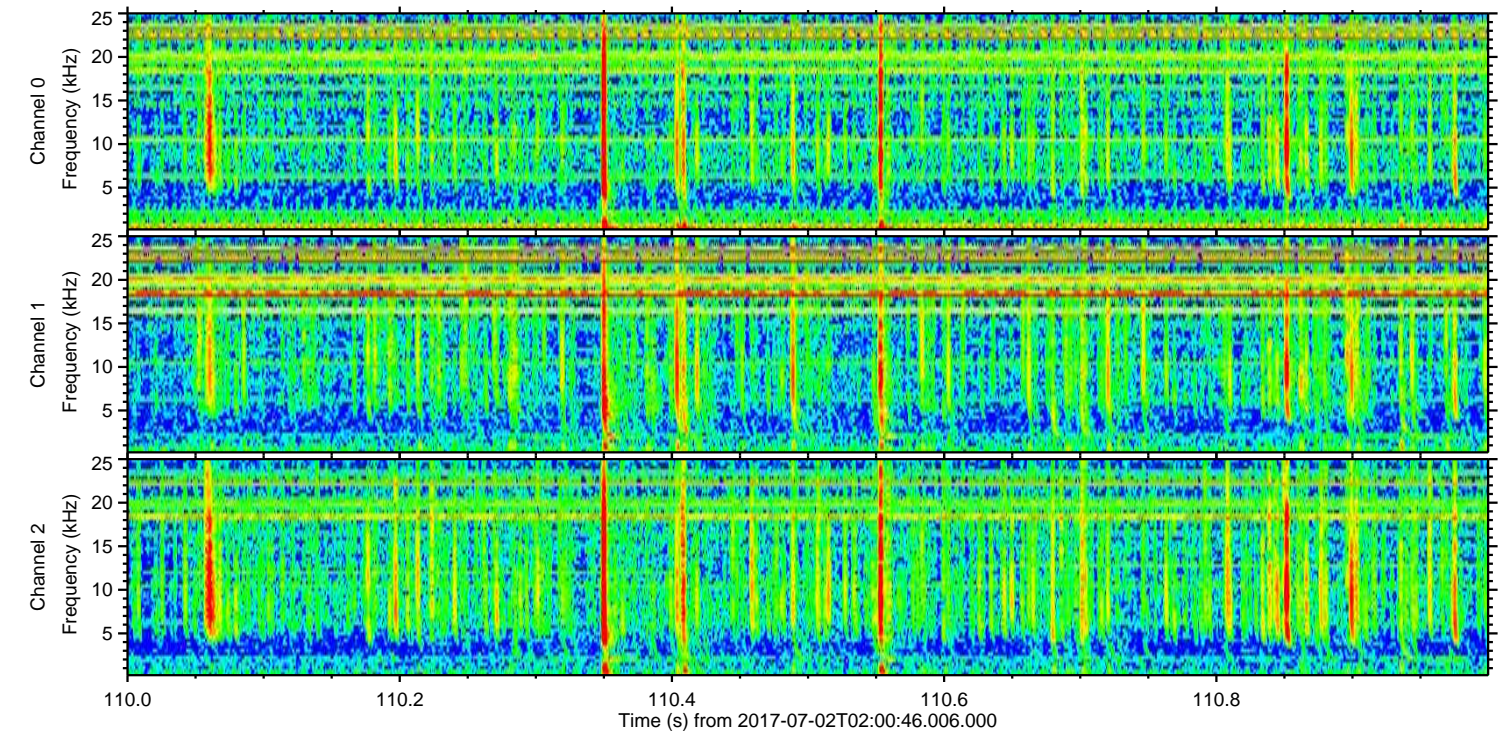
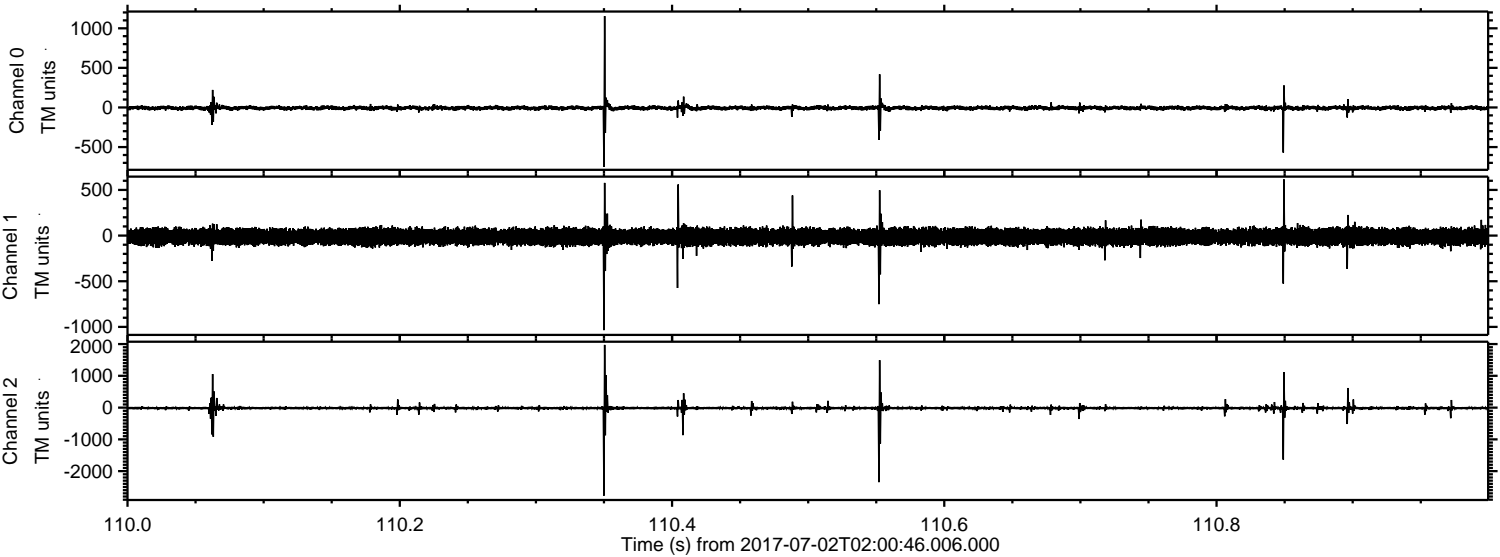
ELMAVAN 3D WAVEFORMS (Measured data sampled at 50 kHz) 51000 packets of 144 samples from 2017-07-02T02:00:46.006.000. Part 135/147

Processed Tue Jul 18 11:00:39 2017 by ELM ver.2012-10-06 from 001__elm20170702_020045__dat00.bin

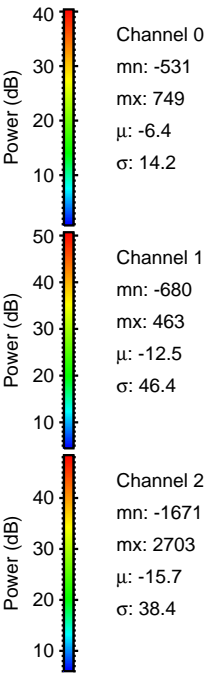
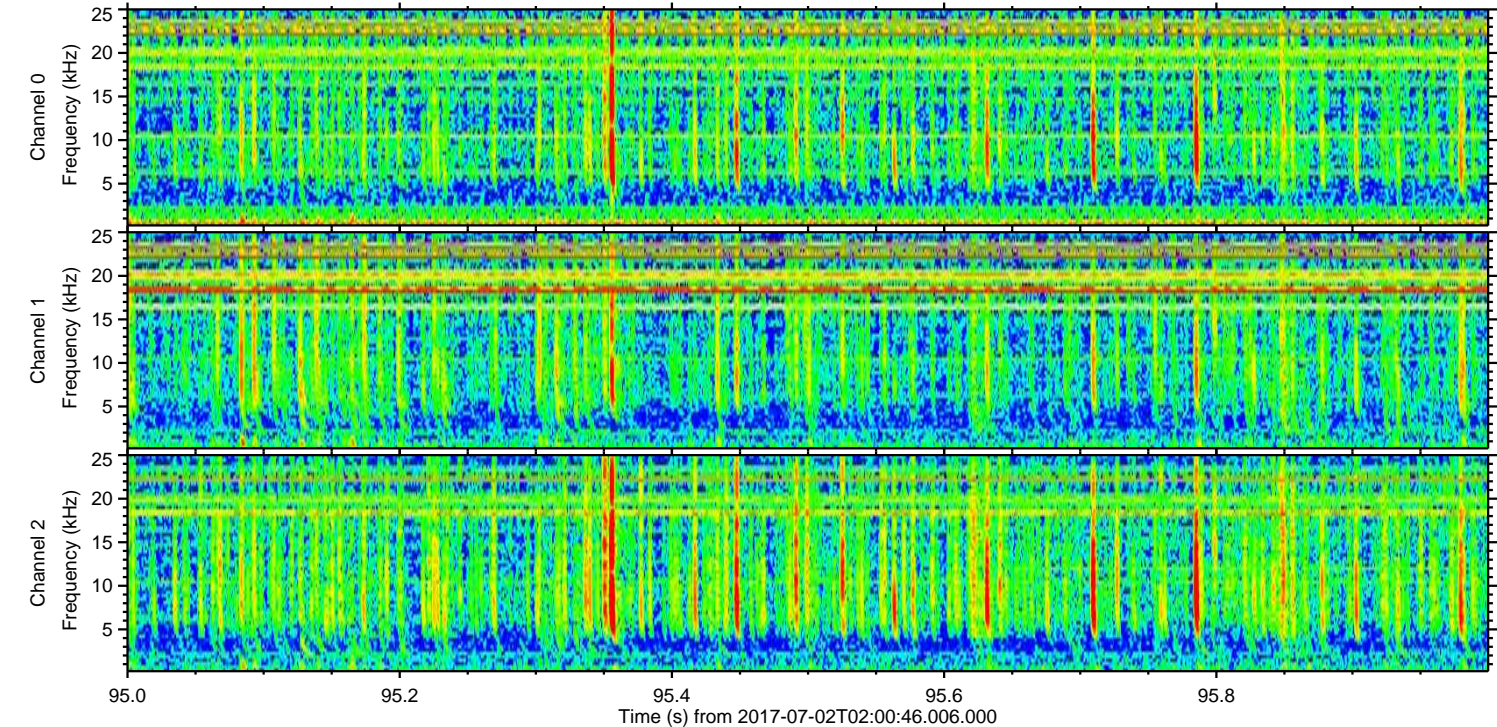
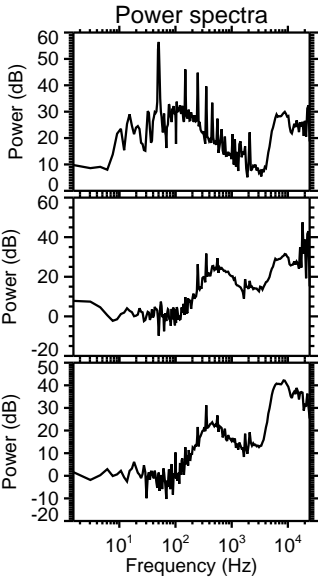
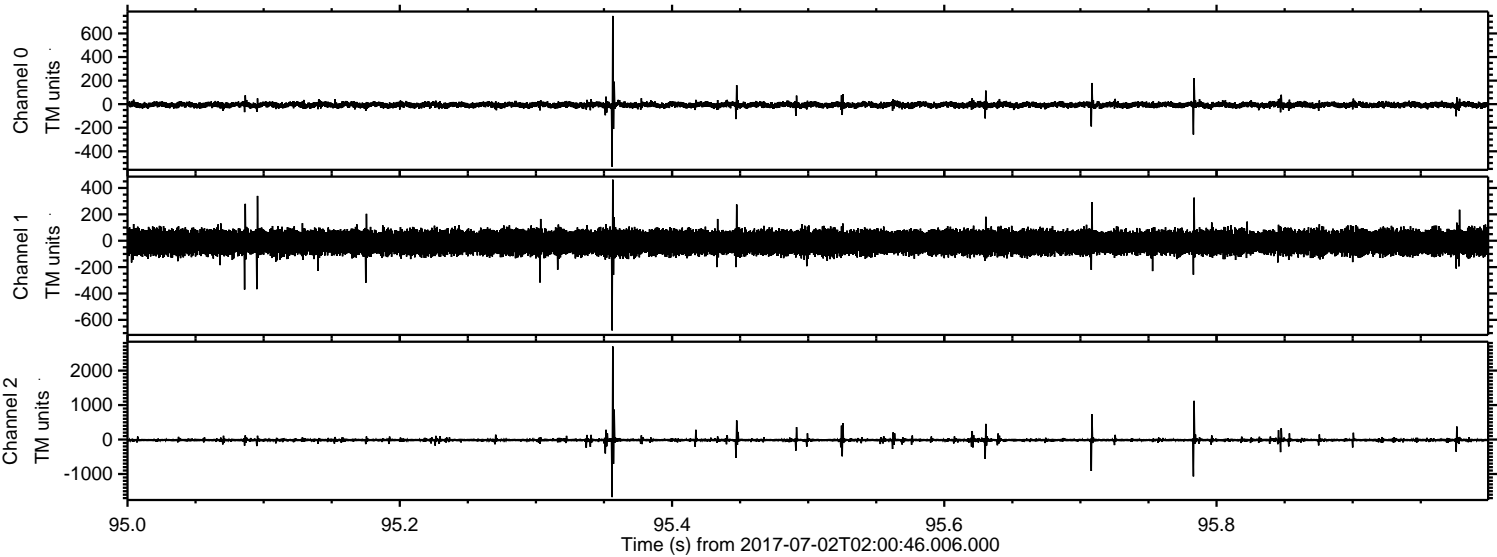


ELMAVAN 3D WAVEFORMS (Measured data sampled at 50 kHz) 51000 packets of 144 samples from 2017-07-02T02:00:46.006.000. Part 111/147

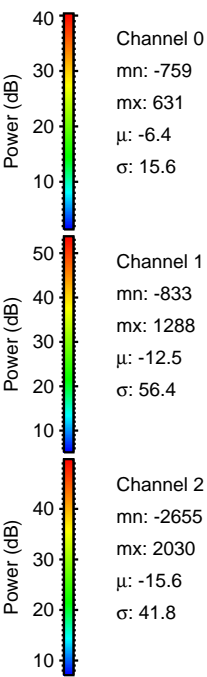
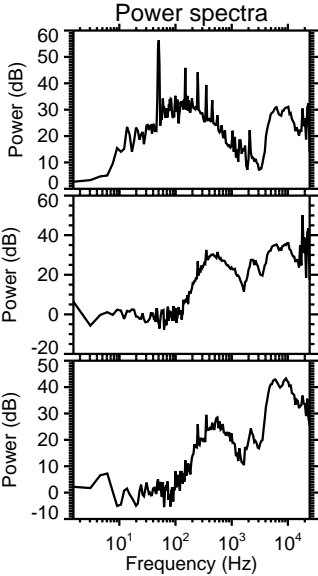
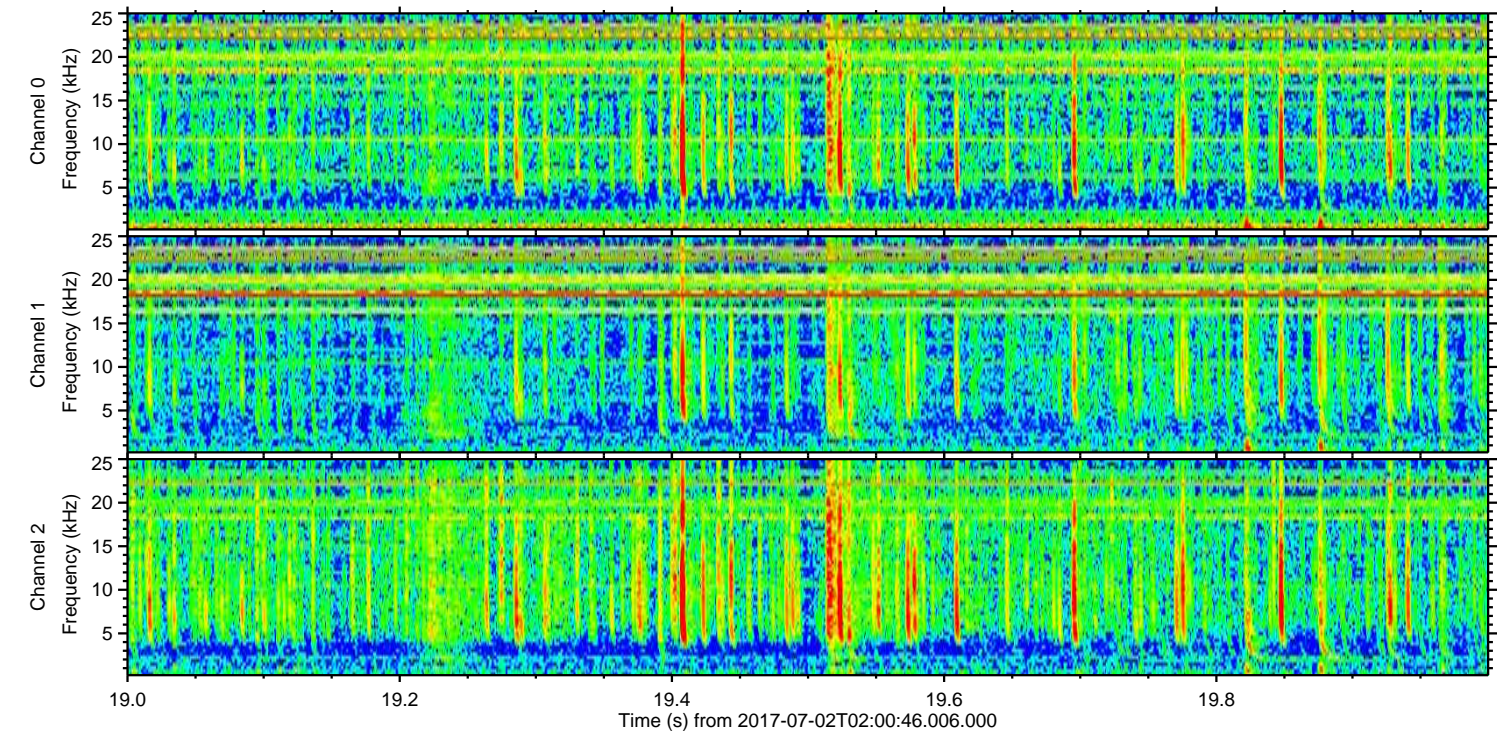
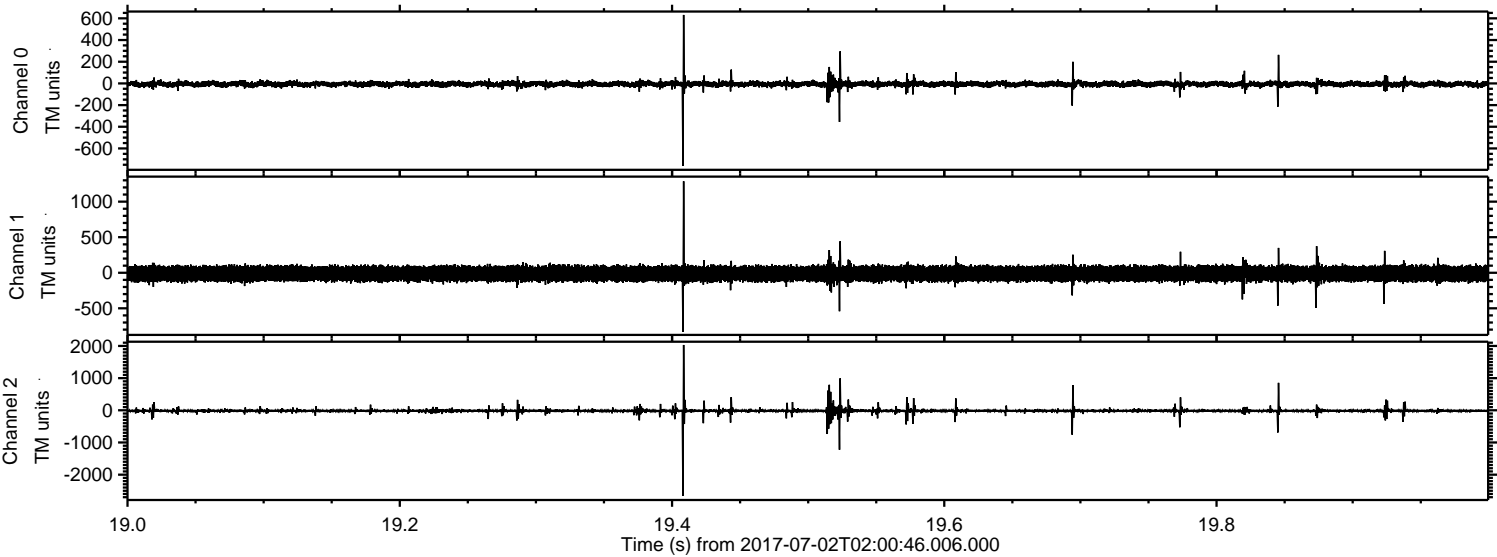
Processed Tue Jul 18 11:00:40 2017 by ELM ver.2012-10-06 from 001__elm20170702_020045__dat00.bin



Processed Tue Jul 18 11:00:41 2017 by ELM ver.2012-10-06 from 001__elm20170702_020045__dat00.bin



Processed Tue Jul 18 11:00:41 2017 by ELM ver.2012-10-06 from 001__elm20170702_020045__dat00.bin

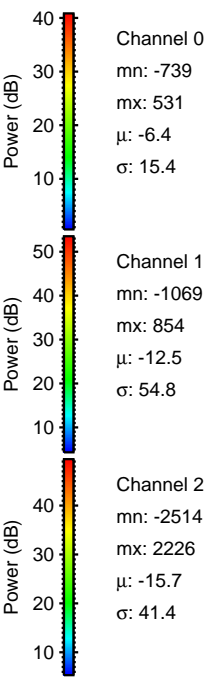
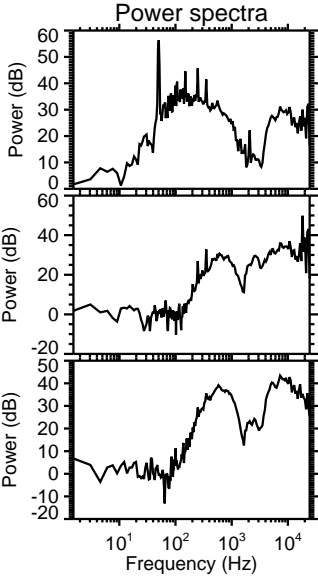
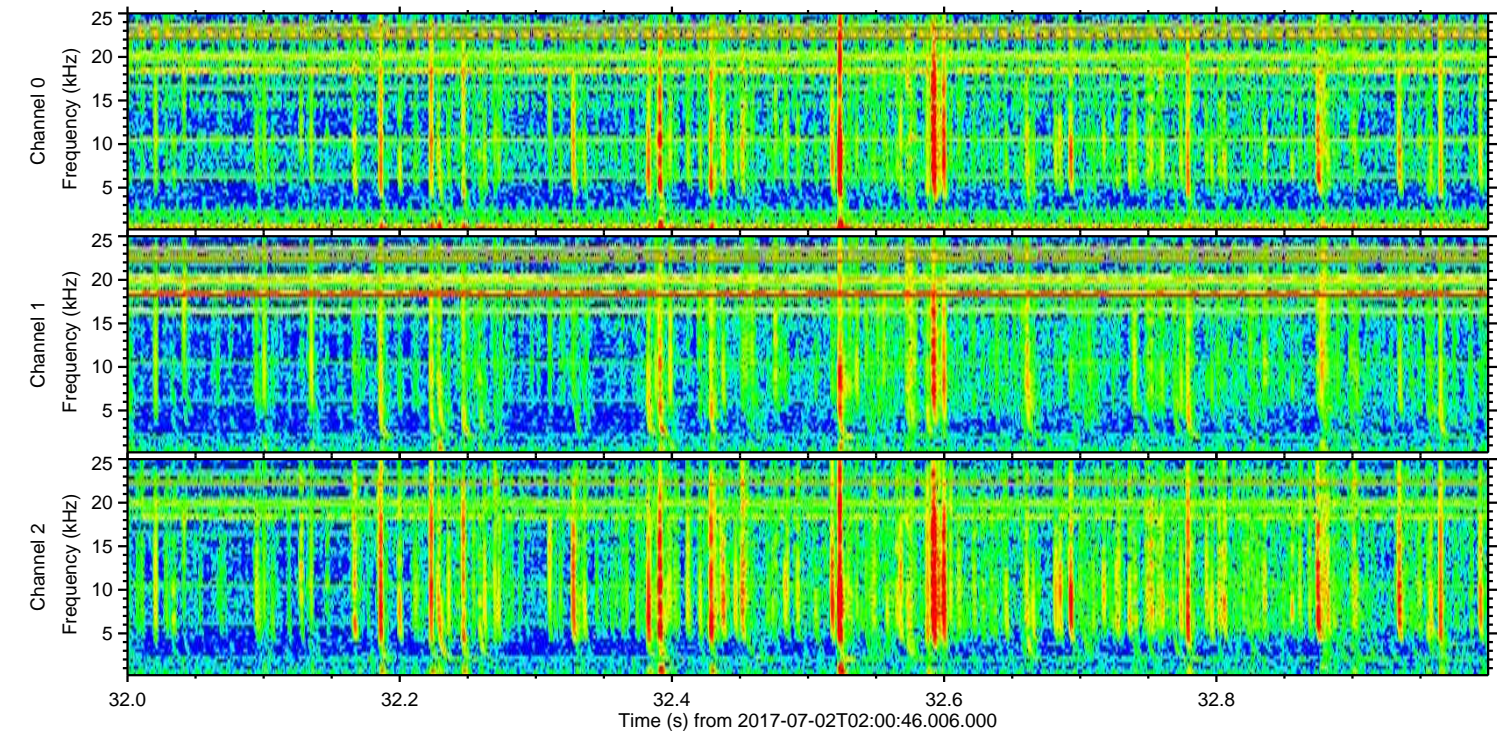
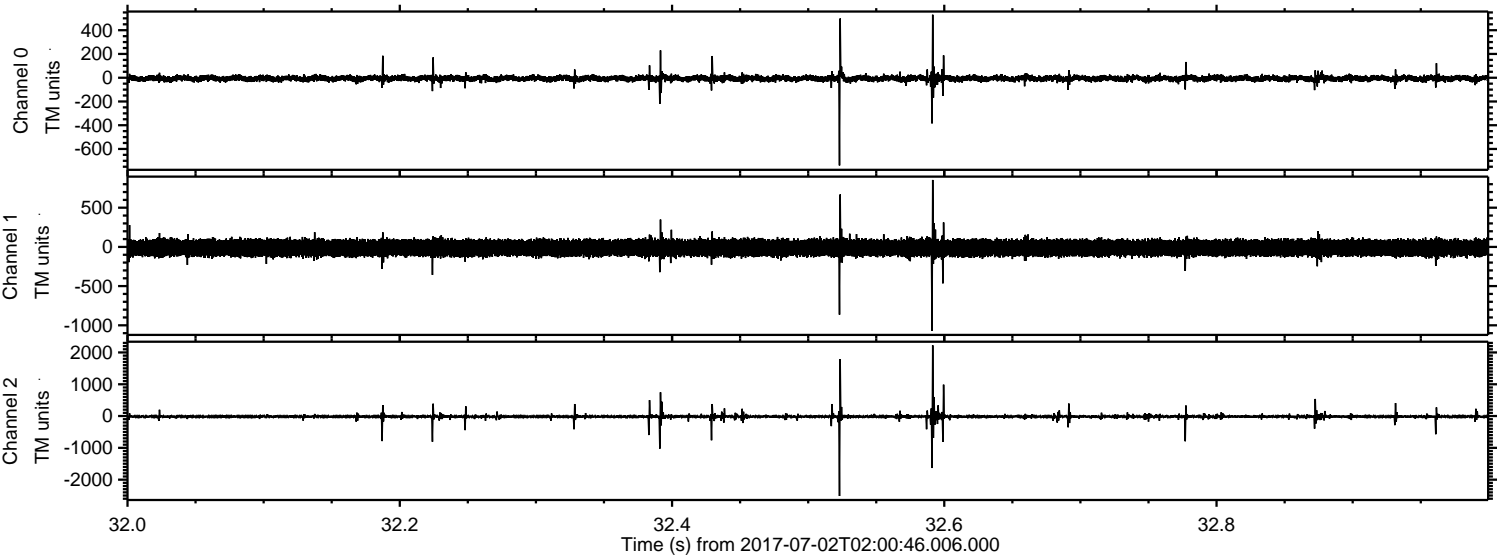


Channel 0
mn: -759
mx: 631
 μ : -6.4
 σ : 15.6

Channel 1
mn: -833
mx: 1288
 μ : -12.5
 σ : 56.4

Channel 2
mn: -2655
mx: 2030
 μ : -15.6
 σ : 41.8

Processed Tue Jul 18 11:00:42 2017 by ELM ver.2012-10-06 from 001__elm20170702_020045__dat00.bin



Processed Tue Jul 18 11:00:43 2017 by ELM ver.2012-10-06 from 001__elm20170702_020045__dat00.bin

