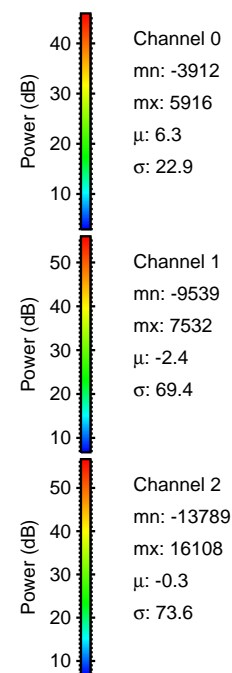
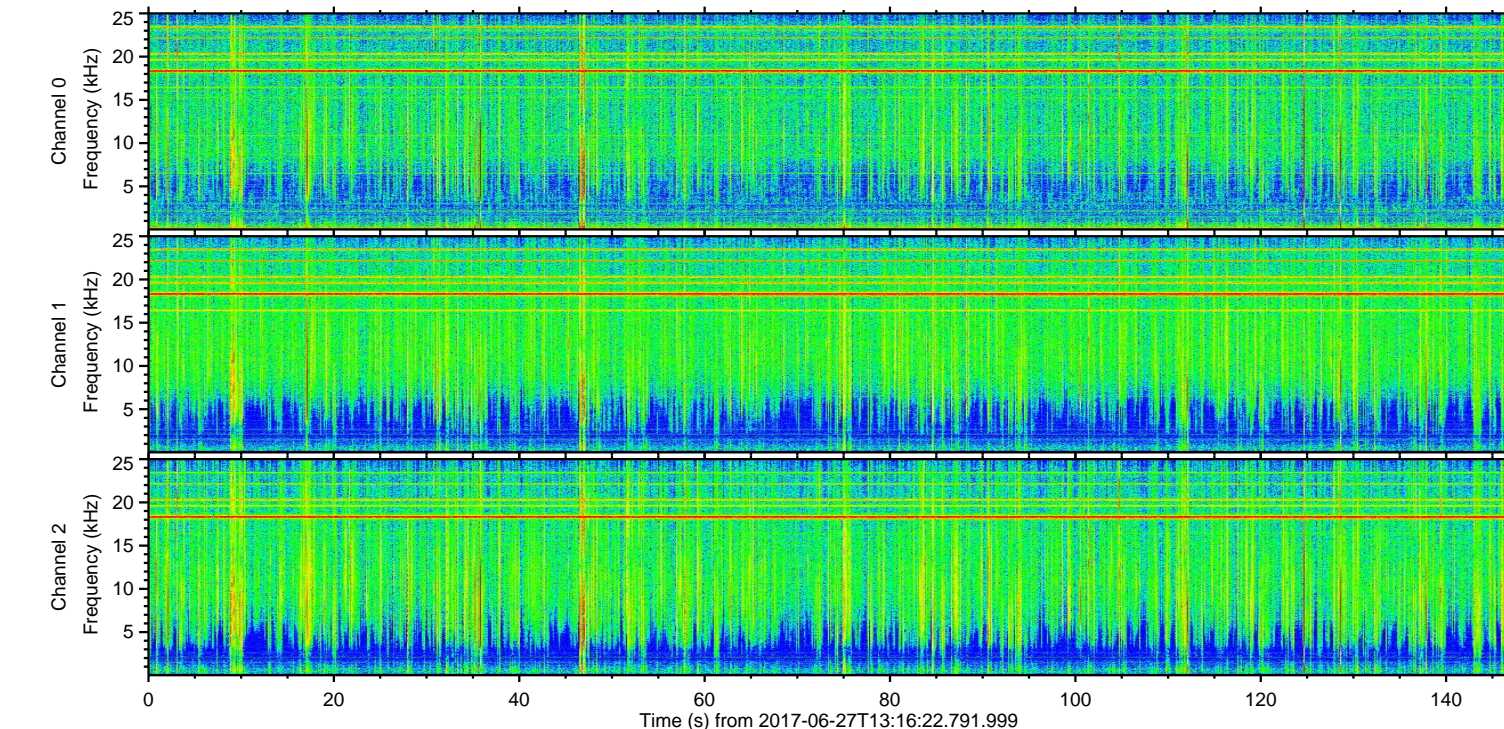
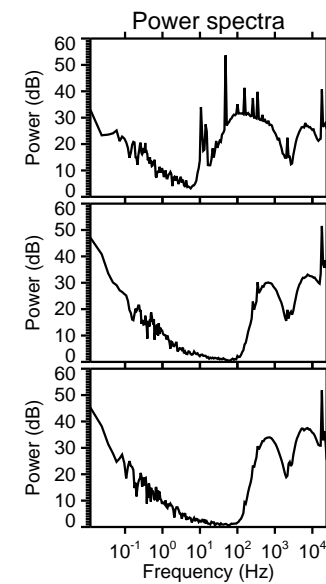
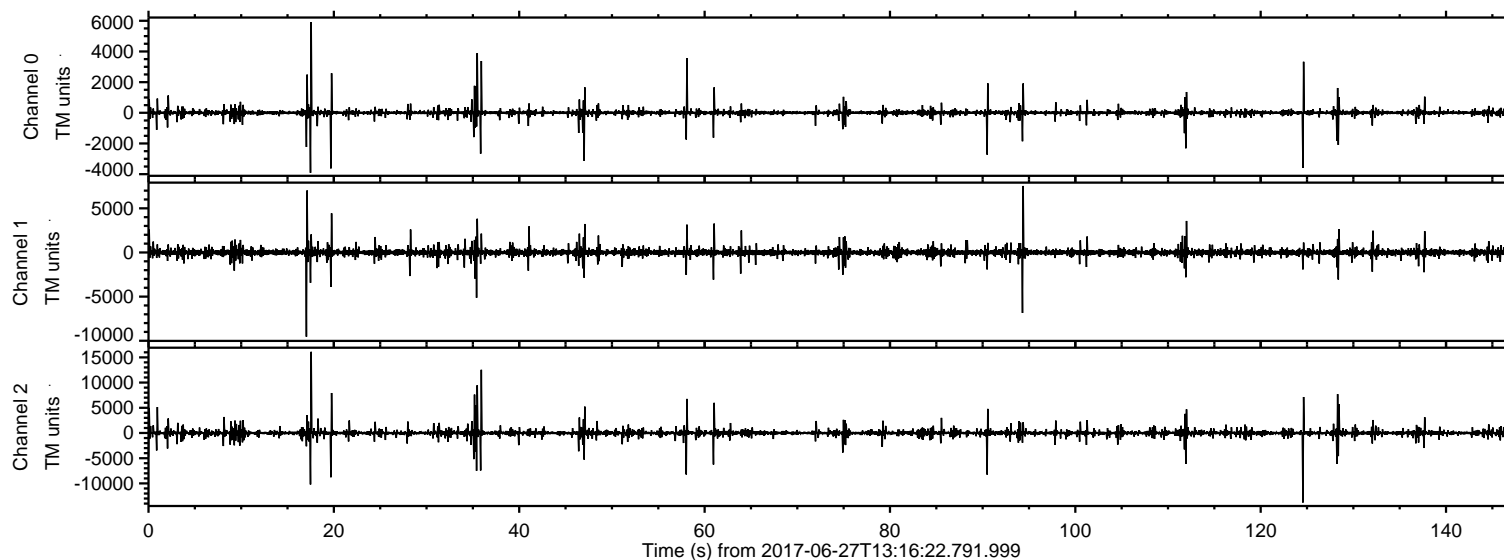


# ELMAVAN 3D WAVEFORMS (Measured data sampled at 50 kHz) 51000 packets of 144 samples from 2017-06-27T13:16:22.791.999.

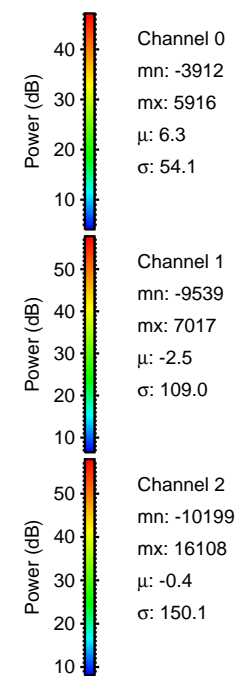
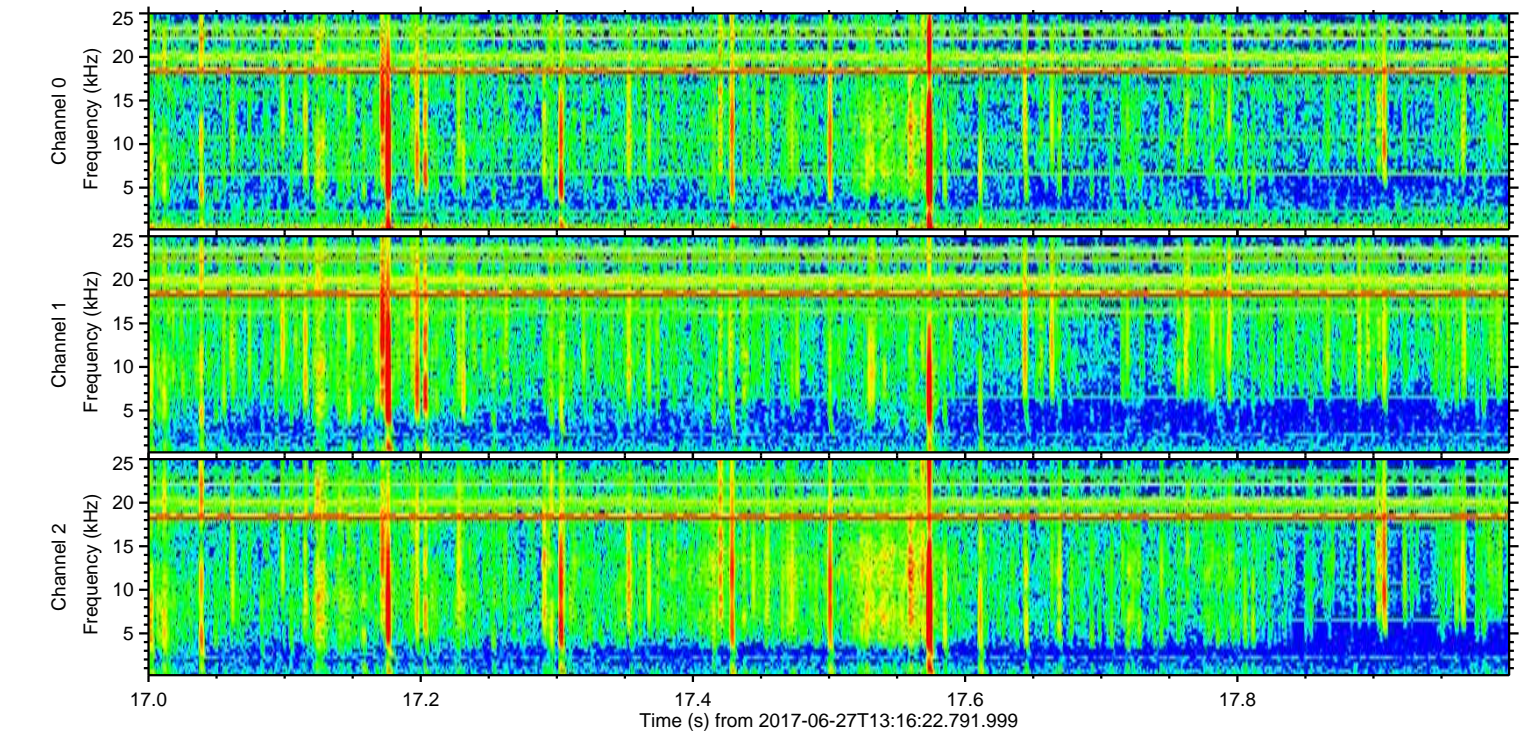
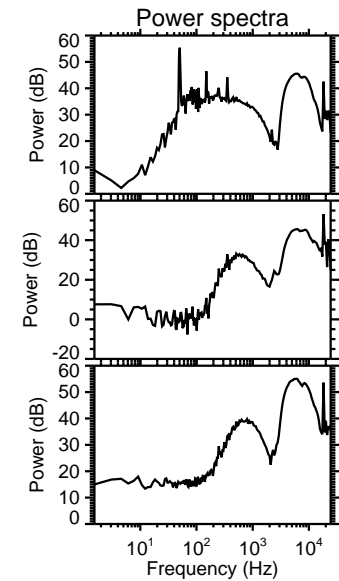
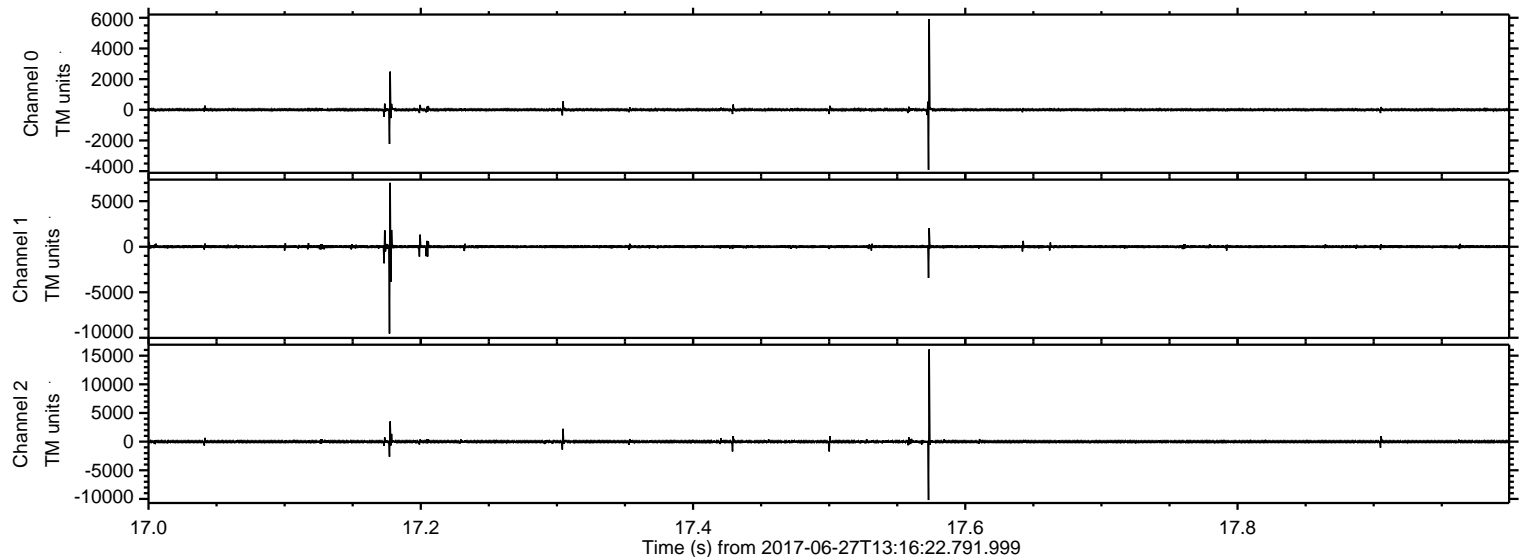
Processed Tue Jun 27 15:24:17 2017 by ELM ver.2012-10-06 from 001\_\_elm20170627\_131621\_\_dat00.bin





ELMAVAN 3D WAVEFORMS (Measured data sampled at 50 kHz) 51000 packets of 144 samples from 2017-06-27T13:16:22.791.999. Part 18/147

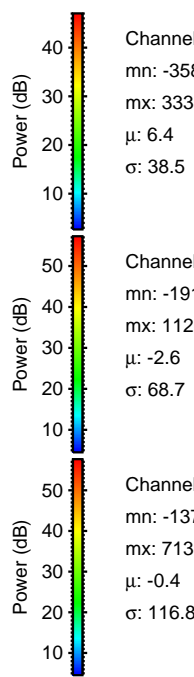
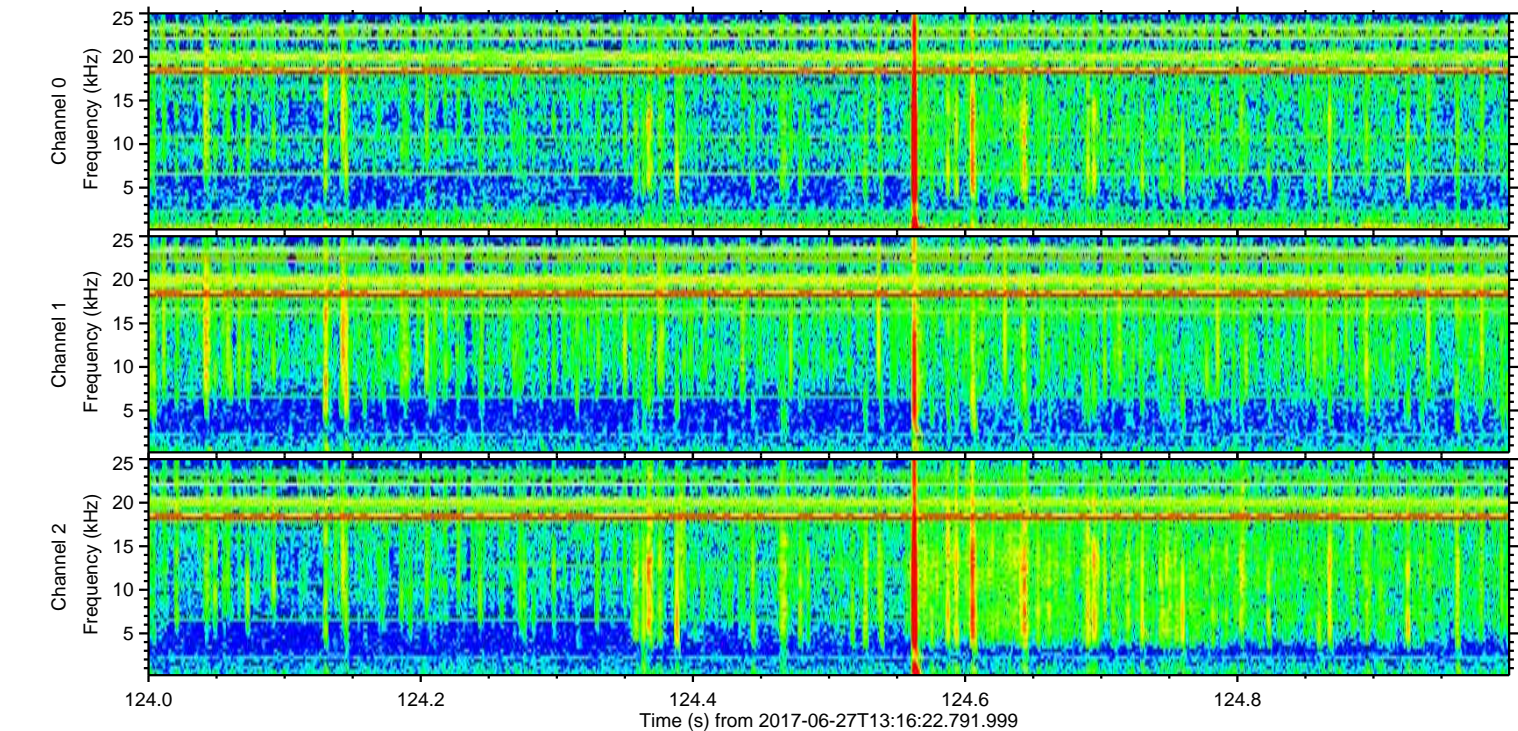
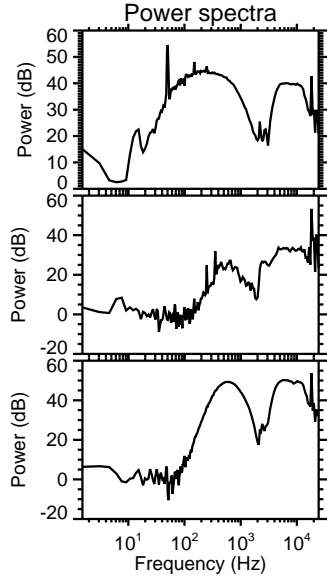
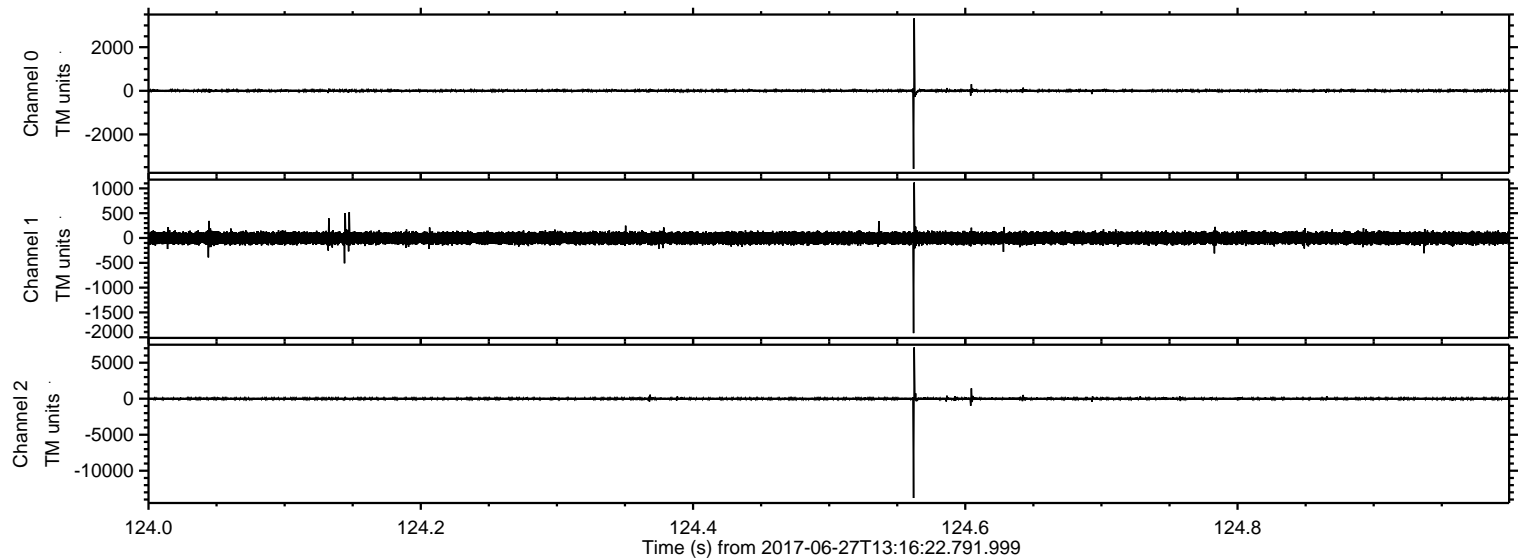
Processed Tue Jun 27 15:24:23 2017 by ELM ver.2012-10-06 from 001\_\_elm20170627\_131621\_\_dat00.bin





ELMAVAN 3D WAVEFORMS (Measured data sampled at 50 kHz) 51000 packets of 144 samples from 2017-06-27T13:16:22.791.999. Part 125/147

Processed Tue Jun 27 15:24:24 2017 by ELM ver.2012-10-06 from 001\_\_elm20170627\_131621\_\_dat00.bin



Channel 0  
mn: -3580  
mx: 3331  
 $\mu$ : 6.4  
 $\sigma$ : 38.5

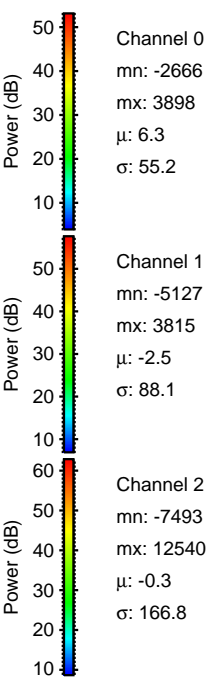
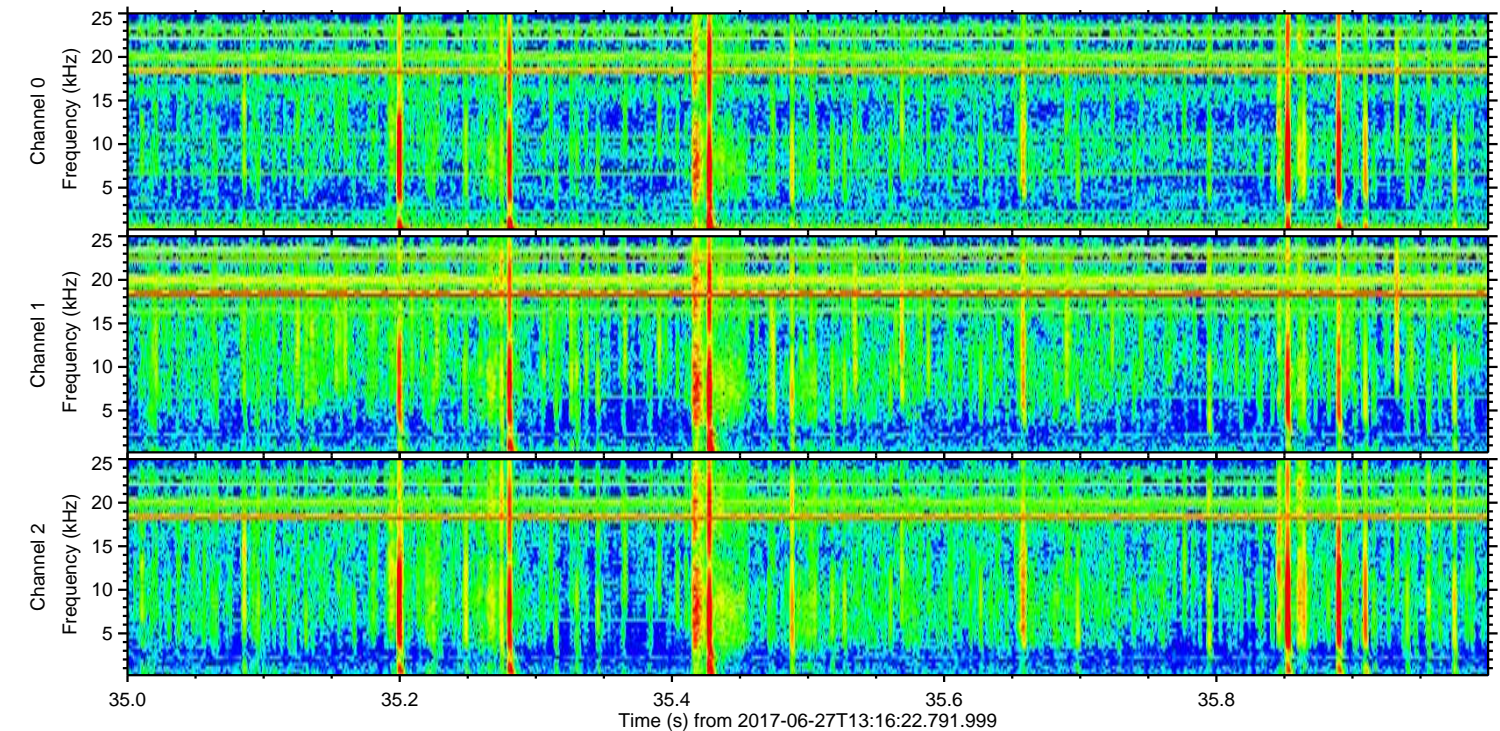
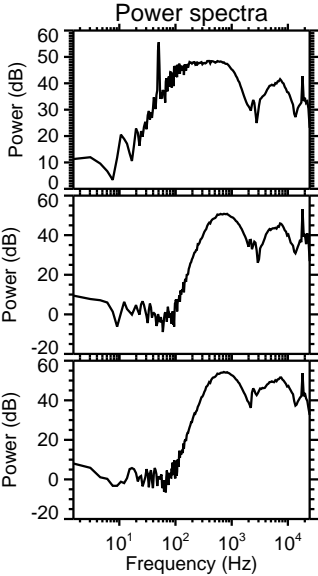
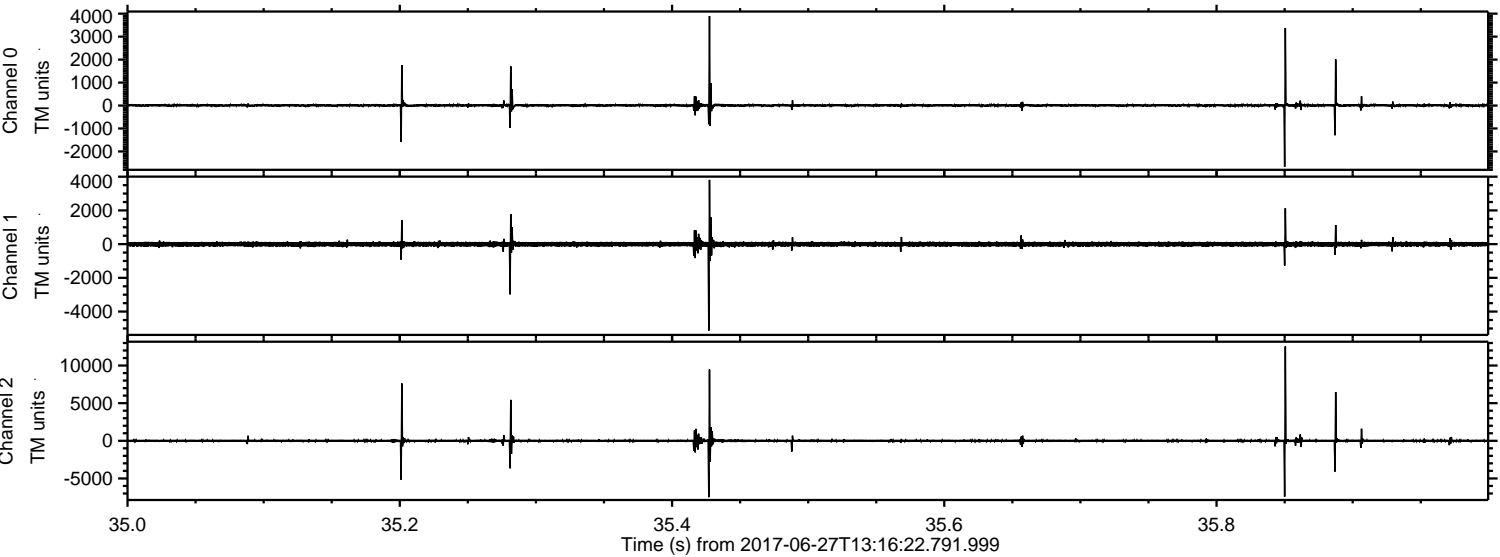
Channel 1  
mn: -1917  
mx: 1120  
 $\mu$ : -2.6  
 $\sigma$ : 68.7

Channel 2  
mn: -13789  
mx: 7139  
 $\mu$ : -0.4  
 $\sigma$ : 116.8



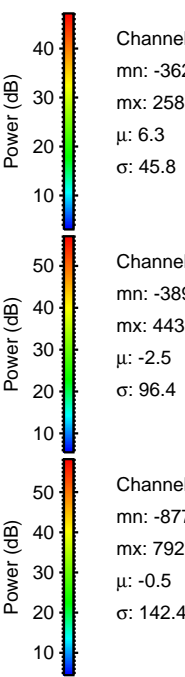
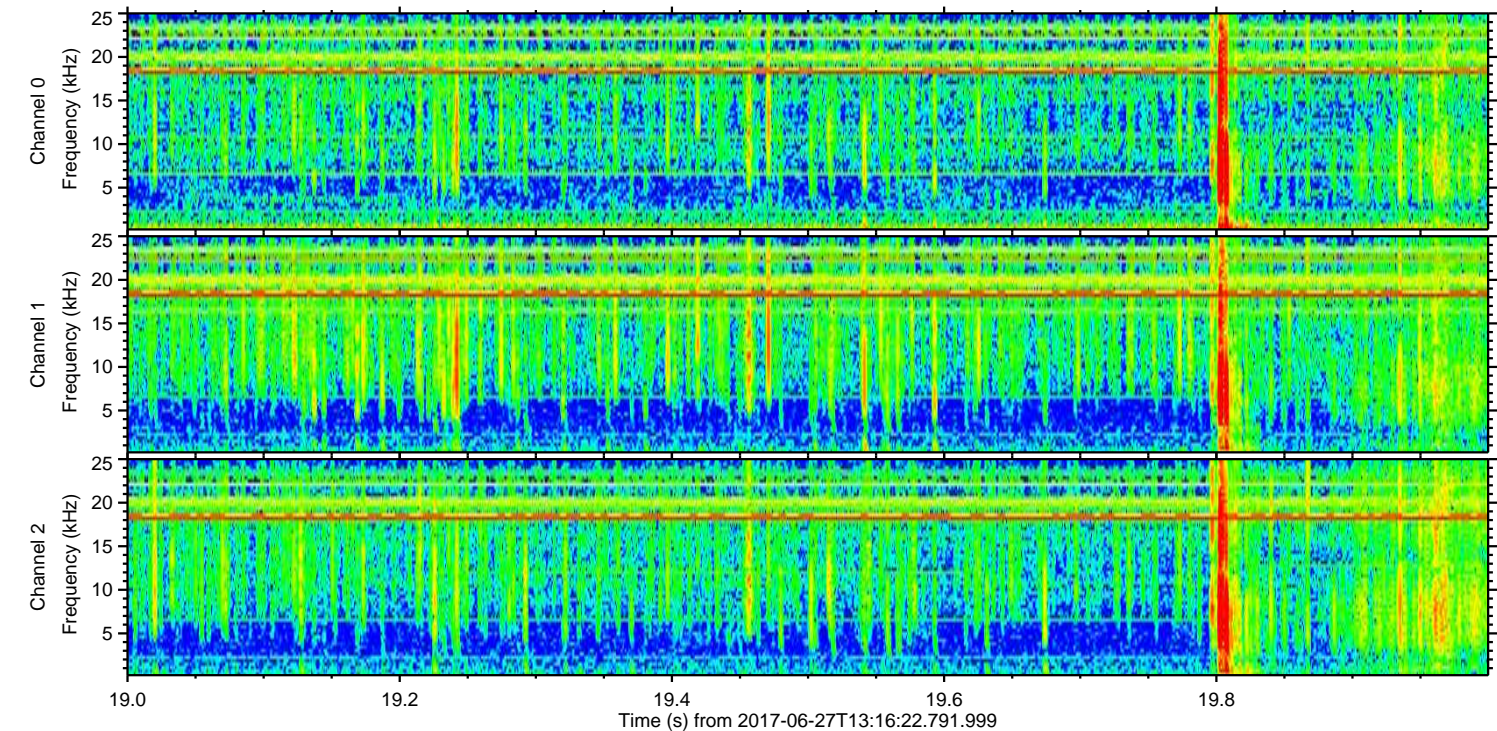
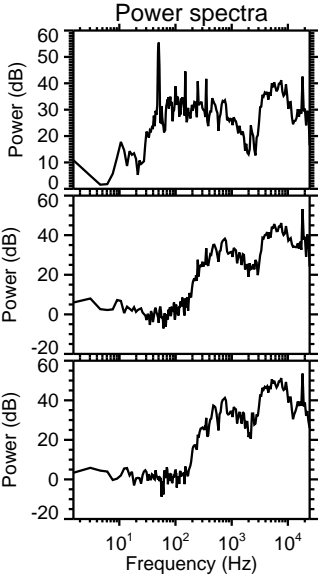
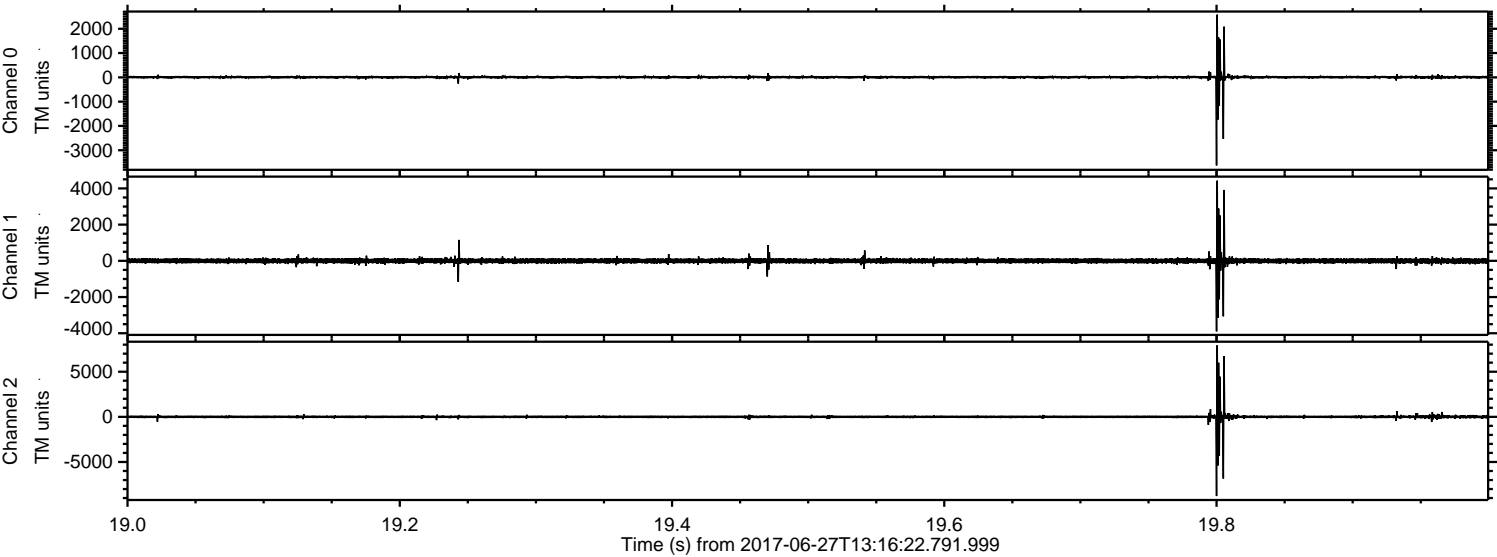
ELMAVAN 3D WAVEFORMS (Measured data sampled at 50 kHz) 51000 packets of 144 samples from 2017-06-27T13:16:22.791.999. Part 36/147

Processed Tue Jun 27 15:24:25 2017 by ELM ver.2012-10-06 from 001\_\_elm20170627\_131621\_\_dat00.bin





Processed Tue Jun 27 15:24:26 2017 by ELM ver.2012-10-06 from 001\_\_elm20170627\_131621\_\_dat00.bin



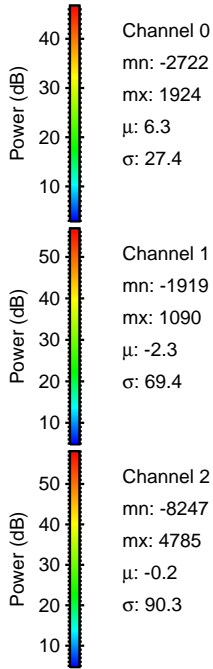
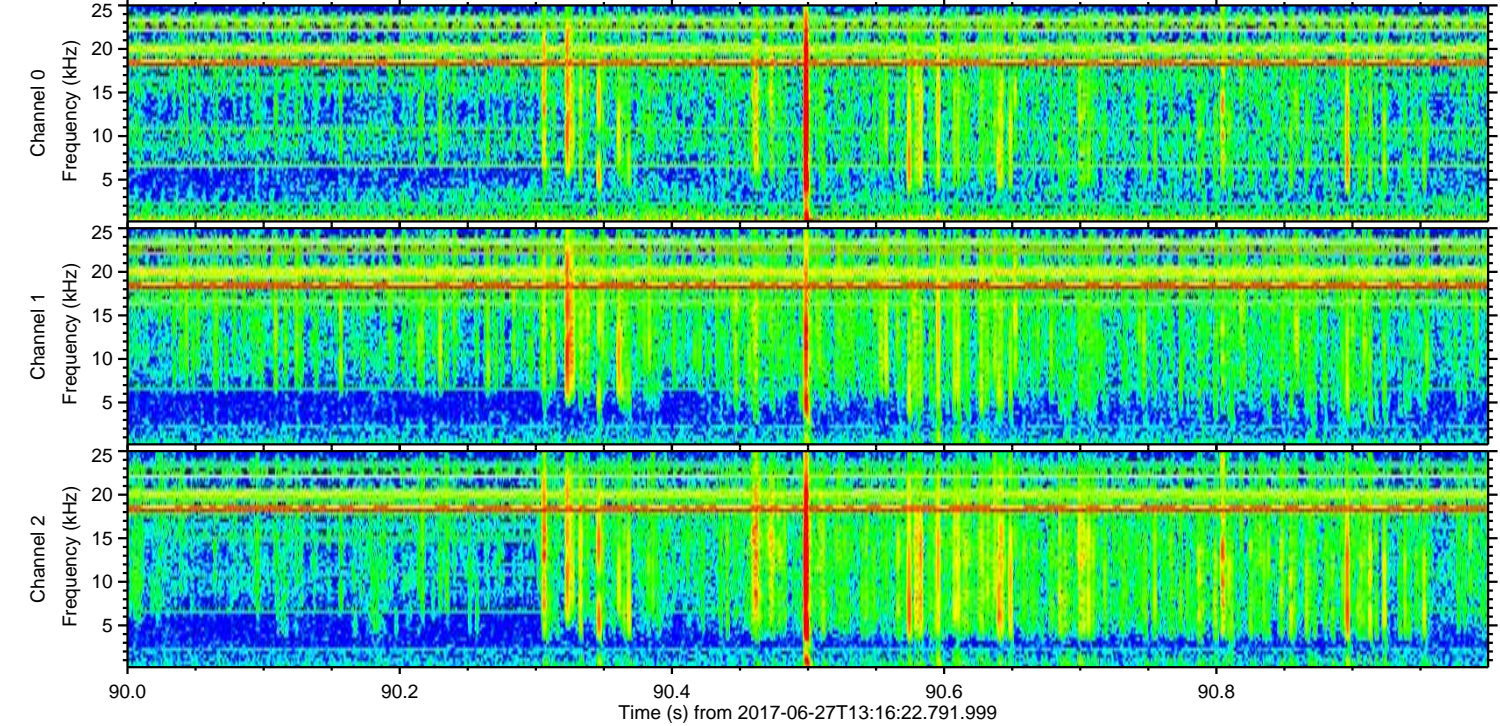
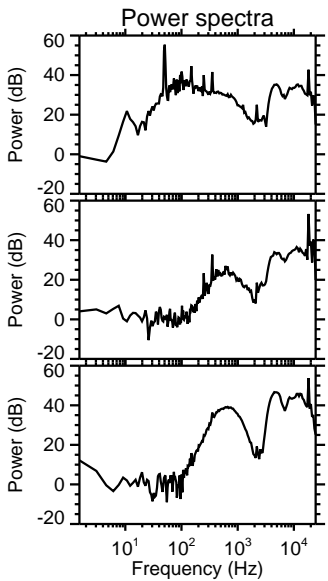
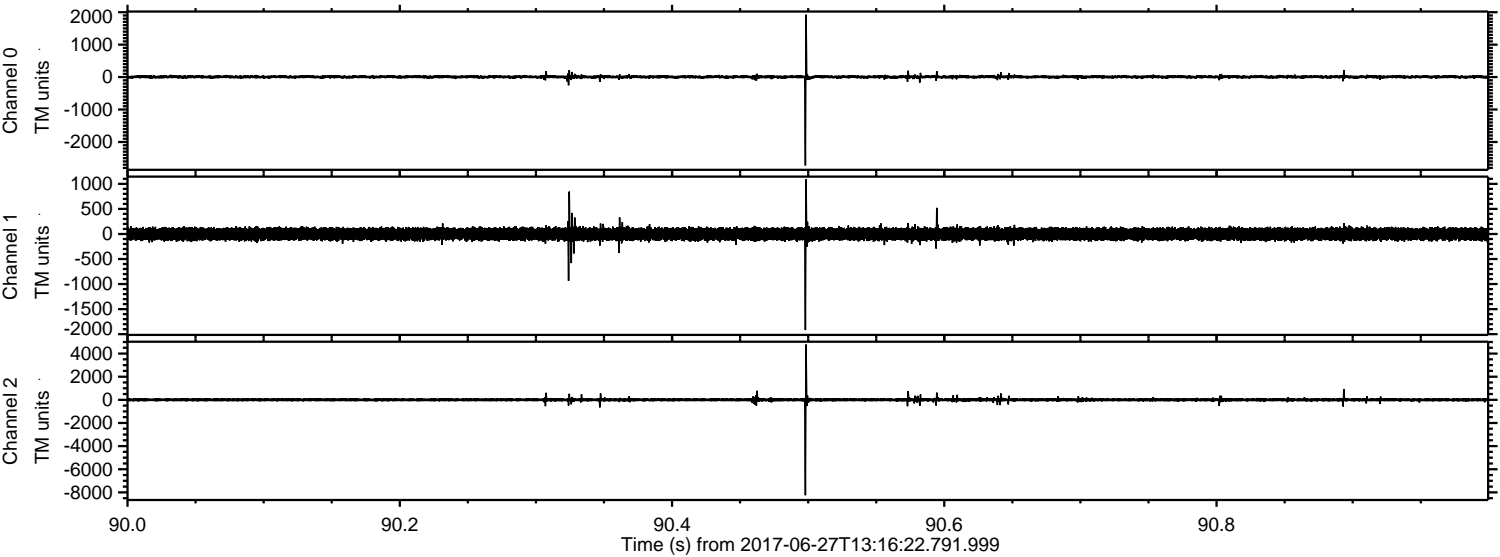
Channel 0  
mn: -3626  
mx: 2581  
 $\mu$ : 6.3  
 $\sigma$ : 45.8

Channel 1  
mn: -3896  
mx: 4430  
 $\mu$ : -2.5  
 $\sigma$ : 96.4

Channel 2  
mn: -8775  
mx: 7927  
 $\mu$ : -0.5  
 $\sigma$ : 142.4



Processed Tue Jun 27 15:24:26 2017 by ELM ver.2012-10-06 from 001\_\_elm20170627\_131621\_\_dat00.bin



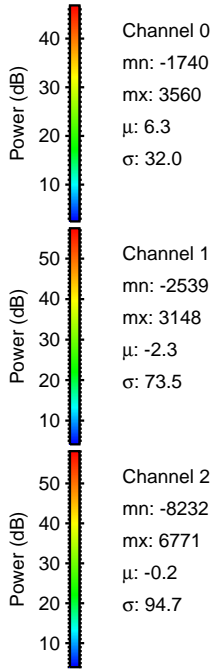
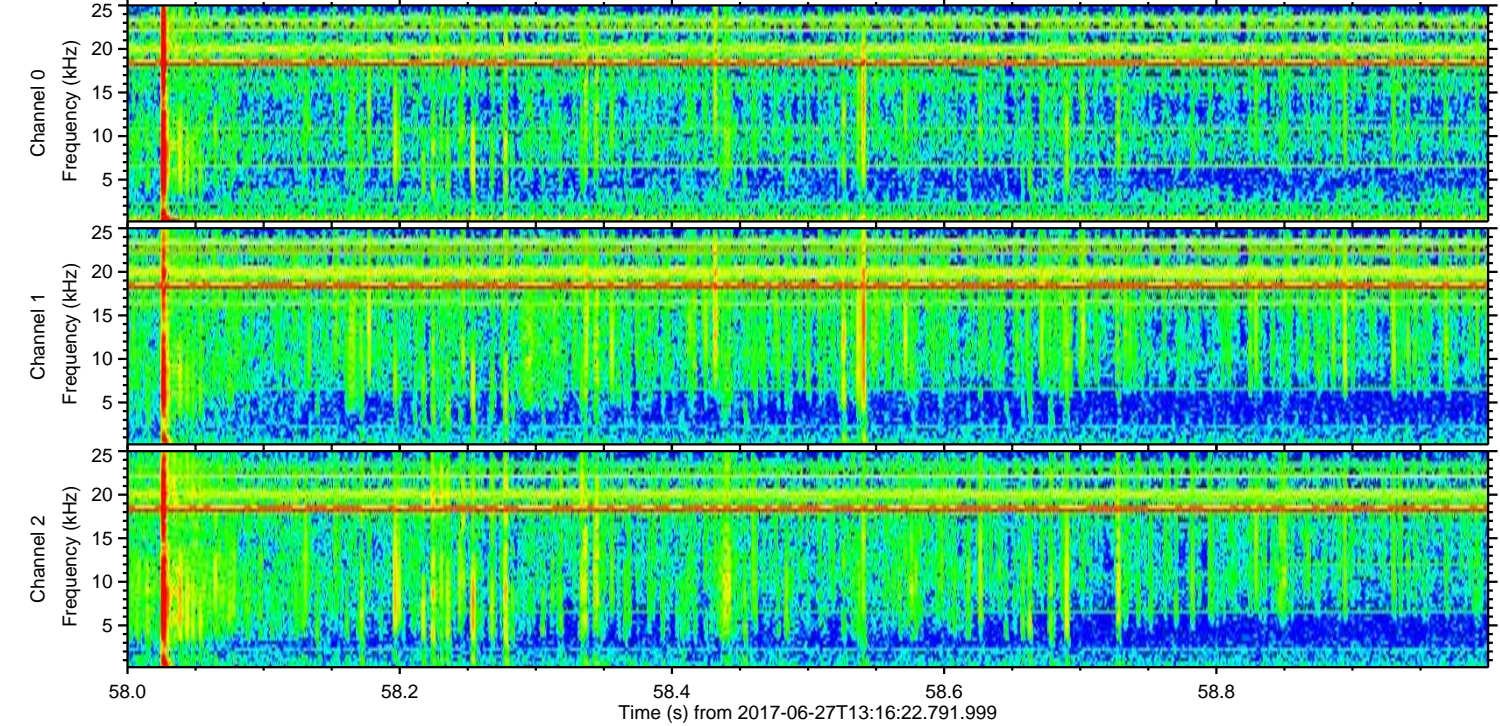
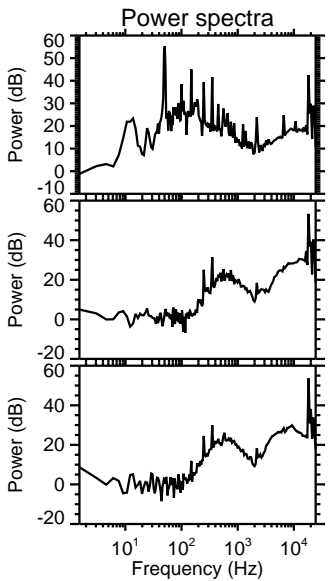
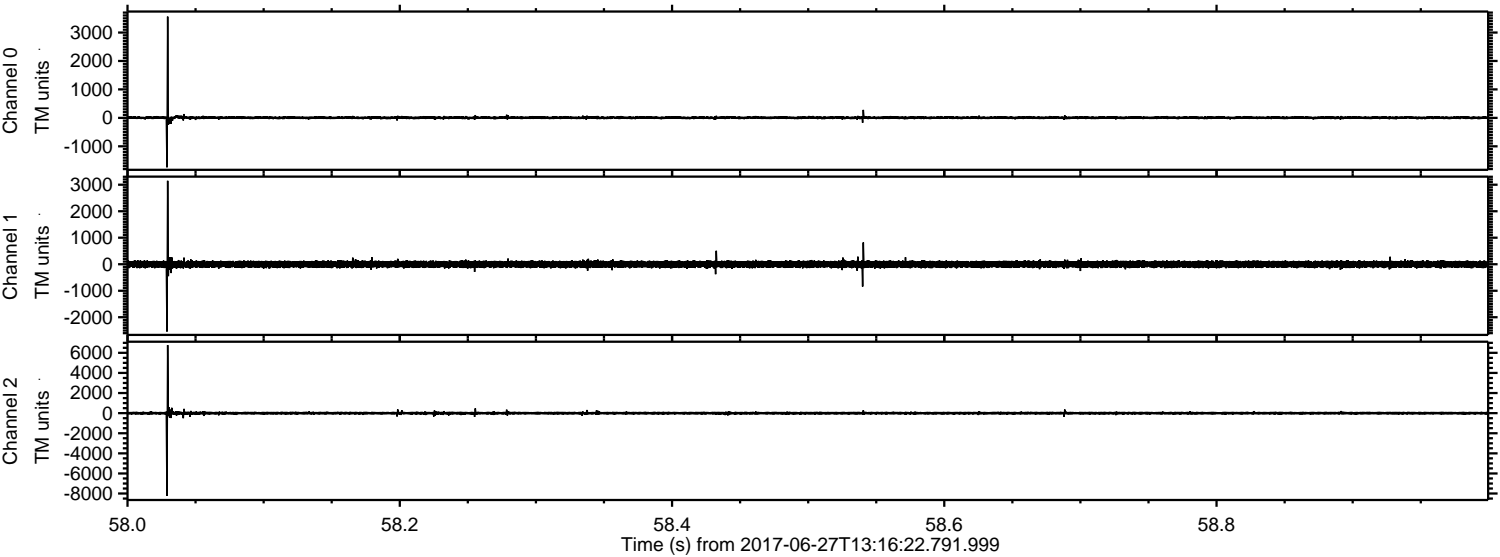
Channel 0  
mn: -2722  
mx: 1924  
 $\mu$ : 6.3  
 $\sigma$ : 27.4

Channel 1  
mn: -1919  
mx: 1090  
 $\mu$ : -2.3  
 $\sigma$ : 69.4

Channel 2  
mn: -8247  
mx: 4785  
 $\mu$ : -0.2  
 $\sigma$ : 90.3



Processed Tue Jun 27 15:24:27 2017 by ELM ver.2012-10-06 from 001\_\_elm20170627\_131621\_\_dat00.bin



Channel 0  
mn: -1740  
mx: 3560  
 $\mu$ : 6.3  
 $\sigma$ : 32.0

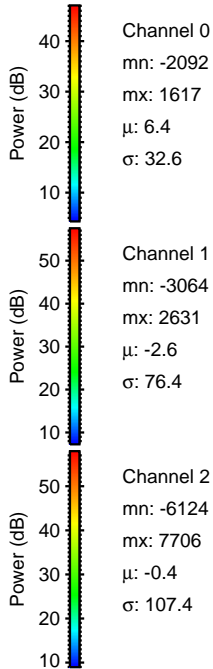
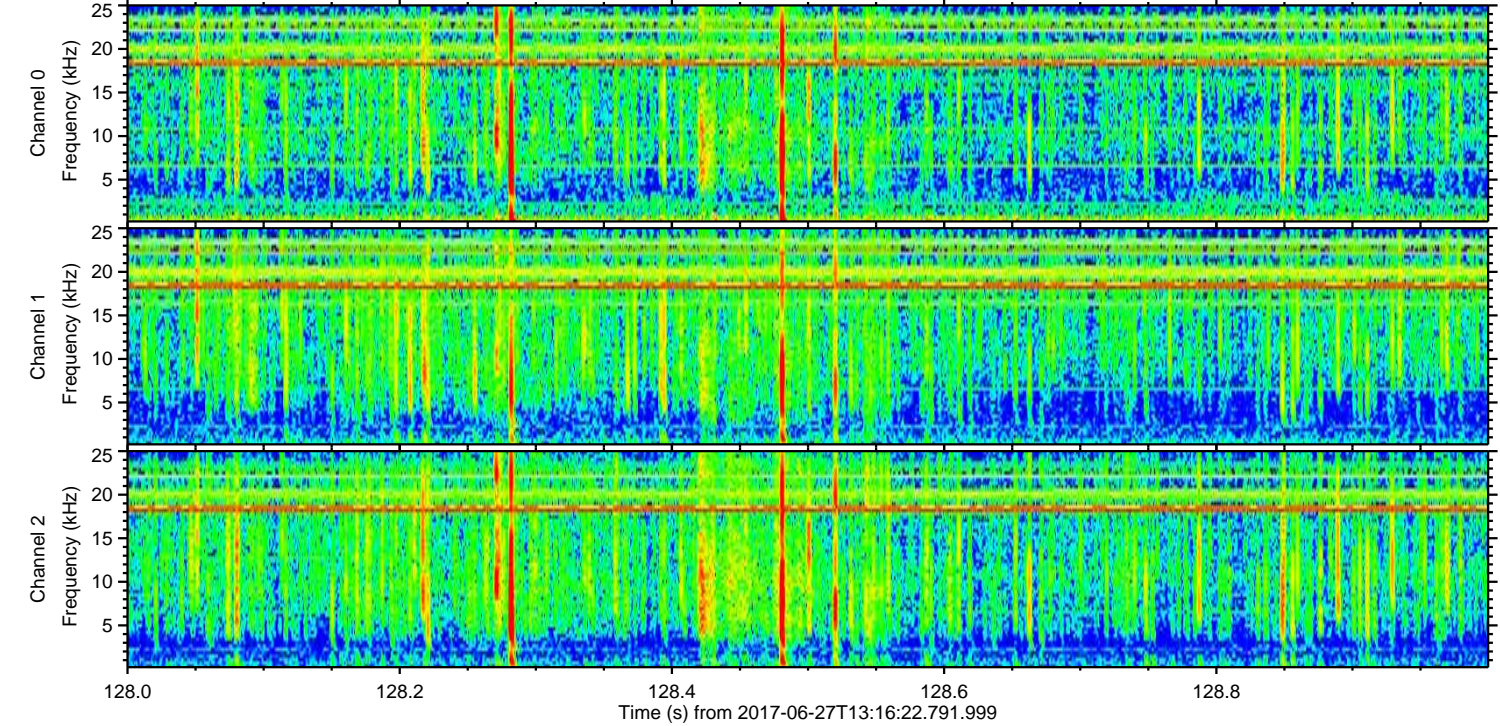
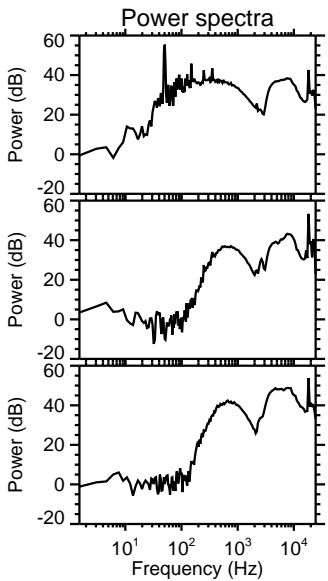
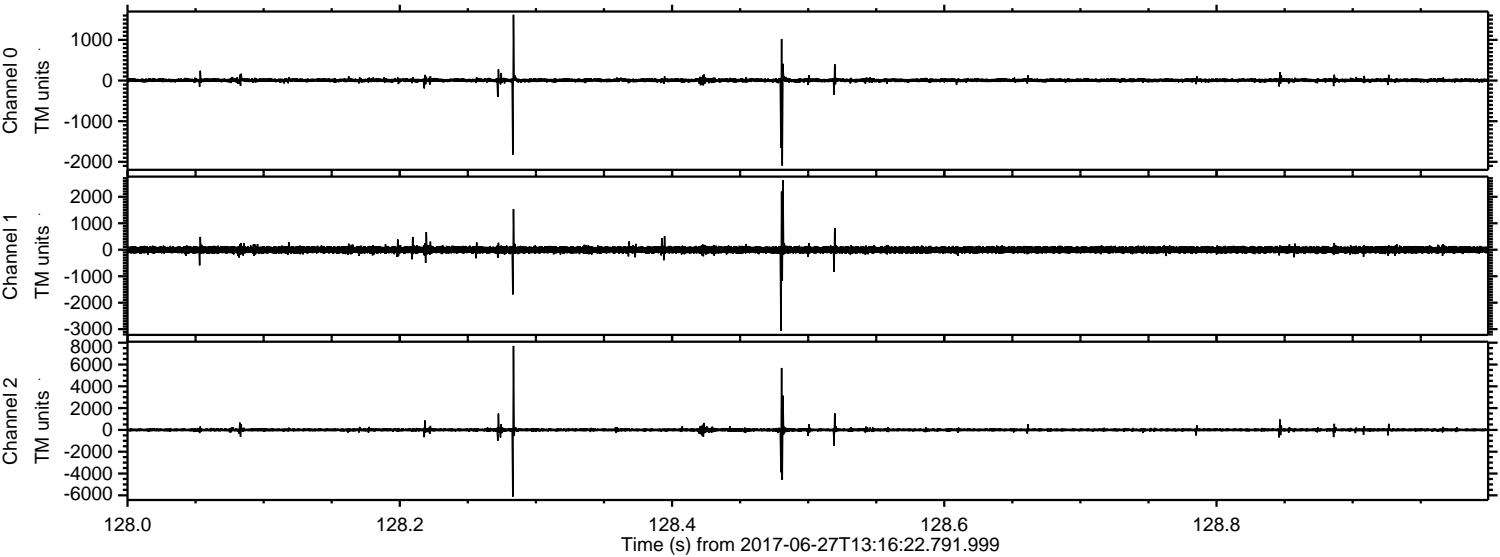
Channel 1  
mn: -2539  
mx: 3148  
 $\mu$ : -2.3  
 $\sigma$ : 73.5

Channel 2  
mn: -8232  
mx: 6771  
 $\mu$ : -0.2  
 $\sigma$ : 94.7



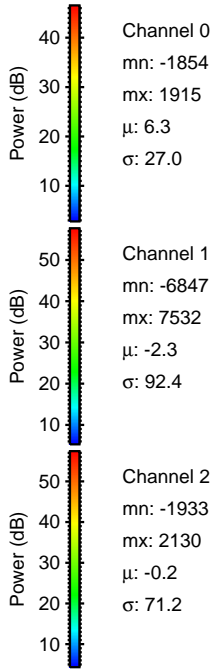
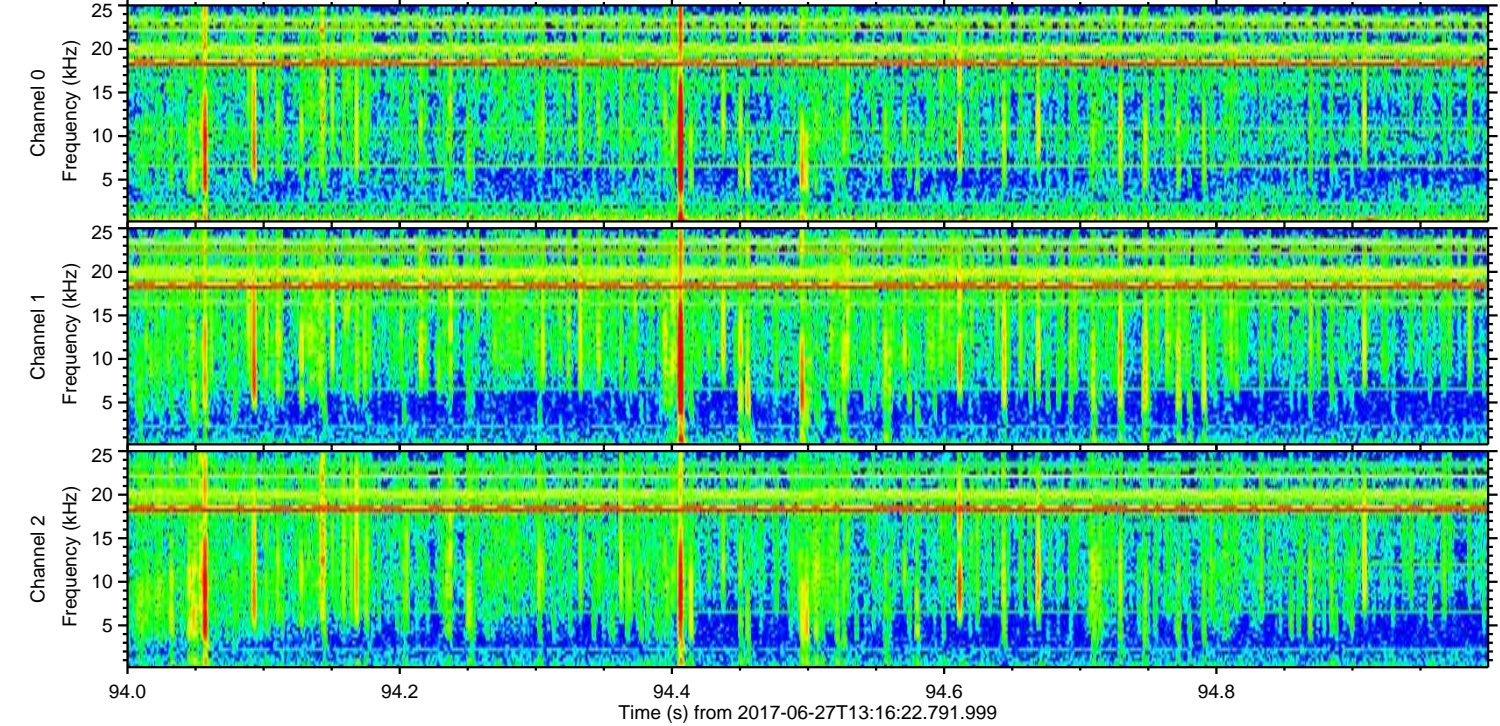
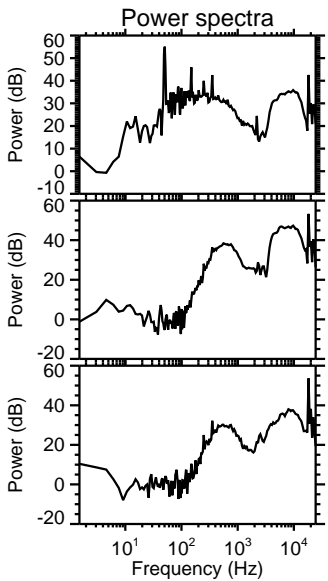
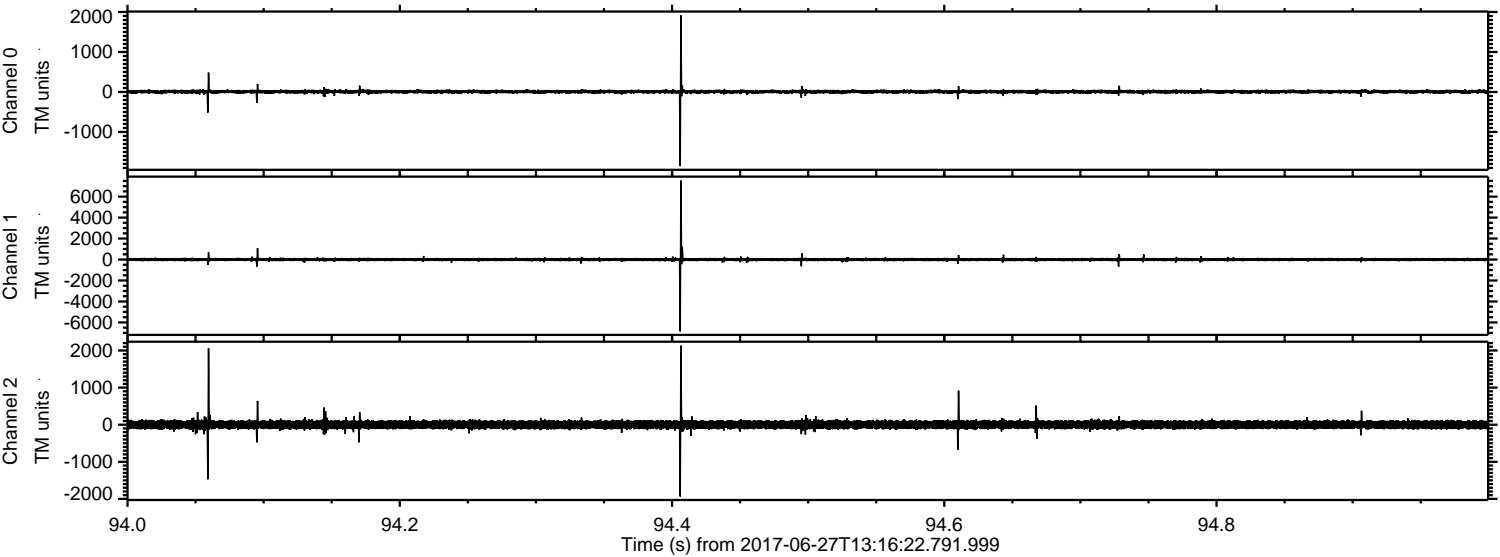
ELMAVAN 3D WAVEFORMS (Measured data sampled at 50 kHz) 51000 packets of 144 samples from 2017-06-27T13:16:22.791.999. Part 129/147

Processed Tue Jun 27 15:24:28 2017 by ELM ver.2012-10-06 from 001\_\_elm20170627\_131621\_\_dat00.bin



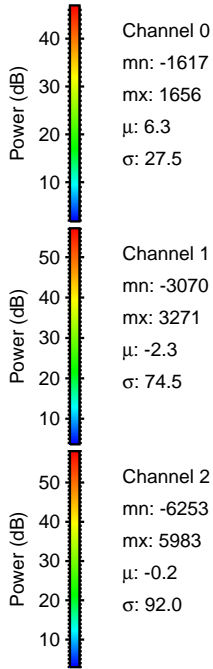
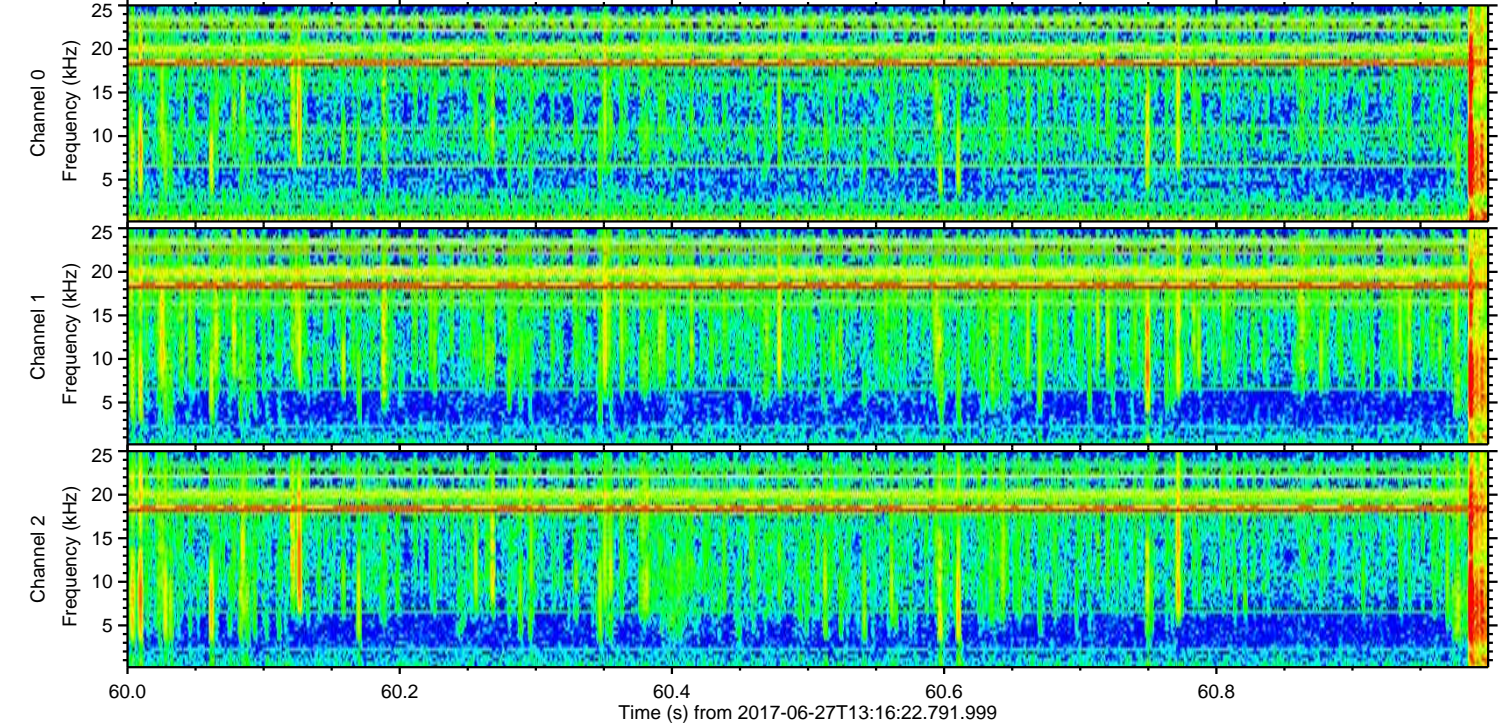
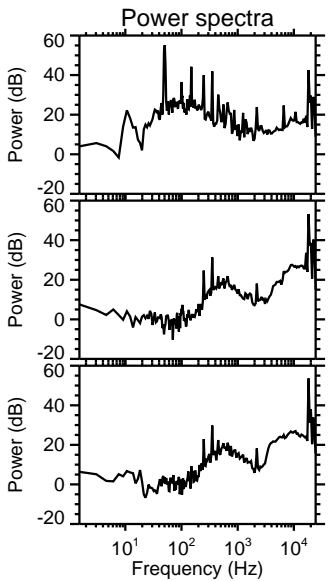
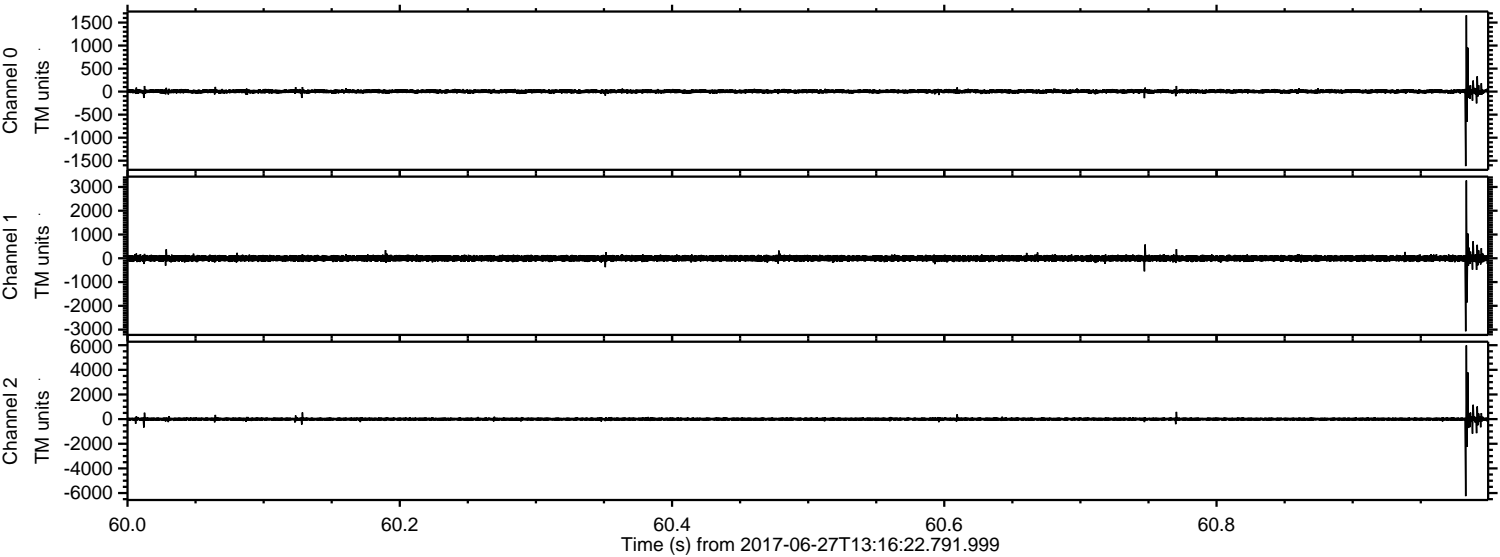


Processed Tue Jun 27 15:24:29 2017 by ELM ver.2012-10-06 from 001\_\_elm20170627\_131621\_\_dat00.bin





Processed Tue Jun 27 15:24:29 2017 by ELM ver.2012-10-06 from 001\_\_elm20170627\_131621\_\_dat00.bin





Processed Tue Jun 27 15:24:30 2017 by ELM ver.2012-10-06 from 001\_\_elm20170627\_131621\_\_dat00.bin

