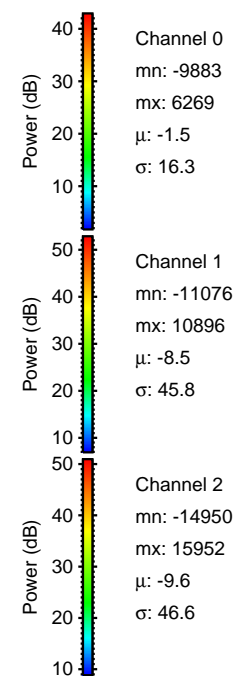
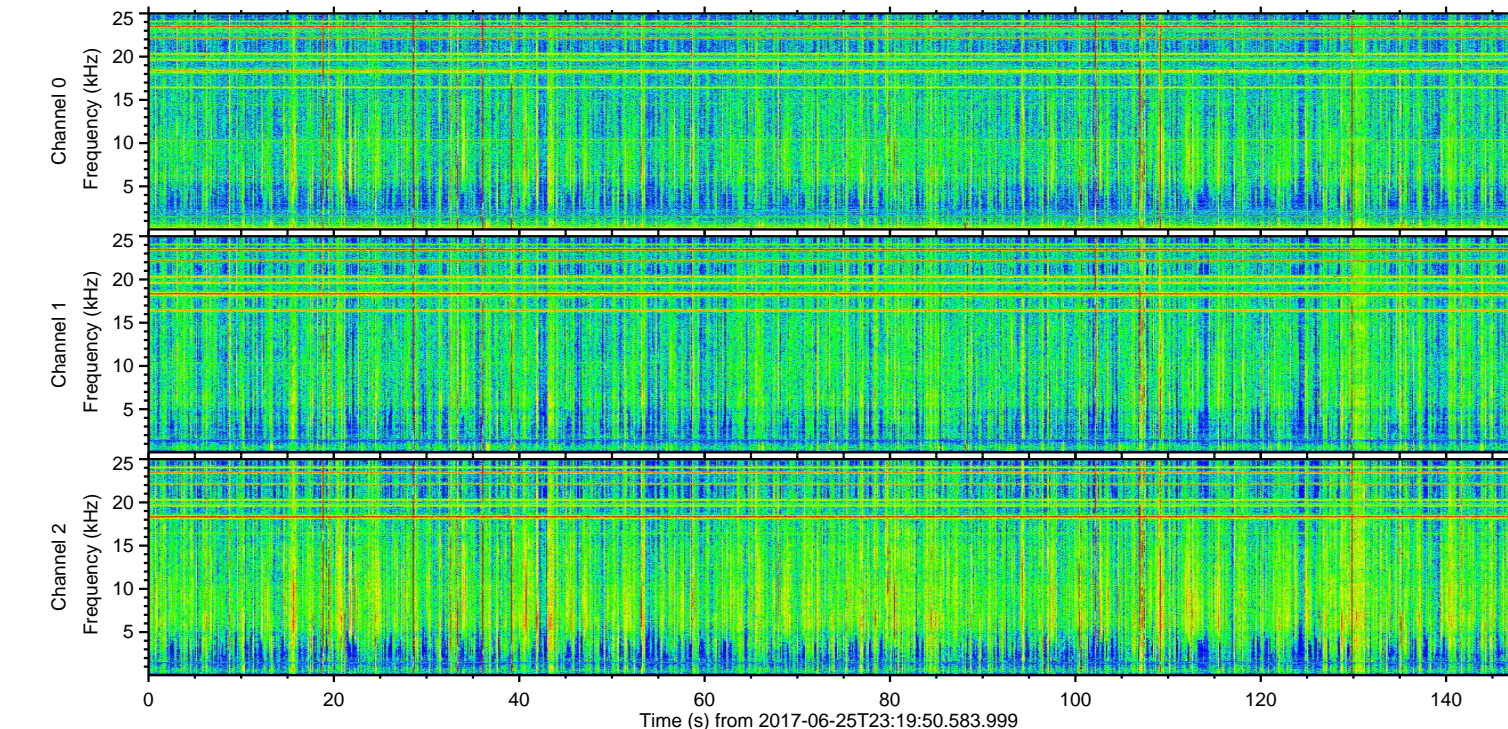
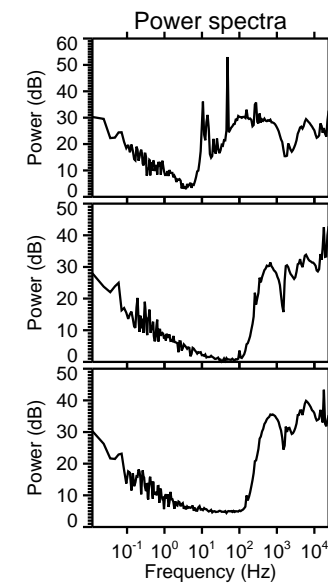
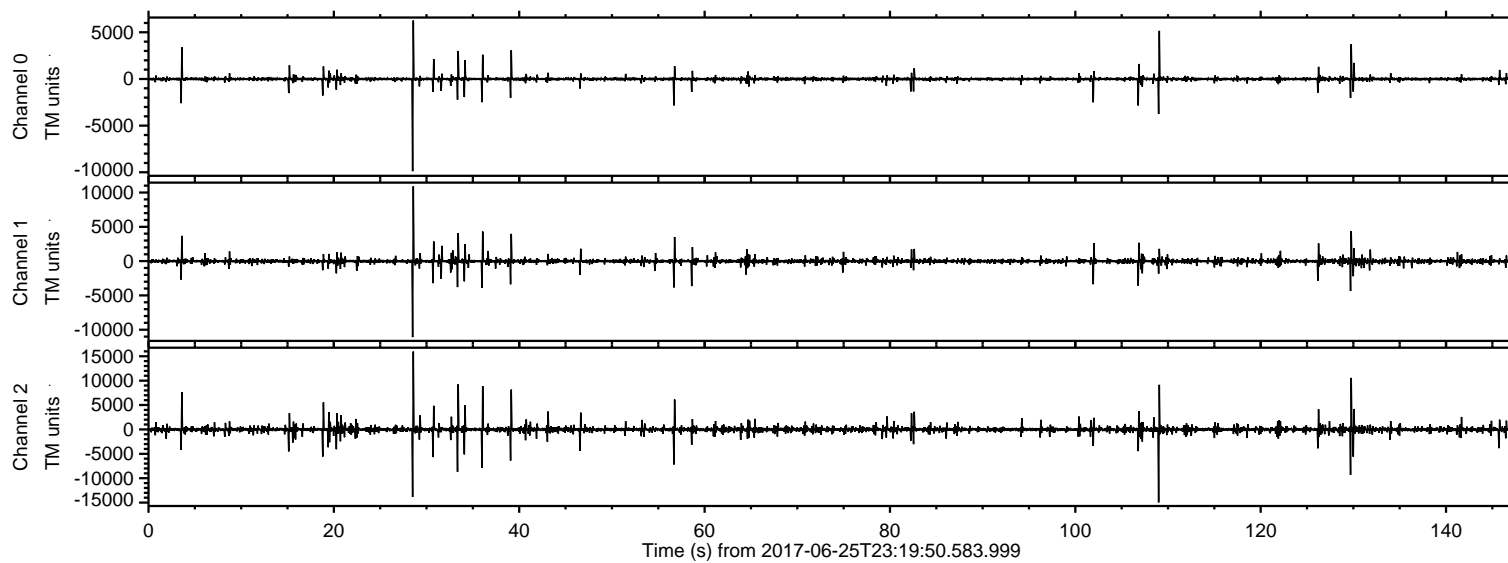


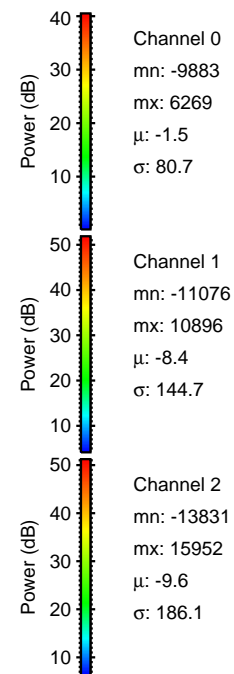
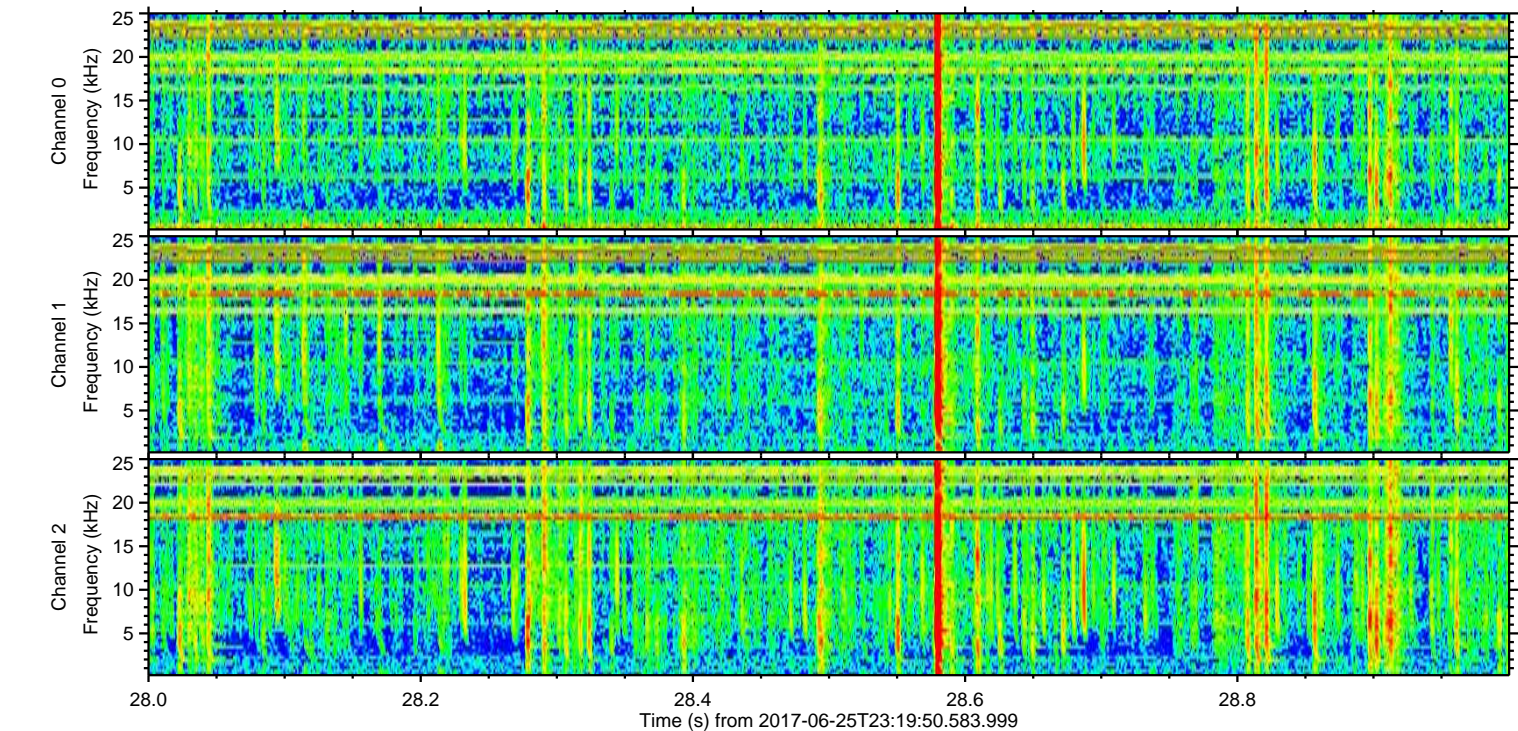
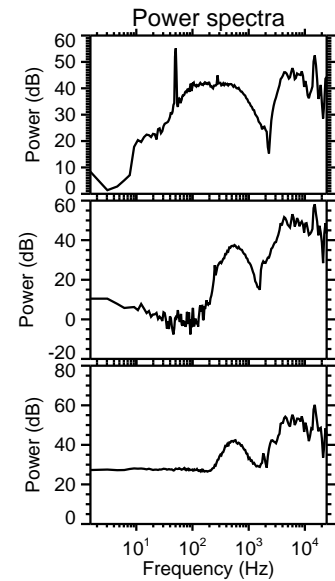
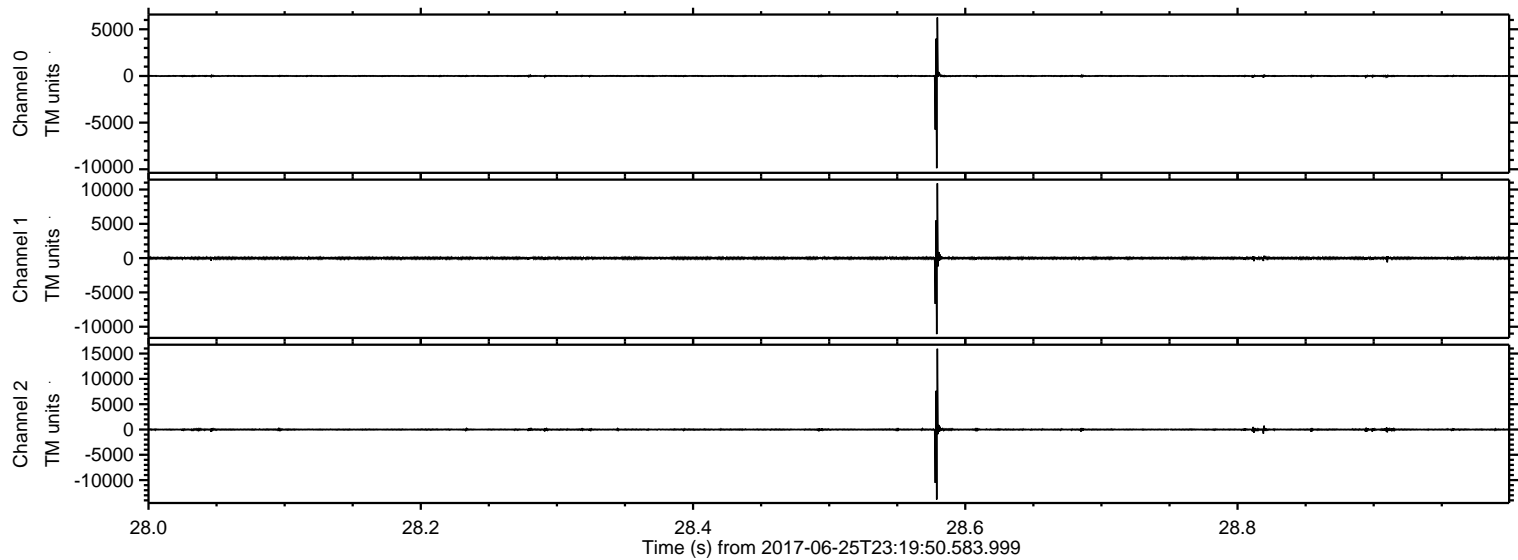
ELMAVAN 3D WAVEFORMS (Measured data sampled at 50 kHz) 51000 packets of 144 samples from 2017-06-25T23:19:50.583.999.

Processed Mon Jun 26 01:27:15 2017 by ELM ver.2012-10-06 from 001\_\_elm20170625\_231949\_\_dat00.bin





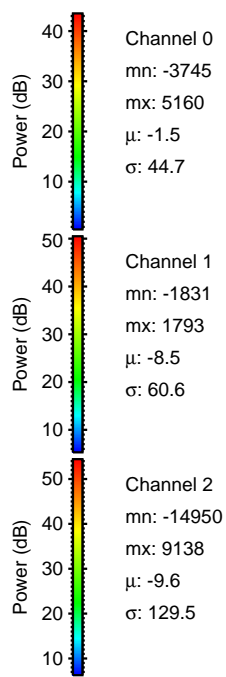
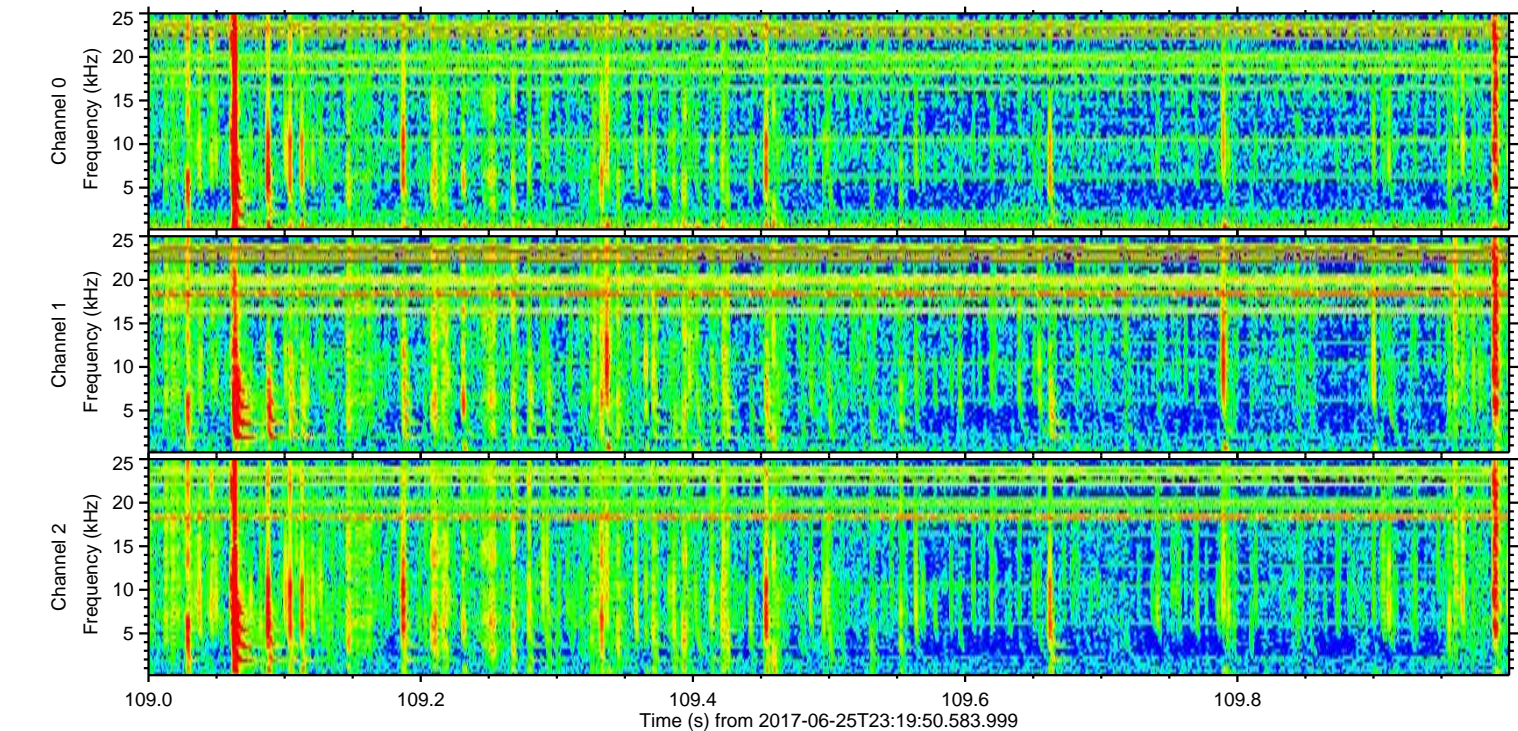
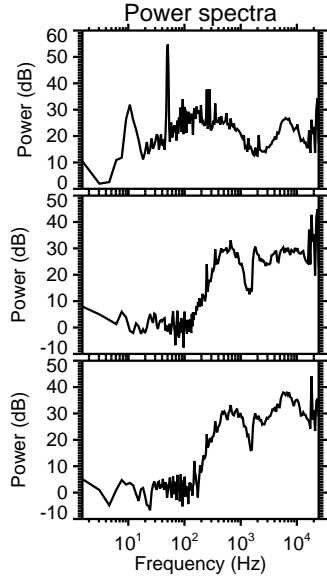
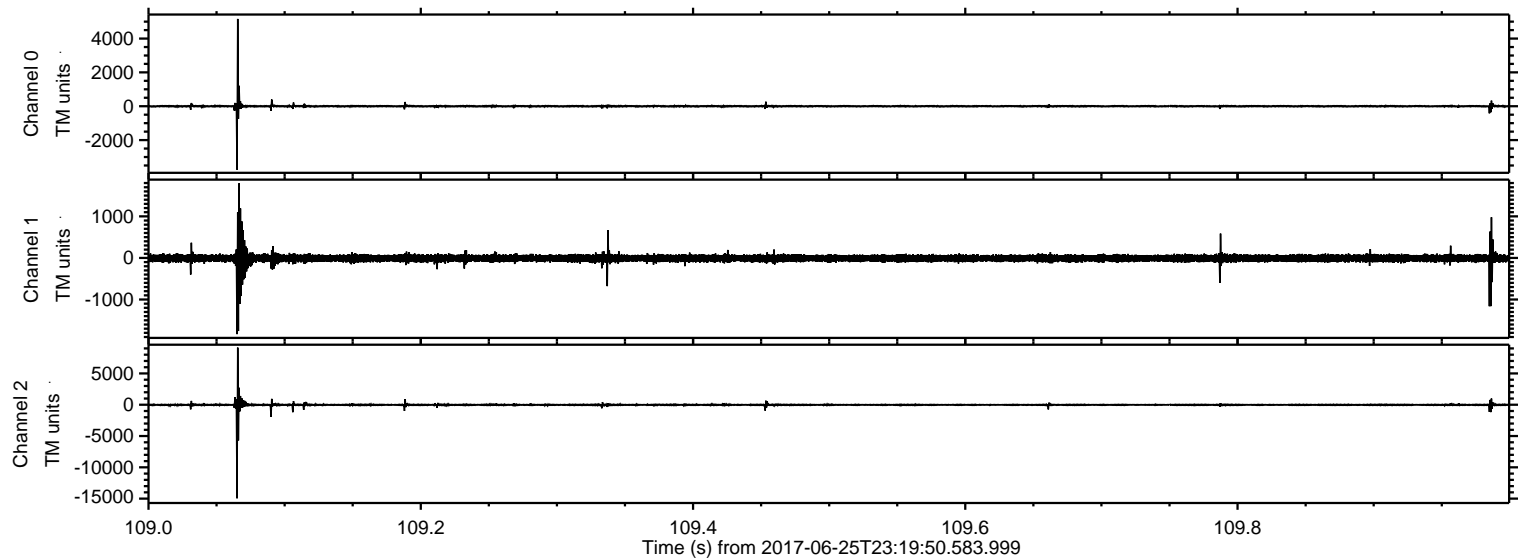
Processed Mon Jun 26 01:27:21 2017 by ELM ver.2012-10-06 from 001\_\_elm20170625\_231949\_\_dat00.bin





ELMAVAN 3D WAVEFORMS (Measured data sampled at 50 kHz) 51000 packets of 144 samples from 2017-06-25T23:19:50.583.999. Part 110/147

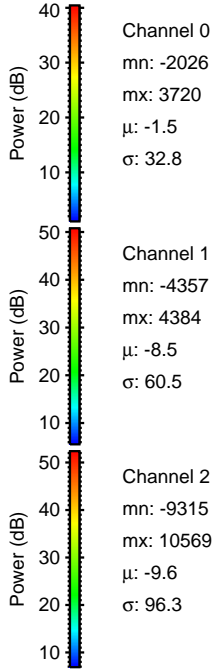
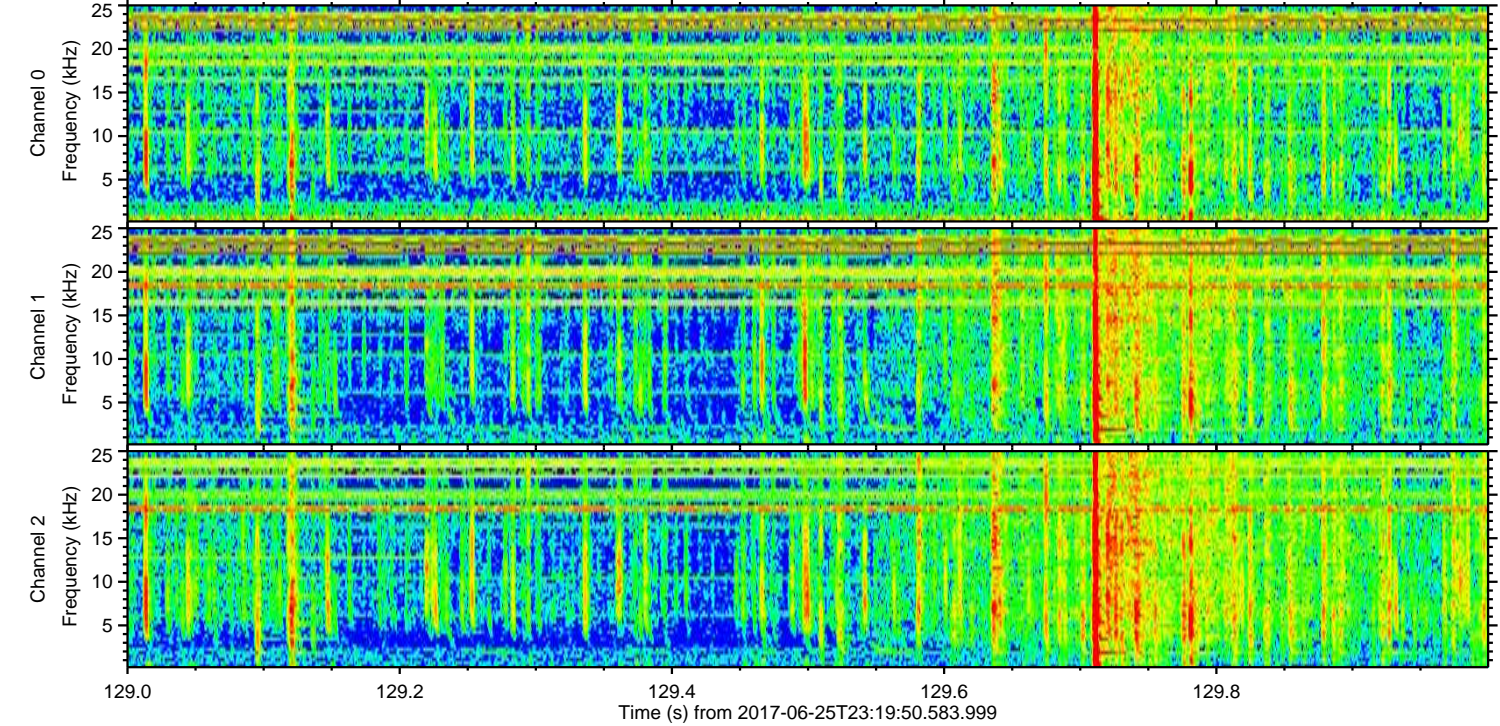
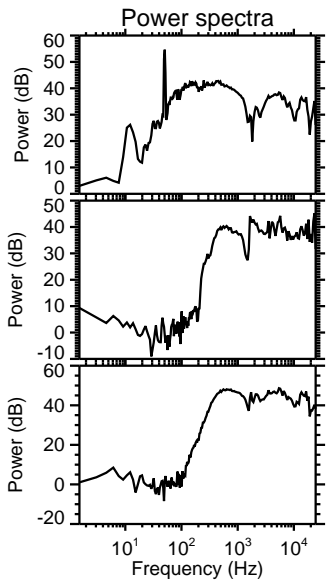
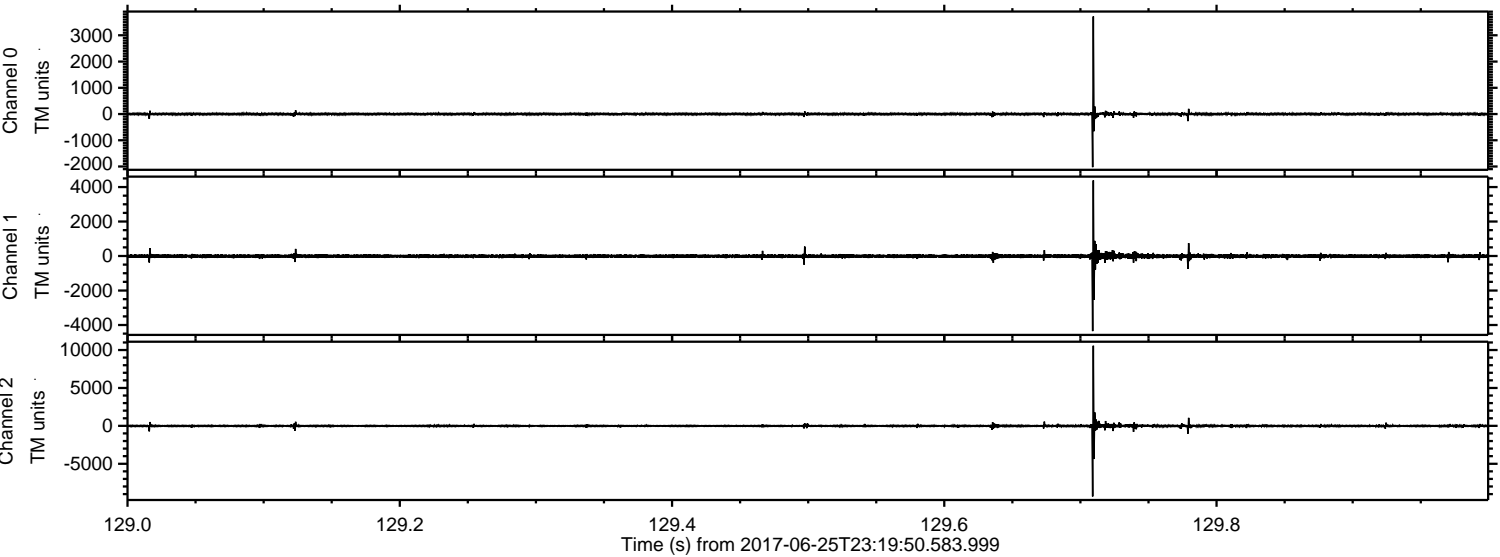
Processed Mon Jun 26 01:27:21 2017 by ELM ver.2012-10-06 from 001\_\_elm20170625\_231949\_\_dat00.bin





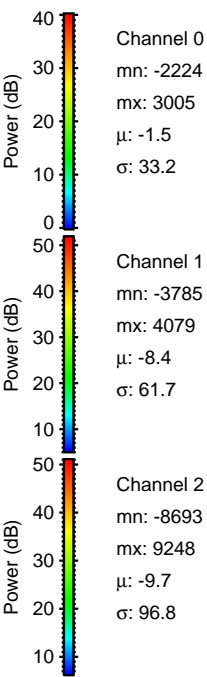
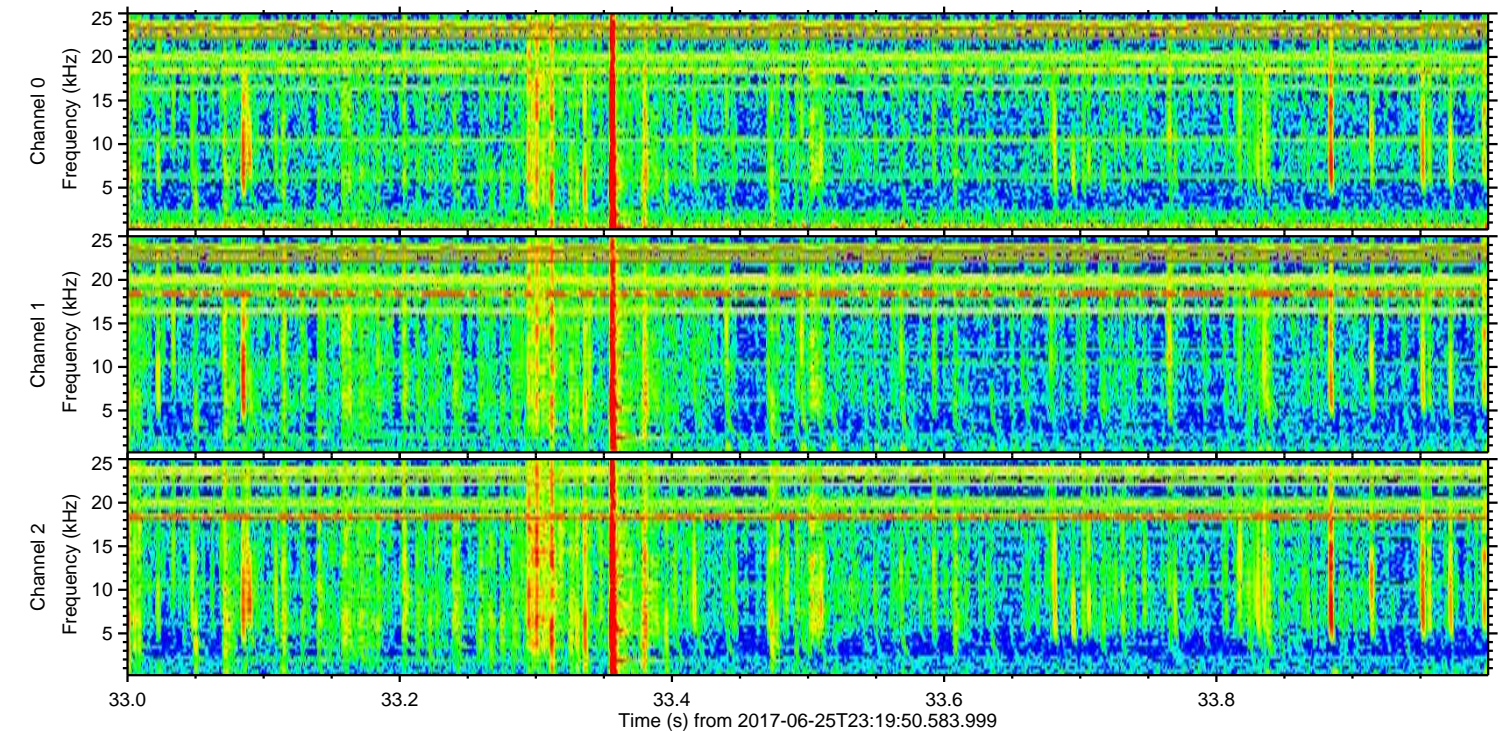
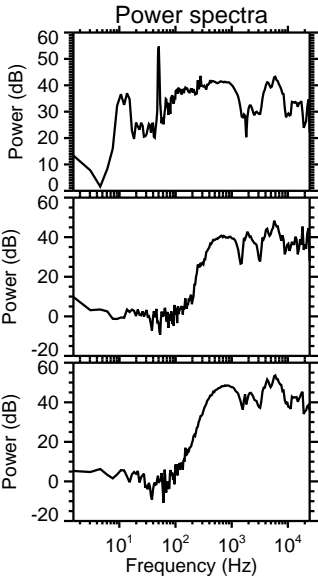
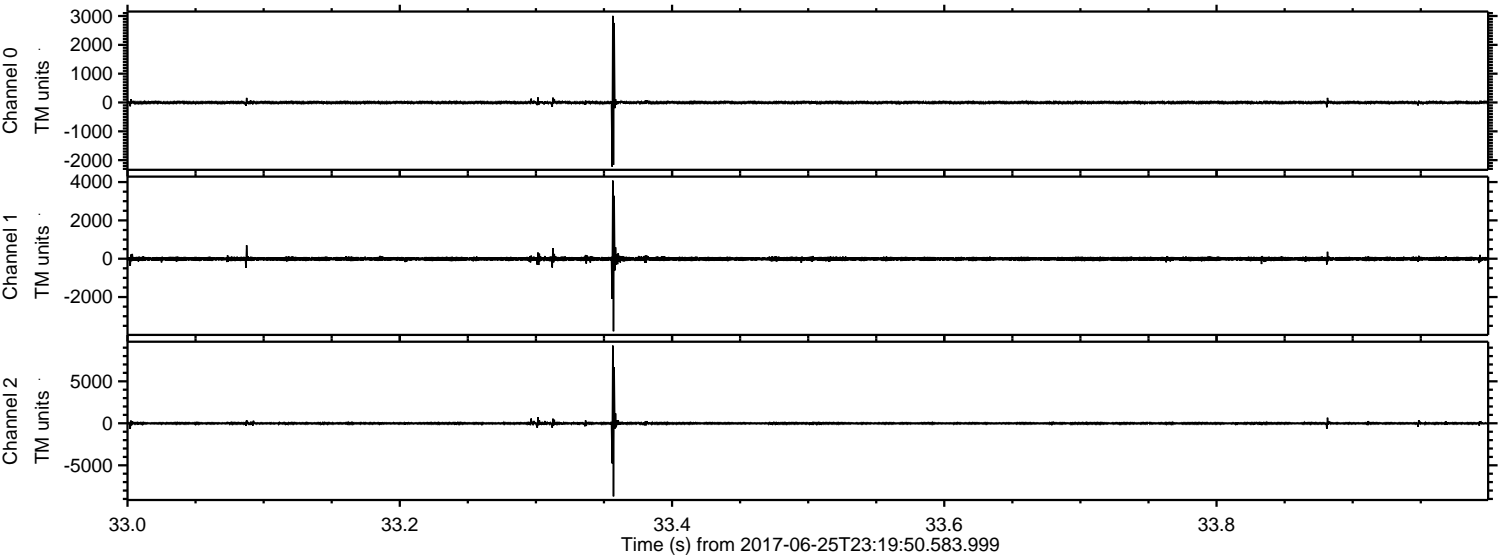
ELMAVAN 3D WAVEFORMS (Measured data sampled at 50 kHz) 51000 packets of 144 samples from 2017-06-25T23:19:50.583.999. Part 130/147

Processed Mon Jun 26 01:27:22 2017 by ELM ver.2012-10-06 from 001\_\_elm20170625\_231949\_\_dat00.bin



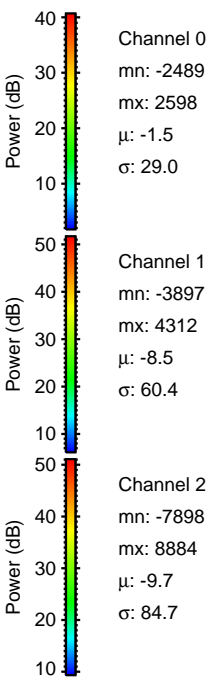
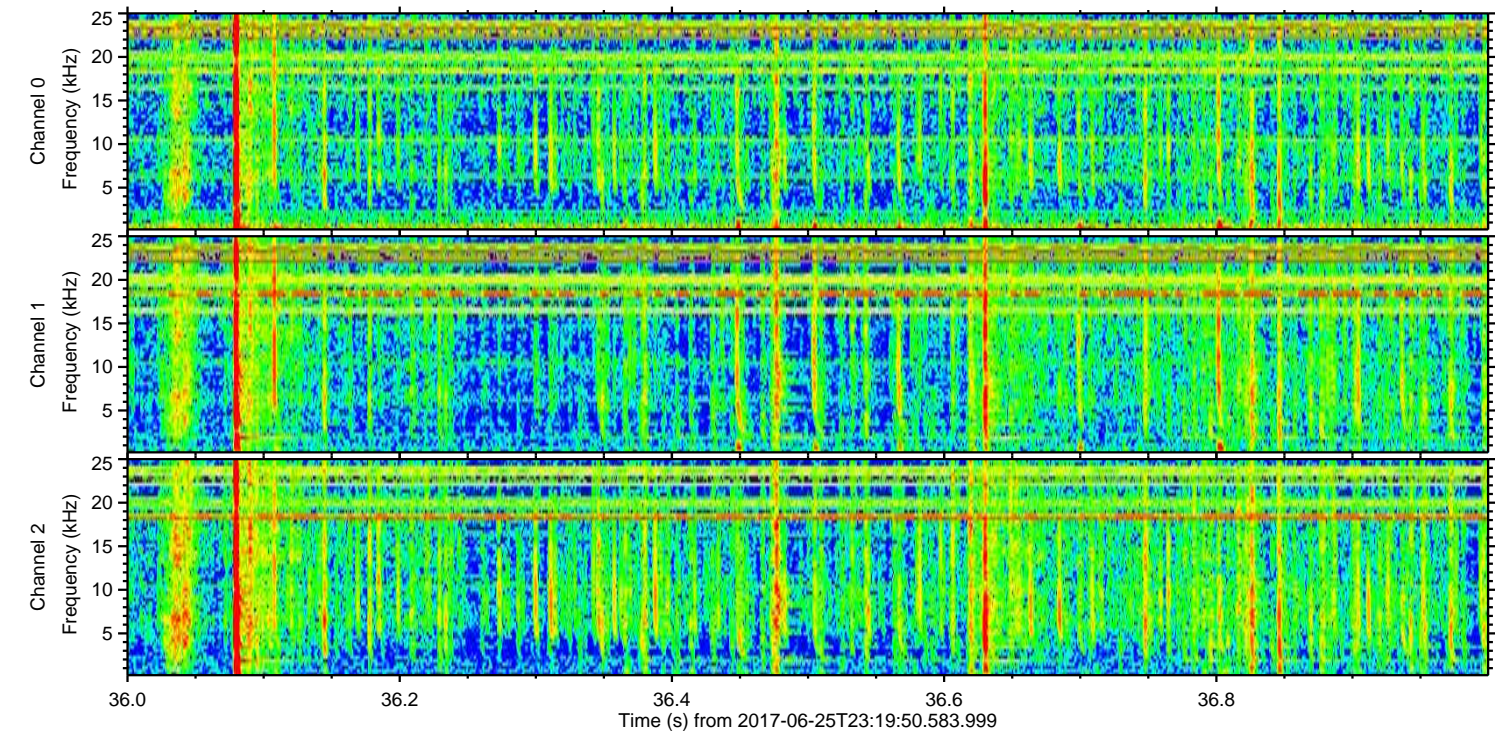
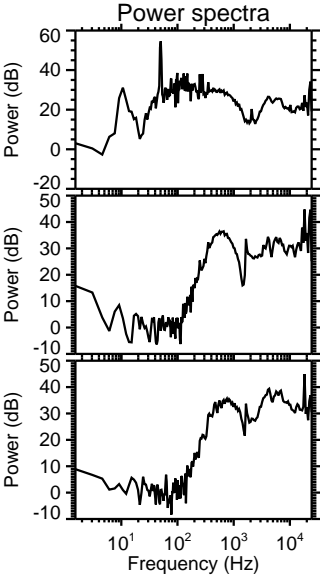
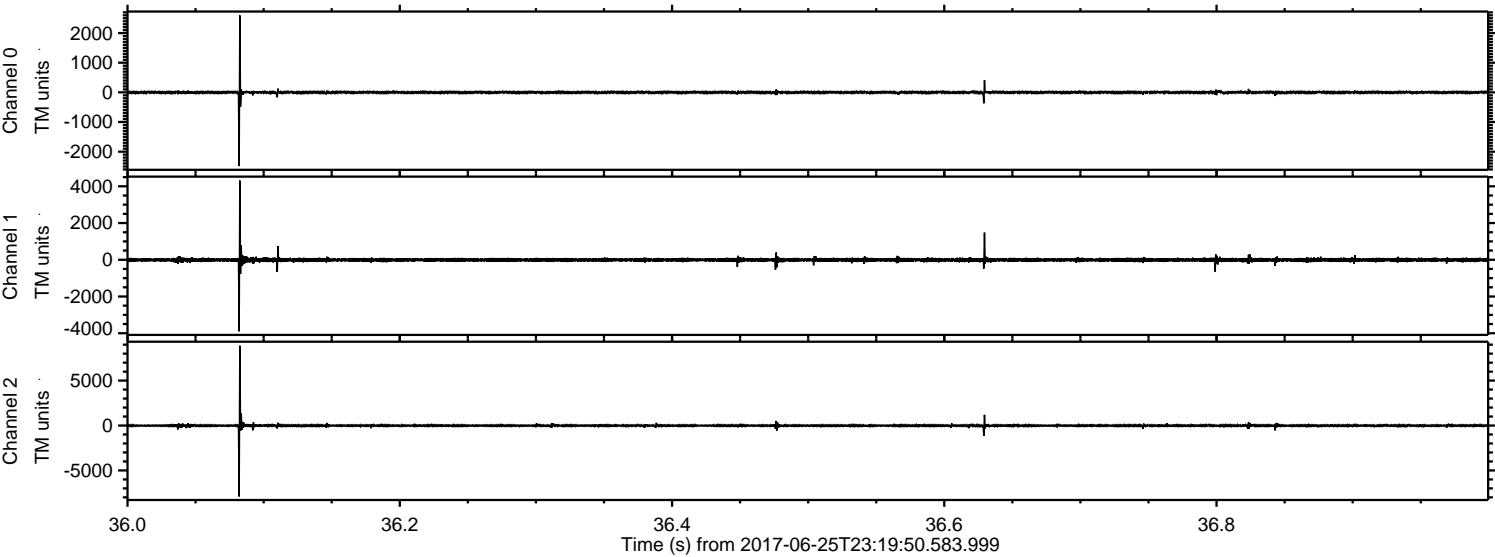


Processed Mon Jun 26 01:27:23 2017 by ELM ver.2012-10-06 from 001\_\_elm20170625\_231949\_\_dat00.bin





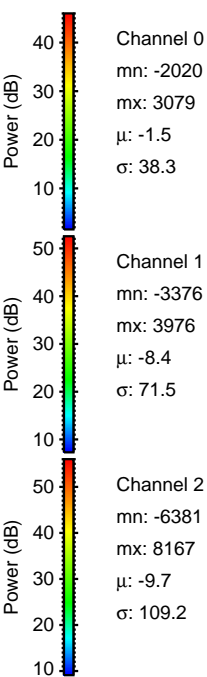
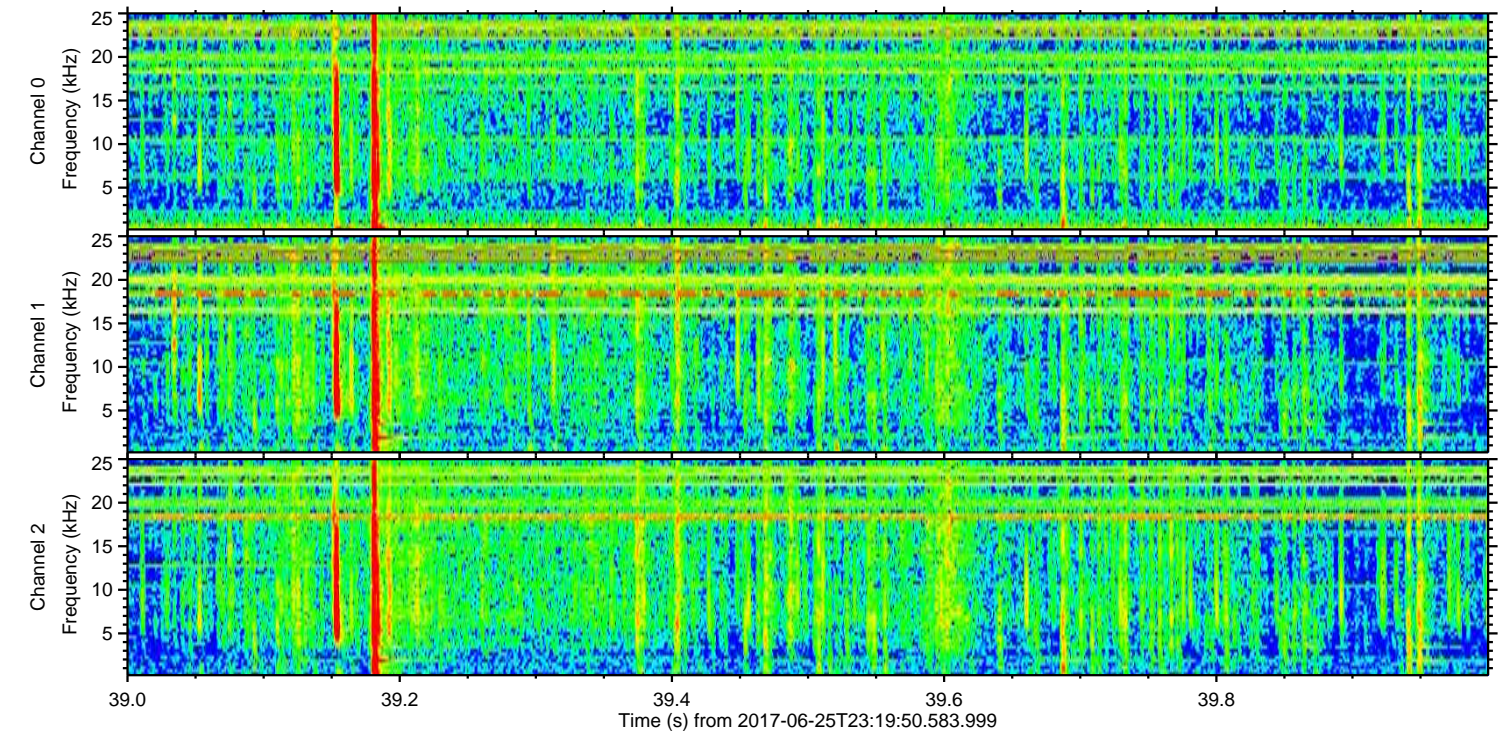
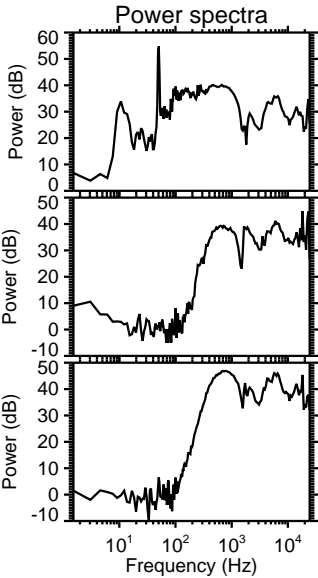
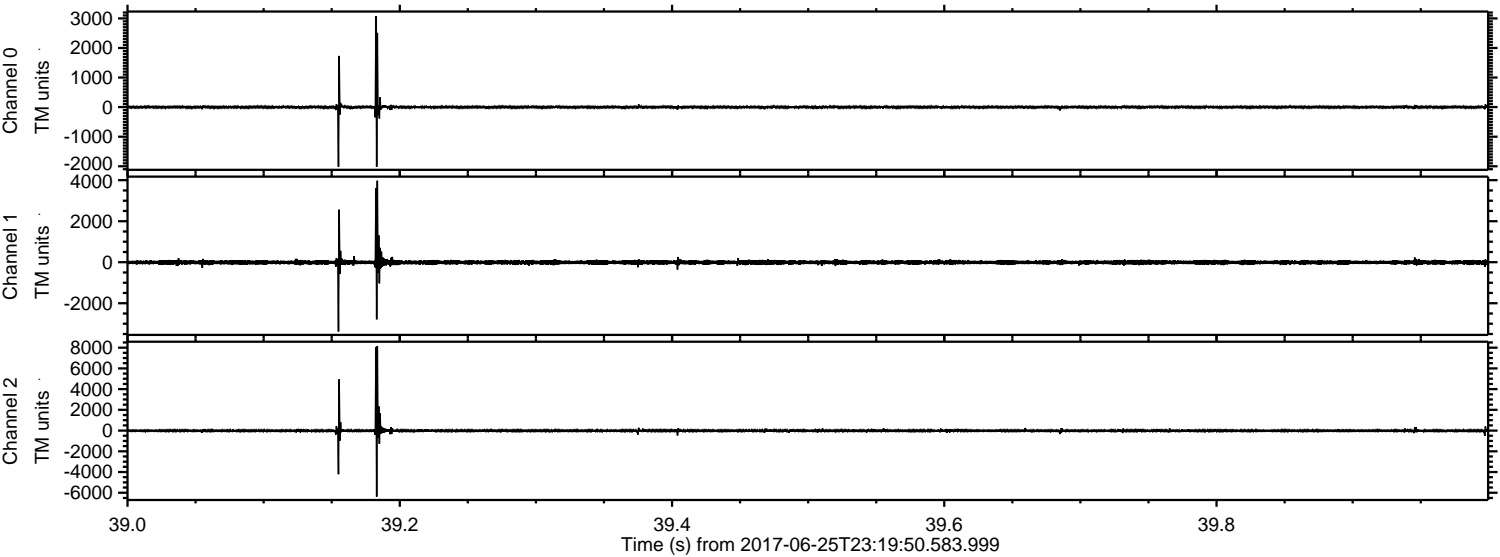
Processed Mon Jun 26 01:27:23 2017 by ELM ver.2012-10-06 from 001\_\_elm20170625\_231949\_\_dat00.bin





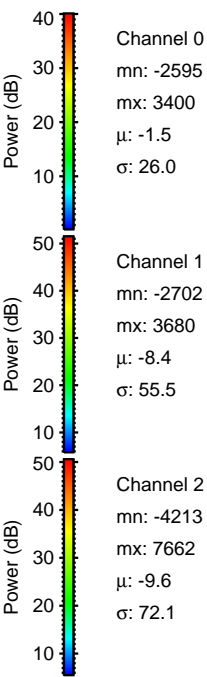
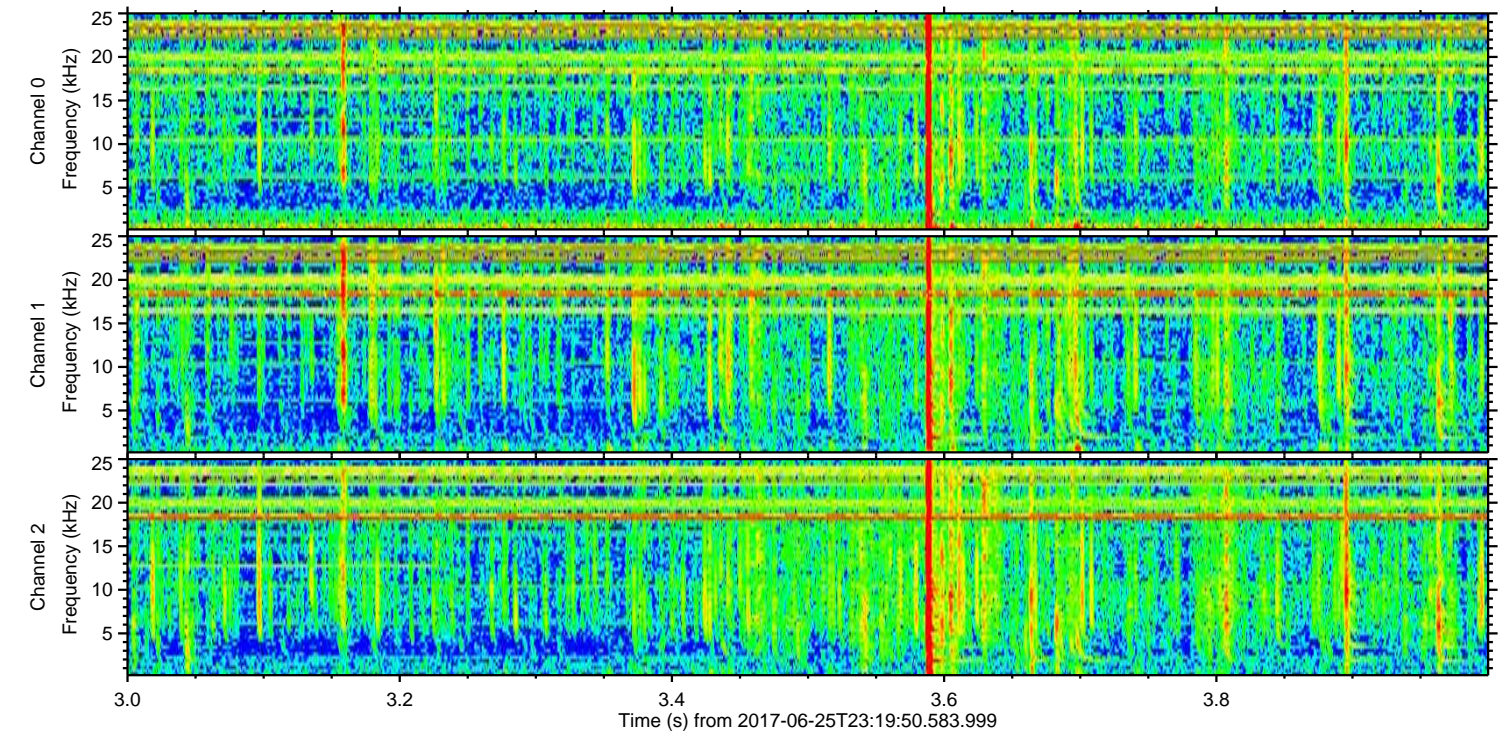
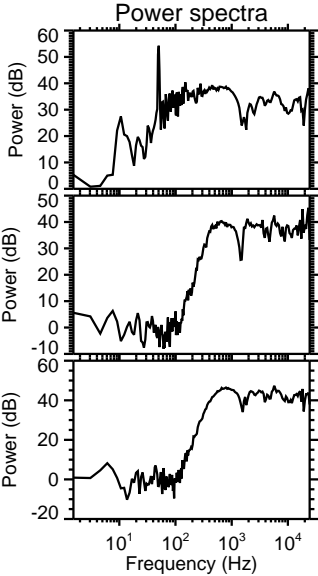
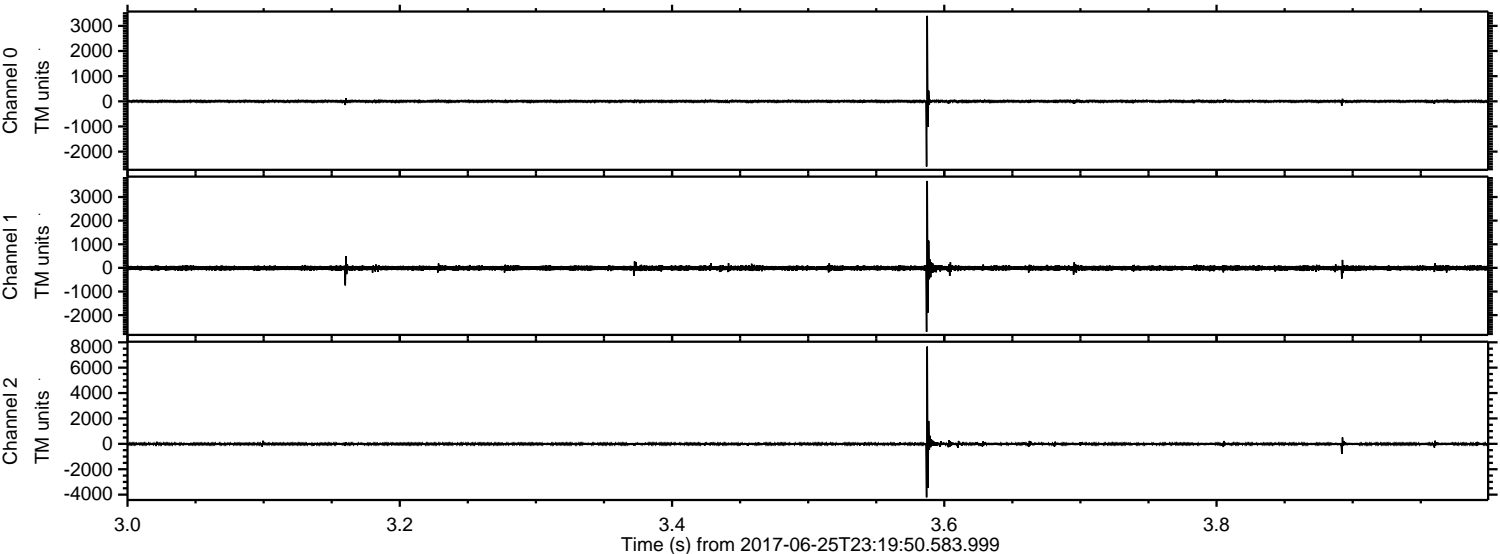
ELMAVAN 3D WAVEFORMS (Measured data sampled at 50 kHz) 51000 packets of 144 samples from 2017-06-25T23:19:50.583.999. Part 40/147

Processed Mon Jun 26 01:27:24 2017 by ELM ver.2012-10-06 from 001\_\_elm20170625\_231949\_\_dat00.bin





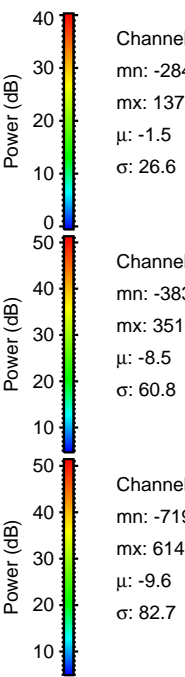
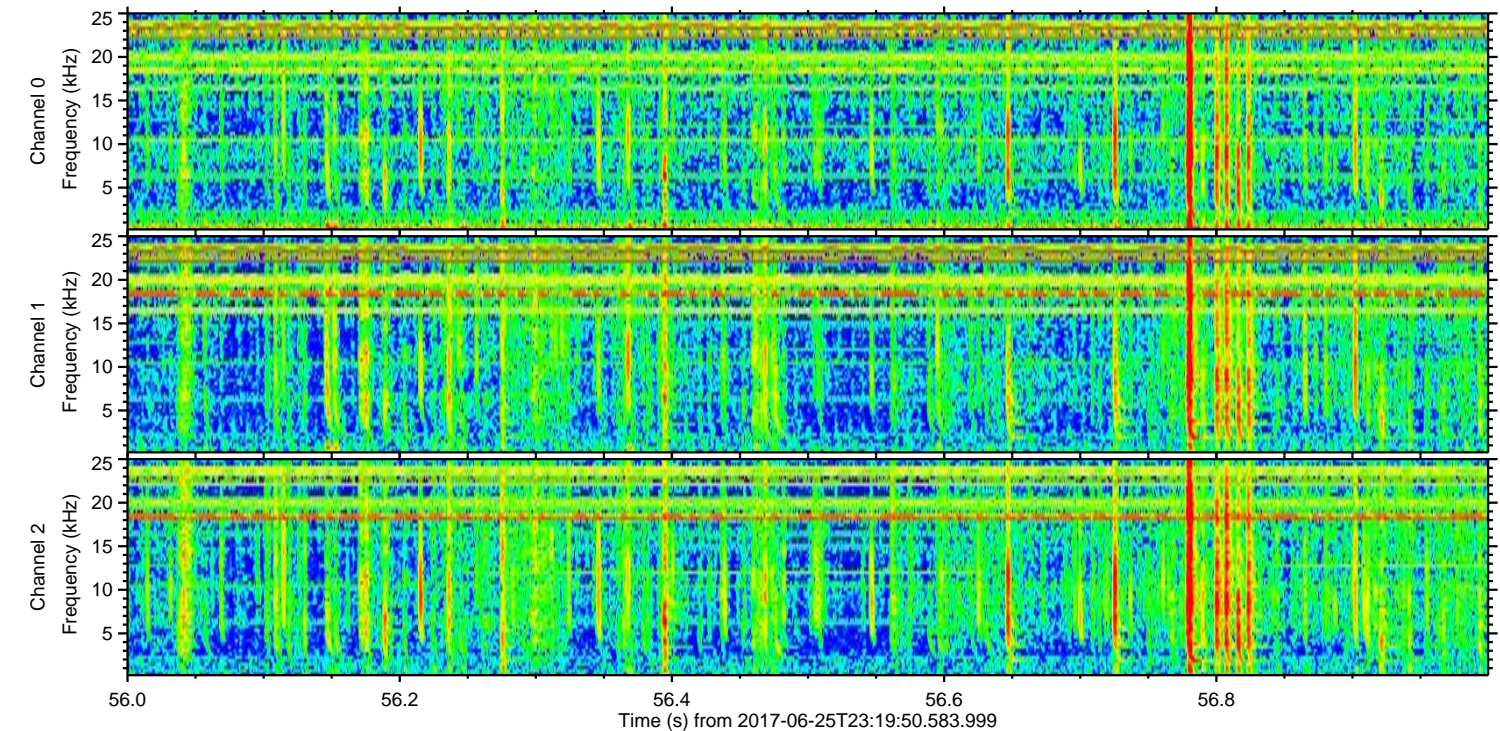
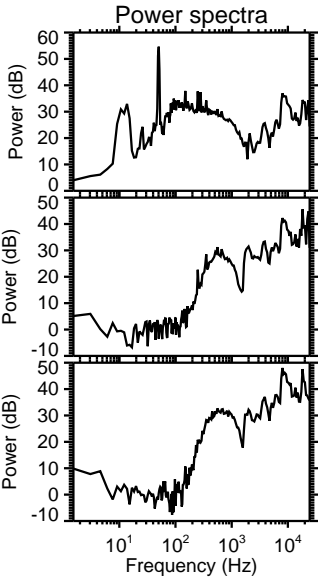
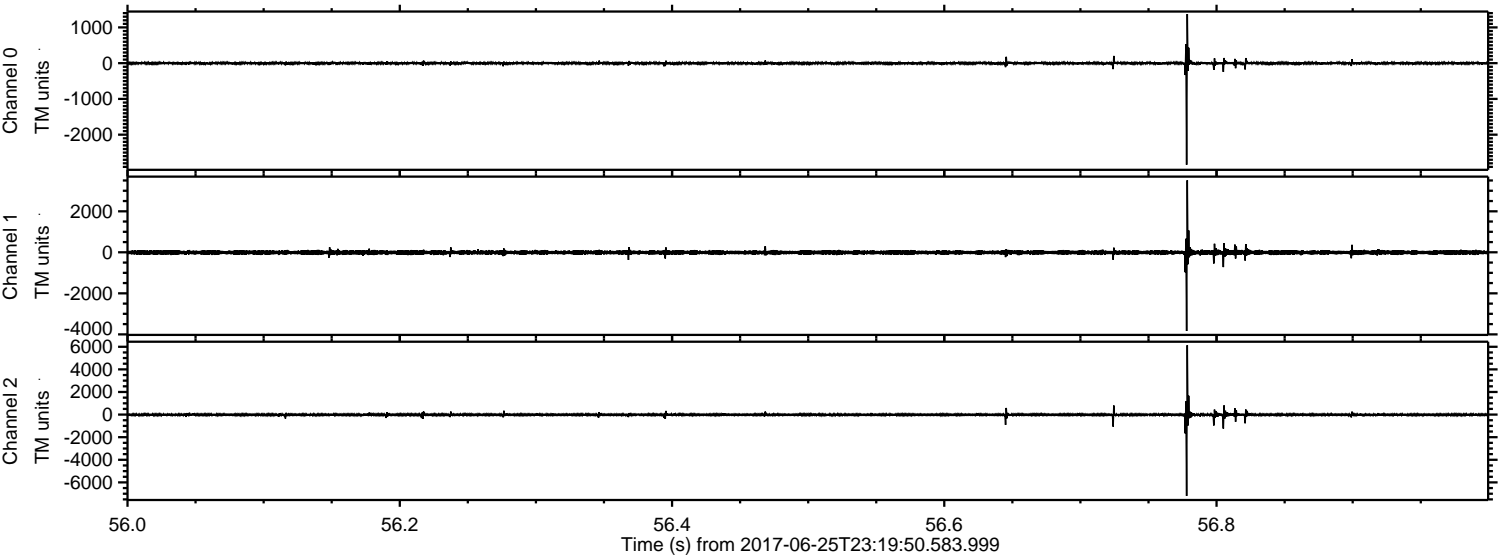
Processed Mon Jun 26 01:27:25 2017 by ELM ver.2012-10-06 from 001\_\_elm20170625\_231949\_\_dat00.bin





ELMAVAN 3D WAVEFORMS (Measured data sampled at 50 kHz) 51000 packets of 144 samples from 2017-06-25T23:19:50.583.999. Part 57/147

Processed Mon Jun 26 01:27:25 2017 by ELM ver.2012-10-06 from 001\_\_elm20170625\_231949\_\_dat00.bin



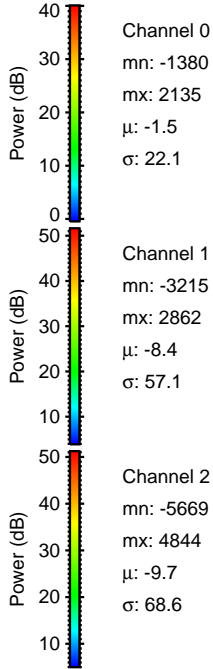
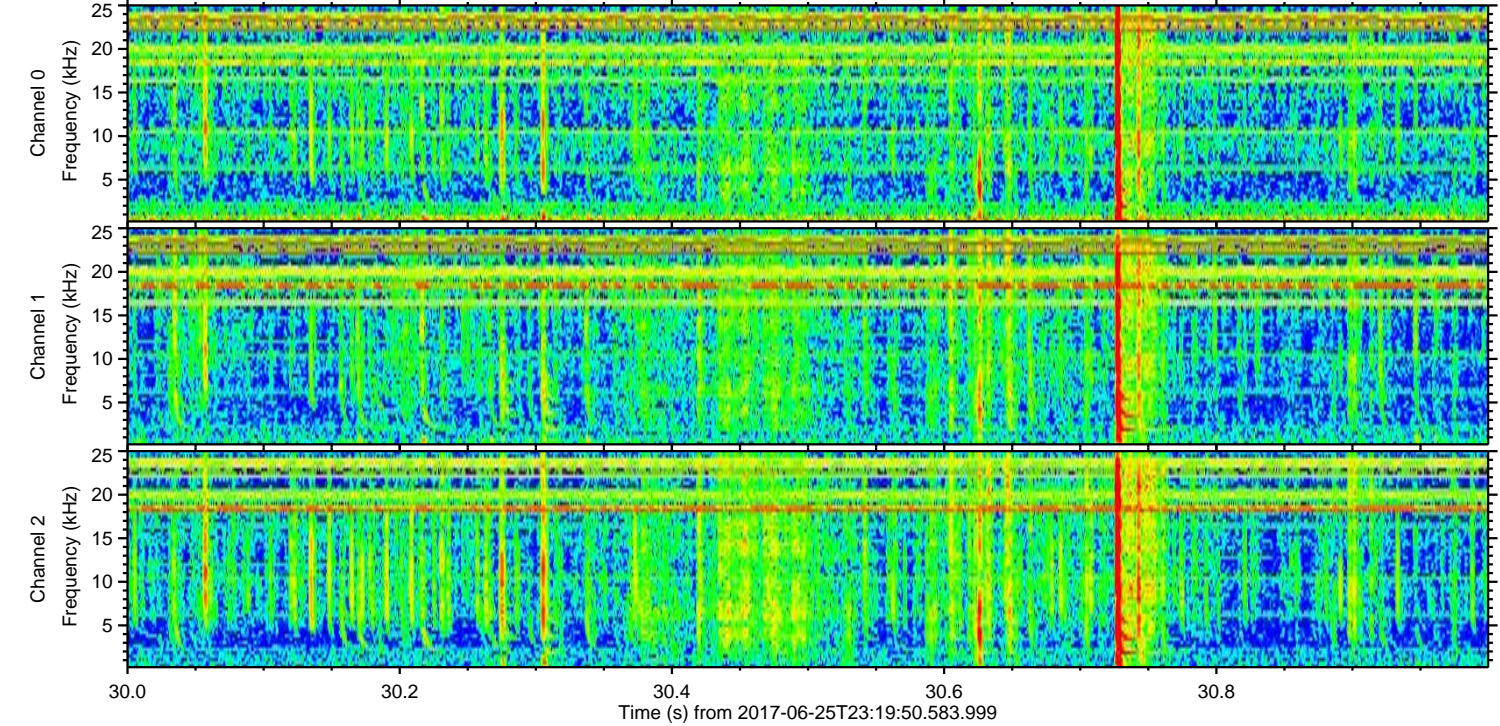
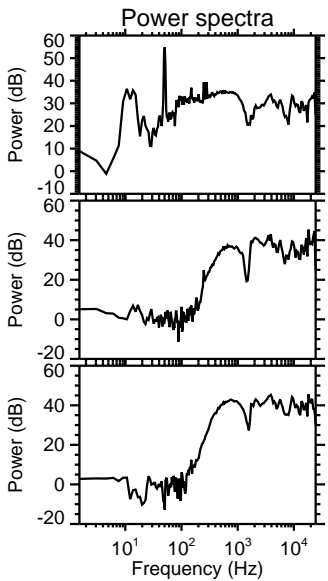
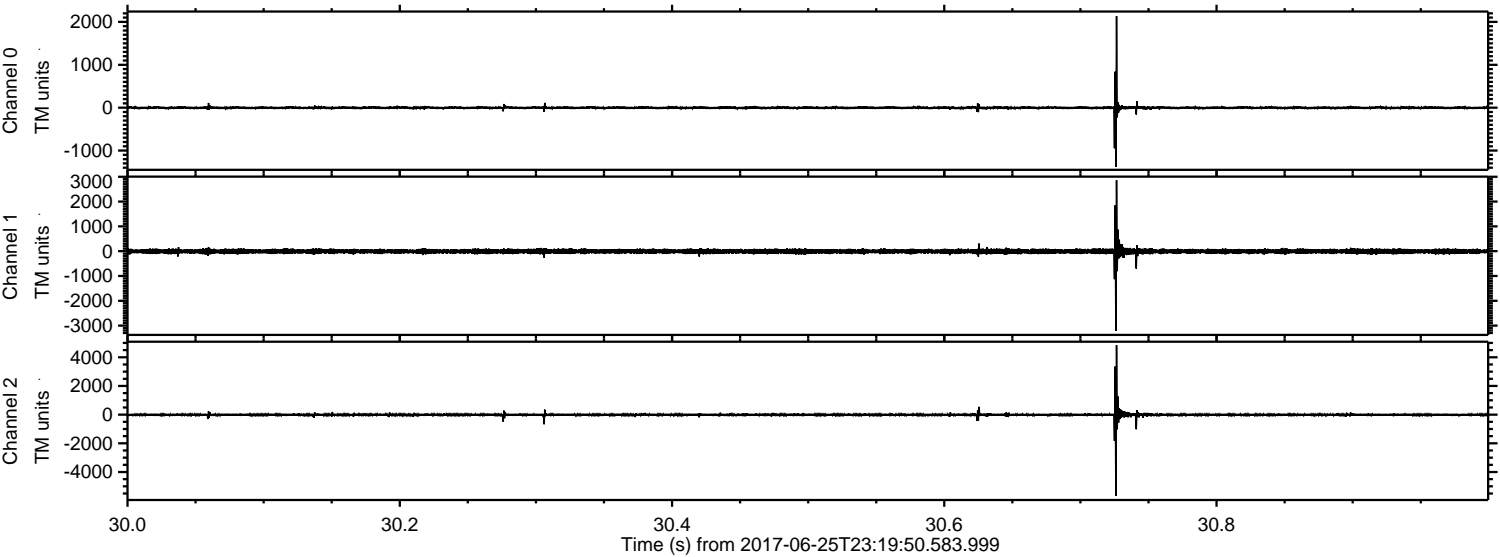
Channel 0  
mn: -2840  
mx: 1376  
 $\mu$ : -1.5  
 $\sigma$ : 26.6

Channel 1  
mn: -3835  
mx: 3514  
 $\mu$ : -8.5  
 $\sigma$ : 60.8

Channel 2  
mn: -7196  
mx: 6140  
 $\mu$ : -9.6  
 $\sigma$ : 82.7



Processed Mon Jun 26 01:27:26 2017 by ELM ver.2012-10-06 from 001\_\_elm20170625\_231949\_\_dat00.bin





Processed Mon Jun 26 01:27:26 2017 by ELM ver.2012-10-06 from 001\_\_elm20170625\_231949\_\_dat00.bin

