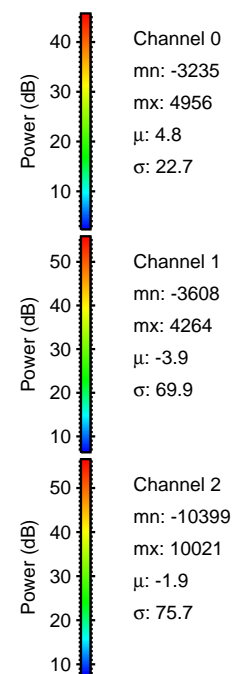
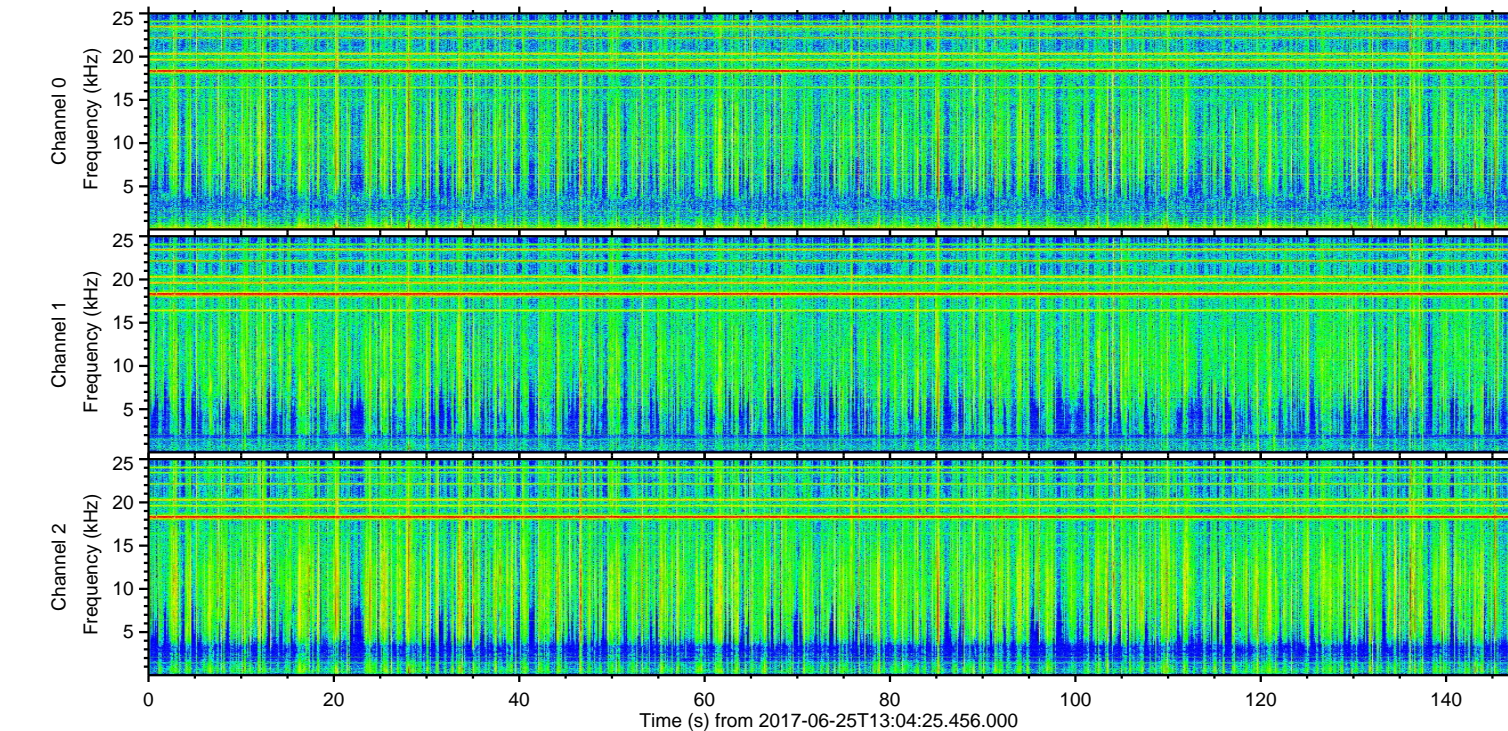
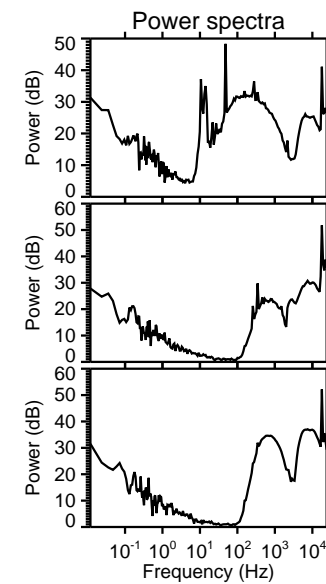
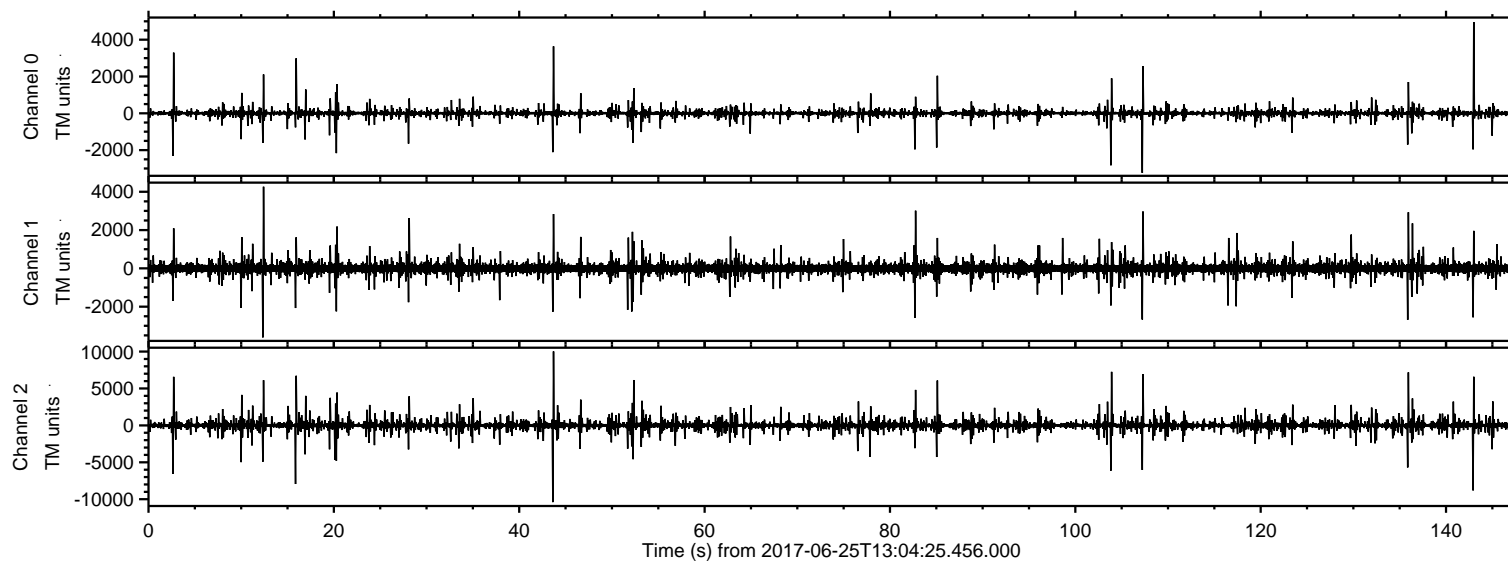


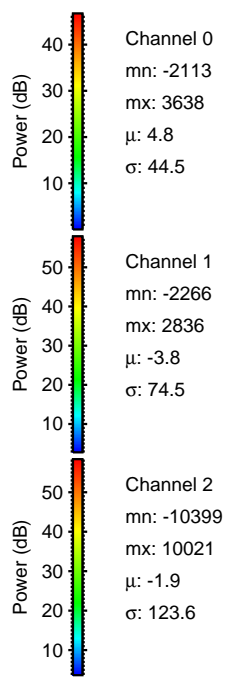
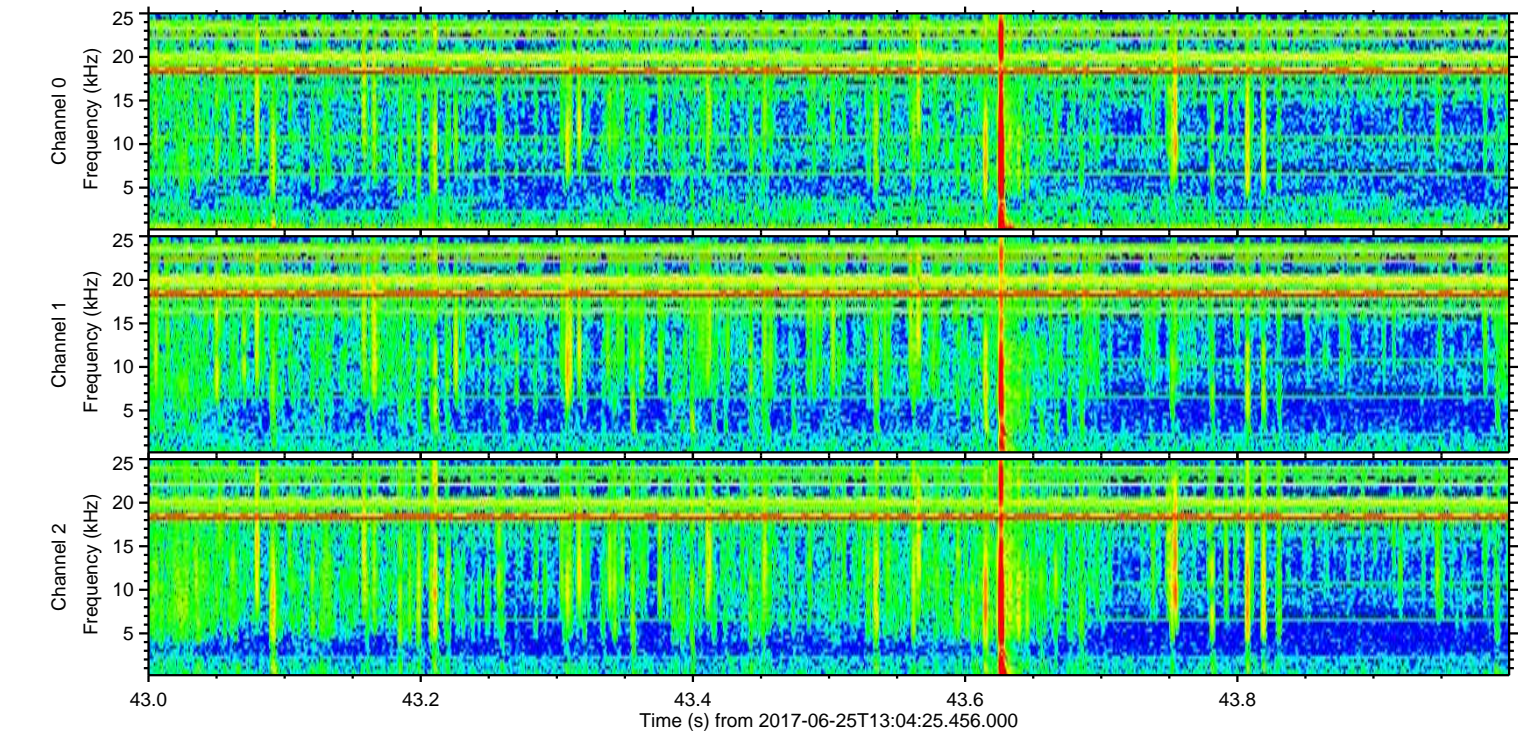
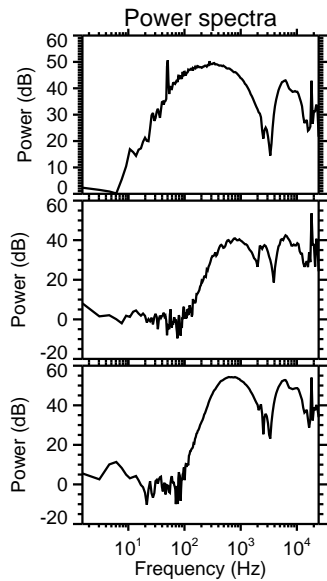
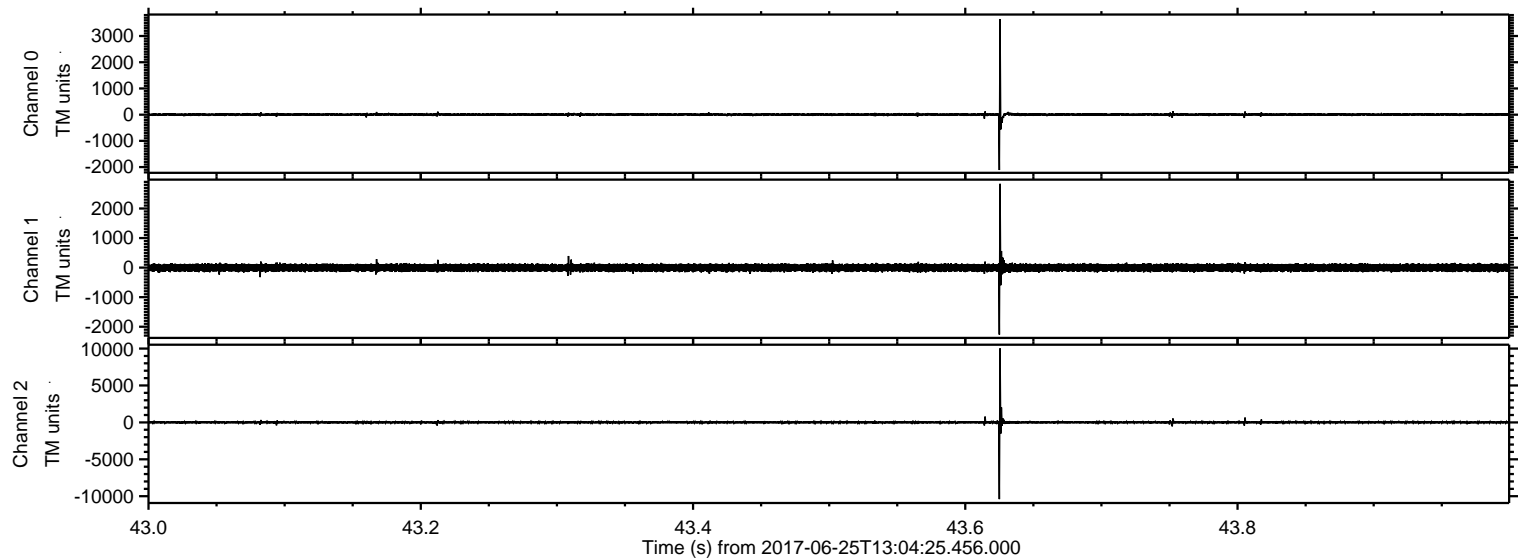
# ELMAVAN 3D WAVEFORMS (Measured data sampled at 50 kHz) 51000 packets of 144 samples from 2017-06-25T13:04:25.456.000.

Processed Sun Jun 25 15:11:54 2017 by ELM ver.2012-10-06 from 001\_\_elm20170625\_130424\_\_dat00.bin





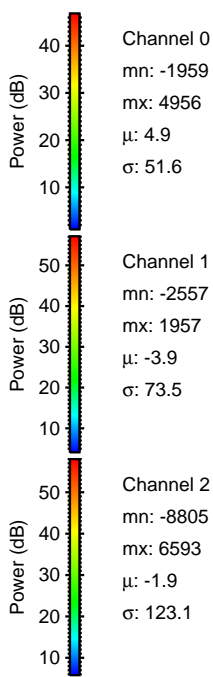
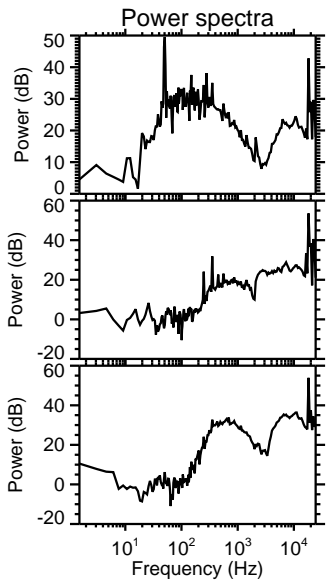
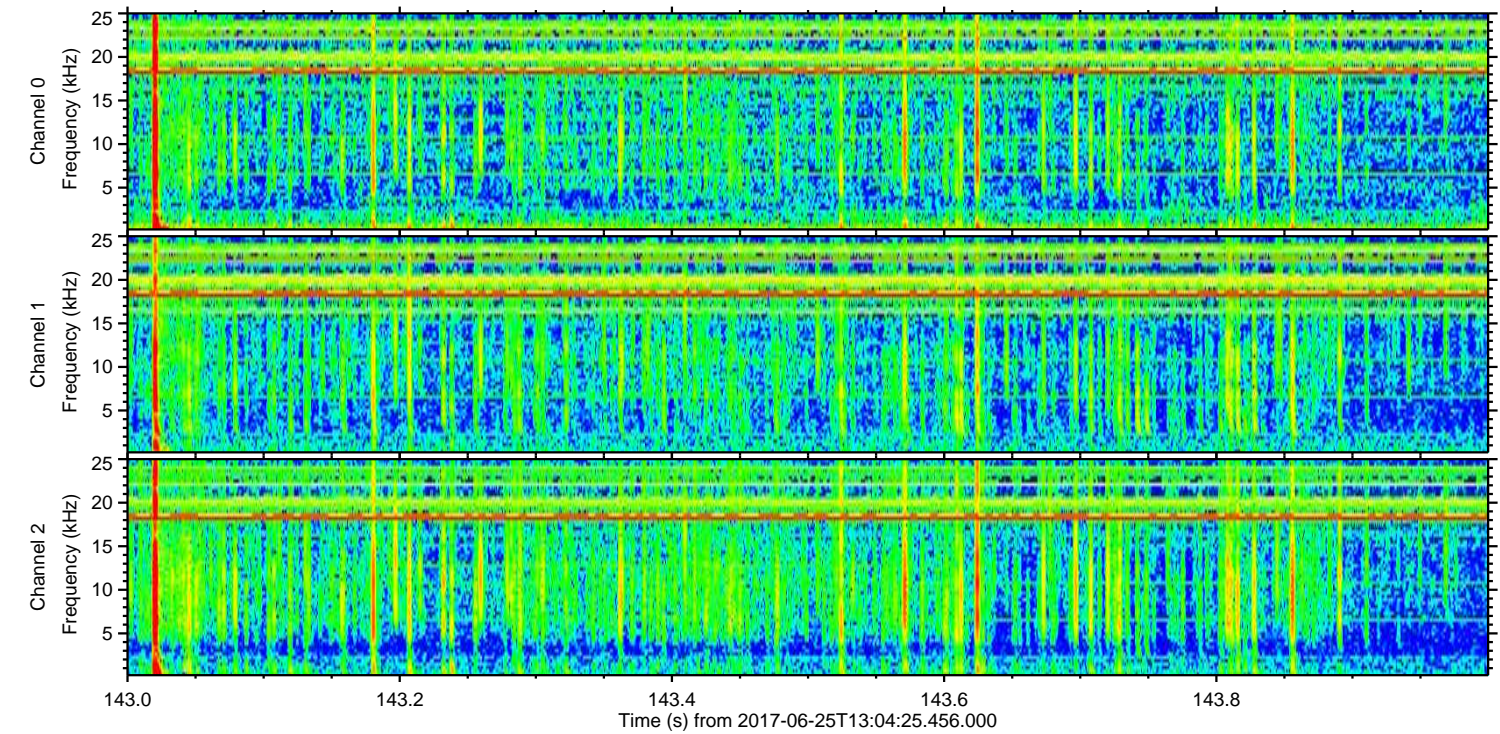
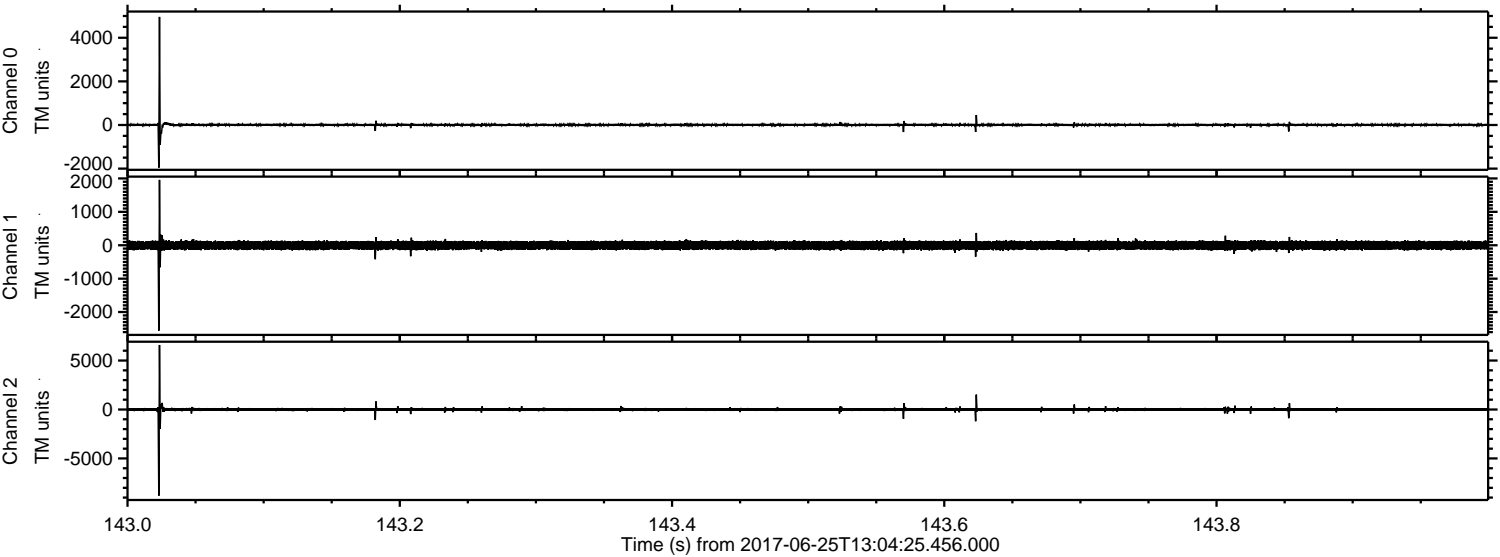
Processed Sun Jun 25 15:12:01 2017 by ELM ver.2012-10-06 from 001\_\_elm20170625\_130424\_\_dat00.bin





ELMAVAN 3D WAVEFORMS (Measured data sampled at 50 kHz) 51000 packets of 144 samples from 2017-06-25T13:04:25.456.000. Part 144/147

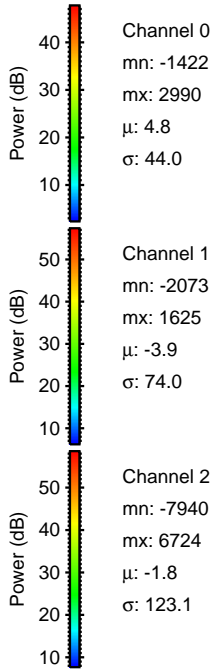
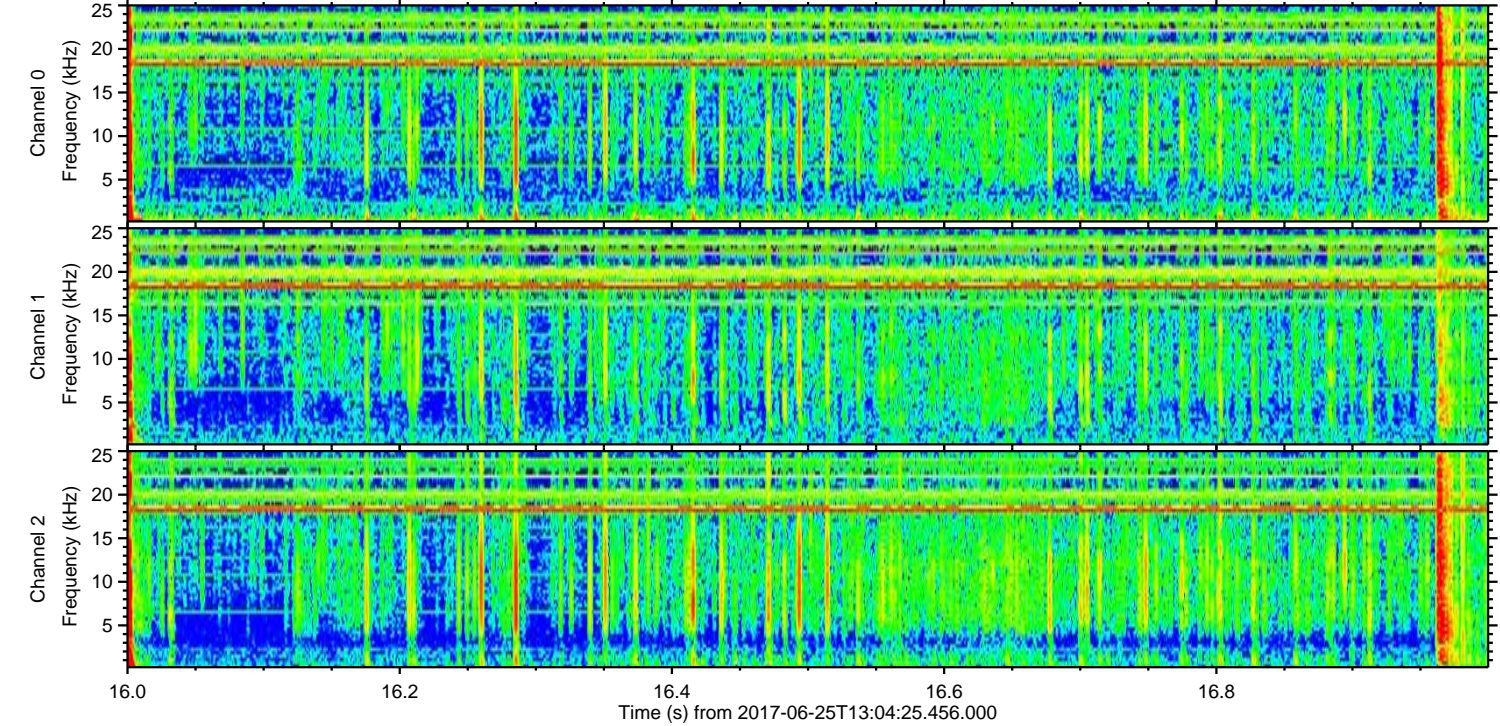
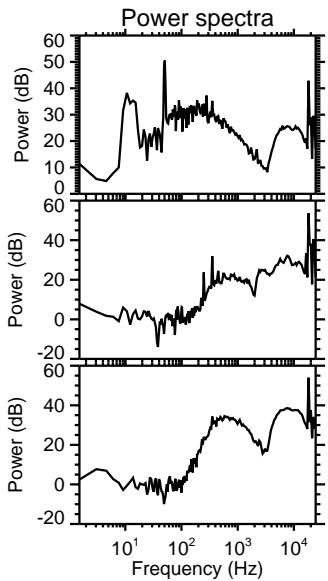
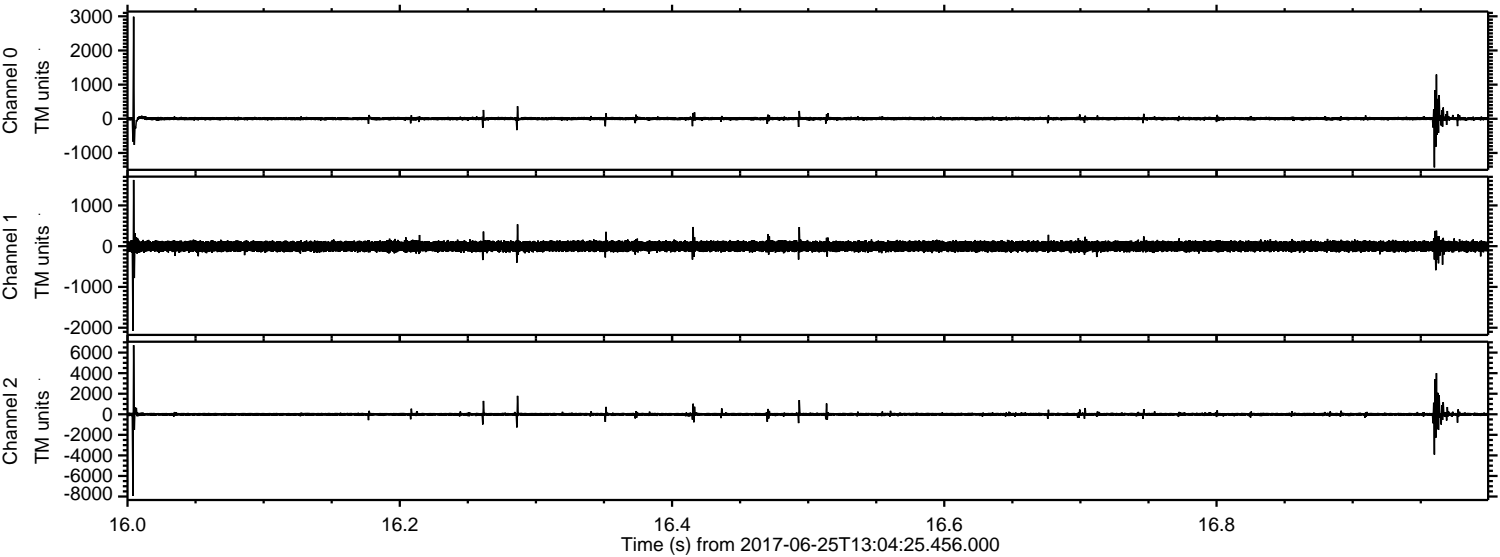
Processed Sun Jun 25 15:12:01 2017 by ELM ver.2012-10-06 from 001\_\_elm20170625\_130424\_\_dat00.bin





ELMAVAN 3D WAVEFORMS (Measured data sampled at 50 kHz) 51000 packets of 144 samples from 2017-06-25T13:04:25.456.000. Part 17/147

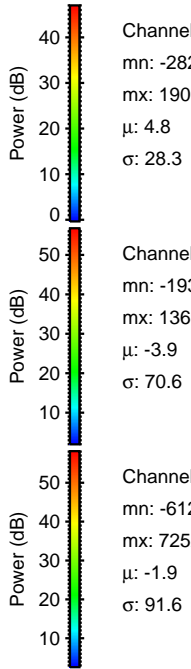
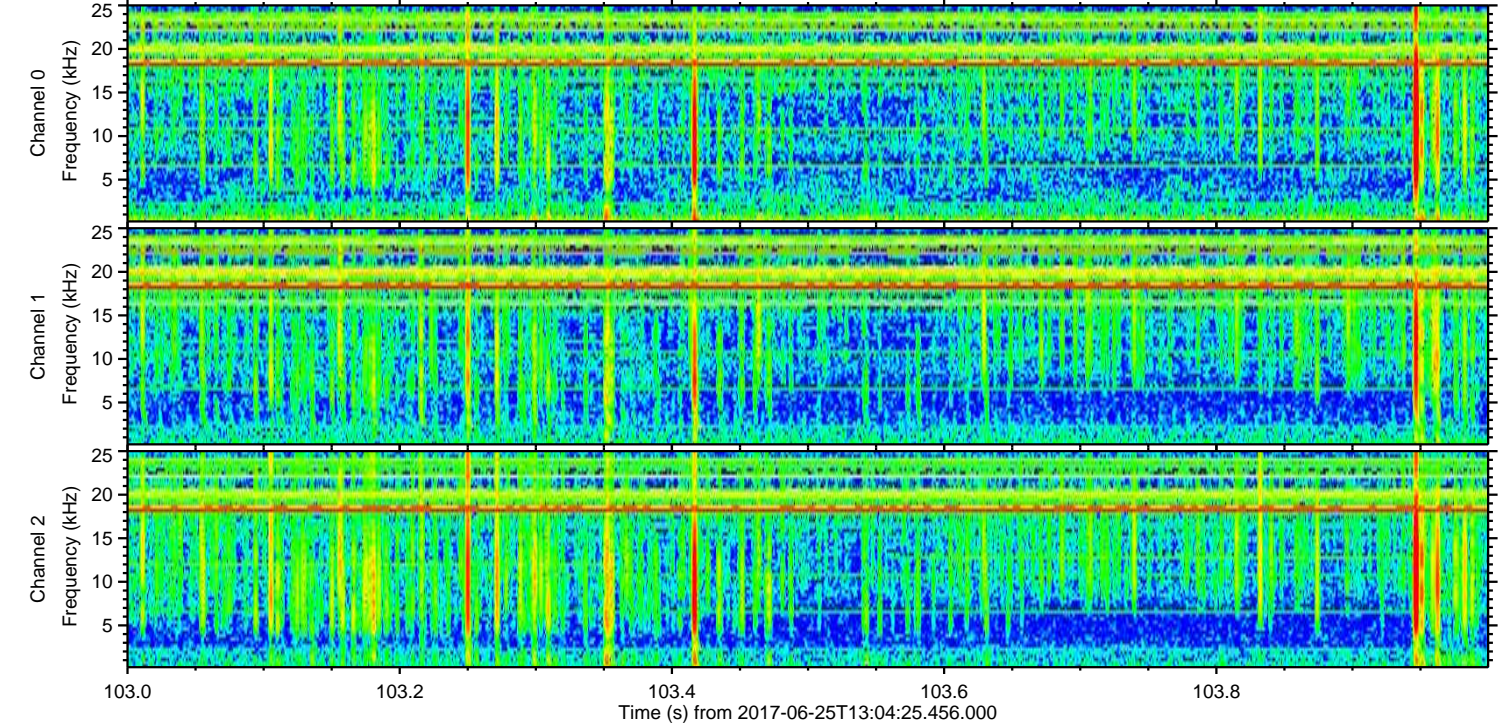
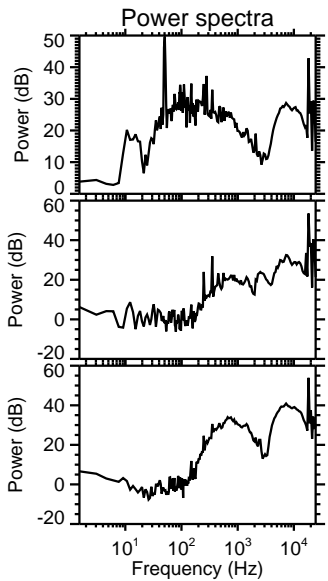
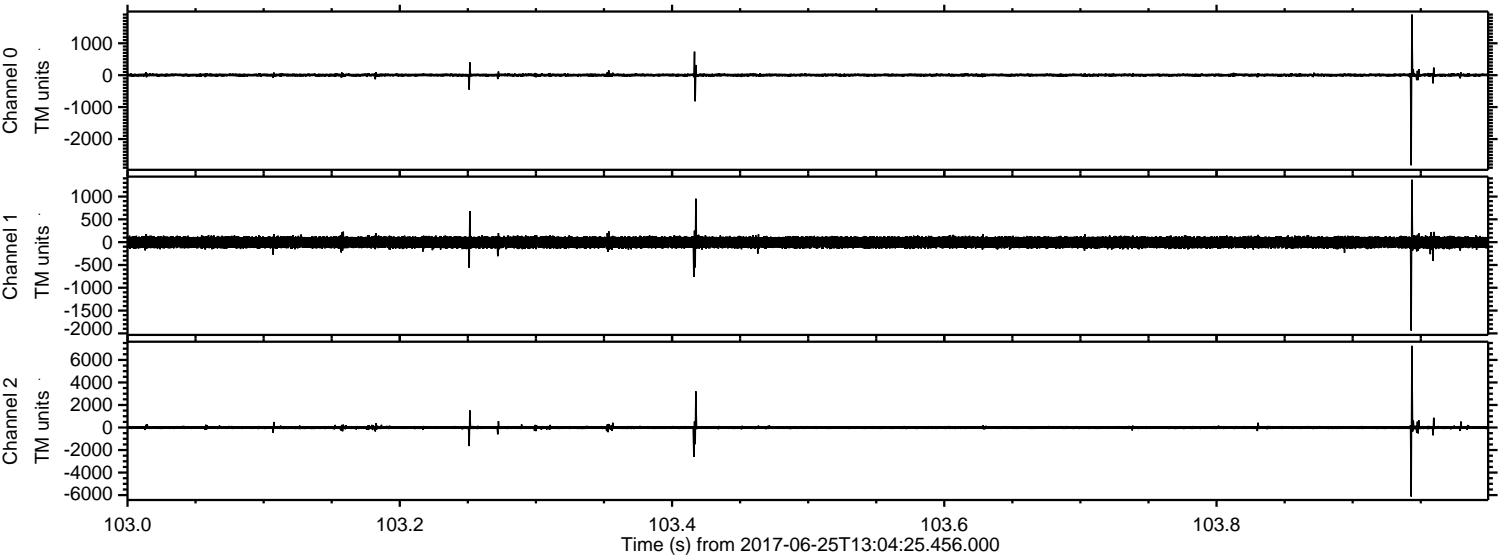
Processed Sun Jun 25 15:12:02 2017 by ELM ver.2012-10-06 from 001\_\_elm20170625\_130424\_\_dat00.bin





ELMAVAN 3D WAVEFORMS (Measured data sampled at 50 kHz) 51000 packets of 144 samples from 2017-06-25T13:04:25.456.000. Part 104/147

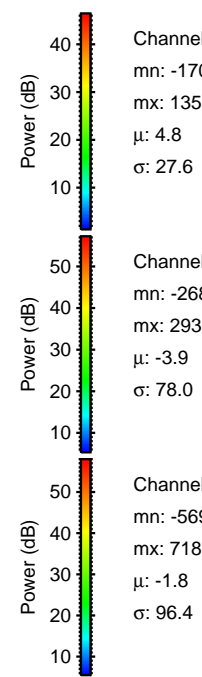
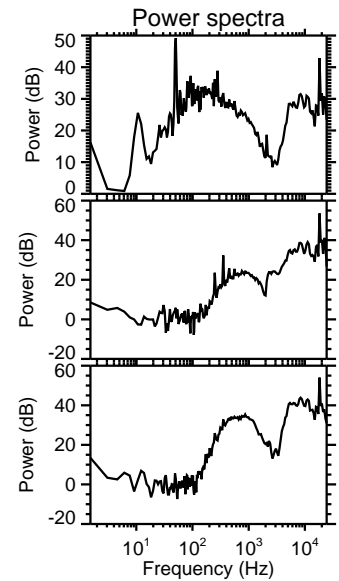
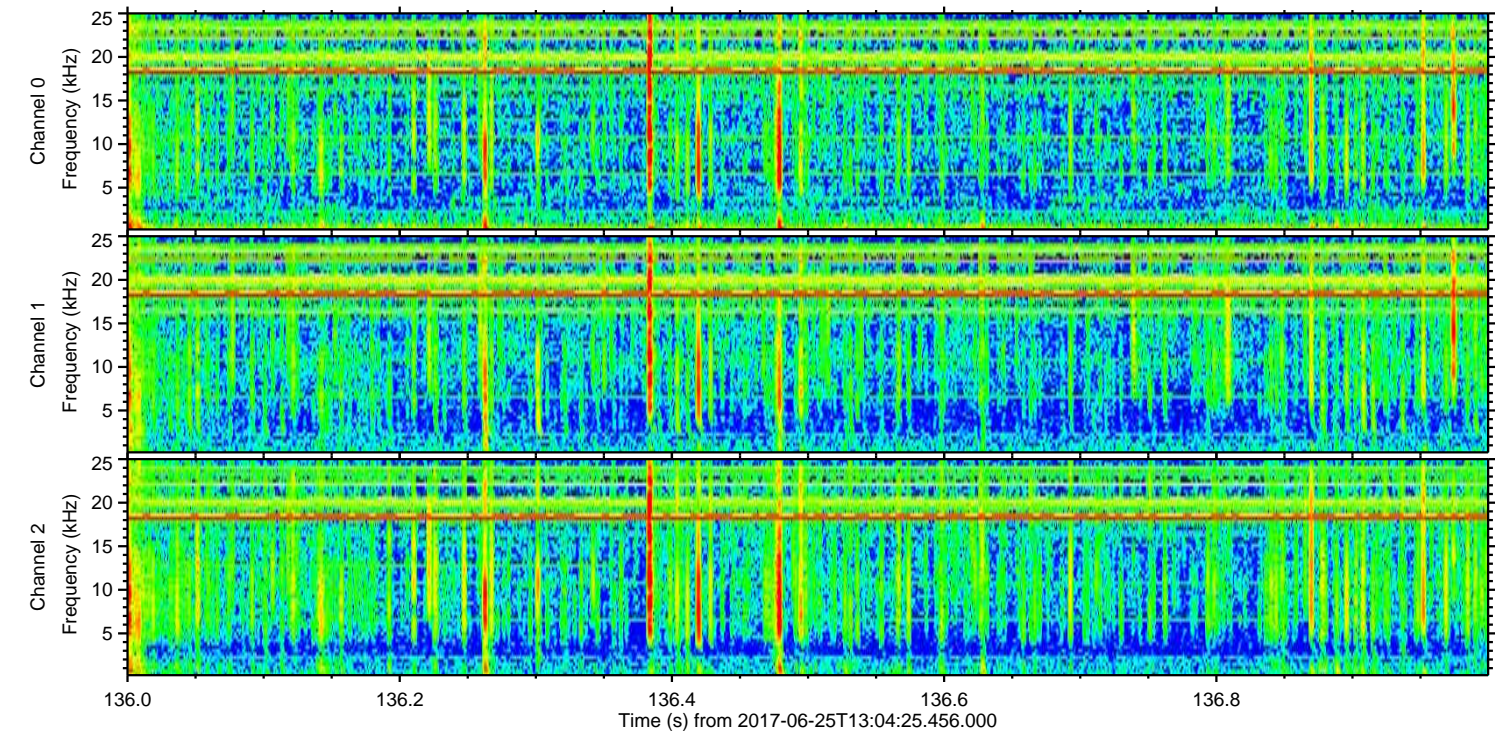
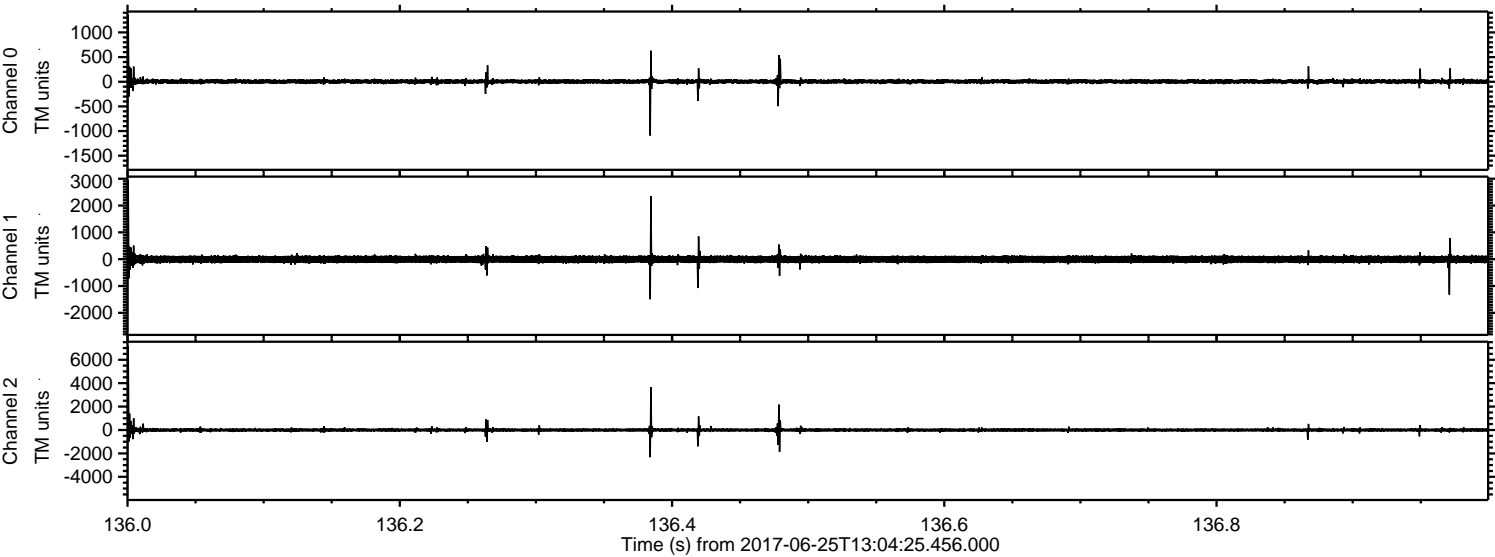
Processed Sun Jun 25 15:12:03 2017 by ELM ver.2012-10-06 from 001\_\_elm20170625\_130424\_\_dat00.bin





ELMAVAN 3D WAVEFORMS (Measured data sampled at 50 kHz) 51000 packets of 144 samples from 2017-06-25T13:04:25.456.000. Part 137/147

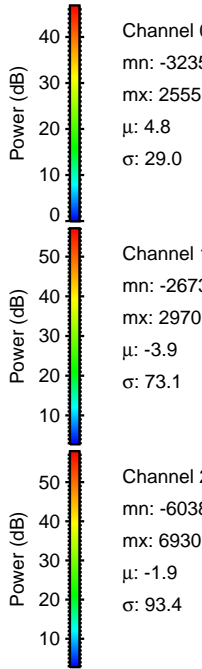
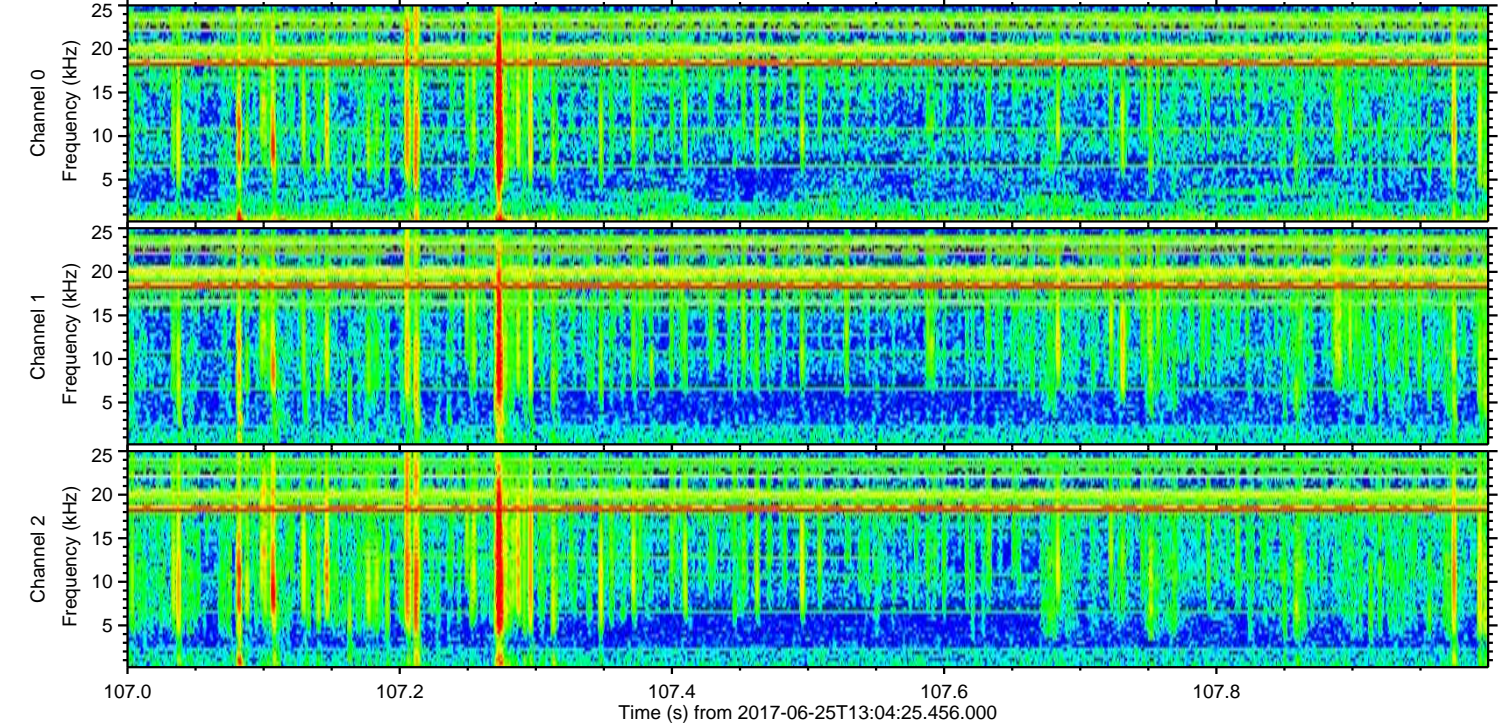
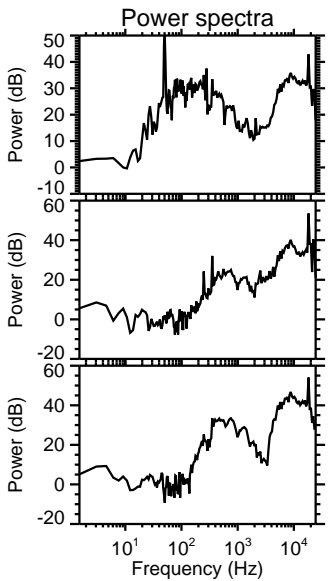
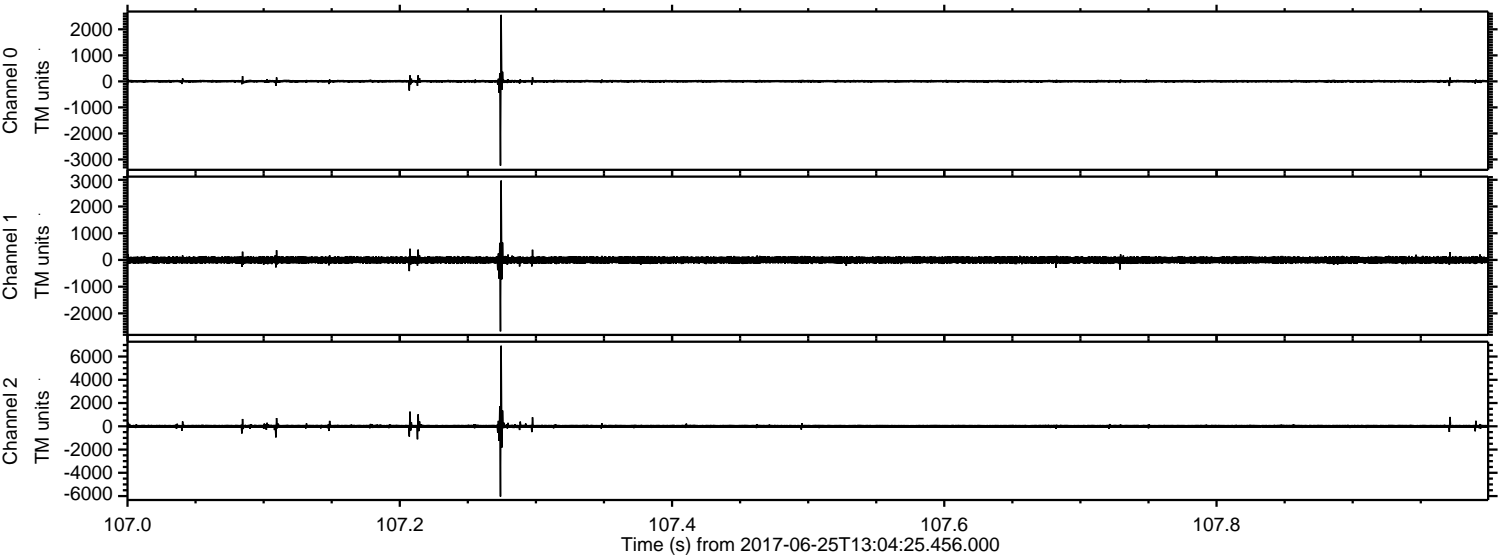
Processed Sun Jun 25 15:12:03 2017 by ELM ver.2012-10-06 from 001\_\_elm20170625\_130424\_\_dat00.bin





ELMAVAN 3D WAVEFORMS (Measured data sampled at 50 kHz) 51000 packets of 144 samples from 2017-06-25T13:04:25.456.000. Part 108/147

Processed Sun Jun 25 15:12:04 2017 by ELM ver.2012-10-06 from 001\_\_elm20170625\_130424\_\_dat00.bin



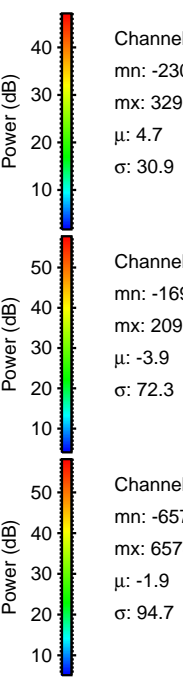
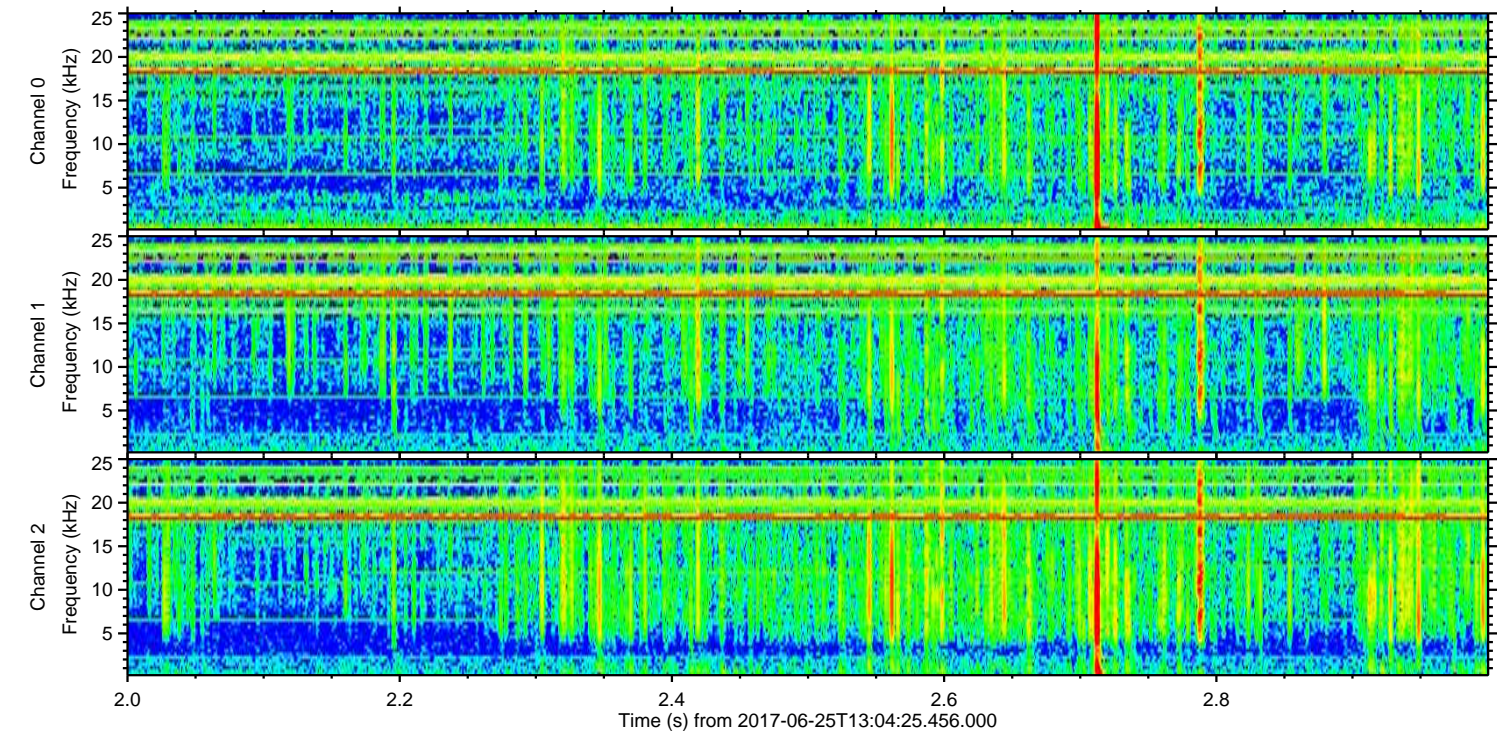
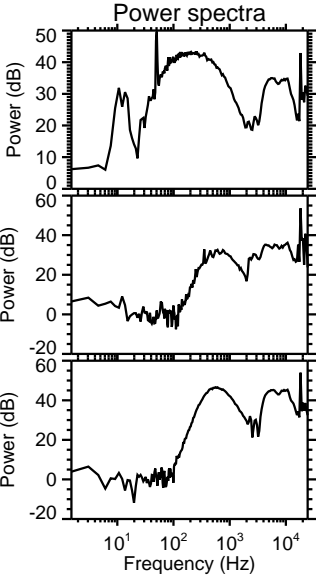
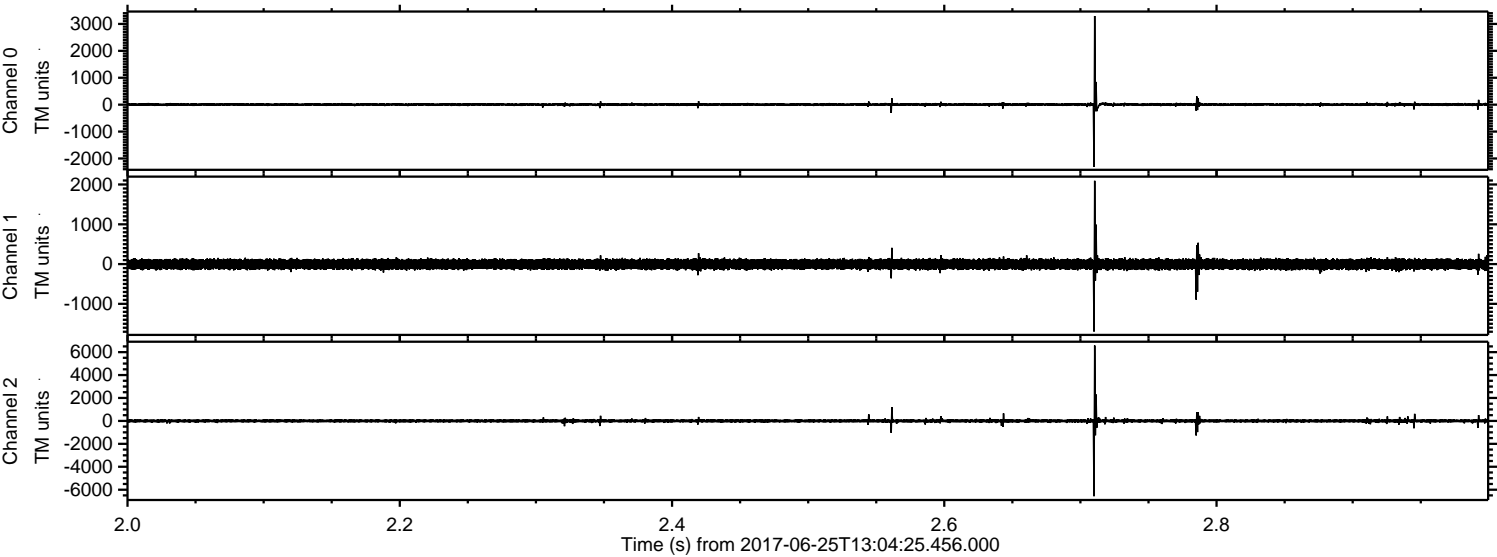
Channel 0  
mn: -3235  
mx: 2555  
 $\mu$ : 4.8  
 $\sigma$ : 29.0

Channel 1  
mn: -2673  
mx: 2970  
 $\mu$ : -3.9  
 $\sigma$ : 73.1

Channel 2  
mn: -6038  
mx: 6930  
 $\mu$ : -1.9  
 $\sigma$ : 93.4



Processed Sun Jun 25 15:12:04 2017 by ELM ver.2012-10-06 from 001\_\_elm20170625\_130424\_\_dat00.bin



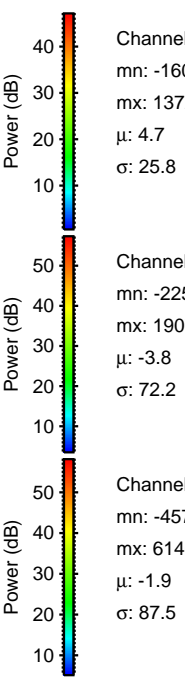
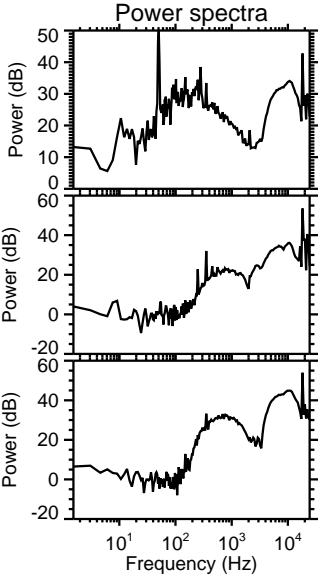
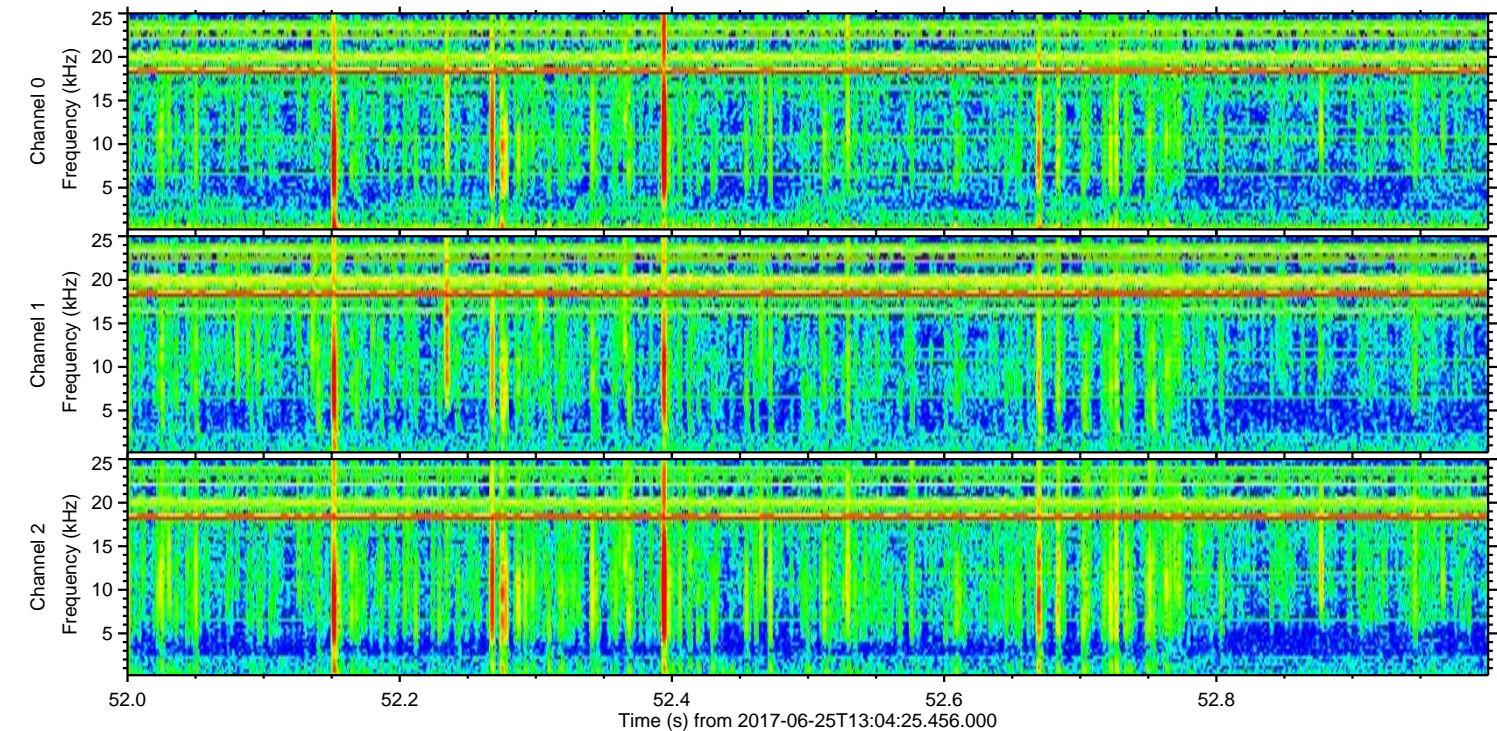
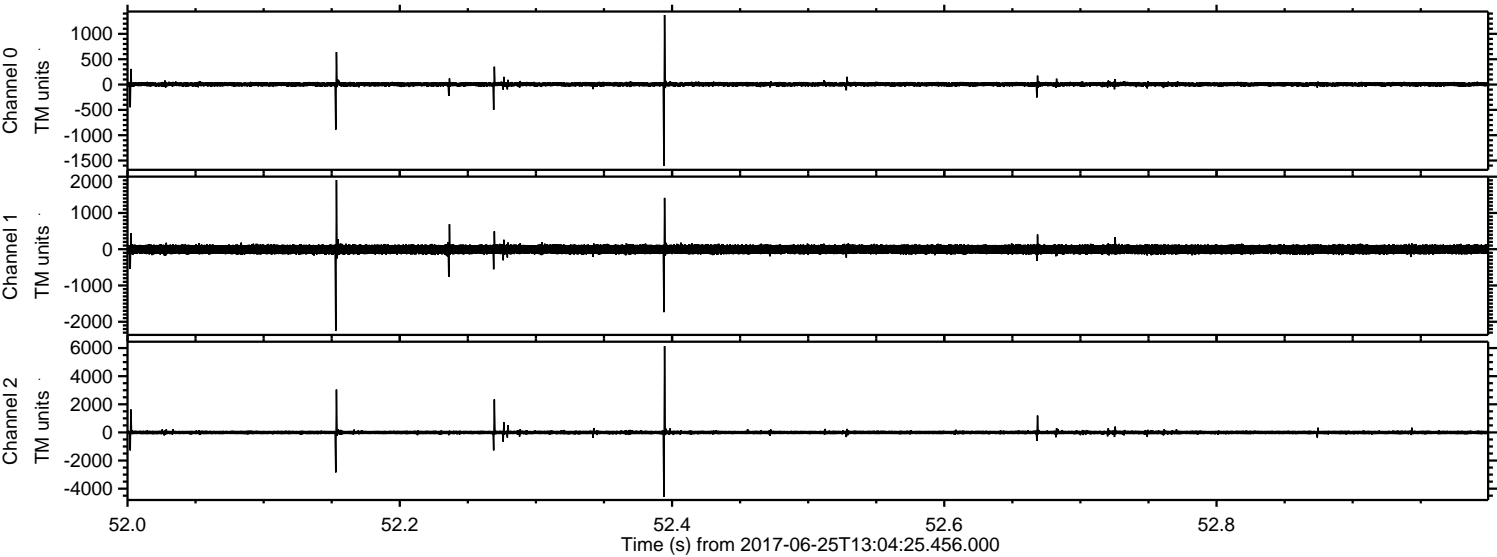
Channel 0  
mn: -2306  
mx: 3296  
 $\mu$ : 4.7  
 $\sigma$ : 30.9

Channel 1  
mn: -1695  
mx: 2093  
 $\mu$ : -3.9  
 $\sigma$ : 72.3

Channel 2  
mn: -6571  
mx: 6578  
 $\mu$ : -1.9  
 $\sigma$ : 94.7



Processed Sun Jun 25 15:12:05 2017 by ELM ver.2012-10-06 from 001\_\_elm20170625\_130424\_\_dat00.bin



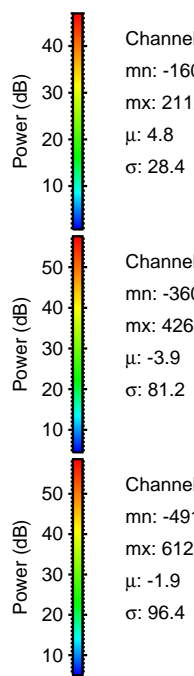
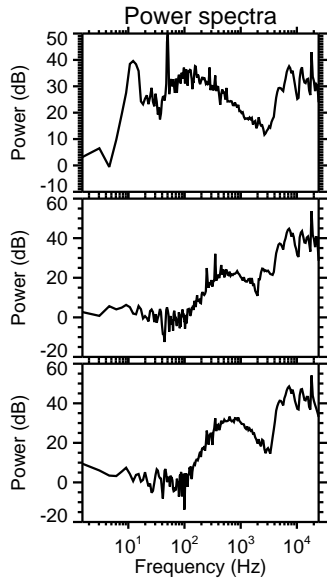
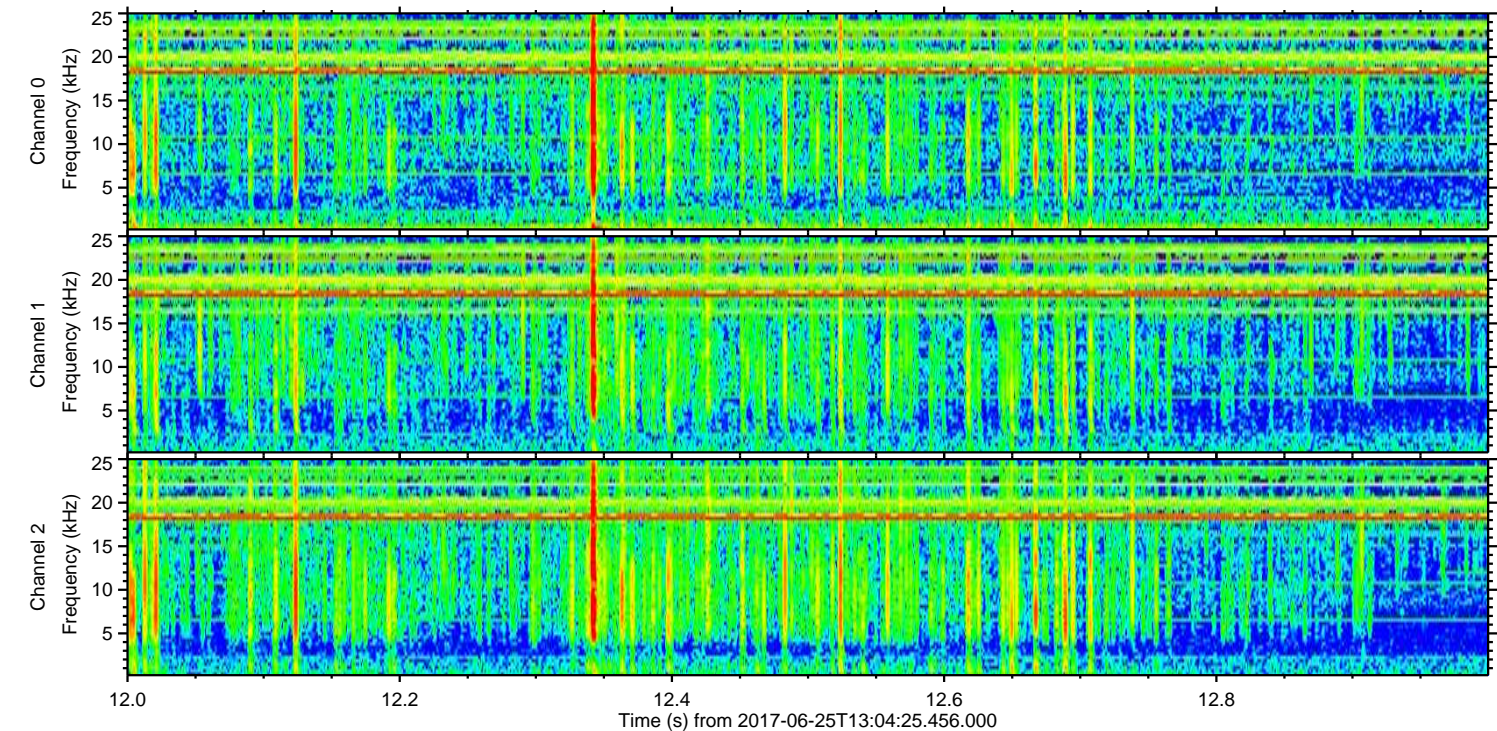
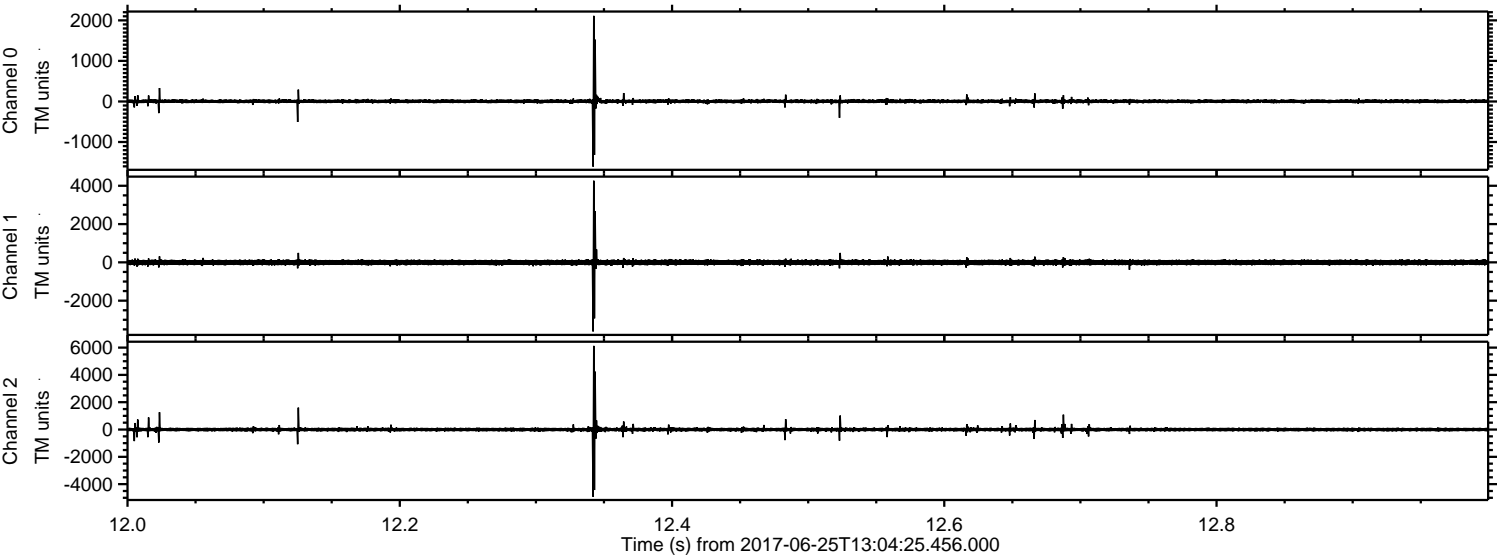
Channel 0  
mn: -1603  
mx: 1372  
 $\mu$ : 4.7  
 $\sigma$ : 25.8

Channel 1  
mn: -2251  
mx: 1907  
 $\mu$ : -3.8  
 $\sigma$ : 72.2

Channel 2  
mn: -4577  
mx: 6146  
 $\mu$ : -1.9  
 $\sigma$ : 87.5



Processed Sun Jun 25 15:12:06 2017 by ELM ver.2012-10-06 from 001\_\_elm20170625\_130424\_\_dat00.bin



Channel 0  
mn: -1605  
mx: 2112  
 $\mu$ : 4.8  
 $\sigma$ : 28.4

Channel 1  
mn: -3608  
mx: 4264  
 $\mu$ : -3.9  
 $\sigma$ : 81.2

Channel 2  
mn: -4914  
mx: 6123  
 $\mu$ : -1.9  
 $\sigma$ : 96.4



Processed Sun Jun 25 15:12:07 2017 by ELM ver.2012-10-06 from 001\_\_elm20170625\_130424\_\_dat00.bin

