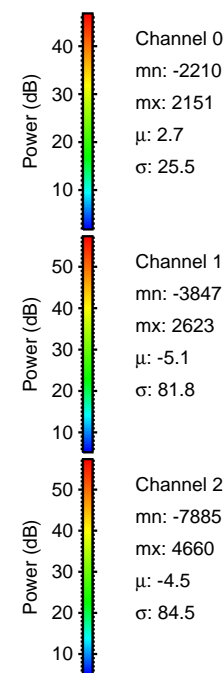
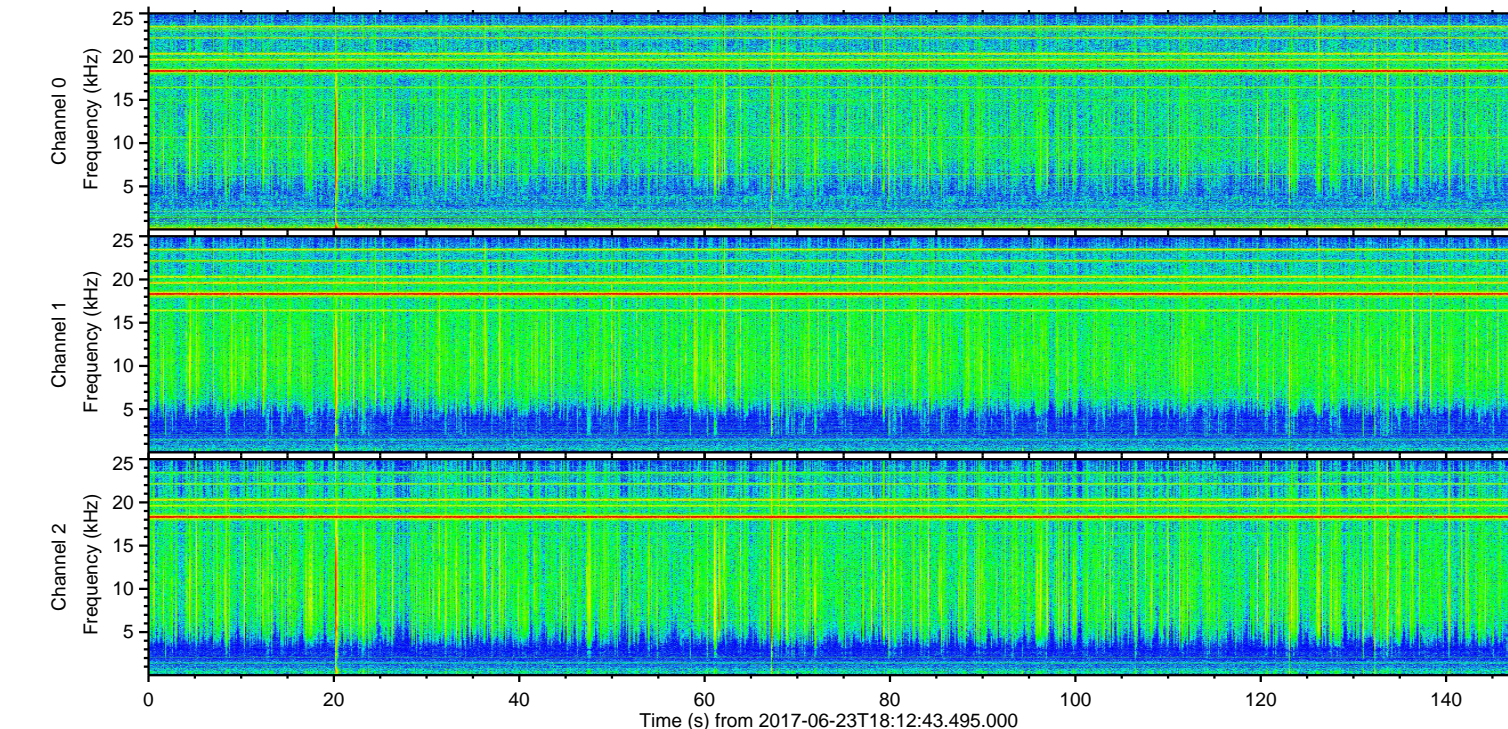
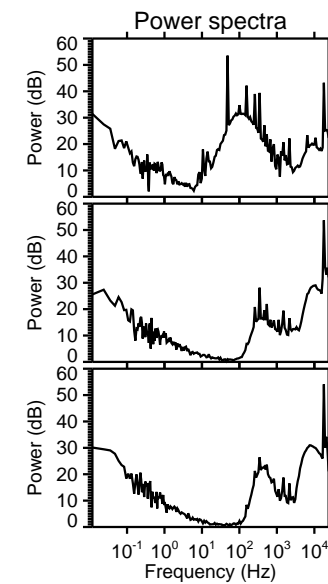
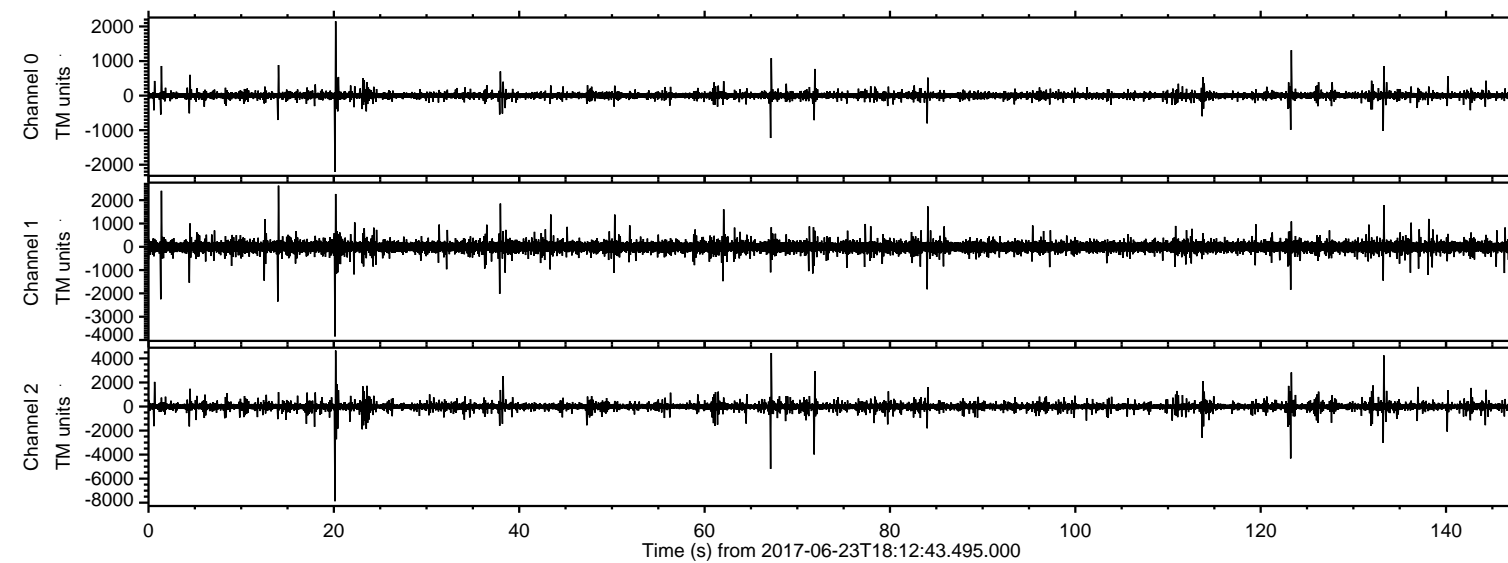
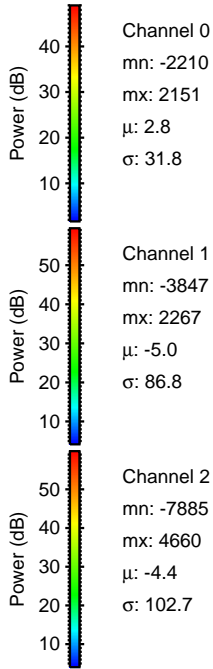
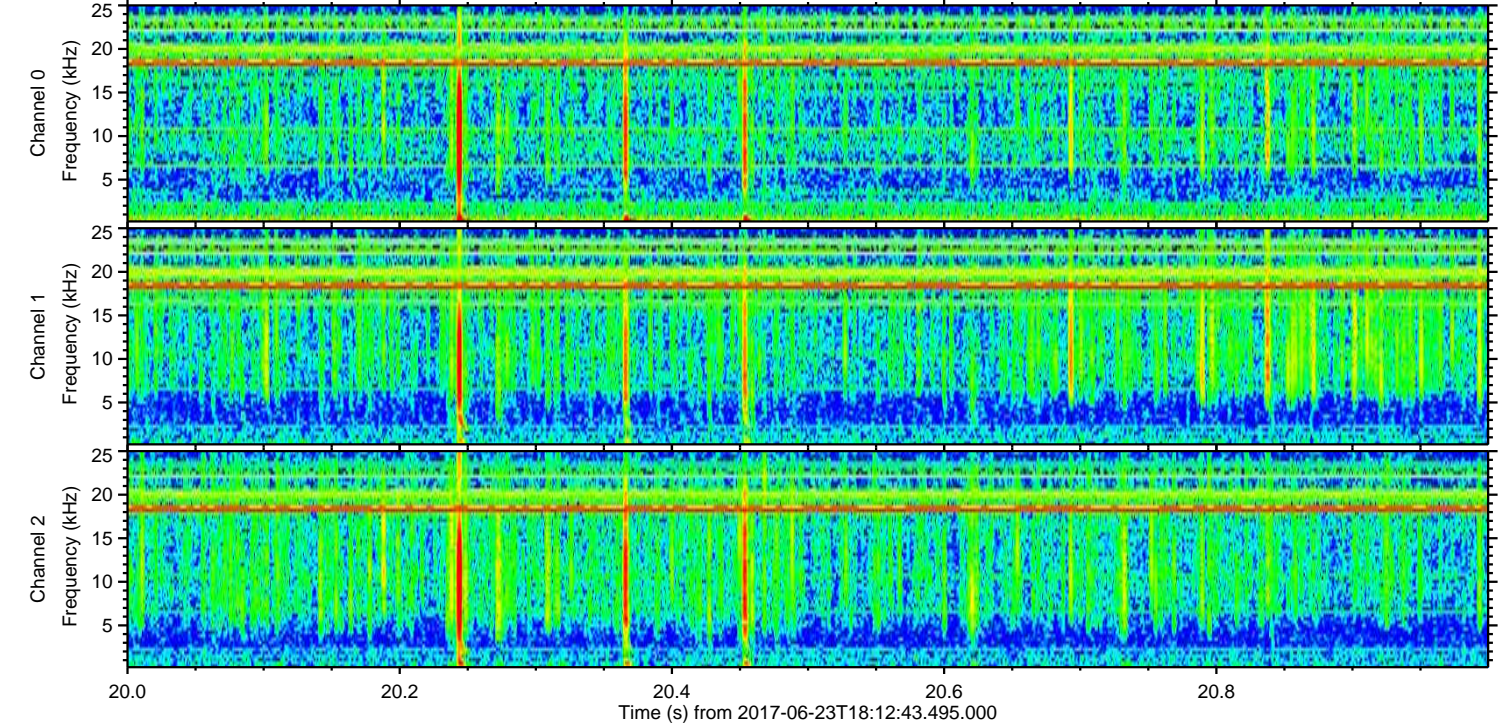
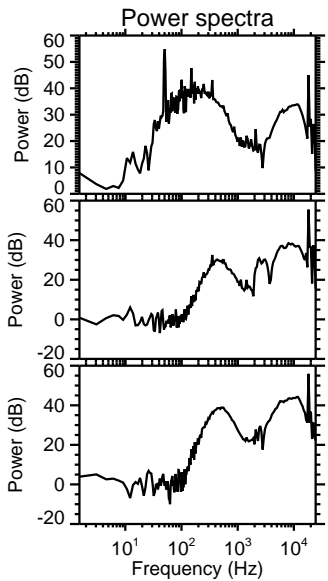
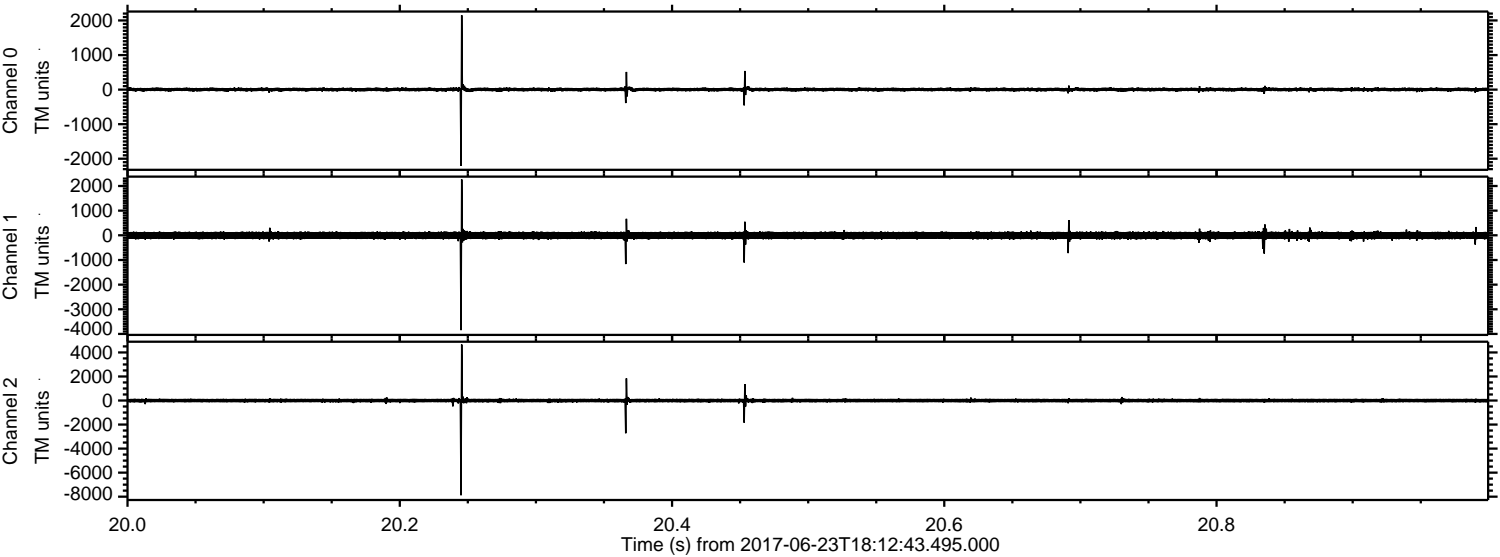


ELMAVAN 3D WAVEFORMS (Measured data sampled at 50 kHz) 51000 packets of 144 samples from 2017-06-23T18:12:43.495.000.

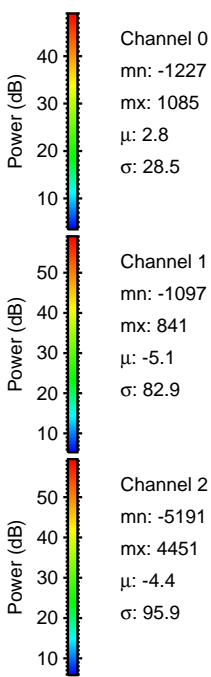
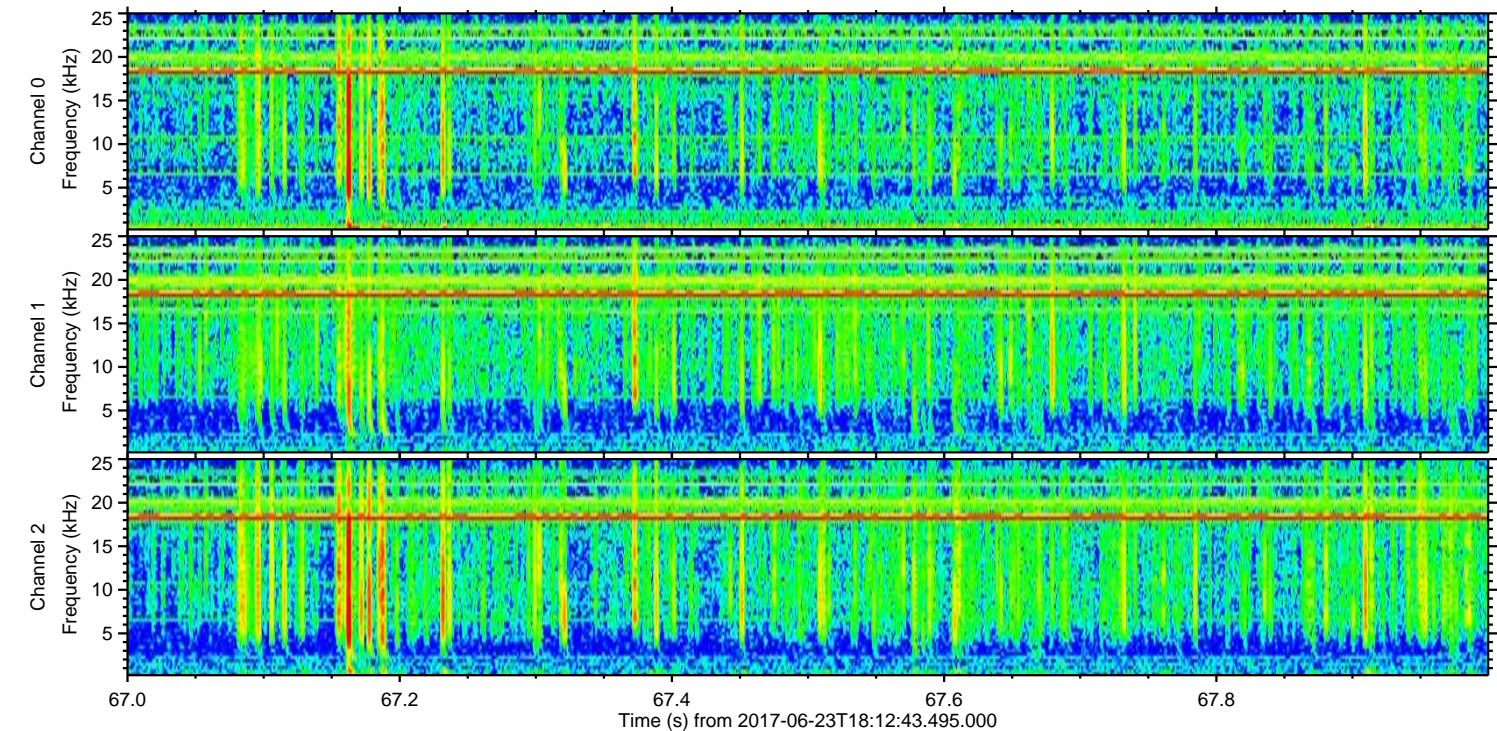
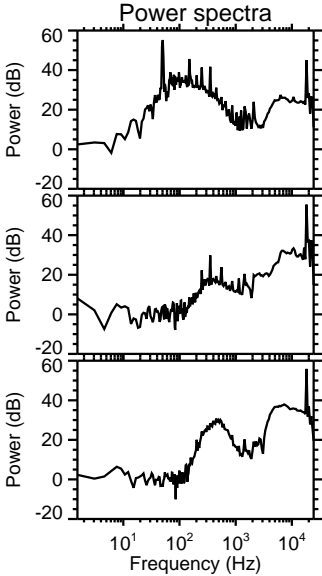
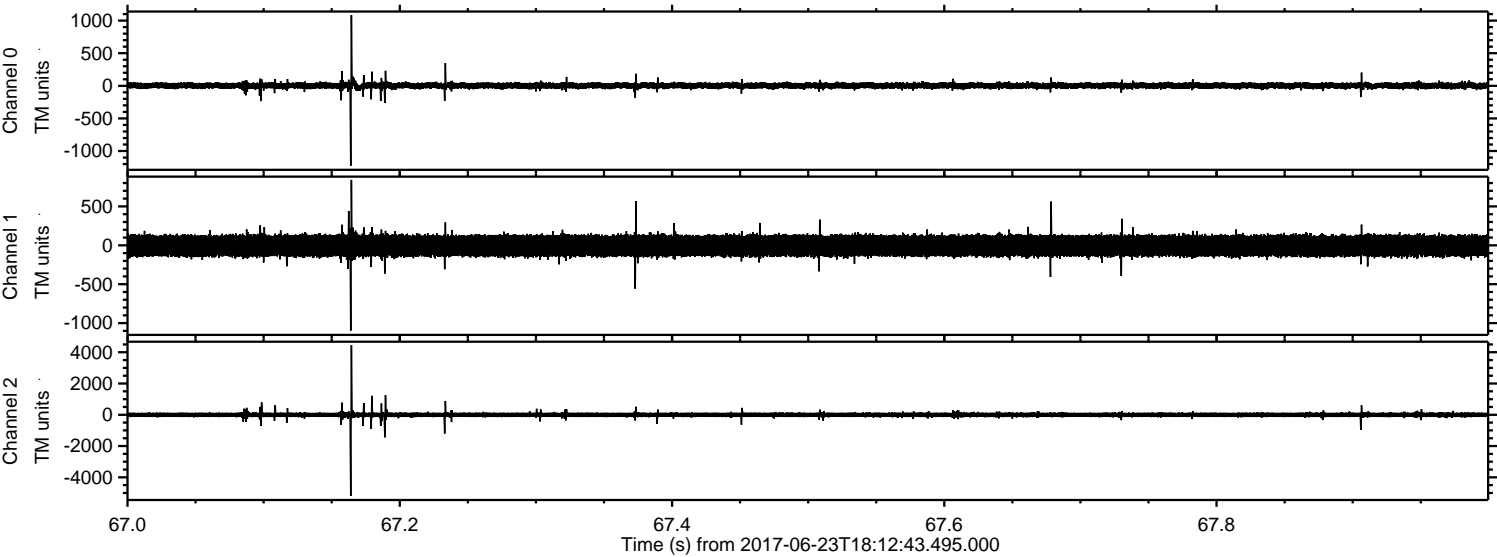
Processed Fri Jun 23 20:20:51 2017 by ELM ver.2012-10-06 from 001__elm20170623_181242__dat00.bin



Processed Fri Jun 23 20:20:59 2017 by ELM ver.2012-10-06 from 001__elm20170623_181242__dat00.bin

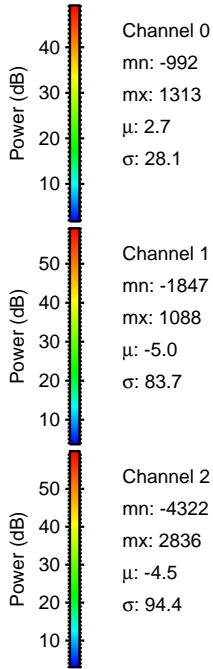
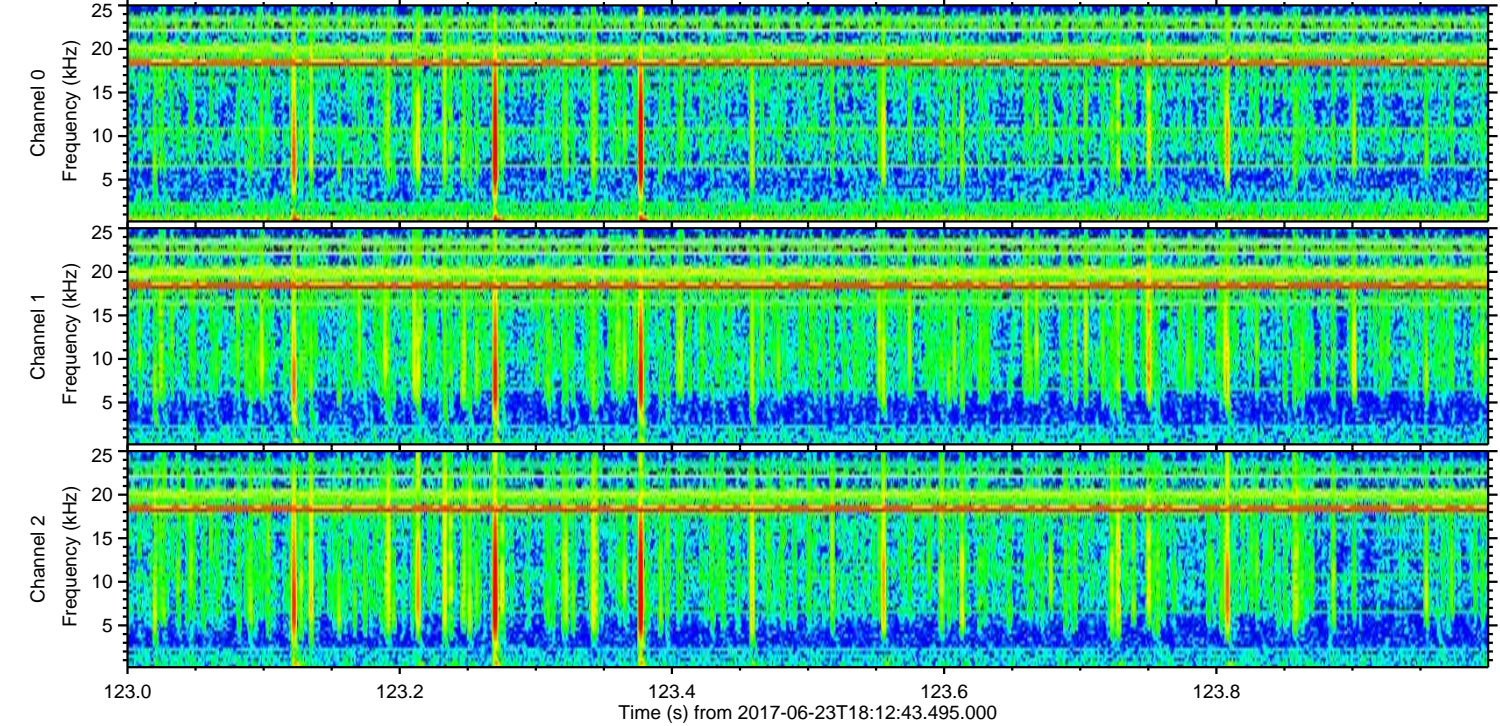
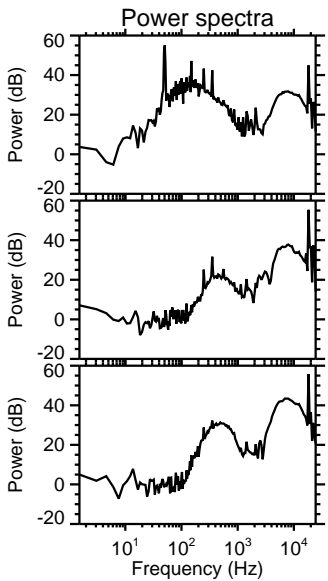
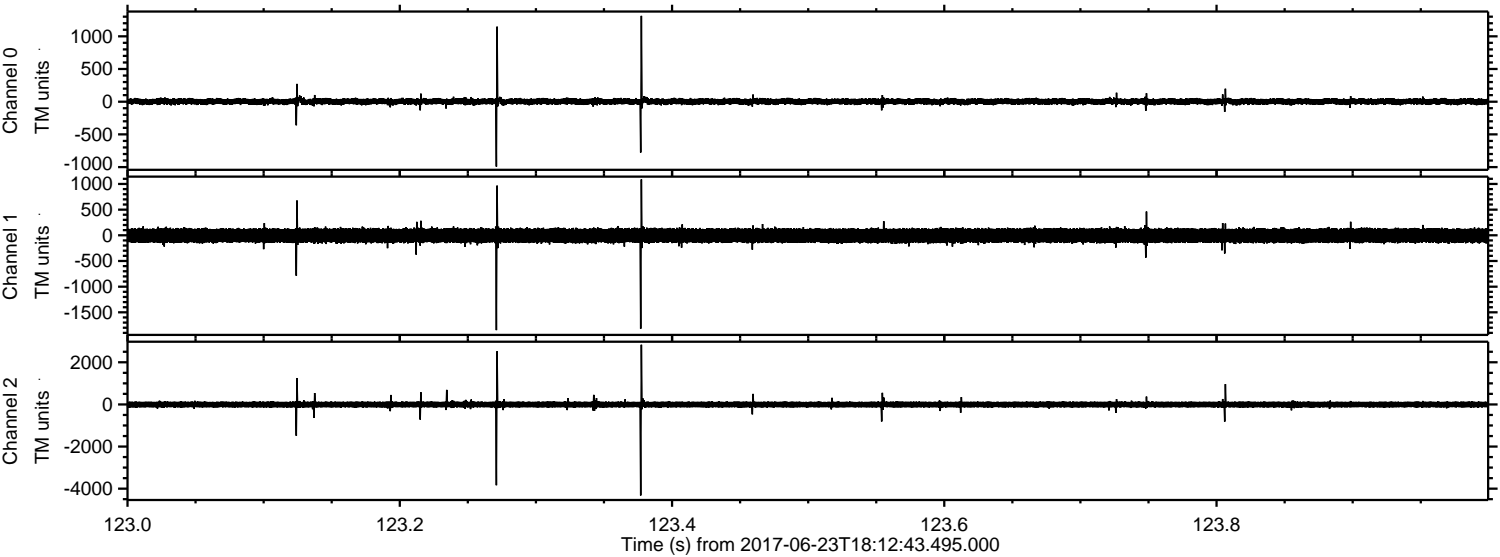


Processed Fri Jun 23 20:21:00 2017 by ELM ver.2012-10-06 from 001__elm20170623_181242__dat00.bin



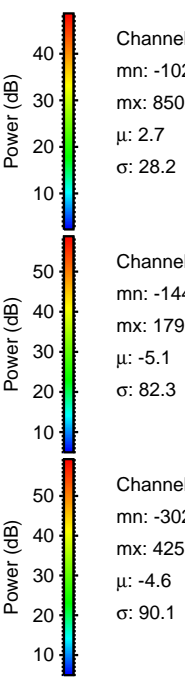
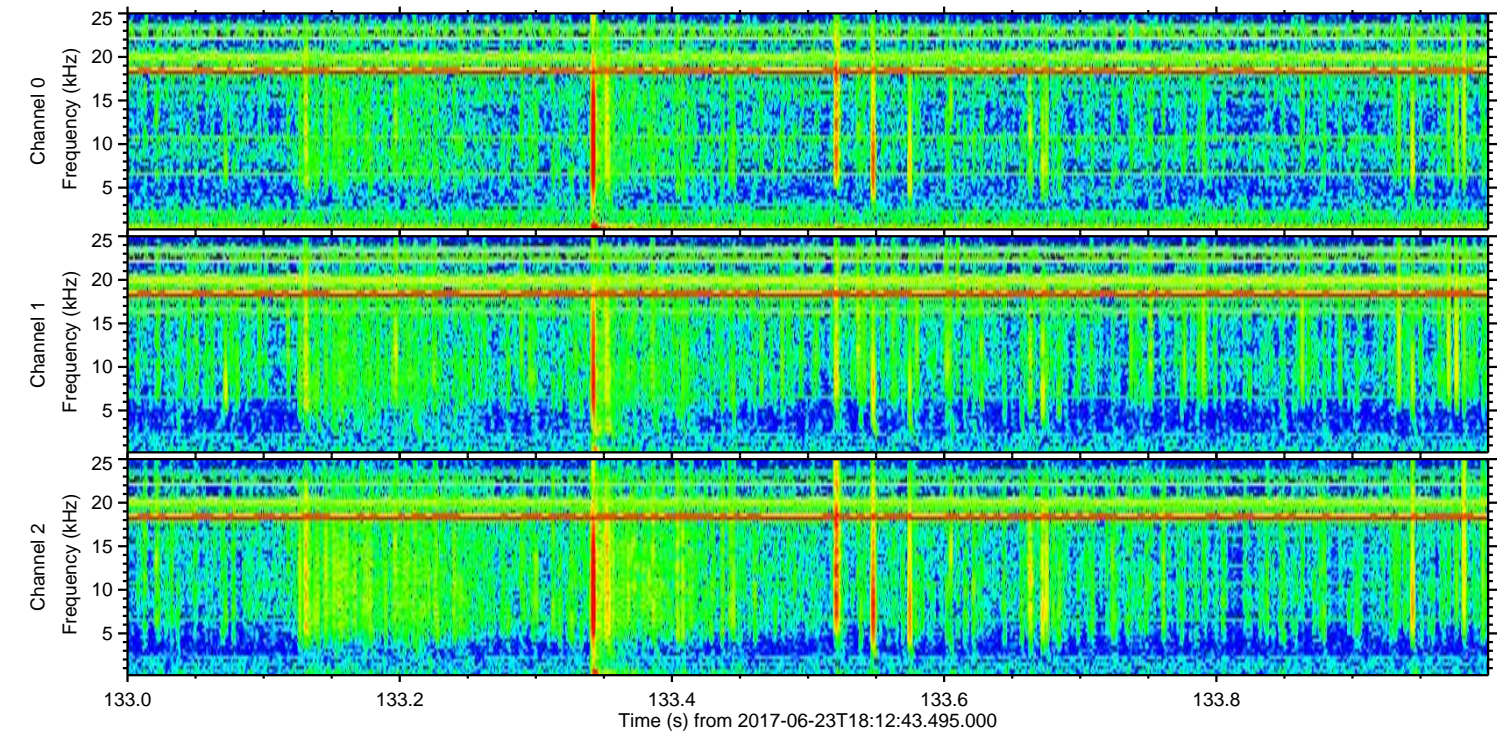
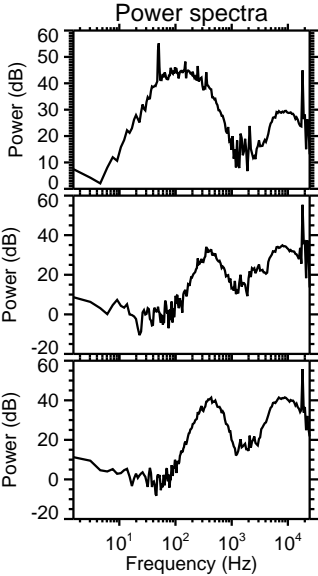
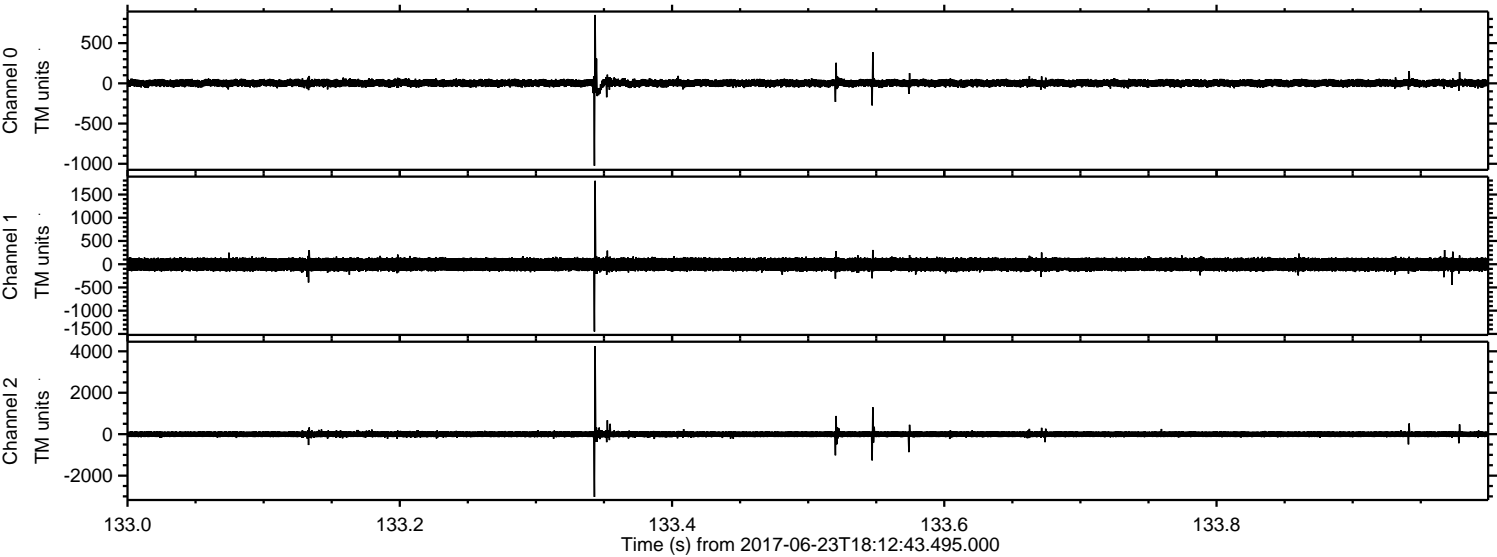
ELMAVAN 3D WAVEFORMS (Measured data sampled at 50 kHz) 51000 packets of 144 samples from 2017-06-23T18:12:43.495.000. Part 124/147

Processed Fri Jun 23 20:21:01 2017 by ELM ver.2012-10-06 from 001__elm20170623_181242__dat00.bin

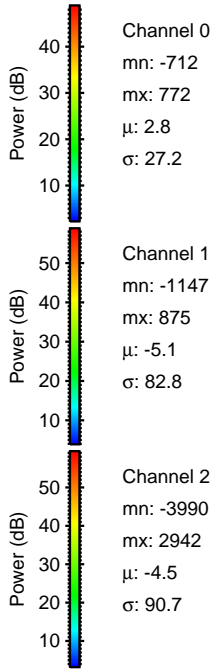
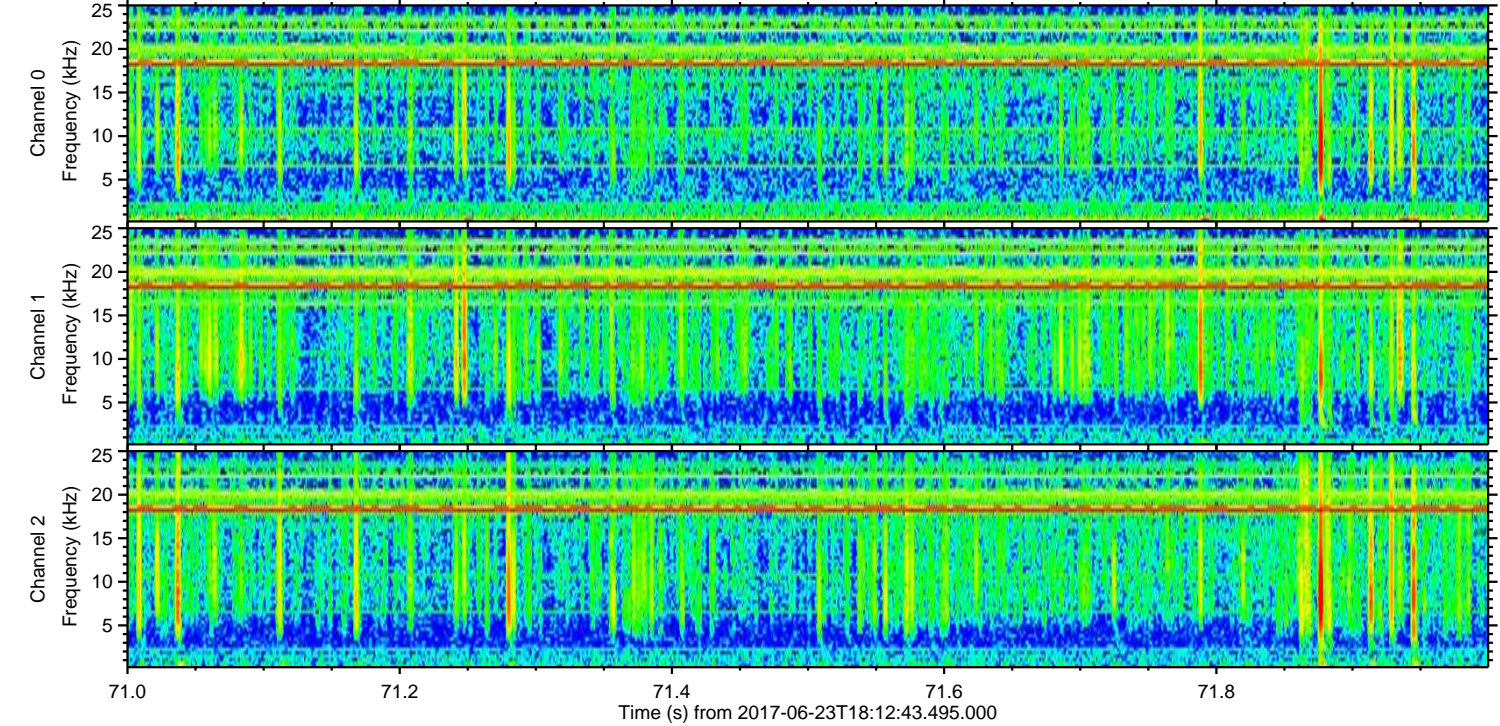
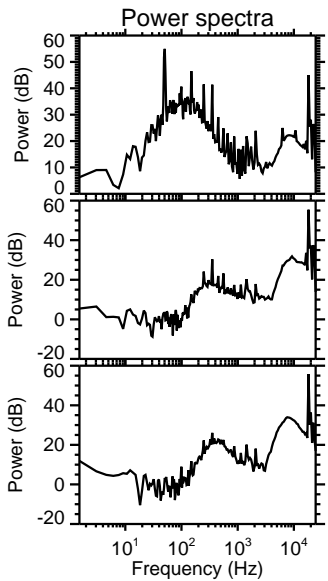
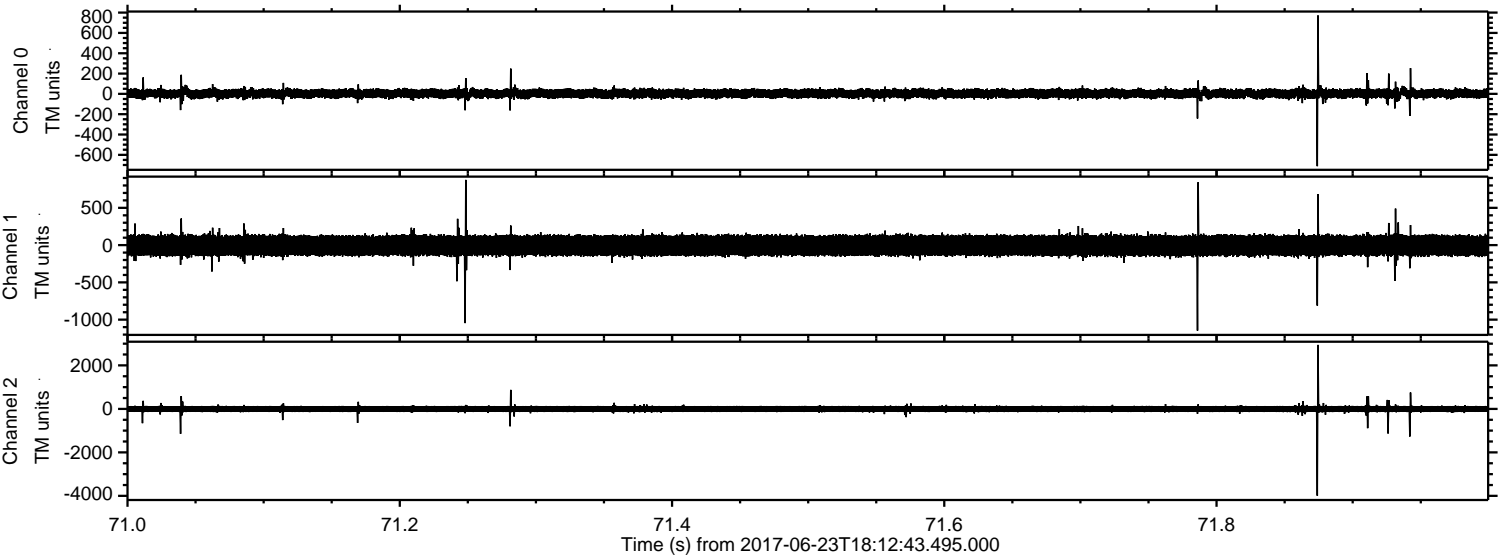


ELMAVAN 3D WAVEFORMS (Measured data sampled at 50 kHz) 51000 packets of 144 samples from 2017-06-23T18:12:43.495.000. Part 134/147

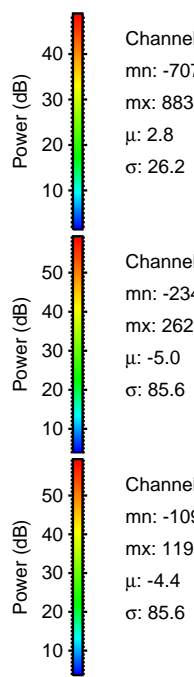
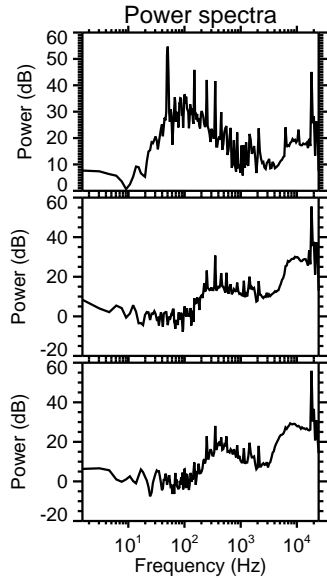
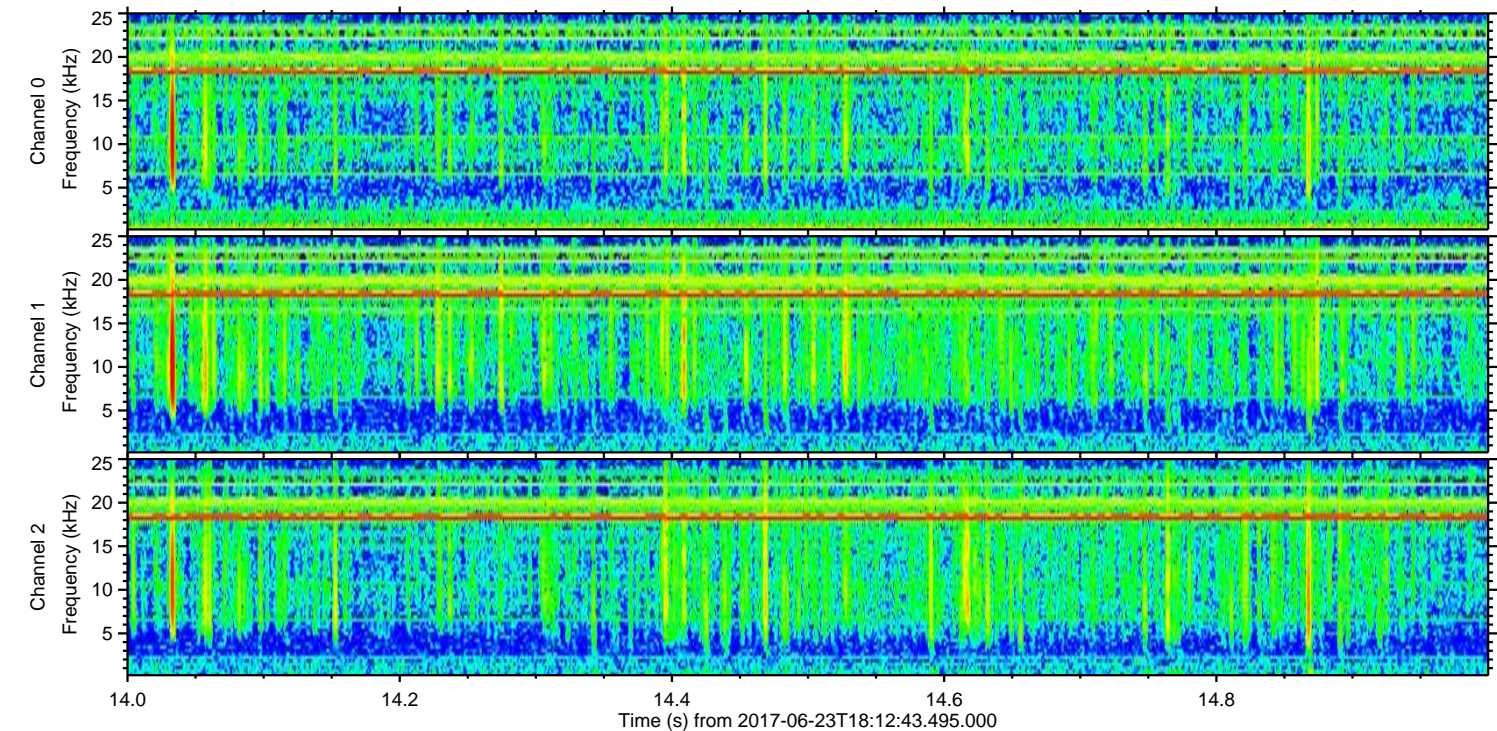
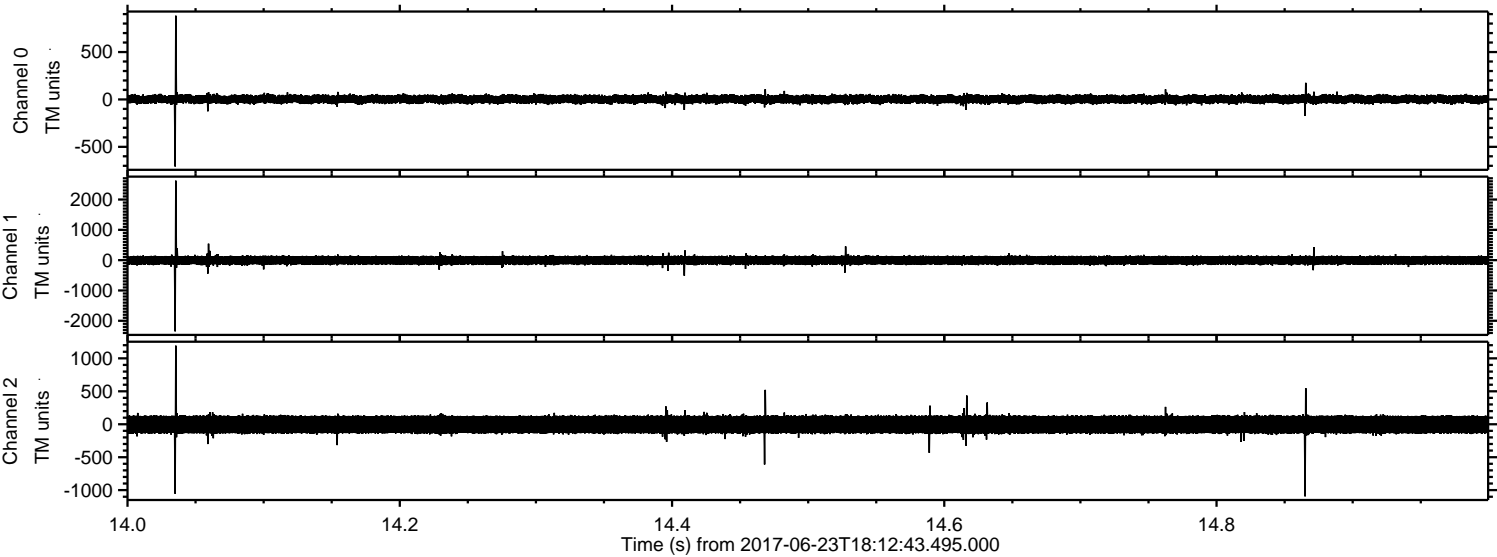
Processed Fri Jun 23 20:21:01 2017 by ELM ver.2012-10-06 from 001__elm20170623_181242__dat00.bin



Processed Fri Jun 23 20:21:02 2017 by ELM ver.2012-10-06 from 001__elm20170623_181242__dat00.bin

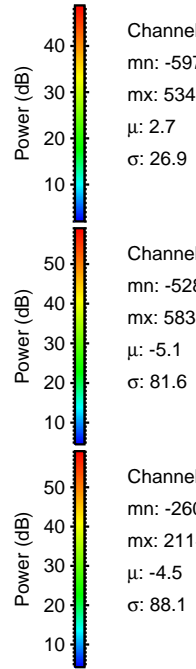
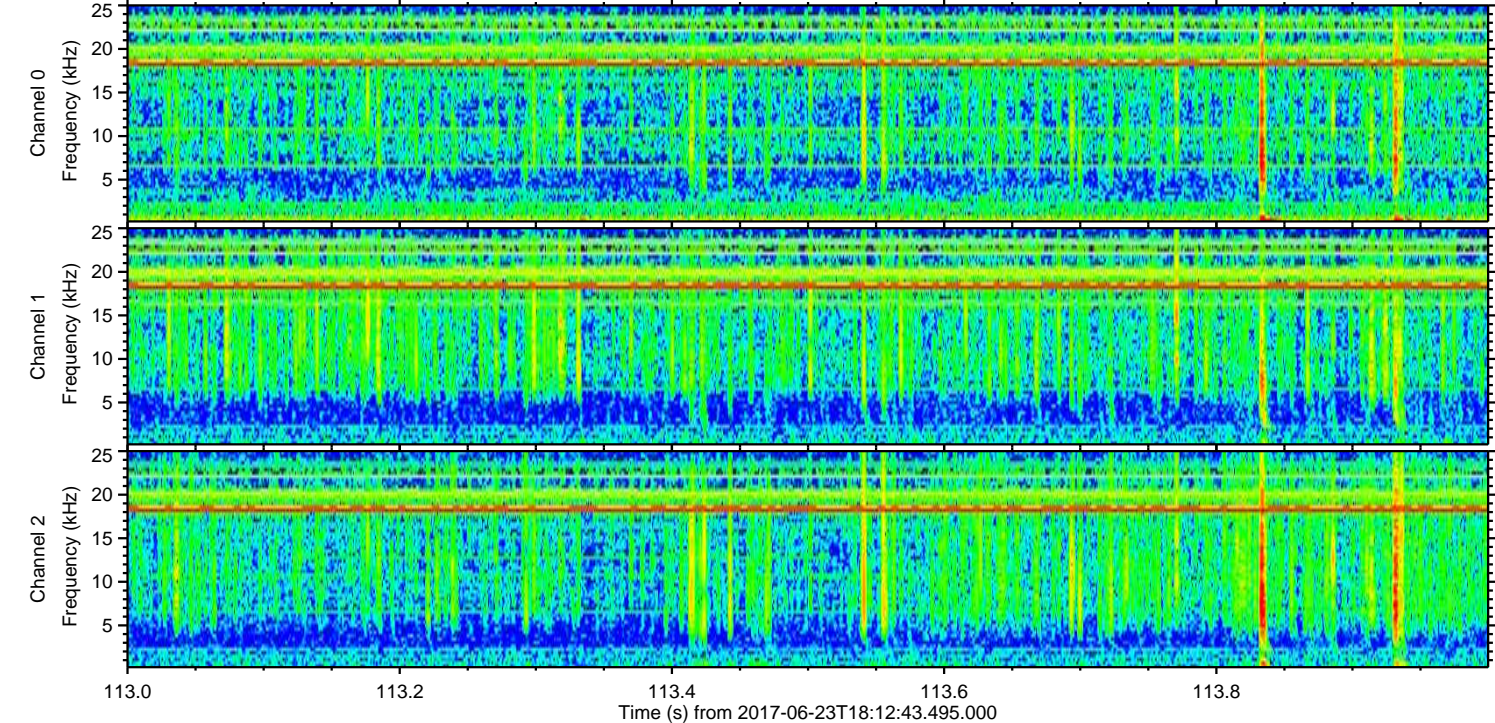
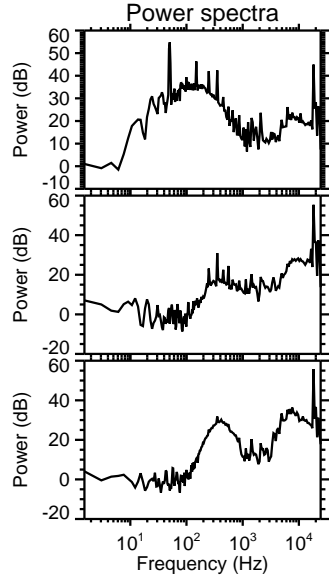
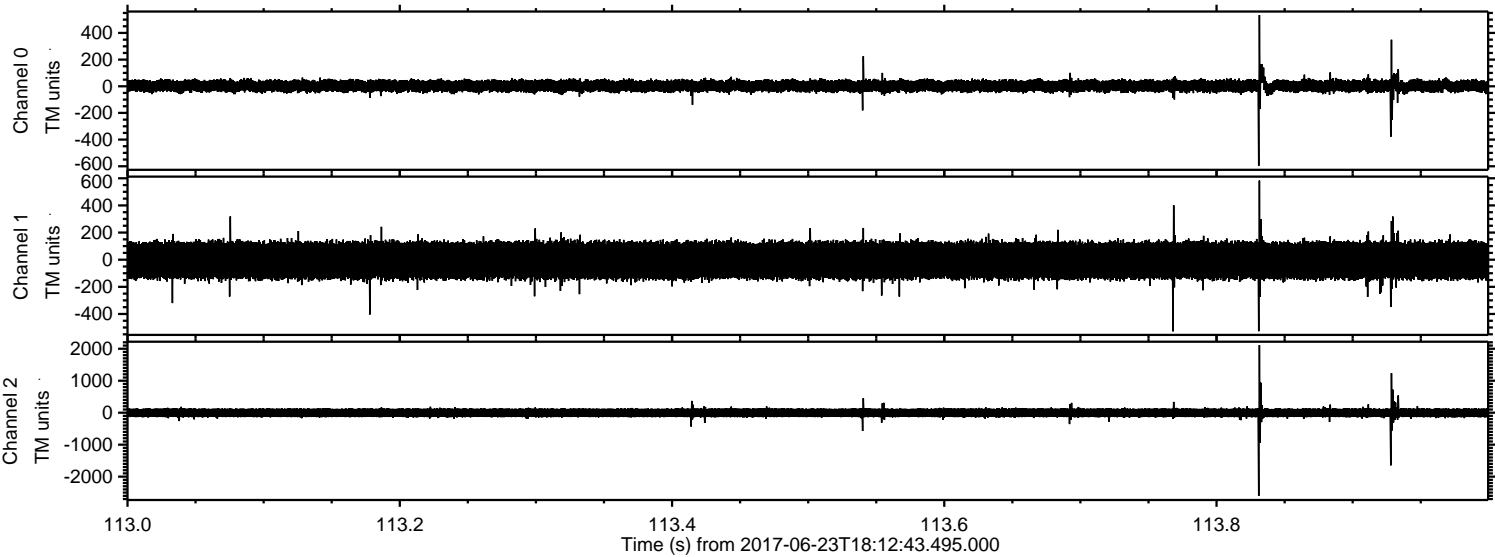


Processed Fri Jun 23 20:21:03 2017 by ELM ver.2012-10-06 from 001__elm20170623_181242__dat00.bin



ELMAVAN 3D WAVEFORMS (Measured data sampled at 50 kHz) 51000 packets of 144 samples from 2017-06-23T18:12:43.495.000. Part 114/147

Processed Fri Jun 23 20:21:04 2017 by ELM ver.2012-10-06 from 001__elm20170623_181242__dat00.bin

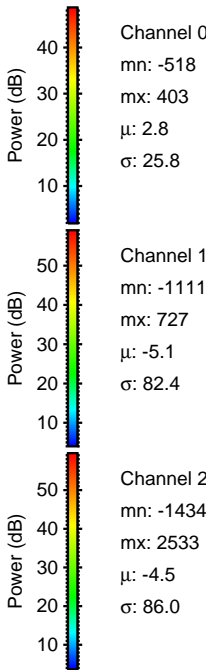
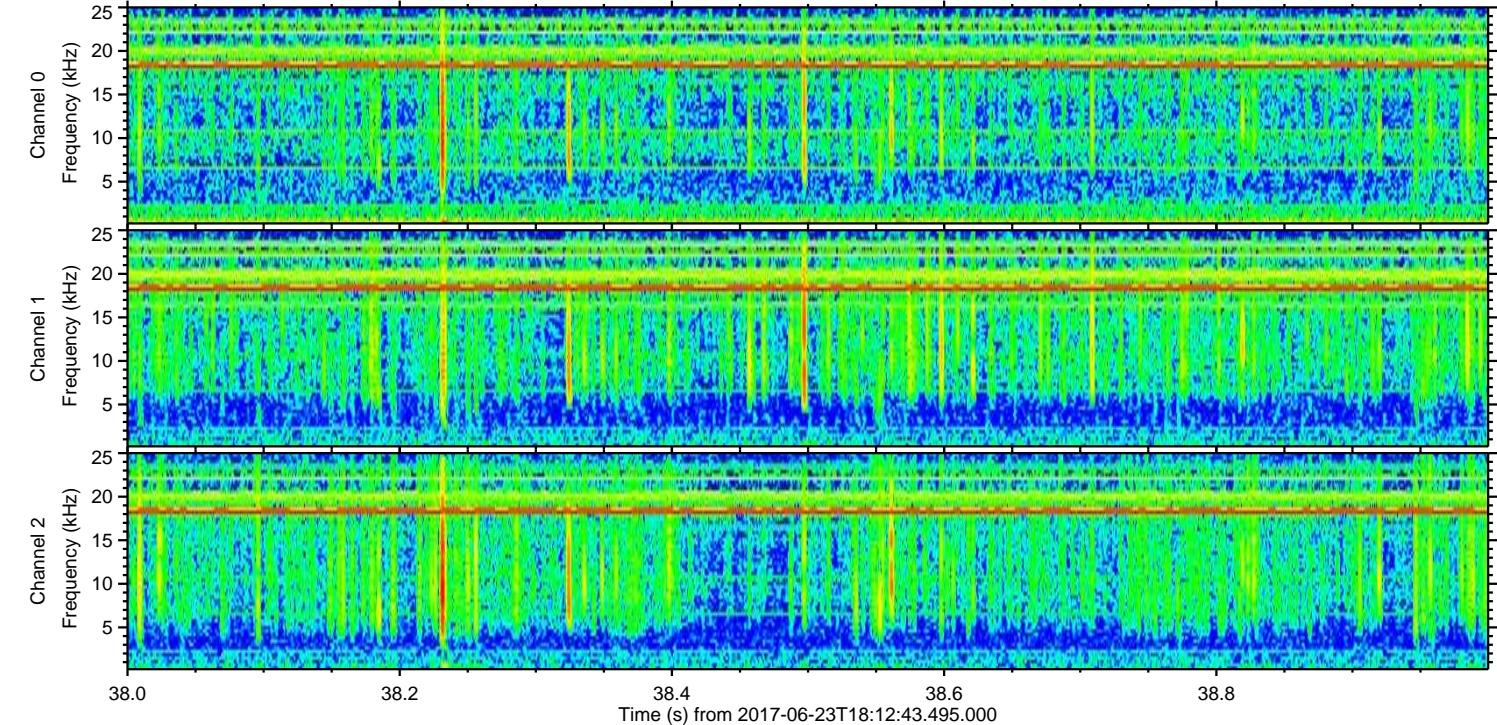
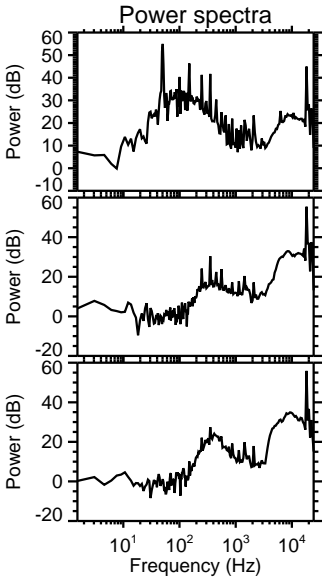
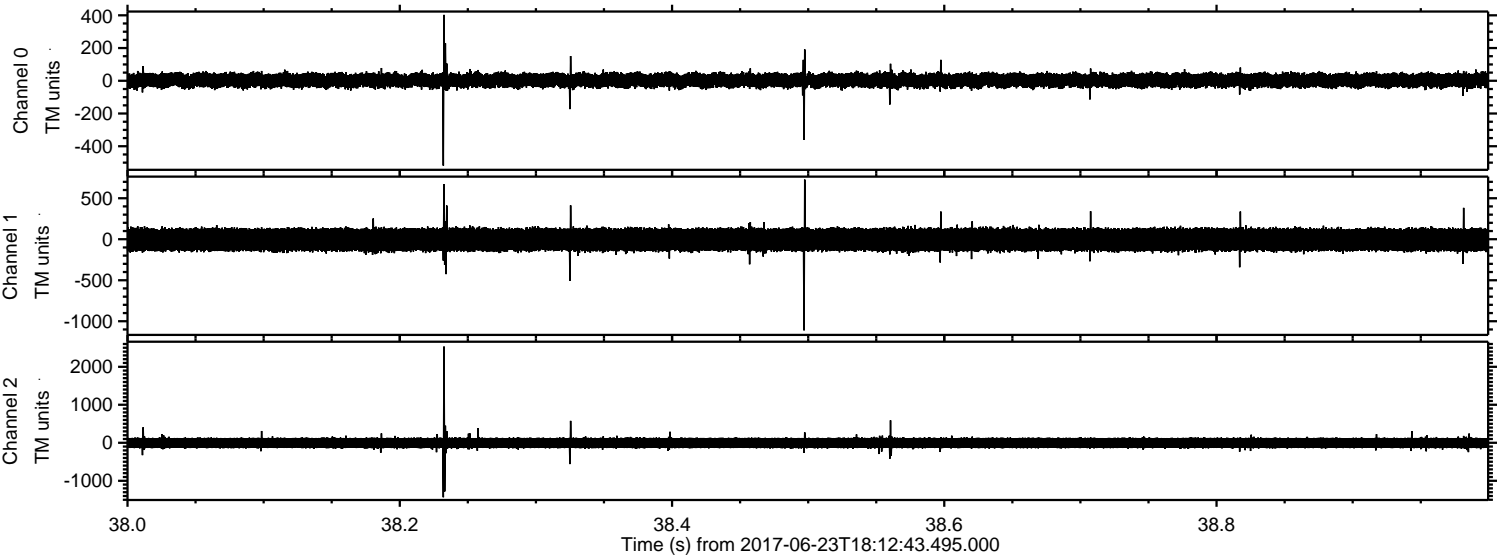


Channel 0
mn: -597
mx: 534
 μ : 2.7
 σ : 26.9

Channel 1
mn: -528
mx: 583
 μ : -5.1
 σ : 81.6

Channel 2
mn: -2601
mx: 2114
 μ : -4.5
 σ : 88.1

Processed Fri Jun 23 20:21:05 2017 by ELM ver.2012-10-06 from 001__elm20170623_181242__dat00.bin



Channel 0
mn: -518
mx: 403
 μ : 2.8
 σ : 25.8

Channel 1
mn: -1111
mx: 727
 μ : -5.1
 σ : 82.4

Channel 2
mn: -1434
mx: 2533
 μ : -4.5
 σ : 86.0

Processed Fri Jun 23 20:21:05 2017 by ELM ver.2012-10-06 from 001__elm20170623_181242__dat00.bin

