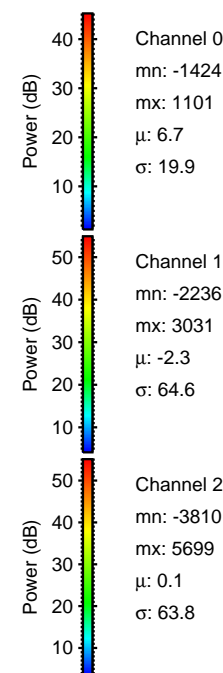
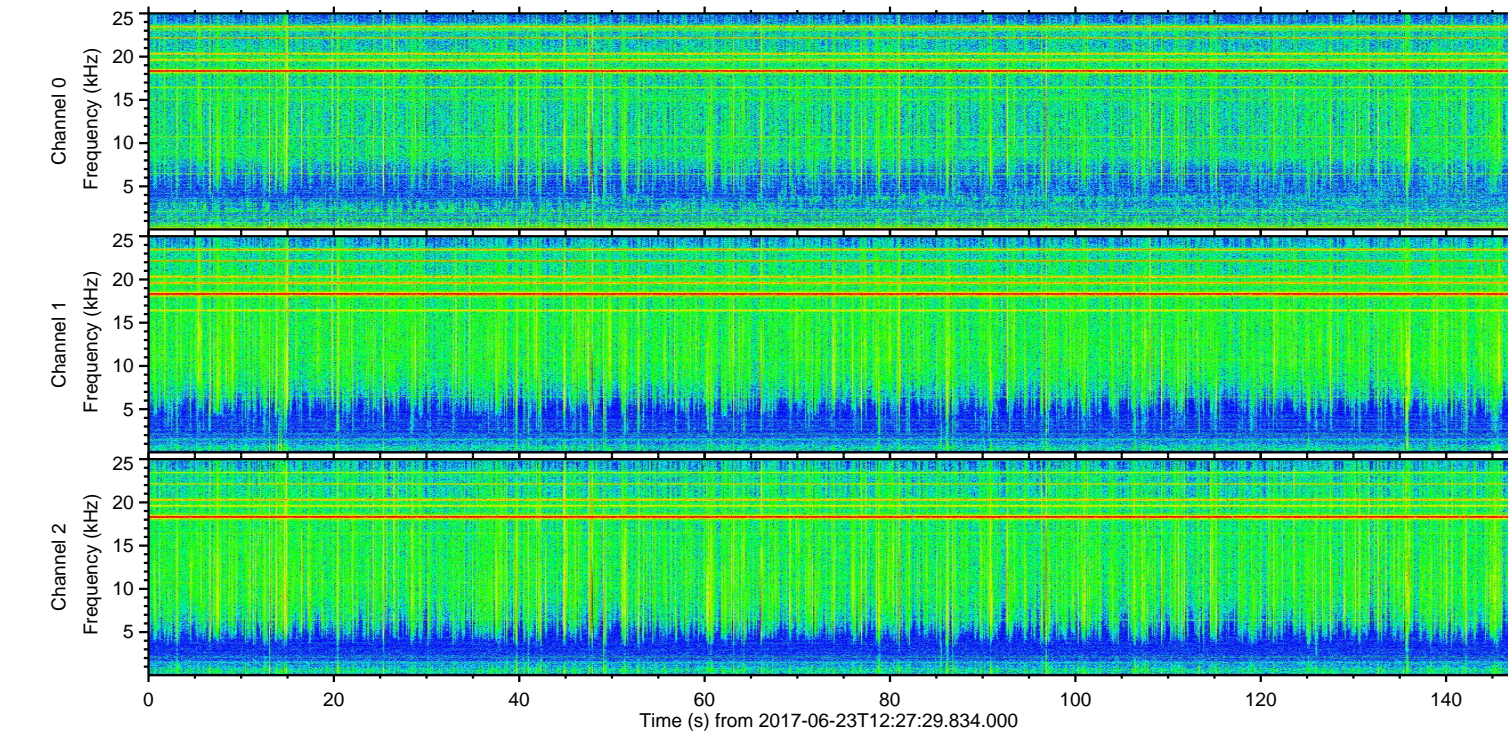
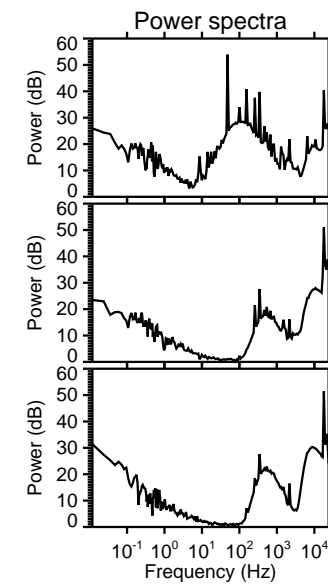
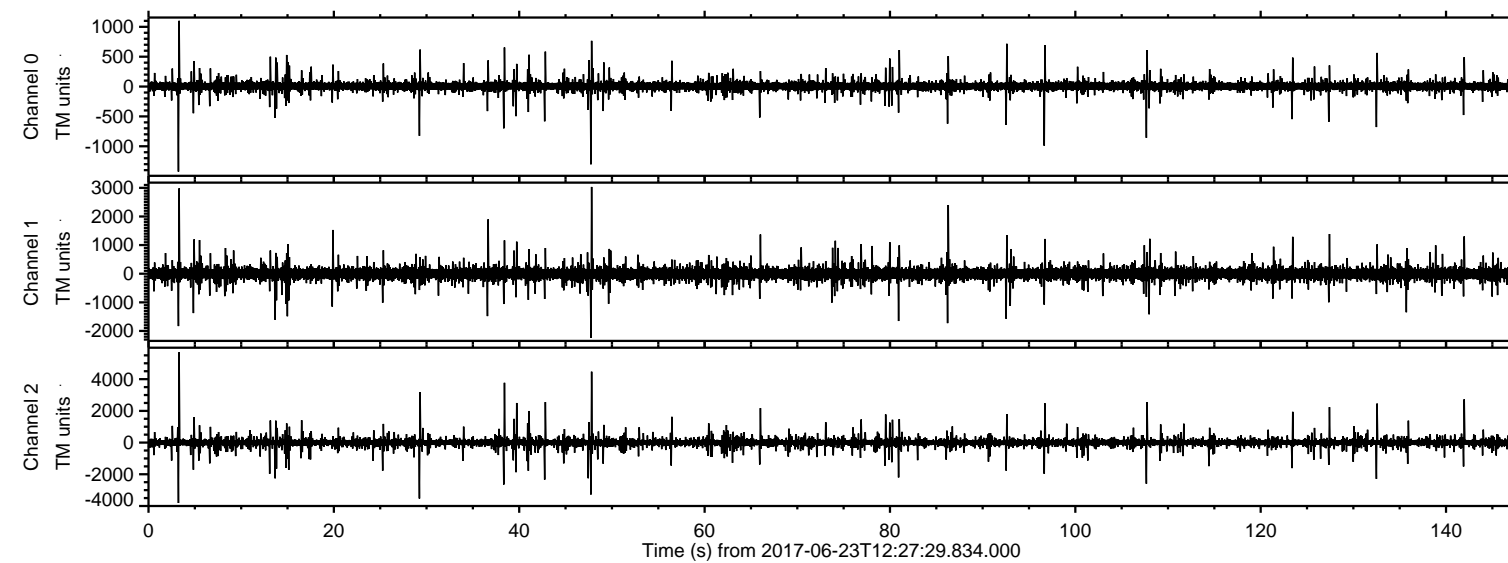
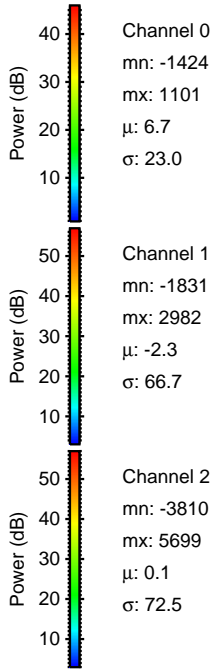
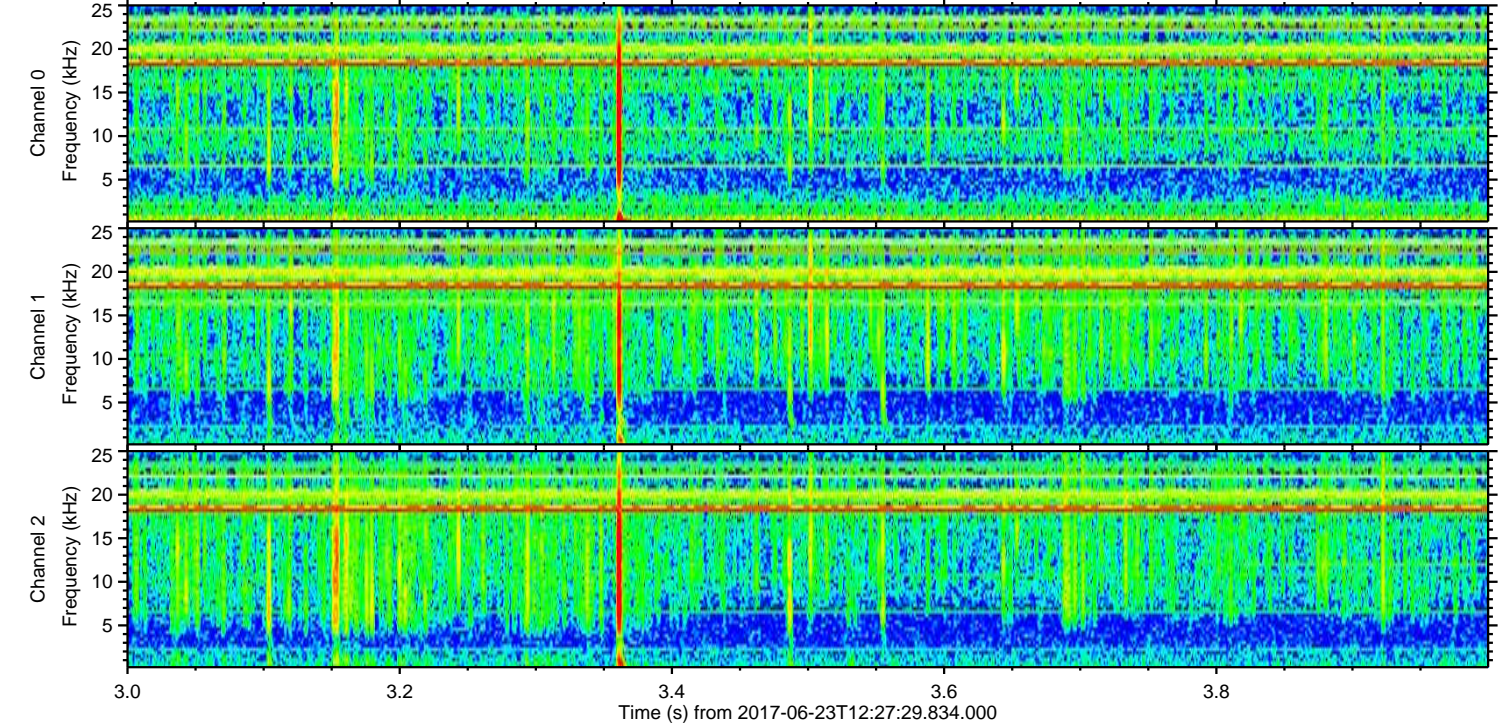
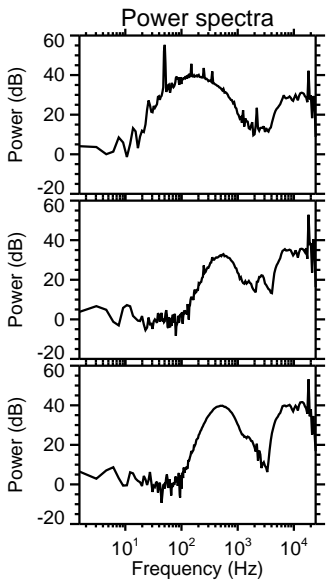
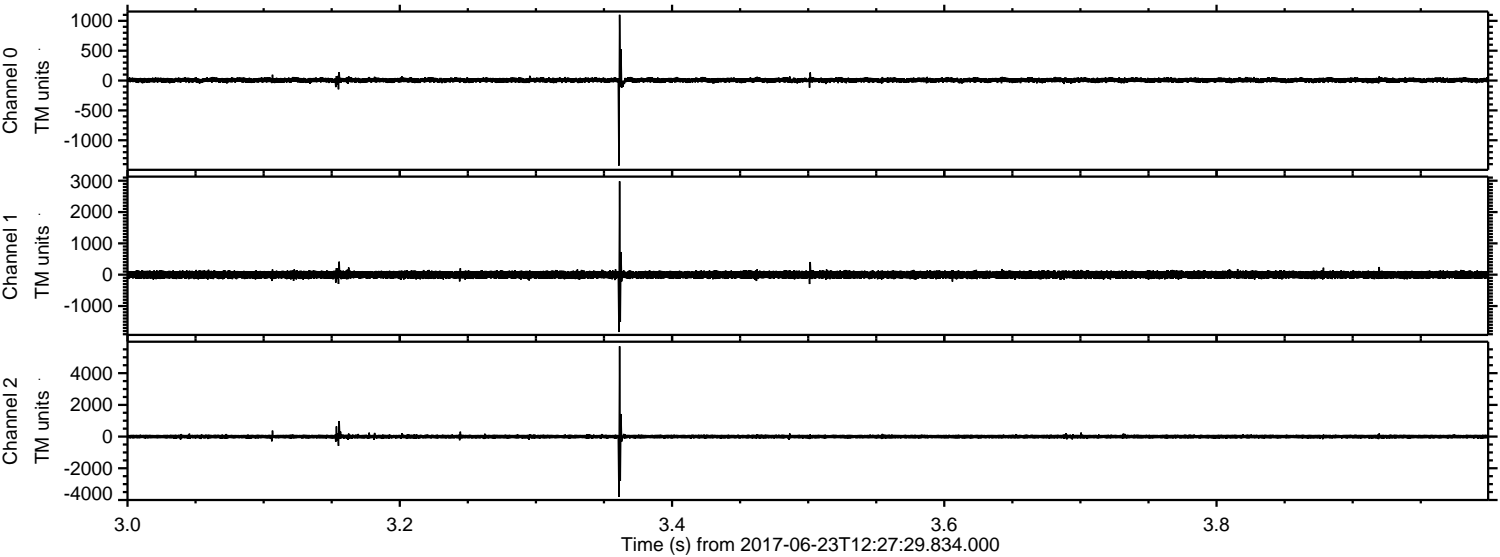


ELMAVAN 3D WAVEFORMS (Measured data sampled at 50 kHz) 51000 packets of 144 samples from 2017-06-23T12:27:29.834.000.

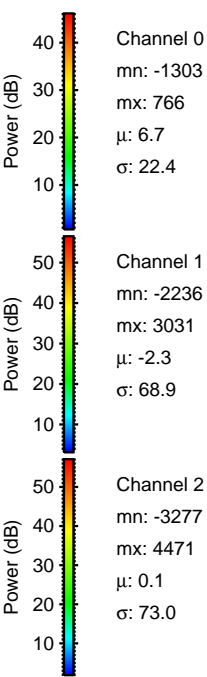
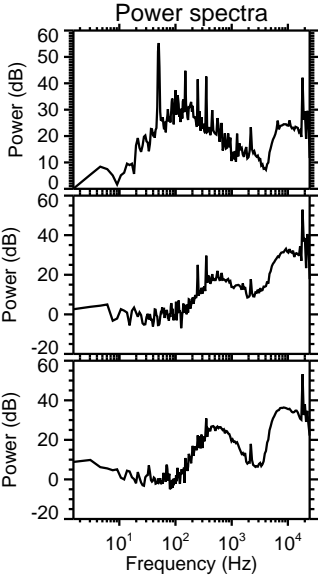
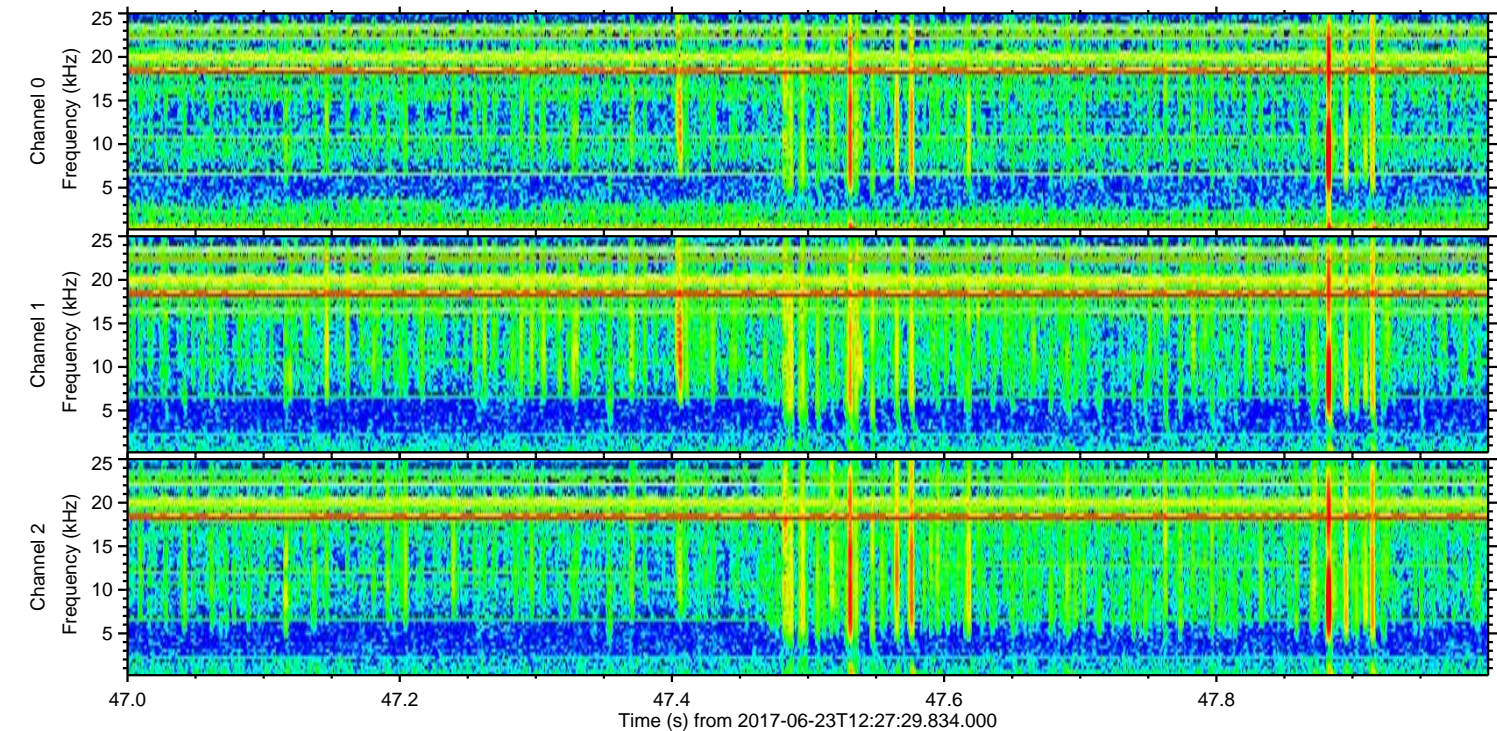
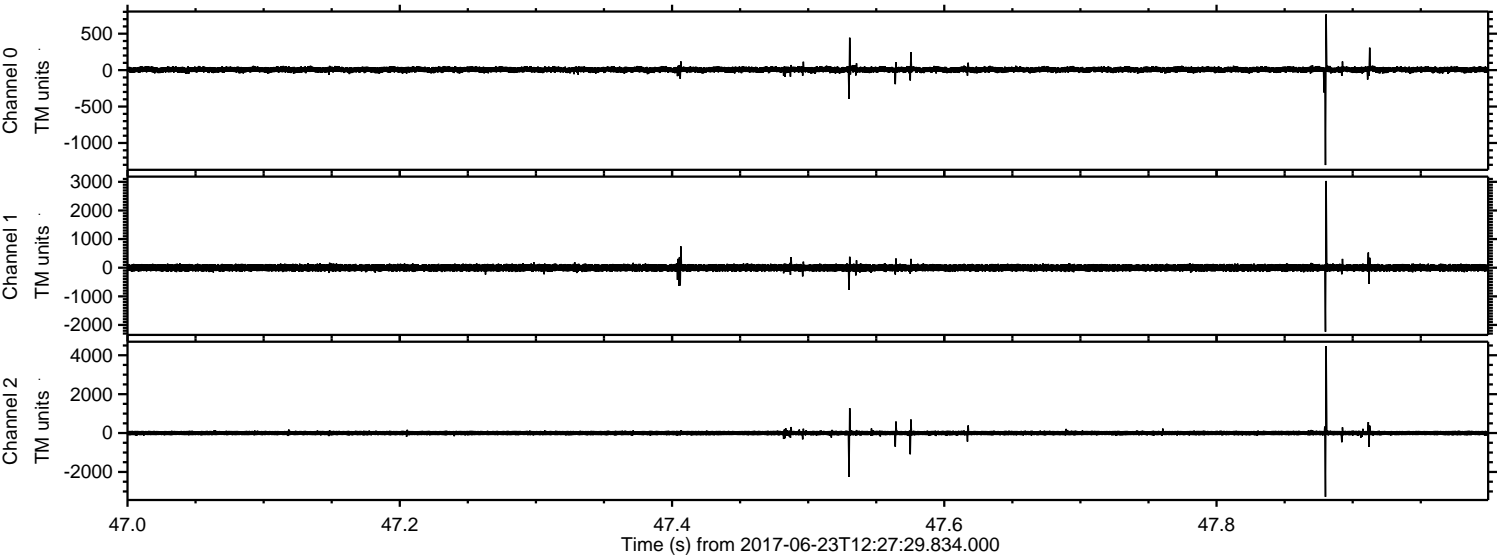
Processed Fri Jun 23 15:09:00 2017 by ELM ver.2012-10-06 from 001__elm20170623_122728__dat00.bin



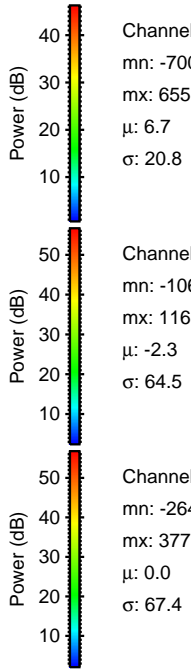
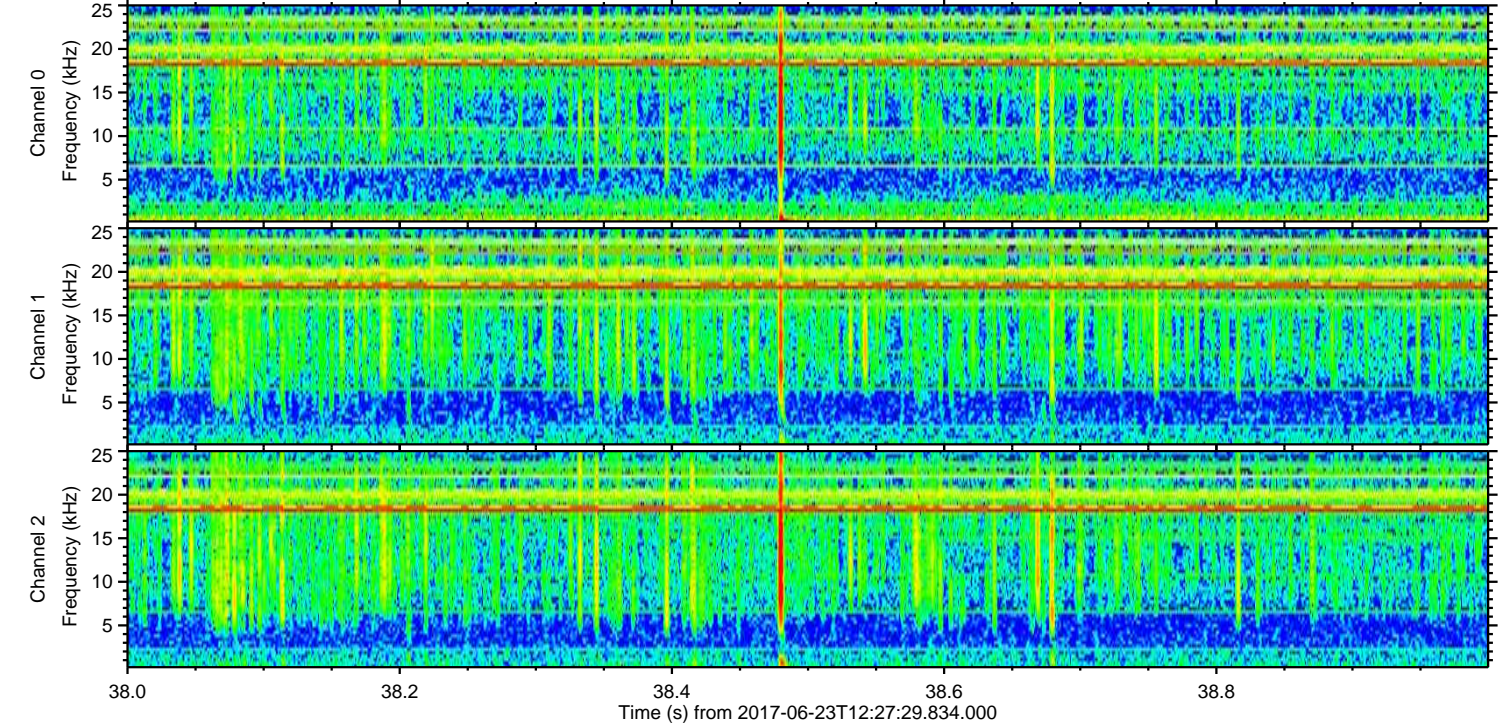
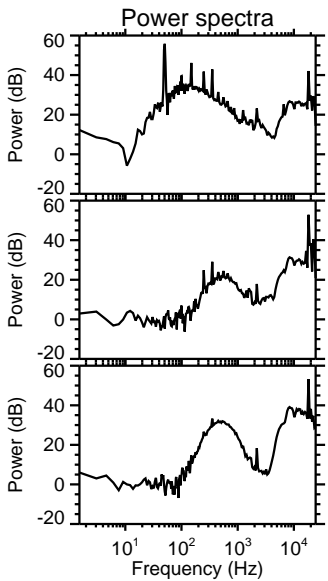
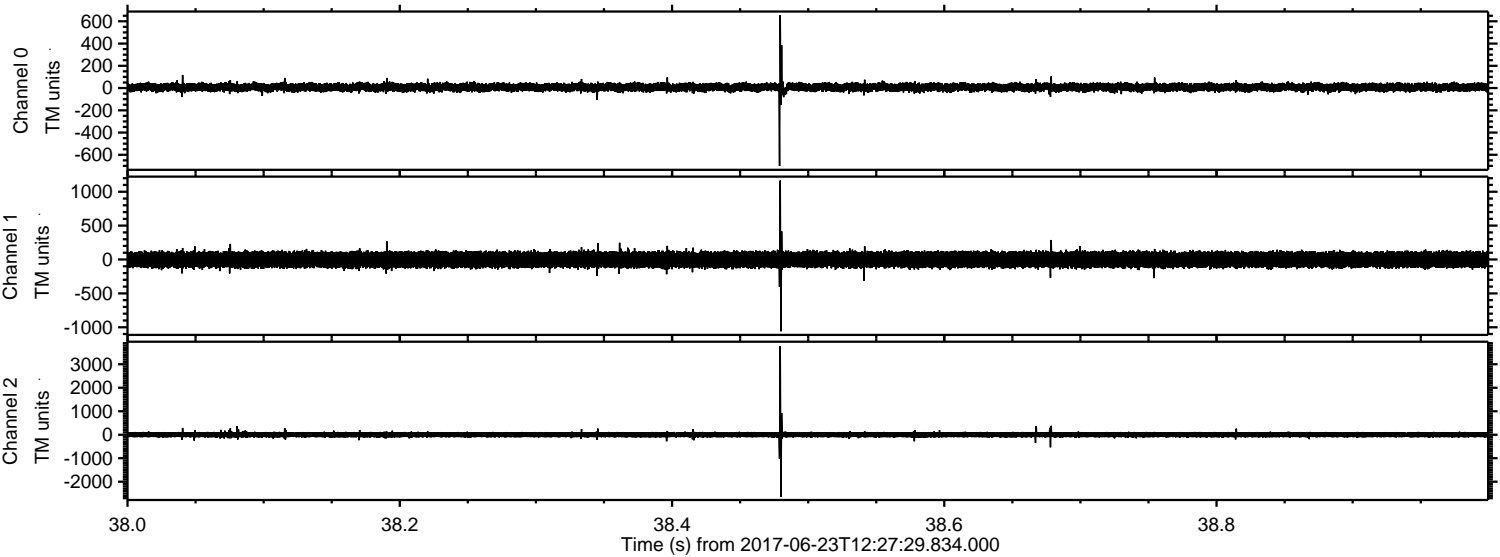
Processed Fri Jun 23 15:09:06 2017 by ELM ver.2012-10-06 from 001__elm20170623_122728__dat00.bin



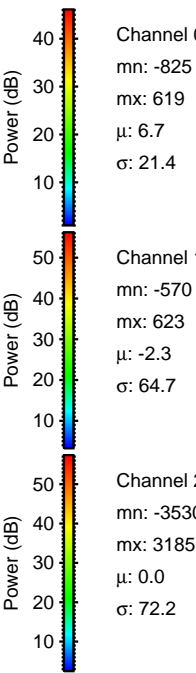
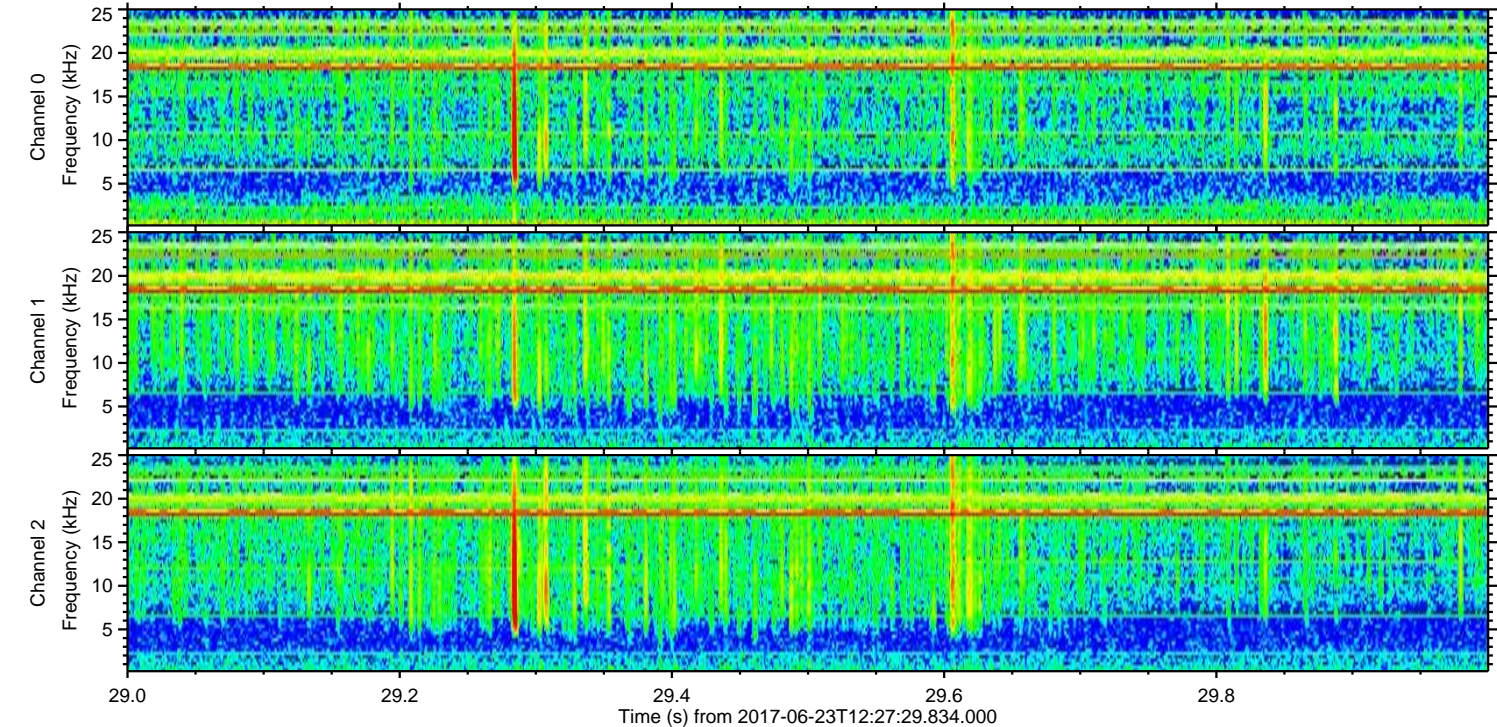
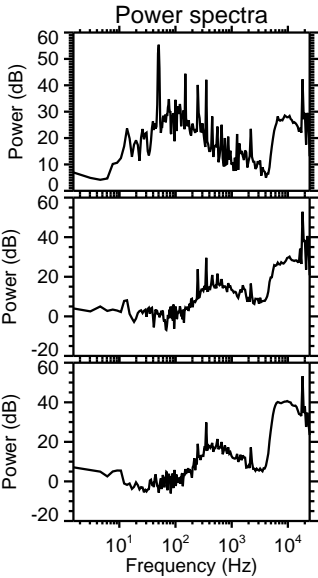
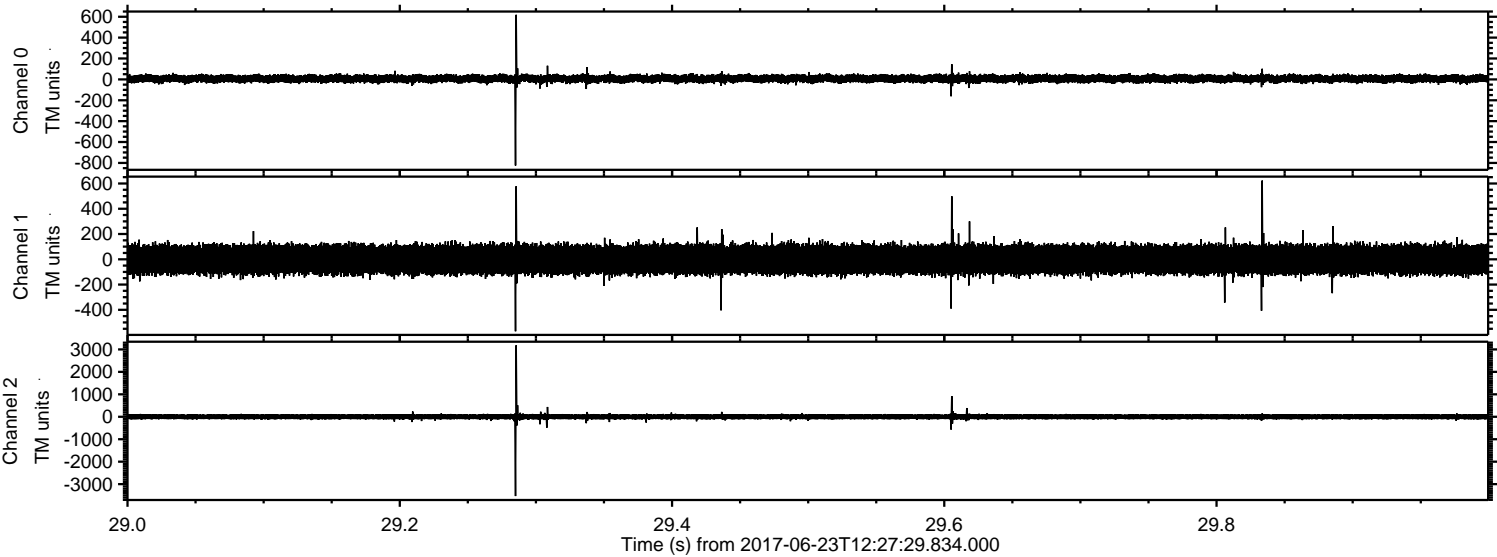
Processed Fri Jun 23 15:09:07 2017 by ELM ver.2012-10-06 from 001__elm20170623_122728__dat00.bin



Processed Fri Jun 23 15:09:07 2017 by ELM ver.2012-10-06 from 001__elm20170623_122728__dat00.bin

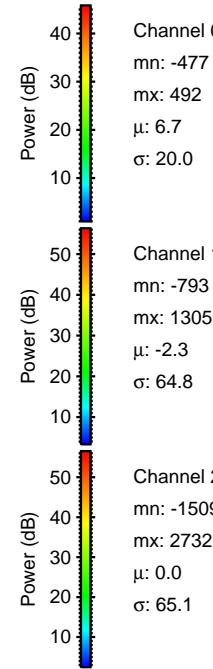
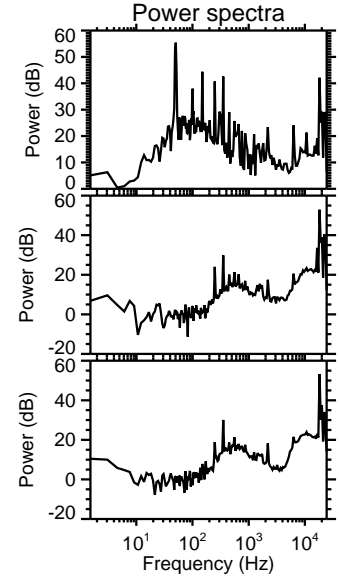
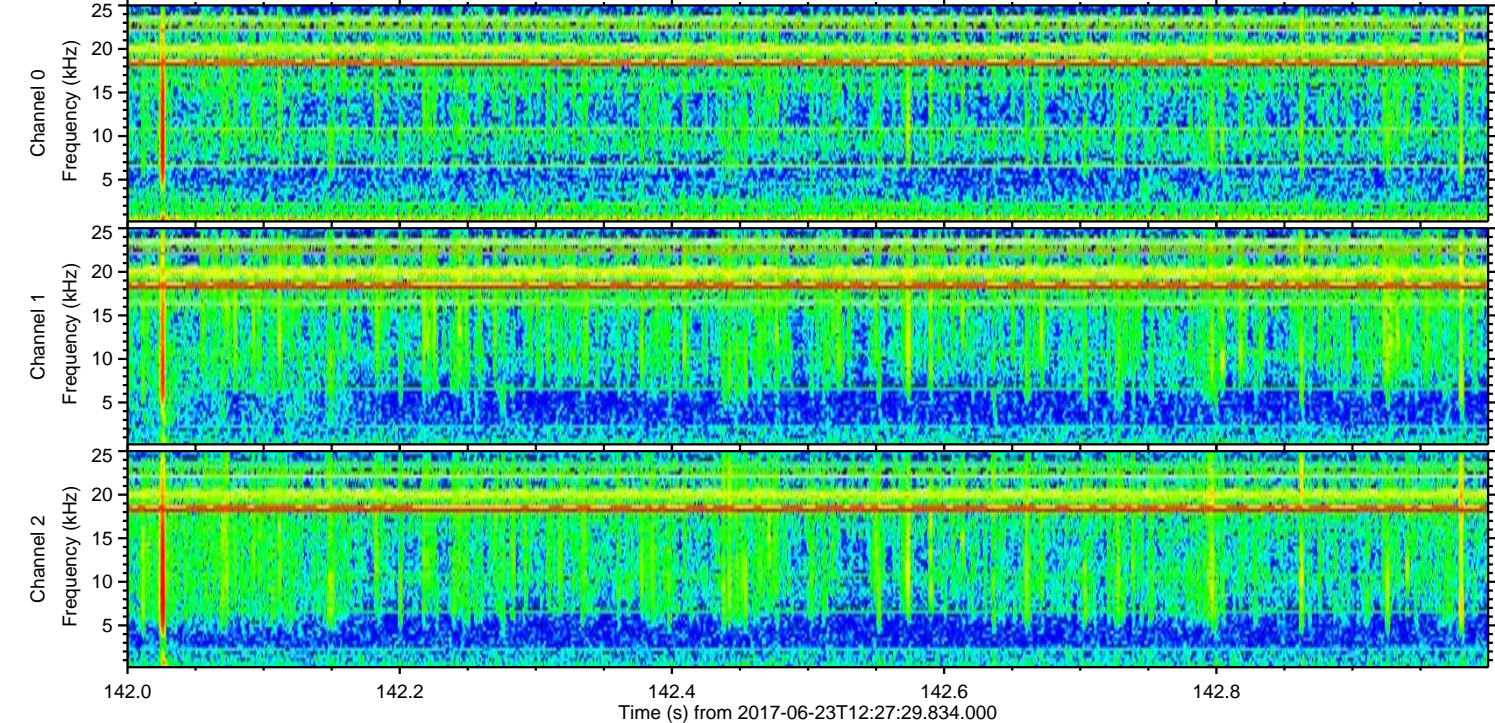
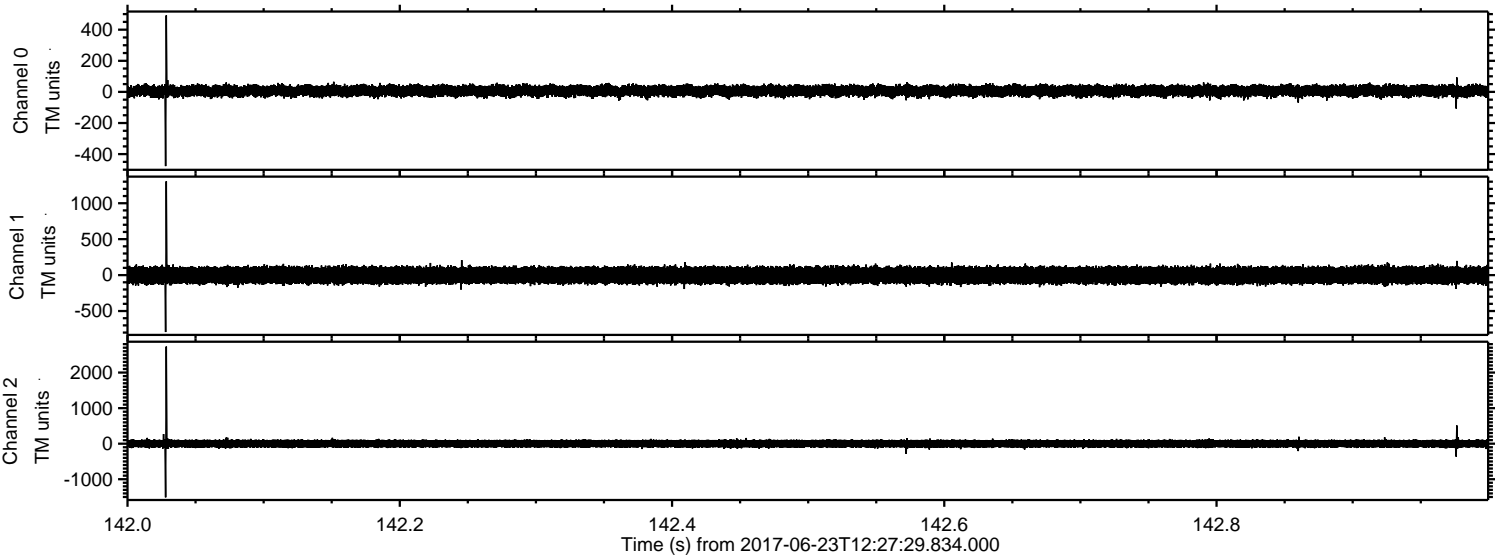


Processed Fri Jun 23 15:09:08 2017 by ELM ver.2012-10-06 from 001__elm20170623_122728__dat00.bin



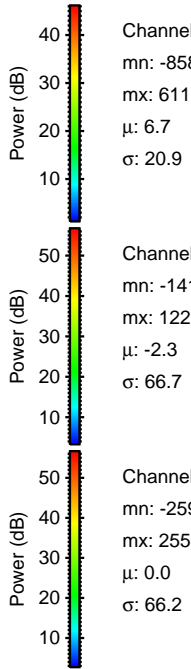
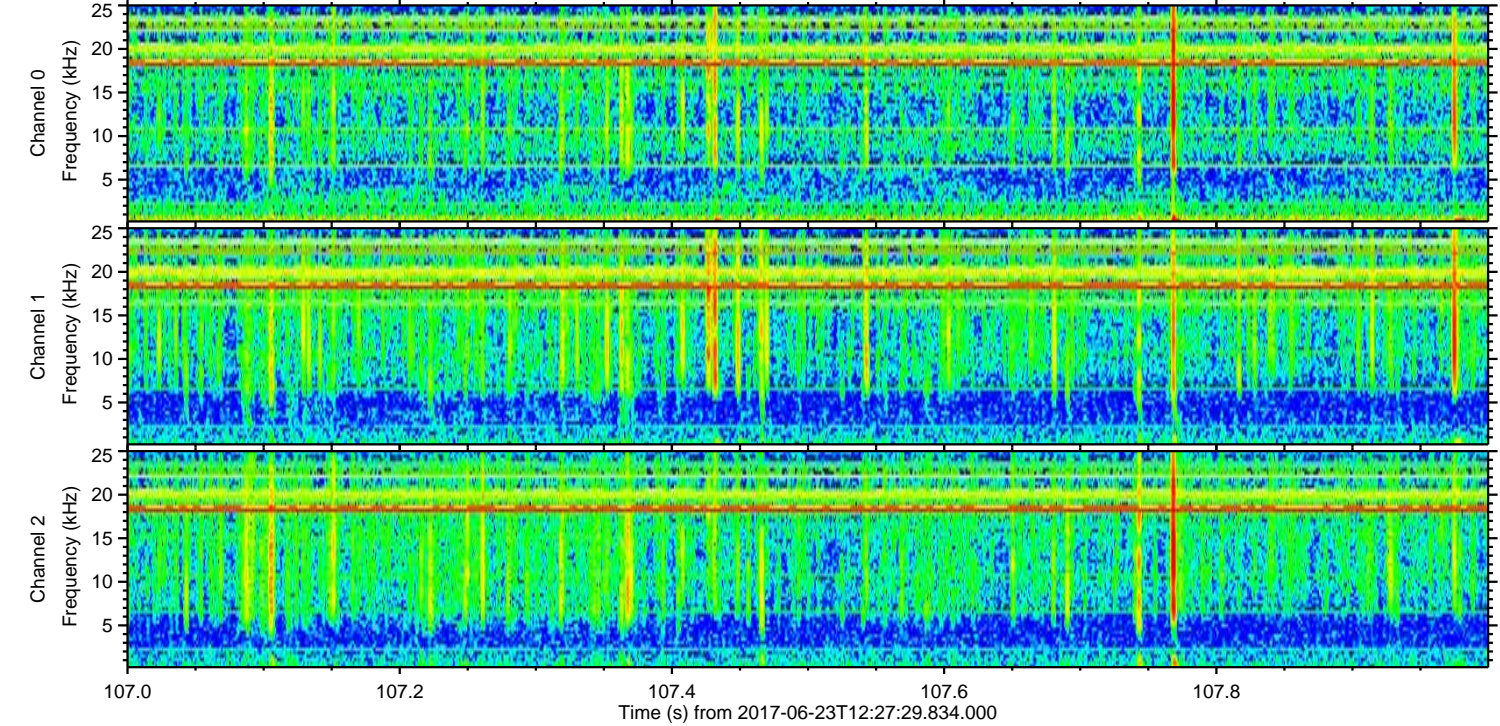
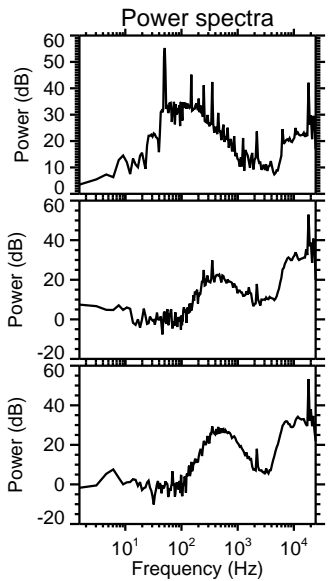
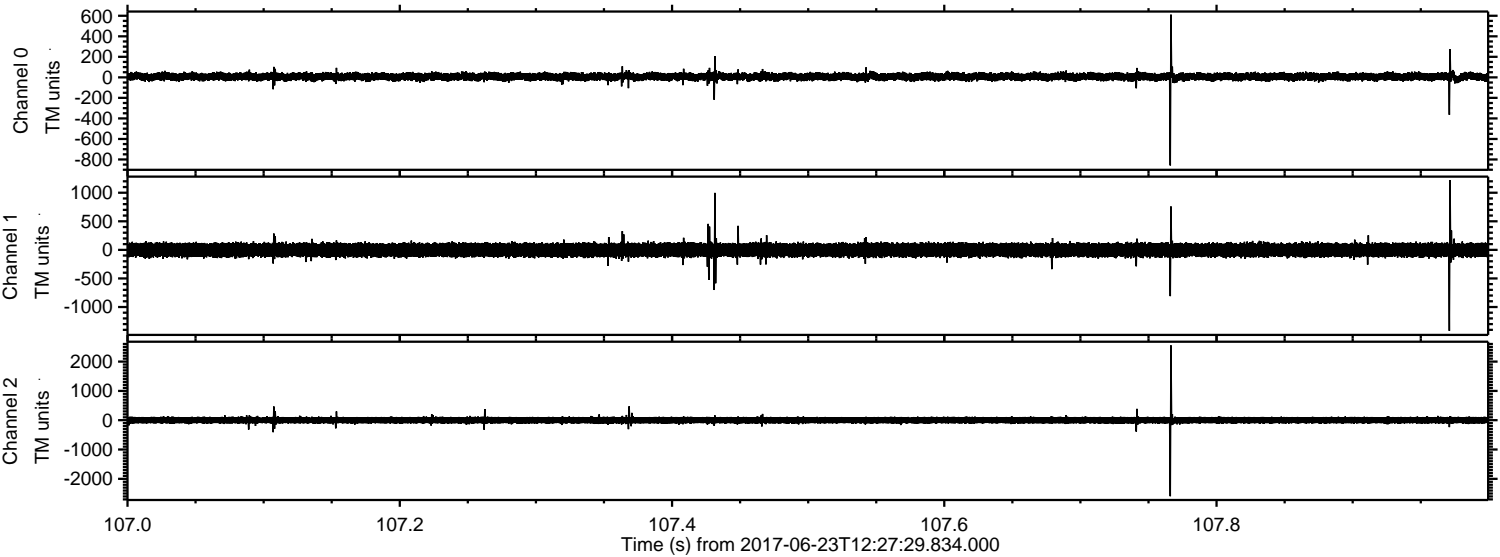
ELMAVAN 3D WAVEFORMS (Measured data sampled at 50 kHz) 51000 packets of 144 samples from 2017-06-23T12:27:29.834.000. Part 143/147

Processed Fri Jun 23 15:09:09 2017 by ELM ver.2012-10-06 from 001__elm20170623_122728__dat00.bin



ELMAVAN 3D WAVEFORMS (Measured data sampled at 50 kHz) 51000 packets of 144 samples from 2017-06-23T12:27:29.834.000. Part 108/147

Processed Fri Jun 23 15:09:10 2017 by ELM ver.2012-10-06 from 001__elm20170623_122728__dat00.bin

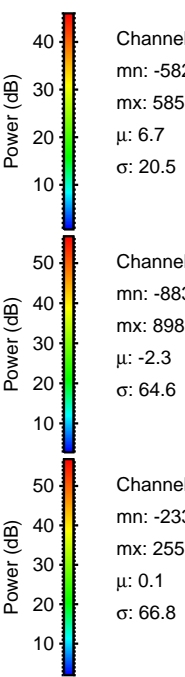
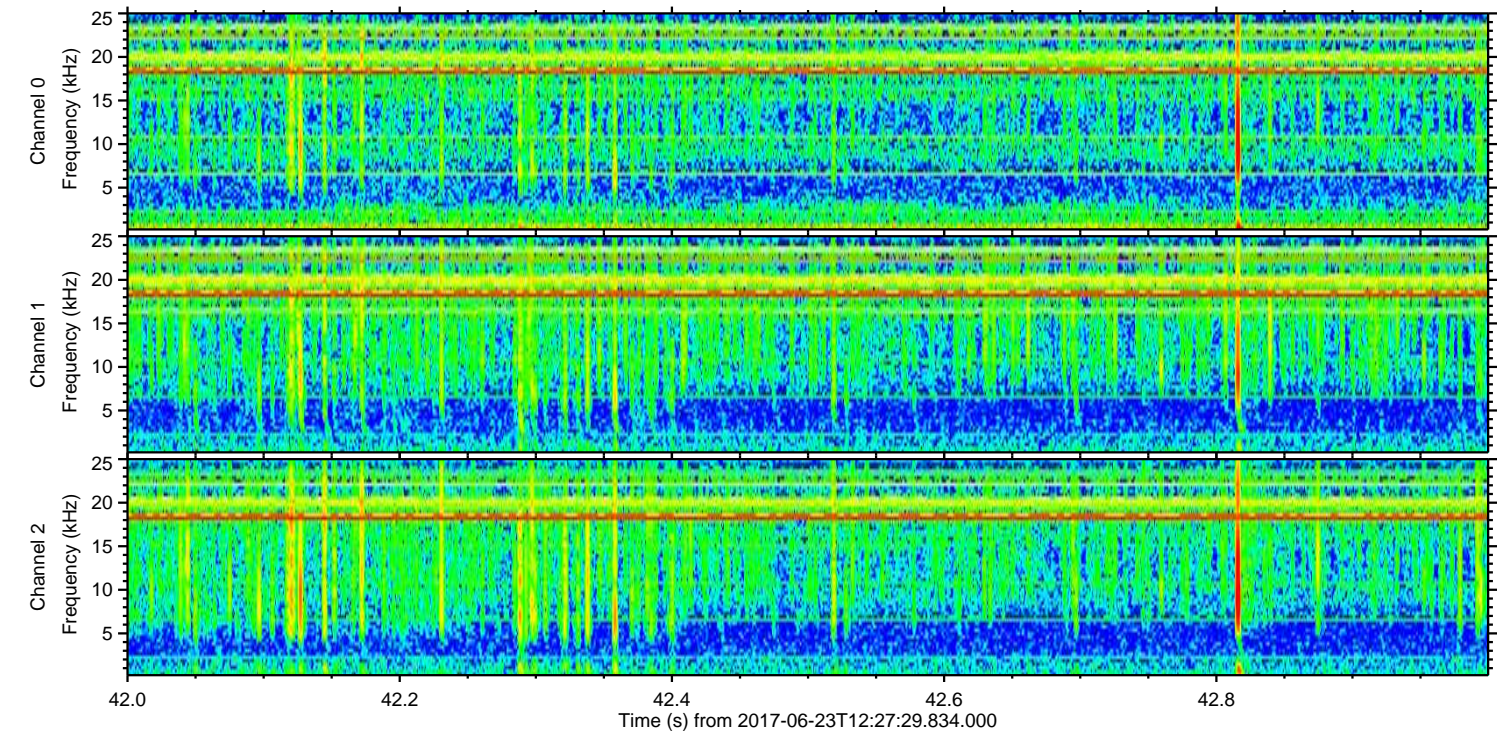
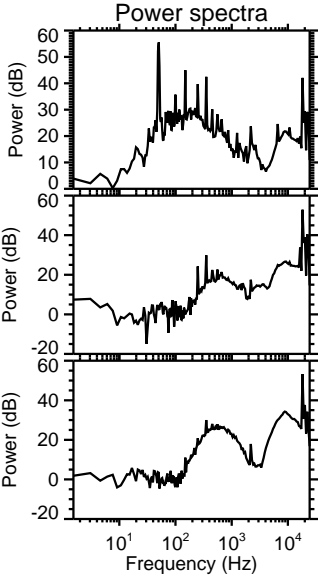
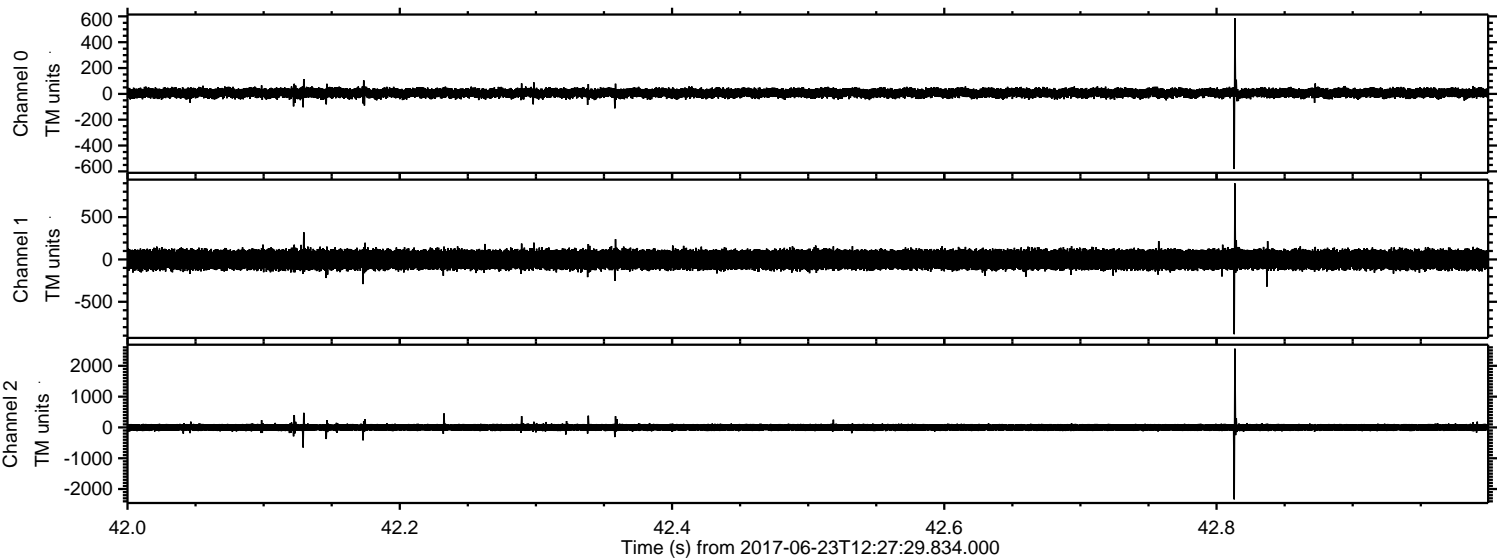


Channel 0
mn: -858
mx: 611
 μ : 6.7
 σ : 20.9

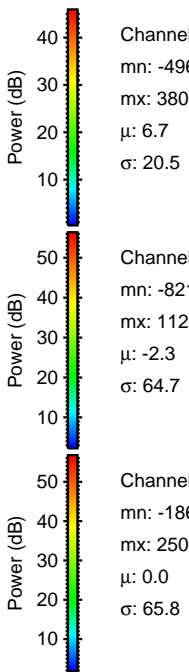
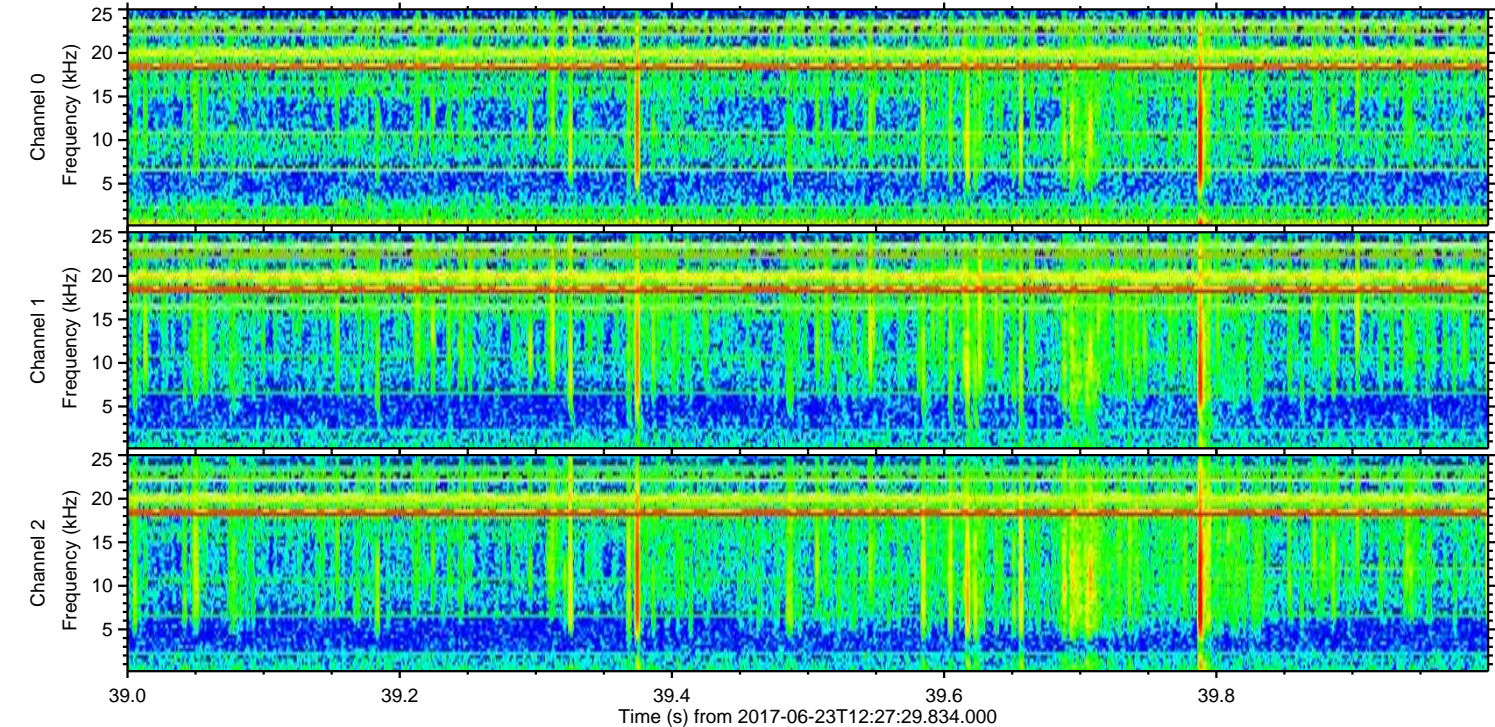
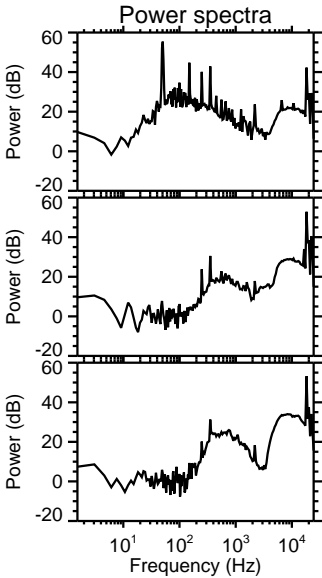
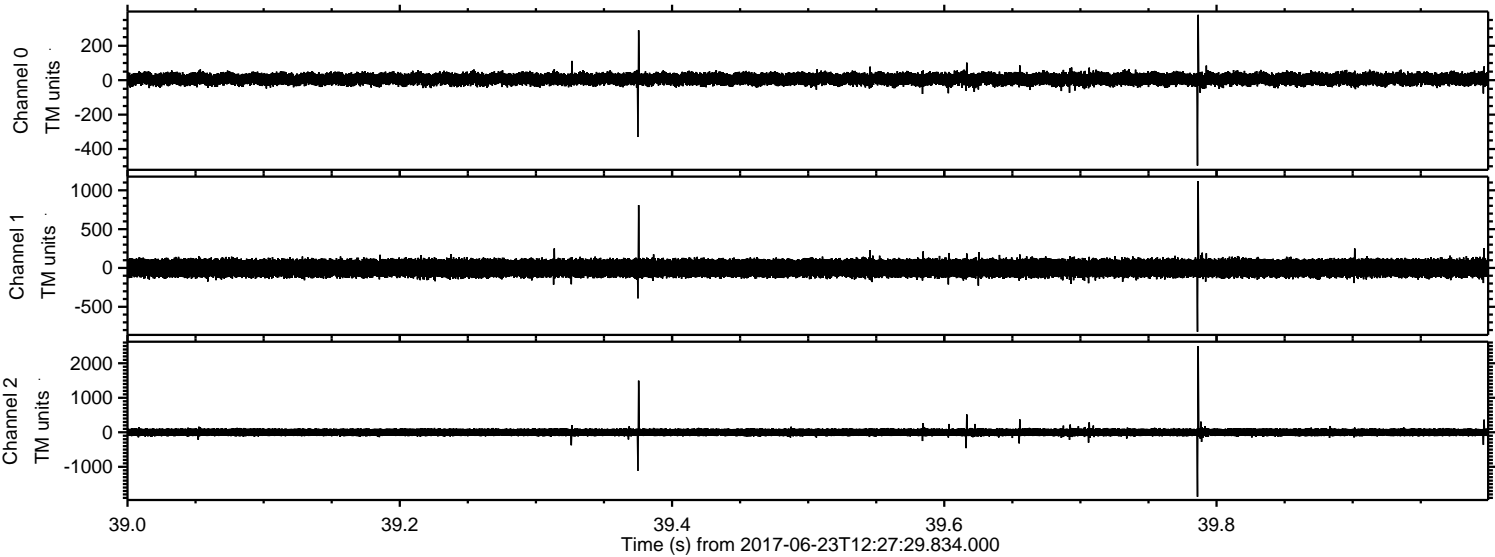
Channel 1
mn: -1418
mx: 1221
 μ : -2.3
 σ : 66.7

Channel 2
mn: -2592
mx: 2550
 μ : 0.0
 σ : 66.2

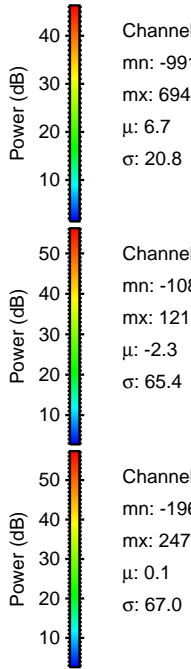
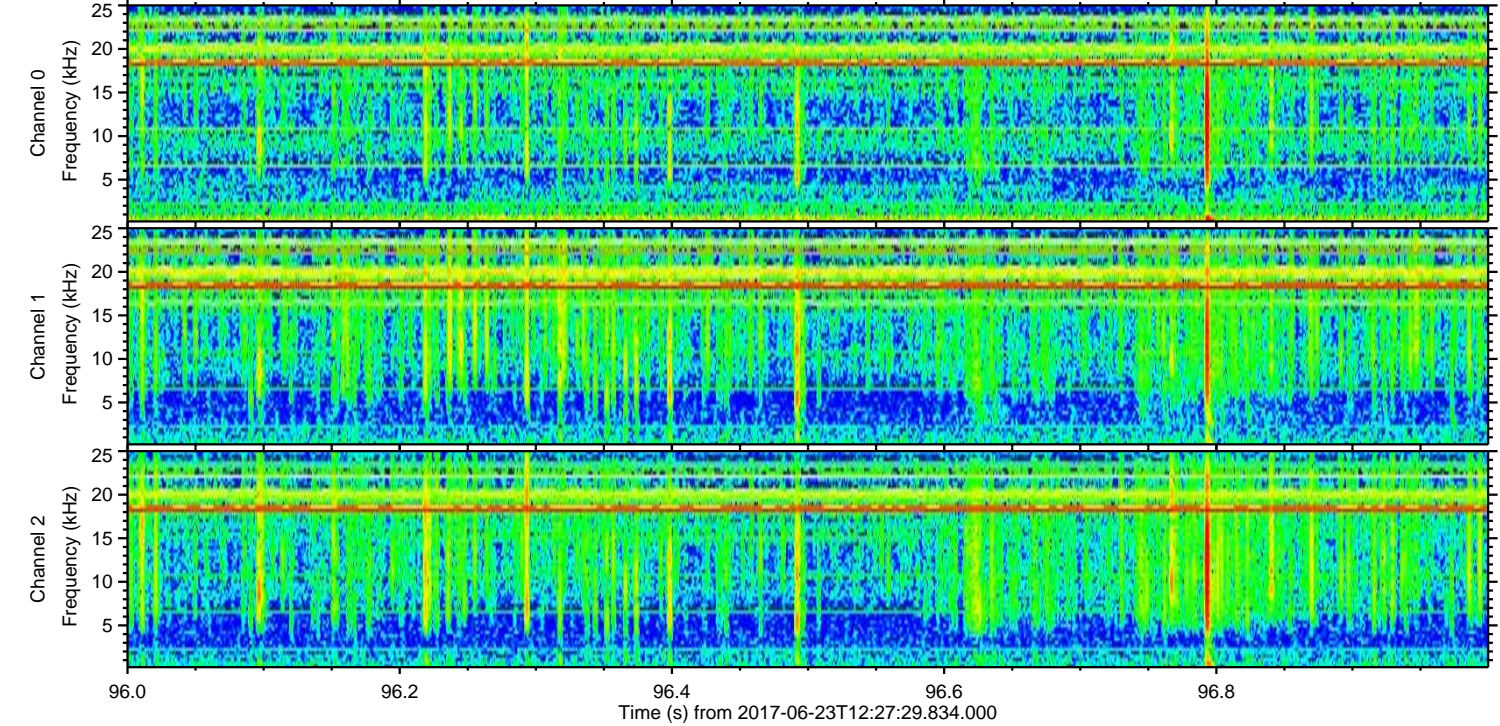
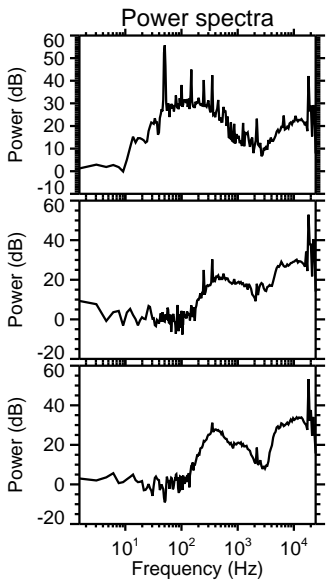
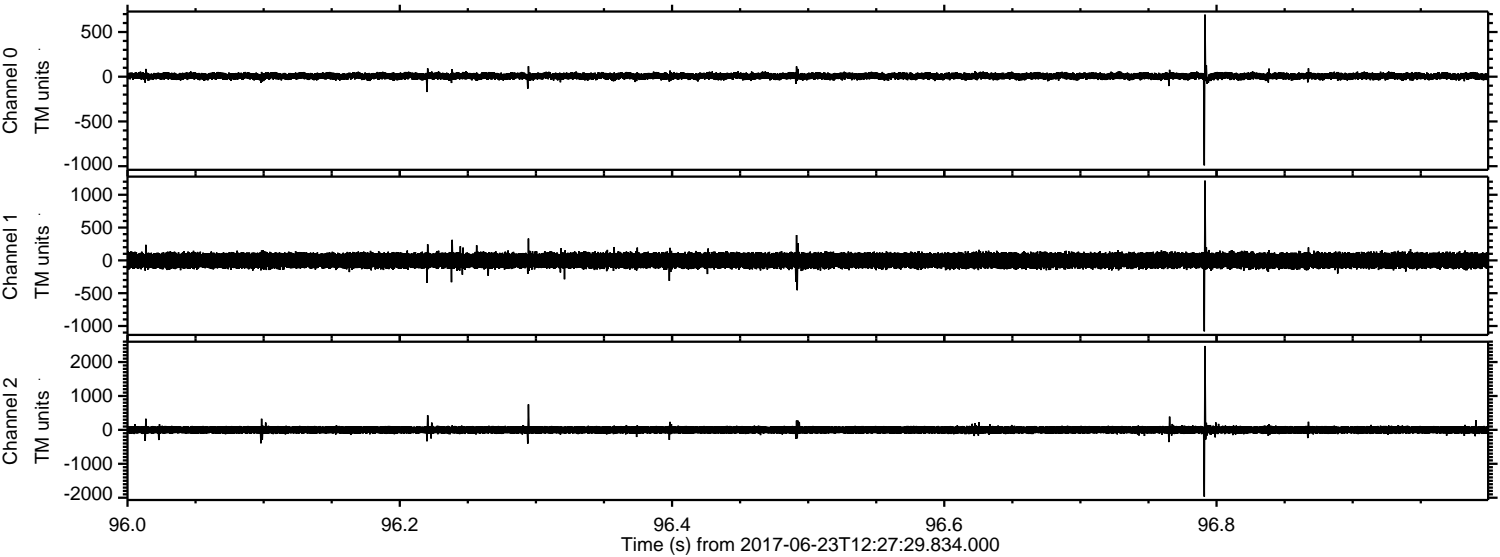
Processed Fri Jun 23 15:09:10 2017 by ELM ver.2012-10-06 from 001__elm20170623_122728__dat00.bin



Processed Fri Jun 23 15:09:11 2017 by ELM ver.2012-10-06 from 001__elm20170623_122728__dat00.bin



Processed Fri Jun 23 15:09:12 2017 by ELM ver.2012-10-06 from 001__elm20170623_122728__dat00.bin



Channel 0
mn: -991
mx: 694
 μ : 6.7
 σ : 20.8

Channel 1
mn: -1082
mx: 1216
 μ : -2.3
 σ : 65.4

Channel 2
mn: -1968
mx: 2475
 μ : 0.1
 σ : 67.0

Processed Fri Jun 23 15:09:12 2017 by ELM ver.2012-10-06 from 001__elm20170623_122728__dat00.bin

