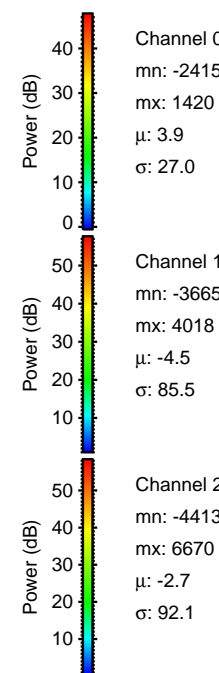
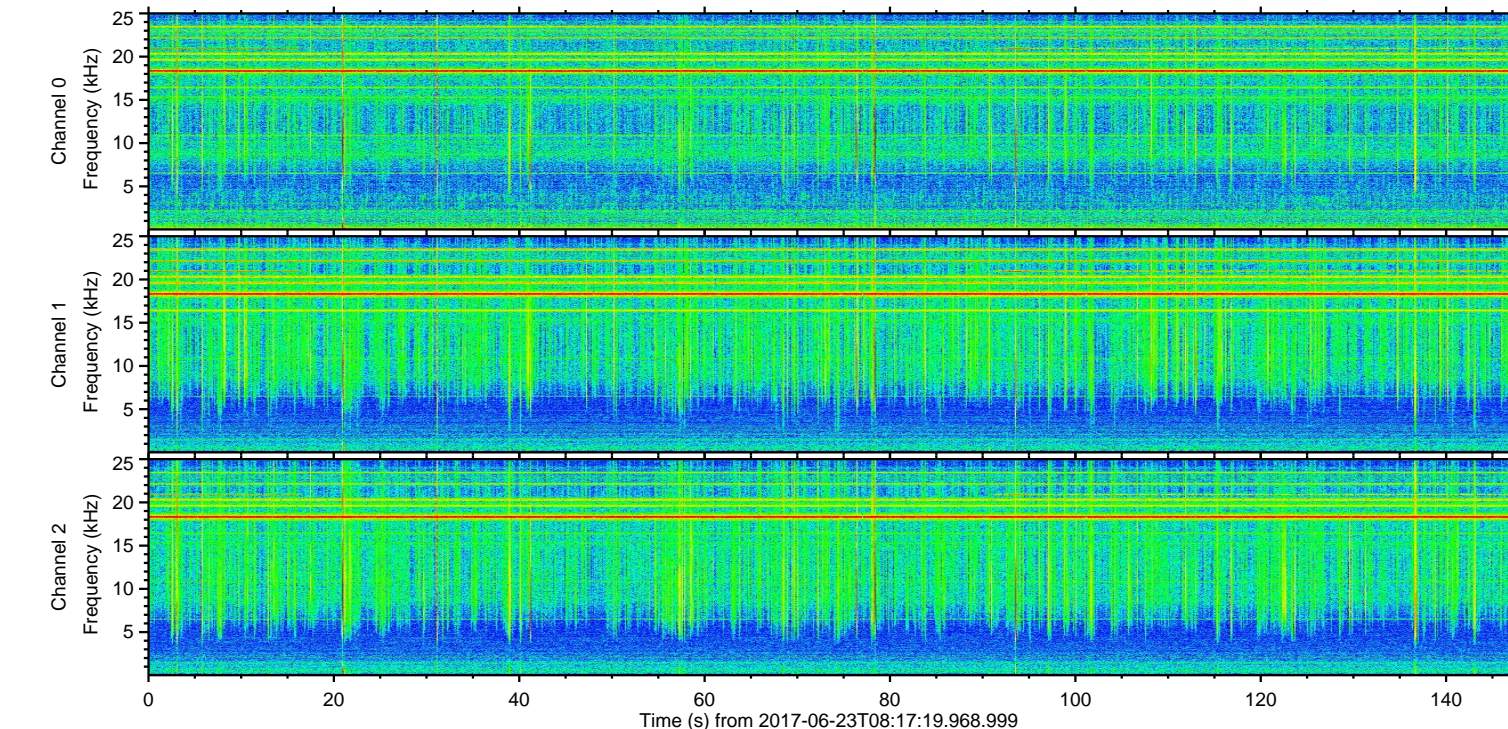
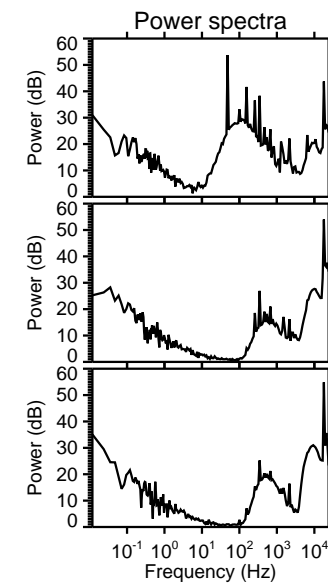
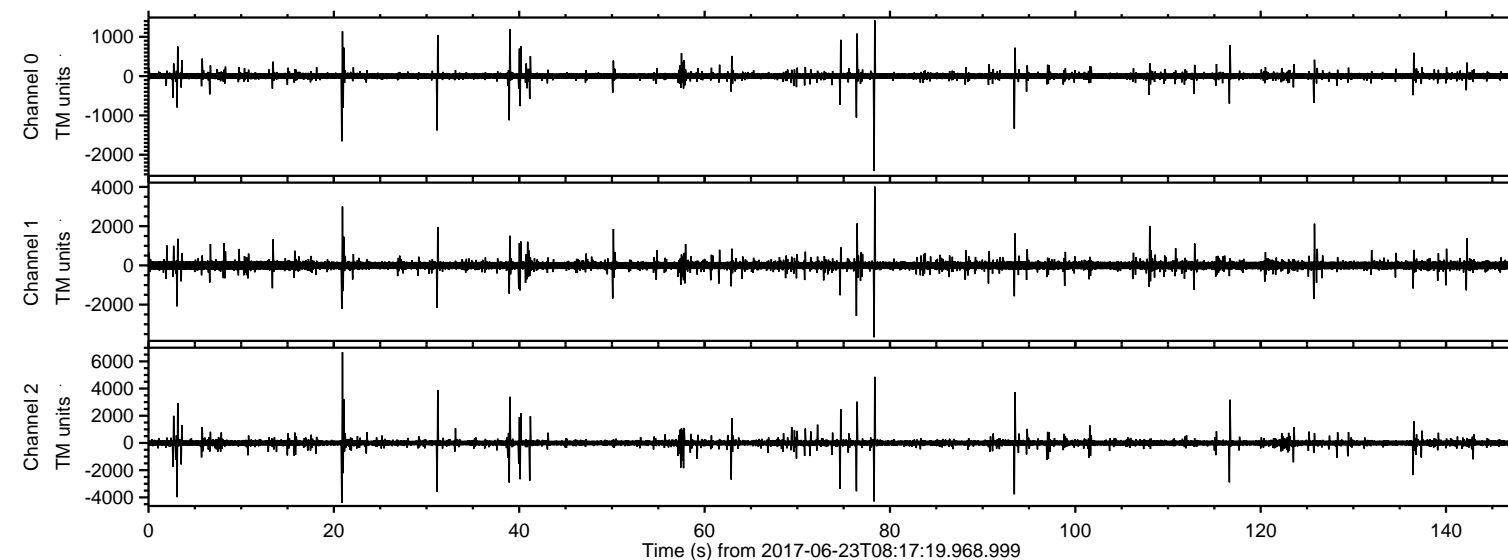


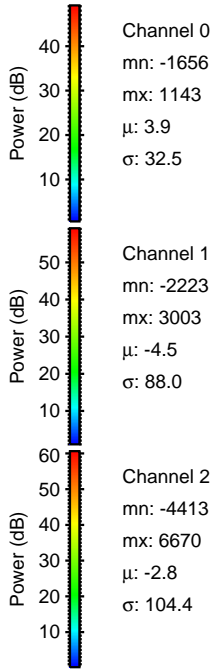
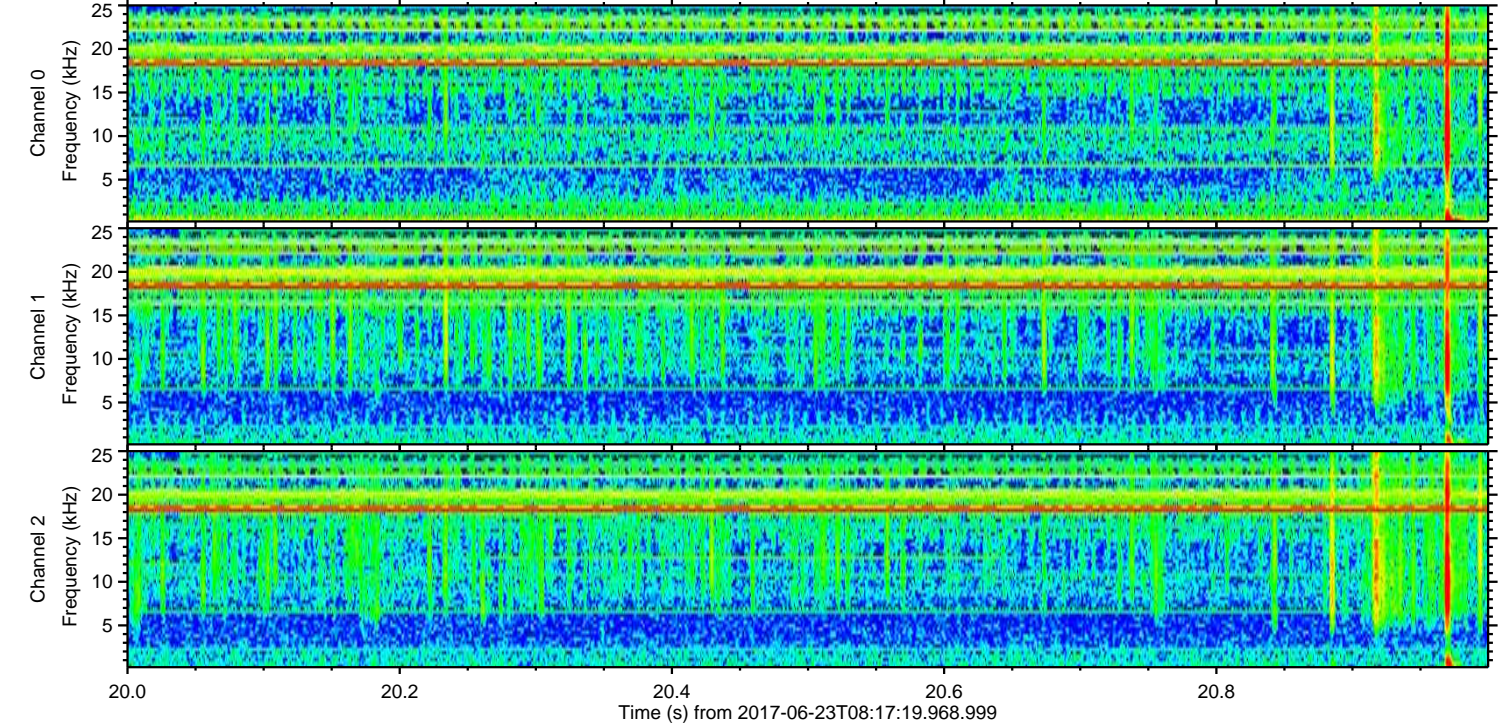
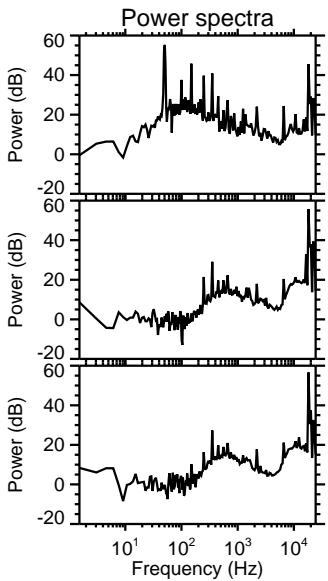
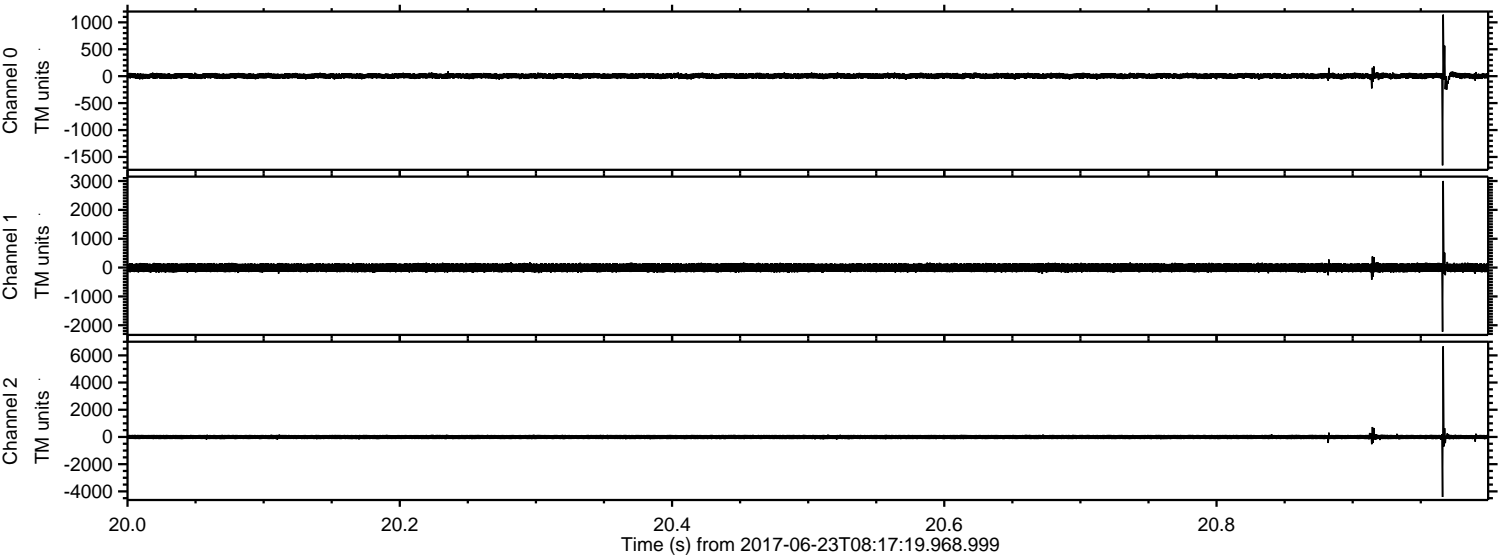
ELMAVAN 3D WAVEFORMS (Measured data sampled at 50 kHz) 51000 packets of 144 samples from 2017-06-23T08:17:19.968.999.

Processed Fri Jun 23 10:25:47 2017 by ELM ver.2012-10-06 from 001__elm20170623_081718__dat00.bin



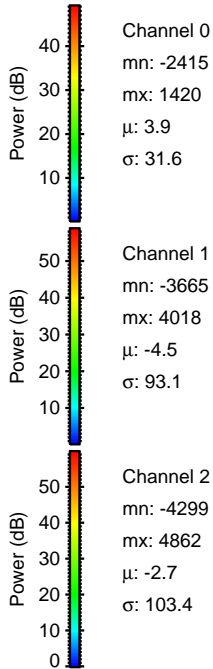
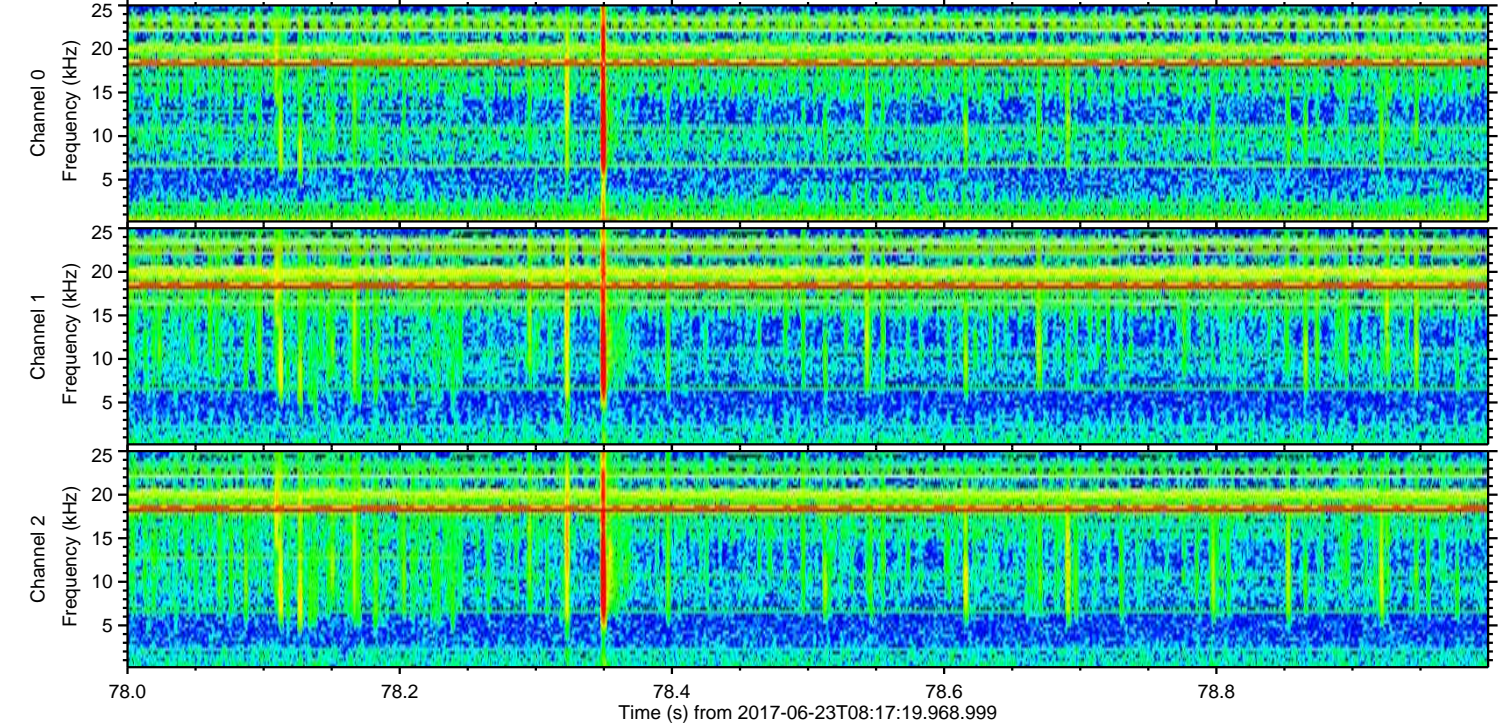
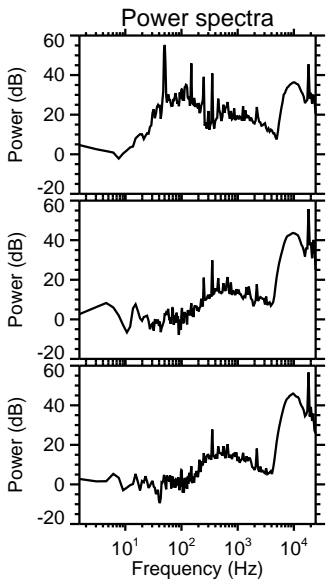
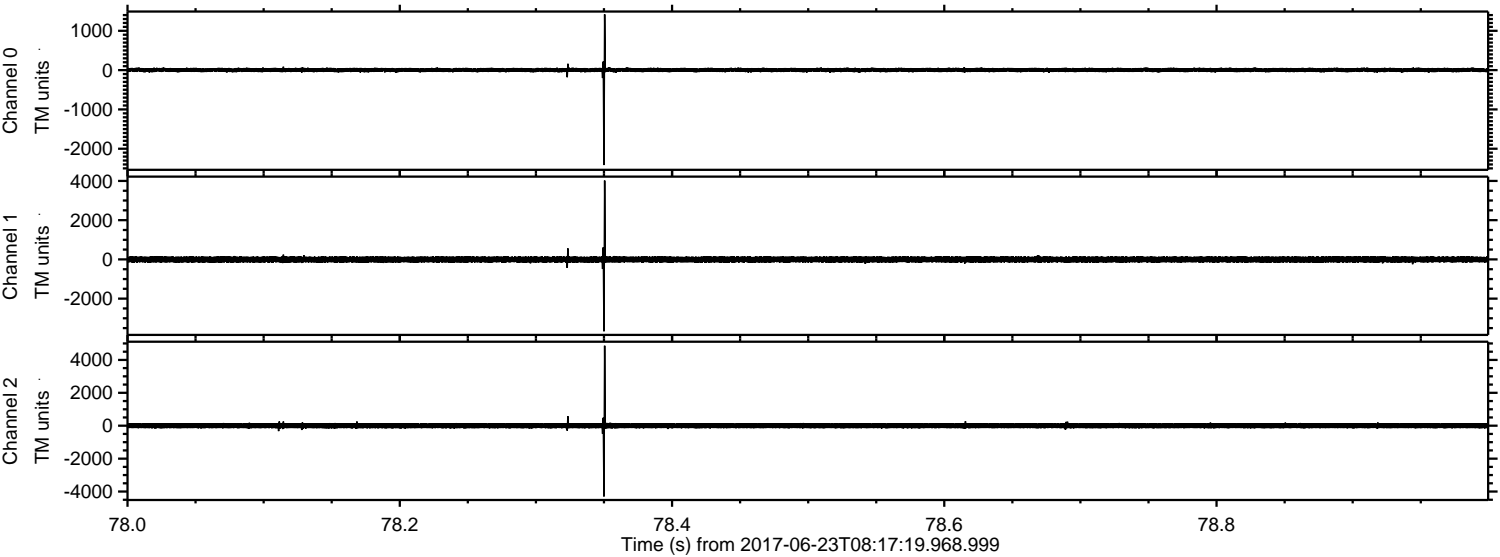
ELMAVAN 3D WAVEFORMS (Measured data sampled at 50 kHz) 51000 packets of 144 samples from 2017-06-23T08:17:19.968.999. Part 21/147

Processed Fri Jun 23 10:25:55 2017 by ELM ver.2012-10-06 from 001__elm20170623_081718__dat00.bin

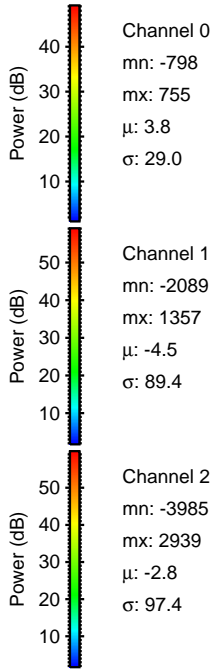
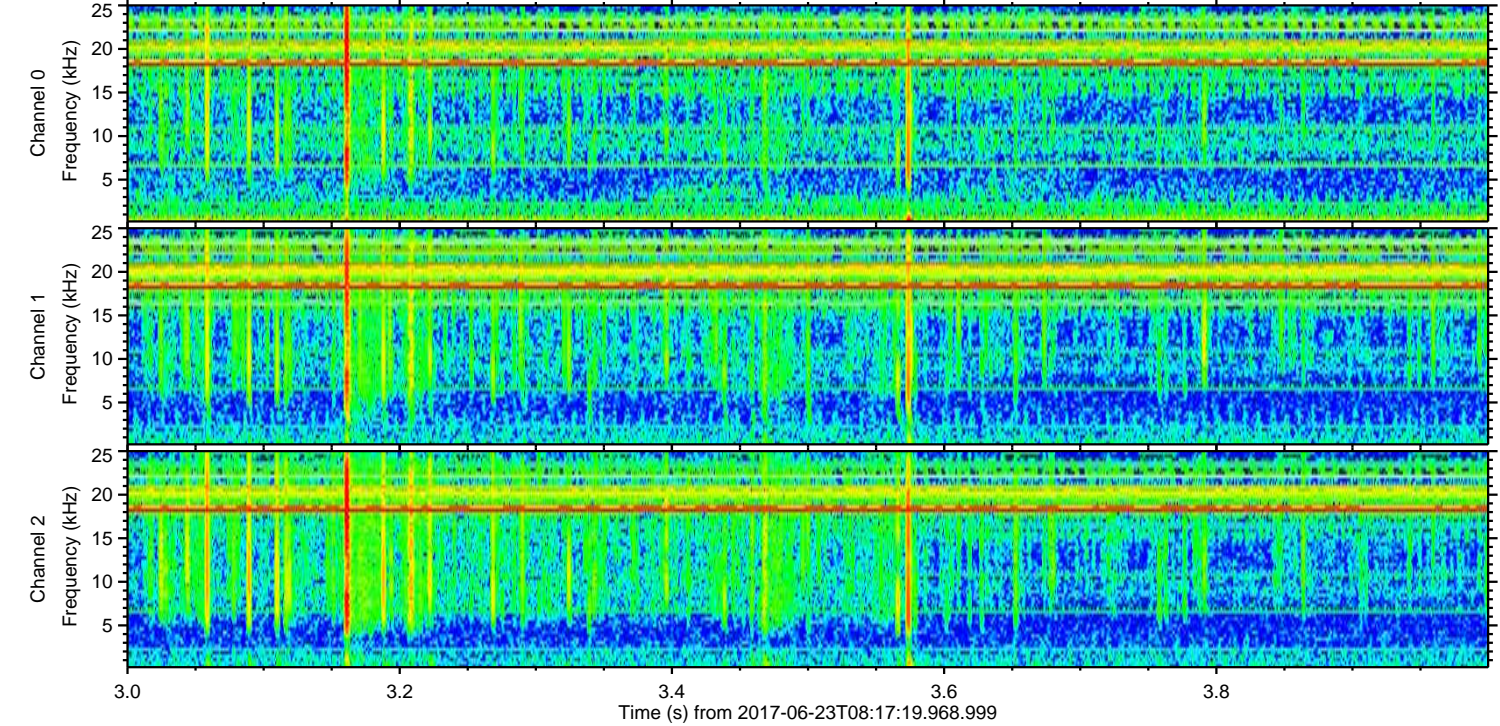
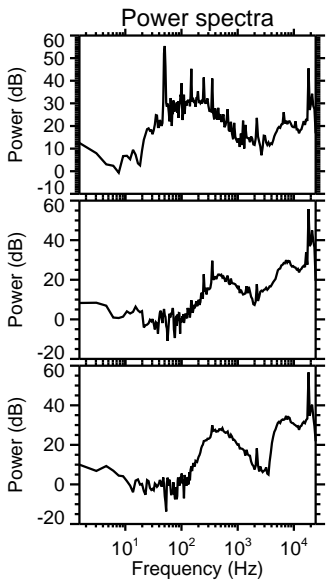
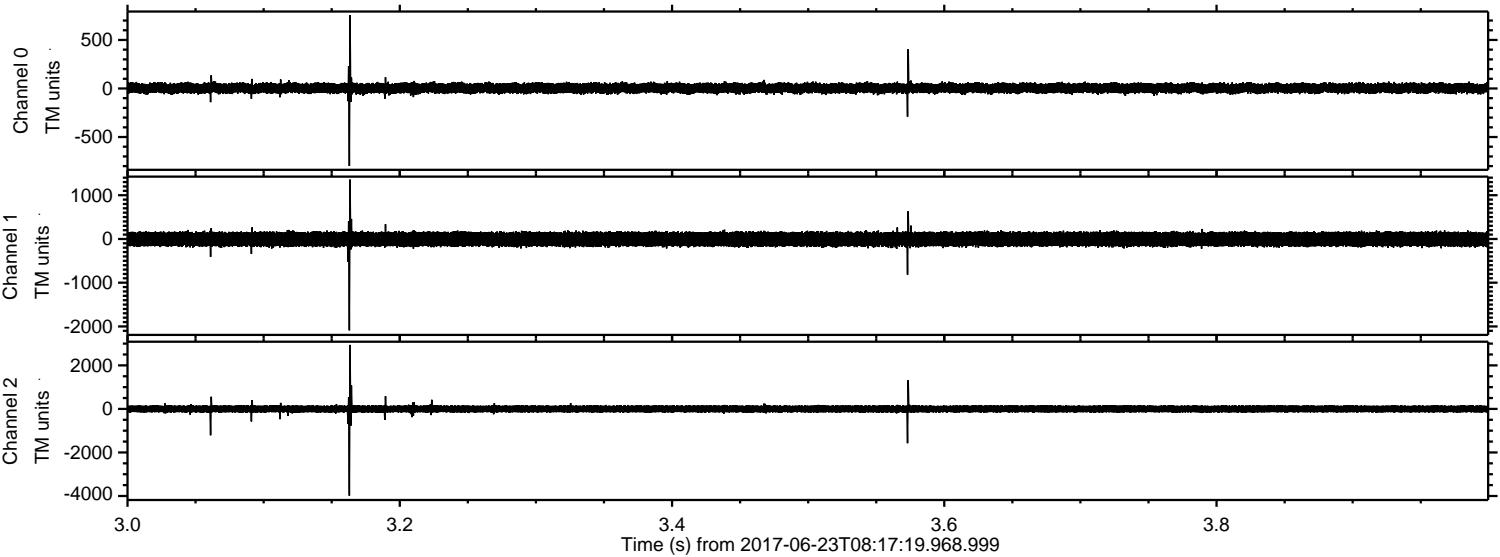


ELMAVAN 3D WAVEFORMS (Measured data sampled at 50 kHz) 51000 packets of 144 samples from 2017-06-23T08:17:19.968.999. Part 79/147

Processed Fri Jun 23 10:25:56 2017 by ELM ver.2012-10-06 from 001__elm20170623_081718__dat00.bin

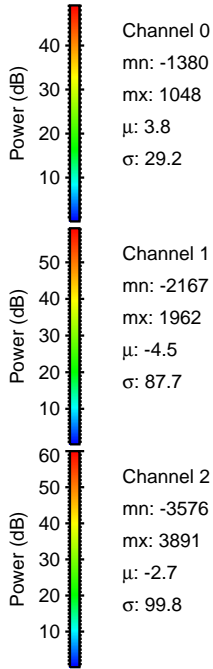
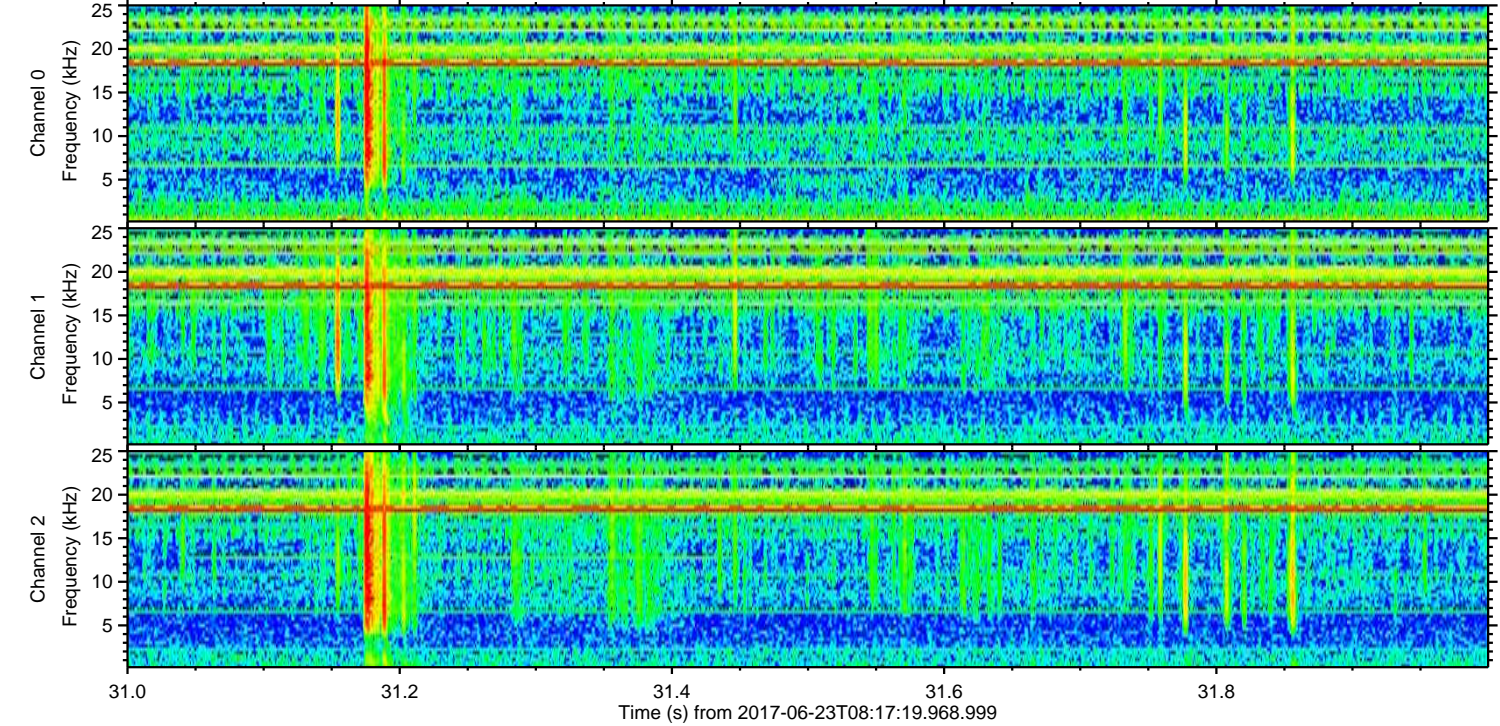
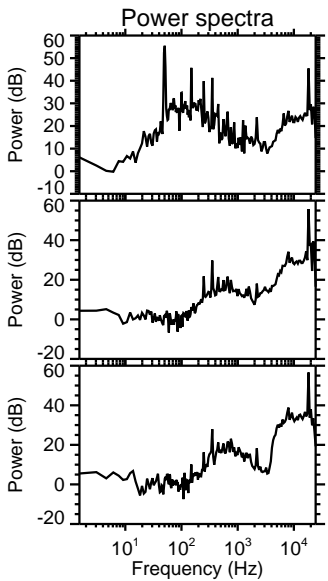
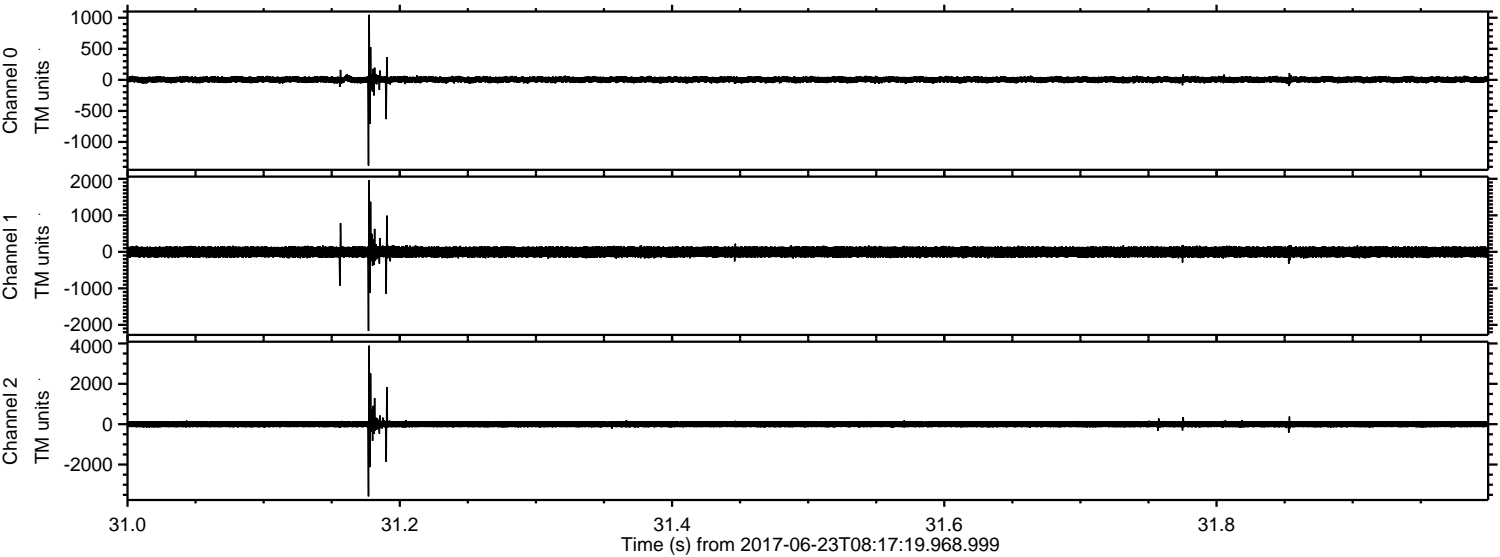


Processed Fri Jun 23 10:25:56 2017 by ELM ver.2012-10-06 from 001__elm20170623_081718__dat00.bin

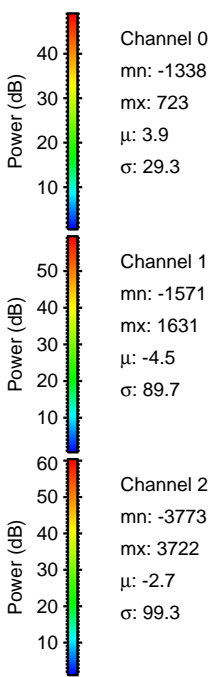
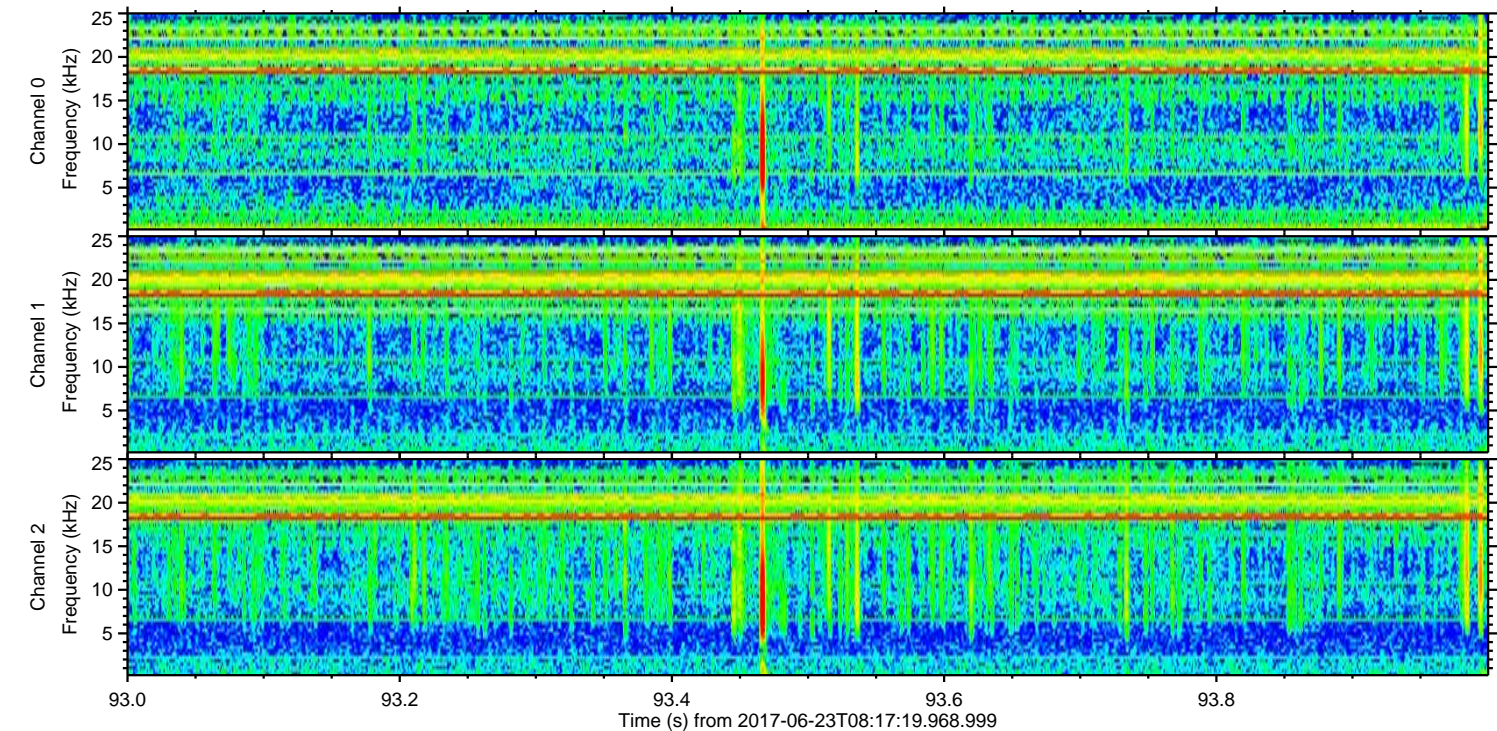
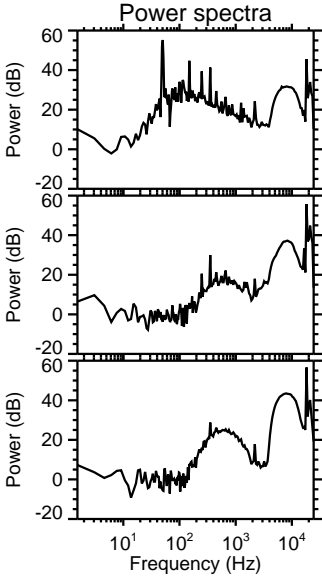
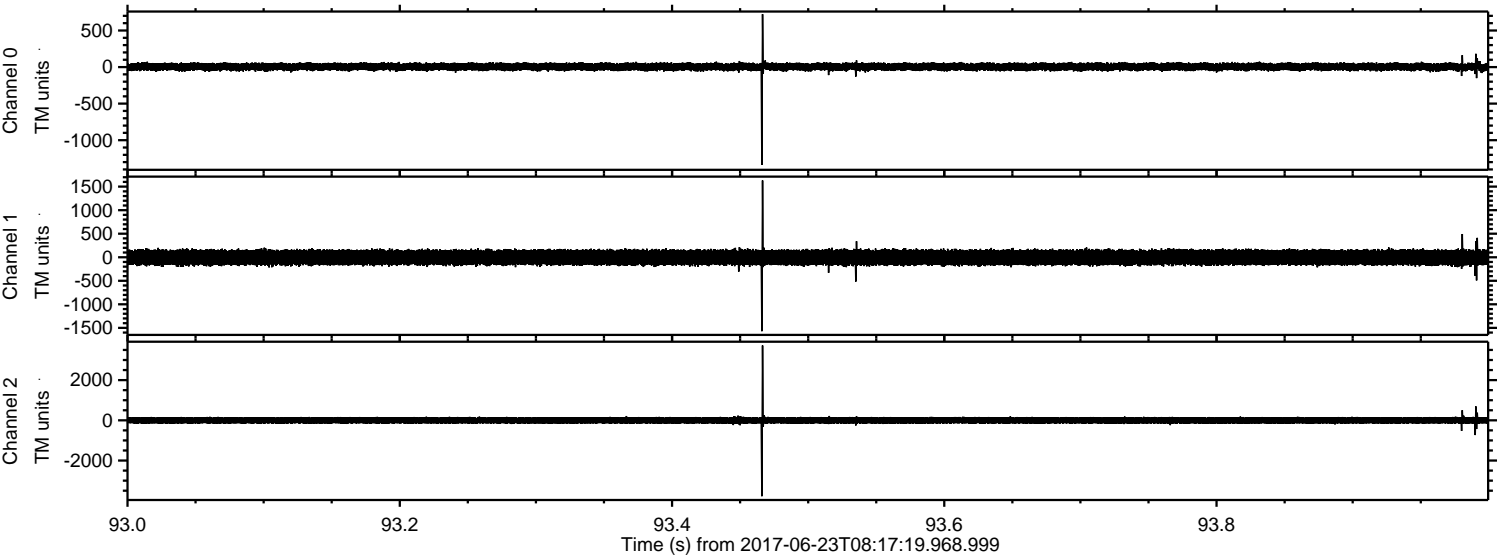


ELMAVAN 3D WAVEFORMS (Measured data sampled at 50 kHz) 51000 packets of 144 samples from 2017-06-23T08:17:19.968.999. Part 32/147

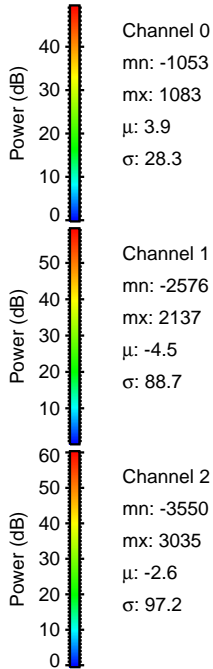
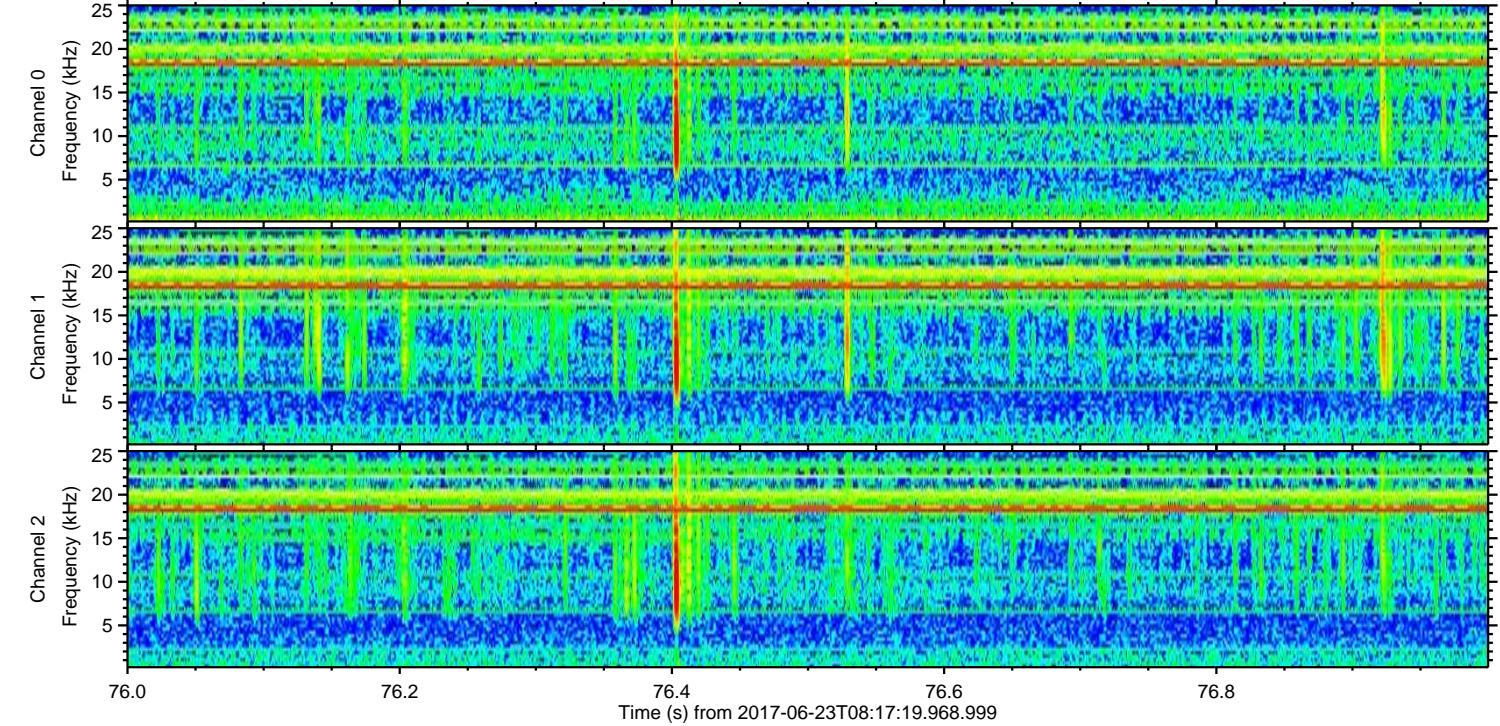
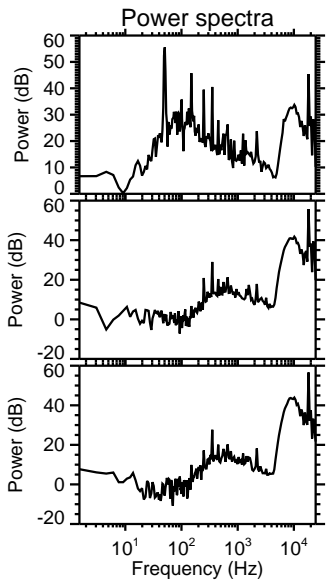
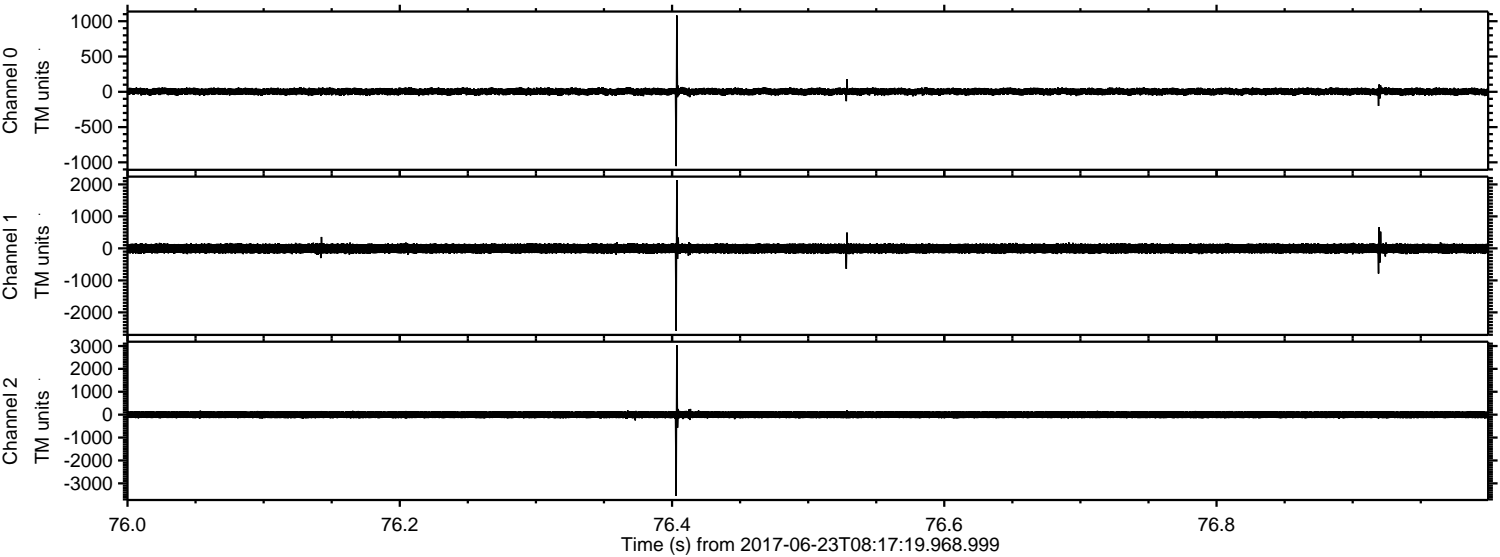
Processed Fri Jun 23 10:25:57 2017 by ELM ver.2012-10-06 from 001__elm20170623_081718__dat00.bin



Processed Fri Jun 23 10:25:58 2017 by ELM ver.2012-10-06 from 001__elm20170623_081718__dat00.bin

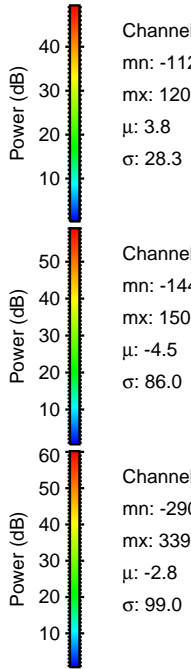
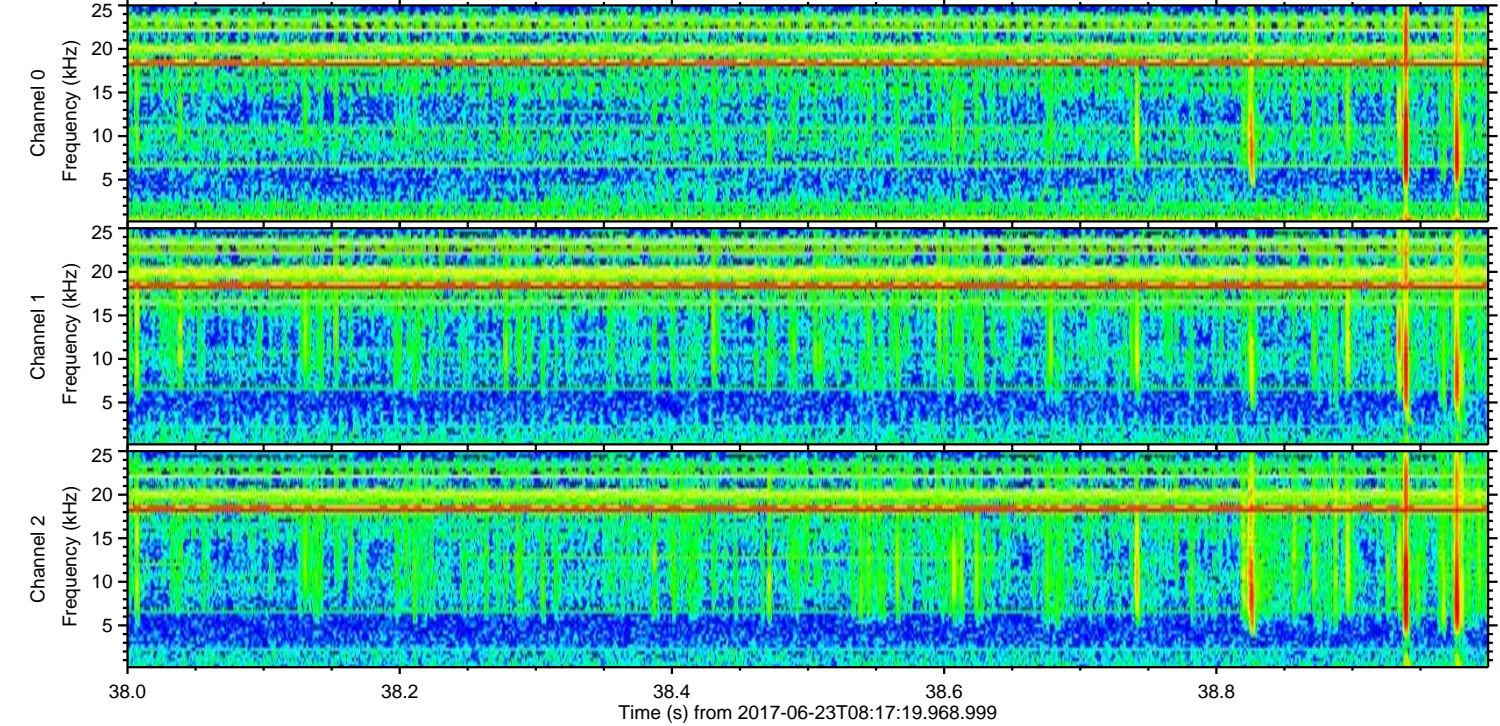
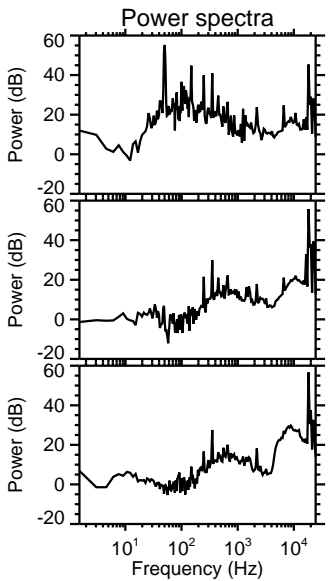
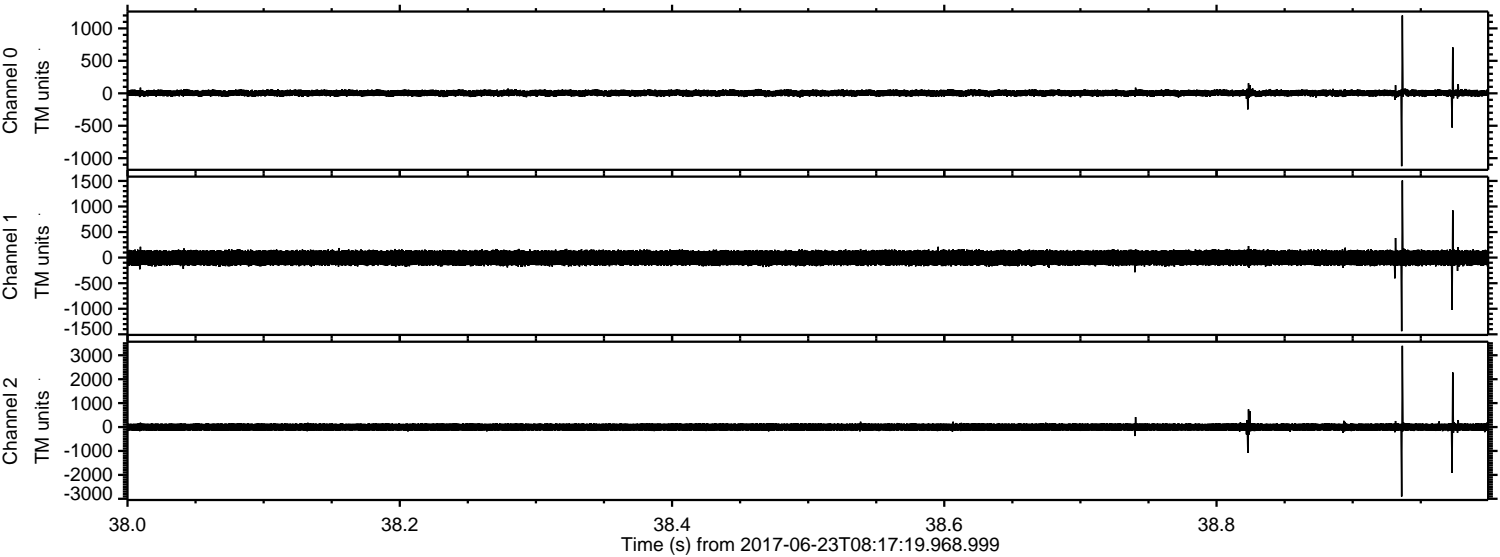


Processed Fri Jun 23 10:25:59 2017 by ELM ver.2012-10-06 from 001__elm20170623_081718__dat00.bin



ELMAVAN 3D WAVEFORMS (Measured data sampled at 50 kHz) 51000 packets of 144 samples from 2017-06-23T08:17:19.968.999. Part 39/147

Processed Fri Jun 23 10:26:00 2017 by ELM ver.2012-10-06 from 001__elm20170623_081718__dat00.bin

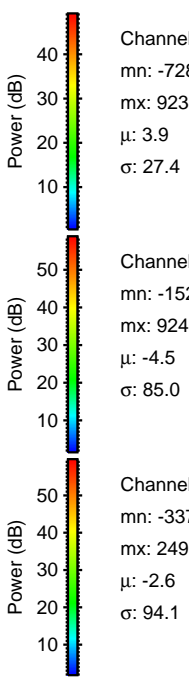
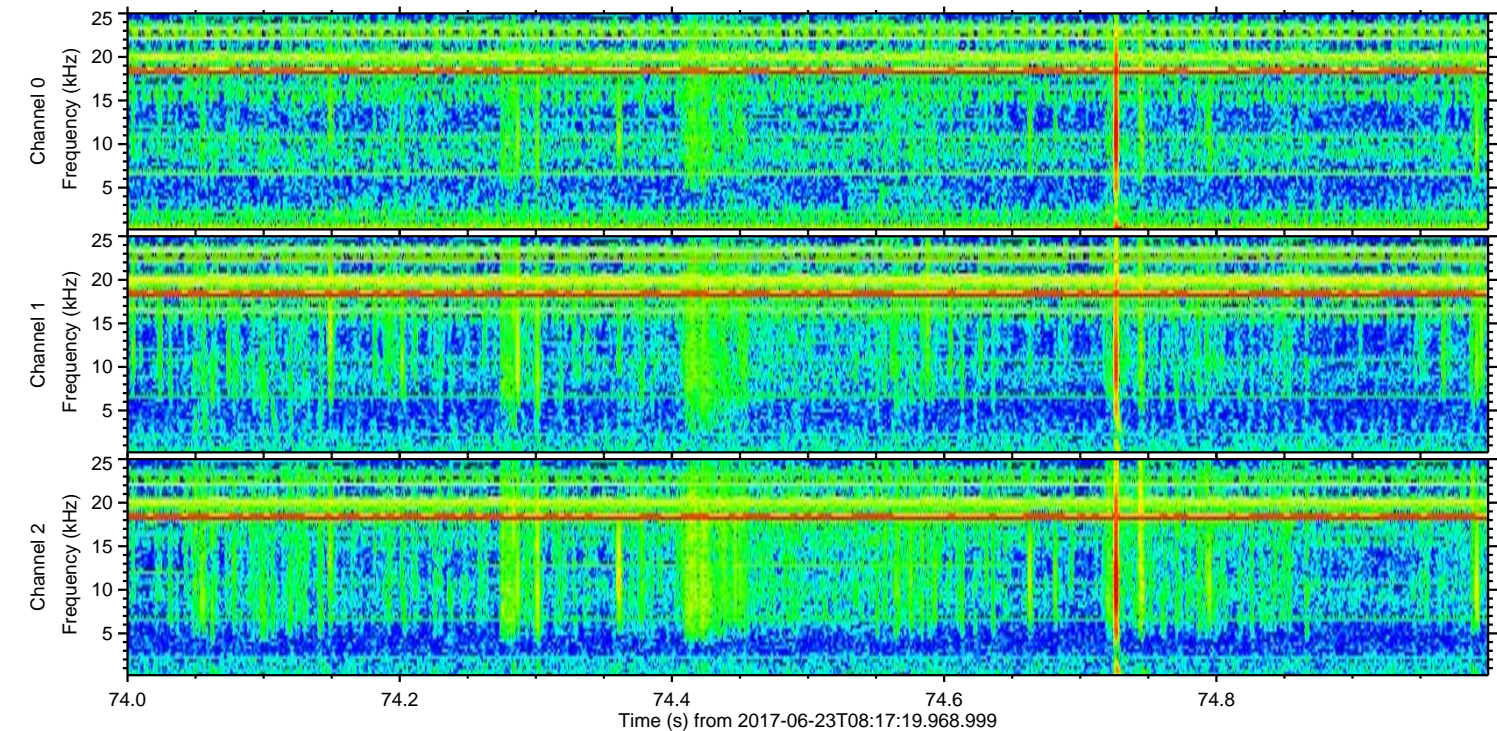
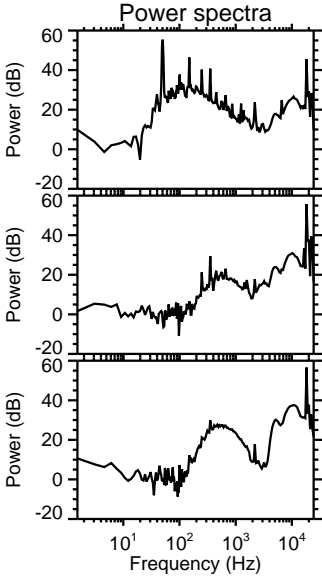
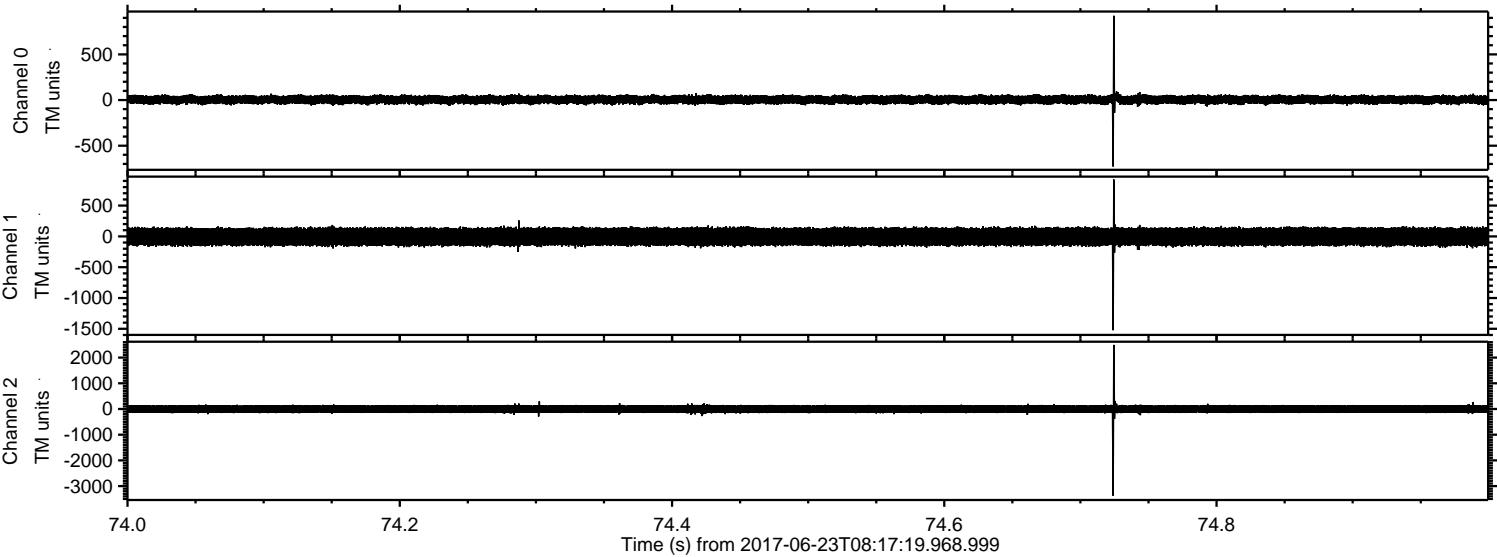


Channel 0
mn: -1123
mx: 1200
 μ : 3.8
 σ : 28.3

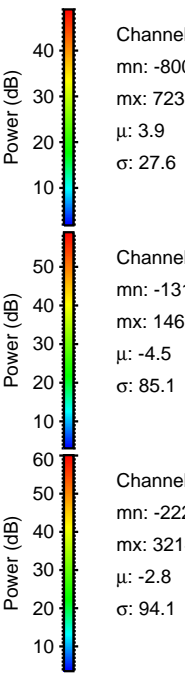
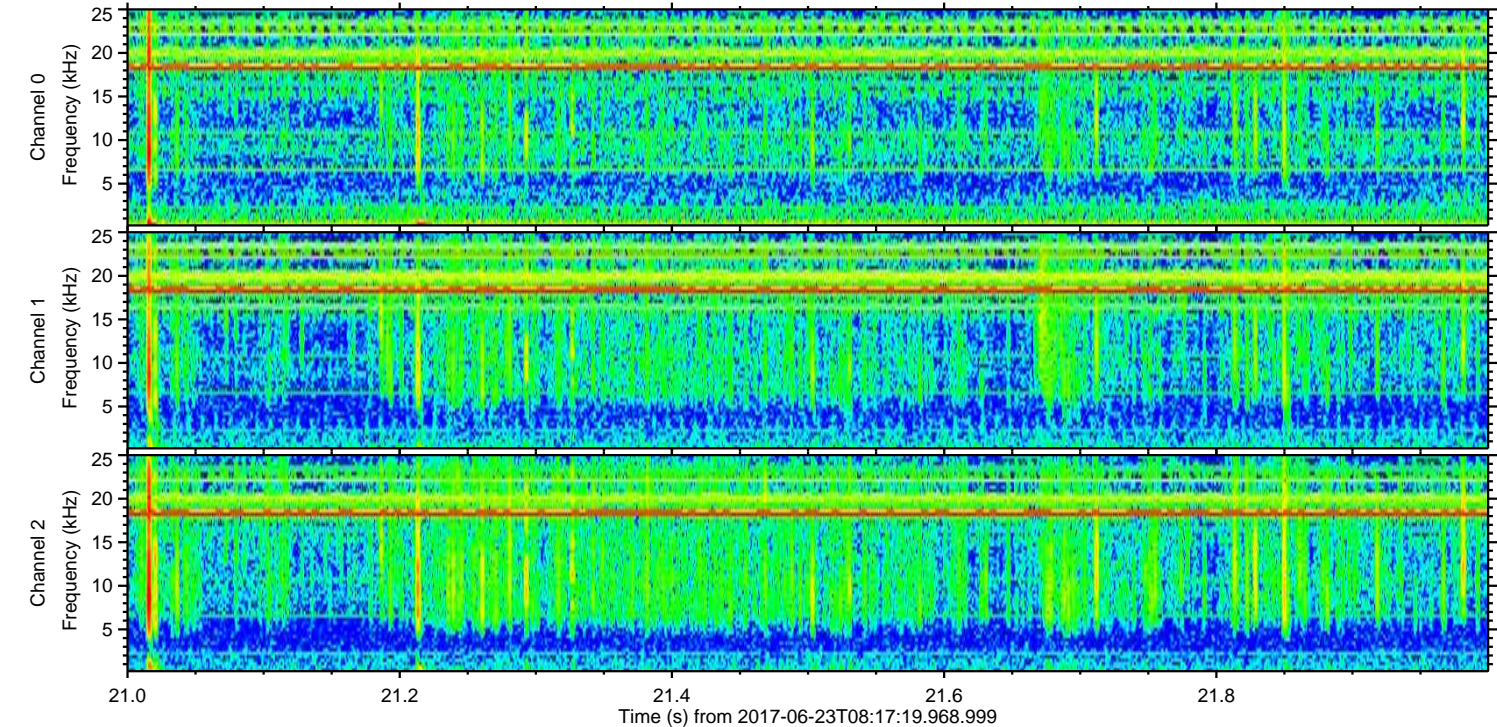
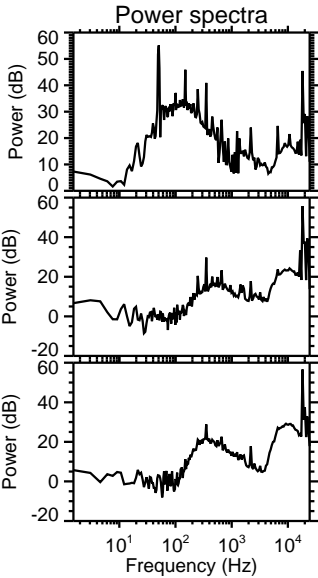
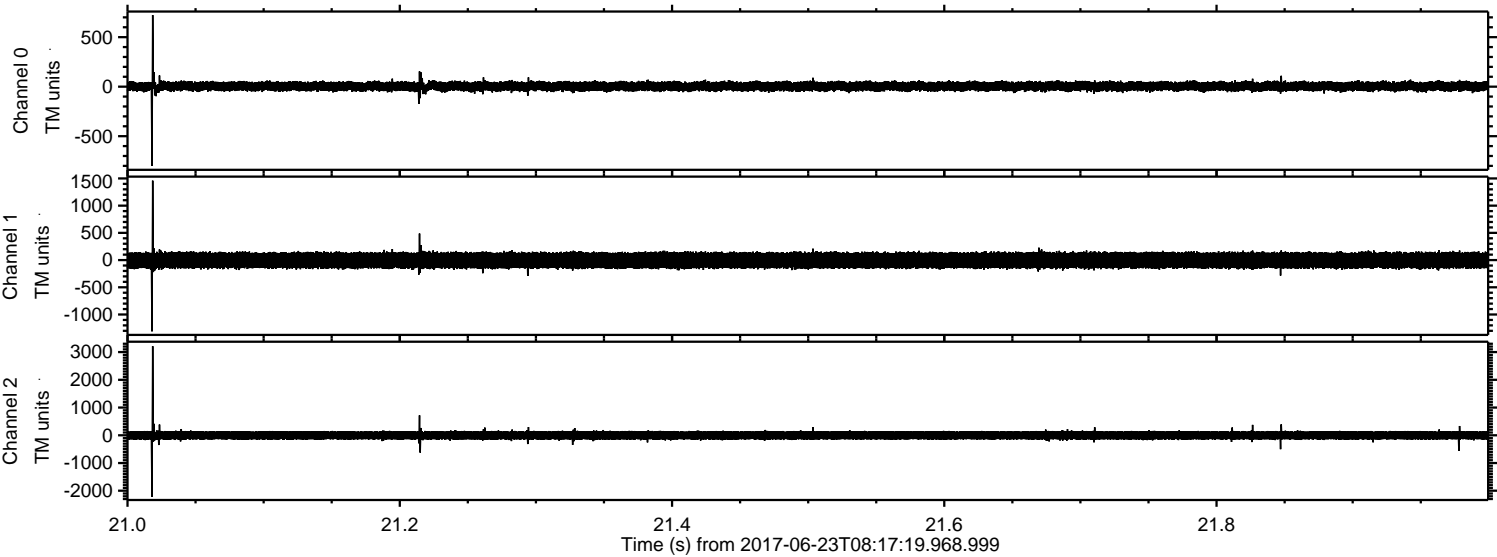
Channel 1
mn: -1440
mx: 1509
 μ : -4.5
 σ : 86.0

Channel 2
mn: -2904
mx: 3396
 μ : -2.8
 σ : 99.0

Processed Fri Jun 23 10:26:01 2017 by ELM ver.2012-10-06 from 001__elm20170623_081718__dat00.bin



Processed Fri Jun 23 10:26:02 2017 by ELM ver.2012-10-06 from 001__elm20170623_081718__dat00.bin



Processed Fri Jun 23 10:26:02 2017 by ELM ver.2012-10-06 from 001__elm20170623_081718__dat00.bin

