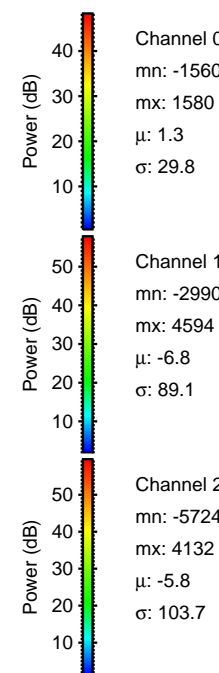
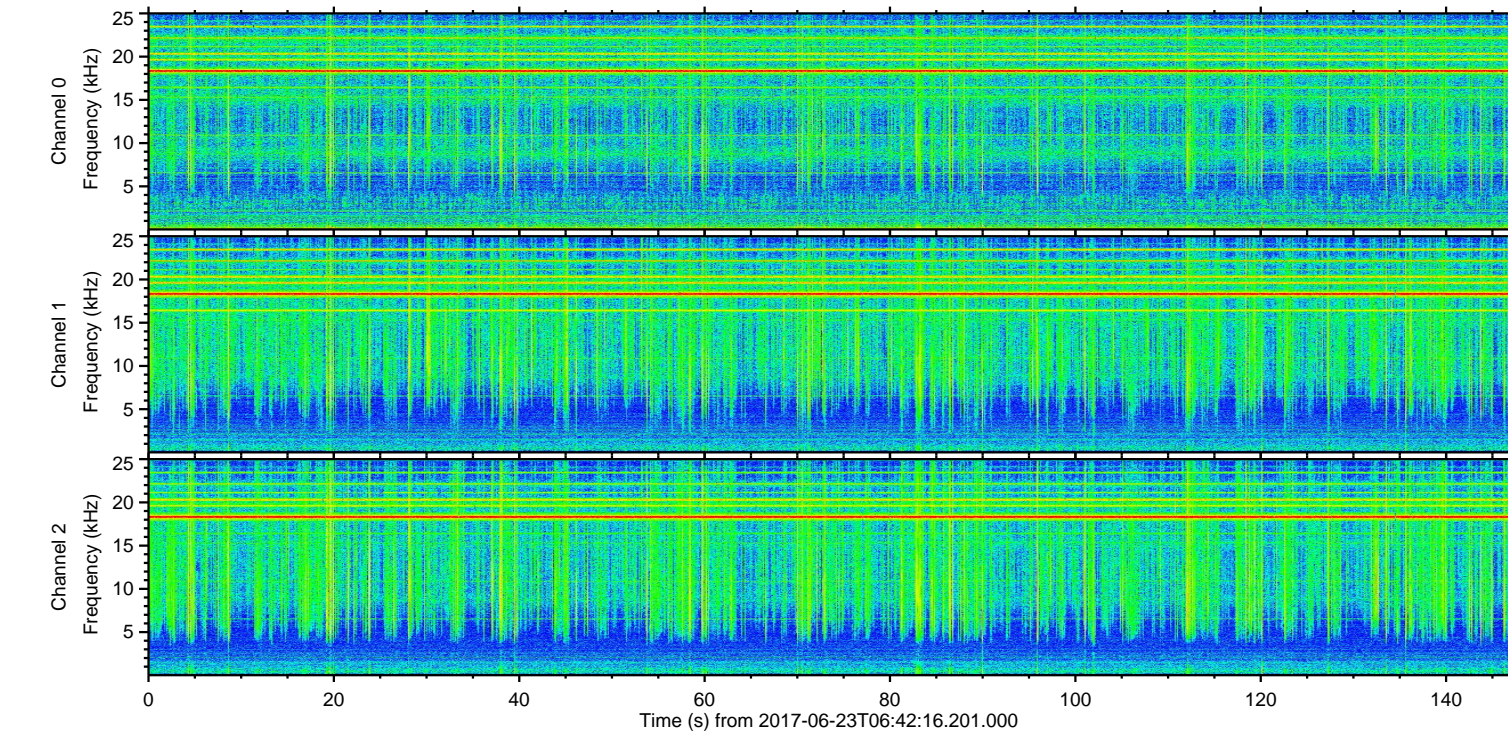
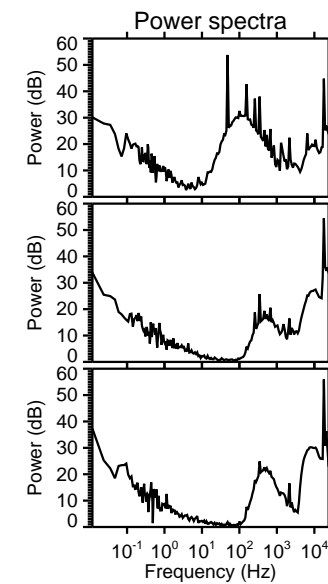
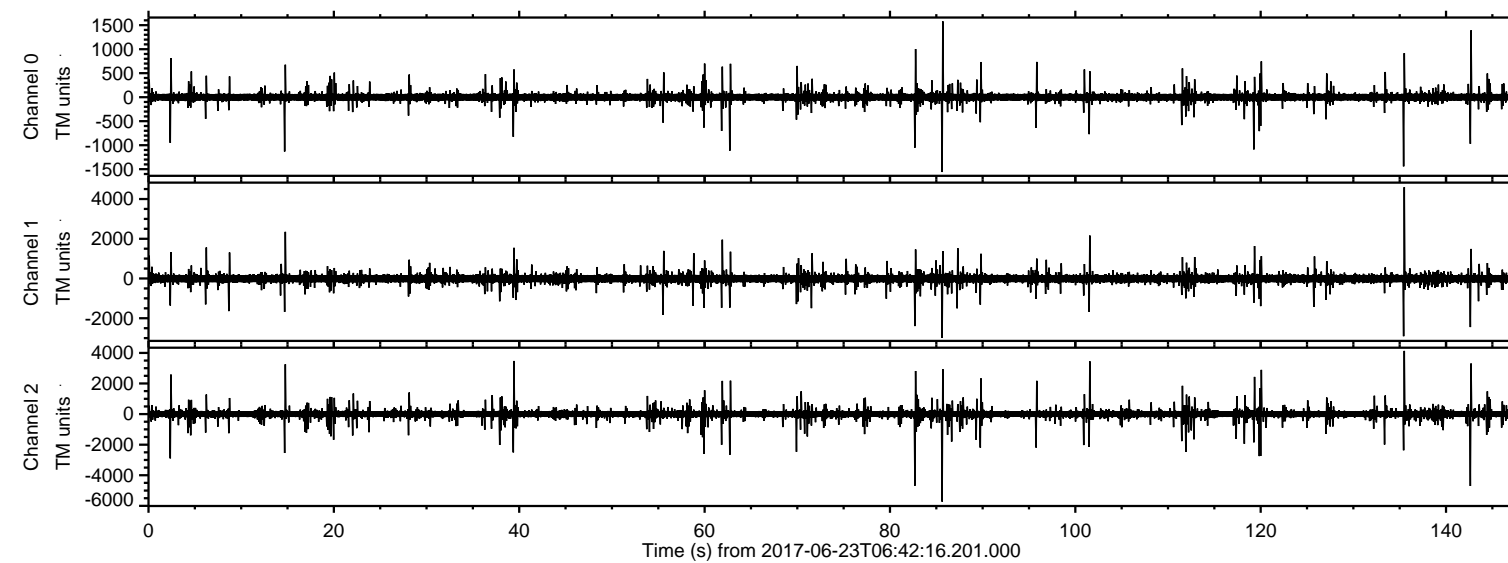


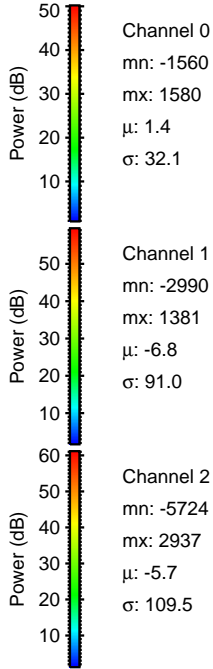
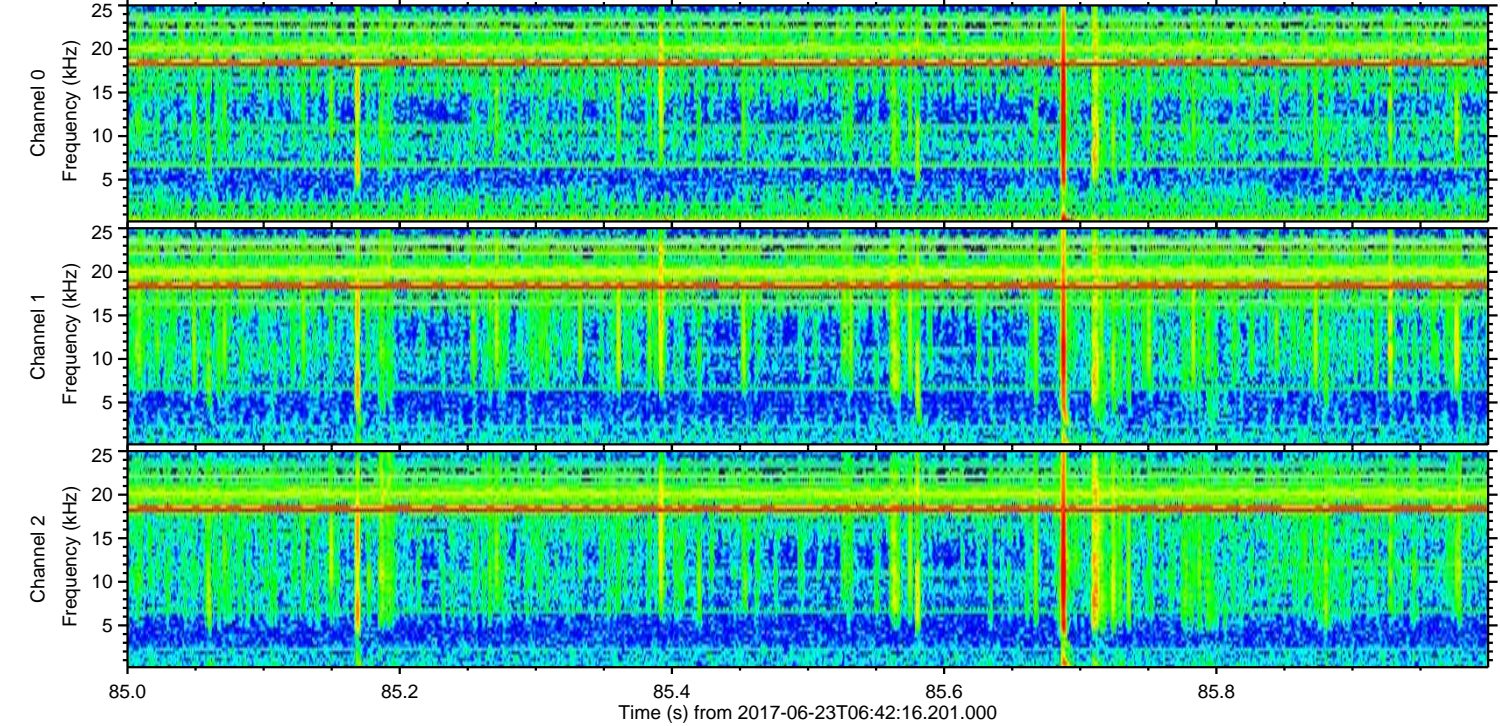
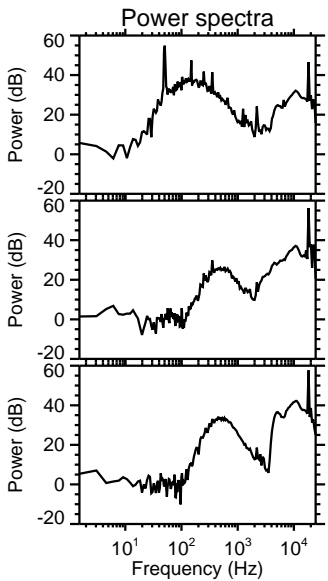
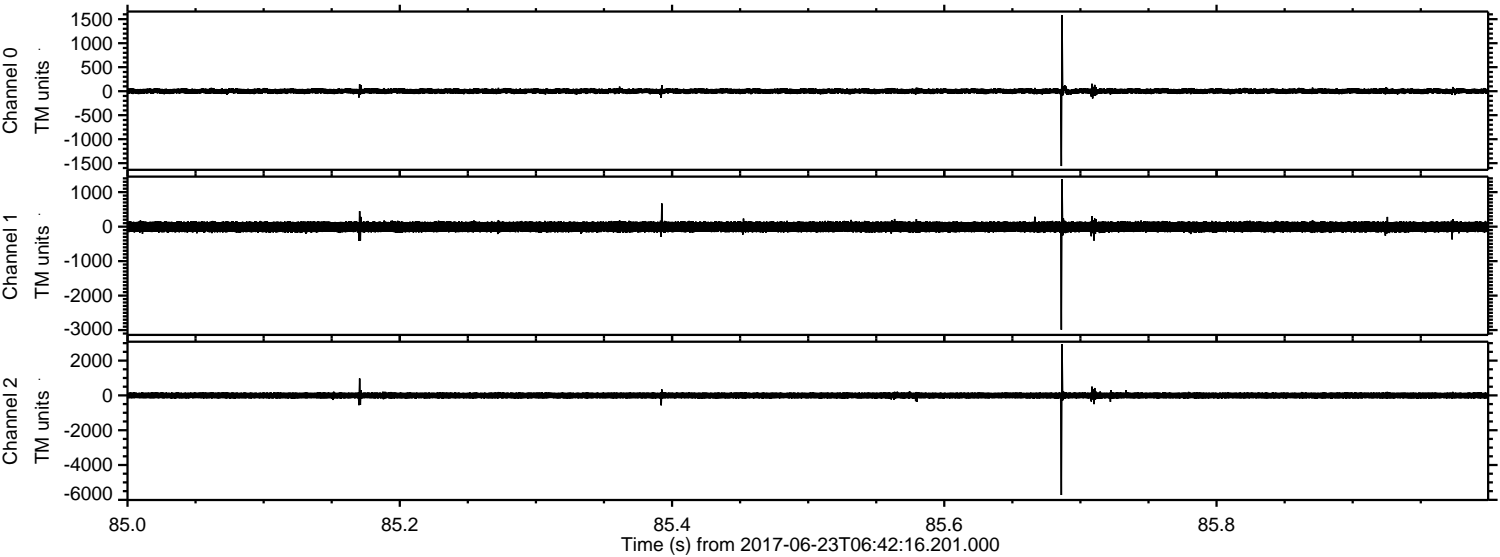
ELMAVAN 3D WAVEFORMS (Measured data sampled at 50 kHz) 51000 packets of 144 samples from 2017-06-23T06:42:16.201.000.

Processed Fri Jun 23 08:49:43 2017 by ELM ver.2012-10-06 from 001\_\_elm20170623\_064215\_\_dat00.bin





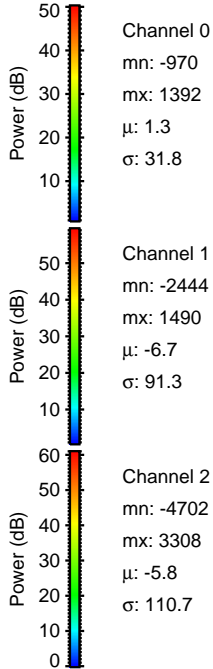
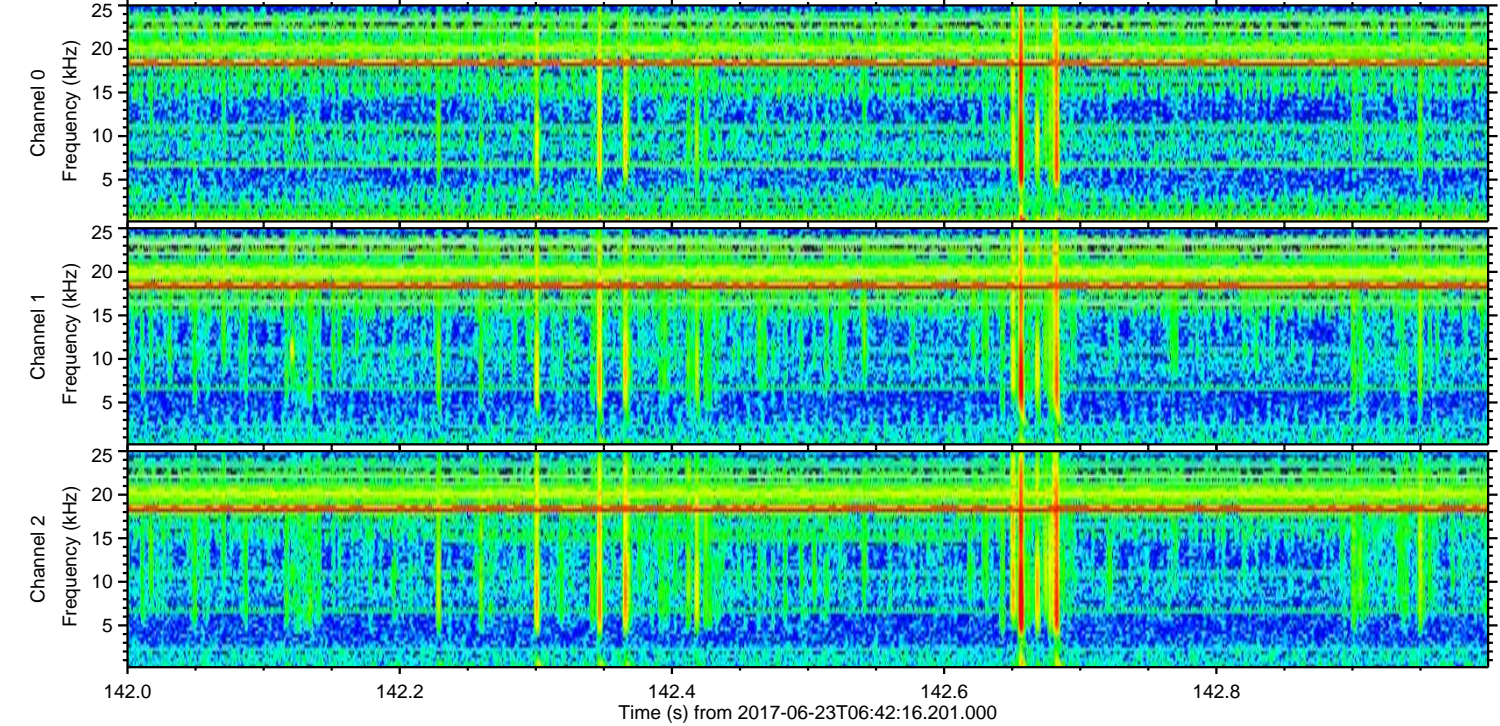
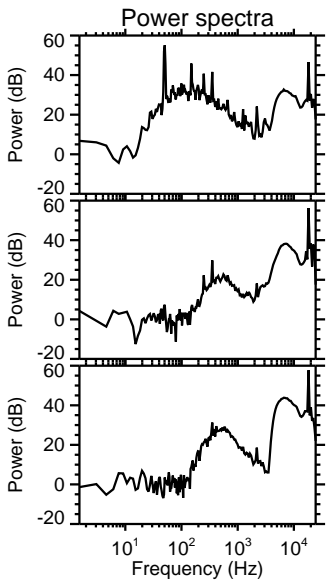
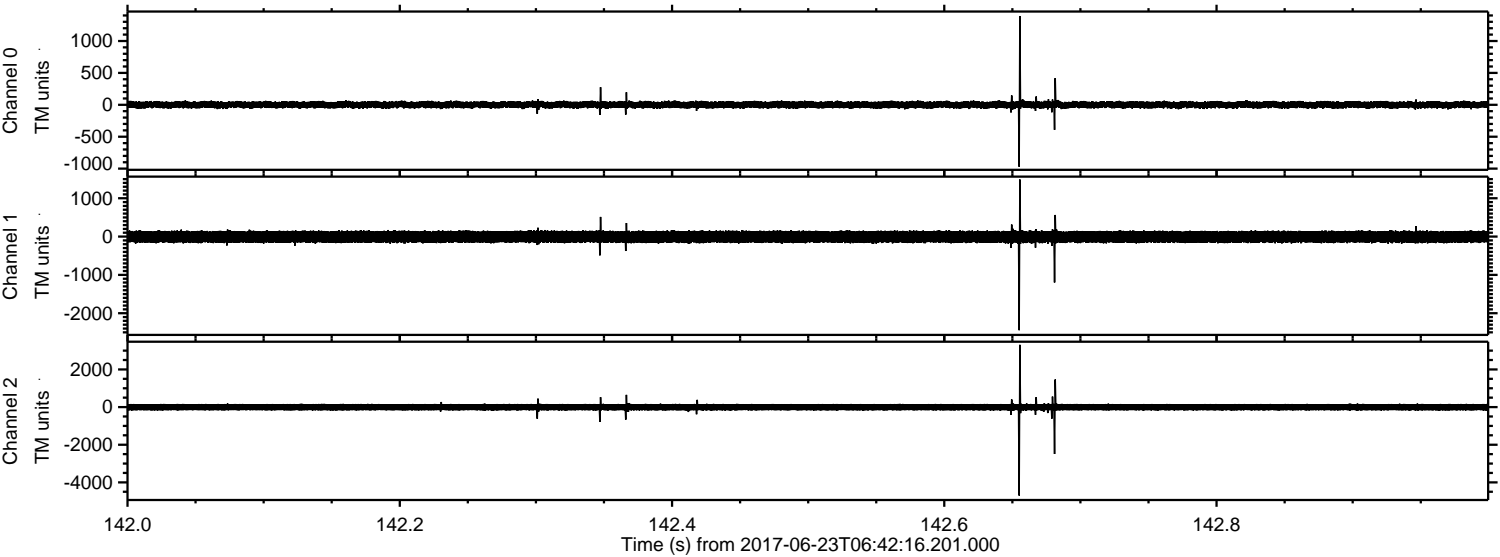
Processed Fri Jun 23 08:49:50 2017 by ELM ver.2012-10-06 from 001\_\_elm20170623\_064215\_\_dat00.bin





ELMAVAN 3D WAVEFORMS (Measured data sampled at 50 kHz) 51000 packets of 144 samples from 2017-06-23T06:42:16.201.000. Part 143/147

Processed Fri Jun 23 08:49:51 2017 by ELM ver.2012-10-06 from 001\_\_elm20170623\_064215\_\_dat00.bin



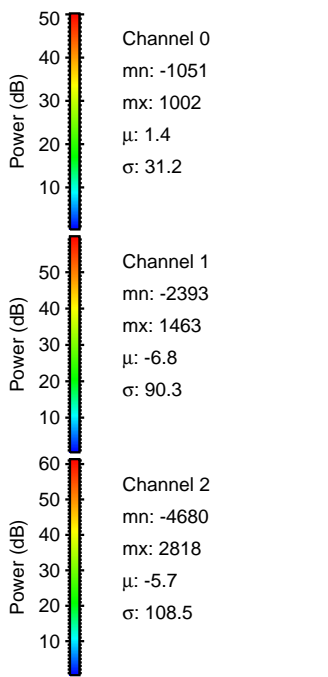
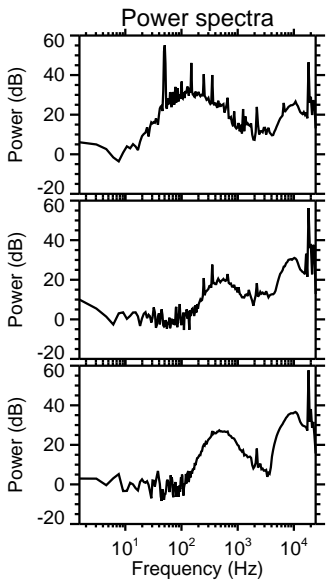
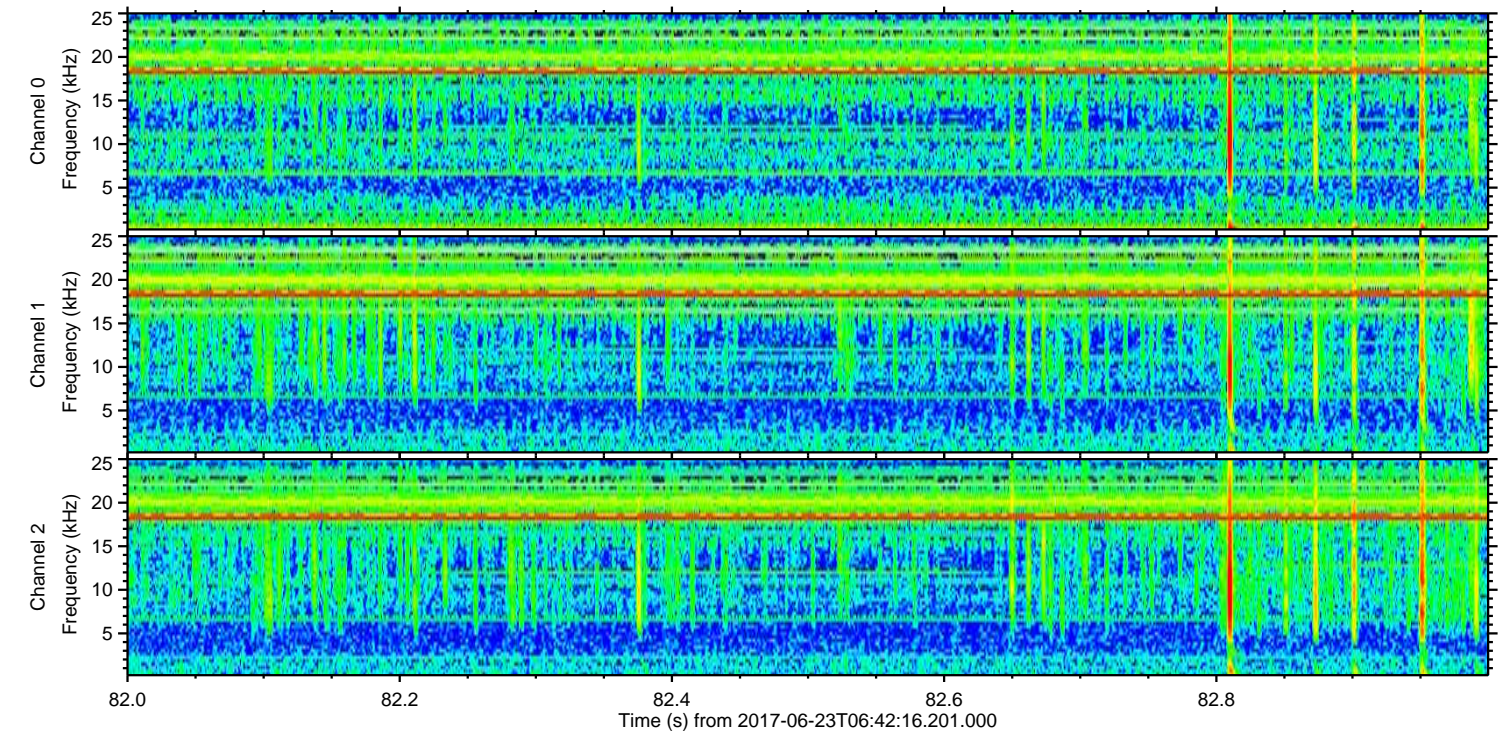
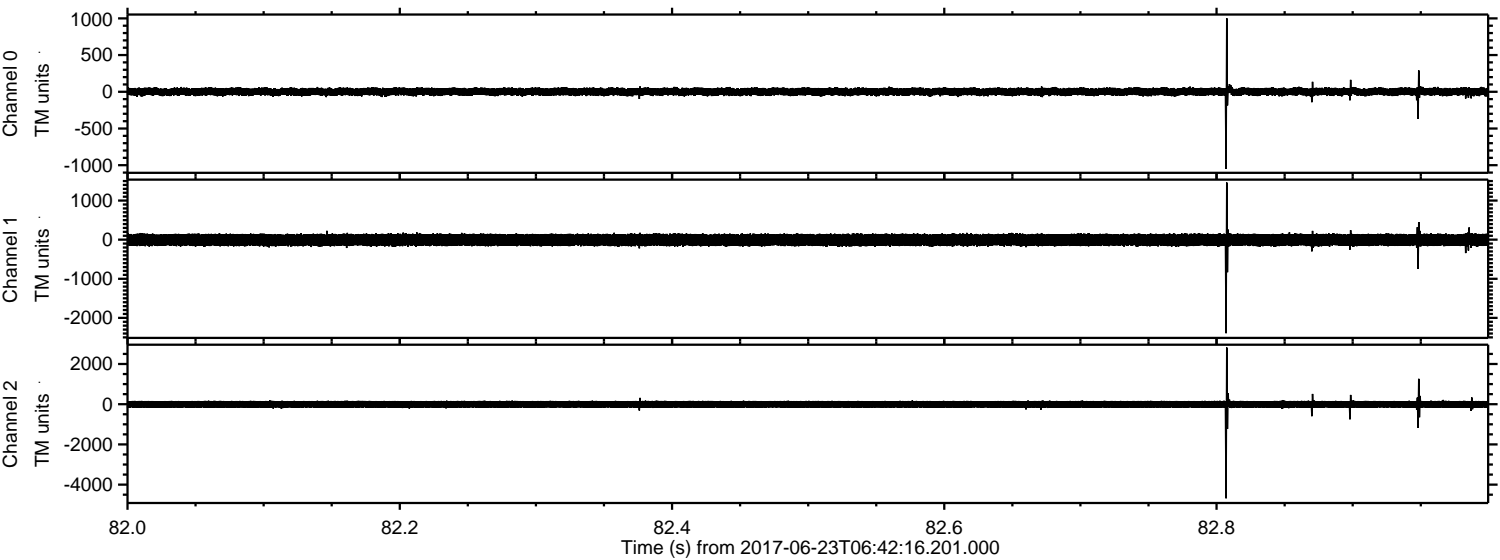
Channel 0  
mn: -970  
mx: 1392  
 $\mu$ : 1.3  
 $\sigma$ : 31.8

Channel 1  
mn: -2444  
mx: 1490  
 $\mu$ : -6.7  
 $\sigma$ : 91.3

Channel 2  
mn: -4702  
mx: 3308  
 $\mu$ : -5.8  
 $\sigma$ : 110.7



Processed Fri Jun 23 08:49:52 2017 by ELM ver.2012-10-06 from 001\_\_elm20170623\_064215\_\_dat00.bin



Channel 0  
mn: -1051  
mx: 1002  
 $\mu$ : 1.4  
 $\sigma$ : 31.2

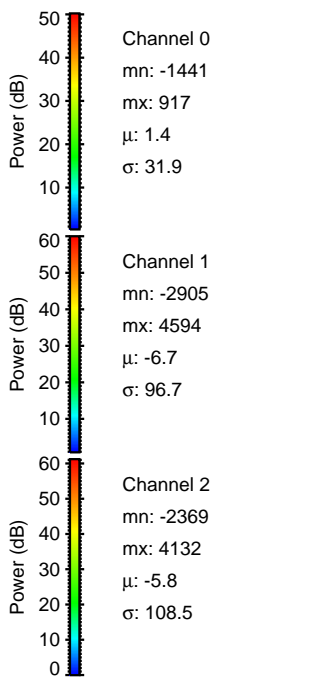
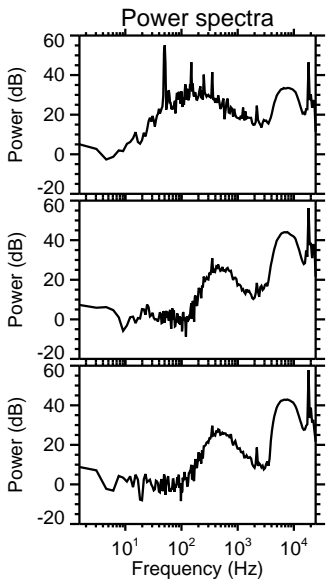
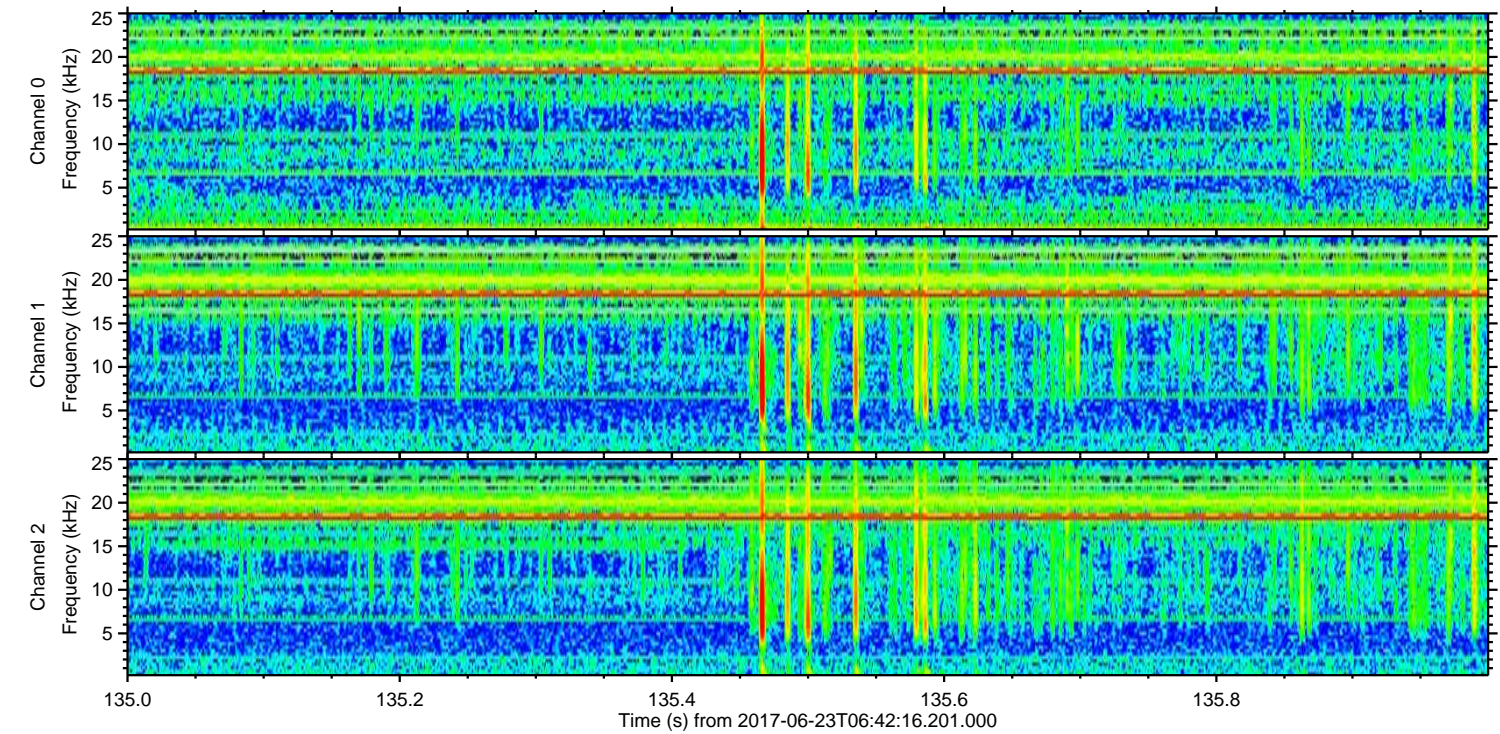
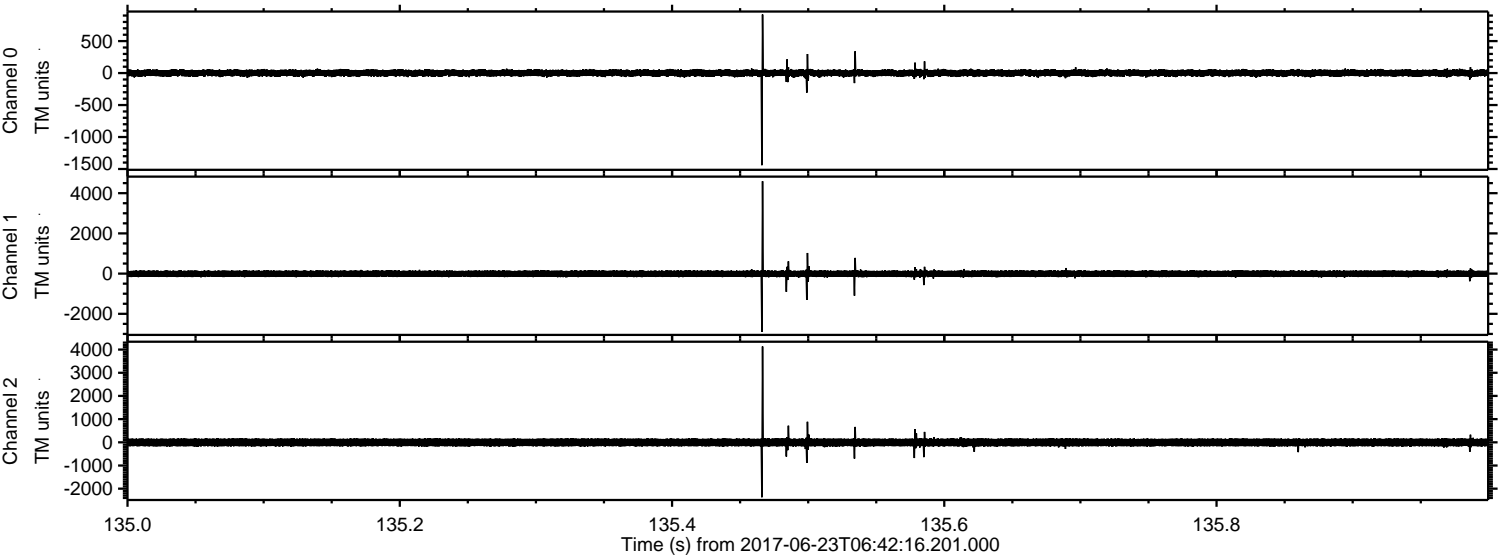
Channel 1  
mn: -2393  
mx: 1463  
 $\mu$ : -6.8  
 $\sigma$ : 90.3

Channel 2  
mn: -4680  
mx: 2818  
 $\mu$ : -5.7  
 $\sigma$ : 108.5



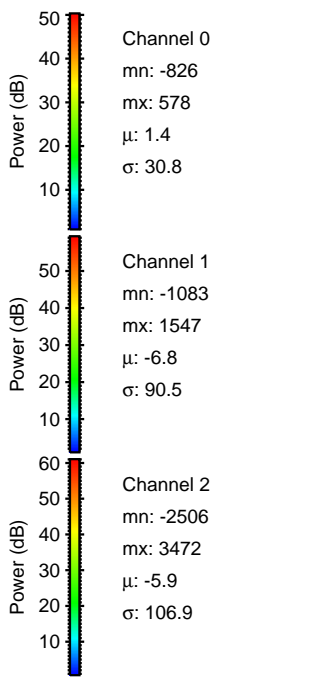
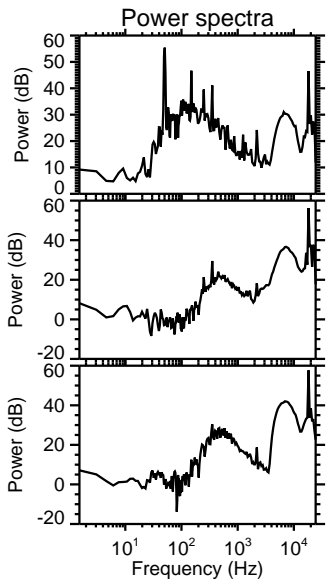
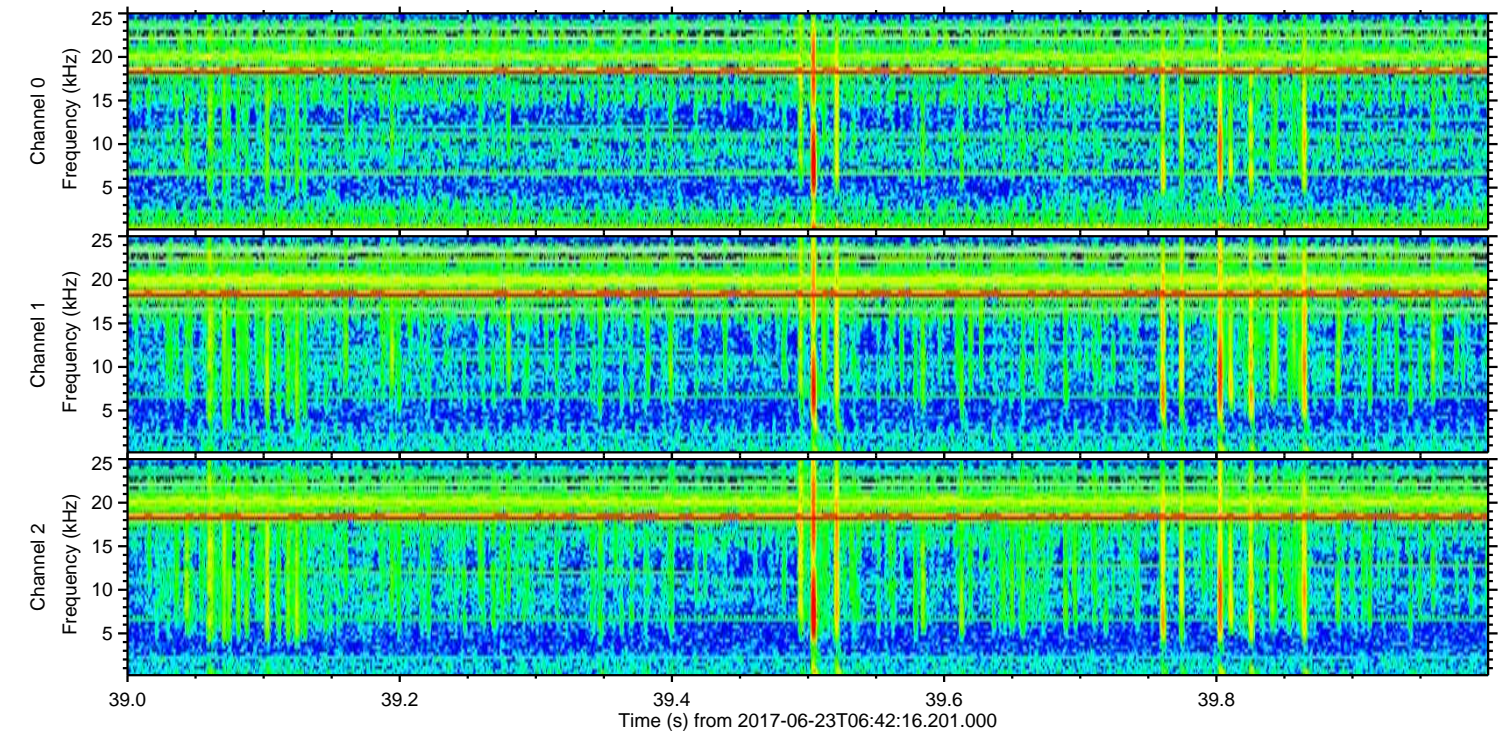
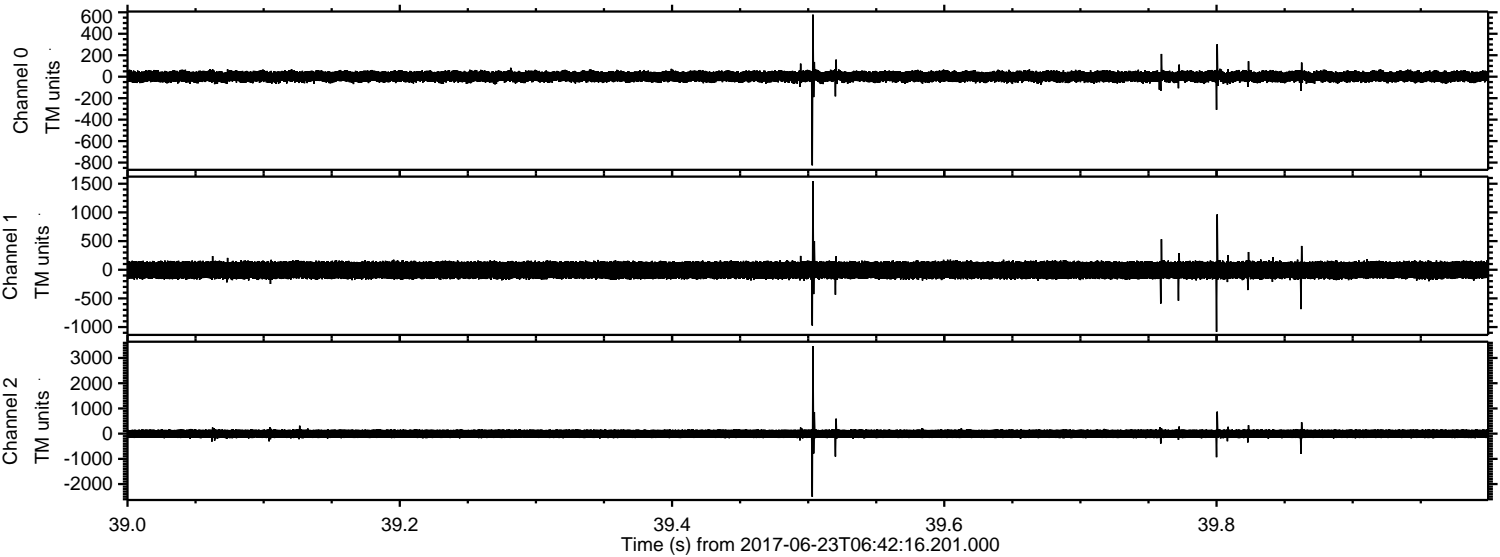
ELMAVAN 3D WAVEFORMS (Measured data sampled at 50 kHz) 51000 packets of 144 samples from 2017-06-23T06:42:16.201.000. Part 136/147

Processed Fri Jun 23 08:49:52 2017 by ELM ver.2012-10-06 from 001\_\_elm20170623\_064215\_\_dat00.bin





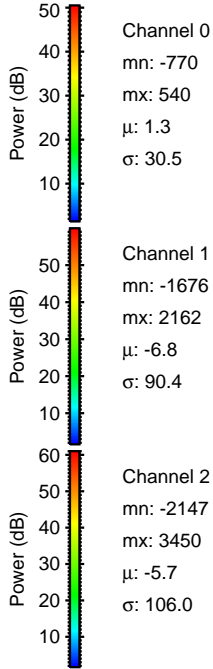
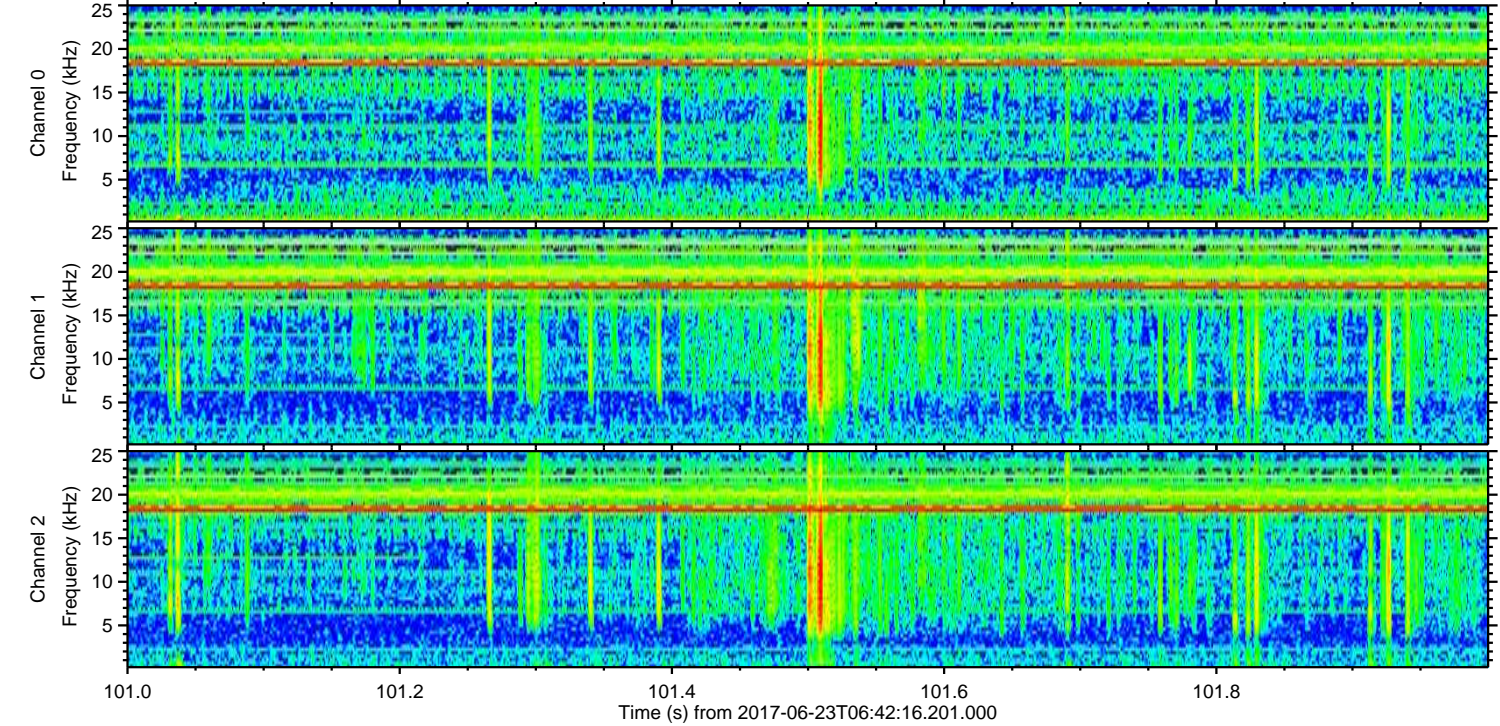
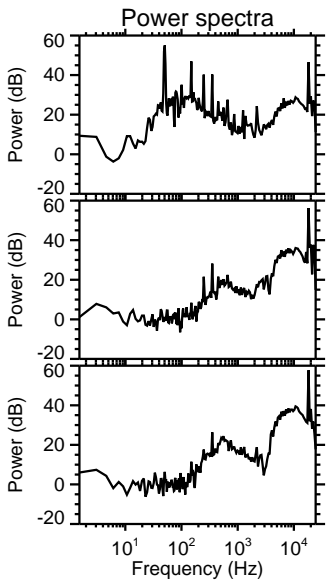
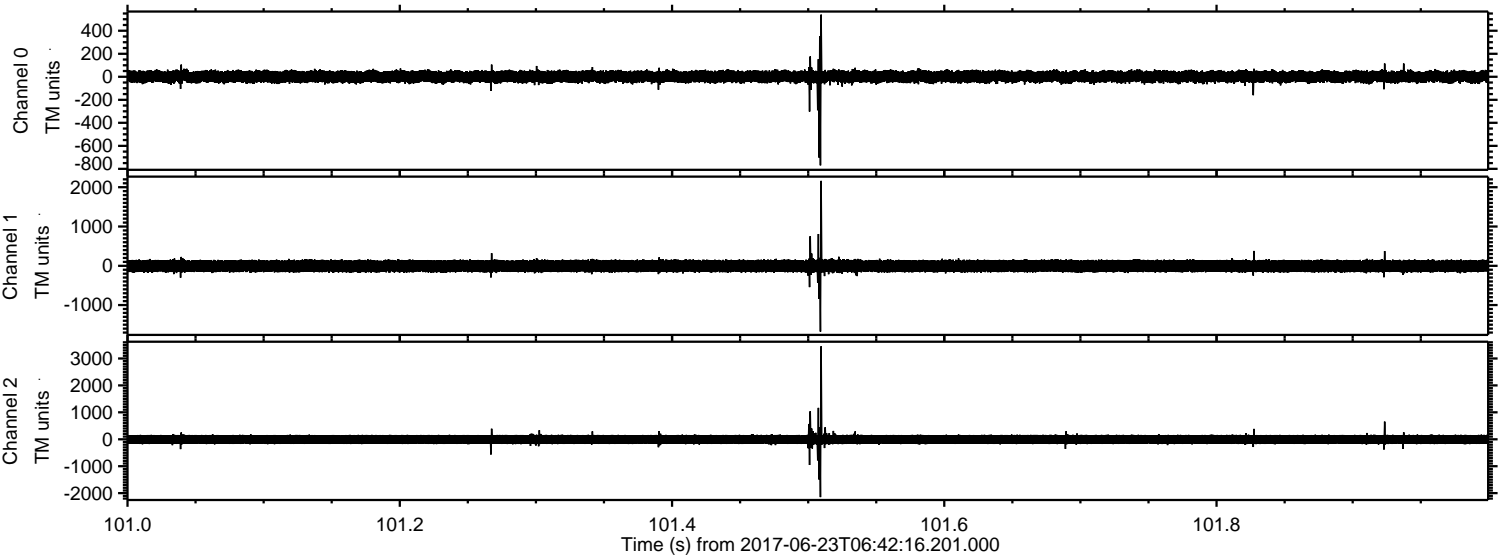
Processed Fri Jun 23 08:49:53 2017 by ELM ver.2012-10-06 from 001\_\_elm20170623\_064215\_\_dat00.bin





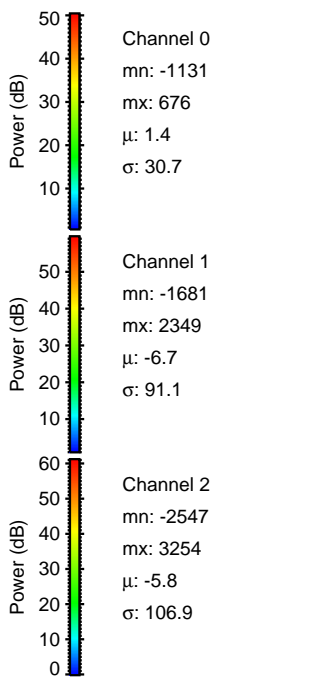
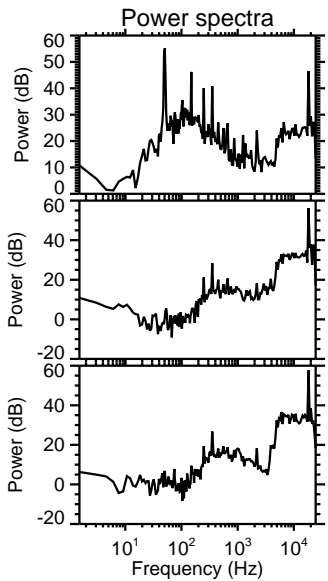
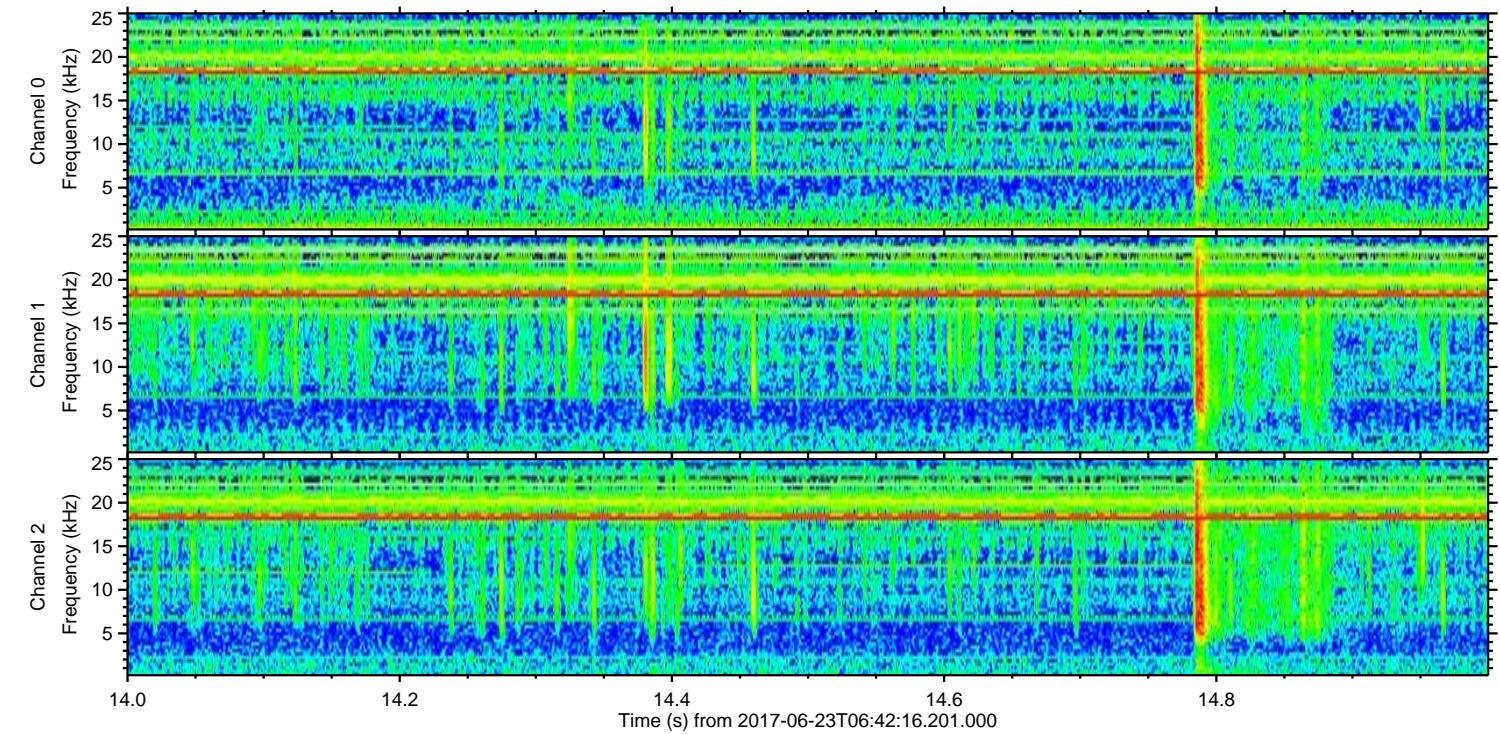
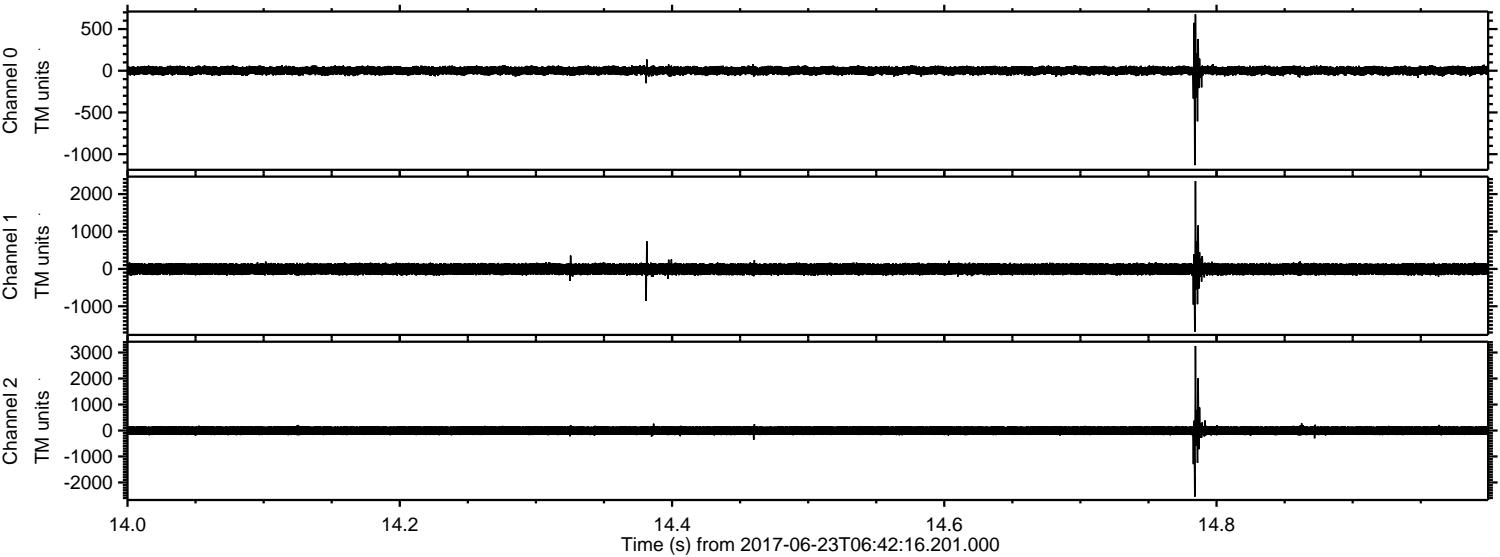
ELMAVAN 3D WAVEFORMS (Measured data sampled at 50 kHz) 51000 packets of 144 samples from 2017-06-23T06:42:16.201.000. Part 102/147

Processed Fri Jun 23 08:49:54 2017 by ELM ver.2012-10-06 from 001\_\_elm20170623\_064215\_\_dat00.bin



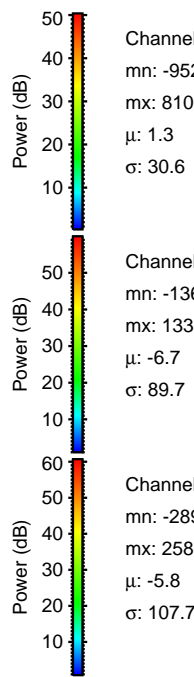
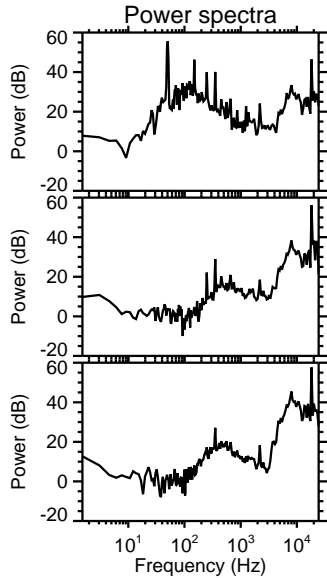
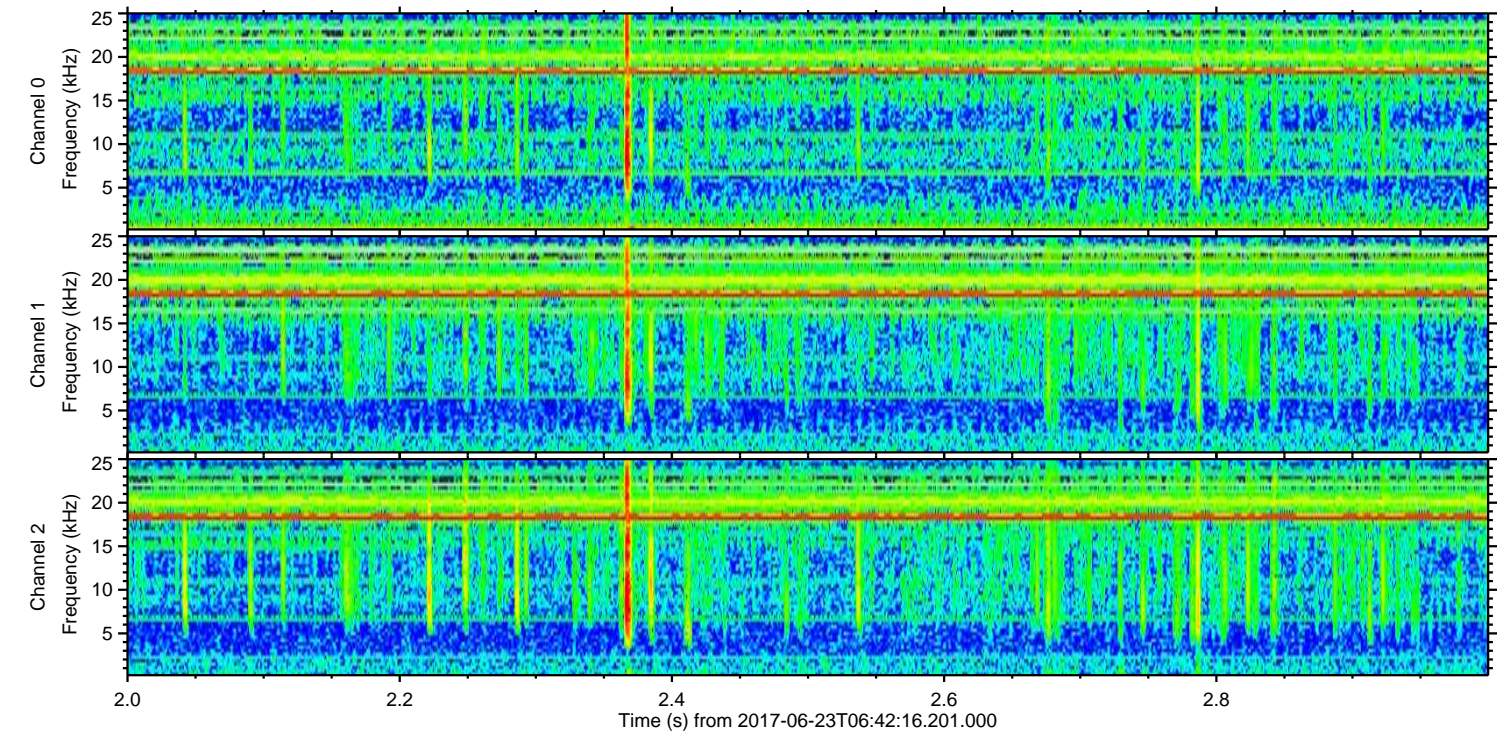
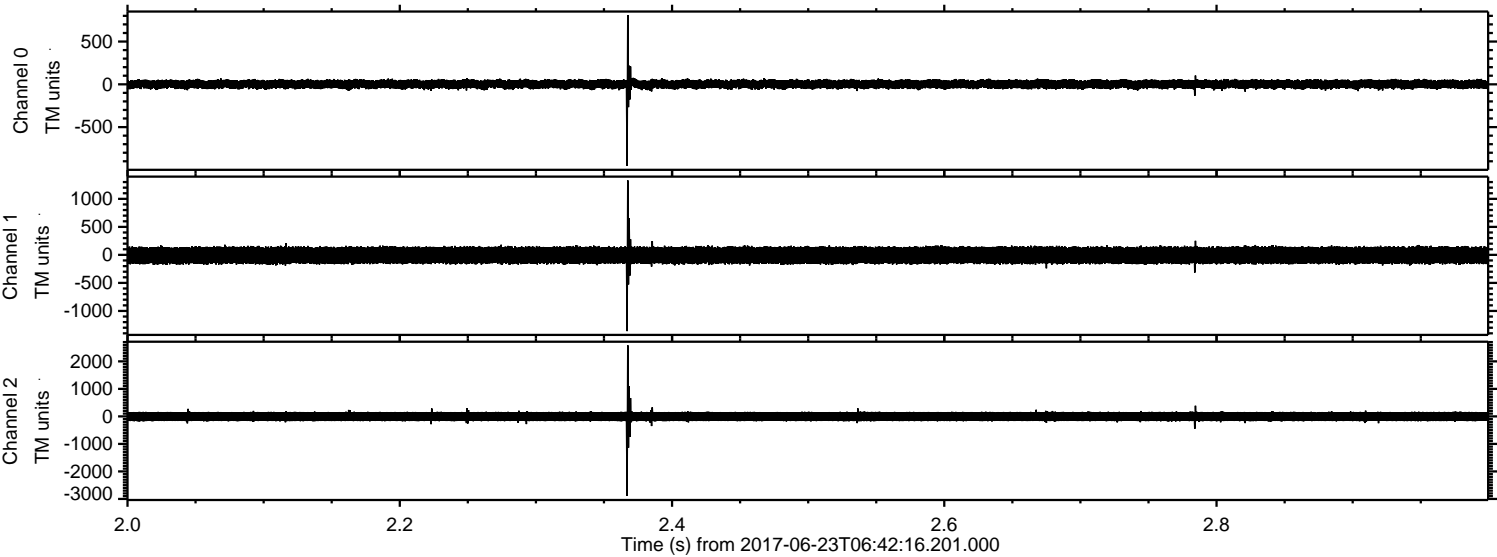


Processed Fri Jun 23 08:49:54 2017 by ELM ver.2012-10-06 from 001\_\_elm20170623\_064215\_\_dat00.bin





Processed Fri Jun 23 08:49:55 2017 by ELM ver.2012-10-06 from 001\_\_elm20170623\_064215\_\_dat00.bin



Channel 0  
mn: -952  
mx: 810  
 $\mu$ : 1.3  
 $\sigma$ : 30.6

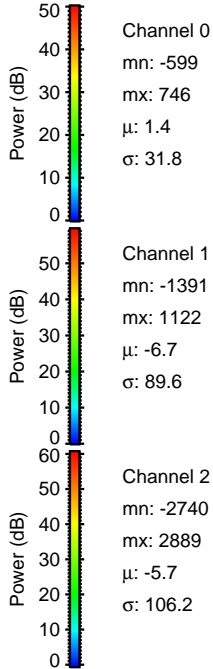
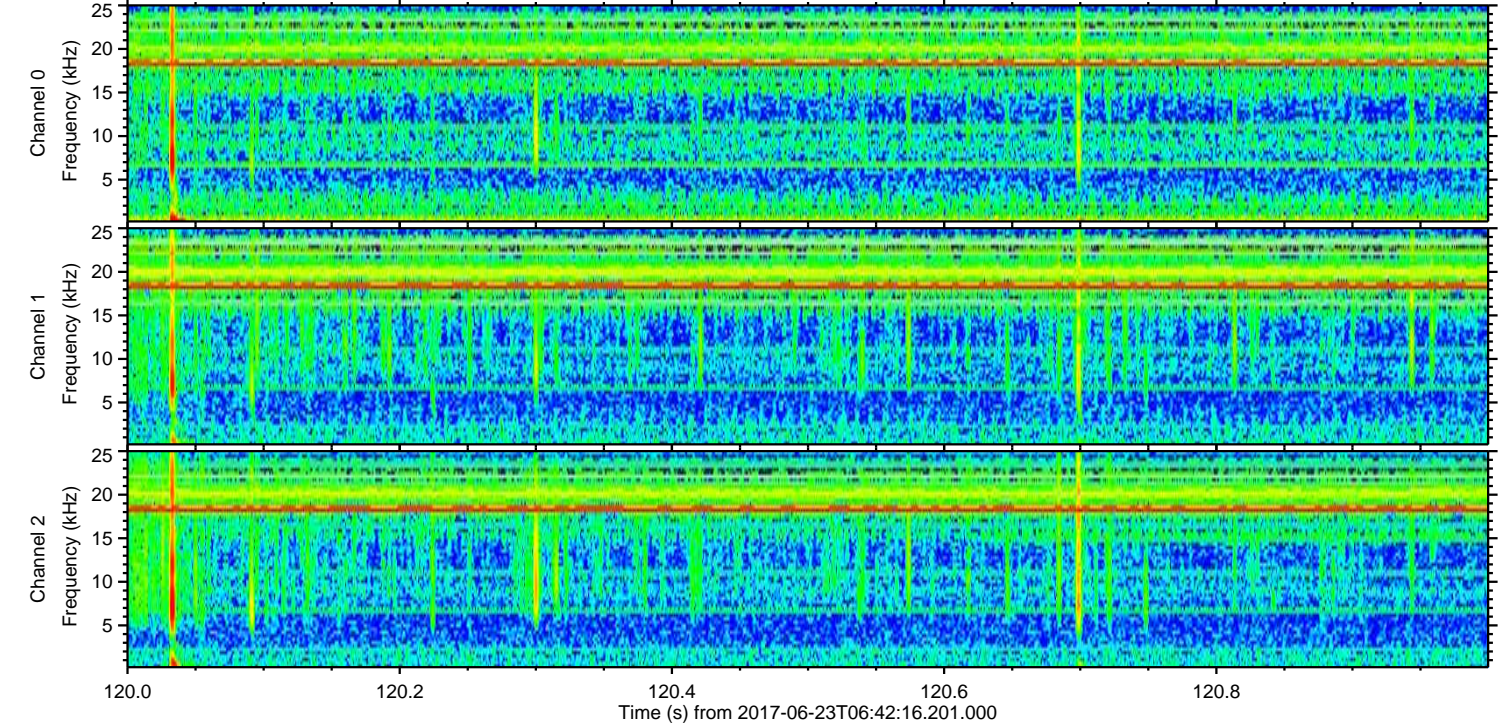
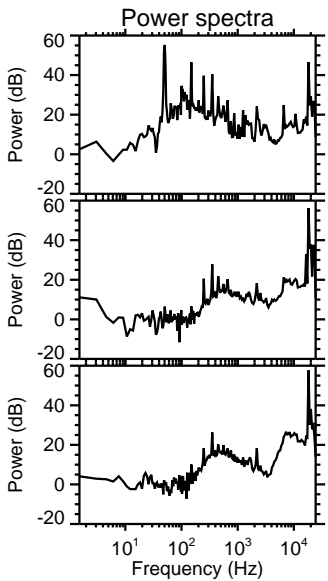
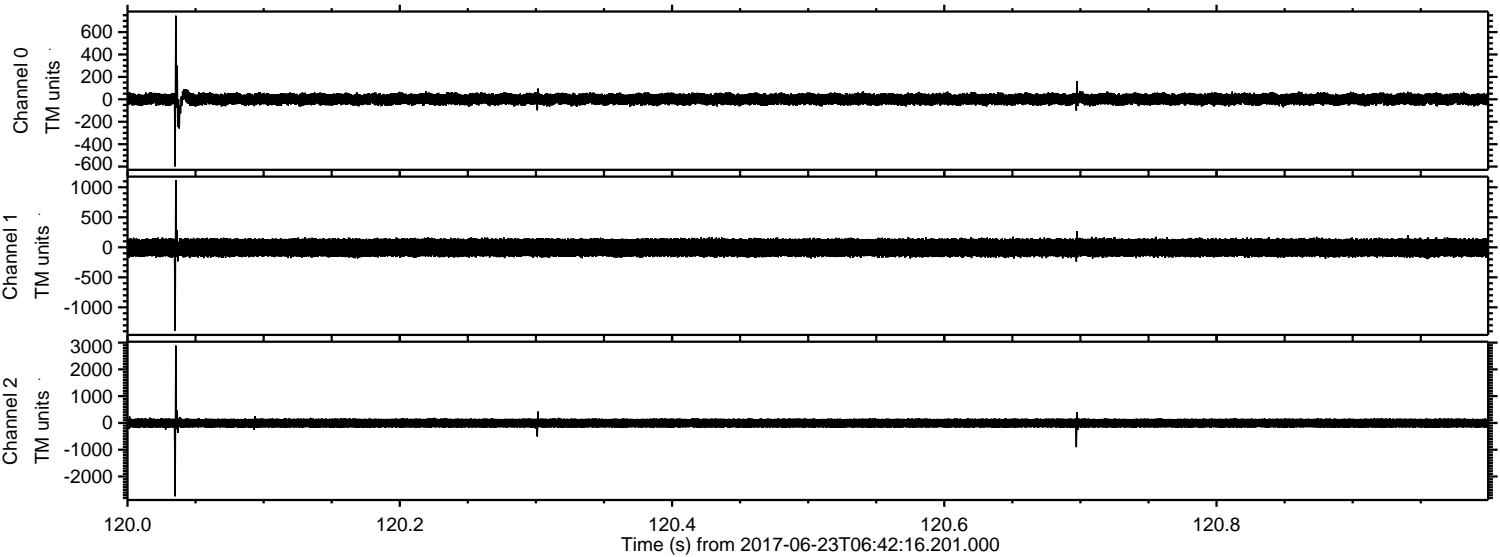
Channel 1  
mn: -1360  
mx: 1330  
 $\mu$ : -6.7  
 $\sigma$ : 89.7

Channel 2  
mn: -2895  
mx: 2585  
 $\mu$ : -5.8  
 $\sigma$ : 107.7



ELMAVAN 3D WAVEFORMS (Measured data sampled at 50 kHz) 51000 packets of 144 samples from 2017-06-23T06:42:16.201.000. Part 121/147

Processed Fri Jun 23 08:49:56 2017 by ELM ver.2012-10-06 from 001\_\_elm20170623\_064215\_\_dat00.bin





ELMAVAN 3D WAVEFORMS (Measured data sampled at 50 kHz) 51000 packets of 144 samples from 2017-06-23T06:42:16.201.000. Part 117/147

