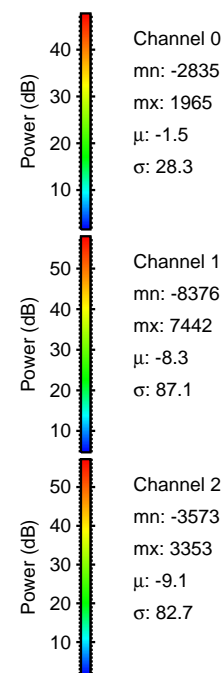
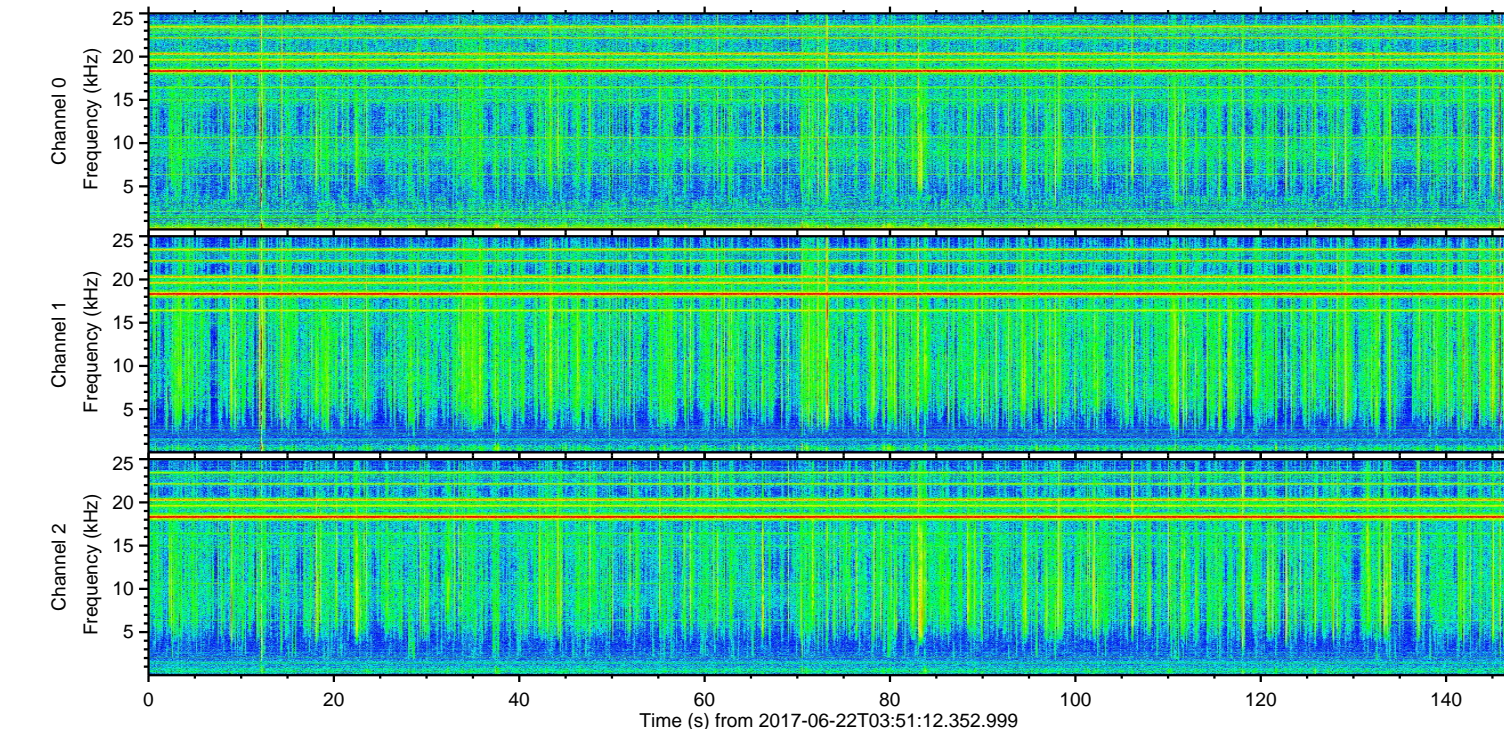
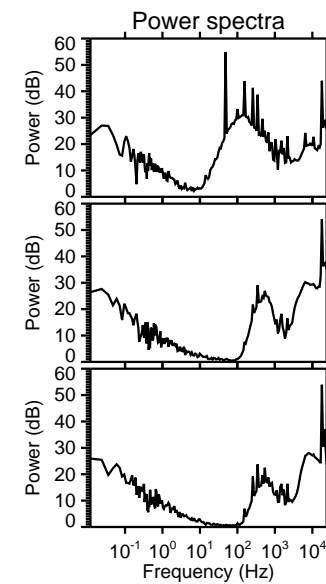
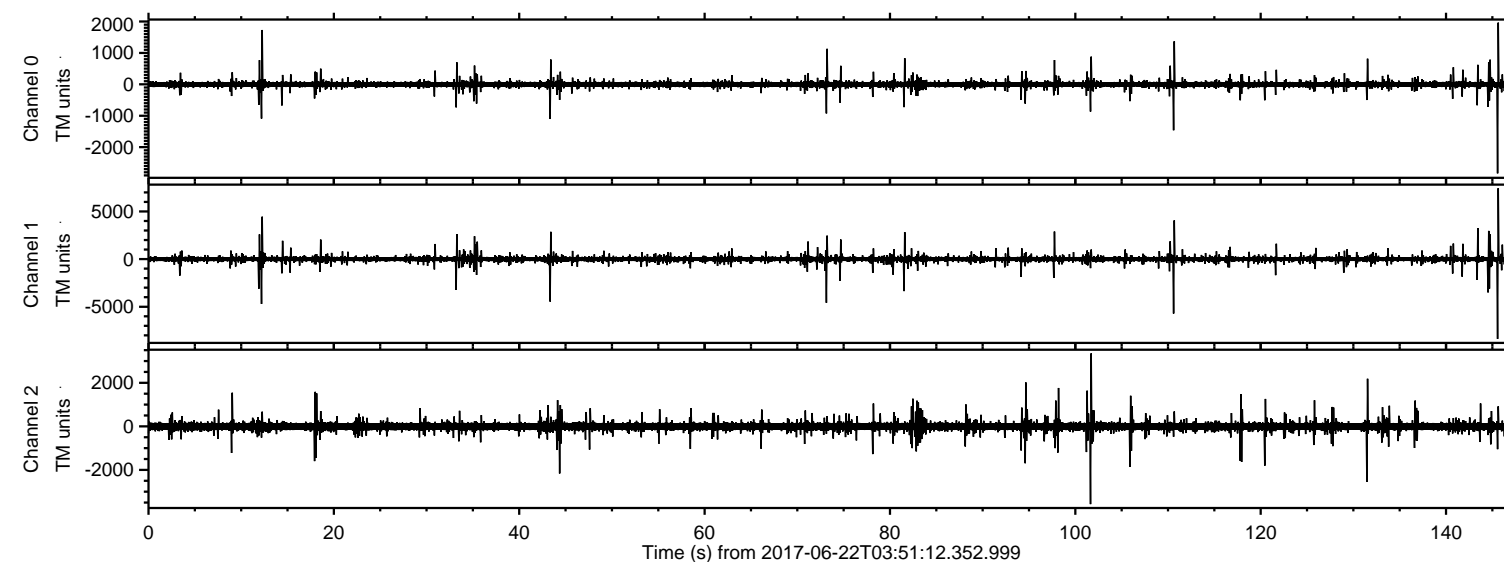


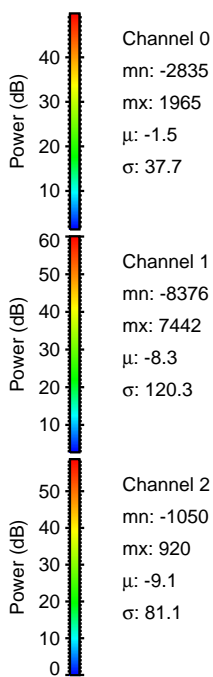
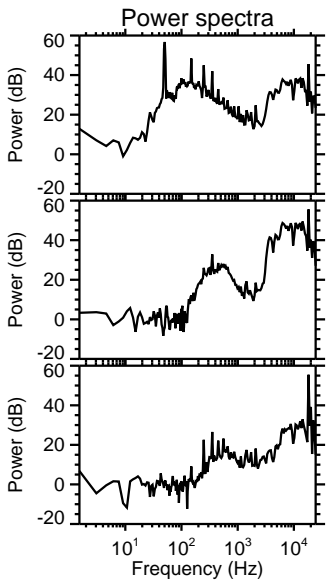
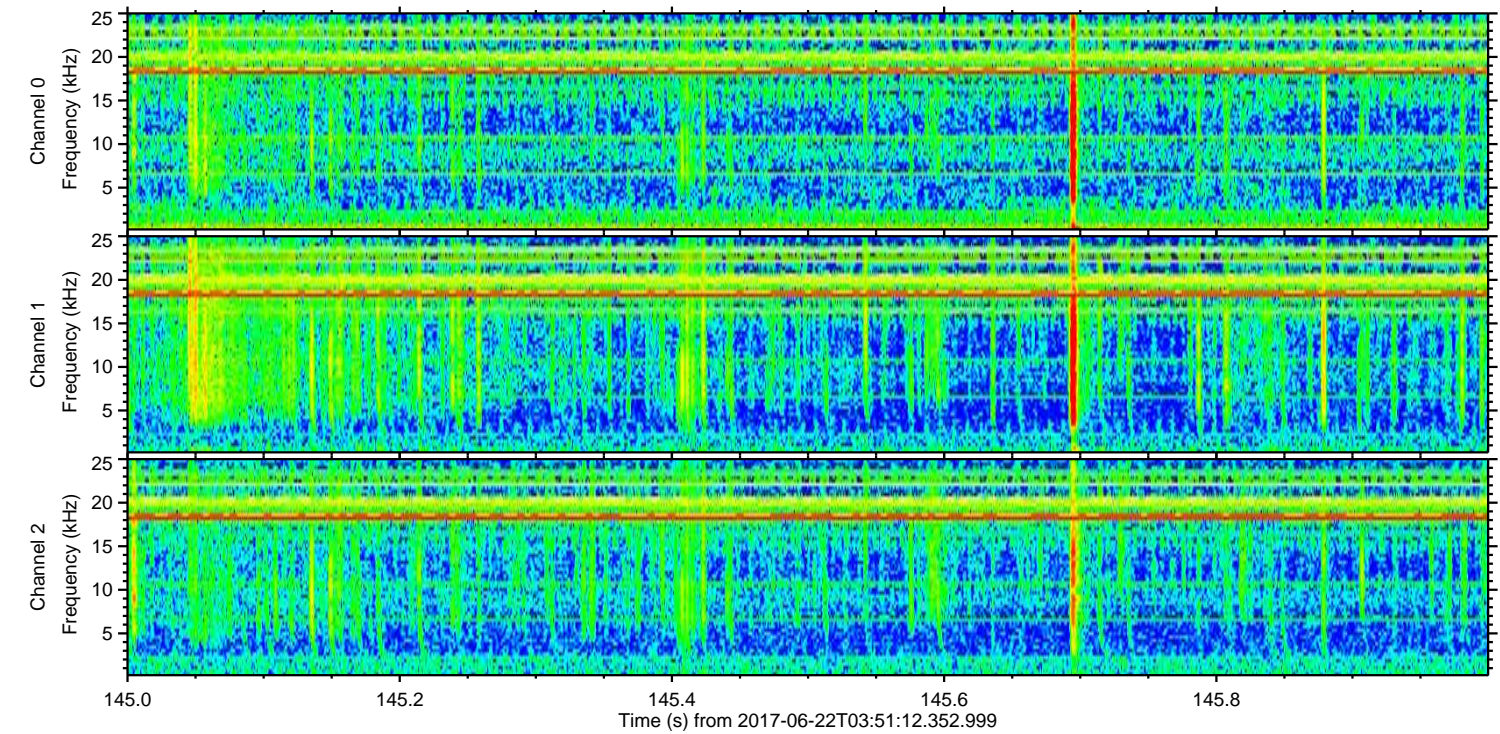
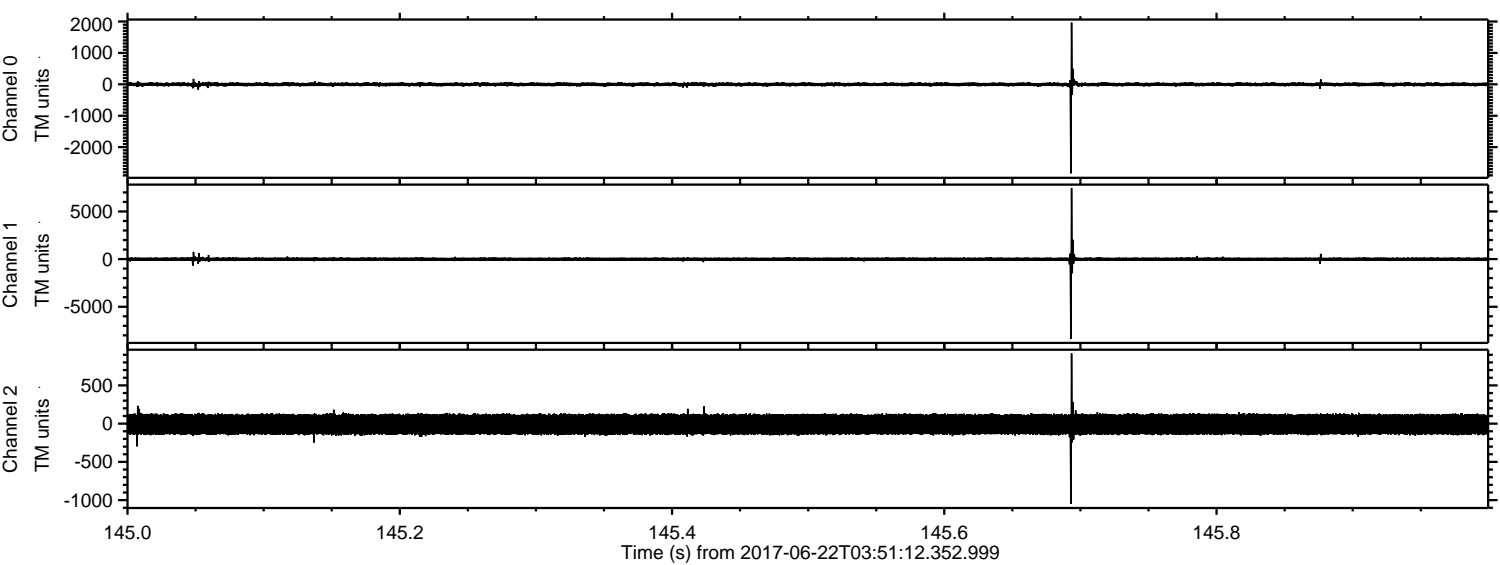
ELMAVAN 3D WAVEFORMS (Measured data sampled at 50 kHz) 51000 packets of 144 samples from 2017-06-22T03:51:12.352.999.

Processed Thu Jun 22 05:59:27 2017 by ELM ver.2012-10-06 from 001__elm20170622_035111__dat00.bin



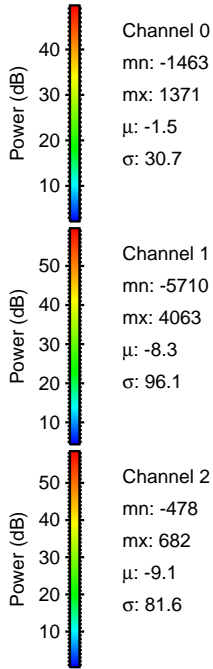
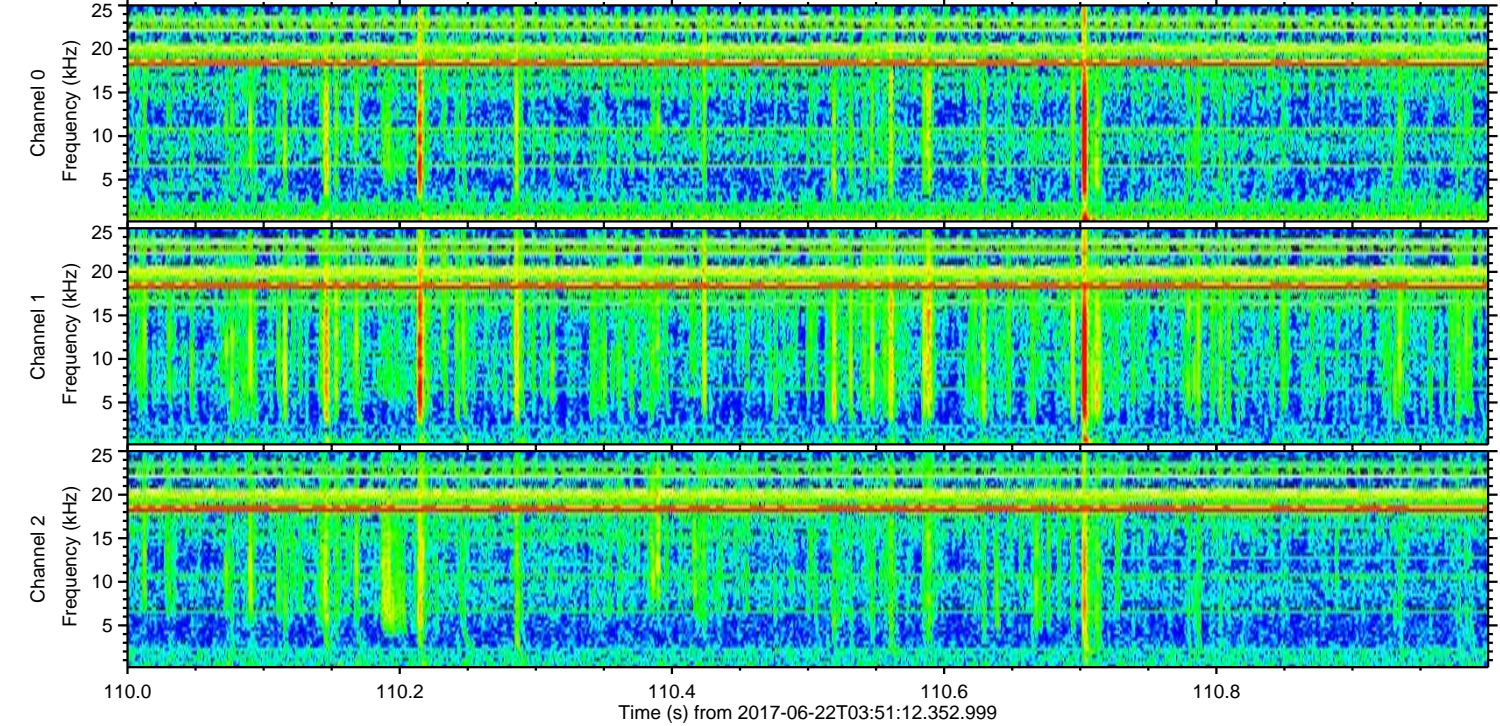
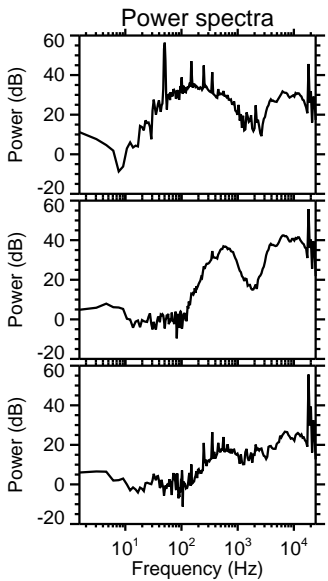
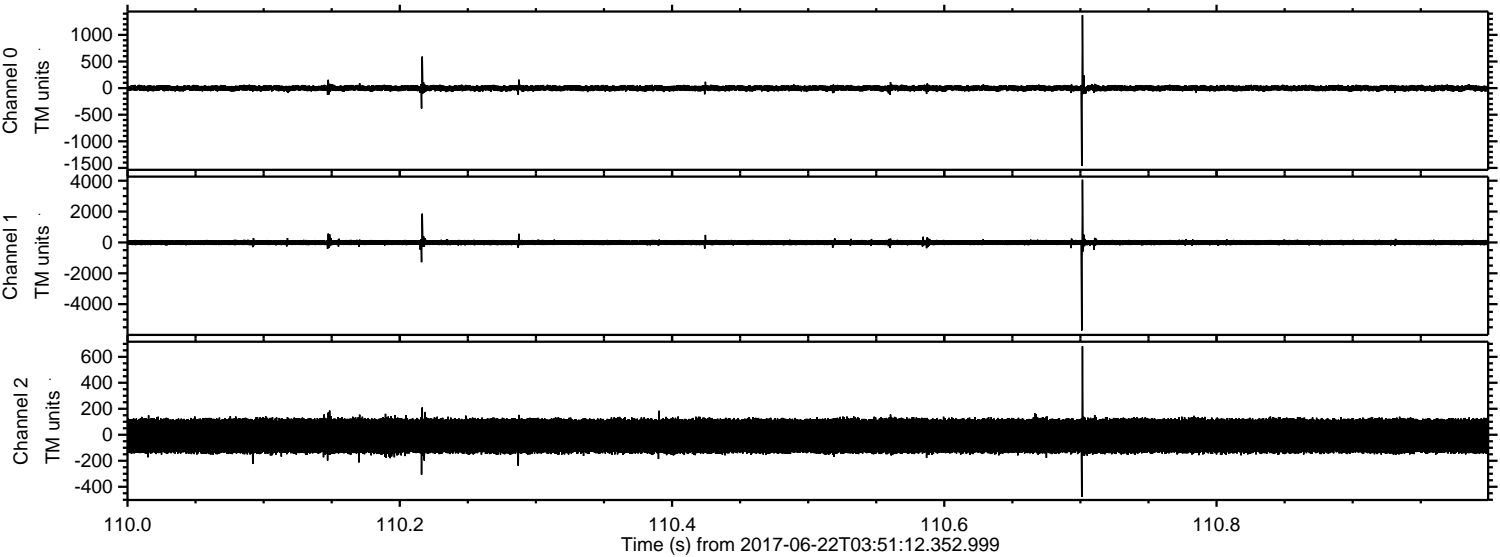
ELMAVAN 3D WAVEFORMS (Measured data sampled at 50 kHz) 51000 packets of 144 samples from 2017-06-22T03:51:12.352.999. Part 146/147

Processed Thu Jun 22 05:59:32 2017 by ELM ver.2012-10-06 from 001__elm20170622_035111__dat00.bin



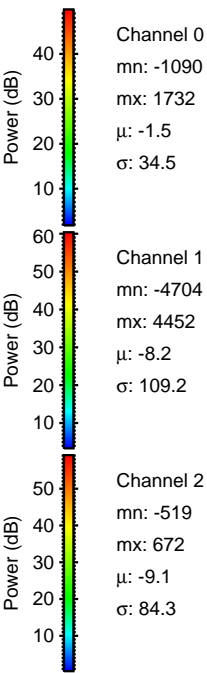
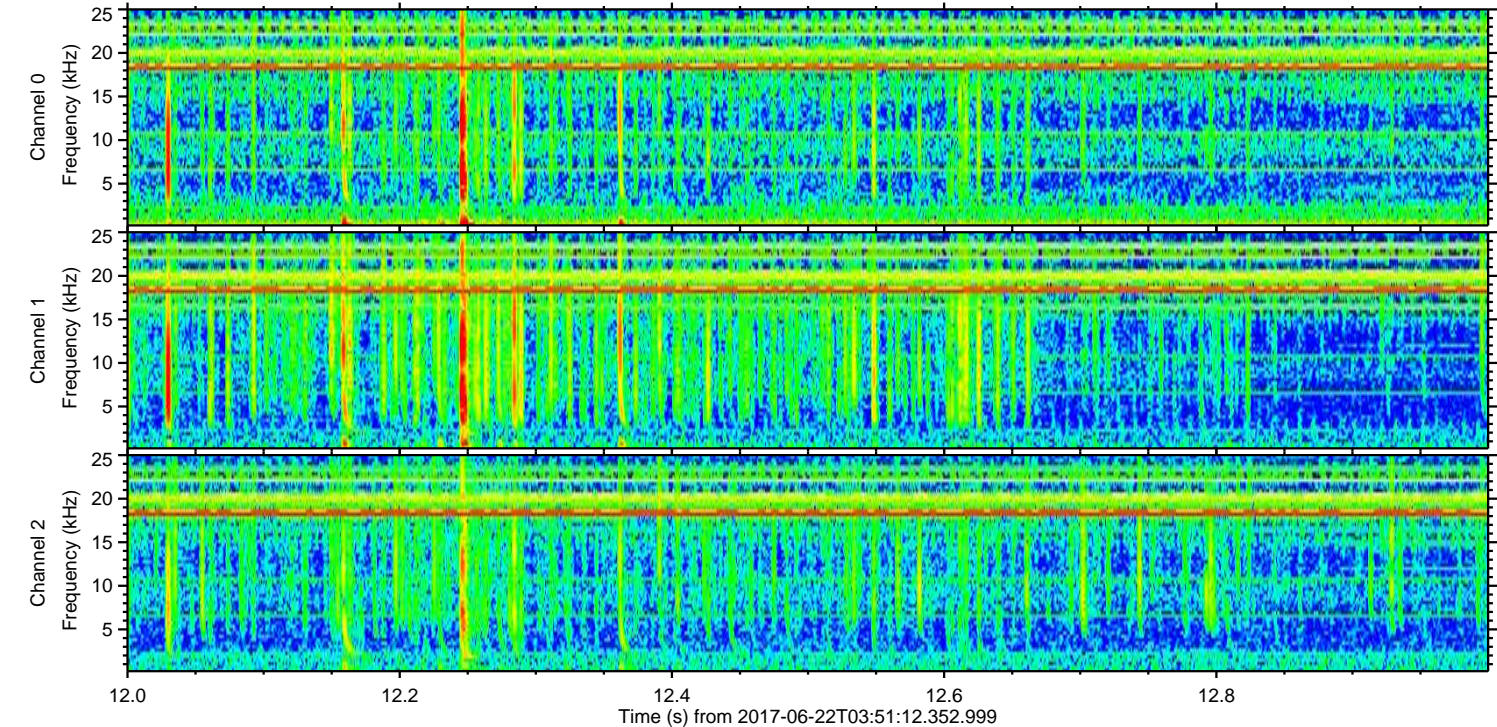
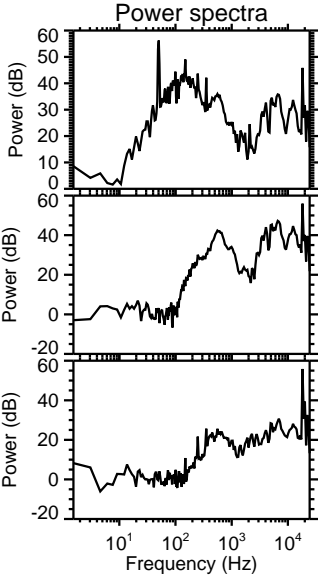
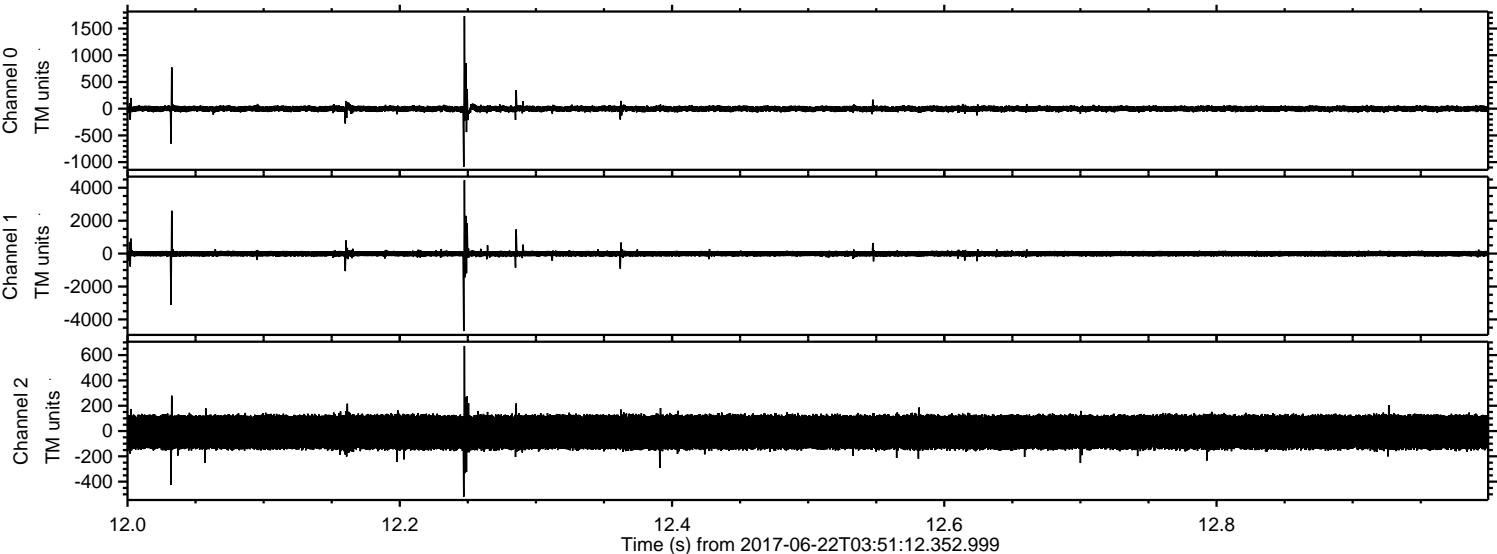
ELMAVAN 3D WAVEFORMS (Measured data sampled at 50 kHz) 51000 packets of 144 samples from 2017-06-22T03:51:12.352.999. Part 111/147

Processed Thu Jun 22 05:59:33 2017 by ELM ver.2012-10-06 from 001__elm20170622_035111__dat00.bin



ELMAVAN 3D WAVEFORMS (Measured data sampled at 50 kHz) 51000 packets of 144 samples from 2017-06-22T03:51:12.352.999. Part 13/147

Processed Thu Jun 22 05:59:34 2017 by ELM ver.2012-10-06 from 001__elm20170622_035111__dat00.bin



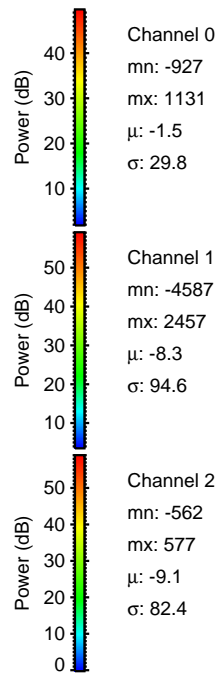
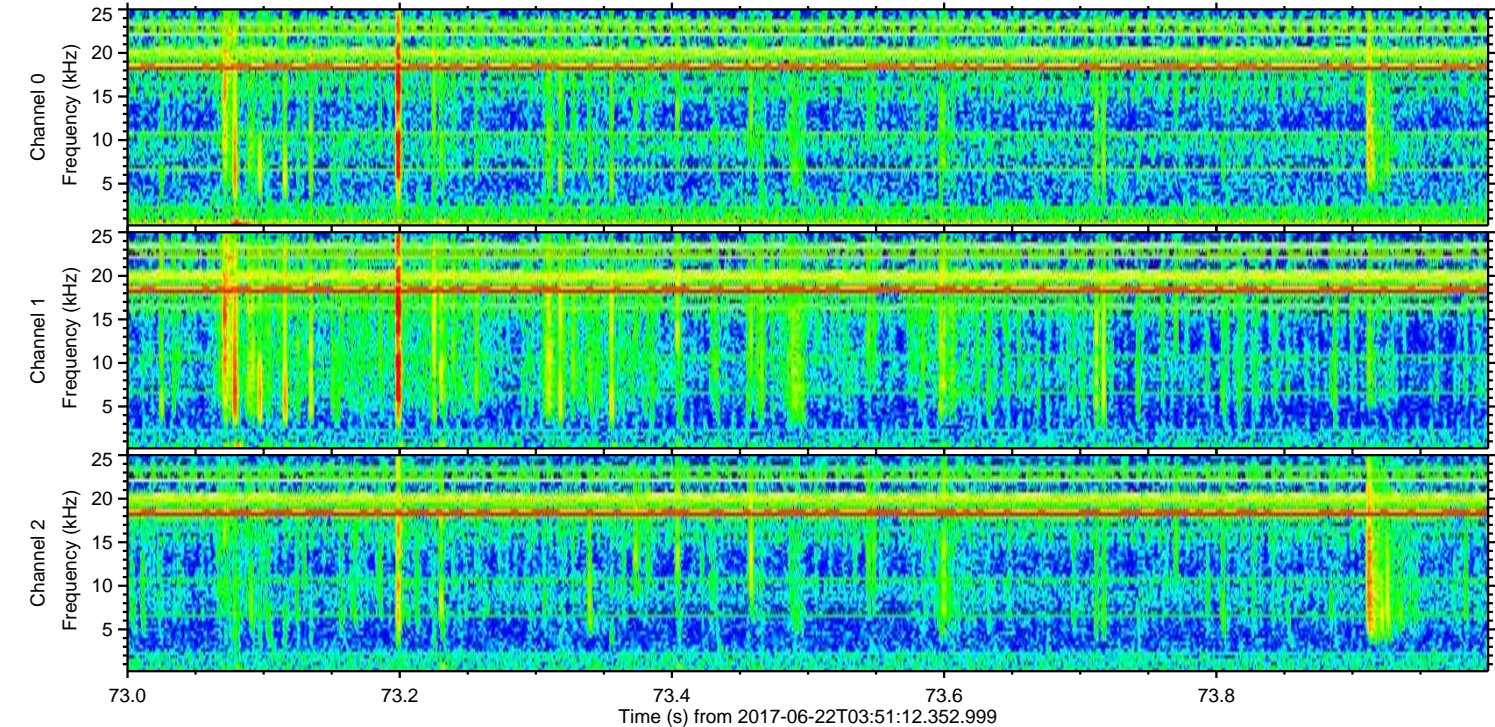
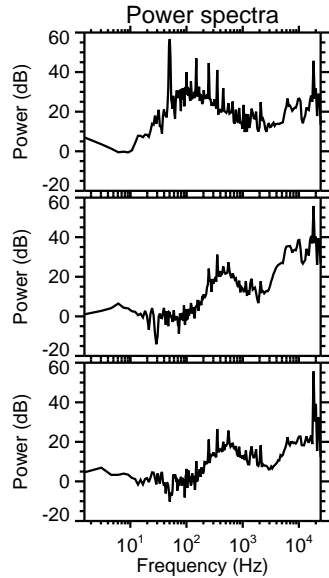
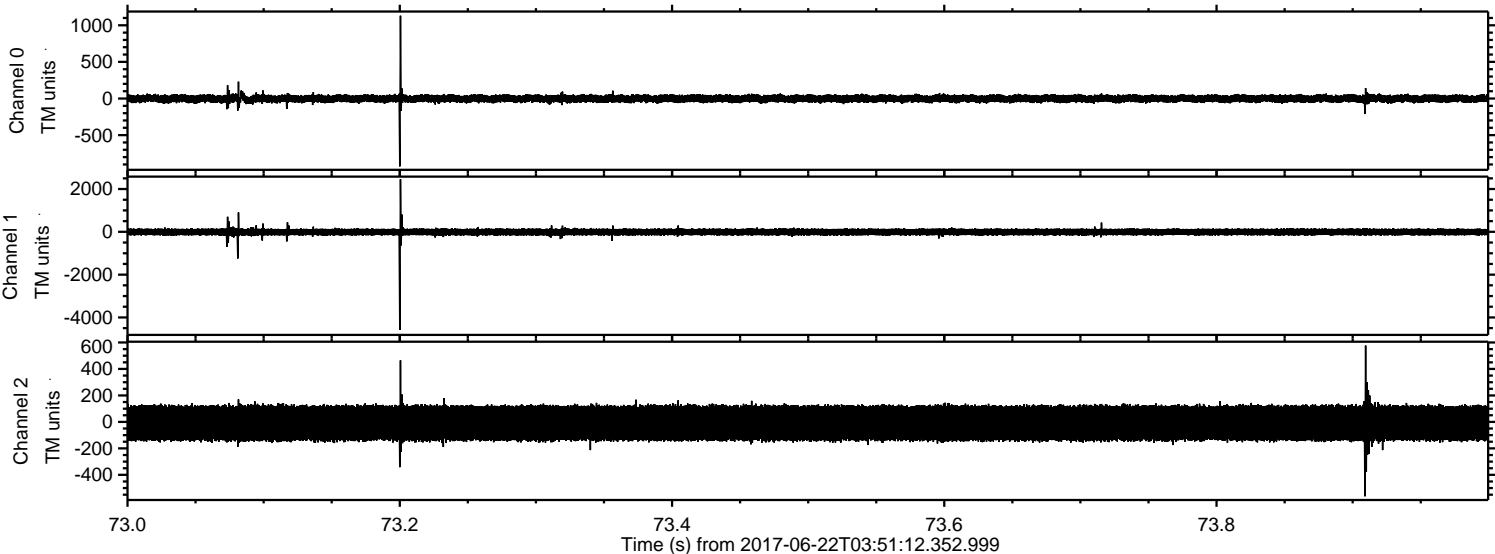
Channel 0
mn: -1090
mx: 1732
 μ : -1.5
 σ : 34.5

Channel 1
mn: -4704
mx: 4452
 μ : -8.2
 σ : 109.2

Channel 2
mn: -519
mx: 672
 μ : -9.1
 σ : 84.3

ELMAVAN 3D WAVEFORMS (Measured data sampled at 50 kHz) 51000 packets of 144 samples from 2017-06-22T03:51:12.352.999. Part 74/147

Processed Thu Jun 22 05:59:34 2017 by ELM ver.2012-10-06 from 001__elm20170622_035111__dat00.bin



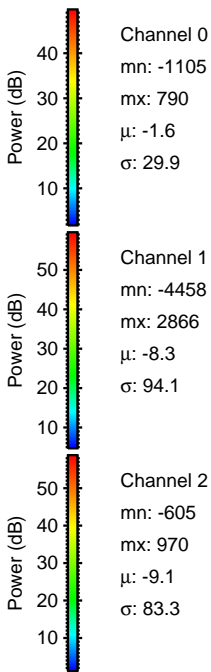
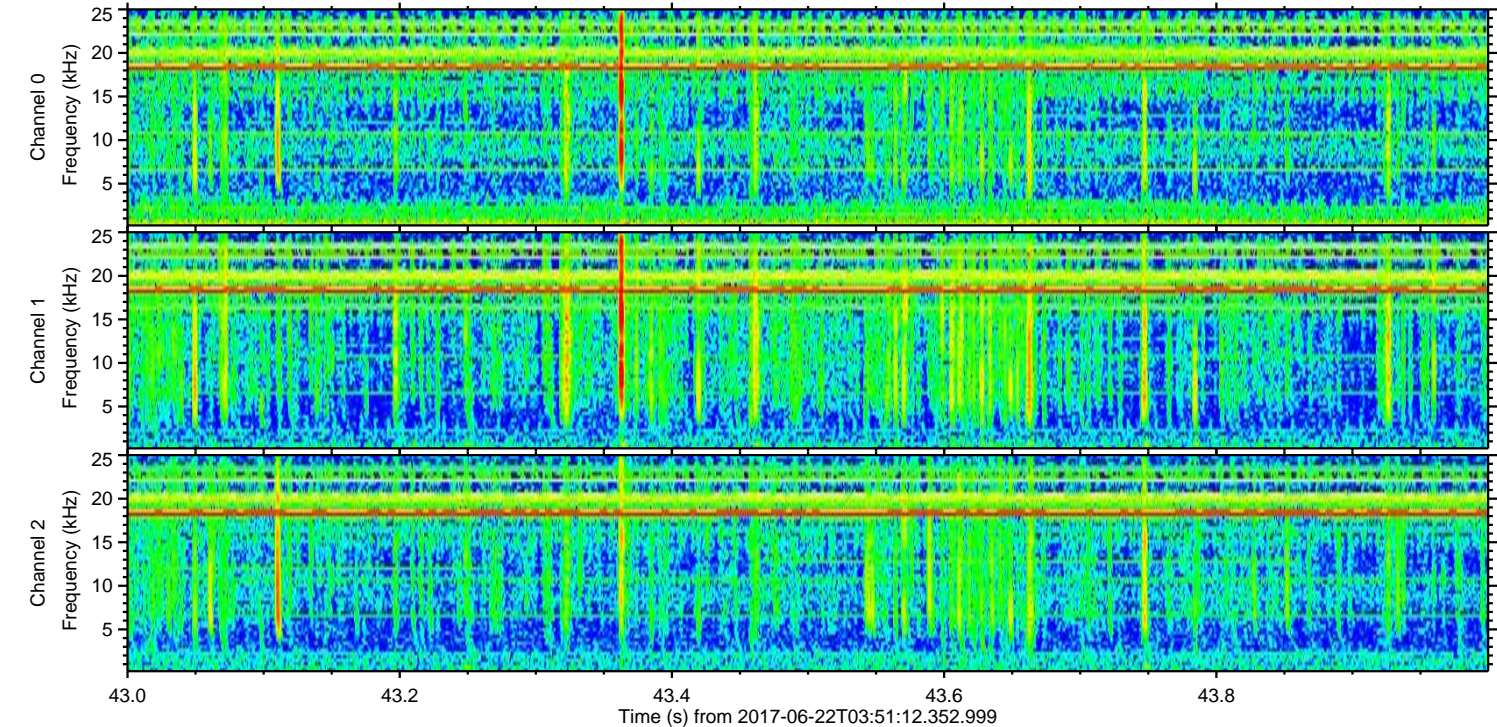
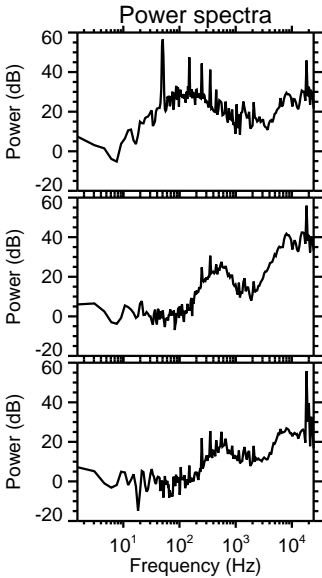
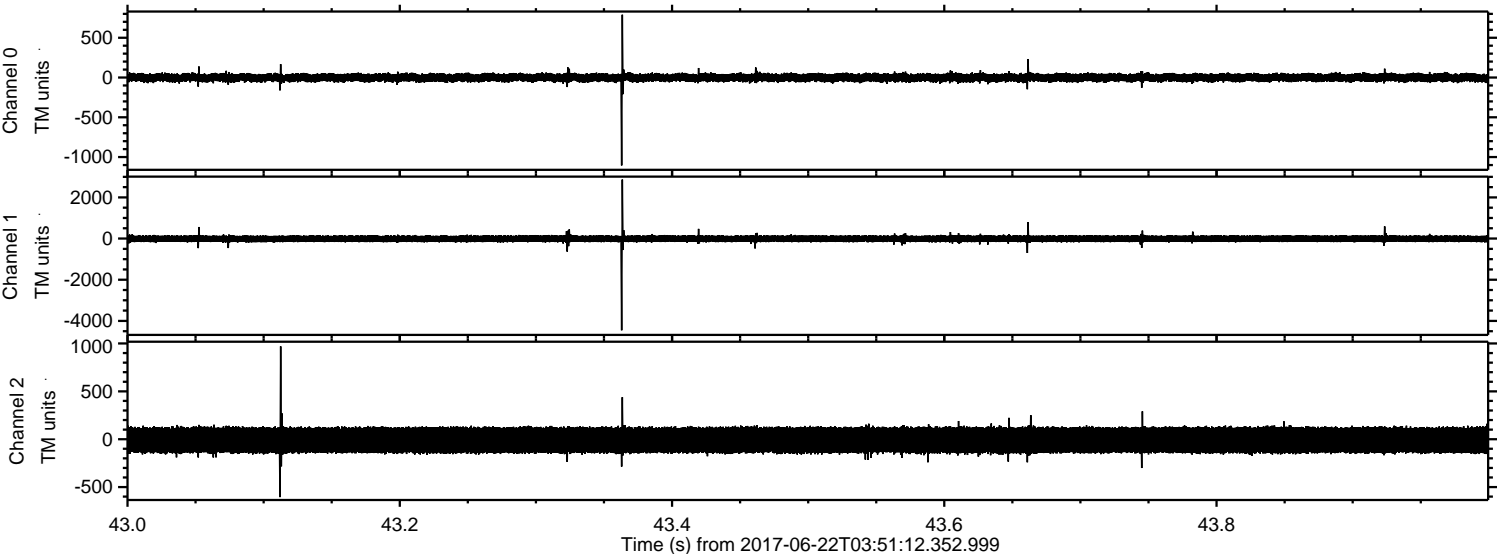
Channel 0
mn: -927
mx: 1131
 μ : -1.5
 σ : 29.8

Channel 1
mn: -4587
mx: 2457
 μ : -8.3
 σ : 94.6

Channel 2
mn: -562
mx: 577
 μ : -9.1
 σ : 82.4

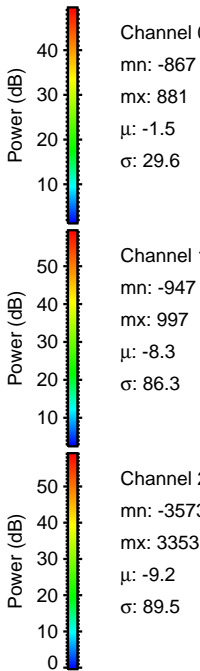
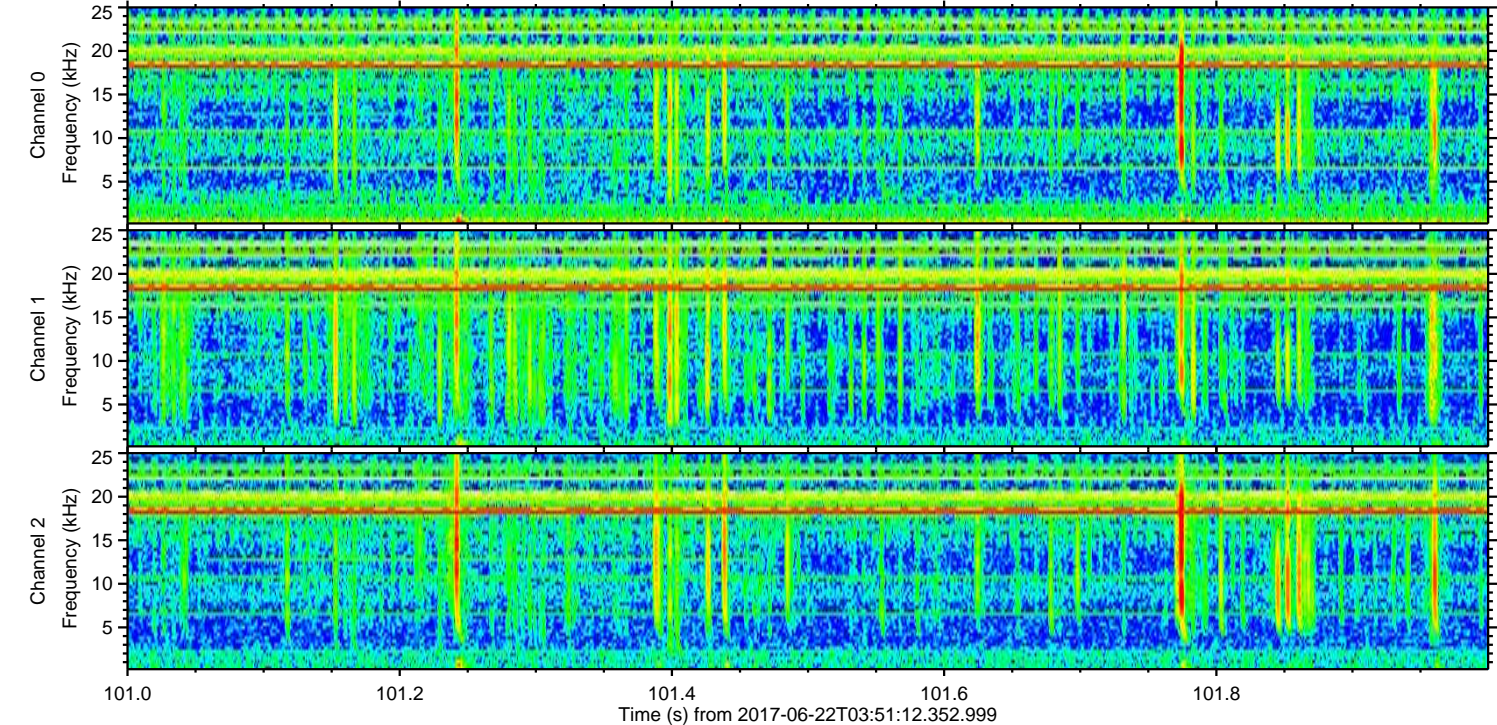
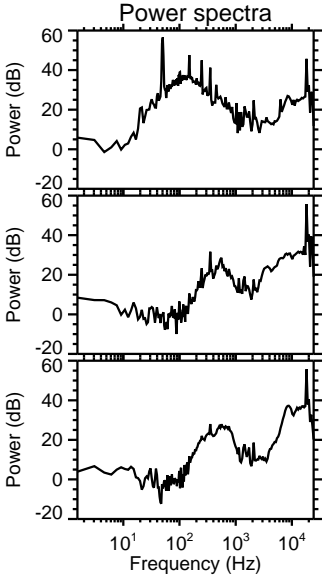
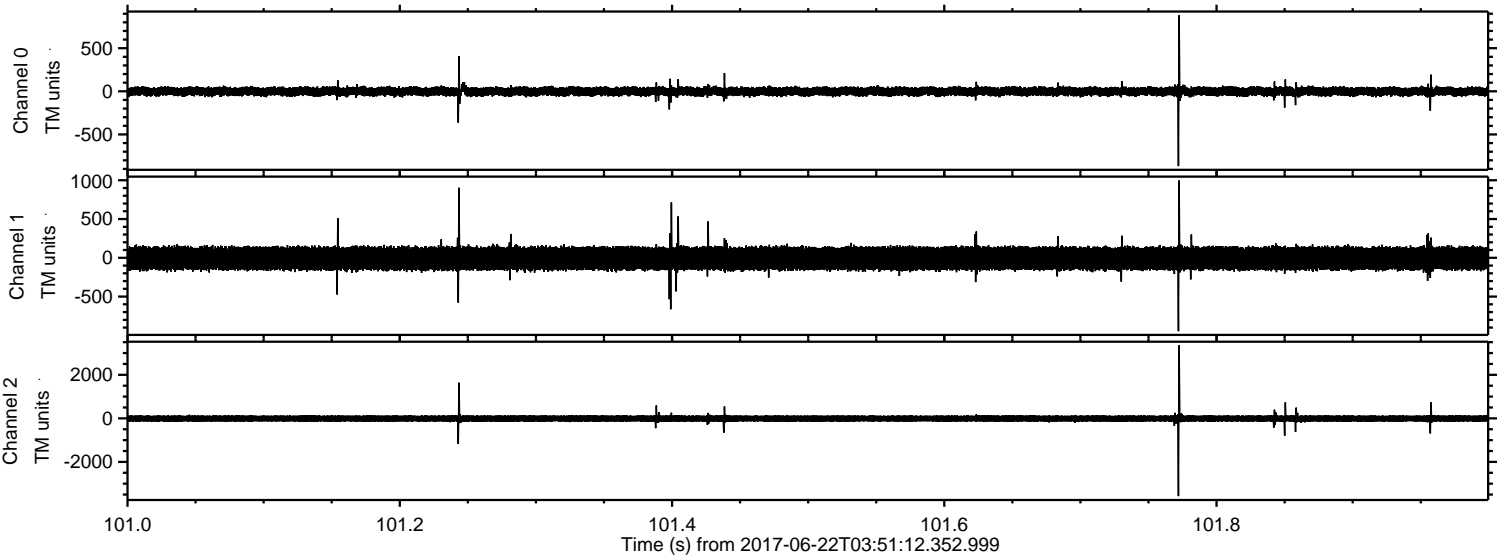
ELMAVAN 3D WAVEFORMS (Measured data sampled at 50 kHz) 51000 packets of 144 samples from 2017-06-22T03:51:12.352.999. Part 44/147

Processed Thu Jun 22 05:59:35 2017 by ELM ver.2012-10-06 from 001__elm20170622_035111__dat00.bin



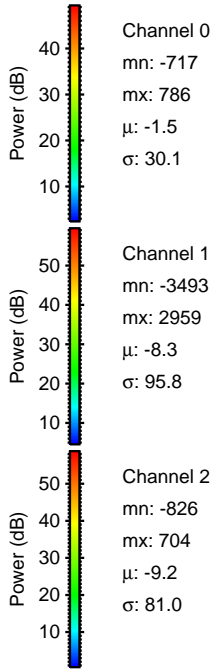
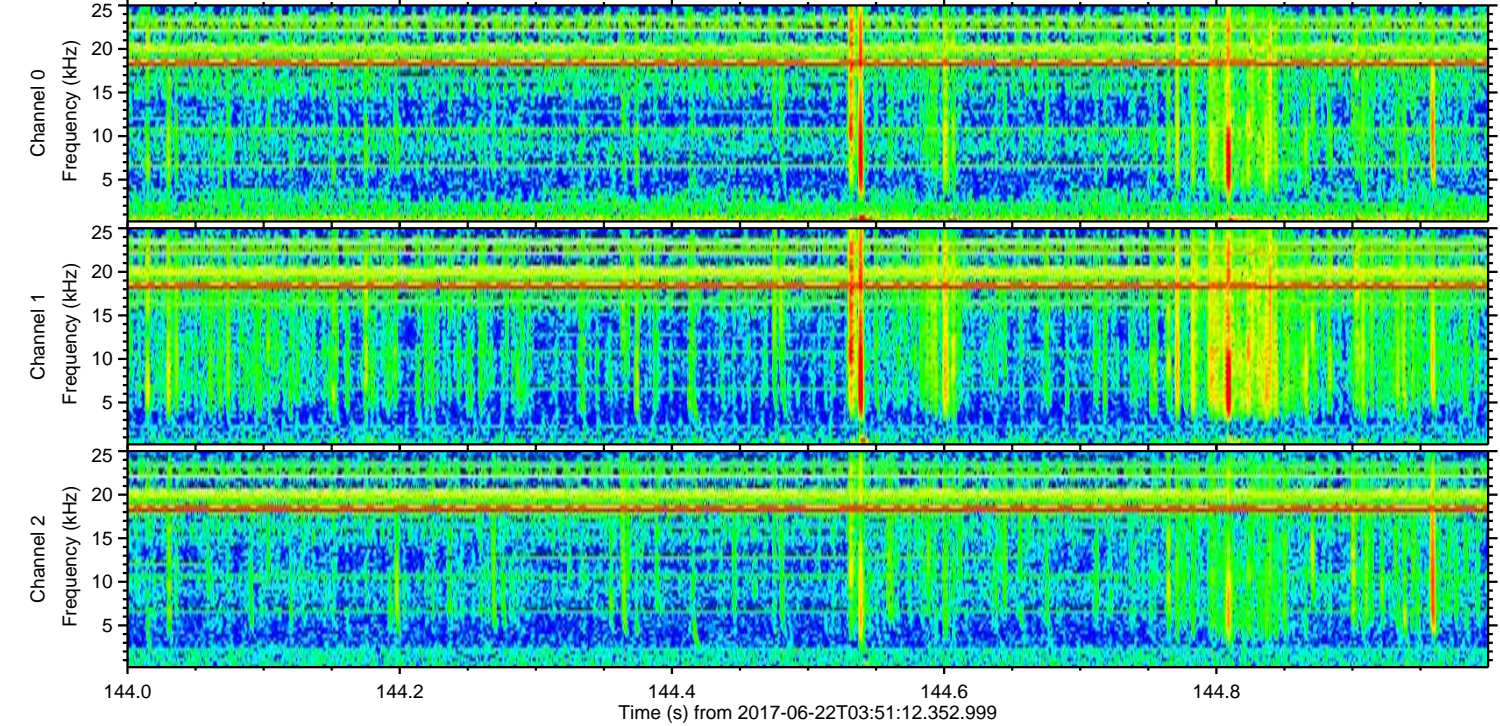
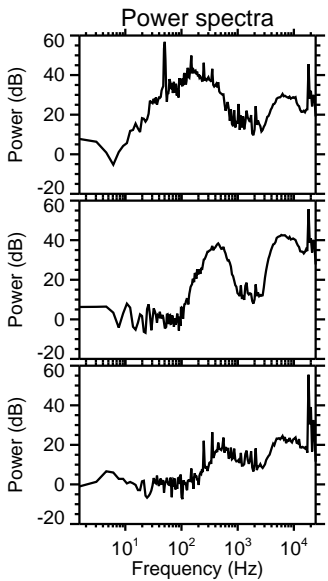
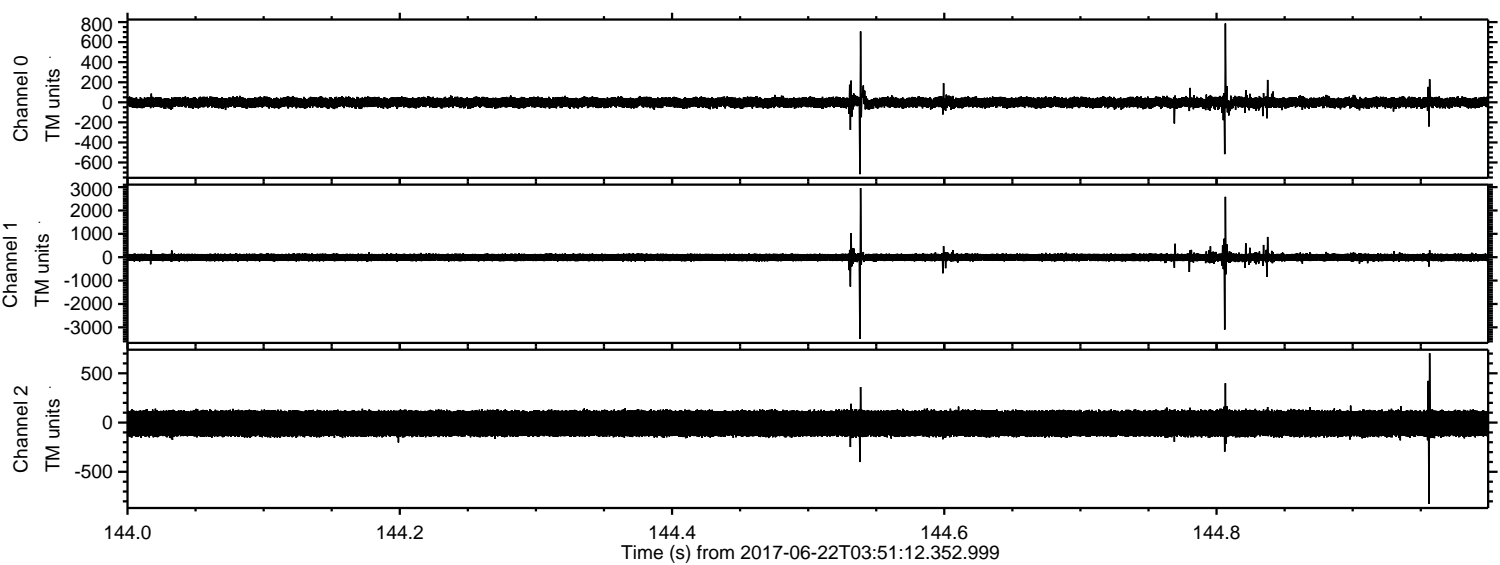
ELMAVAN 3D WAVEFORMS (Measured data sampled at 50 kHz) 51000 packets of 144 samples from 2017-06-22T03:51:12.352.999. Part 102/147

Processed Thu Jun 22 05:59:36 2017 by ELM ver.2012-10-06 from 001__elm20170622_035111__dat00.bin



ELMAVAN 3D WAVEFORMS (Measured data sampled at 50 kHz) 51000 packets of 144 samples from 2017-06-22T03:51:12.352.999. Part 145/147

Processed Thu Jun 22 05:59:36 2017 by ELM ver.2012-10-06 from 001__elm20170622_035111__dat00.bin

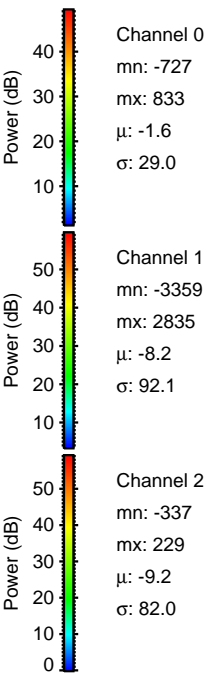
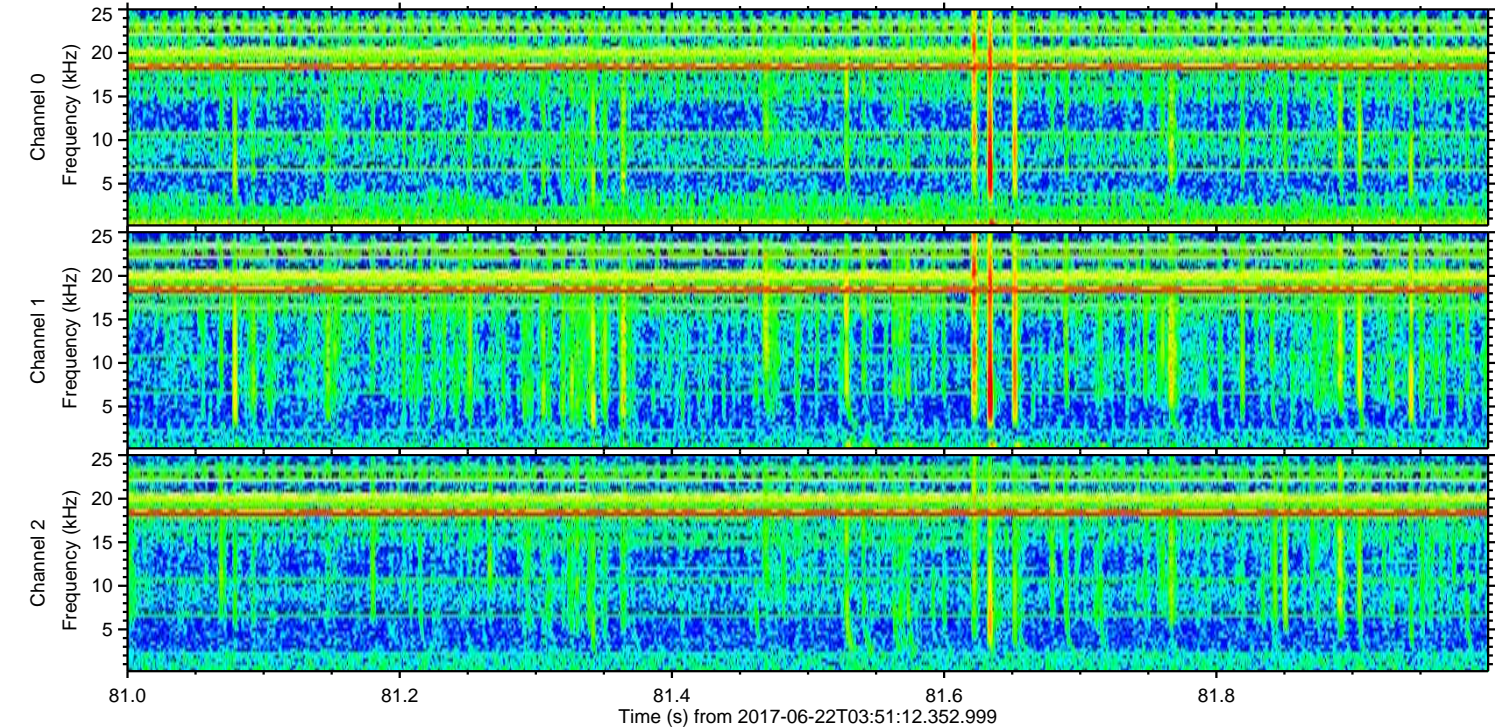
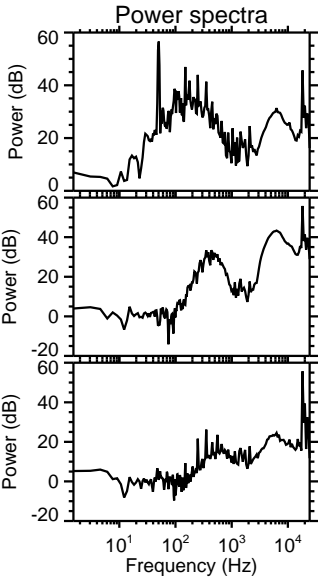
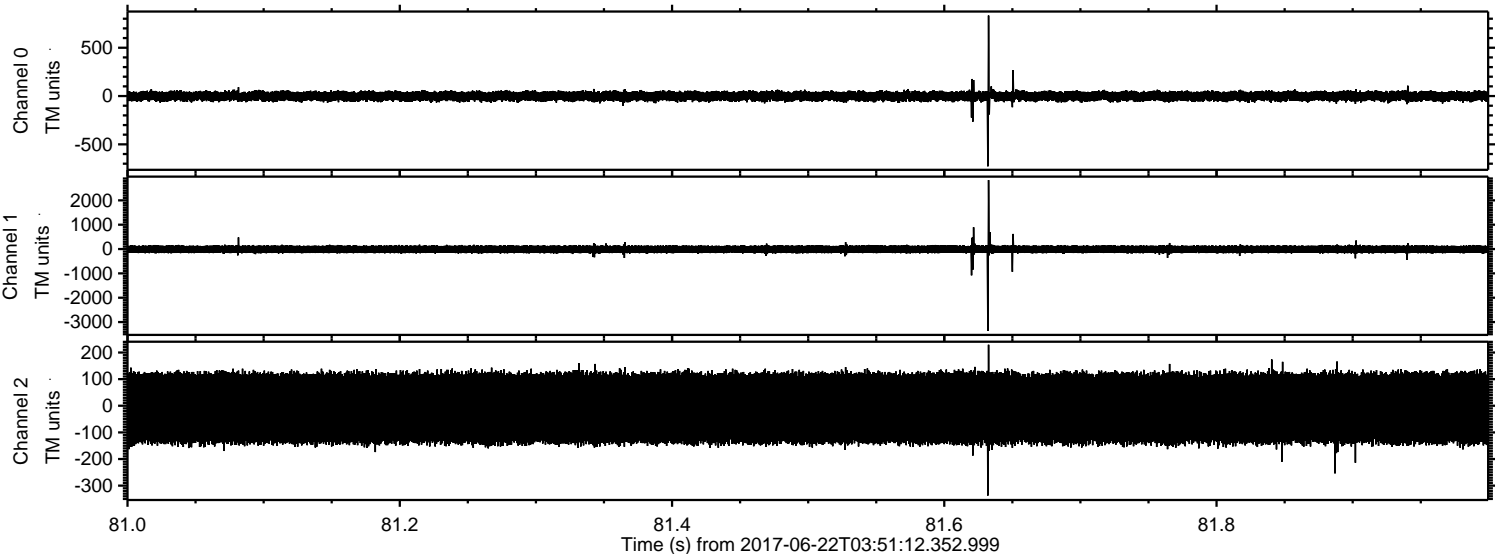


Channel 0
mn: -717
mx: 786
 μ : -1.5
 σ : 30.1

Channel 1
mn: -3493
mx: 2959
 μ : -8.3
 σ : 95.8

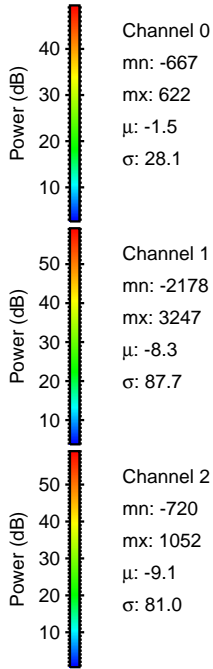
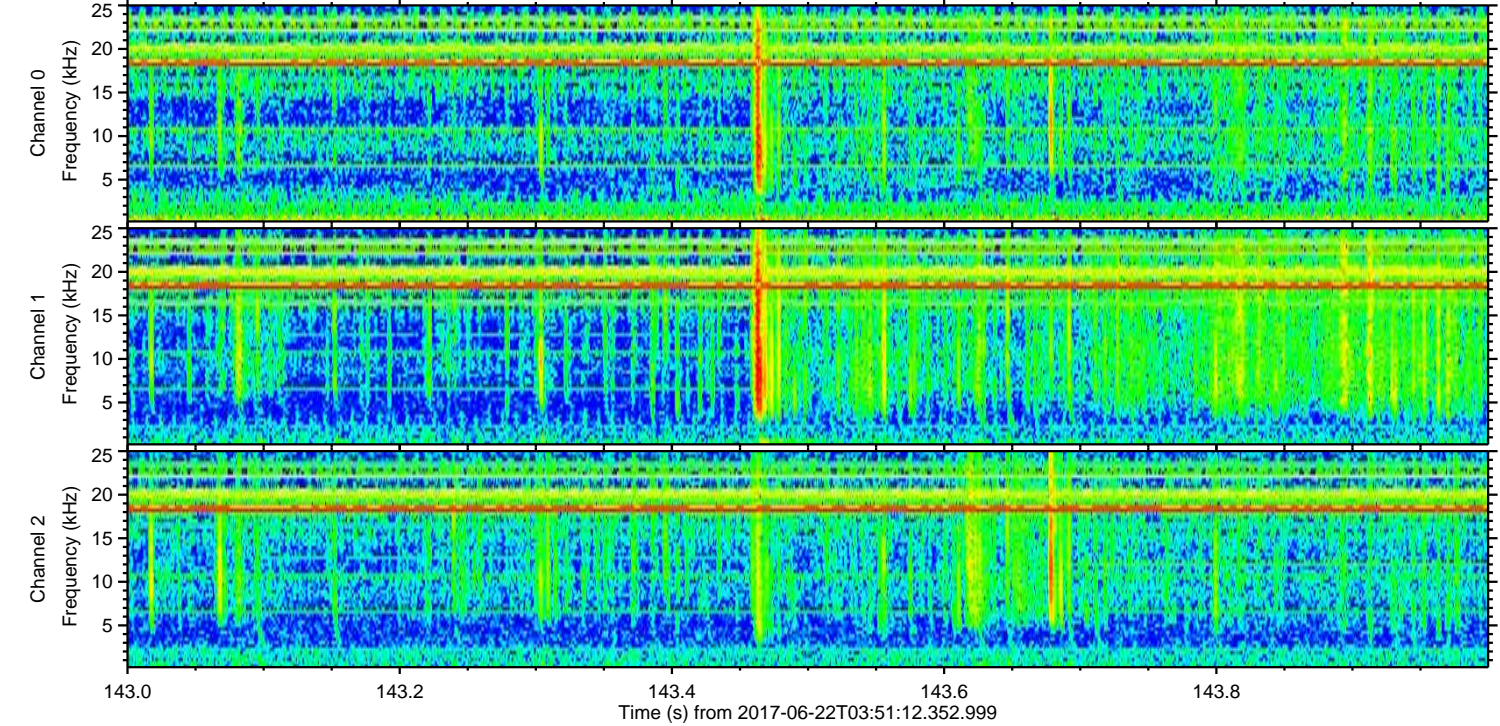
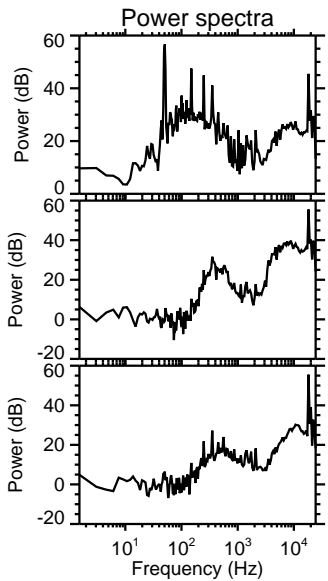
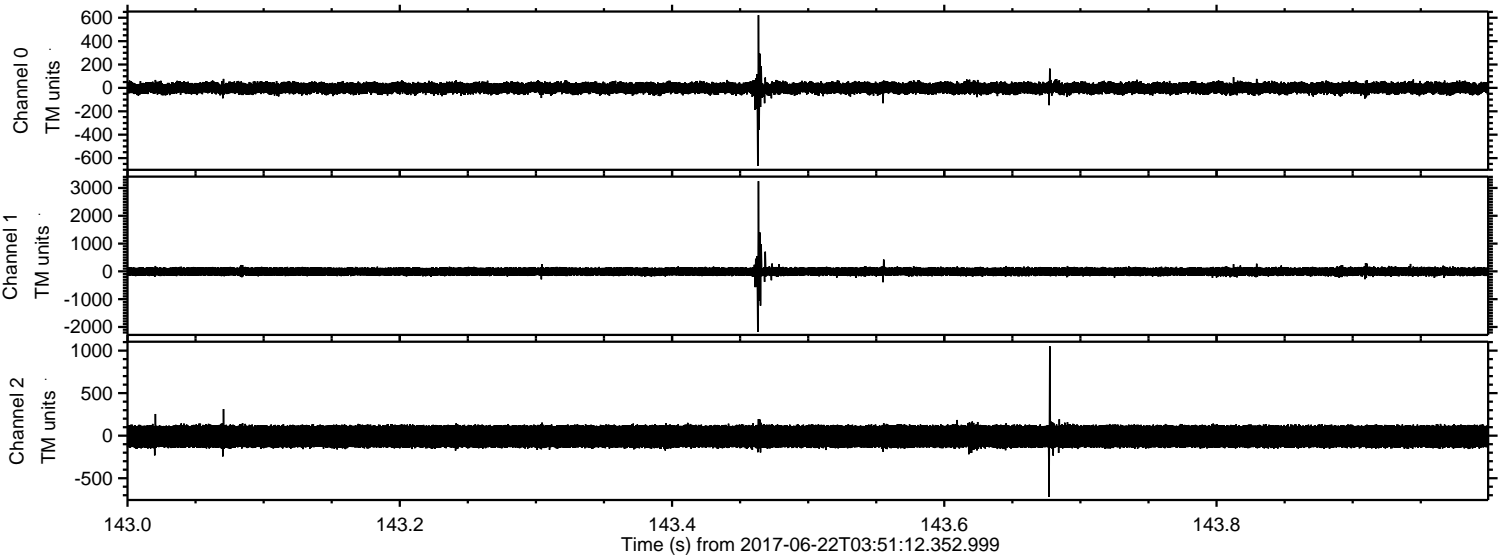
Channel 2
mn: -826
mx: 704
 μ : -9.2
 σ : 81.0

Processed Thu Jun 22 05:59:37 2017 by ELM ver.2012-10-06 from 001__elm20170622_035111__dat00.bin



ELMAVAN 3D WAVEFORMS (Measured data sampled at 50 kHz) 51000 packets of 144 samples from 2017-06-22T03:51:12.352.999. Part 144/147

Processed Thu Jun 22 05:59:38 2017 by ELM ver.2012-10-06 from 001__elm20170622_035111__dat00.bin



ELMAVAN 3D WAVEFORMS (Measured data sampled at 50 kHz) 51000 packets of 144 samples from 2017-06-22T03:51:12.352.999. Part 2/147

Processed Thu Jun 22 05:59:38 2017 by ELM ver.2012-10-06 from 001__elm20170622_035111__dat00.bin

