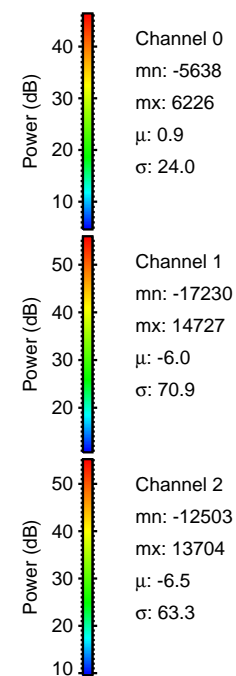
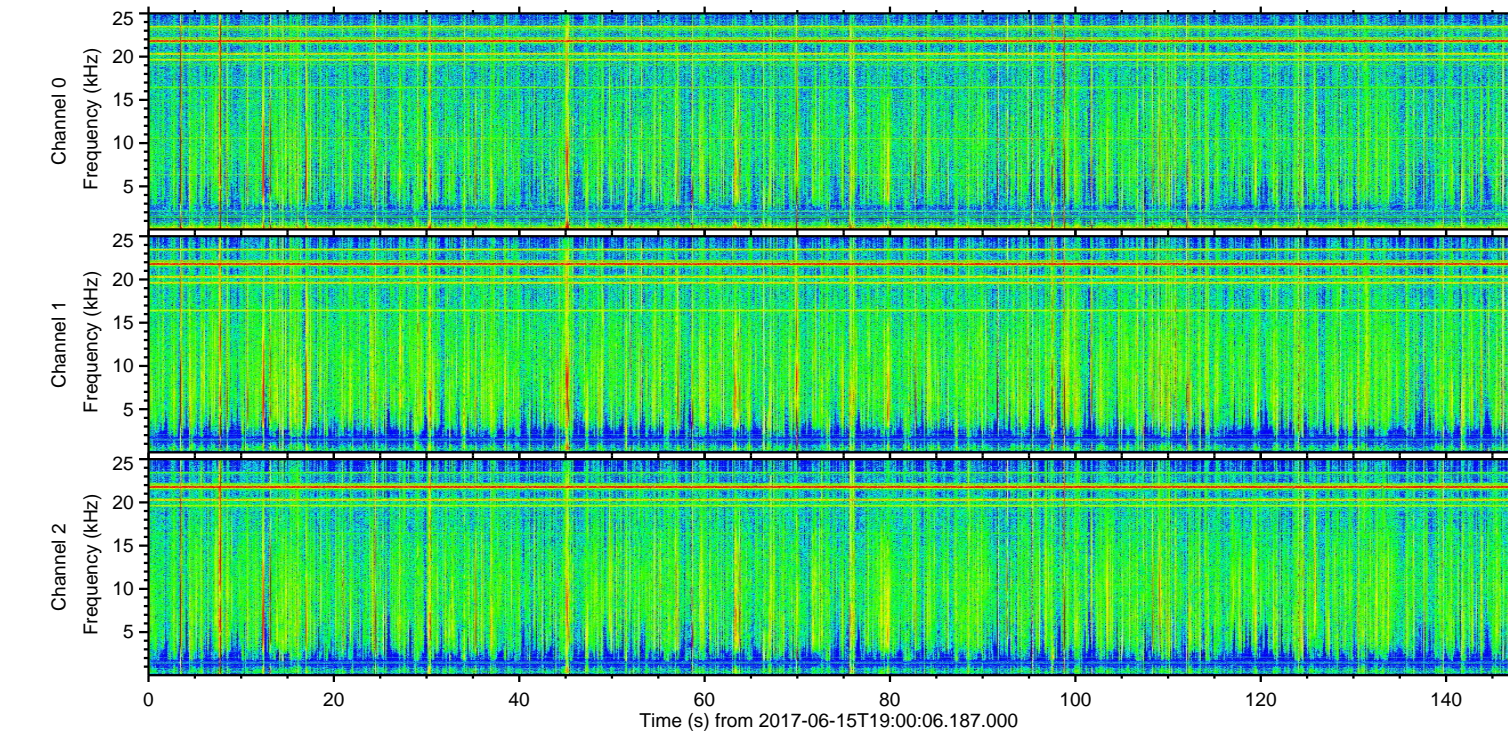
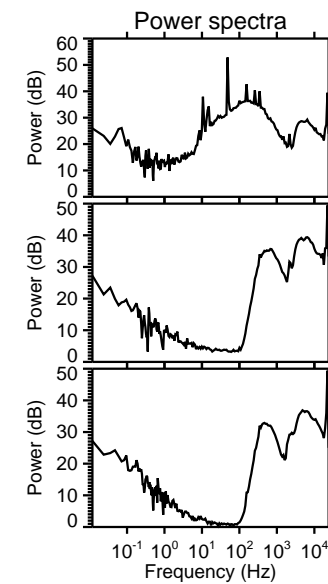
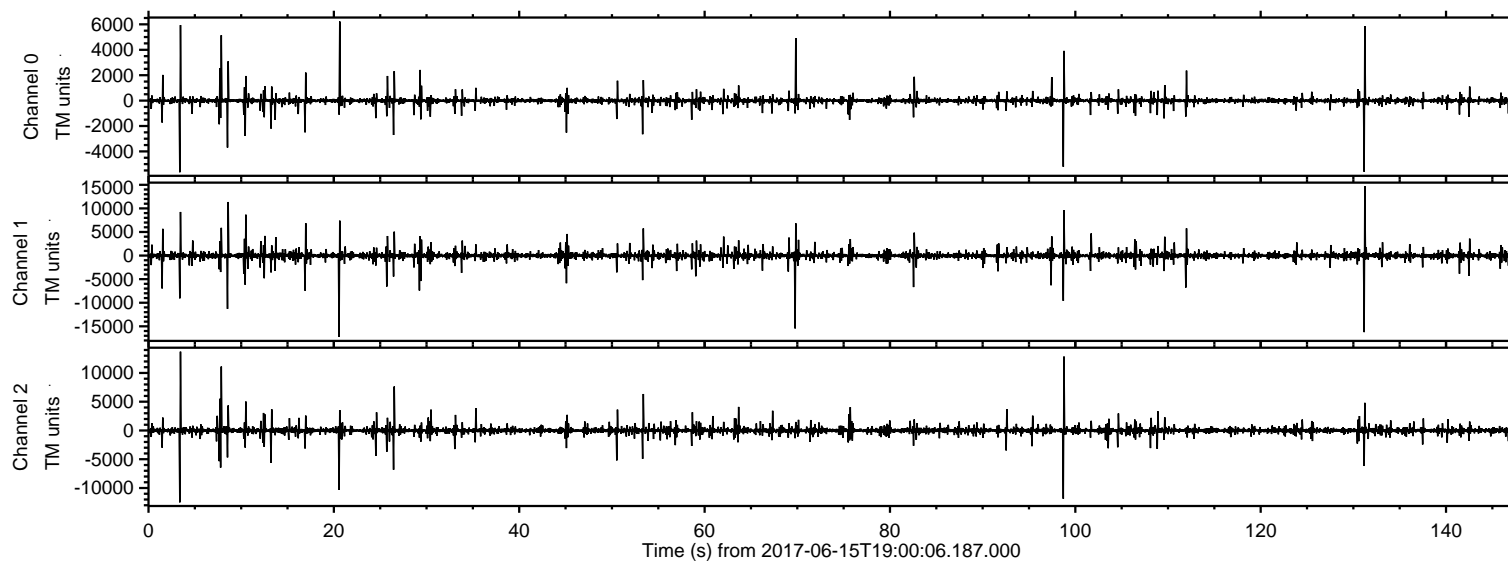
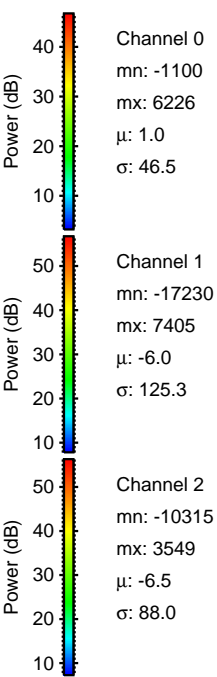
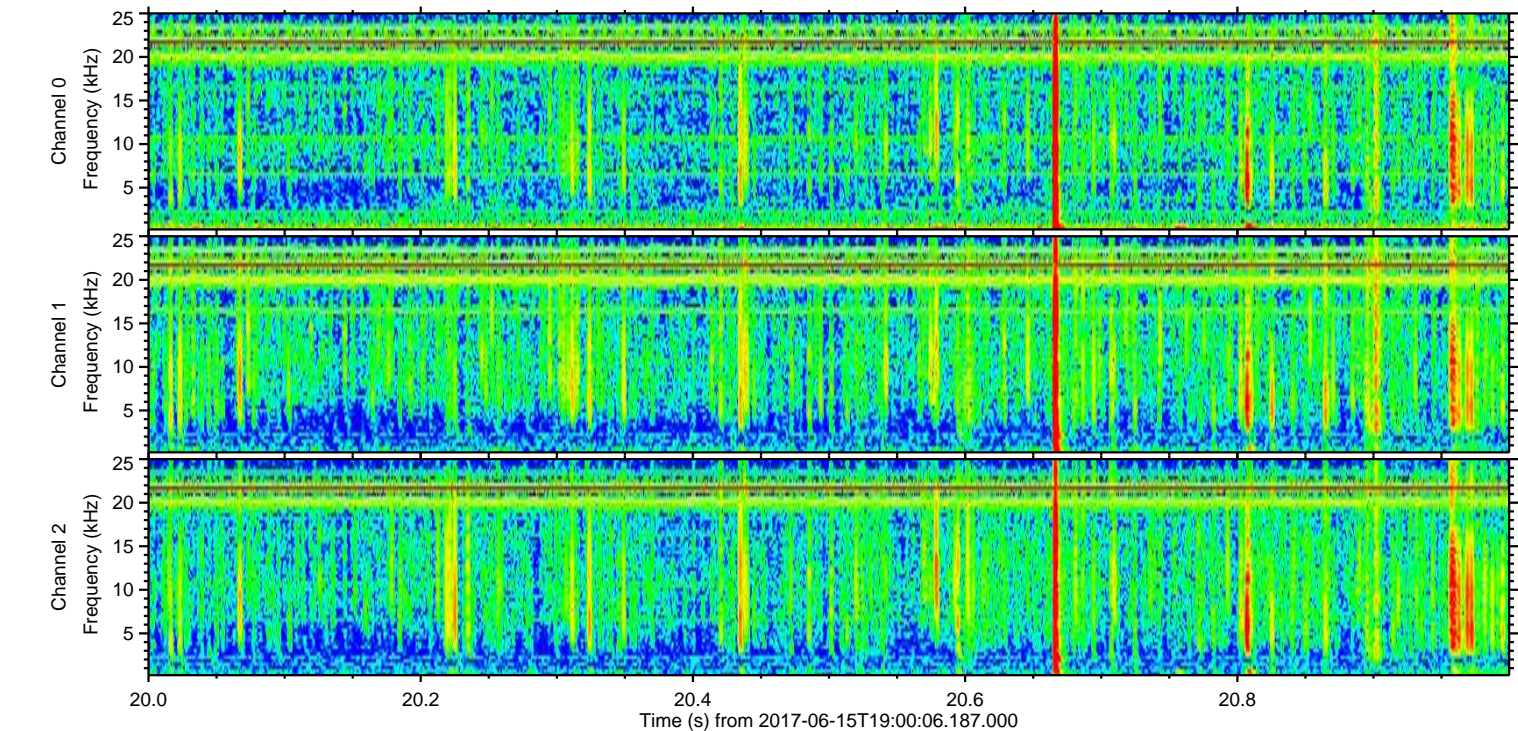
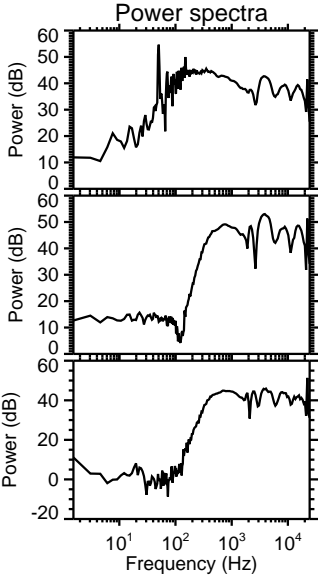
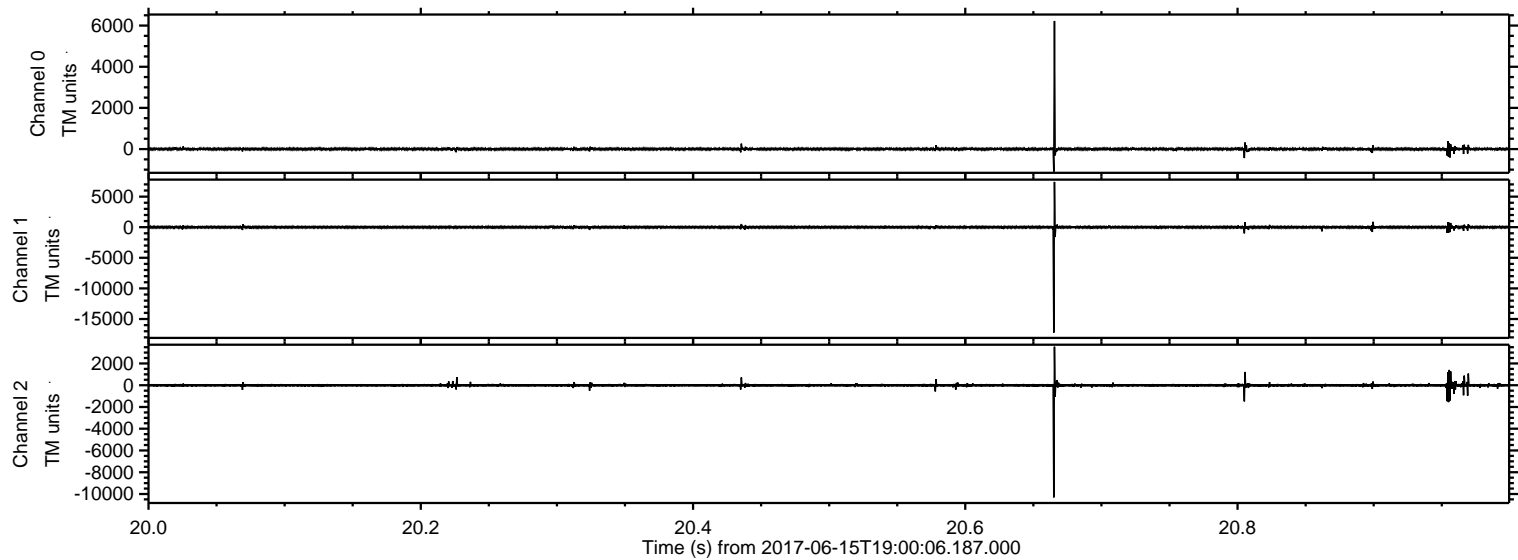


ELMAVAN 3D WAVEFORMS (Measured data sampled at 50 kHz) 51000 packets of 144 samples from 2017-06-15T19:00:06.187.000.

Processed Thu Jun 15 21:08:06 2017 by ELM ver.2012-10-06 from 001__elm20170615_190005__dat00.bin

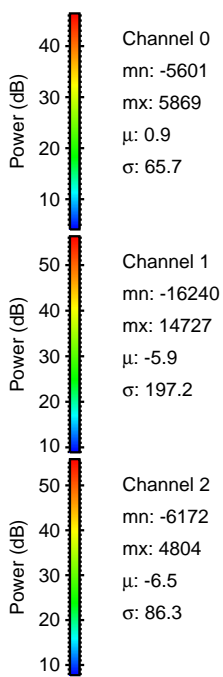
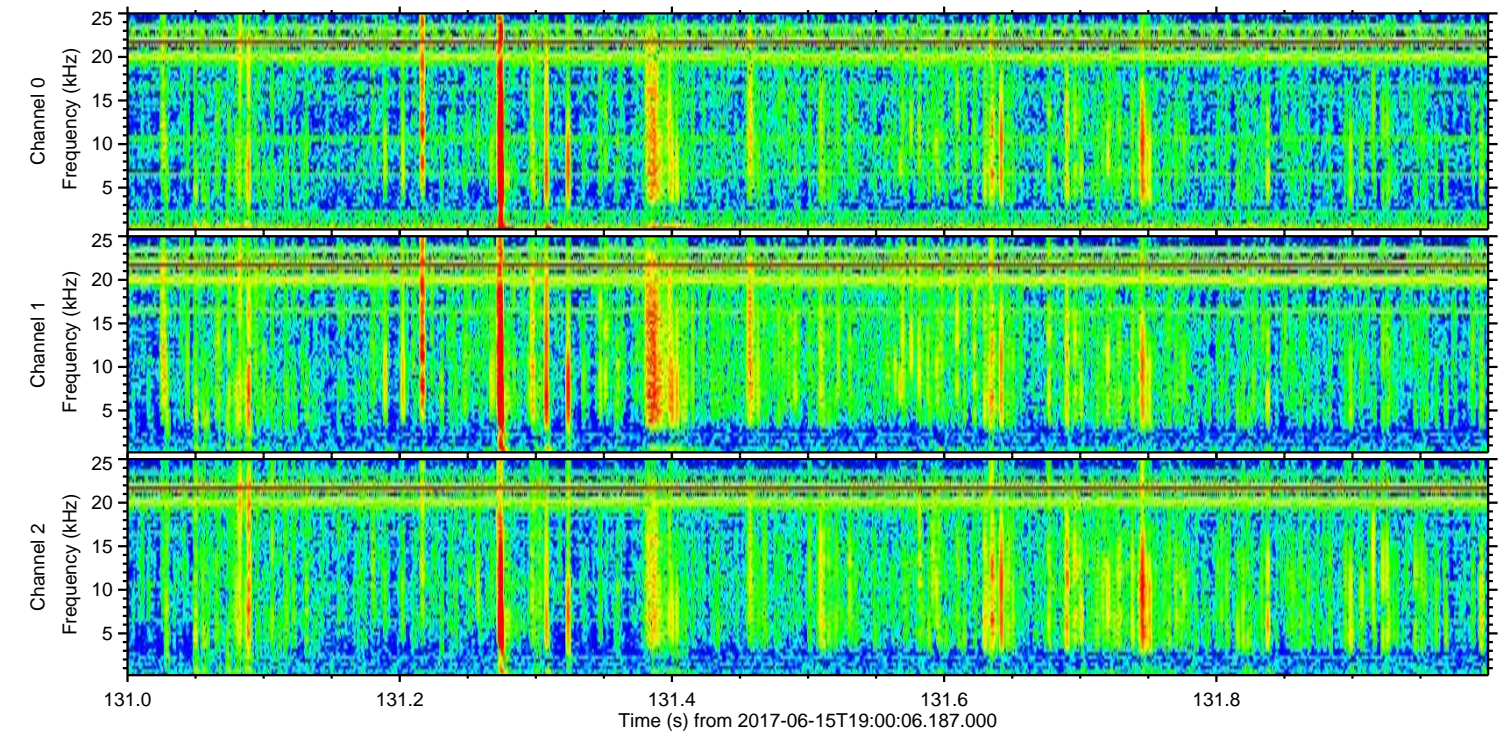
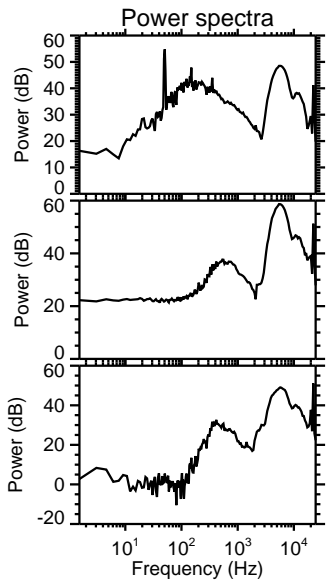
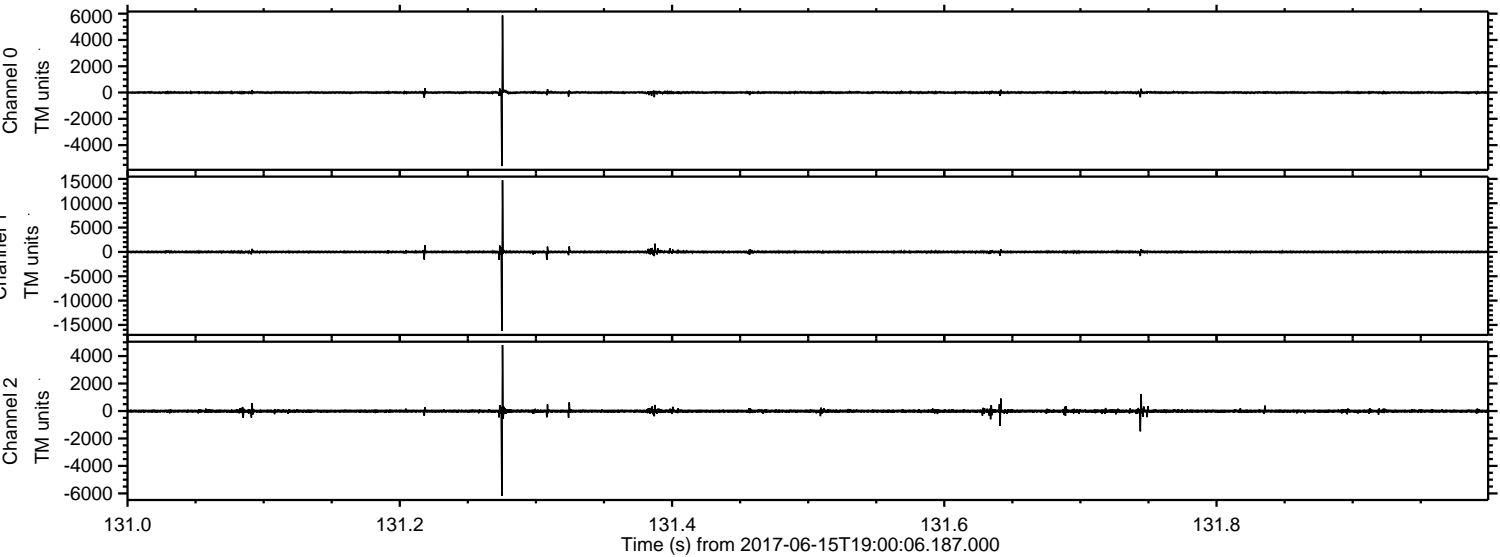


Processed Thu Jun 15 21:08:12 2017 by ELM ver.2012-10-06 from 001__elm20170615_190005__dat00.bin

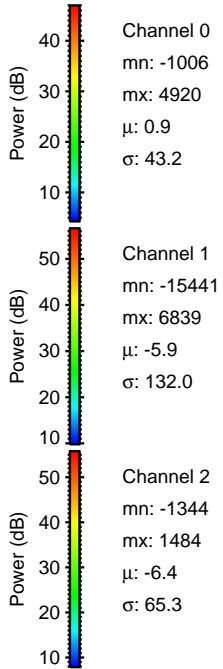
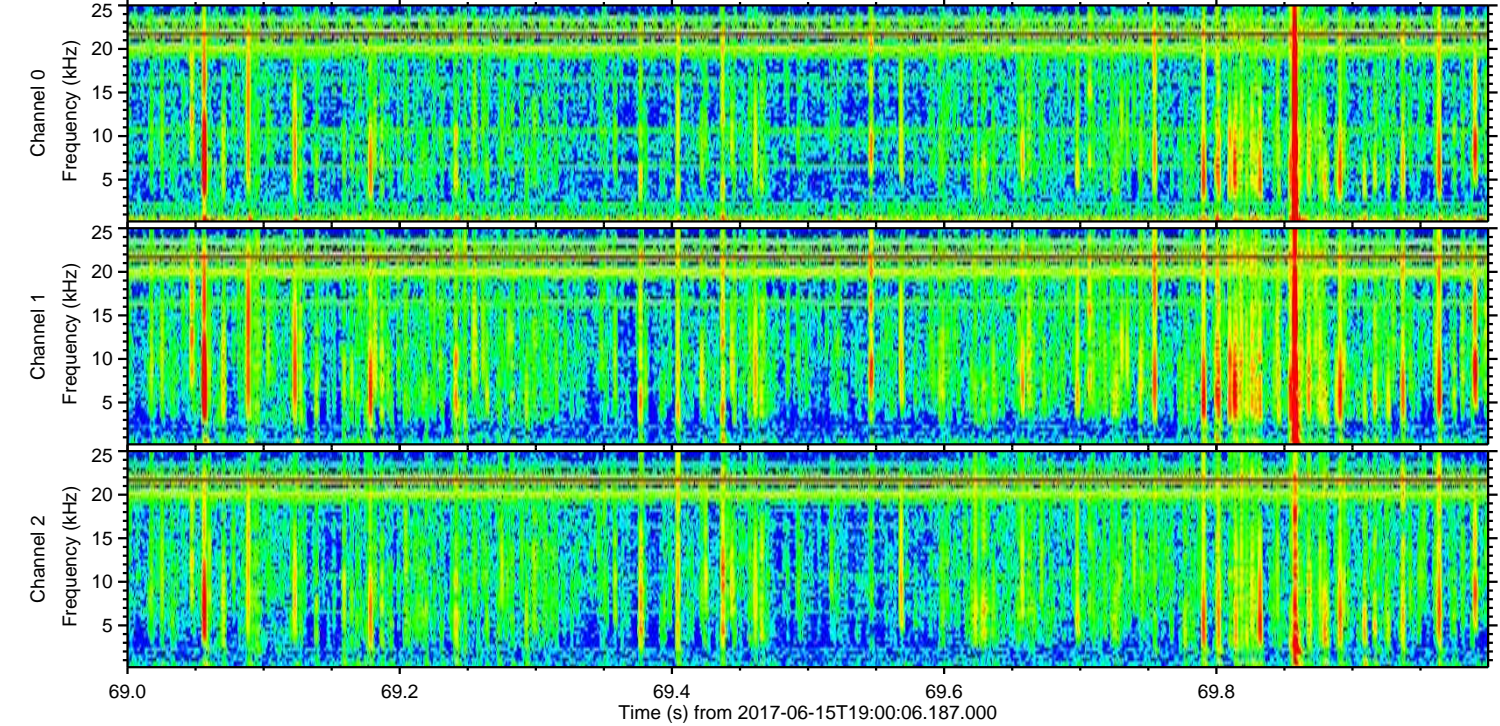
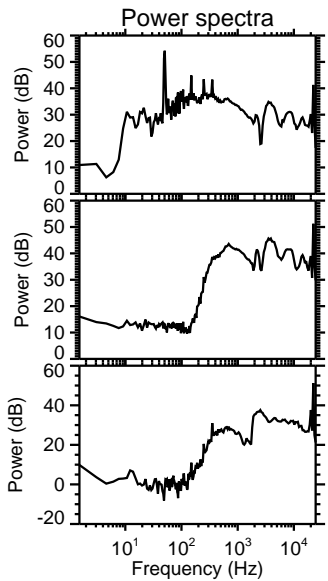
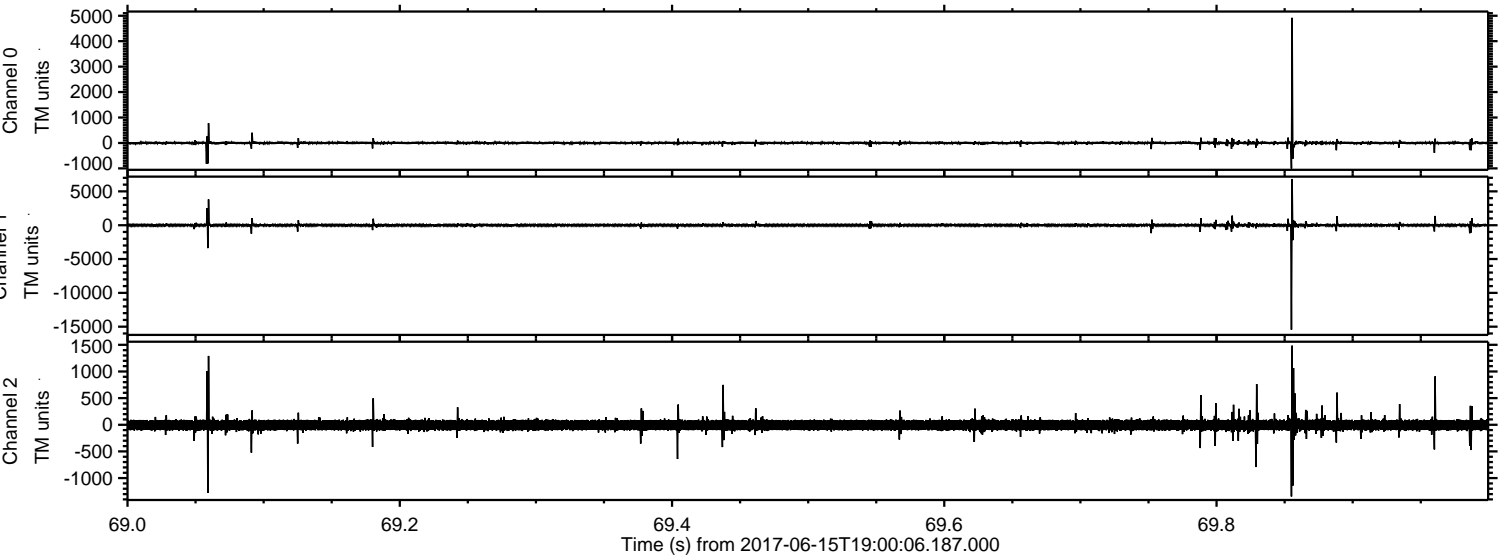


ELMAVAN 3D WAVEFORMS (Measured data sampled at 50 kHz) 51000 packets of 144 samples from 2017-06-15T19:00:06.187.000. Part 132/147

Processed Thu Jun 15 21:08:12 2017 by ELM ver.2012-10-06 from 001__elm20170615_190005__dat00.bin

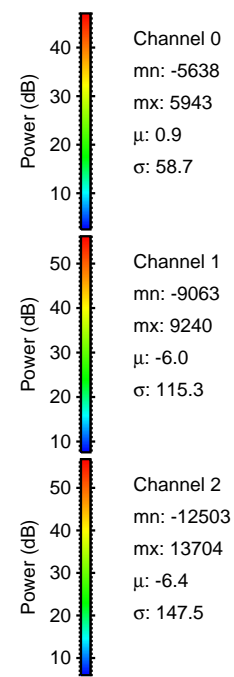
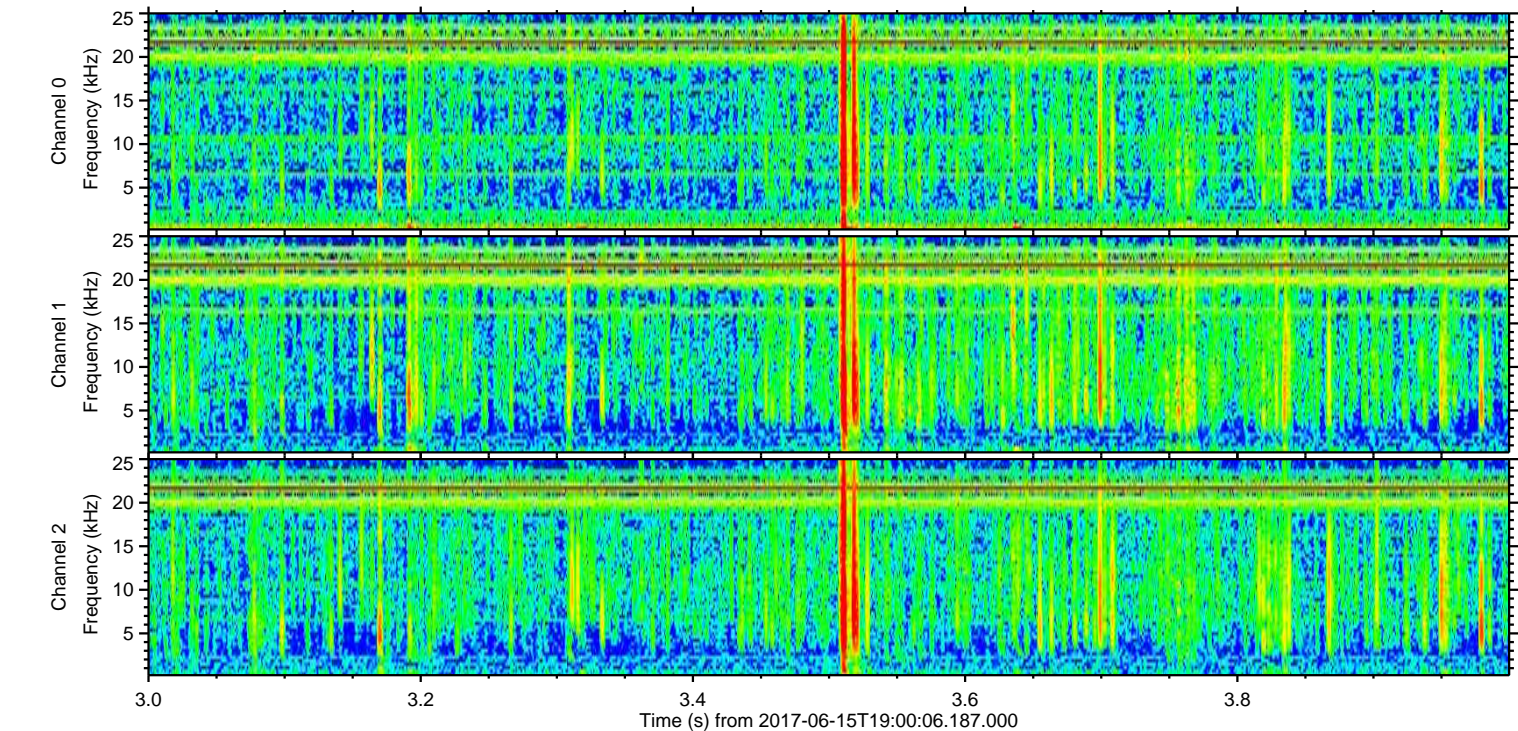
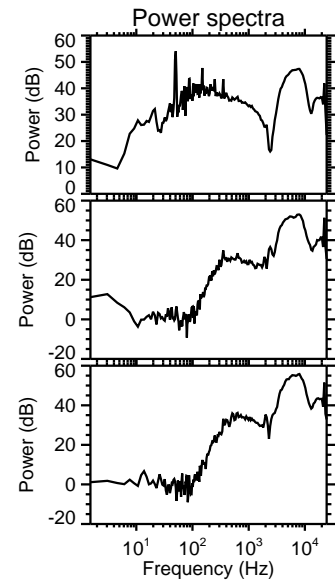
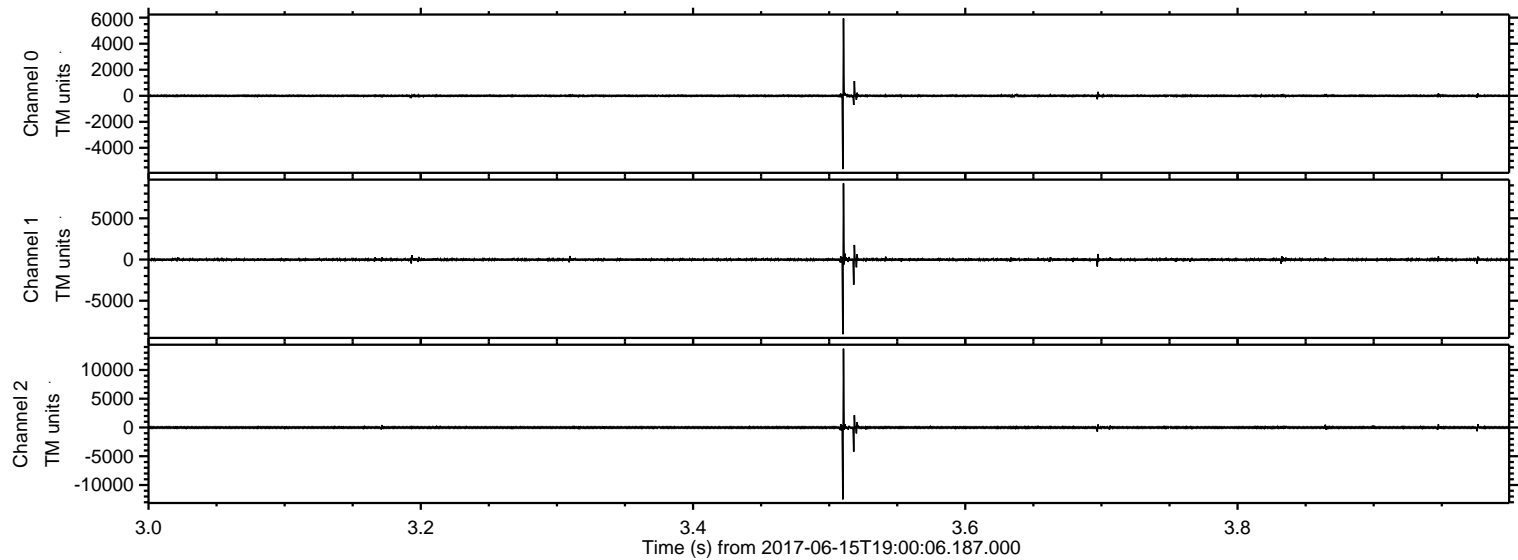


Processed Thu Jun 15 21:08:13 2017 by ELM ver.2012-10-06 from 001__elm20170615_190005__dat00.bin

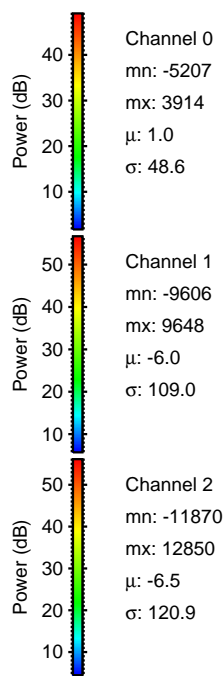
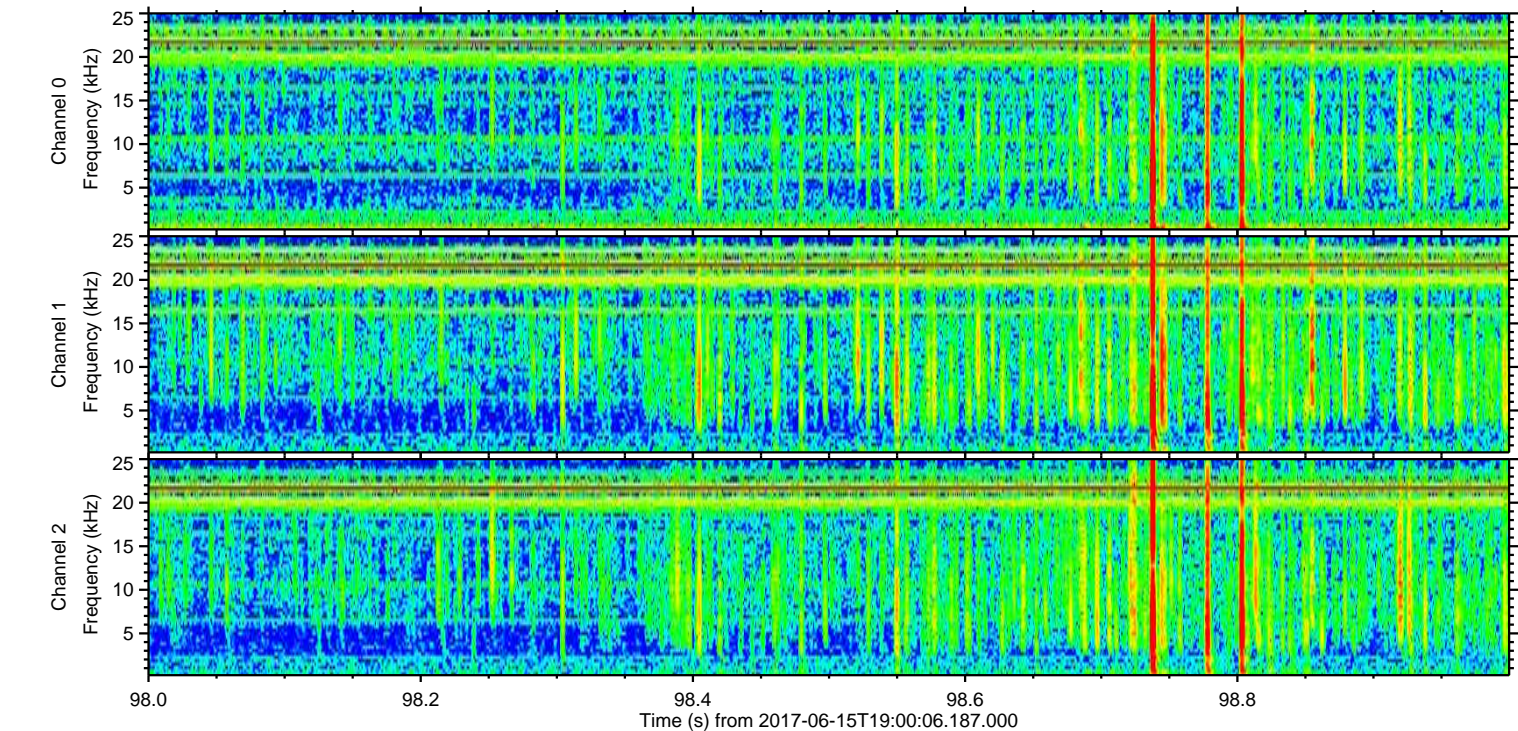
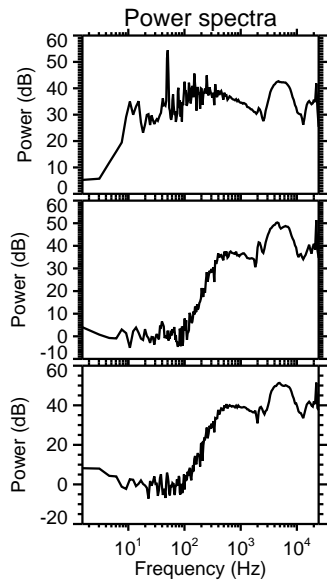
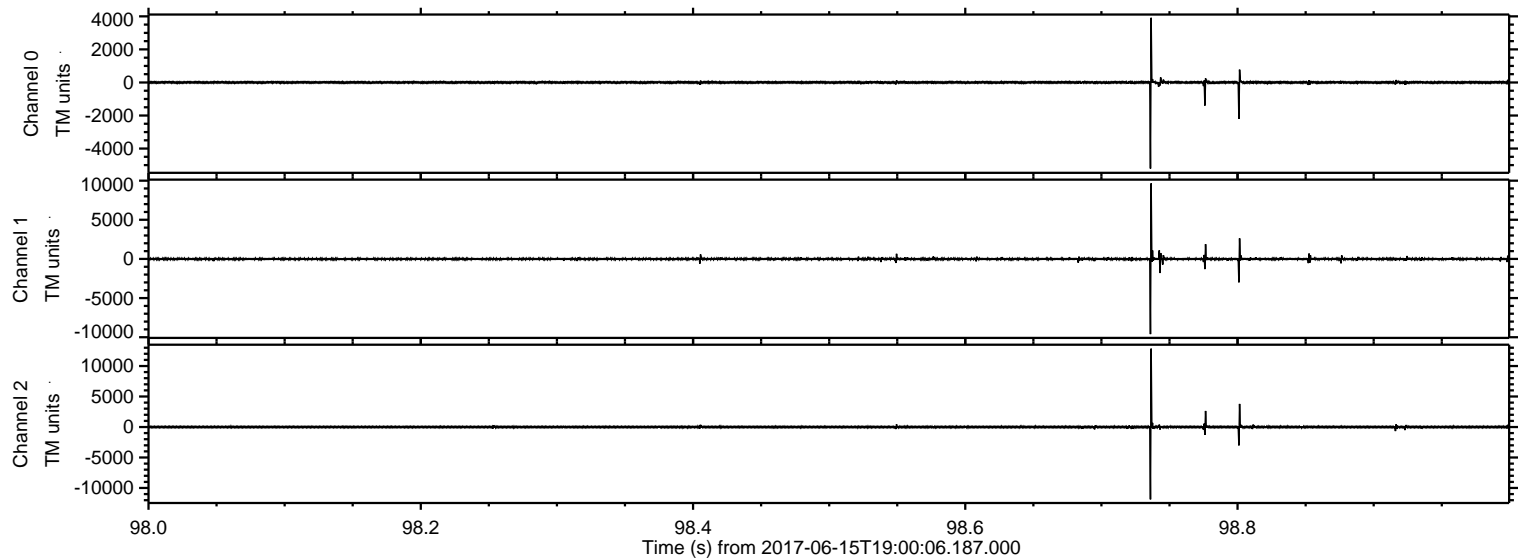


ELMAVAN 3D WAVEFORMS (Measured data sampled at 50 kHz) 51000 packets of 144 samples from 2017-06-15T19:00:06.187.000. Part 4/147

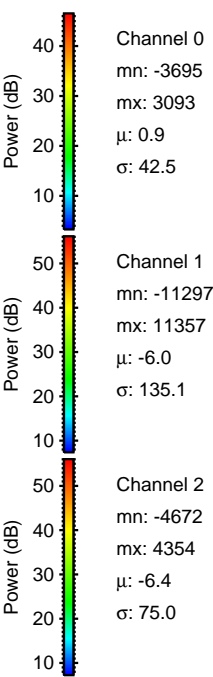
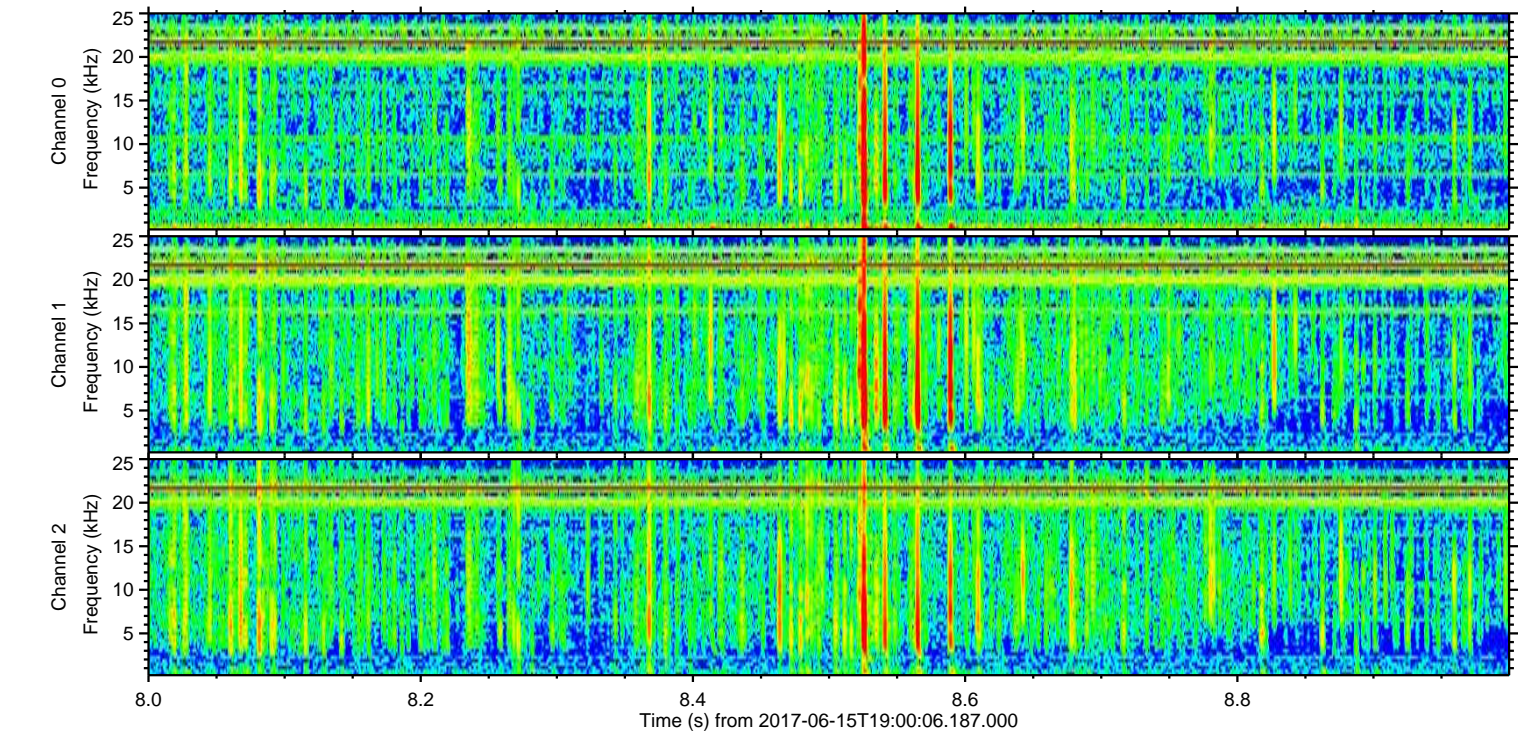
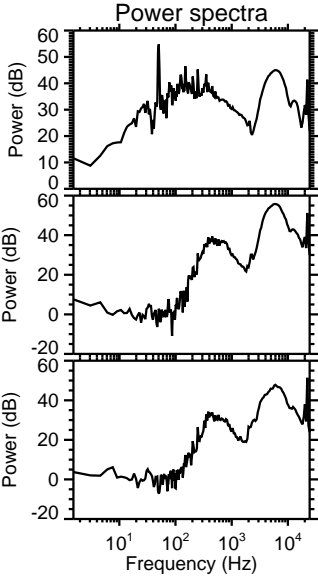
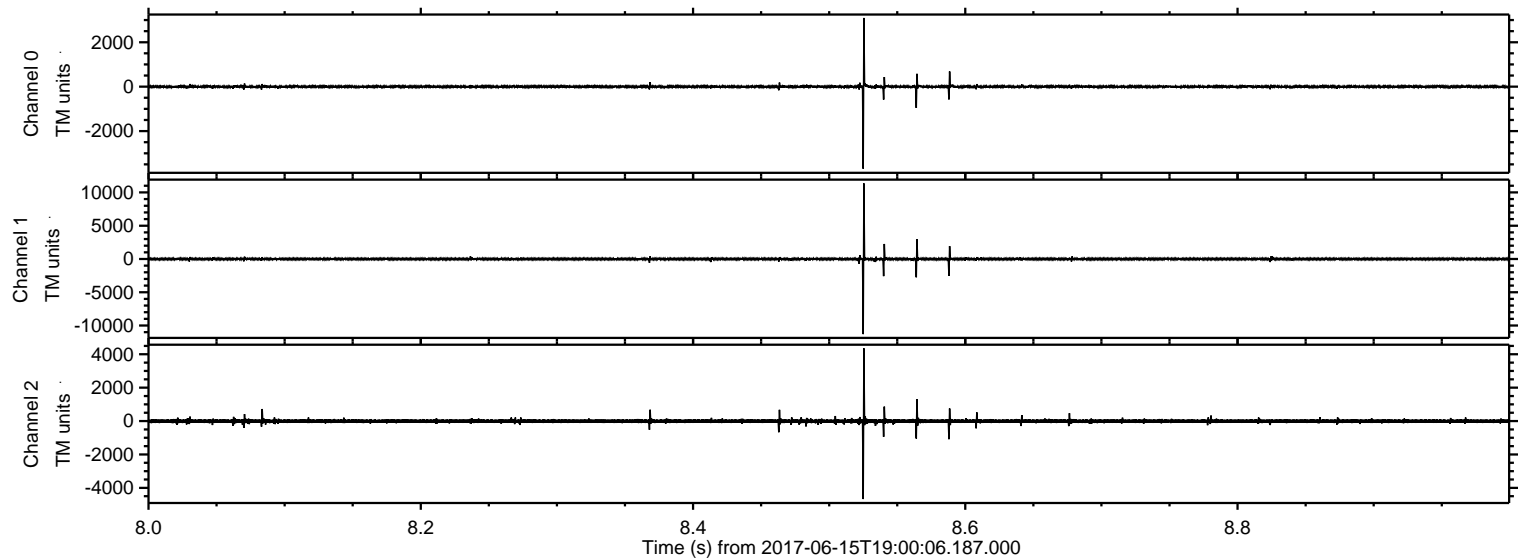
Processed Thu Jun 15 21:08:14 2017 by ELM ver.2012-10-06 from 001__elm20170615_190005__dat00.bin



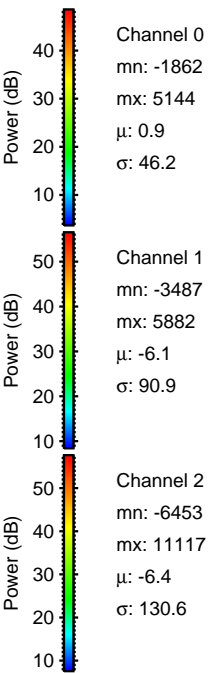
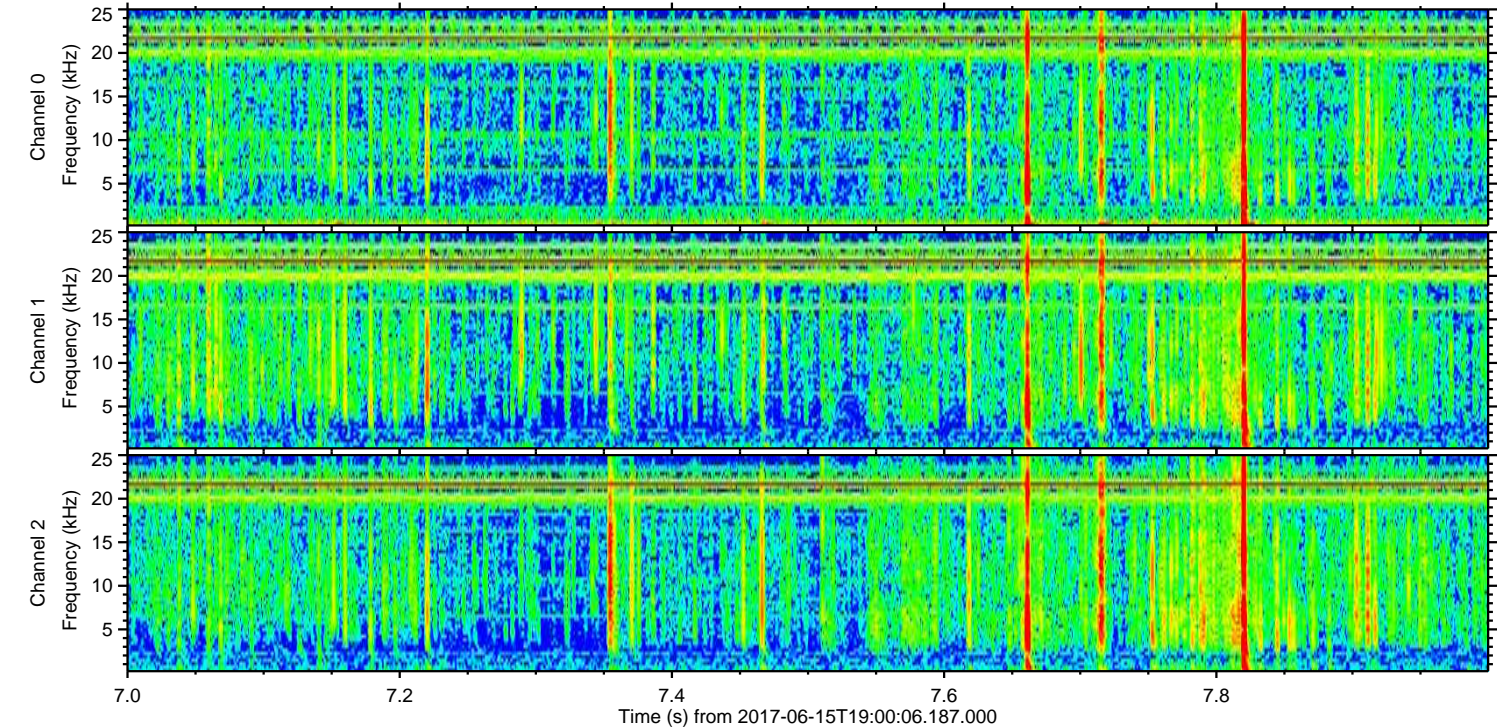
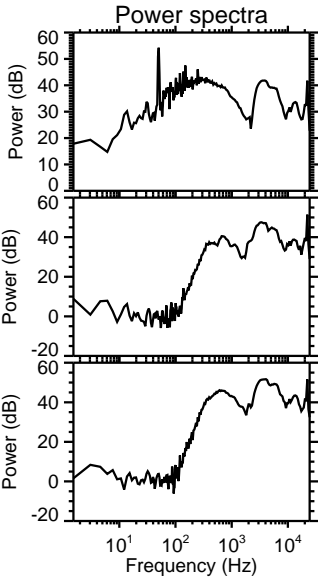
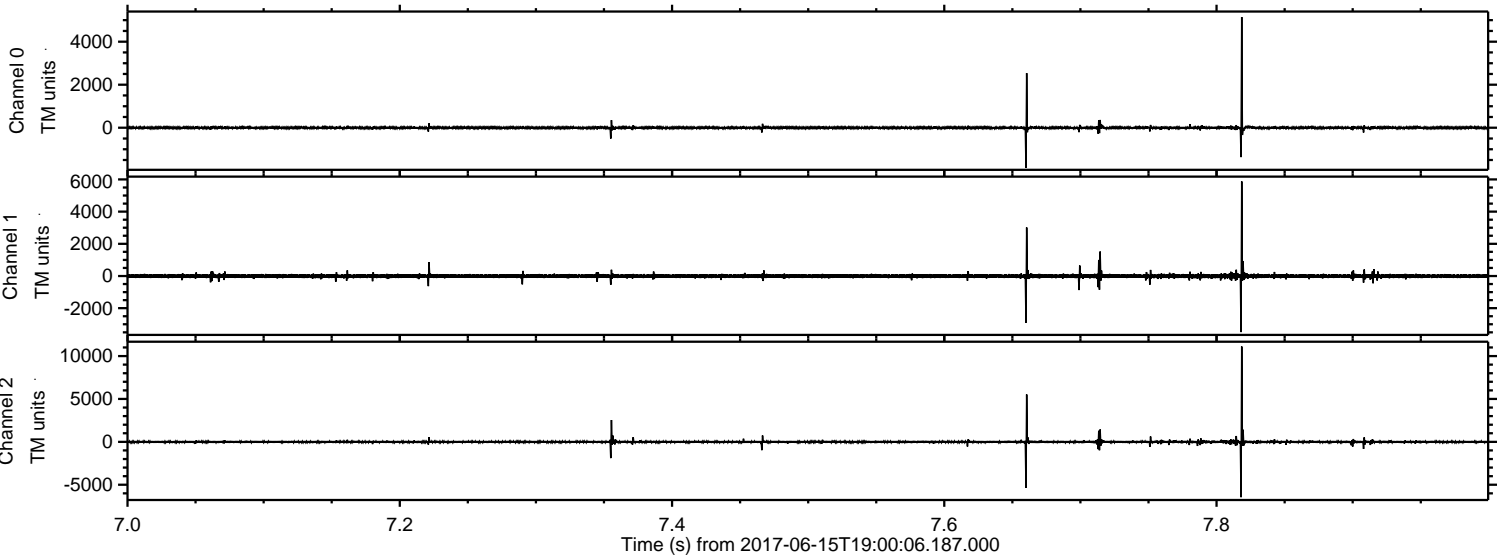
Processed Thu Jun 15 21:08:14 2017 by ELM ver.2012-10-06 from 001__elm20170615_190005__dat00.bin



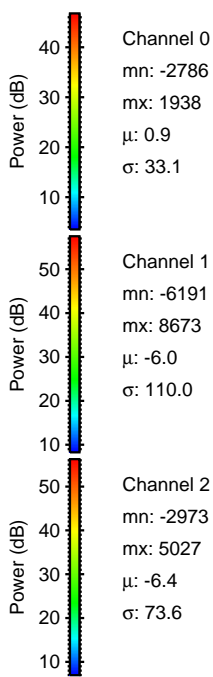
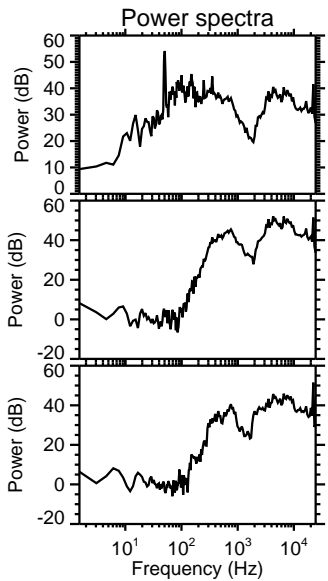
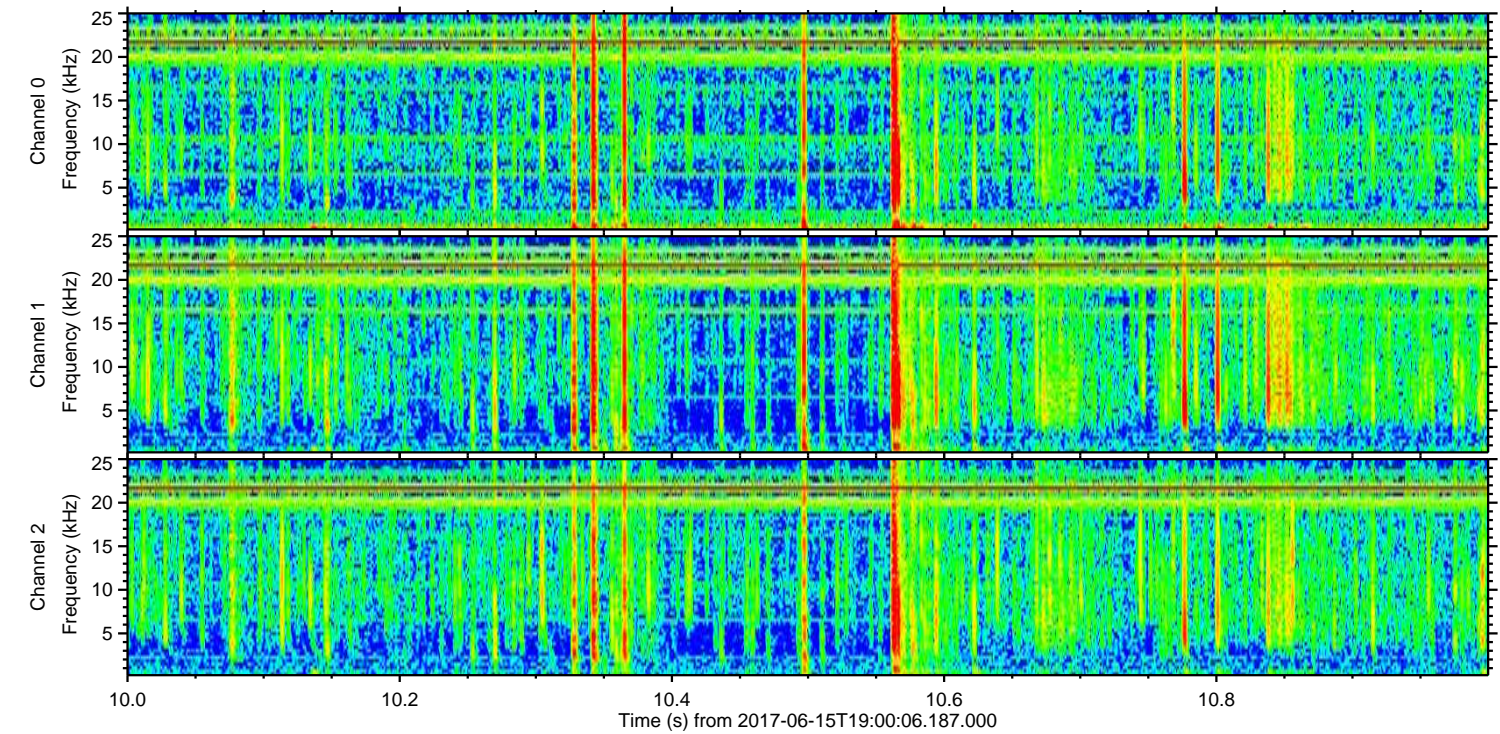
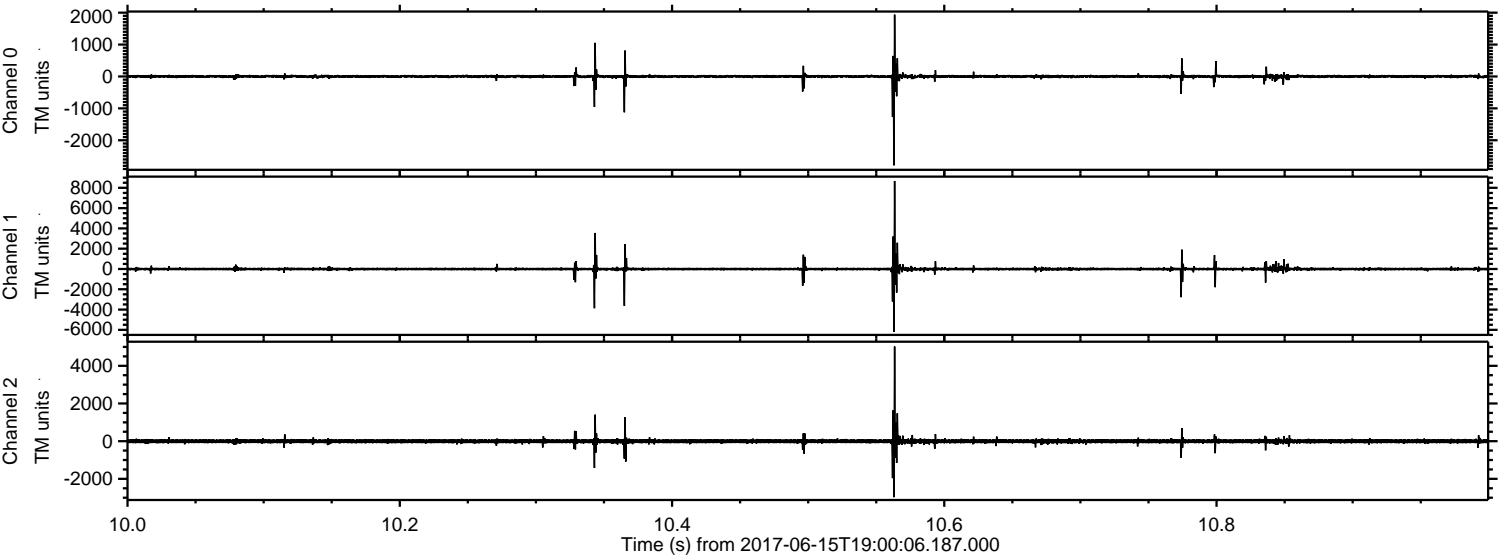
Processed Thu Jun 15 21:08:15 2017 by ELM ver.2012-10-06 from 001__elm20170615_190005__dat00.bin



Processed Thu Jun 15 21:08:15 2017 by ELM ver.2012-10-06 from 001__elm20170615_190005__dat00.bin



Processed Thu Jun 15 21:08:16 2017 by ELM ver.2012-10-06 from 001__elm20170615_190005__dat00.bin



Channel 0

mn: -2786
mx: 1938
 μ : 0.9
 σ : 33.1

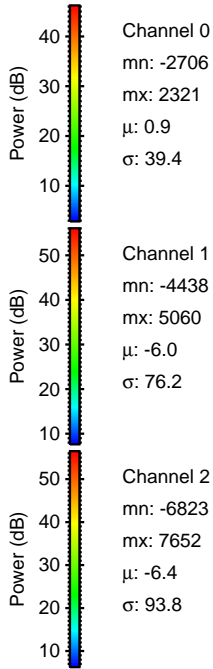
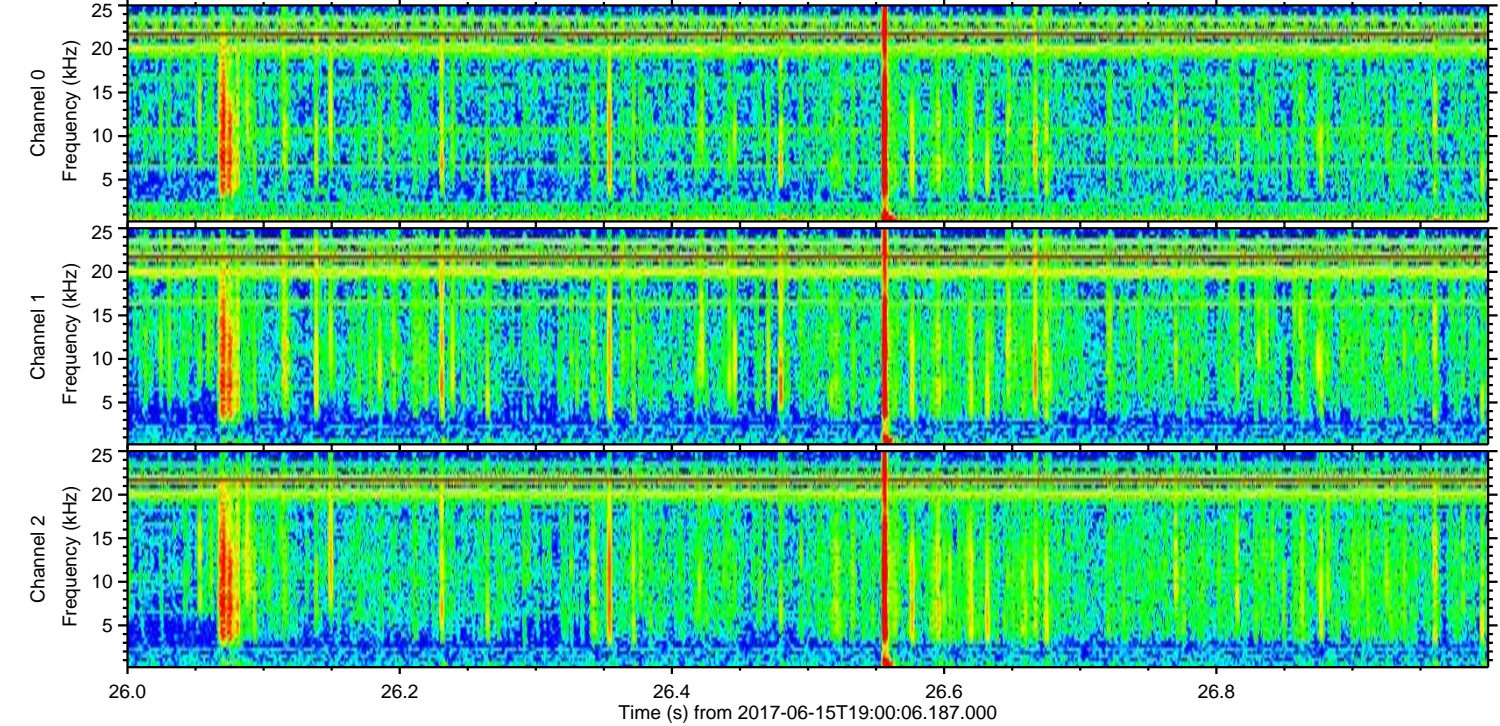
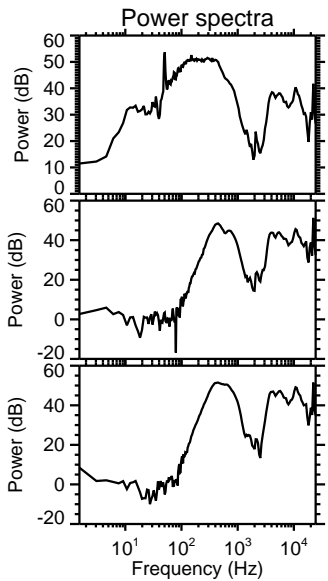
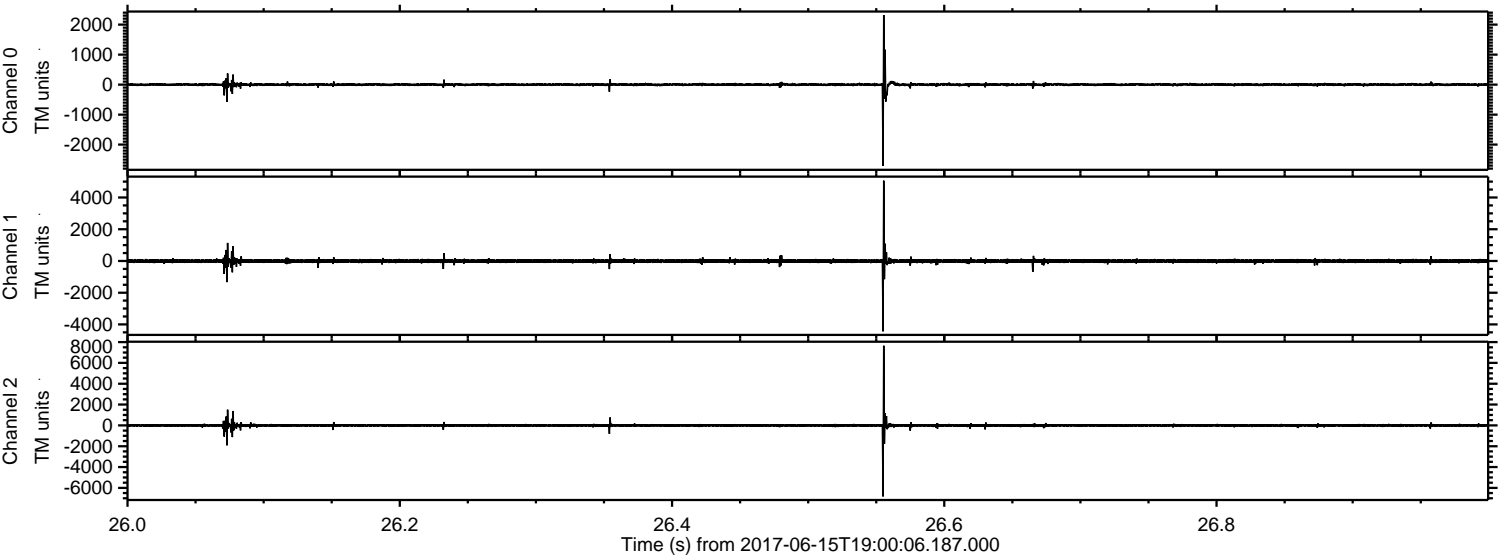
Channel 1

mn: -6191
mx: 8673
 μ : -6.0
 σ : 110.0

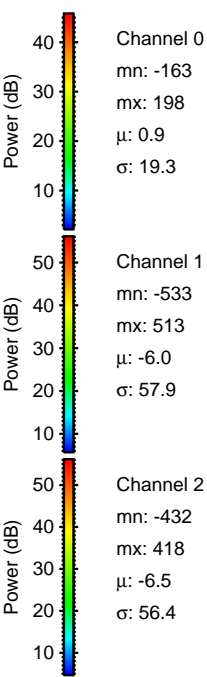
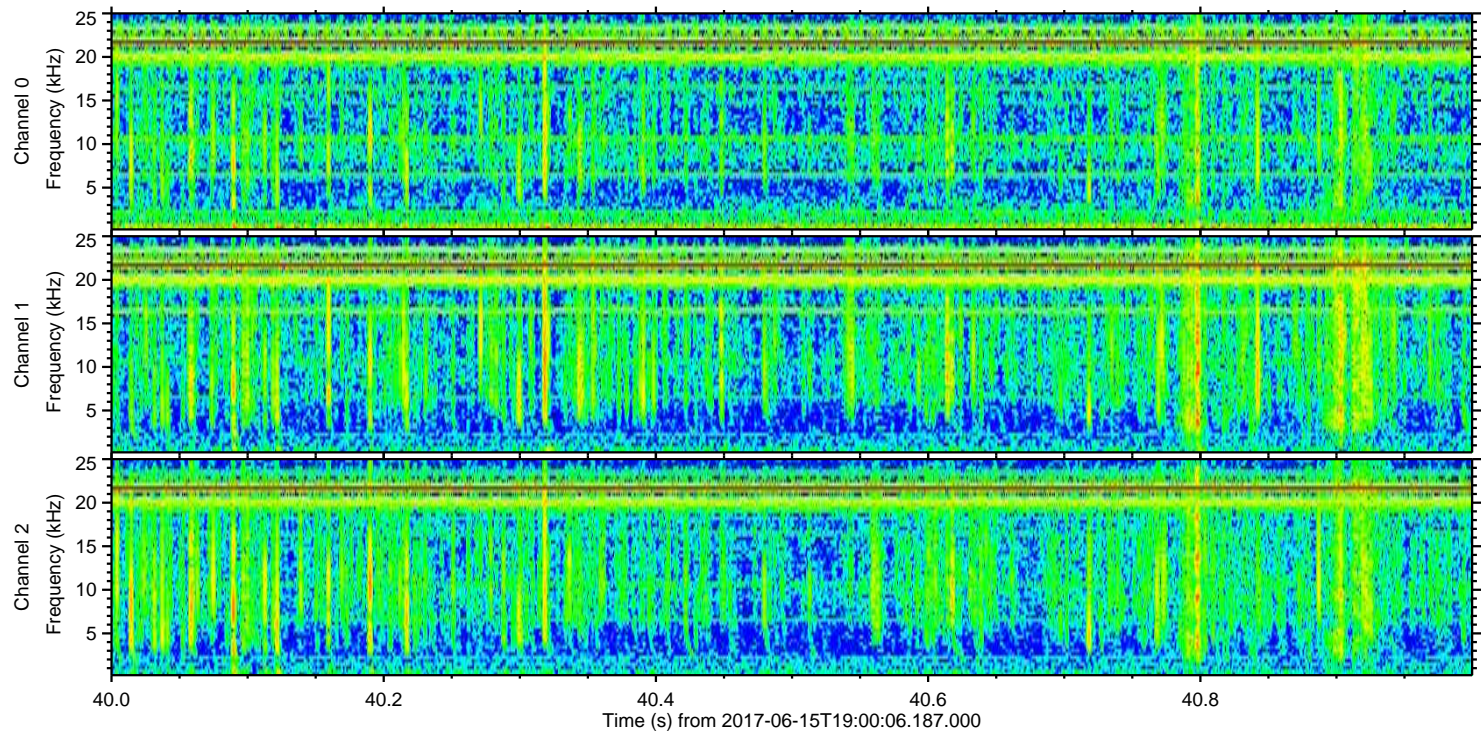
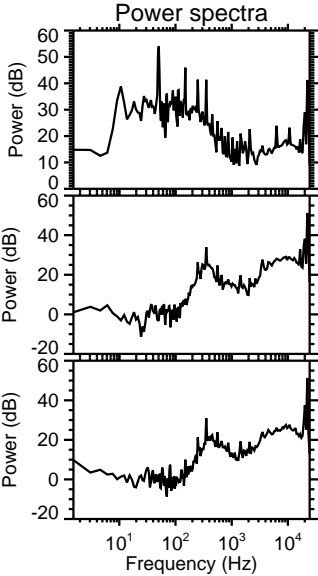
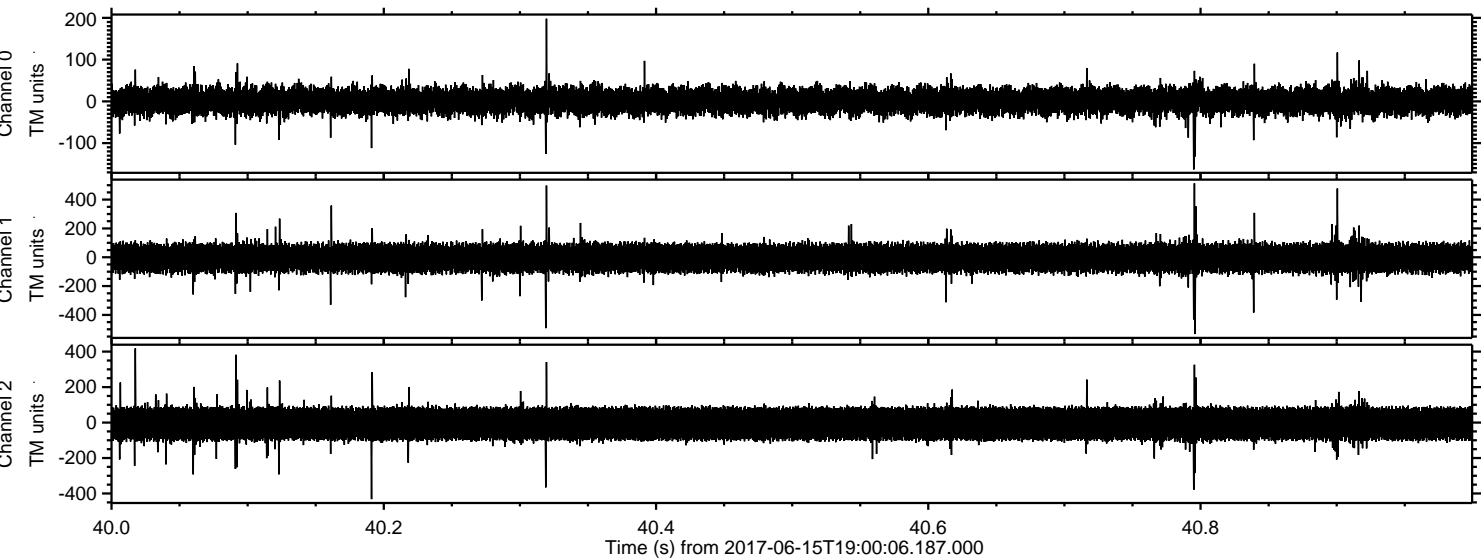
Channel 2

mn: -2973
mx: 5027
 μ : -6.4
 σ : 73.6

Processed Thu Jun 15 21:08:17 2017 by ELM ver.2012-10-06 from 001__elm20170615_190005__dat00.bin



Processed Thu Jun 15 21:08:17 2017 by ELM ver.2012-10-06 from 001__elm20170615_190005__dat00.bin



Channel 0
mn: -163
mx: 198
 μ : 0.9
 σ : 19.3

Channel 1
mn: -533
mx: 513
 μ : -6.0
 σ : 57.9

Channel 2
mn: -432
mx: 418
 μ : -6.5
 σ : 56.4